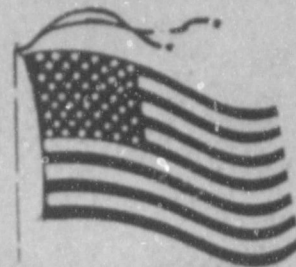


WEATHER

February 19	53	23	.00
February 20	64	29	.00
February 21	48	25	.14
February 22	51	23	.00

Muleshoe Journal

The Community Of Opportunity-Where Water Makes The Difference



Vol. 67, No. 8

10 PAGES TODAY

Published Every Thursday At Muleshoe, Bailey County, Texas 79347

20¢ THURSDAY, FEBRUARY 23, 1989

Meals On Wheels In Funding Trouble



On Tuesday, March 7, 11 a.m.-2 p.m., Coffee Memorial Blood Center of Amarillo will conduct a Blood Drive at the First United Methodist Church of Lazbuddie.

Coffee Memorial Blood Center said over 75 units of blood are needed each day to meet the routine blood needs of 18 hospitals in the Panhandle.

They point out that each donation can help as many as 3-4 persons; an all volunteer program assures that blood will be available and it will be safe blood; and the donor receives a mini-physical which includes blood pressure, pulse, temperature, hematocrit (iron level); it helps to control health care costs and becomes a vital part of the community's lifeblood.

Muleshoe Rebekah Lodge has announced it will serve a community luncheon on Thursday, February 23, 11 a.m. 'til? Tickets are \$3.50 and will be for all you can eat.

On the menu are stew, cornbread and cobbler, with drink.

Rev. Charles Fisk of the Progress Baptist Church, said the church will be presenting a Billy Graham film, "Cry From the Mountain," at 6 p.m. at the church on Sunday, February 26.

"Cry From the Mountain," is one of a series of Billy Graham films, which also include "The Hiding Place" and "Joni and the Prodigal," all released by World-Wide Pictures.

Rev. Fisk said the entire area is issued an invitation to attend the showing of the film at no charge on February 26.

Cont. Page 6, Col. 5

Bailey County Electric

Holds Meeting At Morton

A total of 217 persons attended the annual Bailey County Electric Cooperative meeting last Saturday, February 18, at the Morton Activities Building.

The nominating committee, Paul G. Row, J. E. Clappitt, Gary Abbe, Billy Gore, J. L. Dale and Bennie Claunch nominated the following persons for election to three districts: Lewis Wayne Shafer and Frankie Fine, District Four; Johnny Furgeson and Nelson Carlisle, District Five and Raymond Lewis and Tracey Griffiths, District Seven.

Commemorative

Buckles Will

Be Given By CofC

Members and non-members are issued a cordial invitation to attend the annual Chamber of Commerce and Agriculture Banquet.

It is scheduled for 7 p.m. on Saturday, March 4, 1989 in the Bailey County Coliseum.

This year, members of the CofC have a special 'bonus' waiting if they purchase banquet tickets in advance.

With the purchase of two advance banquet tickets at \$10 each, a member will be entitled to receive a genuine pewter Muleshoe Commemorative Belt Buckle.

Smith explained that this buckle bonus is limited to advance sales only, and none will be given to persons who purchase tickets at the door. There will be only one buckle for each member.

Scheduled as speaker is Dr. Lawrence Ward, superintendent of the Muleshoe Independent School District.



CROWNING OF ROYALTY CONCLUDES SWEETHEART FESTIVAL--Annually, the crowning of the Sweetheart King and Queen and Junior High School King and Queen concludes the Sweetheart Festival. Last Saturday night was no different. This year's royalty include from left, MHS Queen Michele Cox and MHS King, Jeff Hicks, both representing the Speech Department; and WJHS Queen Sonia Cisneros and WJHS King, Matt Boehler, representing the WJHS Band. (Journal Photo)

MAIF Chairman, Member Present Update To Rotarians

Duane Castleberry, chairman, and Bob Stovall, member, of the Muleshoe Area Industrial Foundation (MAIF) were co-speakers for the Muleshoe Rotary Club Tuesday at noon.

First, Castleberry explained the purpose of MAIF as "we exist solely to promote the growth of the Muleshoe area through economic development and new industry," he commented.

He spoke of schools and seminars the seven board members have been attending in an attempt to learn as much as possible about attracting new industry, as well as to helping existing local industry to grow and expand.

The group has been setting objectives, goals and working out strategies, such as how to go about asking for tax abatement; mortgage loans; and the need to know the company they are working to recruit.

He explained, in answer to a question, that by tax abatement, the MAIF would not be giving up anything the community already has, but it will be a postponement, for say, seven years, until a company has some time to become established.

Castleberry said the MAIF Board of Directors is currently working on a policy on tax abatement -- a policy that will be to make sure everyone is treated fairly.

He spoke of support of the community, such as all financial institutions, the utility companies, the school, hospital, mayor and city manager.

We need more than \$100 a year for your membership, he added, we need your support and your input.

Stovall said, "We are trying to show the membership we are a professional group, one Muleshoe can be proud of."

He said according to a TDC member who toured Muleshoe and its facilities last week that pride in the community is shown in the school system and the city parks. "They reflect the pride Muleshoe people have in this community, and are very positive," said the TDC official.

At this time, MAIF is beginning negotiations with a couple of industries. They are only suspects at this time, and are not as yet, full-fledged 'prospects,' warned Stovall.

Prior to the program, President George Nieman told the

Cont. Page 6, Col 3

Finances May Force Program 'Shut Down'

By: Glen Williams

The Meals on Wheels program is in serious financial difficulty, and unless the situation can be corrected, the future of the

MHS Group Talk About French Visit

The MHS students who are going on the "Essence of Europe" trip in June met Sunday, February 19, in the home of Shea Wilbanks. This month's study was about the country of France.

A review of last month's meeting was given by Mrs. Johanna Wrinkle. She, along with the group, welcomed James Foster as a new traveler.

She then described the sites to be seen traveling from London, England to Paris, France. The travelers were reminded of the optional tour choices they would have to make once they were in Paris. Last month, the group filled in forms for their French visas. The visas have been received and were given to the teenagers. The final payment for the tour must be postmarked by February 28.

In the absence of Kelly Conklin, Mrs. Wrinkle told the group why Eiffel Tower was erected and how it now has become one of the most famous sites in France.

Doug Chitwood reported on Napoleon and the Arc de Triomphe. Next, Monica Swint showed pictures of and emphasized the importance of Versailles. The Louvre Museum and its' treasure of art works was the topic of Burnley Riley.

Shea Wilbanks reported on how the French Revolution

Cont. Page 6, Col. 1

program will be at risk. Therefore, we hope that more community support can be had.

We are presently serving twenty-five persons, twelve anglos, twelve hispanics and one black. The number served has been as high as twenty-nine, and several others have asked for service. But, at the present time, available funds will not support an increase. Thus, the number needing service is going up, but community support has declined.

The meals are prepared by the Muleshoe Nursing Home at a cost of \$2.75 per meal. Trays, cups and other supplies cost about \$.25 per meal, making a total of approximately \$3. And, the meals are delivered by volunteers.

Total projected cost of the program for the next fiscal year is about \$23,000. Funding is received from three sources: (1) The Department of Aging, through the South Plains Association of Governments; (2) Program income -- money contributed by the subscribers; and (3) donations by individuals and organizations.

With the funds that are now available, the program can probably continue for about four more months. But, at that point, if more money is not forthcoming, we don't know what will happen.

So, let me say, it is a good program. It is well managed, many volunteers have labored faithfully to support it, and it serves a very worthwhile purpose -- providing one hot meal a day, five days a week, for elderly persons who cannot prepare adequate meals for themselves. The meals are served without regard to race, creed, color, sex, or financial status.

The meals are delivered without charge, but subscribers may contribute any amount toward

Cont. Page 6, Col.3

Stanley Wilson: Known As 'The Voice Of Sports'

(Editor's Note: The following story was written exclusively for The Journal by a student from the Texas Tech University School of Mass Communication, Journalism, and was made possible through a grant from The Reader's Digest Foundation.)

By: Linda Rabb

While many Muleshoe residents recognize Stanley Wilson's voice, they're not sure exactly from where they know it.

His voice should sound familiar; Stanley Wilson announces the radio play-by-plays for Muleshoe High School's football and basketball games.

Wilson started his announcing by just helping a couple of friends at the radio station do the play-by-plays; that was 20 years ago.

Those who have worked side-by-side with Wilson through the years have always commented on his enthusiasm and his knowledge of what is going on. He is commonly referred to as "Mr. Sports."

Wilson said he remembers his first football game well. During a play, he announced the wrong name of the ball carrier. The player then passed the ball to the guy who Wilson had just announced.

Wilson quickly covered himself by just reversing the two players' names, knowing the listeners would never realize the mistake. However -- Wilson forgot one detail -- that many people carry their radios to the game.

Throughout the years, Wilson has seen the community support

for Muleshoe school sports swing back and forth -- like a pendulum.

Wilson's family settled in Muleshoe in 1954, and he later graduated from Muleshoe High School. During high school, he played basketball and entered rodeos. However, during his

sophomore year, he was disqualified from all school sports because school officials found out he had won money in a Lamesa rodeo.

School officials considered Wilson a 'pro' for winning money, therefore making him

Cont. Page 6, Col. 3



STANLEY WILSON THE VOICE OF SPORTS

Management Systems Studied By Judges

Management systems and other ways to improve county government got a lot of attention during the 31st Annual Conference of County Judges and Commissioners here last week.

The three-day conference featured about 50 speakers or panel members who assisted in 33 presentations aimed at strengthening county government.

Some pitfalls to avoid when planning county budgets were addressed by Tom Nilsen of Austin, manager of the Local Government Assistance Program in the Comptroller's Department.

"There's no substitute for biting the bullet," Nilsen said. He said many groups try to

save on costs by cutting out all maintenance funds. "This may work for a year or so, but if left too long the maintenance fees could easily cost 5-to-10 times the amount of the original maintenance budget," he said.

Nilsen said another strategy that some agencies use is that of "drawing down a specific fund balance," but a better plan is to keep a contingency fund.

"Don't rely on bookkeeping tricks, such as shifting a payday, to balance your budget. A better approach is to make a good, sound budget based on all information available," he said.

Nilsen said county officials should review older programs and spending plans for savings,

rather than new programs. He said Commissioners Courts should test to determine if budget items are still relevant by asking:

- Why are we doing this particular project?
- Is there a more economical way to accomplish this goal?
- Is there still a need for this service or practice?
- Is this practice still required by law or regulation?
- Are other groups now providing the service, and can it be bought from them for less than it would cost us?

Another speaker, Cameron County Auditor Rayburn McNelly of Brownsville, said he did not know of any county government group in Texas that has been hurt financially by a recent bank failure.

McNelly said that every precaution must be taken by counties to avoid this difficulty and protect their investments.

Attorney Lowell Denton of San Antonio said county leaders can protect themselves and avoid lawsuits if they study federal and state labor law principles applicable to counties.

He recommended adopting practices and making decisions to avoid liability and considering practical suggestions that apply to the various situations.

Coryell County Judge Douglas H. Smith of Gatesville, president of the County Judges and Commissioners' Association of Texas, told the county officials to check on the status of their child welfare boards.

"If your county does not have a child welfare board, you need one," Smith said.

Dr. Milo J. Shult, associate director of the Texas Agricultural Extension Service, said the problem of child abuse is a very serious one in Texas and the nation.

Rob Robinson of Gilmer, vice president of the Texas Council of Child Welfare, she he and others there and in related agencies are urging county leaders "to do everything possible to stop child abuse."

He said the problem is much more widespread than many leaders realize.

"We need to concentrate on changing this situation," he said.

The conference was conducted by the V.G. Young Institute of County Government, a part of the Texas Agricultural Extension Service, in cooperation with the County Judges and Commissioners' Association of Texas. John Gilmartin and Joe Rothe, Extension specialists with the Institute, served as general chair and program chair, respectively.

Combust Co-Sponsors Bill To Re-Vitalize Industry

U.S. Representative Larry Combust (R-Texas), citing the need to bring stability and security to the domestic oil and gas industry, has co-sponsored three pieces of legislation to establish a national energy policy, impose a variable oil import fee and provide additional tax incentives for producers.

"Domestic oil and gas production is at its lowest level in 24 years, and now is the time for Congress to take action to ensure that we will have domestic oil producers in the 1990s," Combust said. "Something must be done now to prevent the United States from being at the mercy of foreign oil and gas barons who could, at any moment, increase the price of their oil."

Combust is co-sponsoring a resolution expressing the sense of Congress that the President should formulate and implement a national energy policy to protect the national and economic security of America. The bill calls for the President to establish a domestic core supply of 20 million barrels per day of natural gas, natural gas liquids and crude oil.

"Members of Congress from oil-producing states have been calling for a national energy policy for years, but representatives from states who benefit from cheap imported oil have ignored our warnings," Combust said. "Now that domestic production is nearing a quarter-century low, I believe we need to renew our efforts to convince the rest of the nation that we face a grave situation."

If we find ourselves in a situation where our national security depends on domestic oil, it could take many years to restore our oilfields to full production. We cannot afford to be held hostage by foreign oil producers for that amount of time, so we must take preventative measures now," Combust added.

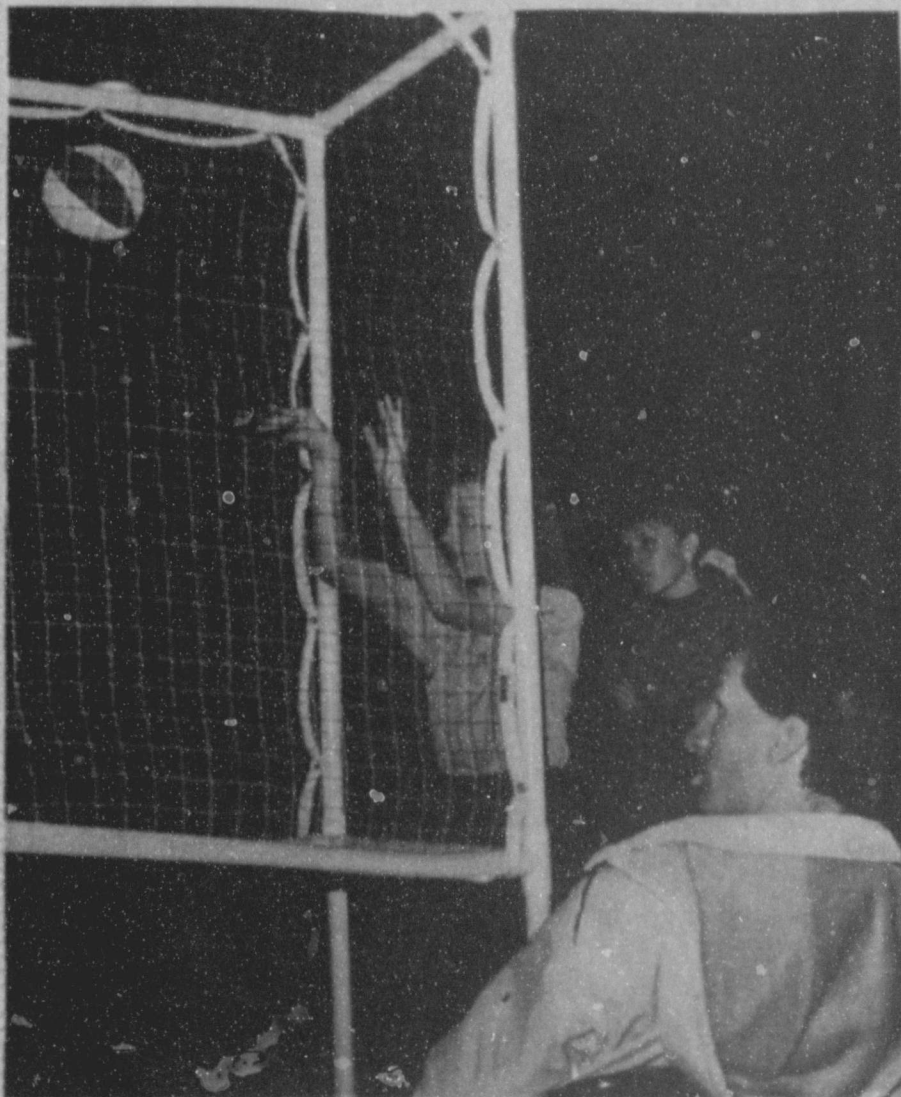
Combust has also signed onto legislation to impose a variable oil import fee on imported oil and other petroleum products. The Energy Security Tax Act of 1989 calls for the amount of the tax to be the difference between the variable price of oil and \$22 per barrel, and for other petroleum products the base price will be set at \$24.50 per barrel.

"This legislation would stimulate drilling activity and arrest the decline of domestic production," Combust said of the overall economic situation in the United States, but an estimated \$50 billion which could be raised during the next five years as a result of the import fee would benefit oil producers who have suffered as a result of flagging domestic sales over the past several years."

Combust, in a letter to President Reagan in October, 1988, requested assistance from

the White House in imposing measures which would aid the domestic producer, including a variable import fee. He has since written to the U.S. Department of

Energy requesting that it consider measures, including the import fee, to ensure the nation's security.



POP-A-SHOT POPULAR AT FESTIVAL—One of the most popular activities at the annual Sweetheart Festival last Saturday night at the Bailey County Civic Center was the Pop-A-Shot Basketball throw. MHS Basketball Coach Wade Littlefield reported the event took in \$73 in the evening. (Journal Photo)

It's February!

FEB						
5	6	7	8	9	10	11
12	13	14	15	16	17	18
19	20	21	22	23	24	25
26	27	28				

Do You Know

Where Your Corn Seed Is?

It's In The Bag

and

In Our Warehouse!

It's Not Too Late To Get Your Name On Golden Harvest Corn Seed For This Year

6%

Cash Discount Thru March 3

Call Our Dealers For Complete Details:

Willis James.....	925-6716
Wayne Clark.....	965-2895
Horace Morgan.....	925-6725
Okla. Lane Farm Store.....	825-2345

AR-B Seeds, Inc.

518 West Seventh

935-5298

Dumas, Texas

Golden Harvest. Golden yields.

Employee Business Expenses

Unreimbursed employee business expenses are generally deductible only to the extent that they exceed two percent of adjusted gross income. More information on changes to itemized deductions can be found in IRS Publication 17, "Your Federal Income Tax," which can be ordered by calling 1-800-424-3676.

Joes Boot Shop
& Country Junction

CONGRATULATIONS
To The Winner Of
The Valentine Box Candy

Andi Kirkland
Box 411
Farwell, Texas 79325

JUST ARRIVED
Over 2,500 Boots

★ Goatskins
★ Badgers

★ Mules
★ Kangaroos
★ Bullhides

WHY WAIT FOR YOUR TAX REFUND WHEN YOU CAN GET YOUR MONEY FAST!

Use H&R Block's Rapid Refund Program

It's a loan against your expected federal income tax refund. Available whether H&R Block prepares your tax return or not.

IT'S FAST! H&R BLOCK

272-3332 224 W. 2nd St. Muleshoe, Tex.

Mollies Majic Machine

Specializing in

Alterations & Custom Sewing

Remakes Cabbage Patch Dolls

Modern Equipment includes

Blind Hemmer & Serger

Store Hours

Tues.-Sat. 10am to 5pm

Mollie Davis Owner

115 S. 1st. Muleshoe 272-4170

EXTENSIVE REDUCTIONS

75% and more off Most Seasonal Merchandise

Ladies coordinates by Joyce® Devon® Country Suburbans® JH Collectibles® Donovan-Galvani®

Val. 29⁰⁰ to 150⁰⁰ **75% OFF**

Only 2 racks left

Hurry! They won't last long at these close out prices!

Ladies Dresses by Sabino Henry Lee® Liz Claborne® JH Collectibles®

Val. to 144⁰⁰ **75% OFF**

Incredible end of season savings!

Mens Tweed Jackets & Top Coats

Val. 99⁰⁰ to 175⁰⁰ **75% OFF**

Take advantage of These fantastic savings!

Select group Mens Suits

Val. To 129⁰⁰ **75% OFF**

sizes 36 To 48 Your cost **32⁵⁰**

Large group Ladies shoes & boots by Nicole® Penaljo® Dexter®

Values 36.⁰⁰ To 84.⁹⁹ **75% OFF**

Famous Brands Skirts from our Chicago Aquisition bold styles, vibrant colors.

Values 65⁰⁰ 110⁰⁰ Now only **14⁹⁹**

Save over 75%!

Famous Brand Blouses from our Chicago Aquisition

Values 35⁰⁰ to 88⁰⁰ **12⁹⁹**

Take advantage of These savings!

Select group of Ladies blouses & sweaters by Ship-n-Shore Donnkenny® Angenie® Western Connection® Knitivo® Design Zone®

Val. 22⁰⁰ To 90⁰⁰ **75% OFF**

Last call!

Levi 501 Jeans Light Blue color only

Reg. 28⁹⁹ **75% OFF**

Waist sizes 28-34 your cost **\$7.25**

Bentley's
SMART FASHION

Bridal Shower Honors

Miss Jayna Harris

The home of Genice Atkins was the scene of a bridal shower Saturday, Feb. 18 honoring Jayna Harris, bride elect of Jack Lennon.

The honoree and Mrs. Atkins greeted the guests between the hours of 2 and 3:30 p.m. and Nikki Atkins registered the guests.

Zanna Huckaby and Suzanne Williams served assorted cookies, grape slush punch, nuts and mints from crystal and silver appointments.

Bailey County

4-H Plan

Coming Events

Bailey County 4-H'ers have several dates to remember beginning with a ETN Training on 4-H Record Books at the District Extension office on March 8 from 1:30 to 7 p.m.

There will be two trainings for agents, leaders, parents and 4-H'ers on senior record books. The same training will be conducted at both sessions. If you would like to attend, you are asked to notify the Extension office by February 27 because those attending must pre-register by March 1.

Another important date to remember is the Texas 4-H Foundation Scholarship applications are due in the county Extension office by 5 p.m. on Thursday, March 9. The Foundation scholarships include the 50 Houston Livestock Show-Rodeo ones and the 10 San Antonio Livestock Show scholarships. Applications are available in the county Extension office.

The annual Bailey County 4-H Fruit Sales is getting underway and orders are due in the Extension office by 5 p.m. on Friday, March 17. Proceeds from the fruit sales will go into the general 4-H fund to support the overall 4-H program in Bailey County and into the exchange group fund to help defray costs of a 4-H exchange with another state.

The varieties of fruit are the same this year as they were last year, and the prices are the same also.

The fruit will be delivered to Muleshoe sometime during the last week of March. Those 4-H'ers who sell fruit will be notified of the delivery date and time as soon as the Extension office knows. "It is important that you pick up your fruit and get it delivered promptly after it is delivered" said Kandy McWhorter. "Spoiled fruit doesn't make a very good impression on those who were kind enough to order from you."

"Remember, the proceeds go to support the entire Bailey County 4-H program and also remember to turn in your fruit orders at the Extension office by 5 p.m. March 17."

A mixed silk floral arrangement in a basket adorned the serving table. The honoree's corsage consisted of mixed spring flowers with orchid accents.

Special guests included: Carolyn Harris, mother of the honoree; Beth Lennon of Wellington, mother of the prospective groom; Barbr Ayne Lennon, sister in law of the prospective groom, of Wellington; Audie Bill Buchanan, the prospective groom's grandmother of Hollis, OK; and Katherine Porter, aunt of Lovington, N.M.

The hostesses gifts were a 12 piece set of stainless cookware, 20 piece set of stoneware and the centerpiece.

Hostesses for the occasion included: Genice Atkins, Bonnie Carpenter, Eva Dell Carpenter, Brenda Clark, Carol Cox, Maxine Donaldson, LeAnn Gallman, Linda Huckaby, Janie Hughes, Louise King, Pat Langfitt, Irma Leal, Betty Mullins, Jan Pierce, Gayle Sisemore, Charlene Treider, Ann Williams, Suzanne Williams and Eddie Wood.

Plains Art

Association Sets

Spring Show

The Plains Art Association has announced the 27th annual Spring Show and Sale to be held March 1-31 in Herral galleries in the Herral Fine Arts Complex on the Wayland Baptist University Campus at Plainview.

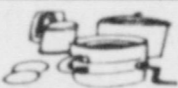
The competition is open to all area artists over the age of 16 years. Categories are oil, acrylic not under glass, water media under glass, pastel and graphics (ceramics, sculpture, creative stitchery and enamels Etc).

David Ringlesbacher, judge, wo West Texas University will award ribbons and cash prizes to the first through third place in each category. Purchase prizes are also available.

PAA has announced that they reserve the right to disallow entries previously shown in the PAA Show or considered to be in poor taste.

Artists should take entries to Herral Galleries on Saturday, Feb. 25 between the hours of 9:30 a.m. and 4 p.m.

For more information you are asked to call Ehtel Ramsower at 293-1655 or Sally Eaves 293-8904.



MICROWAVE TIPS

Most cooks know that one of the best uses of the microwave oven is to speed the time it takes to bake potatoes.

What some don't know is that if potatoes are kept in tinfoil, they will continue cooking for ten minutes after taken out of the microwave.

Potatoes will stay hot inside foil paper for half an hour, even if on the outside or terrace, where it's cool.

If one is eating out, potatoes which are to cook inside the foil for another ten minutes can be placed in a closed casserole dish, or one can be used to cover them. That will help the cooking.



MISS JAYNA HARRIS

Journal Files

60 Years Ago

1929

DON'T NEGLECT THE HOME TOWN PAPER

The value of printers ink in its relation to practical exploiting of the community cannot be over estimated. The hometown newspaper is without doubt the greatest asset both to the individual and to the area in which he lives and transacts his business. It is as important a part of the business man's breakfast as the bacon and eggs or the cream and sugar for his coffee. When he has absorbed and fully digested either of them--or both of them--he is better equipped to face his own problems and those that confronts him as an important wheel in the community's machinery of progress--West Texas Today.

50 Years Ago

1939

LOCALS

The total number of cotton bales ginned in Bailey County to Jan. 16 was 14,700, there being 37,410 ginned to the same date last year.

For Sale: Two farms, one well improved. One 141 Acres at \$20 per acre; one 148 acres at \$27.50 per acre, 7 miles west of Sudan.

40 Years Ago

1949

LICENSE TAGS MUST BE AFFIXED BY APRIL 1

Motor vehicle license tags for 1949 are now on sale in the office of Bailey County tax assessor and collector Hugh Freeman, and must be affixed to vehicles operated on April 1.

Finley Pierson last week became the first person to get a new tag in the county.

30 Years Ago

1959

ST. CLAIR BUYS SERVICE STATION CORNER ON MAIN

A Muleshoe landmark, the old Phillips 66 service station at the corner of Main and Ave B has fallen into the path of progress and change.

The service station and lot owned and operated by Nelson and Vaughn has been sold to Lowell Irvin St.Clair, who this week razed the building and leveled the lot.

St. Clair announced he has no immediate plans for use of the property.

20 Years Ago

1969

Grocery specials advertised in the Journal this week included: whole fryers 29 cents pound; cup-up fryers 39 cents pound; pork roast 39 cents pound; shrimp 89 cents pound; chuck roast 55 cents pound; sirloin steak 89 cents pound; 5 pound flour 29 cents; cake mixes 25 cents each; quart jar Miracle Whip 49 cents; 20 ounce catsup

Whitt Barber Named Mr. Valentine

February 14 was a special day for Whitt Barber...he was selected as Mr. Valentine by the listening audience of Channel 6.

A yearly event at Channel 6, in which they accept nominations for a Mr. Valentine candidate for two days prior to Valentine's Day, and then their listeners call in and cast their votes for their favorite.

Those nominated this year were: Gordon Wilson, Doug Logsdon, Bob Donaldson, Curtis Shelburne, Dennis Hayes, Whitt Barber, Dr. Homer Allgood, Bill Taylor, Jr., Frank Ellis, Clinton Rogers, Christopher Hays and J.C. Shanks. "It was indeed a very close race" said Magann Rennels.

The merchants in Muleshoe who co-sponsor this event over Channel 6, also give the winner of the Mr. Valentine contest prizes.

Participating this year were: Louvenia Garlington and Beauti-

Control Cosmetics and her gift to Mr. Valentine, a \$20 Gift Certificate, for him or his sweetheart. La Placita Restaurant in town owned by Linda and Edward Orozco gave Mr. Valentine an enchilada plate with drinks for two. Fry&Cox gave him a Durabeam flashlight, Damron Drug, a large box of Russell Stover Chocolates, and Bernice's Beauty Shop, a hair cut.

On Valentine's Day, Magann Rennels, of Channel 6, called Barber at his home to tell him of his selection as Mr. Valentine, and the interview with him was broadcast over Channel 6.

Barber was quite surprised, but very pleased to be Channel 6 listeners' choice for Mr. Valentine for 1989!

AARP Will

Meet Friday

AARP will be meeting for their regular monthly meeting Friday, Feb. 24 at 11:30 a.m. and all members are urged to attend.

Speaker will be Poppy Hulsey, Assistant State Director for AARP. Tony Brooks, from KCAS Radio Station of Lubbock will also be speaking.

Personal Interest

The deduction for personal interest is being phased out. This deduction is limited to 40 percent in 1988, 20 percent in 1989, and 10 percent in 1990. No deduction will be allowed thereafter. Personal interest generally includes interest on car loans, credit cards, personal loans, and on most tax deficiencies of individual taxpayers. More information on changes to itemized deductions can be found in free IRS Publication 17, "Your Federal Income Tax." Call 1-800-424-3676 to order.



WHITT BARBER

CALENDAR OF EVENTS

FEB. 23-MARCH 1

THURSDAY, FEB. 23	8:30 a.m.
ODDFELLOWS LODGE	ALTEEN
7:30 p.m.	8:30 a.m.
HOBBY CLUB	
2 p.m.	
MULESHOE SQUARE	TUESDAY, FEB. 28
DANCE CLUB	ALCOHOLIC ANONYMOUS
8 p.m.	8:30 p.m.
TOPS CLUB	STUDY CLUB
6 p.m.	4 p.m.
FRIDAY, FEB. 24	JENNYSLIPPERS
KIWANIS CLUB	12 noon
6:30 a.m.	REBEKAH LODGE
	7:30 p.m.
	ROTARY CLUB
	12 noon
SATURDAY, FEB. 25	WEDNESDAY, MARCH 1
ALCOHOLIC ANONYMOUS	LIONS CLUB
10:30 a.m.	12 noon
AL-ANON	

The family of Pauline Houston appreciates every expression of shared kindness and sweet love carrying us through our sorrow.

Marie & Clyde Redwine & Family
Eugene, Frances & Brian Houston

TAXPAYERS' Rights, Remedies, Responsibilities

Want to learn more about the property tax system? That's possible by reading a pamphlet the State Property Tax Board has written and made available at the local appraisal district office.

It's called "Taxpayers' Rights, Remedies, Responsibilities" and it may help you save money. Learn about tax relief available through

- homestead exemptions
- disabled veteran exemptions
- special productivity value for farm, ranch, and timber land
- tax deferral for over-65 homeowners

You'll learn how your property is appraised. That way, you can decide if the appraisal district's value is reasonable.

If you think it isn't, the pamphlet tells you how to prepare an appeal to the appraisal review board. You'll learn the types of protests the appraisal review board can hear and useful evidence to bring to your hearing.

Important dates in the tax year are listed. You'll know what your responsibilities are and when you are obligated to satisfy them.

"Remedies" is free to taxpayers. Ask for yours today at

State Property Tax Board

Box 15900 Austin, TX 78761-5900

Bailey County Tax Appraisal District

104 E. Ave. C. Muleshoe 272-5501

Mary Kay
COSMETICS
Please call for a free facial or manicure
Janie Hughes
Beauty Consultant
(806) 272-4685
609 W. Ave. J Muleshoe, TX

1/2 OFF
Fall & Winter
Merchandise
Lookin' Good
206 Main Phone 272-5052



NEW CHAIR FOR NURSING HOME--Johnny Chappell relaxes in one of the new chairs purchased for the Muleshoe Nursing Home with money raised through the Christmas Card Project. (Journal Photo)

State Taxpayers, Like Corporate Stockholders, Demand and Expect Fiscal Accountability

By Governor Bill Clements

In these days of expansion within the Texas economy, we cannot lose sight of the fact that the largest business in Texas is state government.

And we cannot ignore another sad but true fact: We are not running our business - state government - in a modern, up-to-date manner.

Eighteen months ago, I created a task force and directed this working group to review the effectiveness of our state's management and financial reporting systems.

This Accounting, Auditing and Financial Reporting Task Force was created in the belief that state government could be streamlined and made more responsive to its citizens.

Texas do not deserve, and will not tolerate, an inefficient bureaucracy, ineffective management programs and misguided policies that threaten our ability to fund educational, human services and criminal justice needs to the fullest possible extent.

This task force brought private sector executives and state government representatives together at the same table in a true spirit of dedication and cooperation. The task force members worked hand-in-hand to develop what I'm confident will be a blueprint for legislative action.

Their recommendations can help make state government more modern, more efficient, more productive and, yes, more accountable to the citizens of our state.

The chairman of the task force, Bob Cruikshank of Houston, presented the group's recommendations earlier this month.

It is a thoughtful report, and a job well done.

The report identifies measures that can be implemented to achieve a common goal of fiscal responsibility, and to build upon the management reforms adopted in the last legislative session.

The task force recommendations, at an estimated cost of \$24 million to \$39 million to implement over a five-year period, could result in annual savings of \$60 million thereafter.

We cannot set our sights low. We must develop and adopt modern management programs for today - and the 21st century.

The task force proposals will be subject to considerable review and legislative scrutiny in the coming weeks and months as the Texas Legislature begins addressing the state's future needs.

But, I am confident that many of these task force recommendations will receive prompt consideration because, quite honestly, they make common sense.

These proposed initiatives, almost without exception, have been put to the test in the private sector, with impres-

sive results.

State government must be run in a business-like fashion, with a constant eye on the bottom line. Texas taxpayers, like corporate stockholders, demand and expect fiscal accountability. They want to know that their hard-earned dollars are being invested properly, and wisely.

This task force report points the way.

It highlights the need for internal auditing divisions within major state agencies and institutions.

It wisely urges the development of a more competitive computer and computer software purchasing process to ensure that state government gets the most productive equipment available, at the best possible price.

And, importantly, it recommends that state government develop a linked computer network that would enable state budget leaders to immediately identify the financial standing of an individual agency, or the state as a whole.

The current hodge-podge of computer systems now in place throughout state governments makes such communications impossible.

Further, the task force endorses the full development and implementation of the Uniform Statewide Accounting and Financial Reporting Procedures, as well as the statewide payroll system, to enhance the state's ability to manage spending.

As we all know, the 1987 session of the Texas Legislature, with the able assistance of Comptroller Bob Bullock, began this process. Now it is time to complete it and have these systems in operation so Texas can meet state taxpayers' demands for an accountable - and efficient - state government.



HOLLAND COMES TO MULESHOE--Mary Mesman, right and Johanna Mesman of Farwell, visited the Muleshoe Nursing Home Friday afternoon and presented a program on Holland and cheese making. They also brought along different cheeses for the residents to taste. (Journal Photo)

Country Club Report

By Claudine Elliott

February 15 meeting of the Ladies Country Club Association was called to order by president, Dorothy St. Clair. Since the year is just getting under way we do not have much going on. Give us a little time and the season will be in full swing.

Playday chairman, Helen Templeton, awarded golf balls to Analita, Jeanetta, Helen and Ruby. We had 27 members and one guest attending, visiting her mom, Mary Frances Holt, from Plainview Mary Jo Black.

Members attending were:

Cookie Bamert, Claudine Elliott, Dorothy St. Clair, Ruby Hart, Jeanetta Precure, Jerrey Mayo, Ruby Lee Kerr, Analita Haley, Mary Frances Holt, Melzine Elliott, Rayniel Bamert, Helen Templeton, Laverne Winn, Martha Young and Neats Foster. Also Mary Crane, Yolonda Bell, Evelyn Riley, Kay Fields, Sherri Shipman, Cindy Barrett, Dawn Williams, Lynn Campbell, Arglee Millen, Caraleen Hamilton, Marilyn Young, Linda Elder, and visitor, Mary Jo Black of Plainview.

4-H Youth Fruit Sale Underway

Bailey County Extension agent, Kandy K. McWhorter, reports that Bailey County 4-H youth are again selling fresh fruit as a money-making project this year.

Funds received from these sales will be used to support the 4-H general fund and the exchange group project for Bailey County 4-H youth.

The assortment of fruit will be good, says McWhorter, and includes apples, oranges, grapefruit and pears. Fruit can be ordered in the following arrangements.

- Mixed Box oranges and apples (18 lbs) \$12.50; Mixed box oranges, apples and pears (18 lbs) \$18.00; Mixed box grapefruit, oranges and pears (30 lbs) \$17.00; Mixed box grapefruit, oranges and apples (30 lbs) \$17.00; Mixed box grapefruit, oranges and pears (30 lbs) \$18.00; 1/2 box Texas Ruby Red grapefruit (20 lbs) \$9.00; Full box Texas Ruby Red grapefruit (40 lbs) \$16.00; 1/2 box California Navel oranges (20 lbs) \$10.00; Full box California Navel oranges (40 lbs) \$18.00; 1/2 box Washington Red Delicious apples (9 lbs) \$7.00; Full box Washington Red Delicious Apples (18 lbs) \$13.00; 1/2 box

Washington D/Anjou pears (8 lbs) \$7.00; Full box Washington D/Anjou pears (16 lbs) \$13.00.

4-H members will be contacting their friends and neighbors to sell fruit. If, however, you are not contacted directly, you may call the Extension office at 272-4583 to place your order. The deadline for placing an order is March 17. Fruit will be delivered approximately the last week in March.

4-H members will be delivering the fruit on which they took orders. Our Extension office will deliver fruit to those who place their order thru the office or advise you when the fruit is available if you state that you wish to pick it up. If you have questions, call the Extension office for further information.

EASY SHEET CHICKEN SALAD

1/2 Cp. mayonnaise or salad dressing, 1-3 tsp. lemon juice, 2 cans (5 oz. each) chicken, 1/2 Cp. chopped celery, 1 can (17 oz.) sweet peas with tiny pearl onions, drained, 2 Tbs. grated Parmesan cheese, 1 can (2 oz.) sliced olives. In medium bowl, mix mayonnaise, Parmesan cheese and lemon juice to taste. Gently stir in remaining ingredients. Chill. Yields 5 to 6 servings.

DID YOU KNOW?

The Facts About Saint Patrick

It's no blarney to say many people are pretty green when it comes to knowing fact from fiction about St. Patrick and his day. For example, did you know:



- St. Patrick, the patron saint of Ireland, was not an Irishman, but born in England the son of a Roman official.
- St. Patrick's day is more widely and enthusiastically celebrated here in the United States, especially in New York City, home of the magnificent St. Patrick's Cathedral, than in Dublin, Ireland.
- The Cathedral is the seat of the Archdiocese of New York and the first major neo-gothic-style Cathedral in the United States.
- Ireland's favorite spirit, Irish Mist Liqueur traces its heritage back 1200 years. A secret blend of four Irish Spirits aged in wood, heather honey and herbs, it is thought to be the "heather wine" that minstrels sang of centuries ago. St. Patrick lived c. 389 to 461 A.D.

Bays Recipe Contest Provides Pot O' Gold For Winner

If the luck o' the Irish be with you, then enter your favorite recipe in the 1989 Bays English Muffins National Recipe Contest and win a trip for two to Ireland.

The winner of the 1989 Bays Recipe Contest will receive the grand prize package of a trip for two to Ireland with a week of cooking lessons and hotel accommodations at the famous Ballymaloe Cookery School in County Cork. A four-day driving tour through scenic southwest Ireland follows.

In quaint towns along the way, the winner will enjoy first-class lodging in hotels, manor houses and castles as well as gourmet dining in renowned restaurants. Round-trip airfare and \$500 spending money are also included.

To enter the contest, consumers are invited to submit their original recipes using Bays English muffins in breakfast, lunch and dinner entrees as well as appetizer, snack or dessert dishes. Four finalists will be flown to Chicago on April 28 for the final competition.

Second place winner will receive an Amana Radarange Microwave Oven and one case of Bays English Muffins. Third and fourth place winners will each be awarded a \$100 gift certificate from Williams-Sonoma and a case of Bays English Muffins.

Twenty-five runners-up each will receive a gift package of Bays English Muffins and a gourmet apron.

All entries must be received by April 1, 1989. Send original recipes plus one top label from a package of Bays English Muffins to: Bays



English Muffins, P.O. Box 450, Chicago, IL 60690-0450.

All entries become the property of the Bays Corporation. Arizona, Maryland and Vermont applicants need not submit top labels.

- Bays Beef Bleu**
(Serves 4)
- 1/4 cup mayonnaise
 - 1/4 cup applesauce
 - 4 ounces bleu cheese, crumbled
 - 4 teaspoons prepared horseradish
 - 2 teaspoons Dijon-style mustard
 - 4 Bays English Muffins, split and lightly toasted
 - 16 thin slices of rare roast beef

- 8 slices red or other sweet onion
- 8 slices tomato
- 4 teaspoons finely chopped chives, if desired

Combine mayonnaise, applesauce, bleu cheese, horseradish and mustard, in medium size mixing bowl, blending very well. Spread one-third of the mixture evenly over toasted muffin halves. Place 2 slices roast beef on top of each muffin half. Top with onion and tomato slices. Spread remaining mayonnaise mixture evenly over each sandwich half. Place on baking sheet and broil for 2 to 3 minutes until sauce browns lightly. Sprinkle with chopped chives. Serve immediately.

'Congratulations'

Mom & Dad

Kenneth & Inez Cox

on your 50th

Wedding Anniversary

From your children
and grandchildren

Muleshoe Journal USPS 367-820

Established February 23, 1924. Published by Muleshoe Publishing Co., Inc. Every Thursday at 304 W. Second. Box 449, Muleshoe, Texas 79347. Second Class postage paid at Muleshoe, Texas 79347.

Member NATIONAL NEWSPAPER ASSOCIATION
WEST TEXAS PRESS ASSOCIATION
PANHANDLE PRESS ASSOCIATION

L. B. Hall, President & Publisher
Sammy E. Hall, Vice President & Controller
Clara Williams, News Editor
Estelita Harris, Society Editor

Subscription Rates:
Muleshoe Journal and Bailey County Journal
Fifty and Surrounding Areas
Muleshoe Journal and Bailey County Journal
Elsewhere in Texas \$14.00
Muleshoe Journal and Bailey County Journal
Outside of Texas \$18.00
Yearly by Carrier \$12.50
Advertising rates listed on application

TUXES
Prom or Weddings

\$39.95

Black Classic
Tails or Reg. Tux

ORDER BY MARCH 15

ROB'S R. shop
502 Main, Clovis

Double Offer.

Free Gift.

FOUR "NAUTICAL NECESSITIES" YOUR BEAUTY BONUS WITH ANY \$13.50 MERLE NORMAN PURCHASE. Merle Norman's spring bonus gift "Nautical Necessities" includes lip and cheek colors, crisp and breezy clear. Plus the beautiful moisture balance of fragrance-free Eye Creme Complex. One per customer while supplies last. Bring this ad to redeem your free gift.

Free Makeup Lesson.

Merle Norman's Makeup Forecast: Breezy resort looks in crisp, confident Yacht Club Colors. Let our expert Beauty Advisor show you these ritzy pastels for eyes, cheeks, lips and nails. Perfect purchase selections for your free "Nautical Necessities" bonus gift.

MERLE NORMAN STUDIOS

1519 W. Amer. Blvd. Muleshoe 272-3459



MAIF SPEAKS TO ROTARY CLUB--Duane Castleberry, chairman of the Muleshoe Area Industrial Foundation, left, and Bob Stovall, center, MAIF member, presented the program for the Muleshoe Rotary Club Tuesday at noon. At right is Rotary President George Nieman, who was in charge of obtaining the program for the day. The MAIF duo presented an update on their activities. (Journal Photo)

MHS Group

Cont. From Page 1

started with the storming of the Bastille, July 14, 1789. This year will be the two hundredth year of the Revolution.

Next, the monthly quiz was given and Monica Swint and A. J. Liles tied for first. A. J. was

Rotary...

Cont. From Page 1

out, with another 30 to be mailed as yet.

On March 16-17, the tournament will be in the junior high gym, and on March 18, both junior high and high school gyms will be utilized for basketball action.

Also approved by the board was a Magic Show for April 13. The show will be by Nick Black and his assistants. Black is a 'home-grown' product who puts on quite a magic show.

Guests at the Rotary meeting included David Clarkson, Julie Cage, Duane Castleberry, Cindy Purdy, Rhonda Carpenter, and Jeff Hicks, Student of the Month.

the winner in the tie-breaker. He received a passport holder. He, then won the door prize of an umbrella.

The group is now seriously considering pushing him out over the Atlantic as he was the door prize winner last month, plus he did not prepare his report on Notre Dame.

Refreshments of eclairs, croissants, French cheese and strawberries were served by Judy and Shea Wilbanks to Monica Swint, Burnley Riley, Michelle Finney, James Foster, A. J. Liles, Doug Chitwood, and parents, Chera Foster, Barbara Finney, Sandi Chitwood and Johanna Wrinkle, counselor.

The group will meet March 12 in the home of Kelly Conklin and Switzerland and Italy will be studied.

Envy is more irreconcilable than hatred.

—La Rochefoucauld.

World Day Of Prayer Friday

World Day of Prayer, on Friday, March 3, marks its 102nd observance as thousands of Christians join together in 170 countries and regions of the world to pray as one body for each other and for peace in the world.

In Muleshoe, World Day of Prayer observances will be held in First United Methodist Church of Muleshoe, 507 West Second at 7 p.m. in the chapel.

Theme of the 1989 World Day of Prayer is "Jesus, Teach Us to Pray."

Meals...

Cont. From Page 1

the cost that they can, or so desire. And, we would urge them, and other family members, to please contribute as freely as possible so as to continue the service. Also we would ask you -- whoever you are -- if you believe it serves a good purpose, give it your support.

The money will be put to good use, the records are open for your inspection. They are audited annually, and all contributions are tax deductible.

You may make donations to: Marjorie Merritt, 708 West 20th, Muleshoe, TX 79347; 806/272-3894. Or, Glen Williams, 205 West Avenue J, Muleshoe, TX 79347; 806/272-3647.

A few dollars each, donated by a lot of people, will purchase a good many meals for some VERY deserving folks.

Wilson...

Cont. From Page 1

ineligible for school sports. Wilson did continue with sports by playing on a local 'outsider' basketball team.

When he's not involved with local sports, Wilson stays busy by running his own company. In 1965, he bought Wilson Drilling Company from his mother after his father died.

"Mom would just as soon I'd do something else," he said.

Wilson admits the job was not easy going at first. It took long hours and a lot of studying to make it a success.

During the past 24 years, Wilson Drilling has patented an underground incinerator and added services such as water well drilling, electrical and water conditioning treatments and the installation of heating and air conditioning ground water heat pumps. Currently, Wilson is specializing in earth-coupled heat pumps.

Wilson said when he does have free time, he enjoys golfing and fishing. He recently learned to snow ski and is planning to try his hand at it again in March.

Electric...

Cont. From Page 1

J. G. Brown, Magnavox Radio Cassette Recorder, Bailey County Electric; Steve Dunn, Chevron Motor Oil 12-1 qt. bottles, Dale Oil Co.; Elree Gandy, Black and Decker Food Processor, Bailey County Electric; Robert Hunt, 8-piece Bar-B-Q Cutlery Set, Bailey County Electric and Ernest Ruthardt, Chevron Motor Oil, 12-1 qt. bottles, Dale Oil Co.

And, Bennie Claunch, Regal Drip Coffeemaker, Poleline Electric Supply; Donal G. Bibrey, 1988 Proof Coin Set, First State Bank, Morton; Griffiths Farm, Emerson FM/AM Clock Radio, Sullivan, Gray and Smith; D. L. Tucker, Char-Broil Electric Barbecue Grill, Bailey County Electric and Jack Dale Davis, Char-Broil Electric Portable Barbecue Grill, Bailey County Electric.

SAVE YOUR PASTURE



from Gophers with PERRYCO GOPHER KILLER! Special Features

- ★ Two packer tires for positive traction, in sandy soil.
- ★ 18" coulters cuts deeper for smooth operation
- ★ Two packer tires leave tunnel intact.
- ★ Precision engineered for years of service.

SOLD BY

FRY & COX INC. 401 S. 1st Street • Muleshoe, Texas Phone 806/272-4511

Pray." The prayers and worship resources were written by an ecumenical group of Christian women in Burma and then translated into hundreds of languages and dialects.

This year's service brings to consciousness the struggles of the people of Burma, so ravaged by the terrors of war and economic oppression. It also invites a deeper understanding of the Lord's Prayer stressing the power of intercessory prayer and challenging those who pray to listen and respond to those in need, whoever and wherever they may be.

Since its founding in 1941, Church Women United has been the official sponsor of World Day of Prayer in the United States and has assumed responsibility for the preparation and distribution of World Day of Prayer resources and materials in this country.

Church Women United (CWU) is the ecumenical movement that brings Protestant, Roman Catholic and Orthodox women together

into one Christian community of prayer, advocacy and service. It represents a broad spectrum of religious tradition, race, age, economic status and ethnic background and works through a national unit, 52 state units (including ones in Greater

Washington, D. C. and Puerto Rico) and 1,750 local units.

Unified by a common faith in Christ, the women of Church Women United work for the elimination of poverty of women and children and issues of justice and peace.

Around Muleshoe

Cont. From Page 1

If you're looking for an evening of excitement -- plan to be in the Three Way gym next Friday evening, February 24.

The Three Way Seniors will be presenting Bob Crosby's Donkey Ball -- featuring local talent!!

Advance tickets for adults are \$3 and will be \$4 at the door. Grade school student advance tickets are \$2 and will be \$3 at the door.

A fund has been set up at First Bank in Muleshoe to help offset the cost of double liver transplants for the twin sons of Mr. and Mrs. Delmer Bleeker.

They are the grandsons of Mr.

and Mrs. Vernon Bleeker.

A year old the first of February, the twins have spent most of their life in a hospital and are currently waiting for life-saving liver transplants.

Your contributions can be made to the Bleeker Twins Fund at First Bank in Muleshoe; or the Bleeker Twins Fund at the Keller State Bank, Box 483, Keller, TX 76248.

HERE'S WHO TO CALL WHEN THE WELL RUNS DRY!

We'll get your water supply back in a hurry! And we can replace your worn out old pump with a Goulds--best selling, best performing pump in the world. Any size. Any brand. When you need water, call us.



Wilson Drilling Co.

Muleshoe HWY 84 West 806/272-5521

DOES YOUR CAR PULL TO THE LEFT OR THE RIGHT?

Could be it needs the front end aligned. Let us check it out and straighten it if required.

FRONT-END ALIGNMENT

ONLY **\$28.00**

Includes:

- Camber Adjustment
- Toe Adjustment
- Shock Absorber Check
- Caster Adjustment
- Tire Check
- Steering Linkage Check

Don't Wait! Special Price Ends **2-28-89**

Robert D. Green, Inc.

2400 W. Amer. Blvd.

272-4588



Mr. Goodwrench



Check It Out!

Check It Out!

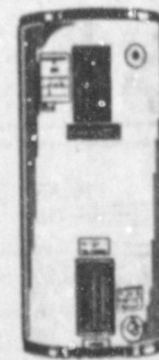
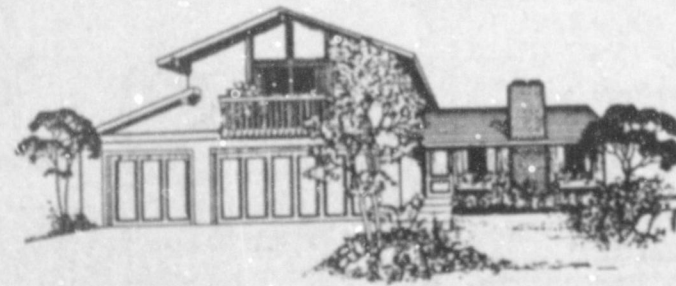


Check It Out!

Could Be Lowest Everyday Price In Town On **CRAFTMASTER Water Heaters**



5 yr Warranty



30 gal.	Natural Gas	\$129. ⁹⁵
40 gal.	Natural Gas	\$139. ⁴⁰
50 gal.	Natural Gas	\$185. ⁴⁰
30 gal.	LPG	\$198. ¹⁰
40 gal.	LPG	199. ⁴⁰
50 gal.	LPG	245. ⁴⁰
32 gal.	Electric	\$132. ⁵⁰
42 gal.	Electric	\$135. ⁹⁵
52 gal.	Electric	\$142. ⁰⁰

6 - 10 - 12 gal Electric Available

Controls, Elements, Thermostats In Stock

Higginbotham-Bartlett Co.

215 Main

"Quality & Service At The Right Price"

272-3351

HOMESTEAD EXEMPTIONS



CAN LOWER THE PROPERTY TAXES ON YOUR HOME

A homestead Exemption

lowers the property taxes on your home by lowering its taxable value. For example, if your home is valued at \$50,000 and you receive a \$5,000 homestead exemption, your home will be taxed as if it were worth only \$45,000.

You qualify

for a homestead exemption if you owned your home on January 1 and used it as your primary residence on January 1. It doesn't matter whether your home is a house, a condominium or a mobile home.

Exemptions are available

to all homeowners on their school taxes. Additional exemptions are available to homeowners who are disabled or age 65 or over. Other exemptions may be offered to homeowners by school districts, counties, cities, and special districts. All taxing units offer exemptions to disabled veterans.

Apply to

your local appraisal district office at the address shown

Bailey County Appraisal District

104 E. Ave C

272-5501

below for all exemptions you may qualify for. Application forms are available at this

If you received a homestead exemption on your present home in 1988, you won't need to apply again for 1989 unless the chief appraiser requires you to reapply.

However, if you passed your 65th birthday or became disabled before January 1, file a new application to receive the additional exemptions.

If you haven't received an exemption on your present home, or if you've moved to a new home, make a new application for 1989.

The deadline

for applications is April 30, 1989. Contact your appraisal district before then if you need more time.

For more information, get a free copy of the pamphlet, *Taxpayers' Rights, Remedies, Responsibilities*, at your appraisal district office or from the State Property Tax Board in Austin.



A LONG WALK AROUND THE CHAIRS--The young lady at the right seems to be perturbed about where she found herself when the music stopped at the 'Cake Walk' during the annual Sweetheart Festival at the Bailey County Civic Center last week. Always popular, the event is a proven 'money-maker' for the Fine Arts Booster Club each year. They expressed their appreciation to everyone who participated in the annual Festival. (Journal Photo)

Irrigators Asked Check Underground Leaks

The High Plains Underground Water Conservation District No. 1 reminds irrigators to check their concrete underground pipelines for possible mortar joint leaks prior to the 1989 irrigation season.

"Mortar-jointed underground pipeline is still used across the Texas High Plains. In most cases, the pipelines were installed prior to the early 1970s and need to be checked for leakage caused by age deterioration," says Ken Carver, High Plains Water District Assistant Manager.

Mud puddles forming on the land surface usually indicate large underground pipeline leaks. In some instances, smaller leaks may occur on the underside of a pipeline. If the pipe was placed in a trench cut into a caliche layer, the porous caliche absorbs the water, and a tell-tale mud puddle may never appear on the land surface.

Water losses equivalent to 50 percent of the well yield can occur when several small leaks are added together. Irrigators should check their underground pipelines during the winter so that they can make any necessary repairs before the summer irrigation season.

"A flow meter is probably the best and easiest way to find out if your underground pipeline is leaking and to what extent the leaks affect crop water application," says Carver.

Flow meters are usually installed on the well discharge pipe and on the discharge from the underground pipeline. The difference in readings from the two flow meters will give irrigators an indication of the underground pipeline water loss.

Water District field staff now use electronic transit-flow meters to check pipeline leaks. This service is free of charge, and

requests are handled on a first-come, first-served basis.

"With the new meters, all we have to do to obtain a flow reading is connect the sensors to the exterior of the discharge pipe on the pump and to the discharge pipe from the hydrant valve on the line. The wells do not have to be stopped," says Carver.

For those who wish to check their own pipelines, the older-style flow meters are available on a free-loan basis to irrigators within the Water District's service area.

Water escaping from the underground pipeline eventually returns to the Ogallala Aquifer, but does not benefit the irrigator. With pipeline repairs, irrigators will obtain an increase in their water supply equivalent to the water loss; a reduced fuel cost per unit of water applied to their crops; reduced labor costs; and increased production.

Assuming that an irrigator had a fuel cost of \$3 per acre-inch of water pumped and a loss for 100 gallons per minute for a 120-day irrigation pumping season, the fuel cost to pump the lost water would be \$1,909.

If the same irrigator replaced 500 feet of leaking underground pipeline for \$2.75 per foot, he would have an expense of \$1,375. Given the \$1,909 wasted fuel expense, the irrigator can easily recover the repair expense in just over a year's time.

Additional information and assistance on checking for underground pipeline leaks can be obtained from the local USDA-Soil Conservation Service Office, the Texas Agricultural Extension Service or the High Plains Underground Water Conservation District No. 1, 2930 Avenue Q, Lubbock, Texas 79405 or call (806) 762-0181.

New Jails Fail To Ease Overcrowding

Despite the construction of new jails, throughout Texas, overcrowding continues to be a major problem, said the executive director of the Texas Commission on Jail Standards.

Jack Crump, speaking at the annual County Judges and Commissioners' Conference here Jan. 26, said that currently 32 new jails are under construction and another 50 are being planned.

"Counties have spent a billion dollars on jail construction during the past 10 to 12 years," he said. "And another \$254 million will be spent on jails currently being planned."

"The total bunk capacity in our jails today stands at 30,000 while our daily inmate population is 31,500," Crump said. "That's 106 percent of capacity."

With the new constructions, bunk capacity should be at about 36,250 by 1990, 43,000 by 1991 and 45,000 by 1992, Crump said.

Texas' jail population has grown consistently since 1983, he said. "Today we are looking up 1.8 individuals per 1,000 population. In 1983 we had a bunk capacity of 19,000 and a jail population of 14,500--or 76 percent of capacity."

Why is the jail population continuing to increase?

Crump said that changes in laws, such as jail sentences for DWI convictions, have added the jail load along with a more fluid population and better law enforcement.

The official said that certification of jails as complying to state standards continues to be a problem along with overcrowding.

Crump said that privatization--jails operated by private firms--is here and will continue to increase. "A private firm is already operating a unit in Reeves County, and jails in Bexar and Zavala counties will be operated by private concerns. Privatization is permissible by the civil statutes and we are going to see more of it," he said.

The annual conference hosted by the Texas Agricultural Extension Service attracted more than 750 county judges and commissioners from across the state.

Three Way News

Jana Bettel from Muleshoe spent Monday night with her parents, the Jack Lanes'.

Mr. and Mrs. Rayford Masten were in Levelland Monday on business and then on to Whitherrell to visit their daughter, the Lamar Pollard family.

Mr. and Mrs. George Tyson ate lunch with their daughter, the Tommy Jo Durhams and Tommy Durhams Saturday to celebrate their 59 wedding anniversary.

Mrs. Mattie Quisenberry from Muleshoe spent Tuesday night with her daughter, the Jack Lanes Wednesday. Mrs. Lane took Mrs. Quisenberry to Lubbock for a check-up.

Mr. and Mrs. Ralph Davis and Charise Parker from Lubbock were dinner guests in the Bill Dolle home Wednesday.

Mr. and Mrs. Kennon Zhan and family from Littlefield and Mr. and Mrs. Keith Layton from Enochs were supper guests with their parents, the Nelson Carlises Saturday evening.

Mr. and Mrs. Robby Autrey from Tahoka are the parents of a boy born Friday in a Lubbock hospital. Grandparents are Mr. and Mrs. Bob Foley of Maple.

Mrs. Bob Foley of Maple. Great grand parents are Mr. and Mrs. Robert Kindle of Maple.

Mr. and Mrs. Bill Dolle and Darla visited Bill's parents, the Herbert Dolles Saturday afternoon and ate Mexican food for the evening meal.

Mr. and Mrs. Butch Tucker were in Lubbock Saturday to be

with an aunt who underwent surgery.

Mr. and Mrs. Robert Kindle were in Lubbock Friday to see their new great grandson.

Mrs. Bud Huff and Mrs. Jack Robinson from Three Way and Mrs. Bill Key from Enochs and Bonnie Long from Morton took birthday cake and punch to the rest home in Morton last Thursday.

GRAIN PRICES	
FEED CORN.....	4.85 cwt
WCY.....	5.70 cwt
RCY.....	5.00 cwt
WHITE FOOD CORN..	6.85 cwt
MILO.....	4.12 cwt
SOYBEANS.....	6.77 cwt
NEW WHEAT.....	3.58 cwt
	99%
Prices February 22, 1989	
MARKETS COURTESY OF FARMERS CO-OP ELEVATORS	
Muleshoe, Texas	
272-4335	

Comptroller Says Abolish Permit Fee

State Comptroller Bob Bullock is urging the Texas Legislature to abolish the \$25 annual sales tax permit fee.

"The fee is inherently unfair to small businesses," Bullock said in a letter to the House Ways and Means Committee, which is considering several bills to repeal the fee.

Bullock said the fee has generated tremendous hostility at a time "the state can ill-afford to tread on the cooperation and confidence of the business community."

He said there may have been reasons why the fee was adopted by the Legislature in 1987, but that it has been more trouble that it was worth in the small amount of revenue it has generated.

Bullock said that one benefit of the fee was that several thousand former permit holders were purged from the rolls -- people who either didn't need a permit or who, in fact, may have used the permit to make illegal tax-free purchases.

"As someone said about Prohibition, it was a noble experiment that didn't work," Bullock noted.

Red Tag Special



9.99

3/4-In. x 16-FT. POWER TAPE RULE has a toggle blade lock, belt clip.

LUFKIN - NOW **12.99**
Speedwinder 3/8 x 100 ft. Steel Tape Reg. 27.69

Fry & Cox, Inc.

"Your Store First Choice"

VISA MasterCard True Value CHARGE CARD
401 S. 1st Sales Ends 2/28/89 272-4511

Patients In West Plains Medical Center

FEB. 16
Moises Garcia, Kelly Dale and Guadalupe O'Campos

FEB. 17
Crystal Chilton, Moises Garcia, Guadalupe O'Campos and Billy Don Read

FEB. 18
Crystal Chelton, Juanita Jarman and Billy Don Read

FEB. 19
Crystal Chilton, Juanita Jarman and Billy Don Read

FEB. 20
NO PATIENTS

IT'S HERE! A NEW CHRYSLER-PLYMOUTH COMBINATION - THE PRESIDENTS' SALE!



A WINNING COMBINATION OF GREAT DEALS AND UP TO \$750 CASH BACK!

1989 CHRYSLER NEW YORKER
\$500 CASH BACK*
+ \$850 EQUIPMENT PACKAGE SAVINGS**
\$1350 TOTAL SAVINGS

1989 CHRYSLER NEW YORKER LANDAU
\$750 FACTORY CASH BACK*

1989 CHRYSLER LE BARON COUPE
\$11,945*
-\$600 CASH BACK**
\$11,345

1989 PLYMOUTH SUNDANCE
\$8820*
-\$600 CASH BACK**
\$8220

1989 PLYMOUTH HORIZON AMERICA
\$6943*
-\$400 CASH BACK**
\$6543

OR GET 4.9 A.P.R.** ON SUNDANCE!
1989 COLT HATCHBACK, IMPORTED FOR PLYMOUTH
\$500 FACTORY CASH BACK*

OR GET 4.9 A.P.R.** ON HORIZON!

*Choose your new car from stock at your local Chrysler-Plymouth dealer, and get these big cash back savings. **The savings on the equipment package are based on the sticker prices of the options, if they were purchased separately. ***Annual Percentage Rate financing for qualified buyers through Chrysler Credit Corp. on Horizon and Sundance from new dealer stock. Other rates offered as length of contract varies. †The prices shown above are base sticker prices, excluding title, taxes, and optional equipment packages.

Hurry to our President's Sale before it goes away!
CHRYSLER Plymouth
Muleshoe Motor Co.
1225 W. Amer. Blvd. 272-4251



ANNOUNCES



"New" Product
"New" Lower Price!
SATISFACTION GUARANTEED

For Full Details Contact ASCOM



SMR NETWORK

TMX 8712
DUPLIX MOBILE
TELEPHONE-RADIO
(Combined Mobile Telephone
And Trunked Two-Way Radio)

★★★★★ Five Star
Authorized Dealer

Associated Communications, Inc.

806-293-3626
PLAINVIEW, TEXAS
3422 OLTON ROAD

1-800-88-ASCOM

505-763-5520
CLOVIS, NEW MEXICO
116 E. GRAND AVE.

"FOR YOUR TOTAL RADIO COMMUNICATIONS NEEDS"

Unpredictable Forecast? Shop The Classifieds

272-4536



CLASSIFIED RATES Minimum Charge \$2.30
Consecutive Insertions Minimum Charge \$2.00
CLASSIFIED DISPLAY RATES \$1.75 Per Column Inch
DEADLINES 12 noon Tuesday For Thursday Paper 12 noon Friday For Sunday Paper <i>We reserve the right to classify, revise, or reject any ad. Not responsible for any error after ad has run once.</i>

1. Personals

A J.T.P.A... Staff person will be available at Muleshoe Community Action on Tuesdays 9:30-3:30 to discuss applications and available services.
s1-1t-16tc

FOR REGISTERED Child care, full time or drop-in's. 272-3036.
d1-2t-4tc

FRANK'S Refrigeration & Appliance Service Parts & Repairs.
817 Gum
Muleshoe, Texas
79347
PHONE
Home 272-3822
f1-6s-1tc

Call your local used cow dealer for 7 day a week dead stock removal. 965-2903 or 1-800-692-4043.
c1-37t-1tc

PIANO FOR SALE
Wanted: Responsible party to assume small monthly payments on piano. See locally. Call credit manager 1-800-447-4266.
p1-8t-6tp

Will do housecleaning if interested. Call 925-6795.
w1-8t-4tc

CONCERNED
About Someone's Drinking?
HELP IS AVAILABLE
through Al-Anon
Call 272-2350 or 965-2870 or come to visit Tuesday nights, 8:00 p.m. or Saturday mornings at 10:30 a.m. and through AA call 965-2870 or come visit Tuesday nights, 8:00 at 620 W. Second, Muleshoe.

3. Help Wanted

LVN, MA, or EMT, parttime. Need extra money? Complete Mobil Insurance Physical. Call 806-747-3223.
t3-8s-3tc
19, 23, 26

ATTENTION HIRING
Government jobs your area. Many immediate openings without waiting list or test. \$17,840 \$69,485. Call 1-602-838-8885. Ext. R-10191.
p3-6s-6tp

WE ARE NOW taking applications for Part-Time Sales Clerk.
Muleshoe Fina
102 E. Amer. Blvd.
Muleshoe, TX 79347
272-5278
t3-8s-2tc

3. Help Wanted

ATTENTION RN'S
West Plains Medical Center, Muleshoe, needs RN's for several vacancies. Salary negotiable. In house health plan. Hospital and Nursing Home and Dr.'s Clinic connected. Call Kay Swint, DON, 272-4524.
s3-8t-3tc
t-s-s

HELP WANTED need assistant Farm Manager, need high education, Farm Experience required. Must be mechanically inclined & people oriented. Salary negotiable. Call 272-5506, or come by Bamert Seed Co., Muleshoe, TX.
b3-8t-4tc
23-26-2-5

5. Apts. For Rent

NICE- Large one bedroom range and refrigerator furnished. Good location. Water Paid. Deposit Required. 272-7575.
h5-5t-1tc

8. Real Estate

TWO BEDROOM, 1 bath, garage, carpeted, fenced back yard. Kitchen appliances, washer, dryer and chest freezer included. One block from the high school. Call 272-5405.
p8-5s-9tp

3-2-1 STUCCO. Close to town on Hwy. 2 bedrooms downstairs, 1 bedroom and bath upstairs. Fire place. A must see on 100x400 lot. Call Whitt Reid Real Estate 272-3611 or Thursie Reid, 272-5318.
w18-3s-1tc

NICE 3 bedroom, 2 bath house, 2 miles west of Muleshoe. With large barn. Nice location. Call 946-3340.
d8-25s-1tc

FOR SALE: 2 bedroom 1 bath mobile home on 60 x 100 lot with 2 car carport in Country Club Addition. Call: 925-6480 after dark.
08-45s-1tc

ATTENTION GOVERNMENT HOMES

from \$1 (U-repair). Delinquent tax property. Repossessions. Call 1-602-838-8885 Ext. GH 10191.
p8-6s-6tp

REPOS: 2 and 3 bedroom Mobile Homes No Credit needed. Low down payment. Low monthly payments. Call 806-894-8187.
b8-7s-8tc

ATTENTION: First time home buyers, 2 and 3 bedroom Mobile Homes. No credit needed. We deliver. Call 806-894-7212.
b8-7s-8tc

You can judge your friends by what they do rather than by what they say.
Curiosity is still the basis of most of our knowledge; are you curious?

8. Real Estate 8. Real Estate



Whitt Reid Real Estate 201 Main Street Muleshoe, Tx. 272-3611

is featuring this week a beautiful Spanish Style Country home located 3/4 miles North East of Muleshoe on Plainview highway approximately 3435 square feet of living space, 3 large bedrooms, 2 and 3/4 baths, large carport, Central heat and air, large family room. Cathedral Ceiling, rock fire place w/gas starter, intercom system, shake roof, fenced yard, landscaped, incinerator, storage house, elegantly decorated-A dream home, priced for quick sale. Call after hours-Thursie Reid-272-5318
Sandra Chancey-925-6727
Geo. Poteet-272-4047
Roy Whitt-272-3058

11. For Sale

3BEDROOM BRICK on 3 acres of land, 2/car detached garage, fireplace, built-ins, Central heat with a house well Barn and corrals. Country Club Addition. Call 272 3390 or 272-4010.
a18-3s-8tc

1983 14x80 MANATEE MOBILE HOME 3 bedroom, 2 bath. Large bedrooms, storm windows, assumable loan. 263.68/month. Call 965-2364 after 5:00 p.m.
r11-7t-1tc

FOR SALE 16ft. Deck Boat, 85 Johnson Motor real clean, has been covered. 927-5423.
r11-7t-1tc

Bingham & Nieman Realty

116 E. Ave. C. 272-5285 or 5286
PRICES REDUCED UP TO \$7,000 on 2 & 3-1-1 Brick Homes, Cent. heat, Energy Efficient. PRICED FROM \$23,500 !!! Approx. \$600.00 total move-in, payments based on income for Qualified Buyers.

RICHLAND HILLS
IMMACULATE 3-2-2 Brick, corner lot, Cent. A&H, built-ins, FP, loads of storage & closet space, much more!

PRICE REDUCED 3-1-1 Brick, Cent. Heat, Evap. air, built-ins, fenced yard....

VERY NICE 3-2-3 Home, Cent. A&H, built-ins, FP, fans, spktr. sys., fenced. **PRICED TO SELL!!!!**

VERY NICE 3-2-2 Brick Home, Cent. A&H, built-ins (inc. kitchen ctr., compact, microwave) Jacuzzi, loads of storage, basement, aut. spktr. sys. & Much More!!!!

JUST LISTED-3-2-1 carport Brick, Cent. A&H, built-ins, FP, den or 4th bdrm., storage bldg., Fenced yd.

HIGHLAND AREA
JUST LISTED-Nice Large 2-2-2 Brick, Cent. A&H, utility, cov. patio, fenced yard & more!!!!

VERY NICE 3-2-2 Brick, Cent. A&H newly remodeled kitchen with built-ins, storm windows, fenced yard, storage bldg. and much more!!!!

NICE 3-2-2 Brick home (2 story), on corner lot, Cent. A&H, built-ins, and much more. **LET'S LOOK TODAY!!!!**160's

NICE 3-2-1 carport home 2 living areas, priced under \$20 per sq. ft., fenced yard, workshop-storage, & more!!!!

NICE 3-1/4-1 Brick Home Cent. A&H, built-ins, large den w/Fireplace, fenced yard, storage bldg. \$30's!!!!

HIGH SCHOOL
NICE 2-1/2-2 Home, corner lot, built-ins, nice carpet, heat pump, fenced yard, storage bldg. & more!!!!

PRICE REDUCED FOR QUICK SALE! Nice 2-1-1 Home, Cent. Heat, carpets, work-storage area, and much more. \$19,950.00!!!

DIANNE NIEMAN, BROKER

8. Real Estate 8. Real Estate

Henry Realty
111 W. Ave. B Muleshoe 272-4581
COMMERCIAL PROPERTY - Ideal location on West American Blvd. 150' highway frontage. A great business opportunity.
3 bdrm., 1 bath good location. Immediate occupancy.

3 Bdrm., 2 bath, spacious home outside city limits, near city on highway. 29'x40' metal building. Lot 85'x620'.

3 Bdrm., 1 bath, completely remodeled, edge of city on highway.

RURAL HOME 3 bdrm, 2 bath, large den on one acre with many extras, fenced with barns, fruit trees, garden, extra storage, storm cellar and satellite dish.

4 bdrm., 2 bath, 2 car garage, central heat/air, large utility, carpet, near down town. Excellent condition.

9. Automobiles For Sale

Is It True You Can Buy Jeeps for \$44 through the U.S. government? Get the facts today! Call 1-312-742-1142 Ext. 6976-A. p9-3t-4tp

ATTENTION GOVERNMENT SEIZED VEHICLES from \$100. Fords, Mercedes, Corvettes, Chevys. Surplus Buyers Guide. 1-602-838-838-8885 Ext. A-10191. p9-6s-6tp

dealership log homes
Your complete Log Home Company has all of America's finest lines, starting at \$12,475. Great earning potential, will not interfere with present employment. Investment 100% secured by model home. Call Don Hickman Toll Free 1-800-633-0670 or Collect 615-399-1721.
COUNTRY LIVING LOG HOMES
P.O. Box 171080
Nashville, TN 37217

15. Misc. 15. Misc.

ESTABLISHED COMMUNICATIONS COMPANY SEEKS
In Muleshoe area an aggressive salesperson, self motivated, and a desire to succeed. Sales experience helpful, but not required. Please send a complete resume with a cover letter to:
Associated Communicatng, Inc.
116 E. Grand Ave.
Clovis, NM 88101
t-s

MAN EXPERIENCED in irrigation well repair. Call 806-238-1596 day or 238-1328 nights.
b3-49s-1tc

CHRISTIAN WOMAN will sit with elderly day or night. 272-3339.
1p-7t-3tp

Retirees Can Avoid Estimated Tax Payments

Many retirees have tax withheld from their pension and annuity payments. This may free them from having to make estimated tax payments, the Internal Revenue Service said.
By having the payer adjust the amount of tax withheld from payments or distributions, a retiree can avoid having to make estimated payments during the year. If the retiree chooses to be exempt from withholding (have no income tax withheld), he or she may be required to make estimated tax payments on those distributions. The payer can instruct the retiree on how to make either election.
Tax withheld from periodic pension or annuity payments is based on marital status and the number of withholding allowances claimed on the withholding certificate Form W-4P, "Withholding Certificate for Pension or Annuity Payments," or a similar form provided by the payer. If a retiree does not give the payer a withholding certificate, the tax withheld will be determined by treating the retiree as a married person claiming three withholding allowances. If not enough tax is withheld, a retiree could be penalized for underwithholding.
If a retiree chooses not to have federal tax withheld, he or she should be careful that enough taxes are being paid and/or withheld on all sources of taxable income. A worksheet to help figure estimated tax is included on IRS Form 1040-ES, "Estimated Tax for Individuals."
Part of social security and equivalent railroad retirement benefits may be taxable, even though income tax is not withheld from these benefits. Retirees may need to make estimated tax payments or have more tax withheld from their other income, if they have such income.
Generally, social security recipients may have to pay tax on part of their benefits if their total income for 1989, including tax-exempt interest and one-half of their social security or equivalent railroad retirement benefits, is more than:
(1) \$32,000 if they are married and will file a joint return;
(2) Zero, if they are married, file separate returns, and did not live apart from their spouses for the entire year; or
(3) \$25,000 in all other circumstances.
Should a retiree be charged a penalty for underpayment of estimated taxes, there are provisions under which the penalty may be waived, such as casualty, disaster, or other unusual circumstances.
More information on estimated taxes can be obtained in the free Publication 505, "Tax Withholding and Estimated Tax." Forms and publications are available by using the order blank in the tax return package or by calling 1-800-424-3676.

For Rent
KITCHENETTES
272-4533

Just One Head Injury

CAN CHANGE YOUR MIND

A revolution from the DPH Treatment

GEORGE NIEMAN, BROKER

MULESHOE AREA



Winter '89



BUSINESS DIRECTORY AND SHOPPING GUIDE

WES-TEX FEED YARDS, INC.

Custom Cattle Feeding

Wes-Tex Feed Yards, Inc.

272-7555

Henry Insurance Agency, Inc.

"Serving All Your Insurance Needs"

272-4581

111 W. Ave. B.



★ Texas Bingo ★ Is Here

Rattlesnake Game

Learn The Natures Of Texas

Muleshoe Art Loft

Ana's House of Beauty

Welcomes
Naomi Acosta



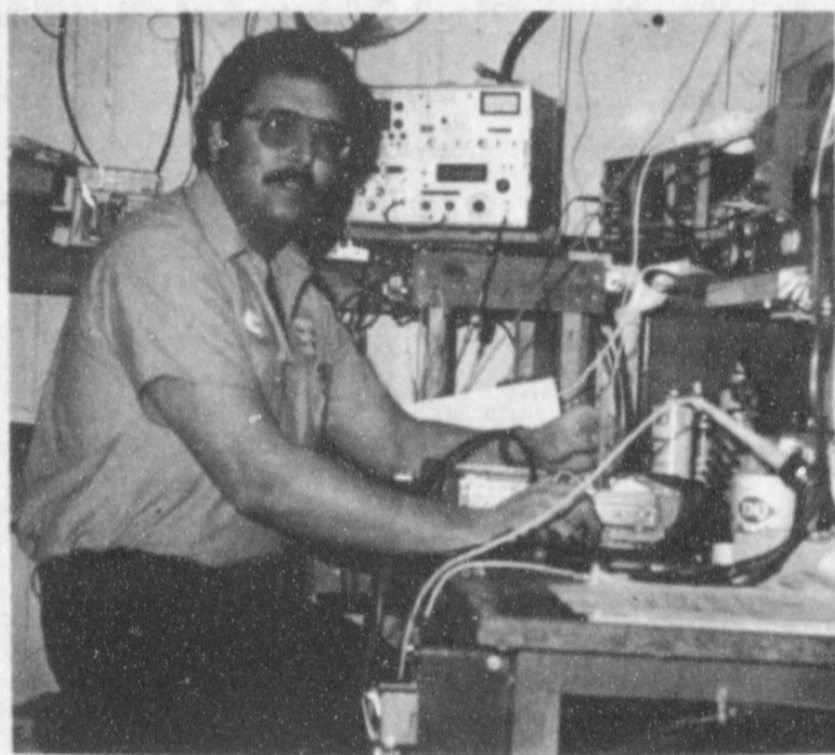
Haircutting Manicures Perms

The latest in Hair Styling

Ana's House Of Beauty

272-4152

109 Ave. B.



W.T. Services has been in business in Muleshoe for four years. We specialize in installation and repair of all Major Brands of Two Way Radio Equipment, including Mobile Radios, Base Stations and Repeaters.

Shop hours are Monday through Friday from 8-5. We can also put you in contact with area Motorola salesmen for All your New Radio Needs.

Thank You
Gary Parker
Manager



W.T. services inc.
319 E. American Blvd.
MULESHOE, TEXAS 79347

272-4888

Muleshoe, Texas 79347 319 E. American Blvd.

El Nuevo Leal's Restaurant

NEW!!!



- Beef or Chicken Fajitas
- Chicken Enchiladas with red or green sauce
- Sopaipillas
- Your choice, topped sopaipilla topped with stew meat, taco meat or chicken

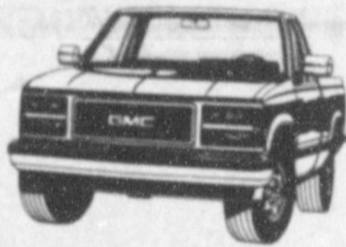
Closed Mondays
1542 W. Amer. Blvd.

31 Years Of Business In Muleshoe

272-3294

ROBERT D. GREEN, INC.

"Pick-Up Truck Headquarters"



4WD Sierra SLX Series 1500 Wideside Pickup

2400 W. American Blvd.

(806)272-4588



W.T. services inc.

319 E. American Blvd.
MULESHOE, TEXAS 79347

Mobile Communications
Two-Way Radio Repair

GARY PARKER
Technician

Muleshoe - 806-272-4888
Hereford - 806-364-7311

"BOTANAS" - APPETIZERS
Chili Con Queso Dip.....1.75
Cheese Nachos.....2.50
Bean Nachos.....3.15
Meat Nachos 3.50
(Nachos Are 8 To An Order)

Viola's Restaurant

2002 W. Amer. Blvd.

272-3838



Scoggin Ag Center, Inc.

Weed & Feed Now

and stop the weeds in your
Spring Yard

Your Local Fertilome Dealer

272-4613

1532 W. American Blvd.



5 Locations To Serve You!

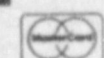
- *Clays Corner *Enochs *Muleshoe
- *Pleasant Valley *Old Griffith

Farmer's Co-Op Elevators

Higginbotham Bartlett

Its Time To Start Thinking About
Spring Painting Again

Consider Jones-Blair Paints & Sundries
Quality Paints At Competitive Prices.
We Have The Paint And Price For You!



"Quality & Service
At the Right Price"

272-3351

215 Main

Pick-Up Seat Exchange

Complete Seat Overhaul

Replacement
Springs



Molded
Carpets

McCormick's

Upholstery and Drapery

1009 S. 1 st.

806-272-4660

Muleshoe, Texas 79347