



Muleshoe Journal

The Community Of Opportunity-Where Water Makes The Difference

WEATHER

April 7	81	41	.00
April 8	88	41	.00
April 9	63	35	.00
April 10	57	27	.00
April 11	49	27	.00
April 12	65	31	.00

Vol. 67, No. 15

12 PAGES TODAY

Published Every Thursday At Muleshoe, Bailey County, Texas 79347

20¢

Thursday, April 13, 1989

Sales Tax Rebate Check Increases Again

Cotton Prices Expected To Climb In 1989

Announcement by USDA this week of plans to consider changes in procedures for establishing the Adjusted World Price of U.S. Upland cotton was seen by W. Bruce Heiden, president, National Cotton Council, as "A signal to our domestic customers and to the rest of the world that U.S. cotton intends to be consistently competitive."

Secretary of Agriculture Clayton Yeutter announced on Wednesday his intent to seek public comments on a proposal authorizing his use of discretionary authority to adjust the AWP Formula to make U.S. cotton more consistently price competitive. During most of the

past 12 months, prices of U.S. cotton have been uncompetitive with other world growths. With indications of tightening supplies among other cotton producing nations, however, U. S. cotton has become more competitive in recent weeks.

"We are pleased that Secretary Yeutter has acknowledged that we have a problem with the world price discovery mechanism and has agreed to act on the Council's recommendation to correct it," said the NCC president.

The secretary's action came one week after a Council delegation led by Heiden met with Yeutter to discuss the competitive issue.

"We understand that the Secretary intends to act on a recommendation developed originally by the Council's Producer Steering Committee and adopted by Council delegates at the annual meeting in January," Heiden said. "Although it may be a couple of weeks before new regulations are ready for publication in the Federal Register, Cont. Page 6, Col. 1

Post Office Makes Offer To Vacationers

"If work or vacation should ever take you away from home, the Postal Service would like to remind you that there are several options available when determining what to do with your mail," says Muleshoe Postmaster Abel Arguello.

"If you'll be away just a few days and don't have time to notify the Post Office, as a friend or neighbor to pick up any mail from your box," Arguello says. "Accumulated mail in a box is an advertisement that the house is vacant."

"Small receptacles such as apartment house boxes have a limited capacity. Your carrier will remove accumulated mail when the box becomes full, and leave a notice to pick up the mail at the Post Office."

"We will be glad to hold your mail at the Post Office for up to 30 days," says Postmaster Arguello. "Either stop by the office here, or ask your carrier for a hold mail card. Be sure to specify the dates which you would like your mail held, fill out the card, sign it and hand it to a clerk or your carrier a day or two before you leave."

"The Postal Service does not accept requests to hold mail for one day or requests made by telephone," Arguello says.

"When you return, you can either pick up the accumulated mail at the office, or call and ask that it be delivered the next day. Since there may be more mail than will fit in the box, someone should be available to receive it."

"If you expect to be away for more than 30 days, you should consider a temporary address change," says Arguello. "Simply pick up a change of address order form from the Post Office or your carrier and fill it out completely, including the effective date and the date you wish to terminate the order."

"This service is commonly used when families travel to vacation homes. It allows them to stay current with bills and correspondence. Again, it's a good idea to call when you return so that normal delivery will resume."

"We want to work with you to ensure uninterrupted mail service," concluded Postmaster Arguello.



J & L FASHIONS WINS PLAQUE--Judy and Leon Logsdon proudly display a plaque they won at a recent clothing convention. The plaque was given the Logsdon's for their winning essay entry in "Customer Service."

Superintendent Gives Facts, Figures On School

Dr. Lawrence Ward, superintendent of the Muleshoe Independent School District provided the program for the Muleshoe Rotary Club on Tuesday, speaking on "Education and Its Community Involvement."

According to Dr. Ward, in the future, there will be more relationship between schools and the community.

He said they will be working closer together than ever before -- which he says will be to the mutual benefit one to the other.

"If the United States is to be maintained economically, we must be prepared for it," he said, adding, "Our nation is at risk, education is not at risk."

Citing many figures, Dr. Ward explained how education has advanced.

For example, in 1950, only 50 percent of the students graduated from high school; this had increased to 74 percent in 1977 and rose to 84 percent in 1987.

The drop-out rate for school students has also dropped since 1910, from around 80 percent to current 24 percent, he added.

Varsity Baseball Performing Well In First Season

Muleshoe High School's first baseball team is still trying to gain a good 'foothold' on the year, despite a loss to Lubbock Christian High School last Friday, 17-7.

Under the very capable leadership of Coach Jeff Anderson, the team is learning a lot this first year, and despite what the final records show, will have matured and learned a lot about playing baseball.

In his four times at bat last Friday, Ricky Flores had one hit, three runs, struck out one time and had one base on balls.

For Danny Rodriguez, it was four times at bat with one hit and three runs batted in; Michael Hardwick had one hit in four times at bat, struck out twice and had one run batted in. The other player who was at bat four times was Larry Gonzales, with two hits, one strike-out and one run batted in.

Abel Leal batted four times with one run, one strike-out and three bases on balls.

Batting three times were Roque Flores, who had two strike-outs and one base on balls; Rodney Reynolds had two hits, one run and one base on balls; and Rodney Reynolds had two hits one run and one base on balls.

In his two times at the plate, Joe Orozco had one hit, one run and one strike-out.

Each team made four errors in the game.

saying there has been a 500 percent increase in college graduates.

In 1969, students in school on any given day averaged 69 percent; this had risen to 92 percent by 1979.

Also, test scores continue to rise, he added.

As far as the local economy is concerned, Dr. Ward said the school collects nearly \$1.5 million in taxes, and added to this amount are funds received from state and federal money.

The salaries alone total nearly \$4.5 million each year, he added. "Many people perceive school as a financial liability," concluded Dr. Ward. "Instead, it is a financial asset."

"We need to consider what happens to most of that money. Economists estimate that money changes (or rotates) 6-7 times before it leaves town. That's a big economic impact on Muleshoe."

President George Nieman asked for all Rotarians possible to show up to help with the Rotary-sponsored Black's Magic and Illusion Show Thursday night, to be held at 7 p.m. in the Muleshoe High School auditorium.

He said the executive board had met last Tuesday immediately following the Rotary meeting and talked about income from dues and meals, which are coming up short about \$200 per month.

He asked for the membership Cont. Page 6, Col. 4

Chairperson Being Sought For MDA

A volunteer chairperson and volunteers are needed to help coordinate two special fundraising events in Muleshoe during summer leading up to Labor Day weekend for the annual "Jerry Lewis Telethon."

Paul Moore, district director of the Muscular Dystrophy Association (MDA) for the South Plains, stated that very little special events are generated from area communities even though a majority of people with muscle diseases are from one of them. He went on to say that "volunteer help is needed to help continue the most comprehensive local patients services offered by any health agency and to generate more funds to find answers in research sooner."

MDA's state and worldwide research has already provided hope in the study of duchenne muscular dystrophy, Myasthenia gravis, and ALS (Lou Gehrig's disease). Just recently, research

Cont. Page 6, Col. 3

State Comptroller Bob Bullock said Friday that statewide sales tax rebates for the first four months of 1989 are up 13.4 percent over last year's tax allocations for the same period.

Jennyslipper Walkathon Set May 13

Are you ready for this? It's time for the "Miles for Muleshoe Walkathon" again. It will be sponsored by the Jennyslippers on Saturday, May 13, beginning at 9 a.m.

Again this year, the Jennyslippers will be using the proceeds of the walkathon to purchase the Fourth of July fireworks.

Mary Ann Ramirez, walkathon chairman, reminded, "The gigantic fireworks display is the highlight of the July 4th celebration, which attracts class reunions, family parties, picnics and people who just enjoy the entertainment in the park that traditionally closes out the day of celebration."

All ages can participate in the walkathon -- and you can walk one mile, or walk the maximum - 10 miles.

You can decide on the prize you want to work for, get pledge sheets filled out. A tip! You can enter as clubs, organizations, and businesses in Muleshoe to enter as a group -- and a challenge among yourselves, or enter individually.

Mrs. Ramirez said pledge sheets for the Walkathon may be picked up at the Muleshoe Library.

Pledge sheets will be turned in by Wednesday, May 24, and prizes will be awarded on Saturday, June 24.

Plan now to join the fun -- test your own capabilities -- and along the way, challenge a friend, or friends, to join you.

Not only the Jennyslippers, but the community will say "Thanks For Supporting Muleshoe."

Lazbuddie Trio Qualified Tuesday For Regional Meet

Wednesday morning, Coach Mark Sisson of Lazbuddie notified *The Journal* that three Lazbuddie athletes qualified for regional competition on Tuesday.

In the district meet held at Dimmitt Tuesday, Michael Williams was district champ in both the 1600 and 3200; Chad Waddell was district champ in the high jump and Amy McGeehee qualified in the 100 meter.

If they place first or second in the regional meet in two weeks at Levelland, they will advance to state competition.

Michael Williams went to state last year, according to the coach.



SUPERINTENDENT SPEAKS TO ROTARY--Dr. Lawrence Ward, superintendent of the Muleshoe Independent School District was speaker for the Muleshoe Rotary Club Tuesday. Pictured at right, Dr. Ward spoke on "School and The Community." Pictured with Dr. Ward is George Nieman, Rotary president. (Journal Photo)



Absentee voting for the board of trustees of the Muleshoe Independent School District will be from Monday, April 17-May 2.

Absentee voting will be in the Bailey County Clerk's office with Clerk Barbara McCamish as absentee voting clerk.

Juana Shelburne said the MISD PTA will meet at 7 p.m. on Monday, April 17 in the Dillman Elementary gym.

Dillman Elementary Music Department will provide the program, and the installation of the 1989-90 officers will be conducted.

Mrs. Shelburne said an executive committee meeting will be held at 6:30 for the president and incoming officers, as well as for current officers.

Muleshoe Jennyslippers will sponsor skating Friday night, April 14, at the Bailey County Coliseum.

Skating hours are 7-9 p.m., and it's still just \$1.

Varsity Track Girls Compete In Two Meets

On Saturday, April 8, Coach Ruben Osuna took his varsity girls' track team to Dimmitt for the Dimmitt Relays, where they came home with 26 points and a sixth place.

Erin Kelley won second in the high jump; the 1600 meter relay team of Erin Kelley, Amber Green, Monica Swint and Wendy Green won fourth and Monica Swint was fourth in discus.

Heather Hutton was sixth in the 1600 meter run and Wendy Green placed seventh in the 100 meter hurdles.

At the Sandhills Relays in Monahans on April 1, Fort Stockton won the meet, but Muleshoe placed fourth with 67 points.

Winning second places were Amber Green in the long jump and Erin Kelley in the high jump.

Amy Harrison was third in both the high jump and triple jump.

Fourth places were Amber Green, triple jump; and the three relay teams.

It was Erin Kelley, Kelly Conklin, Amy Harrison and Amber Green for the mile relay; Jill Noble, Amy Harrison, Monica Swint and Amber Green in the 400 meter relay; and Jill Noble, Amy Harrison, Monica Swint and Amber Green in the 800 meter relay.

Michelle Finney placed fifth in the triple jump.

Largest Meat Dept In Town!

MONOPOLY MATCH 'N WIN

PRIZE	NUMBER OF PRIZES	ODDS CHART ODDS 1 TICKET	ODDS 13 TICKETS	ODDS 24 TICKETS
\$2,500	12	403,333	31,026	15,513
\$1,000	18	268,889	20,684	10,342
\$500	30	161,111	12,389	6,208
\$100	100	48,400	3,723	1,862
\$50	200	24,200	1,862	931
\$25	400	12,100	931	465
\$10	1,000	4,840	372	186
\$5	2,000	2,420	186	93
\$2	4,000	1,210	93	47
\$1	8,000	605	47	24
TOTALS	48,513	100	8	4

PROGRAM DATA
 \$1.00 ticket price money available during 12 week program
 48,513 total winning game pieces available during program
 100 tickets are winning game pieces
 NUMBER OF TICKETS: 12
 PROGRAM RUNS THROUGH: June 18, 1989
 AREA COVERED BY PROGRAM: North Texas, West Texas, Eastern New Mexico & Southern Oklahoma
 (WIP) There will be two (2) drawings in each participating store for \$100 prize per store per drawing. Drawing dates for these are April 10, 1989 and May 1, 1989. There will be one drawing for the \$10,000 Grand Prize. Drawing date for the Grand Prize Drawing will be given 77 days after game termination. The odds of winning the sweepstakes will vary depending upon the number of qualified entries submitted.
 GAME PRIZES: \$1,000, \$500, \$100, \$50, \$25, \$10, \$5, \$2, \$1
 TOTAL GAME PRIZES: \$196,715
 NO PURCHASE NECESSARY

OSCAR MAYER BUN LENGTH BEEF
FRANKS
1 LB. PKG.
\$1.29

HEAVY GRAIN FED BEEF
ROUND STEAK
\$1.79
LB.

OSCAR MAYER BUN LENGTH MEAT
WIENERS
1 LB. PKG.
\$1.19

HEAVY GRAIN FED BEEF BONELESS CENTER CUT	LB	\$1.99
ROUND STEAK	LB	\$1.99
HICKORY SMOKED SLICED SLAB	LB	\$1.19
WRIGHT'S BACON	LB	\$1.19
SELECT SLICED YOUNG		
BEEF LIVER	LB	89¢
HEAVY GRAIN FED BEEF		
RUMP ROAST	LB	\$1.99
HILLSHIRE FARMS REG / POL / BEEF / LITE TRAY PAK		
SMOKED SAUSAGE	LB	\$2.19
LEAN BONELESS ROAST OR		
SIRLOIN TIP STEAK	LB	\$2.39



5¢ OFF LABEL
ARMOUR VIENNA
SAUSAGES
5 OZ. CANS
3 FOR \$1



CAMPBELL'S
PORK & BEANS
16 OZ. CANS
3 FOR \$1



5¢ OFF LABEL
LIQUID BLEACH
CLOROX
ONE GALLON JUG
99¢



40¢ OFF LABEL
DETERGENT
BOLD
42 OZ. BOX
\$1.69



66 SML. / 48 MED. / 32 LG.
SUPER TRIM DIAPERS
HUGGIES
BOX
\$9.99



ABSORBENT PAPER-JUMBO ROLL
HI-DRI TOWELS
59¢



ALL TYPES 6 PK
COCA-COLA
12 OZ. CANS
\$1.79



KEEBLER-16 OZ. BOX
ZESTA SALTINES
89¢



BETTY CROCKER FUDGE
BROWNIE MIX
21.5 OZ. BOX
\$1.09

FLORIDA
SWEET CORN
3 EARS
\$1




WASHINGTON DELICIOUS
RED APPLES
3 LB. BAG
99¢



10¢ OFF LABEL
TENDERCRUST
BREAD
1 1/2 LB. LOAF
59¢



GENERAL MILLS COUNTRY
CORN FLAKES
15 OZ. BOX
\$2.29

NEW CROP

YELLOW ONIONS	LB	19¢
CALIFORNIA		
NAVEL ORANGES	LB	39¢
SWEET JUICY		
CANTALOUPE	LB	49¢
RED RIPE SALAD		
TOMATOES	LB	59¢

AUNT JEMIMA ORIGINAL PANCAKE MIX 2 LB. BOX **\$1.29**

AUNT JEMIMA BUTTERLITE SYRUP 24 OZ. BTL **\$2.39**



BACON FLAVORED CHIPS
BAC-OS
3 1/2 OZ. JAR
\$1.29



NESTLE INSTANT TEA
3 OZ. JAR
\$2.99



SOFTIQUE-15¢ OFF LABEL
FACIAL TISSUE
250 CT. BOX
\$1.49



JONNY CAT CAT LITTER
10 LB. BAG
\$1.99

FROZEN



SHURFINE FROZEN
ORANGE JUICE
12 OZ. CAN
99¢

Clairrol® condition® \$1.00 Cash Refund Official Mail-In Certificate


NAME: _____
 ADDRESS: _____
 CITY: _____

HEALTH & BEAUTY

ASST. TOOTH PASTE	AQUA-FRESH	6 OZ. TUBE	\$1.69
ASST. ROLL ON DEOD.	BAN	2 1/2 OZ. SIZE	\$2.99
ASST. SHAMPOO	CONDITION	15 OZ. BTL	\$1.38
X-BODY X-PROTECTION	CONDITION II	15 OZ. BTL	\$1.38
	ASPIRIN	200 CT. BTL	\$6.99



SHURFINE
CHOCOLATE MILK
1/2 GALLON CTN
\$1.29



BORDEN
24 PK.
POPSICLES
OR FUDGE BARS
\$1.89

PRICES EFFECTIVE
APRIL 9-15,
1989




SHURFINE ORANGE
DANISH ROLLS
8 CT. CAN
\$1.19

BANQUET MICROWAVE MEAT POT PIES CHICKEN/ BEEF/TURKEY 7 OZ. BOX **59¢**

FISHER BOY FISH STICKS 8 OZ. PKG **99¢**



BORDEN
1/2 GAL.
HI-PRO MILK
\$1.09

From The Senate

By: Teel Birins

If you had to choose one word to describe the 71st Legislature at the end of three months, it would be harmony. As a freshman, I candidly expected much more disagreement on major issues than I have witnessed to date. The reason for all this harmony is, at least in part, due to the fact that the legislative leadership, Governor Clements, Lt. Governor Hobby and Speaker of the House Gib Lewis, are working together. In fact, they have had breakfast together once a week throughout the course of the session.

One of the clearest examples of this harmony has been the budget process. Early on Governor Clements decided to accept the Legislative Budget Board draft of the current services budget as his own. This was a marked departure from his strategy in the previous legislative session where he submitted his own draft of a current services budget which was some \$5 billion below that of the LBB.

For me, some of the best news of the session may be the recent announcement that Governor Clements, Lt. Governor Hobby and Speaker Lewis all support major restructuring of our criminal justice system. The first duty of any government is to protect its citizens. Texas is failing to meet its duty. The average convicted felon is serving only thirty days of each year of his sentence. We are literally turning over the entire population of the Texas Department of Corrections each year. A major overhaul of the details of the sweeping overhaul plan have not surfaced. I believe the principle components of the plan are on target. I said all through the campaign, that criminal justice

reform in Texas must contain three elements. First, we simply must create more capacity to house violent criminals. Today in Texas incarceration is simply no longer a deterrent to crime. Second, we must come up with creative alternatives to incarceration for non-violent first offenders. Third, early identification of those at risk of entering the criminal justice system will help get at the root causes of crime and not just treat its symptoms.

The principle feature of the plan is construction of some 10,800 new prison beds. These new beds would be financed through existing bonds that have been approved by the voters in November. The plan also envisions paying counties directly to house inmates in community facilities. The community programs would include drug counseling, education programs, community service and other work programs. These new facilities, when combined with provisions that would grant the judiciary greater latitude in sentencing, would allow for cheaper, less restrictive and more rehabilitative alternatives to incarceration. If that does not work, prison would be the next option.

A series of measures supported by Lt. Governor Hobby make up another major element of the criminal justice restructuring plan. These measures are all directed at an attempt to keep kids in school. As I have often said, two things happen when a kid is in school. One, he is not out on the street stealing hubcaps, and two, with each day he is in this structured environment he is statistically less likely to turn to criminal behavior.

In what I believe is one of the

most positive aspects of the plan, the Texas Department of Corrections, the Board of Pardon and Paroles and the Adult Probation Commission would be reorganized under a single agency called the Texas Department of Criminal Justice. This move combined with significantly improved computer tracking of criminals, will result in a more efficient and economical way to deal with criminal justice in Texas.

One aspect of the proposal that is criticized by some is merging the duties of adult probation officers and parole officers. The parole officers that argue against this claim there would be a local bias on the part of probation officers. I disagree. I think that is a positive step as opposed to a negative one. Furthermore, the plan envisions significant case load reductions for these new probation/parole officers. The idea here, of course, is to allow probation and parole to have more teeth. As it stands now, a monthly check-in with your probation or parole officer is often the extent to which either of these systems work.

Several of the sheriffs I visited with are reticent to express approval of the plan for fear that it might wind up making their lives tougher and their jails even more crowded with state prisoners. In light of recent TDC action restricting the number of prisoners our counties can send to TDC, I can't say as I blame them. I believe the new TDC admission plan was designed to relieve the major overcrowded urban county jails at the expense of rural jails.

I have pointed this concern out on several occasions to Senator Robert McFarland, R-Arlington, Chairman of the Senate Criminal Justice Committee. I believe that he understands the dilemma of our rural counties. He has assured me that he will work with me to include a provision in the criminal justice reform package that will mandate the new Department of Criminal Justice to base prison admissions on factors other than simply the number of prisoners a county has admitted in the past.

It wasn't that long ago that those of us living in the High Plains of Texas thought nothing about sleeping with our doors and windows open and unlocked or leaving the keys in our car over night. But today that sense of safety and well being is gone. In a very real sense we have all become victims of criminal justice that exists in Texas. It is my firm conviction that we in the Legislature must see to it that our state government fulfills its number one duty to the citizens of Texas, to protect them from crime. Hopefully the harmony that exists amongst the leaders in the Legislature will help us move swiftly toward this important goal.



Best of Press

She Can
Many a woman who can't add can certainly distract.
—Tribune, Chicago.

No Fun
He who falls in love with himself has no rivals.

Garden Pests Need Control Starting Now

Gardening season is just around the corner, and with it the need for early preparation against insect pests that are sure to be around.

First, gardeners should inspect insecticides left over from last year to determine if they are still good, said Spencer Tanksley county agent with the Texas Agricultural Extension Service. Product age and storage conditions must be considered.

If properly stored, most products should have at least a two-year shelf life once they begin to be used, Tanksley said. Dusts sometimes have a tendency to absorb moisture if the bag is not sealed tightly after each use; they should not be used if lumpy.

Place bags containing insecticides in a clear, polyethylene bag and seal it with a rubber band to keep moisture out, Tanksley said.

If dusts are two years old or older and there is any doubt about their storage, dispose of them according to label directions and buy new insecticide, Tanksley said.

Although liquid materials are not as likely to absorb moisture, storage is still important, Tanksley said. Caps should be resealed tightly on the product after each use. Do not use liquids which are cloudy or milky in color or which have sediments on the bottom of the container.

Do not store pesticides on a shelf in front of a window, especially if the window gets strong afternoon sun, Tanksley said. Do not store liquids in an area subjected to extreme temperature fluctuations. Extremes from summer to winter temperatures may not hurt the active ingredient in the insecticide, but it may damage the ability of the product to mix properly in water.

Tanksley said if liquid materials are at least two years old and have not been stored properly, monitor vegetables closely after spraying to determine if the pesticides are controlling insects.

It's important to anticipate pesticides that will be needed for the crops to be grown, said Tanksley. Select insecticides by

considering the plants and the period for insect control before repeating the application. This also will affect time from application until a safe time for harvesting.

Finally, know exactly what is being sprayed on plants and the amount, Tanksley said. Don't jeopardize plants by spraying first and then checking for possible plant damage.

Good Reason

Teacher—What inspired the old-time pioneers to set forth in their covered wagons?

Student—Well, maybe they didn't want to wait about thirty years for a train.

So Sorry

Minister: "Ah, good morning Mrs. Brown. I see you are taking a tramp into the country."

Mrs. Brown: "A tramp indeed! I'd have you know this is my husband."



ONE MINUTE SPORTS QUIZ

By Christian Thorlund

1. Who is Ken Phelps?
2. Who is J. R. Reid?
3. What baseball manager managed the most World Series games?
4. In what sport is Bob Knight well known?
5. On what day does the 1989 Major League baseball season end?

The Answers:

1. DH of the New York Yankees.
2. Top scorer for U. of N.C. basketball team.
3. Casey Stengel, 63.
4. Basketball—he's coach at Indiana U.
5. Oct. 1st.

MAX KING

For
MISD School Board



- ★ Born & Raised In Muleshoe
- ★ Graduate MHS
- ★ 2 Children In MSD System
- ★ Graduate Texas Tech

Served on City Council,
West Plains Hospital Board,
Muleshoe Housing Authority Board,
Owns & Operates Local Business

Your Vote And Influence Appreciated Pd. Pol. Adv. By Max King Committee

Best Yield • Best Price

• Best Quality



Cotton Seed - All Brands

Soybean Seed - White Corn Seed,

Frito-Lay Approved - White Cob Yellow,

Forages - Grazer, Millet & Wheat Seed

Gene McGuire
272-5544

Bill Hunt
272-3474



REVIVAL MEETING

FIRST BAPTIST CHURCH
220 WEST AVENUE E
MULESHOE, TEXAS

APRIL 9 - 14, 1989

CLAUDE CONE, PREACHER
JOHN GLOVER, MUSIC

SUNDAY SERVICES
11:00 A.M.
7:00 P.M.

NON.-FRI.
NOON
7:30 P.M.

REDUCE RISK WITH . . .

Hail/Fire Protection

- Protection to ACTUAL CASH VALUE
- Acre-by-acre coverage (spot loss protection)
- Increased protection for big yields
- Reduced MPCJ premiums with substitute Hail/Fire coverage
- Duplicate coverage with MPCJ for highly leveraged farmers
- Protects for INVESTMENTS & PROFITS

Multiple Peril Protection

- Protection against most unavoidable crop losses (most crops)
- Protection based on YOUR YIELD HISTORY at 50%; 65%; or 75%
- Optional prevented planting protection
- Cost protection for replanting
- Reduced premiums through government participation

CROP INSURANCE BENEFITS

For FARM/FAMILY

- Income stability
- Improved financial planning
- Backstops forward pricing
- Security
- Peace of mind

At the BANK

- Loan repayments on schedule
- Reduced loan risk
- Foundation for cash-flow projections
- Lender is the loss payee
- Liquid collateral
- Security

Crop Insurance Works!

Insurance Deadline Is April 15th

Henry Insurance Agency

111 W. Ave. B

272-4581

Easter Egg Hunt Winners Announced

Those finding prize eggs during the recent Easter egg hunt were announced this week by the Jennyslippers and included:

TODDLERS TO TWO YEARS
Shaylann Stephens, Sha Lisa Ladd, Sha Lisa Ladd, Samantha Orcutt, Juan Carlos Orozco, Ricky Trevino, Ina Evandis, Samantha Orcutt, Nora Olgas, Ricky Trevino, Ricky Trevino, Ricky Trevino, Denise Gutterrez, Mark Anthony Orozco, Ina Enandez, Juan Carlos Orozco, Chris Trevino, Margo Fagisa, Lernado Mendoza, Doug Duncan, Juan Carlos Orozco, Manuel Fagin, Ina Enandiz, Amanda Barillo, Stacy Mata, Megann Fogin, (given name not available) Orozco, Stacie Mata, Samantha Orcutt, Megann Fogin, Joshua Rojas, Nicholas Ogas, Juan Carlos Orozco, Nicholas Ogas, Juan Carlos Orozco, Ismel Toscano, Marcell Rameriz and Felpeta Rayes.

Prizes not claimed were donated by Robert D. Green and Thrift Way.

THIRD TO FIFTH GRADE
Cynthia Villareal, Charlie Wood, Josh (?), Melissa Mata, Michael Orozco, Clifton Knowles, Kris Seferino, Greg Pena, Candy Garcia, Laura Lira, Virginia (?), Unis Ortiz, Ronda (?), Laura Lira, Angelito (?), Crystal (?), Angelica Diaz, Virginia Garcia, Angelica Diaz, Candy Garcia, Jennifer Rojas, Angelica Diaz, Juan Salazar, Felipeta Reyes, Jesse Gonzales, Justin Lee, Justin Lee, Laura Lira, Larry Pineda, Lee Ogra, Lisa Garcia, Mandy Johnson, Melissa Pineda, Percilla Aguirre, Tracy Orozco, Crystal Orozco, Bridget Guzman, Sara Freeman, Veronica Garcia, Candy Garcia, Maria Garcia, Laura Freeman, Laura Soto, Melissa Pineda and Lisa Marie Rameriz.

Not claimed prizes were donated by Bingham and Neiman, Sonic, Mission Cable, Heritage House Inn, Viola's, Adrian and Yellow Rose.

KINDERGARTEN TO SECOND
Stephanie Kirk, Suzanne Gloria, Jessie Gossett, Ronnie Orozco, Lindy Pineda, Casey Tosh, Jonas Alfaro, Celestina Rojas, Fabian Guzman, Lindy Pineda, Michael Martinez, Isaac Nicolas, Jeremy Tosh, Amy Ronek, Laticha Anzaldua, Kimberly Anzaldua, Wade Barryhill, Lindy Pineda, C.J. McNeil, Kole Magby, Amber Bruns, Zack Barrett, Fidel Lira, Bobby Guerrero, Stephanie Garcia, Ronnie Orozco, Aberham Mendoza, Michael Martinez, Megan Tipps, Shawn Page, Joe Garcia, Celestine

Rojas, Myra Hernandez, Kayna Puckett, Jimmy Marquez, Crystal Sotelo, Jennifer Castorena, Tori Tosh, Clifford Wimberly, Celestina Rojas, Jeffery Snell, Jimmy Marquez, Cynthia Villareal, Kayna Puckett, Tiffany Flores and Melissa Flores.

THREE AND FOUR YEARS
Willie Whimply, Dustin Lewis, Dustin Lewis, Kayla Bearden, Kayla Bearden, Kayla Bearden, Gloria Torres, Gloria Torres, Laura Vasquez, Laura Vasquez, Jason Anzaldua, Jason Anzaldua, Bryce Hudgens, Rachel Rudd, Adam Ramirez, Jammie Afaro, Latasha Chavis, Adam Ramirez, Adrian Garza, Ashley Davidson, Nathan Duran, Ricky Rudd, Ricky Rudd, J.R. Lujan, J.R. Lujan, Jeffery Skipworth, Alvin Garza, Kristlin Magby, Sara Domenguz, Ashley Williams, Rosairo Garza, Joshua Maddox, Monka Chavis, Rosy Espelo, Daniel Johnson, Salomon Espasa, Ruben Ovale, Stephanie Rohaus, D.J. Domigus, Kristin Magby, Kristin Magby, Kristina Lazano, Amanda Foster, Juan Garza, Ashley Davidson, Ashley Davidson, Christopher Blalock, Belen Hernandez, Missy Pedigo, Kristen Magby, Marie Reyes and Ricky Rudd.

A prize given by James Crane was not claimed.

Businesses donating prizes included: A&M Farm Supply, Adrian Photography, Ana's House of Beauty, Anthony's, Bass Appliance, Ben Franklin, Blue Stamp Store-Ina Wilemon, Bratcher Motor Supply, Chubby's Beauty Shop, Churches Chicken, Crane Tire Company, Dairy Queen, Damron Drug, Decorators, Dinner Bell, and El Huasteco Cafe.

Also Fair Store, Feature Attraction, Fina Station, First Bank, Fry&Cox, Robert D. Green, Heritage House Inn, Higginbotham & Bartlett, James Roy's Meat Market, Joe's Boot Shop, L&M Construction, La Placita, Lambert Cleaners and Leals Restaurant.

Also Little Gulf, Look n' Good, Main Street Beauty Shop, Mission Cable, Muleshoe Art Loft, Muleshoe State Bank, Muleshoe Trade Center, Old Corral, Pan-Save, Perry's, Pizza Hut, Poy-nor's, Richland Hills Texico, Sages, Sanitary Barber Shop, Spudnut Shop, Something Special Sonic, Sunbelt Savings, T.J. Outpost, Thriftway, Williams Brothers Office Supply, Wilson Appliance, Winkler Meat Market, Yellow Rose, Franklin Welding, in memory of Bill Franklin, Viola's, Western Drug and Bingham and Neiman.

"We wish to thank April Franklin for being our Easter Bunny for the T.V. interview and for showing up at our March 17 skating!" said a Jennyslipper spokesperson. "Holly Huckaby

was our Easter Bunny for the hunt, Thank You Holly". Several people helped with the egg hunt; and the Jennyslipper stated that they were grateful to all of them.



JUNE PLANS REVEALED---Mr. and Mrs. Gary Knowlton and Mrs. Billy Enos wish to announce the engagement and approaching marriage of their daughter, Pamela Enos, to Michael Kent Neel, son of Mr. and Mrs. Merlyn Neel. Miss Enos is also the daughter of the late Billy Enos. Vows will be exchanged at 7 p.m. Saturday, June 17, in the American Blvd. Church of Christ. (Guest Photo)

Scout Leaders Attend Training Session

Muleshoe Junior Girl Scout Troop 152 leaders Arelia Morris and assistant, Terry Radford attended Girl Scout Camp Rio Blanco's Outdoor Training in Crosbyton on April 7, 8 and 9.


This training is necessary to certify leaders so they can take their troop camping.

The course included eight basic outdoor skills used in camping experience; Manners in the out of doors, How to dress, Knife Safety, First Aid, Cooking, Protection of the environment and Fire Building.

"We enjoyed meeting leaders from other areas and exchanging ideas, cookouts, hiking around Camp Rio Blanco, tent building and sleeping in the covered wagon, despite the cold and wind" said a spokesman for the troop.

The leaders returned Sunday exhausted, but excited about their experience and hope to pass along the things they learned to the troop so they can learn to enjoy and respect the wonderful outdoors.

CALENDAR OF EVENTS	
APRIL 13-19	
THURSDAY FRIENDSHIP CLUB 2:30 p.m. ODDFELLOWS LODGE 7:30 p.m. HOBBY CLUB 2 p.m. MULESHOE SQUARE DANCE CLUB 8 p.m. TOPS CLUB 6:30 p.m.	4-H CLUB MANAGER'S TRAINING BROWNFIELD 7:30-9 p.m.
FRIDAY KIWANIS CLUB 6:30 a.m. JENNYSLIPPERS SPONSOR SKATING 7 p.m.	TUESDAY ATHLETIC BOOSTERS 7:30 p.m. ALCOHOLIC ANONYMOUS 8:30 p.m. ALPHA ZETA PI 7:30 p.m. XI OMICRON XI 7:30 p.m. REBEKAH LODGE 7:30 p.m. TRIANGEL CB CLUB 8 p.m. CITY COUNCIL 8:30 a.m.
SATURDAY DISTRICT 4-H MEETS JUDGING CONTEST LUBBOCK	4-H CLUB MANAGER'S TRAINING POST 7:30-9 p.m.
MONDAY SWCD DISTRICT BOARD MEETING 7 a.m. MOONLIGHT EXTENSION CLUB 7:30 p.m. PTA 7 p.m.	ROTARY CLUB 12 noon WEDNESDAY LIONS CLUB 12 noon DUSTY PRAIRIE EXTENSION CLUB 2:30 p.m.



15% Off

Tuxedo Rental


From:

Friday, April 7 -

Friday, April 21st

Lambert Cleaners

123 Main 272-4726



True Value HARDWARE STORES

Care For Your Lawn

 99.00 3.0-HP, 20-in. Rotary Mower has a saddle-type blade stabilizer/adaptor, one-piece steel, deep deck, more.	 129.88 19-in. Electric Mower with high-amp motor, 7-in. wheels and flip-over handle that folds for storage.	 349.95 4-HP 22-in. High-Wheel Mower has high-lift blade, full underdeck baffles and blade stabilizer for smoothness.
 99.00	 199.88 3.5-HP, 22-in. Lawn Mower is self-propelled, with front-wheel cog drive, 8-in. wheels, fingertip drive control.	 169.88 3.5-HP, 20-in. Rotary Mower has a saddle-type blade stabilizer/adaptor, for smooth, even mowing.

 37.99 4 1/2 Cu. Ft. Wheelbarrow reinforced poly tray that won't rust. 37x25 1/2 x 12 in.	 6.49 Lawn Food for 5,000 sq. ft. Slow-release nitrogen for deep-green growth.	 7.88 Lawn Food With Weed Control lets grass become greener. 5,000 sq. ft.	 11.88 Lawn Food With Crabgrass Control stops weeds, establishes roots.	 10.99 60-Ft. Radial Reinforced Vinyl Hose offers 5/8-in. I.D.	 5.44 5-Lb. Easy Weeder works hard to prevent weeds all season long!
---	---	--	---	--	--

Sale Ends May 13, 1989

Fry & Cox, Inc.

401 S. 1st 272-4511

New Low Price!!

Our new shirt-waist dresses from American Shirt Dress* have made such a hit that we've reordered. We were able to get quantity discount and we are now passing that savings on to you. American made quality in a cool poly/cotton blend!

Popular Spring pastels and brights in sizes 7/8 to 15/16, all constructed with neat details and accented with coordinated belt.



Val. to 36⁰⁰

Now **19⁹⁹**

Bentley's SMART FASHION

Journal Files

60 Years Ago

1929 LOCAL CONTRACTORS ARE KEPT BUSY

Building operations in Muleshoe and vicinity continue to increase each week and with the approach of spring, it is predicted that the city will see the largest building program in its history. With construction going forward on several residence and business houses, contractors are kept busy this week making estimates for additional structures, which are to be erected as soon as possible.

The office building for Panhandle Lumber Company was started Friday of last week and is to be 24 feet by 60 feet. Several garages and smaller houses are also being built this week and with the farm building which is in progress, carpenters and contractors are working full time.

50 Years Ago

1939 PAVING OF FIVE CITY BLOCKS PROPOSED

That the City of Muleshoe is contemplating improving and extending improvement of principal business streets here, was the information imparted last Friday noon to business men at the Chamber of Commerce meeting.

Tentative plans are to resurface the two blocks of pavement on Main Street, also lay a pavement 30 feet wide on at least two and possibly three cross business streets adjoining Main Street, property owners to furnish expense of curb building. Cross street paving will connect with paving on State Highway Number 24.

40 Years Ago

1949 POSTAL RECEIPTS REGISTER BIG GAIN

A gain of 35,828 percent in postal receipts for the first quarter of 1949 over the same quarter of 1948 has been registered by the Muleshoe post office.

Total receipts for this year during the first three months were \$5,780.68, against \$4,255.87 for January, February and March of 1948, or a net gain of \$1,524.81.

30 Years Ago

1959 LOCAL BANKS PAY THREE PERCENT ON SAVINGS

Muleshoe Banks have advanced the rate of interest paid on savings to three percent, compounded semi-annually. Officers of both the Muleshoe State Bank and of the First National Bank announced the

increased interest rate Monday of this week.

This increase was made effective in many of the banks of the area.

The local banks now offer one of the best savings plans and for the people of this area a very convenient one.

20 Years Ago

1969 HOSPITAL EXEMPT FROM CITY TAX

In a meeting of Muleshoe City Council Tuesday morning April 22, Councilmen passed a resolution exempting West Plains Memorial Hospital from city ad valorem taxes.

In other business conducted by the council, a discussion was held on the possibility of putting Muleshoe City business on a computer basis in the tax department and water and sewer department.

10 Years Ago

1979 DINE OUT MERCHANTS LUNCHEON



Latest Arrivals

Tyler James Vandiver

Tyri and Laurie Vandiver are the proud parents of a son, Tyler James, who was born at 11:50 p.m. Thursday, April 6 in West Plains Medical Center.

The young man weighed nine pounds and eight ounces. He has an older sister, Lindsay.

Grandparents are Butch and Doris Vandiver of Muleshoe and Orran and Kathy Fairly of Alamogordo, N.M.

Great grandparents are Mr. and Mrs. R.O. Gregory, Mr. and Mrs. H.F. Vandiver and Mrs. M.L. McInnis.

Shayla Dawn McCasland

Bret and Suzanne McCasland are the proud parents of a daughter, Shayla Dawn, who was born at 1:02 a.m. Friday, April 7 in West Plains Medical Center.

Shayla Dawn weighed eight pounds and 14 ounces. She is the first child for the couple.

Grandparents are Jerry and Lena Layton and Don and JeTonne McCasland of Clovis, N.M.

Each day a different Special Stew---Steak
Home Made Chili
Home Made Hot Rolls
Includes vegetable, potatoes, salad, desert and drink
Only 96 cents ALL YOU CAN EAT

OPEN 6 DAYS A WEEK
RANCH HOUSE CAFE

Pintores Art

League Set

Show Dates

The Pintores Art League of Clovis, N.M. has set their annual Spring Fine Art Show dates as April 24-April 28 to be held at the Eastern New Mexico University Clovis campus lobby.

There will be cash and ribboned awards in each of seven categories: oil/acrylic, water-based mediums, pastel, mixed media, graphics/calligraphy, sculpture, and hand formed pottery. There will also be Purchase Awards, Merchant Awards, a Best of Show award, and Public Opinion award. Each category must have at least six entries to be eligible for judging.

The judge this year will be Dale Hamlett of Portales. Dale is a native of Missouri and grew up in the rolling prairie country of wide open spaces close to nature. He majored in art at Northeast Missouri State University and has a B.S. degree in Education. His M.A. is from the University of New Mexico.

Entries will be accepted Thursday, April 20 between the hours of 2 and 6 p.m. at the Town Hall within the ENMU-C complex. Any artist in the region may exhibit up to four paintings, none larger than 48X48 inches including the frame. All entries must be appropriately protected, matted and/or framed, and wired for hanging. A fee of \$5.00 for members and \$8.00 for non-members will be charged. Membership is available at the time of registration. Individual critique tapes will be available for a fee of \$1.00 per entry.

Entries must be original works of art in good taste, not previously shown in a Pintores judged show. No copies or supervised pieces will be accepted. Entries must be picked up on Friday, April 28, between 2 and 4 p.m. at the ENMU-C lobby.

The show will be open to the public Monday, April 24-Friday April 28. The public may view the works during regular campus hours, 8 a.m. until 9 p.m.

For further information you may contact Alexa Pickel (505) 763-4973 or Joan Hultman (505) 762-7336.

Carlos A. Perez, President of Venezuela:

"The crisis Latin American nations are undergoing has a name written in capital letters—foreign debt."



APRIL SUPER KIDS--(From Left) Front Row: Belen Hernandez, Pre-Kindergarten; Juan Olguin, Kindergarten; Ananda Villegas, Kindergarten; and Fidel Lira, First Grade. Back Row: Keshia Graves, First Grade; Misti Johnson, Second Grade; and Aaron Faver, Second Grade, were named April Super Kids at Dillman Elementary School. Not pictured: Jimmy Lee, Early Childhood. (Journal Photo)

In Fashion

Clothes will become even less constraining and even more comfortable in the 1990's. Casual, unconstructed styling will gain acceptance in activewear and business clothes. New lighter weight fabrics are being created for warm and cold climates.

As jewelry becomes more an accessory to fashion clothes, store personnel are trained to help customers. They study proportion, face shape and neckline and assist the customer to coordinate garments with the correct accessory.

Earrings are considered the most important fashion accessory, with necklaces and scarf pins a close second.

Boys Will Be Boys

Little Tom had just been vaccinated. When the doctor tried to put a bandage over the spot, Tom insisted that he wanted the bandage on the other arm.

"Why Tom, the bandage should be put on the sore arm so that the boys at school won't hit it," the doctor said.

"Put it on the other arm, Doc," Tom replied. "You don't know those guys."

SPRING RECORD DAYS Sale

Our Buyers' Number One Goal is to Bring You the Best Fashion Values for Your Money!



Super Buy

Save Now on Casual Fashion Skirts for Women

8⁹⁷

Your Choice

Print Skirt, COMPARE AT 19.99. Made from 100% cotton and styled with pleats front and back and side pockets. Assorted prints. Sizes 8-18.

Twill Skirt, Reg. 12.99. Made from a 50% cotton-50% polyester twill blend. RLM® pull-on skirt features an elastic waistband for all-day comfort. In assorted solid colors. Women's sizes 8-18.



Save 30%

Women's Short Sleeve Tops

8⁹⁷

Sale

Reg. 12.99. T-body style top is 50% polyester-50% cotton for cool comfort and easy care. Choose from solids and stripes. Sizes 8-18.



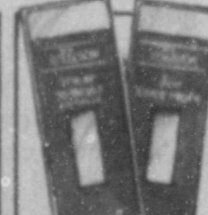
Save 30%

NUNN BUSH

Nunn Bush® Shoes

29⁹⁷

Reg. 42.99. Two styles of slip-ons, both with a leather upper, flexible sole. Brown or black. Men's 7-12.



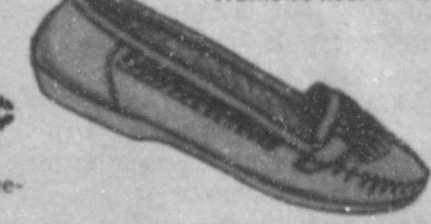
701 Collection® Hosiery

Your Choice **97¢**

Reg. 1.29 Pkg. Sheer, knee-hi's and ankle-hi styles.

Candies® Pigskin Casual Sale **9⁹⁷**

Reg. 29.99. Pigskin leather upper and a flexible man-made sole. Assorted colors. Women's sizes 5½-9.



Sale Prices Good Thru Sat., April 15th

Coupon Good On Items At Regular Price Only

25% Off

Any One Item At Regular Price
Coupon Good Thru Sat. April 15th

ANTHONY'S
We're Good at Making You Look Great!

TAKE-OFF

FAST

WITH WEIGHT WATCHERS® NEW QUICK SUCCESS® PROGRAM

TAKE OFF \$15.00
JOIN NOW FOR ONLY...

\$10

Lose weight faster than ever.

- You'll have so much to look forward to this summer if you start losing weight right now!
- With our new easy-to-follow food plan you can keep right on enjoying your favorite foods... never feel hungry... and still lose weight FAST!
- Our weekly meetings are more exciting than ever.
- You'll actually enjoy our simplified optional exercise plan.
- Make the move to Weight Watchers right now... think of how much more fun the "NEW YOU" will have this Spring and Summer.



Registration Fee \$17.00
First Meeting Fee \$ 8.00
Regular Price \$25.00

YOU SAVE \$15.00
Offer Ends April 29, 1989

Sheila Falk
Area Director

Come to the Weight Watchers meeting nearest you.

SUDAN
First National Bank
Community Room
1st and Main
Thur: 6:30 pm

JOIN WEIGHT WATCHERS NOW!

Offer valid April 9 through April 29, 1989. Offer valid at locations listed (Areas 87, 98, 107) only. Offer valid for new and renewing members only. Weight Watchers and Quick Success are trademarks of WEIGHT WATCHERS INTERNATIONAL, INC. ©WEIGHT WATCHERS INTERNATIONAL, INC. 1989

CALL TOLL FREE **1-800-359-3131**

Spring Brings Threat Of Severe Weather

The next few months are "tornado season" in Texas, so a few pointers and safety tips on tornadoes are in order, says Spencer Tanksley, county agent with the Texas Agricultural Extension Service, the Texas A&M University System.

Here are a few general facts about tornadoes:

--Tornadoes generally travel an average speed of 30 miles per hour but have been clocked at 70 miles an hour.

--Tornadoes normally move from southwest to northeast although their direction of travel can be erratic and change suddenly.

--Tornadoes are often spawned in thunderstorms that have accompanying large hail.

--Most tornado damage is caused by violent winds but most

tornado injuries and deaths result from flying debris.

--Tornado winds may produce a loud roar similar to that of a train or airplane.

--Tornadoes can occur with little or no warning although most occur during the mid-afternoon or early evening hours.

Stay tuned to weather forecasts during times of unsettled weather, advises Tanksley. When a tornado or severe thunderstorm "Watch" is issued it means that tornadoes or severe weather are possible in the area designated.

On the other hand, a tornado or severe thunderstorm "Warning" means that tornadoes or severe weather are occurring. Persons in or near the storm path TAKE COVER IMMEDIATELY.

Tanksley lists these precautions if a tornado or severe thunderstorm warning is issued: --Stay away from windows, doors and outside walls.

--In small buildings or homes, go to a basement or an interior part of the lowest level. Closets,

bathrooms and interior halls offer the best protection in many cases. Seek cover under something sturdy.

--In schools, factories, hospitals and shopping centers, go to a pre-designated shelter area. Interior hallways on the lower floor are usually best.

--In high-rise buildings, go to interior small rooms or hallways on the lowest floor possible.

--In mobile homes or vehicles, leave and take shelter in a substantial structure. If none is available, lie flat in the nearest ditch or ravine and shield your head with your hands.

The key to surviving severe

MDA...

Cont. From Page 1

tests showed that a missing genetic protein called dystrophin may be induced into human cells to provide a treatment or cure in the very near future.

MDA needs volunteers to conduct celebrity lock-ups, door to door drives, dances, bike races, or any special event that can be successful. Anyone interested in coordinating programs for MDA can write or call collect to: MDA, 8212 Ithaca, Suite F, Lubbock, Texas 79423, (806) 793-5632.

weather such as a tornado is prior planning, emphasizes Tanksley. All family members should know where the safest areas of the home are in event of threatening weather.

Red Cross Chapter Offering Local

First Aid Class

The South Plains Regional Chapter, American Red Cross, in conjunction with Muleshoe ISD, has scheduled a Standard First Aid Class to be held at Muleshoe State Bank on Saturday, April 15, 8 a.m.-5 p.m.

Rusti Woods, from the American Red Cross office in Lubbock said the Muleshoe community is urged to take this well developed program.

American Red Cross has developed a comprehensive 8-hour course that covers the essentials needed for adult CPR as well as Standard First Aid. This course teaches the standard first aid skills a person needs to act as the first link in the emergency medical system (EMS).

The focus of this course is to prepare participants to respond correctly in emergencies. The skills and techniques they will learn are as follows:

*Help participants to stay calm in emergencies because they know what to do.

*Help participants to make decisions and take appropriate steps to keep a victim alive and keep injuries from getting worse until EMS arrives.

Whether you want to learn American Red Cross First Aid because you want to be prepared for emergencies of any kind -- from simple household accidents to life-threatening disasters or because it is necessary for your job, this course clearly answers your needs.

For further information, or to sign up for the class, contact Jo Beth Edwards at 272-7541 or 272-3543 before 4 p.m. today, Thursday.

Rotary...

Cont. From Page 1

to vote on a change of price for the meals from \$425 to \$5.50 per meeting. This was approved.

President Nieman also briefly discussed another wrestling program to be sponsored here. After discussion, it was voted to hold wrestling in Muleshoe again in July.

Bill James was the winner of the Polio Plus drawing this week.

Guests at the meeting included Duane Castleberry, Ronald Byrd, Todd Bessire, Monty Gartin, Ken Box, Julie Cage and Brandon Wilson, student of the month.

Washington Notes

Prices Up

Wholesale prices surged 1.0 percent in February, matching the January increase and marking the worst back-to-back news on inflation in nearly eight years, the government said.

Bush and Homeless

President Bush said he was troubled by "ragged, pathetic figures huddled over steam grates" near the White House and vowed to step up the search for solutions to the "national shame" of homelessness.

Brady Goes to Work

Former White House press secretary James S. Brady, wounded in the attempted assassination of then-President Reagan eight years ago, told reporters he has a new job and a new goal: working for public acceptance of the disabled.

Trade Deficit

The deficit in the broadest measure of American trade improved dramatically last year, narrowing to \$135.3 billion, as a surge in merchandise exports was enough to offset a sharp worsening in the U.S. investment balance sheet, the Commerce Department said.

NEWS NOTES

Space Report Good

EDWARDS AIR FORCE BASE, Calif.—Discovery returned from its five day mission in what appeared to be the best condition of any space shuttle, with only minor damage to its protective tiles, NASA officials said.

Peacekeeping Agreement

UNITED NATIONS—Officials of five Central American nations endorsed a plan to send U.N. peacekeepers to the region to ensure guerrillas don't launch cross-border raids.

Iceberg Threat

WELLINGTON, New Zealand—The world's largest iceberg, believed to be about the size of Hong Kong, is slowly melting in Antarctica but appears to pose no threat to shipping, a news agency reported.

Chile Retaliates

SANTIAGO, Chile—Chile seized five Japanese fishing boats Thursday in reprisal for Japan's closing of its market to Chilean fruit because of a cyanide scare.

Soviets' Food Woes

MOSCOW—President Mikhail S. Gorbachev called on the Communist Party to take urgent steps to ease chronic food shortages—the Soviet Union's "biggest wound"—but he indicated the problem would exist for years.

Cotton...

Cont. From Page 1

we appreciate Secretary Yeutter's prompt response to the industry's recommendation."

As a part of the Secretary's decision-making process, he has indicated that he will look at prices in U. S. spot markets and in Northern Europe, the level of export sales and other relevant data in making any adjustment.

In other action, Yeutter announced that he will also solicit comment on a cotton program change that would require the payment of warehouse storage and interest on 8-month loan extensions.

"In our meeting, Secretary Yeutter expressed his concerns about the compatibility of the 8-month loan extension with the marketing loan," Heiden said. "He indicated that he might find it necessary to call either for advance payment of storage or provide documentation that would relieve government of any responsibility for the charges during the loan extension.

"This issue will be taken up with industry leadership, and I am hopeful that a consensus can be reached that will allow the Council to file comments in behalf of the entire industry."

Alfalfa May Have Young Weevil Larvae

April is a critical time for alfalfa producers on the South Plains, cautions Spencer Tanksley, Bailey County Extension agent for agriculture.

This is the time when producers need to examine their alfalfa for the presence of alfalfa weevil larvae, Tanksley said.

With the beginning of warm spring weather, overwintering female weevils begin laying eggs. The young larvae which hatch out are very small, yellow-green in color and feed in the growing tips and developing buds. Older larvae are green with a white stripe down their back.

"We expect to have our peak alfalfa weevil activity in April in our area," said Tanksley. "If larvae numbers are high enough to reach the economic threshold, one properly timed application should give control.

"Treatments should be ap-

plied in alfalfa two to six inches tall when populations average one larva per stem or when 30 to 40 percent of the plant terminals show weevil feeding damage.

Taller plants seven to 14 inches tall should be treated when larvae average 1.5 per stem or when 25 to 30 percent of the terminals are damaged. Several effective insecticides are registered for alfalfa weevil control.

The alfalfa weevil has only one generation per year and is usually only a pest of first cutting, said Tanksley.

After the larvae finish feeding, usually by mid May in our area, the larva spins a net-like cocoon on the plant or in the soil debris. The adult weevil emerges from this cocoon and leaves the field. The weevils stay out of the alfalfa fields all summer and re-enter them in the fall. The adults overwinter in the field and the cycle then repeats itself.

Since the larvae are a pest of first cutting, it is sometimes possible to cut a little earlier than usual and avoid chemical treatments. Cutting results in exposure and a lack of food which kills many of the remaining larvae. Winter grazing by livestock helps reduce weevil populations, concluded the county agent.

EXENCIONES DE RESIDENCIA



PUEDEN REDUCIR LOS IMPUESTOS QUE PAGA POR SU CASA

Una exencion de residencia le ayuda a reducir los impuestos sobre la propiedad que tiene que pagar por su residencia reduciendo el valor que se utiliza como base para calcular sus impuestos. Por ejemplo, si su casa esta valorada en \$50,000 y usted recibe una exencion de residencia de \$5,000, usted va a pagar impuestos de residencia como si su valor fuese de \$45,000.

Usted puede recibir una exencion de residencia si usted era el dueño de su casa el primero de enero y la usaba como su residencia principal en la misma fecha. No importa si su residencia es una casa, un condominio o una casa remolque.

Hay exenciones que cualquier persona que es dueño(a) de su residencia puede usar para rebajar sus impuestos escolares. Exenciones adicionales se ofrecen a dueños de residencia que estan incapacitados o tienen 65 años o mas. Otras exenciones pueden ofrecerse a propietarios por distritos escolares, condados, ciudades y distritos escolares.

Bailey County Appraisal District
104 E. Ave. C 272-5501

Solicite todas las exenciones que usted puede recibir en la oficina local del distrito de valoracion en la direccion que se cita abajo.

Si usted recibio una exencion para su residencia actual en 1988, usted no necesita solicitar para 1989 a menos que el jefe de valoracion pida que haga una nueva solicitud.

Sin embargo, si usted cumplio 65 años o quedo incapacitado antes del primero de enero haga una nueva solicitud para recibir exenciones adicionales.

Si usted no ha recibido una exencion para su residencia actual o si se cambio de casa haga una nueva solicitud para 1988.

Usted tiene que hacer su solicitud antes del 1 de mayo de 1989. Comuniquese con su distrito de valoracion antes de esa fecha si necesita mas tiempo para hacerla.

Para tener mas informacion usted puede recibir una copia gratis del folleto *Los Derechos, Remedios y Responsabilidades del Contribuyente de Impuestos* en la oficina del distrito de valoracion o puede pedirla del Consejo Estatal de Impuestos sobre la Propiedad (State Property Tax Board) en Austin.

"Our CD rates are the icing on the cake."

9.90%
Annual yield*

9.55%
Annual rate*

12-Month CD/Minimum deposit \$500

"Here's the cake!"

Tom Wagaman
President, Sunbelt Savings, FSB

"You can see for yourself that Sunbelt's CD rates are very competitive. But rates alone don't give you the full picture. Rates don't tell you much about the kind of bank you're doing business with.

"Sunbelt believes in uncomplicated banking. No bonus rate gimmicks, for example, which lure you with higher rates that don't last. No confusing maturities to disguise the annual yield. No nonsense.

"Call 1-800-527-5165. We'll be glad to tell you exactly what your CD will earn at Sunbelt, in dollars and cents. We'll also be happy to answer any other questions you may have—with no runaround.

"You'll get good rates at Sunbelt. You'll also get straight answers."

Sunbelt Savings* FSB
No Excuses. Answers.™

*Current rates subject to change daily. Substantial penalty for early withdrawal. Annualized yield is calculated assuming all principal and interest remain on deposit for one year at the annual rate. Interest compounded quarterly. Other terms and rates available. ©1989 Sunbelt Savings, FSB. Member FSLIC.

MHS Students Have Opportunity For Scholarship

Two Muleshoe High School seniors have an opportunity to win a \$500 college scholarship, it was announced this week by L. B. Hall, publisher of the *Muleshoe Journal* and *Bailey County Journal*.

The *Journals* are members of the West Texas Press Association, the world's largest regional press group, and that organization is seeking out two future community journalists to receive stipends of \$500 each.

Through the "Bob Craig Memorial Scholarship" program, named in honor of long-time Hamlin Herald publisher Bob Craig who died in 1981, the West Texas Press Association is sponsoring an essay contest based on the theme "My Future and Career Plans in Community Journalism." High school seniors interested in pursuing a career in community journalism may submit their essays to WTPA Scholarship Committee, Stephen Henry, Chairman, P. O. Drawer 1628, Levelland, Texas 79336-1628.

The essay must be postmarked no later than April 21, 1989.

The essay is limited to a maximum of 400 words and no letters of reference will be accepted for consideration in the contest.

In addition to being a senior in high school, they must maintain

The desires of youth show the future virtues of the man.
—Cicero.

a 'B' average or better and plan to continue studies at a school of journalism. Once the winners are selected they must be enrolled in at least three hours of journalism each semester he or she receives assistance.

The scholarships will be divided into payments of \$250 per semester for two semesters for two students. The essays will be judged by the Texas Press Association.

MICROWAVE TIPS

One of the tricks for preserving beef—and improving its taste—is to marinate it.

Ground beef from the grocer or butcher should be used within 24 hours; it spoils more rapidly because more surface is exposed to bacteria.

Other meats can be stored in the fridge for two or three days.

If you wish to keep it longer, place it in a marinade composed of lemon juice, wine or vinegar as soon as you get home.

This will tenderize beef, improve its taste, and allow you to keep it safely for about five days before microwaving. Pork should generally be used within two days.

Enochs News

by: Mrs. J.D. Bayless

Mr. and Mrs. Greg Bruton and children of Lubbock spent Easter with her parents, Mr. and Mrs. Burley Roberts and Tory.

Mrs. Ruby Nichols of Lubbock visited her sister, Mrs. Winnie Byers, Wednesday till Friday.

C.W. Hamilton of Roswell, N.M. brought his sister, Vonna, home last Sunday and they were dinner guests in the home of Mr. and Mrs. Bill Key.

Visiting Mr. and Mrs. E.N. McCall Friday afternoon was her sister and husband, Mr. and Mrs. Fred Locker, of Littlefield.

Sidney Graves celebrated his 16th birthday Friday, March 31. His parents brought him a birthday cake. His grandmother, Mrs. Nova Louise Thomas, of Smyer came out to help him celebrate his birthday.

Mr. and Mrs. Harrie Pollard had all of their children and grandchildren home for Easter. They were Mr. and Mrs. Tommy Lewis and children of Littlefield, Mr. and Mrs. Joel Sinclair and children of Muleshoe and Mr. and Mrs. Steve Pollard of Morton.

Mrs. Wanda Wheeler of Grandberry visited her parents and attended the wedding of her niece, Jana Redman and Johnny Oliver Saturday, April 8, 1989 at 2 p.m. at the First Baptist Church Chapel in Morton. I wish you a Happy Married life together.

Mrs. Oleta Burris of Wellman spent Friday till Sunday afternoon with her sister and husband, Wanda and J.E. Layton, and attended the revival service at the Baptist Church and attended the Cemetery meeting.

Goldman Stroud visited his sister and husband, Mr. and Mrs. Jess Glaspay at County Line, Oklahoma Friday night till Sunday, his brother-in-law is ill.

Guests in the home of Mr. and Mrs. Bill Key Thursday night and attending church with them at the Baptist Church were Mr. and Mrs. Marion Walker of Vernon.

Visiting Mrs. Mamie Adams Saturday were Howard Parsley and Dale Nichols and Mr. and Mrs. Norman Smith.

The Annual Enochs Cemetery meeting was held Saturday, April 8, 1989 at the Bula-Enochs Community Center. There were 59 present. They were from Oklahoma, Lubbock, Odessa, Muleshoe, Wellman, Belen, N.M., Enochs. Those coming the farthest were Mr. and Mrs. Howard Parsley from Durant, Okla., Mrs. Opal White from Goliad, Okla., Mrs. Dorothy Nell Piland of Great Ben, Kansas, and Mr. and Mrs. Norman Smith of Belen, N.M.

Visiting the Bill Keys Wednesday afternoon were John Latham and Mrs. Doris Huff.

Mr. and Mrs. Dale Nichols visited Mr. and Mrs. John Gunter in Lubbock Sunday afternoon.

Mr. and Mrs. Goldman Stroud visited Mr. and Mrs. Boyd Maxey at Amherst Sunday afternoon.

Mr. and Mrs. Harold Abney and children visited her parents, Mr. and Mrs. Buford Peterson Saturday night and attended the revival at the Baptist Church. Mrs. Abney and daughter sang a special song and Mrs. Abney sang a special with her dad.

The guest evangelist at the Baptist revival was Rev. James Brandon of Lubbock. His wife was also a visitor Saturday night and Sunday.

Mrs. Olive Cox of Muleshoe had dinner with them at the revival Thursday and attended the services.

Mr. and Mrs. Ted Thomas and Mrs. Wanda Wheeler were visitors at the Baptist Church Sunday and ate dinner with

them. There were a lot of other visitors.

Mrs. Nova Louise Thomas and her pastors wife of Smyer, visited in the home of her daughter, Rev. and Mrs. David Graves and ate dinner at the church and attended the church service.

Visiting Mrs. Ellen Bayless Saturday afternoon were Mrs. Dorothy Nell Thomas Piland of Great Bend, Kansas.

Mr. and Mrs. Jerry Nichols and children of Muleshoe stopped by on their way home from Mexico and visited his parents, the Dale Nichols, Saturday evening.

The thoughts of youth are long, long thoughts.
—H. W. Longfellow.

Youth riotously led breedeth a loathsome old age.
—Thomas Cogan.



Losing Out
Mother: "What are you doing in the pantry, Tommy?"
Tommy: "Fighting temptation, mother."

Only Once!
"Were you ever bothered by athlete's foot?"
"Once—when a football player caught me out with his girl."

Father's Title
"Father, what is an empty title?"
"An empty title is your mother's way of calling me the head of the house."

It's Time To Look

At

Crop Insurance

Call Today

Ronnie Holt

Office 272-3614

Night 965-2842

Multiple Peril Crop Insurance
Has Sale Closing Date Soon! Talk
To Us About Your Coverage Today!

Call Ronnie Holt For
Information About Your Own
Protection.

Call Or Come By Western 66!!

Earth Hwy. & Talk To Ronnie Holt

The tax deadline is almost here.



Our experienced preparers are working extra hours through April 17. It's not too late to help you get the maximum refund you're entitled to. 224 W. 2nd - Muleshoe, TX 272-3332

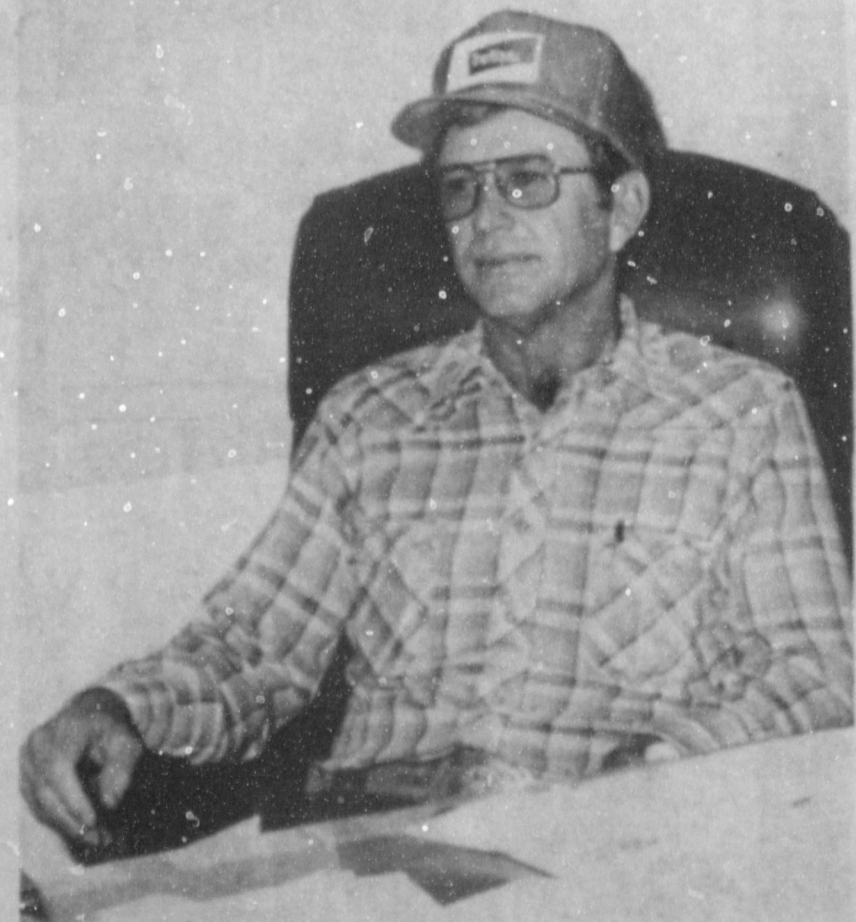
H&R BLOCK DON'T SETTLE FOR LESS!

Muleshoe Fertilizer is after your business!!

.....Quality Fertilizer..... Custom Blend.....

We have a Air Flow Fertilizer Applicator, one of the first in this area that is used for precise fertilizer placement.

We Appreciate Your Business !!



Muleshoe Fertilizer

Hwy 70

Muleshoe, Texas

Ronnie Black, mgr.

272-3443



MULES' TALE

Co-Editors Justine Hanes & Esther Acosta

Thursday, April 13, 1989



Official Publication of Muleshoe High School Written and Edited by Students of the Muleshoe Schools

MHS Students Involved With Dinner Theatre

The 1989 Spring Review Dinner Theatre was a wonderful success due to the enthusiasm and involvement of many students. All of the three branches of the fine arts are involved in the production and entertainment for the evening. The Jazz band which consists of Roland Ambriz, Ronnie Gail Barrett, Jermy Bruns, Toby Carpenter, Jason Clarkson, Kelly Conklin, Jimmy Cisneros, Blaine Ferris, Steve

Garcia, Jimmy Johason, Dana Hamilton, Stacy Knowlton, Matthew Madrid, Christy Mata, Tony Quintana, Danny Rodrigues, Mickey Trussell, Lonnie Wilhite, and Jackie Luna played their selections during the style show.

Decoration for the style show was provided by many talented students who created and developed fine works of art. This places consisted of paintings, pottery, models, and drawings.

This year many MHS students had the opportunity to do the introductions and model for various businesses. Dusty Rhodes did the introduction for his parents' store Joe's Boot Shop, Jason Harmon spoke for Anthony's, Justine Hanes, who works at Bentley's did their introduction.

Modeling in the style show were Debbie Brown, Shonda Strahan, Amber Green, Wendy

Green, Monica Swint, JoAnn Guterrez, Ad Godinez, Jenny Benett, Selina Gonzalez, Tiffany

Angeley, Michael Hargus, Kent Lilly Garza, and many others.

The last but definitely not least performance was the One Act Play's production of "Elizabeth The Queen."

Students that were involved were Jeff Hicks, Stephanie Cox, Austin Swint, Brad Long, Chad Griswald, Candice McCume, Amy Turner, Tim Shipman, Amy Montgomery, Andrew Espinoza, Virgil Snell, Dusty Lee, Jeff McGuire, Jermy Combs, Noel Vourazieris and Andy Langfit.

Stage crew plays a special part in the production of the play and these people consist of Kimberly Chance, Christin McCune and Michelle Holmans.

The entire evening was a success due to the talent and hard-work of MHS students. Parents had every reason to glow with pride on the achievements and performances of their children!

One Act Play Advances To Regional

Muleshoe hosted the Area One act competition in the High School Auditorium, on April the eighth. Four different plays competed for regional advancement. Of the four teams competing only two are advanced.

Muleshoe's play *Elizabeth The Queen*, and Canyon's *Anne Of A Thousand Days*. Muleshoe and Canyon advanced to regional. Regional competition will be held on April the nineteenth in Odessa.

The MHS actors receiving awards are: Austin Swint and Virgil Snell-Honorable Mention, Jeff Hicks and Candace McCune, All-Star Cast, and Stephanie Cox, Best Actress.

Linder Elder SCAC March Citizen Of Month

The Student Community Action Club held its monthly meeting at El Huesteco on March 27, 1989. Lisa Noble opened the meeting by asking Kimberly Harris to lead a prayer. Kevin King read the minutes of the previous meeting. Wendy Green gave the treasurer's report, which was 101.60. The March Citizen of the Month, Linda Elder gave a brief talk on her duties as a County Attorney. Wendy then presented Mrs. Elder a corsage. The members discussed the idea of a talent show. Due to a lack of interest, the plans were cancelled. Instead, S.C.A.C. decided to help with the restoration of Jane's Ranch House on Tuesday, April 11. Nominations for Citizen of the Month were then accepted and voted on. The April meeting of S.C.A.C. was scheduled for Tuesday, April 18 at 7 p.m. at the Old Corral. The new members will be selected at this meeting. Lisa then adjourned the meeting.

Tennis Teams Advances To Regional

The Varsity Tennis team competed at District 2-3A tournament in Lubbock, Texas, April 6-7. A.J. Liles and Frank Precure

placed first in doubles. Stacy McElroy and Noel Vourazieris also placed first in girls doubles, and Selina Gonzalez placed second on girls singles.

Others that competed from Muleshoe were Chad Garlington and Darrel McCamish in boys doubles, and Doug Chitwood and David Quintana both played singles.

Overall the Muleshoe Tennis team took first in the District. Regionals will be held at Odessa, April 26-27th.

Student Teacher

Muleshoe High School is glad to feature Ms. D'Nene Lawson. Ms. Lawson is student teaching for the Home Economics Department. She attends Eastern New Mexico University in Portales, New Mexico. Ms. Lawson enjoys working with kids, and would like to teach in Texas, New Mexico or Arizona. Ms. Lawson's hobbies include: drafting, her minor, and modeling, in which she has taught classes on. What she most enjoys about teaching, is getting to know the students. Ms. Lawson has enjoyed student teaching in Muleshoe, and has found it to be an exciting experience.



Stephanie Barrett

Mrs Barrett Receives Honor

Stephanie Barrett, math teacher at Muleshoe High School, has been selected by the Texas Tech University department of mathematics as the outstanding pre-college mathematics teacher for 1989. She and her husband, Robbie, will attend a banquet on Thursday, April 13, at the Fifty Yard Line restaurant in Lubbock in honor of this achievement. Colleen Tollett, computer teacher at MHS, nominated Stephanie for this honor.

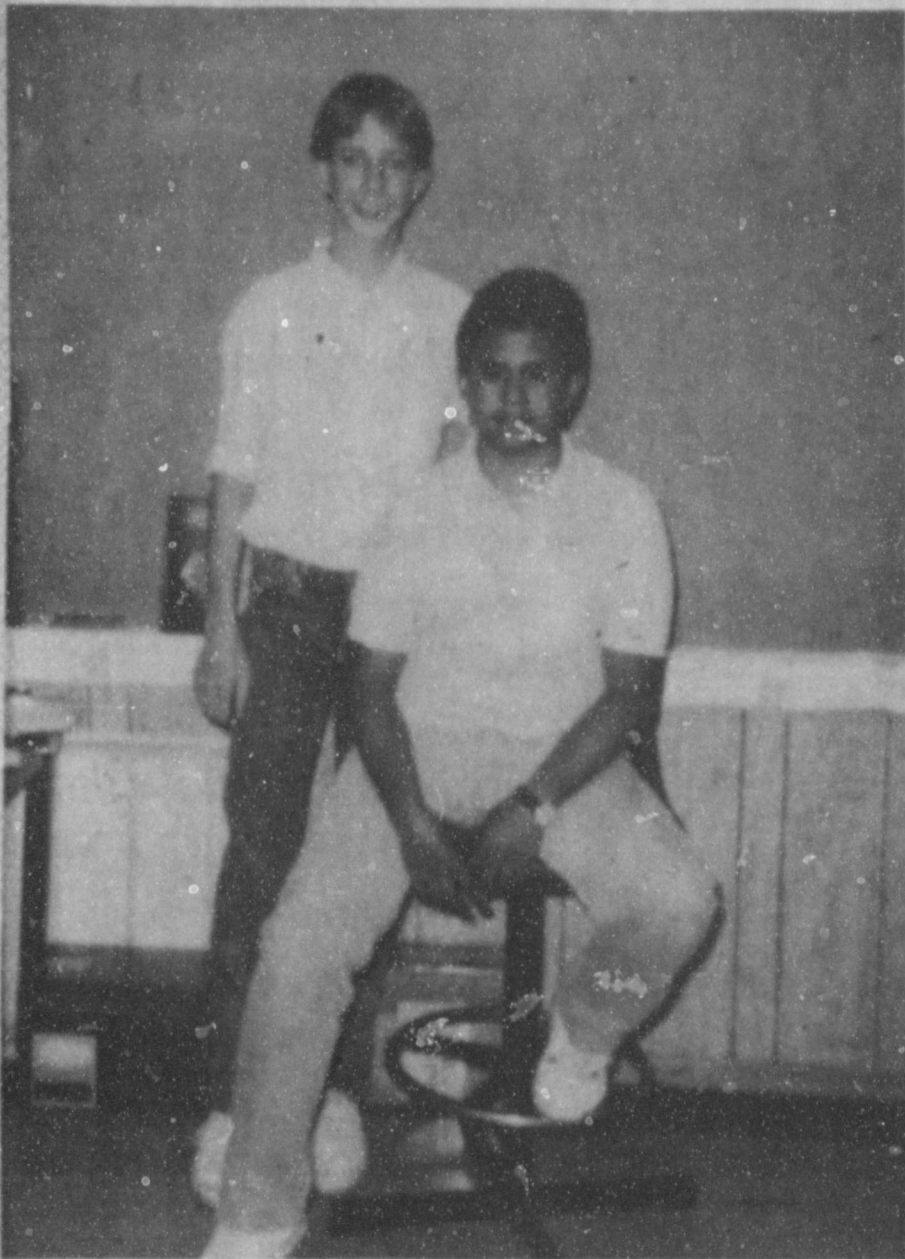
In referring to the honor, Mrs. Barrett commented, "It is a great honor to receive an award for something I love doing."

Mrs. Barrett graduated from Muleshoe High School in 1978 and attended WTSU for two years before marrying and returning to Muleshoe. She graduated from ENMU in 1982 with a B.S. degree in secondary education with a major in mathematics and a minor in physical education. She began her Muleshoe teaching career as a math teacher in the junior high school in 1982; she then transferred to high school in 1986. Mrs. Barrett currently teaches calculus, Algebra I, pre-algebra, and informal geometry; she also serves as department chairman.

Stephanie's parents are Mary Janice and Curby Brantley, and her grandparents are Myrtle Puckett and Ruby Brantley, all of Muleshoe. She and her husband are parents of two children, Zack and Robbie Jan. The high school faculty and students offer their congratulations to Mrs. Barrett for this prestigious honor.



A newly hatched alligator is just eight inches long. It will grow about a foot a year until it reaches the average adult length of six to eight feet.



Corley Hutton & Steve Garcia



Jamie Reyes, Marsha Wilson, Andrew Espinoza & Brandon Wilson

MHS Students Victorious At District

District competition began on March 28 and the 31st at the Littlefield High School. The following students qualified for the regional competition: Jamie Reyes placed first in Number Sense and in the Calculator event. Andrew Espinoza placed first in spelling, Brandon Wilson placed first in persuasive speaking and second in Lincoln-Douglas Debate, Stephanie Cox placed first in Poetry Interpretation, D'Anne Box placed second and

Corley Hutton placed third in Typewriting and Steve Garcia placed third in Informative Speaking. Overall Muleshoe took second in the District.

UIL Regional Competition will be in Odessa on April 21-22. These students and also all of the One-Act cast members will be competing to qualify for the State competition. Good Luck to all the students that will be representing Muleshoe!!!

MHS Golf Teams Place At District

The varsity golf team proved themselves this past week. District was held for both girls and boys. The girls team consisting of Heather Hutton, Amy Turner, and Tory Matthews placed third in their district. Heather Hutton placed sixth and Tory Matthews placed tenth, both were named All District players. Tullia High School placed first in girls competition and the second place was won by Friona High School.

The boys team placed first in

district. Jason Box was honored second medalist and also named All District player. Tim Shipman and Tadd Young were also named All District players. Other team members for Muleshoe were Kevin King and Collin Tanksley.

Regional competition will be April 22-23rd in Midland. Coach Kyle Carver will be taking the team to their competition at the Mission Hills Country Club. Congratulations and good luck in the future!!

Norma Del Toro Receives National Award

The United States Achievement Academy announced today that Norma Jean DelToro has been named an All-American Scholar.

The USAA has established the All-American Scholar Award Program in order to offer deserved recognition to superior students who excel in the Academic disciplines. The All-American Scholars must earn a 3.3 or better grade point average. Only Scholars selected by a secondary school instructor, counselor, or other qualified sponsor are accepted. These scholars are also eligible for other awards given by the USAA.

Norma Jean DelToro who attends Muleshoe High School was nominated for this National Award by Mrs. Linda Marr.

Norma Jean DelToro will appear in the All-American Scholar Directory, which is published nationally.

"Recognizing and supporting our youth is more important than ever before in American history. Certainly, winners of the All-American Scholar Awards should be congratulated and appreciated for their dedication to excellence and achievement," said Dr. George Stevens, Executive Director of the United States Achievement Academy.

The Academy selects All-American Scholars upon the exclusive recommendations of teachers, coaches, counselors, and other qualified sponsors. Once awarded, the students may be recognized by the USAA for other honors.

Norma Jean DelToro is the daughter of Rey and Gloria DelToro. The grandparents are Geronima Perez of Muleshoe, Texas, and Aurora DelToro of Hereford, Texas.



Selina Gonzalez, Noel Vourazieris, A.J. Liles & Frank Precure



The average pencil has enough graphite to draw a line at least 35 miles long.



D'Nene Lawson

MULESHOE AREA



Winter '89



BUSINESS DIRECTORY AND SHOPPING GUIDE

WES-TEX FEED YARDS, INC.

Custom Cattle Feeding
Wes-Tex Feed Yards, Inc.
272-7555

Henry Insurance Agency, Inc.

Serving you since 1964

272-4581 111 W. Ave. B.



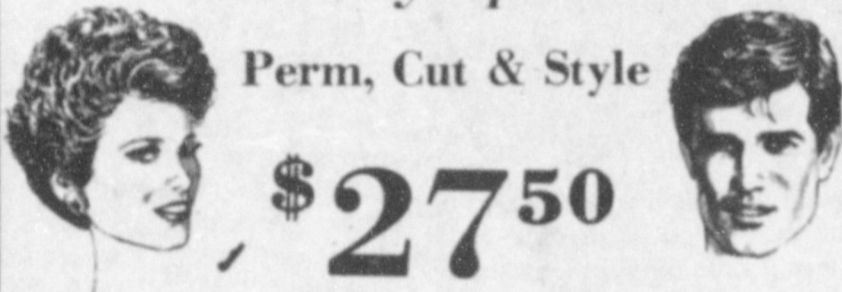
KENNETH R HENRY
CERTIFIED INSURANCE COUNSELOR
REAL ESTATE BROKER

Just Unloaded New Shipment Of **American Antiques**

- Furniture
- Glassware
- Collectibles

THE MULESHOE ART LOFT

Monday Special!



Perm, Cut & Style

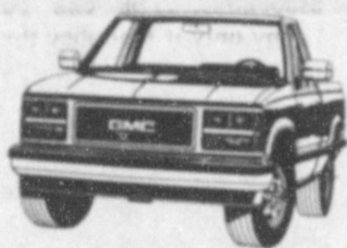
\$27.50

Ana's House Of Beauty

272-4152 Call for Appointment 109 Ave. B.

ROBERT D. GREEN, INC.

"Pick-Up Truck Headquarters"



4WD Sierra SLX Series 1500 Wideside Pickup

2400 W. American Blvd. (806)272-4588



WAT services inc.

319 E. American Blvd.
MULESHOE, TEXAS 79347

Mobile Communications
Two-Way Radio Repair

GARY PARKER
Technician

Muleshoe - 806-272-4888
Hereford - 806-364-7311

We are now serving
Beef & Chicken Fajitas
Chicken Enchiladas
(Green & Red Sauce)
For a real treat and the best
in Fajitas try Viola's
Also serving our
Famous "Pina Coladas"
11:00 A.M. to 9:30 P.M.

Viola's Restaurant

2002 W. Amer. Blvd.
272-3838



McCormick's Upholstery has been serving Muleshoe and the area since 1945. They have specialized in all types of residential and commercial upholstery and pick-up seat covering.

McCormick's offers a pick-up seat exchange service that allows you to have a completely rebuilt seat in only a few minutes.

McCormick's would like to thank you for your many years of trust with your furniture.

McCormick's would also like to announce our new hours. We are open Monday- Thursday from 8-5. Friday is allotted to working out of the shop.

**Thank You
Van and Betty McCormick**

McCormick's Upholstery and Drapery

1009 S. 1st Muleshoe, Texas 272-4660

El Nuevo Leal's Restaurant

CHILE RELLENO



- with Chalupa.....\$4.15
- with 1 Enchilada...\$3.75
- with 2 Enchiladas..\$4.85
- with 3 Enchiladas..\$5.75

Closed Mondays 31 Years Of Business In Muleshoe
1542 W. Amer. Blvd. 272-3294

Pivot Products Distributor, Inc.

NOW STOCKING

"Beef-Pro"

The High Protein Beef Dinner different from any dog food you've ever fed your dog. Because BEEF-PRO is made with real BEEF - (the leading ingredient) and lots of it. Manufactured right here in the Texas Panhandle by Merrick Pet foods of Hereford.

1501 W. Amer. Blvd. 272-5536

Muleshoe Retail Merchants Association

Pre-Employment Checks Credit Checks
Check Collections Account Collections

Serving Bailey, Lamb, Parmer
& Cochran Counties

801 West 9th 272-3221

Higginbotham Bartlett

Its Time To Start Thinking About
Spring Painting Again

Consider Jones-Blair Paints & Sundries
Quality Paints At Competitive Prices.
We Have The Paint And Price For You!

"Quality & Service
At the Right Price"

272-3351



215 Main

Scoggin Ag Center, Inc.

Weed & Feed Now

weeds

Spring Yard

Your Local Fertilome Dealer

272-4613

1532 W. American Blvd.



5 Locations To Serve You!

*Clays Corner *Enochs *Muleshoe

*Pleasant Valley *Olú Griffith

Farmer's Co-Op Elevators

Pick-Up Seat Exchange

Complete Seat Overhaul

Replacement
Springs



Carpets.

**McCormick's
Upholstery & Drapery**

1009 S. 1 st.

Muleshoe, Texas 79347



Shop The Classifieds

272-4536



CLASSIFIED RATES
Minimum Charge \$2.30
Consecutive Insertions Minimum Charge \$2.00
CLASSIFIED DISPLAY RATES
\$1.75 Per Column Inch
DEADLINES
12 noon Tuesday For Thursday Paper
12 noon Friday For Sunday Paper
We reserve the right to classify, revise, or reject any ad. Not responsible for any error after ad has run once.

1. Personals

OWN YOUR OWN
Apparel or Shoe Store. Choose From: Jean-/Sportswear, Ladies, Men's, Children/Maternity, Large Sizes, Petite, Dancewear/Aerobic, Bridal, Lingerie or Accessories Store. Add Color Analysis. Brand Names: Liz Claiborne, Healthtex, Lee, Chaus, St. Michele, Forenza, Bugle Boy, Levi, Camp Beverly Hills, Organically Grown, Lucia, Over 2000 Others. Or \$13.95 One Price Designer. Multi Tier Pricing Discount or Family Shoe Store. Retail Prices Unbelievable for Top Quality Shoes Normally Priced From \$19. to \$60. Over 250 Brands 2600 Styles. \$18,900 to \$29,000: Inventory, Training, Airfare, Grand Opening, etc. Can Open 15 Days. Mrs. Schneider (407) 366-8606. R1-15t-1tp

WILL DO Horseshoeing. Call Bob Clark, 272-3266. G1-14s-4tp

Call your local used cow dealer for 7 day a week dead stock removal. *965-2903 or 1-800-697-4043. cl -37t-tfc

CONCERNED
About Someone's Drinking?
HELP IS AVAILABLE
through Al-Anon
Call 272-2350 or 965-2870 or come to visit Tuesday nights, 8:00 p.m. or Saturday mornings at 10:30 a.m. and through AA call 965-2870 or come visit Tuesday nights, 8:00 at 620-W. Second, Muleshoe.

2. Lost and Found

FOUND
Set of Keys at King's Phillip's '66' on West American Blvd. Several keys with Trans-AM medallion on ring. Owner can identify and pick up at Old Corral Restaurant. U1-15t

3. Help Wanted

PART-TIME Truck Driver. Must have commercial license & references. Contact Bamert Seed Co., 272-5506. B3-14t-3tc

3. Help

Wanted

SOUTH PLAINS HEALTH PROVIDER ORGANIZATION, Inc.
A non-profit medical organization in Muleshoe, Texas, is seeking an LVN to work as a nutritionist asst. in WIC (women, infants and children supplemental food program) dept. Applicant must be a graduate of an accredited school of nursing, licensed to practice in the State of Texas. Nutrition related experience helpful but not required. Hours 8:00-5:00 p.m. Monday through Friday. Excellent fringe benefits package. For more information, Call (806) 293-8561. Equal Opportunity Employer. S3-15s-3tc

HELP WANTED
General Office Clerk for Bailey County Electric Cooperative. Apply at 305 E. Ave. B, Muleshoe, Texas. Closing Date April 24, 1989. An Equal Opportunity Employer. B3-15s-3tcs

HELP WANTED: We are now accepting applications for Lineman (Trainee). Excellent Fringe Benefits. An Equal Opportunity Employer. Apply at Bailey County Electric Cooperative Association in Muleshoe, Texas. Closing Date, April 24, 1989. B3-15s-3tcs

HELP WANTED: Part-time Bartender. Experience required. Apply in person, Muleshoe Country Club. M3-15t-4tc

4. Houses

For Rent

FOR RENT: 2 bedroom, 1 bath, w/garage, recently remodeled throughout. Plumbed for washer & dryer. Call 272-4475, after 5:00. H4-15t-4tc

5. Apts.

For Rent

FOR RENT: Nice 2-bedroom apartment. Water paid. Deposit required. 272-7575. P11-11t-TFC

9. Automobiles For Sale

1982 PONTIAC 6000 LE Clean. Loaded, 272-4222, after 6:00, 272-5313, Sam. W9-15-4tc

8. Real Estate

G.I. Owner Bailey Co. pasture land. Contact - Smitty - 1106 Ross, Vernon, TX 76384, Call (817)552-2140. S8-14t-4tc

ATTENTION: First Home Buyers. 2&3 Bedroom Mobile Homes. Credit Experience Needed. We deliver. (806) 894-7212. B8-14s-8tc

REPRO'S 2&3 Bedroom Mobile Homes. No Credit Experience Needed. We deliver. (806) 894-8187. B8-14s-8tc

FOR SALE: Lot 8, Parkridge Addition. \$2,000. (806) 794-6329. 8-14s-9tp

11. For Sale or Trade

FOR SALE OR RENT: 3-2 House. Fenced back yard. Call Norma Head, 946-3661. H11-15s-tfc

32 Ft. Holiday Rambler Travel Trailer. Call 946-3628. 11-14t-4tp

REGISTERED Beef Master Bulls For Sale. Call M.D. Gunstream, (806) 272-5035 or 272-4515. G11-13t-tfc

8. Real Estate

Whitt Reid Real Estate

201 Main Street Muleshoe, Tx. 272-3611

LAMB COUNTY, IRRIGATED LAND AND RANCH LAND. It's worth a second look.....
6390 A. in cultivation and irrigated by twenty-five (25) Center Pivot Sprinklers. 5130 Acres of native grass, excellent West Texas Ranch. 34 irrigation wells. There are 8 houses, and several barns and cattle pens. 5 domestic wells and 37 drinking water tubs. One fourth of the minerals go with the sale.

SOME BIG MONEY CAN BE MADE WITHIN THE NEXT TEN YEARS..... PRICED FOR QUICK SALE..... CALL: GEORGE POETE (806) 272-4047 (Home)



Buy Sell or Trade Check Classifieds

Bingham & Nieman Realty

116 E. Ave. C.

272-5285 or 5286

RICHLAND HILLS
IMMACULATE 3-2-2 Brick, corner lot, Cent. A&H, built-ins, FP, loads of storage & closet space, much more!

PRICE REDUCED 3-1-1 Brick, Cent. Heat, Evap. air, built-ins, fenced yard....

VERY NICE 3-2-3 Home, Cent. A&H, built-ins, FP, fans, spktr. sys., fenced. **PRICED TO SELL!!!!**

156.58' x 140' corner residential lot or lots - \$7,500.00!!!!

JUST LISTED 3-2-1 carport Brick, Cent. A&H, built-ins, FP, den or 4th bdrm., storage bldg., Fenced yd.

HIGHLAND AREA
JUST LISTED-Nice Large 2-2-2 Brick, Cednt. A&H, utility, cov. patio, fenced yard & more!!!!!!

VERY NICE 3-2-2 Brick, Cent. A&H newly remodeled kitchen with built-ins, storm windows, fenced yard, storage bldg. and much more!!!!

NICE 3-2-2 Brick home (2 story), on corner lot, Cent. A&H, built-ins, and much more. **LET'S LOOK TODAY!!!!!!**60's

NICE 3-1/2-1 Brick Home Cent. A&H, built-ins, large den w/Fireplace, fenced yard, storage bldg. \$50's!!!!

HIGH SCHOOL
NICE 2-1/2-1 Home, corner lot, built-ins, nice carpet, heat pump, fenced yard, storage bldg. & more!!!!

PRICE REDUCED FOR QUICK SALE! Nice 2-1-1 Home, Cent. Heat, carpets, work-studio area, and much more. \$19,950.00!!!!
FmHA Financed- 3-1-1, Cent. heat, nice carpets, \$600.00 tot. in to qualified Buyer!!!!

3-2-1 + 2 carport Brick, Cent. A&H, built-ins, fenced yard, apt - storage area!!!!

IMMACULATE 3-2-3Brick Home, Cent. A&H, built-ins, nice finished basement with fireplace, spktr. sys., & much more!!!!

DIANNE NIEMAN, BROKER

COUNTRY CLUB-VERY NICE 3-2-2 brick, Cent. A&H, built-ins, FP, Earthtone carpet, large fenced yd., storage-workshop, corner lot. \$50's!!!!

COUNTRY CLUB-VERY well-kept 2-1-1 Home on corner lot, nice earthtone carpets, workshop, & more. \$20's!!!!

LENAU ADDITION
COZY 3-1/2-1 home, Cent. heat, nice earthtone carpets, fenced yard, storage bldg., & more!!!!

3-1-1 home, Cent. A&H, utility, storage bldg., cellar, gas grill & more. \$20's!!!!

COUNTRY HOMES
NICE 3-2-2 Brick on 1 acre on pavement, close to town. DW, WB stove, utility, storm windows & doors. \$50's!!!!

NICE 4-2/2-1 Brick on 1.2667 ac. on pavement at edge of town, built-ins, loads of storage, & much more. **PRICED FOR QUICK SALE!!!!**

VERY NICE-3-2-1 Home on 1 acre, close to town, Cent. Heat, Evap. air, nice carpets, nicely remodeled. \$30's!!!!

HOME TO BE MOVED, Nice 4-3-2 Home. Cent. A&H, built-ins, fireplace, loads of storage & closet area, 2150 sq. ft. of living area, much more, \$40's!!!!!!

2-1 home, 20 acres, sub. pump, sprinkler, barns & corrals. \$40's!!!!

JUST LISTED - NICE COMMERCIAL BLDG. ON MAIN HIGHWAY, Approx. 2800 feet of area, suitable for various types of business. Possible Owner Financing to qualified Buyer. \$20's!!!!

APPROX. 3,000 sq. ft. bldg. Railroad frontage. CASH PRICE \$15,000.00.

69+ acres, improved pasture, 8" well, undgrd. line, fenced, plus nice 3-2-2 home, Cent. A&H, built-ins, utility, storm cellar, nice shop, & much more, close to town!!!!

JUST LISTED 3-2-2 Brick on 1 acre on pavement close to town, Cent. A&H, built-ins, FP, etc. \$40's!!!!

GEORGE NIEMAN, BROKER

Henry Realty

111 W. Ave. B Muleshoe 272-4581

3 Bdrm., 2 bath, spacious home outside city limits, near city on highway. 29'x40' metal building. Lot 85'x620'.

3 bdrm., 1 bath good location. Immediate occupancy.

3 Bdrm., 1 bath, completely remodeled, edge of city on highway.

COMMERCIAL PROPERTY - Ideal location on West American Blvd. 150' highway frontage. A great business opportunity.

4 bdrm., 2 bath, 2 car garage, central heat/air, large utility, carpet, near down town. Excellent condition.

Don't Forget The Tax Man

***** B.J. Crowley's HOROSCOPE

Week of April 10, 1989

ARIES—March 21 to April 20—Happiness is right in your present surroundings. Be realistic! The grass is not greener somewhere else.

TAURUS—April 21 to May 20—If you are wrong, admit it! You are trying too hard to be perfect. Accept the fact you are not infallible.

GEMINI—May 21 to June 20—Avoid unethical associates. You can be happy only if you obey the moral code. Do what you know is right.

CANCER—June 21 to July 22—You may be called upon to help someone close to you make a major decision. Your advice will be valuable.

LEO—July 23 to Aug. 22—Resolve to do a good deed each day even if it is only giving someone a sincere compliment. The action takes little effort on your part.

VIRGO—Aug. 23 to Sept. 22—If you want to make the world a better place you can begin in your own corner. Help is needed nearby.

LIBRA—Sept. 23 to Oct. 22—Avoid persons who see only the pessimistic side of life. Develop a winning personality if you want to climb the ladder of success.

SCORPIO—Oct. 23 to Nov. 22—Do your own thing, using as much originality in projects as possible. Curb feelings of jealousy.

SAGITTARIUS—Nov. 23 to Dec. 21—Your winning streak continues. Be patient with family members. Be certain your demands are not too great.

CAPRICORN—Dec. 22 to Jan. 19—Someone who has been slow in accepting you now does an about face. Your pleasant attitude wins friends for you.

AQUARIUS—Jan. 20 to Feb. 18—Direct your attention to matters at home. Pleasant surprises could be in store. Use your imagination for creative activities.

PISCES—Feb. 19 to March 20—Take a few minutes in your busy day to relax and meditate. Adopt a sensible health program and stick with it.



For Your Classified Call Muleshoe Journal 272-4536

Deadline Set For Writers' 1989 Contest

The nation's oldest continuously operating writer's group, Panhandle Professional Writers of Amarillo, invites all writers to enter its annual contest by the June 15, 1989, deadline. Entries may be on any topic, but must be unpublished and in the following categories:

Short stories - maximum 3500 words, or may be short-short, \$5 fee per entry, maximum two entries.

Articles - maximum 2800 words, \$5 fee per entry, maximum two articles.

Poetry - maximum 50 lines, \$5 fee per entry, maximum two entries.

Book-length manuscripts - summary and three chapters, fiction or non-fiction, \$10 fee per entry, maximum two entries.

Writing for children - maximum 1500 words identified as Category A, ages four to eight; Category B, ages nine to 12; or Category C, Young Adult; \$5 fee per entry, maximum two entries.

All submissions must include a cover sheet listing the name of the author and the title of the entry. The author's name must

not appear on any page of the entry itself. Since the contest judges will provide written criticism for each entry, all writers are encouraged to enclose an SASE for return of their work.

Announcement of winners will be at PPW's annual workshop "Frontiers in Writing," August 11-12, 1989. Cash prizes for short stories, articles, poetry and writing for children are \$25 first place, \$20 second place, and \$15 third place. Book-length manuscript prizes are \$50 first place, \$25 second place and \$15 third place. Certificates will also be awarded.

Only entries postmarked by June 15, 1989, which include fee and cover sheet for each entry, and which are typed, double-spaced on one side only of white 8 1/2 x 11 paper will be considered. Fees should be paid by check or money order to Panhandle Professional Writers.

For more information, send an SASE to Pam Sanders, Vice President of Contests, Panhandle Professional Writers, P. O. Box 19303, Amarillo, TX 79114.

Diet Changes Reduce Many Disease Dangers

Individuals can substantially reduce risks of heart disease, cancer and other chronic diseases through specific changes in eating habits, according to a national report released recently.

Dr. Mary Kinney Sweeten, nutrition specialist with the Texas Agricultural Extension Service, said a National Research Council committee has offered this prescription for lowering chronic disease risk:

° Eat less fat and more fruits, vegetables and carbohydrates.

Sweeten said the committee, which included Texans, completed its three-year study earlier this month.

The report complements the Surgeon General's Report on Nutrition and Health released last year, and is the only other comprehensive scholarly attempt to examine simultaneously all known dietary associations with chronic disease in an attempt to provide recommendations for reducing health risks.

Sweeten said the committee recommended that the public:

° Reduce total fat consumption to 30 percent or less of calories,

° saturated fatty acids to less than 10 percent of calories, and cholesterol to less than 300 milligrams daily.

° Eat five or more servings of a combination of fruits and vegetables, especially green and yellow vegetables and citrus fruits. Also, eat six or more servings of starches and other complex carbohydrates daily to bring total carbohydrates to more than 55 percent of calories.

° Maintain only a moderate intake of protein. Meet the Recommended Dietary Allowance (RDA) for proteins each day, but in doing so not exceed 1.6 grams per kilogram of body weight, which is twice the RDA guideline.

Sweeten said the committee report advised people to balance their food intake and physical activity to maintain appropriate body weight.

She said other recommendations contained in the report include to either avoid alcoholic beverages or drink no more than one ounce of pure alcohol per day; to limit total daily salt intake to six grams or less; to maintain

adequate calcium intake by meeting the Recommended Dietary Allowance; to avoid taking dietary supplements, especially in excess of the RDA in any one day; and to maintain an optimal intake of fluoride, especially during the years or primary and secondary tooth formation and growth.

The committee study was underwritten by the W. K. Kellogg Foundation, the Henry J. Kaiser Foundation, the PEW Charitable Trusts, the Fannie E. Rippel Foundation, Occidental Petroleum Corp., and the National Research Council Fund.

Sweeten said more public education will be needed to implement recommendations contained in the report.

"Individuals will need to devote more time and attention to their daily diets, and professionals will need to provide guidance to the public in diet planning," she said.

In addition, the food processing industry, restaurants and school cafeteria meal planners will need to change recipes and menus, and government agency

dietitians will need to change or update food and nutrition policies and programs, Sweeten said.

Texans serving on the Diet and Health Committee were Henry C. McGill, Southwest Foundation for Biomedical Research, University of Texas Health Science Center, San Antonio, and Richard B. Shekelle, School of Public Health, University of Texas Health Science Center, Houston.

Youth is a perpetual intoxication; it is the fever of reason.
—La Rochefoucauld.

GRAIN PRICES	
FEED CORN....	4.76 cwt
WCY.....	5.25 cwt
RCY.....	4.80 cwt
WHITE FOOD CORN..	6.00 cwt
MILO.....	3.96 cwt
SOYBEANS.....	6.43 cwt
NEW WHEAT ...	3.43 cwt
	98 1/4 %
Prices effective April 11, 1989	
MARKETS COURTESY OF	
FARMERS CO-OP	
ELEVATORS	
Muleshoe, Texas	
272-4335	

IT IS BETTER THAN IT USED TO BE!

But You Will Never

Know If You

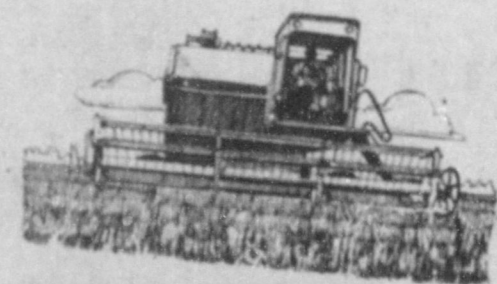
Don't Sign Up

By April 17th

**Call Ronnie Holt For
Your Crop Insurance
Details**

Sales Closing Date Is Thru April 17th

Due To The 15th Being Saturday



**RONNIE HOLT
INSURANCE
AGENCY**

P.O. BOX 304
WESTERN 66 OFFICE BUILDING
MULESHOE, TX 79347
OFFICE (806) 272-3614
RES. (806) 965-2942

SPECIALIZING IN CROP, LIFE AND HEALTH INSURANCE