

WEATHER

July 23	82	60	.00
July 24	84	61	.24
July 25	83	62	.00
July 26	84	57	.Tr

Muleshoe Journal

'The Community Of Opportunity-Where Water Makes The Difference'

Vol 67, No. 30

10 PAGES TODAY

Published Every Thursday At Muleshoe, Bailey County, Texas 79347

20¢ THURSDAY, JULY 27, 1989

Group Asks MISD For Refrigerated Air

City Council Tours Airport During Meeting

Meeting in regular session Tuesday morning, members of the Muleshoe City Council transferred \$2,090.70 in delinquent accounts to Bad Debts. It was explained that the one and one-third page of delinquent accounts were from May, 1988.

Following a brief discussion on the new municipal airport, the city council, City Manager Dave Marr, and Clea Williams went to the airport to inspect the facilities including the new hangars.

Council members viewed several minor problems with the new hangars, with eight under construction, along with an apartment at the west end.

As the city council begins work on a new budget, they will be visiting various city facilities for on-site inspection of problem areas, in order to make budget determinations for the coming year.

45th Annual Earth Rodeo This Weekend

Earth's 45th Annual Rodeo is just around the corner. It will be Friday and Saturday, July 28-29, with performances scheduled at 8:30 p.m. each evening.

Events officially kick off with a 6:30 p.m. parade on Friday, with a \$200 first prize for the best float and riding club division.

Also featured during the parade will be a horse drawn carriage division.

Following the parade, and preceding the Friday night performance will be a hamburger supper at the rodeo arena, sponsored by the Lions Clubs of Earth and Springlake.

Then on Saturday, with a purchase of a rodeo ticket, the holder is entitled to attend the annual Earth Rodeo Barbecue at the rodeo arena.

Some of the special events will be bull fighting, a little girl barrel race, stick horse race for youngsters age six and under, cow penning contest, wild cow milking, Little Miss Cowgirl Contest, and Queen Contest.

Rodeo events are calf roping, bareback riding, saddle bronc riding, girl's barrel race, bull riding, bulldogging, team roping, girl's break-away roping and mixed team roping.

This year, stock is furnished by Lynn Wallace Rodeo Co.

Entries will be taken 12 noon-6 p.m. on Thursday, July 27, at the rodeo arena.

Each night, the events will conclude with a Rodeo Dance. Furnishing dance music will be the West Texas Express.

Admission to the rodeo is \$5 for adults and \$3 for students under the age of 12.

Crime Line ALERT

From the Bailey County Sheriff's Department, Chief Deputy Steve Bearden has reported recent crimes that cash rewards are being offered through the Crime Line.

Bailey County Crime Line is now offering a \$200 cash reward for information leading to the arrest and indictment of suspects involved in the Farmer's Co-op Elevator office located at 113 North First.

The crime took place sometime between 9 a.m. on July 23, 1989 and 12 a.m. on July 24, 1989.

Call 272-HELP.
And, remember -- you will remain completely anonymous.



ONE OF THE BRIGHT SPOTS OF MULESHOE--Each summer, Jim Noble, who lives in west Muleshoe, has taken advantage of an area between his fence and West Avenue B to grow a small but beautiful (and bountiful) garden. This year is no exception. He is shown amid black-eyed peas, green beans, radishes, lettuce, tomatoes, okra, squash, cucumbers and peppers. Noble said he enjoys working in his garden that always provides fresh vegetables for his wife, Betty, to prepare. (Journal Photo)

MISD Superintendent Discusses How Legislature 'Costs' School

Dr. Lawrence Ward, superintendent of the Muleshoe Independent School District, was guest speaker for the Muleshoe Rotary Club Tuesday at noon. He was introduced by Olan Burrows, who was in charge of the program.

Dr. Ward talked about how Legislation passed by the 71st Legislature is affecting school districts, and the 'direct impact' the legislation is having on the small, or 'poor' school districts.

For instance, the legislature mandated pay raises of \$1,800 for school teachers -- but, did not provide the funds for the raises.

In Muleshoe, with 123 teachers, this is an increase in the budget of \$221,400, according to Dr. Ward's figures. He said that combined with counselors and other professional personnel, it means an increase in the budget of \$334,000+ for this year.

Then, the legislature has mandated a pay raise for teachers next year of \$1,100, but once again, will not be providing the funds to pay the raise.

The Muleshoe Independent School District will receive \$145,000 from the state this year, but next year, with another raise mandated, the state will only add an additional \$34,000 to the \$145,00 they are providing, thus leaving the local school district to pick up the rest of the tab for the raises.

He talked about court suits by small school districts, where the small school districts are attempting to obtain more state funding for legislation that is proving to be devastating for the poor districts.

The state approved \$450 million increases in state funds, but the small schools contend that \$1.5 billion will be necessary to make a difference. They call the \$450 "small drops" in the multi-billion dollar school funding bucket.

The 3rd Texas Court of Appeals said the system was unfair, but was not unconstitutional.

At this time, the school tax for Muleshoe Independent School District is .85 per \$100 valuation, and Dr. Ward said that by law, the School Board can raise the tax eight percent without opening the door for a rollback election. The eight percent would be an additional 6.23 cents per \$100 or a tax of .9123. With this amount, the superintendent said an additional \$112,140 can be

Former Resident Chosen 'Fellow' By Texas Bar

Charles E. King of the Amarillo law firm Gibson, Ochener, & Adkins, was elected a Fellow of the Texas Bar Foundation by the Board of Trustees in San Antonio, June 30 at the Annual Fellows Dinner.

He is the son of Elizabeth 'Lib' King and the late Bob King, and brother of Joe King and Doris Scoggin, both of Muleshoe. King is a graduate of Muleshoe High School.

Selection as a Fellow of the Texas Bar Foundation is recognition of a lawyer whose professional, public and private career has demonstrated his or her outstanding dedication to the welfare of the community and state and the traditions of the profession.

The election process is limited and by invitation only. Each year only one-third of one percent of the State Bar of Texas membership may be elected as new Fellows.

The Texas Bar Foundation was organized in 1965 with the goal of furthering programs of legal education and research of mutual significance and benefit to the public and profession by supporting educational and charitable projects within its purposes.

The foundation is made up of over 2,500 Fellows, Life Fellows and Sustaining Life Fellows.

raised each year, as they figure each one cent will mean an increase of \$18,000.

He talked of pending tax raises in other school districts, citing that some school districts charge up to \$1.57 per \$100. He used Dimmitt as an example of a raise, saying their tax rate is currently .60 per \$100. He said the system is facing a 30 percent increase, and a staff cut of three teachers.

Dr. Ward has articles from a number of large daily newspapers covering the state, and showed articles the newspapers have written about the 71st Legislature and their laws, which are proving to 'hurt' all small schools.

Salaries for teachers and aides in Muleshoe High School were \$752,176 in 1988-90 and will be \$826,020 for 1989-90; it will be 493,128 for 1988-90 in Watson Junior High and \$562,376 for 1989-90.

Teachers and aides at DeShazo Elementary received \$598,217 for 1988-90 and this will be \$659,340 for 1989-90. At Dillman, it was \$632,645 for 1988-89 and will be \$720,271 for 1989-90.

Career Ladder salaries are rising from \$108,000 in 1988-89 to \$139,600 in 1989-90.

Chapter I Regular and aides salaries are rising from the \$141,813 in 1988-90 to \$162,073 in 1989-90; and Chapter I Migrant and aides salaries are \$171,704 for 1988-89 and will be reduced to \$165,048 for 1989-90.

Total salaries for the 1988-89 school year were \$3,025,604; compared to \$3,351,347 for the next school year.

Prior to Dr. Ward's discussion of the school financing, Rotary President Terry Hutto talked about the possibility of the Rotary Club sponsoring another wrestling match in Muleshoe as a fund raiser.

The project will be further discussed at the next meeting, after Hutto talks to Wrestling

Two New Principals; Six Teachers Hired

When the Board of Trustees met Monday night in the school administration building, a near capacity crowd was on hand for the meeting.

After formal opening of the session, Sheila Moraw acted as spokesperson for one group of people.

Mrs. Moraw told the trustees that the group wished for the trustees to check into refrigerated air conditioning for both Dillman and DeShazo Elementary Schools as they are currently considering air conditioning the two schools.

Mrs. Moraw said the trustees "need to be commended" for considering the air conditioning, as present conditions, and the unairconditioned schools are not a learning atmosphere when it is hot weather.

"Our concern about the air conditioning is medical," said Mrs. Moraw. "So many of our children have allergies that we are here to ask that evaporative systems not be used. Evaporative

systems bring in everything that is outside, including the pollens that cause our children's allergies."

Mrs. Moraw also read a letter from a Lubbock allergist who suggested that evaporative air conditioning systems not be used in the schools.

Board President Howard Watson thanked the visitors for their input and commented, "We will assure you we will do what's best for the system."

Another group at the meeting were teachers, who provided refreshments for those present as a 'thank you' for raises granted to all teachers and aides in the Muleshoe Independent School System.

Preparing and serving cookies, crackers, cheese and grapes, were Alice Liles, Barbara Mutschler, and John Gully.

Coming out of executive session shortly before 3 a.m. Tuesday morning, five resignations had been accepted; six teachers and two school principals had been employed.

Resignations were accepted from Coach Ruben Osuna; junior high school teacher Pam Osuna; Steve Dinwiddie, high school science teacher; Donna Merrill, fourth grade teacher and Muleshoe High School Principal Wayland Ethridge.

Principals employed were Dr. Fred Ivy, as principal at DeShazo Elementary; and Dr. David Wyer, a Muleshoe native, as principal of Muleshoe High

Cont. Page 6, Col. 3

Bus Driver School Will Be Held Here

In accordance with Texas law, school bus drivers will undergo training in Muleshoe next week.

David Gray, instructor, said classes get underway at 1 p.m. on Monday, July 31, at Muleshoe High School.

He reminded that any person employed to drive a school bus in the State of Texas is required to complete a Bus Driver Training Course. Once completed, the driver must take refresher courses.

On Monday, Gray said the school will conclude at 5 p.m. On Tuesday, school hours are 1-6 p.m. and Wednesday, the school begins at 1 p.m. and concludes at 6 p.m. The refresher courses are scheduled for Tuesday and Wednesday.

Thursday's hours are 1-5 and on Friday, the last day of school, Gray said it will be from 1-3 p.m.

The instructor said he will be utilizing both classroom and actual driving of the buses during the five day school.

He said to register, call 272-3080 or 272-4412.

Encounter Crusade Begins Sunday Night

Beginning Sunday at 8 p.m., the Bailey County Ministerial Alliance will be sponsoring The Bailey County Encounter Crusade at Benny Douglass Stadium.

Involved will be the churches who are members of the Bailey County Ministerial Alliance and special music will be directed by 'Big' John Hall, well known for his bass-baritone renditions of gospel music.

The entire community has been invited to attend the Bailey County Encounter Crusade which will be held each evening at 8 p.m. through August 4.

The special music leader has received numerous awards and has appeared frequently on the Christian Television networks. He has a number of albums and tapes.

Remember -- you are invited to participate -- in any or all of the special services.

Cont. Page 6, Col. 1

MULESHOE AREA



Spring '89

BUSINESS DIRECTORY AND SHOPPING GUIDE

WES-TEX FEED YARDS, INC.

Custom Cattle Feeding
Wes-Tex Feed Yards, Inc.
 272-7555

Henry Insurance Agency, Inc.

Serving You Since 1964
 111 W. Ave. B. 272-4581

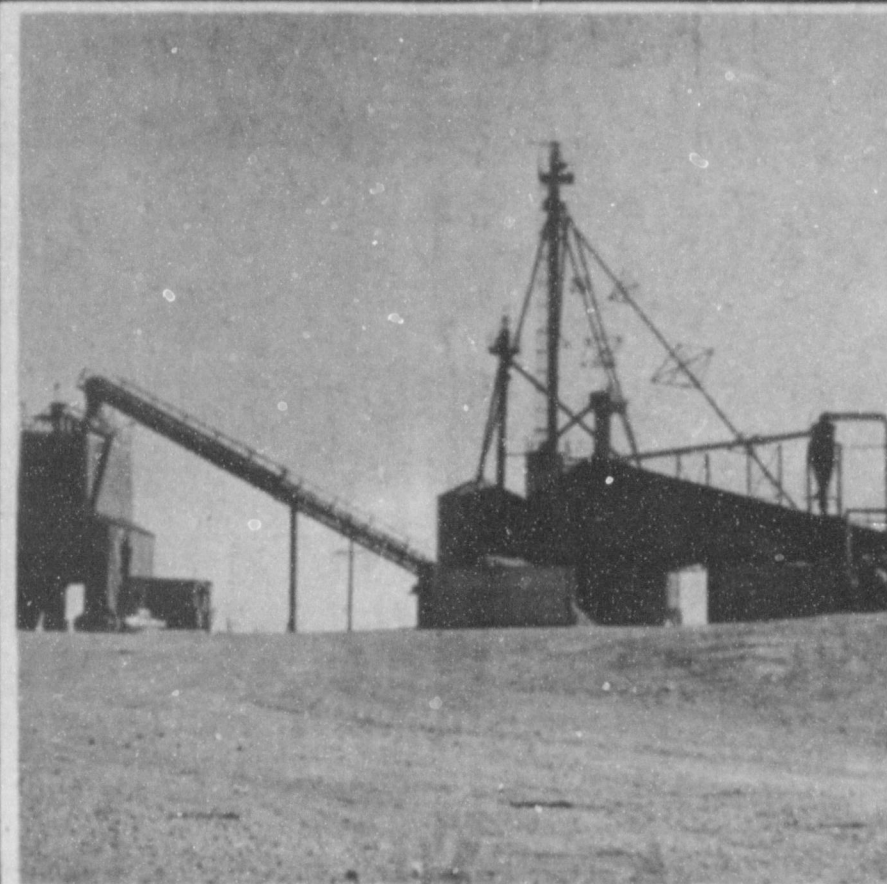


Fabric Covered
Hot Boxes
 • Tapestry • Floral Print
 • Damask
Muleshoe Art Loft



Helping You Is What We Do Best!
 David Tipps, Agency Mgr.

1612 W. Amer. Blvd. 272-4567



Wes-Tex Feed Yards was purchased July 1, 1984 and has two locations, both west of Muleshoe.

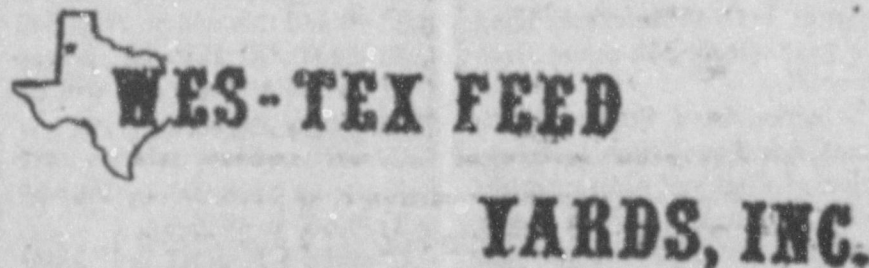
Wes-Tex can care for 23,000 head of cattle. They feed and care for customers' cattle until they are sold to buyers.

The feed yards have a yearly payroll in excess of \$500,000 a year. They also purchase a hundred million pounds of grain per year. Grain that is locally grown.

Also all repairs, parts and supplies for the feed yards are locally purchased when possible.

In addition Wes-Tex Feed Yards employs approximately 28 full-time employees and several part-time.

Contributing to the economy of Muleshoe.



Leal's Restaurant

WILBURN SPECIAL
 Tostadas, Beans, Hamburger
 Meat, Rice, Lettuce, Tomato
 Cheese & Quacamole.



\$5.89

Closed Monday
 11:00 a.m. to 9:30 p.m.

1542 W. Amer. Blvd. 272-3294

Pivot Products Distributors, Inc.

We distribute Beef-Pro Dog Food. Manufactured in Hereford, Tx.

Beef-Pro Dog Food has 21% protein for younger dogs and 27% protein for older dogs.

1504 W. Amer. Blvd. 272-5536

B & B Medical Supply

'Dripride Underpads'

(806) 272-3707
 616 S. 1st St.
 MULESHOE, TX 79347
 MARK BENEDICT, C.R.T.T.

(817) 663-2084
 BOX 849
 QUANAH, TX 79252

Where the Patient is No. 1

Higginbotham-Bartlett Co.

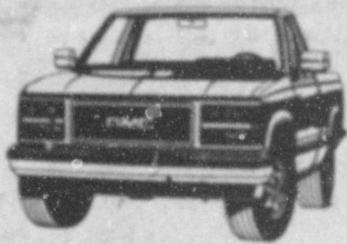
"Quality & Service At The Right Price"

215 Main 272-3351

BUYER'S SPECIAL
 reg. 4.29
2.44
 6 inch slip joint pliers
 reg. 9.09
4.44
 10 inch groove joint pliers
 T O O L

Robert D. Green, Inc.

"Pick-Up Truck Headquarters"



4WD Sierra SLX Series 1500 Wideside Pickup

2400 W. Amer. Blvd. (806) 272-4588



UUT SERVICES INC.

319 E. American Blvd.
 MULESHOE, TEXAS 79347

Mobile Communications
 Two-Way Radio Repair

GARY PARKER
 Technician

Muleshoe - 806-272-4886
 Hereford - 806-364-7311



CHIMICHANGA (Meat Burrito)

Deep Fried, Topped With Bean Sauce and Cheese

\$3.50

Violas Restaurant

Closed Tuesday
 11:00 a.m. to 9:30 p.m.

2002 W. Amer. Blvd. 272-3838

Scoggin Ag Center, Inc.

Tires, Tires, Tires

We Aim To Please You The Customer

We make All Types Of Service Calls

We Fix Flats!!!!
 See Rudy Gonzales

1532 W. Amer. Blvd. 272-4613

5 Locations To Serve You!

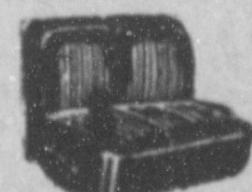
- ★ Clays Corner ★ Enochs ★ Muleshoe
- ★ Pleasant Valley ★ Old Griffith

Farmers Co-Op Elevators

Pick-Up Seat Exchange

Complete Seat Overhaul

Replacement Springs



Molded Carpets

McCormick's

Upholstery & Drapery

109 S. 1st 272-4660



LUBBOCK, Friday, July 21, 1989

The House has passed a bill, the Senate is still talking, and the Administration is still balking.

That sums up the response of Plains Cotton Growers, Inc., Lubbock, to questions from its members on the status of efforts to enact a 1989 disaster assistance program. Elaborating, PCG explains that the House on June 27 approved legislation basically extending to 1989 crops the benefits provided in last year's disaster law. And Senate Agriculture Committee Chairman Patrick Leahy, joined by other Senate notables including Texas Senators Phil Gramm and Lloyd Bentsen, are pushing for a similar measure in the Senate.

"It's going to be a while before the Senate acts," says PCG Executive Vice President Donald Johnson, "but I feel pretty good about our chances there."

However Agriculture Secretary Clayton Yeutter, citing cost concerns, to date has resisted all attempts to reverse his earlier stand against legislation covering other than the drought-damaged 1988 winter wheat crop. So, Johnson says, to temper that opposition and improve the odds against a veto, any disaster bill may have to provide a cap on total expenditures. "But to get by both houses of Congress it will also have to cover a wide range of crops," he reasons.

On the High Plains, PCG officials point out, an estimated 250,000 standing acres of cotton have been taken out by hailstorms and washing rains, and another quarter of a million planted acres either never got out of the ground or "died a-borning" from lack of rain.

Questions from producers on these farms where disaster already is a reality are most urgent, says Johnson. "And there are thousands of other farmers who know there's a disaster just around the corner if it doesn't rain pretty soon and pretty often, or if the growing season isn't just about perfect in other ways, including a late freeze."

PCG's figures for its 25 counties indicate a planted acreage of about 2.8 million, with some 2.3 million left standing as of July 1. In evaluating crops on this acreage, PCG has applied percentages developed in a June 26 survey of conditions in 19 of its major producing counties. The survey was done by Dr. James Supak, Area Extension Agronomist, who doesn't think inclusion of the other six counties would materially alter percentages.

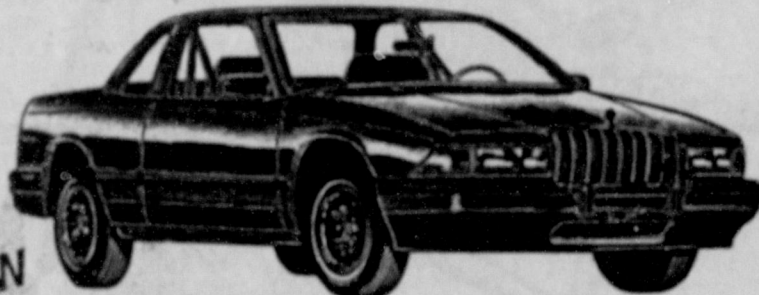
Supak's survey shows only 966,000 acres (42 percent) in "good" condition, 920,000 (40 percent) "fair" and 414,000 (18 percent) in "poor" shape. Most in this latter category, PCG notes, is drought-stressed cotton that without rain can become a disaster almost overnight. And much of the 920,000 acres rated fair, almost all without deep moisture, has a very poor chance of producing more than maybe 30 or 40 percent of a normal crop.

Then there's the risk of an early freeze, PCG reminds. The figures show that 713,000 acres (31 percent) was planted in June, with almost half that amount, 345,000 acres, planted after June 10. An October freeze, not at all uncommon, would be devastating to yields on this acreage. Only about 713,000 acres (31 percent) is said to have been planted in the prime period before May 15. The remaining 874,000 (38 percent) is included in plantings from May 16 to May 31.



The world's best source of borax, a water softener, is in the Mojave desert, California.

SUPER SAVINGS!!



1988 Buick Regal Limited CPE.

Dark Blue, Blue Interior, Power Windows, Power Locks, Power Seats, A/C, Cruise, Tilt, Alum. Wheels, AM/FM Stereo Cass. Trunk Rel.

List Price 16,254.00
Delivered Price
\$11,999.*



New 1988 GMC Crew Cab Pickup

(Sierra Classic) 7.4L V8 (454)

Tan and Blue, Tan Interior, A/C, Power Windows, Power Locks, AM/FM Stereo Cass., Cruise, Tilt, Automatic, Aux. Fuel Tank.

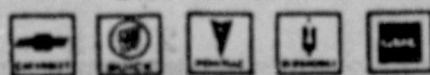
List Price 20,379.00
Delivered Price
\$15,999.*

* Dealer Retains Rebate

Robert D. Green, Inc.

806-272-4588

2400 W. American Blvd. Muleshoe, Texas



Gubernatorial Candidate Blasts 'Drug' Dealers

Republican gubernatorial candidate Clayton Williams, claiming that Texas has become the "sunshine state" for drug dealers, has vowed to shut off the supply of drugs in Texas.

During his keynote address to the Texas Narcotics Officers' Association in Abilene July 11, Williams called for a stronger public will in Texas -- like that of Florida -- to fight the state's increasing drug problem. Williams, the only Republican to announce his candidacy for governor, said he supports doubling the number of the state's drug enforcement officers to stop the drug supply in Texas.

TEXAS SHOULD TAKE LEAD FROM FLORIDA

Texas can learn a valuable lesson from Florida, Williams said, where narcotic officers apprehended some 2,200 drug suspects in just one day--the largest single drug crackdown in any one state in the U.S.

"Are Florida's officers simply better?" Williams asked. "Of course not. Florida gives their officers better resources."

Williams pointed out that Florida has 678 federal and state narcotics agents whereas Texas--which has five times as much land as Florida--has only 441.

Williams said he will strongly urge the federal government to add more Drug Enforcement Agents in Texas and called on the state to double the Department of Public Safety's narcotics force and hire more Highway Patrol officers.

"We need new legislation, tougher legislation and more drug fighting resources."

Williams said he will support legislation enabling state officers to seize the assets of "these millionaire drug dealers" to pay for the additional officers.

The candidate also noted that Florida spends approximately 6.7 percent of their budget on corrections facilities while Texas spends only 3 percent of their annual budget on corrections.

"We to must build more prisons," Williams said, "and we must pay for them by being more efficient and by establishing priorities."

"I know it must be terribly frustrating for you men and women to spend months, even years, to arrest a criminal only to see him back on the streets again a few months later."

Williams recognized that prison is not always the answer and proposed the state build a military-style boot camp in the Big Bend area in West Texas. The camp would take in drug offenders under the age of 27 and introduce them to early morning calisthenics, remedial education, drug counseling and hard work, Williams said. The candidate pointed out that similar programs have been successfully implemented in Florida and Georgia.

Williams also proposed that graduates of the boot camps pass through a transitional phase before re-entering civilian life where they would learn productive work habits.

Williams added that fighting the demand for drugs and expanding drug education also are part of his five-point plan to stop the state's growing drug problem. The candidate will detail those plans later in his campaign.

In addition to his plan to fight to win the war on drugs, Williams said his campaign also

will focus on the pursuit of economic development, improvements in education, governmental efficiency and rural health care.

Williams, a lifelong Republican and one of Texas' most successful entrepreneurs, has started 26 businesses in more than 50 Texas cities and towns.

Bird Buyers Warned

WASHINGTON--Parrot lovers and other buyers of exotic birds are getting a stern warning from the Department of Agriculture to make certain their pets meet federal import requirements.

Muleshoe Journal is published weekly except on Thursdays at 304 W. Second, Box 441, Muleshoe, Texas, 79347. Second Class Postage Paid at Muleshoe, Texas, 79347.

Member 1989
TEXAS PRESS ASSOCIATION

L. B. Hall, Publisher
Suzanne Hall, Vice-President/Circulation
Chris Williams, News
Evelyn Harris, Society
Rally Millage, Advertising
Dora Foreman, Classified
Vicki Divine, Bookkeeping

Subscription Rates:
Muleshoe Journal and Bailey County Journal
Bailey and surrounding counties
Muleshoe Journal and Bailey County Journal
Elsewhere in Texas \$14.75
Muleshoe Journal and Bailey County Journal
Outside Texas, \$16.50
Yearly By Courier \$12.50

Anthony's Weekend Home Improvement



Every Bath Towel & Bath Rug
An Example of Just One of the Many Savings on our Plush Towels!

Riviera by Dundee® cotton towels in decorator colors:

Bath Towels, Reg. 3.99	Sale 2 ⁹⁷	Save 25%
Hand Towels, Reg. 2.99	Sale 1 ⁹⁷	Save 30%
Washcloths, Reg. 1.99	Sale 97¢	Save 50%

Every Bed Pillow
Example of the Savings on Just One of Our Bed Pillows

Signature Bed Pillows: Choose from std., queen or king, Reg. 6.99 ea.

Sale 4⁹⁷ All Sizes
Save 25%

Entire Stock 1" Mini Blinds
In alabaster, white or woodtone (blue and rose available in larger stores).

23" Width, Reg. 7.97 **3⁹⁷**
27", 29", 31", 35" and 36" Widths, Reg. 7.97 **5⁹⁷**
Save 25% to 50%

Entire Stock Kitchen Ensembles
Save on all our kitchen towels, oven mitts, pot holders and more by Treasure Craft® Bath & Dreyfuss and others.

25% Off

Entire Stock Chair Pads & Pillows
Example of savings on our ruffled or corded decorator pillows: Reg. 5.99 Each

Sale 3 for \$12
Save 30%

Entire Stock Shower Curtains
Save now on all our decorator shower curtains in your choice of colors and patterns.

25% Off

Entire Stock of Mattress Pads
An Example of Just One of the Many Savings on All Our Mattress Pads!

Cannon® Convoluted mattress pad guarantees you a good night's rest:

Twin, Reg. 15.99	Sale 10 ⁹⁷	Save 30%
Full, Reg. 19.99	Sale 13 ⁹⁷	Save 30%
Queen, Reg. 24.99	Sale 16 ⁹⁷	Save 30%
King, Reg. 29.99	Sale 19 ⁹⁷	Save 30%

Every Bedsheet in Stock
An Example of Just One of the Many Savings on our Sheets and Sheet Sets!

Coordinated percale sheet sets include flat and fitted sheet, pillowcases:

Twin, Reg. 13.97	Sale 9 ⁹⁷	Save 25%
Full, Reg. 19.97	Sale 13 ⁹⁷	Save 30%
Queen, Reg. 25.97	Sale 17 ⁹⁷	Save 30%
King, Reg. 29.97	Sale 19 ⁹⁷	Save 30%

Hours:
Mon. - Sat.
9 - 6

ANTHONY'S
We're Good at Making You Look Great!

321 Main Muleshoe 272-3478

Journal Files

60 Years Ago

1929

IMPROVEMENT OF MAIN STREET HAS ALREADY STARTED

If weather conditions hold good for a few more days it will be possible for automobiles and trucks to pass through Main Street without the aid of tractors in negotiating the mud holes.

Work started last Tuesday on this street and everything will be done to put it in first class condition. Trucks are hauling dirt from south of town to make fills, and drain ditches will be opened and culverts repaired.

It is to be hoped that now the good work is started that our streets will be maintained as they should be, thus saving the people many dollars of unnecessary expense.

50 Years Ago

1939

KEEP ON SINGING

The world is full of music, if your heart is full of song; and you'll have but little worry. Except when in the wrong; if you want to keep on singing. Enjoy life still more and save a lot of money. Trade at Beavers Grocery Store.

SATURDAY SPECIALS

Pickles, 26-ounce "Oklahoma Girl" dill or sour 13 cents; Catsup, 14 ounce bottle 15 cents; Jello, any flavor 6 cents; Coffee 25 cents pound; No. 2 1/2 can Pears 18 cents; Flour 10 pounds 38 cents; salt 10 cents box; and spuds, fancy, new or old crop 10 pounds 28 cents.

40 Years Ago

1949

LEGION BUILDING NEAR COMPLETION

Nearing completion this week, the new American Legion home in Muleshoe is attracting lots of attention from the citizens. The building, going up on ground bought by the local ex-service men and women, in the west part of town, will be finished soon.

The building contains a large meeting room, a large auditorium, convenient kitchen, checking room, ladies powder room, rest rooms, and spacious halls.

30 Years Ago

1957

MULESHOE POPULATION 5,346

In a survey taken this week, it is estimated that the present population of the City of Muleshoe is 5,346. The findings in this survey is based on the number of customers served by the municipal water system.

W.E. Young of the City Water Department says the city has more than 1300 water customers and of this number about 200 are

business connections leaving at least 1100 residential customers.

The accepted average is that there are four and seven tenths persons, served by each water meter. Figure it out, this comes to a total of 5,346.

20 Years Ago

1969

ELEVATOR EXPLOSION KILLS EMPLOYEE

The hands of the clock stopped at exactly 1:55 p.m. Friday at the Sherley-Anderson Elevator in Lazbuddie when a violent explosion ripped through the elevator.

At that time approximately 20 feet of grain fell on Cloys Wane Stanberry, 31, and his body was not recovered until some five hours later, at 6:55 p.m.

Stanberry, the elevator superintendent, was inside on the workroom floor at the time of the explosion.

Jerrell Pruitt and Frank McCamish, employees of Bailey County Electric, were both on the premises at the time of the explosion, having replaced a meter.

Pruitt was seven or eight feet from the workroom floor when the explosion occurred. He was knocked down by the blast and the hair around his face was singed by the fire.

It became apparent that smoke was coming out of the top of the elevator and a helicopter was summoned from Cannon Air Force Base at Clovis, N.M. The helicopter landed twice on top of the elevator after taking up fire fighting equipment and the fire was extinguished.

10 Years Ago

1979

Grocery specials advertised this week in the Journal included: Gladiola flour 5 pound bag 29 cents; sugar 5 pounds 99 cents; 1 pound coffee \$2.19; 18 ounce peanutbutter \$1.19; 15 ounce can pear halves 2 for \$1; Vienna sausage 2 cans 89 cents; potted meat 4 cans \$1; 6 1/2 ounce can tuna 69 cents; avocados 4 for \$1; cucumbers 25 cents pound; potatoes 10 pounds 98 cents; spare ribs \$1.49 pound; pork chops \$1.89 pound; pork steak \$1.49 pound; and 12 ounce package Little Sizzlers \$1.09.

GOLF COURSE CONSTRUCTION STARTS

This week members of Bailey County Electric Cooperative set light poles for the Miniature Golf Course being constructed east of the Bailey County Exhibition Center and Coliseum.

Sure Sign

Regardless of your age, you're getting along in years when it takes you longer to rest than it does to get tired.

-Star-News, Andalusia, Ala.

Thought
We Had Forgotten
About You!
We Luv Ya!!
Love,
Your Kids
& Husband



ENGAGEMENT ANNOUNCED--Mr. and Mrs. Bill Dolle of Maple announce the engagement and approaching marriage of their daughter, Belinda Jo, to Scott S. Austin, son of Mr. and Mrs. Jack Austin of Lubbock. The couple will exchange vows at 7 p.m. Aug. 19 in Green Lawn Church of Christ in Lubbock. Miss Dolle is a graduate of Three Way High School and South Plains College. She also attended West Texas State University. She is employed at Lubbock Texas Air Center. Austin is a graduate of Reno, Nevada High School and is employed at Casters of Lubbock. He is now attending Texas Tech University. Miss Dolle is the granddaughter of Mr. and Mrs. Herbert Dolle of Littlefield and Mr. and Mrs. Ralph Davis of Lubbock. (Guest Photo)

Children Can Be Taught To Behave In Public

Parents who are embarrassed by their young child's behavior in public have obviously not done their homework, according to a specialist with the Texas Agricultural Extension Service.

"Because children are not born socialized or to mind in public, they have to be taught social rules at home," said Dorothy Taylor, family life specialist with the Texas Agricultural Extension Service at College Station.

"Threats to go to the car or to go home, pinching or kicking a child under the table or to ignore a disruptive, attention seeking child reflect the parents' inability to take charge of the situation," she said.

Taylor said that most parents have been or will be embarrassed in public at some time by a child's behavior. She suggested several steps to minimize these occurrences.

"Plan public times or expeditions to take advantage of 'up time' for the child," she said. "Avoid taking a hungry, sleepy or tired child anywhere but to home and his/her bed."

Taylor said, "In a restaurant, make sure young children have something to eat immediately, such as crackers. Too much snacking however, can ruin his meal. Practice good table manners everyday at home. Prior to going out, tell the child what to expect and exactly what you expect of him."

She also suggested making common sense rules, such as young children should sit in shopping carts or in strollers, children should walk with the parent and never run, everybody should hold hands when in traffic areas, children practice keeping

their feet on the floor and their hands to themselves, especially in stores with breakable items.

Parents should accentuate the positive, the Extension Service specialist said. Tell children you know they will try to be good. Let them know you'll remind them gently if they forget "A quiet whisper will do more good than all the threats in the world," Taylor said.

"Controlling one's behavior is tough, especially if you haven't had many years to practice. Promise the child a reward for helping you and everyone else have a pleasant time," she said.

"When a child needs correcting, take him aside-leave," Taylor said. "Throwing a fit is an historical, worldwide event known best by children. Removing him from his audience removes his support or power, and parents can take charge again."

"Parents are responsible for their young child's behavior," Taylor said.

"Some children make parents' jobs easier than others. Taking children anywhere involves constant thought and attention. If you don't want to be bothered, you'd better not take children with you. It's certainty, everybody loves a good child, but everybody notices a bad one's parents."

CALENDAR OF EVENTS

JULY 27 - AUGUST 1
TOPS
6:30 p.m.
ODDFELLOWS LODGE
7:30 p.m.
HOBBY CLUB
HOBBY CLUB
2 p.m.
MULESHOE SQUARE
DANCE CLUB
8 p.m.
FRIDAY
KIWANIS CLUB
6:30 a.m.
AARP
11:30 a.m.

SATURDAY
ALCOHOLICS ANONYMOUS
10:30 a.m.
TUESDAY
REBEKAH LODGE
7:30 p.m.
ROTARY CLUB
12 noon
STUDY CLUB
4 p.m.
EASTERN STAR
8 p.m.



GIFTS FOR CHURCH--Tomasa Guzman, left, and Camila Hurtado proudly show off a can opener, whistling tea kettle, hanging basket and a canister set, gifts for the Spanish Methodist Church. These items were earned for the church through the point system at Western Gift Store. (Journal Photo)

Three Way News

Mrs. Roger Hatcher and girls from Clovis spent Thursday night with her parents, the Jack Lanes.

Mrs. Jack Lane, Mrs. Obie Standard and son and Mrs. Janna Benett from Muleshoe were in Lubbock Monday on business.

Mr. and Mrs. Gregg Giessler from Earth are the parents of a baby born Sunday in a Littlefield hospital. Grandparents are Mr. and Mrs. Jack Hodnett of Maple. Great grandparents are Mrs. Maggie Hodnett of Morton and Jack Mapes of Lorenza.

Mr. and Mrs. Bill Dolle and Darla attended the funeral of Edmond Loerald in Hereford Wednesday.

Mrs. J.T. Lemons from Ros-

well spent Friday and Saturday with her daughter, the Bobby Kindle family.

Mrs. Adolph Wittner spent Wednesday night in Lubbock to be with her sister in law, Mrs. Jim Emerson, who is a surgical patient in Methodist Hospital.

Mr. and Mrs. Johnny Furgerson spent the weekend in San Angelo visiting friends.

The community received a good rain Friday night and another Saturday night.

Mrs. Buzz Henexson and two children, Christopher and Christina from Kellogg and Brin, Tobin and Amber Huff from Wolfforth spent the past week with Mr. and Mrs. Bud Huff.

Mrs. Ada Long from Amarillo and Mrs. Lorena Miller from Canyon visited Mrs. H. W. Garvin Sunday afternoon.

WE'RE TALKIN' 59¢ REFILLS!

EACH AT PARTICIPATING DAIRY QUEEN STORES

32-OZ. THERMAL MUG filled with Coca-Cola \$1.59

ON SALE IN **DQ COUNTRY**

NON-STOP IN DQ COUNTRY

BREAST CANCER DETECTION UNIT available to area women!

THURSDAY, JULY 27th
WEST PLAINS MEDICAL CENTER
MULESHOE, TEXAS

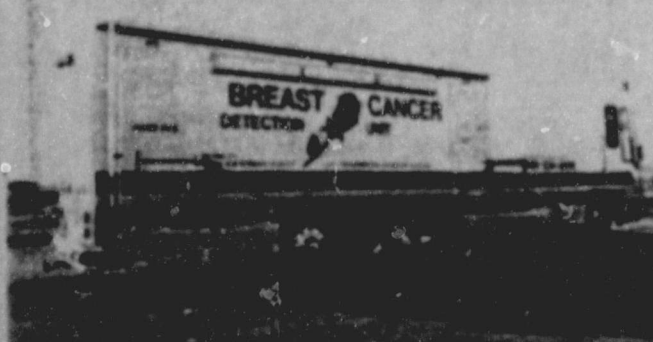
Call 272-4524 for appointment

According to the American Cancer Society, one out of ten women will develop breast cancer sometime in her lifetime. It is currently estimated

that over 37,000 women die each year as a result of breast cancer.

Ninety percent of breast cancers are diagnosed by women or their physicians finding a lump in the breast. Women who are diagnosed with a lump large enough to feel have a 50 percent five year survival rate. A woman who is diagnosed as having breast cancer by mammography, before a lump can be felt, has a 97% five year survival rate and a 90% 10 year survival rate. The cost is only \$50.00.

A mammogram can detect a cancer this small, even before it can be felt.



Black Widow Spider Myth Dispelled

It's time to nail the lid on the coffin of the old myth that black widow spiders eat their mates, said a Texas A&M arachnologist who has the research to do just that.

For those of us who grew up in the South, this information does not settle well; after all, the idea that black widow spiders eat their mates was one of the fascinations of childhood. Playing outdoors on summer evenings, the prospect of encountering such a homicidal spider was wonderfully terrifying. Not only that, but we learned it in school.

But spider scholar Bob Breene tells us that only a small fraction of black widow females end up as "feast after the fact." In fact, whether or not the male is eaten is largely a function of what kind of shape the male is in, said Brown.

The myth was started around the turn of the century after some faulty research by noted entomologist John Henry Comstock, Breene said. Comstock apparently coined the name "black

Alexander, Bradshaw Engagement Announced

Mr. and Mrs. George R. Alexander of Longview announce the engagement and approaching marriage of their daughter, Janice Marie Alexander to Steven Neal Bradshaw, son of Mrs. Odie N. Bradshaw of Abilene and the late Odie Bradshaw. Bradshaw is the grandson of Neal and Skeet Bradshaw of Lubbock and Vernal King of Muleshoe.

Vows will be exchanged at 2 p.m. Saturday, July 29 in the Alpine Church of Christ at Longview, TX.

A 1987, graduate of Longview High School, the bride elect is a junior at Abilene Christian University majoring in Elementary Education. She is presently employed by A.C.U.

Bradshaw is a 1988, graduate of Lazbuddie High School and is a sophomore at Abilene Christian University, majoring in Agriculture Business. He is also employed by A.C.U.

widow" and Breene offered this theory on where the research broke down:

"Roughly, about 1900, Comstock secured one or more black widow females. Since nobody wants potentially poisonous animals running about, Comstock put them in escape-proof cages, where they built their webs.

"Next, he acquired male black widows, and before long he had them mating with the females. Understandably, he didn't want to just stick his hand in there to get each male out after he was done, so he left him in there until the female finally ate him.

"Comstock never knew it, but he had started a time-honored tradition in the study of arachnology. Soon, researchers all over the world were sticking males and females together in escape-proof cages and waiting until one of them got zapped."

Breene said the major danger to mating for black widow males then seems to be escape-proof cages. Even so, the males do approach the females with great caution, taking advantage of their major weakness -- poor-sightedness -- by cutting the redesigning the web, to disorient the female.

The male's cutting behavior could effectively "blind" the female because her primary sensory contact with her environment is tactile and through the web she created. This blinding may help the male evade an attack by the female. The bridal veil spun by the male prior to copulation detains the female for only a second or less, but it is probably sufficient to allow the male to escape by immediately dropping out of range, with little or no chance of successful pursuit by the female due to her disorientation in what is now the unfamiliar territory of her cut web.

While the widows' mating behaviors may not be as morbid as we have believed, the spiders are fascinating nonetheless. All the while the male is cutting and spinning the females' web, he is vibrating his abdomen to throw the female into a trance. In addition, his silk may contain pheromones which further

placate her.

In Breene's studies, the average duration of the first cutting sequence was 58.5 minutes. In all observations, the male was repulsed on his first approach. If he was repulsed a second time, he began a third cutting sequence, and so on. Once the female allowed his approach, the male spins a bridal veil and inseminates her. However, he can be interrupted by the female at any point, sending the male into another cutting sequence.

Another reason that the good-for-one-time-only myth about the black widow male has persisted is that the piece of apical sclerite that the male loses in the females' bursa following coupling was a mutilation that left the males incapable of mating again. But Breene's research has disproven this idea, and Breene suggested that the appendage may function in the initial charging of the palpal organs with sperm.

An inseminated female will produce about 5 to 10 egg sacs,

each usually having between 150 to 250 eggs. The eggs hatch in the egg sac and the spiderlings go through a molt before emerging about four weeks later. The newly freed spiderlings are not yet cannibalistic; they disperse quickly by ballooning.

Breene said there are five species of widow spiders in the continental United States: *Latrodectus mactans*, *L. hesperus*, and *L. variolus*, the three black widows; the brown widow, *L. geometricus*; and the red widow, *L. bishopi*.

FACTS & FIGURES

The chances are about one in three that you belong to a credit union. In the United States today, credit unions count more than 60 million members!

Credit unions are not for profit financial cooperatives. They are the only democratically run financial institutions. According to the Credit Union National Association, only members may belong or vote, and members elect a board of directors from their membership.

Baby Shower Honors Kedric Jace Carver

Kedric Jace Carver, son of Kyle and Shelley Carver, was honored with a baby shower

Friday, July 21 in the home of Mrs. Gary Gilleland. Guests were greeted by Mrs. Gilleland.

Patients In West Plains Medical Center

THURSDAY
Ernestina Bara, Eliseo Salazar and Fred Horn

FRIDAY
Ernestina Bara, Eliseo Salazar, Norma Pitcock, Vance Wagnon and Lauson Herington

SATURDAY
Mario Garza, Norma Pitcock, Wanda Wiley, Juanita Garcia, Tony Roe, Aurora Mata and Lauson Herington

SUNDAY
Janie Garcia and Aurora Mata

MONDAY
Janie Garcia and Aurora Mata



MRS. SHELLEY CARVER AND KEDRIC JACE CARVER

Permanent Wave

Special

\$27.50

(includes haircut & style)

Call Yolanda, Linda or Noemi for an appointment.

Ana's House of Beauty

109 Ave. B. Muleshoe 272-4152

BENTLEY'S **MULESHOE**

QUITTING BUSINESS!

<p>CAMP BEVERLY HILLS* Colorful Tops For Girls</p> <p>Great Looking Tops At A Great Price. Sizes S-M-L Reg. 35.</p> <p style="font-size: 2em; text-align: right;">24⁵⁰</p>	<p>ENTIRE STOCK OF SHOES DEXTER * CANDY * NUNN BUSH * NIKE * REEBOK * HUSH PUPPY *</p> <p style="text-align: center;">Reduced 30% OFF</p> <p style="text-align: center;">Hurry For Best Selection</p>	<p>US WORKSHOP* Junior Print Shirt</p> <p>Flourescent Stripes Perfect With Shorts Fun Top Value to 24.</p> <p style="font-size: 2em; text-align: right;">14⁹⁹</p>
<p>JUNIOR SLEEVELESS JUMPER</p> <p>Perfect for the warm weather. Bold, Bright And Colorful. Sizes 3-13 100% Cotton Reg. 30.</p> <p style="font-size: 2em; text-align: right;">12⁹⁹</p>	<p>AMERICAN SHIRT* WAIST DRESS</p> <p style="font-size: 2em; text-align: right;">19⁹⁹</p> <p>Great Selections of Pastels Range from Size 5 to 22 Hurry For Best Selection Regular Price At 36.</p>	<p>MENS DRESS SHIRT Arrow Quality</p> <p>Dover and Bradstreet Long Sleeve Cotton/Poly Value to 28.</p> <p style="font-size: 2em; text-align: right;">16⁹⁹</p>
<p>ENTIRE STOCK MENS JEANS</p> <p>Wranglers * Levis * All Styles Value to 48.</p> <p style="font-size: 2em; text-align: right;">15⁹⁹</p>	<p style="text-align: center;">EVERYTHING IN THE STORE</p> <p style="text-align: center;">Reduced Up To 75%</p> <p style="text-align: center;">Shop Now For School.</p>	<p>CALIFORNIA KRUSH* Short Sets</p> <p>Bright Floral 100% Rayon Size S-M-L Great For The Summer Reg. 25.</p> <p style="font-size: 2em; text-align: right;">9⁹⁹</p>

Bentley's

Smart Fashion

118 N. MAIN ST. MULESHOE, TX. PHONE 272-4119

Open Mon-Sat 9-6

No Coupons - No Holds

Anything or Everything!

That's right, you can sell a personal or household item or the entire household if you wish by placing just one small Classified Ad. Thousands of eager customers read the Classifieds everyday. It's a treasure for budget-minded buyers. Let our Classified representative help you write a sure-fire selling ad and just listen to your phone ring.

272-4536

**Muleshoe Journal and
Bailey County Journal**

Your ONLY Local Media That Is U.S. Post Office 2nd Class
Subscriber Permit Approved

WTSU Schedules Cult Workshops; Seminars

West Texas State University, Canyon, will offer a seminar on cults and ritualistic crimes from 8 a.m.-5 p.m. Wednesday, August 2. The seminar is open to educators, judges, law enforcement officers, social service workers and other interested community service personnel.

Workshop topics include freedom of religion, destructive religious cults, ritualistic abuse of children, Afro-Caribbean religions, heavy metal music, satanism and profile of a victim/participant.

The registration fee is \$15. An abbreviated presentation designed for parents is scheduled from 7-9 p.m. Thursday, August 3 in Mary Moody Northern Hall on the WTSU campus. Admission to the program is \$2 and may be paid at the door.

A three-day instructional seminar on cults and the investigation of ritualistic crimes will be offered to criminal justice personnel August 2-4. Registration fee, which includes workshop materials, is \$20.

Seminar presenters are Detective Corporal L. D. Adair, Detective T. W. Fahrlander and Detective Corporal E. A. Rendleman. All three work in the detective division, juvenile section of the Lubbock Police Department and have at least 12 years of law enforcement experience.

"The purpose of the seminar is to educate people on the potential problems their children may face because of cult involvement," Melanie Kritzer, program coordinator, said. "It is not intended to cause a panic situation but, like drugs and alcohol, is something we can't ignore."

It is estimated that as many as 3,000 cults exist in the United States and that cult membership totals three million Americans. Children and young adults are becoming increasingly involved even in small communities

School...

Cont. From Page 1

Promoters Ricky Romero and Nick Roberts.

He reported that Congressman Larry Combest will be the speaker for Tuesday, August 8.

Curtis Shelburne was winner of the Polio Plus Drawing.

Guests at the meeting included Tom Jinks, Tom Alvis, Carolyn Ward, Mark Heckman, Hal Wood, John Bryant Cowart, Barak Harlan, Grady Speed, Gant Barnhill, Warren Dayton, Myrtle Feagley and Judy Watson.

making it more important than ever to recognize evidence of cult participation, mind control and recruiting tactics.

Individuals interested in attending the parents' program are welcome at the door, however, preregistration is encouraged for those wishing to attend the August 2 one-day seminar and the August 2-4 school. Arrangements may be made by contacting University Police, West Texas State University, WTSU Box 295, Canyon, Texas 79016 or by calling 806-656-2300.



CONSUMER ALERT

by Jim Mattox Attorney General

Credit Check:

Consumer's Right To A Fair Report

A consumer's application for a credit card, charge account, personal loan or other form of credit is usually dependent on a "credit check" supplied by a consumer reporting agency (credit bureau). These agencies gather and sell consumer background information to creditors, employers, insurers, and other businesses.

Because credit bureaus maintain computerized information on hundreds of millions of consumers, there is always a chance of error. Federal law requires these agencies to maintain complete and accurate files and investigate consumer complaints of errors. In some cases, however, consumers have been unable to resolve incorrect listings with the reporting agency.

After receiving hundreds of consumer complaints against one of the nation's largest credit bureaus, the Attorney General's Consumer Protection Division filed a lawsuit alleging that the company failed to maintain accurate consumer information, and failed to investigate and correct information within a reasonable period of time.

That lawsuit has since been settled and consumer complaints are being addressed. But consumers should be aware that they have specific rights and protections concerning credit reports.

The right to know. The name and address of the reporting agency used by a business must be supplied to the consumer by that business.

Refrigerated Air

Cont. From Page 1

School.

New teachers employed included Claire Brown, Tanya Steinbock, Dick Moore, Cathleen Clemans, Sharon Hampton and Steven Hatfield.

Sharon Hampton will be junior high girls' coach and Steven Hatfield will be junior high school coach, according to MISD Superintendent Dr. Lawrence Ward.

Dr. Ward said that while in executive session for approximately four hours, board members also conducted a quarterly evaluation of the superintendent's performance.

Introduced during the MISD Board meeting was Dr. Tom Alvis, who will be the new Assistant Superintendent of Business, replacing retiring Tom Jinks. Dr. Ward said Jinks will remain with the school system as a consultant on a part time basis for the coming school year, as he indoctrinates Dr. Alvis with the financial operations of the school.

Approved by the board were the 14 school bus routes, with no major changes. Assistant Superintendent for Curriculum Elizabeth Watson said the longest route for the buses is the 140.4 miles per day traveled by a bus which goes to the state border near Arch, N.M. and the earliest bus leaves on its route at 6:30 a.m. each school day.

Tom Jinks reported that new buses are expected to arrive in Muleshoe on August 4. He also said four bus drivers are still needed. Potential bus drivers must have a Class 'A' Driver's License, pass a physical and take a Safe Driver Course.

In discussing the upcoming budget, Board Member Max King commented, "We're going to have to 'fine hone' the budget or we're going to find a big, hefty tax rate."

According to Board Member Curtis Shelburne, "There has not been much 'fat' in the budget during the three years I've been on the school board."

After a lengthy discussion on school finances, it was the consensus that a tax raise would be necessary for the coming year. Dr. Ward reported on school tax rates that nearly doubled that charged in Muleshoe, which currently has a tax rate of .85 per \$100 valuation.

Local taxes raise \$1,835,563; and added to this is \$3,368,600 from the State of Texas and \$959,982 in federal funds for a total of \$6,165,545.

However, estimated expenditures will be \$6,697,000, which leaves a deficit of \$504,998.

The payroll is the biggest item at \$4,918,000; contracted services, such as utilities and others is estimated to be \$504,000; supplies and materials, \$519,000; operating costs will be figured at \$312,309 and capitol outlay is

expected to be around \$442,706.

Some \$600,000 is expected to be spent on Watson Junior High School in the next two years in construction and renovation.

According to Dr. Alvis, the Health Directors Committee held a meeting and eliminated the 'prescription card' used by school employees, as claims were "exceedingly high" during the last year. He said prescriptions are now under the health deductible of 80-20. He said, "Professional people (teachers, administrators) did not abuse the prescription card. Non-professional people were the ones who abused the prescription card."

It was explained that by using the card, prescriptions could be obtained by paying a fee of \$3-\$6 per prescription.

Mrs. Watson reported on In-Service Days for new teachers and the regular faculty. In-Service for new teachers will be August 7-9 and In-Service for all teachers begin August 24, with the first day of School scheduled on Friday, September 1.

The annual faculty breakfast will be the first day of In-Service, August 24.

The school board meeting ended at approximately 3 a.m.

Who Knows?

1. Name the first president to ride on a railroad train.
2. What is an addax?
3. Name the author of "Up From Slavery"
4. One light year is equal to one million, five million or six trillion?
5. Name the only person to serve as vice-president and president without being elected.

Answers:

1. Andrew Jackson, 1833.
2. The antelope which lives in the deserts of North Africa.
3. Booker T. Washington.
4. Six trillion miles.
5. Gerald R. Ford, appointed vice-president by President Nixon, and president when Nixon was forced to resign.

Everyone is willing to help the other fellow providing he has the money to pay for it.

We must admit that the younger generation learns fast but we are not so sure what.

Thank You

To All My Loyal Customers For A Successful Year!

Hope To Serve You In Years To Come.

We Appreciate Your Patronage.

Linda, Mama & Pa

of Linda's Kitchen

in Damron Drug

308 Main Muleshoe 272-4210

Mystik

Polymer Chemistry for lubricants

JT-6
MULTI PURPOSE
GREASE

JT-7
MULTI-PURPOSE GEAR
LUBRICANT

JT-8
SUPER HEAVY DUTY
MOTOR OIL

OIL SALE!!

Oil Has Gone Up. But We're Giving

10% Off The OLD Prices!!

Bulk Drip Oil

\$1.29

per gallon

Stock Up --- And While You're Here

Check The Commodity Markets

On Our New Terminal.

Western "66" Company

Earth Highway

272-4556

LIQUIDATION PUBLIC AUCTION

Terms: Cash Checks Accepted

SNEED'S AUTO SALES - 500 E. 1st Clovis, NM - SATURDAY, JULY 29 10:30 A.M.

Terms Cash Checks Accepted

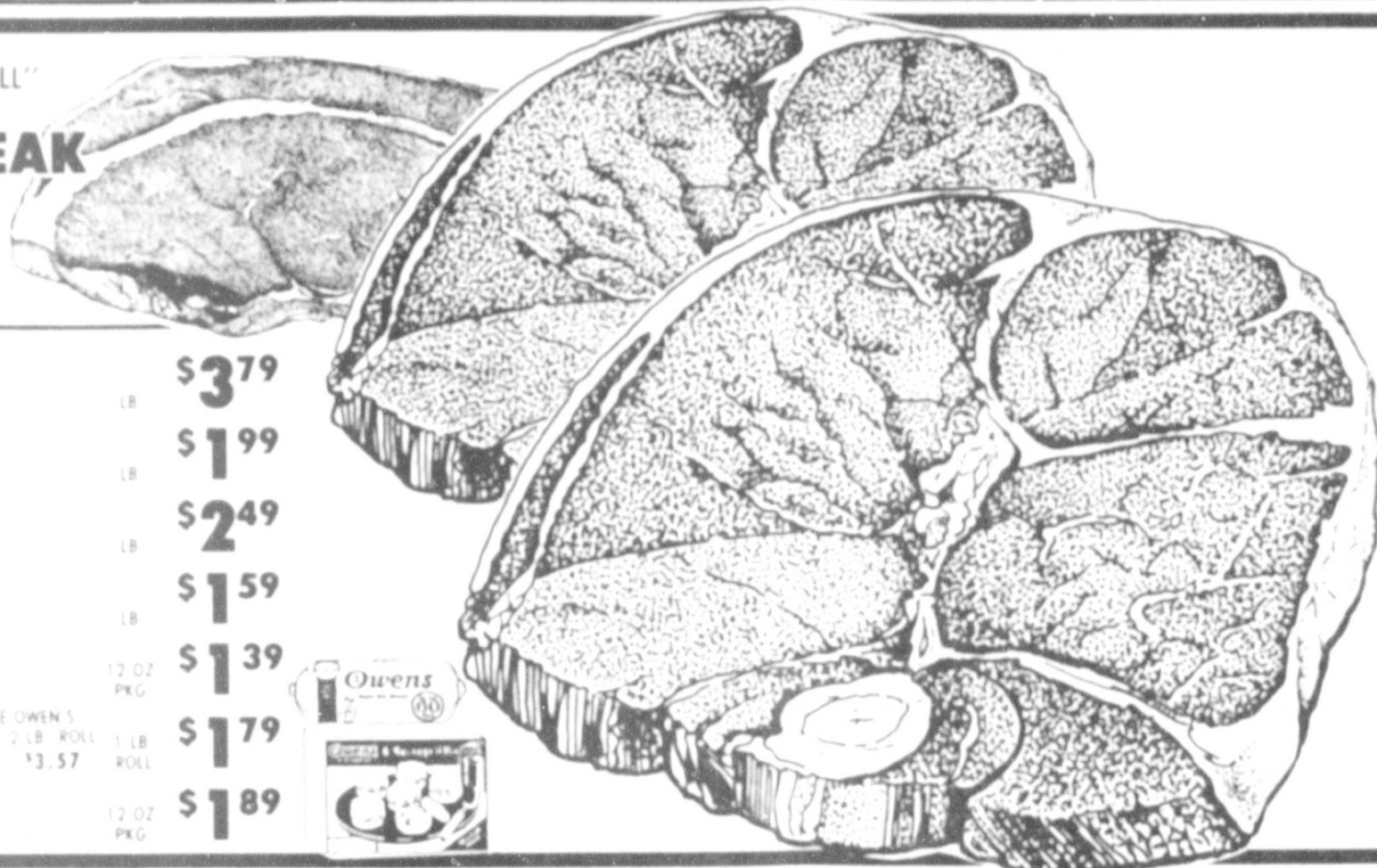
WE HAVE BEEN COMMISSIONED TO SELL AT AUCTION THE FOLLOWING ITEMS AT TOMMY SNEED'S AUTO SALES AND DETAIL SHOP! EVERY ITEM IS IN GOOD COND. AND CLEAN.

DETAIL SHOP	VEHICLES
LG SHOP VAC ON 55 GAL DRUM	ALL VEHICLES ARE SUBJECT TO PRIOR TRADE OR SALE. MAYBE SOME THAT AREN'T LISTED AT SALE. THEY ARE ALL EXTRA CLEAN AND NICE.
PAINT GUNS	MAKE & MODEL STOCK # MILEAGE COLOR
AIR SUPPLY	84 Starline 200 White
ELECT SUPPLY	84 Ford Bronco 400 11,000 White
WINDSHIELD WASHER & SHAMERS	87 Ford 94 Ton 855 34,777 White
HANDY AND 1000 H PRESS WASHER	88 Ford Bronco 941 11,000 White
WATER HOSES AND HOLDERS	84 Suburban 841 70,001 Unkn
UPHOLSTERY CLEANER	84 Ford Bronco 415A 100,000 Red
CAR CLEANER	84 Ford Bronco 403 34,000 Red
PART OF BARREL SOLVENT	84 Ford Bronco 413 33,447 Auburn
PART OF BARREL GREASER	84 Bronco 411 35,000 Red
DETAIL PAINT GUN	84 GMC Grndscr 412A 105,000 Blue
HEAT GUN	84 GMC Grndscr 412A 74,700 Red
SUPPLY PADS	81 Capri 417A 81,200 Blue
SHOP	84 Bronco 417 81,200 Blue
GENCH GRINDER/RYSE ON STAND	84 GMC Grndscr 417 81,200 Blue
4000 LB GRAY 16-LIFT AIR JACK	84 GMC High Step 417 81,200 Blue
SMALL 16-LIFT AIR JACK	84 GMC High Step 417 81,200 Blue
TRANSMISSION ATTACHMENT FOR FLOOR JACK	84 GMC High Step 417 81,200 Blue
SUN TUNE UP TESTER	84 GMC High Step 417 81,200 Blue
PORT. ELECT. START AUTO STARTER	84 GMC High Step 417 81,200 Blue
DRILL PRESS ON STAND	84 GMC High Step 417 81,200 Blue
LG VISE	84 GMC High Step 417 81,200 Blue
METAL WORK BENCH	84 GMC High Step 417 81,200 Blue
CHEVY PICKUP	84 GMC High Step 417 81,200 Blue
ACETYLENE OXYGEN SET VICTOR	84 GMC High Step 417 81,200 Blue
MARQUETTE BATTERY CHARGER	84 GMC High Step 417 81,200 Blue
30-140	84 GMC High Step 417 81,200 Blue
2 1/2 TON FLOOR JACK	84 GMC High Step 417 81,200 Blue
3/4 DRIVE SOCKET	84 GMC High Step 417 81,200 Blue
3/8 AIR DRILL	84 GMC High Step 417 81,200 Blue
AIR IMPACT SOCKETS ALL SIZES	84 GMC High Step 417 81,200 Blue
CREEPERS	84 GMC High Step 417 81,200 Blue
PUMP WRENCHES	84 GMC High Step 417 81,200 Blue
PULL DOWN LIGHTS	84 GMC High Step 417 81,200 Blue
SAFETY JACKS	84 GMC High Step 417 81,200 Blue
CHAINS	84 GMC High Step 417 81,200 Blue
AIR HOSE	84 GMC High Step 417 81,200 Blue
MOTOR STANDS	84 GMC High Step 417 81,200 Blue
TIRES	84 GMC High Step 417 81,200 Blue
OVER 80 GOOD TIRES 14" 15" 16"	84 GMC High Step 417 81,200 Blue
METAL TIRE RADIS	84 GMC High Step 417 81,200 Blue
ROAD HAWKER TIRES/WHEELS	84 GMC High Step 417 81,200 Blue
CHEVY RALLY TIRES/WHEELS	84 GMC High Step 417 81,200 Blue
16" AU 8-10 BLAZER	84 GMC High Step 417 81,200 Blue
WHEELS, HUB CAPS, RIMS	84 GMC High Step 417 81,200 Blue
TOOLS	84 GMC High Step 417 81,200 Blue
CRAPSMAN 2-TIER ROLL AROUND	84 GMC High Step 417 81,200 Blue
TOOL BOXES	84 GMC High Step 417 81,200 Blue
FULL OF CRAPSMAN TOOLS	84 GMC High Step 417 81,200 Blue
OFFICE	84 GMC High Step 417 81,200 Blue
LG WOOD W/ GLASS TOP EXEC DESK	84 GMC High Step 417 81,200 Blue
HIGH SACK EXEC CHAIR	84 GMC High Step 417 81,200 Blue
SEC. DESK W/ RETURN-WOOD GRAB	84 GMC High Step 417 81,200 Blue
ROYAL FAX BAND COPPER ON STAND	84 GMC High Step 417 81,200 Blue
4 MATCHING OFFICE CHAIRS	84 GMC High Step 417 81,200 Blue
1 STEEL AGE 4-DRAWER LETTER FILE	84 GMC High Step 417 81,200 Blue
NORTHCOM 3 TELEPHONE SYSTEM	84 GMC High Step 417 81,200 Blue
2-DRAWER FILES	84 GMC High Step 417 81,200 Blue
2-DRAWER FILES (HON) LETTER	84 GMC High Step 417 81,200 Blue
METAL DESK	84 GMC High Step 417 81,200 Blue
COLOR PORTABLE TV	84 GMC High Step 417 81,200 Blue
MISCELLANEOUS	84 GMC High Step 417 81,200 Blue
NEW SHIRTS	84 GMC High Step 417 81,200 Blue
BARNEL FOR USED OIL	84 GMC High Step 417 81,200 Blue
RADIANT HEATERS	84 GMC High Step 417 81,200 Blue
PORTABLE AIR TANK	84 GMC High Step 417 81,200 Blue
LG EVAPORATIVE COOLER	84 GMC High Step 417 81,200 Blue
EXHAUST HEADER 350 CHEVY	84 GMC High Step 417 81,200 Blue
BOX OF TRAILER BALLS	84 GMC High Step 417 81,200 Blue
DOUBLE PROPANE TANK	84 GMC High Step 417 81,200 Blue
ELEC CORD ROLLERS	84 GMC High Step 417 81,200 Blue
WOOD LADDER	84 GMC High Step 417 81,200 Blue
OIL	84 GMC High Step 417 81,200 Blue
FIRE EXTINGUISHERS	84 GMC High Step 417 81,200 Blue
2 WHEEL CART	84 GMC High Step 417 81,200 Blue
FLOOR MATS	84 GMC High Step 417 81,200 Blue
SOME AUTO PARTS	84 GMC High Step 417 81,200 Blue
BARRELS	84 GMC High Step 417 81,200 Blue
CLAMPS	84 GMC High Step 417 81,200 Blue
CREENZA	84 GMC High Step 417 81,200 Blue
2 BLK CHAIRS	84 GMC High Step 417 81,200 Blue
CHEK WRITER	84 GMC High Step 417 81,200 Blue
END TABLE	84 GMC High Step 417 81,200 Blue
COFFEE MAKER	84 GMC High Step 417 81,200 Blue
SMALL REFRIG.	84 GMC High Step 417 81,200 Blue
COAT RACK	84 GMC High Step 417 81,200 Blue
SEC. CHAIR	84 GMC High Step 417 81,200 Blue
GREEN PLANT	84 GMC High Step 417 81,200 Blue
3 ARM CHAIRS	84 GMC High Step 417 81,200 Blue
PROPERTY: PROPERTY FOR SALE SUBJECT TO SELLER'S APPROVAL. ALIQUOTS 150' X 200' EAST 1ST BY S-CORNER OFFICE BLDG. CAR SHEDS BOTH SIDES 2 ROLL UP DOOR SHOP. IRON RAIL FENCE AROUND STREET AREA OF PROPERTY.	84 GMC High Step 417 81,200 Blue

James Priest & Associates
W & J Auction
"OUR KNOWLEDGE IS YOUR SECURITY"
JAMES AND BUTCH PRIEST - AUCTIONEERS
(505)763-7311 1008 E. 1st Clovis, NM (505)762-9249

Summer Food Sale

"GREAT FOR THE OUTSIDE GRILL"
HEAVY GRAIN FED BEEF
TOP SIRLOIN STEAK
\$2.79
LB. BONELESS



"THE KING OF STEAKS" HEAVY GRAIN FED BEEF
T-BONE STEAK LB. **\$3.79**
BONELESS CENTER CUT
ROUND STEAK LB. **\$1.99**
LEAN BONELESS SIRLOIN TIP
STEAK OR ROAST LB. **\$2.49**
3 1/2" x 5 1/2" LB. AVG. LEAN & MEATY FRESH
PORK SPARE RIBS LB. **\$1.59**
GOOD'S GERMAN BRAND OR MESQUITE
SMOKED SAUSAGE 12 OZ PKG. **\$1.39**
FROM SPRING CREEK FARMS REG. HOT MILD SAGE OWEN'S
PORK SAUSAGE 1 LB. ROLL **\$1.79**
OWEN'S REGULAR HOT
SAUSAGE & BISCUITS 12 OZ PKG. **\$1.89**

LET'S HAVE A COOK-OUT
HEAVY GRAIN FED BEEF
ROUND STEAK
\$1.79
LB.

MARGARINE QUARTERS
PARKAY
16 OZ. BOX
2.97¢
FOR

SMALL/MEDIUM/LARGE
ULTRA PLUS DIAPERS
PAMPERS
BOX
\$8.97

PAPER TOWELS
DELTA
JUMBO ROLL
2.97¢
FOR

STARKIST OIL/WATER
CHUNK LIGHT
TUNA
6 1/2 OZ. CAN
57¢

10% OFF LABEL
IMPERIAL GRANULATED
SUGAR
5 LB. BAG
\$1.77

ALL TYPES ORVILLE REDENBACHER
3 PAK BOX
MICROWAVE POPCORN
COUPON EXPIRES AUG. 2, 1989

BUY 2-3 CT. BOXES
FOR \$1.97 EACH. GET 1
THIRTIETH COUPON

FREE

ALL TYPES
2 LITER BOTTLE
COCA-COLA
97¢

SHURFINE 1/2 GAL SQ CTN
ASSORTED
ICE CREAM
\$1.37

CLEAN COOKING
WESSON OIL
64 OZ. BTL
\$2.97

TORTILLA CHIPS
DORITOS
12.39 SIZE BAG
\$1.97

HORMEL VIENNA
SAUSAGE
5 OZ. CANS
2.87¢
FOR

BATH BAR
LIFEBUOY
4 BAR PAK
\$1.47

LIQUID DISH DETERGENT
DOVE
22 OZ. BTL
97¢

ICEBERG
LETTUCE
HEAD
59¢

GARDEN FRESH
CARROTS 2 1 LB BAGS **79¢**
TOMATOES LB **79¢**
NEW CROP
BARTLETT PEARS LB **79¢**
WALLA WALLA SWEET
YELLOW ONIONS LB **49¢**
CALIFORNIA SUN SWEETENED
NECTARINES LB **69¢**

SWEET JUICY PECOS
CANTALOUPE
4 \$1
LBS.

SHURSAVING PLAIN RIPPLE
POTATO CHIPS
16 OZ. BAG
\$1.47

HUNT'S TOMATO
SAUCE
8 OZ. CANS
4.97¢
FOR

BATH TISSUE
DELTA
4 ROLL PKG
87¢

DETERGENT
RINSO
38 OZ. BOX
97¢

KELLOGG'S
FROOT LOOPS
15 OZ. BOX
\$2.97

KELLOGG'S
CORN FLAKES
18 OZ. BOX
\$1.87

FROZEN

PET RITZ 9 INCH
PIE SHELLS
2 CT. PKG.
\$1.17

ASST. AQUA NET
SHAMPOO 16 OZ BTL **87¢**
ASST. CONDITIONER
AQUA NET 16 OZ BTL **87¢**
ASST. TOOTH PASTE
CLOSE-UP 4 & 6 OZ TUBE **99¢**

MOUTHWASH
SIGNAL 24 OZ BTL **\$2.37**
SOFT SENSE ASST
LOTION 10 OZ BTL **\$1.97**
TABLETS, CAPLETS
NUPRIN 100 CT BTL **\$5.97**

KRAFT
VELVEETA SLICES
16 OZ. PKG.
\$2.67

16 OZ. TUB BIRDSEYE TOPPING
COOL-WHIP
\$1.57

SENECA FROZEN
APPLE JUICE
12 OZ CAN
\$1.07

thriftway

WE ACCEPT FOOD STAMPS... WE RESERVE THE RIGHT TO LIMIT

10 OZ. PKG. SHURFINE 1/2 MOON CHEESE
COLBY OR CHEDDAR
\$1.57

SHURFINE
BUTTERMILK 1/2 GAL JUG **\$1.27**
SHURFINE CHOCOLATE
MILK 1/2 GAL JUG **\$1.27**

AT AFFILIATED
FOODS INC.
MEMBER STORE
PRICES EFFECTIVE
JULY 23-29, 1989

Billy Don Riels Muleshoe Native Services Set

Funeral services for Billy Don Riels, 35, of The Colony, formerly of Muleshoe, will be held at 2 p.m. Friday in the Trinity Baptist Church with the Rev. Dale Berry, pastor, officiating.

Burial will be under the direction of Ellis Funeral Home. Riels died Sunday at his home.

Born Dec. 19, 1953, in Muleshoe, he had been a resident of The Colony five years. He married Mari S. Silvernale on Oct. 8, 1982, in Austin. He was production manager-Box Division of Chippenhook, Inc. and a member of American Legion Post 164 at Gainsville, and Son of Legionaires of Gainsville. He served in the U.S. Army from 1972-1975.

Survivors include his wife, Mari; four sons, Robert Brooks Riels of Austin, Arlie Dustin Riels, George Michael Riels and Alan Gerald Walker, all of The Colony; his parents, A.W.

Sam Richards Services Held At Friona

Funeral services for Sam A. Richards, 57, of Friona were held at 2:30 p.m. Tuesday, July 25 in Union Congregational Church with the Rev. Guy Patterson, pastor, officiating, assisted by the Rev. Vergil Ichtertz, pastor of the Calvary Baptist Church.

Burial was in Friona Cemetery under the direction of Ellis-Blackwell Funeral Home. Richards died Saturday night in Parmer County Community Hospital following a lengthy illness.

Born in Mason, he moved to Friona from Hobbs, N.M. He was a retired crew form for GTE. He married Doris Lee on Dec. 24, 1955, in Clovis, N.M. He was a veteran of the Korean War, serving in the U.S. Navy.

Survivors include his wife, Doris; a son, Randy of Friona; two daughters, Rhonda Bentley and Tammy Richards, both of Friona; two sisters, Ollie B. Owens of Garland and Mildred Cox of Hampton, VA; four brothers, J.R. of Boiling, Gene of Williamsburg, VA, Robert of McKinney and Don of Sudan; and six grandchildren.

The family suggests memorials to the Alzheimers Foundation.

Mickie Faust Graveside Services Held Here Monday

Funeral services for Mickie Sue Faust, 47, of Lubbock were held at 10 a.m. Monday in Franklin-Bartley Funeral Home Chapel with the Rev. Ed Ainsworth, pastor of Agape Christian Center, officiating.

Graveside services were conducted at noon Monday in Bailey County Memorial Park under the direction of Franklin-Bartley Funeral Home. Mrs. Faust died at her home Thursday.

Born in Lubbock, she had lived in Muleshoe prior to moving back to Lubbock in 1969. She married Eddie Faust on Nov. 5, 1957, in Lubbock. She was a housewife.

Survivors include her husband, Eddie; four daughters, Deborah Lynn Ismaili of Houston, Patricia Suzanne Seaman of Salt Lake City, Utah, and Katherine Annette Faust and Margaret Jannette Nelson, both of Lubbock; and two grandchildren.

"Jack" and Nina Riels of Muleshoe; and three sisters, Wanda Atkins of Arlington, Patricia Dunnuck of Denver, Indiana and Sylvia Harp of Andrews.

Gertrude Holman Services Set In Oklahoma

Graveside services for Gertrude Holman, 85, of Lubbock will be conducted at 2 p.m. today, Thursday, in Fairview Cemetery at Vinita, Okla with the Rev. Randy Messer, pastor of the First Baptist Church of Vinita, officiating.

Burial will be under the direction of Ellis Funeral Home. Ms. Holman died at 5:06 a.m. Tuesday in Quaker Villa Nursing Home of Lubbock.

She was born March 26, 1904, in Vinita, Okla and moved to Lubbock in 1964, from Vinita. Her husband, Arlie W. Holman died in 1970. She was a housewife and in charge of a ward at State Hospital at Vinita for 14 years. She was a member of the Colonial Baptist Church at Lubbock.

Survivors include a brother, Bill Lawrence of Tulsa, Okla.; two grandchildren; and several nieces and nephews.

John Bennett Funeral Services Set

Services for John Bennett, 76, will be conducted at 2 p.m. today, Thursday, July 27, at Ellis Funeral Home Chapel of the Chimes with Bret McCasland, pastor of the Muleshoe Church of Christ. Interment will be in Longs Cemetery, Longs, N.M. under direction of Ellis Funeral Home of Muleshoe.

Born Dec. 3, 1912 in March, Missouri, he was a blacksmith and a member of the Muleshoe Church of Christ.

He had been a resident of Muleshoe since 1962. His wife died in 1956.

Survivors include a daughter, Janice Bennett of Muleshoe; a son, Ross Bennett of Salt Lake City, Utah; a sister, Margaret Brown of Portales, N.M.; two brothers, Lake Bennett of Carlsbad, N.M. and Harold Bennett of Maybank, TX; and eight grandchildren.

Betty Jo Watson Services Held At Springlake

Funeral services for Betty Jo Watson, 58, of Springlake were held at 2 p.m. Monday in Springlake Baptist Church with the Rev. Steve Branson, pastor, officiating.

Burial was in Springlake Cemetery under the direction of Parson-Ellis Funeral Home. Ms. Watson died at 7 a.m. Saturday in St. Mary's of the Plains Hospital.

Born Feb. 4, 1931, in Flomont, she had been a resident of Springlake since 1944. She was a home maker and a member of the Springlake Baptist Church.

Survivors include a son, Buster Watson of Calera, Okla.; two daughters, Donna Townsend of Calera, Okla. and Debby Dayton of Springlake; a sister, Peggy Dannecker of Chicago, Ill.; four brothers, P.A. Washington of Springlake, Jay Washington of Tulsa, Earl Washington of Hereford, and George Washington of Lubbock; seven grandchildren; and four great grandchildren.

STATE CAPITAL



HIGHLIGHTS

By Lyndell Williams
TEXAS PRESS ASSOCIATION

AUSTIN—If this summer seems hotter than most, it's not the dwindling ozone layer—it's the record political heat being generated in Austin. It comes from several sources, including:

- Quarreling factions in the Legislature blaming one another for the failed special session;

- A governor determined to let lawmakers feel the heat back home before calling them back in November to complete the workers' compensation mission;

- An attorney general who said the three public utility commissioners should resign for political infighting; and

- Warring aspirants for higher office, backed by prematurely large war chests, who have removed the gloves early.

And almost lost in the heat wave was a breath of fresh air that is truly Texas: the state highway commission approved a newly designed license plate which includes the state flag and motto: "The Friendly State."

"Don't Mess With _____" Remember the "Drive Friendly" signs along highways which have now been replaced with "Don't Mess With Texas?"

Perhaps more appropriate are signs, "Don't Mess With _____," and then one could fill in the blanks with the several choices: Senate conferees, Jim Mattox, Ann Richards, Bill Clements, or Mark White, etc.

Mark White? Yes, the former governor is close to officially joining the hopefuls running for governor, according to sources from several directions.

Some private polls indicate he leads Mattox and Richards in enough categories to spur his camp to hope for a comeback.

Home for the Heat Gov. Clements made no bones about it: he wants lawmakers to face the political heat back home for failing to resolve the workers'

compensation issue.

Then, he thinks the stubborn trial-lawyer senator who blocked progress in conference committee will see the light before he calls them back in November.

But one of the trial-lawyer conferees, state Sen. Kent Caperton, D-Bryan, retorted flatly that "Clements doesn't know what he's talking about."

Finger Pointing Lawmakers are embarrassed by the poor results from the 30-day special session which cost taxpayers about half a million dollars.

Even as the session ended in failure, the name-calling and finger-pointing grew hot and heavy, but included some humorous exchanges as senators tried to cool off.

In floor debate, Sen. Carl Parker, D-Port Arthur, accused Sen. Bob McFarland, R-Arlington, of spending more time playing golf than in studying workers' comp.

Don Henderson, R-Houston, responded, "I'd like to say I've been with Sen. McFarland on the golf course and what he does there isn't golf."

Then McFarland said he'd missed his chance when Parker played in the foursome ahead of him. "Maybe I should have hit into that group a few more times."

But Parker outsmarted him, he said. "Carl knew he was safe because he stood by the flag."

Mattox Rips PUC Going beyond a request for an official opinion, the attorney general said the entire PUC panel has succumbed to political infighting and should resign.

In an official opinion, Mattox said state law prohibits PUC chair Marta Greytok from simultaneously serving as the agency's executive director.

Greytok, a Republican, accused Mattox of partisan politics himself, saying several Democrat predecessors had already done what Mattox ruled illegal.

Campaigns, Hopefuls Forecasters are calling next year's race for governor the costliest in Texas history, some \$50 million, based on campaign spending reported to date.

During the first half of 1989, two candidates spent more than \$500,000 while the third promises to catch up.

GOP candidate Clayton Williams of Midland led the field with \$618,787 in expenditures, designed to boost his low name identification, and covered mainly by a

loan to himself.

Democrats Ann Richards with \$581,814 and Mattox at \$308,057 were second and third, and each questioned the validity of the other's figures.

Mattox said he hopes Treasurer Richards keeps the state's books better than she keeps her own campaign books, and her campaign manager said discrepancies appear in the Mattox records, too.

Mattox led in campaign fundraising, including a \$10,000 check from "chicken king" Bo Pilgrim, who made headlines passing out blank, \$10,000 checks on the Senate floor.

Other Highlights

- Amarillo's Boone Pickens, a Republican possibility for governor, will move to the University Park area in Dallas.

- John Odum, Democrat candidate for attorney general, said he will use an interpreter in a bilingual debate challenged by John Bryant.

20.Public Notice

PUBLIC NOTICE
BAILEY COUNTY
TEXAS
COMMUNITY
DEVELOPMENT
PROGRAM

Bailey County is planning to file an application for a Community Development fund grant from the Community Development Block Grant (CDBG) Program administered by the Texas Department of Commerce (TDOC), Texas Community Development Program (TCDP).

A public hearing concerning the proposed grant application will be held at 5:00 p.m., Monday, July 31, 1989 in the Commissioners Court Room; Bailey County Courthouse, Muleshoe, Texas. The purpose of this public hearing will be to discuss the range of eligible activities, the amount of TCDP funds available for projects in the South

• Liberal House Democrats shot down a bill allowing the death penalty for persons convicted of child murder.

Cash Rewards
Up To \$1,000
For Information!
Call
Bailey County
Crime Line
272-HELP

Shop
Muleshoe
First!

20.Public Notice

Plains Region and the grant application process.

All citizens are encouraged to attend this public hearing and present their views on the County's community development project needs. Written comments will be accepted by the County up until the time that the County's application is submitted to TDOC.

For further information about the TCDP application process, contact Jim Watson, County Judge at (806) 272-3077. Handicapped individuals who might have difficulty in attending this public hearing should contact the Co. Courthouse to arrange for special assistance.

Bailey County
Judge Jim Watson
300 S. 1st
Muleshoe, Texas
79347

W-20-30-1tc

Clip & Save
July Special!!
Oil Change
\$16.95
(Includes oil filter & up to 5 qts of most name brand oil)
Also includes Lube Job & 9 pt. Safety Check
Must Present This Hd for This Special!
Good Thru July Only!
JW's Auto Service
501 W. Amer. Blvd. 272-3452

PHILLIPS 66
OIL SALE!!
Bulk Drip Oil
\$1 29 per gallon
10% Off Other Phillips Lubricants!!
85¢ qt.
Let's visit about FuelCard or farm delivery of...
PHILLIPS 66 SUPER CLEAN UNLEADED GASOLINES
The Clean-Up and Keep Clean Gasolines
Western "66" Company
Earth Highway 272-4556

Shop The Classifieds

272-4536



CLASSIFIED RATES
Minimum Charge \$2.30

Consecutive Insertions Minimum Charge \$2.00

CLASSIFIED DISPLAY RATES
\$1.75 Per Column Inch

DEADLINES
12 noon Tuesday For Thursday Paper
12 noon Friday For Sunday Paper
We reserve the right to classify, revise, or reject any ad. Not responsible for any error after ad has run once.

1. Personals
Call your local used cow dealer for 7 day a week dead stock removal. 965-2903 or 1-800-692-4043. cl-37t-tfc

CONCERNED About Someone's Drinking? HELP IS AVAILABLE through Al-Anon Call 272-2350 or 965-2870 or come to visit Tuesday nights, 8:00 p.m. or Saturday mornings at 10:30 a.m. and through AA call 965-2870 or come visit Tuesday nights, 8:00 at 620 W. Second, Muleshoe.

PAINTING: Interior & Exterior. Call 272-4874. H1-30s-tfc

OWN YOUR OWN Apparel or Shoe Store, choose from: jeans/sportswear, ladies, men's, children's/maternity, large sizes, petite, dancewear/aerobic, bridal, lingerie or accessories store. Add color analysis. Brand names: Liz Claiborne, Healthtex, Bonnie & Bill, St. Michele, Forenza, Bugle Boy, Levi, Camp Beverly Hills, Leslie Faye, Lucia, over 2000 others. Or \$13.99 one price designer, multi tier pricing discount or family shoe store. Retail prices unbelievable for top quality shoes normally priced from \$19. to \$60. Over 250 brands 2600 styles. \$18,900 to \$29,900: Inventory, Training, Fixtures, Airfare, Grand Opening, Etc. Can open 15 days. Mr. Schneider (407) 366-8606. 1-30t-1tp

"ADOPT" Warm, loving couple-wishes to give wonderful home, very secure future, much love to white newborn. All medical and legal expenses paid. Please call collect. 215-993-0979. 1-30t-6tp

Painting and Building Repair Equipped. Inside-Outside. Free Estimates. Howard Griffin. Smyer, TX. 1-234-2128. 1-32s-8tc

3. Help Wanted
PERSON for general fertilizer application. Mail resume to Box 702, Muleshoe, Texas 79347. 3-30t-2tp

3. Help Wanted
RESPONSIBLE PERSON
Wanted to own and operate high profit candy vending route. Nationally proven program since 1959-includes training. Requires cash investment of \$4237 to \$14070. Call 1-800-328-0723. **EAGLE INDUSTRIES** -Since 1959 3-29s-tfc

EXCEL-DFM Foods, 900-B Millard, Friona, Tx. Now taking applications & interviews, for full-time production workers, on Wens. 1:30-3:30p.m. CST., Located on west end of Millard Warehouse in Friona E3-29s-4tc

ATTENTION: EARN MONEY READING BOOKS! \$32,000 year income potential. Details. (1) 602-838-8885. Ext. Bk10191. 3-29s-4tp

WANTED: Experienced Irrigation Truck Operator. Also Ag-Related Electrician. Only Experienced Need Apply. Call (806) 238-1596 Daytime. After 8 p.m. (806) 238-1328 or 481-9008. B3-18t-tfc

"ATTENTION - GOVERNMENT SEIZED VEHICLES from \$100. Fords, Mercedes, Corvettes, Chevys. Surplus Buyers Guide. 1-602-838-8885 EXT. A10191. 9-29s-4tp

NEEDED: LVN for 11 p.m. to 7 a.m. shift and LVN for pt. shift work. Contact: Jo Blackwell, Prairie Acres Nursing Home, 201 E. 15th, Friona, TX 79035 or Call 806-247-2222. P3-30s-4tc

NEEDED: RN, Director of Nursing. Please send resume or application by August 4th. to Jo Blackwell, Prairie Acres Nursing Home, 201 E. 15th, Friona, TX 79035 or call 806-247-3922. P3-30s-4tc

"ATTENTION" HIRING!! Government jobs your area. Many immediate openings without waiting list or test. \$17,840-\$69,485. Call 1-800-838-8885. EXT R10191. 3tsh-30s-8tp

WANTED MANAGER: For Education Products. Earn \$36,000 to \$83,000 yr. For interview, come by Heritage House Inn, 10 a.m.-11 a.m. & 2 p.m.-4 p.m. Mon. PLEASE! NO PHONE CALLS. R3(ts)-30t-2tp

IMMEDIATE opening for responsible person for office employment. Mail resume to Box 511, Muleshoe, Texas 79347. 3-30t-2tp

3. Help Wanted
HELP WANTED
Muleshoe Independent School District is now accepting applications for male and/or female qualified bus drivers for the school year, 1989-90.

Applicants must be able to obtain, prior to employment, a Texas Chauffeur's License, pass a physical examination provided for by the school, have a safe driving record from the Texas Department of Public Safety, and have completed or be enrolled in a twenty hour driving course provided by the school.

The next Bus Driver Training Course is scheduled for July 31 through August 4, 1989 at the Muleshoe High School.

Salary range is from \$56.00 to \$90.00 per week with driving time being two to three hours per day.

Application forms may be picked up at the bus garage or the school business office.

M3-30t-9tc

9. Automobiles For Sale

FOR SALE: 1976 Mercury Marquis. Good condition. 63,000 miles Call 272-3107. 9M-27t-tfc

FOR SALE: 1986 Chevrolet Astro Conversion Van. Low Mileage, Good Shape. Call after 5 p.m. 272-4131. P9-25t-tfc

10. Farm Equip. For Sale

FOR SALE: Four 1985 model 4865, Valley irrigation machine. Contact Velmont Financial-402-691-6254. F10-30t-3tc

11. For Sale or Trade

For Sale: 55 double wide 6"X9" steel file drawers. 16 1/2" deep. 805 W. 8th. Buy one or all. Call me a price. D11-29s-tfc

FOR SALE: Kawasaki 400, \$400. Call 272-4011. H11-30t-2tc

FOR SALE: 1977 Buick Limited, 4-door. P&A: 74,000 Actual Miles. Good Condition. 272-5343 or 965-2230. B11-25s-tfc

FOR SALE: Country Living. 2-bdrm., 1 1/2 bath, with 2-car garage. Has new roof. Located 1/4 mile north of the Muleshoe Animal Clinic. House sits on 25 acres of land. For more information, Call 272-3882 and leave message. G-11-25s-tfc

11. For Sale or Trade

FOR SALE: 9-tower G.H., 360-Pivot Sprinkler in good condition. T. L. Timmons, Day-385-4487, Night 925-6484. T11-22s-tfc

SEVERAL rolls of smooth wire and insulated post, for electric fence. 104 W. 6th. Call 272-5788. 11-20s-tfc

FOR SALE: 1972 Airstream, 31 ft. Will trade for farm equipment, cattle, or cash. Call day 385-4487, Night 925-6484. T11-29t-8tc

8. Real Estate

100 Acres for sale. Three good wells. Four side rolls. House and barns. Two miles on 1760. M. D. Gunstream, 806-272-5035 or 806-272-4515. G8-28s-tfc

FOR SALE: By Owner. 3-Br. 1700 sq. ft. Living. Heat Pump, covered Patio, Storm Cellar. Detached 2-car garage with auto openers. 272-3321. Y8-27s-tfc

80 ACRES TO LEASE for pasture. 1&2 acre plots, for sale, 2 1/2 miles N. of Muleshoe. Call 946-3472. 8-30t-4tp

8. Real Estate

FOR SALE: 3 bdrm., 2-bath, den & game room, detached 2-car garage, heat pump, fireplace. Owner will pay all closing. 505-257-7667. V8-30t-4tc

FOR SALE: By Owner. Richland Hills. 3-2-1 & den, or office. Brick, built-ins, F.P. heat-pump, storage building. Fenced Yard. "40's." Call 272-4344 or 272-3510. J8-30s-tfc

FOR SALE BY OWNER: Richland Hills. Excellent location. 3-2-2 Brick home. Cent. A&H. Fans, Storm Windows, Nice Storage. 272-5194. F8-30s-12tc

FOR SALE: 3 miles east of Muleshoe, Hwy 70, 1 mile north on YL Road 200 yds East.

3 bedroom 2 full baths, central H/A 2 acres of land, Good well & storm cellar. Call anytime 806-352-1715. B8-30t-tfc

JUST ARRIVED! New 3-2 Doublewide 28-40. Payments lower than rent. Call Mickey 1-800-999-9286. B8-30t-2tc

8. Real Estate

WE HAVE OVER 30 Repo Homes. All sizes. Priced to fit your budget. Call Mickey 1-800-999-9286. B8-30t-2tc

BUY NOW. Interest rates have been lowered. Ribbon Doublewide 28-60 3 bedroom, 2 bath, A/C and more. Must see to appreciate. Free delivery and set-up. Call Mickey 1-800-999-9286. B8-30t-2tc

15. Misc.

YARD SALE: Lots of everything. Fri. & Sat. 9 a.m. - 6 p.m. Sun. 1 p.m. - 6 p.m. Located 1 mile west on 1760, 1/4 mile north, behind Red Brick House. 1-30t-1tp

JAMES' GARDEN has SWEET CORN for sale, large or small amounts. To place order, 925-6716. J15-30t-2tc

GARAGE SALE: Fri. 9 a.m.-5 p.m. Sat. 9 a.m.-2 p.m. Lots of baby items. 1507 W. Ave. J. B15-30t-1tc



Bingham and Nieman Realty

272-5285 or 5286

116 E. Ave. C

RICHLAND HILLS
JUST LISTED-Nice 3-2-2 Brick on Large corner lot, Cent. A&H, built-ins, storm windows & doors, large basement, much more!!!!

IMMACULATE 3-2-2 Brick, corner lot, Cent. A&H, built-ins, FP, loads of storage & closet space, much more!

VERY NICE 3-2-3 Home, Cent. A&H, built-ins, FP, fans, spkrl. sys., fenced. PRICED TO SELL!!!!

156.58' x 140 corner residential lot or lots-\$7,500.00!!!!

HIGHLAND AREA
VERY NICE 3-2-2 Brick, Cent. A&H newly remodeled kitchen with built-ins, storm windows, fenced yard, storage-bldg. and much more!!!!

NICE 3-2-2 Brick home (2 story), on corner lot, Cent. A&H, built-ins, and much more. LET'S LOOK TODAY!!!!160's

NICE 3-2-1 Brick Home. Cent. A&H, built-ins, large den w/fireplace. Fenced yard, storage bldg. \$50's!!!!

PRICE REDUCED 2-2-2 Brick, corner lot, Cent. A&H, spacious rooms, utility, cov. patio, fenced yard, & much more. 40's!!!!

HIGH SCHOOL
2-1 1/2-1 Brick, fl. furnace, CA, fenced yard & more. \$20's!!!!

NICE 2-1 1/2-1 Home, corner lot, built-ins, nice carpet, heat pump, fenced yard, storage bldg. & more!!!!

NICE 3-2-1 Brick, approx. 1,600 sq. ft. of liv. area, Cent. A&H, built-ins, fenced yard. Excellent Location. \$40's!!!!

PRICE REDUCED FOR QUICK SALE! Nice 2-1-1 Home, Cent. Heat, carpets, workstorage area, and much more. \$19,950.00!!!!

PRICE REDUCED- IMMACULATE 3-2-3 Brick Home, Heat Pump Sys., built-ins, nice finished basement w/FP, spkrl. sys., & much more. \$50's!!!!

VERY NICE 3-2-1 Brick, Cent. A&H, built-ins, FP, storm windows & doors, covered patio, fenced yard, corner lot. 50's!!!!

DIANNE NIEMAN, BROKER

GEORGE NIEMAN, BROKER

Henry Realty
111 W. Ave. B Muleshoe, Tx
272-4581

3 Bdrm., 2 bath, spacious home outside city limits, near city on highway. 29x40 metal building. Lot 85'x620'.

3 Bdrm., 1 bath, completely remodeled, edge of city on highway.

COMMERCIAL PROPERTY - Ideal location on West American Blvd. 150' highway frontage. A great business opportunity.

4 Bdrm., 2 1/2 car garage, central heat/air, large carpet, near downtown. Excellent condition.

RURAL HOME-3 Bdrm., 2 bath, large den on one acre with many extras. Fenced with barns, fruit trees, extra storage, storm cellar, and satellite dish. Priced to sell.

SPACIOUS-2 Bdrm., 2 bath, with garage. Freshly painted. Fireplace. Ready to move in.

JUST LISTED-Outside city - 3 Bdrm., 2 bath, garage on one acre. Carpet with drapes and blinds. Dishwasher. Good storage.

3 bedroom, 2 bath, carpet, large living room. Excellent condition, near high school. Priced to sell.

2 bedroom, 1 bath, completely remodeled. Ideal first home in excellent location.

Shop **Muleshoe** First!

15. Misc.
ROUND-UP APPLICATION
Pipe-wick mounted on high-boy. Row Crops. CRP. Vol. Corn. 30' or 40' rows. Roy O'Brian. 265-3247. 19-20s-tfc

Ernie's Roofing
Specializing in flat roofs, shingles and Build-up roofs.
Residential-Commercial
Free estimates, References, work Guaranteed. L15-295-7tc
Bus. 481-9438 Home 505-762-6510

CUSTOM SPOT SPRAYING
Economical way to apply your Round-up or Fusillade chemical. Self-propelled 3-person rig. Call 806-272-3767 or 505-763-5771 W15-28t-10tc

Shop **Muleshoe** First!

Illustration of a cowboy on a horse, part of the newspaper's branding.

PEST MANAGEMENT UPDATE
 Farmer-Bailey Counties
MIKE D. BLANTON
 Extension Agent-Entomology

Temperatures have been high throughout the area. Although there has been ample humidity, very little rain has been reported. Irrigated commodities are growing rapidly and look good. Overall, dryland fields are in need of moisture. Several economically significant pests are being found at this time; therefore, producers need to be aware of the pest situations in their individual fields.

CORN

Fall armyworms (FAW) are, and will continue to be a major concern in the corn fields throughout the rest of the growing season. One adult female (moth) can lay 700 to 1,000 eggs during its eight to ten day lifetime. Eggs are small, round, and creamy white in color. They are laid in large masses on the underside of leaves. These larvae look very similar to corn earworms with one very easily distinguishable characteristic; the FAW has a white inverted Y on its forehead.

Fall armyworms feed in the whorls of younger corn, often damaging the tassels. As the corn matures, they can be found causing extensive damage to the ear. It is important to find this pest before it enters the ear. One of the most common places to find small larvae is behind the ear around the ear shank. Once larvae enter the ears, control is nearly impossible. For feed corn, the only threshold we have is 50 percent or more plants infested with one or more larvae. Those who produce food corn will need to drop this percent drastically.

Pyrethroids generally are not as effective in controlling this pest; while Lannate and Lorsban seem to give acceptable results.

Spider mites are still increasing in many fields, with some reaching economic injury levels; however, there are still a few fields that have very few mites, indicating the need for field to field monitoring of this pest.

Southwestern corn borer moths have begun laying eggs in the corn. Over the next several days, many fields in the area should be approaching the economic threshold. The threshold for second generation SWCB is reached when 20 to 25 percent of the plants are infested with eggs or newly hatched larvae.

Due to the weather conditions experienced earlier in the growing season potential yields in many corn fields have been lowered anywhere from 10 to 30 percent. This is due to less kernel rows per ear. Whereas, in the past few years, we have become accustomed to 16 to 18 rows per ear, this year, the average number of rows per ear is 12 to 14, in many fields.

COTTON

Fleahopper numbers are beginning to build in several cotton fields. This pest is primarily a concern in cotton that has low percent square set or in late cotton that is not blooming yet.

Aphids are being reported throughout much of the area but most infestations are in southern Bailey County. These infestations are still fairly light.

GRAIN SORGHUM

Corn leaf aphids are still the primary pest being reported in grain sorghum; but, as stated in an earlier newsletter, they are rarely economically injurious. A few greenbug colonies are still being found on the underside of lower leaves in some fields. Greenbug populations will typically increase rapidly after heading.

Dallas Cheerleaders Quit

DALLAS-Fourteen veteran Dallas Cowboys cheerleaders have resigned after being told that new team owner Jerry Jones wants to change their uniforms to include halter tops, have them act as hostesses at player parties and pay the team a portion of the profits from their public appearances.

TFV Awards Legislators For Farm, Ranch Assistance

The Texas Farmers Union announced that 54 members of the Texas Legislature will receive "White Hat" Awards for their work on legislation important to family farmers and ranchers and to rural Texans during the 71st session.

Senators recognized for their contributions during the session are: Gonzalo Barrientos, Chet Brooks, Kent Caperton, Steve Carriker, Chet Edwards, Eddie Bernice Johnson, Ted Lyon, John Montford, Carl Parker, Hugh Farmer, Tati Santiesteban, Carlos Truan and Hector Uribe.

Representatives honored are: Dudley Harrison, Lena Guerrero, Clyde Alexander, Erwin Barton, Hugo Berlanga, Fred Blair, Eddie Cavazos, Warren Chisum, Paul Colbert, Karyne Conley, David Counts, Richard Crawford, Renato Cueller, Betty Denton, Eldon Edge, Larry Evans, Orlando Garcia, Bruce Gibson and Ernestine Glossbrenner.

Also included are: Al Granoff, Jerry Johnson, Libby Linebarger, Pete Lancy, Mike McKinney, Parker McCollough, Bob Melton, Alex Moreno, Keith Oakley, Jim Parker, Pete Patterson, Jim Rudd, Sam Russell, Robert Saunders, Curtis Seidlits, Curtis Soileau, Tom Uher, Ralph Wallace, Steve Wolens, Jack Vowell, Dick Waterfield and Rick Williamson.

TFU President Joe Rankin said special recognition for "outstanding leadership on behalf of family farmers and ranchers and rural Texas," was given to Senator Steve Carriker and Representatives Dudley Harrison and Lena Guerrero.

TFU President Rankin also commended Lt. Governor Bill Hobby and Speaker of the House Gib Lewis for their activities in securing passage of legislation important to rural Texas. "Maintaining our Agriculture Commissioner as a statewide elected official and improving the quality of health care and education were priorities of the leadership and

for their actions we congratulate Lt. Governor Hobby and Speaker Lewis," Rankin said.

According to Legislation Consultant Patrick Cox, legislators were selected for the awards based on their voting records and on work done in committees. Issues selected during the session were the Sunset Legislation for the Texas Department of Agriculture, rural health care, increasing aid and making improvements in public education and for the elderly and other

legislation which will improve the competitiveness of the state's family farmers and ranchers in today's marketplace.

"Overall, the legislature is much more attentive to problems in education, health care, crime prevention, needs of the elderly and preserving family farms and ranches in Texas," Cox stated. "But major problems persist, especially with the slow economic recovery in rural Texas and the inequitable funding formulas for our public school system," Cox noted.

New Rules Will Not Affect Texas Water

When the U. S. Environmental Protection Agency (EPA) announces new rules to protect the public, it often means expensive changes at the local level. And such is the case in some U. S. cities after EPA's June announcement that by December, 1991, all municipal water systems using surface water sources must install filtration systems. The systems will remove disease-causing viruses, bacteria, and protozoa drawn from reservoirs, rivers, and other open sources.

Some of the nation's largest cities, including New York, Boston, San Francisco, Seattle, and others, face paying large shares of the estimated \$3 billion in initial nationwide cost for adding the filtration systems. They also will pay portions of about \$500 million in annual operation costs for the new systems.

But according to the Texas Department of Health (TDH), cities in this state will be spared the new expense, because Texas has required surface water filtration since 1945.

James Pope, director of the TDH Division of Water Hygiene, said that the state's 44-year-old water filtration statutes have been one reason why Texas has long had a reputation for the quality of its drinking water.

"For years we have been ahead of many other parts of the

country in protecting consumers from unsafe municipal drinking water," he said. "But a bonus is that, by requiring filtration systems when we did, cities were able to install their systems at a fraction of today's cost for new systems."

Pope said that the new EPA rules also require drinking water chlorination after filtration. "Again, Texas is ahead of other parts of the country. Chlorination became mandatory in this state in 1970."

The EPA rules further state that cities must regularly submit drinking water samples for bacteriological tests, another long-standing requirement in Texas.

Pope said the new rules do not apply to cities using wells as water sources.

Sudan News
 By: Evelyn Ritchie

Debbie Hall is a patient in the High Plains Hospital in Amarillo.

Visiting one day last week with Ruby Vereen was her daughter, Jean, of Lovington, N.M. She also visited with Muriel Crouch.

In the rodeo at Muleshoe during the weekend several area youths participated with Kyla Morris taking All-Around Honors in the Junior Girls 9-12. She won first in Poles with 23.125 and was the only 9-12 year old girl to place in Goat Tying. She was first in Barrels, and flag race also with 9.432. She is the daughter of Mr. and Mrs. Mike Morris of Sudan.

Kyle Edwards, son of Mr. and Mrs. Steve Edwards won All-Around boy in the 13-15 Intermediate group. He won first in Ribbon Roping with 17.639 and Steer Stopping with 4.284. Kyle also placed third with 2.128 in Steer Dabbing and was the only contestant to place in the California Touching.

Star Tennyson has arrived home from Baylor University in Waco where she attended the summer session.

Alma Burnett remains a patient in the Methodist Hospital in Lubbock in room 773 East.

Justin Holley recently underwent surgery on his hand. It was reported that he is doing well.

Shop
Muleshoe
 First!

West Plains
Medical Center
272-4524

GRAIN PRICES

FEED CORN...	4.04
WCY...	4.68
RCY...	4.28
WHITE FOOD CORN...	5.18
MILO...	3.33
SOYBEANS...	5.21
WHEAT...	3.76
104%	

Prices effective July 25, 1989

MARKETS COURTESY OF FARMERS CO-OP ELEVATORS Muleshoe, Texas 272-4335

Shop Muleshoe's Largest Grocery Store With The Widest Aisles, Easiest Access To Items, And Biggest Selection In Muleshoe.

WEEKEND SALE
Friday Thru Sunday Only
July 28-July 30



ALWAYS FRESH
MILK
 1 GAL.

\$1.89

KRAFT
B.B.Q. SAUCE

18 OZ.

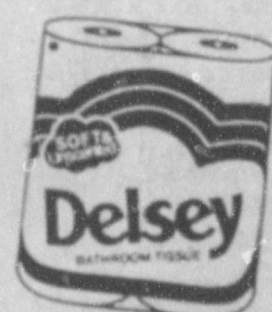
79¢



DELSEY
TISSUE

4-Roll

89¢



TARTAR CONTROL **Aqua-fresh** **Aqua-fresh**

AQUA FRESH

TOOTHPASTE

4.6 OZ.

99¢

40% OFF LABEL
TIDE
DETERGENT

42 OZ.

\$1.99



INSTANT
NESTEA

\$1.99

3 OZ.

Only
 While Supplies
 Last!



WE ACCEPT FOOD STAMPS...WE RESERVE THE RIGHT TO LIMIT