

# WEATHER

January 19	47	22	.00
January 20	(not available)		
January 21	30	22	.50
January 22	30	20	.00

# Muleshoe Journal



*'The Community Of Opportunity-Where Water Makes The Difference'*

Vol. 69, No. 4

12 PAGES TODAY

Published Every Thursday At Muleshoe, Bailey County, Texas 79347



MEMBER TEXAS PRESS ASSOCIATION

20¢

THURSDAY, JANUARY 24, 1991

## Lazbuddie Stock Show Much Larger

### around Muleshoe

#### NOTE

The Three Way Livestock Show and pictures will be featured in the Sunday edition of *The Bailey County Journal*.

\*\*\*

Sign-ups for Muleshoe Youth Basketball Program, which includes boys and girls in grades 3-6, will be Tuesday, January 22 and Thursday, January 24.

These sign-ups will be at the Muleshoe Fire Station from 6:30-8:30 both nights. A sign-up deadline has been set for Monday, January 28.

A meeting will be held for all interested coaches on Thursday, January 31, at 7 p.m. at the Muleshoe Fire Station. If you plan to coach or assist a coach in this program, it is imperative that you be at this January 31 meeting because player and team assignments will be done during this meeting.

\*\*\*

The staff of Dillman Elementary would like to encourage all parents of children birth to fifth grade to attend an *Active Parenting Seminar*.

It will be held on Monday, February 4, in the cafeteria. Coffee will be served at 9:15.

At 9:30 a.m., the seminar, *Winning Cooperation*, will be presented by Jan King and Debbi Hutto.

This will be the first in a series of several *Active Parenting Seminars*. If you have any questions, call the school office at 272-7541.

\*\*\*

Laurey Grant Riney, daughter of Mr. and Mrs. C. E. Grant Jr. was on the Dean's Honor List for the fall semester at Texas Tech University.

Students on the Dean's List have a GPA of 3.5 or better.

Mrs. Riney will be a May graduate with a degree in Elementary Education. She is presently doing her student teaching at Littlefield.

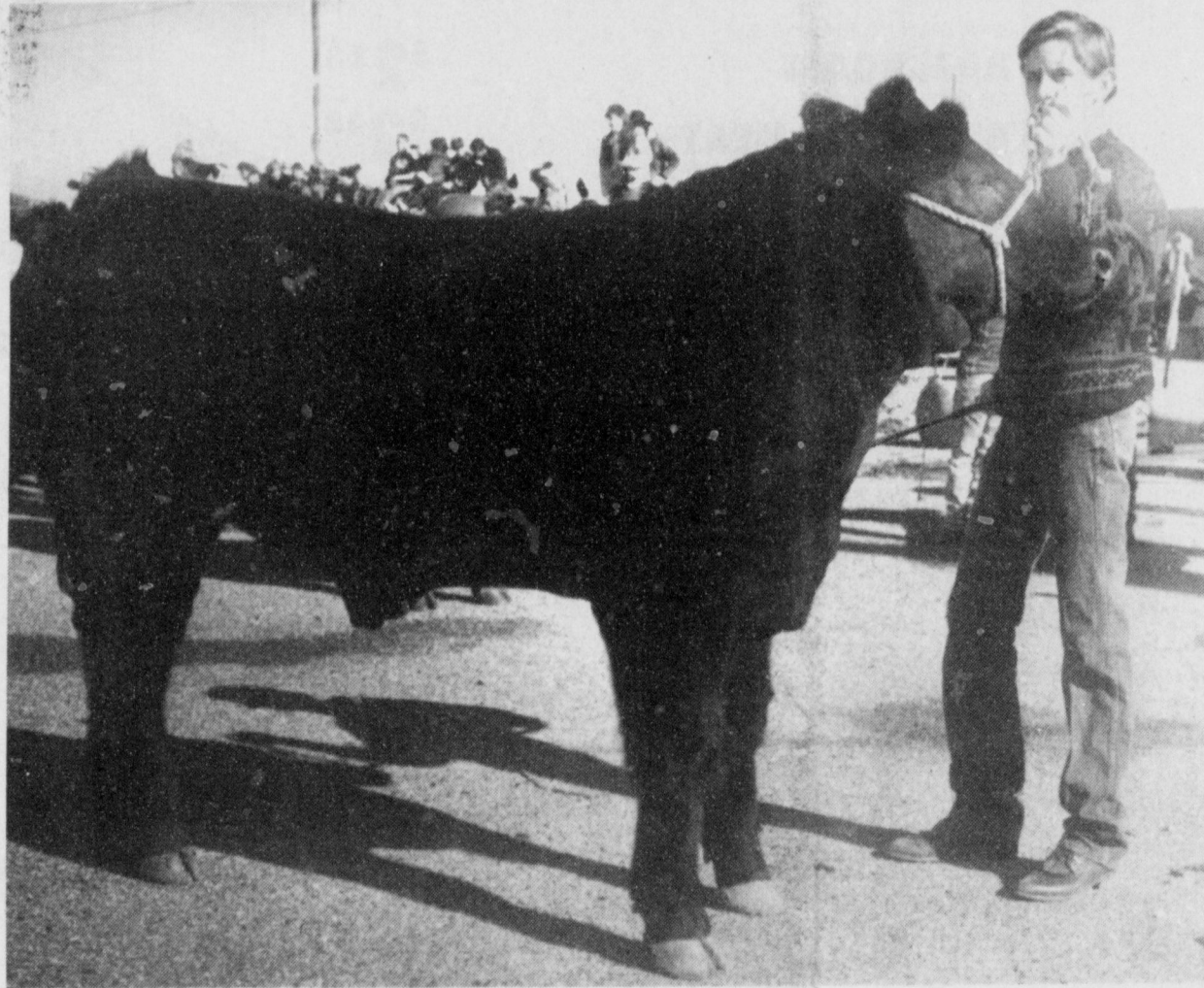
\*\*\*

Army Spec. David Castorena, a military police specialist, has arrived for duty at Wilkins Barrack, Germany.

He is the son of Alex and Lupe Castorena of 114 W. Fifth, Muleshoe.

The soldier is a 1984 graduate of Muleshoe High School.

\*\*\*



**GRAND CHAMPION STEER AT LAZBUDDIE**--Brice Redwine showed the Grand Champion Steer at the Lazbuddie Livestock Show last weekend. This was the first time in several years that steers had been entered in the annual Lazbuddie Show. (Journal Photo)

## Council Reaches Agreement On Proposed Almeria Contract

Following a lengthy discussion Tuesday morning, the Muleshoe City Council adopted a proposal for Almeria Inc. concerning their proposal to acquire city-owned land for a large greenhouse operation.

After discussing the pros and cons of the proposal, Muleshoe Mayor Darrell Turner informed the news media present, "Although we did discuss the pros and cons of the project, we don't want it perceived at all that we're not behind the industry coming to Muleshoe. We want to see the new jobs

that would be created. But, at the same time, we have to support the people of Muleshoe who elected us to take care of their business for them. We want this industry, and other industries to locate here, but we must establish certain guidelines."

Initially, Walter Schmidt and Dick Klikeman had approached the city to obtain 80 acres of land to begin the operation. They are now seeking 200 acres, initially. This concession was approved by council members.

Also, the city agreed to

transfer the deed to Almeria Inc. at the time of the closing of their loan with FmHA.

The city also opted to provide up to 500,000 gallons of water per day at the Lubbock contract price. Above the half-million gallons, Almeria Inc. will pay Cont. Page 6, Col. 4

## KC Mufflers Featured In Monthly Magazine

(Editor's Note: *Exhaust News* is a magazine especially produced for muffler shops and muffler and exhaust systems distributors. The following story

was featured in the January 15, 1991 edition of *Exhaust News* and is reproduced with their permission. The cover features C.K. (Kid) and Duane Castleberry in full color.)

By: Lee Cruse, Editor  
*Exhaust News*

Many of the things that have contributed so much to the success of KC Mufflers & Manufacturing, headquartered in Muleshoe, Tex., were not planned. They just came naturally.

C. K. "Kid" Castleberry and his son Duane Castleberry operate their exhaust warehouse and manufacturing facility in the West Texas town with the memorable name, like they live, with honesty and integrity; principles that mirror the ancient philosophy of the golden rule. It would be difficult to draw a line between their professional and personal lives. They don't try. They enjoy both with an obvious enthusiasm.

Their attitudes, their way of life reflect values once cherished in this country, particularly Cont. Page 7, Col. 1

## The Unique Generation Elects Slate Of Officers

With all the things that are written about "Youth who have gone bad," there's a very "Bright" spot in Muleshoe these days.

They call themselves *The Unique Generation* and were formed to provide a place for ALL youth to meet, visit, play games, dance, hear music and be off the streets.

Since Frank and Janie Saldana decided the youth of Muleshoe needed a place to meet and be together, *The Unique Generation* continues to grow.

The group meets on alternating Thursday and Friday nights (because of Friday night basketball) and all youths, of all ethnic groups, ages 10 and above, are welcome.

Children under the age of 10 can also go to the meetings and parties at 217 E. Avenue D, but must have their parents present at all times they are there.

The Saldanas, with the help of their daughter, Frances, organized *The Unique Generation* and currently have various youths attending their parties from Muleshoe, Clovis, Sudan, and Lazbuddie.

The Saldanas, as well as the newly elected officers emphasize that parents and interested persons can drop by at any time they are meeting, or having a party, to see what's going on

with the following results:  
**STEERS**  
**BRITISH BREEDS**  
Jason Jesko, Jason Thomas, then Jason Jesko.  
**EXOTICS**  
Brett Thomas, first and grand champion; Seth Black, second and Reserve Grand Champion; Justin St. Clair, Casey Bradshaw and Mandy Magby.  
Senior showmanship went to Casey Bradshaw and Jason Thomas won junior showmanship.

## Ag Meeting Set Today At Coliseum

The Eleventh Annual Bailey County Winter Ag Conference will be held at the Bailey County Coliseum beginning at 8 a.m. The first speaker is scheduled for 8:30 a.m.

As in the past, the conference will be held at the Bailey County Coliseum beginning at 8 a.m. The first speaker is scheduled for 8:30 a.m.

This year's conference will include information being presented on the 1990 farm program, emergency farm loans, conservation compliance program, and subject matter topics will be discussed on control of spider mites in corn, oilseed crops, post-directed sprays for weed control, reduced tillage systems and pesticide laws and requirements.

The annual conference is co-sponsored by the Bailey County Agriculture Committee of the Extension Service and Blackwater Valley Soil and Water Conservation District.

Tanksley commented, "The conference serves as an excellent opportunity for farmers to obtain information on timely topics that will help them with their farming activities for next year. An excellent group of Speakers will be presenting this information for everyone's benefit.

**LAMBS**  
**FIREWOOL LIGHT WEIGHT**  
Dawnda Magby, Jana Vise, Jeffery Seaton, Wayne Terry, Eric Williams and Craig Russell.

**HEAVY WEIGHT**  
Edward Terry, first and breed champion; Seth Black, second and reserve breed champion; Shena Seaton, Jody Copp and Lacy Clark.

**FINEWOOL CROSS LIGHT WEIGHT**  
Craig Russell, Jay Seaton and Craig Russell.

**HEAVY WEIGHT**  
Jana Vise, first and breed champion; Cade Morris, second and reserve breed champion; Jody Copp and Seth Black.

**HAMPSHIRE LIGHT WEIGHT**  
Seth Black, Edward Terry, Jeffery Seaton, Tyler Gartin, Shena Seaton and Krista Smith.

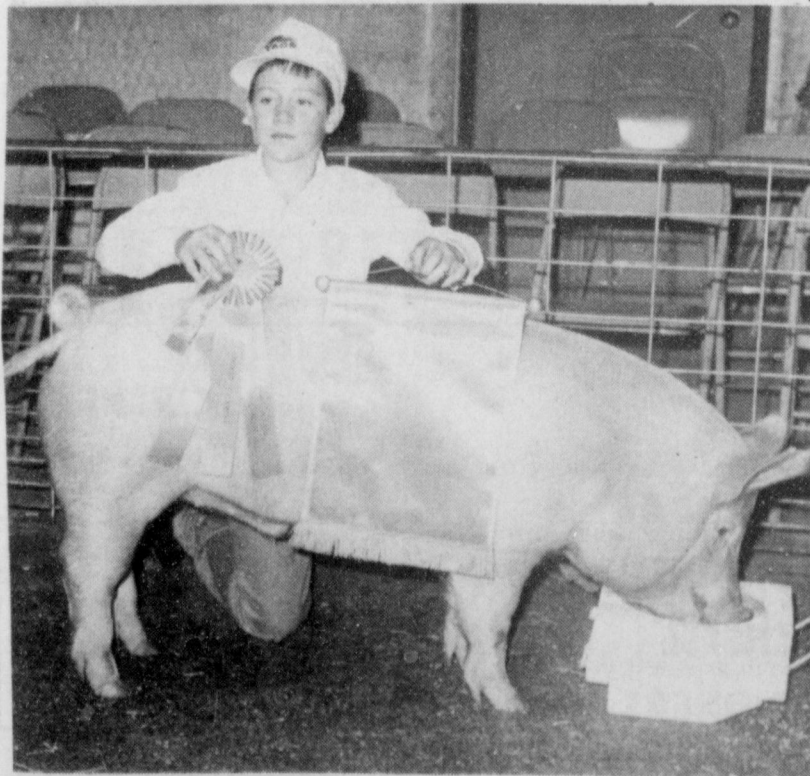
**HEAVY WEIGHT**  
Cade Morris, first and breed champion; Cody Clark, second and reserve breed champion; Dawnda Magby and Seth Black.

**SUFFOLK LIGHT WEIGHT**  
Cody Clark, first and reserve breed champion; Shana Foster, Jana Vise, Seth Black and Savannah Black.

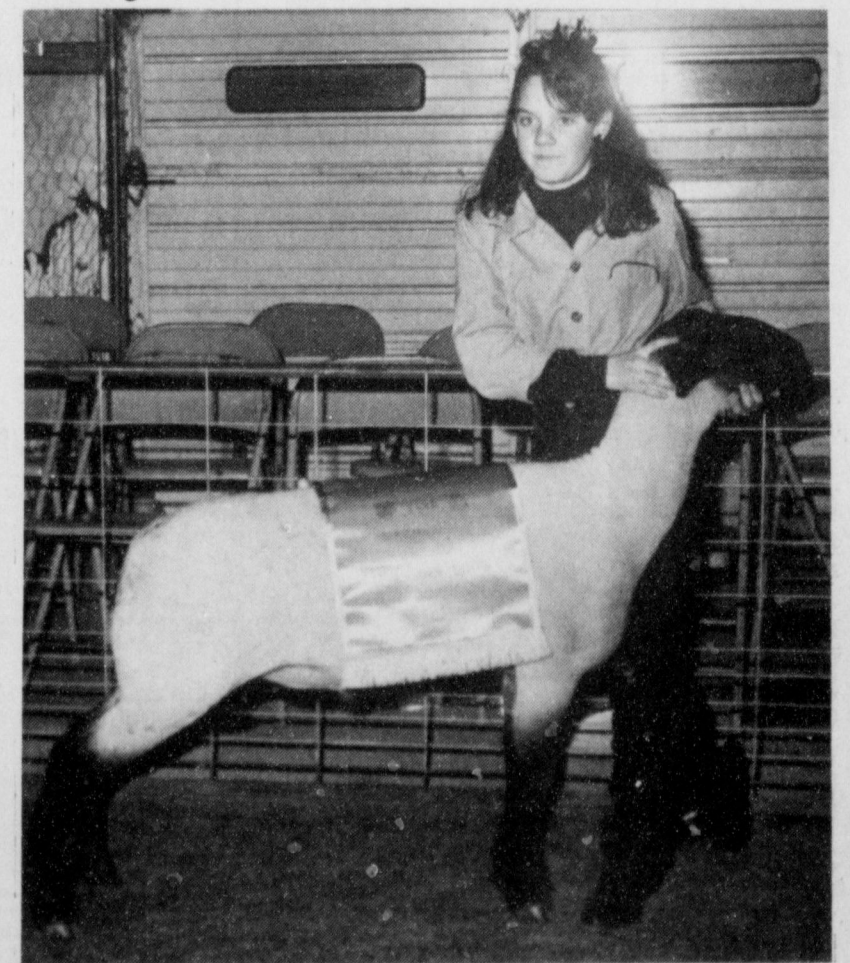
**HEAVY WEIGHT**  
Shana Foster, first and breed champion; Shana Foster and Cade Morris.

**SOUTHDOWN LIGHT WEIGHT**  
Edward Terry, first and breed champion; Jeffery Seaton, second and reserve breed champion; Eric Williams and Jody Copp.

Shana Foster showed the Grand Champion Lamb and Cody Clark exhibited the Reserve Grand Champion Lamb. Cont. Page 6, Col. 1



**IT WAS A CHAMPION**--Brice Redwine exhibited the Grand Champion Swine during the Lazbuddie Livestock Show last Saturday. (Journal Photo)



**FOSTER SHOWS GRAND CHAMPION LAMB**--At the Lazbuddie Livestock Show last Saturday, Shana Foster exhibited the Grand Champion Lamb. (Journal Photo)

## Remember! CofC Banquet Saturday

Muleshoe High School Cafeteria


7 p.m.

Dr. Kenneth Wyatt, Speaker



**IT'S HERE!**

**THE GOLDEN BOOK ENCYCLOPEDIA**



**VOLUME 1 only**  
**49¢**

Volume 20 FREE with purchase of Volume 2.

Start your child's set Today!  
Volumes 2 through 19 only **\$2.99** each.

Your children can expand their knowledge with a reference center designed specifically for them.  
Over 2,500 colorful photographs, illustrations, maps, charts and diagrams.


All trademarks are the property of Western Publishing Company, Inc. © 1990 Western Publishing Company, Inc.

**BARGAIN**  
*Blizzard*

FRESH EXPRESS 12x16 SAUSAGE/ PEPPERONI/ COMBO.  
**PIZZA**  
**2 \$5.99** FOR




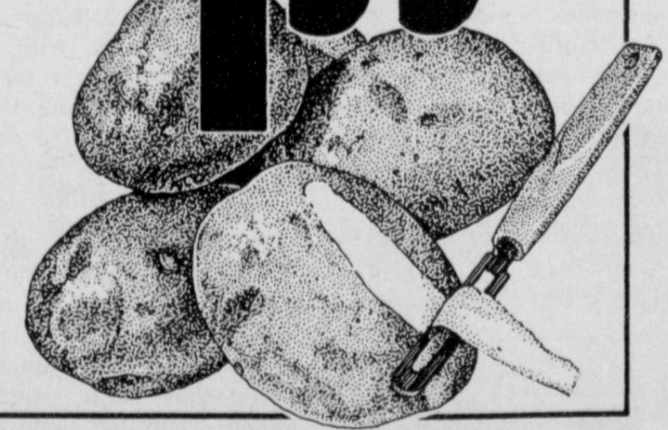








HEAVY GRAIN FED BEEF BONELESS  
**ARM ROAST** LB. **\$2.28**  
FOR FAJITAS  
**BEEF SKIRT MEAT** LB. **\$2.48**  
BUTTERMILK BREADED  
**CHICKEN TENDERS** 3 LB. BOX **\$9.98**  
ORANGE  
**ROUGHY FILLETS** LBS. **\$4.98**  
CHIMICHANGA BEEF & BEAN  
**BURRITOS** **98¢**  
OSCAR MAYER  
**LITTLE SMOKIES** LB. **\$2.88**  
OSCAR MAYER HONEY HAM/ ROASTED CHIC.  
**THIN SLICED MEATS** 6 OZ. PKG. **\$1.68**

HEAVY GRAIN FED BEEF  
**BONELESS CHUCK ROAST**  
**\$1.78** LB.



 ASSORTED GRINDS <b>FOLGER'S COFFEE</b> 13 OZ. CAN <b>\$1.99</b>	 BATHROOM <b>CHARMIN TISSUE</b> 4 ROLL PKG. <b>99¢</b>	 ABSORBENT PAPER <b>BOUNTY TOWELS</b> JUMBO ROLL <b>79¢</b>	 TONY'S ASSORTED <b>ITALIAN PIZZA</b> 16½ to 17½ OZ. <b>\$1.79</b>	 CITRUS HILL W/ CALCIUM/ REGULAR/ CLASSIC <b>ORANGE JUICE</b> 12 OZ. CAN <b>\$1.09</b>
--	--	--	---	---

 108-175 CT. PKG. FREE/ REG./ PLUS <b>PUFFS FACIAL TISSUE</b> <b>99¢</b>	 112 OZ. BOX <b>RINSO DETERGENT</b> <b>\$3.29</b>	 96 OZ. BTL. 60" OFF LABEL FABRIC SOFTENER <b>SNUGGLE LIQUID</b> <b>\$3.99</b>
---	---	--

 ASSTD. POTATO <b>PRINGLES CHIPS</b> 6.5-7.5 OZ. CAN <b>\$1.29</b>	 DUNCAN HINES <b>ASSORTED COOKIES</b> 11 OZ. PKG. <b>99¢</b>	 EXTRA FANCY RED <b>DELICIOUS APPLES</b> LB. <b>59¢</b>	 RUSSET <b>POTATOES</b> 20 LB. BAG <b>\$1.99</b>	 NEW <b>LEVER 2000</b> BAR SOAP 3.5 OZ. PKG. <b>59¢</b>	 DISH DETERGENT <b>PALMOLIVE LIQUID</b> 22 OZ. BTL. <b>\$1.29</b>
 ALWAYS NIGHT/ PLUS/ DOUBLE <b>MAXI PADS</b> 16-24 CT. PKG. <b>\$3.29</b>	 SHURFINE ASSORTED <b>SODA POP</b> 2 LITER BOTTLE <b>79¢</b>	 ROMA <b>TOMATOES</b> LB. <b>89¢</b> GARDEN FRESH <b>GREEN ONIONS</b> 3 BUNCHES <b>\$1.00</b> RED <b>ONIONS</b> LB. <b>39¢</b> FRESH ANAHEIM <b>PEPPERS</b> LB. <b>89¢</b> RUBY RED FLORIDA <b>GRAPEFRUIT</b> 4 FOR <b>\$1.00</b>	 HUNT'S <b>MANWICH SAUCE</b> 15.5 OZ. CAN <b>\$1.19</b>	 AMERICAN BEAUTY <b>PASTA</b> 10 OZ. PKG. <b>59¢</b>	 HOMESTYLE SPAGHETTI <b>RAGU SAUCE</b> 28 OZ. JAR <b>\$1.49</b>

<b>79¢</b> ONLY TO BE REDEEMED AT THRIFTWAY/ LA TIENDA STORES <b>79¢</b>	<b>Save 79¢</b> ON <b>Rave</b> Professional Formula SHAMPOO, CONDITIONER, or STYLING AIDS PRODUCT MANUFACTURER'S COUPON EXPIRES APRIL 1, 1991	WESTERN FAMILY <b>VITAMINS</b> C-500 MG. CHILDREN'S MULTI 100 CT. BTL. <b>\$1.79</b> <b>TABLETS/ CAPLETS</b> <b>4.99</b> <b>BUFFERIN</b> 100 CT. BTL. <b>\$4.99</b> <b>ASSORTED ROLAIDS</b> 75 CT. SIZE <b>\$1.69</b> ASSTD. SHAMPOO/ CONDITIONER WITH COUPON <b>RAVE</b> 15 OZ. BTL. <b>\$1.00</b>	BIRDSEYE <b>CORN ON THE COB</b> 4 EAR PKG. <b>99¢</b> HOMESTYLE WAFFLES 16½ OZ. PKG. <b>\$1.99</b> <b>EGGO</b> SHURFINE ½ MOON LONGHORN COLBY/ 16 OZ. PKG. <b>\$2.39</b> <b>CHEDDAR</b> SHURFINE BUTTERMILK/ HOMESTYLE 16 OZ. PKG. <b>\$1.00</b> <b>BISCUITS</b> SHURFINE COTTAGE 10 CT. CAN <b>\$1.39</b> <b>CHEESE</b> ASSTD. PATIO MEXICAN 24 OZ. CTN. <b>\$1.39</b> <b>DINNERS</b> 12-13½ OZ. BOX <b>\$1.39</b>	BANQUET REG. FRIED <b>CHICKEN</b> 28 OZ. BOX <b>\$2.99</b> BANQUET FLAV. FRIED <b>CHICKEN</b> 28 OZ. BOX <b>\$2.99</b>
--	--	--	--	---

 SHURFINE <b>SOUR CREAM</b> 8 OZ. CTN. <b>2 \$1</b>	 REGULAR/ LIGHT <b>DORITOS</b> \$1.69 SIZE <b>99¢</b>	 FRENCH ONION/ GREEN CHILI <b>SHURFINE DIPS</b> 8 OZ. CTN. <b>2 \$1</b>	 <b>thriftway</b>	 <b>AFFILIATED FOODS INC.</b> MEMBER STORE WE ACCEPT FOOD STAMPS... WE RESERVE THE RIGHT TO LIMIT PRICES EFFECTIVE JANUARY 20-26, 1990	 ALL TYPES <b>COCA-COLA</b> 2 LITER BOTTLE <b>\$1.09</b>
--	---	--	--	--	--



# Annual Pinewood Derby Held Here Saturday

Excitement mounted and the moments grew tense as approximately 80 race cars raced down the race tracks at the annual Boy Scout Pine Derby Saturday. The derby, held at the high school gym, drew a large crowd of parents and spectators to watch the scouts race the cars they had designed, carved and painted for the races.

Prizes were awarded for the Best Design, Cubbiest, and the Best Paint Job. Winners of these awards were Jeffery King, Design; Gary Jones, Cubbiest; and Clifford Wimberley, Best Paint Job. These scouts were awarded ribbons.

Genius Cubbie Awards went to Wesley Holt, Tiger Den No. 2; Chris Vaughn, Bear Den No. 3; Westin Price, Wolf Den No. 3; Cody Turner, Tiger Den No. 1; Grayson Rennels, Bears; Jerome Clements, Webelos; and Jon Keith Turner, Webelos.

Each Den raced and the three having the best time then raced each other. The three top racers in Tiger, Den 1 were: Cody Turner, first; Stephen Shelburn, second; and Tad Lutz, third. Top racers in Den 2 were Mickey Tosh, first; Joshua Clark, second; and Michael Durbin, third. Grand champions in the Tigers were Tad Lutz, first; Stephen Shelburn, second and Cody Turner, third.

Taking top honors in Wolf Den 1 were Cade Hooten, first; Weston Price, second; and Tyler Black, third. Den 2 included: Rocky Dehoyas, first; David Morris, second; and Chris Baker, third.

The Grand Champions in the Wolves were Cade Hooten, first; Rocky Dehoyas, second; and Weston Price, third.

Taking first place in the Bears were B.J. Copeland, first; T.J. Hutto, second; and Jonathan May, third. In Den 2 Bret Clements, came in first; Kole Magby, second and Chris Vaughn, third. Grand Champions for the Bears were: Bret Clements, first; Jonathan May, second; and Chris Vaughn, third.

Only three Webelos raced

therefore they were all champions and included: Aaron Purdy, first; Jon Keith Turner, second; and Christopher Shelburne, third.

All of the Grand Champions in every division received trophies, and all boys who raced received a ribbon.

The district Pine Wood Derby is scheduled for Saturday, Feb. 9 at Sundown School. Registration is set for 10 a.m. to noon with the races getting underway at 1 p.m. Registration in the district competition is four

## Scholarships Available

### From Scholarship

#### Foundation

High School students who are interested in applying for \$1,000 college scholarships should request applications by March 15 for Educational Communications Scholarship Foundation, 721 N McKinley Road, P.O. Box 5002, Lake Forest, IL 60045-5002.

To receive an application, students should send a note stating their name, address, city, state, zip code, approximate grade point average and year of graduation.

All requests for applications will be fulfilled on or about April 15. Seventy-five winners will be selected on a basis of academic performance, involvement in extracurricular activities and need for financial aid.

dollars per car.

In other Boy Scout business, Mrs. Betty Griswold reminded the boys that registration money is due by Monday, Jan. 28 and no later. The registration fee is \$8 and Boys Life is \$7.80. The extra \$1 is for insurance. She stated that Boys Life is optional.

"Parents you need to report to your child's den leader all the activities that your child has been in or done. Some examples are if they make A's on their report cards, you need to send a signed note saying your child did make A's. Even his church activities are important

and school activities are important. He is a cub seven days a week" Mrs. Griswold continued.

Parents are also asked to take time to check their cubs book and sign the appropriate page, so his Den Leader can give him credit for his work. She stated that cubs have missed many recognitions due to the lack of records.

The Blue and Gold Banquet has been set for Tuesday, Feb. 15 at 6:30 p.m. at the Methodist Church. Indian Dancers will perform. Everyone is asked to take enough food for their

family plus two, so the guest may eat also. Parents are needed for decorating and serving, you may contact Kay

Graves.

Feb. 3 is Scout Sunday and everyone is asked to wear their uniforms to church.

## GRILLED FRESH TOMATO SALSA

5 medium-sized tomatoes (about 2 pounds)

2 medium-sized sweet red bell peppers

2 medium-sized unpeeled yellow onions

1 large unpeeled garlic clove

1 pickled or fresh jalapeno pepper, halved lengthwise with seeds removed

1/2 cup tightly packed fresh cilantro or fresh parsley leaves

1/4 teaspoon salt

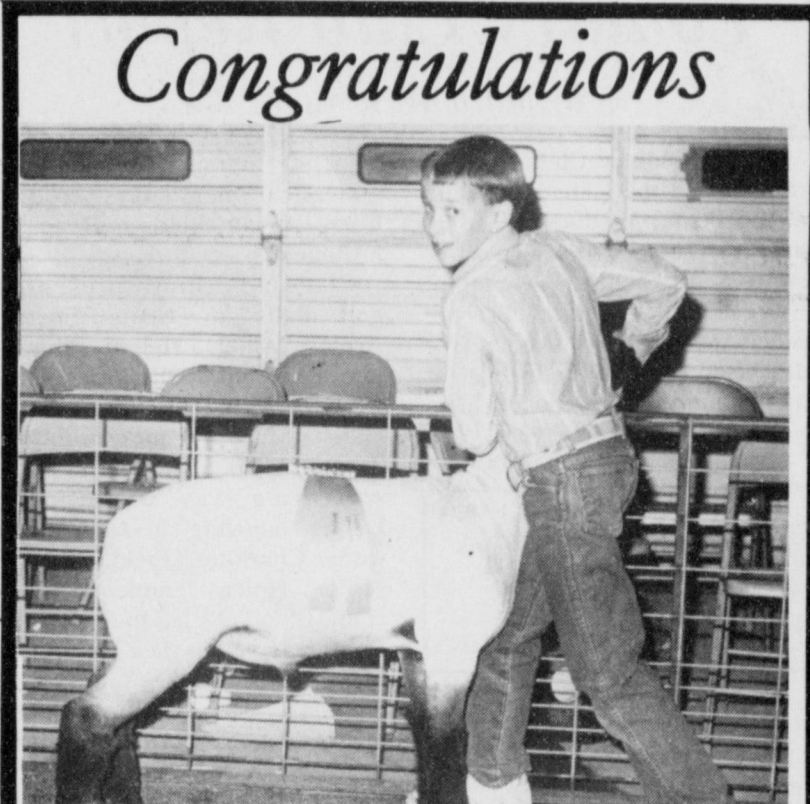
Preheat broiler. Use tomatoes held at room temperature until fully ripe. Core tomatoes; remove stems and seed from red peppers leaving whole; cut ends off onions. Place tomatoes, red peppers, onions and garlic on a jelly roll or roasting pan. Broil about 5 inches from heat, until skins are charred, about 15

minutes, turning occasionally. Meanwhile, in a bowl of a food processor fitted with a metal wing blade, process jalapeno pepper, cilantro and salt until chopped, using on and off motions, about 30 seconds. Remove skins from tomatoes, peppers, onions and garlic. Squeeze tomatoes to release juice and seeds, discarding juice and seeds. Place tomatoes in food processor. Quarter onions and halve red peppers. Place onions, peppers and garlic in food processor. Process until vegetables are coarsely chopped, about 5-10 seconds.

Yield: 3 1/2 cups. Serve as a dip with taco chips and raw vegetables, over steamed vegetables, pasta, mixed greens, fish, chicken, tacos, etc.



RELAXING AT THE BEACH--These kindergarten students in Mrs. DePalma's room at Dillman Elementary were among those enjoying a day at the beach last week. (Journal Photo)



BREED CHAMPION HAMPSHIRE--Cade Morris, son of Mr. and Mrs. Bill Morris exhibited his Heavy Weight Hampshire to Breed Champion honors at the Lazbuddie Stock Show which was held last Saturday. (Journal Photo)

**Muleshoe Journal** USPS 367-820  
 Established February 23, 1924. Published by Muleshoe Publishing Co., Inc., Every Thursday at 304 W. Second, Box 449, Muleshoe, Texas, 79347. Second Class Postage Paid at Muleshoe, Texas, 79347.

**MEMBER 1991**

**TEXAS PRESS ASSOCIATION**

L. B. Hall, Publisher  
 Sammie Hall, Vice President/Controller  
 Clea Williams-Jacobson, News  
 Evelyn Harris, Society  
 Holly Millsap, Advertising  
 Dora Toscano, Classified

**SUBSCRIPTIONS**  
 Muleshoe Journal and Bailey County Journal  
 Bailey and surrounding counties  
 Muleshoe Journal and Bailey County Journal  
 Elsewhere in Texas \$14.75  
 Muleshoe Journal and Bailey County Journal  
 Outside Texas, \$16.50  
 Yearly By Carrier  
 \$12.50

Advertising Rate Card on Application  
 Advertisers should check their ads the first day of insertion. The Journals will not be liable for failure to publish an ad or for a typographical error or errors in publication except to the extent of the cost of the ad for the first day insertion. Adjustment for errors will be limited to the cost of that portion of the ad where the error occurred.

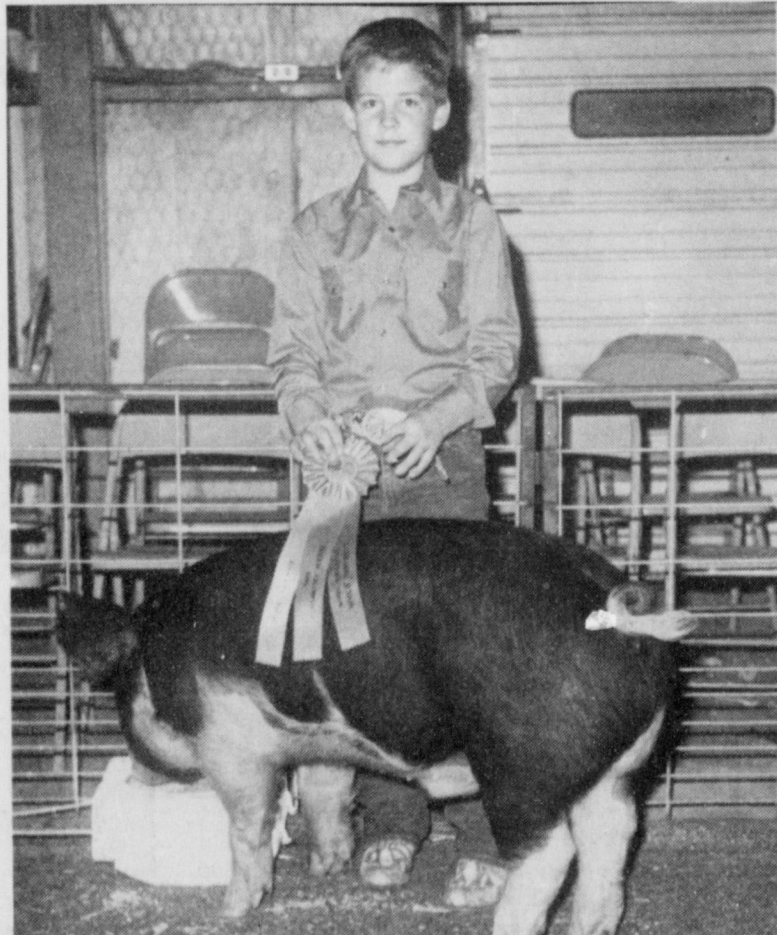
	1991 Crop		Month
	Sale	Flat	
Feed Corn.....	4.28,0.00ch		March
White Cobb Yellow.....	4.90,0.35ch		March
Red Cobb Yellow.....	4.48,0.11ch		March
White Food Corn.....	5.80,0.86ch		March
Milo.....	4.13,-0.08ch		March
Soybeans.....	5.34,-0.53sh		March
Wheat.....	2.28,-0.30kwh		KW March

96%  
 Prices effective Jan. 22, 1991

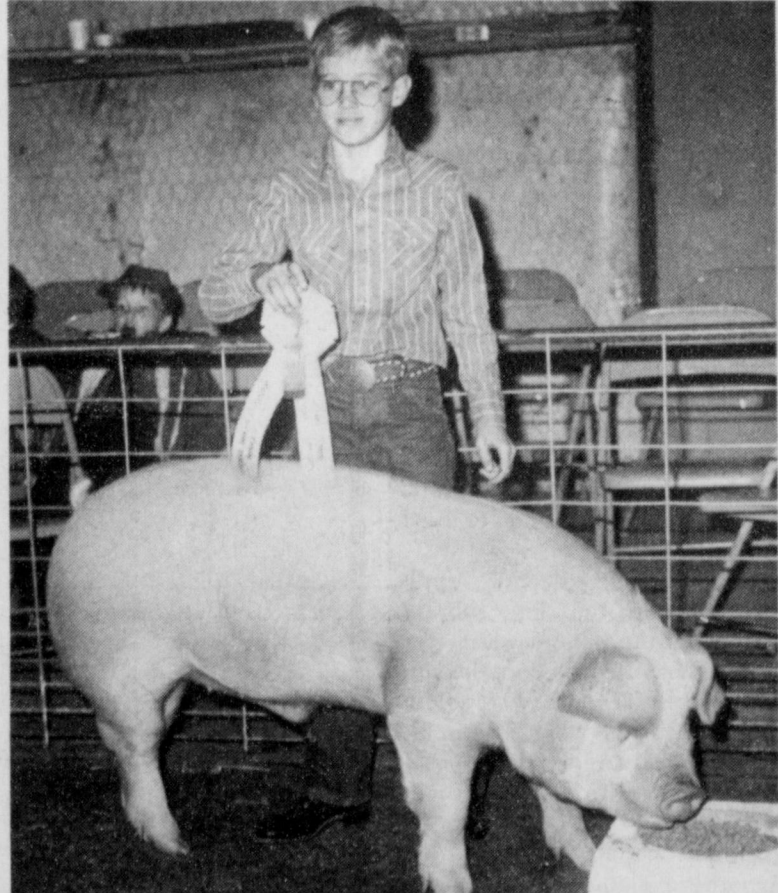
**Farmer's Co-Op Elevators**  
 272-7561

**Wilbur-Ellis**  
 Tide Division

# Congratulations



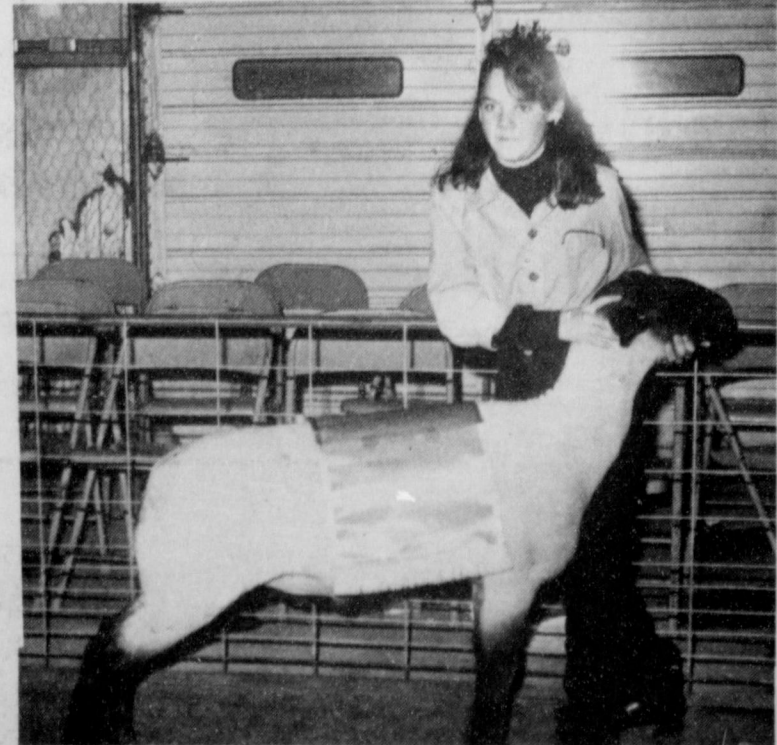
BREED CHAMPION BERKSHIRE--Justin Puckett, son of Mr. and Mrs. Ronnie Puckett exhibited his Light Weight Berkshire and took Breed Champion honors at the Lazbuddie Stock Show held last Saturday. (Journal Photo)



RESERVE BREED CHAMPION--Tyler Gartin, son of Mr. and Mrs. Steve Gartin exhibited his Medium Weight Chester White to Reserve Breed Champion honors at the Lazbuddie Stock Show. (Journal Photo)



BREED CHAMPION SOUTHDOWN--Edward Terry, son of Mr. and Mrs. Edward Terry, Sr. exhibited his Lt. Weight Southdown to Breed Champion honors at the Lazbuddie Stock Show held last Saturday. (Journal Photo)



GRAND CHAMPION LAMB--Shana Foster, daughter of Mr. and Mrs. Lyndon Foster walked away with Grand Champion honors at the Lazbuddie Stock Show held last Saturday. Shana took the honors with her Heavy Weight Suffolk. (Journal Photo)



THOMAS TAKES GRAND CHAMPION HONORS--Brett Thomas, son of Mr. and Mrs. Randy Thomas showed his Exotic Steer to Grand Champion honors at the Lazbuddie Stock Show held last weekend. (Journal Photo)

**W.T. Services, Inc.**





**SCRAPBOOK PRESENTATION**--Helen Templeton presented the Ladies Country Club Association Scrapbook to Ruby Hart, Melzine Elliott and Argilee Millen during their meeting at noon Wednesday. (Journal Photo)

## Country Club Report

by Marlene St. Clair

Ladies Country Club Association started their new year with a luncheon, Wednesday, January 16. There were twenty-five ladies and two guests attending.

President, Jeanetta Precure called the meeting to order. We discussed some of the events for the coming year. Looking forward to a good new year. The

weather hasn't favored the golfers to many days so far. Come spring things will get in high gear.

Claudine Elliott presented golf balls to Neats Foster, Arglee Millen, Helen Templeton, Jo Rempé, Charlotte Field, Cookie Bamert and Analita Haley. Martha Young won the door prize.

Meeting was adjourned. Ladies enjoying a nice lunch were Charlotte Field, Arglee Millen, Helen Templeton, Melzine Elliott, Claudine Elliott, Ruby Hart, Ruby Lee Kerr, Jeri Mayo, Dorothy St.Clair, Sheri Shipman, Mary Frances Holt, Marlene St.Clair, Cookie Bamert, Kay Field, Martha Young, Carlean Hamilton, Linda Elder, Genice Atkins, Marilyn Young, Jeanine Gunstream, Neats Foster, Jeanetta Precure, Analita Haley, and two guests, Lisa Kretsinger and Myrt Feagly.

## Tops Club

TOPS chapter No. 34 met at 6:30 p.m. Thursday, January 17 in the Heritage Thrift Shop. Jewell Peeler, co-leader, called the meeting to order with the TOPS pledge, fellowship song, and a prayer.

Betty Jo Davis, weight recorder, called the roll with 19 members responding with the amount they had lost or gained. One visitor, Ozelle Cherry was welcomed and a former member, Rose Sain, was welcomed back.

Minutes of the previous meeting were read by Aurora Mata, secretary, and they were approved as read.

It was reported that a new contest "Crown of Stars" will begin next week.

A getwell card was signed for Laverne James, who had surgery Wednesday at Methodist Hospital in Lubbock.

Rose Sain and Aurora Mata celebrated their birthdays and received a gift from the club. The group sang "Happy Birthday" to them.

Best loser for the week was Betty Jo Davis. Runners-up were Mary Edmiston, first; and Zeanna Kelly, second.

The meeting was adjourned with the singing of the good-night song.

## Contact Lens

### Return Vision

#### To Millions

An 'almost forever' contact lens may return good vision to about seven million Americans, afflicted by refractive errors that cannot be corrected by eyeglasses or contact lenses.

A refractive error is when light entering the eye is not bent properly by the cornea to focus on the retina. The resulting poor vision-- nearsightedness, farsightedness and astigmatism-- affects nearly one-third of the world's population.

The cornea, like a clear watch crystal, covers the eye. About as thick as a credit card, it provides two-thirds of the focusing power of the eye.

Keith P. Thompson, M.D., of the Yerkes Regional Primate Research Center in Atlanta, is investigating a biocompatible synthetic implant that can be attached to the front surface of the cornea, eliminating the need for corrective eyeglasses or contact lenses.

He is experimenting with an implant which has corrected refractive errors in Rhesus monkeys. Unlike a contact lens which is placed on top of the epithelium, the thin layer of cells on the surface of the cornea, the lens-shaped implant replaces the epithelium.

Within a few days, a new layer of cells spreads over the implant which is made of synthetic collagen, the kind of gelatinous substance found in bones and connective tissue. The body does not reject the implant. However, the new epithelial cells cause some erosion of the synthetic lens material.

"We are looking into ways to increase the stability of this material and improve its resistance to degradation by the cellular agents and enzymes that cause the erosion," Dr.

## Elderly Are At High Risk

Drowsiness in an elderly friend or family member might be more than a sign of tiredness. It may be a symptom of overexposure to cold temperatures according to a geriatrics expert at Baylor College of Medicine in Houston.

The elderly are at high risk for hypothermia because they do not produce as much body heat and do not shiver as hard as younger people. Since shivering is the body's first defense against cold, the older person's body tends to cool faster when exposed to lower temperatures.

"Indoor temperatures should not drop below 65 degrees if an elderly person is in the house," says Dr. Robert Luchi, director of Baylor's Huffington Center on Aging.

Luchi also recommends that the elderly have warm food and drink several times a day during cold weather and wear a warm hat. Physical activity raises body temperature, so mild exercise is a good idea.

When the body temperature drops to 90-95 degrees, paleness and uncontrollable shivering may be the first hint of trouble. Other warning signs include drowsiness, confusion and difficulty in walking and speaking.

In severe cases, when the body temperature is below 90 degrees, breathing becomes shallow, mental alertness may diminish and victims may even slip into a coma. These persons should be taken to a hospital immediately.

Hypothermia should be treated slowly. After moving the victim to a warm environment and removing any wet clothes, keep him still and begin restoring body-heat at the rate of about one degree per hour.

"If done too fast, it can cause shock. The victim should be wrapped in warm blankets and given a warm beverage," says Luchi. "In more severe cases warm him with your own body-heat or apply hot water bottles, taking care not to burn the skin."

Do not give alcohol, apply direct heat to the skin, rub the skin or let the patient walk.

Recovery from hypothermia takes several hours when done properly. It is best attempted with medical supervision so vital signs can be monitored regularly.

Other people at risk for hypothermia are the very young, whose bodies are not fully developed, and drugs addicts and alcoholics whose immune systems are often weak. Homeless people are also at risk if exposed to the elements during colder weather.



Benjamin Franklin was one of the first people to manufacture playing cards in America.



**NEW OFFICERS INSTALLED**--The Ladies Country Club Association met at noon Wednesday and installed officers for the coming year. These officers include Jeanetta Precure, president; Kay Field, vice president; Charlotte Field, tournament chairman; Analita Haley, reporter; Cookie Bamert, Ways and Means; Helen Templeton, Play Day; and Sheri Shipman, secretary. Not pictured, Yolanda Bell, treasurer; and Linda Elder, High Plains Director. (Journal Photo)

Thompson reported at a Research to Prevent Blindness science writers seminar.

One potential advantage of synthetic corneal reshaping over the traditional corneal transplant operation is that it removes only a thin layer of cells, rather than the entire cornea. "We are adding something to the cornea and we are not taking something away," as Dr. Thompson puts it.

He believes that people whose refractive errors are insufficiently corrected by glasses or contact lenses may benefit from synthetic corneal reshaping. If vision changes, the implant could be removed, reshaped by laser to a new prescription, and reattached to the cornea, he adds.



A fish known as the plaice is such a master of camouflage it can reproduce a checkered pattern on its back if placed on such a background.

## Congratulations



**RESERVE BREED CHAMPION**--Exhibiting his Heavy Weight Finewool Cross to Reserve Breed Champion honors was Cade Morris, son of Mr. and Mrs. Bill Morris. He won this honor at the Lazbuddie Stock Show which was held last weekend. (Journal Photo)

## North Lazbuddie Gin

## Congratulations



**RESERVE BREED CHAMPION CROSS**--Stacy Foster exhibited her Heavy Weight Cross to Reserve Breed Champion at the Lazbuddie Stock Show which was held last weekend. Stacy is the daughter of Mr. and Mrs. Lyndon Foster. (Journal Photo)



**BREED CHAMPION CROSS**--Holley Engelking, daughter of Mr. and Mrs. Dave Engelking exhibited her Heavy Weight Cross to Breed Champion honors at the Lazbuddie Stock Show held last Saturday. (Journal Photo)

## Lazbuddie Feeders Division of Bovina Feeders

**SONIC** **TWO GOOD!**

**BROWN BAG SPECIAL**

- 2 REGULAR SONIC BURGERS
- 2 ORDERS OF FRIES
- 2 MEDIUM DRINKS\* Soft Drinks

**\$4.49 PLUS TAX**

no place hops like **SONIC**

1633 West Amer. Blvd  
272-3998

\*Coca-Cola and "Coke" are trademarks of the Coca-Cola Company. ©1991 SONIC INDUSTRIES INC.



## Baby Shower Honors

### Ryan Cole Mason

A baby shower honoring Ryan Cole, Mason, son of Sheldon and Debbie Mason of Lubbock was held on Dec. 8 from 2 to 5 p.m. in the home of Mrs. Larry Jesko.

The theme of the shower was Rocking Horses. The table cloth was white with country blue trim. Colors were carried out in country blue and burgundy. A rocking horse, made by Ryan's father, served as the centerpiece.

Special guests included: Wanda Locke of Lubbock, great grandmother of Ryan; and grandmothers, Joann Cotton of Lubbock and Billie Mason of Lubbock, and an aunt, Sharon Kindle.

The hostesses gifts were a stroller and nursery monitor.

Hostesses for the occasion included: Mrs. Larry Jesko, Mrs. Elvis Powell, Mrs. Greg Gregory, Mrs. Don McDonald, Mrs. Don McElroy, Mrs. Steve Foster, Mrs. Dale Vise, Mrs. Mike Miller, Mrs. Jerry Don Glover, Mrs. Jimmie Dale Seaton, Mrs. Charleston Steinbock, Mrs. Davey Engelking,

Mrs. Lee Jesko, Mrs. John David Agee, Mrs. Travis Bessire and Mrs. Bill Morris.

### Top Amateur Chefs Compete

#### In Beef Cook-Off

Ten top amateur indoor cooks will gather in the scenic Texas Hill Country April 25-26 for the 1991 Texas Beef Cook-Off. The contest will take place at the YO Hilton in Kerrville.

At stake is a cash prize of \$3,000 and an expense-paid trip to the National Beef Cook-Off in the fall of 1991 for the first-place winner. The second place Texas Beef Cook-Off winner receives \$2,000, and the third place winner, \$1,000.

"The Texas Beef Cook-Off annually shows off the brightest new ideas in preparing beef dishes," Sharon Spenrath, chairman of the Texas Beef Cook-Off, said. "Each year, these amateur home cooks show the diversity, versatility and popularity of today's beef. Their talents indicate that beef has grown far beyond just steaks, roasts and patties."

Last year's winner featured an original adaptation of caldo, a Mexican soup made from a strong beef stock base and chunks of chuck roast.

Anyone 18 year of age or older who resides in Texas and is not a food professional may enter the 1991 contest. Each contestant must have an original, innovative beef recipe. Although the call for entries covers indoor, outdoor barbecue and microwave categories, the Kerrville competition will declare a Texas indoor winner only. Outdoor barbecue and microwave winners are named in national competition.

Indoor entries will be judged by a five-member panel of national food experts. Dishes are rated on taste, ease of preparation, appeal and appearance. The first-place winner will be eligible to win and additional \$15,000 plus other prizes at the National Beef Cook-Off Sept. 22-24 at Colorado Springs, Colo. Contestant entries must be postmarked by March 1. For an entry form and information, contact Sharon Spenrath, Texas Beef Cook-Off chairman, Rt. 1 Box 126, Comfort, Texas 78013.

The Texas Beef Cook-Off is sponsored by Texas Cattle-Women in cooperation with the Texas Beef Industry Council.



DEBBIE MASON AND RYAN COLE

### Davieaus' Celebrate Golden Anniversary

John and Pearl Davieau returned to Sonoma, California to celebrate their golden anniversary with family and friends.

Hosting the celebration were Judi and Deck Ford and Shelli, of Austin; Patti Morgan, John and D.J. of Colorado Springs, Colo. and Lori and Dan Weider, Corey and Meghan of Puyallup, Washington.

Mr. and Mrs. Davieau were married Dec. 21, 1940 in Vallejo, Calif.

The Davieaus then spent the 22 with family and on Dec. 23 all of the family traveled to Lake Tahoe for Christmas.

A special guest, Capt. George Burke of the U.S. Air Force flew in from Overton, Kansas for the reception. In 1970 while Davieau was managing a ranch, a plane carrying 15 executives crashed on the ranch. Davieau happened by and was able to save one of the men which was Capt. George Burke. Davieau managed the ranch for 36 years and only checked the sight of the crash once and it happened

### 60 Years Ago

1931

#### ONE OF MULESHOE'S LEADING BUSINESS IS THAT OF SELLING GASOLINE; 748,000 GALLONS DURING YEAR

That the gasoline business in Muleshoe is one of this prosperous little city's largest business enterprises, is manifest in a recent survey made by a Journal representative of the local retail filling stations, of which there are now 11 in operation.

An estimate of 1290 gallons of gasoline is sold daily to automobilists in the Muleshoe territory according to the survey. Last year there were 1,091 automobiles registered in this county and a conservative estimate indicates there are at least 150 tractors being operated in the county.

The figures also show that each auto owner in the county uses an average of one and one fifth gallons per day, enough to travel 20 to 35 miles, depending on the number of cylinders in the car and whether it is being driven by a conservative business man or a vivacious flapper.

### 50 Years Ago

1941

#### TWO HUNDRED MILES REA HIGH LINE BEING CONSTRUCTED

Oklahoma City contractors have moved into Muleshoe for construction of the 200 mile extension of the R.E.A. high-line.

The company has offices and storage at Charles Lenau Lumber Company warehouse, and has already unloaded considerable material. More will be arriving in a few days it is said.

The new extension will serve approximately 400 additional members, and if these do as well as the present list, the local

association will just about be tops in the State. The Bailey County Association now ranks seventh in the use of power in Texas, and there are 70 associations in the state.

With the completion of the new extension there will be 463 miles of highline, serving one of the richest and most progressive sections in Texas. Farmers are adding every possible modern convenience, and those who knew this country a few years ago during the "Oil Lamp Age" would not recognize it now.

### 40 Years Ago

1951

#### LOCAL MARKETS

- Cream-----65 Cents
- Eggs-----35 Cents
- Heavy Hens, lb. 20 Cents
- Light Hens, lb 17 Cents
- Hogs, cwt-----\$20.50
- Kafir, cwt-----\$1.90
- Hagari, cwt-----\$1.90
- Maize, cwt-----\$1.90
- Wheat, bu.-----\$2.15



The ancient Egyptians cultivated the wild watermelon. Pictures of the fruit have been found in the older of the pyramids.

### LOCAL DISTRIBUTION OPPORTUNITY FOR NATIONAL FIRM

Nation's Leading Car Care Product Co. is now selecting dealers - Partners for A Local Route. Accounts/Territory Protected. Minimum 10K Investment. Nets UP To 60K+ Per Year. 100% Secured.

Call Mr. Coy

NOW!

1-800-771-7722

### Muleshoe Area Retired Teachers

The Muleshoe Area Retired Teachers organization met Friday, Jan. 18 in the 16th and Ave D Church of Christ fellowship room. Mabel Wolfe, president, opened the meeting by leading the Pledge of Allegiance to the flag and to the Texas flag.

Wilma Smith introduced Kimberley Chance and Patricia Del Toro, Muleshoe High School students who entertained the group with several readings, some of which will enter in a tournament in Friona in the near future.

Hostesses for the occasion were: Margie Moore and Mary B. Obenhaus. Refreshments were served to the guests and members present including: Mabel Wolfe, Maxine Ragsdale, Wilma Smith, Carrie Lee Bishop, Pauline Guinn, Josephine Mitchell, Margie Moore, Ethel Allison, Beulah Mimms, Joyeline Costen and a new member, Lucy Faye Smith.

Mrs. Guinn reminded the members to report their volunteer hours to her before the end of January. These may be mailed to her or given to her by telephone.

The next meeting will be on Feb. 15 at the 16th and Ave. D Church of Christ. The program will be announced at a later date.



In old England, the word "child" referred only to a girl.

**HEALTH INSURANCE**

CALL Mark Morton 109 S. 1st Muleshoe 272-7519

State Farm Mutual Automobile Insurance Company Home Office Bloomington, Illinois

STORE LOCATION

<b>ALLSUP'S MILK</b> 1 GALLON <b>\$1.99</b>	<b>FLOUR</b> SHUR SAVINGS OR SHURFINE 5lb. BAG <b>69¢</b>
<b>SUGAR</b> ALL BRANDS 5lb. BAG <b>\$1.69</b>	<b>CRISCO</b> SHORTENING 3lb. CAN <b>\$2.59</b>
<b>APPLE JUICE</b> LUCKYLEAF 64 oz. <b>\$1.29</b>	<b>B-B-Q SANDWICH</b> ALL BEEF Made Fresh and Hot! <b>99¢</b>
Pepsi 6pk. 12oz. cans <b>\$1.99</b>	<b>CHICKEN TENDERS</b> 3 STRIPS / <b>99¢</b>
<b>Burritos</b> 2/ <b>99¢</b>	<b>Tide Detergent</b> 39 oz. <b>\$1.99</b>
Shurfine or Shur Saving <b>Pancake Syrup</b> 32oz. <b>\$1.09</b>	<b>Shur Savings</b> <b>Corn/Green Beans</b> 3/ <b>99¢</b>

**SHOP OUR EVERYDAY LOW PRICES..... WE APPRECIATE YOU!**

PRICES GOOD THRU JAN. 27th

**COOKED FRESH 24 HRS. A DAY**

HOT FOODS MENU		AVAILABLE AT ALL ALLSUP'S LOCATIONS
BARBECUE BEEF SANDWICH	99¢	1 PIECE BOX CHICKEN \$4.99
BARBECUE PORK RIBS (LB.)	\$3.99	BEEF & CHEESE CHIMCHANGA \$1.19
BARBECUE WHOLE CHICKEN	\$3.99	(MEAT) CORN DOG 69¢
ALLSUP'S BURRITO	79¢	DELICIOUS HAMBURGER 59¢
BREAKFAST BURRITO	99¢	WILSON HOT LINKS 99¢
BURRITO BEEF & SALSA	\$1.19	SAUSAGE ON A STICK \$1.59
DELICIOUS CHICKENBURGER	79¢	SAUSAGE & BISCUIT 79¢
FRIED STEAK	\$1.59	SAUSAGE, EGG & BISCUIT \$1.09
3 COUNT CHICKEN STRIPS	\$1.49	SAUTEYA \$1.09
W/POTATO WEDGES/CHICKEN (2 PCS) BISCUIT	\$1.99	4 COUNT STEAK FINGERS \$1.00

CALL-IN ORDERS WELCOME CHECK OUR WEEKLY SPECIALS

## WEIGHT WATCHERS® ANNOUNCES

THE NEW

# PERSONAL CHOICE PROGRAM

### THE WEIGHT LOSS BREAKTHROUGH OF THE DECADE!

**Incredible!** Choose the plan to fit the way you live. Imagine...now you get your choice of three food levels based on your lifestyle and weight loss goals. Best of all, you get to choose the level that's best for you.

**Remarkable!** So simple, it just makes sense. Weight Watchers new Personal Choice Program lets you choose the way that fits your life. You'll see it's the easiest program ever!

**Sensational!** You'll get all the structure you need. All the flexibility you want. No matter which food level you select you'll be able to enjoy the foods you love and still lose weight.

**Unbelievable!** Here's a weight loss plan that thinks for you. Got a party, a wedding, a night on the town? Go ahead, enjoy yourself. With our new Personal Choice® Program, you simply move to a different level that week and still keep heading toward your weight loss goal.



Sheila Falk Area Director

### LIMITED TIME OFFER

Join Now For Only... **\$10**

Registration Fee ..... \$19.00

Weekly Meeting Fee .. \$ 9.00

Regular Price ..... \$28.00

**YOU SAVE \$18.00**

Still only \$9 per week!

Come to the Weight Watchers meeting nearest you.

MULESHOE  
 American Boulevard Church of Christ  
 2201 West American Boulevard  
 Every Wednesday at 12 Noon

**WEIGHT WATCHERS®** Gives You Choices Call Toll Free **1-800-359-3131**

Offer ends February 2, 1991. Offer valid at participating locations (South Texas, West Texas, and Santa Barbara County) Call areas 37, 96, 107 only. Offer not valid with any other offer or special rate. Offer valid for new and returning members only. Offer valid for Traditional Weight Watchers meetings only. Weight Watchers is a trademark of WEIGHT WATCHERS INTERNATIONAL, INC. ©WEIGHT WATCHERS INTERNATIONAL, INC. 1991. All rights reserved.



## Lazbuddie Show

Cont. From Page 1

Cody Clark won junior lamb showmanship and Jana Vise was the champion senior showman.

### SWINE BERKSHIRE LIGHT WEIGHT

Justin Puckett, first and breed champion; Brice Foster, second and Reserve Breed Champion; Edward Terry and Adam St. Clair.

### CHESTER WHITE MIDDLE WEIGHT

Tyler Gartin, Holley Engeling, Jody Copp and Dawn Weir.

### HEAVY WEIGHT

Brice Foster, first and breed champion; Brett Thomas and Jeffery Seaton.

Tyler Gartin won reserve breed champion.

### DUROC LIGHT WEIGHT

Garrett Magby, Jeffery Seaton, Cole St. Clair and Kayla Copp.

### HEAVY WEIGHT

Dustin Weir, first and breed champion; Jeffery Seaton, se-

cond and reserve breed champion; Justin Puckett, Shena Seaton and Eric Magby.

### HAMPSHIRE LIGHT WEIGHT

Shena Seaton, Adam St. Clair, Lori Bradshaw and Deon Gallman.

### MIDDLE WEIGHT

Casey Bradshaw, first and breed champion; Dawn Weir, second and reserve breed champion; Jason Thomas, Garrett Magby and Mandy Magby.

### HEAVY WEIGHT

Jay Seaton, Staci Foster, Jeffery Seaton, Tyler Gartin, Cole St. Clair and Jody Copp.

### SPOTS AND POLANDS

Brice Redwine, Shannon Redwine, Kia Morris, Josh McDonald and Juli McDonald.

### YORKSHIRE

Brice Redwine, first and breed champion; Kia Morris, second and reserve breed champion; Justin Puckett, Dustin Weir and Wayne Terry.

### LIGHT CROSS

Deon Gallman, Dawn Weir

and Mandy Magby.

### HEAVY CROSS

Holley Engeling, first and breed champion; Staci Foster,

## Officers...

Cont. From Page 1

Barbara Davila, secretary and Alice Davila, treasurer, both of Sudan; and Marivel Ramirez, historian-reporter, of Muleshoe.

*The Unique Generation* is planning to give away two stuffed animals on January 24 to try to help finance a Valentine's Day Party. Tickets are 50 cents each and every person will have two chances to win.

The youth will be conducting various fund-raising projects to fund their group and meetings.

Frank and Janie Saldana are sponsors of the group, and provide the meeting place.

They could use tables, chairs, games, music and other items to help.

The Saldanas said 67 youths attended their Christmas party, even with all the snow that was on the ground on the weekend before Christmas.

second and reserve breed champion; Shena Seaton, Dustin Weir and Eric Magby.

Brice Redwine exhibited the Grand Champion Swine and Casey Bradshaw had the Reser-

## Almeria Contract

Cont. From Page 1

meter rate. Water rights will be transferred to Almeria Inc. after 30 months, provided they prove to be a viable operation.

The council also approved providing 160 hours of dirt work, levelling the land at Sanderosa. This is valued at nearly \$11,000.

The time limit set to close the loan with FmHA is 60 days, or the contract will be void.

Almeria Inc. promoters, Schmidt and Clikeman, have now indicated they will grow 'some' outside crops as well as those in the greenhouse operation. They will not be growing any crops like corn or cotton, but will be producing certain types of garlic, according to City Manager Dave Marr.

Marr expressed concern about getting involved in outdoor operations, especially because of future water use by Almeria to produce their outdoor crops.

This is believed to be adequately handled with the limitation on daily water usage at the Lubbock Contract Water Rate.

It was explained that the Lubbock Water Contract runs out in July, so adequate water supplies would be available for Almeria to conduct their operations south of Muleshoe.

Present at the meeting was Duane Castleberry, chairman of the Muleshoe Industrial Foundation. He said, "We (MIF) fully support the council, mayor, city manager and appreciate your concern about water."

"We think this proposal will work for them (Almeria) and you have the full support of the Industrial Foundation."

City Manager Marr, Mayor Turner and Chairman Castleberry were to meet with Almeria representatives Tuesday afternoon to go over the proposal as approved by the city council.

In other action, the city council approved joining the

ve Grand Champion Swine.

Jason Thomas won the swine junior showmanship and Brett Thomas was the senior showman for the swine.

checking geological formations as there are certain areas where a regional landfill operation cannot be constructed.

Marr also said Levelland is the only city currently in a 'crisis' situation as their existing landfill is running out of space.

The city manager also informed council members that the city did not get a paving grant this year as priorities were given to those cities and towns seeking water and sewer funds for various projects.

City Manager Marr ended by praising Duane Castleberry and the Muleshoe Industrial Foundation for being an aggressive and hardworking group. "They do an amazingly good job," he said.

## Basketball results

Floydada boys 83, Muleshoe 60. Floydada girls 41, Muleshoe 47 in overtime.

He said the consultants are

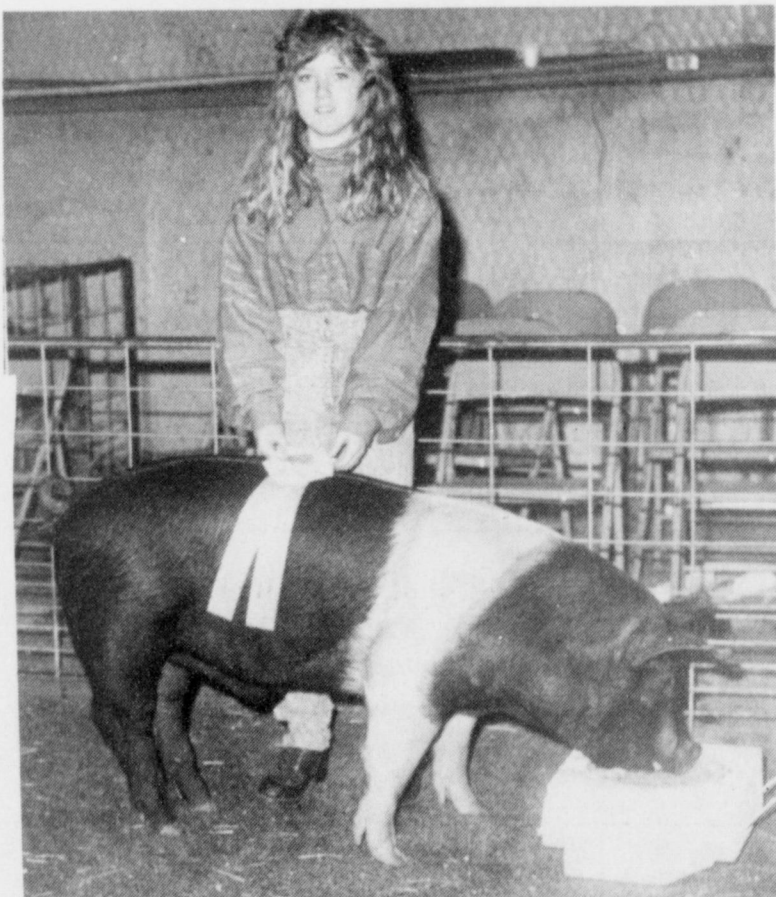


THE UNIQUE GENERATION OFFICERS AND SPONSORS--Last week, *The Unique Generation*, a youth group, elected officers and named sponsors. Pictured standing from left are Alice Davila, Sudan, treasurer; Marivel Ramirez, Muleshoe, historian-reporter; Barbara Davila, Sudan, secretary; and Frances Saldana. Seated from left are Raquel Guzman, Lazbuddie, president; Janie and Frank Saldana, sponsors, Muleshoe; and Raul Rojas, Muleshoe, vice president. (Journal Photo)

## Congratulations

**RESERVE GRAND CHAMPION**--Seth Black exhibited his Exotic Steer in the Lazbuddie Stock Show and took Reserve Grand Champion at the show which was held last Saturday. (Journal Photo)

## Ronnie Holt Insurance



**RESERVE BREED CHAMPION**--Dawn Weir, daughter of Mr. and Mrs. Doyle Weir exhibited her Middle Weight Hampshire to Reserve Breed Champion honors at the Lazbuddie Stock Show held last Saturday. (Journal Photo)



**RESERVE GRAND CHAMPION SWINE**--Casey Bradshaw, son of Mr. and Mrs. Lloyd Bradshaw showed his Medium Weight Hampshire to Reserve Grand Champion honors at the Lazbuddie Stock Show which was held last weekend. (Journal Photo)

# Congratulations



**BREED CHAMPION HEAVY WEIGHT CHESTER WHITE**--Brice Foster, son of Mr. and Mrs. Steve Foster exhibited his Heavy Weight Chester White to Breed Champion honors at the Lazbuddie Stock Show held last Saturday. (Journal Photo)



**BREED CHAMPION POLAND**--Brice Redwine, son of Mr. and Mrs. Bobby Redwine showed his Poland pig to Breed Champion honors at the Lazbuddie Stock Show held last Saturday. (Journal Photo)



**BREED CHAMPION DUROC**--Dustin Weir, son of Mr. and Mrs. Doyle Weir exhibited his Heavy Weight Duroc to Breed Champion honors at the Lazbuddie Stock Show held last Saturday. (Journal Photo)

## Sherley-Anderson Lazbuddie Elevator



## KC Mufflers

Cont. From Page 1

rural America, where people bonded and helped each other.

Even in our age of vanishing loyalties, Kid and Duane attribute the success of their operation to the fact that most of the customers they have had a chance to serve during their 10 years in business have stayed with them.

"Most of the people we serve have become friends," Duane said. "In most cases, it goes beyond a supplier-customer relationship."

There are instances where loyalty is directly proportionate to the price. "We have lost a few customers over the years," Kid said. "It is usually because someone offers them mufflers a

few cents under our price."

"Fortunately," he adds, "most of those shops have come back to us. And we welcome them and continue trying to give them the best service we can."

As with any good supplier, they plan an important role in the success of the shops they serve. It is a role they have created by providing dependable service with quality products they and their customers can stand behind.

It is obvious that Kid and Duane have an equally strong loyalty to their suppliers. Most of the companies and people who supply their warehouse have been with them for several years. International Muffler

Company is their principal supplier. They also carry a line of heavy duty mufflers from Iron-tuff Manufacturing Company. They stock Car Sound catalytic converters. Clamps, hangers, exhaust hardware and accessories are from Nickson Industries. Their inventory also includes aluminized pre-bents and straight tubing. They also carry products from Byrne Associates, including their line of Snapper self-locking grommets.

They have special praise for the people at IMCO. T "They have stood behind us and their product and worked with us in providing what our customers need," Kid said. "Our attitudes and goals are similar. We're both here to serve the muffler shop."

KC also manufactures a variety of products which they deliver to their customers and ship in quantities across the country. They continue to produce glass packs, the product that launched their venture into manufacturing. KC glass packs are produced in numerous sizes and configurations. These are available in blanks or with ends, straight or offset. They make glass packs in several lengths, ranging from ten to 44 inches.

"If a customer wants something longer or different, we'll make it for him," Duane says, expressing a typical KC attitude.

It was a customer request that got them started producing five-inch diameter glass packs with three-inch cores. Like most of the other products they manufacture, their glass packs are available in aluminized or conventional cold rolled steel.

The newest product in the manufacturing operation is an aluminized Y pipe muffler with a three-inch outlet and dual out-

lets for late model GM vehicles.

They also make the KC Turbo Sound Muffler, which continues to increase in popularity. The Turbo Sound is made with the sturdiness and convenience of a glass pack, but as its name implies, has the sound of a turbo. Cores are welded together for extra strength and to prevent rattles. Two baffles are also welded to the cores. The low back pressure and performance qualities make the muffler popular with many shop operators.

The Hooter is another of their specialized products. This decorative chrome tailpipe extension also functions as a resonator. It is made with a punched core welded inside the chrome. Its decorative effect is further enhanced by the use of bright, glow in the dark colors.

They use their computerized Bendit to produce several part numbers of the more popular OE-duplicate pipes. They also make universal pre-bents, making the more difficult bends, allowing the shop to cover several applications with one pipe by making the easier bends. KC pre-bents are available in regular or aluminized tubing. They supply all sizes up to and including three-inch.

Other products they manufacture include resonators, X-tra Heavy Duty Metal Straps, universal brackets, donut retainers, header collectors and spark arrestors for vehicles operating in areas where there is a high danger of fire.

"We've been accused of making our metal straps out of old car frames," Kid says with a grin. "They are heavy and durable."

The people at KC are becoming increasingly known for their ability to design and build

mufflers and exhaust systems for specialized needs of people who use stationary engines, off-road equipment and other vehicles with auxiliary power units. These specialized applications are designed to fill varied needs including irrigation, agricultural, transportation and oil field operations.

It is not unusual for people to bring a small engine to KC and tell them they need the exhaust system or muffler moved. These needs usually arise when the owner finds he can't mount the small engine where he wants it because of the location of the exhaust system.

Many of these people have learned of KC by word of mouth. Others come by way of one of KC's muffler shop customers.

"Many of these people go to their local muffler shop and say, 'Can you make this?' The shop operator then calls us or tells the customer how to contact us," Duane said.

"Nobody ever told us we couldn't do some of the things we do," Kid remarked. "But, our people love the challenge of these special projects. We are flexible and in most cases we can make what our customers need, whether it is special pre-bent numbers or special exhaust systems."

IMCO has also worked with them in supplying special order mufflers when their customers have shown they have a need for quantities of units not in the company's regular line.

It is their exhaust warehouse that provides them with their greatest on-going challenge.

(Editor's note: Because of the local interest, the entire story about KC Muffler and Manufacturing will be featured in *The Journals*. The rest of the story of Kid and Duane Castleberry and their operation will be in the Sunday *Bailey County Journal*.)



KID CASTLEBERRY AND DUANE CASTLEBERRY

### Need A Yard Man For 1991

I Can Do Anything You Need Done.

CALL

CAPPY GATEWOOD

ANYTIME

272-5435



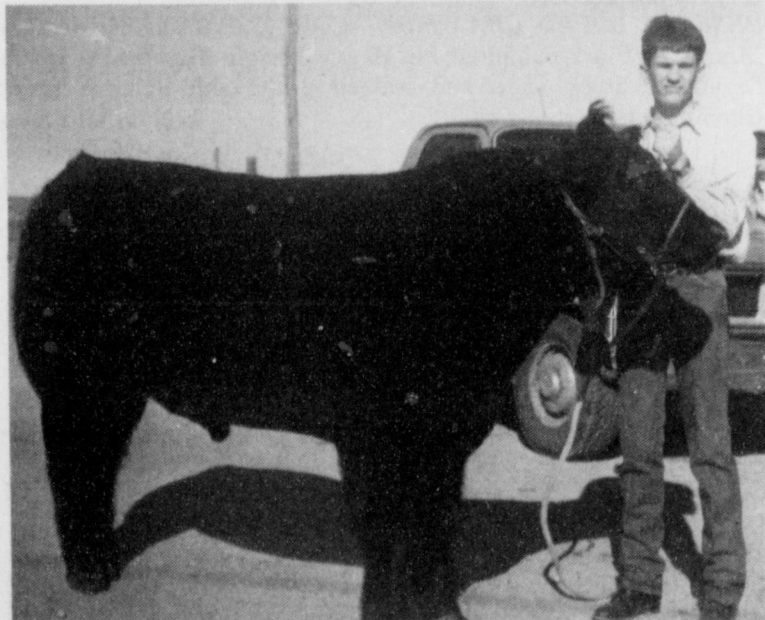
## Congratulations



TAKES GRAND CHAMPION SWINE HONORS---Brice Redwine, son of Mr. and Mrs. Bobby Redwine exhibited his Yorkshire to Grand Champion honors at the Lazbuddie Stock Show held last Saturday. (Journal Photo)

Farmer's Spraying Service Inc.

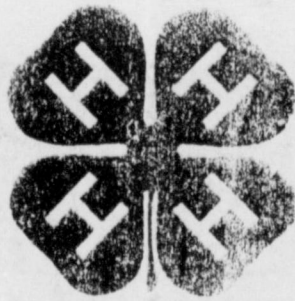
# Congratulations



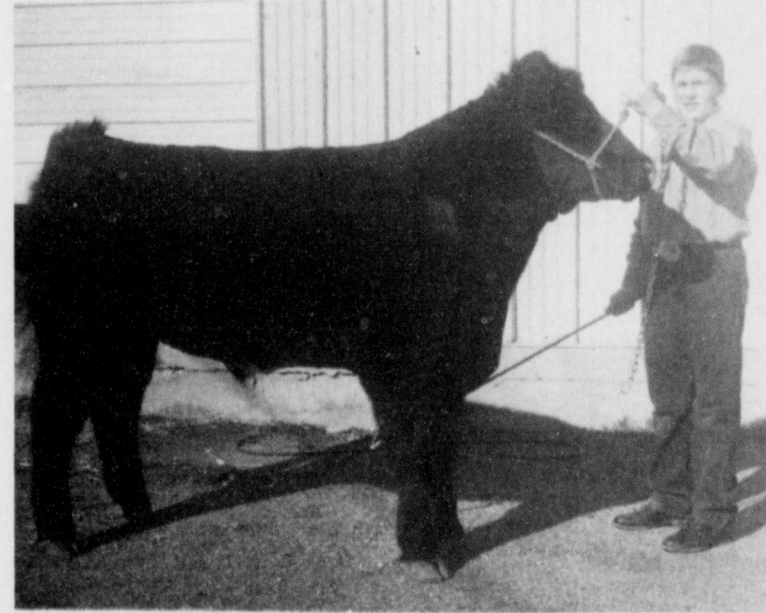
SENIOR SHOWMANSHIP---Casey Bradshaw showed his ability to show animals in a stock show and walked away with the Sr. Showmanship award at the Lazbuddie Stock Show held last weekend. (Journal Photo)



RESERVE BREED CHAMPION---Seth Black, son of Mr. and Mrs. Ricky Black showed his Heavy Weight Finewool to Reserve Breed Champion honors at the Lazbuddie Stock Show which was held last weekend. (Journal Photo)



Farmer's  
Co-Op  
Elevators



JUNIOR SHOWMANSHIP---Jason Thomas son of Mr. and Mrs. Randy Thomas proved he can show animals in the ring, and took Jr. Showmanship honors at the Lazbuddie Stock Show held last weekend. (Journal Photo)



RESERVE BREED CHAMPION---Jeffery Seaton, son of Mr. and Mrs. Jimmy Dale Seaton exhibited his Heavy Weight Duroc to Reserve Breed Champion honors at the Lazbuddie Stock Show which was held last Saturday. (Journal Photo)



**Lazbuddie Honor Roll**

**PRINCIPAL'S "A" HONOR ROLL**

**FIRST GRADE**  
Savannah Black, Jodi Coker, Shannon Redwine and Cameron Richardson

**SECOND GRADE**  
Kendra Gallman, Sunshine Lueras and Kati Mimms

**THIRD GRADE**  
Staci Foster, Steven Gartin, Garrett Magby and Bobby Martha

**FOURTH GRADE**  
Seth Black, Kellen Morris, Kia Morris, William Morris and Shena Seaton

**FIFTH GRADE**  
Steven Foster, Carla Johnson and Dustin Weir

**"A-B" HONOR ROLL**  
**FIRST GRADE**  
Kayla Copp, Trevor Gartin, Kelsey Jones, Kayla Kimbrough, Jered Nickels, Candice

Randolph and Jay Seaton  
**SECOND GRADE**

Amber Burton, Domingo Chavez, Lacy Clark, Valerie Everett, Maria Godinez, Fabian Guzman, Mayra Hernandez, Sarah Jennings, Kristy Montoya, Micheal Nail, Cole St. Clair and Laura Via

**THIRD GRADE**  
Leslee Brown, and Jason Jesko

**FOURTH GRADE**  
Holly Engelking, James Jennings, Andy Johnson, Joshua McDonald and Amber Richardson

**FIFTH GRADE**  
Don Burch, Maria Franco, Deon Gallman, Blas Martinez, Brice Redwine, Juan Salazar, Christopher Smith and Jason Thomas

**FIRST SEMESTER "A" HONOR ROLL**

**FIRST GRADE**  
Savannah Black, Jodi Coker, Shannon Redwine and Cameron Richardson

**SECOND GRADE**  
Kendra Gallman, Maria Godinez, Mayra Hernandez, Sunshine Lueras and Kati Mimms

**THIRD GRADE**  
Garrett Magby and Bobby Martha

**FOURTH GRADE**  
Seth Black, James Jennings, Kellen Morris, Kia Morris, William Morris and Shena

Seaton  
**FIFTH GRADE**

Dustin Weir  
**FIRST SEMESTER "A-B" HONOR ROLL**  
**FIRST GRADE**

Kayla Copp, Trevor Gartin, Kelsey Jones, Kayla Kimbrough, Michael Martinez, Lloyd Nail, Jered Nickels, Candice Randolph, Jay Seaton, Wayne Terry

**SECOND GRADE**  
Amber Burton, Lacy Clark, Jerry Cooper, Valerie Everett, Fabian Guzman, Sarah Jennings, Kristy Montoya, Micheal Nail, Cole St. Clair and Laura Via

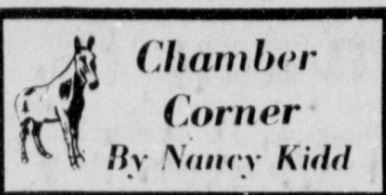
**THIRD GRADE**  
Leslee Brown, Staci Foster, Steven Gartin, and Jason Jesko

**FOURTH GRADE**  
Holly Engelking, Andy Johnson, Christina Martha, Joshua McDonald, Rose Mendosa and Amber Richardson

**FIFTH GRADE**  
Melissa Aguirre, Don Burch, Steven Foster, Maria Franco, Deon Gallman, Carla Johnson, Blas Martinez, Ronald Puckett, Brice Redwine, Juan Salazar, Christopher Smith and Jason Thomas

He is happy that knoweth not himself to be otherwise.

---  
-Thomas Fuller.



The Chamber of Commerce and Agriculture would like to welcome five new Directors to the Board. They are: Rex Harris, David Tipps, Randy Lewis, Curtis Carpenter and Kid

Castleberry.

These men will take their oath of office Saturday night at the Chamber's annual banquet. We look forward to an exciting year in 1991. Plan to attend the banquet Saturday, January 26th at 7 p.m. at the high school cafeteria.

Tickets are on sale at the Chamber office and from all Board members. The remaining Board members are: Lonnie

Adrian, Inez Bobo, Pat Young, Robert Montgomery, Jeri Weid-ebush, Cliff Black and George Nieman.

We promise you a good meal, and excellent entertainment featuring Dr. Kenneth Wyatt.

This is an evening you will not want to miss. There will be some surprises when the awards are given.

Memory works wonders with the truth.

**Ward Bros. Tractor, Inc.**

**Annual Farm Machinery Auction**

**Sale Feb. 21, 22, 23**

*Buyers from several different States - and Mexico*

**Deadline for listing on sale bill:**

**January 28, 1991**

*(Will take consignments up until day of sale.)*

**For further information, Call Clovis, N.M.**

**(505) 762-2612**

**Letter To The Editor**

Dear Editor:

I would like to thank each and everyone of you, for your letters, cards, packages, but most of all -- for your prayers in my time of need and those of my family while I'm here in Saudi Arabia.

Thank you,  
CPL Ben Martinez  
and Family

**Campbell Tire Recycling and Disposal**

Levelland, Texas 79336

Licensed By State

For More Information Call - Kary or Jerry

806-894-2822

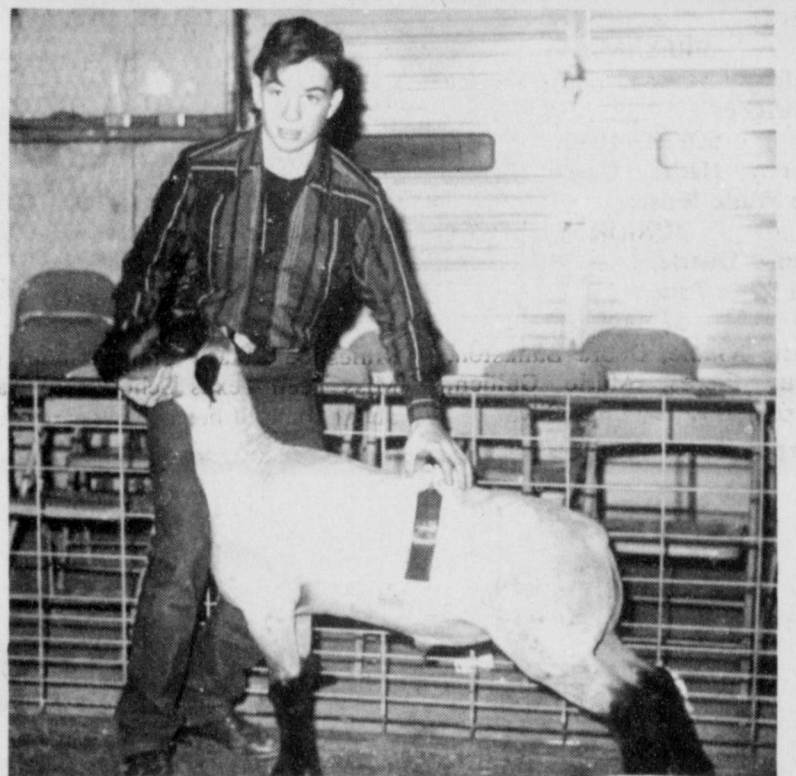


**RESERVE BREED CHAMPION**---Exhibiting his Light Weight Berkshire to Reserve Breed Champion honors was Brice Foster, Brice is the son of Mr. and Mrs. Steve Foster. (Journal Photo)

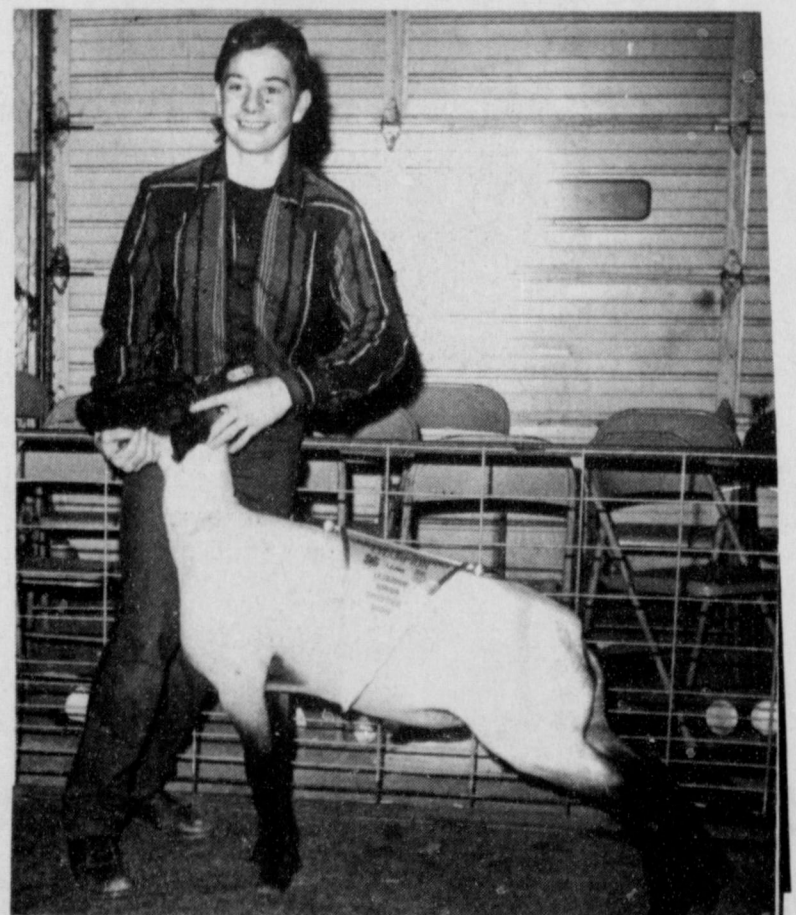


**RESERVE BREED CHAMPION**---Exhibiting his Lt. Weight Southdown to Reserve Breed Champion honors at the Lazbuddie Stock Show was Jeffery Seaton, son of Mr. and Mrs. Jimmy Dale Seaton. The stock show was held last Saturday. (Journal Photo)

*Congratulations*



**RESERVE BREED CHAMPION**---Cody Clark, son of Mr. and Mrs. L.D. Clark exhibited his Heavy Weight Hampshire in the Lazbuddie Stock Show and walked away with Reserve Breed Champion honors. (Journal Photo)



**RESERVE GRAND CHAMPION LAMB**---Cody Clark, son of Mr. and Mrs. L.D. Clark exhibited his Lt Weight Suffolk to Reserve Grand Champion at the Lazbuddie Stock Show which was held last Saturday. (Journal Photo)

*Viola's Restaurant*

*Foster Fertilizer, Inc.*

*Lazbuddie Garage & Supply*

*Serv-All Thriftway*

*American Valley, Inc.*

*Leal's Restaurant*



**Three Way Honor Roll**

**KINDERGARTEN**  
Angela Banda, Sammy Castillo, Ashley Layton, Julie Salamanca, Steven Watson, Laticia Guitron, Maria Ponce and Alma Rodriguez

**FIRST GRADE**  
Rhianna Anglin, Joal Armendariz, Anthony Furgeson, Kara Heinrich, Missy Jeffcoat, Debra DeLaRosa, David Gilbreath, Melissa Lopez, Christina Mills, Ivan Navarro and Julia Ponce

**SECOND GRADE**  
Brenda Castillo, Lauren Foote, DeAnne Martha, Kristal Martha and Eric Sowder

**THIRD GRADE**  
Lynette Armendariz, Monty Kirby, Scott, Pollard, Rebecca Robertson, Jessica Robinson, Rosa Soliz, Robin Tooley, Daniel Reeves, Abel Rodriguez, Patricia Rodriguez, Christian Saenz, Alberto Valderas and Kasey Wright

**FOURTH GRADE**  
Jonathan Kindle, Janice Martha, Perla Astorga, Kelly Kidd, Martha Lopez, Gerardo Perez and Joshua Robinson

**FIFTH GRADE**  
Russell Pollard, Joshua Tooley, Sammy Soliz, Kyle Walker and Cody Wilson

**SIXTH GRADE**  
Diana Salamanca, Chris Soliz, Kyle Kindle, Lupe Landeros, Maribel Lopez, Melanie McCaul, and Jesus Perez

**SEVENTH GRADE**  
Keith Kindle, Brittany Kirby and Roy Martha

**EIGHTH GRADE**  
Erin Sowder, Octavio Perez, Lisa Salamanca and Monty Turney

**FRESHMAN**  
Melissa Bennett, and Roxana Rodriguez

**SOPHOMORE**  
Barney Haros, Gisela Perez, and Wade Wilson

**JUNIOR**  
Denise Duarte, Larry Robertson and Marc Tucker

**SENIOR**  
Carrie Kindle, Debra Bankston, Jesus Flores, Mario Guillen, Jesse Haros and Lupe Silva

**Tax Exempt Bonds To Be Sold This Month**

Tax-exempt bonds to be used through the Texas Higher Education Coordinating Board's College Savings Bond Program will be sold later this month in small denominations to give anyone the opportunity to purchase them for funding future college costs.

Prospective purchasers should contact one of five participating underwriters, their banker, an investment broker, or a financial advisor before or during the week of Jan. 21-25. The Coordinating Board will finalize the sale at its quarterly meeting on Jan. 24.

Purchase prices of these bonds will depend on the maturity value (available in increments of \$1,000) and interest rates at the time of the sale. Minimum purchase prices could be as low as several hundred dollars for small denomination bonds with long maturities. These details will be

available from brokers when the bonds are actually offered for sale.

The bonds will accrue interest semi-annually, but will only pay interest at maturity.

Proceeds from this \$25 million bond sale will allow the Coordinating Board to provide low-interest loans to college students in Texas through the board's Hinson-Hazelwood loan program.

"Ordinarily, state bonds are available only in much larger denominations. This bond sale will give more Texans an opportunity to help meet the rising cost of higher education," said Commissioner of Higher Education Kenneth H. Ashworth.

Interest accruing on the bonds is exempt from federal income tax but may be subject to the individual and corporate Alternative Minimum Tax. This is described in a preliminary

official statement which should be obtained from an underwriter, banker, investment broker or financial advisor and read by a prospective purchaser prior to making an investment decision.

**Enochs News**  
by: Mrs. J.D. Bayless

Mr. and Mrs. Pete Thomas's grandchildren Andy, Jamie and Ben Thomas of Morton spent several days visiting their grandparents.

I was in Mulshoe Tuesday on business and visited Mrs. Clara Coffman and Mrs. Olive Cox.

Guests in the home of Mr. and Mrs. Jack Stanley Sunday was her sister, Mr. and Mrs. Dan Norvill from Hereford Mr. and Mrs. Bud Huff also visited with them.

The Co-op Gin at Enochs are almost through ginning. They have ginned 6,300 bales.

Mrs. Lorella Jones guests recently were a son, Mr. and Mrs. Roger Jones and children from Leuders, and Mrs. Roslyn Sellers of Sergraves.

Mrs. Paula Grant and children of Lubbock visited her parents, the Dale Nichols during the weekend.

**Infant Viral Lung Infections On Rise**

Respiratory syncytial viral pneumonia (RSV) occurs throughout the year but is most prevalent during the winter months. Glenn Boris, M.D., pediatrician at Methodist Hospital in Lubbock said, "RSV epidemic outbreaks typically peak December through February."

RSV is the most frequent cause of lower respiratory tract disease in infants and young children and is responsible for approximately 100,000 infants and preschoolers being hospitalized in the United States each

year, according to the Centers for Disease Control. By age 3, virtually every child in the U.S. will have come in contact with this contagious virus.

The primary mode of transmission of the RSV virus is hand to hand. High risk infants include those less than six weeks old, premature babies, children suffering from heart or lung disease and those children whose ability to resist disease has been impaired for some reason, Dr. Boris said.

Light is to reading what facts are to intelligence.

1043

**WHY BUY A COPY WHEN YOU CAN AFFORD THE ORIGINAL?**



There's no reason to settle for second best, when GM Goodwrench parts are readily available and competitively priced. GM Goodwrench parts are designed specifically for your GM vehicle. So they fit right, they work right, and they last longer.

GM Goodwrench branded parts are available only at your GM dealer. So stop in and discover the difference Mr. Goodwrench makes. Get genuine GM parts from Mr. Goodwrench at

**Robert D. Green, Inc.**  
2400 W. Amer. Blvd. 272-4588  
It's not just a car, it's your freedom.





**ROTARY PRESENTS CHECK**--Dr. Bruce Purdy introduced Marsha Wilson, right, who was presented a \$100 check by the Mulshoe Rotary Club to help sponsor her participation in the Miss Teen Texas Scholarship Pageant. Marsha talked to Rotary about some of her achievements in Mulshoe. (Journal Photo)

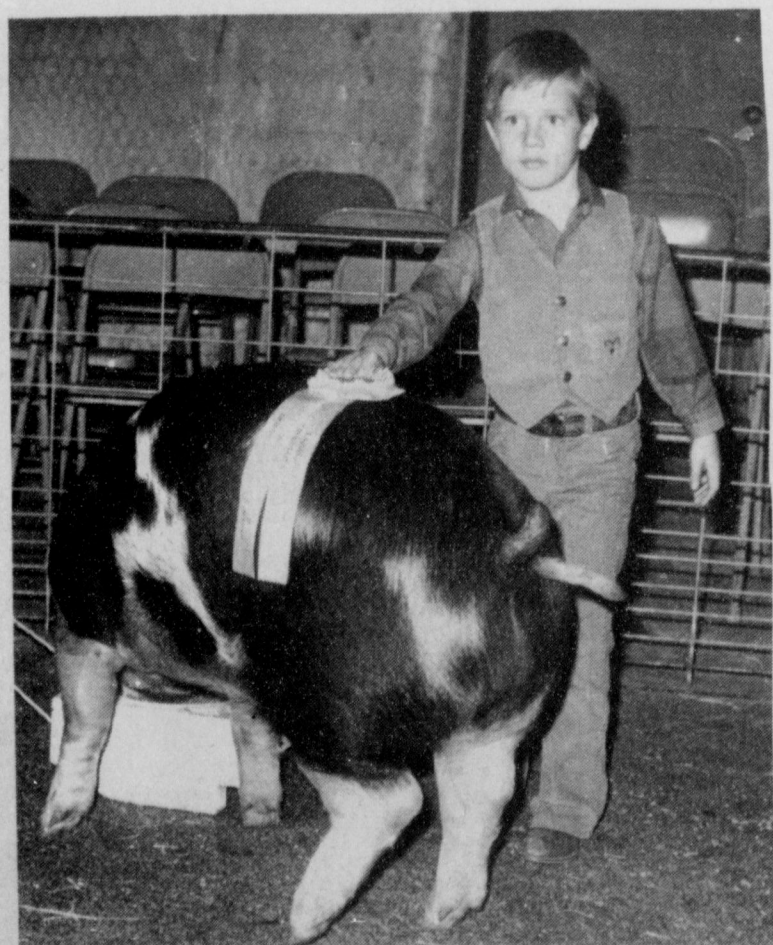
**Notice To Taxpayers**

*Pursuant to Section 31.02 of the Texas Property Code, all 1990 taxes will become delinquent on February 1, 1991. Additional penalty and interest will be added if not paid by this date.*

**Bailey County Appraisal District**

104 E. Ave. C. Mulshoe 272- 5501

*Congratulations*

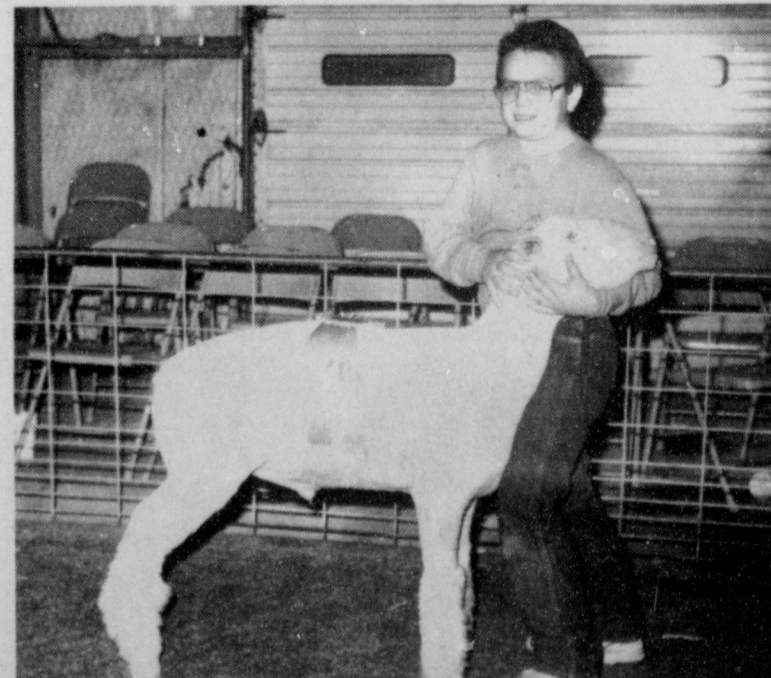


**RESERVE BREED CHAMPION SPOT**--Shannon Redwine, son of Mr. and Mrs. Bobby Redwine exhibited his Spot pig at the Lazbuddie Stock Show last weekend and walked away with the Reserve Breed Champion honor at the stock show. (Journal Photo)

*Congratulations*



**BREED CHAMPION FINEWOOL CROSS**--Jana Vise, daughter of Mr. and Mrs. Dale Vise exhibited her Heavy Weight Finewool Cross to Breed Champion honors at the Lazbuddie Stock Show held last Saturday. (Journal Photo)



**FINEWOOL BREED CHAMPION**--Edward Terry, son of Mr. and Mrs. Edward Terry exhibited his Heavy Weight Finewool Lamb to Breed Champion honors at the Lazbuddie Stock Show held last Saturday. (Journal Photo)

**Easter Grain, Inc.**

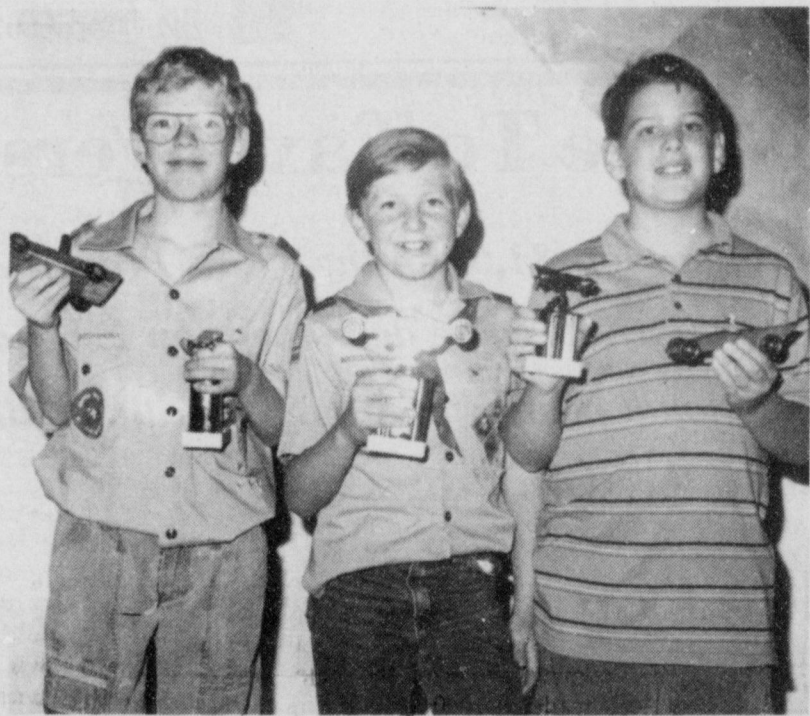
*Paco Feed Yard*



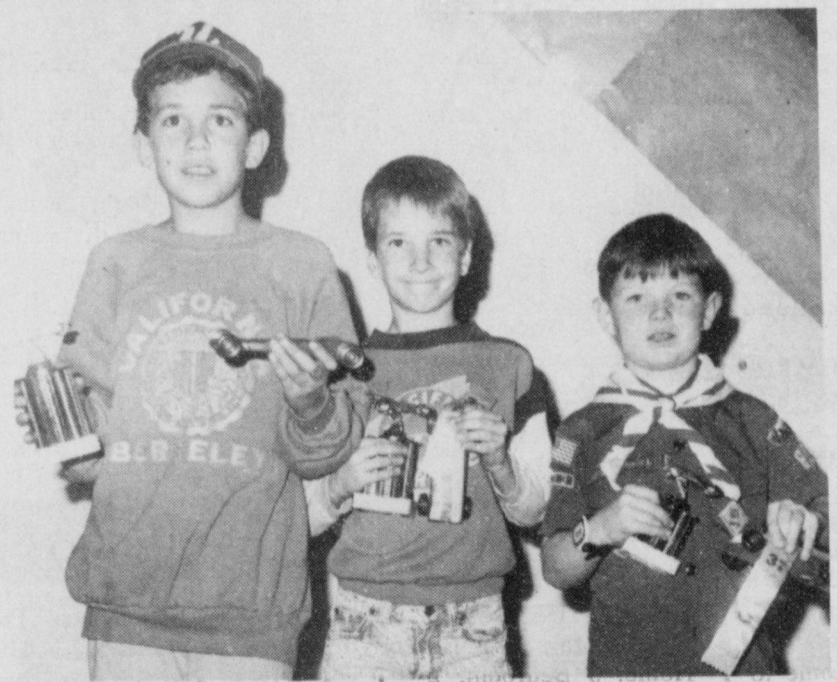
# 1991 Pinewood Derby



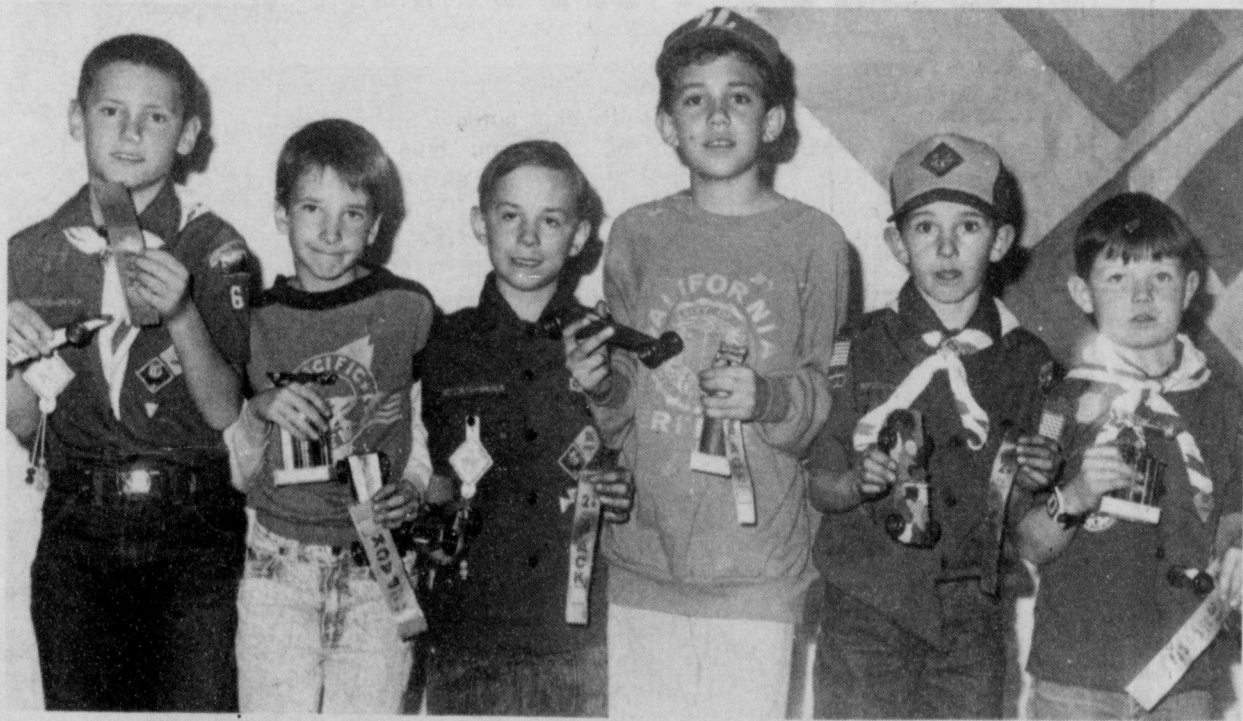
**MAKING THE TOP THREE**--Wolf Den 1. Cade Hooten, first; Weston Price, second; and Tyler Black, third; Den 2, Rocky Dehoyas, first; David Morris, second; and Chris Baker, third. (Journal Photo)



**WEBELOS TROPHY WINNERS**--Aaron Purdy, first; Jon Keith Turner, second; and Christopher Shelburne, third. (Journal Photo)



**TROPHY WINNERS, BEAR DIVISION**--Bret Clements, first; Jonathan May, second; and Chris Vaughn, third. (Journal Photo)



**TOP RACERS FOR THE BEARS**--Den 1. B. J. Copeland, first; T. J. Hutto, second; and Jonathan May, third. Den 2. Bret Clements, first; Kole Magby, second; and Chris Vaughn, third. (Journal Photo)



**TIGER TROPHY WINNERS**--Tad Lutz, first; Stephen Shelburne, second; and Cody Turner, third. (Journal Photo)



**WOLF TROPHY WINNERS**--Cade Hooten, first; Rocky Dehoyas, second; and Weston Price, third. (Journal Photo)



**PINEWOOD RACERS TIGER DIVISION**--Den 1. Cody Turner, first; Stephen Shelburne, second; and Tad Lutz, third. Den 2. Mickey Tosh, first; Joshua Clark, second; and Michael Durbin, third. (Journal Photo)



# CLASSIFIEDS 272-4536

## CLASSIFIED RATES

15 Words & Under  
Minimum Charge  
\$2.30  
Thereafter  
\$2.00  
16 Words & Over  
1st Insertion  
15 cents per word  
2nd Insertion  
13 cents per word

## CLASSIFIED DISPLAY RATES

\$1.75  
Per Column Inch  
DEADLINES  
12 noon Tues.  
For Thursday Paper  
12 noon Friday  
For Sunday Paper

To receive the reduce rate after the first insertion ad must run continuously.

We reserve the right to classify, revise, or reject any ad. We are not responsible for any error after ad has run once.

## 1. Personals

**CONCERNED About Someone's Drinking? HELP IS AVAILABLE**  
through Al-Anon  
Call 272-2350 or 965-2870 or come to visit Tuesday and Thursday nights, 8:00 p.m. & through AA call 965-2870 or come visit Tuesday nights, 8:00 at 620 W. 2nd, Muleshoe.

## 3. Help Wanted

Muleshoe Independent School District is now accepting applications for male and/or female qualified bus drivers. Applicants must be able to obtain, prior to employment a Texas Chauffeur's license, pass a physical examination provided for by the school, have a safe driving record from the Texas Department of Public Safety, and have completed or be enrolled in a twenty hour driving course provided by the school. Salary range is from \$56.00 to \$90.00 per week with driving time being two to three hours per day. Application forms may be picked up at the school Business Office.

**WANTED:** Experienced machinist and gearhead man. Call (806) 238-1596 days or 238-1328 nights-- after 9 p.m.  
B3-tfc

## 9. Automobiles For Sale

**FOR SALE:** 1987 Chevy Subaru Silverado. AM/FM Cassette, tilt cruise, new tires. 60,000 miles. Call 272-5037.  
P4-44t-fc

## 15. Misc.

**GOLD CREDIT CARD**  
100% approved  
\$1,500. credit line  
money back guarantee for complete info. call 1-900-329-0010 25. fee A15-2s-4tp

**FOR RENT:** Large Self storage rooms with 24 hour a day access. Call J&J Self Storage at 272-4307.  
S15-1s-tfc

We need to buy 100,000 ft of aluminum pipe 2" to 8". Also side row sprinklers. Contact T. L. Timmons, State Line Irrigation, Littlefield, 806-385-4487.  
T15-tfc

## 8. Real Estate

For Sale or Trade in Hagerman, N.M. area Thriving Mechanic business and country home on 2 acres. Landscaped and completely fenced. 4 Bedrooms, 2 1/2 Baths, Carport Patio. Automotive & truck repair business with 2 car stall-shop. Only shop within 25 miles. Business is good. Owners retiring. \$40,000. Call (806) 272-3671.  
G8-48s-5tcS

**FOR SALE:** Country Home. 3 Bedroom, 2 Bath, 220 sq. ft. with 3 Acres. 8 miles North of Lazbuddie.  
K8-51s-tfc

**HOUSE FOR SALE:** 3 Bedroom, 2 full baths, Central heat and air. Good storm cellar and well. On 2 Acres. 3 miles East on Hwy 70 and 1 mile North, then 200 yards East. 806-352-1715 or 352-1899 in Amarillo.  
B8-4t-tfc

## Blue Corn Slowly Making Its Way Into Stores

Blue corn, virtually ignored by modern-day consumers until recently, is slowly making its way into grocery stores and restaurants.

"The demand has picking up steadily in Central Texas," said Daniel Guerra of Austin, plant manager of El Lago, which has been making blue corn products for two years. "Most of the demand first came from restaurants, then health food stores and grocery stores."

Blue corn, which has a nuttier, sweeter taste than other types of flour corn, was being

grown by the Pueblo Indians as early as 1540 when Francisco Vasquez de Coronado explored the southwestern United States. But consumer demand will determine whether farmers continue to grow the specialty crop which yields less but brings higher prices than ordinary corn.

Guerra said 5 percent of the 600 Mexican restaurants El Lago services purchase blue corn tortilla chips regularly.

Restaurants can purchase a package of 10 dozen regular white corn tortillas for \$1.75 from El Lago, but the same quantity of blue corn tortillas cost \$7.50. Consumer prices are about a dollar higher at their outlet store, he said.

Alana Sugar, manager of Whole Foods Market based in Austin, said their best selling blue corn item is a 9-ounce box of cereal flakes at \$2.59. That compares to a 12-ounce box of Kellogg's Corn Flakes for \$1.69.

"Children are really attracted to blue corn flakes," said Sugar. "They're fun."

Blue popcorn kernels are sold for \$1.49 a pound and sell just as well as their yellow counterparts, Sugar said.

Chuy's Mexican Restaurants in Dallas, Austin and Houston is "well known for its blue corn dish," said Dallas manager John Jacobs.

The Chuy's Special is a Santa Fe style stacked enchilada with layers of blue corn tortillas, tomatillo sauce and a chicken breast smothered in Monterey jack cheese.

But the colorful commodity still lags behind in the research arena. Although processors, restaurateurs and retailers seem excited about blue corn prospects, researchers seem skeptical.

Texas A&M University cereal

Classify

272-4536

## 8. Real Estate 8. Real Estate

### Henry Realty

111 W. Ave. B. 272-4581

Muleshoe, Tx.

Just listed- 3 Bedroom, 1 bath, 1 carport storm shelter, good fence. Priced to sell.

2 Bedroom, 1 bath, Perma stone, carpet, fenced, insulated, storm doors and windows; low utilities. Neat, clean and excellent location near High School.

2 Bedroom, 1 bath, 15,000.

**IN CONTRACT**  
NEW LISTING-3 Bedroom, 1 bath Lenau Addition. Well insulated with storm door and windows. Patio room. Thermo pane windows. Landscaped to perfection with easy care of grounds. Low utility cost. Priced to sell at \$29,500.

3 Bdrm., 2 bath, spacious home outside city limits, near city highway. 29x40 metal building. Lot 85'x420'.

**COMMERCIAL PROPERTY**-Ideal location on West American Blvd. 150' highway frontage. A great business opportunity.

**SPACIOUS**-2 Bdrm., 2 bath, with garage. Freshly painted. Fireplace. Ready to move in.

Brick Veneer Restaurant 150 Seating, over 5,000 sq. ft. with modern Equipment. Ready for operation Located on US Hwy 84 in Muleshoe. 7000 sq. ft. paved parking. Excellent Financing available for Qualified Buyer.

### BAILEY COUNTY LAND FOR SALE

Owner will finance the following size blocks: 2-30 acres, 2-100 acres, 2-200 acres, and 1-277 acres. Wheat, milo and cotton allotments. 1 1/4 circles of permanent grass. 7 Center Privs. A Sweet Cattle Set-Up.  
If interested, contact T.L. Timmons  
806-385-4487 (Day) 806-925-6484 (Night)

## Bingham & Nieman Realty

116 E. Ave. C George Nieman, Broker 272-5285 or 272-5286

**IMMACULATE** 3-2-2 Brick, Cent. A&H, Built-ins, FP, sunken lv. area with cathedral ceiling, ceiling fans, earhtones, storage bldg. \$50's!!!!

**NICE RESIDENTIAL LOTS**- \$5,000 UP.....

**PRICE REDUCED**-Nice 3-2-2 Brick, Cent. A&H, FP, Earhtone carpets, fenced yd. \$60's!!!!

3-2-2 Home. Heat pump, Built-ins, FP, earhtone carpets. Fenced yd., & more. **PRICE REDUCED**-\$30's!!!!

3-2-2 Brick, Corner Lot, Cent. A&H, Built-ins, FP, patio. \$50's!!!!

**HIGH SCHOOL**  
**PRICED REDUCED** 3-1-1 Home, earhtone carpets, workshops, cellar, fenced yd.

2-1/2-1 Brick, fl. furn., Cent. Air, fenced yd., & more. \$20's!!!!

**FmHA FINANCING** to qualified buyer- 3-1-1 Brick, Cent. heat, earhtone carpet, \$20's

**JUST LISTED** 2-2-2 Home, Cent. heat, evap. air, built-ins, fenced yd., & more.

**HIGHLAND AREA**  
**VERY NICE** 4-2-1 Brick, Cent. A&H, built-ins, earhtone carpets, util., encl., patio, storm win. & doors, grill, spklr. sys., stor. bldg., fenced yd. \$60's!!!!

**PRICE REDUCED** 2-2-2 Brick, corner lot, Cent. A&H, spacious rooms, utility, new carpet, & vinyl, cov. patio, fenced yd. \$30's!!!!

**JUST LISTED**- Nice 2-2-1 Brick, Cent. A&H, built-ins, HEATED POOL, spklr. Sys., fenced yd., corner lot, & more. \$50's!!!!

**LENAU ADD.**  
Nice 4-2-2 carport home. Cent. A&H, built-ins, FP, Cent. Vac., Office, Sewing area, fenced yard. \$30's!!!!

3-2-2 Brick, heat pump, built-ins, nice carpets, fenced yd., & more!!!!

3-1-1/2 Brick, CH, Evap. Air, utility, fenced yd., corner lot. FmHA financing possible!!!!

3-1 Home, Corner lot, wall furn., fenced yd. \$20's!!!!

**COUNTRY CLUB** 3-2-2 Brick, Cent. A&H, built-ins, FP, 2,000+ lv. area, fenced yd., storage bldg., & more.!!!!

**JUST LISTED-VERY NICE** 3-2-2 Brick, 3,000+ sq. ft. of lv. area incl. nice finished basement, built-ins, geothermal A&H, energy-eff., loads of closet & storage, on 7.86 acres, fence, stock tank, sideroll, & many more amenities, close to town. **DON'T MISS THIS!** \$90's!!!!

3-2-3 Carport Home on 11 ac. edge of town, Cent. A&H, built-ins, cellar, barns, & corral. **MAKE OFFER!!!!**

**NICE** 3-2-1 Home on 1 acre close to town, Cent. Heat, evap. air, nice carpets, remodeled. \$30's!!!!

**GYMNASTICS STUDIO- BLDG. & EQUIPMENT- PRICED TO SELL!!!!**

**RESTAURANT BLDG., LAND., & EQUIPMENT- A GOOD BUY!!!!**

**COMMERCIAL TRACT** 175'x100' (Hwy. 70 & 84, RR spur access, approx. 1200 sq. ft. bldg. **PRICED TO SELL!!!!**

24 ac., W. Hwy. 84, 8" well, 3 homes, 14 mobile home hookups, & also has veg. & fruit stand!!!!

## Sudan News

by Ann Gaston

Missy and Joe Ky Shultz of Plainview and Kathey and Brett Granger of Browfield were visitors in the home of Josephine Fisher and to attend the Christmas Classics to watch their sister Tanya play, and their brother Shannon play in the Tournament.

Mike and Shawni Nix just returned from Arlington where they watched their daughter Melissa play for UTA and they defeated Rice and Stevenville.

Visiting in the home of Matt and Mickey Nix and Frank and Nell Lane for the holidays were Mike and Sandy Nix, Kay Lynn and Aaron of Belton.

The results of the Sudan Livestock Show held Jan. 5, 1991 were as follows:

Class I fine wool: 1. Kyla Morris breed champ., 2. Crystal Lively res. breed champ and 3. Jeremy Bourland.

Class II fine wool cross: 1. Courtney Legg, breed champ., 2. Andy Roberts res. breed champ., and 3. Kody Morris.

Class III Southdown: 1. Penni Hargrove, breed champ, 2. Joshua Bourland, res. breed champ.

Class IV light weight med. wools: 1. Andy Roberts, 2. Jeremy Bourland, 3. Heather Bourland.

Mr. and Mrs. Gedonne Williams of Denton were new year's visitors in the home of his mother, Edith Williams. They enjoyed New years dinner in Muleshoe with his children and families; Mr. and Mrs. Larry Puckett and Kevin and Greg Williams, Lillian Cook of Littlefield also joined them.

Trace Fritz, son of Lisa and John Fritz of Lubbock was dismissed from the hospital December 28th and taken home. Trace was born prematurely at 2 lbs. 12 ozs. and now weighs 6 lbs. 2 ozs. Trace is the grandson of Valda Bishop of Sudan.

Ty Hargrove continues to improve at Methodist Hospital's Rehab Center.

Dick West has been coming home some weekends and is improving also at the Rehab Center at Methodist.

John Burnett had surgery on his eye Monday, and Alma continues her treatment.

Harold Haynie continues treatments at the vet hospital in Amarillo.

Jerry Cardwell has surgery and is home in Greenville, Tx.

Glen Gatewood fell and broke his hip and is in Methodist Hospital in Lubbock.

Bertha Welkner is home after a stay in the Littlefield hospital.

Timothy J. Bright of Sudan is among the 472 Eastern New Mexico University students named to the 1990 fall semester Dean's Honor Roll.

Bright, a freshman communication major, is designated cum laude.

Cum laude students hold a 3.6 to 3.69 GPA and students receive "honors" if they have a 3.25 to 3.59 GPA.

Two Sudan area students attending Angelo State University in San Angelo, are listed on the honor roll for the fall semester at the University.

Those listed on the 3.00 to 3.49 honor roll include Misty L. Gay Bartley, an accounting major.

Those listed on the 3.50 to 4.00 honor roll include Kendra Lou Whitten, an accounting major.

Call 272-4536 Classify!



**Jerry Cribbs  
Funeral Services  
Held Tuesday**

Funeral services for Jerry Gale Cribbs, 57, of Morton were held at 2 p.m. Tuesday, Jan. 22 in the Morton First Baptist Church with Kim Allen Coats of San Angelo and Kenny Neal Coats of Levelland, officiating.

Burial was in Morton Memorial Cemetery under the direction of Ellis Funeral Home of Morton. Cribbs died at 1:10 p.m. Saturday in Cochran Memorial Hospital at Morton.

Born Oct. 3, 1933, in White City, Cribbs had been a resident of Morton since 1972, moving there from Sterling City, Calif.

He was a retired farmer. He married Mary Ickes on Jan. 25, 1958, in Reno, Nev.

Survivors include his wife, Mary; two sons, Thomas Earl

Cribbs of Hobbs, N.M. and Sgt. Jerry Oscar Cribbs of Goose Creek, S.C.; a daughter, Teresa Gail Amalla of Morton; a sister, Velena Clark of Red Bluff, Calif.; a brother, Warren Cribbs of Vernon; and two grandchildren.

**Patients in  
Muleshoe Area  
Medical Center**

JAN. 18-21  
FRIDAY

Fred Mapes, Callie Brown, Letha Patterson, W.O. Harrell and Elizabeth Watson

SATURDAY

David Bellar, Fred Mapes, Callie Brown, Elizabeth Watson, Roy Warwick, W.O. Harrell and Frankie Daniell

SUNDAY

Fred Mapes, Callie Brown, Elizabeth Watson, Roy Warwick, Frankie Daniell, Elizabeth King, and Alene Horn

MONDAY

Fred Mapes, Callie Brown, Elizabeth Watson, Roy Warwick, Frankie Daniell, Elizabeth King, and Alene Horn

**Minnie Gant  
Local Woman's  
Mother Dies**

Funeral services for Minnie A. Gant, 104, of Morton were held at 2 p.m. Monday, January 21 in the Three Way Baptist Church with the Rev. Roger Foote, pastor, officiating.

Burial was in Morton Memorial Cemetery under the direction of Ellis Funeral Home of Morton. Mrs. Gant died Saturday in Morton Manor Nursing Home.

Born Aug. 27, 1886, in Berry County, Missouri, she had been a resident of Morton since 1975, moving there from Goodland. She was a homemaker and a member of the Three Way Baptist Church. Her husband, E.L. Gant, died in 1948.

Survivors include a son, Morris T. Gant of Three Way; two daughters, Effie Prather of Lamesa, and Fay Wellborn of Muleshoe; 10 grandchildren; 28 great grandchildren; and 13 great great grandchildren.

She was preceded in death by two sons, Elmer Gant in 1931, and George Gant, and a daughter, Marie Robertson in 1968.

**“Confused  
about life  
insurance?  
Rely on me  
to help you  
make the right  
choices.”**



CALL ME.  
Mark Morton  
109 S. 1st  
272-7519  
Muleshoe, Tx.

State Farm  
Life Insurance Company  
Home Office: Bloomington, Illinois



Like a good neighbor,  
State Farm is there.

**HOMESTEAD  
EXEMPTIONS**



**CAN LOWER THE PROPERTY  
TAXES ON YOUR HOME**

**A homestead  
Exemption**

lowers the property taxes on your home by lowering its taxable value. For example, if your home is valued at \$50,000 and you receive a \$5,000 homestead exemption, your home will be taxed as if it were worth only \$45,000.

**You qualify**

for a homestead exemption if you owned your home on January 1 and used it as your primary residence on January 1. It doesn't matter whether your home is a house, a condominium or a mobile home.

**Exemptions are  
available**

to all homeowners on their school taxes. Additional exemptions are available to homeowners who are disabled or age 65 or over. Other exemptions may be offered to homeowners by school districts, counties, cities, and special districts. All taxing units offer exemptions to disabled veterans.

**Apply to**

your local appraisal district office at the address shown below for all exemptions you may qualify for. Application forms are available at this address.

if you received a homestead exemption on your present home in 1990 you won't need to apply again for 1991 unless the chief appraiser requires you to reapply.

However, if you passed your 65th birthday or became disabled before January 1, file a new application to receive additional exemptions.

If you haven't received an exemption on your present home, or if you moved to a new home, make a new application for 1991.

The deadline for applications is April 30, 1991. Contact your appraisal district before then if you need more time.

For more information, get a free copy of the pamphlet, *Taxpayer's Rights, Remedies, Responsibilities*, at your appraisal district office or from the State Property Tax Board in Austin.

**Bailey County  
Appraisal District**

104 E. Ave. C.

272-5501

**ANTHONY'S®**

**2 Sales are Better than 1!**

**Our January Sales Events Continue**

**1/2 PRICE CLEARANCE SALE**

**Selected  
Fall and Winter  
Merchandise**

**1/2  
PRICE**

**SAVE UP TO 50%  
ON FALL & WINTER**

- SWEATERS
- OUTERWEAR
- CHILDREN'S LONG SLEEVE TOPS
- WOMEN'S SHOES & BOOTS
- WOMEN'S TURTLENECKS
- MEN'S FLANNEL SHIRTS
- MEN'S SWEATSHIRTS
- WOMEN'S DRESSY BLOUSES, JUMPSUITS & PARTY PANTS

**1/2  
PRICE**

SELECTIONS WILL VARY BY STORE. NO RAINCHECKS.

**YELLOW TICKET SALE**

**Fall and  
Winter  
YELLOW  
TICKET  
CLEARANCE**

**EXAMPLE  
OF SAVINGS  
FOR YOU!**

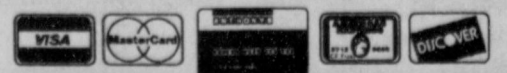
Original Price	19.99
Yellow Ticket Price	13.99
<b>WITH AN EXTRA 50% OFF</b>	<b>NOW ONLY 6.99</b>

**TAKE AN  
EXTRA  
50%  
off  
All Yellow  
Ticket Items**

SELECTIONS WILL VARY BY STORE. NO RAINCHECKS.

- Additional 50% Off Taken at the Register.
- Intermediate Markdowns Have Already Been Taken.

**ANTHONY'S®**



321 Main

Muleshoe

272-3478