



Muleshoe Journal

'The Community Of Opportunity-Where Water Makes The Difference'



Vol. 69, No. 9

12 PAGES TODAY

Published Every Thursday At Muleshoe, Bailey County, Texas 79347

MEMBER TEXAS PRESS ASSOCIATION 20^c THURSDAY, FEBRUARY 28, 1991

EMS Director Discusses Emergencies

around Muleshoe

Bailey County Commissioners will meet in special session tomorrow, Friday, at 10 a.m. in the courthouse.

After routine items, the commissioners will consider the following:

Applications and designate county depository; Jackey Wayne Burris to give ambulance report and discuss EMS Expo in Dallas; consider waiving probation period for salary for Joyce McGehee; Jerry Hicks to discuss jail renovations and consider authorizing coliseum manager to use funds budgeted for part-time janitor and relief manager to pay one employee to perform both services.

Also, Pat Furzer from Colonial Insurance Company to discuss Section 125 Plan; discuss 1990 census results; discuss HJB 29 and HB 66; approve bond for deputy treasurer and discuss participation in Tex Pool.

A planning committee meeting of the Golden 50's Class Reunion will be held on Tuesday, Feb. 26, at 7:30 p.m. in the Muleshoe Public Library.

A class reunion is scheduled for July 6, so all interested persons are encouraged to attend.

Gordon Wilson is president of the group and Evelyn Peat is secretary/treasurer.

Pvt. Robert Nunez has completed the equipment records and parts specialist course at Fort Lee, Petersburg, VA.

He is the son of Pedro Nunez of Muleshoe and a 1990 graduate of Muleshoe High School.

Details are sketchy as press time but the *Journal* has received information of the death in Saudi Arabia of Medford Collins, son of Fred Collins of Sudan.

On Monday afternoon, incumbent City of Muleshoe Mayor Darrell Turner filed for reelection to his position.

The election for mayor will be held on Saturday, May 5 at the Muleshoe City Hall.

Army Sgt. Rudolph Sanchez Jr. has deployed to the Middle East. Cont. Page 6, Col. 3

Sudan Schools

Plan Seminar

On Teen Suicide

Monday, March 4, in the Sudan High School auditorium at 7 p.m., John F. Simonds, M.D., will present a program on youth suicide, its warning signs, and methods of prevention/intervention.

Dr. Simonds is Medical Director of Charter Plains' Adolescent Psychiatric Treatment Program. Prior to moving to Lubbock, Dr. Simonds held the position of Professor of Psychiatry and Director of Child Psychiatry Out-Patient Services and the Residency Educational Program in Child Psychiatry at the University of Missouri Medical School.

Sudan ISD urges the public to attend this free presentation.



BAILEY COUNTY 4-H'ER SHOWS RESERVE CHAMPION RED ANGUS STEER--Courtney Tanksley, daughter of Spencer and Linda Tanksley, showed her second place heavyweight Red Angus Steer to Reserve Champion at the San Antonio Livestock Exposition last week. Showing the Grand Champion Red Angus Steer was Jason Jesko, from the Lazbuddie FFA. Winning second place in the lightweight class was Keila Kennedy, also from the Bailey County 4-H. (Guest Photo)

Special Olympics Telethon Will Benefit Local, Area Olympians

The first annual Texas Special Olympics, Area 17 Telethon will be held Saturday, March 2 from 7 p.m. to midnight on KAMC-TV, Channel 28, Lubbock.

Hosts for the 5-hour telecast will be Bob Nash and Misty Dickey of KAMC-TV. Guest hosts will include Ray Moran, KJTV; James Gray, former Texas Tech football player; Kay Stockdale, LISD; Sonny Keesee, Lubbock County Sheriff; Joe Wilson, Texas Special Olympics and Katie Keefer and Byron Grandy of KAMC-TV.

Throughout the evening, many Special Olympics athletes and their families will be featured. They will include the Hubert Kidd family from Muleshoe.

Kidd, who is manager of Five Area Telephone Cooperative, Inc. has donated \$100, and challenges each and every co-op in the area, whether electric, telephone, gin, elevator or whatever, to match the challenge. The Kidds will be featured between 7-7:30 p.m. on Saturday.

Volunteer coaches will explain and demonstrate the training given the athletes prior to competition.

The telethon will spotlight the year-round athletic competition and sports training opportunities for the Area 17 citizens with mental retardation through videotape segments, and interviews with guests and athletes.

Special Olympics is founded on the belief that people with mental retardation can, with proper instruction and encouragement, learn to enjoy and benefit from participation in individual and team sports; adapted as necessary to physical limitations.

The Texas Special Olympics, Area 17 Telethon, is being produced and telecast to help make the citizens of Lubbock and West Texas aware of the

Dillman Will Have Meetings For Parents

Muleshoe ISD said they would like to encourage all parents of children, from birth through fifth grade, to attend an *Active Parenting Seminar*.

It will be held Monday, March 3, in the Dillman Cafeteria.

The program, *Children on the Grow*, is part of a series by Michael Popkin and will be presented by Liz Tipps and Ruth Locker.

Coffee will be served at 9:15 a.m., followed by the program from 9:30-10:30. There is no charge to attend, the MISD said they feel the information is very worthwhile, and merits your attendance.

MISD also released *Five Ways to Get Your Child Off to A Good Start*:

1. Get to know your child's teacher. As a parent, you know your child best. Share what you know with the teacher. Does your child have a special interest? A favorite book? Are there subjects in which your child needs special help? You don't have to wait until parent conferences.

2. Talk with your child's teacher about problems, too. What goes on at home affects how a child does in school. Separation, family illness, a new

Cont. Page 6, Col. 3

many sports opportunities available to the mentally retarded of our area and to raise the needed funds to support this special program.

Many mentally retarded have not had the opportunity to share the joy, skill and courage that are a part of Special Olympics. Hundreds have not had the opportunity to benefit from participation in the Special Olympics program. The money raised through this telethon will help Area 17 Special Olympics expand services to offer sports opportunities to everyone eligible who would like to participate.

The public is invited to take part in the telethon by calling in pledges. Some of the ways contributions will be used are:

1. Adopt-an-Athlete. It costs \$150 for an athlete to participate in all sports for an entire year. \$30 for a single event.
2. Become a member of the Booster Club. The membership fee of \$25 will help support the athletes and the program. Booster Club members will receive a "Guardian Angel" pin and will be invited to a reception held annually for Booster Club members to meet the athletes and their families.
3. Send an athlete to Sports Camp. The fee to send one athlete to Summer Residence Sports Camp is \$150. This camp is held on the campus of Texas Tech University and is conducted by Tech Women's Head Basketball Coach, Marsha Sharp along with many of her top basketball players.
4. Call in a pledge of any amount to 745-6888.

Viewers from Muleshoe, as well as a number of other

Cont. Page 6, Col. 5

Rotarians Watch Demo Using Resusci-Annie

"The most important part of our job most of the time -- is YOU," said Jackey Wayne Burris, director of the Bailey County EMS Ambulance Service.

Burris was speaking to members of the Muleshoe Rotary Club after being introduced by Rotarian Jerry Hicks, who was in charge of the program.

"Your actions in the first few minutes of any emergency often gives us something to work with when we arrive," added Burris. He talked about one of the most important aspects of the EMS's job, which is Cardiopulmonary Resuscitation (CPR) which is used to try to re-institute breathing after a person's heart has stopped.

Burris reminded Rotarians that Bailey County has Advanced Life Support Ambulance Service, a rarity in rural areas. "Most rural ambulance services are not Advanced Life Support, but we're lucky enough to have it," added the EMS director.

"It becomes very important what you can do before we (the ambulance) can get there," added Burris. "CPR often makes the difference in saving a life."

He discussed CPR classes and told the Rotarians that each and every citizen needed to take CPR training, which only takes eight hours to complete. He said persons wishing to sign up for classes could call the EMS building at 272-4390 and sign up.

Burris told of instances right in Muleshoe where a deputy sheriff or family member started CPR and "we had something to work with when we got there. They're (the victim) walking around today."

The EMS director had with him Resusci-Annie, a lifesize female doll, especially designed to teach CPR. He demonstrated CPR practices, assisted by local dentist and Rotarian, Dr. Tom Bonds.

As he worked, he explained the procedures and what to do when someone collapses in front of you, or has been unconscious for 0-6 minutes. If alone, you first ventilate (blow two breaths) into the victim, then do 15

compressions, then ventilate two more times. If there is no pulse, immediately call for help, quickly, but without panic, give the emergency dispatcher information, including address and current condition of victim. Then resume CPR until the ambulance arrives.

First, said Burris, you check the patient to see if they have 'just passed out.' If they do not respond to verbal questioning or gentle shaking, tilt their head back, and check for breathing. Then institute CPR, checking the carotid artery at the side of their neck to see if a heart beat has been instituted.

He also showed how to dislodge obstructions in the airway, for both adults and children and infants. He demonstrated the Heimlich Maneuver and showed on Resusci-Annie how to administer the Heimlich Maneuver.

Signs and symptoms of a heart attack were discussed, including tightness in the chest, heartburn, numbness or pain in the left arm going down into the hand, or radiating into the neck.

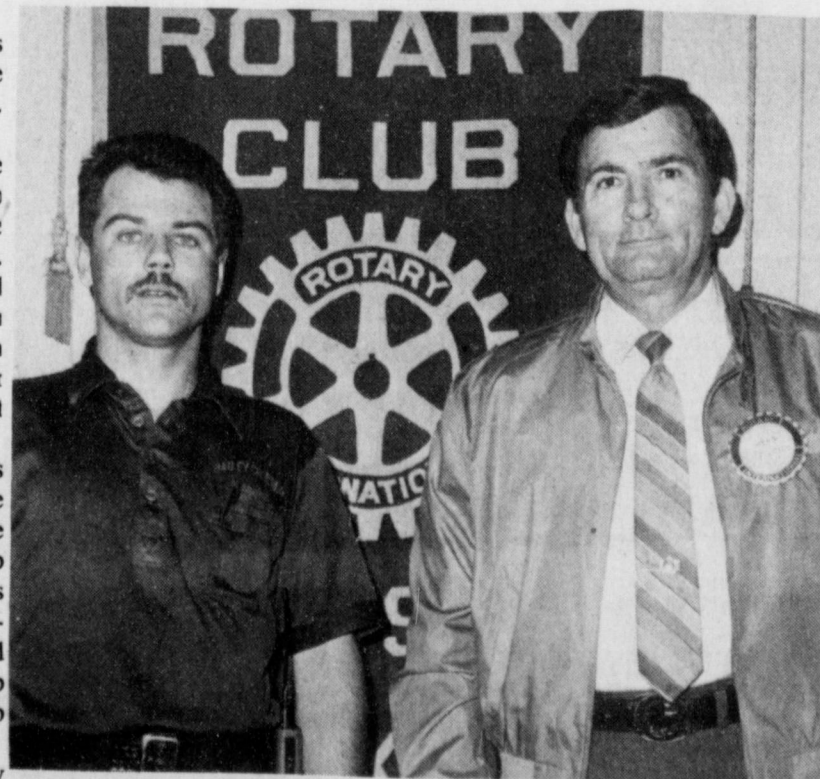
Cont. Page 6, Col. 3

Helen Grigsby Re-Assigned To Dillman

Helen Grigsby has been appointed to serve as Associate Principal at Dillman Elementary for the remainder of this year. Mrs. Grigsby, currently a teacher at DeShazo Elementary, has been with the Muleshoe Schools for 13 years. She will assume her new position on February 28 (today).

Superintendent Bill Moore said, "Mrs. Grigsby will do an excellent job of managing Dillman Elementary for the remainder of this school year. She has taught on that campus and in recent years has conducted teacher appraisals there, so she is no stranger to the staff and faculty."

Grigsby is filling the position created when Barbara Finney was transferred to DeShazo Elementary School on February 19.



EMS DIRECTOR SPEAKS TO ROTARY--Jackey Wayne Burris, left, was guest speaker for the Muleshoe Rotary Club on Tuesday. He spoke about "Emergencies." He was introduced by Rotarian Jerry Hicks, right. (Journal Photo)

'Toast To Texas' - Patriotic Salute Saturday

MAC Drawing Also Scheduled

Mule Memorial - 1:45 p.m.

 <p>GRANULATED SHURFINE SUGAR 5 LB. BAG</p> <p>\$1.59</p>	 <p>ALL PURPOSE SHURFINE FLOUR 25 LB. BAG</p> <p>\$2.99</p>	 <p>REGULAR, DRIP OR PERK SHURFINE COFFEE 13 OZ. CAN</p> <p>\$1.29</p>	 <p>SHURFINE CUT/FRENCH STYLE GREEN BEANS OR CS/WK GOLDEN CORN 16 OZ. CANS</p> <p>3 FOR 99¢</p>	 <p>SHURFINE TOMATO SAUCE 8 OZ. CANS</p> <p>6 FOR 99¢</p>	 <p>CHUNK LIGHT OIL OR WATER PAK SHURFINE TUNA 6.5 OZ. CANS</p> <p>2 FOR 99¢</p>	 <p>SHURFINE PAPER TOWELS JUMBO ROLLS</p> <p>2 FOR 99¢</p>	 <p>SHURFINE BATH TISSUE 9 ROLL PKG.</p> <p>\$1.99</p>
---	--	---	--	--	---	---	---

GROCERY SPECIALS

SHURFINE FANCY MIXED VEGETABLES 2 16 OZ CANS 99¢	SHURFINE 30 CT. TALL KITCHEN TRASH BAGS 10 CT. YOUR SHURFINE DRAWSTRING CHOICE 100 FT. ROLL 79¢	SHURFINE FREE RUNNING IODIZED SALT 26 OZ. CTN. 29¢	SHURFINE EVAPORATED MILK 2 12 OZ. CANS 99¢	SHURFINE ASSORTED TOASTER PASTRY 11 OZ. BOX 99¢
SHURFINE RATION CHICK DOG FOOD BEEF LIVER 5 15 OZ. CAN 99¢	SHURFINE PLASTIC WRAP 100 FT. ROLL 79¢	SHURFINE WATER SOFTENER PELLETS 40 LB. BAG \$3.89	SHURFINE TEA BAGS 100 CT. BOX \$1.99	SHURFINE HOT COCOA MIX 10 CT. BOX \$1.19
SHURFINE TOMATO SOUP 3 10.75 OZ. CANS 99¢	SHURFINE LIQUID GREEN LEMON DISH DETERGENT 32 OZ. BTL. \$1.29	SHURFINE DRY CAT FOOD 4 LB. BAG \$1.69	SHURFINE QUICK OATS 42 OZ. BOX \$1.99	SHURFINE SQUEEZE BOTTLE CHOCOLATE SYRUP 24 OZ. BTL. \$1.29
SHURFINE WHITE FACIAL TISSUE 250 CT. BOX 99¢	SHURFINE LEMON AUTOMATIC DISH DETERGENT 50 OZ. BOX \$1.79	SHURFINE DECAFFEINATED INSTANT COFFEE 8 OZ. JAR \$3.89	SHURFINE FRUIT RINGS CEREAL 15 OZ. BOX \$1.99	SHURFINE LONG GRAIN RICE 2 LB. BAG 79¢
WESTERN FAMILY FEMININE REG. THIN MAXI PADS 27 CT. BOX \$2.69	SHURFINE FABRIC SOFTENER SHEETS 40 CT. BOX \$1.59	SHURFINE DECAFFEINATED COFFEE 13 OZ. CAN \$1.99	SHURFINE ASSORTED RTS FROSTING 16 OZ. CAN \$1.19	SHURFINE INSTANT RICE 14 OZ. BOX 99¢
SHURFINE WHITE NAPKINS 140 CT. PKG. 79¢	SHURFINE FABRIC SOFTENER RINSE 64 OZ. JUG \$1.09	SHURFINE COFFEE FILTERS 2 100 CT. PKGS. 99¢	SHURFINE COMPLETE PANCAKE MIX 32 OZ. BOX \$1.19	SHURFINE MICROWAVE NATURAL BUTTER 3 CT. PKG. \$1.39
	SHURFINE CARPET DEODORIZER 14 OZ. CAN \$1.19	SHURFINE REGULAR OR LITE COFFEE CREAMER 16 OZ. JAR \$1.19	SHURFINE SQUEEZE BOTTLE WAFFLE SYRUP 24 OZ. BTL. \$1.19	

 <p>MACARONI & CHEESE SHURFINE DINNERS 7.25 OZ. BOXES</p> <p>6 FOR 99¢</p>	 <p>SHURFINE PINTO BEANS 2 LB. BAG</p> <p>59¢</p>	 <p>PURE VEGETABLE SHURFINE SHORTENING 3 LB. CAN</p> <p>\$1.79</p>	 <p>SHURFINE ASSORTED SODA POP 2 LTR. N.R. BTL.</p> <p>69¢</p>	 <p>PURE VEGETABLE SHURFINE OIL 48 OZ. BTL.</p> <p>\$1.79</p>
--	---	--	--	---

SHURFINE REG./HOT WHOLE HOG PORK SAUSAGE 2 LB. ROLL \$1.69 1 LB. ROLL \$37

SHURFINE QUALITY MEAT FRANKS 12 OZ. PKG. 88¢

SHURFINE QUALITY MEAT SLICED BOLOGNA 12 OZ. PKG. \$1.09

SHURFINE BOLOG./P&P/SALAMI LUNCHEON MEATS 6 OZ. PKG. 69¢

SHURFINE LEAN DANISH COOKED HAM 12 OZ. PKG. \$3.39

SHURFINE LEAN DANISH COOKED HAM 4 OZ. PKG. \$1.29

SHURFINE THIN BEEF/HAM/TURKEY/CHICKEN CORN BEEF/PASTRAMI SLICED MEATS 2 1/2 OZ. PKG. 39¢

SHURFINE PIMENTO OR JALAPENO CHEESE SPREAD 7 1/2 OZ. PKG. 99¢

SHURFINE HAM SALAD 7 1/2 OZ. PKG. 99¢

SHURFINE CHICKEN SALAD 7 1/2 OZ. PKG. 89¢

SHURFINE QUALITY SLICED BACON 1 LB. PKG. \$1.79

SHURFINE WINTER FEST

SHANK PORTION 9-11 LB. AVG. HICKORY

SMOKED HAM

\$1.18

5.8 LB. AVG. BUTT PORTION \$1.28

U.S.D.A. GRADE A SHURFINE FINEST QUALITY TURKEY SELF BASTING WITH TENDER TIMER 10-22 LB. AVG.

TURKEYS

69¢

LB.

SHURFINE MARGARINE 3 1 LB. QTRS. 99¢

SHURFINE ORANGE JUICE 69¢ 12 OZ. CAN

FROZEN FOODS & DAIRY

SHURFINE APPLE OR GRAPE JUICE 12 OZ. CAN 79¢	SHURFINE BTRMLK/HMSTYLE BISCUITS 6 10 CT. CANS 99¢
SHURFINE ON THE COB CORN 4 EAR PKG. \$1.39	SHURFINE ASSORTED YOGURT 3 8 OZ. CUPS 99¢
SHURFINE RED RASPBERRIES 10 OZ. CTN. \$1.59	SHURFINE AMERICAN SLICES 12 OZ. PKG. \$1.49
SHURFINE WHOLE STRAWBERRIES 16 OZ. BAG \$1.39	SHURFINE HALF MOON CHEDDAR OR COLBY CHEESE 10 OZ. PKG. \$1.59
SHURFINE GR. PEAS WK GOLDEN CORN 16 OZ. BAG 99¢	SHURFINE 11 OZ. ORANGE DANISH OR 9.5 OZ. CINNAMON ROLLS CAN \$1.39
SHURFINE PEAS & CARROTS OR CUT BROCCOLI 16 OZ. BAG 99¢	SHURFINE CORN OIL MARGARINE 1 LB. QTRS. 69¢

FRESH BROCCOLI OR CAULIFLOWER EACH 69¢

PRODUCE SPECIALS

FRESH TANGY LEMONS 4 FOR \$1.00	GARDEN FRESH GREEN ONIONS 3 BUNCHES \$1.00
GARDEN FRESH RADISHES 3 BUNCHES \$1.00	CRISP CARROTS 3 1 LB. BAGS \$1.00
CONTROLLED ATMOS. X FANCY RED DEL APPLES 1 LB. 69¢	FRESH CELERY STALK 49¢

ALL PURPOSE RUSSET POTATOES

\$1.29

15 LB. BAG

SHURFINE SALTINE CRACKERS 1 LB. BOX 59¢	SHURFINE WHITE, YELLOW, OR DEVIL FOOD LAYER CAKE MIX 18.5 OZ. BOX 79¢	SHURFINE ASSORTED POTATO CHIPS 7 OZ. BAG 79¢	SHURFINE TOMATO KETCHUP 32 OZ. BTL. 89¢	WITH JUICE CHUNK, CRUSHED OR SLICES SHURFINE PINEAPPLE 20 OZ. CAN 79¢	SHURFINE SWEET PEAS 17 OZ. CANS 2 FOR 99¢	DICED OR WHOLE PEELED SHURFINE TOMATOES 16 OZ. CANS 2 FOR 99¢	SHURFINE CHUNK OR WITH GRAVY DOG FOOD 25 LB. BAG \$3.99	SHURFINE LIQUID BLEACH GAL. JUG 89¢
---	---	--	---	---	---	---	---	---

SHURFINE REGULAR OR LITE FRUIT COCKTAIL 16 OZ. CAN 79¢

SHURFINE YELL. CLING HLVS OR SLICED PEACHES REG. LITE 16 OZ. CAN 79¢

SHURFINE BARTLETT REG. OR LITE PEAR HALVES 16 OZ. CAN 79¢

SHURFINE APPLE OR CHERRY PIE FILLING 20 TO 21 OZ. 99¢

SHURFINE PINK WHITE GRAPEFRUIT JUICE 48 OZ. BTL. \$1.89

SHURFINE CRANRAS/CRANAPL. CRANBERRY DRINK 48 OZ. BTL. \$1.89

SHURFINE PRUNE JUICE 32 OZ. BTL. \$1.09

SHURFINE WHITE OR GOLDEN HOMINY 3 15 OZ. CANS 99¢

SHURFINE SCALLOPED/AU GRATIN POTATOES 5.5 OZ. BOX 89¢

SHURFINE REG. OR ITALIAN STEWED TOMATOES 16 OZ. CAN 59¢

SHURFINE REG. OR VEGETARIAN VEGETABLE SOUP 2 10.75 OZ. CANS 99¢

SHURFINE WITH RICE CHICKEN SOUP 2 10.75 OZ. CANS 99¢

SHURFINE SOUP CHICKEN NOODLE 2 10.75 OZ. CANS 89¢

SHURFINE ASSORTED SAUCE MIXES 3 ENV FOR 99¢

SHURFINE ELBO MACARONI OR LONG SPAGHETTI 24 OZ. PKG. 99¢

HEALTH & BEAUTY

WESTERN FAMILY MINT OR TARTAR CONTROL TOOTH PASTE 6.4 OZ. TUBE 99¢

WESTERN FAMILY MED. SOFT TOOTHBRUSH 1 CT. PKG. 99¢

WESTERN FAMILY RINSE MINT REG. ANTI-PLAQUE 16 OZ. BTL. \$1.89

WESTERN FAMILY CHERRY REG. NIGHTTIME MEDICINE 6 OZ. BTL. \$1.99

WESTERN FAMILY COSMETIC PUFFS 100 300 CT. PKG. 79¢

WESTERN FAMILY EFFERVESCENT ANTACID PAIN RELIEVER 36 CT. PKG. \$2.99

WESTERN FAMILY NON COATED ASPIRIN 100 CT. BTL. 69¢

WESTERN FAMILY ASST. ULTIMATE WEIGHT LOSS PLAN 14 OZ. CAN. \$2.99

WE SUPPORT OUR MEN AND WOMEN IN THE MIDDLE EAST

Our Best to you!

The Grocery Gang

THE GOLDEN BOOK ENCYCLOPEDIA Volume 6

Start your child's set Today!

ON SALE NOW FOR ONLY **\$2.99**

thriftway

PRICES EFFECTIVE FEBRUARY 24-MARCH 2, 1991

MEMBER STORE

AFFILIATED FOODS INC.

WE RESERVE THE RIGHT TO LIMIT IN TEXAS AND COLORADO

Enochs News

by: Mrs. J.D. Bayless

Robin Kindle from Lamesa spent the weekend with her parents, the Bobby Kindles.

Mr. and Mrs. W.T. Simpson spent the weekend in Ruidoso

Genero Heredia

Funeral Services

Held Monday

Funeral services for Genaro T. Heredia, Sr., 62, were held at 11 a.m. Monday, Feb. 25 in Ellis Funeral Home Chapel of the Chimes with the Rev. Raymond Mendoza, pastor of the Church of God of the First Born, officiating.

Burial was in Muleshoe Memorial Park under the direction of Ellis Funeral Home. Heredia died at 9:24 p.m. Friday in the Methodist Hospital in Lubbock.

Born July 17, 1928, in Mexico, Heredia moved to Muleshoe in 1971, from Mexico. He married Esther Morales in 1950, in Mexico. She died in 1981. He was a farmer and a Catholic.

Survivors include three sons, Jessie Heredia of Denver City, TX, Jose Heredia of Hobbs, N.M., and Genaro Heredia, Jr. of Muleshoe; two daughters, Socorro Gomez of Muleshoe, and Maria Elena Hernandez of Lovington, N.M.; a sister, Nicolasa Martinez of Hagerman, N.M.; two brothers, Jesus Heredia of Mexico and Gregorio Heredia of Marfa, TX; 22 grandchildren; and three great grandchildren.

Thelma Bowington

Dies In Lubbock

Following Illness

Thelma Dell Bowington, 81, died at 12:01 p.m. Thursday, Feb. 21 in the Methodist Hospital in Lubbock.

The body was cremated under the arrangements of Ellis Funeral Home of Muleshoe.

Born Nov. 23, 1909, in Odessa, she had been a resident of Muleshoe since 1983, moving here from Jal, N.M. She was a homemaker and a Baptist. She married Ralph C. Bowington on May 10, 1931, in Carlsbad, N.M.

Survivors include her husband, Ralph C. Bowington; five daughters, Ann Weeks of Tyler, Joelene Swanner and Beverly Muatt, both of Lubbock, Becky Best of Muleshoe, and Shirley Bowington of San Francisco, Calif.; four sisters, Bernice Courtney, Lois Chandler and Nadene Hays, all of Midland, and Beryl Culver of Snoshmish, Wash.; and 27 grandchildren.

The family suggests memorials be made to Cal Farleys Boys Ranch.

Muleshoe Journal USPS 367-820
Established February 23, 1924. Published by Muleshoe Publishing Co., Inc., Every Thursday at 304 W. Second, Box 449, Muleshoe, Texas, 79347. Second Class Postage Paid at Muleshoe, Texas, 79347.

MEMBER 1991
TEXAS PRESS ASSOCIATION

L. B. Hall, Publisher
Sammye Hall, Vice President/Controller
Cleta Williams-Jacobson, News
Eveline Harris, Society
Holly Millsap, Advertising
Dora Toscano, Classified

SUBSCRIPTIONS
Muleshoe Journal and Bailey County Journal
Bailey and surrounding counties
Muleshoe Journal and Bailey County Journal
Elsewhere in Texas \$14.75
Muleshoe Journal and Bailey County Journal
Outside Texas, \$18.50
Yearly By Carrier
\$12.50

Advertising Rate Card on Application
*Advertisers should check their ad the first day of insertion. The Journal will not be liable for failure to publish an ad or for a typographical error or errors in publication except to the extent of the cost of the ad for the first day of insertion. Adjustment for errors will be limited to the cost of that portion of the ad where the error occurred.

visiting friends.

Mr. and Mrs. Jack Stanley and Mr. and Mrs. Jackie Stanley were dinner guests in the Bud Huff home Sunday.

George Tyson was a dinner guest in the home of his sister, Mrs. H.W. Garvin Saturday.

Mr. and Mrs. Cliff Heirnich were in Ruidoso over the weekend skiing.

Mr. and Mrs. Kevin Reeves were dinner guests in the Jack

Patients In Muleshoe Area Medical Center

FEB. 22-25
FRIDAY

Rhea Gonzales, Jacob Rubio, Christopher Taylor, Rhonda Kitchens, Ofelia Saucedo and Christina Bayless.

SATURDAY

Rhea Gonzales, Laura Lucio, Jacob Rubio, Rayitos Godinez, Janie Moraw, Rhonda Kitchens, Ruby Garner, Ofelia Saucedo, Christina Bayless, Anna M. Escamilla and Baby Girl Escamilla

SUNDAY

Rhea Gonzales, Janie Moraw, Rhonda Kitchens, Corrin Otliz, Ruby Garner, Ofelia Saucedo and Christina Bayless

MONDAY

Rhea Gonzales, Janie Moraw, Rhonda Kitchens, Corrine Otliz, Ruby Garner, Ofelia Saucedo and Christina Bayless

James Stewart

Services Held

Here Wednesday

Funeral services for James B. Stewart, 83, were held at 2 p.m. Wednesday, Feb. 27 in St. Luke Baptist Church in Muleshoe with the Rev. Arthur Hayes, pastor of the Progress Second Baptist Church, officiating.

Stewart died at 9:42 a.m. Thursday in Muleshoe Area Medical Center following a sudden illness.

He resided in Dimmitt a number of years before moving to Muleshoe. He moved from Muleshoe to Childress in 1981. He was a veteran of WW II serving in the U.S. Army and a retired carpenter. He was a Baptist. He was preceded in death by his wife, Lee Sils on Dec. 5, 1981.

Survivors include a son, Bobby Moss of Ft. Worth; three daughters, Bernice Carter of Long Beach, Calif., Betty Stewart of Farwell and Barbara Ann Stewart of Dallas; a brother, Herron Washington of Muleshoe; four grandchildren; and four great grandchildren.

Health Insurance

Q: When you have a claim, who's ready with Good Neighbor Service?



A: Mark Morton
109 S. 1st
272-7519
Muleshoe, Tx.

State Farm Mutual
Automobile Insurance Company
Home Office:
Bloomington, Illinois

Reeves home Sunday.

Mrs. Jack Lane and Mrs. Obie Standard were in Muleshoe Friday visiting their mother and grandmother, Mrs. Nettie Quisenberry.

Visiting in the home of Mr. and Mrs. Bill Key Thursday were Mr. and Mrs. W.H. Berry of Littlefield.

Visiting in the home of Mrs. Inez Sanders Sunday were Mrs. Nita Sanders of Lubbock and Mr. and Mrs. Ted Thomas of Hereford also visited her Sunday evening.

Mr. and Mrs. Curtis Snitker of Hart visited his parents, Mr. and Mrs. Clifford Snitker Thursday.

Taura Burton of Lubbock spent a week with her grandparents, Mr. and Mrs. Burley Roberts. Mrs. Roberts was taking her home Monday.

Mrs. Bill Key and Mrs. Ellen Bayless attended the R.E.A. meeting at Muleshoe Saturday. Mrs. Key won a door prize. It was a new kind of tea maker.

They also visited Kenneth Everett.

Mr. and Mrs. Tim Roberts of Birturg, Germany are the parents of a baby son. His name is Matthew Ryan. He weighed eight pounds and ten ounces. He was born Feb. 2, 1991. He has a sister, Bridget, five years old. The grandparents are Mr. and Mrs. Burley Roberts of Enochs.

Mr. and Mrs. Bill Key visited Mr. Morris Gant Sunday afternoon. He lost his wife Saturday night.

Mr. and Mrs. Bret Alexander and son, Christopher, from Phoenix, Az. have been visiting his mother, Mrs. Darlene Alex-

ander at Littlefield and grandmother, Mrs. Kaye Jones and brother, Kelly of Bula. Bret is Staff Sargent at Phoenix and they will be leaving for Fairbanks, Alaska soon, where he will be stationed for three years.

Harvey and Bonnie Blackstone went to Quitaque Sunday to help Mr. and Mrs. Horace McDonald celebrate their 50th anniversary.

GOLDEN GLEAMS

I have not observed men's honesty to increase with their riches.

ANTHONY'S



Classic Style for Spring . . . Linen Look Coordinates from Donnkenny®

30% off
Sale \$16.80 to \$33.60
REG. \$24 TO \$48. Create your own classic look for spring with linen look coordinates from Donnkenny®. Start with the slim skirt, print skirt or pull-on pant and pair them with your favorite short sleeve blouse. Made from a machine washable blend of polyester-rayon. In rose for misses' sizes 8-18. SAVE UP TO \$14.40

FASHION FOCUS

TODAY THROUGH SUNDAY

- Juniors' Levi's® 501® Jeans in White
Reg. \$29, Sizes 3-13 **\$24.99**
- Lorraine® Daywear
Slips, camisoles and more.
Reg. \$6.50 to \$16 **1/3 off**
- Hanes® Silk Reflections® Hose
Sheer, Reg. \$4.95
Control Top, Reg. \$5.50
3rd pair of equal or less value ... **Get 1 FREE**
- Fashion Earrings **2/\$10**
Only
- Cotton Sleepshirts **2/\$24**
Reg. \$15 Each



Short Sleeve Musingwear® Knit Shirts for Men

REG. \$20
\$12.99

Get into the swing of spring with knit shirts from Musingwear®. Made from cotton-polyester in stripes with a single pocket. M,L,XL. SAVE \$7

NoFade® Dress Shirts

REG. \$16 & \$17.99
\$9.99

Our NoFade® long sleeve dress shirts have a 7-button front, placket sleeves. Sizes 14 1/2-17 1/2. SAVE UP TO \$8

Designer Silk Ties
Reg. \$12.50 **\$7.99**



Levi's® 501® Shrink-to-Fit and 517® Boot-cut Jeans for Men

YOUR CHOICE \$17.99

Levi's® 501® Jeans are 100% cotton that shrink to a comfortable fit after several washings. With a button-fly, straight leg. Sizes 29-42. 38" Lengths **\$19.99**

Levi's® 517® Jeans feature a zipper fly and boot cut leg. In 100% cotton denim in indigo blue. Men's sizes 29-42.

Levi's® Fashion Jeans for Men

REG. \$31.99 & \$34.99
\$23.99

Choose from Levi's® 501®, 505® and 550® jeans in bleached and whitewash finishes. 100% cotton in sizes 28-38. SAVE UP TO \$11

LARGE GROUP Dress and Casual Shoes for Men and Women

40% off

Men's Reg. \$36.99 to \$69.99
Women's Reg. \$19.99 to \$39.99
Wide variety of styles and colors. Sizes and styles will vary by store.



Girls' Roll Sleeve Knit Tops

REG. \$4.99
\$7

Crewneck top is an easy care blend and features roll sleeves. SAVE \$2
Sizes 7-14, Reg. \$8 **\$5.99**

ENTIRE STOCK Girls' Jeans

1/3 off

Reg. \$15.99 to \$29.99. Choose from assorted styles and fashion finishes. 100% cotton in sizes 4-6x, 7-14.

Boys' 2-4T Muscle Pants Sets

REG. \$9.99
\$14

Set includes short sleeve top with screen print and pull-on pant. SAVE \$4



VISA MasterCard Discover American Express

Muleshoe 321 Main 272-3478



For Sale

Cock Pheasants

Jack Little

806-272-4805

Journal Files

60 Years Ago

1931

SHORT PAYMENT OF TAXES FORCES COUNTY SCHOOLS TO CLOSE

The failure of citizens to pay their school taxes this year, resulting in a lack of money to defray the running expenses of schools throughout Bailey County, is causing a decided hinderance to educational activities in the county is clearly set forth by the tax records kept at the county court house.

As a result of the present financial conditions, the Wilson school was forced to close Friday of last week and the Watson school will close its doors for this term year Friday of this week. Five other schools will probably be forced to close their doors the next Friday, while the status of the other six schools is not absolutely determined at this time. Present indications are that some may continue for a month or so longer, while only one will run the full nine months term.

50 Years Ago

1941

FRIDAY AND SATURDAY SPECIALS

Lemons 15 cents dozen; large heads lettuce 3 1/2 cents; oranges 2 dozen 25 cents; good spuds 10 pounds 10 cents; bread 7 cents; coffee 19 cents pound; syrup 49 cents gallon; corn 3 cans 25 cents; prunes 20 cents gallon; tomatoes 2 cans 13 cents; spinach 2 cans 7 cents; dried peaches 10 cents pound; large box oats 23 cents; hog lard 6 1/2 cents pound, bring pail; bacon 15 cents pound; sausage 2 pounds 17 cents; and beef steak 17 cents pound.

40 Years Ago

1951

TO ORGANIZE C.C. HERE MARCH 20

Delbert Downing, manager of the Chamber of Commerce at Midland, Texas, has accepted an invitation to address a gathering here March 20 to perfect organization of a Muleshoe Chamber of Commerce.

The banquet will launch the local body whose organization has been worked out in the last few months. Business firms have pledged nearly \$10,000 a year for its support.

30 Years Ago

1961

Grocery specials advertised this week in the Journal include: 1/2 can tuna 15 cents; No. 303 can green beans 2 for 29 cents; No. 303 can spinach 2 for 29 cents; 46 ounce can

orange juice 39 cents; bacon 59 cents pound; hams 43 cents pound; chuck roast 49 cents pound; coffee 69 cents pound; Velveeta cheese 79 cents pound; 2-18 ounce jars plum jam 89 cents; apples 10 cents pound; and grapefruit 5 cents pound.

20 Years Ago

1971

SUDAN CHURCH ANNIVERSARY CELEBRATION SET

Mrs. Nolan Parrish of Sudan said the First Baptist Church of Sudan will celebrate its 50th anniversary in special services on Saturday, February 27 and Sunday, February 28.

A "Birthday Party" will be held 7-9 p.m. on Saturday, February 27 in the fellowship hall of the church. Regular services will be held Sunday morning, February 28. Lunch will be served in the fellowship hall at noon, added Mrs. Parrish, and at 2 p.m. will be a short program with all former pastors who attend the celebration participating in the program. Most of the living former ministers of the church are expected to attend.

10 Years Ago

1981

PURDY, SMITH, WILBANKS NAMED VALENTINE SWEETHEARTS

Three chapters of Beta Sigma Phi Sorority held their combined Valentine dance and crowned their Valentine sweethearts, Saturday night at the Country Club.

Crowned Sweetheart of the Alpha Zeta Pi was Cindy Purdy. She and her husband, Dr. Bruce Purdy, have one son, Aaron, one year of age.

Xi Omicron Xi chose Judy Wilbanks as their Valentine Sweetheart. She and her husband, Paul, have two children, Melissa and Shea.

Lucy Smith, a teacher at Muleshoe High School, was crowned Preceptor Zeta Rho Sweetheart. She and her husband, Eric, have a daughter, Patricia Thratcher.

NURSING HOME ROCK-A-THON SLATED FRIDAY

The Muleshoe Nursing Home's Rock-A-Thon is scheduled Friday, Feb. 13, tomorrow 9 a.m. to 5 p.m.

Residents of the nursing home are asking for local people to support their rocking for the Bailey County Heart Association, with pledges of money. Residents will rock for different lengths of time, minutes, hours or longer.



LAZBUDDIE MAN HONORED--Glenn and Barbara Lust of Lazbuddie accept a plaque from Northrup King Co., being presented by Phil Lemons, district sales manager. "Lust earned his award by selling more than seed, he gave customers a high level of service" said Lemons. (Guest Photo)

March Is Red Cross Month

"People in our community who are members of our U.S. Armed Forces and their families have access to a wide range of Red Cross programs and services that go well beyond the boundaries of our community" said Jamie Brown. "Each year, Red Cross chapters and Services to Armed Forces stations across America and overseas provide approximately 2.2 million services to members of the military and their families.

"For example: 1) The Red Cross around-the-clock, around-the-world emergency communication network links men and women of our Armed Forces to their families during times of personal emergencies. This service operates 24 hours a day, 365 days a year and transmits or receives a yearly average of 859,000 high priority messages at no cost to service personnel or their families.

"2) The Red Cross provides counseling to military members and their families in the community to help solve problems caused by personal crises and environmental stress during periods of family separation. This service is facilitated because Red Cross staff are positioned on military installations and hospitals worldwide.

"3) Red Cross paid and volunteer staff on military installations overseas also provide the same range of Red Cross training and services available in most U.S. communities.

"The Red Cross is grounded in seven principles of humanity, impartiality, neutrality, independence, voluntary service, unity, and universality. The 250 million people who make up the worldwide Red Cross Movement help anyone in need. No regard is paid to political, racial, religious, or ideological differences."

For further information you may contact your local chapter at (806) 765-8534....

Time Conscious

Nothing makes an office worker more punctual than 5 p.m. -Times, Los Angeles.

By Far!

By far the most costly surplus the taxpayer has to pay for in this country is the surplus of government. -Journal, Atlanta.

AARP Appoints

Assistant State Director

Alma Faye Carter of Littlefield has been appointed to the position of Assistant State Director of the American Association of Retired Persons (AARP). Ms. Carter attended the National Leadership Orientation Conference in San Diego, California January 7 to 11 and an orientation for new volunteer leaders in Dallas January 29 to 31.

Ms. Carter will work with AARP chapters in Bailey, Castro, Cochran, Cottle, Crosby, Dickens, Farmer, Floyd, Garza, Hale, Hoskley, Kent, King, Lamb, Lynn, Lubbock, Motley, Stonewall, Swisher, Terry, and Yoakum counties. In Texas there are 404 AARP chapters and more than 1,900,000 members of the organization. AARP chapters present programs, conduct service and educational projects, inform members of legislative issues, foster understanding of the national AARP programs, and provide opportunities for fellowship.

Ms. Carter will also serve as a contact for information regarding the many consumer programs offered by AARP, such as income tax assistance, health, defensive driving, crime prevention and citizen representation.

AARP is the nation's leading organization for people age 50

and over. It serves their needs and interests through legislative advocacy, research, informative programs and community services provided by a network of local chapters and experienced volunteers throughout the country. The organization also offers members a wide range of special membership benefits, including *Modern Maturity* magazine and the monthly *Bulletin*.

For further information, write to:

AARP
8144 Walnut Hill Lane
Suite 700, LB-39
Dallas, TX 75231

Glenn Lust

Recognized By

Northrup King Co.

Glenn Lust of Lazbuddie, area dealer for Northrup King Co., was recently recognized for outstanding 1990 sales achievement at award ceremonies held February 16 at Inn of the Mtn Gods in Ruidoso, N.M.

Northrup King recognizes dealers at three levels for both sales volume increase and net sales increase. Award winners receive personalized plaques with gold, silver, or bronze medallions.

Glenn and Barbara Lust were presented with the Most Valuable Partner Silver Sales Award for net sales increases.

According to Phil Lemons, District Sales Manager, "Lust earned his award by selling more than seed. He gave customers a high level of personal service, including agronomic assistance."

Lust was among 12 area dealers presented with awards from Northrup King.



BEST OF PRESS

True Plastic surgeons can do almost anything with a human nose except keep it out of other people's business. -The Gator.

A Gem For Thought

Know how to give without hesitation, how to lose without regret, and how to acquire without meanness. -Grit.

CALL Mark Morton
109 S. 1st Muleshoe
272-7519

HEALTH INSURANCE

Blue Cross
Mutual American
Munich Life
New York Life
Prudential

Get Ready
For Those Spring
Cookouts!



1/2 Beef
\$1.59
lb.
Cut & Wrapped To
Your Specifications

**1/2 or Whole
Hog**
Cut & Wrapped To
Your Specifications
\$1.19
lb.

Let Larry & Paula Cater
Your Next Party!

Larry's
**Breakfast
Sausage**
2 lb. Stick
\$3.00

All Meat
Beef Patties
2 lb. Pack
\$1.59
lb.

**Pork
Spare Ribs**
\$1.69
lb.

Home Made Smoked
German Sausage
\$2.19
lb.

New York Strip
**Steaks
By The Loin**
\$3.91
lb.

Winkler Meat Co.

401 Main Muleshoe, Tx. 272-4703

WEIGHT WATCHERS MEMBERS ARE LOSING WEIGHT LIKE NEVER BEFORE.

OUR MEMBERS LOVE IT!

THE NEW **PERSONAL CHOICE PROGRAM**



Joyce Nimetz
Area Director
At goal weight for
over 23 years.

"The members in our group are so excited by Personal Choice. It truly is a breakthrough. For the first time they have their choice of three different food plans. So they're in control. And it's simple to follow. From day one, they can eat their favorite foods and still stay on the Program. It's marvelous. Absolutely marvelous."

LIMITED TIME OFFER
JOIN FOR ONLY
\$12

Registration Fee \$19.00
Weekly Meeting Fee \$ 9.00
Regular Price \$28.00
YOU SAVE \$16.00
Still only \$9 per week!

Come to the Weight Watchers meeting nearest you.

MULESHOE
American Boulevard
Church of Christ
2201 West American Blvd.
Every Wednesday at 12 NOON

WEIGHT WATCHERS Call Toll Free **1-800-359-3131**

Offer ends March 23, 1991. Offer valid at participating locations (South Texas, West Texas, and Santa Barbara County, Cal.) areas 37, 96, 107 only. Offer not valid with any other offer or special rate. Offer valid for new and renewing members only. Offer valid for traditional Weight Watchers meetings only. Weight Watchers is a registered trademark of WEIGHT WATCHERS INTERNATIONAL, INC. ©WEIGHT WATCHERS INTERNATIONAL, INC. 1991. All rights reserved.

School Names Geography Bee Winners

Heath Brown, son of Scott and Claire Brown, a sixth grade student at Lazbuddie Junior High, won the school's geography bee on February 8 and moved one step closer to winning a \$25,000 college scholarship. Other students involved include: second place, Tim Smith; third place, Edward Terry; Joshua McDonald, Justin Puckett, Cade Morris, Seth Black, Jacob Jennings, Dustin Weir, Brice Redwine, Brice Foster, Blake Mimms, Justin St. Clair, Ivette Reyes, Socorro Reyes, Rachelle Rice, Joanna Gallman, Matt Elliott, Sammy Everette, Heather Engelking, and Julie McDonald.

The school-level bee, at which students answered oral questions on geography, was the first round in the third annual National Geography Bee, which is being sponsored by National Geographic WORLD, the Society's magazine for children, Amtrak, and Kudos Snack.

"The bee was kicked off the week of January 28 in thousands of schools around the United States, District of Columbia, and five U.S. territories" according to a Lazbuddie School spokesperson. "The school winners, including Heath Brown, will now take a written test; up to 100 of the top scorers in each state will be eligible to compete in their state bee on April 5th.

The National Geographic Society, with its co-sponsors, will provide an all-expense-paid trip to Washington, D.C., for state champions and their teacher escorts to participate in the National Geography Bee finals on May 22 and 23. The first-place national winner will receive a \$25,000 college

Manuel Contreras, Sr Honored

On 95th Birthday

Manuel Contreras, Sr. was honored with a 95th birthday party and cook out Saturday in the home of his granddaughter, Esther Contreras, and hosted by his son, Victor Contreras, Sr. and daughter, Janie Lopez and grandchildren. Out of town guests present were: Mr. and Mrs. Manuel Garcia and family of Monahans, Mrs. Janie Contreras Porras and daughter of Monahans, Mr. and Mrs. Richard Fernandez and Lourie Estrada of San Angelo, Ms. Janie Contreras Lopez of Plainview, Mr. and Mrs. Carlos Contreras, Sr. and family of Littlefield, Mr. and Mrs. Victor Contreras, Jr. and family of Earth, Zeke Contreras of Sherman and Davy Pedroza of Denison, great grandson.

Contreras was born Feb. 27, 1896.

scholarship; the second-place winner, a \$15,000 scholarship; and the third-place winner, a \$10,000 scholarship. Alex Trebek, host of "Jeopardy!," will moderate the national finals.

The National Geographic Society developed the National Geography Bee in response to a growing concern about the lack of geographic knowledge among young people in the United States. A 10-country Gallup Survey conducted for the Society in 1988 and 89 found that people in the U.S., ages 18 to 24, the youngest group surveyed, knew less about geography than young people in any of the other countries.

The National Geographic Society, with more than 10 million members, has as its mission the "increase and

Tops Club

TOPS chapter No. 34 met at 6 p.m. Thursday, Feb. 21 in the Heritage Thrift Shop. Leader, Laverne James called the meeting to order with the TOPS pledge, fellowship song and a prayer.

Betty Jo Davis called the roll with 18 members present. One new member, Joy Harp, was welcomed.

Minutes of the previous meeting were read by Aurora Mata, secretary, and they were approved as read.

It was announced that the next meeting will be awards night. Polly Otwell will give a program on child abuse.

Mrs. Mata also reported that Side Two is still ahead in the contest.

Best loser for the week was Alma Robertson, and Laverne James was first runner-up.

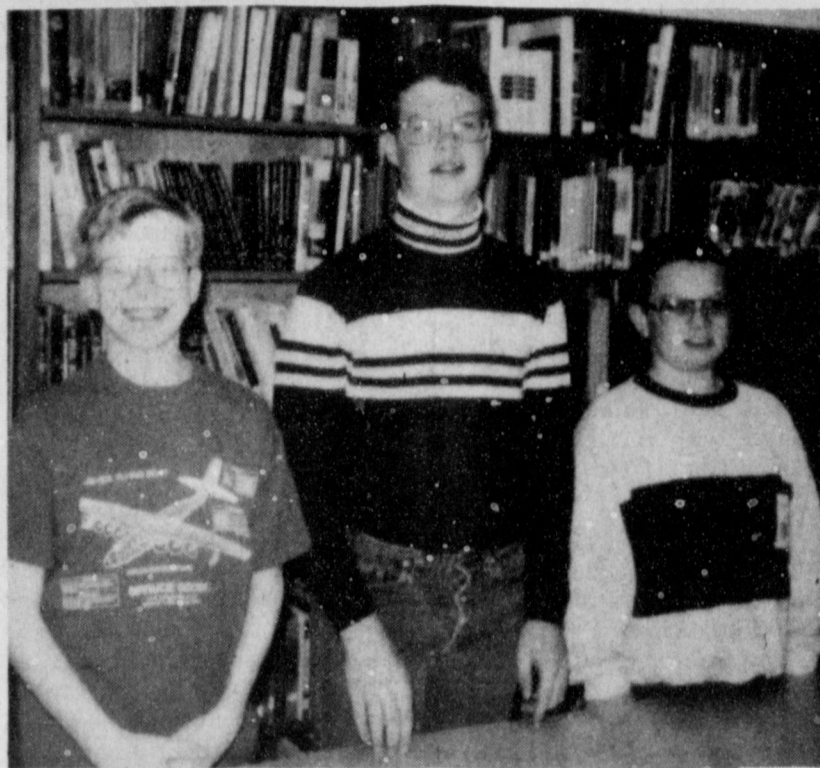
The meeting was closed with the singing of the goodnight song.



MANUEL CONTRERAS SR.

diffusion of geographic knowledge." Besides the National Geography Bee, the Society sponsors a number of other geography education initiatives, including the Summer Geo-

graphy Institute for teachers, the National Geographic Society Education Foundation, and the Geographic Alliance Network, which currently encompasses 40 states and Puerto Rico.



GEOGRAPHY BEE--Winners of the Geography Bee held at Lazbuddie on February 8 include: Heath Brown, first place; Tim Smith, second place; and Edward Terry, third place. (Guest Photo)

Children Biting Off More Than They Can Chew

Health officials warn that a rising popularity of smokeless tobacco among the youth may lead to a growing incidence of oral cancer at the end of the decade. Currently, oral cancer strikes 11 per 100,000 Americans.

A 1989 Texas Department of Health (TDH) survey of about 4,400 Texas students in grades 7, 8, 10 and 12 reveals that more than 49 percent of the male respondents had tried smokeless tobacco at least once.

Some 31 percent of the seventh grade boys and nearly 70 percent of male seniors had tried snuff or chewing tobacco at least once. Most (about 62 percent) male students who had tried smokeless tobacco did so before age 13.

Ron Todd, coordinator of the TDH Office of Smoking and Health, said, "A lot of younger kids start with snuff, the kind sold in convenient packets. And the risk of oral cancer may be 50 times higher for long-term snuff users than for tobacco non users." He added that boys in Texas begin using smokeless tobacco earlier than do boys of other states.

He said that the percentage of eighth grade students who reported using smokeless tobacco in the previous 30 days was close to that found in a nationwide survey (8.8 percent Texas vs 9.8 percent nationally). However, Texas tenth graders

were more than twice as likely to be heavy users (20 times in the previous 30 days) than tenth graders nationally.

"We have the same problem with snuff and chewing tobacco that we have with cigarettes--children start using it, and by the time they realize their mistake, they are addicted to nicotine," Todd said.

"Tobacco use is not adult behavior--it is juvenile behavior. If children want to act like adults, then they should stop using tobacco. That's what most adults are doing," Todd added.

Dr. Robert Bernstein, Commissioner of Health, said that smokeless tobacco was advertised in the 1970s as an alternative to cigarettes, with slogans like "take a pinch, instead of a puff."

"Since both forms of tobacco use can result in nicotine addiction and cause cancer, the only real choice offered by such slogans is between the risks of lung cancer and oral cancer," Dr. Bernstein said.

He added that survival rates for persons with either lung cancer or oral cancer are two of the lowest among the major cancers.

Todd attributes increased teen tobacco use to advertising.

Chamber Chorale, University Singers In Concert

The Eastern New Mexico University School of Music will present the Chamber Chorale and University Singers in an all-American, patriotic concert on Monday, March 4 at 8 p.m. in Buchanan Hall.

Both choirs are under the direction of Dr. David Gerig, assistant professor of music.

For the first half of the performance, the University Singers will present American folk songs arranged for choir, including "The Water Is Wide," "Blow the Candles Out" and "Amazing Grace."

They will also perform a set of seven contemporary musical settings of native American texts by Kenneth Jennings which are representative of six American Indian tribes.

The Chamber Chorale will follow with works by major American composers, two of which are recently deceased; Aaron Copland and Leonard Bernstein.

The choir will perform two motets by Copland, written when he was a young man studying in Paris, "Help Us, O Lord" and "Sing Ye Praises to Our King." Also, on the program is the choral square dance, "Stomp Your Feet," written for the ballet *The Tender Land*.

Other selections will include with choral selections from the musical *Porgy and Bess*, by George Gershwin including "I Got Plenty of Nuttin'" and "Summertime."

AAUW State

President To Visit

Muleshoe Branch

Betty Anderson, State AAUW (American Association of University), president, and Shirley McManigal will be in Muleshoe when the local A.A.U.W. meets at 7 p.m. Monday, March 4 at the Old Depot.

"Shirley and I are pleased that we will have an opportunity to visit with some of the Muleshoe branch leaders at 6 p.m. prior to your monthly meeting" said Ms. Anderson.

My topic for your branch meeting will be "Education for the 21st Century. The fast pace of change in the late twentieth century means that we can ignore the problems of education only if we are willing to risk our collective future. I will include information about AAUW's Initiative for Educational Equity and a recent report by the Texas Committee for the Humanities, "Preparing for Texas in the 21st Century: Building a Future for the Children of Texas" Ms. Anderson continued.

"Toast To Texas" Specials

Fall & Winter Merchandise

50% off

Spring & Summer Rompers

20% off
(Saturday Only)

Lookin' Good

206 Main Phone 272-5052
MULESHOE, TEXAS 79347

Why Should You Have Your IRA With Farm Bureau Insurance? It's As Easy As 1... 2... 3!

1. Investment Philosophy:

Southern Farm Bureau's investment philosophy is that our client's asset safety comes first. Southern Farm Bureau Life carefully chooses the top quality investments which will provide a competitive return and a minimum risk. Speculative investments have no place in an investment portfolio of such serious nature.

2. Safety And Strength:

Southern Farm Bureau has an A+(Superior) rating from A.M. Best and has in excess of \$2.4 billion in company assets.

3. Interest Rates:

If you are not receiving at least 8.0% interest on your IRA, you should see your Farm Bureau Agent NOW!!



Bailey County Farm Bureau

1612 West American Blvd. Muleshoe 272-4567

Happy Birthday Texas



106 E. Amer. Blvd.
Muleshoe
272-5074

Totally Texas Sale

March 1 & 2

Texas Longhorn Steer Boots - \$85

Texas Buckles -- All 10% off

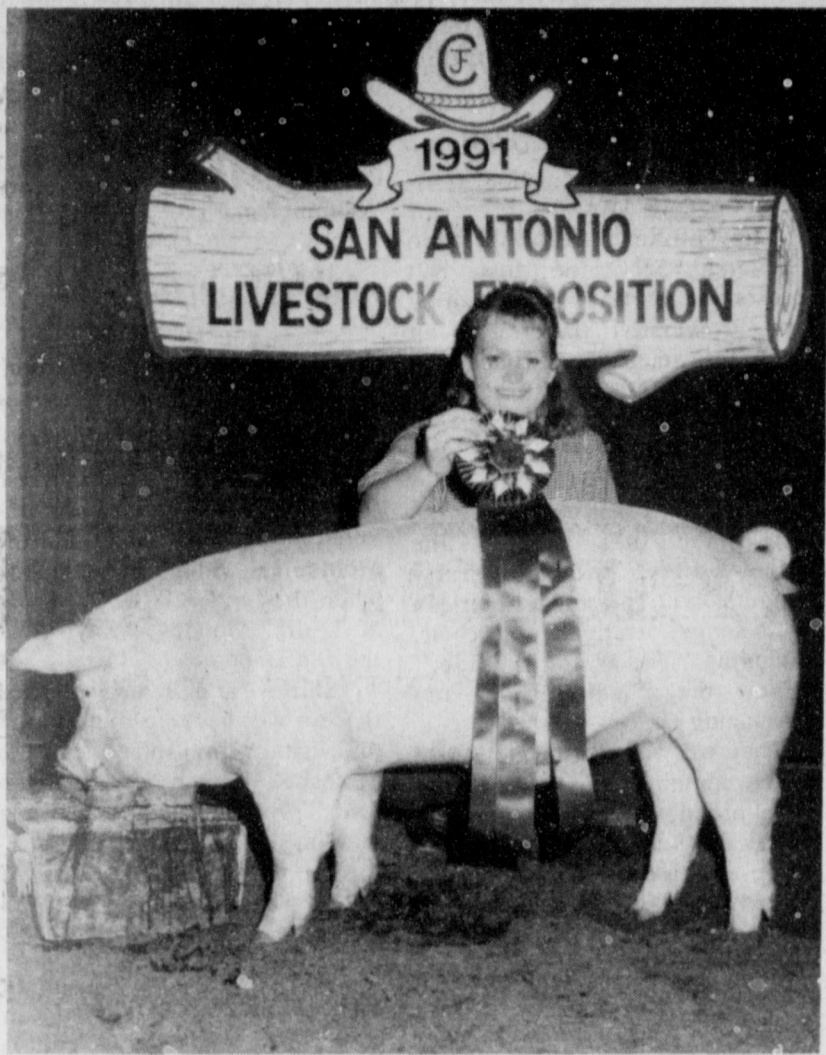
Buy A Pair Of Texas Made Tony Lama Boots & Register For A FREE Tony Lama Jacket To Be Given Away Every Hour Friday & Saturday - March 1st & 2nd

All Texas Items At Country Junction

10% off

Texas Armadillo Droppings
60¢
(u-u-u-u-um good)

Join The 'Toast To Texas' Celebration
Saturday - 2 p.m.
At The Mule Memorial



EXHIBITED CHAMPION CHESTER WHITE--Courtney Tanksley, daughter of Spencer and Linda Tanksley, is shown with her Champion Chester White, exhibited at the San Antonio Livestock Exposition last week. Monty Watson, Plainview FFA, showed the Reserve Champion Chester White. (Journal Photo)

Farm Program 'Disk Available

Bailey County Agriculture Agent, Spencer Tanksley, announces that he has available in his office a copy of 1991 Farm Program Templates on diskette received from Dr. Jackie Smith, Extension Economist, TAEX, District office in Lubbock.

Anyone who would be interested in having a copy is asked to bring a formatted 5.25" diskette by the Bailey County Extension office in the courthouse. The personnel will be glad to make a copy of the information for your use.

The input sections on these templates are divided into four parts: general factors which describe the whole farm; factors concerning the acreage planted to the base crop which is eligible for deficiency payments; factors concerning the crop planted on flexible acreage; and factors concerning the use or maintenance of ACR and CUA.

The templates contained on

the disk are both for SuperCalc4 and for Lotus 1-2-3, version 2.01 or higher. When using the templates, the user may wish to copy the files to the appropriate subdirectory on the hard disk and execute them from there, or may access them from the floppy disk.

DISCLAIMER STATEMENT:

This analysis is provided by the Texas Agricultural Extension Service solely on an "as is" basis. TAEX assumes no liability for the use of this data. Please note that there may be slight errors due to rounding.

Educational programs conducted by the Texas Agricultural Extension Service serve all people of all ages regardless of socio-economic level, race, color, sex, religion, or national origin.

This user's manual is distributed in furtherance of the acts of Congress of May 8, 1914 as amended, and June 30, 1914.

EMS Director

Cont. From Page 1

in to the emergency number in Muleshoe, which is 272-4200. "And, some people do not have any of the classic symptoms," cautioned Burris, "So make sure their heart has not stopped."

"Keep your cool," cautioned Burris. "Remember, if you lose your cool, you're not going to help anybody."

In response to questioning, Burris discussed drowning, and talked about "dry drowning" where a victim has spasms with their vocal chords, and the end result "is the same as if they drowned in water."

He said some telephones (those with rural prefixes) are already on 9-1-1 and the calls go

Muleshoe. . .

Cont. From Page 1

East with American military forces participating in Operation Desert Storm.

Desert Storm, the largest deployment of U. S. military forces since Vietnam, is in response to Iraq's invasion of Kuwait and threat to Saudi Arabia.

Sanchez, a fighting vehicle system mechanic at Ferris Barracks, Germany, is the son of Rudolph and Benita Sanchez of Farwell and a 1977 graduate of Farwell High School.

Dillman. . .

Cont. From Page 1

baby, or even a move can all affect a child's school work. You don't have to tell the teacher all your personal business, but make sure your child's teacher knows important facts.

3. Make sure your child gets enough sleep. Tired children can't do their best work. So set a bedtime - and stick to it.

4. Learn what is expected of your child. Will there be homework? How much?

5. Limit TV. Studies show that the kids who do best in school watch the least television. But remember - when you first turn off the set, you'll have to help your child find other things to do. Read a book or magazine. Take a walk. Visit the library, or try playing a game.

All of this helps your child adjust to school, and also helps make good study habits.

However, this is not enhanced 9-1-1, which shows the address the call is coming from. That service will be in place in October of this year. So it is still important for rural people to be sure to give accurate addresses and patient conditions, such as conscious, unconscious, heavy bleeding, or whatever the problem.

He also discussed the 'Good Samaritan Act' which generally clears someone trying to help a victim. "If you are not being grossly negligent, you generally are not held responsible for additional injuries in trying to help someone," he said.

Bruce Purdy, Rotary president, talked about a personal experience with a family member being helped by CPR. He praised the Bailey County Sheriff's office, EMS personnel and local doctors for their quick and positive actions after his father (John Purdy) suffered a cardiac arrest a couple of months ago.

"He's walking around today," said Dr. Purdy.

Burris fielded several questions during his discussion about CPR and emergency procedures.

Dr. Purdy said the Rotary District Conference will be held April 25-28, and said Muleshoe Rotary Club will be entering the Bulletin contest, and the local organization was asked to donate a \$25 door prize for the conference.

Max King will be in charge of the next program, followed by Robert Leopard. Then on March 12, Robb Mossbacher will be at the Rotary meeting to discuss *Texas For Term Limitations*.

David Tipps won the Polio Plus drawing.

Visiting Rotarians were Johnny Atkinson and Charles Aycock from the Texico-Farwell Rotary Club. Other guests included Aaron, Tyson and Derek Purdy; Ben Butler, Charles Riegel, Angela Crawford and Thurman Myers.

Some prophets are without honor unless they toot their own horns.

Theft Ring Broken Up

A string of ranch-related thefts and burglaries committed over the last two years in Oklahoma and Texas has been unraveled with the arrest of two suspects in Oklahoma City by field inspectors of the Texas and Southwestern Cattle Raisers Association, working in close cooperation with law enforcement agencies in the two states. The couple is suspected of stealing 200 to 300 saddles and other ranch supplies valued at more than \$250,000, says Don C. King, TSCRA secretary-general manager.

"The break-up of this major interstate theft ring is good news to farmers and ranchers in these two states. Any way you look at it, this is a big, big case; one of the biggest in years," King said. "The success of this extensive, six-month long inves-

Telethon. . .

Cont. From Page 1

communities surrounding Lubbock are invited to join with other community individuals, civic and business organizations to help the 20-county Area 17 citizens with mental retardation.

For additional information regarding the telethon call Jacque Hastings, 747-6731.

tigation would not have been possible without the cooperation provided by all agencies."

TSCRA field inspectors involved in the ongoing investigation are Carrol Cain of Del City, Okla., Joe Ramer of Sulphur, Okla., Paul Wade of Antlers, Okla., and Raymond Russell of Pawhuska, Okla. Also participating are officers from the Oklahoma County Sheriff's Office, Oklahoma City Police Department, Midwest City, Okla., Police Department and the Cooke County, Texas, Sheriff's Office.

Facing multiple charges in Oklahoma and Texas are Sabrina Ann McMillan, 29, and Ronald Douglas Fisk, 43. More charges are expected to be filed against the two as the investigation proceeds. Investigators said McMillan has outstanding warrants for her arrest in Colorado and Fisk is wanted in New Hampshire.

King encouraged anyone in Oklahoma or Texas who has been the victim of a saddle theft in the last two years and has not recovered their property to contact Detective David Mercer, Oklahoma City Police Department, Monday through Friday, 8 a.m.-5 p.m. at (405) 297-1289.

WANTED WW I AND WW II WAR SOUVENIRS

German, Japanese, Italian, Russian, Civil War and some American Military Items

NOTHING FOR SALE

CASH PAID FOR:

- Daggers & Swords up to \$5,000
- Bayonets \$5 to \$50
- Medals & Badges \$5 to \$100
- Helmetts & Hats \$15 to \$800
- Nazi Uniforms \$15 to \$1,000
- Nazi Cloth Insignia (each) \$25 to \$1,000
- U.S. WWII Leather Flight Jackets \$50 to \$900
- Military Guns up to \$2,000
- German Lugers \$200 to \$2,000
- German Steins
- Muzzle Loading Antique Guns especially Japanese

Holiday Inn
2700 E. Mabry Dr.
U.S. 60,70, & 80
Clovis New, Mexico

SATURDAY MARCH 2
10 A.M. To 6 P.M.

Please bring anything you think may be of interest to us. Qualified Japanese sword appraiser will be present.

Every Day Low Prices

Prices Do Not Include Delivery! Cash & Carry

We've Got Your Insulating Needs Covered!

FREE NBA TEAM TRAVEL BAG

When you buy 10 rolls or more of R-13 Premium Wall Insulation or higher R-value Owens-Corning pink Fiberglas' insulation.

Save At Home! 272-3351

2x4 - 2x6 Dimension Lumber

White Wood	8'	10'	12'	14'	16'
2x4	1.70	2.15	2.55	3.00	3.40
2x6	2.55	3.20	3.85	4.50	5.15

Redwood & Treated Lumber In Stock!

Macco Liquid Nail tube **\$1.59**

Duplex Recept. - - 49¢
S.P. Switch - - - - 69¢
Electrical Tape - - 59¢

15 lb. Roofing Felt **\$7.99**

Other Roofing Products Priced Right!

Drywall 1/2" 4x8 **\$2.39**

50 lb. CTN Drywall Mud **\$5.79**

Financing Available! Prices Subject To Change Without Notice!

Higginbotham-Bartlett Co.

"Quality & Service At The Right Price"

215 Main Muleshoe, Tx. 272-3351

WE'VE GOT THE HOMETOWN Spirit

You don't have to have \$2,000...

It is a common misunderstanding that it requires \$2,000 to open an IRA. This is not true. The maximum contribution is \$2,000.

You can fund your IRA with what you can afford per year. It can be done with lump sum contributions or you can have automatic IRA deductions made from your checking or savings account. Substantial penalty for early withdrawal.

We've got the Hometown Spirit ... nothing else comes near it!

1ST BANK MULESHOE

Member F.D.I.C.

STATE CAPITAL



HIGHLIGHTS

By Lyndell Williams
TEXAS PRESS ASSOCIATION

AUSTIN - Lawmakers moved two emergency issues forward last week when the Senate approved a school funding reform plan and a House committee passed the proposed lottery amendment.

Other lawmakers filed proposals to reform the insurance industry.

In the Senate, Carl Parker, D-Port Arthur, steered his proposed constitutional amendment (plus a statute bill as a safety net in case voters reject it) past the unanimous GOP opposition, causing sponsors to ponder what House Republicans will do this week.

Democrats are eager to comply with a court order which cuts off state revenues to all school districts on April 1 if a reform measure is not approved by then.

GOP Gatekeepers

But if House Republicans also vote as a bloc, the proposed amendment will fail for lack of two-thirds support.

Whether they have the inclination or the strength to impose bloc politics, the House will get a test vote this week when the lottery amendment comes to the floor.

In a session dominated by Democrats, Republicans have only one ace in the hole: enough votes to stop any attempt to change the constitution.

Ordinarily, this big stick would not see much action, but as fate would have it, the Legislature faces a number of Democrat-designed priority issues requiring amendments to change the Texas Constitution.

Insurance Reform

Insurance Committee chairman, Rep. Eddie Cavazos, D-Corpus Christi, is sponsoring an industry reform plan which would change the way policy rates are set in Texas.

The bill will end the practice of using insurance companies' data on losses and premiums to determine rates for auto and property insurance.

Gov. Ann Richards said insurance companies collaborate in this process to set rates, a charge denied by industry spokesmen.

New Minority Seats

African-Americans in Dallas and Hispanics in Houston are floating names by the dozens expected to be drawn in those cities.

In the process, some Anglo Democrats, U.S. Rep. Mike Andrews, D-Houston, for one, are being more openly discussed by them as possible casualties of re-districting trade-offs.

In several areas around the state, Republicans have a regional population boom to make their case

for a new seat, while minorities argue that past discrimination makes them due.

What's becoming apparent in many of these cases is that to satisfy both claims, an Anglo Democrat might be pined of minority Democrat precincts at one end and fattened with GOP precincts on the other.

Some Republicans are indirectly supplying census data to minority groups, a wooing to make one ponder if the GOP plans to widely back more minority candidates for new seats, not only in these cities but for legislative and judicial seats statewide.

Game of "Footsie"

Top Democrats see this as an obvious game of footsie laced with treachery; they generally assume minorities will choose from the slate of Democratic candidates.

Likely as that is, as minorities begin to win more offices, it will not last forever, and perhaps a few professionals realized the future may be closer than they imagined last week.

Houston city councilman, Ben Reyes, a former House member, shocked an Hispanic audience when he told them, "The best friend that minorities have is the Republican party" when seeking political help to draw minority districts.

No, they're not, argued Texas Democratic Party chief Ed Martin: "Minority leadership knows that Republicans don't give a hoot about minority districts."

Then Texas Republican Party chairman Fred Meyer retorted: "(Anglo) Democrats have always held the pen that redraws political lines. Ask an African-American or Hispanic if they have gotten the best representation as a result."

Other Highlights

- When some of the 30 women lawmakers asked her for a "women only" party at the Governor's Mansion, Richards suggested a slumber party and is working out a date.

- State Rep. Bob Glasgow, D-Stephenville, explaining why he was sponsoring a bill prohibiting paying lobbyists with tax money, said he was shocked to learn Houston and Harris County have hired 10 lobbyists with combined salaries of \$430,000.

- Former San Antonio Mayor Henry Cisneros, one-time darling of the Democrats and still the guru of Hispanic politicians, is under consideration for president of the University of Arizona.

- Former Texas Education Commissioner Bill Kirby, who resigned last month, will become an education consultant with the law firm of Bracewell & Patterson. The firm has offices in Austin, Houston, Dallas and Washington.

No Patience

Angler--You've been watching me for three hours. Why don't you try fishing yourself?

Onlooker--I haven't the patience.

No Very

Mrs. Flanagan: "Was your husband in comfortable circumstances when he died?"

Mrs. Murphy: "No; he was half way under a train."

Three Way News
by Mrs. H.W. Garvin

George Tyson spent Monday and Tuesday in Lubbock with his daughter the Tommy Durhams.

Mr. and Mrs. Robert Kindel spend the first of the week in Childress visiting Mr. Kindles sister.

Mrs. Adolph Wittner spend part of the week in Plainview with her daughter the Baxter Vaughan family.

Darlene and Darla Dolle were in Lubbock Thursday on business and visited her parents the Ralph Davises.

Troy Tyson from Levelland visited his father George Tyson Saturday and also visited the R.L. Davises and his aunt Mrs. H.W. Garvin.

Robin Kindel from Lamesa spent the weekend with her parents the Bobby Kindles.

Several from the community attended the Bailey County Electric meeting in Muleshoe Saturday.

Mrs. Jack Lane was in Clovis Tuesday visiting her daughter the Rodger Hatchers.

Mrs. Tommy Foot from Seminole spent Wednesday visiting her son Rev. Rodger Foot and family.

The Obie Standard family had his cousin and wife from Artesia N.M. spend the weekend with them.

Mr. and Mrs. Buford Peterson visited her sister, Mrs. Lucille Smith at Hart Thursday.

Guests in the home of Rev. and Mrs. Donnie Howell Friday till Sunday afternoon was Mrs. Lula Swin of Roaring Springs.

Mr. and Mrs. Harvey Blackstone attended the Youth Program at 6th St. Church of Christ in Muleshoe Sunday evening the speaker was from Amarillo and there were 25 young people from the Orphans Home at Portales, N.M. attending.

Refreshments of Hamburgers and cookies were served following the program.

I was in Muleshoe Tuesday and visited in the home of Mrs. Clara Coffman, Mrs. Olive Cox, and Mrs. Howard.

Rev. and Mrs. Donnie Howell attended the funeral of an aunt at Archer City Tuesday.

Sheriffs Office Report

According to the jail book at the Bailey County Law Enforcement Center, the following offenses were filed during the month of February:

2-1-91
23 year old male, DWLS, \$500 bond.

2-3-91
21-year old male, family violence, \$200 bond.

2-4-91
37-year old male, public intoxication, \$162.50 fine.

2-4-91
47-year-old male, burglary of habitation, \$5,000 bond.

2-5-91
34-year-old male, burglary of habitation, \$5,000 bond.

2-5-91
35-year-old male, DWLS sentencing, \$250 fine and three days.

2-5-91
33-year-old male, burglary of habitation, \$5,000 bond.

2-5-91
25-year-old male, DWI sentencing, \$750 fine, plus court costs and 60 days.

2-10-91
31-year-old male, public intoxication, \$117.50 fine.

2-12-91
John Villalobos, 38, driving while intoxicated, \$750 fine.

2-12-91
27-year-old male, DWI sentencing, 20 days.

2-13-91
19-year-old male, revocation of probation.

2-8-91
38-year-old male, DWI sentencing, \$700 fine, plus court costs and 18 days.

2-16-91
23-year-old male, DWI sentencing, \$1,000 fine, plus court costs and 40 days.

2-16-91
48-year-old male, DWI sentencing, \$700, plus court costs and 20 days.

2-17-91
37-year-old female, IBC for

Potter County.
2-20-91

Joe Nazario Flores, 40, DWI (Felony), \$500 fine, plus court costs, three years probation TDC and 18 mos. DL suspension.

2-23-91
Rojelio N. Anzaldua, 35, DWI, \$750 bond.

2-24-91
23-year-old male, no driver's license and no liability insurance, \$225.50 fine, city.

Joe Ernest Coker, 40, DWI, \$750 bond.

Help Your Heart

American Heart Association
Beating the Winter Blues

The holidays are over And too much food and too little exercise have taken their toll on your body. So now you're waking up tired and going to bed exhausted. You've got the winter blues.

But the winter blues can be easily cured with a little tender, loving care. If you overdid it during the holidays, it's not too late to get back on track with a healthful lifestyle.

According to the American Heart Association, a healthy lifestyle starts with proper nutrition and exercise. A low-fat, low-salt diet and regular exercise can help reduce your risk of developing cardiovascular diseases and stroke, which claim the lives of nearly one million Americans each year.

The benefits, however, go far beyond preventing heart disease. A healthful diet combined with a regular exercise program will help you look better, feel better and have more energy for work and play.

As you resume your trek toward a healthy lifestyle, remember that "diet" doesn't always mean a change in eating patterns to lose weight. Your diet is simply the foods you choose to eat on a regular basis. The AHA recommends that healthy Americans over the age of two reduce the total fat in their diet to about 30 percent of total calories and limit cholesterol intake to less than 300 mg per day.

The numbers can be intimidating, but reducing fat and cholesterol in your diet can be easy. You can start by buying only lean cuts of meat and trimming any visible fat before cooking. Remember to remove the skin from poultry before cooking. Instead of frying meats and vegetables, try baking, steaming, broiling or roasting them to reduce the fat.

You can reduce the amount of fats consumed in dairy products by substituting skim milk, low-fat cheeses and low-fat yogurt for their high-fat counterparts.

It's also important to limit the number of egg yolks you consume to no more than three or four per week, including those used in cooking. Try substituting two egg whites for one whole egg in recipes for baked goods.

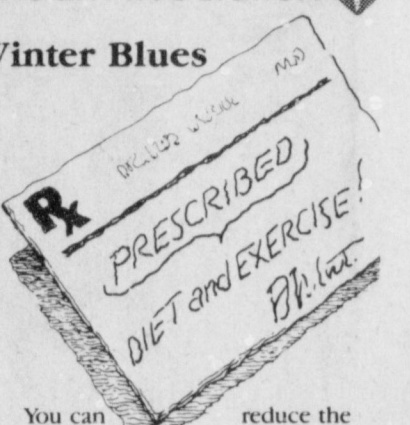
Another way to beat the winter blues is by exercising. Many people who exercise regularly have a greater resistance to stress, anxiety and fatigue, not to mention improved condition of the heart and lungs.

And don't let winter weather keep you from keeping fit. Indoor malls are a great place to walk, and local fitness facilities usually offer indoor exercise and aerobics classes, swimming and weight training.

The AHA says that to improve cardiovascular fitness, moderate to vigorous exercise (such as cycling, brisk walking, jogging, jumping rope or swimming) should be performed for 30-60 minutes at least three to four times per week.

So, don't sit back and wait for spring. Now is the time to beat the winter blues!

For more information on diet and exercise, call your nearest American Heart Association.



ONE MINUTE SPORTS QUIZ

By Christian Thorlund

1. What were total passing yards for the recent Super Bowl teams?
2. What were first down totals?
3. How did turnovers compare?
4. Who won the Senior Skins Game (golf) in Hawaii recently?

Answers:

1. NY--214; Buffalo--205.
2. NY--24; Buffalo--18.
3. There were none.
4. Jack Nicklaus.

YA'LL COME!



Saturday, MARCH 2 2:00 P.M.

"TOAST TO TEXAS"

ARMED FORCES SALUTE at 2:30 P.M. at Mule Memorial

Texas Independence Day

MAC Drawing Will Follow Activities!

Sponsored by: JENNYSLIPPERS...

5 AUCTION 5

Saturday, March 2, 1991 - Sale Time: 10:00 a.m.

LOCATED: Muleshoe, Texas - Muleshoe Civic Center (same being West end of Muleshoe, Texas on U.S Highway 84, or across the street East of Robert Green Chevrolet-Pontiac).

BOMER ELECTRIC CO. - Owner
Telephone: Bob Bomer - (806) 272-5175 or (806) 272-3381

The following will be sold at Public Auction.

BUCKET TRUCK, WINCH TRUCK, TRENCHER UNIT -

- 1-1989 Ford F-250, 1/2 Ton Pickup Truck, With Koenig Service Bed & Stewart Hyd. Telescoping Bucket Mounted, 300 Engine, 5 Speed Trans., P/S, P/B, A. C. C. (14,000 Miles)
- 1-New L.W. Pickup Bed, (For Above Pickup)
- NOTE: Pickup & Service Bed With Hyd. Bucket Will Be Sold Separate & Complete.
- 1-1978 Ford F-600 S.A. Winch Truck 361 Engine, 5 Sp., 2 Sp., Braided P.T.O. Winch, 9.00x20 Rubber
- 1-Jeep-4-Trench, Model GW 86, Trencher, Blade Attach.

ELECTRIC MOTORS -

- 1-G.E. 60 H.P. Vertical Hollow Shaft Electric Motor
- 1-Gould-Century 60 H.P. Horizontal Electric Motor
- 1-Newman 50 H.P. Horizontal Electric Motor

STORAGE BUILDING, TRAILERS, TANKS -

- 1-8'x12' Colored Tin Storage Building
- 1-S.A. Utility Bed Service Trailer
- 1-S.M. S.A. 5 Utility Trailer
- 1-500 Gallon Propane Tank/Trailer
- 3-400 Gallon Round Poly Liquid Tanks

PORTABLE WELDER, SHOP EQUIPMENT, ELECTRICAL TOOLS -

- 1-Lincoln Weldanpower 225 Amp. AC-DC Portable Welder, B&S 16 H.P. Engine
- 1-Winco 12.5 KW, 480 Volt, 1800 RPM, Self Exciting Generator, (New)

ELECTRICAL PARTS, SUPPLIES, CONDUIT, WIRE -

- 1-Lot Meter Loops, Meter Bases, Weather Heads, Eagle

**RECEPTACLES, SWITCHES, WALL PLATES, 220 Volt Receptacles, Circuit Breakers, Eagle Process Timers, Light Fixtures, Fluorescent Bulbs, Ballasts, Various Size Electrical Pump Panels, Various Size Breaker Panel Boxes (Commercial & Residential), Switch Boxes, Wire Mold, Brass Floor Outlets & Fittings, Conduits, LB's, FS's (1/2" To 4"), Disconnect Switches (30 Amp. To 100 Amp.), D/C Storage Batteries, Sealtight Conduit (1/2" To 2"), Flex Conduit (1/2" To 2"), PVC, EMT, Rigid Conduit, Large Lot THW, THWN Wire (No. 14 To 4/0), Overhead Triplex Aluminum Wire (Lot EMT, PVC, Rigid Sweeps (1/2" To 4")
- 1-Lot Electrical Supplies Too Numerous To Mention

NON-CLASSIFIED, SHOTGUNS -

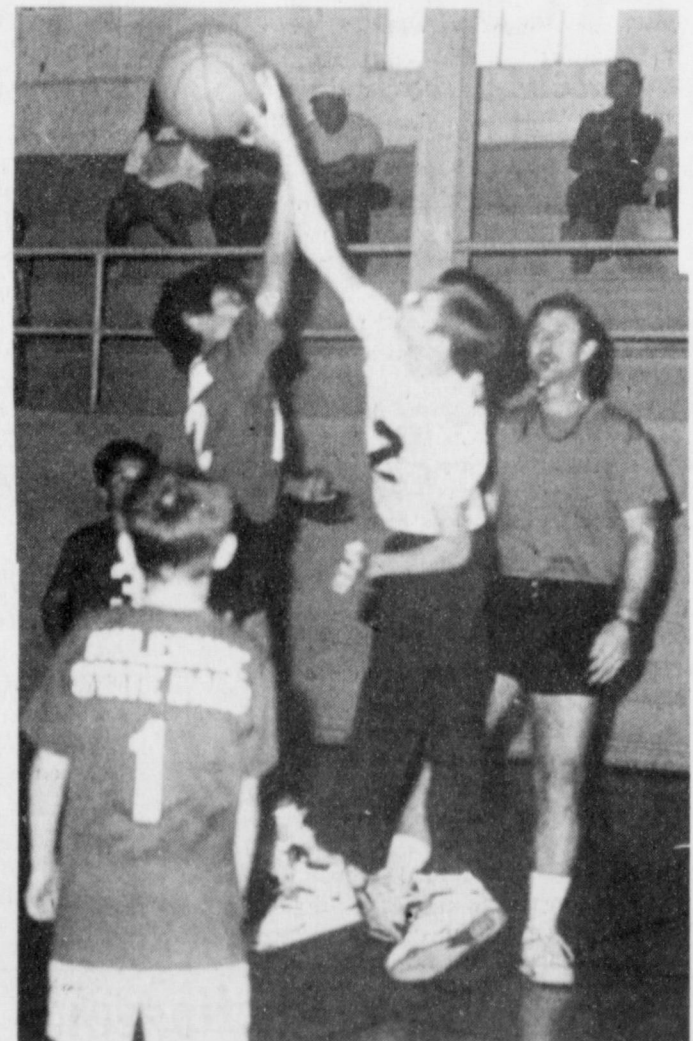
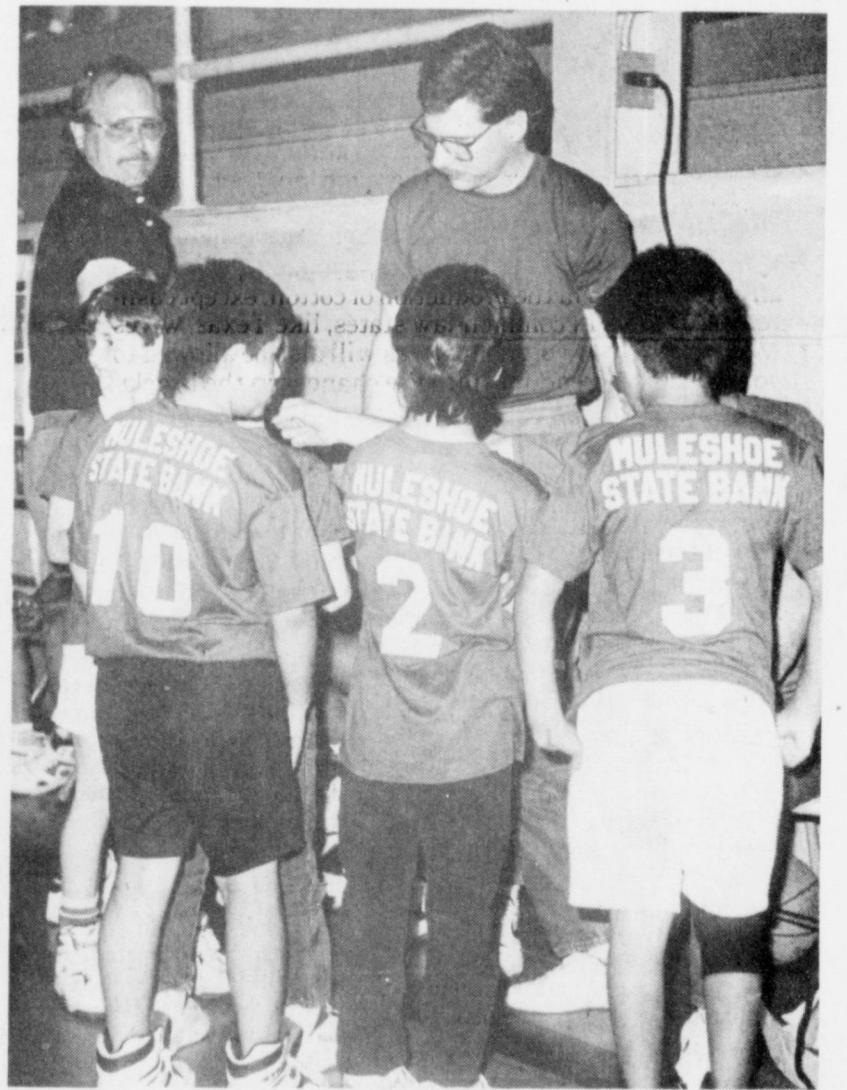
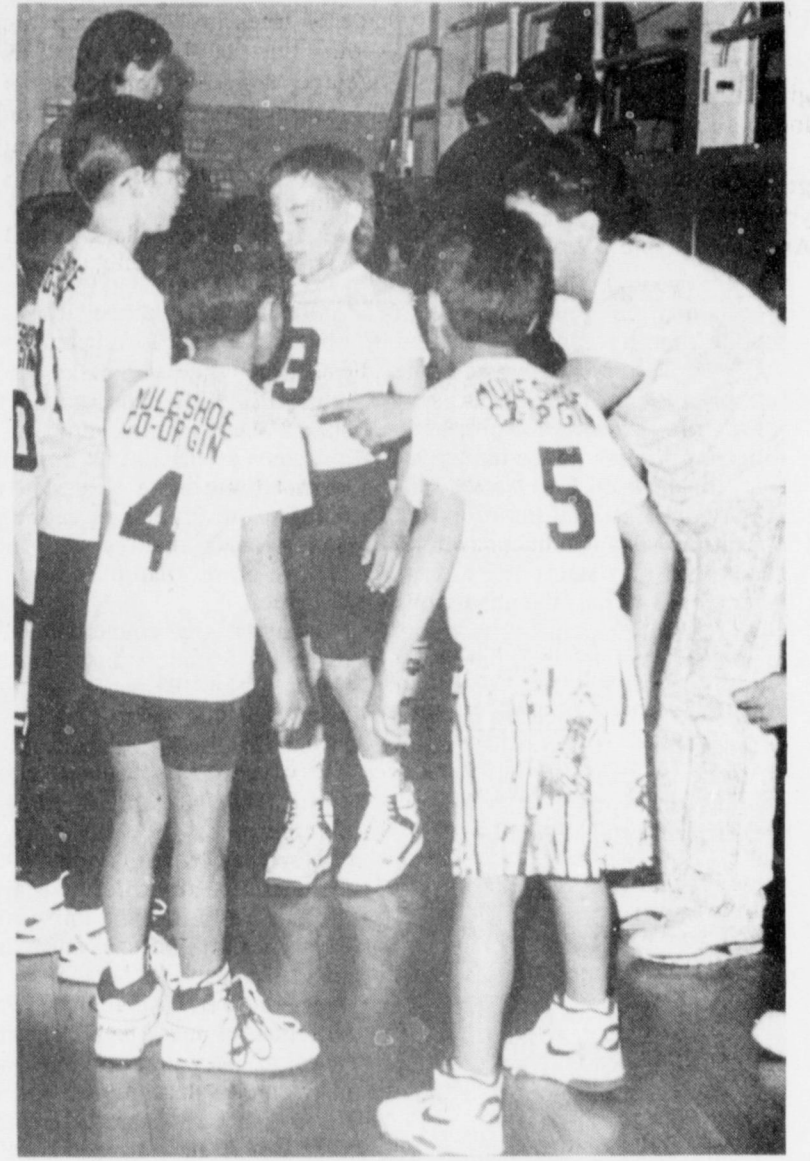
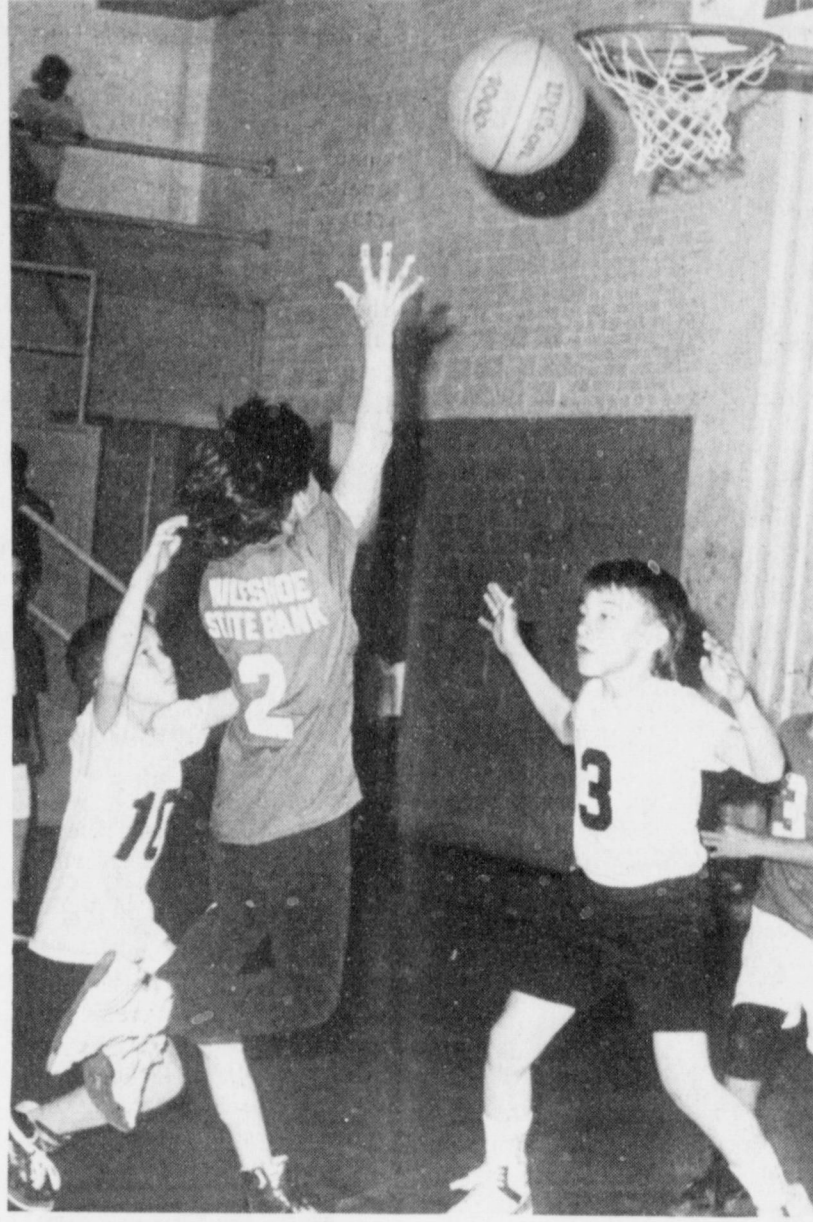
- 1-Carrier 7 1/2 Ton, Self Contained, Roof Top Heating & Cooling Unit
- 1-Carrier 3 1/2 Ton, Self Contained Heating & Cooling Unit
- 1-Westinghouse 4 Ton Air Conditioner Unit
- 1-Payne 5 Ton Air Conditioner Condenser
- 1-Initial 5 Ton Air Conditioner Condenser
- 1-Lot Used Working Furnaces
- 1-Lot Vacuum Cleaners (Kirby, Royal, Hoover)
- 1-Lot Electric Quartz Heaters
- 1-Lot Various Size Shelving
- 2-8" Sidemount Toolboxes
- 2-No-Flex Irrigation Pipe Applicators
- 1-No-Flex Roll-Up Unit
- 1-Winchester Model 140, 12 Ga. Automatic Shotgun
- 1-Harrington-Richardson 12 Ga. Single Shot Shotgun, (Model 088)
- 1-Large Lot Items Too Numerous To Mention

NOTE: Any Announcement Sale Day Takes Precedence.

Five Star Auctioneers
P. O. Box 1030 - Plainview, Texas 79073-1030

JAMES G. CRUCE (806) 296-7252 (6704)
MERVIN W. EVANS (806) 293-8195 (6427)
BENNI REAGAN (806) 469-5217 (7411)
JIM SUMMERS (806) 864-3611 (8363)
JIMMY REEVES (806) 864-3362 (CLERK)**

Muleshoe Little Dribblers In Action



County Agent Report

By: Spencer Tanksley

WINTER YELLOWING AND SCORCHING OF EVERGREENS

Spencer Tanksley, CEA-AG, gives the following information for the benefit of area citizens: Throughout the winter evergreens have a tendency to turn yellow and sometimes brown. Arborvitae and Juniper com-

monly called Cedar, often have this problem. Some of this yellowing is related to the decrease in chlorophyll production due to generally cooler temperatures. However, there are other factors involved.

Often the greatest damage occurs on the south-southwest side of trees growing along the south side of buildings. This damage suggests that heat of the afternoon sun, which is on the southwestern horizon during winter afternoons, is undoubtedly involved.

The other factor is lack of soil moisture. Evergreens, unlike

deciduous trees which drop their leaves in the fall, have their leaves or needles all winter long. Trees cool themselves by allowing water to evaporate through holes in their leaves, called stomates. They are similar to large evaporative coolers. When air temperatures reach into the high 70's on warm winter afternoons, the actual temperature on the south side of buildings, due to the direct sun and reflected heat from the building, may be in the 80's or 90's.

If there is adequate soil moisture the trees can pump water to the needles for evaporation and the temperatures will be lowered. However, if soil moisture is too low the leaves will not be cooled and scorching and drying occur.

Trees should be watered a minimum of one inch of water every three weeks if an equal amount of rainfall has not accumulated. About 90 percent of a tree's roots will be in the first 18 inches of soil.

One inch of water will move about six inches deep in heavy soil to about 12 inches deep in lighter sandy soil.

Therefore, even in sandy soil you probably need more than just the minimum one inch and in a very dry heavy soil, you may need more than two inches to get close to that 18 inch depth.

In addition, if you are dealing with closely spaced windbreak trees the root systems will be overlapping and competing for water.

Your dormant bermuda grass lawn may be very wet several days after a good rain, but, if the days since the rain have been exceptionally hot, the soil under the trees may be nearly devoid of moisture due to the demand for water from the trees.

HOLD OFF ON LAWN FERTILIZATION

Recent warm weather has people thinking about spring things. Some are already asking about fertilizing lawns.

February, March and April are too early for fertilizing dormant warm season turf such as bermuda grass and buffalo grass.

Applying nitrogen when turf is dormant merely wastes it. Winter rains or snow will leach it down out of the rootzone before the grass can utilize it.

In addition, bermuda grass is known to lose a large portion of its root system in late April. High levels of nitrogen in the soil at this time make this situation worse.

Waiting to fertilize until bermuda grass is nearly completely green in early to mid May will be better for the turf and save you money.

Letter To The Editor

Dear Friends:

The Jennyslippers wish to encourage your participation in the events which are upcoming this Saturday, March 2, Texas Independence Day.

Please fly your flags, both Texas and/or U. S. Flags.

Please prepare a Texas or Patriotic display in your business window.

In honor of Texas Independence Day, please dress 'Texas' or western and we'd appreciate the support of all employees by dressing western on Saturday in your place of business and at the Toast to Texas.

PLEASE COME TO THE MULE MEMORIAL about 1:45 p.m. this Saturday afternoon to get ready for the Toast and have time for everyone to get their glass of clear Texas water for the Toast. Encourage your friends and employees to come. We'll have a great program.

COME HELP US honor our Armed Forces who are serving with courage and valor. America, Texas and Muleshoe salutes them!!

Thank you, Nelda Merriott, Chairman Jennyslippers ps - And please put a poster in your business window. Thanks, again. Last year, television stations from Amarillo and Lubbock were here and we'll probably have even more coverage this year! Muleshoe is lookin' good!!!

Texas Senate Week In Review

On Wednesday, February 13, the Senate passed landmark environmental legislation that provides Texas with an aggressive, organized response to oil spill clean-up and prevention. Senate Bill 14, sponsored by Senator Carl Parker of Port Arthur, designates the General Land Office as the lead agency for responding to oil spills and other pollutants in coastal waters. In addition, the bill creates a \$50 million fund by placing a two cent per barrel fee on crude oil transported by vessel to pay for the state response costs, compensate persons damaged by spills, and fund research. This bill also requires persons responsible for the spill to be responsible for actual clean-up costs. Upon passage of this legislation, Lieutenant Governor Bob Bullock announced that the bill was a major piece of environmental legislation for Texas.

The Senate also passed legislation this week that provides student reservists who have been called into active duty in the Persian Gulf with full reimbursements of tuition and fees or academic credit for coursework completed before leaving school. Under previous Texas law, schools could not refund tuition and fees in full after the 12th day of class of a semester. Senate Bill 63, sponsored by Senator Rodney Ellis of Houston, now goes on to the House.

On Tuesday, February 12, the Texas Senate and the Texas House met in joint session to hear Supreme Court Chief Justice Tom Phillips deliver the State of the Judiciary Address. Chief Justice Phillips expressed the need to increase salaries for retired appellate and trial judges stated the needs for the three levels of Texas courts, including staff, salary increases,

equipment and uniform jurisdiction at the county level, and increased legal services to the very poor.

In committee business, the Senate State Affairs Committee heard testimony on Senate Joint Resolution 18, sponsored by Senator John Montford of Lubbock, which proposes a constitutional amendment relating to the establishment of a state lottery. Governor Ann Richards testified in support of the measure to give the voters the choice on how they want to fund state government. The legislation is still pending in committee. The Nominations Com-

mittee met and recommended several gubernatorial appointments to the full Senate.

Also this week, in a more unusual event, the members of the Legislature met for an historic group photograph in the excavation north of the Capitol to commemorate the expansion and restoration of the Texas State Capitol building. The Capitol Press Corps was on hand to record the event as well as Senate and House photographers.

The Senate stands adjourned until 2 p.m. Monday, February 18.



LUBBOCK, Friday, February 15, 1991

Both producers and importers are wondering what effects the proposed amendment to the Research and Promotion Act of 1966 will have on them. The amendment, attached to the Food, Agriculture, Conservation and Trade Act of 1990 would eliminate the refund provision and allow imported cotton and the cotton equivalent of imported textiles to be assessed. Producers involved with Lubbock-based Plains Cotton Growers, Inc. are no exception.

"We all are very curious about the upcoming referendum," explains Donald Johnson, PCG Executive Vice President. "Producer reaction to the proposed changes, especially the portion that makes the assessment non-refundable, will determine whether or not industry efforts to place an assessment on imported cotton have been successful."

The curiosity stems from the fact that neither group is exactly sure what ramifications its passage will bestow on the other. Therefore it is no surprise that questions about this issue abound. To answer some of those questions the Cotton Board has released some preliminary information about the referendum.

Many producers are curious about the effect of making the current assessment non-refundable. They wonder if the supplemental assessment rate will be lowered after the referendum is passed. The Cotton Board says it will still have the authority to set the supplemental assessment at a level between zero and one percent. The Board also notes that the current \$1.00 plus 6-tenths of one percent of the value of the bale rate would "be the subject of a thorough analysis" if the referendum passes.

Another question being asked is who will be allowed to vote in the referendum. Eligible voters will include anyone involved in the production of cotton, except cash-rent landlords. In common-law states, like Texas, wives will be eligible to vote. Importers will also be allowed to vote on the referendum since the changes in the legislation will place an assessment on imported upland cotton and the raw cotton equivalent of imported textiles.

It isn't known at this time how many importers will be eligible to vote. The Cotton Board explains that due to the large number of small importers a minimum participation level will be established based on the importers annual volume and categories of products. Importers below this level would not be allowed to vote and would not be required to pay the assessment.

How the referendum will be conducted is another often asked question. Eligible voters should receive a mail ballot and explanation from ASCS in the same manner as previous referendums. The referendum is tentatively scheduled to be held May 20-29, 1991. A simple majority of producers and importers voting in the referendum is needed for it to pass.

The NCC has also announced that they are arranging a number of information meetings designed to answer questions from producers and other interested parties. The dates for these meetings have been tentatively set for the last full week of April and the first week of May. The meetings scheduled for the High Plains will most likely be held during the first week of May.

There will also be changes in the make-up of the Cotton Board and Cotton Incorporated (CI). Among them are a boost in the amount of funds that will be collected, the addition of importers to the Cotton Board and an increase in the number of directors on CI's board.

The Cotton Board estimates that if the referendum is passed it will generate 80-percent more revenue than the current program. The additional funds will be applied directly to CI's program budget where the largest percentage will be invested in their national advertising program.

Changes to the Cotton Board itself should the amendment pass probably will come in the form of an addition of two to three importer members to the current 22-member board. Cotton Board points out that no importers will serve on the CI board.

Texas would gain four producer directors on the CI board since each state representation is determined by its support rate and production level.

Plains Cotton Growers is on record in favor of this amendment notes Johnson. He explains that passage of the amendment will provide a mechanism for imported cotton and cotton products to pay its share of the marketing efforts designed to enhance cotton's share of the textile market.

There also will be a change in the way the State Support Program is administered. Under the new program five percent of CI's overall budget would be divided among the states, according to each state's percentage of total collections. Depending on a number of factors, Texas would most likely receive \$400,000 to \$800,000 annually in state support funds. These funds can be spent on textile or agricultural research within the state or be designated for promotion within existing CI projects.

To oversee the distribution of these funds Texas has begun the process of organizing the Texas State Support Committee. Newly elected officers of the committee are: Joe Pennington, Chairman; Larry Nelson (current PCG President), Vice-Chairman; and William R. Bickley, Secretary.

Every five years the Secretary will conduct a review to determine support for the continuation of the amendment. Producers and importers may request a referendum at any time if 10-percent of producers and importers voting in the initial referendum request one.

BECAUSE YOU OPENED YOUR HEART,



Today, new techniques allow doctors to repair many heart defects in children without making a major incision. Your contributions to the American Heart Association help make these and other advances possible. And that makes opening your heart a good way to save it. To learn more, contact your nearest American Heart Association. You can help prevent heart disease. We can tell you how.

DOCTORS WON'T HAVE TO OPEN HERS.

American Heart Association

This space provided as a public service

Thomas Holloway, economist with Mortgage Bankers Assoc.: "I don't think we can expect a surge in activity during the first part of the new year."

Jack Lenzi, lobbyist: "The NRA was disappointed but not surprised. The federal ban is an infringement on rights of citizens who collect automatic weapons."

Tamir Rankow, travel agent, Coral Gables, Fla.

"This is a sad day in the history of aviation. Eastern has always put pressure on other carriers to keep fares lower than they might otherwise do."

"Consumers should not have any concerns about the availability of petroleum and petroleum products."

High Plains Corn Growers--- Are You Considering Growing Food Corn In 1991??



- ★ Here is the **BOTTOM LINE** profitability for the hybrids on Frito-Lay's current list- as they performed in the Frito-Lay Yield Trial in 1990.
- ★ For this comparison a \$5.50/cut price was used - This in no way should be considered a firm contract price on actual contracts.
- ★ Frito-Lay will allow 65% of Yellow Food Corn Contracts to be planted to PX9540.

COMPANY	HYBRID	#/ACRE	@ \$5.50	INCOME PER ACRE	PS PX9540
Northrup King	PX 9540	12886	708.73	-----	\$0.00-----
NC+	5891	12494	678.17	-\$21.56	
Pioneer Brand	3162	12482	686.51	-\$22.22	
NC+	5990	12341	678.75	-\$29.98	
Pioneer Brand	3168	12074	664.07		-\$44.66
Pioneer Brand	3192	11258	619.19		-\$89.54

Kenneth Christie Farm - Summerfield, TX

See your local Northrup King Seed Dealer to reserve your seed or for further information.

Pivot Products Distributors, Inc.

710 E. Amer. Blvd.

Muleshoe, Tx.

272-5536

**Report From
U.S. Representative
Larry Combast**

U.S. Representative Larry Combast (R-Texas) is encouraging senior citizens to apply for a one-week government study program the week of May 12-18 in Washington, D.C. In the past three years, seniors from the West Texas-Permian Basin area have traveled to the nation's capital to participate in discussions with members of Congress and administration officials. "During their visit, these senior ambassadors observe and comment on the process of government," said Combast. "It is important to have opportunities to share viewpoints in our representative democracy. Seniors often give their time and effort with valuable suggestions that have become the milestones guiding our maturing society."

In addition to discussing issues with Congressman Combast, seniors will participate in one-site study visits to Capitol Hill, the Supreme Court and the Library of Congress. Time will also allow for visits to many of Washington D.C.'s historical sites.

The congressman said that seniors interested in applying for an internship must be at least 60 years of age, in good health, active in local senior citizen projects and willing to share what they learn with others back home.

Since the program is funded roundtrip transportation to Washington, D. C. Interns also pay an \$815 fee that covers hotel, meals, transportation to events and other miscellaneous costs. The program fee also includes a supplemental life, health and accident insurance policy designed for coverage during the trip. Interns may raise funds for the fee through sponsorship or donations in the community.

Applications must be received no later than Friday, March 8. For more information, or to apply, contact Congressman Combast through staff member Lisa Elledge in Washington, D.C. at (202) 225-4005.

Two centuries after the ink dried on the words, "We the people...", the practice of government for the people seemed to dry up. Now we have an opportunity to get government back in the hands of the people.

I have always believed that government serves best when it is closest to the people. In Texas, we may have the opportunity to take our share of \$20 billion in federal funds and apply the taxpayers' money to programs chosen by the states and Congress. Under a proposal in the President's State of the Union Address, the states would have flexibility to manage these selected programs and in the words of one governor, "...save states about 4 million bureaucrat hours of paperwork" by administering programs without Washington's unnecessary regulations.

Many of you have heard or read where I recently launched my campaign to Fight Against Intrusive Regulations ("FAIR").

These unnecessary federal regulations are sapping the financial strength from our economy. There are many examples. The Department of Energy reports that environmental regulations will cost the oil and gas industry \$15 billion to \$79 billion and threaten to make what will be left of domestic oil reserves too expensive to drill for in ten years. Landfill regulations imposed from Washington are costing Plainview a half million dollars for a plastic liner. Similarly, folks in Littlefield are now paying \$3 more each month in garbage collection fees because of similar regulations that treat West Texas landfills like dumps in the industrialized Northeast. The Clean Air Act which I voted against in the 101st Congress may cost America business \$30 billion each year. These federal regulations have one thing in common: they end up costing you when local governments and small businesses have to spend money to comply with this massive regulatory onslaught. I believe that a noticeable amount of the current recession is a governmental-created regulatory recession.

Congress and the bureaucrats rush to act, passing laws that give birth to regulations instead of solving problems. A prime example is Congress' rush to judgement in passing the Clean Air Act by a vote of 401 to 25 last October. Although I voted against this legislation, many of my colleagues could not wait for completion of a 10-year study by a team of 2,000 scientists concluding that, "there is no evidence of a general or unusual decline of forests in the United States and Canada due to acid rain." The study by the National Acid Precipitation Assessment Program (NAPAP) cost the taxpayers \$570 million, but it was ignored as Congress postured to act on behalf of "clean air." The NAPAP study said we could achieve 80 percent of the emission reductions required in the Clean Air Act for only half the costs. Just consider what reasonable regulations could do for clean air and economic environment. Think about the cost we pay for the ribbons of red tape dispensed from Washington.

The President's offer to turnover the \$20 billion in block grants administered by the states could be a start in snipping the red tape reeling out from Washington. The federal government could reduce overhead; states would have flexibility for managing programs with power and decision-making closer to the people. Already, the states have provided innovation in educational choice, enterprise zones, health cost control, welfare reform and transportation. With reasonable rules and local control, government may again serve the citizens instead of the system.

Riches are chiefly good because they give us time.
-Charles Lamb.

It is difficult for a rich person to be modest, or a modest person rich.
-Epictetus.

The rich man is not one who is in possession of much but one who gives much.
-St. John Chrysostom.

**Senator Teel Bivins
Reports**



Austin - As I left the Capitol the other night after one of those killer days that you sometimes have at the beginning of the Session, it struck me that I just didn't seem to have as much time to get things accomplished as I did in the previous regular session. On further analysis, I decided that the principal reason had to be the Finance Committee. While I was aware that the Senate Finance Committee has always been the hardest working committee, even I wasn't prepared for the work schedule set by Chairman John Montford. The Committee meets every day of the week that we are in Session. All other Senate standing committees meet once a week. Senate Finance generally meets at 9:00 a.m. each day and usually reconvenes after the Senate has adjourned in the afternoon for the rest of the day. We spend all that time listening to every State agency present their request for appropriation of funds for the next budget cycle.

While this assuredly is the most serious business in State government, it is not without its lighter moments. The table at which the thirteen members of the Finance Committee sit is in the shape of a "U" (the arms being at right angles). It sits right at the corner of one end of the table between two Hispanic senators. I thought this was a fairly strategic move on my part since I was a Republican and I would be sitting between two Democrats. However, the first time we were presented with an issue that was even the least bit sensitive they leaned forward and began speaking Spanish so fast that even I could not understand them.

The witness table runs parallel with the two arms of the "U" and is perpendicular to the bottom. Witnesses presenting their budget requests sit at the end of the witness table. Often times agencies' employees are called upon to

respond to questions. The day the Public Utility Commission was making its presentation, witnesses were seated in chairs at the end of the table taking up every available seat. Scott Henderson, Director of Information Resources of the PUC, was called to respond to a question. There being no other chairs, he knelt at the end of the table. I told him that while I appreciated his humble and supplicant demeanor, kneeling before the Committee was not necessary. The assistant sergeant-at-arms was instructed to bring another chair to the end of the table.

So far my favorite witness to have testified before the Committee was Dr. Tony Fabelo of the Criminal Justice Policy Council. While Dr. Fabelo had a very heavy Spanish accent, he was articulate and well-spoken as anyone I have ever met. His agency is very small. The agency's budget request amounted to \$348,000 per year. In what amounted to his closing argument on behalf of his agency, he pointed out that the Texas

Department of Criminal Justice whose budget is over a billion and a half dollars, spends over a million dollars per year on toilet paper. He beseeched our committee that surely the Criminal Justice Policy Council was worth less than half of the TDC's budget request for toilet paper.

Even in the face of these very gloomy budget times, Chairman Montford has a sense of humor. After all the agencies had presented their requests for appropriations, the Committee begins what has historically been referred to as "mark-up." "Mark-up" is the actual process of writing the appropriations bill. Senator Montford has put his conservative stamp on the Committee by changing the name of the process to "mark-down."

**News From
State Comptroller
John Sharp**

"When you use local tax dollars to buy everything from paper clips to patrol cars, you want the most mileage for your money," State Comptroller John Sharp said.

"Now, for the first time, everything city and county governments need to know about purchasing--from state regulations and procedures to the bidding process and cooperative buying--is in the Comptroller's new purchasing manual for local governments," Sharp said.

Sharp will unveil the *Model Purchasing Manual for Texas Cities and Counties* Tuesday, February 19, at the 33rd Annual County Judges and Commissioners Conference at Texas A&M University in College Station.

"The new manual is easy to use, even for those who don't know the first thing about purchasing. You don't have to be a lawyer or an accountant to use this book," Sharp said.

The manual was developed because the Comptroller's office was receiving so many questions from local government officials about purchasing procedures.

The purchasing manual also is backed up by telephone assistance through a toll-free call to the Comptroller's Local Government Division. Additionally, agency staff is available to conduct seminars about the purchasing manual.

"We'll come right to the courthouses and city halls, go over the manual, and help local officials set up an efficient and effective purchasing process,"

Sharp said.
For additional information contact the Comptroller's Local Government Division at 1-800-531-5441, extension 3-4679.

**Senator
Phil Gramm
Reports**

U.S. Sen. Phil Gramm of Texas has announced the award of a \$2,414,000 low-interest loan to Lamb County Electric Cooperative Inc. of Littlefield.

The funding provided by the Rural Electrification Administration line to serve 500 new customers in Lamb, Hockley, Castro, Bailey, Hale and Cochran Counties. The company will make other system improvements with a portion of the allocation.

The loan is for 35 years at five percent interest.

I believe in assuring that Texans get a fair return on the tax dollars we send to Washington," Gramm said in announcing the project.

"So I am pleased that this loan will provide permanent improvements which will benefit local residents," the senator said.

REA, which operates both electrification and telephone service programs, has provided low-interest loans and loan guarantees to small companies and cooperatives for 50 years. The agency was authorized by Congress to carry out a special rural loans and grants program to promote economic development and the creation of jobs.

Mankind is divided into two classes--the getters and the givers.

Justice is the goal, and not necessarily the product, of our courts.



**CLASSIFIED
WORKS
FOR
YOU!**

Whether you want to buy or sell something you can depend on the classified pages. The results are quick sales and buys that save you money.

**Muleshoe & Bailey County Journals
Call Classified 272-4536.**

Corn Seed

Food & Feed Corn

10%

saving on Seed

until March 31

Cargill

White Food 9402 & 78010

White Cobb Yellow - 125-647

Feed Corn - 8027 & 7993

Don Bryant Seed

home- 965-2464

mobile-965-2227



CLASSIFIEDS 272-4536

CLASSIFIED RATES

15 Words & Under
Minimum Charge
\$2.30
Thereafter
\$2.00
16 Words & Over
1st Insertion
15 cents per word
2nd Insertion
13 cents per word

CLASSIFIED DISPLAY RATES

\$1.75
Per Column Inch
DEADLINES
12 noon Tues.
For Thursday Paper
12 noon Friday
For Sunday Paper

To receive the reduce rate after the first insertion ad must run continuously.

We reserve the right to classify, revise, or reject any ad. We are not responsible for any error after ad has run once.

1. Personals

CONCERNED
About Someone's
Drinking?
HELP IS
AVAILABLE
through Al-Anon
Call 272-2350 or
965-2870 or come to
visit Tuesday and
Thursday nights,
8:00 p.m. & through
AA call 965-2870 or
come visit Tuesday
nights, 8:00 at 620
W. 2nd, Muleshoe.

3. Help Wanted

Home Health Aid
wanted for Muleshoe
Area. Must have own
transportation. Mail
resume or letter of
inquiry to 310 W.
16th, Muleshoe, Tex.
79347.
G3-9t-4tc

**CLERICAL
POSITIONS**
Bovina Feeders, Inc.
is now taking applica-
tions. Apply in
person only. From
Muleshoe approxima-
tely 10 miles North on
214 and 5 miles West
on 145.
B3-9t-3tc

**EARN \$300 TO \$500
PER WEEK READING
BOOKS AT
HOME. CALL 1-615-
473-7440 EXT. B805.
A3-8t-4tp(ts)**

**WANTED: Exper-
ienced machinist and
gearhead man. Call
(806) 238-1596 days or
238-1328 nights-- after
9 p.m.
B3-tfc**

**CONSTRUCTION jobs
now hiring all posi-
tions. Both skilled &
unskilled. Male & Fe-
male openings. For
info. Call (615) 779-
5505 Ext. J-1104.**

**MULESHOE AREA
HEALTHCARE
Center**
Long Term Care You Can Trust
NOW ACCEPTING APPLICATIONS FOR:
•Registered Nurse for Director of Nurses,
Full-Time
•Social Worker, Part-Time
•Excellent Benefits
EQUAL OPPORTUNITY EMPLOYER
**APPLY IN PERSON
PERSONNEL OFFICE**
8:00 AM-12:30 NOON AND 1:30 PM-4:00 PM
106 W. Ave. H MULESHOE, TX 79347
272-7578

4. Houses For Rent

**FOR RENT: 3-1-1t
carport. Fully car-
peted. Fenced back yard
with storage building.
Call for details. 272-
4814 after 5:30 p.m.
B4-8s-4tc**

9. Automobiles For Sale

1979, Tan Chevy
Pickup, 350 motor,
3/4 ton, Power Brakes
and Steering, A/C,
AM-FM stereo cas-
sette. Fairly new mo-
tor with 26,000 miles.
New tires. Good con-
dition. \$2500.00. Call
272-3461 and ask for
Blain.
9-8s-1tp

**FOR SALE: 1987
Chevy Suburban Sil-
varado. AM/FM Cas-
sette, tilt cruise, new
tires. 60,000 miles.
Call 272-5037.
P4-44t-tfc**

11. For Sale Or Trade

**FOR SALE: Tandem
Unit. 8 Tires and
Wheels. Mounted.
Size of tires 112.5
Radials 80% rubber,
80% brakes. COM-
PLETE UNIT. Axels,
Springs, and Air
Tanks. Call 272-5654.
A11-8s-2tc**

15. Misc.

**Estate Sale-Priboth
Everything goes. 85
years of collections.
Lots of antiques also
car with 29,000
miles for \$1700 and
home for sale.
Starting March 1st.
Fri., Sat., & Sun.
932 E. 14th, Little-
field.
2tc**

**3 PEERLESS Sub-
mersible Pumps \$7000
or \$2500 each. Used
part of one season
Muleshoe area. 180'
4" 15HP, 160' 5"
15HP, 185" 6" 25HP
including cables bowl
units sand skirts
panels. Phone 715-
835-8372. Lila Schultz
3834 Nimitz, Eau
Claire, Wisconsin
54701.
S15-6t-3tp**

**CUSTOM FARM 1 to
3 sections from stub-
ble through harvest in
Parmer, Castro, Bail-
ey or Curry counties.
Like to rent 1/2
section. Call (806)238-
1470.
15-5s-8tp**

**FOR RENT: Large
Self storage rooms
with 24 hour a day
access. Call J&J Self
Storage at 272-4307.
S15-1s-tfc**

3. Help Wanted



8. Real Estate

HOUSE HUNTING?
Homes and property
available in your area
(as low as \$10) from
tax delinquencies and
failed savings and
'loans. No credit check
For info., call (219)
345-2679.
c8-8s-4tc

8. Real Estate

Henry Realty

111 W. Ave. B. 272-4581
Muleshoe, Tx.

Just listed- 3 Bedroom, 1 bath, 1 carport
storm shelter, good fence. Priced to sell.

2 Bedroom, 1 bath, Perma stone, carpet,
fenced, insulated, storm doors and
windows; low utilities. Neat, clean and
excellent location near High School.

3 Bdrm., 2 bath, spacious home outside
city limits, near city on highway. 29x40
metal building. Lot 85'x420'.

COMMERCIAL PROPERTY-Ideal location
on West American Blvd. 150' highway
frontage. A great business opportunity.

SPACIOUS-2 Bdrm., 2 bath, with garage.
Freshly painted. Fireplace. Ready to move
in.

Brick Veneer Restaurant 150 Seating, over
5,000 sq. ft. with modern Equipment.
Ready for operation Located on US Hwy 84
in Muleshoe. 7000 sq. ft. paved parking.
Excellent Financing available for Qualified
Buyer.

For Rent 4 BR., 2 Bath, 2 Car Garage,
Refrig. Air \$400 per month and you pay
utilities. 8 Miles from muleshoe.

**BAILEY COUNTY LAND
FOR SALE**
Owner will finance the following size
blocks: 2-80 acres, 3-160 acres, 4-240
acres, and 1-320 acres. Water, rail and
cotton allotments. 1/4 center of
pastureland grass. Center Point, A Sweet
Cattle Sale. If interested, contact T.L. Timmons
806-385-4487 806-925-6484
(Day) (Night)

**FOR SALE: 14x70, 2
bedroom, 2 bath mo-
bile home. Good
condition. \$10,000 or
will consider any
reasonable offer. 272-
5489 or 965-2178.**

Bingham & Nieman Realty

George Nieman, Broker

116 E. Ave. C.

272-5285 or 272-5286

RICHLAND HILLS
IMMACULATE 3-2-2 Brick, Cent. A&H,
Built-ins, FP, sunken lv. area with
cathedral ceiling, ceiling fans, earthtone.,
storage bldg. \$50's!!!!

NICE RESIDENTIAL LOTS! \$5,000 UP.....

PRICE REDUCED-Nice 3-2-2 Brick, Cent.
A&H, FP, Earthtone carpets, fenced yd.
\$60's!!!!

HIGH SCHOOL
3-2-1 Home 1900+sq. ft. of lv. area, heat
pump, built-ins, FP, fenced yd., storage
bldg., & much more. \$40's!!!!

JUST LISTED- 4-2-1 Brick, † 2 carport,
built-ins, Cent. A&H, 2 car Det. garage &
workshop, fenced yd., sprinkler sys.,
Much More. \$40's!!!!

2-1/2-1 Brick, fl. furn., Cent. Air, fenced
yd., & more \$20's!!!!

FmHA FINANCING to qualified buyer-
3-1-1 Brick, Cent. heat, earthtone carpet,
\$20's!!!!

HIGHLAND AREA
NICE 3-2-1 Brick, built-ins, Heat Pump
FP, fans, energy eff., fenced yd., &
storage \$50's!!!!

NICE 2-2-2 Brick, Cent. A&H, earthtone
carpets, fenced yd., much more. Priced
to Sell!!!!

JUST LISTED 2-2-2 Home, Cent. heat,
evap. air, built-ins, fenced yd., & more.

JUST LISTED-Nice 3-1-1, heat pump, nice
carpets, fenced yd. Much More. \$30's!!!!

VERY NICE 4-2-1 Brick, Cent. A&H,
built-ins, earthtone carpets, util, encl.,
patio, storm win. & doors, grill, splkr.
sys., stor. bldg., fenced yd. \$60's!!!!

JUST LISTED- Nice 2-2-1 Brick, Cent.,
A&H, built-ins, HEATED POOL, splkr.
Sys., fenced yd., corner lot, & more.
\$50's!!!!

Help Your Heart

American Heart Association

You Can Reduce Your Risk of Heart Disease

The newspaper headlines can
sometimes seem pretty grim. Heart
disease, cancer, Alzheimer's disease,
AIDS, and many other diseases alter
or take the lives of millions of
Americans each year. But there is
hope. According to the American
Heart Association you can take charge
of your life when it comes to heart
disease. You can reduce your risk of
developing it.

Diseases of the heart and blood
vessels, including heart attack and
stroke, are the leading cause of death
in the United States. Almost one
million Americans each year die from
cardiovascular disease.

The AHA says that reducing your
risk and perhaps preventing the
development of heart disease
starts with knowing the risk factors.
Extensive studies have identified
several factors that increase the risk of
heart attack and stroke. And although
no single risk factor causes heart
disease, the more risk factors you
have, the greater your chances of
developing it.

Unfortunately, some risk factors
cannot be changed. For instance,
heart disease can be hereditary. African
Americans tend to develop cardiovas-
cular disease related to their increased
risk of high blood pressure. Being a
male is another risk factor. And older
people have a greater tendency
toward heart disease.

But other risk factors
can be changed, and
these are the ones to
focus on:

• Cigarette smoking—
If you smoke, quit.

• High blood pressure—
Control high blood
pressure by cutting
back on sodium in
the diet (no more than
1000 mg. per day) and
take medications as prescribed by
your doctor.

• Blood cholesterol
levels—Maintain a
cholesterol level at or
below 200 mg/dl.
You can help control
your cholesterol
level by consuming no more
than 30 percent of total
calories from fat.



Control high blood
pressure by cutting
back on sodium in
the diet (no more than
1000 mg. per day) and
take medications as prescribed by
your doctor.

Maintain a
cholesterol level at or
below 200 mg/dl.
You can help control
your cholesterol
level by consuming no more
than 30 percent of total
calories from fat.

Maintain a
cholesterol level at or
below 200 mg/dl.
You can help control
your cholesterol
level by consuming no more
than 30 percent of total
calories from fat.



Classify!
Call 272-4536

8. Real Estate

**FOR SALE: Country
Home. 3 Bedroom, 2
Bath. 2200 sq. ft. with
3 Acres. 8 miles North
of Lazbuddie.
K8-51s-tfc**

HOUSE FOR SALE in
Muleshoe: 3 bedroom,
1 bath. Fenced yard,
storage shed. (806)
965-2838.
G8-7t-14tc

8. Real Estate

**HOUSE FOR SALE: 3
Bedroom, 2 full baths,
Central heat and air.
Good storm cellar and
well. On 2 Acres. 3
miles East on Hwy 70
and 1 mile North,
then 200 yards East.
806-352-1715
in Amarillo.**

LENAU ADD.
Nice 4-2-2 Carport Home. Cent. A&H,
built-ins, FP, Cent. Vac., Office, Sewing
area, fenced yard. \$30's!!!!

2-1-1 Home, freshly
wall furn., d interior,
\$20,000, fenced yd.

3-2-2 Brick, Heat Pump, built-ins, Nice
Carpets, fenced yd., & more!!!!

3-1 Home, Corner lot, wall furn., fenced
yd. \$20's!!!!

COUNTRY CLUB- Nice 3-2-2 Brick, Cent.
A&H, built-in, freshly repainted,
fenced yard!!!!

COUNTRY CLUB-PRICE REDUCED on
this 3-2-2 Brick, Cent. A&H, built-ins, FP,
2,000+ lv. area, freshly painted, storage
bldg., fenced yd., much more \$69,900!!!!

JUST LISTED- VERY NICE 3-2-2 Brick,
3,000+ sq. ft. of lv. area inc. nice finished
basement, built-ins, geothermal A&H,
energy-eff., loads of closet & storage, on
7.86 acres, fence, stock tank, sideroll, &
many more amenities, close to town.
DON'T MISS THIS! \$90's!!!!

3-2-3 Carport Home on 11 ac. edge of
town, Cent. A&H, built-ins, cellar, barns,
& corral. MAKE OFFER!!!!

NICE 3-2-1 Home on 1 acre close to town,
Cent. Heat, Evap. Air, Nice Carpets,
Remodeled. \$30's!!!!

GYMNASTICS STUDIO- BLDG. & EQ-
QUIPMENT- PRICED TO SELL!!!!

RESTAURANT BLDG., LAND., & EQ-
QUIPMENT- A GOOD BUY!!!!

COMMERCIAL TRACT 175'x100' (Hwy.
70 & 84, RR spur access, approx. 1200 sq.
ft bldg. PRICED TO SELL!!!!

24 ac., W. Hwy. 84, 8" well, 3 homes, 14
mobile home hookups, & also has veg. &
fruit stand!!!!

• Physical inactivity—
Exercise 30-60 minutes at
least 3-4 times per week.
• Obesity—
Maintain your
ideal weight.



The mission of the
American Heart Asso-
ciation is to reduce
disability and death from
cardiovascular diseases
and stroke. The AHAs
3.2 million volunteers across the
country are accomplishing that
through public and professional
education and by supporting vital
cardiovascular research.

During February, American Heart
Month, AHA volunteers all across the
country will be contacting their
neighbors and friends asking for
support—a commitment toward life,
and quality of life.

For more information, contact your
nearest office of the American Heart
Association.

18. Legals

18. Legals

NOTICE TO CONTRACTORS

Sealed bids addressed to the City of
Muleshoe, Texas will be received at the
City Hall until 8:30 AM, March 19, 1991
and then publicly opened and read for
furnishing all plant, labor, material and
equipment, and performing all work
required for SEAL COATING CITY
STREETS.

Bids shall be submitted in sealed
envelopes upon the blank form of the
proposal attached hereto and marked in
the upper left hand corner.

All proposals shall be accompanied by a
cashier's check or certified check upon a
national or state bank in the amount of
five (5%) percent of the total maximum
bid price payable without recourse to the
City, or a bid bond in the same amount
from a reliable surety company, as a
guarantee that bidder will enter into a
contract and execute any bonds that may
be required within ten days after notice of
award of contract to him. The bid security
must be enclosed in the same envelope
with the bid. Bids without check or bid
bond will not be considered. Contract is
expected to be awarded at the March 19,
1991 meeting.

If contract is over \$25,000 the successful
bidder must furnish performance and
payment bonds upon the forms which are
attached hereto in the amount of 100% of
the contract price from an approved surety
company holding a permit from the State
of Texas to act as surety or other surety or
sureties acceptable to the Owner.

The right is reserved to reject any and
all bids and to waive any informality in
bids received.

Plans, specifications, and bidding docu-
ments may be obtained from McMorries &
Associates, Inc., 6300 Canyon Dr.,
Amarillo, Texas 79109, by qualified
general contractors on deposit of \$50.00
per set.

CITY OF MULESHOE, TEXAS
By: Darrell E. Turner
Mayor

NOTICE TO CONTRACTORS

Sealed bids addressed to the City of
Muleshoe, Texas will be received at the
City Hall until 8:30 A.M., March 19, 1991,
and then publicly opened and read for
furnishing all plant, labor, material and
equipment, and performing all work
required for a Plastic Pond Liner.

Bids shall be submitted in sealed
envelopes upon the blank form of the
proposal attached hereto and marked in
the upper left hand corner.

All proposals shall be accompanied by a
cashier's check or certified check upon a
national or state bank in the amount of
five (5%) percent of the total maximum
bid price payable without recourse to the
City, or a bid bond in the same amount
from a reliable surety company, as a
guarantee that bidder will enter into a
contract within ten days after notice of
award of contract to him. The bid security
must be enclosed in the same envelope
with the bid. Bids without check or bid
bond will not be considered. Contract is
expected to be awarded at the March 19,
1991 meeting.

The right is reserved to reject any and
all bids and to waive any informality in
bids received.

Plans, specifications, and bidding docu-
ments may be obtained from McMorries &
Associates, Inc., 6300 Canyon Dr.,
Amarillo, Texas 79109, by qualified
general contractors on deposit of \$50.00
per set.

CITY OF MULESHOE, TEXAS
By: Darrell B. Turner, Mayor

Classify
272-4536

MULESHOE AREA

Mid-Winter '91

BUSINESS DIRECTORY AND SHOPPING GUIDE

TOPPED SOPAIPILLA
Sopaipilla topped with ground beef, cheese, lettuce, tomato & guacamole



\$4.79 Closed Mondays

Leal's Restaurant
1606 W. Amer. Blvd. 272-3294

Henry Insurance Agency, Inc.



"Serving All Your Insurance Needs Since 1964"

KENNETH R. HENRY
CERTIFIED INSURANCE COUNSELOR
REAL ESTATE BROKER



111 W. AVENUE B
PHONE 806/272-4581
MULESHOE, TEXAS 79347

PERMANENT FLOWERS
Special Prices!

LART LOFT

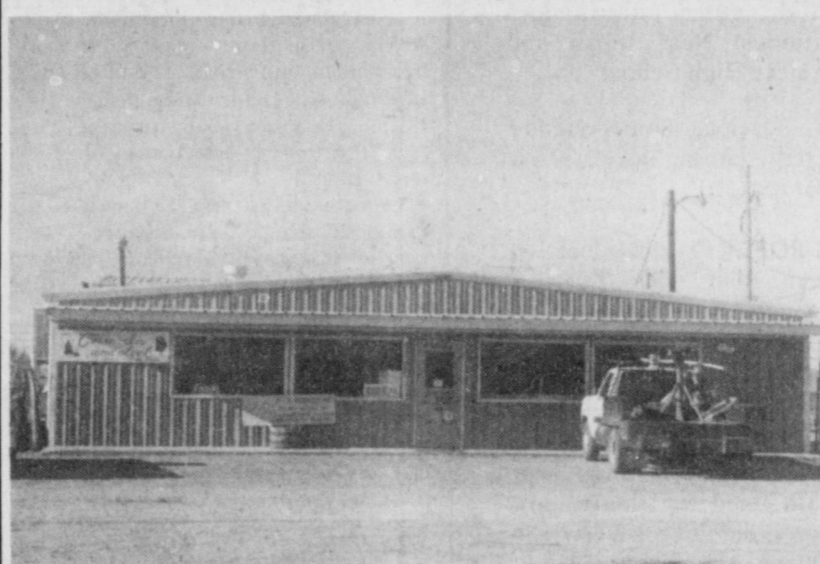


Pivot Products Distributors, Inc.

Pivot Products Announces
Mini Max Trax

A revolutionary steel wheel for use on Center Pivot irrigation systems that makes Minimum tracks, gives Maximum traction and will never go flat.

710 E. Amer. Blvd. 272-5536



In-Store Special!

12 Piece Mix with Rolls
\$8.99 plus tax



1411 W. Amer. Blvd. 272-5581

W.T. Services Inc.

319 E. American Blvd.
MULESHOE, TEXAS 79347

Mobile Communications
Two-Way Radio Repair

GARY PARKER
Technician

Muleshoe - 806-272-4888 Hereford - 806-364-7311

Pivot Products located at 710 E. Amer. Blvd. is ready to take care of all your irrigation needs whether it's repairing your old system or building a new one.

They have parts & service for most irrigation systems. They also specialize in Center Pivot moving and structural repairs of pivots.

Lambert Cleaners

123 Main 272-4726

Sadie Lewis, presser is ready to help you with your Spring cleaning, by cleaning & pressing those Bedspreads & Drapes for you.

Give Your Patio A New Look
This Spring Put Down Astro Turf

From Muleshoe Floor Covering
2 Roll Special
Brown or Green
\$5.95 Yd. Plus Installation

Muleshoe Floor Covering
122 S. Main Curtis Carpenter 272-3555

Pivot Products has a new line of barbed steel loops & weights for pivot drops and will very soon be manufacturing a steel wheel for use on pivots that will not rut down or get stuck.

Come by and visit with Arnold and the friendly personnel today about all your irrigation needs.


Now Installing Underground Pipe.

We Have All Your Irrigation Supplies!
Above Ground Gated Plastic Pipe
Solar Surge Valves

Irrigation Supply
J.C. & Zona Gatewood
607 E. Amer. Blvd. 272-4466

March Special
Sunday Noon Buffett
Beginning March 3, 1991
11:30 a.m. - 1:30 p.m.
(Special Good Thru March 31)

Delivery Available
11 a.m. - 1:30 p.m.
and
After 5:00 p.m.



1412 W. Amer. Blvd. 272-4213


Pivot Products Inc.

710 E. Amer. Blvd.
272-5536

No. 2 COMBINATION PLATE
Chile Relleno, 2
Enchiladas (Meat or Cheese) **\$4.75**

Closed Tuesdays

Viola's Restaurant
2002 W. Amer. Blvd. 272-3838



True Value BARGAIN OF THE MONTH

BUCKET OF VALUES
With Sponges, Cloth, Scrubber And More!

2.99
While Supplies Last
QUANTITIES LIMITED

Fry & Cox True Value
401 S. 1st 272-4511



5 Locations To Serve You!

Clays Corner - Enochs - Muleshoe
Pleasant Valley - Old Griffith

Farmer's Co-Op Elevators
272-7561

WE RECOMMEND ferti-lome
Lawn & Garden Products

Time To Use ferti-lome LAWN FOOD

Kearney Scoggin

Scoggin Ag Center, Inc.
"Where Fertilizer Is Our Business"
1532 W. Amer. Blvd. 272-4613

