

## WEATHER

July 26 92 66 .32  
July 27 87 63 .25  
July 28 84 63  
July 29 88 62

# Muleshoe Journal

The Community Of Opportunity-Where Water Makes The Difference

The Foreman Company  
PO Box 50  
Monmouth, ILL. 61462-0050

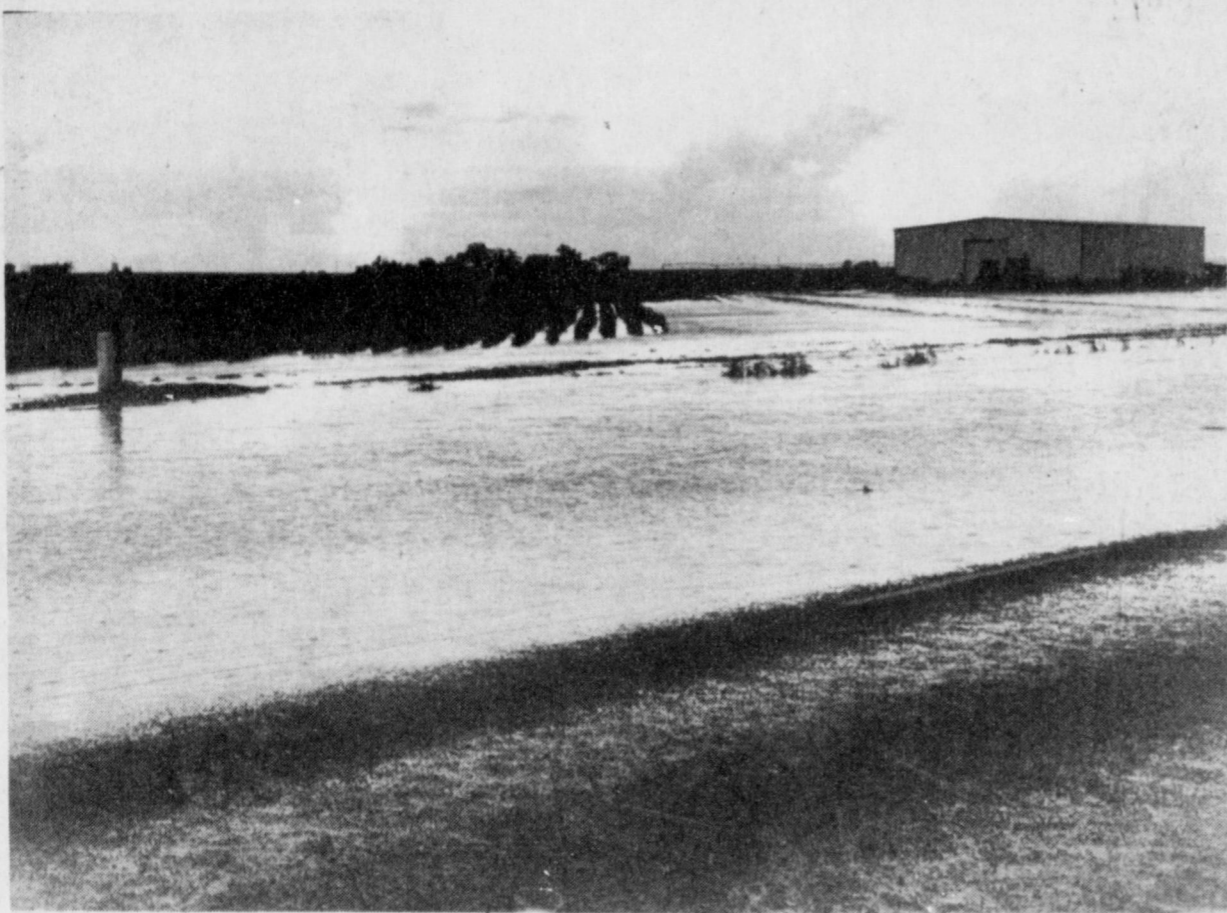


Vol 70, No. 31

Published Every Thursday At Muleshoe, Bailey County, Texas 79347

TEXAS PRESS ASSOCIATION 20°

Thursday, July 30, 1992



IS IT A RIVER OR A HIGHWAY? --During Saturday afternoon's heavy rainstorm water raced across North Highway 84 making it seem more like a river than a highway for a period of time. Some sections of the Lazbuddie area received four to five inches of rain Saturday afternoon. (Journal Photo)

## Antiques Give Added Attraction To Fair

The thirteenth annual Bailey County West Plains Fair will be held September 16-18 in the Bailey County Coliseum. This year marks the 75th anniversary of the founding of Bailey County and a large exhibit of antiques and historical items will be on display in the Civic Center meeting room as an added attraction.

Exhibits to the Fair will be accepted from adults and youth (18 years old or under) who live in Bailey, Parmer, Lamb or Cochran County. Entries will be accepted in the following divisions: Agricultural Crops, Horticulture, Vegetables, Fruits, Culinary, Canned Fruits and Vegetables, Textiles, Fine Arts, Crafts and

Hobbies, Small Pet Show, and Antiques for the 75th Anniversary Display.

A special cash prize of \$50.00 will be given this year by the Muleshoe Jennyslippers to one lucky exhibitor who enters an exhibit in the fair. Start now getting your entries ready.

The M.A.C. Committee will be sponsoring the Commercial Booths and Exhibits. Local merchants have the earliest option to reserve booths. That deadline is August 15. After this date, out-of-town exhibitors and vendors will be allowed to rent the booths at the same cost. You may contact John Stevens to rent your booth inside the coliseum or an outside space.

The M.A.C. Committee will also be sponsoring special segments of entertainment, drawings for cash prizes and many other activities for a big 1992 Fair.

"These exhibits add greatly to the Fair and we encourage everyone to come and help make this our best year ever," said Billy Downing, secretary of the Extension office.

The 1992 Fair schedule is as follows: Thursday, September 16, 10 a.m. - 8 p.m., All fair entries must be taken to the coliseum. Entries will remain in place until 4 p.m. Saturday.

Commercial Booths may be set up, same hours.

Antiques and Historical items must be entered also.

Friday, September 17:  
Cont. Page 6, Col. 1

## Rattlesnake Bites Local Man, Paramedic Praised

Kevin Harris, employee of 5-Area Telephone was on a service call at Pep, TX Tuesday, July 21 at 11:30 a.m. when he was bit by a rattle snake.

As Harris stepped from the pick-up and started to walk around to the back, he was bit on his right leg just below the knee. According to Harris, the snake was not coiled and did not rattle until afterwards.

Harris got back in his pick-up and started to drive back to town. He radioed the 5-Area dispatcher that he had been bit by a snake. Five-Area called the ambulance.

Another employee of 5-Area, Alton Carpenter met Harris at Circle Back and transported him to Needmore, where they were met by the ambulance.

Jacky Wayne Burris, Perimedic with Muleshoe Ambulance Service, immediately opened the bite and removed venom. Harris was then taken by ambulance to Muleshoe Area Medical Center. Others on the ambulance were Joyce McGehee and Heath Scott.

Upon arrival at the hospital at approximately 12:15 p.m., nurses were already in contact with Methodist Hospital in Lubbock, by phone.

Dr. Bruce Purdy administered antivenin and monitored Harris for a reaction to the medicine.

Harris was taken by ambulance to Methodist Hospital, where he saw an associate of Dr. Thomas.

When the doctor asked Harris who had treated his bite, he told the doctor it was the perimedic on the Muleshoe ambulance. The doctor commended Burris for such a professional job. He stated that if the venom had not been removed and if Harris had not been cut to cause bleeding to remove venom he would have been taken to surgery where they would have literally cut an area of flesh out of his leg, surrounding the bite. He would then have followed this in later weeks with skin grafts.

The doctor told Harris that swelling was another complication of snake bites and if his leg had started to swell he would have had to cut from just below his knee to above the ankle to release pressure so blood could circulate to his foot,

so he wouldn't lose his foot or the use of it. None of these had to be done.

Harris was given more antivenin at Methodist Hospital and was hospitalized until Wednesday for observation.

"We citizens of Muleshoe have much to be thankful for," said Carolyn Harris. "We have a very dedicated, trained medical service that we take for granted."

"These people who dedicate hours and hours of their own time to learn these skills are to be highly commended, but we usually just assume we are due their services. Sure some of the people are paid employees of the ambulance, but they weren't always. They spent their time and money to get the skills to take care of all the people of Muleshoe. We should recognize these people and commend them in every way possible," Mrs. Harris continued.

## MISD Board Hires Coach/Teacher

During the MISD School Board meeting Monday night, Rodney Weiss was hired as a teacher/coach for the 1992-93 school year.

Cindy Purdy, president, called the regular meeting to order at 7 p.m. in the School Administration Building.

Ms. Purdy recognized Al Bishop, high school principal.

Following the approval of the minutes of the regular meeting of July 20, Bill Moore, superintendent, recommended that the board renew the MISD Health Care Plan with Alta. Following a discussion, the board voted to go with Alta.

A discussion was held on three items that represent policy changes in the MHS student handbook as well as the entire handbook. The board voted unanimously to approve the handbook.

Also discussed was the formation of a citizen's committee to review the MISD voting districts. Names were presented from each of the five

voting districts to ensure a good geographic representation. A tentative date for the first meeting has been set for August 13.

Adrian Meador reported that the calendar is filling up fast. He stated that they were working on staff development for teachers.

Jo Mayhugh gave the final informational report and a discussion was held regarding the budget and the tax rate for the upcoming year. No action was taken.

With no other business, the board went into executive session.

The next regular school board meeting will be on Monday, August 10 at 7 p.m.

ATTENTION  
MASH is coming to Muleshoe  
Watch for more information  
in the local restaurants.

## Big Mule Days Celebration Set

Mule Days will be held in Muleshoe Friday and Saturday, August 21 and 22. A proposed schedule of events for the two days has been released by the Muleshoe Chamber of Commerce and Agriculture.

Activities will begin at 6 p.m. Friday with a Head and Heel Rodeo at the Muleshoe Riders Roping Arena (Roping from Horses,

sponsored by the Riders Club.

On Saturday morning activities will get underway at 9 a.m. with a Mule-jumping contest at the Mule Memorial. As of Tuesday six mules had been entered. Entry fee is ten dollars.

Also on the schedule will be a Pony Express Race, from Needmore to Muleshoe (Horse Event).

A Street Dance has also been proposed on Main Street, with live music from 9 p.m. to 12 midnight, sponsored by KMUL Radio and Winkler Meat Company.

There will also be a carnival at the Boy Scout Grounds.

Food will also be available on the street. Winkler's will have their Bar-B-Que wagon open for business.

The Heritage Foundation is planning a meal to be served at the Heritage Center beginning at 6:30 p.m. Saturday, with a program following.

Pat Prater and Kay Mardis met with the Jennyslippers at noon

Tuesday at the library and explained their program for the evening.

Following the meal, at approximately 7:30 a narration type program on the Depot Steps is being planned. People will be acting out the things on the ground level.

There will be groups singing old songs and square dancing.

The Jennyslippers will have an ice cream booth, home made ice cream, open all evening. All proceeds will go to the Heritage Foundation.

Restaurants who will be open for Mule Days will be Carousel of Good Food; Connie's Family Cafe; Damron Drug Store Cafe, Dairy Queen, Dinner Bell Restaurant; El Huasteco Cafe, Church's Fried Chicken, Leal's Restaurant, Pizza Hut, Snack Shack and Viola's Restaurant.

Remember this is a tentative schedule and is subject to change as more items may be added.

## Morton Lions To Sponsor Car Show

The Morton Lions Club will sponsor their Third Annual Car Show in conjunction with the Annual Last Frontier Festivities Saturday, August 8 at the Cochran County Park.

The show will get underway at 9 a.m. with the trophies being awarded at 1 p.m.

There will be five classes this year, plus a Peoples Choice Award. The different divisions will be: Antique, 49s and earlier; Fifties, cars and trucks; Classics, 60s and newer; Custom and Hot Rod, all years; and Custom Trucks and RVs, all years.

Plaques will be given to the first 50 entries.

A Poker run has been scheduled from 1 to 3:30 p.m. and a Parade is scheduled for 4 p.m.

For more information you may contact Mitch or Mike Grant at 266-8689 or 5844 after 5. You may enter by mail or the day of the show.

## Heavy Rains, Hail, Wind Return To Area

Heavy rains accompanied by high winds and some hail returned to the Muleshoe area over the weekend. Rains varied from four to five inches in the Lazbuddie-Pleasant Valley area to three fourths of an inch (unofficially) in Muleshoe.

Water rushed over Highway 214 North for a period of time Saturday night, causing hazardous driving.

Ronnie Puckett reported that he received four to five inches of rain at his farm Saturday afternoon and another one inch on Sunday. He said that he received little hail and lots of wind, causing some damage to corn.

Demp Foster, at Foster Fertilizer in Lazbuddie told *The Journal* that he received two and three tenths of

an inch of rain on Saturday and another quarter of an inch on Sunday.

Mrs. Tommy Haley, at the Bailey, Parmer county line reported that they received an inch and nine tenths, with no crop damage.

At the Pleasant Valley Cafe, Betty Bryant reported that they received two inches of rain Saturday and another seven tenths on Sunday. She said that they had a little hail and some crop damage.

Rain and high winds also hit west of Muleshoe. Blackwater Agricultural Association on Highway 84 lost part of their roof and had some water damage on the inside. They reported receiving two inches of rain.

Although some farmers on FM 1760 reported heavy rains, Mrs. Don Seales reported that they only received one half inch of rain.

Joe Costen, west of Muleshoe, reported that they received an inch and half of rain Saturday night, accompanied by high winds. He stated that they had two storm windows blown from their house. On Sunday night they received another inch and half of rain, totaling three inches in all.

At Needmore they received an inch of rain the two days combined.

Muleshoe received (unofficially) three quarters of an inch over the weekend.

## Little League Baseball Elects New Board

Following presentation of trophies to the top three teams of each league, T-Ball, Minor and Major Leagues, and participation certificates to each of the boys and girls who played ball this year, a meeting of all coaches and interested parents was held Saturday afternoon, and new board members were elected.

Those serving on the board for the coming year include: Jacky Wayne Burris, president; Roy Anzaldua, vice president; Susan Copeland, secretary/treasurer; and Julian Dominguez, Player Agent. One representative from Muleshoe.

Cont. Page 6, Col. 1



IN FIRST PLACE---Shanna Hogan was the first woman bicyclist to pass through the check in center in Muleshoe Monday afternoon. This trip across America cost Ms. Hogan approximately \$500. (Journal Photo)

## Bicyclists Pass Through Muleshoe This Week

Bicyclists from the RAMS, Race across America, began coming through Muleshoe at 3:36 (Eastern Time) Monday afternoon. The first bicyclist to come through the check out center (behind Fry and Cox) was Rob Kish from Port Arthur, Florida. At 4:10 (Eastern Time) Paul Salon of San Francisco, California went through the check out center.

Chamber of Commerce and Agriculture manager Jack Wilson was manning the check out center and calling in their times.

The first woman who arrived at the check out center was Seana Hogan of San Jose, Calif. Ms. Hogan arrived at the check out center at approximately 5 p.m. (Eastern Time).

Bonnie Allison of Irvine, California was the second woman to arrive at the check out center.

Five women, 26 men, and four tandems with two people each, left Irvine, Calif. Saturday, July 23 and four teams with four people each, left Irvine on Sunday, July 24. They are expected to arrive in Savannah, GA the first weekend in August, traveling 2,909 miles. The cost of the trip is approximately \$5,000 to each of the bicyclists.

The 11th Annual Race Across America (RAAM'92), the world's longest and most grueling bicycle race, will pass through California, Arizona, New Mexico, Texas, Louisiana, Mississippi, Alabama, and Georgia. The race is on-going, there are no time outs, and drafting (riding in packs) is not allowed.

Most of the riders will cycle 20-22 hours per day and sleep 90 minutes to three hours in a 24 hour period. The winners will average 300-350 miles per day and exist on liquid diets.

The four man team competition will be the first for RAAM. Four riders may trade off riding or ride as a group (draft), whatever they feel is most efficient given the terrain and time of day/night. Because some riders may sleep while others ride, the pace of this race will be highly elevated as compared to one person doing all the riding. This will likely result in completing the 2,909 mile route in about six days, just about as fast as it takes to drive across America. This race will also be a feat of support crew organization because of the added stress of caring for four cyclists and the "immediacy" of the race.

About 50 percent of the RAAM field is expected to finish officially. Cont. Page 6, Col. 1



# Congratulations



**RED T-BALL**---Manager was Charlie Villarreal and was coached by Gilbert Lopez and Jesus Agundis. Team members include: Alex Agundis, Nathan Anthony, Alvina Garza, Tabatha Obenhaus, Derek Purdy, Rachel Rudd, Christopher Ballard, Juan Garza, Daniel Greenhouse, Cory Hunt, Candace Hutto, Monique Rodriguez and Stephanie Rojas. (Guest Photo)



**TURQUOSE T-BALL**---Sponsored by Poynor's was managed by Joe Flores. Team members include: Quintan Hall, Jonathan Marlow, Crystal Vasquez, Chase Winkler, Kyle Yell, Gracie Adrian, Che' Chavez, Tiffany Flores, Stephen Seymore, Levi Valdez, Eric Madrid, Kristen Magby, Laura Wood and Zachary Yanis. (Guest Photo)



**PURPLE T-BALL**---Team was managed by Mike Lopez. Team members include: Matthew Lopez, Wyndi Allison, Cody Altman, Erik Bray, Tatom Heathington, Brandi Whalin, Jeremy Armstrong, Brennan Broyles, Traci Chapman, Ruben Gloria, Ryan Powell, Da'Nae Barker and Britni Gartin. (Guest Photo)



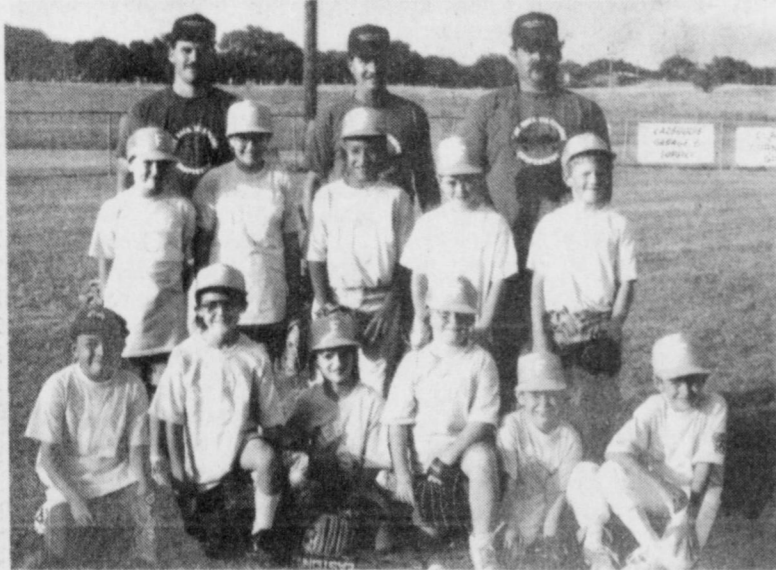
**DOLLAR BILLS**---Team was managed by Robert Orozco. Team members include: Joe Adair, Salomon Esparza, Cody Turner, Shari Alanis, Marissa Beversdorf, Rocky DeHoyos, Jeffrey King, Juanito Olguin, Drew Robinson, Bryce Thomason, Dan Williams and Tody Lee Martinez. (Guest Photo)



**MAROON T-BALL**---Manager was Bo Long and was coached by Joe Gear. Team members include: Tyrel Gear, Matthew Landon Hurtado, Mark Anthony Orozco, Michael Garcia, Brent Long, Brian Long, Elizabeth Rodriguez, Michael Tosh, Jason Sexton, Mylissa Thompson and Jennifer Young. (Guest Photo)



**U-BARS**---Team was managed by James Atwood and coached by Doug Spradling. Team members include: Anthony Anguiano, Kyle Atwood, Tucker Crawford, James Hancock, Roddy Spradling, Ben Angeley, Bryan Felan, Benjamin Oppliger, Mickey Joe Tosh, J. Nick Hale, Tori Tosh and Anissa Rae Norman. (Guest Photo)



**FIREBALLS**---Team was managed by Clay Kidd. Team members include: Josh Clark, Blake Gable, Stephan Shelburne, Casey Tosh, Tyler Black, Toni Bray, Manuel Flores, Landon Nichols, Clifford Wimberley, Dusty Kidd, John Nicholas Rodriguez and Amber Bruns. (Guest Photo)



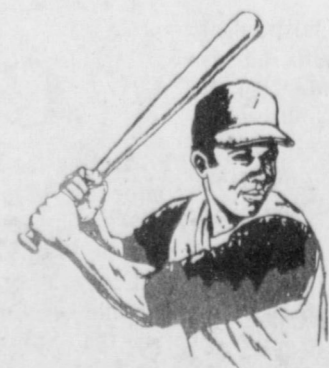
**BEARS**---Managed by Julian Dominguez. Team members include: A.J. Burhman, Brandon Burris, Andy Dominguez, D.J. Dominguez, Michael Durben, Brandon Mount, Mark Rodriguez, Chris Hall, Joshua Hernandez, Ryan Saylor, Stephan Woodard and Jason Bond. (Guest Photo)



**ASTROS**---The team was managed by Mario Castillo. Team members include: Gabe Flores, Michael Johnson, Joshua Maddox, Lincoln Riley, Richard Cogliandro, Roxann Garcia, David Morris, Benny Salcido, Christopher Vela, Shawna Dale, Fidel Lira, Chelyn Maddox, and Sheila Garcia. (Guest Photo)



SR21



Photos Courtesy of Adrian Photography

**Lowe's** **Pay-n-Save**  
 MARKETPLACE  
 401 W. Amer. Blvd. Muleshoe 272-4585

515 W. Amer. Blvd.  
 Muleshoe  
 272-4406



**Iva E. Williams Funeral Services Held Monday**

Funeral services for Iva E. Williams, 78, of Morton were held at 2 p.m. Monday at First Baptist Church with the Rev. John Culwell, pastor, officiating.

Burial was in Morton Memorial Cemetery under the direction of Ellis Funeral Home. Mrs. Williams died July 24 8 miles west of Levelland as a result of a car accident. She was born February 21, 1914 in Decatur. She married Andrew Jefferson Williams July 25, 1933 in Portales, N.M. He died in 1939.

Mrs. Williams had been a resident of Morton since 1933. She was a member of the First Baptist Church, a member of the 1936 Study Club, and The Delta Kappa Gamma. She had taught school in Morton for 40 years. She had also worked for the Cochran County School Credit Union. Mrs. Williams was very active in Girl Scouts and Camp Fire Girls.

Survivors include two sons, Ray Williams of Gardnerville, NV, and Dean Williams of Lubbock; two daughters, Ruth Pierce of Morton and Shirley Williams of Longbeach, CA; two brothers, Jack Lackey of Morton and Lee Lackey of Lake Isabella, CA; two sisters, Estelle Lacurto of Ft. Worth and Dolly Lackey of Madera, CA; eleven grandchildren and fifteen great-grandchildren.

The family suggests memorials to the Ronald McDonald House in Lubbock.

**Ruby Lee Harvey**

**Funeral Services**

**Held Tuesday**

Funeral services for Ruby Lee Harvey, 78, of Lubbock were held at 10 a.m. Tuesday at the Muleshoe Memorial Park Cemetery with the Rev. Terry Taylor, pastor of Richland Hills Baptist Church, officiating.

Burial was in Muleshoe Memorial Park Cemetery under the direction of Ellis Funeral Home. Mrs. Harvey died July 26 at 5:07 a.m. in Highland Medical Center after a lengthy illness. She was born December 23, 1913 in Stanton. She married Lismon Harvey December 23, 1930 in Lubbock. He died April 25, 1992.

Ruby Lee had lived in Lubbock since 1975. She was a former resident of Muleshoe. She was a homemaker and a member of the First Baptist Church at Muleshoe.

Survivors include one son, Terry Lee Harvey of Lubbock; one daughter, Barbara Jean Edwards of Odessa; one sister, Choline Herron of Palm Bay, Florida; several grandchildren and great grandchildren.

**BIBLE VERSE**

*This is the confidence that we have in him: that, if we ask anything according to his will, he heareth us.*

1. Of whom is the writer speaking?
2. Who is the author of the above statement?
3. By what term was he known?
4. Where may this statement be found?

**Answers:**

1. Of Jesus Christ.
2. John the Apostle.
3. The "disciple whom Jesus loved."
4. I John 5:14.

**Ruby Murdock**

**Funeral Services**

**Held Wednesday**

Funeral services for Ruby Murdock, 87, of Eufaula, Oklahoma were held at 11 a.m. Wednesday at the Ellis Funeral Home Chapel with the Rev. Stacy Conner, First Baptist Church, officiating.

Burial was in Muleshoe Memorial Park Cemetery under the direction of Ellis Funeral Home. She died at 4 a.m. July 25 at the Eufaula Manor Nursing Home after a lengthy illness. She was born January 9, 1905 in Ranger. She married Benjamin Franklin Murdock June 25, 1922 in Lakeview. He died May 1, 1978.

Ruby had been a former resident of Muleshoe, moving here from Memphis. She had been a resident of Eufaula, Oklahoma since 1984. Ruby was a member of Trinity Baptist Church. She was a homemaker.

Survivors include one son, Gene Murdock of Eufaula, Oklahoma, nine grandchildren and several great grandchildren.

**Ben Franklin®**

Mon. Thru Sat. 8:00 a.m. to 8:00 p.m. Open Sun. Noon to 5:00 p.m.  
2104 West American Blvd.



**BACK TO SCHOOL**

Empire® Blunt or Pointed 4 1/2-in. Scissors. 48 **57¢ ea.**

Keith Clark® Dictionary or Thesaurus. 55 **1.97 ea.**

A&W® Protractor or Compass. Your choice. 42 **2 for 99¢**

Cheese Kurls.® Savor the flavor of Cheese Kurls while watching T.V., as a lunchtime snack or almost anytime! Your choice of cheese corn, cheese balls or ranch flavor cheese kurls. In convenient 1-oz. packages! 97 **8 for \$1**

Bic® 10-pk. Pens. Blue or black ink, med. pt. 43 **88¢ pkg.**

**ONE MINUTE SPORTS QUIZ**

By Christian Thorlund

1. Who is Andrei Olhovskiy?
2. When does Duke play Michigan this year (basketball)?
3. Who is Ernie Irvan?
4. Name the top 5 teams (batting) in the A.L. as of July 1?
5. Name the top five N.L. teams as of June 30?

**Answers:**

1. Russian tennis pro.
2. Dec. 5.
3. Stock car racer.
4. Minnesota, Milwaukee, Baltimore, Toronto and Oakland.
5. St. Louis, San Diego, Cincinnati, Atlanta and Philadelphia.

**Bailey County Journal**

Established March 31, 1963. Published by Muleshoe Publishing Co., Inc. Every Sunday at 304 W. Second, Box 448, Muleshoe, Tx. 79347. Second Class Postage paid at Muleshoe, Tx. 79347.

MEMBER 1992  
**TEXAS PRESS ASSOCIATION**

L.B. Hall, Publisher  
Sammye Hall, Vice-President/Comptroller  
Evelene Harris, News  
Joyce Adams, Society  
Holly Miltrap, Advertising  
Diana Bermea, Classified

SUBSCRIPTIONS  
Muleshoe Journal and Bailey County Journal  
Bailey and surrounding counties  
By Mail \$18.75  
Muleshoe Journal and Bailey County Journal  
Elsewhere  
\$17.50  
Muleshoe Journal and Bailey County Journal  
By Carrier Yearly  
\$14.00

Advertising Rate Card on Application  
The Journals will not be liable for failure to publish an ad or for a typographical error or error in publication except in the case of the cost of the ad for the first day of insertion. Adjustment for errors will be limited to the cost of that portion of the ad where the error occurred.

24-ct. Crayola® Crayons or 8-oz. Elmer's® Glue. 36-52 **99¢ ea.**

10-ct. Empire® Pencils. #2 writing pencils. 40 **2 for \$1**

B  
A  
C  
K  
T  
O  
S  
C  
H  
O  
O  
L

Boys Mens FRUIT OF THE LOOM® Underwear. 100% cotton, white. 8  
Mens 3-pr. Brief, Boys 3-pr. Tee ..... 3.97  
Boys 3-pr. Briefs ..... 2.97  
Mens 3-pr. Tees ..... 5.97

Children's or Ladies FRUIT OF THE LOOM® Tees. 100% cotton, jersey knit tees or ladies double neck short sleeve top. Choose from assorted colors and sizes. 4-6  
Childrens 6-20 Tees ..... 2.97  
Ladies S-XL Tees ..... 3.88  
Ladies S-L Double Neck Top ..... 4.97



**WHITE SOX**---Sponsored by Scoggin Ag Center, Inc. were managed by Don Carter and coached by Kim Black. Team members included: Zach Barrett, Michael Ray Rodriguez, Raymond Toscano, Landon Black, Jason Crawford, Ike Norman, Eddie Pedigo, Eric Posadas, Unis Ortiz, Larry Pineda, Rolando Vasquez and Michael Woodard.  
(Guest Photo)

Photo Courtesy of Adrian Photography

**Scoggin Ag Center, Inc.**

1532 W. Amer. Blvd. 272-4613

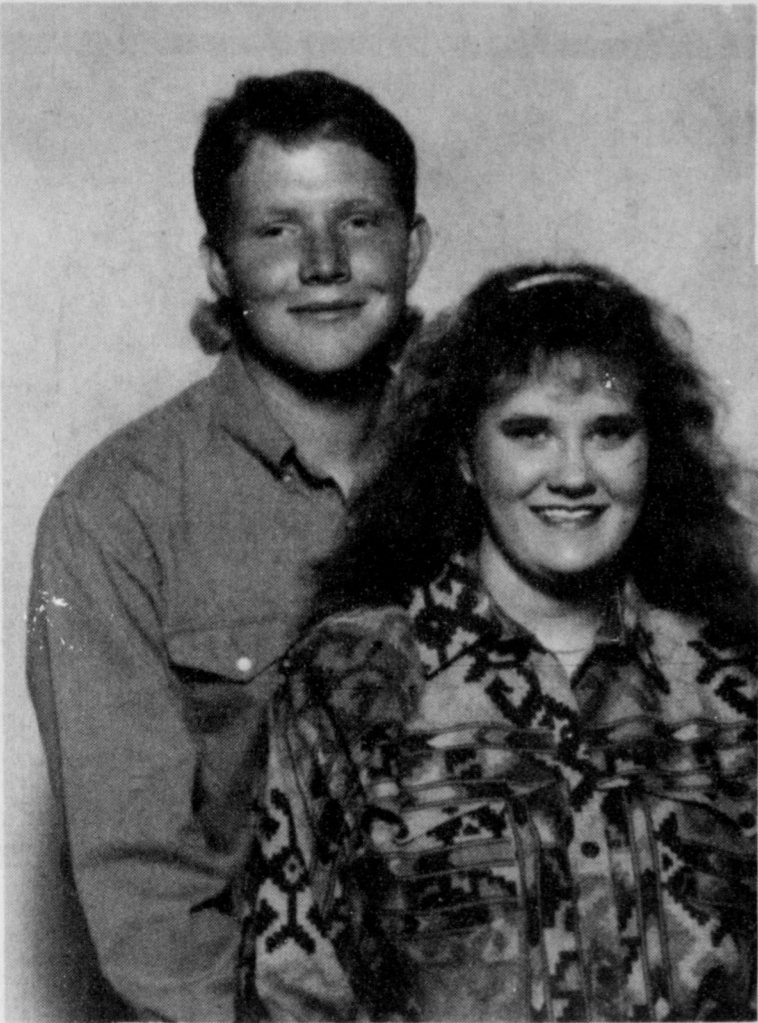
ADI School Bags. Pick a pack to fill your needs! Choose an Insulated Lunch Locker, Denim Teardrop Backpack, Vinyl Sport Bag or a printed drawstring knapsack. 44 **6.97 8.97 9.97**

100-Page Magnetic Photo Album. Preserve and display your favorite photographs beautifully! 65 **3.97 ea.**

Crayola® Art Supplies. Washable watercolors, poster, paint 12-ct. long/short colored pencils. 23-31 **99¢ 1.57 1.77**

Duo Tang® Portfolios. Your choice of assorted styles and colors. 57  
3-Prong ..... 5 for \$1  
2-Pocket ..... 8 for \$1  
2-Pocket, 3-Prong ..... 4 for \$1





**ENGAGEMENT ANNOUNCED**—Dennis and Beverly Turney announce the engagement and upcoming marriage of their daughter Melinda to Chris Locke of Maple. The bridegroom's parents are Mr. and Mrs. Ferris Locke of Portales, N.M. and JoAnn Cotten of Abilene. The bride and bridegroom are 1990 graduates of Three Way High School and are juniors at West Texas State University. The bride is an accounting major and the bridegroom is majoring in ag business. Grandparents of the bride are Trueman and Frances Nix of Littlefield and Myrna Turney of Enochs. The bridegroom's grandmother is Wanda Locke of Lubbock. The wedding will be Saturday, August 8 at 6 p.m. at the Three Way Baptist Church. (Guest Photo)

## Buy A Blouse And Battle Breast Cancer

If you bought a skirt, jacket, blouse or dress designed and manufactured by Doncaster and sold through a local Doncaster representative, you helped make a donation of \$333,000 to the American Cancer Society. The actress, Jayne Meadows, accepted the check in behalf of the American Cancer Society at Doncaster's National Sales Meeting at the Waldorf-Astoria in New York. The majority of the donation goes to the 3500 local units of the American Cancer Society to support community educational and support services. The research portion of the donation will be directed to the prevention, diagnosis and treatment of breast cancer. One out of nine women will contract breast cancer in their lifetime. It will kill 40,000 women this year. Marilyn Young is a local Doncaster Fashion Consultant. She sells Doncaster's collection of classic fashions by appointment. Marilyn Young reported that Doncaster will make another donation this year for a two year total of \$500,000. Doncaster is the oldest and largest company to sell direct to the customer through independent Fashion Consultants. There are

over 3000 Doncaster Fashion Consultants nationwide. Doncaster is a Division of Tanner Companies, Inc., Rutherfordton, North Carolina. For further information contact Debbie Penson, 704-287-4205.

## Elmer and Thresia Davis Host Supper

A menu supper was given Saturday night in the home of Elmer and Thresia Davis July 25. Those enjoying the supper were Pastor Jimmy Williams and Sharon and children, April, John, James and Johnnie Williams, all of Muleshoe, Carl and Faye Houston of Littlefield and the host and hostess Elmer and Thresia Davis. Anyone who wants to laugh half the night just give a menu supper. It's a barrel of fun and a barrel of laughs. Everyone orders from a menu. They don't know what they are ordering. There are four courses. And it's hilarious. For more information, call Thresia Davis.

It is easier to drown than most people think.

## AARP Hears Program On Heritage Foundation

Muleshoe's chapter of the American Association of Retired Persons met Friday, July 24 in the Bailey County Civic Center with about 15 attending.

Sammie Ethridge presided. She introduced several guests. Among them were Ray and Faye Hawthorn, new residents of Muleshoe. The Hawthorns moved here from Odessa recently.

Bertie Thompson was in charge of the program. She introduced Vivian White of the Heritage Foundation who gave a talk on the activities of the Foundation.

White noted that the Heritage Foundation was founded in the early 1980's. "We are the third board of directors," White said. "We are trying to preserve some of the history of Muleshoe."

Recently the foundation had a street name changed to Heritage Drive. The street changed was the street that runs in front of the Depot.

"There is a lot of work to be accomplished yet," said White. She said she is glad the Senior Citizens are using the Depot. They are allowed to use it at no charge.

White said the ranchhouse is nearly completed and that they are looking for furnishings. A piano has been given by Dewitt Precure.

She asked for donations of feather pillows to make a feather bed for the ranchhouse. "We have three bedrooms and a nursery to furnish," she said.

White said the Foundation is proud of the basement and its completion. "We may paint the walls later," she said.

The stairwells have handrails on them now and the original brass light fixtures are in the house now. They are carbide gas and electric lights.

Both fireplaces work. The Foundation will use one bedroom for an office. Roller shades are up. "We plan to put some lace curtains up," White said. "We will be open on August 22 for people to tour, but individuals can call at any time for a tour."

The Foundation has started a railroad track behind the Depot. The ranchhouse will be used as a museum. An old log cabin has been brought in by John Fried.

Workrooms in the ranchhouse will be used for quilting parties. Landscaping has started around the ranchhouse. "We will have a driveway with parking spaces later," said White.

"We will also have two windmills. The metal one will pump water by August 22. We also hope to have a caboose

someday to set between the Depot and the log cabin," she said.

The thrift shop and volunteers keep the expenses paid at the Depot.

The annual membership drive for the Heritage Foundation will be held the last week in August.

The Foundation will participate in Mule Days and give churning and quilting demonstrations. "School children are always excited to see the Depot," White said.

"There is still a lot of work to be done. Give us your input," she noted.

### GREEN SALAD WITH GRAPEFRUIT, BABY BEETS, AND AVOCADO

- Serves 4-6
- Salad:**
- 2 bunches baby beets (about 18)
  - 1 large head red leaf lettuce, cleaned and torn into bite-size pieces
  - 2 medium pink grapefruit, peeled, seeds removed, and sectioned
  - 1 medium avocado, ripe
- Dressing:**
- 1 tablespoon fresh orange juice
  - 2 tablespoons fresh lemon juice
  - 1 tablespoon plus 1 teaspoon port
  - 1 tablespoon whipping cream
  - 1/2 cup olive oil
  - 1/2 teaspoon salt
  - Black pepper

1. In a medium saucepan bring water to a boil. Immerse the beets and cook until tender but slightly resistant, about 15 minutes. Drain and cool. Peel and reserve.
2. Place the lettuce in a large, shallow salad bowl. Position the baby beets around the outside edge, alternating with the grapefruit sections. In the center create a spokelike pattern with the remaining grapefruit sections.
3. Cut the avocado into 1/4-inch slices and place between the grapefruit "spokes." Mound any remaining grapefruit in the center. Refrigerate until ready to serve.
4. To make the dressing: Combine the orange juice, lemon juice, port, and cream in a small mixing bowl. Whisk until well blended. Slowly whisk in the olive oil until completely blended. Add the salt and pepper and taste for seasoning.
5. Pour the dressing over the salad and toss at the table. Serve immediately.

### NOTES, COMMENT

The problem of any problem is to find the facts.

Never argue with friends over a non-essential.

## Hodgkins Patient Receives Bone Marrow Transplant

A patient with Hodgkins disease is receiving Lubbock's first bone marrow transplantation this week at University Medical Center.

Brad Seiler, 35, underwent a transfusion of his own bone marrow Wednesday and Thursday and will recover in UMC's Bone Marrow Transplantation Unit during the next month.

About one quart of Seiler's healthy bone marrow was harvested on June 3 to be stored for use in this week's transplant. Physicians at UMC plan to perform only autologous transplants, in which the patient's own bone marrow is used, for at least one year.

The transplant is necessary for Seiler's survival because of the effects of chemotherapy on his existing marrow. The harvested bone marrow, now back in Seiler's body, is producing new blood cells to replace the destroyed cells.

Seiler will stay in the unit approximately one month while recovering. The unit employs a positive-pressure filtering system

that replaces old air with clean air six times an hour.

Everardo Cobos, M.D., Chan Park, M.D., Roy Hall, M.D., and Shannon Acosta, R.N., B.S.N., led the team performing the transplant.



### MICROWAVE TIPS

Microwaving asparagus, now plentiful, is simple.

Put a fourth of a cup of water in a baking dish. Snap off tough asparagus ends.

Arrange in dish so tips are in the center and cover with plastic wrap and microwave four minutes on High. Rearrange so spears which were on outside of dish are put in center and microwave for remaining time, covered, on High. Let stand three minutes.



### Brittany Nicole Railsback

Ricky and Jenny Railsback announce the birth of a daughter, Brittany Nicole. The child was born at 2:19 a.m. July 27 in Clovis High Plains Hospital. She weighed 7 lbs, 9 oz. and was 20" long. Grandparents are Mr. and Mrs. Richard Railsback and Mr. and Mrs. R. G. Bennett III. Great grandparents are Luease Bennett, Mr. and Mrs. Bobby Railsback of Vernon, Pearly Gilley of Lubbock and Mr. and Mrs. M.J. Christensen of Mystic, Connecticut.

**NEW! The Real**

**"BILLY THE KID"**  
New Mexico's Historical OUTDOOR DRAMA

Each Friday & Saturday  
**JULY 3 - Aug. 22**  
8 p.m.  
Cattle Call BBQ 6:30 - 8 PM

Caprock Amphitheatre  
10 miles south San Jon, NM  
(Exit 356 off I-40)

No Reservation Needed  
except for groups of 20  
or more

**505-576-2455**  
After July 3 Call  
Boxoffice 576-2779



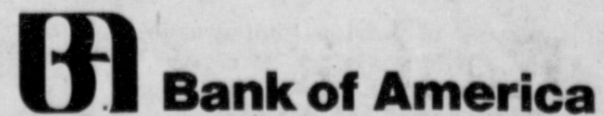
## Check Us Out For Free.

Bank of America is proud to be in Texas, so we'd like to celebrate. And you're invited. Drop by any Bank of America Texas branch and open a personal checking account. Free. That's right. There will be no monthly fee all the way through September 15, 1993. And you'll get your first order of checks free, too.

While you're there, pick up an application for a BankAmericard® VISA® or MasterCard® credit card. Upon credit approval, you'll get all the benefits of a BankAmericard and you'll pay no annual fee for the first year. And best of all, you'll have the security that comes with being part of the Bank of America family, one of the nation's largest and strongest groups of financial institutions.

Like all good things, this one won't last forever. So, hurry. We're looking forward to welcoming you.

Muleshoe 304 Main Street, 272-5527 Farwell 203 Avenue D, 481-3353



# BIG DQ DEALS!

**FULL MEAL DEAL™**  
**\$2.99**

1/4 lb. Hungr-Buster® Fries,  
16-oz. Drink, Sundae

**DO KIDS' MEAL**  
**\$1.99**

Your Choice Of:  
Hamburger, Steak  
Fingers & Gravy,  
Corn Dog or Hot  
Dog, Plus Fries,  
Drink, Choice of Treats  
and a Free Prize!

**Dairy Queen**

**ON SALE**  
**JULY 27 - AUGUST 9,**  
**1992!**

All participating Dairy Queen stores.  
© Reg. U.S. Pat. & Tm. Off. Am. D.Q. Corp. \*TM Reg. U.S. Pat. & Tm. Tx. D.Q. Corp. © Tx. D.Q. Corp. \*Pre-cooked weight



## Journal Files

1942

Official notice that Sgt. Carl Ireton is among those listed as missing in action on Bataan, was received last weekend from the War Department. Sergeant Ireton is a brother of R. C. Ireton of Muleshoe and had been stationed in the Philippines for several months before war broke on December 7.

For awhile, just before the Japs attacked Fort Stotsenburg, Sergeant Ireton was with Billie Black, who was Bailey County's first World War II casualty. Their units were divided during the first days of the fighting and they never saw each other again.

It is thought that a considerable number of Americans are still waging war on the Japs from hide-outs in the Philippine hills.

1952

Raymond E. Franz has been employed as manager of the Muleshoe Chamber of Commerce, H.S. Sanders, Jr., announced this week. He will assume his duties here about September 1.

Mr. Franz at present is with the Quality Biscuit Company, working on sales statistics and sales promotion and administration, departments which he inaugurated as control of production and distribution of products. He is well known in the southwest where his work has been for some time.

1962

If you don't like the textbooks they are going to use in the 1963-64 school term, then you had better get in your protest right away--no later than August 1.

That's the suggestion of Neal Dillman, superintendent of Muleshoe Schools, who says that all protests must be received in writing by that time.

1972

Mr. and Mrs. Robert Bomer, of Muleshoe, are making their post-secondary education a family affair. The young couple, now enrolled at Oklahoma State Tech, Okmulgee, are planning a simultaneous graduation from Tech in September, 1973. Arranging to graduate together isn't an easy task since Bob is taking a six-trimester course in industrial electronics, while his wife, Lana, is enrolled in

a four-trimester medical secretarial science course. The couple's timing should be perfect. They have proven themselves top students in the classroom, and that should eliminate any problem of either one of them being delayed because of grades. Studying at home together has resulted in above-average grades for both.

1982

Rusty Williamson, county ASCS Executive Director has issued a reminder to all farmers that August 2 is the final certification date for 1982 crops planted on all farms.

Failure to report planted crops will result in a producer losing all program benefits such as loan programs and deficiency payments.

Failure to report will also cause the yield for the farm to be set at zero for upland cotton and program crop acreage to be zero for each program crop not reported.

Farmers are urged to measure their crops accurately and bring their information into the ASCS office no later than August 2. Acreage needs to be reported whether or not a farmer is participating in the program, if he wishes to protect his crop history for the farm. Zero acreage certifications will need to be given if a producer has a base for a crop and has not planted the crop this year.

### In Fashion

The updated, trendy fall costume jewelry features super-sized pearls and rhinestones. Oversized pearls are fashioned in unique designs such as neck-hugging collars, pendants, brace-lets and attention-getting earrings.

Fake rhinestones are cut in shapes or emeralds, ovals, squares, and rounds. These fabulous fakes are featured in neck-hugging collars, and pendants on chains with matching earrings.

EPA: Secondary smoke causing illness in thousands of children.

## When Hurting Won't Stop

By Ron Trusler, M.Ed., LPC, LCDC, LMFT, Director of Clinical and Substance Abuse Services, Central Plains Center for MHMR and Substance Abuse

Some people think of suicide when the hurting keeps going on and on. It's not that they are mentally ill, they just want the pain to stop. They may feel like they have tried everything and nothing helps. The light at the end of their tunnel is an on-coming train instead of hope.

People who commit suicide do not just suddenly decide to do it. It involves circumstances that keep eroding and tearing away at their coping abilities for the things they are facing. They normally give out clues about their attitude about life. Some of the clues are obvious, like a long time in deep depression with statements like, "life isn't worth living," or buying a weapon. Other clues are less obvious, like hoarding medication, slowly drawing away from others, giving things away, etc.

It's important to take the clues you do see seriously. Ask the person about their thoughts and intentions of suicide, especially if you see a cluster of clues. Take threats seriously. Don't shrug them off as if they are just trying to get attention. You can call the police if you suspect a person is suicidal. There is a local crisis-line available also at 296-5555.

If you are one who is thinking of ending your life, there may be another option. There is nothing wrong with hurting and feeling bad about life. Most of us do at some point. You are not strange, bad or weird for struggling with what you are facing. I would suggest two things:

1) Call a counselor or someone you trust that will allow you to express your feelings--someone that will let you hurt; and

2) Do some type of physical exercise. It doesn't have to be an extreme thing. It could be like moderate walking. If you are physically limited, find something you can be involved in mentally or as physically as possible that will allow you to expend energy.

My hope is that the sun will shine for you someday soon.



TEACHERS ATTEND WORKSHOP--Five Bailey County teachers recently participated in a science workshop sponsored by Southwestern Public Service Company. Almost 40 middle school teachers from throughout the Texas Panhandle attended "Electric Principles for the Classroom" July 15 at the Amarillo Garden Center. The workshop featured demonstrations and hands-on projects the teachers could use in their classrooms. Directed by Texas Agri-Business Electric Council Executive Director Greg Stark, teachers worked with static electricity, studied electrical circuits and made electric motors. In addition, Amarillo meteorologist Len Slesick spoke on environmental issues, emphasizing the importance of balance between the cost and the benefits of government regulation. Pictured left to right, front row: Debbie Weir, Kim Gregory-Thetford, Debbie Kemp, Susan Noack. Back row: SPS marketing representative Greg Boggs and Kevin Noach. (Guest Photo)



### Occupational Change

Patient--Have you been a dentist long?

Dentist--No, I used to be a steel riveter but I got too shaky to work on high buildings and bridges.

### Only Once

"Were you ever bothered by athlete's foot?"  
"Once--when a football player caught me out with his girl."

Marine aquaculture holds promise as successful industry.

### BRIEFS

Trade deficit worst since November '90.

AIDS vaccine successful with chimps.

Russia invites U.S. to search for POWs.

FCC ruling allows networks to buy cable TV systems.

Russian and Ukrainian to get Army training in Kansas.

## Dorothy's Sidewalk Sale

**July 30, 31 & Aug. 1**  
**Save Up To 50% or more**

Drastic Reductions On Dresses, Sportswear,  
Decorated T-Shirts (as low as \$15)  
and Much More! Rock Bottom Prices  
and Great Selections On Sale!

Gabriel Shopping Center  
1511 W. 5th St.      1-806-296-2135  
Plainview, Tx.

## Congratulations



COLTS---Team was managed by Roy Anzaldua. Team members include: Jason Anzaldua, Craig Denney, Daniel Johnson, Ricky Rudd, Ronny Seales, Fermin Gonzales, Jr., Kourtnee Marr, Christopher Seymore, Russell Warren, Trae Fahrtrapp and Jerred Harp.

(Guest Photo)



TWINS---Sponsored by the VFW were managed by Robert Alanis. Team members included: Rudy Garza, Joseph Anguiano, Hadley Henderson, Jonathan May, Tyson Purdy, Clint Black, Dustin Cleavinger, J. Michael Martinez, Kyle McDaniel, Joseph Quintana, Rodney Alanis and Aaron Purdy.

(Guest Photo)

Photos Courtesy of Adrian Photography

## Viola's Restaurant

2002 W. Amer. Blvd. 272-3838

**Get Ready  
For  
Mule Days!!**

<p style="text-align: center;"><b>1/2 Beef</b> Cut &amp; Wrapped To Your Specifications <b>\$1.51 lb.</b></p>	<p style="text-align: center;"><b>Hams</b> Larry's Award-Winning Home Cured Bone-In <b>\$1.99 lb.</b></p>
<p style="text-align: center;"><b>Whole Loins KC Strips</b> <b>\$3.99 lb.</b> Cut &amp; Wrapped To Your Specifications</p>	<p style="text-align: center;"><b>Larry's Award-Winning German Sausage</b> <b>\$1.99 lb.</b></p>
<p style="text-align: center;"><b>Larry's Own Breakfast Sausage</b> 6 lb. Box Sliced <b>\$1.50 lb.</b></p>	<p style="text-align: center;"><b>Pork Loins By The Loin</b> 12-15 Lb. Each <b>\$1.73 lb.</b></p>

## Winkler Meat Co.

401 Main Let Us Cater Your Next Party! 272-4703



## SBA Economic Injury Disaster Loans Available

Walter Fronstin, district director of the U.S. Small Business Administration in Lubbock announced last week that SBA is accepting applications for Economic Injury Disaster Loans (EIDLs) from eligible small business concerns and small agricultural cooperatives without credit available elsewhere. Applicants must have sustained substantial economic injury because of their dependence upon farmers and ranchers who suffered the agricultural damage. "Farmers and ranchers are not eligible to apply for these SBA loans," Fronstin said. "However, nurseries that are victims of drought can apply."

Fronstin said that businesses seeking loan information and loan applications may call SBA's Area 3 Disaster Office in Fort Worth since all disaster loans are processed through that office. The toll-free number is, 1-800-473-0476 or TDD 817-267-4688 for the hearing impaired.

Businesses located in the following counties serviced by the Lubbock District Office of the SBA and which are affected by drought, hail, flood and freeze which offered between January 1 and December 31, 1991 have until February 22, 1993 to file an EIDL application.

Effected counties include: Bailey, Castro, Cochran, Dickens, Foard, Hale, Haskell, Kent, King, Knox, Lamb, Lubbock, Parmer, Stonewall, Terry, and Yoakum.

Business located in the following counties serviced by the Lubbock

### Bicyclists...

Cont. from Page 1

which is completing the course within 48 hours. For rookie entrants, the odds of finishing are about 30 percent.

The reward for the riders is primarily self-satisfaction of knowing they've endured the world's toughest sporting challenge, in addition to a plaque, medal and RAAM Ring.

The top finishers will receive a portion of the \$18,000 worth of prizes (products and cash) from about 100 contributing RAAM sponsors, engineered by Jennifer Wise of Wise Marketing, Newport, RI.

### Baseball...

Cont. from Page 1

Sudan and Lazbuddie will also serve on the board.

Dominguez's duties will be to help any player from any team with any problems that he or she might have.

### Fair...

Cont. from Page 1

1 to 9 p.m., Fair Open To The Public.

7 p.m. Entertainment by local talent.

Saturday, September 18: 10 a.m. to 4 p.m. View Fair Exhibits

2 p.m. Small Pet Show

4 p.m. All entries must be picked up.

"Each year the fair has gotten largest so we want to encourage everyone to come and help make this our best year ever," Mrs. Downing continued.

District Office and were affected by freeze between October 1 and November 30, 1991, also have until February 22, 1993 to file an application with the SBA: Briscoe, Childress, Collingsworth, Deaf Smith, Donley, Hall and Parmer.1

The EIDL loan program is intended to assist agriculture-dependent businesses and small agricultural cooperatives who sustained a substantial decrease in sales (or other forms of economic injury) directly due to losses incurred by the farmers and ranchers to whom the business usually sells. In some cases, his may include non-agriculture-related businesses which sustain a substantial economic loss directly due to the inability of the farmers affected by the disaster to purchase goods and services at their normal levels. Small businesses claiming to have been physically injured by the specified adverse weather are not eligible for the EIDL loans.

Fronstin said the program is available only to those businesses that are considered small by SBA's size standards and do not have credit available from other sources.

The interest rate for loans processed under this designation is four percent. The loans are limited to the financial needs of the applicant based on the actual economic injury and may be made for up to \$500,000. A loan may extend to 30 years, depending on repayment ability.

### Local Booster Club Begins New Year

If you think the summer is ending too soon, just ask the members of the Mighty "M" Band, they will definitely tell you it has gone way too fast.

Summer Band starts Aug. 3 as well as do the meetings for the Fine Arts Boosters.

The Fine Arts Boosters will meet Monday, Aug. 3 at the High School at 7:30. Plans are to be worked on for money making projects as well as getting ready for the concession stand at the football games.

More parents need to let the boosters know that they are interested in the kids projects they have planned for the coming year.

The Boosters not only support the band and One Act Play at contest, but the band parents support the band at football games.

The band is one of the Loudest support groups for the football team, so as members of the Fine Arts Boosters everyone is asked to get together and support the band and the football team.

### African Bees

Feral and Africanized honeybees will invade California, Arizona, New Mexico and Louisiana, thus jeopardizing growers and beekeepers in some of the country's most productive farmlands.

### Outlook Brighter

The economy continued to improve with an upturn in manufacturing evident nationwide, the Federal Reserve said.

## Texas Is At A Crossroads

By Kay Bailey Hutchison  
Texas State Treasurer

Our state was founded in the frontier spirit and prospered under the values of individualism, entrepreneurship and innovation. Now we must rely on that same spirit to remake Texas government. How we manage our state budget during the next two to four years will determine how we enter the 21st Century and what kind of Texas we will leave our children and grandchildren.

As Treasurer, I observe the financial distress of other states across the country and I see what they have done wrong. Texas should learn from their mistakes, not repeat them.

Last year, California suffered a \$14 billion deficit and the state enacted \$7 billion in new taxes. Today, Californians are struggling to overcome an additional \$11 billion deficit and its businesses are fleeing due to high taxes. These deficits are caused by years of excessive government spending, which could not be curtailed in one year.

Texas, like all states, is facing an increasing appetite for state spending. While we don't need to go on a diet, we do need to keep ourselves lean. All of us know the problems that come from overeating.

Fortunately, Texas will have over \$3 billion in additional revenue to spend in the next biennium. That is without any tax increase. This gives us plenty of growing room and we can live within that budget, but we must pull together and reexamine our options and priorities.

We must not reward mediocrity and failure. Entrepreneurship in state government must be encouraged.

Texas is taking some positive action: The Productivity and Incentive Commission, created in the last legislative session, encourages Texas state employees to offer money saving ideas. If it works, the employee(s) receives a bonus of up to 10 percent of the savings. This idea was borrowed from private enterprise.

The State Treasury, I am pleased to report, won the first Productivity and Incentive Award for saving the state \$12,000. In addition, the Treasury just save \$5 million by substituting commercial paper for interfund borrowing. This savings is half the Treasury's annual operating budget.

Another example of originality that produces long term economic benefits is the Higher Education Research Fund. This \$60 million fund has brought millions of dollars of research grants to Texas, which translates into millions of dollars in future manufacturing jobs. A professor of any public or private Texas college or university, who has an idea for a research project, may approach the commission and request a grant to aid in the preparation of the research application.

The results: The University of Texas is creating a laser-powered rail gun that will be the spark plug of the future for internal combustion engines. Rice University is developing a faster and cheaper method of producing diamond film which will revolutionize electronics by creating semiconductors with greater capability than silicon chips. The market for these materials is estimated in excess of \$1 billion.

Economic incentives have reaped other great benefits. Texas A&M is becoming a premier biotech research center. Researchers have turned cotton seed into an edible, high-fiber food. The tearless onion

they developed and first cultivated in 1987 brings \$103.5 million into the Texas economy each year. At the University of Houston, world-renowned physicist Dr. Paul Chu directs the largest university-based superconductivity center in the United States.

These represent just a few of the projects that Texas government has assisted by thinking and working smarter. Other states are thinking, too.

The largest expenditure of most states is Medicaid. To halt the tide of escalating Medicaid costs Oregon enacted the Basic Health Services Act. While this Act expanded Medicaid eligibility to cover everyone living under the federal poverty level, at the same time it restricted the specific health conditions and medical treatments Medicaid would cover. It also limited increases in state Medicaid payments.

(Ten percent of all Texans are included in our state's Medicaid coverage. The state has appropriated \$5 Billion in general revenues for our share of the program during the current biennium. Due to federal mandates, many people eligible for Medicaid in Texas live above the federal poverty level.)

Wisconsin has initiated an innovative reform of its welfare system to break the cycle of dependency that has destined so many recipients to lives of poverty. The Parental and Family Responsibility Demonstration assists teenage parents who are at the greatest risk of becoming lifetime welfare recipients. It removes many of the regulations that discourage young parents from staying in school, finding a job, and keeping their families together.

Government can no longer provide everything we may want in the way of services. We must take into account who will pay the bill. We must build our economy naturally and not over-regulate and over-tax those people and businesses who are footing the bill.

I want Texas to stand out among all states as a leader in efficiency through innovation. That is the least we can do for future generations.



RACE ACROSS AMERICA---John Marino of Irvine, California, one of the officials with RAAM stopped in Muleshoe at the check in station Monday afternoon. Tuesday afternoon some of the bicyclists were still coming through town. (Journal Photo)

### EPA Approves Fury-TM Insecticide

The Agricultural Chemical Group of FMC Corporation announced that the Environmental Protection Agency (EPA) has approved a Section three registration for new Fury TM insecticide.

Fury insecticide is a new, higher potency pyrethroid, engineered to provide the most effective cotton insect control on the market at a low pound per acre rate. In more than 100 field trials conducted throughout the Cotton Belt, Fury controlled a very wide range of pests. In side by side trials, Fury gave better control of bollworms, budworms, and boll weevils and provided more effective suppression of aphids than either Karate or Baythroid insecticides. In addition, control of lepidopteran eggs may be achieved with proper application timing.

Test data showed fields treated with Fury insecticide outyielded those where competitive pyrethroid products were used. Since Fury insecticide will be competitively priced, FMC offers cotton growers a pest control product that will enhance their profit. "We're very

pleased that the EPA has registered Fury insecticide," said FMC Marketing Manager and unmatched consistency give us the opportunity to offer cotton growers more bang." Also, its low use rate and physical properties are positive for the environment.

Fury will be available as an emulsifiable concentrate (EC), containing 1.5 pounds of active ingredient per gallon. The product will be packaged in jugs and in FMC's environmentally responsible U-Turn reusable containers. Due to the additional time required to obtain state approvals and manufacture product, FMC anticipates Fury will be available at the distributor level by mid-July.

### WASHINGTON NOTES

#### Announce Cuts

The United States and Russia agreed to slash their arsenals of long-range nuclear weapons by two-thirds and pursue the possibility that American war prisoners may be alive in the former Soviet Union.

## Congratulations



RANGERS---Sponsored by the Rotary Club were managed by Gerald Otwell and coached by Billy Tosh. Team members included: Bobby Joe Copeland, John McClanahan, Toby Kitchens, Morgan Locker, Ronnie Orozco, Christopher Otwell, Chris Vaughn, Joe Luis Cortez, Joshua Kitchens, Matthew McClanahan, Jeremy Tosh and Rolando Estrada. (Guest Photo)



METS---Sponsored by the Lions Club were managed by Terry J. Hutto and coached by Bruce Barrett. Team members included: James Barrett, Judd Glover, T.J. Hutto, Delwyn Latham, Michael Dan Lopez, Koie Magby, Brett Curtis, Kelsey Monk, Greg Pena, Celestino Rojas and Matt Turney. (Guest Photo)

Photos Courtesy of Adrian Photography

## Leal's Restaurant

1606 W. Amer. Blvd. 272-3294

## Congratulations



ASTROS-MAJOR---Sponsored by Bailey Gin Co. The team was managed by Albert Lee and coached by Clayton Ramm. Team members include: Blake Hardwick, Buck Angeley, Bret Clements, Grant Oppliger, Drew Ramm, Greyson Rennels, David Vandiver, Jesus Barrera, Brandon Beversdorf, Justin Lee, Ismael Nunez and Payton Rennels. (Guest Photo)

Photo Courtesy of Adrian Photography

### Bailey Gin Co.

946-3397

### MIRACLE WORKER.



404  
Sink your workin' feet into 8 inches of Red Wing soft... Red Wing support... and Red Wing fit. It's a miracle in all day comfort.

### The Fair Store

120 Main 272-3500



Comfort and dependability, passed for generations.



# Low's Pay-n-Save MARKETPLACE

## LOWE'S MEANS LOW PRICES!



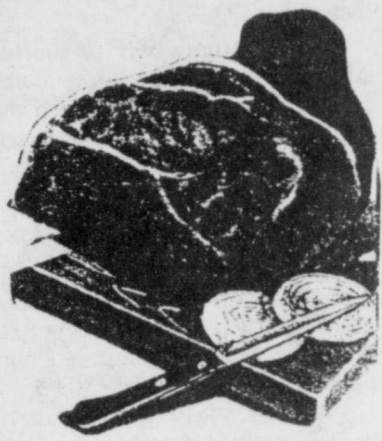
2 Liter

Coca Cola  
**\$1.19**  
Asst.

### Low's Pay-n-Save MARKETPLACE QUALITY MEAT

Decker Boneless

**Half Hams**  
**\$1.97**  
lb.



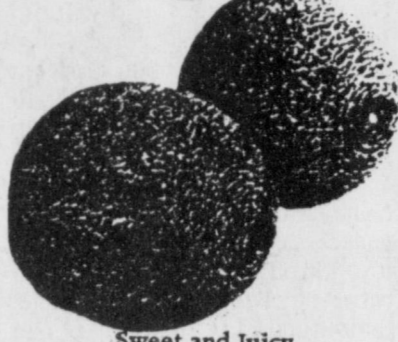
Don Martino  
**Pepperoni Pizza**  
**\$4.47**  
3 pack

### Introducing Freshness!

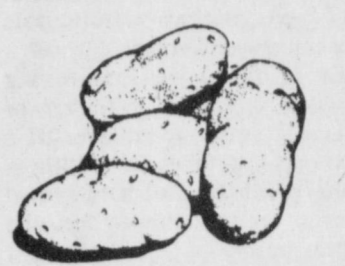
Bartlett  
**Pears**  
New Crop From California  
**55¢**  
lb.



Sweet and Juicy  
**Cantaloupes**  
**29¢**  
/lb.



Texas  
**Potatoes**  
**\$1.99**  
20 lb. Bag



R.G.  
**Beef Patties**  
**\$4.37**  
5 lb. Box

Sliced Beef Liver  
77¢ lb.

**Pork Steaks**  
**\$1.47**  
lb.

Small Pack \$1.67 lb.

Texas Smoked  
**Chopped Brisket**  
With Sausage  
**\$1.97**  
lb.

Fryer Livers & Gizzards 97¢ lb.

Tropical  
**Mangos**  
**59¢**  
/ea.

Hot  
**Jalapeno Peppers**  
**79¢**  
lb.

Thompson Seedless  
**Grapes**  
Fresh From California  
**65¢**  
lb.

Texas Grown  
**Zucchini Squash**  
**45¢**  
lb.



Texas Grown  
**Yellow Onions**  
Great on Hamburgers  
**4 \$1**  
lbs. For



Boston Butt  
**Pork Roast**  
**\$1.27**  
lb.

Fresh  
**Ground Beef**  
**97¢**  
lb.

10 lbs. or More

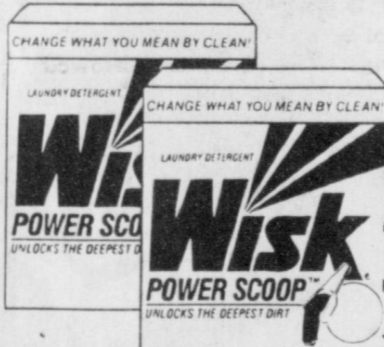
Small Pack \$1.17 lb.

Fresh Chicken  
**Leg Quarters**  
**37¢**  
lb.

Small Pack 47¢ lb.



Wright's  
**Bacon Ends & Pieces**  
**\$1.67**  
3 lb. Box



Wisk  
**Power Scoop**  
**\$2.79**  
38 oz. 15 Use



White Cloud  
**Bath Tissue**  
**89¢**  
4 Roll



Puff's  
**Facial Tissue**  
**99¢**  
Pre-Priced \$1.19



Schilling  
**Bacon Bits & Pieces**  
**89¢**  
3.5 oz.



Sugar Sweet  
**Kool Aid**  
**69¢**  
Makes 7 qts.



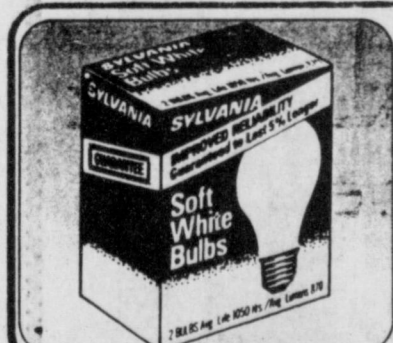
Hunts  
**B.B.Q. Sauce**  
**99¢**  
15 oz. Asst.



Bounty  
**Paper Towels**  
**79¢**  
Jumbo Roll



Lay's  
**Potato Chips**  
**\$1.09**  
\$1.49 Size



Sylvania  
**Soft White Bulbs**  
**89¢**  
2 pack



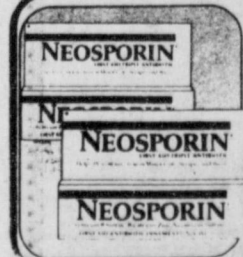
Dorothy Lynch Homestyle  
**Dressing**  
Buy One 8 oz. Bottle of Dorothy Lynch Homestyle Dressing and Get One 8 oz. Bottle of Dorothy Lynch Reduced Calorie Dressing  
**FREE**  
with coupon



Expires 8-6-92  
BUY ONE 8 OZ. BOTTLE OF DOROTHY LYNCH HOME STYLE DRESSING AND GET ONE 8 OZ. BOTTLE OF DOROTHY LYNCH REDUCED CALORIE DRESSING  
**FREE**  
WITH THIS COUPON  
Retailer: F&W STORES, INC. WILL REIMBURSE THE SALES TAX ON THE FULL PRICE AS SHOWN WHEN SUBMITTED IN ACCORDANCE WITH THE COUPON. SEE STORE FOR FULL DETAILS. SEE STORE FOR COUPON. © 1992 F&W STORES, INC.  
Good only at Low's Pay-n-Save Marketplace  
Maximum Retail Value  
**\$1.19**



Stayfree  
**Plus Night & Plus Maxi**  
**\$2.49**  
18 ct. 20 ct.



Neosporin  
**Ointment**  
**\$3.39**  
1/2 oz.

**Alka Seltzer**  
**\$1.79**  
Foil Pack 12 ct.



Shurfine 2% Lowfat  
**Milk**  
**\$1.89**  
1 Gal.

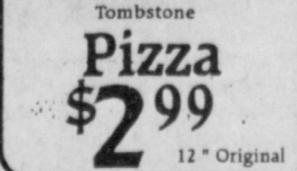
### FROZEN FOOD



Downy Flake  
**Waffles**  
**\$1.39**  
12 oz.



NEW Eggo  
**Fruit Waffles**  
**\$1.69**  
Asst. Flavors 6 oz.



Tombstone  
**Pizza**  
**\$2.99**  
12" Original



Where Available



Mrs. Smith's  
**Pies**  
**\$3.29**  
Asst.



Weight Watchers Asst.  
**Entrees**  
**\$2.49**  
For



Fudgsicle  
**Bars**  
**\$2.29**  
12 ct.



Weight Watchers Asst.  
**Sandwiches**  
**2 \$3**  
For



Weight Watchers Asst.  
**Sandwiches**  
**2 \$4**  
For

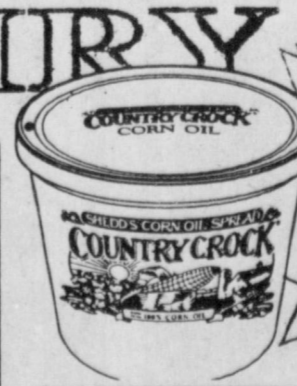


Weight Watchers Asst.  
**Sandwiches**  
**2 \$4**  
For

### DAIRY



Minute Maid Chilled  
**Orange Juice**  
**2 \$5**  
64 oz. For



Country Crock  
**Country Crock**  
**\$2.09**  
3/4 lb.



Kraft  
**Velveeta Slices**  
**\$2.19**  
12 oz.



Weight Watchers  
**Yogurt**  
**2 \$1**  
6 oz. For

**Low's Pay-n-Save**  
MARKETPLACE  
401 W. Amer. Blvd. Muleshoe 272-4585  
515 W. Amer. Blvd. Muleshoe 272-4406  
Prices effective July 26 - August 1, 1992  
WE RESERVE THE RIGHT TO LIMIT QUANTITIES IN TEXAS  
Our Best to you



# Common Course Numbering System

By Dr. A Rodney Albright

In an effort to facilitate communication with senior colleges and ease transfer from two-year colleges into four-year college programs, nine Gulf Coast area community colleges have initiated a common course numbering system that has become a model for other colleges throughout the state. Under this system, identical courses offered at each of the participating institutions have the same course title and number, thereby making it easier for students who transfer between colleges within this cooperation consortium.

The result: students transferring between two-year colleges or leaving a two-year college for a university can now do so without losing expensive and hard-earned college credits already on the student's record.

This innovative system, called the Common Course Numbering System, now serves as a model for similar efforts across Texas, and has been adopted by college consortia in other states.

To develop the system, presidents and chancellors of the Gulf Coast Consortium of Community/Junior Colleges (as the group is known) appointed an ad hoc committee of representatives of each of the nine partners in 1987.

Then began the time consuming and complex renaming and renumbering of courses by credit, title, abbreviation and description, until like courses at the nine separate colleges shared a single title and course number.

The committee grappled with other colleges as well: the capabilities of existing computer systems to accommodate changes, the overlap between academic and vocational-technical courses, and the problems related to determining ranges of course numbers within course sequences.

From the committee's detailed study emerged the basic format now known as the Common Course Numbering System. The format involves a four-letter rubric and a four-number system to describe the course name, course level and course credit. ENGL 1301, for example, describes the first level college English course at all Consortium colleges.

After a lengthy development process, during which the committee worked closely with the staff of the Texas Higher Education Coordinating Board, the numbering system was phased into the catalogs and class schedules of each Consortium college. Implementation has brought a sense of transfer ease to students and college advisory staffs.

"The Common Course Numbering System has improved the student transition process in two ways," one college counselor explained. "First, with students who come to us from other area community colleges we immediately know course equivalency. This makes transition smooth, and most importantly, accurate."

"It also helps at the four-year institutions to which the students transfer. People there who evaluate college credits have a common

system from which to evaluate. The counselor's job is smoother and more accurate, and students are happier with the process."

Today, 46 public community/junior colleges, two private junior colleges, the Texas State Technical College System, and 15 universities have signed a formal agreement to participate in a Texas Common Course Numbering System. Twenty-two other colleges and universities are considering joining the movement.

An ad hoc Common Course Numbering System Implementation Task Force is also studying the Consortium model at the request of Coordinating Board Commissioner Dr. Kenneth Ashworth.

The Common Course Numbering System eliminates the unnecessary repeating of courses lost through poor articulation between colleges, and saves time, tuition and tax funds. It is one shining example how Texas colleges, led by the nine members of the Gulf Coast Consortium, are working together to strengthen and improve the state's public higher education system.

## Patients in Muleshoe Area Medical Center

JULY 24

Cindi Smith, Gilbert Castorena, Mary Lockeby, Lorene Martin, Melissa Delgado, McArthur Matthews, Manuela Gonzales, Silvestre Olvera, Nora Burch, Walter Bartholf, Arthur Hayes, Concha Estrada, Delia Devenport

JULY 25

Jason Rodriguez, Cindi Smith, Gilbert Castorena, Mary Lockeby, Lorene Martin, Darrene Collins, McArthur Matthews, Manuela Gonzales, Silvestre Olvera, Mary Johnson, Nora Burch, Lisa Lee, Arthur Hayes, Concha Estrada, Delia Devenport

JULY 26

Cindi Smith, Jason Rodriguez, Lorene Martin, Mary Lockeby, Darrene Collins, Manuela Gonzales, Silvestre Olvera, Mary Johnson, W. B. Killingsworth, Arthur Hayes, Concha Estrada

JULY 27

Jason Rodriguez, Cindi Smith, Rosa Castro, Mary Lockeby, Lorene Martin, Darrene Collins, Manuela Gonzales, Silvestre Olvera, Mary Johnson, W. B. Killingsworth, Arthur Hayes, Concha Estrada, Delores Segovia

Has A Point

Professor: Can you tell me something about the word "statistics?"  
 Sophomore: Well, they're something like a bikini--what they reveal's interesting, but what they conceal is vital.

**HEALTH INSURANCE**  
 CALL Mark Morton  
 109 S. 1st Muleshoe  
 272-7519  
 State Farm  
 Mutual Automobile Insurance Company  
 Home Office Bloomington, Illinois

State Capital  
  
**HIGHLIGHTS**  
 By Lyndell Williams  
 TEXAS PRESS ASSOCIATION

AUSTIN — After hanging Gov. Ann Richards' bright star over the nation, Texas delegates to the Democratic National Convention returned from New York to woo independent voters and Perot supporters.

Texas Republicans, also courting the moderate bloc, are excited about hosting their national delegates next month at the Astrodome in Houston.

Is it back to political business as usual, now that Ross Perot is gone?

Not exactly. The hundreds of Texans who were Perot volunteers are, this week, a greatly disappointed group of some of the finest citizens in the state.

Leaderless, they still represent the backbone of the disenchanted, beleaguered but still standing and fighting middle ground.

You probably won't see them rushing to catch the political late

train; their influence is destined to be house to house, neighbor to neighbor.

They're still what is best for Texas.

### Revised Southern Strategy

Perot's candidacy, perhaps weakened by his misstep in hiring Ed Rollins and Hamilton Jordan, may have been given the coup de grace by the Democrats' revised Southern strategy.

With Arkansas and Tennessee heading the ticket, they stand a great chance of winning back the once-solid South.

Those 170 electoral votes for Clinton and Gore would have ensured the presidential election would be decided by the Democrat-dominated Congress. Perot has no party support there.

With Perot out of the race, the Democrats' political eggs are all in one Southern basket; they had convinced other Democrats across the nation to go along for a three-way race.

Now it's a Southern gamble.

### Certainty, Uncertainty

Like the stock market, political campaigns ride on certainty and falter on uncertainty.

The Southern strategy risks an unknown, according to an aide for Garry Mauro, Clinton's Texas campaign manager.

"What we don't know is how independent Northern voters will react to an all-South ticket. When our black and Hispanic voters see all those blondes up there on the platform, will they lose hope and

enthusiasm?"

Speaking of stock markets, U.S. trading gained following Perot's departure; in Mexico, his withdrawal drove the market up three percentage points on buyers' renewed hope for passage of a free trade pact with the U.S.

### No Pass, No Play

Ironically, the no pass, no play school rule which Perot drove through the Legislature in the mid-1980s surfaced again as an issue needing fine-tuning.

The rule mandates that students receiving a "F" are banned from extracurricular activities for a minimum of six weeks.

Carolyn Crawford of Beaumont, chair of the State Board of Education, wants to permit failing students to attend practices and rehearsals, while they work to bring their grades up.

Another proposal is to shorten the competition ban to three weeks for the first offense, but keep the rule's full force for subsequent offenses.

### Summer School Solution

Elementary students in danger of being kept back a grade instead could be required to attend summer school to catch up under a proposal made last week by Education Commissioner Lionel "Skip" Meno.

"Many youngsters, particularly in the early elementary grades, need more than 180 days in order to be successful," Meno said.

Meno will present his proposal in September to the State Board

of Education, which will decide whether to recommend it to the Legislature.

### Prison Suit Pact

Hammered by Texas Attorney General Dan Morales, a Democrat, and U.S. Attorney General William Barr, a Republican, plaintiff lawyers for Texas prison inmates signed a settlement which should end the courtroom prison reform battle.

The presiding judge still needs to approve the pact which will eliminate all prison population caps in new prisons and allow the use of tents in prisoner book camps.

Morales comes off a winner. He rejected an earlier pact, drawing flak from the prison board, but he got his terms.

### Other Highlights

Official votes of the Texas delegation at the national Democratic convention: Bill Clinton, 204; Paul Tsongas, 20; Jerry Brown, 4.

Genie D. Short, U.S. Federal Reserve Bank vice president, said the Texas real estate market is strongest in Houston, weakest in the Dallas-Fort Worth area.

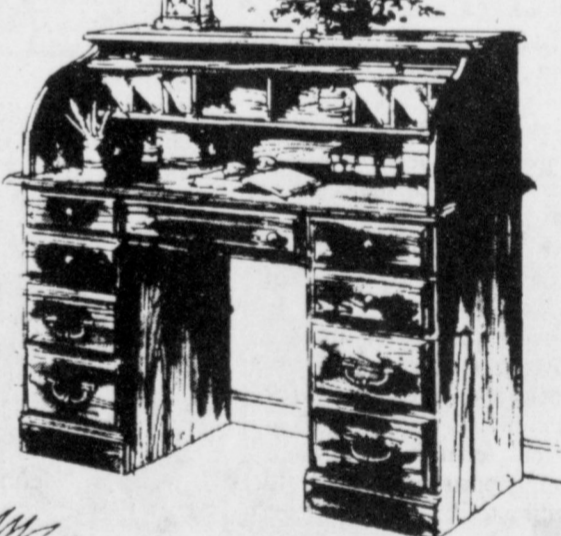
In Austin, irate citizens protested the *American Statesman* newspaper's printing of a (paid) wedding notice and picture of a lesbian couple. The issue pitted the publisher and gay and lesbian leaders against ministers and traditional family value groups.

There are people who have time to talk (about their views) indefinitely.

**BACK-TO-SCHOOL DESK SALE**  
 Riverside Desks Ready for Immediate Delivery  
**10 DAYS ONLY...**  
 A wide assortment of desk styles—all crafted by Riverside, America's largest maker of fine desks!  
 A solid investment in your child's future at once-a-year savings up to \$700

**Curved Back Desk Chair**, swivels, rocks, adjusts in height. Rugged casters. Medium brown oak finish.  
**\$159**

**ROLL TOP \$299**  
**FLAT TOP DESK**



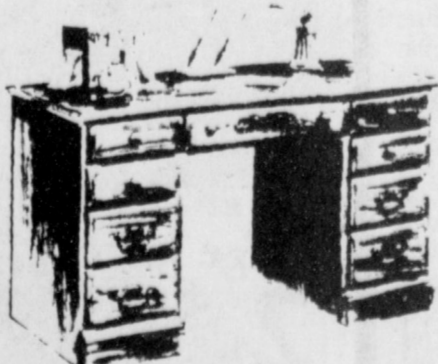
Roll Top Desk with locking top. Abundant storage, organizing and work space, including numerous pigeonholes, plus center drawer, pedestal drawers and 2 file drawers. Rich brown finish. 48x20x42" high.



Double Pedestal Desk, locking file. Writing surface is high pressure laminate to resist marks and scratches. Ample storage in 7 drawers, including 2 file drawers. Medium brown finish has NOVACRON protective topcoat to resist everyday spills. 60x30x30H

**\$399**

**Use Your Master Or Visa Card Or Our Convenient Terms**



**Pedestal Desk**, 5 drawers, including center drawer with pencil tray and 2 file drawers. deep brown finish. 48x20x30" H.  
**\$199**

### OAK CREEK ROLL TOP DESK

Crafted of oak solids and veneers in a rustic dark oak finish, the desk has Guardsman® Duro-Tuff protective topcoat to repel stains and heat. Behind the locking tambour top is ample storage space plus lots of extras. Below is two pull-out shelves, four pedestal storage drawers, and two independently locking file drawers. 60" x 33" x 50" H.



**\$2751<sup>25</sup>**


**Other Roll Top Desks \$1995 To \$2751<sup>25</sup>**

Your Quality Furniture Store

# CALTON FURNITURE

507 E. 2nd 359-1442

**Congratulations**



A'S---Sponsored by James Crane Tire Co. The team was managed by Mike Hahn and coached by Sam Whalin. Team members include: Jeffrey Bruns, Kyle Hahn, Beau Henry, Ryan Hodge, Jonathan Lee Pacheco, Ches Phelps, Chris Whalin, Kevin Edwards, Jose Luis Florez, Kyle Owen, Ricko Aguirre, J. Matthew Hale and Michael Thompson. (Guest Photo)

Photo Courtesy of Adrian Photography

**James Crane Tire Co.**  
 322 N. 1st 272-4594



## Texas Campaign To Begin

A statewide public education campaign to encourage Texans to compost, "Don't Bag It" and recycle everything they can has been launched across Texas to address the problem of bulging Texas landfills and growing environmental issues.

Billboards in 20 Texas cities and radio advertisements across the state will ask Texans to reduce the pollution they generate by recycling garbage and yard waste, decreasing their use of toxic products in the home and yard and ensuring the proper disposal of used motor oil, tires and batteries.

Built around the theme "Take Care of Texas, It's The Only One We've Got," the campaign represents the first public education phase of **Clean Texas 2000**, a statewide initiative to involve the entire state of Texas in pollution reduction.

"Clean Texas 2000 is about every Texan taking personal responsibility for the pollution we generate," said Texas Water Commission (TWC) Chairman John Hall. "If each of us will focus on that responsibility, we will protect our air, land and water, save money and resources and guarantee an environmental quality of life for Texas that is second to none in this nation."

One of the first priorities of the campaign will be to halt the flow of almost 4 million tons yard waste to Texas landfills each year. The Texas legislature has set a goal of reducing by 40 percent the amount of materials going to Texas landfills by 1995. Yard waste makes up almost 20 percent of what goes into landfills.

"If every Texan would compost their yard waste, we could extend the life of the landfills we have in the state right now by another 10 years," said TWC Commissioner Peggy Garner. "And the landfill space we're using now to bury grass clippings, leaves and brush is going to cost four times as much to replace in the future."

The TWC recently awarded over a million dollars in grants to cities and groups for composting projects and more grants are planned.

In addition, the TWC and the Texas Agricultural Extension Service (TAEX) will form an innovative partnership that will arm **Clean Texas 2000** with the TWC's field staff resources, as well as the 800 county extension agents stationed across Texas.

Combined agency training sessions will be held regarding yard waste and garbage recycling and the TAEX's highly successful "Don't Bag It" program. "Don't Bag It," which promotes leaving grass clippings to provide nutrients to your lawn and soil, is being used in over 100 Texas communities and will become a Key component of **Clean Texas 2000** efforts to keep yard waste out of landfills.

The joint agency cooperative will also provide support for development of a package of information, technical assistance and grant opportunities that will enable cities to develop programs for composting, "Don't Bag It", Household Chemical Collection and garbage recycling. That package will be announced and made available this fall.

"We are preparing to put in place, the kind of all-inclusive assistance

program that our cities and communities must have if we expect widespread recycling and reduction," said TWC Commissioner Pam Reed. "**Clean Texas 2000** can't be just some catchy little phrase out there. It must be a dead serious program that produces results."

Another major focus of the **Clean Texas 2000** public education campaign will be to change public habits regarding the disposal of used motor oil, tires and batteries. Dumping any of these is now illegal in Texas.

An estimated 18 million gallons of oil is being dumped on Texas each year by those who change their own motor oil. And there are about 500 million tires stacked up in dumps all over the state that will have to be cleaned up. The TWC has new programs to begin addressing both of these problems but it will take time and cooperation from all Texas citizens.

**Clean Texas 2000** offers a statewide Environmental and Recycling Information Center that will answer questions or provide "how to" literature on virtually any environmental area affecting the home, lawn or auto. Call 1-800-458-9796 or write **Clean Texas 2000**, Texas Water Commission, P.O. Box 13087, Austin, Texas 78711.

## Too Long, Too Much

Lawrence Walsh, the special prosecutor Congress named years ago to investigate the Iran-Contra controversy and related questions, is still at it a decade after the alleged misdeeds occurred.

He has, still, 43 lawyers, all being paid by the taxpayers. The investigation has cost millions. It has lasted so long, in fact, that Walsh spends little time on it these days. He has turned over the lead role to a younger attorney.

The former Secretary of Defense, Caspar Weinberger, was recently indicted, a very interesting ploy, since he had been offered an escape by a plea bargain, which he refused.

Fortunately, Congress has created no new, independent investigating bureaucracies, perhaps because Walsh and his team seem to have found a lifetime career with the millions Congress has provided them.

Shouldn't the traditional agencies--the FBI and other in-place federal investigative bodies carry out investigations of executive department personnel? Are we to believe they wouldn't conduct fair investigations? One can't accept that cynicism as justification for independent extravagancies--financed by a majority in Congress in the opposition.

### No Sale

"I see your husband has a new secretary," remarked Mrs. Busybody to the lady on whom she was calling.

"Yes?"

"Yes, and she's very pretty."

"I know, she's our daughter."

## Discuss Formulas Before Birth Of Child

Parents should discuss formulas with their pediatrician before the birth of their child if they plan to bottlefeed, says Dr. Kathleen J. Motil at the USDA's Nutrition Research Center in Houston.

There is such a large selection of formulas, it is never too early to talk about choices, says Motil, an assistant professor of pediatrics at Baylor College of Medicine.

Modern formulas are adapted to be as nutritionally close to breast milk as possible. They all supply proteins, fats, carbohydrates, vitamins and minerals, but one formula may not fit the needs of all infants.

Formulas fall into one of three groups. Based on protein content, the 20 or so infant formulas on the market today are classified as casein/whey, soy, or pre-digested protein called hydrolysates.

Casein/whey or cow's milk-based formulas make up the largest group of formulas. Approximately 85 percent of infants thrive on these formulas, Motil said.

Infants who cannot tolerate the casein/whey protein in these popular formulas or who have a family history of allergies may need a soy-based formula. Industry studies indicate that 12 percent of the infant population falls into this group.

According to Motil, sensitivity to cow's milk protein may result in vomiting, diarrhea or poor weight gain.

"Consult your doctor if feeding problems arise," she warns. "This is not the time for a parent to experiment with a new formula. Vomiting and diarrhea can quickly lead to dehydration in young infants."

Hydrolysates are the easiest to digest but the most expensive. Because they contain pre-digested cow's milk protein, they reduce the likelihood of allergies as well. Hydrolysates are designed for infants who fail to gain weight or suffer from severe diarrhea or disorders such as cystic fibrosis.

Formulas are also available

"with" or "without iron." Motil believes iron is unjustly blamed for stomach upsets, and she recommends iron-enriched formulas.

"We are finding that infants who are taken off iron-enriched formulas too early may become iron deficient."

Parents will quickly discover that formulas are available in three

## International Exchange News

This August, an eager, excited group of international students will arrive in our area from all over the world. For more than forty years, "Youth For Understanding (YFU) International Exchange has brought teenagers from twenty-seven countries to live with families and attend local high schools. At the moment, there are simply not enough host families for these kids.

International exchange students are great for our community and our young people. They are a wonderful resource for our local schools and they help teenagers learn about the world without ever leaving home. In many ways, it is our own local teenagers who lose out because they don't have a chance to know these students.

Hosting a student is fun and rewarding for the entire family. Single parent families, families with grown children, families with younger children or couples with no children at all can have a successful hosting experience.

Help bring the world home! If you can, open your heart, and your home to a teenager from another country. Call Darlene Witt at 1-806-795-2102 or 1-800-872-0200 now and a local YFU volunteer will contact you. It could be the most rewarding call you will ever make.

### The Main Requirement

Maude--Let's start a secret society.

Alice--All right, I heard a lot of secrets at the bridge party this afternoon.

## Savings Found In Energy Efficiency

By Sandra Haverlah

As more energy is required by Texas residents, more power plants to produce that energy will be built--and this is a cost we all share as consumers of energy.

Currently, the most effective way of reducing the continuous need for energy is to change our consumption habits. Increasingly, municipalities are requiring that new homes be fitted with energy-efficient and water saving appliances and fixtures. But for the majority of homeowners, the appliances we use are the original models and may be in need of replacement.

If you are planning on purchasing a new water heater, dishwasher, air conditioner furnace or washer and dryer, the 1991 Consumer Guide to Home Energy Savings by Alex Wilson and the American Council for an Energy-Efficient Economy can help you locate appliances that will contribute to a reduction in your electricity bills.

The guide provides tips on what to look for when shopping for new appliances, lists the most energy-efficient models available, and even provides a form to calculate your savings from purchasing energy-efficient models.

Even if you are not planning on buying new appliances, this guide offers advice on how to reduce energy consumption with your current refrigerator, water heater, air conditioner and other appliances.

Texas has the distinction of having an abundance of natural gas as a resource. If possible, use gas appliances in your home. Many of the power plants that provide our electricity use coal shipped in from other states for producing that power. Switching to gas appliances will not only save you money on your electrical bills but will help the Texas economy as well.

For a catalog of books about energy savings at home, write to the American Council on an Energy-Efficient Economy, 1001 Connecticut Avenue N.W., Suite 535, Washington, D.C. 20036.

Sandra Haverlah is a consumer advocate for Texas Citizen Action and Executive Director of the Texas Consumer Association. You can send her questions and comments to: The Consumers Column, 3625 Manchaca, Suite 202, Austin, TX 78704.

forms: powered, concentrated liquid, or ready-to-feed preparations.

All three forms of formula have advantages. Powdered is compact and economical, concentrated liquid is easy to prepare by mixing equal parts of water and formula, and ready-to-feed offers trouble-free preparation--just open and pour. Choice will be determined by

family finances, convenience and lifestyle.

Parents can provide their pediatrician with valuable background information so he or she can recommend a formula best suited to their infant's needs. "The decision making then becomes a joint effort," Motil said.

## Homebuyer Workshops Offered

The Texas Department of Housing and Community Affairs (TDHCA) announced that it will hold eight homebuyer workshops throughout the state. All first-time homebuyers and real estate professionals are encouraged to attend.

The purpose of the workshops is to inform the public about the department's Single Family Bond Program and the homebuying process. Lenders and representatives from the department will discuss the program and be available to answer questions.

The Single Family Bond Program channels low interest mortgage money through participating Texas lenders to eligible low to moderate income individuals and families who are purchasing their first home or have not owned a home in the last three years.

The department plans to start a new bond program on July 8. Under the program, the department will offer \$132 million in mortgage financing at a 7.41 percent interest rate for low to moderate first-time homebuyers statewide.

As part of TDHCA's goal to target more housing funds to very low income persons, the department is requiring that every participating lender in this program set-aside 25 percent of their funding for the first six months for very low income borrowers.

The department identified areas of the state which traditionally have not participated in the Single Family Bond Program and campaigned to get representation in those areas. As a result, lenders are now participating in 17 counties that have not had previous participation.

The department is also offering a down payment assistance program for low and very low income persons. Through this program, TDHCA hopes to assist those Texans who don't have the equity

to make a down payment. The loans are available at Zero percent interest and do not have to be paid back until the borrower sells the home.

The 72nd Legislature created TDHCA by merging the former Texas Housing Agency and the former Texas Department of Community Affairs. The Community Development Block Grant was also transferred from the Texas Department of Commerce to TDHCA.

The Texas Department of Housing and Community Affairs is dedicated to helping Texans achieve an improved quality of life through the development of better communities.

Persons who are interested in attending a homebuyer workshop may call the agency's toll-free hotline number, 1-800-792-1119.



## Who Knows?

1. What political party held its first convention in Philadelphia?
2. Name the eleventh U.S. president.
3. What two countries set up a "hotline" in 1963?
4. Who succeeded Justice Potter Stewart?
5. Name America's first woman astronaut in space.

### Answers:

1. The Republican Party, in 1856.
2. James Polk.
3. The United States and Russia.
4. Sandra Day O'Connor.
5. Sally K. Ride, on the space shuttle *Challenger*, in 1983.

## Congratulations



**K-BARS**---The team was sponsored by the Kiwanis Club and was managed by Kenneth King and coached by David Faver and Curtis Shelburne. Team members include: Timothy Madrid, Jeffrey Shelburne, Aaron Faver, Steven Madrid, Joseph Mata, Blake Mount, Joe Richard Rodriguez, Brandon Thomason, Jerry Cisneros, Robert Gardner, Layne Kemp and Christopher Shelburne. (Guest Photo)



**BREWERS**---The team was sponsored by Muleshoe Motor Co. and was managed by Larry Parker and coached by Joel Sinclair. Team members include: Chris Noriega, Facundo Olivas, Jr., Jose Garcia, Chad Parker, Chris Reyna, Mason Sinclair, Ricky Toscano, Jon Keith Turner, Gilbert Vela, Jr. Douglas Field and Joe Bob Orozco. (Guest Photo)

Photos Courtesy of Adrian Photography

## Congratulations



**BULLS**---The team was managed by David Tipps, Team members include: Jonathan James, Bradley Thomason, Brandon Broyles, Cade Hobten, Louie Pacheco, Dewayne Pedigo, Arturo Perez, Jordan Pool, Jeffrey Skipworth, Megan Tipps, Matthew James and Lindy Pineda. (Guest Photo)

Photo Courtesy of Adrian Photography

## Bailey County Farm Bureau

1612 W. Amer. Blvd. 272-4567



## MULESHOE STATE BANK

MEMBER FDIC

101 West American Blvd. Phone 806/272-4561  
MULESHOE, TEXAS 79347





LUBBOCK, Friday, July 24, 1992  
By Roger K. Haldenby

Boll weevil specialists from across Texas met in San Angelo this week to discuss the progress of an advanced computer-model for strategic management of boll weevil, cotton's worst economic pest, into the 21st century. Lubbock-based Plains Cotton Growers, Inc. (PCG), through its Boll Weevil Steering Committee, is sponsoring the work being conducted by elements of the Texas A & M University (TAMU) System.

The basis for the advanced strategic planning tool now in its first year of development is another computer model, developed over the past three years, that predicts timing and level of boll weevil emergence from overwintering habitat in the spring. The overwintering survival and emergence model combines the research work of Dr. Don Rummel, Texas Agricultural Experiment Station (TAES) Lubbock, Dr. Jeff Slosser, TAES Vernon, Dr. Tom Fuchs, Texas Agricultural Extension Service (TAEX) San Angelo, and Dr. Nick Stone, Virginia Polytechnic Institute, Blacksburg VA.

Many elements are integrated into the strategic management model. The prototype is built on information from three counties (Dickens, Motley, and Kent) within PCG's boll weevil diapause control zone.

A component of the model is a geographic information system (GIS) in which location and acreage of cotton fields together with the results of a comprehensive vegetation survey, land usage, towns, roads, and surface water are also included. Boll weevil infestation data collected over the 28 years of PCG's program operation since 1964 are a unique and valuable resource for the project.

Drs. Rummel, Slosser and Fuchs continue to provide the research data for the new project. The programming and model development is coordinated by Dr. Ted Wilson, Professor of Entomology at TAMU, College Station. Wilson is developing a model that simulates boll weevil development and population increase which links to an existing cotton crop system simulation also created by him.

As insect and crop development are linked to the GIS data base, users of the model will be able to forecast overwintering survival, emergence, summer feeding and yield loss for each of many existing and promising management strategies. The effectiveness of these alternate management approaches will be evaluated in field trials on the High Plains Boll Weevil Control Program under the leadership of Roger Haldenby, Program Coordinator for PCG.

The model is targeted for completion in 1995 and should increase our ability to predict major boll weevil outbreaks. Insecticide use in PCG's control zone could be lowered by as much as 40 percent. If adopted and adapted by other areas of Texas, reductions of up to 60 percent could be seen in those areas.

ASCS will be reviewing contracts this year to determine eligibility for loans and loan

deficiency payments. A meeting will be held Wednesday, August 5, 10:00am at Holiday Inn Civic Center, Lubbock to provide the cotton industry with contract information regarding program benefit eligibility. The program will be jointly presented by National Cotton Council staff and Washington ASCS representatives. All industry members interested or involved in contracting are encouraged to attend.

## Big Bend National Park Among America's Best Destinations

A recent survey of the Harley Owners Group, commonly known as H.O.G., selected Texas' Big Bend National Park among the best vacation spots in the United States. Harley-Davidson, Inc. polled more than 5,000 H.O.G. members across the U.S. about their favorite vacation spots to uncover America's 50 best travel destinations.

In addition to the scenic pairing of mountains and desert, Big Bend National Park was selected for its recreational opportunities, which include hiking, rafting and donkey rides to Boquillas. Also cited were the local music, food and hospitality. Other nominations from the "Lone Star State" include Austin, San Antonio and Del Rio.

Part of Harley-Davidson's mystique comes from the fact that Harley-Davidson owners navigate our country's roadways in search of "new worlds," much in the same spirit that Columbus discovered America. They are modern-day explorers who take to the highways and byways aboard their Harley-Davidson motorcycles. "Who better to judge the country's top travel destinations than the nation's touring experts?" asked Bill Davidson, Harley Owners Group Manager and descendant of one of the company's founders.

"The purpose of H.O.G.'s Discover YOUR America program is to remind people about the wide range of travel opportunities that exist here in the United States."

The survey uncovered a truly diverse America rich with history, beautiful landscapes, modern cities, wide-ranging climates and the greatest natural resource — its people.

H.O.G. members will have the chance this summer to vote for the nation's 10 best travel destinations from among these 50 locations. The current nominations were evaluated on a number of criteria including: scenic value, recreational and entertainment variety, quality of lodging and dining and affordability.

The survey comes at a time when the popularity of domestic road travel remains strong despite a restrictive economic climate. Affordability was among the top criteria to draw additional comments from respondents, illustrating travelers' economic concerns.

The Discover YOUR America Program is another example of Harley-Davidson's continued commitment to serving its customers.

For more information about motorcycle touring contact a local Harley-Davidson dealership.

## MONEY TALK

*Editor's Note: Texas State Treasurer Kay Bailey Hutchison addresses various issues related to personal finance and state government. However, these views are not intended to replace the advice of reputable financial advisers or other professional counselors.*

**Q.** I read that some of the major credit card companies are lowering the interest rates they charge certain customers. How can I apply for these better rates?

**A.** When a credit card company lowers the interest rate it charges certain customers it has analyzed a number of factors in reaching that decision. Usually, it is required that you have been an account holder of the company's credit card for a minimum of one year. Then, the company will look at your payment history and average outstanding balance over a period of time.

In most cases your account is examined on a quarterly basis and if you meet the company's qualifications they will notify you that you will be charged a lower interest rate. You may also call the credit card company and request a review of your account.

Another option is to research those banks offering credit cards with interest rates lower than the rate you are being charged. They often will provide this information over the telephone. In addition, some local newspapers publish the lowest credit card rates offered by Texas banks.

*If you have a question, write the Texas Treasury, P.O. Box 12608, Austin, Texas, 78711.*

## EnviroNomics

by Texas Land Commissioner Garry Mauro

### The Gulf is Special, Let's Bring it Back!

The Gulf of Mexico is a multi-faceted jewel, one of the great treasures of Texas. A place of rest and relaxation, toil and reward, a special place and a place that is in trouble.

Aside from the beauty and fun that draws tourism to the tune of \$6 billion annually, the diverse gifts of the Gulf of Mexico make it exceedingly important to life in and out of the water. From the Gulf is harvested half the seafood consumed in the United States; 45 percent of both our import and export tonnage plies its waterways; 90 percent of

offshore U.S. oil and gas production is there.

The trouble is that the shallow Gulf, a vast basin, is assaulted by pollutants washed down from cities, industries and agricultural endeavors through our rivers. There is an average of 70 oil spills in Texas waters alone each month. Storm runoff floods the Gulf with trash, as does marine debris dumped from shipping and offshore oil and gas platforms. Some 80 percent of that trash is plastic.

Most people are afraid to face the complete truth.



## Congratulations



**SUDAN T-BALL**---The team was managed by David Killough. Team members include: Kevin Byrum, Lacey Deanne Chester, Mindy Gore, Maegan Lance, Lance Layton, Luke Loudder, Gravel Martinez, Evan Maxwell, Nune Perez, Joshua Piercy, Ashley Davison, Chelsea Lewis, Jay Messamore, Kody Morris, Mark Nix, Pedro Lee Perez.

(Guest Photo)



**SUDAN MINORS**---Team was managed by David Killough. Team members include: Julie Gatewood, Brandon Hill, Lance Steven Martin, Freddy Medellin, Kenzi Wilson, Zach Chester, Lessie Collins, Troy Dugan, Steven Gonzales, Trent Killough, Andy Messamore and D.J. Provence.

(Guest Photo)



**SUDAN MAJORS**---The team was coached by Phil Bowland and Craig Harper. Team members included: Joshua Bourland, Jay Carr, James Collins, Erik Edwards, Garrett Flowers, Shane Harper, David Kenner, Russ King, Anthony Lopez, Jonathan Martin, Rocky McAdams, Cameron Nix and Dustin Provence.

(Guest Photo)

Photos Courtesy of Adrian Photography

**Texas Sesame**  
Will be buying new crop milo and soybeans along with our food and feed corn at all locations.

Come by or call our office for current contracts and pricing information.

We are also offering several storage programs for your 1992 crop.

**Texas Sesame**  
(division of ADM)

Mark Glawe, V.P. - Mgr.  
272-4231 Muleshoe office  
647-2133 Flag Office

## Farmer's Coop Gin

Sudan, Tx. 227-2461

## Pay-n-Save #7

Joe Holliman, Mgr.  
306 Main Sudan, Tx. 227-2035

## 1st National Bank

Member F.D.I.C.  
200 Main Sudan, Tx. 227-2411



# HEALTH

for the whole family

## Different Headaches — Different Treatments

Although the headache you may have suffered from overdoing it on New Year's Eve has subsided, for 45 million Americans who suffer from chronic, recurring headaches, New Year's Day comes all too often.

According to Michael C. Cronen, D.O. of Louisville, Ky., some people who are treating these headaches with aspirin or an aspirin substitute, might be better off visiting their physician to determine which type of headache they suffer from and how to treat it.

Headaches come in various forms, and each type has its own treatment:

**Tension:** This is by far the most common form of headache, and it is characterized by a dull pain and a feeling of tightness around the scalp or neck. Tension headaches commonly affect the entire head and are

localized to one side. They can be triggered by emotional stress, fatigue or depression.

**Cluster:** The pain associated with this type of headache is generally very severe, developing around or behind one eye. It usually occurs at night and awakens the victim from sleep. The affected eye may tear and the nose may become congested on the same side as the headache.

Attacks occur in clusters, or groups, for days, weeks or months at a time — then they may disappear for a year or more. Most cluster headache sufferers are men, and there's some evidence that excessive smoking and/or alcohol consumption can trigger an attack.

**Sinus:** When sinuses become infected or inflamed, a gnawing pain may develop in the nasal area, often increasing in severity as the day goes on. One of the most common symptoms of a sinus headache is a rise in temperature. In most instances, nasal decongestants and antibiotics are used to treat sinus headaches, although draining the affected sinus also provides relief.

*"Although migraines can be hereditary, recent research indicates they may be caused by stress, poor sleeping habits, menstruation and changes in altitude and temperature."*

**Temporal Arteritis:** This type of headache normally affects older adults and is associated with a low grade fever, problems with eyesight, weight loss and a pain on one side of the jaw while chewing. The headache is caused by an inflammation of the temporal artery resulting in a jabbing, burning pain around the ear. Serious complications can develop unless you seek medical attention.

**Vascular:** A vascular headache occurs when the blood vessels in the scalp expand and contract to produce a throbbing pain which is often synchronized with the pulse beat. The best known and probably the most debilitating of the vascular

headaches are migraines — in which the pain starts on one side of the head and generally remains one-sided.

**Migraine:** Although migraines can be hereditary, recent research indicates they do have physical causes. Migraines may be caused by stress, poor sleeping habits, menstruation and changes in altitude and temperature. Foods such as chocolate, red wine and aged cheese can provoke a migraine, as can noise, certain odors, bright lights and watching television.

Migraines are divided into two categories: classic and common. The difference is that the classic migraine gives the victim warning symptoms 10 to 30 minutes before the headache begins. This symptom, known as an aura, can include visual disturbances such as flashing lights, zigzagging lines or areas of total darkness; tingling or numbness in an arm or leg; strange odors; restlessness; confusion; or speech impairment.

Headache prevention and treatment can range from taking aspirin and avoiding headache triggers, such as foods or stressful situations you know provoke the headaches, to seeing your physician for medication for migraine headaches. In many cases, osteopathic manipulative treatment, provided by an osteopathic physician (D.O.), can bring relief from an attack already in progress or help prevent further attacks.

Dr. Cronen said you should consult your physician if you answer "yes" to any of the following questions: Is the headache sudden and severe; does it affect one side of the head? Is it associated with a pain in the eye or ear? Is it accompanied by nausea, vomiting, hallucinations, sensitivity to light and sound? Does it recur in a definite pattern? Does it result in confusion or loss of consciousness? Is it persistent? Does it interfere with your ability to function normally at work or in social situations? And, is it similar to headaches suffered by other members of your family?

## How To Get The Home You Want

This is the time of year when people start looking for that new home that was talked about all winter, often discovering that finding a mortgage is sometimes harder than finding a "Dream Home." But, there is a ray of hope with a little-known mortgage—the EEM.

The Energy Efficient Mortgage (EEM) is a special type of mortgage that takes into consideration the savings in energy bills a homeowner realizes from living in an energy-efficient home. This "extra money" can be used to pay a higher monthly mortgage payment.

When lenders determine whether a prospective borrower can afford a house, they use debt-to-income ratios to establish the buyer's ability to repay the loan. The typical ratio is 28 percent of the gross income for housing and no more than 36 percent for all debts including the mortgage. Taking into consideration that an energy-efficient home will cost less to operate, the EEM raises the qualifying ratios to 30 and 38 percent respectively in recognition of anticipated energy savings.

Until recently, determining whether or not your new home would qualify for an EEM was difficult. There was no uniform standard to qualify a home for an EEM. However, a newly built home can now easily qualify as long as it's



built to meet or exceed the requirements of the 1989 Model Energy Code (MEC) published by the Council of American Building Officials (CABO). This is due to the fact that Fannie Mae, one of the largest secondary mortgage lenders, recently agreed to provide an automatic 2% adjustment of its underwriting ratios for any home built to the 1989 Model Energy Code.

Currently, there are at least ten states whose state codes equal or exceed the MEC guidelines. Therefore, any homes built in those states should automatically qualify for an EEM. For new home buyers in the other states, they need only specify to the builder that they want their house built to meet the MEC guidelines for it to qualify.

For more information on the advantages of Energy Efficient Mortgages, talk to your lender or write

to the CertainTeed Home Institute for a free brochure called "How to Get the Home You Want" at P.O. Box 860, Valley Forge, PA 19482.

## "Secret Molecule" May Mean Marvelous Hair

Thanks to modern science, stronger and thicker feeling and looking hair is now possible. Healthier looking, more manageable hair can be yours with the help of a secret Belgian molecule.

The Fermodyl Treatment was invented by a noted Belgian scientist who based his revolutionary formula on a molecule that enables hair to reach its full potential. Recently, Dr. Collet-Cassart, another renowned Belgian scientist who specializes in genetics and protein, created a new formulation by combining the original secret with the latest scientific advances.

The result is Fermodyl Interactives®, a major new development in hair care and treatment. The corrective molecule in the Bodifying Strengthening Treatment, Corrective Structuring Treatment, Intensive Moisturizing Treatment and Maximum Volumizing Treatment is said to:

- Actually thicken hair from within.
- Leave hair inherently stronger.
- Provide improved elasticity.
- Give hair new styling support and expand styling options.

## Say Good-Bye To Dirty Contact Lenses

Call it long-term buildup, call it dirt, or call it plain old gunk. It's that troublesome film on your soft contact lenses that just won't go away no matter what you do.

No amount of rinsing, soaking, or rubbing can get your soft contact lenses completely clean. Some amount of debris is always left behind. Little by little, the buildup increases until one day those windows to your world start to fog over and aren't nearly as comfortable as they used to be.

The conventional soft contact lens is designed to be cleaned and reused for approximately one year, which translates to about 5,000 hours of lens wear. Considering that lens

deposits begin to accumulate soon after a lens is placed on the eye, it's easy to understand why most contact lens wearers breathe a sigh of relief when it comes time for lens replacement.

Disposable contact lenses introduced several years ago have solved the problem of long-term deposit buildup for more than one million people who prefer the option of overnight wear. The lenses are worn round-the-clock for up to seven days and six nights and then simply thrown away.

But what if overnight lens wear is not an option? What if you are a member of the daily wear set—the group who removes their lenses at

bedtime, cleans and disinfects them overnight, and then puts them back in the next morning? Take heart. There is good news for you too.

People who want the clear vision and comfort afforded by frequently replaced lenses, but are not candidates for overnight wear, will appreciate the recent development of SUREVUE® Contact Lenses. These lenses, manufactured by Johnson & Johnson Vision Products, Inc., are designed for daily wear with a recommended replacement schedule of every two weeks. Use the lenses for two weeks, toss them, and then replace them with a new pair.

The human race has its problems, including you and me. ---

## Congratulations



LAZBUDDIE-ORANGE T-BALL---The team was managed by Evaristo Sanchez, Jr. Team members include: Joshua Barnes, Cobey Branscum, Kelli Harris, John Howard, Shawndee Nichols, Bethenie Sanchez, Sterling Vega, Kolby Wilkerson, Lucas DeLeon, Eric Magby, Andrew Martinez, Brady Mimms, Candice Randolph and Tobin Redwine. (Guest Photo)



LAZBUDDIE LONGHORNS MINOR TEAM---The team was managed by Steven Gartin and coached by Bobby Redwine. Team members include: Trevor Gartin, Trey Nichols, Shannon Redwine, Colt Richardson, Wayne Terry, Fabian Guzman, Michael Martinez, Landon Parham, Tyler Gartin, Garrett Magby, Andy Johnson and Brandon Randolph. (Guest Photo)



LAZBUDDIE LONGHORNS---Sponsored by the Lazbuddie Merchants were managed by Jimmy Dale Seaton and coached by Dave Engelking. Team members included: Jeffrey Seaton, Brandon Foster, Michael Jones, Joshua McDonald, Cade Morris, Josh Morris, Don Burch, Richard Flores, Brice Foster, Brice Redwine, Juan Salazar, Christopher John Smith, Cameron Turner and Dustin Weir. (Guest Photo)

Photos Courtesy of Adrian Photography

## A U C T I O N

Date: Saturday, August 1, 1992 Time: 1:30 PM CSDST  
 Located: In Friona, TX at 1106 6th St.

Owner: Lucille Rockey

I have sold my house and am moving into an apartment. Due to the lack of space I will sell the following at Public Auction.

- |  |  |
|--|--|
| Kenmore Mod 29123 12.0 CuFt Freezer                        | 1-Wrought Iron lamp                                  |
| New Vista Victrola cabinet type AM-FM radio and turn table | 1-Lot hanging lamps                                  |
| 1-Lot albums from the late 50's and early 60's era         | 2-Folding lawn chairs                                |
| 1-Sofa (excellent condition)                               | 1-Redwood picnic table w/2 bench seats               |
| 1-Queen size brass bed w/box springs and mattress          | 4-Folding chairs                                     |
| 1-Set of Chair-back twin beds w/box springs and mattress   | 1-Wood pet carrier cage                              |
| 2-Early American dressers w/mirrors (excellent cond)       | 1-2 wheel lawn cart                                  |
| 1-Hall table w/matching wall mirror                        | 1-Hotpoint refrigerator w/Ice Maker (excellent cond) |
| 1-Wall hugger recliner                                     | 1-Small round antique table                          |
| 1-Lot misc living room chairs                              | 1-Kitchen stool                                      |
| 2-Wood frame wicker chairs                                 | 1-Lot dishes, pots, & pans                           |
| 1-Sears exercise bike                                      | 1-Wood salad bowl set                                |
| 1-Lot night stands & end tables                            | 1-Metal typewriter stand                             |
| 1-Swivel rocker  | 1-Sears sewing machine in cabinet                    |
| 1-Small drop leaf table w/2 drawers                        | 1-Hall table   |
| 1-Love seat  | 1-Antique doll table w/2 matching chairs             |
| 1-Eureka vacuum cleaner (like new)                         | 1-Brass doll bed                                     |
| 1-Antique green octagon table                              | 1-Brass dressing bench                               |
| 1-Lot misc items too numerous to mention.                  | 4-Matching straight back dinette chairs              |
|  | 1-Sears Free Spirit 3 wheel cycle                    |
|  | 1-Sunbeam vacuum cleaner                             |

Please bring your own check books. Not responsible for accidents. All items will be sold as is. No warranties are given or implied.

Potts Auction Service

Auctioneer: Larry Potts  
 HCR 3 Box 148  
 Friona, Texas 79035  
 (806) 247-2343 Office  
 (806) 295-6633 Home

**Lazbuddie Garage & Supply**  
 965-2188

**Farmer's Spraying Service, Inc**  
 965-2624

**Easter Grain, Inc.**  
 Lazbuddie, Tx.  
 965-2817

**Foster Fertilizer, Inc.**  
 Lazbuddie, Tx. 965-2921

**Sherley-Anderson -Lazbuddie Elevator**  
 Lazbuddie, Tx. 965-2922

**North Lazbuddie Gin**  
 965-2754



# What Fishermen Tell Us

By Lyndal Waldrip  
TPWD News Editor

Pollution and water quality are problems most citizens are concerned about, whether or not they go fishing. Texas has its share of these problems but the picture is not doom and gloom, especially now that state agencies, industry and citizens are working together.

Some respondents to the Texas Statewide Angler Survey were concerned about the effects pollution was having on fishing, fish populations and the state's lakes, rivers, streams and bays.

An example:  
"...I am pleased to see that such a survey is being conducted. This survey can only help in improving what we have, but I am sorry to see that the real issue, pollution, is not being addressed. Elimination of pollution of our bays, rivers, lakes, etc., should be our immediate priority. How can there be improvement to our recreational fishing when our waters are being polluted? I no longer catch fish where I used to. It is not due to over fishing, restrictions, hard to get to, etc., but only due to pollution. My 34 years of fishing these waters will attest to that!"

David Sager, chief of the environmental quality branch in the resource protection division at the Texas Parks and Wildlife Department, said the department, along with other state agencies, are addressing the problem. "We're investigating problems. We seek stringent discharge permits from regulatory agencies to protect fish and wildlife resources. These agencies have become responsive in placing limitations to protect the environment. We haven't eliminated pollution, but we're working on it."

One major problem the department is working on with the Texas Water Commission and the Texas Water Development Board is freshwater inflows. Also a Coastal Zone Management Plan is being developed in cooperation with the General Land Office to help protect the resources along the Gulf Coast.

TPWD and the Gulf Coast Conservation Association have begun sampling minimally impacted bays-Christmas Bay was the most recently tested bay to find areas with good water quality for comparison with other areas to determine which other areas are polluted. Recently, the U.S. Environmental Protection Agency awarded a grant for the department and other agencies to study the water quality and the level of chemicals in sediments and fish tissues in the Rio Grande.

The department also is building a new resource protection laboratory at the A.E. Wood State Fish Hatchery in San Marcos that will allow the department to run more tissue samples cheaper and more efficiently. The facility should be completed by the end of the year.

In the last biennium budget, the resource protection division formed a new branch, aquatic studies, to address these questions.

\*\*\*\*\*  
"...I don't like the idea of having to buy a fishing license and have to buy a stamp to go on the license. This is unfair and like having to

buy two licenses for the same thing. Fishermen are not the reason for fish getting scarce. Why don't you go to the real reason for fish dying and getting scarce, like refineries dumping chemicals in the water and also run off from farms up country, the chemicals they spray their crops with? No, you are afraid of them, so you double taxes and blame the lack of fish on poor people."

The state is getting more stringent on discharges into the state's waters, Sager said. "We've worked with the Water Commission and provided them with information to help place restrictions and better standards on industries to protect fish and wildlife resources."

"We are concerned that there have been some problems associated with some industries," he said. "There are catastrophes that happen and advisories that have been listed because of past industry practices. In no way can we say no problems are out there, but we're working to correct them. Probably the majority of industries are adhering to the requirements that regulatory agencies have placed on them."

Farm run off, or non-point source pollution as it is called, is

just now being emphasized by state and federal governments, Sager said. The EPA is developing regulations now to combat the problem and the Texas Water Commission is studying non-point source pollution in Texas. "It's definitely affected the lakes and rivers, but we're not beyond hope. We're probably in the serious stage."

Sager emphasized that many non-point source pollution problems can be controlled by all citizens. Examples include not fertilizing your yard before a rainstorm, not pouring the oil from your car's oil change down the gutter; farmers not fertilizing more than is necessary; and making sure that proper run off systems are in place. "It's not hopeless. There are a lot of things citizens can do to help."

\*\*\*\*\*  
"...Would like to see more effort by Parks and Wildlife Department to locate and publicize water pollution rather than some of the minor freshwater fishing violations. It seems silly to worry about someone catching fish with illegal nets, etc., when frequently, several thousand pounds of fish are killed by pollution."

Although TPWD is getting more

## Group Statewide Opposed To Bullet Train

Agriculture Commissioner Rick Perry said that he is opposed to the high speed "bullet" train unless and until the Texas High Speed Rail Authority can address the specific needs of agriculture.

"I'm not opposed to progress," Perry said. "Progress is what made agriculture the second largest industry in Texas. Progress is what we support on issues like biotechnology, free and open economics, like new technologies that help us conserve water. But we need to prepare for change in a logical, orderly manner and not let it overwhelm us and put agriculture at risk."

Perry spoke at a news conference called by a group of Central Texas farmers, ranchers and business people organizing a statewide effort to oppose the bullet train.

"We can't let Texas farmers and ranchers become an endangered species," Perry said, noting that the train's proposed route would take some 14,000 acres of agricultural farmland out of production. "This would have a devastating impact on the state's food and fiber system and the economies of many rural communities."

Currently, Texas ranks second in the nation in agricultural sales, with the state's farmers and ranchers generating more than \$12 billion in farm sales. In all, the economic impact of Texas agriculture is \$36 billion.

Among Perry's concerns about the bullet train is that producers may not have reasonable access to all of their property if the route cuts across a farm or ranch. Unlike conventional railroads, the high-speed rail system will be fenced, permitting no crossing.

The rail corporation has proposed building short tunnels under the line so producers can get to both sides of their property, but they have said that money will limit the

number of tunnels that can be built.

Perry noted that it is not inexpensive to operate a tractor or combine, and if producers have to go out of their way to get to a field, "that's just money out of your pockets."

But he is also worried about money coming out of the pockets of Texas taxpayers if the High Speed Rail Corporation defaults on the government bonds it wants issued for the project.

Another of Perry's concerns is the effect the noise level will have on livestock and people living near the route. A passing train will be 99 decibels from 80 feet away, which is equal to the sound of a jet plane during take off.

"Folks, that's more that a 600-mile jet runaway cutting through the Texas countryside," Perry said.

These are only a few of the concerns that Perry has raised before the Texas High Speed Rail Authority and the Texas High Speed Rail Corporation.

Agriculture Commissioner Rick Perry said today that grain sorghum producers in the Lubbock area need to check with their county extension agents or Texas Department of Agriculture regional office before applying hormone-type herbicides such as 2,4-D or Dicamba for weed control.

"Some counties in the South Plains are regulated under Chapter 75 of the Texas Herbicide Law, and producers need to check with the TDA regional office to see if their fields are located in a regulated county," Perry said.

Counties are regulated under the Texas Herbicide Law, administered by TDA, to prevent damage to cotton or other susceptible plants through herbicide drift of other uncontrolled applications.

If 2,4-D drifts onto a nearby field, susceptible plants can be severely

calls than ever from the public concerning pollution and fish kills, which is good, Sager said, TPWD is not the state's water quality agency. That distinction belongs to the Texas Water Commission. TWC sets the water quality standards and issues permits for Texas.

"We get involved after a fish kill for restoration and restitution purposes," he said. TPWD is charged with restoring the damaged areas to their previous condition and of estimating the value of loss to the citizens of Texas. "Not all fish kills are caused by pollution nor can we always find the responsible party, especially if we get a call several days after the fish kill."

"When we find pollution we do the same thing private citizens should do. We go to regulating agencies and try to get it corrected. Agencies are trying to work together, but we all have our own responsibilities."

As far as how many pounds of fish are killed annually, TPWD does not have those figures. However, the department does have figures for the number of reports of fish kills and pollution complaints, said Don Pitts, TPWD's field response coordinator.

damaged or destroyed.

Because of adverse weather conditions earlier this year, many cotton producers across the South Plains were not able to get their fields planted. According to recent estimates released by the Texas Agricultural Statistics Service, cotton acreage in the region dropped 9 percent from last year to 2.5 million acres. Some cotton producers replanted washed out cotton fields to sorghum or soybeans.

Grain sorghum planted acreage in the South Plains is expected to reach 650,000 acres during 1992, compared with 290,000 acres last year.

---  
A man lives by believing something; not by debating and arguing about many things.

---Thomas Carlyle.  
---  
We are born believing. A man bears beliefs as a tree bears apples.

## Congratulations



**GOLD T-BALL TEAM**---The team was managed by Jan Morris and coached by Jan King. Team members include: Joseph Gonzalez, Shay Bond, Bryan King, Shawnacie Kretsinger, Ryan Marricle, Barry Morris, Donny Joe Copeland, Joel Cowart, Megan Barrett, Jedediah Bond, Lacy Bond, Monica Chavez, Jessica Gonzales and Alfonso (Pancho) Marrufo. (Guest Photo)



**GREEN T-BALL TEAM** ---The team was managed by Mike Dale. Team members include: Brian Berry, Theran Elder, Brandon Maddox, Laura Lizzette Perez, Christina Phelps, Fernando Toscano, Jordan Dale, Phillip Field, Tanner Hagerman, Libby Leal, Justin Lopez, Tad Ramsey Lutz, Nikki Bonds, Jessica Carpenter and Christopher Harp. (Guest Photo)

Photos Courtesy of Adrian Photography

# Don't Buy Anything...

UNTIL YOU'VE CHECKED OUR CLASSIFIED SECTION!



Dodge traffic, crowds and tired merchandise are on display, at feet. Find your best buy through your leisure! Read them and the Classifieds! Services and select for the best buy around!

## Muleshoe & Bailey County Journals

272-4536

## Wes-Tex Feed Yards

272-7555



# CLASSIFIEDS 272-4536

### CLASSIFIED RATES

15 Words & Under  
Minimum Charge  
\$2.30  
Thereafter  
\$2.00  
16 Words & Over  
1st Insertion  
15 cents per word  
2nd Insertion  
13 cents per word

CLASSIFIED DISPLAY RATES  
\$1.75  
Per Column Inch

DEADLINES  
12 noon Tues.  
For Thursday Paper  
12 noon Friday  
For Sunday Paper

To receive the reduced rate after the first insertion, ad must run continuously.

We reserve the right to classify, revise, or reject any ad. We are not responsible for any error after ad has run once.

### 1. Personals

CONCERNED About Someone's Drinking? HELP IS AVAILABLE through Al-Anon

Call 272-2350 or 965-2870 or come to visit Tuesday and Thursday nights, 8:00 p.m. & u... AA call 965-2870 or come visit Tuesday nights, 8:00 at 620 W. 2nd, Muleshoe.

For more information and assistance regarding the investigation of get-rich-quick, work-at-home and other financial/business opportunities, The Muleshoe and Bailey County Journals urges its readers to contact the Better Business Bureau, 1206 14th St., #901, Lubbock, TX 79401 or call (806)763-0459

I would like to buy some Bailey County History Books. Please call 272-7575 and ask for Evelyn. H1-30s-4tc

### 3. Help Wanted

PERMANENT JOB OPPORTUNITY Wanted: Assistant Partsperson to fill position at local Case-IH Dealership. Will train but some experience is definitely a plus. Please come in for an application. C&H EQUIPMENT, WEST HIGHTWAY 84, MULESHOE, TEXAS Phone 806-272-551 C3-30s-3tc

R.N.'s needed part time and full time. All shifts. Contact Personnel- Deaf Smith General Hospital. 806-364-2141 Ext. 317 D3-30s-3tc

IMMEDIATE OPENINGS for LPN's and RN's. Excellent salary. Shift differentials. Insurance available. Apply at High Plains Nursing Center, 1400 West 21st Street, Clovis, NM 88101. (505)762-4705 or Golden Age Nursing Center, 1201 Norris St., Clovis, NM 88101. (505)762-3753. G3-29s-8tc

### 3. Help Wanted

PHOTO TRIMMERS EARN TO \$125 PER DAY! NO EXPERIENCE NEEDED. 1-800-262-4389

TRUCK & TRACTOR DRIVERS WANTED: Monthly salary, lots of travel. Job runs March-December. Contact Scott or Charles at SCB Farms, Inc. in Bovina, TX--(806)238-1206 S3-23s-tfc

A-NEW way to sell Avon! No more door to door selling required! For a limited time only, no initial starter fee. Call 272-5607 after 6 p.m.

WE'LL PAY YOU to type names and addresses from home. \$500.00 per 1000. Call 1-900-896-1666. (\$1.49 min/18yrs.+) or Write: PASSE- G883, 161 S. Lincolnway, N. Aurora, IL 60542.

\*POSTAL JOBS\* THIS AREA \$23,700 per year plus benefits. Postal carriers, sorters, clerks. For an application and exam information, call 1-219-736-9807, ext. P8266. 8am to 8pm, 7 days. 3-29t-4tp(Tts)

LIVE INS NEEDED Live with our clients in their homes 2 to 5 days per week. Shifts available in Muleshoe and Clovis. Call Clovis Home Care. (505)769-2244. C15-30t-4tc

\$200-\$500 WEEKLY Assemble products at home. Easy! No selling. You're paid direct. Fully guaranteed. FREE Information-24 Hour Hotline. 801-379-2900 Copyright # Tx 340DH A3-31t-16tp

BEAUTICIAN NEEDED Full or part time. Apply in person MAIN STREET BEAUTY SHOP M3-31t-8tc

### 9. Automobiles For Sale

CHEAP! FBI/U.S. SEIZED 89 MERCEDES.....\$200 86 VW.....\$50 87 MERCEDES.....\$100 65 MUSTANG.....\$50 Choose from thousands starting \$25. FREE Information-24 Hour Hotline. 801-379-2929 Copyright # Tx340JC A9-31t-16tp

### 11. For Sale Or Trade

FOR SALE 23 1/2 foot travel trailer. Fully equipped- Self contained. Shown by appointment only. Call 800-272-5672. Muleshoe B11-30s-5tc

PIANO FOR SALE WANTED: Responsible party to take on small monthly payments on piano. See locally. Call Manager at 800-635-7611 30s-6tp

### 11. For Sale Or Trade

MOVIE RENTAL INVENTORY FOR SALE: VHS movies, storage cases, styrofoam inserts, shrink wrap machine and shelves. Great opportunity to start your own business. Call Jan at 806-247-3590. C11-30s-2tc

### 15. Misc.

ESTATE SALE SAT. JULY 31- AUG. 1 9:00 A.M. - 3:00 P.M. Furniture, Household Items, Clothing- Women-22/42, Men Medium, Shop & Yard Items. Lots of Misc. Home of Ed White 511 Ormand, Sudan. 12-31t-1tp

FOR RENT: Large Self Storage rooms with 24 hour a day access. Call J & J Self Storage at 272-4307. S15-13t-tfc

Need to have an ESTATE SALE? Let us do it for you! 227-2016 or 227-2060 B15-28t-8tc

CONNIE'S CLASSY CANINES Dog Grooming! For Appointment Call 272-3167 602 E. Chicago C15-31t-3tc

ROUND-UP APPLICATION Pipe-wick mounted on high-boy. 30 in. or 40 in. rows. Cotton, milo, soybeans and Vol. corn. Call: Roy O'Brian 265-3247

### 8. Real Estate

A little confidence in a person can often produce great results.

When it gets down to hard cash, one often gets down to the real person.

People who go to the beach just for the sights are well rewarded.

A conversationalist will talk whether anyone is listening or not.

### 15. Misc.

GOT WEEDS? CALL JACK LITTLE FOR FREE ESTIMATE ON COST OF CUTTING WEEDS! SATISFACTION GUARANTEED! CALL 806-272-4805 MULESHOE L15-30t-tfc

### 8. Real Estate

Large 3 bedroom older house on oversized lot, with mature trees, 620 West Avenue C, Muleshoe. Must sell to settle estate. All offers will be considered. Call Gordon H. Green, attorney for the estate. 272-3140.

NO DOWN: Take up payments on my house at 910 W. 8th. Call Tom Alvis (915) 228-4510 or 4211. A8-30t-10tc

Brick home, 2 acres. 3 bedroom, 3 bath, fireplace, double car garage, cement cellar. 1 1/2 miles south of Bula. Call 946-3484. C8-28s-8tc

HOUSE FOR SALE IN SUDAN 3 BDRM, 2 Bath, LR, Den, Util, Metal Barn, Corner Lot 511 Ormand 8-31t-1tp

Best of Press So Easy It is always so easy to substitute our prejudices for our good judgment. -Baptist Observer.

Truth Ability avails little without dependability. -Grit.

So It Seems Many motorists appear willing to meet the other cars more than half way.

We believe whatever we want to believe. -Demosthenes.

### 3. Help Wanted

Earn \$500 - \$1000 weekly stuffing envelopes. For details - RUSH \$1.00 with SASE to: GROUP FIVE 57 Greentree Drive, Suite 307 Dover, DE 19901 C3-29S-28tp(t)

### 9. Automobiles For Sale

MUST SELL! 86 CHEV BLAZER 4X4, Silverado PKG, Power Windows, Power Door Locks, Tilt Steering Wheel, Cruise control, AM/FM Stereo Cassette, Running Boards, no old contract to assume, no back payments to make. Just need responsible party to make reasonable monthly payments, call Doug Hulderman in the Credit Dept., FRIONA MOTORS 806/247-2701

MUST SELL! 88 Buick Regal Limited 2 - Door, Automatic Transmission, Power Windows, Power Locks, Power Drivers Seat, Tilt Steering, Cruise Control, AM-FM cassette, Low Miles, no old contract to assume, no back payments to make. Just need responsible party to make reasonable monthly payments, call Doug Hulderman in the Credit Dept. FRIONA MOTORS 806/247-2701

MUST SELL! 92 Ford F150 XLT Super Cab, Power Windows, Power Door Locks, AM/FM Stereo cassette, Tilt Steering Wheel, Cruise Control, no old contract to assume, no back payments to make. Just need responsible party to make reasonable monthly payments, call Doug Hulderman in the Credit Dept., FRIONA MOTORS 806/247-2701

### 8. Real Estate

-Constitution, Atlanta.

Reflections Some people never have reflections unless they're standing in front of mirrors. -Tribune, Chicago.

Who's Money It is the love of other people's money which is the root of all evil. -News, Buffalo.

### GOLDEN GLEAMS

We believe whatever we want to believe. -Demosthenes.

### 3. Help Wanted

Earn \$500 - \$1000 weekly stuffing envelopes. For details - RUSH \$1.00 with SASE to: GROUP FIVE 57 Greentree Drive, Suite 307 Dover, DE 19901 C3-29S-28tp(t)

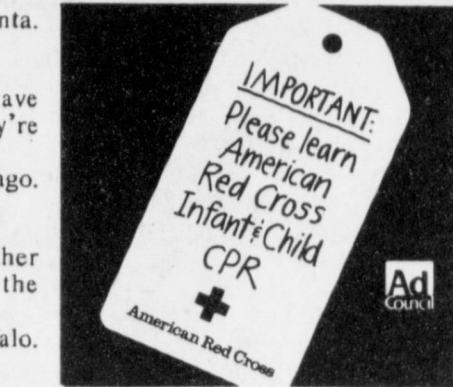
### 9. Automobiles For Sale

MUST SELL! 86 CHEV BLAZER 4X4, Silverado PKG, Power Windows, Power Door Locks, Tilt Steering Wheel, Cruise control, AM/FM Stereo Cassette, Running Boards, no old contract to assume, no back payments to make. Just need responsible party to make reasonable monthly payments, call Doug Hulderman in the Credit Dept., FRIONA MOTORS 806/247-2701

MUST SELL! 88 Buick Regal Limited 2 - Door, Automatic Transmission, Power Windows, Power Locks, Power Drivers Seat, Tilt Steering, Cruise Control, AM-FM cassette, Low Miles, no old contract to assume, no back payments to make. Just need responsible party to make reasonable monthly payments, call Doug Hulderman in the Credit Dept. FRIONA MOTORS 806/247-2701

MUST SELL! 92 Ford F150 XLT Super Cab, Power Windows, Power Door Locks, AM/FM Stereo cassette, Tilt Steering Wheel, Cruise Control, no old contract to assume, no back payments to make. Just need responsible party to make reasonable monthly payments, call Doug Hulderman in the Credit Dept., FRIONA MOTORS 806/247-2701

### 8. Real Estate



Classify!

Scientists now say the oldest known flower lived 120 million years ago.

### 20. Public Notice

NOTICE TO BIDDERS Sealed proposals addressed to the Bailey County Commissioner's Court, Bailey County, Texas, for the construction of approximately 26,000 square yards of Seal Coat will be received in the office of the County Judge, County Courthouse, Muleshoe, Texas, until August 13, 1992, at 10:30 a.m., at which time they will be opened for consideration.

A certified or cashier's check or acceptable bid bond in the amount of five percent (5%) of the total bid shall accompany each bid.

Successful bidders shall be required to furnish performance and payment bonds each in the full amount of the contract, written by a surety company authorized to do business in the State of Texas and acceptable to the Commissioner's Court. All work is to be completed no later than October 2, 1992.

Attention of all bidders is called to the provisions of Article 519A, V.A.T.C.S., requiring that not less than the prevailing rates per diem wages for work of a similar character in the locality where the work is to be performed, shall be paid all laborers, workmen, and mechanics employed in the construction of Public Works.

Information for bidders, proposal forms, plans and specifications are on file at the office of the County Judge, Bailey County, Texas, and are open for public inspection. A set of such documents may be obtained from Abacus Engineering, at 210 Paris Ave., Lubbock, Texas.

The County reserves the usual rights regarding technicalities and formalities, and bid acceptance or rejection.

No bid may be withdrawn after the scheduled date and time for receiving the bids until after 30 days have elapsed. B18-31t-2tc(T)

### 8. Real Estate

### HENRY REALTY

111 W. AVE. B 272-4581 Muleshoe, Tx. 2 bedroom, 1 bath, 1 car garage, brick veneer. Country Club Addition. Central heat and air. Very nice.

2 bedroom, 1 bath, detached 2 car garage, extra lot and well for garden. Country Club Addition.

Spacious 2 bedroom, 2 bath with one car garage. Fireplace. Ready to move in.

New listing-2 bedroom, 1 bath, redone for qualified buyer.

3 bedroom, 2 bath, carport, spacious home outside city limits near city on highway. Lot is 85'x402'. Metal building is 29' by 40'. Great setup for workshop.

FOR LEASE-3 bedroom, 2 bath, carpet, spacious living area, fenced yard. Near high school.

COMMERCIAL PROPERTY Ideal location on West American Blvd. 150' highway frontage. A great business opportunity.

Brick veneer restaurant 150 seating. Over 5000 sq. ft. with modern equipment. Ready for operation. Located on U.S. Highway 84 in Muleshoe. 7,000 sq. ft paved parking. Excellent financing available for qualified buyer.

West American Boulevard 150' frontage. Priced to sell. LAND 150 acre irrigated farm with sprinkler on highway NW of Muleshoe. Allotted acres with good yields. Two wells. Corners are in CRP. Owner financed.

240 acres irrigated farm. Equipped with sprinkler. Underground electricity. Undergro In Contract. Consider rolls or big gun sprinklers. Priced to sell.

## Bingham & Nieman Realty

116 E. Ave. C. George Nieman, Broker 272-5286 272-5285

**RICHLAND HILLS**  
JUST LISTED- 3-2-2 Brick with fireplace, 5 ceiling fans, new carpet & paint, new dual fuel heat pump, abundance of closet space...\$90's..RH-8  
PRICE REDUCED- 3-2-2 Brick, Cent. A&H, built-ins, FP, sunken lv. area, ceiling fans, earthtone carpets..... RH-1  
3-2-2 Brick, Cent. A&H, built-ins, FP, fenced yd., \$50's!!! RH-2  
3-3-1 Carport, Cent. A&H, built-ins, FP, abundant storage, covered patio!!!! RH-3  
NICE RESIDENTIAL LOTS...\$5,000 UP  
JUST LISTED 4-2-2 Brick, Large living/dining combined...\$50's!!! RH-5  
3-2-1 Brick, Cent A&H, with fenced yard...\$50's! RH-6  
**HIGH SCHOOL**  
VERY NICE 2-2-1+1 carport, Cent. A&H, built-ins, low maintenance lawn, Much More!! \$30's! HS-1  
**IMMACULATE LARGE BRICK HOME** 3-2-2 Heat Pump, built-ins, Whirlpool, loads of storage, lg. shop-storage, \$70's!!!! HS-2  
3-2 Remodeled, heat pump, built-ins, fenced yd., storage bldg. \$20's!!!! HS-3  
4-2-2 Brick, Built-ins, Cent A&H, ceiling fans...\$40's!!! HS-5  
**HIGHLAND AREA**  
3-2-1 Brick, Cent. A&H, FP, built-ins. MAKE OFFER!!!! HL-1  
3-2-1 Home, wall furnace heat, window evap. air, \$20's!!!! HL-2  
**LENAU ADD.**  
3-1-1 car carport-Den with fireplace, floor furnace heat. Low \$20's...L-8  
NICE 4-2-2 carport, lg. home with Cent. Heat, Evap. air, built-ins, FP \$30's!! L-1  
REMODELED BRICK 3-2-1 with Cent. heat, built-ins---- \$20's!!!! L-2

3-2-2 Brick-Fireplace, built-ins, & large workshop/storage bldg. all on oversized corner lot... Low \$50's...CC-1  
3-1-1 carport Home, Cent. A&H, built-ins, FP, fenced yd. \$20's!!!! L-3  
3-1 1/2-1 Cent. heat, evap. air, cov. patio, fenced yd. L-4  
3-2-1 carport Neat & Clean, built-ins, A&H, cov. patio, storage bldg...\$30's!!! L-5  
3-2-1+carport, Brick, ceiling fans, Approx. 2060 sq. ft...\$40's L-6  
JUST LISTED-2-1-1 carport, fenced back yard, with two storage bldgs...Priced in the \$20's...L-7  
4-3 Bath, Brick, on 2 acres built-ins, FP, Geothermal Ht. Pump, horse stalls, pens & tack rm...Also income producing shop on location or use for your own needs...\$80's!!! Price Reduced!!!  
VERY NICE 4-2-2 Brick Home on 6 ac., Cent. A&H, 2300'+lv. area, MUCH MORE!!!! 70's!!! HR-4  
3-2-2 Brick, blt-ins, Ht. pump, FP. 2.5 acres on pavement. \$60's!!! HR-3  
3-2-3 Carport Mobile Home on 11 ac. edge of town, MAKE OFFER!!!!!! HR-5  
3-2-1 on 1 acre, Cent. Heat, Evap. Air, Remodeled. \$30's!!!! HR-6  
NICE 3-2-2 Brick on 1 ac. on hwy., Cent. A&H, built-ins, fenced yd. Make Offer!!! HR-7  
ASK ABOUT OUR COMMERCIAL LISTINGS  
320 acres Dryland, Three Way area. Reduced. \$225 per acre!!!  
PLEASANT VALLEY--160 acres, 8" well. Lindsey circle!!!!  
354 ac. S. of town, good allot. & yields!!!!!!





# MULESHOE Spring/Summer '92 AREA



# BUSINESS DIRECTORY AND SHOPPING GUIDE

**Fajita's Beef or Chicken**  
3 flour tortillas, pico de gallo, guacamole, cheese and sour cream  
**\$6.99**



Closed Mondays  
**Leal's Restaurant**  
1606 W. Amer. Blvd. Muleshoe 272-3294



**Henry Insurance Agency, Inc.**



"Serving Your Insurance Needs Since 1964"

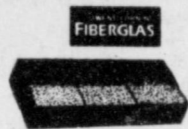
KENNETH R. HENRY  
CERTIFIED INSURANCE COUNSELOR  
REAL ESTATE BROKER



111 W. Ave. B.  
Phone 806/272-4581  
Muleshoe, Tx. 79347

**ART LOFT**

• Just A Suggestion •



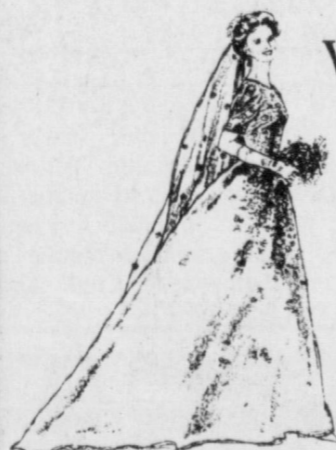
Cash & Carry  
3-Tab Shingles - **\$6.65** per bundle  
Felt Paper - **\$8.55** per roll  
T-Lock Shingles - **\$12.43** per bundle

**Higginbotham-Barlett Co.**  
"Quality & Service At The Right Price"  
215 Main Muleshoe 272-3351

We specialize in ADCO Dry Cleaning.



We dry clean all types of suits, dresses, bedspreads, drapes, caps, shirts and any general type of dry cleaning you might need.



We also preserve wedding gowns and clean upholstery and carpets.

We do alterations of all types clothing.

We would like the public to know we appreciate their business and say thank you for allowing us to serve you the last 9 years.

**Lambert Cleaners**

123 Main 272-4726

**Wilson Drilling Co.**

"Complete service from the bottom of the well to the bottom of the Glass"

Domestic \* Irrigation \* Test Holes



\*INSURED \* BONDED  
W. Hwy 84

**272-5521**

TX LIC 02628W NM WD1152



**Dinner Bell Restaurant**

Open 7 days - 6 a.m. - 9 p.m.

Daily Noon Buffet  
11 - 2 p.m.

Friday Fish Buffet  
11 - 9 p.m.

Homemade Bread & Desserts Made To Order  
2103 W. Amer. Blvd. Muleshoe 272-5871

**Monday Night Buffet**

All You Can Eat

**\$3.99**



Delivery Available  
11:30 am - 1:30 pm  
& After 5:00 pm



1412 W. Amer. Blvd. **272-4213**

We Still Have A Wide Assortment of Lawn and Garden Chemicals and Fertilizers.

Some Bedding Plants & Shrubs Still Available

**Kristy's Plants**

710 E. Amer. Blvd. Muleshoe 272-5536



**Viola's Deluxe Dinner**

Chile Relleno, Taco, Enchilada (Meat or Cheese), Chalupa, Beans and Rice

**\$6.95**

Open 11:00 a.m. - 9:30 p.m.  
Closed Tuesdays

**Viola's Restaurant**

2002 W. Amer. Blvd. Muleshoe 272-3838

**Tired of Cleaning?**

Let us help you with your cleaning of your Carpet, Upholstery, Drapes & Bedspreads

at  
**Lambert Cleaners**

123 Main Muleshoe 272-4726

COUPON

Double Meat Cheeseburger with a large order of french fries

**\$3.25** plus Tax

New Hours:  
Mon. - Sat. - 11 a.m. - 8 p.m.  
Closed Sundays

**The Snack Shack**

222 W. Ave. H. Muleshoe 272-3840  
Coupon Good Until August 5th!



**Weed 'Em Out!**  
With quality products from ferti-lome

**WEED OUT™ Plus Lawn Fertilizer**

Three weed killers in one great fertilizer. Kills all broadleaf weeds and feeds your lawn a "balanced meal" at the same time. Safe to apply on all types of turf grasses.



Kearney Scoggin  
**Scoggin Ag Center, Inc.**  
"Where Fertilizer Is Our Business"  
1532 W. Amer. Blvd. Muleshoe 272-4613

**Combination Motors & Salvage**

We specialize in Motor Repairs and Rebuilding!  
New & Used Parts Available  
Wrecker Service - 24 hours a day!

**272-4458**

Pancrete - \$2.69

4" x4" x8' Post Treated - \$5.19  
Cedar - \$7.31



Pickets  
6' Spruce - 71¢  
6' Cedar - \$1.05

Landscape Timbers  
3 1/2" x4 1/2" x8'  
**\$3.56**  
Pickets

Hours: Mon. - Sat. 8 a.m. - 6 p.m. - Sun. 1:30 p.m. - 4:30 p.m.

**Fry & Cox True Value**

Hardware, Lumber & Building Materials  
401 S. 1st Muleshoe 272-4511