

Weather

January 31 44 28
February 1 64 27
February 2 65 25
February 3 62 28

Muleshoe Journal

'The Community Of Opportunity-Where Water Makes The Difference'



Vol. 71, No. 5

Published Every Thursday At Muleshoe, Bailey County, Texas 79347

TEXAS PRESS ASSOCIATION 25¢

Thursday, February 4, 1993

Area Bank Deposits Up, Loans Down

around
muleshoe

Gregory Lance King, son of Mr. and Mrs. Max King was among the more than 1,300 students at Texas Tech University who received their degrees during December commencement exercises.

Graduating with honors, King received a Bachelor of Science degree.

More than 2,700 Texas Tech University students qualified for the academic honors lists at the end of the 1992 fall semester.

Students on the President's List earned a perfect 4.0 (A) grade point average while enrolled in 12 or more semester hours of class work. Students finishing 12 or more hours with a grade point of 3.5 to 3.9 qualified for the Dean's List.

Muleshoe area students making the lists included: Maria Santos Almanza, Jeremy Sean Bruns, Kelly Kay Conklin Heidel, Jeffery Todd Hicks, Christina Diana Mata, Curtis Burl Moore, Gaylon Brent Black, Andrew Thomas Espinoza, Lisa Ann Noble Gunstream, Jonessa Gay Jennings, Mark Dewayne Cox, and Brandon Wade Kirk.

The Journal received word Tuesday afternoon that C.P. Calvert, a former resident of Muleshoe, died Monday, Feb. 1 at Lufkin.

Burial will be today, Thursday, at Lufkin under the direction of Gibson Funeral Home.

Senior Airman John D. Bevers has been decorated with the Air Force Commendation Medal.

The medal is awarded to those individuals who demonstrate outstanding achievement or meritorious service in the performance of their duties on behalf of the Air Force.

Bevers, a communications-computer systems plans and programs management specialist, is the grandson of Ray M. and Alma R. Bevers of Muleshoe.

He graduated from Muleshoe High School in 1987.

Airman Billy P. Williams, son of Mr. and Mrs. Glen Stevens of Muleshoe, has graduated from the tactical aircraft maintenance specialist course at Sheppard Air Force Base, Wichita Falls, Texas.

Students were taught aircraft maintenance fundamentals of Cont. Page 6, Col. 5

WJHS Students Take First Place In Hook Contest

Several students from Watson Junior High competed in The Awesome Balsa Wood Hook Contest Saturday on the Texas Tech University campus.

In the Junior High Division, Muleshoe had eight students place in the top ten.

John Cowart, MJHS student, won first place and \$100.00. His hook weight in grams was 6.5. The strength was 109 pounds and the qualifying strength was 109 pounds.

Second place winner, also a WJHS student, Daymond Gossett won \$50.00. His hook weight in grams was 5.7. The hook strength was 74 pounds and the qualifying strength in pounds was 74.

Other students from WJHS placing in the top ten were: Michael Vaughn, fourth; Greg Pena, fifth; Geoff Goff, sixth; Kayna Puckett, seventh; and Dusty Ramage, ninth.

Erin Wilhite of WJHS placed 11th; Kyle McDaniel, 13th; and Shane Scoggin, 14th place.

Even though the contest was open to high school students no one from Muleshoe High School entered.

The contest is sponsored by TTU Engineering Ambassadors, The A.S.M.E., and The Science Spectrum.

Scholarship sponsors are: Berl Springer, Arnold Maeker and Joe Stanley.



JOHN'S CUSTOM MILL ENGLUFED IN FLAMES--Local volunteer firemen fought a tough battle Saturday night when John's Custom Mill was destroyed by fire. The firemen were on the scene from 10:40 p.m. Saturday until 4 a.m. Sunday. Flames lit up the sky as they shot up some 30 to 40 feet above the structure.

(Journal Photo)

February Declared 'School Board Recognition Month'

February has been declared School Board Recognition Month in Texas by Governor Ann Richards. It is a time for educators and citizens across the state to salute the unpaid volunteers who serve education on behalf of their communities. It seems fitting that at least once a year we thank them for their time and dedication.

In these difficult times, school board members are called on to be the policymakers for the state's 1,050 plus school districts and are often called on to make tough decisions.

The school districts oversee multimillion dollar budgets providing education for nearly 3.5 million students in prekindergarten through grade 12 on 5,976 school campuses statewide, staffed by 205,832 teachers, 10,621 campus administrators, 6,4990 central office administrators, 21,240 professional support staff, 31,208 educational aides, and 114,813 auxiliary staff for a total work force of 390,204. (Source: The Texas Education Agency)

The local school board members are dedicated, educated, responsible citizens who carry out the truest form of representative government-volunteer public service. School board service perhaps is the purest form of grassroots democratic

5-Area Telephone Announces Equal Access

Five Area Telephone Cooperative will be offering a new service, referred to as equal access, to their customers effective July 14. Equal access will allow customers to make long distance calls through the long distance company of their choice by simply dialing 1 plus the number.

"Since the long distance business is very competitive, you should be aware that some long distance companies may contact you, by telephone or mail, with information about their services," said Hubert Kidd, manager of Five Area Telephone. "Questions arising from these contacts can best be answered by the long distance companies themselves."

Cont. Page 6, Col. 3

CofC
Membership
Breakfast

Today, Thursday
6:30-8 a.m.

Bailey County Coliseum

principals upon which the nation was founded.

Being an effective school board member is not an easy task. Lay school leaders need to be knowledgeable about many complex educational and social issues.

Board members govern individual school districts, establish local policies, approve educational programs, provide necessary physical facilities, oversee the hiring of properly certified professional and classified personnel, and share in costs by raising necessary local funds along with state funds to operate district educational programs.

School board members' service ensures that decisions about the

public schools are made as close to the needs of the children and communities as possible.

Further the local board members serve as examples for the young people of the excellent tradition of volunteer in that is a hallmark of our society.

Members of the Muleshoe Independent School District Board of Trustees (and their years of service) are: President Cindy Purdy (6), Vice President Sam Harlan (6), Secretary Curtis Shelburne (5), and trustees Edwin Cox (4), Max King (4), Arnold Price (3), and Frank Saldana (2).

"Every day, school board members face challenges. For their untiring personal dedication and commitment to public service: Cont. Page 6, Col. 1

Saturday Night Fire Destroys Old Landmark

A devastating fire destroyed one of Muleshoe's oldest landmarks, John's Custom Mill, Saturday night. Local firemen, almost 100 percent, responded to the fire call at 10:40 p.m. Three units from the Sudan Volunteer Fire Department responded to the call for help, and to cover for the local department, in case of another fire, since all of the local firemen and equipment were tied up.

According to Muleshoe Fire Marshal Jimmy Mills, flames reached 30 to 40 feet above the structure, creating hazardous conditions and keeping fire fighters on the scene until 4 a.m. Sunday.

For a period of time power lines arked above the structure increasing the danger.

East Highway 84 was blocked off and traffic was routed around the scene.

"The cause of the fire is still under investigation," Mills said. "The fire was of incendiary nature, and we have some suspects."

Local officials are being joined in the investigation by a representative from the State Fire Marshal's office in Lubbock.

Mills stated that three firemen suffered minor injuries, Benny Parker was treated at the scene and Kevin Harris and Brian Rudd were treated in the emergency room of Muleshoe Area Medical Center.

"We are fortunate that the injuries were minor," Mills said.

Although Mills was a little reluctant to say much about the local fire department, since he is a fireman himself, he was very pleased, and the entire Muleshoe community should be also, with the way the volunteer firemen respond to this kind of an emergency.

Figures Released As Of December 31, 1992

According to figures released by six local and area banks, deposits were up and loans down for the last quarter of 1992, from the same period of time in 1991.

On December 31, 1991, bank deposits from the seven area banks were \$246,683,136 and on December 31, 1992, deposits for the same period were \$260,780,681, showing an increase of \$14,097,545.

Bank loans at the same seven banks, were down some \$32,662,382 for the same period of time. On December 31, 1991, loans totaled \$137,642,715 and on December 31, 1992, loans were \$104,980,333.

First Bank of Muleshoe, combined with First Bank of Bovina, along with Muleshoe State Bank and the Farwell bank show deposits of \$83,377,000 as of December 31, 1992, as compared to \$78,042,000 on December 31, 1991, reflecting an increase in deposits of \$5,335,000.

At the same time loans at the two banks decreased some \$5,164,000. Total loans as of December 31, 1991 were \$45,560,000 and were \$40,396,000 as of December 31, 1992.

Driver Education Classes To Begin At Muleshoe H.S.

Muleshoe High School will offer the classroom phase of Driver Education starting Monday, February 15. Classes will be taught by Coach Randy Adair and will meet from 7 to 8 a.m. each morning in the high school auditorium.

Classes are being taught before school in order to not create conflicts with other activities such as one-act play, band, and spring sports.

The cost of the course is \$125.00. The fee also covers the behind-the-wheel phase of driver education. The course is a minimum of 32 classroom hours to receive credit.

A calendar of classroom instructional days is found below. Any student who enrolls must be 15 years of age prior to April 15.

The course fee must be paid in full at the time of registration. Also, proof of birth date (copy of birth certificate) must be provided when the students register.

Registration will be held February 1 through 12 at the office of Adrian Meador, curriculum director, in the Administration Building, 514 W. Ave G, Muleshoe.

Cont. Page 6, Col. 1

Muleshoe State Bank, along with the Farwell bank, shows deposits of \$34,714,000 as of December 31, 1992, and were \$29,730,000 as of December 31, 1991, up some \$4,984,000.

Loans from Muleshoe State Bank closing out December 1992 were 18,363,000 as compared to 20,115,000 December 1991, reflecting a decrease of 1,752,000.

First Bank of Muleshoe and First Bank of Bovina combined show deposits of \$48,663,000 as of December 31, 1992, up some \$351,000 from \$48,312,000 as of December 31, 1991.

Loans for the two banks as of closing time December 31, 1992, were \$22,033,000 as compared to \$25,445,000 on December 31, 1991 reflecting a decrease of \$3,412,000.

From Morton, First State Bank shows an increase in deposits of \$255,813. Deposits were shown at \$44,024,187 as of December 31, 1991, and on the last day of December 1992 were \$44,280,000.

At the same time loans decreased by \$13,127,805. On December 31, 1991, loans were \$29,474,805 and were \$16,247,000 as of December 31, 1992.

Security State Bank of Farwell reported deposits of \$52,361,609 as of December 31, 1992, as compared to \$49,041,172 as of December 31, 1991, reflecting an increase of \$3,320,437. Loans at the bank were \$5,954,763 as of December 31, 1992, down some \$8,587,673 from the December 31, 1991 total of \$14,542,436.

Friona State Bank showed an increase in deposits of \$4,026,518. Deposits as of December 31, 1991, were \$66,418,000 and were \$70,444,518 as of December 31, 1992.

Loans for the same period were down \$4,904,613. Loans as of December 31, 1991, were \$43,292,000 and were \$38,387,387 at closing 1992.

First National Bank of Sudan Cont. Page 6, Col. 1

Cub Scout Banquet Set Saturday Night

The Cub Scout, from Blue and Gold Banquet will be held Saturday, February 4 at 6 p.m. in the First United Methodist Church.

All Cub Scouts from Tiger Cubs through Webelos and their families are urged to attend.

According to Betty Griswold, Scout Master, every mother should take enough food for their family plus two or three guest.



FEBRUARY BOARD RECOGNITION MONTH--February has been declared School Board Recognition Month, recognizing a group of people who give a number of hours of volunteer work doing their part in helping students get the best education possible in communities across the nation. Local board members are: (Back L-R) Frank Saldana, Max King, Edwin Cox, and Arnold Price. (Seated From Left) Sam Harlan, Bill Moore, superintendent of MISD, Cindy Purdy, and Curtis Shelburne. (Journal Photo)

Lowe's **Pay-n-Save**
MARKETPLACE

ASSORTED
Hershey's
Candy
Your Choice
\$1.89

national BRANDS SALE

ALL TYPES
COCA-COLA
6 PK, 12 OZ. CANS
\$1.79

ALL TYPES
COCA-COLA
3 LITER BTL
\$1.79

U.S.D.A. GRADE "A" . . . PILGRIM'S PRIDE
Whole Fryers
PILGRIM'S PRIDE BONELESS SKINLESS Breast or Strips
\$2.69
PILGRIM'S PRIDE
LB.
49¢

FARMLAND PORK/PORK & BACON
Sausage Links 12-OZ. PKG.
89¢

Mama Rosa's Pepperoni or Deluxe
Pizza
2 PAK \$3.49
40-OZ. PKG.

Oranges
4 LB. BAG
\$1.19

Bacon 1-LB. PKG. **\$1.59**

Franks 1-LB. PKG. **\$2.19**

HILLSHIRE FARM'S Smoked Sausage
\$1.99

OSCAR MAYER Bologna 1-LB. PKG. **\$1.49**

LOUIS RICH 12 OZ. TURKEY OR 9 OZ. BREADST **Variety Pack** EACH **\$1.99**

THOMPSON SEEDLESS
Grapes LB. **99¢**

GARDEN FRESH Broccoli LB. 79¢	SUPER SELECT Cucumbers 3 FOR \$1	BELL PEPPERS 3 FOR \$1
GREEN LEAF Lettuce BNCH. EACH 69¢	KIWI FRUIT 5 FOR \$1	RUBY RED Grapefruit 5 LB. BAG \$1.19

ASSTO. BANQUET Frozen Dinners 9 TO 11 OZ. BOX **99¢**

BANQUET FROZEN ASSTO. Fried Chicken 25 OZ. BOX **\$2.69**

BANQUET ASSTO. Game Time Wings 16 OZ. BOX **\$2.69**

CHUN KING ASSTO. Egg Rolls 6 OZ. BOX **89¢**

MINUTE MAID ASSTO. Chilled Orange Juice 95 OZ. JUG **\$2.99**

MRS. SMITH'S Apple or Peach Pies 26 OZ. BOX **\$2.89**

ASSORTED Eggo Fruit Top Waffles 6.25 OZ. BOX **\$1.69**

ASSORTED Jeno's Crisp & Tasty Pizza 7.7 OZ. BOX **99¢**

GOLDEN RIPE
Bananas 3 LBS. **\$1**

WITH OR WITHOUT BEANS
Wolf Brand Jalapeno, or Regular Chili 15-OZ. CAN **89¢**

ASSORTED Sunshine Krispy Crackers 16-OZ. BOX **69¢**

FRANCO AMERICAN Spaghetti, Spaghetti O's, Wald O's, Circus O's, Teddy O's 15-OZ. CAN **2.99¢**

SWANSON'S PREMIUM Chunk White Chicken 5-OZ. CAN **\$1.69**

CAMPBELL'S Chunky Chicken Noodle, Classic Chicken Noodle, or New England Clam Chowder 19-OZ. CAN **\$1.39**

CAMPBELL'S REG. OR HEALTHY REQUEST Tomato Soup 10.75-OZ. CAN **2.99¢**

CAMPBELL'S Tomato Juice 6-PK. 5.5-OZ. CANS **\$1.69**

ASSORTED V-8 Vegetable Juice 6-PK. 5.5-OZ. CANS **\$1.89**

PREMIUM, NONFAT, OR SUGAR FREE
Blue Bunny Frozen Yogurt 1/2 GAL. RD. **\$2.79**

ASSORTED
Frito's Corn Chips 2 \$3

CHEEZ-ITS
Hi-Ho Deluxe Crackers 12-OZ. BOX **\$1.99**

REDEEM THESE VALUABLE KELLOGG'S COUPONS
Kellogg's 1993 FESTIVAL OF FLAVORS

FRUIT & NUTS \$1.99 WITH COUPON \$1.99 WITHOUT COUPON on ONE 20 oz. ONLY.

RASIN BRAN \$1.99 WITH COUPON \$1.99 WITHOUT COUPON on ONE 20 oz. ONLY.

SMACKS \$1.99 WITH COUPON \$1.99 WITHOUT COUPON on ONE 17.6 oz. ONLY.

FRUITY KISSES \$1.99 WITH COUPON \$1.99 WITHOUT COUPON on ONE 14 oz. ONLY.

FRANCO AMERICAN Spaghetti, Spaghetti O's, Wald O's, Circus O's, Teddy O's 15-OZ. CAN **2.99¢**

SWANSON'S PREMIUM Chunk White Chicken 5-OZ. CAN **\$1.69**

CAMPBELL'S Chunky Chicken Noodle, Classic Chicken Noodle, or New England Clam Chowder 19-OZ. CAN **\$1.39**

CAMPBELL'S REG. OR HEALTHY REQUEST Tomato Soup 10.75-OZ. CAN **2.99¢**

CAMPBELL'S Tomato Juice 6-PK. 5.5-OZ. CANS **\$1.69**

ASSORTED V-8 Vegetable Juice 6-PK. 5.5-OZ. CANS **\$1.89**

REG. OR WITH BLEACH Ultra Surf Laundry Detergent 47 TO 44-OZ. BOX **\$2.99**

ASSO. ULTRA SOFTENER Snuggles Re-fills 29 OZ. CTN. **\$1.99**

SUNLIGHT Liquid Dish Detergent 22 OZ. BTL. **\$1.29**

ASSORTED Dove Bath Soap 7 BAR PKG. **\$2.19**

ASSORTED
Campbell's Ramen Noodles 3-OZ. PKG. **7.99¢**

ASSORTED
Rich N' Ready Fruit Drinks GAL. CTN. **\$1.69**

Casa Fiesta Taco Shells 12-OZ. BOX **99¢**

Casa Fiesta Taco Seasoning 1.25-OZ. PKG. **2.99¢**

Casa Fiesta Diced Green Chilis 4-OZ. CAN **2.99¢**

ASSORTED KRAFT Salad Dressing 16-OZ. BTL. **\$2.29**

KRAFT ASSORTED Mac & Cheese Dinners 5.5-OZ. TO 7.5-OZ. BOXES **\$1.99**

AMERICAN, SWISS, OR PIMENTO Kraft Singles 12-OZ. PKG. **\$1.99**

KRAFT ASSTO. VELVEETA Shell Dinners OR KRAFT DELUXE Mac & Cheese Dinner 9.4-OZ. TO 14-OZ. BOX **\$1.79**

KRAFT COLBY JACK MILD CHEDDAR, MOZZARELLA Shredded Cheese 8-OZ. PKG. **\$1.69**

ASSORTED VARIETIES Hormel Micro Cups 7.5-OZ. CUP **89¢**

NORMAL Dinty Moore Beef Stew 24 OZ. CAN **\$1.89**

ASSORTED VARIETIES Spam Luncheon Meat 12-OZ. CAN **\$1.49**

ASSORTED
Hi-C Drinks 3-PK. CTN. **88¢**

KRAFT REGULAR OR LIGHT Philadelphia Cream Cheese 8-OZ. BOX **99¢**

KRAFT REG. OR LIGHT Parkay Margarine 16 OZ. QTRS. **2.99¢**

REGULAR OR LIGHT Kraft Velveeta 7-LB. BOX **\$3.79**

KRAFT PARKAY SPREAD 3-LB. TUB **\$1.69**

Lowe's **Pay-n-Save**
MARKETPLACE
401 W. Amer. Blvd. Muleshoe 272-4585

515 W. Amer. Blvd. Muleshoe 272-4406

PRICES EFFECTIVE JAN. 31-FEB. 6, 1993

WE RESERVE THE RIGHT TO LIMIT QUANTITIES IN TEXAS

Our Best to You!

**Bernice Hawkins
Funeral Services
Held Saturday**

Funeral services for Bernice Hawkins, 83, of Sudan, were held Saturday, January 30 at 2 p.m. in the First Baptist Church of Sudan, with Elder Glen Williams, Primitive Baptist Minister of Muleshoe officiating.

Burial followed in the Sudan Cemetery under the direction of the Ellis Funeral Home.

Bernice died Thursday, January 28 at 4:30 p.m. in the Lamb

Healthcare Center.

She was born in Kirkland, Texas and moved to Sudan from Roaring Springs, Texas in 1924. She married Joseph Isaac Hawkins in Muleshoe on February 27, 1927, he passed away September 18, 1989. Bernice was a homemaker and a Nurse. She was a member of the Primitive Baptist Church.

Survivors include three sons, Rex Hawkins of Wylie, Texas, Odus Hawkins of Levelland, Texas and Wayne Hawkins of Sudan, Texas, six daughters, Josephine Sadler of Whitharral, Texas, Fern Bulls, Portales, N.M., Linda Hawkins of Sudan, Texas, Joan McPherson, Irving, Texas, Lora Shank, of Lubbock, Texas and Lola Hall of Snyder, Texas. Three sisters, Edith Calahan of Ft. Worth, Texas, Alma Bevers of Muleshoe, Zeldia Walker of Dallas, Texas and Velma Pruitt of LaFeria, Texas; two brothers, John Hardcastle of Water Valley, Tennessee and Jim Hardcastle of Ely, Nevada; 21 grandchildren and 32 great great grandchildren

**Patients In
Muleshoe Area
Medical Center**

January 29, 1993

Myrtle Lee, Blanca Pacheco, Marqarite Bustamante, Robert Hayes, Ana Jasso, Baby Boy Jasso

January 30, 1993

Myrtle Lee, Christopher Ortega, Jeanetta Hukill, Blanca Pacheco, Alex Aguirre, Jr., Margarite Bustamante, Felipa Garcia, Carmen Franco, Terry Williams

January 31, 1993

Myrtle Lee, Christopher Ortega, Jeanetta Hukill, Blanca Pacheco, Terry Williams, Alex Aguirre, Jr., Margarite Bustamante, Felipa Garcia, Virgie Shaw, Carmen Franco

February 1, 1993

Myrtle Lee, Christopher Ortega, Jeanetta Hukill, Blanca Pacheco, Juanita Bruce, Terry Williams, Alex Aguirre Jr., Margarite Bustamante, Felipa Garcia, Virgie Shaw, Carmen Franco



GABBY'S PREMIERE-Gabby the Friendly Clown joins Janetta Hukill, a Healthcare Center resident, in celebrating her 84th birthday at the party hosted by Lona Embry Thursday, January 28, 1993.

Congratulations



GRAND CHAMPION STEER---Brittany Kirby showed her Heifer Grand Champion Steer at the Three Way Livestock Show held recently. Brittany was also named Reserve Showman in the Cattle Show. She is the daughter of Mr. & Mrs. Craig Kirby. (Journal Photo)

Bailey Gin Co.

**Earley Bartley
Funeral Services
Held Monday**

Funeral services for Earley Bartley, 85, of Sudan, were held Monday, February 1, in the Sudan Church of Christ at 3 p.m. with the minister, Terry Wilson officiating.

Burial followed in the Sudan Cemetery under the direction of Ellis Funeral Home.

Bartley passed away Saturday, January 30 at 6:42 p.m. in the Lamb Healthcare Center of Littlefield.

Earley was born in Tompkinsville, Kentucky and

moved to Sudan from Chillicothe, Texas in 1940. He married June E. Chandler in Quanah, Texas October 12, 1935, he was a farmer and a member of the Sudan Church of Christ.

Survivors include his wife, June; one son, Gene Bartley of Sudan; one daughter, Vicky Williams of Horseshoe Bay, Texas; one brother, Lonny Bartley of Mt. Herman, Kentucky; four grandchildren, Lynn, Lee, Misty and Michael Bartley.

Badge of Office

Most of the wrinkles in a businesspersons face are trade marks.

-World, Tulsa.

Speed's Transmissions

1st & Pile Clovis, N.M.

505-762-6638

**FREE Towing
For 50 Miles
(When Major
Repairs Performed
In Our Shop)**

**1 Day
Service In
In Most
Cases**

Report of Condition

First Bank of Muleshoe

Consolidated Report of Condition of First Bank

of Muleshoe And Foreign and Domestic Subsidiaries, a member of the Federal Reserve System, at the close of business December 31, 1992, published in accordance with a call made by the Federal Reserve Bank of this District pursuant to the provisions of the Federal Reserve Act.

LEGAL TITLE OF BANK				<369>	STATE BANK NO.	2720-02
First Bank of Muleshoe					FEDERAL RESERVE DISTRICT NO.	11 13 22965
PO Box 565					CLOSE OF BUSINESS DATE	
Muleshoe, Texas 79347-0565					December 31, 1992	
CITY	COUNTY	STATE	ZIP CODE			
Muleshoe	Bailey	Texas	79347-0565			

		Dollar Amounts In Thousands				
		Bill	Mill	Thou		
ASSETS						
1. Cash and balances due from depository institutions:	a. Noninterest-bearing balances and currency and coin		3	394	1.a	
	b. Interest-bearing balances		0		1.b	
2. Securities			20	248	2	
3. Federal funds sold & securities purchased under agreements to resell in domestic offices of the bank & of its Edge & Agreement subsidiaries, & in IBFs:	a. Federal funds sold		6	500	3.a	
	b. Securities purchased under agreements to resell			0	3.b	
4. Loans and lease financing receivables:						
a. Loans and leases, net of unearned income		22	383		4.a	
b. LESS: Allowance for loan and lease losses			350		4.b	
c. LESS: Allocated transfer risk reserve			0		4.c	
d. Loans and leases, net of unearned income, allowance, and reserve (item 4.a minus 4.b and 4.c)			22	033	4.d	
5. Assets held in trading accounts				309	5.	
6. Premises and fixed assets (including capitalized leases)				967	6.	
7. Other real estate owned				61	7.	
8. Investments in unconsolidated subsidiaries and associated companies				0	8.	
9. Customers' liability to this bank on acceptances outstanding				0	9.	
10. Intangible assets				81	10.	
11. Other assets				767	11.	
12. a. Total assets (sum of items 1 through 11)				54	360	12.a
b. Loans deferred pursuant to 12 U.S.C. 1823 (j)				N/A	12.b	
c. Total assets and losses deferred pursuant to 12 U.S.C. 1823(j) (sum of items 12.a and 12.b)				54	360	12.c
LIABILITIES						
13. Deposits:	a. In domestic offices			48	663	13.a
	(1) Noninterest-bearing	9	135		13.a.(1)	
	(2) Interest-bearing	39	528		13.a.(2)	
	b. In foreign offices, Edge and Agreement subsidiaries, and IBFs			0	13.b	
	(1) Noninterest-bearing			0	13.b.(1)	
	(2) Interest-bearing			0	13.b.(2)	
14. Federal funds purchased and securities sold under agreements to repurchase in domestic offices of the bank & of its Edge & Agreement subsidiaries, & in IBFs:	a. Federal funds purchased			0	14.a	
	b. Securities sold under agreements to repurchase			0	14.b	
15. Demand notes issued to the U.S. Treasury				0	15.	
16. Other borrowed money				0	16.	
17. Mortgage indebtedness and obligations under capitalized leases				0	17.	
18. Bank's liability on acceptances executed and outstanding				0	18.	
19. Subordinated notes and debentures				0	19.	
20. Other liabilities				261	20.	
21. Total liabilities (sum of items 13 through 20)				48	924	21.
22. Limited-life preferred stock and related surplus				0	22.	
EQUITY CAPITAL						
23. Perpetual preferred stock and related surplus (No. of shares outstanding			0		23.	
24. Common stock (No. of shares a. Authorized			50,000		24.	
b. Outstanding			50,000		24.	
25. Surplus (exclude all surplus related to preferred stock):				2	000	25.
26. a. Undivided profits and capital reserves				2	936	26.a
b. LESS: Net unrealized loss on marketable equity securities					0	26.b
27. Cumulative foreign currency translation adjustments					0	27.
28. a. Total equity capital (sum of items 23 through 27)				5	436	28.a
b. Losses deferred pursuant to 12 U.S.C. 1823 (j)					N/A	28.b
c. Total equity capital and losses deferred pursuant to 12 U.S.C. 1823 (j) (sum of items 28.a & 28.b)				5	436	28.c
29. Total liabilities, limited-life preferred stock, equity capital, and losses deferred pursuant to 12 U.S.C. 1823 (j) (sum of items 21, 22, and 28.c)				54	360	29.

MEMORANDA: Amounts outstanding as of Report of Condition date:

1. Standby letters of credit. Total 181

NOTE: This report must be signed by an authorized officer(s) and attested by not less than three directors other than the officer(s) signing the report.

I, Linda Lutz, Cashier of the above-named bank do hereby declare that this Report of Condition

has been prepared in conformance with the instructions issued by the Board of Governors of the Federal Reserve System and is true to the best of my knowledge and belief.

We, the undersigned directors, attest to the correctness of this Report of Condition and declare that it has been examined by us and to the best of our knowledge and belief has been prepared in conformance with the instructions issued by the Board of Governors of the Federal Reserve System and is true and correct.

Director [Signature]
Director [Signature]
Director [Signature]

(MAKE MARK FOR NOTARY'S SEAL) State of TEXAS, County of BAILEY, day of January 19 92. I and I hereby certify that I am not an officer or director of this bank.



LAZBUDDIE STUDENTS OF THE MONTH—Students of the month for the month of January at Lazbuddie Junior High and High Schools are Joanna Gallman, Tim Smith, Edward Terry, and Rocio Aguilar.

Lazbuddie January Junior High Student Of The Month

Edward Terry is the 13 year old son of Ed and JoDonna Terry. His birthday is March 8. Edward enjoys Italian food and Dr. Pepper as his favorite food and drink. "Horses" rates as his number one song. Double Impact wins as top movie. Special tv show is Beverly Hillsbillies. Athletics presides as his best school subject. Playing sports is what he likes to do for fun. Light blue is Edward's color preference. Garth Brooks appears to be the top musical performer. Lord of the Flies is included as a favorite book.

Rocio Aguilar is the daughter of Julio and Theresa Aguilar. Her birthday is November 22, 1977. Hamburgers from Whataburger and a 7-up consists of Rocio's favorite food and drink. "Good Vibrations" rates as her top tune. Movie preference is Three Men And A Cradle. No. 1 tv show includes Beverly Hills 90210. Algebra 1 is her school specialty, because it is challenging. Reading and playing basketball win as choices for pastimes. Color priorities are hot pink and purple. The Beach Boys are the top musical group. Any

sweet Valley High book presides as top book choice.

Check Your Withholding!

Make sure your federal income tax withholding is correct. Changes in your financial or personal situation may affect the accuracy of your withholding.

Since you last filed Form W-4, "Employee's Withholding Allowance Certificate," with your employer, did you:

- Have to pay more tax when you filed your 1992 tax return than your 1991 return?
- Marry or divorce?
- Gain or lose a dependent?
- Have a change in:
 - nonwage income (interest, dividends, capital gains, etc.)
 - family wage income (more than one job or both spouses work)
 - itemized deductions (purchase or sale of a home, etc.)

If you checked any of the above, you may need to complete a new W-4 for 1993 and give it to your employer. IRS Publication 919, *Is My Withholding Correct?*, can help. Order Form W-4 and Publication 919 by calling 1-800-829-3676.



SENIOR CITIZENS SPEAKER---Gil Robert Reynolds, far right, spoke to the Senior citizens Monday, during their noon meeting, and told of his trip to Washington. Pictured here with Gil Robert are Odessa Shanks, President (left) and Margaret Collins, Program Chairman. (Guest Photo)

In Fashion

Long skirts are back with a new look. If you plan to add only one long skirt to your wardrobe a classic pleated wool tartan is a good buy. Solid blazers and blouses add variety.

Lazbuddie High School January Student Of The Month

Tim Smith is the 16 year old son of Tim and Debbie Smith. His birthday is September 26, 1993. The food Tim most enjoys is steak. Dr. Pepper rates as his favorite soft drink. Song preference is "When I Look Into Your Eyes". A Few Good Men appears to be the number one movie selection. Deep Space IX rates as the top tv show. History epitomizes his favorite school subject. Reading is Tim's preferred pastime. Blue is his most popular color. Def Leopard exemplifies his idea of a favorite musical group. Book preference is What Was Good About Today?

Joanna Gallman is the 16 year old daughter of Robert and Ellen Gallman. Her birthday is November 17. Food and drink specialties include Mexican food and Dr. Pepper. "I Will Always

Love You" wins as her top song. She regards Dances With Wolves as her movie preference. Home

Future Of U.S. Math Education Rests In Society's Attitudes

Attitude, not aptitude, hampers Americans' mastery of mathematics, explained a Texas Christian University mathematician.

Dr. Robert Doran said unless people's tolerance for ignorance regarding mathematics changes, little can be done to improve declining

"It's the values that we are emphasizing in our society that have a lot to do with the fact that our students possess an innate ability to perform better in mathematics than Americans. He cited results from recent International contests that show U.S. students who are good in mathematics compete favorably with students from other countries.

Many U.S. students have failed to focus on "hard" subjects such as mathematics and science, he said. "Those things that require a great deal of mental hard work simply are not very popular these days in this country."

Doran observed that Americans will confess almost with a sense of pride that they never perform well in mathematics. This attitude is especially harmful when expressed by parents in front of their children, he said.

Students have to feel from the time they are small children that parents believe doing well in

Improvement rates as the number one tv show. Reading and music measure up as special hobbies. The color purple is chosen as favorite color. Restless Heart triumphs as the top musical group. Love Comes Softly by Janette Oke receives the award for her book choice.

mathematics is important, he said.

Doran discounted attempts to change teaching styles and alter testing procedures as ways to improve U.S. mathematics education. "I am not convinced that will make much of a difference unless society itself changes its attitude about this subject and gives it the proper reward," he said.



In addition to oven glass, one can use pottery and stoneware in a microwave. Also, paper and porcelain—including shells—and pyroceram, are safe.

There's also an ovenable paper-it can be used in any type of oven including the microwave and also goes in the freezer.

Time can be saved by cooking in a utensil one eats from--such as pottery, shells, even paper.

Being born poor need not be a permanent handicap but only hard work will erase it.

We're long on ideas and plans and short on the energy required to carry them out.

ONE DAY DIET.

Lose 16 to 20 lbs. In 30 Days

If you just need to trim off a little or want to loose a lot of weight, ONE DAY DIET is the newest and most powerful concept in dieting that's sure to be your last! You only need enough willpower for "ONE" Day, because tomorrow you eat anything you want.

100% Natural & Drug Free
30 Day Money Back Guarantee
Charlie Hanks, (806) 965-2471

Now there are 260 great reasons to switch to Bank of America.

Bank of America plus First Gibraltar. 260 branches for Texans to bank on.

As hard as you work for your money, the least we can do is make getting to it easier. And now that we have 260 branches, there's bound to be one near you, where you can do everything from opening a checking account to getting a home loan.

But having more branches is just one way we're making banking easier. Now you'll have access to your money free of charge at any hour of the day or night, from more than 250 VERSATELLER® ATMs throughout Texas. And you'll be able to get information about your accounts 24 hours a day, 7 days a

week, by phone through our new MoneyTalk™ service.

Perhaps best of all, switching to Bank of America means switching to one of the leading financial institutions in Texas, part of the BankAmerica family which has over \$188 billion in assets. That buys you a lot of security.

Now you have more reasons than ever to switch to Bank of America. Call us or stop by today and see how much more bank you can get for your money.

BANKING ON AMERICA™

Bank of America

1-800-432-1000

Bank of America Texas, N.A. Member FDIC

Congratulations

GRAND CHAMPION OF SHOW---Russell Pollard son of Mr. & Mrs. Terry Pollard showed his Cross Steer to Grand Champion, Breed Champion honors as well as Grand Champion of the Show at the Three Way Livestock Show. Russell was also named Showman in the Cattle Show. (Journal Photo)

CHAMPION STEER---Cody Wilson exhibited his English Steer (shown) to Champion Steer and his Ameri-Cross Steer to Champion Steer at the Three Way Livestock Show. Cody is the son of Mr. & Mrs. Rodney Wilson. (Journal Photo)

Maple Co-op Gin

Tricia Underwood Accepted At SOSU School of Pharmacy

Tricia Danae Underwood of Muleshoe, Texas, has been accepted and is enrolled in her first semester in the Southwestern Oklahoma State University School of Pharmacy at Weatherford. Tricia is the daughter of John W. and Danette Underwood of Muleshoe, Texas.

A total of 38 students were accepted to the 1993 spring pharmacy school class at Southwestern. Chosen from 113 qualified applicants, the class has a composite grade point average of 3.26 and is composed of 25 women and 13 men.

Minimum requirements for admission to the School of Pharmacy at Southwestern include the completion of at least 60 semester hours of specified pre-

pharmacy courses with a cumulative GPA of at least 2.0.



Tricia Danae Underwood

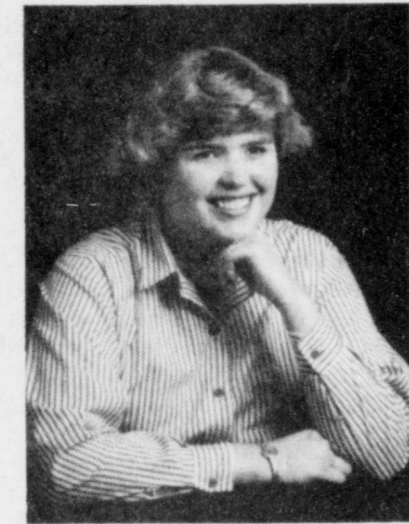
Kristi Miller Accepted At SOSU School Of Pharmacy

Kristi Diane Spies Miller of Sentinel has been accepted and is enrolled in her first semester in the Southwestern Oklahoma State University School of Pharmacy at Weatherford. Kristi is the daughter of Ronald Eugene and Ronda Zell Spies of Muleshoe, Texas.

A total of 38 students were accepted to the 1993 spring pharmacy school class at Southwestern, chosen from 113 qualified applicants, the class has a composite grade point average of 3.26 and is composed of 25 women and 13 men.

Minimum requirements for admission to the School of Pharmacy at Southwestern include the completion of at least 60 semester hours of specified pre-

pharmacy courses with a cumulative GPA of at least 2.0.



Kristi Spies Miller

Russian Defaults Rise

WASHINGTON-- Russia failed to make another \$10.2 million in payments on U.S.-backed loans used to buy grain and farm products, bringing the total in default to \$68.3 million, an Agriculture Department spokesman said.

Cable Rates Rise

WASHINGTON--If your latest cable television bill contained notice of a price increase, you're not alone. Cable companies around the country are getting in their last rate hike before federal regulation begins in April, 1993.



GOOD ENOUGH TO EAT!-Janetta Hukill, one of the birthday celebrities for the month of January, enjoys the party given at the Healthcare Center, hosted by Lona Embry last Thursday, January 28, 1993; flowers by Kathy's Kreations.

Mental vacations are more necessary than physical rest.

This will be a good year for those who strive to move ahead.

Bob Stout, Ed. D. Psychologist

Announces the opening of his private practice at 207 S. 25 Mile Avenue, Hereford, Texas, Wednesdays. For appointments call: (806) 353-4372

Brownfield Farmers Ordered To Pay \$24,000 In Attorneys' Fees

Federal Judge Samuel Cummings has ordered four Brownfield area farmers to pay \$24,000 in attorneys' fees to Texas Rural Legal Aid.

The award was the result of successful litigation against these farmers by Texas Rural Legal Aid on behalf of over 160 cotton hoehands who worked in the farmers' cotton fields during the years 1984-1986.

The four farmers, R.H. Clements, J.W. Hawkins, Doyle Moss, and P & B Farms, paid these workers less than \$2.50 per hour for their labor, well under the federal minimum wage. They also violated federal law by failing to give the field workers wage receipts, by not keeping the employment records required by federal law.

These Brownfield farmers have

had to pay a high price for not obeying these federal laws. While it would have cost each farmer perhaps a few hundred dollars to abide by the federal regulations, these farmers have already paid damages of over \$60,000 to the field workers and must now pay an additional \$24,000 in attorneys' fees to Texas Rural Legal Aid.

"These farmers have learned the hard way that it doesn't pay to violate the laws. The farmers could have paid their workers a subsistence wage, and they could have settled this dispute prior to litigation. Instead they went to court and lost big," explained Kay Mares, attorney for the hoehands.

Ms. Mares added "We hope that this case encourages farmers to save themselves a lot of trouble by obeying the federal laws."

Congratulations



RESERVE BREED CROSS---Joshua Tooley son of Mr. & Mrs. Howard Tooley exhibited his Cross pig to Reserve Breed honors at the Three Way Livestock Show held recently. (Journal Photo)

Bailey County Electric Coop. Assn.

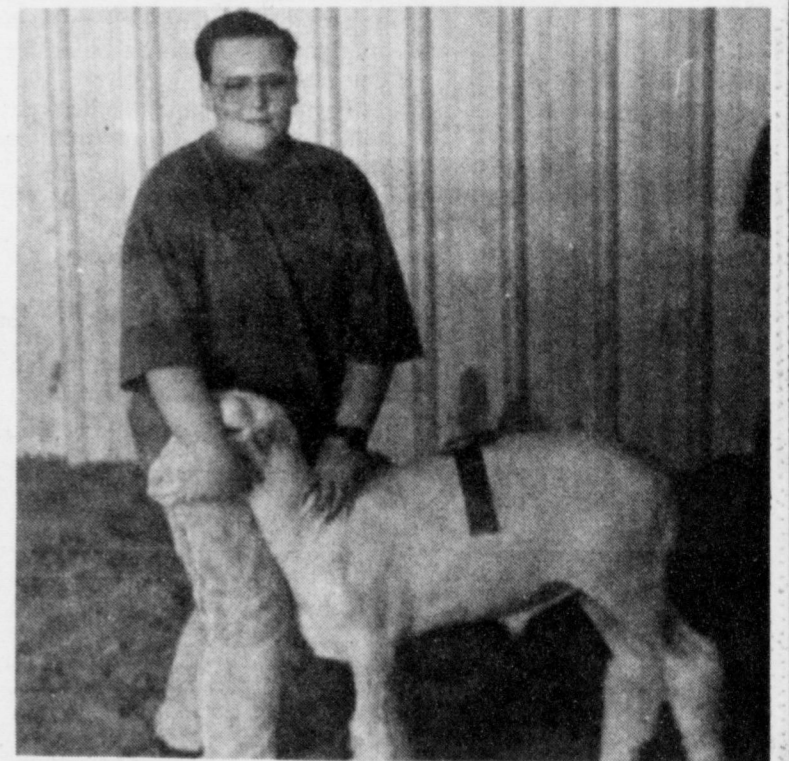
Congratulations To All The Three Way Livestock Show Winners



RESERVE GRAND/BREED CHAMPION---Rebecca Robertson daughter of Mr. & Mrs. Darwin Robertson exhibited her Hampshire pig to Reserve Grand and Breed Champion honors at the Three Way Livestock Show held recently. (Journal Photo)



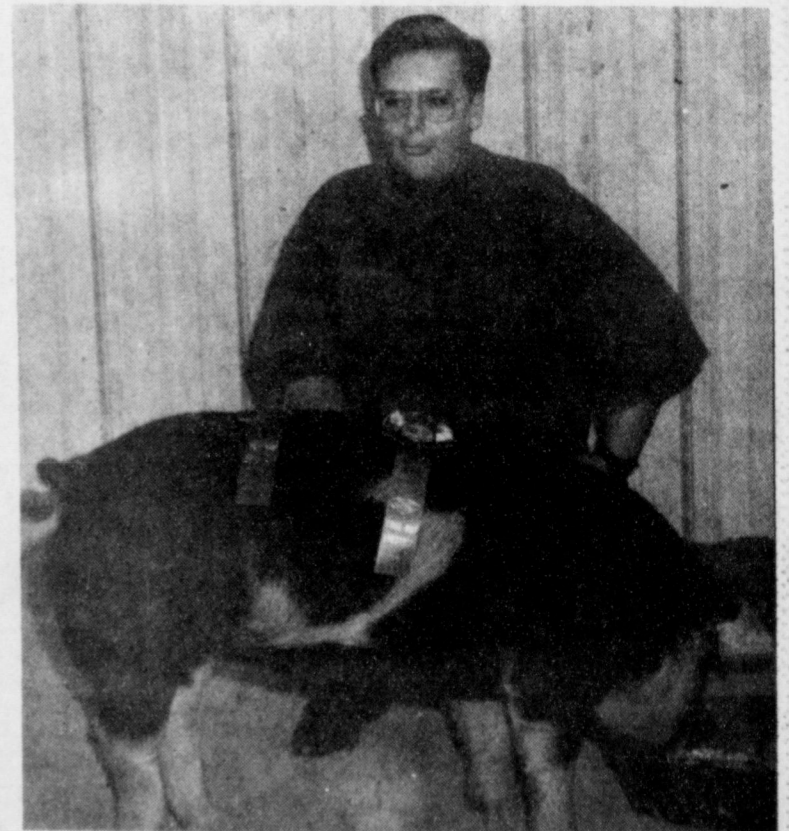
GRAND/BREED CHAMPION ---Melissa Bennett granddaughter of Mr. & Mrs. Jack Lane showed her Duroc to Grand Champion and Breed Champion honors at the Three Way Livestock Show held recently. (Journal Photo)



BREED/RESERVE BREED CHAMPION ---Jonathan Bennett exhibited his Hampshire to Reserve Breed honors and his Finewood (shown) to Breed Champion honors during the Three Way Livestock Show held recently. (Journal Photo)



BREED CHAMPION CROSS---Scott Pollard son of Mr. & Mrs. Terry Pollard exhibited his Cross pig (shown) to Breed Champion honors at the Three Way Livestock Show held recently. Scott also showed his Duroc to Reserve Breed honors and was awarded the Reserve Showman in the Swine Show. (Journal Photo)



CHAMPION SPOT/POLAND---Jonathan Bennett grandson of Mr. & Mrs. Jack Lane exhibited his Spot/Poland pig to Breed Champion at the Three Way Livestock Show held recently. (Journal Photo)



MULESHOE AREA MEDICAL

Center

School Board

Cont. from Page 1

Let's give our school board members a hand!" said Bill Moore, superintendent.

In the regular school board meeting Monday night, Mrs. Purdy called the meeting to order at 7 p.m. and Shelburne gave the invocation.

Minutes of the previous meeting were approved as read.

Moore introduced Pam Hancock, District Coordinator for the VIPS program.

"We have VIPS on all four campuses in the MISD," Mrs. Hancock said. "We have had the program at Dillman Elementary for a few years and it is a very successful program. Some parents work up to four or five days a day, tutoring, helping the teachers, helping the students with reading

Drivers...

Cont. from Page 1

Anyone with questions about Driver Education should contact Coach Adair at 272-7571 (office) or 272-3882 (home).

The behind-the-wheel phase of Driver Education will be taught in April, May, and June.

A student must complete 14 hours of in-car instruction before receiving Driver Education Certification.

Again, Coach Adair will conduct/coordinate this phase of Driver Education.

Instructional days for classroom Driver Education are: Feb. 15, 16, 17, 18, 24 and 28;

March days are: 1, 2, 3, 4, 5, 8, 9, 10, 11, 15, 16, 17, 23, 24, 25, 26, 29, 30, and 31;

April days are: 1, 2, 5, 6, 7, 8, 13, 14, and 15.

Fire...

Cont. from Page 1

have volunteers, who also give of their own time, who are willing to come to the aid of their fellow firemen, as the Sudan firemen did Saturday night.

The local fire department was called back to the scene of the fire twice Monday night.

The Journal talked with Mrs. Peggy Bates, daughter of the late John Fried, and were told that John's Custom Mill's original building was built at its present location on East Highway 84 in about 1935.

Bank...

Cont. from Page 1

reported deposits of \$10,317,554 as of December 31, 1992, up some \$1,159,777 from \$9,157,777 as of December 31, 1991.

At the same time loans were down \$778,291. On December 31, 1991, loans were \$4,773,474 compared to \$3,995,183 as of December 31, 1992, showing a decrease.

and spelling.

"At DeShazo we have almost as many volunteers and almost as many volunteer hours, but we need more volunteers. Volunteers at DeShazo do more instructional tutoring.

"This is the first time (this year) we have had the VIPS program in the junior high. At junior high, there is a lot of tutoring going on. The volunteers also do a lot of clerical work. This program is also very successful at the junior high.

"At the high school we have something different. These volunteers do a lot of outside things, reading onto tapes and this helps students that for some reason have trouble reading. The program is doing very well."

In other business, the board discussed a workshop scheduled for March 9, where they will be taking a look at goals for the district, and developing objectives for the next four or five years. A list of the administrative staff's long range plans were passed out for the board to take a look at.

The board also discussed the 1993-94 school calendar and Staff Development Waiver.

Shelburne read a resolution clarifying action taken by the board on October 26, 1992, regarding re-districting and the board adopted the resolution.

During the informational reports, Mrs. Purdy reported on a meeting she and several other board members attended. She also passed out a list of questions concerning the roll of the school board member. She took the answers to Austin over the weekend.

She also reported that a Legal Seminar will be held in Lubbock on March 3.

Moore stated that February has been declared as School Board Recognition Month and asked all board members to have lunch at the different cafeterias during the month. The board members will be eating at DeShazo on Feb. 11; Dillman, Feb. 18; and High School, Feb. 24. Plans are also made to have a walk through at the Junior High on Feb. 24.

It was reported that the Food Service is continuing to go well.

Jo Mayhugh reported that as of Dec. 31, 1992, 58.60 of the taxes had been collected. Thirty-two percent of the CED's have been collected, this is more than at this time last year.

Payment of current bills were authorized and the board went into executive session.

Richard Nixon, former U.S. president:

"The secret to a long life is never look back, look forward. You've got to have something to live for," commenting on his 80th birthday.



BEARS EARN BADGES---(From Left) James Hancock, Ricky Cogliandro and Joshua Maddox earned their Bear Badges at a Camp Fire Thursday night. (Journal Photo)

Mule-Buddies Team Remain Undefeated

The Muleshoe-Lazbuddie fifth and sixth grade boys basketball team remain undefeated at 4-0. The Mule-Buddies defeated the Lahers in Clovis, N.M. Saturday night by 20 points, 38-18.

It was reported that Mason Sinclair shot well, leading the team in scoring with ten points (two-three point shots), and had two assists.

Dustin Cleavenger hit six of eight free throws and scored eight points. He also continued his aggressive rebounding pace, hauling in 12 rebounds.

Bret Clements helped the Mule-Buddies by adding six points and five rebounds. Josh Morris scored four points and showed this strength by hitting the boards for a team high of 13 rebounds.

James Barrett scored his season high four points. He continued his accurate passing. Jeffrey Bruns tossed in two points and was the team assist leader with three assists. Ky Kennedy started the Mule-Buddies by scoring the first two points of the game.

Judd Glover ran the baseline with precision driving to the basket for two points.

The first quarter was close with the Mule-Buddies taking an 11 to 6 lead. In the second quarter the Mule-Buddies scored 13 points to lead at the half 24 to 10. In the third quarter, the Mule-Buddies only scored two points, however, they

Five-Area...

Cont. from Page 1

Equal access ballots will be mailed to Five-Area customers in April. The ballot will list all long distance companies wishing to participate in the equal access conversion.

At that time, they will be able to choose their long distance company.

"We will continue to keep you informed of the equal access conversion process," Kidd continued.

Enochs News

by Mrs. J.D. Bayless

Mrs. Dennis Turney spent a week with her daughter and husband, Mr. and Mrs. Curtis Locke at Canyon to take care of her daughter and the new granddaughter, Chelsea Lea.

Mr. and Mrs. Jackie Stanley of Lubbock came Sunday to visit his parents Mr. and Mrs. Jack Stanley.

Mr. and Mrs. Ted Thomas of Lubbock were visitors at the Baptist Church Sunday morning, they also visited her parents Mr. and Mrs. Keith Price and their grandmothers.

Mrs. Lucille Smith of Hart visited her sister, Mrs. Margie Peterson during the weekend.

Meagan Pollard of Morton visited her grandparents Mr. and Mrs. Harrie Pollard the past week.

Mrs. Myrna Turney also her son, Kenneth Turney and son Matt of Muleshoe, drove to Canyon last Saturday to see Myrna's first grandchild, Chelsea Lea and granddaughter, Mr. and Mrs. Chris Locke at Canyon.

Muleshoe...

Cont. from Page 1

repairing and servicing aircraft with turbo engines. Maintenance management and documentation were also taught for the assessment of aircraft readiness capability.

The airman is a 1992 graduate of Muleshoe High School.

Over 3,000 children from across the South Plains are expected to participate in a children's fair, "An Adventure in the Arts". The fair,

Bears Earn Bear Badges At Camp Fire

Three scouts from the Bear Den earned their Bear Badges at a Campfire Thursday night.

Bear Badges went to James Hancock, Ricky Cogliandro and Joshua Maddox. Not present were: Jeffrey Skipworth and Tad Lutz.

Larry Hancock is their Den Leader and Pam Hancock and Gary Maddox are assistant Den Leaders. Linda Cogliandro is a helper.

sponsored by Caprock Girl Scout Council, will be February 13 from 1 to 5 p.m. at the Exhibit Hall of the Lubbock Civic Center.

Magicians, jugglers, musicians, and artists will be on hand to entertain and demonstrate their talents and skills as hundreds of Girl Scouts man booths allowing participants to use their imaginations and creativity as they explore the wonderful world of art.

All children are welcome to attend. Admission is one canned good item to be donated to the Food Bank.

For information call Mary Benton or Diana Phillips at 745-2855 or 1-800-530-4957.

The singing Blake Family will appear in concert at the Calvary Baptist Church, Friday, February 5, at 7:00 p.m..

The Blake family is from Springfield, MO. They sing in churches all across America.

Everyone is welcome to come and enjoy the singing. "A time of fellowship and refreshments will be after the services," stated B.G. Hill,

Congratulations

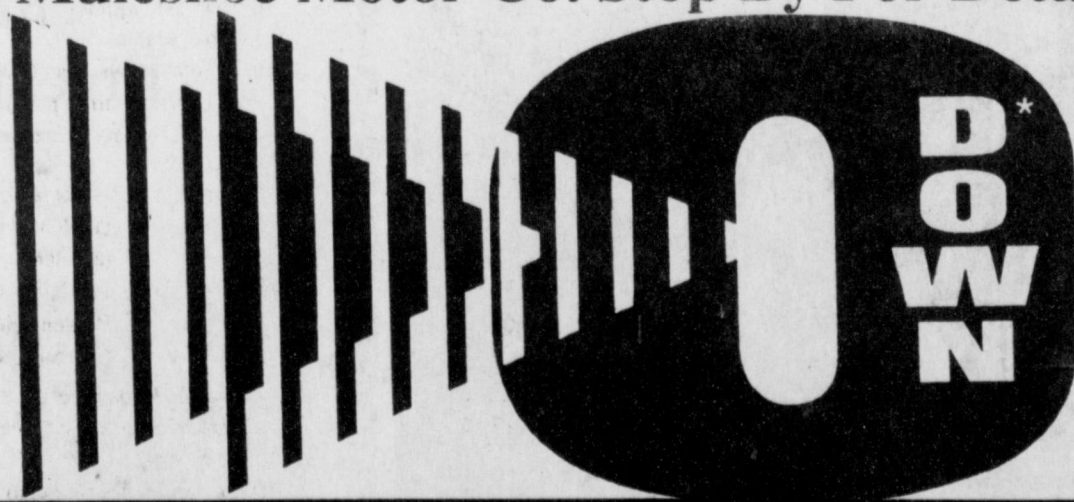


RESERVE/BREED CHAMPION---Keith Kindle son of Mr. & Mrs. Joey Kindle exhibited his Chester pig (shown) to Reserve Breed Champion and his Berkshire to Breed Champion at the Three Way Livestock Show. (Journal Photo)

1st State Bank

Member F.D.I.C. -Morton, Tx.

Second Chance Finance Plan Now Available!
Credit Problems Are No Longer A Problem
At Muleshoe Motor Co. Stop By For Details!



Delivers Any Car In Stock!

\$349 per month
1992 Ford Crown
Victoria

\$169
per month
'92 Ford Escort LX

'90 Honda
Accord EX
46,000 Miles, Clean
Local Owner

\$6250.00
'89 Chevy Celebrity
4 Dr. Clean
Auto Air

Pick your vehicle & pick your payment.
All vehicles have remaining factory warranty available

"Se Habla Espanol"

*Plus tax, title, & license on approved credit. Payments based on 9.5% APR for 60 months.

Open Mon.-Fri. 8 a.m. - 6 p.m. Sat. 9 a.m. 2 p.m.

Muleshoe Motor Company

"Car Capitol of The West Plains"

1225 West American Blvd. 806-272-4251

Make a point
to save 6% on all
Pioneer® products.

Pioneer Days,
February 8-13

This year Pioneer Days is bigger than ever. Why? Just check out the performance of Pioneer brand products in 1992. Then consider the superior agronomic service and support that only Pioneer can offer. Then put a pencil to it. You'll see how big 6% can be.

Gene & Francis Franks Muleshoe, Tx.
806-925-6454
Gene Paul Jarman
806-272-5185



PIONEER
BRAND PRODUCTS

*Pick up a free jacket when you make a qualifying purchase from a participating Pioneer sales representative.
All sales are subject to the terms of labeling and sale documents.
® Registered trademark of Pioneer Hi-Bred International, Inc., Des Moines, Iowa, U.S.A.

COM-92-34-2

Army Increases Pay For New Recruits

The Army is known for having competitive pay and benefits, but now a good thing has gotten better with the passage of a pay raise effective January 1, 1993, according to Lt. Col. Brad M. Beasley, commander of Army recruiting in New Mexico and West Texas.

"The 3.7 percent raise will increase a soldier's base pay, housing allowance, and subsistence allowance for food and personal items," Beasley said. For new soldiers, this means they will enter the Army with a monthly pay check of \$753, not including furnished room and board, free medical and dental care, and inexpensive life insurance.

By meeting certain educational qualifications, a soldier could enter the Army at the rank of specialist and draw a monthly pay check of \$1007 a month. He would also receive \$353 for housing, if married, and \$225 for food and subsistence items after completing initial training.

"If you're interested in going to college, the Army can also help pay your bills," Beasley said. "The Montgomery G.I. Bill plus Army College Fund provides qualified soldiers \$25,200 for a four-year enlistment." Soldiers enlisting for two years can qualify for \$17,000 and \$22,800 for a three-year term.

Qualified students who have spent at least one year in college and have unpaid student loans can select from over 250 job training areas and have those loans repaid in full up to a maximum of \$55,000.

"With the new pay raise we

received in January, bonuses for enlistment, tremendous educational programs, and unequalled skill training, the Army is the place for a young person to get out in front of the pack," Beasley said.

Young people interested in more details can reach Beasley in Albuquerque at 505-266-0898 or talk to their local Army recruiter, listed in the telephone book under U.S. Government.



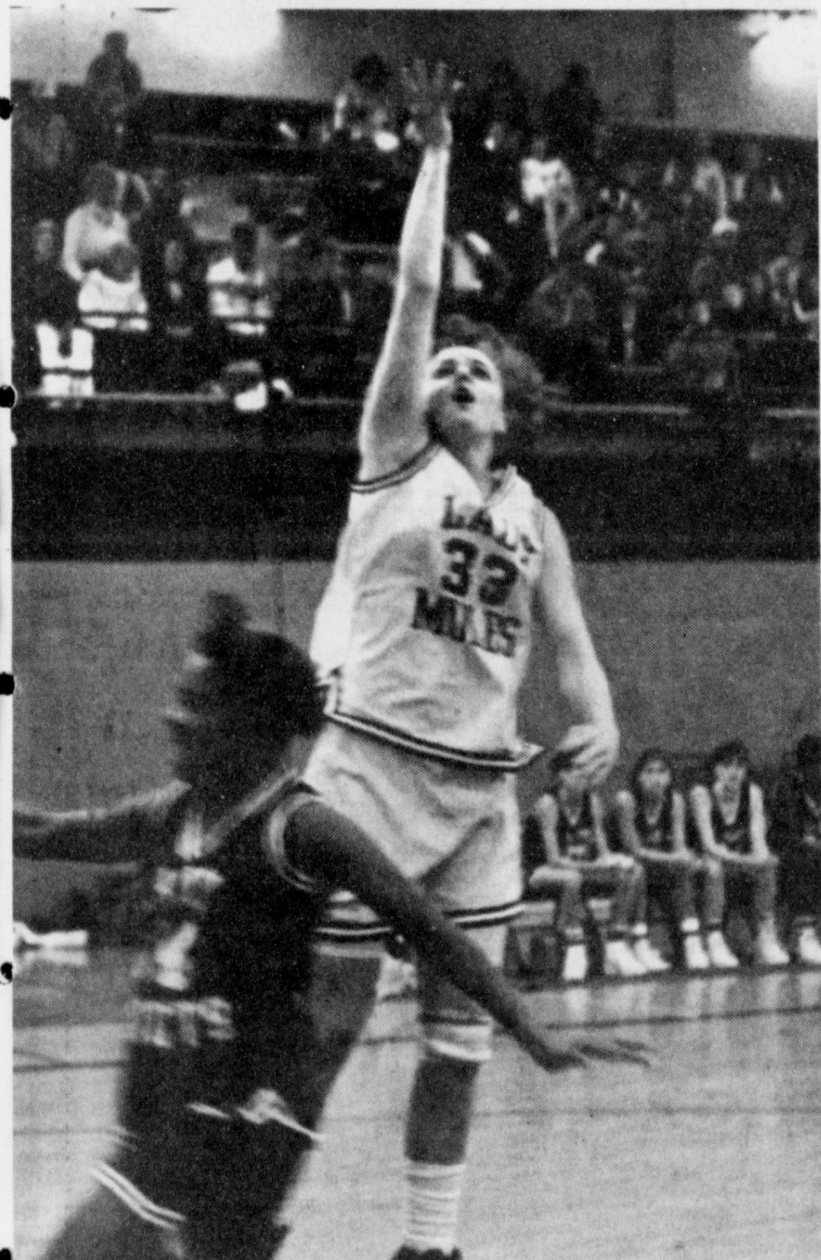
Sports Quiz

By Christian Thorlund

1. What was the score of the Redskins-Forty-Niners NFL playoff?
2. Who was the football coaches' coach of the year (college) in 1990?
3. What coach was coach of the year in 1962 and 1972?
4. What two college coaches lead bowl games?
5. How long did Bear Bryant coach at Alabama?

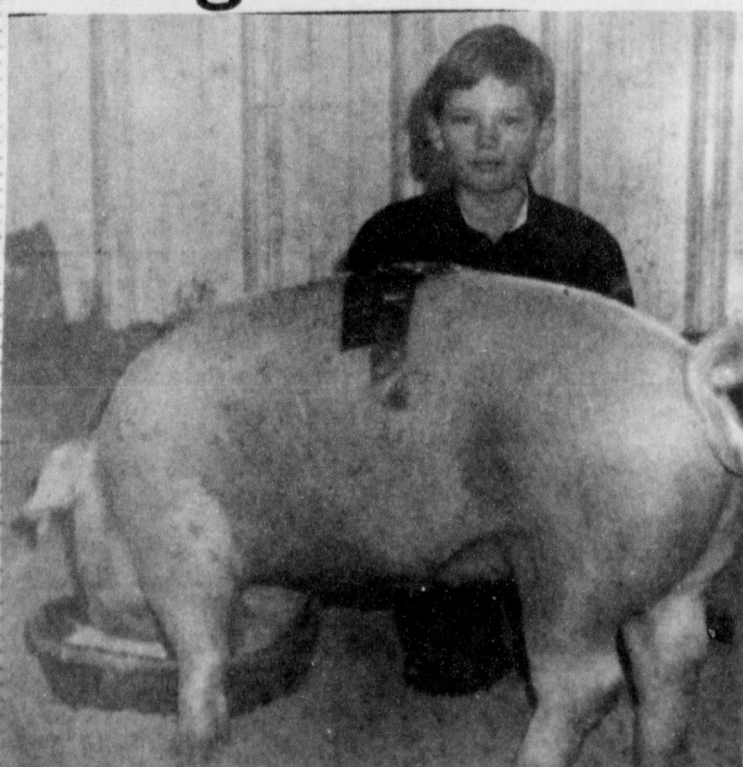
Answers:

1. 20-13 San Francisco.
2. Bobby Ross.
3. John McKay.
4. The late Bear Bryant and Joe Paterno, 29 and 23.
5. 24 years, 1958-82.



Lady Mule Kristin Holmans---takes the ball to the goal for two points in an exciting game last Friday night at the Watson Junior High Gymnasium. The Lady Mules were victorious in an impressive win over Tulia's Lady Hornets with the final score being 44 to 27. The Lady Mules are 18-6 for the season and at press time Tuesday afternoon were tied for first place in the district. (Journal Photo)

Congratulations



CHAMPION CHESTER---Kasey Wright son of Mrs. Murray Davis exhibited his Chester pig to Breed Champion honors at the Three Way Livestock Show held recently. (Journal Photo)

Higginbotham-Bartlett
-Morton, Tx.

What's the Best Way To Clean Your Carpet?

By Veronica Steers

(NU) - How often does your carpet need cleaning? It depends. Is it located in an entrance way or another heavy traffic area? Does it have a protective finish to help guard against soil and stains?

Carpets treated with a finish such as Scotchgard Stain Release carpet protector will not require cleaning as often as untreated carpets. But some experts suggest residential styles be cleaned at least once a year.

How do you know when it's time to clean your carpet? This depends on the color and the amount of traffic. Your eye is generally the best judge. You should clean your carpet, however, BEFORE it stops responding to daily vacuuming.

You can either have the carpet professionally cleaned or do it yourself with steam cleaning equipment. Professional extraction, better known as "steam cleaning," is reputedly the best cleaning method because it leaves the least amount of detergent residue.

Steam Clean

If you clean the carpet yourself, use steam cleaning equipment rather than a detergent or shampoo, which leaves a soap residue that can interfere with protective finishes already on the carpet. Whichever method you choose, remember some key points:

- Before cleaning, place foil or plastic pads under furniture legs to avoid staining or rust spotting while the carpet is still damp.

- After-cleaning stain and soil resist treatments are available, but check before using them to be sure you won't void the manufacturer's warranty.

- Some carpet cleaning services attempt to sell you "reapplications" of protective treatments, such as silicone sprays. These treatments demonstrate excellent repellency characteristics, but may cancel out existing soil and stain protection and void the manufacturer's warranty. Always choose a branded protector you can trust.

If Honey Can't Do It---Call

Handy-Man

272-3574

Charles Harvey

No Job Too Small

Report of Condition

Muleshoe State Bank

PUBLICATION COPY - COMMERCIAL AND SAVINGS BANKS
CONSOLIDATED REPORT OF CONDITION (Including Domestic and Foreign Subsidiaries)

STATE 035 (3/92)

LEGAL TITLE OF BANK	<370>			STATE BANK NO.	1631-21
Muleshoe State Bank	PO Box 1010			FEDERAL RESERVE DISTRICT NO.	11 13 16793
Muleshoe, Texas	79347-1610			CLOSE OF BUSINESS DATE	December 31, 1992
CITY	COUNTY	STATE	ZIP CODE		
Muleshoe	Bailey	Texas	79347-1610		

ASSETS		Dollar Amounts in Thousands				
		Bi	Mil	Thou		
1. Cash and balances due from depository institutions:	a. Noninterest - bearing balances and currency and coin		2	392	1.a.	
	b. Interest - bearing balances		1	198	1.b.	
2. Securities			12	004	2.	
3. Federal funds sold & securities purchased under agreements to resell in domestic offices of the bank & of its Edge & Agreement subsidiaries, & in IBFs:	a. Federal funds sold		2	875	3.a.	
	b. Securities purchased under agreements to resell			0	3.b.	
4. Loans and lease financing receivables:						
a. Loans and leases, net of unearned income			18	728	4.a.	
b. LESS: Allowance for loan and lease losses				365	4.b.	
c. LESS: Allocated transfer risk reserve				0	4.c.	
d. Loans and leases, net of unearned income, allowance, and reserve (item 4.a minus 4.b and 4.c)			18	363	4.d.	
5. Assets held in trading accounts				0	5.	
6. Premises and fixed assets (including capitalized leases)				541	6.	
7. Other real estate owned				932	7.	
8. Investments in unconsolidated subsidiaries and associated companies				0	8.	
9. Customers' liability to this bank on acceptances outstanding				0	9.	
10. Intangible assets				0	10.	
11. Other assets				1	058	11.
12. a. Total assets (sum of items 1 through 11)				38	363	12.a.
b. Loans deferred pursuant to 12 U.S.C. 1823 (j)				N/A	12.b.	
c. Total assets and losses deferred pursuant to 12 U.S.C. 1823(j) (sum of items 12.a and 12.b)				38	363	12.c.
LIABILITIES						
13. Deposits:	a. In domestic offices			34	714	13.a.
	(1) Noninterest - bearing		7	178	13.a.(1)	
	(2) Interest - bearing		27	536	13.a.(2)	
	b. In foreign offices, Edge and Agreement subsidiaries, and IBFs				13.b.	
	(1) Noninterest - bearing				13.b.(1)	
	(2) Interest - bearing				13.b.(2)	
14. Federal funds purchased and securities sold under agreements to repurchase in domestic offices of the bank & of its Edge & Agreement subsidiaries, & in IBFs:	a. Federal funds purchased			0	14.a.	
	b. Securities sold under agreements to repurchase			0	14.b.	
15. Demand notes issued to the U.S. Treasury				206	15.	
16. Other borrowed money				0	16.	
17. Mortgage indebtedness and obligations under capitalized leases				0	17.	
18. Bank's liability on acceptances executed and outstanding				0	18.	
19. Subordinated notes and debentures				0	19.	
20. Other liabilities				531	20.	
21. Total liabilities (sum of items 13 through 20)				35	451	21.
22. Limited - life preferred stock and related surplus				0	22.	
EQUITY CAPITAL						
23. Perpetual preferred stock and related surplus (No. of shares outstanding	0			0	23.	
24. Common stock (No. of shares a. Authorized	50,000				24.	
b. Outstanding	50,000			1	000	
25. Surplus (exclude all surplus related to preferred stock)				1	000	
26. a. Undivided profits and capital reserves				912	26.a.	
b. LESS: Net unrealized loss on marketable equity securities				0	26.b.	
27. Cumulative foreign currency translation adjustments						
28. a. Total equity capital (sum of items 23 through 27)				2	912	
b. Losses deferred pursuant to 12 U.S.C. 1823 (j)				N/A	28.b.	
c. Total equity capital and losses deferred pursuant to 12 U.S.C. 1823 (j) (sum of items 28.a. & 28.b)				2	912	
29. Total liabilities, limited - life preferred stock, equity capital, and losses deferred pursuant to 12 U.S.C. 1823 (j) (sum of items 21, 22, and 28.c)				38	363	

MEMORANDA: Amounts outstanding as of Report of Condition date:

1. a. Standby letters of credit. Total
1. b. Amount of Standby letters of credit in memo 1. a. conveyed to others through participations

NOTE: This report must be signed by an authorized officer(s) and attested by not less than three directors other than the officer(s) signing the report.

We, the undersigned officer(s), do hereby declare that this Report of Condition has been prepared in conformance with official instructions and is true and correct to the best of my (our) knowledge and belief.

SIGNATURE OF OFFICER(S) AUTHORIZED TO SIGN REPORT

DATE SIGNED 1-29-93

NAME AND TITLE OF OFFICER(S) AUTHORIZED TO SIGN REPORT

AREA CODE/PHONE NO. 806-272-4561

We, the undersigned directors, attest to the correctness of this Report of Condition and declare that it has been examined by us and to the best of our knowledge and belief has been prepared in conformance with official instructions and is true and correct.

SIGNATURE OF DIRECTOR SIGNATURE OF DIRECTOR SIGNATURE OF DIRECTOR

(MAKE MARK FOR NOTARY'S SEAL)

State of Texas
Sworn to and subscribed before me this 29 day of January, 19 93
and I hereby certify that Margaret Hamilton is a duly qualified officer or director of this bank.
My commission expires May 12, 1993

County of Bailey
Margaret Hamilton
Signature Notary Public

Texans Find State Bar Of Texas Toll Free Phone Number Helpful

In its first year of operation more than 15,000 callers used the State Bar of Texas' toll-free number to request information on lawyer discipline and the complaint process. The number, which went into use January 1992, is part of the Bar's program to inform the public about how complaints against lawyers are handled.

"The toll-free number has proven to be an effective means for explaining grievance procedures to the public and for expediting the process. Our records show in October alone, 2,545 callers used the toll-free line," said Dallas attorney Harriet Miers, president of the State Bar. "Most of the callers want to know how to file a complaint against an attorney."

The toll-free number was installed to offer the public access to the complaint forms necessary to set a grievance in motion and to provide general information about the discipline process. It was not

designed to address questions about specific cases, and phone operators do not encourage or discourage callers from filing a grievance.

"A misconception some callers have is that they can call the 800-number and receive immediate action. The public doesn't realize that the grievance process takes time. Complaint forms must first be reviewed by our office to see if a rule of professional conduct may have been violated. If the complaint alleges professional misconduct, it is then referred to a local grievance committee for a hearing before a decision can be made on punishment," said Jim McCormack, the State Bar's general counsel.

"We encourage the public to use the 1-800 number as means to express themselves regarding the effectiveness of lawyers as public servants," said Houston attorney Tom Cunningham who chairs the Commission for Lawyer Discip-

line. The commission reviews the function and effectiveness of the attorney discipline system and makes recommendations for the refinement and improvement of the system.

To better accommodate toll-free callers, the Bar became one of the first subscribers to phone technology which allows toll-free calls to be rerouted to the nearest regional grievance office based on the area code of the originating call. For example, a caller from a 214-area code would be patched into the Dallas office instead of the Austin headquarters, putting the caller in touch with the grievance office in his/her area.

State Bar grievance offices operating on the toll-free system are Austin (headquarters), Fort Worth, Dallas, El Paso, San Antonio and Houston. Bar phone records indicate that the Houston office has received the most inquiries, 3,271 calls in a seven-

month period, followed by Austin, which received 3,139 calls during the same time period.

"There is a large audience out there that can benefit by the service this number provides and we've put much effort into publicizing the

phone number," said Miers. "The number of incoming calls increases whenever the phone number is advertised." In April the Austin office received 338 calls. In May, when the phone number was first advertised in the Bar's monthly

magazine, the Texas Bar Journal, the number of calls jumped to 800. In November, to handle the overwhelming number of calls, the Bar added its El Paso office to the rotation of offices on the 800-system.

VA Insurance Dividends Announced

The Department of Veterans Affairs (VA) has announced that more than \$960 million in dividends will be paid in 1993 to veterans holding active veterans' life insurance policies.

These dividends are made possible because veterans are living longer than originally predicted, and the insurance trust funds are earning high yields from U.S. Government securities.

The payout will be credited automatically to 2.5 million policyholders on the 1993 anniversary date of their policies. Policyholders may choose to receive a dividend check or select one of nine alternate payment options. VA is cautioning veterans that only those policies that have been kept in force receive annual dividend distributions.

The dividend amount will vary according to age, type of insurance and duration of the policy. No application from individual policyholders is necessary.

Government life insurance policies were issued to veterans of World Wars I and II and the Korean Conflict who served between 1917 and 1956. The largest group receiving dividend payments will be the 2.1 million veterans of World War II with National Service Life Insurance ("V") policies who will receive an average payment of \$386. Total payments to these policy holders are expected to reach \$818.1 million.

Dividends totaling \$8 million will be paid to the 30,377 World War I veterans holding U.S. Government Life Insurance ("K") policies for an average payment of \$263.

Some 263,914 veterans who have maintained Veterans Special Life Insurance ("RS" and "W") can

expect to receive dividends averaging \$399 for a total of \$105.2 million.

Veterans who hold Veterans Reopened Insurance policies ("J," "JR" and "JS"), currently numbering 98,960, will share a \$32.5 million dividend. Average payments to "J" policyholders are \$297; for "JR," \$534; and "JS," \$545.

Although VA also administers a special life insurance program for disabled veterans and a program offering mortgage life insurance coverage, neither pays dividends. For active-duty service members and reservists, VA supervises a contract with a private carrier to underwrite Servicemen's Group Life Insurance. No dividends are paid on Group Life Insurance.



STUDENTS TAKE TOP HONORS AT WOOD HOOK CONTEST---A number of students from Watson Junior High participated in The Awesome Balsa Wood Hook Contest at Lubbock Saturday and came away with several of the top prizes. John Cowart took first place and received a check in the amount of \$100.00 and another local youth, Daymond Gossett took second place and received a check in the amount of \$50.00. (Journal Photo)

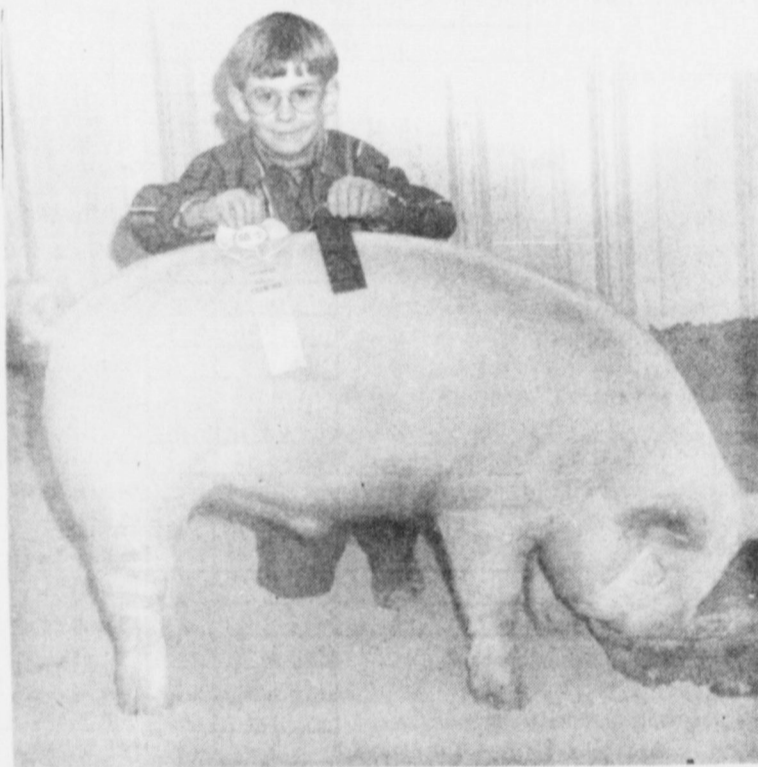
Congratulations



RESERVE GRAND/RESERVE BREED---Joshua Tooley son of Mr. & Mrs. Howard Tooley showed his Southdown to Reserve Breed and his Hampshire (shown) to Reserve Grand Champion honors at the Three Way Livestock Show held recently. Joshua was also awarded the Reserve Showman in the Lamb Show (Journal Photo)

Muleshoe Publishing Co.

Congratulations To All The Three Way Livestock Show Winners



RESERVE CHAMPION YORKSHIRE---Taylor McDonald son of Mrs. Robbie Sowder exhibited his Yorkshire pig to Reserve Breed Champion honors at the Three Way Livestock Show held recently (Journal Photo)



RESERVE BERKSHIRE/HAMPSHIRE---Russell Pollard son of Mr. & Mrs. Terry Pollard exhibited his Berkshire and Hampshire to Reserve Breed Champion honors at the Three Way Livestock Show held recently. (Journal Photo)



GRAND/BREED CHAMPION---Rebecca Robertson daughter of Mr. & Mrs. Darwin Robertson showed her Suffolk to Grand and Breed Champion honors during the Lamb Show at the Three Way Livestock Show. (Journal Photo)



RESERVE CHAMPION SUFFOLK---Robin Tooley daughter of Mr. & Mrs. Howard Tooley exhibited her Suffolk (shown) to Reserve Breed honors. She also showed her Southdown as well as her Fine Cross to Breed Champion honors at the Three Way Livestock Show. Robin also walked away with the Reserve Breed title with her Spot pig in the Swine Show. (Journal Photo)



RESERVE BREED CROSS/FINEWOOL---Melissa Bennett granddaughter of Mr. & Mrs. Jack Lane exhibited her Finewool and Cross lambs to Reserve Breed Champion honors at the Three Way Livestock Show. Melissa was also named Showman in the Lamb Show. (Journal Photo)

Lowe's Pay-n-Save MARKETPLACE

401 W. American Blvd.
Muleshoe, TX 79347
(806) 272-4585

515 W. Amer. Blvd.
Muleshoe
272-4406

CLASSIFIEDS 272-4536

CLASSIFIED RATES

15 Words & Under
Minimum Charge
\$2.30
Thereafter
\$2.00
16 Words & Over
1st Insertion
15 cents per word
2nd Insertion
13 cents per word

CLASSIFIED DISPLAY RATES
\$1.75
Per Column Inch

DEADLINES
12 noon Tues.
For Thursday Paper
12 noon Friday
For Sunday Paper

To receive the reduced rate after the first insertion, ad must run continuously.

We reserve the right to classify, revise, or reject any ad. We are not responsible for any error after ad has run once.

1. Personals

For more information and assistance regarding the investigation of get-rich-quick, work-at-home and other financial/business opportunities, The Mulshoe and Bailey County Journals urges its readers to contact the Better Business Bureau, 1206 14th St., #901, Lubbock, TX 79401 or call (806)763-0459

CONCERNED

About Someone's Drinking? HELP IS AVAILABLE through Al-Anon Call 272-2350 or 965-2870 or come to visit Tuesday and Thursday nights, 8:00 p.m. & through AA call 965-2870 or come visit Tuesday nights, 8:00 at 620 W. 2nd, Mulshoe

Will power in a bottle!

Burns fat, increases energy, curbs appetite! All natural products. Call 272-3463. H1-5s-10tc

Reduce safe and fast with GoBese Tablets and E-Vap "Water Pills" available at Damron Drug. C1-6t-2tp

3. Help Wanted

WANTED:
Community Service Advisor for Bailey County. Part-time. Requires strong math skills, typing, filing. Experience with insurance and Medicare helpful. Apply at courthouse. B3-5s-2tc

Applications are being taken for full time and part time sales clerk. See Tootie at:
Mulshoe Fina
102 W. American Blvd.
272-5278
I3-5t-4tc

NEEDED

Representatives in Sudan Lazbuddie and Mulshoe. For more information call 272-5607
AVON
"The Smartest Shop In Town"

3. Help Wanted

HOSPITAL JOBS
Start \$7.30/hr, your area. No experience necessary. Must be 18. For info, call 1-900-820-8633, ext.8265. 6am-8pm. 7 days. \$12.95 phone fee. 3-4t-6tp

\$200-\$500 WEEKLY
Assemble products at home. Easy! No selling. You're paid direct. Fully Guaranteed.
FREE Information-24
Hour Hotline.
801-379-2900 Copyright #TX034050
3-2t-16tp(ts)

PARK RANGERS
Game wardens, security, maintenance, etc. No experience necessary. For info call (219) 769-6649 EXT 9689, 8 A.M. to 8 P.M. 7 days.
3-5s-8tp(ts)

CRITICAL CARE RN

Work two 12-hour weekend shifts and accrue Full-time benefits. PLUS substantial weekend, SCU, and shift differentials. Contact Brandy at Roosevelt General Hospital, 1700 S. Ave. O, Portales NM 88130 EOE
R3-5s-4tc

4. Houses For Rent

FOR RENT:
3 Bedroom remodeled with new kitchen cabinets. New bath fixtures, new carpet, new windows, new paint. See at 307 W. 11th or call 806-359-9260.
W4-5t-4tc

5. Apts. For Rent

FOR RENT:
1 Bedroom Furnished Apartment. Water paid. Call 272-7575
P5-6t-1tc

11. For Sale Or Trade

75 Horse Power Electric Irrigation Motor With Switches. 806-965-2856
11-4s-4tp

Wheat Hay. Large Round Bales. \$40.00 per bale. Mark Schwertner, Farwell 825-3143.
11-6t-2tp

FOR SALE:
300 acres 8 miles East of Mulshoe. 125 acre circle in side oats grama. 92 acre circle in wheat. Corners in grass.
505-389-5459 or 409-743-5543
H11-3s-8tc

15. Misc.

Major Appliance and Minor Home Repairs!
Call 272-4450
HENDERSON SERVICE, CO.
tfc

Classifieds!
Bigger and Better Than Ever
272-4536

8. Real Estate

BUILDING LOT BY OWNER
Beautiful Park Ridge Addition-Mulshoe. 103' X 125', paved street, utilities. Great View! Consider trade-in or owner financing. For information---
(806) 795-5409.
W8-6t-8tc(1ts)

FOR SALE
2100 sq. ft. 4 bedroom brick with new timber-line roof. Total electric-3 year old heat pump-(heat & cool). 2 baths, double garage, lots of closets. Call 272-4793 or 5531.
C8-6t-tfc

8. Real Estate

House For Sale
706 W. Ave. J.
Call 272-5756.
S8-5t-tfc

FOR SALE: 10 acres with 3 bedroom house. 5 miles South of Sudan. Call 227-2188.
R8-6t-4tc

FOR SALE
320 Acres--South Bailey County. \$250 per acre. OBO Call 272-4622
K8-6t-tfc

3-1-1 Brick. \$1000 cash allowance with assumption of 8.5% loan. 1424 W. Ave. C. 272-5234.
S8-6t-tfc

HENRY REALTY

111 W. AVE. B 272-4581
Mulshoe, Tx.

LENAU ADDITION--4 bedroom, 2 bath, carport, central heat and air, carpet, dining area, built-in dishwasher and stove. Covered patio, wood fence, storm doors and windows, drapes and curtains. One ceiling fan. Ample storage and shed for travel trailer.

RURAL--3 bedroom, 1 bath, 2 car garage, masonite siding, carpet throughout, central heat, evap. air cond. on roof ducted to all rooms. Built-in dishwasher. New roof. Additional acres available, owner financing to qualified buyer.

2 bedroom, 1 bath, 1 car garage, brick veneer. Country Club Addition. Central heat and air. Very nice.

2 bedroom, 1 bath, detached 2 car garage, extra lot and well for garden. Country Club Addition.

Spacious 2 bedroom, 2 bath with one car garage. Fireplace. Ready to move in.

New listing--2 bedroom, 1 bath, redone for qualified buyer.

3 bedroom, 2 bath, carport. New home outside city limits near city. Lot is 85'x402'. Metal building is 29' by 60'. Great setup for workshop.

COMMERCIAL PROPERTY
Ideal location on West American Blvd. 150' highway frontage. A great business opportunity.

West American Boulevard 150' frontage. Priced to sell.
LAND
160 acres irrigated farm land with pivot sprinkler SW of Mulshoe. 60 acres of wheat. Ideal for livestock operation. Good water.

If You're Looking For The Big Leagues, You'll Find Them In The Classifieds!



Classifieds! Bigger & Better Than Ever!

9. Automobiles For Sale

MUST SELL! 89 Chevrolet C1500 Silverado, Automatic Transmission, Air Conditioning Power Windows, Power Door Locks, Cruise Control, Tilt Steering Wheel, AM/FM Stereo Cassette, Bedliner. No old contract to assume, no back payments to make. Just need responsible party to make reasonable monthly payments, call Doug Hulderman in the Credit Dept., FRIONA MOTORS 806/247-2701

9. Automobiles For Sale

MUST SELL! 90 Ford F150, XLT Lariat, 4X4, Automatic Transmission, Air Conditioning, Power Windows, Power Door Locks, Tilt Steering Wheel, Cruise Control, AM/FM Stereo Cassette, Bedliner. No old contract to assume, no back payments to make. Just need responsible party to make reasonable monthly payments, call Doug Hulderman in the Credit Dept., FRIONA MOTORS 806/247-2701

8. Real Estate

MUST SELL 93 Escort LX, 3 Door, 5 Speed, Air Conditioning, Power Steering, Rear Window Defroster, Dual Electric Mirrors, AM/FM Stereo Cassette, Sport Appearance Package, 14" Aluminum Wheels, Bucket Seats. No old contract to assume, no back payments to make. Just need responsible party to make reasonable monthly payments, call Doug Hulderman in the Credit Dept., FRIONA MOTORS 806/247-2701

8. Real Estate

MUST SELL 93 Escort LX, 3 Door, 5 Speed, Air Conditioning, Power Steering, Rear Window Defroster, Dual Electric Mirrors, AM/FM Stereo Cassette, Sport Appearance Package, 14" Aluminum Wheels, Bucket Seats. No old contract to assume, no back payments to make. Just need responsible party to make reasonable monthly payments, call Doug Hulderman in the Credit Dept., FRIONA MOTORS 806/247-2701

20. Public Notice

NOTICE TO CREDITORS

Notice is hereby given that original Letters Testamentary for the Estate of J.E. Embry, DECEASED, were issued on February 2, 1993, in Docket No. 1948, pending in the County Court of Bailey County, Texas, to: Joe Embry and Floyd Embry.

The residences of the Independent Co-Executors are in Bailey and Parmer Counties, Texas; the post office addresses are:

Joe Embry
809 West 17th Street
Mulshoe, Texas 79347

Floyd Embry
Route 1 Box 109
Farwell, Texas 79325

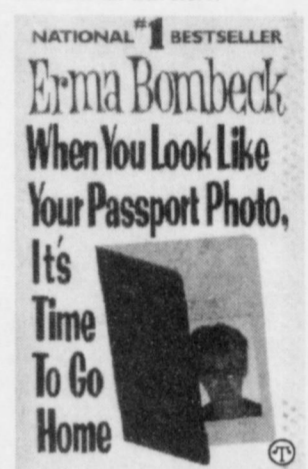
All persons having claims against this Estate which is currently being administered are required to present them within the time and in the manner prescribed by law.

DATED the 2nd day of February, 1993.

Gordon H. Green
Attorney for the Estate
G18-6t-1tc

Popular Writer Is One Of World's Funniest Tour Guides

Vacations always sound so great on paper. But the truth is we pay a lot of money to lug around suitcases twice our body weight, eat food we can't identify, and put our lives in the hands of people we have never met before. In her latest best-seller, *When You Look Like Your Passport Photo*, It's Time To Go Home (Harper Paperback, \$5.99), Erma Bombeck offers tips and truisms for all travelers:



A wizard of the ordinary moment, Erma Bombeck is at her hilarious best when she writes about travel.

Beware of food described as, "Some Americans say it tastes like chicken."

If you are in Germany, the bus driver will be Asian. If you are in Spain, the driver will be Russian. If you are touring France with a French driver you are on the wrong bus.

It's time to go home when someone tells you an icon is over two million years old, is only steps from the bus, and you yawn and say, "Describe it to me."

Don't leave home without this national #1 best-seller which keeps the reader chuckling from page one.



Minnesota has about 11,000 lakes formed by the action of glaciers.



FRIENDS DON'T LET FRIENDS DRIVE DRUNK.

Conversation between Adam and Eve must have been difficult at times because they had nobody to talk about.

—Agnes Repplier

Nieman Realty

116 E. Ave. C George Nieman, Broker 272-5286 or 272-5285
CHECK WITH US FOR AVAILABLE HUD PROPERTIES!!!!

RICHLAND HILLS
PRICE REDUCED 3-2-2 Brick, Cent. A&H, built-ins, FP, sunken lv. area, ceiling fans, earthtone carpets....RH-1

3-3-1 car carport--Large Brick home with built-ins, 2 fireplaces, extra storage. Priced in the \$60's!!! RH-3

NICE RESIDENTIAL LOTS...\$5,000 UP
4-2-2 Brick, Large living/dining combined... \$50's!!! RH-5

3-2-1 Brick, Cent A&H, with fenced yard... \$50's!!!! RH-6

3-2-2 Brick with fireplace, 5 ceiling fans, new carpet & paint, new dual fuel heat pump, abundance of closet space...\$90's....RH-8

HIGH SCHOOL
3-2-1 carport Brick, built-ins, Ig. isolated master bdrm., covered patio...\$40's....HS-1

IMMACULATE LARGE BRICK HOME 3-2-2
Heat Pump, built-ins, Whirlpool, loads of storage, lg. shop-storage, \$70's!!! HS-2

3-2 Remodeled, heat pump, built-ins, fenced yd., storage bldg. \$20's!! HS-3

3-1-1 Brick, heat pump, fenced yard, current FmHA financing..Price reduced..H-4

HIGHLAND AREA
3-2-1 Brick, Cent. A&H, FP, built-ins. MAKE OFFER!!!! HL-1

NICE 3-2-2 Brick, Cent. A&H, built-ins, FP, sunroom, auto. spklr., fenced yd., MORE!! \$70's!!!! HL-2

LENAU ADDITION
PRICE REDUCED-3-1 1/2-1 Home, Cent. heat, evap. air, cov. patio, st. bldg., fenced yd. \$30's!!! L-1

REMODELED BRICK-3-2-1 With Cent. heat, built-ins---PRICE REDUCED!!!L-2

JUST LISTED-2-1-1 Home with Heat Pump, has extra insulation in attic & floors...\$20's...L-4

3-2-1+carport, Brick, ceiling fans, Approx. 2060 sq. ft...\$40's!!! L-6

2-1-1 Carport, fenced back yard,with two storage bldgs..Priced in the \$20's L-7

4-3 Bath, Brick, on 2 acres, built-ins, FP, Geothermal Ht. pump, horse stalls, pens & tack rm. Also income producing shop on location or use for your own needs...\$80's!! PRICE REDUCED!!!!

VERY NICE 4-2-2 Brick home on 6 ac., Cent. A&H, 2300'+lv. area, Much More!! \$70's!HR-4

3-2-2 Brick, blt.-ins., ft. pump, FP, 2.5 acres on pavement. \$60's!!!! HR-3

3-2-3 Carport Mobile home on 11 ac. edge of town, MAKE OFFER!!!! HR-5

3-2-1 on 1 acre, Cent. Heat, Evap. Air, Remodeled, \$30's!! HR-6

3-1-2 Home on 1 1/2 acres storm cellar & storage bldg...\$20's!!!! HR-8

3-2 home on 40 acres barn and more.. \$40's!!!! HR-9

RURAL HOMES
NICE 3-2-2 carport Home, one acre tract, Cent. A&H, built-ins, fenced, on pavement close to town. \$40's!!!! HR-2

ASK ABOUT OUR COMMERCIAL LISTINGS!!!

JUST LISTED--Property on Hwy. 84---Can be used as residential or commercial, large shop, storm cellar, two story home, lot size 140'x100'...C-1

Circle Back Area-177 acres of good dryland... Fully Allotted!!!!

PLEASANT VALLEY-160 acres, 8" well. Lindsey circle!!!!

354 ac. S. of town, good allot. & yields!!!!



Wisconsin leads all states in milk production. It produces about 2 3/4 billion gallons of milk each year.

You & Your Cholesterol

Are You At Double Jeopardy For A Heart Attack?

About one in nine adult Americans is at double jeopardy for heart attack, but millions may not recognize their risk.

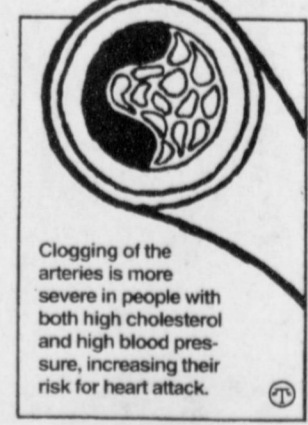
More than 22 million Americans have both high cholesterol and high blood pressure, a double whammy that dramatically increases their risk of heart attack," according to Dr. William Castelli, director of the ongoing landmark Framingham Heart Study.

Even so, 66 percent of Americans don't know their cholesterol numbers, and 59 percent don't know their blood pressure numbers, according to a Gallup survey of 1,000 adults.

To find out — and reduce — your chances for heart attack:

1. Know your cholesterol and blood pressure numbers. "You can't confront your risk of heart attack until you know your cholesterol and blood pressure numbers," Castelli said.
2. Discuss your numbers with your doctor to size up your heart attack risk. You may be at increased risk when your blood pressure is consistently above 140/90, and your cholesterol is consistently 200 or more.
3. Set specific goals with your doctor to lower your numbers. Diet and exercise are the first steps. See your doctor regularly to measure your progress.

For more information on finding out and managing your cholesterol, you can get a free guide from Health Information Services, Merck & Co., Inc., P.O. Box 1486-C, North Wales, PA 19454-9958.



Clogging of the arteries is more severe in people with both high cholesterol and high blood pressure, increasing their risk for heart attack.

Lazbuddie Honor Rolls

3rd Six Weeks "A" Honor Roll Junior High 6th Grade
 Seth Black, Jacoby Jennings, Michael Jones, Christina Martha, John Morris, Kia Morris, Cade Morris, Shena Seaton
7th Grade
 Don Burch, Jason Thomas, Cameron Turner, Roxann Warren, Dustin Weir
8th Grade
 Rocio Aguilar, Shana Foster

High School 9th Grade
 Socorro Reyes, Dawn Weir
10th Grade
 Joanna Gallman, Jeremy Jones, Ivette Reyes, Rachelle Rice, Timmie Smith, Janie Puga
11th Grade

Jessica Burch, Gina Jarman, Dawnda Magby, Jarah Redwine
12th Grade
 Erin Jones, Craig Russell, Joelle Weaver

3rd Six Weeks "A-B" Honor Roll Junior High 6th Grade
 Holly Engelking, Brandon Foster, Andy Johnson, Joshua McDonald, Rosa Mendoza, Amber Richardson, Adam St. Clair
7th Grade
 Brice Foster, Deon Gallman, Justin Puckett, Brice Redwine, Juan Salazar, Chris Smith
8th Grade
 Heath Brown, Janis Hernandez, Jennifer Hill, Israel Lopez, Rebecca Mata, Blake Mimms, Sulema Moran, Juan Reyes, Tyler Rice, Justin St. Clair, Edward Terry

High School 9th Grade

Travis Barber, Keith Burch, Marisol Godinez, Clay Hurst, Katy Jones, Regina Jones, Adolfo Mata, Julie McDonald, Roel Moran, Guy Nickels, Kimberly Smith, Josh Warren, Lindsay Welch

10th Grade
 Eva Jo Alcala, Matthew Elliott, Jon Colby Miller, Dink Pitcock
11th Grade
 Lori Bradshaw, Jody Copp, Troy McBroom, Jodi Morris, Chad Nickels, Rogelio Pacheco, Brett Thomas
12th Grade
 Leland Brockman, Matt Cozbey, Lynette Fuqua, Raquel Guzman, Joni Hernandez, Justin Johnson, Keisha Kemp, Eddie Lueras, Marsha Mendoza, Tisha Orozco,

Carmelita Ramos, Toi Sharp, Mario Zamora

"A" Honor Roll 1st Semester

Jr. High 6th Grade
 Seth Black, Jacoby Jennings, Michael Jones, Christina Martha, Josh Morris, Kia Morris, Cade Morris, Shena Seaton
7th Grade
 Don Burch, Brice Foster, Jason Thomas, Cameron Turner, Roxann Warren, Dustin Weir
8th Grade
 Rocio Aguilar, Shana Foster, Blake

Mimms

High School 9th Grade
 Dawn Weir
10th Grade
 Joanna Gallman, Jeremy Jones, Ivette Reyes, Rachelle Rice, Timmie Smith
11th Grade
 Jessica Burch, Gina Jarman, Dawnda Magby, Jarah Redwine
12th Grade
 Erin Jones, Craig Russell, Joelle Weaver

"A-B" Honor Roll 1st Semester

Jr. High 6th Grade
 Holly Engelking, Andy Johnson, Brandon Foster, Joshua McDonald, Amber Richardson, Rachel Rodriguez, Adam St. Clair, Rosa Mendoza
7th Grade
 Deon Gallman, Justin Puckett,

Brice Redwine, Juan Salazar, Chris Smith

8th Grade
 Heath Brown, Jennifer Hill, Justin St. Clair, Edward Terry, Janis Hernandez, Tyler Rice, Tina Walker

High School 9th Grade
 Travis Barber, Keith Burch, Marisol Godinez, Katy Jones, Regina Jones, Julie McDonald, Roel Moran, Guy Nickels, Socorro Reyes, Kimberly Smith, Josh Warren
10th Grade
 Eva Jo Alcala, Matt Elliott, Jon Colby Miller, Dink Pitcock, Janie Puga
11th Grade
 Lori Bradshaw, Jody Copp, Jonas Hernandez, Troy McBroom, Jodi Morris, Chad Nickels, Brett Thomas
12th Grade
 Leland Brockman, Matt Cozbey, Lynette Fuqua, Raquel Guzman, Joni Hernandez, Keisha Kemp, Eddie Lueras, Carmelita Ramos, Toi Sharp, Mario Zamora

Flu Shots Important For Elderly And Other High Risk Groups

Even though the full brunt of the flu season is here, the elderly and others at high risk who have not been inoculated may still want to consider getting flu shots.

"The best time to have gotten a shot was well in advance of the flu season," said Dr. W. Paul Glezen, epidemiologist at the Influenza Research Center at Baylor College of Medicine in Houston, "but people in the high-risk groups, and that includes the elderly, should still consider vaccination and consult their physicians. Influenza B/Panama continues to be active, and there remains the possibility of the emergence of influenza A before winter is over."

Glezen warns that unvaccinated elderly people are more susceptible to the flu's life-threatening complications, chief among them pneumonia. This is because they tend to have more underlying health problems, he said.

Because the flu vaccine does not provide protection for about two weeks, it is possible to contract influenza even after getting a shot, Glezen said.

The elderly are not the only ones who should guard against flu complications, Glezen said. Other high-risk groups are:

- * People with heart and lung disease, including asthma and chronic bronchitis.
- * People with diabetes, chronic kidney disease and chronic anemia, including sickle cell disease.
- * People, such as health-care workers and home care-givers, likely to come into contact with

people in any of the other high-risk groups.

Influenza usually strikes suddenly and produces symptoms such as fever, generalized muscle pain, weakness and a dry, hacking cough.

Victims of the flu should get plenty of rest and drink lots of liquids.

Adults may take aspirin or an aspirin substitute to reduce fever and pain, but people younger than 21 should use only acetaminophen pain relievers. Aspirin has been associated with Reye's syndrome, a complication of flu and chicken pox that can cause vomiting, convulsions, brain damage and death in children.

Flu epidemics occur annually, but even the worst of them in recent decades are less severe than the 1918 worldwide flu epidemic. It afflicted 500 million people and killed 20 million. More than half a million died in the U.S.

The 1918 epidemic killed more people in less time than any other disease in modern history. It ranks with the Black Death of the 14th Century as one of the few events in recorded history to reduce the earth's population by as much as 1 percent.

A Gem
 Know how to give without hesitation, how to lose without regret, and how to acquire without meanness.
 -Grit.

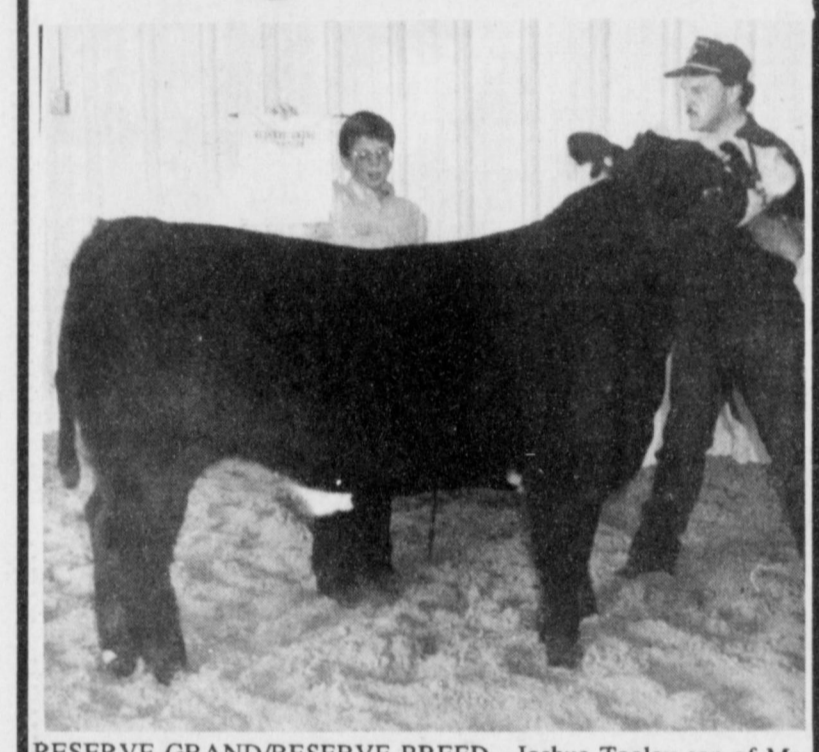
Congratulations



BREED CHAMPION YORK---Brittany Kirby daughter of Mr. & Mrs. Craig Kirby exhibited her Yorkshire pig to Breed Champion honors at the Three Way Livestock Show. (Journal Photo)

Cox Auto Supply
 -Morton, Tx.

Congratulations



RESERVE GRAND/RESERVE BREED---Joshua Tooley son of Mr. & Mrs. Howard Tooley showed his Cross Steer to Reserve Breed and Reserve Grand Champion honors at the Three Way Livestock Show held recently. (Journal Photo)

Maple Butane Co.

ANTHONY'S

SPRING PREVIEW SALE

Lee

Lee® Denim Jeans for Women & Jrs.

\$19.99

REG. \$29.99. 5-pocket styling in 100% cotton denim. Women's sizes 8-18. Jrs. sizes 3-13. SAVE \$10

REG. \$35. **\$24.99**

Lee® Casual Pants for Women

\$22.99

REG. \$28. 100% cotton in assorted colors. Sizes 6-18. SAVE \$5

ATHLETIC SHOES FOR THE FAMILY

Riddell

Men's & Boys' Riddell® Athletic Shoes

\$19.99

Featuring a full leather upper for support and durability.

Boys' Sizes 1-6 \$24.99
 Men's Sizes 8-12 \$26.99

L.A. Gear

L.A. Gear® Athletic Shoes for the Family

\$29.99

REG. \$40 & \$45. Assorted styles in Men's 8-12, women's 5-10, boys' 1-6, girls' 12 1/2-3. All with leather uppers. SAVE UP TO \$15

Levi's

Levi's® 517® Boot Cut Jeans for Men

\$19.99

100% cotton with zipper-fly. In indigo blue. Sizes 29-42.

Men's Levi's® 501® Prewash Jeans

\$23.99

100% cotton. In indigo blue or black. Men's sizes 29-42. Limit 6 per customer.

Levi's® Denim Jacket

\$37.99

100% prewashed cotton in indigo blue. Sizes 36-48.

ATB® Long Sleeve Western Shirt

\$13.99

REG. \$19. Polyester-cotton in plaids, stripes or solids. Sizes 14 1/2-17 1/2.

ENTIRE STOCK

Playtex® Bras

REG. \$13 to \$16. **\$9.99**
 REG. \$16.50 to \$21.50. **\$12.99**

Hanes® Classic Comfort® Hosiery

REG. \$2.95 to \$3.95
 BUY 2 GET 1. **FREE**
 3rd pair must be of equal or less value.

Women's Panties

Lorraine® REG. \$4 & \$4.50
 Satin Panties REG. \$2.99
 Cotton Panties REG. \$2.99
 BUY 2 GET 1. **FREE**
 3rd pair must be of equal or less value.

Women's Sleepshirts

REG. \$16. **\$10.99**

Spring Earrings

REG. \$6. **BUY 2 GET 1 FREE**
 3rd pair must be of equal or less value.

Fashion Handbags

REG. \$15 & \$15.99. **\$9.99**
 REG. \$19 & \$19.99. **\$13.99**
 REG. \$24 & \$24.99. **\$19.99**
 REG. \$29 & \$29.99. **\$21.99**

Men's Levi's® Dockers®

Twill pants. **now \$21.99**

2-Pc. Haggard® 250R Suit, Dress Shirt & Tie

Now **\$99**

Men's Sport Print T-Shirts

REG. \$12.99 to \$15. **\$9.99**

Boys' Levi's® 550® Jeans

Boys' 4-7 REG. \$22. **\$15.99**
 Boys' 8-14 REG. \$25. **\$17.99**
 Boys' 25-30 REG. \$27. **\$19.99**

2-Pc. Skid Pants Set

Boys' 4-7 REG. \$20. **\$13.99**

Boys' Sport Print T-shirts

Boys' 4-7 REG. \$10 & \$12. **\$7.99**
 Boys' 8-20 REG. \$14. **\$8.99**

Boys' Crew/Tube Socks

6 Pk. REG. \$4.99 & \$5.49. **\$3.99**
 6 Pk. REG. \$5.99. **\$4.99**

Girls' 7-14 Legging Sets

REG. \$20. **\$14.99**