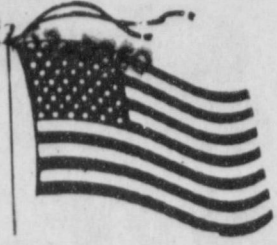




Muleshoe Journal

The Community Of Opportunity-Where Water Makes The Difference

The Foreman Company
PO Box 50
Monmouth, Ill. 61462



Vol. 71, No. 11

Published Every Thursday At Muleshoe, Bailey County, Texas 79347

TEXAS PRESS ASSOCIATION 25¢

Thursday, March 11, 1993



SPELLING BEE CHAMPION---Steven Madrid, center, won the Bailey County Spelling Bee last Thursday and will participate in the Regional Meet on April 3 in Lubbock. Aaron Purdy, left, was the alternate and Kamal Bhakta was the second runner up. (Journal Photo)

Steven Madrid Wins County Spelling Bee

You could almost feel the tension in the air Thursday afternoon when approximately 30 elementary and junior high students gathered in the School Administration Building for the Annual Bailey County Spelling Bee, sponsored by the *Muleshoe* and *Bailey County Journals*.

Steven Madrid, 12 year old son of Mr. and Mrs. Kevin Smith and a

seventh grader at Watson Junior High, was named the 1993 Bailey County Spelling Bee Champion.

He will represent Bailey County in the Regional Spelling Bee Saturday, April 3 at Irons Junior High in Lubbock.

With only two spellers remaining in the bee, Steven Madrid, and Aaron Purdy, Aaron misspelled the word "equation".

Steven correctly spelled "equation" and then correctly spelled "esteem."

Aaron is the son of Dr. and Mrs. Bruce Purdy. He is 13 and also a seventh grade student at Watson Junior High. Coming in third was Kamal Bhakta.

The bee got underway with Curtis Shelburne, pronouncer, giving the students a practice round, beginning with the word "adicate" and completing the round with "cornage."

After the practice round, it was time to get down to serious spelling, and words weren't getting any easier. Thirteen spellers went down in the first round.

Five more spellers went down in the second round, leaving eight to battle it out.

Only one more speller was eliminated in each of the next two rounds, leaving three in the race for the Championship.

Kamal misspelled "embellish" leaving Steve and Aaron remaining, and the battle was on, that is until Aaron misspelled "equation."

Adrian Meador, assistant superintendent, welcomed the students and teachers, parents and judges.

Serving as judges were Bailey County Judge Marilyn Cox, District Clerk Nelda Merriott, Arlene Phelps and Meador.

Meador presented each of the students a certificate, thanking each of them for taking part in the spelling bee.

Steven, Aaron and Kamal were also presented ribbons. Evelene Harris presented each of them a check from the *Muleshoe* and *Bailey County Journals*.

If for some reason Steven cannot go to Lubbock, Aaron Purdy, alternate, will go, to the Regional Meet.

Cont. Page 6, Col. 1

Mule-Buddies Have Perfect Season, Wins Championship

The Muleshoe-Lazbuddie (Kings) fifth and sixth grade boys basketball team capped a perfect season with a victory in the Championship game of the Clovis Play Inc. League Tournament Saturday afternoon. The Mule-Buddies faced the undefeated Clovis Slammers and won by seven points, 32-25.

In the first quarter, the Mule-Buddies only managed 4 points, but their physical defense only allowed 2 points. However, the second quarter was a different story, with the Mighty Mule-Buddies bombing the Slammers for 14 points, leading by a convincing 18-8 score.

The Slammers out scored the boys 10-4 in the third quarter, narrowing the score to 24-18. In the final quarter, the teams traded

baskets with Mule-Buddies winning 32-25.

"It was the closest any team came to defeating the Mule-Buddies," said Coach Joseph Sanchez. "The Mule-Buddies average win for the season was 21 points per game."

"The Slammers were the toughest team we faced this season," stated Joel Sinclair. "They were also the biggest team we had faced."

"James Barrett played physical defense and out smarted the Slammers with his intelligent passing, and taking care of the basketball to insure a Mule-Buddie victory. Dustin Cleavinger led the team in rebounds by hitting the boards for eight rebounds. He scored 4 points and had one assist.

"Bret Clements saved his best defense, for the last game of the season to frustrate the Slammers. Bret led the team with two assists, this was a season high for Bret. He also scored 2 points and five rebounds.

"Cade Morris pulled in one rebound and scored 2 points. Cade returned back to play in the Championship game, from the stock show in Houston.

"Judd Glover handled the ball well causing the opponents to send him to the free throw line a few times. He added two rebounds and one assist.

"Josh Morris caused several turnovers, because of his aggressive defense. He chipped in 2 points, three rebounds, and one assist.

"Jeffrey Bruns is playing his best defense at the most important time of the season. He drove the Slammers crazy at the top of the press. He added in 2 points and two rebounds.

"Mason Sinclair hammered the Slammers by hammering in 20 points, this was a game high Saturday afternoon along with a season high for Mason. He added five rebounds and one assist.

"The Mule-Buddies would like to thank all the fans that attended the Championship game and all of their other games. Tucker Crawford did a great job this season as a

Cont. Page 6, Col. 1

Local People Have Unclaimed Money In State Treasury

The following Muleshoe and Lazbuddie people and businesses have money in the Texas State Treasury Unclaimed Money Fund:

Jeannie D. Asay, Roy Thomas Bratcher, Cecil C. Buhman, L. Byrd, E. Caswell, Burton W. Clark, Mario Flores, Rafael Franco, Sotero Garcia, Ray Griffiths, Daniel H. Hart, Amelia Hernandez

And Frank J. Hunt, G.P. Jarman, Larry Jesko, Leslie Langfitt, Mario Lopez, Johnny Harold Lowry, Sue C. Mader, Roberto Marquez, John H. Miller, Beverly Nickell, Albert L. Perkins, Omar Ramos

And Walter R. Rendon, Robert Ruiz Inc., John Saylor, Robert Smith, W.M. Stevenson, James/Joe Storie, T.J. Power & Company, Roberto Trecozo, Vivendas Cuauhtemoc Inc., Western Drug, Edna Willoughby, Wilson Radiator and Ronald Wolfe.

Those from Lazbuddie include: Isidro Diaz, Raygena Hayes and Walter Murphree.

The Texas Treasury Department reported names of more than 125,000 people, businesses,

Cont. Page 6, Col. 1

Farm Program Outlined By Local ASCS Office

The following important information for farmers were released by Danny Noble, County Executive Director for the local ASCS office.

1992 CORN & GR. SORG. DEFICIENCY

The 1992 final deficiency rate has been announced for corn and gr. sorgh. The payments will be based on 73 cents for corn and 70 cents for grain sorghum. The 0/92 guarantee will also be based on the above rates. The estimated rates

were: Corn, 48 cents and grain sorghum, 46 cents. Payments will be made beginning March 15, 1992.

PRICE SUPPORT DATES

The final date for obtaining price support loans on 1992 crops are as follows: Wheat, Barley, Oats, and Rye-March 31, 1993; Corn, Gr. Sorg., Cotton, Soybeans, and Minor Oil Seed Crops-June 1, 1993.

INTEREST RATE

The loan interest rate for March

is 3.375 percent.

1993 FARM PROGRAM SIGNUP

Signup began March 1, 1993, and will continue through April 30, 1993. Producers wishing to participate **MUST** sign up their intentions during this time frame. Signup is by appointments. Please call 806-272-4538 as soon as possible (Talk to Laverne).

1993 FARM PROGRAM PROVISIONS

1. The Acreage Reduction Program requirements (ARP) are:

Wheat, Barley, and Oats-Zero (0), Corn-10 percent, Gr. Sorg-5 percent, and Upland Cotton-7.5 percent. The required ACR will not fluctuate, it is calculated as a fixed percentage of the crop acre base (CAB).

2. Maximum Payment Acres (MPA) is the result of the base times 85 percent for Wheat, Barley, and Oats; 75 percent for Corn; 80 percent for Gr. Sorgh., and 77.5 percent for Upland Cotton.

3. No paid land diversion is offered for any crop.

4. Yields-Program payment yields are the Historical Weighted Yield (HWY).

5. Target prices are established at: Wheat, \$4.00/bu., Barley, \$2.36/bu., Oats, \$1.45/bu, Corn, \$2.75/bu., Gr. Sorgh., \$2.61/bu., and Upland Cotton, \$0.729/lb.

6. Advanced payments will be made at 50 percent of the estimated deficiency payment rate and all in cash.

7. Oil seeds are eligible for loan.

8. Marketing loan programs are in effect for upland cotton, oilseeds, and honey.

9. Planting Flexibility-Producers may plant crops other than the program crop on up to 25 percent Cont. Page 6, Col. 1

1992-93 Boys 2-3A All District Team Announced

Eric McElroy, a basketball player for the Muleshoe Mules, was named to the 1992-93 All District 2-3A. McElroy is a 6 ft. 2 in. senior.

One other Muleshoe player receiving honors was Pedro Nunez, Honorable Mention All District.

Others of the All District Team includes: Dwain Hawthorne, Tulia; Michael Henderson, Floydada; Mark Outland, Friona; Gary Downing, Tulia; Jamie Davis, Floydada; Kyle Potts, Friona; Allen Blair, Littlefield; Derrick Thomas, Dimmitt; Joey Polk, Littlefield; and Johnny Flores, Dimmitt.

Kenneth Cleveland of Dimmitt was named Coach Of The Year.

District Champions were Bi-district, 53-38. Tulia was District runner-up. They lost to Perryton in Bi-district 74-66.

FmHA Sends Supervisors To Area Field Offices

By Keith Williams

Larry Combest Press Secretary After receiving U.S. Representative Larry Combest's letter detailing an intolerable loan processing backlog, Farmers Home Administration (FmHA) is sending supervisors with loan-approval authority to field offices in Brownfield, Levelland and Muleshoe. Additionally, field

offices in Tahoka, Littlefield, Lamesa and Floydada, will receive additional supervisors.

Combest noted in a February 24 letter to the acting FmHA administrator that departures of county supervisors, coupled with hiring freezes had left field office clerical staffs without any loan approval authority.

"I have heard numerous complaints from area farmers who are extremely upset about the mismanagement by FmHA which has led to this current situation and the adverse effect which it is having on their operations" wrote Combest. "A significant portion of the economy of these rural areas has been put on hold."

Combest complimented recent efforts by personnel in other FmHA offices in the area for traveling to Terry and Hockley counties to review loan applications. However, their own workloads prevented them from more than one day per week in those counties.

Reacting to today's FmHA staffing decision, Combest once again stressed that now is the crucial time when producers must make planting decisions based on FmHA financing. The South Plains area has one of the highest concentrations of FmHA borrowers in the nation.

Cont. Page 6, Col. 1

around muleshoe

The Lazbuddie High School senior class will sponsor an Outsiders Basketball Tournament March 18-20. Men, Women and Mixed Teams may enter.

For more information or entry forms call Rick Copp at 965-2152 or 965-2154 or Debbie Weir at 965-2302.

The Lazbuddie High School senior class will sponsor an Outsiders Volleyball Tournament April 22-24. Mens, Womens and Mixed Teams may enter. For more information or entry forms call Rick Copp at 965-2152 or 965-2154.

Wayland Ethridge was named to the Texas State Technical College Amarillo President's Honor Roll with a 4.0 grade point average for the winter quarter.

Texas State Technical College Amarillo is a non-profit technical college, created in 1970 by the Texas Legislature. The school offers 19 technical programs, including three new programs: chemical technology, metrology, and telecommunications.

The Lazbuddie Volunteer Fire Department will sponsor a Crime Prevention program on Tuesday, March 16 at 7 p.m. in the school cafeteria. The program will be under the direction of the Farmer County Sheriff's Office. Anyone who wishes to attend will be welcome.

Weather Man Needed For Muleshoe

The National Weather Service is looking for a weather man for Muleshoe.

Charles M. Megee stated that the National Weather Service would furnish and install all equipment.

You would be required to take the temperature and rainfall measurements daily and call it in to Lubbock on their 800 number. This is a volunteer service.

If interested call Charles M. Megee, Cooperative Program Manager collect at 762-4647.



RECEIVES HONORABLE MENTION---Pedro Nunez received honorable mention on the All District Basketball team. Not pictured, Eric McElroy was named to the All District Team. (Guest Photo)

Saving O' \$\$\$ The Green

3 Liter \$1.79
6 Pack
Coca Cola \$1.69
12 oz. Cans Asst.
3 Liter Price Not Available in Ft. Stockton

Ground Turkey 99¢ lb.
Small Pack \$1.19

Classic Delights Sandwiches 89¢ ea.

Wrights Smoked Pork Hocks \$1.19 lb.

Swift Premium Corned Beef \$1.99 lb.

Eckrich Fresh Sausage \$1.99 lb.

Eckrich Lunch Makers \$0.99 ea.

Schooner Fish Portions & Sticks \$1.19 lb.

Boneless Top Sirloin \$2.49 lb.

Single Slice \$2.69 lb.

T-Bone Steak \$3.29 lb.

Single Steak \$3.49 lb.

Frito Lay Salsa \$1.69 Asst.

Santitas Chips & Strips 99¢ \$1.39 Size

Del Monte Fruits 89¢ 11-17 oz. Asst.

Del Monte Pineapple 75¢ Asst. 15 oz.

Del Monte Pudding Cups 99¢ 4 pack Asst.

Hot Links \$1.19 lb.

Decker Cooked Ham \$2.39 4x6 Ea.

Decker Chopped Ham \$1.69 4x6 Ea.

Shurfine Turkeys Any Size 79¢ lb.

We Offer Lowe's Low Prices Everyday!

Vlasic Pickles \$1.99 Asst. 22 oz.

Mardi Gras Paper Towel 5 Rolls For \$3

Nescafe Clasico Coffee \$2.29 7 oz.

Purina Senior Dog Chow \$9.99 20 lb.

Purina Chuck wagon \$6.99 20 lb.

KRAFT GENERAL FOODS

HAVE BREAKFAST ON US

BUY 24 OZ. POST-UMI GRANT BUTTER \$2.99 and get 3 FREE

BUY 14 OZ. POST-FRUIT 7 FIBRE AT \$2.89 and get 12 oz. Frozen Orange Juice FREE

BUY 24 OZ. POST-UMI GRANT BUTTER \$2.99 and get 1 Gallon Milk FREE

BUY 24 OZ. POST-UMI GRANT BUTTER \$2.99 and get 32 oz. Pancake Mix FREE

BUY 1 DOZEN CENTER CUT OR ANY 1 L.B. OSCAR MAYER BACON \$1.99 and get 1 Dozen Grade A Large Eggs FREE

BUY 24 OZ. POST-UMI GRANT BUTTER \$2.99 and get 1 Gallon Milk FREE

BUY 24 OZ. POST-UMI GRANT BUTTER \$2.99 and get 32 oz. Pancake Mix FREE

BUY 1 DOZEN CENTER CUT OR ANY 1 L.B. OSCAR MAYER BACON \$1.99 and get 1 Dozen Grade A Large Eggs FREE

PRODUCE

U.S. No. 1 Russet Potatoes 59¢ 5 lb. Bag

Fresh Green Cabbage 19¢ lb.

New Crop California Red Rip Strawberries \$1.19 Pint

Red Delicious Bagged Apples \$1.39 3 lb. Bag

Bagged Grapefruit \$1.29 5 lb. Bag

Bagged Yellow Onions \$1.69 3 lb. Bag

Oreos Reg. or Double Stuff 2 20 oz. For \$5

Del Monte Prune Juice 44 oz. \$1.59

Del Monte Raisins 15 oz. \$1.35

Del Monte Pitted Prunes 12 oz. \$1.49

Gerber Third Foods 2 \$1 6 oz. Asst. For

Gerber Baby Formula \$6.99 16 oz.

Gerber Nursing Pads \$2.99 16 ct.

Glade Potpourri Spray \$1.09 7 oz.

Glade Carpet & Room Deodorizer \$1.69 16 oz.

Wisk Power Scoop Furniture Polish \$2.69 18 oz.

Wisk Power Scoop Furniture Polish \$2.49 12 oz. Asst.

HEALTH & BEAUTY

Crest Crest Complete Toothbrush \$1.69 ea.

Stages Stages Diapers \$7.99 Asst.

Shurfine Biscuits 4 \$1 10 ct. 7.5 oz. For

Shurfine Fried Chicken 2 \$5 25 oz. For

Shurfine Pizza Rolls \$1.29 6 oz.

Shurfine Fish Fillets \$2.99 11.4 oz.

Shurfine Game Time Wings 2 \$5 16 oz. For

FROZEN FOOD

Minute Maid Frozen Orange Juice 89¢ 10-12 oz.

Green Giant Mixed Vegetables 99¢ 16 oz.

Welch's Frozen White Grape or Grape Juice \$1.09 12 oz.

Welch's Frozen Cranapple or Cranberry Juice \$1.69 12 oz.

Gorton's Crunchy Fish Fillets \$2.99 11.4 oz.

Banquet Game Time Wings 2 \$5 16 oz. For

Del Monte Vegetables 5 \$2 16 oz. For

Tony's Italian Pastry Pizza 2 \$4 FOR

Lowe's MARKETPLACE

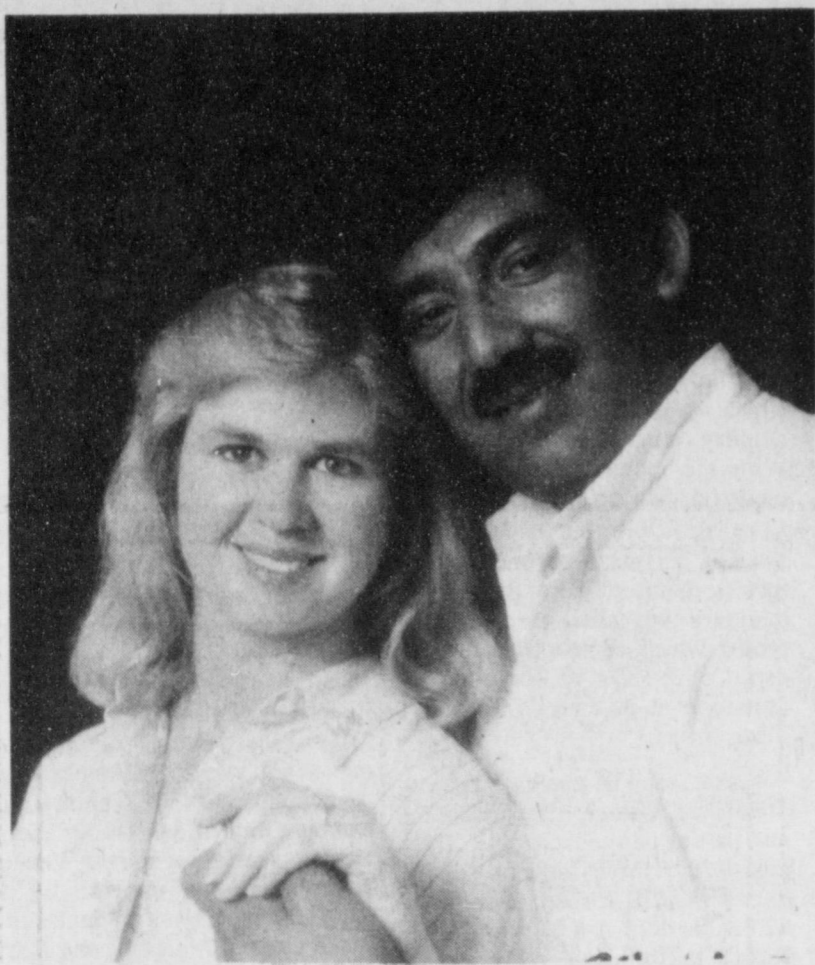
515 W. Amer. Blvd. Muleshoe 272-4406

401 W. American Blvd. Muleshoe, TX 79347 (806) 272-4585

Prices effective March 7 - 13, 1993

WE RESERVE THE RIGHT TO LIMIT QUANTITIES IN TEXAS.

Our Best to You!



ENGAGEMENT ANNOUNCED-Mr. and Mrs. Pete Jesko of Lazbuddie announce the engagement of their daughter, Maureen, to Johnny Castellano Jr., son of Mr. and Mrs. Johnny Castellano of Lubbock. They will marry on April 24 at St. Elizabeth's Catholic Church in Lubbock. The bride-elect, a graduate of Lazbuddie High School and Texas Tech University Health Sciences Center, is employed by St. Mary of the Plains Hospital. The future bridegroom, a graduate of Coronado High School and Texas Tech University, is employed by Marriott. *Guest Photo*

ENMU Offers Nursing Degree

Eastern Mexico University is now offering a Bachelor's of Science Nursing Completion Program for R.N. licensed graduates of associate degree programs.

The program, which began last fall, is designed to help already licensed or those awaiting licensure to complete or enhance their associate degrees.

The BSN degree complements practical nursing skills by providing knowledge of the "theoretical and philosophical issues of health care delivery." It is an opening into supervisory positions in hospitals and caring facilities. It is also an enhancement that can prove beneficial as stricter hospital guidelines come into effect.

The objectives of the program include incorporating nursing theories and concepts into nursing practice, participating and/or initiating planned change for the improvement of health care delivery, and collaborating with consumers and other health care professionals in a multidisciplinary approach to the delivery of comprehensive health care.

The program no to only meets the National League for Nursing guidelines, but also focuses on community issues such as teen pregnancy, sexually-transmitted diseases and elderly health care. The program in nursing reflects a commitment in the promotion of health, prevention of illness, rehabilitation and restoration of wellness.

According to Dr. Ginny Wacker Guido, J.D., M.S.N., R.N. and chair of the ENMU nursing program, "The philosophy of the

program stresses that faculty and students share the responsibility for creating a learning climate which reflects values, fosters intellectual inquiry and creativity, and encourages the maximum development of each individual's potential."

The current enrollment of 30 students includes men and women from several ethnic groups. Most are non-traditional students with families and full-time jobs. There are currently two professors teaching five courses. By the fall semester, a third professor will be added and seven or eight courses will be offered. Scholarships are available to students meeting certain requirements.

Those desiring more information may call the ENMU Nursing Program at 505-562-2403.

In Fashion

Spring suits are arriving in shops featuring long, three-quarter and short sleeves. Many suits are of linen and rayon blended fabric, which wear well. Some are collarless and some are all one color. Yellow appears to be a popular color for the jacket with contrasting skirts of navy or black.

Hats show continued revitalization this year. The two basic shapes are brimmed or unbrimmed. For some ladies an outfit isn't complete without hat and gloves.

Central Texas Nature Center To Allow Hands-On Teaching

Temple-area students of all ages will soon be able to get away from it all and enjoy the great outdoors--and all of it for school credit.

Belton Lake's Miller Springs, with its box canyons and spring-fed streams, has been the pleasant setting for Central Texas picnickers and nature lovers for decades. But the U.S. Department of Agriculture, Scott and White Memorial Hospital, Texas A&M Medical School and Mary Hardin-Baylor University.

The environmental education center, an amphitheater and parking lot are on the drawing board for construction over the next two years, but some work is under way. Students and volunteer groups are building paths and mulching fallen tree branches for use in handicap-accessible trails.

Teaching at the Miller Springs nature center won't be confined to just the sciences, Owen said.

"An English class that was

studying a play on cowboys may have been long ago," he said. "We've also had students from an economics class come out here to study the economical impact the springs have. Students studying history have visited to hear about local legends, so it's not just the sciences."

Teaching materials about aspects of the environment pertaining to Miller Springs are being developed for each grade level. The river-oriented curriculum developed through the center will have wide application throughout Texas, Owen said.

Until the curriculum is developed, Owen and other teachers develop their own studies incorporating the springs, such as groundwater quality, soil investigation, study of animal tracks and plant and rock identification.

For one high school class, Owen is teaching students how to be trail guides for tours with elementary pupils.

"They'll get to know a particular trail very well," he said. "They'll have to know a little about geology because kids like to know about rocks and such, as well as a little about the history of the area."

"It's pretty intensive stuff, but since they're volunteers and want to do this, they won't realize they're learning. It'll sneak up on them."

Because of the Texas Education Agency's emphasis for more environmental science teaching in Texas public schools, Owen said more cooperative ventures among local, state, and federal agencies to establish environmental educational centers, like Miller Springs project, soon the 266-acre area can add "schooling" to its list of activities.

Approximately 75,000 elementary through college-age students in the Temple-Belton-Killeen area will use Miller Springs nature center to learn about the role the environment plays in their day-to-day lives. The educational program will be a hands-on approach.

"This was started because science, for one thing, shouldn't be done entirely in a room," said Tony Owen, Temple High School environmental science teacher. "So this gives an opportunity for kids to get out and explore on their own, in various types of ways, the great outdoors."

Ralph Hicks, a research associate with Blackland Research Center at Temple, said visiting Miller Springs may be the first time many city kids will have seen a preserved natural setting.

"These are city students, people who have never been outside of Temple. They don't know a lot about the environment, especially in areas like this," he said. "The earlier people begin to understand the importance of the environment to things like water quality, the greater impact it will have on them for the rest of their lives."

Watson Junior High School Fourth Six-Weeks Honor Roll 1992-93

SIXTH GRADE

Oscar Baeza, Tarrah Bell, Deepa Bhakta, Amber Bruns, Marisa Buenostro, Russell Byers, Amanda Carpenter, Rhonda Copley, Robin Cowart, Kevin Edwards, Aaron Faver, Laura Freeman, Alma Gonzales, Jesse Gossett, Michael Harris, Krystal Heathington, Jill Hodges and Nathan Keller.

Also Joshua Kitchens, Amy Marricle, Matt McClanahan, Kyle McDaniel, Amanda Messenger, Kellie Morris, Ashley Pool, Larkin Price, Joseph Quintana, Dusty Ramage, Amy Ronek, Blair Saylor, Mason Sinclair, Nichole Sutton, Jon Keith Turner, Lindy Underwood, Jacob Villa, Erin Wilhite and Melissa Williams.

SEVENTH GRADE

LeAnn Altman, Gabriella Barrera, Jesus Barrera, Kendra Benham, Katie Black, Kristina Bray, Luke Bruns, Angela Castorena, Jacen Claunch, Cassidy Cleavinger, Damon Davenport, Toni Davis, Carlos DeToro, Lindsay Dent, Jana Foster, Louisa Garcia, Robert Gardner, Amanda Hahn, Casie Height, Amy Hooten and Keila Kennedy.

Also Thomas Kirven, Amy Locker, Brianna Locker, Gerardo Loya, Steven Madrid, Kayla Magby, Andres Martinez, Elizabeth Mendoza, Scotty Mills, Mandy Myers, Paul Olivarez, Larry Pineda, Maria Puente, Daniel Rey, Shelbi Robinson, Christy Rodriguez, Chris Shelburne, Julie Slayden, Rhonda Warren, Chanda Weatherbie and Michael Woodard.

EIGHTH GRADE

Kristi Bennett, Darren Box, Jacob Caswell, John Bryan Cowart, James Cox, Darren Elliott, Kyle Embry, Samuel Espinoza, Cari Faver, Sarah Freeman, JoBeth Gilleland, Adam Graves, Denice Greenhouse, Stephanie Guerrero, Megan Harlan, Stacy Harlan, Brandi Harrison, Heather Hooten, Mendy Johnson, David Keller, Adrian King, Colby Latham, Melissa Leffler, Melissa Mata, Kendall McDaniel Reagan McElroy and Mark McGuire.

Also Isaac Miramontes, Leigh Moraw, Daniel Morris, Lacy Morris, Kristen Nichols, Shannon Noack, Jennifer Patterson, Leslie Powell, Kermit Price, Jarrod Redwine, Carlos Rojas, Carolyn Schuster, Shane Scoggin, Stefan Sutton, Twyla Wagon (Gear), Sarah Watson, Ransley Welch, Jeffrey Wheeler and Kandy Wilcox.

Life Insurance

Q: Who can you call when you have questions about life insurance?
A:



Mark Morton
109 S. 1st
272-7519
Muleshoe, Tx.

State Farm Mutual Automobile Insurance Company
Home Office: Bloomington, Illinois

Texas Herefords Make Fine Showing

Texas livestock continues to prove its superiority by winning awards in major stock shows.

At the National Hereford Show held with the National Western Stock Show and Rodeo in Denver last month, both the grand and reserve champion bulls were owned by Texans.

The champion was Star Donald 278L, shown by Lone Star Hereford Ranch, Henrietta, and G.D. Rasco of North Zulch. The reserve bull was K&B Impact 0154, owned by K&B Herefords, Onida, S.D., and DJ Hereford Farm of Abilene.

The reserve champion bull calf was IMR All American, owned by Lee Haygood of Indian Mound Ranch in Canadian. Indian Mound also had the high selling bull at the Hereford Sale - a half interest sold for \$30,000.

In the female show, the fall calf champion was B&C Ms Dom 10165, owned by B&C Cattle Co.

of Miami, Tx.

These successes are what Agriculture Commissioner Rick Perry had in mind when he launched the "Texas Livestock...Best in Any Language" marketing campaign two years ago.

The program, according to Perry, "adds another dimension to the outstanding promotional activities of the breed associations." It also serves as a marketing umbrella for small and individual livestock raisers who wish to reach the export market. The program encourages the sale of Texas livestock genetics - semen and embryos - as well as live animals.

"The fine showing made by Texas livestock at the National Hereford Show further validates what international buyers from Europe, Australia, Africa and Latin America have known for quite some time: Texas livestock is the best in any language," said Perry.

Unimmunized Children At Risk

Texas leads the nation in cases of vaccine-preventable diseases. This sad fact should come as no surprise, since immunization levels for preschool children in this state are less than 50 percent. That means that one out of every two young children in Texas are at high risk of serious, sometimes life-threatening diseases such as measles and whooping cough.

Within the past 5 years, 3,717 Texas children under 5 years old have developed measles, and 12 have died from complications of this totally preventable disease. Needless whooping cough outbreaks also have occurred.

In addition to causing unnecessary, senseless suffering and death, preventable diseases are economic burdens on our already over-burdened health care delivery

system. For example, during a 1990 measles outbreak in Dallas, 238 children and adults were hospitalized at a total cost of \$3.4 million. Vaccine for the same 238 people would have cost less than \$3,700.

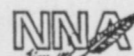
For years we have been aware of the problem, but as a society, we have ignored the blinking yellow warning lights--the reports and statistics that told us that fewer and fewer preschool children were adequately immunized.

Now the lights are no longer yellow. The warning signals have been replaced with the piercing red of a moral stop light. Can we morally continue to ignore needless sickness among our children? I think not. It's time to slam on the breaks.

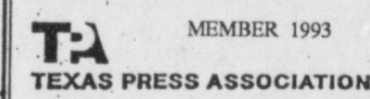
Muleshoe Journal

Established February 23, 1924. Published by Muleshoe Publishing Co., Inc. Every Thursday at 304 W. Second, P.O. Box 449, Muleshoe, Tx. 79347. Second Class Postage paid at Muleshoe, Tx. POSTMASTER: Send address changes to the Muleshoe Journal, P.O. Box 449, Muleshoe, Tx. 79347.

We Are Qualified Members Of:
Panhandle Press Association, National Newspaper Association, West Texas Press Association and Texas Press Association.



National Newspaper Association



L.B. Hall, Publisher
Sammie Hall, Vice-President/Comptroller

Evelene Harris, News
Annette Biederman, Society
Holly Millip, Advertising
Diana Bermea, Classified

Subscriptions
Muleshoe Journal and Bailey County Journal
By Carrier Yearly - \$15.00
Bailey and surrounding counties
By Mail - \$16.75
Elsewhere - \$18.50

Advertising Rate Cards on Application

WEST TEXAS PRESS ASSOCIATION

PPA PANHANDLE PRESS ASSOCIATION

Advertisers should check their ad the first day of insertion. The Journals will not be liable for failure to publish an ad or for a typographical error or errors in publication except to the extent of the cost of the ad for the first day of insertion. Adjustment for errors will be limited to the cost of that portion of the ad where the error occurred.

Savings Are In The Bag At Ben Franklin®

STOP IN AND PICK UP YOUR SPECIAL SHOPPING BAG NOW AND GET READY TO SAVE BIG!

It's Here!!



It's Here!!
Bring In Your Shopping Bag On
Thursday March 11, Friday March 12
& Saturday March 13

AND RECEIVE
20% Off!

All The Regular Priced Items You Can Fit Within The Shopping Bag!

Ben Franklin®
Our Variety Shows

2104 W. Amer Blvd Muleshoe 272-3855
Mon. - Sat. 8 a.m. - 8 p.m. Sun. 12 - 5 p.m.

This Sale Excludes All Special Orders And Previously Purchased Items.

FIXED RATE LOAN PLAN

7.75%*

FIXED RATE FOR FIRST 10 YEARS

- Farm and Ranch Improvement Loans
- Long-Term Loans for Home Construction and Remodeling
- Other Loan Plans Available
- Long-Term Assumable Loans Fully Amortized
- Rate Conversions Available at End of Fixed Rate Period

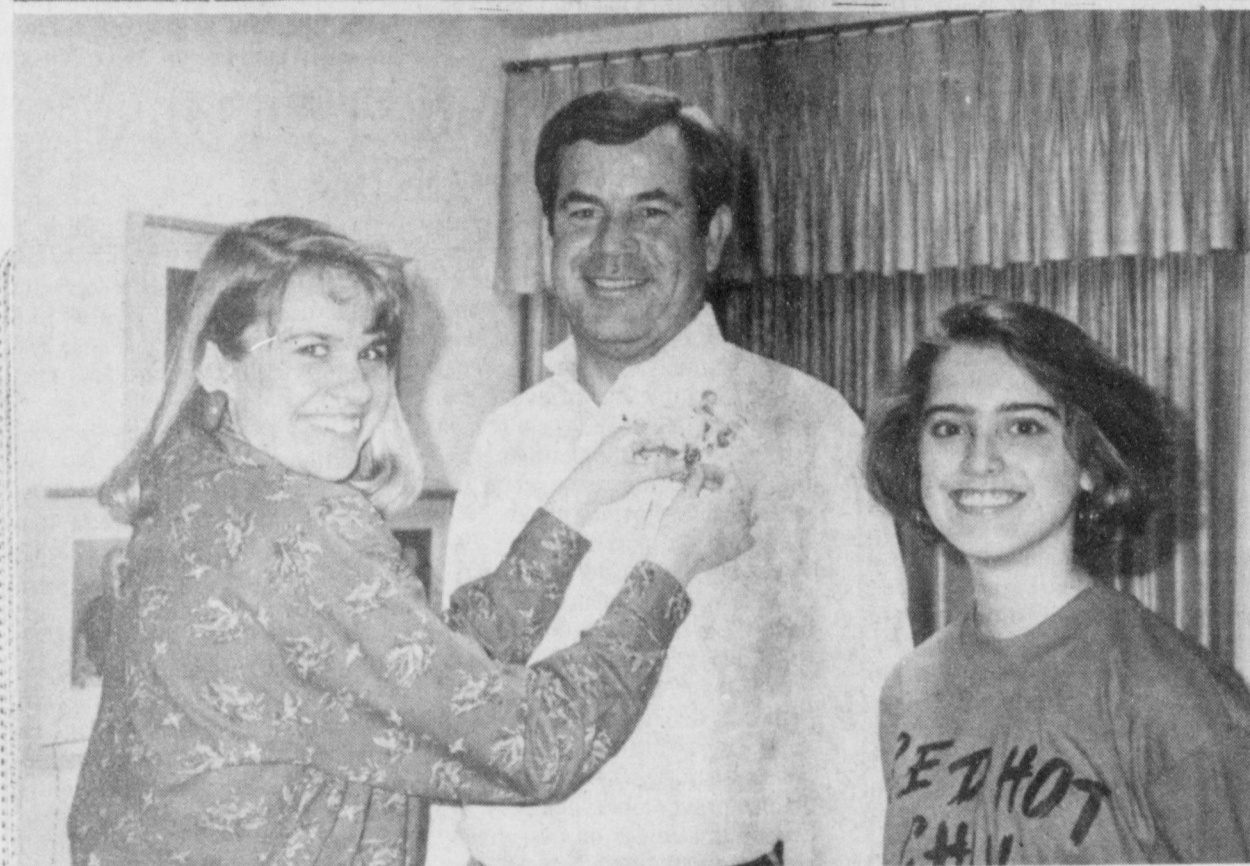
FEDERAL LAND BANK ASSOCIATION OF MULESHOE



RATES CHANGE WEEKLY
RATE CAN BE LOCKED IN BY PAYING A FEE
15 YEAR LOAN ON CENTER PIVOTS

* Annual percentage rates range between 8.06% APR and 8.13% APR depending on length of contract. APR based on rates specified during the week of February 10-17, 1993.





CITIZENS OF THE MONTH NAMED-SCAC student club members met at a meeting held Monday, March 8, 1993 in the home of Mrs. Allison. Honored citizens R.A. Bradley, January "Citizen of the Month" and Robert Montgomery "Citizen of the Month" for February were guest speakers for the evening. SCAC members are involved in honoring outstanding citizens, helping with the Heritage House Museum, and also acting as porters for visiting groups in Muleshoe. Pictured are (top) Stacie Harris, Mandy Shipman, R.A. Bradley and Aida Martinez, (bottom) Kristin Weatherbie, Robert Montgomery, and Stacie Harris. Journal Photos

Garza Theatre Presents "The Lilies Of The Field"

The Garza Theatre is proud to announce the third production of the 1993 season. A warmly humorous family show, "The Lilies Of The Field". It will open April 2 for 9 performances only. The show will run for three consecutive weekends, April 2-4, 9-11, and 16-18. Friday and Saturday evening shows begin promptly at 7:45 p.m., and Sunday matinees

begin at 2:00 p.m. "The Lilies of the Field" will star Jay-Dwayne Goswick, Brian Benitez, Patrick M. O'Conner, Ethel Lewis, Cherri Brooks, Katie Gilbert, Sammy Flores, and Raina Kennedy. Direction will be under Garza Theatre Managing Director, Jane Prince Jones. Reservations are now being taken. You may make reservations by calling the Garza Theatre Box Office at 1-800-846-3706 or (806) 495-4005. You may also pick up tickets by stopping by Mail and More in the Memphis Place Mall in Lubbock at 50th and Memphis. Garza Theatre Box Office hours are 9-5 Monday through Friday. We will be open from noon until

showtime on the following dates: April 3rd, 10th, and 17th. Ticket prices are \$7.00 for adults and \$4.00 for students ages 6-12. Also ask about our special priced group rates.

Ross Perot: "President Clinton has assembled a team full of wonderful intentions...it's completely unrealistic to expect meaningful cuts in spending from Congress."

Love sought is good, but given unsought is better. -Shakespeare.

Taste Of Texas Fiesta To Be Held

The Taste Of Texas Fiesta is back and once again promises great food, great wine, and great entertainment! Mark your calendar for Thursday, April 15, 1993 from 7:30-11:00 p.m. in the Amarillo Civic Center Coliseum and North Concourse. This year's Fiesta is sure to be the best yet! Restaurants from the Panhandle Restaurant Association will be on hand with their finest delicacies and fine wine from Texas' vineyards will please the taste buds and render themselves more than comparable to those from California and France. The Taste of Texas Fiesta is being sponsored by the Don Harrington Discovery Center, the Panhandle Restaurant Association, KISS FM, KBUY 94, Centennial Advertising, Miller of Amarillo, Civic Amarillo, American Airlines, Dixon Paper Company, Whitney Russell Printers, and Trafton Printing. The volunteer co-chairmen for this year's Fiesta are Nancy Woodman and Jean Prouty.

An excess of thirty area restaurants will be offering samples of their favorite foods for tasting. Over 25 Texas Wineries have been invited to participate and are eager for you to sample their best wines. An added attraction to this year's Fiesta is that of Collin Raye. This up and coming country music super star will be the finale to one great evening.

Collin Raye first came to the

Host Families Sought For International Students

1. Host families are being sought for high school students from Scandinavia, Europe, Asia, South America, and Australia for the 1993-94 school year in a program sponsored by the American Intercultural Student Exchange (AISE)

The students, ages 15 through 18 will arrive in the United States in August, 1993, attend a local high school, and return to their home countries in June of 1994. The students, all fluent in English, have been carefully screened by the local representatives in their home countries, and have their own medical insurance and spending money.

Host families participating in this program may deduct \$50 per month for income tax purposes.

2. AISE is also seeking American high school students ages 15 through 17, who would like to spend either a school year or a summer abroad.

Interested persons should call 1-800-SIBLING for further information.

attention of a national audience in January of 1991 with the release of his album, All I Can Be. Mr. Raye quickly followed this success with the release of In This Life which reached the top spot on the country music charts in 1992. With the recent release of two powerful videos (In This Life and Love Me), this country artist has assured his place as one of the fastest rising stars in the C&W market. Appealing to a diverse crowd which crosses the gender gap, Collin Raye will be a major attraction at this year's Taste of Texas Fiesta.

Tickets may be purchased at the Discovery Center, Civic Center, and participating restaurants. The cost is \$15 for Discovery Center members, \$20 for non-members, \$25 at the door, and \$12 for Collin Raye's performance. Discovery Center members must purchase tickets at the Discovery Center to qualify for the membership discount. Tickets for Collin Raye's performance may be purchased at the Discovery Center or the Amarillo Civic Center. You must be 21 years of age or older to attend this event. Proceeds benefit the Discovery Center and the Panhandle Restaurant Association scholarship fund.

For further information, please contact Kimberly Rankin at 355-9548, extension 11.

Muleshoe Hobby Club Meets

Muleshoe Hobby Club met Thursday March 4, 1993 at 2:00 p.m. at the Senior Citizen Complex with Jane Williams as hostess. There were ten members present and one visitor. Those present were Sherry Wisian, Laura Mae Stancell, Loma Baker, Callie Dyke, Hazel Reeder, Sammie Ethridge, Jane Williams, Esther Magby, Glenda Morris, Frances Bruns, and visitor Ann Williams. The hostess gift was won by Loma Baker.

The next meeting will be held March 18 at the same time and place.



Thomas Wendol Devenport

Chuck and Tracy Devenport of Muleshoe are the proud parents of their first son, Thomas, born March 6, 1993 at the Clovis High Plains Hospital.

He weighed in at 7 pounds and 7 ounces and was 20 1/2 inches long.

Grandparents are Tommy and Debbie Gray of Muleshoe, Vicky Devenport of Clovis, and Wendol Devenport of San Antonio.

Great-grandparents are James and Linda Gray of Muleshoe and Betty and Bob Redding of Clovis.

Great-great grandmother is Martha Rodriguez of Clovis.

Zachary Ryan Taylor

Terry and Kathryn Taylor of Muleshoe are the proud parents of a new son, Zachary, born Friday, March 5, 1993 at 9:17 p.m. at the Methodist Hospital in Lubbock.

He weighed 5 pounds and 15 ounces and measured 18 1/2 inches long.

Zachary has a sister, Jordan Elaine.

Grandparents are Willard and Carolyn Mullins of Christoval, Texas and Herb and Sue Taylor of San Angelo, TX.

Great-grandmothers are Ruth Mullins and Mrs. Jami Goode.

Washington Notes

Larger Aircraft

The Federal Aviation Administration said it was proposing further relaxation of restrictions on larger planes in slots reserved for commuter aircraft at Chicago's O'Hare International Airport.

KENW-TV

Public Television

My Heroes Have Always Been Cowboys

Through the eyes and songs of country and western singer Waylon Jennings, My Heroes Have Always Been Cowboys offers a unique look at the modern-day cowboy. The program captures the beauty of West Texas, and Jennings' music underscores both the romance and hard reality of the cowboy's disappearing way of life.

Jennings traveled to the famed 06 Kokernot Ranch in Fort Davis, Texas, for the chance to join the hands on the spring round-up. The "06" remains one of the few large ranches where horse and cowboy still do the round-up work as they did a hundred years ago.

Cowboys arrived at the ranch in pickup trucks and on motorcycles, but Jennings arrived in his deluxe tour bus.

For the next two weeks, however, they all traveled by horse and slept under the stars. Being a cowboy, Jennings learned, is a hard and dangerous job where "you go to bed when it's hot and get up when it's cold and work whether it's raining or shining." After several exhausting days, there were wry smiles around the campfire as Jennings sang "Mamas Don't Let Your Babies Grow Up to be Cowboys."

Celebrating the cowboy spirit, Jennings performs nine other songs in this special, including "My Heroes Have Always Been Cowboys," "Last Cowboy Song," and "I've Always Been Crazy."

My Heroes Have Always Been Cowboys will be broadcast Monday, March 15th at 7:00 p.m. on KENW-TV.

The Cowboy Concert

Yeeha!!!! Grab your hats and your boots for a whirl of a good time with The Cowboy Concert, a two-hour special.

The concert takes place at the Matthew's Opera House in historic Spearfish, South Dakota, in the northern Black Hills. It features the Circle B Cowboys, Troubadour Chuck Suchy, and Troubadour Kyle Evans and his group, The Company Cowboys.

Host of the program is Cowboy Poet Bob Dennis who is a cattle rancher at Red Owl, SD. Bob brings to the show a couple of poems and a real down home feel to the festivities. He was one of the featured poets on The Spirit of the Cowboy, which aired during 1992.

The Circle B Cowboys sing very close 3-part harmony with emphasis on contrvo and blend. Instruments include a stand-up bass, acoustic guitars, and a

steel guitar. They have performed throughout the United States and Canada.

Troubadour Chuck Suchy nearly steals the show with all of his heartfelt songs of the land. Much of the reality and credibility in Suchy's music comes from the fact that he is also a farmer who operates a 1000 acre beef cattle and grain farm on the rolling bluffs of the Missouri River with his wife and three children.

Troubadour Kyle Evans and The Company Cowboys perform with acoustic and electric guitars and drums. Their songs include "Back in the Saddle Again" and "I'd Like to Be in Texas for the Round-up in the Spring."

The Cowboy Concert will be broadcast Monday, March 15th at 8:05 p.m. on KENW-TV.

On Public Television

Celebrate New Mexico

Festival '93 • March 5th - 22nd

featuring 16 "Community Nights"

Tune into your community's special evening:

Roswell	5th	Truth or Consequences	13th
Tucumcari	6th	Ruidoso	14th
Carlsbad	8th	Raton	15th
Farmington	9th	Las Cruces	17th
Red River	10th	Melrose	18th
Portales	11th	Alamogordo	19th

Other Special "Nights"

"North Plains Mall Night"	12th
"Floyd Jamboree Night"	20th

Nightly Drawings for vacations, shopping sprees and more!

Make Your Pledge and WIN, WIN, WIN!

EASTERN NEW MEXICO UNIVERSITY
PORTALES, NM

If you are unable to make a pledge, bring by or mail a 3" X 5" card with your name, address, and telephone number on it to KENW-TV, 52 Broadcast Center, Portales, New Mexico 88130. For more information call: 562-2112 (locally), 800-432-2361 (NM) or 800-545-2359 (TX).

Full Meal Deal™
1/2-Lb. "Hungr-Buster", Fries, 16-oz. Drink and a Sundae
\$2.99

DQ® Kids' Meal
Your choice of a hamburger, hot dog or steak fingers. With fries, a drink and your choice of desserts. Plus a prize!
\$1.99

On Sale March 1-14, 1993

©Reg. TM Am. D.Q. Corp. *Reg. TM Tx D.Q. Op. Coun. ©Tx. D.Q. Op. Coun. †pre-cooked weight At participating Dairy Queen stores.

DECA Student Advances To National Competition

Muleshoe High School DECA student Virginia Lira has qualified for national competition to be held in Orlando, Florida in May.

On March 4-7 at the 1993 State Career Development Conference in Arlington, Virginia placed first in the Civic Consciousness Chapter Project. The project consisted of a radio show fund-raiser for the local MASH organization. Emphasis was placed on using business principles to plan, organize, implement, and evaluate the

project. The competition consisted of a written manual, an oral presentation, and an interview by judges.

Other DECA students representing the chapter at state were: Paul Rojas in Retail Merchandising, Ruben Saldana in Advertising, and Rebecca Cortez and Gonzalo Lozano as voting delegates.

Congratulations to all of these students for being state qualifiers. Good luck to Virginia at Nationals.



Virginia Lira

The American Tap Dance Orchestra

The American Tap Dance Orchestra is committed to celebrating one of America's few indigenous dance forms. Directed and choreographed by critically acclaimed Brenda Bufalino, the company has dedicated itself to the preservation and perpetuation of tap artistry. In the ATDO approach to tap, the dancers' feet are the instrument; using their feet, the dancers create a spectrum of musical tones and rhythms in the manner of a conventional orchestra. As with instrumental soloists in a big band, the dancers in the tap orchestra contribute their own virtuosity to each performed piece so that the whole becomes the sum of each dancer's unique style.

Founded in 1986, highlights of the ATDO's concert, stage, and film work include PBS' "Great Performances/Tap Dance in America," a Night of Tap at the Apollo Theater, the Atlanta Arts Festival, the Jerry Lewis Labor Day Telethon, the International

Festival of Arts at Central Park, and the Utah Arts Festival. Other ATDO appearances include the legendary Cotton Club, the Joyce Theater, the Lincoln Center's Damrosch Park, the Village Gate, Town Hall, and concert appearances throughout the U.S. and internationally.

A trail blazer in the renaissance of tap dance, Ms. Bufalino has taught, lectured, choreographed and performed around the world. In addition to her work with the ATDO, she has appeared as a guest soloist at Carnegie Hall, Avery Fisher Hall, the Brooklyn Academy of Music, the Smithsonian Institution, and Kennedy Center in Washington, D.C., Ms. Bufalino has also made numerous appearances in Israel, England, Italy, Germany, and France.

Tickets for the American Tap Orchestra presentation, at the Lone Star Ballet, to be held Saturday

Good Reason

He: "Since I met you, I can't eat, I can't sleep, I can't drink!"

She (cooly): "Why not?"

He: "I'm broke!"

ENMU University To Host Women's Art Exhibition Titled "Creating Ourselves"

April 2-23 Eastern New Mexico University will host a New Mexico Women's Art Exhibition titled "Creating Ourselves."

The art exhibition is the second of its kind to be held at ENMU. Last year an exhibition of the same title was held hosting over 200 artists. The show last year was a national exhibition, however, while this year's show is devoted entirely to New Mexico artists.

Mary Finneran, curator and art professor at ENMU, says, "We wanted to show a stronger statewide representation of women artists in New Mexico. Our future goal is to organize New Mexico women to curate a show that will go to the National Women's Gallery. Our plan is to hold the exhibit every two years in New Mexico and on the third year go national in conjunction with the New Mexico Women's Studies Conference."

The purpose of the exhibition is to "promote the statement of women and to represent women and women artists." There will be two women jurors to select and award the artists.

Sandra Luehrsen will be the slide juror, selecting the artists and work which will be accepted into the show. She has a bachelor's of art and a master's of art from Northern Illinois University and a master's of fine arts from Arizona State University. She is currently the

Assistant Dean of the Graduate College at Arizona State University.

Judy Sutton Kracke will be the awards juror. She will be awarding the Best of Show, 2nd, and 3rd places. Judy has a master's of fine arts and teaches part time at West Texas State in Canyon, Texas. She is a "site specific, public artist whose works are conceptual and interactional sculptural projects." Interested in global issues, Judy developed a world community project called "One Sun, One Earth, One Peace." The project will consist of 10 sculptures in nine different countries on six continents. The first sculpture will be constructed during March in Argentina. Her work has been widely exhibited in the United States.

The exhibition will be displayed in the Runnells Room of the Golden Library. The exhibition will open with a slide presentation and reception, April 2. The reception and exhibition is open to all faculty, staff, students, and community free of charge.

Ending Questions

Putting President Clinton's orders into practice, the military said it will no longer question recruits about sexual orientation.

On Social Security

A proposal being considered by the Clinton Administration to curb Social Security benefits is already finding strong opposition in Congress. One key lawmaker called it "a death wish" to be forgotten.

On College Aid

College financial aid programs should be fundamentally overhauled to ease a tuition burden on Americans that threatens the nation's "economic and social landscape," a federal commission recommends.

Now Open For Business

C&M Sports Cards

115 S. 1st. Muleshoe

We Buy, Sell Or Trade All Kinds Of Sports Cards

Open Mon.-Wed.-Fri.

3 p.m. - 6 p.m.

Sat. 10 a.m. - 4 p.m.

Would You Like To Earn Extra Money?

Then Why Not Sell AVON?

"The Smartest Shop In Town"

No More Door to Door

Have You Sold Avon Before? Why No Sell Again!

If Interested Call: Holly Millsap

272-5607

After 6 p.m., Mon.- Sat.

WOMEN'S WEAR



Spring Break Sale

Lee

Lee® Denim Jeans or Lee® Denim Shorts for Women and Juniors

\$19.99 Your Choice

Jeans Reg. \$29.99
Shorts Reg. \$25. 100% cotton denim in assorted styles and finishes. Women's sizes 8-18, junior sizes 3-13. SAVE UP TO \$10.

Plus Size Jeans
Reg. \$31.99 \$21.99



Lee® Casual Twill Pants for Women

\$22.99

Reg. \$28. 100% cotton in your choice of pleat front or side elastic waist styles. Assorted colors. Sizes 8-18. SAVE \$5.

Levi's® 501® Stonewash & 550® Electricwash Jeans

\$27.99 Your Choice

501® Jeans. 100% cotton with straight leg. In assorted finishes. Men's 29-38. Limit 6 pair per customer.

550® Jeans. 100% cotton with tapered leg. In assorted colors. Men's 29-38.

Levi's® ESP® Stretch Denim Jeans for Men

\$22.99

Made from a blend of cotton-polyester with boot cut leg. In indigo blue or black. Sizes 32-42

Levi's® 550® Jeans for Boys

\$15.99 SIZES 4-7. REG. \$22

SIZES 8-14
Reg. \$25 \$17.99

SIZES 25-30
Reg. \$27 \$19.99

100% cotton with loose fit and tapered leg. Indigo blue or black. SAVE UP TO \$7



Women's Eastland® Casuals

\$36.99

Reg. \$49. Women's sizes 6-10. Styles will vary by store.

Riddell® Athletic Shoes for Men & Boys!

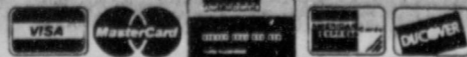
\$16.99 \$19.99

Court Shoe
Reg. \$19.99
Boys' 1-6, Men's 8-12.

Crosstrainer or Basketball,
Reg. \$24.99 & \$26.99
Men's 8-12.



321 Main Muleshoe 272-3478
Hours: Mon. - Sat. 9:00 a.m. - 6:00 p.m.



Farm Program

Cont. From Page 1

of any participating program crop acreage base. This acreage will be known as "Flex" acreage. Permitted crops on flex acres are: any program crop, any oilseed, any designated industrial or experimental crop, and any other crop. **EXCEPT** fruits, or vegetables. The first 15 percent of the flex acreage will be known as **Basketball...**

Cont. From Page 1

manager. Special thanks go to Amber Bruns, Gwen Sinclair, and Clint Black for keeping stats. Johnna Cleavinger was the Mule-Buddie cheerleader Saturday afternoon.

FmHA...

Cont. From Page 1

"Although we finely have this help, I am still greatly concerned that we face a two month backlog of applications," said Combest. "Now, FmHA must do what is necessary to see that this gets the job done."

Spelling

Cont. From Page 1

Being a good speller seems to run in Steve's family, his mother, the former Rhonda King, was also the Bailey County Spelling Bee Champion, when she was in the seventh grade.

Unclaimed...

Cont. From Page 1

organizations, and cooperations from whom they are holding cash of \$50 or more, stocks, or contents of safe deposit boxes.

School Board Meets In Regular Session

The MISD board of trustees met in regular session Monday, March 8 in the School Administration office.

Cindy Purdy, president, called the meeting to order and recognized the visitors present including: Sally and Jay Messenger, Jane Rudd, Dianna Harrison and Amanda Messenger.

Minutes of the February 25 meeting were approved as read.

The first item of business was voting for Place 2 and 5 on the Board of Trustees for the Education Service Center, Region 17.

It was announced that all of the local board members had exceeded the required Board Training hours.

During the informational reports, Bill Moore, superintendent, reported that the Sundown ISD board was interested in joining the PEP School. He stated that they would pay the same start up fee as all of the other schools have. Including Sundown there will be eight schools participating in the PEP School. He also reported that they are working on a summer program for PEP. According to his report, one student has completed all requirements and wishes to go through May graduation. "We are seeing good results out at PEP," Moore said. Moore also stated that 5 p.m. March 17 is the deadline for filing in the school board election.

Adrian Neador, superintendent of instruction, reported on the Spelling Bee held last week. Steven Madrid, a seventh grader was the winner and Aaron Purdy, also a seventh grader, was the alternate. Steven will compete in the Regional Spelling Bee in Lubbock on April 3.

Buck Johnson, superintendent of operations, reported on the food service.

"Normal Flex Acreage" (NFA) and the other 10 percent will be known as "Optional Flex Acreage" (OFA). Crops planted on flex acres are not eligible for deficiency payments and will be considered as P&CP credit for the applicable participating program crop.

10. 0/92 provisions will be in effect for wheat and feed grains, and 50/92 provisions will be in effect for upland cotton.

11. Wheat and feed grain bases were calculated by averaging the planted and considered planted (P&CPP) of the preceding 5 years. Cotton bases were calculated by averaging the P&CP of the preceding 3 years.

12. Zero certification-Producers who certify that no acreage on the farm was planted to the program crop and that any fruits and vegetables planted on the farm is not in excess of normal plantings, will have the entire program crop acre base considered as planted for base retention purposes.

13. Cross compliance does not apply. However, nonparticipating crops cannot increase their bases if there is a participating crop on the farm. Nonparticipating crop plantings may exceed CAB's but P&CP will be limited to the crop acre base if any other crop is participating.

14. Payment limitation will be limited to \$50,000.

15. ACR and CU eligibility-The acreage designated as ACR and CU for Pay, including the 8 percent, must be cropland that was either planted or considered planted to a crop in 1 of the past 5 years. All fields except one, designated as ACR and CU for Pay, must be at least 1.0 chain wide and contain 5.0 acres. **Exception #1.** Blank rows in a skip row pattern are eligible for ACR and CU for Pay if the Skips are uniform across the field containing the larger of 4 normal rows or 150 inches from plant to plant. Must be at least 4-30" rows. For 1993 and subsequent years, the number of rows planted between skips cannot exceed 36 rows. For example, 40 rows planted to the crop and 4 rows out is not considered as skip row and the 4 rows out is not eligible for ACR and CU for Pay. **Exception #2.** There is no minimum size and width requirement for CU for Payment for acres between skips in an established **COTTON** skip row pattern. **NOTE: COTTON ONLY,** not Grain Sorghum. **Exception #3.** Contiguous and noncontiguous strips, including end rows, terraces, and sod waterways, that average 33 feet wide and are required by the CPO. **Exception #4.** Contiguous and noncontiguous strips, including end rows, terraces, and sod waterways, that are planted to a perennial cover and average 33 feet wide.

16. Cover crops are not mandatory to be planted on ACR and CU.

17. Corn and Gr. Sorg. bases are not combined for 1993. However, Corn and Gr. Sorg. permitted acreages are combined. Planted and considered planted (P&CP) will be calculated using the crop acre base (CAB) ratio and payment acres will be calculated using the maximum payment acres (MPA) ratio. These ratios will be used without regard to which crop is actually planted. For further details on the 1993 Farm Program, please contact this office.

PERSON DETERMINATION/ ACTIVELY ENGAGED

All operators and owners must have a "Person Determination" and "Actively Engaged In Farming"

determination on file each year to be eligible for program benefits. To be determined "Actively Engaged In Farming", a producer must contribute in two separate ways. On one hand, they must contribute capital, equipment, or land; on the other hand, they must contribute active personal labor and/or management. Landowners are exempt from this provision. A spouse may be considered as a separate person for payment limitation purposes if all requirements for separate person are met and neither husband or wife has an interest in any other operation (10 percent or more) earning payments. Estates may be an exception.

REMEMBER!!! Payment Limitations and AD-1026's (Sodbuster/Swampbuster) must be on file and approved by the County Committee prior to receiving any payments. End of year reviews will be made to insure producers followed through with their original plan of operation.

The Status date for making person determinations are as follows: CR<A-End of Applicable sign-up period. ACP-Date application is filed. IF producers carry over an ACP practice from one year to the next year (Oct. 1), the status date is the date performed.

ACP-(Farm Program) End of sign-up period-April 30, 1993. Wool and Mohair-Date application is filed but no later than Dec. 1.

The status date applicable to the first program in a program year for which a contract or application is approved or filed for the producer will be used for all programs for payment limitation purposes.

Please contact this office for further details concerning person determinations and status date.

Muleshoe Girls Win In Clovis

The Muleshoe Connection of Ashley Crawford, Amy Marricle, Lindsey Field, and Andrea Roberts played for the Clovis Bucks Saturday afternoon in the championship game of the Clovis Play Inc. League Tournament.

In the first quarter, the girls led their team to a 7-4 lead. The second quarter was shaky with the girls not scoring and the game was tied at 10-10 at half time.

The third quarter was highly contested with the Clovis Bucks leading 17-16. In the fourth quarter the Muleshoe connection showed why they led their team to an undefeated season by completely shutting down their opponents and winning 23-16.

Amy Marricle had one rebound and caused several turnovers that led to scores for her team. Ashley Crawford pumped in 6 points, hit the board for five rebounds (a team high) and led the team with two assists.

Lindsey Field was the team's leading scorer with 8 points. She added four rebounds, and one assist. Andrea Roberts led the team with five rebounds. She also tossed in 3 points.

Where?

Miss--Did anyone ever tell you how wonderful you are?

Youth--No; I don't think anyone ever did.

Miss--Then I'd like to know where you got the idea.

Wise Youth

Fly Fisherman--Did you catch all those trout with nothing but worms?

Boy--Oh, no! There was brains at 'tother end of the line.



MAC BUCK WINNERS---Saturday afternoon Dorothy Bowers, left, was the lucky winner of \$100 in MAC Bucks. Lawana Stroud, right, won \$50 in MAC Bucks, while Lela Sue King, center, won \$25. John Stevens, upper left, and Harvey Bass, both MAC Committee Members conducted the drawing.

Playa Symposium To Explain Regulations, Opportunities

Across West Texas, thousands of playa lakes dot the landscape. Facts and myths about what landowners can and can't do with these shallow, rainfed surface water reservoirs will be explained during two Playa Wetland Symposia March 24 in Lubbock and March 25 in Amarillo.

Several federal and state agencies and private wildlife groups are joining forces with the Texas Parks and Wildlife Department (TPWD) to conduct the identical programs. These are the Texas Agricultural Extension Service, USDA Agricultural Stabilization and Conservation Service (ASCS), USDA Soil Conservation Service (SCS), USDA Farmers Home Administration, U.S. Fish and Wildlife Service (USF&WS), Lubbock and Texas Panhandle chapters of Ducks Unlimited, Texas chapter of the Wildlife Society, and the Playa Lakes Joint Venture.

In Lubbock, the symposium will be at the Texas A&M University Agricultural Research and Extension Center, FM 1294 just east of I-27 at the Shallowater exit. The Amarillo meeting will be at

the Texas A&M center in Amarillo, 6500 Amarillo Blvd. West. Each program will begin at 8 a.m. and end about 3 p.m. Purposes of the conference will be outlined by Gene Miller, TPWD technical guidance biologist, Amarillo. The importance of playa lakes to wildlife will be discussed by James Ray, waterfowl biologist with TPWD, Amarillo. Private opportunities with the Soil Conservation Service will be covered by Gary Valentine, SCS state biologist, Waco.

Farmers Home administration conservation easements and how they can benefit the landowner and wildlife will be explained by Patrick Sultenfuss, chief of that agency's appraisal and underwriting section at Temple. Private lands opportunities with the ASCS will be discussed by Darrell Davis. He is chief of the conservation division at the state ASCS office in College Station.

Opportunities with USF&WS will be covered by David Haukos, technical assistance biologist with that agency, Lubbock. Ray will cover opportunities offered private

landowners by TPWD. A panel of landowners will relate their experiences in implementing projects on private lands. Panelists will be William Armstrong and Robert Baker, Lubbock; Charles Wall, Dalhart; Hulon Carthel, Floydada, and B.J. Pierce, Texico, N.M.

Registration forms are available at county offices of the Extension service. Advance registration by March 17 is \$8. Registration at the door is \$10. Registration includes lunch.

Who Knows?

1. When did Thomas A. Edison complete the world's first motion picture studio?
2. Who opened the Winter Olympic Games at Lake Placid, N.Y.?
3. Who said: "Mediocrity can talk; but it is for genius to observe?"
4. Name the state bird of Maine.

- Answers:
1. One hundred years ago, February 1, 1893.
 2. By New York Gov. Franklin D. Roosevelt, in 1932.
 3. Benjamin Disraeli, British Prime Minister (1804-1881).
 4. The chickadee.

ANNUAL MEETING

ENMR
TELEPHONE
COOPERATIVE



NEW MEXICO

OKLAHOMA
TEXAS

ENMR Telephone Cooperative, Inc.
Saturday, March 27, 1993
Logan High School Gymnasium
Logan, New Mexico

Registration begins at 9:00 a.m.

Business Meeting begins at 10:00 a.m.

Door Prizes Will Be Given

Lunch Will Be Catered By The Fireside Cafe in Logan

Directors will be elected

Directors Include:

- Travis Wood (Roy, Clayton, and Nara Visa area)
- Bruce Runyan (House, Ft. Sumner & Ragland area)
- Mike Teeter (Ft. Sumner, House & Ragland area)
- Ralph Lofton (Bellview, San Jon, Logan & Grady area)



Pictured are: Albert Lopez, Jesus Mendoza, George Madrigal, Anthony Castillo, Fernando Romero and Ramon Mendoza

Your Only Local Raincat Sprinkler Dealer In Town!

This Raincat Sprinkler System is located approximately 6 miles South on the Jerry Nickels farm!

Offering the Farmer with complete Sales & Service in Irrigation Sprinkler System Set-up!

Mendoza Irrigation Service

P.O. Box 239

E. Hwy 84

272-5511

DeShazo Odyssey Of The Mind Team Competes

The DeShazo Odyssey of the Mind Team competed in Lubbock at Texas Tech University on March 6 for the first time. The Odyssey of the Mind (OM) Program is similar to the Olympics, however, it is not for athletics but for the challenging of the mind.

Muleshoe students competed in four different events: "Which End Is Up?", Folk Tales, Old Man and The Sea, and Dinosaurs. According to Ralph Sanchez, the DeShazo students fared well. The "Which End Is Up" team finished fourth overall. The Dinosaurs team also excelled, with a fifth place finish.

The Folk Tale Team also did well with sixth place finish and missed fifth place by 24 hundredths of a point. The Old Man and The sea team finished seventh.

"The Muleshoe students were successful in the competition, and many are excited about competing next year with a year's worth of experience," Sanchez said.

The team members for the "Which End Is Up" were: fifth graders, Blake Mount, Morgan Locker, Kyle Hahn; fourth graders, Brandon Broyles and Bobby Guerro, third graders, Brandon Mount and Jaime Guerrero. In this event they had to construct a balsa wood structure that weighed approximately 0.63 ounces and that holds weight. The team performed a magic skit to introduce their structure and continued it through out the presentation while weights were placed on the structure. They were coached by Ann Mount and Don and Donna Locker and were assisted by Terri Hahn, Tera Keller and Sam Harlan.

The Dinosaurs Team members were: fifth graders, Michael Lopez, Ryan Hodge, and Bret Clements, fourth graders were, Stephanie Kirk

MHS Boys Golf Team Plays In Floydada

The Muleshoe High School boys golf team played their first tournament for the season in the Boys Floydada Invitational.

The team tied for second and lost in a one hole play off to Tulia. Todd Shipman tied for third Medalist and won in a one hole play off.

Individual scores for Muleshoe were: Todd Shipman, 81; Mark Hicks, 92; Brian Box, 92; Chad Montgomery, 83; and Bryan Field 104, for a team score of 348.

In the individuals, Gage Angeley scored 95.

The top three Individual Medalist were: Chris Mahaney, 75, Tulia; Kent Hukill, 78, Canyon; Todd Shipman, 81, Muleshoe; and Josh White, 81, Childress.

Top three team finishers were Canyon, 337; Tulia, 348; and Muleshoe, 348.

Remaining team scores were: Childress, 359; Denver City, 364; Farwell, 370; Friona, 383; Floydada, 393; Olton, 398; and Post 424.

and Megan Tipps, third graders, Rendi Hodge and Lincoln Riley. They had to create dinosaurs that performed tasks from the Mesozoic Era. They were coached by Lizz and David Tipps.

The Folk Tales Team members were, fifth graders, James Barrett, Stacy Locker, Tyson Purdy, and Landon Black, fourth graders, Megan Barrett and Kyle Attwood. They had to create and perform a folk tale. They were coached by Cindy Barrett and Ruth Locker. Dawn Williams was a great help with all the assistance she offered.

The Old Man and The Sea team members were: fifth graders, Lela Hancock and Buck Angeley, fourth graders, Roxanne Garcia, Joe Adair, Adrienne Ashford, Chris Hale and third grader, Stephan Shelburne. They had to create an analogy of the classic and perform it. They were coached by Jaunna Shelburne and Pam Hancock.

"It was organized by the G/T program, however it was not limited to G/T students.

"All the effort put forth by the students and coaches to achieve and reach the goal of competing in the Regional competition was appreciated by Mrs. Finney, Bill Moore, and myself," said Joseph Sanchez.

"Thanks go out to the parents

and family for attending and supporting our OM teams," Sanchez continued. "Mrs. Kim Thetford, Mrs. Trish Moore, also attended the competition and their support was also appreciated. Special thanks go out to Margaret Street for helping our OM coaches by assisting in purchasing of tickets for the OM team members to attend the Texas Tech Women's Basketball game during the OM competition and awards assembly. Margaret Street is the sister of DeShazo teacher, Mrs. Ruth Locker.

Muleshoe City Police Report

Various complaints were logged by the Muleshoe City Police Department over the past two weeks and include: an Attempted Burglary of a motor vehicle; Theft by Check; Stolen CD Player, Stolen Radar Dectator; Tool Box removed from pickup; Person(s), Broken Beer Bottles, Vehicle Scratched, three cases of Burglary of Motor Vehicle; two cases of Theft; Criminal Mischief, and FTA and Speeding.

Arrests made included: three on Capias Warrant; one Local Traffic Warrant; five for Issuance of Bad Checks; Outstanding DPS Warrants; Theft; and Warrant out of Friona.



RECEIVES FIRST DIVISION AT ENSEMBLE CONTEST--The Brass Ensemble, Veronica Gonzales, Josh Lindt, Cari Turner, Tera Keller, and Jason Barrett, along with the Percussion Ensemble, Christy Holt, Mikki Bowen, Rebecca Warren, Mandy Seales, Leo Gallegas, Samuel Villarreal, Audra Lee and Rob Clapp, received a first division at Ensemble Contest recently. The state qualifiers, Shawna Delaney and Mason Conklin are also pictured. (Journal Photo)

Law Enforcement Class Set At SPC Arrest, Search and Seizure

A law enforcement course in arrest, search and seizure is scheduled March 1-10 at South Plains College, with noon Feb. 26 set for a registration deadline.

The class will meet 4-8 p.m. Mondays, Tuesdays, and Wednesdays in the SPC Petroleum/Law Enforcement Technology Building, room 115. Cost is \$24 a person.

The course is required for intermediate certification and meets standards for credit by the Texas commission on Law Enforcement Officer Standards and Education, according to George Lawless,

coordinator and an associate professor of SPC's law enforcement program.

"The course will cover exceptions to search warrant requirements, warrantless searches of vehicles, habitations and persons and will present developmental ideas of the concept of probable cause to search, seize and arrest," said Lawless. Students will learn when to arrest and when a search can be conducted in relationship to the arrest."

Formal registration will be completed at the first class session. Either payment in full or a purchase order number is required.

The class must have at least 10-12 persons.

For more information, contact the SPC law enforcement office at 894-9611, ext. 291.

Washington Notes

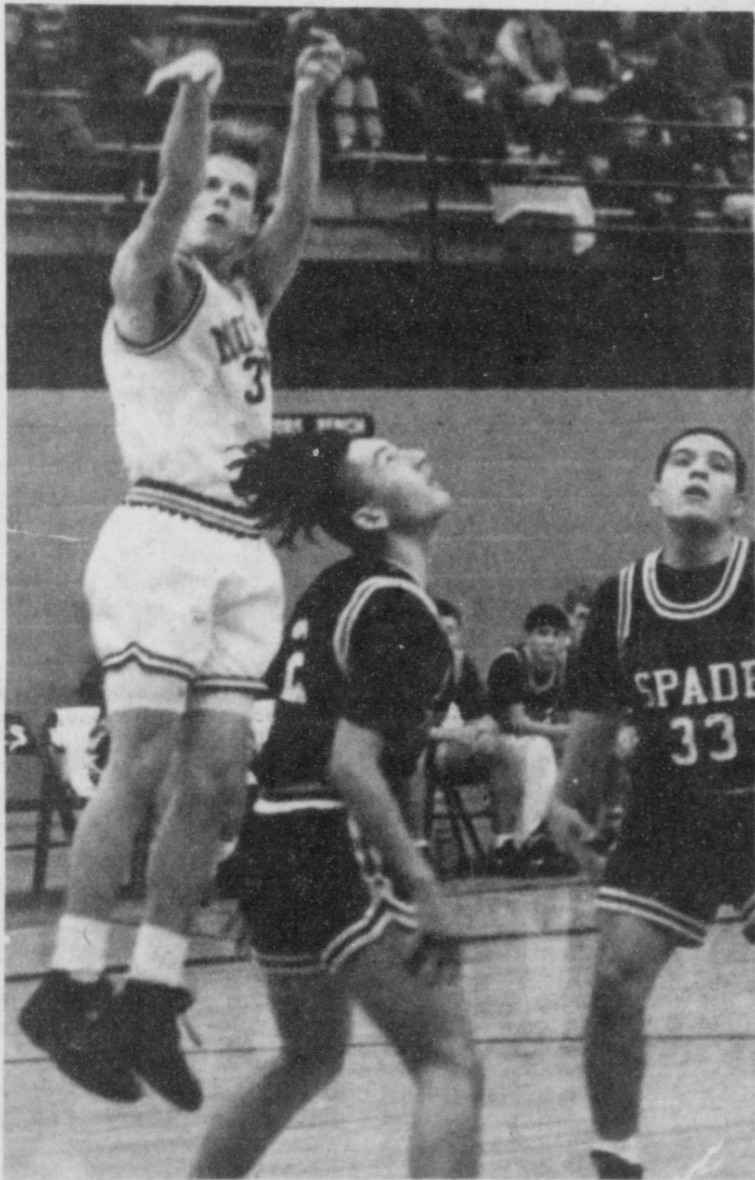
Signs Bill

President Clinton has signed the first major legislation of his presidency, hailing approval of the family leave bill as an end to 12 years of gridlock in Washington.

HEALTH INSURANCE

CALL Mark Morton 109 S. 1st Muleshoe 272-7519

State Farm Mutual Automobile Insurance Company Home Office Bloomington, IL



ALL DISTRICT TEAM MEMBER--Eric McElroy was named to the All District Boys Basketball Team. (Journal Photo)



Liberty Cellularphone Network Brings Cellular LIFELINE To The South Plains Region

Giving You Peace of Mind For Just 49¢ a Day!

We have become a very mobile society—always on the go and always dependent upon our ability to communicate.

Whether you are lost, late, or threatened by an emergency situation, CELLULAR LIFELINE can be there for you. Cellular Lifeline is synonymous with safety, security, convenience and peace of mind. And NOW—it is most affordable for everyone!

For just 49 cents a day (\$14.95 a month), you or someone you care about can have a cellular phone whenever and wherever you travel!

Receive 100 FREE Minutes For Participating in Cellular Usage Survey

The first 50 approved* applicants who apply for Liberty Cellular service in the month of March will receive 100 FREE Minutes of airtime! The only requirement is that you agree to participate in a pilot program allowing us to survey your cellular usage and document any EMERGENCY situations that occur within a six month period.

* Subject to credit approval

Bring This Ad To Your Nearest Liberty Cellularphone Agent or Stop By To See Us At One Of Our Offices Listed Below

LIBERTY CELLULARPHONE NETWORK

In Levelland: 303 Avenue H • 894-8004
In Brownfield: 1319B Tahoka Road • 637-6744
In Plainview: 2215 W. Fifth Street • 293-7366



Early bird gets the WEEDS

Don't Forget!
Poynor's will furnish you a free spreader to apply...

weed and Feed Special
Now's the time to apply ferti-lome's strong 20-4-4 formula that feeds your lawn and prevents future weeds and wild grass from coming up!
2,500 sq. ft bag..... **11.00**
Free use of spreader

Lawn Food containing "TEAM"
New, safe pre-emergent weed control TEAM ("balan and treflan") can be applied to ALL TYPES of turf grasses including fescue!
Prevents grassy-type weeds such as crabgrass and feeds your lawn at the same time. Apply with confidence around trees and shrubs!

Dacthal Pre-Emergent
Controls both broad-leaf weeds and grassy-type weeds.
Safe to apply around trees, shrubs, and 26 different vegetables.
Dacthal contains no food value but is one of our best weed controls.

Dacthal Crabgrass and Weed Preventer

P O Y N O R S

103 Main Muleshoe 272-4552

Muleshoe Fire Department News

By Larry Rasco

President Jack Dunham called the meeting to order, minutes were read and approved as read. Planning conference was held Feb. 6 for the Floydada Rescue School. On March 2nd at Muleshoe Fire Dept., Bryan McNevin will be here to do a class. Bryan is with the Texas Commission on Fire Protection. On March 14th, in Canyon, there will be a planning conference to plan the Panhandle Fire convention that will be held in Amarillo. The Higgins Rescue School will be held April 17 in Higgins Texas. There will be a school starting the 2nd week of March at the fire station conducted by Texas A&M. This school will be approx. 40hrs long.

The firemen's ball will be held on April 17, 1993 at the fire station. The cost will be \$5.00 per couple. The dance will feature a live band, for other details contact any of the firemen. Fire Marshall Jimmy Mills gave a report on the fire at John's Custom Mill that completely destroyed the building. We had several firemen treated for

Services For Inez Powers Clark Held

Services for Inez Powers Clark, 81, of Shallowater were held Monday in the 12th Street Church of Christ, Shallowater, with the family of Inez Clark officiating.

Burial will be held at 3:00 p.m. Monday in Restlawn Cemetery in Hereford, under the direction of Rix Funeral Directors of Lubbock.

Mrs. Clark died at 4:00 p.m. Friday at her daughters residence following a lengthy illness.

She was born in Hawthorne, OK, and has been a Shallowater resident since 1943. She married Chester Lee Clark on August 18, 1931 in Harmon County, Oklahoma. He died on January 9, 1965.

She was a homemaker and a member of the 12th Street Church of Christ in Shallowater.

Survivors include six sons: Wendell of Hereford, Joe Frank of Lubbock, Jim, Harold and Wayne of Dumas, W.D. of Phoenix, AZ; three daughters, Clela Winfrey of Lubbock, Sammie Simpson of Maple and Faye Agnew of New Deal, TX; one brother, Clifton Powers of Hawthorne, Nevada; 24 grandchildren and 30 great-grandchildren.

The family suggests memorials to Hospice of Lubbock, New Mexico Christian Children's Home, HC 69, Box 48, Portales, NM 88130, Lubbock Christian University and Lubbock Children's Home.

Grandchildren will serve as casketbearers.

smoke inhalation but luckily no serious injuries.

"The members of the Fire Department would like to say thanks to all emergency departments and personal that helped with the fire at John's Custom Mill." Muleshoe Police Department, Bailey Co. Sheriff's Department, Bailey Co. EMS, City of Muleshoe, Texas Department of Public Safety, Texas Highway Department, Sudan Fire Department & EMS, and to anyone else that helped.

Muleshoe Firemen of the Month are Scott Churchman and Gary Clark.

Scott joined the fire department in August of 1983, he is employed by Wheelabrator Coal Services Tolk Station. Over the past ten years he has been very active in receiving training at many different schools. Scott is an instructor at Lubbock Area Fire School and has been for several years. I would like to say THANKS to Scott for all the long hours he has spent doing maintenance and rebuilding trucks of his own time. If you see Scott on the street, tell him how much his time is appreciated, to the department and to Muleshoe. The members are very proud that Scott is part of the Muleshoe Fire Department family.

Gary Clark joined the fire department in March of 1992, he is employed by Valley Grain in Muleshoe. Gary has received training from Canyon Area Fire Control School in LPG fires and basic firefighting, Floydada Agro-Rescue School in Pesticide Challenge, Sudan Emergency Rescue School in Emergency Driving, Lubbock Area Fire Control School in LPG & House Fires, Protective Equipment & Breathing Apparatus, Haz-mat R & I. This is alot of training for a short period of time as a member of this department, Gary is a very active fireman, Muleshoe Fire Department members would like to welcome Gary, Brenda and family to our family. Keep up the good work Gary.

BIBLE VERSE



"Whatsoever ye do, in word or in deed, do all in the name of the Lord Jesus, giving thanks to God the Father through him."

1. Who is the author of the above advice?
2. To whom was he writing?
3. Upon what occasion?
4. Where may this verse be found?

Answers:

1. Paul the Apostle.
2. The Christians in the church at Colosse.
3. To counteract the influence of false leaders who had come into the church.
4. Colossians 3: 17.

Whoever lives true life will love true love.

-E.B. Browning.

Loan Consolidation Can Get Borrowers Back On Right Footing

Changes to federal financial aid rules will make it easier for student loan borrowers who are having trouble making payments to get back on track. Borrowers who have loans that are more than 90 days delinquent are now eligible to include them in a loan consolidation account, a plan that can significantly reduce initial monthly payments, say officials at Sallie Mae, a corporation that operates the nation's largest loan consolidation program, the SMART LOAN Account.

"Until now, loan consolidation was not generally available to the very borrowers who need it most -- those who have not been able to make their monthly payments," said Elizabeth H. Ende, assistant vice president at Sallie Mae. "By lowering their monthly payments, delinquent borrowers should get the relief they need to get back on track and start improving their credit rating."

Ende added that borrowers who have defaulted on their loans may also be eligible for loan consolidation, provided they have made satisfactory payment arrangements with the holder of their loans.

Loan consolidation allows borrowers to combine their various eligible student loans into a single new loan that offers lower initial monthly payments. The program was started in 1987 as a way to make student loan repayment more manageable during the early years on borrowers' careers, when they are most strapped for cash. Over the past five years, Sallie Mae has originated \$3 billion of the \$4.8 billion in loan consolidation accounts made to borrowers nationwide.

Loan consolidation programs are funded and operated by financial institutions, such as Sallie Mae, under terms and conditions established by law. In July 1992, Congress expanded eligibility for loan consolidation and made a

number of other changes to the program aimed at helping

Letter To The Editor

Read My Lips - Tax Cut for the Middle Class! No Wait! The deficit is billions more than we were told. (That's hard to believe when a billboard in New York City keeps a running total.) But since we can't provide that then let's pass a government funded abortion counseling, and let gays in the military. Just in recent memory congress voted themselves a \$22K increase. I know plenty of families that don't make that much. What this boils down to is that the middle class once again carries the weight. We God fearing, hard workers trying to raise a decent family are stuck holding the bag. Our employers offer a single digit wage increase while our government outspends itself. Insurance and Utility companies want double digit increases. Gays and abortion counseling should take back seats to REAL problems facing REAL people. Those superficial staff cuts mean nothing to people who count coupons to feed their families. Its not just creating jobs, its making a government work like a business so we are not taxed to extinction. We the majority need to draw attention to ourselves, then we may share in the exceptional favors set aside for special interest groups.

Mark D. Magnan
Belton, Texas

February 22, 1993

Muleshoe Office
302 W. 2nd St.
Muleshoe, TX 79347

Dear Muleshoe Office,

February marks our twentieth year of service to women and families. Our goal in 1973 was to provide the highest possible quality of care to the patients we serve and that remains our goal today.

We have made numerous changes in the way we provide service during the past twenty years. We have listened to feedback from our patients as well as our referring physicians and clinics in order to improve and respond to changing needs. Much technological change has also occurred, making pregnancy termination safer and more comfortable for women.

We appreciate your support over the years and we will continue to listen to your suggestions that improve our quality care. Let us know how we can be of assistance to you and your patients.

Sincerely,
Curtis Boyd, M.D.

borrowers, including extending the maximum repayment term from 25 years to 30 years, allowing married couples to consolidate their loans together, and allowing parents with federally-sponsored PLUS loans to consolidate.

Here's an example of how loan consolidation works: Jane Smith has several basic Stafford loans totalling \$15,800. They are 10-year loans with an 8 percent interest rate for the first four years, and 10 percent thereafter. For the first four years, she will make monthly payments totalling \$192. Her payments will increase for the last six years. With the SMART LOAN Account, she could consolidate all of her loans into a single, 9 percent loan and make only one monthly payment.

She could also lengthen her repayment term and choose a graduated repayment schedule that would reduce her payments for the first four years by about 40 percent -- to as low as \$118 a month. Then her payments would gradually increase, just as her earning potential would probably grow.

The SMART LOAN Account is available to borrowers with at least \$7,500 in Stafford loans, Supplemental Loans for Students (SLS), Perkins loans, Health Professions Student Loans (HOPSL), and PLUS loans for parents. The loans must be in their grace period (the period right after a borrower leaves school) or in repayment. Sallie Mae, which purchases loans from lenders, must own at least one of the loans or the borrower's lender must not offer its own consolidation program.

Consolidation loans carry a fixed interest rate for the life of the loans, which is based on the weighted average rate of the loans being consolidated. The rate can go as low as 9 percent but cannot go higher than 12 percent. Historically, more than nine out of 10 borrowers have been eligible for the 9 percent interest rate.

For additional information on the SMART LOAN Account, consumers may contact Sallie Mae at 1-800-524-9100 any day of the week from 8:00 a.m. to midnight EST.

The greatest love is a mother's; then comes a dog's; then comes a sweetheart's.

-Polish Proverb.

Prevent Food Poisoning

Food poisoning is a common illness which can be quite serious, especially for children, the elderly and those with chronic diseases which suppress the immune system. According to Chuck Barton, M.D., medical director of Methodist Hospital's Adult Emergency Center, proper food handling is one of the best ways to avoid food poisoning.

Dr. Barton suggests the following tips:

*Wash hands thoroughly with soap and water before and after handling food.

*Wash your hands, and all work surfaces such as cutting boards and utensils immediately after handling any raw meats, poultry or eggs.

*Use acrylic cutting boards instead of wood, which can harbor bacteria.

*Do not serve foods which contain raw eggs or raw fish.

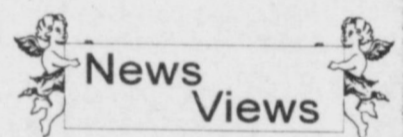
*Refrigerate foods at 40 degrees Fahrenheit-freeze foods at 0 degrees Fahrenheit.

*Do not store foods in cans that have been opened-transfer the food to another container.

*Never thaw meats at room temperature. Instead thaw them in the refrigerator overnight or in the microwave oven.

Cook foods thoroughly, using a meat thermometer to check the internal temperature. Beef and pork should be cooked to at least 170 degrees and lamb and poultry to 180 degrees.

*When warming foods, keep them above 140 degrees. Do not allow hot foods to sit at room temperature for more than two hours.



Albert Gore, Vice President:
"The main components all have to be there in order for the economic program to be successful," commenting on congressional consideration of the administration's economic package.

For Your Customized Caps
Call Area Cap Company
1-800-238-1486

We Appreciate Your Business
Dickey Garner and Bob Stafford

PUBLIC NOTICE

BRIEF EXPLANATORY STATEMENTS

OF PROPOSED

CONSTITUTIONAL AMENDMENTS

SPECIAL ELECTION

MAY 1, 1993

PROPOSITION NO. 1 ON THE BALLOT

Section 1 of Senate Joint Resolution 7 proposes a constitutional amendment that would allow the legislature to redistribute among other school districts ad valorem taxes levied and collected by a school district. The amendment would also allow the legislature to create county education districts with the taxable property of existing school districts in one or more counties combined. County education districts may levy, collect, and distribute ad valorem taxes as authorized by general law. The legislature would be allowed to set the rate of the ad valorem tax to be imposed in a school district or county education district or it may authorize the board of trustees of each school district or county education district to set the rate, provided that the rate of county education district ad valorem taxes may not exceed \$1.00 per \$100 valuation of taxable property, unless a higher rate is approved by the voters of the district. The amendment also provides that the amount of ad valorem taxes redistributed among school districts by the legislature and effectively redistributed within a county through county education districts may not exceed 2.75 percent of the sum of the state revenue appropriated for public schools and the revenue from local ad valorem taxes levied and collected for public schools. The term "state revenue" does not include revenue from ad valorem taxes, revenue for the provision of free textbooks, or contributions to a retirement system. Finally, the amendment provides that it does not affect the distribution of the available school fund under article VII, section 5, of the Texas Constitution.

The proposed amendment will appear on the ballot as follows:

"The constitutional amendment allowing limited redistribution of ad valorem taxes for schools, authorizing the legislature or local districts to set

a minimum tax rate in county education districts, and placing a cap on the ad valorem tax levied by county education districts."

PROPOSITION NO. 2 ON THE BALLOT

Section 2 of Senate Joint Resolution 7 proposes a constitutional amendment that would provide that, except for state educational mandates imposed in compliance with the Texas Constitution or federal law, or unless enacted by a vote of at least two-thirds of the members elected to each house of the legislature, a school district may not be required to comply with an obligation requiring expenditure of school district funds unless the obligation is fully funded. The amendment also requires the legislature to provide by law a procedure for determining whether an obligation is fully funded. In the absence of such a procedure, and at the request of a school district's board of trustees, the comptroller of public accounts shall determine whether or not an obligation is fully funded. This amendment applies only to state educational mandates enacted after December 31, 1993.

The proposed amendment will appear on the ballot as follows:

"The constitutional amendment exempting a school district from the obligation to comply with unfunded state educational mandates."

PROPOSITION NO. 3 ON THE BALLOT

Senate Joint Resolution 4 proposes an amendment to article VII, section 5(b), of the constitution, which currently authorizes the legislature to provide for using the permanent school fund to guarantee bonds issued by school districts and certain education-related revenue bonds issued by the state. The amendment would repeal the provision authorizing

the use of the permanent school fund to guarantee state revenue bonds, but would permit the legislature to provide by law for the issuance of general obligation bonds or revenue bonds of the state for the purpose of making loans to, or purchasing bonds of, school districts for the purpose of acquisition, construction, or improvement of instructional facilities, including all furnishings. The amendment also provides that the state, pursuant to general law, may forgive the payment of principal and interest on all or part of a loan made to a school district under the amendment to partially finance an instructional facility. The cap of \$750 million on the amount of bonds that could be issued under article VII, section 5(b), as amended, would be retained. The amendment would repeal the current provision of the constitution permitting the legislature to authorize bonds in excess of \$750 million by two-thirds record vote of both houses of the legislature. While any of the general obligation bonds issued under the amendment or any of the interest on those bonds is outstanding and unpaid, there would be appropriated out of the first money coming into the state treasury in each fiscal year, not otherwise appropriated by the constitution, the amount sufficient to pay the principal and interest on the bonds that matured or became due that fiscal year.

The proposed amendment will appear on the ballot as follows:

"The constitutional amendment authorizing the issuance of \$750 million in state general obligation or revenue bonds to assist school districts in partially financing facilities, authorizing the state to forgive payments of loans made to a school district for partially financing facilities, and repealing the authorization for \$750 million in state revenue bonds guaranteed by the permanent school fund."

Este es el informe explicatorio sobre la enmienda propuesta a la constitucion que aparecera en la boleta el dia 1 de mayo de 1993. Si usted no ha recibido una copia del informe en español, podra obtener una gratis por llamar al 1/800/252/8683 o por escribir al Secretario de Estado, P.O. Box 12060, Austin, Texas 78711

Published by Secretary of State John Hannah, Jr.

On Public Television

Celebrate New Mexico

Festival '93 • March 5th - 22nd

featuring 16 "Community Nights"

Tune into your community's special evening:

Roswell	5th	Truth or Consequences	13th
Tucumcari	6th	Ruidoso	14th
Carlsbad	8th	Raton	15th
Farmington	9th	Las Cruces	17th
Red River	10th	Melrose	18th
Portales	11th	Alamogordo	19th

Other Special "Nights"

"North Plains Mall Night" 12th
"Floyd Jamboree Night" 20th

Nightly Drawings for vacations, shopping sprees and more!

Make Your Pledge and WIN, WIN, WIN!



If you are unable to make a pledge, bring by or mail a 3" X 5" card with your name, address, and telephone number on it to KENW-TV, 52 Broadcast Center, Portales, New Mexico 88130. For more information call: 562-2112 (locally), 800-432-2361 (NM) or 800-545-2359 (TX).

Bailey County EMS News

By Larry Rasco

Bailey County EMS ran 39 calls in the month of January 1993. Of these calls, 15 were emergency, 20 were transfers to other hospitals, we also had 2 calls with no transport. There was a meeting on Feb. 4th at the EMS building, the members are looking to purchase several pieces of new equipment. There was talk about doing several fund raising projects but nothing was decided on at this time. We are still in winter and have had several bad winter storms with the prediction of more snow and ice, please take care and not have an accident of any kind. The EMS was called to the fire at John's Custom Mill, there were several firemen that were treated for smoke inhalation no serious injuries. Bailey County EMS would like to tell the Muleshoe fire Department that they did an outstanding job at this fire, they controled the fire from reaching other buildings or destroying other parts of property. The Emergency Care Attendants class is still going on at the fire department, it will be finishing up the first week of March. Several of the students will be helping on the ambulance starting in March, we welcome the help.

Patients In Muleshoe Area Medical Center

MARCH 5, 1993

Ernest Brock, Mary Edmiston, Ellis Sterling, Cora Duran, Charlie Tiller, Irma Hernandez, Larry Ross, Jerrell Otwell.

MARCH 6, 1993

Maria Romo, Ernest Brock, Mary Edmiston, Ellis Sterling, Cora Duncan, Charlie Tiller, Erma Hernandez, Larry Ross.

MARCH 7, 1993

Maria Romo, Ernest Brock, Mary Edmiston, Ellis Sterling, Cora Duncan, Charlie Tiller, Charles Bartholf.

MARCH 8, 1993

Maria Romo, Ernest Brock, Mary Edmiston, Ellis Sterling, Cora Duncan, Charlie Tiller, Charles Bartholf.

SALUTE TO THE GIRL SCOUTS



**National
Girl Scout
Week**

March 7-13, 1993

This Page Proudly Sponsored By The Following Civic-Minded Businesses:

Lowes Pay-N-Save

Pizza Hut

Lowes Marketplace

Richland Hills Texaco

Spudnut Shop

Violas Restaurant

Leals Restaurant Muleshoe Trade Center

Posada's Radiator

Alex's Tire Service

Bailey Gin Co.

Bobo Insurance Agency

Wes Tex Feed Yards, Inc.

Sudduth Field & Co.

James Crane Tire Co.

Decorators Floral & Gift

Muleshoe Diagnostic Lab

Lambert Cleaners

Nieman Realty

Williams Bros Office Supply

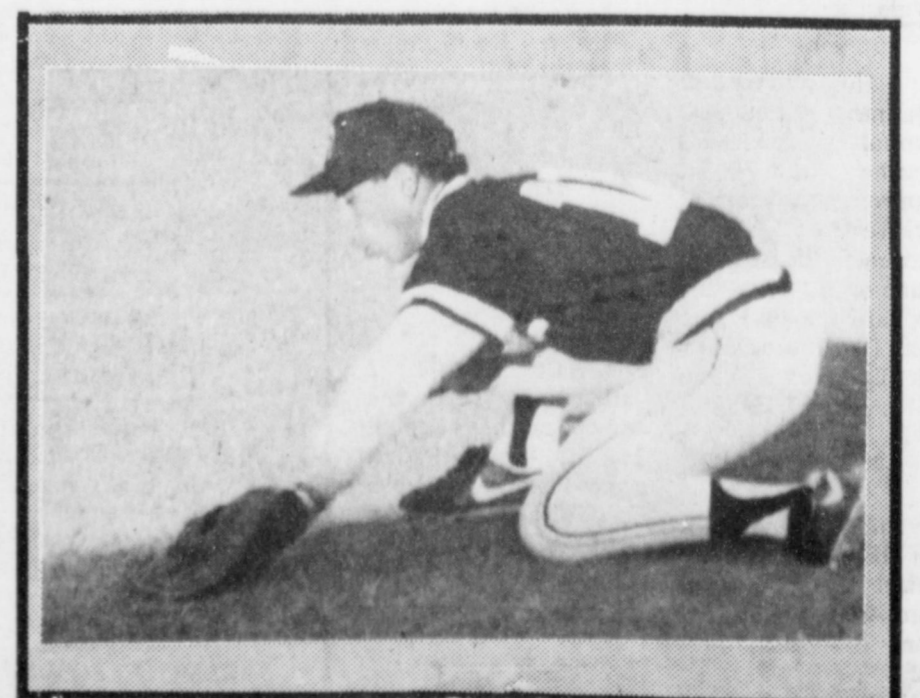
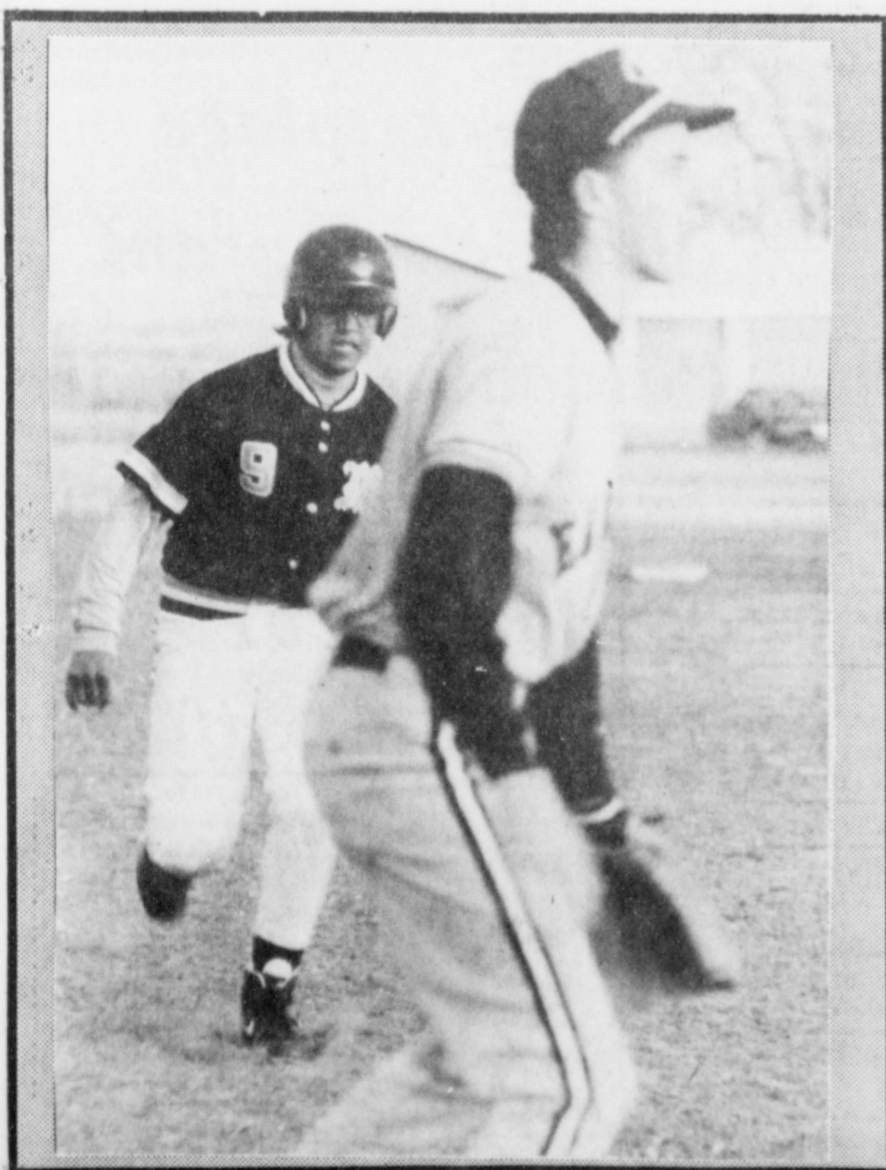
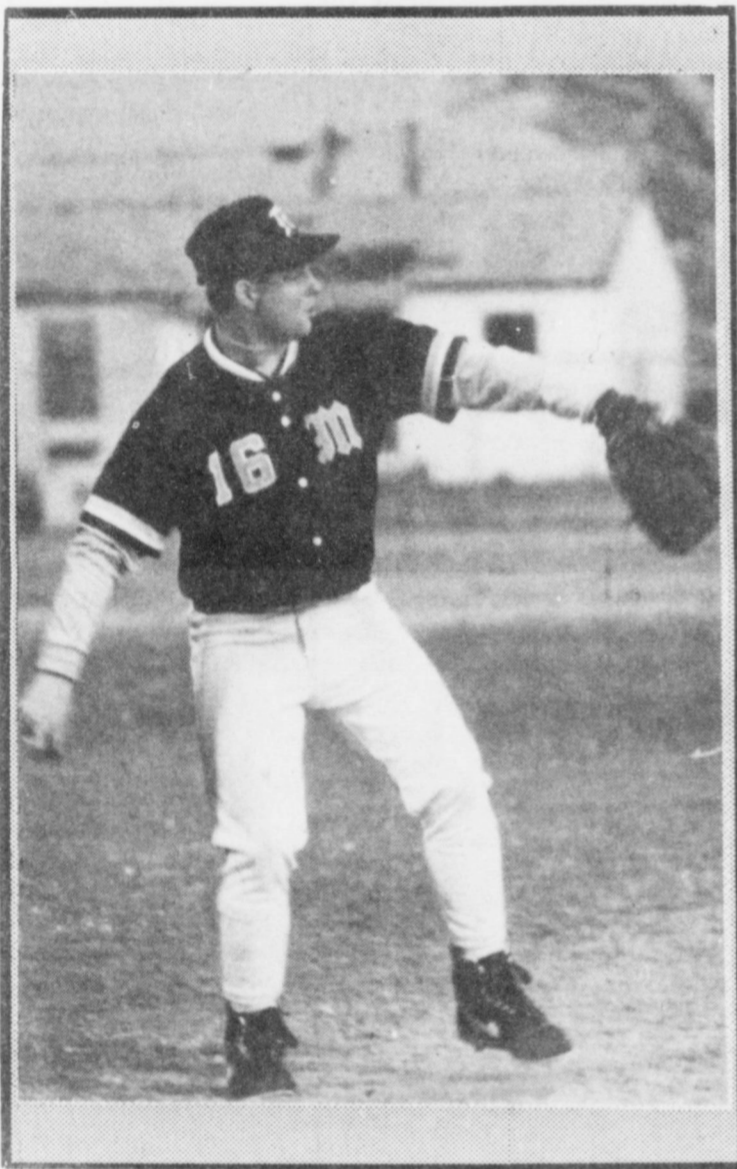
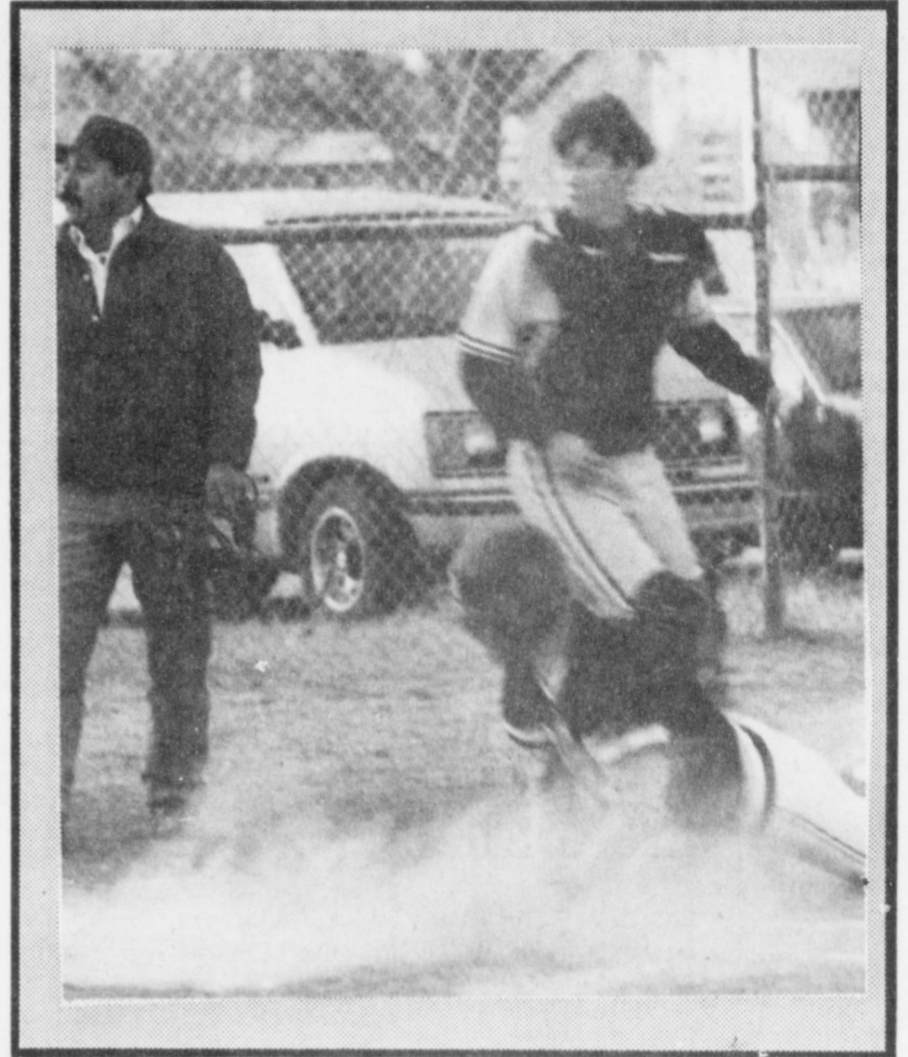
GIRL SCOUTS

Muleshoe Livestock Auction, Inc.

GIRL SCOUTS



Muleshoe Baseball Season Gets Underway



CLASSIFIEDS 272-4536

CLASSIFIED RATES

15 Words & Under
Minimum Charge
\$2.30
Thereafter
\$2.00
16 Words & over
1st Insertion
15 cents per word
2nd Insertion
13 cents per word

CLASSIFIED DISPLAY RATES
\$1.75
Per Column Inch

DEADLINES
12 noon Tues.
For Thursday Paper
12 noon Friday
For Sunday Paper

To receive the reduced rate after the first insertion, ad must run continuously.

We reserve the right to classify, revise, or reject any ad. We are not responsible for any error after ad has run once.

For more information and assistance regarding the investigation of get-rich-quick, work-at-home and other financial/business opportunities. The Muleshoe and Bailey County Journals urges its readers to contact the Better Business Bureau, 1206 14th St., #901, Lubbock, TX 79401 or call (806)763-0459.

1. Personals

CONCERNED About Someone's Drinking? HELP IS AVAILABLE through Al-Anon Call 272-2350 or 965-2870 or come to visit Tuesday and Thursday nights, 8:00 p.m. & through AA call 965-2870 or come visit Tuesday nights, 8:00 at 620 W. 2nd, Muleshoe

2. Lost & Found

Lost 1 Yellow Charolais cow with a backward G-brand. Grady Free 965-2458 F2-10S-4tc

Lost North of Muleshoe 3 Mixed Breed Steers. Bell Brand on Left Hip with Orange Ear Tag. Please Call 925-6664 and Leave Message if you have information. B2-11t-4tc

3. Help Wanted

CLERK-TYPIST WANTED
Must be at least 18 yrs. old and have Computer experience. Send resume to P.O. Box 449, Muleshoe, Tx. 79347

3. Help Wanted

The Home Health Department of Methodist Hospital is seeking a fulltime field R.N. Requires one year of registered nurse experience. Please send resume or call Methodist Hospital-Lubbock Home Health Department. 3615 19th Lubbock, Texas 79410. (806)793-9067 E.O.E. M3-9s-4tc

3. Help Wanted

Immediate opening for CERTIFIED nurse aides Contact Deb or Brenda at Praire Acres 201 E. 15th Friona TX (806) 247-3922 P3-11t-2tc

3. Help Wanted

HOUSE INSPECTORS No experience necessary up to \$800 weekly. Will train. Call 219-769-6649 ext. H5589 8 a.m. to 8 p.m. 7 days 3-10S-4tp(ts)

3. Help Wanted

NEEDED Representatives in Sudan Lazbuddie and Muleshoe. For more information call 272-5607 **AVON** "The Smartest Shop In Town"

5. Apts. For Rent

Apartment For Rent Good Location, Water Paid, Call 272-7575 P5-11t-tfc

5. Apts. For Rent

JUST LIKE FINDING COINS IN THE WISHING WELL!



It pays to advertise in Name Classified. An ad in the Classifieds pages can bring you new found money - just like those coins in the bottom of your wishing well. So do more than wish. Call now and place your ad in:

Muleshoe Journal
Call: 272-4536

8. Real Estate

FOR SALE
2100 sq. ft. 4 bedroom brick with new timberline roof. Total electric-3 year old heat pump-(heat & cool). 2 baths, double garage, lots of closets. Call 272-4793 or 5531. C8-6t-tfc

8. Real Estate

2 Sections irrigated farm land 10 miles North of Hereford. 8 wells, large grain base, lays good. Home steel shop, pipe corrals, underground lines. \$450 per acre. Owner will finance part. 409-543-5636 H8-7s-8tc

8. Real Estate

2 Bdrm. 1 Bath, 2 Car carport on a corner lot. Fenced-in back yard. Close to school and park. Call 817-663-2084 B8-10t-8tc

8. Real Estate

FOR SALE
320 Acres--South Bailey County. \$250 per acre. OBO Call 272-4622 K8-6t-tfc

8. Real Estate

For Sale Nice 3-2-2 brick home on 1 acre. 2 miles North on highway 214. Call 272-5664 B8--10S-4tc

8. Real Estate

For Sale 3 Bdrm., 2 bath, 1 carport brick home near high school 214 W. Ave J. Partial owner financing possible. Call (806) 578-4413 for further information. G8-10s-4tc

8. Real Estate

REMODELED BRICK 3-2-1 With Cent. heat, built-ins--PRICE REDUCED!! L-2

8. Real Estate

REMODELED BRICK 3-2-1 With Cent. heat, built-ins--PRICE REDUCED!! L-2

8. Real Estate

REMODELED BRICK 3-2-1 With Cent. heat, built-ins--PRICE REDUCED!! L-2

8. Real Estate

REMODELED BRICK 3-2-1 With Cent. heat, built-ins--PRICE REDUCED!! L-2

8. Real Estate

REMODELED BRICK 3-2-1 With Cent. heat, built-ins--PRICE REDUCED!! L-2

9. Automobiles For Sale

MUST SELL! 87 Jeep Grand Wagoneer, V-8, 4X4, Automatic Transmission, Air Conditioning, Leather, Dual Power Seats, Power Windows, Power Door Locks, Cruise Control, Tilt Steering Wheel, AM/FM Stereo Cassette, No old contract to assume, no back payments to make. Just need responsible party to make reasonable monthly payments, call Doug Hulderman in the Credit Dept., FRIONA MOTORS 806/247-2701

9. Automobiles For Sale

MUST SELL! 89 Ford Aerostar XLT, 4 captains Chairs, 7 Passenger, Dual Air Conditioning, Power Windows, Power Door Locks, Tilt Steering Wheel, Cruise Control, AM/FM Stereo Cassette, No old contract to assume, no back payments to make. Just need responsible party to make reasonable monthly payments, call Doug Hulderman in the Credit Dept., FRIONA MOTORS 806/247-2701

9. Automobiles For Sale

MUST SELL 89 Buick Riviera 2-Door coupe, Automatic Transmission, Air Conditioning, Power Sunroof, Leather seats, Delco/Bose Stereo System, Dual Power Seats, Power Windows, Power Door Locks, Tilt Steering Wheel, Cruise Control, and Much More. No old contract to assume, no back payments to make. Just need responsible party to make reasonable monthly payments, call Doug Hulderman in the Credit Dept., FRIONA MOTORS 806/247-2701

15. Misc.

Gold Seal Steel Buildings & Steelwood Dealership. Buy discounted wholesale, direct from factory. Sell for profits on material and construction while learning. No inventory requirements. Select markets available. Call for information. (303)758-4135, ext. 1001. A3-9s-4tc

15. Misc.

Will do baby-sitting in my home from infants to 4 years old. Call 272-4997 K15-10S-2tc

8. Real Estate

Home For Sale 2 Bedroom, 2 Bath, Fireplace comfortable/affordable. Financing available. contact: Steve Oliver 285-2022, 285-3184. C8-11t-tfc

8. Real Estate

TEXAS COUNTRY REPORTER COOKBOOK
256 pages of recipes from the viewers of the popular tv show hosted by Bob Phillips \$13.95 Pick up your copy at the newspaper office.

8. Real Estate

COMMERCIAL PROPERTY
Ideal location on West American Blvd. 150' highway frontage. A great opportunity.

8. Real Estate

West American Boulevard 150' frontage. Priced to sell. LAND 160 acres irrigated farm land with pivot sprinkler SW of Muleshoe. 60 acres of wheat. Ideal for livestock operation. Good water.

8. Real Estate

Circle Back Area-177 acres of good dryland... Fully Allotted!!!

8. Real Estate

PLEASANT VALLEY-160 acres, 8" well. Lindsey circle!!!!

8. Real Estate

354 ac. S. of town, good allot. & yields!!!!

8. Real Estate

354 ac. S. of town, good allot. & yields!!!!

Briefs

Hardly
He--My girl is a twin. Him--How can you tell them apart?
He--Her brother walks differently.

Reason Enough
Policeman--Lady, don't you know that is a safety zone?
Woman Driver--Of course--that's why I drove in here.

New home sales jumped 19.4 percent in 1992.

Clinton vows to "end welfare as we know it".

Study: AIDS to have little impact on U.S. society.


Clinton insists economy is still his top priority.

U.N. forced to use emergency food reserves in Sarajevo.

Employment rate down to 7.1 percent in January.

8. Real Estate

You can't lose--or get lost--with THE ROADS OF TEXAS!



Get your copy at the newspaper office. Only 12.95

8. Real Estate

HENRY REALTY
111 W. AVE. B 272-4581
Muleshoe, Tx.

Lenau Addition-4 bedroom, 2 bath, carport, central heat and air, carpet, dining area, built-in dishwasher and stove. Covered patio, wood fence, storm doors and windows, drapes and curtains. One ceiling fan. Ample storage and shed for travel trailer.

8. Real Estate

RURAL-3 bedroom, 1 bath, 2 car garage, masonite siding, carpet throughout, central heat, evap. air cond. on roof ducted to all rooms. Built-in dishwasher. New roof. Additional acres available, owner financing to qualified buyer.

8. Real Estate

2 bedroom, 1 bath, 1 car garage, brick veneer. Country Club Addition. Central heat and air. Very nice.

8. Real Estate

2 bedroom, 1 bath, detached 2 car garage, extra lot and well for garden. Country Club Addition.

8. Real Estate

Spacious 2 bedroom, 2 bath with one car garage. Fireplace. Ready to move in.

8. Real Estate

New listing-2 bedroom, 1 bath, redone for qualified buyer.

8. Real Estate

3 bedroom, 2 bath, carport, home outside city limits near city. Lot is 85'x402'. Metal building is 29' by 29'. Great setup for workshop.

8. Real Estate

JUST LISTED-2-1-1 Home with Heat Pump, has extra insulation in attic & floors...\$20's...L-4

8. Real Estate

3-2-1+carport, Brick, ceiling fans, Approx. 2060 sq. ft...\$40's!! L-6

8. Real Estate

4-3 Bath, Brick, on 2 acres, built-ins, FP, Geothermal Ht. pump, horse stalls, pens & tack rm. Also income producing shop on location or use for your own needs...\$80's!! PRICE REDUCED!!!!

8. Real Estate

VERY NICE 4-2-2 Brick home on 6 ac., Cent. A&H, 2300'+lv. area, Much More!! \$70's!HR-4

8. Real Estate

3-2-2 Brick, blt-ins, Ht. pump, FP, 2.5 acres on pavement. \$60's!!! HR-3

18. Legals

NOTICE TO BIDDERS

Sealed bids for HEATING, VENTILATING AND AIR CONDITIONING OF DeSHAZO, DILLMAN AND WATSON will be received by Mr. Bill Moore, Superintendent of Schools, Muleshoe Independent School District, in the Boardroom of the Muleshoe Independent School District Administrative Office Building, 514 West Avenue G, Muleshoe, Texas 79347 until 7:00 p.m., Tuesday, March 23, 1993. Any bids received after closing time will be returned unopened.

NOTICE TO BIDDERS

Sealed bids for ADDITION TO MULESHOE HIGH SCHOOL will be received by Mr. Bill Moore, Superintendent of Schools, Muleshoe Independent School District, in the Boardroom of the Muleshoe Independent School District Administrative Office Building, 514 West Avenue G, Muleshoe, Texas 79347 until 7:00 p.m., Thursday, March 25, 1993. Any bids received after closing time will be returned unopened.

NOTICE TO BIDDERS

Drawings, specifications and related documents may be acquired from Adling Associates Architects, 2529 74th Street, Lubbock, Texas 79423, telephone 806-748-0880.

NOTICE TO BIDDERS

Drawings, specifications and related documents may be acquired from Adling Associates Architects, 2529 74th Street, Lubbock, Texas 79423, telephone 806-748-0880.

NOTICE TO BIDDERS

The Owner reserves the right to reject any or all bids and to waive any or all formalities. A18-10s-2tc(t)

NOTICE TO BIDDERS

The Owner reserves the right to reject any or all bids and to waive any or all formalities. A18-10s-2tc

NOTICE TO BIDDERS

The Owner reserves the right to reject any or all bids and to waive any or all formalities. A18-10s-2tc

NOTICE TO BIDDERS

The Owner reserves the right to reject any or all bids and to waive any or all formalities. A18-10s-2tc

NOTICE TO BIDDERS

The Owner reserves the right to reject any or all bids and to waive any or all formalities. A18-10s-2tc

NOTICE TO BIDDERS

The Owner reserves the right to reject any or all bids and to waive any or all formalities. A18-10s-2tc

NOTICE TO BIDDERS

The Owner reserves the right to reject any or all bids and to waive any or all formalities. A18-10s-2tc

NOTICE TO BIDDERS

The Owner reserves the right to reject any or all bids and to waive any or all formalities. A18-10s-2tc

NOTICE TO BIDDERS

The Owner reserves the right to reject any or all bids and to waive any or all formalities. A18-10s-2tc

Classifieds!
Bigger and Better Than Ever
272-4536

Know The Weather

Is it true that hailstones sometime get as big as oranges? What makes big hailstones and why does hail fall during a thunderstorm?

The answer to the first question is that hail does sometimes get as large as an orange, or larger.

Hail is usually formed in thunderheads because these storm clouds contain very strong updrafts and downdrafts. Rain droplets begin to fall, are caught by an updraft and suddenly carried to an altitude where the temperature is below freezing. The rain droplets freeze into hail.

They fall again, picking up moisture as they re-enter the rain area, but are sent aloft by another up-draft where the moisture added since the first freeze is frozen to the center core. The process of fall and ascent is sometimes carried on several times, the hailstones growing larger with each trip upward.

The stronger the updrafts in the thunderhead the larger hail is likely to be since strong winds are required to lift big hailstones. One can often break or cut "layers" of ice from the core to outer shell.

No Way
Learn from the mistakes of others--you don't live long enough to make them all yourself.

-Chest, Norfolk, Va.

Next
Next to runaway prices, a shower bath in a strange hotel is the hardest thing to regulate.

-Tribune, Winnipeg.

A Good Idea
Stop worrying about what Junior will do when he grows up--better go see what's he up to, now.

-Pathfinder.

Who marrieth for love without money hath good nights and sorry days.

-John Ray.

You can't lose--or get lost--with THE ROADS OF NEW MEXICO

Get your copy at the newspaper office. Only \$12.95

Classify!
Call 272-4536

You can't lose--or get lost--with THE ROADS OF NEW MEXICO

Get your copy at the newspaper office. Only \$12.95

Classify!
Call 272-4536

You can't lose--or get lost--with THE ROADS OF NEW MEXICO

Get your copy at the newspaper office. Only \$12.95

Classify!
Call 272-4536

You can't lose--or get lost--with THE ROADS OF NEW MEXICO

Get your copy at the newspaper office. Only \$12.95

Classify!
Call 272-4536

You can't lose--or get lost--with THE ROADS OF NEW MEXICO

MULESHOE AREA

Mid-Winter '93

BUSINESS DIRECTORY AND SHOPPING GUIDE

Chicken Enchilada Plate
 3 Enchiladas with your choice of (Red or Green sauce), Beans & Rice
\$4.49



Closed Mondays
Leal's Restaurant
 1606 W. Amer. Blvd. 272-3294

Henry Insurance Agency, Inc.

"Serving Your Insurance Needs Since 1964"

KENNETH R. HENRY
 CERTIFIED INSURANCE COUNSELOR
 REAL ESTATE BROKER




111 W. Ave. B.
 Phone 806/272-4581
 Muleshoe, Tx. 79347


Spring

NEW for Spring, life-like flowers in a vivid array of colors.

ArtLoft




Sure to brighten any setting.



WD 40
 9 oz. can 1.99
 12 oz. can 2.29

Higginbotham-Bartlett Co.
 215 Main 272-3351



IT'S NEW! IT'S FUN! IT'S EASY! IT'S ACCURATE!

The **TruColor Analyzer** at Fry & Cox True Value Hardware & Lumber, 401 South First in Muleshoe. It's the new computerized, accurate way of formulating paint to your own personal decor.

Bring your color samples of paint chips, fabric swatches, tile, carpet, painted wood, siding, or anything with your favorite color that you want to match to Fry & Cox.

An employee will enter the information needed into the computer such as: your name, what you are painting, what type of lighting the paint will be in (daylight, incandescent, fluorescent) as this is a very important factor for formulating paint, what type of **Tru Test Paint** you prefer. The color sample will then be put in the spectrophotometer and the computer will formulate your very own personal color in **Tru Test Paint**.

The employee saves all the information in your personal file in the computer for your future reference.

Come to **FRY & COX** and ask for a free demonstration of the **TruColor Analyzer**.

Store Hours: Mon.-Sat. 8 a.m. - 6 p.m.
 Sun 1:30 p.m. - 4:30 p.m.

Fry & Cox
True Value
 Hardware Lumber
 401 South First Muleshoe, Tx. 272-4511

Sand Puffer
 (Patent Pending)

The SAND-PUFFER is a unique, simple and totally automatic flush valve. It mounts below the sand trap or at the end of the overhang. It automatically senses sand buildup and flushes each time a pre-determined amount of sand accumulates.

The SAND-PUFFER requires no external controls or wiring.

The SAND-PUFFER utilizes sand level sensing device that actuates a shut off plug on a water piston.

Operating off of mainline pressures as low as 6 psi, the unit will work on any system capable of a low pressure spray package.



Pivot Products Inc.
 710 E. Amer. Blvd. 272-5536

Connie's Place
 121 Main 272-3126

Hours:
 Mon. - Fri. 5 a.m. - 4 p.m.
 Sat. - 5:00 a.m. - 2:00 p.m.

Daily Buffet:
 Includes Salad Bar & Cobbler
 Serving Breakfast Daily
 Connie Dominguez, Owner

A Carrousel of Good Food | 1902 W. Amer. Blvd. 272-4131

Friday All-You-Can-Eat Fish 4.99
 (While Supplies Last)

DON'T FORGET THE GREEN!

Keep those Irish eyes shining with a gift of **FTD® flowers** or a green plant. Just call or visit us today.
 St. Patrick's Day is Wednesday, March 17



Decorator's Floral & Gifts
 616 S. 1st Muleshoe 272-4340

Hardware True Value Lumber
 401 South First Muleshoe, Tx. 272-4511

Hardware Week Circular Sale Ends Sunday, March 14

Fry & Cox True Value Lumber & Hardware
 401 S. 1st 272-4511

Spring Cleaning?

Let us help you with your Spring Cleaning of Drapes, Bedspreads, etc.




Lambert Cleaners
 123 Main 272-4726

We pick-up & repair all types of Irrigation motors!
 We service & repair late model GM's Fords & Dodge automobiles & trucks!
 We also specialize in General automotive repair work of all kinds!



Muleshoe Truck & Auto Service Center
 301 N. 1st 272-5111

Meat Chile Relleno
 Meat Chile Relleno topped with Spanish Sauce & Cheese, Beans & Rice
\$4.25



Closed Tuesdays
Viola's Restaurant
 2002 W. Amer. Blvd. 272-3838

LOCKWOOD

Still Going In Circles!
 We can't grow you money, but we will save money for YOU!
 Over 55 years of manufacturing excellence!

NON WIRE ALIGNMENT WIRE ALIGNMENT
 Lockwood commitment to total customer satisfaction
 Keeps Lockwood systems simple to operate and easy to repair
 Lockwood systems built to perform efficiently and dependable for years


Competitive in price Just compare

Irrigation Supply

607 E. Amer. Blvd. (806) 272-4466
 Muleshoe, Texas 79347 or 272-3246
 Underground pipe installation Electric wire to pivot
 Sideroll Repairs Surge Valves
 All Irrigation parts and repairs

Sunday Noon Smorg 11:30 a.m. - 1:30 p.m.
Monday Night Smorg 6 - 8 p.m.
\$3.99

Delivery Available
 11 a.m. - 1:30 p.m.
 & After 5:00 p.m.



Pizza Hut
 1412 W. Amer. Blvd. 272-4213

WE RECOMMEND ferti-lome
 Lawn & Garden Products

Time To Use ferti-lome LAWN FOOD



Prevent summer weeds
 Kill spring weeds

ferti-lome

Kearney Scoggin
Scoggin Ag Center, Inc.
 "Where Fertilizer Is Our Business"
 1532 W. Amer. Blvd. 272-4613