

Around Muleshoe

Homecoming dance is Friday

A Muleshoe High School Homecoming Dance will be held on Friday, Sept. 23, at the Bailey County Coliseum from 10:30 p.m. to 1 p.m., following the game. It is being sponsored by the MHS Senior Class.

Come have coffee with the coach

Ever wish you could discuss Friday night's game with the coach while it is still fresh on your mind? There will be an opportunity on Saturday, Sept. 24 at 7 a.m. at Connie's Place.

Muleshoe High School Coach Randy Adair is welcoming all fans to come and join him for questions and conversation. The main topic will be the Mule's homecoming victory over Roosevelt. Your support of the Mule's athletic program will be welcome.

7th grade team to be recognized

On Tuesday, Sept. 27, the Muleshoe Athletic Boosters will host a covered-dish supper-meeting at 7 p.m. at the high school Cafeteria. Boosters, fans and parents are invited to share supper and show their support for the seventh grade team.

Players, parents and any others who wish to, are asked to bring a covered-dish

Training set for DeShazo volunteers

There will be training for all people interested in being a

Continued on page 2

Muleshoe High to host College Night program

Muleshoe High School will hold its first College Night Program on Tuesday, Sept. 27. The event will be held in the high school cafeteria and will be a "browse only" program from 5:30 to 7:30 p.m.

Approximately 20 colleges and universities have agreed to send representatives to Muleshoe, along with individuals from the military. In

addition, area schools have also been invited to attend.

Students will have the opportunity to visit with college representatives and gain information for furthering their education without driving to Lubbock. It will be an opportunity to look at different colleges from across the state.

Continued on page 2

Nicolas wins grid contest

The battle for the Muleshoe Journal/Bailey County Merchants football contest for games of the week of Sept. 16-19 came down to the wire, with two contestants tied for first and five tied for third.

Battling for the \$10 first prize were Tony Nicolas and Richard Orozco, both of Rt. 2, Box 165, Muleshoe. Each had an 11-5 record for the week.

Going to the tie-breaker,

both Nicolas and Orozco correctly picked Oklahoma to defeat Texas Tech, but incorrectly chose the Mules over Lubbock Cooper. Going to points, Nicolas had the edge by six points and won the \$10 first prize. Orozco ended up second and won \$7.50.

Tied for third were Jenny McDaniel, Maria Nicolas, Ri-

Continued on page 2



Monkey business

(Left) Rachel Garcia, Carla Estrada and Johnna Cleavinger (hanging) enjoy monkeying around while testing their physical abilities on the monkey bars at DeShazo Elementary School. With temperatures lingering in the 80s, many local residents have been taking advantage of the warm weather before winter sets in.

MHS fired up about homecoming game; hope to pluck Eagles

Students at Muleshoe High School are fired up about homecoming Friday and the Mules are gearing up to take on Lubbock Roosevelt.

Full of spirit and energy, the Mules are receiving 100 percent support from their school as a week full of homecoming activities are underway.

Four candidates are running for 1994 Muleshoe High School Homecoming Queen: Keetha Glover, Angela Crawford, Stephanie Perez and Crystal Howe.

The candidates will be presented during a pep rally Friday and the queen will be named and crowned prior to the Homecoming game.

In observance of Homecoming, Thursday is camouflage dress up day (Hunt Eagles Day). Thursday evening, a parade will begin at MHS at 7 p.m. and wind its way to the new City Park.

The Mule-backed proces-

sion will be comprised of the Mighty M Band, cheerleaders, football players, floats and school organizations. Organizations have been working on the floats all week.

At the City Park, a bonfire will immediately follow the parade. There will also be a car bash, at which time all of the football players will take turns taking shots at the car.

On Friday morning, a homecoming breakfast will be held at 7:30 a.m. at the Muleshoe Church of Christ Family Room. MHS students, football players and supporters are welcome. The speaker will be Mark Whitmire.

The theme for dress-up day Friday is Dress to Kill. Activities will include a pep rally at 3 p.m.

The game begins at 8 p.m. on Friday against Lubbock Roosevelt, followed by a homecoming dance at 10:30 p.m., at the Bailey County Coliseum.

Mules looking to rebound against Lubbock Roosevelt

MULESHOE — The Muleshoe Mules face a tough test Friday night as they attempt to even their season record at 2-2. The test takes the form of Lubbock Roosevelt wide receiver Robert Brown.

Brown (6-5, 185) was All South Plains last season and leads the area in receiving this year with an impressive 413 yards and six touchdowns on 20 catches — in just three games.

"Brown's an outstanding receiver," said Muleshoe head

coach Randy Adair. "He's their main weapon and we'll be trying to shut him down."

Adair said that the Mules will

Throwing the ball to Brown will be a trio of Eagle quarterbacks. Johnny Zaragoza (5-11, 170) returns from last year and is joined by Cisco Castaneda as the two main guns.

"They use three different quarterbacks, and they're interchangeable," Adair said. "All three are adequate, they throw the ball pretty well."

The Eagles will also bring a

lot of speed to Muleshoe Friday night.

"At the wide out, they have some speed. Their sprint and mile relay teams went to regionals last year and they were all underclassmen. When you let them get vertical, running north and south, then they reveal a lot of speed. Our goal is to keep them running east and west," Adair explained.

Defensively, the Eagles return three all-district players from last year — Brown at defensive back, Alvin Spring-

field at defensive tackle and Matt Trotter at defensive end.

"They play a 4-3 and are pretty aggressive," Adair said. "They stunt their linebackers and run them through the gaps. We've shown some weakness picking it up so I'm sure they'll do it Friday."

Roosevelt (1-2) beat Ralls 35-31 last week for their only win of the season. They opened the season against Hale Center with a 26-0 loss and followed that with a loss to Abernathy, 25-20.

Muleshoe (1-2) lost 43-18

last week to Lubbock Cooper. The Mules recovered eight first-half turnovers and led 18-7 at the break, but couldn't muster any offense in the second half.

This week, the Mules will get back to the basics, according to Adair.

"We're in a situation with injuries and lack of depth that we're kind of limited with what we can do," he said. "We're just going to run our basic offense and our basic

Continued on page 2



WATSON JUNIOR HIGH RECEIVES RECOGNITION — (Left) Dr. Davis Smith, Texas Commissioner of Health, presents former Watson Junior High School Principal Bob Graves with an award of recognition. WJHS received an Outstanding-Small School Award for the 8th Grade Awareness Day held last school year.

WJHS receives a state award

Good ideas pay off! The fifth annual Awards For Excellence in Texas School Health Program culminated on June 9 with the presentation of awards to 26 schools and nine school districts at the Texas All-Well Health Conference at Southwest Texas State University in San Marcos.

Watson Junior High School in Muleshoe was among the 26 schools that were recognized. The school received an Outstanding-Small School Award for an Eighth Grade Awareness Day held last school year.

The Awareness Day was an all-day conference for 8th grade students which included keynote speakers and eight

Continued on page 2

WJHS

Continued from page 1

mini-sessions. The purpose of the conference was to raise the awareness of prevention, causes and characteristics of chronic diseases and disabling conditions.

The conference was also aimed at raising the level of sensitivity for students with special needs. Pre and post conference activities measure the level of knowledge gained.

Teachers, parents and students indicate this project has

been successful the past two years. Plans are to continue the conference on an annual basis.

The Awards for Excellence in Texas School Health recognizes programs that promote prevention practices among students and enable school staff to be healthy role models for children.

Cash awards were presented to winners. WJHS received an award of \$500 for its outstanding program.

Football

Continued from page 1

defense and do a better job of it."

Quarterback Jimmy Gauna has completed 29-of-63 passes for 515 yards this season, good for five touchdowns. He also leads the team in rushing with 136 yards and four touchdowns.

Wide out Daniel Garbarino was held in check most of the game last week, but still boasts impressive numbers for

the Mules (13 receptions, 279 yards and four TDs).

Jesus Flores had a strong performance in the loss to Cooper. The senior led the Mules with 82 yards on four catches. He nearly got into the end zone after nabbing a Gauna dart down the seam of the Pirate defense, but eventually he was tackled inside the 5-yard line.

Kickoff is set for 8 p.m. at Benny Douglas Stadium.

Contest

Continued from page 1

chard Engelking, Danny May and Rosa Hernandez, all of Muleshoe, with 10-6 records.

On the first tie-breaker, McDaniel, Maria Nicolas and Engleking all remained in the running by correctly picking Oklahoma and Lubbock Co-

per to win. But on scoring, McDaniel nosed out the other two by a single point and won the \$5 prize.

There were 40 entries for the week, which saw upsets, like Detroit's overtime win over Dallas, take their toll on the contestants.

Muleshoe

Continued from page 1

volunteer at Mary DeShazo Elementary School on Friday, Sept. 23 at 2 p.m. at DeShazo school library.

People who are a parent, grandparent, relative or a retired person at home who would like to contribute some of their spare time to help a child or teacher are asked to attend this meeting. It takes about 30 minutes for this training.

Four-county match set for October 2

A four-county match, including Bailey, Parmer, Castro and Lamb counties, will be held on Sunday, Oct. 2 at the

Lazbuddie Arena in Lazbuddie. Rope will be held at 1 p.m. sharp.

Immediately following the match, at approximately 2:30 p.m., there will be 10 header. Ten header progressive after 1. Electronic barrier will be used. There will also be a concession stand.

For more information contact Scott Burris at 965-2830 or 965-2156 or Debbie Weir at 965-2302 or 965-2156.

CALL TODAY TO PLACE YOUR AD IN THE CLASSIFIEDS

Gift Selections of
Caroline Piles Harris
Bride of
Scott Harris
Muleshoe Art Loft

College

Continued from page 1

Parents of high school juniors and seniors are encouraged to attend, along with their students. Any interested high school students, regardless of grade level, are welcome to participate.

For more information on this program contact Linda Marr at Muleshoe High School.

Christmas in September



Layaway NOW

20% off Storewide

September 24 through October 1

New fall arrivals include

- Enro wrinkleless dress shirts
- Lavon jogging suits
- Pine State Sweaters

cardigans, pullovers and sleeveless vests

Regular sizes plus a BIG & TALL Department

"Shop Where Quality is Affordable"

Edwards Men's Wear

2521 N. Prince • 505-763-1411 Clovis

1994 MODEL LIQUIDATION

The new '95 models are here! We're forced to liquidate all '94 models in our huge inventory! YOU'RE GUARANTEED TO SAVE MONEY!

Brand New 1994

CHEVROLET CORSICAS

Your Choice Of 4

1995 Models In Stock!



With Automatic Transmission and Air Conditioning
Only \$179 Down \$179 Month*

8.5% APR

GM SMARTBUY For 36 months And Walk Away!

Subject to 10¢ per mile in excess of 45,000 miles and expenses beyond normal wear and tear. See dealer for other end of term options.

- Buick Century
- Oldsmobile Delta 88
- Chevrolet Lumina
- Oldsmobile 98 Regency
- Buick LeSabre
- All New For '95 -
- Buick Riviera
- Chevrolet Monte Carlo
- Chev S-10 Blazer 4 Door
- Plus,
- The Exciting New Aurora (locally exclusive product line)

Low Payments On Quality Trade-Ins

| | | |
|---|---|---|
| 1987 Pontiac Sunbird SE Automatic, A/C, Power Locks, Tilt Steering Wheel, Cruise Control, AM/FM Cassette, Very Low Miles Only \$99 Per Month <small>36 months @ 11% APR*</small> | 1990 Chevrolet Beretta Air Conditioning, Tilt Steering Wheel, Cruise Control, AM/FM Cassette, Fire Engine Red, Very Clean Only \$129 Per Month <small>48 months @ 11% APR*</small> | 1992 Geo Storm Automatic Transmission, Air Conditioning, AM/FM Cassette, Sport Package Only \$149 Per Month <small>60 months @ 10.5% APR*</small> |
| 1993 Ford Escort LX Hatchback, Air Conditioner, Power Mirrors, Tilt Steering Wheel, Cruise Control, AM/FM Cassette Only \$149 Per Month <small>60 months @ 11% APR*</small> | 1993 Ford Tempo GL Air Conditioner, Tilt Steering Wheel, Cruise Control, AM/FM Cassette Only \$159 Per Month <small>60 months @ 11% APR*</small> | 1990 Chrysler New Yorker Automatic, A/C, Power Windows / Locks / Mirrors, Tilt Steering Wheel, Cruise Control, AM/FM Cassette Only \$189 Per Month <small>48 months @ 11% APR*</small> |
| 1994 Pontiac Grand Am SE Automatic, A/C, Power Locks, Tilt Steering Wheel, Cruise Control, AM/FM Cassette, 4-Wheel ABS Only \$249 Per Month <small>72 months @ 11% APR*</small> | 1994 Chev S-10 Extended Cab V6, A/C, Power Windows / Locks / Mirrors, Tool Box / Tilt Steering Wheel, Cruise Control, Aluminum Wheels Only \$289 Per Month <small>72 months @ 11% APR*</small> | 1993 Cadillac Sedan de Ville Automatic, A/C, Power Windows / Locks / Seats, Tilt, Cruise, Cassette, Leather Int, Air Bag, 4-Wheel ABS Only \$419 Per Month <small>72 months @ 11% APR*</small> |

Does Your Credit Suffer From Bankruptcy? Divorce? Repo? Foreclosure? Let Us Help You Establish Credit and Obtain Bank Financing

Ask For Credit Man!

*1000 down - cash or trade equity. ** Subject to lender's approval and prior sale. Excludes tax, title and license.

STREBECK

GM AUTOPLEX

The very best prices and service anywhere... We personally guarantee it!

CHEVROLET

PONTIAC

GMC TRUCK

Geo

AURORA

Oldsmobile

BUICK

Clovis Highway • Portales, NM

(505) 356-3501 (505) 763-3501

Receiving The Muleshoe Journal or The Bailey County Journal??

If Not,
Subscribe Today!
Call 272-4536

Read the classifieds



National Farm Safety Week September 18-24, 1994

Carelessness Costs----Safety Pays.

Farm Safety is an investment that yields high dividends in an accident free, safely run environment. Just a few minutes each day to check for hazards, along with seeing that your family and workers are "educated" to the dangers of the farm; will net immediate results. Each day, every day, and make farm safety your FIRST order or business.

Muleshoe Co-Op Gins

Charles Moraw, Mgr.
272-4794

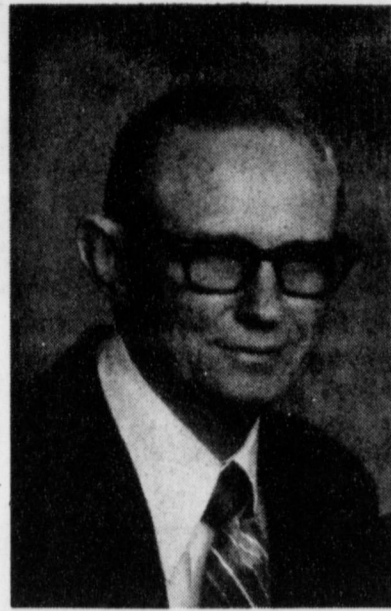
Public Record

Obituaries

MULESHOE - Funeral services for Klyde "K.K." Krebbs, 84, were held Monday at 2 p.m. in the First United Methodist Church with Dr. James Bell officiating. Burial followed in the Muleshoe Memorial Park Cemetery under the direction of the Ellis Funeral Home. Krebbs died Saturday, September 17, 1994 in the Lutheran Home of West Texas

in Lubbock. He was born May 11, 1910 in Durant, Okla. He married Fay Jones December 19, 1932 in New Home. K.K. had been a resident of Muleshoe since 1957 and Bailey County since 1943, moving here from Whiteface. He was a farmer and a real estate broker. He was owner of Krebbs Real Estate Co. from 1963 to 1980. He was a member and one

of the founding members of the First United Methodist Church. He was a church song leader and had been active in singing groups. Survivors include his wife, Fay of Muleshoe; one son, Dale Krebbs of Lubbock; one brother, Roy Krebbs of Denton; and one granddaughter, Keren DaLynn Tanner of Scottsdale, Ariz.



Klyde "K.K." Krebbs

Muleshoe Journal USPS 367820
 Established February 23, 1924. Published by Triple S Publishing, Inc.
 Every Issue Contains: Local, State and National News, Muleshoe, Tx. 79347.
 Second Class Postage paid at Muleshoe, Tx. POSTMASTER: Send address changes to Muleshoe Journal, P.O. Box 449, Muleshoe, Tx. 79347.
 We Are Qualified Members Of:
 National Newspaper Association, National Newspaper Association, West Texas Press Association and Texas Press Association.

© 1990
 WEST TEXAS PRESS ASSOCIATION
 PPA PANHANDLE PRESS ASSOCIATION

Scott Stinnett, Publisher
 Liss Stinnett, Vice-President/Comptroller
 Helena Rodriguez, News
 Laura Sanchez-Mora, Classified
 Holly Millap, Advertising
 SUBSCRIPTIONS
 Muleshoe Journal and Bailey County Journal
 By Carrier Yearly - \$15.00
 Bailey and surrounding counties
 By Mail - \$16.75
 Elsewhere - \$18.50

Advertising Rate Cards on Application
 "Advertisers should check their ad the first day of insertion. The Journals will not be liable for failure to publish an ad or for a typographical error or errors in publication except to the extent of the cost of the ad for the first day of insertion. Adjustment for errors will be limited to the cost of that portion of the ad where the error occurred."

Enochs News

By Mrs. J.D. Bayless

Mr. and Mrs. Jarrol Layton and daughters Ashley and Lauren and her parents Mr. and Mrs. Leon Dupler of Andrews and brothers and sisters met at Brownwood Lake on Labor Day weekend. they enjoyed visiting and fishing.

J.C. Snitker drove to Midland Thursday and had lunch with his mother Mr. Dicie Snitker. He brought her home with him. She visited friends. Mrs. Nancy Whitner and she gave her a permanent. They visited Mrs. Ellen Bayless, Mrs. Inez Sanders, Mr. and Mrs. J.E. Layton and Mr. and Mrs. Junior Austin.

Saturday Ellen Bayless and Dicie Snitker went to Littlefield and were lunch guests in the home of Vera Hodges. J.C. took his mother Dicie home Monday.

The Rev. Ray Cunningham was a patient in St. Mary's

Hospital Monday until Friday. He and his wife Olene came to church Sunday, where he is a pastor and he preached. He was a lunch guest in the home of Dale and Rose Nichols.

Visitors at the Baptist church Sunday were Mrs. Didel Snitker and Mrs. Lile Snitker.

Mrs. Louie Smith and Mrs. Troy Price work at the Enochs Co-op Gin and are going to Lubbock Tuesday and Thursday each week to school.

Mrs. Roxie Stroud and daughter Mrs. Lill Pollard went to Lubbock Sunday afternoon to Roxies grandson and wife Shane and Sandy Price for a baby shower.

Congratulations to Adolph and Nancy Whitner as they celebrated their 50th wedding anniversary on Monday, Sept. 12, 1994.

Mrs. Ellen Bayless enjoyed

going with the senior citizens last Tuesday to Levelland shopping.

Guests in the home of Mrs. Inez Sanders recently was her brother Mr. and Mrs. Jess Hardin of Mississippi and Minnie Preston from Farwell.

Dale and Rose visited their pastor the Rev. Ray Cunningham at St. Mary's Hospital in Lubbock Friday. They also visited Mr. and Mrs. John Gunter at Carrilon and attended the Cowboy Symposium at the Civic Center in Lubbock.

Mrs. Frances Price, Mrs. Wanda Wheeler, Mrs. Troy Price and Mrs. Rose Nichols went to the baby shower for Gary and Christina Price at Whiteface Thursday afternoon.

Visiting Mr. and Mrs. Eric Silhan Sunday was her mother Mrs. Barbara Epperson and grandmother Mrs. Faye Nunn

of Levelland.

Visting with Harvey and Bonnie Blackstone over the weekend were: Lee, Katie and Kim McDonald; Kim's friend Talia Lane of Pampa, Misty Angeley of Muleshoe, Kirk McDonalad of Texas Tech, Nancy Pierce and children Jaclyn and Tyler from Friona, Robby and Kathy Blackstone and children Ryan, Misten, Nicholas, Heather and Candace, of Arlington; Thomas and Terri Blackstone and their son Seth from Odessa.

Louise McCall and daughter Brenda George and son Brent and Louise's grandson Kelly Mason, all from Slaton, were in Enochs Friday and stopped by the Blackstone's on their way to the mountains in New Mexico for the weekend. On Monday, Louise MCall and Brent George dropped back by the Blackstones on their way home.

Announcement policy

The Muleshoe and Bailey County Journals publish engagement, wedding and anniversary announcements and photos free of charge as a service to our readers. The deadline for items to be submitted is at 5 p.m. on the preceding Monday for the Thursday edition and at 5 p.m. on the preceding Thursday for the Sunday edition.

Complete guidelines and forms are available at the Muleshoe Journal office. The Journals reserve the right to edit copy.

Heritage House



Inn

2301 W. American Blvd. Muleshoe
 (Highways 70-84 West)

Will Hold An Open House

Friday, Sept. 23

4 p.m. - 8 p.m.

To Celebrate Their

10th Anniversary

Come Look Us Over!

Fencing Supplies

T-Post #127183 \$2²⁵

Insulators..... \$2⁹⁹

Screw On - Western RP25N
 #570424 (Fits 3/8 and 1/2 Rebar)

Redwood
 Lattice
 4'X8'

\$9⁶⁹

Electric
 Fence Wire

14 Ga. 1/2 Mile
 #152447
 \$25⁹⁹

Rebar Post

3/8 X 4'
 #005780 39¢
 1/2 X 4'
 #005541 65¢

Pickets

1"x4"x6' Premium Cedar..... \$1⁰⁹
 1"x4"x6' Redwood (While They Last)..... 99¢
 1"x4"x6' Spruce..... 92¢

Post

4"x4"x8' Cedar \$7⁰⁵
 4"x4"x8' Treated \$7¹²

Rails

2"x3"x8' Spruce \$2⁴⁹
 2"x3"x8' Cedar \$2⁹⁹

Special Pricing Ends October 2

Monday-Saturday
 8 a.m. - 6 p.m.
 Sunday 1:30-4:30 p.m.

Fry & Cox

True Value.

Help Is Just Around The Corner.

Lumber Hardware

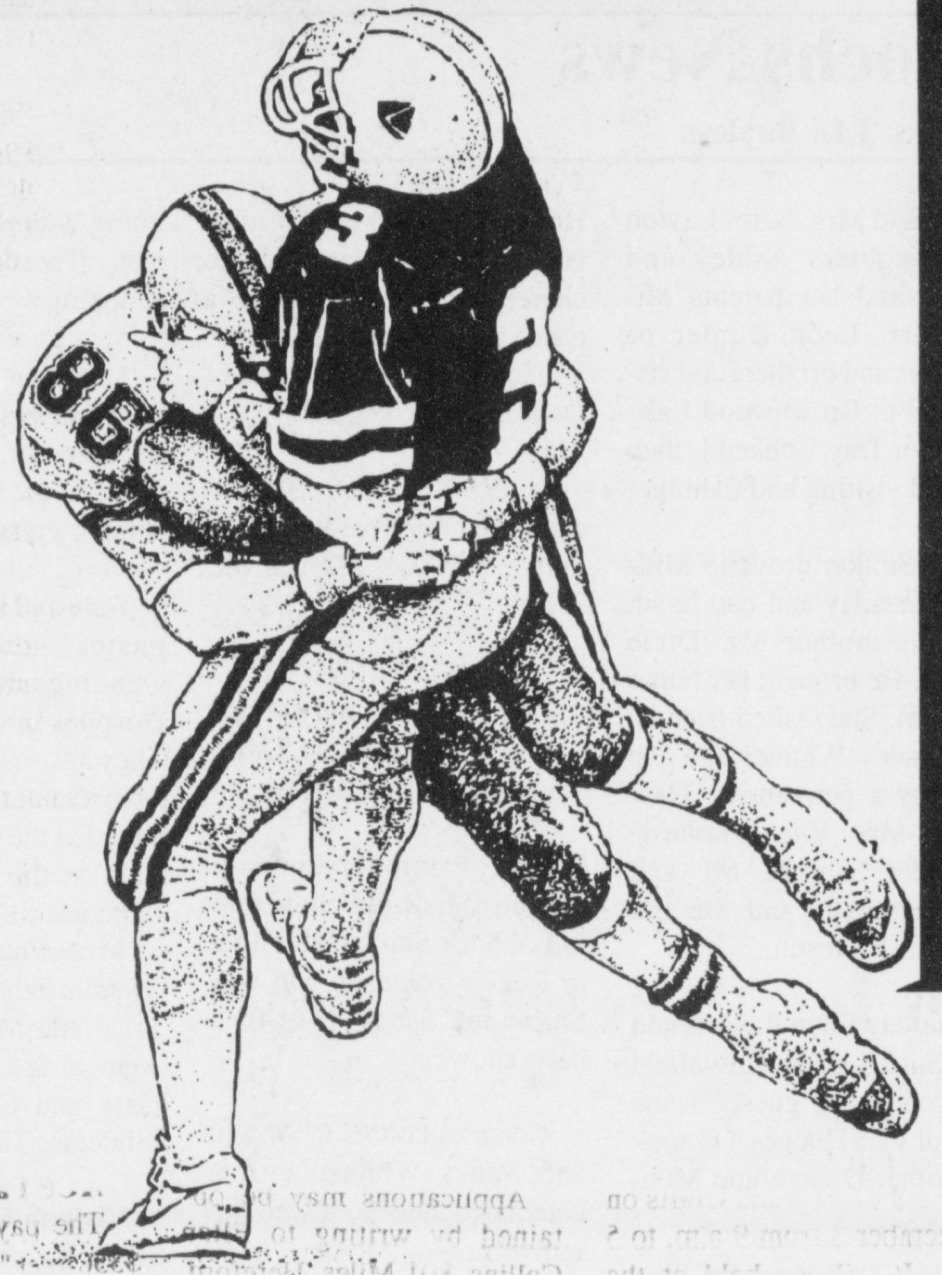
401 South First Muleshoe 272-4511

Muleshoe High School Homecoming '94

Friday, Sept. 23, 1994

Muleshoe vs. Lubbock Roosevelt
8:00 p.m.
Benny Douglas Stadium

1994 Homecoming
Queen Candidates:
Keetha Glover
Stephanie Perez
Crystal Howe
Angelia Crawford



The Following Merchants Urge You To Get
Out Friday Night, Attend The Muleshoe
Homecoming Game and Support
The Muleshoe Mules!!

Bailey Gin Co.

Peanut Hawkins, Mgr.
946-3397

Go
Mules!!!



Shipman & Son Body Shop

410 N. 1st 272-4408

Wes-Tex Feed Yards, Inc.

Louis Reeder, Mgr.
272-7555

Decorator's Floral & Gifts

Betty Wuerflein, Owner
616 S. 1st 272-4340

James Crane Tire Co.



322 N. 1st
272-4594



1008 W. American Blvd.
272-3294



MARKETPLACE 515 W. Amer. Blvd.
401 W. Amer. Blvd. Muleshoe 272-4585 Muleshoe 272-4406

The Spudnut Shop

"The Upper Crust of the
Donut World"

328 S. Main 272-3542

Alex's Tire Service

302 E. American Blvd.
272-5012

Pizza Hut

1412 W. American Blvd.
272-4213

Five Area Telephone Cooperative Inc.



Hubert Kidd, Mgr.
302 Uvalde 272-5533

Terry Field Insurance

223 E. Ave. B 272-5551

Sudduth Field & Co.

104 W. 2nd 272-4291

Muleshoe Journal

304 W. 2nd 272-4536

Engagements



Martinez - Lozano

Esther C. Martinez of Irving and Gonzalo Lozano Sr. of Irving will marry on Saturday, Oct. 1, 1994 at 3 p.m. at First United Methodist Church in Muleshoe. A reception will follow from 5-7 p.m. on that day at the church fellowship hall at 507 West 2nd Street. The bride-elect is the daughter of Juan G. Martinez and Amelia C. Martinez and is a graduate of Big Spring High School. She is employed as a visiting nurses association personal assistant. The prospective groom is the son of Gonzalo Lozano Sr. and Rebecca Lozano Sr. He is a graduate of Muleshoe High School and is employed with Advanced Fixtures Inc. as an assistant supervisor.

News from ASCS

Bailey County Nonhaying & Nongrazing of ACR/ Cupay Dates

Several Bailey County producers recently participated in a survey conducted by the ASCS office to aid the County Committee in determining the nonhaying and nongrazing dates in Bailey County.

With input the County Committee made the decision to leave the nonhaying and nongrazing dates as they are. These dates are May 15th - October 15th.

During this period people may not hay or graze any acres designated as ACR or CU/PAY. The same provisions that had previously applied will apply for the 1995 program year as well.

Findley Payments for 1993

There will be no "NL (not subject to the \$50,000 pay limit) payments for 1993 Wheat, Barley, or Oats, since the 12 month national weighted average market price exceeded the loan rate before reduction.

Final Loan Date Availability

Final loan availability dates are as follows:

March 31, 1995 for Barley, Oats, Rye and Wheat.

May 31, 1995 for Corn, Grain Sorghum, and Upland Cotton.

ACP Pay Limits

The pay limit for ACP is \$3500 per "person". However, please note that any ACP payment received for a 1994 ap-

plication after September 30, 1994 will count against a 1995 pay limit. Example: People are approved for a practice on July 15, 1994, but people do not complete the practice until October 10, 1994.

Even though a person was approved in fiscal year 1994 they actually earned the payment in fiscal year 1995. Therefore the money received would count against the 1995 pay limit amounts.

Loan Service Fee Changes

The new loan service fees published in the previous newsletter have been changed in order to minimize the impact on the producer. They are as follows:

For grain loans, the smaller of \$45.00 per loan plus \$3.00 for each bin over one, or 1/2 of 1% of the gross loan amount. The loan service fee for Upland cotton is the smaller of \$7.50 per loan plus .90 each bale pledged, or 1/2 of 1% of the gross loan amount.

Haying & Grazing of CRP Acres

Producers approved for haying or grazing their CRP acres are reminded that September 30 is the final date to

hay or graze the applicable acres. Remember that all cattle must be removed by September 30 and all hay must be removed from the CRP acreage by December 31.

Also please remember that people are required to come into the office on or before October 14 and report to this office the acreage hayed, the tons of hay harvested, and/or the number of acres and number of livestock grazed.

Cotton Loan Deficiency Payments

Producers are reminded that when the Adjusted World Price (AWP) for cotton falls below

the base loan rate, the crop becomes eligible for Loan Deficiency Payment (LDP) or Producer Option Payment (POP). An added advantage for the producer is that you may come into the office before harvest is completed and sign form CCC-709, Direct Loan Deficiency Payment Agreement.

This will allow a producer to receive the posted AWP on the date the cotton is actually ginned rather than the date to come into the office to request an LPD. This form must be on file in the office prior to the cotton being ginned.



Practice Farm Safety

National Farm Safety Week September 18-24

Running a farm successfully requires many hands working together sometimes not so-big hands. Whenever you or one of your helpers will be operating farm machinery, it's a good idea to review safety precautions. By practicing proper safety procedures around all farm equipment, many accidents will never have a chance to happen.

Bailey County Farm Bureau
Muleshoe, Texas 272-4567

Annual Festival of Arts set for December 3rd

HEREFORD - The Wesley United Methodist Church will be hosting its 14th annual Festival of Arts and Crafts on December 3 from 9 a.m. to 5 p.m. It will be held at the Community Center.

Only a limited number of

booths are available, with applications being screened. A fee will be charged.

Applications may be obtained by writing to Ellen Collins, 801 Miles, Hereford, Texas, 79045 or by calling 364-0774.



National Farm Safety Week

September 18-24

Safety Protects Agriculture's

Greatest Resource.....YOU!!

- * Protect yourself by reading and following instructions in operator's Manuals, on labels and safety signs...
- * Protect yourself by inspecting all facilities and equipment for hazards, then correcting or avoiding them...
- * Protect yourself by keeping machinery guards in place and stopping machines before dealing with operating problems...
- * Protect yourself by equipping tractors with rollover protection (ROPS) and always fastening your safety belt...
- * Protect yourself and your family by being prepared for emergencies and having a home fire escape plan...
- * Protect your children by keeping them off machinery and away from danger, and by assigning older children chores or work they can do safely...
- * Protect yourself, your family and fellow citizens by making safety part of every activity - at work, at home, at leisure and on the road.

Bailey County Electric Cooperative Association

Muleshoe, Texas

272-4504



1-800-658-6378 106 E. American Blvd. Muleshoe, Texas


And Country Junction

10 Day Truckload Hat Sale

Sale Extended To Wed., Sept. 28

| Bailey & Stetson Felt Hats | |
|----------------------------|---------------------|
| 2X & 3X..... | \$49 ⁰⁰ |
| 4X & 5X..... | \$89 ⁰⁰ |
| 7X & 10X..... | \$99 ⁰⁰ |
| 15X & 20X..... | \$149 ⁰⁰ |
| 30X..... | \$199 ⁰⁰ |

ALL
Panhandle Slim
Boots
10% off

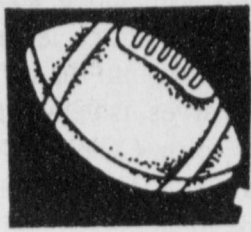


Buy 2 Pair Of
Tony Lama
Seconds
& Get 3rd Pair
FREE!

ALL
Ladies Clothing
(Excluding Jackets)
20% off

Remember Joe's Boot Repair (Leather-Crepe-Rubber)
For Whole & 1/2 Soles and Your Other Leather Repair Needs
Repairs Done In 24 Hours.
Call 806-272-4119

Muleshoe Journal and Bailey County Merchants



Football Contest

\$2250
Awarded
Each Week!



GRAND PRIZE
\$150

Weekly Prizes

1st - **\$10**

2nd - **\$750**

3rd - **\$5**

CONTEST RULES:

1. In Each Advertisement, You Will Find A Game Listed. Circle The Team You Think Will Win. The person's score that most closely matches the TIE BREAKER will be declared the winner. If several persons are still tied, the prize money will be split.
2. Only one entry per person may be made for any one contest.
3. Bring your entry by the Journal Office by 5 p.m. Friday or if mailed, the entry must be postmarked no later than 5 p.m. Friday. Write "FOOTBALL CONTEST" on the mailed entry, and mail to P.O. Box 449, Muleshoe, Texas 79347.
4. In the Tiebreaker Games, WRITE IN THE SCORE of the tiebreaker games. This score will be used to break weekly as well as determine the Grand Prize winner. Decision of The Journal's scoring judges will be final.
5. Winners will receive 10 points for first place, 6 points for second place and 4 points for third place.
6. To be eligible for the Grand Prize, entries must be on Official Entry Blanks printed in the newspaper.
7. Employees of The Journal's are not eligible to enter any one contest.

OFFICIAL ENTRY BLANK

Name _____
Address _____
Phone _____

Tie Breakers

Dimmitt _____ at River Road _____
Lubbock Roosevelt _____ at Muleshoe _____

Connie's Place

121 Main Muleshoe 272-3126
Mon. - Fri. 5 a.m. - 4 p.m.
Sat. 5 a.m. - 2 p.m.
"Serving Breakfast Daily"
We Appreciate Your Business
Connie Dominguez, Owner

Muleshoe Backers!!

Washington at Miami

Muleshoe Feed Barn

311 W. American Blvd. 272-5626

Your Dealers For
Wayne's Show Pig Feed - Bluebonnet Feeds
Complete Lines of HiPro & Show Supplies

We Back The Mules 100%

Baylor at Southern Cal



1008 W. American Blvd.

Muleshoe
272-3294

Closed on Mondays
Backing The Mules 100%

New England at Detroit

**Balloons Galore
Gifts n' More**



MariAnn Sappington

806-272-3365
203 S. Main
Muleshoe, Texas 79347

100% Mule Backers!!

Shallowater at Seminole

The Snack Shack

272-3840

222 W. Ave. H. Muleshoe
Mon. - Fri. 11 a.m. - 1:30 p.m.
3 p.m. - 5 p.m.
Closed Saturday & Sunday

Yea Team ! Go!

Childress at Floydada

**Higginbotham -
Bartlett Co.**

215 Main Muleshoe 272-3351

Sani Wax



From Furniture To Formica

Now Available For Only \$3.95

We Back The
Mules 100%



Arizona at Stanford



272-4213

1412 W. Amer. Blvd.

Delivery Available
11 a.m. - 1:30 p.m.
& After 5:00 p.m.
Muleshoe Backers!!

Hereford at Frenship

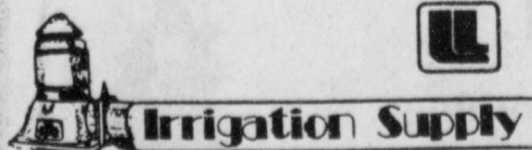
Bob Stovall Printing

"No Job Too Large
or Too Small!"

Come By and Visit With Us
For All Your Commercial Printing

Backing The Mules 100%

San Diego at Los Angeles Raiders



607 EAST AMERICAN BLVD.
MULESHOE, TEXAS 79347

J. C. and Zona Gatewood
Owners 806/272-4466
272-3246

Muleshoe Backers!!

Cincinnati at Houston

**Bailey Gin
Co.**

Peanut Hawkins, Mgr.
946-3397

Backing The Mules 100%

Lubbock Estacado at Borger

Kearney Scoggin
Scoggin Ag Center,
Inc.

"Where Fertilizer Is Our Business"

Go Mules Go!

1532 W. Amer. Blvd.
Muleshoe, Tx. 79347
P.O. Box 452

272-4613

Frona at Dalhart

**Sudduth
Field & Co.**

David L. Sudduth, CPA
Randall L. Field, CPA
104 W. 2nd Muleshoe 272-4291

Go Mules Go!

Canyon at Littlefield

**Decorators
Floral & Gifts**

For All Your Floral Needs!

Betty Wuerflein, Owner
616 S. First Muleshoe 272-4340



We Back The Mules 100%

SMU at Texas Tech

FARM BUREAU INSURANCE
**Bailey County
Farm Bureau**

David R. Tipps, Agency Manager
For All Your Insurance Needs

* Life * Crop * Auto * Home
"Helping You Is What We Do Best"

Yea Team ! Go!

Colorado at Michigan

Western Drug Co.

114 Main Muleshoe 272-31-6

"For All Your Prescription
Needs, Visit The Friendly
People At Western Drug."

100% Mule Backers!!

New Mexico at Brigham Young



NEFFCO HEATING & COOLING, INC.

Keith Hawkins

129 Main Muleshoe 272-5421
Tx. Lic. # TACLB013266E

COMMERCIAL - RESIDENTIAL
HEATING & AIR CONDITIONING, REFRIGERATION, CUSTOM SHEET METAL
INSULATION, STORM DOORS & WINDOWS
HEAT PUMP SPECIALIST
24 HOUR SERVICE - 7 DAYS A WEEK
FREE ESTIMATES

Go Mules Go!

Atlanta at Washington

Lazbuddie cheerleaders attend camp

During the week of July 25-28, the Lazbuddie High School cheerleaders attended a National Cheerleading Association (NCA) summer camp workshop at Texas Lutheran College in Seguin.

The girls participated in all areas of cheerleading ability and came home with numerous superior ratings.

Those attending were Roxann Warren, Shana Foster, Kimberly Smith, Katy Jones, Regina Jones, Krista Smith and mascot Tina Walker.



CHEERING FOR THEIR TEAM - Lazbuddie cheerleaders who attended camp include: (Back, left) Kimberly Smith, Shana Foster, Tina Walker (mascot), Regina Jones and Roxann Warren. (Front) Kimberly Smith and Katy Jones.

Five Area and subsidiary to purchase properties from GTE

West Plains Telecommunications, L.L.C., a subsidiary of Five Area Telephone Cooperative, has entered into an agreement to purchase certain telephone properties from GTE Southwest. The five exchanges being purchased are Earth, Muleshoe, Olton, Springlake and Sudan.

Personnel from Five Area Telephone Cooperative, Inc., and Hicks & Ragland Engineering Company, Inc. of Lubbock, will be traveling throughout these exchanges during the next few months to perform a telephone site survey.

The goal of this effort is to assess the quality and quantity of telephone facilities being purchased.

Five Area Telephone and West Plains Telecommunications are undertaking this effort so that a design can be prepared that will meet the needs of the residents of these exchanges, both now and in the future.

Five Area looks forward to providing telephone service and appreciates the cooperation of the public in their efforts to provide the finest service possible.

Nursing Home News

By Joy Stancell

Tuesday afternoon Lanell Stancell, Beth Watson, Claudine Embry and Sondra Wilson came to shampoo and set the ladies hair.

Ladies from the 16th & Ave. D Church of Christ hosted a watermelon feast for the residents and employees of the HealthCare Center Tuesday afternoon. Joe Smallwood provided the sweet, juicy fruit and Margaret Wilhite, Clara Harbin and Gladys McAlister helped serve.

Wednesday night, Sept. 7, Mamie Askew, Leonard McCormick and Gladys Pierce received a visit from their church family at the 16th & Ave. D Church of Christ.

Clifton Finley and the Rotary Club provided bouquets of flowers.

Glenda Jennings and

In the Service Serrano

CAMP LEJEUNE, N.C. - Marine Pfc. David C. Serrano, a 1993 graduate of Muleshoe High School in Muleshoe, recently reported for duty with Headquarters and Service Battalion, 2nd Force Service Support, Marine Corps Base, Camp Lejeune, N.C.

He joined the Marine Corps in November of 1993.

Jonessa Brockman entertained Wednesday afternoon with their delightful puppets. The Happy Birthday song was sung to Inez Hurst, lead by Glenda. Special guests at the sing-along puppet show were Holly Ann Millsap and Mr. and Mrs. Bennie O'Brien. Jean O'Brien baked loaves of banana bread which was served fresh from the oven. This concluded the program.

Thursday afternoon, Winnie Berry and Grace Scarbrough came to play skip-bo with the residents. Grace baked brownies that were served during the game time.

Sunday afternoon the Muleshoe Singers came to sing gospel music with the residents. It is a time to join together and lift up voices of praise.

Thursday morning the Rev. David McIntire, assisted by Clara Lou Jones, Rue Kimbrough, Glenda Jennings

and Lona Embry, conducted a memorial service for Bill Tarter.

Sympathy goes out to Wilmoth Clements and family over the death of her son and to the Arvel Robertson family too.

Burley Locke has had several of his family visiting with him this week. Mr. Locke can be found enjoying the sunshine on the patio.

Wednesday morning Melvin Griffin hosted coffee, spudnut time. Special guest for the occasion was Jennie McCormick and Jim Claunch.

Bro. Cliff Hargrove, pastor of the Sudan Baptist Church, conducted the devotional time Wednesday morning. Mr. and Mrs. J.C. Shanks directed the music.

Tuesday morning several ladies gathered around the table

in the Day Room for a peashelling and reminiscing session. The peas will be cooked and served for a black-eye pea and cornbread party later.

Upcoming events: Apple Festival Friday, Sept. 16 at 3:30 p.m.

Read The Classifieds!



The MHS Senior Class

Will Sponsor A Hamburger Fry

(Burgers, Chips, Beans, Cake & Drink)

Friday, Sept. 23, 5-7 p.m.

Muleshoe High School Cafeteria

Adults.....\$5.00
Children 12 & Under.....\$3.00

For Home Delivery Call Cafeteria After 3:30 Friday
272-4360

THE HARMON FORECAST


| Sat., Sept. 24 - Major Colleges - Div. 1-A | | Other Games - East | |
|--|----|---------------------------------|----|
| Air Force | 20 | Alegheny | 30 |
| Alabama | 34 | Amherst | 32 |
| Arizona | 27 | Bloomsburg | 22 |
| Army | 26 | Brookport | 28 |
| Auburn | 43 | Buffalo State | 29 |
| Ball State | 29 | California State, Pa. | 21 |
| Boston College | 23 | Carnegie-Mellon | 36 |
| Bowling Green | 32 | Clarion | 19 |
| Brigham Young | 31 | East Stroudsburg | 24 |
| California | 21 | Gaithersburg | 21 |
| Central Michigan | 27 | Ithaca | 27 |
| Colorado State | 22 | Lebanon Valley | 27 |
| Florida State | 22 | Lycoming | 28 |
| Georgia | 26 | Mansfield | 21 |
| Georgia Tech | 23 | Rochester | 16 |
| Hawaii | 20 | St. Lawrence | 20 |
| Kansas | 48 | Shippensburg | 13 |
| Kansas State | 28 | Franklin & Marshall | 10 |
| Maryland | 16 | Lock Haven | 14 |
| Memphis State | 27 | Wesleyan | 17 |
| Miami | 26 | Shippensburg | 13 |
| Michigan | 20 | King's (Pa.) | 20 |
| Michigan State | 30 | Moravian | 14 |
| Nebraska | 51 | Upsala | 7 |
| New Mexico State | 27 | Bowdoin | 8 |
| North Carolina State | 16 | | |
| Northern Illinois | 23 | Other Games - Midwest | |
| Notre Dame | 34 | Albion | 40 |
| Ohio State | 52 | Alma | 28 |
| Oklahoma State | 21 | Anderson | 34 |
| Oregon | 21 | Arkansas-Monticello | 27 |
| Penn State | 38 | Ashland | 21 |
| Rice | 15 | Augustana, Ill. | 30 |
| South Carolina | 17 | Baker | 15 |
| Southern California | 25 | Baldwin-Wallace | 38 |
| SW Louisiana | 20 | Benedictine | 26 |
| Syracuse | 31 | Central Iowa | 24 |
| Tennessee | 28 | Central Missouri | 36 |
| Texas | 21 | Central Oklahoma | 33 |
| Texas A & M | 36 | Central State, Ohio | 19 |
| Texas Tech | 28 | Chadron | 28 |
| U.C.L.A. | 27 | Emporia State | 22 |
| Utah | 25 | Ferris | 20 |
| Utah State | 22 | Hastings | 19 |
| Virginia Tech | 22 | Hope | 20 |
| Western Michigan | 39 | Iowa Wesleyan | 17 |
| Wisconsin | 31 | John Carroll | 32 |
| | | Mankato | 23 |
| | | Michigan Tech | 25 |
| | | Midland Lutheran | 21 |
| | | Missouri Southern | 43 |
| | | Missouri Valley | 31 |
| | | Mount Union | 45 |
| | | Muskingum | 25 |
| | | NE Missouri | 36 |
| | | Nebraska Wesleyan | 35 |
| | | Nebraska-Kearney | 34 |
| | | North Dakota State | 28 |
| | | North Dakota U. | 20 |
| | | Northern Michigan | 28 |
| | | Northern Missouri | 25 |
| | | Pittsburg State | 20 |
| | | Saginaw Valley | 21 |
| | | Simpson | 14 |
| | | South Dakota State | 23 |
| | | South Dakota U. | 29 |
| | | Sterling | 14 |
| | | Wayne State, Mich. | 27 |
| | | Wayne State, Neb. | 29 |
| | | | |
| | | Other Games - South & Southwest | |
| | | Alabama A & M | 17 |
| | | Albany, Ga. | 24 |
| | | Carson-Newman | 16 |
| | | Catskills | 26 |
| | | Central Arkansas | 15 |
| | | Centre | 21 |
| | | East Central Oklahoma | 20 |
| | | Fort Valley | 26 |
| | | Harding | 24 |
| | | Henderson | 27 |
| | | Lenoir-Rhyne | 16 |
| | | Mississippi College | 28 |
| | | New Haven | 25 |
| | | Newberry | 22 |
| | | Norfolk | 21 |
| | | North Alabama | 35 |
| | | Southern Arkansas | 27 |
| | | Tarleton State | 21 |
| | | Thomas More | 25 |
| | | Tuskegee | 14 |
| | | Valdosta | 52 |
| | | Virginia State | 28 |
| | | West Virginia Wesleyan | 22 |
| | | Wingate | 31 |
| | | Winston-Salem | 14 |
| | | | |
| | | Other Games - Far West | |
| | | Carroll, Mont. | 35 |
| | | Central Washington | 25 |
| | | Humboldt | 26 |
| | | Lewis & Clark | 18 |
| | | NW Oklahoma | 21 |
| | | Occidental | 19 |
| | | Portland Lutheran | 31 |
| | | Redlands | 31 |
| | | Texas A&M-Kingsville | 20 |
| | | Western New Mexico | 36 |
| | | Western State | 27 |
| | | Western Washington | 21 |
| | | Whitworth | 14 |
| | | | |



Bruce Willis STRIKING DISTANCE

They shouldn't have put him in the water if they didn't want him to make waves.

MISSION CABLE 272-3310 HBO Just You Wait.



(806) 385-6464 Littlefield, Texas

Muleshoe's Favorite Car Dealer!

'94 Closeout In Progress

78 Vehicles In Stock!



Proudly Presented By:

WES-TEX FEED YARDS, INC.

CUSTOM CATTLE FEEDING
272-7555

People asked to report whooping crane sightings

The U.S. Fish and Wildlife Service (FWS) expects 146 endangered whooping cranes, including 10-12 young, to migrate south this September from their Canadian nesting grounds at Wood Buffalo National Park in the Northwest Territories.

The cranes will winter near the Arkansas National Wildlife Refuge (NWR) on the Texas Gulf Coast north of Corpus Christi. Last fall, 143 birds, including 16 young, made it to Arkansas NWR.

The several-week journey will take the whooping cranes through Alberta and Saskatchewan, Canada, and the

midwestern states of North and South Dakota, Montana, Nebraska, Kansas, Oklahoma and Texas.

In April, the cranes migrated north to Canada - a 2,500 mile journey from the central Gulf Coast of Texas, to their nesting grounds in the Northwest Territories.

In June, Canadian and U.S. biologists counted 28 nesting pairs and 15 young. The high percentage of birds not nesting (28 pairs instead of last year's 43 to 46 pairs) is believed to be due to a late winter and possibly to low food resources on the wintering grounds.

"It is a disappointing year

for reproduction considering the large number of pairs which could have nested," said Dr. Jim Lewis, National Whooping Crane Coordinator, FWS, Albuquerque, N.M.

"Hopefully, habitat conditions will improve in 1995 and we will have a bumper crop of young."

In addition to the Arkansas flock, eight adult whooping cranes survive from an experimental population, begun in 1975, which summers in Idaho and Wyoming and winters primarily in the Middle Rio Grande Valley in central New Mexico.

This flock was developed

using sandhill cranes as foster during an experiment with cross-fostering techniques, parents. Because of imprinting problems (the young whooping cranes did not recognize their own kind as appropriate mates) and high mortality, that experiment has been discontinued.

The population is now being used to test techniques for introducing captive-reared whooping cranes into a migratory situation.

In mid-August, a captive-produced chick was released with a wild male into this flock in Idaho. These birds had been confined together and the male

had begun caring for and feeding the chick.

"Our hope is that the chick will learn a migration route from the adult and that they will begin their migration in late September or October," Lewis said.

The whooping cranes in this flock normally pass through northeastern Utah and northern Colorado in September and remain for four to six weeks in the San Luis Valley near Monte Vista, Colo. In early November, these cranes migrate on to the middle Rio Grande Valley, where they spend the winter between Belen, N.M. and Elephant Butte Reservoir.

State and federal wildlife officials ask anyone seeing a whooping crane this fall to report the time, place and other details of the sighting to local wildlife officials. Adult whooping cranes are white with black wingtips and a red forehead.

In flight, the bird's long neck is held straight forward and its long black legs extend beyond the tail. The adult's wingspan may be more than seven feet, and when standing, some males are as tall as five feet. Juveniles have white and rusty brown body feathers and black wingtips.

College Day activities to be held at MHS

Fall classes have just begun, but for high school seniors, it's not too early to be thinking about attending college next fall. Academic counselors from Clovis Community College in College, N.M., will participate in College Day activities Tuesday, Sept. 27 at Muleshoe High School, beginning at 5:30 p.m.

Students from area schools are also invited to the College Day program in Muleshoe.

The counselors will have information about CCC's open admission policy in which no admission tests are required and will answer other questions about the college.

College bound students may be interested in learning more about the early admission program which allows selected high school seniors and juniors an opportunity to take college courses at CCC and earn college credit while still enrolled in high school.

A concurrent enrollment agreement with several high schools provided students an opportunity to take classes while still in high school and earn high school credit as well as college credit. Policies and procedures regarding early admission or concurrent enrollment programs may be obtained through the high schools or the CCC Office of Admissions and Records.

The community college provides technical training in nursing and radiology technology programs. Students may earn either a Licensed Practical Nursing (LPN) certificate or an Associate of Science Degree in Nursing (ADN).

vocational programs in auto mechanics, building construc-

tion trades, digital electronics, air conditioning, heating and refrigeration. To enroll in one of these programs, students must complete a Vocational Interest Card in the Admissions Office.

For more information, students can contact the high school counseling office or can call CCC at (505)769-4002.

MULESHOE MOTOR COMPANY
"Car Capital of The West Plains"

SPECIAL
\$750 Cash Back or 2.9% Financing
On
1994 Mercury Sable LS
(Stock #M-1, 3.8L-V6, Keyless/Remote Entry, Power Group, Electronic Group, Speed, Tilt, Cruise)
W.A.C.
Good Through September 28, 1994

1225 West American Blvd.
272-4251 Muleshoe, Tx. 1-800-432-7617

Harvest Time Is Here...

Agri-Sprayers, Inc.
Can Fill Your Grain Cart Needs With
A Kinze 840 Grain Cart!

Come Look At Its
Unique Design And
Fast Unloading
Capability!
1 Only



KINZE

Call Dale Turner - 806-825-3600

Cholesterol and Health Screening

September 28, 1994
9:00 a.m. to 3:30 p.m.
Bailey County Electric
Cooperative Office
305 E. Ave. B
Muleshoe, Texas

Provided by: Texas Rural Electric Women's Association
(An organization representing Bailey County Electric Cooperative)
Conducted by: Texas Department of Health Field Office Staff
Appointment: Call 272-5561 (Texas Department of Health)
Walk-ins will be accepted if time is available.

M-M-M-M!



| | | | |
|----------|---------|---------|-------|
| AA | A | B | C |
| 9 1/2-10 | 9-10 | 10-11 | 10-11 |
| D | E | EE | H |
| 5-6 | 6 1/2-7 | 7 1/2-8 | 7 1/2 |

404

Sink your workin' feet into 8 inches of Red Wing soft... Red Wing support... and Red Wing fit! Days go better!

The Fair Store
120 Main 272-3500
Muleshoe, Texas



MADE IN U.S.A.

Lowe's Pay-n-Save Fall Savings



Assorted
Lowe's Soft Drinks
6 Pack, 12 Oz. Cans
99¢

MEAT

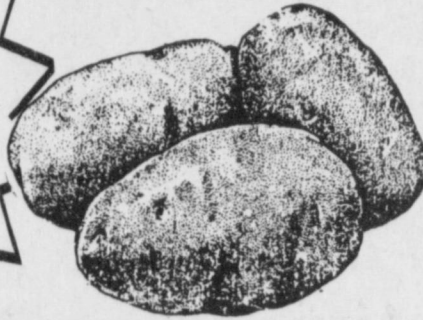


Value Pack
Tenderized, Beef Bottom Round Steak
\$1.39

1 lb.
Peyton's Bacon
99¢

PRODUCE

New Crop,
15 Lb. Bag
Russet Potatoes
99¢



Thompson Seedless
Grapes lb. **79¢**

Super Sweet
Yellow Corn 4 Ears For **\$1**

Red Ripe, 4 Pack
Tomatoes Ea. **69¢**

Fresh California
Broccoli lb. **69¢**



ALL VARIETIES
ECKRICH
Smoked Sausage lb. **\$1.89**
ECKRICH
Cotto Salami 1 lb. pkg. **\$2.19**
ECKRICH
Honey Ham 1 lb. pkg. **\$1.39**



Assorted Ice Cream,
1/2 Gal. Round
Blue Bell
2 For **\$5**



Assorted, 12-16 oz. btl.
Shampoo or Conditioner
Suave
88¢

LOWE'S
White Bread
24 oz. Loaves For **288¢**



DECKER
Smoked Sausage
\$1.39
lb.



FOR CHICKEN FRY
Cube Steaks lb. **\$2.69**



BONELESS ROUND ROAST OF RUMP
Roast lb. **\$1.59**



EL MONTEREY BURRITOS
GREEN CHILI, BEEF & BEAN
Burritos or Chimichangas
\$1.99
40 oz. pkg.



OUR VERY FINEST
SUPERIOR
Ground Beef lb. **\$1.99**



EYE-O-ROUND STEAK OR ROAST
..... lb. **\$1.99**

Stock Up & Save



Wesson Oil
\$1.29
24 oz. btl.



Trappey's
Pinto Beans or Black Eye Peas
15 oz. cans
2 For **89¢**



ASSORTED
GULAR OR DIET
Sprit, Mr Pibb
or Fanta Red
\$1.29
6 pack
12 oz. cans



Assorted Spearmint
Doublemint, Juicy Fruit,
Big Red or Winterfresh
Wrigley's Gum 10 For **\$1**

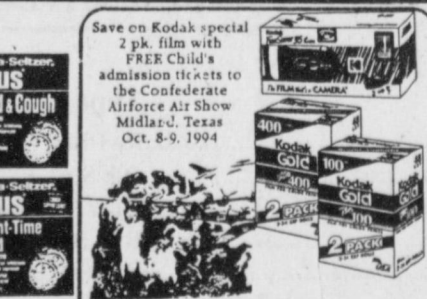
HEALTH & BEAUTY



ASSORTED
Suave Baby Products
\$1.99



SUAVE
Baby Lotion or Baby Bath
..... **\$1.39**
CORGONOL
OR NIGHTTIME
Alka-Seltzer Plus
..... **\$4.39**



Fun Saver Kodak Camera **\$6.99**
100 Speed 135 mm, 2 roll pkg.
Kodak Film **\$5.99**
400 Speed 135 mm, 2 roll pkg.
Kodak Film **\$7.99**



ASSORTED
DEODORANT &
ANTI-PERSPIRANT
Ban Clear **\$2.19**



Save 75¢ on your choice of any
Ban Clear or Ban For Men
Clear solids
(Use Paper or Band-Aid only)
Save 75¢ on Ban Clear or Ban For Men Clear
(Anti-Perspirant or Deodorant only) with this coupon.
Limit one per customer. Expires 9-28-94

FROZEN & DAIRY



SWANSON GREAT STARTS
Breakfast Entrees **4.55**
SWANSON ASSORTED
Breakfast Burritos **3.52**
SHURFINE
Ice Cream Sandwiches **1.89**
FISHER BOY
HEAT N SERVE
Fish Sticks **2.99**



PARKAY Spread
2 1/2 lb. tubs For **2.93**



ASSORTED
Jell-O Gelatin
2 1/2 lb. tubs For **2.93**



Shurfine
Buttermilk **1.39**
TROPICANA CHILLED
REGULAR OR HOMESTYLE
Seasons Best Orange Juice **1.59**

1000 Sheets Scott
White or Assorted,
4 Roll Pkg.
Bath Tissue **\$1.89**

ASSORTED, Reg. \$1.99,
Eagle El Grande
Tortilla Chips
2 For **\$3**

SO DRI PRINTED
Paper Towels
39¢
roll

YELLOW SQUEEZE
French's Mustard **89¢**

GERBER
1st Food
Baby Food 4 For **\$1**
BLACBURN'S ASSORTED
Preserves of **\$1.09**
Jelly
NEW! ASSORTED
Campbell's
Slimmer Chef 2 For **\$3**

DEL MONTE
Seedless Raisins **88¢**
DEL MONTE HOT
Chili Peppers **\$1.39**
DEL MONTE SQUEEZE
Ketchup **\$1.19**
DEL MONTE FITTED
Prunes **\$1.49**

60, 75, 100 Watt, 4 pack
**Sylvania Soft White
Light Bulbs** **99¢**

Nabisco Regular or Reduced Fat,
20 Oz. Oreo/Doublestuf or Regular,
Striped, Sprinkled, Chunky or Chewy,
14.5-18 Oz. Chips Ahoy!
**Oreos or Chips
Ahoy! Cookies** 2 for **\$5**

Assorted, 14.5-16 Oz. Pkgs.
Ritz Crackers 2 for **\$5**

PRE-PRICE \$8.99
GAINES BEEF
Gravy Train Dog Food
\$6.99

CLIP & SAVE

\$100 OFF ANY
24 oz. bottle of
Aunt Jemima
SYRUP

SAVE 80¢
on any 1 box of 10 ct.
Hefty
Twist Tie Lawn & Leaf Bags
AD PRICE \$1.19
COUPON CODE

SAVE 95¢
on ONE 18 oz.
Kellogg's Corn Flakes
CEREAL ONLY

SAVE \$130
on ONE 14 oz.
Cracklin' Oat Bran
CEREAL ONLY

SAVE 1/2
on ONE 24.3 oz. Bite Size
Frosted Mini Wheats
CEREAL ONLY

SAVE
\$2.00
24-32 ct. pkg.

BUY 1 FREE
GET 1 FREE
AT THE CHECK OUT!
BUY Any Instant Quaker® Oatmeal
PRESENT This Coupon to the cashier
along with purchase
RECEIVE Any Instant Quaker® Oatmeal
FREE! Ad Price \$3.19

ASSORTED
Aunt Jemima Syrup
\$1.00 OFF

HEFTY
Lawn & Leaf Bags
\$1.19

KELLOGG'S
Corn Flakes
\$1.39

KELLOGG'S
Cracklin' Oat Bran
\$1.99

KELLOGG'S
BITE SIZE Frosted Mini Wheats
\$2.15

ASSORTED
Cuddles Diapers
\$2.99

QUAKER
Instant Oatmeal
BUY ONE GET ONE
FREE

Lowe's MARKETPLACE

515 W. American Blvd.
Muleshoe 272-4585

401 W. American Blvd.
Muleshoe 272-4585

Prices Effective September 1994

WESTERN MONEY UNION TRANSFER™
The fastest way to send money.

WESTERN MONEY TRANSFER
Available at:
Pay N Save MARKETPLACE

WE RESERVE THE RIGHT TO LIMIT QUANTITIES IN TEXAS



Yard of the week

The home of Buck and Carolyn Johnson, located at 218 West 18th, has been chosen as Yard of the Week by the Jennysliippers. Pictured in the photo are Annick Magermans and Carolyn Johnson. The Johnson's home includes an array of green pines, rosebushes, geraniums and many other flowers and plants.

Harrison completes legal assistant exam

The National Association of Legal Assistants, Inc., has announced that Sherri Bessire Harrison has successfully completed the two-day Certified Legal Assistant (CLA) Examination and is now entitled to use of the CLA professional credential.

Sherri Harrison is among 1,501 legal assistants in the State of Texas and 6,710 legal assistants nationwide who have attained this goal.

Established in 1976, the Certified Legal Assistant examination program is a voluntary professional credentialing program developed by the National Association of Legal Assistants and administered by a board composed of legal assistants, members of the American Bar Association and members of the field of education.



Sherri Bessire Harrison

tion active in legal assistant training.

The CLA program involves successful completion of a two-day comprehensive examination covering the topics of communications, legal research, ethics, human relations

and interviewing techniques, legal terminology, judgement and analytical ability and substantive law.

Thereafter, evidence of continuing legal education must be submitted periodically in order to maintain certified status.

The National Association of Legal Assistants, headquarters in Tulsa, Okla., is a national, non-profit association which represents over 15,000 paralegals through individual members and 85 affiliated state and local associations.

It is the leader in the growth and development of the paralegal profession, providing continuing education, professional development and certification programs for the career field.

Rebekah Lodge to host skating party

The Rebekah Lodge met on Sept. 12. Roll call was called and 13 members answered. The lodge is having a skating party again on October 16. Bring your skates and have fun.

The Lodge all mourns the passing of Frank Snyder. He was one of the remaining four charter members. He joined the Oddfellows in December 1994 and was a charter member of Muleshoe Rebekahs in October of 1945.

Evelyn Branch, the state treasurer of the Rebekah Assembly, was found murdered. Her husband found her when he came home from work. There appeared to be quite a struggle.

The charter will be draped for a period of 30 days in memory of this too.

The prayer list includes Clay

Vansandt, who will have a cat scan. Ernest Bass came home after a lengthy stay at the hospital.

Remember, sometime ago the Lodge reported they will have a birthday party at the nursing home in September. The party will be Sept. 22.

Come join in. They may have a prize in store for those who attend.

The chili dinner was well-received in September. The Lodge is planning another one for October 6. After some good talks, the Lodge was closed.

Dear Friends,

Thank you so much for your love and concern during the illness of our precious one, Dub Harlan.

Your many acts of kindness have been a source of encouragement and strength through these long days.

Love,

The Dub Harlan Family

MULESHOE CATTLE MARKET

Saturday, September 17, 1994, 675 Head of cattle, Market steady with packer cows 1-2 lower.

STEERS

| Weight | Per # |
|------------------|-------------|
| 200-300 lbs..... | \$0.95-1.05 |
| 300-400 lbs..... | \$0.85-0.95 |
| 400-500 lbs..... | \$0.75-0.85 |
| 500-600 lbs..... | \$0.75-0.83 |
| 600-700 lbs..... | \$0.72-0.77 |

HEIFERS

| Weight | Per # |
|------------------|-------------|
| 200-300 lbs..... | \$0.85-0.95 |
| 300-400 lbs..... | \$0.75-0.85 |
| 400-500 lbs..... | \$0.72-0.82 |
| 500-600 lbs..... | \$0.67-0.77 |
| 600-700 lbs..... | \$0.60-0.68 |

PAIRS

| Type | Per head |
|---------------------|-----------------|
| Good and young..... | \$700.00-880.00 |
| Others..... | \$500.00-650.00 |

BRED COWS

| Type | Per head |
|-------------|-----------------|
| Ranged..... | \$450.00-600.00 |

PACKER COWS

| Type | Per # |
|--------------------|---------------|
| High Yielding..... | \$43.00-47.00 |
| Others..... | \$38.00-43.00 |

PACKER BULLS

| Type | Per # |
|-------------|---------------|
| Ranged..... | \$50.00-60.00 |

REPRESENTATIVE SALES

| Seller, City | # | Type | Wt. | CWT or PH |
|--------------------------------------|----|-----------------------|-----------|-----------------|
| Ronald London, Friona..... | | Rwf Bull Clf..... | 330..... | \$90.00 |
| Doug Clements, Morton..... | | Blk Str..... | 380..... | \$87.00 |
| Marvin Beene, Springlake..... | 2 | Char & Blk Bulls..... | 540..... | \$75.00 |
| John Gardea, Muleshoe..... | | Bwf Bull..... | 220..... | \$225.00 per hd |
| S.J. Cleavenger, Anton..... | | Red Str..... | 500..... | \$83.00 |
| S.J. Cleavenger, Anton..... | 2 | Red Str..... | 625..... | \$76.50 |
| E&M Cattle, Muleshoe..... | 4 | Red & Yellow Str..... | 855..... | \$72.50 |
| Roundup Cattle, Shallowater..... | 11 | Hol Str..... | 410..... | \$60.00 |
| Jose Robles, Hereford..... | | Char Hfr..... | 250..... | \$235.00 per hd |
| Doug Clements, Morton..... | | Red Hfr..... | 310..... | \$85.00 |
| Paula Nix, Olton..... | 2 | Bwf Hfr..... | 390..... | \$77.00 |
| Gleason & Gleason, Levelland..... | | Blk Hfr..... | 415..... | \$77.00 |
| Grant & Grant, Muleshoe..... | | Blk Hfr..... | 510..... | \$72.50 |
| Jerry Lionel Gleason, Levelland..... | | Blk Hfr..... | 470..... | \$74.50 |
| Ray Clark, Canadian..... | 4 | Blk Hfr..... | 760..... | \$67.75 |
| Bar S Ranch, Aspermont..... | 18 | Wf Hfrs..... | 760..... | \$66.35 |
| Yvonne Ogerly, Anton..... | 4 | Blk Pairs..... | 1400..... | \$775.00 |
| Valadi Trust, Seminole..... | | Red Pair..... | 1685..... | \$820.00 |
| Valadi Trust, Seminole..... | 2 | Blk Pair..... | 1480..... | \$770.00 |
| Paula Nix, Olton..... | | Red Pair..... | 1565..... | \$880.00 |
| Dan Weatherbie, Muleshoe..... | | Red Pair..... | 1185..... | \$650.00 |
| Valadi Trust, Seminole..... | | Blk Cow P6..... | 1075..... | \$500.00 |
| Valadi Trust, Seminole..... | | Yellow Cow P8..... | 1185..... | \$540.00 |
| Floyd & Terry Rowland, Morton..... | 2 | Mixed Cow P5..... | 1105..... | \$550.00 |
| Gleason & Gleason, Levelland..... | | CharCow..... | 1395..... | \$48.75 |
| Doug Betts, Morton..... | | Char Cow..... | 1320..... | \$47.20 |
| Otis King, Springlake..... | | Red Bull..... | 1860..... | \$57.50 |

The Muleshoe Cattle Market is brought to you each week by Muleshoe Livestock Auction, located east of Muleshoe on U.S. 84. Muleshoe Livestock conducts sales every Saturday, beginning with hogs, sheep and goats at 10 a.m. and cattle following at approximately 12 noon. For information on sales or to consign cattle, call (806) 272-4201.

NOTICE OF REQUEST FOR CHANGE IN LINE EXTENSION TARIFF

Bailey County Electric Cooperative Association (the "Cooperative") intends to change the provisions of the line extension tariff. The changes may result in an increase or a decrease in the charge for a particular line extension. The changes are applicable to all customers served by the Cooperative and are expected to increase the Cooperative's revenues by a small amount. Implementation of the changes is subject to approval by the Public Utility Commission of Texas.

Persons who wish to intervene or comment on the changes should notify the Public Utility Commission of Texas as soon as possible. The intervention deadline is October 7, 1994.

A request to intervene or for further information should be mailed to the Public Utility Commission of Texas, 7800 Shoal Creek Boulevard, Austin, Texas 78757.

Further information may also be obtained by calling the Commission's Consumer Affairs Office at (512) 458-0256 or (512) 458-0221 for text telephone. Please refer to Docket

No. 13185.

Announcement policy

The Muleshoe and Bailey County Journals publish engagement, wedding and anniversary announcements and photos free of charge as a service to our readers. The deadline for items to be submitted is at 5 p.m. on the preceding Monday for the Thursday edition and at 5 p.m. on the preceding Thursday for the Sunday edition.

Complete guidelines and forms are available at the Muleshoe Journal office. The Journals reserve the right to edit copy.

September is month for PTA

AUSTIN - Gov. Ann Richards recently proclaimed September as Parent Teacher Association (PTA) PTA Membership Enrollment Month in Texas and stated in the proclamation that "Texas PTA's 2,600 local units make it an easily accessible avenue for all people to get involved in education and child advocacy."

Texas PTA urges all members to get involved in PTA in their local communities because children need advocates, schools need volunteers and citizens need a link to children's education.

As the largest child advocacy organization in the nation, PTA is committed to uniting the efforts of educators and the general public to secure the highest advantages in physical, mental, social and spiritual education For All Children. It also is involved legislatively in securing adequate laws for the care and protection of children and youths.

A nonprofit organization of more than 800,000 members, Texas PTA is affiliated with National PTA of nearly 7 million members.

The 1994-95 Texas PTA membership recruitment theme is "Put Your Heart in PTA -- For All Children."

For information regarding Texas PTA programs, services or legislative positions, call 1-800-TALK - PTA or 512/476-6769.



BIKE-A-THON WINNERS— Three local children who participated in the St. Jude's Bike-A-thon a few weeks ago were recently awarded for their efforts. Pictured are: (Left) Joel Cowart, who received a bicycle; Brittney Fuqua, who was the top money raiser and was awarded a walkman radio and Chansé Lewis, who received a basketball goal. All together, eight children rode in the bike-a-thon and raised \$1,200 for the cause.

Letter to the Editor

Reader feels there is too much government, taxes

We are being taxed heavily by our local, state and federal governments. The government is trying to take 33 counties in Texas because of a bird. The people in those counties can tell you a sad story. We need governors and representatives who are for the people and will stand up to the federal government. Governor Richards does not fit the bill, she is a Clinton supporter. Texas passed the lottery to help education and relieve some tax burden. It didn't, our taxes went up. If states didn't take federal money they couldn't mandate local and state policies. We the people right now are the power if we

use it. We need to vote for people who will vote against President Clinton's policies. His policies are socialism or communism which ever you prefer. His crime bill which tank God, the republicans voted against, does nothing for crime but takes away rights and money from us. He has the highest tax rates. His health care will take your rights and money also. People, I say we must talk to our commissioners, school board members, city officials and any elected officials. Also I say to any elected official - talk to the people. Bailey County is a farming community. That is all Mule-

shoe has to support it. If we tax the people out of business, we might as well bury the town because it will die. America has a constitution but little by little we are losing it for socialist gains. If we do not change, think about how our children and grandchildren will have to live.

Larry O. Martin
Muleshoe, Texas

Have a nice day!

READ THE CLASSIFIEDS WHEN YOU NEED TO BUY OR SELL SOMETHING !!!! CALL 272-4536

\$2.29
Four-piece

Steak Finger Country Basket*
Steak fingers, fries, country gravy and Texas toast.

On Sale at Dairy Queen® September 19 - October 2, 1994.

©Reg. TM Am. D.Q. Corp. *Reg. TM Tx. D.Q. Op. Coun. ©Tx. D.Q. Op. Coun. All participating Dairy Queen stores.

Farm Safety Week

National Farm Safety Week
September 19-23, 1994

Wes-Tex Feed Yards

Practicing safe farming is serious business. By having professionals regularly service your machinery and following some simple precautions, you can drastically reduce the risk for accidents.

WES-TEX FEED YARDS, INC.
272-7555
Muleshoe, Texas

SPECIAL PRICES!
LOW PAYMENTS!

| | | | |
|---|--|---|--|
| <p>1994 Topaz GS and Tempo GL</p> <p>8 to choose from No Money Down Only \$198 Per Month</p> | <p>1994 Sables and Taurus</p> <p>Several to choose from Starting at Only \$15,495</p> | <p>1994 Town Cars and Continentals</p> <p>Priced To Sell Starting at Only \$22,499</p> | |
| <p>1993 Chevy Cavalier Z24</p> <p>Only \$257 Per Month</p> | <p>1994 Mazda 626 Loaded, 1 Owner</p> <p>Only \$299 Per Month</p> | <p>1992 Geo Metro</p> <p>Only \$157 Per Month</p> | <p>1993 Ford F-150 Short Wide Bed</p> <p>Only \$248 Per Month</p> |
| <p>1993 Mustang LX Convertible, 1 Owner, Loaded</p> <p>Only \$227 Per Month</p> | <p>1993 Jeep Cherokee 1 Owner, Low Miles, Loaded</p> <p>Only \$16,695</p> | <p>1993 Ford Taurus Grey</p> <p>Only \$12,495</p> | <p>1984 Lincoln Town Car</p> <p>Only \$2,995</p> |
| <p>1994 Ford Probe S Red & White - Unbelievable</p> <p>Only \$15,995</p> | <p>1993 Ford Tempo White</p> <p>Only \$7,995</p> | <p>1993 Ford Aerostar Extended Length, Loaded</p> <p>Only \$16,995</p> | <p>1994 Ford T-Bird White - Used</p> <p>Only \$16,995</p> |

**Lots More To Choose From...
Hurry In - Sale Ends September 24th!**

TEAGUE STREBECK

FORD MERCURY
Plymouth Dodge

(505) 356-8581 • (505) 762-3845
1115 North Chicago
Portales, NM

The very best prices and service anywhere... We personally guarantee it!