

Boll weevil referendum to be discussed at meeting

Information on the High Plains Boll Weevil Eradication Referendum will be provided on Friday, March 17 at the Bailey County Coliseum. This two-hour boll weevil meeting will be conducted by the Texas Agricultural Extension Service and will begin at 1:30 p.m.

"We're conducting this educational meeting along with 29 other High Plains and

adjacent High Plains counties in the proposed eradication zone," said Curtis Preston, Bailey County Extension Agent.

The meeting has been accredited by the Texas Department of Agriculture for two continuing education units (CEUs) toward re-certification requirements for private pesticide applicators.

Brant Baugh, entomologist

for Bailey-Parmer counties, will present information on the present boll weevil situation and the proposed referendum so cotton producers can make an informed decision when they have the opportunity to vote in April.

A representative from the Plains Cotton Growers (PCG) will follow with a presentation which will further emphasize the critical nature of the present

boll weevil situation and provide details about the proposed referendum and program operation.

The Plains Cotton Growers Boll Weevil Suppression Program has operated for 31 years and has successfully kept the boll weevil from becoming an established economic pest in the High Plains area, the biggest cotton patch of the world.

"Area producers have en-

joyed a competitive edge compared to other regions of the cotton belt where insect control often means spraying up to 15 times a season," said Dr. James Leser, Extension Entomologist at Lubbock, "Many of these pesticide applications can be directly attributed to the presence of boll weevils."

The PCG program uses a fall diapause control program,

applying malathion within its operational boundaries that, with the help of cold winter weather, reduce the number of boll weevils able to successfully survive as overwintering adults until a cotton crop is up and squaring in the early summer.

Leser explains that the boll weevil has recently out-

Continued on page 2

It's official! McDonalds is coming

Barry Leigh, a real estate representative for the McDonalds Restaurant Corporation in Oklahoma city, Okla., has confirmed on Monday that plans to bring a McDonalds Restaurant to Muleshoe are official. The Golden Arches will be heading this way.

According to Leigh, plans for a groundbreaking ceremony have tentatively been set for Monday, March 13.

Leigh said the McDonald's Restaurant will be located on American Blvd., between 13th & 14th Streets, right next to Alco store.

Leigh said that he could not release information at this time on who the owner of the Muleshoe McDonald's will be. But he did say, "Muleshoe is a vibrant little town."

"We (McDonald's) is able to go into smaller towns now because we have lower investment costs," he said.

"But we are selective about which towns we go into. We thought that Muleshoe was viable and the people here have been real receptive."



Reading picnic

The Conner family was among several who participated in a Reading Picnic held at Dillman Elementary School on Tuesday. The purpose of the picnic was to invite parents to have a picnic with their child and watch a demonstration by teachers on the school's reading program, "Peabody Lesson." Pictured are: (Left) Debbie Conner, Caleb Conner, Stacy Conner and Dillman student Timothy Conner.

Two programs on parenting to be held

Two parenting programs have been scheduled for the upcoming weeks at the Bailey County Civic Center in Muleshoe. The first program will be Tuesday, March 14 at 7 p.m. in the civic center meeting room. The next program will be held on Tuesday, March 21 at the same time and place.

"Understanding Your Role

as a Parent" is the topic of the first program.

This program will cover such areas as: understanding your family as a whole, appreciation for the necessary commitment for parenting, traits of a healthy family and the parent's role as a primary role model.

On March 21, the topic of

the program will be "Understand Your Child." Topics of discussion will include: development norms, safety, nutrition and health, general personality and functioning and human growth and development.

These programs are being sponsored by the Texas Agricultural Extension Service,

Bailey County Office and the Bailey County Extension Family and the Consumer Sciences Committee.

Please contact the Bailey County Extension Office with any special needs you may have in order to fully participate in this program.

FLBA of Muleshoe announces 10 percent dividend to stockholders

The board of directors of the Federal Land Bank Association (FLBA) of Muleshoe has declared a 10 percent dividend to its stockholders of records as of Dec. 31, 1994. Checks will be mailed on or about April 1.

The FLBA of Muleshoe is a cooperative lending institution where the purchase of stock by borrowers is required by law. Dividends paid on this stock will reduce the effective loan rate paid by borrowers on their loans.

Funds for dividends are made possible by the improve agriculture economy in the area, resulting in an improved financial situation for the association. A five percent dividend was paid out in 1994.

The association has also reduced costs to members by eliminating a one percent loan closing fee on new loans.

The FLBA of Muleshoe is a member of the Farm Credit System and makes loans to purchase farms, ranches, homes and to make improvements. Loans are made on fixed and variable rates up to 25 years.

Bill Liles is president of the FLBA of Muleshoe. Donald Christian serves as chairman of the board of directors and Jimmie Pitcock is vice-chairman. Other member-elected directors are Billy D. Baxter, Jim Pat Claunch and Jack Benham. Don McDonald serves as the director elected director.

Area receives about one-quarter inch of rain

The city of Muleshoe received about .24 inches of rain on Tuesday, according to R.G. Bennett. Bennett said that this brings the rain count for the year up to .55 inches, which he said is about the same as this

time last year.

More rain is hoped for, particularly at the end of March, to help area farmers avoid drought conditions similar to last year.

"We are still very dry and

we need all the moisture we can get," said Bailey County extension Agent Curtis Preston.

Preston said that corn is usually planted around the first

of April, from the 5-10, depending on weather conditions from the weeks prior to that.

Cotton planting typically begins in late April and early May.

Leaders express cautious optimism about Arkansas Shiner

With the passage of HR 450 in the U.S. House of Representatives, area water leaders are expressing cautious optimism about the likelihood of stopping the proposed U.S. Fish and Wildlife Service (USFWS) listing of the Arkansas River shiner as an endangered species in the Canadian River of Texas.

HR 450 (The Regulatory Transition Act of 1995), sponsored by U.S. Rep. Tom DeLay (R-Stafford), states that no action can be taken toward pro-

mulgating or implementing new federal regulations during the period from November 20, 1994 to December 31, 1995. The legislation was amended by U.S. Rep. Larry Combest (R-Lubbock) to include a moratorium on the listing of endangered species (including the shiner) through December 31, 1996.

During this moratorium, lawmakers hope to rewrite the Endangered Species Act of 1973 in order to make it more "user-friendly" and to do away

with what many consider to be governmental over-regulation.

"The passage of HR 450 brings us closer to halting the proposed listing of the Arkansas River Shiner as an endangered species. However, there is always the possibility that it will not be passed in the U.S. Senate; or if it is, President Clinton may veto the measure and we will be back where we started from. This is not over yet," says A. Wayne Wyatt, High Plains Water District manager.

The USFWS contends that the two-inch minnow has disappeared from more than 80-percent of its historic habitat, and therefore, should be entitled to protection under the Endangered Species Act.

According to USFWS officials, habitat loss (i.e., diversion of surface water for irrigation, stream dewatering/depletion due to excessive ground water pumping, water quality degradation, and con-

Continued on page 2

Around Muleshoe

Sign-up for little league baseball to be held Thursday

Muleshoe Youth Baseball will have sign-ups for the 1995 Little League baseball season Thursday, March 9 at Muleshoe State Bank Community Room from 6-8 p.m. Boys and girls who will be age 6-15 on or before Aug. 1, will be eligible. Proof of age will be required, as well as sign-up fees.

Anyone who has equipment or uniforms that belong to the league can turn them in on Thursday. For more information contact David Marricle at 272-4863.

Benefit luncheon for Shaws slated

Friends, neighbors and church family are hosting a

Continued on page 2

Only

48

Tickets left for the chamber banquet.
(Out of 300 available tickets, 252 tickets had been sold as of Tuesday)

Weevils

Continued from page 1

flanked the PCG control program and has moved into previously uninfested areas at an alarming pace the last two years.

Infestations are widespread as far north as Lubbock, Lynn, Dawson, Terry, Gaines and Yoakum counties. He notes that scattered infestations have been detected in Hale, Crosby, Floyd, Briscoe, Hockley and Lamb counties.

Leser warns that if left unchecked, the boll weevil could easily cost area producers over \$160 million in yield losses, fiber quality reductions and increased insecticide costs.

"The boll weevil has taken advantage of our four consecutive mild winters, resulting in unprecedented numbers of weevils surviving to infest cotton in early summer," Lester said.

"The 1994-95 winter appears to be the mildest one of them all. Cotton producers in the southern High Plains area can expect an expensive battle with this pest this year," Lester said.

Mild winters, coupled with greatly expanded overwintering sites in the form of grasses in the Conservation Reserve Program (CRP), have significantly altered the boll weevil's chances of overwintering on the High Plains.

In the past, CRP grasses were not considered as very good insulators from cold temperatures associated with

"normal" winters. However, recent mild temperatures are proving that CRP grasses can provide excellent overwintering habitat during mild winters.

According to PCG Boll Weevil Steering Committee

Chairman Wayne Huffaker, PCG is ready to expand the current program to stop the boll weevil from infesting more acreage and to push the weevil out of High Plains cotton acreage all together.

Under the authority of the Texas Boll Weevil Eradication Foundation, PCG is proposing an enhanced suppression program that will increase the current program's operational area and pave the way for full eradication of the boll weevil beginning in the spring of 1998. The enhanced suppression program would continue with a fall diapause treatments for 1995, 1996 and 1997.

The key to implementation of the Enhanced Suppression Program will be a positive vote on the two referenda listed on the ballot to be mailed to eligible voters in the proposed 30-county eradication zone on April 3.

Producers are encouraged to attend this or other boll weevil eradication referendum meeting scheduled during March. For more information contact the county extension office or a representative from Plains Cotton Growers.

Shiner

Continued from page 1

struction of impoundments) is the primary threat to the shiner population.

National, regional and local leaders from Texas don't agree with the USFWS contentions and have voiced their opposition to the proposed listing and its possible impact upon both surface water and ground water supplies in the Texas Panhandle.

Operation of Lake Meredith would be affected if the USFWS requires releases of water from the reservoir as part of a shiner habitat recovery plan. This could reduce

drinking water supplies to the 11 cities (including Amarillo and Lubbock) served by the Canadian River Municipal Water Authority.

In addition, a major reduction in ground water pumpage for crop production would

have a severe impact upon all sectors of the region's agribusiness economy.

The USFWS must make or drop the endangered species determination within one year of publication of the proposed rule in the *Federal Register*, which will be August 5, 1995.

Muleshoe

Continued from page 1

benefit luncheon for Eugene and Donna Shaw. A Mexican pile-on will be served on Monday, March 20 from 11 a.m. to 2 p.m. at the Muleshoe Church of Christ Fellowship Hall on 20th & American Blvd.

Donations will be accepted. All proceeds will go to help defray medical expenses for Donna, who is undergoing radiation treatments for cancer and chemotherapy.

Special Education advisory committee to meet on Friday

The advisory committee for the Special Education Department of Muleshoe Independent School District will meet Friday, March 10 at 9 a.m. at the board room at the Admin-

istration Building. Parents, employers, community leaders, support groups, school staff and other interested people are welcome to attend.

The advisory committee advises on matters relative to the existing services, specific service needs and service priorities of handicapped students.

Volleyball tourney in Lazbuddie set

The Lazbuddie Senior Class will hold a volleyball tournament March 23-25 at the Lazbuddie Schools. There will be separate divisions for men, women and co-ed. The deadline to sign up for the tournament is March 21. For more information call Debbie Weir at 965-2154 or at 965-2302.

Muleshoe Area Calendar

THURSDAY, MARCH 9

Oddfellows, Lodge Hall, 7:30 p.m.
Tops Club, Am. Blvd. Church of Christ, 6:00 pm
Muleshoe Square Dance, 7:30 p.m., American Legion Hall

FRIDAY, MARCH 10

Kiwanis Club, 6:30 am

MONDAY, MARCH 13

Muleshoe Heritage Foundation, Old Depot
Border Rounders dance, 7:30 p.m., Civic Center

TUESDAY, MARCH 14

Alcoholics Anonymous, 723 W. Ave. E, 8 p.m.
Rebekahs, Lodge Hall, 7:30 pm
Rotary Club, Civic Center, noon
Muleshoe Senior Citizens dance, Legion Hall, 7:30 pm
Jennyslippers, noon, Depot
Masonic Lodge, 7:30 p.m., Masonic Lodge

WEDNESDAY, MARCH 15

Lion's Club, noon, Civic Center
Muleshoe Volunteer Fire Dept., City Fire Station

(The Muleshoe Journal is attempting to keep the calendar accurate and up-to-date. Please inform the Journal if there is a change in any of these listings.)

Weather

R.G. Bennett, Muleshoe

| Date | High | Low | Rain | Soil |
|-------------------|------|-----|------|-------|
| Saturday, March 4 | 67 | 25 | | |
| Sunday, March 5 | 72 | 34 | | 50-40 |
| Monday, March 6 | 73 | 35 | | 47-42 |
| Tuesday, March 7 | 71 | 20 | .24 | 46-41 |

Tired of Those
Tight Frizzy
Perms?
Contact
Bruce Davis



Matrix
HAIR-SKIN-COSMETICS

Vidal Sassoon & Exposito Trained 769-0238

My Salon

CLOVIS

Specialist in Women's Designer Perms
809 Parkland Suite D (Behind Kripple Creek)

LEASE MORE FOR LESS

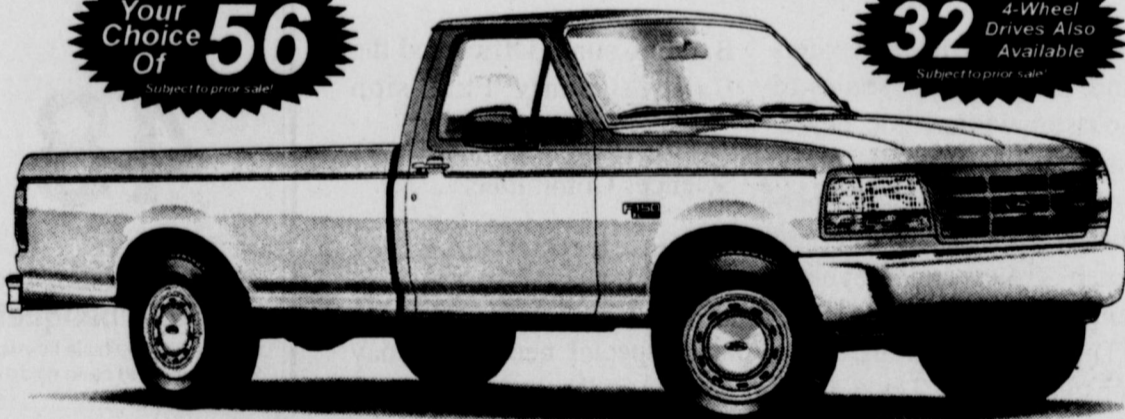
Brand New
Full-Size



\$199 Down
\$199 Month

Your Choice Of 56

32 4-Wheel Drives Also Available



• Air Conditioning • Cruise Control • Tilt Steering Wheel • AM/FM Cassette • XL Trim • Plus Much More!

Only \$199 Down \$199 Month*



| THE ARITHMETIC | |
|-------------------------------|---------|
| Monthly Lease Payment | 199.00 |
| Number of Months | 24 |
| Refundable Security Deposit | 200.00 |
| Cash Down Payment | 199.00 |
| Total Amount Due at Inception | 598.00 |
| Total Monthly Payments | 4776.00 |
| Total Mileage Allowed | 30,000 |
| Mileage Charge Over 30,000 | 11c |

Refundable security deposit, first month's lease payment and down payment are due at lease inception. Must qualify for \$300 commercial rebate includes \$750 factory rebate. All rebates assigned to dealer. Lessee is responsible for excess wear and tear. Lease subject to credit approval and insurability as determined by Ford Credit. Lease payment excludes tax, title and license. Residual \$10,929.36. See dealer for end of lease options.



This Outstanding Offer Is By Special Arrangement...
But Only For A Limited Time - Hurry In!

TEAGUE
STREBECK

FORD MERCURY
(505) 356-8581 (505) 762-3845
1115 North Chicago
Portales, NM
(On the first curve into Portales)

The very best prices and service anywhere...
We personally guarantee it!

When It Comes To Affording A Home, We've Got The Advantage!

Bank of
America's
Home Loan
Program
makes home
ownership easy
and affordable.

- Less income is needed to qualify.
- Down payment could be as low as 3%.**
- Less cash is needed for closing costs.
- No previous loans or credit cards are required.
- Fixed and adjustable rate loans are available.
- A buyer education program is available to assist you in the home buying process.

FREE HOME BUYER SEMINAR at
BANK OF AMERICA TEXAS, 304 Main St., Muleshoe, Texas
on Thursday, March 9 at 7:30 p.m.

• Refreshments will be served •

If you have questions or concerns about home loans, consumer loans and home improvement loans, come to this seminar.

Bank of America

* Mortgage loans are available to creditworthy individuals meeting specified income requirements for their county or when financing homes in selected census tracts in designated Texas counties. These areas are primarily comprised of census tracts with a median income of 80% or less than that of the metropolitan statistical area in which they are located (based on 1990 census). Mortgage insurance may be required. Home buyer education may be required. Maximum loan amount is \$203,150 for single family dwellings. Program terms and conditions subject to change without notice.
** Minimum down payment is 5% of which 2% may come from a grant or other form of down payment assistance. Down payment assistance may be available on selected fixed rate loans. Ask about eligibility requirements. ©1994 Bank of America Texas, N.A. Member FDIC



Classifieds Sell! Advertise Those Unwanted Items In
The Muleshoe Journal - Call 272-4536

Muleshoe student meets Mother Nature

LEVELLAND – Sonya Smith, a South Plains College pre-veterinary major from Muleshoe, met Mother Nature up close on a recent educational field trip to the Texas Coast.

She was part of a troop of South Plains College wildlife management students who annually make the trek as part of course requirements.

"I loved the whole trip in general," Smith said. "But the part I loved the most was getting to go to the coast because I had never been there before."

She saw bobcats and armadillos for the first time at the Wilder Wildlife Refuge, a private refuge, and helped catch Mexican free-tail bats at night, which was released into the wild.

"We strung out nets at night to catch the bats. It was neat to see a bat that close, touch it, feel it," she said.

She also saw nearly 40 species of birds.

"You may not realize birds are that interesting until you see so many different kinds. I came back from the trip with a greater appreciation for nature," she said.

"This is a totally different type of habitat and wildlife species from that of West Texas and the experience allowed our students to see a wide variety of birds, mammals and other animals," said David Etheredge, SPC assistant professor of biology.



LUNCH WITH GRANDMA – (Left) Bette Cowan enjoyed sharing lunch with her granddaughter Kelly Dale at Dillman Elementary School during a Reading Picnic held on Tuesday at the school gym. Many other parents and family members also took time to attend the picnic with their children.

Plant pathology short course to be offered

LUBBOCK – The Texas Agricultural Extension Service will be offering a free special topics satellite course in plant pathology March 13 through April 24 at the Texas A&M University Agricultural Research and Extension Center here. The course will consist of seven two-hour lectures on each Monday from 5-7 P.M.

The course is designed to teach plant disease diagnostic techniques so that participants will be able to differentiate among the different types of plant disease problems. The course will also emphasize re-

alistic disease control considerations and basic plant pathology concepts.

Dr. Larry Barnes, Professor and Extension Plant Pathologist in the Plant Pathology and Microbiology Department at College Station, will be teaching the course. He will cover such topics as the nature of plant disease, plant pathogens, disease control, common homeowner plant disease problems, biotechnology, and modern diagnostic techniques.

The course can be downlinked from any satellite receiver for no charge, but

only participants at the extension center here will be eligible for CEU credits.

The Texas Agricultural Extension Centers in Amarillo and Fort Stockton will also be viewing the courses, but they will not be offering any CEU credits. CEU credits will be available only for participants viewing the course from the Lubbock site.

For more information, or for satellite coordinates, please contact Harold Kaufman or Landa England at (806) 746-6101 at the Texas Agricultural Extension Service.

Seminar to focus on rural land markets in Texas

COLLEGE STATION – The Fifth Annual Outlook for Texas Rural Land Markets seminar will be held April 21 at Texas A&M University.

Speakers will examine Texas rural land markets from various perspectives. Jared E. Hazleton, director of the center for business and Economic Analysis at Texas A&M, will set the stage with an overall look at the "State of the Economy."

"Texas Population Changes" will be discussed by Steve H. Murdock, professor and head of the Department of Rural Sociology. Edward G. Smith, a professor of agricultural economics, will cover "Developments in Agricultural Policy."

Ivan W. Schmedemann will deliver his annual "Per-

spectives on Land Markets" during lunch.

"Statewide Assessment of Texas Hunting Leases" will be discussed by Clark E. Adams, professor in the Department of Wildlife and Fisheries Sciences. Charles E. Gilliland, associate research economist with the Real Estate Center at Texas A&M, will conclude the day's presentations with "Developments in Texas Land Markets."

Advance registration is required, and attendance is limited to 75. All sessions, except lunch, will be held in the Governance Room of the John J. Koldus Building.

For additional information or to register by telephone using a credit card, call Margaret Benedict at 409-845-9691.

Muleshoe Journal USPS 367820
 Established February 23, 1924. Published by Triple S Publishing, Inc. Every Thursday at 304 W. Second, P.O. Box 449, Muleshoe, Tx. 79347. Second Class Postage paid at Muleshoe, Tx. POSTMASTER: Send address changes to the Muleshoe Journal, P.O. Box 449, Muleshoe, Tx. 79347.

We Are Qualified Members Of:
 Panhandle Press Association, National Newspaper Association, West Texas Press Association and Texas Press Association.

WEST TEXAS PRESS ASSOCIATION
 PPA
 Panhandle Press Association

TA TEXAS PRESS ASSOCIATION MEMBER 1995

© 1990

Scot Stinnett, Publisher
 Lisa Stinnett, Vice-President/Comptroller
 Helena Rodriguez, News

Holly Millsap, Advertising
 SUBSCRIPTIONS
 Muleshoe Journal and Bailey County Journal
 By Carrier Yearly - \$15.00
 Bailey and surrounding counties
 By Mail - \$16.75
 Elsewhere - \$18.50
 Advertising Rate Cards on Application

"Advertisers should check their ad the first day of insertion. The Journals will not be liable for failure to publish an ad or for a typographical error or errors in publication except to the extent of the cost of the ad for the first day of insertion. Adjustment for errors will be limited to the cost of that portion of the ad where the error occurred."

Cuando Se Trata De Financiar Una Casa, ¡Nosotros Tenemos Las Ventajas!

El programa de Bank of America De Prestamos Para Viviendas le permite comprar su casa de una manera facil y accesible.

- Se necesita menos ingreso para calificar.
- Los pagos iniciales, o enganche, podrian ser tan bajos como el 3%.**
- Necesita menos dinero en efectivo para los costos del cierre.
- No se requieren tarjetas de credito o prestamos anteriores.
- Ofrecemos prestamos con intereses fijos o ajustables.
- Ofrecemos un programa educativo para ayudar al comprador durante el proceso de comprar su casa.

Gratis seminario de compradores de Horar en el Banco de America Texas, 304 Main Street, Muleshoe, Texas, el Jueves, nueve (9) de marzo a las siete y media de la noche (7:30 p.m.). Refrescos se serbidan.

Si tienen preguntas o sobre o preocupacion de prestamos de hogar, prestamos de consumidores, y prestamos para mejorar su hogar, favor de atender este seminario.

Bank of America

* Los prestamos para viviendas estan disponibles para las personas elegibles para credito y que cumplan con los requisitos de ingresos en sus respectivos condados o busquen financiamiento para casas ubicadas dentro de ciertas zonas o areas de Texas. Estas areas son areas del censo con un ingreso promedio del 80% o menos del area de estadística metropolitana en que se encuentran. Se pueden requerir seguros hipotecarios y educacion del comprador de la casa. La cantidad maxima de prestamo es de \$203,150 para las viviendas de una sola familia. Los plazos y condiciones del programa pueden cambiar sin previo aviso. **El pago inicial minimo es del 3%, del cual el 2% puede venir de una subvencion u otra forma de asistencia de pago inicial. La asistencia de la cuota inicial puede estar disponible en ciertos prestamos de tasa fija. Pregunte acerca de los requisitos de elegibilidad. ©1994 Bank of America Texas N.A. Miembro FDIC.



JOE'S BOOT SHOP
 1-800-658-6378 106 E. American Blvd. Muleshoe, Texas
And Country Junction
 Starting Wednesday, March 1

March Hand Shaking Hat Swapping Days

Bring Any Old Felt Hat - Get \$15 OFF
 On Purchase Of A New Felt Hat From Joe's!

| Bailey | Stetson | Resistol |
|-------------|------------|----------------------|
| 2 & 3X \$49 | 4X \$109 | 4X \$109 |
| 5X \$89 | 7X \$129 | 20X Black Gold \$285 |
| 7X \$99 | 10X \$149 | 30X Black Felt \$345 |
| 10X \$129 | 20X \$199 | 20X White Gold \$345 |
| | 30X \$249 | 20X Diamond \$275 |
| | 100X \$479 | Horseshoe \$275 |

All 1995 Straw Hats Are In! NOW 20% OFF

All Rodeo & Outerwear Jackets 40% OFF

Pioneer Wear, Men's Sport Jackets 50% OFF

1 Lot - Tony Lama, Remington, Panhandle Slim, Justin Smooth Ostrich Boots \$149

1 Lot - Tony Lama & Remington Full Quill Ostrich \$249

Drive A Little, Save A Lot!
 OPEN SATURDAY NIGHT, MARCH 25 TIL 9:00 P.M.
 Nobody Outfits Like Joe's Outfit - and We Want Your Business!

Howe tells Kiwanians about trip to England

The Muleshoe Kiwanis Club held their weekly meeting Friday, March 3 at the facilities of Five Area Telephone.

The meeting was called to order by president Glen Morris. The pledge was led by guest Ryan Marricle. The prayer was given by Eddy Morris.

The Friendship Coin was given to Glen Morris by Tom Bowen for his daughter and the group's sweetheart Mikki Bowen, who was said to be sick.

Door prizes were won by Jerry Hutton and Bryan Morris.

Glen announced that the following are in perfect attendance during the mini-membership drive: Joe Flores, Jerry Hutton, Jim Lutz, Tom Bowen, Clay Kidd, Bryan Morris, Glen Morris, Hugh Young and Eddy Morris.

Glen announced a board meeting will be held Tuesday, March 14 at the ASCS office. All committee members or

chairpersons need to be there.

Glen announced that the Kiwanis Lt. Governor will be visiting the club next Friday

morning. All members are encouraged to attend.

The program was given by Crystal Howe, who the Mule-

shoe Kiwanis club helped sponsor this past January to go on a trip to London, England. The

trip was the annual Universal Cheerleading Association's parade of London.

Crystal went on site-seeing tours such as the changing of the guards at Buckingham Pal-

ace, West Minister Abbey, Big Ben, the house and grave of William Shakespeare and

the tower of London (where the town jewels are kept).

In the parade of cheerleaders, Crystal reported that there



TO ENGLAND AND BACK - (Left) Muleshoe High School cheerleader Crystal Howe was the guest speaker at the Kiwanis meeting Friday. She talked to the group about her recent trip to England. She is pictured with Kiwanian David Marricle.

were six groups of 250 cheerleaders each, who marched for 1-1/2 hours for three miles in the parade.

Cheerleaders were not only from the United States but other countries too, such as Africa. The parade was by invitation

only. Crystal stayed near the London Tower Bridge while

there.

Members attending the meeting were: Eddy Morris, Scott Churchman, Hugh

Young, Jerry Hutton, Tom Bowe, David Marricle, Glen Morris, Flavio Garza, Chuck

Smith, Ben Davis, Bryan Morris, Clay Kidd, Jim Lutz and Joe Flores.

Rennels is honored at SCAC January meeting

On January 16, the Student Community Action Club (SCAC) met in the home of Daniel Garbino. Audra Lee opened the meeting and Russell McGuire followed with a prayer.

Magann Rennels was the guest of honor and January Citizen of the Month. She talked to the group about how important SCAC is and how the club should take pride in

the things they do, as well as themselves.

She made the club look at themselves and judge everything they do. They also learned that it is better not to volunteer for everything and only do the things you enjoy.

Audra then talked about the fundraising project and the club will decide to meet later in the week. The meeting was adjourned.

All friends are invited to an Open House for Bill Lambert's 90th Birthday

March 12, 1995
2:00 p.m. to 4:00 p.m.
Assembly of God Church
Muleshoe, Texas

In lieu of gifts, bring your memories, photos or other mementos of Bill.

Producers encouraged to burn CRP soon

LUBBOCK - Producers interested in burning Conservation Reserve Program (CRP) land need to do so soon according to Lubbock-based Plains Cotton Growers (PCG).

PCG officials warn that time is short because of the narrow window available to producers. Winter months provide the best time for burning CRP grassland since the plants are dormant and do not suffer any adverse effects from the practice.

Burning also provides producers with several added benefits in addition to promoting healthier stands. The benefits include control of weeds and control of certain insect pests that can use the accumulated thatch as winter cover.

An example of this is the boll weevil which has been able to effectively use CRP grass for overwintering in some areas of the High Plains. The main reason for the boll weevils successful use of this cover is the recent string of four mild winters on the High Plains. In past years CRP grass has been found to be poor winter habitat for the weevil when normal winter temperatures prevail.

"The recent string of mild winters has allowed the boll weevil to gain a significant foothold on the High Plains and it appears as if it will make further gains since the current winter is shaping up to be the

mildest experienced in the last five years," notes PCG Boll Weevil Program Coordinator

Roger Haldenby. "What we need is a pipe-busting winter that will not allow the weevil to survive in CRP grass. What we have gotten so far is exactly the opposite."

Haldenby notes that producers can expect to see boll weevils move out of CRP grasses into their 1995 cotton as this years crop gets planted.

Recommendations coming soon from the Boll Weevil Task Force, on which Haldenby serves, will encour-

age growers to hold off planting where possible until at least May 1.

Growers looking for advice on CRP burning should contact Plains Cotton Growers for a copy of the three page "Guidelines for Boll Weevil

Management in CRP Grasses" pamphlet put together by PCG, the Texas Agricultural Extension Service, the Texas Natu-

ral Resources Conservation Commission, and the United States Department of Agriculture Natural Resources Conservation Service.

BUCKLE UP!
It's smart.
It's the law.
It's enforced.

NEW!

DQ

99¢

VALUE MENU

| | |
|---|--------------------|
| 99¢ Treats | 99¢ Eats |
| TexaSize® Drink (32-oz.) | Homestyle® Burger |
| DQ® Float (16-oz.) | Extra-Long Hot Dog |
| DQ® Dipped Cone (5-oz.) | Corn Dog |
| DQ® Sundae (5-oz.) | Large Fries |
| DQ® Fudge Bar or Vanilla-Orange Bar (non-fat) | Cheese Nachos |

All day! Every day!

Dairy Queen

® Reg. U.S. Pat. & Tm. Off. Am. D.Q. Corp. *Reg. U.S. Pat. & Tm. D.Q. On. Coun. At participating Dairy Queen stores.

Entire Stock SALE

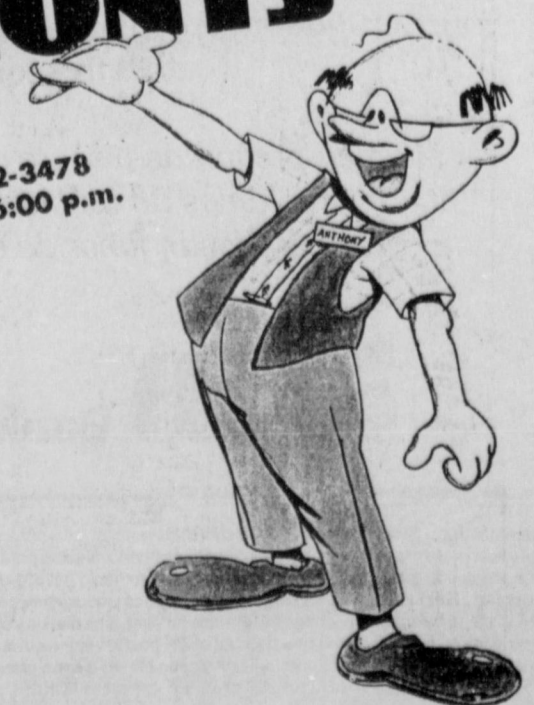
Everything in the Store is on SALE now thru Sunday, Including New Spring Arrivals!

PLUS... Save 50% to 70% off regular prices when you take 40% off all Fall & Winter Red Ticket Prices

Price Reductions will be taken at the Register.

ANTHONY'S

321 Main Muleshoe 272-3478
Hours: Mon.-Sat. 9:30 a.m. - 6:00 p.m.



FEEL FIT!

1177

| | | | | |
|---------|----------|-----------|-----------|-----------|
| B | C | D | E | EEE |
| 8 1/2-9 | 9 1/2-10 | 10 1/2-11 | 11 1/2-12 | 12 1/2-13 |

The Fair Store
120 Main 272-3500
Muleshoe, Texas

RED WING SHOES
MADE IN U.S.A.

The Muleshoe and Bailey County Journals publish birthday announcements free of charge for babies one year old or for people ages 90 and over. A photo may also be included with the announcement. Complete guidelines and forms are available at the Muleshoe Journal office.

March Savings BLOW-OUT

All Types
Coca-Cola
3 liter btl.
\$1.89

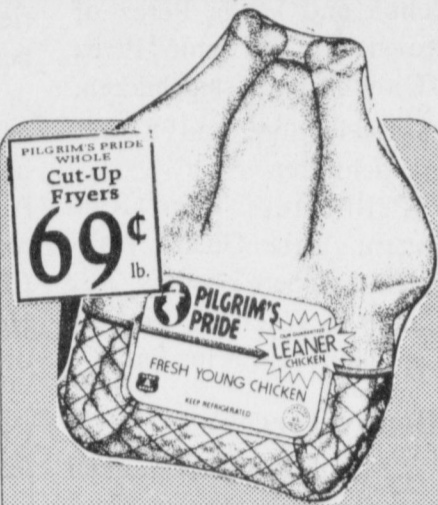


All Types
Coca-Cola
6 Pack, 12 oz. cans
2 for \$2.87

Meat

HORMEL BLACK LABEL
Bacon
BUY ONE AT \$2.47 AND GET ONE
FREE
1 lb. pkg.

Low's Valuable Coupon
BUY ONE GET ONE FREE
Good Only At Lowe's Pay N Save Marketplace
Expires March 15, 1995
Hormel Bacon **FREE**



PILGRIM'S PRIDE
WHOLE
Cut-Up Fryers
69¢ lb.

Fresh Water
Whole Catfish
lb. **\$1.29**



Pilgrim's Pride
Whole Fryers
lb. **49¢**

Fresh Water, Value Pack
Catfish Fillets lb. **\$2.69**
Small Pack lb. **\$2.99**
Mississippi Farm Raised, Value Pack
Catfish Nuggets lb. **\$1.69**
Small Pack lb. **\$1.99**



Beef Boneless
Rump Roast
lb. **\$1.99**

Tyson Grilled Mesquite, 2.58 lb. bag **\$9.99**
Chicken Breast **\$2.99**
Frozen, 5 lb. box
Chicken Gizzards **\$2.99**
J.C. Potter Reg. or Hot, 1 lb. roll
Country Sausage **\$1.69**
J.C. Potters, All Types, 12 oz. pkg.
Sausage & Biscuits **\$1.79**
Tip Top Grade A Frozen, 5-7 lb. avg.
Baking Hens lb. **79¢**
Decker, 12 oz. pkg.
Meat Franks **79¢**
Decker, 1 lb. pkg.
Smoked Sausage **\$1.49**
Decker Meat, 12 oz. pkg. **\$1.19**
Corn Dogs **99¢**
Decker, 12 oz. pkg.
Meat Bologna **99¢**



Boneless Bottom,
Small Pack
Round Steaks
lb. **\$2.29**



Beef
Cubed Steaks
lb. **\$2.79**

Peyton's, 1.5 lb. pkg. **\$4.99**
Sliced Ham
Peyton's, 8 oz. pkg. **99¢**
Chorizo..... **99¢**

Produce



Fresh Large
Tomatoes
lb. **59¢**



Cello Wrapped
Large Size Fresh
Lettuce
\$1

2 Heads For

Fresh
Cilantro 3 bunches **\$1**
Texas Red
Grapefruit 4 for **\$1**
Dole, 10 oz. cello
Caesar Salad **\$1.99**
Dole, 1 lb. pkgs.
Crisp Carrots... 3 for **\$1**
Extra Large, Navel
Oranges lb. **39¢**

California, New Crop
Strawberries lb. **\$1.99**
1 lb. pkg.
Nonalitos **\$1.69**



Small, Medium, Large,
Extra Large, Assorted
Fittie Diapers
18-40 ct. pkg.
\$3.99



Nabisco Assorted Premium
Saltine
Crackers
1 lb. box
88¢

HIGH-FLYING Values



13 OZ. BOX POST
Cocoa or Fruity Pebbles
18 OZ. BOX POST
Golden Crisp
14-15 OZ. BOX POST REGULAR OR MARSHMALLOW
Alpha-Bits
\$1.99
YOUR CHOICE



BULL'S-EYE ORIGINAL
OR HONEY MUSTARD
Barbecue
Sauce 18 oz. btl. **\$1.99**

GRIFFIN'S
Waffle
Syrup 24 oz. btl. **\$1.39**

HEINZ
Tomato
Ketchup 40 oz. btl. **\$1.99**

ASSORTED
Tropicana Twisters
\$1.39
46 oz. btl.



REDUCED FAT, REGULAR, OR DOUBLE STUF
Oreo Cookies
2 For **\$5**

POLAR IN WATER
Chunk Light
Tuna 6.125 oz. can **59¢**



25 CT. 9" LUNCH OR
15 CT. 10" DINNER COMPARTMENT
Diamond Plates
2 For **\$3**

ASSORTED INSTANT
Quaker Oatmeal
\$1.99
12-16.25 oz. box

ASSORTED
Lowe's Drinks
99¢
6 pack 12 oz. cans

La Linda
Lard
\$3.59
8 lb. pail

"GREAT NACHO COMBINATION!"

ASSORTED
Doritos
2 For **\$1**

ASSORTED
Doritos® or
Doritos Thins **\$1.99**
MILD OR MEDIUM
Tostitos®
Salsa **\$1.99**
16 oz. jar

CLEMENTE JACQUES NACHO
Jalapeno
Slices **99¢**
14 oz. size

Purina Pets For People™
Purina
Dog Chow **\$7.99**
25 lb. bag

Purina
Butcher's
Blend **\$7.99**
20 lb. bag

Low's
White Bread
24 oz. loaves
2 for **\$1**



Country Crock,
Regular or Churn's Style
Shedd's Spread
48 oz. tubs
2 for **\$2.97**



Griffin's
Grape Jelly
32 oz. jar
79¢



Texsun Pink
Grapefruit
Juice
46 oz. can
58¢

Frozen & Dairy

ASSORTED
Jack's Pizzas
\$1.99
13.65-16.95 pkgs.

ORIGINAL OR BLUEBERRY
Aunt Jemima Waffles
10 pkgs. **\$1.29**

FISHER BOY
8 OZ. POPCORN SHRIMP OR
Fish Sticks 16 oz. pkg. **\$1.99**

MICHELINA'S
Macaroni & Cheese
79¢
8-10 oz. pkg.

MICHELINA'S ITALIAN
Entrees **99¢**
12 ct.

BLUE BERRY VANILLA OR
RASPBERRY
Ice Cream Sandwiches
\$1.99
12 ct.

SHEDD'S COUNTRY CROCK
Spreadable Sticks
69¢
1 lb. box

Shurfine
Buttermilk
\$1.39
1/2 gallon

SHURFINE
Cream
Cheese **79¢**
8 oz. box

BUTTERMILK, SWEETMILK,
BUTTER FLAVOR
Shurfine Biscuits
4 For \$1
7.5 oz. 10 ct. cans

Suave
Baby Care
SUAVE
14 OZ. BABY OIL OR BABY
Shampoo or
Conditioner **\$1.99**
15 oz. btl.

REGULAR OR W/CORNSTARCH
Suave Baby
Powder **\$1.89**
14 oz. btl.

ASSORTED
Sinutab
\$3.99
24 ct. pkg.

REGULAR OR THIN
Serenity
Pads **2 For \$5**
12 ct. pkg.

ENSURE®
COMPLETE, BALANCED NUTRITION™
\$7.99
6 pack, 8 oz. cans

ENSURE PLUS®
HIGH-CALORIE COMPLETE NUTRITION™
\$8.99
6 pack, 8 oz. cans

WESTERN UNION MONEY TRANSFER™
"The fastest way to send money"

Low's MARKETPLACE

515 W. American Blvd.
401 W. American Blvd.
Muleshoe 272-4585

WE RESERVE THE RIGHT TO LIMIT QUANTITIES IN TEXAS

Muleshoe 272-4406

Prices Effective March 1995
WED THUR FRI SAT SUN MON TUE
9 9 10 11 12 13 14

Public Record

Obituaries

Melvorn West

BROWNFIELD - Funeral services for Melvorn West, 72, of Tokio, were held Feb. 18 in the Brownfield First Baptist Chapel with the Rev. Cletus Caswell officiating. Burial was held in Terry County Memorial Cemetery, under the direction of Brownfield Funeral Home.

Mr. West died Feb. 16, 1995 in Lubbock Methodist Hospital.

He was born Oct. 18, 1922 in Childress and was married to Bertha Pauline Yates in September of 1941 in Rosebud. Mr. West attended public schools in Littlefield. He moved to Muleshoe in 1961 and to Tokio in 1989. He was a farmer and a Baptist.

He farmed in the Muleshoe

and Baileyboro area from 1961-89.

He is survived by his wife; four sons, Melvin of Meadow, Byron of Brownfield; Gary of Gomez, and Danny of Dumas; by three daughters, Paula Phillips of Brownfield, Donna Lester of Lubbock and Debbie Parmer of Texaco; a brother Herman of Levelland, a sister Laura Stice of Wolfforth and by 19 grandchildren and nine great-grandchildren.

Mr. West was preceded in death by his parents W.M. and Nora Green and by three brothers, Delma in 1947, Randell in 1952 and Clyde in 1969.

His grandsons served as pallbearers, Billy Farrington, David Parmer, Bobby Lynn Phillips, Steve Smith, Jermy West and Brad Wilson.

Carlos Guerra Sr.

DIMMITT - A funeral mass for Carlos Guerra Sr., 77, of Dimmitt, was held Monday, March 6 at Immaculate Conception Catholic Church with the Rev. Guillermo Morales, pastor, officiating.

Burial was held in Westlawn Memorial Park under the direction of Foskey Funeral Home.

Guerra died Friday, March 3, 1995 in Dimmitt.

He was born June 10, 1917 in Goliad. He married Maria Rodriguez-Reyes on July 26, 1993 in Dimmitt. He was a member of Immaculate Conception Catholic Church and the Cursillistas.

He was a retired farmer.

Survived include his wife; two sons, Sonny of Knoxville, Tenn., and Carlos Jr. of Muleshoe; two daughters, Connie Flores of Dimmitt and

Mandy DeLaCerde of Grand Prairie; six brothers, Enriquez of Brownsville, Eustaquid of Houston, Julian of Corpus Christi, Gilberto of Fort Worth, Elias of Los Angeles, Calif., and Isabel Jr. of Pomona, Calif.; three sisters, Amelia Ochoa and Linda Perez of Brownsville and Santos Perez of Dimmitt; eight stepchildren; 18 grandchildren and 25 great-grandchildren.

Pallbearers were Raul Guerra, Adrian Guerra, Wally Guerra, Albert Fuentes, Jose Carlos Cardenos, Rouelio Cardenos and Carlos Perez.

Benny Torres

MULESHOE - A funeral mass for Benny Torres, 72, of Muleshoe, will be held today, March 9, at the Immaculate Conception Catholic Church with the Father Joseph Augustine officiating.

Burial will be in the Muleshoe Cemetery under the direction of the Ellis Funeral Home.

Torres died Monday, March 6, 1995, in his home.

He was born October 27, 1922 in Rosebud, TX. He married Cruz Hernandez December 26, 1947 in Uvalde, TX.

Benny had been a resident of Muleshoe since 1968 moving here from Brownfield, TX. He was a member of the Immaculate Conception Catholic Church. He had worked for H&W Company for a number of years.

Survivors include his wife, Cruz; four sons, Ralph Torres,

Sr. of Snyder, TX.; Jose Torres of Muleshoe, Benedeto Torres, Jr. of Muleshoe and Raul Torres of Lariat, TX.; four daughters, Maria Franco of Muleshoe, San Juanita Jaramillo of Muleshoe, Lucia Acosta of Mission, TX, and Margie Lopez of Snyder, TX; three brothers, Jose Torres, Sr. of MI, Abaristo Torres, Sr. of NE, and Refugio Torres, Sr. of Seymour, TX.; three sisters, Pomela Torres of MN, Oralia Vega of Clovis, NM and Concepcion Gomez of NE; 34 Grandchildren and 18 Great Grandchildren.

The family suggest memorials be made to the American Cancer Society.

Travel inquiries in Texas reach a record high

Nationwide interest in Texas travel information continued to grow steadily and break records in 1994. For a second year in a row, more than one million people requested travel publications from the Texas Department of Transportation's Travel and Information Division.

"We were excited last year because--for the first time--we received an historic one million inquiries for travel information. But this year we filled 1,111,386 requests for travel literature. That's an 8% increase over last year's record-breaking benchmark," says J. Don Clark, director of TxDOT's

Travel and Information Division. "With this kind of resounding interest in travel literature, it's no wonder that tourism ranks as the third greatest money-producing industry in Texas."

Texas Comptroller John Sharp agrees: "Tourism has become a vital ingredient in the state's overall economic development recipe. In the years ahead, visitors to the Lone Star State, as well as Texans who choose to explore the expanse of the state they call home, will help the Texas tourism industry outpace the state's overall economic growth. That's how important it is."

"Tx DOT plays an important role by promoting the 'Texas mystique' in their travel literature," Sharp added.

People who call TxDOT's toll-free phone number receive a standard packet of information that includes the *Texas State Travel Guide*, the *Texas*

Official Highway Travel Map, and the *Texas Accommodations Guide*.

The packets are sent within 24 hours through a fulfillment contract with the Texas Department of Criminal Justice.

"The information packet is designed to promote tourism and make travelling easier,"

explains Clark. "The informa-

tion is so complete, you can plan your entire vacation--including travel routes--before

setting a foot out the door."

TxDOT also distributes Texas travel literature through their 12 Travel Information Centers located along the state's borders and in Austin.

Callers in all 50 states and Canada can request information by phoning TxDOT's toll-free number: 1-800-452-9292.

Join Our Workshop With
Jeanene Springer
Roswell, NM, Quilt & Fiber Artist

Construct Your Own
BARCELLO RHAPSODY JACKET

Two Saturday Sessions
March 18th & 25th - 9:00 to 5:00
Registration \$40 (\$20 Deposit)

Call to register now. Bring your stash and join in the fun.
A 15% DISCOUNT will be offered for any supplies purchased at The Fabric House for this class.
We will open at 8 a.m. both days for your convenience.

The Fabric House
113 SE 2nd St., Dimmitt 647-3307
Open Monday through Saturday 9:30 - 5:30

The Muleshoe and Bailey County Journals publish birthday announcements free of charge for babies one year old or for people ages 90 and over. A photo may also be included with the announcement. Complete guidelines and forms are available at the Muleshoe Journal office.

Attention Area Farmers!

WES-TEX FEEDYARD of Muleshoe

Would Like To Contract Your Hi-Moisture Corn For 1995


Contact: Wayne Tunnell
272-7555 or 272-4403



45th Annual
Muleshoe Chamber of Commerce & Agriculture

Banquet To bEAT all...

Featuring The
Geezinslaw Brothers



Annual Chamber Awards: *Limited Tickets \$50 each*

- Man of the Year
- Woman of the Year
- Farm Family of the Year
- Business of the Year
- Employee of the Year

Cash Prizes

ALL YOU CAN EAT!
Shrimp
Steak &
Stuff Yourself!

Tickets On Sale NOW!

For Ticket Information, Call 272-4248

Casual Attire
Saturday, April 1 6:00 p.m.
Muleshoe High School Cafeteria

Liles, Bishop attend TCTA convention

Muleshoe Independent School District Teacher Alice Liles was among more than 600 Texas educators who at-

tended the 1995 Convention of the Texas Classroom Teachers Association held Feb. 10-11 at the Austin Stouffer Hotel in Austin.

Liles is TCTA District 17 Director and is president of the Muleshoe TCTA, a local TCTA affiliate.

Muleshoe High School Principal Al Bishop also attended the convention, where

he was honored and presented with a Texas Secondary Administrator of the Year award.

State Comptroller John Sharp delivered the keynote

address and discussed his proposal to reduce the state's

Teacher Retirement System contribution rate from 7.31 percent to six percent. Del-

egates also presented a "Friend of Education" award to Texas Commissioner of Education

Lionel "Skip" Meno, to recognize his work on behalf of public education.

In other convention action, delegates discussed education issues expected to be consid-

ered by the Texas Legislature, made policy decisions for the

association and elected 1995-96 state officers. They at-

tended convention session on such issues as improving



CONVENTION GOERS - (Left) Muleshoe School teacher Alice Liles, who is also director of the Texas Classroom Teachers Association (TCTA) District 17 and president of the local chapter and Muleshoe High School Principal Al Bishop attended the TCTA Convention in Austin in February. Bishop received a "Texas Secondary Administrator of the Year" award.

TAAS scores, charter schools and vouchers and accountability.

TCTA is a non-profit, non-union professional association serving more than 31,000 classroom teachers and related

professionals in Texas. Founded in 1927, TCTA is the only Texas teacher associa-

tion that limits members to those directly involved in classroom teaching or teaching support.

Mighty M Band does mighty well at UIL competition in Lubbock

Several Muleshoe High School Mighty M Band members were awarded 1st division medals at the recent University Interscholastic League (UIL) solo and ensemble competition held at Texas Tech.

Those awarded medals in this competition were: Kristi Bennett, alto saxophone solo; Melissa Mata, alto saxophone solo; Wayne Wallace, trumpet solo; Jared Clarkson, eu-

phonium solo; Jason Barrett, tuba solo; Samuel Villarreal, snare drum solo and Shannon Noack, piano solo.

Winning in Clarinet Trio was Gerardo Loya, Jennifer Patterson and Kristi Turner.

Winning in Clarinet Quartet were Yolie De Hoyos,

Jennifer Patterson, Ransley Welch and Kandy Wilcox.

Winning in trumpet quartet were Jamie Bohler, James Cox, John Rodriguez and Wayne Wallace.

Winning in brass ensemble were: Jason Barrett, Jamie Bohler, Jared Clarkson, James Cox, Brenna Farley and Steven Madrid.

In addition, the following students qualified for the UIL state solo and ensemble competition to be held in May at Southwest Texas State

University in San Marcos: Jared Clarkson, Samuel Villarreal, Shannon Noack, Gerardo

Loya, Jennifer Patterson, Kristi Turner, Yolie de Hoyos, Ransley Welch, Kandy Wilcox,

Jamie Bohler, James Cox, John Rodriguez and Wayne Wallace.

The hunter's son

This is the poem of the hunter's son as he tracks the woods alone

And the beaver's revenge when he seeks to avenge the hunter's gauntlet thrown by choosing to pair with a grizzly bear, bit, nasty and fully grown.

He was raised in the woods and meadow where ice and forest collide

In the Peace River reach where fathers still teach their sons how to hunt and provide Young Scott was in search of the beaver. The country was thick with'em then.

Traps were his love but he wasn't above a rifle shot now and again.

He snuck through the woods like a shadow and stopped just short of a spring.

There on the bank like a person of rank sat Oscar, the Beaver King

He was big as a Yellowknife huskie and humming a Rachmaninov

Scott froze in his track, Oscar never looked back till he heard the safety click off.

Then he rolled like a log to

the water. The bullet sang just by his ear

Though caught unaware he escaped by a hair and Scott saw the King disappear

Scott cursed his bad luck 'cause ol' Oscar had beaten him just like before

So he turned on the trail, like a dog tuckin' tail and headed back home sad and sore.

But his path was impeded in progress by a bear with a griz pedigree.

He was hungry and large, so when he made a charge Scott climbed up a poplar tree.

He clum till the tree started bendin', twenty feet up off the ground

He sat in a crotch while the bear carved a notch each time that he circled around.

He climbed within inches of Scotty and scared the bejee outta him

He snorted and growled and about disemboweled the poplar tree, root to limb

But he finally backed off, reconsidered, like only a grizzly bear could

He shook a big paw and bid

aurevoir, then disappeared into the wood.

Though shaken, Scott felt he had triumphed, there from his perch in the bleachers.

The vast human brain will always remain the master of

God's lesser creatures

But the sight he beheld left him chastened, outwitted by over-achievers.

The bear reappeared, new help commandeered, with Oscar, the King of the Beavers.



MULESHOE MOTOR COMPANY
"Car Capital of The West Plains"

!!! Priced To Go !!!

| | | |
|----------|---|---------------|
| F | 1993 Chevrolet Cavalier RS (4 door) | Only \$8,475. |
| O | 1991 Chevrolet Silverado (38K Miles)..... | \$11,979. |
| R | 1993 Ford Escort LX (Automatic)..... | \$8,350. |
| D | 1994 Ford Escort LX Wagon (20 K Miles)..... | \$9,950. |
| M | 1989 Ford F150 Pickup..... | \$6,270. |
| E | 1992 Ford F150 Flareside Pickup XLT..... | \$11,980. |
| R | 1993 Ford Ranger XLT (33K Miles)..... | \$8,750. |
| C | 1993 Ford Taurus GL (All Power; 20K Miles)..... | \$11,900. |
| U | 1994 Ford Taurus GL (Loaded)..... | \$13,900. |
| R | 1994 Ford Taurus Wagon (All Power)..... | \$14,300. |
| Y | 1993 Lincoln Town Car..... | \$21,950. |
| | 1994 Mercury Sable (16K Miles)..... | \$14,200. |
| | 1994 Mercury Topaz..... | \$9,530. |
| | 1993 Pontiac Grand Am (4 door)..... | \$9,590. |
| | 1991 Pontiac Sunbird Convertible..... | \$6,990. |

1225 West American Blvd.
272-4251 Muleshoe, Tx. 1-800-432-7617

Don't Buy Until You Shop
WALTER'S CARPET
CARPET SHORT ROLLS SALE

| Color | Texture | Size | Reg. Price | SALE PRICE |
|-------------|--------------|---------------------|----------------------------|----------------------------|
| Beige | Plush | 12x79 ⁵ | \$ 9 ⁴⁵ sq. yd. | \$ 5 ⁰⁰ sq. yd. |
| Blue | Plush | 12x41 | \$ 9 ⁴⁵ sq. yd. | \$ 5 ⁰⁰ sq. yd. |
| Brown | Plush | 12x75 ⁵ | \$ 9 ⁴⁵ sq. yd. | \$ 5 ⁰⁰ sq. yd. |
| Brown | Plush | 12x59 | \$10 ⁴⁵ sq. yd. | \$ 7 ⁹⁵ sq. yd. |
| Beige | Plush | 12x46 | \$12 ⁴⁵ sq. yd. | \$ 7 ⁹⁵ sq. yd. |
| Earth Tones | Heavy Sculp. | 12x42 ¹⁰ | \$13 ⁴⁵ sq. yd. | \$ 8 ⁰⁰ sq. yd. |
| Earth Tones | Heavy Sculp. | 12x37 ¹¹ | \$13 ⁴⁵ sq. yd. | \$ 8 ⁰⁰ sq. yd. |
| Beige Super | Heavy Sculp. | 12x27 ⁹ | \$16 ⁴⁵ sq. yd. | \$10 ⁴⁵ sq. yd. |
| Grey | Heavy Sculp. | 12x31 ⁷ | \$12 ⁴⁵ sq. yd. | \$ 8 ⁰⁰ sq. yd. |
| Taupe | Heavy Sculp. | 12x27 ⁶ | \$10 ⁴⁵ sq. yd. | \$ 8 ⁰⁰ sq. yd. |
| Taupe | Heavy Sculp. | 12x33 ⁷ | \$10 ⁹⁵ sq. yd. | \$ 8 ⁰⁰ sq. yd. |
| Rust/Brown | Heavy Sculp. | 12x46 | \$12 ⁴⁵ sq. yd. | \$ 8 ⁰⁰ sq. yd. |
| Gold/Brown | Heavy Sculp. | 12x38 ⁹ | \$12 ⁴⁵ sq. yd. | \$ 8 ⁰⁰ sq. yd. |
| Brown | Heavy Sculp. | 12x33 ⁷ | \$12 ⁴⁵ sq. yd. | \$ 8 ⁰⁰ sq. yd. |
| Beige | Plush | 12x45 | \$13 ⁴⁵ sq. yd. | \$ 8 ⁹⁵ sq. yd. |
| Grey | Heavy Sculp. | 12x35 ⁴ | \$13 ⁴⁵ sq. yd. | \$ 8 ⁰⁰ sq. yd. |
| Rust | Sculpture | 12x31 | \$12 ⁴⁵ sq. yd. | \$ 7 ⁰⁰ sq. yd. |
| Dark Brown | Sculpture | 12x26 | \$12 ⁴⁵ sq. yd. | \$ 7 ⁹⁵ sq. yd. |
| Lt. Beige | Plush | 12x22 | \$12 ⁴⁵ sq. yd. | \$ 7 ⁹⁵ sq. yd. |
| Brown | Sculpture | 12x40 | \$11 ⁴⁵ sq. yd. | \$ 7 ⁰⁰ sq. yd. |
| White | Plush | 12x30 | \$16 ⁴⁵ sq. yd. | \$ 8 ⁵⁰ sq. yd. |
| Peach | Plush | 12x49 | \$12 ⁴⁵ sq. yd. | \$ 5 ⁹⁵ sq. yd. |
| Lt. Beige | Plush | 12x71 | \$12 ⁴⁵ sq. yd. | \$ 6 ⁹⁵ sq. yd. |
| Brown | Plush | 12x30 | \$ 8 ⁴⁵ sq. yd. | \$ 5 ⁰⁰ sq. yd. |

Many Other Short Rolls & Remnants Sale Priced Pad & Installation Available

WALTER'S CARPET
200 E. 21st St. Clovis, NM
762-9127

MULESHOE JOURNAL CLASSIFIEDS SELL!

For 15 words or less \$300

Deadline for Thursdays paper - noon Tuesday.
Deadline for Sundays paper - noon Friday.

Call today!
272-4536

GENEVIVE MATA WON LOTTO TEXAS
BY USING HER WOMAN'S INTUITION. (OF COURSE, USING QUICK PICK DIDN'T HURT EITHER.)

ONE DAY GENEVIVE MATA HAD A CERTAIN FEELING SHE'D WIN LOTTO TEXAS. SO SHE WALKED DOWN TO THE CORNER STORE, PLAYED A QUICK PICK AND ENDED UP WITH \$3.6 MILLION. NOW SHE'S NOT ONLY A GRANDMOTHER FROM SOUTH TEXAS, SHE'S ALSO ONE OF OVER 150 MILLIONAIRES AND STILL COUNTING.

LOTTO TEXAS

HER SYSTEM: QUICK PICK

WINNING NUMBERS: 8 12 23 29 39 44

FIRST THING SHE DID: COOKED A BIG SUNDAY DINNER CELEBRATION FOR HER FAMILY

PRIZE: \$3.6 MILLION

Five Area ready to accept challenges to better serve community

The following article is from the 1994 annual report of the National Telephone Cooperative Association (NTCA) and courtesy of Five Area Telephone Cooperative, Inc.

Deriving its name from the Old Muleshoe Ranch, the town of Muleshoe, Texas stands under the protective guard of "Ole Pete," a life-sized statue of a mule emblematic of the animals that helped open the old West by pulling the wagons and tilling the soil. In its post on Main Street, Ole Pete also keeps watch over Five Area Telephone Cooperative which provides telecommunications services to parts of six west Texas counties.

Like the early settlers – the founders of Five Area Telephone Cooperative – the current residents of west Texas are always ready for a challenge. With the rich farm and ranch land producing a wide variety of crops, livestock, and wild fowl, the people there understand diversification.

Five Area's traditional service territory includes no towns and has a subscriber density of less than one per mile – in a 3,000-square mile area. Until this year, the cooperative provided all-buried, digital service to a subscriber base of 1,400. In addition, Five Area had connected its six exchanges and main office with fiber-optic cable through an equal-access toll tandem switch, and its toll routes also boasted fiber connections.

Early in 1993, Five Area Telephone Cooperative decided that all this technology – and its partnership in a 10-county cellular operation – gave it the clout and credibility to move on its longstanding desire to grow. Twelve years earlier, five Area had begun to feel out GTE Southwest about acquiring some of the exchanges in nearby towns. Over the next dozen years, Manager

Hubert Kidd recalls, Five Area and GTE exchanged letters and discussions "on and off," but now the time was right: Five Area wanted to buy; GTE wanted to sell; and the towns

wanted modern telecommunications. "It finally became a reality this year," Kidd proudly attests. "We were about to acquire what we had always wanted."

The acquisition consisted of more than 4,600 access lines in five exchanges serving Muleshoe and the neighboring towns of Olton, Sudan, Earth, and

Springlake, all of which lie within a 30-mile radius contiguous with Five Area's historical service area.

The cooperative already served most of the rural areas around the five towns, an arrangement common to NTCA members – and noted by *The Wall Street Journal's* Southwest edition in November. In

its "Texas Journal," the paper hailed the quality of service offered by Five Area Telephone cooperative and succinctly captured one of the ingredients key to the acquisition strategy carried out not only in west Texas but by NTCA members across the country, describing "... a little-known paradox of small-town life: People who live in nearby rural areas often enjoy better phone service and more advanced features... than their small-town neighbors."

The Five Area board decided to organize its new customers and the newly acquired GTE exchanges into a wholly owned subsidiary, West Plains Telecommunications, L.L.C. Why? For several reasons, says Kidd; among them, financing, administration, management, and employment.

Notwithstanding the plaudits of *The Wall Street Journal*, Manager Kidd and the Five Area Board of Directors took on the deal only after much soul searching. In the

final, the directors and staff felt this acquisition would be a life saver for the cooperative.

With the ever-advancing information age, small telcos need to have a good customer base to survive. This acquisition increases telephone operations to a total of 11 exchanges and almost 6,000 access lines.

The acquisition, however, is about more than economic efficiencies. It is about people: "These are good communities with good people, good schools," Kidd says. "It's also about retaining rural America's

way of life. In this agricultural area, the economy and life style seem solid.

With these ingredients, Five Area elected to invest in the communities and their people.

Kidd is quick to point out, the new operation is still a challenge. Lest anyone think that Ole Pete's sentry duty will now be on Easy Street, rather than Main, Kidd is characteristically frank about the future: "We are not experts in the acquisition arena; we are learning the hard way. We'll let you know more in a couple of years".

Creative Living

With Sheryl Borden

PORTALES – Information on cooking with wild rice and what's new in the field of space saving home appliances will be the featured topics on "Creative Living" on Tuesday, March 14 at noon and Saturday, March 18 at 2 p.m. (all times are Mountain.) "Creative Living" airs on public broadcasting station, KENW-TV, from Eastern New Mexico University in Portales, N.M. Ann Thacker, California Wild Rice commission, will explain the differences between types of rice and share some "stuffing" recipes. Thacker is from Old Sacramento, Calif. Another guest, Vicki Gagliano, Sanyo Fisher USA Corp., Chatsworth Calif. will show some of the new versatile space saver appliances on the market.

On Tuesday March 14 at

9:30 p.m. "Creative Living" will not be seen due to "Festival '95" special programming. On Thursday March 16th at noon "Creative Living" will demonstrate making "lite" desserts, discuss learning styles, and also present some delicious recipes to make as food gifts.

Janel Franklin, cookbook author, will prepare some "lite" desserts from one of her popular cookbooks. Franklin lives in Tahoka.

Dr. Dawna Markva, educator and author, will discuss perceptual processing applications and explain how to help children learn according to their individual learning style. Dr. Markova is from South Hero, VT.

Connie Moyers, Southwestern Public Service Co., will prepare some food gifts from the kitchen. Moyers is from Clovis, N.M.

Spring Special

Motorola Bags \$49

Motorola Mobiles \$49

(Installation Not Included) Activation on Plateau Cellular

Call For Details!

W.T. Services

404 Columbia Hereford 296-2672

ON PUBLIC TELEVISION

REMEMBER WHEN



Remember when ice cream sodas were a nickel, and you waited for Howdy Doody time? Mickey Rooney narrates a video scrapbook of the good ol' days.

IF PBS DOESN'T DO IT, WHO WILL?

And We Can't Do It Without Your Support!

Monday, March 13th at 10:45p.m.

kenw tv 3
EASTERN NEW MEXICO UNIVERSITY
PORTALES, NM

Texas Cable Company

Wireless Cable is Here!

Receive 50-200 TV Channels

No Money Down

Don't Miss Your Favorite Movies or Sporting Events

Showtime, HBO, Family Channel and MORE!

No More Blackouts

CALL
1-800-518-1993

Loans up to 20 years for purchasing land or adding improvements.

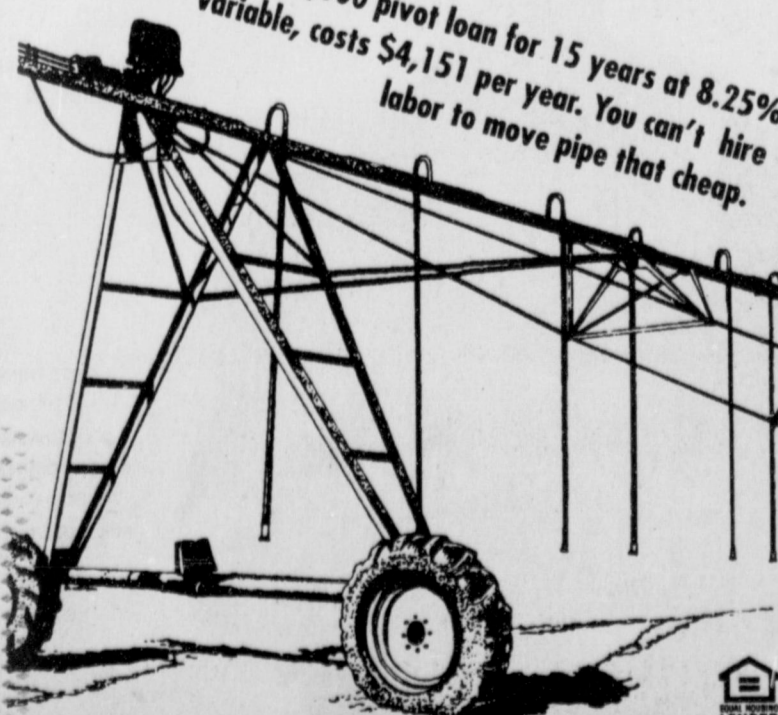
Now is the time to add center pivots for irrigation efficiency.



Federal Land Bank Association of Muleshoe, Texas

Drop by our office at 316 Main or call 272-3010

A \$35,000 pivot loan for 15 years at 8.25% variable, costs \$4,151 per year. You can't hire labor to move pipe that cheap.



The Farm Credit Bank of Texas & the FLBA of Muleshoe are Private Property Rights Advocates!

Mules get 4th place in whirlwind relays

The Muleshoe Mules varsity boys track team finished 4th overall out of 14 teams at the whirlwind relay in Floydada this past weekend. The Mules finished with 46 points.

The Mules will go to Lubbock-Cooper this Friday before Spring Break to compete again. Tulia won the meet with 109 points, Childress was second with 72 point and Post was 3rd with 54 points.

"Overall it (the competition) was very successful and it was a great start for us," said Coach Johnson.

There were 10 boys competing. Charles Acosta placed 6th in the 3,200 and ran the 1,600.

Daniel Garbarino received medals in the 110 meter high hurdles by placing 2nd and he finished third in the Triple Jump. He also finished 4th in the 300 intermediate hurdles, the high jump and he ran the anchor leg in the mile relay which finished 5th.

Riley Byers ran the 110 high hurdles and the mile. John Bryan Cowart ran the 110 high hurdles, 300 intermediate hurdles and third leg on the mile relay.

Jesus Flores ran the 800 meter run and was the only 1st place winner this week for the Mules. He also placed 3rd in the 400 meter dash and ran the 1st leg on the mile relay.

Greg Cortez also ran both the 800 and 400 meter dash and the second leg of the mile relay.

Andres Martinez also ran the 800. Chad Johnson placed 3rd in the shot put and he also threw the discus. Monty Roberts and Ricko Aguirre both threw the shot and discus.

LVNs to meet in Lubbock

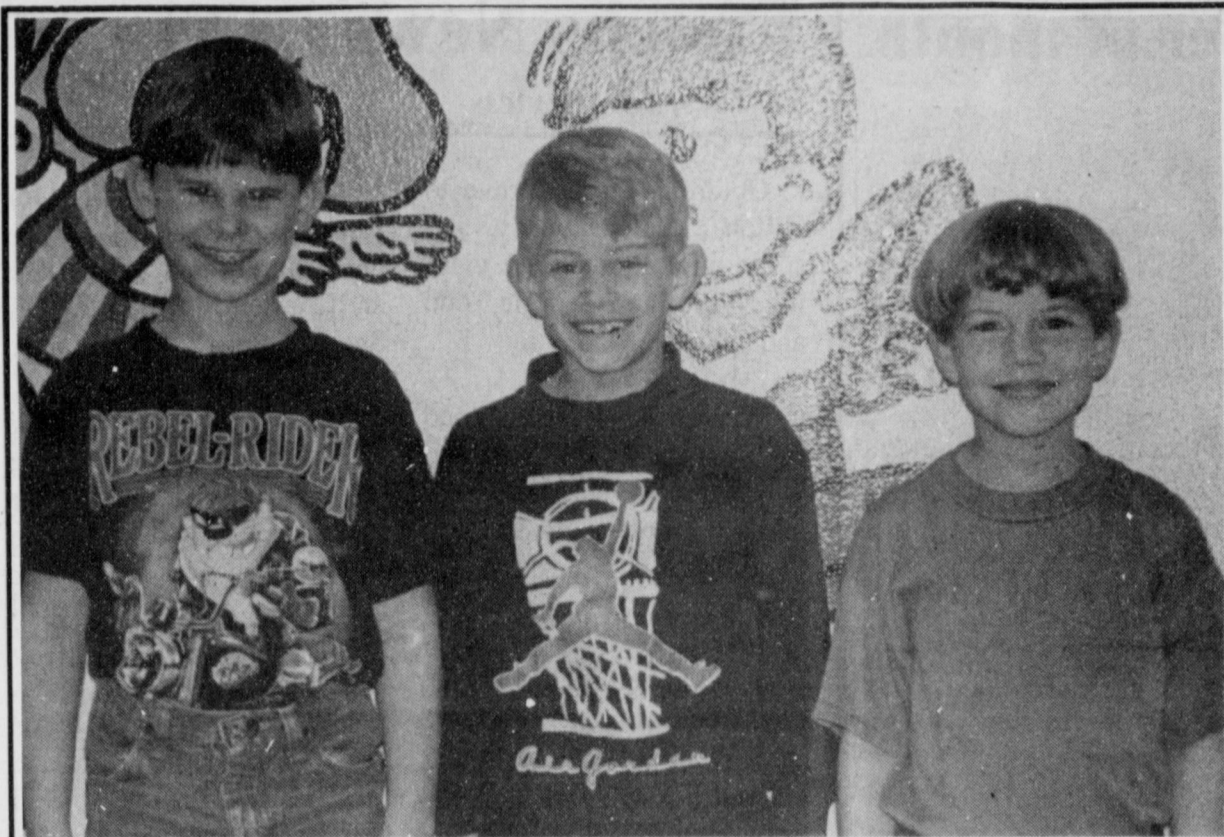
Licensed Vocational Nurses Association of Texas, Lubbock Division 18, will meet Monday March 13 in the Arnett Room of St. Mary of the Plains Hospital. The meeting will be from 7-9 p.m. A board meeting will be held from 6:30 to 7 p.m. The President asks that all board members be present.

Featured speaker for March will be Judy Ponthieu, P.H.D. she will be speaking on "Cultural Diversity." One (1) continuing education hour will be given to those attending.

All nurses are urged to attend all meetings of division 18 and receive your continuing education hours. Each month there is an approved program and continuing education that can be obtained by attending these meetings.

Division 18 will have a two (2) hour workshop in April. All nurses attending will receive continuing education hours. The workshop will be free to members and a small fee to non-members. Further information will be given out the first of next month.

For further information contact Melvena Coverdell, President, 828-45-65.



HOW A STORY IS TOLD - These students at Dillman Elementary School know how a story is told. They were recently chosen at their school to represent Dillman in the upcoming University Interscholastic League (UIL) competition in storytelling. The storytellers include: (Left) Niclas Green, Brady Broyles and alternate Trissy Herington. Not pictured is Eric Newton.

Lazbuddie students named to honor rolls

Lazbuddie Elementary School has announced the names of students who have been named to the Principal's "A" Honor Roll and to the A-B Honor Roll for the fourth six weeks grading period.

Principal's "A" Honor Roll

To be named to the Principal's "A" Honor Roll a student must have all A's in their classes. Those listed on this honor roll include:

2nd grade - David Godinez, Mandy Haney, Marli Johnson, Brett Mimms
3rd grade - Shonnah Black, Kelli Harris, Nicole Lewandoski, Robby Martin, Raul Mata, Shawndee Nichols, Kolby Wilkerson

4th grade - Lucas DeLeon, Eric Magby, Andy Martin, Brady Mimms, Tobin Redwin

5th grade - Savannah Black, Jodie Coker, Kayla Kimbrough, and Candice Randolph

A-B Honor Roll

Those students who have been named to the A-B Honor Roll are:

2nd grade - Chris DeLeon, Tanner Gartin, Susie Juarez, Cory Puckett, Garrett Scisson, Melanie Winders
3rd grade - Amanda Martinez, Bethenie Sanchez, Sterling Via
4th grade - Brittany Brakebill, Lucina Guzman,

Michelle Puckett, Osiris Retiz

5th grade - Kelsey Jones, Michael Martinez, Damon Mouser, Shannon Redwine,

Colt Richardson, Jay Seaton, Triston Thorn

Complete Line
 Monuments - Markers
 Memorials
 Granites - Bronze
Muleshoe Memorial
Park Cemetery, Inc.
 232 Main P.O. Box 373
 Muleshoe, TX
 272-5727 or 272-4670

Breast cancer screening clinic set for March 29

The Women's Center of the Don and Sybil Harrington Cancer Center and High Plains Baptist Hospital will again conduct a breast cancer screening clinic in Muleshoe at South Plains Health Care Providers, Inc., 208 West 2nd, on March 29 from 10 a.m. to 2:30 p.m.

Breast cancer affects one in eight women. The key to boosting chances of winning the battle against cancer are early detection by having an annual breast exam, mammogram and performing breast self-exam each month.

Each participant at the screening will receive a breast exam and one-to-one instruction in breast self-examination by a registered nurse specially trained in breast cancer detec-

tion and a mammogram by a mammography technician.

The program is certified by the FDA, American College of Radiology and the State Health Departments of Texas, Oklahoma and New Mexico.

The American Cancer Society urges all women to have their first mammogram by age 40. Those who have a close relative with breast cancer or other risk factors may be asked by the doctor to have a mammogram at an earlier age.

Ask about funding that is available for free breast screenings and mammograms.

Please call the Women's Center at Harrington Cancer Center at 1-800-377-HOPE or (806)359-4673 today for more information or to schedule an appointment.

GET THE ALICIO Advantage

FREE
SECOND SET OF PRINTS EVERY TUESDAY!

Receive a second set of 3" prints FREE with any exposure roll of 35mm, disc, 110 or 126 color print film left for developing and printing at our everyday prices! C-41 process only. Excludes larger 4" size prints, photo galaxy or kodaklux finishes.

DAILY:
 9 a.m. to 8 p.m.
 1401 W. American Blvd.

SUNDAY:
 12 noon to 5 p.m.
 Muleshoe, TX.

Kodak Colorwatch system

KENW-TV
 Public Television

FESTIVAL '95 March 3rd-19th

Ze Food, Ze Wine, Ze Humor!!
Mark Russell's Tour de France

It's a tough job, but someone has to do it, and Mark Russell is a willing volunteer. In his fourth travelogue special for public television, the political humorist sets off on **Mark Russell's Tour de France**.

With a (satirical) song in his heart, Mark Russell travels the length and breadth of France, sampling the glorious food and wine, exploring France's illustrious history, and experiencing the French *joie de vivre*. And, oh, what a sacrifice it is! As Russell points out while walking along a beach on the French Riviera, "When it comes to working for public television, there is no sacrifice that I am not willing to make. This is a cultural mission and I do it for PBS!"

Mark Russell's Tour de France will be broadcast Thursday, March 9th at 9:05 p.m. It repeats Saturday, March 11th at 7:00 a.m.

Country Music Legends

Saluting the stars of yesterday and celebrating the stars of today, **Country Music Legends** brings a host of big-name performers on stage for a three hour extravaganza of downhome country music.

Willie Nelson appears for the first time with Bob Wills' Original Texas Playboys in the Playboys' last performance. Patti Page celebrates the country pop sound of the 1950s and 1960s with her hit of Pee Wee King's famous song "Tennessee Waltz."

Chet Atkins displays his guitar wizardry in a salute to the late Merle Travis; and Randy Travis, one of country music's hottest stars, pays musical tribute to the late Lefty Frizzell with a performance of Frizzell's hit "Gone, Gone, Gone."

Showcasing artists of the 1960s, **Country Music Legends** also includes performances by Roger Miller, Bobby Bare, Lynn Anderson, and Faron Young.

Country Music Legends airs Saturday, March 11th at 9:15 p.m.

The Eagles In Concert

This chart-rocking band sold more records than any other American band between 1972 and 1979. They reflected the hearts and minds of a generation with a country/rock sound never heard before. And they've never been duplicated. This concert marks the first time Glenn Frey, Don Henley, Don Felder, Joe Walsh, and Timothy B. Schmit have performed together in 14 years and was the catalyst for their sold-out, critically-acclaimed 1994 tour.

The Eagles in Concert airs Sunday, March 12th at 11:30 p.m.

Channel 3 Television from
 Eastern New Mexico University, Portales, New Mexico

Do You Need A Cummins Diesel Power Unit? Come By Wood Equipment

Cummins Diesel Power Units

6 Cylinder 11 1/2" over Center Clutch

| | | |
|--------|--------|--------|
| 4390 | 4 Cyl. | 66 HP |
| 4390T | 4 Cyl. | 85 HP |
| 6590 | 6 Cyl. | 101 HP |
| 6590T | 6 Cyl. | 124 HP |
| 6590TA | 6 Cyl. | 144 HP |

High Visibility Gauge Panel

Self Locking Dernier® Throttle Cable

Coolant Recovery System

C&H Equipment

Phone (806) 272-5514
 W. Hwy. 84 Muleshoe, Texas

case

Guerra is named staff member of month

Adrian Guerra has been chosen as the Support Staff Member of the Month for February at Muleshoe Schools.

Adrian is a graduate of Muleshoe High School and has worked for the school district for three years. He says that he enjoys going to work everyday because everyone is so friendly.

Adrian moved to Muleshoe from Grand Prairie 11 years ago with his parents Carlos and Maria Guerra, his sister and three brothers. He married Leticia Guerra in 1992. They have a son, Isaias and a daughter, Adriana.

Adrian recently received recognition for his cooperation with Andy Perez in saving the life of a small child. Adrian and Andy broke the window out of a car to reach the child who had swallowed a penny. Adrian was able to dislodge the coin and save the child's life.



SUPPORT STAFF MEMBER OF MONTH - (Left) Muleshoe School board trustee Arnold Price presents a plaque to Adrian Guerra, who was recently named Support Staff Member of the Month for Muleshoe Schools.

Minding Your Own Business

By Don Taylor

I'm often accused of acting like a 5-year-old child. I'm not offended, because I hope I'll always have the exuberance, vitality and curiosity that a healthy child exhibits. This is especially appropriate today as I celebrate my fifth birthday - as a newspaper columnist. It has been five very quick, very rewarding and very enjoyable years.

As I travel in the communities where the columns run, I am asked a lot of questions. In this column, I will share answers and give you an inside look at a little bit of my personal life.

How it started

I'm most frequently asked why I decided to write the column in the first place. Actually, I didn't *decide* to write it, I was invited to try. Since I'm not a trained journalist, I didn't have a lot of confidence. However, I'm a believer in the theory that says "If there is little to lose by trying, and much to gain if successful, by all means try," so I tried, and you've been reading the results ever since.

Another common query is, "How old are you?" Well, if you must know, I'm in the metallic age of life. That is when you have silver in your hair, gold in your teeth and lead where you sit.

"Where do you come up with the topics you write about

week after week?" is a frequent question. Here are a few of my sources: Your letters, my own experiences, my client's problems and successes, comments and suggestions from those of you I meet on the street. I also get ideas from questions that are asked in workshops and seminars I present, from other writers and from my family.

Another regular inquiry is, "How long does it take to write a column?" About eight hours of research, writing and editing on the average. I hand write every column. I've had two talented co-workers in the five years who have turned by scratching into computer code. JoAnn Ross was the first, and Ann Stanford is the current. They make me look pretty good.

I'm often asked, "Is it easy?" No. Occasionally, a nearly finished column just flows right out. However, I usually have to develop the idea, research the facts and struggle like the dickens to get the words and thoughts to make any sense at all. It hasn't gotten any easier, but it's still a labor of love.

Column Trivia

The average column is 625 words in length. To date, I have penned more than 162,000 words in 260 columns.

I now have about 60 newspapers carrying the col-

umn. It also runs in two monthly trade publications and several private newsletters. In all, the column reaches more than a million readers every week.

I still read every letter you send. I now get too much mail to answer them all. I hope you understand.

I've written columns at elevations as high as 37,000 feet (on airplanes) and as low as sea level (on the beaches of both oceans.) I've scribbled thoughts in fancy hotels in big cities and cheap ones in small towns. I've recorded paragraphs on Broadway and in the woods in the Ozarks. The majority are written in my office at home.

I'm still married to my first wife, Sue. We've been happily married for 17 years. We'll be celebrating our 25th anniversary in May. (Hey, 17 out of

25 isn't too bad!) We have an 18-year-old daughter, Christi, a cat and a dog.

Thank you for your continuing interest in the column. By reading all the way to the end, you just helped me celebrate my fifth birthday.

Don Taylor is the coauthor of "Up Against the Wal-Mart's." You may write to him in care of "Minding Your Own Business," P.O. box 67, Amarillo, Texas 79105.

Dr. A. R. Ploudre Open your eyes to vision care that works with your budget!

- Quality care at a reasonable cost
- Contact lenses
- Eyeglass prescriptions filled
- NM & Texas Medicaid, Medicare Assignment

We are also proud to provide special assistance to low income families in need of vision care. Families who feel they qualify are encouraged to call for more information.

Payment plan available • Se Habla Espanol

1515 Gidding St., Clovis, NM
(505) 762-2951

Enochs News

By Mrs. J.D. Bayless

Goldman Stroud drove to Hilton, Okla., Monday and spent until Wednesday visiting Morice and Georgie Todd and friends.

We were wishing for a good rain or snow. It misted and was foggy. We had a little snow and it was cold and ice was on every thing until Friday.

Margie Peterson was a patient in Methodist Hospital the past week where she had surgery Wednesday and was dismissed Friday. Get well real soon Margie.

Guests in the home of Mrs. Ellen Bayless Monday was her brother and wife Alene and Chester Coffman from Big Spring.

Mr. and Mrs. Dale Nichols were in Littlefield Tuesday to help his aunt Mrs. Anna Mae Morris celebrate her 91 birthday. Mrs. Nichols baked her a birthday cake and they enjoyed visiting with her.

Mrs. and Mrs. J.E. Layton visited his brother, Mr. and Mrs. Harold Layton at Dell City from Friday to Sunday

afternoon.

Matt Turney of Muleshoe spent Saturday night with this grandmother Myrna Turney.

Mrs. Mutt Autry and Jo Ann drove to Plainview Sunday afternoon to visit her son Mr. and Mrs. Mitch Autry and children.

Subscribe to
the Bailey
County Journal
today!

MULESHOE CATTLE MARKET

Saturday, March 4, 1995, 1150 Head of Cattle with a steady market on lite calfs. 1-2 lower on feeder cattle.

STEERS

| Weight | Per # |
|------------------|--------------|
| 200-300 lbs..... | \$0.95-1.05 |
| 300-400 lbs..... | \$0.90-1.02 |
| 400-500 lbs..... | \$0.85-0.96 |
| 500-600 lbs..... | \$0.75-0.85 |
| 600-700 lbs..... | \$0.70-79.50 |
| 700-800 lbs..... | \$0.65-72.00 |

HEIFERS

| Weight | Per # |
|------------------|-------------|
| 200-300 lbs..... | \$0.80-0.90 |
| 300-400 lbs..... | \$0.80-0.87 |
| 400-500 lbs..... | \$0.75-0.82 |
| 500-600 lbs..... | \$0.65-0.75 |
| 600-700 lbs..... | \$0.65-0.70 |

PAIRS

| Type | Per head |
|-------------------|-----------------|
| Good & Young..... | \$500.00-700.00 |

BRED COWS

| Type | Per head |
|-------------------|-----------------|
| Good & Young..... | \$450.00-570.00 |

PACKER COWS

| Type | Per # |
|--------------------|---------------|
| High Yielding..... | \$40.00-46.00 |
| Other..... | \$35.00-40.00 |

PACKER BULLS

| Type | Per # |
|-------------|---------------|
| Packer..... | \$50.00-55.00 |

BREEDING BULLS

| Type | Per # |
|-------------------|-----------------|
| Good & Young..... | \$750.00-800.00 |

REPRESENTATIVE SALES

| Seller, City | # | Type | Wt. | CWT or PH |
|---------------------------------|----|-------------------|------|-----------|
| Diamond Y Cattle, Muleshoe..... | 2 | Mxd Str..... | 345 | \$102.00 |
| Brandon Kidd, Denver City..... | | Rwf Str..... | 405 | \$96.00 |
| Jeff Burris, Morton..... | 7 | Mxd Str..... | 400 | \$93.50 |
| Diamond Y Cattle, Muleshoe..... | 2 | Limo Str..... | 555 | \$80.50 |
| Paula Nix, Olton..... | 2 | Blk Str..... | 445 | \$92.00 |
| Preston Hugenley, Olton..... | 9 | Mxd Str..... | 465 | \$86.00 |
| Rocking J Ranch, Whiteface..... | 2 | Red Str..... | 505 | \$85.00 |
| Carson Cattle, Bovina..... | 7 | Blk Str..... | 645 | \$78.25 |
| Jesus Hernandez, Muleshoe..... | 16 | Mxd Str..... | 660 | \$74.00 |
| Carson Cattle Co., Bovina..... | 29 | Mxd Str..... | 735 | \$70.00 |
| Carson Cattle Co., Bovina..... | 29 | Mxd Str..... | 760 | \$69.25 |
| Paula Nix, Olton..... | 3 | Red Hfr..... | 290 | \$88.00 |
| Alan Clark, Friona..... | 2 | Char Hfr..... | 335 | \$87.00 |
| A. T. Kyle, Earth..... | 6 | Mxd Hfr..... | 395 | \$83.00 |
| Michael Lee, Plainview..... | 5 | Rwf Hfr..... | 495 | \$75.00 |
| Preston Hughley, Olton..... | 3 | Blk Hfr..... | 530 | \$77.50 |
| Brandon Kidd, Denver City..... | | Char Hfr..... | 520 | \$74.00 |
| John Perain, Herford..... | 3 | Red Hfr..... | 620 | \$68.00 |
| Preston Hughley, Olton..... | | Blk Hfr..... | 670 | \$68.00 |
| Raymond Mendoza, Muleshoe..... | 2 | Brang Pair..... | | \$615.00 |
| CM Cattle, Muleshoe..... | 4 | Blk Pair..... | | \$640.00 |
| T&T Cattle, Littlefield..... | 3 | Char Cows P7..... | | \$570.00 |
| Beck Allen, Muleshoe..... | | Red Cow P8..... | | \$570.00 |
| Preston Hughley, Olton..... | | Wf Cow P7..... | | \$540.00 |
| Paula Nix, Olton..... | | Bwf Cow..... | 1130 | \$46.00 |
| Preston Hughley, Olton..... | 2 | Bwf Cows..... | 1255 | \$45.25 |
| Alkali Cattle, Portales..... | | Bwf Cow..... | 1170 | \$45.00 |
| Raymond Mendoza, Muleshoe..... | | Blk Cow..... | 820 | \$45.00 |
| Preston Hughley, Olton..... | | Blk Bull..... | | \$750.00 |

The Muleshoe Cattle Market is brought to you each week by Muleshoe Livestock Auction, located east of Muleshoe on U.S. 84. Muleshoe Livestock conducts sales every Saturday, beginning with hogs, sheep and goats at 10 a.m. and cattle following at approximately 12 noon. For information on sales or to consign cattle, call (806) 272-4201.

MHS tennis team takes 3rd at tourney

The Muleshoe High School tennis team placed 3rd this past weekend in the TTCA Regional Tennis tournament held in Levelland. The Mules defeated Post 14 matches to four on Saturday to capture 3rd place. Brownfield and Farsan took 1st and 2nd places.

Each player for the Mules were presented with a medal. Players included: Gage Tosh, Isaac Miramontes, Colby Latham, J.B. Beall, Joe Garcia, Robert Gardner, Charles Villarreal, Sharon Johnson, Reagan McElroy, Crista Trussell, Cassidy Cleavinger, Melissa Morales, Fara Black and Nicky Magermans.

Journal Classifieds

Call 272-4536 Deadlines: For Thursday, Noon Tuesday; for Sunday, Noon Friday Call 272-4536

The Muleshoe Journal Is Seeking A Retail Advertising Representative.

Monday thru Friday
Benefits Include
• Salary Plus Commission
• Paid Vacation
Must have a neat appearance and able to deal with the public.
Apply in person to Muleshoe Journal, 304 W. 2nd.

SUBSCRIPTION RATES

MAILED
Muleshoe (In Town): \$16.75 For The Year
Out Of Town: \$18.50 For The Year
College: \$13.50

CARRIER
Carrier: \$15.00
Papers That Are Mailed Expire On The 27th Of Each Month. Notices Are Sent Out At The Beginning, The Middle, And The End Of The Month.

CLASSIFIED RATES

15 Words And Under, First Run: \$3.00
Every Run After The Initial Run: \$2.55
16 Words And Over: 1st Run .20 Per Word
16 Words And Over: 2nd Run .17 Per Word
CLASSIFIED DISPLAY RATES
\$2.00 Per Column Inch
DEADLINES
For Thursday Paper, Noon Tuesday
For Sunday Paper, Noon Friday

To Receive The Reduced Rate After The First Insertion, The Ad Must Run Continuously. We Reserve The Right To Classify, Revise, Or Reject Any Ad. We Are Not Responsible For Any Error After Ad Has Run Once

Have A Nice Day!

Get a jump on your Spring cleaning!
Advertise your garage sale in the Muleshoe Journal.
Call 272-4536

Read The Classifieds When You Need To Buy Or Sell Something!!
Call The Bailey County Journal
272-4536

Public Notice

The Board of Education of Lazbuddie Independent School District will receive Sealed Bids for the Reroofing of the Cafeteria located in Lazbuddie, Texas. Bids will be received until 10a.m. local time on April 10, 1995 at the Board Office located at FM Road 1172, Lazbuddie, Texas at which time they will be publicly opened and read aloud. All bids must be in the hands of Mr. Phil Warren, Superintendent of Schools, before the date and time stated. No Bid will be received after that time. All Bids shall be clearly labeled on the outside of the sealed envelope. The Owner reserves the right to reject any and all Bids, to waive informalities and to determine the selected Bidder that he feels is in his own best interest.

BIDDING DOCUMENTS:

Contract Documents are on file for examination at the office of the Board of Education and may be obtained from Mr. Phil Warren, Superintendent of Schools, located at FM Road 1172, Lazbuddie, Texas. All Contract Documents must be returned no later than one week after the opening of the bids.
10t-2tc

DO NOT BE FOOLED BY THE OTHERS!
We offer realistic prices on the countries #1 Mobile Home Fleetwood.
This week's special is over 1500 sq. ft., doublewide, split living room & den with sliding glass door, glamour bath with skylight.
5 year structural warranty with payments under \$430.00 per month.

PMH
PORTALES MOBILE HOMES
356-5639 OR 1-800-867-5639 DL366

FOR SALE
3 Gifford Hill Sprinklers
Frans Irrigation, Inc.
Box 99, Farwell, TX.
(806)481-3316 or 481-9977

Help Wanted

Muleshoe Area Healthcare Center is currently taking applications for nursing assistants. Contact Terri Brown, R.N. Director of Nursing at 106 W. Ave. H. Please apply in person. No phone calls please. 7t-8tc

NURSES WANTED on the High Plains of Eastern New Mexico. If you want the money, but don't need the benefits, contact us today! Wages competitive with the big city, but offering advantages of small town cost of living: RNs \$20.00/hr, LPNs \$14.50/hr PLUS differentials. Contact Plains Regional Medical Centers, Human Resources Department, Brandy Barrett, Portales (505) 356-4411, ext. 301, OR Sabrina Farmer, Clovis (505) 769-7313. EOE
8t-6tc

Help Wanted: National Linen - Fashion Wear Co. now hiring representatives. Full/Part Time. Party plan experience helpful, not necessary. Call 806-745-3805
9s-4tc

POSTAL JOBS--Start \$11.41/hr. For exam and application info. call (219) 769-8301 ext TX 759, 8a.m. - 8 p.m., Sun.-Fri.
9t-7tpd

Muleshoe Area Healthcare center is accepting applications for Assistant Director of Nurses. Applicants must be an L.V.N. or R.N. Knowledge of Medicare and Medicaid a must! Salary based on experience. Contact Terri Brown, R.N. D.O.N. at 106 West Ave. H., Muleshoe, Texas. Apply in person and bring a current resume.
10t-tfc

Classy Paws Dog Grooming
Call 272-3012
For An Appointment Monday thru Friday
9s-4tc

Buy your classified ad today.

For Sale

1988 Nitro 120 Horse Outboard Bass/Ski, depth finder, trolling motor. Stored in a shed, excellent condition. Call (806) 927-5423.

For Sale Good Alfalfa, inside a barn. See or call Alex Aguirre 806-272-5012.
8s-8tc

For Sale GE Mobile phone with 272 number. Call 272-5255 or 946-8852.
8s-6tc

For Sale King Sized Waterbed, Bookcase headboard with heater & mattress. Yamaha Street Bike. For More Information Call 806-965-2693
9s-tfc

For Sale: Longlife 3.5 20" Blade Lawn Mower. 6' Aluminum Ladder Call 806-272-3906
9s-4tpd

We pay cash for owner-financed notes and mortgages. Call 1-800-766-0177 for free quote.
10s-4tc

For Rent

Extra Nice Apartment For Rent - 2 bedroom, central heat and air, dishwasher, cooktop, selfcleaning oven & disposal. \$340.00 monthly. Call 272-4889.
9t-tfc

To enjoy home delivery of the Bailey County Journal, call 272-4536!

Window Tinting Available Once Again!!
On Wednesdays At
Muleshoe Body Shop
272-4246
10s-2tpd

Miscellaneous

Need overweight people who are serious about losing weight. Call in Levelland 806-894-7302.
8s-25tc

Automobile

1992 Ford XLT Lariat, extended cab, short bed. Loaded, 302 automatic. \$10,200. (505)356-5509.

1989 GMC Suburban, 4 Door, loaded, See at 1918 W. Birch Ave.
10t-2tc

For Sale 1989 Chevy Silverado pickup. Standard cab, long wide bed. 350 automatic with overdrive, new tires. Excellent condition. \$9300. Call (505)356-5509, Portales.
10s-tfc-wp

Real Estate

For Sale: Richard Hills, 1715 W. Avenue H. Remodeled inside & out last year, 3 br, 1 3/4 bath, 2 car garage, large living room, ceiling fans, new drapes. Call 272-4754

FOR SALE LENAU ADDITION
305 East Fir Avenue, large 3 bedroom, 1 3/4 baths, auto lawn sprinkler, single garage, 2 car carport and storage. Call day or night 272-3373. D8-51s-TFC

HOUSE FOR SALE--226 Elm, 2 Bedroom, 1 bath, 1 car garage, 1 large spare room, central heat, 8'x14' storage bldg., cellar, fenced backyard. Call 272-5133 after 12.
10t-2tpd

Farm For Sale

Farm For Sale or Trade - 160 Irrigated Acres, Cotton and Corn Base. 2 Wells, excellent water, on County Line Road. Call 806-745-5870.
9t-4tpd

KEMP HOME FURNISHINGS
We will save you 30 - 50% on brand-named furniture and Serta bedding (Guaranteed)
414 West American Boulevard
Phone 272-5023



KIRBY SALES & SERVICE
207 W. 7th
Clovis, NM 88101
505 - 762-4991
Corner of 7th & Mitchell
Next to Sonic Drive-in
Come In and Look At The New Self Propelled Kirby.
Bring Your Kirby In For Service!
We Also Have Rebuilt Kirbys!
Call Joe Ennis, Distributor,
Only Authorized Dealer In Clovis and Surrounding Area.
Open Saturdays.
9s-t&s-tfc

MUST SELL! 1994 PONTIAC GRAND AM
SE Sedan, Power Windows, Power Locks, V-6, Automatic, AM/FM Cassette, Tilt, Cruise, Air Conditioning, Rear Defroster, Fog Lamps, Driver Side Air Bag, Custom Wheel Covers and much more. No old contract to assume, no back payments to make, just need responsible party to make reasonable monthly payments.
Call Kim Humphrey in the credit dept.
Friona Motors (806)247-2701

MUST SELL! 1994 CADILLAC SEDAN DE VILLE
V-8, Automatic With Over Drive, Power Windows With Lock, Power locks, Power Mirrors, Dual Six-way Power Seats, AM/FM Cassette With Equalizer, Twilight Sentinel, Electronic Climate Control, Rear Defroster, Full Leather Interior, Anti-lock Brakes, Dual Air Bags, Aluminum Wheels & Much More No old contract to assume, no back payments to make, just need responsible party to make reasonable monthly payments.
Call Kim Humphrey in the Credit Dept.
Friona Motors, (806)247-2701

MUST SELL! 1994 OLDSMOBILE ACHIEVA
Sedan, Automatic with Overdrive, Power Windows, Power Locks, Tilt, Cruise, Air Conditioner, AM/FM Cassette, Rear Defroster, Driver Side Air Bag, Custom Wheel Covers and Much More. No old contract to assume, no back payments to make, just need responsible party to make reasonable monthly payments
Call Kim Humphrey in the credit department
Friona Motors, (806)247-2701 !Se Habla Espanol!

MUST SELL! '94 FORD BRONCO
XLT, 4x4, Running Boards, Console W/Built In Radar Detector, Power Windows, Power Door Locks, Cruise Control, Tilt Steering Wheel, AM/FM Stereo Cassette and Much More. No old contract to assume, no back payments to make, just need responsible party to make reasonable monthly payments.
Call Alice Roder in the Credit Dept.
Friona Motors, 806-247-2701

Subscribe to the Muleshoe Journal today!

HENRY REALTY

Small acreage on highway near Muleshoe. New development. Please call for information. 5 acres to 40 acres. Excellent location.

NEW LISTING--2 Bedroom, 1 bath, recently remodeled - new paint, new floor covering throughout. Wood fence. Storm doors and windows.

Near High School, 3 bedroom, 1 bath, floor furnace heat, roof ducted. Evaporative air cond, storm windows & doors, equipped for washer/dryer. Fenced back yard.

Four bedroom, 2 bath, 2 car garage, 2 - car carport. Refrig. air, central heat. Carpet, beautiful dining area with built-in china cabinet and paneled walls and other extras. Storm doors, storm windows and awnings. Concrete fence, front yard has automatic sprinkler. Kitchen built-ins. 1,000 sq. ft. storage. Large home with extra storage.

Near High School - 3 bedroom, 3 bath, BV central heat, ducted in evaporative air cond., carpet throughout., large den with rock fireplace, top grade wood paneling throughout. Storm windows and doors. Insulation in ceiling, large utility room and spacious storage area. Kitchen built-ins. Country Club Addition, 2 bedrooms, 1 bath, 4 car carport, new roof, carpet, 2 ceiling fans, includes vacant lot next door. Storm doors and windows.

Reduced Price- Owner ready to sell. 2 bedroom, 1 bath, 1 car garage, carpet, wood fence.

COMMERCIAL PROPERTY

Ideal location on west American Blvd. 150' highway frontage. A great business opportunity.

West American Boulevard 150' frontage. Priced to sell.
111 WEST AVE B. MULESHOE, TX
272-4581

Nieman Realty

116 E. Ave. C George Nieman, Broker 272-5285 or 272-5286

HIGH SCHOOL

NICE 3-2-1 carport Home, Cent. A&H, built-ins, basement, ceiling fans, water softener, covered patio w/gas grill, fenced yd., & one bdrm. apartment. PRICE REDUCED!!!!!! HS-12

NICE 3-2-2 Brick, 2150+ lv. area, Heat pump, built-ins, Ceiling fans, nice carpets, fenced yd. MORE!! \$70K HS-6

Large 3-2-2 Home, Cent. A&H, FP, 1800+ lv. area, fenced yd. \$50K!!!!!! HS-3

VERY NICE 3,000+ sq. ft. Home, recently remodeled, built-ins, heat pump, FP, spktr. system, storage bldg. fenced yd., CONSIDER TRADE!! \$ 70's!!!! HS-11

3-2-1 Brick, Cent. A&H, built-ins, workshop-storage, fenced yd. \$30's!!!! HS4

HIGHLAND AREA

3-2 Home, 1900+ lv. area, heat pump, st. bldg., fenced yd. \$30's!!!! HL-2

VERY NICE 3-2-2 Brick, Cent. A&H, built-ins, fenced yd., spktr. sys., MUCH MORE!!!! \$60's!!!! HL-1

Nice 4-2-1 Brick, Cent. A&H, built-ins, fans, encl. patio, man. spktr sys., gas grill, st. bldg., fenced yd. \$60's!!!! HL-5

LENAU ADDITION

Nice 2-1-1 Home, new interior paint, new carpet, fenced yd., storage bldg. MORE!!!! & 20's!!!! L-4

LENAU ADDITION

VERY NICE 3-2-1 Home, Heat Pump, storm windows & doors, extra insulation, nice carpet, spktr. sys. & MORE!!!! \$30's!!!! L-2

RURAL HOMES

IMMACULATE 3-2-2 Brick Home, 2900+ lv. area, Heat Pump, built-ins, FP, spacious den, office, 1 acre tract on pavement, close to town, horse barn/tack room. MUCH MORE!!!! \$90's !! HR-3

JUST LISTED- Very Nice 4-2 Home on 40 acre tract close to town, heat pump, built-in stove, nice carpet & tile. 6" irrig. well with high pressure lines, stock shed & pens, tractor & equipment. \$70's!!!!

COUNTRY CLUB

2-1-1 carport home, wall furnace heat, nice carpet, storm shelter, storage bldg., fenced yd. MORE!!!! \$20'S.

2-1 Home, 1 1/2 carport, wall furnace heat, fenced yd, st. bldg., on 2 lots!!!! \$14,900.- CC-2

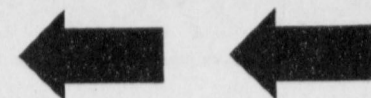
ASK ABOUT OUR COMMERCIAL LISTINGS!!!

COMMERCIAL-200'+ Hwy. 84 frontage-Former Richland Hills Texaco, excellent business location. PRICED TO SELL!!!!!!

JUST LISTED 160 acres N. of Progress. Good productive farm in good water area, 8" well and Valley Sprinkler. PRICED TO SELL!!!!



Muleshoe's Area



MID-WINTER BUSINESS DIRECTORY

Combination Plate # 5
3 Enchiladas & 2 Tacos
Choice of Meat, Cheese or Chicken Enchiladas
(Beans & Rice Extra)
\$4.95



Closed Mondays

Leal's Restaurant

1606 W. Amer. Blvd.

272-3294

Ferti-lome
Super PreEmerge Weed & Feed
Kill Those Weeds in your lawn and garden
before they come up!
20 lb. bag covers 20,000 Sq Ft.
\$10⁷⁵

We Now Have Onion Sets 75¢ A Bunch

Muleshoe Feed Barn

311 W. American Blvd. 272-5626

Gift Selections
of
Lisa Frerich
Bride Elect of
Brett Pylant

Muleshoe Art Loft



TEXAS
FARM BUREAU
INSURANCE CO.

See Rickey Barrett - David Tipps
or Dale Vise For Your
IRAs, or Life, Auto, Home
or the New CAT Crop Program

Bailey County Farm Bureau

1612 W. Amer. Blvd.

272-4567



All Goodyear
DT710 Farm Tires
Radials, Rear +
MFWD



James Crane Tire Co.

322 N. 1st Muleshoe 272-4594

Lasting Impressions

516 S. 1st. 272-4287
Helen Hunter, Owner

Flowers For Every Occasion
Balloons - Gifts

Teleflora

WE RECOMMEND
ferti-lome
Lawn & Garden Products

Time To Use
ferti-lome
LAWN FOOD



Kearney Scoggin

Scoggin Ag Center, Inc.

"Where Fertilizer Is Our Business"
1532 W. Amer. Blvd. 272-4613

Thanks For A Wonderful 1st Year !

| | |
|-------------------------------------|--------------------|
| 285 Calf Starter..... | \$6 ⁷⁵ |
| 287 Show Calf Ration..... | \$5 ⁹⁰ |
| 286 Calf Ration..... | \$5 ⁰⁰ |
| 16% Horse Feed..... | \$6 ⁷⁰ |
| 14% Horse Feed..... | \$6 ⁵⁸ |
| 10% Horse Feed..... | \$5 ⁸⁵ |
| 1208 Horse Complete Horse Cube..... | \$5 ⁴⁵ |
| Handmade Ryon Ropes..... | \$23 ⁰⁰ |

We Have Head Stalls, Reins,
and All Kinds Of Tack & Horseshoes
Come and Visit With Us --- If We Don't Have
What You Need, We Will Get It For You!

Muleshoe Feed Barn

311 W. American Blvd. 272-5626

DAILY BUFFET

Includes Salad Bar & Cobbler
Serving Breakfast Daily

HOURS:

Monday-Friday 5 a.m. - 4 p.m.
Saturday 5 a.m. - 2 p.m.

Connie's Place

121 Main 272-3126

Connie Dominguez, Owner

We pick up and repair all types
of irrigation motors, service & repair
late model GM's, Fords & Dodge
automobiles & trucks.

**SPECIALIZING IN GENERAL AUTOMOTIVE
REPAIR WORK OF ALL KINDS.**

Muleshoe Truck & Auto

301 N. 1st 272-5111

1 Roll of Brown
Philadelphia Sculpture
Carpet

\$5⁹⁹ yd. (Cash & Carry)

"Partners In Profit"
Wall Paper Sale
Feb. 1-May 31

Muleshoe Floor Covering

Open 10 a.m. - 5 p.m. Mon. - Fri. Closed Sat. & Sun.
272-3555 122 Main



Sheree's Attic
Merle Norman Cosmetics
Is Proud To Offer The Services of
Sheryl Engleking ---
Plain Manicures, Hot Oil Manicures, Sculptured Nails, Silk,
Fiberglass, Men's Conservative Manicures and Much More!
Owner Sheree Hunt
1519 W. American Blvd. 272-3459

Sub Lover's Pizza

Small \$8¹⁹ Med. \$11³³ Lg. \$14¹⁹

If you like our sandwiches, you'll love our
Sub Lover's Pizza....our great Pizza Hut pizza
dough baked with ham, salami and lots of mozzarella
topped out of the oven with lettuce, tomato
and our great Italian Dressing

Delivery Available
11 a.m. - 1:30 p.m.
& After 5:00 p.m.



1412 W. Amer. Blvd. 272-4213

Bridal Selections

of
Lisa Frerich *Bride Elect*
of
Brett Pylant



Fry & Cox

Lumber True Value Hardware

401 South First Muleshoe 272-4511
Mon-Sat: 8 a.m. - 6 p.m.
Sun 1:30 - 4:30 p.m.



CELEBRATE WITH FLOWERS!

Send the FTD®
Birthday Party®
Bouquet (BP2)



Decorator's Floral & Gifts

616 S. 1st Muleshoe 272-4340

Henry Insurance Agency, Inc.

"Serving Your Insurance
Needs Since 1964"



Kenneth R. Henry, Certified Insurance
Counselor
Real Estate Broker
Mike McCallum - Agent

Lawn Mower Problems?



Let Us Tune It Up For You.

Bratcher Motor Supply

105-7 East Ave B 806-272-4288