

Around Muleshoe Hospital Board to meet Aug. 3

The board of directors of Muleshoe Area Hospital District will meet in regular session at 7 p.m. Thursday, Aug. 3 in the dining room of Muleshoe Area Medical Center, 708 S. First St., in Muleshoe.

There will be financial and statistical administrator's reports on the hospital and HealthCare Center.

The board will consider the 1995 tax rate, set budget workshop dates and consider a letter of intent to participate in an intergovernmental initiative organization.

The hospital board will go into executive session in accordance with Government Code, Chapter 551, then take action resulting from the executive session and consider management matters.

Littlefield sets city-wide garage sale on Aug. 5

LITTLEFIELD — A city-wide garage sale and flea market will be held in Littlefield Saturday, Aug. 5 beginning at 8 a.m.

Shoppers may pick up maps listing garage sale locations at the flea market, which will be in the 300 block of Phelps Ave. (Main Street) in Tutu's Dance Studio.

Continued on page 4

Sandhill becomes star of Muleshoe's outdoor drama

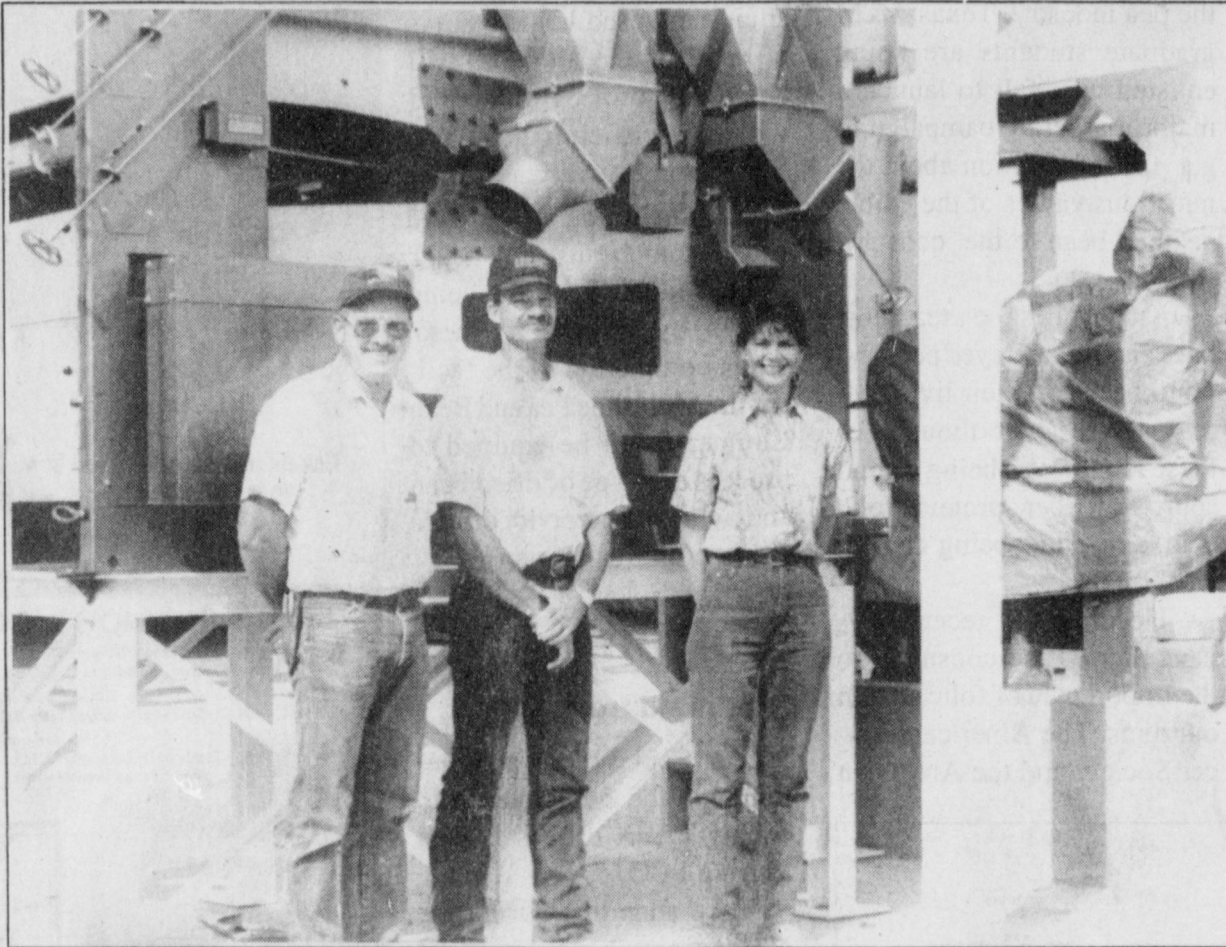
By Martha Toles Frost

"Keepers of the Legend" is set to begin performances on Aug. 4. The new musical by Paula Paul will run nightly through Tuesday, Aug. 8, beginning at 8:30 p.m.

A barbecue sponsored by the Muleshoe Heritage Foundation will be served prior to each performance and is not included in the ticket price.

The fictionalized historical drama includes romance, action, comedy, dancing and plenty of original music to keep the audience entertained, according to Sarah Harris, who has been hard at work advertising the upcoming event.

The play takes place in the first outdoor theater in Muleshoe in the historical atmosphere of the Muleshoe Heritage Complex, with the Janes



New business under construction

Muleshoe Pea and Bean, Inc. is a budding new business in the agricultural community of Muleshoe. Pictured in front of a new cleaner are owners Sam Harlan (left), secretary, and Mike Cleavinger, president. Not pictured are co-owners Ed Nickels and Nicky Nickels. Joy Glover (right) is the business secretary.

Cotton growers having hard time getting started

USDA's preliminary look at the 1995 High Plains cotton crop indicated the area planted, or intended to plant, 3.46 million acres in Texas crop reporting districts 1-N and 1-S as of June 1.

According to Lubbock-based plains Cotton Growers (PCG), the planted acreage estimate reflects an 8.5 percent increase in planted acres from 1994. Whether or not the area can expect to produce cotton

on all of these acres is still unknown.

Recent reports indicate quite a few acres have been significantly impacted by a combination of cool weather, seedling disease, wind damage, hail and low soil moisture. Overall, the High Plain's crop is described as being "late," although most agree that with favorable weather it still has the potential to produce.

"The 1995 crop is really

having a hard time getting started," says PCG Executive Vice President Donald Johnson. "So far we seem to have been on the receiving end of just about everything that can go against establishing a good cotton crop, and yet here we are, still in the game."

Johnson explains that no single area of the High Plains has been totally wiped out. Instead, he says that most of the crop's current problems

stem from an accumulation of damage that has caused some to be replanted more than once and even more to have growth significantly delayed.

The same assessment is provided by Dr. Kater Hake, Extension Cotton Specialist for the High Plains. Hake notes that the crop looks relatively good until you realize that it is the end of June, not the end of May.

Hake warns that the late-

ness of this year's crop creates some unique problems for the producer. In order to answer producer questions about managing a late crop a four-page publication titled "Managing Late Cotton" is in the final stages of development by the Texas Agricultural Extension Service (TAEX), Texas Tech University, PCG and other agencies that serve cotton pro-

ducers take pride in the diversity of the area's agricultural economy, so when something new develops, they aren't afraid to jump in and take a chance.

By Terri Bohler

Area producers take pride in the diversity of the area's agricultural economy, so when something new develops, they aren't afraid to jump in and take a chance.

One of Muleshoe's newest industries is Muleshoe Pea & Bean, Inc., located one quarter of a mile west of Five Area Telephone. Currently under construction, the company is owned and operated by Mike Cleavinger, Sam Harlan, Ed Nickels and Nicky Nickels. Their primary goal is to grow, clean and market a variety of peas and beans.

In November of 1994, the hand-full of experienced farmers began to consider crops which would be a viable alternative to ones currently grown

on their own farms and in the area. They looked at the shorter growing season of 60-90 days — a crop that could follow wheat, or replace hailed out cotton or corn crops, which require a longer growing season. The answer seemed to be peas and beans.

With a four year history of growing black-eyed peas, these growers found that the crop offered many production advantages, including lower input costs, conservation of water, a shorter growing season, less tillage in the rotation with cotton, and greater profit potential.

Continued on page 2

Hake warns that the late-

Continued on page 2



Journal photo/Martha Toles Frost

Sandhill drifts into Muleshoe

Bailey County Precincts 1 & 2 were moving dirt anyway, so they agreed to deliver sand to the set of "Keepers of the Legend" for the Aug. 4-8 drama at the Muleshoe Heritage Center.

Paula Paul is keeper of legends

By Sarah Harris and Martha Toles Frost
"Keepers of the Legend"

Paula Griffith Paul, who has had a lifelong interest in the history of Bailey County, said that it was not until the early 20th century that Muleshoe and Bailey County, Texas came into being.

In the late 19th century, the vast stretches of grassland had been held by the great ranches such as the XIT, the VVN, the Figure Four and the Muleshoe, she explained.

Population consisted of a few cowboys and even fewer ranch wives. Before that, Indian tribes roamed the prairies.

When the XIT began to sell off its holdings to farmers, a



Paula Paul

new era dawned. Relationships between ranchers and the new settlers became tense at times. To add to that drama, West Texas spawned a few of the bank robbers and horse thieves that helped create the legendary Wild West.

Paul found in her research that new settlers created their own legends when they saw the sandhills that ripple across the center of Bailey County and the evidence of the Indians

Continued on page 3

Drama coach describes 'Keepers' rehearsals

By Sally Messenger
"Keepers of the Legend"

The Muleplex Production of Paula Griffith Paul's "Keepers of the Legend" will be presented at 8:30 p.m. each evening, from August 5th through August 8th, at the Muleshoe Heritage Center.

This musical production tells the story of the early his-

tory of Bailey County. While the story reminds us of our heritage, it also impresses on us our responsibility to the future. We are all a part of the Legend of West Texas.

Rehearsals for any production take on a life of their own. The cast and crew take on a persona. In theater terms this is called "the company."

Our company consists of wonderful West Texans who were willing to give up a good deal of their summer in order for this dream to become a reality.

Much has been written about Laura Wood, Cassidy Cleavinger, and Alan Finney. They dreamed the dream and have seen it to fruition. Now I

would like to take a few minutes to tell you about the rest of the company.

Every rehearsal needs comic relief. Victor Leal provides ours. He once told me he never takes anything seriously, and now I believe him.

He has been helped along the way by Matt Pennell and Trevor Thuett. These gentle-

men come to us from Lubbock (faithfully every day).

In one memorable rehearsal, we threw Matt from a horse and Trevor from a train. They both came back the next night!

From the night Mason Conklin walked on the set, nothing has been the same or

Continued on page 3



Sally Messenger

Beans

Continued from page 1

Mike Cleavinger, president of the company. "Wells that pumped 750 gallons of water (per minute) a few years ago are now only pumping 400 gallons."

The new crops have already proven themselves according to Cleavinger, but to fully realize the potential of the pea and bean crop, there was a need to process and market the legumes.

So, the research began. The members gathered information, in the early stages of the company, by attending bean and pea seminars in Louisiana and Colorado. At these seminars, the members of Muleshoe Pea and Bean, Inc. realized that the production and processing of black-eyed peas and bean offered an opportunity to add value to the crops already being produced and an opportunity to enter a market in which the farmer could go

directly to the final consumer.

The Small Business Development Center (SBDC) in Lubbock acted as a business consultant to the new company, according to Joy Glover, secretary for Muleshoe Bean and Pea.

SBDC was extremely helpful to the young business in getting them in contact with foreign export markets. The free services of the SBDC and their resources have enabled the company to make contacts with 48 foreign countries through the SBDC database.

The Texas Department of Agriculture was instrumental in advising and directing in many marketing areas as well. Through the use of "Taste of Texas", a database, many markets were directed to the Muleshoe company.

There is a great potential for the bean and pea industry, according to Harlan, secretary

for the company. "The market is virtually untapped in the Northeastern United State," Harlan said.

Other aspects of the company include informing the public on the values offered by the pea industry. Texas A&M graduate students are being enlisted next fall to launch a major marketing campaign to get the information about the nutritious values of the edible pea and bean to the consumers.

In the Muleshoe area, most have eaten black-eyed peas and pinto beans all their lives, but may have never thought of these legumes as being a good source of fiber, protein, folic acid, as well as being cholesterol free.

Headlines in recent days have alerted the consumer to the importance of folic acid in our diets. The American Cancer Society and the American

Heart Association have endorsed these products.

This year's production from area growers is estimated at 5,000 acres, and plans for substantial growth in the future are already in the making. The equipment used in the plant is of state of the art and will allow the project to expand without sacrificing quality.

A large variety of dried beans, including black-eyed peas, pinto beans, and black turtle soup beans, are being grown by 17 area farmers. Upon completion of the facility, the Muleshoe Pea and Bean Company will be equipped to process any type of dried bean and will endeavor to offer a market for area growers.

Cotton

Continued from page 1

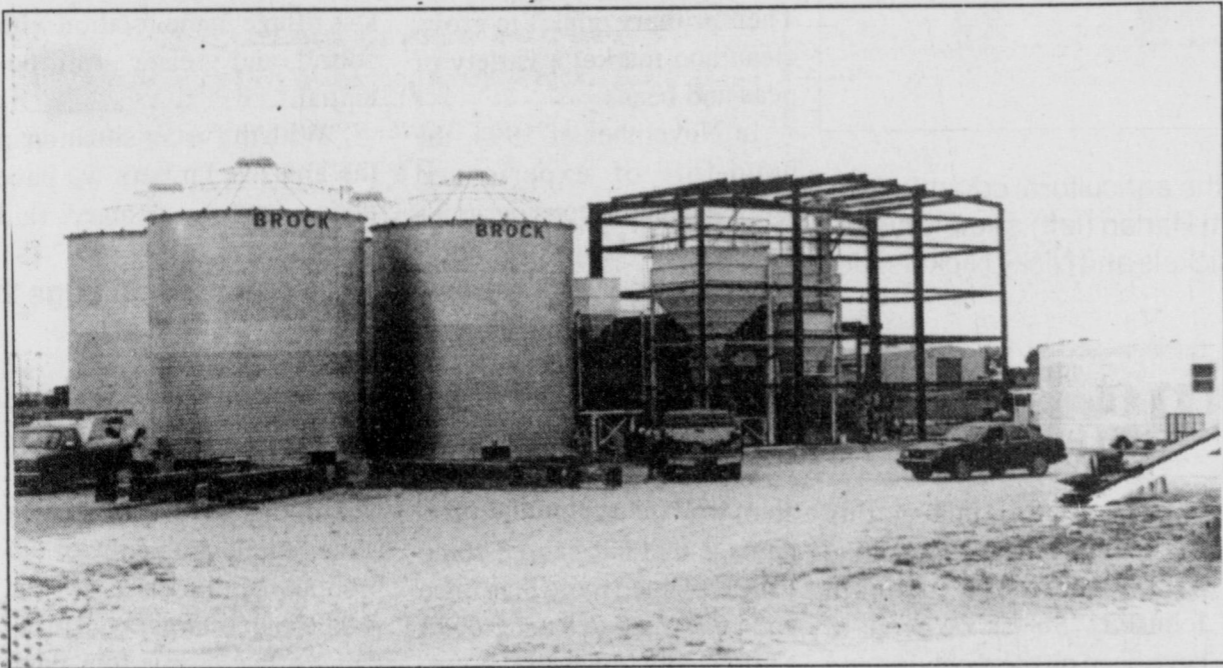
ducers. Copies of the publication will be available from county TAEX offices as well as from PCG.

Hake adds that during the past two cotton seasons on the High Plains many fields were beginning to bloom by the 10th of July. In 1995 Hakes says many fields will not enter bloom until August, leaving a very short window for setting a crop.

Subscribe To The Muleshoe Journal Today!

Keepers of the Legend
A New Musical by Paula Paul
Music by Cassidy Cleavinger and Alan Finney

August 4-8, 8:30 p.m. at the Muleshoe Heritage Center
Tickets may be purchased at Muleshoe Chamber of Commerce for \$10
215 S. First - Muleshoe, Texas 79347 - (806) 272-4248
Barbecue begins at 7:00 p.m. (not included in ticket price)



Muleshoe Pea & Bean, Inc. is under construction
Located west of Five Area Telephone, the site of the construction of Muleshoe Pea & Bean is visible from Hwy. 84. Four area farmers have banded together in an effort to find an alternative to cotton and corn crops.

Muleshoe Journal USPS 367820
Established February 23, 1924. Published by Triple S Publishing, Inc.
Every Thursday at 304 W. Second, Box 449, Muleshoe, TX 79347.
Second Class Postage paid at Muleshoe, TX.
POSTMASTER: Send address changes to the Bailey County Journal, P.O. Box 449, Muleshoe, TX 79347.
We are qualified members of:
Panhandle Press Association, National Newspaper Association, West Texas Press Association and Texas Press Association

WEST TEXAS PRESS ASSOCIATION
PPA
Panhandle Press Association

MEMBER 1995
TEXAS PRESS ASSOCIATION

Scot Stinnett, Publisher
Lisa Stinnett, Vice-President/Comptroller
Martha Frost, Editor
Holly Millsap, Classifieds
Pat Durben, Advertising

SUBSCRIPTIONS: Muleshoe Journal and Bailey County Journal
By Carrier Yearly - \$15.00
Bailey and surrounding counties: by mail - \$16.75
Elsewhere - \$18.50
Advertising Rate Cards on Application

Advertisers should check their ad the first day of insertion. The Journals will not be liable for failure to publish an ad or for a typographical error or errors in publications except to the extent of the cost of the ad for the first day of insertion. Adjustment for errors will be limited to the cost of that portion of the ad where the error occurred.

Have A Nice Day!!!

RED HOT DEALS ON WHEELS

OVER 180 USED CARS & TRUCKS TO CHOOSE FROM INCLUDING 60 LATE MODEL PROGRAM CARS!

90 Ford F-150 \$3,995 V8, XL Package, Nice! Stock # XPA74969	93 Ford Escort GT \$6,995 5-Speed, Air Conditioning, Low Miles! Stock # FA286252	92 Chrysler LeBaron \$8,995 Convertible, Fully Loaded! Stock # DA26075
89 Ford F-150 \$9,995 Super Cab, XL Package, Much More! Stock # XAB7980	94 Chevrolet C1500 \$11,995 Short Wide Bed, Air Conditioning, Nice! Stock # ZP138353	92 Nissan Maxima \$12,995 Fully Loaded! Stock # OA11329

More Red Hot Deals - Financing As Low As 8.9% APR!

89 Ford Escort \$2,995 Stock # FA226297	89 Chevrolet S10 PU \$3,995 Stock # ZA108277	89 Ford Taurus \$5,995 Stock # FA169100
89 Chev S10 Blazer \$6,995 Stock # ZA128013	90 Ford Ranger \$6,995 Stock # XAA08216	90 Chev C1500 Pickup \$6,995 Stock # ZA157489
94 Toyota Pickup \$7,995 Stock # OA177728	94 Ford Tempo \$7,995 Stock # FA134366	94 Mercury Topaz \$8,995 Stock # MA800445
92 Mercury Sable \$8,995 Stock # MA827807	94 Nissan Hard Body \$8,995 Stock # ZA336526	95 Ford Escort Wagon \$9,995 Stock # FA126074
92 Mazda 626 \$10,995 Stock # OA220763	95 Dodge Neon \$10,995 Stock # DA591577	91 Chev S10 Blazer \$11,995 Stock # ZA138135
94 Lumina Eurosport \$12,995 Stock # OA118019	94 Ford F-150 Flareside \$12,995 Stock # XAB41441	93 Ford Explorer 4x4 \$17,995 Stock # XAA90760

Plus Many Other Similar Values! Don't Miss The Bargains!

All prices exclude tax, title and license. All vehicles subject to prior sale.

TEAGUE STREBECK
The very best prices and service anywhere... We personally guarantee it!

FORD MERCURY
(505) 356-8581 (505) 762-3845
1115 North Chicago Portales, NM
(On the first curve into Portales)

Home Folks Caring For Folks At Home!

MULESHOE AREA HOME HEALTH Agency

Featured Patient

Myrtle Creamer has lived in Muleshoe since 1948. She was married to the late W.F. "Buck" Creamer. He passed away in 1981. She has 10 children - James Edward Creamer of Fort Worth; Clela Williams of Muleshoe; Sue Kemp of Amarillo; Phyllis Silvia of Henderson, NV; Carolyn Herrington of Gozad, NB; Monnie McBride of Plano, TX; Forrest Creamer of Las Vegas, NV; Charles Henry Creamer of Muleshoe; Travis Leon Creamer of Dallas and Jannette Evon Schieder of Quitman, TX.

Charles Henry Creamer lives in the home with Mrs. Creamer, helping her with the cooking, cleaning and other chores. Ceramics and painting have been her hobbies through the years.

Mrs. Creamer says the people at the Muleshoe Home Health Agency are all very sweet people. They all take very good care of her, and she just loves them!

Myrtle Creamer

To receive Home Health Services Talk with your physician or talk with hospital personnel when you are hospitalized.

24 Hour # 272-3346
Local Nurse on call 24 hours a day to offer prompt service.

We accept Medicare, Medicaid and Private Insurance

We care for you at home

Affiliated with LUBBOCK METHODIST HOSPITAL SYSTEM

Paul

Continued from page 1

who had once lived there.

Finally, those settlers and ranchers became legendary themselves, as time passed and their descendants looked back on the elegant old ranch houses, the humble half-dougouts and heard stories of the hard times.

Paul has taken all of these elements from real life and legend to create a drama set in the turbulent times of the early twentieth century, a time so recent that a few among us still remember, but only a few.

The author—a descendant of Peter James Bailey, a lawyer who fought with David Crockett and died at the Alamo—believes that it is the responsibility of a story teller to make sure the legends live on, and so she has created "Keepers of the Legend."

In her foreword to *Tales and Trails of Bailey County*, the author said she and her sister Brenda had once gone in search

of a haunted house northwest of their home on the Preston place, which had once been part of the old VVN ranch.

They stayed off the main roads, looking for a small house built by pioneers. They hoped the furniture would still be in it—and letters, or a diary describing life in the pioneer home.

"It would be strangely cool, in spite of the blistering heat outside. It would be dark and smell of dust, and we would feel the presence of the spirits of those long dead pioneers," she wrote.

Although she and her sister never found the house, the writer has continued to search for "a little understanding for what once had been."

She explains that over the years, the past has held a fascination for her. "It is good to know about and analyze the

great moments in history, to know the politics and the personalities of people whose directions changed the course of the world."

"But it is equally compelling to me to know the stories and histories of what we call ordinary people."

Paul grew up in Bailey County and attended Three Way School, where she graduated as valedictorian of her class.

She has published 13 novels, five for children, and eight for adults. Her 14th novel, which does not yet have a publication date, is set in Bailey County from 1943 to the present.

A graduate of Eastern New Mexico University in Portales, she studied journalism and spent 10 years as a reporter in Texas and New Mexico.

She has written a number of plays and had them performed

in theaters across New Mexico. She co-authored an outdoor drama celebrating the Bicentennial of 1976.

The outdoor drama was funded by a grant from the National Bicentennial Commission and was performed in both Spanish and English in 1976.

Among the awards she has won for her writing are the Texas Institute of Letters Award for Children's Literature, Bluebonnet Nominee, National Association of Press Women's Award for Fiction, New Mexico Zia Award for Fiction and numerous state and national awards for newspaper writing, including investigative reporting, feature writing and medical writing.

Paul now lives in Albuquerque, NM with her husband, Kenneth. They have two grown children.

Legends

Continued from page 1

County History: Paleo-Manto Plow-Man, written and compiled by the Muleshoe Junior High Historical Society seventh graders of 1976-77 and

377-78.

Tickets for the outdoor drama are available at the Muleshoe Chamber of Commerce and Agriculture (806) 272-4248.

GET THE **ALAMO** Advantage



FREE
SECOND SET OF PRINTS EVERY TUESDAY!

Receive a second set of 3" prints FREE with any exposure roll of 35mm, disc, 110 or 126 color print film left for developing and printing at our everyday prices! C-41 process only. Excludes larger 4" size prints, photo galaxy or kodaklux finishes.

DAILY: 9 a.m. to 8 p.m.
1401 W. American Blvd.

SUNDAY: 12 noon to 5 p.m.
Muleshoe, TX.



Messenger

Continued from page 1

sacred for that matter. Mason generously shares his expertise with everyone and helps Victor when he runs out of jokes.

Tina Davis and Buddy Beach gamely face the make-up table each night to age well beyond their years. They look good, sound good, and make a great ranch couple. Heath Scott plays their son and the hero of the story. He even gets the girl in the end, but the bad guys beat him up first.

Joel Sinclair has found a new calling. He redefines the term "preacher." Randall Hamilton pitches in to help at all times. He even sacrifices

his back for the production. Dale Griswold makes a wonderful grumpy old man. He has also provided us with beautiful horses and one dog who may well become the next Benji.

Nine terrific kids have been a stage director's dream. I ask, they give. Erin Gallman, Callie Hancock, Megan Barrett, Rendi Hodge, Kyle Atwood, Brandon Mount, Nicole Felan, Jennifer Rempe, and Suzanne Messenger make up this enthusiastic group.

Toni King, Connie Torres, Adrian King and Ronald Scott are impressive as the Indians. Toni choreographed these scenes. Speaking of choreog-

raphy, Cindy Purdy and Sheri Hawkins made dancers out of all of us.

Deborah Noble and Rhonda Calvary round out the cast. They prove the old saying that no role is unimportant.

Sally Messenger is married to Jay Messenger, and they have two children, Amanda and Suzanne. Sally teaches junior high in Muleshoe and is a member of First United Methodist Church, where she plays the piano.

Some of Sally's credits include "Match Maker," "Chalk Garden," "You Can't Take It With You" and "Fern Grotto." She also was assistant Director of a drama workshop.

Jewelry & WATCH REPAIR

- 7 Day Ring Sizing & Repairs
- Remounting & Diamond Setting
- Full Line Watch Batteries
- Neck Chains Repaired
- Jewelry Appraised For Insurance

Faster Service



1908 N. Prince, Clovis
762-9376 (Across from K-Mart)

POLAR EXPEDITION

A blizzard is heading this way. The cold front is bringing snow showers of activities with periods of frozen FUN.

What a better place to cool off this summer than at the **POLAR EXPEDITION**

at Calvary Baptist Church, 1733 W. Ave. C.

This unique Vacation Bible School program will highlight the polar regions of the world to make an exciting and enjoyable experience for the children.

This all new VBS program begins **Monday, August 7 and ends Friday, August 11.**

The children will start their expedition at 7:00 PM each evening and conclude at 9:00 PM each evening.

There is no charge for this VBS program.

All children from 4 years old to the sixth grade are invited.

Each evening will involve Bible lessons, songs, Scripture memorization, contest, and visits from Mr. Bob Sled and Miss Bea Cold.

For further information, call the church at 272-4012. Rev. Ben Davis, pastor of Calvary Baptist Church, invites all parents of the community to send their children to the POLAR EXPEDITION.



TOOL & EQUIPMENT SALE!

SAVE

MORE THAN EVER BEFORE ON PROFESSIONAL TOOLS & EQUIPMENT FROM:

American Tool Companies	NAPA Air Compressors from
NAPA Air Tools from Florida	Douglas Air Compressors
Pneumatic	NAPA Welding from Marquette
NAPA Lifting Equipment from	NAPA Service Tools from
Lincoln/Marquette	Danaher Tool Group
Sharpe Manufacturing	NAPA Service Equipment from
NAPA Tire Hardware	Marquette
Campbell Hausfeld Air	NAPA Hand Tools from Danaher
Compressors	Tool Group
AMMCO Tire Balancers, Brake	Posi Lock Pullers
Lathes and Lifts	Black & Decker
NAPA Specialty Tools from	NAPA Balkamp, Tune-Up
Ken-Tool	Equipment, Grease and
NAPA Tool Boxes from Waterloo	Lubrication Supplies
Industries	

TWO DAYS ONLY - DON'T BE LATE

August 4th - 7:30 a.m.-6:00 p.m.

August 5th - 7:30 a.m.-1:00 p.m.

Great Values, Wide Selection

C & H Equipment

West Hwy. 84 Muleshoe, TX

Have A Nice, Safe Summer!

Subscribe Today!

To The Muleshoe Journal

By Carrier \$15
By Mail
In Muleshoe \$16⁷⁵
Elsewhere \$18⁵⁰

Call the **Muleshoe Journal**
272-4536 or
Come by 304 W. 2nd

CAFB invites Muleshoe to see cars and hear bands

By B.J. Williams
CAFB Marketing & Publicity

Cannon Air Force Base, near Clovis, NM, invites Muleshoe to the Big Five Show. The event will feature classic and contemporary cars, motorcycles, Battle of the Bands, a flea market, Crank-it-Up car stereo contest, and a volleyball tournament.

"There will be food booths and beverages for every taste," Pat Grah and Kurt Giddings, the event's organizers, said.

Classics and chrome

"This year the show is anticipated to be even better than last year's," Grah noted. "Several categories have been added, including muscle cars and low riders. Also, some of

the hottest and shiniest Harleys and other motorcycles from around the area will be on display."

Gifts & Goodies

Merchants, craft-makers, artists, and just people with stuff to sell will be on hand for the Flea Market. This market will probably be the last chance this summer for most people to be exposed to the many shoppers expected at this year's event. It is a great opportunity to find some end-of-summer bargains and back-to-school buys. To reserve a place at the flea market, call Pat Grah at (505) 784-2747.

"The local community has been helping Cannon with making the event bigger and



Like father, like son

Steve Silva's 1954 Ford Victoria was a big hit at Cannon's car show last year. He restored the 1950 toy Buick to match it. Junior is actually older than Big Daddy.

more successful," Grah said. "K-Classic KKYC radio provided

funds for the prizes and coverage of the event. Tarpley Music is providing the sound sys-

tem. Pepsi Cola, Clovis New Car Dealers Association, Cannon Federal Credit Union, Deans Music, Century 21 Executive Showcase and Coors are sponsoring the show.

Around

Continued from page 1

Joining the dancers are a number of multi-talented singers and musicians who can belt out traditional country or pop favorites.

Admission is by donation to the fund-raiser for the New Mexico Outdoor Drama Association.

1995 Roosevelt County Fair to be held Aug. 9-12

PORTALES, NM — This year's Roosevelt County Fair, Aug 9-12, in Portales will include livestock judging, exhibits, carnival rides, Pioneer Day and an old fiddler's contest.

Kids will have plenty to do with barrel racing and pole bending, a greased pig chase,

stick horse races, a pet show and a roping contest.

Entertainment will include square dancing, twirling demonstrations by Michelle Dunn, Top of Texas Cloggers, Pecos Valley Bluegrass and gospel singing.

Music will be provided by the Cox Brothers, Outlet Band, Trilogly, Deseo and the Delk Brother's Band.

A Junior Livestock Sale will end the fair Saturday at 5:30 p.m., along with a barbecue afterwards.

For more information, call (505) 356-4417.

Persons interested in listing a garage sale or renting a flea market booth space are asked to call Jan McCrary at 385-4996 for more information.

Names of those who list a garage sale or rent a booth space will be entered in a drawing for cash and merchandise.

Local businesses also will be having sidewalk sales that day, and discount coupons from restaurants will be printed on the garage sale maps.

'Texas' dancers stage a comeback at San Jon Caprock

SAN JON, NM — The "Texas" performers, from the Palo Duro Canyon, who whirled, twirled, sang and played at an early July performance at the San Jon Caprock Amphitheatre will soon be performing again.

The group is presenting an all-new program of song and dance Sunday, Aug. 6 at 8:15 p.m. at the Caprock Amphitheatre between San Jon and Grady, NM, on Hwy 469.

SUMMER SALE CONTINUES

In Our Ladies Boutique

NOW UP TO **75% OFF**

Open Mon.-Fri. 8:30-5:30

Especially For You

217 Sycamore, Clovis 769-1470
Inside Guy's Electric

—Low impact workout with high impact results for men, women & teens of all fitness levels—

STEP POWER



"New Early Bird" Class

- starts Aug. 8th, 5:45 a.m.

Come on in... give it a try! Get up and get your workout before breakfast! Be home before the kids wake up!

EVENING CLASSES AVAILABLE

Call 272-5190 for more information.

Complete Line Monuments - Markers Memorials Granites - Bronze

Muleshoe Memorial Park Cemetery, Inc.

232 Main P.O. Box 373 Muleshoe, TX 272-5727 or 272-4670

Summer garage sales!

Advertise in the Muleshoe Journal 272-4536



1-800-658-6378 106 E. American Blvd. Muleshoe, Texas

And Country Junction

Back-To-School AUGUST SPECIALS

Full Quill Ostrich Boots \$449

Resistol 20X Black Gold Felt Hats \$300

Bull Hide Tony Lama Super Roper \$99

NEW ITEM! Infant Denim Wear For Girls & Boys



Justin & Miller Harness Sport Lacers

KID'S - Smooth Colors, Leather Reg. \$40.00 NOW \$32.00 - Bay Apache Reg. \$45.00 NOW \$36.00

ALL **20% OFF**

ADULTS - Justin Reg. \$68.00 NOW \$54.40 - Miller Harness Reg. \$75.00 NOW \$60.00

Attend Muleshoe's Outdoor Play "Keepers Of The Legend" 7:00 p.m., Aug. 4-8 Muleshoe Heritage Center

Get Ready For "WORLD CHAMPION" GOAT TEAM ROPING Joe's Boot Shop Parking Lot • Friday & Saturday, Sept. 1 & 2

Muleshoe Rural Health Clinic

708 S. 1st (Muleshoe Area Medical Center) 272-4938

OPEN 5 DAYS A WEEK
Monday-Thursday 9 a.m. - 11 p.m.
Friday 9 a.m. - 5 p.m.
No Appointment Necessary

We accept Medicare, Medicaid, Insurance & Workmans Comp.

Judy Lemons, P.A.-C.
On Duty 9 a.m. to 5 p.m.

Bob McMullen, P.A.-C.
On Duty 5 p.m. to 11 p.m.

Participating Sponsors:

Homer Allgood, M.D.
Mark McClanahan, D.O.
Bruce Purdy, M.D.

We Are Here To Help Serve Our Community

Shur Fine Back-to-class BARGAINS

All Types
Coca-Cola
6 pack,
20 oz. btl. **2\$5**
FOR



All Types
Coca-Cola
3 liter btl.
\$1.89

MEAT

Fresh Pork Spare Ribs lb. **\$1.49**

Preferred Trim Full Cut Round Steak lb. **\$1.09**

Pilgrim's Pride Grade A Drumsticks, Thighs & Wings lb. **79¢**

Shur Fine Reg./Polish Smoked Sausage lb. **\$1.29**

Shur Fine Quality Whole Boneless Ham lb. **\$1.89**

Shur Fine Half Ham lb. **\$1.99**

Shur Fine Meat
Wiener's 12 oz. pkg. **59¢**
Shur Fine All Beef Wiener's 12 oz. pkg. **99¢**
Shur Fine Bologna, P&P Loaf, Salami Luncheon Meat 6 oz. pkg. **49¢**
Shur Fine Sliced Bacon 1 lb. pkg. **\$1.39**
Shur Fine Meat Bologna 1 lb. pkg. **99¢**
Shur Fine Breakfast Sausage Links 11 oz. pkg. **89¢**
Shur Fine Ham Salad 7.5 oz. pkg. **\$1.19**
Shur Fine Chicken Salad 7.5 oz. pkg. **99¢**
Shur Fine Cooked Ham 6 oz. pkg. **\$1.49**
Shur Fine Chopped Ham 6 oz. pkg. **\$1.29**
Shur Fine Hot N' Spicy Wings lb. **\$1.49**
Shur Fine Breaded Chicken Patties or Nuggets lb. **\$2.39**
Shur Fine Fruit Strawberry Gelatin 14 oz. tub **79¢**

Shur Fine Reg./Polish Smoked Sausage
Preferred Trim Boneless Round Steak lb. **\$1.29**
Preferred Trim Boneless Rump Roast lb. **\$1.69**
Preferred Trim Sirloin Tip Steak or Roast lb. **\$1.99**
Fresh Ground Round lb. **\$1.69**

PRODUCE

Red or White Seedless Grapes lb. **89¢**

Golden Ripe Bananas 3 lbs. **\$1**

Garden Fresh Broccoli lb. **59¢**
Sweet Juicy Nectarines lb. **69¢**
Fresh White Onions lb. **39¢**
Fresh Baking Potatoes lb. **49¢**
Dole-Fresh Salad Mix 1 lb. bag **\$1.29**

Shur Fine, 7.25 oz. boxes Macaroni & Cheese Dinners 5 for **99¢**

Shur Fine Assorted Flavors Ice Cream 1/2 gal. sq. ctn. **\$1.19**

SHURFINE • SHURFINE • SHURFINE • SHURFINE • SHURFINE • SHURFINE • SHURFINE • SHURFINE

Gravy or Chunk Shur Fine Dog Food 20 lb. bag **\$3.49**

Reg./No Salt Cut Green Beans • French Sliced Green Beans • WK Golden Crisp • CS Golden Corn • Reg./No Salt WK Golden Corn • Mixed Vegetables • Tiny Sweet Peas • Fancy Sweet Peas
Assorted Shur Fine Vegetables 12-15 oz. cans **3 for 99¢**

Shur Fine Decorator 2 Ply Paper Towels 2 for **99¢**

Shur Fine Ultra Reg. or W/Bleach Laundry Detergent 98-110 oz. box **\$3.99**
Shur Fine Charcoal 10 lb. bag **\$1.39**
Shur Fine Charcoal Lighter 32 oz. btl. **99¢**
Shur Fine Liquid Bleach 1 gal. jug **79¢**
Shur Fine Assorted Potato Chips 6 oz. pkg. **69¢**
Shur Fine Family Size Tea Bags 24 ct. box **\$1.29**

• Hershey's Nuggets • Asstd. Hershey's Kisses • Hershey's Miniatures • Assorted Hugs • Reese's Miniatures • Almond Joy Miniatures • York Mint Patties
Hershey's Candy 13-16 oz. pkgs. **2 for \$5**

Shur Fine Assorted Bathroom Tissue 4 Roll Pkg. **69¢**

Assorted Shur Fine Soda Pop 2 liter btl. **59¢**

All Purpose Shur Fine Flour 25 lb. bag **\$2.99**

POWDERED OR BROWN Shur Fine Sugar 216 BKS 99¢	SHURFINE-SQUEEZE Chocolate Syrup 24 OZ. BTL. \$1.29	SHURFINE Cranberry Cocktail 30 OZ. BTL. 2 \$3	FRESH PAK, KOSHER / PICKLED / REGULAR Shur Fine Dill Pickles 30 OZ. JAR \$1.69
WESTERN FAMILY Coffee Filters 200 CT. PKG. 2.99¢	SHURFINE-FROM CONCENTRATE Apple Juice or Cider 64 OZ. BTL. \$1.69	SHURFINE Cranapple Drink 30 OZ. BTL. 2 \$3	SHURFINE Refried Beans 18.5 OZ. CAN 2.99¢
SHURFINE FRESH OR LITE Coffee Creamer 18 OZ. JAR \$1.19	SHURFINE Grape Juice 48 OZ. BTL. \$1.79	GRAPE OR APPLE Shur Fine Jelly 18 OZ. JAR 89¢	SHURFINE Spring Water 1.5 LTR. BTL. 69¢
SHURFINE-WHITE Facial Tissue 115 CT. BOX 79¢	SHURFINE-BAG N' SEAL Sandwich Bags 50 CT. BOX 99¢	WESTERN FAMILY NATURAL OR WITH ALOE Baby Wipes 24 CT. PKG. \$1.79	SHURFINE Fabric Softener Sheets 45 CT. BOX \$1.49
SHURFINE ASSORTED Colors Napkins 120 CT. PKG. 79¢	SHURFINE-TALL Kitchen Bags 30 CT. BOX \$2.19	WESTERN FAMILY Natural Baby Wipes 84 CT. TUB \$1.99	SHURFINE Fabric Softener Rinse 1 GAL. JUG \$1.49
SHURFINE Foam Cups 4 OZ. 51 CT. PKG. 79¢	SHURFINE 30 Gal. Size Trash Bags 10 CT. BOX \$1.29	SHURFINE-HEAVY DUTY Aluminum Foil 18"X30" ROLL \$1.29	PLAIN OR IODIZED Shur Fine Salt 26 OZ. CTNS. 2.69¢

DAIRY SPECIALS

Shur Fine Vegetable Oil Spread 16 oz. tubs **3 for 99¢**

SHURFINE INDIVIDUALLY WRAPPED American Singles 12 OZ. PKG. **\$1.59**

SHURFINE LONGCORN 10 MOON COLBY OR Cheddar Cheese 18 OZ. PKG. **\$2.59**

SHURFINE B.M. / BTR. FLAVOR Jumbos Biscuits 8 CT. 18 OZ. CAN **89¢**

SHURFINE ORANGE DANISH OR Cinnamon Rolls 8 CT. 9.5 OZ. CAN **\$1.29**

SHURFINE English Muffins 12 OZ. PKG. **59¢**

FROZEN SPECIALS

Shur Fine Orange Juice 16 oz. can **99¢**

SHURFINE ASSORTED Whipped Topping 8 OZ. CTN. **69¢**

SHURFINE Whole Strawberries 18 OZ. PKG. **\$1.49**

SHURFINE TATER'S GR Hash Brown Potatoes 18 OZ. PKG. **\$1.39**

CALIFORNIA FINE CRISPEN BLEND / WESTERN FAMILY BLEND / BROCCOLI-MIX CHOPPER Shur Fine Vegetables 16 OZ. PKG. **99¢**

SHURFINE Apple or Grape Juice 8 OZ. CAN **89¢**

HEALTH & BEAUTY AIDS

Western Family Non-Coated Aspirin 100 ct. btl. **89¢**

WESTERN FAMILY COMPLETE Allergy Medicine 24 CT. PKG. **\$1.59**

WESTERN FAMILY Hista Tabs Decongestant 24 CT. PKG. **\$1.29**

WESTERN FAMILY'S GRAN Tri-Buffered Aspirin 180 CT. BTL. **\$1.79**

WESTERN FAMILY Hydrogen Peroxide 16 OZ. BTL. **49¢**

WESTERN FAMILY Petroleum Jelly 3.75 OZ. JAR **99¢**

WESTERN FAMILY'S GRAN Calamine Lotion 4 OZ. BTL. **79¢**

Western Family Extra Strength Lemon Creme/Mint Antacid Plus 12 oz. btl. **\$2.49**

Reg. or Lite Shur Fine

Fruit 16 oz. can **59¢**

Shur Fine Granulated Sugar 4 lb. bag **\$1.29**

Shur Fine, 13.5-16 oz. cans Vegetables 4 for **99¢**

All Purpose Shur Fine Flour 5 lb. bag **69¢**

Shur Fine Assorted Boys/Girls Ultra Diapers 20-44 ct. pkg. **\$4.99**

Shur Fine Creamy/Chunky Peanut Butter 18 oz. jar **\$1.49**

Shur Fine 12 oz. cans Milk 2 for **89¢**

Shur Fine, 6 oz. cans Water or Oil Chunk Chunk Light Tuna 2 for **99¢**

Shur Fine Saltine Crackers 16 oz. box **69¢**

Shur Fine Tomato Ketchup 28 oz. squeeze **79¢**

Shur Fine Raisin Bran 20 oz. box **\$1.69**

Shur Fine Corn Flakes 24 oz. box **\$1.59**



WESTERN UNION | MONEY TRANSFERSM
"The fastest way to send money"

Pay-n-Save

QUALITY AND SERVICE

Lowe's MARKETPLACE

Our Beauty to You

515 W. American Blvd.
Muleshoe 272-4406

401 W. American Blvd.
Muleshoe 272-4585

WE RESERVE THE RIGHT TO LIMIT QUANTITIES IN TEXAS

PRICES EFFECTIVE AUGUST 2-8, 1995

Muleshoe's Area Spring Business Directory



Topped Sopaipilla
Sopaipilla topped with taco meat,
cheese, lettuce, tomatoes and
quacamole.
\$4.95

Leal's Restaurant
1606 W. American Blvd. 272-3294

- NOW AVAILABLE -



Purina Forage Balancer II
20% Cubes
per bag \$5.68 per ton \$5.25
Purina Horse & Mule Feed
10% Protein
per bag \$5.97 per ton \$5.48
Purina Hoseman's Edge
14% Cubes \$7.70

Muleshoe Feed Barn
311 W. American Blvd. 272-5626

Lasting Impressions
**Flowers, Plants
& Gifts for all
occasions!**
Helen Hunter, owner
272-4287 516 S. 1st

**WE'RE AT YOUR
BECK & CALL...**

Select your flowers — name
the date, destination and time.
We'll deliver for you!



Our Hands
Move Hearts™



*Decorator's
Floral & Gifts*
616 S. 1st Muleshoe 272-4340

We will service **ALL**
Your Ace Pumps,
and help you with all your spraying
parts needs.
Visit us at 1532 W. American Blvd. or
call 272-4613
Scoggin Ag. Center

Hawaiian Pizza

A tropical taste sensation
- Topped with ham and pineapple.

Small \$7.97 Medium \$11.57
Large \$14.48



Delivery Available
11 a.m.-1:30 p.m. & after 5:00 p.m.

1412 W. American Blvd.
272-4213

**BACK TO
SCHOOL
SPECIALS**

**NOW
FEATURING**
Groups From
*Tickle Me &
Hang Ten*

Sizes 4-6X and
7-14

Ask About
Lay-A-Way



Sheree's Attic
Merle Norman
1519 W. American Blvd.
272-3459

- Farmers -

It's Time To Start Looking Over
Your Harvest Equipment For
Tires, Repairs or Inspection.

Bring Your Vehicles
In & Beat The
Rush
Of Harvest!



James Crane Tire Co.
322 N. 1st Muleshoe 272-4594

Sheree's Attic
Merle Norman Cosmetics

**NEW ARRIVALS
FOR FALL &
BACK TO SCHOOL**

Ladies' Sportswear and Separates,
Purses, Lots of New Sterling Silver
Jewelry

Ladies' Sports Wear,
Separates, Children's Groups,
Toddlers, 4-6X, 7-14 Tickle Me

SALE
up to 50% OFF

Owner Sheree Hunt
1519 W. American Blvd. 272-3459

We Sell, Set & Service

Irrigation Engines
300 and 460

See Loyce or William
today at.....

MULESHOE MOTOR CO., INC.
1225 W. AMERICAN BLVD., MULESHOE
1-800-432-7617 272-4251

We pick up and repair all types
of irrigation motors, service & repair
late model GM's, Fords & Dodge
automobiles & trucks.

**SPECIALIZING IN GENERAL AUTOMOTIVE
REPAIR WORK OF ALL KINDS.**

**Muleshoe Truck
& Auto**

301 N. 1st 272-5111

SUPERIOR MED-EQUIP
Suppliers of Medical &
Home Care Equipment

We wish to serve you. If you have equipment from
other dealers and want local service, we can transfer
you easily.

YOU HAVE THE RIGHT TO CHOOSE YOUR SUPPLIER.

Manager - Sherry Wisian
623 W. 2nd St. Muleshoe, TX 79347
806-272-3757 or 272-3600
800-765-1160 or 800-283-8980

WD-40
\$1.99



Check On
Other
Daily
Specials
In Store!

"Quality & Service At The Right Price!"
Higginbotham-Bartlett
215 Main Muleshoe 272-3351

WHOLESALE CENTER

Clearblue Easy
Pregnancy Test
\$8.69 Single

DAMRON DRUG
308 Main 272-4210



**Henry Insurance
Agency,**

"Serving Your Insurance
Needs Since 1964"

Kenneth R. Henry, Certified Insurance
Counselor
Real Estate Broker
Mike McCallum - Agent

**•Oil & Lube
•State Inspections
•Foreign & Domestic**
Call Joe or Shawn for
Alignment Specials
HI-TEK AUTOMOTIVE
215 N. 1st 272-3480

Enochs News

By Ellen Bayless

Guests in the home of Mr. and Mrs. Bobby Adams spending Friday night with them were Mr. and Mrs. J.P. Meek from Canadian. They visited Mr. and Mrs. Bill Key Saturday and spent the night with them. Other guests Saturday were Bill's sisters Juanita and Homer Howard and Lucille Butler of Littlefield.

The Rev. Harold and Kay Abney of Lockney came Friday night and spent until Tuesday with her mother, Mrs. Margie Peterson. They attended church with her Sunday.

Mrs. Maudie Speck and

mother, Clara Coffman of Muleshoe, came by Saturday afternoon and Mrs. Ellen Bayless went with them to Lamesa to visit Mrs. Eldred Coffman.

All of Eldred's, sons got together; Dr. Bill and Ann Coffman from Jacksonville, FL.; Walter and Judy Coffman and son James and wife, Krista Coffman, from Hamilton, where Walter is President of First State Bank; Larry and Ellen Coffman and son Ron from Borger, where Larry is Superintendent of the school

and Ellen teaches school.

We all attended Sunday school and church at the Second Baptist Church in Lamesa where Clara's other daughter, Jeannine Rundell and grandson, Anthony of San Angelo, and her son, Phyne, and girl friend met us and attended church with us.

Dr. Bill Coffman did the preaching. Bill and Ann were on the mission field in the Dominican Republic for two years and at Puerto Rico for six years before working in Florida.

Jerry and Landon Nichols, of Muleshoe visited his parents, Mr. and Mrs. Dale Nichols Sunday afternoon and had supper with them.

Craig and Carolyn Kirby and children were guests in the home of her parents, Mr. and Mrs. Goldman Stroud, Sunday afternoon and were supper guests.

Mr. and Mrs. Bud Huff visited a son, Mr. and Mrs. Chester Huff and family, at Lamesa Friday and Saturday.

Don't Let Anyone Steal Your Dream

DARLENE STANTON
REGISTERED MASSAGE THERAPIST

- Stress Reduction
- Therapeutic Massage
- Trigger Point Therapy

MONDAYS & TUESDAYS

Call Jan's Unique Nails
For Appointment 272-5827

Cleaning out your closets? Have a garage sale!
Advertise it in the Muleshoe Journal!
Call 272-4536.



BAXTER BLACK
ON THE EDGE OF COMMON SENSE

Talkin' Dirty

In this column I have often mentioned scours, manure, abscesses, big tits, bad bags, cancer eyes, foot rot, slurry pits, afterbirth, retained placenta, castration, heat cycles, sheep pellets and snotty noses.

Over the years I have received the occasional letter castigating me for talkin' dirty.

It is never my intention to offend the sensibilities of my readers. My poems and stories are always written with the idea that people who read them regularly are livestock people. In real life I'm not comfortable cussing or telling blue stories in mixed company and I'm no different writin' this column.

So, if I'm talkin' to a cattlemoan I assume she knows what bull semen is. That she has had scourin' calves in her house and knows what it means when someone says it's rainin' like a cow peein' on a flat rock. Those subjects are part of her lifestyle. I feel no need to ask her to leave if I'm doing a rectal exam on a cow.

Farm kids are the best example. They are what we have taught them and what they have experienced. Fifteen year olds who are learning to artificially inseminate learn the proper volved. Uterus has never been a dirty word to them.

Children on a dairy farm learn to spot cows that are in heat. Washing the bag or tip dip does not send them into fits of teenage giggling.

Helping a newborn get his first meal is not a titillating experience. Mucking out the horse barn is hard work but it's not 'ooky'!

All of us who spend our lives tending livestock are aware that our daily working vocabulary is not always proper amongst people from outside the real world (gentiles, I call them). When the new preacher, who hails from Chicago, is introduced to us, we don't immediately invite him to the oyster fry next Tuesday.

I would guess the people who are most conscious of this "cowboy vocabulary" are new spouses marrying into a livestock raising family. I'll bet they could write a book!

So, to those of you sensitive folks who read my column with some reservations, or have neighbors who sit at your dinner table and talk about how to get cow manure stains out of a good shirt, I beg your indulgence. It's not dirty to us, it's just grass and water.

Beat the heat! **99¢ BLIZZARD!** 12-oz.



NOBODY BEATS TREATS & EATS

Get out of the heat and into a Dairy Queen® Blizzard® Flavor Treat or Breeze® Frozen Yogurt Treat, on sale now for just 99¢! With your favorite candy, fruit or nuts, including three new flavors: Pecan Crunch, Chocolate Almond and Walnut Fudge. Hurry, offer ends soon!
On sale July 24 - August 6, 1995, at participating Dairy Queen® stores.

Muleshoe Cattle Market
Saturday, July 29, 1995

374 head of cattle were sold.
Very hot and dry weather condition hampering demand for stocker calves, pairs and bred cows. Feeder cattle still selling steady.

STEERS		HEIFERS	
Weight	per #	Weight	per #
200-300	\$.85-\$95	200-300	\$.73-\$83
300-400	\$.75-\$90	300-400	\$.65-\$75
400-500	\$.65-\$75	400-500	\$.55-\$65
500-600	\$.65-\$70	500-600	\$.55-\$60
600-700	\$.60-\$67	600-700	\$.55-\$60

PAIRS		BRED COWS	
Good & Young	Others	Good & Young	Others
\$450-\$540		\$400-\$500	

PACKER COWS	
Type	Per lb.
Others	\$.30-\$38

BULLS	
Per lb.	
	\$.40-\$47 ⁵⁰

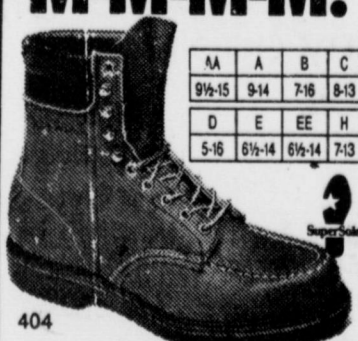
REPRESENTATIVE SALES

Seller, City	#	Type	Wt.	CWT or PH
Trey Spencer, Dimmitt	5	Red Hfrs.	330	\$63.50
Randy Johnson, Muleshoe		Bwf. Hfr.	245	\$205 pr. hd.
Don Mimms, Levelland	2	Wf. Hfrs.	675	\$59.00
Jose Robles, Hereford		Brown Hfr.	270	\$205.00
Sunshine Cattle, Lubbock	7	Mixed Hfrs.	510	\$55.00
Taylor Farms, Plains	2	Red Hfrs.	425	\$61.00
Tony Thomas, Plainview		Rwf. Hfr.	515	\$57.00
Marcelo Rodriquez, Enochs		Bwf. Bull	240	\$94.00
Ellie Frye, Hereford		Hol. Str.	285	\$56.00
Ellie Frye, Hereford		Hol. Str.	475	\$47.50
Taylor Farms, Plains	2	Mixed Strs.	395	\$70.00
Randy Johnson, Muleshoe		Red Bull	220	\$91.00
John Edward Stevens, Muleshoe	2	Hol. Bulls	370	\$51.00
Mark Reeder, Muleshoe		Brin. Bull	295	\$82.00
Euleess Waggoner, Dimmitt		Blk. Bull	665	\$57.50
Bobby Redwine, Muleshoe	3	Mixed Strs.	730	\$63.00
Chuck Califf, Hereford	3	Hol. Strs.	575	\$49.25
Randy Johnson, Muleshoe	1	Red Pair		\$540.00
T W T, Littlefield		Bwf. Pair		\$530.00
Randy Johnson, Muleshoe		Bwf. Cow	990	\$38.00
Marcelo Rodriquez, Enochs		Hol. Cow	1220	\$36.75
Prairie View Dairy, Muleshoe		Hol. Cow	1415	\$38.00
Prairie View Dairy, Muleshoe	5	Hol. Cow	1425	\$37.25

The Muleshoe Cattle Market is brought to you each week by Muleshoe Livestock Auction, located east of Muleshoe on U.S. 84. Muleshoe Livestock conducts sales every Saturday, beginning with hogs, sheep and goats at 10 a.m. and cattle following at approximately 12 noon.

FOR INFORMATION ON SALES OR TO CONSIGN CATTLE, CALL (806) 272-4201.

M-M-M-M!



Sink your workin' feet into 8 inches of Red Wing soft... Red Wing support... and Red Wing fit Days go better!

The Fair Store
120 Main 272-3500
Muleshoe, Texas

RED WING SHOES
MADE IN U.S.A.

Summer Clearance

- 2' Track w/1 light \$20
- 4' Track w/3 lights \$30
- 6' Track w/4 lights \$40
- Outside Wall Lights ... \$20
- Yard Lights \$25
- Southwest Lighting ... \$25
- White, Terra Cotta, Verde
- 52" Master Build Ceiling Fans Wh, PB & AB
- Fan with 1 light \$79⁹⁹
- Fan with 3 lights \$84⁹⁹
- Fan with 4 lights \$89⁹⁹

HOURS: 9 A.M. - 5 P.M.

Lighting Accents
Inside Guy's Electric
217 Sycamore,
Clovis, NM 88101
505-769-1470
MASTERCARD, VISA & AMERICAN EXPRESS WELCOME

Don't go to college without it!
Subscribe Today
272-4536

Engagement



Brenna Matthews and Darrell Cox

Derrell and Treena Matthews of Dimmitt, and Gary and Darlene Cox of San Antonio wish to announce the engagement and approaching marriage of their children Brenna Lee and Darrell Ray. Darrell, a 1988 graduate of East Central High in San Antonio, will receive a 1996 bachelor's degree in criminal justice. Brenna, a 1990 Muleshoe High School graduate, will receive a bachelor's degree in exercise and sports science in August. The wedding ceremony is October 7 at 3 p.m. at the First Baptist Church, Muleshoe.

Nursing Home News

By Joy Stancell

Thursday morning Pastor David McIntire, assisted by Clara Lou Jones and Lucille Wisenhunt, conducted our devotional, reflection time.

Retha Tigie sang several gospel songs for the residents Thursday afternoon. Mrs. Quesenberry brought several guests with her to hear Ms. Tigie.

Saturday afternoon, Benny and Jean O'Brien hosted the Bingo party.

Sunday afternoon the Progress Baptist Church came for Church services and visitation.

Mr. and Mrs. Jerry Hutton came last week to visit with the residents.

Tuesday morning Betty Ruthardt entertained the residents with her piano playing.

Tuesday afternoon Claudine Embry, Beverly Wagnon and Lindsey, Lanell Stancell, Betty

Ruthardt, Thursie Reid and Viki Donaldson gave shampoos, hair sets and nail care. Thank you.

We wish to express our heart felt sympathy to the family and friends of Oliver Spurlock.

Melvin and Wanda Griffin visited Tuesday afternoon with Mr. and Mrs. Hukill. They had just returned from a few days in the mountains of NM.

Monday afternoon, Mrs. Harvey was visited by Margaret Wilhite.

Continued on page 9

Zonell Baker honored with baby shower

Zonell Baker was honored with a baby shower on Saturday, July 22. The pink and blue shower was held at New Covenant Church.

The table was decorated with a white lace cloth over a blue drape. Raspberry sherbet punch was served along with thumbprint cookies, nuts and mints. Crystal appointments and a bouquet of greenery with baby feet ornaments completed the table.

The hostess presented Zonell with a car seat, a high

chair, and a nursery monitor. The hostesses were Rama Smalling, Connie Dominguez, Diane Grumbles, Kay Gray, Lynda Low, Kathie Ralston, Laura Helton, Barbara Mills, Karen Cook, Annita Taylor, Danette Underwood and Toni King.

Special guests were Zonell's mother, Zona Gatewood of Muleshoe and her maternal grandmother, Argilee Millen also of Muleshoe. Out of town guests were Nadine Baker, Rose Lee Powell, Beckie



Zonell Baker

Millen, and Dwahana Stracemer.

Zonell is a respiratory therapist with the Muleshoe Area Medical Center, and her husband Rodney is a farmer.

"Tour De Muleshoe" explained to Kiwanis

The Muleshoe Kiwanis Club held their weekly meeting Friday July 28, at Five Area Telephone Co. The meeting was called to order by the president, Glen Morris. The pledge was led by Chuck Smith and the prayer was given by Jim Lutz. The friendship coin was given to Clay Kidd by Hugh Young.

Guests recognized Friday morning were Jackie Chapman, Lonnie Adrian and Gary Skaggs.

Jackie Chapman is a candidate for Kiwanis Sweetheart. She introduced herself and explained about her school activities as well as a little bit about herself and her family.

Chuck Smith had the program this morning and introduced Lonnie Adrian and Gary Skaggs. They are representing a group that is sponsoring the first Heritage Foundation

"Tour De Muleshoe" bike run scheduled for Saturday, September 2.

The bike run is planned to draw approximately 400 people from out of town. The run includes a tour of scenic farmlands and sandhills, and each ticket includes a spaghetti dinner that will be served after the run from 11:30 a.m. to 2 p.m. Saturday.

Pre-registration, accepted thru August 25th and includes a chance at a drawing for two Southwest airline tickets to anywhere the company flies.

Packets will include water bottles, ride numbers, route maps, collector t-shirts and meal tickets.

Day care will be provided for children of riders. No infants, please. It looks like a very fun filled day for bike

Continued on page 9

"Good Neighbor service makes State Farm unique... my policyholders swear by it year after year."



CALL ME.



Mark Morton
101 S. Main
Muleshoe
272-7519

State Farm
Insurance Companies
Home Offices: Bloomington, Illinois



Like a good neighbor,
State Farm is there.®

Have A Nice Day

YOU'RE ON
SOLID
GROUND

...with The Universal Plans For Health. Your Grower Association saw change on the health care horizon. That's why the Universal Plans for Health were developed.

- ✓ They're a major medical health insurance plan designed for farmers and farm commodity groups.
- ✓ They offer innovative benefits to help you control insurance costs.
- ✓ They are endorsed by state wheat, soybean, poultry, and corn grower associations across the country.

The Universal Plans for Health... When you want to stand on solid ground.

FOR MORE INFORMATION, CALL 1-800-635-1519.

MU-084 Policy Form Series 0407 - Insured by The Commercial Life Insurance Company

PIPE

SOS Outlet & Royal Plastics

Largest inventory of PVC Pipe Fittings & Accessories in Eastern New Mexico

CALL FOR QUOTES 505-356-8720

300 W. Commercial Portales, NM

Roosevelt County Fair

AUGUST 9-12

WEDNESDAY

Entertainment On The Slab Nightly!

Cox Bros. Band

THURSDAY

The Outlet Band

Square & Round Dancers

FRIDAY

Gospel Music

Delk Bros. Band

Livestock Show

Old Fiddler's Contest

SATURDAY

The Delk Bros. Band

Blue Grass Music

Top of Texas Cloggers

Deseo Band

"Friends Free"

Checking Accounts!

- No Service Charge
- No Activity Charge

The account will be subject to any applicable miscellaneous charges.

For More Information, Call Our New Accounts Personnel.

MULESHOE STATE BANK

101 W. American Blvd.
Muleshoe, TX
(806) 272-4561

801 Ave. A
Farwell, TX
(806) 481-9580

Each deposit insured by FDIC

Journal Classifieds

Call 272-4536 Deadlines: For Thursday, Noon Tuesday; for Sunday, Noon Friday Call 272-4536



Garden spot of the week
The landscaped home of John and Marilyn Young at 1807 West Ave. H received the Jennyslipper's Garden Spot award this week. The Youngs renovated the yard in 1993 after the addition of a circle drive. The Austrian Pines are a beautiful addition to the landscape.

Nursing Home

Continued from page 8

The plans are in the making for a trip to the North Plains Mall in Clovis in the near future for our residents.

Wednesday morning, Buster and Wanda Kittrell hosted coffee/spudnut time. Special guests attending the event were Jim Claunch, Jane Reeder and Denise and Tennie McCormick.

Following coffee time, Pat Watson (on the piano) and Yuanda Martin (song leader) directed us in singing our favorite hymns.

Ruby Garner and Velta Fyie were among those visiting the

Carecenter this week.

Ruby Steinbocks' daughter from Houston is here visiting.

Katherine Rogers' sister-in-law visited her over the weekend.

Birdie Warren was visited by James and Fern Warren this week.

Elsie Tarr was visited by her brother J.C. Shanks this week.

Bootie Tillers' brother and sister-in-law took her shopping at Alcos' recently.

Mr. Cunninghams' family came to visit him Wednesday. Burly Locke was visited by

his wife, his daughter, Donna Locker and granddaughter, Wednesday.

We enjoy the Muleshoe and Bailey County Journals very much and look forward to each issue.

Those having birthdays during July were Blanche Awbrey, July 2, Cordie Claunch, July 12 and Helen Tinskey, July 23. Our birthday party was hosted by the Volunteers Plus and Activity Dept. Glenda Jennings entertained and Lasting Impressions furnished the flowers.

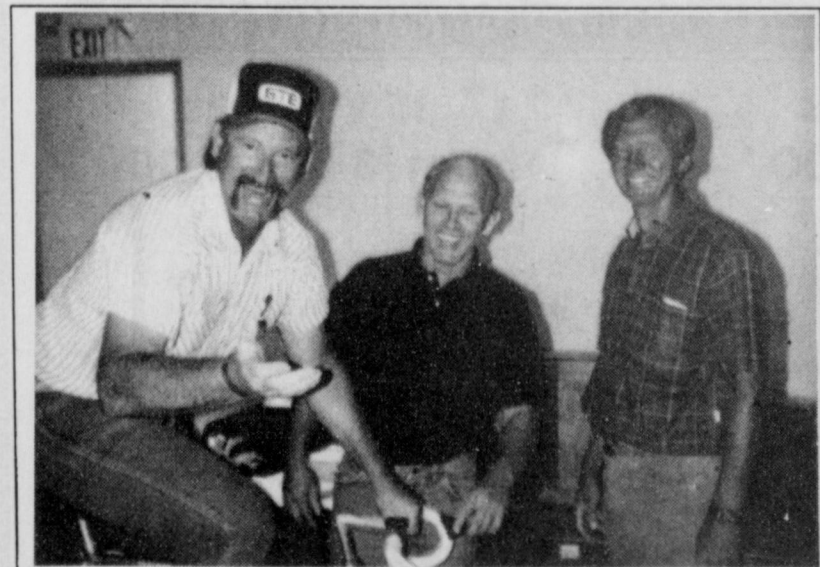
Kiwanis

Continued from page 8

riders and everyone interested in a great day of excitement. Lonnie and Gary brought the program. The Muleshoe Kiwanis Club has agreed to furnish the Muleshoe Putt-Putt Golf Course for the day care center. All the proceeds for the "Tour De Muleshoe" will go to

the Muleshoe Heritage Foundation.

Members attending Friday mornings meeting included R.G. Bennett, Sonny Bennett, Ben Davis, Jerry Hutton, Clay Kidd, Jim Lutz, Bryan Morris, Eddy Morris, Glen Morris, Chuck Smith and Hugh Young.



Glen Morris, Gary Skaggs and Lonnie Adrian

Got a news tip? Call 272-4536

Know of an interesting human interest story, news worthy event or photo opportunity in Bailey County? The Bailey County and Muleshoe Journal strives to offer complete coverage of area events but many times, we do not know about things unless our readers let us know. Give us a call today! We will be glad to listen! Call us at (806)272-4536.



Help Wanted

Farwell Convalescent center is looking for a certified Medication Aide for days, evenings, split shifts. Contact Sherrie (806) 481-9027. Good salary, benefits and retirement. 17s-tfc

Town and Country Food Stores are now taking applications for Full or parttime help. Pick up applications at either store in Muleshoe. 30s-8tc

Bailey County Electric Cooperative Association is now accepting applications for Groundman with advancement to Apprentice Lineman and then Lineman. Applications will be completed at the Muleshoe office at 305 E. Ave. B and the job description may be picked up at this time. Must be available 24 hours a day. All interviews will be conducted after the closing date of August 10, 1995 at 5:00 p.m. 30t-4tc

Full - time help. Must be able to work nights, weekends and holidays. Apply in person 2 to 5 p.m. at Church or Dairy Queen in Muleshoe. No phone calls please. 31s-4tc

Help Wanted!
A motivated, honest, success-oriented individual to sell new and used vehicles. Prior experience not required. Sales experience a plus. Apply in person at Muleshoe Motor Co., Inc. 1225 W. American Blvd. Muleshoe, Texas. 31s-tfc

Waitresses and cooks needed at Pizza Hut in Muleshoe. Apply in person. 31t-2tc

Automobile

1993 Dodge Dakota, Club Cab, Loaded. Super Sharp!, \$10,995. (505)359-1775, Portales.

1993 Pontiac Bonneville, 42,000 miles, 4 door, loaded, \$11,995. (505)359-0947, Portales.

1995 Ford Escort LX, 4 door, \$9995/ (505)359-1775., Portales.

1992 Chevy S-10 Blazer, 4X4. Super Sharp! (505)359-0947., Portales.

1987 Ford Dualie, diesel. Sharp! \$9500. (505) 359-1775

Lawn Care Service

J & J Lawn Service your lawn is the first impression you make when someone comes to your home. So make a great first impression with a finely sculpted lawn. Mowing and Bagging - no dead grass covering the green grass. Edging - carve a fine line between your lawn and sidewalk and curb. Really neatens up any lawn. Call Johnny or James 965-2388.

Double-Wides Triple-Wides 18 Wides 16 Wides and a number of used homes.

Largest selection available at . . .

PMH
PORTALES MOBILE HOMES
Portales Mobile Homes
1-800-867-5639
DL336

MUST SELL! 1992 Buick Park Avenue

Ultra, supercharged, automatic transmission, dual zone air conditioning, dual power seats, tilt steering wheel, cruise control, power windows, power door locks, power dual mirrors, AM/FM stereo cassette and much more. No old contract to assume, no back payments to make, just need responsible party to make reasonable monthly payments.

Contact Ali Roder in the Credit Dept., Friona Motors, 806-247-2701

MUST SELL! 1994 Ford Explorer

Automatic, push button, 4-wheel drive, power windows, power locks, poer mirrors, air conditioning, AM/FM cassette, tilt, cruise, rear defroster and wiper, aluminum wheels, and much more. No old contract to assume, no back payments to make, just need responsible party to make reasonable monthly payments.

Contact Joey in the credit dept. Friona Motors, 806-247-2701

Wanted

Will sit with your elderly by the hour or live in. Call 272-5228. 31t-2tc

For Sale

Reduce safe and fast with GoBeses Tablets and E-Vap "Water Pills" Available at Damron Drug. 30t-3tpd

Hay for Sale: Large round bales. Wheat: \$50 bale or \$75 tone; Oat \$60 bale or \$90 ton. Quantity discounts. Delivery available. 505-359-0947, 505-276-7526, or 505-276-7522. 31t-wp

For Sale: 292 Chevy, 454 Chevy and 350 Chevy irrigation engines, ready to set. Call 800-895-9818, 806-272-5032 or 806-272-3069. 31t-2tpd.

Alfalfa Hay - small square bales, \$4.00, delivery and stacking available. Call 806-946-7018 or 806-525-4245. 29t-4tc

General

I will have a garage sale for you on consignment! Few items or many items? Call 272-5209. 31s-4tpd

Real Estate

FOR SALE

LENAU ADDITION

305 Easr Fir Avenue, large 3 bedroom, 1 3/4 baths, auto lawn sprinkler, single garage, 2 car carport and storage. Call day or night 272-3373. D8-11s-tfc

Moved, need to sell to the 1st buyer, 322 W. Ave. K., nice 2 bedroom home with garage. Conv. or FmH loan, ptys to fit

MUST SELL! 1990 Lincoln Continental

Leather interior, AM/FM cassette, tilt wheel, cruise control, electronic dash, power windows, power locks, power mirrors, power seats, air conditioning and much, much. No old contract to assume, no back payments to make, just need responsible party to make reasonable monthly payments.

Call Ismael in the credit dept. Friona Motors, 806-247-2701

MUST SELL! 1994 Lincoln Town Car

V-8, automatic with overdrive, dual air bags, dual 6-way power seats, dual power heated mirrors, power windows, power locks, remote keyless entry, illuminated entry, leather upholstery, electronic instrumentation, electronic AM/FM cassette with premium sound, rear air suspension system, tilt, cruise, auto headlamps, speed sensitive steering, aluminum wheels, rear defrost, dual exhaust and much more! No old contract to assume, no back payments to make, just need responsible party to make reasonable monthly payments.

Contact Joey in the credit dept. Friona Motors, 806-247-2701

Nieman Realty

116 E. Ave. C George Nieman, Broker 272-5285 or 272-5286

HIGH SCHOOL
NICE 3-2-1 carport Home, Cent. A&H, built-ins, basement, ceiling fans, water softener, covered patio w/gas grill, fenced yd., & one bdrm. apartment. PRICE REDUCED TO \$30,000!!!! HS-12

3-2-1 Brick, Cent. A&H, built-ins, w/drop-storage, fenced yd. \$30's!!! HS-4

HIGHLAND AREA
VERY NICE 3-2-2 Brick, Cent. A&H, built-ins, fenced yd., spktr. sys., MUCH MORE!!! \$60's !!! HL-1

Nice 4-2-1 Brick, Cent. A&H, built-ins, fans, encl. patio, man. spktr sys., gas grill, st. bldg., fenced yd. \$60's!! HL-5

JUST LISTED 3-2-2 home, Cent. A&H, built-ins, fenced yd., corner lot. \$30's !!! HL-2

NICE 3-2-2 Brick, Cent. A&H, Built-ins, FP, 1960' lv. area plus sunroom, fenced yd., auto. spktr., MUCH MORE !!! \$60's. HL-3

LENAU ADDITION
Nice 2-1-1 Home, new interior paint, new carpet, fenced yd., storage bldg. MORE!!!! & 20's!!! L-4

VERY NICE 3-2-1 Home, Heat Pump, storm windows & doors, extra insulation, nice carpet, spktr. sys. & MORE!!!! \$30's!!!! L-2

RICHLAND HILLS - VERY NICE 3-2-2 Brick Home on corner lot, built-ins, Cent. A&H, 2,100' + lv. area, auto spktr., fenced yd., stor-wkshp., MUCH MORE !!! \$70's RH-1

RURAL HOMES
2-2-2 Carport Mobile Home on hwy. close to town, 1.99 acres w/barn and corrals!! \$30's!! R-1

JUST LISTED- Very Nice 4-2 Home on 40 acre tract close to town, heat pump, built-in stove, nice carpet & tile. 6" irrig. well with high pressure lines, stock shed & pens, tractor & equipment. \$70's!!!!

COUNTRY CLUB
JUST LISTED - VERY NICE 4 3-1 Brick, Cent. Heat, built-ins, FP, Clg. fans, cov. patio, fenced yd., cellar, stor. bldg., More !! \$60's cc4

2-1-1 carport home, wall furnace heat, nice carpet, storm shelter, storage bldg., fenced yd. MORE!!! \$20'S.

Just Listed - Nice 3-1 Home, Cent. Heat, dishwasher, nice carpet, fenced yd. \$20's!!!!!! CC-2

ASK ABOUT OUR COMMERCIAL LISTINGS!!!

COMMERCIAL-200'+ Hwy. 84 frontage-Former Richland Hills Texaco, excellent business location. PRICED TO SELL!!!!!!

Subscribe To The Muleshoe Journal Today!

Classy Paws
Dog Grooming
1916 W. Ave. C
Call 272-3012
For Appointment
Monday - Friday
21s-tfc

NEEDED at Muleshoe Area Home Health Agency:
Registered Nurse
Call 272-3346

E.O.E.
MULESHOE AREA HOME HEALTH
Agency

NEEDED at Muleshoe Area Home Health Agency
LVN
Prefer experienc in Home Health
Call 272-3346

E.O.E.
MULESHOE AREA HOME HEALTH
Agency

NEEDED at Muleshoe Area Home Health Agency
Full time
Certified and/or Experience Home Health Aide.
Call 272-3346
Must have dependable car and home phone
E.O.E.

MULESHOE AREA HOME HEALTH
Agency



Over -12- division winners, Mule-Putt tournament
Taking the trophies for the Mule-Putt over -12 competition were (left) Oscar Rodriguez, 2nd; Mark McGuire, 3rd; and Frank Torrez, 1st. Look for the Kiwanis next tournament August 14.

Technical College holds early registration

WACO — Texas State Technical College at Waco will hold early registration for fall quarter day and evening classes Aug. 7 through 11.

New students should contact TSTC's Office of Recruiting at Texas toll free (800) 792-8784, or direct at (817) 3371, for application packets prior to early registration. The registration process begins at Admissions and Records for all new students. However, returning students can report to the instructional department.

TSTC's early registration period is from 8 a.m. to 6 p.m., Aug. 7 through 10 and from 8 a.m. to 5 p.m., on Aug. 11.

Texas State Technical college also offers night classes for credit toward technical degrees. For a schedule of night classes, or for information on

registration, contact the Recruiting office.

Regular registration for fall quarter classes is from 8 a.m. to 6 p.m., on Sept. 6, with new students reporting to Admissions and Records in the Student Center, and returning students reporting to their adviser in instructional departments. Classes begin Sept. 7.

Texas State Technical College at Waco, with an extension in Marshall, is part of the only state-supported technical college system in Texas. With more than 40 instructional programs in the critical and emerging technologies, TSTC is preparing a work force to meet the demands of business and industry. For more information, call direct, (817) 867-3371 or Texas toll free (800) 792-8784.



F. Dewayne Gable

Custom Made Boots
Higdon Boot & Shoe Repair
5106 S. Western
Amarillo, TX 79109

F. Dewayne Gable
Rt. 8, Box 71-12
Amarillo, TX 79118
(806) 358-2701

Joe C. Smith
3905 Kingston
Amarillo, TX 79109
(806) 355-7152

Better Business Bureau

Owning and operating a car brings certain risks which increase with the number of drivers and vehicles on the road. Losses from property damage, medical and legal costs, and lost income add up to billions of dollars annually for automobile mishaps.

As a result, automobile insurance plays an important role in protecting consumers from serious financial loss arising out of such accidents.

With this in mind, the BBB has published a new booklet in its consumer information series, "Tips on . . . Automobile Insurance." This 12-page booklet offers advice on things to know about auto insurance in your state; steps to choosing your coverage and insurer; questions to ask your agent; ways to save money; and terminology you should know.

This booklet even offers do's and don'ts after an accident to protect yourself from future problems. For your free copy of Tips on Automobile Insur-

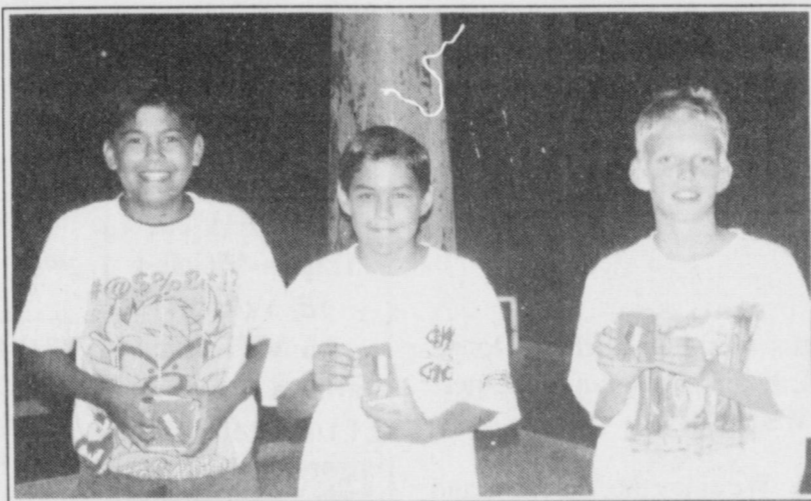
ance, call you BBB at 763-0459 or (800) 687-7890.

If you are traveling overseas during your vacation this year, keep in mind that in most foreign countries, consumer protection laws are very different from those here in the U.S.

The laws of the country in which you make the purchase prevail, so be sure that you understand all the terms of the sale, including shipping arrangements, before you sign the sales slip.

Ask about refund and exchange policies — most merchants have no refund or all are allowed, unless the merchant promises them in advance. Keep your receipts and any documentation of purchases in a safe place.

Ask for an itemized list of your purchases. Familiarize yourself with U.S. customs policies regarding prohibited and restricted items such as fur, leather, fruits and vegetables or computer software.



Mule Putt winners 12 and under division

Recently the Kiwanis hosted a Mule-Putt golf tournament and the winners of the 12 and under division were (left) D.J. Dominguez, 3rd; Andy Dominguez, 2nd; and, Jessie Sowder, 1st.

The Muleshoe and Bailey County Journals publish birthday announcements free of charge for babies one year old or for people ages 90 and over. A photo may also be included with the announcement. Complete guidelines and forms are available at the Muleshoe Journal office.

I would like to thank the following businesses for giving me the opportunity to compete in the 1995 Junior Olympics in San Jose, California:

- FIVE AREA TELEPHONE
- ROBERT LEPARD, D.D.S.
- FIRST NATIONAL BANK, SUDAN
- JARMAN SEED
- RONNIE HOLT INSURANCE
- JOE'S BOOT SHOP
- HARVEY BASS APPLIANCE
- ROBERT D. SMITH, C.P.A.

Taylor Whitley



"West Texas Karate"

Tae Kwon Do-Korean Karate
Men, Women & Children
- All Ages -



"West Texas Tumbling"

Creative Dance,
Trampoline, Cheerleading,
Mini Tramp & Tumbling
- All Ages -



Now Taking Fall Registration

Call 806-272-5190

Will Pickup at Schools &
Kinder Korner

CLASSES BEGIN SEPT. 5

STATEMENT OF CONDITION

FIRST BANK - MULESHOE

Muleshoe, Texas

at the close of business June 30, 1995

ASSETS

Loans and Discounts	\$34,820,645.92
Less Reserve for Bad Debt	537,804.31
Total Loans and Discounts	\$34,282,841.61
Federal Reserve Bank Stock	75,000.00
Banking House, Furniture and Fixtures	1,213,269.70
Other Assets	1,328,231.30

AVAILABLE CASH

Bonds and Securities	\$21,132,415.47
Cash and Exchange	3,669,891.07
Federal Funds Sold	700,000.00
Total Cash Available	\$25,502,306.54

\$62,401,649.15

LIABILITIES

DEPOSITS	\$55,664,439.73
----------------	-----------------

CAPITAL FUNDS

Capital Stock	500,000.00
Surplus	2,000,000.00
Undivided Profits and Reserves	3,834,590.92
Total Capital Funds	6,334,590.92
Other Liabilities	402,618.50

\$62,401,649.15



Member F.D.I.C.

Liquidation Sale!

30 Used Cars & Trucks Will Be Sold Below Market Prices!

Over 100 Vehicles To Choose From!

11 ~~16~~ Vehicles Under \$3,000



1989 Chevrolet Celebrity

Only \$99 Down \$99 A Month

12 ~~15~~ Vehicles From \$3,001-\$7,000



1988 Dodge Caravan

Only \$5900

10 ~~14~~ Vehicles From \$7,001-\$10,000



1989 Ford F-150 Super Cab - Only \$7,900

49 ~~58~~ Other Vehicles Under NADA Book



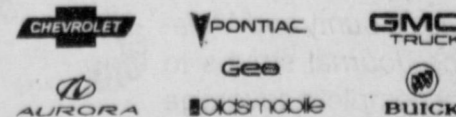
1993 Chevrolet Crew Cab - Only \$19,900

HURRY IN! THEY'RE SELLING FAST!

*36 months @ 10% APR. Excludes tax, title and license. Subject to lender's approval and prior sale. Stock # GA554

STREBECK

GM AUTOPLEX



Clovis Highway • Portales, NM
(505) 356-3501 (505) 763-3501

The very best prices and service anywhere... We personally guarantee it!