

Leading the cheers for the Junior High Owls this season are Rebecca Reid, Connie Rowell, Kim Cornett, Bob Ann Wheelchel, Karen Ziegler and their mascot, Shellie Cornett.

Club Hears Program On Texas History

October 7, 1974, the L. O. A. Junior Study Club met at the P. C. A. community room and enjoyed a program of Texas History presented by June Moosberg. The program took the L. O. A. members on a tour of famous Texans' homes in San Augustine, Texas through slides and narration. Roll call was answered with "What I Like Most About Texas". The devotional was given by

Mrs. LaQuetta Schott and the Pledge to the American Flag and A Collect For Clubwomen were recited by all members.

Pat Edwards, yearbook chairman, presented this year's yearbook. The theme for the 1974-75 club year is "Our Wish For America." Members were excited to receive the long-awaited books. Thanks was expressed by Cathey Weaks to Pat Edwards, Mary Lane Montague, Donna Copeland and Lynda Fogerson for their work in planning this year's activities and yearbook.

Members were reminded to attend the Caprock District Workshop in Floydada on Saturday, October 12, 1974. Several members voiced a desire to attend the meeting.

Tina Nance, Federation Counselor, gave a report on the Fed-

eration Day Tea and Program in Tullia attended by Tina Nance, Gail Wyatt, Mary Lane Montague and Cathey Weaks. Tina presented a brief outline of a speech given by Mrs. Harold Green, Caprock District President.

Plans for the Halloween Carnival were discussed. Mary Lane Montague, plans chairman, gave assignments to the members for work times and what to bring for the concession stand. Excitement ran high as all members made suggestions for activities during the carnival.

An upcoming skit to be presented to the elementary school was discussed. Parts were assigned and rehearsal was set for Monday night in the school auditorium. Every member will be involved in this presentation.

At the conclusion of the meeting refreshments were served by the hostesses, LaQuetta Schott and June Moosberg to Mary Lane Montague, Jane Self, Lynda Fogerson, Barbara Pigg, Patsy Towe, Margaret Hester, Tina Nance, Pat Edwards, Jealeta Baird, Rita Wood, Gail Wyatt and Cathey Weaks.

Mrs. Marion Perkins and her sister, Mrs. Opal Hanna of Turkey, were in Clovis, New Mexico last Thursday to visit their brother, Ray Shannon, at the Hillcrest Convalescent Center.

Mrs. Wesly Woods spent from Monday until Thursday in Central Plains Hospital in Plainview.

Di-Gel QUICKLY RELIEVES 'Gasid Indigestion'

...it's those times you suffer acid indigestion and painful gas, too.

DI-GEL® gives more complete relief because it does what plain antacids can't. It reduces excess acid; also contains Simethicone that gets rid of gas, too. Heartburn, painful gas go fast. Get DI-GEL.

First Application Relieves Itchy Skin Rash

Also Helps Promote Healing

Medicated Zemo quickly relieves itching, irritated skin. Then Zemo helps nature heal and clear red, scaly skin rashes externally caused. For fast relief, get Zemo Ointment or Liquid.

BRISCOE COUNTY NEWS

PUBLISHED EVERY THURSDAY AT SILVERTON, TEXAS 79257
 SECOND CLASS POSTAGE PAID AT SILVERTON, TEXAS 79257
 CHARLES R. SARCHET PUBLISHER
 MARY ANN SARCHET EDITOR
 Display Advertising Rates: Each insertion .50 per word
 Classified and Legal Rates: (75c Minimum Charge)
 Cards of Thanks: MEMBER OF TEXAS PRESS ASSOCIATION AND PANHANDLE PRESS ASSOCIATION



IT'S

HALLOWEEN FUN TIME!

CARNIVAL SPONSORED BY L.O.A. Study Club

Oct. 26 - 7:00 p.m. - 4-H Barn

- | | |
|------------------------|--------------------|
| CONCESSION STAND | BINGO |
| CAKE WALK | CARICATURE DRAWING |
| GRAB BAG | PENNY PITCH |
| DUNKIN BOARD | HAY RIDE |
| FORTUNE TELLER | SPONGE THROW |
| RUSSIAN ROULETTE WHEEL | CAR DEMOLITION |
| BEAN COUNT | FOOTBALL THROW |
| BASKETBALL THROW | RING TOSS |
| HANDWRITING ANALYSIS | CLOWN |
| DART THROW | COSTUME CONTEST |

COMFORT EFFICIENCY ECONOMY



you get it all with

NATURAL ENERGY **Gas Heating**

Fresh, warm air gently circulating from floor to ceiling...so nice to take for granted. Comfort is clean gas heat.

And that dependable comfort is such a bargain here in West Texas. Though gas energy costs a little more than it use to, gas furnaces still cost less than one-third as much to operate as similar electric furnaces.

And at the same time you're saving money with gas heating, you can also have a warm feeling knowing that you're helping conserve energy. Gas heating uses only half as much energy as an electric system doing the same job.

Comfort, efficiency, and economy... you get it all with natural energy gas heating.

Independent Study Sources:
 (1) ELECTRIC UTILITY ADVERTISING AND THE ENVIRONMENT, Oak Ridge National Laboratories, April 1972.
 (2) ENERGY AND THE ENVIRONMENT - ELECTRIC POWER, Council on Environmental Quality, August 1973.
 (3) CALIFORNIA'S ELECTRIC QUANTITY VOL. II, The Reed Corporation with support of the National Science Foundation, September 1972.
 (4) ENERGY UTILIZATION EFFICIENCY OF MAJOR HOME APPLIANCES, American Gas Association, July 1973.



PIONEER NATURAL GAS COMPANY



Shur Fine CARNIVAL

STOCK UP NOW...SAVE ALL WINTER!

THE GREATEST FOOD SALE ON EARTH!

SHURFINE PEACHES
Halves or Sliced YC

2 FOR 88¢

Shurfine FLOUR
5 Pounds

68¢

STOCK UP NOW... SAVE ALL WINTER!

BATHROOM TISSUE	Soffin 8 Pack	98¢
EVAP. MILK	Shurfine 14 1/2 Ounce	4 FOR \$1
FRUIT COCKTAIL	Shurfine 16 Ounce	3 FOR \$1
GREEN BEANS	Shurfine Cut 16 Ounce	4 FOR \$1
DETERGENT	MC-2 49 Ounce	79¢
COFFEE	Shurfine 1 Pound	98¢

SHURFINE COFFEE CREAMER 11 oz.	69¢
SHURFINE PANCAKE MIX 32 oz.	59¢
SHURFINE RICE Med. Grain 2 lb.	69¢
SHURFINE HAMB. DINNERS Assl.	49¢
SHURFINE 7 1/2 OUNCE DINNER Mac. - Cheese	4 FOR \$1
SHURFINE APPLE SAUCE 16 oz.	3 FOR \$1
SHURFINE GRAPEFRUIT NAT. PINK JUICE 46 oz.	2 FOR \$1
SHURFINE Orange, Grape, Fruit Punch FRUIT DRINK 46 oz.	3 FOR \$1
SHURFINE TOMATO JUICE 46 oz.	59¢
SHURFRESH CANNED HAMS 5 lb.	\$5.59
SHURFRESH CANNED HAMS 3 lb.	\$3.39
SHURFRESH ASSORTED FLAVORS LUNCH MEATS 6 oz.	3 FOR \$1.00
SHURFRESH SLICED BACON 1 lb.	99¢

SHURFINE SPEARS ASPARAGUS 14 1/2 oz.	55¢
SHURFINE PORK & BEANS 16 oz.	4 FOR \$1
SHURFINE SLICED BEETS 16 oz.	3 FOR 79¢
SHURFINE SPINACH 15 oz.	4 FOR 89¢
SHURFINE MIXED VEG. 16 oz.	3 FOR 79¢
SHURFINE BLACKEYE PEAS 15 oz.	4 FOR \$1
SHURFINE EARLY HARVEST SWEET PEAS 17 oz.	3 FOR \$1
SHURFINE WHOLE IRISH POTATOES 16 oz.	3 FOR 89¢
SHURFINE TOMATO SOUP 10 3-4 oz.	6 FOR \$1
SHURFRESH FRANKS 12 oz.	59¢
SHURFRESH SLI. BOLOGNA 12 oz.	59¢
BANANAS 2 lbs.	25¢
RUSSETS POTATOES 10 lb.	79¢

SHURFINE TUNA Chunk 6 1/2 oz.	2 FOR 89¢
SHURFINE MUSHROOMS 4oz.	3 FOR \$1
SHURFINE APPLE BUTTER 2 8oz.	2 FOR \$1
SHURFINE 18 OZ. STRAWBERRY PRESERVES	79¢
SHURFINE WAFFLE SYRUP 32 oz.	79¢
SHURFINE FRESH PAK. CUC. CHIP PICKLES 16 oz.	39¢
SHURFRESH CRACKERS 1 lb.	39¢
SHURFINE VANILLA WAFERS 10 oz.	3 FOR \$1
SHURFRESH Swt. milk or Buttermilk BISCUITS 8 oz.	10 FOR \$1
SHURFRESH FROZEN ORANGE JUICE 6 oz.	6 FOR \$1
SHURFRESH Reg. 1/4's MARGARINE 16 oz.	2 FOR \$1
SHURFRESH HALFMOON COLBY LONGHORN CHEESE 10 oz.	79¢
SHURFINE FROZEN BROC. SPEARS 10 oz.	3 FOR \$1
SHURFINE FROZEN CAULIFLOWER 10 oz.	3 FOR \$1
SHURFRESH MIX VEGETABLES 10 oz.	3 FOR \$1
SHURFRESH Pimento or Jalapeno CHEESE SPREAD 7 1/2 oz.	69¢

Specials
Good
Oct. 28
Thru
Nov. 9



NANCE'S Food Store

HERE'S JUST WHAT YOU'RE LOOKIN' FOR!

CLOTH PATCH

TO ORDER: Send \$1.00 for two patches (no stamps) and any two Shurfine Labels, along with your name, address, city, state & zip code to:
Ernest Kelly
PATCH OFFER
P.O. Box 9870
Grand Rapids, Mich.
49501
Please allow 4 weeks for delivery after orders Dec. 31, 1974

GET 2 PATCHES AND ANY 2 SHURFINE LABELS only \$1.

Young Homemakers Have Craft Party

Silverton Young Homemakers had a Tri-Chem Party with Janis Smith of Floydada as the demonstrator in the P. C. A. community room. Each member painted a sketch which was furnished by Ms. Smith.

At the club's regular business meeting it was decided to have a booth at the Halloween Carnival. A Halloween Party will be given for the children of the Young Homemakers on Saturday, October 26.

The club voted to sell pecans. Members attending were Kathy Hubbard, Tommie Blackerby, Fay Perkins, Judy Miller, June Herington, Linda Minyard, Jimmie Ford, Shirley Henderson and the advisor, Kathy King.



VOTE NOVEMBER 5 Agriculture is our Most Vital Industry

Re-elect

JOHN C. WHITE

Commissioner of Agriculture
• Integrity • Leadership

Pol. Adv. paid by T. P. Flativa, Chmn, John C. White Comm, 221 E. 11th, Austin, Tx 78701

Dear Charlotte,

Oh, for the secret of sleep, which any male being possesses! The head of our household can touch a pillow or a recliner or a couch, and neither thunder, television, earthquake, nor the sounds of a sick child disturbs his slumber.

Only this morning at 4 A.M., I again marvelled and envied his ability to sleep through all sorts of disturbances. At this lonely hour, I heard a small voice say, "Mama, come here; I'm going to be sick." Before I could reach her bedroom, blankets, sheets, pillows, pajamas, and child were ready for immediate help. I quickly transferred her to the other twin bed, and by 4:30 A.M. a feverish nauseous little girl had unavoidably added her mark to the other bed, two floors, and a bathroom. I banged cabinet doors in search of aspirin, dramamine, rubbing alcohol, ice bags, clean linens, fresh pajamas, carpet cleaner, dishpans and thermometer.

I washed two loads of linens in my noisy 5 year old washing machine, made beds, scrubbed carpets, mopped and cleaned bathrooms, and

With sick child sound asleep, I started for my bedroom, bumped into a refreshed husband who yawned and said, "G'morning, honey you're up early; I slept like a log; Where's the paper and the coffee?"

----- dead silence -----

H.B.

Jack's PHARMACY
JACK ROBERTSON
Registered Pharmacist



The Edward C. Lain Family, Ed, Nna Lou and their children, Sara, Earnest and Steven, have recently moved to Silverton to make their home and establish their family piano tuning business.

Mr. and Mrs. Lain To Establish Family Business In Silverton

Mr. and Mrs. Edward C. Lain recently moved to Silverton from Southern, California, where they have lived for the past 14 years, and where they had a successful piano tuning and repair business. They are relocating their business here in order that their children can be near their grandparents and to have them in a more wholesome atmosphere in which to grow up.

Ed Lain was born in Savannah, Georgia. He is married to the former Ina Lou Grabbe, the daughter of Mr. and Mrs. Warner B. Grabbe of Silverton, Texas. The Lains are parents of three children, Sara Elizabeth, age 9, Warner Earnest, 7, and Steven Edward, who is 16 months old.

"I grew up in a city," Mr. Lain said, "but I spent many summers on my grandmother's farm in South Carolina. That gave me a more balanced life than simply having been in the city all my life. I want my children to have that same opportunity, to know the people around them and share in their happiness and their sorrows—to know that when someone suffers they may be able to help a living individual they know

and not just a name; someone for whom they can feel genuine compassion. I want them to be able to look up into the heavens at night and see the creation of God and not just the twinkling neon creations of man. These things are almost impossible in the cities today."

Although Mr. Lain lost his sight at age six, and Mrs. Lain does the driving for their family business, he has had a full life like any normal boy, having been active even in Boy Scouts as a youth. He still participates with his family in such activities as swimming, ice skating, roller skating and horseback riding.

He received his training in piano tuning and repair in the tuning school at the Kansas City Conservatory of Music in Kansas City, Missouri, graduating in 1950 and has been in the business since that time. He is an avid amateur archaeologist and is working toward a degree in anthropology when time from work and family permits taking a class.

The Lains are building their business in Silverton and the surrounding area, as well as handling work for Tolzien Music Company in Amarillo and Tarpley Music Company in Pampa.

Public Notice

STATEMENT OF NONDISCRIMINATION

Lighthouse Electric Cooperative, Inc. has filed with the Federal Government a Compliance Assurance in which it assures the Rural Electrification Administration that it will comply fully with all requirements of Title VI of the Civil Rights Act of 1964 and the Rules and Regulations of the Department of Agriculture issued thereunder, to the end that no person in the United States shall, on the ground of race, color, or national origin, be excluded from participation in, be denied the benefits of, or be otherwise subjected to discrimination in the conduct of its program and the operation of its facilities. Under this Assurance, this organization is committed not to discriminate against any person on the ground of race, color or national origin in its policies and practices relating to applications for service or any other policies and practices relating to treatment of beneficiaries and participants including rates, conditions and extension of service, use of any of its facilities, attendance at and participation in any meetings of beneficiaries and participants or the exercise of any rights of such beneficiaries and participants in the conduct of the operations of this organization.

Any person who believes himself, or any specific class of individuals, to be subjected by this organization to discrimination prohibited by Title VI of the Act and the Rules and Regulations issued thereunder may, by himself or a representative, file with the Secretary of Agriculture, Washington, D. C. 20250, or the Rural Electrification Administration, Washington, D. C. 20250, or this organization, or all, a written complaint. Such complaint must be filed not later than 180 days after the alleged discrimination, or by such later date to which the Secretary of Agriculture or the Rural Electrification Administration extends the time for filing. Identity of complainants will be kept confidential except to the extent necessary to carry out the purposes of the Rules and Regulations.



RAY FARABEE

Democrat for State Senate
General Election - Nov. 5

Will Work For

- Economy in Government
- Rural Development
- Expanded Water Resources
- Integrity in Government
- Quality Education & Vocational Training

A Leader who will listen to you ... and be heard in Austin

Pol. Adv. Paid for by Ray Farabee Box 486, Wichita Falls, Texas 76707

ELECT BESS MC WILLIAMS

DEMOCRATIC CANDIDATE FOR
COUNTY AND DISTRICT CLERK

BRISCOE COUNTY, TEXAS

November 5, 1974

Qualified

Experienced

For County and District Clerk:



Bess McWilliams

(Political Adv. Paid For By Bess McWilliams)



JACK HIGHTOWER

JACK HIGHTOWER was born and raised in the Panhandle and Northwest Texas. He understands this area and its people, offering voters the choice of a Congressman—for a change—who can represent everyone in the 13th District. He is extremely well qualified to serve as your new and effective voice in Washington.

JACK HIGHTOWER knows how to trim budgets and work hard for the best government services at the lowest possible cost. He will work to halt inflation, high interest rates, and bring down the high cost of living.

JACK HIGHTOWER will fight for tougher criminal laws, supplemental water supplies, better educational opportunities.

JACK HIGHTOWER recognizes needs and responds quickly to constituent problems. He can handle tough jobs with fairness and integrity. Elect him to help you get things done in Washington ... for a change.

Paid Pol. Adv. by Jack Hightower for Congress Committee, Cleddie Palmer, Chairman, Box 1973, Vernon, Texas 76384

DEMOCRAT FOR CONGRESS



TODAY- WITH ELECTRIC HEAT

ASK ABOUT OUR BRIGHT STAR IN THE GALAXY OF ELECTRIC HEAT!

If you could take a peek into the world of the future ... you'd see a lot of things that would amaze you. But one thing we don't think will surprise you is that electricity in its familiar "switch-flipping" form will still be around. And, the people of the future aren't going to be any less comfort-conscious than we are, or any less concerned about saving energy.

Today's answer to saving energy while maintaining comfort? The heat pump — one unit that both heats and cools your home. For answers to all your questions about home heating, call us for a free electric heat cost survey ... and ask about the Bright Star in the Galaxy of Electric Heating ... the heat pump!

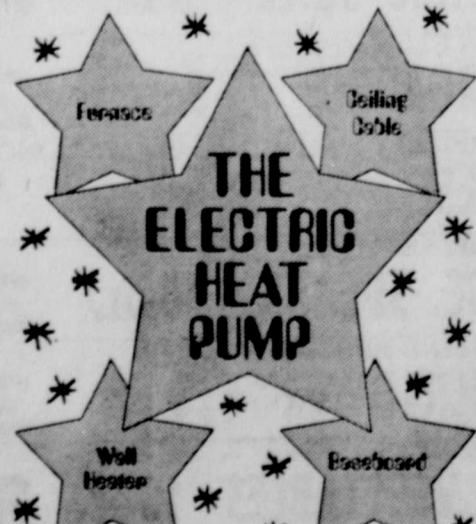
The Future Is Electric!

ELECTRICITY - IT DOES SO MUCH GOOD



The Electric Company

FOR SO MANY PEOPLE



EQUAL OPPORTUNITY EMPLOYER

21-4

Rick Hutsell Fund Rises Over \$1,100.00

Silverton High School students spent almost 12 hours Saturday morning, baking and selling pies and asking people to donate to the Rick Hutsell Fund. The money from their labor donations had totalled \$1,100.00 Wednesday morning, donations still being accepted at the First State Bank in Silverton.

The students organized the Saturday to show their appreciation for the football game at Claude a week before, that they would do something for him that they could. The Seniors and Freshmen sponsored bake sales, and some of the Senior and Freshman boys organized the Juniors and Sophomores in their three car washes. Norma Strange, who helped organize the workday, said, "We are glad that Rick's hospital expenses are enormous. He is our friend and we want to help him."

Rick Hutsell is recovering in the 530 at Northwest Texas Hospital in Amarillo following surgery for the repair of a fractured tibia and a torn ligament in his knee. He is reportedly making slow progress and the doctors expect him to recover. He entered

physical therapy Wednesday morning. Friends of the injured athlete are encouraged to continue sending cards, because his family now expects that he will be in the hospital about two weeks more.

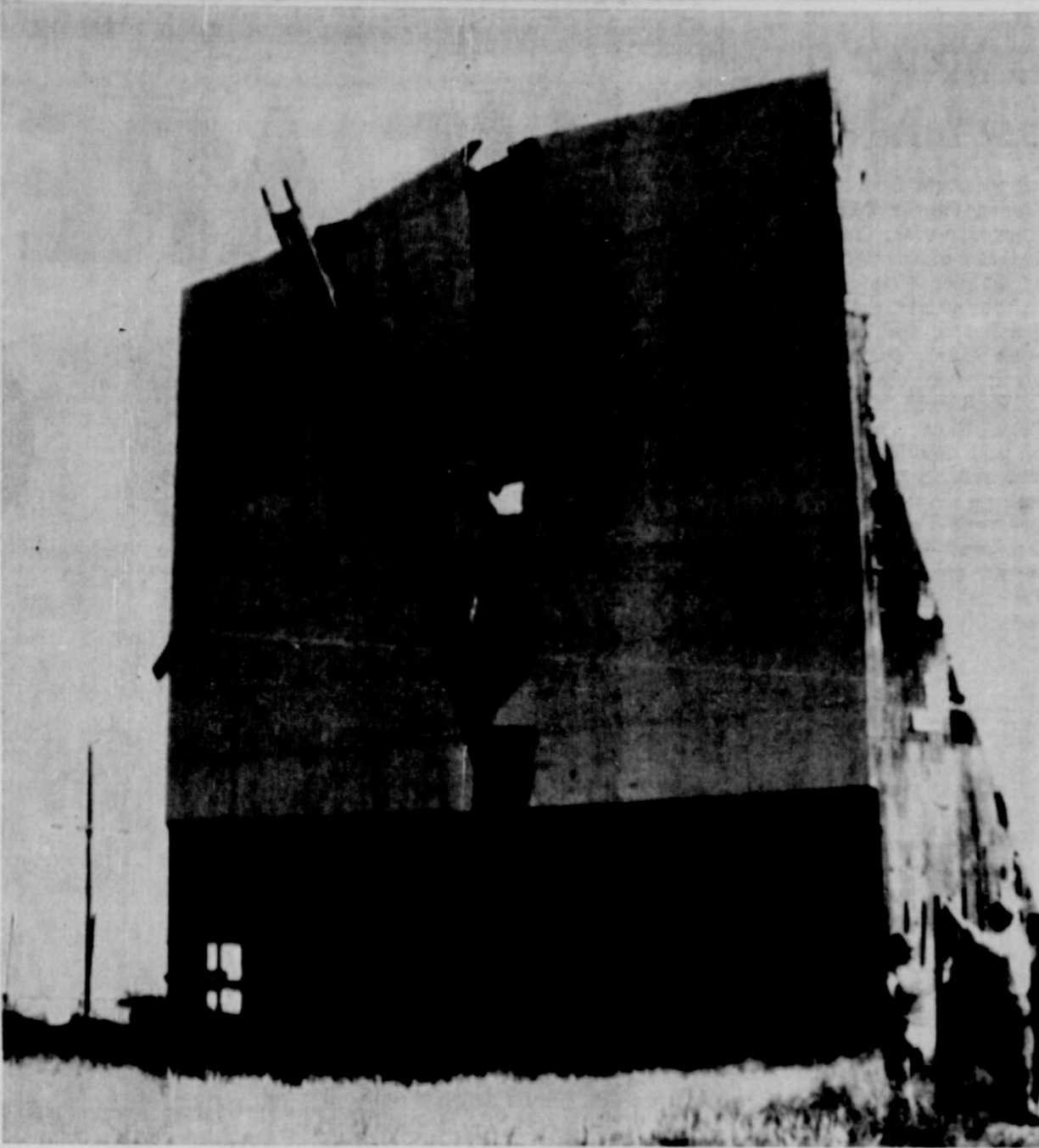
Mrs. Grace Hutsell is at the hospital helping care for her son and has been there since the Sunday night after his surgery. She was in Eden with another son who has a broken collarbone at the time of Rick's injury. Mrs. Flute Hutsell is also staying in Amarillo to help in looking after Rick's needs.

The Hutsell family has asked that the Briscoe County News convey their appreciation for all the many things that are being done for Rick.

Young Farmers To Have Conservation Program Tonight

The Silverton Young Farmers will meet Thursday night at 8:00 in the ag building. They will have a representative from the Soil Conservation Service as a guest speaker on the topic, "The Great Plains Program."

The public is invited to attend.



The old drive-in movie screen came down last week, as the Silverton Young Farmers continued the job of clearing the grounds which were recently sold, with the proceeds of the land sale going to the Silverton Am-bulance Service.

Young Farmers Clearing Old Drive-In Movie

Silverton Young Farmers began work on the show grounds and have worked at it for two days. They tore down the screen and the sheet iron fence, removed the pressure pump, removed the projectors and sold them.

Those members helping are Tobe Riddell, Dwain Henderson, G.W. Chappell, Calvin Shelton, Dan Herrington, Derrel Martin, Jimmy Myers, W. J. Copeland and Fred Minyard. The Young Farmers also had some help from non-members,

Norman Strange, Bryant Eddleman, Joe Lee Bomar, Donnie Martin, Lee Clay and Joe Sellers. The Young Farmers are also assisting in the re-shingling of the Scout Hut.

The Congregation Of The CHURCH OF CHRIST Meeting At Rock Creek

EXTENDS A GRACIOUS WELCOME TO ALL TO ATTEND ANY AND ALL OF OUR SERVICES.

SUNDAY
Morning Worship 10:30 a.m.
Evening Worship 6:00 p.m.

WEDNESDAY
Evening 7:00 p.m.

VETERANS DAY

"This will remain the land of the free only so long as it is the home of the brave." — Elmer Davis

Let's honor the Veterans of the Armed Forces of the United States of America, who have given so much to insure that ours remains the land of the free. Some of them have given their lives; can we give them less than our total support?

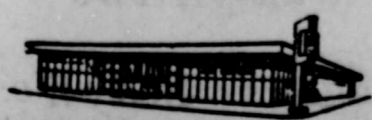
On Veteran's Day, and every day, we are proud to pay tribute to the brave men and women who have defended us at home and abroad.
SUPPORT AMERICA!



Our priceless heritage embodied in the flag of the United States, is as alive today as it was when written for the ages in the Declaration of Independence and the Constitution. It stands for all the world to see and for all Americans to cherish. And in the tradition of Washington, Jefferson, and Hamilton, we, too, have a privilege, a right, and a duty. While we may disagree as to the methods, we should not disagree as to the goal—that of preserving the greatest democratic society the world has ever known.

Our flag is a symbol, not of sentiment, but of history, the history of men and women willing to live and die for it. Surely this willingness is with us still, because daily we experience more of the blessings that are ours—ours because we are Americans.

© Coleman Advertising Serv.,
2653 Tarna Drive
Dallas, Texas 75229



First State Bank

wards and Katy Francis, recreation; Mark and Johnny Klein, clean-up.

Those present were Walter Perkins, Mark Patton, Roger Cantwell, Bryan Schott, Blaine Eddleman, Cynthia Edwards, Bren-

da Boling, Shelly Harris, Andy Fabela, Prislilano Charles, Ramon Ortega, Mark Klein, Johnny Klein, DeAnn Strange, Stacy Robertson, Melinda Sutton and David Vaughn.

Reported by David Vaughn

It's a new Land Bank serving a new agriculture in new ways

Over the next ten years, agriculture will require a minimum of \$60 billion in new financing to meet unprecedented changes and challenges. Because there is a Federal Land Bank—created to insure an abundance of capital at reasonable rates—you can have more confidence this need for credit will be met.

The Land Bank will continue to obtain loan funds in the nation's money markets on the very best terms it can. It will continue to make financing available to farmers and ranchers at reasonable cost. And with increased flexibility now permitted by the Farm Credit Act, it will help more people in more ways.

Today, more than ever, you should understand the operation of your Federal Land Bank. If you are not an Association member, let's get acquainted. If you are a member, let's get better acquainted. Let's work together... to build a secure place for you and your family in a viable, prosperous agriculture.

TOTCH UPSHAW
JACKIE EUBANKS
Floydada, Texas

4-H DOINGS

The 4-Leaf Clover 4-H Club met October 16. The meeting was called to order by Walter Perkins. Bryan Schott called the roll. Patricia Honea, the new Home Demonstration Agent, was introduced to the club. Each member wrote down his name and gave suggestions for club programs.

Committees for next month are Melinda Sutton and Ramon Ortega, refreshments; Cynthia Ed-



This I Believe And Will Work To Achieve . . .

Forced busing destroys neighborhood schools and hurts education . . . The State surplus should be refunded to taxpayers in cash in an amount equal to this year's ad valorem school tax increase . . . Local industrial development bonds should be backed by credit resources of the State to help small towns and cities get new industry . . . The right to work is a sacred guarantee and should be protected by our Constitution . . . No special interest group, including organized labor, should receive special favors in Austin in return for bloc voting support . . . We should import water and prorate the cost of canals or pipelines fairly, according to volume of new water used . . . Deceit and dishonesty in government must stop.

Be Sure To Vote
For

Mary Kirchhoff

DISTRICT 30

CANDIDATE FOR STATE SENATE

"She Gets Things Done"

Paid for by Mary Kirchhoff for State Senate Committee
P.O. Box 544, Plainville, Texas/Lib Williams, Chm.





MARY VIRGINIA KIRCHHOFF

Control Over Gas Is Advocated By Mrs. Kirchhoff

Texas control over Texas gas was advocated today by Mary Kirchhoff, candidate for the State Senate in District 30, when she said Texas needs to take a positive step immediately to prevent future energy problems throughout the state.

"Both Texas and the federal government have the authority to regulate intra-state gas," she pointed out, "and whoever asserts

jurisdiction first will get control. If our Legislature drags its feet on this item, we face the prospect of federal control which conceivably could lead to further shortages of fuel."

Mrs. Kirchhoff noted that Senator Adlai Stevenson (D-Ill.) has already jumped out front on this issue by introducing a bill in the United States Senate (S-2502) which would give the U. S. government regulatory authority over gas moving in intra-state commerce.

"Texas should hold first priority rights over Texas oil and gas produced on state-owned lands, once our contractual obligations are met," Mrs. Kirchhoff said, "If we do not act now, the federal government will. If we lose the opportunity to control this vital resource, we will have another federal check-rein dictating policy and practice over what rightfully should be handled by Texans."

Noting that Texas is the largest producer of hydrocarbons in the United States, the Plainview candidate said, "The Federal Power Commission has approved the sale of Algerian gas in this country at \$1.85 per mcf, while some of our domestic gas is being sold for seven cents per mcf. This makes no sense whatever, and it is unfair to our domestic producers to force them to sell our gas to the East Coast and makes us in Texas rely on Middle East crude oil or Wyoming coal to meet our energy requirements."

"Both logic and economics suggest that Texans burn Texas natural gas for heating and power, while in other parts of the country they use energy resources located close to them," Mrs. Kirchhoff said. "We already know what it's like to have shortages of energy in Texas. We have already experienced these shortages in our homes, in our industries—in fact,

Help Organize Happy Y. F. Chapter

Four members from the Silverton Young Farmer Chapter went to Happy Thursday, October 3, to help that community start a Young Farmer Chapter of their own. Those who helped to explain the purpose of the Young Farmers were Calvin Shelton, Area I President; Don Moore, Area I Vice President, and Howard Smithson, State Vice President. Moore and Smithson are from Dimmitt and Shelton is from Silverton.

There were seven prospective members and the advisor present that night. Those present decided to wait until October 10 to charter. The Happy Young Farmers chartered with 13 to 14 members.

Tobe Riddell and Calvin Shelton from Silverton and Howard Smithson from Dimmitt, along with the two Young Farmer Advisors from Dimmitt went back to Happy Thursday night to assist them further.

Those who went from Silverton to assist with the new organization were G. W. Chappell, Dan Herrington, Tobe Riddell and Calvin Shelton.

Scout Training To Be Offered At Tulia

Cub and Scout training for Packs and Troops will be held at 7:30 p.m. October 28 at the Scout Hut in Tulia.

This will be for Tulia, Kress, Silverton and Quitaque.

For further information, you may contact Mrs. Don Curry.

YOUR NEWS IS IMPORTANT!

The news about what you and your family are doing is an important part of your local newspaper. But the publishers of the Briscoe County News don't know about your news until you tell them.

Whenever you have news for your hometown paper, please call the News Office, 823-2333.

we even had a shortage of fertilizer that was related to the shortage of natural gas. This must not be allowed to happen again. Prompt action by the legislature can solve the problem and this should be an early item on the legislative docket when the Legislature convenes in January."

Hayfever Time. Allerst® Time.



for relief of hayfever and upper respiratory Allergies

A Product of PENNALT CORP.

In All Honesty, These Are The Facts

About

Mary Kirchhoff and Her Opponent

Has worked long and hard to bring new payrolls to West Texas to help young people find opportunities close to home among families and friends. Was first woman to serve on executive committee of West Texas Chamber of Commerce and was one of the key people on the Small Towns Task Force.

When Northwest Texas was left out of the Texas Water Plan, she was the only woman to testify in our behalf during the 42 public hearings before the Water Development Board. Result: Northwest Texas was included in the State Comprehensive Water Plan.

She knows what to do and how to do it, regardless of whether she is asked to help tornado victims recover without great financial loss, or help farmers and businessmen cut through government red-tape, build a hospital, or develop a college. Her list of achievements in public service is outstanding and covers many years of constructive activity.

She is a teacher with a permanent teachers certificate. Her husband and son are farmer-stockmen. All three are Texas Tech alumni and her daughter is enrolled there now. Hers is a West Texas family, deeply involved in sharing the concerns all of us have for the future well-being of our area and the people living here.

Is a long-time liberal and early McGovern supporter. Was a leader in taking over the Democratic Party for McGovern when Texas Democrats were shoved aside in 1972. (Precinct 22, Wichita County, May, 1972)

Was involved with the radical left wing National Student Association as President, Vice President, and in other jobs during the 50's. Revolutionary SDS group is the result of blueprints and plans prepared by NSA in the 50's. (Congressional Record, March 10, 1969, and NSA Report).

As late as 1967, he was still defending publicly the radical NSA organization in newspaper statements.

Was disqualified due to campaign irregularities after being elected student body president at Univ. of Texas. (Daily Texan, May thru Sept., 1955)

Is now one of many early McGovern supporters who have regrouped to run for Congress and state legislative offices across the U.S., with Texas being one of the targets for these liberals.

West Texans—The Choice Is Clear!

Vote Mary Kirchhoff

For State Senator
On Nov. 5

"She Gets Things Done"

Paid for by Mary Kirchhoff for State Senate Committee, P.O. Box 544, Plainview, Texas, Les Williams, Chairman

WE ARE BEHIND YOU OWLS



1974 SILVERTON FOOTBALL OWLS — 81-Glenn Bean, 39-Gary Storie, 82-Carl Wilson, 42-Dan Ziegler, 21-Scott Hutsell, 15-Zane Mayfield, 10-Ken Wood, 19-Brent Brannon, 66-Gary Turner, 20-Gary Younger, 50-Jeff Jones, 30-Danny Perkins, 74-Jimmy Wilson, 40-Brad Ziegler, 61-Todd McJimsey, 12-David Strange, 35-Tommy Lacy, 71-Jace Francis, 32-Brent

BEAT WELLINGTON

Oct. 25 Wellington at Silverton

Nov. 1 Silverton at Memphis

Nov. 8 Shamrock at Silverton

Nov. 15 Wheeler at Silverton

- Nance's Food Store
- Brown Hardware and Furniture
- Lallie's In and Out Drive In
- Jack's Pharmacy
- Verlin B. Towe Agency
- Fogerson Lumber and Supply
- Silverton Metal Works
- Bud's Grocery and Market
- Jones Dept. Store
- Silverton Auto Parts
- T and F Gin, Inc.
- Grabbe - Simpson Chev., Olds.
- Briscoe Cooperatives
- Silverton Oil Company
- Hill Farm Supply, Inc.
- Rhode Pipe Company
- First State Bank
- Ray Thompson Implement, Inc.
- Brown-McMurtry Implement
- Production Credit-Silverton
- Ashel McDaniel Texaco
- Briscoe County News
- The Malt Shop
- Clemmer Garage and Body Works



ASSEMBLY OF GOD
Freddie Stice, Pastor

Sunday
Sunday School..... 9:45 a.m.
Worship Service..... 11:00 a.m.
Evening Service..... 7:00 p.m.

Wednesday
Worship Service..... 7:30 p.m.

☆

CHURCH OF CHRIST SILVERTON
Ted Kingrey, Minister

Sunday
Sunday School..... 9:45 a.m.
Morning Worship..... 10:45 a.m.
Evening Worship..... 6:00 p.m.

Wednesday
Bible Study..... 7:30 p.m.

☆

FIRST BAPTIST CHURCH
Larry Wilson, Pastor

Sunday
Library Opens..... 9:15 a.m.
Sunday School..... 9:45 a.m.
Worship Service..... 11:00 a.m.
Library Opens..... 4:30 p.m.
Youth Choir..... 4:30 p.m.
Training Union..... 5:00 p.m.
Mission Friends, G.A. and R.A..... 5:00 p.m.
Evening Worship..... 6:00 p.m.

Second Monday
Night W. M. S..... 7:00 p.m.

Second and Fourth Tuesday
W. M. S..... 9:30 a.m.

Wednesday
Junior High Acteens..... 3:35 p.m.
High School Acteens, first and third Wednesday..... 3:35 p.m.
Mid-Week Service..... 7:00 p.m.
Choir Rehearsal..... 7:45 p.m.

Second Saturday
Baptist Men..... 7:00 a.m.

Where have the LEAVES Gone?

Trees without their leaves, are like a Church building without the people. The real warmth, friendliness, and welcome atmosphere are created by the people. All of these things are a real aid to worship.

"Give unto the Lord the glory due unto his name; worship the Lord in the beauty of holiness."

Come, be one among many to share in the joy of worshipping in the Lord's house

EVERYONE IN THE CHURCH
THE CHURCH IN EVERYONE

The Church is God's appointed agency in this world for spreading the knowledge of His love for man and of His demand for man to respond to that love by loving his neighbor. Without this grounding in the love of God, no government or society or way of life will long persevere and the freedoms which we hold so dear will inevitably perish. Therefore, even from a selfish point of view, one should support the Church for the sake of the welfare of himself and his family. Beyond that, however, every person should uphold and participate in the Church because it tells the truth about man's life, death and destiny; the truth which alone will set him free to live as a child of God.



Coleman Adv. Serv.

FIRST UNITED METHODIST CHURCH
Ray Elmore, Pastor

Sunday
Sunday School..... 9:45 a.m.
Worship Service..... 11:00 a.m.
M. Y. F..... 5:00 p.m.
Evening Worship..... 6:00 p.m.

Wednesday
Choir Practice..... 6:00 p.m.

☆

NEW FELLOWSHIP BAPTIST MISSION

Sunday
Sunday School..... 9:45 a.m.
Worship Service..... 11:00 a.m.
Training Union..... 5:00 p.m.
Evening Service..... 6:00 p.m.

Wednesday
Choir Rehearsal..... 7:00 p.m.
Prayer Service..... 8:00 p.m.

☆

OUR LADY OF LORETO CATHOLIC CHURCH
Father David Greka

Sunday
Mass..... 10:00 a.m.

☆

ROCK CREEK CHURCH OF CHRIST
Earl Cantwell, Minister

Sunday
Worship Service..... 10:30 a.m.
Evening Worship..... 6:00 p.m.

Wednesday
Worship Service..... 7:00 p.m.

BROWN - McMURTRY IMPLEMENT CO.

GRABBE-SIMPSON CHEVROLET CO., INC.

PLAINVIEW PRODUCTION CREDIT ASSN.

CITY CAFE

RHODE PIPE COMPANY

ASHEL McDANIEL TEXACO

BRISCOE COOPERATIVES

JONES DEPT. STORE

FIRST STATE BANK

HILL FARM SUPPLY, INC.

BRISCOE COUNTY NEWS

SILVERTON FUNERAL HOME

BUD'S GROCERY & MARKET

LALLIE'S IN & OUT DRIVE IN

VERLIN B. TOWE AGENCY

FOGERSON LUMBER & SUPPLY

JACK'S PHARMACY

T. & F. GIN, INC.

BROWN HARDWARE AND FURNITURE

SILVERTON AUTO PARTS

SILVERTON OIL COMPANY

NANCE'S FOOD STORE

SILVERTON LP GAS, INC.

THE MALT SHOP

