

Muleshoe pursuing settlement

The City of Muleshoe is in the process of negotiating a monetary settlement with the Midland company that installed a leaky liner in the city reservoir.

The City Council Tuesday authorized City Manager James Fisher to approach Big D Lining Systems to negotiate a settlement of the remaining balance for a lesser amount.

The reservoir is leaking four times the allowable amount, according to an independent test done in November.

The city has withheld the remaining balance of \$48,021 while Big D has made numerous attempts to repair the leak. The company has told the city there is nothing else they can do.

The heavy plastic liner has leaked since it was installed in the million-gallon water tank

Continued on page 6



Good listener

Muleshoe City Councilman Juan Chavez listens intently to a discussion Tuesday about how a recent merger between Southwestern Public Service Co. and a Colorado-based power company will affect the city.

Electric co-op manager afraid of getting zapped

By RICK WHITE
Managing Editor

The proposal to build a \$200 million power generating station near Denver City has met the approval of state regulators — but not the general manager of the Bailey County Electric Cooperative Association.

Not yet.

Bailey County Electric general manager Duane Lloyd Monday said he needs more time to explore other options before he can support the building of a natural gas-powered plant — to be called Mustang Station.

At this point, Lloyd said, there are too many unknowns to determine for certain how joining the project will impact the 1,800 members of Bailey County Electric. Lloyd also expressed concerns about the rising cost of natural gas and the uncertain future of the electric utility industry.

The three-member Texas Public Utility Commission expressed similar concerns two weeks ago while approving the project.

"We're concerned about what this will do to our members," Lloyd said. "Mustang Station may turn out to be the best option. I don't know. That's why we're going to explore all our options before

"We're dealing with PUC people that don't know what they are talking about. Just like all bureaucrats, they don't understand what's going on in the real world."

— Bailey County Electric General Manager Duane Lloyd

signing on.

"If we can find a better deal for power than the Mustang Station that meets our members' needs, then that's the direction we'll go."

The project was first proposed in 1995 by Amarillo-based Golden Spread Electric Cooperative Inc., the power supplier for Bailey County Electric and 10 other member rural electric cooperatives in the Panhandle-South Plains of Texas and Oklahoma Panhandle.

Golden Spread currently buys about 95 percent of its power from the Southwestern Public Service Co.

The power is then distrib-

Continued on page 6

Official discusses pulling plug on SPS office

By SAMUEL VILLARREAL
Journal Staff Writer

Southwestern Public Service Co. district manager Carl Reed told the Muleshoe City Council Tuesday that service with a smile is a thing of the past.

Reed said the personal customer service that marked SPS' first 75 years of service will be sacrificed in an effort to remain competitive in the electrical utility industry.

Local offices will be shut down and replaced with regional calling centers in Amarillo and Denver, Colo., Reed said. Customers who once paid their electric bills to a familiar face will now send their payments in the mail. Customers who need electrical repair service will be forced to call regional call centers in Amarillo and Denver, Colo.

Reed told council members the proposition of electrical service deregulation

has made personal service today's victim of tomorrow's competition.

"This isn't something we decided on a whim," Reed said. "Soon there will be a few big companies and lots of small companies. The best thing for us (SPS) to do is to become as big as we can, as quick as we can."

Reed said SPS officials had expressed a desire to stick with local billing offices

Continued on page 6

Conservation Reserve Program Acreage / Texas High Plains			
County	Total Enrolled Acres	Acres Expiring 1997	Percent of Total
Bailey	100,587	100,534	99.9%
Borden	8,735	5,661	64.8%
Briscoe	46,413	46,388	99.9%
Castro	51,293	38,711	75.5%
Cochran	83,981	83,822	99.8%
Crosby	37,074	22,974	62.0%
Dawson	110,377	62,395	56.5%
Deaf Smith	156,898	121,811	77.6%
Dickens	44,004	43,434	98.7%
Floyd	97,950	69,157	70.6%
Gaines	166,388	159,126	95.6%
Garza	25,050	16,699	66.5%
Hale	107,118	81,231	75.8%
Hockley	109,730	63,835	58.2%
Howard	44,913	16,401	36.5%
Lamb	134,901	106,804	79.2%
Lubbock	52,620	26,290	50.0%
Lynn	62,982	35,734	56.7%
Martin	78,260	48,457	61.9%
Midland	16,278	6,742	41.4%
Motley	32,600	28,655	87.9%
Parmer	57,322	43,297	75.5%
Swisher	144,719	104,465	91.1%
Terry	122,117	91,777	75.2%
Yoakum	76,412	76,267	99.8%
25 County Totals	1,938,722	1,500,637	77.4%

NM Ag Expo in Portales Feb. 26-27

PORTALES, NM — Last-minute preparations are being made for the fifth annual New Mexico Ag Expo, with more than 6,000 visitors and 300-plus exhibitors expected for the Feb. 26-27 event.

Geared to dairymen, farmers and ranchers, the Ag Expo gets an early start Tuesday, Feb. 25, with the annual Farm-City-University Banquet at 7 p.m.

(MDT) at Eastern New Mexico University's Campus Union ballroom. Dr. Lowell Catlett, New Mexico State University economist and futurist, will be the featured speaker.

The vast field of diverse, yet ag-related events that make up the New Mexico Ag Expo begin Feb. 26 at the Roosevelt County Fairgrounds. Those who attend can expect to find

consultants, exhibitors and information on tillage equipment, feed, supplies, milking equipment, irrigation equipment and more.

An antique tractor parade, an auction of antique tractors and western memorabilia and a chuckwagon feed with live music are all planned. Some of the best and most modern ideas

Continued on page 3

Three Way, Lazbuddie hunt bi-district wins

The playoffs will rekindle old memories for Three Way coach Shawn Harrison and Lazbuddie coach Gary Grahn.

Three Way plays Springlake-Earth at 7 p.m. Thursday at Whiteface High School and Lazbuddie plays Texline at 7 p.m. Friday at Amarillo High School in the Region I-1A bi-district playoffs.

Thursday will be a homecoming for Harrison, who played at Whiteface. His parents still live there.

"I wanted to play at Whiteface because it's a small gym like we're used to and it will give my parents a chance to see us play," said Harrison, who led the Eagles (14-10) to their first district title since 1971.

The District 8-1A champion Eagles, who won 9 of their last 11 games, rely on a tough man-to-man defense that

limited district foes to 42 points a game.

"We got to play great defense to win games," Harrison said.

Three Way will have to slow down the Wolverines' running game.

"We can't let the score get up into the 60s and 70s," Harrison said.

District 7-1A runnerup Springlake-Earth (13-11) is led by James Williams and point guard Ty Moudy.

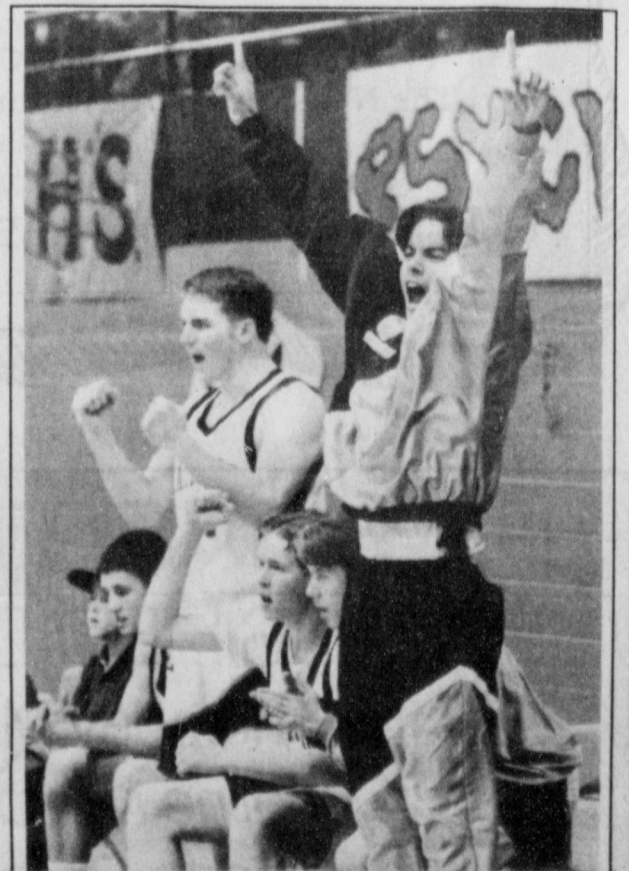
Williams, a 6-2 junior, creates matchup problems because he can post up guards and take big men outside.

Juniors Cody Wilson (6-0) and Jonathan Kindle (6-1) will draw the defensive responsibilities.

"I rather get beat from 20 feet than in the paint," Harrison said.

Three Way is led by wing Jesus

Continued on page 4



We're No. 1

Lazbuddie's Robert Nail celebrates last weeks win against Farwell that earned the Longhorns the No. 2 seed in District 3-1A.

IN CASE YOU MISSED IT

APPLETON, Wis. — A woman is suing her former psychiatrist for malpractice, claiming he convinced her she had 120 personalities — and then charged her insurance company for group therapy.

According to the Associated Press story, Nadean Cool testified in court that the \$300,000 treatment by Dr. Kenneth Olson left her suicidal and haunted by false memories.

AROUND MULESHOE

Muleshoe Little League parents meeting

The Muleshoe Little League will hold a parents' meeting at 7 p.m. Feb. 24 in the conference room of the Bailey County Electric Cooperative building to discuss the future of the program.

The meeting is very important, according to league representative David Marricle. If not enough volunteers are found, the program may be discontinued this summer.

For more information, contact Marricle at (home) 272-4863 or (work) 272-4504.

SPC offering bottom line farming courses

South Plains College will offer Bottom Line Farming Classes in March 5-7 and 12-14 at Muleshoe State Bank. The class will meet from 5-10 p.m.

The cost is \$350 per person, and is required by law for all farmers who are Farmer Home Administrator direct and guaranteed borrowers. The course includes 36 classroom hours and covers such topics as goal setting and priority management.

For more information, contact instructor John Norwood at 806-234-2414.

Cherry's performing at Three Way Baptist

Paul, Vanessa and Erin Cherry will be singing at Three Way Baptist Feb. 23. Services will be held at 11 a.m. and 6 p.m. A pot-luck meal will be served at noon.

The Cherry's will also perform Feb. 24 - 27 at 7 p.m.

Children can meet with the Cherry's each evening at 6:30 p.m. for Bible stories and singing.

Lazbuddie schools hosting special events

Lazbuddie Independent School District will host several events in correlation with Texas Public Schools Week.

March 4 will be grandparents and senior citizens lunch.

March 5 will be a parents breakfast and open classroom.

March 6 will be open house from 6:30 to 8 p.m.

School board classes offered in Amarillo

Area school board candidates will have an opportunity to learn more about the challenges and rewards of board service at a school candidate workshop Feb 24 at the Region 16 Education Service Center, located at 1601 South Cleveland in Amarillo.

The workshop will be held from 7-9 p.m. and will cover such topics as the duties and responsibilities of being on a

school board. Participants will also view *A Call To Service*, a Texas Association of School Boards video highlighting many aspects of board service.

Admission is free. For more information, call David Koempel at TASB, 512-467-0222, or 1-800-580-8272, ext. 6191.

Lusts' bull named to national report

Glen and Barbara Lust of Muleshoe own one bull listed in the 1997 Spring Sire Evaluation Report, published by the American Angus Association.

Issued in both spring and fall, the new report features the latest performance information available on 4,424 sires.

The information is in the form of Expected Progeny differences (EPDs). It is compiled from Angus Herd Improvement Records (AHIR) submitted by breeders to the American Angus Association.

Traits for which EPDs are available include birth weight, weaning weight, milk, yearling weight, and mature daughter size.

DSTV sales representative named for area

Digital Satellite Television, based in Lubbock, has named Rod Phillips as sales manager. Phillips' responsibilities include working with Digital Satellite System retailers in a 22-county service area which includes Bailey County.

For more information on DSTV, call Monica Kincer at (806) 788-0030 or (800) 687-0030.

LOCAL WEATHER AT A GLANCE

	HIGH	LOW	PRECIP
2/15	51	18	—
2/16	63	25	—
2/17	66	27	—
2/18	69	33	—

Source: R.G. Bennett, National Weather Service

Extended Forecast

Dry throughout the rest of the week, with lows in the upper 20's to low 30's and highs in the upper 50's to low 60's.

Shafer Nursery



- Now accepting additional customers to fill our Lawn Maintenance Schedule. (Mowing, edging, weed-eating)
- Now offering Lawn Sprinkler Installation & Repair
- Now is the time for Pre-Emerge Weed Control & Spring Fertilizer Application

Licensed & Insured For Your Protection

Call Now To Schedule Any Of Your Lawn Service Needs
272-4653

Nursery will re-open April 1st!

801 W. American Blvd. Muleshoe

Muleshoe Journal USPS 367820

Established February 23, 1924. Published by Triple S Publishing, Inc. Every Thursday at 304 W. Second, Box 449, Muleshoe, TX 79347.

Second Class Postage paid at Muleshoe, TX.

POSTMASTER: Send address changes to the Bailey County Journal, P.O. Box 449, Muleshoe, TX 79347.

We are qualified members of:

Panhandle Press Association, National Newspaper Association, West Texas Press Association and Texas Press Association

WEST TEXAS PRESS ASSOCIATION



MEMBER 1997

PPA

Panhandle Press Association

TEXAS PRESS ASSOCIATION

Scot Stinnett, Publisher

Lisa Stinnett, Vice-President/Comptroller

Rick White, Editor

Jessica Orozco, Classifieds

Pat Durben, Advertising

SUBSCRIPTIONS: Muleshoe Journal and Bailey County Journal

By Carrier Yearly - \$22.00

Bailey and surrounding counties: by mail - \$24.00

Elsewhere - \$26.00

Advertising Rate Cards on Application

Advertisers should check their ad the first day of insertion. The Journals will not be liable for failure to publish an ad or for a typographical error or errors in publications except to the extent of the cost of the ad for the first day of insertion. Adjustment for errors will be limited to the cost of that portion of the ad where the error occurred.

Have a nice day!

TEAGUE-STREBECK FORD-DODGE & THE PORTALES/ ROOSEVELT COUNTY CHAMBER OF COMMERCE

Presents the 5th Annual

AG EXPO



Educational Seminars & Demonstrations

State Agricultural Trade Show

• FARM • RANCH • DAIRY

Roosevelt County Fairgrounds Portales, NM

FEB. 26 & 27, 1997

Wednesday 9a.m.-6p.m., Thursday 9 a.m.-5p.m.

Farm/City University Banquet

Tuesday, Feb. 25
7 p.m.
Dr. Lowell Catlett
Speaker

REGISTER TO WIN

46"

Magnavox TV

at the Ag Expo
DONATED BY
NORWEST BANK
AND VALLEY
FURNITURE

Antique Tractor Show, Parade, Pull & Auction



AND MUCH MUCH MORE!

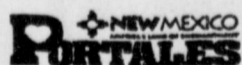
Live Field Demonstrations



For More Information, Call:

The New Mexico Agricultural Expo
200 East 7th Street
Portales, NM 88130

(800) 635-8036



We Ship Everywhere

1-800-658-6378 106 E. American Blvd. Muleshoe, Texas

And Country Junction

All Jewelry

15% OFF Storewide

includes all Montana Silversmith & Crumrine Jewelry & Buckles

Bailey 5X

BUY ONE, GET ONE FREE!

\$160

20X
Bailey Felt \$250

30X
Bailey Felt \$300



Resistol
Black Gold \$325

Great New T-Shirt Designs
Calf Roper - Team Roping - & More!
including the "Rodeo" Check
by Rodeo Wild

NEW SPRING ARRIVALS

For Ladies



Broomstick Skirts & Blouses Sets

NOW **\$47⁰⁰** a set

Spring Collection
Blouses & Pants
by Circle T

NOTICE

CLASSIFIED DEADLINES

For the Thursday Muleshoe Journal,

Deadline Monday 5:00 pm

For the Sunday, Bailey County Journal,

Deadline Thursday 5:00 pm

Ag forecast positive

By Stewart Truelson
American Farm
Bureau Federation

When Agriculture Secretary Dan Glickman told 8,000 Farm Bureau members in Nashville that optimism has come back to American agriculture, many of those farmers were probably thinking — when did it ever leave? As one Farm Bureau member said, "If you are not an optimist, you are not a farmer anymore."

But when Wall Street is also optimistic about agriculture, then maybe it's time to pay attention. A recent issue of Business Week took a look at America's leading industries and the prospects for 1997. Agriculture was right at the top!

On the positive side, Business Week reported robust global demand for farm products with rising incomes in East Asia. Higher prices for most U.S. farm commodities also means farmers can invest in technology.

On the negative side, the publication noted that grain and oilseed will increase, and the European backlash to genetically engineered farm products could spread. They are probably right that we will add to supplies, but progress is being made on the acceptance of biotechnology.

The mood in agriculture today is decidedly different than just a dozen years ago when Iowa Governor Terry Branstad declared a state of economic emergency and invoked a moratorium on farm foreclosures. All across America agriculture was back on its heels. Even so, farmers tried to be optimistic. They believed agriculture was absolutely critical to the well-being of the nation, and we couldn't go forward without it.

They were right. Now, farm incomes are up and export sales are at record highs. Agriculture is one of the bright spots in the economy and, if Business Week is correct, it will continue shining.

Last year's farm bill, the FAIR Act, gave farmers the freedom to farm with less government intervention in their farming decisions. It set the course of agriculture for seven years.

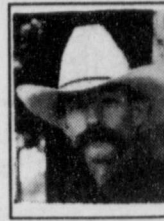
The battle that remains has been dubbed "freedom to trade." U.S. farmers want trade barriers and unfair competition reduced so they can take advantage of world markets. Our farmers still do not have the level playing field they seek.

While trade problems pose a threat to the farm economy, there are other issues that threaten the existence of farms. These include excessive government regulation, loss of property rights and high taxes.

The good news is that farmers are untied more than ever, and still wield considerable clout in Washington, D.C. They will be heard on the trade front and domestic policy issues.

Historically, agriculture has been subject to boom and bust cycles. Today's positive outlook can become tomorrow's bust. For now anyway, farmers' optimism seems justified.

In the year 2020



**BAXTER
BLACK**

ON THE EDGE OF COMMON SENSE

It is the year twenty-twenty. I am 74 years old. I quit team ropin' last year. Never did win a buckle.

The U.S. Team Ropin' Association kept raising the age limit to tie on. If I could have hung on six more years I might have finally caught up. They never would put me back to a two handicap. Doin' good at that one ropin' in 1996 cost me a lot!

The Republicans have maintained control of the U.S. Congress and Senate since 1994. Bill Clinton was president then. Yup, the same one who appointed himself and his wife to the Supreme Court at the end of his second term.

The congress has continued to pass conservative legislation. Now all public buildings are Smoking Only. Non-smokers can be seen on windy corners and office loading docks sneaking fresh air.

The teachers union (NEA), Sheep and the Cuban cigar have been added to the list of endangered species.

Minimum wage is still \$4.75. Workers are flocking to Mexico in search of high paying factory jobs. Spanish is now an official language.

The balanced budget amendment has never passed. It cost too much to maintain the Star Wars defense system which stands ready to retaliate should Granada ever bomb us.

The drive to enforce term limits on the U.S. Congressmen and Senators was finally put to rest when Congress passed the Thermond-Byrd "We know best" amend-

ment.

A movement is afoot in Congress to carve past President Gingrich's face on Mount Rushmore. The Redskins, (formerly Indians, Native American, Indiginous Peoples, etc) have objected, suggesting Russel Means head instead.

Ted Turner's vast land holdings including the states of Montana, New Mexico, and Fulton County, Georgia were recently sold by his heirs to Tyson International meat processors.

The senator from Arkansas, William Jefferson Tyson has introduced a bill to disallow marriage of practicing vegetarians. In spite of the fact the Carniphobia is now considered a disease like Alcoholism or Internet Surfing.

Puerto Rico is still not a state, nor is Washington, D.C. but Alberta and Saskatchewan are being considered for statehood as I write this.

Global worming has eliminated internal parasites as a cause of concern in pets and kindergartens.

Finally, the cattle business has benefited from the laws classifying feeders and producers and old cow vets with casino gamblers. Therapy is mandated and financed by the Department of Health and Judgement Impaired Services.

I get a check every month and go to my group sessions. They're all people like me... still tryin' to win a buckle. Mostly we talk about the old days.

Ag Expo

Continued from page 1

in the ag industry will be presented in carefully chosen seminars and demonstrations.

The seminars and demonstrations are coordinated by Floyd McAlister, Roosevelt County Extension Agent. Roosevelt County Extension Service has been a co-sponsor of the Ag Expo since its inception.

"Most ag shows are coordinated by professional management teams," McAlister said. "As far as I know, our Ag Expo is the largest of the all-volunteer ag shows."

Two of the most popular demonstration are the Working Dog demo by Orrin Barnes and Craig Cameron's gentle method of horse training.

McAlister also helps coordinate the farm equipment

show.

"We've created an ideal situation," he said. "Dealers are happy to have people enjoy operating tillage equipment themselves. We have a field just north of the fairgrounds specifically set aside for this purpose."

A seminar entitled "Options and Marketing" is expected to provide valuable information on buying futures, as well as information of markets and marketing. Doug Harrison of Southwest Commodities will conduct the seminar at noon both days of the Expo.

Only a few Ag Expo booths remain available to exhibitors. For information on booths or any other part of the Ag Expo, contact the Roosevelt County Chamber of Commerce at 1-800-635-8036.

ANNOUNCING

Plainview Production
Credit Association

**63rd Annual
Stockholders Meeting**

Saturday, February 22, 1997
Plainview Country Club

All Stockholders And
Their Families Are
Urged To Attend This
MEETING
Beginning At
4:30 p.m. Sharp
**Two Directors
Will Be
Elected!**

REGISTRATION 4 P.M.
BUSINESS MEETING 4:30 P.M.

Meal Will Be
Served Following
The Meeting



For All your Agricultural Credit Needs!

Offices In Plainview, Dimmitt, Floydada,
Friona, Muleshoe, Olton & Tullia

Lazbuddie sending team to Pantex Science Bowl

Lazbuddie High School will be among twenty-one Texas schools represented Feb. 22 at the Pantex Plant Science Bowl.

The Classroom Center of West Texas A&M University will be host to science teams from across Texas as they compete for a single spot in the National Science Bowl.

Lazbuddie students that will be competing are Heath Brown, Blake Mims, Dustin Weir, Cade Morris, Bryce Foster, Cameron Turner, Don Burch, Seth Black, and Adam St. Clair.

Unlike most competitions they have competed in, the Pantex Science Bowl will pit Lazbuddie directly against larger schools, including Lubbock High School and several teams from Houston.

"We enjoy the competition, and we'll do the best we can," said team instructor Dawn Weir.

The Science Bowl is operated similar to the television game show "Jeopardy!" with the exception that participants compete in teams of four instead of individually. The first half of the competition is played as a round-robin tournament, with winners advancing to the double-elimination final rounds.

Lazbuddie has advanced beyond the round-robin tournament for the past several years, according to Weir.

The Science Bowl was developed in 1990 by the U.S. Department of Energy to motivate high school students to pursue higher education in science, math and engineering. Pantex Plant has sponsored the Texas regional contest for the past six years.

MULESHOE MOTOR CO.

1997 Ford Mustang	\$1,000 CASH BACK OR 2.9%*
1997 Ford Taurus	\$1,000 CASH BACK OR 3.9%*
1996 Ford Explorer XLT 4x4	\$21,800
1995 Ford Escort LX (4 door, 17,000 miles)	\$8,699
1992 Ford Aerostar XLT (extended wagon)	\$9,900
1991 Oldsmobile Calais	\$4,900
1993 Ford F250 Supercab 4x4	\$9,900

*Many below NADA Wholesale. SHOP AND SAVE.
We want to be your car & Truck Dealer*

1225 W. American Blvd. 806-272-4251 or 800-432-7617

LOWEST PRICE OF THE YEAR!

2 Day Sale Feb. 21st & 22nd

chic[®]
Missy & Juniors Denim Jeans
YOUR CHOICE
15⁹⁹

EMPLOYEE OF THE MONTH
Bertha LaFuente

321 Main - Muleshoe 272-3478
Monday-Saturday 9:00-6:00

Mules finish tied for 2nd

SANFORD-FRITCH — Dimmitt's latest loss left Muleshoe boys coach Ralph Mason with a weekend of "what ifs" to ponder.

Muleshoe withstood a spirited Sanford-Fritch effort Friday that included a dozen 3-pointers and beat the Eagles 71-70 in a season-ending District 1-3A game.

Meanwhile, Dimmitt finished the regular season with three-straight losses and tied for second with Muleshoe at 10-4. The Bobcats (24-9) lost 68-66 at Perryton Friday.

But Dimmitt clinched district's No. 2 seed three games ago by virtue of a pair of regular-season wins against the Mules.

"It bothered me," Mason admitted when he saw the Dimmitt score in the paper Saturday. "I knew it was a possibility (that we could end up tied with Dimmitt), but I guess I didn't think about it much because I didn't think it would happen."

Mason is a proponent of playing halves in an eight-team district like 1-3A.

"If we did, we'd be in the

DISTRICT 1-3A

Boys

	District	Overall
Tulia	14-0	30-2
x-Dimmitt	10-4	24-9
Muleshoe	10-4	21-11
Dalhart	6-8	17-13
Perryton	6-8	13-15
Friena	5-9	8-11
River Road	3-11	12-19
Sanford-Fritch	2-12	11-21

(end of regular season)

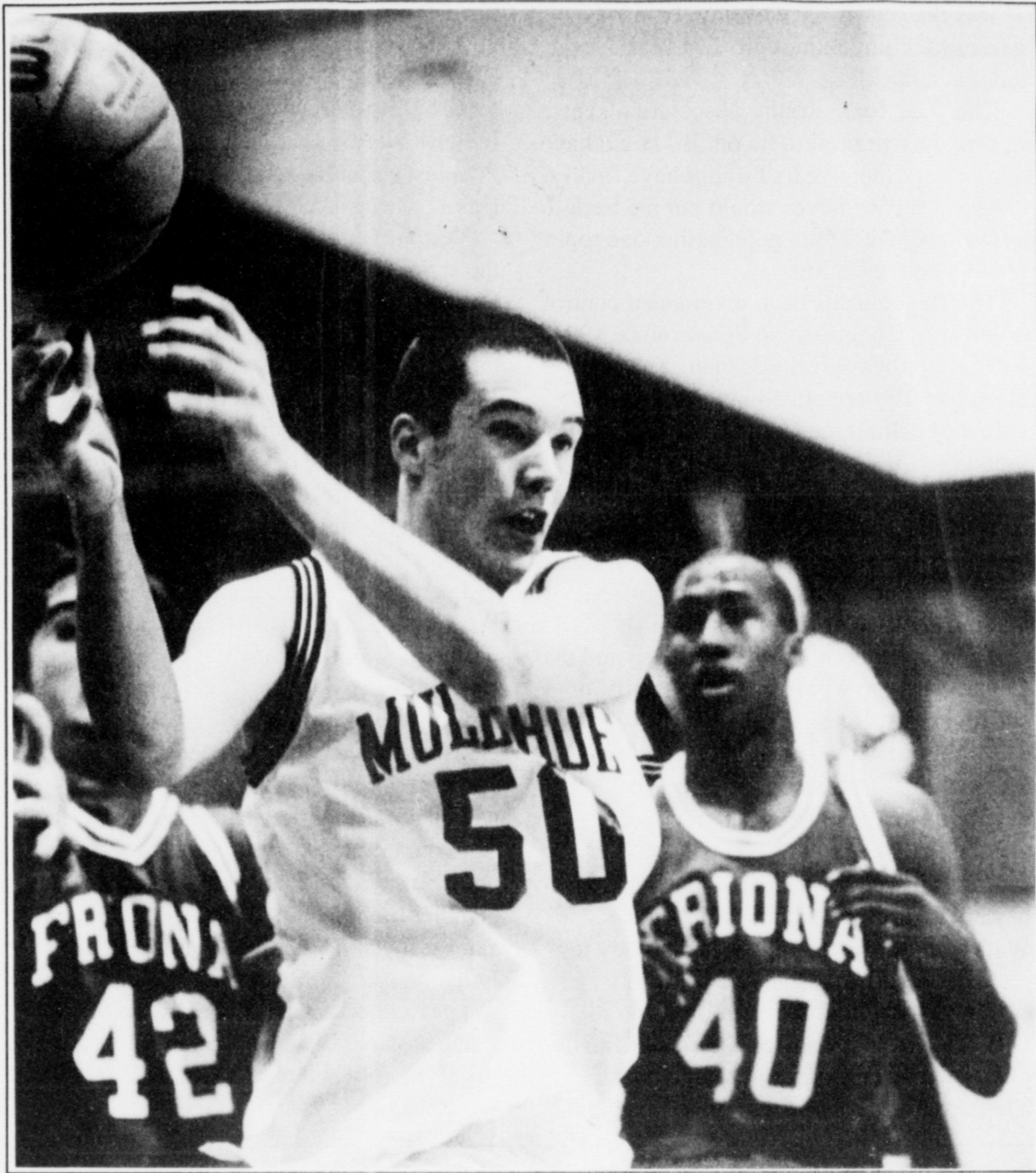
Friday's games —Muleshoe

71, Sanford-Fritch 70; Perryton 68, Dimmitt 66; Tulia 47, River Road 46; Dalhart 61, Friena 51
x-earned No. 2 seed in tie-breaker

(district) playoffs," Mason said. "I don't know how we'd compare with Dimmitt now, but I'd like to find out."

Dustin Cleavinger had 19 points, nine rebounds and six blocked shots and Matt McClanahan added 13 points, six rebounds and five assists Friday as Muleshoe (21-11) ended the season with three-straight wins and what is believed to be the most boys wins in school history.

Continued on page 3



Oops!

Muleshoe sophomore Dustin Cleavinger loses the handle on a pass during a game against Friena last week. The Mules defeated Sanford-Fritch 71-70 Friday and finished the season with a 21-11 record.

JV Mules end season with win at Fritch

FRITCH — B.J. Gonzales scored 14 points and Mason Sinclair added 12 as the Muleshoe junior varsity boys finished their season Friday with a 55-51 District 1-3A win over Sanford-Fritch.

Manuel Campolla added nine points for the JV Mules, who finished the season 11-17 overall and 3-11 in district.

Muleshoe lost an eight-point halftime lead and trailed 39-38 heading into the final eight minutes.

Muleshoe (55) — Sinclair 3 (1) 3-4 12, Pineda 20-04, Gonzales 3 (1) 5-8 14, Bruns 1 0-2 2, Hines 0 0-0 0, Black 1 0-0 2, Barrett 1 0-0 2, Mason 0 (1) 0-0 3, Campolla 3 3-4 9, Hahn 2 2-4 6, Nunez 0 1-2 1. Totals 16 (3) 14-24 55.

Sanford-Fritch (51) — Ricie 1 0-0 2, Uzzell 3 0-0 6, Henderson 1 2-4 6, Graves 0 0-0 0, McAlister 0 0-0 0, Shapely 2 2-4 6, Downs 0 0-0 0, Cole 5 0-0 10, Satterwhite 4 3-4 11, Brown 5 2-3 12. Totals 21 9-13 51.

Muleshoe 18 11 9 17 55
Sanford-Fritch 8 12 19 12 51

Don't be in a hurry to start painting the outside of your house. Allow for the morning dew to evaporate before getting started.

BASKETBALL

State playoffs

CLASS 3A

Boys
Region I
Bi-district
Tulia (W1) (30-2) vs Denver City (R2) (22-9), 7 p.m., Friday, Frenship HS
Monahans (W3) 19-8 vs Sonora (R4) (18-13)
Bowie (W5) (26-4) vs Merkel (R6)
Forth Worth Carter-Riverside (W7) (22-8) vs Comanche (R8) (14-15)
Dimmitt (R1) (24-9) vs Seminole (W2) (28-4), 7:30, Friday, Monterey HS
Clint (R3) (21-8) vs Greenwood (W4) (23-6)
Iowa Park (R5) (20-13) vs Breckenridge (W6) (26-5)
Bridgeport (R7) (16-9) vs Glen Rose (W8) (23-7)
GIRLS
Region I
Bi-district
River Road 45, Lub. Cooper 34

Dimmitt 61, Slaton 41
Clint 73, Sonora 53
Aledo 53, Hillsboro 42
Monahans 47, Colorado 43
Bowie 57, Ballinger 54
Comanche 67, Boyd 41
Henretta def. Merkel, score n/a
AREA
Tuesday
River Road (W1) (24-7) vs Clint (W3) (32-1)
Henrietta (W5) (28-2) vs Aledo (W7) (22-6)
Dimmitt (R1) (21-12) vs Monahans (R3) (14-15)
Bowie (R5) (25-8) vs Comanche (W8) (26-4)
CLASS 1A
Boys
Region I
Higgins (W1) (23-0) vs Claude (R2) (12-13)
Nazareth (W3) (25-4) vs Adrian (R4) (18-8)
Samnorwood (W5) (20-5) vs Hedley (R6) (18-10)
Lorenzo (W7) (24-4) vs

Whitharral (R8) (9-5)
Ropes (W9) (17-8) vs New Home (R10) (12-15)
Megargel (W11) vs Valley (R12) (20-8)
Southland (W13) (13-10) vs Klondike (R14) (20-6)
Throckmorton (W15) vs Rotan (R16) (18-8)
Allison (R1) (13-12) vs Gruver (W2) (18-12)
Lazbuddie (R3) (20-7) vs Texline, 7 p.m. Friday, Amarillo HS
Miami (R5) (19-8) vs Silverton (W6) (20-7)
Springlake-Earth (R7) (13-11) vs Three Way (W8) (14-10), Thursday at Whiteface HS
Smyer (R9) (19-7) vs Wilson (W10) (21-4)
Vernon Northside (R11) vs Paducah (W12) (24-1)
Guthrie (R13) vs Borden County (W14) (22-3)
Rochester (R15) vs Roby (W16) 26-3

ANNUAL MEMBERSHIP MEETING OF

BAILEY COUNTY ELECTRIC COOPERATIVE ASSOCIATION

to be held in the
MULESHOE HIGH SCHOOL
MULESHOE, TEXAS

FRIDAY, FEBRUARY 21, 1997

Muleshoe Band Wagon (Special Entertainment) 5:30 P.M.
Registration 5:30 P.M.
Free Meal (Bar-B-Que, Chicken and Fish) 6:00 P.M.
Business Meeting

Purpose of Meeting - - -

1. Give members a financial report, progress report and general condition of the Cooperative.
2. Elect two (2) directors for a term of three years.
DISTRICT #1 AND DISTRICT #2
3. Elect a committee on nominations, District #4, #5, and #7 to be voted upon at the 1998 annual meeting.
4. Consider and take action upon any other matters that might be presented or come before the meeting.

The nominating committee has nominated the following members to be voted on for the following districts.

DISTRICT #1
Darrell Stephens
Kevin Grand
Chris Bass

DISTRICT #2
Gary Hooten
Tommy DeLeon

Additional nominations for directors may be made at the meeting.

Note: If you are a member or shareholder of a company, corporation or civic organization and you are acting as a voting delegate, you must present a letter of authorization at the registration table signed by the president and secretary of that organization.

The facility where the meeting is to be held is wheelchair-accessible and handicapped parking is available. Request for sign interpretive service and Spanish interpreters are available upon request if received at least 48 hours prior to the meeting. To make arrangements for these or other handicapped services, call 806-272-4504.

DATED: FEBRUARY 10, 1997

NELSON CARLISLE, SECRETARY

Bi-district

Continued from page 1

Perez and point guard Kyle Kindle.

Perez averages 18 points a game. Kyle Kindle adds 10 points a game.

Three Way made the playoffs two years ago when Perez, Kindle and sixth man Lupe Landeros were sophomores.

Grahn chuckled when asked what he knew about Texline.

"I remember playing against them when I was in high school," said Grahn, who played for Vilas, Colo. 15 years ago. "I remember it took about two-and-a-half hours, to get there. But I don't remember

much more."

Grahn said Texline (14-9) reminds him a lot of Farwell because of Tornados' quickness.

"We have to stop them from running up and down the court," Grahn said.

Lazbuddie (20-7) beat Farwell 64-55 in a playoff game last week to earn the No. 2 seed in District 3-1A. The Longhorns built a 11-point halftime lead and then held on for the win.

Lazbuddie needs to continue to get the ball inside to 6-7 Jason Thomas and 6-2 Israel

Lopez, the Longhorns' leading scorers at 16 and 12 points per game respectively.

Farwell was able to shut down Lazbuddie's inside game in the second half by pressuring the entry pass.

Thomas and Lopez combined to scored 39 points, but just 13 in the second half.

"We've got to do a better job of setting screens and keeping our spacing," Grahn.

Lazbuddie, making its fifth-straight playoff appearance under Grahn, hasn't advanced past bi-district since his first year in 1993.



Tax law changes could affect the bottom line of your 1996 income tax return. Here are some changes you should know about.

Each year, there are changes to the tax rules, some due to new laws, some to changes provided for in previous laws. The following are some of the more common changes that could affect most people's income tax returns.

Individual Changes

Personal exemptions are worth \$2,550 for 1996.

For people who do not itemize their deductions, the standard deduction has increased. The new amounts are \$4,000 for single people who cannot be claimed as another person's dependent; \$5,900 for heads of households; and \$6,700 for married people filing jointly or qualifying widow(er)s. People who are at least 65 years old or blind get an extra amount added to their standard deduction. The standard deduction is limited to the larger \$650 or earned income for people who can be claimed as dependents by another, and to \$3,350 for married persons filing separately.

The earned income tax credit (EITC) will increase in 1996 for working people who qualify. The amount a person can earn and still be eligible for the credit increases, too.

Another change to the EITC relates to people with investment income, such as interest, dividends, rents and royalties. No one who has more than \$2,350 in investment income may claim the EITC.

And finally, the EITC will be denied to an individual who is not authorized to work in the U.S. In order to claim the credit, the taxpayer (and spouse, if married) must have a valid Social Security number. A valid taxpayer identification number will be required for each dependent or qualifying child as a condition for claiming a dependency deduction or a dependent care credit for the child.

Other changes affecting this year or future tax years will affect punitive damages received for personal injury or sickness, qualified state tuition programs, individual retirement account (IRA) contributions for spouses who do not work, a non-refundable credit for certain adoption expenses, and medical savings accounts.

Business Changes

The 1996 standard mileage rate for using one's car for business is up a penny to 31 cents a mile. The special rate for rural mail carriers is up to 46.5 cents a mile.

And for 1996, the maximum wages and self-employment income subject to Social Security tax is \$62,700.

The deduction for expenses in maintaining a home office has been clarified to permit a deduction for expenses related to a storage unit regularly used for inventory or product samples for tax years beginning after December 31, 1995.

Employers who were to begin making tax deposits electronically as of January 1, 1997, now have until July 1, 1997, to begin using the Electronic Federal Tax Payment System.

The exclusion for employer-provided educational assistance, which had expired December 31, 1994, has been retroactively extended through taxable years beginning before June 1, 1997.

TRACK

Muleshoe HS varsity

Feb. 22	Randall Relays
March 1	Muleshoe Relays
March 8	Panhandle Relays
March 14 (Fri.)	Cooper Relays
March 21-22	San Angelo Relays (Var. Boys)
March 21-22	Hereford Relays (Var. Girls)
March 29	Littlefield Relays
April 4 (Fri.)	Brownfield Relays
April 10 (Thur)	District meet (Randall HS)
April 25-26	Regional track meet Odessa)
May 9-10	State track meet (Austin)

BASEBALL

Muleshoe JV

Feb. 22	Seminole
Feb. 24	Lubbock Christ.
Feb. 28	Lubbock Cooper
March 10	Floyd (N.M.)
March 15	River Road
March 17	Portales
March 20-22	Seminole Tourn.
April 4	Portales
April 12	River Road
April 14	Portales
April 18	Littlefield
April 21	Portales
April 25	Tulia
May 1	Tulia
May 5	Littlefield

Home games in bold

Mendoza Irrigation Service

Sprinkler Erect, Repair & Move

We Have The Following Used Center Pivots For Sale:

- 1 - 7 Tower Valleys
- 2 - 1/4 Mile Lockwood
- 1 - 8 Tower Zimmatics
- 1 - 1/4 Mile Gillford Hill
- 2 - 10 Tower Zimmatics
- (Galv. Pipe)

Delivery & erection available. We also have new & used irrigation parts for most models IN STOCK!

NEW PIVOT SALES & SERVICE

806/272-5511 806/272-3787 806/272-6259-M
 RAMON MENDOZA Box 467
 JOHN MENDOZA Muleshoe, TX 79347

Mules

Continued from page 4

Mason said it was one of McClanahan's best games of the year.

Douglass Field's two free throws with four seconds left gave Muleshoe a 71-67 lead.

Nolan Silvey hit Sanford-Fritch's 12th 3-pointer at the buzzer.

Joey Williams led the Eagles (11-21, 2-12) with four 3-pointers and 14 points. Matt Parks added three 3-pointers and 13 points.

"You could kind of tell it

was the last game of the season and a long road trip," Mason said. "But give the kids credit, they decided they weren't going to lose."

Cyrus Norman added a pair of 3-pointers and eight points for Muleshoe, finishing the season with a team-high 40 treys.

Muleshoe (71) — Mason 1 (1) 1-2 6, 0-0 8, Norman 1 (2) 0-0 8, Williams 0 (1) 0-0 3, Field 3 2-2 8, Lewis 0 (1) 4-4 7, McClanahan 4 5-6 13, Kemp 1 0-0 2, Shelburne 1 0-0 2, Cleavinger 8 3-4 19, Clements 1 1-2

3. Totals 20 (5) 16-20 71.

FG: 25-56. 3-point FG: 5-18. Rebounds: 31, 8 off. (Cleavinger 9). Blocked shots: 7 (Cleavinger 6). Steals: 9 (Mason 3). Assists: 11 (McClanahan 5). Turnovers: 11. Total fouls: 23. Fouled out: none.

Sanford-Fritch (70) — Reed 0 (2) 0-0 6, Silvey 1 (2) 2-2 10, Moor-ing 2 (1) 6-8 13, Price 0 3-4 3, Parks 1 (3) 2-6 13, Holland 2 1-1 5, Williamson 1 (4) 0-0 14, Williams 2 0-1 4, Knoblock 1 0-2 2. Totals 10 (12) 14-24 70.

Total fouls: 18. Fouled out: Price. **Muleshoe 20 21 8 22 71**
Sanford-Fritch 16 20 16 18 70

Subscribe Today!
 Call the Muleshoe Journal
272-4536

First Love

Bridal Show

Coming Soon!

Saturday, February 22
 From 10 a.m. - 9 p.m. For your entertainment

Traditional Wedding Show at 1 p.m.

Wacky Weddings for 1997

will give you a show you won't forget. Show time 2 p.m.

- Amanda's • Flower's Today • Crescent Jewelers
- Karen's Balloons • Beverly Ray • Mary Kay • Zales
- Gordons • Sears • Freeman's • Maurices
- Rainbow Shop • Toni Autry BeautiControl • Regis
- JC Penny • Nathan McCreery • Green Thumb Nursery
- Furrys - Cake • Stephen Thetford • Tankersleys

North Plains Mall
 CLOVIS, NM

NATIONAL FFA WEEK

BEGIN A BRIGHT FUTURE

We Salute Our Area FFA Members And Agricultural Education During National FFA Week

Minsa Southwest Corp.
 E. Hwy. 84 272-5545

Bailey County Farm Bureau
 1612 W. American Blvd. 272-4567

Electronics Unlimited
 1532 W. American Blvd. 272-5044

Hi-Tek Automotive
 215 N. 1st Muleshoe 272-3480

Sherley-Anderson Lazbuddie Elevators
 Lazbuddie, TX 965-2922

We are proud of your hard work.

Decorators Floral & Gifts
 616 S. 1st Muleshoe 272-4340

Easter Grain Inc.
 Lazbuddie, TX 965-2817

Dale Oil Co. Inc.
 413 W. American Blvd. Muleshoe 272-5576

Sudduth Field & Co.
 104 W. 2nd St. Muleshoe 272-4291

Pivot Products and Kristy's Flowers
 710 E. American Blvd. 272-5536

Muleshoe Journal
 302 W. 2nd Muleshoe 272-4536

Posadas Radiator
 613 E. Ave. F Muleshoe 272-3269

McCormick Seed, Inc.
 400 E. Ash Ave. Muleshoe 272-3156

1104

RED WING SHOES
 Made in U.S.A.

The Fair Store
 120 Main 272-3500

Electric

Continued from page 1

uted through the smaller cooperatives to its rural customers. More than half of Bailey County's approximately 6,500 customer meters are tied to irrigation pumps. Seventy percent of Bailey County's total sales come from irrigation-type service.

Under the proposal, an affiliate of Golden Spread will build and own 50 percent of the Mustang plant.

The Quixx Corp., a subsidiary of SPS, and LS Power of St. Louis, Mo., each will own 25 percent of the facility.

Lloyd accused the PUC of pressuring Golden Spread Electric into building a much bigger plant than originally intended.

After denying Golden Spread's original application, the commission "recommended" building a bigger plant.

"We're dealing with PUC people that don't know what they are talking about," Lloyd said. "Just like all bureaucrats, they don't understand what's going on in the real world."

Golden Spread officials said the new power plant, which



will have the capacity to serve a population twice the size of Amarillo, will be 22 percent larger and 6 percent more efficient than originally proposed.

Lloyd felt Golden Spread put together a package to please the PUC and "lost all focus of what was in the best interest of all our members."

Lloyd agrees the new plant allows for greater flexibility because Golden Spread would be able to sell its excess power.

But he's not convinced that the cooperative can recover the cost of building Mustang Station, especially if the electric utility industry is "re-organized."

The "re-organization" would be similar to the deregulation of the telecommunications industry, and could set off a similar bidding war.

Current Bailey County's rates are 16 percent higher than for SPS customers within Muleshoe city limits. The main

reason is the physical cost of delivering the power into rural areas, where the density rate is two meters per line mile, compared to 68 within the city.

Lloyd also noted that the cooperative's fuel adjustment cost from SPS has gone up 33 percent in the last year.

Bailey County Electric is not obligated to join the Mustang Station project.

But if the local cooperative does join, it would be committed for the life of the plant.

Lloyd will give his recommendation to the seven-member board of Bailey County Electric, which has final approval.

Formed in 1939, Bailey County Electric also services parts of Parmer, Castro, Lamb and Cochran counties.

Golden Spread's other member systems are South Plains in Lubbock, Deaf Smith in Hereford, Greenbelt in Wellington, Lamb County in Littlefield, Lighthouse in Floydada, Midwest in Roby, North Plains in Perryton, Rita Blanca in Dalhart, Swisher in Tulia and Tri-County in Hooker, Okla.

Lloyd said he welcomes comments. He can be reached at 272-4504.



To suitably adjust a workbench if you stand at attention, your wrist is at the right height for the top of a metal-working vise.

Protect your rights! "Render" your taxable property by April 15th.

A "rendition" is a report to the appraisal district that lists all the taxable property you owned or controlled on January 1st of this year. The rendition form is available at your local appraisal district office...or you may draft a similar form.

Who must file a rendition?

You must file a rendition if you own tangible personal property that is used to produce income — such as the inventory and equipment used by a business.

Are there any advantages to you?

The advantages of filing a rendition are:

- You give your opinion of your property's value. If the appraisal district believes the value is higher, it must notify you in writing of the higher value and explain how you can protest that value to the appraisal review board.
- You record your correct mailing address so your tax bills will go to the right address. If your bill is mailed to the wrong address, the law still holds you responsible for paying your taxes on time or paying extra charges for late payments.
- You can also file a "report of decreased value" to notify the appraisal district of significant depreciation of the value of your property in 1996. The district will look at your property before assigning a value in 1997.

What's the deadline?

The last day for filing 1997 renditions is Tuesday, April 15. Call your appraisal district for the last date the rendition may be post-marked, if mailing. You can get an extra 15 days if you ask for it in writing by the April 15 deadline.

Where do you file?

File renditions with your local appraisal district at:

Bailey Central Appraisal District
302 Main Street
Muleshoe, TX 79347
806-272-5501

For more information stop by your appraisal district and pick up

"Texas Property Taxes: Taxpayers' Rights, Remedies & Responsibilities"

OR CONTACT:
Comptroller's Property Tax Division
P.O. Box 13528
Austin, TX 78711-3528

A public service announcement courtesy of this newspaper.

SPS

Continued from page 1

when they began plans to merge with Public Service Company of Colorado. They stated personal service was a vital business tool in West Texas.

PSCo. told SPS they had successfully used a regional calling center for the past two years.

SPS will close its local billing office in Muleshoe in August and relocate technicians to the SPS warehouse on American Boulevard.

In addition to the Muleshoe office, 17 other offices in Texas and new Mexico will close within the next two months.

Payments for both electric companies will be handled by Amarillo National Bank, which is expected to save them \$1

million over the next five years.

Reed said customers will continue to receive electrical service from local technicians, but their calls will be routed through the call stations.

"I guess in 75 years, we've been spoiled," said Councilman Cliff Black. "We'll miss the loss of personal contact."

Black also questioned Reed about the amount of time it would take customers to receive service if they have to call out of town.

Reed told council members PSCo. has used a Denver-based calling center to handle customer service for the past two years and has found it to be efficient.

When asked by council members about billing options,

Reed said SPS is already searching for one or more local businesses to serve as payment centers so customers can continue to pay their bills locally.

Council Roger Williams asked Reed about the future of SPS's involvement with the community.

Reed said although some SPS offices will remain open, they will serve up to ten towns each. He did not believe that managers could find the time to become actively involved in each community.

SPS has discussed the possibility of hiring and economic development director who could work more extensively with local chambers of commerce.

Settlement

Continued from page 1

that serves as the city reservoir in 1994.

The original cost of the liner was \$70,000.

Fisher said he would not discuss specific dollar amounts until a settlement was reached.

In other city news, the council unanimously approved the hiring of a Jean Schotts as city

attorney.

The Lubbock attorney replaces Mike Caldwell effective immediately. Caldwell announced his resignation in November.

Muleshoe's two other practicing attorneys turned down the job, citing time constraints. Schotts, a private practitioner,

served as a trial lawyer for the cities of Lubbock and Garland.

He will be paid a flat rate of \$90 per hour.

Caldwell was paid a \$750 a month retainer fee plus other compensation, Fisher said.

The city received four applications for the job.

— Rick White

Think Quick!

GM Goodwrench Quick Lube Plus oil change. It's fast — or it's free!

Bring your car or light truck to us for a GM Goodwrench Quick Lube Plus oil change. We'll complete all of these services in 29 minutes or less or your next oil change is free:

- Refill your engine with up to 5 quarts of GM Goodwrench Motor Oil
- Install a new AC Delco Oil Filter
- Perform a complete chassis lube
- Check fluid levels: brake fluid, differential fluid, power steering fluid, transmission fluid, windshield washer fluid, transfer case fluid (4wd vehicles)
- Inspect: drive belts, hoses, air filter, tire pressure

SPECIAL \$17.00

GM Goodwrench QUICK LUBE plus

DOC STEWART
CHEVROLET • GEO • BUICK

2500 Mabry Drive
Clovis, NM
505-763-4465
1-800-530-8842

Home Folks Caring For Folks At Home.



MULESHOE AREA HOME HEALTH

Agency

Featured Patient

Rue Kimbrough, of Muleshoe, was married to the late Robert Kimbrough. She has two sons - Bob Kimbrough of San Antonio and Lee Kimbrough of Muleshoe. She has five grandchildren and eleven great grandchildren.

Mrs. Kimbrough is a charter member of the Richland Hills Baptist Church. She was a Pink Lady Volunteer for years at the hospital and nursing home. She taught Sunday School for just about 50 years.

The ladies at the Muleshoe Area Home Health Agency are perfect and she loves everyone of them.



Rue Kimbrough

To receive Home Health Services, talk with your physician or talk with hospital personnel when you are hospitalized.

24 Hour # 272-3346

Local Nurse on call 24 hours a day to offer prompt service.

We accept Medicare, Medicaid and Private Insurance
It Is Your Right To Choose The Home Health Agency You Prefer.



Affiliated with Lubbock Methodist Hospital Systems

FREE Information on New Out Of Hospital Advance Directives will be available soon!

Watch this ad for further info as it comes available.



A time to reflect

A Honda Prelude parked outside of a local doctor's office reflects "Old Glory" in its back window. Flags were raised all over the city in honor of Presidents Day.

MHS debaters third at district

Muleshoe High School's David Keller and Scotty Mills placed third at the District 1-3A cross-examination debate tournament Saturday at West Texas A&M University.

Sanford-Fritch and Friona each earned a trip to the state tournament by placing first and second, respectively.

Cross-examination debate is

a form of debate where students argue the pros and cons of government policy, law, and regulations. The subject for 1997 was government policy regarding juvenile crime.

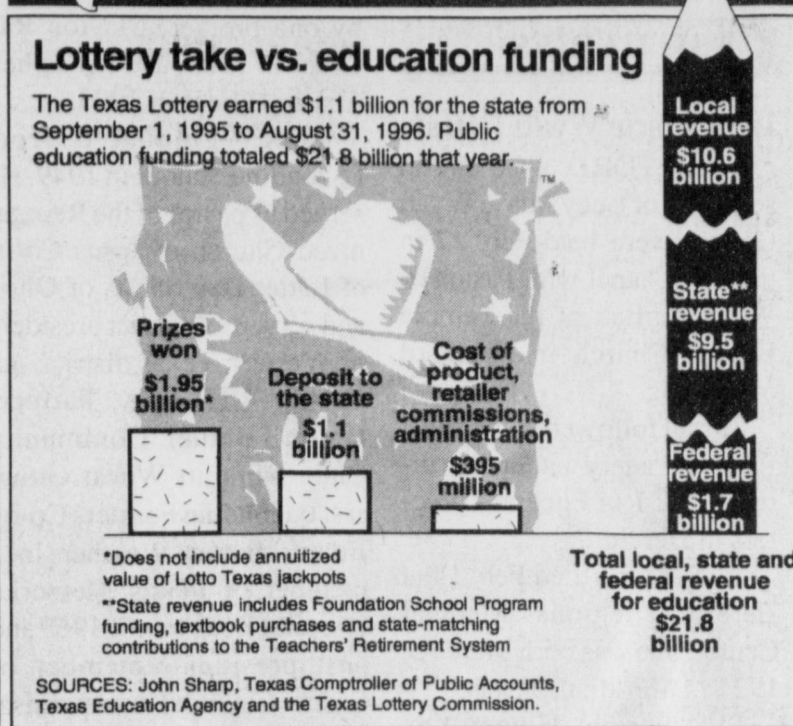
Other MHS debaters at the tournament were Phillip Hardt, Chris Gatewood, Michelle Lopez and Neomi Cruz.



Artist of the month

Jeanette Swanson of Anton was named the Muleshoe Art Association's artist of the month. Swanson has a degree in fine arts from Texas Tech and has studied with several well-known artists in recent years.

Keeping an eye on Texas



Sorghum production shows huge increase

National sorghum grain production in 1996 increased 74 percent to an estimated at 803 million bushels, the largest production level since 1992. Texas production increased 71 percent to 182 bushels.

Area harvested for grain was estimated at 11.9 million acres, up 44 percent from 1995. Harvested acres in Texas increased by 1.4 million to 4.4 million in 1996.

Texas grain yield were well below the national average, dropping from 54 bushels per acre to 48. National yields were at 67.5 bushels per acre, were 11.9 bushels above the 1995 average.

SCAC NEWS

The January SCAC meeting was held Jan. 20 at the home of Chelsey Conklin. Twenty-two of the thirty-three members attended.

President Heather Hooten led the meeting. Chris Shelburne gave the prayer and Stacy Harlan read the minutes. The guest speaker, Chris Mardis, was introduced. Mr. Mardis, a computer teacher at MHS, spoke about the importance of the community, computer programs offered at the school and his own hobby of roping. He was then honored as the SCAC Citizen of the Month.

Old business included discussion of the club T-shirts. New business included ideas for fund-raisers. The meeting closed with the next meeting set for Feb. 17 at the home of Cari Faver.

Area Business Directory

Classic & Rattler Ropes

Bits, Headstalls, Halters, and all kinds of Tack and Feed

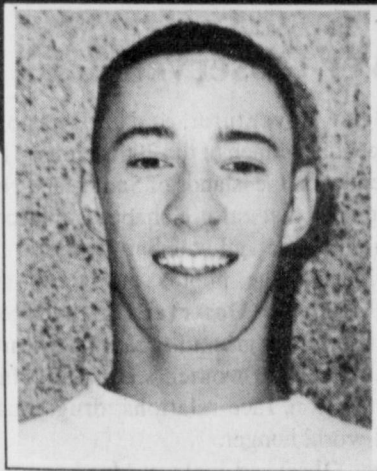
Muleshoe Feed Barn
311 W. American Blvd. 272-5626

SPRING

It's Here!

Muleshoe Art Loft
1529 West American Blvd. 272-3485

Western 66 Congratulates the Mule & Lady Mule of the Week!



COREY WILLIAMS
Senior Corey Williams, captain of the team, scored 5 points and had 5 assists in the game against River Road. Corey is the son of Roger and Dawn Williams.

- JO BETH GILLELAND
- KRISTEN NICHOLS
- HEATHER HOOTEN
- BRANDI HARRISON
- PRISCILLA AGUIRRIE

Thanks to these seniors for their hard work and leadership all season!

Special on Brake Jobs

James Crane Tire Co.
107 Main Muleshoe 272-4594

Sheree's Attic

Merle Norman Cosmetics

Winter Clearance still going on **40%-60% OFF**

Come in and see New Spring Selections

Owner Sheree Hunt
1519 W. American Blvd. 272-3459

GOODYEAR'S SMOOTHEST RIDING REAR FARM TIRE

Why is Goodyear DT710 Radial the perfect choice for farmers who spend a lot of time in the tractor—both in the field and on the road—as well as for short wheel-base, and open cab tractors? Because the DT710 reduces ride disturbance to the operator with its patented tread design of interlocking center lugs. Dozens and dozens of cutting edges effectively grip the soil, providing increased traction. DT710's traction on untilled soil outperforms other Goodyear radials. And the open shoulder design and high lug angles maintain that traction through self-cleaning, even when soil conditions are less than ideal. In addition, the flexible radial sidewall is a second generation, natural-shaped carcass which allows the DT710 to deflect more easily than a bias tire resulting in a longer foot-print. The radial belts in the tread area support the lugs and provides a better bite into the soil. The overall results are better traction, improved ride, longer wear, and less fuel consumption than any bias ply tire.

SPECIAL BUY
On Goodyear DT710 Radial 184R38*

James Crane Tire Co.
107 Main Muleshoe 272-4594

A PAT ANGELEY
Certified Public Accountant

1910 W. American Blvd.
Muleshoe, TX 79347
272-7502 Fax: 272-4198

PHILLIPS 66 SUPERCLEAN UNLEADED GASOLINES

The CardStop
24 Hour Fuel Service
715 W. American Blvd., Muleshoe
To apply for a card, contact WESTERN 66 272-4556
We have diesel!

Fall & Winter Merchandise

50%-60% OFF

New Spring Arrivals Arriving Daily

The Fig Tree
220 Main 272-7561
Muleshoe

PUBLIC RECORD

OBITUARIES

Lucy Marie Wyatt Cottam

HEREFORD — Funeral services for Lucy Marie Wyatt Cottam were held Feb. 17 in the Rix Chapel with Pastor H. Wyatt Bartlett of the Temple Baptist Church in Hereford officiating.

Burial followed in the West Park Cemetery under the direction of Rix Funeral Directors in Hereford.

Lucy Marie died Feb. 14 at Hereford Regional Medical Center. She was born March 3, 1921 in Meridian, Texas.

She married Homer Lee Wyatt in 1940 in Plainview, Texas. They resided in Muleshoe until he died June 14, 1964. She then married Bernard Cottam and resided in Hereford for the past 28 years. He later preceded her in death April 13, 1995.

She was raised in Kress, Texas and graduated from Kress High School. She was a member of the Greenwood Baptist Church. She also enjoyed all sorts of craft making. She was also preceded in death by one son in 1962 and one sister.

She is survived by two daughters, Elaine Parker of Muleshoe, Gennelle Ward of Hereford; 9 grandchildren and 10 great-grandchildren.

The family suggests memorials to the Alzheimers Association.

Reta Joy Welch

James Ervin Welch

DIMMITT — Funeral services for Reta Joy Welch, 62, and James Ervin Welch, 64, were held Feb. 18 at the First Baptist Church with Apostle David Bronc, High Priest Richard Foster with RLDS, Randy Gressett, youth minister of First Baptist Church of Dimmitt officiating.

Burial followed in Castro Memorial Gardens in Dimmitt under the direction of Foskey-Lilley-McGill Funeral Homes, Dimmitt.

Reta and James Welch died Feb. 14 in a train-car accident in Sudan.

Reta was born in Runningwater Draw, Texas. James was born in Lazbuddie. They were married July 14, 1951 in Olton.

Reta was the drug education liaison for the Dimmitt Independent School District and a real estate agent. She graduated from Lazbuddie Schools in 1951.

She was active in 4-H, Campfire Girls, Dimmitt Garden Club, Extension Homemakers, Dimmitt Book Club, United Way Board, Plains Memorial Hospital Auxiliary, Satellite School, Friends of the Library, Democratic Party, and member of the Reorganized Church of Jesus Christ of Latter Day Saints. She served as Pastor of the RLDS Church in Olton, ordained as an Elder in 1988, was a High Priest & President of the West Texas district, served as member of Womens Ministries Commission for the United Nations, was active in D.A.R.E. program, PAL program, Friendly Helpers Coordinator, coached Odyssey of the Mind Teams in 1995 & 1996, past president of Dimmitt Chamber of Commerce Board of Directors.

She was preceded in death

by one brother, Clayton Ray Graef in 1985, and her father, Charley Graef in 1993.

James graduated from Lazbuddie School in 1949. He served as pastor of the Reorganized Church of Jesus Christ of Latter Day Saints of Olton and served as district president of Western Texas district, active in 4-H, FFA, Farmers Union, Bethel Community Club, Dimmitt Wheat Growers, Lazbuddie Farmers Co-op Board, Better Weather Inc., member of Plains Memorial Hospital Board since 1969 and past president, member of Castro County Tax Appraisal Board, Outreach International Board & Camping Association for the RLDS Church, as Evangelist-Patriarch of the Reorganized Church of Jesus Christ of Latter Day Saints, he was a farmer and active in the Democratic Party. He was preceded in death by his father, step-father and a niece.

Survivors of the couple include her mother, Edith Graef of Dimmitt; his mother, Beulah Mae Lawhon of Lazbuddie; one son, Mark Welch of Dimmitt; two daughters, Sharon Welch of Columbia, Mo., Rhonda Neighbour of Des Moines, Iowa; 4 grandchildren; her sister, Charlene Phillips of Clovis, N.M.; his sisters, Billie Embry of Muleshoe, Joy Parsons of Prescott, Ariz., Janice Cole of Farmington, N.M.

The family suggests memorials be made to RLDS Temple Fund, P.O. Box 1059, Independence, MO. 64051; or West Texas & New Mexico Camping Association, Jeff Newcom Business Manager, 2517 Landman N.E., Albuquerque, N.M. 87112; or any favorite charity.



Have a nice day

ANNIVERSARY



Pollards celebrate 60th anniversary

Mr. and Mrs. Carl Pollard of the Three Way area are celebrating their 60th wedding anniversary. They have five children, Howard Pollard, Virginia Williams, Mike Pollard, Kathy Wallace, and Terry Pollard; 11 grandchildren and 13 great-grandchildren. The Pollards were married Feb. 24, 1937 in Portales, N.M. They now reside in Lubbock. The Pollards will celebrate their anniversary at a later date, and will announce as to when and where. The Pollards new address is 111 Frankford Ave. #9A, Lubbock, Texas 79416.

ENOCHS NEWS

By Mrs. J.D. Bayless

Mrs. J.C. Snitker returned home Friday from a two week visit with her daughter, Mr. and Mrs. Rodney Vasquez and family in Ashburn, Va.

Mr. and Mrs. Ronnie Epstine and children, Ashley and Chandler of Amarillo spent Friday and Saturday with her parents, Mr. and Mrs. Dale Nichols.

Mr. and Mrs. Harvey Blackstone drove to Friona Wednesday to attend the Funeral service of Roy Miller at the Calvary Baptist Church in Friona in the afternoon.

Visitors at the Baptist Church Sunday morning were Mrs. Opal Snitker Moore and daughter Marsha and her friend Kay Miller of Albuquerque, N.M. also Cheryell Harvey a missionary from Jordan. Marsha and Kay sang a special song. Marsha also informed us about the work she did for the Chapel in the Albuquerque

Hospital. She brought a message of prayer from Jeremiah. Other visitors were Mr. and Mrs. Curtis Snitker from Hart and Haley Dalton from Littlefield.

Rev. Clarence Tedder brought the evening sermon.

Guests in the home of J.C. Snitker Sunday afternoon were Opal, Marsha, Curtis Snitker, Kay Miller, Rose and Dale Nichols. They celebrated J.C. and Marsha's birthdays, they played music and sang gospel songs.

Megan Pollard of Morton spent Friday night with her parents, Harry and Lill Pollard.

Mrs. Faye Jones and daughter Darlene Alexander of Littlefield honored their grandson and son Kelly with a birthday dinner. It was a hamburger cookout on Saturday, their were 11 in attendance. His birthday was the 13th of Feb.

HERITAGE FOUNDATION BOARD MEETING

The board of directors of the Muleshoe Heritage Foundation met Feb. 10 at the Muleshoe Depot.

President Robert Shafer conducted the meeting and discussions were held about the Heritage center activities.

A focal point of discussion was about getting the community to use the center more, how to conduct tours of this historic complex and how to keep the center running efficiently. Board members discussed the feasibility of a fence around the property and the installation of a safety system.

Chuck Smith reported that the outdoor drama, "Keepers of the Legend," presented each year at the Muleshoe Heritage center will be held in August this year for probably four nights. Heritage board and drama representatives will work out details about usage of the Heritage grounds and buildings.

The president noted that the

Bicycle Run group had been approached about having bicycle races in conjunction with the regular bicycle ride held Labor Day weekend. Board members agreed that this should be a profitable venture. Further discussion will decide this issue.

It was decided to actively continue the inventory of items donated to the center. A plan for usage and recognition for those who donate items was discussed. The advantage of having a video made about the history of the Heritage center to be used for tours, special occasions, etc. was contemplated by board members. Further study will be conducted about this later.

Board members attending the monthly meeting were Robert and Kim Shafer, Chuck Smith, Larry Nickels, Dan Throckmorton, Kristy Price, Vivian White, Gordon Green and Jean Allison.

The Terry Travis family would like to thank all of you who so generously have given your gifts and friendship and love to us during the time of losing our home. We would especially like to thank the Lazbuddie varsity girls basketball team for their gifts and friendship to Candace.

TERRY, NEDDA, CANDACE & BREA

KENW-TV
Public Television

Margaret Mead: An Observer Observed

Margaret Mead, anthropologist, adventurer, and international celebrity, was one of the most influential women of the 20th century. Her pioneering studies of youth and gender on the islands of Samoa and New Guinea challenged society to consider that culture shaped adolescent tempestuousness and role definition in men and women.

Using never-before-seen archival footage, photos, interviews, and dramatic re-creations, **Margaret Mead: An Observer Observed** tells the story of this renowned scientist whose ground-breaking research helped to shape American attitudes toward women's equality, child rearing, sexuality, nuclear proliferation, race relations, drug abuse, population control, pollution, and world hunger.

Margaret Mead: An Observer Observed looks at Mead not only as a professional anthropologist, but examines her controversial personal life as well. Mead was married and divorced three times (to fellow anthropologists).

Margaret Mead: An Observer Observed will be broadcast Monday, February 24th at 9:00 p.m. on KENW-TV.

FRONTLINE

"What Jennifer Saw"

On a hot July night in 1984, in Burlington, North Carolina, Jennifer Thompson, a twenty-two-year-old college student, was asleep in her apartment when she heard a noise. She opened her eyes to see a black man with a knife. In a harrowing account of that night, Thompson says, "At that point, I realized that I was going to be raped. I didn't know if he would kill me." If she lived, she promised herself she would make sure he paid the price.

Days later in a police lineup, she picked out Ronald Cotton as the rapist. Based largely on Jennifer Thompson's testimony, Cotton was convicted and sentenced to life in prison. Cotton always protested his innocence.

Then in 1995, new DNA evidence showed Cotton had not raped Jennifer Thompson and set him free. He had spent eleven years in prison for a crime he did not commit.

In an exclusive interview with **Frontline**, Jennifer Thompson tells the story of her brutal rape and how, twelve years later, she must now confront the consequences of her mistaken identification.

"What Jennifer Saw" on **Frontline** will air Tuesday, February 25th at 9:00 p.m. on KENW-TV.

Channel 3 Television from Eastern New Mexico University, Portales, New Mexico

Muleshoe Cattle Market
Saturday, Feb. 15, 1997
572 head of livestock was sold.

The market sold steady on stocker steers with \$1-\$2 lower on stocker heifers. Feeder heifers were \$1-\$2 lower while feeder steers were steady to a dollar higher. Pairs, bred cows and packer cows all sold steady from a week ago.

REPRESENTATIVE SALES

Seller, City	# Type	Wt.	CWT or PH
Ronnie Short, Hereford	Ywf. Bull	270 lbs.	at \$83.00
Kay Hulls, Friona	Char. Str.	310 lbs.	at \$82.00
Jerry Tully, Plains	4 Blk. Bulls	315 lbs.	at \$85.00
Reel Ent., Amarillo	2 Blk. Strs.	375 lbs.	at \$79.00
Joe Odom, St. Vrain, NM	Blk. Bull	395 lbs.	at \$74.00
LG Layman, Muleshoe	Red Bull	420 lbs.	at \$75.00
Dorothy Neal, Fieldton	7 Mixed Strs.	330 lbs.	at \$78.00
Carson Cattle, Bovina	Char. Str.	515 lbs.	at \$72.50
Otey Shadden Farms, Abernathy	4 Limo Strs.	538 lbs.	at \$74.00
J.C. Parvin, Friona	Char. Str.	605 lbs.	at \$72.50
IGS Farms, Muleshoe	6 Mixed Strs.	613 lbs.	at \$71.00
J.C. Livestock, Levelland	16 Wf. Strs.	616 lbs.	at \$71.00
Owen Young, Levelland	2 Blk. Strs.	633 lbs.	at \$72.00
Duane White, Farwell	10 Rwf. Bulls	746 lbs.	at \$60.50
Curtis Drager, Friona	2 Mixed STrs	713 lbs.	at \$68.00
Carroll Cook, Friona	3 Limo. Hfns.	242 lbs.	at \$71.00
Jerry Tully, Plains	4 Mixed Hfns.	281 lbs.	at \$67.50
Reel Ent., Amarillo	Bwf. Hfr.	370 lbs.	at \$65.00
Otey Shadden Farms, Abernathy	6 Limo. Hfns.	471 lbs.	at \$65.25
Green Harvest Farm, Earth	Blk. Hfr.	440 lbs.	at \$63.50
Rex Bounds, Olton	Red Hfr.	490 lbs.	at \$64.00
JV Stancell, Muleshoe	6 Mixed Hfns.	518 lbs.	at \$62.25
IGS Farms, Muleshoe	5 Mixed Hfns.	646 lbs.	at \$61.50
Owen Young, Levelland	3 Mixed Hfns.	650 lbs.	at \$61.25
Carson Cattle, Bovina	3 Char. Pair		\$520.00
Carson Cattle, Bovina	3 Blk. Pairs		\$530.00
Ezekel Frausto, Amherst	Blk. Pair		\$570.00
LG Layman, Muleshoe	2 Red Cows, P7		\$430.00
Jerry Tully, Plains	Blk. Cow, P6		\$350.00
Carry Stancell, Muleshoe	Blk. Cow	1605 lbs.	at \$34.50
Bobby Rogers, Hale Center	Blk. Cow	1355 lbs.	at \$37.00
Wanda Layton, Morton	Yell. Cow	1160 lbs.	at \$35.50
Demetrio Suillen, Muleshoe	Ywf. Cow	1820 lbs.	at \$38.00
4C Farms, Bovina	Char. Cow	1065 lbs.	at \$37.00
4C Farms, Bovina	Char. Cow	1225 lbs.	at \$35.00

The Muleshoe Cattle Market is brought to you each week by Muleshoe Livestock Auction, located east of Muleshoe on U.S. 84. Muleshoe Livestock conducts sales every Saturday, beginning with hogs, sheep and goats at 10 a.m. and cattle following at approximately 12 noon.

ADVANCE CONSIGNMENTS FOR NEXT WEEK
2 loads of Bred Cows & Pairs
2 loads of Calves, 3-600 lbs. already weaned.

FOR INFORMATION ON SALES OR TO CONSIGN CATTLE, CALL (806) 272-4201.

Journal Classifieds

Call 272-4536 Deadlines: For Thursday, 5 p.m. Monday; For Sunday, 5 p.m. Thursday Call 272-4536

Bailey County FSA News

by Bailey County Agent Kim Hanlin

INSURANCE REMINDER

Producers having a Catastrophic Insurance Policy with this office need to bring in the production records from the 1996 harvested crops. These production records need to be brought in regardless of whether or not you file a claim. The records are needed to figure your APH yield. March 17, 1997 is the final date to purchase CAT Insurance through this office. Insurance must be purchased on cotton, sorghum, corn, soybeans, peanuts and dry beans. Producers must purchase insurance or sign a waiver to be eligible to receive payments. Producers with CAT insurance through the Bailey County Office on wheat that reported wheat for harvest and now do not intend to harvest all the acres need to revise the acreage report by March 17, 1997. If you do not report the acreage as not being for harvest the wheat will be considered insured and will have to have an appraisal before the acreage can be destroyed.

PAYMENT LIMITATIONS

To be eligible for AMTA payments and all other program payments, producers need to file payment forms. Producers will remain ineligible for payments until these forms are submitted. Updates must be made when any changes are made to a farming operation. Payment limitations determinations are subject to State Office review, therefore, it is very important that you provide accurate information.

FRUITS AND VEGETABLES

Producers are to remember that fruits and vegetables, with the exception of lentils, mung beans and dry peas, are not to be planted on contract acres. You will be in violation of the program contract if you plant fruits and vegetables with the following exceptions: (a.) A farm that has a history of producing FAV may plant on contract acres with an acre for acre reduction in contract payments for the crop year planted. (b) If a producer has a history of producing a specific FAV, he may continue to plant that crop on contract acreage if he does not exceed the 1991 through 1995 average plantings. Keep in mind that an acre for acre reduction in payment for each contract acre planted will apply. (c.) Fruits and vegetables may be planted as a double crop with a contract commodity on contract acres without a payment reduction, as Bailey County has been approved a double-cropping region. (d.) FAV's may be planted on excess acreage with no payment reduction. There is no tolerance for fruits and vegetables planted on contract acreage. You are encouraged to use Measuring service for these crops. Home gar-

dens, less than two acres, are not considered FAV, as long as they are not marketed.

LOANS

Commodity loans and loan deficiency payments are available to producers who have produced contract commodities and enrolled in the farm program and meet all requirements. Producers have until May 31, to put their cotton, corn, sorghum, etc. in the loan.

DAIRY PROGRAM

Applications for refund payments for the 1996 DRPP refund period will be accepted from January 1 through March 17, 1997. Producers must provide evidence that the 1996 calendar year milk marketings are equal to or less than the 1995 calendar year milk marketings.

FARM RECORDS

Producers are to report any changes in farming operations such as renting, selling or buying a farm, operator changes, owner changes, address changes, etc. Your reporting these changes will help us keep our records updated.

FAILED ACREAGE

Please report all failed crop acreage timely. Reports of failed acreage need to be made within 15 days after the abandonment of the crop.

SIGNATURE REQUIREMENTS

Unless written notice is given to deny a spouse the authority, a husband and wife can sign documents on behalf of each other for FSA and CCC programs.

DIRECT DEPOSIT

Recipients who become first eligible for payment after July 25, 1996, will have payments made by electronic transfer. All Federal payments made after January 1, 1999, will be made by electronic transfer. Forms are available in the Bailey County FSA Office.

PLANTING DATES

Final planting dates have been established for the following crops: Mungbeans, July 1 - Watermelons, June 15 - Pumpkins, July 1 - Mini Pumpkins, July 1 - Cantaloupes, June 15 - Pinto Beans, July 1 - Jalapeno Peppers, June 1 - Sweet Peppers, June 1 - Green Beans, July 15 - Black Eyed Peas, July 1 - Cabbage, July 5 - Carrots, July 10 - Sweet Corn, June 20 - Indian Corn, June 20 - Cucumbers, July 15 - Peanuts, June 5 - Potatoes, May 1 - Tomatoes, June 1 - Acorn Squash, July 15 - Gourds, July 1 - Haygrazer, August 1 - Millet, August 1 - Broccoli, July 5.

WAREHOUSES

ConAgra, Inc., Summerfield, Tx and Hub Grain Co., Friona, Tx is no longer eligible to operate under the Uniform Grain and Rice Storage Agreement.

NOTICE TO BID

Sealed proposals for **MOWING HIGHWAY RIGHT OF WAY** in Bailey County, covered by project No. 6007-41-001, etc., will be received at the Texas Department of Transportation, 135 Slaton Rd., Lubbock, Texas 79704 until 2:15 p.m. on February 28, 1997, and then publicly opened and read.

A list reflecting the highways and limits along with applicable specifications relative to the Contract is available for inspection at the TxDOT office in Muleshoe, Bailey County, and as listed below.

Bidding proposals are to be requested from:

JoAn Gilley, Contract Administrator, 135 Slaton Road, Lubbock, Texas 79404, Phone 806-748-4426.

The estimated cost for this project is \$60,452.

Interested parties are encouraged to attend a pre-bid meeting on Friday, February 21, 1997, at 2:00 p.m. in Lubbock, 135 Slaton Rd.

Only a Cashier's Check or Money Order or Teller's Check on a State or National Bank, on a State or National Savings and Loan Association or a State or Federally Chartered Credit Union for \$1,300 is considered acceptable. This proposal guaranty must be in the amount stated and may be payable at or through the institution issuing the instrument or may be drawn on a non-bank and payable at or through a bank. The Department will not accept personal checks, certified checks, other types of money orders and bid bonds.

This is a waived project-bidding proposals issued to prequalified contractors and bidders questionnaire contractors upon request. Usual rights reserved. Published in the Bailey County Journal Feb. 16 and published in the Muleshoe Journal Feb. 20.

REAL ESTATE

Wanted cash lease 160 acres with center pivot irrigation systems. Minimum of 700 gallons per minute water well required. Call 806-785-0082 or 806-797-5913 after 7:30 p.m.

2 bdrm House for Sale in Earth, nice area, 364-4670 in Hereford. 8s-4tc

For Sale by Owner: 3-2-2 Brick home with fire place, sun room, fenced yard, sprinkler system. Across from Dillman. Call 272-3918 or 272-3025. 8s-4tc

For Rent or Lease: 3bdrm, 1 bath, garage, 414 E. Dallas, Call 272-4868. 8t-5tc

North of Muleshoe: Grain Elevator/Cleaning facility. Also, 154 acres for pivot or housing development. Levelland irrigated & dryland farms & commercial buildings. 2-4x4 Jeeps. Farrar & Associates, 806-894-4386. 8t-1tc

WANTED

\$\$\$WANTED\$\$\$

We buy used mobile homes. We pay top dollar, any year, any condition. We need your used mobile home. Please call 1-800-404-1321. 7t-1tc

IT'S ON!

This weekend only

Portales Homes

OPEN HOUSE

Saturday

8:30 a.m.-5 p.m.

Great prices, great interest rates, great chance for you this weekend!



Portales Homes

356-5639 or

1-800-867-5639

DL366

AUTOMOBILE

'93 Dodge D-150 regular cab, 6 cylinder, short wheel bed, extra clean, white, \$8,500., (505)359-1775, Portales, N.M.

'91 Chrysler New Yorker, 4 door, loaded, low miles, white, \$7,885., (505)359-0947, Portales, N.M.

'92 Ford Thunderbird, 53,000 miles, Grey, extra nice, \$9,250., (505)359-1775, Portales, N.M.

'91 Chevy extended cab, 4x4, loaded, 80,000 miles, \$13,885., (505)359-0947, Portales, N.M.

'82 Ford Bronco, extra clean, 4x4, 90,000 miles, \$5,585., (505)359-1775, Portales, N.M.

MISCELLANEOUS

Reduce safe and fast with GoBese Tablets and E-Vap "Water Pills" Available Damron Drug. 7t-2hurpd

Plagued by Arthritis Call 1-800-552-8339. 7t-5tc

HAY FOR SALE

German millet hay, haygrazer and large round bales.

Delivery available discounts on quantity. Call (505) 276-7522, 477-2220, 359-0947, 276-7527 41t-1tc

FOR SALE

Sears 8 MPH Electric Treadmill. Auto Incline. Like new condition. \$250. Sears Life-Style Cardio Low-impact Exerciser. Used very little. \$100. IBANEZ Acoustic Guitar and Progressive Instruction Program on CDROM. \$100. Sears 12 cu. ft. up-right freezer. Works great. \$100. Call 272-5971 after 5:30 pm. 8s-2pd

NOTICE OF INCORPORATION

Notice is hereby given that Locker Aircraft, whose principal business office is located on highway 214, North of Muleshoe in Bailey County, Texas, became incorporated on January 2, 1997, under the firm name of Locker Aircraft, Inc.

Published in the Muleshoe Journal on Jan. 30, Feb. 6, Feb. 13, Feb. 20.

HELP WANTED

Muleshoe Country Club looking for a cook. Cooking experience required. Working 30 to 35 hours a week. Call 272-4250 or 272-4004 5s-tfc

Need a driver for elderly man, vehicle furnished. References required. Call 272-3918 or 272-3025. 8s-4tc

Care provider needed for Blanche Lenderson. \$6.00 an hour. Apply in person at the office of Michael R. Caldwell, P.C., 113 W. Avenue D, Muleshoe. References required. 8s-tfc

Licensed water well driller needed. 227-2438 or 927-5110. 8s-2tpd

The Muleshoe Chamber of Commerce and Agriculture is accepting applications for a part-time chamber manager through March 1. Please send resume to Muleshoe Chamber of Commerce 215 S. 1st. No phone calls please. 8t-7tc

BETTER LIVING

MOBILE HOMES

We Have A Good Selection of 4 Bedroom Mobile Homes

Single Wide 4 Bedrooms starting at \$26,000.

YOUR PAYMENTS WOULD BE LESS THAN RENT!

Doublewide, tape & texture, over 2000 square feet - nicest home on the market

WE EVEN HAVE 5 BEDROOMS AVAILABLE!

1-800-404-1321 Portales, NM (505)356-5448

Lic. # D00681

'Se Habla Espanol'

Need Yardman for 1997?

CAPPY'S LAWN SERVICE

HCR5-BOX 38 MULESHOE, TX 79347

CALL 272-4345



- Mowing
- Edging
- Trimming
- Trees
- Fertilizing
- Hauling
- New Lawns
- Shrubs

CAPPY (The Yard Man) GATEWOOD



Nieman Realty



116 E. Ave. C

George Nieman, Broker

272-5285 or 272-5286

RICHLAND HILLS - PARKRIDGE AREA
NICE 3-3-1 Brick, cent. Heat, Evap. Air, built-ins, 2000' + lv. area, fenced yd., stor. bldg., MORE !! \$60K !!! RH-2

NICE 3-2-2 Brick, cent. A&H, built-ins, FP, approx. 2150' lv. area, fenced yd., MORE!!! \$69K!!! RH-7

VERY NICE 3-2-1 Brick, Cent. A&H, built-ins, fans, new paint, carpet, & drapes, fenced yd. \$60K!!! RH-1

NICE 3-2-2- Brick, Cent. A&H, built-ins, FP, cov. patio, fenced yd. \$50's!!!

HIGHLAND AREA

2 Bdrm, 1 bath home, fenced yard. \$16,500!!! HL-4

VERY NICE 3-2-2 Brick, Cent. A&H, built-ins, fenced yd., spktr. sys., MUCH MORE!!! \$60's !!! HL-1

NICE 3-2 Home, Heat Pump, FP, fenced yd., stor. bldg. \$30's!! HL-3

NICELY REMODELED 3-2-1 Brick, Cent. A&H, built-ins, FP, nice carpet & tile, fenced yard, storage building. MORE!!! \$60's!!! HL-8

LENAU - COUNTRY CLUB AREA
JUST LISTED-VERY NICE 2-1-1 carport Home, wall furnace, tile, central air, DW, fenced yd., gas grill, stor. bldg.!! \$20's!! L-6

NICE 2-2-2 Brick, on corner lot, heat pump, fenced yard, storage bldg., MORE! \$40's !!! L-1

2-1-1 Carport Home, wall furnace, nice carpet, storm shelter, stor. bldg., fenced yd. \$20's!!!

HIGH SCHOOL

VERY NICE 3-2 Home, Cent. A&H, built-ins, fans, fenced yd., stor. bldg., MUCH MORE!!!! \$30's!!! HS-5

NICE 2-1-1 Home, corner lot, wall furnace, win. evap. air, stove, util., fans, workshop-storage!!! \$20's!! HS-4

VERY NICE 3-2-1 Home on corner lot, Cent. A&H, built-ins, ceiling fans, fenced yd., stor. bldg.!! \$30's!! HS-3

NICE 2-1-1 Brick, Heat Pump, nice carpets, well insulated, storm windows & doors. \$30's!!! HS6

JUST LISTED -2-1-1 Home, floor & wall furnace, evap. air, siding, stor. bldg., fenced yard !!! \$20's !!! HS-7

BUSINESS FOR SALE-SNACK SHACK - Lot, Buildings, furniture, and fixtures!!!!

RURAL HOMES

NICE 3-2-2+2 Carport Brick Home on 2.5 acres on pavement, close to town, Heat Pump, built-ins, FP, MUCH MORE. \$70K !!! HR-3

JUST LISTED -3-2-2 Home 1.36 ac. on pavement, Cent. A&H, built-ins, freshly painted interior & exterior, fans, fenced yd., 31' x 40' barn !!! \$40's!!! HR-2

2-2-1 carport Mobile Home on .665 acres on pavement close to town, Cent. heat, evap., air, DW, large barn, stor. bldg. and MORE!! \$25K!! HR-5

VERY NICE 3-11/2-1 Home on 8 acres, on pavement close to town, Cent. A&H, built-ins, sun room, concrete cellar, storage bldgs., fenced yd., RV cover, mobile home hookups, stock pens, fenced acreage, & MORE !!! \$50's !!! HR-6

ASK ABOUT OUR COMMERCIAL LISTINGS!!!

160 acre tract, 8" well, circle spktr. w/drops, fully allotted!!

America Drives on Corn



Graphic courtesy of John Deere

U.S. processors produced nearly 1.425 billion gallons of ethanol from 570 million bushels of corn in 1995. This ethanol, when blended with gasoline, provided enough fuel for every licensed driver in America — 173 million people — to drive from Chicago to Denver and back, a trip of 2,024 miles.

Subscribe Today!

Muleshoe Journal and Bailey County Journal

SUBSCRIPTION RATES

Carrier \$22⁰⁰ Year

Muleshoe-By Mail \$24⁰⁰ Year

Out Of Town \$26⁰⁰ Year

Call Today 272-4536



PRESIDENTS' DAY SUPER SALE

Surge! Drinks
1.29
 6 pack, 12 oz. cans or 3 liter blt.
 NEW!
 ALL TYPES Coca-Cola, Dr Pepper, or Sprite
1.79
 6 pack 12 oz. cans
 (ALL FLAVORS MAY NOT BE AVAILABLE IN ALL STORES)

MEAT

Any Size Pack, Assorted
Pork Chops
\$1.29
 lb.

LENTEN SPECIAL
 Farm Raised
Whole Catfish
\$1.99
 lb.

LUNCHMEATS

- Bar S Extra Lean, 1 1/2 lb. Sliced or 2 lb. **\$5.99**
- Honey Ham** YOUR CHOICE
- Bar S Regular, Thick Sliced or Low Salt **\$2.19**
- Sliced Bacon** 1 lb. pkg.
- Bar S Regular or Thick Sliced **\$1.29**
- Meat Bologna** 1 lb. pkg.
- Bar S, 1 lb. pkg. **\$1.79**
- Jumbo Beef Franks**
- Bar S, 12 oz. pkg. **89¢**
- Meat Franks** **\$1.19**
- Bar S, 1 lb. pkg. **\$1.59**
- Jumbo Meat Franks**
- Bar S, 1 lb. pkg. **\$1.59**
- Smoked Sausage**

Jumbo Pack, Pilgrim's Pride
Drumsticks or Thighs
lb. 79¢

Any Size Pack
 Beef Boneless, New York
Strip Steak
\$3.99
 lb.

Louis Rich Fat Free Smoked
 or Oven Roasted
Turkey Breast
\$1.89
 6 oz. pkg.

Regular, Hot or
 Where Available-Special Seasoning
Owens Sausage
\$2.99
 2 lb. roll

Thin Cut, Bone-In **\$2.49**
Pork Chops lb.

Center Cut **\$2.29**
Pork Chops lb.

Boneless
Sirloin Tip Roast
\$1.99
 lb.

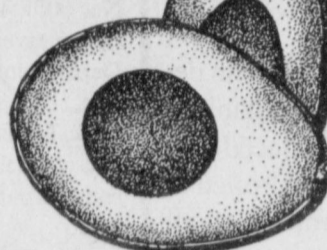
Eckrich Assorted Tortilla
Lunch Makers
99¢
 3.56-3.77 oz. pkg.

Great For Sandwiches, Boneless
Sirloin Tip Steak
\$2.29
 lb.

Seasoned, Market Made
Pork Asado
\$1.99
 lb.

PRODUCE

California Salad Size Hass
Avocados



5 for \$1

Green Onions bunches **5/\$1**

Giant **Sno-White Cauliflower** each **\$1.29**

Washington **D'Anjou Pears** ea. **8/\$1**

Tropical Kiwi ea. **8/\$1**

No. 1 **Potatoes**
 15 lb. bag **2 for \$3**

Washington Extra
 Fancy Red Delicious
Apples
 2 lbs. **\$1**

Banquet Chicken, Turkey,
 Chicken & Broccoli, or Beef

Pot Pies

7 oz. **5/\$2**

Corina, 8 oz. cans
Tomato Sauce
6/97¢



10 ct., 7.5 oz. Buttermilk,
 Sweet Milk, or Butter Flavor
Shurfine Biscuits

5/97¢

Blue Bunny Assorted
Ice Cream
\$4.97
 5 qt. pail

Shursaving, 42 oz. can **97¢**
Shortening



Shursaving Vegetable Oil **97¢**
 Spread 32 oz. tub

ASSORTED
Maxwell House Coffee
2.19
 11-13 oz. can

PRESIDENTS' DAY PRICE LEADERS



PRINT
So-Dri Paper Towels
2.89¢
 Rolls



ASSORTED LAY'S
 OR WAVY LAY'S
Potato Chips
99¢
 Reg. \$1.59 size

CAMPBELL'S ASSORTED
Chunky Soups
89¢
 10.7 oz. can

SMOOTH 'N ZESTY
 MEDIUM
Taco Bell Picante
1.69
 16 oz. jar



TACO BELL
 REGULAR OR WILD
Salsa Con Queso
1.99
 15.5 oz. jar

TACO BELL
 MEDIUM OR HOT
Thick n Chunky Salsa
1.89
 16 oz. jar



JUICE COCKTAIL, CRANAPPLE,
 CRANBERRY RASPBERRY,
 OR CRANBERRY STRAWBERRY
Shurfine Cranberry Drinks
2.3
 48 oz. btl. For

HEALTH & BEAUTY

- WESTERN FAMILY MINT OR CLEAR BAKING SODA **1.79**
- Mouthwash & Gargle** **1.59**
- 30 CT. BRIGHTS, BRIGHTS ASSORTED, 7 1/2" x 3" **1.79**
- 10 CT. KNEEELBOW **1.79**
- 45 CT. ASSORTED **1.79**
- 60 CT. SPOTS **1.79**
- 10 CT. CAPSULES **2.79**
- 10 CT. COLD CAPLETS **2.79**
- 16 CT. SEVERE COLD MAXIMUM **2.79**
- Contac **2.99**
- 4 OZ. MOISTURE CREAM **2.99**
- 8 OZ. SCENTED, UNSCENTED, SENSITIVE LOTION **2.99**
- LubriDerm **2.99**
- Lotion/Cream **2.99**

REGULAR, GENTLE BREEZE,
 OR STANGARD
Bounce Sheets
1.99
 36-40 ct. box

ASSORTED BABY FOOD
Gerber 2nd Foods
4\$1
 4 jars For

INSTANT BROWN, BOIL-IN-
 BAG, OR ORIGINAL
Minute Rice
1.39
 14 oz. box

AUNT JEMIMA ORIGINAL
Pancake Mix
1.39
 32 oz. box

ASSORTED TROPICAL
Post Cereal
2.29
 YOUR CHOICE

ASSORTED OR POP-UP
Puffs Facial Tissue
99¢
 175 ct. box

BUTTER LITE, LITE,
 OR ORIGINAL
Aunt Jemima Syrup
2.89
 24 oz. btl.

ASSORTED
RICE A-Roni
88¢
 4.2-6.9 oz. pkg.

HEFTY!
Tall Kitchen Bags
1.29
 18 ct. pkg.

BEEF 'N MORE
Dog Food
7.39
 20 lb. bag

ASSORTED
Pedigree Dog Food
88¢
 22 oz. can

FROZEN & DAIRY

- ASSORTED **Jack's Pizza** **1.99**
- STEAK N MACARONI, WESTERN CHARBROIL, STEAK N TATER, STEAK N CORN **1.89**
- Night Hawk Dinners **1.99**
- BEEF FRIGERS OR TOP CHOPT STEAK **1.99**
- Night Hawk Dinners **1.99**
- CRUNCHY **Fisher Boy Fish Sticks** **1.99**
- LEAN-POCKETS **1.99**
- HOTPOCKETS **1.99**
- ASSORTED **Hot Pockets or Lean Pockets** **1.99**
- COUNTRY STYLE **Minute Maid Premium Orange Juice** **3.99**
- ORIGINAL APPLE CINNAMON WAFER OR DANISH ORANGE CARAMEL **Pillsbury Rolls** **2.3**

WESTERN UNION | MONEY TRANSFER™
 "The fastest way to send money"
Lowe's MARKETPLACE
 401 W. American Blvd.
 Muleshoe 272-4585
 PRICES EFFECTIVE FEB. 19-25, 1997
 OPEN MONDAY-SATURDAY 7:30 A.M. - 8:00 P.M., SUNDAY 8:00 A.M. - 7:00 P.M.

Pay-n-Save
 515 W. American Blvd.
 Muleshoe 272-4406
 WE RESERVE THE RIGHT TO LIMIT QUANTITIES IN TEXAS