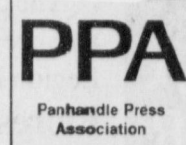




Muleshoe Journal



Volume 75, No. 9

Published Every Thursday at Muleshoe, Bailey County, Texas 79347

Thursday, Feb. 27, 1997



Sold out igloo

Kindergarten students at Dillman Elementary School built an igloo out of plastic milk jugs while studying about winter. The igloo, which is made of almost 500 jugs glued together, is chocked full of kindergarten students from Mrs. Surret's, Mrs. Lowe's and Mrs. Mitchell's classes Tuesday morning. The students learned about winter animals, plants, penguins and Eskimos during the study unit.

Icy roads cause several accidents; 1 death

By SAMUEL VILLARREAL
Journal Staff Writer

A Littlefield man died early Monday morning due to icy road conditions that wreaked havoc on Bailey County roads.

Adan Rodriguez, 45, died in a one-vehicle accident on US Highway 84 about four miles east of Muleshoe.

Rodriguez was traveling west on US 84 about 8 a.m. when he lost control of the 1976 Ford pick-up truck he was driving, according to Department of Public Safety Trooper L.T. Kirk. The pickup slid into the median divider and rolled one time.

Rodriguez was pronounced dead at the Muleshoe Area Medical Center about 9:45 a.m., Kirk said.

Abraham Rodriguez, a passenger in the pick-up, was treated and released at MAMC.

Two additional rollovers were reported Monday morning in Bailey County.

Jose Hernandez of Lubbock lost control of his 1993 International truck eight miles east on Muleshoe. Hernandez was travelling west when he lost control of his vehicle on the icy road. The truck spun 180 degrees before rolling into a ditch.

A rollover involving a Chevrolet Suburban one mile west of the state line on FM 54 near Goodland sent a New Mexico woman to the hospital.

Nancy French of Las Cruces, N.M., 72, was taken to Cochran County Memorial Hospital in Morton. The woman was then

Continued on page 8

Administrative contracts renewed

By SAMUEL VILLARREAL
Journal Staff Writer

The Board of Trustees of the Muleshoe Independent School District Monday extended the contracts of administrative personnel during their regular bi-monthly meeting.

Contracts were extended for MISD Assistant Superintendent Adrian Meador as well as all campus principals and assistant principals.

Contracts were also extended for Don McElroy, technology coordinator, Georgia Pena, director of federal programs, Linda Godsey, director of special education, Hettie Keller, special education diagnostician, Sam Whalin, facility coordinator, and Jo Mayhugh, district business manager.

According to MISD Superintendent Bill Moore, the contracts are reviewed and extended on a yearly basis.

Moore said the district is currently looking at a three percent salary increase on the renewed contracts, but nothing definite will be decided until the district begins formulating a new budget later in the year.

SCHOOL BOARD

In other business, the board approved the district's textbook committee for the 1997-98 school year.

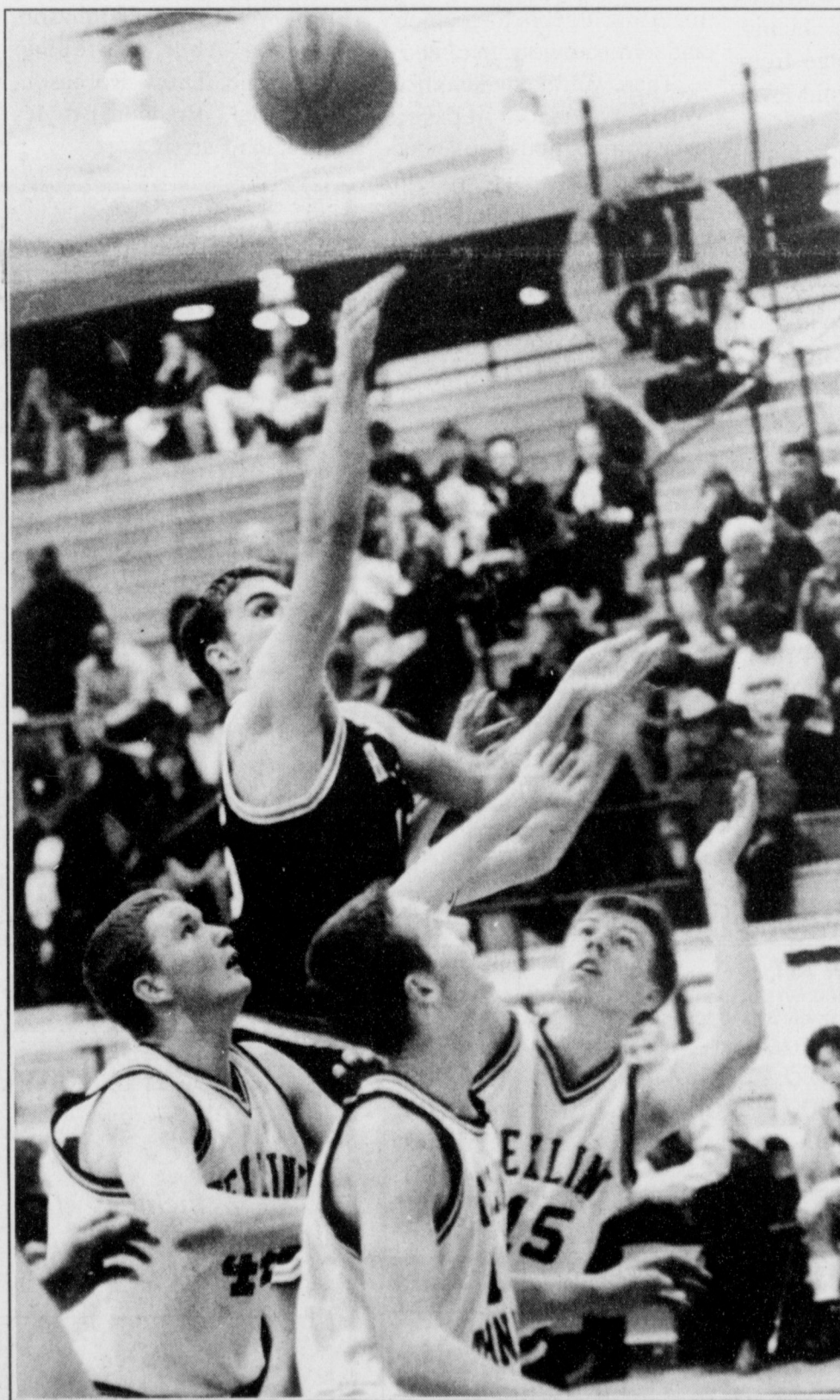
According to Moore, Texas public schools renew their textbooks on a six-year cycle.

"By six years, if they (textbooks) are not outdated, they are pretty worn out," Moore said.

Moore said textbooks in a small group of subjects are replaced each year. Textbooks that will be replaced this year include social studies (grades 1-6), Spanish, science, physical science, English as a second language and theatre arts.

The committee, composed of teachers from each campus, shall review books taken from a list approved by the Texas Board of Education. They will then recommend textbooks to be approved by the local school board.

According to Moore, the state will cover the purchase of textbooks from their approved list. While the district can purchase books not on the list, Moore said that rarely happens.



Up and over

Lazbuddie's Justin St. Clair shoots over three Texline defenders Friday during a Class 1A bi-district playoff game at the Amarillo High Activity Center. The Longhorns beat Texline 50-45 to advance to the area round where they faced Groover Tuesday.

'Horns reach area for first time since '91

By RICK WHITE
Managing Editor

AMARILLO—Even Texline's big men looked small compared to a Lazbuddie lineup that includes four starters 6-foot-2 or taller.

The Longhorns simply dwarfed Texline's baby-faced, three-guard backcourt that combined couldn't dull a razor.

But the Tornadoes, who stood tall enough to win the District 4-1A title, gave Lazbuddie a major scare in the bi-district playoffs.

District 3-1A runner-up Lazbuddie needed two big hoops inside from Israel Lopez and a pair of clutch free throws from sophomore Josh Morris to fend off the pesky Tornadoes 50-45 Friday before a crowd of about 500 at the Amarillo High Activity Center.

Lazbuddie (21-7) played District 2-1A champion Gruver (19-13) Tuesday at Randall High School in the area round. The game was postponed from Tuesday because of the weather.

Wednesday's winner advances to play Springlake-Earth (14-11) in the Region I-1A tournament at 1:30 p.m. Friday at the Texan Dome in Levelland. Springlake-Earth edged Silverton 47-43 in the area round.

Lazbuddie last reached the regionals in 1989.

"We survived," said Lazbuddie coach Gary Grahn said after nervously watching a 10-point third-quarter lead disappear under a barrage of 3-pointers. "It was a game of spurts. We were fortunate to win."

Lopez led Lazbuddie with 13 points. Morris added 11 points off the bench, including two free throws with 10 seconds left that clinched the win, and Justin St. Clair finished with 10 points.

Phil Luther led Texline (16-11) with three 3-

Continued on page 6

Public School Week March 3-7

The Muleshoe Independent School District has planned several events in conjunction with Texas Public Schools Week March 3-7.

Throughout the week, Muleshoe schools will take part in special activities designed to heighten public awareness of the work going on in public schools.

The public is invited to view Muleshoe High School's newly renovated computer lab March 5 from 2 - 3:30 p.m. and March 6 from 8:30 - 10 a.m. There will also be a demonstration of the newest technology at work in the high school.

Watson Junior High School hold a pep rally at 3 p.m. March 6 in support of students competing in athletic and

Continued on page 3

Faulty cable plagues local cable viewers

A stretch of bad wire kept some local cable subscribers from getting a clear reception last week.

Muleshoe cable viewers experienced difficulties with their cable throughout last week until Classic Cable technicians were able to solve the problem Saturday.

Ralph Skaggs, a technician with Classic Cable, said the faulty cable eluded technicians for almost a week.

"Every time we thought we had it fixed it would show up again," Skaggs said.

According to Skaggs, a section of trunk cable was reflecting television signals

through the cable lines backwards. The reflections then began cancelling out other signals.

Homes north and west of 1st street were effected by the bad cable.

Continued on page 6

AROUND MULESHOE

Band parents hosting dance Feb. 28

The parents of the Mighty 'M' Band flag corps will host a dance Feb. 28 from 9 p.m. - 12 a.m. at the American Legion Hall. Admission is \$4.

Flores re-enlists in US Marines

Marine Cpl. Richard Flores, son of Noelia Flores of Muleshoe, recently re-enlisted for four years while serving with Marine Aviation Logistics Squadron-13, Marine Corps Air Station, Yuma, Ariz.

Flores, a 1992 graduate of Muleshoe High School, joined the Marine Corps in March 1993.

Area cancer screening clinic March 10

The Women's Center of the Don and Sybil Harrington Cancer Center and Baptist/St. Anthony's Health System will conduct a breast Cancer Screening Clinic March 10 at South Plains Health Care Providers, 208 West Second Street in Plainview.

Participants will receive a lost-cost screening that includes a mammogram and instruction in self-examination by a registered nurse. The total cost is \$70. A minimum of fifteen women need to register in order for the mobile mammography clinic to come to area towns.

Funding is available through the Texas Department of Health for Texas residents who qualify for assistance. All exams are done by appointment only. Call 359-4673 or 1-800-377-4673 for more information.

South Plains football officials recruiting

The South Plains Chapter of Football Officials is recruiting new officials for the 1997 football season. Off-season meetings are now being held the first Tuesday of each month at Lubbock Christian University's Christian Development Center, room 204. The meetings begin at 6:30 p.m., with the next meeting being held March 4.

For more information, call Don Collins at 792-8203 or Rick Howard at 799-0303.

New Home man receives national award

Gene Beck, a New Home ginner, is the recipient of the 1996-97 Horace Hayden National Cotton Ginner of the Year Award.

Beck began his ginning career in 1966 at Farmers Coop Gin in Littlefield, and has since worked at many gins in the West Texas area.

The Horace Hayden award is presented by the National Cotton Council to a ginner for their outstanding leadership to the U.S. cotton industry, superior customer service and civic contributions.

CCC names several locals to Dean's list

Several area students were named to the Clovis Community College Dean's List for the fall 1997 semester.

Included in the Dean's List were Kathy Strickland and Russel Tunnell of Muleshoe, Eva Alcalá and Donna Cozby of Lazbuddie, and Gerardo DeLeon of Earth.

To be named to the Dean's List at CCC, students must earn at least a 3.5 GPA while enrolled in 12 or more credit hours during the fall semester.

LOCAL WEATHER AT A GLANCE

	HIGH	LOW	PRECIP
2/22	45	16	—
2/23	52	18	—
2/24	53	25	.5 in. snow
2/25	25	22	—

Source: R.G. Bennett, Observer - National Weather Service

Extended Forecast

Cold weather continuing through Thursday. A warming trend will begin by the weekend, with temperatures reaching up to 60°.

¡ Varias exenciones de residencia pueden rebajar sus impuestos de propiedad!

Una exención de residencia reduce sus impuestos de propiedad. Por ejemplo, si su residencia tiene un valor de \$50,000 y Ud. recibe una exención de \$5,000, sus impuestos se calcularán como si el valor de su residencia fuera \$45,000.

¿ Quien califica para una exencion?

Cualquier dueño de una residencia principal el día 1 de enero tiene derecho a una exención de residencia de \$5,000 este año para rebajar sus impuestos escolares... y no importa si la residencia es casa, condominio o casa móvil. (Los condados, municipios y distritos especiales de impuestos tambien pueden ofrecer exenciones de residencia.)

¿ hay otras exenciones?

Si Ud. es incapacitado — o si tiene 65 años o mas — tiene derecho a una exención adicional de \$10,000 en sus impuestos escolares de propiedad. Y si Ud. califica para la exención para los que ya cumplieron 65 años, tambien tiene derecho a un "cielo máximo" permanente en sus impuestos escolares de residencia. (El cielo máximo no tiene que ver con impuestos de propiedad de los condados o municipios, y esas entidades pueden ofrecer otras exenciones.) La exención para los que ya cumplieron 65 años y el cielo máximo se pueden transferir al esposo/esposa sobreviviente si el o ella tiene al menos 55 años de edad y es dueño/dueña de la casa en donde vive.

¿ Dedo solicitarla cada año?

No. Si Ud. recibió una exención de residencia en 1996, no hay necesidad de solicitarla de nuevo en 1997 al menos que se lo pida su jefe de valoraciones. Sin embargo, si no ha recibido una exención en su residencia actual—o si ha cambiado de domicilio tendrá que solicitar una exención una exención para 1997. Y si cumplió los 65 años o resultado incapacitado en 1996, tendrá que solicitar las exenciones adicionales.

¿ Donde y cuando debo solicitar mis exenciones?

Cu solicitud debe llegar en su oficina local del distrito de valoraciones antes del día 30 - de abril! Si necesita mas tiempo, favor de ponerse en contacto con nosotros antes:

Bailey Central Appraisal District
302 Main Street, Muleshoe, TX 79347
806-272-5501

Si desea mas informacion, visitenos y obtenga una copia gratis de

"Impuestos Sobre la Propiedad en Texas: Derechos, Recursos y Responsabilidades del Contribuyente de Impuestos"

escriba a
Comptroller's Property Tax Division
P.O. Box 13528
Austin, TX 78711-3528

A public service announcement courtesy of this newspaper.

WJHS students advance to state math/science meet

By SAMUEL VILLARREAL
Journal Staff Writer

Four Watson Junior High School students advanced to state at the Brownfield Middle School Math/Science Invitational Meet, sponsored by the Texas Math/Science Coaches Association.

Lincoln Riley, A.J. Buhman, Megan Tipps and Adrienne Ashford qualified for the state meet to be held April in San Antonio.

To qualify for the state meet, the students were required to obtain a certain qualifying score on a test in one of four areas, mathematics, calculator, number sense, or science. The required scores vary by grade level and test subject.

Adrienne Ashford placed

2nd in the eighth grade calculator competition. In the calculator competition, students have 30 minutes in which to solve up to 80 math problems.

The questions range from advanced algebra to mid-level trigonometry.

In the number sense competition, Riley placed 3rd in the seventh grade division, while Ashford placed 9th in the eighth grade division.

Number sense, also known as mental math, requires students to solve complex word and number problems without the use of scratch paper or calculators. Students are not allowed to write down any numbers except those in the answer blanks.

In the math competition, Riley placed 5th in the seventh grade division, while Buhman placed 15th. Tipps placed 12th in the eighth grade division.

Students in the mathematics competitions take a 50-question multiple choice test that covers subjects from basic math and algebra to geometry and some simple trigonometry.

There were no students from WJHS who placed in the science competition. The science competition tests students knowledge in a variety of areas, including chemistry, biology, geology, astronomy, and environmental science.

ogy, geology, astronomy, and environmental science.

Other WJHS students who participated at the Brownfield meet were Michael Johnson, Ricardo Aburto, Stephan Shelburne, Drew Robinson, Chris Hall, Brandon Broyles and Zach Barrett.

AZTECA MILLING CO., L.P.
D.B.A.

VALLEY GRAIN PRODUCTS
Is Contracting Food Corn

for the 1997 growing season.

For further information, please contact:
JERRY BARBER OR JERRY BRUNS at (806) 272-6701



1997 Ford Ranger XLT \$189* DOWN \$189* MONTH
(A/C, cassette, sliding window) * 24 month Ford credit RCO; MSRP \$15,030; 62% residual; balloon payment \$9,318.60; 8.85% APR; plus T.T.&L., W. A. C.
1996 Ford Mustang (Automatic; 11,000 miles) \$14,900
1995 Dodge Intrepid \$10,900
1994 Chevrolet 1500 Pickup \$5,900
1991 Ford Explorer \$7,400
1991 Ford Tempo \$4,700

Many below NADA Wholesale. SHOP AND SAVE.
We want to be your car & Truck Dealer *WAC

1225 W. American Blvd. 806-272-4251 or 800-432-7617

Local news about local folks.

Muleshoe Journal

To subscribe, call 272-4536

Have a nice DAY

CLEARANCE SALE CONTINUES
CLEARANCE SALE CONTINUES
CLEARANCE SALE CONTINUES
CLEARANCE SALE CONTINUES

Save **50%-75%**

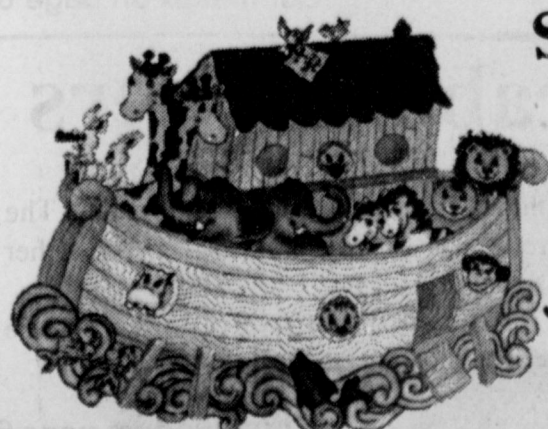
On selected items

20% Storewide

excluding furniture

Haileys

IT'S A SMALL WORLD
608 W. 21ST, CLOVIS • 762-1223



We Ship Everywhere

1-800-658-6378 106 E. American Blvd. Muleshoe, Texas

And Country Junction

Hurry!!

Last Week of February Specials

GOOD THRU SATURDAY, MARCH 1

ONE RACK LADIES' Blouses, Skirts, Vests & Jackets **50% OFF**

All Jewelry **15% OFF** Storewide

includes all Montana Silversmith & Crumrine Jewelry & Buckles

Bailey 5X
BUY ONE, GET ONE FREE!
\$160

20X Bailey Felt \$250
30X Bailey Felt \$300



All Belts **15% OFF**

ALL BRIGHTON Bags, Belts & Jewelry **15% OFF**

All Tony Lama Seconds Boots **FREE!**

Resistol **Black Gold** \$325

BUY ONE, GET ONE FREE!

CRP sign-up dates are March 3-28

Sign-up dates for the 1997 Conservation Reserve program (CRP) are March 3-28 as released by Agriculture Secretary Dan Glickman.

"CRP is a voluntary program designed to encourage producers to plant long-term, resource-conserving vegetation on eligible cropland to improve soil, water, and wildlife resources," said Harold Bob Bennett, State Executive Director of USDA-Farm Service Agency (FSA). "If eligible, producers may receive annual rental payments and cost-share assistance to establish the approved cover," Bennett added. He stated that the length of the contract is 10 to 15 years and that certain activities which have long-term environmental benefits may qualify for incentive payments.

"Those who wish to apply must have owned or operated the land being offered for at least 12 months prior to March 28, 1997 and meet several other FSA requirements," concluded Bennett.

"In addition to FSA's requirements, the cropland also must meet additional requirements administered by the USDA Natural Resources Conservation Service (NRCS)," said John Burt, NRCS State Conservationist. "Factors such as the erodibility of the land, evidence of scour erosion, and the land's proximity to non-cropped wetlands are a few of the legibility factors examined by NRCS," Burt continued.

"Also considered in determining CRP eligibility are practices which are highly beneficial to the environment. Practices like buffer strips on riparian areas, grass filter strips, grass waterways, shelter belts, and the protection of areas around well-heads all have long-term benefits to the environment long after a CRP contract expires," concluded Burt.

To sign-up for the 15th CRP, contact your local FSA office for an appointment at 272-4538.

Absentee landowners interested should contact the FSA office in the county where their land is located.

According to Bennett and Burt, both FSA and NRCS are working closely to insure a successful sign-up. For more information, contact your local FSA office at 806 272-4538 or NRCS office at 806 272-5124.



I wanna see

Cutter Glover, 1, peeks through a hole in a banner during Lazbuddie's bi-district game Friday at the Amarillo High Activity Center. Jerry Don Glover gives his grandson a hand. Cutter is the son of Brian and Shanna Glover of Lazbuddie.

Keeping an eye on Texas

Consumers positive about economy

Consumer confidence in Texas reached its highest point in 15 years in October 1996. In a survey of households in the West South Central region*, consumers were pleased about low unemployment, minimum inflation, and growth in wages. The positive response in regard to the present and future economic outlook in the region was measured at 127.6 points in October, far greater than the lowest point of 51.3 points in December, 1991.

Year	Index (1985=100)
July 1981	~110
December 1991	51.3
October 1996	127.6

* The West South Central region includes Texas, Oklahoma, Arkansas and Louisiana.
SOURCES: John Sharp, Texas Comptroller of Public Accounts, and The Conference Board.

Muleshoe Journal USPS 367820
Established February 23, 1924. Published by Triple S Publishing, Inc. Every Thursday at 304 W. Second. Box 449, Muleshoe, TX 79347.
Second Class Postage paid at Muleshoe, TX.
POSTMASTER: Send address changes to the Bailey County Journal, P.O. Box 449, Muleshoe, TX 79347.
We are qualified members of:
Panhandle Press Association, National Newspaper Association, West Texas Press Association and Texas Press Association

WEST TEXAS PRESS ASSOCIATION
PPA
Panhandle Press Association

TA MEMBER 1997
TEXAS PRESS ASSOCIATION

Scot Stinnett, Publisher
Lisa Stinnett, Vice-President/Comptroller
Rick White, Editor
Jessica Orozco, Classifieds
Pat Durben, Advertising

SUBSCRIPTIONS: Muleshoe Journal and Bailey County Journal
By Carrier Yearly - \$22.00
Bailey and surrounding counties: by mail - \$24.00
Elsewhere - \$26.00
Advertising Rate Cards on Application

Advertisers should check their ad the first day of insertion. The Journals will not be liable for failure to publish an ad or for a typographical error or errors in publications except to the extent of the cost of the ad for the first day of insertion. Adjustment for errors will be limited to the cost of that portion of the ad where the error occurred.

Dr. A. R. Ploudre
Open your eyes to vision care that works with your budget!

- Quality care at a reasonable cost
- Contact lenses
- Eyeglass prescriptions filled
- NM & Texas Medicaid, Medicare Assignment

We are also proud to provide special assistance to low income families in need of vision care. Families who feel they qualify are encouraged to call for more information.

Payment plan available • Se Habla Espanol

1315 Gidding St., Clovis, NM
(505) 762-2951

Proposed bill pushes for electric competition

AUSTIN — Sen. Jerry Paterson (R-Pasadena) and Rep. Mark Stiles (D-Beaumont) filed legislation March 20 which will clear the way for competition in the state's retail electricity market.

A key provision allows for a maximum 15% rate reduction in electric bills of customers of investor-owned utilities. Also included in the legislation are consumer protections and funding to support conservation programs and the development of renewable resources.

"Texas consumers should be very excited about this bill," said Patterson. "It gives them the right to shop around for less expensive electricity than what they're currently buying. And if they find lower-cost power, their current utility is obligated to deliver it to them. There will be no interruption of service, and they'll save money."

"Competition is coming," said Stiles. "The question is when and under what authority. I would rather pass a bill in the state legislature than have the federal government dictate how we get there."

The Texas Consumer Power Act of 1997 will provide for

competition in the generation, or power side of the industry. The transmission and distribution grid, which delivers power to customers, will remain regulated. This will ensure the safety and reliability of the current system.

Besides the rate reduction, the legislation provides for a transition to competition by initiating a pilot project for public schools, colleges and universities on August 1, 1998, choice for residential and small commercial customers on January 1, 1999, and all other retail customers by January 1, 2000.

"Utilities are spending millions of dollars on lobbyists and advertising to try to derail competition. In addition, they have spent over \$4.7 billion in overseas investments in the last two years. These statistics are proof enough for me that the ratepayers of Texas deserve a break," said Stiles.

"This legislation will help Texas businesses compete in global and national markets. Jobs will be created. And best of all, consumers will be freed from monopoly rates charged by utility companies," concluded Patterson.

Have a nice DAY

1 Day Only

Thursday, Feb. 27th

Don't miss the BIGGEST Clearance Sale of the Season

65% OFF

Regular Price

Every Clearance Item in the Store!

321 Main Muleshoe
Monday-Saturday 9:00-6:00

ANTHONY'S

Family Apparel & Shoes

Cable

Continued from page 1

Skaggs said the remaining signals were too weak to be boosted by amplifiers within the cable system.

Technicians had difficulty locating the source of the trouble because the problem seemed to come and go as the week went on. By Saturday, the cable outages became prolonged enough for workers to pin down the problem cable.

Skaggs said the problem was quite unique, and not likely to occur again.

"I've been in cable seven or eight years, and I've never seen anything quite like this," Skaggs said.



Bats improve in Mules' 8-4 loss

A week of practice woke up Muleshoe's slumbering bats.

But Seminole took advantage of timely hitting and beat the Mules 8-4 in a non-district baseball game Saturday at the city baseball field.

BASEBALL

Muleshoe (1-1) collected 10 hits off two Indian pitchers, but left eight runners stranded. Seminole also turned a pair of double plays.

"We hit the ball pretty good," Muleshoe coach Brad Hill said. "Especially for bunch of kids that have seen pitching for just a week."

"The thing I was really was pleased with was that our kids came out and competed against a veteran team that has been out there for three weeks."

Seminole (1-0) returned all but one starter from last year.

Jeffrey Wheeler led Muleshoe's attack with a three-run home run and a single. Losing pitcher Layne Kemp (0-1) and right fielder Aaron Purdy also had two hits.

Kemp allowed seven runs and nine hits in five innings. He struck out five and walked

SEMINOLE 8, MULESHOE 4

Seminole (1-0)	ab	r	h	bi
Dunn c	4	2	2	0
Carter 2b, p	2	3	1	0
Clark lf	4	2	1	0
Guerro p, cf	4	1	2	2
Kruger 3b	4	0	3	5
Pay 1b	3	0	0	1
Fleming rf	2	0	1	0
Anderson ph	1	0	0	0
Mata ph	1	0	0	0
Villevs ss	4	0	0	0
Conteras cf	2	0	0	0
Alvarado 2b	1	0	0	0
totals	31	8	10	7

Muleshoe (1-1)	ab	r	h	bi
Gonzales 2b	4	1	1	0
Wheeler ss, p	4	1	2	3
Kemp p, ss	3	0	2	0
Alanis 3b	4	0	1	0
Redwine lf	4	0	0	0
Woodard c	3	1	1	0
McClanahan cf	2	0	0	0
Purdy rf	3	0	2	1
Mason 1b	3	1	1	0
totals	30	4	10	4

Seminole 10 2 0 3 2 0 8 10 2

Muleshoe 0 0 4 0 0 0 4 10 2

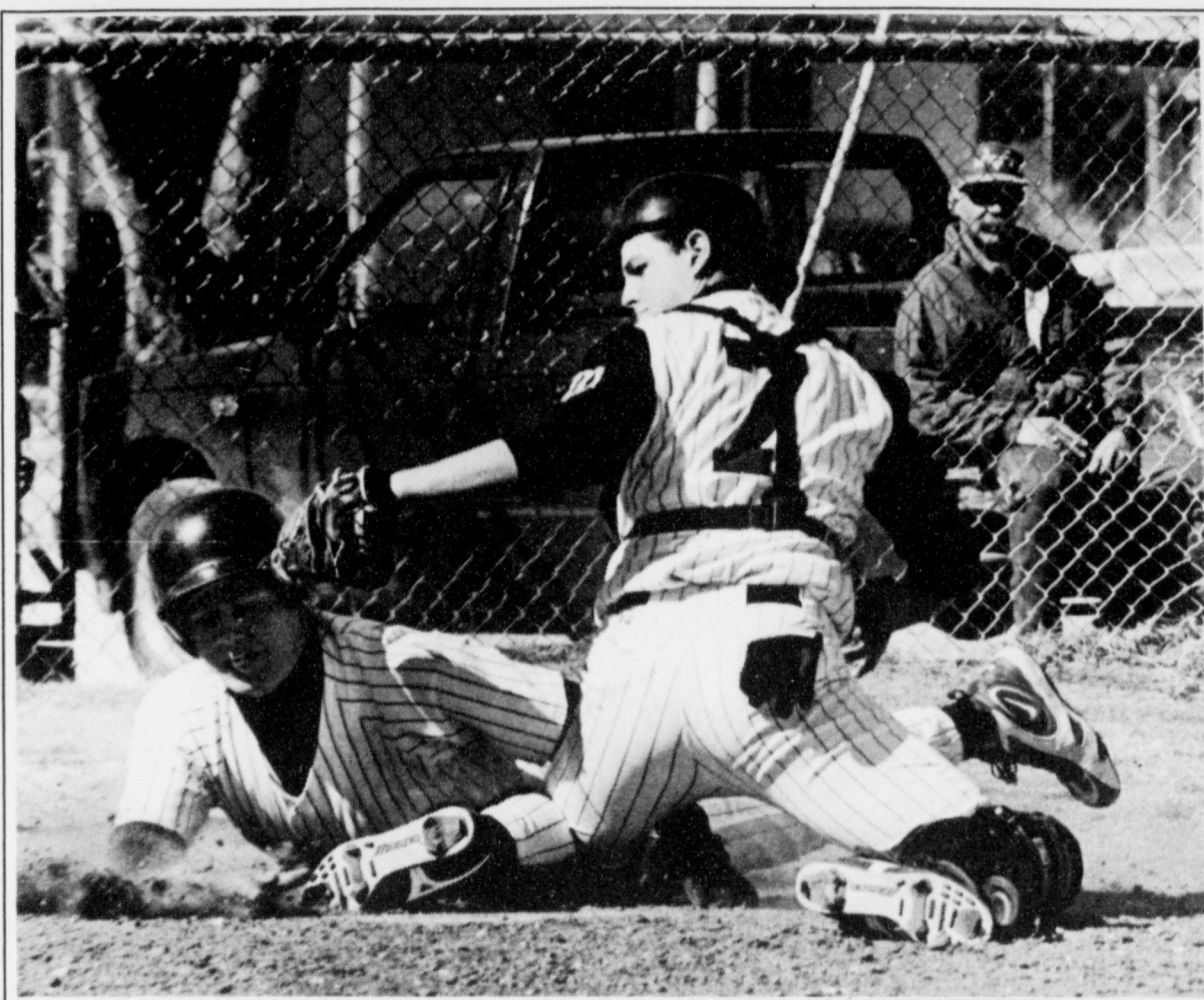
DP—Seminole 2. LOB—Seminole 7, Muleshoe 8. 2B—Dunn (S), Kruger (S), Fleming (S). HR—Wheeler (M).

Pitching summary

ip	h	r	er	sobb
Seminole				
Guerro	4	7	4	4
Cortez (W, 1-0)	3	3	0	2
Muleshoe				
Kemp (L, 0-1)	5	9	7	5
Wheeler	2	1	1	1

two. Wheeler allowed two hits and one run after taking over with a runner on and nobody out in the sixth.

Darren Kruger smacked



Applying the tag

Seminole's Darren Kruger is tagged out at home by Muleshoe catcher Michael Woodard. Kruger was trying to score from third on a squeeze play during the Indians' 8-4 win.

three doubles and drove in five runs for the Indians. Reliever Roger Cortez (1-0) picked up the win with three innings of scoreless relief. He allowed three hits.

Seminole took the lead for good, 6-4, with three runs in the fifth inning and added two more in the sixth.

Kruger keyed both innings

with a pair of two-run doubles. The Indians finished with 10 hits.

Muleshoe took a 4-1 lead in the second inning when Wheeler jumped on a fastball from starter Gabe Guerro and drilled it off the right-field foul pole with two runners aboard.

A baserunning mistake that Seminole turned into a double

play cost the Mules at least a couple of more runs.

Michael Woodard led off the second with a single to right and moved to second on a passed ball. After Matt McClanahan walked, Purdy singled in Woodard for Muleshoe's first run.

Continued on page 5

Lady Mules finish 7th at Randall

CANYON — Cari Faver and Lindsey Field placed in two events each as the Muleshoe girls finished seventh Randall Relays Saturday at Randall High School.

TRACK

District 1-3A member Sanford-Fritch bested a field comprised of mostly 4A school with 127 points. Hereford was second with 119 points and Borger third with 105. Muleshoe finished with 31.

Faver, a senior, finished third in the 1600 (6:00) and fourth in the 3200 meters (12:37).

Faver also ran on the 1600 relay team that finished fifth (4:37). Joining her were Pricilla Aguirre, Stacy Locker and Bobbi Benham.

Field, a freshman, placed fourth in the 800 meters (2:42.14) and sixth in the high jump (4-10).

Mule JV boys 2nd

Greyson Rennels set new school junior varsity record in the 110 meters, leading Mule-

Continued on page 5

Just doing their job

■ Lopez, Morris comfortable in secondary roles

AMARILLO — Israel Lopez and Josh Morris have simple job descriptions.

Morris' job is to shoot. Lopez' is to rebound.

Because the two did their job, Lazbuddie advanced past the bi-district playoffs for the first time since 1991 with a 50-45 win over Texline Friday at the Amarillo High Activity Center.

Lopez scored a team-high 13 points and Morris added 11 points off the bench, including a pair of free throws with 10 seconds left that sealed the win.

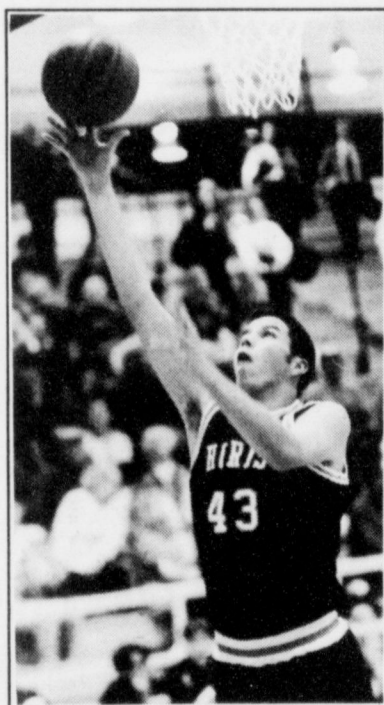
"Coach gets on me if I don't rebound," said Lopez, a soft-spoken 6-foot-3 senior who plays in the shadow of 6-7 teammate Jason Thomas. "I don't mind not being in the spotlight."

With the score tied at 44, Lopez caught an entry pass and spun hard to the middle, scored, and was fouled. He missed the free throw. But a minute later, Lopez scored on an offensive rebound to give the Longhorns a 48-44 lead.

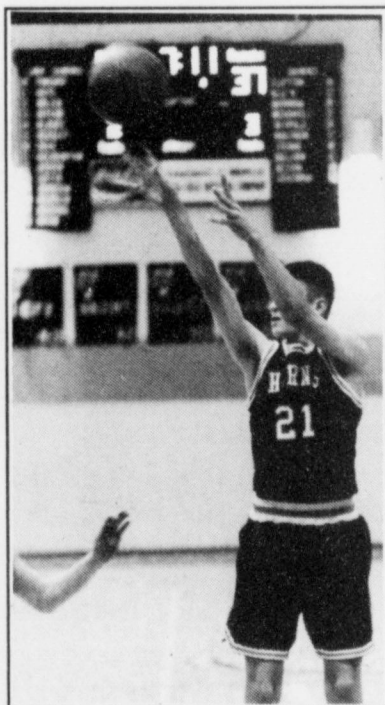
Lopez scored seven points on offensive rebounds.

Besides the clutch free throws, Morris hit two big 3-pointers in the second half.

After Texline canned three-straight 3-pointers to cut a 10-point Lazbuddie lead to 32-31, Morris answered with a 3-pointer of his own to stop the run.



Israel Lopez



Josh Morris

The 6-foot sophomore added another 3-pointer early in the fourth quarter after the Tornadoes had tied the game at 37.

"That's why he's in there; to shoot," Lazbuddie coach Gary Grahn said. "He's going to be a special player one day."

Morris, who is as quiet as

Lopez, said the confidence his coach shows in him makes things easier.

"It brings my confidence up when he tells me he wants me in there to shoot," Morris said.

Despite further prodding, Morris and Lopez both said they were just doing their job.

BASKETBALL

State playoffs

CLASS 1A

Region I

Area

Higgins (W1) (24-0) vs Nazareth (W3) (28-4), Tuesday
Samnorwood (W5) (21-6) vs Lorenzo (W7) (27-4), Tuesday
New Home (R10) (13-15) vs Valley (R12) (23-9), Tuesday
Klondike (R14) (20-8) vs Rotan (R16) (19-8), Tuesday
Lazbuddie (R3) (21-7) vs Gruver (W2) (19-13), Tuesday
Springlake-Earth 47, Silverton 44

Smyer (R9) (20-7) vs Paducah (W12) (27-1), Tuesday

Borden County (W14) (23-3) vs Roby (W16) (26-3), Tuesday

CLASS 3A

Region I

Area

Tulia (W1) (31-2) vs Sonora (R4) (19-13), Tuesday
Merkel (R6) (23-10) vs Comanche (R8) (15-15), Tuesday
Seminole (W2) (29-4) vs Clint (R3) (22-8), Tuesday
Iowa Park (R5) (20-14) vs Glen Rose (W8) (25-7), Tuesday

Home Folks Caring For Folks At Home.

MULESHOE AREA HOME HEALTH Agency

Featured Patient

Chloie Walker was married to the late Foster Walker. She has six children - 5 boys & 1 girl: Oleta Spenser of Tennessee, Tommy Walker of Muleshoe, Lonnie Walker of Nevada, Ronnie Walker of Midlothian, Donnie Walker of Midlothian and Willie Walker - a truck driver.

Mrs. Walker used to enjoy piecing quilts. She is a member of the Church of Christ.

The girls at the Muleshoe Area Home Health Agency are great to Mrs. Walker.



Chloie Walker

To receive Home Health Services, talk with your physician or talk with hospital personnel when you are hospitalized.

24 Hour # 272-3346
Local Nurse on call 24 hours a day to offer prompt service.

We accept Medicare, Medicaid and Private Insurance
It Is Your Right To Choose The Home Health Agency You Prefer.



FREE Information on New Out Of Hospital Advance Directives will be available soon!
Watch this ad for further info as it comes available.

Affiliated with Lubbock Methodist Hospital Systems

Mule JV open with 17-11 win

The Muleshoe junior varsity pounded out four extra bases hits and beat Seminole 17-11 Saturday in a game at the city field called after five inning because of darkness.

Muleshoe scored seven runs in the fourth inning to take a 12-11 lead, then tacked on five more in the fifth.

John McClanahan tripled, singled and scored two runs in Muleshoe's season-opener.

Mason Sinclair and winning pitcher James Barrett each doubled and had two hits. Larry Pineda added a double for the Mules.

Muleshoe finished with eight hits and coaxed 11 walks out of three Seminole pitchers.

Barrett pitched two innings in relief, giving up five runs on four hits while striking out one and walking three.

Cameron Nix started for Muleshoe. In three innings, Nix allowed six runs on four hits while striking out one.

Muleshoe hosts Lubbock Cooper Friday.

Seminole	0	5	1	5	11	8	3
Muleshoe	0	2	3	7	5	17	8

Oscar Cuellar, Eric Clark (3), Jeremy Meeks (4) and Roy Powers. Cameron Nix, James Barrett (4) and Joe Garcia, Clint Black (2). WP — Barrett. LP — Meeks. 2B — Mason Sinclair (M), James Barrett (M), Larry Pineda (M). 3B — Roy Powers (S), Josh Clay (S), John McClanahan (M).



Backhand stab
Muleshoe thirdbaseman Rodney Alanis tries to backhand an errant throw during Saturday's 8-4 loss to Seminole at the city baseball field.

'Horns

Continued from page 1

pointers and 16 points. Nearly half (21) of Texline's points came on seven 3-pointers.

Spreading the floor and treating the 3-point circle like a no parking zone, the Tornadoes patiently worked the ball against Lazbuddie's man-to-man defense.

"We've been short all year," said Texline coach Ron Van Vranken, who was released from the hospital the day before the game. He was treated for a staph infection in his collarbone and back problems and hadn't even seen his team in 12 days. "We've learned to use that to our advantage. I think we wore them down by making them chase us."

Grahn agreed. "They'd work the ball around until we'd have a little breakdown. And they'd hit a

3-pointer."

Lazbuddie led throughout the first half before settling on a 23-18 halftime lead.

The Longhorns stretched their lead to 10 three times in the third quarter, including 32-22 on Chris Smith's short jumper in the lane.

But Luther sandwiched a pair of 3-pointers around a Ty Van Vranken trey, pulling the Tornadoes within 32-31 with two minutes left in the third quarter.

Morris halted the run with a 3-pointer and St. Clair added a 12-foot jumper to put Lazbuddie up 37-31.

But Chris Rice, generously listed at 5-7, hit a twisting 3-

Track

Continued from page 4

shoe to a second-place finish in the junior varsity division.

Rennels won the 110 hurdles with a time of 17.48 seconds and added a second in the 300 hurdles (46.24).

Gilbert Vela and Dustin Cleavinger and the 4x100 relay added wins as Muleshoe finished with 94 points.

Borger won the meet with 130 points.

Vela won the long jump with a leap of 18-6 and was joined by Louis Hines, Manuel Campolaa and Kyle McDaniel on the sprint relay. The sophomore also finished third in the 200 (24.41).

Cleavinger cleared 5-10 to win the high jump and added a fourth in the discus (110-11).

Marcos Soto finished second in the 800 meters (2:19.42).

Randall Relays at Randall High School GIRLS

Team — 1. Sanford-Fritch 127, 2. Hereford 119, 3. Borger 104, 4. Lamas 76, 5. Randall 69, 6. Canyon 61, 7. Muleshoe 31.

MULESHOE SCORERS

100 — 5. Kendra Benham, 13.59; **800** — 4. Lindsey Field, 2:42.14; **1600** — 3. Cari Faver, 6:00.0; 4. Stacy Locker, 6:01.0.; **3200** — 4. Cari Faver, 12:37; **4 x 100** — 5. (Megan Harlan, Brandi Harrison, Carolyn Schuster, Kendra Benham), 54.42; **1600 relay** — 5. (Stacy Locker, Priscilla Aguirre, Bobbi Benham, Cari Faver), 4:37; **High jump** — 6. Lindsey Field, 4-10.

BOYS

Team — 1. Canyon 131, 2. Borger 113, 3. Sanford-Fritch 59, 4. West Texas High 58, 5. Randall 52, 6.

Boys Ranch 51, 7. Hereford 43, 8. Dumas 33, 9. River Road 32, 10. Panhandle 19, 11. Muleshoe 0.

Junior varsity — 1. Borger 130, 2. Muleshoe 94, 3. Panhandle 58, 4. Dumas 57.5, 5. Sanford-Fritch 54 3/4, 6. Boys Ranch 42, 7. Canyon 36, 8. Hereford 33, 9. Randall 29 3/4, 10. West Texas High.

MULESHOE SCORERS

4 x 100 — 1. (Gilbert Vela, Louis Hines, Manuel Campolaa, Kyle McDaniel), 46.83; **1600 relay** — 4. (Gilbert Vela, Louis Hines, Manuel Campolaa, Marcos Soto), 4:03.25; **Long jump** — 1. Gilbert Vela, 18-6; 4. Jesse Reyes, 16-11; **200** — 3. Gilbert Vela, 24.41; **400** — 3. Manuel Campolaa, 58.14; **800 meters** — 2. Marcos Soto, 2:19.42; **3200** — 4. JoJo Elizarreraz, 12:00.19; **High jump** — 1. Dustin Cleavinger, 5-10; **110 hurdles** — 1. Greyson Rennels, 17.48; **300 hurdles** — 2. Greyson Rennels, 46.24.

Batters

Continued from page 4

Matt Mason followed with a single, but McClanahan was caught in a rundown between third and home and tagged out. Purdy was doubled up returning to second when confusion arose over whether McClanahan was out or had returned safely to third.

Instead of having runners at second and third with one out, Muleshoe had a runner at first with two outs.

Muleshoe left two runners stranded in the third, fourth and seven innings.

Monday's game at Denver City was cancelled due to the weather. No makeup date has been scheduled.

pointer at the buzzer and was fouled. The junior made the free throw to make it 37-35 heading into the fourth quarter.

Morris' third 3-pointer two minutes into the fourth quarter gave Lazbuddie a 42-37 lead.

But Luther scored on a hoop inside and a conventional three-point play to tie the score at 42.

With the score tied at 44, Lopez scored from the block with 2:45 left and a minute later grabbed an offensive rebound and scored to put Lazbuddie up 48-44.

After a series of turnovers, Lazbuddie missed the front end of two one-and-ones, keeping the Tornadoes alive.

The second miss came with

12 seconds left and Lazbuddie up 48-45. But Texline couldn't control the rebound.

The Longhorns inbounded the ball to Morris, who was fouled and made both free throws.

"I just shot them like I usually do," said Morris with a shrug of his shoulders.

Texline (45) — Van Vranken 1 (1) 0-0 5, Callis 2 2-4 6, Adams 1 (2) 0-0 8, Poling 0 3-4 3, Rice 1 (1) 2-3 7, Luther 3 (3) 1-2 16. Totals 8 (7) 8-13 45.

Lazbuddie (50) — Mimms 0 0-0 0, St. Clair 5 0-3 10, Morris 0 (3) 2-2 11, Smith 1 (2) 0-1 8, Brown 0 1-2 1, Lopez 6 1-3 13, Thomas 3 1-2 7. Totals 15 (5) 5-13 50.

Texline	9	9	17	10	45
Lazbuddie	12	11	14	13	50

Have a nice DAY

A variety of homestead exemptions could lower your property taxes!

A homestead exemption lowers the property taxes on your home by lowering its taxable value. If your home is valued at \$50,000 and you receive a \$5,000 homestead exemption, your home will be taxed as if it were worth \$45,000.

Who qualifies for an exemption?
Anyone who owned a home on January 1st (and used it as their primary residence on that date) is entitled to a \$5,000 homestead exemption to lower their school taxes this year...and it doesn't matter if your home is a house, condominium or mobile home. (Counties, cities and special taxing districts may also offer homestead exemptions.)

Are other exemptions available?
If you're disabled--or if you're 65 years old or older—you are entitled to an additional \$10,000 school tax exemption on your home. And if you qualify for the over-65 exemption, you're also entitled to a permanent, locked-in "ceiling" on the school property taxes on your home. (The ceiling does not apply to county or city property taxes, and those entities may offer other exemptions.) The over-65 homeowner's exemptions and school tax ceiling transfers to the surviving spouse, if the spouse is 55 years of age or older at the time of death and lives in and owns the home.

Do I have to apply each year?
No. If you had a homestead exemption on your home in 1996, you won't need to reapply for 1997 unless your chief appraiser requires it. However, if you haven't received an exemption on your present home—or if you've moved to a new home—you'll need to file for an exemption for 1997. And if you turned 65 or became disabled during 1996, you need to file for the additional exemptions.

When and where should I file?
File applications by April 30 at your appraisal district office. If you need more time, contact us at:

Bailey Central Appraisal District
302 Main Street, Muleshoe, TX 79347
806-272-5501

For more information, stop in or call for a free copy of "Texas Property Taxes: Taxpayers' Rights, Remedies & Responsibilities"

Or contact:
Comptroller's Property Tax Division
P.O. Box 13528
Austin, TX 78711-3528

A public service announcement courtesy of this newspaper.

INVEST IN QUALITY THAT ENDURES

WITH **KitchenAid®** FOR THE WAY IT'S MADE.™

Model KUDS24SE

- Eliminate Pre-Rinsing with the HYDRO-SWEEP™ Wash System
- Dry Dishes Spotlessly with the SATIN FINISH™ Stainless Steel Tub
- WHISPER QUIET™ Ultima Sound Insulation

Model KRSR25

- Store More Groceries with a 25.1 Cubic-Foot SUPERBA® Side-By-Side Refrigerator
- Maximize Freshness with the ExtendFresh™ Temperature Management System
- Dispense Crushed Ice and Chilled Water Without Opening the Door

Model KERC507

- THERMAL-CONVECTION™ Oven featuring the T.H.E.™ Convection System
- Easy-Clean Ceran® Surface Cooktop with Radiant Elements
- Monochromatic White, Almond or Black Styling

0% FINANCE CHARGE AND NO PAYMENTS UNTIL 1998!

With the Purchase of a Select KitchenAid® Appliance

February 16 - March 29, 1997

See Dealer for Details.

Wilson Appliance

117 Main MULESHOE 272-5531

Washer Model KAWS677E

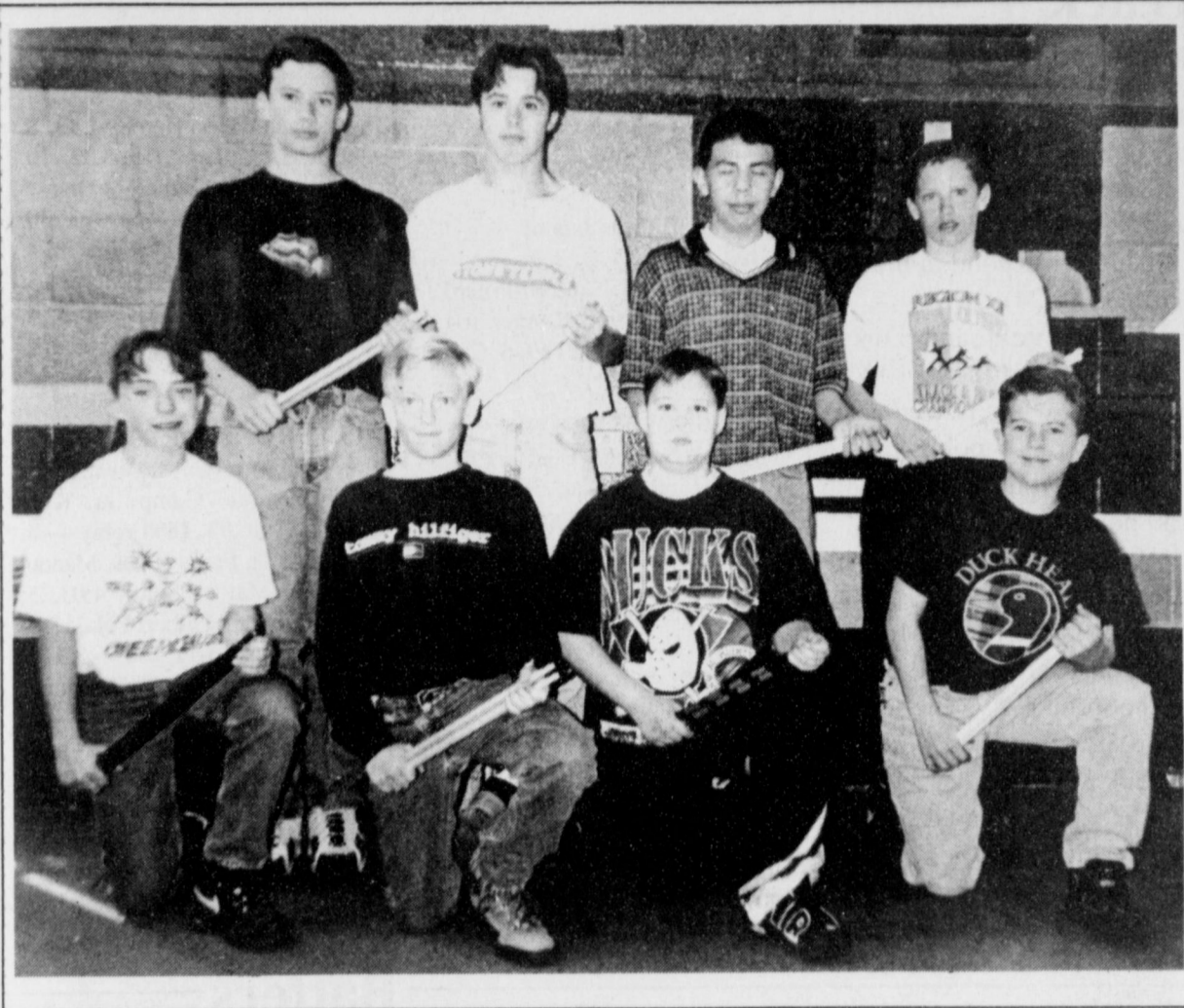
- Clean Larger Loads at Once with Super Capacity Plus
- Wash Delicates Gently with the SURE-CARE™ Agitator
- Eliminate Washing Fine Washables By Hand with the HAND-CARE™ Cycle
- Talk on the Phone Without Interruption with the WHISPER QUIET® Plus Sound Reduction Package

Dryer Model KEYS677E

- Dry Larger Loads at Once with Super Capacity Plus
- Dry Delicates with Care with an Ultra-Low Temperature Setting
- Watch Television without Interruption with the WHISPER QUIET® Sound Reduction Package

SPECIAL OFFER ENDS MARCH 29

*Offer valid on consumer purchases of select KitchenAid® appliances financed between February 16 and March 29, 1997 on an approved Whirlpool Financial National Bank Account. The APR may vary. As of February 1, 1997, the current APR is 21.9%. Minimum monthly finance charge of \$.50. No payments required until January 1, 1998. Finance charges will be assessed from date of purchase unless total is paid in full before January 1, 1998.



Drummers of a different beat

Eight drum soloists from the Watson Junior High School band competed at the Texas Tech solo/ensemble contest, where they each received a first division rating. Pictured are (back row, from left) Russell Warren, Jerrell Otwell, Jason Anzaldua, Kyle Atwood, (front row) Kinsee Estep, Brandon Mount, Daniel Greenhouse and Joel Cowart.



Dillman Superkids

Dillman Superkids for the month of February are (front row, left to right) Monica Gonzales, Ramon Pena, Cristal Quintanilla, (back row) Junior Martinez, Kindra Pruitt, Olivia Delgado, Ray Ramirez and (not pictured) Garrett Riley.

Week

Continued from page 1

academic contests. Dillman Elementary School will host a "Donuts and Dad" March 7. A light breakfast will be served at 7:30 a.m., followed by a brief presentation on the math curriculum. Anyone—not just dads—is welcome.

Also Friday, DeShazo El-

ementary will demonstrate the Accelerated Reader Program and the Heart Beeps programs in the computer lab. Anyone interested in viewing the programs can visit the DeShazo office, where they will be

shown to the lab. Texas Public Schools Week is set aside once a year by the Texas Education Agency as a way for parents and community member to become more involved with local schools.

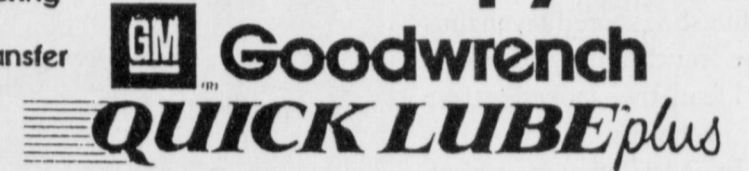
Think Quick!

GM Goodwrench Quick Lube Plus oil change. It's fast — or it's free!

Bring your car or light truck to us for a GM Goodwrench Quick Lube Plus oil change. We'll complete all of these services in 29 minutes or less or your next oil change is free:

- Refill your engine with up to 5 quarts of GM Goodwrench® Motor Oil
- Install a new ACDelco Oil Filter
- Perform a complete chassis lube
- Check fluid levels: brake fluid, differential fluid, power steering fluid, transmission fluid, windshield washer fluid, transfer case fluid (4wd vehicles)
- Inspect: drive belts, hoses, air filter, tire pressure

SPECIAL \$17.00



DOC STEWART
CHEVROLET • GEO • BUICK

2500 Mabry Drive
Clovis, NM
505-763-4465
1-800-530-8842



Muleshoe Cattle Market

Saturday, Feb. 22, 1997

970 head of cattle, 138 hogs and 209 sheep and goats were sold.

The market on stocker calves sold \$3-\$6 higher with some instances of steer calves \$10 higher. Feeder cattle were \$2-\$3 higher. Pairs and bred cows were steady to higher with good selection while packer cows and bulls were \$3-\$5 higher. We had the best selection of cattle and the best buyer attendance and participation this year with quality and conditions excellent.

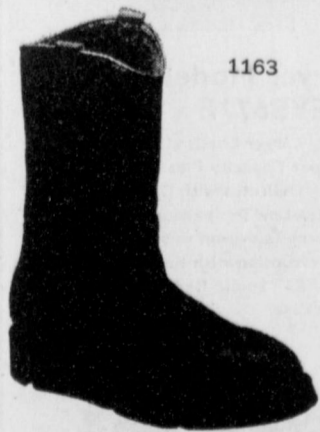
REPRESENTATIVE SALES

Seller, City	# Type	Wt.	CWT or PH
Jason Box, Muleshoe	4 Hol. Strs.	553 lbs.	at \$53.00
Sam Hubbard, Brownfield	Rwf. Str	310 lbs.	at \$99.50
Cochran Co. Farms, Morton	5 Mixed Strs.	320 lbs.	at \$95.50
Cochran Co. Farms, Morton	14 Mixed Strs.	464 lbs.	at \$84.00
Cough Clements, Morton	Red Bull	305 lbs.	at \$94.00
Dewitt Tiller, Sudan	Red Str.	400 lbs.	at \$96.00
Alan Clark, Friona	2 Ywf. Strs.	425 lbs.	at \$89.50
Robert McCurry, Springlake	3 Rwf. Bulls	457 lbs.	at \$77.00
7C Cattle, Bovina	3 Char. Bulls	513 lbs.	at \$78.50
Box Bros., Muleshoe	15 Mixed Strs.	568 lbs.	at \$74.75
Box Bros., Muleshoe	18 Blk. Strs.	651 lbs.	at \$69.75
Henry Batenhorst, Hereford	2 Bwf. Strs.	623 lbs.	at \$75.00
Ida Keller, Earth	12 Red Bulls	654 lbs.	at \$69.00
Lee Jesko, Muleshoe	4 Limo. Bulls	664 lbs.	at \$74.00
Harvey Patterson, Amherst	3 Red Strs.	702 lbs.	at \$72.00
Steve Abbott, Friona	Blk. Hfr.	320 lbs.	at \$73.50
Alex Aguirre, Muleshoe	5 Mixed Hfrs.	355 lbs.	at \$73.50
Heath Scott, Muleshoe	3 Mixed Hfrs.	402 lbs.	at \$72.50
Noel Cano, Hereford	Bwf. Hfr.	415 lbs.	at \$73.00
Shonnie Albus, Morton	Bwf. Hfr.	415 lbs.	at \$74.50
Cochran Co. Farms, Morton	9 Mixed Hfrs.	408 lbs.	at \$72.50
Dale Demel, Sudan	21 Mixed Hfrs.	567 lbs.	at \$68.50
Mike & Debra Beauchamp, Bovina	3 Char. Hfrs.	580 lbs.	at \$67.50
Robert McCurry, Springlake	4 Red Hfrs.	618 lbs.	at \$68.00
Henry Batenhorst, Hereford	Char. Hfr.	540 lbs.	at \$70.00
Lee Howard, Inc., Anton	8 Mixed Hfrs.	666 lbs.	at \$64.50
Harvey Patterson, Amherst	2 Red Hfrs.	758 lbs.	at \$65.50
Alex Aguirre, Muleshoe	4 Blk. Pair		\$430.00
Alan Clark, Friona	Rwf. Pair (young)		\$660.00
Cochran Co. Farms, Morton	2 Rwf. Pairs		\$530.00
Davis Blackwater Ranch, Portales, NM	Red Cow, P8		\$455.00
Joe Kent, Sudan	Char. Cow, P7		\$460.00
Tasko Farms, Fieldton	Rwf. Cow, P7		\$475.00
CC Farms, Morton	4 Char. Cows, P7		\$370.00
7C Cattle, Bovina	Char. Bull		per hd. \$890.00
Williams Land & Co., Morton	Blk. Cow	1090 lbs.	at \$42.00
Daniel Ramirez, Muleshoe	Grey Cow	1070 lbs.	at \$41.25
Prairie View Dairy, Muleshoe	2 Hol. Cow	1625 lbs.	at \$38.00
D.O.A. Inc., Littlefield	Ywf. Cow	1715 lbs.	at \$41.50
Luke Albus, Morton	2 Bwf. Cows	1243 lbs.	at \$39.75
Genizo Investments, Crystal City, TX	2 Red Cows	1010 lbs.	at \$39.50
Mike & Debra Beauchamp, Bovina	Char. Bull	1940 lbs.	at \$47.25
Duane White, Farwell	Brang. Bull	1590 lbs.	at \$47.50

The Muleshoe Cattle Market is brought to you each week by Muleshoe Livestock Auction, located east of Muleshoe on U.S. 84. Muleshoe Livestock conducts sales every Saturday, beginning with hogs, sheep and goats at 10 a.m. and cattle following at approximately 12 noon.

FOR INFORMATION ON SALES OR TO CONSIGN CATTLE, CALL (806) 272-4201.

Subscribe today! Call 272-4536



1163

Red Wing **Comfort Force**
IMPACT ABSORPTION SYSTEM

The Fair Store
120 Main 272-3500

If you suspect you have a gas leak, do not light a match to try to spot it. Instead, lather the suspected area with soapy water so that the escaping gas will cause bubbles and pinpoint the danger area.

"We went to the store for sour cream and to check our numbers. We never did get the sour cream."

Prize:
\$4,823,749.44*

Winning Numbers:
1 6 29 37 38 50

Their System:
"I picked the first and last number, the age of my sons, how long we've been married and the number of grandkids."

First Purchase:
"I bought a tiller."

What She Did With Her Ticket:
"I signed it immediately and took it home and put it in a sealed plastic bag."

*Paid over 20 years.



"I saw that all six numbers matched, and I just went to dancing."

SUE CLEMENTS



OVER 200 MILLIONAIRES AND STILL COUNTING

OBITUARIES

Vera L. Engelking

Funeral services for Vera L. Engelking, 87, of Muleshoe were held Feb. 22 at Ellis Funeral Home Chapel with Rev. David McIntire, pastor of New Vision Nazerene Church, Muleshoe officiating.

Burial followed in the Muleshoe Memorial Park Cemetery under the direction of Ellis Funeral Home of Muleshoe.

Mrs. Engelking died Feb. 20 at the Muleshoe Area Healthcare Center. She was born Oct. 14, 1909 in Logan, Iowa. She married Harry Engelking March 18, 1933 in Clovis, N.M. He died July 18, 1957.

Vera had been a resident of Muleshoe since 1918, moving here from Little Sioux, Iowa. She was a homemaker and a member of St. Martins Lutheran Church in Littlefield.

Survivors include two nieces; Shirley Hicks of Muleshoe and Betty Embry of Farwell; two nephews, Richard and Jerry Engelking both of Muleshoe; two sisters-in-laws, Dorothy Mathiesen of Muleshoe and Marie Engelking of New Kirk, Okla. **Fred Welch**

EARTH—Funeral services for Fred Welch, 66, of Earth were held Feb. 22 at Earth Memorial Cemetery with Rev. Bobby Broyles, pastor First Baptist Church officiating.

Burial followed in the Earth Memorial Cemetery under the direction of Parsons-Ellis Funeral Home of Earth.

Mr. Welch died Feb. 21 at

Methodist Hospital after an illness. He was born Oct. 27, 1930 in Lazbuddie. He married Florence Stout Aug. 19, 1950 in Earth, Texas.

Mr. Welch had been a resident of Lamb County most of his life. He was a farmer and a member of First Baptist Church.

Survivors include his wife Florence of Earth; two sons, Greg Welch of Earth and Rickey Welch of Lubbock; one daughter, Kim Hammons of Brownfield; his mother, Adria Welch of Earth; one sister, Louise Packard of Hereford; one brother, L.J. Welch of Earth; 7 grandchildren.

The family suggests memorials to be given to a favorite charity.

Candy Montiel

EARTH—Funeral services for Candy Montiel, 46, of Earth were held Feb. 24 at St. Mary Magdalena Catholic Church with Father Joe Augustine officiating.

Burial followed in the Earth Memorial Cemetery under the direction of Parsons-Ellis Funeral Home of Earth.

Mrs. Montiel died Feb. 22 at Lamb Health Care Center after a short illness. She was born Sept. 5, 1950 in Runge, Texas. She married Joe

Montiel. He died in 1985. Candy had been a resident of Earth, Texas for 11 years moving here from Dimmitt. She was a home maker and a member of St. Mary Magdalena Catholic Church.

Survivors include four sons, Roman, Paul, Jamie, and Joey all of Earth; two daughters; Erica and Christina Montiel both of Earth; her parents, Hilario and Maria Garza of Springlake; five sisters, Jobita Fuentes, Sylvia Fuentes, Irma Overa and Patsy Garcia all of Earth, Genevca Castaneda of Littlefield; one brother, Reynaldo Garza of Earth; one granddaughter, Stephanie Montiel.

MPD investigating break-in Sunday at Watson Junior High

The Muleshoe Police Department is investigating a break-in at Watson Junior High School late Sunday evening.

A teacher working at the school reported seeing someone in the school between 9 and 9:30 p.m. The person, who remains unidentified, ran away when spotted by the teacher.

Police are unsure how the person entered the building. Muleshoe acting police chief Jay Livingston suggested he or she might be in possession of a set of keys that were lost last week by a school employee.

No property was reported missing.



Subscribe Today!

Muleshoe Journal and Bailey County Journal

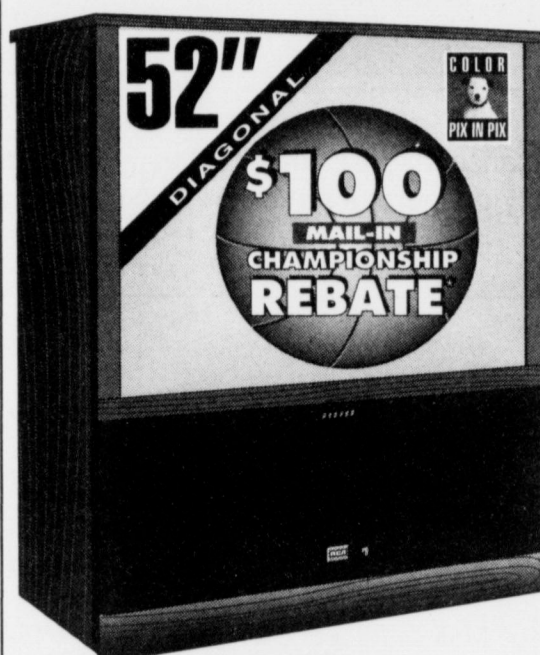
SUBSCRIPTION RATES

Carrier	\$22⁰⁰ Year
Muleshoe-By Mail	\$24⁰⁰ Year
Out Of Town	\$26⁰⁰ Year

*Call Today
272-4536*



Up to \$100 Mail-in Rebate* on Select RCA Home Entertainment Products



- P52720LV RCA Home Theatre™ Projection Stereo Monitor -Receiver**
- Color Picture-In-Picture (5)
 - Master Touch® Universal Remote
 - High Gain Picture System
 - 13-Jack Audio/Video Monitor Panel With S-Video Input

\$1899

SLIMLINE PROJECTION



- PROV712 RCA PROVIEW™ 8MM Camcorder**
- 12:1 Power Zoom Lens
 - 3" LCD Color Display Panel
 - Full-Range AutoFocus
 - Flying Erase Head

\$599



- RP9900 RCA Audio Theatre Dolby™ ProLogic Surround System**
- 120 Watts Total Power (1% THD, @ 1 kHz)
 - 5 Speakers: 2 Main, 1 Center Channel, and 2 Surrounds
 - Universal Remote Control
 - 5 Audio & 2 Video Source Inputs

\$349

- VR652HF RCA Home Theatre™ 4-Head Hi-Fi Stereo VCR**
- Auto Clock Set (1)
 - Master Touch® Universal Remote
 - Alpha-Numeric Digital Display
 - Bilingual On-Screen Menus



COMMERCIAL ▶ ADVANCE (3) \$299



Digital Satellite System #1 DSS® Brand In America!
OVER 200 CHANNELS AVAILABLE From DIRECTV® and USB™

Plus **\$200** cash back from DIRECTV.

And

14 Different Premium Movie Channels And Much More! With The Purchase Of Any RCA Brand DSS® System.



When you buy an RCA DSS® System and a pre-paid one-year subscription to the DIRECTV™ TOTAL CHOICE™ PROGRAMMING PACKAGE.

\$299



† Limited-time offer for new DIRECTV residential subscribers who purchase and prepay a non-refundable one-year subscription to the DIRECTV Total Choice programming package. Customer must remain a continuous Total Choice subscriber for 12 months. One per household. Offer details will appear on the first DIRECTV bill. Offer can be redeemed as a \$200 DIRECTV programming credit or a \$200 check from DIRECTV. Offer valid between February 20 and April 20, 1997 and may not be combined with any other special DIRECTV offer.

©1997 DIRECTV, Inc. DIRECTV, DSS, and TOTAL CHOICE are official trademarks of DIRECTV, Inc., a unit of Hughes Electronics Corp.

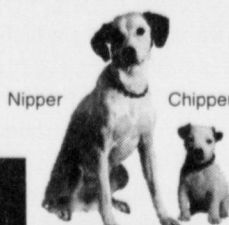
*This offer applies to select RCA Consumer Electronics Projection Stereo TVs, VCRs, Camcorders, and Audio Theatre Systems purchased February 20 through April 20, 1997. Ask us for details.

Residents of Connecticut: Connecticut regulations prohibit advertising an "after rebate" price unless you receive your rebate at the point of sale. All Thomson Consumer Electronics rebates are "mail-in" rebates. Connecticut dealers who elect to advertise "after rebate" prices and point of sale rebates to customers are responsible for fulfilling your rebate, not Thomson Consumer Electronics.

(1) SRS, the SRS symbol (●), and Sound Retrieval System are registered trademarks of SRS Labs, Inc. (2) Commercial Advance is a registered trademark of SRT, Inc. (3) VCR Plus+ and Plus Code are trademarks of Gemstar Development Corp. (4) Dolby is a trademark of Dolby Laboratories Licensing Corporation. (5) VCR or second video source required. (6) Controls most brands of VCRs. (7) Subject to availability based on local off-air and cable broadcasts. StarSight® is a registered trademark of StarSight Telecast Inc.

Residents of Alaska: The RCA Brand DSS® receiver requires a larger dish antenna (not included) to receive DSS® programming. Signal reliability and performance will be susceptible to degradation especially during adverse weather conditions. Check your local dealer or installer for information on larger antennas which may be more compatible with the RCA DSS® receiver.

DSS® is a registered trademark of DIRECTV, Inc., a unit of Hughes Electronics Corp. Trademark(s) ®Registered Marca(s) Registrada(s) © 1997 Thomson Consumer Electronics, Inc.



RCA Changing Entertainment. Again.™
<http://www.rca-electronics.com>

Wilson Appliance

117 Main Muleshoe 806-272-5532

Subscribe Today To The Muleshoe Journal

Call 272-4536



One of many
Muleshoe Policeman Kenny Evans waits for assistance after a one-car accident in west-bound lane of US Highway 84 near the city limits. Freezing rain created extremely dangerous traveling conditions throughout Monday and Tuesday morning.

Accidents

Continued from page 1

transported to Lubbock Memorial Hospital, where she was reported to be in stable condition Tuesday morning.

The accidents carried over late into the night.

A Bailey County spokesman reported a van rolled over US 84 near Progress close to midnight. Two of the three passengers were transferred to University Medical Center in Lubbock. The third was treated and released from MAMC.

Two accidents occurring at approximately 8 p.m. Monday sent Sheriff's crews going their separate ways along US 84.

A sedan occupied by one person was involved in a rollover near Progress. The driver was treated and released.

Three people were also treated and released after their Toyota 4-Runner rolled over 2

and one-half miles east of Muleshoe.

In addition, there were multiple reports of vehicles running off the road, some of which struck road signs.

A representative of Muleshoe Area Medical Center reported a total of nine patients being treated over Monday and Tuesday.

Muleshoe acting police chief Jay Livingston reported no accidents within the city limits.

Pat Vesper, a meteorologist with the National Weather Service in Lubbock, attributed the weather to an upper level storm system moving across the southwestern U.S. The storm system, combined with the high relative humidity in the area, produced conditions which highly favored precipitation.

Vesper said air in the upper

atmosphere was too warm to produce snow early in the day, causing precipitation to fall as rain. However, temperatures on the ground were cold enough to cause the rain to freeze.

Vesper said the cold weather will persist until Thursday. The area should then see a warming trend through the weekend, with temperatures reaching into the low 50's and upper 60's.

COTTON NEWS

LUBBOCK — Projections of supply and off-take for the 1997-98 marketing year indicate a total supply of 22.3 million bales. The supply figure is based on estimated 1997-98 production of 17.8 million bales being added to 4.5 million bales of expected carry-over from 1996 production.

The projections were calculated by economic staff from the National Cotton Council and released during the NCC's Annual Meeting.

One of the most encouraging pieces of information released was the projection for negligible raw cotton imports in 1997, even though Step 3 import quotas continue to open as a result of current relationships between U.S. prices and the "A" index.

The relationship between U.S. prices and the "A" index has narrowed slightly since mid-December, although not enough to shut off step 3 import quotas. "The issues surrounding the problem of Step 3 and raw cotton imports are numerous and a simple solution has not presented itself," notes PCG Executive Vice President Donald Johnson. "Our efforts to develop a solution to this issue will continue through our contact with legislators, USDA representatives and the National Cotton Council staff and members."

Estimated offtake for the 1997-98 marketing year is 18 million bales, 11.2 million for domestic consumption and 6.8 million to the export market.

Planting intentions reported to the NCC indicate producers currently intend to plant 7.1 percent fewer acres in 1997. Expected plantings are put at 13.6 million acres, roughly one million acres fewer than were planted in 1996. Texas planting projections for 1997 were put at 5.2 million acres, 500,000 acres less than 1996. Alabama, Florida, Virginia, Missouri, and Arizona are the only states projecting increased upland cotton acreage in 1997.

Area Business Directory

ATTENTION COTTON FARMERS
We Will Have A Limited Supply of
Delta Pine 2156 Cotton Seed
PUT YOUR ORDER IN NOW!
Muleshoe Feed Barn
311 W. American Blvd. 272-5626

Bridal Selections Have Been Made For:
Jennifer Streich
Bride-Elect of
James Foster
The Art Loft
272-3485

GOODYEAR'S SMOOTHEST RIDING REAR FARM TIRE
SPECIAL BUY
On Goodyear DT710 Radial 184R38*
JAMES CRANE TIRE CO.
107 Main Muleshoe 272-4594

Sheree's Attic
Merle Norman Cosmetics
Winter Clearance
still going on **40%-60% OFF**
Come in and see
New Spring Selections
Owner Sheree Hunt
1519 W. American Blvd. 272-3459

KENW-TV
Public Television
Festival '97
March 7th - 23rd
NOVA
"Curse of T. rex"
NOVA takes another look at T. rex, the indisputable ruler of the dinosaurs and still creating an uproar 65 million years after drawing its last living breath.
This time around, the giant reptile is making mayhem in the courtroom, where public and private interests are battling for the rich fossil legacy of the past, symbolized by a nearly perfect T. rex specimen nicknamed "Sue," discovered in the South Dakota Badlands in 1991. NOVA investigates the dark side of the public's obsession with dinosaurs in "Curse of T. rex."
The program covers the imposing FBI raid that confiscated Sue and gathered tons of evidence, allegedly implicating Sue's discoverers in widespread fossil theft from federal lands. Until recently, fossil collecting was pursued mainly by hobbyists and a handful of academic paleontologists, but now it is a lucrative business with international collectors and museums bidding up the price for the best specimens.
Nova "Curse of T. rex" will be broadcast Saturday, March 31st at 10:00 p.m. on KENW-TV.
Rail Away
Showcases International Train Travel
From the early days of the innovative "iron horse" to today, trains and train travel have fascinated the young and old alike. Despite advances in transportation which have brought us more convenient and quicker ways to travel, railways still capture the imagination. Rail Away looks through the eyes of the rail passenger to explore the cultures of more than a dozen countries and regions across the globe.
A 13-part series about international train travel, Rail Away episodes visit the United States, Thailand, and many places in between as they examine the history, scenery, industry and people of different cultures.
The first episode, "U.S.A.," explores the Rocky Mountains and old gold-mining cities of Colorado. Next, the series moves to Portugal and then on to Sri Lanka, where the railway line winds through the humid tropics to beautiful temples and busy cities. The series then looks at Scandinavian landscape and industry in Denmark and Sweden, and makes a 2,000-mile journey through Southeast Asia from Singapore to Bangkok on one of the world's most luxurious train routes in "Eastern & Oriental Express." In later episodes, the series explores Greece, Scotland, Cuba, India, Tunisia, Finland, and Spain.
Rail Away will be broadcast Sundays at 7:30 a.m. beginning March 2nd. The series repeats Mondays at 11:30 p.m. beginning March 3rd on KENW-TV.
Channel 3 Television from
Eastern New Mexico University, Portales, New Mexico

It's Easter Time!
Come See What We Have
• Unusual Music Sacks
• Musical Bunnies
• Baskets • Bunnies • Eggs
Muleshoe Art Loft
1529 West American Blvd.
272-3485

A PAT ANGELEY
Certified Public Accountant
1910 W. American Blvd.
Muleshoe, TX 79347
272-7502 Fax: 272-4198

New Shipment
Easter Dresses
The Fig Tree
220 Main 272-7561
Muleshoe

Journal Classifieds

Call 272-4536 Deadlines: For Thursday, 5 p.m. Monday; For Sunday, 5 p.m. Thursday Call 272-4536

LEGAL NOTICE

Notice is hereby given that Muleshoe Independent School District intends to examine alternatives to its present food service program. All interested companies must attend a Pre-Bid Proposer's conference and District Tour on MARCH 19, 1997 at 10:00 a.m. at the Administrative Offices.

No offer of intent should be construed from this legal notice that Muleshoe Independent School District intends to enter into a contract with the company for alternative food service unless, in the sole opinion of the district, it is in their best interest to do so.

All costs involved in submitting alternatives to the Muleshoe Independent School District's current food service program shall be borne in full by the interested company and should be kept to a minimum. A copy of the Request for Proposal can be obtained by contacting:

Ms. Jo Addine Mayhugh
Business Manager
Muleshoe Independent School District
514 W. Avenue G
Muleshoe, Texas 79347
(806) 272-3389

Muleshoe Independent School District reserves the right to accept any proposal which it deems most favorable to the interest of the school district and to reject any or all proposals or any portion of any proposal submitted, which, in their opinion, is not in the best interest of the District.

Published in the Muleshoe Journal Feb. 27 and Published in the Bailey County Journal March 2.

WANTED

\$\$\$WANTED\$\$\$

We buy used mobile homes. We pay top dollar, any year, any condition. We need your used mobile home. Please call 1-800-404-1321.
7t-tfc

AUTOMOBILE

'91 Ford Tempo GL, 4 door, Red, Loaded, 1 owner, 28,000 miles, \$6,995., (505)359-1775, Portales, NM.

'91 Lincoln Towncar, White, Red nylon roof, local owner, \$7,495., (505)359-0947, Portales, NM.

'94 GMC Suburban, 2 wheel drive, White, loaded, 87,000 miles, \$19,995., (505)359-1775, Portales, NM.

'93 Dodge D-150 regular cab, White, 80,000 miles, extra clean, \$9,195., (505)359-0947, Portales, NM.

'90 Jeep Cherokee, 4x4, Black, 77,000 miles, \$11,195., (505)359-1775, Portales, NM.

HAY FOR SALE

German millet hay, haygrazer and large round bales.

Delivery available discounts on quantity. Call (505) 276-7522, 477-2220, 359-0947, 276-7527 41t-tfc

The unbelievable 72' home has arrived at Portales Homes.

COME CHECK IT OUT AND STEP IN LUXURY!

US 70 & Kilgore in Portales, NM



Portales Homes
356-5639 or
1-800-867-5639
DL366

REAL ESTATE

2 bdrm House for Sale in Earth, nice area, 364-4670 in Hereford. 8s-4tc

For Sale by Owner: 3-2-2 Brick home with fire place, sun room, fenced yard, sprinkler system. Across from Dillman. Call 272-3918 or 272-3025. 8s-4tc

For Sale Brick home: 3bdrm, 2 bath, fire place, 1 car garage, storage building. Call 272-3196. 9s-4tpd

For Sale to be moved, Nice House. 2 bedroom, 1 bath. Call 806-925-6421. 9s-4tc

For Sale: 1979 Breck 14x80 Mobile home, 3 bdrm, 2 bath on 60x120 fenced lot. 16x12 storage bldg. 2 car carport. Replumbed, new roof & covered 8x12 deck. \$21,000. 806-272-5429. 9s-2tc

House for Sale: 3 bdrm, 1 3/4 bath call 965-2477. 9t-4tc

MISCELLANEOUS

Plagued by Arthritis Call 1-800-552-8339. 7t-5tc

Concealed Hand Gun Course

March 8, 8 a.m. to 6 p.m. (One day class with shooting) If your proficiency certificate has expired, call for details about renewal. Toby Turpen 806-364-6362. 9t-2tc

HELP WANTED

Care provider, needed for Blanche Lenderson. \$6.00 an hour. Apply in person at the office of Michael R. Caldwell, P.C., 113 W. Avenue D., Muleshoe. References required. 8s-tfc

The Muleshoe Chamber of Commerce and Agriculture is accepting applications for a part-time chamber manager through March 1. Please send resume to Muleshoe Chamber of Commerce 215 S. 1st. No phone calls please. 8t-7tc

Plains Memorial Hospital is now recruiting RN's and LVN's for the newly established Geropsych unit in Dimmitt, Tx. Please contact the Human Resource Department at 806-647-2191 ext. 423 or send resume to Plains Memorial Hospital, 310 W. Halsell, Dimmitt, TX 79027. Equal Opportunity Employer. 9t-4tc

Help Wanted: Truck and Tractor operators for Silage Harvest for '97. March thru November. CDL required. Call 806-238-1206. 9t-2tc

FOR SALE

For Sale: Motorola permanent mount cell phone \$100, 12 cubic foot Sears refrigerator \$100, G.E. 40" electric stove \$25, old Coca-Cola sign \$150. 272-4123. 9t-2tc

REAL ESTATE AUCTION

320 ACRES, M/L

PARMER COUNTY, TEXAS

Monday, March 10, 1997 ----- Sale Time: 11:00 A.M.

Auction Location: Bovina, (Parmer Co.) TX

Bovina EMS Bldg., 109 Third Street (Next to GTE Bldg.)

Property location: From Bovina, TX 2.2 miles South on FM Hwy 1731, then 1 mile East on CR S to Northwest

Corner of Property; or from Farwell, TX 9 miles East on FM Hwy 145, then 7 miles North on FM 1731, then 1 mile East on CR S to Northwest Corner of Property; or from Muleshoe, TX 10 miles Northwest on US Hwy 84, then 11 miles North on FM Hwy 1731, then 1 mile East on CR S to Northwest Corner of Property

James T. Hull Estate -- Owner Mary Sue Hull, Trustee

For more information contact: Cruce & Fletcher Auctioneers (806) 296-5050 or (806) 866-4201

LEGAL: North 1/2 of Section 35, Township 7, South Range 2 East, out of Leagues 528 & 529 of a Capitol Syndicate Subdivision, Parmer County, TX containing 320 Acres, m/l

ASCS: Parmer County Farm #900

320 acres Farmland 287.4 acres Cropland 43.1 acres Wheat 139.6 acres Corn 97.1 acres Cotton 6.1 acres Barley 1997 Estimated Payment \$9,942 to \$11,805

Farm Status: Farm is rented on Crop Basis for 1997 Crop Year. Buyer will assume present owners position receiving 1/3 of Crop Rent & Government Payments. Buyer will also assume present owners expense regarding crops. Contact Auctioneers as to Rental Agreement. (806 296-5050)

Irrigation: 1-8" Well 2-6" Wells 1- Tailwater Pump Approx. 2 miles of Underground Pipe Pumps & Gearheads go with lase of land. Motors & sprinklers belong to tenant.

Improvements: Older Barn Minerals: Buyer will Receive 1/2 of Seller's Equity.

Manner of Sale: Dollars per acre X 320 acres to determine Total Sales Price.

Terms: Cash. Successful bidders will be required to execute a real estate contract and deposit 10% of total purchase price with escrow agent.

Title: Property is to be conveyed to purchaser by General Warranty Deed with Updated Abstracts.

Taxes: 1997 Taxes To Be Paid By Buyer. Closing: Closing to be March 31, 1997 or sooner.

Possession: Buyers shall take possession at Closing with possession from tenant as 1997 crops are Harvested.

Buyer Note: All prospective buyers shall examine the property, its improvements and all relevant documentation carefully as each bidder is responsible for evaluating the property and shall not rely on the seller or the auctioneers. Prospective buyers are responsible for conducting their own independent investigation, inquires and due diligence research concerning the legal documents, the property and its improvements. Seller and Auctioneers are assuming that the bidders have inspected the property and all improvements thereon and are satisfied and accept them "AS-IS--WHERE IS" and without representations and warranties expressed or implied. The failure of any bidder to inspect, or to be fully informed as to the condition of all or any portion of the property sold, will not constitute grounds for any claim or demand for adjustment or withdrawal of a bid. Announcements made sale day take precedence.
Owner Will Be Given 20 minutes to Accept or Reject Bid

JAMES G. CRUCE
Plainview, TX
(806) 296-5050
Lic. # 6704

Cruce & Fletcher
Auctioneers & Real Estate Brokers
P.O. Box 609 -- Wolfforth, TX 79382

BOBBY FLETCHER
Wolfforth, TX
(806) 866-4201
Lic # 7131

NOTICE

CLASSIFIED DEADLINES

For the Thursday Muleshoe Journal,

Deadline Monday 5:00 pm

For the Sunday, Bailey County Journal,

Deadline Thursday 5:00 pm



Nieman Realty



116 E. Ave. C

George Nieman, Broker

272-5285 or 272-5286

RICHLAND HILLS - PARKRIDGE AREA
NICE 3-3-1 Brick, cent. Heat, Evap. Air, built-ins, 2000' + lv. area, fenced yd., stor. bldg., MORE !! \$60K !!! RH-2

NICE 3-2-2 Brick, cent. A&H, built-ins, FP, approx. 2150' lv. area, fenced yd., MORE!!! \$69K!!! RH-7

VERY NICE 3-2-1 Brick, Cent. A&H, built-ins, fans, new paint, carpet, & drapes, fenced yd. \$60K!!! RH-1

NICE 3-2-2- Brick, Cent. A&H, built-ins, FP, cov. patio, fenced yd. \$50's!!!

HIGHLAND AREA

2 Bdrm, 1 bath home, fenced yard. \$16,500!!! HL-4

VERY NICE 3-2-2 Brick, Cent. A&H, built-ins, fenced yd., spklr. sys., MUCH MORE!!! \$60's !!! HL-1

NICE 3-2 Home, Heat Pump, FP, fenced yd., stor. bldg. \$30's!! HL-3

NICELY REMODELED 3-2-1 Brick, Cent. A&H, built-ins, FP, nice carpet & tile, fenced yard, storage building. MORE!!! \$60's!!! HL-8

BUSINESS FOR SALE-SNACK SHACK - Lot, Buildings, furniture, and fixtures!!!!

RURAL HOMES

NICE 3-2-2+2 Carport Brick Home on 2.5 acres on pavement, built-ins, FP, MUCH MORE. \$70K !!! HR-3

2-2-1 carport Mobile Home on .665 acres on pavement close to town, Cent. heat, evap., air, DW, large barn, stor. bldg. and MORE!! \$25K!! HR-5

JUST LISTED -3-2-2 Home 1.36 ac. on pavement, Cent. A&H, built-ins, freshly painted interior & exterior, fans, fenced yd., 31' x 40' barn !!! \$40's!!! HR-2

VERY NICE 3-11/2-1 Home on 8 acres, on pavement close to town, Cent. A&H, built-ins, sun room, concrete cellar, storage bldgs., fenced yd., RV cover, mobile home hookups, stock pens, fenced acreage, & MORE !!! \$50's !!! HR-6

ASK ABOUT OUR COMMERCIAL LISTINGS!!!

160 acre tract, 8" well, circle spklr. w/drops, fully allotted!!

Shower of Values



ALL TYPES
Pepsi Cola
3 liter btl.
2/\$3

LIMIT 4 TOTAL
Additional
Purchases \$1.19

ALL TYPES
Pepsi Cola

99¢

6 pack, 12 oz. cans



MEAT



8 oz. pkg.,
Oscar Mayer Regular or Lite
Beef Bologna
Buy One, Get One
FREE

U.S.D.A. Select Beef Boneless
Round Steak
lb. **\$1.59**

U.S.D.A. Select Beef Sirloin **\$1.99**
Tip Roast lb
U.S.D.A. Select Bottom Round Roast, Top Round
Roast or Beef **\$1.99**
Rump Roast lb.
Red Rind **\$2.29**
Longhorn Cheese lb
Pepperoni or Cheeseburger
Mama Rosa **\$2.69**
5" Pizza 4 pack **\$2.69**
12 oz. pkgs., Johnsonville
Breakfast Links **2/\$5**
Johnsonville Beef Bratwurst, Hot Links
or Beddar Cheddar **\$2.69**
Smoked Sausage 1 lb. pkg.

LENTEN SPECIAL
Skin-On

Perch Fillets
lb. **\$2.99**

Sirloin Tip Steak
lb. **\$2.49**

Tenderized Beef
Round Steak
lb. **\$1.89**

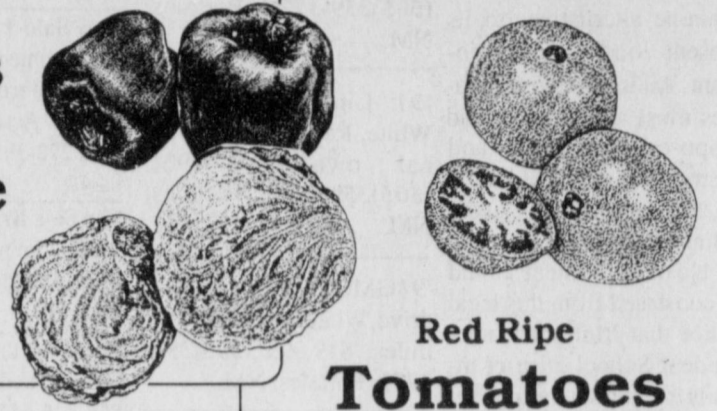
Any Size Package
Ground Round
lb. **\$1.99**

Jumbo Pack, Pilgrim's Pride Split
Chicken Breast
lb. **99¢**

Healthy Choice, 10 oz. pkg.
Resealable Package
**Honey Ham or
Cooked Ham** **\$2.69**
U.S.D.A. Select Beef London
Broil Roast lb. **\$2.29**
Seasoned Market Made
Pork Asado lb. **\$1.99**

PRODUCE

Fresh
Bell Peppers
or Green
Leaf Lettuce
2 for \$1



Fresh Yellow
Hot Peppers lb. **99¢**
Fresh
Serrano Peppers lb. **88¢**
Chilean
Nectarines lb. **99¢**
Thompson
Seedless Grapes lb. **\$1.19**

Red Ripe
Tomatoes
or Fresh
**Hot
Jalapenos**
2 for \$1

American or Pizza Flavor,
NEW - Super Slice
Kraft Cheese

\$1.88

12 oz. pkg.



6 oz. cans, Water or Oil
Pack Chunk Light
Tuna

2/\$1

Lowe's White
Sandwich Bread

57¢

24 oz. loaf

Bread N Butter, Whole Dill, Hamburger
Slices, Best Maid **\$1.69**

Pickles 16 oz. jar

Assorted Lay's® or Wavy Lay's®
Reg. \$2.99 size

Potato Chips **2/\$4**



Hi-Dri Paper Towels
2 \$1
Rolls
For



SOFT'N GENTLE
ASSORTED OR WHITE
Bath Tissue
88¢
4 roll
pkg.



CRUNCHY, LOW FAT CREAMY,
OR CREAMY
Jif Peanut Butter
1.79
18 oz.
jar



TEXSUN
Pink Grapefruit Juice
49¢
46 oz.
can



ASSORTED
Blue Bell Ice Cream
2.79
1/2 gal.
ctn.



GENERAL MILLS CEREAL
Total Raisin Bran
2.79
18 oz.
box



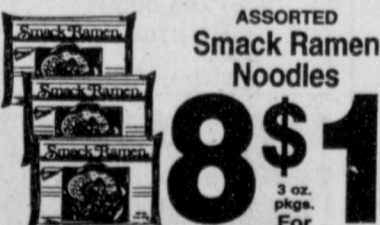
FRESH BURST, COOL MINT,
OR ORIGINAL
**Listerine
Mouthwash**
2.99
16.9 oz.
btl.



Zantac Tablets 10 ct. pkg. **3.99**
Anacin Tablets 100 ct. pkg. **6.79**



CHERRY OR MINT
Maalox 12 oz. btl. **2.79**



ASSORTED
**Snack Ramen
Noodles**
8.19
3 oz. pkgs.
For



HERSHEY'S
**Chocolate Milk
Mix**
1.99
14 oz.
can



PIONEER BUTTERMILK OR ORIGINAL
Biscuit & Baking Mix
2.49
40 oz.
box



ASSORTED
**Capri Sun
Drinks** 10 pack 8 oz. **2.39**



ASSORTED
Patio Burritos
3 \$1
5 oz. pkgs.
For



ASSORTED FAMILY SIZE
**Red Baron
12" Pizza**
2.39
each



**Sunny Delight
Citrus Punch**
1.19
64 oz. btl.



HEFTY TWIST TIE
Trash Bags
1.59
12 ct.
30 gallon



1-2-3-4
WITH BEEF GRAY
**Cycle
Dog Food** 13.2 oz. cans **2.89¢**
For



HONEY BOY
Pink Salmon
99¢
7 oz. can



HORSE RADISH, TARTAR, TARTAR
FAT FREE, OR SEAFOOD COCKTAIL
Kraft Sauces
99¢
9 oz. jar



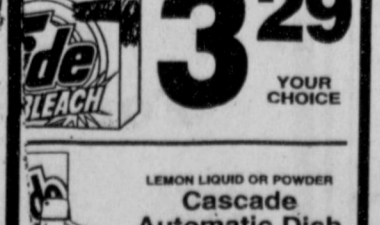
VAN DE KAMP'S VALUE PACK
**Minc'd
Fish Sticks** 28 oz. pkg. **2.99**



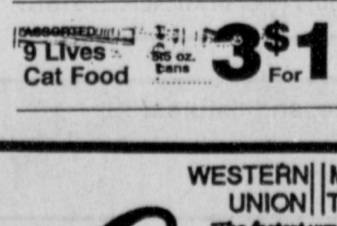
**Blue Bonnet
Spread** 48 oz. tube **2.33**
For



SHEDD'S COUNTRY CROOK
**Spread
Quarters** 18 oz. box **59¢**



WYLEACH, TIDEFREE, REGULAR
*50 OZ. BTL. LIQUID TIDE ULTRA
*39-44 OZ. POWDER TIDE ULTRA 2
**Laundry
Detergent**
3.29
YOUR
CHOICE



9 Lives
Cat Food 2 1/2 oz. cans **3.19**
For



NABISCO REDUCED FAT
ORIGINAL CHOCOLATE, OR
ORIGINAL
Nilla Wafers
1.99
11-12 oz.
box



NABISCO REGULAR OR
LOW FAT ASSORTED
**Honey Maid
Grahams**
2.39
18 oz.
box

WESTERN MONEY UNION | TRANSFER™
"The fastest way to send money"

Lowe's

MARKETPLACE

515 W. American Blvd.
401 W. American Blvd.
Muleshoe 272-4585

Pay-n-Save

WE RESERVE THE RIGHT TO LIMIT QUANTITIES IN TEXAS

Muleshoe 272-4406

PRICES EFFECTIVE FEB. 26-MARCH 4, 1997
OPEN MONDAY-SATURDAY 7:30 A.M. - 8:00 P.M., SUNDAY 8:00 A.M. - 7:00 P.M.