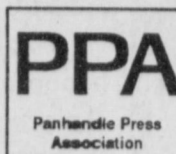




Muleshoe Journal



Volume 75, No. 25

Published Every Thursday at Muleshoe, Bailey County, Texas 79347

Thursday, June 19, 1997

Film company shoots scenes in city

By RICK WHITE
Managing Editor

Hollywood came calling Friday for about a half-dozen Muleshoe teen-agers.

The teens served as extras in a low-budget independent film called "Dill Scallion," a comedy about the misadventures of a country singer who rises from humble beginnings as a bus driver in Muleshoe to stardom in Nashville, only to lose everything and return to his West Texas roots.

"It was really cool," said Mark McGuire, who had a small speaking part. "Me and Scottie Mills are always going to the movies and have been involved in drama, but

we never dreamed something like this would happen."

McGuire and the rest of the local teen-agers were depicted as Scallion groupies being interviewed outside the Muleshoe Auto Body Shop.

During the scene, McGuire says "Scallion is so big he makes Lee Horsley look like a pony."

The production crew also shot scenes at the Muleshoe bus barn, outside the hospital and at the Heritage Center among other places.

"It was exciting," said Muleshoe Chamber of Commerce director Patty Hartline, who also had a small part in the movie. "I

think it was really neat that they chose Muleshoe."

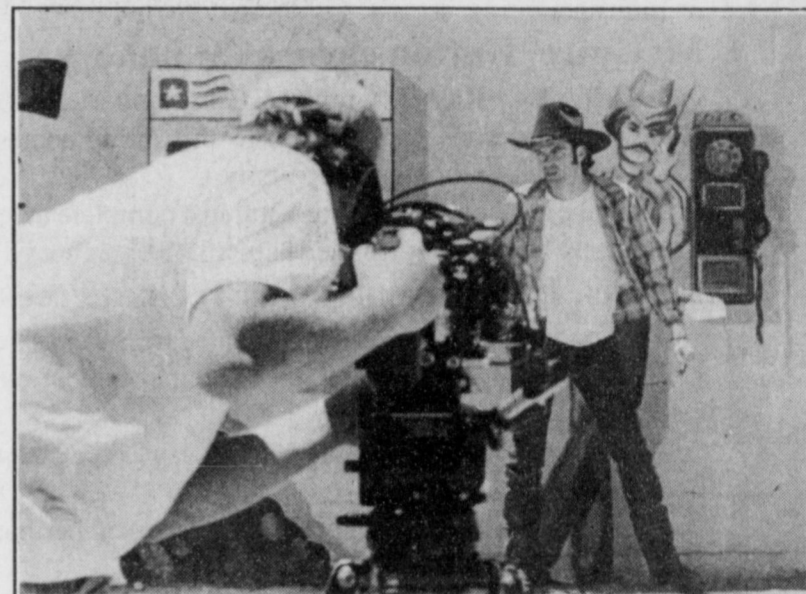
She said area merchants were real cooperative with the crew.

Hartline was told the crew may return later this week to shoot additional scenes.

Producer Joe Baker said the movie is a satirical look at the rabid nature of country and western fans.

The character of Dill Scallion is a lovable guy, like Steve Martin in "The Jerk." He means well but he doesn't quite get it," Baker said.

The movie was written by Jordan Brady,



Double take

An independent movie company was in Muleshoe Friday filming scenes for an upcoming movie called "Dill Scallion."

Continued on page 2

Jenkins named MHS principal

By RICK WHITE
Managing Editor

Moving swiftly and with continuity in mind, the Muleshoe Independent School District Board of Trustees Monday approved the hiring of David Jenkins as high school principal.

Jenkins replaces Al Bishop, who resigned last week to take a position at Elgin High School east of Austin.

The 52-year-old Jenkins has served as the assistant high school principal the last three years. He was also an educator and administrator in Portales, NM for 25 years.

"It seemed so obvious he was the right man for the job," said Curtis Shelburne, vice-president of the school board. "We have some momentum going and we want to keep it rolling."

The school also approved Jenkins' salary at \$50,000.

A campus selection committee quickly identified Jenkins as their top choice, according to MISD Superintendent Bill Moore. He said no other candidates were seriously considered.

"With his experience and abilities, the committee felt it didn't have to look any farther than the office next door," Moore said.

Moore described Jenkins as kid-oriented and enthusiastic — "and those are two things that will serve him very well."

Age was a concern Moore admitted.

"I didn't want to be doing this again in two years," Moore said. "But he convinced me of his intentions to stay at least five years. He understands leaving his fingerprints on the system is going to take time."

Jenkins doesn't plan on making wholesale changes.

"I don't want to make changes just for the sake of making changes," Jenkins said. "Before I do anything, I'm going to sit down with my staff, teachers and parents and listen to what they have to say."

"I don't foresee anything earth-shaking. Good things are going on at the high school."

Jenkins, a native of Clayton, NM, said two or three years ago he wouldn't have been interested in the job.

He had just retired as principal from Portales High School, where 18-hour days had taken its toll.

"Honestly, I was burned out," Jenkins said. "I didn't come to Muleshoe to become a high school principal."

But Jenkins said he was

Continued on page 3

Kids meal



A baby Angora goat snacks on brush Monday in a pen near the south city limits

JOURNAL PHOTO BY LESLI RADFORD

Strong storms roll through Muleshoe area

A thunderstorm packing winds in excess of 50 miles per hour tore through the Muleshoe area Saturday afternoon, uprooting trees and causing a tractor-trailer to lose control.

The rapidly-moving storm dumped .4 of an inch of rain in the city while Bula and parts of eastern Bailey County got an inch or more.

The Muleshoe Police Department reported a giant Elm tree was uprooted near the east city limits, blocking one of the westbound lanes on U.S. Highway 84.

Workers at the Muleshoe Country Club reported carting away three trailer loads full of branches knocked down by the wind.

Bailey County Sheriff Jerry Hicks said it was pouring so hard near the Longview Church about 10 miles south-

Continued on page 2

City police step up traffic patrols

The Muleshoe Police Department handed out more citations in May than it did during the first three months of the year combined.

Backing up new Muleshoe Police Chief Rick Henegar's pledge to step up traffic patrols, city police handed out 188 citations last month, compared that to 169 for January, February and March combined.

In addition, Henegar estimated 400 verbal warnings were also issued in May. He said about half the traffic stops were made along U.S. Highway 84.

Henegar took over as police chief in early March.

"I think the police department is doing an excellent job," Muleshoe City Manager James Fisher said. "There's a lot of traffic that goes through here every day. They need to obey the speed limit when they are in the city limits."

Nearly 20,000 vehicles a day pass through Muleshoe along U.S. 84, according to a recent study.

Driving without insurance tops the list of violations in

TAKING A CLOSER LOOK

Traffic citations issued in May

Violation	Count
Speeding	30
Defective equipment	5
Expired MVI	20
Expired license plate	15
Ran stop sign	8
No driver's license	20
No insurance	49
Seat belt violation	3
All others	38
Total	188
Verbal warnings	400*

* — figure is estimate



Muleshoe Police Chief Rick Henegar

	Oct.	Nov.	Dec.	Jan.	Feb.	March	April
Total Violations	74	43	37	73	30	66	83

May with 49. Speeding is next with 30 tickets.

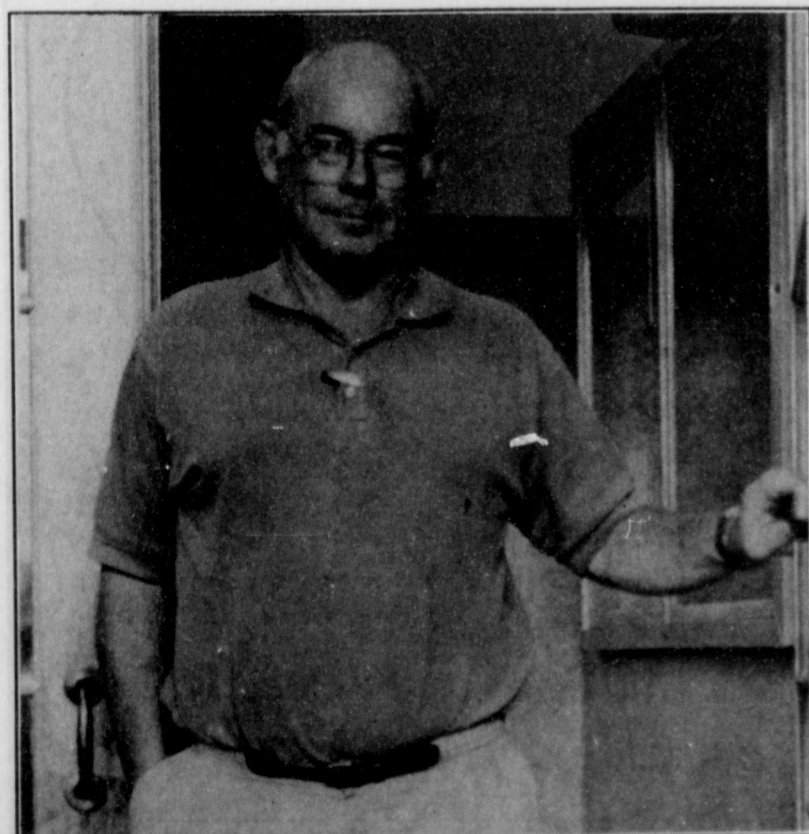
Complaints have been limited, Fisher said, although he did receive a couple of calls accusing the city of running a speed trap.

Fisher did say he's received numerous compliments from community members and even violators about the police department's professional approach to the job.

Henegar said emphasis will

shift to drunk drivers during the summer months when drinking typically increases.

The police department has also made seven drug-related arrests since Henegar took over.



New boss

David Jenkins was named high school principal Monday

AROUND MULESHOE

Arzola graduates from West Texas A&M

Rose Marie (Gloria) Arzola of Canyon graduated May 10 from West Texas A&M University.

Arzola graduated with honors and received a bachelor of science degree as well as her teaching certificate.

She is married to Hector Arzola. Her parents are Ruben and Roseann Gloria of Muleshoe



Rose Marie Arzola

McGuire, Hutton earn ACU honors

ABILENE— Russell Grant McGuire and Holly Ann Hutton of Muleshoe were named to the spring semester honor at Abilene Christian University.

To make the honor roll, a student must complete at least 12 semester hours for grades and earn a 3.45 or higher GPA.

Harris, Kelley earn Texas Tech degrees

Two students from Muleshoe graduated from Texas Tech University during the Spring 1997 commencement exercises.

Kimberly Paige Harris, majoring in law, received her doctorate of jurisprudence.

Erin Lynn Kelley, an English major, received her bachelor of arts degree.

Four earn Tech academic honors

Four Muleshoe students earned academic honors at Texas Tech during the spring semester.

Samantha Anne Caswell, a sophomore majoring in general business, qualified for the President's list.

Jamie Leann Armstrong, Jennifer Denise Johnson and Donna Darlene Puckett qualified made dean's list.

Armstrong is a junior majoring in finance. Johnson is a senior majoring in early childhood. Puckett is a junior majoring in pre-law.

City swimming lessons start June 30

Swimming lessons at the Muleshoe City Pool start June 30.

Sessions run June 30 - July 3 from 11-12 a.m. and July 14-18 from 11-12 a.m. An afternoon session will be held from 2-3 p.m. July 3.

Lessons are open to all persons three years old and up. The cost of the lessons are \$35. Instructors are Water Safety Instruction certified.

The city will also be holding two special swimming nights: Monday is Family Night, with the pool open from 7

to 9 p.m. Thursday is Ladies Night from 7-9. No children allowed.

Behavioral seminar at Christian Center

The Christian Center Church of Muleshoe will be holding a behavioral seminar from 9 a.m. to noon Saturday, June 21.

"Understanding My Personality" is a seminar aimed at helping people better understand their behaviors and the behaviors of others.

There will also be a free continental breakfast and child care will be provided with advance notice.

For more information call 272-3877.

Archer appearing at First Baptist

Tim Archer will be in concert at the First Baptist Church in Muleshoe at 6 p.m. Sunday, June 26, at 6 p.m.

Archer has written and performed many popular contemporary Christian music songs.

For more information contact the First Baptist Church at 272-4224.

Muleshoe rabies clinic June 24

The City of Muleshoe and Muleshoe Animal Clinic will hold a rabies clinic Tuesday, June 24 between 2 and 4 p.m. at the old fire station across from the Muleshoe Police Department.

Rabies shots are \$10. Other shots are available at an additional cost.

All cats and dogs over the age of six months are required

LOCAL WEATHER AT A GLANCE

DATE	HIGH	LOW	PRECIP
6/14	93	55	—
6/15	86	59	.40
6/16	87	55	—
6/17	79	40	.06
Year to date			10.67 inches

SOURCE: R.G. BENNETT, LOCAL NATIONAL WEATHER SERVICE OBSERVER
ALL TEMPERATURES AND PRECIPITATION ARE FOR THE PREVIOUS 24 HOURS.

EXTENDED FORECAST

Partly cloudy through Sunday with lows in the 60s and highs in the 90s, with little to no chance of severe weather through Sunday.

Got a news tip? Call the Journal at 272-4536

During a time like this we realize how much our friends really mean to us Your expressions of sympathy will always be remembered.

Norman Humphreys, Ruth Martin Dunlap, Gary & Sheryl Morris & Family, Mart & Tori Daveson & Family, Sam & Pam Merriman & Family

Jewelry & WATCH REPAIR

- Ring Sizing 5-7 Days Service
- Remounting & Diamond Setting
- Full Line Watch Batteries
- Neck Chains Repaired
- Jewelry Appraised For Insurance

Faster Service



1908 N. Prince, Clovis 762-9376 (Across from K-Mart)

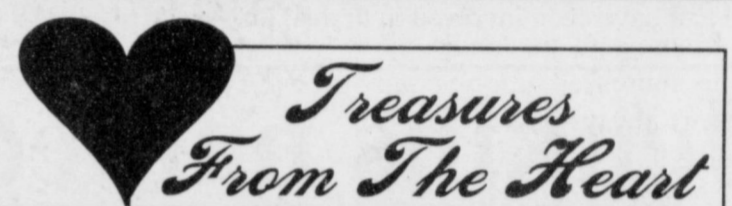


1225 W. American Blvd. • Muleshoe • 806-272-4251 or 800-43207616

- 1997 FORD TAURUS\$1,500 Cash Back or 1.9%
- 1997 FORD MUSTANG\$750 Cash Back or 7.9%
- 1997 FORD ESCORT\$1,000 Cash Back or 1.9%
- 1997 FORD EXPLORER .Special Demo Savings and 4.8%

All rates stated are for 48 months. Dealer will **PAY YOU \$300 CASH** on the purchase of any of these 4 vehicles.

We Want To Be Your Car or Truck Dealer!



2104 W. American Blvd. • 272-4217 • Muleshoe

OPEN 10 a.m.-5:30 p.m. • Monday - Saturday • Open til 7 p.m. on Tuesdays

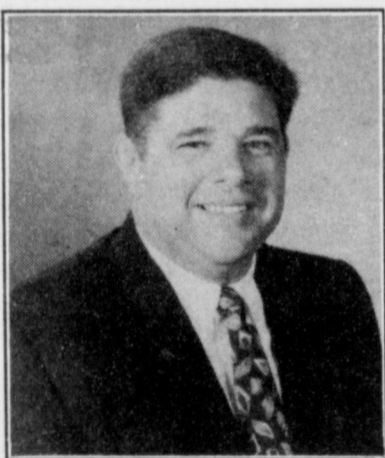
15 DAYS

Till 2nd Annual

TENT SALE

July 3, 4, 5, & 7

Catch us on the Internet - <http://www.marcon.com/treasures>



Billy Balderas

Muleshoe native named Energas operations mgr.

AMARILLO— Muleshoe native Billy Balderas has been named to the position of operations manager for Energas Company.

Balderas, formerly office manager in Plainview, began his employment with the company in 1981.

During his tenure with the company, he has held various supervisory positions. He attended South Plains College and Wayland Baptist University. He has been active in civic and community affairs.

Currently, he serves on the board of directors for the Plainview chamber of Commerce and is a member of Plainview Rotary Club.

Storms

Continued from page 1

west of Muleshoe that he couldn't see.

The strong, gusty winds and slick roads caused a tractor-trailer to jackknife off the road just north of Muleshoe on U.S. 70. The driver skidded off the road and into a ditch, according to the Department of Public Safety. The driver was not hurt.

Muleshoe dodged another potentially strong storm Monday.

R.G. Bennett, an observer in Muleshoe for the National

Weather Service, reported less than .1 of an inch of rain Monday. The storm skirted just southeast of Bailey County.

One Bula farmer wasn't so lucky last Monday when hail wiped out all but 80 acres of the 1,000 acres he had planted. Several other farms in the Bula area sustained heavy damage in Saturday's storm, according to a worker at the Bula Gin.

Muleshoe has received 10.67 inches of rain so far this year, according to the National Weather Service.

Movie

Continued from page 1

a former stand-up comedian who heard of Muleshoe while performing in Amarillo.

Billy Burke, who recently starred in a soon-to-be released movie that Tom Cruise directed called "Pre," plays Dill. Red-hair comedian Kathy Griffin of

the NBC sitcom "Suddenly Susan," plays his girlfriend.

The movie's producers will try to find a distributor by showing the film at festivals, Blake said.

Blake hopes production will be completed by the end of the year.

Home Folks Caring For Folks At Home.



MULESHOE AREA HOME HEALTH

Agency

Featured Employee

Kara Harkins moved to Muleshoe from Crane, Texas. She is a nurses assistant with MAHHA. She loves working with the other staff members at MAHHA, "They are friendly, fun & lots of help."

She plans to attend college for LVN training in the fall. Kara is married to Brantley Harkins. She attends the Christian Center Church.



Kara Harkins

To receive Home Health Services, talk with your physician or talk with hospital personnel when you are hospitalized.

24 Hour # 272-3346
Local Nurse on call 24 hours a day to offer prompt service.

We accept Medicare, Medicaid and Private Insurance
It Is Your Right To Choose The Home Health Agency You Prefer.



Affiliated with Lubbock Methodist Hospital Systems

New Out Of Hospital Advance Directives Now Available!

HAVE A NICE DAY

The Journal staff

Subscribe Today!
Call the Muleshoe Journal
272-4536

Lawmakers approve raises for teachers

Texas teachers are in line to receive guaranteed pay increases next year.

The pay raises in the minimum salary schedule for teachers were included in a tax relief package that would provide a \$10,000 increase in homestead exemptions for local school property taxes.

The raises are contingent on voters passing the constitutional amendment in a special election Aug 9.

The amendment would increase the homestead school tax exemption to \$15,000 as opposed to the current \$5,000.

The salary increases would be state funded, according to Muleshoe Independent School District Superintendent Bill Moore.

Moore said sometimes the state increases salaries but doesn't always pass along the funding.

"From everything I've heard and read, the funding is in place," Moore said.

The exemptions are expected to lower school taxes statewide by \$500 million.

Moore said the amendment would take about \$8 million off the school's tax roll, resulting in the loss of roughly \$100,000 per year.

The school board approved a minimum raise of \$1,000 for all MISD teacher earlier this spring.

Moore said the district would honor its \$1,000 raise even if the state called for a smaller increase.

The total pay package for teachers raises the state minimum salary schedule by 6.5 percent over the biennium and will move beginning teacher pay from a minimum of \$19,950 to \$21,050 next year.

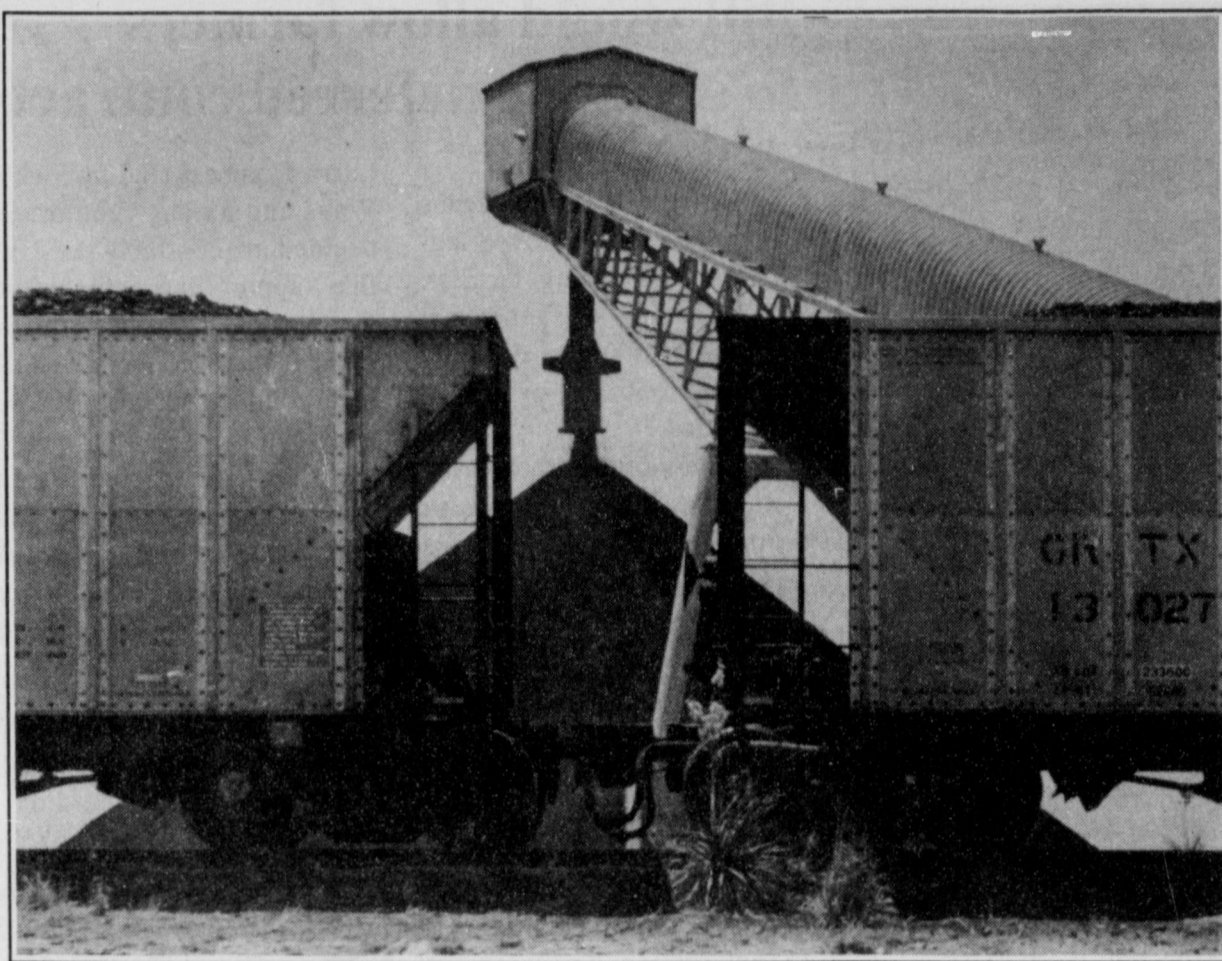
Including movement for an additional year of experience, this year's beginning teacher salary will get a \$1,670 raise next year.

Teachers at the top of the state minimum would move from \$35,510 to \$37,460. Teachers moving on to the top step of the state schedule will get a \$2,460 increase.

Texas State Teacher's Association President Richard Kouri said the struggle to get due recognition for teachers this year was made more uncertain by the original proposal to completely overhaul the tax system and public education funding.

"The two original tax proposals before the House and Senate did not provide for increases in teachers' salaries for the next two years," Kouri said. "That was totally unacceptable given the fact that two years ago, Senate Bill One promised teachers automatic pay increases when additional state funds were available for education."

Teachers who reside in districts that already pay above the state minimum salary schedule will be asking local school boards to place some of the \$700 million in new state money into salaries in order to stay competitive in teacher recruitment and retention.



Taking a load off

A giant conveyor belt unloads coal from railroad cars last week at Wheelabrator Coal Services Co., located at the Tolk Station. Wheelabrator is the coal supplier for Southwestern Public Service

Wheelabrator active in community service

Wheelabrator Coal Services Co. is one of three independent businesses that operate out of the Tolk Station in western Lamb County.

The New Hampshire-based company is the coal supplier for Southwestern Public Service, which converts the coal into electrical power.

Wheelabrator employees 37 workers, all from the immediate area, according to facility foreman Randy Anderson.

Several of those employees recently helped paint and repair bleachers at the Muleshoe Babe Ruth field. Wheelabrator also provided some supplies.

It was just one of several community projects the company has been involved in, according to

Anderson.

Wheelabrator, which operates 24 hours a day, has been at the Tolk Station since 1981.

The company ships between 60,000 and 80,000 tons of coal per week by train to SPS

Tolk Station facility from its mines in Gillette, Wyo.

The coal is unloaded from the railroad cars by literally turning them upside down using a giant rotating coupling.

The approximately 1 1/2 inch nuggets are then moved by a series of conveyor belts to the SPS plant, where it is crushed and used for fuel.

Wheelabrator is a division of WMX, an environmental services company that also operates refuse to energy plants in several states.

BUSINESS NEWS

Jenkins

Continued from page 1

swayed by the people he's worked with and the support of the community.

"Working with Al and Mr. Moore, they made me feel so involved and part of the team that I just want to carry it on," Jenkins said.

Jenkins and his wife Sharry, an English teacher at the high

school, liked Muleshoe so much they built a home here.

"The way my wife and I have been treated since we've been here has just been phenomenal," Jenkins said. "We just feel like this is the place we want to be."

He described himself as a "hands-on" administrator who loves working with kids.

PUBLIC NOTICE

BRIEF EXPLANATORY STATEMENT OF PROPOSED CONSTITUTIONAL AMENDMENT SPECIAL ELECTION AUGUST 9, 1997

PROPOSITION NO. 1 ON THE BALLOT

House Joint Resolution 4 proposes a constitutional amendment which would increase the school property tax residence homestead exemption from \$5,000 to \$15,000. The amendment would also authorize the Legislature to limit all or part of the exemption to political subdivisions that are the principal providers of elementary and secondary education within their boundaries.

In addition, the amendment would authorize the Legislature to allow the transfer of all or part of the age 65-and-over tax freeze to another homestead. Specifically, the Legislature would be authorized to provide that the current limitation against increasing school property taxes on the residence homesteads of persons age 65 or older, or their surviving spouse who is eligible to receive the exemption, may be transferred if the person establishes a different residence homestead.

The amendment would also allow the \$10,000 additional amount for the standard exemption to be used to lower the tax rate of persons cur-

rently receiving the 65-and-over tax freeze. Specifically, for a homestead affected by this limitation in 1996 or in an earlier tax year, the Legislature must provide for a reduction in the school property tax limitation in the 1997 tax year and subsequent tax years in an amount equal to \$10,000 multiplied by the 1997 school property tax rate.

The proposed amendment will appear on the ballot as follows:

"The constitutional amendment providing school property tax relief by increasing the residence homestead exemption by \$10,000 and providing for the transfer of the tax limitation to another qualified homestead for persons over 65 and a reduction in taxes subject to the limitation."

Este es el informe explicatorio sobre la enmienda propuesta a la constitución que aparecerá en la boleta el día 9 de agosto de 1997. Si usted no ha recibido una copia del informe en español, podrá obtener una gratis por llamar al 1/800/252/8683 a por escribir al Secretario de Estado, P.O. Box 12060, Austin, Texas 78711

Published by Secretary of State Tony Garza

Subscribe today!

Call the Muleshoe Journal 272-4536



Thank You!

I would like to thank all of the merchants for the wonderful gifts I received for Father's Day and to those who chose me as the "World's Best Father!"

Jessie Castorena & Family

All You Can Eat!

SEAFOOD BUFFET

Brazos Valley Steak Ranch In Littlefield

FRIDAY NIGHT • 5-9 P.M.

385-6663

709 Marshall Howard Blvd. • Littlefield, TX

Health Seminar & Complimentary Dinner

By Reservation Only

Sponsored By: Capital Wellness Connection

Tuesday, June 24

6:15 p.m. • Carousel Restaurant Muleshoe, Texas

TOPICS THAT WILL BE DISCUSSED:

Arthritis • High Blood Pressure • Heart Disease • Cholesterol • Stroke • Diabetes • Hiatal Hernia • How Food, Water & Air Affect Complete Health & Wellness.

- Attendance at these seminars is by RESERVATION ONLY, Please call Capital Wellness Connection at: 1-800-226-7977 for reservations.
- Bring pad & pencil to take notes.
- Please note: Nothing will be for sale at the seminar.

Door Prizes Will Include Gift Certificate(s) Donated By Capital Wellness Connection.

Advertise It In The Muleshoe Journal Classifieds! Call 272-4536



We Ship Everywhere

1-800-658-6378 106 E. American Blvd. Muleshoe, Texas

And Country Junction

June Specials!

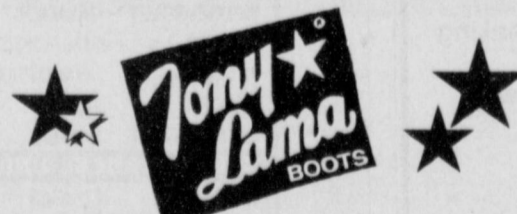
Buy Any

BAILEY 5X

OR ABOVE

Felt Hat . . . & Get Any Straw Hat FREE!

All Straw Hats 20% Off!



Tony Lama

SUPER ROPERS

Regularly \$109⁰⁰

Now \$89⁰⁰

Joe's is gearing Up For Their ANNUAL BOOT TENT SALE

JULY 3, 4, 5 & 7

Free Entertainment All Four Days!

Johnny Rodriguez July 4th.

Bridal Selections at Country Junction for . . .



Misty & Levi Obenhaus ♥ Kara Bahlman & Casey Bradshaw ♥ Ginger Goolsby & Glen Flowers



JOURNAL PHOTO BY LESLI RADFORD

Around the world

Eric Martinez, 5, tries to locate Argentina on the globe Monday during the First Baptist Vacation Bible School. The group was studying what missionaries do in Argentina.

SWIMMING POOL SAFETY TIPS

HOUSTON—Children and water can be a deadly summer combination.

"It's a sad fact that thousands of children drown annually, and 80-95 percent of these deaths occur between Memorial Day and Labor day," said Dr. Joan Shook, a pediatric emergency-room physician at Houston's Baylor college of Medicine and Texas children's Hospital.

"That means that during the summer months it is imperative that mixing children and water not become a tragedy."

Almost 100 percent of child drownings are preventable.

The single most important preventive measure, Shook said, is having an adult designated to watch children who are in the water. This is especially in social settings.

"At least one adult must be given the specific duty of actively watching the kids. That means," she said, "that the designated adult will have to forego social chit chat or anything else that is a distraction."

Also important: making sure all children in the water can

swim. But do not assume that the ability to swim is enough, she said.

"A toddler simply does not have the judgement needed to react properly if he or she gets into trouble in the water."

Other recommendations:
 ■ A child who becomes tired or chilled should be removed from the water immediately.

■ Never rely on blow-up toys or other inflatable devices to prevent a drowning.

■ Keep toys such as tricycles away from the pool. They can distract a child or cause a child to fall into the water.

■ Never leave a child alone around any sort of standing water. This includes buckets, tubs and toilets. Under no circumstances should a child be left alone, even briefly, in a bathtub.

■ Learn cardiopulmonary resuscitation. Survival rates for submersion victims rise significantly when CPR is started immediately.

■ Be sure pools have fences at least five feet high and have self-closing, self-latching gates.

"It's always tragic when a child dies," Shook says, but it is even more tragic when that death was entirely preventable."

Bill would allow farmers to continue deferred contracts

WASHINGTON, D.C. — The House Ways and Means Committee has approved legislation establishing farmers' tax obligations when they sell their harvest under deferred payment contracts, or installment sales.

Farmers often exercise the option to collect the proceeds from the sale of their crops over a period of years in installment payments, to manage the financial burdens from both good and very bad harvest years.

Recently the internal revenue Service has said it would only delay 1996 demands for tax payment on the entire value of the deferred contract, although farmers do not receive the income in a single year.

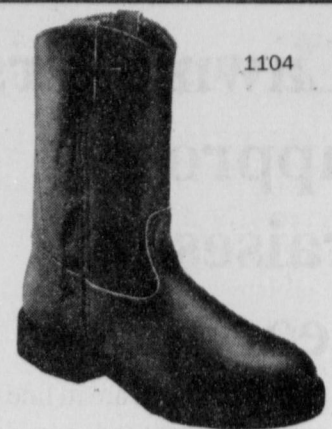
The IRS abrupt change in its interpretation of tax laws aimed at farmers subjected them to the Alternative Minimum Tax (AMT).

At the urging of U.S. Rep.

Larry Combest (R-Lubbock), Ways and Means Committee decided to continue tax law that supports the payment of taxes as each year's farm income is received from installment contracts spread over several years.

"Year-to-year changes in weather and market conditions have made deferred payment contracts vital to the economy of our region," said Combest.

The provision is in the planned budget agreement with the president that is currently working its way through Congress.



RED WING SHOES®
 Made in U.S.A.

The Fair Store
 120 Main 272-3500

Have a nice day

Carpet Rolls • Remnants • Area Rugs
 Wood Floors • Vinyl Flooring • Ceramic Tile

STUBBLEFIELD'S RUGS & REMNANTS

Professional Installation - Financing Available
 (806) 296-7387 2408 W. 5th
 Plainview, TX 79072

BATTLE OF THE FORD DEALERS

9 STATE FACTORY AUTHORIZED PRICE REDUCTION

OVER \$10 MILLION OF NEW FORD CARS & TRUCKS

TEAGUE STREBECK VS. HAMILTON FORD

WIN \$10,000
 Register During Sale Days & Hours

97 FORD F150 SUPERCAB
 • Power Windows/Locks/Mirrors • Dual Air Bags • XLT Package
 • Convenient Third Door • Tilt • Cruise • Cassette/Clock • A/C
 • Reclining 40/60 Split Bench Seat • V8 • Overdrive Transmission
 Stock # FT066577 Total Due At Lease Inception ONLY \$1989

97 FORD ESCORT \$199 DOWN DELIVERS
 • Overdrive Transaxle • AM/FM Stereo • Dual Air Bags • Tinted Glass
 • Child Safety Rear Door Locks • Front Bucket Seats
 Stock # F236829

97 FORD TAURUS GL
 • 3.0L Duratec Engine • Automatic • A/C • Power Windows
 • Power Locks • Cruise Control • Dual Air Bags • Tilt Steering
 • Cassette • Front Reclining 6-Way Power Seats
 Stock # F14004277 Total Due At Lease Inception ONLY \$2034

97 FORD EXPEDITION
 • XLT Package • 4 x 4 • Automatic • AM/FM Stereo Cassette
 • Cruise Control Third Row Seat • Electric Mirrors
 Stock # FTB2965977 Total Due At Lease Inception ONLY \$2189

1.9% APR FINANCING
 48 months on selected new 1997 models.

\$3000 REBATES
 New 1997 Taurus SHO. Rebate reduced with finance option.

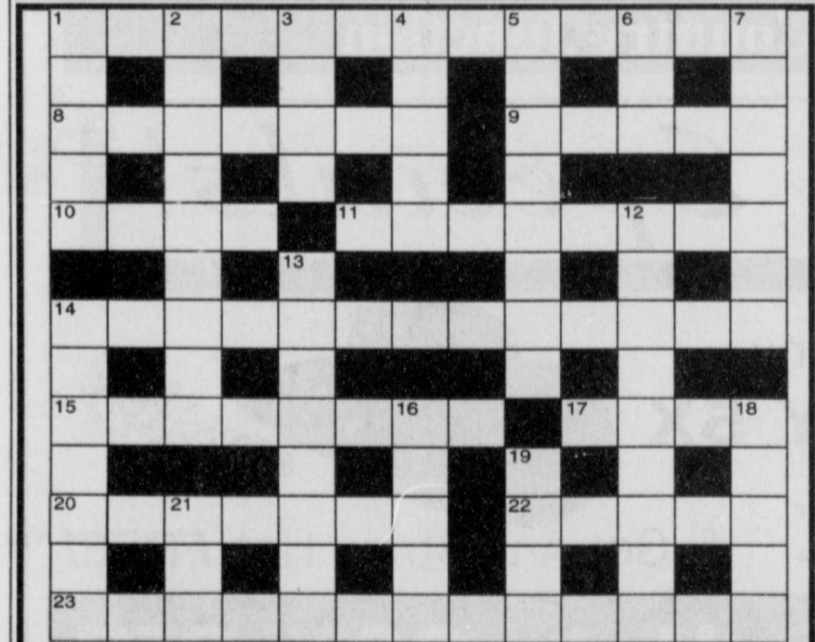
CARS & TRUCKS UNDER \$5,000			CARS & TRUCKS UNDER \$7,000			CARS & TRUCKS UNDER \$9,000		
78 MERCURY MARQUIS	Stock # 13201	91 PONTIAC LEMANS	Stock # CA288790	94 FORD TEMPO	Stock # FA136024			
87 MERCURY TOPAZ	Stock # 770372	92 FORD TEMPO	Stock # FA136986	93 CHEVROLET C2500 PICKUP	Stock # 4729603			
82 NISSAN SENTRA	Stock # VY2041	91 PONTIAC SUNBIRD	Stock # 472711	91 DODGE SHADOW	Stock # 2700702			
82 CHEVROLET IMPALA	Stock # CA11123	88 GMC BLAZER	Stock # 277002	93 FORD RANGER	Stock # VY20181			
88 CHEVROLET CAVALIER	Stock # CA13017	86 CHEVROLET S10 PICKUP	Stock # 270043	93 GMC SONOMA	Stock # VY20121			
77 FORD F150 PICKUP	Stock # XAB1489	91 CHEVROLET CORSICA	Stock # 271402	92 HONDA CIVIC	Stock # 2712061			
78 PONTIAC GRAND PRIX	Stock # CA20681	91 FORD F150 PICKUP	Stock # 1108	91 FORD T-BIRD	Stock # VY202			
89 FORD TAURUS	Stock # V104	89 CHEVROLET BERETTA	Stock # 14801	91 TOYOTA COROLLA	Stock # VY2022			
88 CHEVROLET BLAZER	Stock # 273472	66 FORD MUSTANG	Stock # 272751	92 CHEVROLET LUMINA	Stock # CP24007			
93 MERCURY COUGAR	Stock # M482718	CARS & TRUCKS UNDER \$14,000			94 OLDSMOBILE ACHEVA	Stock # CA288235		
95 MITSUBISHI GALANT	Stock # CA138130	95 DODGE INTREPID	Stock # CP248070	96 NISSAN SENTRA	Stock # CP27070			
94 OLDSMOBILE CUTLASS	Stock # CA28348	95 FORD CONTOUR	Stock # FA136981	96 FORD RANGER	Stock # 270241			
95 PLYMOUTH NEON	Stock # DA138764	95 HONDA CIVIC	Stock # CP248338	92 CHEVROLET SILVERADO	Stock # 273101			
94 PONTIAC GRAND AM	Stock # CP232098	95 MERCURY TRACER	Stock # VY2111	94 CHEVROLET K1500 PICKUP	Stock # 2714007			
92 PONTIAC TRANSPORT	Stock # 273401	96 TOYOTA TERCEL	Stock # CP140786	93 NISSAN QUEST GL	Stock # 472901			
91 FORD EXPLORER	Stock # 2734701	97 FORD ASPIRE	Stock # 140773	97 FORD TAURUS	Stock # FT13622			
90 FORD AEROSTAR	Stock # 17121	7.9% ON-SITE FINANCING			97 FORD AEROSTAR	Stock # 224164		
94 CHEVROLET CAMARO	Stock # CA138288	97 FORD ESCORT	Stock # VY2172	97 MAZDA 626 LX	Stock # CA288462			
91 PLYMOUTH GRAND VOYAGER	Stock # 1703885	96 MERCURY MYSTIQUE	Stock # VY217	95 FORD EXPLORER	Stock # VY21			
95 MITSUBISHI GALANT	Stock # CP248338							

WEDNESDAY THRU SUNDAY ONLY June 18th THRU June 22nd

Largest in Eastern New Mexico & West Texas

OPEN UNTIL **9:00PM** EACH DAY

GREYHOUND STADIUM
 BETWEEN CLOVIS & PORTALES



CLUES ACROSS

- Sellers' black-comedy role
- Oil company, _____ Hess
- Current unit
- Feel antipathy
- Wholeness
- Shares a predicament
- Green beans
- Centers
- Public toilet
- Rise
- Backer

CLUES DOWN

- Openings
- Set forth
- Manner of speaking
- Reflex
- Smokes, in a way
- Birdbrain
- Off the bottle
- Mark
- Cablegram, abbr.

SOLUTIONS TO 6/12 PUZZLE

SOLUTIONS ACROSS	SOLUTIONS DOWN
1. Earnes	1. Enthusiastic
4. Garnish	1. Macabre
8. Tacks	3. Seal
9. Biplane	4. Gab
10. Balks	5. Reproof
12. Obese	6. Image
14. Ice	7. Hoe
15. Dwarf	11. Spars
16. Poe	13. Elevated
17. Sac	15. Defunct
19. Sangria	16. Pirog
21. Immense	18. Comee
23. Vague	20. Niven
24. Sentimental	22. ECM

Sponsored By: **Muleshoe Journal**

P.O. Box 449 • 304 W. 2nd Street
 (806) 272-4536 • Fax: 272-3567

See Answers In 6/26 Edition of Muleshoe Journal

Texas winter wheat forecast running well above last year's totals

AUSTIN — The 1997 Texas winter wheat crop is forecast at 103.6 million bushels, unchanged from last month.

The June 1 estimate is 37 percent above both last year's production and the 1995 crop.

According to a June 1 survey conducted by the Texas Agricultural Statistics service, the statewide yield is expected to average 28 bushels per acre, up 2 bushels from last year. Harvested acreage, at 3.7 million acres, is expected to be up 28 percent from 1996.

Production on the Northern High plains is forecast at 41.1 million bushels, up 21 percent

from last year and 2 percent above last month.

"Most fields in the High plains showed good recovery from the freeze and good moisture conditions. Harvest was getting underway in the Low Plains and Cross Timbers. Some fields were showing damage from excessive moisture and the freeze," State Statistician Dennis Findley reported.

Winter wheat production on the Low Plains is forecast at 23.9 million bushels, up 62 percent from last year but down 2 percent from last month. The Cross Timbers is estimated at

7.1 million bushels, up 4 percent from last year's production, but down 7 percent from last month.

Production in the Blacklands is forecast at 17.0 mil-

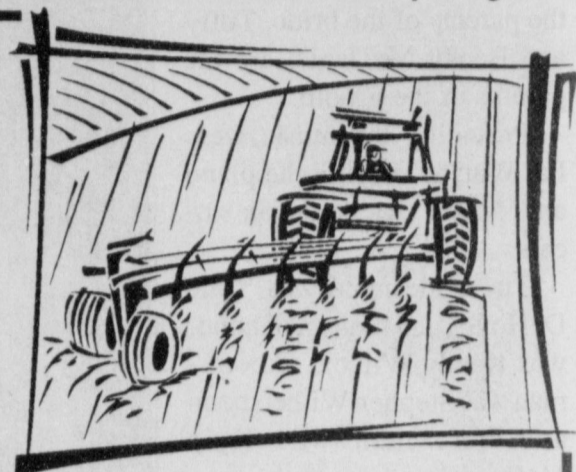
lion bushels, 26 percent above the 1996 crop. Harvest was slowed in some areas by wet conditions.

In South Texas, wheat harvest was virtually complete by

June 1.

United States winter wheat production is forecast at 1.60 billion bushels, up 8 percent from last year and up 3 percent from May 1. Yield is expected

to average 39.3 bushels per acre, up 2.1 bushels from a year ago. Acreage to be harvested for rain is expected to total 40.8 million acres, 3 percent more than a year ago.



MORTON INSURANCE

P.O. Box 954
Morton, TX
(806) 266-5561
Fax: (806) 266-8944

Experience • Versatile • More Options • More Companies

W.C. Eubanks • Agent

CROP HAIL OPTIONS

XS10IP • DXS 15 • DXS 30 • DXS 5/15
Production Guarantee Add Ons - Crop Hail
Many More Crop Hail Plans Available!



REPRESENTING

RCIS • IGF • Rain & Hail

**Stepladder Policies 25% effective June 5
Additional 5% per day until 100% in effect.**

Companies Who Provide New & Innovative Products
Your Full Service Insurance Needs

HOME • AUTO • LIFE • CROP • LIFE & HEALTH

High Plains feedlots well stocked

AUSTIN— Cattle and calves on feed for slaughter market in Texas feedlots with capacity of 1,000 head or more totaled 2.45 million head on June 1, up 12 percent from a year ago.

According to the monthly report released by the Texas Agricultural Statistics Service, the estimate was up three percent from the May 1 level.

Producers placed 570,000 head in commercial feedlots during May, up 14 percent from a year ago and up fifty-eight percent from the April 1997 total.

Texas commercial feeders marketed 500,000 head during May, unchanged from a year ago.

Monthly marketings were down 6 percent from the April 1997 total.

On June 1, there were 1.96 million head of cattle and calves on feed in the Northern High Plains, 80 percent of the state's total. The number on feed across the area increased 11 percent from last year and was up 4 percent from last month.

May placements in the Northern High Plains totaled 457,000, up 59 percent from last month.

Marketings decreased 11 percent from last month, to 370,000.

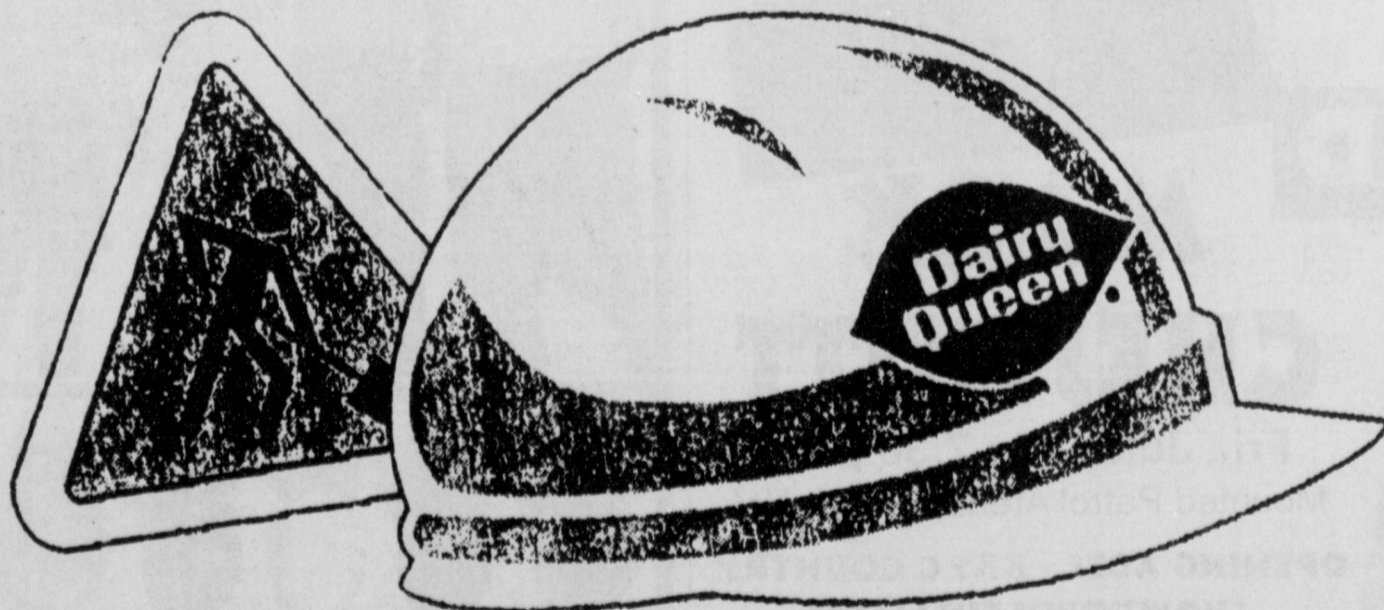
Cattle and calves on feed for slaughter market in the United States in feedlots with a capacity of 1,000 head or more totaled 9.61 million head on June 1, 1996.

Placements in feedlots during May totaled 1.89 million, 22 percent above 1996. During May, placements of cattle and calves weighing less than 600 pounds were 332,000; 600-699 pounds were 406,000; 700-799 pounds were 640,000; 800 pounds and greater were 514,000. Marketings of fed cattle during May totaled 2.09 million, two percent above 1996.

Get Ready Muleshoe!

**Dairy Queen on West American Blvd. is CLOSED —
But Not For Long!**

As part of our challenge to serve our customers better and faster, Dairy Queen is renovating and upgrading the store on West American Blvd.



NOW HIRING!

While the store on West American Blvd. is getting updated, Dairy Queen of Muleshoe is looking for top notch team members.

Dairy Queen is looking for dedicated team players committed to providing our customers with exceptional service, quality, and friendliness!

You Could Be Who We Are Looking For!

Be sure to come by Dairy Queen at 1204 American Blvd. in Muleshoe to apply. • Unit Manager: Steve Hamilton (806) 272-3412

WEDDING

Jaclyn Denise Chapman and Kendall Wade McDaniel were united in marriage June 6 at the Christian Center Church in Muleshoe with Reydon Stanford officiating.

Larry and Jeri Chapman are the parents of the bride. Tuffy and Becky McDaniel are the parents of the groom.

Providing the music were Pat Watson playing the piano and Nicole Richards on vocals.

The bridesmaid was Yolie DeHoyos and matron of honor was Kandy Wilcox. Groomsman was Stephen Witherspoon and best man was Kyle McDaniel.

The bride wore a white dress with lace and pearls, with a big bow on the back. Along with a cathedral train. She wore a white veiled hat with accenting pearl earrings. The groom wore a white tuxedo with a hunter green vest and tie.

The bride wore something old which was a penny with Kendall's birth year. Something new was the veiled hat. Something borrowed was the dress and pearl earrings. Something blue was her garter.

A reception was held at the Bailey County Civic Center. The hostesses were Alma



Mr. and Mrs. Kendall Wade McDaniel (Jaclyn Denise Chapman)

Gonzales, Glenna Yell and Audra Clarkson.

The bride is a 1996 graduate of Muleshoe High School with a year of college at Clovis Community College. The

groom was a Muleshoe High School graduate and will report to the U.S. Air Force June 25.

The couple for the honeymoon went to Dallas.

PUBLIC RECORD

OBITUARIES

Mary Ruth Whitecotton

MORTON — Mary Ruth Whitecotton, 78, of Morton died June 13 at Levelland Nursing Home.

Memorial services were held in the Terrell Cemetery, Terrell, Okla. under the direction of Ellis Funeral Home in

Morton.

She was born May 19, 1918 in Jefferson County, Okla. She married Ernest Whitecotton May 17, 1951 in Nocona, Texas.

Mary and her husband have lived in Morton since 1951, moving from Jefferson County, Okla. She was a member of the First Assembly of God Church and an 8th grade school teacher.

She had taught math in Morton for 35 years, and 3 years in Neely Ward School, 5 miles west of Morton, now consolidated into Morton. She also taught for seven years in Jefferson County, Okla. She retired in 1988.

Survivors include her husband Ernest Whitecotton of Morton; several nieces and nephews.



Muleshoe Cattle Market

SATURDAY, JUNE 14, 1997

692 head of cattle, 118 hogs and 142 sheep and goats were sold. Fewer receipts and fewer people in attendance at the sale. A steady market on all stocker & feeder cattle, pairs & bred cows also steady. Packer cows & bulls steady to a dollar weaker.

REPRESENTATIVE SALES

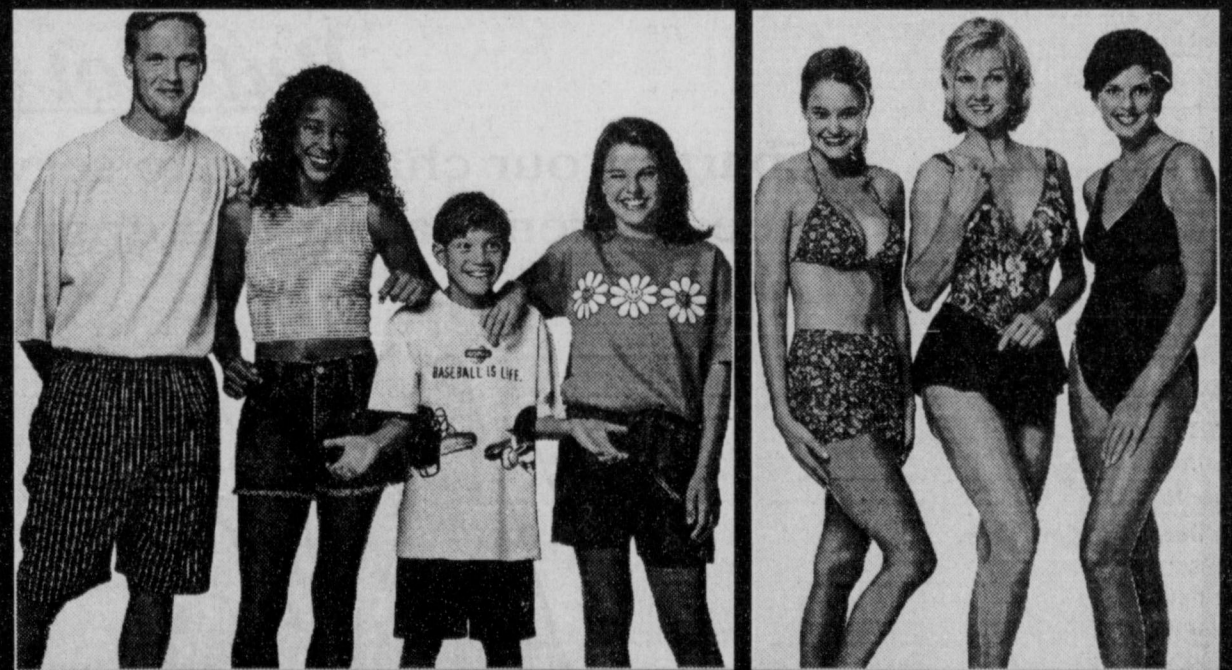
Seller, City	#	Type	Wt.	CWT or PH
Mark Butler, Turkey	Hol. Str.	590 lbs.	at \$62.50
Jimmy Hudgens, Herefor4d	Red Str.	170 lbs.	at \$123.00
Ronnie Griffith, Hereford	Char. Bull	180 lbs.	at \$117.00
Joe Garcia, Albuquerque, NM	Rwf Bull	290 lbs.	at \$99.00
J & F Farms, Muleshoe	Red Bull	360 lbs.	at \$106.00
Leroy Parsons, Clovis, NM	Blk. Bull	435 lbs.	at \$92.00
Cochran Co. Farms, morton	Rwf. Bull	445 lbs.	at \$90.00
Shafer Cattle, Sudan	8 Mxd. Strs.	652 lbs.	at \$78.50
Buddy Yeary, Levelland	Wf. Str.	680 lbs.	at \$75.00
Joe Miller, Amherst	Ywf. Str.	700 lbs.	at \$79.00
Troy Dodd, Canyon	3 Blk. Strs.	722 lbs.	at \$77.50
Leo Chavez, Muleshoe	4 Mxd. Strs.	749 lbs.	at \$74.75
Randy Coleman, Levelland	2 Corriente Strs.	728 lbs.	at \$54.50
Brice Thomason, Muleshoe	Red Strs.	815 lbs.	at \$73.50
Howard Trust, Anton	6 Blk. Strs.	898 lbs.	at \$73.00
Cochran Co. Farms, Morton	3 Red Hftrs.	340 lbs.	at \$91.50
Rosendo Apadaca, Amherst	Red Hfr.	420 lbs.	at \$80.00
Forest Edwards, Morton	2 Red Hftrs.	450 lbs.	at \$84.00
A.C. Light Jr., Olton	3 Blk. Hftrs.	455 lbs.	at \$80.00
Jake Farms, Sudan	3 Wf. Hftrs.	468 lbs.	at \$78.50
Shafer Cattle, Swudan	6 Mxd. Hftrs.	627 lbs.	at \$74.75
Christian Drager, Friona	Bwf. Hfr.	610 lbs.	at \$76.50
Curtis Drager, Friona	Red Hfr.	650 lbs.	at \$76.50
Leo Chavez, Muleshoe	3 Mxd. Hftrs.	703 lbs.	at \$72.00
Sam Hubbert, Brownfield	Rwf. Pair	\$720.00
Sam Hubbert, Brownfield	Wf. Cow P8	\$550.00
T & S Cattle, Hale Center	9 Rwf. Pairs	\$745.00
T & S Cattle, Hale Center	9 Rwf. pairs	\$735.00
T & S Cattle, Hale Center	2 Rwf. Cows P5	\$580.00
Larry Gilbert, Amarillo	Hol. Cow	950 lbs.	at \$45.50
Burl Mardis, Muleshoe	Rwf. Cow	1030 lbs.	at \$42.50
Troy Dodd, Canyon	Rwf. Cow	1145 lbs.	at \$41.50
J & F Farms, Muleshoe	Red Cow	1170 lbs.	at \$42.50
Pete Stracener, Levelland	Blk. Cow	1305 lbs.	at \$44.50
Buck Gossett Jr., Anton	Blk. Cow	945 lbs.	at \$48.50
Dennis Newton, Hereford	Blk. Cow	940 lbs.	at \$44.00
Prairie View Dairy, Muleshoe	Hol. Cow	1250 lbs.	at \$42.50
Sundance Dairy, Plainview	Hol. Cow	805 lbs.	at \$40.00
John Thompson, Friona	Blk. Bull	1945 lbs.	at \$51.00

The Muleshoe Cattle Market is brought to you each week by Muleshoe Livestock Auction, located east of Muleshoe on U.S. 84. Muleshoe Livestock conducts sales every Saturday, beginning with hogs, sheep and goats at 10 a.m. and cattle following at approximately 12 noon.

FOR INFORMATION ON SALES OR TO CONSIGN CATTLE, CALL (806) 272-4201

HALF-PRICE Summer Sale

Summer Fashions for the Family!



Buy Any 1 Item at Reg. Price, Get the Second for

1/2 PRICE

Excludes denim jeans. Second item must be of equal or less value.

ANTHONY'S

Family Apparel & Shoes



321 Main - Muleshoe 272-3478

Monday-Saturday 9:30-7:00

Sale prices effective through Sunday, June 22, 1997

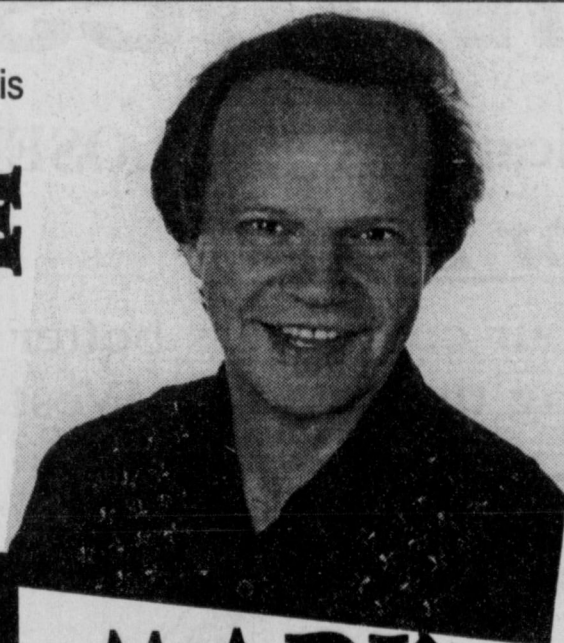


The 11th Annual Norman & Vi Petty Music Festival of Clovis presents

BOBBY VEE

Thurs., June 26 • 7:30 p.m.
Mounted Patrol Arena, Clovis, NM

OPENING ACT - THE FIREBALLS
Tickets: \$10, \$12 & \$15



AND

MARK CHESNUTT

Fri., June 27 • 7:30 p.m.
Mounted Patrol Arena, Clovis, NM

OPENING ACTS - KKYC COUNTRY SHOWDOWN FINALISTS
Tickets: \$12, \$15 & \$20



Reserve your tickets today! Call the Clovis/Curry County Chamber at 505-763-3435

Posters & T-shirts on Sale! Music Festival Posters \$15/\$20 • T-Shirts \$12/\$14
Call the Clovis/ Curry County Chamber at 505-763-3435

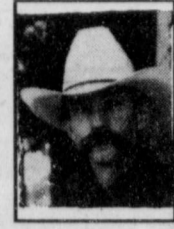
Building Contractors Association Of Curry County
Plains Regional Medical Center
North Plains Mall
Southwestern Public Service
Sunwest Bank
PNM Gas Services
Plateau Cellular
Benders Family of Dealerships

Join us in Clovis on Main Street for the Great Race, a vintage car race coming to Clovis
Wed., June 25, 3-10 p.m.

NEW MEXICO
AMERICA'S LAND OF ENCHANTMENT

Burlington Northern Santa Fe Railroad
Poor Boy's Butcher Shop/The Galley Cafe
Curry County Abstract
95.3 KSEL Country/Retro 107.5 KSMX
Clovis News Journal • Clovis Home Care
YCC Construction • K-Classic/KKYC
Citizen's Bank • Western Bank
KCLV AM/FM • Thrifty Nickel
KWKA/KTQM • First Bank
Coca-Cola • Adair, Inc.
McDaniel's • Wal-Mart
K-Bob's • Pepsi • Allsup's

Roping with a celebrity



BAXTER BLACK
ON THE EDGE OF COMMON SENSE

I was invited to participate in a Celebrity Team Roping this spring. A very fancy affair with movie stars, singers, artists, bronc riders and football players. They match a celebrity with a top professional roper who tries to make the celebrity look good.

I was included in the celebrity category. As one of the staff pointed out, some of the professional cowboys were so good they needed a severe handicap to even things out. So, in fact, they invited me not because I was really a celebrity, but because they'd seen me rope.

Oddly enough the cowboy I drew up with was a past World Champion who'd changed careers and became a movie star. He now lives in Hollywood, eats health food and has 8"x10" promotional photos of himself in flattering poses. Security and his endorsement deals prevent me from naming him, so I'll just call him King Kenny.

I didn't know what to expect. I was nervous about meeting him. His manager/publicist/hairdresser combination visited with me beforehand so that I could act normal.

Kenny showed up, incognito. Somehow I guess I was expecting a scepter and a crown, maybe a flowing purple robe, people scattering flowers across his bow.

His first words were, "Can I borrow yer rope?" His boots appeared to be different sizes. There was a stain on his

straw hat I took to be a raptor deposit.

His second word were, "Can I burn a chew?" One spur aimed out from the side of his heel like he'd hung it in the car door. (He seemed to have been interrupted mid-shave by a loud noise or possibly a comet.)

He looked around furtively then drilled me with pink and blue eye, "I'm disguised as a heeler," he said.

I decided not to take umbrage at his disparaging comment, since I, in fact was the designated heeler.

At the ropin' that night we'd have won the whole shootin' match, but I missed both steers and we didn't make the short go.

He was gracious about my ineptitude. We stood proud and tall as they passed out buckles and accolades to the winners. He bummed another chew, gave me his horse to brush down and put up.

I walked King Kenny through the crowd as people stopped him for autographs and photo opportunities. I really felt special. It was a treat to be in the company of a World Champion. I'll cherish the memory.

The only damper on the evening was he kept introducing me as his personal trainer and massage therapist. Oh, and he called me Buster all night.

The Country Peddler Show
The Perfect Street of Shops

Lubbock!

Lubbock Memorial Civic Center
1501 Sixth Street • Take Ave. Q to 7th St. Turn East
Handcrafted Furniture • Folk Art • Crafts • Clothes

Friday June 20 • 4 pm to 9 pm
Saturday June 21 • 9 am to 6 pm
Sunday June 22 • 11 am to 5 pm

Visit with these and more than 100 other of your favorite Country Peddlers...
Oak Reflections • The Dulcimer Factory • Resco Wood Products
My Sister's Corner • Bobbie McGee Sportswear • Brenda & Friends
Plaids 'n Patches • Palm Tree • Lang Folk Art • Shades 'n Things
George Boutwell • Made On The Farm • Country Pickin's

Admission \$4.00 • Seniors \$2.00 • Children under 12 free
For the safety of all, strollers not recommended
Admission good with handstamp all weekend

Presented by American Country Shows
P.O. Drawer E • Fredericksburg, TX 78624
Phone (210) 997-2774 • FAX (210) 997-0453
Homepage www.perfectstreet.com • E Mail peddler@kfc.com

THE CLASSIFIEDS

★ ALWAYS A BEST SELLER ★

Journal classifieds

REAL ESTATE
AUTOMOBILES
HELP WANTED
GARAGE SALES

STOP & SHOP

Deadlines are 5 p.m. Monday and Thursday

Call 272-4536

Deadlines are 5 p.m. Monday and Thursday

MISCELLANEOUS

Alfalfa Hay in Morton
Horse quality. \$3.75 in Field, \$4.25 in Barn. 229-6267 24s-4tpd

Bad credit? Erase bad credit, stop creditor harassment, lower monthly payments, eliminate interest. Send \$1 and SASE to: **JC and Associates, P.O. Box 967, Lamesa, Texas 79331** 23s-tfc

Raul's Farm & Ranch
Painting & Draywall. All work guaranteed.. 1-505-768-5773 Clovis. 23t-8tc

Need Tupperware? Call Jan Springfield, 272-5827. 23t-8tc

Persons interested in **managing-operating** a retail fireworks outlet in Muleshoe from June 24th thru July 4th. Must be at least 18 yrs old to apply. **No investment required.** Good fund raiser for civic church, school group or family. For further information call **1-800-687-0182.** 24t-3tc

Bill Durben Roofing. Free Estimates. 272-5915 25s-4tc

Collections for Sale: Gibson girl and Shirley Temple porcelain dolls, Roseville, Beleck, Frankhoma, slag glass, Majolica, Gondar, R.S. Prussia & Germany, Native American Pottery (505)359-0015. 25s-3tpd

Concealed Handgun Course
June 14th 8 a.m. — 6 p.m. Plus Shooting (Hereford). Contact Toby Turpen, 806-364-6362. 24t-2thc

Reduce safe and fast with GoBese Tablets and E-Vap "Water Pills" Available at **Damron Drug.** 22t-4thpd

For sale: 2 horse trailer, small camper, stock trailer, inboard boat, 200 cc Yamaha motorcycle. 272-5787. 25t-2tpd

Roundup Applications
Pipe-Wick mounted on high-boy. 30" or 4" rows. Cotton, Milo, Soy Beans and Corn. Call Roy OBryan, 806-265-3247. 25t-tfc

1983 L2 Gleamer Combine 24' Header field ready.
1981 850 Massey Combine 24' Header field ready.
(505) 359-0947, 477-2220, 760-7527, 760-7522.
24t-tfc

REAL ESTATE

For Sale: 2 bdrm, 1 bath, brick entrance, fire place, outside storage, carport, patio, laundry, carpets, and draperies. Call 272-5672. 23s-9tc

For Sale by Owner: 3-11/2-1 1900 square foot living area with fireplace, storage building, fenced yard and heat pump. Call 272-4833 or 272-4464. 24s-7tpd

For sale: 7 acres, six miles from town. Partially fenced. Cash or owner financed. (806)272-4975. 23t-tfc

3-13/4 - 2 on 2 1/2 acres of land. 7 1/2 miles from town on pavement. Call 925-6751. 23s-9tpd

For Sale By Owner — 2 story, 3 bedroom, 1 3/4 baths, new roof, heat pump, carport, 16x20 shop, close to school. Call 272-5339. 23t-8tc

For Sale By Owner — 3-13/4-2, Brick central A&H (heat pump), fans, FP, fenced yard, storage bldg., sprinkler system. Nice Home across the street from elementary school. Call 272-5940. 23t-5tpd

House for Sale or Rent with reduced Price or Rent. 3bdrm, 2 bath, 1750 sq. ft. (Assumable note with small down payment.) 612 W. Ave F. 806-265-3413. 24t-tfc

Brick 2-2-1, 2 living areas, Fans, fireplace and storm cellar. Located in Earth, Texas. 806-562-3961, 806-272-5865 (mornings only) 25t-5tc

For Rent or Sale: 2bdrm, 1 bath, 1020 S 1st, call 806-745-1486 or pick up key at 610 W 2nd. New carpeting and paint. 25t-2tpd

For Sale by Owner: 1912 W Ave H, 3 bdrm, 2 bath, 2 car garage, brick, new roof. Inside: new paint, remodeled, great location. 806-481-3872. 25t-tfc

MOBILE HOMES

Better Living Homes
1997 Singlewide Mobile Home \$19,000. Please Call (505)356-5448. 17t-tfc

HELP WANTED

Make up to \$1,500. Operate a Fireworks stand just outside Muleshoe 6-24 thru 7-4. Must be a responsible adult. Phone 10 a.m.-5p.m. 1-210-429-3808 or 1-800-364-0136. 20s-13tc

Now Hiring Truck Drivers to haul grain in Texas 25 yrs or older with Class A-CDL. 806-647-5384. 22t-10tc

Help Wanted in parts department. Must have some computer and Farm machinery experience. **Apply in person at:** Earl Ladd & Sons Inc. 602 W. Amer. Blvd., Muleshoe, TX. 24t-4tpd

Postal Jobs! 3 positions available. No experience necessary. For Info. Call 818-757-3141 ext. 8003. 25t-1tpd

Unique School Nursing Opportunity. Muleshoe Independent School District is seeking an RN for a position at Muleshoe High School. This full time position will involve teaching a vocational course in "Health Occupations" as well as serving as the school nurse for that campus. Excellent hours and benefits, competitive wages. **Requires current Texas license and B.S.N.** For consideration please contact **Jean Richardson in the office of the Superintendent at (806) 272-3389 or fax resume to (806)272-4120.** 25s-2tc

Local Truck driver needed. Must have CDL. Call 806-272-3697 25t-4tpd

GARAGE SALES

Garage Sale
June 20, 21, & 22nd 9 till ?
Sunday, 12 till ?
11 miles North on Hwy 214 1 mile east on 145 quarter of a mile South. 965-2743.
25s-2tc

WANTED

Would Like to Do Babysitting. Call after 3 p.m. 272-5223. Ages 2 & up, meals provided. Ask for Chris. 24s-4tc

AUTOMOBILE

'91 Chevy Crew cab, automatic, 454 engine, blue, \$10,495., Portales, N.M., (505)359-1775.

'92 Dodge Caravan, loaded, all wheel drive, blue, \$9,495., Portales, N.M., (505)359-0947

'92 Dodge Dakota club cab, V-6, automatic, blue, \$7,995., Portales, N.M., (505)359-1775

'93 Ford F-150 XLT, 38,000 miles, white, \$10,995., Portales, N.M., (505)359-0947

'94 Chevy Astro Mini-van, loaded, XT Package, silver, \$14,495., Portales, N.M., (505)359-1775.

'95 Ford Mustang for sale. 32,000 miles, red, interior red/black, 965-2693. 24t-6tpd

SEIZED CARS from \$175. Porsches, Cadillacs, Chevys, BMW's, corvettes. Also Jeeps, 4WD's. Your Area. Toll Free 1-800-218-9000 Ext. A-10574 for current listings. 24t-4thpd

WANTED

Care provider needed for Blanche Lenderson on Sundays (8 a.m. — 5 p.m.). \$6 an hour. Apply in person at the office of **Michael R. Caldwell, P.C., 113 W. Ave D, Muleshoe. References required.** 25t-tfc



FLEETWOOD HOME CENTER
Portales Homes

16' Wide \$19,999

Storm Windows Extra Insulation

Best Valued at PORTALES HOMES

FREE Delivery!
800-867-5639
DL. 366

Free Puppies

Blue Heeler/Cross
2 females, 1 male 11 weeks old. (505) 985-2239
25t-nctfc

FOR SALE

Customs Swathing & Baling
\$12 abale, David Schulte. 965-2489 or 647-7740. 16s-50tpd

NUENERGY FEEDS, INC.

Is Now Contracting Wheat Straw Will Purchase By The Ton Or By The Acre

Contact the Muleshoe Plant Office (806) 965-2120 or L.D. Clark (806) 965-2339

In New Mexico contact Scott Dickerman (505) 985-2341 or (505) 760-9947

NUENERGY FEEDS, INC.

Rt. 3 Box 59-B Muleshoe, TX

BUY IT & SELL IT FIND IT IN THE CLASSIFIEDS

Nieman Realty

116 E. Ave. C George Nieman, Broker 272-5285 or 272-5286

RICHLAND HILLS - PARKRIDGE AREA

NICE 3-3-1 Brick, cent. Heat, Evap. Air, built-ins, 2000' + lv. area, fenced yd., stor. bldg. MORE!! \$60K !!! RH-2

VERY NICE 3-2-1 Brick, Cent. A&H, built-ins, fans, new paint, carpet, & drapes, fenced yd. \$60K!!! RH-1

NICE 3-2-2 Brick, Cent. A&H, built-ins, FP, cov. patio, fenced yd. \$50's!!!

NICE 3-2-2 Brick, Cent. A&H, built-ins, FP, corner lot!! \$50's!!!! RH-3

HIGH SCHOOL

VERY NICE 3 bdrm, 2 bath Home on corner lot, Cent. A&H, built-ins, stor. bldg, fenced yd, Much More! \$40's! HS-1

VERY NICE 3-2 Home, Cent. A&H, built-ins, fans, fenced yd., stor. bldg., MUCH MORE!!!! \$30's!!! HS-5

VERY NICE 3-2-1 Home on corner lot, Cent. A&H, built-ins, ceiling fans, fenced yd., stor. bldg.!! \$30's!!! HS-3

NICE 2-1-1 Brick, Heat Pump, nice carpets, well insulated, storm windows & doors. \$30's!!! HS6

RURAL HOMES

2-2-1 carport Mobile Home on .665 acres on pavement close to town, Cent. heat, evap., air, DW, large barn, stor. bldg. and MORE!! \$25K!! HR-5

W. of SUDAN-NICE 3-3-2 Brick Home, 5 acre tract on Hwy. 298, Cent. Air & Heat, built-ins, large Quonset Barn, MORE!!!! \$95K!!!

VERY NICE 3-11/2-1 Home on 8 acres on pavement close to town, Cent. A&H, built-ins, sun room, concrete cellar, storage bldgs., fenced yd., RV cover, mobile home hookups, stock pens, fenced acreage, & MORE!! \$50's!! HR-6

IN CONTRACT

ASK ABOUT OUR COMMERCIAL LISTINGS!!!

LENAU - COUNTRY CLUB AREA

PRICE REDUCED!!! Very Nice 4 bdrm. 2 1/2 bath double wide, corner lot, built-ins, heat pump, FP, Much More! CC-2

NICE 2-2-2 Brick, on corner lot, heat pump, fenced yard, storage bldg., MORE! \$40's !!! L-1

2-1-1 Carport Home, wall furnace, nice carpet, storm shelter, stor. bldg., fenced yd. \$20's!!! CC-3

NICE 3-2-1 Home, Elec. Heat pump, DW, nice carpet, fans, fenced yd., MORE!! \$30's!! L-2

2-1-1 Home, Cent. Heat, built-ins, Hardwood floors! \$19,500! L-3

HIGHLAND AREA

JUST LISTED-NICE 3-2-2 Brick, Cent. A&H, built-ins, gas log FP, fenced yd., stor. bldg., MORE!! \$60K!!! HL-5


BUSINESS FOR SALE-SNACK SHACK - Lot, Buildings, furniture, and fixtures!!!!

Commercial Bldg. & Lot, Approx. 1790' area, Numerous uses!! \$22K!!!

Prices Effective June 18-24, 1997

High Heat LOW PRICES

ALL TYPES
PEPSI
\$1.19
3 Liter Bottle



MEAT

- Premium Gold Angus Beef Boneless
Round Steakslb. **99¢**
Limit 2 • Additional Purchases \$1.19 lb.
- Split Cry-O-Vac Beef
Spare Ribslb. **\$1.37**
- Oscar Mayer Bun Length, Reg., Light or Jumbo
Meat Wieners
Buy One 1 lb. Pkg. for \$2.58 & Get One **FREE**
- Bone-In Any Size
Pork Steakslb. **\$1.69**
- Premium Gold Angus Beef
Tenderized Small Pack
Round Steakslb. **\$1.19**
- Sirloin Tip Roast or
Ground Round.....lb. **\$1.99**
- Clear Cove Breaded Fish Portions or
Fish Stickslb. **\$1.49**
- Red Rind
Longhorn Cheese...lb. **\$2.49**
- Ultra Lean
Beef Stew Meat.....lb. **\$2.29**
- Premium Gold Angus Beef Boneless
Top Round Roast or
Bottom Round Roast.....lb. **\$1.89**
- Premium Gold Angus Beef Boneless
Rump Roast.....lb. **\$1.89**
- Premium Gold Angus Beef Boneless
Sirloin Tip Steaks..lb. **\$2.29**
- Great For Asado Boneless
Pork Stew Meat.....lb. **\$1.99**
- Beef Boneless
Beef Stew Meat.....lb. **\$1.99**
- Bone-In
Pork Butt Roastlb. **\$1.49**
- Reg. or Low Sodium
Wilson Bacon1 lb. pkg. **\$2.29**
- Wilson
Meat Franks 12 oz. pkg. **69¢**
- Wilson Reg. or Polish
Smoked Sausage ..1 lb. pkg. **\$1.79**

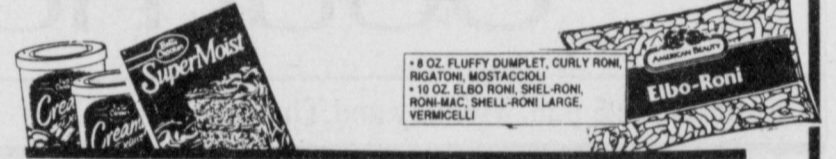
PRODUCE

- Yellow
Onions..... 4/lbs. **\$1**
- Salad Size Hass
Avacados 5/**\$1**
- Your Choice Large
Peaches or Plums...lb. **99¢**
- Green
Onions..... 4/bunches **\$1**
- Green Leaf or
Romaine Lettuce..... 2/**\$1**
- Dole American Blend
Salad12 oz. pkg. **\$1.88**



- Assorted Tostitos®
Tortilla ChipsReg. \$2.99 Size 2/**\$4**
- Vlasic Hamburger
Dill Chips32 oz. jar **\$1.26**
- Soft & Gentle Assorted/ White
Bath Tissue 4 roll pkg. **75¢**
- Drink-A-Pack
Drinking Water ...6 pk., 8 oz. **\$1.19**
- Nabisco Assorted
Nilla Wafers 11-12 oz. box **\$2.39**
- Ellis
Refried Beans ...16 oz. cans 3/**\$1**
- Betty Crocker Assorted Microwave
Popcorn3 ct. pkg. **\$1.99**
- General Mills Reg. or Honey Nut
Cheerios Cereal ... 14-15 oz. boxes 2/**\$5**
- General Mills
Wheaties Cereal 18 oz. box **\$2.79**
- General Mills
Golden Grahams 18 oz. box **\$2.99**
- General Mills
Lucky Charms .. 14 oz. box **\$2.79**
- Betty Crocker Assorted Specialty
Potatoes.....5-5.6 oz. pkg. 4/**\$5**
- Betty Crocker Assorted Hamburger or
Tuna Helper3-9.25 oz. boxes 4/**\$5**

- Natural Blend,
Vegetable, Puritan, or Corn
Crisco Oil 48 oz. btl. **\$1.69**
- Angel Soft White
Bath Tissue12 ct. pkg. **\$2.89**
- Shurfine
Lawn & Leaf Bags.....10 ct. pkg. 2/**\$3**



- Assorted American Beauty
Pastas8-10 oz. pkgs. 2/**\$1**
- Betty Crocker Assorted Ready to Spread
Frosting.....12-16 oz. can **\$1.29**
- Betty Crocker Assorted Super Moist
or Sweet Rewards
Cake Mixes ... 18-18.25 oz. box **99¢**
- Shurfine
Grape Jelly 32 oz. jar **89¢**
- Sunny Chocolate, Vanilla,
Assorted, or Lemon
Cream Cookies...2 lb. pkg. **\$1.69**
- Assorted Gerber 2nd Foods
Baby Food4 oz. jars 5/**\$1**
- Western Family
Coffee Filters100 ct. pkgs. 2/**\$1**
- Shurfine Strawberry
Preserves32 oz. jar **\$1.99**
- Kraft Assorted 32 oz. **Miracle Whip**
or 40 oz. **99¢**
- Mayonnaise**..Your Choice w/ Coupon **99¢**
(Additional Purchases \$1.99 Each)

NOW AVAILABLE! Deli Lunchmeat

- TURKEY BREAST**lb. **\$2.79**
- JALAPENO LOAF**lb. **\$1.79**
- COOKED HAM**.....lb. **\$2.19**
- CHOPPED HAM**lb. **\$1.79**
- HAM & CHEESE LOAF**lb. **\$2.99**
- SALAMI**.....lb. **\$1.79**
- BOLOGNA**lb. **\$1.79**

Ask Market Personnel

HEALTH & BEAUTY

- Western Family Hydrogen
Peroxide 16 oz. btl. 3/**\$1**
- Western Family Isopropyl
Alcohol 16 oz. btl. 3/**\$1**
- Western Family Disposable
Razors..... 10 ct. pkg. **89¢**
- Assorted Barbasol
Shaving Cream.....11 oz. can **79¢**

DAIRY & FROZEN

- Assorted Chocolate Dipped or Fruit Bars
Fruit a Freeze ... 4 ct. pkgs. 2/**\$3**
- Assorted Bakes & Rises
Freschetta Pizza ..26.85-30.7 oz. pkg. **\$4.99**
- Green Giant Corn or
Mixed Vegetables 28 oz. bags 3/**\$4**
- Apple, Peach, or Cherry
Pet-Ritz Cobblers 28 oz. pkg. 2/**\$5**
- Vegetable Oil
Shurfine Spread... 48 oz. tub **99¢**



- Dannon Cheesecake with Cherry or
Strawberry Topping, or Bavarian Cream w/
Raspberry Double Delights
Yogurt6 oz. tubs 2/**\$1**
- Shurfine Mozzarella, Cheddar or
Cheddar/ Jack
Shredded Cheese 32 oz. pkg. **\$3.99**
- Kraft Parkay Reg. or Low Fat
Margarine Quarters ..16 oz. pkg. **79¢**

Libbey.

CHIVALRY
COLLECTION
This Week's Feature
6 oz. Juice
Each **59¢**

WESTERN UNION MONEY TRANSFER™
"The fastest way to send money"

Lowe's
MARKETPLACE
401 W. American Blvd.
Muleshoe 272-4585

Pay-n-Save
515 W. American Blvd.
Muleshoe 272-4406
WE RESERVE THE RIGHT TO LIMIT QUANTITIES IN TEXAS

