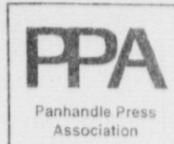


MXD



# MULESHOE JOURNAL



Volume 75, No. 51

Published Every Thursday at Muleshoe, Bailey County, Texas 79347 Thursday, December 18, 1997

## City Council approves early retirement plan

By TERESA STONE  
Journal staff writer

Muleshoe City Council members Monday decided not to establish an official extension policy for utility payments.

The policy would have set specific guidelines, procedures and fines for the customer and the city in case of delinquent payments.

City Manager James Fisher said he has received several requests for an extension policy, however he would prefer to continue working with the people on a case by case basis, instead of adopting a formal ordinance.

Fisher stated in Monday's City Council meeting that the proposed ordinance would actually be less flexible for the city and its customers. The policy would tie the city's hands in granting extensions under extenuating circumstances, he said.

Fisher reassured the Council that if a family is experiencing a financial setback or an emergency, the city does everything to work with them. Muleshoe residents can seek assistance from the South Plains Community Action Program when they have funds available, said Fisher.

see CITY page 2

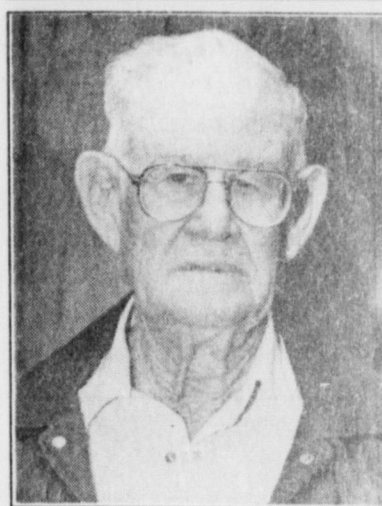
## DESHAZO DUET



JOURNAL PHOTO BY RICK WHITE

Shayla Hall (left) and Bianca Gonzales sing Jingle Bells as part of a Christmas performance by DeShazo' third-graders Monday. The students performed several Christmas classics for the DeShazo PTA.

## ELECTIONS '98



Jack Bates

## Bates seeks reelection

Jack Bates has announced his intentions to seek reelection for Precinct 1 Justice of the Peace in Bailey County.

Bates has served as Justice of the Peace for 15 years and has 330 hours of school training.

He has lived in Bailey County for 70 years and farmed for years in the Fairview community.

He is married to the former Peggy Fried of Muleshoe.

## Harrison County Clerk candidate



Sherri Bessire Harrison

Sherri Bessire Harrison of Muleshoe has announced her candidacy for the office of Bailey County Clerk.

Harrison, a native and life long resident of the Muleshoe area, graduated from Muleshoe High School and attended Texas Tech University for 2 1/2 years. She also graduated from The Sterling Legal Assistant School in Phoenix, Ariz.

In 1992, Harrison returned to Muleshoe and began working as a legal assistant for Attorney Gordon Green. In 1994, she became a certified legal assistant after passing a nationally recognized exam.

"I think my legal background and working with the County Clerk's office will be beneficial in serving the public," said Harrison, who is a member of the West Texas Association of Legal Assistants.

Harrison and her husband Alan have two children, Shelbi and Conner. Both the Bessire and the Harrison families are long time residents of Bailey County and the Muleshoe area.

## PAGE ONE

A QUICK READ OF THE NEWS

### Early Christmas deadlines

Due to the Christmas holidays, advertising deadlines for next week's Muleshoe and Bailey Journals have been moved up.

The deadline for the Thursday, Dec. 25 edition of the Muleshoe Journal will at noon, Monday, Dec. 22. Thursday's edition will be printed a day early and distributed Tuesday afternoon.

The deadline for the Sunday, Dec. 28 edition of the Bailey County Journal will be at noon, Wednesday, Dec. 23.

The paper will be printed and distributed on its regular schedule.

The Journal regrets any inconvenience the early deadlines might cause.

## LOOKING AHEAD

### Lady Mules open district Friday

Off to a 7-5 start, the Muleshoe Lady Mules open their 1997-98 District 1-3A season Friday by hosting Sanford-Fritch at the Watson Junior High School gym.

The junior varsity game is scheduled to start at 6:30 p.m. and the varsity game at approximately 8 p.m.



LETTERS TO SANTA WILL BE PUBLISHED IN THE NEXT TWO EDITIONS OF THE MULESHOE JOURNAL.

## LOCAL WEATHER

	High	low	Pre.
Friday	40	16	—
Saturday	52	13	—
Sunday	67	19	—
Monday	70	20	—
Total to date	21.16 inches		

## EXTENDED FORECAST

Partly cloudy Thursday and Friday with lows in the 20s, highs in the mid 50s. Saturday, colder with a chance of rain and snow, lows in the mid to upper 20s. Highs in the upper 30s.

## Revised hydrologic maps available

To keep area residents informed of ground water availability, the High Plains Underground Water Conservation District No. 1 in Lubbock has just published its hydrologic atlas series, which has been updated to reflect 1995 ground water conditions.

Atlases are now available for Bailey, Cochran, Hale, Lubbock, Lynn, and Parmer Counties, as well as the parts of Armstrong, Castro, Crosby, Deaf Smith, Floyd, Hockley, Lamb, Potter, and Randall Counties lying within the Water District boundaries.

"The hydrologic atlases have been updated every five years since their

original publication in 1981. We have revised the 1990 atlases to include new water-table elevation and saturated thickness maps depicting ground water conditions as of 1995. This revision helps enhance the estimation of ground water availability within each of the counties served by the Water District," said Don McReynolds, technical division director.

Each hydrologic atlas features a specific county and contains maps depicting the elevation of the land surface, the elevation of the base of the Ogallala Formation, the elevation of the water table, and the saturated

thickness of the Ogallala Formation within the county. The atlas packet also contains an informative booklet discussing the Ogallala Formation and an explanation of how to use the maps contained in the atlas.

By reviewing the information contained in the maps, irrigators can determine how deep they need to drill to reach water and how deep they would have to go to complete a well to the bottom of the water-bearing formation.

To update the original maps, technical division personnel used

see MAPS page 2

## Mules swat Swifts

NAZARETH — Muleshoe beat Nazareth for the second time in less than a week, holding the Swifts to 19 points in the second half en route to a 73-51 win Monday.

Dustin Cleavinger led Muleshoe (12-3) with 16 points. Muleshoe beat Nazareth 69-52 last Thursday in the first round of the I-27 Tournament.

Cyrus Norman added 13 points and Matt McClanahan added 11 points as all nine Mules that played scored at least four points.

Darren Huckert led the Swifts with 18 points and Barry Hoelting chipped in 12.

Muleshoe plays at Portales Friday before taking a nine-day Christmas break.

## KMUL radio celebrating 40 years of Spanish music

When Noe Anzaldua moved to Muleshoe 40 years ago, he never would have imagined that he would soon be launching a radio broadcasting career.

Soon after his arrival into town, Anzaldua was asked to translate and record a commercial in Spanish for the local radio station KMUL.

"I had never made a spot before, never even held a microphone close," said Anzaldua, who admitted that at first he was reluctant but after almost two weeks station owner Gilbert Lamb finally convinced him to give it a shot.

After the commercial was completed, Lamb asked Anzaldua to host a 30-minute radio show in Spanish every Saturday and Sunday.

The show was the beginning of Spanish broadcasting in Muleshoe. With the increasing number of Spanish speaking residents, the demand for more air time was soon apparent. Quickly, Anzaldua's airtime increased.

Then in 1992 when Anzaldua took over as general manager of KMUL, the station changed its format to continuous Spanish broadcasting.

Looking back on the last 40 years in radio, Anzaldua realizes that many things

have changed.

"First we used 78s, then 33s and 45s, to cassettes and now CDs which make programming much easier."

Another major change in the radio business, Anzaldua said, is that the big bands no longer give live shows from the stations like they used to do.

Anzaldua looks back fondly on his career.

"I have really enjoyed meeting the people and the opportunity that the radio station has given me to help people in the community."

Helping people has always been a priority for Anzaldua. Many times he has rallied support from the KMUL listeners to help local families in need.

To celebrate his 40th anniversary with KMUL, Anzaldua is once more doing something for the community.

He is trying to assure that all local children will have at least one present this Christmas by sponsoring the local Toy Give-away, Sunday afternoon at Back Stage West.

Also during the celebration, the station will hold a drawing for cash prizes and turkeys, and has organized a dance scheduled for the evening.

# AROUND MULESHOE

## Local church performs Christmas play

The First Assembly of God will be performing their Christmas play, "The Visit" at 7 p.m., Saturday, Dec. 20, and Sunday, Dec. 21. Everyone is invited to come.

## KMUL hosts "La original" give-away

In honor of Noe Anzaldua's 40th anniversary with KMUL, the local Hispanic radio station is hosting a toy give-away, a drawing and a dance on Sunday, Dec. 21 at Backstage West.

The **Toy Give-Away** will be held from noon to 3 p.m. Parents are asked to accompany their own children. Refreshments and food will be available. A pinata, filled with candy, will also be part of the celebration. **Anyone wishing to donate toys can contact the station at 272-4273.**

Area residents can enter the drawing to be held Dec. 21, by registering at local merchants. First prize is \$250, second prize \$150, and third prize is \$100.

The dance will be held from 7 p.m. to midnight. Los Rieleros Del Norte and Corazones Del Norte will be playing.

## Team ropers wanted by MHS club

The Muleshoe High School DECA Chapter is interested in sponsoring a Team Roping at Dusty Rhodes Arena on January 17, 1998. The students would like to hear from anyone interested in this event. For more information contact Michael Thompson at 806-965-2382, Josh McElroy at 806-272-3902, or John Paul Bustillos at 272-5729.

## SPC sets spring registration dates

LEVELLAND — Registration dates for the spring 1998 semester have been announced by South Plains College.

The registration date for the Levelland campus is Jan 15, for day and evening registration. For the Lubbock campus, registration is Jan. 14 for returning students, and Jan. 15 for new students. Sign-up for the Reese Center in Lubbock is Feb. 23-24.

Classes will begin Jan 20 at the Levelland and Lubbock campuses. Classes at the Reese Center begin Feb. 25.

**To get an announcement placed in Around Muleshoe call 272-4536.  
Deadlines are Monday and Thursday by 5 p.m.  
The Journal reserves the right to edit for content and space.**

# KENW-TV

### Public Television

## Christmas at St. Olaf

The world-renowned choirs of Minnesota's St. Olaf College raise their voices this holiday season in **Christmas at St. Olaf**, a new one-hour special. The annual St. Olaf Christmas Festival was named "one of the 10 Christmas events in the U.S. not to be missed" by the *New York Times*. The four-day observance during the first week of December attracts an audience of more than 15,000 people to Northfield, Minnesota.

The college's 450-voice choir and 100-member orchestra performs a rich repertoire of classic Christmas compositions, along with familiar Yuletide carols and Scandinavian songs sung in the original language.

**Christmas at St. Olaf** will be broadcast Wednesday, December 24th at 8:00 p.m. It repeats Thursday, December 25th at 12:00 p.m.

## Merry Christmas, George Bailey

The 1997 Christmas season marks the end of the year-long 50th anniversary celebration of "It's a Wonderful Life," Frank Capra's warm and inspirational family film classic. Sadly, it is also a year in which we pay final tribute to James Stewart, the great star of the film and the most beloved of Hollywood's leading men.

**Merry Christmas, George Bailey** is a unique one-hour "concert" version of "It's a Wonderful Life," using a Lux Radio Theater script originally broadcast on the CBS radio network in 1947, with James Stewart, Donna Reed, and Lionel Barrymore recreating their famous movie roles.

Following in the tradition of Lux Radio Theater, a legendary weekly radio drama of the 1930s and 40s, **Merry Christmas, George Bailey** enlists today's top Hollywood stars in its dramatization of this classic holiday story: Bill Pullman (George Bailey), Hume Cronyn (Mr. Potter), Sally Field (narrator and George Bailey's mother), Nathan Lane ( Clarence the Angel), Charles Durning (Uncle Billy), Chris Farley (bridge keeper), Hal Holbrook (George Bailey's father), Martin Landau (Mr. Gower), Edward James Olmos (Mr. Martini), Joe Mantegna (Nick), and Christian Slater (Harry Bailey and Sam Wainright).

Rhea Perlman plays dual roles as Mary's nosy mother and George's Aunt Tilly; Richard Dreyfus stands in for the original radio host, Cecil B. DeMille, and four popular child actors, including Kirsten Dunst and Jonathan Taylor Thomas, portray the Bailey children.

The condensed radio drama will be taped live on December 8th, 1997, in the historic Pasadena Playhouse. The all-star cast will be arrayed in chairs at the back of the stage, stepping forward to the vintage radio microphones to perform their scenes.

**Merry Christmas, George Bailey** will be broadcast Thursday, December 25th at 11:00 a.m. and 9:30 p.m. on KENW-TV.

Channel 3 Television from  
Eastern New Mexico University, Portales, New Mexico

## CITY

From page 1

Council members agreed the public would be better served by handling each case individually, therefore no action was taken on the proposed ordinance.

Also Monday, the council adopted an early retirement policy for city employees vested in the retirement system and retiring before age sixty five.

City employees are vested after 10 years of full-time service. Anyone over age 60, who

has worked for the city full-time for at least 10 years, is eligible for early retirement.

Anyone with at least 25 years of service, can retire at any age.

The city's new policy makes available to early retirees, group health insurance for a period of 18 months from the date of retirement.

The policy makes the insurance available to the retiree at their expense. The city does not pay any portion of the insurance cost.

In other business Monday, the council agreed to retain re-

cently retired Director of Public Works Cleve Bland as a consultant.

Bland's services as a certified inspector for pest control, water, waste water, solid waste, plumbing and building are needed by the city since no other city employee is qualified to perform the inspections.

Bland's contract with the city will span over 18 months, which is the anticipated time to fully train and certify other city workers.

Also during Monday's meeting, Fisher was granted

authorization to solicit bids for group health insurance.

Fisher told the council that he is concerned over the cost and quality of service provided by the city's current insurance company. Therefore, he would like to seek out other companies that could better serve the city employees.

Prior to adjournment, Councilman Larry Kirk requested that the issue of personal property tax be on January's agenda for discussion due to increased concern expressed by constituents over the tax rate.

## Peace officer training course offered at SPC

A Basic Peace Officer course begins Jan. 20 at South Plains College. Registration deadline is Jan. 16.

The course will meet Mondays, Tuesdays and Wednesdays evenings through May 11 at SPC in Levelland. Cost is

\$392.

The course is designed for all persons wishing to become commissioned peace officers.

Topics will include information on the US Constitution and Bill of Rights, Code of Criminal Procedures, use of

force, mechanics of arrest, firearms, emergency medical care, traffic law, professionalism and ethics and the penal code.

For more information contact the SPS Law Enforcement Office at 806-894-9611, ext. 2291.



# Muleshoe Cattle Market

SATURDAY, DEC. 13, 1997

## REPRESENTATIVE SALES

425 cattle, 244 hogs, 166 sheep and goats. Market fully steady on all classes of cattle, with stronger demand on stocker strs and Packer cows & Bulls 1<sup>00</sup> higher. We will have one more sale this year, December 20th. There will be NO SALE Dec. 27th. First Sale of 1998 will be January 3rd. So, mark your calendars. We would also like to thank all of our customers for their patronage, and we wish everybody a Merry Christmas and a Happy New Year.

The Muleshoe Cattle Market is brought to you each week by Muleshoe Livestock Auction, located east of Muleshoe on U.S. 84. Muleshoe Livestock conducts sales every Saturday, beginning with hogs, sheep and goats at 10 a.m. and cattle following at approximately 12 noon.

**FOR INFORMATION ON SALES OR TO CONSIGN CATTLE, CALL (806) 272-4201**

Seller, City	#	Type	Wt.	CWT or PH
Jason Jesko, Muleshoe	5	Char Strs	187 lbs.	at \$122.00
F.G. Tompkins, Ft. Sumner		BWF Str	235 lbs.	at \$99.00
Carroll Black, Muleshoe		BWF Str	275 lbs.	at \$96.00
Trina Johnson, Littlefield		Blk Bull	360 lbs.	at \$90.00
Antonio Lopez, Muleshoe		Hol Str	370 lbs.	at \$60.00
J.V. Stancell, Muleshoe	3	Mxd Bulls	480 lbs.	at \$84.00
ACU, Morton	4	Mxd Strs	454 lbs.	at \$89.00
Knox Cortese, Ft. Sumner		Brown Str	475 lbs.	at \$81.00
Luis Sotelo, Clovis, NM		Blk Str	500 lbs.	at \$85.00
Alma Rodriguez, Bula		Limo Str	510 lbs.	at \$87.50
Paul McKinney, Wolfforth	2	Mxd Strs	670 lbs.	at \$74.00
KP Farms, Lubbock	3	Mxd Hfrs	362 lbs.	at \$73.00
Kasey Whatley, Muleshoe		Char Hfr	435 lbs.	at \$77.00
Joe Brown, Lubbock	2	Red Hfrs	490 lbs.	at \$72.00
Felix Hipolito, Plainview		Brang Hfr	705 lbs.	at \$65.75
Randy Johnson, Muleshoe		Red Pairs		\$650.00
Moss Ranch, Lubbock		Blk Cow P5		\$525.00
Bobbie Williams, Shallowater		RWF Cow P5		\$400.00
Joe Wheeler, Muleshoe		Blk Cow	1470 lbs.	at \$37.75
Moss Ranck, Lubbock		Brang Cow	1025 lbs.	at \$35.00
J.V. Stancell, Muleshoe		Hol Cow	1155 lbs.	at \$35.00
Don Bandy, Bovina	2	Mxd Cows	1200 lbs.	at \$35.25
Diamond Y Cattle, Muleshoe		Limo Cow	1170 lbs.	at \$36.00
Jack Douglas, Littlefield		Brang Cow	1155 lbs.	at \$34.00
Jennings Bros., Muleshoe		Brang Bull	1845 lbs.	at \$48.00
Alfredo Soto, Farwell		WF Bull	1000 lbs.	at \$50.00

# Kids Eat Free

The Holiday Season is upon us. Shopping consumes much of our time and money. We can't give you more time, but we want to free up some of your money. For the entire month of December, we are going to feed your kids for free.

How can you beat a deal like that? Children twelve and under are invited to come to Leal's and order any item off the children's menu, and we'll pick up the tab.

Just another way to show you our appreciation for your loyal support over the past forty years.  
**Happy Holidays!**

Children must be accompanied by an adult. Drinks not included.

# Leal's

1010 W. American Blvd. • Muleshoe, TX • 272-3294

# How do you know it's Christmas?



**BAXTER BLACK**  
ON THE EDGE OF COMMON SENSE

So, How do you know it's Christmas?

'Cause the sheep can always tell.

They follow a little tradition and have for quit a spell. On Christmas Eve around midnight, the sheep, wherever they are

All rise in quiet unison and fixate on a star. And from their stirring comes a sound, a chuckling Tra, La, La

That weaves and builds itself into a soft melodious BAA Which carries like a dove's lament when nights are very still

As if they're calling for someone beyond a yonder hill.

The legend herders passed on down attributes this tradition To one late night in Bethlehem. A heavenly petition

Wherein a host of angels came and lured them with a song.

The herder's left in haste, they say, and stayed gone all night long.

Well sheep don't do too well alone. They've never compre-

hended that on that night they waited up, the world was upended. So now when daylight shortens up nights get long and cold I make my check at midnight like we've done since days of old And if I find the flock intent and standing all around I listen for the heavenly host above their throaty sound And scan the dim horizon in an effort to discern The sign the sheep are seeking, that their shepherds will return. And I am but a watchman in this drama that replays Around the earth this time of year, and so I stand and gaze And though I see no special star or hear no sweet noel. I know it must be Christmas, 'cause the sheep can always tell.

**MAKE HER CHRISTMAS SPECIAL WITH Diamonds**

THREE CARATS OF DIAMONDS **\$1999**

ONE CARAT OF DIAMONDS **\$999**

Celebrating 56 Years  
**HOLMBERG JEWELRY**

1908 N. Prince • Clovis • (505) 762-9376 Voted #1 Jeweler in Clovis

## State cotton production increases by 22 percent

AUSTIN — Texas Upland cotton production for 1997 is expected to total 5.3 million bales, 22 percent above 1996, according to figures released by Texas Agricultural Statistics Service. This estimate is 2 percent less than the Nov. 1 forecast.

"Except for some weather delays about mid-month, harvest made significant progress on the Plains during Novem-

ber," State Statistician Dennis Findley reported.

Statewide harvested acreage is estimated at 5.3 million acres, 29 percent more than last year. Yield is expected to average 480 pounds per acre compared with 509 pounds last year.

Harvest was almost completed in North Texas. On the Plains harvest made good progress and backlogs of modules developed at gin yards.

Production on the Southern High Plains is estimated to total 2.75 million bales, 23 percent more the previous year's production. Average yield at 489 pounds is 61 pounds less than a year ago.

The Northern High Plains crop, estimated at 750 thousand bales, is 8 percent less than last year. In the Low Plains, production is estimated at 690 thousand bales, up 62 percent

from a year ago.

United States Upland cotton production is expected to total 18.83 million bales, down 1 percent from last year.

Yield is expected to average 665 pounds per acre compared with 701 pounds in 1996. Harvested acreage is estimated at 13.2 million acres, 5 percent more than a year ago.

Have a nice day

### MAPS

From page 1

water-level measurement data taken in the Water District's network of 1,209 privately-owned water wells, as well as supplemental measurements in other wells.

For the updated 1995 maps, wells were measured at a density of one well per one square mile whenever possible.

Persons residing in/or owning land within the High Plains Water District service area may obtain copies of the 1995 hydrologic atlases free of charge from the Water District office in Lubbock.

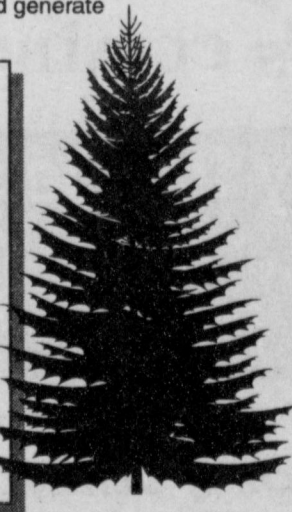
Anyone residing outside of the Water District may purchase the atlases for \$5 each (plus postage and handling) by contacting the High Plains Underground Water Conservation District No. 1, 2930 Ave. Q, Lubbock, TX 79405-1499, or by calling (806) 792-0181.

### Keeping an eye on Texas

#### Real trees make scents

Sixty Texas counties have Christmas tree farms where buyers can choose and cut their own trees. When a tree is harvested, another is planted in its place. While growing, one acre of Christmas trees can produce enough oxygen for 18 people. Texas Christmas tree farms host approximately 640,000 tourists year round, and generate nearly \$400,000 in sales tax revenues yearly.

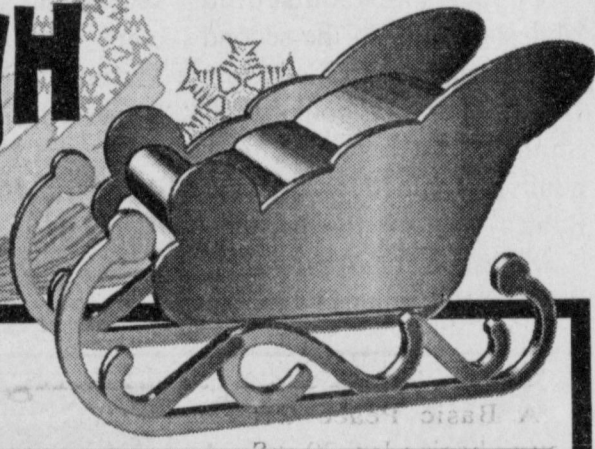
- Give your tree a little "tender loving care"
- Rinse the tree stand with a mixture of one capful of bleach and one cup of water. This reduces the growth of micro-organisms that can block the tree's ability to absorb water.
- Make a fresh cut at the base of the trunk at least one-half inch or more above the original.
- Place the tree immediately in a sturdy stand that holds at least one gallon of water.
- Check your tree stand daily and replenish the water supply. A tree may drink as much as a gallon overnight.
- Recycle. Check your local newspaper for recycling locations and let your tree continue to keep our environment beautiful.



For the Texas Christmas tree farm nearest you on the Internet: <http://agrinet.tamu.edu/forest/x-mas.html> or call the Texas Christmas Tree Growers Association 817-831-0591

SOURCES: John Sharp, Texas Comptroller of Public Accounts, and Texas Christmas Tree Growers Association.

# Get A New Sleigh For Christmas



<p><b>95 CHEVY S-10 PICK-UP</b> Regular Cab #76385A Reg. \$11,995 Sale Price <b>\$9,995</b></p>	<p><b>97 CHEVY 1/2 TON PICKUP</b> Ext. Cab 2WD #86042A Reg. \$22,995 Sale Price <b>\$21,500</b></p>
<p><b>93 CHEVY 1/2 TON PICKUP</b> Regular Cab #86105A Reg. \$8,995 Sale Price <b>\$7,995</b></p>	<p><b>95 CHEVY SUBURBAN</b> #86070A Reg. \$26,995 Sale Price <b>\$23,500</b></p>
<p><b>94 CHEVY 1/2 TON PICKUP</b> Ext. Cab #76297A Reg. \$11,995 Sale Price <b>\$10,995</b></p>	<p><b>96 CHEVY TAHOE 4x4</b> #5208 Reg. \$27,995 Sale Price <b>\$23,995</b></p>
<p><b>95 CHEVY 1/2 TON PICKUP</b> Ext. Cab 4X4 #76116A Reg. \$20,995 Sale Price <b>\$18,995</b></p>	<p><b>96 CHEVY SUBURBAN</b> #5234 Reg. \$27,995 Sale Price <b>\$25,995</b></p>
<p><b>95 CHEVY 1/2 TON PICKUP</b> Ext. Cab 4X4 #86018A Reg. \$19,995 Sale Price <b>\$17,995</b></p>	<p><b>97 CHEVY SUBURBAN</b> #8609A Reg. \$29,995 Sale Price <b>\$27,995</b></p>
<p><b>97 CHEVY 3/4 TON PICKUP</b> Ext. Cab 2WD #5259 Reg. \$23,995 Sale Price <b>\$22,995</b></p>	<p><b>95 GMC SUBURBAN</b> #76340A Reg. \$26,995 Sale Price <b>\$23,500</b></p>

**Muleshoe Journal** USPS 367820  
Established February 23, 1924. Published by Triple S Publishing, Inc. Every Thursday at 304 W. Second. Box 449, Muleshoe, TX. 79347.  
Second Class Postage paid at Muleshoe, TX.  
POSTMASTER: Send address changes to the Bailey County Journal, P.O. Box 449, Muleshoe, TX 79347.  
We are qualified members of:  
Panhandle Press Association, National Newspaper Association, West Texas Press Association and Texas Press Association

WEST TEXAS PRESS ASSOCIATION  
PPA Panhandle Press Association

**TA** MEMBER 1997  
TEXAS PRESS ASSOCIATION

Scot Stinnett, Publisher  
Lisa Stinnett, Vice-President/Comptroller  
Rick White, Editor  
Mary Ann Dominguez, Classifieds  
Leah Bell, Advertising

SUBSCRIPTIONS: Muleshoe Journal and Bailey County Journal  
Fy Carrier Yearly - \$22.00  
Bailey County - by mail - \$24.00  
Elsewhere - \$26.00  
Advertising Rate Cards on Application

\*Advertisers should check their ad the first day of insertion. The Journals will not be liable for failure to publish an ad or for a typographical error or errors in publications except to the extent of the cost of the ad for the first day of insertion. Adjustment for errors will be limited to the cost of that portion of the ad where the error occurred.\*

# BENDER CHEVROLET

<p><b>BENDER</b> CHEVROLET OLDSMOBILE CADILLAC 2500 Mabry Drive • (505)763-4465</p>	<p><b>BENDER</b> CHRYSLER PLYMOUTH DODGE 3400 Mabry Drive • (505)762-4511</p>	<p><b>BENDER</b> HONDA NISSAN 3000 Mabry Drive • (505)762-3701</p>
---	---	--

### Muleshoe stumbles in tournament finale

ABERNATHY — Muleshoe finally paid the price for a mediocre performance against a lesser opponent.

Aaron Coy knocked down a trio of 3-pointers in the fourth quarter and scored 23 points Saturday as Lubbock Cooper held off Muleshoe 54-52 in the fifth-place game of the I-27 Tournament.

"We had our heads in the clouds," said Muleshoe coach Ralph Mason, extremely disappointed in his team's effort Saturday.

Two days earlier, Muleshoe took eventual tournament champion and District 1-3A rival Tulia to overtime before suffering a two-point loss at the buzzer.

Mason has been grasping for answers why his playoff-caliber team is still prone to play down to the caliber of its opponents.

Cooper (7-5) outscored Muleshoe 19-9 in the second quarter and never trailed. Coy, Davis Jones (17 points) and Shane Shuttlesworth (11 points) combined for all of the Pirates' points in the quarter.

Muleshoe (11-3) picked up its defensive intensity in the

#### BASKETBALL

##### I--27 Tournament

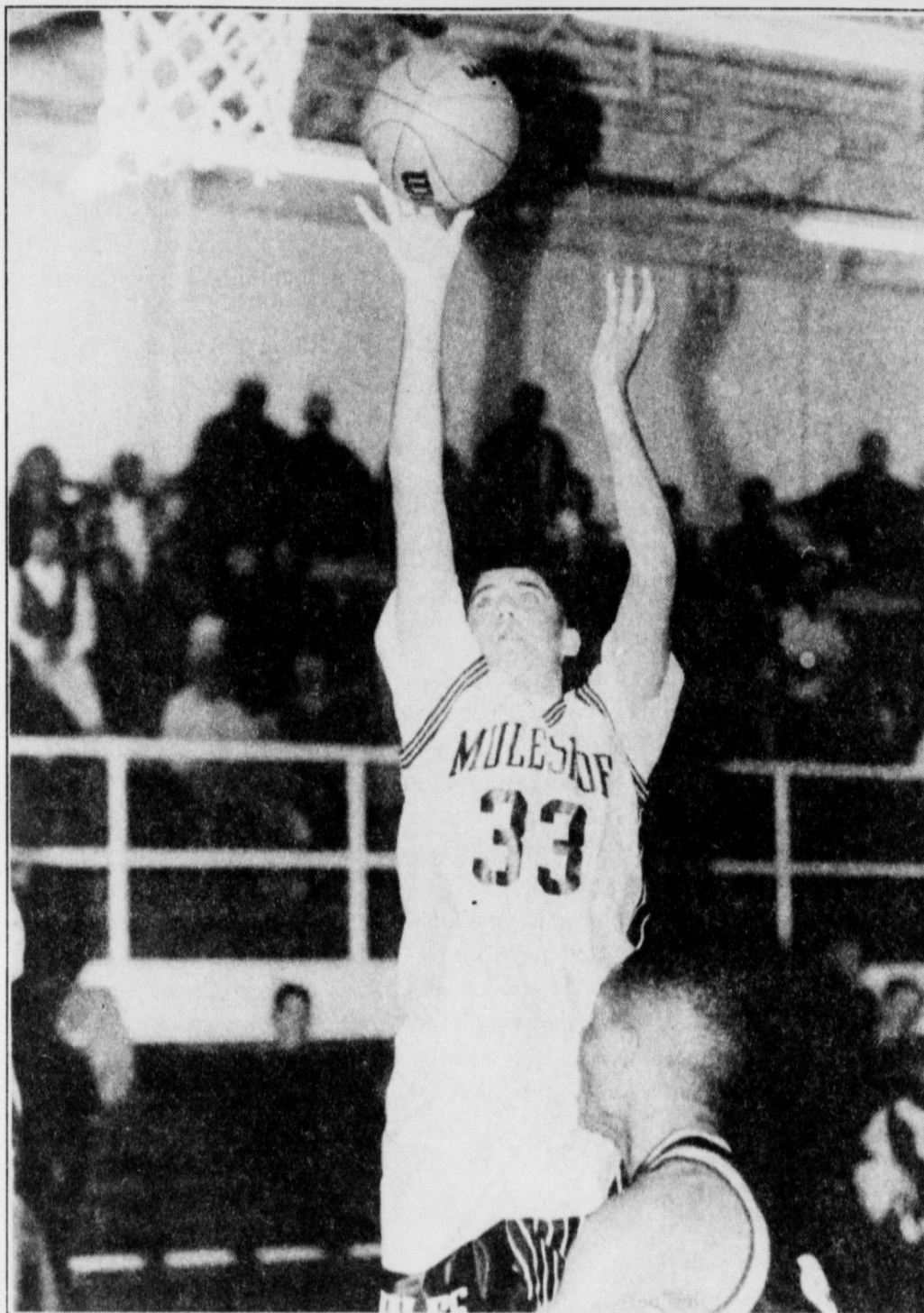
###### BOYS

**Friday**  
**Consolation quarterfinals**  
Trinity Christian 76, Nazareth 66  
Hale Center 82, Crane 39  
Happy 62, Colorado 56  
Abernathy 59, Shallowater 49  
**Championship semifinals**  
Tulia 47, Slaton 33  
LCHS 60, Whiteface 53  
**Fifth place semifinals**  
Muleshoe 66, Idalou 56  
Cooper 74, Littlefield 68 OT  
**Saturday**  
**Guarantee games**  
Nazareth 71, Colorado City 39  
**Consolation semifinals**  
Trinity Christian 71, Happy 62  
Hale Center vs Abernathy (n)  
**Consolation final**  
Hale Center 72, Trinity Christ. 65  
**Fifth place**  
Cooper 54, Muleshoe 52  
**Third place**  
Whiteface 80, Slaton 72  
**Championship**  
Tulia 58, LCHS 49 OT

second half, but couldn't overcome a poor shooting night, Mason said. Muleshoe shot just 34 percent from the field.

Dustin Cleavinger led Muleshoe with 16 points and Bret Clements added 10.

see **STUMBLES** on page 5



#### Smooth sophomore

Muleshoe sophomore Bret Clements shoots over a Tulia defender during Thursday's second round game in the I-27 Tournament in Abernathy.

### Gerber, 3-pointers power Nazareth past MHS 62-40

NAZARETH — A swift start doomed Muleshoe the first time the teams met.

A fast finish foiled Muleshoe's chances in the second meeting.

Powered by a 24-point fourth quarter, Nazareth beat Muleshoe 62-40 Monday.

Junior post Erin Wilhite led Muleshoe (7-5) with 15 points and senior Any Locker finished with 10.

K'Lynn Gerber led Nazareth (10-3) with 18 points. Freshman Shawna Gerber and Cassie Birkenfeld added 11 points each.

Nazareth beat the Lady Mules 62-38 in the semifinals of the Canyon Classic earlier this month, by jumping out to a 27-14 first-quarter lead.

Monday, the Lady Swifts outscored Muleshoe 24-8 in the fourth quarter.

"We played so well for so long," Muleshoe coach Jim Gruhlkey said. "But they came out and hit a couple of quick 3-pointers and it was all downhill from there."

Nazareth connected on four of its seven 3-pointers in the final eight minutes.

In the junior varsity game, Nazareth beat the Lady Mules 52-35.

Lynsie Black led Muleshoe with 13 points and Ellen Wood added seven.

**Muleshoe (40)** — Myers 10-0-2, Field 15-8-7, Whitt 0-0-10, Copley 0-0-0, Morris 0-0-0, Hooten 0-0-0, Locker 5-0-0-10, Williams 3-0-0-6, Benham 0-0-0, Wilhite 6-2-3-15. Totals 15-7-11-40, 3-pointers: Wilhite.

**Nazareth (40)** — Birkenfeld 5-0-2-11, S. gerber 3-4-5-11, Shulte 1-0-0-2, Wethington 1-0-0-3, K. Gerber 8-1-1-18, Hoelting 2-3-4-7, Pohlmeier 3-0-0-9. Totals 23-8-12-62. 3-pointers: Pohlmeier 3, S. Gerber, K. Gerber, Birkenfeld, Wethington.

Muleshoe	15	8	9	8	40
Nazareth	9	13	16	24	62

### Farwell beats fading 'Horns in title game

FARWELL — Playing four games in six days caught up with Lazbuddie.

Ryan Roberts scored 20 points and Mark Lunsford added 12 points as Farwell beat leg weary Lazbuddie 56-46 in Saturday's championship game of the Farwell Invitational Tournament.

Because of an extended run in the six-man state football playoffs, Lazbuddie had just two days of practice and one game to prepare for the Farwell Tournament.

Lazbuddie coach Phil Warren said the lack of basketball conditioning and practice started showing in the second half.

"We just didn't have the legs," Warren said.

Chris Smith led Lazbuddie (3-1) with 15 points and Jason Thomas added 11 points.

"We just didn't shoot the ball well and Farwell did a good job of keeping us off the boards," Warren said.

### Lazbuddie girls rebound, finish fifth

FARWELL — Lazbuddie rebounded from a surprising opening round loss to finish fifth at the Farwell Invitational Tournament.

Holly Engelking scored 22 points and Roxann Warren added 19 points as the Lady Longhorns whipped Melrose, N.M. 63-49 Saturday in the fifth place game.

Verity Rush led the Lady Buffs with 15 points.

Lazbuddie opened the tournament Thursday with a 59-47 loss to Dora, N.M., which lost

#### BASKETBALL

##### Farwell Tournament

at Farwell HS  
**BOYS**  
**Friday**  
**Championship semifinals**  
FRIONA 17 9 18 11 59  
LAZBUDDIE 15 13 15 16 53  
Leading scorers — Friona: Daniel 18, King 11. Lazbuddie: Morris 20, Thomas 18.  
Farwell 66, Elida 56  
**Consolation semifinals**  
Grady, N.M. 89, Dora 72  
Texico 80, Melrose 31  
**Saturday**  
**Seventh place**  
Dora 65, Melrose 42  
**Fifth place**  
Texico 58, Grady 55  
**Third place**  
Friona 76, Elida 70  
**Championship**  
LAZBUDDIE 8 10 17 11 46  
FARWELL 14 14 13 15 56  
Leading scorers — Lazbuddie:

Smith 16, Thomas 11. Farwell: Roberts 20, Lunsford 11.  
**GIRLS**  
**Friday**  
**Championship semifinals**  
Farwell 62, Texico 24  
Friona 46, Dora 21  
**Consolation semifinals**  
GRADY 14 16 11 17 58  
LAZBUDDIE 16 13 17 19 65  
Leading scorers — Grady: Fury 17, Borden 11. Lazbuddie: Warren 24, Morris 14, Engelking 13, Brown 11.  
Elida 74, Grady, N.M. 59  
**Fifth place**  
LAZBUDDIE 14 12 15 22 63  
MELROSE 10 5 9 25 49  
Leading scorers — Lazbuddie: Engelking 22, Warren 18.  
**Third place**  
Texico 37, Dora 33  
**Championship**  
Farwell 36, Friona 33

Lazbuddie was 2 of 18 from 3-point range against the Steers, who improved to 7-6.

In contrast, the Longhorns made 6 of 11 3-pointers in Friday's 59-55 semifinal win against Friona.

Josh Morris led the way with five 3-pointers and 20 points as the Longhorns pulled out the win by outscoring the Class 3A Chieftains 16-11 in the fourth

quarter.  
Thomas added 18 points for the Longhorns.

Warren said shutting down Friona big man Quint Ellis and holding the Chieftains to a pair of 3-pointers were the keys.

Justin Daniel led Friona with 18 points. Aaron King added 11 points and Ellis finished with

see **'HORNS** on page 5

its next two games.

Lazbuddie coach Carey Sudduth described his team's effort against Dora sluggish and lackadaisical.

"I coach effort. We don't do a bunch of fancy things," Sudduth said. "One of the things I count on is we're going to play hard."

Kia Morris led Lazbuddie (10-2) with 17 points.

Amanda Bilberry scored 15 points for Dora and Julie Caviness added 13.

Warren led a renewed effort

in Friday's consolation semifinal, scoring 24 points and grabbing 16 rebounds in a 65-59 win against Grady, N.M.

Morris added 14 points, Engelking finished with 13 and Scottie Brown chipped in 10 as four Lady Longhorns finished in double figures.

Kristi Fury led Grady with 17 points.

"I think we learned a pretty good lesson Thursday," Sudduth said. "That we just can't walk out on the floor and expect to play with people."

We will close Dec. 24 at 4 p.m.!  
We're closed Christmas Day and will reopen Dec. 26th!

We Ship Everywhere

1-800-658-6378 106 E. American Blvd. Muleshoe, Texas

## And Country Junction

**You Better Watch Out!!** In just 8 days ...

# Santa Claus is coming to town

## Better hurry to Joe's Boot Shop

And play "Let's Make A Deal" at the last Midnite Madness December 20th!

**Wear your costume from 6 pm to Midnight for a chance to WIN . . .**

**\$300 Gift Certificate for Best Costume**  
**\$150 Gift Certificate 2nd Prize**  
**\$50 Gift Certificate 3rd Prize**

**Bring your BOOT BUCKS for the auction Dec. 20th at 9:30 pm of OVER \$3000 in FREE MERCHANDISE!**

Participation in the Costume Contest will be Fun!  
Give the Gift of Laughter!

Merry Christmas to All!

**SALES throughout Joe's Boot Shop & Country Junction All Day Saturday, Dec. 20th, through Midnight!**

FREE GIFT WRAPPING

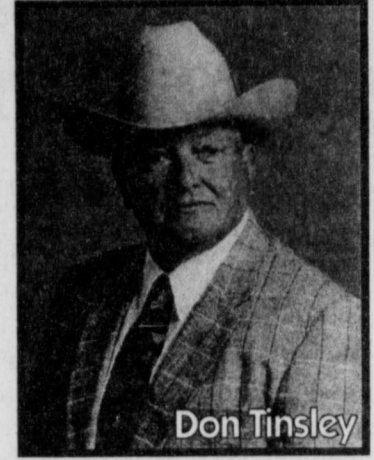


## EMPLOYEE OF THE MONTH



Janice Bradshaw (seated) was named the Muleshoe Chamber of Commerce & Agriculture's December Employee of the Month. Bradshaw works as a legal secretary in the office of attorney Cris Cleavinger. Also pictured: (from left) Hugh Young, Dawn Williams, Teri Hahn, Robert Shafer, David Tipps, Wade King and Cris Cleavinger.

## Back With Buick



Don Tinsley

The 1997 Clovis News Journal Reader Choice Award for Best New Car Salesperson is now back with Buick. At Jones Pontiac GMC Buick, we would like to welcome Don Tinsley to our sales staff. Don brings with him to Jones over 29 years of automotive experience in Clovis and surrounding areas. A quality man is back with the quality Buicks you trust. So we invite all of Don's friends and customers to come by Jones and visit him for a spell.



**JONES**  
PONTIAC GMC BUICK  
3300 Mabry Drive • (505) 762-2986

## GIFTS FROM THE KITCHEN

### INSTANT BROWNIE MIX

- |              |                             |
|--------------|-----------------------------|
| 4 cups flour | 6 cups sugar                |
| 3 cups cocoa | 4 tsp. baking powder        |
| 3 tsp. salt  | 2 cups vegetable shortening |

Combine all ingredients except shortening and mix well. Using a pastry blender or two knives, thoroughly cut in shortening. Store in an airtight container in a cool, dry place. Makes enough for eight batches of brownies.

**To make brownies:** Combine 2 cups brownie mix, 2 eggs, 1 teaspoon vanilla, 1/2 cup chopped nuts. Stir just until all ingredients are moistened. Spread in a lightly greased 8-inch square baking pan. Bake in 350 degree oven 20 to 25 minutes or until set in center.

**Gift idea:** Pack brownie mix in a decorated cloth bag along with the recipe. Add a batch of freshly baked brownies packed in an old fashion tin.

### CINNAMON ORNAMENTS

- |                        |                    |
|------------------------|--------------------|
| 1 can (4 oz.) cinnamon | 1 Tbsp. cloves     |
| 1 Tbsp. nutmeg         | 3/4 cup applesauce |
| 2 Tbsp. white glue     |                    |

In medium bowl, combine cinnamon, cloves and nutmeg. Add applesauce and glue; stir to combine. Work mixture with hands 2 to 3 minutes or until dough is smooth and ingredients are thoroughly mixed. Divide into 4 portions. Roll out each dough portion to 1/4 inch thickness. Cut dough with cookie cutters of desired shapes. Using a straw or toothpick, make a small hole in top of ornament. Place cutouts on wire racks and allow to dry at room temperature for several days until completely dry. Thread ribbon through hole in ornament.

**DO NOT EAT!** Makes about 32 (2-inch) ornaments.

### HEAVENLY HONEY TOPPING

- |                          |                                  |
|--------------------------|----------------------------------|
| 1/3 cup unsalted almonds | 1/3 cup chocolate chips          |
| 1/3 cup unsalted pecans  | 1/2 cup honey, or more as needed |

Sterilize a 1/2 pint wide-mouth jar or other decorative jar. Place almonds in a jar and cover with a layer of honey. Repeat with chocolate chips and then with pecans, filling to jar brim with honey as needed. Tightly close jar with lid. 12 servings. Makes 1 1/2 pint jar.

### FRUIT BUTTER

**Beat together** 1/2 cup margarine, softened with 1 jar (18 oz.) marmalade. Mix well and store in refrigerator in a sealed container. Very good on toast, biscuits, pancakes, or waffles. Keeps indefinitely.

**Variation:** may use strawberry or apricot preserves or add 1 cup of raspberry preserves to the marmalade.

**For gifts,** place in air tight jelly jar and tie ribbon around lid. Hot glue appropriate decorations on outside.

### PUPPY CHOW

- Melt together in microwave or double boiler
- 1/3 cup Margarine
  - 1 cup peanut butter
  - 1 pkg. (12 oz.) chocolate chips

- Stir to mix. Pour over
- 1 box (17 oz.) Crispex cereal

- Measure into large plastic bag
- 3 cups powdered sugar

Add coated cereal mixture. Gently work plastic bag back and forth several times until cereal separates and is coated well. This keeps well and will freeze.

Recipes supplied from Sheryl Bordon of "Creative Living" seen on PBS at noon Tuesday and Thursday.

## LAST-MINUTE

# HOLIDAY SALE!

## SAVE UP TO 60% STOREWIDE

**SAVE 60%**

ENTIRE STOCK OF GOLD, STERLING & VERMEIL JEWELRY

**SAVE 25% & MORE**

HOLIDAY SHOE SALE: CANDIES®, NIKE®, REEBOK®, GUESS® & MORE

**SAVE 25%-40%**

MISSSES' ALFRED DUNNER®, KORET® & SAG HARBOR®

**SAVE 40%-55%**

LADIES' & MEN'S OUTERWEAR\*  
When you take an extra 25% off already reduced items.

**SAVE 40%**

ENTIRE STOCK OF MISSSES' ALREADY REDUCED SWEATERS  
When you take an extra 25% off.

**SAVE 25%**

ENTIRE STOCK OF MEN'S DRESS SHIRTS & TIES

**SAVE 25%-50%**

ENTIRE STOCK OF MISSSES', JUNIORS', WOMEN'S & PETITES' DRESSES

**SAVE 25%-40%**

ENTIRE STOCK OF MEN'S CALVIN KLEIN® SPORTSWEAR

**SAVE 25%**

ENTIRE STOCK OF SLEEPWEAR & ROBES IN MISSSES' & PLUS SIZES

**SAVE 25%**

ENTIRE STOCK OF MEN'S KNIT & WOVEN SHIRTS\*

Just a sample of the savings you will find. Interim reductions may have been taken. Styles, sizes & colors may vary by store. Fine Jewelry, Petites' & Men's Dress Clothing at most stores. \*Assortments exclude designer collections.

CHARGE IT!  
GET 10% OFF ALL DAY  
WHEN YOU OPEN A NEW STORE ACCOUNT.  
Exclusions may apply. Subject to credit approval.

# BEALLS

Muleshoe #649  
321 Main St.  
272-3478

EXTRA HOURS TO SAVE FRIDAY & SATURDAY - ALL STORES OPEN 8 AM-10 PM

Have a nice day!

## BIRTHS

Brian and Tiffany Boehning of Muleshoe announce the arrival of their son Triston Paul. Triston was born Dec. 5, 1997 at Methodist Hospital in Lubbock. He weighed 6 lbs. 4 oz. and was 20 1/4 inches long. Grandparents are Tub and Pat Angeley of Muleshoe.

# High Plains Vegetable Conference Jan. 20

HEREFORD — Strategies for "Sustainable Industry Prosperity" will be the focus during the annual High Plains Vegetable Conference here Jan. 20.

The conference begins at 8:30 a.m. at the Hereford Community Center, 100 Ave. C at Park Ave. It is sponsored by the Texas Agricultural Experiment Station, Texas Tech University, Deaf Smith County Extension Vegetable Development committee, Deaf Smith county Chamber of Commerce and Texas Department of Ag-

## AGRICULTURE NEWS

riculture.

The program will offer continuing education units for pesticide applicators, certified crop consultants and the master gardener vegetable specialty. Applicants are required to obtain 5 CEU's of training each year to retain certification. The \$25 registration fee includes lunch.

Speakers from Texas A & M University, the University of Arkansas and the University of

Nebraska will present vital information adding value to fresh vegetables, new vegetable marketing opportunities, techniques for growing earlier harvests, and innovative production systems.

A session on Integrated Pest Management will focus on field proven practices and address date control measures for insects, diseases and weeds.

"Commercial vegetable

growers, commercial market gardeners and master gardeners will find this conference and tradeshow a rich source of useful information on vegetable crop management and marketing," said Dr. Roland E. Roberts, Extension Service vegetable specialist at Lubbock who has coordinated the conferences since 1971.

For more information and registration contact Dr. Roland Roberts, Extension Vegetable Specialist, at 806-746-6101.

## Tiffin II

715 E. Hwy 70 • Earth, TX • (806) 257-2223

**RED TAG SALE**  
**20% Off On Most Items**

*Extended Hours:*  
**Mondays, Tuesdays & Thursdays**  
**Open Until 8 pm through December 23rd**

**FREE Gift Wrapping**

**If you snooze, you lose. Read the news!**

**JAMES CRANE TIRE CO.**  
107 Main St.  
272-4594

*The Art Loft*  
1529 W. American Blvd.  
Muleshoe, TX • 272-3485

*Delton E. Wilhite*  
& Associates

**INSURANCE & FINANCIAL SERVICES**  
P.O. BOX 567 • 1631 W. American Blvd.  
806/272-3652 • 800/658-3292 • FAX: 806/272-3292

*Family Hair Salon*  
213 E. Ave B • Muleshoe, TX • (806) 272-5987  
**BY APPOINTMENT ONLY**

Pat Young  
Owner/Operator

Jannette Kube  
Operator

**BAILEY COUNTY  
PROPANE INC.**

Frona Highway • Rt. 1 Box 10  
Muleshoe, TX  
272-4678 or 272-3319

*Bob STOVALL Printing*

The Wells & Janet Hall Family  
221 E. AVE. B • MULESHOE, TX  
(806) 272-3373

**HI-TEK AUTOMOTIVE**  
322 N. 1st St.  
Muleshoe, TX  
272-3480

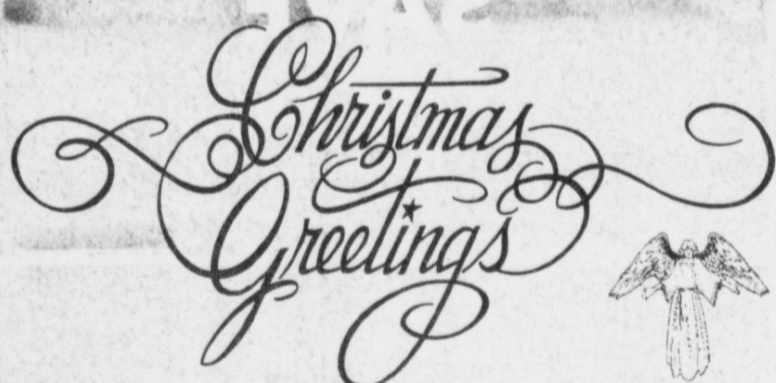
**MULESHOE  
CO-OP GIN**

Manager Charles Moraw  
272-4794 or 272-4791

*SOMETHING SPECIAL*

222 Main St. • 272-4933  
*Gifts for All Occasions*

**T.J.'S DONUTS**  
328 S. Main St. • 272-3542  
*Open*  
*Monday through Saturday*  
*5 am to 3 pm*



*And A Sincere Thank You to the People of Muleshoe for Their Year-Long Patronage of These Hometown Businesses. This Christmas Season, Remember to Spend Your Time and Money with Your Neighbors. In Return, You'll Receive the Best Gift of All - Friendly Smiles and Abundant Gratitude!*

**There's No Place Like Home!**

*Kristy's Plants*  
*Flowers For Every Season*  
710 E. American Blvd.  
272-5536

**TERRY FIELD  
INSURANCE AGENCY**  
223 W. Ave B • Muleshoe, TX  
(806) 272-5551

**DALE OIL CO. INC.**  
413 W. AMERICAN BLVD.  
272-5576

**SUDDUTH FIELD & CO.**  
104 W. 2nd St.  
(806) 272-4291

*Decorator's  
Floral & Gifts*  
616 S. 1st St.  
272-4340

*Main Street Beauty Salon*  
115 S. Main St.  
Muleshoe, TX  
272-3448

**BAILEY COUNTY  
FARM BUREAU**  
1612 W. American Blvd.  
272-4567

Rickey Barrett, LUTCF, Agency Mgr., Dale Vise, Agent, Allen Mount, Agent

**WES TEX  
FEED YARDS**  
*Custom Cattle Feeding*  
272-7555

**LOWE'S MARKETPLACE**  
401 W. American Blvd. • 272-4585

**PAY-N-SAVE**  
515 W. American Blvd. • 272-4406

**BRUCE INC.**  
*Heating • Air Conditioning*  
Highway 214 North • Muleshoe, TX  
272-5114

**MULESHOE  
FEED BARN**  
HI-PRO 311 W. American Blvd.  
272-5626  
ANIMAL HEALTH

**SCOGGIN AG  
CENTER, INC.**  
*"Where Fertilizer Is Our Business"*  
1532 W. American Blvd.  
272-4613

# BUSINESS OF THE MONTH



McDonald's was named the Muleshoe Chamber of Commerce & Agriculture's December Business of the Month. Pictured are (from left) Dawn Williams, Robert Shafer, co-owners Ruth and Jerome Sena, Wade King, Teri Hahn and Hugh Young.

Somehow, the words "Thank You" do not seem adequate for all of the kindness shown to our family the last few weeks.

First, our heartfelt thanks to all of the E.M.S. personnel who were there for us during the tragic accident that took C.E.'s bother-in-law's life. The compassionate caring and concern they gave to C.E.'s sister, Myrna, will never be forgotten. The hugs, the shoulders we leaned on and the tears they shed with us touched us deeply. Ralph, Ben, Curby, Glenda, Donna, Starla, Larry, Kem, Jackey and Joe, we love each and every one of you. D'Anne and Staci, "Thank you" for being there. Brother Stacy, you are always there to help and comfort, "Thank you."

The hospital staff was efficient and caring. The extra room and coffee were greatly appreciated. "Thank you" to Dr. Jubay and the staff at M.A.M.C.

Thank you to everyone for the flowers, calls, visits, food and outpouring of love shown to us during our tragic loss and C.E.'s subsequent surgery. We live in a wonderful, compassionate community which cares for one another. Thank you for being there for us.

Our Love,  
C.E. and Sharon Grant & Family  
Myrna Girard & Family

## OBITUARIES

### DAN BLANCHARD

Memorial services for Dan Blanchard, 68, of Jameston, Calif. will be held at 11 a.m., Saturday, Dec. 22, 1997 at First Baptist Church, Jayton, Texas. Rev. H.T. Stanaland of Jayton and Rev. Bob Wright of Spur will be officiating.

Burial will follow in Stratford, Tex.

Blanchard was born Feb. 16, 1929. He married Wanda

Arnold in 1949. He is survived by his wife. He had three children, Patricia, Don, and Ted, who preceded him in death. They were killed in a train/car accident in Stratford, Feb. 1967. He is the son-in-law of Temple Arnold.

Blanchard was a law enforcement officer in Levelland, Abernathy and Stratford in the '60s.

**LILLIE T. WUERFLEIN**

Lillie T. Wuerflein, 91, died Tuesday, Dec. 16 at Muleshoe Area Healthcare Center. Memorial services are pending with Parsons-Ellis Funeral Home in Earth.

### BILLY J. DARNELL

Billy J. Darnell, 80, died Monday, Dec. 15 at Kristi Lee Manor in Colorado City, Tex. Memorial services are pending with Ellis Funeral Home in Muleshoe.

## Christmas Clearance

Muleshoe Motor Co. will pay your Sales Tax on the following vehicles:

Stock #	Vehicle Type	Special Clearance Price
RT14	1996 Ford Explorer 4x4	\$21,790
RC40	1996 Ford Mustang (Only 11,500 Miles)	\$14,675
7T60B	1995 Dodge Intrepid	\$9,990
RC27A	1993 Mercury Topaz	\$5,990
7T105B	1995 Nissan XE Pickup (29K Miles)	\$8,990
7T87A	1995 Ford F150	\$12,900
7T71A	1991 Ford Ranger	\$5,450
RT9A	1992 Ford Explorer 4x4	\$10,990

Hurry! You Must Act Before December 31, 1997



1225 W. American Blvd.  
Muleshoe, TX  
272-4251  
TOLL FREE  
1-800-432-7617

**AUCUTT'S GENERAL STORE**

# CHRISTMAS Celebration!

**3 DAYS ONLY!**  
Friday - Saturday - Sunday

**Justin Roper**  
Black Only  
Reg. 109.99 **\$94.99**

**Tony Lama Roper**  
▲ Shrunken Shoulder  
▲ Chocolate & Suntan  
#2025 & 2032—  
Reg. 144.99 **134.99**

**Wolverine Workboot**  
#1984—Reg. 118.99..... **109.99**  
#1699—Reg. 149.99..... **134.99**

**MONTANA SILVERSMITHS**  
**10% OFF**  
Reg. 30.00 & Up

Featuring Beautiful Accessories by  
**Brighton**  
Handbags • Belts  
Watches • Wallets  
& More.

**Hats by Stetson**  
4X thru 30X  
Available in Black, Silver  
Belly, Gray Mist & White  
**STEAM AND CREASE FREE FOR AS LONG AS YOU OWN THE HAT**  
**30% OFF**  
Reg. 42.99—55.99

**Justin Full Quill Ostrich Ropers**  
▲ Mens sizes  
▲ Double-stitched Welt  
▲ Cognac, Brown, Almond  
**\$449.00**  
Reg. 549.00

**Wrangler Cowboy Christmas**

**SALE 1749**

Wrangler 13 MWZ and 936 Slim Fit Jeans  
Inseam lengths 38" & 40" slightly higher

**Cowboy Cut JEANS**

**SALE: 14.99**  
One Rack Only

**50% OFF**  
One Rack

**19.99**  
One Rack

**29.99**  
One Rack

**39.99**  
One Rack

**20% OFF**  
All Ladies Sweaters & Blazers  
Assorted Colors & Styles  
Reg. 24.99-298.00

**Wrangler Rugged Wear Shirts**..... **24.99**

**Riata Casual Pants**  
Kakal, Puffy, Grey, Olive, Denim, Navy, Black..... **34.99**

**Shirts by Wrangler, Ruddock, Roper, Cowboys' Turtle**..... **29.99**

**Cinch Shirts**  
24070, 23990, 23995..... **34.99**

**Cinch Jeans**  
Choose from Relaxed Fit or Boot Cut  
Suggested Retail—\$45.00 **OUR EVERYDAY PRICE...**  
**36.99 to 39.99**

**Holiday Specials for Him.**

Stop Santa in his tracks!  
SAVE NOW on captivating styles from...

**HAIRSTON ROBERSON**

**30% OFF**

Wrap up Your Christmas Shopping & Join the Fun at Aucutt's General Store!

Bring in this Coupon for **\$10.00 OFF**  
Specially-marked Laredo Ropers in Women and Youth Sizes.  
CLIP TO REDEEM.

**Laredo**

Youth  
Reg. \$37.99 to \$49.99  
As Low As **\$27.99** with coupon

Womens  
Reg. \$49.99—\$114.99  
As Low As **39.99** with coupon

Sale Items Similar to Illustrations. Sale Ends Dec. 21.

2600 Mabry Drive  
Clovis, New Mexico 505-762-7717

Men-Sat 7:30-9:30  
Sunday 12:30-5:00



# LEGAL MATTERS

BY ATTORNEY GENERAL DAN MORALES

## FINANCING THE HOLIDAYS

THE HOLIDAY SEASON is upon us once again. Whether you are investing in presents for your children, a house-cleaning service for your parents, or a cruise for yourself, the holiday season can be very expensive. This is a time when many people get taken in by easy credit schemes.

Here at the Office of the Attorney General (OAG), we encounter many problematic credit arrangements and offers each year. Some are legal, but they take advantage of consumers who don't read the fine print closely. Others amount to outright fraud.

### Advance-fee loans

As part of Operation Loan Shark, the OAG's Consumer Protection Division won a permanent injunction against a California telemarketing firm that advertised loans in newspapers and magazines, targeting consumers with bad credit or no credit history. Consumers who responded were required to pay \$29.95 before their loan applications would be processed. Instead of receiving a loan or credit, consumers who paid the fee only received new solicitations from another company.

Be wary of any credit offer that requires you to pay a fee in advance for a loan you are guaranteed to receive. This is especially true for credit offers made by telemarketers. Under federal law, a telemarketer who says you are guaranteed a loan is barred from asking for or receiving an advance fee. Also, legitimate lenders never "guarantee" credit or say you are likely to get a loan or credit before you apply, especially if you have bad credit, no credit, or a bankruptcy in your past.

### Zero-percent interest offers

Responding to consumer complaints, our Consumer Protection Division has forced a wide variety of national and regional retailers to

change the way they advertise zero-percent interest offers. Many consumers complained that they were misled into believing that no interest would be charged when retailers advertised, "No Payments, No Interest for One Year."

In fact, interest was tallied from the date of the purchase. Consumers could avoid paying the interest charge only if they paid the debt before the one-year grace period ended. Consumers who waited a year before making payments were required to pay the full amount of interest.

In response to our efforts, a number of major retailers agreed to modify their advertising to clearly explain the steps consumers must take to avoid paying interest on their credit purchases. The advertising must also disclose any minimum purchase needed to qualify for the zero-percent interest offer, the specific products to which the offer applies, and the interest rate that will be assessed if the consumer does not comply with the terms of the offer. This information should be available to you, and you should read it carefully.

### Safeguarding your credit

If you are buying a product or service on credit, it may be tempting to accept the financing plan offered by the seller. However, you should

first shop around to see whether you can obtain financing that gives you a better interest rate and more favorable repayment terms.

Read the fine print carefully. If you are unsure about any terms or conditions in a credit or financing agreement, ask for a clarification. If you do not get a satisfactory answer to your questions but still want to buy the product, seek financing elsewhere.

Do not sign any credit applications that have blank spaces. An unscrupulous lender or salesperson can fill in the blanks later, to your detriment.

### For more information

For more information on consumer protection issues, visit our web site at <http://www.oag.state.tx.us>, where you will find all of our consumer protection brochures, plus the 1997 Consumer Protection Division Annual Report.



## Welcome Richard!

**At Jones Pontiac GMC Buick, we are proud to announce the recent appointment of Richard Kelley as our new General Manager of Sales and Service. Richard brings over 35 years of automotive experience to the staff at Jones. We invite all of Richard's friends and customers to come on in for a cup of coffee or just to say howdy!**



**Simple As A Handshake**



**JONES PONTIAC GMC BUICK**  
505-762-2986 3300 Mabry Dr.  
jones@3lefties.com Clovis, NM



**RECYCLING COALITION OF TEXAS**



## AUCUTT'S GENERAL STORE

Gifts For HIM

All Imperial/Schrade Knives

15% OFF

Including the popular Old Timer & Uncle Henry...

Reg. 11.99 -44.99

**DEWALT.**

**1/4 Sheet Heavy Duty Palm Grip Sander**

- 2.0 Amps, 15,000 OPM
- Detachable Dust Collection
- Dual Counter Balance Low Vibration Design
- Includes Kit Box DW412K

ONLY \$39<sup>99</sup>

**12.0V 3/8" Heavy Duty Versa-Clutch Cordless Drill/Driver Kit**

- Dual Range VSR 0-450/0-1400 RPM
- High Performance Fan Cooled Motor with Replacement Brushes
- Kit Includes 1 Hour Charger, 2 XR Pack™ Batteries & Steel Case DW974K-2

\$179<sup>95</sup>

**Steel Fullsize Toolbox Crossover—Single Lid White**

6604153—Reg. 164.79

ONLY \$139<sup>95</sup>

**60" Treadplate Chest Tool Box Premier - 5th Wheel**

CRTCW60PIC—Reg. 369.00

SAVE 269<sup>00</sup> \$100!

**Aluminum Tool Box**

C63A—Reg. 528.00.....

399<sup>00</sup>

**Homelite HL Series Generator**

Full protective open frame Briggs and Stratton Kool bore engine 5 hp @ 3600 rpm, 2500 Watts (Int.)

HL2500—Reg. 459.99

\$349<sup>26</sup>

**LR Series Generator**

Briggs and Stratton cast iron sleeve engine Twist-lock 240v receptacle 8 hp @ 3600 rpm, 4400 Watts (Int.) LR4400—Reg. 749.99.....

573<sup>92</sup>

**Homelite Chainsaw**

**Power Stroke™ Engine provides maximum power and durability**

12"-16" bar sizes 3/8" LP semi chisel chain 10 lbs. (powerhead) d3350b—Reg. 209.99

\$169<sup>69</sup>

Anti-vibration system Inertia chain brake Vertical cylinder design Front mounted muffler d3850b—Reg. 239.99

184<sup>33</sup>

**55,000 BTU Portable Heater**

Quickly heats a 32'x40' work area. Heats up to 12 hours on one fillup of kerosene. Clean burning and nearly 100% energy efficient. 4603125—Reg. 244.39

\$205<sup>29</sup>

**HURRY! Sale Ends Dec. 24.**

Sale Items Similar to Illustrations. Mon-Sat 7:30-5:30 Sunday 12:00-5:00



**AUCUTT'S GENERAL STORE**

505-762-7717  
2600 Mabry Drive  
Clovis, New Mexico

# Journal Classifieds

REAL ESTATE  
AUTOMOBILES  
HELP WANTED  
GARAGE SALES

## STOP & SHOP

Deadlines are 5 p.m. Monday and Thursday

Call 272-4536

Deadlines are 5 p.m. Monday and Thursday

### BUSINESS OPPORTUNITY

**NO JOKE \$1,125 ? Week net. Tired of empty promises? Work from home with proven turn key system. Not MCM. 800-322-6169 x9944. 50t-6tc**

**SUNSET CONST.**  
\* Remodeling, bathrooms etc.  
\* Carports & Patio  
\* Fence's  
\* Tile  
\* Concrete  
\* All phase's. 505-762-7689. 50t-6tpd

### MOBILE HOMES

16 X 60 Skyline mobile home 2 brm, 2 bath. Needs to be moved. Air conditioning and heat included, take over payments. 965-2967.46t-ffc.

### HELP WANTED

Wanted truck drivers, some experience, CDL required, be home most everynight. (915) 758-9855. 49t-5tc

"AVON", Representatives Needed Now! No Inventory Required, IND/SALES? REP, Toll Free, 800-236-0041. 51t-6tpd

14 yr. old, wants to do baby-sitting during Christmas break. Call 272-6818. 51t-2tch

Now Hiring. Asst. Mgr. Experience required. Apply in person Muleshoe DQ. Ask for Steve Hamilton. 51t-2tch

Our agency is looking for a caring, compassionate RN or LVN for full time staff position. Experience with Medicare and home health preferred. Please call (806) 383-3255 to find out more information about this position. 51t-4tch

### RV/LVN

We need a nurse! Professional self-motivated RN or LVN needed for contact visits. Experience in home health preferred. Call Brian at (806) 385-3255 for more information. 51t-4tch

### FOR SALE

**ATTENTION!!**  
Kirby Sales & Service 207 W. 7th next to Sonic Drive-in. (505) 762-4991 Call for FREE Home demonstration or Repair work. Clovis, NM 35t-ffc

Whirlpool Electric range-6 mo. White on white, like new. Purchased new home with built-in range. Must sell 499.00 Call 272-4063. 50t-ffc

Kimbell organ with entertainment ctr all together. Call 272-5263 or see at 505 E. Austin. Helen Hall. 50t-4tch

### VEHICLES

1995 Chevy Cheyenne short bed pickup. Tilt, cruise, air, auto., 4.3 Vortec engine, silver color. Under 13,000 miles. Very sharp! \$14,000 (505) 356-5509 45t-1tnc

1994 GMC SLE extended cab with short bed. 350, V-8, automatic, tilt, air, cruise, power windows and lock. \$14,000. (505) 356-5509. 45t-1tnc

95' Ford Windstar Van. 34,000 miles loaded. Call 272-5861. 51t-2tpd

### FLEETWOOD HOME CENTER

**Portales**

**BANK LIQUIDATION ALMOST NEW BEDROOM 3 BATH ONLY \$53,500. NO SALES TAX, ALL OPTIONS INCLUDE, AC, SKIRTING UNDER \$500 PER MONTH. SEE AT PORTALES HOMES # 2 IN CLOVIS**

505-762-3488  
(3500 Mabry Dr.)  
DL. 772.

### HUNTING

Hunting Leasing. Pheasant hunting 360 acres. Call 806-946-8348. 51t-

### EXTRA INCOME FOR '97

Earn \$500 - \$1000 weekly stuffing envelopes. For details - RUSH \$1.00 with SASE to:

**GROUP 5**  
8547 N Academy Blvd. Dept N  
Colorado Springs, Co. 80918

We're Trimming  
Price\$ for You...

See ya at  
**LOWE'S**

PRICES EFFECTIVE DECEMBER 17-24, 1997

**MEAT**

- LARGE END  
**PRIME RIB ROAST**.....LB **\$2<sup>99</sup>**  
BONE-IN BUTT  
**PORK ROAST**.....LB **99¢**  
COOK'S BONE-IN  
**BUTT PORTION HAM**.....LB **97¢**  
COOK'S BONE-IN  
**SHANK PORTION HAM**.....LB **87¢**  
BAR S  
**HALF HAMS**.....LB **\$1<sup>17</sup>**  
BAR S BONELESS  
**WHOLE HAMS**.....LB **98¢**  
HORMEL CURE 81 BONE-IN  
**SPIRAL CUT HALF HAM**.....LB **\$2<sup>59</sup>**  
U.S.D.A. SELECT BEEF  
**TOP SIRLOIN STEAKS**.....LB **\$1<sup>99</sup>**  
BAR S REGULAR OR THICK SLICED  
**MEAT BOLOGNA**.....1 LB. PKG **\$1<sup>19</sup>**  
BAR S 1 LB. JUMBO MEAT  
**FRANKS**.....1 LB. PKG **99¢**  
BAR S 12 OZ. REGULAR OR KIELBASA SMOKED  
**SAUSAGE**.....12 OZ **99¢**  
BAR S  
**COOKED HAM**.....10 OZ. PKG **\$1<sup>99</sup>**  
BAR S  
**CHOPPED HAM**.....10 OZ. PKG **\$1<sup>69</sup>**  
SUNDAY HOUSE WHOLE  
**SMOKED TURKEYS**.....LB **\$1<sup>35</sup>**  
HORMEL CURE 81 BONELESS  
**MINI HALF HAMS**.....LB **\$3<sup>59</sup>**  
BAR S 2 LB. CHUNK OR 1.5 LB. SLICED  
**SMOKED HAM**.....EACH **\$5<sup>99</sup>**  
HORMEL  
**LITTLE SIZZLERS**.....12 OZ. PKG **99¢**  
REGULAR, MESQUITE OR LOW SALT BLACK LABEL  
**HORMEL BACON**.....1 LB. PKGS **2/\$5**  
BAR S  
**BACON**.....12 OZ. PKG **\$1<sup>69</sup>**  
OSCAR MAYER RED RIND  
**MEAT BOLOGNA**.....16 OZ. PKG **\$1<sup>59</sup>**  
OSCAR MAYER LITTLE LINK  
**SMOKIES**.....16 OZ. PKG **\$2<sup>29</sup>**

- HALVES, PIECES OR BITS  
**ELLIS PECANS**.....6 OZ. PKGS **2/\$5**  
ALL TYPES  
**COCA-COLA OR DR. PEPPER**.....3 LITER BTL **\$1<sup>39</sup>**  
ALL TYPES (LIMIT 4)  
(ADDITIONAL PURCHASES \$1.29)  
**COCA-COLA OR DR. PEPPER**.....6 PK. 12 OZ. CANS **\$1<sup>22</sup>**  
LOWE'S  
**BROWN'N SERVE ROLLS**...12 CT. PKGS **2/\$1**  
SELECTED VARIETIES  
• TOSTITOS® SALSA/DIP • FRITOS® DIP  
• RUFFLES®  
**DIP**.....REG. \$2.19 11 OZ. SIZE **2/\$4**  
ASSORTED  
**DORITOS® TORTILLA CHIPS**.....REG. \$3.19 SIZE **\$2<sup>29</sup>**  
RUFFLES® ASSORTED  
**POTATO CHIPS**.....REG. \$2.99 SIZE **2/\$4**  
• 9.5 OZ. SWISS • 8 OZ. BACON FLAVORED • 10 OZ. TWIGS  
SESAME & CHEESE STICKS • 13.1 OZ. SOCIALBLES  
• 8 OZ. CHICKEN IN A BISKIT • 8 OZ. VEGETABLE THINS  
• 9-10 OZ. REDUCED FAT/ORIGINAL/LOW SALT/MULTI-GRAIN  
WHEAT THINS • 10 OZ. OAT THINS • 6.75-7 OZ.  
ORIGINAL/REDUCED FAT/LOW SALT BETTER CHEDDARS  
• 8.5-9.5 OZ. ORIGINAL/REDUCED FAT/GARDEN HERB/LOW  
SALT TRISCUIT • 8.5 OZ. ORIGINAL/FRENCH ONION TRISCUIT  
THIN CRISPS • 7-8 OZ. RITZ/CHEESE NIPS/FAT FREE PRETZEL/RITZ  
SOUR CREAM & ONION/WHEAT THIN/WHEAT THIN RANCH AIR CPISPS  
• 8 OZ. HONEY/CINNAMON HONEYMAID CRISPS  
**NABISCO SNACK CRACKERS**.... **2/\$3**  
SHURFINE  
• 10 OZ. SWEET MIDGET PICKLES • 16 OZ. BREAD &  
BUTTER SLICES • 16 OZ. WHOLE DILL • 16 OZ. SWEET  
GHERKINS • 16 OZ. WHOLE SWEET PICKLES • 24 OZ.  
FRESH PACK DILL SPEARS • 24 OZ. KOSHER DILL SPEARS  
**PICKLES**.....YOUR CHOICE **2/\$3**  
SHURFINE JELLIED OR WHOLE  
**CRANBERRY SAUCE**.....16 OZ. CANS **88¢**  
SHURFINE REGULAR OR FAT FREE  
**CHICKEN BROTH**.....14.5 OZ. CAN **3/\$1**  
SHURFINE FANCY  
**WHOLE YAMS**.....23 OZ. CAN **69¢**  
SCHILLING  
**GROUND CINNAMON**.....1 OZ. JAR **\$1<sup>69</sup>**  
SCHILLING BROWN, COUNTRY,  
CHICKEN OR TURKEY  
**GRAVY MIXES**.....87-2.75 OZ. PKGS **2/\$1**  
LITE, FRENCH ROAST, ITALIAN EXPRESSO, COLOMBIAN  
SUPREME OR REGULAR FAC  
**MAXWELL HOUSE COFFEE**...11-13 OZ. CAN **\$2<sup>79</sup>**

**PRODUCE**

- NAVEL  
**ORANGES**.....LBS **2/\$1**  
RED DELICIOUS  
**APPLES**.....LBS **2/\$1**  
GIANT SNO-WHITE  
**CAULIFLOWER**.....LB **2/\$3**  
TEXAS  
**GRAPEFRUIT**..... **8/\$1**  
GREEN  
**ONIONS**.....BUNCHES **4/\$1**  
FRESH  
**BROCCOLI**.....LBS **2/\$1**  
DOLE  
**SALAD MIX**.....1 LB. PKG **88¢**  
LARGE CRISP  
**CELERY**.....STALKS **3/\$1**  
GOLDEN RIPE  
**BANANAS**.....LBS **4/88¢**

**FROZEN & DAIRY**

- BLUE BUNNY FAT FREE YOGURT  
OR ASSORTED FLAVORS PREMIUM,  
FAT FREE, NO SUGAR ADDED OR FAT  
FREE NO SUGAR ADDED  
**ICE CREAM**.....1/2 GAL. ROUND **2/\$5**  
COUNTRY CROCK REGULAR  
OR CHURN STYLE  
**SHEDD'S SPREAD**.....3 LB. TUB **\$1<sup>59</sup>**  
SHURFINE  
**CREAM CHEESE**.....8 OZ. BOX **69¢**  
APPLE, DUTCH APPLE, CHERRY OR PEACH  
**MRS. SMITH'S PIES**.....26-37 OZ. **2/\$5**  
SHURFINE GRADE A  
**LARGE EGGS**.....DOZEN **78¢**  
SHURFINE 9"  
**PIE CRUST SHELLS**.....15 OZ. 2 CT. **99¢**  
SHURFINE DEEP DISH  
**PIE SHELLS**.....2 CT. 12 OZ **99¢**  
LAND O LAKES REGULAR,  
UNSALTED OR LIGHT  
**BUTTER**.....1 LB. BOX **\$2<sup>39</sup>**  
SHURFINE  
**SOUR CREAM**.....1/2 PINTS **2/\$1**  
SHURFINE  
• FRENCH ONION • GREEN CHILI  
**DIP**.....1/2 PINTS **2/\$1**  
SHURFINE ULTRA  
**WHIPPING CREAM**.....1/2 PINTS **2/\$1**  
SHURFINE  
**CRESCENT ROLLS**.....8 OZ. CAN **99¢**  
RHODES 36 CT. LITE WHITE,  
WHEAT, WHITE OR 24 CT. TEXAS  
**DINNER ROLLS**.....48 OZ. PKGS **2/\$5**  
SHURFINE REGULAR OR LITE  
**WHIPPED TOPPING**.....8 OZ. **2/\$1**  
CALIFORNIA OR FLORIDA CITRUS PUNCH  
**SUNNY DELIGHT**.....128 OZ. JUG **\$1<sup>99</sup>**  
KRAFT ASSORTED (LOW FAT NOT INCLUDED)  
**SHREDDED CHEESE**.....8 OZ. PKG **\$1<sup>69</sup>**  
• MILD MEXICAN • 2% MILK • AMERICAN • SWISS • PIMENTO  
• AMERICAN SUPER SLICE • PIZZA FLAVOR SUPER SLICE  
**KRAFT CHEESE SINGLES**.....12 OZ. PKG **\$1<sup>89</sup>**

**HEALTH & BEAUTY**

- FAST RELIEF  
**ALKA-SELTZER**.....36 CT. **\$2<sup>99</sup>**  
7.2 OZ. SINGLE PACK SUGAR  
FREE OR 9 OZ. TWIN PACK  
**PANGBURN'S MILLIONAIRES**.....YOUR CHOICE **\$5<sup>99</sup>**  
SHURFINE HEAVY DUTY  
**ALUMINUM FOIL**.....18"X37.5" **99¢**  
SHURFINE WHITE  
**BATH TISSUE**.....4 ROLL PKG **79¢**  
SHURFINE HEAVY DUTY  
**COMPARTMENT PAPER PLATES**.....15 CT. PKG **99¢**  
• 400 GOLD PLUS GC 135  
• 200 GOLD PLUS GB 135  
• 400 ROYAL GOLD 135  
• 200 ROYAL GOLD 135  
• GOLD MAXIMUM  
**KODAK FILM**.....24 EXP. **\$3<sup>99</sup>**  
• 2 PK. D,C • 4 PK. AA, AAA  
• 1 PK. 9-VOLT  
**ENERGIZER BATTERIES**..... **2/\$5**  
• CUT GREEN BEANS REGULAR/NO SALT  
• FRENCH SLICED GREEN BEANS  
• VP CRISP 'N SWEET GOLDEN CORN  
• GOLDEN CREAM STYLE CORN REGULAR  
• WHOLE KERNEL GOLDEN CORN  
REGULAR/NO SALT  
• WHOLE KERNEL SWEET GOLDEN CORN  
• SWEET PEAS REGULAR/NO SALT  
**SHURFINE VEGETABLES**.....12-15.5 OZ. CANS **3/87¢**  
BETTY CROCKER ASSORTED REGULAR OR LIGHT  
**READY TO SPREAD FROSTING**.....12-16 OZ. CAN **\$1<sup>39</sup>**  
BETTY CROCKER ASSORTED SWEET  
REWARDS OR SUPERMOIST  
**CAKE MIXES**.....18-18.25 OZ. BOX **79¢**  
BAKER'S ANGEL FLAKE  
**COCONUT**.....14 OZ. PKG **\$1<sup>19</sup>**  
BAKER'S REAL  
**CHOCOLATE CHIPS**.....12 OZ. PKG **89¢**  
IMPERIAL PURE CANE  
**SUGAR**.....4 LB. BAG **\$1<sup>39</sup>**  
SHURFINE  
**PUMPKIN**.....15 OZ. CANS **3/\$1**  
SHURFINE BROWN OR POWDERED  
**SUGAR**.....2 LB. BAG **79¢**  
GOLD MEDAL ALL PURPOSE  
**FLOUR**.....5 LB. BAG **79¢**  
SHURFINE  
**MANDARIN ORANGES**...11 OZ. CAN **2/\$1**  
SHURFINE CRUSHED, CHUNK OR SLICED  
**IN NATURAL JUICE PINEAPPLE**.....15.2 OZ. CAN **59¢**  
SHURFINE CHERRY LITE, APPLE OR CHERRY  
**PIE FILLING**.....20-21 OZ. CAN **99¢**  
SHURFINE  
**CORN SYRUP**.....32 OZ. BTL **99¢**  
EAGLE BRAND REGULAR OR LOW FAT  
(CHOCOLATE NOT INCLUDED)  
**CONDENSED MILK**.....14 OZ. CAN **\$1<sup>99</sup>**  
KEEBLER GRAHAM CRACKER ORIGINAL,  
REDUCED FAT, OR BUTTER FLAVOR  
**9" READY CRUST**.....6 OZ. PKG **79¢**  
SHURFINE MINI OR REGULAR  
**MARSHMALLOWS**...10-10.5 OZ. PKGS **2/\$1**  
SHURFINE BERRY/APPLE/RASPBERRY/CHERRY/GRAPE/STRAWBERRY  
**CRANBERRY COCKTAILS**.....64 OZ. **\$1<sup>99</sup>**  
.3 OZ. SUGAR FREE OR 3 OZ. REGULAR  
**JELL-O GELATIN DESSERT**...SM. BOX **3/\$1**  
COOK & SERVE OR INSTANT ASSORTED  
2.9-3.9 OZ. REGULAR OR 1.3-1.5 OZ. SUGAR FREE  
**JELL-O PUDDING**.....SM. BOX **59¢**  
KRAFT COLBY, COLBY-JACK OR CHEDDAR LONGHORN  
**HALFMOON CHEESE**.....10 OZ. PKG **\$1<sup>79</sup>**  
KRAFT ASSORTED 100% GRATED  
**PARMESAN CHEESE**.....8 OZ. CAN **\$2<sup>99</sup>**  
KRAFT REGULAR OR LIGHT  
**CHEEZ WHIZ**.....16 OZ. JAR **\$2<sup>79</sup>**  
KRAFT REGULAR OR LIGHT  
**VELVEETA SPREAD**...32 OZ. BOX PRE-PRICE \$4.19 **\$3<sup>99</sup>**



WESTERN MONEY  
UNION TRANSFER<sup>SM</sup>  
"The fastest way to send money"

**Lowe's**  
**MARKETPLACE**

401 W. American Blvd.  
Muleshoe 272-4585



515 W.  
American Blvd.  
Muleshoe  
272-4406

WE RESERVE THE RIGHT  
TO LIMIT QUANTITIES  
IN TEXAS