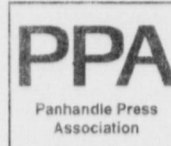




MULESHOE JOURNAL



Volume 35, No. 31

Published Every Thursday at Muleshoe, Bailey County, Texas 79347

Thursday, July 30, 1998

PAGE ONE

A QUICK READ OF THE NEWS

Thunderstorms little help

Isolated thunderstorms Sunday and Monday were welcome but not nearly enough in most areas to help farmers. Up to seven tenths of an inch were reported in the Oklahoma Lane area and in northwest Bailey County, but most of the area received less than .3 based on phone calls to local cotton gins.

"It was really spotty," said Willard Tibbets, manager of the Pleasant Valley Gin. He said the amounts ranged from zero to half an inch. "Very few got enough to help."

The Maple Co-op Gin reported .3 inches; Needmore received just a trace. West Camp got .2 and Muleshoe Co-op reported .2. The National Weather Service reported .24 inches.

Senator proposes aid

AUSTIN — A state legislator Monday proposed spending up to \$400 million to help Texas farmers and ranchers cover some of the losses caused by the withering drought.

Sen. Steve Odgen (R-Bryan) said he would introduce a bill in the next legislature to offer grants for as much as 30 percent of 1999 feed, seed, seedling and fertilizer costs.

It would be a one-time proposal expiring at the end of 1999.

Maximum reimbursements would be \$10,000 or twice the 1998 property tax bill on affected lands, whichever is less.

Skunk-proof yogurt

GOLDEN VALLEY, Minn. — The kitchens that bring you the Betty Crocker brand have whipped up a treat for yogurt-loving skunks. General Mills, the Minneapolis-based maker of Yoplait yogurt, has redesigned the containers to make them more skunk-proof — for the animals' own good.

The overhaul already was under way when animal-rights activists told the company as many as 14 skunks died last year after getting their heads stuck in the discarded containers. The animals suffocated or wandered into roads.

Love American style

SEATTLE — Terry Jones and Victoria Dunn got married in New York. The best man and maid of honor were in Seattle, their minister was in California and some of their friends were in Portland, Ore.

But thanks to video conferencing, everyone was able to take part in the nuptials, united by four TV sets at four different copy stores.

After they were wed, toasts of sparkling cider were raised at all four locations. "This has been truly amazing. Amazing and beautiful both," one New York guest said.

LOCAL WEATHER

	High	low	Pre.
Friday	96	67	—
Saturday	96	66	—
Sunday	97	68	—
Monday	94	66	.24
Total to date	3.88 inches		

EXTENDED FORECAST

Partly cloudy Thursday through Saturday. Highs in the 90s. Lows in the 60s.

Dykes speaker at Red Raider Club outing

Texas Tech football coach Spike Dykes will be the guest speaker at the second annual Muleshoe Red Raider Club's "Old Fashion Tailgate Party" Aug. 5 at the Heritage Center.

Tickets for the all-you-can-eat steak cookout and fund-raiser are \$25 per person.

Texas Tech men's basketball coach James Dickey was the guest speaker last year when organizers

sold about 125 tickets and raised \$3,000.

Dykes has compiled a 69-57-1 record in 11 years at Tech, including a 6-5 mark last year. His teams have made six bowl appearances.

Born in Lubbock and a West Texan through and through, the 59-year-old Dykes is known for his homespun humor and laid back style.

Dykes was an all-state center at

Ballinger High School and later made High school coaching stops in Coahoma, Belton, Big Spring, Alice and Midland Lee.

He was inducted into the Texas High School Coaches Association Hall of Honor in 1991.

For more information or to purchase tickets call Kevin King at 965-5028 or 272-3138 or Max King at 272-4541 or 272-3918.



Spike Dykes



Stepping out

Corie Ann Black rehearses her dance steps Monday while practicing for "Keepers of the Legend." The historical outdoor musical runs Aug. 7-10 at the Muleshoe Heritage Center.

Rojas returns to stage

Muleshoe grad makes perfect villain in 'Keepers of Legend'

By HEATHER SHIPMAN
Journal staff writer

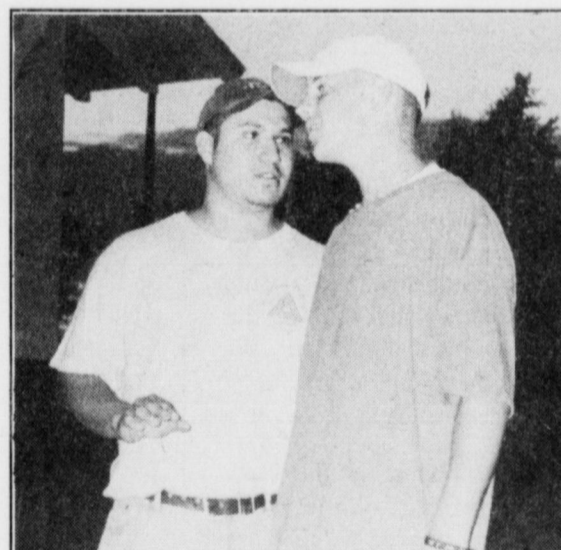
Carlos Rojas is no stranger to the stage or "Keepers of the Legend."

Rojas, a 1997 graduate of Muleshoe High School who is currently attending New York University's Tisch School of the Arts, landed the role as the villainous "Jake Diamond" in the historical outdoor musical that will be performed Aug. 7-10 at the Muleshoe Heritage Center.

"He's such a talented young man," said director Sally Messeneger. "You ask for evil and you get evil."

"We were lucky to get someone like him. He's been wonderful to have around."

It will be Rojas' first public acting experience in about a year.



Carlos Rojas (left) plays the villainous Jake Diamond. Stephan Shelburne is his sidekick.

"I've missed being in front of a crowd, I'm ready to get out there and put what I've learned

see KEEPERS on page 3

Reyes arraigned Monday

By RICK WHITE
Managing Editor

Dressed in a loose-fitting, navy blue jail uniform and flip flops, a sullen Gilberto "Tito" Reyes was arraigned Monday in a Bailey County courtroom on a charge of capital murder and three lesser charges.

Standing before 287th District Court Judge Jack Young, Reyes answered "yes, sir" in a hushed tone as the charges against him were read.

A plea of not guilty was entered for each of the four charges of capital murder, aggravated assault, unauthorized use of a motor vehicle and possession of a firearm by a felon.

The judge ordered Reyes held without bond in connection with the March murder of his former girlfriend, 19-year-old Yvette Barraz of Muleshoe.

A trial date was set for Aug. 24.

"That's the earliest a trial can take place. That doesn't necessarily mean that is when the trial will take place," Young said.

Reyes, 24, of Muleshoe said he was in the process of hiring an attorney.

Judge Young advised Reyes that the sooner he hired a lawyer the better off he would be in presenting a defense.

"On the charge of capital murder, you are facing the possibility of life in prison or even death," Young told Reyes. "And the penalties in the other cases are less but still serious. Your liberty is at stake in each and every one of them."

Reyes was extradited Thursday from the Roosevelt County Detention Center in Portales, N.M. He has been held there since his June 7 arrest at a Portales motel.

Reyes allegedly abducted Barraz March 11 from the parking lot of Leal's Restaurant, where the teenage mother worked as a waitress. Her body was discovered two days later in the back seat of her car in the Texas border town of Presidio.

The indictment read Monday by District Attorney Johnny Actkinson alleges that on or about March 12 Reyes intentionally and knowingly caused the death of Barraz by striking her in the back of the head with a blunt object in the course of committing and attempting the offense of

see REYES on page 2

Drought has local farmers worried about future

By RICK WHITE
Managing Editor

Emergency loans are not the answer to the record-breaking drought in Texas, according to several local farmers.

Last week, President Clinton announced that disaster assistance would be made available to farmers through low-interest loans.

The loans, made through the Farm Service Agency, would be available to eligible farmers who have suf-

fered a loss of 30 percent or more on any single crop. Qualifying producers must be creditworthy, unable to obtain credit elsewhere, and have adequate collateral to secure the loan.

"It would just put me further in debt — if I was even eligible for a loan," said West Camp farmer Kevin Grant, one of a half-dozen farmers who met with the Journal for an informal round-table discussion last week. "You can't borrow yourself out of debt."

Facing its second extended drought in three years, the group is worried not only about their future but about the future of the whole farming community in general.

"For a lot of farmers, this is going to be it," Grant said. "And there is nobody to replace them."

The Texas Agricultural Extension Service estimates that total losses to Texas farmers and ranchers could total more than \$4.6 billion as the drought continues.

And despite a few teasing showers the last few days, there appears to be no end in sight to the drought.

The National Weather Service predicts a high probability of continued drought throughout the rest of the growing season.

"This is the hottest, driest summer I can ever remember, and I've been here all my life," said Lewis Wayne Shafer, who farms in the Needmore community.

"You know there are going to be

years like this, but the profit is so meager nowadays it's hard to make enough money to make it through the hard years," said Jerry Nichols, who farms about nine miles south of Muleshoe.

"Farming used to be fun," said Nichols, who was able to put three children through college farming. He wonders if he would be able to do it today.

see DROUGHT on page 3

Seniors elect officers; form committees

A Senior Citizens Center meeting was held July 23 at the Muleshoe State Bank.

Those attending were updated on the status of the project for getting a senior citizens building for meals and recreation.

Grant application guidelines were passed around so that everyone could see what was involved in preparing for a grant application. Guidelines require that any potential grant recipient must be a non-profit organization with by-laws.

After discussion of the application, the floor was opened for nominations for a board.

Elected were Glen Williams, president, Butch Vandiver, vice president and Gail Gladden, secretary/treasurer.

A list of committees were then passed to the group and they selected the one on which they would like to serve. The committees that were listed were fund-raising, building/grounds, education programs, operations, meal program, exercise program, publicity and

equipment/furnishings.

The board then voted for president Glen Williams to start on research for the project as soon as possible. Researching background information, population and income statistics need to be done so that the group will know which grant will best benefit the project.

Membership fees were set to establish a governing body that has voting rights. The \$1 per person dues can be paid to her at the County Extensions Office at any time.

Combest wants drought aid improved

WASHINGTON — U.S. Rep. Larry Combest (R-Texas) has urged U.S. Agriculture Secretary Dan Glickman to use his discretion to see that landowners who utilize emergency haying or grazing for cattle will not sacrifice more than five percent per month of their annual rental payments under the Conservation Reserve Program (CRP).

The five percent urged by Combest would be at a rate identical to the cost charged during the 1996 drought. Noting heat and drought of historic proportions which have forced

many producers to begin selling off their herds, Congressman Combest expressed concern that the current 25 percent reduction in annual CRP rental payment charged against landowners is prohibiting emergency haying and grazing from providing the help the Secretary intended.

"Producers would like to graze CRP land, but are finding it cost-prohibitive," said Combest. "Considering the severity of our current emergency, I am asking that USDA Secretary Glickman take quick action to help farmers and

ranchers on the Texas High Plains and announce a return to the grazing policy last utilized during the 1996 drought. Texas neighbors help each other in severe times as these, and an announcement from Secretary Glickman would ensure that more effective relief reaches the region."

Combest underscored that because CRP contract holders can only graze 75 percent or hay 50 percent of their acreage, the current 25 percent reduction in payment makes the relative cost of this program excessively high.

Furthermore, Combest noted the fact that this grass or hay is generally of poor quality, and is accessible for only a limited amount of time, which exacerbates the high cost of the program.

REYES

From page 1

kidnapping.

The other three charges stem from a Feb. 9 incident in which Reyes allegedly threatened Barraz with an assault rifle.

Boll weevil trap catchings

(for the week of July 12-18)

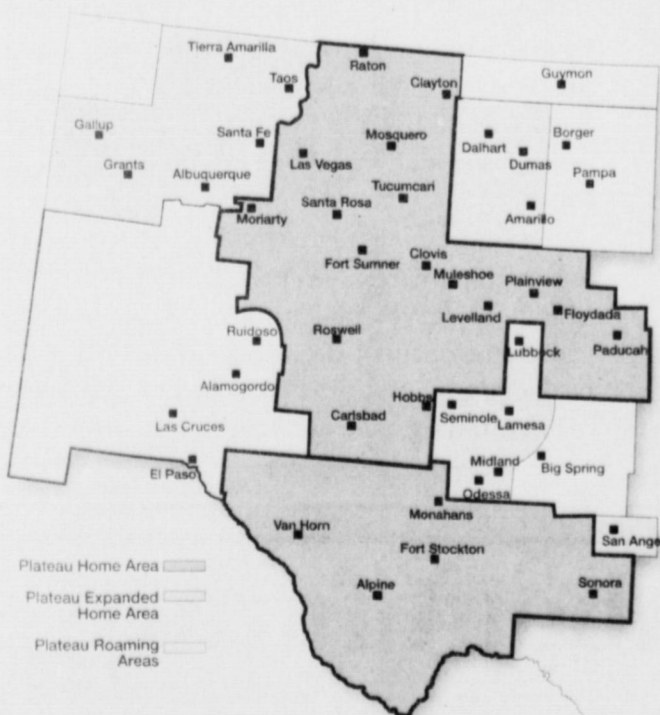


Maple	0
Enochs	0
Bula	0
Circle Back	0
Bailey Gin	0
Needmore	0
East Muleshoe	0
West Muleshoe	0
Total	0

Source: Bailey County Extension Service

BIG-TIME COVERAGE

(From your hometown company)



PLATEAU WIRELESS

PEOPLE YOU KNOW, COMMUNICATIONS YOU TRUST.

Call Toll-Free: 1-877-PLATEAU (752-8328)

NEW COVERAGE!

Now, leaving the neighborhood doesn't mean leaving dependable wireless service.

At Plateau Wireless, our new, expanded coverage area offers over 150,000 square miles of home coverage for one low monthly rate.

Advantage Plans start at just \$29.95 for 80 minutes of airtime, with additional 100 minute increments available for only \$25.00 each. So, there's sure to be a plan to fit your calling needs.

Get better coverage with better savings...from people who live right here in your community.

NEW OFFER!

FREE Activation on any plan during the month of July! Hurry, offer ends soon!

NEW LOOK!

At Plateau Wireless, we've changed our look and slogan to reflect our expanded coverage and commitment to high quality, affordable wireless service...but we're still the same hometown company you know and trust.

For more information or to take advantage of this offer, visit your local retail location:

5-Area Telephone
302 Uvalde
Muleshoe (806) 272-5533

Wilson Appliance
117 Main St.
Muleshoe (806) 272-5532

Farm Equipment Co.
Levelland Hwy.
Morton (806) 266-5517

* Offer requires an annual contract and is contingent upon credit check. Airtime is billed in six second increments in home area and one minute increments in the expanded home area. Long distance, roaming, taxes, surcharges, and other terms and conditions may apply. Plateau reserves the right to change or withdraw this price plan without notice for what it determines is a business necessity.

©1998 Plateau Wireless, Inc.

SUMMER FASHION CLEARANCE

SAVE UP TO

65%

ON ALL

PERMANENTLY REDUCED
SUMMER MERCHANDISE

WHEN YOU TAKE AN

EXTRA 33% OFF

• MISSES' • SPECIAL SIZES' • JUNIORS' • MEN'S • KIDS' • SHOES • ACCESSORIES • GIFTS FOR THE HOME

Total savings off of original prices. Interim markdowns may have been taken.

CHARGE IT!
GET 10% OFF
ALL DAY
WHEN YOU OPEN A NEW STORE ACCOUNT

BEALLS

MULESHOE #649
321 Main St.
272-3478

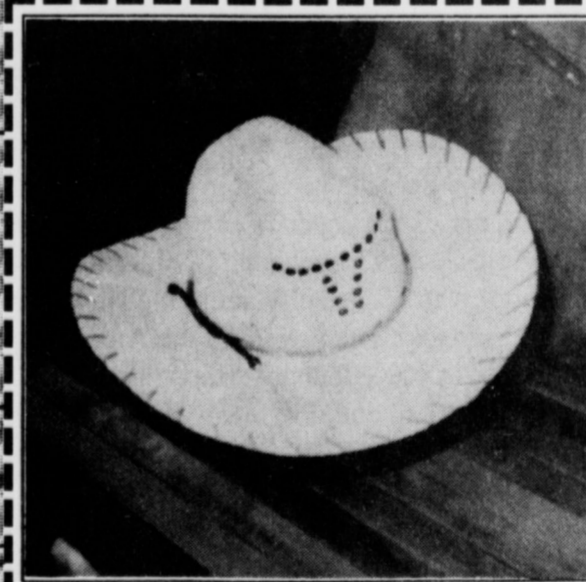


We Ship Everywhere

1-800-658-6378 106 E. American Blvd. Muleshoe, Texas

And Country Junction

It's "BLAZIN' HOT" Outside...
You'll Find "COOL" Deals
Inside Joe's Boot Shop!



JUST ARRIVED
Guatemalan
Palm Leaf
Hats
with
"Double Vent"
Crowns

Come in & we will "customize" your hat with your brand or your imagination!

Available in

4" Brims
starting at
\$17

5" Brims
starting at
\$19

Many Specials Throughout
The Store Thru July!

GRAND OPENING



Ribbon cutting

Silver Screen Video celebrated its grand opening Friday. Pictured are (L to R) Adrian Meador, Hugh Young, Robert Montgomery, Bill James, A.O. Smith, Chandler and Chase Anderson, Laura Precure, Wade King, Teresa Stone, Carlos Del Toro and Josh Alfaro.

THE COMPETITION UNITE

Sheree's Attic
The Fig Tree
Guys & Gals

3 STORES UNDER ONE TENT

GIANT WAREHOUSE SALE

50 - 75% OFF
Under The Tent

EVERYTHING---MUST GO!!!!
\$3, \$5 & \$10 Racks

Don't miss This Sale
3 Days Only
Thurs-Fri-Sat
July 30-31st & August 1st
10:00 am to 6:00 pm

ART Loft Complex Lot
1519 W. American Blvd.
ALL MAJOR CREDIT CARDS ACCEPTED.

BRING A FRIEND



The bird spider of South America is a tarantula that's one of the world's largest spiders. Its body measures up to 3.5 inches long, with legs that can spread to seven inches.

KEEPERS

From page 1

to work," Rojas said.

He served as a stagehand during the first year of "Keepers of the Legend" and had a bit part the following year. Last year, he did not participate because of rules governing NYU freshman drama students.

"As a freshman, the drama department does not allow students to perform in any kind of production whether in school or out," Rojas said. "They believe that if you try what you've learned and don't get it right the first time, that you will give up and close your mind to what they are trying to teach."

In its fourth year, "Keeper's of the Legend" is a mixture of

historical romance, comedy and suspense and features live music and authentic props. Set near the turn of the century, the two-act play depicts the conflict between county farmers and ranchers to incorporate Bailey County.

The play is written by Bailey County native Paula Paul and the music was co-written by Alan Finney and Cassidy Cleavinger.

It will be performed nightly at 8:30, Aug. 7-10 at the Heritage Center. Tickets are \$10 at the gate or \$8 in advance. Children ages 10 and under are \$5.

For more information, call 272-5612.

DROUGHT

From page 1

"But what else can I do at my age. Go to Wal-Mart and get a job as a greeter?" Nichols said.

The group said the biggest problem is the cost of farming — especially equipment — keeps going up while commodity prices remain virtually the same as 20 years ago.

"We've got a problem, the whole community has a problem" said Pleasant Valley farmer Allen Smyer. "And we've got to find a way to solve it."

Several farmers said that bringing back the disaster program would be a good start.

Under the old farm bill, farmers would be compensated for crop losses caused by natural disasters.

Under the new farm bill, farmers can barely recover planting costs.

"That was a good band-aid," said Smyer, who favors removing government control on commodity prices.

Most of all, the farmers were asking for support.

Grant urges business owners and community members to write their legislators.

"When farmers have a bad year, it's a bad year for them too," Grant said.

Miss your paper?
Call 272-4536 weekdays
272-6719 weekends

BENDER		97 CHEVY CAVALIER \$179 Down \$179 Per Month Sale price \$9,828. \$179 per mo @ 9.9% APR for 72 mo	
97 OLDS ACHIEVA 2 to Choose From Down \$199 Per Month \$199 Sale price \$10,273. \$199 per mo @ 6.9% APR for 60 mo	95 PONTIAC TRANSPORT Down \$294 Per Month \$294 Sale price \$13,995. \$294 per mo @ 10.5% for 60 mo #86316A	96 CHRY TOWN & COUNTRY Down \$399 Per Month \$399 Sale price \$20,836. \$399 per mo @ 11.95% for 72 mo #5406	94 FORD AERO STAR Down \$220 Per Month \$220 Sale price \$9,567. \$220 per mo @ 10.95% APR for 54 mo #5368
95 OLDS CUTLASS Down \$210 Per Month \$210 Sale price \$9,891. \$210 per mo @ 10.9% for 60 mo #5789	95 FORD WINDSTAR Down \$295 Per Month \$295 Sale price \$13,587. \$295 per mo @ 11.9% for 60 mo #82052A	94 OLDS BRAVADA Down \$299 Per Month \$299 Sale price \$13,772. \$299 per mo @ 11.9% for 60 mo #5316A	95 NISSAN MAXIMA GLE Down \$349 Per Month \$349 Sale price \$16,813. \$349 per mo @ 9.9% for 60 mo #76356A
97 BUICK PARK AVE REGULAR \$24,995 Down \$21,995 #5386	96 CHEVY CORSICA 6 to Choose From Down \$179 Per Month \$179 Sale price \$8,802. \$179 per mo @ 9.0% APR for 60 mo	97 BUICK LESABRE Down \$299 Per Month \$299 Sale price \$16,995. \$299 per mo @ 9.9% for 72 mo #5360	93 CADILLAC SEDAN DEVILLE Down \$285 Per Month \$285 Sale price \$11,995. \$285 per mo @ 12.5% APR for 54 mo #5286A
89 DODGE CARAVAN Down \$162 Per Month \$162 Sale price \$4,995. \$162 per mo @ 12.5% APR for 36 mo #72450A	96 CHEVY LUMINA Down \$259 Per Month \$259 Sale price \$12,199. \$259 per mo @ 10.9% for 60 mo #5179	95 OLDS AURORA Down \$359 Per Month \$359 Sale price \$16,909. \$359 per mo @ 10.9% for 60 mo #5264	97 CHEVY 1500 EXT CAB REGULAR \$21,995 Down \$20,685 #86042A
97 CHEVY 1500 EXT CAB Z71 REGULAR \$24,995 Down \$22,995 #86074A	90 OLDS CUTLASS Down \$129 Per Month \$129 Sale price \$4,947. \$129 per mo @ 12.9% for 48 mo #5311A	97 DODGE GRAND CARAVAN Down \$369 Per Month \$369 Sale price \$19,782. \$369 per mo @ 10.95% for 72 mo #82048A	96 CADILLAC ELDORADO REGULAR \$31,995 Down \$30,995 #8324
94 FORD PROBE Down \$176 Per Month \$176 Sale price \$7,734. \$176 per mo @ 10.5% for 54 mo #5293A	95 GMC SUBURBAN 4x4 REGULAR \$25,995 Down \$22,700 #76340A	94 MAZDA PICKUP Down \$159 Per Month \$159 Sale price \$6,838. \$159 per mo @ 11.5% for 54 mo #5282A	90 MERCURY COUGAR Down \$144 Per Month \$144 Sale price \$4,995. \$144 per mo @ 12.9% for 42 mo #82027A



BENDER

You're going to like our family!
CHEVROLET • OLDSMOBILE • CADILLAC
2500 Mabry Drive • (505) 763-4465

Muleshoe Journal USPS 367820
Established February 23, 1924. Published by Triple S Publishing, Inc.
Every Thursday at 304 W. Second, Box 449, Muleshoe, TX 79347.
Second Class Postage paid at Muleshoe, TX.
POSTMASTER: Send address changes to the Bailey County Journal, P.O. Box 449, Muleshoe, TX 79347.
We are qualified members of:
Panhandle Press Association, National Newspaper Association,
West Texas Press Association and Texas Press Association

WEST TEXAS PRESS ASSOCIATION
PPA
Panhandle Press Association

TA MEMBER 1997
TEXAS PRESS ASSOCIATION

Scot Stinnett, Publisher
Lisa Stinnett, Vice-President/Comptroller
Rick White, Editor
Mary Ann Dominguez, Classifieds
Leah Bell, Advertising

SUBSCRIPTIONS: Muleshoe Journal and Bailey County Journal
By Carrier Yearly - \$22.00
Bailey County - by mail - \$24.00
Elsewhere - \$26.00
Advertising Rate Cards on Application

Advertisers should check their ad the first day of insertion. The Journals will not be liable for failure to publish an ad or for a typographical error or errors in publications except to the extent of the cost of the ad for the first day of insertion. Adjustment for errors will be limited to the cost of that portion of the ad where the error occurred.



All smiles

Ariana Diaz, 8, hams it up for the camera Monday while taking a break from playing soccer with family and friends at the new city park.

FSA taking emergency loan applications

Applications for emergency farm loan for losses caused by drought temperature conditions are being accepted at the Farm Service Agency (FSA) office located on 115 E. Ave. D. Muleshoe, Texas, Farm Loan Manager Joyce M. Thompson said Tuesday.

Bailey County has been recently named by Secretary of Agriculture Dan Glickman as eligible for loans to cover part of actual production losses resulting from drought temperature conditions.

Thompson said farmers may be eligible for loans of up to 80 percent of their actual losses or the operating loan needed to

continue in business, or \$500,000, whichever is less. For farmers unable to obtain credit from private commercial lenders, the interest is 3.75 percent.

"As a general rule, a farmer must have suffered at least a 30 percent loss of production to be eligible for an FSA emergency loan," Thompson said. Farmers participating in Federal Crop Insurance Program will have to figure in proceeds from these programs in determining their loss.

Applications for loans under this emergency designation will be accepted until March 23, 1999 farmers should apply as soon as possible. Delays in applying

could create backlogs in processing and possibly over into the new farming season," Thompson said.

FSA is a credit agency of the U.S. Department of Agriculture. It is authorized to provide disaster emergency loans to recognized farmers who work at and rely on farming for a substantial part of their living. Eligibility is extended to individual farmers who are U.S. citizens and to farming partnerships, corporations or cooperatives in which U.S. citizens hold a majority interest.

The FSA office in Muleshoe is open from 8 a.m. to 5 p.m. Monday through Friday.

Progress hosting community reunion Sept. 5

The Progress Community will have their reunion on Labor Day Weekend, Saturday, September 5.

It will be at the Muleshoe Church of Christ Meeting Room on West American Blvd. from 2-5 p.m.

Refreshments will be served and all former and present residents are invited to attend as well as friends and family members.

All former students and teachers of the Progress School are encouraged to attend. Since the school consolidated with Muleshoe Schools in 1948-49, there is a special invitation to the stu-

dents who attended that last year.

For more information, con-

tact Kenneth Henry at 272-5651 or Billie Downing at 272-5169.

Lunch Menu for the week from
T.J.'S DONUTS
 Come eat lunch with us . . . served 11 am - 2 pm
 These lunches are served with a drink & dessert!

Mon.- Roast Beef, Mashed Potatoes, Vegetable & Salad
 Tues.- Brisket, Baked Beans & Potato Salad
 Weds.- Hot Steak Sandwich, Gravy, Fr. Fries, Toast & Salad
 Thurs.- Ribeye Steak, Baked Potato & Salad
 Fri.- Catfish/Popcorn Shrimp Platter, Hush Puppies, French Fries, Salad & Toast

328 S. Main St. • Muleshoe • 272-3542

Beach Bash & Sidewalk Sale
 Friday-Sunday
 July 31-August 2

Dig In Our Sandbox & Take Home Treasures

Bring your mall receipt to our summer sandbox and dig for free gifts and giveaways!

One shovelful per customer please, available while supplies last.

North Plains Mall

A property of JP Realty, Inc. celebrating 40 years of success

Shop Monday-Saturday 10-9, Sunday noon-6 2809 North Prince St., Clovis, NM 505-769-2308

Great Deals ALLways Open, Fast & Friendly
ALLSUP'S PRICES EFFECTIVE JULY 29-AUG. 4, 1998
 THE GROCERY STORE FOR PEOPLE ON THE GO!

Store #34 • 318 W. American Blvd
 272-4862 • MULESHOE

COCA-COLA
 6 pk. • 12 oz. cans \$1.59 / 3 liter \$1.79

Oreo Cookies 2.2 OZ. BOX 49¢

MR. CLUSTER Twin Bing Bar EACH 2 FOR 89¢

SURE LIGHT Lighters EACH 2 FOR \$1

HORMEL Potted Meat 3 OZ. CAN 3 FOR \$1

Y'SNORE "ANTI-SNORING" Nose Drop .5M \$5.99

TOM'S ALL VARIETIES Potato Chips REG. 99¢ 79¢

LIGHT & LEAN COOKED Ham or Turkey 8 OZ. PKG. \$1.79

FREE MILK When You Purchase 12 Gallons of Milk, PLUS You Get A Chance To Win FREE Milk For A Year!

Sprint Prepaid Phone Cards Available at all Allsup's Stores.

ALLSUP'S OREO COOKIES 16 oz. pk. \$2.99	ALLSUP'S SPAM 12 oz. can \$2.39	ALLSUP'S BOLO DOG FOOD 13 oz. can 39¢ ea.	ALLSUP'S SHURFINE SUGAR 4 lb. bag \$1.79
--	--	--	---

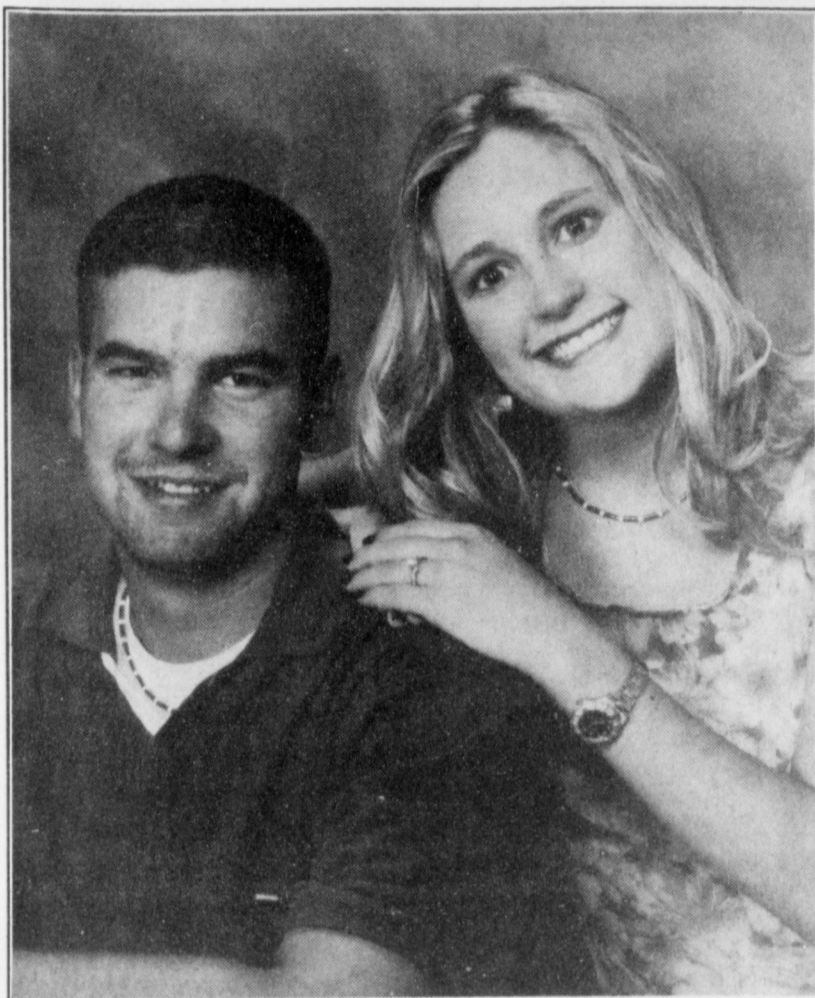
PLAY EASY MONEY WIN INSTANTLY! CASH, PRODUCTS, OR FOOD! No Purchase Necessary!

THOUSANDS of Prizes & Dollars to be Given Away
 YOU COULD WIN THE GRAND PRIZE
 1998 F-150 XLT SUPERCAB PICKUP

Plus You Could Win Instant Cash up to \$1,000, or try your luck at our second chance sweepstakes for 1 of 8 gas for a year winnings, or 1 of 8 weekend trips for four people to SIX FLAGS!

Come In And WIN!

ENGAGEMENTS



McKinney — Dodd

Susan McKinney and Corey Dodd announce their engagement and upcoming marriage. The couple will exchange wedding vows at 2 p.m., Saturday, Aug. 8 in Muleshoe. McKinney is the daughter of Mr. and Mrs. Wayne Henderson of San Angelo. She will graduate from South Plains College in the spring of 1999. She is currently employed by Nor-West Bank of Lubbock. Dodd is the son of Mr. and Mrs. Gene Carlile of Sundown. He is attending South Plains College for Wildlife Management. He is currently employed by Altura Energy.

POLICE REPORT

MULESHOE PD

July 7 — Manuel Nayura Villa, 61, arrested for public intoxication.

July 8 — Alberto Mendoza, 18, arrested for driving without liability insurance.

July 9 — Orlando Arrendondo, 21, arrested for assault (family violence).

July 9 — Rafael Cabrera, 20, arrested for driving while intoxicated.

July 10 — Ronald Rodriguez, 39, arrested for theft.

July 11 — George Franco, 34, arrested for public intoxication and escape.

July 11 — Mary Jane Toscano, 40, arrested on a warrant for criminal mischief and public intoxication.

July 15 — Ramiro Leal, 65, arrested for public intoxication

July 18 — Jose Martin Rivera, 30, arrested for driving

while intoxicated.

July 19 — Melvin Braun, 49, arrested for driving while intoxicated.

July 20 — Linda Alvarez Montoya, 33, arrested on a warrant for forgery.

July 21 — Richard Herrera Tegala, 20, arrested for assault (family violence).

BAILEY COUNTY SO

July 4 — David Russell Norris, 18, arrested for driving with a suspended license.

July 17 — Belinda Garza, 44, arrested for public intoxication.

July 19 — Fabean Garcia Toscano, 37, arrested on a warrant for assault.

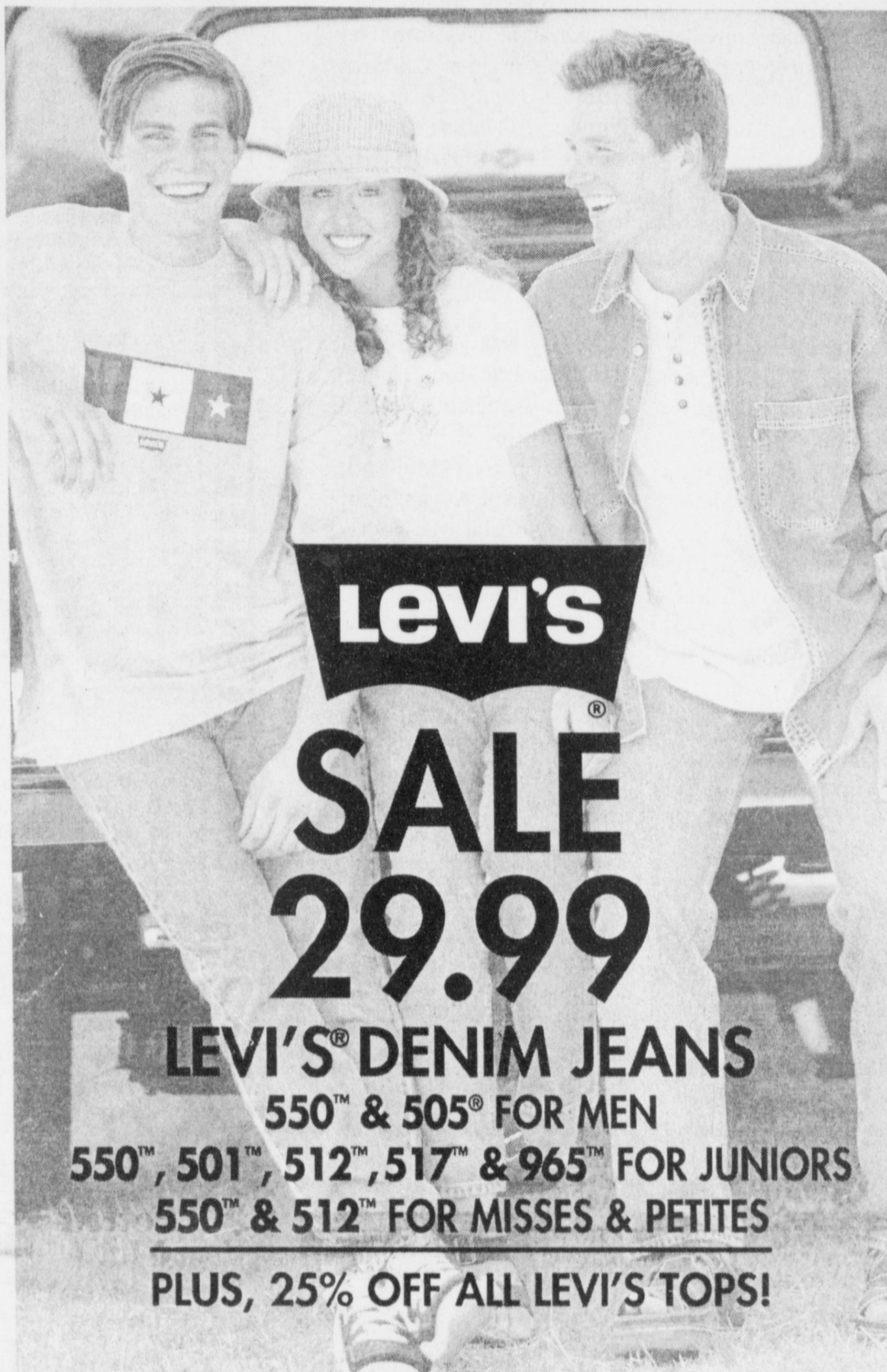
July 17 — Julio Renteria, 25, arrested for public intoxication.

DPS

July 8 — Teresa Hood, 23, arrested on a Hale County warrant for theft by check.

the school site **[sale]**

SAVE UP TO 65% STOREWIDE!



Levi's
SALE
29.99

LEVI'S® DENIM JEANS

550™ & 505® FOR MEN

550™, 501™, 512™, 517™ & 965™ FOR JUNIORS

550™ & 512™ FOR MISSES & PETITES

PLUS, 25% OFF ALL LEVI'S TOPS!

24.99

JUNIORS' LEVI'S SHORTS

31.99

MEN'S 560™ LOOSE FIT 565™ & 567™ WIDE-LEG

39.99

MEN'S & JUNIORS' SILVERTAB®

CHARGE IT!
GET 10% OFF
ALL DAY
WHEN YOU OPEN A NEW STORE ACCOUNT.
Exclusions may apply. Subject to credit approval.

BEALLS
We're all about you!

MULESHOE #649
321 Main St.
272-3478

Just a sample of the savings you will find. Interim markdowns may have been taken. Selections vary by store.

JUNIORS

25% OFF

JUNIORS' MUDD® FLARED JEANS
Denim or khaki. Reg. 38.00, SALE 28.50.

25% OFF

JUNIORS' CARDIGANS
Reg. 20.00-34.00, SALE 15.00-25.50.

ONLY 19.99

JUNIORS' KHAKI TWILL PANTS
Selected styles by Graphite Essentials®.

ONLY 9.99 & 11.99

KNIT TOPS, LEGGINGS, WIDE-LEG PANTS
One Step Up®, Graphite Essentials®, Currants®.

SALE! 24.99

COLLECTION OF JUNIOR DRESSES
Reg. 36.00-39.00.

SHOES

SALE! 29.99-39.99

JUNIORS' CASUAL SHOES
Loafers, mocs, booties, sneakers and more.
Reg. 34.00-54.00.

CHILDREN'S

ONLY 14.99-19.99

GRAPHITE® JEANS FOR KIDS
Girls' 4-16; boys' 4-20.

25% OFF

ENTIRE STOCK OF KIDS' BACK PACKS
Reg. 15.00-28.00, SALE 11.25-21.00.

SALE 15.99-23.99

LEVI'S DENIM JEANS & SHORTS
Boys' 4-20 and girls' 4-16.

MEN'S

ONLY 19.99

GRAPHITE® JEANS & CARPENTER SHORTS
Relaxed or loose fit.

SALE! 9.99 & 14.99

MEN'S SPECIALTY COLLECTION® TOPS.
All cotton. Reg. 14.99-24.00.



1104

RED WING SHOES®
Made in U.S.A.

The Fair Store
120 Main 272-3500

THERE'S A
KILLER
ON THE LOOSE!

Help us fight amyotrophic lateral sclerosis, better known as Lou Gehrig's disease.

MDA®

Muscular Dystrophy Association
1-800-572-1717 • www.mdausa.org



An Outdoor Musical presented by
MulePlex Production Co.

**Keepers
of the
Legend**

August 7-10, 1998
8:30 p.m.

at the Muleshoe Heritage Center
West American Blvd. • Muleshoe, TX

Tickets \$10.00 at gate or \$8.00 in advance
\$5.00 Children Ages 10 and Under (**GROUP RATES AVAILABLE**)
For Information Call 806/272-5612

WHILE IN MULESHOE, ENJOY OUR
FINE SHOPPING, DINING AND
OVERNIGHT ACCOMMODATIONS

Beans & Cornbread Dinner each
evening at 6:30 p.m. served by the
Muleshoe Heritage Foundation
ADULTS \$4.00 • CHILDREN 10 & UNDER \$2.50 (per plate)

OBITUARIES

C.L. MOONEY
SUDAN — C.L. Mooney, 54, of Sudan died July 25, 1998 at Methodist Hospital in Lubbock.

Graveside services were held July 27 in Sudan Cemetery, with Terry Wilson of the Sudan Church of Christ officiating. Burial followed.

Mooney was born March 12, 1944 in Lubbock. He moved to Sudan from Lubbock in 1948 and attended Sudan schools. He was a farmer.

Survivors include his mother, Parrie Lee Mooney of Sudan; one sister, Elaine Nickels of Littlefield; and three brothers, Clifton D. Mooney of Lubbock, Ronnie Mooney of Canyon and Weldon Mooney of Littlefield.

The family suggests that memorials be made to the Sudan EMS/Sudan Fire Department, Sudan, Texas, 79371.

RACHEL ELSEA
HEREFORD — Rachel Elsea, 94, of Hereford died July 24, 1998 at Hereford Care Center Nursing Home.

Graveside services were July 26 at Springlake Cemetery with the burial following.

Elsea was born Dec. 23, 1903 in Texas. She married John Louis Elsea in Clay County on Sept. 28, 1928. He died in 1930.

She moved to the Hereford Care Center from Springlake in 1991. She had been a long-time resident of Springlake. She was a member of the Sunnyside Baptist Church and a homemaker.

Survivors include one daughter, Louise Alair of Springlake; four grandchildren, Nancy Denton of Richardson, Jimmy Alair of Kansas City, Mo., Johnny Alair of Tulia and Eddie Alair of Springlake; eight grandchildren and two great great grandchildren.

Family requests in lieu of flower memorials be made to Springlake Cemetery Association Springlake, Texas 79082.

JOYCE SMITH
FARWELL — Joyce Smith, 55, of Clovis, N.M. died July 26, 1998 in Stanton, Texas.

Services were held July 29 at Ellis Funeral Home Chapel in Muleshoe, with Rev. Sidney

Parsley of Oklahoma Lane United Methodist Church officiating. Burial followed in the Muleshoe Memorial Park Cemetery.

Smith was born Sept. 15, 1942 in Munday, Texas. She had been a resident of Clovis for one year, moving from Portales, where she lived for eight years. She grew up in Farwell. She was a member of a Baptist Church in Portales. She worked as a body shop manager for Galles Chevrolet in Albuquerque, N.M.

Survivors include two daughters, Tracy Homier of Dublin, Ohio and Scarlett DaBous of Dallas; her father, Loyd Routon of Farwell; three sisters, Janice Vaughan of Turlock, Calif., Julie Barney of Farwell and June Carpenter of Stanton; one brother, David Routon of Wichita, Kan. and two grandchildren

The family suggest that memorials be sent to Hospice of the Plains, 7109 Olton, RD, Plainview, Texas, 79072.

OTTIS BLAYLOCK

Ottis Blaylock, 90, of Muleshoe died July 26, 1998 at his residence in Muleshoe.

Services were held July 29 at the Muleshoe Church of Christ, with Gary Montgomery of Westside Church of Christ of Midland officiating. Burial was held at the Muleshoe Memorial Park Cemetery.

Blaylock was born Nov. 17, 1907 in Vigo Park, Texas. He married Agnes Hicks in Wellington, Texas on Dec. 28, 1930. Agnes preceded him in death on Sept. 30, 1976. He later married Maud Hicks Brown in Amarillo on July 21, 1979.

Blaylock had been a resident of Muleshoe since 1943, moving from Maple. He was a member of the Muleshoe Church of Christ. He was a mechanic for E.R. Hart Co. of Muleshoe for 23 years and worked for Muleshoe ISD for 13 years.

A son, Gordon Lee Blaylock, preceded him in death in July of 1980.

Survivors include his wife, Maud of Muleshoe; two sons, Lewis Blaylock of Bridgeport, Texas and Dabney Blaylock of Blackwell, Texas; three daughters, Marieta Wilkinson of Muleshoe, Marie Robertson of Frisco, Texas and Debbie

Lose of Wilsonville, Ore.; three stepchildren, Shirley Waters of Erick, Okla., Don Brown of Seattle, Wash. and Jerry Brown of Stround, Okla; two sisters, Wilma Smith of Muleshoe and Mattie Lee Holloway of Levelland; 11 grandchildren and eight great grandchildren.

The family suggests that memorials be made to the New Mexico Christian Childrens Home, HC69 Box 48, Portales, N.M., 88130.

AUGUSTIN RODRIGUEZ EARTH — Agustin Rodriguez Rodriguez, 57, of Earth died July 27, 1998 at Methodist Hospital in Lubbock.

Rosary was held Tuesday at Ellis Funeral Home Chapel. Services were held July 29 at Immaculate Conception Catholic Church of Muleshoe, with Father Joe Augustine officiating. Burial was held in Bailey County Cemetery.

Rodriguez was born May 28, 1941 in Mexico. He married Rosa Chacon in Morton on April 7, 1965. He moved to Earth in 1993 from Muleshoe. He was a member of the Immaculate Conception Catholic Church in Muleshoe and a farmer.

Survivors include his wife, Rosa of Earth; four sons, Soilo Chacon of Levelland, Lorenzo Rodriguez of Earth, Hugo Rodriguez of Muleshoe and Agustin Rodriguez Jr. of Levelland; two daughters, Maria Rodriguez of Earth and Sylvia Rodriguez of Levelland; one sister, Paula Hernandez of Mexico; two brothers, Jesus Rodriguez of Mexico and Marcello Rodriguez of Fort Hancock; and nine grandchildren.

Home Folks Caring For Folks At Home.

MULESHOE AREA HOME HEALTH Agency

Featured Patient

Letha L. Talley was born March 19, 1923 in Chickasha, Oklahoma. She is the eldest of three sibling girls.

Letha attended school in Oklahoma, finishing both her formative and college years in Chickasha. She graduated from Oklahoma College for Women where she chose to major in Elementary Education. Receiving emergency certification, Letha was able to teach around the Chickasha area while she completed her studies.

Miss Talley moved to Muleshoe in August of 1948. On March 18, 1950, Letha became the bride of Alfred Patterson. Mr. Patterson expired in January of 1983.

Before retiring, Mrs. Patterson spent a total of 39 years teaching. Many who have attended school in Muleshoe remember Mrs. Patterson from the 4th grade. Letha spent all but two years of her career teaching the fourth grade. Thirty-three of those 39 years teaching were right here in Muleshoe. Mrs. Patterson believes the key to quality education is discipline. She is proud to be from the "old school" era when teachers had the ability to correct inappropriate behavior.

Mr. and Mrs. Patterson parented five children: Lionel Patterson of Muleshoe, Carl Patterson of Muleshoe, Nancy Patterson of Muleshoe, Sarah Mitchell of Michigan, and Kathleen Stroud of Muleshoe. Mrs. Patterson has four grandchildren.

Despite pain from injuries, Letha still enjoys sewing and plans to do more of it as she heals and feels better.

Mrs. Patterson is a member of the Retired Teachers Association, a statewide organization, and AARP. She attends the First Baptist Church of Muleshoe.

Although she has just recently chosen M.A.H.H.A. as her preferred home health agency, Letha says that they are "very cooperative" and have definitely treated her very well.



Letha L. Patterson

Home Care



Home is where the heart is

Affiliated with:
Lubbock Methodist Hospital Systems

24 Hour # 272-3346
Local Nurse on call 24 hours a day to offer prompt service.

Out-Of-Hospital Do Not Resuscitate Packets/ Bracelets Now Available. Call us at 272-3346 or come by 623 W. 2nd for information.

We accept Medicare, Medicaid and Private Insurance

It Is Your Right To Choose The Home Health Agency You Prefer.

To receive Home Health Services, talk with your physician or talk with hospital personnel when you are hospitalized.

PENDING SERVICES

Maria C. Espinosa, 76, of Muleshoe died, Tuesday, July 28 at her home in Muleshoe.

Services are pending with Ellis Funeral Home of Muleshoe.

Extra, Extra Photo Savings!

FREE 2nd Set!

3" ALCO Advantage Prints
OR
4" Kodak Prints

Every Tuesday & Saturday!

Daily: 9 A.M. to 8 P.M.
Sunday: Noon to 5 P.M.
1401 W. American Blvd. • Muleshoe, TX 79347

Offer available on 3" Alco Advantage Processing or 4" Kodak Premium Processing prints. 3" prints from 110, 126, disc and 35mm film. 4" prints from 35mm film only. C-41 Process only. Not available on Advanced Photo System, Panoramics or 1/2 frame 135 film. Cannot be combined with any other offer.

You're Invited to the annual

ROOSEVELT COUNTY FAIR

Entry Day — Monday, Aug. 3



August 4-8

Roosevelt County Fairgrounds, Portales, NM

TUESDAY, AUG. 4

6:30 pm Bull Riding
Special Events Arena

7-9 pm Gospel Singing
On the Slab

9 pm-1 am Dance to "Jo-Ga-Chu"
On the Slab

WEDNESDAY, AUG. 5

7 pm Square Dance
On the Slab

9 pm-1 am Dance to "Jo-Ga-Chu"
On the Slab

THURSDAY, AUG. 6

PIONEERS' DAY

6 pm CGRA Barrel Race
Special Events Arena

7-9 pm "Owsley"
Easy listening & rock on the Slab

9 pm-1 am Dance on the Slab
Music by the "Chaser"

FRIDAY, AUG. 7

10 am Fiddler's Contest
Armory

2 pm Resume Fiddler's Contest
Armory

6 pm Junior Livestock Sale
Show Arena

8 pm Ranch Rodeo
Special Events Arena

9 pm-1 am Country Dance
"Nuttin" Fancy Band On the Slab



** New Event! **

SATURDAY, AUG. 8

6:30-8:30 am Pork Chop Breakfast
\$3 per plate

9 am Kids' Kiwanis Pet Show

10 am Kid' Stick Horse Race

10:30 am Kids' Roping Contest

7 pm Billy Cathey Rope Tricks

9 pm-1 am Country Dance
"Nuttin" Fancy Band On the Slab



Jr. Livestock Shows Daily!

FREE

Entertainment Nightly
With Purchase of Gate Ticket

ADMISSION

Adults \$4
Children 3-11 \$2

Season Passes Available!



For More Information Call The
Roosevelt County Extension Office
(505) 356-4417

Subscribe Today
272-4536

ENGAGEMENTS



Collum — Brown

Mr. and Mrs. Jim Collum of Antlers, Okla., formerly of Lazbuddie, announce the engagement and upcoming marriage of their daughter, Tracie Michelle, to Brett Dewayne Brown. He is the son of Shirley Wilson of Canton, Ga. and Harry Brown of Irving. Tracie is a 1988 graduate of Antlers High School and a 1992 graduate of Southeastern Oklahoma State University. Brett is a 1983 graduate of Red Oak High School in Red Oak, Texas. The wedding is set for 3 p.m. on Aug. 15, 1998 at the Antlers Church of Christ, Antlers, Okla.

BIRTHS

DYLAN REED MILLER

Kurt and Valinda Miller of Muleshoe announce the birth of a son, Dylan Reed.

Dylan was born at 2:37 a.m. July 9, 1998 at Methodist Hospital in Lubbock. He weighed 8 lbs., 14 oz. and was 20 3/4 inches long.

Grandparents are Thomas and Pat Wright of Odessa and Mike and Pamela Miller of Muleshoe. Great grandparents are Irvin and Dorothy St. Clair of Muleshoe.



Muleshoe Cattle Market

SATURDAY, JULY 25, 1998

REPRESENTATIVE SALES

607 cattle, 201 hogs and 343 sheep & goats. Stocker & feeder cattle still on a downward trend due to dry weather & still lower prices on fat cattle. Packer cows saw a 1-2 higher trend this week.

The Muleshoe Cattle Market is brought to you each week by Muleshoe Livestock Auction, located east of Muleshoe on U.S. 84. Muleshoe Livestock conducts sales every Saturday, beginning with hogs, sheep and goats at 10 a.m. and cattle following at approximately 12 noon.

FOR INFORMATION ON SALES OR TO CONSIGN CATTLE, CALL (806) 272-4201

Seller, City	#	Type	per hd.	Wt.	CWT or PH
Lucas Aranda, Portales, NM	Brang. Bull	205 lbs.	at \$225.00
Shena Seaton, Muleshoe	Red Bull	280 lbs.	at \$86.00
Jose Robles, Hereford	Char. Bull	320 lbs.	at \$86.00
Efrain Hernandez, Portales, NM	2 Mxd. Bulls	305 lbs.	at \$83.00
Alan Jordan, Friona	Brang. Bull	340 lbs.	at \$80.00
M.C. Osborn, Friona	2 BWF Strs	365 lbs.	at \$80.00
H.G. Watson, Springlake	2 Blk. Bulls	508 lbs.	at \$65.00
Lee Jesko, Muleshoe	2 Red Strs	600 lbs.	at \$65.00
Lee Jesko, Muleshoe	3 Mxd. Strs	683 lbs.	at \$63.00
Alan James, Littlefield	3 WF Strs	715 lbs.	at \$64.25
Kim Hanlin, Littlefield	2 Blk. Bulls	715 lbs.	at \$63.00
S&K Cattle, Lubbock	4 Blk. Hfrs	260 lbs.	at \$225.00
M.C. Osborn, Friona	2 BWF Hfrs	270 lbs.	at \$220.00
Pat Newsom, Sudan	Brang. Hfr	375 lbs.	at \$68.00
Alan Jordan, Friona	4 Brang. Hfrs	345 lbs.	at \$74.00
Shena Seaton, Muleshoe	Char. Hfr	395 lbs.	at \$65.00
Jose Robles, Hereford	3 Char. Hfrs	560 lbs.	at \$67.00
Paula Nix, Olton	10 Char. Hfrs	568 lbs.	at \$67.75
Pearl Holbrook, Clovis, NM	2 Red Hfrs	613 lbs.	at \$62.50
Pearl Holbrook, Clovis, NM	Red Hfr	730 lbs.	at \$61.50
Elsie Pollard, Portales, NM	Char. Hfr	670 lbs.	at \$64.00
Ruby Spencer, New Deal	Brin. Pair		\$480.00
KP Farms, Lubbock	Roan. Pair		\$545.00
3M Cattle, Muleshoe	3 Mxd. Cows	1188 lbs.	at \$37.50
Alma Rodriguez, Bula	Char. Cow	1240 lbs.	at \$38.00
Jose Robles, Hereford	Char. Cow	1230 lbs.	at \$37.75
M.C. Osborn, Friona	WF Cow	775 lbs.	at \$34.75
Wade Wheeler, Muleshoe	Blk. Cow	1345 lbs.	at \$35.50
Jimmy Watson, Lazbuddie	Blk. Bull	1950 lbs.	at \$48.75
Ramon Rodriguez, Bula	Red Cow	1320 lbs.	at \$37.00

We'll gladly run your 90th (or above) birthday's, "1 year old" birthdays and 50th (or above) wedding anniversaries FREE OF CHARGE!

(One time free. Any further insertions are billed according to ad size)

Bring them by the Journal and we'll take care of getting your special occasions in the Journal!

Journal Classifieds

REAL ESTATE
AUTOMOBILES
HELP WANTED
GARAGE SALES

STOP & SHOP

Deadlines are 5 p.m. Monday and Thursday

Call 272-4536

Deadlines are 5 p.m. Monday and Thursday

LEGALS

REQUEST FOR BID

Muleshoe ISD will be accepting bids for a new 1998 or new 1999 3/4 ton diesel crewcab 4x2 pickup with the following equipment: A/C, power window/door locks, automatic transmission, trailer towing package, spare tire and wheel, power/tilt steering, power brakes, and AM/FM radio/cassette. Bids should be submitted to MISD Business Office, 514 West Ave. G., Muleshoe, TX 79347 by 3 p.m., August 10, 1998. "Vehicle Bid Enclosed" should be indicated on the outside of the envelope. Notice of award will be made on August 11, 1998. Delivery of vehicle must be made on or before August 17, 1998. MISD reserves the right to accept or reject any or all bids in the best interest of the District. Published in the Muleshoe and Bailey County Journal on July 26, and Muleshoe Journal on 30, 1998.

FOR SALE

1991 Chevy S-10 Blazer, 4 wheel drive, Tahoe package, 1 owner-local, 52,000 miles, excellent condition, \$8500. (505) 356-5509

Good alfalfa hay, small bales. 272-4589. 29s-8tpd

LAZBUDDIE AREA, 640 acres, 4 sprinklers, 4 wells, 400-500 gallons of water with houses or without.

CATTLE PENS, 165 acres, 1 well, house and barn, cattle pens. (806) 965-2895. 31t-10tpd

For sale, 9 foot sliding patio door. Call 272-4869, 31t-2tch

LEGALS

Notice To Creditors

Notice is hereby given that original Letters Testamentary for the Estate of J.L. BLAYLOCK, DECEASED, were issued on July 10, 1998, in Docket No. 2163, pending in the County Court of Bailey County, Texas, to: THELMA J. BLAYLOCK. The residence of the Independent Executrix is in Bailey County, Texas; the post office address is: 213 East Cedar, Muleshoe, Texas 79347. All persons having claims against this Estate which is currently being administered are required to present them within the time and in the manner prescribed by law. Dated the 27th day of July, 1998.

Gordon H. Green
Attorney for the Estate
Published in the Muleshoe Journal, July 30, 1998.

Vehicles For Sale

1993 Chevy Silverado 2500, X-cab, (3/4 ton), 139,000 miles, white exterior, tan interior, automatic transmission, 4X4, 350 c.i. engine, power windows, power locks, tilt wheel, Am-Fm stereo cassette. \$11,750

1979 Corvette black exterior, white interior, 53,000 miles, numbers match, Goodyear Eagle GT's, L-82 engine, automatic transmission, A/C, tilt and telescope, alum. wheels, Am-Fm stereo cassette, cruise control, rear defogger, power windows, power locks. \$13,950

Call (806) 272-3157 or (806) 272-4832

HELP WANTED

Collections Assistant

Assertive individual with excellent people skills. Background in collections and some accounting knowledge helpful. Bilingual preferred (English/Spanish). Contact Sharon Novak, Muleshoe Area Medical Center, 708 South First Street, Muleshoe, Texas 79347. (806) 272-4524, ext. 3297. 30t-3tch

First United Methodist

is looking for the following positions. (1) **Music Director**-This person would be in charge of three choirs, adult (Main worship choir), children's and handbells. There is the possibility of a youth choir and other creative music possibilities. (2) **Christian Education Director**-This person would be in charge of Sunday school, teacher development and establishment of small groups in the congregation. This person could also lend a hand in several ongoing studies, including Alpha Course, Beth Moore studies and (3) **Experiencing Youth Director**-This person would be in charge of Jr. High and Sr. High Youth Groups, annual mission trips, annual ski trip, oversight of the youth department of Sunday school and one-on-one contact with youth. Each of these positions would be 20 hours a week. The pay would depend on the amount of hours available. We would combine two of these into a fulltime position if someone is interested. The pay would be between \$10-12,000 for parttime and \$20-30,000 for fulltime. The pay would be dependent on qualifications and experience. Please call Brad Reeves at 272-5517 or 272-3543.

HELP WANTED

The City of Muleshoe is taking applications for a worker in the public works department. Applicants should have a good driving record. High School graduate/GED required. Applications may be picked up at City Hall, 215 South First Street, Muleshoe, Texas. The position is open until filled. The City of Muleshoe is an equal opportunity employer. 31S-2TCH

Employment Specialist

to provide on-the-job training for persons who secure supported employment. Must have valid TX driver's license and be eligible for Ctr auto insurance. High school diploma/GED required. Apply at: CPC, 2700 Yonkers, Plainview, 79072. EOE/AEE. 30t-4tch

Harvest Time

Texas Sesame/ADM is now hiring for plant positions for Fall harvest. Openings in Muleshoe, Flagg, and Springlake. HURRY, these won't last long. Call S.O.S. at 1-800-242-5369 or apply directly at Texas Sesame, 107 W. Ithaca, Muleshoe, TX. 31t-2tch

NURSES UNLIMITED, INC. needs attendants for personal care and light housekeeping. Please call Jacque, Mon.-Fri. 8 a.m.-5 p.m. 1-888-892-8512 E.O.E. 31s4tch

Wanted-Night watchman with feedlot and/or cattle experience. **Cattlemen's Feedlot**, Olton, TX (806) 285-2616. 30t-4tch

Pizza Hut now hiring servers and cooks. Please apply 2-5 pm. 31t-2tch

FRESH VEGETABLES

SWEET CORN, 1015 sweet onions, squash, cabbage and cucumbers. DVJ Farms, 202 7th st., Farwell, TX, (806) 481-9420. 28t-23tch

RENT

Mini Storage Units 8X10 or 10X12. Call (806) 227-2325 or (806) 933-4347. 30t-18tch

REAL ESTATE

For Sale, 3 bedroom, 2 bath, 2 car garage in Hite addition in Earth. Call 272-5080 nights, or (806) 986-4216 days or nights. 31s-4tch

GARAGE SALE

Lazbuddie Senior Class of '99 is having a garage sale at Jarman Seed, 801 W. American Blvd. Friday, July 31 and Saturday, Aug. 1 from noon til ???!! 30t-4tch

COURSES

DRIVING SAFETY COURSE

by Aaron C-1308-CP297
• Ticket Dismissal
• Lunch Provided
(806) 246-3642

GARAGE SALE

Large yard sale at the Light House Pentecostal Church 207 E. Ave. G. Friday and Saturday. From 10 a.m. to 5 p.m.

MISCELLANEOUS

Round Up Applications Pipe-wick mounted on high-boy 30" or 40" rows. Cotton, Milo, Soy Beans and Corn. Call Roy O'Brian, (806) 265-3247. 23t-ttc

SERVICE

Sewing and Alterations Letters on Jackets, Cheerleader suits, all sizes, prom dresses. Call 272-6764. 31t-4tch



Niemman Realty



116 E. Ave. C • George Nieman, Broker • 272-5285 or 272-5286

RICHLAND HILLS — PARK RIDGE

• Price Reduced, 3-3-1 Brick, cent. Heat, Evap. Air, built-ins, 2000' + lv. area, fenced yd., stor. bldg. MORE!! RH-2
• We have several single and multi-family lots in this area!!!!

• NICE 3-2-2 Brick, Cent. A&H, built-ins, FP, cov. patio, fenced yd. \$50's!!
• NICE 3-2-3 Brick, corner lot, Cent. A & H, built-ins, FP, 2 stor. bldgs., storm cellar, fenced yd., MORE!! \$60k!! RH-1

HIGHLAND AREA

• JUST-LISTED -NICE 2-1-2 carport Mobilehome, Cent. heat, evap. air, stove, 2 stor. bldgs., MORE!!! \$10K!! HL-2
• 3-2-2 Brick, Cent. A&H, built-ins, gas log FP, fenced yd., stor. bldg., MORE!!! Price Reduced!! HL-5

• Nicely Remodeled 3-2-1 Brick home, 2100' + lv. area, Cent. A&H, built-ins, large den w/FP, fened yd., stor. bldg. \$50's!!! HL-3
• 2-1-1 carport home, wall furnace heat, evap. air, DW, 5 fans, cov. patio, gas grill, fenced yd., MORE!!! \$25K!!!

LENAU - COUNTRY CLUB AREA

• 2-2-2 Brick Home, Cent. A&H, nice carp's, fenced yd. \$40's!!! L-4
• PRICE REDUCED 2-1-1 Carport Home, wall furnace, nice carpet, storm shelter, stor. bldg., fenced yd. \$19K!! CC-3

• 3-2-1+2 carport Brick, 2000'+Lv. area, DW, auto. sprinkler, MORE!!! L-2
• 2-1-1 Home, floor furnace, win. ref. air, fenced yd, stor. bldg., \$19,500 !! L-1

• NICE 3-2-2 CP Mobile Home and lot, Cent. A & H, built-ins, nice yd. with large pecan & fruit trees!!! CC-1

COMMERCIAL

• Established Business: Land, Bldg. & Equip., \$75K!!
• 175' x 140' tract, approx. 8500' bldg. on Main. \$35K!!!
• 56' x 140' tract, approx. 4700' bldg., \$35K!!!

• NICE R.V. STORAGE, 14' X 40' metal bldg. 12' doors, 50X140 camer lot!
• SNACK SHACK - Lot, Buildings, furniture, and fixtures!!!!
• LARIAT- 240 acres, 3 wells, underground tile, good productive land!!!!

HIGH SCHOOL

• NEWLY REMODELED 3-1-1 Home, cent. A & H, new carpet & vinyl, fenced yd., MORE !! \$30's !!! HS-2
• VERY NICE 3-1-1 Brick, Heat pump, DW, nice carpets, fenced yd., MORE!!! \$30's !!! HS-1
• NICE 2-1-1 Brick, Heat Pump, nice carpets, well insulated, storm windows & doors. \$30's!!! HS6
• VERY NICE 3 bdrm. 2 bath Brick, Cent. A&H, built-ins, nicely landscaped, fenced yd., stor. bldgs.!!! \$50's !!! HS-3

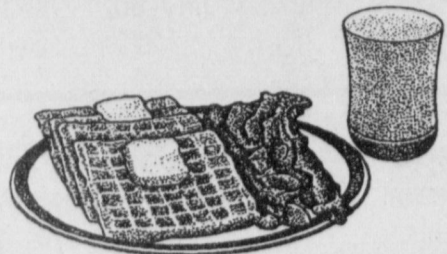
RURAL

• 3-2-2 Home on .92 acre at edge of town, Cent. Heat, evap. air, DW, storage bldg., fenced yd., & MORE !! \$30K!!
• PRICE REDUCED-NICE 3-2 home, 40 acre tract, Geo. Heat Pump, built-ins, 5" irrig. well, Hi-Pres. lines, sprinkler pipe, barn, pens, tractor & equip!!!! \$69K!!!
• W. of SUDAN-NICE 3-3-2 Brick Home, 5 acre tract on Hwy. 298, Cent. Air & Heat, built-ins, large Quonset Barn, MORE!!!! \$95K!!!

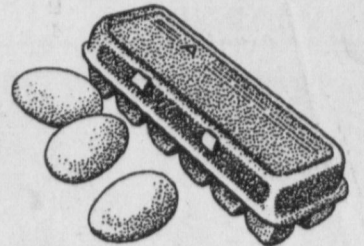
• 5 Acre tract on pavement close to town!
• LAZBUDDIE-PRICE REDUCED-NICE 3-2-2 Brick Home on pavement, 2200' lv. area, Cent. A & H, built-ins. FP, large sunroom!! \$70's!!

• FOR BID: Approx. 4,870 acres (Bailey and Lamb Co.), water rights negotiable, 54 wells (only 2 pumps and motors), approx. 33 circles w/center pivot pads, 40' X 86' tile block barn, 40' X 100' quonset barn w/elec., 20' X 30' shop, 3 sets pipe corrals, 2 sets wire corrals!!
• Approx. 108 acres on Hwy. 70, approx. 2100' office area, 16,900' of commercial bldg. w/loading dock, 3,400 warehouse!! Great Commercial-Industrial Facility!!

Call the Journal Today!
272-4536



World's Greatest Breakfast Sale... This Week At **LOWE'S**



PRICES EFFECTIVE JULY 29-AUGUST 4, 1998

MEAT

- BONE-IN
COOK'S HAM STEAK.....LB **\$2³⁹**
- PILGRIM'S PRIDE-JUMBO PACK
CHICKEN
DRUMSTICKS OR THIGHS.....LB **69¢**
- PILGRIM'S PRIDE-SMALL PACK
CHICKEN
DRUMSTICKS OR THIGHS.....LB **89¢**
- GREAT FOR SALADS
POPCORN SHRIMP.....LB **\$4⁹⁹**
- BEEF BONELESS-VALUE PACK
CHARCOAL STEAKS.....LB **\$1⁵⁹**
- BONE-IN • VALUE PACK
PORK STEAKS.....LB **\$1³⁹**
- BONE-IN • VALUE PACK
COUNTRY STYLE
PORK RIBS.....LB **\$1¹⁹**
- GREAT FOR ASADO
PORK STEW MEAT.....LB **\$1⁶⁹**
- BONE-IN
PORK BUTT ROAST.....LB **\$1²⁹**
- GREAT ON THE GRILL
BEEF BONELESS
SHORT RIBS.....LB **\$1⁹⁹**
- ECKRICH ASSORTED
SMOKED SAUSAGE.....14 TO 16 OZ. **\$1⁹⁹**
- HORMEL LINKS
LITTLE SIZZLERS.....12 OZ. **\$1¹⁹**
- HORMEL
SMOKED PORK CHOPS.....LB **\$2⁹⁹**
- ADVANCED CHICKEN FRIED
BEEF PATTIES OR FINGERS.....LB **\$1³⁹**
- LOW SALT, REGULAR OR MESQUITE
HORMEL
BLACK LABEL BACON.....1 LB PKGS. **2/^{\$3}**
- BAR S
MEAT BOLOGNA.....12 OZ. **99¢**
- BAR S
CHOPPED HAM.....10 OZ. **\$1⁶⁹**
- BAR S BONELESS
WHOLE HAMS.....5 LB **\$7⁹⁹**
- BAR S
RED FRANKS.....2 LB **\$2⁷⁹**
- BAR S JUMBO
MEAT FRANKS.....1 LB **99¢**
- BAR S
COOKED HAM.....10 OZ. **\$2³⁹**
- BAR S EXTRA LEAN
HONEY HAM.....2 LB **\$5⁴⁹**
- BAR S
BEEF BOLOGNA.....12 OZ. **\$1²⁹**
- ASSORTED FRESH-REGULAR OR HOT
JIMMY DEAN SAUSAGE.....12 TO 16 OZ. ROLL **\$1⁷⁹**
- ASSORTED FRESH-REGULAR OR HOT
JIMMY DEAN SAUSAGE.....2 LB. ROLL **\$2⁹⁹**
-
- REGULAR, HOT OR BURRITO
FRITO LAY® BEAN DIP.....9 OZ. CAN **2/^{\$3}**
- ORIGINAL OR LITE
MRS. BUTTERWORTH'S SYRUP.....24 OZ. BTL. **\$2⁸⁸**
- MRS. BUTTERWORTH'S COMPLETE
PANCAKE MIX.....32 OZ. **2/^{\$3}**
- ASSORTED
GERBER JUICE.....32 OZ. **\$1⁸⁹**
- CHILDREN'S
GERBER GRADUATES.....6 OZ. CUP **99¢**
- ASSORTED WITHOUT FRUIT
GERBER CEREAL.....8 OZ. BOX **\$1¹⁹**
- ALL TYPES
COCA-COLA, SPRITE
OR DR. PEPPER.....6 PACK-12 OZ. CANS **\$1⁵⁹**
- ALL TYPES
COCA-COLA, SPRITE
OR DR. PEPPER.....3 LITER BTL. **\$1⁷⁹**

PRODUCE

- RIPE
BANANAS.....LBS **3/^{\$1}**
- CELLO WRAPPED
ICEBERG LETTUCE.....HEAD **69¢**
- MIX OR MATCH
4 LB. BAG ORANGES/3 LB. BAG APPLES
WASHINGTON EXTRA FANCY RED DELICIOUS
APPLES OR
VALENCIA ORANGES.....MIX OR MATCH **2/^{\$3}**
- FRESH
ARTICHOKES..... **2/^{\$1}**
- FRESH
CABBAGE.....LBS **4/^{\$1}**
- FRESH
CARROTS.....2 LB. BAG **2/^{\$1}**
- GARDEN FRESH
SNO-WHITE CAULIFLOWER.....EA. **88¢**

FROZEN & DAIRY

- GLACIER GOLD
HASH BROWN PATTIES.....10 CT. **\$1¹⁹**
- MINUTE MAID ASSORTED
FROZEN
ORANGE JUICE.....10 TO 12 OZ. CAN **99¢**
- HOMESTYLE OR BUTTERMILK
EGGO WAFFLES.....11 OZ. **2/^{\$3}**
- ECKRICH TURKEY, HAM OR BOLOGNA
MAX PAK LUNCH MAKERS.....9 OZ. **2/^{\$3}**
- FRENCH TOAST, EGG/BACON/FRIES,
PANCAKE/SAUSAGE OR
EGG/SAUSAGE/HASH BROWNS
GREAT STARTS
BREAKFAST.....5.25 TO 6.2 OZ. PKG. **3/^{\$4}**
- ORIGINAL OR BLUEBERRY
AUNT JEMIMA WAFFLES.....10 OZ. **99¢**
- ASSORTED
BANQUET CREAM PIES.....14 OZ. PKG. **99¢**
- REGULAR/SHREDDED HASH
BROWNS OR O'BRIEN
ORE-IDA POTATOES.....24 TO 32 OZ. **3/^{\$5}**
- ASSORTED REGULAR OR LIGHT
YOPLAIT YOGURT.....6 OZ. CTN. **2/^{\$1}**
- LIGHT, ORIGINAL OR CHURN STYLE
COUNTRY CROCK
SHEDD'S SPREAD.....48 OZ. **2/^{\$3}**
- SHURFINE GRADE A
MEDIUM EGGS.....DOZEN **2/^{\$1}**

- VAN CAMP'S
PORK AND BEANS.....15 OZ. CAN **3/^{\$1}**
- ORIGINAL OR WITH JALAPENOS
RANCH STYLE BEANS.....15 OZ. **2/^{79¢}**
- NABISCO DOUBLE STUF OR
REGULAR/REDUCED FAT
OREO COOKIES.....20 OZ. PKG. **2/^{\$5}**
- CLOVER SPUN
SUE BEE HONEY.....16 OZ. **\$1⁹⁹**
- ASSORTED-REG. \$2.19
FRITOS® CORN CHIPS.....10 OZ. PKG. **2/^{\$3}**
- FRITO LAY®
FLAVOR OR
LUNCH VARIETY PACK.....9.5 OZ. **2/^{\$4}**
- IMPERIAL
CANE SUGAR.....4 LB. BAG **\$1⁵⁵**

HEALTH & BEAUTY

- WESTERN FAMILY
BUY ONE, GET ONE FREE SPECIAL PKG.
IBUPROFEN.....100 CT. PKG. **\$2⁹⁹**
- WESTERN FAMILY
COSMETIC PUFFS.....100 CT. PKG. **69¢**
- ASSORTED
SUAVE SHAMPOO
OR CONDITIONER.....15 OZ. BTL. **88¢**
- ASSORTED
COLGATE TOOTHPASTE..6 TO 7 OZ. TUBE **\$1⁹⁹**

- 19 OZ. RICE KRISPIES
 - 12 OZ. SPECIAL K
- KELLOGG'S CEREAL**..... **2/^{\$5}**
- 18 OZ. CORN FLAKES
 - 15 OZ. COCOA KRISPIES
 - 16 OZ. FROSTED MINI WHEATS
- KELLOGG'S CEREAL**..... **2/^{\$4}**
- WHITE
SHURFINE BATH TISSUE..9 ROLL PKG. **2/^{\$3}**
- ASSORTED SUGAR SWEETENED
KOOL AID OR COUNTRY
TIME LEMONADE.....MAKES 8 QTS. **\$1⁸⁸**
- CAMPBELL'S
CHICKEN NOODLE SOUP...10.7 OZ. CAN **59¢**
- CAMPBELL'S REGULAR OR VEGETARIAN
VEGETABLE SOUP.....10 OZ. CAN **79¢**
- CAMPBELL'S ASSORTED
FAMILY SIZE SOUP.....26 OZ. CAN **\$1³³**
- ASSORTED
V8 SPLASH
JUICE COCKTAIL.....64 OZ. BTL. **2/^{\$5}**
- PRE-PRICE \$5.99
PURINA MAINSTAY
DOG FOOD.....17.6 LB. **\$4⁵⁹**
- ASSORTED
ALPO CAT FOOD.....5.5 OZ. **4/^{\$1}**
- REGULAR, LIVER OR BEEF
BOLO DOG FOOD.....13.2 OZ. CAN **4/^{\$1}**
- HONEYSUCKLE, GARDENIA OR NEUTRAL
CARPET FRESH.....14 OZ. **99¢**
- REGULAR, VINEGAR OR NO DRIP
WINDEX
GLASS CLEANER.....32 OZ. BONUS SIZE **\$1⁹⁹**
- REGULAR, HEAVY REGULAR OR LEMON
FAULTLESS STARCH AEROSOL..22 OZ. **99¢**
- COLOMBIAN SUPREME, PERK/
REGULAR, DRIP, FRENCH ROAST FAC
OR GOURMET SUPREME
FOLGERS COFFEE.....11.5 TO 13 OZ. CAN **\$2²⁹**
- ASSORTED NABISCO
AIR CRISPS OR
SWEET CRISPERS....7 TO 8.5 OZ. PKGS. **3/^{\$5}**
- NABISCO ASSORTED HEARTY
GRAIN OR SNACKWELL'S
CEREAL BARS.....7.8 OZ. BOX **\$1⁹⁹**
- ASSORTED
V8 100%
VEGETABLE JUICE.....46 OZ. CAN **2/^{\$3}**
- FRANCO AMERICAN ASSORTED
PASTA
WITHOUT MEAT.....14.7 TO 15.2 OZ. CAN **5/^{\$3}**
- PREGO ASSORTED REGULAR,
SUPREME OR CHUNKY
SPAGHETTI SAUCE...27.7 TO 28 OZ. JAR **2/^{\$3}**
- PACE HOT, MILD OR MEDIUM
PICANTE SAUCE.....16 OZ. JAR **2/^{\$3}**

At Lowe's...
we're
BIG on
breakfast!

WESTERN MONEY
UNION TRANSFERSM
"The fastest way to send money"
Lowe's
MARKETPLACE
401 W. American Blvd.
Muleshoe 272-4585

Pay-n-Save
515 W.
American Blvd.
Muleshoe
272-4406
WE RESERVE THE RIGHT
TO LIMIT QUANTITIES
IN TEXAS