

PAGE ONE

A QUICK READ OF THE NEWS

US 84 receives touch-up

Road work along American Boulevard being done by the Texas Department of Transportation was expected to be completed by Wednesday.

"We have been preparing the road for a chip seal that will be applied in June this year," said Richard Morris, maintenance supervisor for TxDOT.

The crews were milling the highway last week. This process removes the high spots in the road. They spent Tuesday and Wednesday cleaning up after the process.

"The milling began on the west side of Muleshoe at Uvalde and US 84 and ran to the city barn on the east side of town," Morris said. "The chip seal, which is a layer of asphalt with a layer of aggregate on top, will run from Uvalde and US 84 to the Lamb/Bailey county line."

Voting results March 22

The Texas Department of Agriculture is expected to release the results of a referendum vote in the Northwest Plains Boll Weevil Eradication Zone on March 22.

Scott Heselmeyer of the TDA said there were 3,395 ballots mailed out to producers in the zone. As of Tuesday, March 16, there have been 1,924 envelopes returned to the office.

"Some of those envelopes could have more than one ballot in them," Heselmeyer said.

The deadline for returning ballots was March 12.

The TDA will hold the ballots until March 22 when they will be counted. The office allows the 10-day waiting period to make sure all ballots get turned in.

MULESHOE CITY COUNCIL

- Robert Montgomery, mayor
- Juan Chavez, District 1 councilman
- Cliff Black, District 2 councilman
- Larry Kirk, District 3 councilman
- Peanut Hawkins, District 4 councilman
- Rick L. Hanna, city manager, 272-4528



Drawing date: Saturday, March 13
Winning numbers: 05-11-28-32-36-45
Estimated jackpot: \$7 million
Winners: None
Next drawing: Wednesday, March 17
Estimated jackpot: \$10 million

On this date in history

- March 18 — First space-walk by Russian cosmonaut Alexi Leonov (1965).
- March 19 — The Massachusetts colony is founded by John Winthrop (1628).
- March 21 — Martin Luther King, Jr. begins civil rights march from Selma, Alabama to Washington, D.C. (1961).

LOCAL WEATHER

	High	low	Pre.
Friday	76	33	.30
Saturday	49	30	—
Sunday	50	26	—
Monday	39	44	—
Prec to date	2.29 inches		

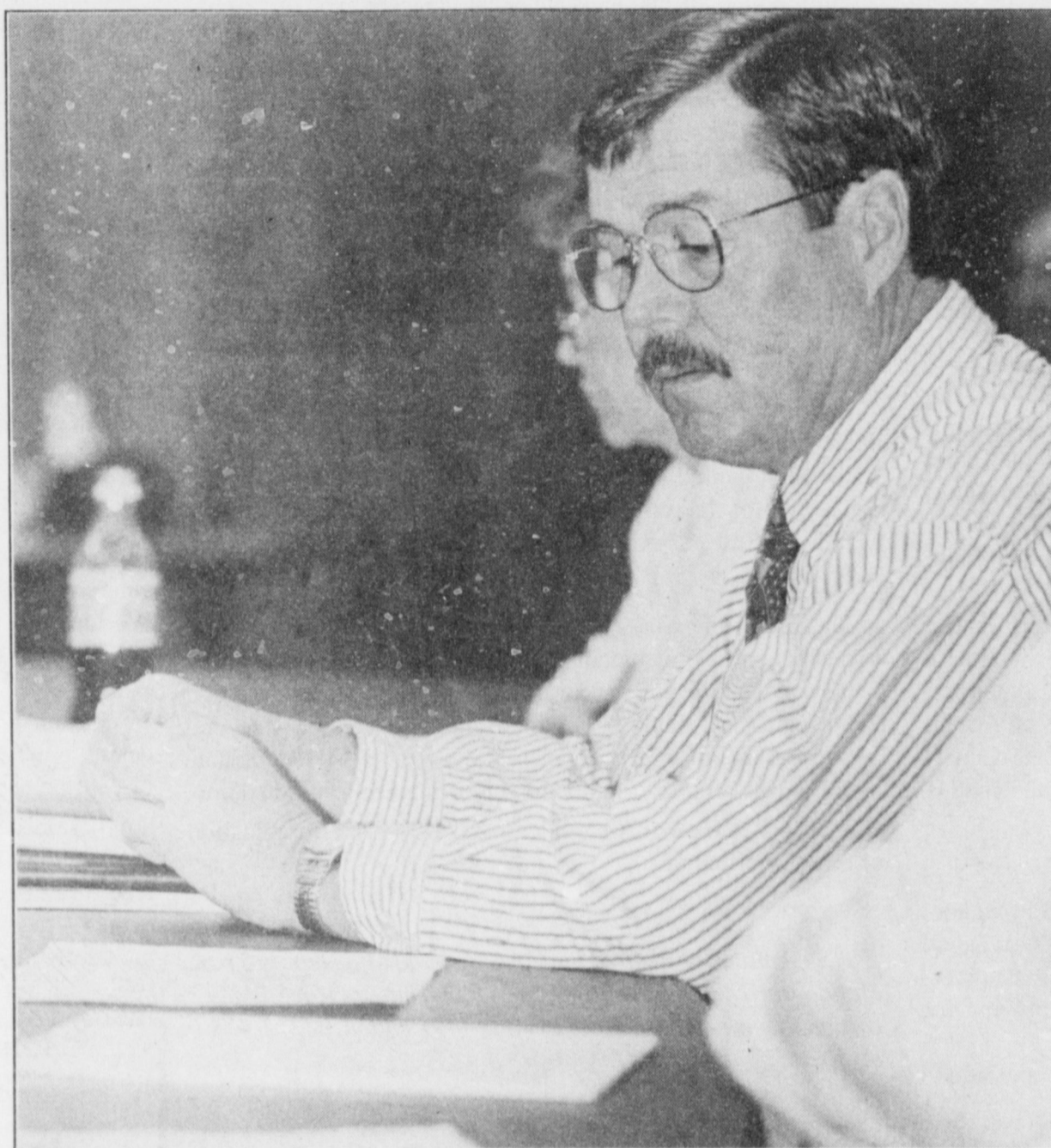
EXTENDED FORECAST

Cloudy with an increasing chance of thunderstorms through Thursday. Winds gusty from the northwest. Look for partly cloudy skies extending through Saturday. Highs in the upper 50s. Lows in the lower 30s.

Managing Editor Rick White can be reached at 272-4536 or ctyankee@fivearea.com

Missed your paper? Call carrier Melissa Flores at 272-6719 or the Journal during normal business hours

Poor reception



Mapping the future

Muleshoe city manager Rick L. Hanna checks a map detailing city-owned property along U.S. Highway during Tuesday's city council meeting.

Classic Cable grilled about service, rates

By RICK WHITE
Managing Editor

It was a promise the Muleshoe City Council and local citizens have heard before.

Classic Cable officials Tuesday pledged a renewed commitment to providing better service to the Muleshoe community during a regularly-scheduled City Council meeting. The promise came during a 45-minute tongue lashing about poor service and non-competitive rates from the likes of Muleshoe city manager Rick L. Hanna, Mayor Robert Montgomery and a handful of citizens.

Hanna invited Classic representatives to address the council, in particular about poor quality reception on two channels and the difference in rates between Muleshoe and several surrounding communities.

Hanna said during the past month the city had received numerous complaints about poor reception on channel 12, an ABC affiliate in Lubbock, and channel 28, a Spanish variety channel, which at times made them impossible to watch.

The city manager said that although the problem was recently corrected, "we feel that three to four weeks is too long to correct a problem." Adding that he expected Classic to address future problems a little more vigorously.

Acting regional manager Bill Flowers deemed the situation "a communication problem."

Several citizens also voiced their displeasure with the Kansas-based cable company, which has 1,500 cable customers in Muleshoe and serves 70 communities in the Panhandle.

"This isn't the first time we've had this problem," Patsy Chance said. "It seems like an ongoing problem. I don't think we're receiving \$35.17 worth of service."

Muleshoe resident Linda Tucker had similar concerns.

"I called almost every day about the problem and all I received were numerous excuses," Tucker said. "I think we deserve better than that."

JOURNAL PHOTO BY RICK WHITE

Citizen suggests 911 changes

By PATTI DRIVER
Journal staff writer

A proposal to enhance the 911 system in Muleshoe and surrounding areas was presented to the Muleshoe City Council at their regular monthly meeting Tuesday.

Pleasant Valley resident Patricia Angeley addressed the council about her family's recent tragedy where their home was completely destroyed by

fire. She expressed concern on the response to the 911 call she placed that day.

According to Angeley, on her second call to the 911 operator Feb. 14, she had to repeat all the details from her first call ten minutes earlier to the Muleshoe operator. She was then transferred to the Littlefield 911 operator where she had to give all pertinent details again.

"I am very thankful our family is okay, but I am concerned about what would have happened if this had occurred at night or if a child had to make the call," Angeley said.

Angeley proposed forming a committee to make a database that would be available to the 911 operator. It would contain vital information about

see 911 on page 4

see CABLE on page 3

Several more candidates file for May 1 election

Four more candidates filed for the May 1 local elections as the March 17 deadline nears.

Arline Phelps has filed for Place 4 and Tim "Buck" Campbell filed for re-election for Place 2 on the Muleshoe Area Hospital District Board.

The Muleshoe City Council has the most candidates on the ballot for May with six.

Kelly Harrison and Eugene "Peanut" Hawkins recently filed for the District 4 seat currently held by Hawkins. They join earlier filer Sharon Grant on the ballot.

The District 3 seat currently held by Larry Kirk also has three candidates running. They are Rich Magby, Jerry Hicks, and Sam Burke. Kirk has not filed for re-election.

The Muleshoe Independent School District Board of Trustees has four candidates running for the three positions.

Cindy Purdy has filed for re-election in District 2; Sergio Leal and Francis Saldana Recio have filed to run for the District 3 seat currently held by Frank Saldana; and Nick Bamert has filed for re-election for District 5.

Filing for candidacy closed at the end of business Wednesday, March 17.

ON DUTY



A sheep dog guards a flock Tuesday morning along Highway 1760 in Muleshoe

Purdy named to risk management board

AUSTIN — The Texas Association of School Boards has appointed Cindy Purdy of Muleshoe ISD to the TASB Risk Management Board of Trustees. She will serve on the board until November 2001.

Purdy is a 12-year veteran on her local board, and has held

the position of president for 10 years. Active in the South Plains School Board Association, she has held the positions of president, vice-president, and director. In addition, she has served on the TASB Board of Trustees and participated in TASB's Delegate Assembly

and Legislative Advocacy Network. Purdy earned a bachelor of science degree and an education master's from Sam Houston State University.

TASB is a nonprofit association established 50 years ago to serve local Texas school districts.

AROUND MULESHOE

Tournament to benefit MADD

The First Annual \$1000 Shoot-out for MADD will be held on March 26-28 at the YC Complex in Denver City. The tournament is for class D and under.

The entry fee is \$150. Participation is limited to the first 18 paid teams. First place team will receive \$1000. For more information call Brent at 799-4894 or Chuck at 791-5708.

SPCAA holds election

The South Plains Community Action Association, Inc. will hold an election the week of March 30, 1999 to elect one alternate for the Target (Client) Sector to the SPCAA Board of Directors representing Bailey County.

Persons wishing to file for a place on the ballot may contact Janie Posadas or Leonor Daniel at the Bailey County Community Action Center at 804 W. American Blvd. in Muleshoe or by calling 272-7537. The filing deadline is 5 p.m. Wednesday, March 24.

Voting will be from 8 a.m. until 5 p.m. beginning Tuesday, March 30 and run through Friday, April 2 at the Bailey County Community Action Center.

Babe Ruth baseball registration

The Muleshoe Area Babe Ruth Baseball League will hold registration on Monday, March 22 from 6-8 p.m. in the Bailey County Electric Cooperative located at 305 E. Ave B in Muleshoe. Registration is open to players (male or female) who will be 13-15 years of age as of Aug. 1, 1999 and live in the Muleshoe, Lazbuddie, Earth and Sudan areas.

The entry fee is \$35. A certified copy of the birth certificate is required at the time of registration. Registration at this time is critical in order to determine teams and schedules. Other area teams include Littlefield, Levelland, Morton and possibly Friona. There will be another registration on Monday, March 29 from 6-8 p.m. at the same location. For more information, call David B. Marricle at 272-4863 after 5 p.m.

Financial aid seminar

The Jennyslippers will sponsor the Annual High School Students/Parents seminar on Monday, March 22, 1999 at 7 p.m. in the Muleshoe High School cafeteria. Area college and university representatives will present information on applying for financial aid to attend college.

The seminar is open to all high school students and adults interested.

Certified Nurse aide course scheduled

Openings are available in an 80-hour course in Certified Nurse Aide scheduled for March 29 through May 10 at South Plains College in Levelland.

The course covers skills necessary to work in long-term care, home health or hospital environments.

Classroom instruction will be given from 5:30-9:30 p.m. on Mondays, Wednesdays and Thursdays. Clinical instruction will be given 8 a.m.-5 p.m. on three Saturdays, to be arranged.

Tuition is \$250, and the state exam fee is \$64.75.

Students must provide proof of immunization for MMR, tetanus and have a current TB test prior to enrolling in the course. Registration is limited to the first 16 students and will be taken up to March 29. Registration materials may be obtained by contacting the SPC Office of Continuing and Distance Education. Call (806) 894-9611, ext. 2341 for more information.

Local church sponsors women's retreat

First United Methodist Church of Muleshoe will be sponsoring an overnight women's retreat from 5 p.m. Friday, March 26 to 3 p.m. Saturday, March 27 at the Amherst Retreat Center in Amherst.

The featured speaker for the event is Amy Black. She is a dedicated christian, accomplished speaker and wife of the pastor of the First United Methodist Church in Lamesa.

The fee for the retreat is \$35 and the registration deadline is March 16. Call 272-5517 to register or to get more information.

Muleshoe CTA offering scholarships

The Muleshoe Classroom Teachers Association is offering two scholarships to students pursuing a career in education. A \$300 scholarship will be awarded to a 1999 Muleshoe High School graduate planning on majoring in education. A second \$300 scholarship will be available to a former MHS graduate classified as a college junior or senior majoring in education.

Contact Gayla Gear or Alice Liles at 272-7303 for an application or more information.

The deadline for items to appear in Around Muleshoe is 5 p.m. Monday for Thursday's edition and 5 p.m. Thursday for Sunday's edition. Items can be mailed (PO Box 449), called in (272-4536) or faxed (272-3567).

Vietnam vet counseling deadline approaching

January 1, 2000, signals an important cutoff date for Vietnam era veterans seeking assistance at one of 206 Vet Centers nationwide. Vet Centers offer readjustment counseling for combat veterans as a primary part of their mission.

Public Law 104-262 passed in October 1996, phases out Vet Center eligibility, effective Jan. 1, for Vietnam era veterans who did not serve in the war zone (era is 5 Aug. 1964 to 7 May 1975). Era veterans who seek help before Jan. 1 can continue counseling after the deadline. Phase out of eligibility on Jan. 1, 2000, affects only Vietnam era veterans who did not serve in the war zone and who have never used Vet Center services.

Vietnam combat veterans and all existing Vet Center clients remain eligible, along with combat theater veterans from World War II, the Korean War, and all post-Vietnam combat zones.

Vietnam era veterans who desire assistance should visit or call the nearest Vet Center now. Trained staff, many who are veterans themselves, are ready to assist and answer questions. Vet Center services include: readjustment counseling, job counseling and

placement, referral for benefits assistance, group readjustment counseling, marital and family counseling, substance abuse information and referral, sexual trauma counseling and referral (all veterans regardless of era or war zone service), and community education and liaison with community agencies

Funcare Daycare
"Come join the fun!"

Skilled care for
INFANTS & UP
7:30 a.m. to 5:30 p.m.
Monday-Friday
All meals provided.

Contact
Angela Lutz
705 W. Ave. J
Muleshoe
272-5891

Call or come by any time!
Trained Child Care Provider
First Aid & CPR certified

Muleshoe Journal USPS 367820
Established February 23, 1924. Published by Triple S Publishing, Inc.
Every Thursday at 304 W. Second, Box 449, Muleshoe, TX 79347.
Second Class Postage paid at Muleshoe, TX.
POSTMASTER: Send address changes to the Bailey County Journal, P.O. Box 449, Muleshoe, TX 79347.

We are qualified members of:
Panhandle Press Association, National Newspaper Association,
West Texas Press Association and Texas Press Association

WEST TEXAS PRESS ASSOCIATION

PPA
Panhandle Press Association

TA
TEXAS PRESS ASSOCIATION
MEMBER 1999

Scot Stinnett, Publisher
Lisa Stinnett, Vice-President/Comptroller
Rick White, Editor
Mari Guadaluca, Classifieds
Leah Bell, Advertising

SUBSCRIPTIONS: Muleshoe Journal and Bailey County Journal
By Carrier Yearly - \$22.00
Bailey County - by mail - \$24.00
Elsewhere - \$26.00
Advertising Rate Cards on Application

Advertisers should check their ad the first day of insertion. The Journals will not be liable for failure to publish an ad or for a typographical error or errors in publications except to the extent of the cost of the ad for the first day of insertion. Adjustment for errors will be limited to the cost of that portion of the ad where the error occurred.

Cardiovascular disease top killer

AUSTIN — On an average day in Texas 156 residents die from cardiovascular disease, according to data released by the American Heart Association (AHA), Texas Affiliate. The AHA compiled these statistics using 1997 mortality information recently released from the Texas Department of Health.

Cardiovascular disease (CVD) remains the number one killer in Texas, claiming the lives of 57,050 people in 1997 (40 percent of the 142,569 Texas residents that died). That translates into two of every five deaths. As a comparison, in the same year cancer was the state's second leading cause of death, claiming 32,144 lives. Accidents accounted for 7,150 deaths and 1,196 people died of HIV infection in 1997.

Nationally, statistics show that from 1986 to 1996 the number of deaths from cardiovascular disease has declined only two percent. One reason for this small decline is that the total U.S. population, and particularly the population of middle-aged and older people, is increasing. Another reason is that recent advances in medical treatment have allowed more people to survive previously fatal cardiovascular events, and now these people are dying of subsequent cardiovascular illnesses.

The mission of the AHA is to reduce disability and death

from cardiovascular diseases and stroke. To accomplish this, the association concentrates its efforts in four areas: education, community service programs, research and revenue generation. Last year the Texas Affiliate reached over five million people in Texas with interactive programs and awarded over \$7.4 million in research funding in Texas.

To reduce your risk of heart

attack and stroke, the AHA recommends having your blood pressure checked regularly, not smoking, eating nutritious foods in moderate amounts, having regular medical check-ups, and exercising. If you feel that you might be one of the 60 million people in the United States who has some form of cardiovascular disease, please call your local American Heart Association office for more

information, or call 1-800-AHA-USA1.

A non-profit health organization funded by individual and corporate donations, the American Heart Association, Texas Affiliate is the state's largest voluntary health organization dedicated to reducing disability and death from heart and blood vessel diseases.

ALL OFFERS WHILE SUPPLIES LAST.

ALLways
Open, Fast & Friendly
Effective Dates: March 17-30, 1999

Store #34
312 W. American Blvd.
272-4862 • Muleshoe

PEPSI
6 pk. 12 oz. cans \$1.69
3 liter \$1.59

PEPSI
Lana's Pork or Southwest
Egg Rolls
SPECIAL! 2 \$1 FOR 1

MADE FRESH
2 Red Chile Burritos & a Tallsup
Chuck Wagon \$1.99

Sausage Biscuit/Egg/Cheese Hashbrown and a 12 oz. Coffee
\$1.99

All Flavors Lay's® or Wavy Reg. \$1.49 or Deli Lay's® Reg. \$1.39
Potato Chips SPECIAL! 99¢

Blue Bunny Vanilla or Variety
Champ! Cones SPECIAL! \$1.49

Canadian Valley
Chopped Ham SPECIAL! 2 \$1.29 for 1

Allsup's
Sandwich Bread or 79¢ ea.

Shurfine
Granulated Sugar SPECIAL! \$1.59

Allsup's 30WT Non Detergent
Motor Oil SPECIAL! 89¢

Allsup's Light, Whole or Shurfine 2%
Milk SPECIAL! \$2.19 Per Gal.

FITTI DIAPERS
small, med. or lg.
\$5.19

SUNNY VANILLA CREME COOKIES
12 oz. pkg.
79¢

CARNATION MILK
12 oz. can
79¢

BUY WISE PAPER TOWELS
roll
49¢

BUY 12 GALLONS OF MILK GET ONE FREE
PLUS... You Get A Chance To Win FREE Milk For A Year!

TAX FILING DEADLINE
MAY 15

NWS expects below average rain in spring

Some much-needed precipitation fell across most of the 15 county High Plains Underground Water Conservation District No. 1 service area in January and February 1999, according to rain gauge readings taken at more than 350 soil moisture sites.

"Total precipitation recorded in the rain gauge network for these two months ranged from less than 0.5 inches in Bailey, Cochran, Deaf Smith, and Parmer counties to 2.5 inches in portions of Crosby and Floyd counties," said Water District Agriculturist Becky Britten.

Most of the moisture occurred in January 1999 when National Weather Service forecast offices in Amarillo and Lubbock officially recorded 2.67 inches of precipitation and 1.35 inches, respectively. Both stations received only trace precipitation in February.

District personnel read rain gauges to obtain data for the annual pre-plant soil moisture survey and the precipitation enhancement program. The rain gauge network provides important information to help District personnel determine how much precipitation actually reaches the ground as storm systems move across the area.

Although people are tired of hearing about it, local National Weather Service officials say the El Nino weather phenomenon (now La Nina) is still an important weather event impacting the Texas High Plains region.

"The waters of the Pacific coast that were once warm with the El Nino phenomenon have now cooled as a result of La Nina. This affects weather patterns and is causing the mild winter that we are currently experiencing" said Walter R. "Andy" Anderson of the Lubbock National Weather Service office.

Anderson said a strong La Nina pattern usually means limited spring precipitation. "We are looking at above-normal temperatures and below-average precipitation through the spring with a chance to return to normal conditions later in the summer as the La Nina phenomenon decreases," he said.



Gray area

Tommy Gray was among a Texas Department of Public Transportation work crew cleaning up along American Boulevard Tuesday morning.

CABLE

from page 1

Excuses given by service operators included interference from oil wells (of which there are none in Bailey County) and the city water pumps. The problem turned out to be faulty equipment.

Muleshoe's rate compared to those of neighboring communities, namely Friona and Bovina, was also a sticky issue.

The controversy was sparked by an ad in a Feb. 12 edition of the Friona Star in which Classic advertised rates for their "standard basic" cable package were being slashed from \$25.95 to \$19.95 (without tax).

With a copy of the ad in hand, Hanna asked the cable company's acting regional manager Bill Flowers to explain the discrepancy. Muleshoe's rate for "standard basic" is \$31.25, including a \$2.40 increase as of Feb. 1. With tax, it goes up to \$35.17.

Flowers said Muleshoe's rates were standard within the other communities Classic served. He said the rates in Friona and Bovina were competition driven.

"In Friona, we're doing something that we're not doing anywhere else in the company," Flowers said. "It's a situation in which we were trying to stop a huge subscriber loss."

To which Hanna responded: "So you're saying that if we had competition here our rates would be lower."

Flowers conceded that Hanna's statement basically rang true, called the Friona/Bovina situation unique, and didn't feel it was something the company would do again.

With the Feb. 1 increase, Classic added two more chan-

nels to the basic cable package in Muleshoe, Home & Garden and VH1. Flowers admitted adding the two channels was a way of "softening the fact that the rates we're going up."

Hanna said he is concerned that citizens on a fixed or low income would not be able to afford cable, often their only source of entertainment.

An audience member pointed out that a cable package is available for low-income residents (channels 2-13 for \$15.95) which came as a surprise to Hanna and several others. The income-based rate is available to subscribers with a yearly income of less than \$14,000. Proof of income must be shown to receive the special rate.

Wrapping up the discussion, Flowers pledged that Classic is

willing to do whatever it has to do to be part of the community and that the company plans to upgrade the system this summer.

Choosing the Right Insecticide for Corn

There are many factors that can have an impact on corn yields in our area. Often, the most



Connie Banks
Zeneca Ag Products

troubling factors are natural events, such as insect infestations both at the seedling and mature stages.

To avoid insect problems in seedling corn, use a

soil-applied insecticide at planting. The ideal soil insecticide should:

- provide excellent control of damaging insects
- rank low in toxicity to the environment, so it's low risk to humans, birds and earthworms
- have low solubility and soil mobility for reduced leaching or groundwater contamination
- be compatible with herbicides
- be easy to handle.

At planting time, FORCE® 3G insecticide is one of the best granular products to control cutworms, white grubs, wireworms, corn rootworms, seedcorn maggots and seedcorn beetles.

As corn matures, scout for corn earworms and armyworms. The most common recommendation for controlling cutworms, chinch bugs and other foliar-feeding insects in mature corn is to use a post-emergence insecticide, such as WARRIOR® T. This unique quick-release, encapsulated formulation controls infestations of damaging insects that could lower yields and quality of field, pop, seed or sweet corn.

Warrior T controls a number of ear and foliar feeding pests, including fall armyworm, corn earworm and European corn borer. The Zeon™ technology found in Warrior T makes sure that the active ingredient is released upon field contact for a quick knockdown and long residual control that can lead to fewer applications.

For more information about Force 3G and Warrior T insecticides from Zeneca Ag Products, contact your local ag chem dealer.

©1999 Zeneca Inc. Zeneca Ag Products is a business unit of Zeneca Inc. FORCE® and WARRIOR® are trademarks of a Zeneca Group Company Force 3G and Warrior T are registered use pesticides. Pests: Safety Always read and follow label directions.

GOOD DEALS

BATTERIES

- ▶ StrongBox™—U1, 165 CCA *Sale Ends April 3*
- ▶ Hibernator—U1R, 235 CCA *April 3*

STRONGBOX™ BATTERY
\$19.95



HIBERNATOR BATTERY
\$29.95

CHAIN & CABLE LUBRICANT

- ▶ Use as penetrating oil to loosen nuts, bolts, and rusted threads
- ▶ Recommended to protect and lubricate exposed chains

GOOD BUY \$2.99



LINCH PINS

- ▶ Size — 7/16 in.
- ▶ Made of forged carbon steel
- ▶ Zinc-plated, spring steel snap rings



GOOD BUY 10 \$1.00 for

Sale Ends April 3

TY23017

TY21752

Sale Ends April 3

TY22087

Sale Ends April 3



Dent & Co.

2800 W. American Blvd. • Muleshoe Location • 272-4296

Muleshoe Sports — Too HOT To Handle!

BLACK EYE PEAS

Pay Less For Processing Your Open Market Peas

OPEN MARKET OR FIRM CONTRACTS AVAILABLE

Local Delivery

Call Us For Details...

PEAS, INC. Pleasanton, TX
830-569-2140 or 569-6331

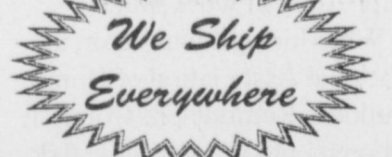


1-800-658-6378

106 E. American Blvd.

Muleshoe, Texas

And Country Junction



Just Arrived
Over 5,000 Pairs of New Stock Tony Lama Boots!

Country Junction has over a DOZEN new Soap by the Slice fragrances! **STOP & SMELL!**



Prices Good March 15th-31st

Tony Lama

First Line

BLACK or CRAZY HORSE ROPERS

\$49

UNBELIEVABLE PRICES!

only

First Line
FULL QUILL OSTRICH BOOTS
\$279

CAIMEN ALLIGATOR
\$279

All STRAW HATS... **20% OFF**

BAILEY HATS

- 5X-7X Felt **\$99**
- 10X Felt..... **\$149**
- 20X Felt..... **\$229**
- 30X Felt..... **\$255**

COLOR OF YOUR CHOICE!

Thank You

In memory of my late husband Gilbert Vela, Sr., who was a great father, brother, son and friend, we would like to give a special thanks to the staff and students of MHS, all local businesses, friends and family that have helped us and our family get through this rough time.

No one knows how much all of the cards, flowers, visits and tremendous amounts of food have meant to us.

With everyone's help, kindness and generous hearts, it will be easier to get on with our lives and to only look toward the future.

We appreciate everything each of you has done for us. This is truly a great community, and we are very proud to be a part of it.

The Vela & Carrion Families



Read It First In The Journal

Muleshoe Little League announces changes

The Muleshoe Little League Board of Directors has changed its format concerning T-Ball League, Minor and Major League play.

In the T-Ball league, out of town teams will be invited to participate as they were last year. The same Non-Local Team Sponsor Agreement that was in effect last year will be required for this year's season. Out of town teams will only be allowed to have the same number of players on their team as the average number of players on the local teams. This year's T-Ball age restrictions require children to be in kindergarten, first or second grades to play.

Minor League play will remain basically the same as in the past with only a few minor changes. All 10 year old play-

Muleshoe Little League sign-up

Where: Watson Junior High gym
When: Thursday, March 25
Time: 6:30 to 8 p.m.

ers will be subject to and invited to the Major League Draft. During the draft of all Minor League players, only the designated team manager's child or children will be protected in the draft. Assistant coaches will be picked after the draft takes place.

All team managers and coaches will be approved by the Board of Directors.

In both the Minor and Major League Divisions, the board voted not to invite out of town teams to play in these leagues. Although we will do every-

thing possible to invite and recruit players from the neighboring communities to sign up and play in Minor and Major League as a part of our local teams.

This year, all Major League players will be re-drafted to create new teams and all team managers and coaches will be approved by the Board of Directors. The team manager's children will be the only protected players from the draft just like in the Minor League.

The first player sign-up will be from 6:30 to 8 p.m. on Thurs-

day March 25 at the junior high gym. Children who are presently enrolled in kindergarten thru 12 years of age on or before July 31, 1999 are eligible to participate.

Sign up costs are still \$25 per player in every division. A certified birth certificate will be required as proof of age at the time of registration.

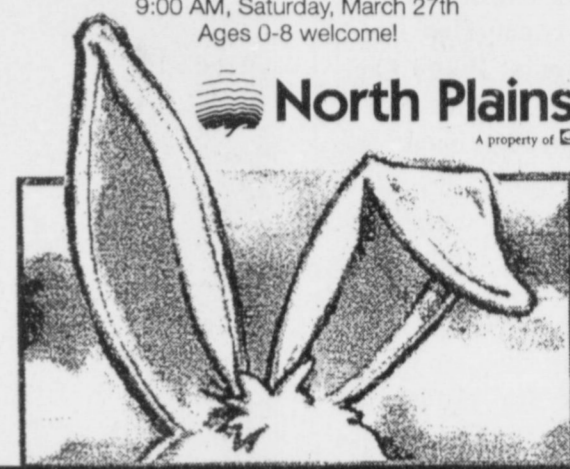
If you are interested in coaching a T-Ball team, please contact Leslie Kerby, Minor Leaguers can call Carroll Precure, and Major Leaguers call Curby Brantley.

If you have questions about rule changes or want to sign-up to be a coach, contact Cliff Black.

The only comes once every year!

The Easter Bunny arrives on March 20th at 2:00 PM!
 Hop on by and take home a picture of your visit.
 Every child receives a free gift.

Ears other great news...
 Enjoy a free breakfast with the Easter Bunny
 9:00 AM, Saturday, March 27th
 Ages 0-8 welcome!



North Plains Mall
 A property of JJP Realty, Inc.

Letters to the Editor make a difference.
 PO Box 449, Muleshoe, TX 79347

Expert offers home repair tips

COLLEGE STATION — As spring approaches, many homeowners may be getting the urge to remodel.

Others are scurrying to find contractors to repair damaged rooftops, paneling, mobile homes and glass windows and doors due to recent hailstorms and floods. But be careful who you hire, warns a housing expert with the Texas Agricultural Extension Service.

"Don't consider an advertisement in the paper, the Yellow Pages, on TV or the radio as an indication of the quality of a contractor's work," advises Extension specialist Janie Harris. "Your best bet is a reality check from those in the know: friends, neighbors or co-workers who have had improvement work done."

When hiring a contractor, the National Association of Home Builders Remodelers Council recommends an interview. Ask the following questions: how long has the contractor been in business, how many projects like yours have they completed in the last year, does your project require a permit, what type of insurance does the contractor carry and will a subcontractor be used?

Get at least three references with names, addresses and

phone numbers of previous clients with projects like yours. Check them. If a subcontractor is going to be used, protect yourself by asking the contractor and every subcontractor and supplier for a lien release or lien waiver.

Call the local Better Business Bureau to see if any complaints have been filed against the contractor before making your final decision.

Next, Harris says, get a written contract. Before you sign the contract, make sure it contains the contractor's name, address and phone number. It should also contain the payment schedule for the contractor, subcontractor and suppliers; an estimated start and completion date; the contractor's obligation to obtain all necessary permits; how charge orders will be handled; a detailed list of all materials (including color, model, size, brand name and product); warranties and warranter information; promises that have been made; and a written statement of your right to cancel the contract within three business days if you signed it at any other place than the contractor's permanent business place.

"The contractor must give

you two copies of a cancellation form — one to keep and one to send back to the company — and a copy of your contract or receipt. The contract or receipt must be dated, show the name and address of the contractor and explain your rights to cancel," Harris explains.

Keep records. Keep all paperwork related to your project. Keep a log of all phone calls, conversations and activities. You might even want to take photographs as the job progresses.

"These records are especially important if you have problems with the project — during or after construction," Harris recommends.

Once the job is completed, the National Association of Consumer Agency Administrators recommends you check everything on your list of requirements before making that final payment.

Make sure all the work meets the standard spelled out in the contract. Get all warranty information and proof that all subcontractors and suppliers have been paid. Make sure the job site is cleaned and clear of all materials and equipment and you have inspected and approved the completed work.

¡PRESTAMOS!
LOANS!
¡PRESTAMOS!

\$100 to \$446
ALL APPLICATIONS ACCEPTED
 Ask for Norma or Yolanda

Open:
 Mon. thru Thurs.—9 am to 5 pm
 Fri.—9 am to 6 pm

272-3673
 Phone Applications Welcome

Continental Credit
 206 South Main Street
 Muleshoe, TX



ENTRY DEADLINE IS APRIL 6, 1999 AT 5 P.M.

ENTER TODAY!
 The Muleshoe Journal's
5th Annual
Cutest Baby Contest

Enter any child **born in 1998** who is special to you—children, grandchildren, nieces, nephews, friends, etc.



Kaitlin Hope Foster
 1997 Cutest Baby Contest Winner

Winner Will Receive a \$50 Savings Bond For Being Selected 1998's Cutest Baby!

This year's contestants will appear in the April 11th issue of the Bailey County Journal. A panel of unbiased judges will pick the most attractive picture to be the 1998 Cutest Baby. All baby pictures will be printed. Babies need not be born in this area.

Bring your favorite child's photo along with \$10 to the Muleshoe Journal office at 304 W. 2nd St., Monday-Friday between 8:30 a.m. and 5 p.m. or mail the coupon below with your child's photo and \$10 to Cutest Baby 1998, c/o Muleshoe Journal, P.O. Box 449, Muleshoe, Texas 79347. You may pick up your baby's picture during office hours after Monday, April 12, 1999. Arrangements must be made to return photos by mail!

Please provide phone number or address (it will not be published) so that we may contact you if we need additional information.

Baby's Name: _____
Date of Birth: _____
Weight at Birth: _____
Length at Birth: _____
Place of Birth: _____
Mom & Dad's Name: _____
Grandparent's Name: _____

ENTRY DEADLINE IS APRIL 6, 1999 AT 5 P.M.

911

from page 1

residents in the surrounding area that could aid response teams in locating and sending the right people to a specific location. This could also reduce response time by getting the correct department from the right area to the scene.

"I hope that we can learn something from this tragedy," Angeley said. "Next time we might not be as fortunate."

Mayor Robert Montgomery thanked Mrs. Angeley for her time and effort and said the council would take the matter under advisement.

In other business, police chief Don Carter asked the council to approve the purchase of radios for each of the seven officers in the police department. He went on to explain that radios purchased approximately 18 months ago have several design flaws that make them unsuitable for law enforcement use. He said the department had several incidents where officers on duty were not able to be reached by the dispatcher which caused delays in response to calls.

The new radios and carrying cases will cost approximately \$4,600. The council approved this request unanimously. The old radios will go to the public works department where they can be utilized.

The Council accepted the deed for the property commonly known as the Mulelot contingent upon title and environmental impact studies. The parcel of land is being donated to the City of Muleshoe by The Burlington Northern and Santa Fe Railway and will be used by the Chamber of Commerce and Agriculture to build a visitor center.

The council also authorized city manager Rick L. Hanna to complete the application process to the Texas Natural Resource Conservation Commission for State-provided Brownfields Site Assessments.

The council passed two resolutions Tuesday.

The first involved endorsing a letter asking the Texas Department of Transportation to conduct a feasibility study to install left turn signals for north/south traffic at the intersection

of US 84 and State Hwy 214.

In the second resolution, the council voted to adopt an early retirement policy for city employees that chose to retire before the age of 65. This policy will allow early retirees to continue their group health, life, dental and vision insurance after retirement by paying for the coverage themselves.

Deborah Noble and Rebecca Villarreal were appointed as the election judge and alternate, respectively, for the City General Election to be held on May 1, 1999. Wanda Hooten was appointed to serve another three-year term on the Muleshoe Economic Development Corporation Board beginning April 1, 1999.

The council will hold a special meeting at 8 a.m. on March 25 in council chambers.

The meeting is being called to pass a resolution to apply for a grant through the Texas Community Development Program to upgrade water service to parts of the city. The council is waiting for cost projections from engineers to complete the resolution information.

The insurance adjuster

The insurance adjuster from Othello asked Lorrie to repeat the story. She wasn't sure if he was laughing or crying.

"Well," she began again, "Like I said, the cow got out. A second calf heifer, no horns, good size. She was in the neighbor's little field.

"Scott, my husband... it was his pet truck, chrome wheel rims, wash it every week, tachometer and pinetree air freshener. You know what I mean. Anyway he said bring the cow halter. It was an old show halter with a chain snap. And bring a leadrope, which we didn't have so I grabbed my 16 ft. lunge line, I'm breakin' a colt, and a bucket of grain.

"So we went to the neighbors and called the cow, who was suspicious of a trap... for good reason 'cause Daniel Boone, here, had tied a loop in the end of the lunge line and laid it out on the ground, then set the bucket inside the circle.

"It worked! While she was eating I slid the loop up over her head. When Scott pulled it tightly she took off like



BAXTER BLACK
ON THE EDGE OF COMMON SENSE

scalded dog and drug about six foot of that flat lunge line through Tarzan's hands before he let it go. Nylon ya know.

"It took us three more tries before he managed to dally on a post down in the soggy corner of the field.

"We put the halter on her, then he promptly announced 'We can lead her back with the halter and lunge line' Right, buffalo breath. She gave him a severe whiplash but you don't cover that, do ya?"

"He managed to dally her one more time after a thorough draggin' through the mud. Then sent me back to the house for his precious pickup.

"I backed the four wheel drive up to the cow where it immediately got stuck up to the white writing. An hour later we are back on higher ground

and he ties the lunge line to the bumper. I drove, he walked and she balked.

"She stretched the length of the lunge line then whipped around to the left and smashed a big dent right behind the drivers side door. Three times she did it before he got the halter snubbed to the trailer ball. It held till the pickup was five feet from the gate. The chain snap broke.

"The cow was pullin back hard - The lunge line was chokin' her.

'Quick', says my commanding officer, Run home and get my pocket knife and the dog!

"Need I say more. I came running back to find the right side panel now dented in and the tailgate creased down the center.

"He cut the cow loose and the dog took her home.

"So, that's the story. The pickup's a real mess. You got any idea what it will cost to fix it? Excuse me, are you alright? Scott, come help me get this insurance man up off his knees."

A&M Prof says low-level exercise benefits helpful

COLLEGE STATION — Raking leaves and mowing the yard may be the most exercise many couch potatoes get, but it may be better than previously believed.

Recent studies show that even low to moderate exercise, such as yard work or climbing the stairs, results in significant drops in blood pressure and body fat and improved overall fitness. The study, conducted by the Cooper Institute for Aerobic Research, tracked the movements of 235 people over a 2-year period and showed that a "lifestyle" program involving everyday activities was almost as beneficial as more intense exercise programs.

The message, says Dr. Jack Wilmore, head of health and kinesiology at Texas A&M University, is clear: Some exercise is better than none at all.

"Too many people do nothing. Raking leaves is better than just sitting," says Wilmore.

"The point is, exercise and motion are good for you. They have proven health benefits. There is no benefit at all by doing nothing."

The study, Wilmore believes, shows that it is easier to exercise than most people think. Everyday activities can have positive results.

"Just by taking the stairs instead of the elevator is a start," the Texas A&M professor says.

Jewelry & WATCH REPAIR

- 7 Day Ring Sizing & Repairs
- Remounting & Diamond Setting
- Full Line Watch Batteries
- Neck Chains Repaired
- Jewelry Appraised For Insurance

Faster Service

Holmberg Jewelry
1941 38 YEARS 1999

1908 N. Prince, Clovis
762-9376 (Across from K-Mart)

Corn smut, aflatoxin by-product of drought

LUBBOCK — During the rainfall-short 1998 growing season, some South Plains corn growers saw common smut and aflatoxin appear in their crops.

Many are wondering how they can avoid a subsequent infection of these fungi this year.

"It all boils down to drought stress," says Dr. Harold Kaufman, Texas Agricultural Extension Service plant pathologist based in Lubbock. "When we catch enough rainfall, these fungal pathogens won't do much damage."

Smut is a fungal pathogen which turns corn kernels and occasionally entire ears into a swollen mass of grayish-black, powdery fungal spores.

"Common smut is an air-borne pathogen. Most often, it infects ears through the silk and works its way down the ear, destroying kernels as it goes," Kaufman said. "Only in severe cases will it destroy an entire ear."

Common smut also can infect plants through wounds on the stalk and leaves. Corn that receives high rates of nitrogen or manure fertilizer often has a higher-than-normal incidence of common smut, and young, tender plants are more infection-prone than older plants.

"Head smut, on the other hand, is a soil-borne pathogen. It works its way up the inside of an infected plant and typically destroys the ear and cob from the bottom up — producing a

shriveled, tear-drop shaped ear," the plant pathologist said.

Drought stress also favors another soil-borne fungal pathogen called aflatoxin. In high concentrations, this carcinogenic toxin produced by the mold aspergillus can be poisonous to humans and animals — making infected corn, peanuts and grain sorghum potentially useless and possibly unmarketable.

Producers who suspect aflatoxin contamination should have their grain tested by the Texas Veterinary Medical Diagnostic Lab or a commercial lab. The results will dictate how the grain can be sold and used, according to U.S. Food and Drug Administration standards.

Unfortunately there isn't a preventative treatment for common smut, head smut or aflatoxin.

Even though variety resistance is about the best prevention tool available, Kaufman said producers can manage their crop to help lessen the impact of these pathogens.

"Managing for an early, healthy crop is the best defense. Plant hardy, resistant hybrids. Plant early and use realistic seeding and fertilizer rates. Try not to damage or injure plants and their roots with tillage equipment," he said. "Harvest when the grain is mature, and if necessary, harvest a little early and dry the grain down with aeration."

B U S I N E S S D I R E C T O R Y

RECIPES **OPEN** Mon.-Fri. 5 am to 2 pm
Sat. 5 am to 1 pm

Go to T.J.'s Donuts! We have a **full breakfast menu and daily lunch specials!**

Thursday—Sirloin steak, baked potato, salad, dessert & drink
Friday—Fried cod fish, hush puppies, spicy french fries, salad, toast, dessert & drink
Monday—Roast beef plate, mashed potatoes, brown gravy, English peas, dessert & drink
Tuesday—Chicken strips, cream gravy, french fries, salad, dessert & drink
Wednesday—Baked ham, yams, broccoli and rice casserole, dessert & drink

T.J.'S DONUTS
328 S. Main St. • Muleshoe • 272-3542

New Easter and Spring GIFTS & ACCESSORIES

Muleshoe Art Loft
1529 W. American Blvd. • 272-3485

JAMES CRANE TIRE CO.
107 S. Main St. • Muleshoe • 272-4594

OIL CHANGE

\$18.95

Up to 5 qts. Your choice of oil. Diesels extra

YOUR FARM Tire Resource

James Crane Tire Co. specializes in

- Brake Repair
- Alignments
- Oil Changes

\$18.95

Up to 5 qts. Your choice of oil. Diesels extra

TIRES & SERVICE CALLS FARM & PERSONAL

We special order sizes not in stock!

There's only one name to remember for all your tire needs...

GOOD YEAR
2 in Tires

JAMES CRANE TIRE COMPANY

107 S. Main St. • Muleshoe • 272-4594

THROWING YOUR MONEY AWAY ON CUT-RATE CAR INSURANCE?

Don't trust just anyone to insure your car, see me in Muleshoe:

Mark Morton Insurance

STATE FARM INSURANCE

101 S. Main St. Like a good neighbor, State Farm is there.®

272-7519 or 1-800-867-9178

State Farm Mutual Automobile Insurance Company, State Farm Indemnity Company, N.I. Home Office: Bloomington, Illinois

Muleshoe Feed Barn

* HI-YIELD LAWN FERTILIZER & WEED CONTROL

* ACCO HORSE FEED ACCO FEEDS
Putting profit within your grasp.

Plus, A Wide Variety of Other ACCO Products

* RUMENSIN & BLOAT BLOCKS

* HI-PRO PRODUCTS HIPRO
FEEDS

A full line of quality feed products

311 W. American Blvd. • 272-5626

FISH

Now is the time for Pond and Lake Stocking of Hybrid Bluegill, Florida Hybrid Bass, Channel Catfish, Fathead Minnows and Triploid Grass Carp and Black Crappie. (Permit required for the Triploid Grass Carp)

We furnish your hauling containers and guarantee live delivery.

SUPPLIES
Fish Feeders, Turtle Traps, Fish Traps, Liquid Fertilizer, Spawning Mats and Gift Certificates

DELIVERY
Thursday, Mar. 25 • 4:30-5:30 p.m. • Wiedebush & Co.
1516 W. American Blvd. Muleshoe, TX • 272-4281

To Place Your Order Call:
Dunn's Fish Farms, Inc.
(580) 777-2202 • Toll Free 1-800-433-2950
• Fax (580) 777-2899
Or contact Wiedebush & Co. in Muleshoe
Fishery consultant available. Discounts and Free Delivery are available on larger orders.

Proposal calls for open government

AUSTIN — A champion of open government and the public's right to know has emerged from the ranks of the Texas Senate.

State Sen. Jeff Wentworth, R-San Antonio, has filed a dozen bills this session requiring state, county and local governments to shape up or risk civil fines of up to \$1,000 a day, the *San Antonio Express-News* reported last week.

Proposals by Wentworth would require meetings of state agencies to be advertised online and would instruct state agencies to post a sign detailing citizens' rights to inspect and copy government records and state employees' responsibilities to provide easy access.

Brought after 18 months of testimony from more than 400 people in eight Texas cities, Wentworth's proposals would:

1. Limit the fees agencies would charge for compiling and copying documents; and
2. Allow citizens to file civil lawsuits in their county courts compelling government agencies to comply with open records requests.

"It is absolutely fundamental to our whole system of government that citizens have access to meetings where decisions are made and to memorandums and records of those decisions," said Wentworth, who chaired the



Senate Interim Committee on Public Information.

"We want to make citizens aware of their rights to these records," he told the *Express News*. "It's their money that paid for the creation of these records. They belong to them and should be available to them as needed and at minimal expense."

Calling the Internet "the wave of the future that the state must prepare for," Wentworth has proposed a committee of state and local officials charged with finding the most "useful and cost-effective" way to provide government information online.

His proposals also would:

- Make arrest warrants and search warrants public information as soon as they are executed;

- Prohibit all agencies from asking for an attorney general's opinion on whether they have to comply with an open records request, if a simi-

lar decision already has been reached;

- Allow these agencies to require requesters to pay a deposit if the records are more than five years old, fill more than 10 archive boxes or will take more than five hours to compile; and

- Exempt alternative dispute resolution agreements and economic development negotiations that include trade secrets or commercially sensitive information from the open records rules.

Jobless rate lowest in years
January unemployment, at 4.7 percent statewide, was the lowest in 19 years, the Texas Workforce Commission reported earlier this month.

"The Texas economy remains strong, providing employment opportunities to job seekers across the state," said Diane Rath, chair of the TWC.

In January, the Metropolitan Statistical Area with the lowest unemployment rate was Bryan-College Station with a rate of 1.8 percent.

Austin - San Marcos was next with 2.7 percent, followed by Lubbock at 2.9 percent and Dallas at 3.2 percent.

The highest unemployment rate was in McAllen - Edinburg - Missions at 19.6 percent, followed by Brownsville - Harlingen - San Benito at 13.8 percent, El Paso at 10.7 percent and Laredo at

10.1 percent

NAFTA exports remain high
Texas exports increased by 3 percent in 1998 to almost \$87 billion, the Texas Department of Economic Development reported last week.

Exports to Mexico last year totaled \$36.33 billion, making that nation Texas' biggest trade partner. Next highest was NAFTA partner Canada at \$10.33 billion.

Electronic equipment and components trade slowed due to declines in East Asian economies but continued to be Texas' largest export industry.

Other Capital Highlights
■ Gov George W. Bush has enlisted the help of Austin political strategist Karl Rove, who will work with the "exploratory committee" investigating the possibility of a Bush presidential race.

■ The 2,424 foreign corporations now operating in Texas are employing about 317,000 people statewide. That amounts to about 3.4 percent of the Texas work force, according to the Texas Comptroller of Public Accounts.

■ State Rep. Ron Wilson, D-Houston, has filed a bill that would transform Austin into the "District of Travis" to be overseen by the state.

Improving kids' nutrition

The food groups in greatest need of attention are fruits and vegetables, dairy products and whole grains according to Dr. Debby Demory-Luce of Baylor College of Medicine in Houston.

Busy life-styles can make ensuring the quality of children's diets very challenging. Eating on the run, skipping meals and junk-food snacking can also be a problem.

To help your children's diets improve 'study' these tips:

- Reinforce good eating habits by being a good role model. Most children need about six servings of grain-based foods, five servings of fruits and vegetables, the equivalent of three to four glasses of milk, and six ounces of meat per day.

- Make breakfast a priority. Breakfast eaters have less trouble concentrating and fewer behavior problems in school. An ideal breakfast includes some protein, a little fat, plenty of carbohydrates and a good source of calcium.

- Think smart snacks. Keep ready-to-eat vegetables and low-fat dip, fresh fruit, ready-to-eat fortified cereal, whole grain crackers, calcium-rich yogurt and fortified juices in easy reach.

• Increase the nutritional 'punch' of meals eaten at home. Add finely minced, cooked vegetables such as zucchini, carrots, and broccoli to soups, casseroles and pasta sauces and replace the water in some recipes with vegetable juice. Be sure to buy 100 percent whole grain breads.

404

RED WING SHOES
Made in U.S.A.

The Fair Store
120 Main 272-3500

J & L Enterprises Introduces
Holy Spirit Inspirations

◆◆◆◆◆

We're proud to introduce this unique Christian contemporary, inspirational CD praising God through music and song. Selections from this annotated collaboration are currently playing on KIJN-FM 92.3 in Farwell and on KNNK-FM 100.5 in Hereford.

Order your copy today by contacting:
J & L Enterprises
P.O. Box 254 • Del Valle, TX 78617
www.holyspiritinspirations.com or
jandl@freeweb.com

CD - \$10.95 Cassette - \$7.95
includes tax and shipping

Hear "True Love" the international hit #1 song on Estonia radio today!

Texas economy experiences slow, steady growth

AUSTIN — The latest economic indicators for Texas show that investors' confidence in Texas businesses remains high, but some sectors of the economy are slowing and overall economic growth during the next six months will be slow.

The latest Index of Leading Texas Economic Indicators was at 132.3 in December 1998, while the December 1998 U.S. Index of Leading Economic Indicators was at 106.5.

The December Texas 300 Stock Index reflects investors' continuing optimism about the Texas business climate. The index was at 121.7, up 20.4 percent compared to December 1997.

December retail sales rose 8.3 percent, a sign that, for most Texas retailers, Christmas 1998 was good. That increase in holiday sales came despite a continuing decline in Texas consumer confidence, which is

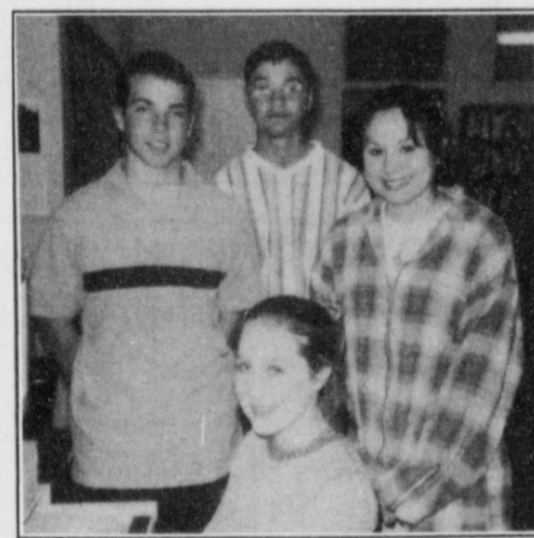
well above the national average.

Most job-related economic indicators point to slower growth in the Texas economy. New business incorporations slowed. The number of new Texas businesses grew 0.2 percent in December 1998, compared to the same period in 1997. The December 1998 Texas unemployment rate of 4.8 percent was 0.3 percent lower than December 1997.

From December 1997 to December 1998, Texas gained about 231,000 new jobs, an increase of 2.6 percent.

Lazbuddie's students of the month

Landon Parham is the 16 year old son of Terry and Celie Parham. His grandparent's are E.A. and Mini Parham and Rocky and Kay Maryfield. Landon wants to go to college to major in veterinarian science. He wants to make it to state in football or basketball. He is a Pisces born on Feb. 22. He enjoys *The Hobbit* as his best book, Jim Carey as his movie celebrity, plain milk for a snack, pizza as top menu selection, Nautica as his jeans, and cinnamon as his gum. The best thing about Lazbuddie school is the sports program. His pet peeve is bad table manners.



Lazbuddie Students of the Month
Pictured (clockwise from left) are Landon Parham, Lucas DeLeon, Veronica Mata and Katy Loudder.

quesadillas as favorite menu item. Her favorite thing about Lazbuddie school is you know everyone and everyone knows you. Her pet peeve is show-offs.

Lucas DeLeon is the 14 year old son of Tommy and Elva DeLeon. His grandparents are Gil and Lupe DeLeon. He was born Sept. 9 and his zodiac sign is Virgo. He wants to make the A honor roll every 6 weeks, and plans to go to college. He likes *The Rifle*, Chris Tucker, his mom's homemade tortillas, enchiladas, beans and rice and any kind of jeans, and Winterfresh gum. The thing about Lazbuddie school he likes most is sports. His pet peeve is teachers talking while students are trying to do work.

Katy Loudder is the 13 year old daughter of Lance and Terri Loudder. Her birthday is Oct. 16 and her sign is Libra. Her grandparents are Roxie Loudder and Bill and Idalo Fleming. Katy wants to go to college, get as many college credits in high school as possible, and get a job that pays well. She enjoys *Hatchet*, her favorite book; Tweety Bird, top cartoon character; cereal as her favorite snack; two cheese enchiladas with rice and beans as best menu item; Lucky's brand of jeans; and cinnamon Ice Breakers as gum. The thing she likes best about Lazbuddie school is the size. Her pet peeve is when people tell you they have to tell you something, and then don't tell you what it is.

Muleshoe Cattle Market
SATURDAY, MARCH 13, 1999

REPRESENTATIVE SALES
578 cattle, 60 hogs and 173 sheep & goats. Market a little softer on stocker cattle due to the wet & cold weather Friday & Saturday. Feeder cattle 1-2 lower. Pairs & Bred cows and Packer cows were steady from a week ago.

The Muleshoe Cattle Market is brought to you each week by Muleshoe Livestock Auction, located east of Muleshoe on U.S. 84. Muleshoe Livestock conducts sales every Saturday, beginning with hogs, sheep and goats at 10 a.m. and cattle following at approximately 12 noon.

FOR INFORMATION ON SALES OR TO CONSIGN CATTLE, CALL (806) 272-4201

Seller, City	#	Type	Wt.	CWT or PH
Ryan Best, Portales, NM	Hol. Str240 lbs.	at \$75.00
Lucas Aranda, Portales, NM2	Hol. Strs240 lbs.	at \$74.50
Joe Almanza, Muleshoe	BMF Bull310 lbs.	at \$85.00
Jose Borjas, Clovis, NM	Blk. Str360 lbs.	at \$83.00
Terry Hutton, Muleshoe4	Blk. Bulls374 lbs.	at \$90.00
Dewey Davis, Bledsoe4	Red Strs363 lbs.	at \$86.00
Dan Frazier, Portales, NM4	Mxd. Strs396 lbs.	at \$87.50
Jose Lopez, Bula7	Mxd. Strs426 lbs.	at \$85.00
David Workman, Shallowater	Red Str430 lbs.	at \$88.00
Everett Butler, Anton2	Blk. Bulls230 lbs.	at \$92.00
Wanda Layton, Morton	Char. Str500 lbs.	at \$79.00
Wanda Layton, Morton	Red Str790 lbs.	at \$70.00
Kyle Massey, Portales, NM6	Mxd. Strs642 lbs.	at \$74.00
Kyle Massey, Portales, NM9	Mxd. Strs706 lbs.	at \$71.50
Duane Lee, Portales, NM	Yell. Str740 lbs.	at \$70.50
J.R. & L.E. Farms, Morton3	Mxd. Strs658 lbs.	at \$73.00
J.R. & L.E. Farms, Morton9	Mxd. Strs848 lbs.	at \$66.50
Alan Black, Sudan	Blk. Hfr240 lbs.	at \$82.00
FM Cattle, Levelland5	Blk. Hfrs271 lbs.	at \$85.00
Dan Frazier, Portales, NM7	Mxd. Hfrs327 lbs.	at \$81.00
David Workman, Shallowater8	Mxd. Hfrs395 lbs.	at \$84.00
Lewis Farm & Ranch3	Char. Hfrs410 lbs.	at \$83.50
Dewey Davis, Bledsoe6	Red Hfrs418 lbs.	at \$82.00
Terry Hutton, Muleshoe5	Blk. Hfrs425 lbs.	at \$82.50
B&H Cattle, Seminole7	Mxd. Hfrs499 lbs.	at \$76.00
Brandon Hill, Levelland	Blk. Hfr600 lbs.	at \$67.50
Kyle Massey, Portales, NM4	Mxd. Hfrs604 lbs.	at \$68.25
J.R. & L.E. Farms, Morton8	Red Hfrs688 lbs.	at \$66.75
3M Cattle, Muleshoe46	Mxd. Hfrs746 lbs.	at \$65.50
Dan Frazier, Portales, NM	Blk. Cow P7	\$460.00
FM Farms, Levelland	Brown Cow P5	\$370.00
Kim McCurry, Amherst	Blk. Cow P7	\$470.00
Everett Butler, Anton	Red Cow1190 lbs.	at \$34.75
Prairie View Dairy, Muleshoe	Hol. Cow1335 lbs.	at \$35.50
Prairie View Dairy, Muleshoe3	Hol. Cow1490 lbs.	at \$34.50
Bonestroo Dairy, Portales, NM	Hol. Cow1180 lbs.	at \$34.00
A&T Cattle, Sudan	Char. Bull1900 lbs.	at \$47.75

OBITUARIES

PAULINE RHOADES

Pauline "Polly" Rhoades, 76, of Lubbock died Tuesday, March 9, 1999 at Covenant Medical Center in Lubbock.

A church service was held Saturday at the Resthaven Funeral Home Abbey Chapel with cremation under the direction of Resthaven Funeral Home.

Mrs. Rhoades was born July

19, 1922 in Sudan. She graduated from Sudan High School. She married Ferman L. Rhoades on Oct. 19, 1941 in Levelland. He died in 1985. She was a Baptist and a homemaker. She moved to Lubbock in 1954.

Survivors include two sons, Robert of Sanger, Texas and Leslie of Los Lunas, N.M.; two

daughters, Joanna Navarrete of Lubbock and Joyce Miller of North Carolina; her mother, Alvia Fay Lambert of Lubbock; two brothers, James Leslie Lambert of Muleshoe and Zane Lambert of Olympia, Wash.; a sister, Helen Goodnough of Lubbock; 17 grandchildren; and 20 great-grandchildren.

The family suggests memo-

rials be made to the Arthritis Foundation, 1330 W. Peachtree St., Atlanta, Ga. 30309.

JESSIE MAE ARNOLD

Services are pending for Jessie Mae Arnold, 78, of Muleshoe.

Mrs. Arnold died at 4 a.m. on March 16, 1999 in Dove Nursing Center at Littlefield.

Depression not a normal part of the aging process

HOUSTON — Depression is not a natural part of growing old but rather a medical condition that should be treated aggressively.

"Depression in the elderly or in anyone, should not be thought of as normal," said Dr. Victor Molinari, a Baylor College of Medicine psychologist and director of geropsychology at the Houston Veterans Affairs Medical Center (VAMC). "Some groups are at higher risk, but the average older person is not depressed any more than a young person."

In general, only about three percent of the elderly living independently in the community will experience depression. That figure increases to around 20 to 30 percent of persons in nursing homes or with chronic illnesses like emphysema, heart disease or diabetes.

"Two personality types are also at high risk - obsessive/compulsive persons bothered by their lack of control over changes related to aging and dependent persons who lose the loved ones they rely on," Molinari said.

"Depression is often not diagnosed because of stereotypes that family, caregivers or even physicians have that the elderly are depressed in general," said Dr. Mark Kunik, a Baylor psy-

chiatrist and director of geropsychiatry at the Houston VAMC.

The elderly often mask their depression by packaging the problem in a physical complaint, so diagnosis can take longer.

Typical signs of depression include:

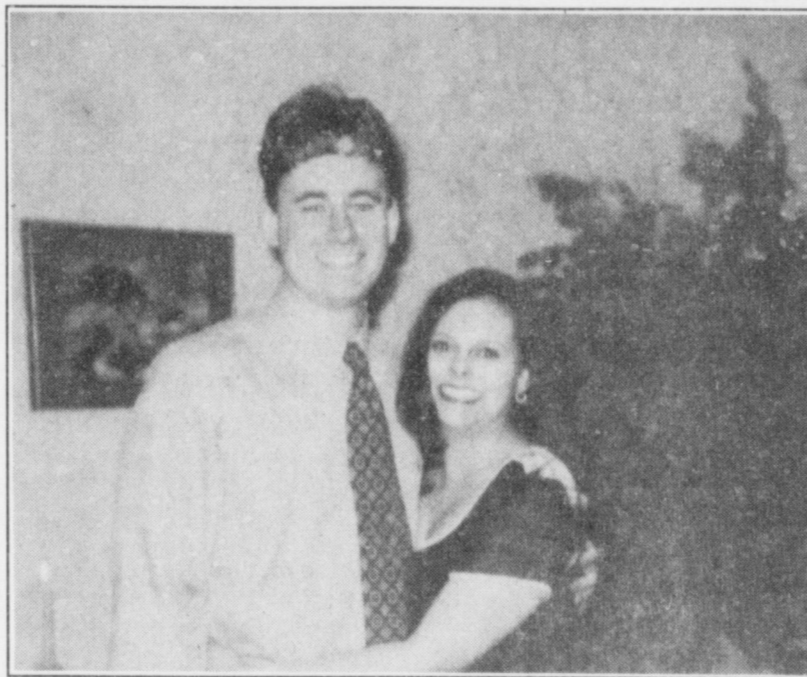
- Sleep problems - too little, too much or early rising
- Decreased pleasure in previously enjoyed activities
- Decreased energy or concentration
- Appetite increase or decrease
- Feelings of hopelessness or helplessness
- Thoughts of death or suicide

"In diagnosing depression, we look for persons experiencing several symptoms for weeks at a time," Kunik said. "Medication, psychotherapy or a combination of both can be effective. The newer anti-depressant medications have favorable benefits and fewer side effects such as dry mouth, constipation, light headedness and heart problems."

Both experts encourage older persons to practice depression prevention by staying active and being connected to other people through family, community activities, senior groups or church.

"If you notice signs of depression in yourself, a friend or family member, don't wait until it becomes severe," Molinari

said. "Talk to the person with depression and their physician, and seek treatment from a mental health professional."



Kyle Kenmore and Annette Serrano at March 7 shower

Couple honored with wedding shower

A wedding shower honoring Kyle Kenmore and Annette Serrano was held from 2-3 p.m. Sunday, March 7 at the home of Barbara Finney.

Greeting arriving guests were Barbara Finney; Kyle; Annette; Yolanda Serrano, mother of the bride; and Connie Kenmore, mother of the groom. Other special guests were Dorothy Ray Harlan and Nell Kenmore, grandmothers of the groom; and Kendra Kenmore, sister of the groom.

Guests were served cookies and lemonade tea.

Hostesses for the shower were Terry Young, Mary Janice Brantley, Cindy Magby, Barbara Finney, Jan King, Karen Harris, Katherine Taylor, Cindy Purdy, Sue Holt, Beckeye Conklin, Donna Nickels, Claire Brown, Christi Whitt, Wanda Wiley, Betty Harrison, Gayla Gear, Ruth Locker, Brenda Robinson, Joyce Scott, and Pat Young.

The hostess gift was an entertainment center.

FESTIVAL '99 March 6th - 21st

Gospel Trails with the Sons of San Joaquin

Gospel Trails with the Sons of San Joaquin combines tight family harmonies, Western music, and gospel hymns to create a riveting, hour-long inspirational performance special.

Gospel Trails with the Sons of San Joaquin airs Saturday, March 20th at 7:30 p.m.

Roy Orbison Anthology

Roy Orbison died on December 6th, 1988. He remains one of rock's truly legendary talents, whose influence grows with each passing year. Roy Orbison Anthology is a collection of classic Roy Orbison performances. The program includes comments of friends and colleagues who acknowledge how Orbison's genius — and simple humanity — have influenced their work and their lives.

Roy Orbison Anthology airs Saturday, March 20th at 8:45 p.m.

Marvin Hamlisch & The Pittsburgh Pops

Academy and Tony Award-winning composer Marvin Hamlisch brings his signature style to Marvin Hamlisch & The Pittsburgh Pops, a dynamic special featuring acclaimed guest artist Marilyn Horne, John Tesh, Pete Fountain, Nell Carter, and Steve Lawrence and Eydie Gorme.

Talented husband and wife duo Steve Lawrence and Eydie Gorme perform a medley of Frank Sinatra hits and salute composers George Gershwin, Irving Berlin, and Cole Porter. World-renowned singer Marilyn Horne performs selections including "In the Still of the Night" and "Always." Composer John Tesh performs two of his original compositions.

Marvin Hamlisch & The Pittsburgh Pops also highlights American jazz as Hamlisch travels to New Orleans to invite some famous musicians to perform at Heinz Hall in Pittsburgh. Clarinetist Pete Fountain plays "Clarinet Marmalade" and the Preservation Hall Band plays the New Orleans anthem "When the Saints Go Marching In." Nell Carter sings a medley from *Ain't Misbehavin'*.

Seated at the piano, Hamlisch takes center stage to perform his popular "The Way We Were" and in a give-and-take with the audience, Hamlisch composes songs on the spot, using titles suggested by audience members.

Marvin Hamlisch & The Pittsburgh Pops will air Sunday, March 21st at 8:10 p.m.

Channel 3 Television from Eastern New Mexico University, Portales, New Mexico

Have A Nice Day!

Journal Classifieds **STOP & SHOP**

Deadlines are 5 p.m. Monday and Thursday Call 272-4536 Deadlines are 5 p.m. Monday and Thursday

FOR SALE

5x5 Aircondition Unit with 5 hp.
For more information call (806) 272-5140 or (806) 272-6799

FOR RENT

Ruidoso Condo
3 Bedroom 3 Bath
Sleeps 8
Call Debbie at (806) 285-3053

Storage Rooms Available
\$25-\$50
Call Ted Barnhill 272-4903

HELP WANTED

Leal's Restaurant is now taking applications for wait staff, full or part-time. Apply in person.ffc

AVON Representatives needed in this area! For an exciting opportunity, Call Misty 272-3713.ffc

Salesmen

For farm equipment dealer. Experience preferred, but not a must. Excellent opportunity for the right individual. Apply at C&H Equipment 272-5514

HELP WANTED

LICENSED VOCATIONAL NURSE, WIC SUPERVISOR
The WIC (Woman/Infants/Children's Supplemental Food Program) Program is accepting applications for two LVN/WIC Supervisors for the Muleshoe and Friona work sites. Requirements: (LVN) Graduate of an accredited, vocational school of nursing; possess current Texas nursing license. Bilingual in English/Spanish required only for the work site in Friona. Apply at WIC office - 122 West Ave. C - Muleshoe, Texas 79027. Inquire: (806) 272-4521. An Equal Opportunity Employer

NUTRITION ASSISTANT
South Plains Health Provider Organization's (WIC) Program in Muleshoe is accepting applications for this position at the address listed below. Requirements: High School diploma or equivalency; experience working with public, bilingual in English and Spanish; and computer skills. SPHPO's WIC Office - 122 W AVE. C - Muleshoe, Tx 79027 Inquire: (806) 272-4521 An Equal Opportunity Employer

HOMES

HADLEY HOMES, INC.

Family Owned Raymond & Sherry Hadley
Se Habla Espanol
(505) 763-1788 or 1-888-316-6111
4100 Mabry Drive Clovis, NM
Fax (505) 763-0698
Sales Reps: Bowie Howard & Anna Loy

HUNTING LEASE

Three responsible hunters are looking for Mule Deer lease. Please call Mark at (361)758-2800.9s-stfc

STRAYED

Six (6) 350-550 wt. mixed-breed heifers and steers. Mill-iron seven brand on right hip; notch in tip of right or left ear. Missing since Feb. 19 in the Stegall Area. Reward for Recovery! Call (806) 946-3617.

For any and all of your classified needs call the Journal at 272-4536

REAL ESTATE

2-1-1 Home with floor furnace, fenced yd., storage building. Call 272-4084.8s-9tpd

SERVICE

HENDERSON SERVICE CO.

MAJOR APPLIANCE & MINOR HOME REPAIRS
272-4450

VEHICLE

1995 Ford F250 XLT, 4x4 regular cab, HD Off Road, AT, AC, 55K miles, ext. warranty. Must see, call 946-3432.ffc

1987 Ford Bronco II. Has a.c., cruise, excellent condition. \$2,500 call 272-3951.ffc

WANTED

Graze out pasture 272-3061.10s-4tch

Read the Classifieds!

Nieman Realty

116 E. Ave. C • George Nieman, Broker • 272-5285 or 272-5286

RICHLAND HILLS — PARK RIDGE

- We have several single and multi-family lots in this area!!!
- NICE 3 bdrm. 2 bath w/3 car detached garage/workshop-storage, Elec. Heat Pump, built-ins, FP, 2380' lv. area, auto spktr., fenced yd., More!!! RH-2
- NICE 3-2-2 Brick, Cent. A&H, built-ins, FP, approx. 2100' lv. area, storage, fenced yd., MORE!!! RH-1

HIGHLAND - HARVEY AREA

- 3-1-1 carport Home, wall furnace heat, evap. air, large yd., MORE!!! \$20's!!!
- 3-2-2 Brick, Cent. A&H, built-ins, gas log FP, fenced yd., stor. bldg., MORE!!! Price Reduced!!! HL-5
- 2-1-1 carport home, wall furnace heat, evap. air, DW, 5 fans, cov. patio, gas grill, fenced yd., MAKE OFFER!!!
- 3-2-2 Brick Home, corner lot, wall furnace heat, Cent. Evap. Air, fenced yd., stor. bldgs., MORE!!! HL-4
- NICE 2-2-1 + 1 Carport Brick, 2,000 + living area., Cent. A&H, built-ins, fans, den w/ WB stove, enclosed heated pool, corner lot, fenced yd., MORE!!! \$80's!!! HL-1
- 2-1-1 Home, Cent. A&H, built-ins, corner lot!!! \$23,500!!! HV-1

LENAU - COUNTRY CLUB AREA

- PRICE REDUCED 2-1-1 Carport Home, wall furnace, nice carpet, storm shelter, stor. bldg., fenced yd. \$19K!!! CC-3
- 2-1-1 Home, floor furnace, win. ref. air, fenced yd, stor. bldg., \$18,500 !!! L-1
- 3-2-2 Carport Mobile Home, Cent. A&H, built-ins, nice yd., pecan & fruit trees!!! \$16K!!!

COMMERCIAL

- Six Unit Apartment Complex (4-2 bdrm. & 2-1 bdrm. units)!!!
- 100' x 140' tract, approx. 7,400' business & warehouse building on American Blvd., PRICED TO SELL!!!
- Established Business: Land, Bldg. & Equip., \$75K!!!
- 56' x 140' tract, approx. 4700' bldg., \$35K!!!
- NICE R.V. STORAGE, 14' x 40' metal bldg. 12' doors, 50X140 corner lot!
- SNACK SHACK - Lot, Buildings, furniture & fixtures!!!

HIGH SCHOOL

- Nice 3-2-2 Brick, built-ins, heat pump, 5 fans, nice carpet, stor. bldg., fenced yd., MORE!!! \$60's!!! HS-3

- 2-2-2 BRICK, Cent. A&H, built-ins, corner lot, approx. 1800' lv. area!!! PRICE REDUCED! MAKE OFFER!!! HS-4
- 3-1/2-1 Home on corner lot, fenced yd., storage bldg., MORE!!! \$20's!!! HS-9
- NEWLY REMODELED 3-1-1 Home, cent. A & H, new carpet & vinyl, fenced yd., MORE!!! \$30's!!! HS-2
- VERY NICE 3-1-1 Brick, Heat pump, DW, nice carpets, fenced yd., MORE!!! \$30's!!! HS-1
- NICE 2-1-1 Brick, Heat Pump, nice carpets, well insulated, storm windows & doors. \$30's!!! HS-6
- VERY NICE 3-1-1 Home, nice carpets and vinyl, heat pump, fans, fenced yd., stor. bldgs., MORE!!! \$30's!!! HS-5
- PRICE REDUCED!!! 3-2-1 Brick, Heat Pump, built-ins, fans, screened porch!!! \$30's!!! HS-7
- JUST LISTED- 2-1-2 CP Home, corner lot, metal siding, storm win & doors, stor. bldg. \$20K!!! HS-8
- 1-14' x 60' and 1-12' x 40' Mobile Home on a 98' x 75' lot, both have cent. heat, evap. air, stove, & ref., cov. patios, fenced yd.!!!
- 3-2-2 Home, corner lot, floor furnace heat, Cent. Air, auto spktr., stor. bldg., fenced yd., MORE!!! \$50's!!! HS-10
- PRICE REDUCED!!! 3-1-1 Brick, Cent. heat, evap. air, fans, fenced yd. HS-12

RURAL

- PRICE REDUCED- NICE 3-2 home, 40 acre tract, Geo. Heat Pump, built-ins, 5" irrig. well, Hi-Pre. lines, sprinkler pipe, barn, pens, tractor & equip!!! \$69K!!!
- W. of SUDAN-NICE 3-3-2 Brick Home, 5 acre tract on Hwy. 298, Cent. Air & Heat, built-ins, large Quonset Barn, MORE!!! \$95K!!!
- 5 Acre tract on pavement close to town!
- Approx. 108 acres on Hwy. 70, approx. 2100' office area, 16,900' of commercial bldg. w/loading dock, 3,400' warehouse!!! 2,800' runway!!!
- LONGVIEW - GOOD Dryland Labor, fully allotted, planted in wheat. \$225.00 per acre. 152.8 acres, 15 hp & 20 hp sub., Lockwood spktr., 85 acres seed brasses & 35 acres wheat. \$475.00 per acre.
- 160 acres, 2 bdrm. home, garage, storage, barn, 8" irrig. well!!! \$42K!!!

NATIONAL BRANDS Spring Extravaganza

\$20,000 Sweepstakes Giveaway!

- Grand Prize — \$10,000 Cash
- 2nd Prize — 51" Panasonic Big Screen TV & \$500 Cash
- 3rd Prize — 5 Individual \$1,000 Cash Awards

SEE YOUR PARTICIPATING AFFILIATED FOODS MEMBER STORE FOR DETAILS.

PRICES EFFECTIVE MARCH 17-23, 1999

MEAT

- Pilgrim's Pride Grade A
Whole Fryerlb. **49¢**
Preferred Trim Boneless
- Sirloin Cut
Pork Chopslb. **\$1.89**
- Preferred Trim Boneless
Beef Arm Roastlb. **\$1.49**
Preferred Trim
- Boneless Beef Arm
Charcoal Steaklb. **\$1.69**
- Preferred Trim Beef
Short Ribslb. **\$1.89**
- Preferred Trim Boneless Beef
Top Blade Steaklb. **\$1.99**
- Fresh
Ground Chucklb. **\$1.79**
- Jimmy Dean-All Varieties
Breakfast Sausage1 lb. roll **\$1.69**
- Jimmy Dean Regular or Hot
Breakfast Sausage2 lb. roll **\$2.99**
- Hormel Reg., Low Salt or Mesquite
Black Label Bacon1 lb. pkg **\$1.89**
- Hormel 10 oz. Patties
or 12 oz. Links
Little Sizzlersyour choice **89¢**
- Hormel Sandwich Maker
Chopped Ham5 lb. loaf **\$5.49**
- Decker Regular or Thick Sliced
Meat Bologna12 oz. pkg **89¢**
- Decker
Chopped Ham10 oz. pkg **\$1.29**
- Farm Raised Breaded
Catfish Nuggetslb. **\$1.59**
- Decker Ranch Brand
Smoked Sausage12 oz. pkg **99¢**
- Advance Breaded Steak
Fingers or Patties12 oz. pkg **\$1.39**
- Wright Brand
Sliced Ham1 lb. pkg **\$1.89**
- Oscar Mayer Meat Cotto
Salami or Red Rind Meat
Bologna1 lb. pkg **\$1.19**
- Oscar Mayer Roasted White
Turkey, Ham & Cheese Loaf or
Chopped Ham1 lb. pkg **\$2.49**
- Oscar Mayer
Cooked Ham1 lb. pkg **\$3.49**
- Oscar Mayer Link Sausage
Little Smokies1 lb. pkg **\$2.19**
- Oscar Mayer All Varieties
Meat Wieners1 lb. pkgs **2/\$3**
- Oscar Mayer All Varieties
Lean Ham6 oz. pkg **\$1.39**
- Louis Rich All Varieties
Variety Pack9-12 oz. pkg **\$1.99**
- Louis Rich Smoked or Oven
Roasted Breast of
Turkey Portionlb. **\$2.99**
- Oscar Mayer
Combo Pack1 lb. pkg **\$2.49**

- Betty Crocker Assorted
Pop Secret
Popcorn3 ct. pack **2/\$3**
- ABC's & 123/Sharks/
Dinosaurs/Ninja Turtles
Chef Boyardee Kid's
Plain Pastas15 oz. cans **2/99¢**
- Select Group Peanut Butter
Peter Pan17.6-18 oz. jars **2/\$3**
- Select Group
Bugles Snacks6 oz. pkg **99¢**

Each Week you may purchase the 5 piece plate setting for only \$3.99 with each \$10.00 minimum purchase.
Affiliated Foods, Inc. presents Chrome Stainless Steel Flatware!

At participating stores only.

WEEK 7
**4 PIECE ICED TEA
SPOONS**
\$4.99
WITH \$3.00 OFF
COUPON.
REG. PRICE \$7.99

W/\$10.00 PURCHASE
ONLY AT PARTICIPATING AFFILIATED FOODS
MEMBER STORES. ONE COUPON PER
COMPLETER PIECE.

PRODUCE

- Golden Ripe
Bananaslb. **4/\$1**
Buy 1 lb. pkg @ \$1.49
- Dole Classic
Iceberg Saladget one **FREE**
- Fresh
Crisp Celerystalks **3/\$1**
- U.S. No. 1
Russet Potatoes5 lb. bag **79¢**
- Extra Large
Bell Peppers3/\$1
- Fresh
Tangy Lemons5/\$1
- New Crop
Yellow Onionslb. **39¢**
- Thompson
Seedless Grapeslb. **\$1.29**
- California
Hass Avocadoseach **39¢**
-
- Asstd. 100 oz. Liquid Ultra or
92-94 oz. Assorted Powder
Tide Ultra 2your choice **\$5.69**
- General Mills
• 15 oz. Apple Cinnamon • 14.25
oz. Frosted • 14 oz. Honey Nut • 15
oz. Original • 11.25 oz. Multi-Grain
Cheerios Cerealyour choice **2/\$4**
- Assorted Varieties
Spam
Luncheon Meat12 oz. cans **2/\$3**
- Ocean Spray Assorted Wellfleet Farms
Cranberry Drinks64 oz. btl **\$2.99**
- Select Group Ocean Spray
Cranberry Blends...64 oz. btls **2/\$5**
- Select Group with Beans
Hormel Chili15 oz. can **79¢**
- For Boys or Girls-Sizes 1-6
Pampers Baby
Dry Diapers22-40 ct. pkg **\$5.99**
- Original
Ranch Style
Beans15 oz. cans **2/79¢**
- Select Group
Rotel Tomatoes10 oz. cans **2/\$1**
- Heinz Squeeze
Tomato Ketchup28 oz. btl **99¢**
- FAC Colombian Supreme, Regular,
French Roast or Gourmet Supreme
Folgers Coffee34.5-39 oz. can **\$5.99**
- Betty Crocker Assorted Fruit
Shapes, Roll-Ups or
Fruit by the Foot4.5-9 oz. pkg **\$1.69**
- Assorted Varieties
CheX Mix7.75-8 oz. pkg **\$1.19**
- Culligan
Drinking Watergal. jugs **2/\$1**
- Select Group Automatic Dish
Cascade
Detergent45-50 oz. box/btl **\$2.29**
- Hunt's Assorted
BBQ Sauce18 oz. btl **79¢**
- Pretty Boy
Wild Bird Seed10 lb. bag **\$1.99**
- Regular Only
Clorox Bleachgallon **99¢**
- All Types
Pepsi-Cola6 pk.-12 oz. cans **\$1.18**
- All Types-3 Liter
Buy One for \$1.99
Pepsi-Colaget one **FREE**
- Refreshing & Pure
Aquafina6 pk.-24 oz. **\$1.99**

FROZEN & DAIRY

- Price's 14 oz. Regular or
13 oz. Light Pimiento
Cheese Spreadyour choice **\$2.39**
- Meat or Beef
Decker Corn Dogs1 lb. pkg **\$1.69**
- Pepperoni or Deluxe 2 Pack
MaMa Rosa's
Pizza48 oz. pkg **\$3.99**
- Oscar Mayer
All Varieties Fun Pack
Lunchables4.5-13.2 oz. pkg **\$1.89**
- Colby, Cheddar or Colby Jack
Kraft Halfmoon
Longhorn Cheese ..10 oz. pkgs **2/\$4**
- Regular or Light
Kraft Velveeta32 oz. boxes **\$3.99**
- Assorted
Kraft Cheez Whiz16 oz. jar **\$2.99**
- Select Group Light
Kraft Singles12 oz. pkgs **2/\$4**
- Regular or 1/3 Less
Fat Kraft Philadelphia
Cream Cheese8 oz. pkg **99¢**
- Regular Only
Kraft Ched./Mont. Jack Cubes/
Select Group Regular or Finely
Shredded Cheese8 oz. pkg **\$1.99**
- Regular, Churn Style or
Light Country Crock
Shedd's Spread48 oz. tubs **2/\$3**
- Citrus or Mango
Tampico Punch128 oz. jug **99¢**
- Regular, Mini or With Onion
Ore-ida Tater Tots ..28-32 oz. pkg **\$1.99**
- Ore-ida
Potato Crispers!20 oz. pkg **\$1.99**
- Assorted Varieties
Banquet Pot Pies...7 oz. boxes **2/\$1**
- Select Group Select or Value
Banquet Meals.....6.7-11 oz. pkg **99¢**
- Assorted Mexican
Patio Dinners.....12-13 oz. box **99¢**
- Assorted
Patio Burritos5 oz. pkgs **5/\$2**
- Plains
Orange Juicegal. jug **\$2.99**
- Plains
Choc-O-Cremegal. jug **\$1.49**
-
- Assorted Varieties 40 Use
Downy Ultra40 oz. btl **\$3.99**
- Fabric Softener
Downy Ultra Refill40 oz. ctn **\$3.49**
- Downy Auto. Ultra
Dosing Balleach **99¢**
- Assorted Varieties
Wesson Oil.....48 oz. btl **\$1.99**
- Select Group Potato Crisps
Pringles6-7 oz. can **99¢**
- 16 oz. Original, Soap Scum
Remove or 32 oz. Fresh Shower
Tilex Cleaneryour choice **2/\$4**
- Select Varieties Ocean Spray
Grapefruit Juice64 oz. btl **\$2.99**
- Van Camp's Regular or Smoked Ham
Pork and Beans ..15 oz. can **2/79¢**
- Reg., Lemon Fresh or Rain Clean
Pinesol28-32 oz. btl **2/\$4**
- Reg., Lemon Fresh or Rain Clean
Clorox Clean-Up...28-32 oz. btl **2/\$4**
- Oil or Water Chunk Light
Star-Kist Tuna6 oz. cans **2/\$1**
- Outdoor Fresh or Gentle Breeze
Bounce Sheets40 ct. box **\$1.99**
- Assorted Varieties
CapriSun Drinks10 ct. pkg **\$1.99**

HEALTH & BEAUTY

- Select Group Facial
Puffs Tissue64-175 ct. box **\$1.19**
- Select Group Angle or Straight
Crest Toothbrushesea. **2/\$3**
- Select Group
Crest Toothpaste6.4 oz. tube **\$1.69**
- Fresh Weave
Always Pantliners18 ct. **99¢**
- Select Group 36 ct. Long
Pantliner or Assorted
Always Maxi Pads14-24 ct. **\$2.99**
- Pro-V Pantene Assorted
Shampoo or
Conditioner10.2-13 oz. btl **\$2.99**
- Regular Original or Super
Tampax Tampons20 ct. box **\$2.99**

Buy Pasta, Get Spaghetti Sauce
FREE!
24 oz. Elbo Roni/Long/Thin Spaghetti
American Beauty Pasta
Buy One Package at Regular Price, Get One 26-26.5 oz.
Assorted **HUNT'S SPAGHETTI SAUCE** Free
First 4 Thereafter Regular Price.
Only at Affiliated Foods Member Stores
Coupon Effective Through Dates of Ad.

Buy RTS Frosting, Get Cake Mix
FREE!
Assorted 16-16.6 oz.
Duncan Hines RTS Frosting
Buy One Can at Regular Price, Get One 18.25 oz.
Assorted **MOIST DELUXE CAKE MIX** Free
First 4 Thereafter Regular Price.
Only at Affiliated Foods Member Stores
Coupon Effective Through Dates of Ad.
Not Subject to doubling.

- Select Group Grated
Kraft Parmesan8 oz. shaker **\$3.39**
- Select Group
• 15 oz. Fruit & Fibre • 24 oz.
Grapenuts • 13.5 oz. Blueberry
Morning • 13 oz. Cranberry Almond
Crunch • 15 oz. Banana Nut Crunch
• 16 oz. Great Grains Raisin Date
Post Cerealsmix or match **2/\$5**
- Kraft Assorted Mac & Cheese
Deluxe Dinners14 oz. box **\$1.79**
- Assorted Stuffing Mix
Stove Top6 oz. box **99¢**
- Kraft Assorted Dinners Velveeta
Pasta & Cheese....9.4-12 oz. box **\$1.79**
- Assorted Dessert Topping
Cool Whip8 oz. tub **99¢**
- Kraft Assorted Mac and Cheese
Dinners5.5-7.25 oz. boxes **5/\$3**
- Taco Bell Regular or Fat Free
Refried Beans.....16 oz. cans **2/\$1**
- Kraft Regular or Smoked
Barbecue Sauce28 oz. btls **2/\$3**
- Kraft Regular or Light
Miracle Whip.....32 oz. jar **\$2.19**
- Regular or Light
Kraft Mayo32 oz. jar **\$2.49**
- Select Varieties Kraft Puddings
Handi-Snacks3.5 oz.-4 pk **99¢**
- Select Group Kraft Reg./
Free/Light Done Right
Salad Dressings16 oz. btl **\$1.99**
- Select Varieties Reg. or Sugar Free
Jell-O Gelatin....3.3 oz. boxes **3/99¢**
- Select Varieties Reg./Sugar Free
Jell-O Pudding1-3.9 oz. box **69¢**
- White or Ultra White
Charmin
Bath Tissue4 roll pkg **99¢**
Betty Crocker 6.5 oz.
Blueberry Muffin or 10.25 oz.
Brownie
Pouch Mixyour choice **2/\$1**

GRANADA GOURMET COLLECTION

**5-Piece Place
Setting** **\$3.99**
With Two Patterns To Choose From
with each \$10.00 purchase
Reg. Price \$6.99

We are giving you the opportunity to purchase a flatware set to suit your household at a fraction of the regular cost! Each week different completer pieces will be featured at a special feature price with coupon so you may round out your flatware collection. Lifetime Warranty, High Quality Shine, Made in Spain, Dishwasher Safe.

REDEEM YOUR VALUABLE COUPONS! Anytime Before March 27, 1999

WESTERN MONEY
UNION TRANSFERSM
"The fastest way to send money"

Lowe's
MARKETPLACE

515 W.
American Blvd.
Muleshoe
272-4406

401 W. American Blvd.
Muleshoe 272-4585

WE RESERVE THE RIGHT
TO LIMIT QUANTITIES
IN TEXAS

Pay-n-Save
MAKES US HAPPY