

## PAGE ONE

A QUICK READ OF THE NEWS

### Extra school work

MAYFIELD HEIGHTS, Ohio — Fixing the Y2K computer problem will be elementary for a Cleveland-area fifth-grader. The Mayfield School District has voted 3-2 to hire Brian Hug, a student at Center Elementary School, to make sure Mayfield's classroom computers don't malfunction when the year 2000 arrives. He'll be paid the minimum wage — \$5.15 an hour.

The boy's mother has declined all interview requests for her son. She told school officials that would mean too much pressure for the boy.

The hiring isn't sitting well with some school officials, but Board President Janice Marquardt said Sunday she understood the boy's work would largely consist of inserting a disk into computers to check for Y2K compliance. He would not be working with networked computers, she added.

### A friendly reminder . . .

The deadline for the Muleshoe Journal's 5th annual baby contest is at 5 p.m. on April 6.

Bring in your favorite child's photo along with \$10 to the Muleshoe Journal office at 304 W. Second St. Babies need not be from this area. The winner will receive a \$50 savings bond.

All baby pictures will be printed in the April 11th issue of the Bailey County Journal.

### LOOKING AHEAD

#### AARP luncheon Friday at noon

The Muleshoe AARP organization is holding a covered-dish luncheon at noon on Friday, March 26 at the Bailey County Coliseum.

Margaret Heathington, director of the Muleshoe Area Home Health agency, will give a program on home health care.

The event is open to the public.

### MEETINGS

Thursday — Muleshoe Area Hospital District, 7 p.m., dining room of the Muleshoe Area Medical Center. Agenda items include consideration of financing proposal for nursing home from First Southwest Co., nursing home project update, consideration of levy on personal property.



Drawing date: Saturday, March 20

Winning numbers: 02-09-15-31-41-42

Estimated jackpot: \$14 Million

Winners: none

Next drawing: Wednesday, March 24, 1999

Estimated jackpot: \$18 million

### On this date in history

March 25 — RCA begins production of the first color television sets (1954).

March 26 — The Republic of Mexico is proclaimed (1825).

March 27 — Robert Bruce is crowned King of Scotland (1306).

### LOCAL WEATHER

	High	low	Pre.
Friday	43	30	—
Saturday	63	33	—
Sunday	72	33	—
Monday	79	35	—
Prec. to date	3.34 inches		

### EXTENDED FORECAST

Partly cloudy Friday with highs in the 60s and lows in the 30s. Showers Saturday with highs in the low 60s. Partly cloudy Sunday with highs in the mid 60s.

Managing Editor Rick White can be reached at 272-4536 or ctyankee@fivearea.com

Missed your paper? Call carrier Melissa Flores at 272-6719 or the Journal during normal business hours.

## Area growers approve boll weevil eradication program

AUSTIN — Area growers Monday voted to create and fund a \$38 million-plus boll weevil eradication program that would cover 500,000 acres in a five-county area.

The vote to establish the Northwest Plains Boll Weevil Eradication Zone passed by a comfortable margin, according to the Texas Department of Agriculture.

However, cotton producers were less enthusiastic about the assessment of \$12 per acre on irrigated cotton and \$5 per acre on dryland cotton.

Seventy-five percent (1,441 to 476) of farmers in Bailey, Castro, Deaf Smith, Lamb and Parmer counties approved the creation of the zone. When it came to funding

— which is estimated at a maximum of \$63.07 an acre — the vote was much closer, with 68 percent voting in favor of the assessment.

To officially establish a boll weevil program in the Northwest Plains Zone and set an assessment, the propositions had to be approved by a two-thirds vote, or those voting in favor needed to farm more

than 50 percent of the zone's acreage.

Cotton producers also elected John Saylor of Muleshoe to represent the zone on the statewide board of directors for the Boll Weevil Eradication Foundation, Inc. Saylor is a cotton producer who farms in

see PROGRAM on page 2

## Seminar focuses on financial aid

By PATTI DRIVER  
Journal staff writer

College bound high school students and adults received information for financial aid at a seminar held Monday night.

The Jennyslippers sponsored a financial aid seminar at the High School cafeteria attended by approximately 70 students, their parents and college-bound adults.

In the 45-minute presentation, representatives from seven area institutions discussed information to help students and their parents find financial help for their education. Two students attending the seminar were awarded \$100 scholarships provided by the Panhandle-Plains Higher Education Authority, Inc. Jennyslipper president Ruby Green drew Chris Garcia and April Kelly as the lucky winners.

Jimmie Ann Batenhorst from South Plains College explained the financial aid procedure step by step for those not familiar with the process. "It is important to fill out the Free Application for Federal Student Aid (FAFSA) accurately and completely. This will help keep processing time to a minimum."

Students filling out the FAFSA must have their own or their parents actual 1998 Federal Income Tax return. According to Batenhorst,

see SEMINAR on page 2



JOURNAL PHOTO BY PATTI DRIVER

### Getting aid

South Plains College representative Jimmie Ann Batenhorst gives financial aid information to Margrette Graves Monday night during a college seminar at Muleshoe High School.

## Mason, Cleavinger earn hoop honors

Ralph Mason and Dustin Cleavinger have enjoyed an unprecedented four-year run at Muleshoe High School.

With Mason at the helm and Cleavinger his star pupil, the pair pushed Muleshoe's basketball program to new heights.

They capped their symbiotic relationship Monday by being honored on *Lubbock Avalanche-Journal's* Class 3A All-South Plains boys basketball team.

Mason was named Coach of the Year after piloting Muleshoe to a 24-8 record and their first district basketball title. During the season, he recorded his 200th high school coaching win.

The fifth-year coach said coaching this year's team was one of the most pleasant experiences he's had in his career.

"It was one finest group of players I've ever had," said Mason, who praised his team for their maturity and work ethic all season.

Cleavinger, a starter and the Mules' leading scorer and

### CLASS 3A ALL-SOUTH PLAINS

#### BOYS

**Player of the Year**  
Chris Ogden, Seminole  
**Coach of the Year**  
Ralph Mason, Muleshoe  
**Frontcourt**  
Dustin Cleavinger, Muleshoe  
Mikey Marshall, Tulia  
**Backcourt**  
Kaleb Clay, Seminole  
D'Hudson, Shallowater

#### GIRLS

**Players of the Year**  
Heather Trout, Denver City  
**Coach of the Year**  
Chris Edwards, Dimmitt  
**Frontcourt**  
Keli Cox, Shallowater  
Kendra Anderson, Colorado  
**Backcourt**  
Lindzi Martin, Shallowater  
Michelle Wickson, Seminole

#### HONORABLE MENTION

##### Boys

**Frontcourt** — Jerry Thomas, Dimmitt; Steven McCain, Littlefield; Matt Cottrell, Slaton; Dustin Hill, Shallowater; Jim Turnbough. **Backcourt** — Derek Buckley, Dimmitt; Charles Sims, Tulia; Steven Roberts, Lamesa; Eric Sheets, Seminole; Morris Randle, Littlefield.

##### Girls

**Frontcourt** — Erin Wilhite, Muleshoe; Britany Huddleston, Slaton; Kristen Warren, Shallowater; Tonya Robertson, Dimmitt; Shenika Griffin, Denver City. **Backcourt** — Shawna Kenworthy, Dimmitt; Amanda Wickson, Seminole; Lindsey Field, Muleshoe.

rebounder since he joined the varsity as a freshman, averaged 21 points and 10 rebounds a game. The 6-6 senior's season included a 45-point, 21-rebound effort against Whiteface in the I-27 Tournament.

Although he once entertained

the possibility of a college basketball career, Cleavinger signed to play football with West Texas A&M University in February. He was an All-South Plains pick at defensive

see SOUTH PLAINS on page 3

## Chamber hoping to dress up banquet

The Muleshoe Chamber of Commerce & Agriculture is hoping banquet-goers will catch the Mardi Gras spirit — and it's offering an incentive.

Chamber director Pam McCaul announced this week that attendees who dress up for "Muleshoe Mardi Gras" can win cash prizes.

"We encourage everybody

to dress up for the banquet," said McCaul, adding that Chamber Board members will be in costume for the event.

The Muleshoe Chamber of Commerce's annual banquet is being held on Saturday, April 10 at Muleshoe High School. A steak and shrimp dinner will be held at 6:30 p.m. in the high school cafeteria.

After the all-you-can-eat feast, the event will move to the auditorium, where the chamber will present its annual awards for Man, Woman, Farm Family, Business and Employee of the Year.

A performance by Fiddlin' Frenchie Burke will follow the

see BANQUET on page 3



Chief Weldon Crim predicts dry spring for area

## 'Chief' sees little change in weather

By SCOTT ROBINSON  
Special to the Journal

Gov. Bush recently declared our part of the country as an extreme fire hazard due to the lack of moisture. The local "Chief" says the condition is not likely to change anytime soon.

Weldon Crim, known to many as the "Chief", conducted his annual 'fireburning' at sunrise Monday and the news wasn't good.

"The southwest wind calls for a poor spring," Crim said. "Heap 'em bad medicine."

Not exactly the news the local farmers were looking for. After a dry spring last year, and a dry winter this year, most were hoping for a favorable forecast. But the wind just wouldn't cooperate.

Last year, the "Chief" called for an aver-

see WEATHER on page 3

## AROUND MULESHOE

### Area preschool holds pre-registration

St. John Lutheran Church of Lariat will be holding pre-registration for the Life in Christ Academy beginning April 5 in the church fellowship hall. The preschool is open to all area three and four year old children.

For more information call Edie Kalbas at 825-3357 or Pastor Dave Symm at 825-2409.

### Weir named to Who's Who

Dawn L. Weir of Muleshoe is among 80 students from Angelo State University in San Angelo, Texas who have been included in the 1999 edition of *Who's Who Among Students in American Universities and Colleges*.

Weir, a junior majoring in biochemistry, was selected by campus nominating committees and editors of the annual directory based on her academic achievement, service to the community, leadership attributes in extracurricular activities, and potential for continued success.

### Watson attending tech school

Sarah E. Watson, daughter of Jimmy and Sandra Watson of Lazbuddie, is attending intelligence training in San Angelo, Texas. She graduated from basic training in Dec. of 1998 at Lackland AFB, in San Antonio. Upon completion of her current training, she will be promoted to E-3 and will be stationed in Minot, N.D. Watson is a 1997 graduate of Lazbuddie High School.

### Cruz reports for duty

Manuel Cruz, son of Elvira and Antonio Cruz of Sudan, reported to Fort Knox, Ky. for basic training on March 18, 1999. He joined the U.S. Army under the Delayed Entry Program. He is a 1998 graduate of Sudan High School.

### Lubbock Cemetery requests help

The South Plains Genealogical Society and the City of Lubbock Cemetery are working together to survey the City cemetery. They are asking for walkers, proof readers and information.

There are many unmarked graves and some with damaged stones. If you have family or friends buried in the cemetery, please contact us. By mail: South Plains Genealogical Society,

PO Box 6607, Lubbock, TX 79493-6607; by voice mail at (806) 775-3685; or by email at [lnix@door.net](mailto:lnix@door.net).

### Dance festival in Lubbock

The Lubbock Area Square and Round Dance Federation is holding the 40th Annual Spring Festival beginning with the Grand March at 7:45 p.m. on Friday, March 26 and Saturday, March 27 at the Dance Center, 2305 120th Street, in Lubbock. This year's theme will be "Echoes of the Century".

The guest square dance caller will be Wade Driver of Mesa, Ariz. and the round dance cuers will be Bill and Martha Buck of Louisiana.

There is no admission charge for spectators. For more information, contact festival chairpersons Dale and Pat Edwards at (806) 863-2237.

### Seniors seminar slated for Muleshoe

The non-profit Senior Info Center will be sponsoring a free seminar for senior citizens and their caregivers at 1 p.m. on Monday, April 5 at the Muleshoe Heritage Foundation Depot in Muleshoe. Topics to be discussed include how to protect their assets, how to avoid nursing home spend down, and how to safeguard their assets.

This is an informational meeting only. Seating is limited. Reservations will be taken at 1-877-467-5433.

### Muleshoe Roadriders holding rally

The Muleshoe Roadriders motorcycle club will be holding their 17th annual Motorcyclist Rally on March 26 and 27 at the Bailey County Coliseum in Muleshoe. There is a full agenda of activities and awards.

For more information call Danny Dickerson at 272-4143 or Albert Ramirez at 272-3818 or by email at [dannyd@fivearea.com](mailto:dannyd@fivearea.com).

### Clark family to sing at local church

The Clark Family from Alavardo, Texas will be in concert at the First Assembly of God church in Muleshoe on Sunday, March 28. Services will begin at 10:45 a.m.

The deadline for items to appear in *Around Muleshoe* is 5 p.m. Monday for Thursday's edition and 5 p.m. Thursday for Sunday's edition. Items can be mailed (PO Box 449), called in (272-4536) or faxed (272-3567).

### Sheriff decks out inmates in stripes

COLBY, Kan. — The sheriff here in western Kansas says his prisoners should look the part.

So he outfitted them in black-and-white striped uniforms with old-fashioned little round convict caps.

"I've had an inmate or two tell me they were not going to court wearing these uniforms, that it's demeaning," Thomas County Sheriff Tom Jones said Sunday. "Jail, in my opinion, ought to be a little demeaning."

### In Sincere Appreciation

The family of Jesse Mae Arnold would like to say thank you to everyone in the Muleshoe community for all your kindness and prayers. Whatever you did to console our hearts will not soon be forgotten.

The Family

## GOOD DEALS

BATTERIES	
▶ StrongBox™—U1, 165 CCA	Sale Ends April 3
▶ Hibernator—U1R, 235 CCA	
<b>STRONGBOX™ BATTERY</b> \$19 <sup>95</sup>	<b>HIBERNATOR BATTERY</b> \$29 <sup>95</sup>
TY23017	TY21752
CHAIN & CABLE LUBRICANT	LINCH PINS
▶ Use as penetrating oil to loosen nuts, bolts, and rusted threads	▶ Size — 7/16 in.
▶ Recommended to protect and lubricate exposed chains	▶ Made of forged carbon steel
	▶ Zinc-plated, spring steel snap rings
<b>GOOD BUY</b> \$2 <sup>99</sup>	<b>GOOD BUY</b> 10 for \$1 <sup>00</sup>
Sale Ends April 3	TY22087 for Sale Ends April 3

Stop in today for the best deals ever!

Hurry, sale ends April 3.



## Dent & Co.

2800 W. American Blvd. • Muleshoe Location • 272-4296

## SEMINAR

from page 1

the student should receive a Student Aid Report (SAR) approximately four weeks after filing their FAFSA. "This should be checked carefully for mistakes."

The SAR will also show a number called the EFC which is the estimated family contribution. "All these numbers determine the amount of aid an institution will award the student," Batenhorst said. "The award letter from the school will show the total aid package available to the student." The package could contain grants, scholarships, loans and workstudy.

"It is better for the student to do workstudy on campus than to get a job outside campus because the workstudy income is not held against the student in the following year's assessment," the SPC representative said.

West Texas A&M University representative Jeanette Head said, "We realize school is an expensive venture but it is well worth it in the future."

"It is much easier for your son or daughter to borrow

money for their education than it is for you the parents," Dave Corley from the Panhandle-Plains Higher Education Authority, Inc. said. He went on to explain how his company is a secondary market for student loans.

"We buy student loans from other lending institutions after the student graduates. There is no interest charged on the loan until six months after graduation. We also lower the interest rate by one-half percent," Corley said. "Being a local company, we are willing to work with people who might not be able to make a scheduled payment," he added.

LEARN representative Ulisses Gutierrez discussed what services his office offers to people looking to further their education. LEARN, federally funded by the Department of Education, helps prospective students prepare financial aid forms and other applications. LEARN also offers skills and interest assessments to help advise students on vocational or academic decisions.

"We especially want to help adults get into school. We also

try to encourage high school students to carry on with their education and not wait for a year or two after graduation," Gutierrez said.

Christy Bradfute from Eastern New Mexico University emphasized an out-of-state school option with in-state tuition. "ENMU has waived out of state tuition for people living in neighboring counties in

## PROGRAM

from page 1

the zone. He has been serving as the Commissioner-appointed director for the Northwest Plains Zone.

The eradication program will consist of diapause treatments this fall, followed by in-season insecticide applications for at least four years. Maintenance spraying will be used for several years.

The vote for the Northwest Plains program comes on the heels of a defeat of a proposal to create the South Plains/Caprock eradication zone, which would have encompassed 10 counties in and around Lubbock.

Texas," Bradfute said. "We keep our student ratio low to keep the one-on-one feeling at the school."



1-800-658-6378 106 E. American Blvd. Muleshoe, Texas

## And Country Junction

Open 9:30 am to 6 pm CST

### BAILEY HATS

5X-7X Felt .....	\$99
10X Felt .....	\$149
20X Felt .....	\$229
30X Felt .....	\$255

COLOR OF YOUR CHOICE!

UNBELIEVABLE PRICES!



First Line

FULL QUILL OSTRICH BOOTS

\$279

UNBELIEVABLE PRICES!

ALL STRAW HATS  
20% OFF

CAIMEN ALLIGATOR  
\$279

Tony Lama  
First Line

BLACK or  
CRAZY HORSE

ROPER'S  
only \$49

Country Junction  
has over a DOZEN new  
Soap by the Slice  
fragrances!

Just Arrived

OVER 5,000 PAIRS  
of New Stock  
Tony Lama Boots!

Prices Good thru March 31st

¡PRESTAMOS!

# LOANS!

¡PRESTAMOS!

\$100 to \$446

ALL APPLICATIONS ACCEPTED

Ask for Norma or Yolanda

Open:

Mon. thru Thurs.—9 am to 5 pm

Fri.—9 am to 6 pm

272-3673

Phone Applications Welcome

## Continental Credit

206 South Main Street  
Muleshoe, TX

# SPS announces rate reductions

Southwestern Public Service Company customers in Texas will see an ongoing price reduction of about 8 percent, beginning with April electric bills, according to a company press release.

Texas customers also will see a one-time credit to April bills, reducing the bill for an average home by about one-third.

The changes were approved last Friday by the Public Utility Commission of Texas.

They reflect a \$44 million annual reduction in the fuel-cost portion of future bills from SPS.

SPS residential customers in Texas using 1,000 kilowatt-hours of service monthly will see a \$3.74, or 6 percent, drop in their bills. The one-time credit, for a home typically using 1,000 kilowatt-hours, will reduce the April bill by \$19.32.

Commercial and industrial customers of SPS in Texas will see reductions of up to 11 percent, because fuel accounts for a greater portion of their over-

all bills.

SPS customers in New Mexico, Oklahoma and Kansas already are enjoying similar reductions in their electric bills. Regulations in those states differ from regulations in Texas, but the price changes are equivalent.

SPS also is providing lower prices to its regional wholesale customers.

The one-time credit and the ongoing reductions in customers' future bills reflect savings SPS has achieved in costs for fuels that fire the boilers at its power generating plants.

The reductions reflect, especially, lowered costs of transporting coal by rail from mines in Wyoming to the coal-fueled SPS plants near Amarillo and Muleshoe. SPS announced the reductions in November, noting that a dispute with the rail carrier — ongoing since 1990 — had been settled, allowing significant savings. Also, costs of natural gas and coal generally are down, allowing additional reductions.



### Outstanding flute soloist

Watson Junior High School eighth-grader Jami Wedel was named an Outstanding Soloist at the Clovis Solo Contest held March 6. Jami was one of only 30 participants in the field of over 800 to win the prestigious rating.

## WEATHER

from page 1

age year, and he is the first to admit he missed that one.

"I missed last year, so maybe I will miss this year too," Crim said.

Hopeful thoughts, but likely that won't happen. History says the "Chief" is correct approximately 80 percent of the time. So, last year's miss indicates this year's forecast will likely be on the nose.

Crim has been conducting these 'fireburnings' since 1983. He is carrying on a family tradition that started with his grandfather Taylor in 1910. Taylor learned the ritual from the Comanche and Plains Indians when he lived near them in El Paso. J.W., Taylor's son and Weldon's father, conducted the 'burnings' from 1923 until 1980.

The 'fireburning' takes place by stacking wood in a tee-pee shape and setting fire to it. The direction the wind blows the smoke at exactly sunrise predicts the weather for the coming spring.

With another dry spring in the forecast, the "Chief" has some advice for the locals.

"My dad used to say the southwest wind meant for you to take the squaw and the kids and move to Oklahoma," the "Chief" said. "It ain't going to rain here."



**RED WING SHOES**  
Made in U.S.A.

**The Fair Store**  
120 Main 272-3500

*Have A Nice Day!*

## BANQUET

from page 1

awards.

Burke is one of the top fiddlers in the country. The Kaplan, La. native recorded several No. 1 country hits in the 1970s, including "Big Mamou" and "Colinda." He plays at the Texas State Fair every year and also is popular at rodeos.

A jazz band from Muleshoe High School will entertain during dinner.

The banquet serves as the

Chamber's major fund-raiser and keeps the organization from seeking contributions from members during the year.

Tickets are \$50 per person and can be purchased at the Chamber office at 218 Main St. weekdays between 9 a.m. and 2 p.m. or from any chamber board member.

McCaul said volunteers are still needed for the event. For more information or to volunteer, contact McCaul at 272-4248.

## SOUTH PLAINS

from page 1

end.

During the last three years, Muleshoe has won at least 19 games.

Joining Cleavinger on the All-South Plains squad were Seminole's Chris Ogden and Caleb Clay, Mikey Marshall of Tulia and D' Hudson of Shallowater.

Ogden was named Player of the Year.

The 6-7 senior and University of Texas signee averaged 16.8 points, 10.4 rebounds and 9 assists while leading Seminole to the state title game.

Clay, a 6-5 senior, averaged 17 points and 6.2 rebounds for the Indians; Marshall, a 6-4 junior, averaged 17.7 points and 12.2 rebounds; while Hudson, a 5-9 junior, averaged 23.4 points and 8.5 assists.

On the All-South Plains girls team, Muleshoe's Erin Wilhite and Lindsey Field earned honorable mention.

Wilhite, a 5-10 senior, averaged 11.8 points and 6.8 rebounds, while Field, a 5-9 junior, contributed 12.2 points and 6 rebounds. They helped the Lady Mules earned their first playoff appearance in five years. The Lady Mules reached the regional quarterfinals.

Heather Trout of Denver City was named Player of the Year. Dimmitt's Chris Edwards earned Coach of the Year.

Joining Trout on the elite team were Keli Cox and Lindsey Martin of District 2-3A champion Shallowater, Kendra Anderson of Colorado City and Michelle Wickson of Seminole.

# A R E A BUSINESS DIRECTORY

**RECIPES** **OPEN** Mon.-Fri. 5 am to 2 pm Sat. 5 am to 1 pm

Go to T.J.'s Donuts! We have a **full breakfast menu** and **daily lunch specials!**

**Thursday**—Sirloin steak, baked potato, salad, dessert & drink  
**Friday**—Fried cod fish, hush puppies, spicy french fries, salad, toast, dessert & drink  
**Monday**—Roast beef plate, mashed potatoes, brown gravy, English peas, dessert & drink  
**Tuesday**—Chicken strips, cream gravy, french fries, salad, dessert & drink  
**Wednesday**—Baked ham, yams, broccoli and rice casserole, dessert & drink

**T.J.'S DONUTS**  
328 S. Main St. • Muleshoe • 272-3542

**OIL CHANGE**  
**\$18.95**

Up to 5 qts.  
Your choice of oil.  
Diesels extra

**FARM**  
Tire Resource

**James Crane Tire Co.**  
107 S. Main St. • Muleshoe • 272-4594

**T.J.'S DONUTS**

Come to T.J.'s Donuts for our **Full Breakfast Menu & Daily Lunch Specials!**

**Thursday**—Sirloin steak, baked potato, salad, dessert & drink  
**Friday**—Fried cod fish, hush puppies, spicy french fries, salad, toast, dessert & drink  
**Monday**—Roast beef plate, mashed potatoes, brown gravy, English peas, dessert & drink  
**Tuesday**—Chicken strips, cream gravy, french fries, salad, dessert & drink  
**Wednesday**—Baked ham, yams, broccoli and rice casserole, dessert & drink

**We Do Special Occasion Cakes & Cookies!**

IN A HURRY FOR A QUICK BURGER?  
**WE MAKE THIN PATTIE HAMBURGERS!**  
(special orders)

**Call-Ins Welcome!**

OPEN: Mon.-Fri. 5 am to 2 pm, Sat. 5 am to 1 pm  
328 S. Main St. • 272-3542

New Spring **GIFTS & ACCESSORIES**

**Spring Here**

NEW Terrariums—Ornamental Wrought Iron Tiffany Style Lamps—The Original Soap by the Slice

**Muleshoe Art Loft**  
1529 W. American Blvd. • 272-3485

**NATIVE GRASSES, INC.**

Experts in the sowing and harvesting of native grasses of the Great Plains and of the Southwest

- Specializing in native American grasses of the Great Plains and the Southwest
- Most native grass seeds available at wholesale prices with turnkey sowing jobs.
- All work done in compliance with Government specifications.

Please Call:  
**Darwin Simnacher**  
505.762.7817  
FAX 505.763.9115 Email simnacher@3lefties.com  
Or Vince Simnacher  
806.946.3461 FAX 806.946.3604  
References provided upon request.

**WHY ARE 37 MILLION CARS INSURED WITH STATE FARM?**

**JUST ASK A GOOD NEIGHBOR.**

Don't trust just anyone to insure your car, see me:

**Mark Morton Insurance**  
STATE FARM INSURANCE  
101 S. Main St. • Muleshoe • 272-7519 or 1-800-867-9178  
State Farm Mutual Automobile Insurance Company (not in NJ), State Farm Indemnity Company (NJ) - Home Office: Bloomington, Illinois

**Muleshoe Feed Barn**

**HI-PRO STEER FEED** **HI-PRO FEEDS**

A full line of quality feed products

290 Show Calf Finisher ..... **\$220/ton**

287 Show Calf Starter ..... **\$215/ton**

311 W. American Blvd. • 272-5626

**Muleshoe Journal** USPS 367820  
Established February 23, 1924. Published by Triple S Publishing, Inc.  
Every Thursday at 304 W. Second, Box 449, Muleshoe, TX 79347.  
Second Class Postage paid at Muleshoe, TX.  
POSTMASTER: Send address changes to the Bailey County Journal, P.O. Box 449, Muleshoe, TX 79347.  
We are qualified members of:  
Panhandle Press Association, National Newspaper Association,  
West Texas Press Association and Texas Press Association

WEST TEXAS PRESS ASSOCIATION MEMBER 1999

PPA Panhandle Press Association

Scot Stinnett, Publisher  
Lisa Stinnett, Vice-President/Comptroller  
Rick White, Editor  
Mari Guadalcasar, Classifieds  
Leah Bell, Advertising

SUBSCRIPTIONS: Muleshoe Journal and Bailey County Journal  
By Carrier Yearly - \$22.00  
Bailey County — by mail - \$24.00  
Elsewhere - \$26.00  
Advertising Rate Cards on Application

\*Advertisers should check their ad the first day of insertion. The Journals will not be liable for failure to publish an ad or for a typographical error or errors in publications except to the extent of the cost of the ad for the first day of insertion. Adjustment for errors will be limited to the cost of that portion of the ad where the error occurred.\*

## Struggles continue for Mule batsmen

MIDLAND—Muleshoe has nowhere to go but up after its losing streak reached nine games with three losses last week in the West Texas Classic.

Muleshoe was outscored 38-8 in the tournament, with all the games ended by the 10-run mercy rule.

The Mules (1-9) have had trouble putting together a consistent effort according to Muleshoe coach Brad Hill. The biggest culprit has been the Mules' bats, which produced just 12 singles and no extra base hits in Midland.

Pecos racked Muleshoe starter Cameron Nix and reliever James Barrett for 11 hits Saturday, handing the Mules a 13-3 setback in five innings.

Nix (0-1) was making his first start.

Aftersporting Pecos a 7-0 lead, Muleshoe scored three times in the third inning with the aid of three walks and a two-run single by senior shortstop B.J. Gonzales.

But Peco answered with two runs in the fourth and four more in the fifth.

In Friday's consolation game, Clint rode five hits and five walks to a 10-run third inning in a 14-4

win.

Clint Black had a pair of singles and an RBI with Gonzales and Barrett adding run-producing hits.

Kyle Hahn took the loss for Muleshoe.

In Thursday's opener, Josh Speed pitched a five-hitter in Monahan's 11-1 two-inning win.

Junior Mitch Mason had both Muleshoe's hits.

Rhett Kerby took the loss.

Muleshoe played at Portales, N.M. Tuesday and opens District 2-3A play Friday by hosting Littlefield. Game time is 4:30 p.m.

### Thursday

MONAHANS 11, MULESHOE 1 (5)  
Muleshoe 100 00 1 2 1  
Monahans 021 53 11 8 1

Kerby, Pyle (5) and Mason; Speed and Swarf. 2B — Monahans Swarf, Passmore. 3B — Monahans, Rodriguez.

### Friday

Clint 14, Muleshoe 4 (6)  
Muleshoe 01 1 200 4 5 2  
Clint 11(10) 101 14 11 3

Hahn, Barrett (3), Gonzales (6) and Mason, Black (5). 2B — Clint, Moreno, Tullius. 3B — Clint, Morales.

### Saturday

Pecos 13, Muleshoe 3 (5)  
Muleshoe 003 00 3 5 4  
Pecos 432 04 13 11 2

Nix, Barrett (5) and Mason, Black (5). Rodriguez and Abila. 2B — Pecos, Gutierrez.

## Turney selected for all-star game

Muleshoe all-state lineman Matt Turney has been invited to play in the prestigious Texas High School Coaches all-star football game this summer.

The game will be held in July in Fort Worth according to Muleshoe head football coach David Wood.

"It's one of the biggest honors a Texas high school player can receive," Wood said.

Turney, a 6-4, 275-pound two-way standout, helped Muleshoe win its first district title since 1979 this fall. He signed to play college football at the University of Texas in Denton in February.

## Pena wins powerlifting title; advances to 3A state meet

Muleshoe senior Greg Pena won the 220-pound division at the Region I-3A powerlifting meet on March 13 at Colorado City.

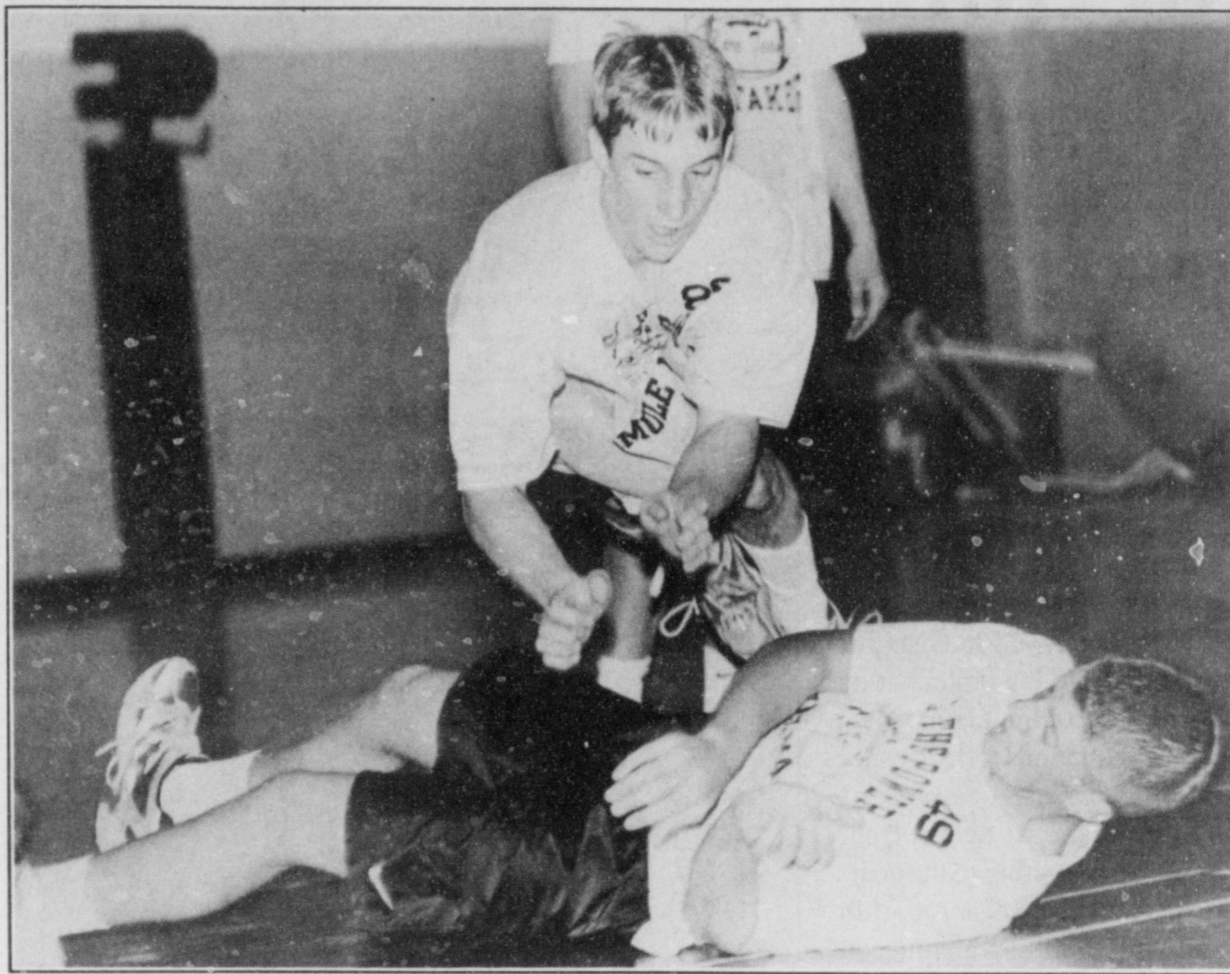
By winning at regionals, Pena qualified for the state meet this Saturday at Fort Hood military base in Killeen.

Pena had a total lift of 1,265 pounds, including 290 pounds

in the bench press and 500 in the dead lift.

Senior teammate Josh Pyle finished fourth in same division. Pyle had a total lift of 1,250 pounds, including 275 pounds in the bench press and 515 pounds in the dead lift.

The top two lifters in each division advanced to the state meet.



## Drop and roll

Freshman Tad Lutz leaps over Stephan Shelburne during an off-season football agility drill Monday in the high school gym.

## Locker, Atwood strong at West Texas Relays

ODESSA — Stacy Locker is always looking for a challenge.

Locker was rarely tested last year in the 800 meters until reaching the Class 3A state track meet in Austin, where she brought home a bronze medal with a school-record effort.

This year it looks like it is going to be different as the Muleshoe junior faced state-caliber competition Saturday at the West Texas Relays, finishing second in the 800 in a head-to-head matchup with Hereford's super sophomore Brionne Yosten.

Yosten, who captured the Class 4A cross country championship in the fall, held off a hard-closing Locker by five yards, finishing with a time of 2 minutes and 20.20 seconds. Locker's 2:20.82 effort was

nearly six seconds better than her previous best this season and her second-best effort ever behind her 2:19.14 clocking at state last year.

She ran a 5:36.87 in the 1600 and finished second.

Even though the Lady Mules' were off last week, Locker called boys track coach Flint Bigham on Thursday and he got her into the meet.

In the boys meet, Muleshoe freshman Kyle Atwood continues his eye-opening improvement in the 800 and 1600

Atwood set personal-bests in both with a 2:04.52 effort while

finishing second in the 800 and a 4:39.63 clocking while placing third in the 1600.

Atwood helped Muleshoe place sixth in the Class 3A-1A meet with 35 points.

Dustin Cleavinger added a second in the high jump (6-4) and sixth in the shot put (42-3), Jeff King finished third (12-0) and Brandon Broyles fourth (12-0) in the pole vault, Russell Byers took fifth in the triple jump (41-3 1/2) and Matt Turney was sixth in the discus (130-2).

The Mules varsity will compete at San Angelo this week while the girls and the junior varsity boys are at Hart.

## SPORTS BRIEFS

### Youth basketball sign-up

Muleshoe youth basketball will be holding registration from 6-7:30 p.m. on Thursday, March 25 at the Muleshoe State Bank. Registration is open to girls in the 3rd through 6th grade.

There will be a second registration in conjunction with the first clinic on Saturday, March 27 at the High School gym. Bring practice gear and shoes. The clinic starts at 10 a.m. for 3rd and 4th grade and at 11 a.m. for 5th and 6th grade.

Registration is \$30 and participants must bring proof of age. There will also be a sign up for those interested in coaching.

### Babe Ruth registration

The Muleshoe Area Babe Ruth Baseball League will hold registration on Monday, March 29 from 6-8 p.m. in the Bailey County Electric Cooperative located at 305 E. Ave B in Muleshoe. Registration is open to players (male or female) who will be 13-15 years of age as of Aug. 1, 1999 and live in the Muleshoe, Lazbuddie, Earth and Sudan areas.

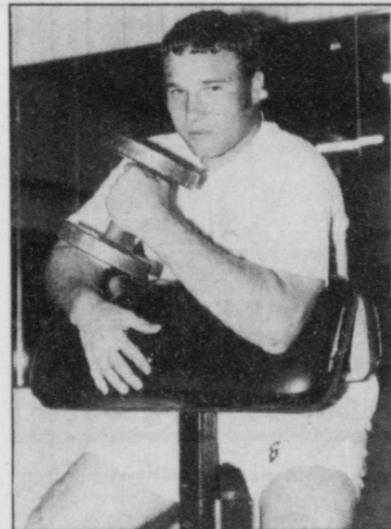
The entry fee is \$35. A certified copy of the birth certificate is required at the time of registration. For more information, call David B. Marricle at 272-4863 after 5 p.m.

### Little League registration

The Muleshoe Little League will hold registration from 6:30 to 8 p.m. on Thursday, March 25 at the Watson Junior High School gym. Registration is open to all children currently enrolled in kindergarten through 12 years of age on or before July 31, 1999.

The registration fee is \$25 per player. A certified copy of the child's birth certificate is required at the time of registration. For more information call Cliff Black.

Those interested in coaching can call Leslie Derby for T-ball, Carroll Precure for Minor league, and Curby Brantley for Major league.



Greg Pena wins regional title

## MULESHOE LADIES GOLF ASSOCIATION NEWS

The Muleshoe Ladies Golf Association met Wednesday, March 17 for their monthly luncheon.

Connie Dominguez served the ladies a delicious lunch. We appreciate her so much!

We had one new member, Lynn Campbell. It was great having her back. Birthday ladies for March were Sheryl Engleking, Claudine Elliott, Judy Wilbanks, Lynn Campbell, and Anita Mitchell. Happy Birthday to all of them.

President Sheryl Engleking presided over the business meeting. Secretary Jana St. Clair read the minutes from our last meeting. Treasurer Rhonda Box gave her report. Tournament chairwomen Laverne Winn reported that the first Friday of each month will be a scramble with the men and ladies. Also, the tournament dates for all year were given.

Linda Elder gave the High Plains dates for each town this year.

Muleshoe will have the High Plains Day here the second Wednesday in May. Dimmitt will have the first High Plains tournament in April.

Deborah Noble announced the days set for our

Ladies Associations garage sale. The sale will be Friday and Saturday April 16 and 17 starting at 9 a.m. each morning.

This is a big garage sale with all ladies contributing items. The location for the garage sale is the old Wiedebush and Company Warehouse on American Blvd. All ladies were reminded to bring their items at 2 p.m. on Wednesday and Thursday afternoons.

Helen Templeton gave playday awards to: Feb. 24 - least putts, Anita Allgood, Linda Elder and Helen Templeton; March 10 - first on green on number one, Claudine Elliott. Our monthly door prize was won by Heather Shipman.

Those attending the luncheon were Laverne Winn, Cookie Bamert, Helen Templeton, Darlene Henry, Deborah Noble, Anita Allgood, Ruby Hart, Sheryl Engleking, Jana St. Clair, Heather Shipman, Rhonda Box, Lynn Campbell, Cindy Baker, Sherri Shipman, Linda Elder, Neats Foster, Judy Wilbanks, and Claudine Elliott.

The ladies played cards after the meeting, weather did not permit golf. It was a fun day for the ladies.

## Great Buys For Your Home

### Roper RAX7244EQ

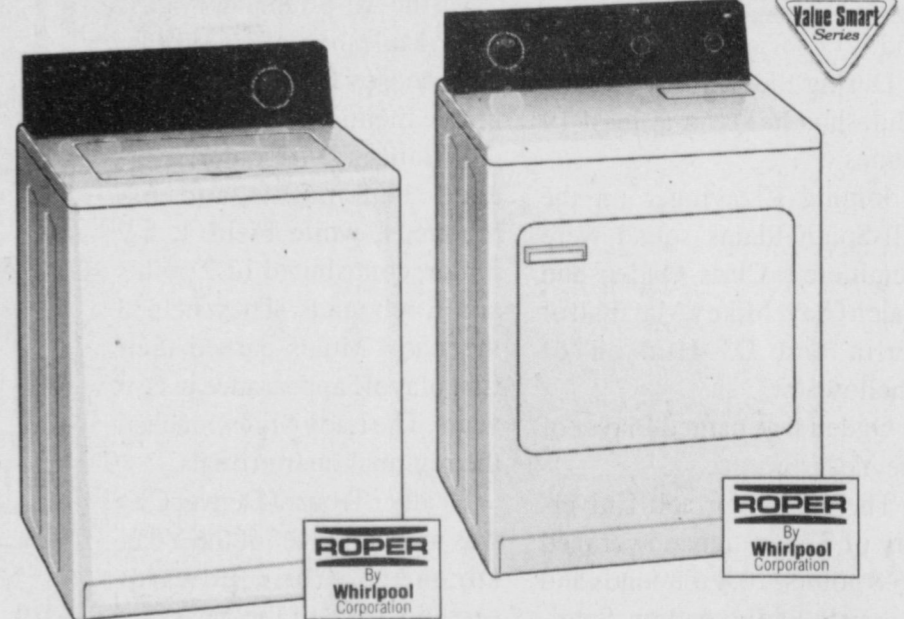
27" Extra-Large Capacity Plus Automatic Washer

- 7 Automatic Cycles
- 2 Wash & Spin Speeds
- 4 Wash/Rinse Water Temperature Combinations
- 4 Water Level Selections
- Multi-Action Agitator for Improved Performance
- White, Almond or White-on-White Styling

### Roper REX5635EQ

29" Extra-Large Capacity Electric Dryer

- 5 Total Cycles Including AUTO DRY
- Automatic WRINKLE PREVENT
- 3 Temperature Selections
- Reversible Large Side-Swing Door
- On/Off End-of-Cycle Signal
- White, Almond or White-on-White Styling



The Pair Only \$649<sup>95</sup>

Come In Today!



With Free Icemaker

Beat the Heat!

Whirlpool ET18GXG9W  
18.1 cu. ft. Top-Mount Refrigerator

- Two EZ-Vue™ Crispers
- EZ-Vue™ Meat Pan
- Accu-Chill System
- Adjustable Glass Shelves

\$599

**WILSON APPLIANCE**

117 Main St. • Muleshoe, TX • 272-5532

**O**BITUARIES

**HORACE McADAMS**

Horace Ware McAdams, 77, of Odessa died Saturday, March 20, 1999 at his residence.

A church service was held Tuesday at First United Methodist Church of Odessa with Rev. Scott Seymour and Rev. Bill Hegemier officiating. Burial was held in Sunset Memorial Gardens under the direction of Hubbard-Kelly Funeral Home.

Mr. McAdams was born Sep. 26, 1921 in Fayetteville, Ark. He married Ann Lucy Bray on October 5, 1941 in Muleshoe.

The McAdams family moved to Muleshoe in 1926. Horace graduated from Muleshoe High School and was class president for all four years. He was a star football player and track quarter miler. His football team won district his senior year and his track team went to state. He later attended Texas University Pharmacy School at Austin.

He enlisted in the U.S. Coast Guard in Aug. 1942 and they sent him to Columbia University Pharmacy School in New York City. He served as Chief Pharmacist's mate on the LST 71 for 20 months. He received an honorable discharge in Nov. 1945.

He returned to Muleshoe and managed a dairy and worked for E.R. Hart Company. He was later a pharmaceutical detail salesman for 15 years. The family moved to Odessa in 1957 and he worked as the bookstore manager for Odessa College for 20 years until he retired in 1985. He was a member of First United Methodist Church, past president of the Wild Cat Toastmasters and Hi Noon Optimist Club. Horace and Lucy owned ABC McAdams Playschool for 39 years and Lucy served as the licensed director.

He is survived by his wife, Lucy; their children, Evert and Estelle McAdams of Plains, Julie and Raymond Jones of Clint, Ben and Sande McAdams of Odessa, and Ken and Ann McAdams of Plainview; grandchildren, Penny and Jimmy Wiseman, Ryan Jones, Lacy, Ken, Andy, Brant, James and Holly McAdams; and sister Bettye Oliver of Muleshoe. He was preceded in death by his parents, William Benton

McAdams and Vivian Buster McAdams, and a sister, Dorothy McAdams Long.

The family suggests memorials be made to First United Methodist Church, Family Hospice of Odessa or the American Cancer Society.

**LARRY SILHAN**

Larry Silhan, 42, of Lubbock died Friday, March 19, 1999 at University Medical Center in Lubbock.

Graveside services were held Tuesday at Littlefield Memorial Park Cemetery. Burial was under the direction of Ellis Funeral Home of Morton.

Mr. Silhan was born July 15, 1956 in Littlefield. He moved to Morton in 1995 from Houston. He moved to Lubbock in 1997. He received a degree in mechanical engineering from Texas Tech University. He was an assistant drilling superintendent for Big Chief Drilling Company of Houston and a mechanical engineer for Norton Drilling Company of Lubbock.

He is survived by a daughter, Heather Silhan of Lubbock; and two sisters, Debra Lamar of Morton, and Kari Runyan of Cleveland, Texas. He was preceded in death by his mother

Joyce in Sept. 1988, his father Frank in June 1993, and brother Robert in Dec. 1993.

**W.G. HEFLIN**

W.G. Heflin, 87, of Clovis, N.M. died Saturday, March 20, 1999 at The Retirement Ranch in Clovis, N.M.

Graveside services were held Tuesday at Morton Memorial Cemetery with Jody Pierce, minister of Eastside Church of Christ in Morton, officiating. Burial was under the direction of Ellis Funeral Home of Morton.

Mr. Heflin was born Jan. 12, 1912 in Spur, Texas. He married Naomi Juanita Chaney on Dec.

26, 1929 in Lubbock. She passed away Aug. 9, 1993.

Mr. Heflin was a resident of Morton from 1935 to 1990 where he owned and operated Heflin Lumber Company. In 1990, he moved to Ruidoso, N.M. and from 1993 to 1998 he lived in Bloomfield, N.M. He lived in a nursing home in Clovis for the past year.

He is survived by a son, W.G. Heflin Jr. of Albuquerque, N.M., seven daughters, Wilma Dolle of Morton, Billie Raether of Portales, N.M., Tiny Womack of Lamesa, Wanda Reeves, Lora Troxell and Doris Taylor, all of

Bloomfield, and Maxine Hudgins of Hobbs, N.M.; three sisters, Mae Heflin, Vernie Trapp and Nancy Brown, all of Clovis; two brothers, Gerald Heflin of Portales, and George Heflin of Levelland; 20 grandchildren; 35 great grandchildren; and four great great grandchildren. He was preceded in death by a son, Wilson Edward Heflin in 1995.

The family suggests memorials be made to the Alzheimer Association, South Plains Chapter, TTU-HSC, Rm. 31, 116 Lubbock, TX 79340 or the American Cancer Society, 2411 73rd, Lubbock, TX 79423.

# SALE

**OUR BIGGEST SALE OF THE SEASON STARTS TODAY!**



**25% OFF**  
EASTER DRESSES  
For misses & juniors.  
Reg. 29.00-89.00, **SALE 21.75-66.75.**



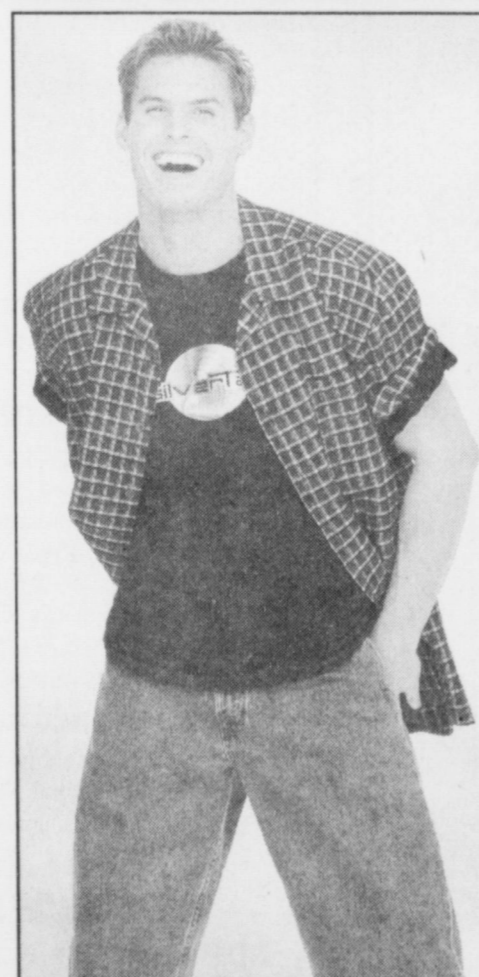
**33% OFF**  
SAG HARBOR® FOR MISSES  
The collection, reg. 30.00-44.00.  
**SALE 20.10-26.80.**



**25% OFF**  
EASTER DRESSES FOR GIRLS  
Infants', toddlers', 4-6X & 7-16.  
Reg. 24.00-36.00, **SALE 17.99-26.99.**



**1/2 OFF**  
2ND PR. FOOTWEAR  
Entire stock family footwear.  
Buy 1 at reg. price, get 2nd pair half off.\*



**29.99-39.99**  
LEVI'S® JEANS FOR MEN  
567", 550", silverTab® & more.  
Men's 550" shorts, 25.00.

**33% OFF**  
COORDINATES FOR MISSES  
Reg. 28.00-50.00, **SALE 18.76-33.50.**

**SALE 14.99**  
COTTON CASUALS FOR MISSES  
Shirts, skirts & pants. Reg. 19.99-24.99.

**SALE 24.99 EA. PC.**  
CAREER SEPARATES FOR MISSES  
Sweaters, skirts, shirts, pants. Reg. 34.00 ea.

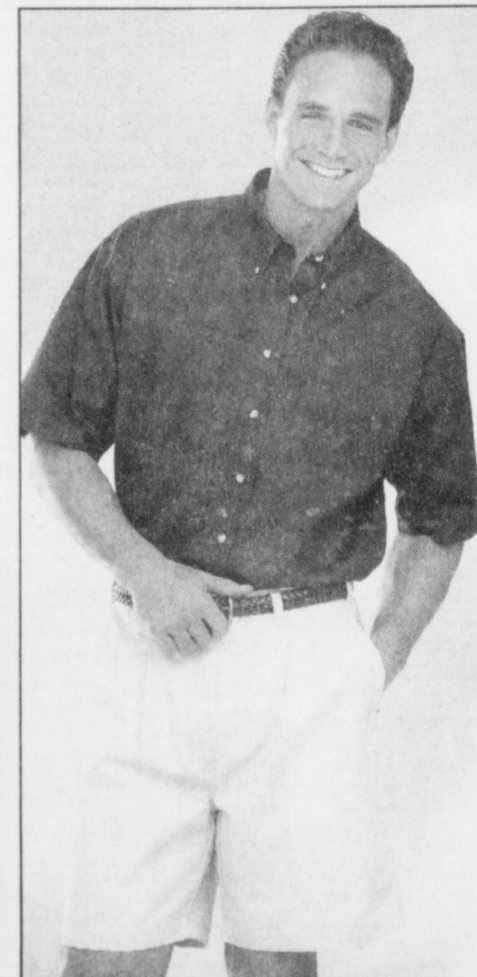
**25% OFF**  
SEPARATES FOR JUNIORS  
Reg. 16.00-38.00, **SALE 12.00-28.50.**

**60% OFF**  
ENTIRE STOCK FINE JEWELRY  
Large assortment of 14K gold, silver & vermeil.

**SALE! 17.99**  
KNIT & WOVEN TOPS FOR MEN  
Vests & shorts too. Reg. 24.00 & 25.00.

**17.99-19.99**  
GRAPHITE® TOPS & SHORTS  
For men. Reg. 24.00.

**SALE! 14.99**  
TOPS & SHORTS FOR MEN  
By Specialty Collection®. Reg. 20.00-22.00.



**14.99-31.99**  
TOPS, SHORTS, PANTS FOR MEN  
Choose great looks from Dockers® & Specialty Collection®. Reg. 20.00-35.00.

**SAVE EVEN MORE WITH THESE COUPONS**

NOW THRU SUNDAY, MARCH 28 ONLY!

**TAKE 10% OFF ANY SINGLE ITEM\***

Valid now thru March 28, 1999 only. Coupon must be relinquished at time of purchase and cannot be combined with any other coupon or private savings offer. Coupons not valid on gift certificates or payment on credit accounts. \*Excludes cosmetics, fragrances, Levi's 501® jeans, shoes and designer collections.

NOW THRU SUNDAY, MARCH 28 ONLY!

**TAKE 10% OFF ANY SINGLE ITEM\***

Valid now thru March 28, 1999 only. Coupon must be relinquished at time of purchase and cannot be combined with any other coupon or private savings offer. Coupons not valid on gift certificates or payment on credit accounts. \*Excludes cosmetics, fragrances, Levi's 501® jeans, shoes and designer collections.

Just a sample of the savings you will find. Interim markdowns may have been taken. Petites & Fine Jewelry at most stores. Vermeil is 18K gold over sterling. Selection varies by store. \*2nd pair must be of equal or lesser value. Excludes Dr. Martens®.

For the store nearest you, call 1-800-324-1313 or log on at [www.beallsstores.com](http://www.beallsstores.com)

**CHARGE IT!  
GET 10% OFF  
ALL DAY  
WHEN YOU OPEN A NEW STORE ACCOUNT.**  
Exclusions may apply. Subject to credit approval.

# BEALLS

321 Main Street • Muleshoe, TX • (806) 272-3478 Open: Monday thru Saturday 10 am to 6 pm, Sunday Noon to 6 pm

**U.S. prepares retaliation in hormone case**

U.S. trade negotiators are in the process of preparing a preliminary list of sanctions against the European Union if the dispute over the EU's ban on U.S. hormone-treated beef is not resolved by the May 13 deadline.

Industry representatives would be allowed 30 days to comment on the provisional list of products before a definitive list is set.

Deputy Agriculture Secretary Richard Rominger remains hopeful that the dispute can be settled through a labeling agreement, but U.S. negotiators say they will reject any deal that keeps the beef ban temporarily in place while new scientific studies are conducted — one option put on the table by the EU.

Both sides also are investigating an option that would compensate the U.S. for lost sales, though U.S. negotiators view compensation as only a temporary measure until the ban has been lifted.

# Texas Senate passes electric industry deregulation bill

AUSTIN—Sweeping legislation to deregulate Texas' \$17 billion electric industry passed on a voice vote last week in the Texas Senate.

Consumers served by investor-owned utilities would get a 5 percent rate cut when power providers begin competing for customers on Jan. 1, 2002, under Senate Bill 7 by Sen. David Sibley, R-Waco.

Sibley said consumers willing to shop for better rates might be able to lower their bills by another 10 percent, depending on their choice of a provider.

SB 7 - said to be on the "fast track" - will be heard next in the House State Affairs Committee. Carrying the measure will be Rep. Steve Wolens, D-Dallas, chairman of the committee.

Critics of the bill say it will benefit large power companies more than ratepayers.

## Budget wish list still on table

A state budget bill has not been filed yet, but state Rep. Henry Cuellar, D-Laredo, of the powerful House Appropriations Committee is working toward a plan incorporating recommendations by Gov. George W. Bush.

Cuellar, chairman of the House Appropriations subcommittee on education, last week recommended that \$3 billion go toward teacher raises and a property tax cut and be used to enhance fairness in the state's school financing system.

Bush wants the Legislature to use \$2 billion to cut school property taxes and \$1 billion for teacher raises and benefits.

Bush also wants to:

- Exempt small corporations from the state business income tax;
- Exempt certain research and development corporations; and
- Exempt diapers, over-the-counter medicines and Internet access from state sales tax.

In a report by the *Austin American-Statesman*, Cuellar indicated that deliberation on teacher salaries and benefits must come from the House Public Education Committee, chaired by Rep. Paul Sadler, D-Henderson.

It would take \$2.1 billion to raise Texas teachers' salaries to the

State Capital



## HIGHLIGHTS

Compiled by Ed Sterling  
TEXAS PRESS ASSOCIATION

national average of \$39,000 a year - amounting to a \$300 a month raise for teachers according to Annette Cootes spokeswoman for the Texas State Teachers Association.

## Abortion notification bill passes

A teen-ager would be required to notify her parents before she could get an abortion under legislation approved by the Texas Senate last week.

The bill's sponsor, Sen. Florene Shapiro, R-Plano, called the measure a "parental rights bill."

Opponents of the bill have argued that requiring parental notification would impede teen-agers' access to a safe, legal abortion.

Gov. Bush called Shapiro's bill "a positive step to reduce the number of abortions in Texas and involve parents in this major medical decision for their minor daughters."

Bush said he hopes to sign the bill, which moves to the House for consideration, into law.

## Other capital highlights

■ State Comptroller Carole Keeton Rylander has named Mike Doyle as director of the agency's Treasury Division, which manages \$10 billion in state cash and investments. Doyle has been in charge of the treasury division since 1994.

■ Texas has the opportunity to join the dozen highest-populated states in a short-term "millennium" lottery that would give a single winner as much as \$300 million. Texas Lottery officials are investigating the possibility of joining.

■ The Senate Economic Development Committee has passed a bill that would limit year 2000 glitch liability for computer makers and software designers. The proposal is by Sen. Robert Duncan, R-Lubbock.

■ The Senate last week passed a bill by Senate Finance Committee chairman Bill Ratliff, R-Mount Pleasant, requiring state agencies to assure women and minority owned businesses will get a fair shot at landing state contracts.

# A variety of homestead exemptions could lower your property taxes!

A homestead exemption lowers the property taxes on your home by lowering its taxable value. If your home is valued at \$50,000 and you receive a \$15,000 homestead exemption, your home will be taxed as if it were worth \$35,000.

## Who qualifies for an exemption?

Anyone who owned a home on January 1st (and used it as their primary residence on that date) is entitled to a \$15,000 homestead exemption to lower their school taxes this year...and it doesn't matter if your home is a house, condominium, or mobile home.

## Are other exemptions available?

If you're disabled—or if you're 65 years old or older—you are entitled to an additional \$10,000 school tax exemption on your home. And if you qualify for the over-65 exemption, you're also entitled to a permanent, locked-in "ceiling" on the school property taxes on your home. (The ceiling does not apply to county or city property taxes, and those entities may offer other exemptions.) The over-65 homeowner's exemptions and school tax ceiling transfers to the surviving spouse, if the spouse is 55 years of age or older at the time of death and lives in and owns the home. Over-65 homeowners also may transfer the percentage of school tax paid, based on their former home's over-65 school tax ceiling, to a new home.

## Do I have to apply each year?

No. If you had a homestead exemption on your home in 1998, you won't need to reapply for 1999 unless your chief appraiser requires it. However, if you haven't received an exemption on your present home—or if you've moved to a new home—you'll need to file for an exemption of 1999. If you are 65 this year, you may file for the over-65 exemption up to one year after the date you turned 65. And if you became disabled during 1998, you need to file for the disabled person's exemption.

## When and where should I file?

File applications by April 30 at your appraisal district office. If you need more time, contact us at:

**BAILEY CENTRAL APPRAISAL DISTRICT**  
302 Main St. • Muleshoe, Texas 79347  
(806) 272-5501

For more information, stop in or call for a free copy of "Texas Property Taxes: Taxpayers' Rights, Remedies & Responsibilities"

Or contact

Comptroller's Property Tax Division  
P.O. Box 13528  
Austin, TX 78711-3528

# ¡Varias exenciones de residencia pueden rebajar sus impuestos de propiedad!

Una exención de residencia reduce sus impuestos de propiedad. Por ejemplo, si su residencia tiene un valor de \$50,000 y Ud. recibe una exención de \$15,000, sus impuestos se calcularán como si el valor de su residencia fuera \$35,000.

## ¿Quién califica para una exención?

Cualquier dueño de una residencia principal el día 1 de enero tiene derecho a una exención de residencia de \$15,000 este año para rebajar sus impuestos escolares...y no importa si la residencia es casa, condominio, o casa móvil.

## ¿Hay otras exenciones?

Si Ud. es incapacitado—o si tiene 65 años o más—tiene derecho a una exención adicional de \$10,000 en sus impuestos escolares de propiedad. Y si Ud. califica para la exención para los que ya cumplieron 65 años, también tiene derecho a un "cielo máximo" permanente en sus impuestos escolares de residencia. (El cielo máximo no tiene que ver con impuestos de propiedad de los condados o municipios, y esas entidades pueden ofrecer otras exenciones.) La exención para los que ya cumplieron 65 años y el cielo máximo se pueden transferir al esposo/esposa sobreviviente si el o ella tiene 55 ó más años de edad y es dueño/dueña de la casa en donde vive. También el dueño de una casa nueva que tiene más de 65 años puede trasladar un porcentaje de cielo máximo del los impuestos escolares que le tocaron en su domicilio vieja.

## ¿Debo solicitarla cada año?

No. Si Ud. recibió una exención de residencia en 1998, no hay necesidad de solicitarla de nuevo en 1999 al menos que se lo pida su jefe de valoraciones. Sin embargo, si no ha recibido una exención en su residencia actual—o si ha cambiado de domicilio tendrá que solicitar una exención para 1999. Si Ud. cumplirá los 65 años durante este año, tiene hasta un año de esa fecha para solicitar una nueva exención. Y si cumplió los 65 años o resultó incapacitado en 1998, tendrá que solicitar las exenciones adicionales.

## ¿Dónde y cuándo debo solicitar mis exenciones?

Su solicitud debe llegar en su oficina local del distrito de valoraciones antes del día 30 de abril. Si necesita más tiempo, favor de ponerse en contacto con nosotros antes:

**BAILEY CENTRAL APPRAISAL DISTRICT**  
302 Main St. • Muleshoe, Texas 79347  
(806) 272-5501

Si desea mas información, visítenos y obtenga una copia gratis de "Impuestos Sobre la Propiedad en Texas: Derechos, Recursos y Responsabilidades del Contribuyente de Impuestos"

o escriba a

Comptroller's Property Tax Division  
P.O. Box 13528 • Austin, TX 78711-3528

HAVE YOU ENTERED YOUR GORGEOUS GRANDCHILD IN THE JOURNAL'S "CUTEST BABY" CONTEST YET?

## It's Chick Days

at Aucutt's General Store!

**FREE**

5 Turkeys with every 50 lbs. Turkey Starter purchased!

**Colorful Easter Chicks & Easter Ducklings** Now At Aucutt's

5 Chicks\* with every 25 lbs. Chick Starter purchased!

10 Chicks\* with every 50 lbs. Chick Starter purchased!

**FREE**

5 Turkeys with every 50 lbs. Turkey Starter purchased!

**Colorful Easter Chicks & Easter Ducklings** Now At Aucutt's

5 Chicks\* with every 25 lbs. Chick Starter purchased!

10 Chicks\* with every 50 lbs. Chick Starter purchased!

**FREE**

5 Turkeys with every 50 lbs. Turkey Starter purchased!

**Colorful Easter Chicks & Easter Ducklings** Now At Aucutt's

5 Chicks\* with every 25 lbs. Chick Starter purchased!

10 Chicks\* with every 50 lbs. Chick Starter purchased!

**FREE**

5 Turkeys with every 50 lbs. Turkey Starter purchased!

**Colorful Easter Chicks & Easter Ducklings** Now At Aucutt's

5 Chicks\* with every 25 lbs. Chick Starter purchased!

10 Chicks\* with every 50 lbs. Chick Starter purchased!

**FREE**

5 Turkeys with every 50 lbs. Turkey Starter purchased!

**Colorful Easter Chicks & Easter Ducklings** Now At Aucutt's

5 Chicks\* with every 25 lbs. Chick Starter purchased!

10 Chicks\* with every 50 lbs. Chick Starter purchased!

**FREE**

5 Turkeys with every 50 lbs. Turkey Starter purchased!

**Colorful Easter Chicks & Easter Ducklings** Now At Aucutt's

5 Chicks\* with every 25 lbs. Chick Starter purchased!

10 Chicks\* with every 50 lbs. Chick Starter purchased!

**FREE**

5 Turkeys with every 50 lbs. Turkey Starter purchased!

**Colorful Easter Chicks & Easter Ducklings** Now At Aucutt's

5 Chicks\* with every 25 lbs. Chick Starter purchased!

10 Chicks\* with every 50 lbs. Chick Starter purchased!

**FREE**

5 Turkeys with every 50 lbs. Turkey Starter purchased!

**Colorful Easter Chicks & Easter Ducklings** Now At Aucutt's

5 Chicks\* with every 25 lbs. Chick Starter purchased!

10 Chicks\* with every 50 lbs. Chick Starter purchased!

**FREE**

5 Turkeys with every 50 lbs. Turkey Starter purchased!

**Colorful Easter Chicks & Easter Ducklings** Now At Aucutt's

5 Chicks\* with every 25 lbs. Chick Starter purchased!

10 Chicks\* with every 50 lbs. Chick Starter purchased!

**FREE**

5 Turkeys with every 50 lbs. Turkey Starter purchased!

**Colorful Easter Chicks & Easter Ducklings** Now At Aucutt's

5 Chicks\* with every 25 lbs. Chick Starter purchased!

10 Chicks\* with every 50 lbs. Chick Starter purchased!

**FREE**

5 Turkeys with every 50 lbs. Turkey Starter purchased!

**Colorful Easter Chicks & Easter Ducklings** Now At Aucutt's

5 Chicks\* with every 25 lbs. Chick Starter purchased!

10 Chicks\* with every 50 lbs. Chick Starter purchased!

**FREE**

5 Turkeys with every 50 lbs. Turkey Starter purchased!

**Colorful Easter Chicks & Easter Ducklings** Now At Aucutt's

5 Chicks\* with every 25 lbs. Chick Starter purchased!

10 Chicks\* with every 50 lbs. Chick Starter purchased!

**FREE**

5 Turkeys with every 50 lbs. Turkey Starter purchased!

**Colorful Easter Chicks & Easter Ducklings** Now At Aucutt's

5 Chicks\* with every 25 lbs. Chick Starter purchased!

10 Chicks\* with every 50 lbs. Chick Starter purchased!

**FREE**

5 Turkeys with every 50 lbs. Turkey Starter purchased!

**Colorful Easter Chicks & Easter Ducklings** Now At Aucutt's

5 Chicks\* with every 25 lbs. Chick Starter purchased!

10 Chicks\* with every 50 lbs. Chick Starter purchased!

**FREE**

5 Turkeys with every 50 lbs. Turkey Starter purchased!

**Colorful Easter Chicks & Easter Ducklings** Now At Aucutt's

5 Chicks\* with every 25 lbs. Chick Starter purchased!

10 Chicks\* with every 50 lbs. Chick Starter purchased!

**FREE**

5 Turkeys with every 50 lbs. Turkey Starter purchased!

**Colorful Easter Chicks & Easter Ducklings** Now At Aucutt's

5 Chicks\* with every 25 lbs. Chick Starter purchased!

10 Chicks\* with every 50 lbs. Chick Starter purchased!

**FREE**

5 Turkeys with every 50 lbs. Turkey Starter purchased!

**Colorful Easter Chicks & Easter Ducklings** Now At Aucutt's

5 Chicks\* with every 25 lbs. Chick Starter purchased!

10 Chicks\* with every 50 lbs. Chick Starter purchased!

**FREE**

5 Turkeys with every 50 lbs. Turkey Starter purchased!

**Colorful Easter Chicks & Easter Ducklings** Now At Aucutt's

5 Chicks\* with every 25 lbs. Chick Starter purchased!

10 Chicks\* with every 50 lbs. Chick Starter purchased!

**FREE**

5 Turkeys with every 50 lbs. Turkey Starter purchased!

**Colorful Easter Chicks & Easter Ducklings** Now At Aucutt's

5 Chicks\* with every 25 lbs. Chick Starter purchased!

10 Chicks\* with every 50 lbs. Chick Starter purchased!

**FREE**

5 Turkeys with every 50 lbs. Turkey Starter purchased!

**Colorful Easter Chicks & Easter Ducklings** Now At Aucutt's

5 Chicks\* with every 25 lbs. Chick Starter purchased!

10 Chicks\* with every 50 lbs. Chick Starter purchased!

**FREE**

5 Turkeys with every 50 lbs. Turkey Starter purchased!

**Colorful Easter Chicks & Easter Ducklings** Now At Aucutt's

5 Chicks\* with every 25 lbs. Chick Starter purchased!

10 Chicks\* with every 50 lbs. Chick Starter purchased!

**FREE**

5 Turkeys with every 50 lbs. Turkey Starter purchased!

**Colorful Easter Chicks & Easter Ducklings** Now At Aucutt's

5 Chicks\* with every 25 lbs. Chick Starter purchased!

10 Chicks\* with every 50 lbs. Chick Starter purchased!

**FREE**

5 Turkeys with every 50 lbs. Turkey Starter purchased!

**Colorful Easter Chicks & Easter Ducklings** Now At Aucutt's

5 Chicks\* with every 25 lbs. Chick Starter purchased!

10 Chicks\* with every 50 lbs. Chick Starter purchased!

**FREE**

5 Turkeys with every 50 lbs. Turkey Starter purchased!

**Colorful Easter Chicks & Easter Ducklings** Now At Aucutt's

5 Chicks\* with every 25 lbs. Chick Starter purchased!

10 Chicks\* with every 50 lbs. Chick Starter purchased!

**FREE**

5 Turkeys with every 50 lbs. Turkey Starter purchased!

**Colorful Easter Chicks & Easter Ducklings** Now At Aucutt's

5 Chicks\* with every 25 lbs. Chick Starter purchased!

10 Chicks\* with every 50 lbs. Chick Starter purchased!

**FREE**

5 Turkeys with every 50 lbs. Turkey Starter purchased!

**Colorful Easter Chicks & Easter Ducklings** Now At Aucutt's

5 Chicks\* with every 25 lbs. Chick Starter purchased!

10 Chicks\* with every 50 lbs. Chick Starter purchased!

**FREE**

5 Turkeys with every 50 lbs. Turkey Starter purchased!

**Colorful Easter Chicks & Easter Ducklings** Now At Aucutt's

5 Chicks\* with every 25 lbs. Chick Starter purchased!

10 Chicks\* with every 50 lbs. Chick Starter purchased!

**FREE**

5 Turkeys with every 50 lbs. Turkey Starter purchased!

**Colorful Easter Chicks & Easter Ducklings** Now At Aucutt's

5 Chicks\* with every 25 lbs. Chick Starter purchased!

10 Chicks\* with every 50 lbs. Chick Starter purchased!

**FREE**

5 Turkeys with every 50 lbs. Turkey Starter purchased!

**Colorful Easter Chicks & Easter Ducklings** Now At Aucutt's

5 Chicks\* with every 25 lbs. Chick Starter purchased!

10 Chicks\* with every 50 lbs. Chick Starter purchased!

**FREE**

5 Turkeys with every 50 lbs. Turkey Starter purchased!

**Colorful Easter Chicks & Easter Ducklings** Now At Aucutt's

5 Chicks\* with every 25 lbs. Chick Starter purchased!

10 Chicks\* with every 50 lbs. Chick Starter purchased!

**FREE**

5 Turkeys with every 50 lbs. Turkey Starter purchased!

**Colorful Easter Chicks & Easter Ducklings** Now At Aucutt's

5 Chicks\* with every 25 lbs. Chick Starter purchased!

10 Chicks\* with every 50 lbs. Chick Starter purchased!

**FREE**

5 Turkeys with every 50 lbs. Turkey Starter purchased!

**Colorful Easter Chicks & Easter Ducklings** Now At Aucutt's

5 Chicks\* with every 25 lbs. Chick Starter purchased!

10 Chicks\* with every 50 lbs. Chick Starter purchased!

**FREE**

5 Turkeys with every 50 lbs. Turkey Starter purchased!

**Colorful Easter Chicks & Easter Ducklings** Now At Aucutt's

5 Chicks\* with every 25 lbs. Chick Starter purchased!

10 Chicks\* with every 50 lbs. Chick Starter purchased!

**FREE**

5 Turkeys with every 50 lbs. Turkey Starter purchased!

**Colorful Easter Chicks & Easter Ducklings** Now At Aucutt's

5 Chicks\* with every 25 lbs. Chick Starter purchased!

10 Chicks\* with every 50 lbs. Chick Starter purchased!

**FREE**

5 Turkeys with every 50 lbs. Turkey Starter purchased!

**Colorful Easter Chicks & Easter Ducklings** Now At Aucutt's

5 Chicks\* with every 25 lbs. Chick Starter purchased!

10 Chicks\* with every 50 lbs. Chick Starter purchased!

**FREE**

5 Turkeys with every 50 lbs. Turkey Starter purchased!

**Colorful Easter Chicks & Easter Ducklings** Now At Aucutt's

5 Chicks\* with every 25 lbs. Chick Starter purchased!

10 Chicks\* with every 50 lbs. Chick Starter purchased!

**FREE**

5 Turkeys with every 50 lbs. Turkey Starter purchased!

**Colorful Easter Chicks & Easter Ducklings** Now At Aucutt's

5 Chicks\* with every 25 lbs. Chick Starter purchased!

10 Chicks\* with every 50 lbs. Chick Starter purchased!

**FREE**

5 Turkeys with every 50 lbs. Turkey Starter purchased!

**Colorful Easter Chicks & Easter Ducklings** Now At Aucutt's

5 Chicks\* with every 25 lbs. Chick Starter purchased!

10 Chicks\* with every 50 lbs. Chick Starter purchased!

**FREE**

5 Turkeys with every 50 lbs. Turkey Starter purchased!

**Colorful Easter Chicks & Easter Ducklings** Now At Aucutt's

5 Chicks\* with every 25 lbs. Chick Starter purchased!

10 Chicks\* with every 50 lbs. Chick Starter purchased!

**FREE**

5 Turkeys with every 50 lbs. Turkey Starter purchased!

**Colorful Easter Chicks & Easter Ducklings** Now At Aucutt's

5 Chicks\* with every 25 lbs. Chick Starter purchased!

10 Chicks\* with every 50 lbs. Chick Starter purchased!

**FREE**

5 Turkeys with every 50 lbs. Turkey Starter purchased!

**Colorful Easter Chicks & Easter Ducklings** Now At Aucutt's

5 Chicks\* with every 25 lbs. Chick Starter purchased!

10 Chicks\* with every 50 lbs. Chick Starter purchased!

**FREE**

5 Turkeys with every 50 lbs. Turkey Starter purchased!

**Colorful Easter Chicks & Easter Ducklings** Now At Aucutt's

5 Chicks\* with every 25 lbs. Chick Starter purchased!

10 Chicks\* with every 50 lbs. Chick Starter purchased!

**FREE**

5 Turkeys with every 50 lbs. Turkey Starter purchased!

**Colorful Easter Chicks & Easter Ducklings** Now At Aucutt's

5 Chicks\* with every 25 lbs. Chick Starter purchased!

10 Chicks\* with every 50 lbs. Chick Starter purchased!

**FREE**

5 Turkeys with every 50 lbs. Turkey Starter purchased!

**Colorful Easter Chicks & Easter Ducklings** Now At Aucutt's

5 Chicks\* with every 25 lbs. Chick Starter purchased!

10 Chicks\* with every 50 lbs. Chick Starter purchased!

**FREE**

5 Turkeys with every 50 lbs. Turkey Starter purchased!

**Colorful Easter Chicks & Easter Ducklings** Now At Aucutt's

5 Chicks\* with every 25 lbs. Chick Starter purchased!

10 Chicks\* with every 50 lbs. Chick Starter purchased!

**FREE**

5 Turkeys with every 50 lbs. Turkey Starter purchased!

**Colorful Easter Chicks & Easter Ducklings** Now At Aucutt's

5 Chicks\* with every 25 lbs. Chick Starter purchased!

10 Chicks\* with every 50 lbs. Chick Starter purchased!

**FREE**

5 Turkeys with every 50 lbs. Turkey Starter purchased!

**Colorful Easter Chicks & Easter Ducklings** Now At Aucutt's

5 Ch

## Barrett, Brockman wed March 13 in Levelland

Jason Barrett and Summer Brockman were married at 6 p.m. on March 13, 1999 at the First Baptist Church of Levelland. Officiating the ceremony was Pastor Steve Vernon.

Jason is the son of Ronnie and Sherry Barrett of Muleshoe. Summer is the daughter of Melvin and Marsha Hill, and Larry and Millie Brockman, all of Levelland.

Serving as Matron of Honor was Rosalinda Torres of Levelland, and Best Man was Jack Bush of Amarillo. Bridesmaids were Chasity Willson and Heather Awbrey both of Levelland. Groomsmen were Darren Elliot of Muleshoe and cousin of the groom, Shawn Wheeler of Huntsville, Texas. Ring bearer was Cody Gipson and flower girl was Makenzee Spruiell. Serving as ushers were Brent Hill and Jeremy Hall.

The bride wore a wonderful gown of candlelight Matte-Satin and Alencon lace. The off the shoulder gown featured a soft scalloped neckline edged in lace and enhanced with pearls. The same lace accented the long illusion sleeves and bodice of the gown, which were encrusted with pearls and crystal sequins. It was finished off in back with satin rosettes. The basque waistline allowed the full ball gown skirt to fall gracefully to the floor and sweep into a semi-cathedral train. The train and front of the skirt were heavily accented with Alencon lace appliques that were further enhanced with pearls and sequins which was finished in the same hem lace.

To complete her ensemble the bride wore a wreath type headpiece that was completely covered in Alencon lace and fully encrusted with pearls and highlighted with sequins. The pearls were formed into loops at the back of the headpiece to create a fleurette, and finished



Summer Barrett in her wedding gown

off with layer of candlelight illusion.

The groom wore a black Berdi style tuxedo jacket with gold embroidered vest and button covers with black wranglers and boots.

Bridesmaids wore purple floor length gowns with empire waists, which were made by the brides grandmother, Carol Kirkpatrick of Levelland. Groomsmen wore black shawl style tuxedo jackets with purple vests and ties along with black wranglers and boots.

The bride chose as something old, her mom's bible from her first marriage, which she carried under her bouquet, something new was her dress and veil, something borrowed was her grandmothers pearl necklace, and something blue was her garter.

Music selections were "God Must Have Spent a Little More

Time" by NSYNC and "Fly" (Angel Song) by the Wilkinsons.

The reception was held in the Fellowship Hall of the church following the ceremony. Serving at the brides table were Heather Brockman, sister of the bride, and Christi White. Serving at the grooms table were Ronnie Gail Hamilton and Brooke Barrett, sisters of the groom.

Summer is a 1995 Levelland High School graduate and attended South Plains College. She is currently employed by Little People Place as a teacher. Jason is a 1995 graduate of Muleshoe High School and received a degree in Diesel Technology in 1997 from South Plains College. He is currently employed by Associated Supply Co. as a warranty administrator.

The couple enjoyed a honeymoon in Ruidoso, N.M. and now reside in Lubbock.



**Muleshoe Cattle Market**

SATURDAY, MARCH 20, 1999

### REPRESENTATIVE SALES

438 cattle, 140 hogs and 189 sheep & goats. Receipts lower due to the wet weather, which was a very nice problem to have. Market was steady on stocker cfs. and feeder cattle. Not enough Pairs & Bred cows to test market. Packer cows sold 2-3 dollars higher.

The Muleshoe Cattle Market is brought to you each week by Muleshoe Livestock Auction, located east of Muleshoe on U.S. 84. Muleshoe Livestock conducts sales every Saturday, beginning with hogs, sheep and goats at 10 a.m. and cattle following at approximately 12 noon.

**FOR INFORMATION ON SALES OR TO CONSIGN CATTLE, CALL (806) 272-4201**

Seller, City	#	Type	Wt.	CWT or PH
Nicole McCurry, Amherst	.....	Hol. Hfr	280 lbs.	at \$96.00
Nicole McCurry, Amherst	.....	Hol. Hfr	340 lbs.	at \$93.00
Armando Pena, Portales, NM	.....	4 Hol. Bulls	210 lbs.	at \$76.50
Joe Garcia, Albuquerque, NM	.....	6 Hol. Strs	680 lbs.	at \$50.50
James Jennings, Littlefield	.....	3 RMF Bulls	217 lbs.	at \$107.00
FM Farms, Brownfield	.....	2 Blk. Bulls	300 lbs.	at \$104.00
Jesus Soto, Hereford	.....	2 blk. bulls	365 lbs.	at \$90.50
Benito Andrade, Farwell	.....	Char. Str	355 lbs.	at \$96.00
Benito Andrade, Farwell	.....	8 Char. Strs	507 lbs.	at \$78.50
Dimas Segura, Muleshoe	.....	Red Str	415 lbs.	at \$86.00
Steve Olson, Hereford	.....	3 Blk. Strs	585 lbs.	at \$75.50
Medando Andrade, Farwell	.....	2 Mxd. Strs	518 lbs.	at \$77.50
Eddie Mardis, Muleshoe	.....	2 Blk. Strs	680 lbs.	at \$73.00
Eddie Mardis, Muleshoe	.....	3 RWF Strs	767 lbs.	at \$70.00
Bill Tipton, Slaton	.....	Red Hfr	215 lbs.	at \$89.00
Nicole McCurry, Amherst	.....	Char. Hfr	335 lbs.	at \$85.00
Jesus Tena, Anton	.....	RWF Hfr	360 lbs.	at \$81.00
C&J Cattle, Muleshoe	.....	8 Mxd. Hfrs	429 lbs.	at \$83.50
Enrique Fierro, Plains	.....	YWF Hfr	490 lbs.	at \$79.00
Rosa Davis, Lazbuddie	.....	Blk. Hfr	595 lbs.	at \$83.00
Joe Wheeler, Muleshoe	.....	3 Mxd. Hfrs	763 lbs.	at \$65.50
Steve Olson, Hereford	.....	4 Blk. Hfrs	789 lbs.	at \$65.00
Jose Robles, Hereford	.....	Blk. Pair	.....	\$470.00
Barry Randolph, Shallowater	.....	Blk. Cow P5	.....	\$400.00
Barry Randolph, Shallowater	.....	RWF Cow	1360 lbs.	at \$39.00
Steve Olson, Hereford	.....	Blk. Cow	1360 lbs.	at \$38.75
Joe Wheeler, Muleshoe	.....	Blk. Cow	1310 lbs.	at \$36.00
Terry Rowland, Morton	.....	Red Cow	1050 lbs.	at \$39.75
Lisa Gonzales, Maple	.....	Blk. Cow	1425 lbs.	at \$38.75
Copeland Limousin, Anton	.....	Red Cow	1555 lbs.	at \$42.00
Sandhill Dairy, Portales, NM	.....	3 Hol. Cows	1450 lbs.	at \$38.25
Prairie View Dairy, Muleshoe	.....	3 Hol. Cows	1525 lbs.	at \$38.00
Prairie View Dairy, Muleshoe	.....	3 Hol. Cows	1255 lbs.	at \$37.50
D&J Dairy, Rogers, NM	.....	Hol. Cow	1705 lbs.	at \$38.00

**Don't forget to enter the Muleshoe Journal's 5th Annual Cutest Baby Contest!** The deadline to enter is quickly approaching—April 6, 1998's Cutest Baby will receive a \$50 Savings Bond. The child need not be from this area to enter. Stop by 304 W. 2nd with the "cutest" photo of your child (born in 1998) and your \$10 entry fee. All entries will be published in the April 11th issue of the Bailey County Journal. Call 806.272.4536 for more details!

# Journal Classifieds

## STOP & SHOP

Deadlines are 5 p.m. Monday and Thursday

Call 272-4536

Deadlines are 5 p.m. Monday and Thursday

### BUILDING MATERIAL

Steel Buildings never put up. 40x30 was \$6,212 will sell for \$3,497, 50x86 was \$17,690 will sell for \$8,970. Call Chuck 1-800-320-2340, 12t-2tch

### FOR SALE

5x5 Aircondition Unit with 5 hp. For more information call (806) 272-5140 or (806) 272-6799

411 lbs. of steel bench weights and one solo flex. Call Tim at (806) 272-3634 after 6 p.m. 12t-1m0.

### FOR RENT

Ruidoso Condo 3 Bedroom 3 Bath Sleeps 8 Call Debbie at (806) 285-3053

### HOMES

**HADLEY HOMES, INC.**

Family Owned Raymond & Sherry Hadley

Se Habla Espanol (505) 763-1788 or 1-888-316-6111

4100 Mabry Drive Clovis, NM

Fax (505) 763-0698

Sales Reps: Bowie Howard & Anna Loya

### HUNTING LEASE

Three responsible hunters are looking for Mule Deer lease. Please call Mark at (361)758-2800. 9s-stfc

### HELP WANTED

Leaf's Restaurant is now taking applications for wait staff, full or part-time. Apply in person. ttc

### STRAYED

Six (6) 350-550 # mixed heifers and steers. Milliron seven brand on right hip; notch in tip of right or left ear. Missing since Feb. 19 in the Stegall Area. REWARD FOR RECOVERY! Call (806) 946-3617.

### SERVICE

**HENDERSON SERVICE CO.**

MAJOR APPLIANCE & MINOR HOME REPAIRS 272-4450

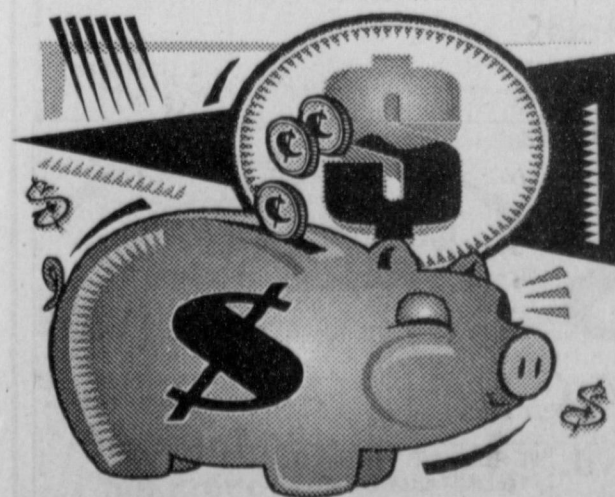
### VEHICLES

1997 GMC Z71, 3 door, white with red interior, 24,000 miles. Excellent condition! Call (505) 762-6881. 12s-2tpd

1987 Ford Bronco II. Has a.c., cruise, excellent condition. \$2,500 call 272-3951. ttc

1995 Ford F250 XLT, 4x4 regular cab, HD Off Road, AT, AC, 55K miles, ext. warranty. Must see, call 946-3432. ttc

**Want to put some extra money in your piggy bank? Advertise in the Journal Classifieds!!! 272-4536**



## Nieman Realty

116 E. Ave. C • George Nieman, Broker • 272-5285 or 272-5286

**RICHLAND HILLS — PARK RIDGE**

- We have several single and multi-family lots in this area!!!!
- NICE 3 bdrm. 2 bath w/3 car detached garage/workshop-storage, Elec. Heat Pump, built-ins, FP, 2,380' lv. area, auto. spktr., fenced yd., MORE!!! RH-2
- NICE 3-2-2 Brick, Cent. A&H, built-ins, FP, approx. 2100' lv. area, storage, fenced yd., MORE!!! RH-1

**HIGHLAND - HARVEY AREA**

- 3-1-1 carport Home, wall furnace heat, evap. air, large yd., MORE!!! \$20's!!!!
- 3-2-2 Brick, Cent. A&H, built-ins, gas log FP, fenced yd., stor. bldg., MORE!!! Price Reduced! HL-5
- 2-1-1 carport home, wall furnace heat, evap. air, DW, 5 fans, cov. patio, gas grill, fenced yd., MAKE OFFER!!!
- 3-2-2 Brick Home, corner lot, wall furnace heat, Cent. Evap. Air, fenced yd., stor. bldgs., MORE!!! HL-4
- NICE 2-2-1 + 1 Carport Brick, 2,000 + living area, Cent. A&H, built-ins, fans, den w/WB stove, enclosed heated pool, corner lot, fenced yd., MORE!!! \$80's!!! HL-1
- 2-1-1 Home, Cent. A&H, built-ins, corner lot!!! \$23,500!!! HV-1

**LENAU - COUNTRY CLUB AREA**

- PRICE REDUCED 2-1-1 Carport Home, wall furnace, nice carpet, storm shelter, stor. bldg., fenced yd. \$19K!!! CC-3
- 2-1-1 Home, floor furnace, win. ref. air, fenced yd, stor. bldg., \$18,500 !!! L-1
- 3-2-2 Carport Mobile Home, Cent. A&H, built-ins, nice yd., pecan & fruit trees!!! \$16K!!!

**COMMERCIAL**

- Six Unit Apartment Complex (4-2 bdrm. & 2-1 bdrm. units)!!!
- 100' x 140' tract, approx. 7,400' business & warehouse building on American Blvd., PRICED TO SELL!!!
- Established Business: Land, Bldg. & Equip., \$75K!!!
- 56' x 140' tract, approx. 4700' bldg., \$35K!!!
- NICE R.V. STORAGE, 14' X 40' metal bldg, 12' doors, 50X140 corner lot!
- SNACK SHACK - Lot, Buildings, furniture & fixtures!!!

**HIGH SCHOOL**

- Nice 3-2-2 Brick, built-ins, heat pump, 5 fans, nice carpet, stor. bldg., fenced yd., MORE!!! \$60's!!! HS-3

- 2-2-2 BRICK, Cent. A&H, built-ins, corner lot, approx. 1800' lv. area!!! PRICE REDUCED! MAKE OFFER!!! HS-4
- 3-1/2-1 Home on corner lot, fenced yd., storage bldg., MORE!!! \$20's!!! HS-9
- NEWLY REMODELED 3-1-1 Home, cent. A & H, new carpet & vinyl, fenced yd., MORE!!! \$30's!!! HS-2
- VERY NICE 3-1-1 Brick, Heat pump, DW, nice carpets, fenced yd., MORE!!! \$30's!!! HS-1
- NICE 2-1-1 Brick, Heat Pump, nice carpets, well insulated, storm windows & doors. \$30's!!! HS-6
- VERY NICE 3-1-1 Home, nice carpets and vinyl, heat pump, fans, fenced yd., stor. bldgs., MORE!!! \$30's!!! HS-5
- PRICE REDUCED!!! 3-2-1 Brick, Heat Pump, built-ins, fans, screened porch!!! \$30's!!! HS-7
- JUST LISTED- 2-1-2 CP Home, corner lot, metal siding, storm win. & doors, stor. bldg. \$20K!!! HS-8
- 1-14' x 60' and 1-12' x 40' Mobile Home on a 98' x 75' lot, both have cent. heat, evap. air, stove, & ref., cov. patios, fenced yd.!!!
- 3-2-2 Home, corner lot, floor furnace heat, Cent. Air, auto. spktr., stor. bldg., fenced yd., MORE!!! \$50's!!! HS-10
- PRICE REDUCED !!! 3-1-1 Brick, Cent. heat, evap. air, fans, fenced yd. HS- 12

**RURAL**

- PRICE REDUCED- NICE 3-2 home, 40 acre tract, Geo. Heat Pump, built-ins, 5" irrig. well, Hi-Pres. lines, sprinkler pipe, barn, pens, tractor & equip!!! \$69K!!!
- W. of SUDAN-NICE 3-3-2 Brick Home, 5 acre tract on Hwy. 298, Cent. Air & Heat, built-ins, large Quonset Barn, MORE!!! \$95K!!!
- 5 Acre tract on pavement close to town!
- Approx. 108 acres on Hwy. 70, approx. 2100' office area, 16,900' of commercial bldg. w/loading dock, 3,400' warehouse!! 2,800' runway!!
- LONGVIEW - GOOD Dryland Labor, fully allotted, planted in wheat. \$225.00 per acre.
- 152.8 acres, 15 hp & 20 hp. sub., Lockwood spktr., 85 acres seed brasses & 35 acres wheat. \$475.00 per acre.
- 160 acres, 2 bdrm. home, garage, storage, barn, 8" irrig. well!!! \$42K!!!

At **LOWE'S**...

Freshness is Always in Stock

# PRODUCE SALE

PRICES EFFECTIVE MARCH 24-30, 1999

## MEAT

VALUE PACK BONE-IN

**SPLIT FRYER BREAST** ..... LB **89¢**

93% LEAN

**ULTRA GROUND BEEF** ..... LB **\$1.99**

H&G

**WHITING** ..... LB **49¢**

RAW

**CATFISH NUGGETS** ..... LB **\$1.19**

"OUR LEANEST CUT"

LOWE'S PREMIUM SELECT

**ULTRA BEEF STEW MEAT** ..... LB **\$2.79**

VALUE PACK

LOWE'S PREMIUM SELECT BEEF

**BOTTOM ROUND STEAK** ..... LB **\$1.79**

"MARKET MADE"

LOWE'S PREMIUM SELECT BEEF

**STEAK FINGERS** ..... LB **\$2.99**

LOWE'S PREMIUM SELECT BEEF

**BOTTOM ROUND ROAST** ..... LB **\$1.59**

LOWE'S PREMIUM SELECT BEEF

**K-BOB MEAT** ..... LB **\$2.99**

LOWE'S PREMIUM SELECT BEEF

**RUMP ROAST** ..... LB **\$1.99**

LOWE'S PREMIUM SELECT BEEF

**CUBED STEAKS** ..... LB **\$2.39**

LOWE'S PREMIUM SELECT

BONELESS PORK

**LOIN CHOPS OR ROAST** ..... LB **\$2.99**

ECKRICH ASSORTED

**MAX PAK**

**LUNCH MAKERS** ..... 10.6 TO 11.2 OZ. **\$1.79**

ASSORTED

**OWENS SAUSAGE** ..... 2 LB. ROLL **\$3.49**

ASSORTED

**OWENS SAUSAGE** ..... 1 LB. ROLL **\$1.79**

LOOP SMOKED OR POLISH

**BAR S SAUSAGE** ..... 1 LB. PKG **\$1.69**

BAR S

**COOKED HAM** ..... 10 OZ. PKG **\$2.19**

BAR S

**CHOPPED HAM** ..... 10 OZ. PKG **2/\$3**

BAR S

**JUMBO BEEF FRANKS** .... 1 LB. PKG **2/\$3**

BAR S

**JUMBO MEAT FRANKS** .... 1 LB. PKG **89¢**

REGULAR OR THICK SLICED

**MEAT BOLOGNA** ..... 1 LB. PKG **\$1.19**

BAR S

**SLICED BACON** ..... 12 OZ. PKG **\$1.39**

## PRODUCE

RED GLOBE

**GRAPES** ..... LB **88¢**

SWEET AND JUICY

**WATERMELONS** ..... EACH **\$2.88**

SWEET

**YELLOW CORN** ..... EARS **4/88¢**

CELLO PACK

**CARROTS** ..... 1 LB. PKGS **3/88¢**

HOT

**JALAPENO PEPPERS** ..... LBS **3/\$1**

U.S. NO. 1

**RUSSET POTATOES** ..... 10 LB. BAG **\$1.48**

SWEET AND JUICY

**CANTALOUPE** ..... EACH **98¢**

FRESH

**GREEN LEAF LETTUCE** ..... EACH **68¢**

TROPICAL

**MANGOS** ..... EACH **78¢**

JUICY

**NAVEL ORANGES** ..... 4 LB. BAG **\$1.88**

TANGY

**GRAPEFRUIT** ..... 5 LB. BAG **\$1.68**

## FROZEN & DAIRY

ALL VARIETIES

LOWE'S HOMOGENIZED/SHURFINE/  
SHURSAVING LOW FAT PREMIUM QUALITY

**MILK** ..... GAL. JUG **\$2.19**

MARKET CUT

**RED RIND CHEESE** ..... LB **\$2.59**

ASSORTED

**SHURFINE**

**ICE CREAM** ..... 1/2 GAL. SQ. **\$1.88**

ASSORTED

**MRS. SMITH'S**

**COBBLER** ..... 26 TO 32 OZ. PKG **\$2.29**

SELECTED VARIETIES

**STOUFFER'S**

**FROZEN**

**DINNERS** ..... 8.7 TO 11.5 OZ. PKG **2/\$3**

REGULAR OR CHURN STYLE

COUNTRY CROCK

**SHEDD'S SPREAD** ..... 48 OZ. TUB **\$1.89**

AMERICAN OR 2%

**KRAFT STACK**

**PACK SINGLES** ..... 16 OZ. PKG **\$2.99**

ASSORTED

**PILLSBURY**

**TOASTER STRUDEL** ..... 11.5 OZ. BOX **\$1.69**

ASSORTED

BIG COUNTRY OR HUNGRY JACK

**PILLSBURY**

**BISCUITS** ..... 9.5 TO 12 OZ. **89¢**

20 OZ. BATTER OKRA OR

16 OZ. CORN NUGGETS

**ORE-IDA**

**TENDEKRISP** ..... YOUR CHOICE **\$1.29**

STOUFFER'S

**LASAGNA** ..... 21 OZ. PKG **\$2.68**

ASSORTED

**FRESCHETTA PIZZA** ... 25.6-30.7 OZ. PKG **\$4.49**

## HEALTH & BEAUTY

POLIDENT DENTURE

**OVER NIGHT SOAK** ..... 36 CT. **2/\$5**

POLIDENT

**DENTURE CLEANSER** ..... 40 CT. **2/\$5**

MRS. BAIRD'S

**SHORT CAKE CUPS** ..... 4 CT. PKG **59¢**

ASSORTED

**RUFFLES®**

**POTATO CHIPS** ..... 5.5 OZ. PKG **98¢**

• 11 OZ. FROOT LOOPS • 15 OZ.

RAISIN BRAN • 15 OZ. FROSTED

FLAKES • 10.9 OZ. CORN POPS

• 16 OZ. FROSTED MINI WHEATS

**KELLOGG'S CEREAL** ... YOUR CHOICE **\$1.69**

PRINT

**CORONET**

**PAPER TOWELS** ..... ROLLS **2/\$1**

ASSORTED

**ANGEL SOFT**

**BATH TISSUE** ..... 4 ROLL PKG **98¢**

ASSORTED BABY FOOD

**GERBER 2 FOODS** ..... 4 OZ. JARS **3/\$1**

ASSORTED BABY FOOD

**GERBER GRADUATES** ..... 6 OZ. TUBS **99¢**

SELECTED VARIETIES

**GERBER JUICE** ..... 32 OZ. BTL **\$1.88**

SELECTED VARIETIES

**VLASIC DILL PICKLES** .... 32 OZ. JAR **\$1.88**

MRS. BAIRD'S

**100% WHOLE**

**WHEAT BREAD** ..... 24 OZ. LOAF **99¢**

CHOCOLATE OR HONEY

**GOLDEN GRAHAMS**

**TREATS** ..... 6.2 OZ. PKGS **2/\$3**

ASSORTED

**V8 SPLASH DRINKS** ..... 64 OZ. **2/\$5**

REGULAR/HOT NO BEANS

OR REGULAR W/BEANS

**HORMEL CHILI** ..... 19 OZ. CAN **99¢**

SHURFINE ASSORTED

**SALTINE CRACKERS** ... 15 TO 16 OZ. BOX **88¢**

CAMPBELL'S

**TOMATO SOUP** ..... 10.7 OZ. CAN **58¢**

ASSORTED

**NABISCO**

**RITZ CRACKERS** ..... 14.5 TO 16 OZ. **2/\$5**

ASSORTED

**ALPO DOG FOOD** ..... 13.2 OZ. CANS **2/89¢**

SHURFINE ASSORTED

**SPAGHETTI SAUCE** ..... 26.5 OZ. CAN **88¢**

AMERICAN BEAUTY ASSORTED

**LA BELLA**

**ROSA PASTA** ..... 7 OZ. PKGS **3/\$1**

BETTY CROCKER ASSORTED

**CHICKEN HELPER** ... 6.2 TO 8.1 OZ. BOX **3/\$4**

MRS. BAIRD'S DELUXE

**PECAN OR**

**BUTTER RINGS** ..... 6 CT. PKG **2/\$3**

ALL TYPES

**COCA-COLA, SPRITE**

**OR DR. PEPPER** ..... 6 PK.-12 OZ. CANS **\$1.68**

ALL TYPES

**COCA-COLA, SPRITE**

**OR DR. PEPPER** ..... 6 PK.-5 LITER **\$1.88**

THIRST-QUENCHING

**POWERADE** ..... 4 PK.-24 OZ. **\$3.49**

**OUR PRODUCE SALE  
WILL PUT YOU IN...**



Each Week you may purchase the 5 piece plate setting for only \$3.99 with each \$10.00 minimum purchase.

Affiliated Foods, Inc. presents

**Chrome Stainless Steel Flatware!**

## Granada GOURMET COLLECTION

At participating stores only.

WEEK 8  
**4 PIECE STEAK KNIVES**  
**\$8.99**  
WITH \$3.00 OFF COUPON.  
REG. PRICE \$11.99  
W/\$10.00 PURCHASE ONLY AT PARTICIPATING AFFILIATED FOODS MEMBER STORES. ONE COUPON PER COMPLETE PIECE.

**5-Piece Place Setting**  
With Two Patterns To Choose From  
**\$3.99**  
with each \$10.00 purchase  
Reg. Price \$6.99  
We are giving you the opportunity to purchase a flatware set to suit your household at a fraction of the regular cost! Each week different complete pieces will be featured at a special feature price with coupon so you may round out your flatware collection. Lifetime Warranty, High Quality Shine, Made in Spain, Dishwasher Safe.

WESTERN MONEY UNION TRANSFER<sup>SM</sup>  
"The fastest way to send money"

**Lowe's**  
**MARKETPLACE**

515 W. American Blvd.  
Muleshoe 272-4406

401 W. American Blvd.  
Muleshoe 272-4585

WE RESERVE THE RIGHT TO LIMIT QUANTITIES IN TEXAS