

MIXED ADC 760
42P 18S
385 08-27-00
NEWS FILE
HC 05M BOX 201
DARK AR 72852-0065

Member
TPA
1999
TEXAS PRESS
ASSOCIATION

MULESHOE JOURNAL

PPA
Panhandle Press
Association

Volume 76, No. 28

50¢

Published Every Thursday at Muleshoe, Bailey County, Texas 79347

50¢

Thursday, April 22, 1999

PAGE ONE

A QUICK READ OF THE NEWS

School Board meeting

The Muleshoe School Board will meet in closed session tonight (April 22) at 7 p.m. to interview one of the finalists for superintendent of schools.

The closed session is the only item on the agenda.

Two finalists have been chosen for the position being vacated at the end of the year by Bill Moore. They are David Loren Hutton, superintendent of Tahoka school district, and Charles E. Carter, superintendent of the Grandfalls-Royalty school district.

Y2K bug bites computerless

CLARKSBURG, W.Va. - The federal agency that regulates stock trading asked Ralph Hinzman how his mutual funds business planned to become Y2K compliant. Hinzman wasn't worried. He told the Securities and Exchange Commission his small operation didn't have a computer.

Hinzman, 87, has been selling mutual funds since 1948, and has had his own company since 1965. He runs Allegheny Financial Programs with his daughter from his home and doesn't see the need for a computer. "You make a check out to the fund, I put a stamp on it and send it in," Hinzman said. "How complicated is that? Why do I need a computer?"

When the SEC sent Hinzman a 17-page form to fill out, he wrote "not applicable, we don't have a computer" on the form and sent it back.

Hinzman was fined \$5,000 for failing to adequately respond to the survey. "Maybe I was a little nasty with the guy who imposed the fine," Hinzman said. "I told him he was getting on my nerves." Hinzman paid his fine and turned over a second Y2K form to his daughter to fill out this month.



Drawing date: Saturday, April 17
Winning numbers: 6-14-15-25-26-40
Estimated jackpot: \$4 million
Winners: 1
Next drawing: Wednesday, April 21
Estimated jackpot: \$4 million

On this date in history

April 22 — Use of the phrase "In god We Trust" on U.S. coins is authorized by Congress (1864).

April 23 — "La Marseillaise," the French national anthem, is written by Claude Joseph Rouget de Lisle (1792).

April 24/25 — The Library of Congress, the national library of the U.S., is established in Washington (1800).

LOCAL WEATHER

	High	low	Pre.
Friday	57	34	—
Saturday	54	34	—
Sunday	54	35	—
Monday	62	34	—
Prec to date	3.35 inches		

EXTENDED FORECAST

Most sunny and windy, gusting up to 30 mph Wednesday. Chance of showers Thursday. Mostly cloudy heading into the weekend. Highs 75-85 thru Thursday steadily decreasing into the upper 60s by Saturday.

The Journal Office can be reached at 272-4536 or ctyankee@fivearea.com

Missed your paper? Call carrier
Melissa Flores at 272-6719 or the
Journal during normal business hours.

Panhandle Funeral Directors honor Ellis

Todd Ellis of Muleshoe has been named Funeral Director of the Year for 1998-99 by the Panhandle Funeral Director's Association.

The award was presented during the Association's spring meeting at Tascosa Country Club April 15 in Amarillo.

Todd is the co-owner and manager of Ellis Funeral Homes of Muleshoe, Sudan, Earth and Morton. He has previously held each office of the Panhandle Funeral Directors Association and is a long-time member of the Board of Directors.

The youngest son of Frank and Sally Ellis of Muleshoe, Todd graduated from MHS in 1980. He worked at First Bank and Muleshoe Livestock Auction during high school.

Todd attended South Plains College and West Texas State and married the former Starla Black of Muleshoe in 1983. They moved to Dallas, where Todd graduated with honors from the Dallas Institute of Funeral Service.

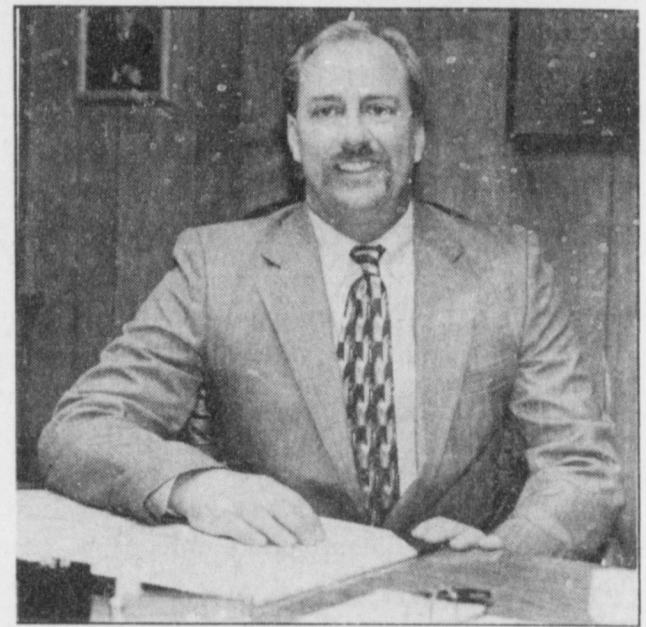
After returning to Muleshoe to join his father at Ellis Funeral Home, Todd received his funeral director's and embal-

ing licenses and then became co-owner and manager of the family business.

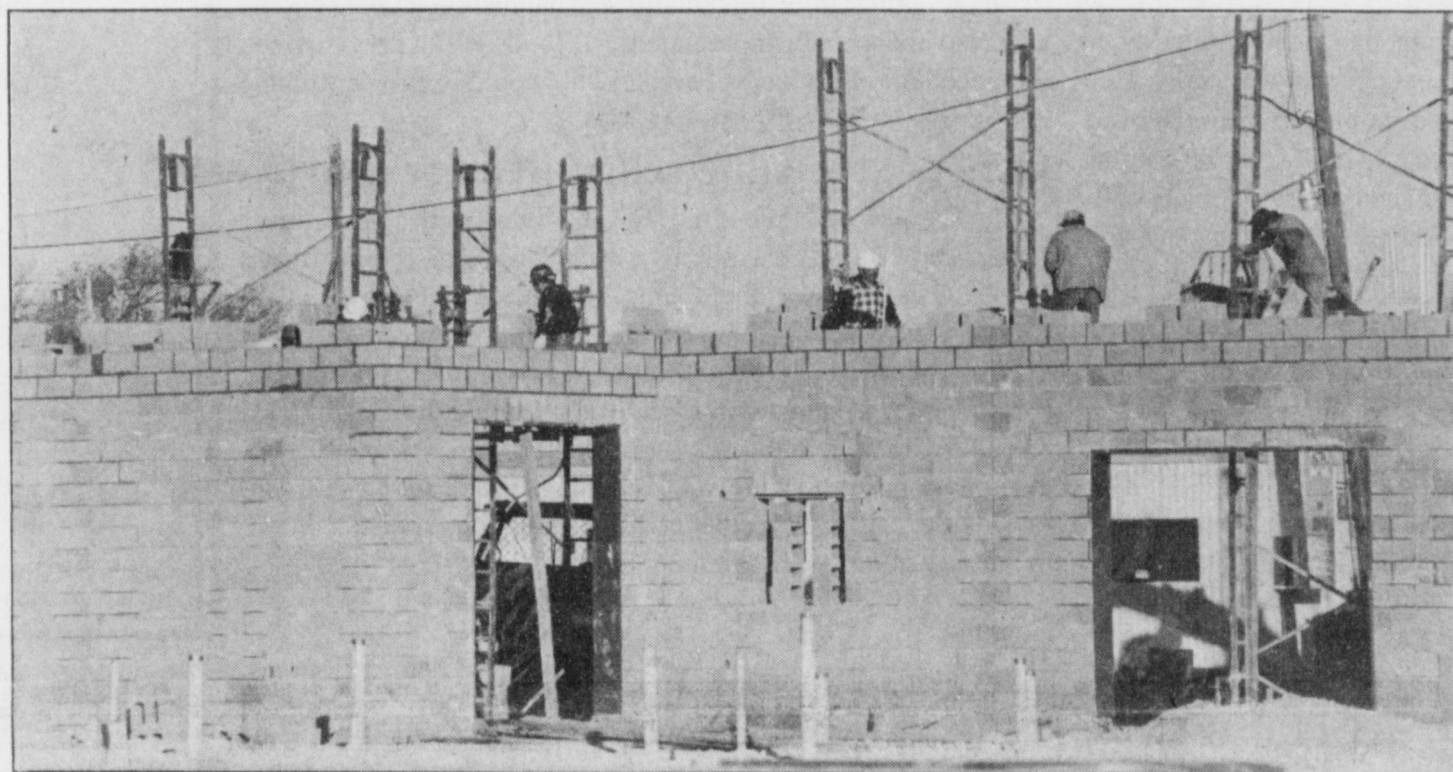
Following the crash of a Delta passenger jet at Dallas-Fort Worth International Airport, the Texas Funeral Directors Association recognized a need for a mortuary disaster team to aid in such crises. Todd was named to the Texas team in 1990 and two years later, the National Disaster Mortuary Operational Response Team was organized.

A major flood which washed

see ELLIS on page 2



Todd Ellis
Panhandle Funeral Director of the Year



Making progress

Masonry workers were busy Monday laying block to form the west end of the new United Supermarket on American Boulevard. The store is scheduled to open in late summer or early fall.

Muleshoe native has display in Smithsonian

Former Muleshoe resident Kathryn Jacobs has received the Computer World Smithsonian Award for 1999.

Jacobs, who is Vice President for Information Services for Compass Group, North American Division, in Charlotte, N.C., was honored at a ceremony April 10 in Washington, D.C.

Her project was selected for placement in the Smithsonian Museum of American History as part of its Information Technology display. The project becomes part of a collection that includes more than 470 of the year's most innovative applications of technology from 42 states and 22 foreign countries.

The Compass Group project allows the company to use its workforce more effectively. The project tracks



Kathryn Jacobs

millions of vending transactions weekly and coordinates payment of 40,000 employees from 48 states representing hundreds of unions.

"This award is a reflection of the commitment Compass Group has to quality improvement through process management, but making sure the new systems support the vision for the company," Jacobs said. "The collective effort from business sponsors, project teams, implementation partners and executive management is producing spectacular results."

Jacobs is the daughter of Benny and Georgia Pena of Muleshoe. She attended Muleshoe schools for 12 years, graduating in 1973. She received her bachelor of business administration degree in Computer Information Systems from West Texas State in 1977.

Georgia and Benny Pena, and their son Benny Ray and his family, were in Washington for the ceremony and to do some sightseeing.

Applicants sought for Johnson scholarship

Applications are being sought from Muleshoe High School seniors for the annual Fred and Evelyn Johnson Memorial Scholarship.

The \$500 scholarship will be awarded to a MHS graduating senior who best exemplifies the well-rounded Renaissance person.

Special consideration will be given for moral character, church and community service, academics, athletic endeavors, communication skills, artistic talent and work ethic.

Given annually by Buck and Carolyn Johnson, the scholarship honors students in memory of Buck's parents, Fred and Evelyn.

Fred came to America an orphaned son of immigrant parents from Trondheim, Norway. Unable to speak English, Fred took advantage of every educational opportunity and placed great value on the American system of public education. At age 30, he married Evelyn Schoenberger, the only child of a South Dakota banking fam-

see SCHOLARSHIP on page 2

Cattle on feed down from March

AUSTIN — Cattle and calves on feed for slaughter market in Texas feedlots with capacity of 1,000 head or more totaled 2.56 million head on April 1, up 1 percent from a year ago.

According to the monthly report released by the Texas Agricultural Statistics Service, the estimate was down 2 percent from the March 1 level. Producers placed 530 thousand head in commercial feedlots during March, up 10 percent from a year ago, and up 33 percent from the February, 1999 total.

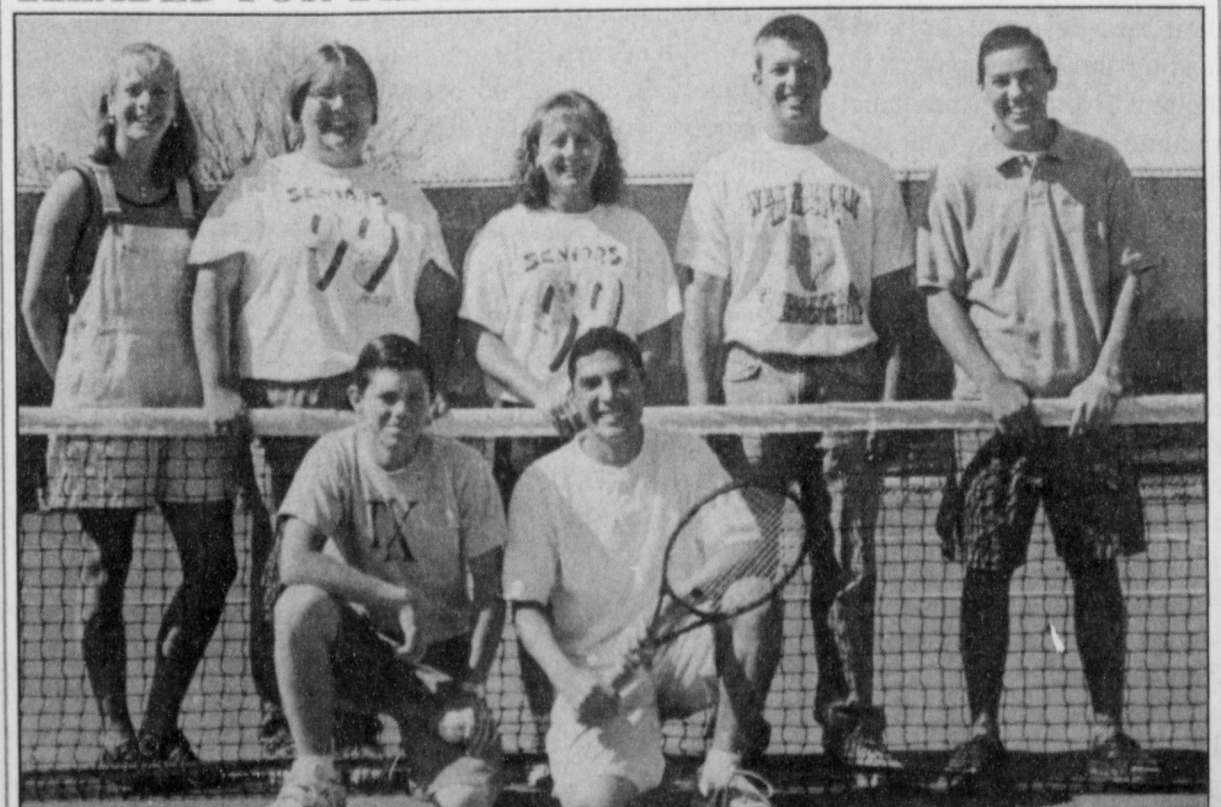
Texas commercial feeders marketed 565 thousand head during March, up 3 percent from a year ago. Monthly marketings were up 28 percent from the February, 1999 total.

On April 1 there were 2.1 million head of cattle and calves on feed in the Northern High Plains, 82 percent of the state's total. The number on feed across the area was up 3 percent from last year, and down slightly from the March total.

March placements in the Northern High Plains

see CATTLE on page 3

HEADED FOR REGIONALS



The Muleshoe High School tennis team will send eight players to the Region 1-3A tournament April 28-29 in Odessa. Pictured are (back, from left) Ellen Wood and Cambri Lewis, 2-3A doubles champions; Rhonda Copley, who was a doubles runner-up with teammate Amber Bruns (not pictured); Jeff Bruns, singles runner-up; Delwyn Latham, 2-3A singles champion. Kneeling are doubles runners-up Chris Vaughn and Eric Posadas.

AROUND MULESHOE

Muleshoe AARP meeting set for April 23

The Muleshoe AARP will have their regular monthly meeting Friday, April 23 at noon at the Bailey County Coliseum. After lunch the group will be entertained by the "Singing Stones"-Rev. Jack Stone with his wife, Debbie, at the piano.

If you enjoy "good ol'" gospel singing, come out, bring a covered dish for lunch and as always, visitors are welcome.

Roping Club to host round-robin April 25

The Muleshoe Roping Club will host a round-robin team roping at Dusty Rhodes Arena Sunday, April 25.

Entries will open at 1:30 p.m. and the roping starts at 2 p.m. Cost will be \$75 per man and the roping will be a three-header, capped at a USTRC #4. Pre-entries will be accepted.

For more information, contact Monty Black, (806) 965-2497 or Jim Field (806) 272-5626 or (806) 227-2577.

Area students inducted into Kappa Mu

LEVELLAND - Two area students were among 91 from South Plains College recently inducted into Kappa Mu chapter of Phi Theta Kappa international honor society for students at two-year colleges.

Inducted were Jay Carr of Sudan, April Cook of Maple and Philip Bowman of Whiteface.

To be eligible, students must complete at least 15 hours at South Plains and maintain a minimum 3.25 grade point average.

Texas Workforce rep to be here May 4

A representative of the Texas Workforce Commission will be at the Muleshoe Workforce Center Tuesday, May 4, from 10 a.m. to 2 p.m. to discuss "Project Rio."

Project Rio is a multi-agency program designed to link education, training and employment during the incarceration of a prisoner with employment, training and education after release.

Studies show an ex-offender who is employed is three times less likely to return to jail. Texans pay \$45 per day, per inmate for confinement (over \$16,000 per year) and each new prison cell costs \$20,000. Project Rio saves Texans millions each year by helping ex-offenders find jobs.

Persons interested in helping in the Muleshoe community may meet with a Texas Workforce Commission representative May 4. For more information, contact the Texas Workforce Commission at (806) 293-8566.

Teen Leadership softball tournament

The Muleshoe High School Teen Leadership Class is sponsoring a softball tournament Saturday, April 24 at the city park.

The cost is \$40 per team. Entry forms can be picked up at Muleshoe High School.

Fine Arts Boosters sponsor car wash

The Muleshoe Fine Arts Booster Club is sponsoring a car wash starting at 11:30 a.m. Saturday, April 24 in the Muleshoe McDonald's parking lot.

The cost is on a donation basis and the event will continue until the last car is finished.

Texico Boosters having hoops tourney

The Texico Booster Club is hosting an outsiders basketball tournament April 22-24 at the Texico High School gym.

The entry fee is \$100 per team and the tourney is limited to the first eight paid entries.

It's a double elimination format with trophies going to first, second, third and fourth place finishers. The champions will also receive a t-shirt.

Class of 1979 searching for individuals

The Muleshoe graduating class of 1979 is planning a reunion and needs help finding class members.

Addresses are needed for: Nacho Agundis, Hope Garcez, Michael Green, Jana Grimsley, Brad Huckabee, Annie Kirven, Marty Livingston, Cecil Mardis, Shelly McGlaun, Terry Newell, Dennis Patterson, Jerry Rodriguez, Jerry Wheat and Brenda Wimberly.

If you have any information concerning these people call Gina Burden at 965-2629 or Beverly Biggerstaff at 272-3425.

Gospel singing to benefit Food Pantry

A Saturday Night Live Community Gospel Singing will be held from 7 to 10 p.m. on Saturday, April 24 at the First Assembly of God Church in Muleshoe.

The singing is free, but donations of canned food items will be accepted and greatly appreciated. All foods will help to restock the Food Pantry's shelves. Persons who would like to participate in this event may call 272-3017.

Cancer screening scheduled for May 3

The Women's Center of the Don and Sybil Harrington Cancer Center and Baptist/St. Anthony's Health System will conduct a Breast Cancer Screening Clinic at Muleshoe Area Medical Center, 708 South First St., on May 3.

Participants will receive a low-cost screening mammogram. Each woman screened will receive a breast health risk appraisal and individual instruction by a registered nurse in breast self-examination. Funding is available through the Texas Department of Health for Texas residents who qualify for assistance. All exams are done by appointment only.

Call 1-800-377-4673 for more information.

Local women attend retired teachers forum

Lucy Faye Smith and Mary Nell Bleeker reported to local members April 16 on the 46th Annual State Convention of the Texas Retired Teachers Association in Dallas.

Meeting in the Fellowship Hall of the 16th and D Church of Christ, the Muleshoe Retired Teachers Association members also honored Pauline Guinn as the volunteer with the most hours in District XVII in 1998.

The theme of the TRTA Convention, held at the Double Tree Hotel April 10-13, was "TRTA Launches into the Millennium." Keynote speakers

were Charles Dunlap, executive director of the TRTA; and Dr. Wright Lassiter, Jr., president of El Centro College in the Dallas County Community College District.

Over 700 members and friends of TRTA attended the convention, which included TRTA business sessions, training seminars and interest sessions.

Founded in 1953, TRTA is the largest association in Texas for public school and higher education retirees. It's 37,000 members continue to be in-

see TRTA on page 4

PROPANE

39¢

Cash Only.

Per Gallon Delivered
To You!!

Bailey County Propane Co.

Call us at 272-4678.

ELLIS

from page 1

out the cemetery in Hardin, Mo. in 1993, resulted in the activation of the Texas D-Mort Team. Todd was encouraged by his father to respond and the experience proved vital. Two years later, the Alfred P. Murrah Federal Building in Oklahoma City was

SCHOLARSHIP

from page 1

ily. The two moved to Muleshoe in November, 1945 as owners of the International Harvester farm equipment dealership.

Fred and Evelyn were active members of the Muleshoe community and huge supporters of the Muleshoe Public Schools. They are perhaps best remembered for their contributions to the Muleshoe Public Library, their self-designed in-home reading and philosophy class, their involvement in the annual spelling bee contests, their support to the school's athletic programs, and Fred's assistance to the High School English department as a teacher of Shakespearean literature.

Previous graduates from Muleshoe who have received the Johnson Memorial Scholarship include: Kip McCall, La Tonya Payne, Chad Johnson, Riley Byers, Carri Faver, Jo Beth Gilleland, Carolyn Schuster and Peyton Rennels. Applications may be obtained by contacting Gayla Gear, high school counselor.

JOURNAL
CLASSIFIEDS
(806) 272-4567

destroyed by a terrorist's bomb.

With the activation of the Region 6 D-Mort team, Todd and 18 other men from three states were called to assist the Oklahoma Medical Board of Examiners with supplies, tracking and body identification. Todd and Chuck Smith of Louisiana developed a plan to map the building's offices by floor and to identify the probable location of personnel in the building at the time of the blast.

They also interviewed survivors to determine where each person was likely to have been working. Todd and Chuck convinced rescue commanders to follow their plan to locate missing bodies in the rubble. Their methods have since been adopted as procedure for conducting such recovery operations.

Todd was elevated to assistant commander of the Region 6 D-Mort team in 1996.

Since that time, Todd has responded when the D-Mort team was activated for the crash

of a Korean Airlines 747 on Guam in 1997 and for flooding in Del Rio in 1998.

Todd currently serves as a Texas Department of Public Safety instructor for its "mass fatalities course" and is an instructor and lecturer on "Recovery of Fatality Victims in Disaster for the Texas Funeral Directors Association and the National Disaster Medical System.

Todd is a member of the Muleshoe Rotary Club, and he and his wife Starla have both served on the Muleshoe Chamber of Commerce and Agriculture Board of Directors.

Todd has served as the Precinct 4 Justice of the Peace and continues to participate in its continuing education program.

Team roping, deer hunting and snow and water skiing are his favorite pastimes. He and his wife enjoy working with their 8-year-old son, Colt, in his 4-H junior livestock projects and in preparation for the Muleshoe Young Riders playdays.

Muleshoe Journal USPS 367820

Established February 23, 1924. Published by Triple S Publishing, Inc. Every Thursday at 304 W. Second, Box 449, Muleshoe, TX 79347.
Second Class Postage paid at Muleshoe, TX.
POSTMASTER: Send address changes to the Bailey County Journal, P.O. Box 449, Muleshoe, TX 79347.
We are qualified members of:
Panhandle Press Association, National Newspaper Association, West Texas Press Association and Texas Press Association

WEST TEXAS PRESS
ASSOCIATION


PPA
Panhandle Press Association

TA
MEMBER 1999
TEXAS PRESS ASSOCIATION

Scot Stinnett, Publisher
Lisa Stinnett, Vice-President/Comptroller
Rick White, Editor
Mari Guadalcasar, Classifieds
Leah Bell, Advertising

SUBSCRIPTIONS: Muleshoe Journal and Bailey County Journal
By Carrier Yearly - \$22.00
Bailey County - by mail - \$24.00
Elsewhere - \$26.00
Advertising Rate Cards on Application

Advertisers should check their ad the first day of insertion. The Journals will not be liable for failure to publish an ad or for a typographical error or errors in publications except to the extent of the cost of the ad for the first day of insertion. Adjustment for errors will be limited to the cost of that portion of the ad where the error occurred.



JOES BOOT SHOP

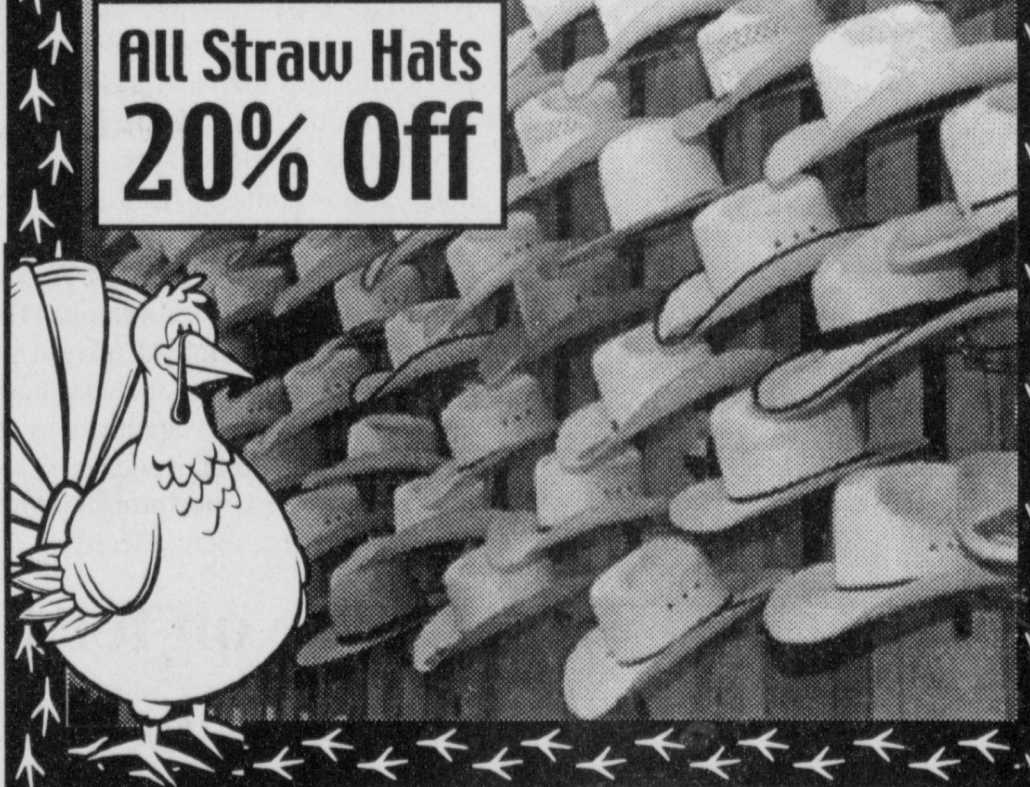


**We Ship
Everywhere!**


1-800-658-6378 106 E. American Blvd. Muleshoe, Texas

And Country Junction

**All Straw Hats
20% Off**



You Got A Turkey In Your Straw?!!



Ya'll
sing!

**Then It's Time For A New
One & We Can Fix That!**

*"We can crease 'em, we can bend 'em,
we can steam 'em up "your" style!
We can lace 'em, we can brand 'em,
we can really make you smile!
We can flatten, we can dip it, we can
dress 'em up so fun! And we're here
to tell you that it's all hand done!"*

Ask Mike "The Hat Doctor" what he can do for you on a NEW STRAW HAT!

Jennyslippers have full slate of projects now in the works

A number of business items were discussed during the meeting of the Jennyslippers April 13 at noon at the Carrousel.

The meeting was called to order by president Ruby Green. Rhonda Calvery said the opening prayer, and the minutes and the treasurer's report were accepted.

Business was taken care of as follows:

Welcome packets - Shelved for the time being, the issue will be taken up in a later meeting.

KENW Tele-Auction - Must be finished by April 15. Green gave a brief report on what has been collected. No decision was made on whether or not to answer phones on Thursday night of the tele-auction.

Bus Tour - Coming up in May. It was voted that the meal be served in the Rebekah Lodge Hall.

Putt Putt Miniature Golf Course - Lots of work to be done; painting, cleaning, etc. Persons who need to do community work will be asked to help. Clean-up day was Saturday, April 17.

The next meeting will be a night meeting on April 26 at the Girl Scout Hut. It will be a membership drive meeting. Members are asked to come, bring a prospective member and a food dish.

CATTLE

from page 1

Placements in feedlots during March totaled 447 thousand head, up 33 percent from the February total. Marketings were up 28 percent from last month at 462 thousand head.

Cattle and calves on feed for slaughter market in the United States in feedlots with a capacity of 1,000 head of more totaled 10.38 million head on April 1, 1999. The inventory was up 3 percent from the 10.12 million head on April 1, 1998.

Placements in feedlots during March totaled 2.02 million head, 18 percent above 1998. During March, placements of cattle and calves weighing less than 600 pounds totaled 357,000 head; 600-699 pounds totaled 468,000 head; 700-799 pounds totaled 739,000 head; 800 pounds and greater totaled 457,000 head. Marketings of fed cattle during March totaled 1.98 million, 5 percent above March 1998, and 12 percent above March 1997.

HONOR ROLLS

Lazbuddie Elementary Honor Roll 5th Six Weeks "A" Honor Roll

Second Grade — Richie Aguilar, Alejandra Estrada, Ryan Mason, Jacob Schacher, Morgan Smith, Cassie Steinbock, Brock Steinbock, RaJon Thorn.

Third Grade — Crescent Crawford, Jason Davis, Jonathon Lennon, Regina Mata, Chelsea Nichols, Brittney Schacher, Dakota Williams.

Fourth Grade — Castle Crawford, Jesse Gomez, Amberlee Steinbock, Montana Steinbock, Stephanie Williams.

Fifth Grade — Madison Smith, Richard Welker.

"A/B" Honor Roll Second Grade — Jessica Arce, Alexandra Ballenger, Trevor Coker, Helen Loewen, Leticia Mendoza, Stefanie Welker.

Third Grade — Samantha Hudson, Brianna Sanchez, Shayla Scission.

Fourth Grade — Erica Derma, Bryce Haney, Brandy Hudson, Kyra Kimbrough.

Fifth Grade — Zachary Ballenger, Kirby Kimbrough, Peter Loewen, Roper Smith.

Lazbuddie Jr. High Honor Roll, 5th Six Weeks Sixth Grade — Ana Hernandez, Brett Mimms.

Seventh Grade — Suzanne Aragon, Shonnah Black, Nicole

Lewandowski, Katy Loudder, Robby Martin, Shawndee Nichols, Bethenie Sanchez, Kolby Wilkerson.

Eighth Grade — Andy Martin, Tobin Redwine.

Ninth Grade — Savannah Black, Kayla Kimbrough, Triston Thorn.

Tenth Grade — Kati Mimms, Crystal Scott.

Eleventh Grade — Amy Angeley, Scottie Brown, Staci Foster, Veronica Mata, Leah Turner.

Twelfth Grade — Seth Black, Jill Hodges, Josh Morris, Kia Morris, Cade Morris, Shena Seaton.

"A/B" Honor Roll Sixth Grade — Kaylee Burnett, Chris Deleon, Tanner Gartin, Mandy Haney, Cory Puckett, Garrett Scission, Melanie Winders.

Seventh Grade — Violet Aguilar, Kelli Harris, Miriam Hernandez, Kera Lewandowski, Amanda Martinez, Raul Mata, Cody Meiwes, Lacey Pope, Michelle Scott, Sterling Via.

Eighth Grade — Brittany Brakebill, Amanda Burton, Lucas Deleon, Monse Melendez, Brady Mimms, Marisol Robles.

Ninth Grade — Jodie Coker, Jeffrey Guillen, Kelsey Jones, Omar Lopez, Trey Nickels, Candice Randolph, Shannon Redwine, Jay Seaton.

Tenth Grade — Kendra Gallman, Cole St. Clair, Laura Via.

Eleventh Grade — Desirae Brakebill, Jason Jesko, Gabriel Juarez, Garrett Magby, Bobby Martha, Brandon Randolph, Bryce Ronek, Jeffery Seaton.

Twelfth Grade — Maria DeLeon, Holly Engelking, Brandon Foster, Rosie Marrufo, Christina Martha, Joshua McDonald, Rachel Rodriguez, Adam St. Clair.

Three Way Honor Roll Fifth Six Weeks "A" Honor Roll

First Grade — Roberto Martha, Angelica Salamanca

Second Grade — Shaelynn Cannon, Brittany Cuellar

Third Grade — Tiffany Davis, Colby Gilbert, Cenee Hood, Austin Thomas

Fourth Grade — Nadia Mann

Fifth Grade — Caleb, Heinrich, Trevor Hood, Lauren Layton

Sixth Grade — Rigo Rodriguez

Eighth Grade — Julie Salamanca, Monica Walker

Ninth Grade — Jordan Gray

Tenth Grade — Ernesto Navarro

Eleventh Grade — Rosa Soliz, Sid Weekes

Twelfth Grade — Jose Baeza, Jonathan Kindle

"A" Average First Grade — Kyle Drew,

Stephanie Kirby, Pricilla Perez, Monica Rubalcava, Carlos Vironche

Second Grade — Brent Elmore, Carmen Medrano,

Third Grade — Colton Heinrich, Cassie Kirby, Antonio Vironche

Fourth Grade — Lorenzo Lopez

Fifth Grade — Cody Kirby, Jeanne Mann

Sixth Grade — Norma Baeza, Cory Contreras, Erika DeLaRosa, Kyla Ellis, Edgar Estrada, Sarah Furgeson, Mikki Holmes, Chris Kindle, Jennifer Kirby, Elizabeth Lopez

Seventh Grade — Kátye Cook, Landon Gray, Buddy Holmes, Kaylie James

Eighth Grade — Victor Baeza, Sammy Castillo, Ashley Layton

Ninth Grade — Alma Castillo, Anthony Furgeson, Kara Heinrich, Jimmy James, Christy Mills, Ivan Navarro, Robert Rodriguez

Tenth Grade — Cynthia Baeza, Heather Kersey, April Webb

Eleventh Grade — Lynette Armendariz, Beatriz Baeza, Kasey Davis, Danny Kersey, Monty Kirby, Scott Pollard, Daniel Reeves, Patty Rodriguez, Robin Tooley, Alberto Valderas

Twelfth Grade — Gerald Perez

Muleshoe Feed Barn CLASSIC ROPES

Large supply of Head & Heal Ropes

Greenback • Classic Gold • Money Makers
Limited selection XR4

EQUIBRAND

Classic Equine Rattler Martin

311 W. American Blvd. • 272-5626

Full breakfast menu and daily lunch specials!

T.J.'S DONUTS

328 S. Main St. • Muleshoe • 272-3542

Thursday—Sirloin steak, baked potato, salad, drink, bread & dessert

Friday—Pub-battered Cod, hush puppies, french fries, salad, drink, bread & dessert

Monday—Roast beef plate, mashed potatoes, brown gravy, green peas, salad, drink, bread & dessert

Tuesday—Red beans & rice, cornbread, drink & dessert

Wednesday—Hot steak sandwich, choice of french fries or mashed potatoes, drink, bread & dessert

OPEN: Mon.-Sat. 5 am-2:30 pm. Closed Sunday.

Plan for the Future

Let us help build your retirement savings.

Ask me about the benefits of our **VARIABLE DEFERRED ANNUITY** and its diverse investment options.

For more complete information about this product including charges and expenses, call me for a prospectus. Read it carefully before you invest or send money.

MARK MORTON, Agent
STATE FARM INSURANCE

101 S. Main St. • Muleshoe • 272-7519 or 1-800-867-9178
Issued by: State Farm Life Insurance Company Home Office: Bloomington, Illinois

Gift Selections for

Roxanne Reves

Bride Elect

of

Mike Holt

Muleshoe Art Loft

1529 W. American Blvd. • 272-3485

DSS SYSTEM

only

\$79.95

DIRECTV with over 200 channels available to you!

WILSON APPLIANCE

117 S. Main St. • Muleshoe • 272-5532

Area Business Directory

This Week's Featured Business...

Muleshoe Feed Barn

HI-PRO

FEEDS

We carry a full line of quality Hi-Pro products. Stop by and see us today!

	Bag	Ton
Hi-Pro 10% HORSE & MULE	\$5 ⁵⁰	\$210
Hi-Pro 1208 15% HORSE CUBES	\$5 ⁶⁰	\$200
Hi-Pro 285 16% CALF STARTER	\$6 ⁷⁵	\$250
Hi-Pro 286 12% CALF STARTER	\$5 ³⁰	\$192
Hi-Pro 291 11% CALF FINISHER	\$5 ³⁵	\$192 ⁵⁰

311 W. American Blvd. • 272-5626

Old Friends. Purina

EQUINE SENIOR

Nutritionally advanced Equine Senior™ Feed is exclusively formulated with added nutrients for the special needs of an older horse's less efficient metabolic system.

• Unique patented feed form is easy to chew and digest.

• Highly palatable; helps horses stay on feed.

• Improves skin and hair coat.

\$8.68 50# Bag \$358.00 Per Ton

STRONGID PASTE 20ml.....\$9.79

The safe and effective horse and foal dewormer that's easy to use!

Circle E Pets

605 West American Blvd. 272-4118

This Summer Save Down Time On Your Sprinklers

LET US AIR-UP YOUR SYSTEMS & PUT ON METAL VALVE CAPS

\$30 per system

for only

(includes mileage)



James Crane Tire Co.

107 S. Main St. • Muleshoe • 272-4594

NATIVE GRASSES, INC.

Experts in the sowing and harvesting of native grasses of the Great Plains and of the Southwest

- Specializing in native American grasses of the Great Plains and the Southwest
- Most native grass seeds available at wholesale prices with turnkey sowing jobs.
- All work done in compliance with Government specifications.

Please Call:

Darwin Simnacher
505.762.7817

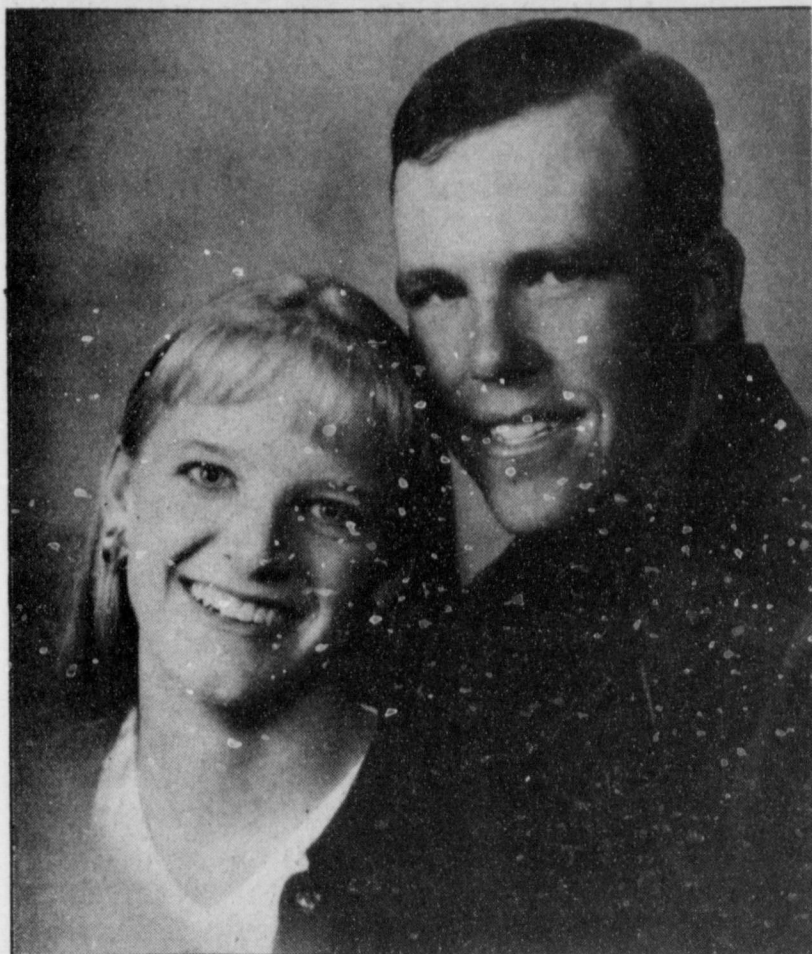
FAX 505.763.9115 Email simnacher@3lefties.com

Or Vince Simnacher

806.946.3461 FAX 806.946.3604

References provided upon request.

ENGAGEMENTS



Sarah Elisabeth Templeton and Si Donovan Beerwinkle

Templeton - Beerwinkle

Mr. and Mrs. Donald Templeton of Earth announce the engagement and approaching marriage of their daughter, Sarah Elisabeth, to Si Donovan Beerwinkle, son of Dr. and Mrs. Don Beerwinkle, also of Earth.

The couple will marry May 15 at 4 p.m. at the First Baptist Church in Earth.

Sarah is a graduate of Springlake-Earth High School and attends West Texas A&M University. Si is a graduate of Springlake-Earth High School and South Plains College in Levelland. He is self-employed in the Earth community.

Grandparents of the prospective bride are Mr. and Mrs. Gene Templeton of Earth and Mr. and Mrs. Donnie Clayton of Springlake. Great grandmothers are Mrs. Willie Crosby of Littlefield and Mrs. Myrtle Clayton of Springlake.

Grandmother of the prospective groom is Mrs. Esther Beerwinkle of Temple, Texas.

All friends and relatives are invited to attend.



Mendy Ch'ree Johnson and Gregory Scott Welch

Johnson - Welch

Kelvin Johnson and Janice Johnson of Muleshoe announce the engagement and approaching marriage of their daughter, Mendy Ch'ree, to Gregory Scott Welch, son of Gary and Coleen Welch of Ranchvale, N.M.

The couple will exchange vows at 2 p.m., June 5, 1999 at the Sunken Gardens at Hillcrest Park in Clovis, N.M. A reception and dance will follow at 3312 Cherry Drive in Clovis.

Mendy is a 1997 graduate of Muleshoe High School. She received certification as a nurse aide in August of 1996. She is currently employed at Golden Age Nursing Home of Clovis.

Gregory is a 1995 graduate of Clovis High School and is employed at Cotton Patch Cafe.

The Muleshoe and Bailey County Journals publish engagement announcements free of charge. A photo may be included with the announcement. Complete guidelines and forms are available at the Muleshoe Journal office.

OBITUARIES

ETT W. EVANS

Ett W. Evans, 82, of Muleshoe died Sunday, April 18, 1999 in Muleshoe.

Graveside services were held April 20, 1999 at 2 p.m. at Muleshoe Memorial Park Cemetery with Rev. Brad Reeves, pastor of First United Methodist Church of Muleshoe, officiating. Burial was under the direction of Ellis Funeral Home of Muleshoe.

Mr. Evans was born April 5, 1917 in Bakersfield, Calif. He married Ruby Kemp in Seminole on January 24, 1983.

He had been a Muleshoe resident since 1947, moving from Bakersfield. He was a member of the First Baptist Church in Muleshoe. He worked in Muleshoe as an oil and gas wholesale jobber for Fina.

Survivors include his wife Ruby; one son, Archie Ray Evans of Pasadena, Texas.; two daughters, Elaine McFarland of Ventura, Calif. and Claudette Vest of Seminole; five grandchildren and five great grandchildren.

The family suggests that memorials be made to Meals on

Wheels, 300 S. First, Muleshoe, Texas 79347; or Vista Care - Family Hospice Plainview, 4418 Olton Rd., Plainview, Texas 79072.

ROSALIA VILLANUEVA

Rosalia Villanueva, 74, of Morton died Saturday, April 17, 1999 at Cochran Memorial Hospital.

Graveside services were held Wednesday, April 21, 1999 at Utimo Fefugio, Ojinaga, Chihuahua, Mexico. A rosary was said Sunday April 18, at Ellis Funeral Home Chapel in Morton. Burial was held in Utimo Fefugio, Ojinaga, Chihuahua.

Mrs. Villanueva was born January 28, 1925 in Mexico. She married Abraham Villanueva.

She became a resident of Morton in 1987 after moving from Ojinaga, Chihuahua. She was a homemaker and a member of the St. Ann's Catholic Church of Morton.

Survivors include her husband Abraham; seven sons, Luis Hector Aranda of Pecos, Texas, Jose Aranda of Marfa,

Texas, Fernando Aranda of Morton, Marcelo Aranda of Ojinaga, Chihuahua; Jesus Armando Aranda, Josie Javier and Aaron Aranda, all of Denver, Colo.; two daughters, Maria de la Luz Rios and Elva Hilda Gomez, both of Morton; 19 grandchildren and three great grandchildren. She was preceded in death by one son, Victor Manuel Aranda, June 14, 1998.

DALE DUDLEY

Dale Dudley, 66, of Muleshoe died April 16, 1999 at Covenant Hospital of Lubbock.

Church Services were held at 4:30 p.m., April 19, 1999 at Trinity Baptist Church in Muleshoe with Rev. Robert Brown, pastor of the Trinity Baptist Church, officiating. Burial was held in Muleshoe Memorial Park Cemetery under the direction of Ellis Funeral Home of Muleshoe.

Mr. Dudley was born May 4, 1932 in Olton. He married Wanda Anders in Muleshoe on December 15, 1951.

Mr. Dudley had been a resident of Muleshoe since 1968, moving from Olton. He was a

member of the Trinity Baptist Church of Muleshoe. He attended Olton public schools. He farmed in the Olton area and had a service station in Olton. He repaired radiators in Olton and in Muleshoe. He was employed by Poynor's White Auto Store in Muleshoe as shop foreman for 24 years.

Survivors include his wife Wanda; two sons, Ronald Dudley of Plainview and Kevin Dudley of Dallas; two daughters, Kathy Bock of Earth and Joy LaDene Harvey of Sherman, Texas; two sisters, Mary Wheeler of Hart, Texas and Linda Mainwaring of Springfield, Ore.; two brothers, Melson Dudley of Floydada and Denny Dudley of Seagraves; eight grandchildren and four great grandchildren.

The family suggests memorials be made to a favorite charity or American Lung Association of Texas, P.O. Box 26460, Austin, Texas 78755-0460.

Attention Irrigators!

*Turbine Pumps no longer efficient?
Considering Electric Submersible?
Worried about high electric costs?
We have a solution!*

Contact:

ENERMART ENERGY SERVICES

1 (800) 342-1378

Or come by and see a display unit at
113 W. 8th St. in Plainview

GRAND OPENING APRIL 24

Charlie Hanks invites you to stop by

Charlie's Originals

Booth #350 at Antiques & Fine Things
2104 W. American Blvd. • 272-4217

**SPECIAL BOOTH #350 SALE ON
BEANIE BABY BEARS &
RETIRED BEANIES**

On April 24 take advantage of...

Beanie Baby Trade Day - from 1 pm to 5 pm

Register all day for DOOR PRIZES from Charlie's Originals!

Join in the fun at our

**Customer
Appreciation**

CELEBRATION!

Saturday, April 24

**Every 20th customer
receives a prize!
Free balloons for kids!**

VANILLA CONES 39¢ **79¢** **MEDIUM COKES 49¢**
SINGLE BURGERS **49¢**
REG. FRIES

SONIC
1633 AMERICAN BLVD. • 272-3998

Prices at Muleshoe location only. Not good with any other special offers. Cheese, chile and bacon extra on burgers.

REGISTER TO WIN A BOOM BOX OR A MOUNTAIN BIKE!
Return completed entry to carhop. Winners notified by phone.

NAME: _____
ADDRESS: _____
CITY/ZIP: _____ PHONE: _____

TRTA

from page 2

involved in local public school education and community issues. Members of TRTA contributed 4,626,686 hours of community volunteer time in 1998.

During the past six months, local units throughout the state participated in the TRTA statewide book program. Working through various local channels, TRTA placed over 10,700 books in the hands of individual Texas children who otherwise might not have had a book to call their own. With the project, retired public school and higher education personnel proudly continue to be a part of the education of Texas school children.

Elected as officers for the Muleshoe Retired Teachers Association for 1999-2000 were: Mark

Nell Bleeker, president; Robin Taylor, first vice president; Lucy Faye Smith, second vice president; Alene Bryant, secretary; Letha Patterson, treasurer; and Georgia Pena, program chairman.

The new officers will be installed and teachers who will retire this year from Muleshoe schools will be honored at the May meeting.

Present at the local meeting were Jean Allison, Mary Nell Bleeker, Mary Crane, Joyeline Costen, Betty Jo Davis, Pauline Guinn, Beulah Mimms, Ann Oyler, Letha Patterson, Georgia Pena, Norma Prather, Maxine Ragsdale, Lucy Faye Smith, Eloise Wilson and former member Ethel Allison. Betty Jo Davis and Pauline Guinn served as hostesses.

PRESTAMOS! PRESTAMOS! Get Your Mother's Day Loans Today!

LOANS!
\$100 to \$446

ALL APPLICATIONS ACCEPTED

272-3673
Phone Applications Welcome

Ask for Norma or Yolanda

Open: Mon. thru Thurs.—8:30 am to 5:30 pm, Fri.—8:30 am to 6 pm

Continental Credit
206 South Main Street Muleshoe, TX

House budget increases spending by 10 percent

AUSTIN — A \$97 billion state budget proposed to cover the next two years gained approval on a voice vote in the Texas House last week.

If the legislation passes in the Senate and earns the signature of Gov. George W. Bush, spending will increase nearly 10 percent over the present 1998-99 budget.

The budget proposed for 2000-2001, however, does not take into account the \$45.6 billion revenue surplus that remains a bone of contention. Some want it to be spent on teacher salary increases and education and others want it, or at least part of it, to pay for property tax relief.

The House spending bill proposes to cut 1,400 state jobs and to increase education funding by 13.4 percent. It also earmarks:

- \$80 million for child care for families enrolled in welfare-to-work programs;
- \$67 million to retire the debt on the long-defunct Superconducting Super Collider project; and
- \$11 million for improve-



ments in the attorney general's child support enforcement division.

The Senate Finance Committee earlier approved a \$98 billion budget that includes the \$2 billion cut in school property taxes — \$500 million more than the school property tax cut proposed last year by Gov. Bush.

Now that the House has finalized its version of the budget, the lower chamber can turn its attention to the towering heap of other bills that have been on hold.

Internet Alcohol Sales Draw Heat

The comptroller's office estimates Texas is losing as much as \$300 million a year in state sales taxes over alcoholic beverages shipped direct to Texas consumers from out of state.

Opponents of this form of interstate commerce argue that minors and dry county residents could place orders via the Internet.

Sen. David Sibley has filed legislation that would increase the \$500 maximum fine to a \$10,000 fine and jail time to shippers who get caught.

"It's like a traffic ticket," Sibley, R-Waco, said of the present maximum fine.

Certified Teachers, Better Tests

"Intangibles" can make a teacher a good teacher.

A new study by the Charles A. Dana Center at the University of Texas shows, however, that something very tangible — teacher certification — is linked to a student's ability to pass the Texas Assessment of Academic Skills.

Students whose teachers who are teaching in their own field do a better job on the all-important

exit test.

The study points out that in the 1996-97 academic year, about 20 percent of Texas public school students had teachers who were not certified in their teaching field.

Eight-Liner Bill Passes Senate

The Senate last week approved legislation that would allow "eight-liners" to remain in bingo parlors and race tracks as long as no winnings are paid out.

Now, the House will consider the fate of the Las Vegas - style gambling machines.

Most Jobless Texans Get No Help

Texas ranks 42nd in the nation in the number of unemployed people receiving benefits, a new study reveals.

The National Employment Law Project and the Institute for Women's Policy Research found that only 22 percent of Texans who qualify actually receive assistance. The national

see **CAPITOL** on page 6

WHITE GOLD COTTONSEED
 First things first—YIELD, YIELD, YIELD
 Fiber Qualities In Premium Range
 Pay less for more with **White Gold** Cottonseed
 Ranger Seed Company Tahoka, TX
 Call 800.982.9677 or 806.998.4935

Marilyn Young Designs
 invites you to the Grand Opening of
Antiques & Fine Things
 Saturday, April 24
 Stop by M&M during the Grand Opening...
GOLD & FINE JEWELRY TRUNK SHOW
 2104 W. American Blvd. • Muleshoe • 272-4217

BAILEY COUNTY FSA NEWS

Change in Office Hours

Beginning Monday, April 12 the office hours for Bailey County FSA will be from 8 a.m. to 4:30 p.m. Monday, Tuesday, Thursday and Friday. Wednesday's the office hours will be from 12 p.m. until 4:30 p.m. This schedule has been granted due to the backlog of work in the county offices.

Payment Limitations

Payment Limitations must be updated when changes occur in your farming operation. A payment limitation must be on file in order to receive program payments. Necessary forms must be filed and a person determination and an actively engaged in farming determination must be made by the Bailey County Committee. Please report any changes in your farming operation to this office so updates can be made to insure payments can be made timely.

Certification

May 17, 1999 is the final date to certify wheat. Please call the Bailey County Office for an appointment. Producers are encouraged to certify all crops, regardless of the intended use.

Revision for Multi-Year CLDAP

New policy has been made regarding multi-year eligibility determinations that will impact County Office processing of Multi-year losses. Under previous instructions, producers could qualify for benefits under the multi-year provisions if the producer received: (a) crop insurance indemnity payments in at least 3 of the previous 5 crop years from 1994 through 1998, including any 1994 ad hoc disaster payment of a non-insurable crop.

Payment under either of these programs could not be combined to meet the minimum 3 to 5 year requirement for compensated losses. Under new policy, a producer is eligible for multi-year benefits the producer received any combination of 3 years of payments under crop insurance, NAP and 1994 ad hoc disaster. All 1994 ad hoc disaster payments will be included in determining producer eligibility and payment amounts regardless of whether the crop was insured, uninsured or non-insurable.

Producers with a multi-year application already on file will

not need to submit a new CCC-540. April 9, 1999, is the final date file an application for disaster assistance. If you have not filed an application for CLDAP (Crop Loss Disaster Assistance Program), please call the office to schedule an appointment.

Dairy Market Loss Assistance

On March 8, 1999, the Secretary announced the provisions of the DMLA Program. DMLA is available to producers on dairy operations if the dairy operation marketed milk commercially anytime from October 1, 1998 through December 31, 1998. Sign-up for DMLA begins on April 12, 1999 and ends on May 21, 1999. Producers shall file applications for benefits in the county where the dairy operation is located. All applications must be submitted by the May 21, 1999 deadline. Late filed provisions will not apply to DMLA. Applications received or requested after COB May 21, 1999, will

not be approved, including faxed or mailed applications. A national payment rate will be determined after the end of sign-up. Payments are made to a person or persons on dairy operations. Only 1 application per dairy operation is required. To be eligible to receive payment, a dairy operation must have produced and marketed milk commercially during the fourth quarter of 1998, have marketed milk commercially anytime in either the 1997 or 1998 calendar year, include milk marketing's from all persons that were involved in the dairy operation during the application period. DMLA payments are subject to assignment and offset. USA will issue payments based on a dairy operation's first 26,000 hundredweight of milk produced in 1997 or 1998, (the higher of). It is estimated that the final payment rate will be between \$.18 and \$.20 per hundred weight, and maximum benefits are estimated at

\$5000.00 per dairy operation.

LDP'S for Hay

Wheat, Barley and Oats may be eligible for an LDP if the crop is harvested for hay or silage. Beneficial interest must be retained in the crop in order to request an LDP. Please remember that you must file CCC-709 before the crop is harvested. If further information is needed, please contact the Bailey County FSA Office.

NAP Approval

A 1998 NAP (Non-insured Assistance Program) has been approved for Bailey County due to drought occurring April through Sept. 1998. Category I forage (common bermuda, little bluestem, sand bluestem, old world bluestem, other brome, buffalo, blue grama, side oats grama, green sprangle top, indian, klein, sand lovegrass, native, plains bristle, annual ryegrass and switch are crops that could be eligible for NAP payment.

WHAT'S YOUR BEEF?

 My grandson **KELLY HARRISON** is ready to "STEER" the City Council in the right direction to make sure our "HERD" of children and grandchildren have a "LOT" of better opportunities to live and work in Muleshoe, Texas.
HEAD 'EM UP & MOVE 'EM OUT TO THE VOTING POLLS...
VOTE MAY 1ST
 Absentee Voting thru April 27-City Hall
paid political advertisement by Kelly Harrison

The American Automobile Association originally sanctioned the Indianapolis 500 race. The United States Auto Club assumed those duties in 1956.

ALLSUP'S ALLways Open, Fast & Friendly
 Effective Dates: April 21-27, 1999
 Store #34
 312 W. American Blvd.
 272-4862 • Muleshoe

ALL OFFERS WHILE SUPPLIES LAST.

CRISCO ALL-VEGETABLE SHORTENING 50% LESS SATURATED FAT THAN BUTTER
 NET WT 48 OZ (3 LB 12 OZ)

PEPSI 6 pk. 12 oz. cans \$1.69
 3 liter \$1.59

SMART BUY SPECIAL! \$2.89

Blue Bunny Vanilla Bars or Cool Tubes **SPECIAL!** 3\$1 for 1

Doritos® or Cracker Jack All Flavors **SPECIAL!** 89¢

Shurfine Saltine Crackers **SPECIAL!** \$1.19

Decker Bacon Save On **SPECIAL!** \$1.29

Shurfine Liquid Bleach **SPECIAL!** 49¢

Van Camp's Pork and Beans **SPECIAL!** \$1.83

Western Family Disposable Razors **SPECIAL!** \$1.83

Allsup's Light, Whole or Shurfine 2% Milk **SPECIAL!** \$2.59 Per Gal.

FITTI DIAPERS med. or lg. \$5.19

SHURFINE PAPER TOWELS roll 89¢

SHURFINE DRY DOG FOOD 20 lb. bag \$4.99

SUNNY COOKIES 32 oz. pkg. \$1.89

Hot Link w/Bread and a Tallsup \$1.59

2 Chimichangas and a Tallsup \$2.99

BUY 12 GALLONS OF MILK GET ONE FREE
 PLUS... You Get A Chance To Win FREE Milk For A Year!

AHA seeking grant funds for portable defibrillators

Five members attended the April AHA meeting at the Muleshoe Area hospital board room.

Members were saddened to hear we Glenda Powell and her family are leaving Muleshoe. Glenda has been an asset to the AHA for over five years. Members will miss her bright smile, cheerful and endless enthusiasm, and friendship and wish her and her family the best on their relocation to Colorado.

Gail Hargrove gave an update on Jump Rope for Heart. Holly Henderson and Christy Whitt from DeShazo Elementary presented Gail with a check for \$1,508.06. The donation will be used to fight heart disease and stroke.

No update was available for Tumbling for Heart. The Clay Bird Shoot is on hold due to Glenda's move and the coordinator's time conflict.

Hargrove and Joyce McGehee are trying to help the local Sheriff's office obtain four automatic external defibrillators for each of the Sheriff's Dept. cars. It's been determined that the first six minutes of cardiac arrest is the most critical and sometimes the Sheriff's Dept. is on the scene before the ambulance arrives. These monitors will allow the Sheriff's Dept. to start emergency life-saving techniques until the arrival of the ambulance. This could be extremely useful in a cardiac arrest in rural Bailey County.

Pads are placed on the patient and the machine reads the patient's heart rate and rhythm and determines if defibrillation is necessary. If so, the machine instructs to clear away from the patient and delivers the necessary shock to possibly restart the heart. Units are \$3,500 each. Joyce and Gail have filled out grant applications and are awaiting replies. Persons interested in helping with this project, want to have a fund raiser, or would like to donate money toward a defibrillator, are asked to please call Joyce at 965-2950 or Gail at Dr. Purdy's office.

Memorials can also be made at either bank in Muleshoe. If you know of someone who has died of a heart attack, stroke, or of cardiovascular disease, or you know a person who has had a loved one that passed away due to one of these things, a memorial may be given in their name. Bring the family's address where you would like a card to be sent telling of your memorial donation. The card does not tell the amount of your donation, so one may contribute whatever amount they wish in confidence.

The May banquet will be held May 11 at 6:30 p.m. at the Five Area Telephone meeting room. All board members are encouraged to attend and bring a dish for a pot-luck meal. There will be special guests, awards, great food, and fun.

If you would like to become a board member, volunteer, or attend a AHA meeting the public is welcome. The meetings are usually held the first Wednesday of the month (except during the summer) at the Muleshoe Area Medical Center board room.

Teachers hired for pre-school at Lariat

The Board of Education and preschool committee at St. John Lutheran Church of Lariat has announced the hiring of two new teachers for its newly formed "Life In Christ Academy."

"We're very pleased to announce that two dynamic teachers will be joining us for the first year of classes," said Gary Haseloff, Board of Education chairman.

Lorre Haseloff and Annie Williams have been hired as the instructors for the new preschool. Lorre holds a bachelor of science degree in education from Baylor University. She has a reading specialization and her degree plan had emphasis in grades K-8.

Lorre taught school in Meadow for one year and in the Tahoka Independent School System for two years. She was the Migrant Coordinator and computer lab instructor for one year as well.

Lorre is married to Darren Haseloff and they have a daughter, Cambree, age 1. She is the daughter of Errol and Joyce Johnson of Lazbuddie.

Annie graduated magna cum laude from Texas Tech with a bachelor of science in human development and family studies. Her degree has special emphasis in early childhood education.

Through her studies at Texas

Tech, she gained much experience in preschool education and the administration of preschool programs.

She completed her student teaching last year in the Farwell Schools 1st grade and is currently an aide at Farwell Elementary.

She is married to Ryan Williams of Farwell.

Life In Christ Academy is a comprehensive preschool open to all area 3- and 4-year-old children. Classes will begin August 17 and will be held each week on Tuesdays, Wednesdays and Thursdays from 8:30 to 11:45 a.m. at St. John Lutheran Church at Lariat. The Academy will follow a normal school calendar for holidays and breaks.

To qualify for enrollment, the student must be age 3 by the Monday following Labor Day, have a copy of their current immunization records and be completely potty trained.

Registration forms and all information may be obtained by calling Edie Kalbas at (806) 825-3357. A registration day has also been slated at St. John Lutheran Church for April 26.

The Academy does not discriminate on the basis of sex, race, color, national or ethnic origin in administration of its educational policies, admission policies or all other school administered programs.

SCAC bake-auction is big success

The Muleshoe Student Community Action Club's bake auction over Channel 6 on 17 was a tremendous success.

At last count the auction raised \$1,104.72, with more money coming in. The funds will be donated to the Muleshoe Heritage Center for another special project.

Each year since SCAC was organized in 1983, the club has given money for improvements at the Heritage Center. Some of these projects have been fur-

nishing and decorating the little girl's bedroom in the Janes ranch house, wall restoration at the old Muleshoe cook house, and a loft and raised roof for the old log cabin. At the next SCAC meeting, the members will vote on the next improvement for which this money will be used.

SCAC could not have had the bake-auction without support and contributions from the community, including the Rennels Family and Channel 6

on 17. The students work hard to make the auction a success by bringing home-baked items made by themselves, their mothers or grandmothers. Nice people like Katie Roubinek and Gladys Black donate delicious bread and beautiful cakes for the students to auction. The students give up a Saturday to answer phones, deliver items, etc.

CAPITOL

from page 5

average is 35 percent.

Part of the problem, the study shows, is that Texas does not include a worker's last three to six months of earnings in its eligibility criteria.

House OKs 'Staff Briefings' Bill

The Texas House last week approved the "staff briefings" bill, a measure written to close a loophole in the Texas Open Meetings Act.

Authored by Rep. Steve Wolens, D-Dallas, House Bill 156 would end the practice of govern-

mental bodies meeting in secret for briefings by employees or third parties.

Wolens' bill has moved to the Senate for consideration.

Other Highlights

■ Construction isn't moving fast enough for Austin-Bergstrom International Airport to open on May 2, as predicted. Officials have moved opening day for the \$690 million facility to May 23.

■ School districts would be required to choose Texas-grown foodstuffs over out-of-state produce, when possible, under legislation passed by the House.

Jewelry & WATCH REPAIR

- 7 Day Ring Sizing & Repairs
- Remounting & Diamond Setting
- Full Line Watch Batteries
- Neck Chains Repaired
- Jewelry Appraised For Insurance

Faster Service

Holmberg Jewelry
1941 50 YEARS 1999

1908 N. Prince, Clovis
762-9376 (Across from K-Mart)

MOTOROLA CELLULAR PHONE

Startac

***\$29.95**

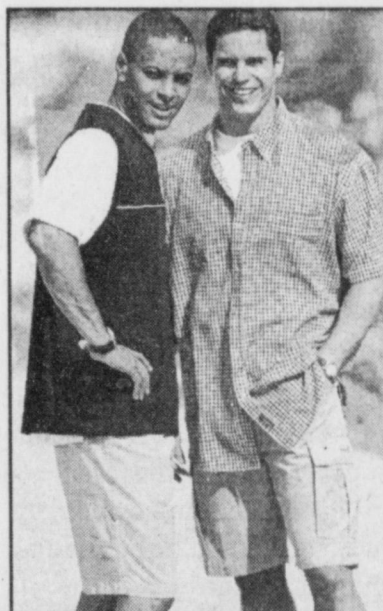
* with activation
* some restrictions apply

- Long Talk Time • Large Color Display
- Emergency Dialing • Safe and Secure
- Phone Book • Easy Charging
- Optional Headset • Turbo Dial™ Feature

WILSON APPLIANCE
117 Main St. • Muleshoe • 272-5532

spring SALE

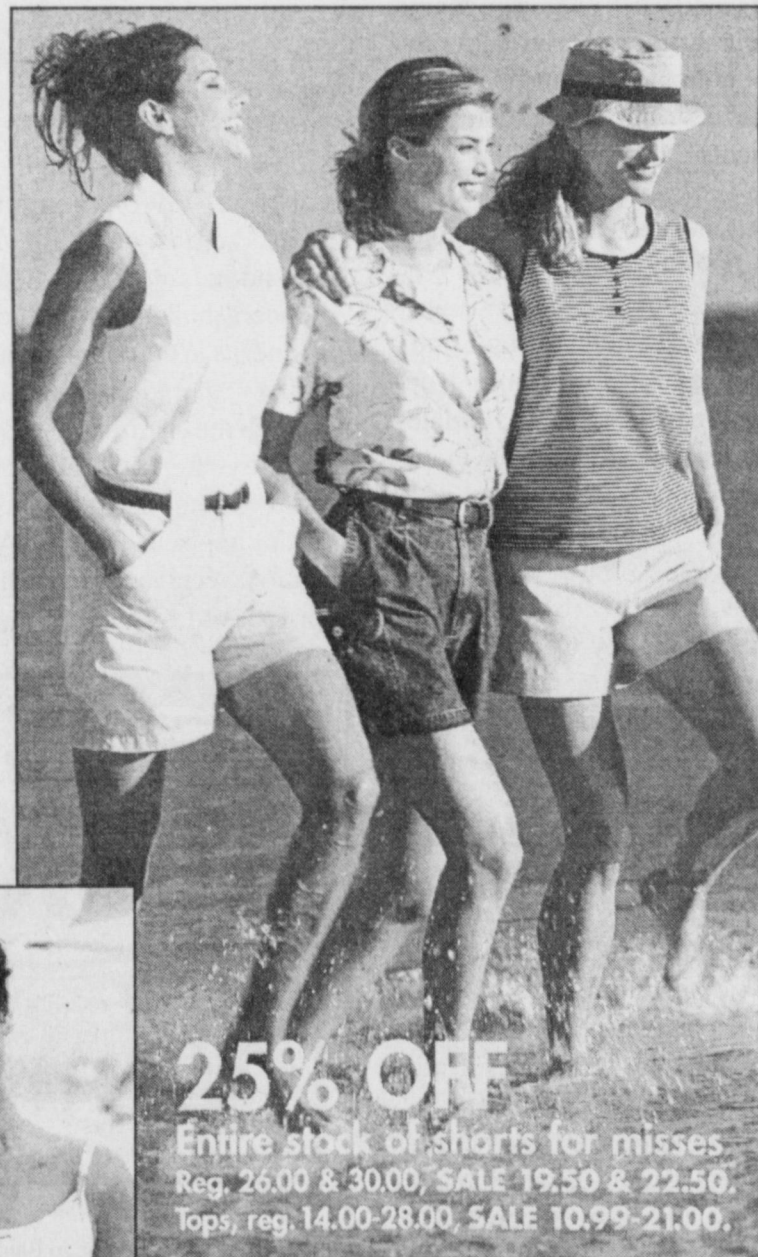
STOREWIDE SAVINGS • NOW THROUGH MONDAY!



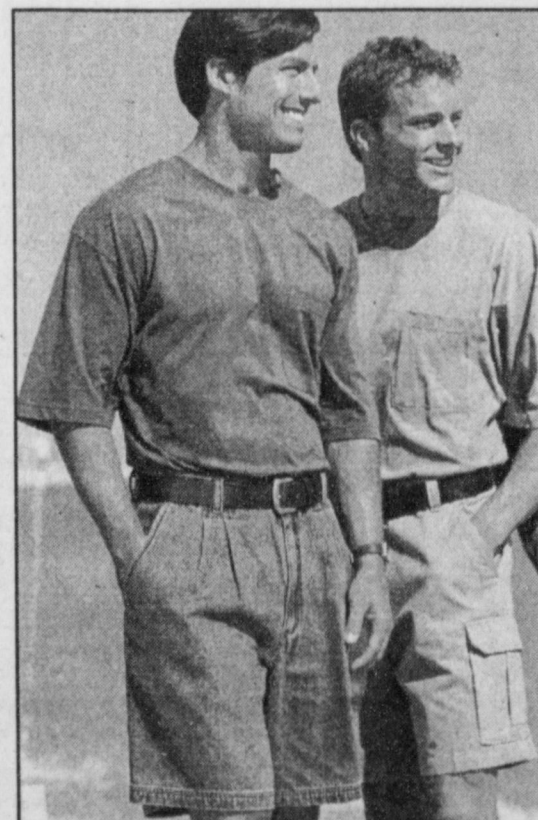
25% OFF
All tops & shorts
for young men
Reg. 18.00-25.00,
SALE 13.50-18.25.



5.99 & 10.99
Solid and striped
knit tops for misses
Henleys, tanks, more.
Reg. 8.00-14.00.



25% OFF
Entire stock of shorts for misses
Reg. 26.00 & 30.00, SALE 19.50 & 22.50.
Tops, reg. 14.00-28.00, SALE 10.99-21.00.



14.99
Specialty Collection® twill
or denim shorts for men
Pleated or flat-front. Reg. 20.00-22.00.
Pocket tee, ONLY 9.99.



25% OFF
Tops, shorts and
shortalls for jrs.
Reg. 14.00-32.00,
SALE 10.50-24.00.



29.99 & 34.99
Aerosoles® and Duck Head®
sandals and slides for ladies
Great spring looks in rich leather.
Reg. 36.00 & 44.00.

Fine Jewelry not at Carthage, Gilmer, Longview (Village Shopping Center) or Vidor, TX. Jewelry may be enlarged to show beauty of detail. Just an example of the savings you'll find. Interim markdowns may have been taken. Styles, sizes and colors may vary by store.



BEALLS

For the store nearest you, call 1-800-324-1313 or log on at www.beallsstores.com

JOURNAL CLASSIFIEDS WORK.
CALL (806) 272-4567 for info.

321 Main Street • Muleshoe, TX • (806) 272-3478 Open: Monday thru Saturday 10 am to 6 pm, Sunday Noon to 6 pm

It's Our Spring Cleaning SALE!

It's still great stuff, but it's been here a while. So we're marking it down, to Save you a PILE!

ALL IN STOCK CARPET
25% OFF
 Regular Price \$12.95 - \$29.95
 Reg. Price

KITCHEN & LIGHT WEIGHT COMMERCIAL CARPET
30% OFF
 In Stock Only
 Reg. Price

Congoleum-Medalist & Armstrong-Memories
SHEET VINYL FLOORING
40% OFF
 In Stock
 Reg. Price

PERGO LAMINATE FLOORING
\$3.99*
 Regular Price \$6.00 SQ. FT.
 SQ. FT. Material Only

PRO FLOORING MAJESTY
\$19.99
 Regular Price \$28.05 SQ. YD.
 SQ. YD. INSTALLED

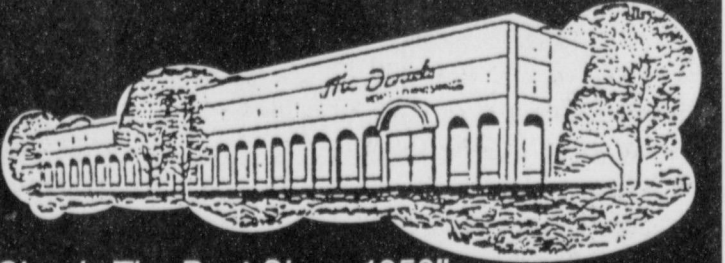
PRO FLOORING MAJESTIC
 Regular Price \$33.15 SQ. YD.
\$25.99
 SQ. YD. INSTALLED

CONGOLEUM EVOLUTION
 Luxury Vinyl Tile
\$3.99*
 Regular Price \$5.66 SQ. FT.
 SQ. FT. Material Only



*Materials only. Floor prep and installation extra.

McDaniel's Floor Covering



"Simply The Best Since 1953"

1013 Mitchell, Clovis, NM



763-7940



National Secretary's Week April 18-24
 Don't forget to honor your #1 secretary for all her hard work!

Muleshoe honor roll

Muleshoe High School Honor Roll

9th Grade — Ricardo Aburto, Blanca Arzola, Megan Barrett, Amanda Bell, Laura Bonds, A.J. Burhman, Elizabeth Castorena, Carmen Flores, Kayla Glover, Lorie Herington, Olimpica Hernandez, Rendi Hodge, Denisse Lopez, Matthew Lopez, Matthew Luna, Ashley May, Suzanne Messenger, Brandon Mount, Lincoln Riley, Laura Wood.

10th Grade — Adrienne Ashford, Letti Barrera, Brandon Broyles, Jennifer Castorena, Melissa Flores, Stephanie Kirk, Westin Price, Aubrey Ruthardt, Joey Stone, Bryce Thomason, Megan Tipps, Travis Tunnell, Joshua Williams.

11th Grade — Joseph Anguiano, James Barrett, Bobbie Benham, Kamal Bhakta, Clint Black, Lysie Black, Randall Bohler, Rosario Flores, Blake Gartin, Chris Gatewood, Rhett Green, Ryan Hodge, Leonard Joyner, April Kelley, Stacy Locker, Michelle Lopez, Mitchell Mason, John McClanahan, Ronnie Orozco, Eric Posadas, Tyson Purdy, Ebony Russ, Michelle Toscano, Brandy Whitt.

12th Grade — Deepa Bhakta, Amber Bruns, Marisa Buenostro, Amanda Carpenter, Dustin Cleavinger, LaRhonda Copley, Robin Cowart, Krystal Heathington, Nathan Keller, Cambri Lewis, Joseph Mata, Amy Marricle, Amanda Messenger, Kellie Morris, Kyle McDaniel, Bobby Padilla, Ashley Pool, Amy Ronek, Aylssa Saylor, Marcos Soto, Lindy Underwood, Erin Wilhite, Melissa Williams, Ellen Wood, Katie Woodworth.

Sun sense makes good sense for Texans

Be sensible in the sun to prevent skin cancer

The most common form of cancer is also one of the most easily prevented. Skin cancer, in all its forms, will impact about 1 million Americans this year, and will account for half of all cancers diagnosed. About 44,200 of those diagnosed with skin cancer will have malignant melanoma, the deadliest skin cancer. But about 80 percent of skin cancers could be prevented through limiting exposure to the sun's harmful ultraviolet (UV) rays. By protecting yourself and your family, you can keep from getting burned by skin cancer.

The physicians of the Texas Medical Association urge you to take some simple steps to protect your skin, and to educate yourself on the signs of skin cancer so you might detect any abnormalities early. Minimize your risk and avoid becoming one of the many who will face skin cancer this year and in the future.

Everyone is at risk for skin cancer, regardless of skin color. People with fair skin that burns easily, blonde or red hair, a family history of skin cancer or a large number of moles are at greater risk, but all people need to guard themselves against skin's No. 1 enemy — damaging UV rays.

UV rays are the same rays that cause sunburn. And most of us know that when we're out in the sun for long periods of time, we're being exposed to damaging rays. But every minute of sun exposure can add up to greater skin cancer risk — even if you're just walking from your house to your car.

"It's so important that people reduce their UV exposure as much as possible," said San Antonio dermatologist Dr. David Madorsky. "People don't think

they need protection when in the sun for a short time. But they do - the damage is cumulative."

Minimizing UV ray exposure doesn't mean hiding indoors. It just means facing the sunshine armed with sunscreen.

Dr. Madorsky recommends daily use of sunscreen that has a sun protection factor (SPF) of 15, and not using it just on sunny days. UV rays still come through when the skies are cloudy. And wearing sunscreen is necessary even if you'll only be outdoors for a few minutes. If you'll be swimming or otherwise active outside, use waterproof sunscreen, and reapply it frequently.

When basking in the sun for a longer period of time, sunscreen isn't enough to protect your skin. Clothing that covers your skin, such as hats and long-sleeved shirts, will afford you the greatest protection. Also, avoid the sun from 10 a.m. to 4 p.m., when its rays are strongest.

Certain antibiotics, pain medications, antidepressants and other drugs can cause you to burn more easily, so be sure to ask your doctor if any medications you are taking cause sun sensitivity. If they do, it's a wise decision to stay out of the sun entirely.

It's also important to know the warning signs of skin cancer. Though most skin cancers are benign, they still need to be treated. And malignant melanoma, a less common but much more serious form of skin cancer, can be fatal if not caught early. Look for spots on your skin or a mole that is changing in size, shape or color, or a new growth or lump. Check your entire body periodically for any changes in the skin. Use a mirror to help you see your back, and be sure to check the soles of your feet, your palms your elbows and the spaces between

your toes.

When checking moles or birthmarks on your skin for melanoma, remember the "ABCD" rule. "A" is for asymmetry, meaning one half of a mole or mark doesn't match the other. "B" is for border, meaning the edges of a mole are irregular or ragged. "C" is for color, meaning the color of the mark isn't the same all over and may have differing shades of brown or black or areas of red, blue or white. "D" is for diameter, meaning the area is larger than 6 millimeters, about the size of a pencil eraser. If you see these changes or notice anything unusual, report it to your doctor as soon as possible.

Of course, prevention still is

the best defense against skin cancer, and even if you've been a sun worshipper who didn't use sunscreen in the past, you can still change your ways and save your skin from further damage.

"Limit your sun exposure as much as you can, and you'll limit your risk," Dr. Madorsky said. "It's never too late."

Texas Medical Association is a professional organization of more than 36,000 physician and medical student members. It is located in Austin and has 118 component county medical societies around the state. The Association represents 85 percent of the doctors of medicine licensed and residing in Texas. TMA's key objective is to improve the health of all Texans.



404



The Fair Store
120 Main 272-3500

Advertising Works!
Call Leah at 272-4536

3300 N. Prince
Clovis, NM 88101
(505) 762-1211
1-800-306-1211

SUPERCENTER

Se Habla Español!

**Manufactured Housing . . .
The Home of the Future . . . NOW!**

Please Join LUV Homes and the New Mexico Manufactured Housing Association this WEEKEND . . . Saturday and Sunday for the Largest Manufactured Home Show in the Country!

- ⇒ Live Radio Broadcast Saturday! KTQM!
- ⇒ Register for Great Prizes!
- ⇒ Food, Fun and Ballons for the Kids!
- ⇒ One time ONLY Financing! If You Are In The Market to Purchase A Home This Year - This Weekend is the time to Buy!! All Inventory is Priced at impossible Low Prices!!
- ⇒ The Best Built Homes in the State!

**You Gotta See These Homes!
See You This Weekend!**

REPRESENTATIVE SALES

585 cattle, 197 hogs and 365 sheep & goats. Market steady on stocker cfs. 1-2 lower on feeder cattle due to lower trend in futures the previous week. Pairs, Bred cows & packer cows sold steady.

The Muleshoe Cattle Market is brought to you each week by Muleshoe Livestock Auction, located east of Muleshoe on U.S. 84. Muleshoe Livestock conducts sales every Saturday, beginning with hogs, sheep and goats at 10 a.m. and cattle following at approximately 12 noon.

**FOR INFORMATION ON SALES OR TO
CONSIGN CATTLE, CALL (806) 272-4201**

**Muleshoe
Cattle Market**

SATURDAY, APRIL 17, 1999

Seller, City	#	Type	Wt.	CWT or PH
Juan Romero, Portales, NM	Hol. Str	255 lbs.	at \$70.00
Jesus Granados, Levelland	Blk. Str	200 lbs.	at \$235.00
Ovidio Balli, Friona	Red Bull	310 lbs.	at \$99.00
Butch Green, Muleshoe	RMF Bull	360 lbs.	at \$99.00
Andy Scott, Hereford	Char. Bull	385 lbs.	at \$104.00
Dale Demel, Sudan	Blk. Str	405 lbs.	at \$91.00
Alan James, Littlefield	WF Str	460 lbs.	at \$91.00
Ricardo Salas, Bula	Char. Bull	500 lbs.	at \$84.50
Jacen Claunch, Enochs	Grey Bull	520 lbs.	at \$79.50
Jim McGowan, Hereford	2 Blk. Strs	448 lbs.	at \$89.00
Jim McGowan, Hereford	5 Blk. Strs	549 lbs.	at \$81.00
Diamond Y Cattle, Muleshoe	Blk. Str	645 lbs.	at \$88.00
Leo Chavez, Muleshoe	9 Mxd. Strs	747 lbs.	at \$68.75
Ernest Ramm, Muleshoe	3 Red Hfrs	per hd. 180 lbs.	at \$225.00
Andy Scott, Hereford	Char. Hfr	390 lbs.	at \$85.00
Dale Demel, Sudan	2 Red Hfrs	390 lbs.	at \$83.00
Jim McGowan, Hereford	4 BMF Hfrs	545 lbs.	at \$75.00
Diamond Y Cattle, Muleshoe	8 Blk. Hfrs	574 lbs.	at \$75.00
RC Douglas, Lubbock	BMF Hfr	620 lbs.	at \$70.00
Jane Ann Miller, Amherst	Blk. Hfr	660 lbs.	at \$68.00
Leo Chavez, Muleshoe	5 Mxd. Hfrs	651 lbs.	at \$67.00
Leo Chavez, Muleshoe	10 Mxd. Hfrs	734 lbs.	at \$65.00
Tim Addison, Plains	2 WF Pairs	\$740.00
Ernest Ramm, Muleshoe	4 WF Pairs	\$750.00
Ernest Ramm, Muleshoe	BWF Pair	\$650.00
Joe Salas, Littlefield	Blk. Pair	\$650.00
Kyle Muller, Littlefield	Blk. Cow P7	\$560.00
T.C. Lynch, Morton	Brang. Cow P7	\$540.00
Kelly Harrison, Muleshoe	Blk. Cow	1555 lbs.	at \$42.00
Grady Free, Muleshoe	Simm. Cow	1415 lbs.	at \$38.50
LM Smith, Muleshoe	Red Cow	1390 lbs.	at \$39.25
Miguel Munoz, Albuquerque	Red Cow	935 lbs.	at \$39.00
Tim Addison, Plains	RMF Cow	960 lbs.	at \$39.50
John S. Perrin, Morton	Red Cow	1360 lbs.	at \$39.75
Wendel Jones, Morton	2 Hol. Cows	1263 lbs.	at \$37.00

TEXAS STATEWIDE CLASSIFIED ADVERTISING NETWORK

West Region
155 Newspapers
589,026 Circulation

North Region
123 Newspapers
605,000 Circulation

South Region
92 Newspapers
584,329 Circulation

MULESHOE JOURNAL'S NEW CLASSIFIED SERVICE WORKS!

Now you can place your Classified Advertisement STATEWIDE or in three different REGIONS. The Statewide Classified Advertising Network reaches more than 1 million readers in Texas.

GET STATEWIDE RESULTS!!
Land For Sale • Employment • Auctions • Miscellaneous For Sale • Vehicles • Farming Equipment • Arts & Crafts • Health Products • Livestock Hauling • And Much More!!

**For more information about TexSCAN,
call our office at 806.272.4536!!**

Cattle Handling Safety

I took part in the making of a video on cattle handling safety put out by Oklahoma State University. It featured several experts including the well respected cattle handling expert Temple Grandin. The video stressed many recommendations that would seem like common sense, i.e. don't get in the crowding alley afoot.

I was pleased to be part of this fine effort and I'm sure you can get a copy by calling 405-744-3727.

But when you consider the cowboy mentality, I might have added a few more guidelines that would appear self-explanatory to normal people. For instance:

- Never tie the tail of your rope to your belt and then rope a cow.
- Never lie down in the bottom of a crowding alley.
- Never attempt to ride a cow out of a



BAXTER BLACK
ON THE EDGE OF COMMON SENSE

squeeze chute.

- Never stand behind the sorting gate.
- Never drink from a water trough wired with an electric heater that has three dead cows laying beside it.
- Do not wear a saber and epaulettes while horseback in a sorting alley.
- Do not wear a mask and cape when flanking calves at a branding.
- Do not grab the funny shaped end of a branding iron.

- Do not attempt to bulldog a steer by diting his nose as they let him out of the squeeze chute.
 - Do not try to remove a cud from a masticating bovine.
 - Avoid falling asleep while doing a rectal exam on a cow.
 - Do not straddle squeeze chute handles or small ruminants.
 - Don't stand too close to anyone with a doctor in their names.
 - Never stick your hand between the side bars of a squeeze chute when it is loaded with cow.
 - Do not lean against mammals.
 - Do not attempt to drive livestock with a bow and arrow.
- And finally—Steer clear of stuff labeled "DANGER", "CAUTION" or "COWBOYS AT WORK".

Real lawnmower man shoots for world record

PHILADELPHIA - across more than 4,500 miles. Thankfully, there is no one to ask Brad Hauter, "How long 'till we get there?" That's because Hauter is following his dream of driving across America - alone. At 10 mph. On a Yard-Man Tractor lawnmower.

Hauter slipped his helmet over his head, adjusted his orange vest and started the mower's engine. Then he waved goodbye and took to the highway. He is attempting to raise \$100,000 for charity and get in The Guinness Book of Records with a lawn tractor journey

According to Guinness regulations, he must ride seven days a week on the same tractor until the journey is complete. The current record is 3,500 miles.

Hauter began his trip April 7 in Atlanta and hopes to finish by June 10 in Santa Monica, Calif. His stopover in Philadelphia made 870.5 miles. "After college, I always dreamed of driving across the country in a car," said 33-year-old Chicago-area resident. "But this is even better."

Journal Classifieds

STOP & SHOP

Deadlines are 5 p.m. Monday and Thursday

Call 272-4536

Deadlines are 5 p.m. Monday and Thursday

LEGAL

APPLICATION. Minsa Southwest Corporation, P.O. Box 484, Muleshoe, Texas, 79347, has applied to the Texas Natural Resource Conservation Commission (TNRCC) for a major amendment of Permit No. 03032 to authorize an increase in the daily average flow for irrigation from 80,000 gallons per day to 300,000 gallons per day and to increase the irrigation acreage from 49 acres to 86.5 acres. The current permit authorizes the disposal of industrial wastewater from milling corn flour at a daily average flow not to exceed 80,000 gallons per day via irrigation of 49 acres. The applicant operates a masa (corn) flour manufacturing plant. This permit will not authorize a discharge of pollutants into waters in the State. The facility and disposal area are located adjacent to U.S. Highway 84, approximately 1.8 miles southeast of the intersection of U.S. Highway 84 and U.S. Highway 70, approximately 1.5 miles southeast of the City of Muleshoe, Bailey County, Texas. The plant site and disposal area are located in the drainage basin of Black Water Draw which is a tributary of the Double Mountain Fork Brazos River, in Segment No. 1241, of the Brazos River Basin. The Executive Director of the TNRCC has prepared a draft permit which, if approved, would establish the conditions under which the facility must operate. **Public Comment/Public Meeting.** Written public comments and request for public meetings may be submitted to the Office of Chief Clerk, at the address provided in the information section below, within 30 days of the date of newspaper publication of the notice. A public meeting is intended for the taking of public comment, and is not a contested case hearing. A public meeting will be held if the Executive Director determines that there is a significant degree of public interest in the application. **Contested Case Hearing.** The TNRCC may grant a contested case hearing on this application if a written hearing request is filed within 30 days from the date of newspaper publication of this notice. The Executive Director may approve the application unless a written request

for a contested case hearing is filed within 30 days after newspaper publication of this notice. To request a contested case hearing, you must submit the following: (1) your name (or for a group or association, an official representative), mailing address, daytime phone number, and fax number, if any; (2) applicant's name and permit number; (3) the statement "I/we request a contested case hearing;" (4) a brief and specific description of how your would be affected by the application in a way not common to the general public; and (5) the location and distance of your property relative to the proposed activity. Requests for a contested case hearing must be submitted in writing to the TNRCC Office of the Chief Clerk at the address provided in the information section below. You may also submit your proposed adjustments to the application/permit which would satisfy your concerns. If a hearing request is filed, the Executive Director will not issue the permit and will forward the application and hearing request to the TNRCC Commissioners for their consideration at a scheduled Commission meeting. **Information.** Written hearing requests, public comments or request for public meetings may be submitted to the Office of the Chief Clerk, MC 105, TNRCC, P.O. Box 13087, Austin, Tx. 78711-3087. For information concerning the hearing process, contact the Public Interest Counsel, MC 103, the same address. Individual members of the general public may contact the Office of Public Assistance, c/o Office of Chief Clerk, at the address above, or by calling 1-800-687-4040 to: (a) review or obtain copies of available documents (such as the draft permit, technical summary, and application); (b) inquire about the information in this notice; or (c) inquire about other agency permit applications or permitting process. General information regarding the TNRCC can be found at our web site at www.tnrc.state.tx.us. Issued March 30, 1999 by LaDonna Castanuela, Chief Clerk, Texas Natural Resource Conservation Commission. Published in the Muleshoe Journal April 22, 1999.

LEGAL

Public Notice. In accordance with the provisions of Chapters 116 and 117 of the Texas Local Government Code, the Commissioners Court of Bailey County, Texas, will enter into a contract with a bank for the depositing of the public funds belonging to Bailey County, its special districts and Clerks' registry of the court funds. Any bank desiring to be designated as a County Depository shall make and deliver to the County Judge an application applying for such funds, said application to be in the hands of the County Judge no later than 10 a.m. Monday, May 10, 1999, at which time applications will be opened. Applications and information concerning requirements and eligibility are available by contacting the County Treasurer. Notice is hereby given that Bailey County will select the qualified applicant that offers the most favorable terms and conditions for handling of the county funds. Signed by Marilyn Cox, County Judge. Published in the Muleshoe Journal April 22, April 29, and May 6, 1999.

FOR SALE

Must Sell! 411 lbs. of steel bench weights and one solo flex. Call Kim at (806) 272-3634 after 6 p.m. 12t-1mo. Big Screen TV for sale. Take on small payments. Good credit required. 1-800-398-3970. 15t-4tch. Waterbed, king size, 6 drawers, lighted, mirrored headboard, \$250. Also a headboard, that fits queen or full size rails, lighted, mirrored, w/matching night stand, \$125. M-F, 8 to 5, 272-4466 or eves. \$ week-ends 272-4919. 16s-3tch

4 Burial Plots

Located at Muleshoe Memorial
Lots 7 & 8 - Block 37
Lots 5 & 6 - Block 38
Call (940) 825-6705

HELP WANTED

COMPUTER TECHNICIAN POSITION. Texas Boll Weevil Eradication Foundation Experience, pc and network knowledgeable computer tech needed for the Muleshoe area. Travel required. Resume to: TBWEF, HR, PO Box 5089, Abilene, TX 79608-5089, fax: (915) 677-1006, email: jjw@txbollweevil.org. For more info: (915) 672-2846 ext. 3131, 3117 or 3109. EEO. 16s-2tch

FOR RENT

Ruidoso Condo
3 Bedroom 3 Bath
Sleeps 8
Call Debbie at (806) 285-3053

1988 Ford F350 Crew Cab
Dually, 460 automatic, XLT Lariat
Almost new tires, 5th wheel ball, \$8,995

1997 Dodge Ram 2500 Club Cab
4x4 Cummins diesel, automatic, Laramie SLT trim, factory warranty, 41,663 actual miles

1997 Ford F350 Dually Super Cab
2 wheel drive, 7.3 turbo diesel,
13,000 actual miles, factory warranty

PRICED TO SELL!!!
(2) 1994 Chevy Astro Vans
(1) 1995 Chevy Astro Van

WE BUY QUALITY, CLEAN VEHICLES!

Portales Premier Pre-Owned Vehicle Headquarters

TRADER HORN MOTOR COMPANY
620 S. Ave C • Portales, NM
(505) 359-0947 or (505) 359-1775

HELP WANTED

Summer Help Wanted: Filled Scout/Demo. Tech. for June through September. Applicants must provide own vehicle. Applications available in the County Extension Office in Farwell and Muleshoe. Apply by May 15, 1999. Contact Cherinell Riley, EA-IPM at 806-481-3300. Texas Agricultural Extension Service serve people of all ages regardless of socioeconomic level, race, color, sex, religion, handicap or national origin. 16s-3tch

HOMES

HADLEY HOMES, INC.
Family Owned
Raymond & Sherry Hadley
Se Habla Espanol
(505) 763-1788 or 1-888-316-6111
4100 Mabry Drive Clovis, NM
Fax (505) 763-0698
Sales Rep: Bowie Howard & Anna Loya

VEHICLE

1987 Mazda 626
Good condition
clean
almost new transmission
AC
tape deck
automatic
Call (806) 265-3342

REAL ESTATE

For Sale
3-2-2 BRICK COUNTRY HOME AT NEEDHORE
Call 946-3361 OR 946-3360
2 Bedroom home, West 9th street. Call 272-3962 or 272-3976. 13t-ttc
FSBO - 2 bdr., 1 bath, garage, approx. 1000 sq. ft. 809 E. Fir. Call (806) 622-9547 or 272-3329. 16s-2tch

NICE 3 bdr., 1 bath, brick home. 1 car garage, cent. heat & air, fenced yd., good location. Reduced from \$35,000 to \$30,000! Motivated seller. Call (806) 481-3288. 16t-1

House for Sale
710 W. 6th in Muleshoe
Call Linda at (505) 742-1785

SERVICE

HENDERSON SERVICE CO.
MAJOR APPLIANCE & MINOR HOME REPAIRS
272-4450

YARD WORK
We will do your yard work!
Call Don or Kay Taylor 272-3717

GARAGE SALE
Saturday, April 24 at 9 a.m. Misc. household items and clothing. 2 1/2 miles west of Clay's Corner. 16t-1tch

Tex-Scan
Nation Wide
Classified Advertising
For more information call 272-4536

Nieman Realty
116 E. Ave. C • George Nieman, Broker • 272-5285 or 272-5286

RICHLAND HILLS — PARK RIDGE

- We have several single and multi-family lots in this area!!!!
- NICE 3 bdrm. 2 bath w/3 car detached garage/workshop-storage, Elec. Heat Pump, built-ins, FP, 2,380' lv. area, auto. spklr., fenced yd., More!!! RH-2
- NICE 3-2-2 Brick, Cent. A&H, built-ins, FP, approx. 2100' lv. area, storage, fenced yd., MORE!!! RH-1

HIGHLAND - HARVEY AREA

- 3-1-1 carport Home, wall furnace heat, evap. air, large yd., MORE!! \$20's!!!!
- 3-2-2 Brick, Cent. A&H, built-ins, gas log FP, fenced yd., stor. bldg., MORE!!! Price Reduced!! HL-5
- 2-1-1 carport home, wall furnace heat, evap. air, DW, 5 fans, cov. patio, gas grill, fenced yd., MAKE OFFER!!!
- 3-2-2 Brick Home, corner lot, wall furnace heat, Cent. Evap. Air, fenced yd., stor. bldgs., MORE!!! HL-4
- NICE 2-2-1 + 1 Carport Brick, 2,000 + living area, Cent. A&H, built-ins, fans, den w/WB stove, enclosed heated pool, corner lot, fenced yd., MORE!!! \$80's!! HL-1
- 2-1-1 Home, Cent. A&H, built-ins, corner lot!!! \$23,500!! HV-1

LENAU - COUNTRY CLUB AREA

- PRICE REDUCED 2-1-1 Carport Home, wall furnace, nice carpet, storm shelter, stor. bldg., fenced yd. \$19K!! CC-3
- 3-2-2 Carport Mobile Home, Cent. A&H, built-ins, nice yd., pecan & fruit trees!! \$16K!!
- 3-2-2 Brick, Cent. A&H, built-ins, fans, 2,036' lv. area, cellar, stor. bldg., fenced yd., MORE!!! \$65K CC-4

COMMERCIAL

- Six Unit Apartment Complex (4-2 bdrm. & 2-1 bdrm. units)!!!
- Established Business: Land, Bldg. & Equip., \$75K!!
- 56' x 140' tract, approx. 4700' bldg., \$35K!!!
- NICE R.V. STORAGE, 14' X 40' metal bldg. 12' doors, 50X140 corner lot!
- SNACK SHACK - Lot, Buildings, furniture & fixtures!!!

HIGH SCHOOL

- 3-1/2-1 Home on corner lot, fenced yd., storage bldg., MORE!!! \$20's!!! HS-9
- VERY NICE 3-1-1 Brick, Heat pump, DW, nice carpets, fenced yd., MORE!!! \$30's!!! HS-1

RURAL

- PRICE REDUCED- NICE 3-2 home, 40 acre tract, Geo. Heat Pump, built-ins, 5' irrig. well, Hi-Press. lines, sprinkler pipe, barn, pens, tractor & equip!!! \$69K!!!
- W. of SUDAN-NICE 3-3-2 Brick Home, 5 acre tract on Hwy. 298, Cent. Air & Heat, built-ins, large Quonset Barn, MORE!!! \$95K!!!
- 5 Acre tract on pavement close to town!
- Approx. 108 acres on Hwy. 70, approx. 2100' office area, 16,900 of commercial bldg, w/loading dock, 3,400 warehouse!! 2,800 runway!!
- LONGVIEW - GOOD Dryland Labor, fully allotted, planted in wheat. \$225.00 per acre.
- 152.8 acres, 15 hp & 20 hp. sub., Lockwood spklr., 85 acres seed brasses & 35 acres wheat. \$475.00 per acre.
- 160 acres, 2 bdrm. home, garage, storage, barn, 8" irrig. well!!! \$42K!!!
- EARTH - 2 Homes (Hite Park Add.), 3 bdrm. 2 bath!! Call for Details!!

HONORING *Working* WOMEN

At Lowe's...
We know you're in a hurry!



PRICES EFFECTIVE APRIL 21-27, 1999

MEAT

- ANY SIZE PACKAGE BONELESS
CHUCK ROAST LB **\$1¹⁹**
JUMBO PACK BONE-IN
FRYER SPLIT BREAST LB **89¢**
ANY SIZE PACK BONELESS BEEF
CHUCK ARM ROAST LB **\$1⁴⁹**
VALUE PACK
GROUND CHUCK LB **\$1⁶⁹**
ANY SIZE PACK BONELESS TENDER
PORK SIRLOIN CHOPS LB **\$1⁶⁹**
ANY SIZE PACK BEEF BONELESS
CHARCOAL STEAKS LB **\$1⁶⁹**
ADVANCE BREADED BEEF
PATTIES OR FINGERS 12 OZ. PKG **\$1²⁹**
ADVANCE BREADED CHICKEN
NUGGETS, STRIPS
OR PATTIES..... 12 OZ. PKG **\$1⁷⁹**
DECKER
CHOPPED HAM 10 OZ. PKG **\$1⁴⁹**
DECKER
COOKED HAM 10 OZ. PKG **\$1⁹⁹**
CENTER CUT
ARMOUR BACON..... 12 OZ. PKGS **2/⁵3**
SWIFT PREMIUM SAUSAGE
LINKS OR PATTIES 7 OZ. PKGS **99¢**
REGULAR OR THICK SLICED
DECKER
MEAT BOLOGNA 12 OZ. PKGS **2/⁵1**
DECKER
MEAT FRANKS 12 OZ. **69¢**
SWIFT PREMIUM
SAUSAGE 'N
BISCUITS 4 CT.-5.5 OZ. **99¢**
GLACIER GOLDEN
HASH BROWN PATTIES 10 CT. **\$1¹⁹**
PRICE'S REGULAR OR LIGHT
PIMENTO CHEESE
SPREAD 13 TO 14 OZ. TUB **\$2²⁹**
PEPPERONI OR DELUXE
MAMA ROSA'S PIZZA..... 24 OZ.-2 PK. **\$2⁴⁹**
-
- ASSORTED
SUNNY COOKIES 12 TO 13. OZ. **5/⁵4**
ASSORTED
CAP'N CRUNCH
CEREAL 13 TO 16 OZ. BOX **2/⁵4**
ASSORTED
DORITOS® 14.5 OZ. BAGS **2/⁵5**
ASSORTED
FRITOS® BEAN DIP 9 OZ. CANS **2/⁵4**
ASSORTED
SUNSHINE
CHEEZ-IT 13.5 TO 16. OZ. BOX **2/⁵4**
ASSORTED
KRUSTEAZ
BREAD MIX 14 OZ. PKG **2/⁵3**
• 16 OZ. HONEY BUNCHES OF OATS
W/ALMONDS • 16 OZ. HONEY BUNCHES
OF OATS • 13 OZ. COCOA PEBBLES
• 13 OZ. FRUITY PEBBLES
POST CEREAL YOUR CHOICE **\$2²⁹**
ASSORTED
PACE PICANTE SAUCE ... 16 OZ. JAR **\$1⁷⁹**
FAMILY SIZE
LUZIANNE TEA BAGS 24 CT. **2/⁵3**
BUTTER OR BUTTER LOVERS
ACT II MICROWAVE
POPCORN 6 CT. PKG **\$2³⁹**
ASSORTED
BULL'S EYE
BARBEQUE SAUCE 18 OZ. BTL. **2/⁵3**
CASSEROLE
PINTO BEANS 4 LB. BAG **\$1⁷⁹**
RANCH STYLE
REFRIED BEANS 16 OZ. CAN **69¢**

PRODUCE

- WASHINGTON EXTRA FANCY DELICIOUS
MIX OR MATCH
RED OR GOLDEN APPLES..... LBS **3/⁵1**
NORTHWEST FRESH
D'ANJOU PEARS LB **69¢**
SWEET
YELLOW CORN **3/⁹⁹¢**
GREEN, RED OR ROMAINE
LEAF LETTUCE EA. **69¢**
CELLO PACK
TOMATOES 4 PK. **\$1³⁹**
MINI PEELED
CARROTS 1 LB. PKG **89¢**
FRESH TANGY
LEMONS **5/⁵1**
JUICY
HONEYDEW MELONS EA. **\$1⁴⁹**
CAESAR COMPLETE, CREAMY
GARLIC CAESAR OR ORIENTAL
DOLE SALAD MIX 10 TO 12 OZ. PKG **\$1⁹⁹**

HEALTH & BEAUTY

- ASSORTED
DOVE OR CARESS
BATH SOAP 2 BAR PKG **\$1⁹⁹**

REFRESHMENTS

- ALL TYPES
COCA-COLA, SPRITE
OR DR. PEPPER..... 6 PACK-12 OZ. CANS **\$1⁴⁸**
ALL TYPES
COCA-COLA, SPRITE
OR DR. PEPPER..... 6 PACK-.5 LITER BTL. **2/⁵5**
ASSORTED FLAVORS
MINUTE MAID 4 PACK-16 OZ. **\$2⁹⁹**

Ambassador
Buy 3 Cards get another card... **FREE**

FROZEN & DAIRY

- FROZEN YOGURT OR ASSORTED
BLUE BELL ICE CREAM 1/2 GAL. **2/⁵7**
ASSORTED 6 CT. REGULAR
OR 10 CT. MINI
BLUE BELL
COUNTRY CONES YOUR CHOICE **2/⁵6**
ASSORTED TONY'S
SUPER RISE
PIZZA 19.7 TO 23 OZ. PKG **2/⁵7**
ASSORTED
BANQUET POT PIES 7 OZ. PKG **2/⁵1**
BANQUET MOZZARELLA
CHEESE NUGGETS 13.5 OZ. PKG **2/⁵5**
ASSORTED
BANQUET
FRIED CHICKEN 19 TO 25 OZ. PKG **\$2⁸⁹**
ASSORTED MUNCHERS
CHUN KING
MINI EGG ROLLS 6 OZ. PKG **99¢**
SELECTED VARIETIES
MARIE CALLENDER'S
DINNERS 22 TO 25 OZ. **\$4²⁹**
ASSORTED
YOPLAIT YOGURT 6 OZ. **3/⁹⁹¢**
FRENCH ONION OR GREEN CHILI
PLAINS DIP 8 OZ. TUB **99¢**
BANQUET MOZZARELLA
CHEESE NUGGETS 13.5 OZ. PKG **2/⁵5**
SELECTED VARIETIES
HEALTHY CHOICE
DINNERS 10.5 TO 11.5 OZ. PKG **2/⁵5**
GREEN GIANT NIBLETS
CORN ON THE COB 4 EAR PKG. **2/⁵3**
MINUTE MAID ASSORTED
ORANGE JUICE 64 OZ. **\$1⁷⁸**
ASSORTED
BANQUET POT PIES 7 OZ. PKG **2/⁵1**
REGULAR OR LITE
MRS. BUTTERWORTH'S
SYRUP 24 OZ. BTL. **\$1⁹⁹**
MRS. BAIRD'S SPLIT TOP
WHEAT BREAD 24 OZ. PKG **88¢**

- HEALTHY CHOICE
GLAZED CHICKEN,
BEEF PEPPER STEAK
OR LASAGNA 7.5 TO 9 OZ. PKG **\$1⁹⁹**
ASSORTED
HEALTHY CHOICE
DINNERS 8.5 TO 9.5 OZ. PKG **2/⁵4**
BANQUET CHICKEN
PATTIES,
TENDERS, WINGS
OR NUGGETS 11 TO 16 OZ. PKG **2/⁵5**
ASSORTED FAMILY SIZE
(EXCLUDES LASAGNA)
BANQUET DINNERS 28 OZ. PKG **2/⁵4**
BANQUET MOZZARELLA
CHEESE NUGGETS 13.5 OZ. PKG **2/⁵5**
BANQUET ASSORTED
KID CUISINE
DINNERS 6 TO 10.6 OZ. PKG **3/⁵5**
SELECTED VARIETIES
VALUE OR SELECT MENU
BANQUET FROZEN
DINNERS 6.7 TO 11 OZ. PKG **98¢**
ALL VARIETIES
LOWE'S HOMOGENIZED/SHRUFINE/
SHURSAVING LOW FAT PREMIUM QUALITY
MILK 1/2 GALLON **99¢**
ROASTED W/BROCCOLI
OR GARLIC MASHED
MARIE CALLENDER'S
POTATOES 20 OZ. **\$2⁹⁹**
SELECTED VARIETIES
HEALTHY CHOICE
DINNERS 10.5 TO 11.5 OZ. PKG **2/⁵5**
ASSORTED BANQUET
HEARTY ONE
DINNERS 15.25 TO 19 OZ. PKG **2/⁵4**
ORIGINAL OR BLUEBERRY
AUNT JEMIMA WAFFLES... 10 OZ. PKG **2/⁵3**
ASSORTED
CHEF BOYARDEE
PASTA WITH MEAT 15-15.5 OZ. CAN **99¢**



WESTERN MONEY
UNION TRANSFERSM
"The fastest way to send money"

Lowe's

MARKETPLACE

401 W. American Blvd.
Muleshoe 272-4585

515 W.
American Blvd.
Muleshoe
272-4406

WE RESERVE THE RIGHT
TO LIMIT QUANTITIES
IN TEXAS