

PAGE ONE

A QUICK READ OF THE NEWS

Posse catches intruder

A man who broke into an empty house in Milwaukee met unexpected resistance when a posse of 30 neighbors — mostly women and children — held him back until police came to rescue him.

"It's good to have good neighbors," said 75-year-old Joseph Webb, who was at church with his wife Sunday when the man punched in a window to gain entry into the house.

When the man grabbed a knife to threaten his way out, a small band of stick-wielding children stopped him at the front door, police said. The would-be burglar was arrested.

Tiebreaker is the difference

The top three players in last week's Journal football contest all called 17 of the 18 games right, so their guesses on the Muleshoe-Littlefield tiebreaker made the difference.

Based on that, Shirley Steinbock of Lazbuddie emerged atop the heap with a guess of 27 combined points on the game, which turned out to produce a total of 20 points.

Bill Nix of Sudan came in second with a tiebreaker guess of 31 points, while Carl Jacobs of Muleshoe was third at 49 points.

Only 13 of the 55 entrants correctly picked San Diego over Detroit.

Religion takes to mall

The disciples of St. Francis of Assisi in Syracuse, N.Y., are going where the people are — the mall.

On Monday, friars and sisters from two Roman Catholic Franciscan orders opened a center of prayer, spirituality and worship in the Carousel Center, which attracted 15 million visitors during the last three years.

The Franciscan Place, the first mall ministry of its kind in central New York, is part of a nationwide trend of religious denominations reaching outside their churches to bolster attendance.

It is open to people of all faiths and offers a chapel, a confessional, and two daily Masses.



Drawing date: Saturday, Oct. 9
Winning numbers: 01-04-17-37-48-50
Estimated jackpot: \$14 million
Winners: 0
Next drawing: Wednesday, Oct. 13
Estimated jackpot: \$18 million

On this date in history

Oct. 14 — The Literary Digest predicts a "dim future for the horseless carriage or the automobile," claiming it will never "come into as common use as the bicycle" (1899).

Oct. 15 — The most famous spy of World War I, code-named Mata Hari, is executed (1917).

Oct. 16/17 — On Oct. 16, the top 10 Nazi war criminals are executed in Nuremberg (1946).

LOCAL WEATHER

Except for partly cloudy conditions on Saturday, the forecast is for sunshine through Sunday. Lows should be in the mid-40s through Saturday, dipping to 36 on Sunday morning. High temperatures should be near 80 until Sunday, falling to 71 that day.

Editor Ronn Smith can be reached at 272-4536 or ctyankee@fivearea.com

Missed your paper? Call carrier Melissa Flores at 272-6719 or the Journal during business hours, 8:30 am-5 pm.

County sales tax reported down from year ago

By RONN SMITH
Editor

Retail sales reported from Bailey County during the first quarter of 1999 was 21.5 percent less than reported during the same period in 1998, according to figures released by comptroller of public accounts Carole Keeton Rylander.

The real significance of the change, if there is any, is difficult to gauge, however. Figures can be affected by late filings, causing lags and surges in the flow of sales reported.

The state as a whole recorded an 8.2 percent increase in retail sales during the same period.

The information filed by Rylander also included the fact that there were 11 fewer businesses reporting from Bailey County in the first quarter of this year compared to last year — a drop from 97 to 86.

Among neighboring counties, only Cochran County showed a comparable decline in sales reported, down 18.5 percent from last year.

Lamb County showed a slight decrease of 7.4 percent, while Castro County showed a slight increase — 1.2 percent.

Two counties to the north of Bailey reported significantly more retail sales this year than last. Parmer County showed an increase of 33.7 percent and two more businesses reporting, while Deaf Smith County showed an increase of 21.9 percent in reported sales.

Decreases and increases in reported sales were not concentrated in one specific areas of the state, but the biggest decrease listed was in another West Texas rural county — 58.1 percent in Lynn County (the Tahoka area).

Band rated superior

The Muleshoe High School marching band received a superior (I) rating from all three judges at the Oct. 4 Plainview Marching Festival.

The band received the runner-up award in Class 3A, and the percussion section was honored as the outstanding percussion section in Class 3A.

Music selections included "Aztec Fire," "Evil Ways" and "La Virgen de la Macarena/Aztec Fire."

The band was also scheduled to perform Oct. 13 in UIL competition at Jones Stadium in Lubbock and Oct. 23 in the Zia Marching Fiesta in Albuquerque.

Drum majors are Leisha Wallace and Elizabet Lozano, and the color guard director is Kimberly Beard.

Muleshoe girl is world champion

By RONN SMITH
Editor

The winning athlete climbs the winner's stand. A gold medal is hung around her neck. She turns and faces the orchestra as the national anthem of her country resounds through the hall.

Most Americans are familiar with the routine from watching the Olympics on television.

Amber Cowart of Muleshoe wasn't at the Olympics — not yet, anyway — but she did experience the thrill in real life during the World Age-Group Championships gymnastics meet earlier this month in Sun City, South Africa.

She won the gold in double-mini trampoline, being named world champion in the 11- and 12-year-old division. She also finished fourth in trampoline. The event was sponsored by the International Federation of Trampoline and Tumbling.

Her gold medal was one of five won by U.S. athletes; there were 80 on the U.S. team.

There were about 1,100 athletes

from 25 countries participating in the championships, the Cowarts said.

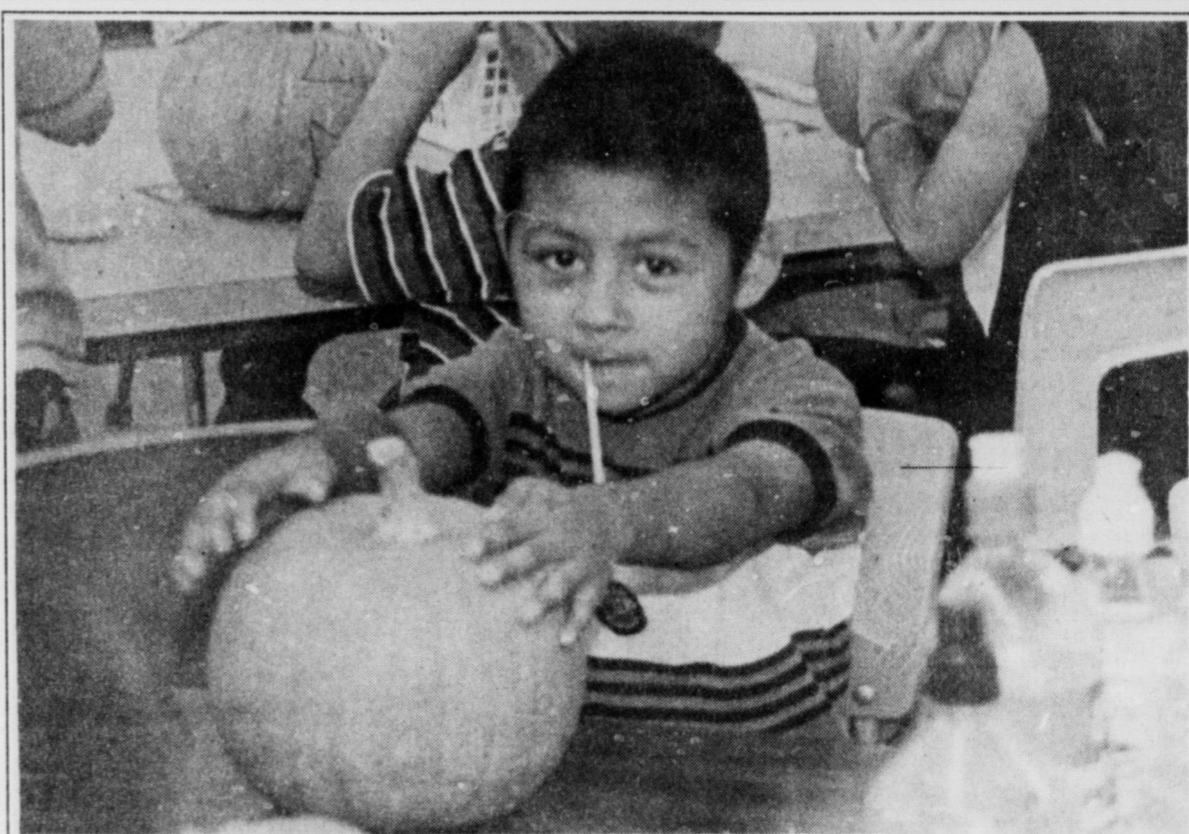
Amber will be honored with a reception Sunday at the Heritage Center depot. The public is welcome to stop by and visit with the family and view mementoes of her and her parents' African trip plus a video of the trampoline and double-mini competitions.

In the double-mini, the six finalists included four from the United States, one from Great Britain and one from Japan.

Although the center of the trip was the competition, the first two days of the 11-day trip were spent on a photography safari of the Pilanesberg Wildlife Reserve near Sun City, which is a three-hour bus trip from Johannesburg.

The visit gave the Muleshoe visitors a chance to observe in the wild such species as elephant, rhinoceros, giraffe, crocodile, hippopotamus, zebra, ostrich, wart hog, wildebeest, kudu and others.

Amber is the daughter of Dr. and Mrs. Barry Cowart of Muleshoe and the granddaughter of Susie Spain and James and Clair Cowart, all of Olton.



* Journal Photos by Beatrice Morin



Pumpkin Picassos

Every great artist needs a place to park his paintbrush while he waits for inspiration to strike, and Doroteo Ruiz (above) keeps his in his mouth. At left, Trevor Hill and Damian Gardea have already heard from their muses and are busy putting their marks on their own masterpieces. The three are students in Linda Brown's kindergarten class at Dillman Elementary School, which was given a chance to decorate pumpkins donated by the Tim Campbells of Muleshoe.

Muleshoe to face Shallowater Mustangs

By KEVIN WILSON
Journal Sports Writer

With Friday's overtime loss to Littlefield, the Muleshoe Mules failed to reach one of their season goals — going undefeated in district play.

After the game, Muleshoe coach David Wood said the team still can attain several more of its goals, including making the playoffs.

"You've got to get focus back," Wood said. "This (loss) isn't going to kill us."

For the Mules to reach their playoff goal, they have to start against the Shallowater Mus-

tangs, who probably also have

a district win on their minds. The Mustangs were beaten 32-7 by Friona last week and are in the midst of a two-game losing streak. Two weeks ago, Shallowater lost to 2A Abernathy 12-7.

"They're pretty average," Wood said about Shallowater. "If you let them stay in a game, they can come up and bite you."

One of the biggest reasons for this is their running back, Justin Stone. Wood said Stone is not unlike Littlefield's Josh Brandes, who torched the Mule defense for 215 rushing yards

Friday.

If the Mules can stop the Mustangs' ground game, Wood added, then the Mustangs will go into a shotgun formation. There are two backs to protect the quarterback in their formation, so the defense must rely on the secondary rather than pass rushing.

Considering Shallowater's recent losses, though, the Mules may find Shallowater their easiest opponent since Brownfield. If this holds true, the Mules have a perfect chance to get

see MULES on Page 2



Amber Cowart of Muleshoe stands on the elephant-tusk championship stand in Sun City, South Africa, after winning the world championship for her age group in double-mini trampolines. It was her first overseas competition.

AROUND MULESHOE

School district schedules tests

The PSAT Test is to be given at 1 p.m. Oct. 16 in the Muleshoe High School cafeteria. It is open to 11th-graders to help them prepare for the SAT college entrance exam.

Registration information is available at the high school counselor's office.

The TAAS Exit will be administered Oct. 26-18 to all juniors and seniors who have not completed their requirements. The test consists of reading, writing and math components. Passing the exam is a requirement for high school graduation in Texas.

Also, College Night is scheduled at the high school from 6 p.m. to 8 p.m. Oct. 19. More information is available at the high school counselor's office.

High school choir concert scheduled

The fall concert of Muleshoe's high school and junior high choirs has been scheduled for 7:30 p.m. Oct. 18.

The public is invited and admission is free.

Soup and Sandwich to offer music

The Soup and Sandwich Luncheon for October will be held from noon to 1 p.m. Oct. 14 in the fellowship hall of 16th and D Church of Christ and will feature music.

With the theme "A Fall Feast of Music," the luncheon will feature such singers and musicians as Jack Stone, Joan Lewis, Jay and Sally Messenger and Curtis Shelburne.

The public is invited to attend this or any of the upcoming Soup and Sandwich programs. The meal is always offered on a free-will donation basis.

A flyer listing the remaining programs for the 1999 series, held on the second Thursday of each month, will be available at the Oct. 14 event and to anyone upon request by calling 272-4619.

First Baptist plans Harvest Fest

The First Baptist Church of Muleshoe is planning its Harvest Fest from 7 p.m. to 8:30 p.m. Oct. 31 in the church's activities center.

The theme will be "Celebrate the Lord of the Harvest," and there will be food, fellowship, prizes and fun available.

Muleshoe Christmas bazaar set

The Moonlight Extension Club is accepting reservations for booth space at its 21st annual Christmas Bazaar, scheduled for Nov. 12-13 at the Bailey County Coliseum in Muleshoe.

The applications will be accepted until Nov. 1.

Forms are available from Linda Huckaby, 902 W. Eighth St., Muleshoe 79347.

Public calendar

Oct. 14 — 8 p.m. Three Way School Board, in the administrative office at the school.

Oct. 18 — 5:15 p.m. Muleshoe senior class parents' meeting, in the Baptist Activity Center. Decisions will concern Project Graduation and fund-raisers.

7:30 p.m. Muleshoe Athletic Boosters Club, in the science room at the high school.

The deadline for items to appear in Around Muleshoe is 5 p.m. Monday for Thursday's edition and 5 p.m. Thursday for Sunday's edition. Items may be brought to the office at 304 W. Second, mailed to P.O. Box 449, called in to 272-4536 or faxed to 272-3567.

MULES

from page 1

back on track.

The biggest key to victory, Wood said, would be for the Mules to cut down their own mistakes and not allow opponents to take advantage.

In each of the past two games, a Mule turnover has led to an opponent's touchdown — and the team has scored only 20 points in those games.

The biggest way to cover up mistakes, though, will be to cause the Mustangs to make some. The Mules will try to have some more performances like Darrell Lewis on defense. Lewis, named the player of the week, had 16 tackles and forced three Littlefield fumbles.

If the Mules are able to get their first district win at Shallowater, the rest of their

schedule could aid their play-off chances. They play two of their final three games at home, including next week's match against the Roosevelt Eagles. Game time Friday night in Shallowater is 7:30.

Fall Harvest Shoe Sale 3 Days Only!

COUPON 20% OFF
Any Regular Price Shoes & Handbags
October 14 - 16, 9:00-5:30 p.m.
(Excludes sale shoes, Birkenstock, & special orders)

Dayhoff Shoes 403 N. Main
Clovis
762-1174

AROUND THE AREA

Farmer-Stockman show wrapping up

The annual Texas Farmer-Stockman Show, billed as the largest outdoor working farm show in the Southwest, runs through Oct. 14 in Lubbock.

The event features several hundred acres of crop demonstrations, more than 54 acres of agricultural equipment displays and a 2 1/2-acre plaza that focuses on research, personal health and safety, education and life-enrichment services.

Visitors also can learn about ultra narrow-row cotton and earn one general continuing education unit by attending a 2:30 p.m. educational session in one of the tents.

The show takes place 1 1/2 miles east of Loop 289 on East 50th St., and the hours are 9 a.m. to 5 p.m.

Rowton murder trial in recess

The trial of Edward Rowton, accused of killing 5-year-old Shawnlee Perry of Earth in 1992, has been recessed until Oct. 18.

The trial was moved from Lamb County to Odessa, where it is being presided over by Senior District Judge Jack Young of Muleshoe.

About 170 potential jurors were given questionnaires last Monday and instructed to return this Monday. Jury selection in the case is expected to take a total of two weeks.

Blood drive scheduled at ENMU

United Blood Services will be accepting blood donations from 9 a.m. to 4 p.m. Oct. 18 in the Campus Union Building at Eastern New Mexico University in Portales.

Potential donors who wish to sign up for a time slot are asked to contact Janell Pronger at (505) 562-3623 or stop by the CUB between 11 a.m. (Mountain time) and 1 p.m. by Oct. 15. Walk-in donations will be accepted.

For every pint of blood donated, United Blood Services will donate \$6 to Portales' Community Services Center for its new after-school program for at-risk children.

Springlake booths still available

The town of Springlake is still renting booths for its arts and crafts bazaar, scheduled for Nov. 13 at the old church building in Springlake.

Spaces are \$20 and \$25, and can be rented by contacting Springlake City Hall at (806) 986-4211, Betty McCurry at (806) 257-2101 or Mary Clayton at (806) 986-4385.

Booths available at Littlefield event

The Littlefield Arts and Heritage Commission is accepting booth reservations for its 10th annual Christmas Bazaar, scheduled for Dec. 4 at the Lamb County Ag Center on South Hall

Cowboy poetry gathering set for Sul Ross

The 14th annual Texas Cowboy Poetry Gathering is scheduled for March 3-5 on the campus of Sul Ross State University in Alpine.

The gathering is the oldest in Texas and the second-oldest in the United States.

The event showcases cowboy poets, storytellers, singers and dancers in numerous sessions, with a Friday-night campfire session and chuckwagon dinner.

More information is available from JJ Tucker at (915) 837-8191 or Jody Skinner at (915) 837-8143.

Avenue.

Prices and other information can be obtained by calling Eva McDonald at (806) 385-3476.

"THINK CHRISTMAS"
October 18 - 23
10:00 - 6:00
SHEREE'S ATTIC
1519 W. American Blvd. Muleshoe, TX 806/272-3459
TRUNK SHOW
Sterling Silver Jewelry
Very SPECIAL PRICES Storewide

Muleshoe Journal USPS 367820
Established February 23, 1924. Published by Triple S Publishing, Inc. Every Thursday at 304 W. Second, Box 449, Muleshoe, TX 79347. Second Class Postage paid at Muleshoe, TX. POSTMASTER: Send address changes to the Bailey County Journal, P.O. Box 449, Muleshoe, TX 79347. We are qualified members of: Panhandle Press Association, National Newspaper Association, West Texas Press Association and Texas Press Association.

WEST TEXAS PRESS ASSOCIATION

PPA Panhandle Press Association

MEMBER 1999

TA TEXAS PRESS ASSOCIATION

Scot Stinnett, Publisher
Lisa Stinnett, Vice-President/Comptroller
Ronn Smith, Editor
Andrea Kemp, Classifieds
Leah Bell, Advertising

© 1990

SUBSCRIPTIONS: Muleshoe Journal and Bailey County Journal
By Carrier Yearly - \$22.00
Bailey County — by mail - \$24.00
Elsewhere - \$26.00
Advertising Rate Cards on Application

Advertisers should check their ad the first day of insertion. The Journals will not be liable for failure to publish an ad or for a typographical error or errors in publications except to the extent of the cost of the ad for the first day of insertion. Adjustment for errors will be limited to the cost of that portion of the ad where the error occurred.

JOE'S BOOT SHOP

We Ship Everywhere!

1-800-658-6378 106 E. American Blvd. Muleshoe, Texas

And Country Junction

You THINK GOAT ROPING IS UNIQUE

World Champion Chicken Roper

JOE'S BOOT SHOP MULESHOE TX

Thanks to all who came by to see us at the Lincoln County Cowboy Symposium in Ruidoso, New Mexico this past October 8, 9 & 10th!

Congratulations to Joe's Boot Shop's own Chicken Roping Champions Jarrod Goree of Plainview & Rodney McDaniel of Dimmitt

Texas' own "World Champion" Chicken Team Ropers with a time of 16.1 seconds!

We're looking forward to next year's challengers from Colorado, Idaho, New Mexico and Arizona. If you have "chicken" team ropers in your state and would like to enter the championship, give us a call!!

Congratulations to the winner of our contest for the "FREE" Bailey 30X Felt Hat Evelyn Allsup of Anaheim, California topped her competition with the winning guess of 2,283 head of cattle — **THE EXACT AMOUNT!!**
2nd Place honors went to William Scott of Tulia, TX — 2,287 head
3rd Place honors went to Gene Tunnell of Dodd, TX — 2,270 head



We wish to thank all the churches and individuals who prayed, called and helped while Jimmy was in the hospital after his wreck. Then all the wonderful, thoughtful expressions of love and support when he died. Thanks especially to Calvary Baptist Church and First Assembly of God Church for your untiring work to serve family and friends who came. The cards, flowers, phone calls and visits were truly appreciated. May God bless each of you.

The Family of Jimmy Cain

Orchid species don't all require hothouse treatment

By RONN SMITH
Editor

I know everyone thinks of orchids as producing gaudy corsages (and when it comes to flowers, there's nothing wrong with gaudy).

But those are usually cattleyas, and cattleyas are just one genus in the largest of plant families. There are more than 30,000 species of orchids, and that doesn't count more thousands of varieties developed by breeders!

Among all those, there are probably more kinds that don't fit the orchid stereotype than there are that actually "look like" orchids.

Many of the families, such as dendrobiums and vandas and others, produce flowers just as beautiful as the cattleyas. Increasingly popular are species whose flowers look like spiders, insects and other creatures — as aids to pollination.

One thing that just about all orchids have in common is that their flowers last for weeks, two months or more being common.

One thing that not all orchids have in common is requiring a tropical climate. Most of them do, all right, and it's in the tropics that the orchid family has reached its extremes of development.

But gardeners who think they need a greenhouse in order to grow orchids on the plains might look to some of the native North American species or the hardy Asian ones.

Possibly the best-known native Americans are the various lady's slippers.

Certainly the pink lady's slippers (*Cypripedium acaule*) are striking — and on the endangered list, I think, although they are available commercially in rare cases.



I have no personal experience with lady's slippers, though, so I can't tell you whether they can be babied enough to survive in our climate.

Nodding ladies'-tresses are a native orchid we can grow here, though, if we're willing to provide one basic necessity: moisture. I don't mean that you should keep a garden hose leaking on them all the time, either. If you plant them in a bog-like mixture of peat moss, soil and compost, that will hold moisture between infrequent waterings.

(The reasons our soil — if not amended — requires watering so often is that 1) it's porous, allowing water to seep on through, 2) has little organic matter until we add it to hold the moisture and 3) subject to high evaporation rates because of sun and wind, among other things.)

The flowers of nodding ladies'-tresses (*Spiranthes cernua*) are just as long-lasting as those of their tropical cousins. The stalks of pristine white flowers are just now fading, and they've been showy since early September.

Nodding ladies'-tresses are natives of Midwestern prairies, down into East Texas, and in woodlands farther east. They aren't endangered, although they have some very rare close relatives — two examples being the Navasota ladies'-tresses (*Spiranthes parksii*) of East

Texas and the Canelo Hills ladies'-tresses (*Spiranthes delitescens*) of Arizona. There are a dozen or so species.

Why are they called ladies'-tresses? As the saying goes, "Your good is as guess as mine."

I suppose the individual stems of flowers may resemble braids of hair, although braids are probably not familiar enough to us today to suggest the name.

I have read that the "nodding" name for the species I have comes from the downward-pointing angle of the flowers. If so, this also isn't noticeable enough to suggest "nodding" to me.

Anyway, the species seems to thrive in my "semi-bog" spots — where I buried children's wading pools with a couple of drain holes cut in them. ("Bog" gardens I try to achieve with wading pools and no drain holes.) The plants have stooled out this fall the way any other perennial would be expected to do.

A study done at the University of Nebraska indicates that ladies'-tresses should not be transplanted in the fall because their root mass tends to shrink if disturbed then. Spring or summer transplanting had no such effect.

Another orchid family that can take even less in the way of special care on the plains is the genus *Bletilla*. This is the most commonly available in commerce — in fact, quite common — and the flowers are "orchid-shaped," looking like miniature cattleya corsages.

Bletilla striata blooms in a sort of burgundy-pink, while *B. striata alba*, as its name implies, complements the burgundy with its white flowers.

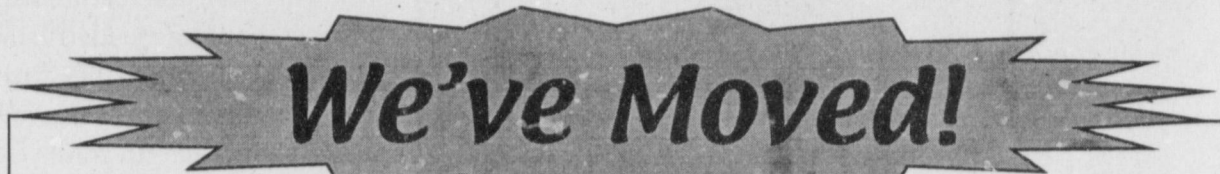
There are several other species, including one with pale yellow flowers.

While these species benefit from summer moisture, *B. striata* (the only one I'm familiar with) prefers somewhat dry winter conditions — tough to provide in much of the gardening world, but not usually a problem for us!

Bletilla species are usually listed in catalogs as "hardy Chinese orchids." All these species, and any you'd be contemplating growing outdoors in our climate, are called terrestrial orchids — meaning they grow on land rather than on tree limbs or other surfaces, as many of the tropical species do.

Remember, just because a plant is labeled as an orchid doesn't mean it's afraid of the cold or that it will produce flowers the size of teacups. And don't be afraid to plant the right species outdoors.

Happy planting!
Questions may be sent to Garden Writer, Route 2, Box 880, Muleshoe, Texas 79347.



Western Drug and Something Special Gifts

NOW OPEN IN THEIR NEW LOCATION

1411 WEST AMERICAN BLVD.

(The former Church's Fried Chicken Building)

We're celebrating 70 years of doing business in Muleshoe! Come See Our New Store!

Western Drug has served the Muleshoe trade area since 1929 and we would like to thank all our loyal and new customers for their business and support.

We have a new drive-thru pharmacy window and we will continue to offer the personal service that has been our trademark!

Something Special Gifts features a complete line of gifts for Men, Women and Babies and offers a Bridal Registry

- Free Delivery
- After Hours Service
- Charge Accounts on Approved Credit
- Workers Compensation Claims
- We Accept Most Insurance Cards



Paul and Judy Wilbanks invite everyone to come see their new store at 1411 W. American Blvd. The store has a drive-in window, easy access and plenty of parking!

We're Here to Serve You!

Paul Wilbanks	Pharmacist
Judy Wilbanks	Gifts
Blanca Reyes	Pharmacy Tech
Laura Reyes	Pharmacy Tech
Helen Schmitz	Clerk
Gaby Reyes	Clerk
Joyce Albertson	Clerk

Western Drug & Something Special Gifts
Muleshoe's Oldest . . . And Newest Pharmacy!
1411 West American Blvd • Muleshoe, Texas
(806) 272-3106 • (806) 272-3571 AFTER HOURS • (806) 272-3136 FAX

PUBLIC RECORD

MULESHOE POLICE
Sept. 25
Juan Madrigal Pacheco, running stop sign, driving with license suspended.
Georgie Longoria Garcia, parole violation.
Sept. 26
Jimmy Ledesma, public intoxication.
John Rick Ellis, public intoxication.
Justin Wylie Lee, driving while intoxicated (first).
Francisco Javier Reyes, assault — family violence.
Jimmy Ledesma Jr., no driver's license, no insurance and DWI.

Sept. 27
Madgalena Roberta Flores, assault.
Martin D. Soto Padilla, assault — family violence, child molestation.
Sept. 30
Jesús José Vargas, sexual assault — felony (two).
Angela Renee Mayfield, theft — state felony.
Oct. 1
Gerardo Luis Ambriz, DPS warrant from Parmer County.
SHERIFF'S OFFICE
Sept. 23
Kenneth Thornburg, public intoxication
Sept. 26

Rodrigo Ayala, DWI (two).
Ricky Lee Lasseter, possession of drug paraphernalia, and possession of marijuana under 2 ounces.
Sept. 27
Peter Neufold Klassen, terroristic threat.

Dr. A.R. Ploudre
Open your eyes to vision care that works with your budget!

- Quality care at a reasonable cost
- Contact lenses
- Eyeglass prescriptions filled
- NM & Texas Medicaid, Medicare Assignment

We are also proud to provide special assistance to low income families in need of vision care. Families who feel they qualify are encouraged to call for more information.
Payment plan available • Se Habla Español

1515 Gidding St., Clovis, N.M.
(505) 762-2951

THINK CHRISTMAS
OCTOBER 18th - 23th
MULESHOE ART LOFT
1529 WEST AMERICAN BLVD. 272-3485

Schuster, Suthers united in August 7 marriage ceremony



Shane Schuster-Suthers poses for a wedding photo

Blake Robinson Suthers and Shane Lee Schuster were married Aug. 7 at the First Presbyterian Church in Canadian, Texas. Richard Royal officiated.

The bride is the daughter of Alec and Lindy Schuster and the granddaughter of Jack and Cara Juan Schuster, all of Muleshoe.

The groom is the son of Mr. and Mrs. Grady Suthers of Fargo, Okla., and the late Beverly "Jackie" Claycomb of Guymon, Okla.

Organist Lila Ranson provided wedding selections. Rodney Knowles and Careylyn Stucky, friends of the bride and groom, sang "The Parent's Prayer" as the parents were seated, and "Chances Are" as the unity candle was lit.

Nika Eschberger of Abilene, Texas, a friend of the bride, served as maid of honor. Bridesmaids were Carolyn Schuster of San Angelo, Texas, and Melinda Schuster of

Muleshoe, sisters of the bride; and Emily Skaarer of Dallas and Rebecca Sims of Idaho Falls, Idaho, friends of the bride.

The attendants were attired in red evening-length gowns and carried arm bouquets of the bride's selected flowers.

Chance Suthers of Weatherford, Texas, brother of the groom, served as best man. Groomsmen were Wes Woolmen of Boise City, Okla.; Lance Knowles of Tyler, Texas, and Jason Cross and Joe Hoskins, both of Arnett, Okla., all friends of the groom.

Leslee Hunt, cousin of the bride from Denver City, registered guests. Ushers were Mike Hoskins of Arnett, friend of the groom; Daniel Hunt of Denver City, cousin of the bride; and Kacy Swires of Meeker, Okla., nephew of the groom.

Ringbearers were Conner King of Vernon and Ky Davis of Meeker, both nephews of the groom. They carried a satin

pillow designed and made by Charlotte Holt of Muleshoe.

The flower girl was Kaitlyn Schuster of Muleshoe, niece of the bride. Dressed in a long white cotton dress with eyelet lace overlay made by Charlotte Holt, Kaitlyn was pulled down the aisle in a decorated wagon by Leslee Hunt.

The bride entered the church wearing a formal gown of white organza that featured an off-the shoulder beaded lace bodice defining an A-line skirt. The back of the gown flowed into a chapel-length train.

Her hair was embellished with white pearls.

The bride carried a cascading bouquet of miniature sunflowers, red gerbera and green ivy wrapped in sheer yellow ribbons. She wore a six-pence in her shoe for something old. It was given to the bride's mother to wear on her wedding day by the bride's great-grandmother, Carrie Lee Bishop. Something new was her attire; something borrowed was a petticoat borrowed from bridesmaid Rebecca Sims and something blue was her garter, made by Charlotte Holt.

The groom wore a black piano-tail tuxedo jacket with a black vest and black Wranglers. He was pinned with a boutonniere of yellow confetti roses.

A dinner/dance reception was held at the Hemphill County Recreational Park.

The sound of the band Borderline accompanied the barbecue brisket feast prepared and served by Shawn Davis of Meeker and Freddie King of Vernon, brothers-in-law of the groom.

The groom's sisters, Carla King of Vernon and Leah Davis of Meeker, served at the bride's table. The table was covered with a white antique linen cloth. The asymmetrical tower cake was topped with fresh flowers and surrounded by the bride and

bridesmaids' bouquets.

Randi King of Vernon, niece of the groom, served at the groom's table. The groom's cake was a replica of the groom's yellow-topped boots.

The bride is a 1994 graduate of Muleshoe High School and a 1998 graduate of Amarillo College with an associate degree in dental hygiene.

She is employed by Dr. Kristen Burris, DDS, in Shattuck, Okla., and Dr. Steven Shrader, DDS, of Cheyenne, Okla., as a dental hygienist.

The groom is a 1991 graduate of Arnett High School and 1996 graduate of Oklahoma Panhandle State University with a bachelor's degree in ag business and a minor in ani-

mal science. He is employed by Ellis County District 3 as an equipment operator and Ellis County EMC as an EMT.

The couple honeymooned in Nashville, Tenn. They will reside in Arnett.

A rehearsal dinner was given Aug. 6 at the home of John and Al' Louise Ramp at the Ramp Ranch.

We think our milk is extra special, but do the critics agree?



Gandy's has been serving West Texas for over 65 years, and just like Muleshoe, we're proud of our heritage. Now you can enjoy the freshness, great taste and value your neighbors have come to trust, right here in Muleshoe. Check your supermarket's dairy case today for Gandy's milk and all the other fine dairy products from Bell Dairy. You'll be glad you did.

Gandy's
DAIRY PRODUCTS

MANUFACTURER'S COUPON | EXPIRES: 10/31/99

\$1 off Gandy's Milk
One Gallon Size

170516

Gandy's
DAIRY PRODUCTS

5 72650 51176 7 (8100)0 17051

Retailer: Dean Foods will reimburse you for the face value plus 4¢ handling if used in accordance with the offer stated herein and in compliance with our established redemption policy, available on request. LIMIT ONE COUPON PER PURCHASE. Non-transferable. Void where prohibited. Cash value 1/20¢. Send coupons to: Dean Foods Company, Box 870046, El Paso, TX 88587-0046.

1104

RED WING SHOES
Made in U.S.A.

The Fair Store
120 Main 272-3500

Engagement/Wedding announcements are published free of charge in the Muleshoe Journal as a courtesy to our readers. Stop by our office at 304 W. 2nd to pick up an engagement or wedding form. Email us at ctyankee@fivearea.com or FAX your information to 272.3567. Thanks for making the Journal part of your day!

Store #34
312 W. AMERICAN BLVD.
Muleshoe, TX
(806) 272-4862

ALLSUP'S
ALLWAYS
LOW PRICES!

ALL OFFERS WHILE SUPPLIES LAST
PRICES EFFECTIVE OCT. 13-26, 1999

ALL VARIETIES
LAYS
REG. \$2.99
2 FOR \$5

always Coca-Cola
delicious
79¢

APPLE CINNAMON OR CINNAMON CREAM
DESSERT BURRITOS
79¢

Diet Coke
79¢

always Coca-Cola CLASSIC
Refresh
79¢

Diet Coke
79¢

DECKER MEAT FRANKS
12 OZ. PKG.
59¢

ALL FLAVORS LITTLE HUGS
5 FOR **\$1**

HORTENSIA BATH TISSUE
4 ROLL PKG.
79¢

BLUE BUNNY ICE CREAM SANDWICHES
Vanilla or Neopolitan
2 FOR **\$1**

Draft of human genome on target for spring 2000

SPECIAL TO THE JOURNAL

HOUSTON—The first draft of the blueprint for the genetic makeup of humans should be completed by spring 2000.

"The international effort to sequence the human genome is on schedule," said Dr. Richard Gibbs, director of the Human Genome Sequencing Center at Baylor College of Medicine in Houston.

"We have enough data to produce a working draft early next year, as planned," he said.

Earlier this month, Gibbs attended the Fifth International Strategy Meeting on Human Genome Sequencing in Cambridge, Mass.

He and other researchers from the 16 centers collaborating on the Human Genome Project confirmed that they have enough equipment and staff to provide information on about 90 percent of the genome by next spring.

The human genome is the blueprint for the body's genetic code. The estimated 100,000 genes that make up the genome contain information about how cells reproduce and carry out functions.

This information is stored on 3 billion base pairs, or chemical building blocks, in the molecule known as DNA.

The international consortium aims to sequence, or determine the order of, those base pairs. This information should help

researchers better understand how the body develops and how diseases occur and can be prevented.

So far, 739 million base pairs (about one-fourth of the human genome) have been sequenced. "The consortium has released this data into the public domain, where scientists can access it without fees, patents, licenses or other limitations on use," said Gibbs, Baylor professor of molecular and human genetics.

The sequences of several individual chromosomes are nearing completion, and the first of these is likely to be announced before the new year.

Earlier this year, Baylor was chosen as one of three U.S. sites to complete the map of the human genome. Gibbs received an \$80 million, five-year grant from the National Human Ge-

nome Research Institute to sequence the genetic map of chromosomes 3, 12 and X.

In addition to the United States, other nations represented in the consortium are the United

Kingdom, France, Germany, Japan and China.

After the draft of the genome is produced, the consortium plans to complete a final sequence by 2003.



Changing heritage

Muleshoe Mayor Robert Montgomery (left) presents a proclamation to Vivian White, outgoing board president of the Muleshoe Heritage Foundation, declaring Sept. 28 as Muleshoe Heritage Day. Jim Allison, the new board president, looks on. The proclamation states that "Muleshoe and the surrounding area have benefited from the effort and dedication of the Muleshoe Heritage Foundation with the restoration of the historic structures at the Muleshoe Heritage Center," and that residents and visitors alike enjoy the facility.

LETTER TO THE EDITOR

Dear Editor,
I am in fifth grade at Hart-Ransom School in Modesto, Calif. I have adopted your state as a class project.

I will be doing a report and making a display about Texas. In May, my class will be having a "states fair." I will display everything I have gotten and learned about Texas to my whole school.

It would be helpful to me if you can ask your readers to send me post cards of Texas, maps, brochures, information about wildlife, industry, neat

places to visit, statistics, sports teams and any other information and items your readers feel would be helpful.

I hope your readers will help me with my project. I'm looking forward to hearing from them, and I promise to send a thank-you to them for helping me.

I am excited about learning about Texas!

BLAKE FISHER
c/o Hart-Ransom School
3930 Shoemaker Ave.
Modesto, Calif. 95358

OBITUARY

CARL V. JONES

Services were held Sunday in the First Baptist Church of Earth for Carl V. "Kokomo" Jones, 72, of Earth. The Rev. Bobby Broyles officiated. Burial was in Earth Memorial Cemetery.

Ellis Funeral Homes handled arrangements.

Mr. Jones was born Nov. 21, 1926, in Plainview. He died

Oct. 8 in Littlefield.

He was a farmer in the Earth area, where he lived all his life.

He is survived by his wife, Mary; a son, Eddie Sam Jones of Earth; a daughter, Carlene Ross of Lubbock; a sister, Lucille Wheat of Hereford; and three grandchildren.

The family suggests memorials to Earth Emergency Medical Services.

REBEKAHS

Noble Grand June Green called Muleshoe Rebekah Lodge No. 114 to order at 7:30 p.m.

Chaplain Ruby Green gave the opening prayer. Secretary Patsy Chance called the roll with eight members answering. The minutes of the previous meeting were read and approved. Chance also gave the financial report, and it was accepted as given.

President Anna Newell's mother, Evelyn Dye, died in San Antonio on Sept. 29.

The new lodge deputy for

2000 will be Bernie Marts.

Tickets for the lodge's annual Thanksgiving dinner are \$6 for adults and \$3 for children under the age of 10, and are available from any Rebekah.

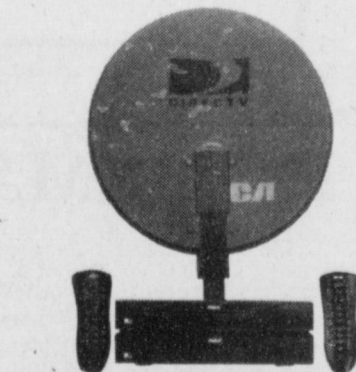
Family night will be held Oct. 14, and the lodge will sponsor skating Oct. 15.

We will go to McDonald's next week after lodge.

Acting Vice Grand Ina Wilemon closed the meeting with the Rebekah Creed and two verses of the song "An Evening Prayer."

Channel surfing for armchair quarterbacks and movie critics alike.

Nobody makes satellite TV easier than knowledgeable RadioShack associates. They can explain everything, answer your questions and sign you up right in a store in your neighborhood. So don't wait another day.



A one-dish, two-receiver system puts different satellite TV programs in two different rooms. It's perfect for watching football or movies.

149⁹⁹
#16-2562, Programming extra
Single-LNB System with one receiver

299⁹⁹
#16-2563/16-2550, Programming extra
Dual System with second receiver
Reg. \$449.98
Save 149.99



14⁹⁹
4-in-1 universal remote
#15-1991, Reg. 19.99.
Add 4 "AAA" batteries
25% OFF



39⁹⁹
14-channel 2-way personal radio
#21-1804, Reg. 59.99.
Add 4 "AAA" batteries
33% OFF



29⁹⁹
Titanium lightweight stereo headphones
#33-1122, Reg. 39.99.
25% OFF



HALF PRICE 29⁹⁹
Clear-sound cordless phone
#43-1049, Reg. 69.99.
SAVE \$40



39⁹⁹
900MHz cordless with headset jack
Dove Gray #43-1107, Graphite
#43-1108, Reg. 69.99.
SAVE \$30



29⁹⁹
Cordless phone
#43-5502, Reg. 59.99.
SAVE \$30

Owned and operated by

WILSON APPLIANCE
117 Main St. • 272-5532

A RadioShack® Dealer



RadioShack.

You've got questions. We've got answers.®

Sale prices good through 10/30/99. Offers/prices not available in all stores. Please inquire.

Most Major Credit Cards Welcome

LOANS

\$100⁰⁰ to \$467⁰⁰

Continental Credit

Call Today! Don't Delay!

206 Main Muleshoe Open M-T 8:30-5:00 Fridays 8:30-6:00 ¡Se Habla Español!

Loans While You Wait!

272-3673

TOUR DE MULESHOE

The Labor Day Tour de Muleshoe bike ride sponsored by the Muleshoe Heritage Foundation was a big success, with close to 100 bike riders flooding Muleshoe.

It takes many months of preparation to make something like this successful.

Lonnie Adrian "got the word out" by sending fliers about the ride to many bike clubs and advertising the ride whenever possible.

Heritage Foundation board members, under the direction of President Vivian White, took on the responsibility for organizing the event.

The six financial sponsors — Leal's, Lowe's Marketplace, Texas Sesame, First Bank, Muleshoe State Bank and McDonald's — along with numerous local merchants who donated prizes all contributed greatly.

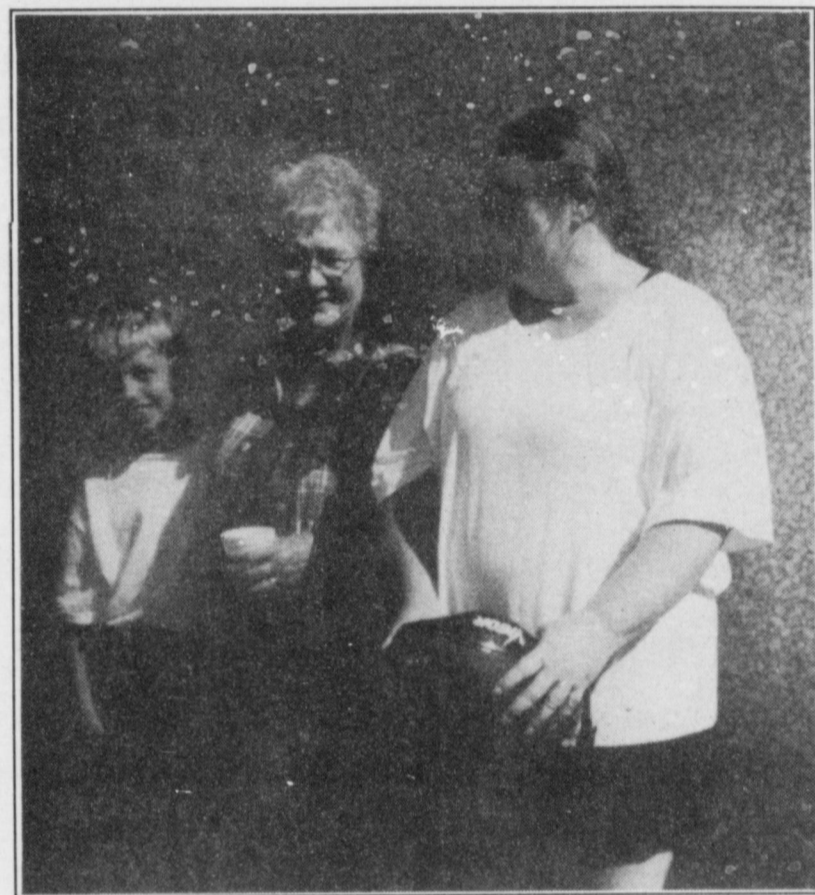
Rest stops along the bike routes were manned by volunteer groups. The Student Community Action Club was responsible for two of the stops, one in Earth and one in Sudan.

The Jennyslippers handled the one close to Lazbuddie, and Dan and Millie Throckmorton handed out drinks and fruit at the rest stop on the Nickels Gin corner in the Pleasant Valley community.

The local news media, Channel 6 on 17 and the Muleshoe Journal, did a tremendous job of advertising and covering the event.



Above, former Muleshoe residents Dr. and Mrs. Charles Pummill take a break at the rest stop in Earth. Working there were Myndi Heathington (left), April Kelley and Blake Gartin of the Student Community Action Club. Below, Heritage Foundation President Vivian White relaxes with rider Austin Allison and an unidentified out-of-town rider.



Extension Service offering butterfly chart

SPECIAL TO THE JOURNAL COLLEGE STATION — Texas is home to more than 400 species of butterflies, but most citizens can't tell a fritillary from a hairstreak.

To help Texans identify some of their most beautiful insect neighbors, the Texas Agricultural Extension Service has produced a full-color identification wheel featuring the Lone Star State's 16 most common butterflies.

"Butterflies of Texas" includes photographs of both the caterpillar and the adult butterfly of each of the 16

species featured. To help people attract more butterflies to their lawns and gardens, the wheel lists host plants for the caterpillars as well as flowers that attract the adults.

The wheel also offers interesting facts about butterflies, skippers and moths and names the 12 Texas butterfly families and the number of species in each that call the state home.

The species pictured are the alfalfa butterfly, American painted lady, black swallowtail, buckeye, cab-

bage butterfly, common wood nymph, giant swallowtail, gray hairstreak, gulf fritillary, monarch, pipevine swallowtail, question mark, red admiral, snout butterfly, viceroy and zebra.

Spinning the wheel reveals a picture of each butterfly in its caterpillar stage.

"Butterflies of Texas" sells for \$10.95 and is available by sending a check or money order payable to Texas Agricultural Extension Service to Distribution and Supply, P.O. Box 1209, Bryan, Texas 77806.

Specify publication L-5308, "Butterflies of Texas."

TOPS NEWS

The Muleshoe Church of Christ fellowship room was the scene of the Oct. 7 meeting for TOPS No. 34.

One guest, Jerri James, attended the meeting with her sister-in-law, Laverne James.

The meeting was opened and presided over by James. Noemi Sánchez led in the singing of both TOPS songs.

Ruth Clements presented the treasurer's report, and the previous meeting's minutes were read by Janie Hughes.

In the weekly report, 15 members weighed in and the

results were given by weight recorders Betty Jo Davis and Dene Bryant.

The best loser was Linda White, with Cheryl de Graffenreid as first runner-up. The announcement of Molly Davis as second runner-up completed the weekly report.

In the monthly report, James, Hughes and White tied for best loser. Joline Franklin was the first runner-up.

Our next TOPS meeting is Oct. 14 at 5 p.m. in the same location. Guests are welcome.

CHRISTMAS OPEN HOUSE

at Antiques & Fine Things
Saturday, October 16 • 10 a.m. - 6 p.m.

Charlie's Collectibles has a special day planned for her customers with a one-day Beanie Baby Sale!

- 10-25% off every purchase
- Free gift with every purchase
- Register for door prizes & Trade Day

2104 West American Blvd., Muleshoe



The first cultivated peanuts were grown by South American Indians at least 12,000 years ago.

Now you can leave home without leaving home.



INTRODUCING THE NEW HOME COVERAGE FROM PLATEAU WIRELESS. KEEPING YOU COVERED IN THE PLACES YOU TRAVEL MOST.

Only Plateau offers expanded home coverage in the areas you travel the most. Places like Amarillo, Lubbock, Midland/Odessa, El Paso, Las Cruces, Ruidoso, Albuquerque, and a lot of places in between. And that means less roaming, and lower rates, whenever you leave home!

Plateau Wireless. People you know, communications you trust.



For these or other great offers, call or visit:

New Mexico	SOVINA Kevin's Auto 105 Gardner (806) 238-1689	EARTH Earth Service 304 W. Main (806) 257-2291	HART Tate Auto Parts Hwy 194 & Hwy 145 (806) 938-2641	GARY Gary's Auto 502 E. Adams (806) 894-9072	MONAHANS Plateau Shack 1120 S. 15th (915) 447-6184	PECOS Radio Shack (915) 447-6184	SAN ANGELO Whomom Communications 2562 Kickerbocker Rd (915) 345-3000
POITERS Telecommunications 600 Main (505) 389-1234	BROWNFIELD Cablestar Plus 405 Lubbock Rd (806) 637-6232	FARWELL EMM-Plateau 200 Ave. A (806) 481-3800	HEFORD WT Services 621 Hill Ave (806) 385-3422	LITTLEFIELD Larry's Radio Shack 621 Hill Ave (806) 385-3422	PLAINS Plains Depot 902 Cowboy Way (806) 458-7112	SONORA Rushing Enterprises 107 Main (915) 387-3582	
TEXAS	HAMILTON Hamilton Auto 220 S. 5th (806) 637-4551	FRONIA WT Services 1010 Columbia (806) 250-5555	KERMIT Kermit Electronics 511 N. Pine (915) 586-2345	MORTON Farm Equipment Co. Loveland Hwy (806) 266-5517	PLANVIEW Two Way Radio & Paging 404 Columbia (806) 296-2672	SAN HORN Van Horn Office Supply 130 Broadway (915) 283-2920	
ALPINE Marion True Value Hardware 301 N. 5th (915) 837-0861	DELL CITY Decon, Inc. 610 S. Main (915) 964-2402	FT. STOCKTON Telecommunications 1003 W. Prices (915) 940-7070	LEVELAND Plateau Wireless 701 Columbia (806) 638-1400	LUBBOCK Commercial Radio 1215 Texas Ave (806) 744-5333	WISSE Wisse Appliances 117 Main St (806) 272-5532	ODessa John Henderson 312 Ave D (915) 392-3503	
BIG LAKE Fisher Lease Service 200 Garden City Hwy (915) 884-2454	JEM JEM Cellular 400 S. Lea St (915) 964-2820	GRANDFALLS Price Electronics N. Hwy 18 (915) 547-2040	MIDLAND The Telephone Store 4410 N. Market Rd. Ste. 20 (915) 689-8855	MULESHOE Five Area Telephone Corp 302 Uvalde (806) 272-5533	ODessa Cartwright Cellular 2315 W. 5th St. (806) 296-4308	SANDERS Dudley Motors 214 Oak (915) 345-2503	

New activations require a one-year contract and upgrades require the purchase of a phone and a two-year contract. Nationwide toll-free long distance plans are available for \$6.95. Digital plan requires purchase of digital phone. Calls placed outside of Plateau Standard Home Area are billed in full one-minute increments and are subject to restrictions of that carrier. Other restrictions apply. ©1999, Plateau Wireless.

JOURNAL INFORMATION...News You Can Use

EDITORIAL INFORMATION

- (1) In order to help accommodate our readers, we urge everyone to keep in mind that the newspaper is put together on Tuesday and Friday. To increase the probability that your information will be placed in your preferred edition, the earlier that stories, information about meetings or any editorial subject is brought to the Journal office the better!
 - (2) Deadlines for "Around Muleshoe" and "Around the Area" — Monday at 5 pm (Thurs. edition) and Thursday at 5 pm (Sun. edition).
 - (3) The following represents a list of information that appears FREE in the Journal:
 - Weddings • Engagements • Bridal Showers • Baby Showers
 - Birth Announcements • First & 90+ Birthdays • 50th+ Anniversaries
- (forms are available at the Journal office, 304 W. 2nd, for weddings, engagements, bridal and baby showers)
- (4) Pictures run in the Journal are given away FREE OF CHARGE to the public on a first come, first serve basis. (Some exceptions apply.)

ADVERTISING INFORMATION Effective Jan. 1, 1999

- (1) Display ads are located throughout the newspaper. Ad costs are based on the number of column inches that the ad occupies. The Journal's open rate is \$3.40/col. inch. Discounts are available under certain conditions. Borders and artwork are added at no extra cost!
- (2) DEADLINES FOR DISPLAY ADVERTISING are Tuesday at Noon (Thurs. edition) and Friday at Noon (Sun. edition). If you are a business or individual in need of placing a DISPLAY AD or you have questions about display advertising, call Leah at 272-4536.
- (3) Classified ads are located on the NEXT TO LAST PAGE OF THE NEWSPAPER. These ads include (but are not limited to) FOR SALE, LEGAL NOTICES, HELP WANTED, GARAGE OR ESTATE SALES, VEHICLES, FOR RENT, ETC...
- (4) Ad cost is based on the number of words within the ad or the type of

classified ad that is desired. Contact Andrea at 272-4536 for more info.

READER ADS: 15 and under words \$4.50 (first run) 15 and under words \$4.15 (each time thereafter) 16+ words .30¢/word (first run) 16+ words .26¢/word (each time thereafter)

DISPLAY CLASSIFIED: Charged by column size of ad. This type of ad will appear in the classified section, but will have a surrounding border. This classified ad is "dressed up." Cost is \$3.53 per inch.

MULESHOE AND BAILEY COUNTY JOURNAL
Lots of news for very little \$\$\$\$\$\$\$
The Journal is printed 52 weeks a year — 2 issues per week!

RATES

Carrier.....	\$22/year
Mailed In Bailey County.....	\$24/year
Mailed Outside Bailey County.....	\$26/year
College Student Rate.....	\$22/year

CARRIERS: BOBBY AND MELISSA FLORES

For carrier route customers: If you miss the paper, call the Journal during office hours at 272-4536. We'll gladly bring you a paper. Evenings and weekends, contact Bobby or Melissa at 272-6719.

Carrier Route Customers
**SAVE THIS NUMBER FOR FUTURE REFERENCE
SHOULD YOU MISS YOUR PAPER!!!!**

272-6719

(evenings and weekends only)

We appreciate the Muleshoe community! We also encourage Muleshoe and surrounding area residents to submit story ideas.
WE WANT TO BE YOUR LOCAL NEWS SOURCE AND YOU CAN HELP!!

COUPON

moonlight

MADNESS

Thursday, Friday & Saturday 9:00-5:30 p.m.

20% Off

Any regular priced shoes & handbags with this coupon (Excludes work boots)

- Women's • Men's • Children's • Nike • Naturalizer
- Hush Puppies • Dexter & Other Brands

RANDY'S SHOES

410 Main • Downtown Clovis

Internal temperature is key to killing bacteria in foods

SPECIAL TO THE JOURNAL
Talk temperature with a cook and the image that usually pops to mind is the heating gauge on a kitchen's oven: bake at 350 degrees, cook slowly at 275 degrees, sear at 425 degrees, etc.
But an even more critical temperature is the one that foods reach internally. Food safety experts at the Texas Department of Health say that foods are properly cooked when they are heated long enough and at a high enough temperature to kill harmful bacteria. And those temperatures vary with the type of food.
"The key is to use a meat thermometer for accuracy," said Ione Wenzel of the TDH Retail Foods Division. "It's the one sure way to know that meat and poultry are thoroughly cooked. In addition to preventing foodborne illness, a meat thermometer can help prevent overcooking and provide a gauge to show that foods are being held at the right temperature."

harmful bacteria. Also, many microwave ovens have 'cold spots' that can keep parts of a food from reaching safe temperatures."

Using a meat thermometer should be habit, Wenzel said — a habit that takes the guesswork out of cooking safely.
"A meat thermometer can be used for all foods," she said.

It will measure the temperature of casseroles, meatloaf, egg dishes and ham as well as meat and poultry to assure that bacteria such as salmonella and *E. coli* . . . have been destroyed."

According to Wenzel, there are several types of meat thermometers available at grocery, hardware or kitchen supply stores. They include:

- Regular oven-proof thermometers that go in food at the beginning of the cooking time and can be read easily;

- Instant-read and digital types, not intended to go into the oven, but that give a quick reading when inserted into the food after cooking;

- Pop-up thermometers, most often found in turkey. They also may be purchased for other types of meat;

- Microwave-safe thermometers designed to be used only in microwave ovens.

"Whatever the type, be sure the thermometer used is clean and is specifically designed for meat and poultry cooking," Wenzel said.

"Others, such as those used in making candy, will not work with meat and poultry," she

added. "Also, be sure the meat thermometer has an easy-to-read dial, one that it is made with stainless steel and has a shatter-proof clear lens."

Most meat thermometers are accurate to within plus or minus 2 degrees.

"For poultry, insert the meat thermometer into the inner thigh area near the breast but not touching bone," Wenzel said. "For beef, pork, lamb, veal or ham — roasts, steaks or chops — the thermometer should go into the center of the thickest part, away from bone, fat and gristle. For ground meat and poultry, casseroles and egg dishes, place the thermometer in the thickest area. Insert the thermometer sideways in the thin foods such as patties."

The temperature of stuffing also should be measured, according to Wenzel. At the end of the standing time, the internal temperature of stuffing should reach 165 degrees F. Reheated foods should reach the same 165-degree mark. Soups and gravies should be brought to a rolling boil. When holding or serving a buffet, hot cooked foods should remain at 140 degrees F or higher.

After each use, wash the stem section of the meat thermometer thoroughly in hot, soapy water.

"A meat thermometer should be as much a part of safe cooking as pot holders and clean utensils," Wenzel said. "It's a habit that can help keep families healthy."

Many cooks, especially those who have been standing over a hot stove for years, use the look-and-touch method of judging whether a dish is ready to serve. Are the juices from meat and poultry clear rather than pink? Does the thigh joint of a turkey or chicken move easily? Have the hamburgers turned from red to brown? Is the fish opaque and easily flaked with a fork?
"These used to be great indicators of whether food was completely cooked," Wenzel said. "However, we now know from good science that there are times these types of visual indicators can be wrong."

Some beef ground into hamburger can turn brown well before it reaches a safe temperature. And although the meat on a turkey leg may be properly cooked, stuffing inside the bird may require more cooking time or a higher temperature to be fully cooked and destroy any



Muleshoe Cattle Market

SATURDAY, OCTOBER 9, 1999

REPRESENTATIVE SALES

1,311 head of cattle, 501 hogs and 163 sheep and goats for a total of 1,975 livestock sold. Choice cfs. sold steady to \$2.00 higher. Feeder cattle steady. Not enough pairs to test market. Bred cows higher. Packer cows 1-2 lower.

The Muleshoe Cattle Market is brought to you each week by Muleshoe Livestock Auction, located east of Muleshoe on U.S. 84. Muleshoe Livestock conducts sales every Saturday, beginning with hogs, sheep and goats at 10 a.m. and cattle following at approximately 12 noon.

FOR INFORMATION ON SALES OR TO CONSIGN CATTLE, CALL (806) 272-4201

Seller, City	#	Type	Wt.	CWT or PH
Jose Nieto, Portales, NM	2	Hol. Bulls	213 lbs.	at \$84.00
Juan Romero, Portales, NM	7	Hol. Bulls	229 lbs.	at \$84.00
Cliff Johnson, Amarillo		Hol. Str.	285 lbs.	at \$78.00
FM Farms, Brownfield		Blk. Bull	230 lbs.	at \$111.00
Robert Sparks, Bovina	4	Char. Bulls	349 lbs.	at \$104.00
Daybreak Farms, Bovina	2	Blk. Strs	475 lbs.	at \$85.50
Dale Demel, Sudan	9	Mxd. Strs	542 lbs.	at \$84.00
Dale Demel, Sudan	2	Limo. Hfrs	510 lbs.	at \$79.50
Lewis F&R Store, Morton	2	Char. Strs	640 lbs.	at \$74.00
Lynn Sheddin, Abernathy		Blk. Str	650 lbs.	at \$76.00
ACU, Morton	7	Mxd. Strs	663 lbs.	at \$75.00
M&B Cattle, Brownfield	4	Mxd. Strs	361 lbs.	at \$97.00
M&B Cattle, Brownfield	4	Mxd. Strs	729 lbs.	at \$75.50
Briscoe-Nunnley, Whiteface	13	RMF Hfrs	283 lbs.	at \$93.00
Briscoe-Nunnley, Whiteface	20	RMF Bulls	331 lbs.	at \$106.00
Briscoe-Nunnley, Whiteface	35	RWF Bulls	419 lbs.	at \$94.00
Briscoe-Nunnley, Whiteface	90	RMF Hfrs	432 lbs.	at \$86.00
Briscoe-Nunnley, Whiteface	126	RMF Hfrs	515 lbs.	at \$80.75
Briscoe-Nunnley, Whiteface	62	RWF Bulls	623 lbs.	at \$75.75
Briscoe-Nunnley, Whiteface	82	RMF Hfrs	601 lbs.	at \$76.00
C&H Cattle, Tulia	3	Mxd. Hfrs	240 lbs.	at \$240.00
Daybreak Farms, Bovina		Blk. Hfr	445 lbs.	at \$83.00
Amanda Stofel, Lubbock		Blk. Hfr	510 lbs.	at \$76.50
Ronnie Gilter, Hereford		Red Hfr	580 lbs.	at \$74.50
ACU, Morton	2	Char. Hfrs	715 lbs.	at \$72.00
Cody Douglas, Elgin, TX	4	Brang. Hfrs	738 lbs.	at \$74.50
Scott Pollard, Portales, NM		Blk. Hfr	825 lbs.	at \$67.50
M&B Cattle, Brownfield		RWF Cow P7		\$480.00
Lewis F&R Store, Morton		Red Cow P6		\$480.00
Robert Sparks, Bovina		Char. Cow P5		\$500.00
Joe Haseloff, Farwell		Jersey Cow		\$640.00
Ralph Lewis, Anton		Blk. Cow	1200 lbs.	at \$34.00

First Birthday

Kyan Lynn Garner celebrated her first birthday thursday, Sept. 30 at the home of her parents, Rammie and Mandy Garner. The celebration included a chocolate cake and Kool Aid. Special guests were her sister, Tessa Garner; Mike & Dorena Proudfoot; Ronnie and Vickie Garner; Billy, Vanessa, Weldon, China and Micha Williams; Becky Griswold; Evelyn Freeman; LaQueta Freeman; Ermila Piñeda and Lupita, Amber and Alex Fuentes.



Journal Classifieds

STOP & SHOP

Deadlines are 5 p.m. Monday and Thursday

Call 272-4536

Deadlines are 5 p.m. Monday and Thursday

<p>LEGAL</p> <p>The City of Muleshoe is accepting bids for a street sweeper. Specifications may be obtained from City Hall, 215 S. First, Muleshoe, TX. Sealed bids should be addressed to the City Manager and are due at City Hall by 3 p.m., Mon Jay, Oct 18, 1999. The City of Muleshoe reserves the right to accept or reject any and/or all bids. Published in the Bailey County Journal on Oct. 10, 1999 and the Muleshoe Journal on Oct. 14, 1999.</p> <p>BUSINESS OPPORTUNITIES</p> <p>Carry out and delivery pizza franchise Financing available for qualified individuals Call Lance or Neil 1-800-310-8848</p> <p>HELP WANTED</p> <p>HELP WANTED Enochs Co-op Gin is now taking applications for full-time module truck drivers. MUST HAVE A CLASS "D" LICENSE. NO EXPERIENCE NECESSARY. For more information. Call Wade at (806) 927-5511</p>	<p>HELP WANTED</p> <p>Employment Opportunity Muleshoe Vet Supply is taking applications for a store management position. Duties will include, but are not limited, to: • sales • service • shipping/receiving • stocking inventory Call (806) 272-4990</p> <p>CONSERVATION CAREERS FOREST RANGERS, GAME WARDENS, MAINTENANCE, ETC. No exp. necessary. Now hiring. For info call (800) 280-9769, ext. 9689, 8 a.m.-10 p.m. days www.cnijobhelp.com</p> <p>JOB OPPORTUNITY Full-time clerical position Must be able to type, have basic computer skills and be good in math. APPLY IN PERSON! NO PHONE CALLS PLEASE! Bamert Seed Co. See Carolyn</p> <p>FOR SALE Big Screen TV for sale. Take on small payments. Good credit required. 1-800-398-3970.</p>	<p>FOR RENT</p> <p>Ruidoso Condo 3 Bedroom 3 Bath Sleeps 8 Call Debbie at (505) 420-6700</p> <p>SERVICES</p> <p>CREATE A NEW LOOK Your makeup should reflect your personal style. By analyzing your coloring and the clothing colors you wear, I'll create a look that's uniquely yours. For a free makeover, call Susan Kerby Mary Kay Independent Beauty Consultant at 272-5153 or 946-9524</p> <p>FARM EQUIPMENT</p> <p>•Gleaner L2 24' Header field ready •Massey Ferguson 850 24' header, ready to cut the wheat (505) 359-1775 or (505) 276-8423</p> <p>GO MULES!</p>	<p>REAL ESTATE</p> <p>First Texas Ag Credit Federal LAND BANK • Long & Short-Term Financing • Rural Housing • Operating & Improvements • AgFAST Credit Approval • Cash Percentage Program • Low Stock Requirement 2% to \$3,000 Maximum • Equipment Leasing 316 South Main Muleshoe, Texas 806-272-3010</p> <p>160 Acres, 2 wells, pivot sprinkler, house, shop, barn, detached garage. Clays Corner, Oklahoma Lane area Call 806-272-4567 days 806-925-6493 nights</p> <p>HOUSE FOR SALE By Owner. 3-2, Carport, Lg. storage & Apt. bldg., brick veneer, fenced & cable hookups. N 214 on pavement. Call 272-5865, mornings.</p> <p>WANT TO BUY</p> <p>WHEAT PASTURE wanted Highest prices paid. Muleshoe, Lazbuddie or Oklahoma Lane areas. (800) 272-5605 or (806) 946-8900</p>	<p>REAL ESTATE</p> <p>Nieman Realty</p> <p>116 E. Ave. C • George Nieman, Broker • 272-5285 or 272-5286</p> <p>RICHLAND HILLS — PARK RIDGE</p> <ul style="list-style-type: none"> • VERY NICE 2-2-2 Brick, Heat Pump, built-ins, FP, fans, fenced yd., stor. bldg., MORE!!! RH-2 • 56' x 140' tract, approx. 4700' bldg., \$35K!!! • Established Business: Land, Bldg. & Equip., \$75K!!! • NICE R.V. Storage, 14' X 40' metal bldg. 12 doors, 50X140 corner lot! <p>HIGHLAND - HARVEY AREA</p> <ul style="list-style-type: none"> • VERY NICE 2-1-1 carport Home, nicely remodeled, Cent. Heat, DW, fans, fenced yd., Stor. Bldg., MORE!!! \$30's!!! HL-1 • 3-2-2 Brick Home, corner lot, wall furnace heat, Cent. Evap. Air, fenced yd., stor. bldgs., MORE!!! HL-4 • VERY NICE 3-1-1 Brick, Heat pump, DW, nice carpets, fenced yd., MORE!!! \$30's!!! HS-1 • NICE 3-2-1 Brick, Cent. A&H, built-ins, fenced yd., stor. bldg. \$50's!!! HS-2 • 2-1-1 Home, wall furnace, win. evap. stove, refrig., W&D, fenced yd.!!! \$23,000!!! HS-11 • VERY NICE 3-1-1 Home, Cent. A&H, nice carpets, six fans, 2 stor. bldgs., fenced yd., \$30's!!! HS-5 • VERY NICE 3-1-1 Brick, Cent. A&H, stove, DW, fenced yd., MORE!!! \$38K!!! HS-4 <p>LENAU - COUNTRY CLUB AREA</p> <p>IN CONTRACT</p> <ul style="list-style-type: none"> • VERY NICE 2-1-1 Home, Cent. Heat, evap. air, fenced yd. stor. bldg.!!! \$32K L-1. • 2-1-1 Home, Cent. A&H, DW, Fenced yd. \$29.5K L-3 • PRICE REDUCED 2-1-1 Carport Home, wall furnace, nice carpet, storm shelter, stor. bldg., fenced yd. \$19K!!! CC-3 • NICE 3-2-2 Brick, Cent. Heat & Cent. Evap. air, built-ins, FP, fenced yd., stor. bldg.!!! \$40's!!! CC-1 • 2-1-1 carport Home, wall furnace, evap. air, fenced yd.!! L-2 • Nice 2-1-1 Home, Cent. A&H, built-ins, fans, fenced yd., stor. bldg., MORE!!! L-4 • 3-1-1 Home, wall heat, DW, fenced yd., \$20's!! L-5 <p>COMMERCIAL</p> <ul style="list-style-type: none"> • 246' x 145' tract, Hwy. 84, \$29.5K!!! • VERY NICE 50 UNIT MOTEL, Priced to sell!!! Call for details!!! • NICE 26 UNIT MOTEL, Priced to Sell!!! Call for details!!! • GOOD INCOME PROPERTY - approx. 3490' bldg., paved parking, good net lease!!! PRICED TO SELL! • NICE CHURCH BUILDING, approx. 2 acre tract, with 3-2 Mobile Home for classrooms or parsonage!!! • W. of SUDAN-NICE 3-2 Brick Home, 5 acre tract on Hwy. 298, Cent. Air & Heat, built-ins, large Quonset Barn, MORE!!! \$95K!!! • 5 Acre tract on pavement close to town! • Approx. 108 acres on Hwy. 70, approx. 2100' office area, 16,900' of commercial bldg. w/ loading dock, 3,400' warehouse!! 2,800' runway!!! • LONGVIEW - GOOD Dryland Labor, fully allotted, planted in wheat. \$225.00 per acre. • 152.8 acres, 15 hp & 20 hp. sub., Lockwood spktr., 85 acres seed grasses & 35 acres wheat. \$475.00 per acre. • EARTH - (Hite Park Add.), 3 bdrm. 2 bath!!! Call for Details!!!
--	---	---	--	---

NATIONAL BRANDS SWEEPSTAKES!

• Grand Prize-\$10,000
 • Second Prize-(2) \$5,000
 • (10)-Intel Pentium III Computer Packages
 Check for complete details at your participating
 Affiliated Foods Member Store!
 \$50,000 Total Prizes from General Mills

STORE HOURS
 Sunday-8 am to 10 pm
 Mon.-Sat.-7:30 am to 10 pm

PRICES EFFECTIVE OCTOBER 13-19, 1999

MEAT

- Boneless Beef Trimmed Whole
Top Sirloins lb. **\$1.69**
- Preferred Trim Boneless Beef
Top Sirloin Steak ... lb. **\$1.89**
- For Stir Fry
Pork Strips lb. **\$2.39**
- Preferred Trim Boneless Sirloin Cut
Pork Chops..... lb. **\$1.89**
- Boneless Skinless
Chicken Breasts lb. **\$1.99**
- Family Pack 73% Lean
Ground Beef lb. **99¢**
- Small Pack 73% Lean
Ground Beef lb. **\$1.19**
- Farm Raised Breaded
Catfish Nuggets lb. **\$1.59**
- Hillshire Farm All Varieties Lit'l
Cocktail Smokies... 1 lb. **\$2.49**
- Hillshire Farm Reg., Beef or Polish
Smoked Sausage .. 1 lb. **\$2.19**
- Hillshire Farm Meat or Beef
Summer Sausage... 9 oz. **\$1.79**
- Hillshire Farm Bratwurst or
Italian Sausage.. 18.7 oz. **\$2.49**
- Advance Breaded Strips, Patties or
Chicken Nuggets .. 12 oz. **\$1.59**
- Advance Country Fried Breaded
Patties or Fingers .. 12 oz. **\$1.29**
- Hormel Assorted Black Label
Sliced Bacon 1 lb. pkg. **\$1.89**
- 10 oz. Patties or 12 oz. Links Hormel
Little Sizzlers your choice **99¢**
- Hormel Cure 81 Boneless
Mini Half Hams lb. **\$2.79**
- Bar S Smoked Boneless 5 lb. Net Wt.
Whole Hams ea. **\$6.99**
- Bar S Jumbo
Meat Franks 1 lb. **79¢**
- Bar S Regular or Thick Sliced
Meat Bologna 1 lb. **99¢**
- Price 14 oz. Reg. or
13 oz. Lite Pimiento
Cheese Spread.. your choice **\$2.19**
- Oscar Mayer Luncheon Meat
Combo Pack 1 lb. **\$1.49**
- Louis Rich All Varieties
Variety Pack..... 9-12 oz. **\$1.99**
- Oscar Mayer Regular
Lunchables 4.15-4.5 oz. **99¢**
- Oscar Mayer All Varieties
Meat Wieners 1 lb. **\$1.49**
- Oscar Mayer All Varieties
All Beef Franks 1 lb. **\$1.99**
- Oscar Mayer Chopped Ham, Ham
& Cheese or Roasted White Turkey
Luncheon Meat 1 lb. **\$2.19**
- Oscar Mayer Cotto Meat Salami or Red Rind
Meat Bologna 1 lb. **\$1.49**
- Kraft Assorted Flavors
Cheez Whiz..... 16 oz. **\$2.99**
- Assorted Drink Tang or
CapriSun 10 pack 6oz. **\$1.99**
- Assorted Unsweetened
Kool-Aid Drink Mix 2qt. **5/\$1**
- Assorted
Kool-Aid Bursts .. 6pk.-6.7oz. **4/\$5**
- 24 oz. GrapeNuts, 20 oz. Honeynut,
17.2 oz. Spoon Size or 19 oz. Frosted
Post Shredded Wheat .. **2/\$4**
- Kraft Assorted
Velveeta Dinners... 9.4-12 oz. **3/\$5**
- Kraft Original, Cheesy, Alfredo, Thick and Creamy
Mac & Cheese Dinners 7.25 oz. **69¢**
- Kraft Assorted Macaroni & Cheese
Deluxe Dinners ... 14 oz. **3/\$5**
- Kraft Assorted Regular or Light
Mayo or Miracle Whip .. 32 oz. **\$2.39**
- Kraft Assorted Light Done Right Regular or Free
Salad Dressing 16oz. **\$1.99**
- Pillsbury Choc. Chunk, Choc. Chip or White Chunk
Cookie Mix 16.6oz. **3/\$4**
- Old El Paso Yellow or White
Taco Shells 12 ct. **\$1.39**
- Old El Paso Regular or Fat Free
Refried Beans 16oz. **2/\$1**
- Cut, Kit. Sli. Green Beans, WK Corn,
Med. Sweet Peas Green Giant
Vegetables 14.5-15oz. **2/89¢**
- Le Sueur Small
Sweet Peas 15 oz. **89¢**

PRODUCE

Mix or Match Fall
PRODUCE SALE
 • WASHINGTON EXTRA FANCY LARGE RED OR GOLDEN DELICIOUS APPLIES
 • NEW CROP TEXAS GRAPEFRUIT
 • JUMBO YELLOW OR WHITE ONIONS
 • GARDEN FRESH GREEN ONIONS
 • JUMBO BAKING POTATOES
 • EXTRA LARGE TOMATOES
 • LARGE BELL PEPPERS
 • CRISP CELLO CARROTS (1 LB)
5/\$1

HEALTH & BEAUTY

- Suave Assorted
Shampoo or Conditioner.. 15 oz. **79¢**
- Assorted Close-Up
Toothpaste 6 oz. **99¢**
- Regular/White Water Fresh
Zest Soap 5 oz.-3 bar pk. **2/\$3**
- White 3 Bar
Safeguard or Ivory .. 4 bar pk. **\$1.79**
- Children's Reg. Suspension or Grape
Tylenol Liquid 4 oz. **\$4.99**
- Caplet, Gellab, Gelcap Extra Strength
Tylenol PM 50 ct. **\$5.99**
- Children's Tylenol Grape, Reg. or Bubble Gum
Chewable Tablets .. 30 ct. **\$2.99**
- Tylenol
Simply Sleep 24 ct. **\$3.99**
- Your Choice • Arthritis Caplets
• Gelcaps • Gellabs • Caplets
Ex-Strength Tylenol.. 50 ct. **\$4.99**
- Assorted Pantene Pro-V
Shampoo or Conditioner.. 10.2-13 oz. **\$2.99**
- Asstd. Old Spice, Sure or Secret
Anti-perspirant Deodorant 1.6-2.25 oz. **3/\$5**
- Original, Peppermint or Smooth Mint
Scope Mouthwash .. 33 oz. **\$3.99**
- Assorted
Crest Toothpaste .. 6.4 oz. **\$1.99**
- Betty Crocker Assorted Specialty
Potatoes 5-8.4 oz. **\$1.09**
- Assorted Glass Cleaner
Windex 26 oz. **2/\$5**
- Assorted Air Freshener
Glade Aerosol 9 oz. **99¢**
- Regular only
Clorox Bleach gal. **99¢**
- Assorted Facial
Puff Tissue 144-250 ct. **3/\$5**
- 15 ct. Freezer Gal., 20 ct. Freezer Qt.,
25 ct. Storage Qt., 20 ct. Storage Gal.
Ziploc Bags your choice. **\$1.99**
- White / Designs
Bounty Towels reg. roll **99¢**
- Assorted Dish Detergent
Dawn Ultra 25-28 oz. **2/\$5**
- Liquigel or Assorted Powder
Cascade Detergent.. 45-50 oz. **2/\$5**
- 32 oz. Clorox Clean-up, Original or Lemon Fresh
Pinesol Cleaner 28 oz. **3/\$5**
- Original or Soap Scum Remover
Tilex Cleaner..... 16 oz. **3/\$5**
- Sizes 1-5 Regular or Size 4 Rash Guard
Pampers Diapers .. 22-44 ct. **\$6.49**
- Original or Gentel Breeze
Bounce Sheets..... 80 ct. **\$3.99**
- All Types
Pepsi Cola 6pk.-12 oz. **3/\$5**
- All Types
Pepsi Cola 2 liter **88¢**
- Refreshing
Frappuccino single btl. **99¢**

FROZEN & DAIRY

- Regular or 1/3 Less Fat Kraft Philadelphia
Cream Cheese 8 oz. **99¢**
- Banquet Assorted
Pot Pies 7 oz. **2/\$1**
- Assorted Varieties
Banquet Chicken .. 19-25 oz. **\$2.99**
- Plains
Choc-O-Creme gal. **2/\$3**
- Plains Red Diamond Sweet Tea, Back
Porch Lemonade or Assorted
Snack Attack 16 oz. **69¢**
- Patio Assorted Varieties
Burritos 5 oz. **3/99¢**
- Assorted Varieties
Patio Dinners 12-13 oz. **4/\$4**
- Plains Regular or Non-Fat
Sour Cream 16 oz. **2/\$3**
- Plains Assorted Varieties
Cottage Cheese ... 24 oz. **\$1.99**
- Assorted
Tampico Pops 18 ct. **2/\$4**
- Keebler Cinna'wich Vanilla
Ice Cream Sandwich 6 ct. **2/\$4**
- Sara Lee Select Group
Cheese Cake Bites .. 8 oz. **\$2.99**
- Sara Lee Original Cherry, Strawberry or French
Cheese Cake 17-23 oz. **\$2.99**
- Sara Lee Strudel, Cinnamon or Pecan
Coffee Cake 10-11.5 oz. **2/\$5**
- Sara Lee Family Size
Pound Cake 16 oz. **\$2.99**
- Plains
Orange Juice gal. **\$2.99**
- Assorted Value Menu or Select Menu
Banquet Meals .. 6.7-11 oz. **4/\$4**
- Assorted Punch
Tampico gallon jug **99¢**
- Assorted Jell-O Snacks
Gelatin or Pudding . 6 ct. **2/\$4**
- Assorted
Downy Ultra 20 oz. **\$1.99**
- Duncan Hines Homestyle Assorted
RTS Frostings .. 15-16.6 oz. **\$1.29**
- Bath Tissue
Angel Soft 4 roll pkg. **79¢**
- Reg. or With Bleach 100 oz.
Liquid Ultra or Powder Gain Ultra 2..... 78-83 oz. box **\$3.99**
- Assorted Varieties
Crisco Oil 48 oz. **3/\$5**
- Duncan Hines Assorted Moist Deluxe
Cake Mixes 15.7-18.25 oz. **69¢**
- Assorted Varieties
Hamburger Helper Dinners 6.25-8.6 oz. **99¢**
- All Purpose
Gold Medal Flour... 5 lb. **89¢**
- Regular No Beans
Wolf Brand Chili ... 19 oz. **99¢**
- Assorted Grated or Shredded Cheese
Parmesan 7-8 oz. **\$3.29**
- Betty Crocker
Brownie Mix 19.8 oz. **99¢**
- Betty Crocker Assorted Rice or
Pasta Blends 4.2-6.8 oz. **89¢**
- General Mills Cereal
Wheaties 18 oz. **2/\$5**
- General Mills Cereal
Golden Grahams .. 18 oz. **2/\$5**
- Betty Crocker Assorted Popcorn
Pop Secret 3 ct. **3/\$5**
- Kraft Regular or Light
Velveeta Spread .. 32 oz. **\$3.99**
- Old El Paso Assorted Thick & Chunky Salsa or
Picante Sauce... 16-20 oz. **3/\$5**
- Jell-O Original/Strawberry
Cheesecake Snacks 4 ct. **2/\$4**
- Kraft Asstd. Cubes, Reg. or Finely
Shredded Cheese . 8 oz. **2/\$4**
- Kraft Individually Wrapped
Regular or Extra Thick
Velveeta Slices 12 oz. **\$1.79**
- Kraft Halfmoon Mild Cheddar or Colby
Longhorn Cheese.. 14 oz. **2/\$5**
- Assorted Flavors
Kraft Dips 8 oz. **99¢**
- French Loaf/Dinner Rolls/
Bread Sticks/Cornbread Twists
Pillsbury Bread .. 11-11.3 oz. **3/\$4**
- Pillsbury Assorted
Big Country Biscuits 12 oz. **69¢**
- Assorted Varieties 4 Pack
Pillsbury Biscuits.. 7.5 oz. **3/\$4**
- Green Giant Frozen Select Group
• Broccoli & Cheese Sauce
• Broccoli, Cheese & Rice
• Cauliflower & Cheese Sauce
• Broccoli & Cauliflower Medley
• Cream Style Corn
• Fanfare Broccoli
• Southwest Corn & Peppers
• Honey Glazed Carrots
Vegetable Medleys 10 oz. **\$1.09**
- Pillsbury Assorted
Toaster Scrambles 10 oz. **3/\$5**
- Pillsbury Assorted
Toaster Strudel .. 11.5 oz. **3/\$5**
- Assorted Varieties
Totino's Party Pizza 9-10 oz. **99¢**
- Totino's Assorted
Pizza Rolls 7.5 oz. **99¢**
- Green Giant Nibblers
Corn on the Cob .. 12 ear **2/\$4**
- Assorted Varieties
Sunny Delight..... 64 oz. **99¢**
- Select Group
Folgers Coffee . 34.5-39 oz. **\$5.99**
- Assorted Potato Crisps
Pringles 6-7 oz. **99¢**
- Ocean Spray Asstd. Cranberry Juice
Cocktail..... 48 oz. **2/\$4**
- Dinty Moore
Beef Stew 24 oz. **\$1.99**
- Assorted varieties
Bugles 6oz. **99¢**
- Ocean Spray Whole or Jellied
Cranberry Sauce.. 16 oz. **99¢**
- Hormel Assorted
Kid's Kitchen 7.5oz. **2/\$3**
- Smucker's Assorted Jams
Marmalade Preserves or
Jellies..... 12 oz. **2/\$3**
- JIF Assorted
Peanut Butter..... 18 oz. **\$1.79**
- Oil or Water Pack Chunk Light
Star-Kist Tuna 6oz. **2/\$1**
- Assorted Varieties
Del Monte
Spaghetti Sauce 26-26.5oz. **99¢**
- Elbo-Roni, Long or Thin Spaghetti
American Beauty Pasta 24 oz. **99¢**
- Assorted Varieties
Spam 12 oz. **3/\$5**
- Welch's
Grape Jelly..... 32 oz. **99¢**
- General Mills Reg. or Honeynut
Cheerios 14-15 oz. **2/\$4**
- Old El Paso Assorted
Enchilada Sauce .. 10 oz. **89¢**

WESTERN MONEY UNION TRANSFERSM
 "The fastest way to send money"

MARKETPLACE
 401 W. American Blvd. Muleshoe 272-4585
 WE RESERVE THE RIGHT TO LIMIT QUANTITIES IN TEXAS