

PAGE ONE

A QUICK READ OF THE NEWS

Police hunt banana thrower

Police in Kenosha, Wis., are looking for an irate motorist who allegedly hurled a half-peeled banana at another car's windshield, then sped away.

The Kenosha County Sheriff's Department said the incident happened as a 35-year-old Kenosha woman was being tailgated. The offending driver allegedly made an obscene gesture after the woman tapped her brakes.

When she stopped for traffic several blocks later, the car drove onto the gravel shoulder along the right side, and the angry driver rolled down his window and threw the banana at her car, striking the windshield.

The car then turned and fled the scene.

Man caught in funeral theft

A man dressed in red sweatpants didn't seem to fit in at the funeral, but mourners ignored him — until he swiped the deceased's brooch.

The 51-year-old Cleveland, Ohio, man stole the brooch when he leaned over to look at the body of Erma Bailey during her funeral Thursday at Liberty Hill Baptist Church, police said.

The man is expected to be charged with burglary and gross abuse of a corpse.

"For the family, they were hurt as well as dumbfounded," the church's pastor said.

People caught on to the theft after the man dropped the brooch, then grabbed it again and ran out the church with mourners in pursuit.



Drawing date: Saturday, April 8
Winning numbers: 9-33-38-39-41-48
Estimated jackpot: \$17 million
Winners: 0
Next drawing: Wednesday, April 12
Estimated jackpot: \$23 million

On this date in history

April 13 — Commissioners selecting a permanent capital for the Republic of Texas pick the village of Waterloo (now known as Austin) on the east bank of the Colorado River (1839).

April 14 — The Mexican Congress reauthorizes Stephen F. Austin's colony in the region of the Brazos River (1823).

LOCAL WEATHER

Mostly sunny and warm conditions are expected through the weekend, with high temperatures near 80 on Thursday, Saturday and Sunday — and about 86 on Friday. Morning lows should be mostly in the mid-40s throughout the period. No further chance for significant precipitation is forecast.

Editor Ronn Smith can be reached at 272-4536 or ctyankee@fivearea.com

Missed your paper? Call carrier Melissa Flores at 272-6719 or the Journal during business hours, 8:30 am-5 pm.

Chamber honors Hargrove, Holt, Barriers, United

By RONN SMITH
Editor

The Muleshoe Chamber of Commerce handed out several honors Saturday night, and when the curtain came down on "Muleshoe on Broadway" (the annual banquet's theme):

- Gail Hargrove had been named woman of the year;
- Ronnie Holt was named man of the year;
- Tony, Nancy, Casey and Bailey Barrier were named farm family of the year;
- United Supermarket was named business of the year;
- Tonya Pool was named employee of the year.

Sheree Hunt, in presenting the award to her employee of 1 1/2 years, said Pool's job began when Hunt just asked her to come down and help out at Sheree's Attic.

"What started out as a favor to me has evolved into her receiving this award," Hunt said.

Julie Cage presented the Barriers' award, explaining in poetry how the family came to Muleshoe 14 years ago and was soon shouting "Hay! Hay! Hay!" as it became obvious what their biggest product would be.

Robert Shafer, beguilingly dressed as the title character from the musical "Miss Saigon," presented the award for business of the year, detail-

ing United's beginnings in a small store in Sayre, Okla., and growth into a major regional grocery chain.

Cindy Purdy, in honoring Hargrove, detailed the many community projects to which Hargrove contributes:

Jennyslippers projects, including a welcome brochure for newcomers; getting mail delivery to the door of individual residents of the senior citizens complex; Hope Chest; American Heart Association, including getting a grant to help pay for automatic external heart defibrillators in patrol cars, making Bailey County the first in Texas to have them in sheriff's department vehicles.

Stacy Conner took a slightly different tack in praising Holt, saying he was envious of earlier presenters because "they all had great people to talk about and this is a little difficult... a series of black clouds with no silver lining."

He described Holt as "a Baptist deacon with no rhythm on the school board who made the motion to bring back dancing in the schools."

But he seriously praised Holt for his service on the Five Area Telephone Cooperative board and said that the new expansion at First Baptist Church simply wouldn't have happened without Holt.

Residents had fun with theme

Before Saturday night, who would have suspected there were that many dashikis still in existence around Muleshoe?

One of the most popular costumes for "Muleshoe on Broadway," the chamber banquet, was a 1960s-style dashiki — often with a hippie wig — a la characters from the musical "Hair." (No one showed up in

the more notorious "Hair" costume.)

Robert Domínguez of United Supermarkets, who couldn't possibly be old enough to have worn his dashiki the first time around, was perhaps the most visible among them as he circulated around the whole room.

see **THEME** on page 2

Chamber building named for Young

One unique feature of Saturday's Muleshoe Chamber of Commerce banquet was the formal announcement that the chamber's new headquarters building has been named the Hugh Earl Young Building to honor the late Five Area Telephone Cooperative executive.

Construction has been completed on the 900-square-foot building and a grand opening will be scheduled once interior appointments are in place.

Young's widow, Pat, and several family accepted an award on his behalf at the banquet.

Technology group to mark official opening at MHS

JOURNAL STAFF REPORT

Years of work will come to fruition Thursday night in the technology department at Muleshoe High School: The FACT Consortium has scheduled the official opening of its video network.

The consortium began in earnest in 1995 because Five Area Telephone Cooperative wanted to provide a high-quality telecommunications network in the school districts within its service area. Fiber-optic cable was run to six school districts for this purpose.

Five Area and the districts — Muleshoe, Lazbuddie, Three Way, Sudan, Springlake-Earth and Olton — have worked with South Plains College to bring education via interactive television to the districts involved.

The group even adopted the name Five Area

see **FACT** on page 2



Journal photo: Ronn Smith

Roger Sowder and Kimble Kearns launch into the opening radio broadcast of "Greater Tuna" by discussing "Human Rights — Who Cares?" in a production that followed the annual chamber of commerce banquet.

State winner

Kelsey Beggs of Watson Junior High School placed 18th in the state and received a medal Saturday at the Texas Math and Science Coaches' Association state meet in San Antonio. She represented Muleshoe in the event's computer applications competition.



Historic book presented to county

JOURNAL STAFF REPORT

Ruth Hall and Julie Cage, on behalf of the Bailey County Historical Commission, have presented the commissioners court with a historic book framed in a shadow box.

The book contains records of county expenditures for goods and services in the years 1931-34 — sometimes at costs of 5 and 10 cents.

The artifact was presented Monday during the commissioners' regular meeting, prior to Hall giving them copies of the historical commission's annual report to the state.

Hall also was commended for her work on a grant application aimed at continuing renovation work on the Bailey County courthouse.

She said funding for the current year was mainly concentrated on a few projects, a practice she questioned.

"I don't believe it was the intent of the Legislature to completely restore a few historic buildings with most of the money," she said. "I think the intent was to take a look at all 254 counties and try to get all our courthouses into functional condition."

Hall represented the county at a March 30 associates program workshop, "An Introduction to Oral History," sponsored by the Southwest Collection/Special Collections Library at Texas Tech.

Attendees furnished donated their time and furnished their own transportation to attend the workshop.



Journal photo: Beatrice Morin

Fountain fencing

Victor Arzola of Arzola's Ornamental Iron spends Saturday installing a fence around the new ornamental fountain at City Park. The Rotary Club had planted a specimen-sized ash tree adjacent to the fountain Thursday as part of continuing efforts to beautify the park.

AROUND MULESHOE

Softball fund-raiser scheduled

The Muleshoe chapter of Family Career and Community Leaders of America will be sponsoring a softball tournament April 15-16 at the Muleshoe softball field.

The event is a fund-raiser to help the students in the chapter to attend their state meeting and competition in Fort Worth.

This is an ASA-rules, double-elimination tournament.

Entry fee is \$100 per team; T-shirts will be awarded to first-, second- and third-place teams

Entry deadline is 8 p.m. April 14. More information or entries are available by calling Brenda or Filemón Guzmán at 965-2111 or Ramón Guillén at 272-5050.

Muleshoe kindergarten enrollment set

Kindergarten and pre-kindergarten enrollment at Dillman Elementary School is scheduled for 8 a.m. to noon and 1 p.m. to 3 p.m. April 14 in the Dillman gymnasium.

Children who will be 4 years old by Sept. 1 are eligible to enroll in pre-kindergarten; those who will be 5 by Sept. 1 are eligible for kindergarten.

Parents are asked to bring the child's birth certificate, immunization records and Social Security number.

Children who enroll April 14 will be screened for speech and language that day.

An immunization clinic will be held at the Muleshoe Area Medical Center Outpatient Clinic (118 W. Avenue C) from 8 a.m. to noon and 1 p.m. to 5 p.m. April 13. There will be a \$5 charge per shot.

Hanna to address luncheon

Muleshoe City Manager Rick Hanna will address those attending the April Soup and Sandwich Luncheon at 16th and D Church of Christ.

The event is scheduled for noon to 1 p.m. April 13 in the church's fellowship hall and is open to the public. The meals are always served on a donation basis.

Hanna is scheduled to speak on plans, events and challenges facing the city of Muleshoe.

The luncheon series is held on the second Thursday of each month. More information about this month's program, or on any of those upcoming, can be obtained by calling 272-4619.

Lazbuddie kindergarten enrollment set

Lazbuddie Independent School District will hold registration for kindergarten and pre-kindergarten students from 9 a.m. to 11 a.m. April 14 in the school library.

Any child who will be 4 years old or older on Sept. 1 is eligible to enroll. Parents are asked to bring a birth certificate, Social Security card and a copy of immunization records for each child to be enrolled.

More information is available by calling 965-2153.

Muleshoe could capture dual district track titles

By KEVIN WILSON
Writer

Track season is winding down for Muleshoe, and both teams have a chance to do some damage at the district meet.

"We're a lot stronger (than last year)," said girls' track coach John Irwin, who is in his second season as coach and coming off a district championship in 1999.

"Our district's a lot stronger, but our girls are working hard," Irwin added.

The girls travel this weekend to Dimmitt to run a few events for practice, then they

will travel to Shallowater on Tuesday for the district meet.

The mile relay team of Olivia Alcorn, Bobbie Benham, Stacey Locker and Mindy Locker just set a school record with a time of 4:11. Irwin said a time probably would place first at district.

Senior leadership is a key in some of the other events as well. Irwin praised senior Kayla Johnson, who leads both the sprint and the 800 relay teams. On the boys' side, confidence also running high.

"If we can fill all the places, we should do very well," coach

Joe Pat Wright said.

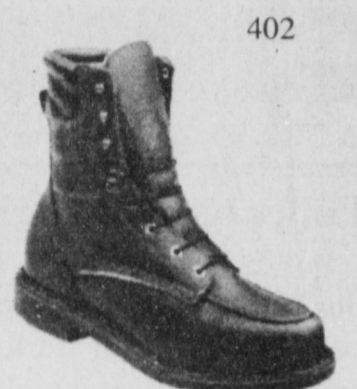
One of the stronger events will be the pole vault, where the Mules field Brandon Broyles, Jeff King and Tyson Purdy.

The 300 hurdles also should be a strong event for the Mules, with Jesús Tobar and Danny Ramírez.

Ramírez will join Chris Barrera and Jeff Bruns in the 100, while Lupe Nuñez and José Alarcón run the 400.

Alarcón also will be an integral part of the 800-meter relay team with Kyle Atwood, who also runs in the mile relay.

Both teams have a great shot to win district, but they must continue the excellent performances that have been constant all season.



402



The Fair Store
120 Main 272-3500

Area communications personnel commended

The South Plains Association of Governments has expressed appreciation to the communications personnel of all the 911 public-safety answering points and responding emergency agencies in the South Plains Region.

This is in observance of Public Safety Telecommunications Week in Texas, April 9-15.

The special week is pro-

claimed as a time to recognize the public-safety telecommunications personnel who serve the public every day as the vital link between people calling for help and the agencies that provide assistance.

The workers' job of protecting people and property is done behind the scenes and often goes unrecognized.

"We commend these indi-

viduals for their dedicated efforts in making a difference, and helping save lives and properties — all in a day's work," stated a SPAG press release.

OPENING

from page 1

Community Telecommunication (FACT) Consortium in honor of Hubert Kidd, long-time head of Five Area who retired recently.

The consortium then got a million-dollar grant from the Texas Infrastructure Fund Board that was structured around innovation and education in rural Texas and its ability to be replicated by others.

The grant helped to develop a very high speed network us-

ing a technology known as asynchronous transfer mode — the first of its kind among Panhandle school districts.

Many state and local dignitaries have been invited to the official opening, along with news media and others wishing to witness the occasion.

Muleshoe Journal USPS 367820
Established February 23, 1924. Published by Triple S Publishing, Inc. Every Thursday at 304 W. Second, Box 449, Muleshoe, TX 79347.
Second Class Postage paid at Muleshoe, TX.
POSTMASTER: Send address changes to the Bailey County Journal, P.O. Box 449, Muleshoe, TX 79347.
We are qualified members of:
Panhandle Press Association, National Newspaper Association, West Texas Press Association and Texas Press Association

WEST TEXAS PRESS ASSOCIATION
PPA
Panhandle Press Association

TA MEMBER 2000
TEXAS PRESS ASSOCIATION

Scot Stinnett, Publisher
Lisa Stinnett, Vice-President/Comptroller
Ron Smith, Editor
Beatrice Morin, Classifieds
Leah Bell, Advertising

SUBSCRIPTIONS: Muleshoe Journal and Bailey County Journal
By Carrier Yearly - \$22.00
Bailey County — by mail - \$24.00
Elsewhere - \$26.00
Advertising Rate Cards on Application

Advertisers should check their ad the first day of insertion. The Journals will not be liable for failure to publish an ad or for a typographical error or errors in publications except to the extent of the cost of the ad for the first day of insertion. Adjustment for errors will be limited to the cost of that portion of the ad where the error occurred.

THEME

from page 1

Also popular were Southern belles from "Show Boat," and there were some alluring examples. Certainly the chamber's own Pam McCaul radiated stage presence when she was in the limelight.

Characters from "The Wizard of Oz," "Annie Get Your Gun," "Cabaret" and others mingled among ordinary mortals — as did at least one very classy "Phantom of the Opera."

Wells Hail's late-night talk-show host also welcomed "A Chorus Line" — known in everyday life as Lazbuddie High School cheerleaders Staci Foster, Crystal Scott, Myra Hernández, Desirae Brakebill, Kayla Kimbrough and Savannah Black.

The chorus line, in turn, welcomed half a dozen "volunteers" from the audience who imperiled their well-being by joining in a few high kicks.

Hall also presented his "Top 10 reasons for living in Muleshoe" as well as other guests Lavon Hunt, Marie and Harvey Bass, crowd favorites Corey and Colie Hunt (The Blues Brothers), and Alice Hall.

The best theme-related line, however, had to belong to Robert Shafer as "Miss Saigon." Introducing United Supermarkets as the business of the year, Shafer deadpanned, "It isn't often that a lady of the evening gets to present an award for business of the year."

Certainly not in Muleshoe, anyway.

Protect your rights! "Render" your taxable property by April 17th.

A "rendition" is a report to the appraisal district that lists all the taxable property you owned or controlled on January 1st of this year. The rendition form is available at your local appraisal district office... or you may draft a similar form.

Who must file a rendition?

You must file a rendition if you own tangible personal property that is used to produce income—such as the inventory and equipment used by a business.

Are there any advantages to you?

The advantages of filing a rendition are:

- ☛ You give your opinion of your property's value. If the appraisal district believes the value is higher, it must notify you in writing of the higher value and explain how you can protest that value to the appraisal review board.
- ☛ You record your correct mailing address so your tax bills will go to the right address. If your bill is mailed to the wrong address, the law still holds you responsible for paying your taxes on time or paying extra charges for late payments.
- ☛ You can also file a "report of decreased value" to notify the appraisal district of significant depreciation of the value of your property in 1999. The district will look at your property before assigning a value in 2000.

What's the deadline?

The last day for filing 2000 renditions is April 17. Call your appraisal district for the last date the rendition may be post-marked, if mailing. You can get an extra 15 days if you ask for it in writing by the April 17 deadline.

Where do you file?

BAILEY CENTRAL APPRAISAL DISTRICT
302 Main Street • Muleshoe, Texas 79347
(806) 272-5501

For more information stop by your appraisal district and pick up

"Texas Property Taxes: Taxpayers' Rights, Remedies & Responsibilities"

Or contact:

Comptroller's Property Tax Division
P.O. Box 13528
Austin, TX 78711-3528

JOE'S BOOT SHOP
1-800-658-6378 106 E. American Blvd. Muleshoe, Texas
And Country Junction

Country Junction invites you to...

Fizz Balls \$3
Vanilla • Lavender
• Strawberry
• Orange • Grapefruit

Body Butter \$8
Lavender Fields • Berry
Twist • Teed Pear
• Wildwood • Sea Mist
• Summer Vine
• Island Fruit
• Raindrops

Bath Puff \$1.50-\$2
2 Kinds

Foaming Bath Salt \$3
• Lavender • Island
Fruit • Sea Mist
• Raindrops

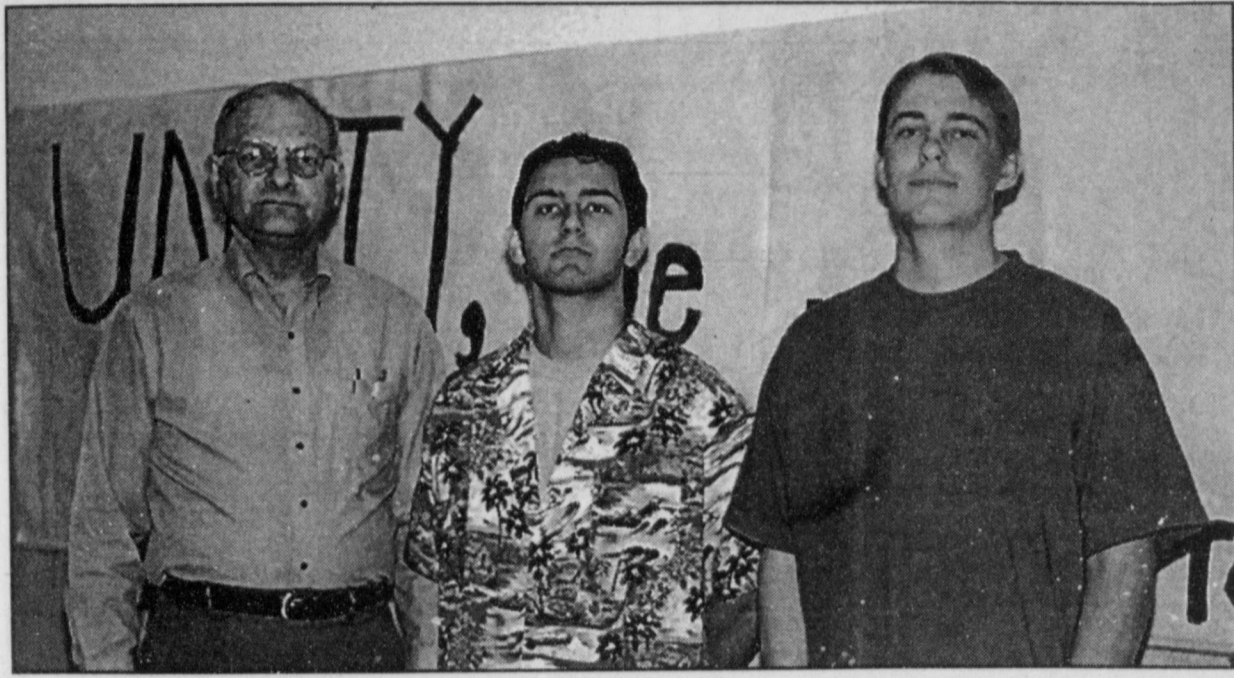
Soap by the Slice \$4.50
23 Luxurious
Fragrances

Family Size Soap by the Slice \$14
Slice it yourself!

Votive Candles \$14
50+ Fragrances

Create your own Easter gift baskets

Prices do not include tax.



Journal photo: Beatrice Morin

Potential Oscar winners

Dr. Kerry Moore (left) congratulates two members of the Muleshoe High School one-act play cast who were honored Saturday during regional UIL competition. Louie Pacheco (center) was named best actor among students competing from Class AAA schools, while Westin Price (right) also made the all-star cast. Muleshoe performed the classic drama "Beckett."

Nominations for teacher of year being accepted through May 4

Written nominations for the Muleshoe Independent School District's teacher of the year are being accepted at the superintendent's office until May 4.

The sixth annual awards are scheduled to be presented at a general faculty meeting May 26 in the high school auditorium.

Teachers at Dillman Elementary and DeShazo Elementary are eligible for the elementary award

while teachers at Watson Junior High and Muleshoe High School are eligible for the secondary award.

Underwritten by Muleshoe State Bank, the awards each consist of a golden apple and a check for \$250. Last year's winners were Carol Williams of Dillman and Lori Haseloff of Watson.

Nominees must be full-time classroom teachers. Anyone who lives, works or attends school in

the district may submit a nomination.

Nominees will be sent an information packet, which will be due back at the office by 4 p.m. May 15 if the nominee wishes to be considered.

U.S. honors former naval personnel

SPECIAL TO THE JOURNAL
WASHINGTON, D.C. — With Mother's Day and Father's Day right around the corner, the U.S. Navy Memorial in Washington is encouraging sons and daughters to honor their parents who served in the Navy, Coast Guard, Marines or Merchant Marine by enrolling them in the Navy Log in Washington.

The log has thus far collected names and services information of 245,000 present and former naval personnel.

Most of the names are of living people self-enrolled or by gift tributes from friends or families, but a large number are of deceased veterans enrolled in the log by their descendants or by surviving shipmates.

All enrollments form a part of America's enduring naval heritage, a permanent and publicly accessible video register available for viewing at the Naval Heritage Center next to the memorial on Pennsylvania Avenue, midway between the White House and the Capitol, or on the memorial's Internet web site, www.lonesailor.org.

Each log entry contains the entrant's name, date and place of birth, dates and branch of naval service, highest rate or rank attained, up to five top medals and awards and five duty stations.

Log enrollments help support the memorial's values-based educational programs, which honor, preserve and celebrate America's enduring naval heritage.

Sons and daughters desiring to enroll their mother or father should send his or her name, date and place of birth, dates of naval service, highest rate or rank, up to five awards received and five duty stations served accompanied by a \$25 tax deductible enrollment donation to Navy Log Dept. Y2000, P.O. Box 96570, Washington, D.C. 20077-7685.

A head and shoulders portrait photo may be added for an additional \$25 (photo cannot be returned).

Enrollments make welcome gifts to veterans. Sponsored enrollments are also sought from relatives of deceased naval veterans.

The Navy Memorial Foundation is a non-profit, tax exempt

organization that receives no government support for building and operating the Navy Memorial or the Navy Heritage Center next to the memorial.

Thank You
for making our
Babe Ruth League
car wash such a
great success!
13-Year-Old
Baseball Team

Look for our new
CHILDREN'S NOOK
EASTER DRESSES
Little Girl Sizes 2, 4 & 6
Antiques & Fine Things
2104 W. American Blvd. • 272-4217

REBEKAHS

After a meal served by Mary Ann Ramirez and Alene Bryant, Noble Grand Thursie Reid opened the lodge meeting with 13 members present.

The charter was extended for Past President Pauline Ragsdale Simpson.

A card was sent to Sylvia Kenemer, whose son had been in a car accident and whose husband's grandmother had a stroke and is in the hospital in Lubbock.

Letters were received and read from Rebekah President Rosalie Gant and Secretary Rosie McMillin. A letter from Muleshoe High School student Stephanie Kirk also was read.

Sister Bonita Rainey was installed as right support to vice grand and Joy Nicholson was installed as inside guardian.

Commission was read by Secretary June Green and presented to Berni Marts as lodge deputy. Marts then gave a report on the Rebekah Assembly.

The association meeting was discussed and committees were assigned.

Ramirez announced that her son, David, plans to marry July 8 and that a bridal shower will be held at the lodge June 11.

The meeting closed with the Rebekah Creed and two verses of "An Evening Prayer."

TOPS NEWS

TOPS No. 34 met April 6 at the Church of Christ on American Boulevard. There were 19 members present.

Laverne James, leader, called the meeting to order and presided.

The weekly weigh-in results were given by Alene Bryant and Betty Jo Davis.

The best loser was Missy Royal with Lucille Harp as first runner-up and Rose Sain and Paula Cantrell tied for second runner-up.

Tommie Fulcher was the best loser in the monthly report. Evelene Harris was first runner-up and Brenda Young was second.

Betty Jo Davis was the best K.O.P.S. for the month.

James discussed eating breakfast and some favorite breakfast foods.

She conducted a poll of members' favorite breakfasts. The most popular is toast and coffee, and cereal and toast and cereal and bananas. Graham crackers with fruit also was mentioned.

James commented that breakfast cereals have the best nutritional value if they are high in fiber and low in sugar.

The next meeting will be at 5:30 p.m. April 13. Visitors are welcome.

RETIRED TEACHERS

The 47th annual state convention of the Texas Retired Teachers Association was held April 5-8 at San Antonio's Four Points Sheraton Hotel.

The theme of the convention was "TRTA—Moving and Growing into the Next Century." Keynote speakers were state Rep. Robert Junell, chairman of the House Appropriations Committee; Charles Dunlap, executive director of the Texas Retirement System of Texas; and Mike Lehr, executive director of the Texas Retired Teachers Association.

The banquet speaker was Christopher Egan of Egan/Martinez Design.

Eight hundred four people registered for the convention. In addition to taking care of association business, they attended

training sessions and interest sessions.

Founded in 1953, the association is the largest in Texas for public school and higher education retirees, and is composed of more than 45,000 members who continue to be involved in local public school education and the well-being of their communities.

In the past decade, members have contributed more than 52 million hours of community volunteer time to Texas.

Those attending the convention from the Muleshoe Area Retired Teachers were Lucy Faye Smith and Mary Nell Bleeker.

The Muleshoe group meet the third Friday of each month, September through May, in the 16th and D Church of Christ Fellowship Hall.

Area Business Directory

A Store Full of New
SPRING ARRIVALS
Just Back from Market
STERLING SILVER JEWELRY
Fall & Winter Merchandise
LAST CHANCE SALE
60-75% Off
Sheree's Attic and **MERCET NORMAN**
COSMETIC STUDIO
1519 W. American Blvd. • 272-3459

Marked Down
Full! **50% or more** Tons!
Brimming! Everything Upstairs
Muleshoe Art Loft
1529 W. American Blvd. • 272-3485

Have Your Next Birthday Party At Dairy Queen!
We'll supply your party with...
Clowns • Lots of Balloon Animals • Magic Tricks • Party Favors • Cake • Ice Cream • & a Fun Bunch Meal with a Slush
ALL FOR ONLY \$4.99 (per child)
7 child minimum. Call Vicki Ferguson to book your party
DAIRY QUEEN
1201 W. American Blvd. • 272-3412

90 DAYS SAME AS CASH.
LX133 Lawn Tractor 13 hp • 38-inch mower deck • 5-speed shift-on-the-go transmission
JS60 Walk-Behind Mower 6 hp • 21-inch steel deck
\$38 PER MONTH* Now **\$279*** \$50 OFF
Right now, during Deere Season 2000, you can pay no interest on select John Deere models for 90 days. Just visit a participating dealer before July 5, 2000, and take advantage of this limited-time offer.
Dent & Co.
2800 W. American Blvd. • 272-4296

This Week's Featured Business...

WHY ARE 37 MILLION CARS INSURED WITH STATE FARM?
JUST ASK A GOOD NEIGHBOR.

Don't trust just anyone to insure your car, see me:
Your Local State Farm Agent
Mark Morton
101 S. Main St. in Muleshoe
272-7519 or
1-800-867-9178
Like a good neighbor, State Farm is there.
State Farm Mutual Automobile Insurance Company (not in NJ), State Farm Indemnity Company (NJ) • Home Office: Bloomington, Illinois

"Little strokes fell great oaks." - Chaucer
GREEN MAKER
fertilome SLOW RELEASE LAWN FERTILIZER
• DECORATIVE • ELEGANT **METAL ART PLANTERS**
BULK GARDEN SEED BACCTO POTTING SOIL
Kristy's Plants
710 E. American Blvd. Muleshoe, TX 272-5536

Count on me to provide the best homeowners insurance value in town.
State Farm Agent:
Mark Morton
101 S. Main St. • Muleshoe
272-7519 or 1-800-867-9178
State Farm Fire and Casualty Company • Home Office: Bloomington, Illinois

OBITUARY

LEONA HARRIS

Graveside services were held Monday at Bailey County Cemetery for Leona Harris, 79, of Casper, Wyo. Curtis Shelburne officiated.

Ellis Funeral Homes handled arrangements.

Mrs. Harris was born Sept. 5, 1920, in Estelline, Texas. She died April 4 at Wyoming Medical Center in Casper.

She was a 1940 graduate of Mule-

shoe High School and a longtime member of the Church of Christ.

She married Clarence "Pete" Harris on Dec. 21, 1939, in Muleshoe.

Her interests included quilting and gardening.

Mrs. Harris is survived by her husband; two daughters, Connie Gantzer and Brenda Van Tuyl, both of Sheridan, Wyo.; a twin brother, Leon Loe of Reedsport, Ore.; four grandchildren; and a great-grandson.

'CREATIVE LIVING'

Information on making an appliqué vest, dealing with loss and grief, and making easy meals will be featured on "Creative Living" April 18 at 1 p.m. and April 22 at 3 p.m. (All times are Central.)

"Creative Living" airs on public broadcasting station KENW-TV from Eastern New Mexico University in Portales.

Jean Mallory of Lubbock, owner of Mallory's Classic Designs, will show how to make a beautiful iris and butterfly vest with appliqué.

Vickie Schmall of Corvallis, Ore., who represents the Oregon State University Cooperative Extension Service, will discuss how to cope with loss and grief.

Barbara Rose, who represents the California olive industry, will show how to prepare some quick and easy meals featuring ripe olives.

Gluten intolerance and home

decorating will be featured April 18 at 10:30 p.m. and April 20 at 1 p.m.

Cookbook author Bette Hagman of Seattle will discuss how gluten intolerant individuals can live well without wheat in their diets.

Cheryl Hyde of Augusta, Ga., an interior designer with Carole Fabrics, will create miniature vignettes showing different decorating elements for two trends that are becoming increasingly popular.

"Creative Living" is produced and hosted by Sheryl Borden of Portales.

Viewers can request copies of materials offered on the show by sending a first-class stamp for each handout requested.

Send the stamps, along with name, address and booklets requested, to "Creative Living" Requests, c/o KENW-TV, 52 Broadcast Center, Portales 88130.

BIRTHS

WENDELL SMITH

Stanley and Eileen Smith of Route 1, Muleshoe, announce the birth of a son, Wendell Dean Smith, at 4:30 p.m. March 16 at Muleshoe Area Medical Center.

He weighed 8 pounds, 8 ounces and was 22 1/2 inches long.

He has two sisters, Keela, age 8, and Emily, 6, and a brother, Dalyn, 3.

Grandparents are Robert and Sylvia Smith and Samuel and Arlene Zimmerman.

TATUM HOOD

Teresa Hood of Earth announces the birth of a daughter, Tatum Hood, at 9:42 p.m. March 4 at Muleshoe Area Medical Center.

She weighed 7 pounds, 7 ounces and was 21 inches long.

She has two siblings, Haicha Hood and Isaac Romero.

Grandparents are Cal and Joyce Hood of Earth. Great-grandparent is Ora Lee Ward of Dimmitt.

NADIA MARTINEZ

Fabian and Yolanda Martinez of Muleshoe announce the birth of a daughter, Nadia, at 6:25 p.m. March 3 at Muleshoe Area Medical Center.

She weighed 7 pounds, 10 ounces and was 20 inches long.

She has three siblings, Alyssa, Michael and José.

Grandparents are Guadalupe Martinez of Abilene, Delfina Torres of Muleshoe and Hector and Rosavelia Barrientos of Mexico.

Great-grandparents are María and Santos López of California and Gregorio and Ines Martinez of Mexico.

AUCUTT'S GENERAL STORE

Celebrate the arrival of spring at...

Chick Days



April 13th thru 22nd



Colored Easter Chicks **.99¢**

Straight Run Chicks..... **.99¢**
Pullets..... **\$1.19**

Get 3 FREE Straight Run Chicks

With purchase of 25 lb. bag of Hi-Pro Chick Starter

Get 6 FREE Straight Run Chicks

With purchase of 50 lb. bag of Hi-Pro Chick Starter



HI-PRO FEEDS

Sulfur 50 lb. bag

Repels insects. All natural control. Greens your lawn.

\$12.50

Rabbit Pellet 25 lbs. Reg. \$4.29
Sale \$3.99

Ducks **\$2.99**

Rabbits **\$8.99**

Rabbit Pellet 50 lbs. Reg. \$6.34
Sale \$5.99

Bronze Turkeys **\$4.69**

Rooster Booster

Multi-Wormer Triple action — A multi-action product that kills round, cecal and capillary worms in poultry

Reg. \$13.99
\$11.99

Liquid B12 & Vitamin K

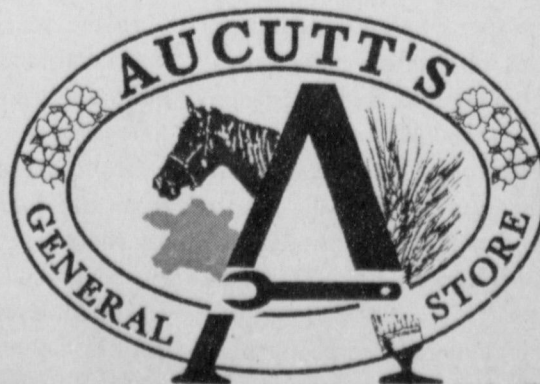
Premium vitamin supplement for all classes of poultry

Reg. \$12.99
\$10.99

Feeders & Waterers 15% Off

OPEN: Monday-Saturday 8 am-6 pm (mst)

"I Bet It's At Aucutt's!"



Join in the **EASTER EGG HUNT** In our store April 13th-22nd FREE PRIZES to all families who finish our hunt! Come in for details!

Dursban Hose End Spray

by Hi-Yield Easy application. Contact kill. Covers 2,600 sq. ft. **\$9.99**

Dursban Granules

by Hi-Yield Kills fleas and ticks. Covers 5,000 sq. ft. Lasts 3-4 weeks. **\$6.99**

Brand New Arrivals Now On Sale!

Clothing On Sale!



New Styles Arriving Daily!

All Men's Shirts **20% Off**
All Women's Shirts **20% Off**
All Dresses **15% Off**
Men's, Women's & Children's Wrangler Riata **Casual Pants 15% Off**
Men's Justin Boots.... **\$53.99**

2600 Mabry Drive Clovis, NM 505.762.3333



TAKE YOUR TV TO NEW HEIGHTS.

FREE PROFESSIONAL INSTALLATION

When you buy a DIRECTV System & Total Choice® Programming

Total-Choice® package only \$29.99 per month for over 95 of your favorite channels, including 31 audio music channels

MOVIES • SPORTS MUSIC • PAY PER VIEW NEWS • ACCESS TO OVER 240 CHANNELS

RCA

Purchase price good through April 23rd only! Subscribe by May 5!

RCA®-DIRECTV™ Single-LNB System #18-2562 Programming extra.

Only **\$99.99**



*Limited-time offer for new residential subscribers who purchase a DIRECTV System by 4/23/00, and subscribe to Total Choice® programming by 5/5/00. Limit one installation discount. Reg. \$199.99, with purchase of single-LNB system. Taxes not included. Complex installations may result in additional fees. Programming, pricing, terms and conditions subject to change. Hardware and programming sold separately.

WILSON APPLIANCE 117 Main St. • Muleshoe 272-5532

Sadler's ChemDry Carpet Cleaning 385-6591

CASKETS AND MONUMENTS "SAVE HUNDREDS OF DOLLARS!" FREE DELIVERY to your funeral home of choice within 100 miles of Hereford. 337 N. MILES HEREFORD, TX 363-2700

Texans ID military's No. 1 task

As has been the case in the past, responses to my December newspaper questionnaires proved that Texans offer great insight into our country's most pressing questions. I always look forward to reading your comments.

One set of questions had to do with one of the bedrock functions of government, to "provide for the common defense," as the U.S. Constitution succinctly puts it.

I asked you to identify which is most important, 1) for the United States to participate in more peacekeeping missions, or 2) to keep our troops' combat edge sharp or 3) to urge our allies to handle more peacekeeping duties.

The replies I received indicate that 47 percent of you believe guarding our forces' combat edge to be the most important, followed by 45 percent who thought it most important to urge our allies to handle more of the world's peacekeeping duties. Only 8 percent answered that peacekeeping missions should be our country's first defense priority.

I also asked what you believe to be the most important foreign or national security matter now facing the United States, and by far the greatest majority identified protecting our country from terrorism, followed closely by controlling our borders and keeping (or reclaiming) the Panama Canal.

A great many of you identified China as our greatest national security problem. What follows are some of your answers and comments:

- **From Tomball** — "We need to build the strongest military in the world and attract the best to serve in it with better pay."
- **Denton** — "The over-extending of our military personnel on peacekeeping missions is the single greatest threat to this country."
- **Seguin** — "The things we need to worry the most about are terrorism within our own borders, and



drug pushers."

- **San Antonio** — "Our military is being weakened. It is not a social club, and the governing of it has to be different from the way civilian life is conducted. We will be in serious trouble if we do not act to maintain a strong military and set the highest standards."
- **Georgetown** — "We are threatened by the indifference (or lip service) of our allies to the need to hold rogue nations in check."
- **Bayshore** — "I am most concerned about giving away the Panama Canal and China's growing influence in the region, so close to our shores."
- **Cleburne** — "We must not jump into every 'humanitarian' crisis. There has got to be a better way to handle things. We cannot continue to commit troops and money to every hot spot in the world."
- **Trenton** — "We should withdraw from the United Nations before we lose our sovereignty and our freedom."
- **Waco** — "Bring all the troops home and then re-think the way we do these things."
- **Port Arthur** — "Chemical warfare and terrorism lead the list. Why don't we train other countries to respond the way we do to these humanitarian disasters?"
- **Bonham** — "The most important things is to keep our troops combat ready."
- **Temple** — "I am very concerned about the internal security of our technology. China has already

done a great deal of damage and stolen information that can be used against us. Shame on those who allowed this to happen on their watch."

- **Dripping Springs** — "We should be rebuilding our military strength both in manpower, in moving forward with a missile defense, developing new defense technologies and weapons."

- **Austin** — "We need to find a better way to deal with Third World countries and encourage the growth of their economies, so their people won't all move here."

Texans' basic common sense has got it right. The growing number of peacekeeping missions are contributing to a downward spiral of military readiness, causing recruitment and retention problems and costing money we don't have budgeted.

More often than not, our allies are as well-suited to such missions as we are. We should focus U.S. resources on other priorities, which our allies share but for which they lack the unique capabilities that the U.S. alone has.

It is not in our allies' long-term interest for U.S. forces to be tied down on peacekeeping missions that could cause us to lose sight of the global security threats only we have the power to stop.

As a superpower, the United States must draw distinctions between the essential and the important or we risk dissipating our resources and being unable to handle either.

Herbicide Offers Consistent Grass Control Year After Year

Sometimes it is tempting to wait and treat weeds and grasses late in the season after others have emerged. That way, you could get them all in one shot, right? Wrong. The early ones are now too tall for effective treatment and your strategy has backfired. Plus, competition with weeds during the crop's crucial, early stages can rob yields before you realize there is a problem.

Early application of an effective post-emergence herbicide allows you to treat immature weeds, further protecting the yield and quality of your crop.

The ideal post-emergence herbicide should:

- provide excellent control of annual and perennial grass species
- allow growers to create their own weed control program with tankmix flexibility
- be rainfall within hours of application
- work in any and all tillage programs.

For years, FUSILADE® DX* herbicide has been one of the most popular post-emergence treatments for controlling rhizome johnsongrass and other tough perennial and annual grasses in cotton and soybeans.

Fusilade DX controls grasses by translocating through surface tissues and traveling to the growing points in the stems and roots, where it stops growth within hours. To use Fusilade DX effectively, apply to johnsongrass before it reaches the top of your boots, or about 8 inches high. Target annuals when they're toe-high.

This herbicide's flexibility allows you to broadcast, band and direct or spot spray in any tillage system. Also, Fusilade DX easily tank mixes at a variety of rates with other herbicides for expanded control. In cotton, tank mix Fusilade DX with insecticides for timely, convenient insect control.

For the best control of grasses and weeds in cotton and soybeans year after year, count on Fusilade DX. Contact your local ag chem retailer for more information about Fusilade DX by Zeneca Ag Products.



Connie Banks

ZENECA
Ag Products

©2000 Zeneca Ag Products Inc. FUSILADE® DX* is a registered trademark of a Zeneca company. Farm Safety Always read and follow label directions.

zenecaagproducts.com

Subscribe today!

NOTICE OF PROPOSED INCREASE IN ENVIRONS GAS RATES AND SERVICE CHARGES

On March 8, 2000 Energas Company filed a statement of intent with the Railroad Commission of Texas to increase its gas rates in the unincorporated areas ("Environs") surrounding the sixty-seven West Texas Cities listed below. The proposed increase would affect all classes of environs tariff customers including Residential, Commercial, Public Authority, Small Industrial and Air Conditioning customers and would be identical in relative magnitude to those proposed by the Company for the sixty-seven West Texas cities in the Company's pending Appeal at the Railroad Commission. The proposed effective date for the increase is April 27, 2000. The Railroad Commission may delay the proposed effective date for up to 150 days. However, the environs rates will not be changed until the rates inside the sixty-seven West Texas Cities are changed. There are approximately 22,275 Environs customers in the unincorporated areas surrounding the sixty-seven West Texas Cities from which the Company has appealed to the Railroad Commission. The proposed changes in environs rates are expected to increase the Company's annual revenues by approximately \$1.0 million or 8.5%, adjusted for normal weather. The change is a "major change" under state law only in the environs of Lubbock and Odessa.

Energas proposes to restructure its gas rates to moderate bill variability during the heating season, to increase its revenues from gas service by increasing the customer charges and lower pricing blocks, and to increase its charges for miscellaneous services such as reconnecting gas services following nonpayment. The Company also proposes changes to its Gas Cost Adjustment ("GCA") Clause to collect all of the gas cost and related taxes instead of just the difference between actual gas cost and a base cost of gas in the base rates. Copies of the proposal may be obtained at the Energas Office at 5110 80th, Lubbock, Texas, 79424.

Customers who are affected by the proposed environs rate changes may, within 30 days following the proposed effective date, file written comments or a protest with:

Docket Services Section
Legal Division (Re: Docket No. 9002-9068)
Railroad Commission of Texas
P.O. Box 12967
Austin Texas 78711-2967

Any such protest must be received by the Commission no later than May 27, 2000. The deadline to file a petition to intervene in the case as a party is May 27, 2000.

Abernathy	Lamesa	Quitaque
Amherst	Levelland	Ralls
Anton	Littlefield	Ransom Canyon
Big Spring	Lockney	Ropesville
Evovina	Lorenzo	Seagraves
Brownfield	Los Ybanez	Seminole
Buffalo Springs Lake	Lubbock*	Shallowater
Canyon	Meadow	Silverton
Coahoma	Midland	Slaton
Crosbyton	Muleshoe	Smyer
Dimmitt	Nazareth	Springlake
Earth	New Deal	Stanton
Edmonson	New Home	Sudan
Floydada	Odessa*	Tahoka
Forsan	O'Donnell	Timbercreek Canyon
Friona	Olton	Tulia
Hale Center	Opdyke West	Turkey
Happy	Pallsades	Vega
Hart	Pampa	Weilman
Hereford	Panhandle	Wilson
Idalou	Petersburg	Wolforth
Kress	Plainview	
Lake Tanglewood	Post	

Big. Bigger. Biggest.

Introducing three new rate plans:

Digital 300
300 minutes only \$34.95/month.

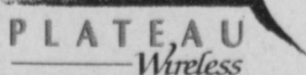
Digital 600
600 minutes only \$64.95/month.

Digital Area 1000
1000 minutes only \$89.95/month.

It doesn't get any better than this.

Plateau Wireless. People you know, communications you trust.

Call toll-free: **1-877-PLATEAU**
(752-8328)



CLWIS Plateau Telecommunications 625 Main (505) 389-1234	BOVINA Kevin's Auto 105 Gardner (806) 238-1889	BROWNFIELD ENMR-Plateau 200 Ave. A (806) 837-8232	FRONIA NT Services/ Doug Baker S. Hwy. 310 (806) 364-7311	LEWELLAND Plateau Wireless 701 College Ave. (806) 636-1400	Lombard Communications 215 Cactus (806) 884-8881	Lubbock Communications 1819 N. University (806) 774-2928	Wilson Appliance 117 Main St. (806) 272-5532	Cartwright Cellular 2315 W. 9th St. (806) 296-6368
DEL CITY Delcom, Inc. 615 S. Main (915) 964-2402	FARWELL Telecommunications 455 Lubbock Rd. (806) 481-3800	HERSFORD NT Services/ Doug Baker S. Hwy. 310 (806) 364-7311	LEWELLAND Plateau Wireless 701 College Ave. (806) 636-1400	MOLAND The Telephone Store 4010 N. Mackay Rd. Ste. C1 (915) 689-9885	MONAHANS Plateau Telecommunications 131 S. Betty (915) 943-3266	MORTON Farm Equipment Co. Levelland Hwy. (806) 286-5517	ODessa John Henderson 312 Ave D (915) 362-3003	SANDERSON Dudley Motors 214 Oak (915) 345-2903
ALPINE Morrison True Value Hardware 301 N. 5th (915) 837-2061	EL PASO Plateau Telecommunications 625 Main (505) 389-1234	HEWLETT Kornel Electronics 511 N. Pflug (915) 586-2345	LEWELLAND Plateau Wireless 701 College Ave. (806) 636-1400	MOOREHEAD Radio Shack 801 1st Ave. (806) 365-3422	MULVANEY Telecommunications 113 S. Betty (915) 943-3266	MULESHOE Five Area Telephone Coop 327 Avila (806) 272-5533	PLAINVIEW Two Way Radio & Paging 404 Columbia (806) 286-9272	SAN ANGELO Western Communications 3562 Knickerbocker Rd. (915) 949-3000
AMARILLO AerLife Auto Rental 504 E. Hubbard Ave. (915) 837-3463	EL PASO Plateau Telecommunications 625 Main (505) 389-1234	KEITH Kornel Electronics 511 N. Pflug (915) 586-2345	LEWELLAND Plateau Wireless 701 College Ave. (806) 636-1400	MOOREHEAD Radio Shack 801 1st Ave. (806) 365-3422	MULVANEY Telecommunications 113 S. Betty (915) 943-3266	MULESHOE Five Area Telephone Coop 327 Avila (806) 272-5533	PLAINVIEW Two Way Radio & Paging 404 Columbia (806) 286-9272	SAN ANGELO Western Communications 3562 Knickerbocker Rd. (915) 949-3000
AMARILLO AerLife Auto Rental 504 E. Hubbard Ave. (915) 837-3463	EL PASO Plateau Telecommunications 625 Main (505) 389-1234	KEITH Kornel Electronics 511 N. Pflug (915) 586-2345	LEWELLAND Plateau Wireless 701 College Ave. (806) 636-1400	MOOREHEAD Radio Shack 801 1st Ave. (806) 365-3422	MULVANEY Telecommunications 113 S. Betty (915) 943-3266	MULESHOE Five Area Telephone Coop 327 Avila (806) 272-5533	PLAINVIEW Two Way Radio & Paging 404 Columbia (806) 286-9272	SAN ANGELO Western Communications 3562 Knickerbocker Rd. (915) 949-3000
AMARILLO AerLife Auto Rental 504 E. Hubbard Ave. (915) 837-3463	EL PASO Plateau Telecommunications 625 Main (505) 389-1234	KEITH Kornel Electronics 511 N. Pflug (915) 586-2345	LEWELLAND Plateau Wireless 701 College Ave. (806) 636-1400	MOOREHEAD Radio Shack 801 1st Ave. (806) 365-3422	MULVANEY Telecommunications 113 S. Betty (915) 943-3266	MULESHOE Five Area Telephone Coop 327 Avila (806) 272-5533	PLAINVIEW Two Way Radio & Paging 404 Columbia (806) 286-9272	SAN ANGELO Western Communications 3562 Knickerbocker Rd. (915) 949-3000

HURRY! APRIL 15TH is the LAST DAY to take advantage of...

5.9% APR Financing on all used cars and trucks during Bender's Anniversary Sale!!

and - if you're looking for GREAT GAS MILEAGE we have 20 different cars that get... **30-47** MPG Highway

47 MPG Chevy Metro	43 MPG Honda Civic EX	39 MPG Nissan Sentra	37 MPG Codge Stratus	37 MPG Chevy Prizm	32 MPG Dodge Avenger
31 MPG Chrysler Sobrieng	31 MPG Honda Accord	30 MPG Olds Cutlass	30 MPG Chevy Camaro	30 MPG Nissan Altima	30 MPG Olds Alero
30 MPG Plymouth Breeze	30 MPG Chevy Monte Carlo	30 MPG Chrysler Concord	30 MPG Chevy Malibu	30 MPG Olds Intrigue	30 MPG Dodge Intrepid

\$100 Gasoline with each car or truck purchase! **\$3000** In Savings Bonds to be given away on April 15th!

Get Low Monthly Payments & High Gas Mileage!!!

BENDER'S FAMILY OF DEALERSHIPS

CHRYSLER-PLYMOUTH-DODGE Chrysler Plymouth Dodge	HONDA-NISSAN HONDA NISSAN	CHEVROLET-OLDSMOBILE-CADILLAC Chevrolet Oldsmobile Cadillac
---	-------------------------------------	---

3400 MABRY DR. 1-800-466-4513 • 762-4511
3000 MABRY DR. 1-888-968-3702 • 762-3701
2500 MABRY DR. 1-800-530-8842 • 763-4465

Scientists working against food-borne illness

SPECIAL TO THE JOURNAL COLLEGE STATION — Food safety is what has been cooking in the United States in the 20th century, and researchers of the 21st century should be pro-active in finding the causes and develop prevention strategies to minimize further food-borne illness outbreaks, according to the director of the Center for Food Safety at Texas A&M University.

"Food safety has exploded as an issue in the United States and the world," said Dr. Elsa Murano.

In the last 100 years, food safety has made excellent progress with advances. Those include sanitation and hygiene, food processing and physical treatments such as heat and irradiation, advances in microbiology, and better detection methods and treatment of food-borne illnesses.

At the beginning of the 1900s, diarrheal illness such as that caused by contaminated food was the third-leading cause of death in the United States. Now,

it's not even among the top 10 causes, she said.

However, in 1998 there were an estimated 76 million cases of food-borne illnesses and 5,194 deaths in the United States.

"Five-thousand deaths is not acceptable," she said. "Consuming food for your benefit should not be considered a risky practice."

More than \$37 billion is spent annually in this nation in medical costs and time lost from work because of food-borne illnesses, she added.

Certain production practices — such as using non-composted material as fertilizer — at the farm level can contribute to food-borne illnesses.

Also contributing to the number of cases in the United States is an increase in the number of people who are immuno-compromised — the very old and the very young.

The centralized food industry in the United States allows large outbreaks, she said. The trend toward all-natural, minimally processed food promotes

outbreaks.

"Unfortunately, bacteria and parasites are all natural and organic as well," Murano said.

Outbreaks can occur more frequently due to Americans' reliance on out-of-home food processing. On the average, we spend 15 cents per dollar

on food; 7 cents of that is spent outside the home, she said.

An increase in international trade could influence the emergence of Third World diseases among Americans.

Genetic exchange of virulent factors could encourage food-borne illness. In other words, "We're getting new pathogens," she said.

Additionally, new pathogens with special abilities defy traditional scientific beliefs as to what restricts growth; some grow even at refrigerated temperatures.

New pathogens resistant to antibiotics and to processing treatments also are emerging, she said. A proactive effort from the farm to the consumer level is imperative, Murano added.

Several avenues researchers can take include:

- Research into the risk factors at each stage of production, processing, distribution, retail and preparation to minimize human pathogens;

- Developing and testing of decontamination strategies such as applying irradiation;

- Learning more about the behavior of food-borne pathogens in different environments; and

- Getting involved in educating consumers and the food industry about food safety, in cooperation with other agencies like the Texas Department of Health.

Finally, she urged, everyone involved in food preparation should remember the "three C's":

- Cook food to the necessary temperature and thoroughly to destroy food-borne pathogens;

- Cool food as quickly as possible and keep it at the desired temperatures during storage; and

- Clean food preparation areas thoroughly.

I really appreciate my many friends and the great job my family did on my birthday party. The many cards and calls I received made me thankful for each one of you!
God bless each and everyone.
Ada Murrah

¡Se Habla Español! **While You Wait**

LOANS
\$100 to \$467
CREDIT STARTER LOANS

CONTINENTAL CREDIT

206 S. Main St. in Muleshoe

Mon.-Thurs. 8:30 a.m. to 5:30 p.m.
Fri.-8:30 a.m. to 6 p.m.

Phone Applications Accepted **272-3673**

Read It First In The Journal!

HONOR ROLL

THREWAY SCHOOL Fifth Six Weeks All 'A'	Tiffany Davis Colton Heinrich Alberto Vironche
Grade 2 Angelica Salamanca	Grade 5 Lorenzo López
Grade 3 Shaelynn Cannon Brittany Cuellar	Grade 6 Nathan James Lauren Layton Antonio Vironche
Grade 4 Cence Hood Cassie Kirby	Grade 7 Norma Baeza Rigo Rodríguez
Grade 6 Caleb Heinrich Trevor Hood Cody Kirb	Grade 8 Kayte Cook Landon Gray
Grade 8 Kaylie James	Grade 9 Sammy Castillo Ashley Layton Julie Salamanca
Grade 9 Monica Walker	Grade 10 Alma Castillo Robert Rodríguez
Grade 12 Alberto Valderas	Grade 11 Ernesto Navarro Michael Soliz April Webb
'A' Average	Grade 12 Beatriz Baeza Monty Kirby Scott Pollard Daniel Reeves Patty Rodríguez Rosa Soliz
Grade 1 Marlene Cantu Enrique García	
Grade 2 Stephanie Kirby Roberto Martha Pricilla Pérez	
Grade 4 Andrew Campos	

GREAT PRE-EASTER SAVINGS START FRIDAY, APRIL 14!

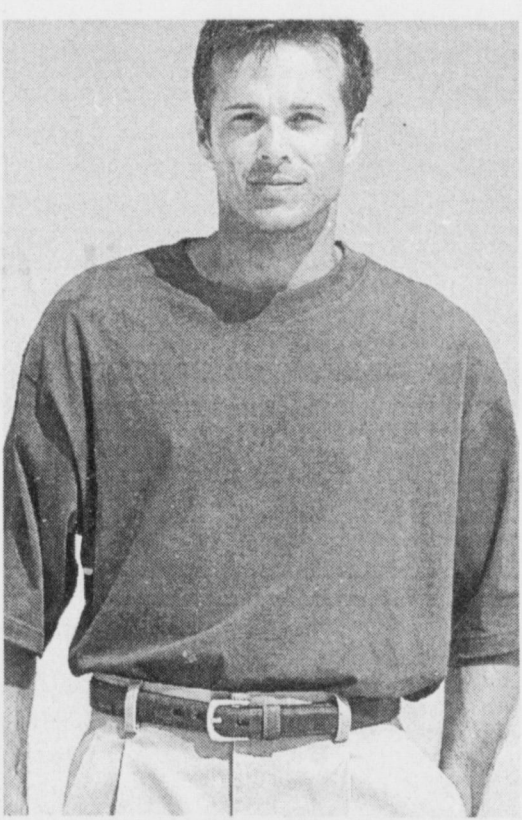
Spring Sale!



25% OFF
Dresses, Suitings, Pantsuits
Misses' spring styles. Reg. 52.00-104.00,
SALE 39.00-78.00.



9.99-17.99
Misses' Spring Knit Tops
Choose from a variety of styles in stripes
and solids. Reg. 14.00-24.00.



8.99-23.99
Men's Sun River® Collection
Sun River Essentials® shirts; Sun River Khakis®
pants and shorts. Reg. 12.00-32.00.

MISSES' SHOES/ACCESSORIES MEN'S/YOUNG MEN'S

25% OFF
Linen-look Separates
By Sag Harbor® and Requirements®.
Reg. 40.00-48.00, SALE 30.00-36.00.

BUY-1, GET-1 50% OFF
Entire Stock Shoes
For men, women & children!
Discounted pair must be of equal or lesser value.

SALE! 31.99
Men's Dockers® Classic-Fit Pants
Wrinkle-free khakis, several colors. Reg. 48.00.

25% OFF
Juniors' & Misses' Swimwear
Reg. 32.00-84.00, SALE 24.00-63.00.

60% OFF
Entire Stock Fine Jewelry
Reg. 35.00-175.00, SALE 12.99-69.99.

SALE! 29.99
Levi's® Red Tab™ Jeans & Shorts
550" relaxed fit stonewash jeans or 595" baggy
stonewash shorts. Reg. 35.00.

25% OFF
STG Studio® Stretch Separates
Reg. 34.00, SALE 25.50.

25% OFF
Straw & Crochet Handbags
By Rebecca Malone® & Del Mano®.
Reg. 18.00-25.00, SALE 13.50-18.75.

SALE! 19.99
Young Men's Shorts
Cotton and nylon styles. Reg. 26.00.

JUNIORS'

SALE! 19.99-29.99
Casual Dresses
In stretch denim, border print, plaid
and patterned styles. Reg. 25.00-40.00.

COUPON GOOD FRIDAY THRU SUNDAY ONLY!

EXTRA 10% OFF
ANY SINGLE SALE ITEM*

COUPON VALID APRIL 14-16. *Excludes regular-priced and all permanently-reduced red, green, yellow-ticketed clearance items, cosmetics, fragrances, Levi's®, Dockers®, shoes by Dr. Martens®, Easy Spirit®, Nine West®, Kenneth Cole Reaction® and Nike, and designer collections. Coupon not valid on gift certificates or payment on account; must be relinquished at time of purchase; cannot be combined with any other coupon or private savings offer.

CHILDREN'S

25% OFF
Entire Stock Children's Playsets
Reg. 14.00-28.00, SALE 10.50-21.00.

25% OFF
Girls' Spring Dresses
Girls' 2T-16. Reg. 24.00-40.00,
SALE 17.99-29.99.

Just a sample of the savings you will find. Interim markdowns may have been taken. Selections vary by store. Entire stocks only where indicated.



BEALLS

For the store nearest you, call 1-800-324-1313 or log on at www.beallstores.com

NEW LOOK - SAME GREAT TASTE!

CELEBRATION!

Join us in celebrating Daily Food Specials & Prizes Monday April 10th thru Saturday, April 15th

MONDAY - Buy One Get One Corn Dogs & Burritos
TUESDAY - 99¢ Single Burgers
WEDNESDAY - Buy One Get One Extra Long Coney
THURSDAY - Buy One Get One Steak Sandwiches
FRIDAY - Buy One Get One Fish or Chicken Sandwiches
SATURDAY ALL DAY HAPPY HOUR BUY ONE GET ONE DRINKS
89¢ Single Burgers, 49¢ Fries or Tots, \$1.49 Wacky Pack Kid Meals

REGISTER TO WIN THURSDAY - \$50 Gift Certificate

Joe's Boot Shop: FRIDAY - Mt. Bike: SATURDAY - BBQ Grill

1633 American Blvd. MULESHOE • 272-3998

Return entry to carhop. Winners will be notified by phone.

Name: _____
Address: _____
City: _____ ZIP: _____
Phone: _____

SONIC
America's Drive-In.

Electronic filing gets green light

AUSTIN — Attorney General John Cornyn issued an opinion March 17 on a new law requiring candidates for statewide and legislative offices to file electronically with the Texas Ethics Commission.

Under the law, each candidate will file a list of their campaign donors' names, addresses and amounts of political donations, and the Ethics Commission will post those filings on the Internet in beginning in July.

Cornyn said the street address or post office box of each donor will be deleted before being made available electronically.

The deleted information will be available to the public on paper only at the Ethics Commission offices in Austin.

Dewhurst halts pipeline

Texas Land Commissioner David Dewhurst said last week he will not sign easements required for a company to operate a 50-year-old gasoline pipeline that crosses eight counties and six riverbeds.

In rejecting Longhorn Pipeline Partners' request for easements, Dewhurst said he is not convinced the U.S. Department of Transportation has done a thorough enough job of investigating the health and safety ramifications of shipping jet fuel and gasoline through neighborhoods and schoolyards.

"I saw with my own eyes how close this pipeline comes to



schools, churches and homes," Dewhurst said.

"I come from the oil and gas industry and I can say without hesitation that not enough objective study has been done to secure the safety of this pipeline."

The pipeline crosses Austin, Bastrop, Blanco, Fayette, Kimble, Reeves, Waller and Ward counties.

Tobacco law unaffected

In a ruling last week, the U.S. Supreme Court nullified Food and Drug Administration regulations that prohibit tobacco sales to anyone under 18, require photo identification of all tobacco purchasers under age 27 and restrict vending machine cigarette sales to adults-only locations.

Texas Health Commissioner Reyn Archer said the ruling does not apply to Texas law governing the sale of tobacco to minors. He said, however, the Texas Department of Health had received instructions from FDA to stop

conducting FDA-sponsored retailer compliance checks, or stings.

The department received \$277,000 from FDA this year to conduct inspections of retail outlets throughout the state to determine if stores were complying with the regulations.

Charter schools studied

A study by the University of Texas at Arlington, University of North Texas, University of Houston and the Texas Center of Educational Research shows more than half of the teachers in independent charter schools in Texas are not state-certified.

The study focused on 89 of the 168 state-approved charter schools in operation during the 1998-99 school year in Texas. Those schools had a total enrollment of 17,616.

Other findings:

- Charter schools have larger classes than public schools and a higher proportion of minority students;

- Students enrolled at charter schools like them better than public schools and believe they get more attention from their teachers;

- Charter school teachers in Texas have an average six years of experience — or about half that of public school teachers; and

- Charter school teachers are paid an average \$7,500 a year less than public school teachers.



Muleshoe Cattle Market

SATURDAY, APRIL 8, 2000

REPRESENTATIVE SALES

1268 head of cattle, 183 hogs and 444 sheep and goats for a total of 1,895 animals were sold at the April 8 sale. Market fully steady on all classes of cattle, with stocker heifers selling 2-3 dollars higher. We had an excellent set of cattle to offer this week, which made for a good sale & market.

The Muleshoe Cattle Market is brought to you each week by Muleshoe Livestock Auction, located east of Muleshoe on U.S. 84. Muleshoe Livestock conducts sales every Saturday, beginning with hogs, sheep and goats at 10 a.m. and cattle following at approximately 12 noon.

FOR INFORMATION ON SALES OR TO CONSIGN CATTLE, CALL (806) 272-4201

Seller, City	#	Type	Wt.	CWT or PH
Vicki Heppard, Amarillo	4	Hol. Strs	189 lbs.	at \$112.00
Carmello Rodriguez, Albuquerque	11	Hol. Strs	305 lbs.	at \$101.00
Israel Azua, Sudan	145	Char. Bull	145 lbs.	at \$260.00
Pat Newsom, Sudan	230	Red Bull	230 lbs.	at \$130.00
Randy Floyd, Seagraves	320	Blk. Str	320 lbs.	at \$124.00
J.R. Rodriguez, Sudan	365	Red Str	365 lbs.	at \$115.00
Derrel Mason, Muleshoe	383	Red Str	383 lbs.	at \$110.00
ACU, Morton	465	BMF Str	465 lbs.	at \$115.00
S&S, Littlefield	493	Mxd. Bulls	493 lbs.	at \$108.00
Dennis Brown, Morton	490	5 Mxd. Bulls	490 lbs.	at \$115.00
Tommy Lewis, Morton	485	Blk. Bull	485 lbs.	at \$150.00
Tommy Lewis, Morton	500	2 Mxd. Bulls	500 lbs.	at \$105.00
Donnie Baker, Morton	590	4 Mxd. Strs	590 lbs.	at \$98.00
Donnie Baker, Morton	602	3 Red Strs	602 lbs.	at \$95.00
B&H Cattle, Seminole	677	6 Mxd. Strs	677 lbs.	at \$87.50
Eddie Mardis, Muleshoe	761	7 Mxd. Strs	761 lbs.	at \$83.00
Tommy Lewis, Morton	300	Blk. Hfr	300 lbs.	at \$114.00
Dennis Brown, Morton	380	Blk. Hfr	380 lbs.	at \$104.00
J.R. Rodriguez, Sudan	408	4 Mxd. Hfrs	408 lbs.	at \$109.00
Lashea Mason, Muleshoe	420	Red Hfr	420 lbs.	at \$107.00
Rocking B, Inc., Sudan	473	3 Blk. Hfrs	473 lbs.	at \$103.00
Lee Roy Fulford, Lubbock	510	BMF Hfr	510 lbs.	at \$96.00
Heathington Farms, Muleshoe	520	3 Blk. Hfrs	520 lbs.	at \$99.00
Steve Kennedy, Muleshoe	555	Blk. Hfr	555 lbs.	at \$95.00
Alex Aguirre, Muleshoe	580	Blk. Hfr	580 lbs.	at \$93.50
Blair & Blair, Plains	630	Red Hfr	630 lbs.	at \$83.00
John Marr, Friona	793	4 Char. Hfrs	793 lbs.	at \$73.75
Tommy Lewis, Morton	17	Blk. Pairs		\$1110.00
Tommy Lewis, Morton	5	Blk. Pairs		\$1120.00
Tommy Lewis, Morton	4	Char. Pairs		\$1090.00
Tommy Lewis, Morton	7	Blk. Cows P		\$660.00
S&S, Littlefield		Char. Pair		\$900.00
Jose Saenz, Whiteface	2	Char. Pairs		\$910.00
Lewis Bros., Muleshoe	2	Mxd. Cows P8		\$770.00
Lupe Cisneros, Earth		Hol. Cow P		\$740.00
Royce Blair, Plains		Red Cow P6		\$510.00
FM Farms, Brownfield	2	BMF Cows P8		\$700.00
Randy Floyd, Seagraves		Red Cow	1410 lbs.	at \$44.00
Rocking B, Inc., Sudan		Red Cow	980 lbs.	at \$44.25
Brett Mimms, Friona		Blk. Cow	1315 lbs.	at \$42.00
Alan James, Littlefield		RMF Cow	1330 lbs.	at \$43.25
4B Livestock, Muleshoe		Char. Cow	1495 lbs.	at \$41.50
Brian Boehning, Earth		Hol. Cow	1530 lbs.	at \$41.25
Travis Bessire, Muleshoe		Red Cow	1570 lbs.	at \$42.25
A&B Cattle, Muleshoe		Red Cow	1065 lbs.	at \$45.00
Lloyd Williams, Muleshoe		Blk. Cow	1625 lbs.	at \$46.00
Lloyd Williams, Muleshoe		Limo. Bull	1810 lbs.	at \$57.50

Journal Classifieds

STOP & SHOP

Deadlines are 5 p.m. Monday and Thursday

Call 272-4536

Deadlines are 5 p.m. Monday and Thursday

<p>HELP WANTED</p> <p>Summer Babysitting Wanted full or part time Call Andi Black 272-5209</p>	<p>HELP WANTED</p> <p>Headquarters Antiques and Crafts is needing part-time help 1 to 3 days a week. Call 272-5209</p>	<p>FOR SALE</p> <p>BUYING? SELLING? www.iwantacar.com We can help!</p>	<p>REAL ESTATE</p> <p>House for Sale By Owner 3-2, Carport. Lg. storage & apt. bldg., brick veneer, fenced & cable hook-ups. N 214 on pavement. Call 272-5865, mornings.</p>	<p>FOR RENT - CONDO</p> <p>Ruidoso Condo 3 Bedroom 3 Bath Sleeps 8 Call Debbie at (505) 420-6700 or (806) 285-3053</p>	<p>REAL ESTATE</p> <p>For Sale 2 Bedroom, 2 bath 2 car garage 505 E. Chicago Day: (806) 354-5290 Night: (806) 467-1886 Financing Available</p>	<p>REAL ESTATE</p> <p>Home For Sale Excellent condition updated Brick Home For Sale in Country Club edition 3-2-2, corner lot, storage shed, Geo-Thermal Heating and Cooling, Plantation Shutters, new fence, sprinkler system. Call 806-272-5274 806-783-9307</p>	<p>REAL ESTATE</p> <p>First Texas Ag Credit Long & Short-Term Financing Rural Housing Operating & Improvements AgFAST Credit Approval Cash Percentage Program Low Stock Requirement 2% to \$3,000 Maximum Equipment Leasing 316 South Main Muleshoe, Texas 806-272-3010</p>
<p>HELP WANTED</p> <p>Buckner Children and Family Services of Lubbock has a full time position available for a Case-aide to provide Homemaker services to families with children at risk. Experience required, bilingual preferred. To be offered in Littlefield, please apply in person at 129 Brentwood Ave., Lubbock, Tx</p>	<p>WANTED</p> <p>HEADQUARTERS ANTIQUES AND CRAFT MALL is opening soon in Muleshoe. Booth space available. No work day required. Call 272-5766 or 272-5209 for information.</p>	<p>1998 Ford Explorer, white - tan interior, power windows and locks. AM/FM/CD 20,000 miles asking \$22,000 Call 806-272-5209</p>	<p><i>If at first you don't succeed, try and try again!</i></p> <p> WELCOME to our SPRING HOME SHOW! Running in conjunction with the New Mexico Housing Association Home Show Register to win \$25,000⁰⁰ giveaway! \$1,000⁰⁰ Factory Incentive (Good thru 4-16-00 on top of '99 liquidation prices!) 99 Close Outs - Hurry! Won't Last Long! (5) 1999 Model Close Out Homes (7) New 2000 Model Homes (6) Pre-Owned Homes Ranging from \$3,000-\$50,000 400 sq. ft. to 1,750 sq. ft. LAND-HOME PACKAGES AVAILABLE SPECIAL HOME SHOW FINANCING TRADES WELCOME OPEN SUNDAY, APRIL 9 & APRIL 16 10 A.M. - 5 P.M. 1st CHOICE HOMES, Inc. 4100 Mabry Drive Clovis, NM 888-316-6111 • 505-763-1788 DL# 891</p>	<p>REAL ESTATE</p> <p>FORECLOSED HOMES. LOW or \$0 down! Gov't. and bank repos being sold now! Fantastic savings! Financing available. Local listings, 1-800-501-1777, ext. 299.</p>	<p>It's a Steal! 3 bdrm, open kitchen & dining, large corner lot. Near school. 272-3692</p>	<p>Have A Great Day!</p>	<p> Nieman Realty 116 E. Ave. C • George Nieman, Broker • 272-5285 or 272-5286</p>
<p>HELP WANTED</p> <p>The City of Muleshoe is taking applications for a worker in the street department. Equipment operator a plus. High school graduate/ GED required. Upon employment, subject may be required to pass a drug test. Applications can be picked up at: City Hall, 215 South First, Muleshoe, TX position open until filled. EOE, ADA</p>	<p>SERVICES</p> <p>We do custom farming, combining & shredding For more information- (806) 272-3090 or leave a message</p>	<p>3-Thread Overlock Serger Still in Box \$200 OBO Call 272-5209</p>	<p>5-Shelf Lawyer-style Bookcase with drop front glass \$200 OBO Call 272-5209</p>	<p>2-1-1 Home, Cent. A&H, DW, MORE!! \$29.5K!!! L-3</p> <p>2-1-1 Home, 2 wall furnace units, win. evap. air, fenced yd. \$22K!!! L-2</p> <p>NICE 3-2-2 Brick, Cent. Heat & Cent. Evap. air, built-ins, FP, fenced yd., stor. bldg.!!! \$40's!!! CC-1</p> <p>3-1-1 Home, wall heat, DW, fenced yd., \$20's!!! L-5</p> <p>2-1-1 Home, Cent. A&H, new carpet, 4 fans, manual spktr., stor. bldg., fenced yd. \$28K!!! L-1</p> <p>VERY NICE 3-2-1 Brick, Elec. Heat Pump, built-ins, fans, fence yd., MORE!!!! \$39K!!! L-4</p>	<p>VERY NICE 2-1-1 Carport home, nicely remodeled, Cent. Heat, DW, fans, fenced yd., stor. bldg. \$29.5K!!! HL-1</p> <p>PRICE REDUCED-3-2-2 Brick, corner lot, wall furnace heat, cent. evap. air, fenced yd., stor.-workshop!! MORE!!! \$49,500!!! HL-4</p>	<p>Established Business: Land, Bldg. & Equip., \$75K!!</p> <p>Nice Building with approximately 15,450 sq. ft. of shop area plus approx. 1,044 sq. ft. office (Dual Fuel Heat Pump for Office), 6 station phone system, restrooms (1 w/shower), loading dock, approx. 195 foot frontage. MORE !!!</p> <p>HIGH SCHOOL</p> <p>NICE 3-1-1 Brick, cent. heat, evap. air, DW, fans, fenced yd., workshop-storage, extra garage, MORE!!! \$38K!!! HS-6</p> <p>VERY NICE 3-1-1 Brick, Heat pump, DW, nice carpets, fenced yd., MORE!!! \$30's!!! HS-1</p> <p>NICE 3-2-1 Brick, Cent. A&H, built-ins, fenced yd., stor. bldg. Price Reduced! \$52K! HS-2</p> <p>VERY NICE 3-1-1 Home, Cent. A&H, nice carpets, six fans, 2 stor. bldgs., fenced yd., \$30's!!! HS-5</p> <p>VERY NICE 3-1-1 Brick, Cent. A&H, stove, DW, fenced yd., MORE!!! \$38K!!! HS-4</p> <p>3-2-2 Brick, Dual Fuel Heat Pump, built-ins, fans, storage bldg., fenced yd., MORE!!! \$60K!!! HS-7</p> <p>NICE 3-1-1 Home, Cent. Heat & Cent. Evap. Air, built-ins, stor. bldg., fenced yd., MORE!!! \$41.5K!!! HS8</p>	<p>RURAL</p> <p>PLEASANT VALLEY, Approx. 320 acres, 2 bdrm home, 1 bath, 2 car detached garage, on pavement!!!</p> <p>VERY NICE 4 bedrm., 2 bath, Brick Home on Hwy. 70, total elec., Geo Heat Pump, built-ins, FP, loads of storage, fenced yd., auto spktr., storage bldg. & shed, 2 acre tract. MORE!!!</p> <p>W. of SUDAN-NICE 3-3-2 Brick Home, 5 acre tract on Hwy. 298, Cent. Air & Heat, built-ins, large Quonset Barn, MORE!!!! \$95K!!!</p> <p>5 Acre tract on pavement close to town!</p> <p>Approx. 108 acres on Hwy. 70, approx. 2100' office area, 16,900' of commercial bldg. w/loading dock, 3,400' warehouse!! 2,800' runway!!</p> <p>FIX UP-3-2-2 Carport Home & 2-1-1 Home on 20 acre tract, 50' x 150' shed, 54' x 80' sheet metal barn, MORE!!! \$55K!!!</p> <p>EARTH - (Hite Park Add.), 3 bdrm. 2 bath!! Call for Details!!!</p>
<p>CNA'S NEEDED</p> <p>10 to 6 shift and PN position. Competitive wage, benefits and supportive team of professionals. Apply in FARWELL CONVALESCENT CENTER, 305 5th St. Farwell, TX (806) 481-9027. For TDD contact, use TX relay system for hearing impaired (800) 735-2988 to contact the Center phone # above. Random drug screening and physical test will be required. EOE</p>	<p>Garth Sheet Metal</p> <ul style="list-style-type: none"> * General Sheet Metal * Metal Roofs Irrigation * Motor Covers * Ornamental Iron Work <p>1024 W. 2nd Street Muleshoe, TX (806) 272-3337</p> <p>New Steel Building in Crate. 40X22 was \$5,800 now \$2,830. Must Sell!! 1-800-292-0111</p>	<p>2 - 1987 2 1/2 ton Chevy Trucks 24 foot box, 366, 5 speed. 1995 - Ford F150 Short wide bed. 1986 - Ford F250 Supercab 460, automatic. Call 272-53433 KC Mufflers or come by KC Mufflers</p>	<p>There's always tomorrow!</p>	<p>COMMERCIAL</p> <ul style="list-style-type: none"> Duplex (2-2 bdrm. 1 bath units) plus 1 (2 or 3 bdrm) for residence or rental. \$30K!!! R.V./Mobile Home Park on 2.95 acres, home, office, 3 M.H. units. LET'S LOOK TODAY!!! APPROX. 4,800' shop plus 600' office area on a 60' x 130' lot!!! PRICE REDUCE!! 40K!!! 246' x 145' tract, Hwy. 84, \$29.5K!!! VERY NICE 51 UNIT MOTEL, Priced to sell!!! Call for details!!! NICE 26 UNIT MOTEL, Priced to Sell!!! Call for details!!! 56' x 140' tract approx. 4700' bldg., \$35K!!! GOOD INCOME PROPERTY approx. 3490' bldg., paved parking. 	<p>VERY NICE 2-1-1 Home, Cent. A&H, DW, MORE!! \$29.5K!!! L-3</p> <p>2-1-1 Home, 2 wall furnace units, win. evap. air, fenced yd. \$22K!!! L-2</p> <p>NICE 3-2-2 Brick, Cent. Heat & Cent. Evap. air, built-ins, FP, fenced yd., stor. bldg.!!! \$40's!!! CC-1</p> <p>3-1-1 Home, wall heat, DW, fenced yd., \$20's!!! L-5</p> <p>2-1-1 Home, Cent. A&H, new carpet, 4 fans, manual spktr., stor. bldg., fenced yd. \$28K!!! L-1</p> <p>VERY NICE 3-2-1 Brick, Elec. Heat Pump, built-ins, fans, fence yd., MORE!!!! \$39K!!! L-4</p>	<p>Established Business: Land, Bldg. & Equip., \$75K!!</p> <p>Nice Building with approximately 15,450 sq. ft. of shop area plus approx. 1,044 sq. ft. office (Dual Fuel Heat Pump for Office), 6 station phone system, restrooms (1 w/shower), loading dock, approx. 195 foot frontage. MORE !!!</p> <p>HIGH SCHOOL</p> <p>NICE 3-1-1 Brick, cent. heat, evap. air, DW, fans, fenced yd., workshop-storage, extra garage, MORE!!! \$38K!!! HS-6</p> <p>VERY NICE 3-1-1 Brick, Heat pump, DW, nice carpets, fenced yd., MORE!!! \$30's!!! HS-1</p> <p>NICE 3-2-1 Brick, Cent. A&H, built-ins, fenced yd., stor. bldg. Price Reduced! \$52K! HS-2</p> <p>VERY NICE 3-1-1 Home, Cent. A&H, nice carpets, six fans, 2 stor. bldgs., fenced yd., \$30's!!! HS-5</p> <p>VERY NICE 3-1-1 Brick, Cent. A&H, stove, DW, fenced yd., MORE!!! \$38K!!! HS-4</p> <p>3-2-2 Brick, Dual Fuel Heat Pump, built-ins, fans, storage bldg., fenced yd., MORE!!! \$60K!!! HS-7</p> <p>NICE 3-1-1 Home, Cent. Heat & Cent. Evap. Air, built-ins, stor. bldg., fenced yd., MORE!!! \$41.5K!!! HS8</p>	<p>RURAL</p> <p>PLEASANT VALLEY, Approx. 320 acres, 2 bdrm home, 1 bath, 2 car detached garage, on pavement!!!</p> <p>VERY NICE 4 bedrm., 2 bath, Brick Home on Hwy. 70, total elec., Geo Heat Pump, built-ins, FP, loads of storage, fenced yd., auto spktr., storage bldg. & shed, 2 acre tract. MORE!!!</p> <p>W. of SUDAN-NICE 3-3-2 Brick Home, 5 acre tract on Hwy. 298, Cent. Air & Heat, built-ins, large Quonset Barn, MORE!!!! \$95K!!!</p> <p>5 Acre tract on pavement close to town!</p> <p>Approx. 108 acres on Hwy. 70, approx. 2100' office area, 16,900' of commercial bldg. w/loading dock, 3,400' warehouse!! 2,800' runway!!</p> <p>FIX UP-3-2-2 Carport Home & 2-1-1 Home on 20 acre tract, 50' x 150' shed, 54' x 80' sheet metal barn, MORE!!! \$55K!!!</p> <p>EARTH - (Hite Park Add.), 3 bdrm. 2 bath!! Call for Details!!!</p>

BARGAINS



PRICES EFFECTIVE APRIL 12-18, 2000

MEAT

- X-TRA SAVINGS PAK 73% LEAN
GROUND BEEF LB **97¢**
 RG'S
BEEF PATTIES 5 LB. BOX **\$3⁹⁹**
 X-TRA SAVINGS PAK
GROUND CHUCK LB **\$1⁵⁹**
 X-TRA SAVINGS PAK
GROUND ROUND LB **\$1⁷⁹**
 X-TRA SAVINGS PAK
ULTRA GROUND BEEF LB **\$1⁹⁹**
 THIN SLICED BEEF
SIRLOIN TIP STEAKS LB **\$1⁹⁹**
 X-TRA SAVINGS PAK
 BONE-IN
PORK STEAKS LB **\$1³⁹**
 GREAT FOR PORK ASADO/CARNE ADOVADA
PORK STEW MEAT LB **\$1⁶⁹**
 X-TRA SAVINGS PAK
**CHICKEN
 DRUMSTICKS
 OR THIGHS** LB **59¢**
 SMALL TAIL-ON
COOKED SHRIMP LB **\$6⁵⁹**
 DELICIOUS
SEAFOOD COMBO LB **\$3⁶⁹**
 GOOD FOR YOUR HEALTH
WHITING FILLETS LB **\$1⁶⁹**
 ECKRICH ASSTD. VARIETIES
SMOKED SAUSAGE 16 OZ. PKG **\$1⁹⁹**
 ECKRICH FAMILY PACK
**MEAT BOLOGNA
 OR COTTO SALAMI** 16 OZ. PKG **2/⁵³**
 ECKRICH
SMOKED SAUSAGE 3 LB. PKG **\$5⁵⁹**
 HONEY HAM, COOKED HAM, TURKEY
 BREAST, CHICKEN BREAST, HONEY
 TURKEY OR ROAST BEEF
**HEALTHY CHOICE
 LUNCHMEATS** 10 OZ. PKG **2/⁵⁵**
 SMOKED, OVEN ROASTED OR HONEY
BUTTERBALL TURKEY ... 16 OZ. PKG **2/⁵⁵**
 BUTTERBALL SLICED-N-SERVE BONELESS
TURKEY CHUBS LB **\$3⁹⁹**
 SWIFT PREMIUM BEEF OR PORK
BROWN 'N SERVE LINKS .. 7 OZ. PKG **89¢**
 SWIFT PREMIUM
SAUSAGE 'N BISCUITS 4 CT. PKG **99¢**
 BEEF OR CHICKEN
DELIMEX TAQUITOS 24 OZ. PKG **\$5⁹⁹**
 ECKRICH ASSTD. VARIETIES FUN KIT
LUNCH MAKERS 11.6-12.3 OZ. **\$1⁶⁹**
 EL HORNO
FLOUR TORTILLAS 12 CT. PKG **99¢**

- CLAUDE'S 12-16 OZ. BTL
**BRISKET SAUCE
 OR FAJITA
 MARINADE SAUCE** YOUR CHOICE **2/⁵³**
 ASSTD. FLAVORS
GATORADE DRINKS 32 OZ. BTL **99¢**
 GENERAL MILLS
WHEATIES CEREAL 18 OZ. BOX **2/⁵⁵**
 ANTI-BACTERIAL
LYSOL 29.3 OZ. BONUS SIZE **\$2¹⁹**
 RESOLVE 16 OZ. AEROSOL OR 17 OZ. TRIGGER
FABRIC REFRESHER ... YOUR CHOICE **\$2¹⁹**
 KRAFT ASSTD.
BARBECUE SAUCE 18 OZ. BTL **79¢**
 AMERICAN BEAUTY VERMICELLI,
 ELBO-RONI OR LONG/THIN SPAGHETTI
PASTA 24 OZ. PKG **99¢**
 HUNT'S ASSTD.
SPAGHETTI SAUCE 26-26.5 OZ. CAN **99¢**
 GERBER ASSTD.
1ST BABY FOOD 2.5 OZ. JAR **3/⁹⁹**
 LUVS ASSTD. 1-6 SIZE
DIAPERS 18 TO 40 CT. PKG. **\$4⁹⁹**
 BRAUNY WHITE OR PRINTS
PAPER TOWELS ROLL **88¢**
 LOWE'S ASSTD.
SOFT DRINKS 3 LITER BTL **88¢**
 ALL TYPES
PEPSI COLA 6 PK.-24 OZ. BTL **2/⁵⁵**

PRODUCE

- SEEDLESS
WHITE GRAPES LB **88¢**
 FRESH
GOLDEN CORN EARS **3/⁵¹**
 TANGY JUICY
LIMES **6/⁵¹**
 SWEET JUICY
CANTALOUPE EACH **99¢**
 NEW CROP
WHITE ONIONS LBS. **3/⁵¹**
 RED RIPE
ROMA TOMATOES LB **79¢**
 LARGE
EGGPLANT LB **69¢**
 MINI PEELED
CARROTS 1 LB. PKG **99¢**
 FRESH TENDER
ASPARAGUS LB **99¢**
 GARDEN FRESH
CILANTRO BUNCHES **4/⁵¹**

FROZEN & DAIRY

- FISHER BOY 16 OZ. STICKS OR
 12 OZ. PUB STYLE FILLETS
**FISH STICKS
 OR FILLETS** YOUR CHOICE **2/⁵⁵**
 RED BARON ASSTD.
BAKE TO RISE PIZZA 27-31 OZ. **\$3⁹⁹**
 VANILLA, NEAPOLITAN, MISS.
 MUD OR STRAWBERRY CHEESECAKE
**BLUE BUNNY
 ICE CREAM
 SANDWICHES** 10 OR 12 CT. PKG **2/⁵⁶**
 BLUE BUNNY ASSTD.
ICE CREAM & HI-LITE ... 1/2 GAL. SQ. **2/⁵⁵**
 SHREDDED HASHBROWNS,
 SOUTHERN HASHBROWNS OR
 POTATOES O'BRIEN
ORE-IDA POTATOES 24-32 OZ. PKG **\$1⁹⁹**
 ORE-IDA
CORN ON THE COB 4 CT. PKG **\$1²⁹**
 BIRDS EYE ASSTD.
VEGETABLE BLENDS 16 OZ. PKG **2/⁵³**
 DAISY ASSTD.
SOUR CREAM 16 OZ. CTN. **\$1²⁹**
 KRAFT
AMERICAN SINGLES 16 OZ. **\$2⁷⁹**
 KRAFT
VELVEETA 16 OZ. ASSTD. **\$2⁴⁹**
 PLAINS REGULAR OR NON-FAT
SOUR CREAM 16 OZ. **2/⁵³**
 ASSTD.
PLAINS MILK 1/2 GALLON **2/⁵³**
 TROPICANA ASSTD. PURE PREMIUM
ORANGE JUICE 64 OZ. CTN. **\$2⁹⁹**
 PILLSBURY HUNGRY JACK
BISCUITS 9.5-10 OZ. CAN **99¢**
 SHURFINE
MARGARINE QUARTERS 16 OZ. **2/⁵¹**
- CAMPBELL'S ASSTD.
CHUNKY SOUP 19 OZ. **3/⁵⁵**
 THICK AND TANGY
HEINZ 57 SAUCE 10 OZ. BTL **\$3⁴⁹**
 CHUNKS OR BITE SIZE
FIELD TRIAL DOG FOOD 17.6 LB **\$3⁹⁹**
 SPRAYWAY
GLASS CLEANER 19 OZ. CAN **\$1⁹⁹**
 ASSTD. HI-C 10 PACK
BLAST DRINKS 6.7 OZ. **\$1⁹⁹**

ALL TYPES PEPSI COLA



12 PACK
12 OZ.
CANS

\$2⁶⁹

HEALTH & BEAUTY

- SCOPE ORIGINAL OR PEPPERMINT
MOUTHWASH 8.4 OZ. **\$2²⁷**
 • 6.4 OZ. MULTI-FRESH • 6.2 OZ.
 EXTRA WHITE • 3.5 OZ. MULTI-WHITE
 • 5.2 OZ. MULTI-WHITE REFILL • 6.2 OZ.
 MULTI-WHITE FRESH
CREST TOOTHPASTE ... YOUR CHOICE **\$2²⁷**
 20 CT. GELCAPS OR 24 CT. PAIN
 RELIEF TABLETS/CAPLETS
ALEVE LB **\$2⁸⁷**
 ALBERTO V05 ASSTD.
**SHAMPOO OR
 CONDITIONER** 15 OZ. BTL. **77¢**
- SMICKER'S ASSTD. FLAVORS
ICE CREAM TOPPING 11-12 OZ. **2/⁵³**
 MONTELORES
PINTO BEANS 4 LB. BAG **\$1²⁹**
 HIDDEN VALLEY
SALAD DRESSING 16 OZ. BTL **\$1⁹⁷**
 LOWE'S
**HAMBURGER OR
 HOT DOG BUNS** 8 CT. PKG **59¢**
 LA MODERNA COOKIES/GALLETAS
ANIMALITOS 28 OZ. PKG **97¢**
 REED ASSTD.
RELIGIOUS CANDLES 7 DAY **77¢**
 PETER PAN ALL PURPOSE
FLOUR 25 LB. BAG **\$2⁹⁷**
 SNUGGLE
FABRIC SOFTENER 64 OZ. BTL **2/⁵⁵**
 TIDE ASSTD. 92-94 OZ. ULTRA 2
 POWDER OR 100 OZ. ULTRA LIQUID
LAUNDRY DETERGENT .. YOUR CHOICE **\$5⁹⁹**
 NABISCO ASSTD.
OREO COOKIES 20 OZ. PKG **2/⁵⁵**
 HONEY BOY
PINK SALMON 15 OZ. CAN **2/⁵³**
 DEL MONTE
TOMATO SAUCE 8 OZ. CAN **5/⁵¹**
 HORMEL REGULAR OR CHICKEN
VIENNA SAUSAGE 5 OZ. CAN **2/⁵¹**
 HORMEL
POTTED MEAT 3 OZ. CAN **3/⁹⁹**
 • FRUIT COCKTAIL • CHERRY MIXED
 FRUIT • PEACHES RASPBERRY FLAVOR
 • PEACHES YC SLICED • PEAR HALVES
DEL MONTE FRUIT 8-8.5 OZ. CAN **2/⁵¹**
 SMUCKER'S ASSTD.
**SIMPLY FRUIT
 SPREADABLE** 10 OZ. **\$1⁸⁹**
 LA MODERNA
MARIAS COOKIES 6.4 OZ. ROLL **3/⁹⁹**
 NESCAFE
CLASICO COFFEE 7 OZ. JAR **\$3⁹⁹**
 SWEETENER
NUTRASWEET 100 CT. PKG **\$1⁹⁹**
 NORTHERN WHITE/ULTRA 4 ROLL
BATH TISSUE DOUBLE ROLL **\$1⁹⁹**
 CHICKEN OF THE SEA WATER OR OIL PACK
CHUNK LIGHT TUNA 6 OZ. **2/⁵¹**
 FRITO LAY®
BEAN DIP 9 OZ. CAN **2/⁵⁴**
 PRE-PRICED \$3.29 ASSTD.
TOSTITOS® CORN CHIPS ... 14.5 OZ. **2/⁵⁵**
 COMSTOCK REG. APPLE
 OR REG./LIGHT CHERRY
PIE FILLING 20-21 OZ. CAN **2/⁵⁴**
 GEBHARDT
TAMALES 16 OZ. CAN **89¢**
 GEBHARDT REG. OR JALAPEÑO
REFRIED BEANS 15 OZ. CAN **2/⁵¹**
 VAN CAMP'S ASSTD. CHILEE OR BEANEE
BEANEE WEENEE 7.7-8 OZ. **79¢**

WESTERN UNION MONEY TRANSFERSM
 "The fastest way to send money"

Lowe's
 MARKETPLACE

401 W. American Blvd. Muleshoe 272-4585

AFFILIATED FOODS INC.
 MEMBER STORE
 AT PARTICIPATING STORES

WE RESERVE THE RIGHT
 TO LIMIT QUANTITIES
 IN TEXAS