

PAGE ONE

A QUICK READ OF THE NEWS

Boxers or briefs?

Malaysian authorities are searching for four men they say conduct break-ins clad only in their underwear.

Police have dubbed the group of four men the "Underwear Gang" and believe they are responsible for a spate of robberies in Malaysia.

The gang has broken into five bungalows and held up two kiosks where gasoline is sold, escaping with more than \$47,000 in cash and valuables.

"We believe the robbers are illegal Indonesian immigrants who are taking advantage of the festive season to rob," a police officer said, referring to the Muslim holy month of Ramadan.

Shirt tale ends in arrest

A fairly obvious clue led Columbus, Ohio, police to the suspected culprits in the theft of a college mascot's costume.

The Brutus the Buckeye costume for the Ohio State University mascot had been reported stolen, along with the car it was sitting inside.

When patrol officers spotted the stolen car behind a building near campus, they staked it out.

Two men approached the car early Thursday morning. One of them was wearing a striped, scarlet-and-gray shirt with "BRUTUS" in block letters on the front. That's the mascot's shirt.

"These were not exactly brilliant thieves," said Sgt. Earl Smith, spokesman for the division of police.



Drawing date: Saturday, Nov. 24
Winning numbers: 22-35-36-43-48-54
Estimated jackpot: \$6 million
Winners: 1 (Fort Worth)
Next drawing: Wednesday, Nov. 28
Estimated jackpot: \$4 million

On this date in history

Nov. 26 — The first Battle of Adobe Walls (1864), fought near the ruins of an old fort in the central Texas Panhandle, began the end of American Indian dominance in the region.

Also on Nov. 26 — Fort Richardson is established to help guard the Texas frontier (1867), on a tributary of the Trinity River near the present town of Jacksboro; it was used for 11 years.

LOCAL WEATHER

As of Tuesday, the National Weather Service was predicting that the area's freeze would thaw Thursday, with a high of about 41 — but windy, making it still feel colder. After that, mild weather should return, with highs around 60 Friday through Sunday. The forecast was calling for morning lows around freezing through Monday.

Editor Ronn Smith can be reached at 272-4536 or ctyankee@fivearea.com

Missed your paper? Call carrier Bobby Flores at 272-6719 or the Journal during business hours, 8:30 a.m.-5 p.m.

School district gets \$468,000 state grant

JOURNAL STAFF REPORT

The Muleshoe Independent School District has been notified it will receive a grant of about \$468,000 for renovation of facilities, according to Superintendent Gene Sheets.

"This is a once-in-a-lifetime deal," Sheets said. "I doubt we'll ever see another one like it."

He said the money will go toward projects that the district had hoped to do

over the next two or three years, but will now have to do in 18 months — the term of the grant.

Plans include renovation of junior and senior high administrative offices, classrooms, air conditioning and heating in some areas where those are lacking, and dressing rooms.

Sheets said Don Wood and Sam Whalin put the package together for the district. "I basically dumped it in their laps," Sheest

said. "We hired a grant writer to finish it up, but these guys really put it together."

The windfall comes as the district is enjoying the benefits of several other grants. Teacher Pat Angeley won a \$5,000 Intel Teach to the Future grant earlier this year. It includes a one-year subscription to a specialized website and will buy equipment for DeShazo Elementary School, other

see **GRANTS** on page 2

Mules capture 22 spots on all-district roll

By **DELTON WILHITE**
Journal sportswriter

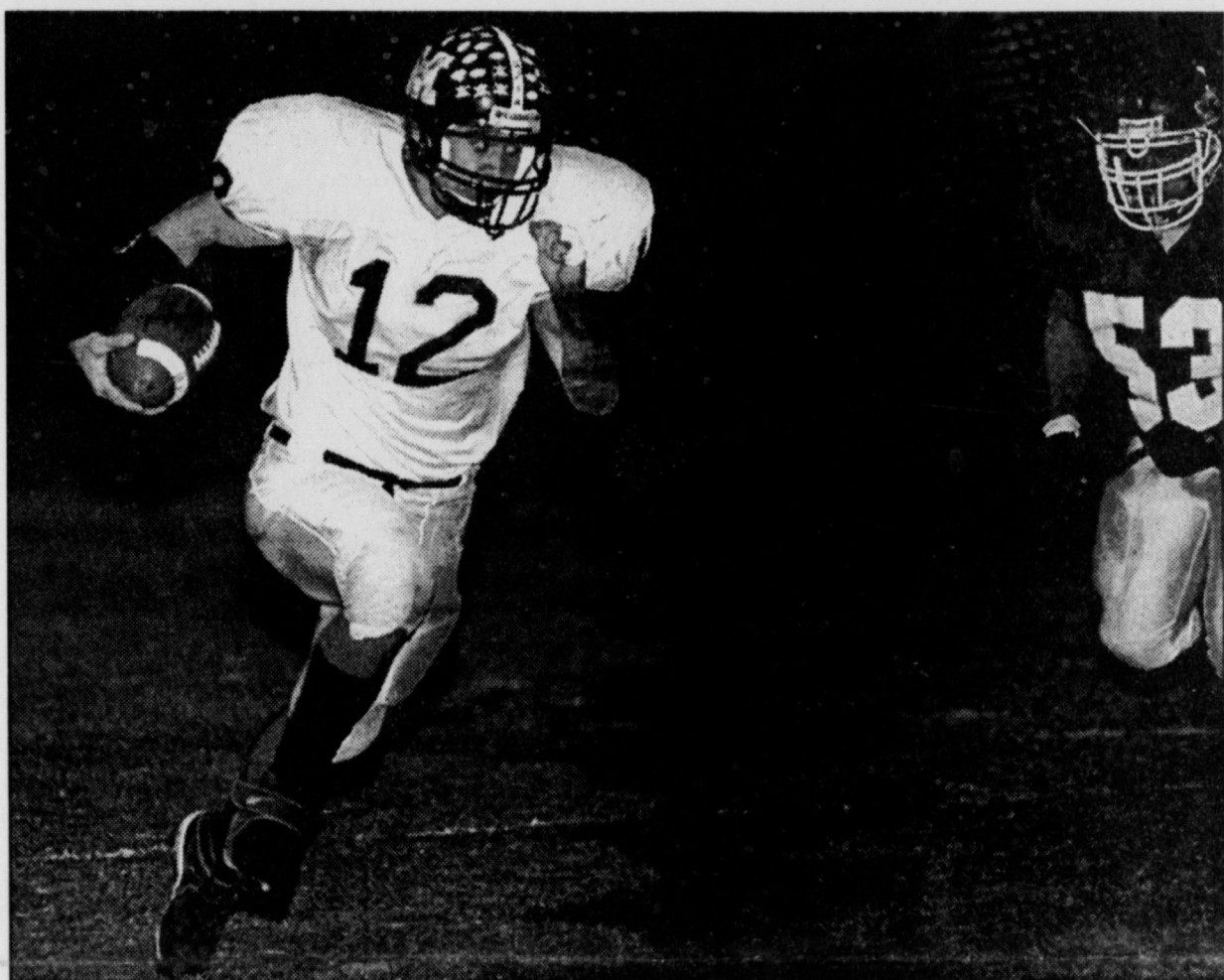
Muleshoe head football coach David Wood announced Tuesday that 12 Mules made the first-team all-district slate, six were second-team selections and four made the honorable mention list.

Mule linebacker Stephan Shelburne was named District 2-3A's most valuable defensive player.

Mules selected to the first team both ways were Lincoln Riley, D.J. Domínguez and Kyle Atwood.

First-team defensive selections were end Luis Sánchez, linemen Daniel Johnson and Rey Martínez, Domínguez as a linebacker, Atwood in the

see **MULES** on page 2



Journal photo: Mike Hahn

Mule quarterback Lincoln Riley outruns a Golden Crane in Friday's 22-0 playoff loss.

Daschle draws praise for pushing Senate farm bill

By **ROGER HALDENBY**
Plains Cotton Growers

Senate Majority Leader Tom Daschle is demonstrating that he understands the urgent need for a farm bill before the 2002 crop year.

He has repeatedly pushed hard, first on the Senate Agriculture Committee and now on his colleagues in the U.S. Senate,

for swift passage of the Senate Farm Bill (S.1628).

With harvest wrapping up on the High Plains of Texas, cotton producers are looking to next planting season just a few short months away.

Many are fearing the worst as they talk to their bankers, financiers and landlords about plans for their 2002 crop operations.

They fear that if no new farm legislation has been passed to replace the failing 1996 act, there will be no way for many of them to stay in business.

Low prices, substantial drops in income, and no "safety net" under the 1996 farm bill have left growers in dire need of a

see **BILL** on page 2

Scott Brown tops field in Week 12 grid contest

JOURNAL STAFF REPORT

The final football contest of the season was unique in another way, too: The three top winners all have addresses on Route 3, Muleshoe.

First-place winner Scott Brown was the only contestant to miss only three games — Boston College at Syracuse, Nevada at UTEP and Oakland at the New York Giants.

The second- and third-place winners each missed four games. Mandy Garner, who finished second, guessed 48 on the tiebreaker and it turned out to be 29 (the combined score of Oklahoma and Oklahoma State). Debbie Weir guessed 57 on the tiebreaker.

Three out of four misses by Garner and Weir were on the same games: Ohio State at Michigan, Georgia at Georgia Tech, and Iowa at Iowa State.

Garner then missed New Orleans at New England, while Weir missed

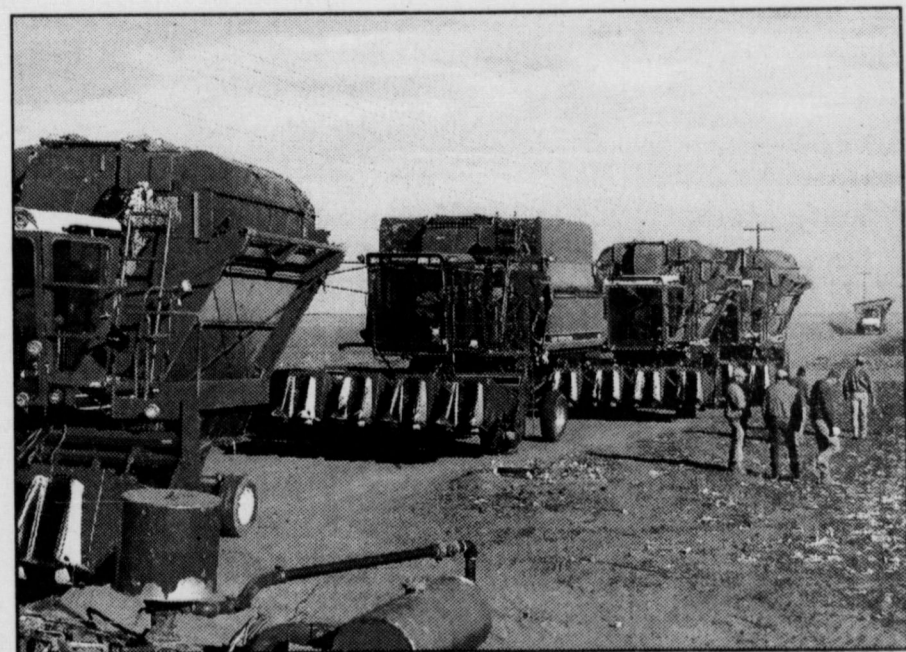
McNeese State at Jacksonville State.

Garner and Weir had plenty of company in missing the Ohio State-Michigan mess: Other than Brown, the only entrant to sniff out Ohio State's upset was Marilyn Engelking (who also has a Route 3 address). She finished in a tie for 10th place with six misses and a guess of 49 on the tiebreaker.

Five contestants missed five games. Alene Bryant finished fourth in the contest with tiebreaker guess of 34; Adam Graves of Canyon was fifth with a guess of 48; Daniel Hernández of Bovina was sixth with a guess of 60; and J.C. Orozco of Muleshoe might have finished better than seventh but he didn't fill in the tiebreaker blank.

Tying for eighth were Kathleen Hayes and Alma Orozco, both of Muleshoe, with six misses and guesses of 41.

Tying Engelking was Carl Jacobs of Muleshoe.



Journal photo: Beatrice Morin

Cotton strippers form a caravan at the McGuire farm Monday. Farmers harvest neighbors' crops

By **BEATRICE MORIN**
Journal writer

About 60 people gathered this week to help a couple of neighbors get their cotton harvested before Tuesday's snowstorm hit.

Nine cotton strippers were in the field to harvest about 700 acres in the Lazbuddie area for Marty McGuire, who remains in Lubbock's Covenant Medical Center after heart surgery followed by complications.

John Saylor, McGuire's brother-in-law, said the volunteers built 150 modules there.

The group formed spontaneously in response to McGuire's

situation. "We knew Marty needed the help," Saylor said. "We're just good neighbors trying to help out."

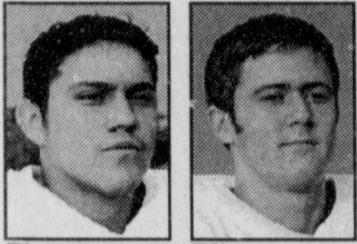
The group's next assignment was to finish up the cotton harvest for Jim Don Jennings, who recently had a death in the family.

Tuesday's snow melted as it fell until late afternoon, when bitter cold temperatures had cooled the ground enough for the melting snow to form ice.

Very light snow was still falling at sundown Tuesday in Muleshoe and had been forecast to continue through Wednesday, but forecasters were beginning to back off.

AROUND MULESHOE

Mule football players honored



Flores Riley
Atwood Johnson

The Muleshoe Athletic Boosters Club announced last week list of honor players from the Mules' first play-off game, in which the team defeated Childress 34-28. Offensive player of the week was again A.J. Flores, defensive players of the week was Lincoln Riley, special teams player of the week was Kyle Atwood and the Slobberknocker Award went to Daniel Johnson.

The game was certainly among the many thrillers the Mules have provided in recent years, with Flores scoring the winning points in overtime.

Boy Scouts plan annual food drive

Muleshoe Boy Scouts will conduct their annual food drive during the next two weekends.

Grocery bags will be distributed to each home in the city on Dec. 1, then picked up on Dec. 8.

Organizers ask that residents place the bags, containing their donations, outside their door before 10 a.m. Dec. 8.

Donations will go to the Bailey County Food Pantry for local use. For more information, or in case some homes are missed, residents are encouraged to call Cliff Black at 272-5109 or Mike Richards at 3536.

Public calendar

Nov. 29 — 12:30 p.m. to 7 p.m. Blood drive at Trinity Christian Center Church, sponsored by United Blood Services. Bring photo ID and know medication list.

Also on Nov. 29 — 7 p.m. to 8:30 p.m. "Communication Within Our Family" in the Muleshoe High School

BILL

from page 1

program with a predictable and more satisfactory support level.

The Senate bill has many similarities to the House Bill passed Oct. 5. Both have been the subject of extensive analysis, hearings and much debate.

The authors have crafted the bill reported out by the Senate Agriculture Committee to have sufficient budget authority for immediate action.

U.S. Rep. Larry Combest, chairman of the House Agriculture Committee, took a strong role in getting his committee's bill reported out of the House.

Daschle should be commended by agricultural communities across the U.S. for taking a similar strong stance on their behalf when it comes to the Senate.

Daschle's latest actions could give us farm legisla-

tion from the Senate by this weekend.

Then it will be in the hands of a conference committee and due process before being passed on to President Bush for signature into law.

MULES

from page 1

secondary and Riley as punter.

Offensive players selected for the first team were Domínguez at tight end, Jeffre Skipworth and Bradley Thomason on the offensive line and Atwood at receiver. Riley was chosen at quarterback and A.J. Flores was selected at running back.

Second-team, offensive selections were Johnson on offensive line and Domínguez at kicker.

Defensive selections were Thomason at defen-

cafeteria. Program will be in Spanish; child care, refreshments and a door prize will be featured.

Dec. 1 — 8 p.m. to midnight. Community dance at the Bailey County Coliseum. Admission \$3 (\$5 per couple). Sponsored by Muleshoe Ag Boosters; security will be provided.

Also on Dec. 1 — Deadline for reserving space in the Moonlight Extension Club Christmas Bazaar, set for Dec. 8 at Bailey County Coliseum. Information, Linda Huckaby at 272-3464; Extension office at 272-4583.

Dec. 3 — 7 p.m. to 9 p.m. Financial Aid Seminar sponsored annually by the Jennyslipppers, in the high school cafeteria. Aimed at anyone interested in getting a college education.

Dec. 8 — 6 p.m. to 9 p.m. Brisket dinner for Lone Star Pheasants Forever Chapter 693 at the Bailey County Coliseum. Raffles and a silent auction; \$10 per person. Information, Carolyn Harris at 272-5506 (daytime).

The deadline for Around Muleshoe is 5 p.m. Monday for Thursday's editions and 5 p.m. Thursday for Sunday.

LETTER TO THE EDITOR

Dear Editor,

RE: Liberal senators oppose Estrada (Sunday, Nov. 18)

Congratulations for taking the bold step to run a front page article expressing strong views concerning national politics.

Since the *Bailey County Journal*, the *Muleshoe Journal* and the *Lubbock Avalanche Journal* are the only papers that we receive in a timely manner, it is encouraging to see national information in the local paper.

Now let us see the opposing view. We know that there are just as many liberal extremists as there are conservatist extremists. Just give your readers both sets of information.

Only running strong views from one side puts you in the same category as those who attempt to shape the news rather than report it.

Who is the Traditional Values Coalition? What traditional values do they support? Who is La Amistad? What are the values they speak of?

It's hard to tell if we agree with them or not until we know something about them. Just saying that they oppose liberal senators is not really enough.

We'll be watching for more information on this subject as well as other subjects. Maybe you could run a pro-and-con column.

KAY COLE
Maple

secondary end, Michael Durben on the defensive line, Brian King at linebacker and Riley in the secondary.

Honorable mentions were Jesús Tovar at run-

GRANTS

from page 1

benefits for Angeley's Intel class, and for three years of her services teaching how to integrate technology into the curriculum.

April Smith, Shann Best and Chris Mardis also combined efforts to win three Tech Prep Grants for the

district: one for \$1,500 to purchase software for MOS certification for computer classes, one for \$500 to buy portfolios for Smith's senior students, and one for \$1,000 to purchase two digital cameras to use in the technology classes.

Come Join The Celebration!

Raymond McGehee's
80th Birthday Party
December 9, 2001
2:00 p.m. to 4:00 p.m.
Lazbuddie Church of Christ
Your presence is gift enough. We look forward to seeing you there!

"OUR" CHRISTMAS OPEN HOUSE
SAT., DEC. 1ST
10 AM - 6 PM
30% OFF
Storewide
Plus, Draw For Your Xtra Savings
Of Up To An Additional 20% Off
(Excludes Merle Norman Cosmetics)
sheree's Attic
1519 W. American Blvd. Muleshoe, TX
Refreshments - Door Prizes - Free Gift Wrapping - Credit Cards Accepted

You're Invited To Our
Christmas Open House
Celebrating "The Gift Of Freedom"
Saturday, Dec. 1st
10 am to 3 pm

- ☆ Door Prizes
- ☆ Refreshments
- ☆ Balloons for the Kids

Decorators
Floral & Gifts
616 S. 1st Street
Muleshoe • 272-4340

Muleshoe Journal USPS 367820
Established February 23, 1924. Published by Triple S Publishing, Inc.
Every Thursday at 304 W. Second, Box 449, Muleshoe, TX 79347.
Periodicals Postage paid at Muleshoe, TX.
POSTMASTER: Send address changes to the Bailey County Journal, P.O. Box 449, Muleshoe, TX 79347.
We are qualified members of:
Panhandle Press Association, National Newspaper Association,
West Texas Press Association and Texas Press Association.

WEST TEXAS PRESS ASSOCIATION
PPA Panhandle Press Association

TA MEMBER 2001
TEXAS PRESS ASSOCIATION

Scot Stinnett, Publisher
Lisa Stinnett, Vice-President/Comptroller
Ronn Smith, Editor
Beatrice Morin, Classifieds
Leah Bell, Advertising
© 1990 Yolanda Martinez, Office Assistant

SUBSCRIPTIONS: Muleshoe Journal and Bailey County Journal
By Carrier Yearly - \$22.00
Bailey County — by mail - \$24.00
Elsewhere - \$26.00
Advertising Rate Cards on Application

Advertisers should check their ad the first day of insertion. The Journals will not be liable for failure to publish an ad or for a typographical error or errors in publications except to the extent of the cost of the ad for the first day of insertion. Adjustment for errors will be limited to the cost of that portion of the ad where the error occurred.

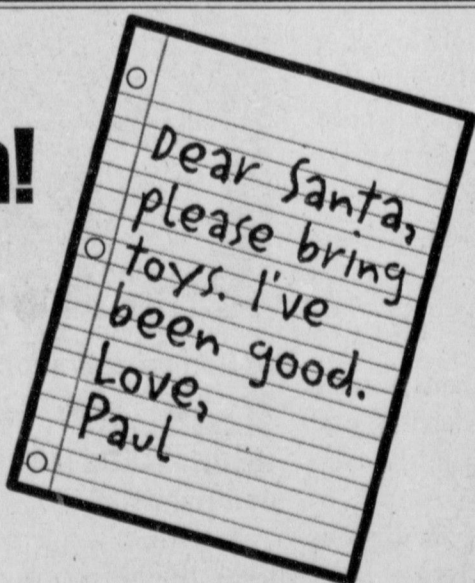
We Want Your Letters To Santa!

Muleshoe/Bailey County Journals have once again been selected as an official drop-off site for your child's letter to Santa.

In order for our elves to have time to publish and forward your letters, we ask that you have them in our office by 5 pm on Tuesday, December 11, 2001. Ages 0 through 5th grade will be published.

We ask that a parent or guardian please print the child's name (separate from the signature) on your letter.

Letters will be published in the Dec. 16, 20 and 23 editions of the Muleshoe/Bailey County Journals.



Please have your letters in our office by 5 pm on Tuesday, Dec. 11th.
Either mail them to:
c/o Santa Letter
P.O. Box 449
Muleshoe, Texas 79347
Or drop them off at
304 W. 2nd Street

Hearing Problems? Or is it just wax?



Find out for yourself - FREE!
One Day Only!

Now you can see a picture of your ear on a TV screen thanks to the innovative Video Ear Scan. This amazing technology is available locally! FREE of cost or obligation. Call to make your appointment now.

Special Event

- FREE Hearing Check Up & Video Ear Scan
- Sale prices starting as low as \$485 for computer adjustable models or \$699 for the NEW digitally adjustable models.
- Save \$500 on the almost invisible Fully Digital Canal model.



hosted by
LIVINGSTON
Audiology & Hearing Aid Centers

Monday, December 3rd
Bailey County Coliseum
in Muleshoe
Toll free 1-800-828-0722

Pruning wisteria twice a year will increase flowering

By RONN SMITH
Editor

Got wisteria? If so, you probably have more of it than you originally planned to have!

There are some pruning pointers in the January issue of *The English Garden*. (I know: This is November and the January issue is coming out . . .)

The first bit of advice is to trim wisteria (as well as Virginia creeper, climbing hydrangea, Boston ivy and the true ivies) away from window frames and doors, as these vines can wedge their way in and do some real damage.

The article advises pruning wisteria twice a year, summer and winter, to produce the maximum flowers.

If you had been doing this last summer, you'd simply have cut all the long shoots back to five or six buds from the main stems.



Now, with the leaves off so you can see what you're doing, you'd shorten those stems even more — to two or three buds. Any new side shoots that formed after the summer trimming also would be shortened to two or three buds.

This — like any other pruning — reduces the amount of top growth in proportion to roots, and should produce a burst of new growth in the spring. Wisteria flowers on the new growth, so a big burst of spring growth is what you want.

Pruning doesn't address the tendency of most wisterias to send up sprouts

around the yard. Unless you want more plants to move somewhere, you'd be well-advised to use a hoe on these sprouts as soon as possible

Many of us might be able to identify with remarks by David Manson in the same magazine.

Manson says that "honesty may not always be the best policy" when it comes to plants.

He relates his experience with a member of the physalis family — what we generally refer to as Chinese lanterns, the annual plant that produces orange fruits enclosed in husks. (The tomatillo, which makes such good salsa, is a member of the same clan.)

"No one told me what a nuisance this plant would turn into," Manson writes. "But it isn't the first time something I have invited

into the garden has turned into a menace."

Generally, I don't mind plants that will grow aggressively in our climate, since it seems there aren't that many. I have about reached the point with one species, however, where I'm about ready to use the newspaper mulch method to wipe out some of it. This is a flower we had in the yard when I was a kid, and it never tried to take over; I must have bought a mutant strain a few years ago, and it's getting out of hand.

Of course, I'm giving it one last trial, moving much of it out near a young wind-break. If it will spread and take over out there, it will be much more beautiful than weeds!

I'm talking about obedient plant or false dragonhead (*Physostegia virginiana*). I don't want to discourage everyone from planting it — I sus-

pect most soils in the area don't have enough added organic matter for it to spread excessively. It's truly beautiful in bloom, but I'd have to advise against planting it in restricted areas such as the two places I started it!

The recent days of bitter-cold wind were an ample reminder of the unpleasant aspects of our region's climate.

If you have fresh transplants that were not acclimated, it probably would be worth your while to provide wind protection to keep them from drying up.

If the plants are small, the shelter can be as simple as plastic milk cartons with the bottoms cut out. This time of year, I'd also recommend cutting out at least part of the top, so the sun's heat won't build up inside

and cause the plants to break dormancy. Remember: At this point, you're wanting to provide protection from the drying winds.

Unless this is to be in a sheltered area, you'll probably need a pole of some type to keep the wind from blowing the milk carton away.

If the plants are more sizable, the shelter may need to be something like burlap stapled around three or four poles.

In the spring, if you're using milk cartons (or something similar) for frost protection, you'd want to leave the tops intact.

Happy planting!
Questions and comments can be sent to Garden Writer, 571 County Road 1018, Muleshoe, Texas 79347, or e-mailed to ronnsmith@hotmail.com.

OBITUARIES

EPIFANIO PEREZ

Services were held Nov. 21 at St. John's Catholic Church in Roswell, N.M., for Epifanio G. Pérez, 84, of Roswell. The Rev. Juan Montoya was the celebrant. Burial was at South Park Cemetery in Roswell, with military rites by the Roswell Veterans Honor Guard.

LaGrone Funeral Home of Roswell handled arrangements.

Mr. Pérez was born Jan. 6, 1917, at Arabella, N.M. He died Nov. 18 at Eastern New Mexico Medical Center in Roswell.

He had been a resident of Roswell since 1974 and was a member of St. John's Catholic Church, the Veterans of Foreign Wars, the Disabled American Veterans and the Fraternal Order of Police. He was a U.S. Army veteran of World War II.

He worked in farming at various places.

Mr. Pérez is survived by seven sons and five daughters-in-law, Silvestre and Beth Pérez of Johnson City, Tenn., Epi Jr. and Teresa Pérez of Midland, Teddy and Vera Pérez and Timothy Pérez, all of Lubbock, and Jinio and Connie Pérez, Domingo and Daisy Pérez and Antonio Pérez, all of Roswell; five daughters and two sons-in-law, Mary Ann Hall of Colorado Springs and Savina and Alonso Loya, Rita Haner, Becky Pérez and Felipa Nettie Pérez and her husband, Gilbert R. Lucero Jr., all of Roswell; 33 grandchildren; and 29 great-grandchildren.

He was preceded in death by his wife, Felipa N. Pérez, in 1993.

Pallbearers were Chris Pérez, Michael "Spike" Pérez, B.J. Haner, Joshua Pérez and Teddy Pérez. Honorary bearers were Dr. Donald Wenner, Dr. Madhu Sasidhar, Dr. Shams Tabrez, Dr. Audrey Vega, Albert Gonzales,

Ynes Jaramillo, Antonio Pérez, Timothy Joe Pérez and Alisa Pérez.

V.R. 'JIM' LUMPKIN

Services were held Saturday at Ellis Funeral Home Chapel for V.R. "Jim" Lumpkin, 80, of Pampa. The Rev. John C. Denton officiated. Burial was at Earth Memorial Cemetery.

Ellis Funeral Home of Muleshoe handled arrangements.

Mr. Lumpkin was born Aug. 13, 1921, in Ellis County, Texas. He died Nov. 21 in Pampa.

He married Tema Stanford on Aug. 23, 1941, in Muleshoe. She died in

1977.

He was a farmer in the Muleshoe area for 25 years before moving to Amarillo in 1966 to farm at Bushland. In 1978, he moved to Graham, where he worked for Ottis Manufacturing.

He was a Baptist and a 50-year member of the Masonic Lodge in Young County. He also was a lifetime member of the Graham Veterans of Foreign Wars.

Mr. Lumpkin is survived by a daughter, Sherry Gee of Pampa; two sons, Larry Lumpkin of Battle Mountain, Nev., and Jerry Lumpkin of

Sacramento, Calif.; seven grandchildren; and eight great-grandchildren.

He also was preceded in death by a daughter, Terry Gail Lumpkin, in 1953.

The family suggests memorials to Olivia's Angels at BSA Hospice (P.O. Box 958, Amarillo 79176).

BIRTHS

KIRVEN

Quincy and Twila Kirven of Lubbock are the parents of a daughter, Mikala Alyse Kirven, born at 11:40 a.m. Nov. 15 at Covenant Medical Center in Lubbock.

She weighed 7 pounds, 11 ounces and was 20 1/2 inches long. She has two brothers, Trey and Nathan, and a sister, Bryana.

Grandparents are Elmer and Billie Downing of Lubbock and Annie Smith of Littlefield. The great-grandmother is Selma

Smith of Hereford.

Michael and Regina Smith of Muleshoe are the parents of a daughter, Ashley Smith, born at 2:28 p.m. Nov. 16 at Muleshoe Area Medical Center.

She weighed 6 pounds, 20 ounces and was 19 inches long. She has a brother, Dustin John.

Grandparents are Robert and Sylvia Smith of Muleshoe and Samuel and Arlene Zimmerman of Fleetwood, Pa.

Diamond Gifts

1/4 CARAT of Diamonds
Your Choice
\$199

Layaway NOW for Christmas

HOLMBERG JEWELRY
Celebrating 60 years
1908 N. Prince • Clovis, NM • 762-9376

WEEKLY SAVINGS

DECEMBER 1ST THRU 7TH

ATHLETIC GEAR

20% Off all bags, batting & baseball gloves by Nike & Mizuno, batting gloves & bats for youth & tee-ball, and tee-ball batting stands.

Remember: Moonlight Madness hours Saturday, Dec. 8 - open till 8 pm. Every \$10 spent from 5-8 pm on Dec. 8 is an entry in the Chamber drawings!

Williams Athletics

1405 W. American Blvd. • Muleshoe • 272-6853

JOE'S BOOT SHOP Open 9 am to 7 pm MST

And Country Junction Clovis, NM
(505) 763-3764 2600 Mabry Drive

Spend Your Mule Bucks With Us!

Now Is The Time To Layaway For Christmas!

Stop by Country Junction in Muleshoe. Use your Mule Bucks to buy merchandise or to purchase a Gift Certificate which can be used at Joe's Boot Shop and Country Junction in Clovis, NM!

Although we were left off the Mule Bucks participant list, your Mule Bucks are redeemable at Country Junction! We're open in Muleshoe & Clovis, NM, and we're overflowing with Western gift items and Christmas decorations!



Journal photo: Beatrice Morin

Grant for Park View

Gathered to celebrate the awarding of a \$500 matching grant from West Texas Resource Conservation and Development to the new nursing home are (from left) Jim Bone, administrator of the hospital district; Bill Saxton, director of the nursing home; Rickie Warren, president of the county RC&D board; Janet Claborn, secretary of the county board and West Texas RC&D board member; and Claude Ross, program coordinator for West Texas RC&D. The grant will help pay for a ceiling-mounted halogen floodlight in the minor surgery/treatment/examination room of the new facility.

'CREATIVE LIVING'

Information on canned pears, fun crafts for kids, and Cajun cooking will be featured on "Creative Living" at 1 p.m. Dec. 4. (All times are Central.)

The annual holiday special will air from 3 p.m. to 4:40 p.m. Dec. 8 as part of KENW's Winter Membership Drive.

"Creative Living" airs on public broadcasting station KENW-TV from Eastern New Mexico University in Portales.

Tamsen Salvador, spokesperson for Pacific Northwest Canned Pears in San Francisco, Calif., will demonstrate quick dinner solutions featuring canned pears.

Rheata White of Rheata's Studio and Gallery in Muleshoe will demonstrate painting on enamel with copper. She also will show some of the items her students have made.

Kerri Elders of Ranchvale, N.M., co-author of the American Gourmet Collection cookbook, will demonstrate how to make a Cajun spice mixture that's ideal for seasoning various meats and seafoods.

On Dec. 8, the 11th annual 90-Minute Creative Living Holiday Special is scheduled to begin at 3 p.m. as part of the Winter Membership Drive. It will include six holiday-related segments.

One guest will be Nancy Siler of Wilton Industries in Woodridge, Ill. She will demonstrate how to mold a smiling-face lollipop and turn it into several characters. These ideas are great for birthday parties, holiday festivities or any other time something delicious and special is desired.

Deborah Durham of Hewlett-Packard in Los Angeles will share some creative party ideas.

Another guest will be Diane Lieb of Portales, who will show how to make chenille, and then how to use it on various garments and home-decorating projects.

Sandra Fry of Carlsbad, N.M., Extension home economist for Eddy County, will show how to use common household cookie cutters to create some very clever Christmas ornaments.

Also, Margaret Sindelar of Bothell, Wash., will demonstrate projects using photo-transfer paper. These can be used on garments, as gift items or even for some decorative projects around the house. She is with Martingale and Co.

Connie Moyers of Clovis, the Roosevelt County Extension home economist, will conclude the holiday special by sharing ideas on "Gifts From the Heart."

Anyone making a pledge during the special will get any two of the 17 "Creative Living" booklets can be chosen with just a \$35 pledge — or four booklets can be selected with a pledge of \$60. Viewers might also like to pledge \$75 and receive a half-inch VHS tape with all of the guests fea-

ture during the special. The tape will be a good reference in the future.

Information on gluten-free cooking and parenting skills will be featured at 10:30 p.m. Dec. 4 and 1 p.m. Dec. 6.

Bette Hagman, cookbook author from Seattle, will share typical holiday recipes that are

gluten-free.

Sandy Queen, motivational speaker from Columbia, Md., will talk about parenting techniques and explain how to build self-esteem in children while maintaining the right of parents.

"Creative Living" is produced and hosted by Sheryl Borden of Portales.

Texas Guarantee seeking the college-bound

SPECIAL TO THE JOURNAL
Texas Guaranteed is partnering with the Texas State Library and the Texas Library Association to make higher education resources more accessible for millions of Texans.

The company has updated the materials and resources for the second year of its *Know Before You Go: Unlocking the Door to Your Future* campaign, available at more than 300 public libraries across the state.

"In working to promote the value of education for over 20 years, we have found that students and their families often lack the information they need to make informed decisions about their higher educa-

tion pursuits," said Milt Wright, president and CEO.

"*Know Before You Go* provides direction and access to information to make the entire college experience an easier and more understandable process from beginning to end," he said.

A key campaign component is the resource notebook that helps librarians assist college-bound Texans and their families find information about:

- Career planning and college admission — when to prepare for college, standardized tests, how to find the right school, and when to apply for admission;
- Student financial aid — sources and types of

financial aid, when and how to apply for financial aid, and the role of the financial aid office; and

- Money management and budgeting — how to create a budget, credit education, responsible borrowing, and student loan delinquency and default assistance.

Mommy will be kissing Santa Claus

Woody's Jewelry
117 W. 2nd, Portales, NM
(505) 356-5641

Viewers can request copies of materials offered on the show by sending a first-class stamp for each handout requested, along

with name, address and booklets requested, to "Creative Living" Requests, c/o KENW-TV, 52 Broadcast Center, Portales 88130.

ANTIQUES AUCTION

Saturday, Dec. 1st - 9:30 a.m.
"The Art Loft"

1529 W. American Blvd. • Muleshoe, TX
"Arlene Phelps & Inez Bobo," Owners
• From Plainview - Hwy 70/84W
• From Lubbock - Hwy 84W • From Clovis - Hwy 84E

COMPLETE CONTENT LIQUIDATION
Antiques, Glassware, Collectibles & More Than You Expect!
Viewing — Friday, Nov. 30 — 12 noon to 5 p.m.

ANTIQUES & FURNITURE	1 Lot-Office Furniture
1-Louis XV Style Settee	1 Lot-Privacy Screens
1-3 pc. Louis XIV-Style Parlor Set	1-Pine Table
1-Wardrobe — Art Deco	1-Carpet Rocker
1-French Style Ormate Table/6 Chairs	1 Lot-Picture Albums — 1800's
w/ Buffet & Mirror — Tapestry Seats	GLASSWARE
1-Fireside Slipper Box	Crystal, Dishes, Majolica,
1-Post Office Sorting Table	Pressed, Vases, Figurines,
1-Old Drop Leaf Table/2 Chairs	Collector Spoons, Collector
1-Mahogany Side Board	Plates, Cups, & MORE!!
1-Wooden Pie Rack	MISC.
1-Wash Ringer	Asst. Enamelware, Lamps, Brass,
1-8 pc. Maple Dining Set	Rugs, Collectibles, Mirrors, Pulleys,
(6 Chairs, Table, Lazy Susan)	Picture Frames, Immigrant's Trunk,
1-Wooden Day Bed — Maple	Pottery, Scales, Garden Art, Railroad
1 Lot-Hall Chairs — Carved	Dolly, Fabric, Carpet Dolly, Cheese
1 Lot-Smoke Stands	Boxes, Sculptures, Shelves, Fixtures,
1 Lot-Rockers & Chairs	AND MUCH MORE!

*****MUCH MORE TO SEE*****

TERMS: Cash or Check. All items Sold AS-IS. Accounts Settled Same Day. We Are Agents Only. All items must be removed from premises by Mon., Dec. 3. Announcements Sale Day Take Precedence. Lunch Available.

McNutt Auction Service of Plainview, TX
Larry McNutt — Tx. 7881 806-293-3365 or 292-6462

Children's Health Alert

Fever check?

Dr. John Hellerstedt, MD, FAAP

Usually you can tell if your child isn't feeling well. Children will slow down, lose their appetite, and may feel warm to your touch. However, the only way to know for sure if they have a fever is to take their temperature.

There are a number of thermometers on the market, but most parents still rely on the glass mercury type or simple digital thermometer. Make sure the thermometer is clean by rinsing the tip in cool, soapy water. Shake down a glass thermometer until it reads below 96 degrees.

To decrease the amount of mercury in the environment, the American Academy of Pediatrics now recommends the use of digital thermometers, instead of mercury-filled glass thermometers. Don't throw your mercury thermometer in the trash, that makes the problem worse! Your local hospital may be willing to accept your old mercury thermometer, and provide environmentally proper disposal.

The oral method should be used with children old enough to hold the thermometer under their tongue for several minutes. Rectal readings are best for babies or younger children. Taking the temperature under the armpit can provide a good estimate of fever, if done properly.

While 98.6 degrees has long been considered a "normal" temperature, it can vary slightly. Your child's doctor will be able to give you more information about fever. Don't wait until your child is sick, and you are worried. Ask your doctor about how to deal with fever at your very next visit.

This Children's Health Alert is presented as a public service by this newspaper and the TexCare Partnership — connecting Texas families with children's health insurance for \$18 a month or less.

Call 1-800-647-6558 for information or to apply.

Dr. John Hellerstedt is the Medical Director of the Children's Health Insurance Program.

JOIN US FOR THE HOLIDAYS IN LUBBOCK!

Your holiday checklist - straight from the North Pole:

- SHOP** at South Plains Mall for all of the latest and greatest merchandise! You'll find something for everyone on your holiday gift list with over 150 specialty stores and 5 department stores!
- VISIT** www.lubbocklegends.com for hotel coupons, discounts, suggestions of fun things to do...and more!
- STAY** at any of these great hotels and enjoy a fun and relaxing weekend!

Holiday Inn

Holiday Inn & Towers
801 Avenue Q
(806) 763-1200
(800) 765-0330
www.holiday-inn.com/lubbock-civic
\$59 fall promotional rate (good all week-ask for FPR rate)
\$99 for 2 nights (Fri, Sat, Sun-ask for SNF rate)
* Heated indoor pool & sauna; full service restaurant & lounge; minutes from TTU & the Depot Entertainment District

Holiday Inn Park Plaza
3201 S. Loop 289
(806) 797-3241
www.holiday-inn.com/lubbock-plaza
\$59 fall promotional rate (good all week-ask for FPR rate)
\$99 for 2 nights (Fri, Sat, Sun-ask for SNF rate)
* Just 3 miles from South Plains Mall; heated indoor pool & sauna; full service restaurant & lounge

Courtyard by Marriott
4011 S. Loop 289
(806) 795-1633
(800) 321-2211
www.courtyard.com
\$69 Special Shopping Rate (ask for code SOJA)
* Heated indoor pool & hot tub; adjacent to 5 popular restaurants; 3 miles from South Plains Mall; King & Queen size beds; courteous staff to serve you

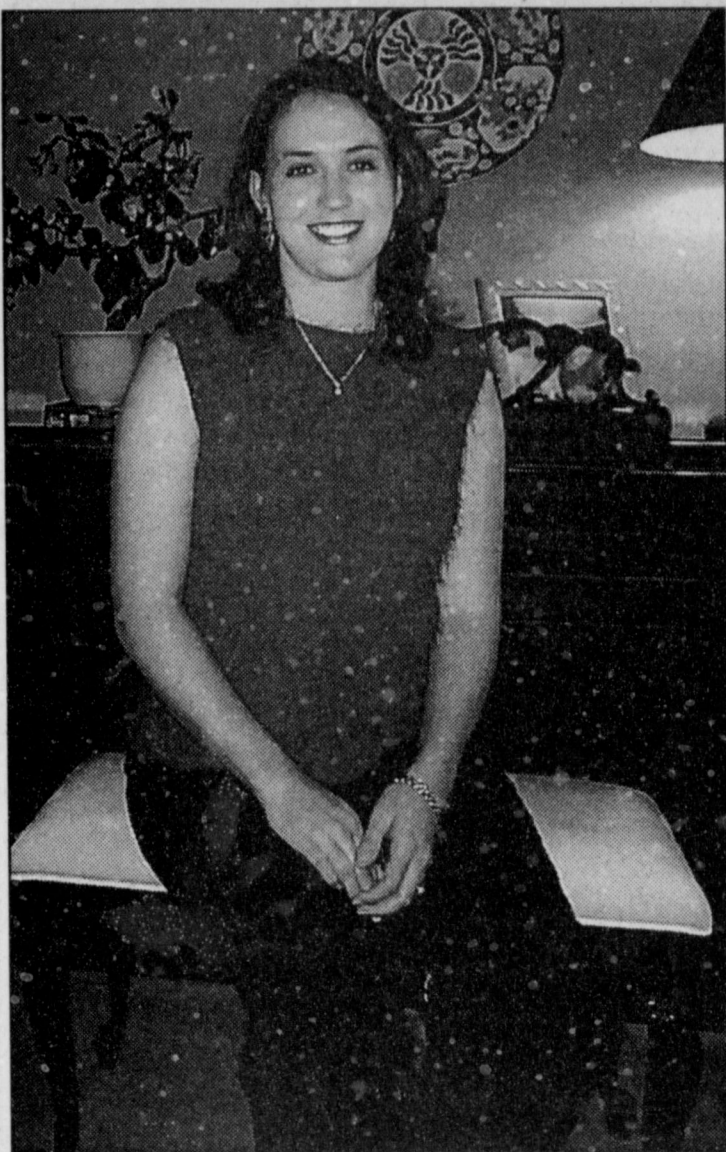
La Quinta (2 locations)
4115 Brownfield Hwy.
(806) 792-0065
601 Avenue Q
(806) 763-9441
Up to 10% off (ask for our "PROMO" rate)
* Complimentary deluxe continental breakfast; free local calls; irons & hairdryers in every room; pay-per-view movies

Hawthorne Suites, Ltd.
2515 19th Street (Across from Tech)
(806) 765-8900
Please mention code "CA" for our special holiday rate.
* Complimentary full, hot breakfast; Texas-size hot tub; fully equipped fitness center; full kitchens in each suite
Offer based on availability. Not valid with any other discounts or promotions. Offers good only at Lubbock locations.

PLAY while you're in Lubbock at these great events:

Holiday Happening Lubbock Memorial Civic Center November 15-18	The Nutcracker Lubbock Memorial Civic Center December 7-9
Red Raider Basketball United Spirit Arena November 16, 17, 24, 26 December 1, 3, 17, 22	43rd Annual Carol of Lights And Lights on Broadway Texas Tech November 30
TTU Football vs. Oklahoma Jones SBC Stadium November 17, 1 pm.	"The Odd Couple" Starring Barbara Eden Municipal Auditorium November 30-December 2
Candlelight at the Ranch Ranching Heritage Center December 7-8	Lady Raider Basketball United Spirit Arena December 2, 5, 16

Slide Road & South Loop 289 • 792-4653
A Macerich Company Property • www.southplainsmall.com
www.lubbocklegends.com
1-800-692-4035



Angie Shimp pauses during her bridal shower.

Shower honors Shimp

Angie King of Columbus, Ga., was honored Nov. 18 with a bridal shower at the home of Janelle Turner in Muleshoe.

The honoree is the daughter of Max and Pat King of Muleshoe.

Guests were greeted by the honoree and her mother. The serving table featured fall leaves arranged around bottles in graduating sizes with flickering candles.

Special guests include the bride-elect's grandmother, Rheba Barrett of Muleshoe; her sisters-in-law, Cyndi King and Sylvia King, both of Lubbock, and Rachelle King of San Antonio; her aunt, Lynn Box of Muleshoe; and her nieces, Kelsie King and Raegan King, both of Lubbock, and Ashley King of San Antonio.

Hostesses, in addition to Turner, were Anita Allgood, Jo Jinks, Sue Bessire, Magann Rennels, Tiffany Boehning, Sherri Shipman, Sandi Chitwood, Marsha Watkins, Sharon Grant, Christie Whitt, Donna Green, Judy Wilbanks, Georgette Isaac and Terry Young.

The hostess gift was a set of cookware.

The honoree is scheduled to marry 1st Lt. John Shimp of Fort Benning, Ga., Dec. 29 in a formal ceremony at the First United Methodist Church of Muleshoe.

The prospective groom is the son of Nancy Nentl and Dave Shimp, both of Minneapolis, Minn.

The couple met while attending Texas Tech University, where they both graduated.

Packing safe school lunches is a snap

SPECIAL TO THE JOURNAL COLLEGE STATION — School children who come home with stomach cramps, diarrhea or vomiting may be suffering from a "food bug" rather than a "flu bug."

And the sack lunches that many of them take to school may be the reason, said Dr. Peggy Van Laanen, Texas Cooperative Extension food and nutrition specialist.

"Packing a lunch that will be stored at room temperature and eaten many hours later requires special precautions," Van Laanen said. "Temperatures between 40 and 140 degrees F, also known as the 'danger zone,' can cause these harmful bacteria to multiply and cause illness."

"Bacteria that cause foodborne illness need moisture, the right temperature, a food source such as protein, and time," added Britta Thompson, Extension food and nutrition associate.

"Any moist protein food is especially susceptible. Foods that are handled a lot during preparation — such as ham, chicken or egg salad — pose an extra risk because bacteria from hands can spread to them."

The experts offer the following advice to lessen the risk of bringing food-borne illness home from school:

- Maintain a clean area when preparing sack lunches. Make sure utensils, hands, work areas and food containers are clean.

Wash the lunch box or thermos after each use. If using a paper bag, use a bag made for food, not grocery bags that may be contaminated from insects or food leakage.

- Keep cold foods cold. Store lunches in a refrigerator. If one is not available, use an insulated lunch box to keep foods colder than it would stay in paper bags. A freezing gel, ice or frozen drink placed in an insulated lunch box will keep food chilled. Make sure children know to place their lunches in a cool place out of direct sunlight.

- Keep hot foods hot. Use a clean thermos with a tight-fitting lid for hot foods such as chili, soups and stews. Rinse the thermos with boiling water and pour steaming hot food into the thermos. The food should still be hot at lunchtime.

- If making sandwiches with lunch meat, keep them cold. When purchasing

Ready in a flash: Toasting spices unleashes flavor in grilled chicken

SPECIAL TO THE JOURNAL COLLEGE STATION — As summer turns to fall, Americans look for robust meals, and they know that grilling is not just for summer.

"Outdoor grilling reminds us of hunters cooking over open flames," said Dr. Sarah Birkhold, poultry specialist with Texas Cooperative Extension, "and chicken brings variety and versatility to outdoor cooking."

To add a robust, rugged flavor to poultry, she suggested, use spice rubs.

A rub is a mixture of dry spices applied to raw meat, and spice mixtures can be designed to provide new flavors to familiar meats, she said.

"Some spices such as chili powder, cayenne pepper and cumin take on even more vibrant flavor when toasted," she said.

To toast these spices, heat a dry pan over medium high heat until it is very hot. Add spices and toast for two to three minutes. Toss the spices occasionally during toasting.

"Store toasted spices in a dry container (such as an empty spice bottle) for later use. Apply a generous portion of the spice rub to the raw boneless breast fillets, whole chickens or Cornish game hens, and let the meat to stand for 30 minutes before cooking," Birkhold said.

Boneless breast fillets can be cooked over direct heat, she said, and larger pieces such as whole birds should be cooked using indirect heat.

"Prepare the bed of coals according to the manufacturer's recommendation for direct or indirect cooking. The fire will add its own touch of flavor," she said.

More flavor can be created lunch meat, pay close attention to "use-by" dates. These products can harbor bacteria that can grow slowly, even at refrigerator temperatures.

- Plan a menu of properly prepared and healthy foods. Foods that look or smell sour may be contaminated with bacteria that cause foodborne illness. Don't pack leftovers that have been in the refrigerator for an extended time, and don't re-pack perishable lunch items that have not been eaten. Throw them away.

- If a refrigerator is not available, make sack lunches with foods that don't need to be kept cold, such as peanut butter; dried products such as beef jerky; and non-perishable cheese and cheese spreads. Other choices include canned meat, poultry and seafood that can be opened and eaten immediately; fresh fruits and vegetables; and breads, cereals, and nuts.

Ready-to-eat foods in individual servings such as puddings or canned fruits make a nice addition to sack lunches.

More information about packing a safe sack lunch is available from any county Extension office.

through smoke. Popular woods include hickory, pecan and oak. Grilling with soaked wood chips directly over coals or using indirect smoke from a fire box in the end of a pit will greatly enhance these flavors. Wood chips or chunks can be bought at many stores. Use as directed by the manufacturer.

Cook meat on the grill to the desired doneness; all poultry should be cooked thoroughly, she said.

Dark meat should reach 180 to 185 F, and white meats must be cooked to 165 or 170 F. Use a meat thermometer placed at the thickest portion of the meat to tell when food is completely cooked.

When sliced, all juices should run clear.

"Classical pairing of hot spices with a sweet sauce provides interest to the meal and accolades for the grill master," Birkhold said.

A simple sauce can be prepared by combining one-quarter cup orange juice and half a cup of apricot jelly in a saucepan.

Heat over medium heat until the jelly melts. Drizzle a small amount over the chicken just before serving.

Pass this sauce with cooked chicken.

Serve with borracho beans (seasoned whole pinto beans) and a cool citrus salad.

More recipes can be found at the National Chicken Council's website, www.eatchicken.com.

Bridal Selections for
Monica Clemmons
bride elect of
Markus Williams
Shower-Dec. 2 (Home of Ruth Locker)
Nuptials-Dec. 29
Antiques & Fine Things
2104 West American Boulevard
272-4217

To All Our Friends & Family

We would like to express our heartfelt thanks for the many acts of kindness during our family's time of need. We very much appreciate all of the food, flowers, cards, letters and calls. We would also like to express our gratitude to the Lazbuddie E.M.S. and Ellis Funeral Home. If there were more communities such as this, the world would be a better place in which to live.

The Bill Jennings Family

To Everyone Who Pulled Together To Help Finish Stripping Our Cotton... Your Kindness Is Overwhelming And Makes Us Realize How Wonderful This Country And It's People Truly Are. Thank You.

Pug & Jim Don Jennings

NEWSPAPER POLICIES

EDITORIALS are the opinion of the newspaper. They are written by staff members of the *Muleshoe Journal*. They are not signed because they express the position of the publisher, owners and newspaper staff.

LETTERS TO THE EDITOR are written by readers of the newspaper. They are brief expressions of opinion, most concerning issues of local interest. Letters must be legible. They may be edited for content, length and space. All letters must be signed by the writer and must include a daytime telephone number (used solely for verification). Open letters, letters to third parties and/or unsigned letters will not be published.

COLUMNS are the personal opinion of the writer whose by-line appears. Columns from readers should address an issue of local concern and general interest. Columns may be edited for content, length and space.

Letters to the Editor and Columns can be sent to:
Editor - Muleshoe Journal
P.O. Box 449, Muleshoe, Texas 79347
FAX 806.272.3567 or e-mail ctyankee@fivearea.com

Letters To Santa

Must be in our office by 5 pm on Tuesday, Dec. 11th

Mail them to:
c/o Santa Letter
P.O. Box 449
Muleshoe, TX 79347
Or drop them off at
304 W. 2nd Street

Muleshoe/Bailey County Journals have once again been selected as an official drop-off site for your child's letter to Santa.

In order for our elves to have time to publish and forward your letters, we ask that you have them in our office by 5 pm on Tuesday, December 11, 2001. Ages 0 through 5th grade will be published.

We ask that a parent or guardian please print the child's name (separate from the signature) on your letter.

Letters will be published in the Dec. 16, 20 and 23 editions of the Muleshoe/Bailey County Journals.

Christmas toys should be selected with safety in mind

SPECIAL TO THE JOURNAL COLLEGE STATION— You better watch out ... you better not cry ... it's time to start hitting the toy stores again, in search of that perfect holiday present for that perfect little angel.

Although the holiday season "officially" starts the day after Thanksgiving — Nov. 23 this year — every toy-shopping adult knows that finding just the right child's gift can be more time consuming than that.

"Hot" toys vary from season to season and age to age, but Dr. Linda Jouridine, Texas Cooperative Extension health specialist, stresses that trendy toys aren't always the best — or the safest.

In fact, she said, put children's safety first all year long. Along with having young vehicle passengers ride in age-appropriate car seats and keeping children's immunizations up to date, giving children safe toys is vital. Nowhere is this more critical than with that classic American holiday gift — the bicycle — and other riding toys.

According to figures from the product safety division of the Texas Department of Health, each year about 300 deaths and 400,000 injuries in children younger than 15

are associated with bicycles, Jouridine said.

Another "hot" item in recent years has been the razor scooter — another wheeled, riding toy designed for children. "But we see 100,000 injuries (annually) associated with scooters," she said.

As far as the ever-popular inline skates and old-fashioned roller skates are concerned — injuries just naturally occur when wheels are put on kids' feet. Many of those deaths and injuries can be prevented through the use of safety equipment designed for these young riders, Jouridine said.

"What parents did was fail to heed the No. 1 safety suggestion — when giving a wheeled present, make sure to give all the appropriate safety equipment also," she said.

For example, inline skaters also should be equipped with a safety helmet as well as wrist, elbow, knee and shin pads, she said.

"Protective gear is not just a bid for manufactures to try to get more money," she said, "but is an important part of safety."

Another vital aspect of safety in children's toys is age-appropriateness, Jouridine said. While infants and toddlers aren't the

best recipients for bicycles and inline skates, they do appreciate toys designed for children their ages.

"In general, make sure to read the warning labels (on toys) for age recommendations," Jouridine said.

Don't try to go by the child's level of intellectual development, she said, but by his or her age. A 2-year-old child really might be as smart as a 5-year-old, she said, but he's still only 2, and "he's still going to put buttons in his mouth."

Don't buy items with cords or strings as gifts for children younger than about 2, Jouridine said, because these cords can wrap around a child's neck and strangle him or her.

For these young gift-recipients, Jouridine recommends toys that will stimulate the child's brain development and motor coordination through bright colors, sounds and activities.

"Make sure everything is large enough so it can't get lodged in a baby's throat," she added. In fact, never give children under age 5 toys with small parts, including marbles, small balls and balloons. As colorful and festive as they are, balloons — as well as these other items — are still a choking hazard for children,

she said.

"As a general rule," Jouridine said, "buy toys with sturdy construction, and nothing (no small parts) that can come loose or come apart." Keep these recommendations in mind even if the child receiving the gift is older, but has smaller siblings in the house.

Children who are older, up to about age 8, should still not receive any toys with sharp points or metal edges, she said. "If you buy

arrows or darts, make sure they have protective tips or suction cups that stay secure."

Toys that operate through electricity or that have heating elements — such as woodworking sets or ovens — are not recommended for children younger than 8, she added.

Adults should consider all the issues before deciding whether or not to purchase toy guns for their children. Toy guns for children

have been controversial for years, but now, Jouridine said, "I am concerned that many law enforcement officials, operating under a heightened sense of security post 9/11, might mistake a toy gun for a real one."

Whatever the age of the child or the kind of toy purchased, Jouridine recommended immediately discarding any plastic wrapping or packaging the toy came in, "to prevent choking or suffocation."

JOURNAL INFO...News You Can Use

EDITORIAL INFORMATION

(1) In order to help accommodate our readers, we urge everyone to keep in mind that the newspaper is put together on Tuesday and Friday. To increase the probability that your information will be placed in your preferred edition, the earlier that stories, information about meetings or any editorial subject is brought to the Journal office the better!

(2) Deadlines for "Around Muleshoe" and "Around the Area" — Monday at 5 pm (Thurs. edition) and Thursday at 5 pm (Sun. edition).

(3) The following represents a list of information that appears FREE in the Journal:

- Weddings • Engagements • Bridal Showers • Baby Showers
- Birth Announcements • First & 90+ Birthdays
- 50th+ Anniversaries

(forms are available at the Journal office, 304 W. 2nd, for weddings, engagements, bridal and baby showers)

(4) Pictures run in the Journal are scanned. In some cases, original prints of photos can be made. However, due to developing supply costs, there will be a charge for these prints. (Some exceptions apply.)

ADVERTISING INFORMATION Effective Aug. 1, 2001

(1) Display ads are located throughout the newspaper. Ad costs are based on the number of column inches that the ad occupies. The Journal's open rate is \$3.75/col. inch. Discounts are available under certain conditions. Borders and artwork are added at no extra cost!

(2) DEADLINES FOR DISPLAY ADVERTISING are Tuesday at Noon (Thurs. edition) and Friday at Noon (Sun. edition). If you are a business or individual in need of placing a DISPLAY AD or you have questions about display advertising, call Leah at 272-4536.

(3) Classified ads are located on the NEXT TO LAST PAGE OF THE NEWSPAPER. These ads include (but are not limited to) FOR SALE, LEGAL NOTICES, HELP WANTED, GARAGE OR ESTATE SALES, VEHICLES, FOR RENT, REAL ESTATE, ETC...

(4) Ad cost is based on the number of words within the ad or the type of classified ad that is desired. Contact Beatrice at 272-4536 for more info.

We appreciate the Muleshoe community! We also encourage Muleshoe and surrounding area residents to submit story ideas. WE WANT TO BE YOUR LOCAL NEWS SOURCE AND YOU CAN HELP!!

READER ADS: 15 and under words \$4.80 (first run) 15 and under words \$4.35 (each time thereafter) 16+ words .32¢/word (first run) 16+ words .27¢/word (each time thereafter)

DISPLAY CLASSIFIED: Charged by column size of ad. This type of ad will appear in the classified section, but will have a surrounding border. This classified ad is "dressed up." Cost is \$3.71 per inch.

MULESHOE AND BAILEY COUNTY JOURNAL
Lots of news for very little \$\$\$\$\$\$
The Journal is printed 52 weeks a year — 2 issues per week!

RATES

Carrier.....\$22/year
Mailed In Bailey County.....\$24/year
Mailed Outside Bailey County.....\$26/year
College Student Rate.....\$22/year

CARRIERS: BOBBY AND MELISSA FLORES
For carrier route customers: If you miss the paper, call the Journal during office hours at 272-4536. We'll gladly bring you a paper. Evenings and weekends, contact Bobby or Melissa at 272-6719.

Carrier Route Customers
SAVE THIS NUMBER FOR FUTURE REFERENCE SHOULD YOU MISS YOUR PAPER!!!!
Bobby & Melissa Flores
272-6719
(Evenings and Weekends Only)

Journal Classifieds

STOP & SHOP

Deadlines are 5 p.m. Monday and Thursday

Call 272-4536

November 29, 2001

LEGAL NOTICE

ORDINANCE NO. 0-386-1101
AN ORDINANCE OF THE CITY OF MULESHOE, TEXAS ADOPTING AND ENACTING A NEW CODE OF ORDINANCES; PROVIDING FOR THE REPEAL OF CERTAIN ORDINANCES NOT INCLUDED THEREIN; PROVIDING FOR A PENALTY FOR THE VIOLATION THEREOF; PROVIDING FOR THE AMENDMENT OF SUCH CODE; AND PROVIDING WHEN SUCH CODE AND THIS ORDINANCE SHALL BECOME EFFECTIVE.

PASSED AND APPROVED THIS 20th DAY OF NOVEMBER, 2001.
Victor E. Leal, Mayor. ATTEST: LeAnn Gallman, City Secretary. Published in the Muleshoe and Bailey County Journals November 25 and 29, 2001.

EMPLOYMENT WANTED

OLDER MAN SEEKING EMPLOYMENT ON FARM OR OTHER.
806-995-4364

AUCTION

ANTIQUA AUCTION
Sat. Dec. 1, 2001 — 9:30 a.m.
"The Art Loft" — Muleshoe, Texas
1529 W. Amer. Blvd.
"Arlene Phelps & Inez Bobo," Owners
From Phv. — Hwy 70/84W — From Lubbock — Hwy 84W — From Clovis — Hwy 84E
"COMPLETE CONTENT LIQUIDATION"
Antiques, Glassware, Collectibles & More Than You Expect!
Viewing — Friday, Nov. 30 — 12 noon to 5 p.m.

ANTIQUES & FURN.
1-Louis XIV Style Settee
1-3 pc. Louis XIV Style-Parlor Set
1-Wardrobe-Art Deco
1-French Style Ormate Table/6 Chairs
w/ Buffet & Mirror— Tapestry Seats
1-Fire Side Slipper Box
1-Post Office Sorting Table
1-Old Drop Leaf Table/2 Chairs
1-Mahogany Side Board
1-Wood Pie Rack
1-Wash Ringer
1-8 pc. Maple Dining Set (6 Chairs, Table, Lazy Susan)
1-Wood Day Bed — Maple
1-Li.-Hall Chairs — Carved
1-Li.-Smoke Stands
1-Li.-Rockers & Chairs
1-Li.-Office Furn.
1-Li.-Privacy Screens
1-Pine Table
1-Carpet Rocker

1-Li.-Picture Albums — 1800's
"MUCH MORE TO SEE!"
GLASSWARE
Crystal, Dishes, Majolica, Pressed, Vases, Figurines, Collector Spoons, Collector Plates, Cups, & MORE!!
MISC.
Asst. Enamelware, Lamps, Brass, Rugs, Collectibles, Mirrors, Pulleys, Picture Frames, Immigrant's Trunk, Pottery, Scales, Garden Art, Railroad Dolly, Fabric, Carpet Dolly, Cheese Boxes, Sculptures, Shelves, Fixtures, AND MUCH MORE!!
TERMS
Cash or Check, All items Sold AS-IS. Accounts Settled Same Day. We Are Agents Only. All items must be removed from premises by Mon., Dec. 3. Announcements Sale Day Take Precedence. Lunch Available.

McNUTT AUCTION SERVICE
Larry McNutt — Tx. 7881
806-293-3365 or 292-6462
Plainview, TX.

FOR SALE

PEANUT HAY - 1 TON SQUARE BALES. \$50 A TON AT FARM. CALL MARK 806-893-2782

FOR SALE
'81 Buick Skylark \$750
'86 Chevy Pickup \$500
SOLD
Call Dolores Harvey
806-272-3574

Let our Classified section work for you!
Call today!
806-272-4536

Firewood For Sale
12 miles West of town. Must pick up, will not deliver. Approx. 3 cords. Mostly elm, some pecan. \$100 for all 3 cords. 925-6655

ESTATE SALE

ESTATE SALE
Billie (Little One) Jones 318 W. 7th St.
SUNDAY, DEC. 2 1 PM — 5 PM
Antique Round Oak Clawfoot Table With 4 Chairs; Duncan Phyfe Table With Leaves And Hot Pad Covers, And Matching Buffet Server Hutch; Walnut Coffee Table; 4 Walnut Chairs; Oak Chandelier; Sway Lamp; Bronze Rubbing Of Sir Thomas Of England; Antique/Stereo Cabinet; Many Small Items; Wall Decor; And Kitchen Items.

GARAGE SALE
MOVING SALE
807 WEST AVE. J
SATURDAY,
DECEMBER 1, 2001
8 AM — 2 PM

In Unity there is Strength!

HELP WANTED

Newspaper carrier needed in Muleshoe for the Lubbock Avalanche-Journal. Great part-time \$\$\$ for someone willing to get up early. Looking for honest, dependable person with good transportation. Call customer service at (806)762-8855.

PRODUCTION POSITION AVAILABLE

Now accepting applications for production position at HI-PRO FEEDS. Company insurance, 401(k), paid holidays. Must pass drug screen. Apply in person at HI-PRO FEEDS in Friona.

LOST AND FOUND

REWARD OFFERED
2 Female Chocolate Labs. 1 has purple collar, answers to "Baby". Other dog has no collar & small white patch on belly, answers to "Zena." Both missing since Saturday from 615 W. 6th. Anyone with information call Sarah Dickson Home 272-4093; Work 272-3169; Cell. 806-773-9438.

MISCELLANEOUS

SUSAN'S SCENTS
605 W. Amer. Blvd.
(Cellular 2000 building)
Strongly scented homemade candles starting at \$3.95. Refills 40¢/oz. 20+ scents or request your favorite.
272-7523 or 272-5153

DEADLINES FOR CLASSIFIEDS
Monday 5 pm for Thursday's issue.
Thursday 5 pm for Sunday's issue

REAL ESTATE

FOR SALE
3-1-1 Brick Home. 1654 sqft. Remodeled. Large fenced back yard with covered patio. **A MUST SEE!**
807 W. Ave. J. 272-6782

Home for Sale
Neat, clean — 3 Bdrms 1 Bath. New carpet. Good location.
\$24,000. 522 W. 8th.
Call 272-3349

Large 1 1/2 story 4-3-2 on 2 acres in Earth, TX. Formal DR, office, huge kitchen with island. 2 FP, basement and attic.
Call Karen Tunnell
272-4231 work
272-4403 home

Subscribe Today... Muleshoe and Bailey County Journal
52 weeks a year, 2 issues per week!
\$22 carrier/year, \$24 mail-in-county/year, \$26 mail out-of-county/year.
Special rate for college students — \$22 mail/year
Send check to:
Muleshoe Journal
P.O. Box 449
Muleshoe, TX 79347
Let us be your local news source!

157 ACRES DRY LAND FARM, NEAR GOODLAND. \$275 PER ACRE. JIM HYSINGER, BROKER 806-578-4371.

BUY IT! SELL IT!

TILING SERVICE

D&H TILING
Free Estimates for Ceramic Tiling.
Call 806-227-2128 or 806-946-8722

MOVING?
Find a new place or sell your old one with the Journal Classifieds
806-272-4536

Nieman Realty

116 E. Ave. C • George Nieman, Broker • 272-5285 or 272-5286

RICHLAND HILLS — PARK RIDGE AREA

- NICE 3-3-1 Brick, Cent. heat, evap. air, built-ins, fans, 2000+ lv. area, fenced yd., patio, stor. bldg.!! \$57.5K! RH-1
- NICE LOTS AVAILABLE, CALL FOR DETAILS!!!!

HIGHLAND AREA

- 3-2-2 Brick, Cent. Heat, built-ins, fans, fenced yd., large workshop/stor. bldg.!! PRICED REDUCED \$47.5K HL-2
- NICE 3-1-1+1 carport Home, Cent. Heat & Air, carpet & hardwood, 4 fans, fenced yd., MORE!! \$26.5K!! HL-4
- NICE 3-2-1+2 carports, Cent. heat, evap. air, built-ins, storm windows and doors, stor. bldg., fenced yd.!! MORE!! \$54.5K HL-5
- 2-1-2 carport Home, wall heat, win. ref. air, appliances, 1550+lv. area, storage/shop, cellar, fenced yd. \$24.5K!! HS-9

LENAU — COUNTRY CLUB AREA

- 3-2 Brick, Cent. A&H, fenced yd., corner lot!! \$40K!!
- 3-2-2 Brick, Cent. A&H, built-ins, Fireplace, 2000' lv. area, cov. patio, fenced yd., PRICED REDUCED \$75K!!
- NICE 2-1-1 Home, Cent. A&H, new paint, carpet, vinyl, & hardwood, fenced yd., MORE!! \$31.5K!! L-3
- 3-1-1 Home w/walk out yd.!! \$22K!!

COMMERCIAL

- HWY. 84-150' frontage, office, warehouses, truck dock, railroad spur access, with or without fuel storage tanks!! \$30K!!
- An approx. 5.1 acre tract w/approx. 144.5' frontage on Hwy. 84, approx. 1584' office, 1320' shop, 4000' shop, & 2880 bldg., has railroad access, 2 mobile home hookups, MORE!!!
- GOOD INCOME PROPERTY - approx. 3490' bldg, paved parking, good net lease!! PRICED TO SELL!
- Established Business: Land, Bldg. & Equip., \$75K!!
- 200 Main & E. Ave. B-4 rental units plus upstairs & basement or renovate for your own special use!! \$65K!!
- VERY NICE 2300' bldg., Cent. A&H, 175' frontage on Hwy 84 & 70!! MUCH MORE!!
- 140'x100' tract on Hwy. 84 & 70, 1760' bldg., 1500' storage, 2400' cov. area, paved parking!! \$49.5K!!

HIGH SCHOOL AREA

- VERY NICE 3-1-1 Brick, Heat pump, DW, nice carpets, fenced yd., MORE!!! \$30's!!! HS-1
- 3-2 Home, corner lot, fl. furn. heat, fenced yd. \$25K!! HS-10
- NICE 3-2 1/2-2 carport Home, Cent. A&H, built-ins, FP, 2650' + Lv. area, fans, storm windows & doors, new roof, cov. patio, concrete cellar, fenced yd. w/ add. 2 carport, large workshop, & stor. bldg. PRICED REDUCED \$60K!! HS-7
- HWY. 84-2-1 1/2-2 Brick, Cent. Heat, win. air, built-ins, fans, workshop/storage, fenced yd., also good office location!! PRICED REDUCED!! 40K!! HS-2
- 3-1 Home, Fl. furnace, fans, storage & 2 apartments, corner lot!! \$35K HS-3
- EARTH — 3-2-2 Brick, Cent. A&H, built-ins, 1850' + liv. area, fenced yd., + 3 add. lots!! A STEAL @ \$38K!!
- EARTH — 4-2-2 carport home, Heat Pump, fans, storage-workshop!! \$35K

RURAL

- EXCELLENT DAIRY LOCATION-1120 ac., 7 circles, 20 wells, very nice 3-2-3 Home w/basement, 40' x 60' barn w/ 30' x 40' shed, 3 mil. lb. grain facility, add. 3 bdrm. home, 2 mobile homes, on pavement convenient to Muleshoe, Clovis, Portales, & should have 5K head permit within 60 days!!! Could be split if needed!!
- PLEASANT VALLEY, Approx. 160 acres, 2 bdrm home, 1 bath, 2 car detached garage, on pavement!!
- W. of SUDAN-NICE 3-3-2 Brick Home, 5 acre tract on Hwy. 298, Cent. Air & Heat, built-ins, large Quonset Barn, MORE!!! \$95K!!!
- PRICE REDUCED — 108 acres or 7 acre tract on Hwy. 70, approx. 2100' office area, 16,900' commercial bldg. w/loading dock, 3,400' warehouse, new well, 2,800' runway!!!
- 2-2-2 carport Mobile Home on 1.997 acres on pavement close to town, storage, 45' x 74' barn, pens, & fenced pasture!!
- 2 LABORS — 345.8 ac. CRP, 6 yrs. remaining on contract!!



Lowe's Marketplace

401 W. American Blvd. Muleshoe, Texas 272-4585

WE RESERVE THE RIGHT TO LIMIT QUANTITIES IN TEXAS

WESTERN UNION MONEY TRANSFERSM
"The fastest way to send money"

AFFILIATED FOODS INC. MEMBER STORE AT PARTICIPATING STORES



SPECIAL X-TRA SAVINGS PRICING GOOD THRU DEC. 4, 2001

- Diamond 6 oz. bag **ALMONDS OR WALNUTS**
- Ellis 6 oz. bag **PECANS**
- 2 oz. jar Schilling/Mccormick pure **VANILLA EXTRACT**
- 10-12 oz. box **MRS. CUBBISON'S STUFFING**
- Pre-priced \$2.99 **LOWE'S JAR SPICES**
- All Purpose 10 lb. bag **SHURFINE FLOUR**
- Shurfine 4 lb. bag **HARINA PREPARADA**
- Asstd. 16 oz. btl. **WISHBONE SALAD DRESSING**
- 28 oz. box **MINUTE WHITE RICE**
- Kraft asstd. **KRAFT DELUXE OR VELVEETA DINNERS**
- Select group 16 oz. sweet or 24-32 oz. spears **VLASIC PICKLES**
- 15 oz. jar beef or chicken **BOSTON MARKET GRAVY**
- Asstd. 12 pk. cans **LOWE'S SOFT DRINKS**
- 15 ct.-9 in. plates or 20 ct.-16 oz. cups **SOLO PLASTIC WARE**
- 100 sq. ft. roll **GLAD CLING WRAP**
- 64 oz. btl. Ocean Spray **OCEAN SPRAY CRANBERRY JUICE COCKTAILS**
- 64 oz. btl. Tree Top **APPLE CIDER OR JUICE**
- 7 lb. **BAG OF ICE**

- BLUE BELL OR BLUE BUNNY ICE CREAM**
- ASSTD. 1/2 GAL. ROUND WHERE AVAILABLE
- OR
- LOWE'S OR SHURFINE MILK**
- ALL VARIETIES GAL.

EACH WITH 1 REWARD COUPON
1 ITEM PER COUPON

1¢



1¢

EACH WITH 1 REWARD COUPON
1 ITEM PER COUPON



- Asstd. 4 pk. Soft White **SYLVANIA LIGHT BULBS**
- 48 oz. tub **BLUE BONNET MARGARINE**
- Asstd. 8 oz. tub **COOL WHIP TOPPING**
- 4 ear pkg. **ORE-IDA CORN-ON-THE-COB**
- 16 oz. tub **DAISY SOUR CREAM**
- Duncan Hines 18.25 oz. box/16 oz. can **CAKE MIXES OR FROSTING**
- Asstd. Triscuit, Wheat Thins and etc. **NABISCO SNACK CRACKERS**
- 15.25 oz. Honey Nut Chex or 14 oz. Lucky Charms **GENERAL MILLS CEREAL**
- Hellman's or Best Foods (excl. light) 32 oz. jar **MAYONNAISE**
- 8 oz. bag **VALLE ROJO CHILE PODS**
- 5 lb. grapefruit or 4 lb. oranges bagged **GRAPEFRUIT OR ORANGES**
- 10 ct. box **SWISS MISS HOT COCOA**
- Asstd. 18 oz. jar **PETER PAN PEANUT BUTTER**

- Smucker's 12 oz. jar **PRESERVES OR JELLY**
- 4 double roll pkg. **NORTHERN BATH TISSUE**
- Ziploc quart or gallon 15-20 ct. **STORAGE OR FREEZER BAGS**
- 37.5 sq. ft. Reynolds Wrap Heavy Duty **ALUMINUM FOIL**
- 24 ct. pkg original **ALKA SELTZER**
- Asstd. 13 oz. btl. Thermasilk **SHAMPOO OR CONDITIONER**
- 26 oz. btl. **WINDEX GLASS CLEANER**
- 32 oz. spray anti-bacterial **FANTASTIK CLEANER**
- Asstd. homestyle 9 inch 37 oz. pkg. **SARA LEE PIES**
- Asstd. 30-48 oz. pkg. **RHODES ROLL DOUGH**
- 15 lb. bag **RUSSET POTATOES**
- 1 lb. pkg. **HORMEL BLACK LABEL BACON**
- Large 30 ct. **COUNTY POST EGGS**
- 4 lb. bag Pure Cane **IMPERIAL SUGAR**
- 14 oz. can **EAGLE BRAND MILK**
- 3 liter btl. **COCA-COLA, SPRITE OR DR. PEPPER**
- Pre-priced \$2.99 **LAY'S® POTATO CHIPS**
- 16 oz. qtrs. **LAND O LAKES BUTTER**

FREE! EACH WITH 4 REWARD COUPONS
1 item per 4 coupons

SHURFINE WHOLE FROZEN TURKEY 10-14 LB.

OR

CORN KING WHOLE BONELESS HAM 5 LB.

Here's How It Works! Lowe's is giving you deep discounts on many of the items you purchase everyday! For each dollar you spend at Lowe's, we will give you a point. After 50 points (or \$50), you will receive a Lowe's X-tra Savings Reward Coupon. This coupon can then be redeemed for deep discounts on selected items. Each month, Lowe's will select from our most popular items in the store and deeply discount them for our X-tra Savings Reward Coupon holders. Present your coupon and receive incredible savings on selected items.
X-tra Savings Reward Program • Each Dollar You Spend is Worth ONE (1) Point • After you earn 50 points, you will receive a Lowe's X-tra Savings Reward Coupon • Use your Lowe's X-tra Savings Reward Coupon to get deep discounts on one of the selected items. • Only ONE (1) item can be purchased with each Reward Coupon • Items will be changed monthly.
THE X-TRA SAVINGS REWARD PROGRAM GOOD AT LOWE'S MULESHOE, CANYON AND TUCUMCARI STORES ONLY! Points are not transferable between stores. No substitutions please on X-tra Savings Reward items. Only one item may be purchased at the special deep discount per Reward Coupon.

QUALITY MEAT

- BONELESS BEEF **CHUCK ROAST** LB **\$1.69**
- 2 PACK CRY-O-VAC BONE-IN **PORK BUTT ROAST** LB **77¢**
- ANY SIZE PACK BONELESS SKINLESS **CHICKEN TENDERLOINS** LB **\$2.49**
- PEYTON'S REG. OR POLISH **SMOKED SAUSAGE** ... 14 OZ. **\$1.29**

- PEYTON'S **MEAT FRANKS** 12 OZ. PKG **79¢**
- PEYTON'S ASSTD. **SLICED BACON** ... 12 OZ. PKGS **3/\$5**
- ECKRICH ASSTD. VARIETIES **SMOKED SAUSAGE** ... 14-16 OZ. **\$1.99**
- ECKRICH ASSTD. VARIETIES **FUN KIT LUNCH MAKERS** ... 11.6-12.3 OZ. **3/\$5**

- ASSTD. LOWE'S **SOFT DRINKS** 6 PK. CANS **99¢**
- 6 PACK CANS **COCA-COLA, SPRITE OR DR. PEPPER** **2/\$4**

- ASSTD. PILLSBURY **FROSTING** 16 OZ. CANS **2/\$3**
- ASSTD. PILLSBURY **CAKE MIXES** 18.2 OZ. BOX **79¢**
- LOWE'S WHITE SANDWICH **BREAD** 24 OZ. LOAVES **2/\$1**
- ASSTD. CHIPS **PRINGLES** 5.13-6 OZ. CAN **99¢**
- KEEBLER FUDGE SHOPPE **COOKIES** 8-12 OZ. PKGS. **2/\$4**

PRODUCE

- SWEET NEW CROP JUMBO **TANGELOS** LBS **2/\$1**
- MIX OR MATCH WASHINGTON EXTRA FANCY **ROME, FUJI OR GRANNY SMITH APPLES** LB **88¢**
- NEW CROP **PECANS** LB **\$1.99**
- CRISP **ROMAINE, RED OR GREEN LEAF LETTUCE** **2/\$1**
- WHITE **ONIONS** LBS **3/\$1**
- LARGE **RED OR GREEN BELL PEPPERS** **2/\$1**

FROZEN & DAIRY

- ASSTD. **PATIO DINNERS** 10.6-13 OZ. **79¢**
- ASSTD. RED BARON (EXCLUDES RISING CRUST) **12" PIZZAS** 21-23 OZ. PKG **2/\$6**
- ASSTD. FLORIDA'S NATURAL **GRAPEFRUIT OR ORANGE JUICE** 64 OZ. **2/\$5**
- WHILE SUPPLIES LAST! CAN WITH LID **TAMALE STEAMER** EA. **\$9.99**
- ASSTD. 100 OZ. LIQUID OR 87 OZ. POWDERED **ULTRA TIDE DETERGENT** YOUR CHOICE **\$5.99**
- ASSTD. TOP RAMEN **NOODLES** 3 OZ. PKGS **10/\$1**

Register to win an 8 ft. Christmas Stocking full of toys... a gift from Lowe's Marketplace!

WEEKLY PRICES EFFECTIVE NOV. 28-DEC. 4, 2001