

PAGE ONE

A QUICK READ OF THE NEWS

Cops run out of tickets

Great news for motorists in Reading, Pa.: The cops are out of parking tickets.

City police started rationing tickets in November when their supply of ticket books ran short, then had to stop writing citations altogether when their last tickets were used up a few weeks ago.

A replacement supply was expected to arrive this month, but in the meantime the shortage has cost the city an estimated \$25,000 in lost revenue.

Officials said the shortage was due to an unexpected delay in ordering the replacement books.

During the shortage, police have been able to write state citations rather than city-issued tickets, but have largely refrained from doing so.

The state tickets carry a \$44 fine, rather than the city's \$15, and involve extra paperwork for the department.

Apology flies in penny flap

A man turned away from a Portsmouth, N.H., supermarket when he tried to buy baby food with coins has gotten an apology and gift certificate.

Greg Packard, store director at a Portsmouth Market Basket, reached customer Anthony Ouellette by phone and told him he was sorry a store manager did not accept \$3.13 in coins.

"U.S. currency is U.S. currency," Packard said. "It's not the way we run business here."

Ouellette called the apology a very nice gesture, and said it was more important than the \$50 gift.

The manager has been moved to another store and back to a corporate training program, Packard said.



Drawing date: Saturday, Jan. 12
Winning numbers: 7-11-23-35-38-53
Estimated jackpot: \$17 million
Winners: 0
Next drawing: Wednesday, Jan. 15
Estimated jackpot: \$21 million

On this date in history

Jan. 17 — Reconstruction is declared to be at an end in Texas when President U.S. Grant refuses to send federal troops to Austin to oppose the election of a Democratic governor (1874).

Jan. 19 — Gen. Robert E. Lee passes his 50th birthday while on duty with the U.S. Army at Fort Brown, Texas (1857).

Jan. 20 — Gov. James Stephen Hogg is inaugurated — the first native Texan to be elected governor (1891).

LOCAL WEATHER

While the coming days may not be as warm as the past week or so, the National Weather Service predicts highs in the low 50s with the exception of about 48 on Friday and Saturday. Morning low temperatures should be mainly in the mid-20s except for Friday's 22. Partly cloudy conditions should continue to be the rule through Monday.

Editor Ronn Smith can be reached at 272-4536 or ctyankee@fivearea.com

Missed your paper? Call carrier Yolanda Martinez at 272-4536 during business hours, 8:30 a.m.-5 p.m.

Team photo creates tense scene for school board

JOURNAL STAFF REPORT

A donated photo of last year's Mule football team, hung in the junior high gymnasium and then transferred to the high school gym, has become the school district's biggest controversy in some time.

Donors got the picture (reportedly 8 feet by 12 feet) hung in the gymnasium at Watson Junior High without getting the

move cleared through either the school board or the superintendent's office.

The district has no written policy on the placement of such donations.

When Superintendent Gene Sheets found out about the hanging of the photo, he ordered it taken down and rehung in the high school gymnasium.

That didn't go over well with some fans and players, and a few of them said so at Monday's school board meeting, but the board voted 4-3 to leave the photo at the high school.

Trustee Cindy Purdy made a motion to move the picture back to the junior until the end of the school year.

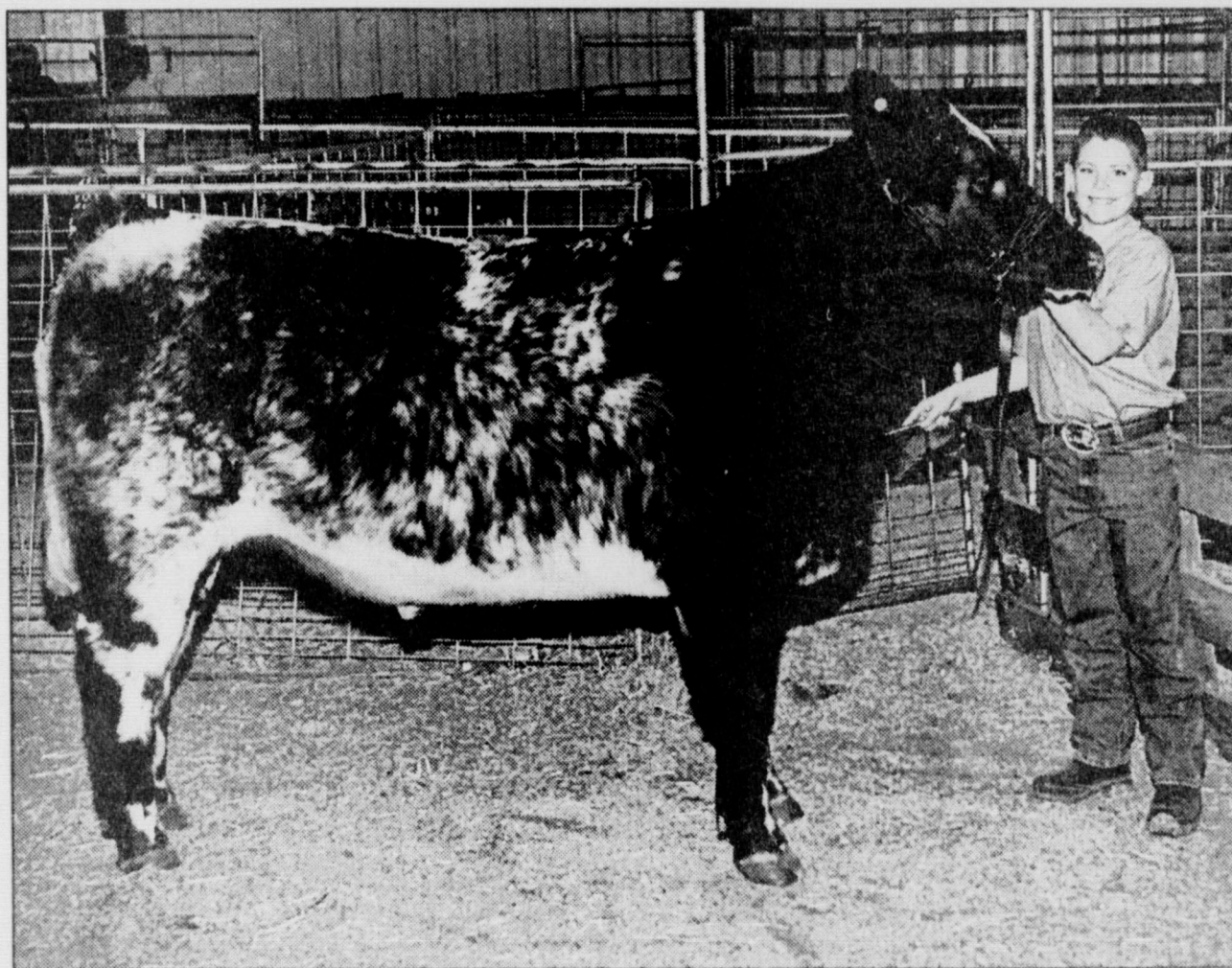
Trustee Bruce Barrett said, "I have a problem with that

until we have some type of criteria on what to hang and what not to hang."

The motion led to a 3-3 board vote, with Curtis Shelburne and David Tipps supporting Purdy while Barrett, Arnold Price and Sergio Leal voted to leave the photo where it is.

Board President Nick

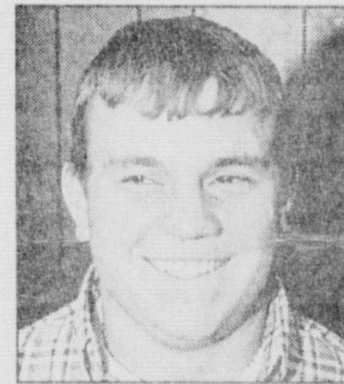
see PHOTO on page 2



Journal photos: Mike Hahn

Lazbuddie winners

The grand champion steer at Saturday's Lazbuddie Junior Livestock Show was shown by Logan Mason, who also took the steer showmanship award. Other showmanship winners were (at right, top to bottom) Suzanne Mason, sheep; Melanie Winders, goats; and Wayne Terry, swine. A complete list of winners is on page 4.



County's jail plan back onto the radar screen

JOURNAL STAFF REPORT

Bailey County Judge Marilyn Cox said Monday she had received a telephone call informing her that the county's proposal for a regional jail is still being considered.

Cox reported that James Parkey, representing a private jail developer, said that because of the county's current handling of 12 prisoners for the U.S. Marshal's Office, he felt it would be possible to finance a 48-bed facility without obligating tax dollars.

In recent months, Sheriff Ron Kemp has been looking at buildings around town to see if one is suitable for a jail. Remodelling an existing building would be cheaper, Cox said, but could not be done without taxpayer money.

County officials were to meet Monday with representatives of a company that specializes in remodelling buildings for use as jails.

Monday's commissioners' court meeting also:

- Received a report that EMS collections totalled \$16,000 in December;
- Accepted a bid on a water tanker for the fire department; and
- Approved bonds for Alisa Baca as deputy county treasurer and deputy county clerk.

Democratic candidates speak

JOURNAL STAFF REPORT

The five Democratic candidates for county offices spoke briefly Saturday night at the Bailey County Coliseum, introducing themselves and their offices.

Participating were District Judge Gordon Green, County Judge Marilyn Cox, District Court Clerk Elaine Parker and commissioners C.E. Grant (Precinct 2) and Jerry Damron (Precinct 4). Precinct chairmen Don Dyer, Alfonso Posadas and Kay Cole also introduced themselves, with Cole giving a rundown of statewide candidates who spoke in Lubbock the night before.

Green advised the crowd that "Issues will change but character won't. Choose someone whose sense of values can be trusted over the long run."

Cox made her position clear in later remarks. "I am a Christian by choice, I am a conservative and a Democrat by choice," she said.

Parker, the clerk for 4 1/2 years after 17 as deputy, said, "I love what I do and I love the people of Bailey County."

Extension board gets economic update

JOURNAL STAFF REPORT

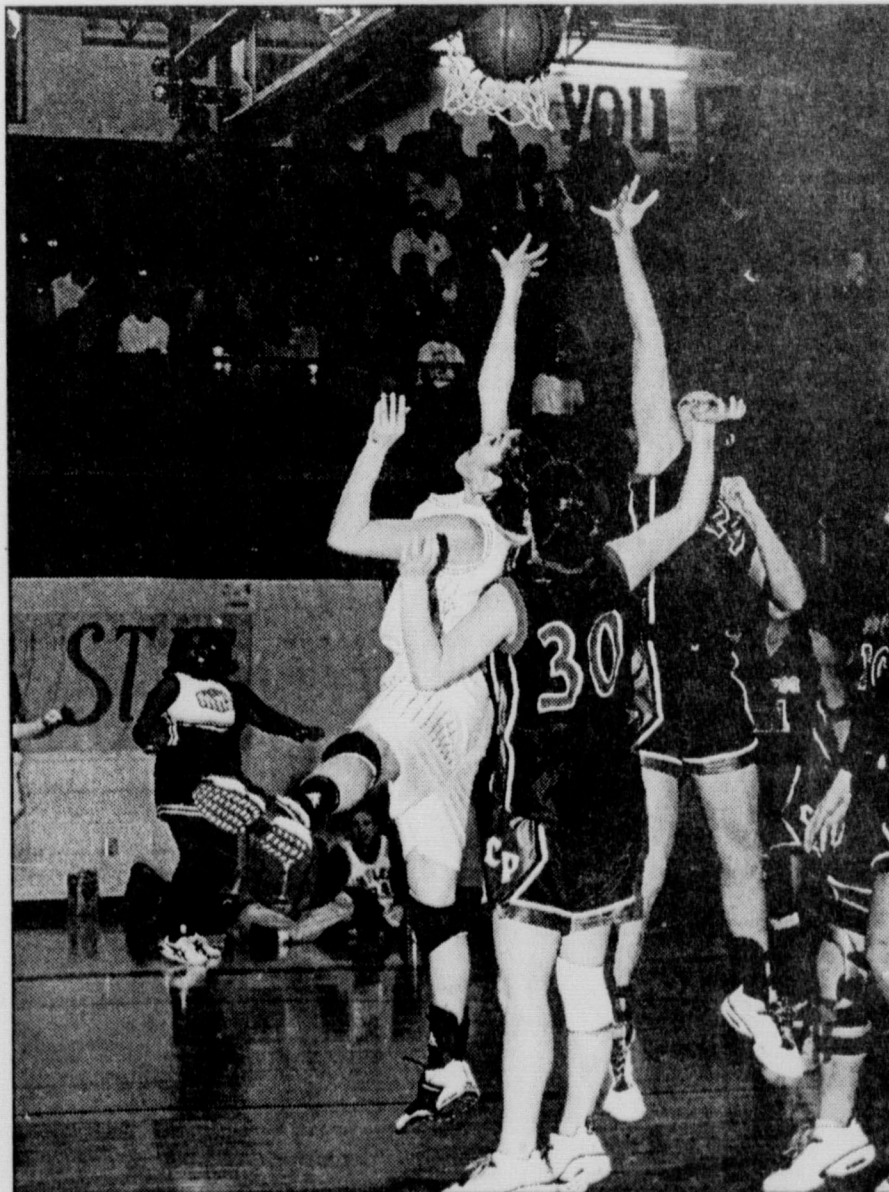
Texas Cooperative Extension's county committee got economic updates last Thursday from Janet Claborn, the city's economic development director, and Curtis Preston, county Extension agent.

Preston's good news is that

the county's agricultural income for 2001 is estimated at \$100 million after several years in the \$80 million to \$90 million range.

Claborn concentrated mainly on dairy-related news, including the dairy supply company that is

see ECONOMIC on page 2



Journal photo: Mike Hahn

Flores to the goal

Muleshoe's Tiffany Flores shoots from close quarters in last week's district contest against Lubbock Cooper, which the Lady Mules won 43-14.

AROUND MULESHOE

Square-dance lessons to begin

Muleshoe Square Dance Club will be sponsoring lessons beginning Jan. 24 at 7:30 p.m. in the Bailey County Coliseum.

The first two lessons are free. James Pettus of Portales, a member of the club for 21 years, will be the caller. More information is available by calling 946-3622.

School news

Parents and others interested in activities in the Muleshoe Independent School District can learn about changes in the current week's activities by calling 272-7669. The information line is also updated for changes in the school schedule due to bad weather.

Public calendar

Jan. 17 — 7 p.m. Muleshoe Area Hospital District board, in the board room at the hospital.

Jan. 19 — 10:30 a.m. to 11:30 a.m. "Reach for Peace," Muleshoe Area Public Library Storytime; preceded at 9:30 a.m. by "Ready for Life" (for newborns to age 2, with parents) and followed at 1 p.m. by "Saturday Afternoon at the Library" (for all elementary-school students).

Jan. 20 — 11 a.m. The Rev. Liz Sisko of Christ Methodist Church in Levelland speaks at First United Methodist Church of Muleshoe.

Also on Jan. 20 — 6 p.m. The Rev. Ken Robinson of Artesia, N.M., leads services at Oklahoma Lane Methodist Church.

Feb. 2 — 7 a.m. to 7 p.m. Voting-at Three Way and Sudan schools on district consolidation.

Feb. 4 — Mammograms at Muleshoe Area Medical Center if enough people sign up. Appointments required; (800) 377-4673.

ECONOMIC

from page 1

opening in Muleshoe and a second that has expressed interest.

She reported that J&S Dairy began milking three months ago, RTM expects to begin in March, and the

HONORS

KING

Adrian King of Muleshoe was named to the president's list for the fall semester at the University of Texas-Permian Basin in Odessa.

He is a senior psychology major.

To be eligible for the honor, a student must be attending full-time and maintain a 4.0 grade-point average.

King is the son of Kenneth and Toni King of Muleshoe.

King's wife, Lindsey, was named to the dean's list with a grade-point average of 3.8.

She is a sophomore biology major and a graduate of Farwell High School.

ANGELO STATE

Four students from Muleshoe and one from Lazbuddie have been named to the dean's list for the fall semester at Angelo State University in San Angelo.

To be eligible for the dean's list, a student must be enrolled full-time and earn a grade-point average of at least 3.25.

The honorees include Steven Brice Foster, a finance major from Lazbuddie, and Michael Dan López, pre-dentistry; Gerardo Loya, music; Joseph Bryan Mata, pre-medicine; and Eric J. Posadas, computer science.

PHOTO

from page 1

Bamert, before casting the deciding vote in favor of the staus quo, cited the board's responsibility to make a decision for all 1,300 of the district's students, not just the athletic program.

Jerrell Otwell, one of the players in the photo, spoke movingly to the board about what the photo means to him — and the significance of four junior varsity play-

ers who were in the photo after they contributed all they had for the good of the program.

Sheets issued a statement to the faculty that says, "It is my responsibility that we didn't have any clear administrative guidelines and criteria in place for handling these types of donations. Had there been such guidelines in place, this

misunderstanding could have been avoided."

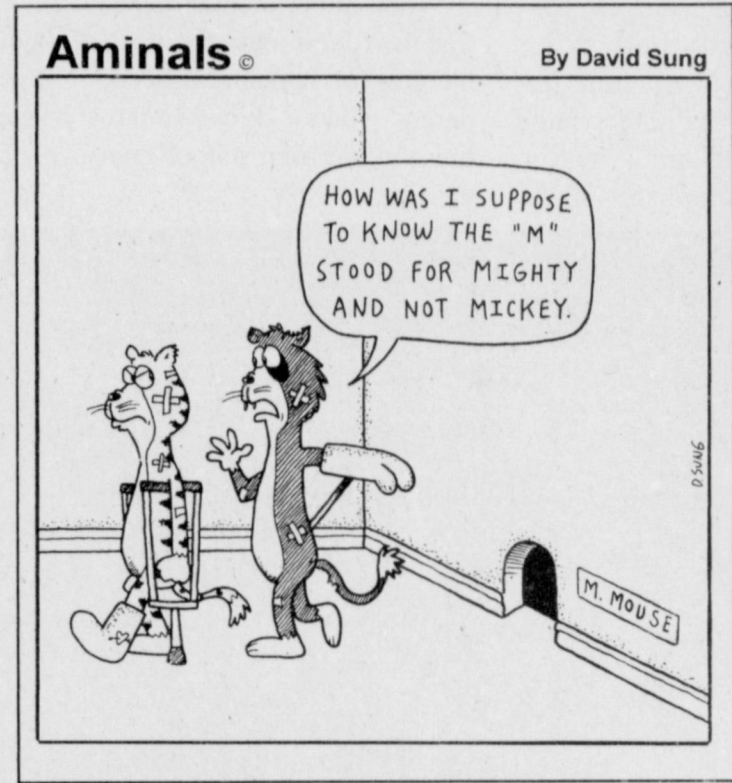
In follow-up conversations Tuesday, Sheets said repeatedly that he considers himself solely responsible for the episode.

Barry Cowart told the board that the junior high gymnasium was the choice location for the picture because it would be seen by larger numbers of younger

students and possibly inspire some of them.

But Cowart encouraged everyone to accept the board's decision and not let it become a "festering sore."

Shelburne, noting he has two sons in the photograph, summed up the situation: "No one here wants to take away from what those kids did. Having said that, it's just not that simple."



former Waterlander dairy and three others have permits in progress — including "a big one" near Progress.

She added that a hoof trimmer also has relocated to Muleshoe to work on dairies.

City Manager David Brunson added that hay

TOPS NEWS

The Muleshoe Church of Christ was the scene Jan. 10 for the TOPS No. 34 meeting; eight members attended.

Alma Robertson led both TOPS songs.

The prayer and pledge were led by Laverne James, who also presided over the meeting.

Alene Bryant and Linda White, weight-recorders, conducted the weigh-in.

The results of the weigh-in were presented by Bryant and White.

Bryant was the best loser of the week and first runner-up was Molly Davis.

There was a three-way tie between James, Elaine Coburn and Rose Sain for second runner-up.

A get-well card was prepared for Evelene Harris by Retha Knowles, card chairperson.

James presented a pro-

gram about healthy living. The program was taken from a *Prevention* magazine.

TOPS No. 34 is scheduled to meet at 5 p.m. Jan. 17 at the regular site. Visitors are welcome.

there has been some assurance that the program will be changed in the next legislative session.

She also reported that L&L Pallet has doubled its business and Leal's Tortillas may get a new contract.

farmers and others have profited locally from the influx of dairies.

Claborn said data is still being gathered for the proposed cheese plant, but the plan has snagged. The legislation promoters hoped to use to help build the plant is not designed for such large projects, but Claborn said

THE PROFESSIONAL BODY SHOP

Wrinkle Free

BODY WORKS INC.
David Mount-Owner

- Auto, Truck (Small & Large)
- Frame Alignment
- Windshield Replacement
- Fiberglass Repair (Cars, RVs, Boats)
- Truck Painting (Large Shop Area)
- Compare Our Prices
- Insurance Work Welcome

Ask Us About Our **LIFETIME PAINT GUARANTEE**

VISA, AMEX, DISCOVER, MASTERCARD, SIKKENS

505-762-0432
1600 East 1st, Clovis, NM

JOE'S BOOT SHOP

We Ship Everywhere!

And Country Junction 2600 Mabry Drive
(505) 763-3764 • Open: Mon.-Sat. 9 am to 7 pm MST Clovis, NM

Stock Show Specials!

You'll Find the Newest, Most Fashionable Stock Show Apparel at Joe's Boot Shop!

Wrangler

Wrangler Jeans
936DEN & 13MWZ
ONLY \$19.99
38"+ length \$2 more

All Ladies Wear 20% Off

All Cinch & Wrangler 20X SHIRTS 20% Off

Look for the \$800 Entertainment Center being auctioned at the Bailey County Jr. Livestock Show on Saturday, Jan. 19. It's a beautiful southwest piece donated by Joe's Boot Shop & Country Junction. Have a great show kids!

Get Your **JOE'S BOOT SHOP** MULESHOE, TEXAS **Collectible T-shirts** available at Country Junction in Muleshoe, Texas!

Muleshoe Journal USPS 367820
Established February 23, 1924. Published by Triple S Publishing, Inc. Every Thursday at 304 W. Second, Box 449, Muleshoe, TX 79347.

Periodicals Postage paid at Muleshoe, TX.
POSTMASTER: Send address changes to the Bailey County Journal, P.O. Box 449, Muleshoe, TX 79347.

We are qualified members of:
Panhandle Press Association, National Newspaper Association, West Texas Press Association and Texas Press Association

WEST TEXAS PRESS ASSOCIATION

PPA Panhandle Press Association

TA MEMBER 2001 **TEXAS PRESS ASSOCIATION**

Scot Stinnett, Publisher
Lisa Stinnett, Vice-President/Comptroller
Ron Smith, Editor
Beatrice Morin, Classifieds
Leah Bell, Advertising
© 1990 Yolanda Martinez, Office Assistant

SUBSCRIPTIONS: Muleshoe Journal and Bailey County Journal
By Carrier Yearly - \$22.00
Bailey County — by mail - \$24.00
Elsewhere - \$26.00
Advertising Rate Cards on Application

Advertisers should check their ad the first day of insertion. The Journals will not be liable for failure to publish an ad or for a typographical error or errors in publications except to the extent of the cost of the ad for the first day of insertion. Adjustment for errors will be limited to the cost of that portion of the ad where the error occurred.

Varsity girls beat up hapless Cooper, 43-14

By DELTON WILHITE
Journal sportswriter

During the first half, the Lubbock Cooper Lady Pirates had more turnovers than Betty Crocker against the Lady Mules on Jan. 8.

Muleshoe raced to a 43-14 lead at intermission as Cooper struggled to get its offense started.

"The team you saw in the first half is the Lady Mules," Lady Mule coach Shanna Simms said. "The second half, we got away from our game and tried to do too much individually. We will put two halves together real soon. . . it is difficult to keep your intensity with a huge lead."

"We are a team much like a well-oiled machine — when all 11 players are doing their part. Cooper fought back hard in the

second half and is to be complimented. We just have to be ready for them next time."

The Lady Pirates' only lead of the night was when they scored the first bucket and dropped in two from the free throw line to go up 4-2. The Muleshoe defense seemed to nail them to that four points for the next four minutes while scoring 10 unanswered points.

Mindy Locker blocked back-to-back shots and Shani Rasco scored in the paint as the first period ended to give Muleshoe a 14-6 advantage. In the second period, the pressure defense continued to create turnovers and scoring opportunities.

With Tori Barton blasting away from outside and Sara Benham banging

away in close, Muleshoe outscored the Lady Pirates 27-8. Cooper dropped in a three almost three minutes into the quarter for its first points in almost five minutes.

Kayla Glover completed a fast break to send the teams to intermission with the Lady Mules leading 43-12. The Lady Pirates regrouped during the break and returned to the floor with renewed determination.

Jessica Carpenter and Candace Hutto provided the only interruptions as the Lady Pirates went on a 13-4 run in the first five minutes of the second half. Britni Gartin trimmed three points off the Cooper run with a free throw and a 20-foot jump shot.

The teams play fairly close during the final

frame, with Muleshoe scoring the final 12 points in less than two minutes. Benham made two final free throws with only six seconds left in the game.

"We have to get to where we play the second half with the same intensity we have in the first half," Lady Mule Mindy

Locker said. "We are 2-0 in district, and no one will be able to stay with us this year because we are so deep. We never miss a beat when the second five come in the game. We are quick on the front of the press, and the big girls can stop them if they get to the front court."

BIRTH

OROZCO

Jaime and Silvia Orozco of Muleshoe are the parents of a daughter, Kimberly Orozco, born at 3:35 p.m. Jan. 2 at Muleshoe Area Medical Center.

She weighed 8 pounds, 10 ounces and was 23 1/2 inches long. She has two sisters, Claudia and Yanette.

Grandparents are Juan and Guadalupe Orozco of Chihuahua, Mexico, and

Juan Angel and Catalina Martínez of Durango, Mexico. Great-grandparents are Cristina and Moyses Orozco and Pedro and María Izac Martínez, all of Mexico.

Up to

1/2 OFF Sale

Selected Merchandise thru Jan. 31, 2002

Williams Athletics

1405 W. American Blvd.
272-6853

Four Good Reasons

to Invest with Edward Jones

- 1 U.S. government guaranteed bonds 2.32% to 5.33%*
Guaranteed as to timely payment of principal and interest.
- 2 Insured federal income tax-free municipal bonds 4.50% to 5.10%*
Insured as to timely payment of principal and interest.
- 3 Insured corporate bonds 4.30% to 6.54%*
Insured as to timely payment of principal and interest.



*Yields to maturity effective 01/15/02. Subject to availability and price change. Yield and market value may fluctuate if sold prior to maturity.

Call or stop by today for more information.

Katherine Schraeder
220 S. Main Street
Muleshoe, Texas 79347
806/272-4102

www.edwardjones.com

Member SIPC

Edward Jones

Serving Individual Investors Since 1871

OBITUARIES

FAY KREBBS

Graveside services will be held at 2 p.m. Thursday at Muleshoe Memorial Park for Fay Krebbs, 88, of Fountain Hills, Ariz. The Rev. Randy Thomas will officiate.

Ellis Funeral Home of Muleshoe is handling arrangements. The family will greet friends at the funeral home from 9 a.m. to 11 a.m. Mrs. Krebbs was born July 16, 1913, in Brownwood. She died Saturday in Paradise Valley, Ariz.

She married Klyde "K.K." Krebbs on Dec. 19, 1932, at New Home, Texas. He died Sept. 17, 1994.

She had lived in Arizona for five years after moving there from Lubbock.

She and her husband were founding members of the First United Methodist Church of Muleshoe, where she was still a member.

Mrs. Krebbs is survived by a son, Dale Krebbs of Fountain Hills; a sister, Juanita Clark of Lubbock; a brother, Burl Jones of Austin; and a granddaughter, DaLynn Turner.

JACKIE DAVENPORT

Services were held Tuesday at Ellis Funeral Home Chapel for Jessie Mae "Jackie" Davenport, 89, of Muleshoe. The Rev. Gary Hubbard officiated. Burial was in Littlefield Cemetery.

Ellis Funeral Home handled arrangements. Mrs. Davenport was born May 6, 1912, in Palestine, Texas. She died Monday at Muleshoe Area Healthcare Center.

She married Loyd H. Davenport on July 31, 1930, in Clovis. He died Jan. 3, 1992.

She moved to Muleshoe in 1991 from Needmore. She was a homemaker and a member of the Church of Christ.

Mrs. Davenport is survived by a son, Marvin Davenport of Muleshoe; two daughters, Shirley Corbell of Clovis and Betty Gustin of Lubbock; two sisters, Pauline Chappell of Muleshoe and Dorothy Sneller of San Antonio; eight grandchildren, Pamela Davis of Plainfield, Ill., Debi Smith and Tifanee Stehlik, both of Lubbock, Kim Napolitano of Hope Mills, N.C., Shanileigh Swanson of Anton, Raymond Loyd Davenport of Muleshoe, Michael Davenport of Aurora, Ill., and Marvin Davenport Jr. of New York City; and 13 great-grandchildren.

She also was preceded in death by a son, Billy Loyd Davenport, on Dec. 25, 1933; a brother; and two sisters.

The family suggests memorials to Muleshoe Area Healthcare Center (106 W. Avenue H, Muleshoe 79347).

Services were held Wednesday at Ivey Chapel of Foster-Lilley-McGill Funeral Home in Dimmitt for Jeanne Howell, 59, of Dimmitt. The Rev. Steve Claybrook officiated. Burial was in Westlawn Memorial Park at Dimmitt.

Mrs. Howell was born July

9, 1942, in Mesa, Ariz. She died Sunday at home.

She was a graduate of Muleshoe High School and moved to Dimmitt in 1979. She married Don Howell on July 2, 2000, in Dimmitt.

She worked at Dimmitt Consumers for several years and then at the Tulia ASCS office for 10 years, retiring in 1997.

She was president of Ladies' Auxiliary Post 8056 of the Veterans of Foreign Wars in Dimmitt.

Mrs. Howell is survived by her husband; two daughters, Cindy Ann Clayton of Muleshoe and Karen Jean Passig of Clovis; a son, Sandy

Clayton of Canyon; two brothers, Johnny Garrett of Houston and James Garrett, hometown unavailable; a sister, Carolyn Ferris, hometown unavailable; and three grandchildren, Cody Clayton of Muleshoe, Dusty Clayton of Canyon and Cade Passig of Clovis.



Davenport

Expert Jewelry and Watch Repairing

- Ring sizing - 2-3 days
- Ring re-mounting • Jewelry appraising
- All makes watch batteries • Faster service

Celebrating 60 years
HOLMBERG JEWELRY

Jewelry Accents • Credit Program; Always 90 Days Same As Cash
1908 N. Prince • Clovis, NM • 762-9376
New Saturday Hours: 9:30 - 12:00

RICHARD BARTON

PONTIAC EXCITEMENT MATTERS BUICK It's All Good GMC WE ARE PROFESSIONAL GRADE

OVERDRIVE SALES EVENT

We're Shifting Into Overdrive With Our Low January Prices! Get An

\$2,000 CASH BACK!

ON TOP OF ANY OTHER REBATES!

5.9% Financing

Up To 60 Months!

On any new Pontiac, Buick or GMC in stock.

Model	List Price	Discount	Bonus Cash	Your Price	Financing
2001 Pontiac Grand Prix GT	\$25,484	-\$1,485	-\$2,002	\$21,997	5.9% 60 MONTH
2002 Pontiac Sunfire SE	\$17,729	-\$1,027	-\$2,002	\$14,700	5.9% 60 MONTH
2002 Pontiac Grand Am SE	YOUR PRICE			\$262	1 MONTH WALK AWAY FOR \$250
2002 GMC Sierra TX/OK	\$20,310	-\$1,158	-\$2,002	\$17,150	5.9% 60 MONTH
2002 GMC Sierra SLE 2X2	YOUR PRICE			\$377	1 MONTH WALK AWAY FOR \$250
2002 GMC Envoy SLE 2WD	YOUR PRICE			\$362	1 MONTH WALK AWAY FOR \$250

CARS

Model	MSRP	Price
96 Dodge Neon	\$6,215	\$4,988
96 Nissan 200SX	\$8,030	\$5,376
99 Ford Escort SE	\$9,595	\$7,340
99 Chevy Cavalier	\$9,010	\$7,360
98 Pontiac Sunfire SE	\$9,485	\$7,320
98 Plymouth Breeze	\$9,205	\$7,648
98 Plymouth Breeze	\$9,305	\$7,970
97 Ford Taurus GL	\$8,665	\$7,880
98 Ford Taurus LX	\$9,650	\$8,760
00 Chevy Cavalier	\$11,290	\$9,380
95 Buick LeSabre	\$8,785	\$7,940
98 Toyota Corolla CE	\$11,150	\$9,882
98 Olds 88 Sedan	\$11,810	\$10,580

TRUCKS

Model	MSRP	Price
00 Ford Taurus SE	\$13,685	\$11,730
00 Pontiac Grand Am	\$13,745	\$11,786
01 Olds Alero GL	\$14,415	\$12,780
01 Pontiac Grand Am	\$14,100	\$12,870
01 Buick LeSabre	\$18,980	\$17,840
97 GMC Sierra SL	\$13,565	\$11,340
99 GMC Sierra SLE	\$20,625	\$16,780
98 Chevy Silverado	\$18,845	\$15,720
98 Chevy Silverado	\$20,655	\$17,330
97 GMC Sierra SLT	\$18,520	\$17,440
98 Chevy Silverado	\$21,080	\$17,940

Buy Your Name Brand Appliances & Electronics through our SELECT BUYERS CLUB

Select Products for Select Customers

0% DOWN*

100% FINANCING*

LOW MONTHLY PAYMENTS*

*Restrictions apply. See store for details.

- TVs • VCRs • DVD Players • Camcorders • Stereos • DVD/CD Changers
- Microwaves • Computers • Refrigerators • Gas/Electric Ranges
- Washers/Dryers • Heating/Cooling Units

The New Intel Celeron Processor-Based PC

64 MB 3D RAM, 5.6K Modern SoundBlaster Audio-Color Ink Jet Printer, Windows 98-Keyboard & Mouse-15" Color SVGA Monitor-Two Year Warranty-See store for complete list of features.

\$89

Per Month

SE HABLA ESPAÑOL MON-THURS. 9:00-5:30, FRI-9:00-6

Continental Credit

LOANS \$100-495 • WHILE YOU WAIT OR BY PHONE

206 S. Main • Muleshoe • 272-3673

RICHARD BARTON

A familiar name known for service, honesty, and easy dealing

3390 Mabry Drive Clovis, NM 88101 505-762-2986 / 1-888-569-1900

PONTIAC EXCITEMENT MATTERS

BUICK It's All Good

GMC WE ARE PROFESSIONAL GRADE

5.99% Financing

On Used Cars

Up To 60 Months!

Lazbuddie Junior Livestock Show

LAZBUDDIE JUNIOR LIVESTOCK SHOW

Judge: Robbie Phillips, ag science teacher at Levelland.

BARROWS

Grand champion, Kayle Jesko, Yorkshire; reserve champion, Ryan Mason, cross; showmanship, Wayne Terry.

Durocs — First, Brock Steinbock; second, Kayle Jesko; third, Ashton Mason; fourth, Wayne Terry.

Hampshire (Class 1) — First, Bryce Haney; second, Melanie Winders; third, Roper Smith; fourth, Jeffrey Phillips.

Hampshire (Class 2) — First, Jay Seaton; second, Kayla Parham; third, Matt Goe; fourth, Jeffrey Phillips.

Hampshire (Class 3) — First, Dylan Haney; second, Shannon Redwine; third, Kolby Wilkerson.

White OPB — First, Jacob Schacher.

Polands — First, Randy Smith; second, Kirby Kimbrough.

Spots (Class 1) — First,

Ashton Mason; second, Shannon Redwine; third, Logan Mason; fourth, Tobin Redwine.

Spots (Class 2) — First, Austin Mason; second, Jodie Coker; third, Montana Steinbock.

Yorkshires (Class 1) — First, Logan Mason; second, Melanie Winders; third, Kirby Kimbrough; fourth, Dustin Bartlett; fifth, Jeffrey Phillips.

Yorkshires (Class 2) — First, Kayle Jesko; second, Suzanne Mason; third, Jay Seaton; fourth, Dylan Haney.

Crosses (Class 1) — First, Brock Steinbock; second, Bryce Haney; third, Mandy Haney; fourth, Roper Smith.

Cross (Class 2) — First, Ryan Mason; second, Tobin Redwine; third, Logan Mason; fourth, Melanie Winders.

Cross (Class 3) — First, Dustin Bartlett; second, Montana Steinbock; third, Sergio Cuevas; fourth, Wayne Terry.

GOATS

Grand champion, Kolby Wilkerson; reserve champion, Kolby Wilkerson; showmanship, Melanie Winders.

Goats (Class 1) — First, Kolby Wilkerson; second, Lakota Goe.

Goats (Class 2) — First, Kolby Wilkerson; second, Melanie Winders; third, Kolby Wilkerson.

SHEEP

Grand champion, Suzanne Mason; reserve champion, Kayle Jesko; showmanship, Suzanne Mason.

Sheep (Class 1) — First, Kayle Jesko; second, Lakota Goe; third, Ashton Mason.

Sheep (Class 2) — First, Suzanne Mason; second, Logan Mason.

STEERS

Grand champion, Logan Mason; reserve champion, Kayla Parham; showmanship, Logan Mason.

Steers (Class 1) — First, Logan Mason; second, Kayle Jesko.

Steers (Class 2) — First, Kayle Jesko; second, Matt Goe.

TODAY'S RECIPE

WILTON BEAR WIGGLERS

- 2 (6 oz.) pkg. orange gelatin
- 2 1/2 cups boiling water
- 1 (8 oz.) can pineapple chunks
- 1/2 cup miniature marshmallows
- 1/2 cup whole maraschino cherries

Lightly spray a jelly-roll pan with vegetable pan spray.

Dissolve the gelatin in boiling water. Chill until slightly thickened, about 1 1/2 hours.

Stir in pineapple, marshmallows and cherries. Pour into the prepared pan.

Chill until set, about two hours.

Cut out with desired cutters. Lift out with spatula.

Makes eight to 10 gelatin cut-outs.

DEEP DISH

MEXICAN MEAT PIE

- 2 frozen pie shells
- 1 can (16 oz.) refried beans
- 1/2 cup picante sauce
- 1 lb. ground meat
- 1 small onion, chopped
- 1/2 tsp. salt
- 1 pkg. (1 1/4 oz.) taco seasoning
- 1 cup crushed tortilla chips
- 2 cups Cheddar, grated
- 1 can (4 oz.) chopped green chilies

Thaw the frozen pie shells and bake them for 10 minutes.

Mix together the beans and picante sauce; spread half the mixture in the bottom of each pie shell.

Brown the meat with the onion, salt and taco seasoning. Divide and spread on top of bean mixture.

Top each pie shell with

half the tortilla chips and Cheddar. Circle the edge of each pie with green chilies.

Bake in a preheated 350-degree oven for 20 to 25 minutes.

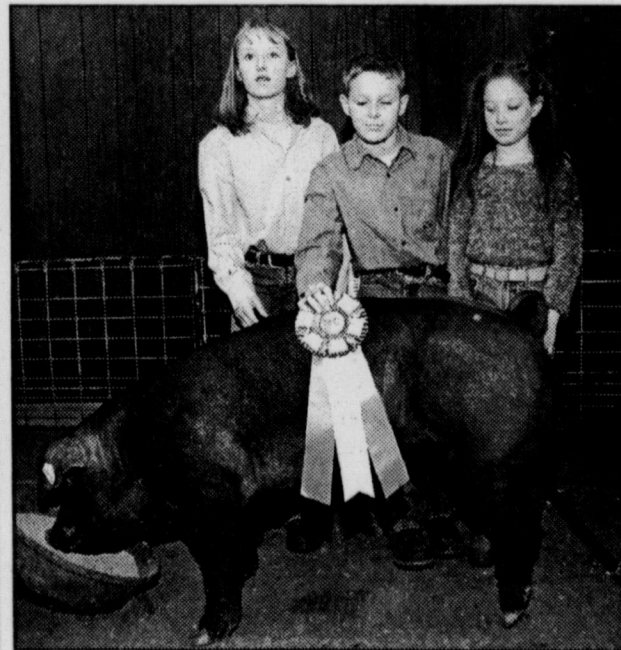
To serve, sprinkle with chopped tomatoes and green onions.

For thicker pie, use only one large deep-dish pie shell.

CENTRAL COMPRESS & WAREHOUSE

205 Railroad Ave. • Sudan, TX • 227-2388

SALUTES THE PARTICIPANTS & WINNERS OF THE LAZBUDDIE LIVESTOCK SHOW!



CHAMPION DUROC
Brock Steinbock

(pictured w/ Mariah & Montana Steinbock)

RESERVE CHAMPION POLAND
Kirby Kimbrough

Congratulations on a great show - Lazbuddie!



Foster Fertilizer, Inc.
PO Box 52 • Lazbuddie • 965-2921





GERMANIA
FARM MUTUAL INSURANCE
127 Main St. • Muleshoe • 272-3979

We Proudly Support Lazbuddie & Its Youth!

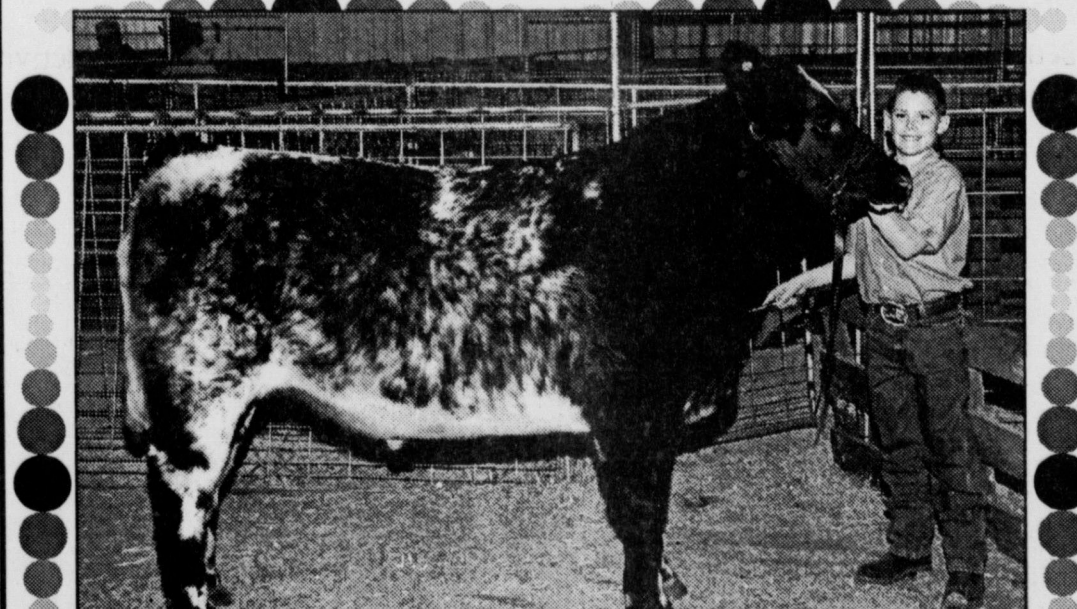
RESERVE GRAND CHAMPION BARROW
Ryan Mason

Bailey County Propane, Inc.
Friona Hwy. • Muleshoe
272-4678

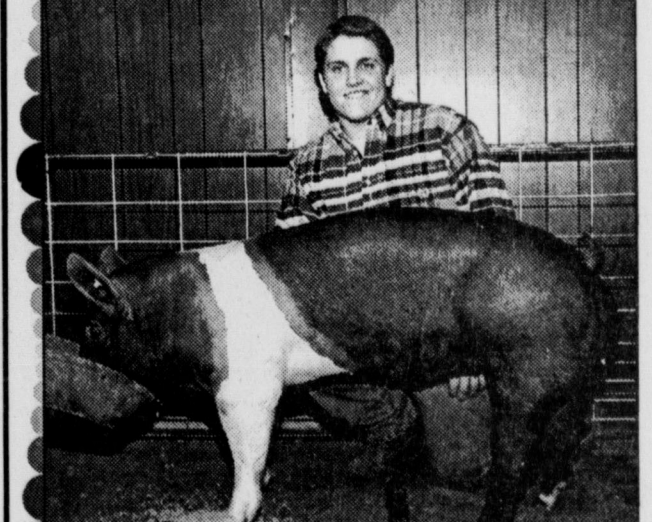
We Proudly Support The Youth In Our Area!



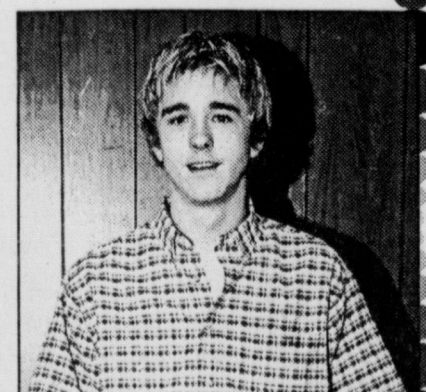
RESERVE GRAND CHAMPION STEER
Kayla Parham



GRAND CHAMPION STEER
Logan Mason



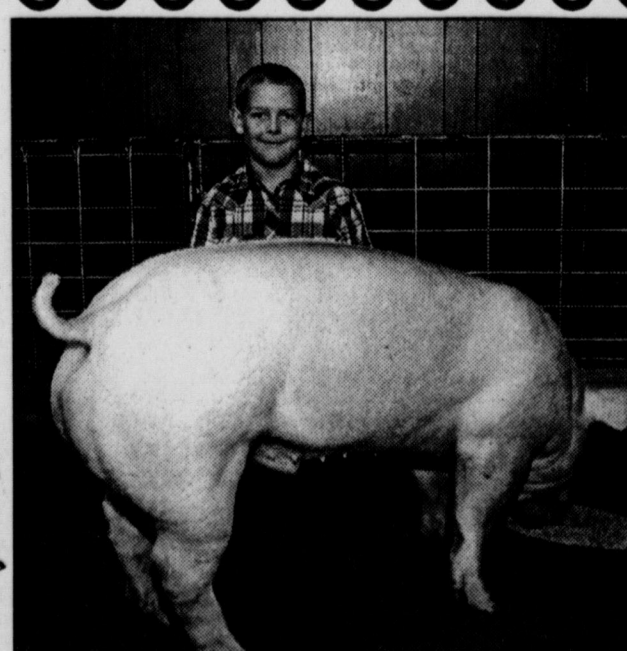
CHAMPION HAMPSHIRE
Jay Seaton



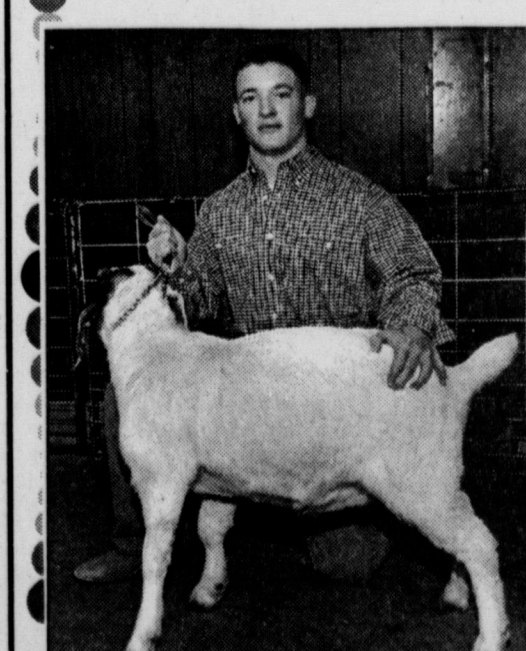
RESERVE CHAMPION CROSS
Dustin Bartlett

GRAND CHAMPION BARROW
Kayle Jesko

Congratulations to all Lazbuddie Livestock Show Participants!



Parmer County Cotton Growers Co-op
340 US Highway 84
Farwell, Texas
806-825-3701



GRAND CHAMPION GOAT
Kolby Wilkerson

Congratulations on a Great Show Kids!

SHERLEY-ANDERSON
Lazbuddie Elevator
965-2922

Purple-flowered 'yucca' may turn out to be a star

By **RONN SMITH**
Editor

For those of you who like to try something different, there is available this year another relative of the "red-flowering yucca" (which, as you know, is neither a yucca nor really red — but still very attractive).

These are members of the *Hesperaloe* genus, related to the *Aloe vera* that is used for skin burns and other things. The recent introduction has purple flowers that are fairly large; the name isn't firmly established, but it's being sold as "probably" *Hesperaloe funifera*.

It's a plant from north-eastern Mexico and its cold-hardiness isn't established. I'd plant it on the



most part; poor, fairly dry soil suits them best.

I don't know yet whether the purple flowers will attract hummingbirds as well as the red do, but they should still be effective for that purpose.

south side of a wall or other source of radiant heat. Of course, we didn't think the red-flowering yucca was hardy here until the Denver Botanical Garden announced that the plant was winter-hardy there!

This purple flowering form grows to about the same size as the red or a little bigger — foliage reaching 4 feet in height with the flower scapes growing to 6 feet.

Avoid fertilizing for the

Also new for this year is the strangest-looking delphinium to come down the pike in many a year — strange but very attractive.

The flowers of 'Merel' are bright blue, with petal edges that are more fluted and uneven than the usual delphinium. Top that off with a row of "petal-ettes" around the center that are irregularly splashed with white (this is somewhat similar to anemone-flowered dahlias, but the row of small petals is much more prominent on these.)

'Merel' grows only 22 inches tall, so it probably won't be as subject to wind damage as the tall delphiniums are.

•••

Remember that the last day of January is the traditional day to plant peas. (Traditional for the few who plant them around here, anyway.)

The trick, then, is to plant

some every 10 days to two weeks through about mid-April in order to have a continuous supply through the spring. (Peas are not long-bearing.)

They simply won't survive much heat, and even the ones planted in mid-April can get cut short if the weather turns hot a little early.

Fresh-picked peas

grown in cool weather have a flavor that is simply not approached by those that have been shipped in. I recommend growing your own.

Happy planting!

Questions and comments can be sent to Garden Writer, 571 County Road 1018, Muleshoe 79347, or e-mailed to ronnsmith@hotmail.com.

HERITAGE FOUNDATION

The Muleshoe Heritage Foundation board met Jan. 7 at the Muleshoe Santa Fe Depot.

Members present were Wells Hall, Walter Marie Boness, Charles Flowers, Vivian White, Ladene Spears, Gene Rogers, Sammy Simpson, Betty Kirby, Lonnie Adrian, Jim Allison and Jean Allison.

Hall, the president, conducted the business meeting. Minutes were read by Boness, the secretary, and approved. White gave the treasurer's report and also reported that the Heritage Thrift Shop did better last year than it did the previous year.

Proceeds from the shop are used for day-to-day expenses at the Heritage Center.

White reported that Jimmy Wedel made a donation to the center in memory of his mother, Doris Wedel. She also said there had been a break-in at the Thrift Shop that left the entrance doors ruined and a small amount of money lost.

The board decided to no longer allow any money left overnight at the Thrift Shop, and Hall appointed Adrian to see about get-

ting the doors repaired.

Jean Allison gave a report on the Old-fashioned Christmas Open House held at the center the first Saturday in December. She reported that the Cutest Baby and Little Miss contests was successful with nine babies and six Little Miss contestants. A full crowd was present to enjoy seeing Mr. and Mrs. Santa Claus and to enjoy all of the other activities at the center that night. Suggestions were made about how to improve the contests next year, and Hall asked Allison to head this committee again. He also appointed Simpson to serve on the committee.

It was reported that the Heritage Center float won second place in the annual Christmas parade.

A short discussion followed about the July 4 parade, for which members soon will begin preparing.

Jim Allison reported on a recent meeting with David Murrah, who represents an Austin firm that assists museums with planning, obtaining grants and developing a mission statement.

Jim Allison suggested that the president appoint a planning committee for the center before getting a firm to assist. Hall then appointed Jim Allison chairman of such a committee, with Simpson, Flowers and Rogers also serving. This committee will devise a mission statement and decide how to proceed. It was suggested that it be called the "mission, expansion and planning committee."

Board members voted to get someone to clean the buildings once a month, with Rita Hawkins coordinating this activity. Rogers agreed to contact Hawkins about heading the committee.

A short discussion followed about the annual Tour de Muleshoe bike ride and how to improve it. White reported that the event has been set for June 15 this year. Hall appointed Adrian to head this activity again.

Jim Allison asked about using the MulePlex building for much-needed storage. Hall volunteered to check on this.

The next regular meeting is scheduled for 7 p.m. Feb. 4.

BOEHNING DAIRY

Earth, Texas
Brian Boehning

Says, "Great show kids!
We're proud of you!"

RESERVE CHAMPION SPOT
Austin Mason

JOE'S BOOT SHOP

And Country Junction

Now Open in Clovis, NM!

Thanks for the excellent show Lazbuddie!

GRAND CHAMPION LAMB
Suzanne Mason

RESERVE CHAMPION YORKSHIRE
Logan Mason

We salute the winners and participants in the Lazbuddie Livestock Show 2002!

Muleshoe Journal

806-272-4536
email: ctyankee@fivearea.com

CHAMPION SPOT
Ashton Mason

Congratulations to all Winners & Participants in the Lazbuddie Livestock Show from...

LAZBUDDIE GARAGE & SUPPLY
Lazbuddie, TX • 965-2188

MULESHOE PEA & BEAN
272-7620 or 272-5589

We're Proud Of You!

CHAMPION POLAND
Rowdy Smith

JUST FOR FUN

1	2	3	4	5	6	7	8	9	10	11	12	13		
14				15					16					
17				18					19					
20				21				22	23					
		24						25						
26	27	28			29	30				31	32	33		
34					35					36				
37					38	39				40				
41					42				43					
44					45				46	47				
					48				49	50				
		51	52						53			54	55	56
57									58				59	
60									61				62	
63									64				65	

Clues ACROSS

- 1. ___ and Andy, TV show
- 5. Stand for corpse
- 9. Take off
- 14. His ark
- 15. Beige
- 16. Withdraw from drugs
- 17. Noxious weed
- 18. Solicitude
- 19. Business enterprise
- 20. The third son of David
- 22. Faculty and students of a college
- 24. Capital of Latvia
- 25. Puts down
- 26. Kinship group
- 29. Succeeds
- 31. Akin
- 34. Serious music
- 35. Israeli submachine gun
- 36. North American nation, abbr.
- 37. Triumphs
- 38. Volume of scriptures
- 40. Scamp

Clues DOWN

- 1. Pier, side of porch
- 2. Ancient kingdom near Dead Sea
- 3. Paddles
- 4. Wool clippers
- 5. Obscure
- 6. "Top Gun" character
- 7. Amount of time
- 8. Rusticate
- 9. Makes an effort
- 10. Highways
- 11. Having sufficient skill
- 12. Appear
- 13. Scottish Gaelic
- 21. National capital of Peru
- 23. Chalice
- 26. Bath linen
- 27. State clearly
- 28. Hypertonic
- 30. Pertaining to sound frequency
- 31. Infectious blood disease
- 32. Sir ___ Newton
- 33. Clean
- 38. Hebrew leader
- 39. Figures
- 40. Type of market
- 43. Weapon
- 45. Shaped sharply
- 46. National capital of Bahamas
- 48. Aviator
- 50. Plots of ground
- 51. Entranceway
- 52. Individual facts
- 53. Swiss river
- 54. Conform
- 55. Blunt
- 56. In addition
- 57. Medical practitioner
- 58. Norse goddess
- 59. Exclamation: yuck!

Crossword Answers

S	W	A	H	N	B	T	A	U	V	H	D					
S	W	E	O	R	Y	B	R	A	B	I	D	O				
1	V	E	N	H	O	S	S	H	I	T	O	V	E	O		
3	O	O	Y	B	S	S	B	I	T	O	V	E	O			
		1	3	B	V	B	E	O	A							
3	O	V	E	N	H	O	S	S	H	I	T	O	V	E	O	
H	V	M	S	K	I	N	V	I	S	G	H	E				
1	V	M	B	K	I	N	V	I	S	G	H	E				
B	I	S	B	A	T	I	V	N	E	I	O	L				
		3	A	V	T	I	V	I								
3	B	V	B	E	O	A			1	3	B	V	B	E	O	A
3	B	V	B	E	O	A			1	3	B	V	B	E	O	A
H	B	O	S	H	O	S	H	V	O	N						
3	B	V	B	E	O	A			1	3	B	V	B	E	O	A

NURSING HOME NEWS

By Joy Stancell

Annie Chávez's daughter donated quarters for bingo Saturday. J.C. Shanks, Alda Odom and Clara Coffman directed the devotional service Thursday morning. Harold and Avis Carpenter came Friday afternoon for a music and reminiscing session. Melvin and Wanda Griffin, Harold and Mary Jo Burge and Iris Clements directed the bingo bash Saturday morning. Each Sunday morning, members of the Muleshoe Church of

Christ directed the Communion service. Buster Kittrell and Harold Burgetaught the Bible study Sunday afternoon. Members of First United Methodist Church directed a Communion and music service early Sunday afternoon. Sunday afternoon church services were directed by members of Calvary Baptist Church. J.C. and Curtis Snitker entertained Monday afternoon in the day room.

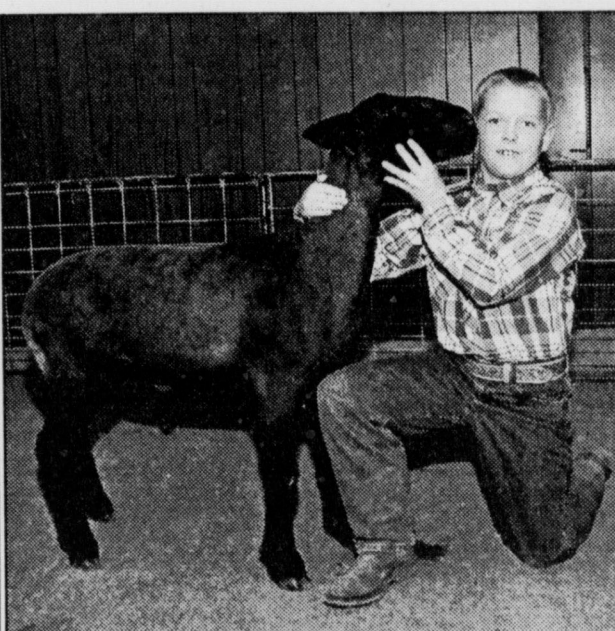
The Rev. Gary and Judy Hubbard directed a memorial service for Myrtle Carter on Monday morning. Beverly Wagnon, Claudine Embry, Linda Nowell, Josie Ovalle, Dorothy Turner, Lanell Stancell, Pat Watson and Iva Nell Dale shampooed and set the women's hair Tuesday afternoon. Norma Eaves gave manicures. Joe Embry and Harold Burge were among our visitors Tuesday afternoon. Ozell Cherry was visited Mon-

day by her daughter and son-in-law, Linda and Duane White. At this writing, Nettie Quisenberry, Elmo Owens and Rosie Martin are in the local hospital and Riehl Williams is hospitalized in Lubbock. All ask for prayers. Kathrine Rogers was visited Tuesday afternoon by Maxine Rogers. K.B. Martin was visited Monday by his daughter, Ann Williams. Webb Watts was visited re-

cently by his granddaughter and her pet dog. His daughter, Joy Whitt, visited with him Tuesday. Mary Jo and Harold Burge and Buster and Wanda Kittrell served coffee and doughnuts to the residents Wednesday morning. Harold Burge led the table discussion. The Rev. Steve Claybrook and Buster and Loyce Killingsworth directed the devotional. Jackie Scoggins and Jo Ellen Cowart directed the sing-along Wednesday afternoon. Special

guest Robin Cowart also participated. Jim Claunch visited Roma Davis on Wednesday morning. The Followers Sunday School Class from First Baptist Church has given a donation to the center. Congratulations to Helma Rojas (the center's employee of the month) and also Conrad Cumpian. Kathryn Hancock recently was visited by her daughter, Janie Mosley, and Jeanette St. Clair.

We're Proud Supporters of the Lazbuddie Livestock Show!



RESERVE GRAND CHAMPION LAMB
Kayle Jesko

RONNIE HOLT INSURANCE
218 Main St. • Muleshoe, TX • 272-4271


Great Show Kids!



RESERVE CHAMPION HAMPSHIRE
Dylan Haney

MULESHOE STATE BANK
Farwell Branch
801 Ave. A • Farwell, TX
(806) 481-9580

Each deposit insured by FDIC



RESERVE GRAND CHAMPION GOAT
Kolby Wilkerson

Thanks for a Great Show Lazbuddie!

Russell Spraying, Inc.
Rt. 3 Box 810 • 965-2624 or 965-2627

Journal Classifieds

STOP & SHOP

Deadlines are 5 p.m. Monday and Thursday

Call 272-4536

January 17, 2002

LEGAL NOTICE

NOTICE OF CONCENTRATED ANIMAL FEEDING OPERATION APPLICATION

TPDES Registration No. WQ0004343-000 APPLICATION. JAMES LEONARD CRAWFORD, JR., 1040 Country Road 1028, Muleshoe, Texas 79347 has applied to the Texas Natural Resource Conservation Commission (TNRCC) for a new TPDES Registration No. WQ0004343-000 to authorize the applicant to operate a new dairy at a maximum capacity of 4,800 milking head and 5,000 total head in Bailey County, Texas. The application was received by TNRCC on May 17, 2001. No discharge of pollutants into the waters in the state is authorized by this registration except under chronic or catastrophic rainfall conditions. All waste and wastewater will be beneficially used on agricultural land. The proposed facility will be located on County Road 103 approximately 0.5 miles south of County Road 1028, which is approximately 3.5 miles west of the intersection of US Highway 84 and County Road 1028, in Bailey County, Texas. The facility will be located in the drainage area of the Double Mountain Fork Brazos River in Segment No.

1241 of the Brazos River Basin. The application is available for inspection by the public during normal business hours at the USDA Service Center, NRCS office, 105 East Avenue D, Muleshoe, Texas. The Executive Director of the TNRCC has prepared a draft registration which, if approved, would establish the parameters and limitations within which the facility must operate.

PUBLIC COMMENT. Written public comments may be submitted to the Office of Chief Clerk, at the address provided in the information section below, within 30 days of the date of newspaper publication of this notice. The Executive Director will consider all relevant information pertaining to whether the applicant meets the requirements for the registration and will issue a written determination as to any final action on the application for registration and a response to all comments.

INFORMATION. Written public comments should be submitted to the Office of the Chief Clerk, MC 105, TNRCC, P.O. Box 13087, Austin, TX

78711-3087. For additional information, about the application or the procedure for public participation in the registration process, individual members of the general public may contact the Office of Public Assistance at 1-800-687-4040. General information regarding the TNRCC can be found at our web site at www.tnrcc.state.tx.us. Issued: Jan. 07, 2002. Signed: LaDonna Castañuela, Chief Clerk; Texas Natural Resource Conservation Commission. Published in the Muleshoe Journal, January 17, 2002.

AGRICULTURE

Wanted To Rent Or Lease 1/2 Section Irrigated Land Contact GTM At 806-272-5720 Or 806-946-7754

HAVING A GARAGE SALE? Advertise it in the Muleshoe Journal Classifieds! CALL TODAY! 272-4536

ESTATE SALE

ESTATE SALE 315 E. Fir Jan. 19, 9 a.m. Furniture, clothing, decorating items, dishes & miscellaneous.

SMILE!

ACCOUNTANTS

FEED YARD ACCOUNTANT, minimum requirement, accounting degree with 2 years cattle feed yard experience. Reports directly to the Business Manager/Controller. Experience with Turnkey Accounting Software a plus. Must be proficient with Windows, Spreadsheets and Word Processing applications. Responsibilities to include all daily financial accounting functions as well as other assigned duties. Compensation and benefits based on qualifications and experience. This is not a five day, 8 to 5 position. Please send a cover letter with salary history and resume' to Confidential Accountant, Cattlemen's Feedlot, PO Box 676, Olton, TX 79064-0676.

HELP WANTED

WANTED - Delivery driver. Must be 21 years of age. CDL license preferred. Contact Wilbur Ellis Company at Clay's Corner 806-965-2330.

LOST AND FOUND

FOUND - Young Blackish Blue Heeler near YL area. Call 806-965-2767 and leave a message.

MISCELLANEOUS

Agundiz's Carports & Portable Buildings 806-965-2417

PETS

FOR SALE 5 purebred miniature Dachshund puppies. 6 weeks old. \$100. ea. Males & Females. 806-481-9120 in Farwell. If no answer, please leave a message.

PET GROOMING

Connie, formerly of Connie's Classic Canine, would like to invite all of her loyal Muleshoe customers to visit her. Now grooming at The Jungle, 800 W. Grand Ave. in Clovis, NM.

It's not what you say, but how you say it!

2700 sq.ft. living area. Paved drives, storm cellar, 2 BR, double garage, extra nice home in Earth. \$85,000. 965-2959

HOUSE FOR SALE 2-1, SINGLE GARAGE. CALL FOR APPOINTMENT TO SEE! (806)272-3696.

Let our Classifieds section work for you! 806-272-4536

REAL ESTATE

Laz. Area. - 640 acres, 4 wells, 300-500 gal./well. 4 sprinklers, 3 houses (2 good), 2 large barns, lots of cattle pens & sheds. 395 acres of fertilized, irrigated wheat procession first of March. Call 806-965-2895, mobile: 806-946-9413

DEADLINES FOR CLASSIFIEDS Monday 5 pm for Thursday's issue. Thursday 5 pm for Sunday's issue.

Brick House For Sale. 2100 sq.ft. 3 Bdrm., 2 Bath, Lots of Storage, Remodeled, Newly Painted, New Tile in Kitchen, Laundry room and Back Bathroom. Call 272-4108

For Sale By Owner 1001 W. 7th St., Muleshoe 3 Bdrm., 2 Bath, 2 Car Garage. Recently updated with blinds, water softener and reverse osmosis. Shown by appointment only. \$78,000. 806-745-6562, 806-441-5346, 806-946-3461.

Nieman Realty

116 E. Ave. C • George Nieman, Broker • 272-5285 or 272-5286

RICHLAND HILLS - PARK RIDGE AREA

- NICE 3-3-1 Brick, Cent. heat, evap. air, built-ins, fans, 2000' + lv. area, fenced yd., patio, stor. bldg.! \$57.5K! RH-1
- NICE LOTS AVAILABLE, CALL FOR DETAILS!!!

HIGHLAND AREA

- NICE 3-1-1+1 carport Home, Cent. Heat & Air, carpet & hardwood, 4 fans, fenced yd., MORE!! \$26.5K!! HL-4
- NICE 3-2-1+2 carports, Cent. heat, evap. air, built-ins, storm windows and doors, stor. bldg., fenced yd.!! MORE!! PRICE REDUCED!! \$49.5K!! HL-5
- 2-1-2 carport Home, wall heat, win. ref. air, appliances, 1550' + lv. area, storage/shop, cellar, fenced yd. \$24.5K!! HL-9
- 3-1-1 Brick, Cent. A&H, fans, 2 stor. bldgs., fenced yd.!! \$36.5K!! HL-1

LENAU - COUNTRY CLUB AREA

- 3-2 Brick, Cent. A&H, fenced yd., corner lot!! \$40K!!
- NICE 2-1-1 Home, Cent. A&H, new paint, carpet, vinyl, & hardwood, fenced yd., MORE!! \$31.5K!! L-3
- 3-2-1 carport Home, Brick, Cent. A&H, built-ins, FP, 1,880' Lv. area, fenced yd., MORE!! \$47.5K!! L-1

COMMERCIAL

- HWY. 84-150' frontage, office, warehouses, truck dock, railroad spur access, with or without fuel storage tanks!! \$30K!!!
- An approx. 5.1 acre tract w/ approx. 144.5' frontage on Hwy. 84, approx. 1584' office, 1320' shop, 4000' shop, & 2880 bldg., has railroad access, 2 mobile home hookups, MORE!!!
- GOOD INCOME PROPERTY - approx. 3490' bldg. - paved parking, good net lease!! PRICED TO SELL!!
- Established Business: Land, Bldg. & Equip., \$75K!!
- 200 Main & E. Ave. B-4 rental units plus upstairs & basement or renovate for your own special use!! \$65K!!
- VERY NICE 2300' bldg., Cent. A&H, 175' frontage on Hwy 84 & 70!! MUCH MORE!!
- 140'X100' tract on Hwy. 84 & 70, 1760' bldg., 1500' storage, 2400' cov. area, paved parking!! \$49.5K!!

HIGH SCHOOL AREA

- VERY NICE 3-1-1 Brick, Heat pump, DW, nice carpets, fenced yd., MORE!!! \$30's!!! HS-1
- 3-2 Home, corner lot, fl. furn. heat, fenced yd. \$25K! HS-10
- NICE 3-2 1/2-2 carport Home, Cent. A&H, built-ins, FP,

2650' + Lv. area, fans, storm windows & doors, new roof, cov. patio, concrete cellar, fenced yd. w/ add. 2 carport, large workshop, & stor. bldg. PRICED REDUCED \$60K!! HS-7

- HWY. 84-2-1 1/2-2 Brick, Cent. Heat, win. air, built-ins, fans, workshop/storage, fenced yd., also good office location!! PRICED REDUCED!! 40K!! HS-2
- 3-1 Home, Fl. furnace, fans, storage & 2 apartments, corner lot!! \$35K HS-3
- VERY NICE 3-1-1 Brick, Cent. A&H, built-ins, nice carpet, FP, large covered patio, fenced yd., stor. bldg., MORE!! \$49K!! HS-4
- 3-1 1/2-1 carport, wall furn. heat oven, cooktop, basement, shop/storage!! \$16K!! HS-6
- 2-1 Home, corner lot, stove, refrig., fans, workshop & storage, fenced yd.!! \$23.5K!! HS-8
- EARTH - 3-2-2 Brick, Cent. A&H, built-ins, 1850' + liv. area, fenced yd., + 3 add. lots!! A STEAL @ \$38K!!
- EARTH - 4-2-2 carport home, Heat Pump, fans, storage-workshop!! \$35K

RURAL

- TO BE MOVED - 3-2 DOUBLEWIDE, Cent. A&H, built-ins, metal roof!! \$19K!!
- 3-1 Home on one acre, FM 746, Cent. Heat, Evap. Air, built-ins!! \$22K!!!
- EXCELLENT DAIRY LOCATION-1120 ac., 7 circles, 20 wells, very nice 3-2-3 Home w/basement, 40' x 60' barn w/ 30' x 40' shed, 3 mil. lb. grain facility, add. 3 bdrm. home, 2 mobile homes, on pavement convenient to Muleshoe, Clovis, Portales, & should have 5K head permit within 60 days!! Could be split if needed!!
- PLEASANT VALLEY, Approx. 160 acres, 2 bdrm home, 1 bath, 2 car detached garage, on pavement!!
- W. of SUDAN-NICE 3-3-2 Brick Home, 5 acre tract on Hwy. 298, Cent. Air & Heat, built-ins, large Quonset Barn, MORE!!!! \$95K!!!
- PRICE REDUCED - 108 acres or 7 acre tract on Hwy. 70, approx. 2100' office area, 16,900' commercial bldg. w/ loading dock, 3,400' warehouse, new well, 2,800' runway!!!
- 2-2-2 carport Mobile Home on 1.997 acres on pavement close to town, storage, 45' x 74' barn, pens, & fenced pasture!!



THOMAS-FULLER

Jennifer Gresham of Earth announces the engagement of her daughter, Amber Thomas, also of Earth, to Shane Fuller, son of Jim and Donna Fulier of Lubbock. The bride-elect, a graduate of Dora (N.M.) High School, is presently attending Texas Tech. The future bridegroom is a graduate of Lubbock Cooper High School and presently attending Lubbock Christian University. They are both employed by United Supermarkets in Lubbock. The wedding is scheduled for March 9 at the Earth Church of Christ.

'CREATIVE LIVING'

Information on home décor, decorating pastries and couture fitting will be featured on "Creative Living" at 1 p.m. Jan. 22 and 3 p.m. Jan. 26. (All times are Central.)

"Creative Living" airs on public broadcasting station KENW-TV from Eastern New Mexico University in Portales.

Lana Bennett of Murfreesboro, Tenn., coordinator of training and education with Singer Sewing Co., will show how to create custom home decor projects that are fun to make and will save money.

Nancy Siler, director of consumer affairs with Wilton Industries in Woodridge, Ill., will show how to use the basic out-

line and star decorating technique to create colorful and exciting cakes, cookies and other things.

Sewing experts Barbara Evant of Oradell, N.J., and Edna L. Dunston of Land O'Lakes, Fla., will show how to use a special unitard that resembles a dress form to achieve couture fitting.

Information on creating motifs for a masculine-looking office and removing water spots from furniture will be featured at 10:30 p.m. Jan. 22 and 1 p.m. Jan. 24.

Tera Leigh of Lafayette, Calif., a representative of Paintability, will demonstrate how to use acrylic paints, stencils and an applicator that resembles a rubber stamp to cre-

IRS approves water depletion-allowance data

Data to support landowners' claims for a cost-in-water income-tax depletion allowance for federal returns has been approved by the Internal Revenue Service.

Taxpayers who own land within the 15-county High Plains Underground Water Conservation District may obtain the data from the

district's office in Lubbock. Landowners who have previously claimed the allowance and established their cost-in-water at the time of land purchase need only the amount of the 2001 decline to substantiate their claim.

Those who have not previously claimed the allowance need to estab-

lish the number of feet of saturated material they had beneath their land at the time of acquisition, the cost of the water (determined by comparing land sales with and without groundwater at the date of acquisition of the land in question) and the decline in the water level during the tax year.

Cost of the data is \$10 per parcel of land.

All requests for water-depletion data must be in writing; the requests may be presented in person, e-mailed to lkeller@hpwd.com or mailed to LaTisha Keller, High Plains Water District, 2930 Avenue Q, Lubbock 79405-1499.

HONOR ROLL

WATSON JUNIOR HIGH Third Six Weeks

Sixth Grade — Morgan Baca, Corie Black, Kimberly Buffham, Colby Carpenter, Colt Ellis, Ashley Grumbles, Cassandra Kirby, Jacy Lawrence, Jonathan Lennon, Ceasar López, Courtney Mardis, Gilberto Mojica, Franklin Piland, Patrick Precure, Garrett Riley, Creston Standard, Eli Symm and Kelsey Tipps.

Seventh Grade —

Dustin Barker, Brittini Carter, Theresa Chávez, James Coffman, Laura Cogliandro, Timothy Conner, JennaLee Free, Kaitlyn Geissler, Tasha Gómez, Juana González, Jamie Hall, Shayla Hall, Calli Hancock, Chelsi Hawkins, Kendall Johnson, Abby Lawrence, Katherine Lepard, Alyssa López, Lynn McBane, Madison

Myers, Alvaro Ontiveros, Molly Pedroza, Kindra Pruitt, Jaysol Regalado, Matthew Richards, Elizabeth Symm, Irma Torres, Eric Washington and Kati Brown.

Eighth Grade — Martha Alemán, Zannia Avila, Megan Baca, Garrett Behrends, Brady Black, Logan Caddell, Ashley Dickson, Arsenio Geter,

Lindsey Hall, Caleb Heinrich, William James, Kevin Kilmer, Mary López, Vanessa López, Roxann Mendoza, Lorenzo Nuñez, Veronica Nuñez, Janice Pacheco, Monica Posadas, Randall Radford, Christine Reeves, Sarah Sexton, Madison Smith, Hillary Tipps, Trevor Turnbow, Cami Vandiver, Brandi Wood and Kasey Wood.

BLACKWATER FARMS AUCTION
SATURDAY, JAN. 26, 2002 • 9 A.M.
 LOCATION: FROM PORTALES, NM, GO 5 MILES N.E. ON HWY 70 TO HWY 202, THEN GO 4 MILES EAST ON HWY 202, THEN 1/2 MILE SOUTH TO AUCTION SITE. WATCH FOR SIGNS.
 OWNER: WAYNE BAKER • 505-356-4515 • 505-356-8996
 We have sold Blackwater Farms and will sell our farm equipment at public auction on the above date.

TRACTORS • FRONT END LOADER
 1-1993 MD CASE/IH 9280 FWD TRACTOR, CAB & AIR, P.S. TRANS, 4 HYDRA, 3 PT, DUALS 20 8R42 RUBBER, 7409 HRS (CLEAN) SN JCB0030904
 1-1993 MD JOHN DEERE 4960 MFWD TRACTOR, CAB & AIR, P.S. TRANS, TRIPLE HYDRA, 3 PT, P.T.O, WEIGHTS, 18 4R42 RUBBER, 6997 HRS, SN P005983
 1-1992 MD JOHN DEERE 4760 MFWD TRACTOR, CAB & AIR, P.S. TRANS, TRIPLE HYDRA, 3 PT PTO, WEIGHTS, 18 4R42 RUBBER, 8722 HRS, SN P002033
 1-1988 MD JOHN DEERE 4850 MFWD TRACTOR, CAB & AIR, P.S. TRANS, TRIPLE HYDRA, 3PT, PTO, WIGHTS 18 4R42 RUBBER, SN P013824
 1-1991 MD JOHN DEERE 4455 TRACTOR, CAB & AIR, P.S. TRANS, DUAL HYDRA, 3PT, T, P.T.O, WEIGHTS, 18 4R42 RUBBER, SN P010874
 1-1984 MD JOHN DEERE 2950 TRACTOR, CAB & AIR, O.R TRANS, DUAL HYDRA, 3PT, PTO, WEIGHTS, 18 4-38 RUBBER, 5777 HRS SN 25438
 1-JOHN DEERE 265 SELF LEVELING F.E. TRACTOR LOADER WITH BUCKET & HAY FORKS

SWATHERS • BIG BALERS
 1-1996 MD MACDON 3300 TURBO SWATHER, CAB & AIR, 18' HEADER, CRIPPER, DIESEL, 1100 HRS, SN 10725 (CLEAN)
 1-1995 MD NEW HOLLAND 2550 SWATHER, CAB & AIR, 18' HEADER, CRIPPER, DIESEL, 2500 HRS SN 56926
 1-1995 MD HESSTON 4800 BIG SQUARE BALER W/MONITOR, SN 1961 (25,000 BALES, CLEAN)
 1-1998 MD HESSTON BIG BALE ACCUMULATOR HAY TRAILER SN 776 (NICE TRAILER)
 1-1995 MD CASE IH 6580 BIG SQUARE BALER, W/MONITOR, SNH0026764 (25,000 BALES, CLEAN)
 1-1995 CASE IH 6581 BIG BALE ACCUMULATOR HAY TRAILER SN 1062762
 1-NEW HOLLAND 216 HYDRA HAY RAKE, SN 596269
 1-ALFALFA DRYING TRAILER
 1-SWATHER TRAILER
 1-FARMHAND 4 WHEEL HAY RAKE
 1-BRILLON 12' GRASS/ALFALFA DRILL, D.T. W HYDRA
 1-GOPHER KILLER, 3PT MACHINE (2 YEARS OLD, LIKE NEW) WITH BUCKET & HAY FORKS

FERTILIZER SPREADERS • EQUIPMENT
 1-JOHN DEER TRICYCLE 6000 SELF PROPELLED SPRAY RIG W/80' BOOMS, CAB & AIR, 4077 HRS, SN 4005223
 1-BIG A 2500 DRY FERTILIZER SPREADER, CAB, CUMMINS DIESEL, 6643 00-25 RUBBER
 8-1500 GAL POLY FERTILIZER TANKS
 4-FERTILIZER INJECTION PUMPS
 3-CHEMICAL PUMPS
 1-8 ROW 3 PT SPRAY RIG

FUEL TANKS • METAL LATHE • WELDER
 28,000 GAL FUEL TANKS W/PUMPS ON SKIDS
 1-500 GAL FUEL TANK ON TRAILER
 1-1,000 GAL FUEL TANK ON TRAILER
 1-LOT OF FUEL TANKS & STANDS
 1-SHOP METAL LATHE

PEANUT HARVEST EQUIPMENT
 1-1994 MD BUSH HGS 9004 1 ROW PEANUT COMBINE (LIKE NEW)
 1-1992 MD PERMAN PEANUT DIGGER, 4 ROW, 3 PT, PTO, W/RODWEEDER
 5-20' METAL PEANUT TRAILERS

PEANUT CLEANING EQUIPMENT
 CARTER CLEANER, CONVEYORS, CLEANING TABLES, ELEVATOR, LEGS, HYDRA TRAILER, HOIST (TO BE REMOVED) THIS CLEANING SYSTEM IS LOCATED AT 225 N. MIKE AVE. IN PORTALES, NM AND WILL BE SOLD FROM SALE SITE AT 1 P.M. TO VIEW EQUIPMENT CALL WAYNE BAKER AT (505) 356-8996 OR BILL JOHNSTON AUCTIONEERS AT (505) 356-5982.

FARM EQUIPMENT
 1-JOHN DEER 875 ROW CULTIVATOR, 3 PT, HYDRA, FOLD (LIKE NEW)
 1-MAW 5X7 STUBBLE MULCH FLOW W/ PICKERS, COLTER, HYDRA, FOLD D.T.
 1-FLEX KING 40' RODWEEDER, D.T., G.W., HYDRA, FOLD
 1-LULLSTON 10-ROW ROLLING CULTIVATOR, 3 PT, 10 BAR, G.W.
 1-8 ROW ROLL RIPPER PLOW, TRIPLE 4X4 TOLL BARS, 3 PT, G.W.
 1-HAMBY 17-SHANK CHISEL PLOW, 4X4 BARS 3 PT, G.W.
 1-11 SHANK V-RIPPER PLOW, 4X4 BARS, 3 PT, G.W., BIG BAR
 1-7' HYDRA 3 PT BLADE
 1-JOHN DEERE 400 8-ROW ROTARY HOE, 3 PT
 1-LULLSTON 8-ROW ROLLING CULTIVATOR, 3 PT, 5 TINE
 1-8 ROW LISTER, 4X4 BAR, 1X3 CHANKS, G.W. 3 PT
 8-DAMMER DYKERS
 1-AERWAY AERATOR W/ NEW BLADES
 1-LULLSTON 8 ROW ROLLING CULTIVATOR, 4X4 BARS, 3 PT, 5 TINE
 2-JOHN DEERE 8300 20-8 GRAIN DRILLS W/RESS WHEELS, HYDRA
 1-NOBEL 36" SPRINGTOOTH HARROW, D.T., HYDRA
 1-30' SHOP MADE CULTIPACKER, 3 PT, 4X4 BARS
 1-4H MODEL 500 16 ROW AIR PLANTER, BIG BAR, 3 PT
 1-4 W/MON SPREADER
 1-3 PT BORDER DISK
 1-4 ROW FERGUSON CULTIVATOR
 2-8 ROW 4X4 TOOL BAR, 3 PT, G.W., 1X3 SHANKS
 1-10 ROW DOUBLE 4X4 TOOL BAR, G.W., 3 PT
 1-ROC 16' SWEEP PLOW, 3 PT, G.W., TRIPLE 4X4 BAR
 1-HAMBY 36" STIFF SHANK CULTIVATOR, 4X4 BAR, 3 PT, G.W.
 1-ORTMAN ROLL MAKER
 1-36" DAMMER DYKER W/TOOL BAR/ CHISEL, 3 PT, G.W. 8-ROW
 1-30' DAMMER DYKER W/TOOL BAR/CHISELS, 3 PT, G.W. 12 ROW

LOTS MORE ITEMS TOO NUMEROUS TO MENTION!

AUCTIONEER'S NOTE: THIS IS ONE OF EASTERN NEW MEXICO'S LARGER AUCTIONS. DON'T MISS IT!

MIKE ARCHIBEQUE • OFFICE (505) 356-5982 • PORTALES, NM 88130
WHEN ONLY THE BEST WILL DO, CALL...
Bill Johnston Auctioneers
 WEB SITE: <http://bja.yucca.net> — email address: bja@yucca.net

REPRESENTATIVE SALES

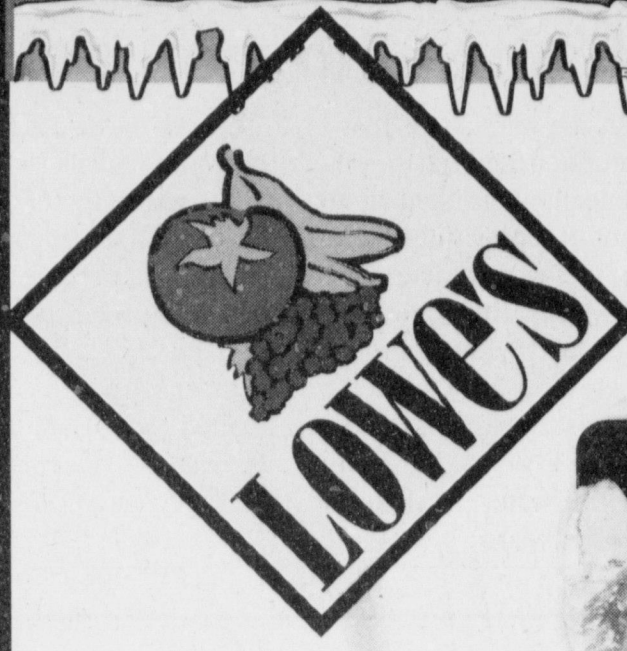
1609 head of cattle, 200 hogs and 413 sheep and goats for a total of 2,222 animals were sold at the Jan. 12th sale. Market steady to stronger on all steers, heifers sold 1-2 lower. Pairs and Bred cows steady along with packer cows and bulls. We had an excellent selection of cattle to offer this week. We would like to thank everyone who buys and sells with us. We appreciate your business.

The Muleshoe Cattle Market is brought to you each week by Muleshoe Livestock Auction, located east of Muleshoe on U.S. 84. Muleshoe Livestock conducts sales every Saturday, beginning with hogs, sheep and goats at 10 a.m. and cattle following at approximately noon.
 FOR INFORMATION ON SALES OR TO CONSIGN CATTLE, CALL (806) 272-4201

Muleshoe Cattle Market
SATURDAY, JAN. 12, 2002

Seller, City	#	Type	Wt.	CWT or PH
Gregario Armendariz, Bula	2	Hol. Bulls	170 lbs.	at \$108.00
Justin Mullins, Portales, NM	3	Hol. Strs	212 lbs.	at \$104.00
Schaap Dairy, Portales, NM	15	Hol. Strs	268 lbs.	at \$96.00
Gover, Inc., Earth	6	Blk. Strs	300 lbs.	at \$129.00
Gover, Inc., Earth	4	Blk. Strs	385 lbs.	at \$120.00
Darrell Huseman, Nazareth	3	Mxd. Bulls	342 lbs.	at \$115.00
Alma Rodriguez, Bula		YWF Str	405 lbs.	at \$110.00
Ross Caviness, Maljamar, NM		Blk. Str	460 lbs.	at \$109.00
Lucinda West, Brownfield		Blk. Bull	450 lbs.	at \$107.00
Diamond Y Cattle, Muleshoe	3	Blk&Char. Strs	502 lbs.	at \$109.00
Diamond Y Cattle, Muleshoe	17	Blk. Strs	616 lbs.	at \$87.00
Diamond Y Cattle, Muleshoe	11	Mxd. Strs	710 lbs.	at \$84.00
Atlas Cattle, Ft. Sumner, NM	26	Mxd. Strs	503 lbs.	at \$96.50
Atlas Cattle, Ft. Sumner, NM	6	Mxd. Strs	606 lbs.	at \$85.50
FM Farms, Brownfield	14	Red&Blk. Strs	660 lbs.	at \$87.25
Juan Castillo, Portales, NM	2	Blk. Strs	715 lbs.	at \$82.50
John Hill, Abernathy	5	Blk. Strs	770 lbs.	at \$80.00
Chico Cattle, Abernathy	6	Blk. Strs	819 lbs.	at \$78.00
FM Farms, Brownfield	2	Mxd. Hfrs	283 lbs.	at \$114.00
FM Farms, Brownfield	12	Red&Blk. Hfrs	392 lbs.	at \$96.00
Max Davis, Rogers, NM		Char. Hfr	335 lbs.	at \$102.00
Darrell Huseman, Nazareth	4	Mxd. Hfrs	315 lbs.	at \$109.00
Diamond Y Cattle, Muleshoe	4	Mxd. Hfrs	328 lbs.	at \$107.00
Diamond Y Cattle, Muleshoe	8	Blk. Hfrs	692 lbs.	at \$81.00
Lucinda West, Brownfield	3	Mxd. Hfrs	448 lbs.	at \$87.00
Atlas Cattle, Ft. Sumner, NM	17	Mxd. Hfrs	461 lbs.	at \$86.00
Daybreak Farms, Bovina	3	Char. Hfrs	463 lbs.	at \$88.00
Daybreak Farms, Bovina	4	Char. Hfrs	644 lbs.	at \$79.50
L.G. Layman, Muleshoe	2	Red Hfrs	528 lbs.	at \$82.50
Phil Neinst, Springlake	2	Char. Hfrs	543 lbs.	at \$84.50
Leo Chavez, Muleshoe	16	Mxd. Hfrs	571 lbs.	at \$84.50
Leo Chavez, Muleshoe	19	Mxd. Hfrs	642 lbs.	at \$80.00
Brenda Jesko, Muleshoe	6	Blk. Hfrs	704 lbs.	at \$78.00
Cody Hill, Farwell		Blk. Pair		\$690.00
Guy Goen, Seminole		Red Pair		\$665.00
Roy Kuper, Hereford		Hol. Cow P8		\$1100.00
Tommy Lewis, Morton	2	Blk. Cows P		\$570.00
Paula Nix, Springlake		Blk. Cow P7		\$590.00
Atlas Cattle, Ft. Sumner, NM	11	WF Cows P6		\$525.00
Cody Hill, Farwell		Blk. Cow	1145 lbs.	at \$40.25
Letha Wheeler, Muleshoe		BWF Cow	1660 lbs.	at \$42.00
Wade Wheeler, Muleshoe		BMF Cow	1615 lbs.	at \$43.50
Jesus Rodriguez, Muleshoe		Blk. Cow	1280 lbs.	at \$39.50
Brent Eady, Plains		RMF Cow	1195 lbs.	at \$40.25
ACU, Morton		BWF Cow	1025 lbs.	at \$40.75
IGS Farms, Muleshoe		RWF Cow	1260 lbs.	at \$42.00
IGS Farms, Muleshoe		Blk. Bull	1585 lbs.	at \$54.00
CM Cattle, Muleshoe		Char. Bull	1885 lbs.	at \$55.50

BRING IN YOUR X-SAVINGS CARD. LOWE'S X-SAVINGS CARD REQUIRED AT THE TIME OF PURCHASE TO EARN REWARD POINTS.



Winter Wonderland OF SAVINGS

Stay warm with these monthly savings by using your X-Savings Coupons!

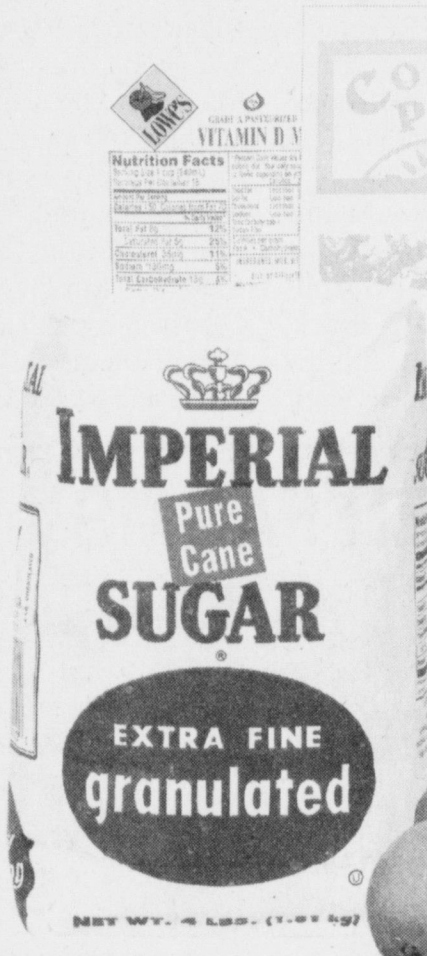


Hormel Black Label Bacon — OR — **County Post Eggs**
16 OZ. PKG. — OR — 30 CT. PKG.

— OR —
Lowe's or Shurfine Milk
ALL VARIETIES GALLON JUG

Imperial Pure Cane Sugar — OR — **Gold Medal Flour**
4 LB. BAG — OR — ALL PURPOSE 5 LB. BAG

— OR —
Navel Oranges
8 LB. BAG



X-tra Savings



Here's How It Works!

Lowe's is giving you deep discounts on many of the items you purchase everyday! For each dollar you spend at Lowe's, we will give you a point. After 50 points (or \$50), you will receive a Lowe's X-tra Savings Reward Coupon.

Reward Coupon. This coupon can then be redeemed for deep discounts on selected items.

Each month, Lowe's will select from our most popular items in the store and deeply discount them for our X-tra Savings Reward Coupon holders. Present your coupon and receive incredible savings on selected items.

X-tra Savings Reward Program

• Each Dollar You Spend Is Worth ONE (1) Point. • After you earn 50 points, you will receive a Lowe's X-tra Savings Reward Coupon.

• Use your Lowe's X-tra Savings Reward Coupon to get deep discounts on one of the selected items.

• Only ONE (1) item can be purchased with each Reward Coupon. • Items will be changed monthly.

X-tra REWARD ITEMS FOR JANURAY 2001! X-tra Savings

Pringles Potato Chips TWIN PACK 12 OZ.	Wesson Cooking Oil ASSORTED 48 OZ. BTL.	Peter Pan Peanut Butter ASSORTED 18 OZ. JAR	Maxwell House Coffee 11 TO 13 OZ. CAN EXCLUDES DECAF	Red Delicious Apples 5 LB. BAG	Aunt Jemima Pancake Mix 32 OZ. BOX	Charmin Bath Tissue DOUBLE ROLL 4 ROLL PKG.	Rolling Pin Premium Glazed Donuts DOZEN	EXTRA THIN OR LARGE WHITE Mrs. Baird's or Rainbow Iron Kids Bread 24 OZ. LOAF
Jell-O Pudding or Gelatin Cups ASSORTED 6 CT. PACK	3 Minute Instant Oatmeal 12 TO 15 OZ. PKG.	Planters Dry Roasted Peanuts 12 OZ. JAR OR CAN	Dinty Moore Beef Stew or Chicken & Dumplings 24 OZ. CAN	Coca-Cola, Sprite or Dr Pepper 6 PACK CANS	Lipton Tea Bags FAMILY SIZE 24 CT.	SWISS MISS Milk Chocolate	Swiss Miss Hot Cocoa Mix INSTANT 10 CT. PKG.	Red Baron 12 In. Original Pizza EXCLUDES RISING CRUST
Lay's® Potato Chips PRE-PRICED \$2.99	Vlasic Whole Dill Pickles 46 OZ. JAR	WishBone Salad Dressing ASSORTED 16 OZ. BTL.	Ragu Pasta Sauce ASSORTED 16 TO 26 OZ. JAR			7 lb. Bag of Ice	Vicks Cough Medicine ORIGINAL FORMULA 44 OR PEDIATRIC 4 OZ. BTL.	Dove Anti-Perspirant 1.7 TO 2.6 OZ.
Toasterm Breakfast Pastries 22 OZ. PKG.	Orville Redenbacher's Microwave Popcorn 3 CT. PKG.	Natures Grain Bagels 6 CT. PKG.	U.S. No. 1 Russet Potatoes 10 LB. BAG	Texas Grapefruit 6 LB. BAG	Decker Pepperoni 6 OZ. PILLOW PACK	Peyton's Beef Franks or Bologna 12 OZ. PKG.	Peyton's Chorizo 1 LB. PKG.	Healthy Choice Dinners SELECT GROUP 9.5 TO 11.5 OZ.
Gorton's Breaded Fish TENDERS, FILLETS OR STICKS 11 OZ. PKG.	Pepperidge Farm Three Layer Cakes 19.5 OZ. PKG.	New York Brand Garlic Breadsticks 10.5 OZ. BOX						



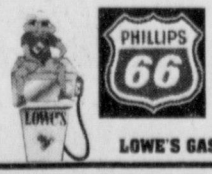
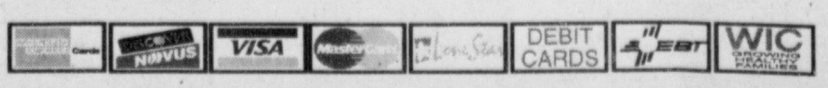
Why shop at your neighborhood Lowe's Supermarket?...
Our Prices are LOWER!

SPECIAL REWARDS GOOD JANUARY 9TH THRU FEBRUARY 5TH, 2002

Prices Good At Muleshoe Store Only!

WE HAVE MONEY ORDERS, CHECK CASHING AND PHONE CARDS.
WESTERN MONEY UNION TRANSFER

ACCEPTED IN SELECT LOWE'S STORES...



LOWE'S GAS LOCATIONS: Lubbock: 19th & Frankford

The X-tra Savings Reward Program Good at Lowe's Muleshoe Store Only!

Offer valid January 9th thru February 5th, 2002. Points are not transferable between stores. No substitutions please on X-tra Savings Reward Items. Only one item may be purchased at the special deep discount per Reward Coupon.