

*****MIXED ADC 760
43P 38S
385 08-27-02
NEWS FILE
HC 65M BOX 201 AR 72852-0065
OARK

PAGE ONE

A QUICK READ OF THE NEWS

Spellcheck not included

About 200,000 state vacation guides were printed before officials discovered that a page with a greeting from North Dakota Gov. John Hoeven had misspelled "North."

It was spelled N-R-O-T-H.

Tourism Director Allan Stenehjem said the goof was caught before the guide was distributed. He said the page will be reprinted and a personal letter from the governor will be added. The cost of the fix, about \$3,000, will be covered by the printer, he said.

Skaters' humor is clear

Canadian speed skaters are not worried about been seen through.

"Yeah, you could put it that way," Winnipeg's Cindy Klassen said in a phone interview from Calgary.

"We're a pretty transparent bunch ... What you see is what you get," joked Klassen, 22, who will skate in her first Olympics at Salt Lake City next month.

Klassen's remarks came after fellow skater Krissy Myers caused a stir at the World Sprint Speedskating Championships in Hamar, Norway, by wearing "happy face" underpants that were clearly visible under her skin-tight suit.

Klassen said Myers wore the "happy face" underpants as a prank and not to protest having to wear the revealing suit. Myers was unavailable for comment, but Klassen said the skaters have become accustomed to the "racy" suits.

"They've been that way for a while. And, yeah, people complain a bit every year we get new 'skin suits,' but it's usually all done in jest," she said.



Drawing date: Saturday, Jan. 26
Winning numbers: 10-12-26-28-34-37
Estimated jackpot: \$4 million
Winners: 0
Next drawing: Wednesday, Jan. 30
Estimated jackpot: \$6 million

On this date in history

Jan. 29 — The Permanent School Fund is set up by the Fifth Texas Legislature (1854).

Also on Jan. 29 — Confederate gunboats capture Union warships near Sabine Pass, Texas (1863).

Jan. 30 — Gov. James Stephen Hogg is inaugurated — the first native Texan to be elected governor (1891).

Feb. 1 — Rutgersville College opens its doors near La Grange, Texas — the first "college" deserving of the name to be established in Texas (1840).

LOCAL WEATHER

As of Tuesday, the National Weather Service was predicting a couple of very cold mornings for Thursday and Friday — 14 and 16 degrees, respectively. Those two days should remain cool all day — about 39 on Thursday and 43 Friday. After that, expect warming to about 51 on Saturday, 55 Sunday and 58 Monday.

Editor Ronn Smith can be reached at 272-4536 or ctyankee@fivearea.com

Missed your paper? Call carrier Yolanda Martinez at 272-4536 during business hours, 8:30 a.m.-5 p.m.

First dairy moratorium to be sought Tuesday

The Concerned Citizens for Clean Water have announced plans to formally ask Curry County commissioners Feb. 5 to consider a five-year moratorium on dairy expansion in the county.

Group spokesman Paul Elders of Ranchvale, N.M., has said the group will seek similar delays in Roosevelt and Bailey counties.

While Elders does not disagree with statements that dairies use less water than

irrigated farming, as was said by dairy representatives at a Jan. 24 public meeting at Clovis Community College, he said the Concerned Citizens do not agree that the government's environmental regulations are tough enough to prevent dairies from polluting.

He also said he doesn't believe that the industry's net economic benefit to Curry County has been \$225 million, as dairy lobbyist Sharon Lombardi said at the meet-

ing. "I contest that very strongly," Elders said Saturday.

Aside from keeping the water supply clean, however, the group also wants to divert the millions of dollars that would be spent on the Ute Water Project into a CRP-type program (to bring lake water to Clovis) to buy out irrigated farming operations and return them to dryland.

see **DAIRIES** on page 2

Lady Mules overwhelm Lady Eagles

By DELTON WILHITE
Journal sportswriter

Even with the Castilleja twins at full speed, Lubbock Roosevelt's Lady Eagles were no match for the Lady Mules' depth Jan. 22.

All 11 Lady Mules scored in the 60-40 trouncing of the Lady Eagles, pushing Muleshoe's district record to 5-1.

"It was a good team effort tonight," said Shana Simms, the Lady Mule coach. "Roosevelt is a scary team to play, especially (with Muleshoe) coming off the loss to Shallowater. I was concerned how we would react tonight, but the girls responded well and came to play."

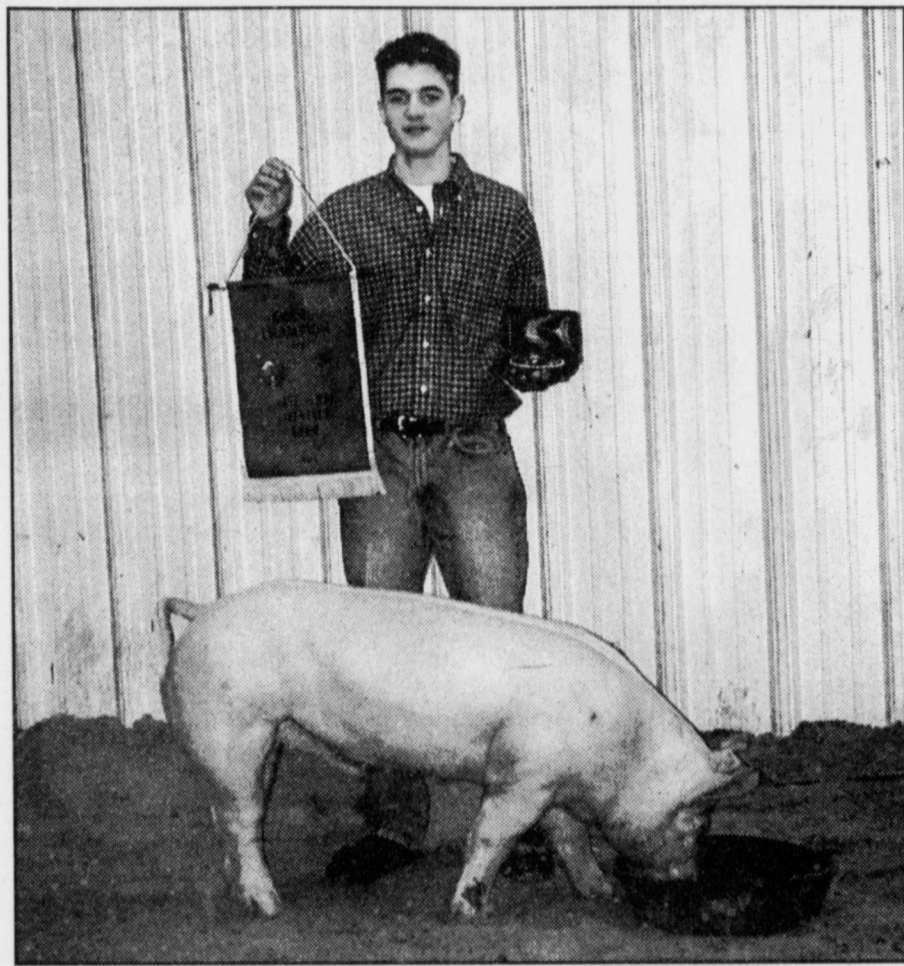
Again it was not a pretty game because of Roosevelt's very physical play, but the Lady Mules did not allow emotion to rule their play, demonstrating their ability to play through their opponents' rough housing of the opposition.

Muleshoe never allowed the Lady Eagles to lead. Mindy Locker stepped up her pace in the early going by grabbing two offensive rebounds and laying them back on the rack for the Lady Mules first four points of the game.

Jessica Carpenter answered a Lady Eagle three-pointer with a trey of her own on an inbound play. Kayla Glover also had four points in the opening period with the second deuce coming on a feed from Locker as Glover slashed through the Lady Eagles back door. The Lady Mules owned a 15-8 advantage after the first eight minutes.

The Lady Eagles mounted a 6-1 run in the first two minutes of the second frame before Tiffany Flores dropped in her first of two three-pointers. Locker added her third basket of the night and Tori Barton ended first-half scoring by making the front end of a one-and-one to send the teams to the locker room with the Lady Mules leading 22-16.

Roosevelt cracked the scoring ice first in the second half, but the Lady Mules all but froze them out during the second half. — see **GIRLS** on page 2



Journal photo: Leah Bell

Showing the champion

Landon Gray pauses with his grand champion swine (a Yorkshire) at Saturday's Three Way Junior Livestock Show. Complete results are on page 3.

Farmers in capital to fight for farm bill

By SHAWN WADE
Plains Cotton Growers

Farwell farmer Mark Williams is among Plains Cotton Growers leaders in Washington, D.C., this week to push Congress toward approval of a new farm bill.

Williams is vice president of the cotton group.

With Congress' return to work, a renewed round of speculation also has surfaced in an effort to gauge the probability of passage and implementation of a new program in 2002.

The good news is that despite the debacle that occurred prior to Christmas, odds are improving that a bill can be agreed to in

the Senate, conferenced with the House's version and implemented for this crop year.

That opinion is not universal by any means, but it is supported by recent comments made by administration officials and various senators.

Members of the House Agriculture Committee continue to be ready to move to conference and work toward a finished product that can be sent to the White House.

Most speculation appears to center around the first week of February as the most likely time frame for the Senate to revisit the debate on the Farm Bill (S.1731).

Plains Cotton Growers President Ronnie Hopper of Petersburg notes that the primary purpose of the cotton-growers' trip will be to re-emphasize the importance of a new farm bill for the 2002 crop.

He added that another important facet of the visit will be heading off potentially crippling amendments to the Senate bill that would substantially alter payment-limitation language currently in that bill.

For cotton, the main impact of the proposed limitation amendment put forth by Sen.

see **BILLS** on page 2

Muleshoe art students win in Wayland competition



Journal photo: Beatrice Morin

Art students (from left) Tony Jaramillo, Gradee Adrian, Nathan Walton, Stacy Mata and Andrew Padilla were winners at a recent competition in Plainview. Work by Jaramillo and Adrian will be sent to New York for national competition.

SPECIAL TO THE JOURNAL

Muleshoe High School senior Tony Jaramillo and junior Gradee Adrian took top honors in a recent art competition at Wayland Baptist University in Plainview.

Work by the two students, which won Gold Keys (the highest award), will be sent on to New York for national competition.

Receiving honorable mention from Muleshoe were junior Nathan Walton, sophomore Stacy Mata, senior Andrew Padilla and a second work by Adrian.

The entire Scholastic Arts show will remain on display at Wayland's Abraham Art Gallery through Feb. 14.

About 2,000 entries were judged in the competition, according to Muleshoe art teacher Hellen Adrian.

AROUND MULESHOE

Cub Scouts' Pinewood Derby set

Muleshoe Cub Scouts have scheduled their annual Pinewood Derby for noon Saturday in the DeShazo Elementary School gymnasium.

Car signup begins at 10:30 a.m.

There is no fee for Cub Scouts; others must pay \$5. Every Cub Scout participating will get a trophy donated by Five Area Telecommunications.

Prior to the race, cars will be judged for best paint, "Cubbiest" (meaning the car that appears to have had the least adult hands-on work) and other categories.

More information is available by calling Mike Richards at 272-3536.

Cell-phone drive extended

The drive to collect used cell phones for Women's Protective Services of Lubbock has been extended through the end of February.

All customer information will be removed from the phones before they are re-assigned, according to organizer Nelda Laney of Hale Center.

Muleshoe-area contributors may drop off the phones at the Muleshoe Journal office during business hours. The drive originally was to last only through Jan. 31.

First Ag Credit welcomes Sharp

Don Sharp has become the new vice president of the First Ag Credit branch in Muleshoe.



He will be the loan officer for the office's commercial lending operations. He began with Texas PCA at the Marfa branch in 1993 and moved to San Angelo in 1997.

He was raised on a family farm at Hart and attended South Plains College, Sul Ross State University and Angelo State University.

Sharp

He and his wife, Shirley, also farmed, ranched and fed cattle in Yuma County, Colo., from 1965 to 1984, and he

was with Farmers Home Administration in Paducah beginning in 1984.

Lazbuddie seniors plan Bowl meal

The Lazbuddie senior class has announced a pre-game Super Bowl fish fry for 11:30 a.m. to 1:30 p.m. Feb. 3.

The menu will include catfish, baked potato or curly fries, fried biscuit puffs with honey, tossed salad and homemade desserts.

The price will be \$6.50 for a regular meal or \$5 for a "lite" plate. Takeouts are available.

Deliveries can be arranged by calling 965-2130.

Public calendar

Feb. 2 — 7 a.m. to 7 p.m. Voting at Three Way and Sudan schools on district consolidation.

DAIRIES

from page 1

Elders says he believes this would conserve enough water to allow the aquifer to take care of the region's residential and commercial needs indefinitely.

Elders' group has posted information related to the region's water supply on the Internet at

www.saveourwatersupply.com.

The website also includes the amount of farm subsidies paid over the past five years to various dairy farmers in Curry County. Those amounts are topped by \$674,572 paid to Randy Vanderdussen of Rajen Dairy, just west of Clovis.

BILL

from page 1

Chuck Grassley of Iowa would be a significant reduction in support through elimination of the three-entity rule and a reduction in the combined payment limit

for the fixed and counter-cyclical support payments.

Another problem farmers have with the Grassley amendment would be the elimination of marketing certificate authority and changing the marketing loan program from a non-recourse to a recourse loan program.

The Plains contingent in D.C. includes Hopper, Williams, Secretary-Treasurer Rickey Bearden of Plains, and Executive Vice President Steve Verett.

Flores had eight points, Cox six, Carpenter, Glover, Barton and Rasco four apiece, Hutto and Hodge three each and Benham one. Roosevelt's Laticia Harris led scoring with 15.

GIRLS

from page 1

ing the next five minutes during a 17-2 scoring burst.

Annie Cox picked Felicia Castilleja's pocket and was blasted attempting to convert the steal to points. Cox made the Lady Eagles pay for the foul by dropping in both freebies to begin the Lady Mule scoring run.

Britni Gartin made up for lost time during the romp by dropping in three early in the run and finishing three consecutive fast breaks as Muleshoe clamped on a full-court press for which the Lady Eagles could find no answer.

Gartin added two free throws as the period ended (making 11 of her 13 points scored in a single quarter) to give Muleshoe a 42-23 lead.

Shani Rasco added two in the final period on a text book "give and go," and

Candace Hutto made both ends of a one-and-one after being fouled pulling down a defensive rebound. Rendi Hodge and Barton each hit from behind the arc in the final minute to complete the scoring for the night.

"Coach Simms told us between quarters that if our shots did not fall then our defense has to take over," Lady Mule Candace Hutto said. "Our defense took over and we got after the rebounds, then the shots began to fall and we had fun tonight."

The Lady Mules out-rebounded Roosevelt 52-32; Sara Benham grabbed 12 and Rasco, Locker and Hutto pulled down eight apiece.

Gartin led the Lady Mules in scoring with 13 points, all in the second half, and Locker added 10.

THE PROFESSIONAL BODY SHOP

Wrinkle Free

BODY WORKS INC.

David Mount-Owner

- Auto, Truck (Small & Large)
- Frame Alignment
- Windshield Replacement
- Fiberglass Repair (Cars, RVs, Boats)
- Truck Painting (Large Shop Area)
- Compare Our Prices
- Insurance Work Welcome

Ask Us About Our **LIFETIME PAINT GUARANTEE**

505-762-0432

1600 East 1st, Clovis, NM

Operating Financing & More

NEW!

Now Offering

- Real Estate Financing
- Name Brand Crop Inputs
- Agronomic Advice
- Insurance
- Leasing

Contact Your Local AgriFlex Credit Representative:

Jerry Criswell
Canyon, TX
806-655-6911

Ag Services of America, Inc.
1-800-395-8505 • www.agservices.com

Or find out more online at www.powerfarm.com

IS YOUR TAX PREPARER AS SOPHISTICATED AS YOUR TAX SITUATION?

We have trained tax professionals who can prepare even the most complex returns. And since they attend annual tax law seminars, they're ready to handle most any tax situation. Even yours.

H&R Block
104 Ave. C, Muleshoe, TX
806-272-3332
Monday-Friday 9:00-6:00

Muleshoe Journal USPS 367820

Established February 23, 1924. Published by Triple S Publishing, Inc. Every Thursday at 304 W. Second, Box 449, Muleshoe, TX 79347.

Periodicals Postage paid at Muleshoe, TX.

POSTMASTER: Send address changes to the Bailey County Journal, P.O. Box 449, Muleshoe, TX 79347.

We are qualified members of:

- Panhandle Press Association, National Newspaper Association,
- West Texas Press Association and Texas Press Association

WEST TEXAS PRESS ASSOCIATION

PPA Panhandle Press Association

MEMBER 2001

TEXAS PRESS ASSOCIATION

Scot Stinnett, Publisher
Lisa Stinnett, Vice-President/Comptroller
Ron Smith, Editor
Beatrice Morin, Classifieds
Leah Bell, Advertising
Yolanda Martinez, Office Assistant

© 1990

SUBSCRIPTIONS: Muleshoe Journal and Bailey County Journal
By Carrier Yearly - \$22.00
Bailey County — by mail - \$24.00
Elsewhere - \$26.00
Advertising Rate Cards on Application

Advertisers should check their ad the first day of insertion. The Journals will not be liable for failure to publish an ad or for a typographical error or errors in publications except to the extent of the cost of the ad for the first day of insertion. Adjustment for errors will be limited to the cost of that portion of the ad where the error occurred.

CONGRATULATIONS

to all the participants and winners of the Area Livestock Shows!

We salute each of you for your hard work and dedication in raising some of the finest livestock in the area!

Five Area Telephone Cooperative, Inc.

West Plains Telecommunications, Inc.

Five Area Systems, Inc.

Five Area Long Distance

Plateau Wireless

Five Area Paging

fivearea.com
Your local Internet Provider

THE FIVE AREA TELEPHONE

At A Loss About What To Do For Your Valentine?

Put A Love Poem In The Muleshoe Journal!

Let the Muleshoe Journal deliver your special Valentine's Day message! Send a photo of your Valentine along with a four line poem and \$15 (for a 2x2 ad similar to the one below) to P.O. Box 449, Muleshoe, Texas 79347. Or drop your Valentine's messages by our office at 304 W. 2nd Street. We'll put your poem in a Valentine's border and publish it in the Valentine's Day edition. **Deadline to have photos and poems in our office is Tuesday, Feb. 12 at noon.** Arrangements must be made to have your photo returned by mail.

This Valentine's I'd Just Like To Say I Love You More Each Passing Day!

Love, Snuggles

Make your poem funny or serious!

Roses Are Red... Violets Are Blue... No One Hugs As Good As My Honey Do!

Love, John Doe

(Poems may be edited for objectionable content)



Journal photo: Leah Bell

Grand champion steer

Rhett Richardson shows his grand champion steer, an exotic, at Saturday's Three Way Junior Livestock Show as Chris Kindle displays the awards the animal won.



Journal photo: Leah Bell

Grand champion goat

Kyle Richardson shows off his grand champion goat at Saturday's Three Way Junior Livestock Show. The final edition of the show drew three steers, two goats, two lambs and 31 swine, shown by a total of 14 exhibitors.

Three Way Stock Show

STEERS

Grand champion and reserve champion: Rhett Richardson.

Champion American: Rhett Richardson.

Champion Exotic: Rhett Richardson. **Reserve Champion Exotic:** Ryan Richardson.

GOATS

Grand champion: Kyle Yordy. **Reserve champion:** Johanna Yordy.

LAMBS

Grand champion: Rhett Richardson (Southdown). **Reserve champion:** Ryan Richardson (Southdown).

SWINE

Grand champion: Landon Gray (Yorkshire). **Reserve champion:** Landon Gray (Poland).

Berkshires — First, Chris Kindle; second, Misty Davis; third, Landon Gray.

Durocs — First, Rowdy Davis; second, Misty Davis; third, Chris Kindle; fourth, Tiffany Davis.

Hampshire — First, Ryan Richardson; second, Amanda Branham; third, Misty Davis; fourth, Rhett Richardson.

Spotted Poland — First, Landon Gray; second, Chris Kindle; third, Rowdy Davis.

Yorkshires

Champion: Landon Gray. **Reserve Champion:** John Austin Branham.

Class 9 — First, Kara Heinrich; second, Kara Heinrich; third, Canaan Heinrich; fourth, Canaan Heinrich.

Class 10 — First, Landon Gray; second, Canaan Heinrich; third, Kara Heinrich; fourth, Canaan Heinrich.

Class 11 — First, John Austin Branham; second, Rhett Richardson; third, Tiffany Davis; fourth, Rowdy Davis.

Crosses — First, Chris Kindle; second, Ryan Richardson; third, Andrew Branham; fourth, Misty Davis; fifth, Tiffany Davis.

Church plans 15K run, walk

The public is invited to enter a 15K run and 5K run/walk being sponsored March 16 by Faith Christian Family Church in Clovis.

Do the Oneighty is scheduled to begin at 7 a.m. (Mountain time) promptly at North Norris Street and Llano Estacado Boulevard in northeast Clovis.

The event is a fund-raiser for a summer youth camp for students in seventh through 12th grades.

More information is available on the church's website, www.fcfconline.com/180.htm, by calling (505) 762-7751, or by going by the church at 3401 N. Norris St.

The family of Hazle Robinson would like to express to each of you our many thanks for all your thoughts, prayers, food and flowers. A special thanks to the Muleshoe Fire Department.

Charles Corance, Dixie Perkins
Juanita Smith & Families

UNLIMITED NIGHTS & WEEKEND MINUTES For \$40

*Limited time offer. Some restrictions apply. Ask Susan for details.

CELLULAR 2000

605 West American Blvd. Muleshoe

272-7523 or 272-5153

M-F 10-5:30
Late appls. available

'CREATIVE LIVING'

Information on "shabby chic" decorating and clean-up tips will be featured on "Creative Living" at 1 p.m. Feb. 5 and 3 p.m. Feb. 9 at 3 p.m. (All times are Central.)

"Creative Living" airs on public broadcasting station KENW-TV from Eastern New Mexico University in Portales.

Tera Leigh of Lafayette, Calif., a co-founder of Paintability, will show how to paint on a variety of items, including candles and soap, to create eye-catching accessories for any room in the home, or to make for gifts.

Deborah Durham, a representative of Resolve Carpet Cleaner in Wayne, N.J., will show what she calls the "morning-after-party" survival kit. It is designed for everyone who loves entertaining but hates the tedious, time-consuming post-mortem cleanup.

Information on decorating cupcakes and removing dust and pollen from the air will be featured at 10:30 p.m. Feb. 5 and at 1 p.m. Feb. 7.

Nancy Siler of Wilton Industries in Woodridge, Ill., will demonstrate how to turn already baked and iced cupcakes into a Friendly Fish, a Bear Hug, even a Beagle, a Poodle and a Lovable Lion.

Joan McClain of Manhattan Beach, Calif., a representative of Fantom Technologies, will demonstrate a cleaning system that will help provide a remedy for the thousands of people

who suffer from allergies, asthma and common household dust.

"Creative Living" is produced and hosted by Sheryl Borden of Portales.

The show is carried on more than 100 PBS stations in the United States, Canada, Guam and Puerto Rico and is distributed by Westlink of Albuquerque.

Viewers can request copies of materials offered on the show by sending a first-class stamp for each handout requested, along with name, address and booklets requested, to "Creative Living" Requests, c/o KENW-TV, 52 Broadcast Center, Portales 88130.

Name Brand Appliances & Electronics Available Through Our SELECT BUYERS CLUB

DVD PLAYER with Hi-Speed Motion Scan

\$39 Per Month

By Panasonic

0% DOWN* 100% FINANCING* LOW MONTHLY PAYMENTS*

• TVs • VCRs • DVD Players • Camcorders
• Stereos • DVD/CD Changers • Microwaves
• Computers • Refrigerators • Gas/Electric Ranges
• Washers/Dryers • Heating/Cooling Units

CONTINENTAL CREDIT

LOANS \$100-495 • WHILE YOU WAIT OR BY PHONE
206 S. Main • Muleshoe • 272-3673

JOE'S BOOT SHOP

We Ship Everywhere!

And Country Junction 2600 Mabry Drive
(505) 763-3764 • 1-800-658-6378 • Open: Mon.-Sat. 9-7 MT Clovis, NM

JOE'S... NOT JUST A BOOT SHOP ANYMORE!

GRAND OPENING SALE March 8-9

NOW STOCKING OUR FEED & TACK DEPARTMENT

• Chaps • Chinks • Rodeo Gear • Ropes
• More Arriving Daily

JUST ARRIVED AT COUNTRY JUNCTION!

HANDCRAFTED WESTERN WORKS OF ART

• Bedroom • Leather Accent Pieces
• Hand-Carved Benches • Much, Much More!

HATS

Best Prices In The Southwest!
Over 5,000 Hats to choose from!
• Bailey • Resistol
• Stetson • Atwood
• Milano

JOE'S
16,000 Pairs of Boots In Stock!
Over 5,000 Hats!

COUNTRY JUNCTION
Has Gift Items For Everyone!

Now Carrying PURINA FEEDS For All Your Pet & Livestock Needs

WORK BOOT HEADQUARTERS
Lacer & Pull On Styles
Steel Toe & Non-Steel Toe Styles
• Justin • Ariat
• Double H • Tony Lama
• Chippewa • Rhino

Headquarters for the Western Lifestyle.

ANNOUNCING AN EXCITING ADDITION AT

Sheree's Attic

Dear Customers & Friends,

After feeling the effects of the economic decline for the past four months and taking a closer look at the trend toward "resale" clothing, I'm pleased to announce that in February, Sheree's Attic will be opening **The Attic Too**, an upscale consignment boutique located inside our present location!

I have considered the idea of offering consignment shopping at Sheree's Attic for some time. I'm very excited about this new opportunity for both you and me!

Our newly added department will take your new and "next to new" clothing on consignment and sell it for you. Attic Too will offer quality clothing at minimal prices for its customers. And for those of you who resell your clothing at Attic Too, you'll get a return on your original expense! **Everyone wins!**

Attic Too is exciting because it'll have a larger selection of brands, styles and sizes—from casual wear to prom dresses, junior to plus sizes!

For those of you interested in consigning clothes, all garments must be in excellent condition and fashionably in season. Damaged and out-of-season clothing won't be accepted. I will go to great lengths to select only merchandise that looks brand new. Stop by and visit with me if you're interested in consigning. **SPACE IS LIMITED.**

We are currently accepting spring merchandise (no tears, missing buttons, stains, etc.) which is cleaned, pressed and on hangers. I want you to be a part of this new adventure!

Sheree

The Attic Too
"Your Consignment Boutique"

1519 W. American Blvd. • Muleshoe, TX • 272-3459



Journal photo: Leah Bell

Grand champion sheep

Rhett Richardson shows off his grand champion sheep at Saturday's Three Way Junior Livestock Show. Kara Heinrich displays the awards the animal won.

SPC sets senior event

SPECIAL TO THE JOURNAL
LEVELLAND — South Plains College's annual Senior Sneak Preview, offering area high school seniors a glimpse into college life and careers, will have a faster-paced format when it returns Feb. 15.

The event is scheduled for 9 a.m. to 1:30 p.m. and includes registration and opening assembly in Texan Dome, information sessions, campus tours, an information session for parents in the Student Services Building, open house in the Student Center and a picnic lunch in the Women's Gym.

"This will be a fast-

paced day in which the students will be able to get all the information they need," said Kimbra Quinn, director of new student relations.

"It will be an opportunity for students and parents to see what is available at SPC in terms of educational offerings and career options," Quinn said.

Up to 700 students from 80 high schools in Eastern New Mexico, Texas Panhandle and the South Plains are expected to be on hand, Quinn said.

More information is available by calling (806) 894-9611, ext. 2213 or ext. 2113.

Tips can help say goodbye to dry skin

SPECIAL TO THE JOURNAL
HOUSTON — When winter temperatures bring on the dry-skin blues, changes in the daily routine can make a big difference.

"Dry skin is a problem for many people during the winter months," said Dr. Ida Orenge, an associate professor of dermatology at Baylor College of Medicine in Houston.

Lotions typically fall into one of three categories — liquid, cream and ointment. All help retain moisture.

Lotions are good for use over the entire body, easy to apply and don't stain clothing as much as creams.

Creams are better for localized areas such as the hands, feet and face because they last longer on the skin. Ointments are thicker and greasier, appropriate for very dry areas and best applied at night to avoid soiling clothes.

Orenge offers the following tips for beating dry skin:

- Take lukewarm showers no longer than five minutes. Long, hot showers can strip the skin of natural oils.
- Instead of pure soap, opt for one with a moisturizer or use a soap substitute.
- Use soap only under the arms, in the groin and on the feet. Running warm water over the arms, chest and back is enough to clean these areas.
- Soak in a medicated bath such as an oatmeal bath for 15 minutes. This helps to control itching that results from dry skin, and helps to moisturize.
- Use a moisturizer two or three times a day if necessary. People who work closely with the public and have to wash their hands several times per day should re-apply lotion after every washing.

• Try not to stress. Controlling stress is essential for maintaining healthy skin.

"It is important to follow a good diet to avoid drying out the skin," Orenge said. "Low-

fat diets can cause a person to lose essential fatty acids that help moisturize skin."



CHAMPION CROSS
 Chris Kindle
CONGRATULATIONS
 Three Way Stock Show Winners!



JOHN DEERE
 FARM EQUIPMENT DEALER
 Morton, TX • 266-5535



*We're proud to support
 Three Way youth!*

Farmers Co-Op Gin
Assn. of Enochs
 Enochs, TX • Mgr. Wade Baker
 927-5511 or 927-5512

CHAMPION DUROC
 Rowdy Davis

RESERVE CHAMPION
HAMPSHIRE
 Amanda Branham

HIGGINBOTHAM-
BARTLETT CO.
 201 WNW 2nd • Morton
 806/266-5255

*Thanks for a great show Three Way!
 We're proud of all of you!*



TOPS NEWS

TOPS No. 34 leader Laverne James opened the Jan. 24 meeting with the prayer and pledge. It was held at the usual site, the Muleshoe Church of Christ.

A new meeting time of 4:30 p.m. was approved, and the new time will begin at the Jan. 31 meeting.

Songs were led by Elaine Coburn and Alma Robertson.

The roll was called by Polly Otwell, who also presented the previous week's minutes. They were approved as read.

Get-well cards were sent to Evelene Harris and Ruth Clements by Retha Knowles, card chairperson.

Nine members weighed in, with the weigh-in conducted by weight recorders Otwell and Linda White.

The best loser for the week was Robertson, followed by Knowles as first runner-up and Molly Davis as second runner-up.

A bracelet charm was presented to Joline Franklin for being one of the best losers in the last six-month report. She had been absent from the meeting in which the awards were presented.

James gave a program about opportunities and how to react to them. Showing friendliness

to new acquaintances can lead to having a friend for life, and being one.

James asked members to relate their earliest memory of being helped by a TOPS member. Several mentioned longtime member Jewel Peeler as being one who first helped them with unforgettable smiles, cards and kind words.

James closed with the words "Never compromise a dream — and don't ever let go of that dream. Never give up!"

The next meeting is scheduled for 4:30 p.m. Jan. 31 at the regular site. Visitors are welcome.



CHAMPION BERKSHIRE
 Chris Kindle

Great Show Three Way!

King Ag
Aviation, Inc.

FM 746 East Sudan • 946-3399 or 946-7309



STEER SHOWMANSHIP
AWARDS

Champion (right)
 Rhett Richardson
 Reserve Champion (left)
 Ryan Richardson

Muleshoe Journal's 8th Annual CUTEST BABY CONTEST

Enter any child born in 2001 who you fell in love with at first sight - children, grandchildren, nieces, nephews, friends, etc...



**Winner will receive
 a \$50 Savings Bond for
 being selected 2001's
 Cutest Baby!**

+++ **ENTRY DEADLINE** +++
Fri., March 15, 2002 at 5 pm

This year's contestant will appear in the March 31 edition of the Bailey County Journal. A panel of unbiased judges will pick the most attractive picture to be the 2001 Cutest Baby. All baby pictures will be printed in this Easter edition of the paper. Babies need not be born in this area.

Bring your favorite photo along with \$12 to the Muleshoe Journal office at 304 W. 2nd Street, Monday-Friday between 8:30 a.m. and 5:00 p.m. or mail the coupon below along with your child's photo and \$12 to Cutest Baby Contest, c/o Muleshoe Journal, P.O. Box 449, Muleshoe, Texas 79347. You may pick up your baby's picture during office hours after Monday, April 1, 2002. Arrangements must be made to return photos by mail.

Please provide phone number or address (it will not be published) so that we may contact you if we need additional information.

Baby's Name: _____
 Date of Birth: _____
 Weight at Birth: _____
 Length at Birth: _____
 Place of Birth: _____
 Mom & Dad's Name: _____
 Grandparent's Name: _____
 Contact Info: _____

OBITUARIES

J.G. 'DOLLY' ARNN

A memorial service was held Tuesday at the First United Methodist Church for J.G. "Dolly" Arnn, 85, of Muleshoe. Glen Williams and Judge W.H. Erickson officiated. Burial was in Muleshoe Memorial Park.



Arnn

Ellis Funeral Home handled arrangements.

Mr. Arnn was born Dec. 16, 1916, at Carey, Texas. He died Sunday at home.

He married Verda Nell Wakefield on May 30, 1936, in Sayre, Okla. She died Nov. 2, 1999. They moved to Bailey County from Childress in 1939.

He was a farmer and a member of First United Methodist Church.

Mr. Arnn is survived by two daughters, Gail Etheredge of Lubbock and Betty Kirby of Stegall; three sisters, Ethelda Vanhouten of Six Lakes, Mich., Madaline McCain of Clarksville, Ark., and Roxie Stephens of Lubbock; a brother, Kenneth Arnn of Ardmore, Okla.; five grandchildren; nine great-grandchildren; and two great-great-grandchildren.

The family suggests memorials to Meals on Wheels (300 S. First, Muleshoe 79347) or a favorite charity.

G.R. 'BOB' SCOTT

Services were held Tuesday at the First Baptist Church of Morton for G.R. "Bob" Scott, 74, of Morton. The Rev. Paul Lively officiated. Burial was in Morton Memorial Cemetery.

Ellis Funeral Home of Morton handled arrangements.

Mr. Scott was born April 24, 1927, in Morton. He died Sunday in Levelland.

He was a lifelong resident of Morton and married Audrey Faye Kelly there on Jan. 14, 1950. She died Oct. 28, 2000.

He was a truck driver and a member of the Cochran County Senior Citizens and First Baptist Church.

Mr. Scott is survived by two sons, Doug Scott of Coleman, Texas, and Steve Scott of Seminole; a daughter, Susan Lamb of Morton; a sister, June Jacobs of Seminole; a brother, Bill Scott of Cuba, N.M.; and seven

grandchildren.

He also was preceded in death by a sister, Marie Scott, in 1996.

The family suggests memorials to the American Heart Association or First Baptist Church of Morton.

GENE HANLIN

Services were held Tuesday at Crescent Park Church of Christ in Littlefield for Gene Edsel Hanlin, 74, of Littlefield. Eric Dickey officiated. Burial was in Littlefield Memorial Park.

Hammons Funeral Home of Littlefield handled arrangements.

Mr. Hanlin was born Aug. 15, 1927, at Lone Wolf, Okla. He died Sunday at home.

He married Sue Sumrall in 1948 at Altus, Okla., and they moved to Littlefield in 1951. He worked in the parts department of Sumrall Pontiac until 1960. He then established Hanlin Auto Parts in Littlefield, Morton Auto Supply in Morton, and Hanlin Auto Parts in Sudan.

He was preceded in death by his wife on April 26, 1996, and by a brother, David Hanlin, in 1999.

Mr. Hanlin is survived by a son, Kim Hanlin of Littlefield; two daughters, Darla Reep of Morton and Dinah McCoy of Littlefield; a brother, Leland Hanlin of Denton; two sisters, Georgia Echols of Oklahoma City and Virginia Noll of Galena Park, Texas; eight grandchildren, Cary Hanlin, Ashley Hanlin, Morgan Hanlin, Skipper Reep, Toby Reep, Macy McCoy, Marta McCoy and Madlyn McCoy; and three great-grandchildren.

The family suggests memorials to Littlefield EMS or to a favorite charity.

JOHN GAMMON

Services were held Jan. 24 in the Willcox (Ariz.) Church of Christ for John Henry Gammon, 92, of Willcox. Burial was in Sunset Cemetery at Willcox.

Westlawn Chapel and Mortuary of Willcox handled arrangements.

Mr. Gammon was born Aug. 8, 1909, in Pottawatomie County, Okla. He died Jan. 20 in Tucson.

He married Grace Jennings on Oct. 29, 1933, in Lubbock. She died in 2001.

He attended school at Rock Springs, Okla., and graduated from Maud (Okla.) High School in 1928. He attended the University of Oklahoma as an engineering major and

then Texas Technological College in Lubbock as an animal husbandry major. He left school during the Depression to help on the family farm.

He raised registered Hereford cattle, wheat and grain crops on land near Lazbuddie that shared a fence with the XIT Ranch. Their home overlooked Running Water Draw.

Except for six years at Muleshoe, the Gammons remained at Lazbuddie until they moved to Arizona in August 1964. They farmed and ranched in the Bonita, Ariz., area until moving to Willcox when they retired in 1983. They also operated a you-pick apple and peach operation at Bonita.

He had been a member of the Lazbuddie Church of Christ and served for many years on the Lazbuddie School Board. He was instrumental in the consolidation of the Midway and Lazbuddie districts. He also served as board president of the High Plains Underground Water Conservation District and worked to get the irrigation depletion allowance approved.

He later served as a song leader, Sunday school teacher and elder at Willcox Church of Christ. He also served on the boards of the local grain co-op and the Sulfur Springs Valley Electric Cooperative.

He was a member of the Arizona Apple Growers Association, Arizona Cattlegrowers Association and the Southern Arizona Senior Golf Association.



Gammon

Mr. Gammon is survived by a son and daughter-in-law, John and Mary Lou Gammon; two daughters and a son-in-law, Jean Louise and Joe Briggs and Marianna Gammon; a sister, Irene Thorn; a brother and sister-in-law, J.W. and Letha Gammon; five grandchildren; and seven great-grandchildren.

He also was preceded in death by two sisters, Della Daniel and Christene Ivy.

The family suggests memorials to the John and Grace Gammon Scholarship Fund (benefiting a Lazbuddie High School senior each year) at Compass Bank (173 S. Haskell, Willcox 85643).

HONORS

PURDY

Cindy Purdy of Muleshoe has been re-appointed to the board of trustees of the Texas Association of School Boards' Risk Management Fund.

Her term runs through November 2004.

Purdy has been on the Muleshoe School Board for 12 years, including service as board president and secretary.

She holds bachelor of science and master of education degrees from Sam Houston State University in Huntsville.

STEVENS

Jill Stevens of Houston graduated summa cum laude from Abilene Christian University last spring.

She received a bachelor of business administration degree in marketing, with a minor in psychology.

Stevens is the daughter of Richard and Anita Stevens of Houston and the granddaughter of the late Richard and Juanita O'Hair of Earth. She also is the niece of LaVerne and Shirley Vaughan of Muleshoe.

ENMU DEAN'S LIST

Two Muleshoe students are among the 471 on the dean's honor roll for the fall 2001 semester at Eastern New Mexico University in Portales.

They are Letti Barrera, majoring in early childhood education, and Lisa Diane Lee, majoring in English.

To be eligible for the honor, a student must complete at least 15 hours during the semester and maintain a grade-point average of at least 3.25.

OKLAHOMA STATE

Two Muleshoe-area students were among those named to honor rolls for the fall 2001 semester at Oklahoma State University in Stillwater.

Shena Jenice Seaton of Lazbuddie was among 1,180 named to the president's honor roll, meaning they were taking 12 or more hours and earned a 4.0 grade-point average.

Shanna Lea Bridges of Earth was named to the dean's honor roll, meaning she took 12 or more hours and earned a grade-point average of at least 3.5.

MORTON INSURANCE AGENCY
120 S.E. 1st Street
Morton, Texas
(806) 266-5561 (806) 266-5365
FAX (806) 266-8944 Email: morton@windmill.net

RESERVE CHAMPION DUROC
Misty Davis
Good Show Kids!

LAMB SHOWMANSHIP AWARDS
Champion (right) Ryan Richardson
Reserve Champion (left) Rhett Richardson

GOAT SHOWMANSHIP AWARDS
Champion (right) Kyle Yordy
Reserve Champion (left) Johanna Yordy

THANKS FOR A GREAT SHOW KIDS!
MAPLE CO-OP GIN
Maple, TX • 927-5501

Quilt show scheduled for March

The Piecemakers Quilt Club of Amarillo has scheduled its Amarillo Quilt Show for March 16-17 at the Western Plaza Mall north entrance, I-40 and Western.

The show will be open from 10 a.m. to 5 p.m. daily.

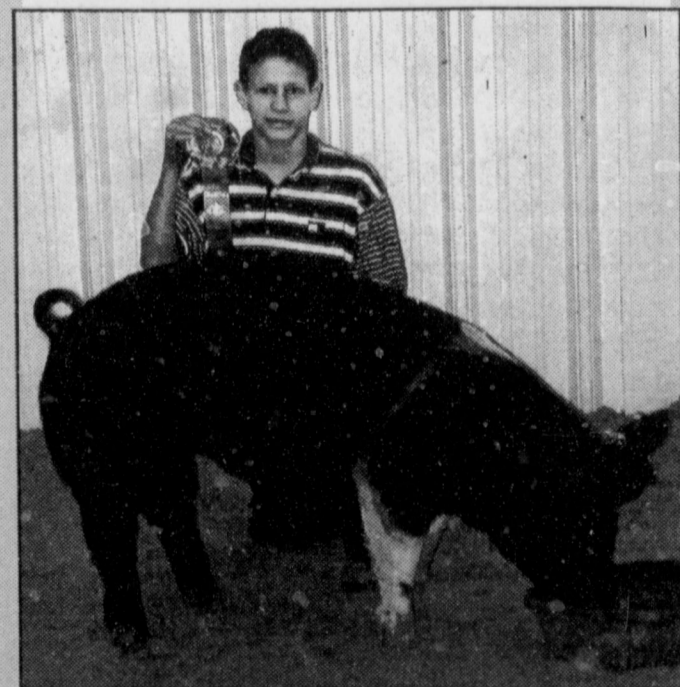
The event will feature projects by area quilters including traditional, contemporary, appliqué, original design, wall hangings and wearable art.

A viewer's choice award winner will be selected.

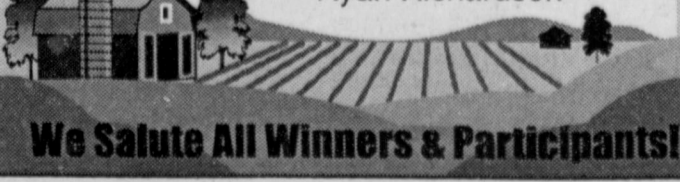
More information (including entry forms) is available by sending a self-addressed stamped envelope to Jorene Kirkland, 2031 S. Fannin, Amarillo 79109. She also can be contacted by e-mail at jorenek@tcac.net or by phone at (806) 359-3315.

BAILEY COUNTY FARM BUREAU

1612 W. American Blvd. • Muleshoe • 272-4567



CHAMPION HAMPSHIRE
Ryan Richardson



SWINE SHOWMANSHIP AWARDS
Champion (left) Chris Kindle
Reserve Champ. (right) Tiffany Davis

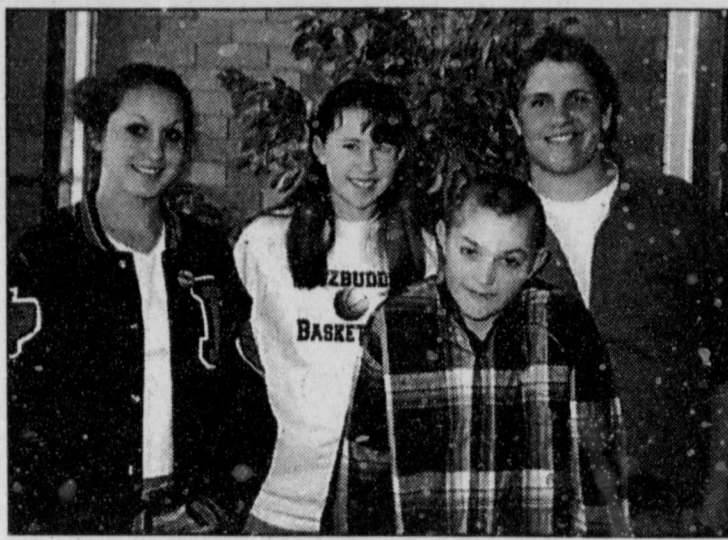
RES. GRAND CHAMPION SWINE
(CHAMP. SPOTTED POLAND)
Landon Gray

Muleshoe Journal salutes all of you!

NOT PICTURED: Res. Champ. Berkshire-Shown by Misty Davis
Res. Champ. Spotted Poland-Shown by Chris Kindle

Lazbuddie honors students of the month for December

Katy Loudder, Jay Seaton, Dakota Williams and Chelsea Nichols are the students of the month for December at Lazbuddie High School and junior high.



December students of the month at Lazbuddie High School and junior high are (from left) Katy Loudder, Chelsea Nichols, Dakota Williams and Jay Seaton.

Loudder is the 16-year-old daughter of Lance and Terri Loudder. Her birthday is Oct. 16.

She says the things that are important to her are family, freedom, expression and friends.

Her goal is to graduate and not die in five years; her personal motto is "You can lose yourself by trying to make an impression, but by finding yourself, you have already made one."

She would make the world a better place by training herself to become intelligent and humble enough to hand the "changing the world" assignment to someone better qualified.

Her survival tip for high school is "This too shall pass."

Her favorite song is "Anticipate" by Ani Defiance, favorite reading is *I Never Loved Your*

Mind by Paul Zindel, celebrity is actress Julia Stiles, snack is chips and color is black.

Her pet peeve is surveys, interviews, unwanted suggestions and Kitty Litter.

Seaton, 17, is the son of Rick and Mandi Seaton and his birthday is Feb. 12.

His goals include graduation and going to college. His personal motto is "Never give up."

He would make the world a better place by changing one

life; his survival tip for high school is to have fun and not get down.

His favorite song is "The Dance," favorite reading is *The Green Mile*, snack is Sprees and color is green.

Dakota is the 12-year-old son of Howard and Tracy Williams, born on Aug. 16.

He says important things are school, friends and family. His plans for high school include playing football and listening to his teachers. He hopes to

become a lawyer.

His motto is "Be nice." He would make the world a better place by picking up all the litter people throw down.

His survival tip for junior high is "Do your homework."

His favorite song is "Clear Blue Sky" by George Strait, favorite college is Texas Tech University, favorite reading is *Sports Illustrated*, celebrity is Clint Black, snack is Snickers and color is red.

His pet peeve is people who pick on little kids.

Chelsea is 11 and the daughter of Mike and Sherri Nichols. Her birthday is Feb. 14.

She says family, friends, basketball, her pets, education and church are important.

Her plans include making the varsity basketball team and making good grades in high school.

Her personal motto is "True champions are never satisfied."

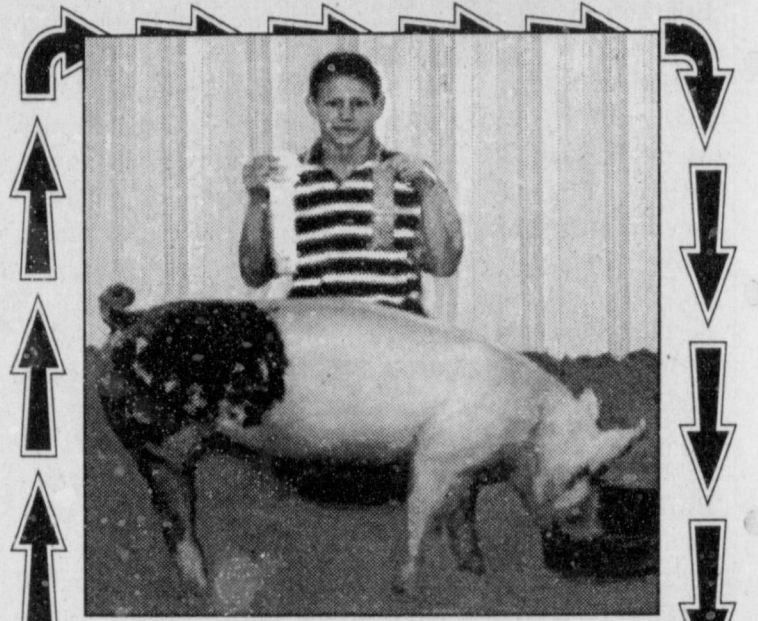
She would make the world better by cleaning up the trash in her community and keeping it clean. Her survival tip for junior high is "When you're

an eighth-grader, don't pick on the sixth-graders because when you're a freshman you'll be the one getting picked on."

Her favorite song is "Crush" by Mandy Moore, favorite college is Texas Tech University,

favorite reading is the Harry Potter books, celebrity is Jim Carrey, snack is Hersheys and Coke, and color is blue.

Her pet peeve is people who keep tapping on her shoulder to annoy her.



RESERVE CHAMPION CROSS
Ryan Richardson

Thanks for a great show!
We have proudly supported Three Way
and wish you the best of luck!

COX AUTO SUPPLY CO.

210 S. Main • Morton, Texas
266-8811 or 266-8986

Valentines for Troops campaign begins

SPECIAL TO THE JOURNAL

Three Southern California businessmen have begun a nationwide campaign to collect valentines for distribution to military service members stationed at Southern California military bases. The program is called "Send Your Heart to Our Troops."

Michael Fleming, 49, his brother David, 47, and partner, Paul Kramer, 37, are asking individuals, schools, businesses and church congregations around the country to mail their valentines to one of their businesses.

The valentines must arrive by Feb. 10 for delivery to the bases by Feb. 13.

"Our goal is 1 million valentines, which we think is realistic — especially if we have the support for this

around the country," said Michael Fleming, the campaign organizer.

This is not the first mail program that the three businessmen have initiated. They began Operation Roller Mail back in the Gulf War. That program, involving the customers of roller skating rinks all over the United States generated 500,000 letters.

The trio then began an e-mail program using a variety of military email sites linked to their business and church websites.

"I got my church, Light of the Canyon in Anaheim, involved in the mail programs and you can get complete information on the Valentines program as well as the addresses where to mail Valentines for us to deliver on the church's

website. You can even send a Valentine's Day e-mail message to the troops," Fleming added.

The valentines they receive for the troops will be screened and sorted.

"The valentines will be removed from envelopes prior to delivery. We are asking that large quantities that come from schools or organizations be mailed in boxes with each valentine removed from any envelope to ease the screening process," said Kramer, who is in charge of receiving valentines.

Valentines should be mailed to Send Your Heart to Our Troops, c/o Farrell's Ice Cream Parlor Restaurant, 21516 Golden Triangle Road, Santa Clarita, Calif. 91350.

Other information on the program and other drop-off

addresses, as well as access the Email the Troops link at www.LOTC.org.



Morton's Thriftway

400 S. Main • Morton, Texas
266-5375

Congratulations to all
2002 Three Way Stock Show
participants & winners!

RESERVE GRAND
CHAMPION STEER
(CHAMPION AMERICAN)
Rhett Richardson



REPRESENTATIVE SALES

984 head of cattle, 185 hogs and 356 sheep and goats for a total of 1,525 animals were sold at the Jan. 26th sale. Market steady on most classes of cattle with packer cows 1-2 dollars higher.

The Muleshoe Cattle Market is brought to you each week by Muleshoe Livestock Auction, located east of Muleshoe on U.S. 84. Muleshoe Livestock conducts sales every Saturday, beginning with hogs, sheep and goats at 10 a.m. and cattle following at approximately noon.

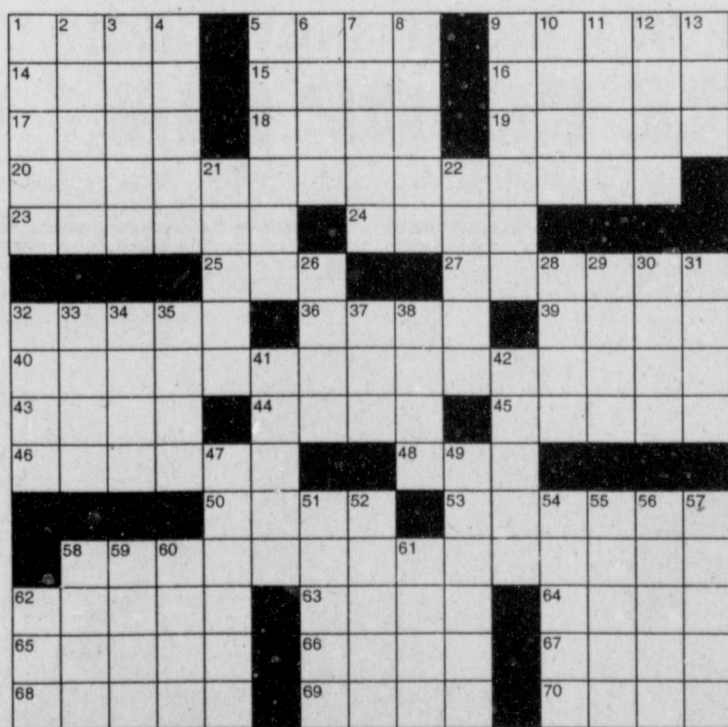
FOR INFORMATION ON SALES OR TO
CONSIGN CATTLE, CALL (806) 272-4201

Muleshoe Cattle Market

SATURDAY, JAN. 26, 2002

Seller, City	#	Type	Wt.	CWT or PH
Wayne Tunnell, Muleshoe	3	Hol. Bulls	132 lbs.	at \$115.00
H-J Dairy, Texico, NM	25	Hol. Strs	174 lbs.	at \$110.00
Luis Flores, Muleshoe	19	Hol. Bulls	193 lbs.	at \$106.00
Ron Dyer, Farwell	11	Hol. Bulls	203 lbs.	at \$106.00
Ron Dyer, Farwell	13	Hol. Bulls	253 lbs.	at \$102.00
Thomas Williams, Plainview	7	Hol. Strs	416 lbs.	at \$75.00
Caswell Cattle, Muleshoe	BWF	Str	345 lbs.	at \$119.00
FM Farms, Brownfield	3	Char. Strs	312 lbs.	at \$123.00
Ricardo Aburto, Muleshoe	2	Char/Blk Bulls	450 lbs.	at \$100.00
T.C. Lynch, Morton		Yell. Bull	560 lbs.	at \$91.50
Amigo Farms, Whiteface	2	Mxd. Bulls	653 lbs.	at \$78.50
Dink Miller, Floyd, NM	2	Mxd. Strs	655 lbs.	at \$84.00
D.C. Pearson, Ropesville	16	Limo. Strs	776 lbs.	at \$79.50
Kelly Harrison, Muleshoe	13	Mxd. Strs	801 lbs.	at \$77.50
Rebecca Carrasco, Hereford		Blk. Hfr	370 lbs.	at \$103.00
Caswell Cattle, Muleshoe		Blk. Hfr	370 lbs.	at \$104.00
Curtis Drager, Friona		Char. Hfr	485 lbs.	at \$86.50
Joe Garcia, Albuquerque, NM	3	Blk. Hfrs	457 lbs.	at \$86.50
John Hill, Abernathy	3	Blk. Hfrs	573 lbs.	at \$84.50
Prairie View Dairy, Muleshoe	12	Blk. Hfrs	630 lbs.	at \$79.00
JR&LE Cattle, Morton	3	Char. Hfrs	595 lbs.	at \$80.50
JR&LE Cattle, Morton	3	Yell. Hfrs	777 lbs.	at \$75.00
Goen & Sons, Seminole	2	RWF Cows P		\$500.00
John Shelley, Clovis, NM	4	BMF Cows P7		\$510.00
Goen & Sons, Seminole		Char. Cow	1105 lbs.	at \$44.50
JR&LE Farms, Morton		Char. Cow	1240 lbs.	at \$40.75
Jean Glenn, Elida, NM		Blk. Cow	1210 lbs.	at \$45.75
Jack Douglas, Littlefield		Brin. Cow	1335 lbs.	at \$43.00
Rex Black, Muleshoe		Blk. Cow	1185 lbs.	at \$44.50
Brian Boehning, Earth		Hol. Cow	1400 lbs.	at \$43.25
Israel Azua, Sudan		Char. Bull	1890 lbs.	at \$54.00
Daniel Ramirez, Muleshoe		Brown Bull	1610 lbs.	at \$54.25

JUST FOR FUN



Clues ACROSS

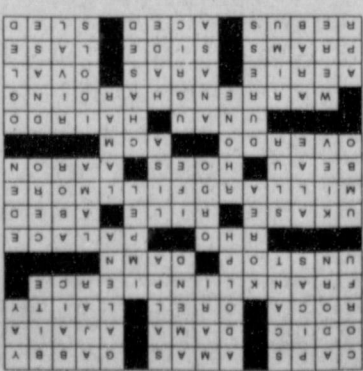
- Top ends
- Portuguese nurses
- Voluble
- Of an ode
- Fallow deer
- Bird genus of spoonbill
- Cape near Lisbon
- Soviet city
- Everyone except the clergy
- American President
- Remove obstruction
- Beshrew
- 17th letter of the Greek alphabet
- Type of residence
- An edict of the Russian tsar
- Make angry
- In bed
- American President
- Dude
- Tills
- Moses' elder brother (Bible)

Clues DOWN

- Ionian island
- Fit out
- Magpies genus
- Skimp
- Hitler
- Cheremis
- Make right

- Primitive marine animal
- Soft blue-gray mineral
- Open
- Tibeto-Burman language
- Morsel
- Tai
- North or South
- Do
- Church booklet
- Priest
- N.E. Indian language
- Medium-sized mackerel
- Paradise
- Convexity
- Capital of the Ukraine
- Wings
- Utter indistinctly
- Nigerian City
- Hartmann, actress
- European river
- Joseph R. __, Supreme Court Justice
- Coercion
- Pursued
- Genus of leaf-footed bugs
- Language of western Siberia
- Paragons
- Competitor
- Enzyme
- Looked
- No longer are
- Saddle horse
- Coniferous tree
- Incline from vertical
- Month, abbr.

Crossword Answers



Junior varsity girls trample Roosevelt and Cooper

By DELTON WILHITE
Journal sportswriter

The junior varsity Lady Mules took their show on the road last week for back-to-back games with the Lubbock Roosevelt Lady Eagles and Lubbock Cooper Lady Pirates.

Muleshoe plucked the Lady Eagles 58-30 and withstood a 20-point fourth quarter by the Lady Pirates to hang on for a 43-40 victory over Cooper.

The Lady Mules owned a 24-13 advantage over the Lady Eagles at the halftime break. Tabatha Obenhaus found Gradee

Adrian open on the blocks to crank the Lady Mules offense in the second half. Lindsey Wood drove the baseline for two and Mitci Hawkins hit two from the charity stripe as the Lady Mules lapped Roosevelt 35-17.

Jami Carpenter added eight points and Adrian scored seven in the final period for the Lady Mules.

Obenhaus set the pace with 19 points in the game and Carpenter had 12 points for Muleshoe. Adrian made nine, Wood six, Amber Cowart five, Hawkins four and Megan

Mason three for the Lady Mules.

On their second trip to Lubbock in four days, the Lady Mules jumped on the Lady Pirates with an 8-2 scoring run in the first six minutes. Carpenter scored on a layup to spark the Muleshoe scoring run.

Defense has been the key to this team, and full-court pressure forced the confused Lady Pirates to give up the ball in the back court to give Muleshoe scoring opportunities. Wood picked the Lady Pirates' pocket and dropped in an

easy two.

The frustrated Cooper coach was called for a technical foul when he refused to return the ball to the official after another Lady Pirate turnover. Carpenter made the second of two charity tosses and scored on an in-bounds play to push the Lady Mules to a 10-6 advantage after one period.

Wood nailed a three at the five-minute mark of the second period and drove the lane as Muleshoe continued to dominate Cooper. Obenhaus rounded out

the first half scoring as Muleshoe had scrambled to a 19-10 cushion at the break.

Muleshoe added two points to its lead in the third frame, but Cooper came alive in the final frame chipping eight points from the Lady Mule pad. The Lady Pirates equaled their first three periods' offensive output by scoring 20 points in the quarter.

It proved too little too late as the Lady Mules hung on despite missing 11 of 17 free throws during Cooper's final run. Wood led the Lady Mules

with 15 points; Obenhaus added 10 and Carpenter made eight, Megan Mason four, Cowart three, Adrian two and Hawkins one.

The Lady Mules were scheduled to return to their home court to face the Littlefield Lady Cats on Tuesday and then visit Dimmitt for a rematch with the Bobbies on Feb. 1.

The Lady Mules' final outing will be a showdown with Shallowater's Lady Mustangs to try to wrestle a portion of the district championship from Shallowater.

Bailey County Electric Co-Op Assn.
305 E. Ave. B • Muleshoe, TX
272-4504 (in Muleshoe) or 266-8600 (in Morton)

RESERVE CHAMPION YORKSHIRE
John Austin Branham
Congratulations To All The Three Way Stockshow Participants!

Parmex County Cotton Growers Co-op
Salutes the Winners of the Three Way Livestock Show 2002!

RESERVE GRAND CHAMPION GOAT
Johanna Yordy
Farwell, TX • 825-3701

CENTRAL COMPRESS & WAREHOUSE
205 Railroad Ave. • Sudan, TX • 227-2388

RESERVE GRAND CHAMPION LAMB
Ryan Richardson

CONGRATULATIONS

Journal Classifieds

STOP & SHOP

Deadlines are 5 p.m. Monday and Thursday

Call 272-4536

January 31, 2002

- AGRICULTURE
- HELP WANTED
- LOST AND FOUND
- REAL ESTATE
- SEEKING EMPLOYMENT

Wanted to buy, lease or rent—1/2 section irrigated land. Contact GTM (Gene Rogers) at 806-272-5720, 272-8987 or 806-946-7754.

GTM Custom Farming
FROM START TO FINISH
All of your plowing needs!
Reasonable Rates!
Call Gene Rogers for more information.
Home 806-272-5720
Office 806-272-8987
Mobile 806-946-7754

CLINIC NURSE MANAGER
Seeking dynamic leader for our outpatient clinic in Muleshoe, Texas. Clinic provider staff includes two nurse practitioners. If you are a registered/license nurse with proven leadership and motivated to provide the finest primary care to our patients, we want to hear from you. Salary is negotiable based upon education and experience. Benefit package includes paid leave, health, disability, and retirement plans, etc. (RN): Graduate of an accredited school of nursing; licensed to practice as an RN in the state of Texas. (LVN): Graduate of an accredited, vocational school of nursing; possess current Texas nursing license. Bilingual (English/Spanish) preferred. Apply at South Plains Health Provider Administrative Office — 2801 W. 8th — Plainview, TX 79072 — Inquire: (806)293-8561; ext. 318. Fax: (806)293-8413. E-mail: sdewoody.sphpo@tachc.org
An Equal Opportunity Employer

ACNE SOLUTION
Don't hide because of acne & pimples! No drugs! No side effects! Safe, simple & affordable. 806-272-4570.

PET GROOMING
Connie, formerly of Connie's Classic Canine, would like to invite all of her loyal Muleshoe customers to visit her. Now grooming at The Jungle, 800 W. Grand Ave. in Clovis, NM.

REAL ESTATE
Laz. Area. — 640 acres, 4 wells, 300-500 gal./well. 4 sprinklers, 3 houses (2 good), 2 large barns, lots of cattle pens & sheds. 395 acres of fertilized, irrigated wheat procession first of March.
Call 806-965-2895, mobile: 806-946-9413

Lost — 9-month-old Border Collie-Australian Shepard mix, brown with white chest, white socks on front feet & yellow eyes. Lost in Needmore area. Call 946-3650.

For Sale or Rent 3-1-1 House, Central Heat/Air, Fenced, Storage Bldg., Corner Lot. 1021 W. 3rd Street. Make Offer. 806-965-2864 or 965-2787.

Would like to care for elderly. Call Peggy at 272-7799 for more information.

Will commute from Clovis to care for the elderly in their home, day, night or will relocate for live-in. Call (505)763-1064 home or (505)749-3378 cellular.

Subscribe! 806-272-4537

HELP WANTED
Amarillo Case Management
Case Manager in Muleshoe area
RN, BSN—RN, LSW or SWA.
1 year experience working with children.
Current CEU's and License.
Targeted and Medical Case Management
Excellent contact reimbursement
Call (806)468-6380 or fax resume to (806)468-6383

There are no gains without pains!

Subscribe Today...
Muleshoe and Bailey County Journal
52 weeks a year, 2 issues per week!
\$22 carrier/year,
\$24 mail in-county/year,
\$26 mail out-of-county/year.
Special rate for college students — \$22 mail/year
Send check to:
Muleshoe Journal
P.O. Box 449

Outpatient Clinic Manager — serve as initial contact person for individuals requesting services, coordinate proper referrals, and provide psychiatric rehabilitation services, skills training and socialization skills. High School diploma or GED required. Must have valid Texas Driver's License and be insurable. Must have good organizational skills. Salary range starts at \$17,505/yr. Apply at: Central

or Fax resume: 806-296-5804. EOE/AEE.

Let us be your local news source!

Nieman Realty
116 E. Ave. C • George Nieman, Broker • 272-5285 or 272-5286

RICHLAND HILLS — PARK RIDGE AREA
• NICE 3-2-1 Brick, Cent. heat, evap. air, built-ins, fans, 2000' + lv. area, fenced yd., patio, stor. bldg. \$57.5K!! RH-1
• NICE LOTS AVAILABLE, CALL FOR DETAILS!!!!

HIGHLAND AREA
• NICE 3-1-1+1 carport Home, Cent. Heat & Air, carpet & hardwood, 4 fans, fenced yd., MORE!! \$26.5K!! HL-4
• NICE 3-2-1+2 carports, Cent. heat, evap. air, built-ins, storm windows and doors, stor. bldg., fenced yd.!! MORE!! PRICE REDUCED!! \$49.5K!! HL-5
• 2-1-2 carport Home, wall heat, win. ref. air, appliances, 1550' +lv. area, storage/shop, cellar, fenced yd. \$20.5K!! HL-9
• 3-1-1 Brick, Cent. A&H, fans, 2 stor. bldgs., fenced yd.!! \$36.5K!! HL-1

LENAU — COUNTRY CLUB AREA
• 3-2 Brick, Cent. A&H, fenced yd., corner lot!! \$40K!!
• NICE 2-1-1 Home, Cent. A&H, new paint, carpet, vinyl, & hardwood, fenced yd., MORE!! \$31.5K!! L-3
• 3-2-1 carport Home, Brick, Cent. A&H, built-ins, FP, 1,880' Lv. area, fenced yd., MORE!! \$47.5K!! L-1

HIGH SCHOOL AREA
• 3-1 Home, corner lot, wall furn., heat, evap. air, hdwood & carpet, new paint, fenced yd.!! \$25K!! HS-5
• VERY NICE 3-1-1 Brick, Heat pump, DW, nice carpets, fenced yd., MORE!! \$30's !!! HS-1
• 3-2 Home, corner lot, fl. furn. heat, fenced yd. \$25K!! HS-10
• NICE 3-2-1/2-2 carport Home, Cent. A&H, built-ins, FP, 2650' + Lv. area, fans, storm windows & doors, new roof, cov. patio, concrete cellar, fenced yd. w/ add. 2 carport, large workshop, & stor. bldg. PRICED REDUCED \$60K!! HS-7
• HWY. 84-2-1 1/2-2 Brick, Cent. Heat, win. air, built-ins, fans, workshop/storage, fenced yd., also good office location!! PRICED REDUCED!! 40K!! HS-2
• 3-1 Home, Fl. furnace, fans, storage & 2 apartments, corner lot!!! \$35K HS-3
• VERY NICE 3-1-1 Brick, Cent. A&H, built-ins, nice carpet, FP, large covered patio, fenced yd., stor. bldg. MORE!! \$49K!! HS-4

2-1 Home, corner lot, stove, refrig., fans, workshop & storage, fenced yd.!! \$23.5K!! HS-8
• EARTH — 4-2-2 carport home, Heat Pump, fans, storage-workshop!! \$35K

COMMERCIAL
• NICE six unit office complex, Cent. A&H, restroom facilities, and also has a nice one bedroom and a nice two bedroom rental units. PRICED TO SELL!! \$39.5K!!
• HWY. 84-150' frontage, office, warehouse, truck dock, railroad spur access, with or without fuel storage tanks!! \$30K!!
• An approx. 5.1 acre tract w/ approx. 144.5' frontage on Hwy. 84, approx. 1584' office, 1320' shop, 4000' shop, & 2880 bldg., has railroad access, 2 mobile home hookups, MORE!!
• GOOD INCOME PROPERTY — approx. 3490' bldg., paved parking, good net lease!! PRICED TO SELL!!
• Established Business: Land, Bldg. & Equip., \$75K!!
• 200 Main & E. Ave. B-4 rental units plus upstairs & basement or renovate for your own special use!! \$65K!!
• VERY NICE 2300' bldg., Cent. A&H, 175' frontage on Hwy 84 & 70!! MUCH MORE!!
• 140'X100' tract on Hwy. 84 & 70, 1760' bldg., 1500' storage, 2400' cov. area, paved parking !! \$49.5K!!!

RURAL
• TO BE MOVED — 3-2 DOUBLEWIDE, Cent. A&H, built-ins, metal roof!! \$19K!!
• EXCELLENT DAIRY LOCATION-1120 ac., 7 circles, 20 wells, very nice 3-2-3 Home w/ basement, 40' x 60' barn w/ 30' x 40' shed, 3 mil. lb. grain facility, add. 3 bdrm. home, 2 mobile homes, on pavement convenient to Muleshoe, Clovis, Portales, & should have 5K head permit within 60 days!! Could be split if needed!!
• PLEASANT VALLEY, Approx. 1600' acres, 2 bdrm home, 1 bath, 2 car detached garage, on pavement!!
• W. of SUDAN-NICE 3-3-2 Brick Home, 5 acre tract on Hwy. 298, Cent. Air & Heat, built-ins, large Quonset Barn, MORE!!! \$95K!!
• PRICE REDUCED — 108 acres or 7 acre tract on Hwy. 70, approx. 2100' office area, 16,900' commercial bldg. w/ loading dock, 3,400' warehouse, new well, 2,800' runway!!!

town, storage, 45' x 74' barn, pens, & fenced pasture!!



Lowe's Marketplace

401 W. American Blvd. Muleshoe, Texas 272-4585

WE RESERVE THE RIGHT TO LIMIT QUANTITIES IN TEXAS

WESTERN UNION MONEY TRANSFERSM
"The fastest way to send money"

AFFILIATED FOODS INC. MEMBER STORE AT PARTICIPATING STORES



SPECIAL X-TRA SAVINGS PRICING GOOD THRU FEB. 5, 2002

Pre-Priced \$2.99
LAY'S® POTATO CHIPS

46 oz. jar Whole
VLASIC DILL PICKLES

Asstd. Wishbone 16 oz. btl.
SALAD DRESSING

Asstd. 16-26 oz. jar Ragu
PASTA SAUCE

22 oz. pkg. Toast'em
BREAKFAST PASTRIES

6 ct. pkg.
NATURE'S GRAIN BAGELS

3 ct. pkg. Orville Redenbacher's
MICROWAVE POPCORN

10.5 oz. box New York Brand
GARLIC BREADSTICKS

19.5 oz. pkg. Three Layer
PEPPERIDGE FARM CAKES

10 lb. bag U.S. No. 1
RUSSET POTATOES

5 lb. bag
TEXAS GRAPEFRUIT

6 oz. Pillow Pack
DECKER PEPPERONI

12 oz. pkg. Peyton's
BEEF FRANKS OR BOLOGNA

12 oz. jar or can Planters
DRY ROASTED PEANUTS

Asstd. 6 ct. pack
JELL-O PUDDING OR GELATIN CUPS

LOWE'S OR SHURFINE MILK

ALL VARIETIES
GALLON JUG

NAVEL ORANGES

8 LB. BAG



EACH WITH 1 REWARD COUPON
1 ITEM PER COUPON



12-15 oz. pkg. 3 Minute
INSTANT OATMEAL

24 oz. can Dinty Moore
BEEF STEW OR CHICKEN & DUMPLINGS

Tenders, Fillets or Sticks 11 oz. pkg.
GORTON'S BREADED FISH

Select Group 9.5-11.5 oz.
HEALTHY CHOICE DINNERS

Family Size 24 ct.
LIPTON TEA BAGS

Instant 10 ct. pkg.
SWISS MISS HOT COCOA MIX

Asstd. 12 ct. pkg.
JUICY JUICE DRINKS

Peyton's 1 lb. pkg.
CHORIZO

7 lb.
BAG OF ICE

Original Formula 44 or Pediatric 4 oz. btl.
VICKS COUGH MEDICINE

1.7-2.6 oz.
DOVE ANTI-PERSPIRANT

25 oz. btl. Dawn Ultra
LIQUID DISH SOAP

12 oz. Twin Pack
PRINGLES POTATO CHIPS

Asstd. 48 oz. btl. Wesson
COOKING OIL

6 pack cans
COCA-COLA, SPRITE OR DR. PEPPER

Wright's 16 oz. pkg. Original or Honey
SLICED HAM

5 lb. bag
RED DELICIOUS APPLES

32 oz. box Aunt Jemima
PANCAKE MIX

Asstd. 18 oz. jar Peter Pan
PEANUT BUTTER

11-13 oz. can (Excludes Decaf.)
MAXWELL HOUSE COFFEE

Double Roll 4 Roll pkg.
CHARMIN BATH TISSUE

1 dozen Rolling Pin Premium
GLAZED DONUTS

24 oz. loaf Extra Thin or Large White
(Where Available)
MRS. BAIRD'S OR RAINBOW IRON KIDS BREAD

Red Baron 12 Inch Original
(Excludes Rising Crust)
PIZZA

IMPERIAL SUGAR

PURE CANE 4 LB. BAG

OR GOLD MEDAL FLOUR

ALL PURPOSE 5 LB. BAG

OR COUNTY POST EGGS

30 COUNT



HORMEL BLACK LABEL BACON
16 OZ. PKG.



2 1/2 DOZEN



EACH WITH 1 REWARD COUPON



Here's How It Works! Lowe's is giving you deep discounts on many of the items you purchase everyday! For each dollar you spend at Lowe's, we will give you a point. After 50 points (or \$50), you will receive a Lowe's X-TRA Savings Reward Coupon. This coupon can then be redeemed for deep discounts on selected items. Each month, Lowe's will select from our most popular items in the store and deeply discount them for our X-TRA Savings Reward Coupon holders. Present your coupon and receive incredible savings on selected items. X-TRA Savings Reward Program • Each Dollar You Spend Is Worth ONE (1) Point • After you earn 50 points, you will receive a Lowe's X-TRA Savings Reward Coupon • Use your Lowe's X-TRA Savings Reward Coupon to get deep discounts on one of the selected items • Only ONE (1) item can be purchased with each Reward Coupon • Items will be changed monthly THE X-TRA SAVINGS REWARD PROGRAM GOOD AT LOWE'S MULESHOE, CANYON AND TUCUMCARI STORES ONLY! Points are not transferable between stores. No substitutions please on X-TRA Savings Reward Items. Only one item may be purchased at the special deep discount per Reward Coupon.

QUALITY MEAT

BONELESS BEEF
RUMP OR BOTTOM ROUND ROAST LB \$1.79
PREVIOUSLY FROZEN
BONELESS SKINLESS
CHICKEN BREAST LB \$1.79
BONELESS COUNTRY STYLE
PORK RIBS LB \$1.49

HEINZ TOMATO
KETCHUP 24 OZ. SQUEEZE BTL 99¢
SELECT GROUP
FOR ALL COFFEE MAKERS
FOLGERS COFFEE 34.5-39 OZ. CAN \$4.99
CHUNK LIGHT, OIL OR WATER PACK
STAR KIST TUNA 6 OZ. CANS 2/\$1
BETTY CROCKER ASSTD. MICROWAVE
POP-SECRET POPCORN 3 PACK 2/\$3
ALL TYPES
6 PACK 1/2 LITER BTL. OR 3 LITER BTL.
COCA-COLA, SPRITE OR DR. PEPPER YOUR CHOICE 3/\$5

HILLSHIRE FARMS
ALL VARIETIES
SMOKED SAUSAGE 1 LB \$1.99
BAR S SLICED
BACON 12 OZ. PKGS 2/\$3
OSCAR MAYER ASSTD.
FUN PACK LUNCHABLES 10.8-13.1 OZ. 3/\$5

SELECT GROUP 100 OZ. LIQUID
OR 73-78 OZ. POWDER
GAIN ULTRA DETERGENT YOUR CHOICE \$3.99
APRIL FRESH OR TROPICAL BLOOM
DOWNY SOFTENER... 64 OZ. 2/\$5
REG. ONLY WITHOUT BEANS
HORMEL CHILI 19 OZ. CAN 99¢
ASSTD. SHURFINE SALTINE
CRACKERS 15-16 OZ. BOX 79¢
PRE-PRICED \$2.99 LAY'S®
POTATO CHIPS BUY ONE, GET ONE FREE
ORIGINAL OR SEASONED SANTA FE
TORTILLA CHIPS ... 14-20 OZ. 2/\$4
MILD, MED. OR HOT PACE
PICANTE SAUCE 16 OZ. 2/\$3

PRODUCE

RED RIPE
TOMATOES LB 69¢
FARM FRESH
YELLOW SQUASH LB 99¢
COLORADO BAKING
POTATOES LBS 2/\$1
CRISP STALK
CELERY 2/\$1
RED OR GREEN CHILEAN
SEEDLESS
GRAPES LB \$1.29
EXTRA LARGE CALIFORNIA
NAVEL ORANGES LBS 2/\$1
SWEET AND JUICY
CANTALOUPE LB 69¢
WASHINGTON EXTRA FANCY
RED OR GOLDEN DELICIOUS
APPLES LB 79¢

WHITE OR ULTRA DOUBLE ROLL
BATHROOM TISSUE
KLEENEX COTTONELLE 4 ROLL PKGS 2/\$4

FROZEN & DAIRY

MANGO, PLUS CALCIUM, CARIBBEAN,
CALIFORNIA OR FLORIDA
SUNNY DELIGHT ... 64 OZ. BTL 99¢
ORIGINAL 20-24 OZ. PKG
(EXCLUDES RISING CRUST)
REG. \$4.69 EACH
RED BARON 12" PIZZA... BUY ONE, GET ONE FREE
PEPPERONI OR COMBINATION
TOTINO'S PIZZA ROLLS 19.8 OZ. 2/\$5
SHEDD'S SPREAD ORIGINAL,
CHURN STYLE,
PLUS CALCIUM OR LIGHT
COUNTRY CROCK 3 LB. 2/\$3
ASSTD. FLAVORS BLUE BUNNY
ICE CREAM 5 QT. PAIL \$4.99
JALAPENO, GREEN CHILI
OR FRENCH ONION
PLAINS DIPS 16 OZ. TUBS 2/\$3
KLEENEX VIVA
PAPER TOWELS ROLL 89¢

WEEKLY PRICES EFFECTIVE JAN. 30-FEB. 3, 2002