

	H	L
Feb. 2	63	26
Feb. 3	53	26
Feb. 4	29	24

# County Flounders In First Snow Storm

## Taxes Not Collected On Over 16,000 Acres

The county commissioners court has repeatedly made public statements to the effect that Bailey County was unable to improve its physical facilities because of a lack of tax revenues. The group has also stated that in order to provide additional facilities a raise in tax evaluation would have to be made.

A check of the county books this week revealed that there are more than 16,600 acres of land in Bailey County upon which there are back taxes past due. That figure does not include a total of more than 670 lots in Muleshoe, Bula, Enochs, Goodland, Maple and Progress which are tax indebted.

A breakdown of tax indebted lots shows more than 450 in Muleshoe, 100 in Progress, 25 in Maple, 15 in Goodland and 14 in Bula.

Sizes of the indebted land holdings vary from a huge 2,214 acre tract to small city lots. Some of the back taxes date back to the middle 1920's.

In some cases the county does not even know who owns the land. The lots are listed in the county tax books as owners "Unknown."

In many instances back taxes on land and lots are so high as to surpass the actual sale value of the land.

About ten percent of the lands in the county and lots in Muleshoe and other townships are under homestead and county taxes can not be collected until such time as the homestead might be lifted. However, there is nothing to stop the collection of taxes on the rest of the tax indebted land, or its sale at public auction.

Texas state law allows the county to file suit against owners of tax indebted land and sell off — at public auction — that land upon which tax indebtedness is not satisfied.

The last county tax auction was held so long ago that the writer was unable to locate anyone at the courthouse who could remember the date.

When asked about the situation and why the county had not placed tax indebted land in the hands of persons who would pay taxes on it, Judge Williams stated that it was a difficult problem because land couldn't be sold without the cooperation of city and school tax districts.

A check with the city tax assessor's office showed two things: 1. The city's cooperation has not been requested in any such matter within the memory of that office. 2. If the county did wish to file suit to either collect back due taxes or auction off the lands involved, all the county would have to do under the law is legally advise the city and school district of its action.

Once the city and school district were advised it would be up to them to bring actions to obtain their individual shares of the monies derived from the suit or sale.

The Muleshoe School district has a standing rule that automati-

ically brings suit against those land owners who allow their school taxes to fall three years behind.

The city has turned all its delinquent taxes over to the county attorney who is in the process of attempting to collect them. If those taxes which are currently delinquent are not collected soon the city will file suits where necessary according to the city tax office.

At the present time the county has no plan to collect its delinquent taxes.

Correction of the present past due tax indebtedness would be advantageous to the county for two reasons. The first is that it would place an immediate lump sum in the county treasury and offset some of its current money problems. Second it would place the lands and lots in the hands of persons likely to pay taxes on them and thus increase the county's tax take without raising local assessments.

Despite the question of why past due taxes have not been satisfied by the commissioners, the overall tax picture is not unbright. In general, tax receipts approach the 94-96 percent collection point, according to Judge Williams.

When asked to comment on the collection problem, County Attorney Roger Gorrell answered, "Even though the county attorney is required by the state constitution to represent in county suits brought by it, he can not proceed in the name of the county unless authorized to do so by . . . the commissioners court . . . in suits for delinquent taxes, it is the duty of the county attorney to file such suits only after 30 days' written notice to the taxpayer by the commission-

See TAXES, Page 4

One of Muleshoe's leading jewelry stores changed hands this week.

Muleshoe Jewelry was purchased by Mrs. Elmo Stevens and Mrs. Jewel Griffiths for an undisclosed sum. Red Simmons, previous owner, will no longer be connected with the firm.

Buddy Ray, present manager, will remain with the firm.



A BIRD'S PARADISE — Literally thousands of birds were to be seen flying very low or perched on limbs and barbed wire in fence rows during the blizzard of blowing snow, sometimes with visibility at zero. As you can see the birds had their winter coats on and were ready for "come what may", during Tuesday's storm which was pretty much widespread over the Panhandle of Texas. (Journal Photo & Engraving)

## Schools Closed And Most Other Activities Halted

Old Man Winter stopped fooling around, took off the gloves and struck the Muleshoe area a crippling blow this week leaving a more than a ten inch deep white blanket drifted as high as ten feet in some sections.

Traffic in Muleshoe and Bailey County slowed to a crawl Monday when wind-whipped snow cut visibility to just about zero in most county areas. The long over-due first serious snow plunged the thermometer to a bonechilling 20 degrees. The official report by the U.S. Weather Observer was 7 inches and some farmers reported as high as ten inches in the fields.

## 19 File For Local Offices

Five Republicans and 14 Democrats have filed for county and district political offices, according to both party chairmen.

Both present commissioners, W. H. "Bill" Eubanks and I. M. Stinson, will have competition for their places at the commissioners table.

Stinson has the most competition with four men competing for his district one office. They are C. E. Layne, B. W. McClendon, Floyd B. Ruthardt and Billy Morrison. Only Morrison is a Republican.

Eubanks (district three) will be opposed by C. A. Petree. Both are Democrats.

Two Republicans, Jim Beller and John Thompson will oppose Dee Clements in his try for reelection. Clements is a Democrat.

Three persons will oppose Dess Stafford for the office of tax assessor-collector. They are Don Kemp, Jean Lovelady and C. O. "Dutch" La Rue. Of the group, only La Rue is a Republican.

J. J. Redwine will be opposed by Earl Ladd Jr. for the post of constable. Ladd is a Republican and Redwine is a Democrat.

County Attorney Roger Gorrell, District Attorney Jack Young and District 2 Democratic Chairman D. O. Burlsmith are all running for re-election. None are opposed.

Continuing into the night, the snow drifted as high as four feet, making most farm roads impassable and imprisoning many farm families in their homes.

All schools and some businesses were closed Tues. & Wed. Most snow-bound employees enjoyed an unscheduled vacation.

— Almost all social, club and organizational activities were cancelled.

A Friends of the Library drive to recruit more than 250 additional members to the group in downtown stores yesterday was stopped dead in its tracks. The group's chairman, Rev. Frank Peery, announced the organization would make another stab at the drive Feb. 19th.

The Classroom Teachers Association banquet was cancelled when its speaker sent word he was unable to make it to Muleshoe. No future date for the affair has yet been announced.

The Annual Boy Scout Council Derby Dinner was also cancelled, and no future date was given for the affair.

Most farmers in the county had felt that the area needed either a heavy snow or rain to alleviate dry soil conditions locally. This week's snow may not fill the bill, however. Because of accompanying high winds most of the snow was whipped from the fields and piled in ditches and against houses, barns, fences and stalled cars.

Although several minor accidents were reported in the area there were no serious injuries reported.

## TANE Official Will Speak At Church Here

Rev. Albert F. Tucker, executive secretary of Texas Alcohol Narcotics Education, Inc., will speak at the First Methodist Church of Muleshoe on Sunday Feb. 9 at 10:50 o'clock A.M.

After serving pastorates in New Mexico and west Texas for 21 years, Reverend Tucker became the first President, and later Executive Secretary, of the New Mexico Temperance League. In 1952 he was elected the Executive head of TANE.

The speaker holds certificates of special training from the University of Denver, Yale University, and the Institute of Scientific Studies for the Prevention of Alcoholism at Loma Linda, California. In 1961 Reverend Tucker studied the alcohol problem in Europe and was a delegate to the World Christian Temperance Foundation which met in Oslo, Norway. Among other places of responsibility, Reverend Tucker is a member of the Executive Committee and Board of Directors of the National Temperance League, which has headquarters in Washington, D. C.

All who are interested in Civic Righteousness and State Betterment are welcome to attend the service, according to the pastor of the host church, Reverend J. Frank Peery.

## DAIRY MART

The Dairy Mart has been purchased by Henry Pyburn. It was formally owned by Harold Freeman.

## Local Girl Is Named To Represent County

Pat Chitwood is Lazbuddie High School's 1964 Betty Crocker Homemaker of Tomorrow. She achieved the highest score here in a written knowledge and attitude examination given Dec. 3, 1963. General Mills, Inc., sponsor of the program, will award her a "Homemaker of Tomorrow" pin to signify her achievement, and her test paper will be entered in competition for state honors.

The state Homemaker of Tomorrow will be awarded a \$1,500 college scholarship and will be named a national finalist. Her school will be presented with a set of Encyclopaedia Britannica, awarded by Encyclopaedia Britannica, Inc. The state's second ranking girl will receive a \$500 scholarship.

In the spring, state Homemakers of Tomorrow will compete for the national title. She will be chosen on the basis of her original test score together with personal observation and interviews during the trip. Her scholarship will be increased to \$5,000. National runners-up will receive \$4,000, \$3,000 and \$2,000 scholarships, respectively.

Pat is a Senior at Lazbuddie High School and plans to attend Texas Christian Univ. in the fall. She has been an active member of the FHA for 4 years and during her junior year she was vice president. This year she is serving as treasurer.

In 1963 she attended the state meeting at Dallas as representative for her chapter. She was chosen for this trip by getting the most points for work in the chapter. She also attended the FHA Officer Workshop at Tech along with other officers of her chapter.



Pat Chitwood

## Man Completes Army Course

FORT LEE, VA. (AHTNC) — Pvt. Granvil L. Oden, whose wife, Belinda, and parents, Mr. and Mrs. Houston G. Oden, live in Earth, Tex., completed a nine-week general supply course Jan. 28 at the Army Quartermaster School, Fort Lee, Va.

During the course Oden received instruction in the receipt, storage and issue of supplies and material.

Oden entered the Army in August 1963 and completed basic training at Fort Polk, La.

The 23-year-old soldier is a 1960 graduate of Spring Lake High School.

## Local Boys

Glenn Head and Morris Lewis, Muleshoe F. F. A. Club members will be contestants in the calf scramble at the Houston Livestock Show and Rodeo on February 29, 1964, at the 2 p.m. performance. They will see "America's Wildest Rodeo" as guests of the show at this performance.

The Houston show's calf scramble will again qualify as the "world's greatest" when the first of a series of 19 contest takes place in the Sam Houston Coliseum on February 19.

When the Houston show held its first scramble in 1942, 24 calves were awarded. It was not dreamed that the project would result the cattle business in the next 22 years.

## BARN BURNS

A barn of Benny Pena's partially burned and some equipment was lost Tuesday afternoon in a fire caused by a heater. Two dogs were burned to death but Pena's horses were saved.

## C. E. Layne Announces Candidacy

C. E. (Check) Layne has announced his candidacy for the office of county commissioner, precinct No. 1, Bailey County.

Layne has been a resident of Bailey County for the past 44 years. He is a Baptist, and property tax-payer. He has worked for the State Highway Department and was in his own business here for 15 years.

Layne states he believes he has had sufficient business experience to handle the county finances properly and to keep Bailey County on a sound financial basis. He also stated that he has had experience in working county roads.

He expects to see each voter personally before the election and ask for his or her vote in the forthcoming Democratic primary.

## Poll Tax Sales Accredited

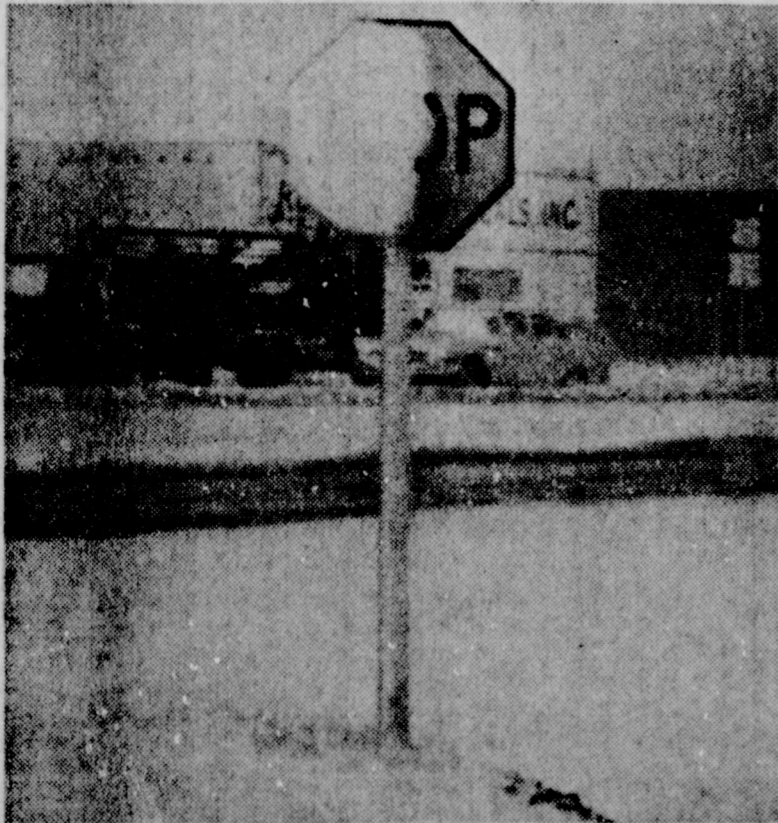
Sales of poll tax receipts in Bailey County during 1964 topped last year's sales by a narrow margin.

This year's total sales came to 2,542. Last year the total was 2,512, a difference of only 30 receipts. There were 50 exemptions this year, according to Dess Stafford, county tax assessor-collector.

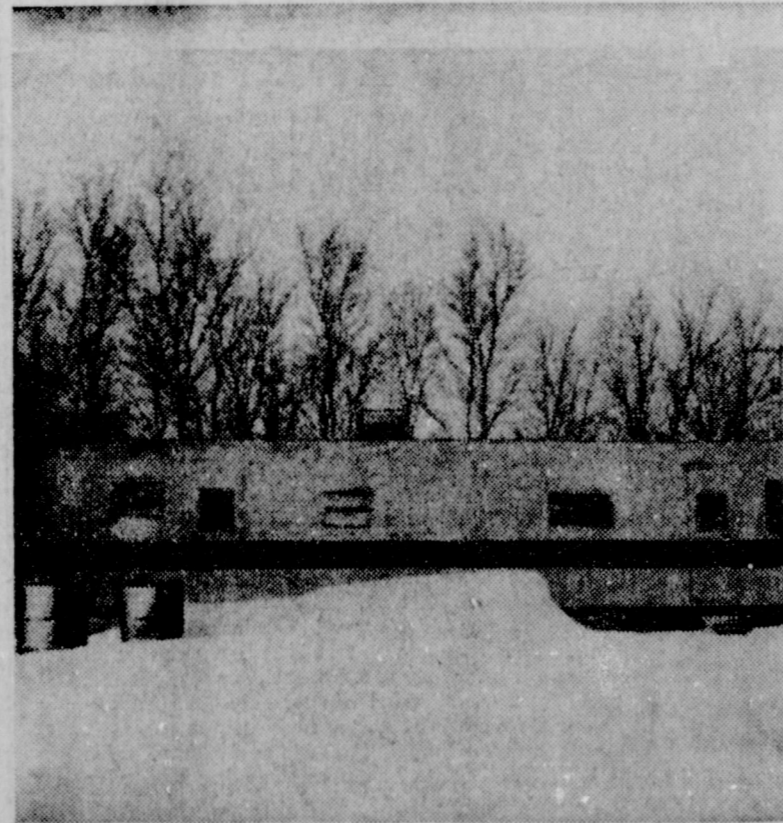
## Accredited

Dr. R. G. Garrett, Executive Director of the Texas Animal Health Commission announced the reaccreditation of Bailey County as a Modified Accredited Tuberculosis Area this week.

County Agent, Mr. J. K. Adams, has received the certificate which is good for six years.



STOP! — If you can. Many of Muleshoe's residents who had to be out Tuesday in blizzard conditions saw signs that were partially covered or totally covered with the wet, sticky snow, adhered by the force of the wind. Although conditions were suitable, there were relatively few actual fender-benders. Several had to be pulled from curbs, drifts and deep snow. (Journal Photo and Engraving)



DRIFTING, SHIFTING SNOW — Shown here in front of the Cecil Edwards home out on the Friona Highway at C. E. Briscoe's trailer park, is a little higher than the two barrels on the left. Many fences, cars, houses and other objects caused drifts throughout the country — some 10 to 14 feet high. (Journal Photo & Engraving)



REB AND YANK — Lester Howard and R. end of the county and the other by persons L. Fields (right) loading Reb and Yank, two in file south. The winner, the one weighed to be fattened for the October being the most, will be the loser. He'll be bar-b-que of the Farm Bureau. One calf will come bar-b-que. The loser, that will be the bs fattened by persons living in the south; winner, will be auctioned off.





### Local Clothing Merchants in Dallas For Annual January Fashion Market

Colorful styles of the Southwest that survived fashion market tests may be in your wardrobe next year.

The Annual January Fashion Market in Dallas, third largest in the nation, is the sampling ground because it is the leader of the East and West Coast markets by a few weeks.

Several of Muleshoe's clothing buyers were in Dallas Jan. 26-

31 to attend the annual event. Roger Albertson, manager of Cobb's Dept. Store, and Midred Wingo, buyer for Cobb's represented their store at the market; Opal Thompson represented The Fashion Shop; and Irvin and Dorothy St Clair and Dorothy Mathiesen went to represent St Clair's Department Store.

"If a dress is a dud here," one salesman says, "you can be sure it won't show up on the coast."

Mrs. Wingo stated, "Clothes for summer are real pretty and I think the ladies will be very happy with the new styles, quality of fabrics and pretty colors."

More than 2,000 manufacturers and some 7,000 lines of women's summerweight casual apparel are a part of this market's success story.

Buyers normally complete breakfast by 8:30 a.m. daily evaluate a fashion show of 150 pieces and then spend the day canvassing salesrooms. Dress manufacturers pay a \$25 fee to put a dress before the assembled buyers for 30 seconds.

That brief display can make or break a style.

### Epsilon Delta Coffee Is Held At John Miller's

The Epsilon Delta Kappa Gamma Society of Muleshoe met Saturday, February 1, in the newly decorated country home of Mrs. John Miller for a coffee.

Mrs. Marvin Tollett, Sudan, presided during the business session in which the election of 1964-66 officers was held.

Mrs. John Campbell, Olton, was elected president of the organization.

Others elected were Mrs. Ed Johnson, first vice-president; Mrs. Lenton Smith, Littlefield, second vice-president; Mrs. Ray Blessing, Amherst, recording secretary; Mrs. C. E. Nichols, Sudan, corresponding secretary; and Mrs. George Bohner, Olton, treasurer.

### State Pres. AAUW Slated for Lubbock

The American Association of University Women will meet — weather permitting — in Lubbock Saturday, Feb. 8, for a coffee, to be held at 9:15 in the Texas Tech Museum Auditorium.

The local group was invited by the Lubbock branch to attend and hear the State President, Mrs. R. H. Weiss, Kerrville, as she would not be able to visit this area this year.

Among those from Muleshoe who are planning to attend are Mrs. Neal Dillman, Mrs. Elizabeth Watson, Mrs. Ray Daniels, Mrs. C. E. Moore, Mrs. R. E. Everett, Mrs. J. W. Witherspoon, Mrs. Hollie Francis, Mrs. Mabel Laughlin, and Mrs. Jack Beddingfield.

Mrs. Dave Tullis, Littlefield, led the group singing.

The Valentine motif was accentuated in table and room decorations. The hostesses served from a beautifully decorated table with silver and crystal appointments.

Muleshoe members attending were Mrs. Wilson Witherspoon, Mrs. Jack Obenhaus, Mrs. Jack Beddingfield, Mrs. Clifton Finley, Mrs. Horace Blackburn, Mrs. John Watson and the hostess, Mrs. John Miller.

### To Telephone Meeting

Eddie Wallace, Bula, left Monday with members of the Bailey County Telephone Co-Op board of officers to go to Washington, D. C. where they will attend a business meeting of the National Telephone Co-operative.

Before returning home, he plans to do some sight-seeing and visit with an aunt in New Jersey.

### Mrs. Mary Farley Thanks Local OES

Mary Farley, chairman of Arthritis and Rheumatism Program for Muleshoe Chapter No. 792, Order of the Eastern Star, extends sincere thanks and appreciation to all members of the Chapter who have responded so generously to the program.

"This great opportunity of love and service is made possible through a program of our Grand Chapter of Texas, cooperating with the Arthritis and Rheumatism Foundation," says Mrs. Farley.

"This is a voluntary health agency, devoted exclusively to the problem of Arthritis and Rheumatic Diseases, through research, patient care, and education," she states.

There are over twelve million sufferers of this dreadful crippling, with no known cure.

In Texas, there are Arthritis and Rheumatism Chapters located in Dallas, Fort Worth, Houston, San Antonio, Amarillo and El Paso. These Chapters are eager to have Eastern Star Members and friends assist them in any way.

The members of Muleshoe Chapter who have not yet contributed, may do so, by mailing their checks, made to the Chapter, to Mary Farley, P. O. Box 545.

### Wayland's Alumni Now Making Plans For Homecoming

PLAINVIEW — Superstitious or not, several hundred alumni of Wayland Baptist College here are expected to gather for the 13th annual Homecoming festivities on Feb. 14-15, according to Dr. W. Neil Record, executive secretary of the Association of Former Students and assistant to the WBC president.

A number of Muleshoe and area exes will be among the number to attend activities at their old Alma Mater.

High on the list of alumni attractions is the traditional selection of the Coming Home Queen to be chosen this year from the Honor Class of 1944. A drama production, basketball games, class reunions, and a baby parade are on the agenda. Additional events are also being planned.

Special reunions for the classes of 1914, 1924, 1934, 1944 and 1954 are scheduled for the afternoon of Feb. 15 with a mass reunion also tentatively on the agenda, according to Dr. Record. The annual business session will be that afternoon also when officers are elected and plans formed for the new year. Current president is Vernon Stokes, Plainview.

Members of the Board of Directors whose terms expire this year are Jack Jeter, Happy; Mrs. Lillian Shelton Herral, Abertamy; and George James, Plainview. Other Board members are Lynn Rhoderick, Aiken; Bill Webb, Borger; and Edna Windwehen Thomas, Plainview.

The Coming Home Queen will be presented at the chapel program planned by the Association for Feb. 14, in Gates Hall Auditorium, and also at the annual Homecoming dinner for exes the following day.

The annual parade of Future Pioneers, all under five years of age, will be followed by a barbecue on Feb. 15.

To lead off the weekend's activities will be production of "The Rock" by the drama department and double basketball games when the WBC Hutcherson Flying Queens will meet the Topeka Boosters and the Pioneers will play the Indians from Midwestern University.



### Muleshoe Couple Honored With Open House For 45th Anniversary

Mr. and Mrs. C. R. Roebuck were honored with open house in observance of their 45th wedding anniversary Sunday afternoon from 2 to 5 p.m.

Hosts for the event were their daughters, a son, and son-in-laws, Mr. and Mrs. Frank Lee, Muleshoe; Sgt. and Mrs. Hugh Norris, Abilene; and Howard Roebuck, Clovis, N. M. Assisting

with serving hospitalities were granddaughters, Lawanna Kay and Brenda Lee.

The serving table was draped with a lace cloth over red and highlighted with Valentine motifs in red and white. A square cake was decorated with white icing trimmed with blue. Two large wedding bells centered the cake and the words "Cephus and "Minnie" were inscribed inside the bells. Appointments of silver and crystal were also used.

Roebuck and the former Minnie Riddle were married January 31, 1919 in Ashdown, Ark.

The couple moved to Muleshoe in October 1928 from near Cloudy Okla. in Pushmataha County. Since that time, they have made their home here. He is a member of the Masonic Lodge and Mrs. Roebuck a member of the Eastern Star.

### Bula Methodist WSCS Has Meeting

The Women's Society of Christian Service of the Bula Methodist Church met Monday at the church with six attending.

Mrs. Roy Young was in charge of the study, "The Christian Family and its Money."

The program was opened with the reading of Psalm 8 by Mrs. Bogard, followed by group singing, "A Charge to Keep" and Mrs. Young led in prayer.

All of those present participated in a group discussion under the leadership of Mrs. Young.

The benediction was given by Mrs. Bahlman.

Those in attendance were: Mrs. F. L. Simmons, Mrs. George Bahlman, Mrs. Paul Young, Mrs. Roy Young, Mrs. L. H. Medlin and Mrs. Tom Bogard.

Yale's hockey team includes nine lettermen.

### Clothing Workshop Slated by Agent

The public has been extended an invitation to a workshop on basic clothing construction which will begin Thursday, Feb. 6, at 9:30 a.m. according to Jean Martin, Bailey County Home Demonstration Agent.

The first meeting will be held in the meeting room of the Bailey County Electric building in Muleshoe. Those planning to attend are urged to put off buying material and patterns until after coming to the first meeting.

This will be the first of three clothing workshops to be conducted in the county by the home demonstration agent. The second workshop which will teach advanced dress-making will be held in March, while the workshop on semi-tailoring, conducted by Mrs. Mel Evans, assisted by home demonstration members who participated in the recent tailoring workshop, will be in April.

All women interested in basic clothing construction are urged to attend the meeting Thursday morning at 9:30 in the Bailey County Electric building.

### Muleshoe Family Relative Dies

D. P. Finley, 81-year-old brother-in-law of Mary Finley and uncle of Clifton Finley, both of Muleshoe, died Sunday in Dodson, Texas.

Due to bad weather conditions, the Muleshoe relatives were not able to attend the Tuesday funeral services. Funeral services were conducted at Hollis, Oklahoma and interment was made at Dodson.

### Plainview Pastor To Conduct Meet

The Rev. James A. Mock, Plainview, will hold services in Muleshoe at St. Phillip's Episcopal Church this Sunday, Feb. 9. Rev. Mock is the minister of St. Mark's Episcopal Church, Plainview, and is minister-in-charge of the local Episcopal congregation.

Sunday's evening service will be held at 7:30 p.m. in the Community Room of the First National Bank.

An invitation to all interested persons and area Episcopalians is extended by Mr. Mock and the congregation to attend services as visitors. Further information may be obtained by phoning 74-90 or 3-1810.

Brushing the top crust of a pie with milk, before baking, helps the pastry brown.

### Lazbuddie HD Meets

The Lazbuddie Home Demonstration Club met for its regular meeting in the home of Mrs. Jimmy Briggs.

There were six members and two guests present.

A program on hair styling was given by Dorothy Anderson, Muleshoe hair stylist.

The next meeting has been scheduled for Hub in the Community Building February 13. Program topics will include "Carpet Care".

### Judith Jesko Senior Student At Sacred Heart

WICHITA, KANS. — Judith Jesko, Route 3, Muleshoe, has enrolled as a senior for the spring semester at Sacred Heart College, it was announced here.

Miss Jesko is a business major, minoring in social science.

Sister Mary Sylvia, president, said students from 15 states and four foreign countries have enrolled for second semester.

The liberal arts college, administered by the Sisters Adorers of the Most Precious Blood, is a four-year institution founded in 1933 and offering 110 courses of study in 31 different academic areas.

### LETTERS TO THE EDITOR

We, as a ladies farm organization, representing the Pleasant Valley community, have noticed for some time that it has become increasingly difficult to find good fabrics, clothing or home furnishings made of natural fibers. Especially hard to find is cotton and woolen merchandise in our area stores. "Even cotton powder puffs are hard to find!"

We have all apathetically watched synthetics, mostly of an inferior quality, taking over our cotton and wool markets.

The whole economy of our area here is based on these crops, especially cotton.

We feel, it would be to the advantage of everyone concerned to obtain fabrics, clothing and home furnishings and any other merchandise possible which is made of cotton and for all of us to use these natural fibers as much as possible.

We are not against synthetics and know they have their place but feel it is suicidal to not recognize what could happen to our area if our natural fibers are replaced.

We hope that you, too, are concerned about this situation. We would appreciate your efforts in this matter.

In closing, we thank you, and we will be expecting to find more good natural fibers products available in our stores in the near future.

Yours sincerely,  
Pleasant Valley Social Club  
Signed: Claudine Embry, president

### EHA STYLE SHOW

The Future Homemakers of America style show previously slated for Monday night at the Springlake High School was rescheduled for Monday night, February 10. Bad weather conditions stimulated the rescheduling.

### LENAUS VACATION

Mr. and Mrs. Charles Lenau spent several days in Alamogordo, N. M. and El Paso, Texas vacationing from Muleshoe's cold weather.

**GROW SLIM WHILE YOU EAT**

WITH SAFE VITAMIN-FORTIFIED diet-master

**REDUCING PLAN**

Be a good loser. DIET on balanced meals without loss of energy, hunger pangs or jumpiness. DIET on the DIET-MASTER REDUCING PLAN... fully guaranteed to help you lose excess weight, or your money back.

**WESTERN DRUG**

**WELLBORN'S BEAUTY SHOP**

1101 Ave. J. Phone 3-4040

SHOP MULESHOE FIRST!

## Meet the Muleshoe State Bank CUSTOMER of the Week



**J. LEWIS MORRIS** of 429 E. Dallas is bookkeeper at Weidebush-Childers and has banked with the Muleshoe State Bank for the past 15 years. Mr. and Mrs. Morris have one son, 11 years old, and one daughter, 10 years old. The Morris family attends the First Baptist Church. "They've always been real good to me here," Mr. Morris says. We are proud to recognize this customer of the Week!

**MULESHOE STATE BANK**

Member FDIC

Welcome aboard Amigos!

**Now on Chico's new BARGAIN FARES**

—travel round trip for only 40% more than one-way fares through April 30th

Now the entire Santa Fe is a terrific travel bargain through April 30, 1964.

Here's how Chico's travel bargains will save you money: If the one-way fare is \$10, you can travel round trip for only \$14. When the one-way fare is \$25, you travel round trip for only \$35. On one-way fares costing \$50, the round trip is only \$70.

Round-trip bargain fares will apply for all trains between all Santa Fe stations, making it easy for you to enjoy a trip at special savings. And you have a 30-day return limit on these bargain fare tickets.

Remember, family fares are even lower than Chico's bargain fares, making Santa Fe the most economical way for husband and wife, or family groups to travel.

Let your hometown Santa Fe agent furnish complete information

It pays to have us look for trouble

A gap in your insurance program can mean serious financial loss to you and your family. It pays to have us look for these trouble spots through a careful review of your policies. It's possible, too, that some of your policies can be updated to provide broader and more economical protection. Call us for a no-obligation check up.

**JENNINGS INSURANCE AGENCY**

102 E. Ave. 8 Phone 3-4970

Representing Hartford Accident and Indemnity Company  
Member The Hartford Insurance Group, Hartford 15, Conn.



# STATE CAPITAL Highlights AND Sidelights

by Vern Sanford

TEXAS PRESS ASSOCIATION

AUSTIN, Tex. — A controversial section of the new Texas Regulatory Loan Act, passed last year after 36 years of legislative wrangling over loan control, has been declared unconstitutional.

District Judge Herman Jones of Austin held invalid the provision that at least 51 per cent of stock in lending firms operating in Texas must be owned by Texans.

Jones emphasized this was the only section of the 1963 act affected by his ruling in a suit brought by three out-of-state firms.

The companies whose subsidiaries operate in at least eight Texas cities charged the in-state ownership requirement violated state and federal due process and equal protection guarantees.

American Investment Company, a Delaware Corporation; Industrial Finance and Thrift Corporation of Louisiana; and Consolidated Credit Company of Charlotte, N. C., joined by a number of other out-of-state firms, instituted the suit.

Their subsidiaries operate in Houston, Dallas, San Antonio, Fort Worth, El Paso, Waco, Texas and Arlington.

Regulatory Loan Commissioner Frank Miskell refused licenses to them.

**COMMITTEE ON HIGHER EDUCATION** — The Governor's Committee on Education Beyond the High School is well ahead of schedule, reports Dr. A. B. Martin, executive director.

Earlier this year, the committee — made up of leading industrialists and educators — set an April date for preliminary reports for the recommendations due Gov. John Connally in August. Studies on education in public and private colleges and universities, and professional and technological needs have advanced so well that subcommittees and their consultants have been discharged, Martin said, and the April date has been moved back to February 15.

**PARK IMPROVEMENTS STARTED** — Tuesday's ground-breaking ceremonies at Falcon State Park in Starr and Zapata Counties near Zapata launched a three-park improvement program which will cost \$1,041,966.

The \$279,416 in improvements at Falcon will include a boat ramp, parking area, paved road, 24 shelters, 50 tent campsites with water, cooking grills, tables, three restrooms with showers and laundry units, ranger's residence and concession building.

Similar improvements are planned for Dam "B" Park near Jasper in East Texas and Lake Whitney State Park in Central Texas, according to J. Weldon Watson, Parks and Wildlife Department executive director.

**TOURIST PLAN UNVEILED** —

A pilot plan designed to bring more foreign visitors to Texas was announced by Governor Connally.

Sen. Walter Richter of Gonzalez, the governor's representative, and Walter Meyer of San Antonio, who originated the plan, took off for Germany Sunday to test the program.

They hope to encourage 40 to 50 German citizens to make a 16-day red carpet tour of Texas' leading cities and historic spots from October 15 through November 2.

Texas Tourist Development Agency is sponsoring the projected program in cooperation with Chambers of Commerce and interested private citizens. No public funds are involved.

The tourists, of course, will pay their own way, although some will benefit from hospitality in Texas as homes. First visitors will get special low plane fare and at-cost prices all around.

It is hoped the initial visit by the Germans will establish guidelines for a continuing long-range program to boost travel in Texas by globe-trotters from other lands.

**COURT RULES ON LAND** — In a 5-4 decision, the State Supreme Court overruled lower courts and directed a new trial in a dispute over oil income on 16,000 acres of Winkler County land.

Suit, brought by Southland Royalty Company against Pan American Corporation to recover a portion of proceeds from minerals produced, involves interpretation of a 39-year-old lease.

**NO FIRM PROBE URGED** — Atty. Gen. Waggoner Carr has called on State Banking Commissioner J. M. Falkner to continue investigation of a collapsed California money order firm, American Security Currency Limited was doing business in 317 Texas grocery and drug stores.

Thousands of Texans reportedly were caught with valueless paper on their hands when the firm went into bankruptcy. Carr recommends getting all facts on its history and status plus full details of an alleged sale of accounts to another company also licensed by the commission.

**CONNALLY IN CIRCULATION** — Governor Connally returned to his duty at his office in the Capitol last week, for the first time since he was wounded in Dallas on November 22 by the assassin of President Kennedy.

Connally announced a traveling and speaking schedule which included visits to UPI and AP managing editors' conventions here; a Boy Scout report ceremony in the Capitol; Abilene's B-52 day celebration on February 15; the Laredo Washington Birthday festival on February 22; the Paper Industry Salesmen's Association meeting in New York on February 25; dedication of the New York World's Fair Texas exhibit on February 26; and probably a visit with President Johnson in Washington on the way back to Texas.

**LIBRARY ADDITIONS** — Texas State Library last week obtained an historic treaty and an historic suit of clothes. Both are certain to be viewed by thousands in years ahead.

Sen. Ralph Yarborough presented the Library a certified State Department copy of the El Chamizal treaty signed by President Johnson on December 20 — defining the boundary along the Texas-Chihuahua and El Paso-Juarez borders. The treaty, placed on display in a glass case, ended a century-old boundary dispute.

Governor Connally, at the Library's request, turned over to the State archives the black, light-weight suit he was wearing when he was seriously wounded in Dallas. He was the first Texas governor to be the victim of an assassination attempt. The suit bears bullet holes in the back, front and right sleeve. Also placed in the archives is the blood-stained shirt Connally wore on the tragic November day, and his black and gold silk tie.

**DIVERSION PAYMENTS** — Agri. Comm. John C. White says

## Yarborough In Washington

Dear Fellow Texan: President Johnson has issued a ringing challenge to the best in every American in his State of the Union message.

His proposals are an outline to be followed in achieving a new hope, a new security, a new sense of purpose to our Union, a new opportunity to move forward. The American people may enlist with new hope in our battle against disease and despair in a positive approach that once accomplished will make our country stronger and greater.

It is especially pleasing to see the emphasis on the growing needs for better schools, more teachers, more opportunity for American youth.

We are facing at the outset of this Congressional session the need to move onward with programs such as Area Redevelopment, Youth Employment, the Food Stamp program, the National Service Corps, the Peace Corps, the need for modernized unemployment insurance and for a high-level commission on automation.

Labor-saving devices are displacing about 1,250,000 workers a year. Forecasts for the national economy, fortunately, have been very favorable, but 4,657,000 job-seekers are unemployed and remedial action is urgently needed.

Since my last report of visits in Texas, Opal and I participated in the third annual Gathering of the Scottish Clans at Salado Nov. 10 and in Veterans' Day functions in Austin Nov. 11. I took part in the Conroe Post Office dedication Nov. 16 and in the Fort Worth Postal Clerks Banquet on the same day. Following the tragic assassination of President John F. Kennedy on the second day of what was promising to be a Texas triumph on Nov. 22, I cancelled many of my commitments during the month of mourning.

Opal and I spent Christmas in Austin where we have lived for over thirty years.

On Jan. 10, I inspected Ellington Air Force Base and toured the adjacent Manned Spacecraft Center with Postmaster General John A. Gronouski, prior to the great ceremonies at the Rice Hotel at noon where the Sam Houston 5-cent stamp drawn by Texas artist Tom Lea was placed on sale. Mrs. Jennie Morrow Decker, 92, great granddaughter of Sam Houston, bought the first sheet of stamps.

During January I have spoken in Dallas, Austin, Houston and San Antonio at Democratic Party meetings, urging Texans to pay their poll taxes and qualify to vote.

On Jan. 11, I spoke at an installation of officers ceremony by the Dallas Letter Carriers at which National Letter Carrier President Jerome Keating, spoke.

On Jan. 19, I participated in the ceremonies of dedication for the fine new Franklin County Hospital at Mount Vernon and spoke at a noon luncheon in Houston Jan. 20 as part of the annual observance of Health and Welfare Week.

Everywhere we went, Opal and I were overwhelmed with the kindness, the understanding and the innate courtesy of the people of Texas. God bless all of you. May 1964 be a year of happiness.

ment, Youth Employment, the Food Stamp program, the National Service Corps, the Peace Corps, the need for modernized unemployment insurance and for a high-level commission on automation.

Labor-saving devices are displacing about 1,250,000 workers a year. Forecasts for the national economy, fortunately, have been very favorable, but 4,657,000 job-seekers are unemployed and remedial action is urgently needed.

Since my last report of visits in Texas, Opal and I participated in the third annual Gathering of the Scottish Clans at Salado Nov. 10 and in Veterans' Day functions in Austin Nov. 11. I took part in the Conroe Post Office dedication Nov. 16 and in the Fort Worth Postal Clerks Banquet on the same day. Following the tragic assassination of President John F. Kennedy on the second day of what was promising to be a Texas triumph on Nov. 22, I cancelled many of my commitments during the month of mourning.

Opal and I spent Christmas in Austin where we have lived for over thirty years.

On Jan. 10, I inspected Ellington Air Force Base and toured the adjacent Manned Spacecraft Center with Postmaster General John A. Gronouski, prior to the great ceremonies at the Rice Hotel at noon where the Sam Houston 5-cent stamp drawn by Texas artist Tom Lea was placed on sale.

Mrs. Jennie Morrow Decker, 92, great granddaughter of Sam Houston, bought the first sheet of stamps.

During January I have spoken in Dallas, Austin, Houston and San Antonio at Democratic Party meetings, urging Texans to pay their poll taxes and qualify to vote.

On Jan. 11, I spoke at an installation of officers ceremony by the Dallas Letter Carriers at which National Letter Carrier President Jerome Keating, spoke.

On Jan. 19, I participated in the ceremonies of dedication for the fine new Franklin County Hospital at Mount Vernon and spoke at a noon luncheon in Houston Jan. 20 as part of the annual observance of Health and Welfare Week.

Everywhere we went, Opal and I were overwhelmed with the kindness, the understanding and the innate courtesy of the people of Texas. God bless all of you. May 1964 be a year of happiness.

## News Report From Washington

WASHINGTON, D. C. — Political events between now and mid-summer may drastically alter the outlook for the upcoming party nominating conventions at San Francisco and Atlantic City.

But at the moment it's Capitol Hill consensus that President Johnson and Peace Corps Director, Sargeant Shriver shape up as the best Democratic ticket, with Sen. Barry Goldwater and Gov. William Scranton standing out as the strongest one-two combination the Republicans can field.

That's based on the outcome of a poll conducted by Congressional Quarterly, an unofficial but knowledgeable authority on Washington issues, among both Democratic and Republican lawmakers.

Not surprisingly, all but one of the 144 Democratic responses listed the President as party choice for top place on the ticket. Sen. Hubert Humphrey chalked up the lone dissenting vote.

Shriver rated 45 votes, three more than Humphrey, as Vice Presidential nominee. Sen. Eugene McCarthy ran a poor third with 11 and Attorney Gen. Robert Kennedy got a mere five ballots.

On the Republican side Goldwater racked up 50 votes of 113 replies for the GOP nomination with Pennsylvania's Gov. Scranton getting only 23.

Former Vice President Richard Nixon was the choice of 20 while New York's Gov. Nelson Rockefeller polled just seven.

For Vice President, however, Scranton topped the list a 21 votes with Kentucky's Sen. Thurston Morton next with 13 and Goldwater with 12.

Perhaps most significant aspect of the poll was the poor showing of the Attorney-General with the politically attuned Congressional press.

His lack of support for a place on the ticket seemed to underscore the theory being heard with increasing frequency in Washington circles that the late President's brother is too contro-

versial a figure in the North as well as in Dixie and that his presence on the ticket would be as much a liability as an asset for that reason.

Those same theorists speculate that Shriver, a brother-in-law of the late Chief Executive, could hold the Johnson-Kennedy factions together in the coming election and would be the most acceptable of the available list to both camps.

While not as nationally known as Sen. Humphrey on the political front, Shriver has made an enviable reputation for himself as head of the Peace Corps, gaining thereby stature both as an administrator and as knowledgeable in foreign affairs.

With the memory still fresh of one mid term of accession to the White House, it could well be that the lawmakers were mindful — as the voters will be this fall — that the No. 2 spot on the ticket is much more than a mere formality of the place to pay political debt.

### RUSS WANTS MACHINES

The Central Intelligence Agency says the Kremlin wants to buy large amounts of Western chemical machinery on long-term credit so as not to hamper Soviet arms production.

According to CIA's analysis, the soviet economy has run into such deep trouble that Premier Khrushchev can achieve his chemical industry expansion goals only by paring other programs or through long-term credits from the West.

### SMOKING AND CONGRESS

The Federal report on smoking is not likely to rush Congress into action on bills dealing with cigarettes. The Federal report issued recently branded cigarettes a health hazard and called for corrective action.

Four bills on cigarettes are before the House Commerce Committee. The oldest has been there almost a year. The newest, almost a month.

## The Sandhills Philosopher



Editor's note: The Sandhills Philosopher on his Johnson grass farm gets into a discussion this week which is his responsibility, not ours.

Dear editor:

Since I'm not acquainted with politics in Ohio — I'm not even up on politics right here in this part of Texas — I'm not assuming to tell the people of Ohio what to do, just in case The Muleshoe Journal has a wide coverage in that state, but I was interested in some things I read after that astronaut, Glenn, announced he was running for the United States Senate.

What interested me was the claim by some Ohio papers that he hasn't had the proper training to be a Senator.

This got me to thinking, what is the proper training for a Senator? and the more I thought the less I concluded. It is a field apparently nobody has explored, and if a young man came to you and said he was interested in training to be a Senator, what would you tell him? I'm not up on these matters, but I doubt if there's a college or university in the country offering a course in Senatorship. It'd be like trying to study for the Supreme Court.

Another thing the papers said about Glenn was that he shouldn't try to start at the top, he ought to run for some lesser office first. I can see how a Senator could think a man ought to run for Congress first, and I can see how a Congressman could think he ought to run for a state office first, and I can see how a state official could say he ought to run for a local office first, and how a local official could say he ought to stick a while longer with farming or barbering or whatever he's doing, and while if I had thought farming was the first

Yours faithfully,  
J. A.

## BLUB BLUB

Some days you need a PLUMBER fast. And what's the quickest and easiest way to find one? You're right. The YELLOW PAGES, where YOUR FINGERS DO THE WALKING



## BEAUTIFUL PRACTICAL

### SET OF SIX THERMO SERV GLASSES

YOU CAN GET THEM FREE!



Any residential home-owner customer of Southwestern Public Service Company can get this beautiful Sea Mist green and white set of Thermo Serv insulated glasses just for listening. That's right! Just for listening as our electric heating representative unfolds the comforting story of electric heating and how it can be applied to your home. Call your Public Service Company this week to arrange appointment.



This sign on a heating dealer's door is your assurance of a qualified electric heating installation covering the complete job and ...including financing, if that is your wish.

Electric Comfort Heating ...for the comfort of your life!

### ZALE'S COMPLETE WATCH OVERHAUL

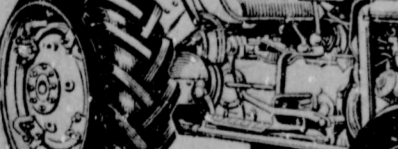


Only \$5.95

**INCLUDES**  
• cleaning, oiling, polishing  
• adjusting, electrical timing  
• replacing needed parts  
• Fully guaranteed by America's largest jeweler  
• ONE LOW PRICE for any standard watch

Get your watch in the hands of expert Zale's craftsmen who use the latest scientific equipment, replacing all needed parts including crystals, cleaning and balance staff.

DIAL REFINISHING EXTRA



Clovis



**BROCK IMPLEMENT CO.**  
"OUR PRICES ARE RIGHT"  
406 N. 1st Phone 3-5930

## Paragraphs

**So Far So Good**  
Optimism and cheer do not always have very much to commend them. There was the man, for example, who cried out, "Doing fine so far," as he fell past the fifteenth-story window.

—The Commercial Appeal, Memphis.

**Your Age Will Tell**  
You can claim to be middle-aged, at least, if you can remember back when anybody who wore blue jeans worked.

—The Herald, Sparta, Wis.

**Stop This If You Can**  
An Illinois woman sued in the Supreme Court to have teaching of religion barred in public schools. No matter how the case is decided, they won't be able to keep the kids from praying at exam time.

—Spruce Pine News, Ill.

**For Losing Only**  
She didn't mind losing her heart to the Navy but she resented him starting to look for it.

—The Globe, Camp Lejeune.

**How True**  
The only trouble with being a good sport is that you have to lose to prove that you are.

—The McAnand News, McAlester, Okla.

**So They Say**  
It takes two to make a marriage — a single girl and an anxious mother.

—The Beam, Corpus Christi Naval Air Station.

## PATZER CHIROPRACTIC CLINIC

1538 American Blvd.  
MULESHOE, TEXAS  
Phone 3-9670  
KEEP SMILING

### Does BLADDER IRRITATION MAKE YOU NERVOUS?

After 21, common kidney or bladder irritations affect twice as many women as men and may make you tense and nervous from too frequent, burning or itching urination both day and night. Secondary, you may lose sleep and suffer from headache, backache and feel old, tired, depressed. In such irritation, CYS-TEX usually brings fast, relaxing comfort by curbing irritating germs in strong, acid urine and by analgesic pain relief. Get CYS-TEX at drugstore. Feel better fast!



# Senator Tower Urges Government Conduct Long Range Farm Study

Senator John Tower today joined with other Senators in urging the creation of a non-partisan Commission to conduct a long-range, extensive review of American farm policy.

The Commission would be composed of twelve members, four of which would be appointed by the President, four by the President of the Senate, and four by the Speaker of the House. The resolution provides that the Commission would be politically balanced with an equal number of Republicans and Democrats. Two members would be from the Senate, two from the House, two from the executive department, and the rest from private life.

The resolution setting up the Commission declares that it is the policy of Congress "to promote the effective utilization of the agricultural production of the United States so that:

## Views and Reviews

Lester Pearson, Prime Minister of Canada:

"We are so friendly that we feel we can criticize the United States like a Texan does — and in the same idiom."

Lyndon B. Johnson, President: "I regard Sargent Shriver as one of the most brilliant, most able and most competent officials in the Government. I regard him as my real confidant."

James K. Mathews, Methodist Bishop of Boston:

"The greatest multitude of church members try to get a life-time of mileage out of their teen-aged view of the Christian faith . . ."

Nikita Khrushchev, Premier of Russia:

"No attempt of Cuba's enemies, no economic blockade by the imperialists can block the grand march of the great Cuban people."

Billy Graham, evangelist: "In light of the serious nature of the government report on smoking, it will not be a good Christian witness for a clergyman to smoke cigarettes."

Barry Goldwater, Senator (R., Ariz.):

"I would say that he's (Johnson) suddenly become all things to all people. It was my impression that he out-Roosevelted Roosevelt, he out-Kennedeyed Kennedy and even made Truman look like some kind of piker."

SHOP MULESHOE FIRST!

## COMMENTS ON SPORTS

By PETE FRITCHE

WASHINGTON, D. C. — The bowl games produced more interesting contests than usual this year. Most of the New Year's Day games were close enough to be exciting for the spectators.

The big flop, in this sense, was the Cotton Bowl game. Navy went to Dallas with blood in its eye. There was big talk from Coach Wayne Hardin about how Navy would be number one in the country if they knocked off Texas, etc.

Such talk had the wrong reaction with the Longhorns. They hadn't played their tough schedule, winning all their games only to be upset by Navy, even Navy with Roger Staubach.

The Longhorns proved they were the nation's number one team. Navy went back to Annapolis happy to be number two. In fact, there were many who wondered about that. The score does not tell the whole story.

The final was 28-7, which does not sound too bad. But it was 28-0 before Navy scored late in the game when it was all over anyhow, and at the gun Texas was on the Navy two about to make it 35-7.

The other games in the Major Bowls were good. Alabama was lucky to get by Mississippi 12-7, on four field goals, for Mississippi outgained them in the vital developments and was knocking on the door in the final moments of that Sugar Bowl.

Nebraska likewise humbled Auburn, but the Tigers were coming back in the second half and the Cornhuskers were happy to make off with the Orange Bowl triumph. Illinois put it on Washington's Huskies in a game that had so many fumbles in the first half it appeared neither team would ever score.

The Huskies carried a lead into the second half but couldn't make it stand up.

The pro title games were likewise thrilling this year. The NFL title game, won by the Chicago Bears over the New York Giants, was unusually close for

a game including Y. A. Tittle 14-10.

The AFL title match was not really close, the San Diego Chargers bombing the Boston Patriots, but it was an interesting game, especially the first half. And now that football is laid to rest, largely, we look to basketball and wait for baseball's spring training.

WASHINGTON, D. C. — It is highly possible that both the American and National League will feature close pennant races, down to the wire, next year. For the National League this would not be new. For the American it would.

Why is there a growing suspicion the Yankees will not breeze in again? For one thing, the World Series punctured the Yankee balloon. The Yanks lost some of their intimidating intangibles in their October humiliation.

Most important, the Los Angeles Dodgers demonstrated good left-handed pitching would stifle Yankee bats. Already some managers in the American are taking dead aim on that weakness. Charlie Dressen, of the Tigers, says he wants three or four top lefties on his staff next year.

Several teams are possible challengers in 1964. The Chicago White Sox, with great pitching, could win if New York's staff is not on a par. The Tigers are working on new pitching strength. If they come up with it, they might challenge.

They have added Jerry Lumpe at second and on Demeter in the outfield but have given up Rocky Colavito. If Demeter adequately replaces Colavito, and Detroit pitching is sound, the Tigers could be tough.

The Minnesota Twins have been rugged for two years. Just a little added here and there, or a faltering by the leaders, could have given the Twins a pennant in 1962 or 1963. They are definitely a threat this year.

Likewise, the Baltimore Orioles, under a new manager, are strong enough to make a bid. This is good for the American League.

In the National, there is St. Louis, San Francisco, Cincinnati and maybe Chicago to be considered. The Phillies could also get into the act. Any of these teams might win a flag in the scrambled National League race. The Reds' chances depend to a large degree on the recovery of Fred Hutchinson, their able skipper.

## Jehovah's Group Cancels Meetings

The Muleshoe congregation of Jehovah's Witnesses are cancelling all meetings this weekend to attend a circuit convention in Levelland February 7-9.

Boyd Lowery, presiding minister of the local congregation said, "The things we learn at this assembly will be put into practice in our house-to-house visitation of the residents of Levelland and then used for more effective ministry when we return home."

The 600 expected "Witnesses" and interested persons will meet in the Women's building of the Levelland Fairgrounds for the three-day training program.

## MORALE CODE IN KOREA

The United States commander in Korea has decreed a stern moral code for the 50,000 American troops stationed in that bleak land.

"I wish to make it perfectly clear . . . that I will not tolerate improper conduct or lowered moral standards," General Hamilton H. Howze said in a letter circulating throughout his command.

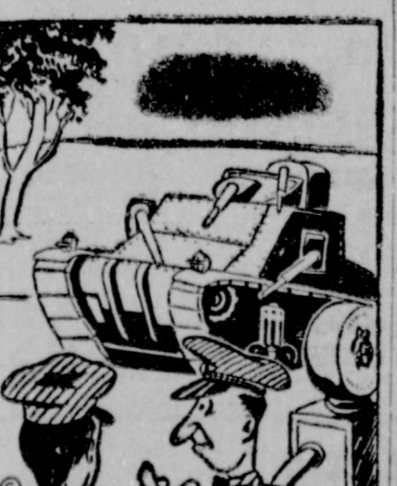
The standards also apply to Defense Department civilians working in Korea.

Everett Case is in his 18th season as basketball coach at North Carolina State.

Former pitcher Vic Sorrell coaches North Carolina State's baseball team.

## Motor Wise

South Side Gulf



"Don't believe this guy trusts us." You can trust us to give you the best service possible. Our products and personnel are tops in Muleshoe!

## Look At Our American Culture

By EDWARD H. SIMS

(Conclusion)

Firstly, the modern trend in painting, abstraction in particular, must necessarily leave the average citizen cold. It can do nothing for him. For experts and lovers of the style, it can have great meaning. But as for these paintings in galleries for public sale and viewing, this sometimes becomes a farce at best.

We see the spectacle before our eyes today of Americans buying abstractionist paintings which they don't understand, for snob-appeal. There is nothing wrong with this individually, per se, but judged as a trend, in the field of painting, one is justified in concluding that we have pursued a fad (which has been done often enough in history).

Meanwhile, it seems forgotten in some circles that the real effect of a painting, its effect on the man or family who acquires it, is what matters. If a landscape or a simple character portrait brings restfulness and inspiration, a sense of beauty and relaxation to the buyer, it matters not whether experts rate the painting bad, mediocre or great.

If one is buying paintings as an investment or to study painting for art's sake, he must of course concern himself with expert opinion. The average man, however, should be willing to buy a painting. We should buy more paintings in the United States — buying them for what they do for us, and not for what they do for a salesman or critic.

In looking at other fields in judging American culture, we must mention the field of education. In many countries teachers and professors at schools and colleges and universities are looked upon as the elite. Their profession is accorded high respect by the general population.

Is that the general atmosphere among most Americans? Too often we look upon teachers with a patronizing or necessary-evil cast. We do not like to think

about voting new taxes to raise that scale.

College and university professors are often looked upon as eccentrics or referred to sarcastically as eggheads. That's because they are different. They are, and should be! They know more, and their field, than we do, and we would be wise to learn from them. We would be wise to patronize chautauqs, and have more of them.

We would be wise to pay our teachers more and realize that in their hands is the future of our children, the generation which will run this country; establish its cultural patterns.

In the American system, with its strong accent on commercialism, we face the danger of aiming to develop genuine appreciation of the higher cultural attainments. In our music, in our television and radio entertainment (thrills and shocks for drawing

## PROBES RESUMED

Now that Congress has launched its 1964 session, the Senate Rules Committee will resume public hearing on the business affairs of Robert G. Baker, former secretary to the Senate's Democratic majority.

Chairman McClellan (D., Ark.) said that his Senate Investigations subcommittee will resume its probe of the Pentagon's award of the huge TFX warplane to the high bidder, the Fort Worth division of General Dynamics Corporation.

## A FARM PLAN

President Johnson has directed Secretary of Agriculture Orville L. Freeman to draft plans with farm leaders for a broad assault on agricultural problems including the overriding issue of rural poverty.

Freeman and the farm organization leaders will form an eight-man committee to hammer out solutions by finding areas of agreement.

an audience for sponsorship and not accent on cultural forms of expression), in our commercial approach to painting, in our treatment and lack of appreciation of the educated and the cultured, we miss the mark.

Our schools and colleges must redouble their efforts to teach art and cultural appreciation — even as science must take precedence. We as a nation and a people must be ready to admit that the level of cultural attainment in our land is not what it should be, and think about ways and means to do something about it.

Our standards in music, in opera, in television and radio, with their commercialism, in art must be raised if we are to be among the leaders of the world in cultural attainment.



**WESTERN deep well TURBINES**  
last up to 3 TIMES longer than other pumps

Western's exclusive redwood-lined tubeline eliminates bronze bearings and shaft wear. Saves you money all around. For more details without obligation call your Western Pump dealer today.

**EDWARDS GIN AND IRRIGATION**  
Ph. 5670 Muleshoe  
215 E. 6th Street

## BELL FERTILIZER, INC.

Where will your fertilizer dollar go the fatherest?

At the place where you can get your analysis in terms tailored to fit your needs. We can make any analysis your soil test might call for with any added elements you might want. Then why spend money for materials you do not need to get the analysis desired: also, why waste money on terms you do not need? We do not use credit cards or sign time contracts, but work out your individual needs on an individual basis. Be sure to see us for all your fertilizer needs -- in analysis or dry materials -- before you buy.

**DON'T GUESS -- SOIL TEST**  
Bell offers this service to all of their customers  
PHONE 3-2750 or 4690

## Taxes--

(Continued from Page 1)

ers court.

When asked if his office had had any discussion with the county commissioners on the subject of delinquent taxes during his term in office Gorrell answered, "I have had no discussion with the commissioners court. . . on collecting delinquent taxes.

Commissioner I. M. Stinson stated he thought most of the land was under homestead. When informed that less than 10 percent was under homestead he replied that he felt the same about this matter as he felt about past due bills for farm labor contract work. "They should be collected." He further stated that he would introduce the matter into discussion at the next meeting of the commissioners court.

## "No Need to Gamble! GET THE BEST SEED... Northern Grown Blue Tag!"

Only the best Approved and Foundation lots are used to produce the high yielding Red River Valley Certified Seed crop. Northern grown, well known for top production performance wherever planted! Don't gamble . . . Plant the Best!

**MINNESOTA'S RED RIVER VALLEY CERTIFIED SEED POTATOES**

ORDER EARLY — FROM YOUR GROWER — SUPPLIER!

FREE! Write P. O. Box 486, East Grand Forks, Minnesota for new bulletin, growers and variety list.

Equal to the Best — Better than the Rest! CERTIFIED SEED POTATO GROWERS OF MINNESOTA'S RED RIVER VALLEY

## FREE TRIP TO THE WORLD'S FAIR

Buy a New-Blue Ford 6000 and go to the N.Y. World's Fair . . . FREE!

Now, you can take a once-in-a-lifetime trip to the World's Fair in New York City! Ford makes this exciting offer: Buy a new blue Ford 6000 tractor and you will receive a complete 3-day trip to the World's Fair absolutely free!

Select one of the trip departure dates and you're off to the Fair!

You'll get scheduled air transportation from a nearby major air port . . . 3 wonderful days . . . take in the World's Fair and the glamour of New York City. The offer includes tickets, fine food and hotel accommodations.

**ALL FREE WHEN YOU BUY A FORD 6000 TRACTOR!** Act now to take advantage of this once-in-a-lifetime opportunity!

Stop in today and take a "second look" at the new-blue 6000 . . . look at the features that take the "big ache out of big acreage."

This offer is good for a limited time only.

**Buy Now and "GO WITH FORD TO THE FAIR"**

**FORD THIS OFFER GOOD UNTIL FEBRUARY 29 1964**

**FRANCIS IMPLEMENT CO.**  
MULESHOE, TEXAS

## CHEVELLE! MALIBU SUPER SPORTS by CHEVROLET

Background, new Chevelle Malibu Super Sport Coupe; foreground, Chevelle Malibu Super Sport Convertible.

### What's so super about the Chevelle Malibu Super Sports?

Inside? Front bucket seats. All-vinyl interior. Ammeter, oil pressure and water temp gauges. Floor-mounted straight-line shift lever for Powerglide\* or sporty 4-Speed\* stick shift.

Under the hood? Lots of choice. Two Sixes—standard 120-hp and optional 155-hp\*. Three V8's, from standard 283-cu.-in. up to (you're reading it right!) 327-cu.-in.\* Try this one to flatten out hills!

Options? Electric tachometer, Positraction rear axle, sintered-metallic brake linings and sport-styled simulated walnut steering wheel, to name just a few of them.

Outside? Special moldings and wheel covers, SS identification. Actually, about all that's not super about these Malibu SS Coupes and Convertibles is their price. And the best way to find out what everything else is that makes them so super is to drive one. Your Chevrolet dealer can take care of that.

**CHEVROLET**

**THE GREAT HIGHWAY PERFORMERS Chevrolet • Chevelle • Chevy II • Corvair • Corvette**  
See them at your Chevrolet Showroom.

## CROW CHEVROLET CO.

201 MAIN STREET MULE SHOE PHONE 3-1000

501 S. First — Ph. 3-5710 We Give Gunn Bros. Stamps



# Maple News

**By MRS. ORAN REAVES**  
 MAPLE — The W. M. S. of the Maple Baptist Church met in the home of Mrs. Doyle Davis Tuesday, January 28, for Bible Study. Mrs. D. L. Tucker had charge of the lesson.  
 Refreshments were served by the hostess Mrs. Davis to the following, Mrs. C. A. Petree, Mrs. A. E. Robinson, Mrs. E. M. Lowe,

Mrs. D. L. Tucker and Mrs. Johnny Wheeler.

Mr. and Mrs. Foy Lewis and Mariya spent the weekend in Brownfield with her Mother and sister Mrs. Shepherd and Miss Ruth Shepherd and their son and wife, Mr. and Mrs. Charles Lewis.

Mr. and Mrs. B. F. Yeates and baby, Las Vegas, New Mexico visited Saturday night and Sunday in home of his brother and family, Mr. and Mrs. Hugh Yeates.

Mrs. Hugh Yeates and children Mrs. Wayne George and children and Mrs. Oran Reaves and Sheila visited in Muleshoe Wednesday with Mrs. Oran Reaves Jr.

Mr. and Mrs. Jim Pyburn Whit-haral, were Sunday dinner guest in the home of his parents, Mr. and Mrs. Kenneth Pyburn.

Miss Maudine Eubanks, Lubbock spent the weekend in the home of her parents Mr. and Mrs. Bill Eubanks.

Devane Simpson, Causey spent the weekend with his cousin Dan Simpson.

Miss Joan Lemons, Muleshoe spent the weekend in the Oran Reaves home. Her parents, Mr. and Mrs. Murray Lemons came out Sunday afternoon and Joan returned home with them.

Mr. and Mrs. Oran Reaves Jr. Muleshoe, visited with Mr. and Mrs. Loyd Warren Wednesday night.

Mr. and Mrs. Kenneth Middleton visited in Levelland Saturday with his parents, Mr. and Mrs. Middleton and her parents, Mr. and Mrs. Jones.

Mr. and Mrs. Jerry Garlington and son, Muleshoe, visited Sunday with her grandmother, Mrs. J. M. Phillips.

Notre Dame and the Air Force Academy will play their first football game at Colorado Springs, Colo., next Oct. 10.

FRANCIS IMPLEMENT CO.

FORD TRACTOR  
 Muleshoe, Texas

**NOT EVERYBODY BUYS SEAL-TITE CONCRETE PIPE**

*Of course not. However, each year more and more successful farm owners take the time to investigate and find by careful comparison of product, installation and performance, that their earlier buys were, as well as the Best Underground Irrigation System, at*

**STANDARD CONCRETE PIPE COMPANY**

**WANT ADS**

**LEGAL NOTICE**  
 MULESHOE INDEPENDENT SCHOOL DISTRICT  
 February 1964

Specifications for Bids for lighting the High School Football Field

1. Guaranteed lighting to an acceptable level of 14 foot-candles over the complete playing field.  
 2. Steel poles shall be used to support the luminaire and capable of withstanding 100 M. P. H. winds and located as shown on the drawings which may be seen at the school Business Office.  
 3. Luminaires shall be Widelite, Quartz, catalogue No. LI500BLB, or approved equal.  
 4. All wiring shall be underground in conduits across playing field a minimum of 18" deep, direct burial conductors may be used at all other locations and conductors exposed above ground shall be in conduit. All wiring shall be installed for a future increase of 35 per cent added luminaires. Conductors shall be acceptable by UL Laboratories standard.  
 5. All lighting shall be controlled from one panel in an accessible location. The service to the football field shall be from one point and shall be 240-480 volt, from the primary bank.  
 6. Complete plans showing pole locations, conduit layout, schematic of all wiring and details of all switching and fusing shall be furnished with each bid.  
 7. Outlets shall be provided for in the concession stands, press box, ticket offices, rest rooms, and for score boards operation to be 120-240 volts.  
 8. The successful bidder shall warrant all material and workmanship for a period of one year from date of acceptance. He shall also secure and pay for all permits and license necessary, and will comply with all laws and ordinances. He will maintain and pay for all insurance necessary to protect the public and the school from all claims which may arise during the installation of this equipment.  
 9. All bids will be final and no additions or deletions shall be made to said job without written instructions from the President of the School Board or his appointee.  
 10. No bids shall be returned or received after bid opening date of February 10th, 1964 — 8:00 P. M. at the School Administration Office.  
 11. The Muleshoe Independent School District Board of Trustees has the right to reject any or all bids.  
 (Signed) W. E. Meyers  
 Secretary — Board of Trustees  
 (Signed) John W. Smith  
 President — Board of Trustees  
 6t-21c

**PLAY PIGGLY WIGGLY'S BEVERLY HILLBILLIES WIN UP TO \$200.00 PLUS GOLDEN JALOPIES FOR THE KID OR WIN ONE OF MANY COLOR T.V. SETS**

**DOUBLE STAMPS SATURDAY ONLY with \$2.50 Purchase Or More!**

Boyers, H.A. Reg. 49c Retail, Tax 4c	
HAIR DRESSING 2 oz. Bottle	43c
Lavoris, Reg. 89c Retail, 17 oz. Decanter	
MOUTHWASH	69c
Charm, Ass't. Fragrances, Reg. 59c Retail	
BATH OIL Tax 5c, 16 oz. Bottle	49c
Reg. \$1.69 Retail, 50 Count Bottle	
DRISTAN	\$1.39
Maryland Club, Drip, Fine or Reg., 1 lb. can	
COFFEE	69c
Libby's, 15 1/2 oz. Can	
CORNED BEEF HASH	39c
Ballards or Pillsbury, Buttermilk or Sweetmilk	
BISCUITS 3 cans	25c
Good N Rich, Chocolate or White, 13 oz. box	
CAKE FROSTING	25c
La Choy, No. 2 1/2 Can	
CHOW MEIN NOODLES	29c
La Choy, No. 303 Can	
VEGETABLE CHOP SUEY	29c
Northern, Ass't. Colors, 4 Roll Pkg.	
TOILET TISSUE	37c

Get Complete Details at Your Piggly Wiggly Store

<b>MIRACLE WHIP</b>	KRAFT SALAD Dressing, Qt. Jar	49¢
<b>PINEAPPLE</b>	Spruce Sliced In Heavy Syrup Syrup, No. 2 Can	19¢
<b>PEACHES</b>	Hum's, Sliced or Halves in Heavy Syrup No. 2 1/2 Can	25¢
<b>CRACKERS</b>	WORTZ SALTED 1 Pound Box	19¢
<b>TIDE</b>	HEAVY DUTY DETERGENT GIANT BOX	69¢
<b>CORN</b>	Kountry Kist Golden Whole Kernel 12 oz. Can	10¢

Vitamin Rich Produce from Piggly Wiggly

<b>CARROTS</b>	TEXAS TABLE SIZE	2	1 lb. Cello Bags	19c
<b>BANANAS</b>	Central American Golden Fruit, Lb.			10c
<b>ORANGES</b>	CALIFORNIA SUNKIST NAVELS POUND			12 1/2 c
<b>CELERY</b>	FRESH GREEN PASCAL EACH			15c
Fresh, 2 large Bunches	MUSTARD GREENS	25c	Fresh Thin Skin Avocados	2 large size 25c
Clipped Tops, Purple Top, TURNIPS Lb.	15c	Fresh Snow White, CAULIFLOWER Pound	29c	
Fresh, Large Bunch ROMAINE	19c	Fresh, Large Size, LIMES Pound	29c	
Oregon, D'Anjou, PEARS Pound	25c	Fresh, Green, Bunch PARSLEY	10c	

Freshest Frozen Foods

<b>CREAM PIES</b>	Banquet, Banana, Cocc nut, Lemon, 24 oz. bottle	39c	
<b>DINNERS</b>	PATIO WESTERN 12 oz. Pkg.	39c	
Banquet, 8 oz. Pkg. Macaroni and Cheese Casserole	21c	Sommerdale, 10 oz. Pkg. CAULIFLOWER	19c
Patio, 1 1/2 Pound Pkg. BEEF ENCHILADA	59c	Ranch Oven Bread Dough 2 2 Lf. pkg.	69c



These Values Good in Muleshoe, Feb. 6, 7, & 8, 1964

We Reserve the Right to Limit Quantities.

<b>JELLO</b>	Gelatin, Assorted Flavors 3 oz. Box	10¢
<b>TOWELS</b>	Northern Paper Jumbo Roll	29¢
<b>Napkins</b>	Northern, Assorted Colors 2 80 ct. pkgs.	27¢

Piggly Wiggly Meats! Always The Best

Butcher Boy, Pickle, bologna, Liver Loaf, Macaroni and Cheese

<b>LUNCHEON MEAT</b>	4 6 oz. pkgs.	\$1	
<b>SLICED BACON</b>	Butcher Boy Thick or Thin 2 lb. pkg.	97¢	
<b>CHUCK ROAST</b>	Armour Star Aged, Heavy Beef, Valu-Trim, Lb.	49¢	
<b>FRYERS</b>	USDA, Grade A Fresh Frozen Fresher than Fresh, POUND	29¢	
Lean, 100% Pure Beef, Dated for Fresh-Ground Beef ness	3 lbs. \$1.00		
Continental Brand, Sliced, 4 oz. Pkg. CHOPPED HAM	49c	Sea Tang, 10 oz. Pkg. BREADED SHRIMP	49c
Lee's Tasty, All Pork SAUSAGE	2 lb. pkg. \$1.39	Rodeo's, All Meats, 12 oz. Pkg. FRANKS	39c
		Armour Star, Aged Heavy RIB STEAK Beef, Pound	69c

**WHO WOULD YOU TURN TO FOR A NEW PERMANENT?**

Certainly you shouldn't come to us. The specialist you need is a beautician. We specialize in saving accounts and loans for homes. In fact, that is our only business, and because it is, we can concentrate all our efforts on these services.

The Best Place To Save And To Borrow . . .

**SPECIALIZING IN SAVINGS ACCOUNTS and HOME LOANS**

**First Federal Savings & Loan**

Home Office Clovis, N.M. 4th & Pile	Branch Office Portales, N.M. 2nd & Abilene
-------------------------------------------	--------------------------------------------------

<b>Marshmallows</b>	KRAFT, MINIATURE 6 1/2 oz. Pkg.	15c
<b>Cottage Cheese</b>	BELL OR BORDEN 2 LB. CTN.	59c
<b>Black Pepper</b>	SCHILLING'S PURE 4 oz. Can	35c
<b>Cooking Oil</b>	Wonder All Vegetable 24 oz. bottle	29c
<b>Sour Cream</b>	BELL OR BORDEN'S 8 oz. Pkg.	25c
<b>Cake Mix</b>	GOOD-N-RICH WHITE, ANGEL 16 oz. Pkg.	37c
<b>Med. Eggs</b>	IDEAL, GRADE A DOZEN	45c
<b>Chili</b>	WILSON with BEANS No. 300 Can	29c

<b>TOMATOES</b>	<b>VINEGAR</b>
Hunt's, Stewed Tomatoes No. 300 Can	Hunt, White, Distilled, Quart Bottle
19¢	19¢



Lowest Prices . . . Greatest Variety . . . always at . . .

**Piggly Wiggly**

**Samsonite FOLDING CHAIR \$3.99 off Sale Feb. 8th**



### Bula News

By MRS. JOHN BLACKMAN  
Sunday guests in the W. T. Thomas home were Luther Hamm, Muleshoe, Sam McCormick, Amarillo and Stanley Simmons, Amherst.

Bill Newsome, Dallas, attended to business here last week and was a guest in the V. C. Weaver home.

Glenn and Durwood Aaron, Carlsbad, N. M., visited Saturday afternoon with their grandmother.

FRANCIS IMPLEMENT CO.  
FORD TRACTOR  
Muleshoe, Texas

er, Mrs. L. L. Waldees.  
Visiting Sunday afternoon in the Nolan Harlan home were Mr. and Mrs. Robert Jennings and Mrs. Favors of Littlefield.  
P. E. Dever of Plainview, spent Sunday afternoon in home of his sister Mr. and Mrs. John Blackman.  
Mr. and Mrs. Don Grusendorf and girls Linda and Patricia drove to Rush Springs, Okla. over the weekend returning Mrs. John Richardson to her home, here after spending several weeks there with her mother, Mrs. Mary E. Tugman.

Bula School honor roll A and

B. for the last six weeks.  
First grade — Lisa Risinger B — James Smither, Susan Layton, Terry Williams, Karen Speck and Janice Cannon.  
First grade A — Lisa Risinger, B Clawson, B-Jerry Sowder, Steven Thomas, Tommy Gilliam, John Aduddell and Guinn Pollard.  
Third and Fourth grades — none.  
Fifth grade — A—Diane Crume B — Jolene Reid, Pamela Layton, Patricia Robertson and Jolene Cox.  
Margaret Richardson B — Iva Clawson, Tom Newton and Judy Sixth grade A — Donna Crume, Snitker.  
Seventh grade A — Patricia Grusendorf B—Elaine Tiller, Dorothy Spence, Rodney Claunch, Do-

lores McCall and Randy Aduddell.  
Eighth grade A— Mike Richardson, B—Glen Salyer, Joyce Sowder and Sheryl Medlin.  
Freshman A — Jwana Young B — Betty Salyer and Marilyn McCall.  
Sophomore A — Mike Capeheart B — Lana Aduddell, Brenda Clawson, Sammy Nichols, Kenneth Overland.  
Junior A — Linda Grusendorf, B — Beverly Clawson, Gerald Reid and Pat Risinger.  
Senior A — Donna Lands, Mike Risinger B — Jo Ann Autry, Roger Jones, Curtis Archer and Gene Autry.  
Superintendent Dasey drove five high school students to Level-

land South Plains College, Wednesday to attend the seminar, held there once each month.  
George Ann Bahlman registered Thursday at South Plains Jr. College as a second semester freshman student. She attended McMurray her first freshman semester.  
The Junior students have begun making plans for their annual outsiders volleyball tournament March 16-23.  
Guests Sunday in the C. C. Termerman home were Mr. and Mrs. Jack Witcher, Jim and Bennie Joe of Amarillo. A-1c and Mrs. Norman Witcher and daughter Carole of Tampa, Florida. Also

Mr. and Mrs. Terry Blake, Cindy and Dayton of Bula.  
Visiting Sunday afternoon in the F. L. Simmons home were Philis Roberts and her room mate Louise Ingram of Lubbock. Both are students at Jeeie Lee's School of hair styling.  
Mrs. B. L. Blackman is spending several weeks this winter at Lovington in the homes of her daughter Mrs. W. T. Carter and son R. L. Blackman.  
Mr. and Mrs. Bill Lamb and children Sharon and Alton of Hereford attended services Sunday morning at the Bula Methodist Church and were lunch guests of the Ivan Clawson's.  
Mr. and Mrs. Ray Kennison, daughters Kim and Dusty of Portales, spent Sunday with her parents, the Tom Bogards.

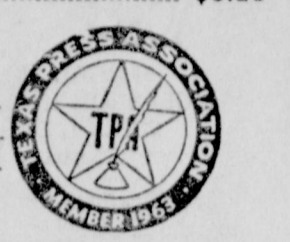
## The Muleshoe Journal

Published each Thursday by The Muleshoe Publishing Co.  
304 West Second Street, Muleshoe, Texas

Member of The Associated Press  
Entered as second class matter at the Muleshoe Post Office under act of Congress, March 3, 1897.

Subscription Rates  
Immediate Territory ..... \$4.00  
Out of Territory ..... \$4.50  
Combined with Bailey County Journal  
Both papers in territory ..... \$5.50  
Both Papers outside territory ..... \$6.25

Advertising Rate on Application.  
L. B. Hall ..... Publisher  
R. F. Goodrow ..... Editor  
Doris Kinser ..... Society Editor



## Television Schedule For Muleshoe Area

C Indicates Color Programs

**KING BROS.**  
GRAIN & SEED CO.  
Complete ELEVATOR SERVICE AND SEED PROCESSING FOR The Muleshoe Area.  
SHOP MULESHOE FIRST  
Lane's Furniture  
NEW "BLUE LUSTRE" Carpet Shampoo Machine  
Just Phone 6430 and We Will CLEAN YOUR CARPET For You.  
or Rent Our Shampoo Machine by the hour or day  
Lane's Furniture  
111 Main St., and Save  
**LUMBER PAINT**  
and Hardware  
Chas. L. Lenau  
LUMBER COMPANY  
202 E. Ash  
Phone 2220

**KGNC-TV (4) Amarillo**  
Muleshoe Cable 4 Mon. thru Fri. Daytime Viewing  
6:45 - Devotional  
6:50 - Weather  
6:55 - Farming Today  
7:00 - Today Show  
8:00 - Cartoon Magi  
8:45 - King & Odie  
9:00 - Say When  
9:25 - NBC News  
9:30 - C—Word for V  
10:00 - Concentration  
10:30 - C—Missing Li  
11:00 - C—1st Impres  
11:30 - C—Truth or C  
11:55 - NBC News  
12:00 - News  
12:10 - Weather  
12:20 - Ruth Brent  
12:35 - Burns & All  
1:00 - Let's Deal  
1:25 - NBC News  
1:30 - The Doctors  
2:00 - Loretta Youn  
2:30 - C—Don't Say  
3:00 - Match Game  
3:25 - NBC News  
3:30 - Room for Dac  
4:00 - Cartoon Magi  
5:00 - Yogi Bear  
5:30 - Hunt-Brinkley  
6:00 - News  
6:15 - Weather  
6:25 - Sports  
Thursday Evening  
6:30 - Jon. Winters  
7:30 - Dr. Kildare  
8:30 - C—Hazel  
9:00 - Kraft Theater  
10:00 - News  
10:15 - Weather  
10:25 - Sports  
10:30 - C—Tonight  
Friday Evening  
6:30 - Showtime  
7:30 - C—Bob Hope  
8:30 - Science Fiction  
10:00 - News  
10:15 - Weather  
10:25 - Sports  
10:30 - C—Tonight  
Saturday Viewing  
7:30 - Heckel and Je  
8:00 - Bullwinkle  
8:30 - C—Ruff & Red  
9:00 - C—Hector He  
9:30 - C—Fireball XI  
10:00 - Dennis  
10:30 - Fury  
11:00 - Sgt. Preston  
11:30 - Cartoon Magi  
1:00 - Cotton John  
1:30 - Theatre  
2:40 - Supercar  
3:10 - Matinee  
4:45 - Feature Films  
6:00 - News  
6:15 - Weather  
6:25 - Sports  
6:30 - Lieutenant  
7:30 - C—Joey Bisho  
8:00 - C—Movie  
10:25 - News  
10:41 - Weather  
10:51 - Sports  
10:56 - Theatre  
Sunday Viewing  
7:30 - Heavens Jubi  
8:30 - Cotton John  
9:00 - A-OK  
9:30 - Movie  
11:00 - Church  
12:00 - Movie  
1:45 - Movie  
3:15 - Great Music  
3:30 - Rocky & Frie  
4:00 - C—Wild King  
4:30 - C—Bowl  
5:00 - C—Meet Pres  
5:30 - C—Science A  
6:00 - News  
6:15 - Weather  
6:25 - Sports  
6:30 - C—Walt Disne  
7:30 - Grindl  
8:00 - Bonanza  
9:00 - C—Fashions  
10:00 - News  
10:15 - Weather  
10:25 - Sports  
10:57 - Checkmate  
11:00 - Checkmate

**KUVB-TV (7) Amarillo**  
Muleshoe Cable 5 Mon. thru Fri. Daytime Viewing  
9:30 - J. LaLanre  
10:00 - Price Right  
10:30 - Object Is  
11:00 - Seven Keys  
11:30 - Father Knows  
12:00 - Tenn. Ernie  
12:30 - Billy Bailey  
12:40 - Weather  
12:45 - Charlie Keys  
1:30 - Day in Court  
1:55 - Women's New  
2:00 - Gen. Hosp.  
2:30 - Queen for Day  
3:00 - Trailmaster  
4:00 - Rifleman  
4:30 - Zane Gray  
5:00 - Sea Hunt  
5:30 - Beaver  
6:40 - News  
Thursday Evening  
5:30 - Beaver  
6:00 - Texas News  
6:30 - C—Flintstones  
7:00 - Donna Reed  
7:30 - My Three So  
8:00 - Jimmy Dean  
9:30 - Special  
10:00 - Local News  
10:10 - Weather  
10:15 - Weather  
10:20 - Movie  
Friday Evening  
6:00 - Bill Bailey  
6:30 - Destry  
7:30 - Burke's Law  
8:30 - Price Is Right  
9:00 - Fight of Week  
9:45 - Make Spare  
10:00 - Bill Bailey  
10:10 - Weather  
10:20 - Movie, Dbl. F.  
Saturday Viewing  
9:00 - Farm to Mkt.  
9:30 - The Jetsons  
10:00 - Casper  
10:30 - Beany & Ceci  
11:00 - Bugs Bunny  
11:30 - Bandstand  
12:30 - Movie  
1:30 - Challenge Gol  
2:30 - Pro Bowlers  
4:00 - Sports  
5:30 - ABC  
6:00 - Sportsman  
6:30 - Hootenanny  
7:30 - Lawrence Wel  
8:30 - Hollywood  
9:30 - Wrestling  
10:30 - Movie, Dbl. F.  
Sunday Viewing  
8:00 - Herald of Tru  
8:30 - Oral Roberts  
9:00 - Christ World  
9:30 - Big Picture  
10:00 - Challenge Gol  
11:30 - This is Life  
12:00 - Social Secur  
12:30 - Dory Funk  
1:00 - Discovery  
1:30 - Issues & Ans.  
2:00 - Directions '64  
2:30 - Rifleman  
3:30 - Zane Grey  
4:00 - Trailmaster  
5:00 - Movie  
6:30 - Jamie  
7:30 - Arrest & Tria  
9:00 - Movie

**KFDA-TV (10) Amarillo**  
Muleshoe Cable 6 Mon. thru Fri. Daytime Viewing  
6:25 - Sign On  
6:27 - Thought for I  
6:30 - Travelogue  
7:00 - Farm News  
7:20 - News  
7:30 - Editorial  
7:35 - Weather  
7:40 - Sports  
7:45 - Freddie  
8:00 - Capt. Kingaro  
9:30 - I Love Lucy  
10:00 - The McCoys  
10:30 - Pete & Glad  
11:00 - Love of Life  
11:25 - CBS News  
11:30 - Search Tomor  
11:45 - Guiding Light  
12:00 - News  
12:10 - Weather  
12:20 - Farm & Ranc  
12:30 - The World Tu  
1:00 - Password  
1:30 - Art Linkletter  
2:00 - To Tell Truth  
2:25 - CBS News  
2:30 - Edge of Night  
3:00 - Secret Storm  
3:30 - Pioneers  
3:30 - Soldiers of F  
4:00 - Freddie  
5:00 - Superman  
5:30 - Cronkite New  
6:00 - News  
6:20 - Weather  
Thursday Evening  
6:30 - M-Squad  
7:00 - Rawhide  
8:00 - Perry Mason  
9:30 - The Nurses  
10:00 - News  
10:15 - Weather  
10:25 - Editorial  
10:30 - Movie  
10:55 - News  
11:00 - Movie  
Friday Evening  
6:30 - Great Advent  
7:30 - Route 66  
8:30 - Twilight Zone  
9:00 - Password  
9:30 - Dead—Alive  
10:00 - News  
10:15 - Weather  
10:25 - Editorial  
10:30 - Movie  
10:55 - News  
11:00 - Movie  
Saturday Viewing  
6:45 - Cartoon Time  
7:00 - Capt. Kangaro  
8:00 - Alvin Show  
8:30 - Tennessee Tru  
9:00 - Quick Draw  
10:00 - Mighty Mouse  
10:30 - Rin Tin Tin  
10:30 - Roy Rogers  
11:00 - Sky King  
11:30 - Action Theatr  
12:00 - Box Office  
5:30 - Porter Wagon  
6:00 - News  
6:20 - Weather  
6:30 - Jackie Gleaso  
7:30 - Defenders  
8:30 - Phil Silvers  
9:00 - Gunsmoke  
10:00 - News  
10:15 - Weather  
10:30 - Movie  
10:55 - News  
11:00 - Movie  
Sunday Viewing  
8:00 - Fisher Family  
8:30 - Church Serv.  
9:30 - Gospel Singin  
10:30 - Sunday Show  
1:00 - Religious Q  
1:30 - Sports  
3:00 - Action Theatr  
4:30 - Sheriff Cochis  
5:00 - 20th Century  
5:30 - News  
5:50 - Weather  
6:00 - Lassie  
6:30 - Favorite Mart  
7:00 - Ed Sullivan  
8:00 - Judy Garland  
9:00 - Candid Came  
9:30 - What's My L  
10:00 - News  
10:15 - Weather  
10:30 - News Report  
11:00 - Movie

**KCBD-TV (11) Lubbock**  
Muleshoe Cable 2 Mon. thru Fri. Daytime Viewing  
7:00 - Headlines  
7:05 - Farm Report  
7:25 - Weather  
7:30 - Today  
8:25 - News Report  
8:30 - Today  
9:00 - Say When  
9:25 - News Report  
9:30 - C—Word for  
10:00 - Concentration  
10:30 - C—Missing Li  
11:00 - C—1st Impres  
11:30 - C—T, or Cons  
11:55 - Day Report  
12:00 - Noon Report  
12:15 - Closeup  
12:30 - Price Is Right  
1:00 - Let's Deal  
1:30 - C—People Wil  
1:30 - The Doctors  
1:25 - News  
2:00 - Loretta Youn  
2:30 - C—Don't Say  
3:00 - Match Gam  
3:25 - Afternoon Rep  
3:30 - Room for Dad  
4:00 - Father Knows  
4:30 - Superman  
5:00 - W. Woodpeck  
5:30 - Hunt, Brinkley  
6:00 - News  
Thursday Evening  
6:30 - Temple Houst  
7:30 - Dr. Kildare  
8:30 - C—Hazel  
9:00 - C—Perry C.  
10:00 - News  
10:30 - C—Tonight  
Friday Evening  
6:30 - Fugitive  
7:30 - C—Bob Hope  
8:30 - This Week  
9:00 - C—Jack Paar  
10:00 - News  
10:30 - C—Tonight  
Saturday Viewing  
7:15 - Jungle Jim  
8:30 - C—Ruff & Re  
9:00 - C—Hector He  
9:30 - Fireball XL-5  
10:00 - Dennis Menac  
10:30 - Fury  
11:00 - Sergeant Pre  
11:30 - C—Bullwinkle  
12:00 - C—Robin Hoo  
1:00 - Wizard  
1:30 - Movie  
2:00 - Basketball  
4:00 - Cartoons  
4:30 - Lone Star Sp  
5:00 - Showtime  
6:00 - News  
6:30 - Lieutenant  
7:30 - Joey Bishop  
8:00 - C—Movie  
10:00 - News  
10:30 - Fantastic Fea  
Sunday Viewing  
12:10 - Sign On  
12:15 - Living Word  
12:30 - Frontiers of F  
1:00 - Answer  
1:30 - Top Plays  
2:00 - Sunday  
3:00 - McGraw  
3:30 - Red Raider  
4:00 - Ret. to Oz  
4:30 - College Bowl  
5:00 - Meet Press  
5:30 - Bill Dana  
6:00 - News  
6:30 - C—Walt Disne  
7:30 - Grindl  
8:00 - C—Bonanza  
9:00 - Cuba Part II  
10:00 - News  
10:30 - Espionage  
11:30 - Meet McGraw

**KLEB-TV (13) Lubbock**  
Muleshoe Cable 3 Mon. thru Fri. Daytime Viewing  
6:20 - Sign On  
6:25 - Farm Fare  
6:30 - Sunrise Semes  
7:00 - Cartoons  
7:45 - King & Odie  
8:00 - Capt. Kangarc  
9:00 - Seven Keys  
9:30 - I Love Lucy  
10:00 - The McCoys  
10:30 - Pete & Glad  
11:00 - CBS News  
11:30 - Tenn. Ernie  
12:00 - WTTN News  
12:20 - Names in New  
12:25 - WTTN Weathe  
12:30 - World Turns  
1:00 - Password  
1:30 - Houseparty  
2:00 - Tell Truth  
2:25 - CBS News  
2:30 - Edge of Night  
3:00 - Secret Storm  
3:30 - Trailmaster  
4:30 - Popeye  
5:00 - Amos N Andy  
5:30 - CBS News  
6:00 - WTTN Weathe  
6:10 - WTTN News  
6:20 - Roundup  
Thursday Evening  
6:30 - Password  
7:00 - Rawhide  
8:00 - Perry Mason  
9:00 - Jo Stafford  
10:00 - News  
10:30 - Great Advent  
11:30 - Peter Gunn  
Friday Evening  
6:30 - Combat  
7:30 - Route 66  
8:30 - Arrest & Tri  
10:00 - News  
10:30 - Late Show  
Saturday Viewing  
6:20 - Sign On  
6:25 - Farm Fare  
6:30 - Sunrise Semes  
7:00 - Kangaroo  
8:00 - Alvin Show  
8:30 - Tennessee Tu  
9:00 - Quick McGraw  
9:30 - Mighty Moas  
10:00 - Ria Tin Tin  
10:30 - Roy Rogers  
11:00 - Sky King  
11:30 - Bugs Bunny  
12:00 - Robert Trout  
12:30 - Bandstand  
1:30 - Westing  
2:30 - Quebec Carn  
2:45 - Music  
3:00 - Golf  
5:00 - Hootenanny  
6:00 - Porter Wagon  
6:30 - Wagon Trair  
8:00 - Defenders  
9:00 - Gunsmoke  
10:00 - Movie  
Sunday Viewing  
7:00 - Bob Poole  
8:00 - Bible  
8:30 - Herald of Tru  
9:00 - Oral Roberts  
9:30 - Mod. Almanac  
10:00 - Lubbock Mmi  
10:30 - Timely Topics  
10:50 - Baptist Churc  
11:45 - Cartoons  
12:00 - Golf  
1:00 - Face Nation  
1:30 - Spectacular  
3:00 - Music  
3:15 - Bowling  
4:00 - Inquiry  
4:30 - Science  
5:00 - 20th Cent.  
5:30 - Science  
6:00 - Lassie  
6:30 - Martian  
7:00 - Ed Sullivan  
8:00 - Judy Garland  
9:00 - Candid Came  
9:30 - My Line  
10:00 - News  
10:30 - Hollywood  
11:30 - This is Life

**Higginbotham**  
Barlett  
Building Needs  
Lumber Paint Wallpaper Hardware Houseware Gifts  
Higginbotham  
Barlett  
MULESHOE  
Abel Cable  
For Year-Long Enjoyment  
INSTALL NOW  
Three Plans for Hook-Up  
Muleshoe Antenna Co.  
Call Now  
107 East Third  
Phone 3-3100  
ALSUP CLEANERS  
Offer These FINE SERVICES  
1. Drive-In Window Service for your convenience in cold weather.  
2. Re-sizing of cottons to finer texture for that like-new look.  
3. Alterations of all kinds of men's, women's and children's clothing  
4. A personal touch for your clothing by people who care how you look.  
THAT'S Alsup Cleaners  
Phone 3-0760  
215 S. 1st.

**TRUCKLOAD TIRE EVENT**  
We've got to unload our present tire stocks at drastically reduced prices...to make room for 1964 shipments!  
14"-15"-16" SIZES 1963 DISCONTINUED TIRES  
**ALL MUST GO!**  
Not Seconds! Not Retreads! New Goodyear Tires!  
Design Changes, Nylons, Rayons, Biggest New Tire You Cash In! Tubeless, Tube-type Bargains in Years!  
**NO MONEY DOWN!**  
With Your Old Tires  
**CLEARANCE OF RETREADS**  
• Economical Miles of Safe Driving  
• Approved Goodyear Tread Design  
• Applied to Sound Tire Bodies  
**\$888**  
ALL SIZES REDUCED TO MOVE AT ONE LOW PRICE!  
**SELECTED USED TIRES**  
and not a Baldie in the whole batch  
Plenty of mileage to go on these bargains! Use as spare, for jalopy, trailer, wagon. Our experts have checked casings for safety.  
**\$195**  
**GOODYEAR SERVICE STORE**  
SEE US FOR ALL YOUR SNOW TIRE NEEDS  
GO-GO-GO SURBANITES  
FLOOR MATS \$2.48 each — Front and Rear  
**JOHNSON-POOL TIRE CO.**  
301 N. 1st Phone 7680

For All Your Needs  
Prescriptions — CALL ON YOUR —  
Cosmetics WAGREEN AGENCY  
Veterinary WESTERN DRUG



READ AND USE

# CLASSIFIED ADS

FOR FAST RESULTS

## WANT ADS -- PHONE 2350

1 line per word ..... 4c  
 2 lines per word ..... 7c  
 After 1st issue, 3c per word each additional time.  
 Minimum charge \$1.00  
 Card of Thanks \$1.00  
**DEADLINE FOR CLASSIFIED ADVERTISING PAGE:**  
 For Thursday's Issue: Monday, 12 Noon  
 For Sunday's Issue: Thursday, 12 Noon  
**TO LATE TO CLASSIFY**  
 Thursday Issue --- Tuesday 5 P. M.  
 Sunday Issue --- Friday 3 p.m.  
 Double Rate for Blind Ads.

### 1. Personals

**REXAIR Sales and Supplies.**  
 Phone 8190. 1-12-tfc  
**Watkins Products for sale.** Call  
 W. O. Burford. Phone 965-3765. 1-36-tfc  
**Medical management of the overweight.**  
 Dr. G. Youngblood  
 519 Pile Phone PO3-7733  
 Clovis, N. M. 1-49-tfc

### 5. Apts. for Rent

**FOR RENT:** Large 3 rooms and bath apartment. Phone 3-4650. 5-25-tfc  
**FOR RENT:** Two room furnished apartment. 410 W. 2nd Phone 3-9280. 5-5t-tfc  
**FOR RENT:** Furnished 3 room and bath apartment. Bills paid. Layne Apartment on Morton Hwy. 5-5s-tfc

### 6. Rooms for Rent

**FOR RENT:** Bedroom in my home. See Ida Tapp last house on right north of Calvert's Grocery or call Polly Ottwell. 6-48-tfc  
**FOR RENT:** Bedroom. \$7.00 per week. 410 W. 2nd. Phone 3-9280. 6-4t-tfc

### 7. Wanted to Rent

**Wanted to Rent:** 2 or 3 bedroom furnished or unfurnished house. Call Muleshoe Publ. Co. Phone 7220 or 5490. 7-26-tfc

### 8. Real Estate for Sale

**Exclusive:** 45 A. 8" well. Level underground pipe 15 A cotton, rest grain. Hay. 2 bedroom home can be handled for \$12,000.00 down. On farm road 1760. 4 1/2 M from town. 8-6t-tfc

**Farms-Ranches-Motels City Property**  
**HOLLAND REAL ESTATE**  
 Just West of Crossroads Cafe  
 121 West American Blvd.  
 Phone Day or Night 3-2930  
 Muleshoe, Texas 8-41-tfc

**FARMS - CITY PROPERTY AND RANCHES**  
**KREBBS REAL ESTATE CO.**  
 210 S. First Morton Hwy.  
 Office Ph. 3-1910 Res. 5881  
 Muleshoe, Texas. 8-46-tfc

**FOR SALE**  
**NEW BRICK HOUSES**  
 Two and three Bedrooms  
 Country Club Addition  
 Contact: Billy Morrison  
 Billy's Superette  
 Phone 4850 or 3-2130 8-25-tfc

**FOR SALE:** 3 Bedroom house. Large utility room. \$11,500. Phone 946-2485. 8-5t-tfc

**FOR SALE:** North Side Texaco Service Station 4 blocks north of Rail Roads tracts. See E. H. Hall 8-2-tfc

**FOR SALE**  
**IRRIGATED:** 640 acres improved, on pavements. Lays good. 10 per cent down, liberal terms on balance, low interest rate. \$450. acre. Exclusive.  
**L. C. Lee**  
 Phone 647-3778 719W. Lee Street  
 DIMMITT, TEXAS 8-4s-tfc

### Political Announcements

The following candidates have authorized The Journal to announce their candidacies for the offices indicated, subject to the action of the Democratic and Republican Primaries in May, 1964.

**County Tax Assessor and Collector**  
 DESS STAFFORD  
 DON KEMP  
 JEAN LOVELADY

**Bailey County Sheriff**  
 DEE CLEMENTS  
**District Constable**  
 J. J. REDWINE

**County Commissioner**  
 Bailey County Precinct No. 3  
 W. H. (Bill) Eubanks  
**County Commissioner**  
 Bailey County Precinct No. 1  
 I. M. "IKE" STINSON  
 C. E. (CHECK) LAYNE

**District Attorney**  
 JACK YOUNG

**FOR SALE:** 666 Acres, 2 miles west of Coyote Lake on Arch. N. M. road, and 1 mile south. Well improved with good cotton, feed and grain allotments. 2 houses and barn. Virgil Wood, Needmore, 2 mi. east, 1 south, and 1-2 west. 8-4s-4tp

**FOR SALE:** Equity in 3 bedroom or 2 bedroom and den house. Separate dining room and attached garage. Call 3-1929. 8-4s-tfc

**640 Acre Irrigated Farm and Pasture**  
 3 large pump wells - Rio Grande River water, on Highway 112 between Center and Del Norte, Colorado. Priced to sell at \$100.00 per acre prior to March 1. Contact Gordon H. Rowe, Monte Vista, Colorado. 8-5s-2tc

**WANTED LAND LISTINGS**  
 We have several buyers for farms. If interested in selling we would certainly appreciate your listings.  
**PHONE WRITE OR SEE**  
 Plains Real Estate  
 Phone 385-3211  
 I. D. Ginstead, Realtor  
 Nite Phone 385-3009  
 P. O. Box 1032  
 Littlefield, Texas 8-5s-8tc

**FOR SALE:** Lamb County Farm. 160 A 10" well, on natural gas, 230 ft. concrete pipe line, unlimited water. Make ideal stock farm. 1/4 mineral available. \$300.00 per A. 7 M West 1/4 S Earth Call Idalou 892-2381. 8-6t-6tc

**FOR SALE:** 2 bedroom house. Call 3-5180. 8-5s-3tc

**YANKEE MOTORS**  
 504 E. American Blvd.  
 General Automotive Repair  
 Phone 5629 Res. 3-3600  
 9-26-tfc

**FOR SALE:** 1963 Falcon Sprint, low mileage new car guarantee. Will take trade. See at 1401 W. 7th or phone 763-3524, Clovis 9-6t-tfc

**FOR SALE:** 62 Chevrolet Impala with air, low mileage, real clean car. Call 925-3413. 9-6t-tfc

**10. Farm Equip for sale**  
 Indexed List Finders - For efficient telephone lists - personal or business.  
 Now only \$2.99 each at The Muleshoe Journal. 10-43-tfc

**FARMERS!**  
 Set up your system now as Harvesting progresses in our IDEAL Farm Record Book.  
 Binders, refill sheets for all types of records at the Muleshoe Journal. 10-43-tfc

**11. For Sale or Trade**  
**FOR SALE:** Used 7", 8" aluminum gaged pipe and 12" hydrants. Chapman Supply Co.  
 Phone 3-4730  
 Morton Highway 11-3t-tfc

**FOR SALE:** 2 yr-old Brick home in Richland Hills. 3 br., den, 2 full ceramic tile baths, attached double garage. Call 3-9950. 11-4t-tfc

**FOR SALE:** Cord Wood. Bill Copley, Phone 3-4750. 11-4s-10tc

**FOR SALE:** Box cars. E. K. Angeley, 965-3487 or 5520. 11-5t-tfc

**FOR SALE:** 30-30 Winchester. 22 Browning automatic, new. 1 single shot 22. 1 pellet gun. 2 single shot shotguns. 1 gun case. Electric air compressor. Phone 6892. 11-5s-2tc

**LEGAL NOTICE**  
**NOTICE TO DEBTORS AND CREDITORS**  
 THE STATE OF TEXAS)  
 COUNTY OF BAILEY)  
 TO THOSE INDEBTED TO, OR HOLDING CLAIMS AGAINST THE ESTATE OF MAGGIE BYARS, DECEASED, NUMBER 654 IN THE COUNTY COURT OF BAILEY COUNTY, TEXAS, SITTING IN MATTERS OF PROBATE.  
 The undersigned, having been appointed Independent Executor, of the Estate of Maggie Byars, deceased, late of Bailey County, Texas, by the said Bailey County Court, on the 27 day of January Texas, on the 27 day of January 1964, hereby notify all persons indebted to the Estate to come forward and make settlement, and those having claims against said estate to present them to the undersigned, within the time prescribed by law, to the undersigned, at Enochs, Bailey County, Texas.  
 Witness my hand this 27th day of January A. D. 1964.  
 Signed: James F. Byars  
 INDEPENDENT EXECUTOR OF THE ESTATE OF MAGGIE BYARS, DECEASED. 5s-2tp

### 12. Household Goods

**KIRBY SALES AND SERVICE**  
 Phone 7470  
 1908 West Avenue B  
 Muleshoe, Texas

**Credit Good**  
 Repossessed like new 62 model Singer Sewing Machine in blond, console cabinet. Will zig zag, button hole, fancy stitch ect. 6 payments at \$6.02 or will discount for cash. Write credit manager 1114 19th, Lubbock. 12-5t-tfc

### 15. Miscellaneous

**Water well drilling with spudder.** H. L. Stratton. 321 E. Dallas. Ph. 3-9250. 15-32-tfc  
**Cesspools and lines cleaned out.** 1 load \$7.50 or 3 loads \$13.50. Phone 3-5930. Dub Ashley. 15-2s-tfc

### 16. Livestock

**WANTED:** Two lambs. Will pay \$5.00 each. Call Muleshoe Journal 2350. Dick Goodrow. 16-6t-tfc

### 17. Seed & Feed

**FOR SALE:** 2000 Bales Threshed Rye Straw. Clean and bright. Excellent stock bedding. 75 cents per bale or \$25.00 per ton. About 50 lb. bales. From Muleshoe, 9 miles East on Hwy. 70, 1 3/4 miles North. Gerald Allison. 17-4s-tfc

## Easy Care Adds to Charm Of New Grilled Windows

Want your windows to express Colonial Williamsburg charm, yet allow you carefree cleaning, too? Whether you are building a new house or remodeling an old one, your best solution is to use new wood windows with removable grilles in either diamond or rectangular patterns. It's a combination offering the important benefits to practical homeowners: handsome appearance and easy maintenance.

There are several styles of ponderosa pine windows available with removable grilles - double-hung, casement, and sliding, for instance.

The small pane effect in any of these types of windows will give your home a beguiling look inside and will increase architectural interest outside.

What's more, despite their authentic multi-paned Colonial styling, these windows are easy to wash. You simply snap off the decorative grilles from within the house. No tools are needed, thanks to their spring-loaded side pins. Then follow the Cleanliness Bureau window-washing advice:

"Wash with warm soap or detergent suds containing a few drops of kerosene and a little blueing for extra sparkle. A bottle washing brush dipped in suds picks up dust from corners of window pane molding. Rinse with warm water and polish dry with clean, lintless cloth."

"Use an up and down stroke on the outside of the pane, and a side to side stroke on the inside. If a mark is left, you can quickly tell which side needs additional polishing."

Simply snap the grilles back on when the job is done.

**THE BUDGET**  
 President Johnson sent to Congress a \$97,963,000,000 budget aimed at cutting in half the Federal deficit while launching an "attack on poverty."

The budget message for fiscal 1965 projected a reversal in the rising tide of Government spending. It is \$500,000,000 less than the Kennedy budget of this year.

**—SPECIAL—**  
 4 Steak Fingers  
 Salad, French Fries  
 and Thicket Toast  
 In a Basket  
 85c  
**CORN DOG**  
 On a Stick  
 25c  
**BILL'S DRIVE IN**  
 19th and Clovis Road 17-4t-tfc

### JOHNSON AND PEARSON

President Johnson and Canada's Prime Minister Lester B. Pearson concluded two days of talks with a show of harmony - the signing of two United States-Canadian pacts.

One is an agreement designed to carry out the aims of the Columbia River Treaty. The other is an agreement for an international park at Campobello, the Canadian island summer home of the late President Roosevelt.



**WHITE "MAGIC 50" TIRE**  
 The Only Tire in the World Guaranteed NOT TO WEAR OUT for 40,000 Miles! Plus 40,000 Mile Road Hazard Guarantee.



**SLOW STARTS?**  

**PUT YOUR CAR IN EXPERT HANDS**

Can't make heads or tails out of it? We can, so for improved motor performance and the finest auto service anywhere... put your car in our hands.

**PLAINS AUTO PARTS**  
 SERVICE DEPARTMENT  
 421 S. MAIN Phone 7150


FOR GREATER FARM PROFITS SEE  
**BELL FERTILIZER, INC.**  
**CONTINENTAL Blend-O-Mix Factory**  
 All Analysis -- Bagged or Bulk Material  
 State Guaranteed Analysis  
 Anhydrous Ammonia --- Rental Equipment

Book your PAG Planting Seeds with us NOW, for GUARANTEED Delivery for 1964. There will be a SHORTAGE on these SEEDS.


**BELL FERTILIZER, INC.**  
 123 WEST BIRCH AVE. Phone 3-2750 or 4690  
 Dick Bell, Mgr. Res. 3-5760

## BUSINESS SERVICES DIRECTORY

**Robinson's Boot Shop**  
 127 Main—Phone 7219  
**FINE WESTERN WEAR**  
 Men, Women & Children  
**SHOE REPAIR SHOP**  
 Ike Robinson & John Howard



**IT PAYS TO BORROW MONEY FROM US.**  
 We can save you money when you buy a new or used car. We're here to help you... with low cost, easy-to-repay loans. We can help you in other ways too. It will pay you to talk to us, and no obligations. — Farm Loans.  
**POOL INSURANCE COMPANY**  
 Phone 2950 --- Muleshoe  
 W. M. POOL, Jr. --- LEE R. POOL



**PRINTING—ART OR TRADE?**  
 To us, printing is not merely a trade, it's a creative art, an exact science. Our staff has the technical skill, with that plus factor: creativity - to make your every printing order distinctive!  
**OFFSET AND LETTERPRESS COMMERCIAL PRINTING SOCIAL PRINTING**  
**Muleshoe Publishing Co.**  
 304 W. 2nd Phone 2350



**COTTONSEED DELINTED**  
 Phone 3-2510 - Muleshoe  
**WILLIAMS SEED CLEANING CO.**

**Kelton Barber Shop**  
 -- BARBERS --  
 Omer Kelton  
 Martin French  
 Sell Us Your USED FURNITURE And APPLIANCES  
**SWAP SHOP**  
 Phone 3-0740

**DR. B. Z. BEATTY**  
 dentist  
 115 South First Street  
 Office Hours 9-12 - 1:30-5  
 Closed Saturday Afternoon  
 Off. Ph. 4300 - Res. 8511

**FOR SALE—**  
 Used Wurlitzer Spinnet Piano Good Condition - Contact  
**PHILLIPS HOUSE OF MUSIC**  
 219 Ma'a - Clovis - PO 3-5041

**HEATHINGTON LUMBER COMPANY**  
 Lumber, Paint, Builders Hardware  
 Clovis Rd. - Ph. 7970

**Farley Insurance Agency**  
 Real Estate and Insurance  
 AUTO FINANCING  
 FARM & CITY LOANS  
 SERVICE BEYOND THE CONTRACT  
 Over Bank, Muleshoe, Texas  
 Off. Ph. 7270 - Res. 3-0313



**JOHN J. MOCK**  
 LICENSED STATE LAND SURVEYOR  
 925 Clovis Hwy.  
 Phone 6760  
 MULESHOE

**SINGLETON FUNERAL HOME**  
 24 HOUR AMBULANCE SERVICE  
 Phone 2860  
 Muleshoe

We Pay Top - Top Prices for Furniture and Appliances  
**W-J AUCTION**  
 Auction Every Tues. Nite  
 Call Collect  
 PO 3-7311 - 108 PILE  
 Clovis, New Mexico

**JAKE DIEI**  
 DIRT & PAVING  
 Land Leveling Terracing  
 Ph. 8410 or 3-5940  
 unit 333  
 Box 581  
 Plainview, Hwy.



**BUYING COINS**  
 Pennies: 1908S, 6.00; 1909S, 10.00; 1910S, 1.00; 1-11S, 2.00; 1912S, 1.00; 1913S, 1.00; 1914D, 8.00; 1915, 1.00; 1915S, 1.00; 1922D, .50; 1924 D, 2.50; 1926S, .75; 1931D, .75; 1931S, 9.00; 1933D, .50.  
 Nickels: 1913S, 1.00; 1913D, 3.00; 1913, 5.00; 1914 D, 2.50; 1915 S, 1.50; 1921S, 2.50; 1924S, 1.50; 1926S, 1.00; 1950D, 2.00.  
 Dimes: 1916D, 25.00; 1921, 2.50; 1921D, 3.00; 1926S, .75; 1931 D, 50.  
 Quarters: 1913S, 15.00; 1914S, 1.00.  
 Halfs: 1904S, 1913 and 1914; 2.00  
 1921 and 1921D, 3.00; 1960D, 1.00  
 Also all gold coins. Phone Goodrow 7229.

I paint anything of value. Spray or Brush. Commercial rig. Cotton trailers \$7.50 plus paint. Phone 3-5930. Dub Ashley. 1-2s-tfc

For Home Delivery of Clovis News Journal and Amarillo Globe call Tommy Cornelison. 3-3460. 1-5s-tfc

**FOR SALE:** AKC Registered German Shepherd. Call Amos Mills 955-9157. 1-5s-4tc

**EXPERIENCED TEACHER**  
 Let your child improve in school, overcome shyness, gain confidence. Clovis, N. M. Phone 763-4844. 1-6t-2tc

**2. LOST & FOUND**  
**LOST:** A red part Boxer Bull dog answering to the name of Sam. If found contact Malone of the Journal. 2-2-tfc

**3. Help Wanted**  
**WANTED:** Full time Beautician. Call 3-4480. 3-1t-tfc

**WANTED:** beautician Dorothy Beauty Salon call 8150 or 4379. 3-5s-tfc

**\$172.50 PER WEEK and up.**  
 If you are 25 years old or more, married, Bondable, and can be your own boss, we will set you up in business at our expense. As our dealer for the Filter Queen Health Unit in this territory. No experience necessary. We will train you at our expense. For interview write Tom P. Smallwood, 3021B 34th St. Lubbock, Texas. Give name address and Phone No. Man or Woman. 3-5s-2tc

**OPPORTUNITY** for full time Rawleigh Business in Muleshoe or Bailey County. Car necessary. No cash investment required. For personal interview write Sales Manager Rawleigh TXB-270-302 Memphis Tenn. 3-6t-3tc

**4. Houses for Rent**  
**FOR RENT:** 3 rooms with bath and utility unfurnished house. Inquire 1412 W. Ave. C. Ira Thomass. 4-3-tfc

**FOR RENT:** 3 rooms and bath unfurnished cottage. One person or couple preferred. See at Robinson Boot shop or corner of 164 West 1st and Ave. E. 4-5t-tfc

**WRECKING YARD**  
 New and Used Parts MOTOR EXCHANGE  
**B. W.'s GARAGE**  
 B. W. McClendon  
 Phone 3-4230 - Night 3-0680  
 1720 American Blvd.



### Parmetr County News

It seems that those who spend your tax money are determined to banish "poverty" from all areas of the United States even if they have to try to use the same methods turned down by the "poverty stricken" wheat farmers who turned down the same program as that being promoted by the planners now. It seems rather strange that the "servants of the people" refuse to believe that these same people whom they profess to serve know so much less than the "servant" believes he does about his needs and desire.

Potato growers remember the several days they spent in Amarillo and other areas of the United States last year, testifying AGAINST potato marketing quotas until the USDA decided it was useless to try to impose them again. And now President Johnson states that it is imperative that this rejected program be imposed in the interest of abolishing poverty, not only among the producers but other rural people, as well. We suppose the attempt by the same planners to impose the minimum wage provision upon the same folks where it has been proven it is not equitable or possible to pay it, will also be presented as a weapon against poverty in this period of unprecedented prosperity.

We do note, however, that the proposal for a cotton acreage diversion program has been declared dead by none other than USDA Secretary Orville Freeman, not by his choice, by any means, but by the refusal of congress to appropriate funds for paying for the diverted acres. This, we hope, may indicate an acceptance of the Farm Bureau plan which would attempt to pay farmers for what they produce, rather than for what they don't

produce on a basis that would improve the possibility of increasing, rather than decreasing production. Reasonable market prices would be the primary foundation for this program.

Although Texas Farm Bureau regrets the resignation of Organizational Director Millard Shivers, it is believed that Wayne Little, who has been in this department for twelve years or more, will make a successful replacement.

John Henderson, who heads organizational and membership work, will attend a district membership meeting in Lubbock this Monday, along with other Farm Bureau leaders. CONSIDER THIS: He that handleth a matter wisely shall find good; and whoso trusteth in the Lord, happy is he. Proverbs 16:20.

Funeral services for Clarence A. Bishop were held yesterday in Progress Baptist Church. Burial was in Muleshoe Cemetery under the direction of Singleton Funeral Home.

Bishop had resided in Bailey County since 1945 when he moved here from New Mexico.

The 82-year-old man was a well known farmer and groceryman. He is survived by his widow, Mrs. Ruth Bishop, of the home, four children, Mrs. M. O. Nigh, Progress; Mrs. J. C. Myrick, Oroville, Calif.; A. Bishop, Roswell, N. M.; and LeRoy Bishop, Ft. Sumner, N.M.; three sisters, Mrs. N. Lum, San Antonio; Mrs. Ola Batchelor, DeKalb and Mrs. Dora Harvey, Texarkana and four brothers, Tom, Oak Grove; Will, Oak Grove; W. L. Avery and Luther Bishop, Box Elder.

Carnegie Tech's basketball record holder is Bill Soffa. Between 1957-61 he scored 1,571 points.

Andy Komer holds the career (1,085) and season (315) rebound records at Carnegie Tech. He operated between 1957 and 1961.

Ed Little, President of Bailey County Gas Users Association reported today that County Gas Users Association would meet at 7:00 a.m. on the 7th day of February, 1964, at Legion Hall in Muleshoe, Texas, to hear a report on a recent meeting of representatives from the Plains Irrigation Gas Users Association with Joseph C. Swidler, Chairman of the Federal Power Commission, in Washington on January 21, 1964.

Mr. Little stated that the Plains organization had made many, many attempts to negotiate a fair gas rate and remove inequities and prorate problems from the present contract with Pioneer Natural Gas Company. After more than two years of negotiations with Pioneer with no success, and after Pioneer has refused to make any concessions at all, the Board of Directors of the 14 county organization at its regular monthly meeting on January 9, 1964, instructed Bruce Parr, President of the Association, Jay Boston from Deaf Smith County, and John D. Alkin, the Association's attorney to set up a meeting with the Chairman of the Federal Power Commission to see if it could afford any relief for the irrigation farmers.

### Services Held For C. A. Bishop

Ed Little, President of Bailey County Gas Users Association reported today that County Gas Users Association would meet at 7:00 a.m. on the 7th day of February, 1964, at Legion Hall in Muleshoe, Texas, to hear a report on a recent meeting of representatives from the Plains Irrigation Gas Users Association with Joseph C. Swidler, Chairman of the Federal Power Commission, in Washington on January 21, 1964.

Mr. Little stated that the Plains organization had made many, many attempts to negotiate a fair gas rate and remove inequities and prorate problems from the present contract with Pioneer Natural Gas Company. After more than two years of negotiations with Pioneer with no success, and after Pioneer has refused to make any concessions at all, the Board of Directors of the 14 county organization at its regular monthly meeting on January 9, 1964, instructed Bruce Parr, President of the Association, Jay Boston from Deaf Smith County, and John D. Alkin, the Association's attorney to set up a meeting with the Chairman of the Federal Power Commission to see if it could afford any relief for the irrigation farmers.

A report on the Washington meeting will be made to the Bailey County Irrigation Gas Users. Mr. Little expressed the hope that all irrigation farmers would turn out to get first hand the results of the conference with representatives of the Federal Power Commission.

### Gas Users Meet To Hear Report

The officers in the Bailey County Gas Users Association are: Ed Little, President; Bill St. Clair, Vice President; Wiley Baker, Secretary-Treasurer; Bill Millen, Director to Plains Irrigation Gas Users Association; Virgil Nowell, Alternate Director to Plains Irrigation Gas Users Association.

FRANCIS IMPLEMENT CO.  
FORD TRACTOR  
Muleshoe, Texas

Your **OLDSMOBILE** will give you better service with **AMALIE** 100% Pure Pennsylvania Motor Oil

Why? Today's high compression engines running at high or low speeds; running in grueling stop and go traffic require the superior oiliness, the heat resistance found only in **AMALIE** Pennsylvania Oil.

**AMALIE** is the oilier oil refined from the world's finest crude by special low-heat process. **AMALIE** stands up under engine heat long after conventional oils break down, thin out, drain off. Cuts wear, insures long miles of smooth engine performance...



change to **AMALIE** 100% Pure Pennsylvania Motor Oil!

Your service station man will stock **AMALIE** for you... Just ask him.

**Wiedebush & Childers**

# BUDGET-PRICED PRODUCE

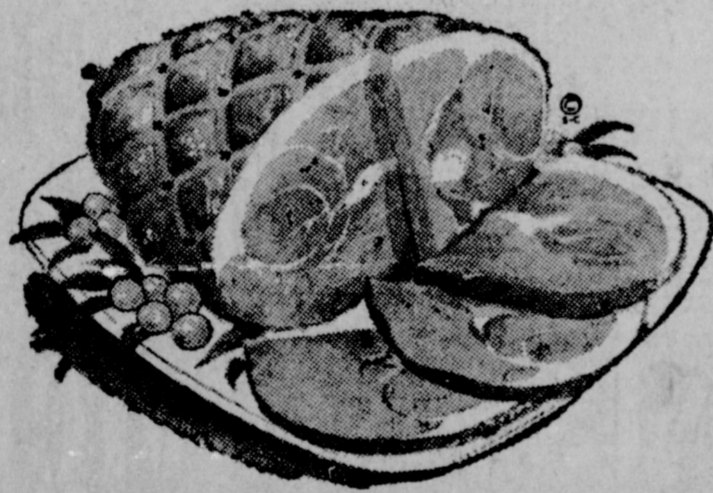
<b>CELERY</b> Large Stalk California Green Pascal	<b>15¢</b>	<b>BANANAS</b> Golden Ripe	<b>lb. 10¢</b>
	<b>GRAPES</b> California Fancy Red	<b>CAULIFLOWER</b> California Snow White	<b>lb. 19¢</b>
	<b>lb. 19¢</b>	<b>Sweet Potatoes</b> Portales Golden Sweet	<b>lb. 10¢</b>



<b>COFFEE</b>	<b>MAXWELL HOUSE INSTANT</b>	<b>6 oz. Jar</b>	<b>99¢</b>
<b>CRISCO</b>		<b>3 lb. Tin</b>	<b>69¢</b>
<b>TREET</b>	<b>ARMOUR'S</b>	<b>12 oz. Can</b>	<b>39¢</b>
<b>OLEO</b>	<b>BLUE SEAL</b>	<b>1 lb. Ctn.</b>	<b>10¢</b>

### HAMS

Pickneys "Sun Ray" Sugar Cured



<b>Whole</b>	<b>lb. 39c</b>
<b>Butt Half</b>	<b>lb. 45c</b>
<b>Shank Half</b>	<b>lb. 43c</b>

<b>Arm Roast</b> Choice Heavy Pen Fed Beef	<b>lb. 55c</b>
<b>Chuck Roast</b> Choice Heavy Pen Fed Beef	<b>lb. 49c</b>
<b>Chuck Roast</b> Blade Cut Choice Heavy Pen Fed Beef	<b>lb. 39c</b>

### CLUB STEAKS

Choice Heavy Pen Fed Beef

**lb. 69¢**



### CHEER

REGULAR SIZE BOX **29c**

### THRILL

Giant Size Pink Liquid Detergent **55c**

<b>Coffee</b> Maxwell House (drip or reg.) 1 lb. Tin	<b>69¢</b>
<b>Pop Corn</b> Pops-Rite (white or yellow) 2 lb. Cello Bag	<b>29¢</b>
<b>Cookies</b> Sunshine Hydrox 1 lb. Pkg.	<b>45¢</b>
<b>Gold Medal Flour</b> 5 lb. Bag	<b>49¢</b>
<b>Gladiola Cake Mixes</b> White, Yellow, Devil Food & Pound 2 lb. Arrow Wrap	<b>3 for 89¢</b>
<b>Aluminum Foil</b> 25 ft. roll	<b>79¢</b>
<b>Bath Room Tissue</b> Aurora 2 roll Pkg.	<b>25¢</b>
<b>Dr. Pepper</b> 6 bottle Ctn. King Size	<b>39¢</b>
<b>Potted Meat</b> Libby's 1/4's can	<b>4 for 49¢</b>
<b>Blackeye Peas</b> with Snaps, No. 300 can	<b>2 for 29¢</b>
<b>RSP Cherries</b> Kimbells No. 303 Can	<b>25¢</b>
<b>Apples</b> Comstock Pic Sliced, No. 2 Can	<b>25¢</b>
<b>MIXED MUSTARD &amp; Turnip Greens</b> Kimbells No. 303 Can	<b>2 for 25¢</b>
<b>Sweet Potatoes</b> Kimbells Fancy Golden No. 3 Squat Can	<b>25¢</b>
<b>Grape Drink</b> Welchade Qt. Can	<b>3 for \$1.00</b>
<b>Grape Jelly</b> Zestee Pure 18 oz. Glass Tumbler	<b>33¢</b>
<b>Peanut Butter</b> Zestee 18 oz. Refg. Jar	<b>49¢</b>
<b>Alka-Seltzer</b> 59c Reg. Price	<b>39¢</b>
<b>Aspirin</b> Bayer, 29c Reg. Price	<b>19¢</b>

## BUY FERTILIZERS NOW!

**DOLLAR FOR DOLLAR. SIDE BY SIDE. YOU JUST CAN'T BEAT**

**MIDWAY FERTILIZER**  
For Range of Formulation or Low Price!  
Anhydrous & Dry Fertilizers  
Any kind of mixed dry fertilizer you may want!

- New Cotton Super
  - New Plow Down & Sorghum Fertilizer
  - New Wheat Special
- MIDWAY FERTILIZER CO.**  
Phone 965-3583 Midway, Texas

<b>LINK SAUSAGE</b> Blue Morrow's 'Lil Piggy' 12 oz. Pkg.	<b>39c</b>
<b>FROZEN FOOD</b>	
<b>STRAWBERRIES</b> Betty Jean, 10 oz. pkg.	<b>2 FOR 39¢</b>
<b>OKRA KEITHS</b> Whole Baby 10 oz. pkg.	<b>2 FOR 39¢</b>
<b>TAMALE DINNERS</b> PATIO	<b>39¢</b>

Listen To **MULETRAIN** over **KMUL** sponsored by **CASHWAY**

# White's CASHWAY

**GUNN BROS.**  
STAMPS  
Double Every Wednesday