

Muleshoe Chamber Of Commerce Kicks Off Whirlwind Campaign For Members

Muleshoe Chamber of Commerce Wednesday was half-way through a whirlwind one-week campaign for new members, and from early indications, the drive was going over with a bang.

While no goals have been set, Roger Albertson, drive chairman, has said that "100 new members should be added to the chamber's rolls before we wind up Saturday night."

The drive was launched Monday at a breakfast meeting at

Paul's Restaurant, and 32 men went out immediately to start button-holing prospective members for the chamber.

Worker kits were distributed, and workers are to report again Friday morning at a breakfast. By noon the first day, results had already started to come in to headquarters. The drive is being conducted in conjunction with National Chamber of Commerce week.

Solicitors include Pat Glover, James Glaze, Franklin Mann, Carl White, Bill McDowell, Spencer Beavers, Thurman White, Howard Cox, W. F. Buck Creamer;

Also Neal Dillman, Louis Powers, Robert Alford, Jimmy Crawford, Jim Cox, Horace Hutton, Harvey Bass, Robert Blackwood, Robert Hooten;

Also Douglas Haynes, the Rev. J. Frank Peery, Myron Pool, Curtis Walker, Wilbur LeVeque, Mrs. Thurman White, Olan Burrows, Jeff Peeler, Frank Ellis, Earl Harris, Eddie

Faust, Delbert Barry, Charles Lewis and J. M. (Mac) Hall. Speakers at the kickoff breakfast included the Chamber president, Dr. Charles Lewis, Albertson and the chamber manager, Roy Davis.

Albertson said all firms and individuals interested in chamber membership should call the chamber office, 2480 or contact any of the membership solicitors.

In presenting the drive to the solicitors, chamber officials pointed out that "cities don't just happen — they're made — made by the work of citizens who have vision, desire and persistence."

"This is already a good town," they were told, "one you can be justifiably proud of. But it can be even better in the future if you will work together, mutually seeking out your problems, setting your goals, finding ways to solve those problems and reach those goals, organizing your resources and working

steadfastly toward greater and greater accomplishment."

"You are launching a very important effort to organize more of your resources, seeking to enlist more money and man-power for the common good."

"You are not asking for donations; you are selling futures, greater futures for your town and area for each business or institution, and for each family and individual."

The solicitors also were told

that they "are involved in this effort because you recognize it is more important to look to the future than the past, because you are willing to take some responsibility for what happens to you, your family and your town. This acceptance of responsibility, this personal commitment is the basic unit of community development."

It was pointed out that members may pay their dues on a monthly basis, quarterly, semi-annually or annually or they

may permit the chamber to draw on their bank account for the fees.

"We have had a very successful year in the Muleshoe Chamber of Commerce," Dr. Lewis told the workers, "and we are looking for an even greater year. Muleshoe is an alert, busy town and we want to keep it that way."

It also was pointed out that professional men as well as business men may join the chamber.

DEDICATED TO THE PROGRESS AND DEVELOPMENT OF BAILEY COUNTY AND THE GREAT MULESHOE COUNTRY

DEDICATED TO THE PROGRESS AND DEVELOPMENT OF BAILEY COUNTY AND THE GREAT MULESHOE COUNTRY

The Muleshoe Journal

DEDICATED TO THE PROGRESS AND DEVELOPMENT OF BAILEY COUNTY AND THE GREAT MULESHOE COUNTRY

VOL. 43 - NO. 14 10 PAGES Published Every Thursday At Muleshoe, Bailey County, Texas --79347 THURSDAY, APRIL 8, 1965

in muleshoe
With the Journal Staff

Scott Oliver, Muleshoe, outgoing president of the Panhandle High School Press Association, presided at last Saturday's meeting of the organization at West Texas State University. Two hundred area journalists attended. The Muleshoe Mule Train, Muleshoe High school yearbook, placed second for Class B yearbooks. Soaring Wings of Canyon, first and The Cub, Brown, placed third.

Dr. B. O. McDaniel, Muleshoe, and Mr. and Mrs. Glen Young, Littlefield, returned recently from a 12-day fishing trip to Port Isabel. Despite rainy weather, the group brought home several fish, and bad cases of sunburn.

Airman Darrell L. Crook, son of Mr. and Mrs. Howard R. Crook, has completed Air Force basic military training at Lackland AFB and has been assigned to ATC school at Sheppard AFB, Sherman. He is a graduate of Farwell High school.

M-Sgt. Walter G. Stuka has received the 51st Bomb Squadron's Quila Award at Seymour Johnson AFB, N. C. His wife, Lorene, daughter of Albert Sheller, is from Earth.

Dimmitt "Outsiders" Volleyball team is planning a tournament for April 12-16, according to Bill Culpepper. Entry fee is \$3 a team, and admission charge will be 25 cents for each. See MULESHOE, Page Five



OUTSTANDING JAYCEE - Muleshoe Jaycees picked Elvon DeVaney (left) as their "outstanding Jaycee" at their annual installation banquet last Saturday night. The presentation of the award was made by John Smith, the club's first president. DeVaney is the retiring president. (Journal Photo.)

DeVaney Is Named Outstanding Jaycee

Muleshoe Jaycees picked outgoing president Elvon DeVaney as the "outstanding Jaycee" for the year at their banquet Saturday night, and the organization's first president, John Smith, presented him with a plaque in recognition of his contributions to the club. Jaycees have made strides

during DeVaney's administration, it was pointed out, and the retiring president "has devoted many hours of hard work to make the club a success."

Presentation of awards and installation of officers for the new year highlighted the banquet which had Doyle Balko, Jal N. M., as the banquet speaker. Balko is a national vice-president of Jaycees. Earl Ladd was presented with the Jaycee's "Citizenship" award.

See JAYCEE, Page Five

Incumbents Re-Elected Councilmen, Trustees

Election Turn-Out is Small

Muleshoe voters returned incumbent Rudolph Wiedebush to the city council Tuesday in a tight vote which saw only 130 ballots cast. Matt Dudley, also an incumbent, was a shoo-in without opposition.

To win the election, Wiedebush defeated Royce L. Garth, only other candidate who filed for the place. Wiedebush polled 89 votes to Garth's 53 for place 1 on the council.

For Place 2, Dudley received 119 votes. However, three other persons received write-in votes. Roy Wrinkle got 5 and Red Johnson and Elvon DeVaney one each.

Incumbents also were swept back into office in last Saturday's school board election when John Smith and Ralph Douglas defeated two other candidates to retain their seats in an election which saw 265 votes cast in the district.

Douglas received 190 votes and Smith 158. R. A. Bradley polled 106 and V. L. (Vic) Benedict got 66 votes. School board members were elected on an "at-large" basis, the two receiving the greatest number of votes winning the places.

A. E. Redwine and W. D. (Dub) Harlan were re-elected at Lazbuddie. Ninety votes were cast. Both Redwine and Harlan are the incumbents. Springlake saw both incumbents re-elected.

See ELECTION, Page Five



Rudolph Wiedebush Matt Dudley Ralph Douglas John Smith

To Survey Junior College Possibilities

The man who knows more about junior colleges probably than anybody in Texas is coming to Muleshoe next week to conduct a survey.

Dr. C. C. Colvert, who has been dubbed, "Mr. Junior College of Texas," will launch his long-heralded survey of the Muleshoe area as a possible junior college site. He will spend Thursday, Friday and Saturday, April 15-17, in Muleshoe and adjoining counties checking into every phase of the junior college possibilities. Alex Williams, chairman of the junior college committee of the Chamber of Commerce, has been informed.

Dr. Colvert met in Austin

last month with a Muleshoe delegation, headed by Williams, who discussed the survey with the educator. The mid-April date has finally been set for the survey, the first step in the drive for a junior college.

Dr. Colvert will return to Austin after completing his survey, and then will sum up the possibilities in a written report to the plan's backers here. If he gives a favorable report — and sponsors believe that the area offers splendid opportunities for such a college — he will return to Muleshoe later and proceed with definite plans for launching the program.

While he is in Muleshoe next week, Dr. Colvert will talk at a public meeting when he will

outline the steps that must be taken before a junior college can be secured.

Dr. Colvert, if he makes a recommendation that the pro-

38 To Attend Enid Festival For Band, Choir

Thirty-eight Muleshoe high school pupils will participate in the annual Tri-State Music Festival in Enid, Okla., April 28 - May 2, it was announced Wednesday.

Directors are Robert Breck-See FESTIVAL, Page Four

posal be pursued, will explain the area necessary to secure a junior college. Several nearby school districts will need to join with Muleshoe in lining up for the program.

The junior college program is carried on in much the same manner as public school districts, although the area covered is much larger. Buses are operated in the same manner as for the 12-year schools, and the junior college in essence is an extension of the high school program for two more years, providing 14 years of free education for pupils, it was explained.

Dr. Marvin Baker, president of the South Plains College in Levelland, has been an enthusiast. See COLLEGE, Page Four



GOLF TOURNAMENT ENTRANT - Muleshoe Country Club's annual invitational golf tournament got off last Sunday, and here's Pat Bobo teeing off. In the foursome were E.T. Ford, Sam Fox and Toad Christian. (Journal Photo.)

County's Test Wells Down 2.33 Feet Since '64, Check Reveals

Bailey county's underground water wells have dropped an average of 2.33 feet per well since 1964, a survey released Wednesday by the High Plains Underground Water Conservation District No. 1 revealed.

The decline was noted on 55 wells under test. For the five-year period from 1960 to 1965, however, the decline was 8.44 feet per well, and the average drop per year per well figures 1.69 feet.

David Cunningham, field representative for the district, pointed out that some wells

showed a much greater decline than others in the same county and that the overall decline here was not as great as in

It's Time To Paint. Fix - Up

Spring has arrived, and that means that nature is getting ready to put on its most colorful garb. Birds are singing — and building nests, making ready for the arrival of spring.

It may be a bit late, but Spring is fast approaching. Accordingly, man is getting ready for the new season too. All of which is by way of saying that Thursday, Friday and Saturday, the county courthouse will close on Saturdays, starting this Saturday. courthouse officials decided this week. Previously the building has been open until noon on Saturdays.

Temperatures		
	High	Low
April 4	79	52
April 5	67	44
April 6	67	36
April 7	75	44
Sunrise Sunset		
April 8	6:12	6:57
April 9	6:11	6:57
April 10	6:10	6:58
April 11	6:08	6:59



TOP DESHAZO SPELLERS - Bailey county spellers are way over in the back of the book now as they prepare for next Tuesday's county spelling bee here. DeShazo has picked its three best (one will be an alternate) who are now putting in every spare minute "boning up" for the bee. Left-right are Sue Darsey, Tonya Powers and Shana Porter. (Journal Photo.)

SHOP MULESHOE FIRST



STRATEGY FOR EASTER - INTRIGUING HAIRSTYLES
AVOID THE RUSH - CALL US NOW!

WELLBORN'S BEAUTY SHOP

101 Ave. J

h. 3-4040

Jenny TOPS Crown Six-Month Queen

The Jenny TOPS met last Thursday night with 17 members present. The TOPS pledge was recited. Weight recorder, Myrtle Wells called the roll. Each member answered by telling how much she had lost or gained.

Countesses for the week were Ethel Allison and Mable Wolfe each having a 2 pound loss. The queen for the week was Essie Hall with a 3 pound loss.

Countesses for the month of March were Evelyn Johnson with a 6 pound loss and Lucille Harp with a 5 1/2 pound loss. The queen for the month was Marie White who had lost 7 pounds. She received a lovely basket of fruit.

This was also the six month and yearly celebration. The ten top losers were: ten and down: Jora Mae Beller, Freida Foss, Evelyn Harris, Selma Redwine, Jewel Peeler, Doris Richards, Marie White, Girtie Kirk, Evelyn Johnson, Ethel Allison and Lucille Harp. Lucille Harp was crowned

queen for the six months and year. She received a nice shower of gifts brought by each member of the club and an engraved charm.

In conjunction with the crowning of the queen a delicious salad supper was enjoyed. The tables were covered with lace over pink with an arrangement of pink roses on the queen's table. Centering one table was an artificial birthday cake. This was the second birthday for the Jenny Tops in Muleshoe, Myrtle Wells, Cecile Cunningham, Ruby Ward, Lauranette Mason and Zora Mae Beller were in charge of decorating. Myrtle Wells received an award for her work in the club. Essie Hall received a birthday gift and the group sang a birthday song.

Lazbuddie Enters Judging Contest

Lazbuddie 4 - H Chapter went to Canyon Saturday for elimination judging contest. Taking the several from Lazbuddie was Mrs. Jack Tamplar.

Leslie and Earnestine Templar entered the quarter horse division. Loy Dale Clark, Billy Eubanks, Mack Ramage and Wesley Barnes won second place on livestock division. Katie, Dale and Ann Blackstone had entries in contest food and nutrition, with Dale taking third place. Earnestine Templar was the only blue ribbon winner from Lazbuddie.



WINNER - Mark Edwards, Sixth - grader, showed the prize - winning exhibit at De Shazo in last weekend's school wide science fair. He is the son of Mr. and Mrs. Horace Edwards. (Journal Photo).

Muleshoe Artists Receive Awards

Twenty-five paintings selected from a field of 251 entries by 109 artists living in 22 towns in the South Plains area and other points in Texas and New Mexico make up the Tenth Annual Citation Show for Region 29. Texas Fine Arts Association.

Artists receiving prizes and awards will also be presented Texas Fine Arts Association citations. Among the several receiving citations was Marie Lennu, Muleshoe, on "Spring Bouquet" in oil.

All works receiving citation merit will be sent to Austin to be exhibited in the Texas Fine Arts Association Summer Citation Show.

Also selected were 15 paintings for the new South Plains Circuit Show, a traveling exhibition for the South Plains region. The collection will be displayed at Methodist Hospital Gallery during July and August and bookings are open to area towns for May and June.

Among several others were Blanche Lenderson of Muleshoe.

Citation Exhibition and South Plains Circuit Show selections will remain at the Center until April 30, under auspices of Lubbock Art Association.

Shower Honors Recent Bride

A wedding shower honoring Mrs. Eugene Houston, the former Frances Dean Meyers, was held last Thursday in the home of Mrs. John Agee.

A floral centerpiece on the refreshment table along with other decorations throughout the house carried out the bride's chosen colors of blue and white.

A short program, including an original poem by the groom, entitled "This I Believe, Dear", was presented.

Sharon Agee, Rosemary Briggs and Marie Redwine presided at the serving table with Peggy Carrell greeting and registering the guests. Approximately 50 guests attended the shower, with many lovely gifts, along with the electric skillet by the hostesses.

Hostesses for the event were Mrs. John Littlefield Mrs. Clarence Mason, Mrs. Alton Morris, Ms. Ralph Cox, Mrs. Thomas Carrell, Mrs. J. R. Harris, Mrs. Bert Gordon, Mrs. Earl Peterson, Mrs. W. F. Harper, Mrs. Barney Floyd, Mrs. Ernest Nowell and Mrs. John Agee.



RICHLAND HILLS WINNER - This "products of cotton" display took first for Richland Hills school in the annual science fair. The display was made by Suzanne Byrd. (Journal Photo).

LOCAL GIRL SCOUTS PLAN PLAY

Troop 39 of the Muleshoe Girl Scouts will present a skit entitled "Muletrain" and one act play entitled "The Lady Who Put Salt In Her Coffee", at the Muleshoe High School Auditorium Friday night at 7:30. Admission will be fifty cents for adults and ten cents for children. The girls are paying their way to summer camp with the proceeds.

Mistress of Ceremonies will be cadet Karen Parks, with Gil Lamb played by Narda Pierce. Mrs. Jenny Slipper will

be played by Christy Ford. Mr. Johnson Grass played by Kathleen Jennings Texas Pete, by Danita Saxton, Beatnik by Sheryl Burton, Rufus the Mule by Wovery Throckmorton.

The one act play will be played as Kathy Pena playing Mrs. PETERKIN, Agatha as Terry Waller, Solomon John as Cynthia Puckett, Elizabeth Eliza as Kay Cambell, Two Little Boys by Jan Cockerell and Sarah Ward, Chemist by Tracy Cowan, Herb Lady by Janet Campbell, Lady from Philadelphia by Lizann Gunter.

Owen Powell III
Owen C. Powell, Muleshoe, is recovering from a heart attack in a Dimmitt hospital. Powell is to be moved to a Lubbock hospital soon.

Patzer
Chiropractic Clinic
Muleshoe, Texas
Phone 3-9670
1540 American Blvd.
KEEP SMILING

TRI-CO BOWLING CENTER

COME JOIN THE FUN

MOONLIGHT BOWLING SAT. APRIL 10 9 P.M. TILL?

COMMUNITY LEAGUE TO MEET	MON. 12 - 6:30 P.M.
TUESDAY NIGHT	OPEN
MIXED LEAGUE	WILL BOWL WED. 14 8:30 P.M.
POWDER PUFF LEAGUE TO MEET	THUR. 15 6:30 P.M.
MIXED LEAGUE	WILL BOWL FRI. 16 7:30 P.M.
MAJOR LEAGUE	TO BOWL MON. 12 8:30 P.M.

SNACK BAR IS OPEN
SERVING A-LA-CARTE LUNCHES
HOME MADE PIES

LADIES' LEAGUES FORMING NOW!

Open Mon. Through Sat.
9:30 A. M. to 11:30 P.M.
OPEN SUNDAY
1:00 P.M. to 11:30 P.M.

MEN! RESERVE YOUR LEAGUE LANES NOW!

Zing into spring! Chevelle by Chevrolet



'65 Chevelle Malibu Convertible— with color-keyed all-vinyl upholstery

It's the most popular mid-size traveler built— which isn't surprising when you consider who built it.

There's no doubt that a car like this could get by on its good looks alone. But the fact that it is built by Chevrolet assures you right off it's got a lot more going for it than merely meets the eye. It tells you, for example, you can have the impetuous kind of power—6 or V8—that Chevrolet has a reputation for putting in its cars. It tells you that you get Body by Fisher handiwork inside and

out. It tells you that you're going to get a ride developed by engineers who are old hands at putting the squelch on bumps. Knowing all this, you probably won't be startled by the fact more people are now buying Chevelle than any other car its size. But you will have a happy surprise when you check what you can buy one for—right now at your Chevrolet dealer's.



HIGH TIME TO TRADE AT YOUR CHEVROLET DEALER'S

Zing into spring in a new Chevrolet, Chevelle, Corvair, Chevy II or Corvette

CROW CHEVROLET COMPANY

201 MAIN

MULESHOE

PH 3-1000

Youth Revival At Progress

A Youth - led revival will be held at the Progress Baptist Church Friday, Saturday and Sunday. The youth extend a special invitation to everyone to attend every service. Friday and Saturday night, at 7:30 p.m. and Sunday 11 a.m. and 7:30 p.m.

Rev. Ronald Brown, student pastor, Baptist Church of Belen, N. M. will be the evangelist. At the same time Brown has been completing his education, he has led his church in building a new church building. Come and hear inspirational messages.

Miss Brenda Tanner will lead the singing and provide special music, with Miss Susie Tanner at the piano.

The revival will be culmination of observance of Youth Week and the youth will fill places of leadership in the church Sunday. Lunch will be served to them by the W. M. S. Sunday night, will be an "Hour of Challenge" with old-time singing, testimonies, praying, and preaching.

Bro. B. C. Stonecipher, pastor, invites you to come worship with the church that has a friendly welcome for you.

Club Planning Library Theme For Program

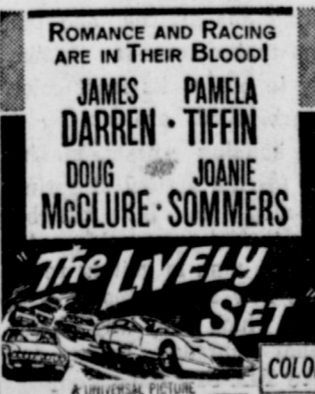
Muleshoe Study Club will observe National Library Week April 21 - 27. The club will meet Thursday at 4:30 p.m. with Mrs. Rufus Gilbreath.

Visiting speakers for the meeting will be Mrs. Georgia Pena and Mrs. C. E. Moore.

Mr. and Mrs. J. G. Arm spent the weekend with her parents, the E. A. Wakefields in Childress. Mrs. Wakefield has been ill, but is much improved.

WALLACE THEATRE

GENERAL ADMISSION
75c Adult 25c Child
THUR., FRI., and SAT.
April 8-9-10



WE

HAVE

IT

IS ALL

AT



SUNDAY APRIL 18
"EASTER IS ALMOST HERE"

HAVE THE **COAT**
THE **SUIT**
THE **KNIT**
THE **DRESS**
THE **SHOES**

ONLY **BETTER MAKERS**
ONLY **BEST QUALITY**
ONLY **NEWEST STYLES**
ONLY **WANTED COLORS**

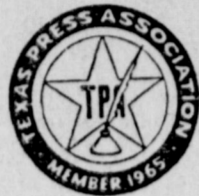
The Muleshoe Journal

Published each Thursday by The Muleshoe Publishing Co.
304 West Second Street, Muleshoe, Texas
Member of The Associated Press
Entered as second class matter at the Muleshoe Post Office under act of Congress, March 3, 1897.

SUBSCRIPTION RATES

Immediate Territory \$4.00
Out of Territory \$4.50
Combined with Bailey County Journal
Both papers in territory \$5.50
9th Papers outside territory \$6.25
Advertising Rate on Application.

L. B. HALL Publisher
RAMON MARTIN Editor
PAT JOHNSON Woman's Editor



Muleshoe Junior Thin Clads Set For Plainview

Muleshoe seventh and eighth grade trackmen will go to Plainview Saturday to participate in a junior track meet. Coaches Bob Graves and Ronnie Jones said Wednesday.

Muleshoe 8th grade and 7th grade teams each came off with second place in a meet last Saturday at Springlake.

For the 8th graders, Friona with 134 1/4 points finished first; Muleshoe gathered 133 1/4; Hereford got 129 points and Dimmitt finished fourth with 95.

In the 7th grade meet, Dimmitt won first with 173 points; Muleshoe had 122, and Hereford got 115 points.

Individual winners were as follows:

SEVENTH GRADE
100 - Dash - Larry Ratliff-1st-11.6; 220 - Dash Larry Ratliff 2nd 26.5; 440 relay - Muleshoe - 3rd - 53.5 - Alfred Bleeker, Chucky Roming, Robert Duckworth, Larry Ratliff. 880 - relay - 3rd 157.3 - Robert Duckworth, David Hall, John Bean, Vincent DeLeon; 50 yd. Dash - Alfred Bleeker - 4th - Leland Farris - 6th.
75 yd. dash - Alfred Bleeker, 4th; 120 Lows - Jim Putman - 4th; 70 Highs - Ronnie Barrett - 2nd; 660 yd. run - Vincent DeLeon - 1st 144.1; Ronnie Barrett - 3rd; 440 Dash-David Hall - 2nd - 62.2;
Broad Jump - Larry Tarliff-tie - 2nd - 3rd - 15.5"; High Jump - tie second Bean, Barrett - Duckworth; Shot putt - Ratliff - 3rd - Barrett - 6th; Discus - Jim Putman 6th; P. Vault - Ronnie Barrett - 5th.

EIGHTH GRADE
440 - relay - Muleshoe - 1st-50.3 - Larry Calvert, Rickey Botkin, Roger Swint, Charlie Beamon; 100 - Dash - Charlie Beamon - 1st - 11.0; 50 - Dash - Charlie Beamon - 1st - 6.0; Lowry Lewis - 3rd - 6.2; John Elliott - 6th - 6.4; 75 Cash - Larry Calvert - 2nd - 8.8. Roger Swint - 4th - 8.9; 440 - Dash - Jimmy Richardson 6th - 62.4; 660 - Dash - Jackie Harris, 3rd - 140.2; Eusebio Villarreal - 4th-141.4; 880 relay - Muleshoe - 3rd - 147.3 Roger Swint, Lowry Lewis, Rickey Botkin, Larry Calvert; 120 - Low Hurdles - John Elliott - 3rd - 16.1;
Field Events
Shot Putt - Charlie Beamon-2nd - 41.7"; Tommy Haynes - 5th - 38.7"; Discus - Lowry Lewis - 6th - 105.4"; P. V. - Dennis Bush - 4th - 8.7"; John Elliott - 5th - 8.4"; B. Jump - Charlie Beamon-2nd - 16.1". Larry Calvert 3rd - 15.11"; Johnny St. Clair - 5th - 15.9"; H. Jump - Danny McNeil - 1st - 4.10"; Johnny St. Clair - 4th - 4.8".



PLAYS IN PITTSBURGH - Susan Birdsong leaves Saturday for Pittsburgh, Pa. to play an all-star high school band concert at Duquesne University next Tuesday night. The Muleshoe High School senior will rehearse with the band Sunday, Monday and Tuesday for the concert. She is the daughter of Dr. and Mrs. W. F. Birdsong. (Journal Photo).

Kay Floyd Given Wedding Shower

A bridal shower was given for Kay Floyd bride - elect of Dale Griswold, Muleshoe, at the Muleshoe State Bank Community Room March 30 at 8 p. m.

In the receiving line were Kay, her mother, Mrs. Austin Floyd, and the fiances mother, Mrs. Leonard Griswold.

White punch and individual white cakes with blue trim, carried out the bride - elect chosen colors of white and blue.

Out of town guests for the occasion were Mrs. A. E. Jackson and Judy, Mrs. Laurence Jackson and Belinda from Hereford, and Mrs. Carl Burns from Sudan.

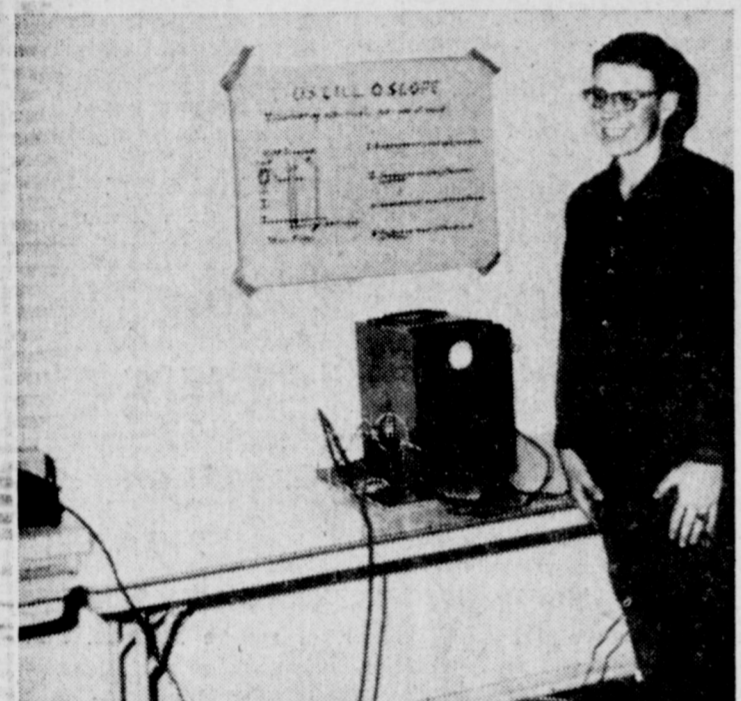
Hostesses for the occasion

Mind's Effect On Health Set As Study Theme

Effect of our thinking on our health will be examined in this Sunday's Bible Lesson to be read at all Christian Science churches. The subject is "Are Sin Disease, and Death Real?"

The Responsive Reading for the day begins with a verse from Isaiah: "Behold I create new heavens and a new earth; and the former shall not be remembered, nor come into mind."

Related passages will be presented from the Christian Science textbook, including these lines: "Instead of God sending sickness and death, He destroys them, and brings to light in mortality. . . . When Christ changes a belief of sin or of sickness into a better belief, then belief melts into spirdisease and death disappear" (Science and Health with Key to the Scriptures by Mary Baker Eddy, pp. 206,442).



PHYSICS WINNER - Dan Judd and James Pitts took first place in physics in the high school annual school science fair. Here is Dan Judd with the display. (Journal Photo).

FAT OVERWEIGHT

Available to you without a doctor's prescription, our product called Galaxon. You must lose ugly fat or your money back. Galaxon is a tablet and easily swallowed. Get rid of excess fat and live longer. Galaxon costs \$3.00 and is sold on this guarantee: if not satisfied for any reason, just return the package to your druggist and get your full money back. No questions asked. Galaxon is sold with this guarantee by:

WESTERN DRUG STORE
Muleshoe
Mail Orders Filled

Music Teachers Dine at Clovis

China Inn near Clovis was the scene of a 1 p.m. luncheon as Mrs. Sam McKinstry met with other piano teachers and their husbands from Clovis, Portales and surrounding towns who are entering their students in the Guilds National Piano Playing Auditions.

They were honoring as their guest David Hornsby Boulder, Colorado, who is in Clovis at this time as auditioner for the yearly piano playing auditions where the trials are held for this section.

Mrs. McKinstry will be at the womans club, Clovis, on Friday from 1 p.m. to 3 p.m., Saturday from 9 a.m. to 5 p.m. where she will meet 34 of her students for their National Piano Playing Auditions with Hornsby.

Mrs. McKinstry is a member of the Texas Music Teachers Association, Music Teachers National Association and is an active member of the national guild of piano teachers.

STORAGE SPACE FOR RENT SWAP SHOP

Catholic Church Lists Services

Immaculate Conception of Mary Catholic Church, Muleshoe has the following schedule for the week:

Palm Sunday Holy Masses at 8:30 a.m. and 12:15 p.m. Palms for the people before Masses.
Holy Thursday - 8: p.m.-High Mass
Good Friday - 8: p.m. - Way of the Cross
Easter Sunday - Midnight High Mass Saturday, April 17 at 8:15 p.m. Easter Sunday Mass - April 18.

LATE WANT ADS

FOR SALE:
Antique bedroom suite - baby bed - basinette - barcalounger chair - child's wind up swing. Call 3-0220 from 8 to 5.

CARD OF THANKS
We wish to express our thanks to our many friends for the food and many kindnesses at the time of the death of our husband and father, W. A. Shafer.
Mrs. W. A. Shafer
Mr. and Mrs. Arthur Shafer
Mr. and Mrs. Louis Shafer
Mr. and Mrs. Bud Shafer
Mr. and Mrs. Bub Shafer
Mr. and Mrs. A. B. Harris
141-11p

CARD OF THANKS
We wish to express our sincere thanks to our many friends and neighbors for the kindness shown us at the death of our loved one T. W. Bewley. For each work of encouragement, for the nice food served and the beautiful flowers. For all of these we are eternally grateful.
Mrs. Betty Bewley
Jimmy Seaton Family
Rhiney Steinbock Family
1-141-11p

Glub, bloop, gurgle, gur . . . stopped? Find PLUMBERS fast in the YELLOW PAGES.
Where your fingers do the walking.



we are pleased to have been selected to furnish the new

Tri-County SAVINGS AND LOAN ASSOCIATION

Office in Muleshoe

WILLIAMS BROS. OFFICE SUPPLY
and
MILLER-HOWARD Office Supply Co.

'65 HOTLINE: FORD HARDTOPS



The styling warms you up to these '65s from Ford—and a test drive leaves you hot for 'em! **GALAXIE** is all new from road to roof. Standard new 240-cu. in. Six is Texas' biggest! A new body-frame-suspension system results in a quieter ride than Rolls-Royce. Even the interior elegance compares with America's most expensive cars! And then there's **MUSTANG**—our runaway success car! Lots of standard luxury at a low price: bucket seats, all-vinyl interior, full carpeting, a new 200-cu. in. Six, 3-speed floor shift and much more! Make the switch to the **TEXAS FORD DEALER'S** hardtop hotline now . . . at your

MULESHOE MOTOR CO.
MULESHOE, TEXAS American Blvd at 1st Street



You are cordially invited to attend open house Sunday, April 11, 1965 from 2 til 5 p.m. at the new office of Tri-County Savings And Loan Ass'n. 232 Main Street Muleshoe, Texas

Tri-County SAVINGS AND LOAN ASSOCIATION
MULESHOE, TEXAS



Economy Hurt By 'Dry' Stories, Newspaper Asks

Every publication these days seems to be getting into the "dust bowl" act, good, bad and indifferent views being expressed.

And two stories with Muleshoe datelines have focused the gloomy writings on this prosperous area. Both The National Observer and The Dallas News articles weeping about the dust have had Muleshoe datelines. The Sunday Brand at Hereford this week looked at the various and sundry writings and came up with its own story. It called a late March issue of U. S. News and World Report

as the only unbiased, truly factual look at the moisture shortage. Some drought, yes, said the magazine, but nothing like in the '30's.

The Brand pointed to the elementary school reader, "Weekly Reader" which has a page article titled, "Land Where the Dust Blows Again."

The article said, "As I was driving through the Texas Panhandle, I looked for fields green

with wheat. Instead, I found a drab, brown landscape with dry rivers and creeks. Drought has dried the land." The Brand article said the pictures and illustrations obviously were borrowed from the New York Times.

Of the Observer article, an employee of a utility company said "He (the writer of the Observer article) seemed to have made up his mind before he got here."

The Brand article continues: "Muleshoe residents, spotlighted by the datelines in The National Observer and The Dallas News stories, have understandably reacted with a touch of wounded civic pride, a chamber of commerce official said.

"After the Observer article, a public meeting was called in the Bailey county town. People talked about "much worse" blowing days, about not realizing they would be directly quoted, about inviting the reporter back. Perhaps indoctrination in the mercurial development of the region and his tune would change, they reasoned. The plan was abandoned, however.

"We didn't try it because we didn't think they would print it," Roy Davis, manager of the chamber, explained.

And the Brand article concludes with: "Just what effect the unfavorable spotlight will have on the overall, long-range economic expansion of the region is not known, or if, with the public's desultory capacity for slipping from one 'man-made' crisis to another, it will matter at all.

"But to slightly alter a phrase from an eastern man named Joe Western: 'The damage in short, could be incalculable.'

Festival

(Continued from Page 1) enridge, Bill Bradley and Leasel Richardson.

Those going include: Stage Band: Anthony Rundell, Trombone; Pam Seymore, Alto Saxophone; Gail Locker, Baritone Saxophone; Dennis Burrows, Trumpet; and Richard Stout, Trapi.

Orchestra: Susan Birdsong, clarinet; David Dillman, french horn; Tommy Jones, trumpet;



JUNIOR HIGH WINNERS - These were the junior high school winners in last week's science fair conducted school-wide. Left-right are Randy Lackey, Leland Meason, Leland Ferris, Debra Rudd, Lee Gable, Lex Guinn, Johnny Raney and Richard Fox. First place exhibits were shown by Debra Rudd and by Lee Gable and Lex Guinn. (Journal Photo)

Fix-Up

(Continued from Page 1) Saturday have been proclaimed by Mayor Wilbur LeVeque (See below) as "clean - up, paint - up, fix - up" days in Muleshoe.

The mayor is asking all citizens to join in the movement to

College

(Continued from Page 1) lastic backer of the Muleshoe project and has conferred with local backers on several occasions, offering advice on procedure. The school at Leveland had expected an enrollment not exceeding 700 by the end of five years, but it passed the 800 mark three years after it was founded. Dr. Baker has promised his continuing support and has offered to aid the Muleshoe backers in any way possible.

The need for a junior college here was stressed by many persons who attended the Muleshoe area Improvement Forums conducted last autumn. In fact, the junior college proposal was one of the top priority items on the MAIF program.

Hal Anderson, trumpet; Marsha Blackman, flute; Patsy Angeley, flute and Stephanie Perry, bass.

Band: Charlotte Garney, piccolo; Ellen English, flute; Sandra Rundell, flute; Kathy West, clarinet; Renee Howell, clarinet; Nancy Lee, clarinet; Terry Bryant, clarinet; Lynn Ericson, clarinet; Pam Kerr, alto clarinet; Jan Everett, alto saxophone; Carolia Bass, Tomnye Welch, cornet; Jan Landers, french horn; Lyna Pitts, french horn and Neil Finley, bass.

Choir: Jane Branscum, second soprano, Sherry Smith, first soprano; Jean Davvs, first soprano; Gloria Ragland, first soprano; Ann Davis, first alto; Gay Seagroves, second alto; Dwyan Calvert, baritone; and Gene McGuire, baritone; Miron Young, Bass; Wister Harrison, bass and John Gully, second tenor.

Your OLDSMOBILE will give you better service with AMALIE
100% Pure Pennsylvania Motor Oil

Why? Today's high compression engines running at high or low speeds; running in grueling stop and go traffic require the superior oiliness, the heat resistance found only in AMALIE Pennsylvania Oil.

AMALIE is the oilier oil refined from the world's finest crude by special low-heat process. AMALIE stands up under engine heat long after conventional oils break down, thin out, drain off. Cuts wear, insures long miles of smooth engine performance...

change to AMALIE 100% Pure Pennsylvania Motor Oil!

Your service station man will stock AMALIE for you ... Just ask him.

Wiedebush & Childers

Retail prices on nearly a fourth of the foods used regularly by consumers declined during the past five years. Among these items were choice grade beef, pork, ice cream, frying chicken, eggs, margarine and vegetable shortening. The biggest increases in price were on sugar, oranges and potatoes — and these reflect a temporary situation. The retail price of most other foods is up only slightly, says the U. S. Department of Agriculture.

SHOP MULESHOE FIRST

FARM SHOW
Lubbock Municipal Coliseum
April 10, 1965.
Featuring the latest products of major farm equipment. Get your free tickets at Fry & Cox. A color T.V. will be given away as an attendance prize. See this outstanding show FREE
FRY & COX
Muleshoe, Texas

Cross a Wildcat engine with a Buick Special, and what do you get?

A car with 9 lives and a very businesslike purr.



SEE YOUR LOCAL AUTHORIZED BUICK DEALER. AUTHORIZED BUICK DEALER IN THIS AREA:

BUICK MOTOR DIVISION

BROCK IMPLEMENT CO., INC., 322 North First Muleshoe, Texas

TUNE IN "LOWELL THOMAS AND THE NEWS"—CBS RADIO



PROCLAMATION:

WHEREAS this is the season of the year when life comes a - new and the world takes a fresh, new look,

AND WHEREAS, nature dons its spring garb, flowers bloom and trees wrap themselves in new foilage:

AND WHEREAS man, too, takes on a new spirit of life in the spring since it is a season for renewing and for freshing up after the drab winter months.

AND WHEREAS, this is the time of the year for cleaning up, painting up and fixing up the premises,

THEREFORE, I HEREBY proclaim Thursday, Friday and Saturday, April 8, 9 and 10, as CLEAN-UP, PAINT-UP AND FIX-UP days in Muleshoe, and urge all citizens to join in the movement to make our city more beautiful,

(Signed) L. B. Le Veque, Mayor

of Muleshoe

Meet the MULESHOE STATE BANK CUSTOMER of the Week



Mr. F. Haynes

This weeks customer of the week is F. Haynes, who farms two miles north of Muleshoe. Haynes and his wife Lola, have five married children. The Haynes attend the Baptist Church. Haynes said he had banked with the Muleshoe State Bank since 1952, when he first came to this part of the country, and "they are very accomodating. Sure think they are O.K." We are proud to recognize this customer of the week.

Muleshoe State Bank
"YOUR GOOD NEIGHBOR SINCE 1914"



Election

(Continued from Page 1)
 bents, R. L. Byers Jr. and Guy F. Kelley, re-elected without opposition. Kelley received 27 votes and Byers got 26 out of 29 ballots cast.
 At Three Way Incumbent Joe Sowder received the high vote of 32, followed by Doyle Davis with 28. Other candidates included Incumbent Chester Peetree, five votes, and E. B. Julian, 12.
 Incumbent Guy H. Walden was re-elected and Frank Lane was named a new trustee in light voting at Sudan. Walden, secretary of the board got 77, Land 79. Others were: Calvin O. Baker, 61; Bill Boyles 47; Donnie R. Cowart, 27 and Bill Nix 26. Incumbent W. B. Jones Jr. did not file for re-election. A total of 163 votes was cast.
 At Littlefield, incumbents

John D. Smith and Buster Owens were re-elected. Smith got 143 votes and Owen 112. Only other candidate, Edwin Coffman, received 103 ballots. A total of 181 votes was cast.
 At Friona, two new directors were named in an election which saw 218 votes cast. Louise Welch polled 100 votes and Dr. Paul Spring got 163 to become new trustees. W. R. Mabgy and Ellis Tatum did not seek re-election. Billy Dean Baxter received 69 votes and C. M. Phipps had 31.
 Fifty-eight votes were cast at Farwell. Clarence Johnson received 59 votes and Joe Blair polled 55. Both are farmers. Incumbents A. H. Haseloff and Jim Curtis declined to run.
 Bovina sees the possibility of a run-off between Billy Marshall and Lloyd Gobeir who each received 65 votes.
 Two trustees elected included

Leon Griffin and Leslie McCain, both of whom are new candidates. Griffin polled 70 and McCain was the leader with 89. Incumbents Johnnie Horn got 39 and Vernon Estes received 52. Other votes included Edward Isaac, 41; Paul Jones, 40, and Eddie G. Steelman, 22.
 Olton polled a total of 375 votes, an unusually large number. In a three-man race for the two positions open, John Norfleet and Elmer McGill, both farmers, were elected. Norfleet led the ticket with 218 and McGill got 224. Joe W. Hall, building contractor, received 209 votes. Both are former Olton school pupils.
 Incumbents Fred Hicks and Roy Roberts did not seek re-election.
 In Hereford, Dr. A. T. Mims was high with 379, followed by L. B. Russell, an insurance man with 293 votes. Russell, until last year, was high school principal. Others running included S. L. Garrison, 191; S. F. Clements, 126, and Dr. Gale Page, 31. President Ivan L. Block did not seek re-election.



CREDIT COURSE GRADS - A retail procedures' course was conducted in Muleshoe last week by Wayne Holcomb (second from left) with University of Texas Extension division, and "graduates" received certificates. Here receiving certificates are Bill Taylor (left) and John West, from Neal Dillman, superintendent of schools. (Journal Photo)

Muleshoe

(Continued from Page 1)
 person.
 Speaking on the nation's No. 1 health problem, "Heart," Dr. W. F. Birdsong, Muleshoe, will speak to the Rotary club April 13 and to the Lions club April 14, it was announced by Bill Renfro, regional director of the Texas Heart Association, Lubbock.
 Dr. and Mrs. W. F. Birdsong had as their guest over the weekend Ira Muse, Wilson, N. C., an employee of the Internal Revenue Service. He and the Birdsongs went to Amarillo Sunday to visit Robert Holt. Afterward, Muse flew to Dallas on business.
 Second monthly meeting of the Citizens Band Radio club of Muleshoe was held last Friday night in the conference room of the Bailey County Electric Co-op. Six members were present and four new members. Also on hand was

one visitor. Don Gover, president, announced Les Dudley has been named vice-president and Glen Rowland, Kenneth Wells and Meredith Prudle are directors. Following Friday's meeting, "42" was played. Refreshments were served.
 Condition of Jerry Eugene Maxwell, 29, injured in an automobile accident near Whiteface Sunday, continued critical Wednesday. He suffered skull fractures, a broken left knee and severe cuts when the small automobile in which he was riding turned over. Less seriously injured were three girls from Girls' Town, Whiteface.
 Andy Thompson, Muleshoe, is in Galt, Calif. staying for a few days, after receiving word that his son-in-law is ill. Opal Thompson announced Tuesday that she received a phone call from her husband saying their son-in-law was much improved.
 SHOP MULESHOE FIRST

CO-OP Chatter by FARMERS CO-OPERATIVE ELEVATOR

FARMERS CO-OP ELEVATOR

FARMERS CO-OPERATIVE Elevator

Phone 5350 6660

FERTILIZER - GRAIN - SEED

H.L. WARD, Manager

MULESHOE, TEXAS

Check

(Continued from Page 1)
 late area, the greatest decline of all shown for the Panhandle was that reported in Potter county where the average decline per well was 5.98 feet. However, the test was made on only four wells. By strange contrast, Potter's neighbor, Randall county, had a drop of only 1.49 feet average per well.
 The High Plains release gave

a well by - well report. For example, a decline of 4.21 feet was shown for a well in the extreme southern part of the county, while a well in the same area dropped only .48 foot.
 On the other hand, nine wells showed slight increases for the year, the greatest being a 2.59 foot gain for a well also in the southern part of the county. A well in the extreme northeastern part of the county had the greatest decline, 5.49 feet. A test well located inside Muleshoe, showed a decline of 2.06, and another on the west edge of Muleshoe had dropped only 1.63 feet.
 In discussing the ground water depletion situation, High Plains Engineer Donald L. Reddell wrote: "the effects of the hot, dry summer of 1964 are re-

flected in the decline of the water table from 1964 to 1965. . . . The average decline for the entire water district was 3.99 in 1964, a 60 percent increase over the decline of 1963 and 67 percent greater than the five-year average decline. The annual decline for 1964 was the greatest of any year since 1955."
 As to the future he wrote: "If we continue to use ground water in the High Plains we eventually will reach a point of economic exhaustion. This has already happened in some areas. . . . A practical method for meeting the water depletion problem is the improvement of water conservation practices. However, this will at best only serve to extend the life of the area's water supply. Therefore, some long-range thinking and planning are needed if the High Plains is to have adequate water to maintain its economy in the future."
 And he concluded "If the urgent requirements for additional water supplies are to be met, vigorous and enlightened leadership must be provided by the leaders of each and every community. . . ."

Jaycee

(Continued from Page 1)
 award" for his outstanding work as fire chief.
 "Spark Plug" awards went to DeVaney, Roger Gorrell and Curtis Walker for their work with the club, and Terrell Johnson and Kenneth Henry were given "Spoke" awards. "Roadrunner" awards went to Roger Gorrell and DeVaney. The outgoing president also was presented with the past president's award.
 Guests were present from Friona, Tulia, Dimmitt and Hereford Jaycee organizations. The Alley Cats from Lubbock provided music for the dance which followed.
 New officers installed included Kenneth Henry, president; Jerry Gleason, first vice-president; Curtis Walker, second vice-president; Jimmy Lane, secretary-treasurer; Elvon DeVaney, inter-club director; and Franklin Mann, Melvin Malone and Carl White, directors. Curtis Walker served as master of ceremonies, and invocation was given by Franklin Mann.
 Awards also were presented to The Muleshoe Journal and to Radio Station KMUL for their contribution to Jaycees. Installing officer was Bud Miller, state director of Jaycees for Region 1-C.

ATTENTION MR. FARMER!

IRRIGATION ENGINES

145 GZ WAUKESHA ENGINES WITH 9:2 COMP. RATIO. COMPLETELY REBUILT WITH NEW PARTS. THESE ENGINES ARE READY TO PUMP-GUARANTEED. \$1,495. EACH. MODERN EQUIPPED SHOP WITH WELL TRAINED MECHANICS TO REPAIR WAUKESHA & MOLINE ENGINES. WILL GIVE FREE PICK UP & DELIVERY PLUS PAINT JOB ON ALL OVERHAUL JOBS. LARGE STOCK OF PARTS.

MATHIS IRRIGATION ENGINES

408 E. 6TH. PLAINVIEW, TEXAS

PH. OFFICE CA. 3-2634
 NIGHT CA 4-6970
 CA. 4-4050

PUBLIC NOTICE

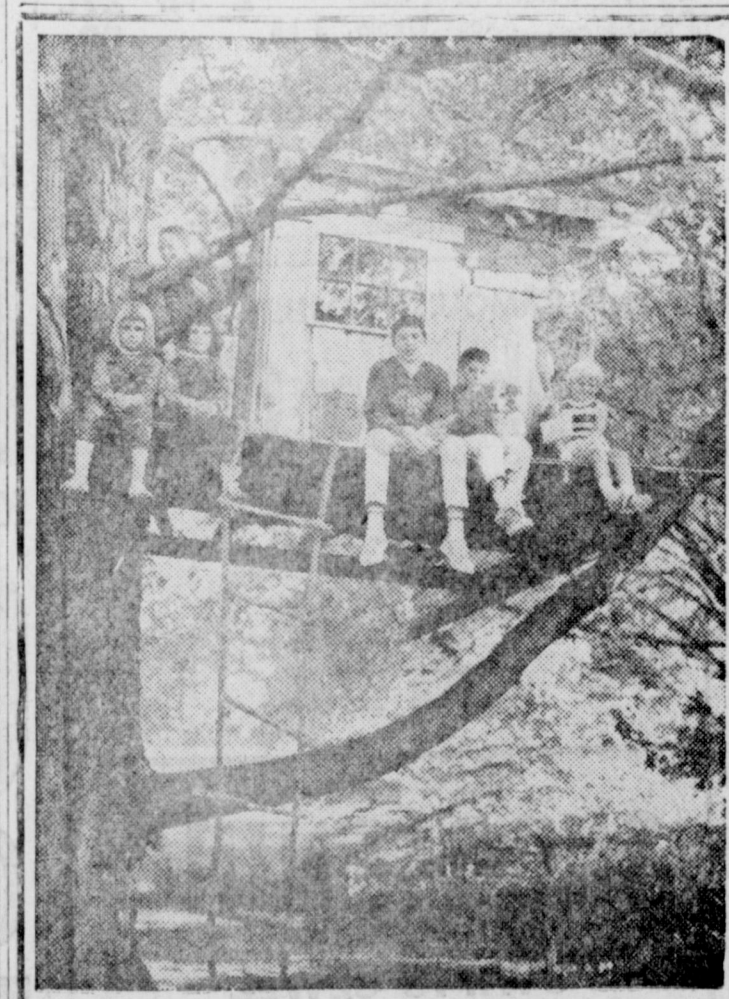
As you probably know, interested citizens are looking into the possibility of establishing a Junior College in this general area, which might include your community.

In pursuit of this worthy project a public meeting will be held Thursday evening, April 15th, at 8:30 in the Muleshoe High School Auditorium. Dr. C. C. Colvert, Special Consultant with the Junior College Division of the University of Texas will be the principal speaker. Dr. Colvert is one of the nation's leading authorities and proponents of Junior Colleges. He will outline the procedure for establishing Junior Colleges and will discuss other phases of their operation, including organization finances, etc. Questions will be answered and a general discussion will be had. No doubt his talk will be very interesting and informative.

It is believed that a Junior College, regardless of its location, would be of great benefit, and would render an invaluable service to your area. The meeting April 15th will be an important step toward its attainment.

Please come if you can, tell your friends and let's work together to provide our people the very finest educational advantages possible.

STORAGE SPACE FOR RENT SWAP SHOP



When they build their real homes, we'll be here to help them with home loans. If you need a home loan now, talk it over with us today. We are home loan specialists.

First Federal Savings & Loan

Clovis, N.M. 4th & Pile Home Office

Portales, N.M. 2nd & Abilene Branch Office

MEMBER OF THE SAVINGS AND LOAN FOUNDATION
 SPONSOR OF THIS ADVERTISEMENT IN LOOK MAGAZINE

SAVE SAVE SAVE SAVE SAVE

FRY & COX DOES IT AGAIN. MONEY SAVING VALUES ON PARTS WITH BONUS FOR YOU.

PUROLATOR FARM BONANZA

BUY 4 OIL, AIR OR FUEL FILTERS AND YOU MAY PURCHASE ONE 4 PIECE PLACE SETTING OF STAINLESS STEEL TABLE WARE FOR ONLY \$1.25

BUY 16 FILTERS AND YOU MAY THEN BUY 16 PIECES, SERVICE FOR FOUR FOR ONLY \$4.35 (SAVE \$12.50 PER SET)

SUPPLY LIMITED SEE ON DISPLAY AT FRY & COX NOW.

SPECIAL BY AUTOLITE

WITH PURCHASE OF 10 SPARK PLUGS GET A COUPON FROM FRY & COX WHICH WILL ENTITLE YOU TO PURCHASE A CORDLESS ELECTRIC WESTCLOX FOR ONLY \$7.95, A SAVINGS OF \$10.00 COME IN TODAY, SEE THE CLOCK, PICK UP YOUR SPARK PLUGS AND GET FULL DETAILS.

MONEY SAVING VALUES BY MASSEY FERGUSON

CLIP THE COUPONS FROM APRIL FARM JOURNAL OR COME TO FRY & COX AND PICK UP YOUR COUPONS FOR THE FOLLOWING SAVINGS.

SAVE 50c ON BOX OF SPARK PLUGS.

SAVE \$2.00 ON PURCHASE OF BATTERY

SAVE \$1.25 ON 3 OIL FILTERS, OR 40c ON PURCHASE OF ONE FILTER.

SAVE 50c ON ANY BOX OF 25 GENUINE MF KNIFE SECTIONS.

Fry & Cox

FRIENDLY AND COMPLETE ONE STOP FARM SUPPLY"

401 S. First Phone 3-3660



BIOLOGY WINNER - Billy Jack Kelly, a high school sophomore, exhibited the prize-winning biology display at the recent school-wide science fair here. (Journal Photo).

Science Fairs' Winners Listed For All Schools

The annual Muleshoe Science Fairs were held Friday, from 7 p.m. until 9 p.m. in the elementary schools, junior high, and high school.

Students from the fourth grade through high school exhibited their projects which were designed to demonstrate a biological, chemical, engineering, mathematical or physical principle or an industrial development.

Students were given opportunity to display their scientific talent and to be recognized for their efforts.

The winners were as follows:

RICHLAND HILLS
Fourth Grade: 1st Place Kathy Pena; 2nd Place Hal Tibbets and Kenny Taylor (joint) 3rd Place John Gartin, Honorable Mention Tracy Cowan, Honorable Mention Perry Hall.

Fifth Grade: 1st Place Vicki Stallings, 2nd Place Monica Griffiths, Janis St. Clair, Marilyn Pool, 3rd Place Pamela Gattis, Honorable Mention Van da Spurgeon, Honorable Mention Barbara Harper.

Sixth Grade: 1st Place Suzanne Byrd, 2nd Place Karen Maylugh and Marcell Airhart, 3rd Place Mark Dillman, Honorable Mention Rhonda Mardis, Honorable Mention Ronald Byrd.

The grand champion winner for the Richland Hills fair was Suzanne Byrd, a sixth grade girl, who showed an exhibit on "THE PRODUCTS OF COTTON."

Judges for the Richland Hills fair were Mr. W. O. Harrel, Dale Fischgrabe, and Earl Ladd Jr.

MARY DESHAZO
Fourth Grade: 1st Place Shannon DeVane, Purification of Water; 2nd Place Susan Foster and Marcia Wallace, Solar System; 3rd Place David Carter and Lupe Rodriguez, Seed Display; Honorable Mention Boyd McCamish, Electric Motor;

Honorable Mention Joe Pat Jones, Volcano.

Fifth Grade: 1st Place, Buddy Mock, Oil Well Construction; 2nd Place, Denise Glenn, Story of Coal; 3rd Place, Tonya Powers and Peggy Carter, The Eye. Honorable Mention, Don Heatington, Rocks and Minerals; Honorable Mention, Sharon Beavers and Kathlyeen Beene, The Ear.

Sixth Grade, 1st Place, Mark Edwards, Soil of Bailey County; 2nd Place, Frank Ellis, Soil Conservation; 3rd Place, Kathryn Smyer, Model Dam; Honorable Mention, Debbie Schuster, The Teeth; Honorable Mention, Cynthia Wrinkle, Prehistoric Man.

The grand champion winner was Mark Edwards, a sixth-grade boy, who showed the Soil of Bailey County.

Judges were Dr. B. E. Sanderrin, Jack Young and E. T. Ford.

JUNIOR HIGH
BIOLOGICAL SCIENCE: 1st place, Lee Gable and Lex Guinn, Dissection of a Calf; 2nd Place, Johany Roney, The Digestive System; 3rd Place, Richard Fox, Effect of Light on Plants.

EARTH SCIENCE: 1st Place, Debbie Rudd, The Ear; 2nd Place, Randy Lackey, Electro Plating; 3rd Place, Larry Mason and Leland Ferris, Perpetual Motion.

HIGH SCHOOL
BIOLOGICAL SCIENCE: 1st Place, Billy Kelly, Dissection of a Frog; 2nd Place, Alice Davis, Smoking Machine; 3rd Place James Morgan, Moisture Holding Capacity Exhibit.

PHYSICAL SCIENCE: 1st Place, Dan Judd, Electronic Picture of Sound; 2nd Place, Don Lenau, Ozone Generator; 3rd Place, Glenn Kenney and Ronald Coomer, Telescope.

Dale Fischgrabe and his assistant at the Soil Conservation Office were the judges for junior high and high school.

All winners of the local science fair may enter their exhibits at the regional science fair at Texas Technological College in Lubbock, April 23 and 24.

Success of the local science fairs is attributed to the cooperation of the students, teachers, and parents, the time given by the capable judges; and the interest shown by the citizens of Muleshoe.

SHOP MULESHOE FIRST

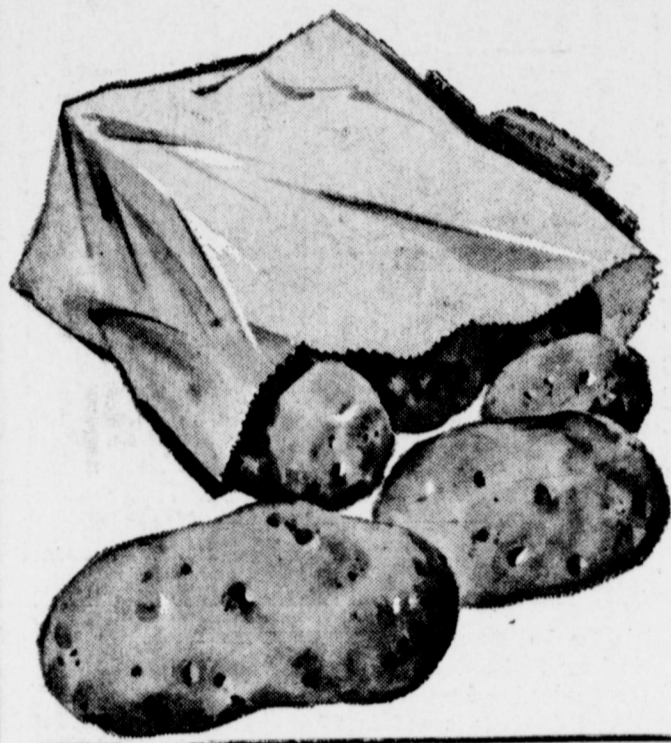
QUALITY AT LOWER PRICES

April Savings Dividend

POTATOES

COLORADO WHITE RUSSETS

20 Lb. BAG \$1.49



- Crackers Nabisco Honey Graham 1 Lb. Box 35c
- Preserves Kraft Pure Strawberry 18 Oz Glass Tumbler 49c
- Cream Cheese Kraft Philadelphia 8 Oz Pkg. 29c
- Tuna Sea Call Light Meat 1/2s Can 2 For 39c
- Dog Food Kim No. 1 Tall Cans 6 For 49c
- Cookies Supreme Coconut Chocolate Drop 1 Lb. Pkg. 45c
- Pecan Sandies Supreme 15 Oz. Pkg. 45c
- Gladiola Flour 25 Lb. Bag \$1.98
- Plastic Wrap Cut - Rite 100 Ft. Roll 29c
- Pancake Mix Aunt Jemima 2 Lb. Box 39c
- Cleanser Babo Reg Size 2 For 29c
- Detergent Ivory Liquid Giant Size 59c
- Instant Starch Niagara 14 oz. Apothecary Jar 29c
- Soap Bar Ivory Personal Size 4 For 25c
- Corn Kimbells Whole Kernel Golden 12 oz Can 2 For 29c
- Chicken Allens Whole 3 Lb 4 Oz Can 89c
- Blackeye Peas Ranch Style No. 300 Ca. 2 For 19c
- Orange Drink Hi-C 46 oz Can 3 For 89c
- Pommac 6 Bottle Ctn. Plus Deposit 2 For 69c

CALIFORNIA SUNKIST

LEMONS Lb. 19c

ENDIVE 19c
CALIFORNIA GARDEN FRESH BUNCH

CORN GOLDEN FRESH EARS

2 for 19c

Meats

THAT SCORE

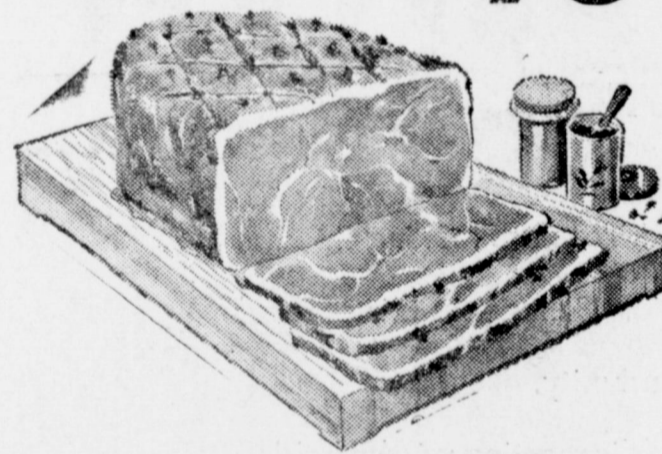
SIRLON STEAKS

CHOICE HEAVY PEN FED BEEF

LB. 69c

HAMS

HORMEL'S CURE 81 BONELESS OR CUDAHYS BAR - S FULLY COOKED "READY TO EAT" Average wt. 8-10 lb HALF or WHOLE LB. 98c



KIMBELL TALL CANS

MILK 3 FOR 39c
KIMBELL DRIP OR REG.

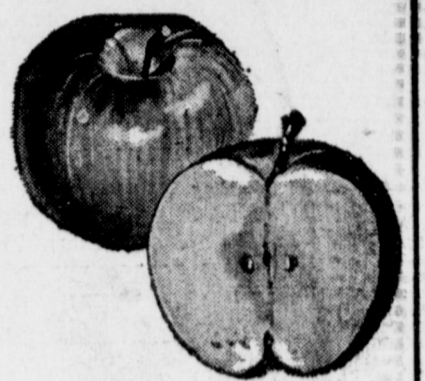
COFFEE 1 Lb. TIN 69c

GLADIOLA CAKE MIXES 3 FOR 89c
YELLOW DEVIL FOOD-POUND

APPLES

WASHINGTON EXTRA FANCY WINESAPS

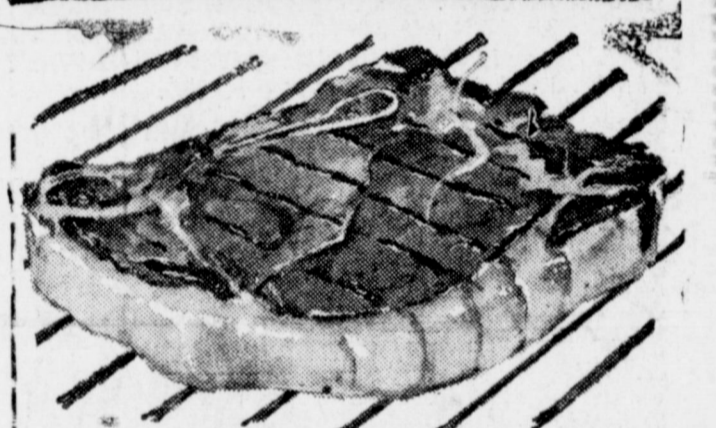
LB. 15c



FROZEN FOOD

- BREAD MORTONS Home Bake Pkg. 3 - 1 Lb. Loaves 49c
- HONEYBUNS MORTONS 9 Oz Pkg. 29c
- GRAPEFRUIT SECTIONS Minute Maid 13 1/2 Oz Can 29c
- CORN Keiths Cut 10 Oz. Pkg. 2 For 35c
- BROCCOLI Keiths Chopped 10 Oz. Pkg. 2 For 35c

Sirloin



- HORMELS FRANKS ALL MEAT 12 Oz. Pkg. 39c
- HORMELS BACON DAIRY BRAND SLICED 1 Lb. Pkg. 59c
CLARY'S USDA GRADE A
- FRYER PARTS FRESH DRESSED
- DRUMSTICKS LB. 49c
- BREASTS LB. 59c
- THIGHS LB. 49c
- WISH BONES LB. 79c
- WINGS LB. 19c

STORAGE SPACE FOR RENT SWAP SHOP

IRRIGATION MOTOR REPAIR

Car-Truck Repair
ALTERNATOR
Generator-Starter

Wheel Alignment-Balancing
Washing-Lubrication
7 Mechanics At Your Service

PLAINS AUTO SERVICE DEPT.

Ph. 7150 Muleshoe, Texas

May We Serve You

PARAMOUNT KOSHER DILL
Hamburger Chips
24 OZ. JAR
29c

SHORTENING
SWIFTS JEWEL
3 Lb. TIN 59c

GUNN BROS. STAMPS
DOUBLE EVERY WEDNESDAY

White's CASHWAY

Listen To MULETRAIN 10:15 A.M. over KMUL sponsored by CASHWAY



ROOM NEWSPAPER — The fifth grade of Hilltop school has a bulletin board newspaper with each day of the week at the top. Events are posted under each day to be observed as well as

national news events. Pictured are Leroy Medlock, Jimmy Sleptoe, Betty Stewart, Larry Donell Mitchell, Tyrone Clements and Reva Mac Porter.



OUR GOALS ARE HIGH — This is the motto of the low second at Hilltop. Some of the students of the class are pictured beneath their sign.

They are Earma Kelley, Darrell Porter, Gilis Minor and Linda Graves. Their teacher is Mrs. F. D. Harris.

Duplers Given House-Warming At Maple Home

By MRS. H. W. GARVIN
THREE WAY — Friends of Mr. and Mrs. Gib Dupler were given a house-warming Saturday night at their new home a half-mile south of Maple. Many unusual gifts were presented. Both Mr. and Mrs. Dupler were born and reared in Three Way Community and both are 1950 graduates of Three Way high school. They were married soon after graduation and have three children, Rhonda, 12, Chuck, 8, and Douglas, 1. Dupler has been employed by State Line Butane company for the past six years.

Mrs. A. E. Robinson has been a patient in the West Plains Hospital in Muleshoe for several days, and is reported as improved. Pete Tarlton underwent surgery in Green Memorial Hospital in Muleshoe last Tuesday and is reported as improving. He will return home soon. Mrs. Cass Stegall and her mother, Mrs. T. G. Gaddy, have both been in the hospital. Mr. and Mrs. Dub Black left Saturday for Dallas to attend the ginners' convention. He is manager of the Growers Gin at Maple.

Those attending the ginners' convention in Dallas this week from the Maple Co - Op Gin are Mr. and Mrs. J. F. Furguson, Mr. and Mrs. John Sheppard, Mr. and Mrs. Leon Dupler, Mr. and Mrs. Barney Lack, Mr. and Mrs. R. Z. Dewbre and Mr. and Mrs. Jim H. Johnson. Mr. and Mrs. Johnny Wheeler were in Lubbock Saturday to attend the FHA food show. A granddaughter, Jill Wheeler, Muleshoe, won first in Bailey county and was entered in the district. She placed second in the Lubbock show.

The WSCS of the Three Way Methodist Church met in the D. V. Terrel home Monday to hear a program on "God Speaks Through the Bible" led by Mrs. Tommy Galt. Those present were Mrs. Stegall, Mrs. Reeves, Mrs. Maister, Mrs. Galt, the Rev. Ruth Cooper and Mrs. Terrel.



HILLTOPERS SQUAD — This is Hilltop school's basketball team, the Hilltopers. They are (L-R) front row Linda Washington, Rita Williams, and Bobby

Woody. Back row, Gleen Johnson, Arlene Brown, Geraldine Richardson and Decetia Washington.



EXAM TIME — F. D. Harris, Principal of Hilltop school is shown here while students take exams. Students shown are Dwayn Williams, Dealia Wash-

ington, Willie Finch, Lula Belle Mitchell, Rita Joyce Williams and Mike Richardson.

Farmers Union Chief Discusses Farm Programs

By EARLENE BULLOCK
State Farmers Union President, Jay Naman of Waco, told the Parmer County Farmers Union at a meeting held at Clara's Spur Restaurant in Farwell that the "future of commercial agriculture may soon be determined by the congress. There will either be a bright future for Parmer County farmers with a sound farm program with a fair price or chaos in the market place and bankruptcy in the farms."

"The program that the administration supports will in all probability include wheat, feed grains and cotton which means that commodity groups and organizations must get together to work out differences and support a consensus of views. I hope that Farmers Union can be the instrument for bringing the various groups together in support of a mutually beneficial program."

In regard to a cotton program Naman said that he felt that the administration program would provide for direct payments to the farmer along the lines of the Talmadge - Humphrey bill which was introduced into the last congress. He said that he felt objecting to this program founded on the possibility that limitations or cut-offs would be added are largely over-emphasized. Naman said he felt that any programs presently in operation could have limitations if the congress wished to make them apply. No such limitations presently apply to the wool program which permits direct payments to the producer.

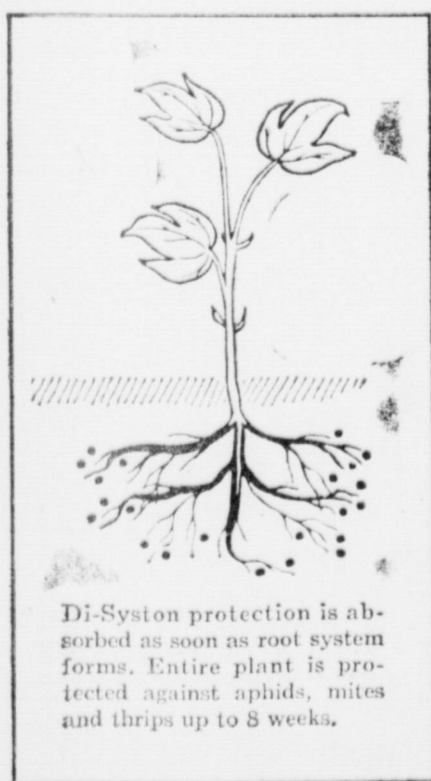
Naman described the Washington Flyer program soon to be launched. Parmer County Farmers Union is presently raising funds to permit the county to participate in the program.

by sending one or more farmers to Washington to visit with people in the congress and Department of Agriculture concerning programs under consideration. An effective program

is being planned by the National Farmers Union Legislative office in Washington and the farmers representatives will be called upon to fly to Washington at strategic times.

Here's cotton growers' first step in the Chemagro Practical Cotton Program

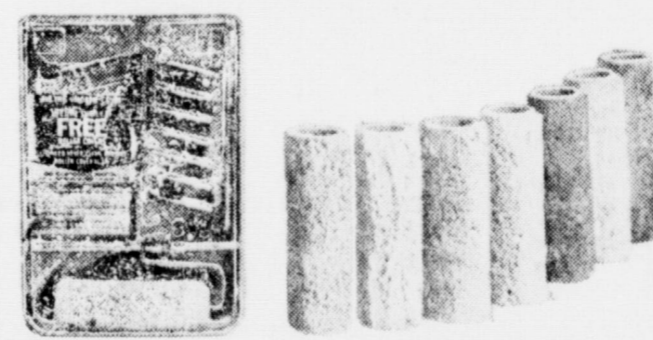
Give your crop an early, vigorous start by protecting against early-season pests with Di-Syston—the proven systemic insecticide



Di-Syston is your first insect-control step toward a high quality cotton crop. This proven systemic insecticide prevents stunted, crooked plants caused by aphid, mite and thrips damage during the early seedling stage. Cotton sets fruit and squares early to make a good bottom crop. Di-Syston is applied with seed at planting time and works from inside the plant where it is unaffected by weather. And, since Di-Syston is inside the plant, it will not harm beneficial insects . . . kills only the insects that suck plant juices. Start your cotton off right this season. Apply Di-Syston at planting time.

CHEMAGRO CORPORATION
KANSAS CITY 20 • MISSOURI

GET ALL THIS FREE! WITH LUMINALL SATIN



\$3 VALUE PAINT TRAY, ROLLER & COVER PLUS A LIFETIME SUPPLY OF ROLLER COVERS (YOU NEED NEVER CLEAN A ROLLER COVER AGAIN)

CHARLES LENUA LUMBER CO.
202 E. ASH MULESHOE, TEXAS

500 NORTH COLLEGE PHONE PO 3-8256 P. O. BOX 5037 LUBBOCK, TEXAS 79417

GENERAL IRRIGATION ENGINE, Inc.

There is A Difference

GMC 478 with Truck Clutch \$1,075.00	GMC 478 with Industrial Clutch \$1,195.00
Don't Be Misled	
There is a difference in clutch assemblies — and it does make a difference in the price.	
You can buy the GMC 478 with the truck housing and clutch assembly at General Irrigation Engines, Inc. for only \$1,075.00.	
And that's not all — Clip the coupon below and bring it to General Irrigation Engines, Inc., 500 No. College Ave., Lubbock, and receive an additional \$50.00 discount on any GMC Engine in this ad.	
GMC 702 \$2,050.00	Pontiac 389 \$559.00
\$50.00 Bonus Coupon Good thru April 30th, 1965	
Chevrolet 292 \$499.00	

SHOP MULESHOE FIRST

Television Schedule For Muleshoe Area

☉ Indicates Color Programs

KING BROS.
GRAIN & SEED CO.
Complete ELEVATOR SERVICE AND SEED PROCESSING FOR The Muleshoe Area.

FIRST NATIONAL BANK MULESHOE
4%
ON 12-MONTH CERTIFICATES OF DEPOSIT
3%
ON SAVINGS COMPOUNDED QUARTERLY
FINANCE YOUR CAR WITH US! PERSONAL LOANS

PAINT
and
Hardware
Chas. L. Lenau

LUMBER COMPANY
202 E. Ash

EGNC-TV (4) Amarillo
Muleshoe Cable 4
Mon. thru Fri. Daytime Viewing

6:30 - Classroom
7:00 - Today Show
8:00 - Today Show
9:00 - T or C
9:30 - C-What's this
9:55 - Doctor
10:00 - Concentration
10:30 - C-Jeopardy
11:00 - Bluff
11:30 - I'll Bet
11:55 - NBC News
12:00 - News
12:10 - Weather
12:20 - Ruth Brent
12:30 - Make A Deal
12:55 - NBC News
1:00 - Truth
1:30 - The Doctors
2:00 - Another World
2:30 - C-Don't Say
3:00 - Match Game
3:25 - NBC News
3:30 - Sheriff Bill
5:30 - Hunt - Brink
6:00 - News

Thursday Evening
6:15 - Weather
6:30 - D. Boone
7:30 - Dr. Kildaire
8:30 - C-Fare
9:00 - P. Como
10:00 - News
10:15 - Weather
10:25 Sports
10:30 - C-Tonight

Friday Evening
6:15 - Weather
6:25 - Sports
6:30 - Showtime
7:30 - C-Bob Hope
8:30 - Jack Benny
9:00 - J. Paar
10:00 - News
10:15 - Weather
10:25 - Sports
10:30 - C-Tonight Sh
12:00 - Sign Off

Saturday Viewing
7:00 - Roy Rog.
8:00 - Top Cat
8:30 - Hector H.
9:00 - Underdog
9:30 - Fireball, XL-5
10:00 - Dennis Menac
10:30 - Fury
11:00 - Superman
11:30 - C. Cargo
12:00 - Cotton John
12:30 - Matinee
1:00 - Movie
2:00 - Weird
3:00 - Movie
4:30 - Movie
6:00 - News
6:15 - Weather
6:25 Sports
6:30 - Flipper
7:00 - Kent. Jones
7:30 - America
8:00 - Movie
10:15 - News
10:30 - Weather
10:40 - Sports
10:45 - Arrest & T.
12:00 - Sign Off

Sunday Viewing
7:30 - Dixie
8:30 - Cotton John
9:00 - Amarillo
9:30 - Biography
10:00 - Palm Sun.
11:00 - Church
12:00 - Passover
12:30 - Directors
2:00 - Profiles
3:00 - Battleline
3:30 - Science
4:00 - Kingdom
4:30 - G.E. College
5:00 - Hullabaloo
6:00 - News
6:15 - Weather
6:25 - Sports
6:30 - W. Disney
7:30 - Branded
8:00 - Bonanza
9:00 - The Rogues
10:00 - News
10:15 - Weather
10:25 Sports
10:30 - Wide Coun.
11:30 - Biography
11:30 - Sign Off

KVII-TV (7) Amarillo
Muleshoe Cable 5
Mon Thru Fri.

Daytime Viewing
8:45 - Modern E.
9:15 - Beaver
10:15 - Want Ads
10:30 - Price Right
11:00 - Donna
11:30 - Father
12:00 - Texas News
12:22 - Market
12:30 - Tenn. Ernie
1:00 - Flame
1:30 - Day in Court
1:55 - Women's New
2:00 - Gen. Hosp.
2:30 - Young Mar.
3:00 - Trailmaster
4:00 - Wells Fargo
4:30 - Challenge
5:00 - Leave to Bea
5:30 - News
6:00 - Rifleman

Thursday Evening
6:30 - Johnny Ques
7:00 - Donna Reed
7:30 - My 3 Sons
8:00 - Bewitched
8:30 - Peyton Place
9:00 - Jimmy D.
10:00 - Local News
10:15 - Weather
10:20 - Movie

Friday Evening
6:30 - Custer
7:30 - Addams
8:00 - Valentines D
8:30 - Wells Fargo
9:00 - 12 High
10:00 - News
10:15 - Weather
10:20 - Movie

Saturday Viewing
8:00 - Farm
8:30 - Church
9:00 - Shenanigans
9:30 - Annie Oakley
10:00 - Casper
10:30 - Porky Pig
11:00 - Bugs Bunny
11:30 - Hoppity
12:00 - Game Week
3:00 - Bandstand
4:00 - Sports
5:30 - Sportsman
6:00 - ABC
6:30 - King Family
7:30 - Lawrence Wel
8:30 - Mission
9:30 - Bob Young
9:45 - Preview

Sunday Viewing
8:00 - Herald of Tru
8:30 - Oral Roberts
9:00 - Christ
9:30 - Beany
10:00 - Bullwinkle
10:30 - Discovery
11:00 - Christophers
11:30 - S. S.
12:00 - Directions 65
12:30 - Dory Funk
1:00 - Basketball
3:00 - Golf
4:00 - Science
4:30 - Church
5:00 - Wrestling
6:00 - FDR
6:30 - Wagon Train
7:30 - Broadside
8:00 - Movie
10:00 - News
10:15 - Weather
10:20 - Movie

KFDA-TV (10) Amarillo
Muleshoe Cable 6
Mon. thru Fri. Daytime Viewing

6:25 - Sign On
6:27 - Meditation
6:30 - Amarillo
7:00 - Farm News
7:20 - News
7:30 - Tri Report
8:00 - Capt. Kangar
9:00 - CBS News
9:30 - I Love Lucy
10:00 - Andy
10:30 - McCoys
11:00 - Love of Life
11:25 - CBS News
11:30 - Search Tomor
11:45 - Guiding Light
12:00 - News
12:10 - Weather
12:20 - Farm & Ranc
12:30 - The World Tu
1:00 - Password
1:30 - At Linkletter
2:00 - To Tell Truth
2:25 - CBS News
2:30 - Edge of Night
3:00 - Secret Storm
3:30 - Jack Benny
4:00 - Proud Eagle
4:30 - Superman
5:00 - Lone Ranger
5:30 - CBS News
6:00 - News
6:15 - Weather

Thursday Evening
6:30 - Munsters
7:00 - Fantastic
8:30 - Celebrity
9:00 - Defenders
10:00 - News
10:15 - Weather
10:25 - Editorial
10:30 - Movie
11:00 - The Big Flick

Friday Evening
6:30 - Rawhide
7:30 - Adventure
8:30 - Gomer Pyle
9:00 - Slattery
10:00 - News
10:15 - Weather
10:25 - Background
10:30 - Movie
10:55 - News
11:00 - Movie

Saturday Viewing
6:45 - Cartoon Tim
7:00 - Mr. Mayor
8:00 - Alvin Show
8:30 - Tenn. Tux.
9:00 - Quick Draw
9:30 - Mighty Mow
10:00 - Lion Hearted
10:30 - Jetsons
11:00 - Sky King
11:30 - Flicka
12:00 - News
12:15 - Movie
4:00 - Golf
5:00 - Grand Ole O
5:30 - Porter Wagon
6:00 - News
6:20 - Weather
6:30 - J. Gleason
7:30 - Gilligan
8:00 - Secret
9:00 - Gunsmoke
10:00 - News
10:15 - Weather
10:25 - Sports
10:30 - Flicker
10:55 - News
11:00 - Flicker

Sunday Viewing
8:00 - Fisher Family
8:30 - Church Serv.
9:30 - Gospel
10:30 - R. Question
11:00 - Ac. Theatre
1:00 - College
1:30 - CBS
3:00 - Golf
4:30 - Amateur
5:00 - 20th Cen.
5:30 - News
5:45 - Weather
6:00 - Lassie
6:30 - Martian
7:00 - Ed Sullivan
8:00 - People
9:00 - Candid Came
9:30 - W. My Line
10:00 - News
10:15 - Weather
10:25 - Movie
10:55 - News
11:00 - Movie

KCBD-TV (11) Lubbock
Muleshoe Cable 2
Mon. thru Fri. Daytime Viewing

7:30 - Headlines
7:05 - Farm Report
7:25 - Weather
7:30 - Today
8:25 - News Report
8:30 - Today
9:00 - Cartoons
9:30 - What's Song
9:55 - Morning Re.
10:00 - Concentration
10:30 - C-Jeopardy
11:00 - Bluff
11:30 - I'll Bet
12:00 - N and W.
12:15 - Com. Closure
12:30 - Let's Deal
12:55 - News
1:00 - Truth
1:30 - Doctors
2:00 - Another Work
2:30 - C-Don't Say
3:00 - Match Gam
3:25 - Afternoon Rep
3:30 - Price Is Rig
4:00 - Father Knows
4:30 - Ranger
5:00 - H. Hound
5:30 - Hunt-Brink.
6:00 - News

Thursday Evening
6:50 - D. Boone
7:30 - Dr. Kildare
8:30 - Hazel
9:00 - Kraft The.
10:00 - News
10:30 - Tonight

Friday Evening
6:30 - Lawrence W.
7:30 - Bob Hope
8:30 - J. Benny
9:00 - Jack Paar
10:00 - News
10:30 - C-Tonight

Saturday Viewing
7:30 - Movie
8:30 - Hector Ae.
9:00 - Underdog (C
9:30 - Fireball XL-5
10:00 - Dennis Menac
10:30 - Fury
11:00 - Exploring
12:00 - Movie
2:00 - Ski Champ
3:00 - Movie
4:30 - C.L.A.S.P.
5:00 - Shindig
6:00 - News
6:30 - Flipper
7:00 - Kentucky J.
7:30 - Branded
8:00 - Movie
10:00 - News
10:30 - Movie

Sunday Viewing
7:55 - Sign On
8:00 - Hoppity Hoop
8:30 - Cartoons
9:00 - R. Rogers
10:00 - The Drama
10:45 - Church
11:45 - Air Force
12:00 - Discovery
12:30 - Faith
1:00 - Basketball
3:00 - Sports
4:00 - Kingdom
4:30 - G. E. Colleg
5:00 - Meet Press
5:30 - Sportsman
6:00 - News
6:30 - Wond. World
7:30 - Broadside
8:00 - C-Bonanza
9:00 - The Rogues
10:00 - News
10:30 - Movie

KLBK-TV (13) Lubbock
Muleshoe Cable 1
Mon. thru Fri. Daytime Viewing

6:20 - Sign On
6:30 - Sam. Ser
7:00 - Farm
7:20 - News
7:30 - King Odie
8:00 - Capt. Kangar
9:00 - Donna
9:30 - I Love Lucy
10:00 - Andy
10:30 - McCoys
11:00 - Love of Life
11:25 - CBS News
11:30 - Search
11:45 - Guiding
12:00 - WTTN News
12:10 - Names in N
12:20 - Farm
12:25 - Weather
12:30 - World Turns
1:00 - Password
1:30 - Houseparty
2:00 - Tell the Tru
2:30 - Edge of Night
3:00 - Secret Storm
3:30 - General Hosp
4:00 - Trailmaster
5:00 - Amos 'N And
5:30 - News

Thursday Evening
6:00 - Weather
6:10 - News
6:20 - News
6:30 - Munsters
7:00 - Perry Mason
8:00 - Bewitched
8:30 - Peyton
9:00 - Combat
10:00 - News & Weat
10:30 - Movie

Friday Evening
6:00 - Weather
6:10 - News
6:20 - News
6:30 - Rawhide
7:30 - Addams
8:00 - Donna
8:30 - Gomer Pyle
9:00 - Burke's Law
10:00 - N-W
10:30 - Late Show

Saturday Viewing
6:20 - Sign On
12:00 - Bugs
6:30 - Summer Sem
7:00 - Bowery Boys
8:00 - Alvin Show
8:30 - Ten. Tuxedo
9:00 - Quick Draw
9:30 - Mighty Mouse
10:00 - Casper
10:30 - Jetsons
11:30 - Sky King
11:30 - Flicka
12:30 - Porky
1:00 - Bandstand
2:00 - Wrestling
2:30 - Sports
3:00 - Golf
4:30 - Bowling
5:00 - Pickin Time
6:00 - Porter Wagon
6:30 - J. Gleason
7:30 - Defenders
8:30 - Peyton
9:00 - Gunsmoke
10:00 - N-W
10:15 - Movie
12:00 - Movie

Sunday Viewing
6:55 - Sign On
7:00 - Bullwinkle
7:30 - Sgt. Preston
8:00 - Linus
8:30 - Adventures
9:00 - Herald
9:30 - This is Life
10:00 - Lubbock Minis
10:30 - Church
10:45 - Baptist
11:00 - Church
11:30 - Bible
12:15 - Nation
12:45 - Alumni
1:00 - NBA
1:15 - Music
1:30 - CBS
3:00 - Golf
4:00 - Amateur
4:30 - Science
5:00 - 20th Cen.
5:30 - Mr. Ed
6:00 - Lassie
6:30 - Flinstones
7:00 - Ed Sullivan
8:00 - Living Doll
8:30 - Password
9:00 - Candid Camer
9:30 - What's My Li
10:00 - News
10:30 - Late Show
12:00 - Sign Off

Higginbotham Bartlett Building Needs
Paint Wallpaper Hardware Houseware Gifts
Higginbotham Bartlett MULESHOE
Abel Cable
For Year-Long Enjoyment
INSTALL NOW
Three Plans for Hook-Up
Muleshoe Antenna Co. Call Now
107 East Third
Phone 3-3100
ALSUP CLEANERS
Offer These FINE SERVICES
1. Drive-In Window Service for your convenience in cold weather.
2. Re-sizing of cottons to finer texture for that like-new look.
3. Alterations of all kinds of men's, women's and children's clothing
4. A personal touch for your clothing by people who care how you look.
THAT'S
Alsup Cleaners
Phone 3-0760

Holidays In Texas? 291 In Six Months

By VERN SANFORD
Texas Press Association
AUSTIN — You probably did not know it, but 291 holidays will be celebrated in Texas in the coming six months.
Most of the holidays aren't statewide observances. But Munday's June 18 Vegetable Festival, the May 7 Panola County Green Pageant, Boone's April 15 Saengerfest, and Raymondville's April 15 Onion Fiesta are in the offing, as well as 287 other local celebrations.
In order to help Texans and tourists keep track and plan their travels accordingly, the State Highway Department has published a Texas Calendar of Events. It covers the period from April 1 through September.
For the first time, the Highway Department also has issued a Calendar in Spanish, to serve "a remarkable surge" of tourists from South of the border.

FEDERAL DOLLARS — Legislative budget writers, nearing the end of a long trail, are confronted with a new problem. Question is how to anticipate the effect on state finances of an unprecedented flood of federal dollars flowing into a variety of programs.
Some think a special session of the Legislature may be necessary, after final congressional action, in order to tie down overlooked matching - fund requirements.
Two proposed federal programs are perplexing the appropriations bill conferees:
1. Medicare — hospitalization and health care for the aged, blind, disabled and children — now on public assistance rolls.
2. The elementary and secondary education act which passed the House of Representatives in Congress. It would provide over \$85,000,000 to Texas schools next year.
Conferees, wrestling with the problem of how to balance the books, or recommend new taxes, hope to figure some way that federal funds can be used to reduce pressure on state school money.

Medicare offers some complex questions as to how much money the state must provide in matching funds to meet federal program requirements.
With new federal programs springing up in all areas, Veteran Texas lawmakers are looking toward annual sessions of the Texas Legislature. They say the state's antiquated system of biennial budgeting soon must yield to one - year financing and annual sessions if Texas is to keep in line with congressional operations.
WATER PLANS MOVE —

committee approval. This despite warnings that federal courts, which ordered districts of equal population, might disapprove.

HORSES STOPPED AT THE GATE — After the longest committee hearing thus far this session, the bill by Rep. Maurice Pipkin of Brownsville to legalize parimutuel bets on horse races in counties which approve by local option was sent to a subcommittee.
Whether it is reported out of the subcommittee depends on how many votes Pipkin thinks he can garner on the House floor. Right now, the odds are that the bill would be defeated in the House by about 2 - to - 1.
If no better results can be expected, Pipkin will ask the subcommittee to kill the bill quietly for this session by not reporting it out.
Texas Racing Association, which has been trying to "educate" Texans on horse racing, says it will be around for another try.
At a public hearing the association presented a series of "expert witnesses" on horse racing as a sport and also as a money raiser both for the general economy and for the local and state tax coffers. It emphasized the impetus horse racing reportedly gives to agriculture and argued that parimutuel betting is not so much betting as it's a test of knowledge and skill in selecting a winning horse.
Opponents of the bill attacked it on moral grounds, saying horse - race betting would attract undesirable persons and would weaken the moral fiber.

So, Sen. Louis Crump of San Saba introduced a new version which would require all Senators to run for re - election in 1966 if they want to keep their jobs. New measure quickly won committee approval.
Increasing terms from four to six years still is a feature of the "big senate" plan. If approved by the Legislature, it will go to voters July 24. Senators think it will be a relatively painless way out of re - districting for them.
A Senate bill to legalize variances of 15 per cent over and under the mathematical population average for House and Senate districts also received

See HOLIDAYS, Page 4


Corrosion Proof



FIBER GLASS Herbicide Applicator TANKS

- Available in the Panhandle right now. You can pick them up at our plant in Amarillo or we can ship on the day your order is placed.
- No plugged nozzles on your applicator.
- No rusty tank.
- No maintenance.
- You don't paint it or clean it or re-line it.
- The Mur-Tex 420 gallon tank is actually two tanks, a tough outer shell and a seamless inner tank bonded together.
- 8" fill neck with a rubber cap.
- Fitted for recirculation.
- Each tank is built into its own rubber cushioned steel saddle.
- Bolts or welds onto any rig without modification.

MUR-TEX CO., INC.
48th & S. Washington • P. O. Box 3517 • AC 506 DR 3-7418
Available in 420, 300 and 200 gallon capacity.
Write or phone your order direct or order through your dealer.



Who ever heard of an economy tiger?
You did—just now. It's called the Pontiac Tempest. A zippy six that thrives on regular gas is standard equipment. Feel more tigerish and still want regular-gas economy? Pick the 250-hp V-8 engine. The price? A trifle, as tigers go. Look into it. COME TO TIGER COUNTRY. SEE THE NEW BIRMINGHAM STAR CHEF, GRAND PRIX, CATALINA, T-2, LE MANS, GTO AND TEMPEST AT YOUR AUTHORIZED PONTIAC DEALER.

The Wide-Track Pontiac Tigers
LADD PONTIAC
602 W. AMERICAN BLVD., MULESHOE, TEXAS

For All Your Needs
— CALL ON YOUR —
WALGREEN AGENCY
WESTERN DRUG
Prescriptions
Veterinary
Cosmetics
Phone 3-1060

CLASSIFIED ADS FOR FAST RESULTS

READ AND USE

WANT ADS -- PHONE 2350

1 time per word ... 4c 3 times per word ... 10c
 2 times per word ... 7c 4 times per word ... 13c
 After 1st issue, 3c per word each additional time.
 Minimum charge 50c
 Card of Thanks \$1.00

DEADLINE FOR CLASSIFIED ADVERTISING PAGE:
 For Thursday's issue: Monday, 12 Noon
 For Sunday's issue: Thursday, 12 Noon
TO LATE TO CLASSIFY
 Thursday issue — Tuesday 5 P. M.
 Sunday issue — Friday 3 P. M.
 Double Rate for Blind Ads.

I. Personals

LISTEN WHERE YOU LOOK !!!

Now with forward-facing microphone, hearing-instruments made to fit everyone's personal loss. Write for information

QUALITY HEARING CENTER
 2028 Austin Amarillo, Texas
 1-13s-4tc

REX AIR: Sales, service and supplies. Write box 509 Texico, N. M. or call 482-9017.
 1-10t-4tc

WANTED TO BUY: Texas Centennial half dollar and any type gold coin. Call 3-1630 after 6 p.m.
 1-7t-4tc

Complete yard service, Deep breaking, discing, leveling, sowing. Also Barnyard or chemical Fertilizing. Call 7660 or 3-2651.
 1-9s-4tc

LUZIER'S COSMETICS
 Free Demonstration Satisfaction Guaranteed
 MRS. E. E. HOLLAND
 Ph. Off. 3-2930 - Res. 3-2930
 121 American Blvd.
 1-49s-4tc

FOR SALE — Toy Boston Bull puppies. Phone 965-2675. Ross McKilip.
 1-13t-4tc

FOR SALE — Squirrel monkey one year old. Call 3-1630 after 6 p.m.
 1-14s-4tc

Lose weight safely with Dex-A-Diet Tablets. Only 98 cents at your Drug Store.
 1-14t-4tp

3. Help Wanted

WANTED — Experienced beautician. Full or part time. Call 3-4480.
 3-49s-4tc

Applications are now being taken for dealers for the new Richland Hill Texaco Station to be completed about May 15. At 20th and American Blvd. Apply at Texaco Inc.
 3-11t-16tc

Car Hop Wanted: Bill's Drive In.
 3-12s-4tc

HELP WANTED Male or Female — Are you looking for a good part time or full-time income in Bailey Co. or Muleshoe. Many Rawleigh dealers earn \$2.50 and up per hour. See J.W. Pack, Rt. 1, Shallowater or write Rawleigh, TXD-279-276 Memphis, Tenn.
 3-13t-6tp

HELP WANTED — FEMALE: Market research company needs women for telephone and personal assignments to begin immediately. No selling. Hourly wage and car allowance. Reply stating experience to Winona Interviewing Service, 3462 Minnehaha Ave., Minneapolis, Minnesota 55406.
 3-14t-1tp

5. Apts. for Rent

Two bedroom furnished house for rent. Layne Apartments. Call 4960.
 5-12t-4tc

FOR RENT: Furnished 3 room, bath apt. Call 3-4650.
 5-12s-4tc

FOR RENT: Unfurnished apt. 3 rooms, bath. Call 3-1090.
 5-19t-4tc

Furnished Apt. for rent Adults only. 319 West Ave. E.
 5-7t-4tc

FOR RENT: 3 room and bath furnished apartment. See Sam Gholson at Sam's Auto Store.
 5-13t-4tc

FOR RENT: Brick apartments. 2 bedroom, carpeted, draped and has built-in ins. Located on W. 18th. Call 3-2651.
 5-4t-4tc

FOR RENT — Two bedroom apartment. Carpeted, draped, built-in ins. Phone 3-4960 or 3-3350.
 5-4t-4tc

Apartment for rent. 511 Main.
 5-14t-6tp

FOR RENT — One furnished bachelor apartment. 323 West Ave. E. Phone 8120 Mrs. Melendy.
 5-13t-4tc

FOR RENT — Furnished bachelor apt. 323 West Ave. E. Ph. 8120.
 5-14s-4tc

6. Rooms for Rent

Bedroom for rent — See Ida Tapp. Last house north of Calvert's grocery.
 6-4s-4tc

8. Real Estate for Sale

HOUSES FOR SALE
 Redi-Built or BRICK, 3-BEDROOMS, 2-BATHS, 90-FT. LOT APARTMENTS FOR RENT Licensed Plumber for all your needs
CALL — BILLY MORRISON
 Ph. 4850 or 3-2130

FOR SALE OR TRADE: 340 Acres irrigated land. Farmer Co. Best soil, lays good. Will all row water. Maize, wheat allotments. Priced for quick sale. Will trade for 80 — 160 A. near Muleshoe. Terms can be arranged. Phone 3-4260. D. H. Sneed, Muleshoe, Texas.
 8-5t-4tc

HOUSES FOR SALE or TRADE
ALEX ADAMS
 210 Ave. B
 Ph. 3-3350 or Ph. 3-4960
 8-14t-4tc

FARMS — CITY PROPERTY AND RANCHES FOR SALE
 3 - Labores, water under it, 2 - in. grass, 1 - in. cultivation, good allot. Near Circleback and Needmore. 3 bedroom home, carpet, central heat — only \$8,500 good F. H. A. Loan.
 2 - br. large — only \$9,500, good F. H. A. Loan. Garage Fully equipped, doing good business — only \$11,500. Let us SELL YOUR property for you — NOW!
F. H. A. — G. I. — CONVENTIONAL LOANS
KREBS REAL ESTATE CO.
 210 S. First Morton Hwy. Office Ph. 3-1910 Res. 5881 Muleshoe, Texas.
 8-46-4tc

McGee-Dutton Real Estate
 Farms - Ranches - Motels - Trades. Houses \$5,300. up. Acreage Large or small — lots Town or Country. Insurance, Life or Hospital. Farm Loans, the best. Give us your listing, and see us for all your Real Estate needs, please Office 3-4080
 A. J. Dutton . . . 4419
 J. A. McGee . . . 3-4690
 8-14t-4tc

SHOP MULESHOE FIRST

FOR SALE: New 3 Br. brick home, electric kitchen — 2 baths — den and fireplace, carpeted, double garage. Lots of storage space. Good location, Near Elementary and high school. Douglas Avery 405 W. 6th. Shown by appointment phone 3-2800 after 6 p.m.
 8-9s-4tc

FOR SALE — 2 bedroom, carpeted house 1418 West Ave. C Phone after 6 p.m. 3-5821.
 8-8t-4tc

FOR SALE — Income property located in good rental area of city. See at 121 West Ave. J. or phone 3-1090.
 * 8-12t-4tc

9. Autos for Sale

FOR SALE: 59 chevrolet Impala, 4 dr., hardtop. Factory air, power steering and brakes. new tires. Good condition. One owner. \$795. Ph. 2350 day, 965-2630 night.
 9-7s-4tc

FOR SALE — 1959 Ford Galaxie 4-dr. Sedan, radio — heater — air conditioner \$750 — 1959 Cushman Motor Scooter \$100. Phone 3954
 9-14s-2tc

10. Farm Equip for sale
 90 joints of pierce sprinkler pipe 4" x 30' swing lines. Elbows & Valves. Call 933-2293. Bula.
 10-13s-4tp

FOR SALE — 360 ft. 8x20 galed 2½ in. outlet 40 in. rows. 330 ft. 7x30 galed 2½ in. outlets 40 rows. Call Horton Griffin 946-2317.
 10-12s-4tc

FOR SALE — 390 Ford Irrigation engine like new butane carburetor: \$635 Call 3-9900.
 10-14t-4tc

NEW 1965 GMC PICKUP DELIVERED \$1749 LADD PONTIAC
 Muleshoe, Tex. Ph. 3-3080 10-34t-4tc

12. Household Goods
 Late Model Repossessed Singer Sewing Machine in walnut console. Will zig-zag, blind hem, fancy stitches, etc. 5 payments at \$6.72. Will discount for cash. Must have good credit. Write Credit Mgr. 1114 19th St. Lubbock, Texas.
 12-10s-4tc

13. Property for Lease
 Building for Rent or Lease. Inquire King Tire Co, Phone 5520.
 13-9t-4tc

15. Miscellaneous
FOR SALE — 16 foot Lone Star boat with 75 Mercury engine. 25 Hp electric Johnson Motor. Donald Harrison.
 15-7t-4tc

WANTED: Ironing in the rear apartment 520 West 2nd. Mary Rose McCready.
 15-12t-8tc

Don't merely brighten your carpets . . . Blue Lustre them. . . eliminate rapid resoiling. Rent electric shampooer \$1. Higginbotham - Bartlett.
 15-14t-4tc

17. Seed & Feed
FOR SALE: Early Sumac Cane Seed. Phone 965-2675, Morris McKilip.
 17-22s-4tc

HARLIN RADIO & TV
 Located in Johnson Pool Appl. 320 MAIN Have serviced over 10,000 Tv's PHONES Days 7370 3-3820 Night 3-4900

FOR SALE HORSES
 Boarded — Day, Week or Month Trained, Shod and Trimmed
3 Stallions Standing
HORSE HAVEN
 North of Sale Barn 946-2401 Ph. 5140 10-14s-4tsc

Dial 2350 For Classified Ads

LEGAL NOTICE
 THE STATE OF TEXAS
 To any Sheriff or any Constable within the State of Texas GREETING:
 You are hereby commanded to cause to be published once each week for four consecutive weeks, the first publication to be at least twenty-eight days before the return day thereof, in a newspaper printed in Muleshoe, Bailey County, Texas, the accompanying citation, of which the herein below following is a true copy.
CITATION BY PUBLICATION
 THE STATE OF TEXAS
 TO: Walter Tabb, Defendant,
 Greeting:
 YOU ARE HEREBY COMMANDED to appear before the Honorable 154th District Court of Bailey County at the Court-house thereof, in Muleshoe, Texas, by filing a written answer at or before 10 o'clock A. M. of the first Monday next after the expiration of forty-two days from the date of the issuance of this citation, same being the 24th day of May A. D. 1965, to Plaintiff's Petition filed in said court, on the 7th day of October A. D. 1964, in this cause, numbered 2765 on the docket of said court and style Walter Tabb, Plaintiff, vs. Walter Tabb, Defendant.

A brief statement of the nature of this suit is as follows, to-wit:
DIVORCE ACTION
 as is more fully shown by Plaintiff's Petition on file in this suit.

If this citation is not served within ninety days after the date of its issuance, it shall be returned unserved.
 The officer executing this writ shall promptly serve the same according to requirements of law, and the mandates hereof, and make due return as the law directs.
 Issued and given under my hand and the seal of said court at Muleshoe Texas, this 5th day of April A. D. 1965.
 Attest: Signed: Hazel Gilbreath, Clerk, 154th District Court Bailey County, Texas. (SEAL)
 14-4t-4tc

LEGAL NOTICE
 NOTICE TO ALL PERSONS HAVING CLAIMS AGAINST ESTATE OF W. A. SHAFER, DECEASED:
 Notice is hereby given that original letters testamentary upon the estate of W. A. Shafer

PRINTING — ART OR TRADE?
 To us, printing is not merely a trade, it's a creative art, an exact science. Our staff has the technical skill, with that plus factor: creativity — to make your every printing order distinctive! OFFSET AND LETTERPRESS COMMERCIAL PRINTING SOCIAL PRINTING
 304 W. 2nd Phone 2350 Muleshoe Publishing Co.

BUSINESS SERVICES DIRECTORY

FINEST PRINTING SERVICE
 304 W. 2nd Phone 2350 Muleshoe Publishing Co.

Kelton Barber
 Shop — BARBERS — Omer Kelton Sony Shoemaker

Sell Us Your
USED FURNITURE
 And APPLIANCES
SWAP SHOP
 Phone 3-0740

THIS SPACE FOR SALE

Robinson's Boot Shop
 127 Main—Phone 7219
FINE WESTERN WEAR
 Men, Women & Children
SHOE REPAIR SHOP
 Ike Robinson
 Serving Muleshoe since 1925.

sort of safety zone for the anxious traveller.
 However, the emphasis was on his belongings rather than his personal safety. Thus, this strict rule never applied to hazards from the accommodations themselves — the furnishings and appliances used by the guest.
 In that respect the hotel's responsibility has always been, and still is, merely to use "reasonable care" — much like the responsibility of a store toward its customers.
 What care is "reasonable"? Of course, circumstances differ in each case. However, a few examples will give you a rough guide:
 A hotel was held liable to a guest who stepped on a needle, where evidence showed that the room had not been properly cleaned for her arrival.
 And a hotel was held liable to a guest who got a shock from turning on the light, where the management had allowed the wiring to fall into dangerous disrepair.
 But a hotel was held not liable to a guest bitten by an insect, where there was nothing to indicate that the hotel could have prevented the mishap.
 And a hotel was held not liable to a guest injured when a bench cracked under her weight, where there was a defect in the wood not discoverable by any normal precautions.
 "A hotel," said the court, "is not an insurer against accidents."

OTWELL'S VACUUM CLEANER REPAIR
 Filter Queen Distributor Disposable Bags For All Makes
SALES SERVICE
 All Vacuum Cleaners New and Used Repaired Cleaners
 After 6 p.m. or before 8 a.m.
 Phone 3-1630 918 East Hickory

A public service feature of the American Bar Association and the State Bar of Texas. Written by Will Beraard.

YL Methodist Revival Closes

Revival services concluded Sunday night at the Y. L. Methodist Church, with the Rev. Floyd Dunn of Morton conducted the services which began Sunday March 28. Tye Young of Muleshoe leading the singing.
 The gospelaires of Muleshoe provided music three nights, with a wovens trio composed of Rowena Watson, Nathalie Staling and Virginia Lambert accompanied by Pat Watson at the piano. Refreshments were served at the Fellowship Hall of the church after services Friday night.

SHOP MULESHOE FIRST

Old Farm Principles Are At Stake As 1965 Farm Programs Debated

By OVID A. MARTIN
 Associated Press Farm Writer WASHINGTON (AP) — American farmers are being challenged to consider whether hard work and saving are morally sound or unsound.
 They are being asked also to consider abandonment of economic principles of the past and present which seek returns for each person on the basis of his contribution in work and other effort.
 These challenges were tossed to producers by the dean of its farm organization leaders, James G. Patton, president of the National Farmers Union, at the organization's recent convention in Chicago.
 But Patton's appeal for adoption of a new set of economic principles — based on the distribution of goods and services to all on the basis of their needs rather than on their contributions — is opposed by another farm leader, Charles B. Shuman, president of the American Farm Bureau Federation.
 No other economic group — business, labor, or the professions — has leadership so widely apart on economic principles as does agriculture.
 PATTON ROCKED many in agriculture by a convention speech which called for strong government programs to assure everyone his needs regardless of what he offered in the economic field. Patton put it this way:
 "There are still too many people — and too often high places in business and government — who are mesmerized by the out-dated doctrines of scarcity economics. And these same people preach the moral virtues of work and saving and the ignominy and character undermining of leisure and of reward without labor."
 "I say that what the individual can offer no longer can or should determine the measure of his reward. His reward should and must be measured by his need."
 The Farmers Union presi-

dent went on to say that with today's technical know-how, resources and capital, there is no problem of producing enough to supply all with their needs, whether they work or not.
 BUT SHUMAN, himself a farmer, takes a position directly opposite that of Patton who for the last 26 years has devoted his full time to farm organization work and to efforts to get stronger federal programs for agriculture.
 "I am proud to be a conservative," Shuman once told his organization's convention . . . modern-day liberals favor greater concentration of power in the federal government with high taxation, big government spending and all sorts of controls and regulations.
 "They advocate the sacrifice of freedom for security. Modern liberalism is materialism. It places greatest emphasis on the division of material things. Freedom is a spiritual and moral value. If the goal of man kind is to release the greatest potentials of all individuals then this goal can only be reached with a maximum of freedom."
 PATTON SAID he is not concerned "one iota" with the fact that, under his type of economy, many might take more from society than they gave.
 A good rule to follow when using electrical appliances — the home is one item per outlet. The use of a double socket is not wise, for soon families will get away from small item like lamps or clocks, and begin using bigger appliances. The result may soon be a fire hazard.

—SPECIAL—
 21 Shrimp Basket
 Tartar Sauce, French Fries, Thick Toast
 \$1.25
 Rich, Thick
 MALT or SHAKE
 30c
BILL'S DRIVE IN
 Phone 7250
 19th and Clovis Road

HEATHINGTON LUMBER COMPANY
 Lumber, Paint, Builders Hardware
 Clovis Rd. — Ph. 7970

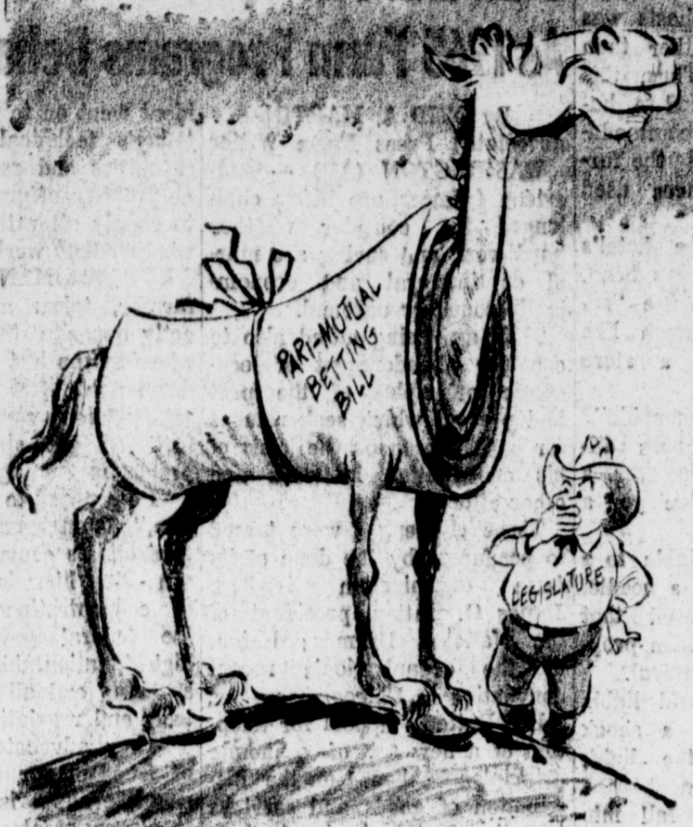
COTTONSEED DELINTE
 Phone 3-2510 — Muleshoe
WILLIAMS SEED CLEANING CO.

Farley Insurance Agency
 Real Estate and Insurance
AUTO FINANCING FARM & CITY LOANS
 SERVICE BEYOND THE CONTRACT
 209 West Avenue B Off. Ph. 7270 — Res. 3-0343

CONTACT
MULESHOE PUBLISHING COMPANY
 FOR ALL OF YOUR PRINTING NEEDS

JAKE DIEL DIRT & PAVING
 Land Leveling Terracing
 Ph. 8410 or 3-5940 Unit 333 Box 50 Plainview Hwy.

SINGLETON FUNERAL HOME
 24 HOUR AMBULANCE SERVICE
 Phone 2860 Muleshoe



THE LONG LOOK

Holidays

(Continued from Page 1)

AG OPINIONS — Atty. Gen. Waggoner Carr has held that a county clerk has no authority to issue a duplicate marriage license unless the license he issued was returned and recorded by him. Ruling was given in answer to a request by Gillespie County Attorney Richard Hoerster.

Carr also ruled that nothing in the State's laws prohibits the operation of a mobil barber shop.

GROCERS FIGHT LABELING — Texas retail grocers raised strong objections at the public hearing for Rep. A. C. Atwood's bill to require labeling of imported citrus fruit, dating original packing of fruits or vegetables and marking "cold storage" any bin in which produce has been under refrigeration for as long as 90 days.

Atwood and Bob Lilly of the (Rio Grande) Valley Farm Bureau told the committee that the bill is intended to help build consumer acceptance of fresh Texas fruits and vegetables over cold storage and imported products.

Grocers argued that the provisions of the bill would be a nuisance and would serve no useful purpose.

WAR ON POVERTY — Governor Connally has appointed a 10-member interagency committee on economic opportunity to coordinate the State's activities under the Economic Opportunity Act of 1964. Terrell Blodgett, director of the Governor's OEO, will head the committee.

Others on the committee are State Education Commissioner J. W. Edgar; Health Commissioner J. E. Peavy; Employment Commission Administrator Richard Coffman; Public Welfare Commissioner John Winters; Industrial Commission Director Harry Clark; Labor Statistics Commissioner Charles King; Parks and Wildlife Director Weldon Watson; State Librarian Dorman Winfrey, and Glen Garrett, director of the Good Neighbor Commission, which is taking over Migrant Labor office administration.

SHORT SNORTS
Sen. Dorsey B. Hardeman of San Angelo got Senate approval for a resolution directing Commissioner of Agriculture John C. White to appoint a citizens' committee to study the effect of beef, mutton and pork imports on the Texas livestock industry. . . . A Senate jurisprudence sub-committee headed by Sen. Tom Creighton of Mineral Wells heard district attorneys from all major counties tell how they think the hot check law should be strengthened. . . . A proposed constitutional amendment to lower the Texas voting age to 19 passed from House to Senate, where it is expected to face tough opposition. . . . City officials strongly opposed a House bill to give firemen and policemen a minimum salary of \$250 a month in cities over 10,000 population and to increase their longevity pay from \$2 to \$10 a month for each year of service. . . . Governor Connally signed into law an act to reorganize tuberculosis control services in the State Department of Health and to launch a long-range program to eradicate the disease. . . . A constitutional amendment to phase out state collection of property taxes by 1972 won Senate Senate committee approval but fac-

es a rocky pathy. . . House passed the bill tightening penalties for driving while intoxicated. . . . Another House-passed bill would eliminate provision for voters over 60 in towns of 10,000 or less voting without obtaining poll tax exemption certificates. . . . Governor, Lieutenant Governor and House Speaker would name a delegation of 15 to negotiate with Mexico for return of the Flag of the Alamo under a resolution sent to the Senate by the House. . . . State Republican Chairman Peter O'Donnell Jr. named John M. Bennet Jr., San Antonio rancher, as the GOP state finance chairman. . . . State Treasurer Jesse James reports a March cigarette stamp sales increase of \$816,841 over March, 1964. . . . Police chiefs and their assistants from 72 Texas towns are in Austin for a law enforcement work shop at the State Department of Public Safety.



Today's Meditation

EVERYONE has quite a fixed feeling about people who are making social protests these days. In various ways we react to sit-ins, walk-ins, wade-ins and pray-ins. Probably there is a general reaction of hostility toward such demonstrations.

We might consider that Jesus, who was rejected in his own hometown of Nazareth when he preached there, might be thought of as a kind of "preach-in." To tell the truth he has been a troubling preacher for nearly twenty centuries. He comes perpetually into his Church to trouble his people with Gospel. Even when his people have built magnificent cathedrals and created elaborate programs in his name, he has come to them, perpetually, to disrupt their confidence and calm, always intruding, always disturbing. He is here now in our midst. If we truly understand what he is saying to us, if the Gospel is preached here perpetually, we will be judged in our work and distracted in our impassioned pursuits.

For he is still seeking to make clear to us what God has done and still doing through him.

But because he ascended unto heaven, he is perpetually, too, our hope and our glory. His power extends beyond his grave, his Resurrection. He is the perpetual, eternal light of our world, constantly judging and redeeming us.

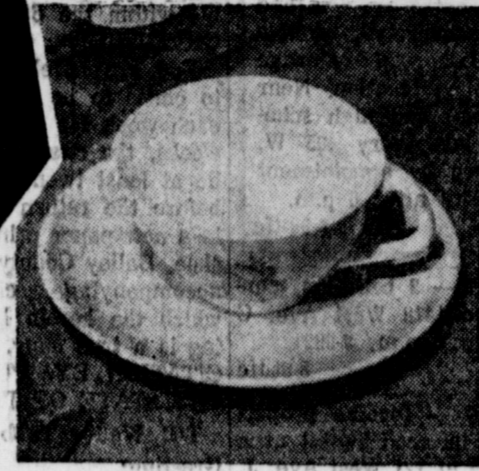
Muleshoe Folk Attend Meet

Mr. and Mrs. Earl Richards, manager of the coop gin of Muleshoe, along with Mr. and Mrs. Wilcy Moore, assistant manager, Mr. and Mrs. Bill Millen and others left Sunday for Dallas to attend the Annual Ginners Convention. The delegation should arrive back in Muleshoe, Wednesday evening.

SHOP MULESHOE FIRST

THIS WEEK!
STEUBENVILLE FAIRLANE
SAUCER
50¢ VALUE
Only 9
WITH EACH \$5.00 PURCHASE

These values are good April 8-9-10, 1965 in Muleshoe, Texas



REDEEM COUPONS YOU RECEIVED IN MAIL FOR STEUBENVILLES SHAW BOTTOM 14 oz. FAIRLANE TALL DRINK GLASSE

99c VALUE EACH

3 FOR \$

THIS WEEK ONLY!

- SUGAR** Holly 5 Lb. Bag **39¢**
- GRAPEFRUIT JUICE** Texsun 46 Oz Can **3 FOR \$1**
- PEARS** Pacific Gold in Syrup No. 2 1/2 Can **29¢**
- MILK** Carnation or Pet Evaporated Tall Can **3 FOR 39¢**
- CORN** Kounty Kist Golden Whole Kernel 12 Oz Can **12 1/2¢**
- VERMICELLI** Q & Q 5 Oz. Box **5¢**

FROEZN FOODS!
Johnston Apple, Peach, Cherry, 79c Value

- FRUIT PIES** Big 9 Inch **59¢**
- Banquet
- TUNA PIES** 8 Oz. Pkg. **6 For \$1**
- Pacer Sliced
- STRAWBERRIES** 10 Oz. Pkg. **2 For 35¢**



We reserve the right to Limit Quantities.

YOU ALWAYS SAVE MORE MONEY AT PIGGLY WIGGLY! LOWEST PRICES IN TOWN!

HEALTH AND HOME NEEDS!

HOME PERMANENTS

Toni Gentle, Super, Regular, \$1.47
Reg. \$2.00 Retail, Tax 15c

Rinseaway Rinse, 12c off Label
Dandruff Shampoo 6 oz. **79c**

Bar-B-Bowl, with Hood, Electric Motor, 21" Chrome Grill, Adjustable 7" Wheels Heavy Gauge, Reg 13.95 Retail
Barbeque Grill **\$11.88**

TURN YOUR MEAL INTO A FEAST SERVE

PIGGLY WIGGLY MEATS!

SIRLOIN STEAK

Armour Star Aged, Heavy Beef, Valued, Trimmed, Pound **79c**



Smoked Picnics

Butcher Boy **SLICED BOLOGNA**, Pound Pkg. **49c**

Armour Star, Aged, Heavy Beef, Valued, Trimmed, Boneless

LOIN TIP ROAST, Pound **98c**

Rodeo's Whole Pound **27c**

American or Pimento **SLICED CHEESE**, 8 Oz. Pkg. **3 for \$1**

Armour Star **SAUSAGE**, 1 Lb. Pkg. **3 for \$1**

Blue Morrow's **STEAK FINGERS**, 15 Oz. Pkg. **79c**

CHUCK STEAK

Armour Star Aged, Heavy Beef, Valued, Trimmed, Pound **55c**

Bacon SLICED Butcher Boy Pound **49c**

VITAMAN RICH PRODUCE ALYAYF AT PIGGLY WIGGLY!

- Texas Full o Juice **Oranges** **5 LB. BAG 39¢**
- RADISHES** California Fresh Large Bunches **2 FOR 9c**
- BROCCOLI** California Extra Fancy Green Large Bunches **29c**

LARD 3 Lb. Delite Carton **49c**

OLEO Elgin Colored 1 Lb. Pkg. **2 For 25c**

APPLESAUCE Apple Bay No. 303 Can **12 1/2¢**

PRESERVES Strawberry Bama 18 Oz. Tumbler **49c**

Lowest Prices . . . Greatest Variety . . . always at . . . **Piggly Wiggly**