

# Muleshoe Jaycees 'Mean Business;' Committees Named To Plan Community Center

Muleshoe Jaycees let it be known Monday in no uncertain terms that "we mean business" in this matter of a community center for Muleshoe.

By a unanimous vote, they approved the campaign at their luncheon Monday, and instructed Jaycee President Kenneth Henry to name committee chairmen to further the proposal.

He named David Suddeth as general chairman. Heading the finance committee will be Don Harmon, and Tim Campbell and Gene Paul Jarman are to be co-chairmen of the committee which is to find a location

for the center.

The need for a center has long been felt by the Jaycees, it was pointed out by the Jaycee chief Wednesday, "and we felt that there is no better time than right now to get the idea rolling," he concluded.

He said Wednesday that the organization will "look into every angle of the community center program and come up with some first-rate suggestions." He said the members of the committees will visit other community centers to see how they are constructed and operated.

Said Suddeth: "We believe

that one of the greatest needs of Muleshoe at the present time is for a good community center, and we are going to do our utmost to see that Muleshoe gets such a center."

At Monday's luncheon, Pat Glover was introduced as the "Jaycee of the Month," and the group voted to have a booth at the annual Halloween carnival to be held in the school bus barn.

Speaker Monday was Gil Lamb

The club will start an all-out campaign to sell crane hunting tickets for the season which opens Oct. 30. The Jaycees are offering daily and season prizes to hunters bagging the biggest

sandhill cranes. Dr. Jerry Gleason is chairman of the crane committee.

It was pointed out that county residents do not need licenses in order to hunt sandhill cranes within the county in which they live. The crane "tickets" which the Jaycees are selling entitle the hunter to participate in the Jaycees' contest. Also those who buy tickets will be given guide service if desired.

Another program which has been approved by the local Jaycees deals with the Vietnam Policy. The Organization, both locally and on a national basis, has advocated a "stay-tough" policy in Vi-

etnam. James A. Skidmore Jr., president of the U. S. Jaycees, appeared before President Johnson recently to report that the young man's civic group has endorsed this policy through a vote of the Jaycees' 5700 chapters in 50 states and the District of Columbia.

The 33-year-old Jaycee leader told President Johnson the Jaycees took this stand because they realize that "to achieve victory over communist aggression, forces as well as diplomatic resources are often necessary."

The 260,000-member Jaycee group was the first organiza-

tion to give full endorsement to the peace-time draft in 1940.

"Now, as in 1940, we do not find it easy to enter into conflict. We fear war more than anyone for it directly affects the lives of our members, the young men of America," said the Jaycee president.

More than 92 percent of our members are veterans and young men who will be called upon to defend their nation," added Skidmore.

Submitted to the Jaycees by the organization's 18-member executive committee, the referendum gave each member the opportunity of favoring a stay-

tough policy in Vietnam, opposing or taking no stand on the issue. Voting as chapter units in 5700 communities, the referendum logged a yes vote by a 12 to 1 ratio.

"Our referendum pointed out that "responsible action in Vietnam using military force, diplomacy and all other public and private resources to protect these principles is for the ultimate benefit of all freedom-loving people.

"As long as there are men who hate and destroy, this nation must continue to have the courage to resist or all that we have built and stood for will crumble," Skidmore concluded.

# The Muleshoe Journal

DEDICATED TO THE PROGRESS AND DEVELOPMENT OF BAILEY COUNTY AND THE GREAT MULESHOE COUNTRY

VOL. 43 — NO. 41

12 Pages

Published Every Thursday At Muleshoe, Bailey County, Texas — 79347

THURSDAY, OCT. 14, 1965

## City To Brighten Lighting System

Muleshoe's street lighting system will be stepped up throughout the city on a long-range plan adopted by the city council at their meeting Monday, and first of the new high-powered lights probably will be in operation by the end of the year. A new contract with

Southwestern Public Service Co. was authorized at Monday's council session.

All street lights in Muleshoe eventually will be changed and new high-powered systems will be installed. City Manager Albert Field estimates it will be two years before all lights have been changed.

"Actually it's a complete updating of our public lighting system," the city manager explained.

He said residential street lights will be upped from 2500 to 7000 lumens, and lights along highways will be boosted from 15,000 to 20,000 lumens.

Downtown lighting will not be changed until after a survey has been completed, but it's possible that the downtown system will be raised from 15,000 to 50,000 lumens. It was explained that many towns are now increasing their street lighting systems, among them Hereford and Littlefield which recently completed new downtown remodeling, including new lighting.

At Monday's session, attended by all members of the council, the mayor and the city manager, action also was taken on a proposal to annex 21.47 acres of land at the west edge of Muleshoe, and a public hearing date was set. The hearing will be Nov. 1st at 2:30 p.m. in the city council chambers. A notice setting the public hearing appears in this issue of the Journal. Land covered is in the Richland Hills area in two tracts.

The council tabled a proposal.



With the Journal Staff

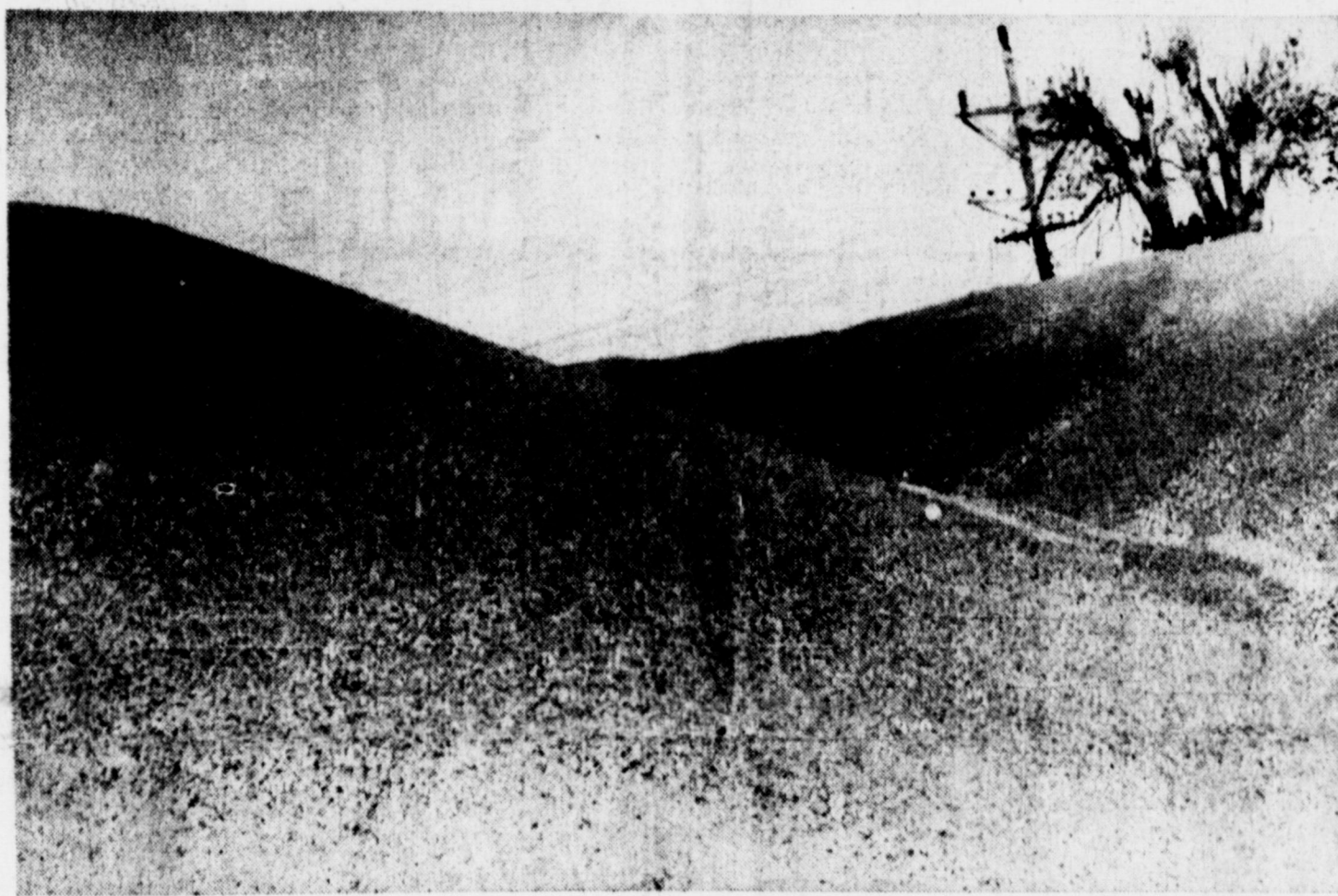
Muleshoe Jaycees will sponsor a Skeet Shoot Sunday afternoon from 2 until 6 p.m., according to John Blackwell. The affair, second such event to be held, will take place at the west edge of Muleshoe across the road from Pop's Cafe.

Muleshoe Mules have an open date on their calendar this week before launching their conference schedule Oct. 22. They will go to Dumas that date to take on the conference's top team, the Dumas Demons. Next home game will be Oct. 29 when Tula comes here. Balance of the season, games will start at 7:30 instead of 8 o'clock except the final game Nov. 20, a Saturday afternoon setto.

Texas High Plains Bookmobile schedule for this week was announced Wednesday by Georgia Pena, bookmobile librarian, Thursday morning the

See MULESHOE, Page Five

See CITY, Page Five



HARVEST MOON — That shiny spot at the top of this picture is the bright harvest moon, shining down on telephone pole-high grain sorghum being stockpiled throughout the county as a near bumper crop rolls to

market. Elevator men figure the Bailey county crop gathering process is half over, will reach the three-quarters mark by the end of this week. (Journal Photo)

## Huge Grain Crop Rolls To Market

Yield is good. Quality is good. Price is good.

Those three sentences describe this year's grain sorghum harvest, say elevator men here, and prospects for a record production are seen by some.

Ben Yeager of Muleshoe Elevator, estimated the harvest at the 50 percent mark at the start of this week, dry weather for last few days speeding the movements of combines. Yeager said he believes the harvest will reach the three-quarters mark by the end of the week if the weather stays dry.

Meantime, elevators already are bulging, and stockpiling of grain (see picture at left) is taking place at many points throughout the county.

"This year's crop is extremely dry, a good feature," Yeager points out, "and even dryland yields are running from 1500 to 2500 pounds to the acre. Irrigated lands are turning out 6800 to 8500 pounds per acre."

Yeager said the yields are running considerably better than had been hoped for after cool, wet weather hit this area earlier this month. The first grain rolled to market around Sept. 10, but a series of cool, wet days practically brought the combines to a halt until last week when harvest was renewed. Many combines operated throughout the weekend, farmers taking advantage of warm, dry weather which prevailed throughout the weekend.

Corn also is rolling to market, and, like grain sorghum, the moisture content is low — 16 to

20 percent moisture, according to Bill Wimberly of Texas Sesame. He says this is an "extremely high dry reading for this time of the year."

Corn yield also is good, with some running as high as 7000 to 7500 pounds to the acre on irrigated land. Little or no dryland corn is grown in this area.

Asgrow 105 is the principal white variety being grown here, Wimberly says, "but we have a number of yellow varieties which are showing up here."

Meantime sesame harvest is "still a good way off," Wimberly said. The crop first is cut and shocked and then combined later, he explained.

Slow is the word for cotton harvest, and that describes the crop for the entire South Plains area, according to the USDA cotton classing office in Lubbock. Only 4700 samples were classed during the week ending last Friday, according to W.K. Palmer, chairman of the office. This brought the total samples classed for the season to only 7200, while at this same date last year, 13,000 samples had been classed.

Virtually all of the South Plains cotton harvested has been hand pulled. The clear weather from mid-week enabled farmers to resume harvesting and the volume of cotton received at the Lubbock office increased daily. It is expected to continue to increase.

For the week ending Friday, Oct. 8, the Lubbock office classed 77 percent in the White

See GRAIN, Page Five

## Bureau Picks 3 Directors, Renames Five

Bailey county Farm Bureau held its annual meeting in the senior high cafeteria last Saturday night and picked three new directors and renamed five. President Joe Wheeler presided over the business meeting.

New board members elected were Glenn Harris, Phil Gartlett and Burley Lee Roberts. Re-elected were Ernest Ramm, O. M. Lackey, Les Bruns, Kenneth Powell and Ruel Kirby.

The organization adopted 17 resolutions which will send to the Texas Farm Bureau state convention to meet in Dallas Nov. 14-17 for consideration by that body, Wheeler said.

The meeting Saturday night had Carol Haire as the speaker. Miss Haire, a high school student, attended a summer-time youth seminar sponsored by the Farm Bureau at Sam Houston State Teachers College, Huntsville. Guests were registered by Letha Wheeler, Ann Little and Vera Engelking.

Reports, in addition to the report by the president, included

See BUREAU, Page Five

## Watermelons Splash, Culbrits Are Hunted

Somewhere around Muleshoe there are some young folk who either just like to hear watermelons hit the pavement and go "shoosh" or else they are just terribly careless with what they do with used watermelon.

And sheriff's officers and city officers are somewhat disgusted.

Watermelons that have gone "shoosh" make an awful big mess, especially when they land on city streets and then are driven through by a lot of vehicles.

So far nobody has actually been caught, except for two lads 14 and 15 years old who landed in Judge Glen Williams' juvenile court after they tossed a piece of watermelon (used) from the scooter which they were riding. The rind hit a small girl in the face but fortunately did not injure her. Needless to say it messed her up considerably.

"Mostly this watermelon-tossing routine has just been a nuisance," said Sheriff Dee Clements who said he had caught a carload of boys and girls eating watermelon on one of the school grounds. Later he saw watermelon rinds tossed from the automobile in which the youths were riding. At the sheriff's insistence, they cleaned up the mess which they had created. Two of the girls, the sheriff said, were from Hart.

A much more serious situation, however, has been noted in these free-tossing episodes. Several Muleshoe people have

reported broken screens and cluttered porches from automobile drivers who have sped by residences and tossed a handful of beer bottles at front porches.

"This sort of practice is much more serious than the watermelon tossing spree, and we will do everything in our power to stop it," officers said. Such incidents could result in serious damage, especially if the beer bottles happened to hit someone."

Other than one or two new watermelon-tossing reports this past weekend was a quiet one, city and county dockets showed. Two drunks were picked up, one landed in jail on a charge of driving while intoxicated, and a vagrant was lodged in the calaboose.

During the time Chief Carl Neeley is confined to a hospital in Lubbock taking Cobalt treatments, Harold White is acting chief of police here.

## Splawn Picks 9 Of 10 Winners In Grid Series

Howard Splawn moved into the winning spot in this week's football guessing contest, his first time this year to score in the top money in the Journal's series.

Splawn picked nine out of 10 winners correctly, including the Florida-Mississippi winner. His actual score of that game, however, was off 16 points, but that was one point better than the second-place winner, G. W. Chapman. Each of the top

See SPLAWN, Page Five

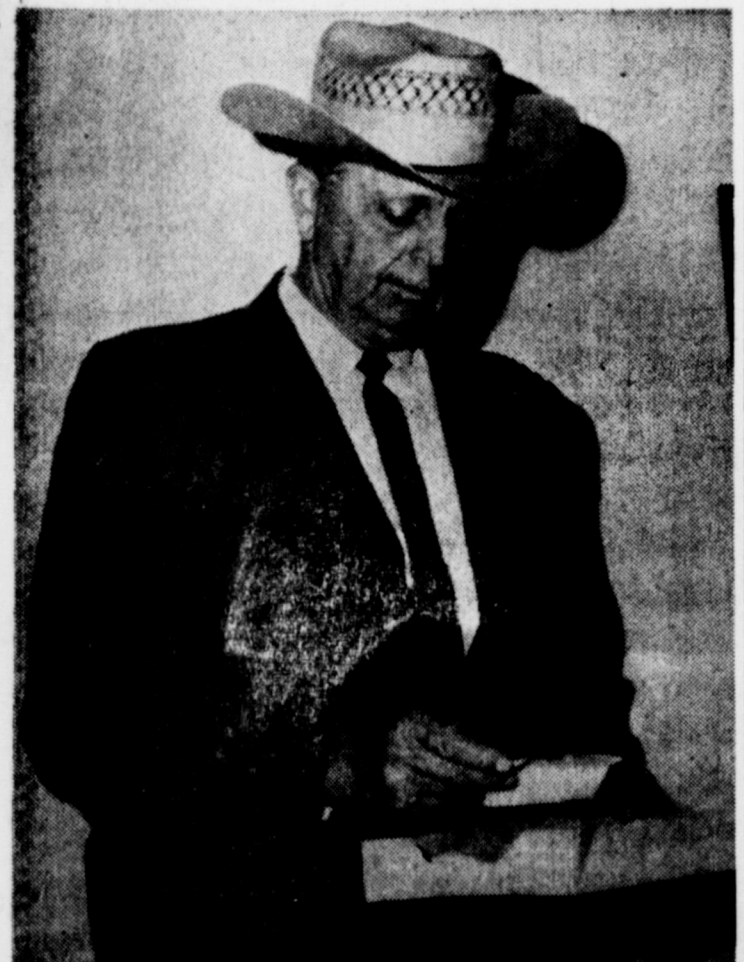
## Temperatures

	High	Low
Oct. 10	93	45
Oct. 11	92	46
Oct. 12	74	49
Oct. 13	75	41
	Sunrise	Sunset
Oct. 14	6:51	6:15
Oct. 15	6:52	6:14
Oct. 16	6:53	6:13
Oct. 17	6:53	6:12



UF LEADERS — Chairmen for the various divisions of the United Fund which kicked off Tuesday with the first of a series of breakfasts, got together in Muleshoe State Bank Community room early this week to map their programs.

Here are three of the division heads - Linda Murray, commercial division; Robert Alford, professional group; and John Shelton, advance gifts. Kenneth Henry (not shown) heads the employees group. (Journal Photo)



WEEK'S WINNER — Winner of this week's Ramada Inn drawing was picked by Sheriff Dee Clements, but the name of the winner will not be announced until next Sunday. The 10 week contest continues, sponsored by 13 Muleshoe firms, "A Weekend at the Ramada Inn" as the prize. (Journal Photo)

## Muleshoe Band Struts At WTSU

Muleshoe High School band will play at half-time Saturday during the West Texas State University-Colorado State College game.

The local band was picked for this honor last week from the director at West Texas, Gary Garner.

Hale Center will play before the game.

# Judi Elliott is Installed Worthy Advisor of Rainbow Assembly Here

Judi Elliott was installed Worthy Advisor of the Muleshoe Assembly No 161 Order of Rainbow For Girls at their installation Saturday night in the Masonic Hall, here.

Miss Elliott, daughter of Mr. and Mrs. Harmon Elliott chose as her theme "Make Love Your Aim". For her flower she chose the rose and her colors were rose and pink and she carried the colors and theme throughout her installation. She dedicated her installation to her family, Mr. and Mrs. Harmon Elliott and John Freeman. Her scripture was found in Matthew 22:37-39.

Mrs. Wayne Williams, Mother Advisor introduced the Installing Officers. Mrs. Jim Denison served as Marshall; Mrs. Ruby Lee Kerr, Recorder; Carolyn Allison, Chaplin; and Mrs. Bob Allford, Pianist.

The invocation was given by Bob Allford, Olton, cousin of Judi.

The installation service began as the recorder read the list of officers to be installed. As she read the list, each girl was presented behind the bow for installation. Worthy Advisor for the ensuing year was Judi Elliott; Jeanine Wagon, Worthy Associate Advisor; Marcie Williams, Charity; Lynn Ericson, Hope; Terry Bryant, Faith; Pam St. Clair, Chaplin; Cindy Davis, Drill Leader; Rene Lackey, Love; Kerry Beddingfield; Religion; Charlotte Da-

vis, Nature; Sue Pylant, Immortality; Sheridan Porter, Fidelity; Brenda Garrison, Patriotism; Kathy Williams, Service; Glenda Calhoun, Outer Observer; Pam Seymore, Musician and Brenda Schott, Choir Director.

Special guests introduced were several past and present Mother Advisors and Worthy Advisors and Alton Epting, Worshipful Master of Muleshoe Masonic Lodge No. 1237AF&AM and the Advisory Board of Rainbow, No. 161.

Judi honored her parents and brother with a corsage and bouquets as a token of her love for them. She introduced her other relatives who were present for the installation service.

## Mrs. Black Shows Art Paintings

Mrs. Elizabeth Black is displaying several of her paintings at the Muleshoe Area Public Library. On the final day of the showing which will be Oct. 23, coffee will be served at the library by Mrs. Black or some of her students, from 9 to 11 a.m.

The general public is invited to view the paintings done by Mrs. Black and some of her advanced art students, according to Anne Camp, librarian.

"I'm Overshadowed" and "The Love Of God" were rendered by Bob Allford, accompanied by his wife, Jenny Lynn. A special flower drill was presented to Judi by several of the Rainbow Girls. The drill was planned and directed by Jeanine Wagon, Worthy Associate Advisor.

Bob Allford then sang "May You Always" as a special wish to Pam from Judi as Pam was presented her Past Worthy Advisor pin.

The benediction was given by Harmon Elliott followed by the retiring march by the newly installed officers.

The installation service was ended by the singing of "My Rainbow".

Refreshments were served in the banquet room by Karen Burelsmith, Susan McVickers and Carolyn Allison.

Presiding at the guest register for the installation was Miss Trace Walker, daughter of the Curtis Walkers and Miss Karen Burelsmith.

Ushers for the installation were Miss Susan McVickers and Miss Carolyn Allison.

## Cecil Davises Entertain Guests

Mr. and Mrs. Cecil Davis had several visitors in their home over the week-end. Davis' cousin was here from Stratford, Ann Pronger, who is a junior at E.N.M.U. Also Mr. and Mrs. G. C. Davis, Austin, and an uncle of Cecil and Mr. and Mrs. Odis Anderson, friends. Mrs. Nova Davis, Mr. and Mrs. Harlan Davis, Jed and Shelly, Muleshoe were also present for the occasion. Mrs. Davis' cousin from Calero, Okla., Mr. and Mrs. Horace Guess and Mr. and Mrs. Wendell Guess, Clines Corner, N.M. also visited in Muleshoe over the week-end.

According to Mrs. Davis the group was very impressed with the Mule Memorial Statue and various other improvements around the Muleshoe area.



Judi Elliott  
Worthy Advisor

## Tech Bulging, Official Tells Rotary Club

Texas Tech, big, complex and complicated, continues to grow, and it must grow to serve the needs of today's and tomorrow's youth. This was the word of Marshall L. Pennington, vice-president for business affairs at the college, who spoke to members of the Muleshoe Rotary club Tuesday.

This is Tech's 40th year, and Pennington pointed out significant figures showing the growth of the school and told of its plans for the future.

He said Tech is one of 22 fully state-supported institutions of higher learning in Texas, and is third largest in Texas in "headcount."

In 1925, Pennington said, the school had 910 students; 30 years later, it has 5321 men and 1833 women for 7154, and last fall the enrollment had climbed to 13,827. This year, the total is 16,045 — 10,139 men and 6165 women. This represents a 10-year increase of 93 percent — 64 percent men and 178 percent increase for women students.

The school will need 1400 teachers alone by 1970. This year the faculty was boosted by 111 persons "not completely adequate."

Muleshoe, Pennington said, had 38 students in 1954 and now has 54. During the past 10 years, Muleshoe has supplied 445 Tech students.

Pennington strongly favors Amendment 1 to be voted on by Texans Nov. 2, pointing especially to the fact that the amendment will put state-supported colleges "in line for approximately \$50 million in matching federal funds over a 12-year period." He added that if Texas does not use these funds, they will go to other states. "The funds thus obtained will be administered entirely by the



## Trinity Group Attend Rally

A Baptist Youth Rally was held at the new Progress Baptist Church Monday night, according to Mrs. Wendell Speck. Going along from the Trinity Baptist Church here were sponsors, Mr. and Mrs. Wendell Speck, Mrs. Troy Walker and Larry Roloff, Velma Ewart, Debbie Sain, Narssia Otwell, Larry Baker, Jimmy Bruto, Alvin Walker, Mart Long and Doris Horsley.

A team from Wayland Baptist College in Plainville brought the program after which refreshments were served to approximately 150.

"Remember, The Lord is willing, if we are willing." Try

## Today's Meditation

Rev. Lupe Rando Pastor, Spanish Baptist Mission  
When you worry about your problems every day and can't solve them, don't let it bother you. Yes, the problems we have keeps us going every day and we never solve them. Some people worry too much about solving, because they want to solve them all at one time, but worrying does not solve our problem, instead it creates another problem.

We can solve our problems if we go at it one at a time. And

state schools — not by the federal government," he explained.

Of Tech he said: "Texas Tech is big, complex, complicated, sometimes frustrating, always fascinating; and it is getting bigger, more complex, more complicated, more frustrating and more fascinating each year."

Guests included Guy Waldren, Sudan; Judge Glen Williams, School Superintendent Neal Dillman; and Mike Bryant, student guest who spoke on the school's golf team. Other members of the team, Bill Hart, Sam Johnson, Jay Ward, Ricky Bodkin and Paul Lenua.

## Mrs. Beddingfield Speaks At Olton

Mrs. Jack Beddingfield, a member of the State Welfare Committee of Texas Classroom Teachers Association, will speak at the Olton Classroom Teachers Association Tuesday on Aspects of Teacher Welfare.

Mrs. Beddingfield is a member of the State Board of Texas Classroom Teachers Association and past president of Muleshoe Classroom Teachers.

**SPECIAL CARPET REMNANTS**  
ALL TYPES & SIZES  
PINK NYLON 15x13  
**\$2.99 a Sq. Yd.**  
**Johnson - Pool Furniture & Appliance.**



**INTRODUCING SHARON SMITH HAIR STYLIST**  
FORMERLY OF MADEMOISELLE BEAUTY SALON AMARILLO

**WELLBORN'S BEAUTY SHOP**  
101 Ave. J. Ph. 3-4040



8 Yr. Old ..... L.to R. Gene Rogers, Gary Parker and Bobby Nickels



9 Yr. Old ..... L. to R. Randell Hodges, Sandy Hart and Mark Bruns



10 Yr. Old ..... L. to R. Larry Vinson, Rex Black and Roger Williams

# CONGRATULATIONS TO THE WINNERS!

OF THE  
PUNT PASS & KICK  
CONTEST

# MULESHOE MOTOR CO.

"AT THE CROSSROADS"



11 Yr. Old ..... L. to R. Bryon Brady, David Faver and Ricky Black



12 Yr. Old ..... L. to R. Johnny Hayes, Ricky Faver and Raymond Davenport



**RHONDA WAGNON** — New Mexico State University's varsity cheerleaders are (l-r) Raren Utgaard, Bottineau, N. Dak.; Darla Rogers, Silver City; Jeannie Park, Rhonda Wagon, Muleshoe and Sturtz, Las Cruces; Carol Bell, Mesilla Park, Rhonda Wagon, Muleshoe and Dorinda Montoya, Santa Fe. Rhonda is

the daughter of Mr. and Mrs. B.H. Wagon. She is majoring in physical education and also secretary of Physical Education Majors Club, historian of Spurs and member of Bible Chair. Miss Wagon is a 1964 graduate of Muleshoe High School. (ENMU Photo)



**ONE WILL BE QUEEN** — Pretty Benni McDaniel, third from left, Hardin-Simmons University senior from Muleshoe, is among five nominees for University Queen. Miss McDaniel, 21 is the daughter of Dr. and Mrs. B.O. McDaniel of Muleshoe. She is working toward a

bachelor of arts degree in chemistry and biology and a bachelor of science degree in medical technology. Other nominees are Sharon Tate of Hobbs, N. M., Greta Lum of Kaneohe, Hawaii; Judy Oxford of Fort Worth, and Elizabeth Faris of Abilene.

### Winners Listed For Lazbuddie's FHA, FFA Fair

By Mrs. C. A. Watson  
LAZBUDDIE — Lazbuddie FHA and FFA held its annual fair this past weekend, and winners, by divisions, are listed below:

**FHA Division**  
Bread — Linda Ashford, 1st; Cheryl Ramage, 2nd.  
Yeast Rolls — Charlotte Davis, 1st; Cheryl Ramage, 2nd.  
Corn Bread — Linda Ashford, 1st; Jan Mason, 2nd; Vickie Broyles 3rd.  
Loaf Bread — Cheryl Ramage, 1st.  
Cakes — Charlotte, 1st; Ramona Espinosa, 2nd; Jan Mason, 3rd.  
Tube cake — Jackie Seaton, 1st; Jeannie Beach, 2nd; Jack-

### Bible Classes To Begin Sunday

According to Winnie Peters and Mabel Sill, speakers, Bible classes will begin Sunday at 3:30 p.m. in the director's room of the First National Bank. The group will also meet each Tuesday at 7:30 p.m. According to the two women the general public is expected to attend.

**LATE WANT ADS**

For Sale: Well located 3 bedroom house. Will sell with two year rental contract with option to buy. Phone 7050 days, 4520 after 5 p.m. 8-411-1fc

Nice Bedroom with kitchen privileges. Phone 7771, days, or 7772 nights. 807 W 7th. 6-411-61c

ie Seaton, 3rd.  
Candy-Fudge — Linda Ashford, 1st; Ann Blackstone, 2nd; Vickie Broyles, 3rd.  
Divinity — Cheryl Ramage, 3rd.  
Peanut Brittle — Christene Espinosa, 1st; Nancy Putman, 2nd.  
Pies-Cherry — Nedda Foster, 1st; Linda Ashford, 2nd; Cheryl Ramage, 3rd.  
Pies-Apple — Janice Miller, 1st; Linda Ashford, 2nd.  
Pies-Pineapple — Charlotte Davis, 1st; Cheryl Ramage, 2nd; Linda Ashford, 3rd.  
Cookies-Drop — Charlotte, 1st; Cheryl Ramage, 2nd; Jane Williams, 3rd.  
Cookies-Rolled — Vickie Broyles, 1st; Vickie Broyles, 2nd; Linda Ashford, 3rd.  
Canning-Tomatoes — Jackie Seaton, 1st; Charlotte Davis, 2nd; Linda Ashford, 3rd.  
Tomato Juice — Connie Harlin, 1st; Charlotte Davis, 2nd; Vickie Broyles, 3rd.  
Green Beans — Anne Blackstone, 1st; Jackie Seaton, 2nd; Connie Harlin, 3rd.  
Blackeyed Peas — Jackie Seaton, 1; Charlotte Davis, 2; Linda Ashford, 3.

**FFA Division**  
Single Stalk Cotton — Edwin Parker, 1st; Dale Blackstone, 2; Troy Steinbock, 3; Steve Foster, 4; David Nelson, 5.  
20 Open Bolls — Derral Embry, 1; Gary Elliott, 2; Frank Hinkson Jr., 3; Victor Schumann, 4.  
Alfalfa Hay — Steve Foster, 1; Derral Embry, 2; Eddie Cartwright, 3.  
Red Top Cain Sheath — Loy Dale Clark, 1; Ronald Mayfield, 2; Leon Watson, 3.  
Millet Sheath — Bobby Redwine, 2.  
Gallon Wheat — Steve Foster, 1; Troy Steinbock, 2; Charles Ramage, 3.  
Gallon Barley — Larry Eubanks, 1; Billy Eubanks, 2.  
Gallon Peanuts — Gary Elliott, 1.  
Sudan Seed — Bobby Redwine, 1.  
Gallon Sorghum Grain — Red-Larry Eubanks, 1; Billy Eubanks, 2; Edwin Parker, 3.  
Soy Beans — Dale Blackstone, 1; Steve Foster, 2; Troy Steinbock, 3.  
Gallon Corn — Bobby Redwine, Larry Eubanks, 2; Mike Hinkson, 3.  
Sun Flower Heads — Leon Watson, 1; Leon Watson, 2; Dale Blackstone, 3.  
Soy Bean Sheaths — Dale Blackstone, 1; Larry Cox, 2; Charles Ramage, 3.  
10 Heads Grain Sorghum —

1st: Joy Williams, 2nd; Joy Williams, 3rd.  
Cup Towels — Jan Mason, 1st; Nancy Putman, 2nd, Jill Mims, 3rd.  
Clothing-High School — Formal — Cynthia Harvey, 1st; Suit — Sherry Robinson, 2nd; Dress — Sherry Robinson, 3rd. Myra Morris — dress — 2, Allene Embry — dress — 3, Linda Ashford — dress — 3.  
Skirt — Linda Ashford, 1 and 2, Allene Embry, 3.  
Sport Clothing — Linda Ashford, 1st; Marsha Schumann, 2nd; Jill Mims, 3rd.  
Jr. High FHA — Kathy Coker — dress — 1, Marlyn Fred — dress — 2, Ann Blackstone — dress — 3.

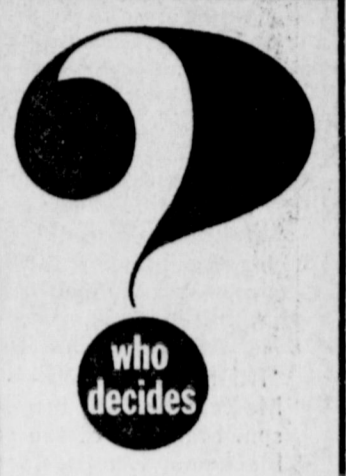
**FFA Division**  
Single Stalk Cotton — Edwin Parker, 1st; Dale Blackstone, 2; Troy Steinbock, 3; Steve Foster, 4; David Nelson, 5.  
20 Open Bolls — Derral Embry, 1; Gary Elliott, 2; Frank Hinkson Jr., 3; Victor Schumann, 4.  
Alfalfa Hay — Steve Foster, 1; Derral Embry, 2; Eddie Cartwright, 3.  
Red Top Cain Sheath — Loy Dale Clark, 1; Ronald Mayfield, 2; Leon Watson, 3.  
Millet Sheath — Bobby Redwine, 2.  
Gallon Wheat — Steve Foster, 1; Troy Steinbock, 2; Charles Ramage, 3.  
Gallon Barley — Larry Eubanks, 1; Billy Eubanks, 2.  
Gallon Peanuts — Gary Elliott, 1.  
Sudan Seed — Bobby Redwine, 1.  
Gallon Sorghum Grain — Red-Larry Eubanks, 1; Billy Eubanks, 2; Edwin Parker, 3.  
Soy Beans — Dale Blackstone, 1; Steve Foster, 2; Troy Steinbock, 3.  
Gallon Corn — Bobby Redwine, Larry Eubanks, 2; Mike Hinkson, 3.  
Sun Flower Heads — Leon Watson, 1; Leon Watson, 2; Dale Blackstone, 3.  
Soy Bean Sheaths — Dale Blackstone, 1; Larry Cox, 2; Charles Ramage, 3.  
10 Heads Grain Sorghum —

Gary Elliott, 1; Ronald Mayfield, 2; Mike Hinkson, 3; Bill Jones, 4; Leon Watson, 5.  
10 Heads White Grain Sorghum — Royce Barnes, 1; Dale Blackstone, 2.  
Yellow Corn — 10 ears — Dale Blackstone, 1; Ruben Flores, 2; Bobby Redwine, 3.  
Irish Potatoes — 1st, Leon Watson; 2nd, Jimmy Broyles; 3rd, Larry Davis.  
Onions — Gary Elliott, 1st; Johnny Delgado, 2nd; Leon Watson 3rd.  
Turnips — Bobby Gleason, 1st, Leon Watson, 2nd. Hinkson, 1st; Johnny Delgado, 2nd; Mike Hinkson, 3rd.  
Tomatoes Small Varieties — Mike Hinkson, 1st; Frank Hinkson, 2nd; Gary Elliott, 3rd.  
Pumpkin — Leon Watson, 1st; Mike Hinkson, 2nd.

Watermelon — Troy Steinbock, 1st; Ricky Bustamantie, 2nd; Steve Foster, 3rd.  
Cantalopes — Dale Blackstone, 2nd.  
Bell Peppers — Perfect Artz, 1st, Leon Watson, 2nd, Johnny Delgado, 3rd.  
Peppers Hot — Victor Schumann, 1st; Bobby Gleason, 2nd;

Bobby Gleason, 3rd.  
Okra — Dale Blackstone, 1st; Garry Elliott, 2nd.  
Sheep - Medium Wool — Ronald Mayfield, 1st; Wesley Barnes Jr., 2nd; Barnes Jr., 3rd; Ronald Mayfield, 4th; Billy Jones, 5th; Ronald Mayfield, 5th. South D. — Barnes Jr., 1 and

•See WINNERS, Page Four•



Who determines what your life shall be? What determines the real nature and destiny of man? If it be God, then there is more to prayer than mankind dreams, and every trial in our lives is an opportunity to discover man "in His image." Hear this public lecture titled "What Determines Your Standpoint?" by GLENN L. MORNING, C.S.B., member of the Board of Lectureship of The First Church of Christ, Scientist, in Boston, Mass.

**Christian Science lecture**

**CLOVIS AIR FORCE BASE CHAPEL CLOVIS, NEW MEXICO**

SUNDAY OCT 17 '65 AT 3:00 P.M., MST

ADMISSION FREE EVERYONE WELCOME

**Crrrrnnnnch!**  
Unbend. Find **AUTOMOBILE REPAIRING; AUTOMOBILE DEALERS** fast in the **YELLOW PAGES**. Where your fingers do the walking.

### Homemakers Hear Speaker

Mrs. Elmo Stevens gave an interesting talk on table setting and etiquette at Thursday's meeting of the Lazbuddie Young Homemakers which was held in the Lazbuddie Home-ec building, according to Mrs. Max Crim.

Charlene Farley, president of the club presided over the meeting and Mrs. Marlene McDonald introduced the guest speaker, Mrs. Stevens.

Mrs. Stevens had a table arrangement for each meal. She used different china, crystal and flatware for each setting.

The next meeting for the club will be at 3 p.m. Nov. 4.

### Midway Club Will Hear Mrs. Brown

Mrs. Varney Rannels will serve as hostess for Tuesday's Midway Variety Club meeting to be held in the Oklahoma Lane Community Building at 2 p.m.

Mrs. Dee Brown will give a talk on her New England trip which she has just returned from, according to the reporter for the club, Mrs. M. C. Mason.

A wide variety of objects has served mankind as money. Shells, beads, cattle, and other domestic animals have been commonly used throughout the world. More unusual items include huge stones, pig tusks, and woodpecker scalps.

SHOP MULESHOE FIRST

**INDEPENDENT DRUGGIST LEAGUE**

**IDL DRUG STORES**

**WEEK END SPECIALS**

**SCORE HAIR CREAM** 3-oz. Tube **66¢**

**GLEEM TOOTH PASTE** Reg. 53¢ NOW **44¢**

**GET SET HAIR SPRAY** Large 13-oz. **66¢**

**Head & Shoulders SHAMPOO** Large Tube **77¢**

**GILLETTE STAINLESS STEEL BLADES** 8's NOW **69¢**

**ANACIN TABLETS** Reg. 1.25 NOW **99¢**

**WESTERN DRUG**

INDEPENDENT DRUGGIST LEAGUE

Speculation's over!  
**Toronado is here!**

New one-of-a-kind car... engineered by Oldsmobile!

Speculation's over. Toronado's here! New proof of Oldsmobile engineering leadership. Only full-size car with front wheel drive. Gives you up-front traction... flat floors... six-passenger spaciousness! Plus exceptional stability... the year's most advanced styling! All on a big 119-inch wheelbase—powered by a 385-hp Rocket V-8! Rumor's over. Toronado's here! At your Dealer's... **LOOK TO OLDS FOR THE NEW!**

Another first from Oldsmobile! Toronado, only full-size car with front wheel drive! Engine, transmission, differential and steering are all up front... to put the traction where the action is!

**STEP OUT FRONT IN '66**  
... in a Rocket Action Car!

**OLDSMOBILE**

GREAT TIME TO GO WHERE THE ACTION IS... SEE YOUR LOCAL AUTHORIZED OLDSMOBILE QUALITY DEALER TODAY!

**Brock Implement Company Inc.**  
422 North First  
Muleshoe, Texas

THE 1966 ROCKET OLDSMOBILES ARE HERE! SEE THEM... DRIVE THEM AT THE OLDSMOBILE DEALERSHIP NEAREST YOU!



'TRI M' MEMBERS — Sponsors for the Modern Music Masters Society are Bill Bradley and Leasel Richardson. Members of the society pictured here are Marsha Blackman, vice-president, Regina Hawkins, Lynna Pitts, Carol Haire and Ellen English, treasurer. Second row are Terry Lynn Bryant, Linda Griffiths, Jan Landers, president, Brenda Tanner, Jan Everett, Chaplin, Pam Kerr and Caroline Bass, secretary. Top row are Neil Finley, Lindell Wilson, historian and John Gully. Not pictured are Don Huff, David Dillman, sergeant at arms, pictured are Sonja Bass, Kathy West, Gereta Gardner and Jane Branscum.

**LEGAL NOTICE**  
NOTICE OF PUBLIC HEARING ON CONTEMPLATED ANNEXATION

The City of Muleshoe, Texas proposes to institute annexation proceedings to enlarge and extend the boundary limits of

**You PONTIAC will give you better service with AMALIE 100% Pure Pennsylvania Motor Oil**

Why? Today's high compression engines running at high or low speeds; running in grueling stop and go traffic require the superior oilness, the heat resistance found only in AMALIE Pennsylvania Oil.

AMALIE is the oil of choice refined from the world's finest crude by special low-heat process. AMALIE stands up under engine heat long after conventional oils break down, thin out, drain off. Cuts wear, insures long miles of smooth engine performance...

change to AMALIE 100% Pure Pennsylvania Motor Oil!

Your service station man will stock AMALIE for you... Just ask him.

**Wiedebush & Childers**



**JUGGLING all your goals in one savings account? Open several-one for each goal!**

"WHAT'S THE DIFFERENCE?" you might ask. "One savings account or several?" With 2 or more accounts, you can earmark your savings for each goal... plan your progress carefully. And you may have special needs—where a trust or investment account would best serve you. Choose from a wide variety of savings accounts here. All earn the same liberal return.

**First Federal Savings & Loan**

Home Office 4th & Pile Clovis, N.M. Branch Office 2nd & Abilene Portales, N.M.

"CURRENT DIVIDEND 4%\*"

said City to include the following described territory, to wit:

Being two tracts of land out of Section 33, Block Y, W. D. & F. W. Johnson Subdivision, Bailey County, Texas, described by metes and bounds as follows:

Tract 1. Beginning at an IP set for the NW corner of Richland Hills Addition to the City of Muleshoe, Texas, that bears N 24 degrees 54' W, 1841.6 ft. and N 63 degrees 24' 15" W, 1779.48 ft. from the SE corner of Section 33, Block Y, W. D. & F. W. Johnson Subdivision, Bailey County, Texas.

Tract 2. Beginning at an IP set for the NE corner of Richland Hills Addition to the City of Muleshoe, Texas, that bears N 24 degrees 54' W, 1841.6 ft. from the SE corner of Section 33, Block Y, W. D. & F. W. Johnson Subdivision, Bailey County, Texas.

Tract 3. Beginning at an IP set for the SE corner of Section 33, Block Y, W. D. & F. W. Johnson Subdivision, Bailey County, Texas, that bears N 24 degrees 54' W, 1841.6 ft. and N 63 degrees 24' 15" W, 1779.48 ft. from the SE corner of Section 33, Block Y, W. D. & F. W. Johnson Subdivision, Bailey County, Texas.

Tract 4. Beginning at an IP set for the NW corner of Richland Hills Addition to the City of Muleshoe, Texas, that bears N 24 degrees 54' W, 1841.6 ft. and N 63 degrees 24' 15" W, 1779.48 ft. from the SE corner of Section 33, Block Y, W. D. & F. W. Johnson Subdivision, Bailey County, Texas.

Tract 5. Beginning at an IP set for the NW corner of Richland Hills Addition to the City of Muleshoe, Texas, that bears N 24 degrees 54' W, 1841.6 ft. and N 63 degrees 24' 15" W, 1779.48 ft. from the SE corner of Section 33, Block Y, W. D. & F. W. Johnson Subdivision, Bailey County, Texas.

Tract 6. Beginning at an IP set for the NW corner of Richland Hills Addition to the City of Muleshoe, Texas, that bears N 24 degrees 54' W, 1841.6 ft. and N 63 degrees 24' 15" W, 1779.48 ft. from the SE corner of Section 33, Block Y, W. D. & F. W. Johnson Subdivision, Bailey County, Texas.

Tract 7. Beginning at an IP set for the NW corner of Richland Hills Addition to the City of Muleshoe, Texas, that bears N 24 degrees 54' W, 1841.6 ft. and N 63 degrees 24' 15" W, 1779.48 ft. from the SE corner of Section 33, Block Y, W. D. & F. W. Johnson Subdivision, Bailey County, Texas.

Tract 8. Beginning at an IP set for the NW corner of Richland Hills Addition to the City of Muleshoe, Texas, that bears N 24 degrees 54' W, 1841.6 ft. and N 63 degrees 24' 15" W, 1779.48 ft. from the SE corner of Section 33, Block Y, W. D. & F. W. Johnson Subdivision, Bailey County, Texas.

Tract 9. Beginning at an IP set for the NW corner of Richland Hills Addition to the City of Muleshoe, Texas, that bears N 24 degrees 54' W, 1841.6 ft. and N 63 degrees 24' 15" W, 1779.48 ft. from the SE corner of Section 33, Block Y, W. D. & F. W. Johnson Subdivision, Bailey County, Texas.

Tract 10. Beginning at an IP set for the NW corner of Richland Hills Addition to the City of Muleshoe, Texas, that bears N 24 degrees 54' W, 1841.6 ft. and N 63 degrees 24' 15" W, 1779.48 ft. from the SE corner of Section 33, Block Y, W. D. & F. W. Johnson Subdivision, Bailey County, Texas.

Tract 11. Beginning at an IP set for the NW corner of Richland Hills Addition to the City of Muleshoe, Texas, that bears N 24 degrees 54' W, 1841.6 ft. and N 63 degrees 24' 15" W, 1779.48 ft. from the SE corner of Section 33, Block Y, W. D. & F. W. Johnson Subdivision, Bailey County, Texas.

Tract 12. Beginning at an IP set for the NW corner of Richland Hills Addition to the City of Muleshoe, Texas, that bears N 24 degrees 54' W, 1841.6 ft. and N 63 degrees 24' 15" W, 1779.48 ft. from the SE corner of Section 33, Block Y, W. D. & F. W. Johnson Subdivision, Bailey County, Texas.

Tract 13. Beginning at an IP set for the NW corner of Richland Hills Addition to the City of Muleshoe, Texas, that bears N 24 degrees 54' W, 1841.6 ft. and N 63 degrees 24' 15" W, 1779.48 ft. from the SE corner of Section 33, Block Y, W. D. & F. W. Johnson Subdivision, Bailey County, Texas.

Tract 14. Beginning at an IP set for the NW corner of Richland Hills Addition to the City of Muleshoe, Texas, that bears N 24 degrees 54' W, 1841.6 ft. and N 63 degrees 24' 15" W, 1779.48 ft. from the SE corner of Section 33, Block Y, W. D. & F. W. Johnson Subdivision, Bailey County, Texas.

Tract 15. Beginning at an IP set for the NW corner of Richland Hills Addition to the City of Muleshoe, Texas, that bears N 24 degrees 54' W, 1841.6 ft. and N 63 degrees 24' 15" W, 1779.48 ft. from the SE corner of Section 33, Block Y, W. D. & F. W. Johnson Subdivision, Bailey County, Texas.

Tract 16. Beginning at an IP set for the NW corner of Richland Hills Addition to the City of Muleshoe, Texas, that bears N 24 degrees 54' W, 1841.6 ft. and N 63 degrees 24' 15" W, 1779.48 ft. from the SE corner of Section 33, Block Y, W. D. & F. W. Johnson Subdivision, Bailey County, Texas.

Tract 17. Beginning at an IP set for the NW corner of Richland Hills Addition to the City of Muleshoe, Texas, that bears N 24 degrees 54' W, 1841.6 ft. and N 63 degrees 24' 15" W, 1779.48 ft. from the SE corner of Section 33, Block Y, W. D. & F. W. Johnson Subdivision, Bailey County, Texas.

Tract 18. Beginning at an IP set for the NW corner of Richland Hills Addition to the City of Muleshoe, Texas, that bears N 24 degrees 54' W, 1841.6 ft. and N 63 degrees 24' 15" W, 1779.48 ft. from the SE corner of Section 33, Block Y, W. D. & F. W. Johnson Subdivision, Bailey County, Texas.

Tract 19. Beginning at an IP set for the NW corner of Richland Hills Addition to the City of Muleshoe, Texas, that bears N 24 degrees 54' W, 1841.6 ft. and N 63 degrees 24' 15" W, 1779.48 ft. from the SE corner of Section 33, Block Y, W. D. & F. W. Johnson Subdivision, Bailey County, Texas.

Tract 20. Beginning at an IP set for the NW corner of Richland Hills Addition to the City of Muleshoe, Texas, that bears N 24 degrees 54' W, 1841.6 ft. and N 63 degrees 24' 15" W, 1779.48 ft. from the SE corner of Section 33, Block Y, W. D. & F. W. Johnson Subdivision, Bailey County, Texas.

Tract 21. Beginning at an IP set for the NW corner of Richland Hills Addition to the City of Muleshoe, Texas, that bears N 24 degrees 54' W, 1841.6 ft. and N 63 degrees 24' 15" W, 1779.48 ft. from the SE corner of Section 33, Block Y, W. D. & F. W. Johnson Subdivision, Bailey County, Texas.

**Winners**

(Continued from Page Three)

1. F.W. — Terry Parham, 1st; David Nelson, 2nd; Larry Davis, 3rd; Terry Parham, 4th; Billy Jones, 5th; Ronald Mayfield, 6th.

2. Steers — Bobby Redwine, 1st; Hogs — Chester Whites — 1st, Danny Clark; 2nd, Loy Dale Clark; 3rd, Loy Dale Clark; 4th, Bobby Gleason.

3. Hampshire — Ronald Mayfield, 1st.

4. Poland — Bobby Gleason, 1st; Bobby Redwine, 2nd; Gleason, 3rd; Bobby Redwine, 4th.

5. Cross — Larry Davis, 1st; Bobby Redwine, 2nd; Billy Jones, 3rd.

6. Cross — Ronald Mayfield, 1st; Clark, 2nd; Danny Clark.

7. Relatives of the Alford Steinbock's met at the Steinbock home Thursday, Friday and Saturday of last week. Meeting in the home for the get-together were Mr. and Mrs. Fred Vincent, Fresno, Calif., Albert Vise, Dinuba, Calif.; Mr. and Mrs. Frank Moss, Sulphur Springs, and Jewell Broden also of Sulphur Springs. Mr. and Mrs. Arne Sarten, Lubbock, Mr. and Mrs. David White and children and Merriman Vise from Oklahoma Lane, also Thresta Whaylon, Lazbuddie.

8. Mr. and Mrs. Marion Green and son, Jeff have moved to Lazbuddie from Olton. The Greens have moved on the J. B. Jennings farm. Green is employed at Western Ammonia Plant.

9. Mr. and Mrs. Eugene Houston moved this week on Mrs. Lena Menefee's farm. They are from Lubbock. They are former Lazbuddie students, both having graduated from Lazbuddie High school.

10. Mrs. J. B. Jennings and Pat and Johnny Nichols were at DeKalb over the weekend visit-

ing Darrell Jennings and family. Darrell had the misfortune of falling from a horse and breaking his collar bone.

11. Mrs. Julia Taylor, Jerry, Don and Wayne, Muleshoe, visited Sunday evening with the Charlie Watson family.

12. The Lazbuddie Young Homemakers met Thursday, Oct. 7, at 3 p.m. in the Lazbuddie Home Economics building. Mrs. Marlene McDonald introduced the guest speaker, Mrs. Elmo Stevens. Mrs. Stevens gave a talk on table settings and etiquette. Mrs. Stevens had a table arrangement for each meal. She used different china, crystal and flatware for each meal. Charlene Farley furnished refreshments.

13. Birthdays this week go to Lillian Smith, James G. Ward, Malony Stepp, Margrett Wilson, Roy Gilbreth.

14. The Lazbuddie homecoming game was played Friday night at Lazbuddie with the Happy Cowboys. The Cowboys did not score in the first or last half but scammed over the Horns 25 to 8 in the 2nd and 3rd quarters. The football sweetheart was Marsha Schumann and the "hero" was Charles Ramage. Escorts were Leon Watson, Sammie Harlin, Mack Holt, and Charles Ramage. Sweetheart candidates, Marsha Schumann, Tonie Smith, Carolyn Morris and Marsha Addudell.

15. A public hearing will be held by and before the City Council of the City of Muleshoe, Texas on the 1st day of November, 1965, at 2:30 o'clock in the City Council Chamber of the City Hall of the City of Muleshoe, Texas, for all persons interested in the above proposed annexation. At said time and place all such persons shall have the right to appear and be heard. Of all said matters and things, all persons interested in the things and matters herein mentioned, will take notice.

BY ORDER OF THE CITY COUNCIL OF THE CITY OF MULESHOE, TEXAS, THIS THE 11TH DAY OF OCTOBER, 1965.

S-S W. B. LeVeque, Mayor.

**TREASURER'S REPORT**

Report of Edith Wilt, County Treasurer of Bailey County, Texas, of Receipts and Expenditures from 7-1-1965 to 9-30-1965, inclusive:

<b>JURY FUND 1st CLASS</b>	
Balance last Report	1,801.30
To Amount received since last Report	94.88
By Amount paid out since last Report	1,319.45
Amount to Balance	576.73
Balance	1,896.18

<b>ROAD &amp; BRIDGE FUND, SECOND CLASS</b>	
Balance last Report	55,266.40
To Amount received since last Report	5,189.16
By Amount paid out since last Report	46,004.39
Amount to Balance	14,451.17
Balance	60,455.56

<b>GENERAL COUNTY FUND 3rd CLASS</b>	
Balance last Report	28,205.40
To Amount received since last Report	1,104.18
By Amount paid out since last Report	16,459.66
Amount to Balance	12,849.92
Balance	29,309.58

<b>OFFICERS SALARY FUND.</b>	
Balance last Report	2,391.65
To Amount received since last Report	16,093.21
By Amount paid out since last Report	14,792.10
Amount to Balance	3,692.76
Balance	18,484.86

<b>SPECIAL ROAD FUND</b>	
Balance last Report	2,314.77
To Amount received since last Report	—
Amount Paid out, Prec. No. 1	—
Amount Paid out, Prec. No. 2	127.50
Amount Paid out, Prec. No. 3	1,217.36
Amount Paid out, Prec. No. 4	—
Amount to Balance	969.91
Balance	2,314.77

<b>ROAD &amp; BRIDGE NO. 1 FUND</b>	
Balance last Report	19
To Amount received since last Report	10
By Amount paid out since last Report	22,105.87
Amount to Balance	6,989.83
Balance	29,095.70

<b>ROAD &amp; BRIDGE NO. 2 FUND</b>	
Balance last Report	15.9
To Amount received since last Report	10.2
By Amount paid out since last Report	15,391.08
Amount to Balance	10,798.12
Balance	26,189.20

<b>ROAD &amp; BRIDGE NO. 3 FUND</b>	
Balance last Report	26.43
To Amount received since last Report	10.00
By Amount paid out since last Report	28,243.96
Amount to Balance	8,193.62
Balance	36,437.58

<b>ROAD &amp; BRIDGE NO. 4 FUND</b>	
Balance last Report	4,255
To Amount received since last Report	10,398
By Amount paid out since last Report	8,461.19
Amount to Balance	6,193.39
Balance	14,654.58

<b>COURTHOUSE &amp; JAIL FUND</b>	
Balance last Report	3,021.34
To Amount received since last Report	274.69
By Amount paid out since last Report	3,296.03
Amount to Balance	—
Balance	3,296.03

<b>LATERAL ROAD FUND</b>	
Balance last Report	22.07
To Amount received since last Report	22,897.02
Amount paid out by Prec. 1	1,040.85
Amount paid out by Prec. 2	1,090.43
Amount paid out by Prec. 3	2,647.36
Amount paid out by Prec. 4	1,087.97
Amount to Balance	17,052.48
Balance	22,919.09

<b>Road District 1-A Int. &amp; Sinking Fund</b>	
Balance last Report	142,840.75
To Amount received since last Report	856.73
By Amount paid out since last Report	4,043.65
Amount to Balance	139,653.83
Balance	143,697.48

<b>SOCIAL SECURITY FUND</b>	
Balance last Report	8,542.64
To Amount received since last Report	—
By Amount paid out since last Report	2,681.56
Amount to Balance	5,861.08
Balance	8,542.64

<b>ROAD IMPROVEMENT HIGHWAY 84</b>	
Balance last Report	29,299.49
To Amount received since last Report	52,754.12
By Amount paid out since last Report	30,337.25
Amount to Balance	51,716.36
Balance	82,053.61

<b>Road Bond Series 1961 Int. &amp; Sinking Fund</b>	
Balance last Report	17,637.13
To Amount received since last Report	470.26
By Amount paid out since last Report	3,175.00
Amount to Balance	14,932.39
Balance	18,107.39

<b>Road &amp; Bridge Warrant Int. &amp; Sinking Fund</b>	
Balance last Report	16,437.44
To Amount received since last Report	593.15
By Amount paid out since last Report	2,144.38
Amount to Balance	14,886.21
Balance	17,030.59

<b>LAW LIBRARY FUND</b>	
Balance last Report	200.00
To Amount received since last Report	60.00
By Amount paid out since last Report	61.50
Amount to Balance	198.50
Balance	260.00

<b>RECAPITULATION</b>	
Jury Fund Balance	576.73
Road and Bridge Fund Balance	14,451.17
General County Fund Balance	12,849.92
Officers Salary Fund Balance	3,692.76
Special Road Fund Balance	969.91
Road and Bridge No. 1 Fund Balance	6,944.12
Road and Bridge No. 2 Fund Balance	10,798.12
Road and Bridge No. 3 Fund Balance	8,193.62
Road and Bridge No. 4 Fund Balance	6,193.39
Courthouse & Jail Sinking Fund Balance	—
Lateral Road Fund Balance	17,052.48
Road District 1-A Fund Balance	139,653.83
Social Security Fund Balance	5,861.08
Road Improvement Highway 84	51,716.36
Road Bond Series 1961 Int. & Sink.	14,932.39
Road & Bridge Warrant Int. & Sink.	14,886.21
Law Library	198.50

**SHOP MULESHOE FIRST**



FALL IS FUN — Fall may be in the air, but in the Corpus Christi area Priscilla Bell finds October a good month to take a stroll through the dunes at Padre Island. (AP Wirephoto)

ed refreshments. Birthdays this week go to Lillian Smith, James G. Ward, Malony Stepp, Margrett Wilson, Roy Gilbreth.

The Lazbuddie homecoming game was played Friday night at Lazbuddie with the Happy Cowboys. The Cowboys did not score in the first or last half but scammed over the Horns 25 to 8 in the 2nd and 3rd quarters. The football sweetheart was Marsha Schumann and the "hero" was Charles Ramage. Escorts were Leon Watson, Sammie Harlin, Mack Holt, and Charles Ramage. Sweetheart candidates, Marsha Schumann, Tonie Smith, Carolyn Morris and Marsha Addudell.

By ready for planting. Order yours now from

**MAIZE SEED**

**NK 310 HIGHEST YIELDER. LATE MATURING STRONG STABILITY. STURDY PLANTS.**

**NK 255 NEW. YELLOW ENDOSPERM. MED. LATE MATURING. SMUT RESISTANCE. EXCELLENT STABILITY.**

**NK 125 COMBINES EASILY. SMUT RESISTANCE. LARGE HEAVY, SEMI-OPEN HEAD, UNIFORMITY.**

**PLUS MANY OTHER VARIETYS**  
**WAYNE PETERSON**  
RT. 1 BOX 37 MULESHOE PH 965-2371

**FARMERS CO-OPERATIVE ELEVATOR**

1093

CAN I DEPEND ON THIS BUS STOPPED AT THE FARMERS CO-OP ELEVATOR?

WELL IF IT DOESN'T, THERE'LL BE AN AWFUL SPLASH!

YOU CAN DEPEND ON FARMERS CO-OP ELEVATOR

FOR CATERING UNUSUAL

**FARMERS CO-OPERATIVE Elevator**  
FERTILIZER • GRAIN • SEED  
H.L. WARD, Manager  
MULESHOE, TEXAS

THE STATE OF TEXAS, County of Bailey. Before me, the undersigned authority, on this day personally appeared Edith Wilt, County Treasurer of Bailey County, who being by me duly sworn, upon oath, says that the within and foregoing report is true and correct.

Signed: EDITH WILT, County Treasurer.  
Sworn to and subscribed before me this 7th day of Oct., 1965

HAZEL GILBREATH, Clerk.  
County Court, Bailey County, Texas  
Seal



**NEW BUSINESS** — Judge Glen Williams and Roy Davis, manager of the Chamber of Commerce, are shown after the official "ribbon cutting" event for Muleshoe's newest business, Muleshoe Raceway is owned and managed by Jeanne Garth and Wanda Givins. (Journal Photo)



**RENAMED** — Sherman Inman (left) was renamed to the Blackwater Soil Conservation District board last week, and has begun serving his third, five-year term. Here he's shown with George Sultemeier, work unit conservatist for Bailey county. (Journal Photo)

**Grain**

(Continued from Page One)

grades and 23 percent in the Light Spotted grades. In the White grades, Middling was the predominant grade with 55 percent, with Strict Low Middling next with 15 percent, Middling Light Spotted was the predominant grade in the Light Spotted category with 17 percent. Staple length continued to average about 31-32 inch. During the week the Lubbock office classed 69 percent 31-32 and longer.

Micronaire reading continu-

ed to be very good. Ninety-five percent miked 3.5 and better.

The Consumer and Marketing Service of the U.S.D.A. reported very light trading in the new crop cotton. Prices for the White grades ranged from loan levels to \$2.50 per bale over the loan, Light Spotted grades were in greater demand and prices ranged from \$1 per bale over the loan to \$5.00 per bale over the loan.

Average prices for the most predominant qualities were: Middling 15-16 — 27.70, Middling 31-32 — 28.30, Strict Low Middling 15-16 — 26.30, Strict

**The Muleshoe Journal**

Published each Thursday by The Muleshoe Publishing Co. 304 West Second Street, Muleshoe, Texas. Member of The Associated Press. Entered as second class matter at the Muleshoe Post Office under act of Congress, March 3, 1897.

**SUBSCRIPTION RATES**

Immediate Territory	\$4.00
Out of Territory	\$4.50
Combined with Bailey County Journal	
Both papers in territory	\$5.50
Both Papers outside territory	\$6.25

Advertising Rate on Application.

L. B. HALL ..... Publisher  
 RAMON MARTIN ..... Editor  
 PAT JOHNSON ..... Woman's Editor  
 JAY SPAIN ..... Mech. Supt.



**City**

(Continued from Page One)

al by General Telephone Co. seeking to set up public pay telephones along Main Street and First, pending further study.

The men also discussed recommendations made by the planning Commission for a "comprehensive city plan." The group decided to set up a meeting with a firm which conducts such programs, and to go further into any such long-range, complete planning program.

Possibility of a low-rent housing program for Muleshoe also was investigated and will be studied further at future ses-

**G.P. Kuykendalls Feted Sunday**

Mr. and Mrs. George P. Kuykendall, long-time residents, were honored at a reception from 4 to 6 p.m. in Lubbock Country Club in recognition of their 50th wedding anniversary. Kuykendall and the former

sions of the council, it was decided.

County-city fire report prepared by Chief Earl Ladd was read by the city manager.



Jay McDanel

**C.T.A. Hears Jay McDanel**

Jay McDanel, who teaches chemistry and biology in Abilene and district 7 membership chairman and a member of the Texas Classroom Teachers Association, N.E.A. and Abilene Classroom Teachers Association, was guest speaker for the Muleshoe Classroom Teachers Association which met last Monday at 4 p.m. in the Richland Hills Cafeteria with Mrs. W. V. McAlpin presiding over the meeting.

Mrs. Al Harrison, vice-president, introduced McDanel, who spoke on the professional rights and responsibilities committee. This is a new committee which has been organized to acquaint the public and the profession with professional rights and responsibilities of teachers, improve education and upgrade the teaching profession through the improvement of personnel the integrity of public education and educators and initiate studies into professional and school problems where frictions threaten to disrupt the education program. To serve these objectives, the Muleshoe Classroom Teachers Association is now in the process of adopting the code of ethics of the education profession.

The serving table was cover-

**Muleshoe**

(Continued from Page One) unit will be in West Camp and La-iat, and in the afternoon at two locations in Bovina. Friday's itinerary includes Lums Chapel in the morning, Spade during the noon hours and Hart Camp and Fieldton that afternoon. Saturday's schedule includes Olton in the morning and Littlefield in the afternoon.

Mr. and Mrs. Bert Carpenter and children from Lubbock were Sunday guests in the Walter Sain home here.

Bailey county coin collectors have been invited to attend the Amarillo Coin Club's annual fall coin show to be held in Holiday Inn West, Amarillo, Oct. 30 and 31. The show is open to the public from 9 a.m. until 10 p.m. Oct. 30 and from 10 a.m. until 6 p.m. Oct. 31. Admission is free.

The next meeting for the C.T.A. will be Nov. 1 at the Junior High School at 4:20 p.m. The program will be presented by the Welfare Committee.

Classifieds Get Results!

**Bureau**

(Continued from Page One)

a summary of the women's activities, given by the women's committee chairman, Ann Little.

Ben Cockrell and Joe Sooter each gave agents' reports, and W. E. Jinks Meyers reported on election results. Buster Kittrell was in charge of resolutions, and past county president Ed Little was in charge of the jackpot drawing.

The jackpot prize, \$150 in cash went to Mrs. E. E. Holland.

**Splawn**

(Continued from Page One)

guesstimators said wrongly that Oregon would beat Stanford, the only actual winner either missed. Chapman also has been among the money-makers in contests in past years.

The contest continues this week. Grand prize will be \$50 in cash and two tickets to the Cotton Bowl. Details can be found on page 3-B of this issue.

Low Middling 31-32 — 26.80, Middling Light Spotted 15-16 — 26.70, Middling Light Spotted 31-32 — 27.20.

Prices paid farmers for cottonseed ranged from \$45 to \$47 per ton.



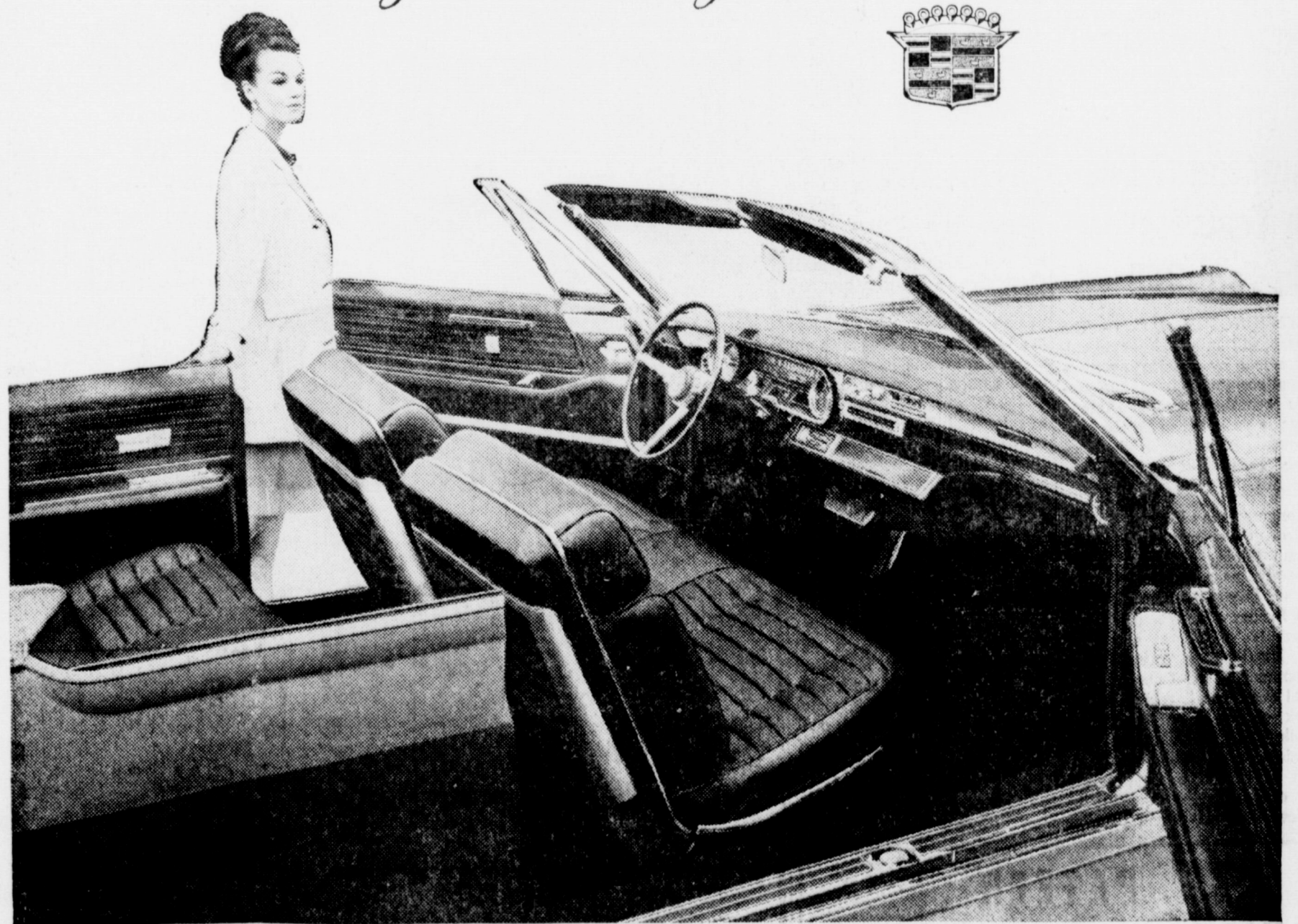
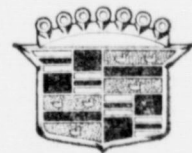
*New Elegance! New Excellence! New Excitement!*

The finest of all Cadillacs is here! It greets you with an exciting new elegance surpassing even the Cadillac styling triumphs of years gone by. Its dazzling new look is highlighted by a totally new split-level grille and by new clean-swept body contours. And its interiors have never been more breathtaking! New

leathers, new fabrics and new appointments (with dramatic walnut paneling on all Fleetwood models) impart an air of unrivaled distinction and luxury. And Cadillac's traditional engineering excellence rewards you with a number of suspension, chassis, and acoustical advances which result in an almost incredible

smoothness and quietness of operation. Finally, consider the excitement of Cadillac's new performance. You'll marvel at the new alertness and the wonderful handling ease provided by Cadillac's exclusive variable ratio power steering. Visit your Cadillac dealer and drive the great new Standard of the World!

*Presenting the nineteen sixty-six Cadillac*



SEE AND DRIVE THE MAGNIFICENT 1966 CADILLAC NOW ON DISPLAY AT YOUR AUTHORIZED CADILLAC DEALER

**2nd Debut for Mother**

*Since She Had Her Face Lifted at Home Without Surgery*

2ND DEBUT with CEF is for women of all ages. It helps nature prevent and eliminate tattle-tale lines and wrinkles. Its marvelous benefits are gradual, subtle and lasting. CEF, the remarkable biological ingredient in 2ND DEBUT, works beneath the surface of the skin, bringing countless tiny droplets of natural moisture to replace those time and the elements have taken away.

As the moisture accumulates, it pushes lines and wrinkles upward and out. The skin's moisture balance is restored. Signs of aging are smoothed away and the face is "lifted"—naturally and without surgery.

2ND DEBUT is formulated with CEF 600 for normal skin care, and with CEF 1200 "double potency." So, start using 2ND DEBUT today.

2ND DEBUT Liquid Cleanser is for women who are bothered by a ruddy complexion, blackheads, or large pores. All of these problems are due partly to improper cleansing.



**2nd Debut**  
WITH CEF 600

by ARRIVE BEAUTIFUL

2ND DEBUT COSMETICS with CEF that help keep you Debutante Lovely year after year after year.

**Cobb's**

**JONES MOTOR COMPANY**  
801 HALL AVE. PHONE 385-5171



MRS. WILLIAMS — Mrs. Williams began painting in 1950 when she took a course by mail. She has taken under Dr. Caballero, and won citation in 1960 at the Muleshoe State Bank exhibit and first place and honorable mention in Muleshoe State Bank exhibit in 1961; placed third in Christmas Show in 1963 and entered "famous artists" magazine cover competition in Aug. of 1965. Mrs. Williams lives at Stegall. (Journal Photo)



DESERT SCENE — Mrs. Cass Stegall hung some of her art pictures at Paul's Cafe Thursday and she is shown displaying this one. Mrs. Stegall began painting in 1959 when she was instructed by Dr. Caballero. She took from Katherine Travis in 1960 and Dana Arnold in 1964. (Journal Photo)

**Agreement Due In Congress On Farm Bill**

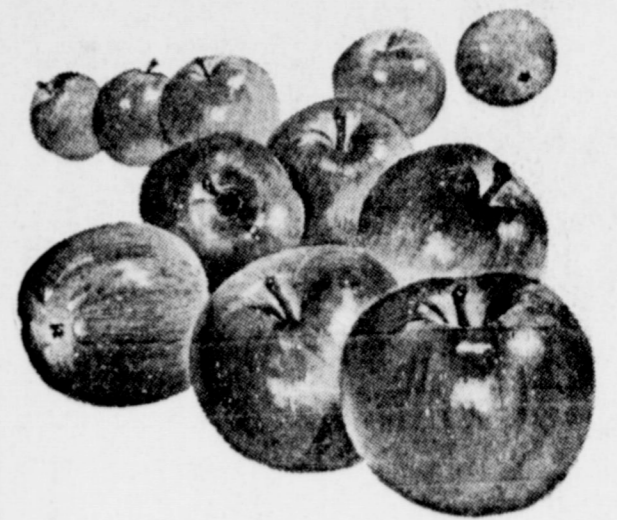
WASHINGTON, D.C. — The House will move closer to adjournment by considering measures postponed from last week's crowded agenda. Among them is expected to be the conference committee on the Omnibus Farm Bill and the Sugar Act.

Congressman Walter Rogers addressed delegates to the American Mining Congress in his capacity as a member of the House Committee on Interior and Insular Affairs and its Subcommittee on Mines and Mining. His topic is "Mineral Development of the Outer Continental Shelf" as it relates to the work of the new 19-member Public Land Law Review Commission, on which the Congressman serves. The Commission was established by Congress to review U. S. laws and policies

affecting development of the public lands and to make recommendations for changes. Congressman Rogers' topic before the Fair Campaign Practices Committee's National Conference on Broadcasting and Election Campaigns is "Promising Avenues of Recourse and Control" in dealing with abuses of electronic media in election campaigns. As a member of the House Committee on Interstate and Foreign Commerce, Congressman Rogers is chairman of the Subcommittee on Communications and Power, which has jurisdiction over broadcasting industry matters. At the conference, the major 1965 event of the bipartisan Fair Campaign Practices Committee which seeks to raise standards of U.S. election campaigning, Congressman Rogers will discuss his proposal for effective Federal laws to control libelous election campaign statements. "This law should deal not only with the problem of civil libel but should also provide strong penalties from a criminal standpoint," Congressman Rogers said.

**APPLE JUBILEE**

NEW MEXICO RED DELICIOUS Lb. **9¢**



**GRAPEFRUIT**

FLORIDA RUBY RED



Lb.

**15¢**

**CORN**

CALIFORNIA LARGE GOLDEN EARS

**3 FOR 19¢**

**CELERY**

CALIFORNIA CRISP GREEN, LB.

**9¢**

**SWEET POTATOES Lb. 10¢**

**T-BONE STEAKS**

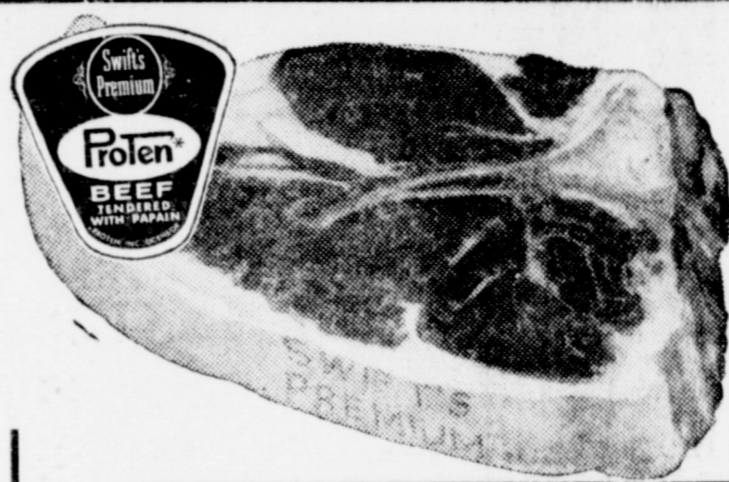
SWIFTS PREMIUM PROTEN BEEF

**98¢**

**RANCH STEAKS**

SWIFTS PREMIUM PROTEN BEEF

**59¢**



- SWIFTS PREMIUM PROTEN BEEF **ARM ROAST** Pound **59c**
- SWIFTS PREMIUM PROTEN BEEF **CLUB STEAKS** Pound **79c**
- SWIFTS PREMIUM PROTEN BEEF **SIRLOIN STEAKS** Pound **89c**

**BACON**

PICKNEYS HARVEST TIME SLICED

2 LB. PKG.

**\$1.49**

**BABY FOOD**

HEINZ OR GERBERS STRAINED

**12 FOR \$1.00**

**FINER FOODS LOWER PRICES**

GOLDEN CORN "100% CORN OIL"

**OLEO**

1 LB. BOX

**2 FOR 49¢**

HOLLY

**SUGAR**

10 LB. BAG

**89¢**

SWIFTS JEWEL

**SHORTENING**

3 LB. TIN

**59¢**

PRESTONE

**ANTI-FREEZE**

1 GAL. CAN

**\$1.59**

**FROZEN FOOD**

- Handy Pak 2 Lb. Pkg. **FRENCH FRIED POTATOES 29c**
- Birds Eye 9 Oz. Pkg.
- ITALIAN GREEN BEANS 6 For \$1**
- Banquet, Chicken Turkey & Beef
- POT PIES 5 For \$1**
- Sun Joy 10 Oz. Pkg.
- STRAWBERRIES 5 For \$1**
- Ocean Beauty 12 Oz. Pkg.
- SALMON STEAKS 89c**

**Top-Grade MEATS**

- SWIFTS PREMIUM PROTEN BEEF **SHORT RIBS** Pound **29c**
- SWIFTS PREMIUM PROTEN BEEF **HAMBURGER MEAT 3 LBS. \$1.00**
- KRAFT AMERICAN SLICED **CHEESE 15 Oz. Pkg. 59c**

**FREE**

COME IN AND REGISTER "RAMADA Week-end"

COMPLETE DETAILS IN BAILEY CO. JOURNAL

Need not be present to win Drawing Every Week, Register Here For Each week's Drawing DATES SUBJECT TO AVAILABILITIES

- Cookies** Sunshine Yum Yum 11 Oz. Box **39c**
- Grape Jam** Zestee Pure 18 Oz. Glass Tumbler **35c**
- Honey** Waxahachie Chief 4 Lb. 4 Oz. Can **99c**
- Pickles** Paramount Polish Style Sweet Sliced 23 Oz. Jar **39c**
- Cheese** Kraft Velveeta 2 Lb. Box **79c**
- Dog Food** Kim No. 1 Tall Can **6 For 49c**
- Whip'N Chill** Jello Asst Flavors **19c**
- Gladiola Magic Cake Mixes, Devil Food, White & Yellow 8 Oz. Pkg.** **2 For 23c**
- Napkins** Kim 80 Count Box **2 For 25c**
- Pumpkin** Libbys Fancy No 303 Can **2 For 25c**
- Corn** Niblets Whole Kernel Golden 12 Oz. Can **19c**
- Anti-Freeze** Red Barn 1 Gal. Can **\$1.39**
- Peaches** Sun "Dranched Elberta No 2 1/2 Can **25c**
- Potatoes** Hunts Whole New No 300 Can **2 For 29c**
- Soup** Cambellis Tomato No. 1 Can **10c**
- Coffee** Kimbells Drip or Reg. 1 Lb. Tin **69c**
- Coca-Cola** 12 Btl. Ctn. Plus Deposit **69c**
- Dial Soap** Bath Size Asst. Colors **2 For 39c**
- Pledge** Johnson Large Can **\$1.19**

**PATZER CHIROPRACTIC CLINIC**  
 MULESHOE, TEXAS  
 Phone 3-9670  
 1540 American Blvd.  
**KEEP SMILING**

GUNN BROS. STAMPS  
 DOUBLE EVERY WEDNESDAY

*White's* **CASHWAY**

Listen To MULETRAIN 10:15 A.M. over KMUL sponsored by CASHWAY

# Bula Pins Its Grid Hopes For 1965 Season On These Young Stalwarts



SAMMY NICHOLS



RODNEY CHAUGH



GLEN SALYER



DALE MCFADIN



KENNETH OVERLAND



MICHAEL RICHARDSON



KEITH OVERLAND



DENNIS NEWTON



DENNIS LURNEY



JOHN FRED



RANDAL ROBERTSON



BARTY ADUDELL

## THE FAMILY LAWYER

### Law and Love

**Who Owns a Letter?**  
Interesting letters may give rise to interesting notions. Such as:  
"I'd better not throw away is letter from Fred. He might come famous some day, and the letter could be worth a lot of money as a collector's item."  
Suppose Fred really does become famous and his letter valuable. Would it belong to you, because it was sent to you? Or would it belong to Fred, because he created it?  
The law's deft solution is to divide the ownership of a letter into two separate rights — the right of possession and the right of publication. The recipient has the right of possession of the paper and ink. He may keep the letter as a memento, sell it to a collector, or even toss it onto a bonfire if he pleases.

But the right of publication — to make copies and exploit it as a literary work — still belongs to the original writer. This division of rights was illustrated in a famous lawsuit involving some personal letters written by Mary Baker Eddy, founder of Christian Science. After Mrs. Eddy's death, her executor tried to prevent the auctioning of these letters. The court ruled that the sale itself could not be prevented, because Mrs. Eddy had given away the right of possession when she first mailed the letters. But the court did forbid reprinting of the letters in advertisements of the auction, because Mrs. Eddy had never given away the right of publication.

Of course, circumstances alter cases. For example, if you write a letter-to-the-editor, you are obviously giving the editor not only the right of possession

but the right of publication as well.

Also, publication of a letter without the writer's consent may be justified by the necessities of law enforcement. Thus, when a woman was charged with adultery, incriminating letters she had written were held admissible in court even though she tried to keep them out.

But as a rule, the separate rights of possession and publication will be kept intact. For the law is simply lending form to the instinctive promptings of fair play.

As one court put it, in denying a man's demand for the return of love letters he had once sent to a woman:

"According to befitting decorum, such letters, written to her to keep and read and cherish, are hers."

A public service feature of the American Bar Association and the State Bar of Texas. Written by Will Bernard.

## Pep Schedules Fall Festival

St. Philip's Parish Annual Thanksgiving Festival plans were made at a Parish meeting recently.

Plans call for an all day affair, two big meals, turkey, sausage and all the trimmings and carnival attractions for all. Make your plans now to attend PEP'S 20th Annual Thanksgiving Festival November 25 at the Modern Parish Hall.

Cotton Auction to be in the evening. A Shetland Pony will be given away. Followed by a Public Dance at 9 p.m. Everyone is invited. Committee chairmen are: Dining room, V. H. Diarsing, dance, V. E. Glumpler, games, Fred Albus, cotton, Syl Diarsing, concession, Ed Kuhler, sausage, A. J. Sokora, fish pond, Gery Franklin, cooking, Mrs. A. A. Duesterhaus, advertising, A. G. Jungman.

SHOP MULESHOE FIRST

## Rose Chapter Holds Election

Chapter parents and chapter mothers were elected at the P.H.A. Rose Chapter meeting which was held last Monday in the homemaking room at the Muleshoe High School, with the president, Karon Black, presiding over the meeting.

Elected chapter parents were Mr. and Mrs. Bernard Phelps and Mr. and Mrs. Irvin St Clair. Chapter mothers elected were Mrs. B. H. Wagnon, Mrs. Harvey Bass, Mrs. D. O. Burlesmith and Mrs. Wiley Moore.

## Golf Players Take First Place

A Club Tournament concluded Sunday at the Country Club here with Carl Bambert taking first place with a 194, Bill St-Clair took second with a 195; Irvin St Clair, third with a 196; Glen Watkins, fourth with a 197 and there was a two-way tie for fifth between Dudley Malone and Babe Barber with a 198.

In the Women's Tournament Pearl Gunstream took first with a 215 and Cookie Bambert second with a 222, according to Skippy Carter, Country Club Pro.

## White, Beavers Attend School

Rheata White and Phyllis Beavers attended the second annual fall design school Sunday at Albuquerque, N. M. at Burgett Wholesale Floral Company.

Mrs. White was one of the two outstanding designers with the latest ideas in Christmas and Fall Designing. Mrs. Beavers was assistant to the designers.

Around 125 florists attended the school and buffet lunch.



JO ANN BRAY

Assistant Educational Director  
Bailey Co. Elect. Will  
Serve Cookies Baked On  
Frigidaire Elect. Range  
**FREE COFFEE & COOKIES**

FRIG.  
**DISHWASHER**  
\$99<sup>95</sup>

FRIG.  
**REFRIGERATOR**  
\$199<sup>95</sup>

14 Ft.  
DI4J W.T.

CUSTOM IMPERIAL  
F.I.C.  
**Washer & Dryer**  
\$449<sup>95</sup>  
W.T.  
WC 1-64 - DC1 - 64

FRIG.  
**FREEZER**  
\$189<sup>95</sup>

12 Ft. UFD12-J

FRIG.  
**Electric Range**  
\$299<sup>95</sup>  
W.T.  
RDE38J  
ELECT. CLEAN OVEN

With Purchase of  
any Frig. Appl.  
You May Select  
A Cultured Pearl  
Valued To \$18.95  
**FREE**  
Still In Oyster

DRAWING AT  
SAT. 16th  
9 P.M. MUST  
BE PRESENT

EVERYONE  
INVITED TO BE  
PRESENT FOR THE  
SINGING SAT.  
NITE AND FOR  
THE DRAWING AT  
9 P.M. YOU MAY  
REGISTER ANYTIME  
DURING 3 DAYS.  
COME ONE  
COME ALL.



Gspelaires Will Sing From 8 To 9 P. M. SAT. NIGHT



LAURA HICKEY

Home Service Advisor  
Southwestern Public Service  
Will Serve Cookies From  
Frigidaire Elect. Range

MULESHOE  
MINSTRELS  
Will Sing At  
4 P.M. SAT.

Under Direction OF  
Leasol Richardson

NEW ENTERPRIZE  
**GAS RANGE**  
\$119<sup>95</sup>  
30" W.T.

EVERYTHING  
MARKED TO  
SELL - BUY  
ON TIME-  
Old Trade In Makes  
DOWN PAYMENT

FRIG. ELECT.  
**DRYER**  
\$169<sup>95</sup>  
W.T.  
DIA 63 IMPERIAL

**FREE**  
LAMP TO BE  
GIVEN AT  
4:45 P.M. SAT.

RCA  
12" PORTABLE  
**Transistor T.V.**  
\$109<sup>95</sup>  
W.T.

# HARVEY

## APPLIANCES

MULESHOE, TEXAS

# BASS

## Trucker Launches Own Campaign To Control ALS

By Herb Thompson  
Associated Press Writer  
ANAPOLIS, Md. (AP) — A 48-year-old truck driver from Severna Park, Md., has charged into battle against amyotrophic lateral sclerosis.

James B. Dunkum, who stands 6 feet 2, weighs 235 and enjoys robust health, has decided to start a national drive to finance more research into this incurable disease. He is unfazed by the enormity of his task.

The disease, referred to as ALS, first attacks the limbs, then gradually the rest of the body.

Doctors don't know how it originates. They only know that it is slow, painful and fatal.

It killed baseball player Lou Gehrig in 1941 at the age of 38. Victims this year have included Gene Brito, 39, and end with the Washington Redskins professional football team, and Mrs. George Skouras, whose late husband was a prominent figure in the movie industry.

Dunkum's wife, Virginia, succumbed to ALS at the age of 50 last year. It claims one of every 1,000 Americans who die each year between the ages of 20 and 80. Death occurs in one to five years, with the average about three years.

Helplessly watching his wife waste away, Dunkum decided to do something about it. Doctors told him not nearly enough research was being done by the federal government or private organizations and funds were vitally needed.

Dunkum began devoting all of his spare time to raising

money both on his over-the-road hauls for the Adley Express Co. of Baltimore and at home.

Last August, the nonprofit ALS Foundation of America Inc. was chartered by the State of Maryland, one month before Virginia Dunkum died.

The organization operates out of a small office in Glen Burnie, Md. It is staffed solely by volunteers using furniture and equipment donated by the Teamsters Union, of which Dunkum is a member.

"We don't want any high-salaried professional fund raisers," Dunkum says. "Every penny that we raise is going into medical research."

The foundation has raised about \$2,000 to date. Dunkum says \$50,000 is needed before the first research grant is made.

He has named ministers of different faiths to the board of directors "so that in case of my death there will be no profiteering."

His major goal at the moment is to find some nationally known person who will lend his name to the drive. "I'm just Jim Dunkum, a common truck driver," he says. "We need a well-known name to focus public attention on what we're trying to do."

Lou Gehrig's widow declined use of the baseball player's name, because it might conflict with efforts of the Muscular DYSTROPHY Association, which she supports.

Although Dunkum found strong sympathy in local halls of the Teamsters Union for the ALS foundation, it took him some time to win backing of national union officials. They had received complaints that he was "confusing the general public" with his fund-raising efforts.

But they swung behind the

## The Sandhills Philosopher



Editor's note: The Sandhills Philosopher on his Johnson grass farm is a little price-conscious this week. His letter indicates.

I found a copy of a national magazine snagged on a fence out here on this Johnson grass farm yesterday. I don't know how it got here, it was too thick and heavy for the wind to blow it in and it didn't have any neighbor's name on it, although I was careful not to look till I'd gotten through reading it, and I was very interested in an editorial I ran across.

This editorial was thanking farmers and ranchers for doing such a magnificent job in feeding America at such a low cost.

According to it, in the last few years, the retail price of food has risen 14 per cent, but the price farmers get for raising it has dropped 15 per cent. At the same time, the cost of cars, including gas and repairs, has risen 54 per cent.

This big-city magazine was saying America owed a big thanks and a long round of ap-

soft-spoken and persistent truck driver after he obtained a White House appointment last Dec. 22 to discuss his project with Dr. Edward Fongotson of President Johnson's staff.

Dr. Fongotson encouraged him to continue his work for private funds, Dunkum said.

He and his co-workers have been given free space and time to tell of his program in newspapers and on the radio and billboards. And Dunkum is sure that "a nation that can spend billions to get to the moon can stop a killer like this."

plause to the farmer and rancher for this splendid job.

Now this is all well and good, but as far as I'm concerned I'd much rather have seen an editorial lambasting us for getting 15 per cent better than a 1955 model steak or bushel of corn or a bale of cotton.

Moreover, the editorial pointed out, medical costs are up 72 per cent, but, try as hard as I can, I can't make any ache I have feel 15 per cent less painful that it did a few years ago. I don't know what the solution to the farm problem is, any more than Congress does, but I have a notion it won't be discovered till every magazine you pick up has started jumping on farmers and ranchers for their outrageous price increases. What agriculture needs is an editorial entitled "These Gouging Farmers."

Don't know when this will happen. I've tried raising the price of my stuff, but nobody pays any attention to it.

Yours faithfully,  
J.A.

Lights, No Cars  
TITTOGRAD, Yugoslavia (AP) — This 39,000 population capital of Montenegro has taken on a modern look with installation of traffic lights at almost every street intersection.

There has been some joking about it. Residents complain that at some of the red and green light crossings there isn't an automobile an hour.

✦SHOP MULESHOE FIRST✦

## George Speaks To Club: 'Texas In The Space Age'

"The Space Age of the Twentieth Century has become the age of an alert America," emphasized State Representative Jesse T. George, Bailey County's Austin lawmaker, when he addressed the Anton Study Club, in the home of Mr. and Mrs. Reece Pritchard.

With the topic and theme of the regular monthly study club meeting, "Texas in the Space Age," Lawmaker George reiterated the thoughts of a space agency official when he stated, "You cannot afford to place a price tag on either our national prestige or our vital national security."

Representative George presented a capsule report on the United States space program, pointing out that, "We are at the mid-way point in our National goal of landing a manned space craft on the moon by 1969. The projected moon project has cost us over 12 billion dollars and a vast national effort involving over 400,000 people. Since the beginning of the Space Age in 1957, some 30 billion dollars has been allocated for space exploitation in this country. Our pursuit of scientific knowledge and our growing defense race have forced the driving and motivating forces behind our race to the moon," George explained.

"Of the seven billion dollars allocated this year for the United States space program 5.4 billion will be directed toward civilian space projects, while 1.6 billion will be used to perpetuate the military space pro-

gram. Though the Soviet Union is spending nearly as much as the United States in the space field, her program is limited strictly to that of a military nature. Russia claims there is no such thing as a civilian space program, and accuses 'the United States of using the Gemini V Project as a "spy ship" over Russia, Red China, Cuba, and North Viet Nam. The facts are that the recent success flight of the Gemini V by astronauts Cooper and Conrad which carried out four experiments for the Department of Defense and 13 civilian experiments," George stressed.

"Numerous and noteworthy records have been established by the United States as a result of the Gemini V project," George continued. "The Gemini V was in orbit longer, beating the Russian record of five days; the U. S. is now ahead in the total number of man-hours logged in space, and the United States now has the lead in the number of manned space flights."

"Texas and Texans can be justly proud that our State has taken the leading and dominating role in the United States' Age of Space. The Space Age is bringing a twenty-five year boom to Texas, highlighted by the Manned Spacecraft Center located in Houston. Here we can actually see the down-to-earth measurement and impact of the billions of dollars now being spent on space travel. A survey of the space center reveals that by 1990 the population in that area will increase seven times; predictions are that Houston, now the world's sixth largest city, will mushroom to the rank of third largest city in the world. New plants, industrial developments and a whole new way of life is emerging as we began to emerge as a space state," George continued.

In concluding his informative talk, Representative George proudly stated, "We, as Texans and as Americans can feel a deep sense of pride and security in our space program. Serving as a stimulus to our economic growth, the space age has opened the door from the known past to the challenging unknown future. This unknown future is being met by a sound defense system and an impenetrable national security."

Representative George was introduced by Mrs. Jim Warren Anton.

Refreshments were served, and a business meeting followed the program.

## Grocery Buying In Moscow Means Everyone Queues

Editors Note: As wife of Canadian Press correspondent John Best learned first the time-consuming shopping of the Soviet housewife which she describes here.

By JOAN BEST  
MOSCOW (AP) — The secret of shopping for vegetables and fruit in Moscow is to learn to "follow the string bag."

Instead of scanning newspaper advertisements for bargains—you'll find neither produce ads nor bargains here—the shopper must keep a sharp eye peeled for purchases carried by others who've already been to the market.

In that way, before you arrive at the market place, you have a good idea of what you can buy that day and don't have to spend so much time looking around.

When we arrived in Moscow a year ago, I set out to find the local market. I had been told the general vicinity and, by following the route traced by people carrying potatoes in string bags, was able to locate the market.

During the summer months when many fresh fruits and vegetables were on sale I was often stopped on the street and asked where I'd bought tomatoes or other purchases in my string bag.

Besides learning the market-intelligence value of string bags I also quickly learned all about queue-joining.

Russians have a great weakness for lineups. When a shopper sees one she gets into it and then finds out what she is queuing for. If it doesn't interest her she drops out of line.

But if it does—and Russian women out shopping often seem to be in the market for just about anything that's going—she counts herself ahead by having staked out a position.

Moscow's central market is indoors but many of the stall markets are open-air. Most of the goods on sale are state produce but, particularly in the open-air markets, you find "entrepreneurs" selling goods from their private plots. These generally are higher in both price and quality.

Except for a few home-made signs there are no price tags on fruit and vegetable trays. The shopper just has to inquire.

Double scales with weights are used for weighing purchases. The shopper takes care to see that only good produce gets on the scales.

On two occasions, women in the lineup behind me have obligingly plucked bad tomatoes out of the lot weighed for me, scowled at by the salesman.

Once when I was buying apples the woman selling apples

next door wasn't busy removed two rotten a had missed. I have no di man selling the apples few words with her afte

Wrapping is casual ( existent. If you don't brin own carton or bag you v your blueberries in a bit c spaperfolded into a cone

They have barrels of dill pickles which are sc on to the scales. If you supply a carton the wet p are dumped into your strin with the other vegetab

Sauerkraut and smetan an excellent sour cream— sold in bulks so you must ply your own jars.

When shopping in Soviet stores you queue up to pas- counter to decide what to Then you line up again to the required amount at the sa, or cash wicket. With the ceipt ticket you line up still other time to obtain the arti

If the purchase is sold weight and comes to m ounces than you had anticipa you may find yourself back the kassa line. If your p chases are from different cou ers you must obtain individ tickets.

The only freezer units I seen are small ice crea chests. Recently, I've se frozen plums and tomatoes i sale in bulk.

We also have a local store that specializes in partially prepared foods. You can buy stuffed beets or peppers, pieces of chicken or meat with a potatoe or cracker coating, cooked chickens and salads.

I've watched the clerks prepare a new slab of butter for sale. The slab is about a tw- foot cube. A long knife is used to skin a thin layer off the cube. Then two girls, using wire, cut the cube down and across in several layers.

They have a fish tank at our local meat store. Having paid the dassa, customers leave the store with fresh flipping fish.

# Introducing the tuned car. 1966 Buick.

What makes a car a car is styling, performance, ride and handling. Only when they're all tuned together is the car a Buick. Like this 1966 Riviera Gran Sport.



You know how well your car's engine runs after a tuneup? Buick tuning has the same effect on the whole car. Not just the engine. The whole Buick. Everything blends with everything else. Styling. Performance. Ride. Handling. All tuned to work together in harmony. That's what the tuned car is. A Buick. Only Buick is the tuned car. (And every Buick is the tuned car.) What the tuned car is a masterful blending of all the things that make a great car greater. The Riviera for 1966 is the tuned car. It features six-passenger seating, disappearing headlights, a silently efficient new ventila-

ting system and the kind of roadworthiness you'd expect in a car that costs twice as much. (You can get a Riviera for your desk as well as your garage. Send \$1 in check or money order to Riviera, P.O. Box 68, Troy, Mich., for an accurate 1/25 scale model '66 Riviera.) But Riviera's not the only tuned car. LeSabre is, too. And Wildcat, Electra 225, Special, Skylark, Sportwagon. See them all at your Buick dealer's. The tuned car may not mean much to you now. But then you haven't had a chance to drive one yet.

Wouldn't you really rather have a Buick?

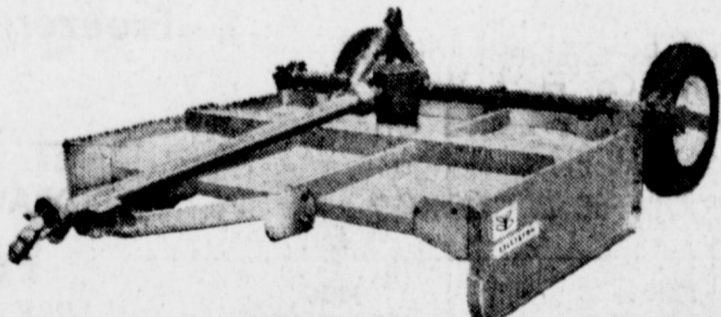
There's an authorized Buick dealer near you. See his Double-Checked used cars, too.

BROCK IMPLEMENT CO. INC. 422 N. FIRST MULESHOE TEXAS



No Cracks, Dad  
CLAY, Ky. (AP) — One of Mrs. George Todd's fourth grade pupils had a ready answer when asked to explain the function of oil glands in the skin.

"They keep you from cracking up," answered the youngster.



## COMMANDO! Lilliston's six-foot rotary cutter

Wars on stalks, weeds, brush — makes hay, too. Always on the attack. Wields tempered steel blades with tremendous shattering force. Shreds stalks, levels undergrowth, mows pastures, reduces weeds and brush to mulch. Then turns around and makes hay, too! Cost is low, and it works for practically nothing. Call us for a free demonstration.



Makes hay as fast as your tractor will go. Side member adjusts to 45 degree angle (as above) or 90 degree angle to spread heavier material for drying.

FRY & COX  
Your Friendly One Stop Farm Store in Muleshoe



# MULESHOE'S ANNUAL

1st Place Winner -  
Howard Splawn  
2nd Place Winner -  
G. W. Chapman



# FOOTBALL CONTEST



BACK  
THE  
MULES

### CONTEST RULES

MULESHOE PUBLISHING CO.  
Box 449 — Muleshoe, Texas

- \* Only one entry per person may be made for any one contest.
- \* Weekly contests are open to everyone except employes and families of this newspaper.
- \* Entries are to be judged by the sports editor and staff of this newspaper. All decisions of judges are final.
- \* Entries must be submitted on the official form, as printed in this paper.
- \* Bring or mail your entries to the Journal office. Mailed entries must be post marked not later than 5 p.m. Friday.
- \* The deadline for weekly submission is 5 p.m. Friday.
- \* Winners names will be published in this newspaper each Thursday following the close of the weekly contest.
- \* Choose team you think will win.
- \* 10 points for 1st. place, 5 points for 2nd place determines Grand Prize Winner.

### WIN WEEKLY PRIZES!

1st. Place \$5      2nd. Place \$3

## GRAND PRIZE \$50

FOR EXPENSES AND TWO TICKETS TO THE COTTON BOWL AT DALLAS, TEXAS. THERE WILL ALSO BE A CONTEST AND PRIZES FOR THE BOWL GAMES!

### YOU MAY WIN!

THIS CONTEST MADE POSSIBLE BY THE FOLLOWING FIRMS:

Brock Motor Co.

Western Drug

Piggly Wiggly

James B' Glaze Ins.

W. Q. Casey Insurance

Heathington Lumber

First National Bank

Muleshoe Floral

E. R. Hart Co.

Paul's Cafe

L & H Grocery

Beavers Flowerland

Muleshoe Motor Co.

Muleshoe Co-op Gin

Ladd Pontiac

Cashway Grocery



Ben Franklin Store



Jennings Insurance

Muleshoe State Bank

Pool Insurance

The Fashion Shop OF MULESHOE

D & G Grocery

Farmers Co-op Elevator

Johnson-Pool Furniture and Appliance



Johnson Furniture

Dari Delite

King Bros Grain & Seed Co.

Muleshoe Auto Parts

## LET'S BACK THE MULES!

# MULES!

### ENTER TODAY!

## FUN! PRIZES!

### Only One Entry Per Person

### OFFICIAL ENTRY FORM

One Entry Per Person

- ..... Auburn vs Georgia Tech.....
- ..... Alabama vs Tennessee.....
- ..... Iowa State vs Colorado.....
- ..... Texas A&M vs TCU.....
- ..... Kentucky vs LSU.....
- ..... Syracuse vs Penn State.....
- ..... So. California vs Stanford.....
- ..... Yale vs Columbia.....
- ..... UCLA vs Missouri.....
- ..... Tie Breaker.....

Texas ..... Arkansas .....  
SCORE SCORE

NAME ..... PHONE .....  
ADDRESS ..... CITY .....

# SHOP MULESHOE FIRST

## Television Schedule For Muleshoe Area

**KING BROS.**  
GRAIN & SEED CO.  
Complete ELEVATOR SERVICE AND SEED PROCESSING FOR The Muleshoe Area.

**FIRST NATIONAL BANK MULESHOE**  
**4%**  
ON 12-MONTH CERTIFICATES OF DEPOSIT  
**3%**  
ON SAVINGS COMPOUNDED QUARTERLY  
**FINANCE YOUR CAR WITH US! PERSONAL LOANS**

**LUMBER PAINT**

and **Hardware**  
  
**Chas. L. Lenau**

**LUMBER COMPANY**  
202 E. Ash

**KGNC - TV (4) Amarillo Muleshoe Cable 4**  
Mon. thru Fri. Daytime Viewing  
7:00 - Today Show  
8:00 - Today Show  
9:00 - F. Phrases  
9:25 - News  
9:30 - Concentration  
10:00 - M. Star  
10:30 - P. Bay  
11:00 - Jeopardy  
11:30 - P. Office  
11:55 - NBC News  
12:00 - News  
12:10 - Weather  
12:20 - Ruth Brent  
12:30 - Make A Deal  
12:55 - NBC News  
1:00 - Truth  
1:30 - The Doctors  
2:00 - Another Wot  
2:30 - C-Don't Say  
3:00 - Match Game  
3:25 - NBC News  
3:30 - Sheriff Bill  
4:30 - Laramie  
5:30 - Hunt-Brink  
6:00 - News

Thursday Evening  
6:15 - Weather  
6:25 - Sports  
6:30 - D. Boone  
7:30 - Laredo  
8:30 - Mona Mc.  
9:00 - D. Martin  
10:00 - News  
10:15 - Weather  
10:25 - Sports  
10:30 - C-Tonight  
10:30 - C-Tonight

Friday Evening  
6:15 - Weather  
6:25 - Sports  
6:30 - Showtime  
8:30 - Mr. Roberts  
9:00 - U.N.C.L.E.  
10:00 - News  
10:15 - Weather  
10:25 - Sports  
10:30 - C-Tonight Sh  
12:00 - Sign Off

Saturday Evening  
7:00 - Roy Reg.  
8:00 - The Jetsons  
8:30 - Atom Ant  
9:00 - Squirrel  
9:30 - Underdog  
10:00 - Top Cat  
1:00 - C. John  
10:30 - Fury  
11:00 - Movie  
2:00 - Football  
5:30 - R. Diamond  
6:00 - News  
6:15 - Weather  
6:25 - Sports  
6:30 - Flipper  
7:00 - I Dream  
7:30 - Get Smart  
8:00 - Movie  
10:00 - News  
10:15 - Weather  
10:25 - Sports  
10:30 - Movie  
12:45 - Sign Off

Sunday Evening  
7:30 - Comedy Tin  
8:00 - C. John  
8:30 - Dixie  
9:30 - A & Trial  
11:00 - Church  
1:00 - Wild Kingdom  
1:30 - College Bow  
2:00 - Sunday  
2:30 - Football  
5:30 - R. Diamond  
6:00 - News  
6:15 - Weather  
6:25 - Sports  
6:30 - W. Disney  
7:30 - Branded  
8:00 - Bonanza  
9:00 - Wackiest  
10:00 - News  
10:15 - Weather  
10:25 - Sports  
10:30 - Director's  
12:00 - Sign off

**KVII - TV (7) Amarillo Muleshoe Cable 5**  
Mon. thru Fri. Daytime Viewing  
6:30 - Wake-up  
7:00 - Crop-Stock  
7:15 - Weather  
7:20 - News  
7:30 - Wells Fargo  
8:00 - Movie  
10:00 - Young set  
11:00 - Donna  
11:30 - Father  
11:55 - News  
12:00 - Ben Casey  
1:00 - Nurses  
1:30 - A Time  
1:55 - Women's New  
2:00 - Gen. Hosp.  
2:30 - Young Mar.  
3:00 - No Time  
3:30 - Action  
4:00 - L. Beaver  
4:30 - H. Patrol  
5:00 - P. Jennings  
5:15 - News  
5:25 - Weather  
5:30 - Rifleman  
6:00 - Bat Mastejr.

Thursday Evening  
6:30 - S. Burke  
7:30 - Crackerby  
8:00 - Bewitched  
9:30 - Peyton Place  
9:00 - Hot Summer  
10:00 - Local News  
10:15 - Weather  
10:20 - Crop Stock  
10:30 - Aquanuts  
11:00 - Movie

Friday Evening  
6:30 - Flintstones  
7:00 - Tammy  
7:30 - Adams  
8:00 - Honey West  
8:30 - P. Place  
9:00 - J. Dean  
10:00 - News  
10:15 - Weather  
10:20 - Crop-Stock  
10:30 - Movie  
10:50 - Football  
10:55 - News  
11:30 - Movie

Saturday Evening  
7:00 - Movie  
8:30 - College  
9:00 - Shenanigans  
9:30 - Church  
10:00 - Casper  
10:30 - Porky Pig  
11:00 - Bugs Bunny  
11:30 - Milton  
12:00 - Hoppity  
12:30 - Bandstand  
1:30 - Movie  
3:00 - R. Derby  
4:00 - Sports  
5:30 - Music  
6:00 - Masterson  
6:30 - Shindig  
7:00 - King Fam.  
8:30 - H. Palace  
9:30 - Ripcord  
10:00 - Movie  
12:00 - Movie  
1:30 - Thriller

Sunday Evening  
7:00 - To Whom  
7:15 - Church  
7:30 - Search  
8:00 - Herald of Tru  
8:30 - Oral Roberts  
9:00 - Church  
9:30 - Beany  
10:00 - Bullwinkle  
10:30 - Discovery  
11:00 - N. V. Peale  
11:30 - D. Funk  
12:00 - Directions  
12:30 - Issues Ans.  
1:00 - ABC Scope  
1:30 - Movie  
3:00 - Chamber  
3:30 - Topper  
4:00 - Beatles  
4:30 - A. Oakley  
5:00 - R. Rider  
5:30 - O'Toole  
6:00 - Voyage to  
7:00 - F. B. I  
8:00 - Movie  
10:00 - News  
10:15 - Weather  
10:30 - Joe Kirbe  
11:00 - Movie  
1:00 - H. Jungle

**KFDA - TV (10) Amarillo Muleshoe Cable 6**  
Mon. thru Fri. Daytime Viewing  
6:25 - Sign On  
6:27 - Meditation  
6:30 - College  
7:00 - Farm News  
7:20 - News  
7:30 - Tri Report  
7:30 - News  
8:15 - Capt. Kang  
9:00 - I Love Lucy  
9:30 - McCoys  
10:00 - Andy  
10:30 - D. Van Dy  
11:00 - Love of Life  
11:25 - CBS News  
11:30 - Search T.  
11:45 - Guiding Lig  
12:00 - News  
12:10 - Weather  
12:20 - Farm & Ra  
12:30 - The World T  
1:00 - Passport  
1:30 - Art Linklette  
2:00 - To Tell Tru  
2:25 - CBS News  
2:30 - Edge of Nigh  
4:00 - Secret Storm  
4:30 - S. Preston  
4:00 - Proud Eagle  
5:00 - Lone Ranger  
5:30 - CBS News  
6:00 - News  
6:20 - Weather

Thursday Evening  
6:30 - Munsters  
7:00 - A. Griffith  
8:00 - Movie  
10:00 - News  
10:15 - Weather  
10:25 - Background  
10:30 - Movie  
10:55 - News  
11:00 - Movie

Friday Evening  
6:30 - Wild West  
7:30 - Hogan's H.  
8:00 - G. Pyle  
8:30 - Smothers I  
9:00 - Slatery  
10:00 - News  
10:15 - Weather  
10:25 - Sports  
10:30 - Movie  
10:55 - News  
11:00 - Movie

Saturday Evening  
6:45 - Cartoon Tim  
7:00 - C. Kangaroo  
8:00 - Heckle-Jeckle  
8:30 - Tenn. Tex.  
9:00 - M. Mouse  
9:30 - Lion Hearted  
10:00 - Tom-Jerry  
10:30 - Quick Draw  
11:00 - Sky King  
11:30 - Lassie  
12:00 - Flicka  
12:30 - News  
12:45 - Movie  
4:00 - Wrestling  
5:00 - Wilburn B.  
5:30 - Porter Wagon  
6:00 - News  
6:20 - Weather  
6:30 - J. Gleason  
7:30 - Trials of  
8:30 - The Loner  
9:00 - Gunsmoke  
10:00 - News  
10:15 - Weather  
10:25 - Sports  
10:30 - Movie  
10:55 - News  
11:00 - Movie

Sunday Evening  
8:00 - Pattern  
8:30 - Church Serv.  
9:30 - Gospel  
10:30 - Religious  
11:00 - Music  
11:15 - Football  
2:30 - Showcase  
3:30 - Science  
4:00 - Mr. Ed  
4:30 - Amateur  
5:00 - 20th Cen.  
5:30 - News  
5:50 - Weather  
6:00 - Lassie  
6:30 - Martian  
7:00 - Ed Sullivan  
8:00 - P. Mason  
9:00 - Candid Came  
9:30 - W. My Line  
10:00 - News  
10:15 - Weather  
10:25 - Sports  
10:30 - Movie  
10:55 - News  
11:00 - Movie

**KCBD - TV (11) Lubbock Muleshoe Cable 2**  
Mon. thru Fri. Daytime Viewing  
7:30 - Headlines  
7:05 - Farm Report  
7:25 - Weather  
7:30 - Today  
8:25 - News Report  
8:30 - Today  
9:00 - Kartoons  
9:25 - News  
9:30 - Concentrati  
10:00 - M. Star  
10:30 - P. Bay  
11:00 - Jeopardy  
11:30 - P. Office  
11:55 - News  
12:00 - N and W.  
12:15 - Com. Closeup  
12:30 - Let's Deal  
12:55 - News  
1:00 - Truth  
2:00 - Another Wor  
3:00 - Match Gam  
3:25 - Afternoon Rep  
3:30 - Nurses  
4:00 - Father Knows  
4:30 - Superman  
5:00 - Cartoons  
5:30 - Hunt-Brink  
6:00 - News

Thursday Evening  
6:30 - D. Boone  
7:30 - Laredo  
8:30 - Mona Mc.  
9:00 - D. Martin  
10:00 - News  
10:30 - Tonight

Friday Evening  
6:30 - Camp Run.  
7:00 - Hank  
7:30 - Convoy  
8:30 - Mr. Roberts  
9:00 - U.N.C.L.E.  
10:00 - News  
10:30 - C-Tonight

Saturday Evening  
7:30 - Roy Rogers  
8:30 - Atom Ant  
9:00 - Squirrel  
9:30 - Underdog  
10:00 - Top Cat  
10:30 - Fury  
11:00 - First Look  
11:30 - Exploring  
12:00 - Milton  
12:30 - Ramar  
2:00 - Football  
5:00 - Music  
6:00 - News  
6:30 - Flipper  
7:00 - Jeanne  
7:30 - Get Smart  
8:00 - Movie  
10:00 - News  
10:30 - Movie

Sunday Evening  
8:25 - Sign on  
8:30 - Shenanigans  
9:00 - A. Oakley  
9:30 - Beany-Cecil  
10:00 - Discovery  
10:30 - Drama  
10:45 - Church  
12:00 - Meet Press  
12:30 - Faith  
1:00 - W. Kingdom  
1:30 - Football  
2:00 - Sunday  
2:30 - Football  
5:30 - Red Raider  
6:00 - News  
6:30 - Wond. World  
7:30 - Branded  
8:00 - C-Bonanza  
9:00 - Wackiest  
10:00 - News  
10:30 - Movie

**KLBK - TV (13) Lubbock Muleshoe Cable 3**  
Mon. thru Fri. Daytime Viewing  
5:55 - Sign on  
6:00 - Sun. Sem.  
6:30 - Cartoon Cir.  
6:30 - Sam. Ser  
7:00 - Farm  
7:20 - Second cup  
7:35 - News  
8:00 - Capt. Kangar  
9:00 - Donna  
9:30 - McCoys  
10:00 - Andy  
10:30 - D. Dyke  
11:00 - Love of Life  
11:25 - CBS News  
11:30 - Search  
11:45 - Guiding  
12:00 - WTTN News  
12:10 - Farm & Ra  
12:25 - Weather  
12:30 - World Turns  
1:00 - Passport  
1:30 - Houseparty  
2:00 - Gen. Hos.  
2:30 - Edge of Nigh  
3:00 - Secret Storm  
3:30 - Ben Casey  
4:30 - Cal. Carniva  
5:00 - Rifleman  
5:30 - News


Thursday Evening  
6:00 - News  
6:10 - Weather  
6:20 - News  
6:30 - Munsters  
7:00 - Gilligan  
8:00 - Movie  
10:00 - News-Wea  
10:30 - Movie  
10:45 - Movie

Friday Evening  
6:00 - News  
6:10 - Weather  
6:20 - News  
6:30 - Wild West  
7:30 - Hogans Herc  
8:00 - G. Pyle  
8:30 - Bewitched  
9:00 - J. Dean  
10:00 - News  
10:30 - Movie

Saturday Evening  
5:55 - Sign On  
6:00 - Summer Sen  
6:30 - S. Preston  
7:00 - Bugs  
7:30 - Porky  
8:00 - Heckle - Jaci  
8:30 - Milton  
9:00 - Mighty Mous  
9:30 - Beatles  
10:00 - Tom & Jerry  
10:30 - Casper  
11:00 - Sky King  
11:30 - Lassie  
12:00 - Flicka  
12:30 - Bandstand  
1:30 - Film  
3:30 - Wrestling  
4:30 - Grand Ole  
5:00 - Wilburn b.  
5:30 - Pickin T.  
6:00 - Porter Wagon  
6:30 - Jesse James  
7:00 - Shenandoah  
7:30 - Rawhide  
8:30 - The Loner  
9:00 - Gunsmoke  
10:00 - News-Wea.  
10:20 - Movie  
12:00 - Late Show  
1:30 - Sign Off

Sunday Evening  
6:55 - Sign On  
7:00 - Bullwinkle  
7:30 - Looney Tunes  
8:00 - Linus  
8:30 - Movie  
10:30 - Cartoons  
10:45 - Church  
11:45 - Football  
2:00 - Scoreboard  
2:15 - News-Wea.  
3:00 - Inquiry  
3:15 - Film  
3:30 - Big Picture  
4:00 - Bowling  
4:30 - Amateur  
5:00 - 20th Cen.  
5:30 - Green Acres  
6:00 - Voyage  
7:00 - FBI  
8:00 - P. Mason  
9:00 - C. Camera  
9:30 - D. Van Dyke  
10:00 - News  
10:20 - Movie  
12:00 - Sign Off

**Higginbotham Bartlett Building Needs**  
  
Lumber Paint Hardware Wallpaper Houseware Gifts

**Higginbotham Bartlett MULESHOE**  


**For Year-Long Enjoyment**  
**INSTALL NOW**  
Three Plans for Hook-Up Muleshoe Antenna Co. Call Now 107 East Third Phone 3-3100

**ALSUP CLEANERS**  
Offer These FINE SERVICES  
1. Drive-In Window Service for your convenience in cold weather.  
2. Re-sizing of cottons to finer texture for that like-new look.  
3. Alterations of all kinds of men's, women's and children's clothing.  
4. A personal touch for your clothing by people who care how you look.

**THAT'S ALSUP CLEANERS**  
Phone 3-0760

### Mrs. Kefauver Ships U.S. Art Around Globe

Washington (AP) — The widow of a U.S. senator noted for his folksy, down-to-earth approach to politics is the guiding hand behind a subtle effort to improve the American cultural image abroad.

Nancy P. Kefauver, an artist and art instructor, heads the program to display the works of American artists in U. S. embassies.

Mrs. Kefauver's late husband, Estes Kefauver of Tennessee, was the democratic vice-presidential candidate in 1956. He died in 1963.

About a dozen U. S. embassies already are displaying paintings sculpture and other works by artists from the United States, and requests are now being filled from about 40 more.

United States art of all kinds and periods are to be used. Besides paintings and sculpture, ceramics, graphics, mosaics, and wall hangings will be displayed.

Most are to be borrowed from the artists or the owners, although gifts are accepted.

The late president John F. Kennedy named Mrs. Kefauver state department art consultant. Last September she was given the title of advisee on the fine arts.

The first shipment under the new program went out about a year ago — original graphics and paintings for the new U.S. embassy in Mexico City.

Since then, Mrs. Kefauver said, works by United States artists have gone on display in U. S. chanceries in London, New Delhi, Brasilia, Nairobi, Panama, and Copenhagen.

Art by American Indians has been specially requested by some ambassadors. Ambassador William H. Sullivan in Laos asked for primitives before he left the United States last December. "We are putting together a collection of Indian art along with a few graphics and water colors for our embassy there," Mrs. Kefauver said.

Mrs. Chester Bowles, wife of the United States ambassador to India, also asked for Ameri-

can Indian art. Mrs. Kefauver said that a beautiful carving of a ram's head was among the originals sent to New Delhi.

Mrs. Kefauver has made official visits to nine U.S. embassies in Central and South America as well as to others in Europe and the Middle East. These trips provide useful background information for selection of embassy art, she believes.

Art trends and cultural concepts of the countries in which the embassies are located are important factors in planning a collection, she said.

Other consideration, she said, are the wishes of the ambassador and his wife, and the climate of the country — to assure the preservation of the works.

The principal criteria, Mrs. Kefauver said, however, was that the art must be original and must be of high quality as a fitting representative of the United States culture.

### Keep Draft Car Schwartz Warn

Draft age men who burn "draft cards" can get their inductions into the armed forces speeded up, under the provisions of a new official bulletin to Texas draft boards, Col. Morris S. Schwartz, state Selective Service director, said Wednesday.

The bulletin, issued as a result of Public Law 89-152, refers to legislation signed President Johnson in August which makes it a criminal offense to "knowingly mutilate or destroy a registration certificate, or any other certificate issued in official connection with the draft law or regulations.

The bulletin reads: "When such violations are brought to their attention, local boards are requested to consider whether or not such registrant-violator should be declared delinquent or reclassified if necessary, and their inductions accelerated."

Violators of the new law which amends section 12 (b) (3) of the draft act, are also subject to punishment by imprisonment up to five years, or fine up to \$10,000, or both, upon prosecution and conviction.

Federal attorneys have been asked to advise appropriate draft boards when violations involving willful destruction and mutilation of registration certificates are referred to them by the Federal Bureau of Investigation.

**LEGAL NOTICE**  
THE STATE OF TEXAS COUNTY OF BAILEY NOTICE OF SALE UNDER ORDER OF SALE AS UNDER EXECUTION

By virtue of an order of sale issued out of the District Court of Bailey County, Texas, on a judgment rendered in said Court on the 7th day of September, 1965, in favor of M. W. Bulloch and against E. S. Abbott, et al. in the case of M. W. Bulloch against E. S. Abbott, et al. No. 2827 in such Court, I did on the 28th day of September, 1965, at 10:00 o'clock A.M., levy upon the following described lots, tract or parcel of land situate in the County of Bailey, State of Texas, and more particularly described as follows, to-wit:

All of Lots Numbers Eleven (11) and Twelve (12), Block Number Forty Three (43), Original Town of Muleshoe, Bailey County, Texas,

and on the 2nd day of November, 1965, being the first Tuesday of said month, between the hours of 10:00 o'clock A. M. and 4:00 o'clock P. M. on said day, at the courthouse door of said County, I will offer for sale and sell at public auction, for cash, all the right, title and interest of the said E. S. Abbott in and to said property.

Dated at Muleshoe, Texas,

### Like Rabbits NEW YORK (AP) — Cars are multiplying faster than households.

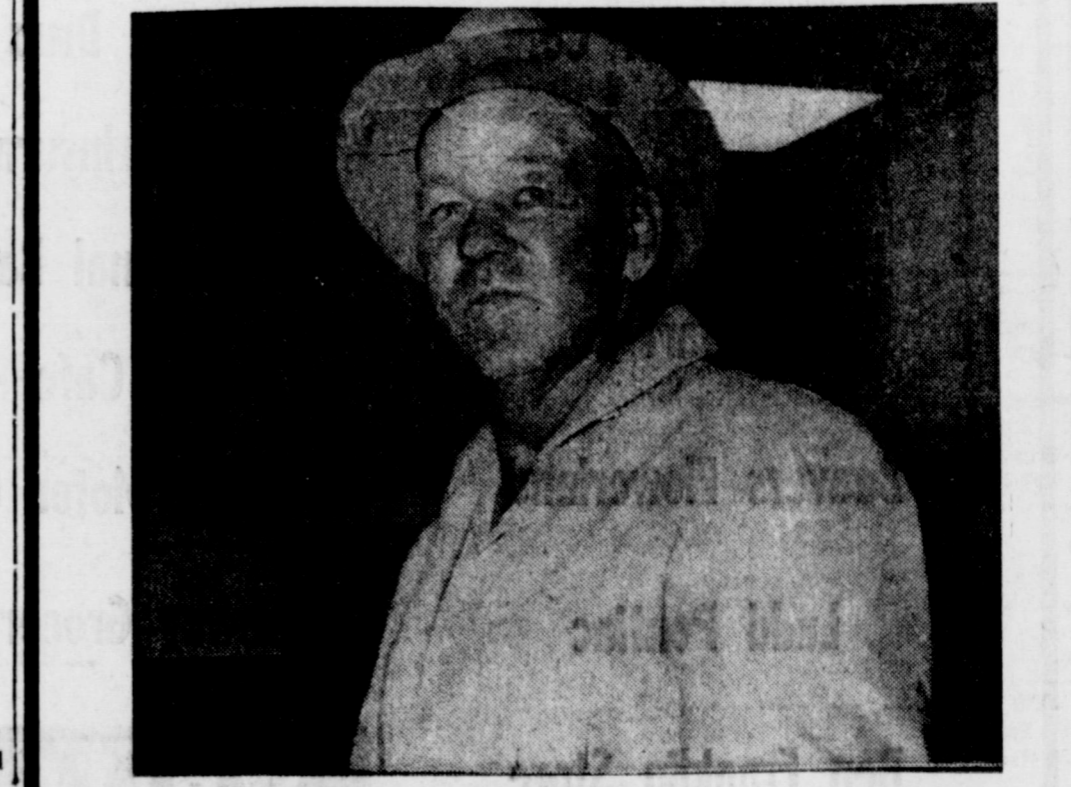
Five years ago, an official of Universal C.I.T. Credit Corporation notes, there were 51,400,000 households in the United States and 45,850,000 cars. Now the figures are 56,100,000 largely reflecting an increase in two and three-car families.

Some time this year the number of cars probably will actually exceed the number of households.

this 28th day of September, 1965.

Dee Clements, Sheriff of Bailey County, Texas.

## Meet the MULESHOE STATE BANK CUSTOMER of the Week



**Roland Bigham**  
This week's customer of the week is Roland Bigham who lives at 515 W. 6th. St. Bigham has farming interests. He and his wife, Eunice, have a daughter, Mrs. G.L. Peterson, of Clovis. The Bighams attend the First Methodist Church. Bigham said he had banked with the Muleshoe State Bank 36 years and "I think it's great. I stay with them and they stay with me." We are proud to recognize this customer of the week.

**Muleshoe State Bank**  
"YOUR GOOD NEIGHBOR SINCE 1914"



BUY and SELL BUSINESS LEADS

WANT ADS

LOST and FOUND REAL ESTATE

WANT ADS -- PHONE 2350
1 time per word -- 4c 3 times per word -- 10c
2 times per word -- 7c 4 times per word -- 13c
After 1st issue, 3c per word each additional time.
Minimum charge 50c
Card of Thanks \$1.00
DEADLINE FOR CLASSIFIED ADVERTISING PAGE:
For Thursday's Issue: Monday, 12 Noon
For Sunday's Issue: Thursday, 12 Noon
TO LATE TO CLASSIFY
Thursday Issue -- Tuesday 5 P.M.
Sunday Issue -- Friday 3 p.m.
Double Rate for Blind Ads.

1. Personals
LUZIER'S COSMETICS
Free Demonstration
Satisfaction Guaranteed
MRS. E. E. HOLLAND
Ph. Off. 3-2930 - Res. 3-2930
121 American Blvd.
1-49s-tfc
FOR RENT: 15 ft. camper
by day or week, call 3-1630.
1-35s-tfc

7. Wanted to Rent
Want to rent. Two - three
bedroom home, with garage
and fenced yard. Possi-
bly, option to buy. Near Rich-
land Hills School. Unfurnished
only. Will furnish references.
Reply quoting price and com-
plete information to: Box 449,
Muleshoe Journal.
7-37s-tfc

Custom cutting wanted. Call
Weldon Slayton, 965-2140 or con-
tact 6 mi. North of Muleshoe
where Mid Way Fertilizer form-
erly was. Turn left, 1st house
on right.
1-37s-tfc

8. Real Estate for Sale
FOR SALE: 2 bedroom, Lenuau
addition. Call 3-4300 or 3-3472
for appointment.
8-16t-tfc
For Sale: Southside Gulf Ser-
vice Station. Call 3-5710. 506
South First.
8-40s-tfc

RAWLEIGH Products have
been the standard in millions of
homes for over 76 years in the
United States and three foreign
countries they have over 300
household items, extracts, pure
black pepper, pie filling, spices,
liniment, medicine, rug
shampoo, floor wax, floor shine,
bowl cleaners, spot remover,
iron board covers, pine oil and
many other fine products. Raw-
leighs vitamins are recom-
mended by good doctors every-
where. Try Rawleighs herb
and iron tonic for that tired,
run down feeling. Your Raw-
leigh dealer in Muleshoe is R.
E. Dorn, Phone 3-0820. Located
at 615 E. 5th St.
1-41t-1tp

170 A. irrig. -- \$135 per A.
25 per cent down. 1-8" well.
160 A., 2-8" wells, good al-
lots., perfect. \$350 per A.
160 A., 1-8" and 1-10" wells,
perfect. \$600. Will Trade on
irrig. 1/2.
640 A., 4-8" wells, \$550. Trade
on irrig. Lazbuddy area.
320 A. dryland excel. im-
prov., perfect. \$225.
Wanted: rough 80 tightland
close in -- Listings Appreciated
-- buyers waiting.
Krebs Real Estate. Phone 3-
1910.
8-38s-tfc

3. Help Wanted
Wanted Hair Stylist. Expe-
rience important but not neces-
sary. Come by Wellborn Beauty
Shop.
3-40s-tfc

HOUSES
FOR SALE
Redi-Built or
BRICK, 3-BEDROOMS,
2-BATHS, 90-FT. LOT
APARTMENTS FOR RENT
Licensed Plumber for
all your needs
CALL--
BILLY MORRISON
Ph. 4850 or 3-2130

4. Houses for Rent
FOR RENT: 3 bedroom brick
house in country, Phone 4600,
Russell Bryant.
4-35t-tfc
For rent - Small house unfur-
nished. Ph. 3-4682 or see at
224 E. 5th.
4-37s-tfc
For rent -- 4 room modern
house. Call 3-9163 or 7600.
4-41t-tfc

3 BR 2 Baths den, fireplace.
2 car garage near Richland
Hills.
3 BR 1 Bath house. Lenuau
Addition, fenced back yard. F
HA loan approved. Priced:
\$8,500.00.
3 BR 1 Bath 2 car garage,
conveniently located bet ween
three schools. \$11,500, terms ar-
ranged.
240 A. strong irrigated land
1-10" and 1-8" wells, 3000'
underground tile. Good allotments.
160 A. Dry Land 2 BR modern
house domestic well. Good
allotments. 165.00 per acre.
80 A. Close in. 8" well, 2
BR modern house. \$500.00 per
acre. Good terms available on
this one.
Good Missouri stock farms
for sale or trade. Commercial
and ranch property available
through our exclusive CLS list-
ing service. List your prop-
erty with us where personal at-
tention is given.
EDDIE LANE REAL ESTATE
PHONE 4390
Residence
Eddie Lane 5680
Buddy Lane 3-5741
Jimmie Pitcock 4540
Wanted low cost lots, phone
3-1910 or 5881.
8-31s-tfc

5. Apts. for Rent
Space for 3 trailers, and small
apartment for rent Call 3-4650.
5-40t-tfc
FOR RENT: Two bedroom
apartment, carpeted, draped,
built - ins. Phone 3-4960 or 3-33-
50.
5-28s-tfc
FOR RENT: 3 room furnis-
hed apartment, trailer space.
323 West Ave. E. Phone 8120.
5-31s-tfc
For Rent. Furnished apart-
ment. 319 West Ave. E. Adults
only.
5-37s-tfc

10. Farm Equip for sale
NEW 1965
GMC PICKUP
DELIVERED \$1748.00
LADD PONTIAC
Muleshoe, Tex. Ph. 3-3050
10-34t-tfc

6. Rooms for Rent
Bedroom for rent -- See Ida
Tapp. Last house north of
Calvert's grocery.
6-4s-tfc
Sensible Solution
LOUISVILLE (AP) -- An au-
to seen frequently in the down-
town section carries this no-
tice on the rear end: "I'm
Fighting Poverty. I Work."

FOR SALE
I.H. No. 21 Stripper With
Green Boll Atch. \$550.00
I. H., Single Wheel
\$75.00
Servis shredder \$200
Farm-all - M - 3pt, \$65
13' Home \$200
J. D. Spemmer plus \$500
Ford Reat Scoop \$45.00
Cline Land Lever \$375.00
Cotton Basket \$50
Ford Tractor And Loader
\$475.00
NORWOOD USED
IMPLEMENTS
1026 South Main
Muleshoe Ph 3-3213
10-39t-tfc
11. For Sale or Trade
For sale: Sewing machine.
Fleetwood. Call 965-2761. In go-
od condition.
11-41t-3tc
Happy Day
KATMANDU, Nepal (AP) --
King Mahendra's 46th birthday
anniversary in June was a big
affair for at least 317 people --
the King and 316 prisoners he
released from 32 jails to mark
the occasion.

See it and you will have
it. Large rooms. Big
paneled den with fire-
place. Lovely kitchen
with bar and all. O'Keefe
and Merritt Applian-
ces. Full double oven.
3 big bedroom and 2
bath. Fully carpeted.
Double car garage on
pavement. All brick.
2 bedroom, den and kit-
chen combination with
Tapan appliances. For-
mal living room. Carpet
Single garage. Low down
payment.
Large home, formal liv-
ing room. 3 large bed-
rooms. 2 large baths.
Large den with kitchen
offset. Carpeted. Double
garage.
3 large bedrooms. 2 full
baths. Large living room.
Lots of cabinets. O'Keefe
and Merritt Range. On
pavement. Double gar-
age.
Phone 4850 or come to
Billy's Supperette and
see D. L. Morrison or
Billy.
8-41s-tfc

FOR SALE
3 Bedroom Brk 19th St.
3 Bedroom Brick Ave D.
237 Acres, Bailey Co. terms
to suit. Wells, cotton &
grain.
160 Acres. Bailey Paved
Road. Priced to sell.
160 Acres. close in on pave-
ment. 8" well. 25 Ac-
cotton \$300.00. Easy terms.
Income property sale or
trade.
We Need Listings
L. H. (Alex) Adams Realty
119 W. 3rd St.
Ph. 3-3350 -- 3-4960
8-40t-tfc

For sale -- Good clean level,
160 acres, plenty of water, un-
derground tile. Located 5 miles
S.W. of Lariat. Priced to sell
by owner. Contact after 6:30 p.
m. at Columbia Manor Apt. 7,
Clovis, N.M. Phone 763-0363 or
either of morning.
8-41t-3tp
For Sale -- 320 A. cultivated
land strong water district 160 A
Maize allotment. No MONEY
DOWN. See Jimmie Pitcock.
Eddie Lane Real Estate
Phone 4390 or 4540
8-41s-tfc
FOR SALE: New 3 bedroom
brick home. Call 3-4300 or 3-3472
8-16t-tfc
For Sale -- small equity, 3
bedroom residence in Lubbock
Call owner at 3-2249 for infor-
mation. David Sudduth, 201 E.
Fir, Muleshoe, Texas.,
8-40s-tfc

DO YOU
HAVE ROACHES !!
CALL 3-3050 or 3-9040
Akin Exterminating Co.
Home Owned & Operated
15-32t-tfc
Good Merchandise
Buena Mercancia
Economart Main Street
Mayur Calle
Muleshoe, Texas - 79347
15-27t-tfc
FOR
Steel Barns
AND
Commercial Buildings
Call Your
Better Buildings
Representative
25 percent dn. - fall terms
Call
Horace Henley Jr.
Dimmitt, Tex. Ph. 647/3501
after 7:00 p.m.
15-39s-tfc

INSURANCE
Farms -- Homeowners -
Auto -- Crop Hall
Let us be your Insurance
Man
Lane Insurance Agency
113 Ave D Phone 4390
15-41t-tfc
Hannah's husband Hector hates
hard work so he cleans the
rugs with Blue Lusture. Rent
electric shampooer. \$1. at Hig-
ginbotham, Bartlett.

17. Seed & Feed
FOR SALE: Early Sumac Cane
Seed. Phone 965-2675, Morris Mc-
Killip.
17-22s-tfc
FOR SALE -- Hay. Call 965-
2140 or contact Weldon Slayton,
6 miles north Muleshoe.
17-30t-tfc

LEGAL
NOTICE
THE STATE OF TEXAS
TO: Mary E. Crawford and
Owan D. Reed Defendants,
Greeting:
You are hereby commanded
to appear by filing a written
answer to the Plaintiffs Peti-
tion at or before ten o'clock
A.M. of the first Monday after
the expiration of forty-two days
from the date of the issuance of
this citation, same being Mon-
day the 8th day of November,
1965, at or before ten o'clock
A.M. before the Special Com-
missioners duly appointed by
the Judge of the County Court
of Bailey County, Texas, at the
Court House of said County in
Muleshoe, Texas.
Said Plaintiffs' Statement was
filed with the County Judge of
Bailey County, Texas on the
20th day of September, 1965, in
this Cause numbered 731, and
styled The State of Texas, et
al. plaintiffs vs. Bennie St.
Cyr, et al.
The names of the parties are
as follows:
The State of Texas and Bailey
County are plaintiffs, and
Bennie St. Cyr and wife,
Cecile R. St. Cyr and J.
O. Crawford, Mary E. Craw-
ford, Roy Reed, Welma Dane,
Wanda Hargrove, Owan D. Reed,
Delsie Dove, Nell Meek,
Ben Crawford, Douglas Ruby,
and Jess Osborn are defend-
ants.
A brief statement of the na-
ture of this suit is as follows,
to wit:
Proceedings in eminent domain
in connection with the State of
Texas constructing, laying out
and reconstructing a highway,
designated as a part of the
State Highway System by the
State Highway Commission of
the State of Texas, in Bailey
County, Texas, and that such
construction, reconstruction and
maintenance upon said highway
is surveyed through, across and
upon, and will cross, run
through and upon the following
described real property situat-
ed in Bailey County, Texas:
0.247 acre of land, more or
less, same being part of a one
acre tract, more or less, out of
that portion of the Northwest
one-fourth of Sec. 21, Block Y,
State Capitol Land, Bailey Coun-
ty, Texas, lying South of U.
S. Hwy. 84 known as Tract No.
1, Parsons Subdivision, same
same Tract No. 1 having been
conveyed to J. O. Crawford by
H. D. Crawford by deed dated
May 1, 1945, and of record in
Vol. 41, Page 231, Deed Records
of Bailey County, which 0.247
acre of land, more or less, be-
ing all of the following describ-
ed 0.283 acre of land, more of
less, save and except 0.036 acre
thereof included in the right-
of-way of a public road 40 ft.
wide, the centerline of which
lies along the North line of Sec.
21, which 0.283 acre of land,
more or less, being more partic-
ularly described by metes and
bounds as follows:
Beginning at the Northwest cor-
ner of Sec. 21;
THENCE S 89 deg. 13' E
with the North line of Sec. 21
a distance of 67.56 ft. to a point
in the South right-of-way line of
present U. S. Hwy. 84;
THENCE, with the South
right-of-way line of present U.
S. Hwy. 84, from a tangent
bearing S 48 deg. 21' 14" E
around a curve to the right hav-
ing a radius of 2,814.93 ft., a
distance of 184.39 ft. to a point
in a tangent bearing S 44 deg
36' 03" E, same point being the
most easterly corner of the a-
foresaid one acre tract of land,
same point being the most nor-
therly corner of a tract of land
owned by Eva Murrah;
THENCE S 48 deg. 58' 48"
W with the Southeast line of the
aforesaid one acre tract and the
Northwest line of the Eva
Murrah property a distance of
44.93 ft. to a point;
THENCE from a tangent
bearing N 52 deg. 06' 21" W
around a curve to the left hav-
ing a radius of 2,864.93 ft. a
distance of 94.71 ft. to a point
in a tangent bearing N 54 deg.
00' W;
THENCE N 54 deg. 00' W
102.56 ft. to a point;
THENCE N 89 deg. 13' W
9.53 ft. to a point in the West
line of Sec. 21;
THENCE N 1 deg. 16' E with
the West line of Sec. 21 a dis-
tance of 40.00 ft. to the point
of beginning.
as is more fully shown by
Plaintiffs' petition on file in this
suit.
If this citation is not served
within ninety days of the date
of its issuance, it shall be re-
turned unserved.
The officer executing this
process shall promptly execute
the same according to law, and
make due return as the law
directs.
Issued and given under my
hand and the Seal of the County
Court, at office in Muleshoe,
Texas, this 21st day of Sep-
tember, 1965.
Attest:
Hazel Gilbreath Clerk, Bai-
ley County Court, Bailey
County, Texas.
38t-4tfc

LEGAL
NOTICE
THE STATE OF TEXAS
TO: Mary E. Crawford and
Owan D. Reed, Defendants,
Greeting:
You are hereby commanded
to appear by filing a written
answer to the Plaintiff's Peti-
tion at or before ten o'clock
A.M. of the first Monday after
the expiration of forty-two days
from the date of the issuance of
this citation, same being Mon-
day the 8th day of November,
1965, at or before ten o'clock
A.M. before the Special Com-
missioners duly appointed by
the Judge of the County Court
of Bailey County, Texas, at the
Court House of said County in
Muleshoe, Texas.
Said Plaintiffs' Statement was
filed with the County Judge of
Bailey County, Texas on the
20th day of September, 1965, in
this Cause numbered 730, and
styled The State of Texas, et
al. plaintiffs vs. J. O. Crawford,
et al. The names of the parties
are as follows:
The State of Texas and Bai-
ley County, Texas are plain-
tiffs, and J. O. Crawford, Mary
E. Crawford, Roy Reed, Wel-
ma Dane, Wanda Hargrove,
Owan D. Reed, Delsie Dove,
Nell Meek, Ben Crawford, Dou-
glas Ruby, and Jess Osborn are
defendants.
A brief statement of the na-
ture of this suit is as follows,
to wit:
Proceedings in eminent domain
in connection with the State of
Texas constructing, laying out
and reconstructing a highway,
designated as a part of the
State Highway System by the
State Highway Commission
of the State of Texas, in Bailey
County, Texas, and that such
construction, reconstruction and
maintenance upon said high-
way is surveyed through, across
and upon, and will cross, run
through and upon the follow-
ing described real property
situated in Bailey County, Tex-
as: 0.056 acre of land, more
or less, being part of Parsons
Tract No. 1, Parsons Subdivi-
sion out of the Northwest one-
fourth of Sec. 21, Block Y,
State Capitol Land, Bailey
County, Texas, lying South of
U. S. Hwy. 84, having been con-
veyed to J. O. Crawford by H.
D. Crawford by deed dated May
1, 1945, and of record in Vol.

12. Household Goods
Wanted responsible party to
take over payments on late
model Singer sewing machine
in Muleshoe area. Will zig-
zag, fancy stitching, etc. 5 pay-
ments \$4.96 or \$25.00 cash.
Write Credit Department, 1114
19th Street, Lubbock, Texas.
12-34t-tfc

15. Miscellaneous
Maize Cutting and Hauling
wanted. Leave word at Ray
Griffiths elevator or call Por-
ter 3-5175. Clovis, Collect. C. P.
Johnson.
15-37t-tfc

FOR
Steel Barns
AND
Commercial Buildings
Call Your
Better Buildings
Representative
25 percent dn. - fall terms
Call
Horace Henley Jr.
Dimmitt, Tex. Ph. 647/3501
after 7:00 p.m.
15-39s-tfc

INSURANCE
Farms -- Homeowners -
Auto -- Crop Hall
Let us be your Insurance
Man
Lane Insurance Agency
113 Ave D Phone 4390
15-41t-tfc

FOR SALE
I.H. No. 21 Stripper With
Green Boll Atch. \$550.00
I. H., Single Wheel
\$75.00
Servis shredder \$200
Farm-all - M - 3pt, \$65
13' Home \$200
J. D. Spemmer plus \$500
Ford Reat Scoop \$45.00
Cline Land Lever \$375.00
Cotton Basket \$50
Ford Tractor And Loader
\$475.00
NORWOOD USED
IMPLEMENTS
1026 South Main
Muleshoe Ph 3-3213
10-39t-tfc

17. Seed & Feed
FOR SALE: Early Sumac Cane
Seed. Phone 965-2675, Morris Mc-
Killip.
17-22s-tfc
FOR SALE -- Hay. Call 965-
2140 or contact Weldon Slayton,
6 miles north Muleshoe.
17-30t-tfc

County, Texas, and that such
construction, reconstruction and
maintenance upon said highway
is surveyed through, across and
upon, and will cross, run
through and upon the following
described real property situat-
ed in Bailey County, Texas:
0.247 acre of land, more or
less, same being part of a one
acre tract, more or less, out of
that portion of the Northwest
one-fourth of Sec. 21, Block Y,
State Capitol Land, Bailey Coun-
ty, Texas, lying South of U.
S. Hwy. 84 known as Tract No.
1, Parsons Subdivision, same
same Tract No. 1 having been
conveyed to J. O. Crawford by
H. D. Crawford by deed dated
May 1, 1945, and of record in
Vol. 41, Page 231, Deed Records
of Bailey County, which 0.247
acre of land, more or less, be-
ing all of the following describ-
ed 0.283 acre of land, more of
less, save and except 0.036 acre
thereof included in the right-
of-way of a public road 40 ft.
wide, the centerline of which
lies along the North line of Sec.
21, which 0.283 acre of land,
more or less, being more partic-
ularly described by metes and
bounds as follows:
Beginning at the Northwest cor-
ner of Sec. 21;
THENCE S 89 deg. 13' E
with the North line of Sec. 21
a distance of 67.56 ft. to a point
in the South right-of-way line of
present U. S. Hwy. 84;
THENCE, with the South
right-of-way line of present U.
S. Hwy. 84, from a tangent
bearing S 48 deg. 21' 14" E
around a curve to the right hav-
ing a radius of 2,814.93 ft., a
distance of 184.39 ft. to a point
in a tangent bearing S 44 deg
36' 03" E, same point being the
most easterly corner of the a-
foresaid one acre tract of land,
same point being the most nor-
therly corner of a tract of land
owned by Eva Murrah;
THENCE S 48 deg. 58' 48"
W with the Southeast line of the
aforesaid one acre tract and the
Northwest line of the Eva
Murrah property a distance of
44.93 ft. to a point;
THENCE from a tangent
bearing N 52 deg. 06' 21" W
around a curve to the left hav-
ing a radius of 2,864.93 ft. a
distance of 94.71 ft. to a point
in a tangent bearing N 54 deg.
00' W;
THENCE N 54 deg. 00' W
102.56 ft. to a point;
THENCE N 89 deg. 13' W
9.53 ft. to a point in the West
line of Sec. 21;
THENCE N 1 deg. 16' E with
the West line of Sec. 21 a dis-
tance of 40.00 ft. to the point
of beginning.
as is more fully shown by
Plaintiffs' petition on file in this
suit.
If this citation is not served
within ninety days of the date
of its issuance, it shall be re-
turned unserved.
The officer executing this
process shall promptly execute
the same according to law, and
make due return as the law
directs.
Issued and given under my
hand and the Seal of the County
Court, at office in Muleshoe,
Texas, this 21st day of Sep-
tember, 1965.
Attest:
Hazel Gilbreath Clerk, Bai-
ley County Court, Bailey
County, Texas.
38t-4tfc

LEGAL
NOTICE
THE STATE OF TEXAS
TO: Mary E. Crawford and
Owan D. Reed, Defendants,
Greeting:
You are hereby commanded
to appear by filing a written
answer to the Plaintiff's Peti-
tion at or before ten o'clock
A.M. of the first Monday after
the expiration of forty-two days
from the date of the issuance of
this citation, same being Mon-
day the 8th day of November,
1965, at or before ten o'clock
A.M. before the Special Com-
missioners duly appointed by
the Judge of the County Court
of Bailey County, Texas, at the
Court House of said County in
Muleshoe, Texas.
Said Plaintiffs' Statement was
filed with the County Judge of
Bailey County, Texas on the
20th day of September, 1965, in
this Cause numbered 730, and
styled The State of Texas, et
al. plaintiffs vs. J. O. Crawford,
et al. The names of the parties
are as follows:
The State of Texas and Bai-
ley County, Texas are plain-
tiffs, and J. O. Crawford, Mary
E. Crawford, Roy Reed, Wel-
ma Dane, Wanda Hargrove,
Owan D. Reed, Delsie Dove,
Nell Meek, Ben Crawford, Dou-
glas Ruby, and Jess Osborn are
defendants.
A brief statement of the na-
ture of this suit is as follows,
to wit:
Proceedings in eminent domain
in connection with the State of
Texas constructing, laying out
and reconstructing a highway,
designated as a part of the
State Highway System by the
State Highway Commission
of the State of Texas, in Bailey
County, Texas, and that such
construction, reconstruction and
maintenance upon said high-
way is surveyed through, across
and upon, and will cross, run
through and upon the follow-
ing described real property
situated in Bailey County, Tex-
as: 0.056 acre of land, more
or less, being part of Parsons
Tract No. 1, Parsons Subdivi-
sion out of the Northwest one-
fourth of Sec. 21, Block Y,
State Capitol Land, Bailey
County, Texas, lying South of
U. S. Hwy. 84, having been con-
veyed to J. O. Crawford by H.
D. Crawford by deed dated May
1, 1945, and of record in Vol.

12. Household Goods
Wanted responsible party to
take over payments on late
model Singer sewing machine
in Muleshoe area. Will zig-
zag, fancy stitching, etc. 5 pay-
ments \$4.96 or \$25.00 cash.
Write Credit Department, 1114
19th Street, Lubbock, Texas.
12-34t-tfc

15. Miscellaneous
Maize Cutting and Hauling
wanted. Leave word at Ray
Griffiths elevator or call Por-
ter 3-5175. Clovis, Collect. C. P.
Johnson.
15-37t-tfc

FOR
Steel Barns
AND
Commercial Buildings
Call Your
Better Buildings
Representative
25 percent dn. - fall terms
Call
Horace Henley Jr.
Dimmitt, Tex. Ph. 647/3501
after 7:00 p.m.
15-39s-tfc

INSURANCE
Farms -- Homeowners -
Auto -- Crop Hall
Let us be your Insurance
Man
Lane Insurance Agency
113 Ave D Phone 4390
15-41t-tfc

FOR SALE
I.H. No. 21 Stripper With
Green Boll Atch. \$550.00
I. H., Single Wheel
\$75.00
Servis shredder \$200
Farm-all - M - 3pt, \$65
13' Home \$200
J. D. Spemmer plus \$500
Ford Reat Scoop \$45.00
Cline Land Lever \$375.00
Cotton Basket \$50
Ford Tractor And Loader
\$475.00
NORWOOD USED
IMPLEMENTS
1026 South Main
Muleshoe Ph 3-3213
10-39t-tfc

17. Seed & Feed
FOR SALE: Early Sumac Cane
Seed. Phone 965-2675, Morris Mc-
Killip.
17-22s-tfc
FOR SALE -- Hay. Call 965-
2140 or contact Weldon Slayton,
6 miles north Muleshoe.
17-30t-tfc

LEGAL
NOTICE
THE STATE OF TEXAS
TO: Mary E. Crawford and
Owan D. Reed, Defendants,
Greeting:
You are hereby commanded
to appear by filing a written
answer to the Plaintiff's Peti-
tion at or before ten o'clock
A.M. of the first Monday after
the expiration of forty-two days
from the date of the issuance of
this citation, same being Mon-
day the 8th day of November,
1965, at or before ten o'clock
A.M. before the Special Com-
missioners duly appointed by
the Judge of the County Court
of Bailey County, Texas, at the
Court House of said County in
Muleshoe, Texas.
Said Plaintiffs' Statement was
filed with the County Judge of
Bailey County, Texas on the
20th day of September, 1965, in
this Cause numbered 730, and
styled The State of Texas, et
al. plaintiffs vs. J. O. Crawford,
et al. The names of the parties
are as follows:
The State of Texas and Bai-
ley County, Texas are plain-
tiffs, and J. O. Crawford, Mary
E. Crawford, Roy Reed, Wel-
ma Dane, Wanda Hargrove,
Owan D. Reed, Delsie Dove,
Nell Meek, Ben Crawford, Dou-
glas Ruby, and Jess Osborn are
defendants.
A brief statement of the na-
ture of this suit is as follows,
to wit:
Proceedings in eminent domain
in connection with the State of
Texas constructing, laying out
and reconstructing a highway,
designated as a part of the
State Highway System by the
State Highway Commission
of the State of Texas, in Bailey
County, Texas, and that such
construction, reconstruction and
maintenance upon said high-
way is surveyed through, across
and upon, and will cross, run
through and upon the follow-
ing described real property
situated in Bailey County, Tex-
as: 0.056 acre of land, more
or less, being part of Parsons
Tract No. 1, Parsons Subdivi-
sion out of the Northwest one-
fourth of Sec. 21, Block Y,
State Capitol Land, Bailey
County, Texas, lying South of
U. S. Hwy. 84, having been con-
veyed to J. O. Crawford by H.
D. Crawford by deed dated May
1, 1945, and of record in Vol.

LEGAL
NOTICE
THE STATE OF TEXAS
TO: Mary E. Crawford and
Owan D. Reed, Defendants,
Greeting:
You are hereby commanded
to appear by filing a written
answer to the Plaintiff's Peti-
tion at or before ten o'clock
A.M. of the first Monday after
the expiration of forty-two days
from the date of the issuance of
this citation, same being Mon-
day the 8th day of November,
1965, at or before ten o'clock
A.M. before the Special Com-
missioners duly appointed by
the Judge of the County Court
of Bailey County, Texas, at the
Court House of said County in
Muleshoe, Texas.
Said Plaintiffs' Statement was
filed with the County Judge of
Bailey County, Texas on the
20th day of September, 1965, in
this Cause numbered 730, and
styled The State of Texas, et
al. plaintiffs vs. J. O. Crawford,
et al. The names of the parties
are as follows:
The State of Texas and Bai-
ley County, Texas are plain-
tiffs, and J. O. Crawford, Mary
E. Crawford, Roy Reed, Wel-
ma Dane, Wanda Hargrove,
Owan D. Reed, Delsie Dove,
Nell Meek, Ben Crawford, Dou-
glas Ruby, and Jess Osborn are
defendants.
A brief statement of the na-
ture of this suit is as follows,
to wit:
Proceedings in eminent domain
in connection with the State of
Texas constructing, laying out
and reconstructing a highway,
designated as a part of the
State Highway System by the
State Highway Commission
of the State of Texas, in Bailey
County, Texas, and that such
construction, reconstruction and
maintenance upon said high-
way is surveyed through, across
and upon, and will cross, run
through and upon the follow-
ing described real property
situated in Bailey County, Tex-
as: 0.056 acre of land, more
or less, being part of Parsons
Tract No. 1, Parsons Subdivi-
sion out of the Northwest one-
fourth of Sec. 21, Block Y,
State Capitol Land, Bailey
County, Texas, lying South of
U. S. Hwy. 84, having been con-
veyed to J. O. Crawford by H.
D. Crawford by deed dated May
1, 1945, and of record in Vol.

12. Household Goods
Wanted responsible party to
take over payments on late
model Singer sewing machine
in Muleshoe area. Will zig-
zag, fancy stitching, etc. 5 pay-
ments \$4.96 or \$25.00 cash.
Write Credit Department, 1114
19th Street, Lubbock, Texas.
12-34t-tfc

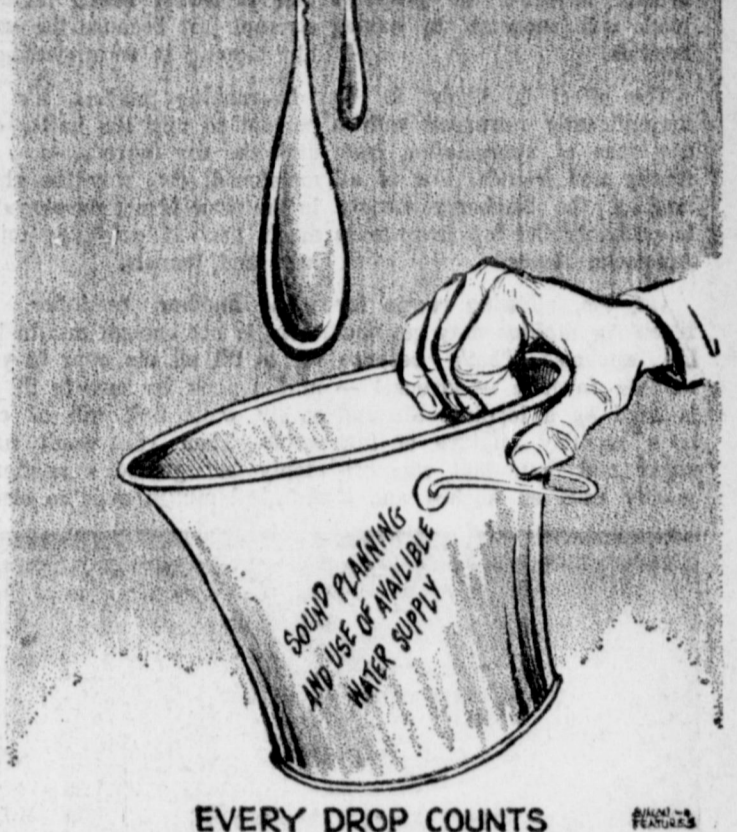
15. Miscellaneous
Maize Cutting and Hauling
wanted. Leave word at Ray
Griffiths elevator or call Por-
ter 3-5175. Clovis, Collect. C. P.
Johnson.
15-37t-tfc

FOR
Steel Barns
AND
Commercial Buildings
Call Your
Better Buildings
Representative
25 percent dn. - fall terms
Call
Horace Henley Jr.
Dimmitt, Tex. Ph. 647/3501
after 7:00 p.m.
15-39s-tfc

INSURANCE
Farms -- Homeowners -
Auto -- Crop Hall
Let us be your Insurance
Man
Lane Insurance Agency
113 Ave D Phone 4390
15-41t-tfc

FOR SALE
I.H. No. 21 Stripper With
Green Boll Atch. \$550.00
I. H., Single Wheel
\$75.00
Servis shredder \$200
Farm-all - M - 3pt, \$65
13' Home \$200
J. D. Spemmer plus \$500
Ford Reat Scoop \$45.00
Cline Land Lever \$375.00
Cotton Basket \$50
Ford Tractor And Loader
\$475.00
NORWOOD USED
IMPLEMENTS
1026 South Main
Muleshoe Ph 3-3213
10-39t-tfc

17. Seed & Feed
FOR SALE: Early Sumac Cane
Seed. Phone 965-2675, Morris Mc-
Killip.
17-22s-tfc
FOR SALE -- Hay. Call 965-
2140 or contact Weldon Slayton,
6 miles north Muleshoe.
17-30t-tfc



of a tract of land owned by Eva
Murrah:
THENCE N 49 deg. 17' E
with the Northwest line of the
Crawford property and the
Southeast line of the Murrah
property a distance of 21.22 ft.
to the point of beginning.
as is more fully shown by
Plaintiffs' petition on file in this
suit.
If this citation is not served
within ninety days of the date
of its issuance, it shall be re-
turned unserved.
The officer executing this
process shall promptly execute
the same according to law, and
make due return as the law
directs.
Issued and given under my
hand and the Seal of the County
Court, at office in Muleshoe,
Texas, this 21st day of Sep-
tember, 1965.
Attest:
Hazel Gilbreath, Clerk, Bai-
ley County Court, Bailey
County, Texas.
38t-4tfc

OTWELL'S VACUUM CLEANER REPAIR
Filter Queen Distributor
Disposable Bags For
SALES SERVICE
All Vacuum Cleaners New and Used
Repaired After 6 p.m. or before 8 a.m.
Phone 3-1630 918 East Hickory

BUSINESS DIRECTORY

Farley Insurance Agency
Real Estate and Insurance
FARM & CITY LOANS
SERVICE BEYOND THE
CONTRACT
209 West Avenue B
Off. Ph. 7270 -- Res. 3-0343

HEATHINGTON LUMBER
COMPANY
Lumber, Paint,
Builders Hardware.
Clovis Rd. -- Ph. 7970
COTTONSEED DELINTED
Phone 3-2510 -- Muleshoe
WILLIAMS
SEED CLEANING CO.

SINGLETON FUNERAL HOME
24 HOUR AMBULANCE SERVICE
PHONE 2860 MULESHOE

Robinson's Boot Shop
127 Main--Phone 7219
FINE WESTERN WEAR
Men, Women & Children
SHOE REPAIR SHOP
Ike Robinson
Serving Muleshoe since 1925.

Safe 'n Sound
Myron Pool
Don't take chances.....
Your home and all the per-
sonal things you hold dear
to you
can be
wiped out
in no
time at
all! Wind-
storm or
explosion
can strike
with devastating sudden-
ness .... destroying your
home and all those pre-
cious personal belongings
as thoroughly as a fire!
This is the reason why you
need broad, up-to-date
modern insurance protec-
tion on your property...
the kind of reliable, expert
protection we can give
you for your home and
those personal things it
holds.... You can rely on
our services. You will be
glad you called us.
For the Best Farm Loans
and Home Loans
Contact
POOL
Insurance Company
Phone 2950
Muleshoe

## America's Top Muffin - Blueberry; Here's Most Popular Streusel Kind

By Cecily Brownstone  
Associated Press Food Editor

WE HOPE that even the most ardent advocate of prepared foods will succumb to baking muffins.

The effort is likely to be magnificently rewarded with a big dose of appreciation from family and friends. For of all muffins, the blueberry variety is probably the top favorite in American homes.

And the following recipe for blueberry muffins may get double applause. That's because another favorite — streusel — is used as a topping. Streusel is a crumbly mixture of fat, sugar and flour that was originally used on kuchen and it

helps to make that sweet bread so popular. Most bakeries specialize in one variety or another of sweet bread featuring streusel just because the crumbly topping is so appealing.

In making muffins, it's important to mix the batter only until the dry ingredients are moistened; this way the gluten in the flour is not developed so much that it produces toughness and tunnels.

And another reminder, if there is not enough muffin batter to fill all the cups in your muffin pans, be sure to fill the empty wells half full of cold is a crumbly mixture of fat, water. Then you won't have sugar and flour that was originally used on kuchen and it

Wash the blueberries that are to go into the muffins by turning them into a strainer and letting cold water run through them. Drain thoroughly, then pat the berries dry on paper toweling.

### Blueberry Streusel Muffins

- 2 cups sifted flour
- 2 teaspoons baking powder
- 1/2 teaspoon baking soda
- 1/2 teaspoon salt
- 3 tablespoons sugar
- 1 egg
- 1 cup commercial sour cream
- 1/4 cup milk
- 1/4 cup salad (not olive) oil
- 1 1/2 cups fresh large blueberries, rinsed and drained

Streusel  
Into a mixing bowl, sift together the flour, baking powder, baking soda, salt and sugar. Beat egg until thick and ivory color; add sour cream and milk; beat to combine; stir in oil; add all at once to sifted flour mixture. Stir only until blended. Fold in blueberries. Turn into buttered muffin pans (1-3 cup size wells) filling 3/4 full. Sprinkle Streusel over batter. Bake in a hot (425 degrees) oven for 15 to 20 minutes or until topping is deep brown. Loosen sides with a small spatula; serve at once. Makes 18 muffins.

- Streusel
- 1/2 cup firmly packed light brown sugar
- 1/4 cup regular unsifted flour
- 1 teaspoon cinnamon
- 3 tablespoons butter or margarine

In a small mixing bowl, stir together the brown sugar, flour and cinnamon. With a pastry blender, cut in the butter until particles are fine and mixture in Blueberry Streusel Muffin recipe.

The chimpanzees in an East African reserve have close family ties and show as much variety in personality as man himself.



BLUEBERRY MUFFINS — If you use the fresh, large, cultivated berries they'll stay plump and plump during baking.

NOW! A WHOLE NEW SERIES OF ULTRA-LUXURIOUS CHEVROLETS

# '66 CAPRICE

BY CHEVROLET



Caprice Custom Coupe—with exclusive formal roof line that comes on no other Chevrolet.



Caprice Custom Sedan—with superb new body by Fisher elegance inside and out.



Caprice Custom Wagon—with fine new look of hardwood paneling on sides and tailgate.

Everything it takes to create a distinguished luxury car has gone into these new Caprices.

Beneath the formal styling elegance that sets the Custom Coupe apart, for instance, you'll find thick wall-to-wall carpeting, comfort-contoured seats and the look of hand-rubbed walnut on the instrument panel, glove compartment and inside door panels. You can order a finely instrumented console, together with new Strato-bucket front seats.

In the Custom Sedan, a new Strato-back front seat is available with bucket-type contours separated by a fold-down

armrest. And in the equally opulent Custom Wagons, offered in 2- or 3-seat models, you can even order carpeting for the cargo area.

Each model rides super Jet-smooth. And for incomparably smooth power, you can specify Chevrolet's advanced Turbo-Jet V8 in either a 336- or 427-cubic-inch version.

The price of it all? Somewhat more than you're used to paying for a Chevrolet. But less, as your dealer will happily confirm—than the select class of fine cars these new Caprices invite comparison with in every detail.



See the new '66 Chevrolet, Chevelle, Chevy II, Corvair & Corvette at your Chevrolet dealer's

## CROW CHEVROLET CO.

42-5827

201 MAIN

MULESHOE

PH. 3-1000

## "PIGGLY WIGGLY BEEF SALE! UNMATCHED GUARANTEE, LOWEST PRICES!

- USDA Choice, Aged, Heavy Beef, Valu-Trimmed  
**SIRLOIN STEAK** Pound ..... 89c
- Lean, 100% All Beef, Dated To Assure Freshness  
**GROUND BEEF** 3 Lb. Pkg ..... \$1.00
- USDA Choice, Aged, Heavy Beef, Valu-Trimmed  
**T-BONE STEAK, Pound** ..... 98c
- USDA Choice, Aged, Heavy Beef, Valu-Trimmed  
**SHORT RIBS, Pound** ..... 23c
- USDA Choice, Aged, Heavy Beef, Valu-Trimmed  
**K.C. STEAK, Pound** ..... \$1.39
- USDA Choice Beef, Lean Cubes of Boneless Beef  
**STEW MEAT, Pound** ..... 69c
- Blue Morrow Thrift  
**BEEF STEAK, 20 Oz. Pkg.** ..... 89c
- Rath's Black Hawk  
**SLICED BACON, Pound Pkg.** ..... 79c
- Rath's All Meat  
**FRANKS, Pound** ..... 59c

## CHUCK ROAST

USDA CHOICE, AGED HEAVY BEEF VALUE-TRIMMED POUND ..... **49¢**

IDEAL, GRADE A, MEDIUM

**EGGS** Dozen ..... 39c

COCA COLA or

**Dr. Pepper** King Size 6 Btl. Ctn. ..... 3 For \$1

VEGETOLE

**Shortening** 3 Lb. Can ..... 59c

DEL MONTE CUT

**Green Beans** No 303 Cans ..... 5 For \$1

LOW IN CALORIES! LOW IN PRICE! Piggly Wiggly PRODUCE

**CARROTS**  
TEXAS SWEET and TENDER ..... 2 BAGS 15¢

**APPLES**  
Cooking or Eating 4 Lb. Bag ..... 29¢

Miracle Whip, Kraft  
**Salad Dressing** Qt. Jar ..... 49c

**SALAD DRESSING** SUZAN Quart Jar ..... 35c

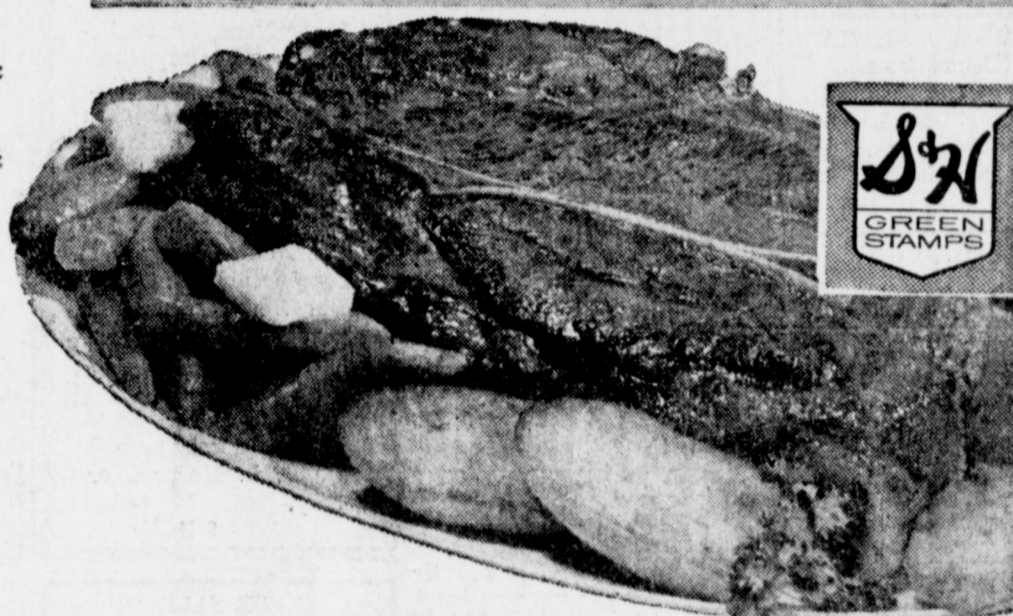
APPLE BAY

**Applesauce** NO. 303 CANS ..... 12 1/2c

THESE PRICES GOOD OCT. 14, 15, 16, 1965  
IN MULESHOE WE RESERVE  
THE RIGHT TO LIMIT QUANTITIES!

- Karo, Green Label  
**SYRUP** 1 1/2 Lb. .... 33c
- Northern Paper, Asst. Colors  
**TOWELS** Jumbo Rolls ..... 23c
- Morton's  
**SALAD DRESSING** Quart ..... 39c

**FREE!**  
**Cannon NYLONS**  
ONE PAIR WITH \$15.00 IN PIGGLY WIGGLY GREEN CASH TAPES, DATED AFTER SEPT. 14



HEALTH & BEAUTY AIDS

- REG. 95c  
**BUFFERIN** 60 Ct. Btl. .... 77c
- Mum Cream, Reg. 79c Val.  
Large Size  
**DEODORANT** ..... 63c
- Listerine, Reg. 69c 7 Oz. Btl.  
**MOUTHWASH** ..... 55c
- Romilar, 8-Hour Cough  
Formula, Reg. \$1.59 3 Oz. Btl.  
**COUGH SYRUP** ..... \$1.29
- Breck, Dry, Normal or Oily,  
7c Off 4 Oz. Btl.  
**SHAMPOO** ..... 39c

AT PIGGLY WIGGLY  
YOU SAVE MORE MONEY  
And  
FAMOUS S&W GREEN STAMPS!

- Bonnebelle, Sweet Cream Quarters  
**BUTTER** Pound ..... 69c
- Empress, Aluminum  
**FOIL** 25 Foot Roll ..... 25c
- Quality Inn, In Syrup  
**APRICOTS** No 2 1/2 Cans ..... 23c
- Stokely  
**TOMATO JUICE** 46 Oz. Can ..... 29c
- Baker Southern Style  
**COCONUT** 4 Oz. Pkg. .... 23c

FROZEN FOODS!

- Banquet, Lemon, Coconut or Banana  
**CREAM PIES** 5 Family Size ..... \$1
- Idaho Valley, C.C. 9 oz. Bag  
**POTATOES** 9 Oz. Bag ..... 9 For \$1.00
- ORANGE JUICE**  
SEALD SWEET 12 OZ. CAN. .... **29¢**

Lowest Prices . . . Greatest Variety . . . always at . . .  
**Piggly Wiggly**