



MULESHOE JOURNAL



20¢

'The Community of Opportunity-Where Water Makes the Difference'

Volume 58, No. 3

10 Pages Today

Published Every Thursday at Muleshoe, Bailey County, Texas 79347

Thursday January 15, 1981

Around Muleshoe

Several Muleshoe students are among the more than 700 students at West Texas State University listed on the honor roll for the 1980 fall semester.

Listed on the President's honor roll is Lauri E. Burgess.

Named to the Dean's honor roll are Frantonya L. Berryhill, Roy C. Mardis, Jon M. Miller and Benetta A. Roming.

Mike Charles Mimms, son of Mr. and Mrs. Dalton Mimms, is among the 29 Lubbock Christian College students named to the 1980-81 Who's Who Among Students in Universities and Colleges.

Mimms is a senior Pre-Vet major and a 1977 graduate of Lazbuddie High School. He has been on the Dean's list, received several livestock judging team awards, and ARCS Scholarship.

Stephanie Barrett and Wovory Dodd have been named to the 1980 fall semester Dean's honor roll at Eastern New Mexico University.

Barrett is an 'honor' Dean's Honor Roll student at Eastern and is a junior. Dodd is a cum laude Dean's honor student and a senior elementary education major.

Take Precautions Before Flu 'Hits'

Joggers, construction workers, policemen, preschoolers and the elderly all have one thing in common. They are prime targets for winter colds and flu. They, and you, could lessen the risk, however, by following a few simple precautions.

Who's most affected by colds and flu? Infants, preschoolers, children, young adults, adults and senior citizens - ages 1 to 101!!!

Family infections are

'Boys' Contest Is Scheduled In Gymnastics

Tri County Gymnastics has announced a Boys' Dual Meet scheduled for Saturday at the Tri County Gymnastics gym in Muleshoe. In the meet will be Jim Masters of Muleshoe and Larc of Littlefield.

Featured during the meet will be the pommel horse, single bar, tumbling, vault, parallel bars and all around.

Competing in the meet will be boys seven and under; eight through ten and 11 and over. Ribbons will be given for first through sixth place with medals scheduled for first through third places.

Warm ups begin at 11 a.m. followed by the meet. There is no admission to attend the competition, and the meeting is open to the public. Coordinators for the event said they would like to have a good crowd to watch the competition.



ELEMENTARY SCHOOL RENAMED.... In surprise action Monday night, as the first item of business on the agenda, the Muleshoe Independent School District Board of Trustees voted to change the name of Richland Hills Elementary to Neal B. Dillman Elementary School. Dillman attended the school board meeting on a well designed ruse to receive his honor. Pictured from left are Ronnie Holt, school board president; retired Superintendent Neal B. Dillman and current Muleshoe School Superintendent Harold Horne.

SPS Announces Major Construction Projects

Southwestern Public Service Company will invest more than \$552 million in new equipment and materials during the next five years, Berl Springer, president and chief operating officer, announced early this week.

New coal-fired generating facilities to be installed during the 5-year period will increase the

capability of Southwestern's system by more than a million kilowatts, bringing the total SPS generating capability to more than 4 million kilowatts.

Tolk Station, located 12 miles east of Muleshoe, is the site for the new generating facilities, and is currently under construction. The station will have two 543,000 kilowatt units and will be Southwestern's largest plant. The first unit, now about one quarter complete, is scheduled to go on the line in 1982 while the second unit will be ready in 1985. This will be the second coal-fired plant for SPS. The first, Harrington Station, near Amarillo, was completed this past summer.

Coal for Harrington and Tolk Stations comes from Atlantic Richfield mines near Gillette, Wyoming and is delivered to the plants by 110 car unit trains.

In reviewing the year, Springer said, "Our peak load reached an all-time high last summer of 2,651,000 kilowatts. We expect our peak load to climb to 3,204,000 kilowatts by 1985. The addition of Tolk Station will more than take care of that increase.

"The cost of fuel now represents nearly 70 percent of out total operating expenses as compared to only 47 percent in 1975. The management of fuel problems continues to require a major effort in the operation of the company," Springer continued. "Supplier price increases, escalator clauses, minimum use requirements, gas pipeline capacity limitations and increasing supplier scheduling difficulties have all contributed to a rapidly increasing cost of fuel."

Springer added that Southwestern Public Service Company is continuing its efforts in the research of energy alternatives including solar and wind energy. SPS and the General Electric Company have completed a feasibility study for repowering one of Southwestern's power plants with 60 megawatts

of solar energy, while a site north of Amarillo has been selected for a potential wind generator.

"All of us at Southwestern Public Service Company have great confidence in the future of the Southwest in spite of the economic problems we are facing at this time. Our area continues to grow and

Con't page 6, Col. 1

Sixteen MHS Band Students All-Region

Sixteen Muleshoe High band students have been selected to play in the All-Region Band. The students were chosen in auditions held Saturday, January 10, at Littlefield High School. The band is selected by audition on the music to be performed by the All-Region Band. Students from 38 bands in classes AAA, AA, and A are eligible to audition for the positions in the band.

Those students selected and their positions were: Clarinets - Tena Landers, 1st chair; Michelle Berry, 8th chair; Diana Saldana, 12th chair; Staci Vandiver, 17th chair; Abby Soto, 20th chair. (Muleshoe has 1/4 of the largest section in the band.....7 out of 28 clarinets!)

Alto Saxophones - Adam Laredo, 1st chair and Minerva Martinez, 3rd chair; Tenor Saxophone - Tracie Webb, 2nd chair; Cornet - Perry Flowers, 6th chair; French Horn - Dana Brewer, 2nd chair; Trombone - Laura Leal, 4th chair; Baritone - Eric Allison, 6th chair; Tuba - Tommy Carlson, 2nd chair; Timpani - Robert Nowlin, 1st chair; and selected as alternate was Donna Horn on Flute.

These sixteen representatives will participate in rehearsals January 29, 30, and 31 in Lubbock. This will be followed by a concert presented on the evening of Saturday, January 31. The band will be under the direction of Dr. Gary Garner, director of bands at West Texas State University.

Junior Livestock Show Judging Is Underway

Board Members Rename School

After using a ruse to get retired Muleshoe School Superintendent Neal B. Dillman to attend a meeting of the Muleshoe Independent School District Board of Trustees on Monday night, Dillman received a surprise.

Shock registered across the face of the retired school superintendent when Jim Shafer made a motion to change the name of the Muleshoe Independent School to the Neal B. Dillman Elementary School. Following a second to the motion by Ernest Ramm, the vote was unanimous to change the name of the school. He was cited for his contributions to the schools and the community while superintendent from 1960 to 1980.

Dillman had been asked to the meeting by Tom Jinks, who informed Dillman his assistance was needed to work on the school calendar. Jinks had informed Dillman there were potential problems working out the schedule of the livestock shows. After Dillman agreed to attend the meeting, the board had scheduled the proposed school change as the first item of business following the reading of the minutes and the invocation.

At 2 p.m. on March 8, a dedication ceremony is scheduled at the Neal B. Dillman Elementary School.

In other action, the board extended the contract of Superintendent Harold Horne to cover an additional year. He was given board approval to enter into a serious study of a Math Leveling Program and to install the program in the two elementary schools.

Superintendent Horne also was authorized to enter into a contract with the most practical proposal to install stage curtains and a dimming system in the Muleshoe High School Auditorium. The superintendent gave the financial report and the tax collection report.

School board members also officially announced the Muleshoe School Board of Trustees election for Saturday, April 4. Tom Jinks, assistant superintendent of business affairs, was given approval to solicit bids for the sale of various equipment.

To fill a vacancy in the Title I Math Program, the board approved the employment of Debra Lambert, a Littlefield resident. She will be employed at Mary DeShazo Elementary School. Mrs. Lambert attended ACU and is a graduate of Texas Tech University.

In other action, the hourly wage of lunchroom

workers was raised to correspond with the minimum hourly wage; Jinks gave the board a progress report of the Technical Assistance Energy Grant; ap-

Con't page 6, Col. 1

Rotary Club Has Speaker On Ethanol

As the contest continues, hot and heavy, at the Muleshoe Rotary Club, several more guests were on hand for the action Tuesday at noon. Guests included Sharla Henry, ex-sweetheart for Rotary; Danny Shipman and Gary Shipman; J. E. Cage; Charles Moraw; Tommy Gunstream; Corky Green; Ben Green; M. D. Gunstream; and Hal Anderson.

Olan Burrows reported that the Coca Cola Cowboys had 174 points to 188 points for the Over The Hill Gang.

Special guest speaker was Gene McGuire, who is presently constructing an ethanol plant at Progress, 4.6 miles northwest of Muleshoe. McGuire said Doug Crawford, who has been named plant manager is currently attending school learning how to process fuel alcohol.

The speaker said Char-mec, Inc., who is the investment company for the operation, is based in Fort Lauderdale, Florida. He outlined some of the seven areas where they are currently investing funds for construction.

McGuire showed diagrams on the production process used in the manufacturing of fuel alcohol, and said his plant will produce 200 proof alcohol, the proof used by oil companies to mix with gasoline for gasohol. He said 200 proof alcohol is 100 percent pure alcohol. McGuire added that unleaded gas requires extra refining and said unleaded gas can have additives of fuel alcohol at less cost to use.

As on the farm use, fuel alcohol can be added to diesel for farm machinery which will provide a tax credit of 40 cents per gallon. Another plus, by-products from the production can be used as livestock feed.

Tax incentives are great in fuel alcohol, added McGuire, as federal excise tax exemptions are an added bonus.

The manufacturer, who is a native of Bailey County said he will be producing around one million gallons per year, using more than 450,000 bushels of corn. With the plant 60-70 percent completed, he said production is expected to start within 60 to 90 days.

Sheep, Cattle Show Kicks Off Tonight

Everything is all set up and the annual Bailey County Junior Livestock Show judging gets underway today, Thursday, at 6 p.m. The annual show is being held at the Bailey County Exhibition Center and Coliseum, and a lot of animals have been entered in this year's show.

Scheduled to be judged tonight, beginning at 6, will be 60 head of cattle and 75 sheep, according to Bailey County Extension Agent Spencer Tanksley. He said an additional 150 head of hogs have been entered in the show, with the swine judging to get underway at 8:30 a.m. tomorrow, Friday.

The popular concession stand is open all during the show, and featured is the barbecue brisket plate which has already proven to be such a 'hit' with the show participants and observers. Other drinks and snacks are also available at the concession stand..... sandwiches, snacks and desserts.

Since moving the annual show to the heated arena at the Coliseum, the show has gained in popularity and is expected to be well-attended.

Directors of the show include Ted Harrison, chairman; Joe Wheeler, vice chairman; Lionel Lane secretary-treasurer; Jerry Gleason, publicity chairman; also, Lewis Scoggin, Donald Harrison, Eugene Shaw, Burl Cooley, Wayne Tunnell, Joe Rhodes, Travis Bessire, Kearney Scoggin, Odell Rasco, Ronnie Holt, Jim Pat Claunch, Dan Throckmorton, Jeff Smith and Darwin Robertson.

New Square Dance Club Is Organized

Who would ever believe that being healthy could also be a lot of fun? It could be if you joined the new Muleshoe Square Dancing Club.

Friday night, you will have an opportunity to see just how much fun square (and round) dancing can be when the newly formed local organization will present an "Introductory to Square Dancing" at 8 p.m. at the American Legion Hall at West 15th Street and Avenue B.

Don Dillard, organizer of the new dance club here, along with his wife Carolyn say some exhibitions of square dancing, along with round dancing will be interspersed with all persons interested joining in with other dancing (country and western style).

Admission to attend the dance Friday night, tomorrow, will be only \$1.

Dillard explained that the \$1 admission charge will be used to help defray

Judge for the 1981 stock show include Ollie Linder, County Extension Agent, Plainview for beef; Charlie Cypert, sheep producer from Plainview and 4-H leader for sheep and Stanley Young, County Extension Agent from Tahoka for swine.

Sheep classifier will be Denny Belew, Vo-Ag teacher, Anton and steer classifier, Larry Gray, Vo-Ag teacher from Dimmitt.

Joe Rhodes is chairman of the steer division with assistants, Donald Harrison, Wayne Tunnell and Burl Cooley.

Chairman of the sheep division is Odell Rasco, with assistants Travis Bessire, Curby Brantley and Dan Throckmorton.

In the swine division, Lewis Scoggin is chairman and assistants are Eugene Shaw, Kearney Scoggin, Joe Wheeler and Jerry Gleason.

Members of the grievance committee include Joe Rhodes, steer division; Odell Rasco, Lamb division; Lewis Scoggin, swine division and Red Harrison, chairman of the board.

Bailey County Extension Agent Spencer Tanksley said that during a meeting the board approved asking for donations to support the annual show again. Members of the board will be contacting individuals and businesses seeking their financial support.

Contributions are encouraged from all persons who would help support the show and contributors are asked to contact one of the directors, the County Agent's office of the ag

Con't page 6, Col. 1

expense for the non-profit dance club. All money received over the Friday night exhibition will be used to help pay future expenses for the Muleshoe Square Dance Club as they are incurred each month.

No alcohol beverages are allowed at this family oriented type of participant entertainment, cautioned Dillard, and children 13-80 will welcome to join the club to learn how to square and round dance.

Many doctors and health officials have said that square dancing is one of the purest forms of exercise, even better than running, walking or jogging, and doctors recommend it to their patients, of all ages.

Make your plans to attend the "Introductory to Square Dancing" on Friday night, and you may want to get out on the floor and join in some of the toe-tapping, swinging dancing sessions.

We Are **NOT** Closing Our Redemption Center At Muleshoe So,
Of Course You Want to Keep On Saving...



GUNN BROS. STAMPS

And You Will At White's Cashway Grocery

The Gunn Bros. Redemption Store Will Remain Open In The Future

White's Cashway Groc., a longtime Muleshoe Super Market giving Gunn Bros. Stamps, will continue giving its customers the added bonus of Gunn Bros. Stamps. They will also continue Double Gunn Bros. Stamps on designated days along with other promotional programs. We invite you to the Gunn Bros. Gift Center at 223 E. Ave. B in Muleshoe to see the beautiful catalog & non-catalog merchandise.

Gunn Bros. Stamps, White's Cashway Groc. of Muleshoe & Gunn Bros. Fine Redemption Centers, Your Savings Bonus For The Future.

Mrs. Tuckers
Shortening
3 lb. Tin **\$1.19**

White Swan Pancake & Waffle
Syrup
32 oz. Bottle **89¢**



Owens Country Style
Sausage
Fresh off the farm

2 lb. Bag **\$2.89** 1 lb. Bag **\$1.49**

Hormeis Super Select
Pork Spare Ribs **\$1.29**

Lowest Discount Produce Prices

Texas Ruby Reds
Grapefruit
5 lb. Bag **99¢**

Washington Red Delicious
Apples
(3 lb. Bag) **89¢**

Cabbage
Texas Firm Green Heads **15¢**

California Crisp Yellow
Carrots (1 lb. Bag) **29¢**

California Fresh Green
Italian Squash **49¢**

California Garden Fresh
Eggplant **43¢**

White's Cashway Gro. -
Home Owned Discount Store

White Swan Luncheon
Peas No. 303 Can **3/\$1**

Beauty Bar Soap
Dove (4 3/4 oz. Bath Size) **65¢**

15 oz. Bottle
Pine-Sol Cleaner **\$1.09**

Behold Lemon
Furniture Polish 7 oz. Can **99¢**

White Swan
Sauerkraut No. 303 Can **3/\$1**

Alpo Beef Flavored Dinner
Dog Food 10 lb. Bag **\$3.29**

No. 303 Can White Swan
Peach Halves **59¢**

USDA Choice Beef

U.S.D.A. Choice Beef
Ranch Steak **\$1.69**

U.S.D.A. Choice Beef
Chuck Roast **\$1.59**

Peytons All Meat
Bologna (12 oz. Pkg.) **98¢**

Pepsi or Diet Pepsi
Ctn. 6/32 oz. Bottles
\$1.69
Plus Deposit

Gladiola All Purpose
Flour
5 lb. Bag **89¢**

Discount Frozen Food

White Swan Frozen 12 oz. Can
Orange Juice **59¢**

Stillwell's Breaded 12 oz. pkg.
Cut Okra **59¢**

Birdseye (4 Little Ears)
Corn on the Cob **99¢**

Carnation's
Tator Tots 2 lb. Bag **99¢**

Carnation Chunk Light
Tuna
in Oil **99¢**
6 1/2 oz. Can

White Swan Saltine
Crackers
1 lb. Box **55¢**

Ranch Style
Chili
No. 2 Can **98¢**

Special Bonus!
CLIP AND REDEEM THIS VALUABLE COUPON

THIS COUPON IS GOOD FOR
100 FREE GUNN BROS. STAMPS
NO PURCHASE NECESSARY!!
AT
WHITES CASHWAYS GROC.

White's
402 Main
272-4244

CASHWAY

We Reserve The Right To Limit Quantities

Double Gunn Bros.
Stamps Every
Wednesday
And Saturday.

7:30 a.m. til 9:00 p.m.
MONDAY - SATURDAY

Open On Sunday
12:00 p.m. to 8:00 p.m.

WE WELCOME
USDA
FOODSTAMP
COUPONS

COME TO
CASHWAY
FOR YOUR
WIC CARD
PURCHASES

Nursing Home

News

By Joy Stancell

E.B. Wilson came to have Bible study with Marie Engram, Russ Duncan, Marie Patton, Ora Roberts, Edith Bruns, Dottie Wilterding, Rosemary Pool, Charlie Garth and Archie Scarlett.

The residents had a cookie decoration party Monday morning. Mrs. Lucille Tuggle made Christmas shaped cookies and the residents decorated them for the staff's small children. Residents participating were Alma

Henley, Ora Roberts, Annie Brown, Grace Kemp, Marie Patton, Marie Engram, Archie Scarlett, and Charlie Garth.

Tuesday afternoon Mr. Gilliland took the residents on a ride in the senior citizen's bus. They went to see the new decorations on Main Street and rode around the residential area. They stopped at the Dairy Queen and had an ice cream cone.

We have a new resident. She is Helen Ellis. She was born in Texas March 7, 1904 and she is a Baptist. She is in room number 92.

Friday Charlie Garth, Marie Engram, Russ Dun-

can and Ora Roberts played dominoes.

Sunday afternoon Ora Roberts, Bulah Connell, Edith Bruns, and Charlie Garth watched the Dallas Cowboys play football on TV in the Day Room.

Edith Bruns was visited by Ruth Briscoe and other family and friends.

Bulah Connell was visited by her daughter.

Dottie Wilterding was visited by Mr. and Mrs. D.B. Head, Marene Hooten, Mae Wilterding, Lona and Kathy Embry.

Rosemary Pool's son, Mike, is here for the holi-

days. He gave her two dozen red roses.

Mary Stevenson's daughter has been visiting.

Bertie Hendrix went to Clovis Tuesday night with Leon and Judy. They saw the Christmas decorations. All of her family attend the Christmas Party.

Annie Brown was visited by Sybil Simpson Friday.

Bertie Hendrix went to Audrey's for Christmas. She spent two nights.

Marie Patton went out to her daughter's, June Gore.

Orpha Bartley went out to her home to be with her

family.

Grace Kemp spent the Christmas holidays with her family.

Ora Roberts went out to her daughter's, Ruby Clark on Saturday. They had a Christmas dinner.

Bulah Connell spent the holiday with her family.

Lottie Hall received nice Christmas gifts from her son and daughter.

Dr. McDaniel was visited by his family during the holidays.

Mrs. Borck was visited by her family.

Mary McDermon returned to the nursing home Wednesday after being hospitalized. Welcome back Mary.

Birdie Phelps was visited by her son, Bernard Phelps Wednesday.

Annie Brown was visited

by Wayne and Sybil Simpson from Clovis Saturday. Mrs. Kersey also visited.

Willie Steinbock was visited by Rex Wednesday.

Mr. and Mrs. Pat Bobo gave the nursing home two amaryllis plants.

Advertising is just another way of calling on customers.

WHO NEEDS YOUR OIL!

GET YOUR ENERGY WITH HEAT RECOVERY FROM WELL WATER RESIDENTIAL HEATING AND COOLING!



SAVE TWO-THIRDS OVER THE COST OF OIL, GAS OR ELECTRICITY!

Wilson Drilling Co.

W. Hwy 84

272-5521

Anthony's
C. R. ANTHONY CO.

JANUARY CLEARANCE

321 MAIN STREET
MULESHOE
OPEN 9 to 6



PRICE SALE CONTINUES...

ITEMS IN EVERY DEPARTMENT

SUPER BUYS ON QUALITY CLEARANCE MERCHANDISE

CUDDLE-UP WRAPS AND Snug Sacks **12⁸⁸**

How do you save energy and still keep warm? With Snug Sack[®], or course! Filled with 100% polyester, Snug Sack[®] snaps into a body wrap while keeping your arms free for reading or knitting. Assorted prints, sizes Medium and Large. Reg. \$25.

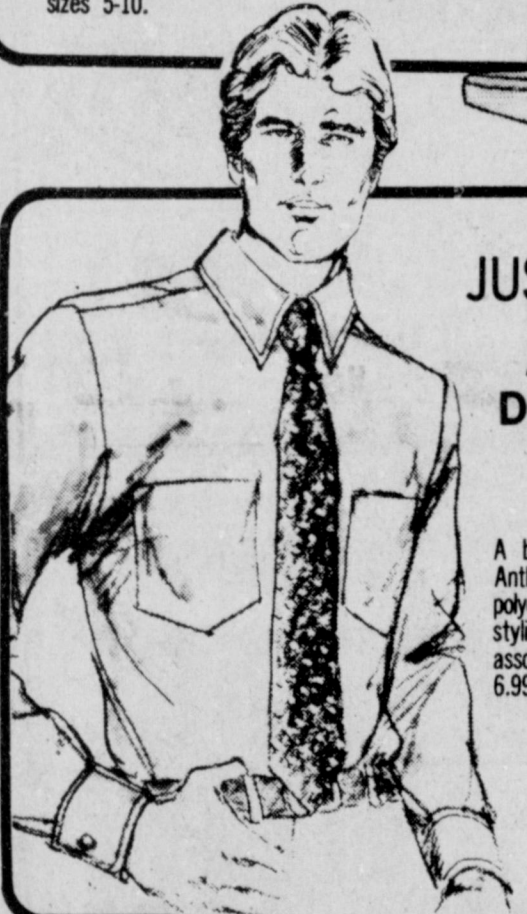
CLOSE OUT PRICED!



Ladies' Fashion Shoes
"BEEP-BEEPS"
By GARFIELD & ROSEN
\$10



Step into style and save! These favorite women's shoes will accent any fashion look. Choose from fashion styles or casual styles in assorted colors, sizes 5-10.



JUST RECEIVED
Anthony's Dress Shirts
\$5

A basic beginning to a great look! Anthony's long sleeve dress shirts are polyester-cotton, and feature two pocket styling. Sizes 14 1/2 - 17 in White and assorted solids and prints. Reg. 5.99 and 6.99.



Utility Jacket
11.⁸⁸

Men who work outdoors need Big Smith's[®] utility jacket! Filled with 100% polyester, it features a quilted shell and snap front for good looks. In assorted colors, sizes S,M,L,XL. Reg. 14.99.

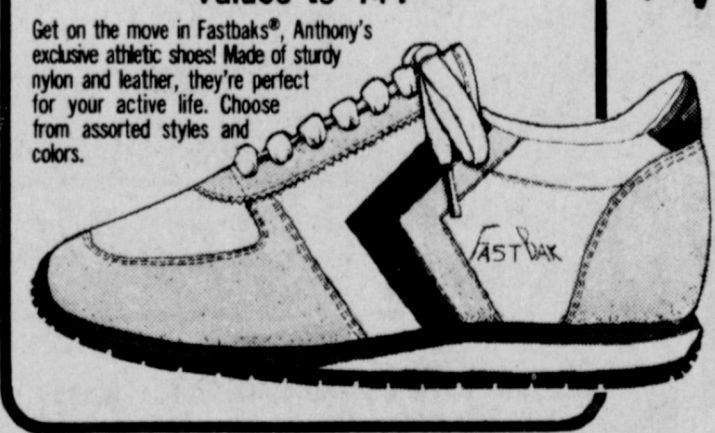
SUPER LIGHT WEIGHT WORK JACKET!



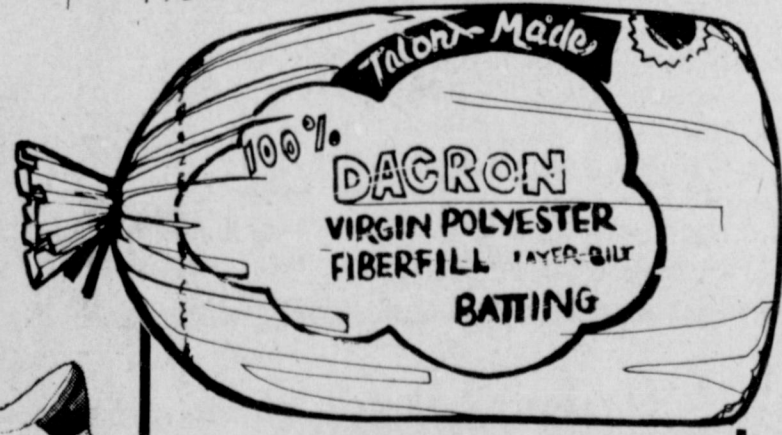
Anthony's Dress Slacks
10⁸⁸
5 prs. \$50

A style for everyone! Anthony's own slacks come in three great styles: An expando waist style, a belt loop style, and a Western style with belt loops and slight flare legs. In five fashionable colors, sizes 32-42. Reg. 14.99.

Fastbak[®] Athletic Shoes
9⁸⁸
Values to 14⁹⁹

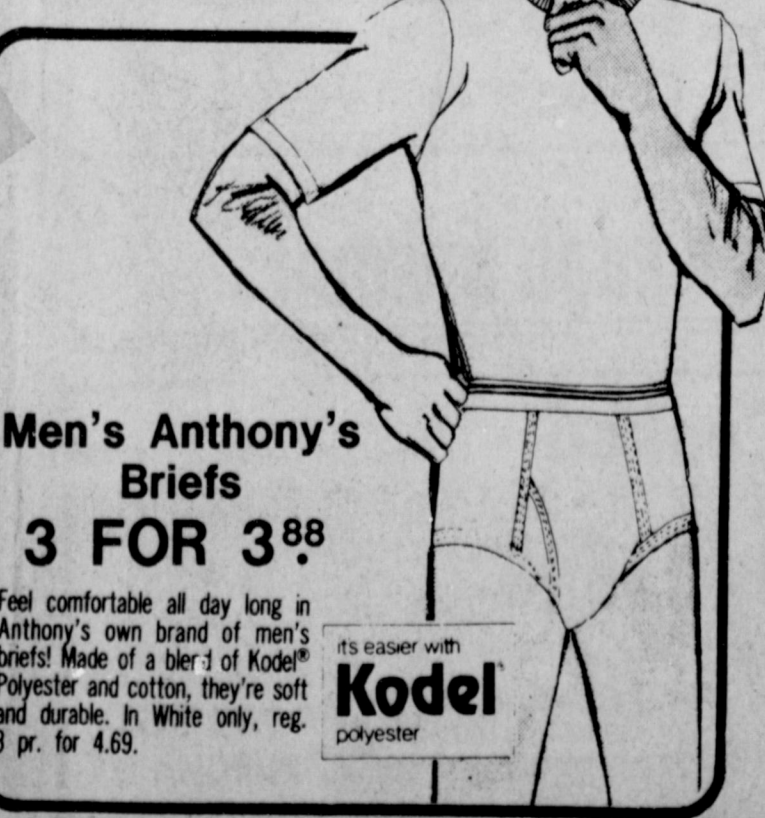


Get on the move in Fastbaks[®]. Anthony's exclusive athletic shoes! Made of sturdy nylon and leather, they're perfect for your active life. Choose from assorted styles and colors.



Dacron Batting
2⁷⁷ 2 FOR \$5

Beautiful hand-made quilts are easy with our 100% Dacron[®] polyester batting! Each package contains an 81" X 96" roll of 1 lb. batting. Use it for pillows and toys, too! Reg. 3.49 pkg.



Men's Anthony's Briefs
3 FOR 3⁸⁸

Feel comfortable all day long in Anthony's own brand of men's briefs! Made of a blend of Kodol[®] Polyester and cotton, they're soft and durable. In White only, reg. 3 pr. for 4.69.

It's easier with **Kodol** polyester

SUPER SAVINGS

Style Spun[®] Sheer-to-Waist
59^c 6 FOR \$3

Love your legs in Style Spun[®] sheer-to-waist pantyhose! Found only at Anthony's, Style Spun[®] are sheer, smooth nylon with a cool cotton inset. Sizes A,B,C in Tan, Beige and Taupe. Reg. 99¢ pr.

Style Spun



Junior Fashion Jeans
\$9⁸⁸

If you like jeans, you'll love this selection of ATB and Faded Glory[®] jeans for juniors! Both are famous for great fashion and fit, plus the best pocket styles to be found! Made of 100% cotton, choose from straight or flare legs in light, medium and dark denim. Sizes 3-15 values to \$20.



JANUARY WEDDING PLANNED.....Mrs. Mary Hargett and Mr. and Mrs. Burley Roberts would like to announce the engagement of their children, Joette Hargett of Lazbuddie and Brian Roberts of Enochs. The wedding is to take place January 17, at 4 p.m. in the Muleshoe First Baptist Church.

Miss Sowder Honored With Gift Tea

Miss Shannon Sowder was recently honored with a gift tea in the Reuel Kirby home of the Goodland Community.

Hostesses were Mrs. Donnie Dewbre, Mrs. Ho-

Study Club

The Muleshoe Study Club met January 8 in the home of Mrs. Mervin Wilterding at 4 p.m.

The collect was led by Mrs. Joe Costen, also the pledge to the Texas flag. Mrs. A.C. Neely gave the roll call and each member answered with where they were born. Mrs. Neely also read the minutes.

Mrs. Costen conducted a business meeting and asked for committee reports. She also discussed the Study Club's plans for participation in the March meeting of Caprock District Convention at the Hilton Inn in Lubbock, March 27 and 28.

The theme of the program was Texas Heritage, entitled "To Texas, Twenty-one Days in a Covered Wagon", was given by Mrs. Doyle Turner.

Refreshments were served by the hostess to the following members: Mrs. Walter Bartholf, Mrs. Betty Jo Carpenter, Mrs. Joe Costen, Mrs. Wesley Glover, Mrs. A.C. Neely, Mrs. Charles Shain, Mrs. Ed Johnson, Mrs. Wilson Witherspoon, the hostess, Mrs. Mervin Wilterding and one visitor, Miss Julie Shain.

H&R BLOCK TAX TEST

Question No. 21

If a mistake is made on your tax return and you owe more taxes, that is all you have to pay.

True False

This is FALSE. You must pay in addition to the tax, any penalty and interest. When H&R Block prepares your return, we stand behind our work. If we make an error that costs you any penalty or interest on additional taxes due, Block pays the penalty and interest. You pay only the additional tax.

WE'LL MAKE THE TAX LAWS WORK FOR YOU

H&R BLOCK
THE INCOME TAX PEOPLE
224 W. 2nd
272-3332

wkdy 9-6 Sat. 9-5



ENGAGEMENT ANNOUNCED.....Mr. and Mrs. Dalton Mimms of Lazbuddie and Mr. and Mrs. Edwin Bachman of Deer Creek, Oklahoma wish to announce the engagement and approaching marriage of their children, Susan Mimms and Don Bachman. The wedding date has been set for February 14, at 2 p.m. at the Lazbuddie Church of Christ. They are both graduates of LCC. Bachman farms in Oklahoma, where they will make their home.

Muleshoe OES Chapter Meeting

Mr. and Mrs. Frank Hinkson, Worthy Patron and Worthy Matron of Muleshoe Chapter No. 792 Order of the Eastern Star presided at the regular meeting of the Chapter, Tuesday evening, January 6th in Masonic Hall.

The Bible was opened upon the Alter; Pledge of Allegiance was given and "God Bless America" was sung.

Routine business was transacted. Guest present were Mrs. Lucille Melton, Worthy Matron of Earth Chapter No. 870; Mrs. Lucille Campbell and Mrs. Mildred Womack.

A letter of commendation was received from Mrs. Freida West, International Temple Committee Chairman, for Muleshoe Chapter being 100 percent in International Temple.

Mrs. Lavonne Hinkson gave a report of the Grand Chapter Session held in Dallas, October 26-30.

Mrs. Vera Clay was appointed Chairman of Time and Talent Committee. Plans were made for receiving Mrs. Vernia Mae Williams, Deputy Grand Matron, District TWO, Section THREE, on her official visit, February 3.

Refreshment hostesses were Mrs. Lavonne Hinkson and Mrs. Eulaine Phillips.

Alpha Zeta Pi Chapter Of Beta Sigma Phi

Alpha Zeta Pi chapter of Beta Sigma Phi met January 6 at the Hawkins and Purdy's School of Dance and Gymnastics for a regular meeting. The opening was repeated by all members and roll was called with 24 members present. The minutes of the previous meeting were read and approved.

Communication, local and international, was read. Committee reports were given and it was announced that prior to the next meeting, there will be a pledge meeting.

All members voted on the Valentine Sweetheart, which will be announced at the Valentine ball in February. The meeting was closed, hostesses Jana Wartes and Jana St. Clair served appetizers and soft drinks.

Following the meeting, a program was presented by the Muleshoe Twisters of Hawkins and Purdy's School of Dance and Gymnastics.

Members present were Renee Anderson, Brenda Black, Pat Black, Linda



FEBRUARY DATE SET.....Mr. and Mrs. Clarence Kubec of the West Camp Community wish to announce the engagement and approaching marriage of their daughter, Stephanie Ann, to Wilburn L. Brooks, son of Mr. and Mrs. Jim O. Brooks of Clovis. The wedding date has been set for February 6, at 7 p.m. at St. Johns Lutheran Church of Lariat. The bride elect is employed at Muleshoe Animal Clinic. The prospective groom is presently farming in the Clovis area.

Bullock, Betty Bush, Joy Glover, Jeanine Gunstream, Terri Hahn, Sherri Hawkins, Debbie Hutto, Melissa Kelly, Joan Lewis, Alice Liles, Ruth Locker, Janis Nichols, Debbie Nickels, Peggy Pohlmeier, Cindy Purdy, Jana St. Clair, Marilyn Saylor, Pam Stockard, Jean Treadwell, Rickie Warren and Jana Wartes.

XI Omicron XI Met In Home Of Jama Brown

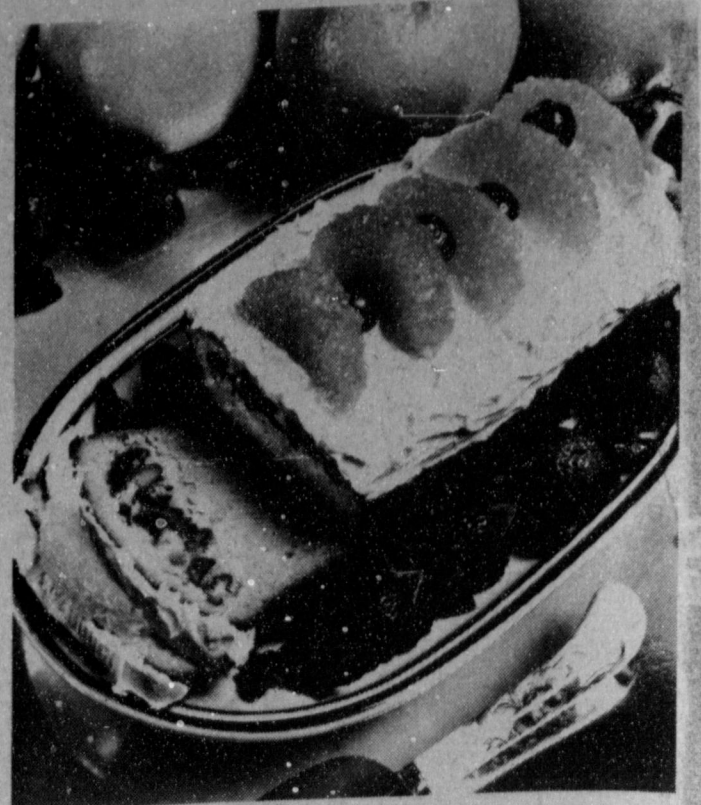
XI Omicron XI met January 6 in the home of Jama Brown with Margorie Merritt serving as co-hostess.

A short business meeting was held. Rhonda Little presided over the meeting. Golden Moments were read by Lindy Schuster.

The next meeting will be held January 20 at which time plans for the Valentine Ball will be announced. Members will



The smallest recorded newspaper page size is 3"x3 3/4" used for the Daily Banner of Roseburg, Oregon, in 1876.



GRAPEFRUIT PECAN BREAD makes a nice in-between-meal snack with its tasty, tangy flavor, notes the Texas Department of Agriculture's home economist. The treat can be prepared with or without icing.

GRAPEFRUIT PECAN BREAD

- 1/2 C. butter
- 1/2 C. honey
- 3/4 C. sugar
- 2 eggs
- 1 1/2 tsp. grapefruit rind
- 3 C. flour
- 3 tsp. baking powder
- 1/2 tsp. salt
- 2/3 C. milk
- 4 T. grapefruit juice
- 3/4 C. coarsely chopped pecans
- 1/2 C. chopped candied cherries
- Powdered sugar icing
- Sections from 1 grapefruit for garnish
- Candied cherries for garnish.

Cream butter, honey and sugar together until fluffy. Beat in eggs one at a time. Blend in grapefruit rind. Sift flour, baking powder and salt together. Add dry ingredients to butter mixture alternately with milk and grapefruit juice. Fold in pecans and chopped candied cherries. Pour into 9x5x2-inch loaf pan. Bake at 350 degrees F. 40-60 minutes or until bread tests done and is nicely browned. When cool, ice with powdered sugar icing. Garnish with fresh grapefruit sections and candied cherries. Yields 10-12 slices.

For additional recipes, write: Commissioner Reagan V. Brown, Texas Department of Agriculture, P.O. Box 12847, Austin, Texas 78711.

vote for the Valentine Sweetheart.

The program was presented by Anita Allgood and Vickie Black on arts and crafts. Each member brought items from their home to show.

Ice cream sundaes were served with soft drinks and tea to the following members Rhonda Little, Doris Scoggin, Barbara Finney, Vickie Black, Judy Wil-

banks, Anita Allgood, Lindy Schuster, Margorie Merritt and Jama Brown.



Scientists have developed and are currently testing nuclear-powered artificial ears - completely implantable organs that could run continuously and automatically for more than the average human life span.

ALLSUP'S
CONVENIENCE STORES

"THERE'S ONE NEAR YOU"

PRICES EFFECTIVE JANUARY 15-17, 1981

SUPPLIES LIMITED WE ACCEPT FOOD STAMPS

<p>BORDEN'S ASSORTED DIPS</p> <p>8 OZ. CTN.</p> <p>59¢</p>	<p>ALLSUP'S ASSORTED ICE CREAM</p> <p>1/2 GAL. HD. CTN.</p> <p>\$1 39</p>
<p>SHURFINE SUGAR</p> <p>5 LB. BAG</p> <p>\$1 99</p>	<p>CRISCO</p> <p>3 LB. CAN</p> <p>\$1 99</p>
<p>Alpo 14 1/2 oz.</p> <p>Dog Food</p> <p>3/99¢</p>	<p>8 oz.</p> <p>Cool Whip</p> <p>49¢</p>
<p>RATH'S HICKORY SMOKED/SMOKY MAPLE BACON</p> <p>1 LB. PKG.</p> <p>\$1 39</p>	<p>MORTON'S MEATLOAF/SAL. STEAK/TURKEY/WESTERN DINNERS</p> <p>YOUR CHOICE</p> <p>89¢</p>
<p>Shurfine Frozen 6 oz.</p> <p>Lemonade</p> <p>5/ \$1 00</p>	<p>Shurfine 1 lb. can</p> <p>Coffee</p> <p>\$1 79</p>

DELICIOUS COOKED FOOD SPECIALS

Fresh Cooked Hot Links

2/99¢

K&L'S Steak House

Will Now Be Closed On Sundays

So Kay, Linda & Staff may have the opportunity to worship God.

K&L'S Will Be Open Monday Thru Saturday

Watch For Our New Luncheon Menu In Sunday's Bailey County Journal



Mr. And Mrs. Auston Floyd Celebrate 40th Anniversary

Mr. and Mrs. Auston Floyd were honored with a reception in observance of their 40th anniversary, Sunday from 2-5 p.m. in the meeting room of Tri County Savings and Loan.

Hosting the reception were their children, Benny Floyd, Kay Griswold, Connie Fulgham and Tommy Floyd and their families.

The two tiered anniversary cake, featuring a bride and groom on the top, was made by their daughter in law, Mrs. Benny Floyd. Cake, mints, nuts, and pink punch were served from crystal appointments by the couples neices, Mrs. Debbie Green and Mrs. Carren Pitcock. Miss Brenda Stevens registered the guests.

Special guests attending the reception were Mr. and Mrs. Robert Blackwood. They also attended the wedding of Mr. and Mrs. Floyd in 1941. Guests were registered from Clovis, Melrose, Slaton, Amarillo, Earth and Muleshoe.

Auston Floyd and Annie Bruns were married January 4, 1941 in Munday, Texas. They moved to Muleshoe January 10, 1941 and lived three miles north of town until in September of that year, when they returned to Munday to farm.

In 1953 they came back to Muleshoe and bought a farm five miles west of town where they farmed for 15 years.

They sold the dairy farm and bought an acreage a mile north of town on the Friona Highway, where they still reside. Floyd worked for Bailey County Electric for 15 years, when he suffered a heart attack on May 14, 1980 and had to retire.

Mrs. Floyd worked for the Lester Baker's for several years at the dry

cleaners. She then worked a few years at Richland Hills cafeteria.

They are members of the Primitive Baptist Church.

The Floyds worked for a number of years with the 4-H youth programs and other extension work when their children were in school. They have four children and six grandchildren.

Tena Landers AAUW Girl Of Month

Tena Landers, the 17 year old daughter of Mr. and Mrs. Henry Landers, was selected Girl of the Month by the American Association of University Women.

She is a senior at Muleshoe High School, where she is active in band. She is a drum major for the Mighty M Band. Tena accompanies on the piano, students who participate in U.I.L. competition in band.

Tena is currently serving as Lions Club sweetheart and is a member of the order of Rainbows for girls. She has served in a number of offices in Rainbow. She is a member of the First United Methodist Church. Her hobbies include music, piano and tennis.

AAUW selects a girl each month who exemplifies good character traits and leadership in school, church and the community. The members of American Association of University Women are proud to announce Tena for this honor. In May the girls, along with their mothers will be honored with a salad supper.

Not every trash basket catches all the stuff that should be thrown into it.



TENA LANDERS

This UT clinic doesn't give shots

AUSTIN, Texas (Spl.) — A new Children's Rights Clinic in The University of Texas Law School will give the voices of children a chance to be heard in Texas courts through competent legal representation.

Through the clinic (in which advanced law students gain practical case experience), a member of the law faculty will be available for appointment by State district judges in Travis County to represent a child's interests in any case where the State intervenes to take custody of a child or to terminate parental rights.

Such a court-appointed attorney for children's rights was mandated when the Texas Family Code was amended in 1979.

No man has an absolute right to free speech—especially married men.



Bernatis Baby

Mr. and Mrs. Mike Bernatis of Midland are the proud parents of a new son born January 12. He weighed 10 lb., 1 oz. and was 21 1/4 inches long. He is the second child for the couple. They have a two and one half year old son, Clint.

Grandparents are Mr. and Mrs. Ben Chapman of Muleshoe and Mr. and Mrs. John Bernatis of Denver, Colorado.

Joshua Brent Kitchens

Mr. and Mrs. Larry Kitchens are the proud parents of a new son born December 28, in the West Plains Medical Center. The young man has been named Joshua Brent.

Grandparents are Mr. and Mrs. I.L. Kitchens of Muleshoe and Mr. and Mrs. Raymond Treider of Lazbuddie.

Great grandparents are

Mr. and Mrs. Charles Neely of Okmulgee, Oklahoma and Mrs. Nola Treider of Lazbuddie.

Joshua Brent was taken home from the hospital wrapped in the same blanket that his father, Larry, was taken home from the same hospital wrapped in. It was made by Larry's mother, Mrs. I.L. Kitchens.

Jeremiah Tabra Love

Mr. and Mrs. Jimmy Love of Clovis are the proud parents of a new son born January 9 at 4:20 in the West Plains Medical Center. The young man weighed 7 lbs., 2 oz. and has been named Jeremiah Tabra. The couple have one other child, Matthew Zachariah, one year of age.

Grandparents are Mr. and Mrs. Mason Love and Juanita P. Wilson all of Clovis.

Great grandparents are Mr. and Mrs. R.C. Hood of Oklahoma and Escar Burton of Clovis.

In Fashion

The classic shirtwaist dress in pure silk with elegant detail is shown in brilliant colors and is designed for daytime and beyond.

WHO KNOWS?

1. How many inches of snow will one inch of rain make?
2. How many Fridays the 13th occur in 1981?
3. Define: Deo Gratias.
4. Who was the first pilot to fly over the North Pole?
5. On what date did Captain Robert F. Scott, famous British explorer, reach the South Pole?
6. Who was Bathsheba's famous son?
7. What is the CIA?
8. What does "Arizona" mean?
9. Identify the "Holy Grail."
10. Which state's name means "Green Mountains"?

Answers To Who Knows

1. Approximately 10 inches.
2. Three--Feb., March and Nov.
3. Thanks be to God.
4. Richard E. Byrd and Floyd Bennett, May 9, 1926.
5. January 17, 1912.
6. Solomon.
7. Central Intelligence Agency, the nation's peacetime spy organization.
8. Arid-Zona or "the dry belt."
9. Legendary cup from which Jesus drank at the last supper.
10. Vermont.

MR. AND MRS. AUSTON FLOYD

Welcome To The Bailey County Livestock Show



January 15-17

At Bailey County Civic Center

MULESHOE STATE BANK

101 AMERICAN BLVD. 272-4561 MEMBER FDIC

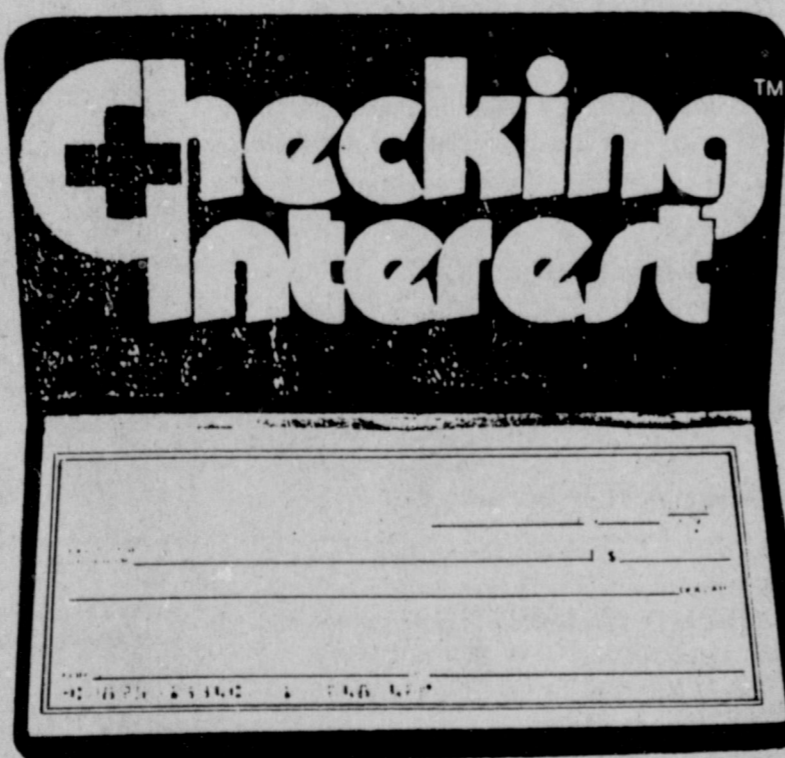
Earn 5 1/4% Interest on All Your Money.

Now you can earn 5 1/4% interest on **all your money** and get free checking with our new Checking Plus Interest account. So you get a checking account just like you're used to and you earn interest besides.

If you save one place and bank at another, combine **all your money** into our new Checking Plus Interest account. Your money earns more. And you never need another account anywhere else.

To earn interest on **all your money** and get free checking, just keep a \$500 balance in your Checking Plus Interest account. If your balance falls below \$500 there is a monthly service charge.

We're helping you build a better tomorrow. With Checking Plus Interest that's best for your money today.



We still pay 5 1/2% on regular savings!

Tri-County SAVINGS AND LOAN ASSOCIATION

MULESHOE 806/272-5527
LITTLEFIELD 806/385-5149

FRIONA 806/247-3984
FARWELL 806/481-3353

ESLIC MEMBER LENDER
1980 The Savings Marketing Corporation

Reduced FOR FINAL SALE

Starts Thurs, January 15

Buy one At Regular Price--Get Second For \$1.00 (Of Equal Or Less Value) Men-Women-Boys-Girls

-Velour & Knit Tops-
-Flannel Shirts-
-Western Shirts- (Long Or Short Sleeve)

Ladies Blouses & Shirts

ALL Denim, Down Or Polyester Coats & Vests 30% off

Men & Boys
Corduroy Jeans
Reg. \$6.95 \$9.95
Reg. \$11.95 16.95
Reg. \$13.25 18.95

Reg. \$10.95 15.95
Reg. \$12.95 18.50
Reg. \$17.50 23.50

Walls Down Jackets Reg. \$75 \$32.95

Ladies & Girls Fashion Jeans 30% off

Lee 100% Cotton Denim Jeans Reg. 17.95 \$12.95

One Group Mens Western Suits Values \$29.95 To \$69.95 149.50

Many Items Not Listed On Sale!

Sidewalk Sale Saturday, Jan 17

Men & Women's Leather Coats & Vests & Leather Trimmed Sweaters 30% off

Western Suede Look Sport Coats
\$105.00 Value.....\$62.95
\$95.00 Value.....\$56.95

Wrangler 100% Cotton No Fault Denim Jeans Big Bell
Boys.....Reg. 12.50.....\$7.50

Students.....Reg. 14.95.....\$9.50

Flare Leg Boys.....Reg. 11.95.....\$9.95
Students.....Reg. 14.95.....\$11.95

Mens Boot Flare Regular Fit Reg. 16.95.....\$12.95
Slim Fit.....Reg. 16.95.....\$12.95
100% Cotton Cowboy Cut.....Reg 17.95.....\$13.95

50% Polyester 50% Cotton Reg. Perma Press Denim.....15.95.....\$12.50

Levi Shrink To Fit Denim Jeans 18.95 Reg. \$13.95

Large Group Boots \$39.95 & up

Boots Not On Sale 10% off

ee's WESTERN WEAR Inc. 1910 W. Amer. Blvd. Muleshoe



OSCAR SEZ.... Everyone should become big boosters of the Muleshoe School basketball program. These young men and women spend a lot of time and effort at the sport and deserve your support.

Show...

Cont. From Page 1
teacher's offices with your contribution.

Each exhibitor may show three beef animals, three hogs, or three sheep in the show. Beef animals shall be classified as market steers, feeder steers or heifers, or any combination but no more than two of each classification.

In the hog division, the exhibitor may enter three hogs, which may be barrows, gilts or any combination of the same. For the sheep show, the exhibitors may show ewes, wethers, or any combination of the same.

Animals may not be removed until the end of the swine show, unless otherwise directed by the division superintendent.

Three classes of steers have been set up, British Pure Breeds; American Crosses and Other Crosses. Exhibitors will be required to declare steer breed at scale and a classifier has been hired to classify the steers into the

SPS...

Cont. From Page 1

new industries continue to show great interest. We anticipate that about 120,000 kilowatts of new industrial and commercial load will be added to our system in 1981.

"We have always planned for the future in order to meet our customers needs. We are still planning--and we intend to see that our customers continue to have the kind of dependable electric service they have had in the past--even better," Springer concluded.

School...

Cont. From Page 1

proved was a tutoring for pay policy; a report was heard and approved on Adult Education Classes; the board approved a change in pledges to secure funds as requested by the Muleshoe State Bank and approval was given to pay school bills.

STATE CAPITAL HIGHLIGHTS
By Lyndell Williams
TEXAS PRESS ASSOCIATION

AUSTIN — One group wants to raise interest rates. Another one wants to lower property taxes.

A year from now maybe taxpayers will be paying out bank loans with money they saved from tax reforms.

Last session one of the Legislature's bloodiest fights involved an effort to remove the 10 percent ceiling on home mortgage loans. In days long gone by, when mortgage rates bobbed around four percent, the Legislature prohibited lending institutions from charging more than 10 percent interest. In recent years, inflation drove up the rate beyond the worst fears of past lawmakers... through the roof, in fact.

The 10 percent ceiling, once believed a safeguard, became a hindrance. Texas lending institutions had to borrow federal money between 12 and 13 percent, and home mortgage loans came to a virtual standstill for a while in the Lone Star State.

Finally, after multiple threats flung back and forth, the Legislature raised the ceiling to 12 percent. However, when Congress temporarily suspended all state ceilings soon after, home mortgage interests shot up to 17, 18, even over 20 percent. Voters took it in stride. Predictions that a vote to re-

move the 10 percent ceiling would result in doom for any legislator did not prove true. The subject was not a serious issue anywhere in the state during campaign season.

Back Again

Now, bankers, credit unions, finance companies, retailers and auto dealers are announcing they are joining forces to remove the new 12 percent ceiling on interest rates.

A consumer association has called it "a conspiracy of lenders to allow an open season on all borrowers," but the lenders say they need the credit opportunities for businesses in Texas.

Some are predicting the issue to be a bloody repeat of last session's fracas. Then again, depending on how lawmakers sense the attitudes of their voters, they may not be afraid to approve the issue. With the recent election in mind, anti-ceiling lawmakers may have fared far better than preceding colleagues.

Property Tax Reduction

Led by John Sharp of Victoria, some seven state representatives last week proposed a plan to use a local option one-cent sales tax hike plus state surplus funds to dramatically lower local property taxes.

The bill would supply an estimated \$300 million a year in surplus funds to school districts which increase homestead exemptions, plus it would allow cities and counties to share equally in a sales tax increase to compensate for property tax reductions.

Using 1979 data, Sharp estimates the bill will reduce property taxes per homestead an average of \$70 per month.

Redistricting Woes

Texas will probably receive the federal census figures in time to begin the redistricting process this session, but it may be all for naught, at least according to one expert.

Now in the works are several lawsuits challenging the census findings in Northern cities. If the census figures are thrown out (probably sometime after the Legislature adjourns), then the Texas redistricting plan would be voided, and the entire process begun again two years from now.

Austin attorney Steve Bickerstaff, a former assistant attorney general under John Hill, said until the census figures are resolved as reliable, then any Texas plan will remain in jeopardy.

A statesman makes the occasion, but the politician makes the politician.
—George S. Hilliard.

Officials Are Warned About Tax Increases

breed division. Lambs will also be classified into the five divisions including Fine Wool, Fine Wool Crosses, Medium Wool, Southdowns and Southdown Cross.

Swine will be allowed one reweigh for light and heavy barrows and cannot be pasted, painted or oiled. Swine can be dressed with water only.

Officials Are Warned About Tax Increases

State Comptroller Bob Bullock warned any increase in local sales taxes would lead to an income tax in Texas.

He said the cities, counties, a few hospital districts and some school boards are now on record wanting the Legislature to give them additional sales tax authority.

Texasans have accepted the sales tax in its present form but it would cease to be painless if every level of government tried to get a slice of the sales tax pie.

"We now have a four percent state sales tax and more than a thousand cities have adopted an additional one percent tax and two cities have a mass transit sales tax," he said. "That adds up to five, five and a half or six percent depending where you live. If every level of government that wants a

Flu...

Cont. From Page 1

body organs are working faster to fight off the virus. *Keep warm. It is important to keep the body clothed with warm attire to insure proper retention of body warmth.

*Most importantly, consult your physician. Do not play doctor.

Keeping your body properly hydrated is as important year-round as it is during the winter. Balanced and adequate body fluids are crucial to good health and wellbeing, especially while working and exercising outdoors during the winter.

sales tax gets one. I would not be surprised to see the sales tax reach 10 percent," Bullock said, "and that would be two percent over New York's--the nation's highest."

The rate would be so high that state government would lose forever the ability to turn to the sales tax for revenue and would be forced into an income tax just like 45 other states have done.

Bullock said when the Legislature starts next week it should dump legislative proposals for new sales taxes into the trash can where they belong.

He said government was already paying for most of the roads and highways in the state and a lion's share of public education and public health.

"I'm sick and tired of politicians crying for local control and then standing in the shadow of the Capitol asking for a handout. The state has a pay-as-you-go law that keeps its budget in balance and local governments can do the same."

He said cities and counties should look in their own backyards for the answers before they come running to Austin.

"There's nothing stopping these governments from charging user fees or even adopting their own income tax if their citizens sincerely want more services," he said.

A politician thinks of the next election; a statesman, of the next generation.
—James Freeman Clarke.

The Scientists Tell Me...

Sorghum Producer Verifies Research With Ton-Per-Acre Yield Increases

By Robert L. Haney
TAES Science Writer

"It does a farmer's heart good to see agricultural scientists accept a challenge and go with it," wrote Mr. Jesses R. Russell, grain sorghum producer near Donna, Texas after the 1980 harvest in a letter to Experiment Station officials.

"I'm referring to my challenge to Dr. Dick Creelman to produce 5,500 to 6,000 pounds of grain sorghum per acre on a large acreage instead of a small plot.

"He accepted this challenge from me, and we produced 6,400 pounds per acre on 200 acres. I followed his complete program of high-level management throughout the growing season in order to accomplish this.

"This accomplishment leaves the avenue open for large acreage production of sorghum if conditions warrant. I would feel comfortable with his program whether producing 200 or 1,000 acres of grain sorghum..."

The scientist referred to in Russell's letter is Dr. Richard Creelman, agronomist with the Texas Agricultural Experiment Station at Weslaco.

"In December of 1979, Mr. Russell came to me asking for suggestions for growing sorghums," Creelman says, "since he couldn't better 4,500 lbs. per acre under irrigation, and our performance tests at Weslaco were approaching 7,000 pounds.

"Skeptical about small research-plot results being transferable to large-scale farming, he challenged us to help him produce high sorghum yields on his farm.

"This seemed an ideal way for us to verify our results in an 'on-the-farm' test.

"After a detailed review of Mr. Russell's sorghum cultural practices, which are common to the area, I made

four suggestions for yield improvement:

"1) Change from 40-inch rows to 26.6-inch-row spacings. This results in better plant distribution and better light utilization. Because closer spacings allow a complete leaf canopy to form earlier, there is a reduction in number of needed cultivations.

"2) Select a tropically adapted hybrid that has consistently performed well in the grain sorghum performance tests at Weslaco.

"The hybrid selected was a commercial ATx399 x Tx430 resulting from Dr. Fred Miller's sorghum breeding program with the Experiment Station.

"Another new Miller hybrid will be tested in 1981; it has the potential to further increase yields by 300 or 400 pounds per acre.

"3) Reduce the amount of nitrogen applied preplant, because the Russell farm has limited soil depth and nitrogen could leach beyond the roots. It was suggested that 40 pounds of nitrogen be applied in the water with every irrigation.

"4) Have an additional irrigation when the grain begins to color. This late irrigation is an effort to increase seed density and bushel weight."

Cost comparisons between the two systems showed an increase for the TAES system of \$7.20 for the 40 pounds of extra nitrogen per acre; \$4.50 for water for the late irrigation; \$8.50 for the labor for the late irrigation. Total additional costs were \$20.20 per acre, less \$6.00 for one less cultivation, which left net additional costs at \$14.20 per acre.

"By following these suggestions, Mr. Russell increased his grain yield 2,000 pounds per acre over 200 acres," Creelman says.

"With the price of grain at

\$4.00 per hundredweight, there was an added profit of \$65.80 per acre or \$13,160 for his 200 acres.

"Mr. Russell and all who know about these remarkable results have increased confidence in agricultural research.

"This 'proof of concept' for high-yielding sorghum has added zest to our work. It should be noted that USDA/ARS scientists participated in discussions of these recommendations.

"And my Extension counterpart, Dr. Travis Miller, was informed of what we were doing and why. At no time were we trying to interfere with the great Extension educational program.

"We were gratified for this opportunity to personally verify, on a large scale, the results of our research," Creelman concluded.

Editor's Note: Any questions regarding this column should be addressed to Science Writer, Department of Agricultural Communications, Texas A&M University, College Station, Texas 77843.

Pressure years

AUSTIN, Texas (Spl.) — University professors are no more immune from what Hollywood calls the "Middle Age Crazy" years than the average citizen.

Those are the years when adults in the 35-to-45 age range feel consumed by pressures both from their own children and from their aging parents.

In order to improve the performance of its teachers, The University of Texas has recognized those pressure years by offering Mid-Life Transition Workshops for faculty members. The sessions help teachers to understand the dilemmas of mid-life and to manage stress.

Three Way News
By Mrs. H.W. Garvin

The Three Way basketball teams played McAdoo Tuesday night at McAdoo with Three Way girls winning and Three Way boys losing. Friday night Three Way played McAdoo on the home court with both boys and girls of Three Way winning.

Mr. and Mrs. Gary Gibbs and children from Kansas and Mr. and Mrs. Boyd Gibbs from Lubbock spent New Years Day with their parents, the Ben Gibbs.

Mr. and Mrs. Jack Furgeson were in Dallas the past week visiting relatives and attending the birthday dinner honoring Jack Furgeson's oldest brother.

Mr. and Mrs. Joe Sower were in Muleshoe Saturday to visit her father, A.G. Taylor, who is a patient in West Plains Medical Center.

We wish to express our sympathy to the Bud Huff family on the death of his father who died Saturday night in West Plains Medical Center in Muleshoe.

Mr. and Mrs. Leon Dupler spent Saturday in Andrews visiting their son the Larry Duplers.

Bobby Kindle and Terry Hutton went deer hunting the past weekend but came home empty handed.

Farmers in the community are very busy plowing the land.

The NOW Account

"Interest On Checking Accounts"

QUESTIONS & ANSWERS

1 Since when are you offering a checking account that earns interest?

We offer this new account beginning January 1, 1981 which pays maximum interest allowable by law; 5 1/2 percent.

2 Why first on that date?

A Federal law called the "Consumer Checking Account Equity Act of 1980" takes effect on that date.

3 Is this a NEW account?

Yes it is. However, by offering this account we do not want to discourage you from establishing or maintaining a separate savings program using our existing accounts.

4 Is this a NOW account?

You could call it that because the checks written on this account are sometimes referred to as Negotiable Orders of Withdrawal.

5 Are there many new rules we will have to learn?

Not really. The laws and rules which apply to this account are little more than a combination of the laws and rules which now apply to separate savings and checking accounts. The checks for this account will look and operate the same and like a savings account, the deposit balances will earn interest.

6 What advantages does this account have over separate checking and savings account?

Quite a few actually:
*Earn interest on your combined checking and savings account balance, instead of just savings, while keeping the total balance as near as your checkbook if you really need it.
*Keep only one account book, your checkbook.
*Balance one less statement, remember one less account number, keep one less set of records.
*Make one less deposit and minimize transfers between accounts.
*Make all your deposits into this one account, including funds destined for longer term installments. Transfer the funds by check when you want to, and, without ever having to lose interest for even a few days, be able to trace all your assets through just one account.

7 Who can open such an account?

Individuals, and certain non-profit organizations.

8 What do I have to do?

Come and in and open one of these accounts with us. You may be required to maintain a qualifying balance in the account during the statement cycle to earn interest, but you may already be keeping that same balance in your checking account, without the benefit of interest.

Call, write or stop in and visit us if you would like more information.

Each depositor insured to \$100,000

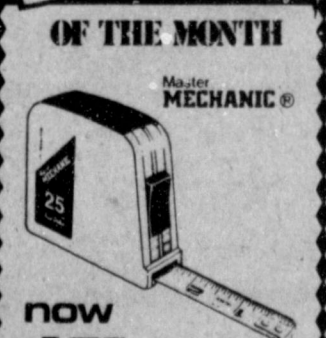


National Bank

202 S. 1st

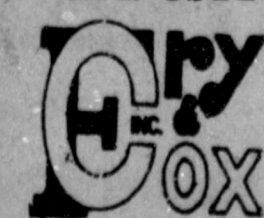
Member F.D.I.C.

272-4515



now **675** While Supplies Last
25-Ft. x 1-Inch POWER TAPE RULE
Positive toggle locks epoxy-coated "write-on" blade in place to let you measure longer distances single-handedly. MMP4425
QUANTITIES LIMITED

401 S. 1st.
Muleshoe
272-4511



WHEAT/PASTURE MIX
(This product contains Ralco-mix's Suppli-Mix)
FEEDING DIRECTIONS: Feed free choice to cattle consuming wheat pasture.



A Proven Product With The Cattle Man In Mind!
Now Available At **GREEN BROS., INC.**

We feature a complete line of Ralco Products
Buy Now And Save With The Ralco Program

Our

20th Anniversary

In Lazbuddie, Texas

Foster Fertilizer Inc.

Tim Foster, President

Steve Foster, Vice President



Crew At Foster Fertilizer...

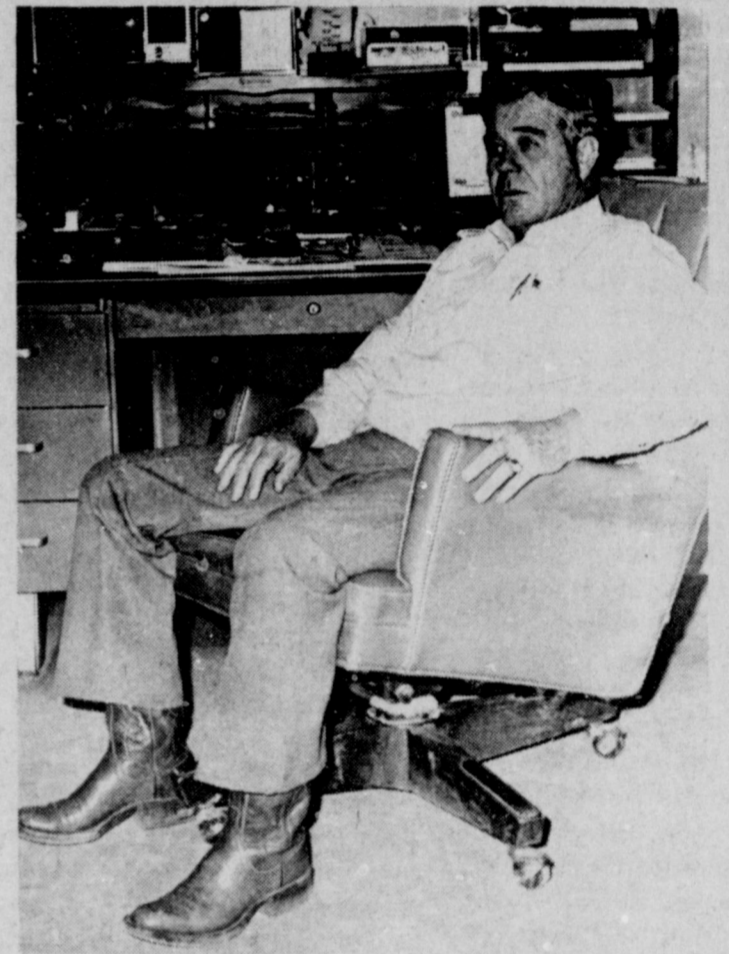
Demp Foster, Steve Foster, R.L. Barber, who has been with the company 19 years, Lyndon Hanna & Pablo Mata.

Foster Fertilizer Wishes To Thank All Their Friends and Neighbors For Making Their 20th Anniversary In The Fertilizer Business Possible.

Foster Fertilizer Will Do Their Utmost To Maintain and Provide Quality Fertilizer and Expert Service For All Their Customers.

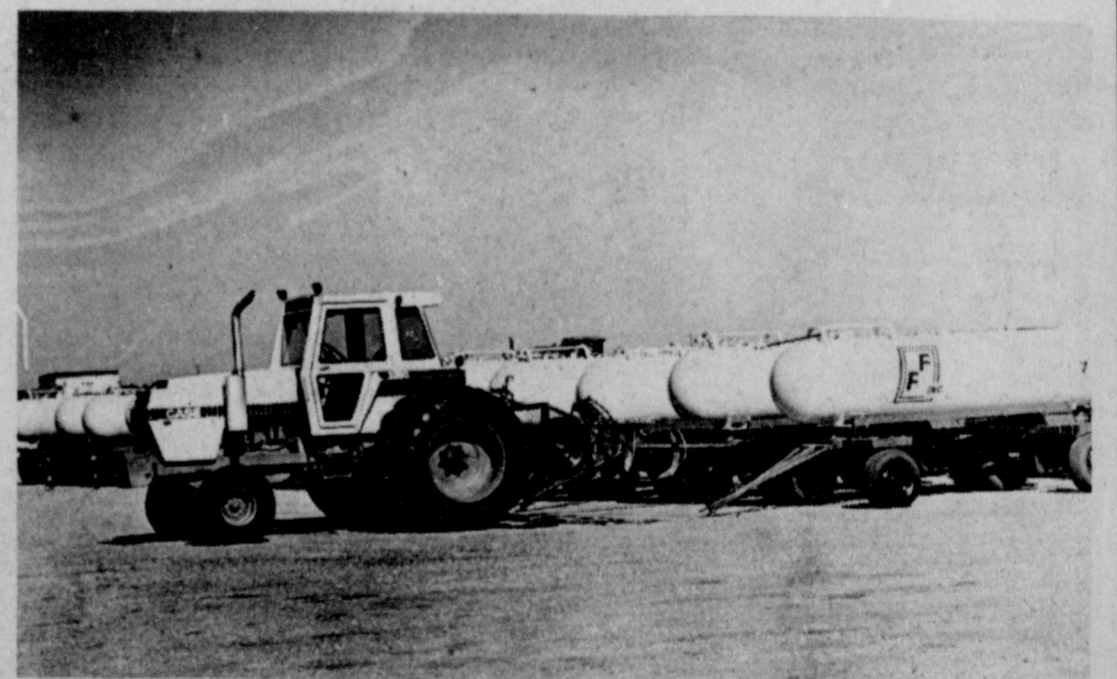
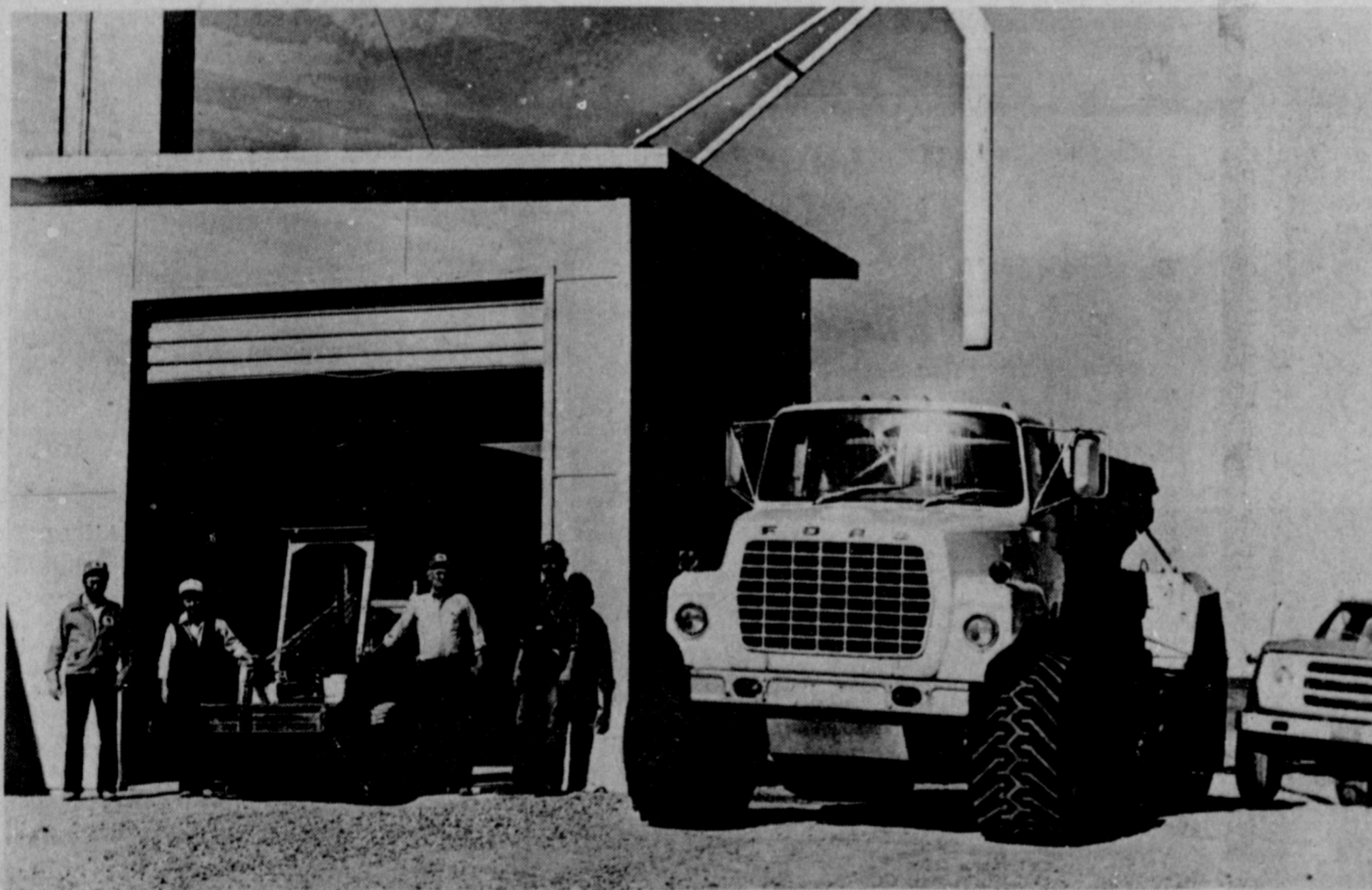
We Are Fully Equipped To Satisfy Your Fertilizer Program.

Call Or Come By Lazbuddie and Let's Talk Fertilizer.



Demp Foster...

Founder Foster Fertilizer and still active in the business after twenty years.



Foster Fertilizer, Inc.

965-2921

Lazbuddie, Texas

Sudan News
By Evelyn Ritchie

Mr. and Mrs. Durwood White of Corpus Christie were here for the holidays with their parents, Mr. and Mrs. Edgar White and Mr. and Mrs. Cleo Whitmire.

Mrs. Ouida Parrish spent the holidays in Tennessee with her son, Mr. and Mrs. Dewayne Parrish and family.

Mrs. J.W. Olds entertained last week to spend the holiday in Denver with Mr. and Mrs. J.D. Smallin and family. She returned home Sunday night.

Dr. Evelyn Milam of Nevada, Mo. spent the holidays with her mother, Mrs. John Milam.

Mr. and Mrs. W. C. Masten, Mr. and Mrs. Matt Nix and Pearl Opsal hosted a family get together Sunday, December 21 when seventy one family members had dinner together and visited.

Holiday visitors in the home of Mr. and Mrs. G.C. Ritchie were their children, Mr. and Mrs. Arb Rylant and family of Longmont, Colorado, Mr. and Mrs. Tom Lamphere and girls of Lewisville, Mr. and Mrs. Dewayne Phillips and children of Lubbock, Mr. and Mrs. Steve Ritchie of Redlands, California. Also Jim Salisbury of Mentone, California, Mr. and Mrs. Vernon Corley of Belen, N.M. and John and Bryce Corley and Keith and Kevin Riley of Clovis.

Holiday visitors in the home of Mr. and Mrs. Larry Vaughn were Mr. and Mrs. Wayne Cunningham, Tracey and Carl Wayne of Levelland, Mr. and Mrs. John Drake and family of Dallas, Terry Drake and Dorothy Handley.

Mr. and Mrs. John Humphreys and Mr. and Mrs. James Humphreys were in Brownwood during the weekend.

Christmas day guests in the home of Mr. and Mrs. Art Lynch were their children, Jennifer, a student at LCC, Mr. and Mrs. Marc Lynch and Mr. and Mrs. Chris Pope all of Lubbock.

Holiday visitors with Mr. and Mrs. Halbert Harvey were her brother and family from Cortez, Colorado.

Mr. and Mrs. Jerry Etheridge and children of Dimmitt were Christmas holiday visitors with her parents, Mr. and Mrs. G.C. Churchman and brother, Mr. and Mrs. Scott Churchman and Scott.

Letters To The Editor

To the Editor:
When I first heard that the Lamb County Commissioner's had voted to discontinue the 4-county Bookmobile service, I was also told that there was no way it could be continued in the other three counties. I was first shocked, and then saddened by this, as I had never thought the cost was prohibitive to the service given. I have been thrilled every time I have watched the bookmobile going out to carry books to the rural people of the four counties. This has given many, many people thru the years an opportunity to read, or study, and enjoy books that they wouldn't have access to otherwise. It has been, in my opinion, an extra-special service to them. I have the opportunity every day to hear comments from people from the rural areas about how much they have enjoyed the bookmobile, and how much they will miss it. I know it is heart-breaking for Ruby and Lorene to tell a child they can't check them out a book because they won't be back any more...that they will just have to come to town to get their books. Some will be able to and some won't.

I know it has been used, with a circulation in 1979 of over 30,000 items over the four counties, I would say it was used and enjoyed. The rural people had access to the store of books from our library too, which could be taken out on the next trip, or mailed to them if they needed one sooner.

I think of times when the bookmobile ladies have gone out of their way to serve the people, such as the Amherst Nursing Home, where they made a special stop to take books to the residents, who could not get out and go to the library. Ask them if this was a good service.

If there is no way the bookmobile can be continued, I think we should at least let the people know that it was successful, and we should let the two librarians know that all their years of service is truly appreciated.

(S) Anne Camp Librarian

Mr. and Mrs. Ken Walden and Kenny of Oklahoma City visited during the Christmas holidays with their parents, Mr. and Mrs. Claud Kropp.

Mr. and Mrs. H.A. Markham of Delevan, N.Y. were here for some of the holidays with his mother, Mrs. Reed Markham and sisters, Mrs. Sara Woods and Mr. and Mrs. Waymon Bellar and family.

Mr. and Mrs. Don Dykes, Alison, Kristy and Donny of Amarillo spent the Christmas holidays with his parents, Mr. and Mrs. Hubert Dykes.

Having Christmas Day dinner with Mrs. Rose Pinkerton was her brother, Floyd Cox of Littlefield.

Addis Williams remains a patient in ICU at Methodist Hospital.

Mr. and Mrs. Martin Maxwell hosted a family dinner Christmas Day with Mr. and Mrs. Lynn Drum and children of Caddo Mills, Mr. and Mrs. Glen Testerman and children and Mary Lena Maxwell. Raymon Maxwell remains a patient in the Veteran's Hospital in Amarillo. All of the family went to Amarillo Christmas Day to visit with him. Mary Lena and Freddie Maxwell were in Amarillo Monday also to visit him.

Carl Scott enplaned Tuesday for Dallas following the holidays here with his parents, Mr. and Mrs. Carl Scott. Sr. Carl brought Keevan and Rhonda Tamplin, Children of Mr. and Mrs. Richard Tamplin home with him. Mrs. Tamplin is the former Sharon Burton. Carl is a student at Brookhaven College in Dallas.

Mr. and Mrs. Randall Gilcrease, Debra and Paula of Euleus were holiday visitors with their parents, Mr. and Mrs. J.A. Graves. Their grandson, Mr. and Mrs. Brent Whiteaker and Miriam of Tulsa, Oklahoma also visited with his parents, Mr. and Mrs. Wayne Whiteaker. Miriam remained here with her grandparents for a longer visit. Mr. and Mrs. Doc Graves and children and grandchild of Brownwood were here for the New Years Holidays.

Mr. and Mrs. Jerry Bridwell, Jerianne and Clay of Tulsa, Oklahoma were holiday visitors with their parents and grandparents, Mr. and Mrs. Clovis Bridwell and Mr. and Mrs. Glenn Gatewood and families.

Mr. and Mrs. Ron Montgomery were in Tulia during the Christmas holidays with his parents, Mr.

and Mrs. G. W. Montgomery.

Mr. and Mrs. Coleman Terrell, Mr. and Mrs. Arlis Humphreys, Kim Doyle Terrell and Mrs. Humphrey's mother, Mrs. Thompson of Amherst were all in Carlsbad, N.M. December 20 to attend funeral services for their cousin, Coleman Floyd. Services were held at the West Funeral Home. Floyd was a brother of Mrs. Thompson.

Visiting Monday with Mr. and Mrs. Coleman Terrell were their nephews, Rev. and Mrs. Richmond Graham of Amarillo and Mr. and Mrs. Thomas Graham of Devine, Texas.

Mr. and Mrs. Eddie Newcomer of Houston were holiday visitors with her parents, Mr. and Mrs. Jerry Ray and sisters, Mr. and Mrs. Roby Lynn, Jennifer and Candace and Tanya Ray a student at Tech.

Mrs. Radney Nichols and Miss Bertha Verren returned home Tuesday night from Spring where they spent the holidays with Mr. and Mrs. Charlie Nichols and family.

Mr. and Mrs. Dick Roark and Kathy of Alamogordo, N.M. were holiday visitors with his mother, Mrs. Olan Roark and attended church services with her Sunday at the Baptist Church. Joining them later were Mr. and Mrs. Byron Roark of Clovis, Mr. and Mrs. Billy Baker, Mr. and Mrs. Dennis Baker and family, Mr. and Mrs. Terry Burch and Brandi and Mr. and Mrs. Dennis DeArmond and Leah all of Spearman.

Mr. and Mrs. Bonner Markham and family of Amarillo were holiday guests with his parents, Mr. and Mrs. Joe Burt Markham.

Mr. and Mrs. Bob Masten of Morton were here for the holidays with their daughter, Mr. and Mrs. Joe Bellar and boys.

Mr. and Mrs. John Norwood and children of Alice and Mr. and Mrs. Raegan Cox and family of Muleshoe visited during the Christmas holidays with their parents, Mr. and Mrs. Matt Nix.

Out of town guests with Mr. and Mrs. R.D. Nix for the holidays were their daughter, Mr. and Mrs. Jay Miller and Craig of Winona, Miss., Mr. and Mrs. Jim Savage and Chris and BRIAN OF Lindsey, Oklahoma, Mr. and Mrs. Ken Dawson and Dale of Tulia. Also his brother, Mr. and Mrs. John Nix of Texline and sister, Mrs. Lora Irwin of Grenville,

N.M.; her brother, Mr. and Mrs. Raymond White and Mrs. Susan Shaw and Scott all of Hereford; Mrs. Cherri Talley of Odessa. Others joining them throughout the holidays were Mr. and Mrs. Bill Nix, Mr. and Mrs. Tim Nix, Jackie Markham, Mr. and Mrs. Matt Nix and their family and Mr. and Mrs. Bob Masten.

Raymond Maxwell has been a medical patient in the hospital in Amarillo for several days and was to undergo further tests on Monday. Their daughter, Mr. and Mrs. Lynn Drum and children of Caddo Mills were here to spend some time with them during the holiday and also with Mr. and Mrs. Glenn Testerman and girls, and

grandparents, Mr. and Mrs. Martin Maxwell.

Mr. and Mrs. Roger Bellar and Todd of Tyler were holiday guests with his parents, Mr. and Mrs. Waymon Bellar and family.

Mr. and Mrs. B.A. Beauchamp and Derwin were in Farwell for Christmas Day get together with her family members.

Wareena Roark was a Christmas Day dinner guest of Mr. and Mrs. Roy Baccus, Dorothy Jones and Mrs. Myrtle Jones. That evening she went to be with her brother, Mr. and Mrs. Jack Young in Muleshoe.

Some analysts predict early 1981 recession.



Plains Cotton Growers, Inc., Lubbock, has made the first positive step toward the development of a multi-faceted plan to combat bollworm infestations that have caused increasing economic damage to High Plains cotton in each of the past three years.

Out of reserve funds collected from producers to carry out the widely acclaimed Diapause Boll Weevil Control Program, PCG through its Boll Weevil Steering committee has authorized the expenditure of up to \$50,000 to get a research program underway this year, according to Ed Dean, PCG Field Service Director.

Weevil control funds are separate from PCG moneys, Dean explains, and authority to spend weevil program money for any other purpose required a unanimous resolution from the Boll Weevil Steering Committee and agreement from each of the 11 High Plains compresses who collect the funds under contract with the Steering Committee and PCG.

"But just about everyone on the Plains is convinced that a continued escalation of the bollworm problem on the Plains is the most serious threat to High Plains cotton production since the boll weevil began overwintering above the Caprock in the early fifties," Dean says, "and that the bollworm is an immediate threat to the entire area."

Dean also emphasizes that these funds can be committed without jeopardizing the continued success of the weevil control program in any way.

Dean cautions, however, that availability of boll weevil reserve funds is currently limited to 1981 only and is contingent on the success of ongoing efforts to attract additional funds for 1981 and future years from Cotton Incorporated and other entities with a high stake in the area cotton industry, including the State Legislature.

Entomologists believe bollworms can be controlled with insecticides effectively applied at the proper time in proper amounts. The great danger, they say, lies in the lack of widespread bollworm infestations on the Plains in recent years and the resultant inexperience of producers, a situation which could lead to impulsive, indiscriminate use of chemicals. That in turn, they point out, would help the pests to develop tolerance to insecticides and become virtually uncontrollable as have bollworms and tobacco budworms in other cotton production areas.

Dean thinks some of the original objectives of research will be to learn exactly what effect agroecosystems changes of recent years on the Plains have had on both beneficial and destructive insects; what natural bollworm enemies in the area are most effective; whether overwintering or in-migration is most responsible for the increased insect load, and what wild plants are the major hosts for bollworms.

The full scope and direction of the research project however will be determined in future meetings of State Extension Service and private entomologists.

Need Insurance?

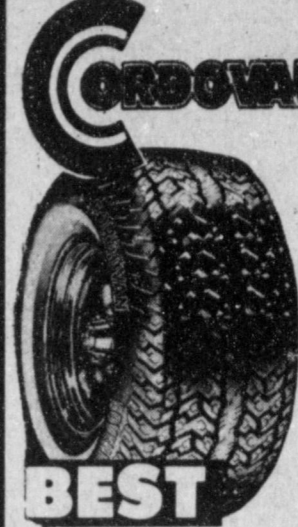
Call
Barbara Scarbrough
272-5093

For A No Deductible Coverage
Hochheim Prairie Farm Mutual Insurance Association

TIRE SALE

Buy One At Regular Price And Get The Second One At 20% OFF

For years Steel belted radials have been the established standard of the industry...now Aramid — the space-age, fire cord material has been developed by Dupont laboratories to replace steel as a belt material in radial tires. Aramid is the ideal material for tires because it combines the toughness and durability of steel at one fifth of the weight with the comfort and smooth ride of a fabric belted radial.



Cordovan Sovereign Aramid Belted Radial

ARAMID BELTED — The strongest tire cord ever developed, the strength of steel with less weight. ARAMID is much more flexible — for a much more comfortable ride. ARAMID produces a lighter, easier rolling tire which improves gas economy. ARAMID absorbs more road shock — eliminates joint slap and provides greater impact resistance.

Number	Tubless Whitewall Size	Regular Price Each	Sale Price 2nd Tire	Plus F.E.T. Each
No. 23C45	P215/75R15	74.61	59.69	2.64
No. 23C49	P225/75R15	78.88	63.10	2.77
No. 23C64	P235/75R15	81.88	65.50	3.07

MILEAGE Stronger-than-steel Aramid gives equal performance with less weight. Lighter weight reduces internal friction and heat build-up. **SMOOTH RIDE** The flexible lightweight Aramid belts plus super tough Polyester cord radial body plies deliver a smooth, comfortable ride. **SKID RESISTANCE** Sovereign's computerized tread pattern effectively drains out water and improves traction in wet or dry weather. Radial construction keeps the tread flat on the road with a surefooted grip. Flexible sidewalls absorb lateral forces on curves and corners the tread remains in contact with the road.



Cordovan Radial CR-10

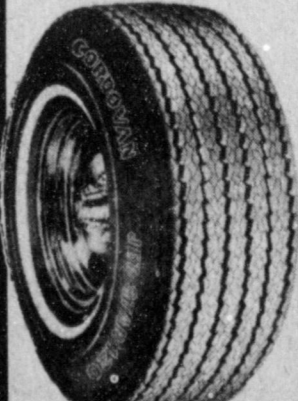
Number	Tubless Whitewall Size	Regular Price Each	Sale Price 2nd Tire	Plus F.E.T. Each
No. 61C60	GR78-14	50.54	40.43	2.61
No. 61C66	HR78-14	52.87	42.30	2.78
No. 61C45	GR78-15	52.28	41.82	2.57
No. 61C49	HR78-15	53.61	42.89	2.79
No. 61C64	LR78-15	57.17	45.74	3.08



Premier IV Polyester Steel Whitewall

Constructed with 2 belts of steel cord and 2 tough body plies of Polyester Cord. Good traction on both wet and dry pavement. Hi-traction tread compound remains flexible at temperatures below freezing to maintain good traction. In many cases it eliminates winter tire changeover.

Number	Regular Price Each	Sale Price 2nd Tire	Plus F.E.T. Each
P165/80R13, Whitewall	40.96	32.77	1.89
P185/75R13, Whitewall	44.65	35.72	2.02
P185/75R14, Whitewall	50.41	40.33	2.19
P195/75R14, Whitewall	51.25	41.00	2.33
P205/75R14, Whitewall	54.67	43.74	2.48
P215/75R14, Whitewall	57.62	46.10	2.58
P225/75R14, Whitewall	59.34	47.47	2.81
P205/75R15, Whitewall	56.98	44.96	2.57
P215/75R15, Whitewall	59.70	47.76	2.75
P225/75R15, Whitewall	61.57	49.25	2.93
P235/75R15, Whitewall	65.89	52.71	3.11



JET STAR 120 Polyester Cord .85" Whitewall

The 4 ply polyester cord body resists impact, blow outs, deterioration. You get a softer, quieter ride with no road white or joint slap and no morning thump.

Number	Regular Price Each	Sale Price 2nd Tire	Plus F.E.T. Each
A78-13, Whitewall	32.40	25.92	1.55
B78-13, Whitewall	33.60	26.88	1.70
C78-13, Whitewall	35.29	28.23	1.90
C78-14, Whitewall	35.42	28.34	1.83
D78-14, Whitewall	35.96	28.77	1.84
E78-14, Whitewall	38.13	30.50	2.12
F78-14, Whitewall	40.12	32.10	2.23
G78-14, Whitewall	41.21	32.97	2.38
H78-14, Whitewall	44.40	35.52	2.60
G78-15, Whitewall	42.94	34.35	2.46
H78-15, Whitewall	45.23	36.18	2.66
J78-15, Whitewall	47.40	37.92	2.89
L78-15, Whitewall	48.73	38.98	2.96

A&M FARM & RANCH SUPPLY

3 CONVENIENT LOCATIONS
100 S. Ave. C Portales 2400 E. Mabry Drive Clovis
Also Muleshoe, Tex.

N.O.W. More Than Ever...

The N.O.W. account has arrived at Muleshoe State Bank!
The N.O.W. account is here combining benefits of checking and savings in one account, letting you write checks while receiving interest at the same time.
The N.O.W. account will pay the highest legal rates of interest allowed on your N.O.W. account.
Come in and get the full details.

The N.O.W. account ... Now more than ever.

MULESHOE STATE BANK

101 AMERICAN BLVD 272-4561 MEMBER FDIC

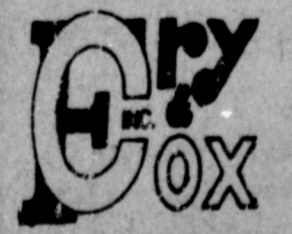


True Value BARGAIN OF THE MONTH



Taylor now 4.68
White Supplies Last

401 S. 1st. Muleshoe 272-4511



SHOP RITE

Prices Good
Thursday thru
Wednesday, Jan.
15-21, 1981



Each of these advertised items is required to be readily available for sale at or below the advertised price in each store, except as specifically noted in this ad. We reserve the right to limit quantities. None sold to dealers.

**NOW...
A CHANCE TO
WIN \$1,000!**

Game Tickets and
Collectors Cards
Available at the
Checkout Counter
or Store Office.
No Purchase Necessary.

ODDS CHART EFFECTIVE 12-20-80			
PRIZE VALUE	NUMBER OF PRIZES	ODDS FOR ONE GAME TICKET	ODDS FOR 3 GAME TICKETS
\$1,000	1	1 in 1,320,000	1 in 440,000
\$500	2	1 in 660,000	1 in 220,000
\$250	4	1 in 330,000	1 in 110,000
\$100	16	1 in 82,500	1 in 25,750
\$50	64	1 in 20,625	1 in 6,437
\$25	256	1 in 5,156	1 in 1,611
\$10	1,024	1 in 1,289	1 in 403
\$5	4,096	1 in 322	1 in 101
\$2	16,384	1 in 81	1 in 25
\$1	65,536	1 in 33	1 in 11
TOTAL NO. PRIZES	14,880	1 in 33	1 in 11

WINNING DEAL: Series #WD15 is being played in Shop Rite Food Stores located in Belton, and Grants, New Mexico and Muleshoe, and Nocona, Texas, and 11 Piggy Wiggly Stores located in Aamogton, Gallop, Espanola, Roswell, Clovis, Truth or Consequences, Silver City, Carrizozo, and Carlsbad, New Mexico, and Floydada and Seminole, Texas.
Scheduled termination date of this promotion is February 18, 1981, however, WINNING DEAL officially ends when all Game Tickets are distributed.
Game program may be repeated by popular demand. The total number and worth of prizes to be awarded will depend upon the number of winning tickets actually redeemed.



PORK CHOPS
Fresh, Center Cut
\$1.88
Loin or Rib Cuts
lb.



PORK LOIN ROAST
Fresh.
\$1.59
Whole or Half Loins
lb.

Flour Tortillas 79¢
Hereford brand, 25-oz. pkg.

Cheddar Cheese \$1.79
Sharp, Kaukauna, Balls, 8-oz. pkg.

SWIFT'S CIRCLE'S Boneless Hams

Pork Sausage \$1.79
Jimmy Dean, Ass'l. Varieties, 1-lb. roll

Pork Sausage \$3.55
Jimmy Dean, Ass'l. Varieties, 2-lb. roll

Fryer Breast Qtrs. 88¢
U.S.D.A. Grade A, Fresh, lb.

ROUND STEAK
\$1.88
U.S.D.A. Tender Select Beef, Bone-In, lb.

ROUND STEAK
\$1.98
U.S.D.A. Boneless, Tender, Select Beef, lb.

FRYER LEG QTRS.
78¢
U.S.D.A. Grade A, Fresh, lb.

Savings That Help Tax-Tight Budgets!

Kraft Velveeta \$1.69
Easy to Use in Favorite Recipes, 1-lb. pkg.

Purina Dog Food \$6.69
Dog Chow, 25-lb. bag

Ivory Liquid \$2.39
Dish Detergent, 48-oz. btl.

Salad Dressing 69¢
Kraft, French or Creamy Italian, 8-oz. btl.

Folger's Coffee \$2.29
All Ass'l. Grinds, 1-lb. can

Saltine Crackers 69¢
Zesta, 1-lb. pkg.

Grape Juice \$1.49
Welchs, 40-oz. btl.



GRAPEFRUIT
5 \$1
lbs.
Ruby Red. Serve for Breakfast.

Green Cabbage 19¢
Fresh, Firm Crisp Heads, lb.

D'Anjou Pears 2 88¢
As a snack - they're delightful, lbs.

Bunch Radishes 3 \$1
Colorful, buns.

Leaf Lettuce 2 69¢
Red or Green, buns.

Crisp Cauliflower 79¢
Serve Raw With Dips!, lb.



FRIED CHICKEN
Banquet, 32-oz. pkg. Frozen
\$2.19



GOLDEN CORN
Green Giant, Whole or Cream Style
3 \$1
16-17-oz. cans



GREEN BEANS
Cut, Green Giant
3 \$1
16-oz. cans



PAPER TOWELS
Hi Dri
2 99¢
Jumbo rolls



BATH TISSUE
Hi Dri
4 79¢
roll pkg.



LARGE EGGS
71¢
doz.

Pancake Mix Aunt Jemima Buttermilk, 2-lb. pkg. \$1.29

Flake Coffee Folger's, 13-oz. can \$2.09

Instant Coffee Folger's, 10-oz. jar \$4.09

Instant Coffee Folger's, 6-oz. jar \$2.79

KEEBLER COOKIES
Fudge Stripes, Deluxe Grahams or Fudge Sticks, 9 to 12 1/2-oz. pkg. \$1.09

Maxi Pads Kotex, 12-ct. pkg. \$1.19

Maxi Pads Kotex, 30-ct. pkg. \$2.79

Margarine Mazola, 1-lb. pkg. 83¢

Mazola Oil 32-oz. btl. \$1.99

Heinz 57 Steak Sauce 10-oz. btl. \$1.49

Ketchup Heinz, Keg O, 32-oz. btl. \$1.23

Softsoap Brown, White or Gold, 9-oz. btl. \$1.39

Gaines Burgers Cheese Flavor, 72-oz. pkg. \$3.09