



Muleshoe Journal

Striving to be your source for local news

75¢

Volume 94, No. 21 www.muleshojournal.com Muleshoe, Texas May 23, 2013

Jury Deliberates Only 14 Minutes Before Acquittal

By Larry Thornton
Managing Editor
It only took 14 minutes for a Bailey County jury to deliberate and return

of Laura Orozco on Dec. 14, 2012, in reference to an incident that occurred the previous evening.

minutes later through the unlocked front door.

Orozco testified she was on her cellphone when she reportedly confronted Guzman about the forced entry, and damage to the back door, to which she said Guzman demanded to know why she hadn't responded to his telephone calls.

When Orozco said when she held out the cellphone and told Guzman she was on the cellphone — a blue Sanyo cellphone, Guzman allegedly took the phone and left the

"This case is about a man who overstepped the line..."

— D.A. Kathryn Gurley

a "not guilty" verdict Wednesday in the trial of accused burglar Sergio Guzman.

Facing charges of burglary of a habitation and theft from a person, Guzman was acquitted of both charges by the five men and seven women jury.

In her opening argument, Dist. Attorney Kathryn Gurley said, "This case is about a man who overstepped the line," but by its decision based upon the testimony received the jury apparently disagreed.

According to testimony received from Muleshoe Police Ofc. Logan Ruthardt, he was called to the residence

According to the testimony received from the officer, following an argument with the victim, the defendant was told to leave the residence in the 500 block of W. Ave D, only to return about

"There is more to this story..."

— Attorney Julie Panger

25 minutes later, and allegedly force entry through the locked back door.

"I didn't want to see him again that night," Orozco said.

She said he left through the back door, only to return a few

residence.

Because the victim didn't have personal transportation or another phone in the residence, she didn't report the alleged incident until the next day.

Continued on A3

Commissioners' Court Approves County Audit

By Larry Thornton
Managing Editor
Bailey County's recent audit report, which was received and approved during

said, referring to this year's "clean audit" of the period ending Sept. 30, 2012.

"You guys always do a good job in your

county taxes.

"You would have been short \$2.63 million if you didn't have tax collected," Kirkland said.

Regarding the county's investment report, Kirkland noted that most of the county's funds had been pulled out of Tex Pool, leaving only the amount to keep an active account in place, and moved to Muleshoe State Bank, where a higher interest rate was being collected.

According to Kirkland, Bailey County's net assets in

Continued on A3

"There is nothing that gives you any heartburn..."

— Auditor Jack Kirkland

a special meeting of the commissioners' court on Friday, May 17, contained no surprises, according to auditor Jack Kirkland of Farwell.

"There is nothing that gives you any heartburn," Kirkland

budgeting," he added.

In his discussion of the county's revenue, Kirkland pointed out that while the county has operations, the service fees it collects is insufficient to county expenses without

Concert Praised

Some MISD school board members stepped out from Monday's board meeting and returned later with high praise for the student's performance.

After the board's approval of an assistant choir instructor, school board member Kelly Kittner said, "I think tonight shows what can happen when you have two qualified instructors."



Colors Extraordinaire

Muleshoe Juniors and Seniors arrived at this year's prom in vehicles ranging from the ordinary to the extraordinary. Pictured above are three of the more unusual arrivals — a "clown car," a truck from the Muleshoe Fire Department, and almost a must for an agricultural community... a John Deere tractor. Not pictured was a balloon-bedecked Peterbilt from a local trucking company.

After disembarking, the celebrating students walked the red carpet, including introductions by MISD instructor Jim Daniels, before entering the cafeteria and commons area, with its Arabian nights-inspired "Colors of the Winds" motif. Additional photographs on B6. Photographs by Larry Thornton

School Board Opens Pre-K To Most District Employees

By Larry Thornton
Managing Editor

Full-time, permanent employees of the Muleshoe Independent School District, along with its cafeteria staff received an additional benefit during Monday's regular meeting.

At Superintendent Dr. Gene Sheets' recommendation, the school board voted to allow the school district's employees to enroll their four-year-old children in MISD's pre-Kindergarten program — which was formerly limited to qualified lower-income families.

Students in the district's PPCD, a different program, are three-years-old and qualified by disabilities, and therefore, be affected by the change.

"Back at the first of the year, Dana Heathington (principal at Dillman Elementary) came to me with an idea," Sheets said. He explained that offering the benefit to the district's full-time,

"Can the school district require teachers to enroll their children here?"

— Board member Carroll Precure

permanent employees, and cafeteria staff, could attract future employees or aid in retaining current employees.

"I appreciate Mrs. Heathington for bringing this to me," Sheets said.

"I guess it would be

Continued on B4

We are pleased to introduce Muleshoe State Bank ONLINE BANKING
www.muleshoestatebank.com
GOING STRONG SINCE 1931

MULESHOE STATE BANK

"Where a handshake still means something."

MULESHOE • 272-4561 • 101 W. American Blvd. • FARWELL • 481-9580 • 801 Ave. A

OPINION

Around Muleshoe...



Announcements from non-profit organizations in the Muleshoe area.

To post an announcement send an email to editor@muleshoejournal.com

MHS Awards Program

Muleshoe High School's "Celebration Of Educational Excellence" awards night will be held on Tuesday, May 28, at 6:30 p.m., in the Dr. Kerry Moore Auditorium. The public is invited, and encouraged to attend.

Summer Library Volunteers

The Muleshoe Area Public Library is in need of volunteers for its Summer Reading Program's two-year-old through kindergarten group in June and July.

The library will need seven volunteers to travel with the Texas Migrant Council toddlers to the library, stay with them while they are in the program and travel back to TMC with them on their bus each Monday in June and July.

The library also needs someone who is familiar with Youtube.com™ to help each Monday, along with someone someone to video tape the reading program. Call the library at 272-4707 to volunteer.

Mule Putt Booking

The Jennyslippers' Mule Putt Golf Course on West American Blvd., next to the Bailey County Coliseum, will be opening soon, and is currently booking parties, beginning at two hours for \$35.

Call 272-5448 or 946-7292, and also 272-3408 or 806 729 6753 to book a party.

MHS Event

MHS National Honor Society Induction Ceremony, Thursday, May 23, at 7 p.m., at the Kerry Moore Auditorium.

Relay Recess

- Dillman Elementary will be hosting Relay Recess, a fund raiser for the Bailey County Relay for Life, on Friday, May 24, beginning with opening ceremonies in the gym at 12 noon, and with closing ceremonies at 2:30 p.m. The public is invited to attend and participate.

- Lazbuddie ISD will also be hosting Relay Recess on Tuesday, May 28 with opening ceremonies at 12:30 p.m., and closing ceremonies at 3:30 p.m. Survivors are invited to attend.

Senior Center Events

- Health Fair on Tuesday, May 28. There will be booths on medical management, blood pressures, home safety, bone density screening, diabetes screening, nutritional screening, cholesterol screening, hearing screening, and vision screening.

- Pancake Breakfast on Saturday, June 1. There will be lots of good old fashioned pancakes, sausage and bacon. A donation of \$5 for adults and \$3 for children is requested.

- Senior Center Dance on Tuesday, June 11. With a pot luck dinner.

Eating Healthy = Lower Cancer Risk

Muleshoe Journal USPS 367820

Established Feb. 23, 1924 Published by Panhandle Weeklies, LLC.

Every Thursday at 201 W. Ave. C, P.O. Box 449, Muleshoe, TX 79347.

Periodicals paid at Muleshoe, TX, and at additional mailing offices.

Postmaster: Send address changes to the Muleshoe Journal, P.O. Box 449, Muleshoe, TX 79347.

We are qualified members of the Panhandle Press Association, West Texas Press Association and Texas Press Association

Michael Distelhorst, Publisher © 2013

mdistelhorst@hearstmp.com

Larry Thornton, Managing Editor

editor@muleshoejournal.com

Rhea Gonzales Ad Representative

adsales@muleshoejournal.com

Ad Design / Classified Advertising

advertising@muleshoejournal.com

classifieds@muleshoejournal.com

Subscriptions:

By Carrier Yearly — \$27

Bailey County, by mail — \$29

Elsewhere — \$40

By E-mail — \$22

Advertising rate cards on request

Hours are 8 a.m. to 5 p.m., Monday - Thursday, and 8 a.m. to noon on Friday.

*Advertisers should check their ad the first day of insertion. The Journal will not be

liable for failure to publish an ad or for a typographical error or errors in publications

except to the extent of the cost of the ad for the first day of insertion. Adjustment for

errors will be limited to the cost of that portion of the ad where the error occurred."



'End Of Construction: Thank You For Your Patience'

In a recent column, I mentioned that among the highest points of a recent trip to Carolina, was a visit (two visits, actually) my wife and I made to the Billy Graham Library in Charlotte.

As I said in that column, I don't usually toss around the word "inspirational," but the Billy Graham Library deserves that adjective.

Designed to reflect his upbringing on a dairy farm in North Carolina, the library, grounds and all, wonderfully honors Billy Graham by honoring most of all the Lord he has served so long and well.

I was particularly surprised to find that among the most thought-provoking sights at the library were on its verdant grounds. And they were graves.

One is the grave of that "sweet singer of Israel," George Beverly Shea, who has often been called "America's beloved Gospel singer."

A Grammy Award-winner and 10-time nominee, Shea was inducted in 1978 into the Gospel Music Association Hall of Fame.

For most of his long life, he was an integral

TCTA Scholarship Is Available

There is a Texas Classroom Teachers Association (TCTA) Post-Secondary Scholarship available for a Muleshoe High School graduate currently attending a college or university and majoring in Education.

Students interested in applying for the scholarship may pick up an application at the Muleshoe High School main office.

The scholarship deadline for submitting an application is Monday, June 3.

Local Adult Education Courses Offered

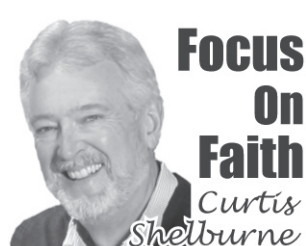
Literacy, GED preparation and adult basic education classes are available at Workforce Solutions, on Main Street in Muleshoe.

Classes are on Tuesdays and Thursdays in May, Mondays and Tuesdays during June, July and August.

Contact Alison Broughton at 817-504-0189 for additional information.

New enrollment is set for July 1.

Thanks for reading the Journal!



Focus On Faith
Curtis Shelburne

part of Billy Graham's team and the featured singer at Graham's crusades. Graham said, "I've been listing to Bev Shea sing for over 50 years, and I still would rather hear him sing than anyone I know."

George Beverly Shea lived to be an amazing 104 years old, and he had passed away on April 16, 2013, just a few weeks before my wife and I visited the Billy Graham Library.

We'd heard that his body had been buried on the grounds of the library.

On the afternoon we first visited, we were running out of time, but we hurried out and followed the path down and around, and came to one grave (that of Wilma "Billie" Barrows, wife of longtime music director Cliff Barrows), and, nearby, a small pile of fronds and flowers, and I told Juana, "I'll bet that's George Beverly Shea's grave."

Three days later, we had a little time to come back and finish our tour.

And, sometime during that interval, the headstone had been



Jean Johnson greets the Rev. Billy Graham. (From the Muleshoe Journal's photo archive)

set: "George Beverly Shea: America's Beloved Gospel Singer."

And he was.

On this past Sunday, back home, I played during worship a recording of him singing the song for which he wrote the music, "I'd Rather Have Jesus."

Back up the path on the library grounds is another peaceful plot with spaces for two graves. And one is being used.

It's the grave of Ruth Bell Graham, Billy's wife, and an amazing person in her own rite.

Ruth was born in China to missionary parents, and at the top of her North Carolina fieldstone marker is the Chinese character for

"righteousness" (which is also, I'm told, on her father's headstone).

She passed away just a few days after the library was opened in 2007.

Below her name and the dates, "June 10, 1920 - June 14, 2007" are words that Ruth had seen as she was riding down a highway.

She thought these would make a fine epitaph, and she was right: "End of Construction: Thank You for Your Patience."

I wonder what will be written on your headstone and mine? Words that point to Christ, I hope.

One thing's sure: we're writing those words right now.

There are **NO LIMITS** with Plateau **4G**

Sign up today and get the Samsung Exhibit Android Phone for FREE!

There are NO LIMITS with Plateau 4G. With plans featuring unlimited calling, texting and data starting at \$50 per month, what are you waiting for?

Phone offer ends June 30, 2013. The Samsung Exhibit Android phone is available for free only with a two-year contract for wireless service. While supplies last. Contract Term: One or two-year commitment required. Early termination fee: \$100 per year, maximum \$200 and is prorated. Activation Fee \$25.00. Partial megabytes rounded up. Full speeds available up to monthly data allotment; capable device required. After data allotment used, speeds slowed to up to 2G speeds for remainder of billing cycle. Night and weekend minutes are available when within the Plateau Network. Night and Weekend Hours: Monday through Thursday 7 p.m. through 6:59 a.m. and Friday 7 p.m. through Monday 6:59 a.m. Free Mobile to Mobile calls between Plateau mobile phones within the Plateau area. Roaming outside Plateau Network Home Area (U.S. and Canada): \$0.10 per minute voice call with Free Nationwide Long Distance, \$0.50 per MB Data. Additional taxes, fees and surcharges may apply. 50% usage on all plans must be on the Plateau network. Unlimited data: 4G speeds up to your selected plan of 2GB or 5GB. May not be available in all markets. Certain restrictions apply.



Drop by your nearest Plateau store or call us today to learn more.

1-877-PLATEAU (752-8328)

www.plateautel.com

PLATEAU

County Audit... Continued From A1

2012 showed a \$194,911 increase compared to the period ending the previous year, for a total of \$1,488,553, primarily due to an increase in property taxes.

The county's unrestricted net assets were at \$1,218,566.

The county's revenues totaled \$4,872,608, with \$2,716,043 of it being from property taxes; \$189,207 from sales and other taxes; \$39,482 from interest income,

and \$13,902 being listed as from Miscellaneous income.

Of the county's \$4,667,697 in expenses, the largest portion went to public safety — \$1,384,810; followed by roads and bridges — \$1,034,588; and general government — \$825,046.

The interest on the county's long-term debt for the construction of the Bailey County Law Enforcement Center

was \$351,803.

According to the audit report, the county's unassigned fund balance at the end of FY2012 was \$1,013,044, while the total balance was \$1,406,859.

The report lists Bailey County's outstanding debt at \$3,615,634, of which \$3,475,000 is comprised by the bonds on the law enforcement center.

It's capital assets are listed at \$7,417,296, of

which \$243,100 is in land; \$4,002,714 is in buildings and improvements; \$2,211,848 is in machinery and equipment; and \$959,634 in vehicles.

With it's accumulated depreciations of \$4,815,231, the total assets are listed at \$2,602,065.

In regards to special revenue funds, the Bailey County EMS in 2012 had total revenues of \$214,177, and total

expenditures of \$424,617, which were under budget by \$13,738.

Based on the year-to-date figures noted

at the May regular commissioners' court, the EMS totals are expected to improve during 2013.

Burglary Trial... Continued From A1

Although the district attorney described the reported incident as being a case of a man, the defendant, who overstepped boundaries, defense attorney Julie Panger said it was a case of the police report recording a "snapshot" and not the complete story.

"There's more to this story," said Panger, who was representing the defendant along with attorney Justin Kiechler of Lubbock.

During the testimony which followed, Orozco admitted being in a long-term dating relationship with the defendant — whom she described as a family friend — and that it wasn't unusual for Guzman to enter her own home, or the homes of her parents or sister unannounced and without knocking.

According to testimony, the cellphone wasn't ever recovered,

and it was replaced by the victim for \$40.

In his closing argument, Keichler said, "I think it's pretty apparent that Mr. Guzman had consent to enter the house that night.

However, Gurley asked the jury to "apply the law to the facts," and

said, "If you walk up to a back door, and it is locked doesn't indicate consent."

Keichler said the jury had sufficient reason, based upon the testimony, to acquit the defendant.

"The unreasonable doubt is about the 'effective consent' to

enter the building," he said, referring to the requirement that to convict the defendant he must be proven guilty beyond a reasonable doubt.

**SHOP THESE
MULESHOE MERCHANTS!**

**Interested in
this space?
Call Rhea at
the Muleshoe
Journal
272-4536
or
806-518-4606**

2231

RED WING SHOES®
Made in USA

The Fair Store
120 Main 272-3500

Need Braces?

Now offered at
J.W. HALTOM
Family Dentistry
& Orthodontics



• Invisalign, the new invisible braces now offered!

• Adults and children welcome!

• Convenient, no interest payment plan!

320 E. 8th St.
385-6935
Monday - Thursday 8 to 5
Friday 8 to noon

Hillary Harris, Amber Garcia,
Jessica Haltom, & J.W. Haltom

American Cancer Society
2013 Relay for Life of Bailey County
Let's paint Muleshoe PURPLE!

Paint Muleshoe Purple will take place the week of June 3-7. Decorate your business however you see fit - just make sure they are PURPLE!

A contest will be held the night of the Relay to determine the winner. We'll take pictures starting at noon Wednesday, June 5 and display them the night of the Relay. Everyone can vote for the best display that evening by putting a dollar, some change, whatever amount of money into a bucket - the group that gets the most money in their bucket will be declared the winning business of Paint Muleshoe Purple!

To join in on the fun and help support the American Cancer Society's Relay For Life of Bailey County, **simply call Terrie Smith at (806) 946-8989 by Monday, June 3** to sign up. Make sure your business is decorated by **Wednesday, June 5** at noon to be included - although we would love to see everyone decorated by Monday morning!

Thank you for your support in the fight against cancer!



Questions? Call Terrie Smith at (806) 946-8989 or Starla Ellis at (806) 946-7552.

SEE US TO RACK UP MILES OF MEMORIES



And Get A

\$70

Reward Card after submission*.

Buy any set of four new MICHELIN® brand passenger or light truck tires, and get a \$70 Reward Card after submission.*

NOW THROUGH JUNE 18, 2013

*See redemption form at participating dealers for complete offer details.
Offer expires 06/18/13. Void where prohibited.



TIRE WORKS
TIRE PROS

220 E. American Blvd
Muleshoe, TX 79347

(806) 272-4594

Mon-Fri 7:45am - 5pm; Sat 7:45am - 12pm

www.TireworksInc.com



TAKE IT TO THE PROS
www.TirePros.com

Senior Citizen News

By Susan Skipworth

Goodness, it is almost June! Time is flying by. Another School year gone with plans in the makings for summer fun!

We would like to congratulate all our Muleshoe High School Seniors on a job well done.

We, here at the Oneita Wagon Senior Center, wish you all the best in everything that your future holds. Remember your roots, you have made us proud.

No matter where you roam, Muleshoe will always be your home. Congratulations, Seniors!

Remember, the center will be closed on Monday, May 27, to observe Memorial Day. God bless America, and all our military

personnel.

Also, remember that we are having our annual Health Fair on Tuesday, May 28.

Please, come on down and join in on all the valuable information.

There will be booths on medical management, blood pressures, home safety, bone density screening, diabetes screening, nutritional screening, cholesterol screening, hearing screening, and vision screening.

A benefits counselor will be here to provide extra help on prescription drugs and the Medicare Part B premium.

Come join us on Tuesday the 28th.

Kathy Carr from the Bailey County Extension Office will be here on Wednesday,

May 29.

Kathy always brings us lots of valuable information on nutrition and makes it lots of fun.

Come hear what Kathy has to say.

We will also be hosting our pancake breakfast on Saturday, June 1. There will be lots of good old fashioned pancakes, sausage and bacon.

We're inviting everyone to come have breakfast with us. A donation of \$5 for adults and \$3 for children is requested.

And, the center's 10th annual July 4 fund raiser is in full swing.

This year we are giving chances on a 42-inch plasma screen television, and also a seven-inch Kindle™ Fire HD.

Tickets are still only one for \$10, or three for \$25.

Help support our senior center!

Please join us in wishing these special seniors a very happy birthday: Billie Harvey, Pauletta Crawford, Eulaine Phillip, Linda Sims and Wander Shafer

Our first dance of the year was a roaring success! Lots of people came from far and wide to attend.

We had a wonderful time with a food table that was unbelievable.

We will be having another dance on the June 11.

Come join us, and dance the night away.

Pray for rain and mud.

May 27-31 menu:
Monday, May 27 —

Closed for Memorial Day.

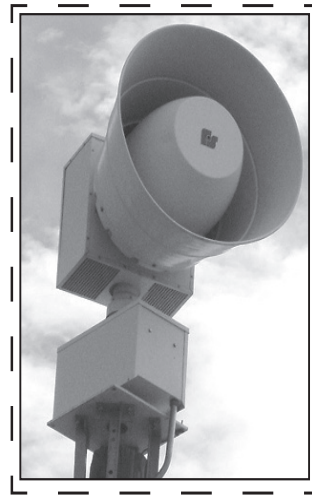
Tuesday, May 28 — Roast beef, mashed potatoes, carrots, Waldorf salad, wheat bread, and banana pudding.

Wednesday, May 29 — Grilled steak, mashed sweet potatoes, green beans, tossed vegetable salad, low calorie French dressing, cornbread, and tropical

fruit salad.

Thursday, May 30 — Taco salad, refried beans, Spanish rice, broccoli and cauliflower salad, corn or flour tortilla, and apricot halves.

Friday, May 31 — Fish or chicken strips, beans, green peas, tossed vegetable salad, low calorie French dressing, wheat roll, and tropical fruit mix.



Muleshoe's Storm Siren Signals
"Hi-lo" wawering signal... seek more information by radio, television or internet.

Long steady signal, break, long steady signal... "all clear."

(Cut and keep!)

BAILEY COUNTY DEVOTIONAL PAGE

ASSEMBLY OF GOD FIRST ASSEMBLY OF GOD

Pastor Ryan Pate
521 South First Street
272-3017
S.S. 9:45 am,
W.S. 10:30 am & 6:00 pm,
Wed. 7:00 pm
EL BUEN PASTOR
415 E. Ave. F - 272-5455
Pastor Ruben Acevedo
272-4542
S.S. 9:45 am, W.S. 11 am &
6 pm; Wed. 7 pm

BAPTIST

CALVARY BAPTIST
1733 W. Ave. C.
Rev. Jeff Coffman
FIRST BAPTIST
220 West Ave. E
Dr. Stacy Conner
FIRST BAPTIST
Lazbuddie • 965-2126
**PRIMERA IGLESIA
BAUTISTA**
223 E. Ave. E
Rev. Rosendo Lopez
PRIMITIVE BAPTIST
621 South First
Elder Bernard Gowens, Min.
PROGRESS BAPTIST
Progress, TX
**PROGRESS SECOND
BAPTIST**
Arthur Hays, Min. - 1st & 3rd Sundays
RICHLAND HILLS BAPTIST
Bro. Larry Thornton
17th & West Ave. D
S.S. 10 am; W.S. 11 am
www.rhbc-muleshoe.org

CATHOLIC

**IMMACULATE CONCEPTION
CATHOLIC CHURCH**
805 E. Hickory
Leonardo Pahamtang, Min.

Serve Wholeheartedly, as if you were serving the Lord, not men. Ephesians 6:7

MULESHOE VALLEY INC.
2601 W. American Blvd.
P.O. Box 631
Muleshoe, Texas
(806) 272-4266
Mobile (806) 946-8763
mviinc@fivearea.com

**CENTRAL COMPRESS
& WAREHOUSE**
SUDAN, TEXAS

Muleshoe Journal
201 W. Ave. C, Muleshoe
OFFICE: 806.272.4536

**Deaf Smith
County Grain, Inc.**
Cliff A. Skiles, Jr.
Jeb S. Skiles

Muleshoe Journal
www.muleshojournal.com
201 W. Ave. C, Muleshoe
OFFICE: 806.272.4536
FAX: 806.272.3567

Acts 2

(Solutions on A5)

D F C V S Q X V G M X R G P R M M D T Q M C L W D
J S M R K U R W I B L E D P M N E N S J M Q A O K
G D T S E K S G L A R S E U O H R I I Q U W Q B S
L F O G K Y L E K S E U Z L Y H G W I L C D F A J
F Z S G O M A G J F S R I F H B L T T N Z Q F R Q
K E W J F B G R U X U R T L Y R I N P R G J H V O
N W L D A O O S P A O E P E I T P E N T E C O S T
E V P L U C S G N I H C A E T S E L T S O P A U F
F I G K O M P R B C P T B A O N A O N I O A V E V
K M Q M F W E R E O W I Q H N V O I H Z S R J Z V
T G E V R U S S I D Y O T I G W R V K T G T H A U
F A I L H N H H O A N N W W L K Y D I M H U Q N
I R Q E A W O S I P E O O G E V B G Z R T I U K W
F S R X U S J W E P O B W T S N A E L I L A G S S
N E Z W P X U X E A K T A E O H S Y P P U N C A Y
L Z J L A B Z R L C P A A M F Z T E Z S K S U K J
C F E U A V E Z E N R P V M F M T Y H Y S Z G U D
E F F U J X X V Z J C U V G I E L E P L T K O P A
Q F U F J T G K W N B X Y J R A Z N K O K X N Q Z
F E F F C B L T Z P I I M M E S S I A H X A L G F

Pentecost
Violent wind
House
Tongues of fire
Holy Spirit
Jerusalem
Galileans
Parthians
Mesopotamia
Cappadocia
Wonders of God
Peter
Jesus
Resurrection
Messiah
Repent
Baptized
Apostles
teachings
Fellowship
Prayer

This devotional & directory is made possible by these businesses who encourage all of us to attend worship services.

EPISCOPAL - CHARISMATIC

**ST. CLEMENTS CHURCH
COMMUNION OF CHRIST
THE REDEEMER**
Hwy. 214 South • 272-5954
Father Sergio Leal
Sun. W.S. 10:30 am

CHRISTIAN TRINITY CHRISTIAN CENTER

1723 W. American Blvd.
272-3877
Reydon Stanford, Pastor
Sun. W.S. 10:30 am

CENTRO CRISTIANO

117 E. Birch St.
Hermanos Barron
S.S. 10 a.m.; W.S. 11 a.m. & 6 p.m.; Wed. 7 p.m.

CHURCH OF CHRIST

LARIAT CHURCH OF CHRIST
Wesley Roach, Min.
S.S. 10 a.m.; W.S. 11 a.m. & 6 p.m.; Wed. 7:30 p.m.

LAZBUDDIE CHURCH OF CHRIST

Nathan Crawford, Min.
S.S. 9:30 am; W.S. 10:20 am
& 5 pm; Wed. 7 pm

MULESHOE CHURCH OF CHRIST

22nd & W. American Blvd.
S.S. 9:30 am; W.S. 10:20 am
& 6 pm; Wed. 7:30 pm

16th & AVE. D

CHURCH OF CHRIST

Curtis Shelburne, Min.
272-4619
S.S. 9:30 am; W.S. 10:30 am;
Growth Gr. 1:30 pm;
Wed. 7:00 pm

EPISCOPAL - CHARISMATIC

**ST. CLEMENTS CHURCH
COMMUNION OF CHRIST
THE REDEEMER**
Hwy. 214 South • 272-5954
Father Sergio Leal
Sun. W.S. 10:30 am

CHRISTIAN TRINITY CHRISTIAN CENTER

1723 W. American Blvd.
272-3877
Reydon Stanford, Pastor
Sun. W.S. 10:30 am

CENTRO CRISTIANO

117 E. Birch St.
Hermanos Barron
S.S. 10 a.m.; W.S. 11 a.m. & 6 p.m.; Wed. 7 p.m.

Antiques & Fine Things
2104 W. American Boulevard
Muleshoe • 272-4217

Trollbeads
every story has a bead

1ST BANK MEMBER FDIC
202 South First 272-4515

BOEHNING DAIRY
690 CR 45, Earth
"MILK - A PART OF EVERYTHING THAT IS GOOD!"

MCDONALD'S OF MULESHOE
1315 W. American Blvd. • 272-3333
Open at 5 AM every day!

i'm lovin' it

1412 W. American Blvd.
Muleshoe • 272-4213
Open: Sun.-Mon. 11AM-11PM
Lunch Buffet: Sun.-Fri. 11:30AM-1:30PM
Monday Night Buffet: 6-8PM
PIZZA HUT WING STREET IS HERE!
"Gather round the Good Stuff"

"THE FIVE AREA TELEPHONE COOPERATIVE, INC."
West Plains Telecommunications, Inc.
Five Area Systems, Inc. • Plateau Wireless
Five Area Long Distance • Five Area Internet
302 Uvalde Muleshoe, USA (806) 272-5533

MCCORMICK SEEDS, INC.
400 East Ash • 272-3156
Muleshoe, Texas
A COMPLETE LINE OF FIELD SEEDS
Tim McCormick

MULESHOE ANIMAL CLINIC
GENERAL PRACTICE
MVS
1430 US Hwy. 84, Muleshoe Office: 272-3061

WAYNE COPLEY TRUCKING
CALICHE, SAND & ROCK PRODUCTS
P.O. Box 63 Muleshoe, Texas 79347
(806) 272-3697
Mobile: (806) 946-8072

Julie DeBruin, Agent
1602 West Amer Blvd
Muleshoe, TX 79347
Bus: 806-272-7548
Fax: 806-272-4756

FARMERS

LUTHERAN

ST. JOHN LUTHERAN
Lariat, TX • David Symm, Min.
S.S. 10:30 am; W.S. 9:30 am

METHODIST

FIRST UNITED METHODIST
507 W. 2nd St.
S.S. 9:45; W.S. 11:00;
Praise & Prayer 6 pm;
First Sunday of Month
4 pm Parkview Nursing Home Service
Mon. 9 am Ladies Bible Study;
Tues. 6 pm Adult Bible Study;
Pastor Mindy McLanahan,
272-5517

LAZBUDDIE METHODIST

S.S. 9:30 am; W.S. 10:30 am
Pastor Ken Peterson
965-2121
EL DIVINO SALVADOR U.M.C.
619 E. 5th Street & Ave. G,
Fernando Sanchez, Pastor
272-6888

PENTECOSTAL

Iglesia Apostolica de la Fe en Cristo Jesus
207 East Ave. G
Sunday 1:30 pm
Wednesday 7:30 pm

INTER DENOMINATIONAL

NEW COVENANT
Plainview Hwy.
Steve Claybrook, Pastor
W.S. 10 am; Wed. 7 pm
MULESHOE COWBOY FELLOWSHIP
710 E. American Blvd.
Steve Friskup, Minister
272-5199
Service: 7:30 p.m. Thursday

If you have changes to make to church information, please contact the Journal at 272-4536.

SHIPMAN'S BODY SHOP, INC.
410 N. First St. • Muleshoe, TX
Office: 806-272-4408 • Fax: 806-272-3366 • Night # 806-336-5422

MAPLE COOP GIN
927-5501
Maple, Texas

Lal's TORTILLA FACTORY
105 E. Ash St., Muleshoe • 272-5772
Phillipians 4; "I can do all things through Christ who strengthens me."

BCEC BAILEY COUNTY ELECTRIC COOPERATIVE ASSOCIATION
A Touchstone Energy Cooperative
Muleshoe — 272-4504 Morton — 266-8600

To Place Your Ad Here
Call Rhea At
Muleshoe Journal
806-272-4536 or
806-518-4606

Superintendent Reports On State Academic Challenge

On May 5, 29 high schools from around the state competed in an academic contest that resembled an athletic contest.

Teams from all across Texas competed in the State Academic Challenge sponsored by the Texas Association of Community Schools.

The contest was held at the University of Mary Hardin-Baylor in Belton. Schools from north of Amarillo to south of Houston competed in the State Contest.

All of the teams qualified for the state contest by competing at one of six area contests across the state.

Muleshoe High School qualified three teams to the state

Super news from MISD

By Superintendent Dr. Gene Sheets

contest this year. Although the Muleshoe High School teams did not place in the top five teams that were awarded scholarships, Muleshoe High School was well represented at the state contest.

One Muleshoe High School graduating seniors, Camilo Torres, has competed at the state contest the last two years.

Last year, his team won third place at the state contest. Due to his efforts in competing in the Academic Challenge last year, Camilo will graduate next week

with \$1,456.67 in scholarships from the Academic Challenge organization!

Each team consists of three high school students (three levels based on GPA averages). Each team member competes in four rounds of five questions each.

The students have 15 seconds to answer each question.

The competition gets intense and exciting as students compete for college scholarships.

Currently, I am the state director for the Academic Challenge.

This year, the state contest had to go to a

tie-breaker round to determine the final outcome.

The excitement level and tension at the end of the contest was similar to the end of a close athletic competition.

Results for the first through fifth places and total amount of scholarships won for each team at this year's state contest:

First place — Comanche High School, \$7,410; second place — Dalhart High School, \$3,675; third place — Denver City High School, \$2,940; fourth place — Peaster High School, \$2,205;

fifth place — Hamilton High School, \$1,470.

This year, just under \$20,000 in college scholarships were awarded at the state contest alone. Another \$30,000 in college scholarships were awarded at the area contests held across the

state. The Academic Challenge contest has given away over \$500,000 in scholarships in the last 10 years. Competing schools must be an institutional member of the Texas Association of Community Schools.

Acts 2



Muleshoe Country Club Ladies Association

The Ladies Association of the Muleshoe Country Club met May 15 at the club for their monthly business meeting, luncheon and annual Ladies Memorial Golf Tournament.

Among the members present were Kay Fields, Judy Wilbanks, Tammy Black, Elinor Yerby, Linda Erdmann, Jeanetta Precure, Jerie Flowers, Treena Mathews, Helen Templeton, Anita Black, LaVern Winn, Marlene Martin, Claudene Elliott, Linda Woods, Donna Glover and Brenna Shipman.

The meeting was called to order by MCCLA president Martin and the benediction was given by Flowers.

The meal was provided by Fields, Yerby and Martin.

Pres. Martin welcomed the three guests — Ashley Pool, Bobbie Black and Campbell Stapleton.

Following the meal the minutes of the April meeting were read by Secretary Mathews and approved by the members.

The treasurers report was given by T. Black in the absence of Pat Kirk.

Under "old business," Winn reported the putting green flags had been designed and were being made by eEVOLVE.

The Jack & Jill, and Seniors Tournament, held April 27, was very successful and enjoyable.

Several of the ladies reported what a fun tournament it was and looking forward to having more tournaments of this nature in the future.

Precure wanted all to be aware the MCC newsletter was being written by T. Black and she deserves all the credit for an informative, newsy, fun and colorful report of the club's activities.

The tournament report was given by T. Black. The Jenny Slipper Tournament is schedule for Aug. 17, and more information

will be available as the date draws closer.

Mathews gave the High Plains Tournament report. We had four players, Pat Kirk, Erdmann, T. Black, Christie Whitt, at Palo Dura Creek on April 17th, with Erdmann winning Low Net, first flight.

On May 8, in the Farwell tournament, there were three players — Mathews, T. Black, Erdmann.

Muleshoe had two winners in first flight, Low Putts (29), T. Black, and Low Gross (92), Erdmann.

The next tournament will be June 12, at Canyon Country Club. Tee time is 9 a.m.

Play Day Chairman Wilbanks gave out awards to Shanghia card players Mathews, first pat hand; Flowers, high score; Glover, Flowers, Templeton, Elliom, most outs; Elliott, low score.

One golf award was given; Flowers for most aquatic balls.

A. Black gave a review of the monthly MCC Board meeting. The door prize was won by Flowers.



Kay Field with her award.

Tourney Winner Announced

Kay Field, pictured on the left, won the Ladies Association of the Muleshoe Country Club's annual Ladies Memorial Golf Tournament on May 15, with a low net of 63.

Members participating included Tammy Black, Jerie Flowers, Linda Erdmann, Kay Fields, Elinor Yerby, Judy Wilbanks, Jeanetta Precure, Treena Mathews, Helen Templeton, Christie Whitt.



OPEN HOUSE

Saturday, May 25 • 2-4pm.

404 South Hwy 385 • Springlake, Texas
Bank financing info will be available to potential interested buyers. Come and see this huge home, perfect for a growing family.

CALL PHYLLIS BRIDGES
AT 806.685.1543

McDaniel's APPLIANCE 1020 Main Street, Clovis, NM
505-762-4481 or 800-682-7891

Time for new appliances?

WE ARE YOUR HOMETOWN WHIRLPOOL DEALER.

WE NOW CARRY SPEED QUEEN!

Whirlpool Home Appliances

WE'RE AT YOUR

Service

Visit the following local businesses for quality service and customer satisfaction!

Interested in advertising your business here?

ONLY \$10.00 PER WEEK TO ADVERTISE HERE!

Contact **Rhea Gonzales** at the **Muleshoe Journal** 806-272-4536



A NEW LANDFILL HAS BEEN APPROVED OR HADN'T YOU HEARD?

Currently your government officials publish their plans and decisions in the newspaper – including where they intend to build facilities you might not want down the street.

That could change in the future because they want to bury their public notices somewhere online, on a little seen, rarely visited government website – out of sight, out of mind.

Don't let government keep you in the dark.

If it is not in the newspaper, you won't know about it.

KEEP THE LIGHT ON PUBLIC NOTICES





Pictured above, from left to right: Standing — Sharon Agee, Sheila Stevenson, Donna Glover, Sherri Shipman, Cindy Barrett and Debbi Hutto; seated and Sandi Chitwood, Pat Young, Vicki Black. Not pictured — Alice Liles.

Beta Sigma Phi Chapter Installs Officers

Zeta Rho chapter of Beta Sigma Phi held its last meeting for 2013 and installed officers for the upcoming 2013-14 year.

Installation was held at the home of Debbi Hutto on Tuesday, May

14. The new officers are Cindy Purdy, president; Cindy Barrett, vice president; Vicki Black, recording secretary; Pat Young, corresponding secretary/treasurer; Judy Wilbanks and

Pamela Miller, city council representatives; and Alice Liles, publicity.

After a short business meeting, the group traveled to the Vine Restaurant in Portales for the evening meal.

SPC Honors Nursing Graduates During May Pinning Ceremony

South Plains College Associate Degree Nursing program hosted its pinning ceremony on Thursday, May 9 in the Texan Dome.

The program honored 25 students.

Awards were presented during the ceremony to Morgan Masters of Levelland for Student of the Year; JoAnna Swinburn of Lubbock for UMC Leadership in Nursing Award; and Kerri Rivera of Levelland for the Healing Touch Award from Covenant Health System.

The winner of the Maxine Dunn Nursing Scholarship was presented to Maria Lara of Plainview.

The graduates from Levelland are Jesse Martinez, Masters, Kristy Puga, Rivera, Jessica Rodriguez, Ana Seth-Davis and Jessica Tafoya.

Also from Hockley County are Jim Jourden of Smyer, Christine McCasland of Anton and Hillary Rich of Ropesville.

Other area nursing graduates include Carla Castro of Ralls, Kristin Porter of Abernathy, Ashley Felton of Wolforth and Jill Waggoner of Muleshoe

Graduates from Lubbock are Connie Carrizales, Natalia Grove, Jake Lott, Beth Munoz, Kristin Parker, Robin Pinkert, Veronica Mendoza-Sanchez, Jaycee Saye and Swinburn.

Plainview graduates are Tiffany Crupe and Lara.

Thanks for reading the Journal!

AGRICULTURAL NEWS

FSA Administrator Urges County Producers To Enroll In DCP/ACRE

On May 16, USDA Farm Service Agency (FSA) Administrator Juan M. Garcia encouraged farmers and ranchers to enroll for the 2013 Direct and Counter-Cyclical Payment Program (DCP) or the Average Crop Revenue Election Program (ACRE) before the deadline.

Producers who wait until the last minute to sign up could face increased waiting time in FSA county offices.

"We understand that producers have gotten busy, but they can't forget to visit their county office and sign up for DCP or ACRE," said Garcia.

"Just as farmers and ranchers plan their spring plantings, producers should plan to schedule an appointment to visit their USDA Service Center at the earliest possible time," Garcia said.

"It's best to complete

the paperwork now rather than to stand in line the day before the deadline," added Garcia.

The sign-up for both programs began Feb. 19, 2013. The deadline to sign up for ACRE is June 3, 2013.

The DCP sign up period ends Aug. 2, 2013.

The 2013 DCP and ACRE program provisions are unchanged from 2012, except that all eligible

participants in 2013 may choose to enroll in either DCP or ACRE for the 2013 crop year.

This means that eligible producers who were enrolled in ACRE in 2012 may elect to enroll in DCP in 2013 or may re-enroll in ACRE in 2013 (and vice versa).

For more information about the programs and loans administered by FSA, visit any FSA county office or www.fsa.usda.gov.

Cattle On Feed Numbers Still Dropping

Cattle and calves on feed for slaughter market in Texas feedlots with capacity of 1,000 head or more totaled 2.54 million head on May 1, down six percent from a year ago.

According to the monthly report released by the Texas Field Office, the estimate was down two percent from the April 1 level.

Producers placed 435 thousand head in commercial feedlots during April, up six percent from a year ago but down 19 percent from March.

Texas commercial feeders marketed 470 thousand head during April, up one percent from 2012 but down

three percent from March.

On May 1, there were 2.21 million head of cattle and calves on feed in the Northern High Plains, 87 percent of the state's total.

The number on feed across the area was down five percent from last year and down two percent from the April 1 total.

April placements in the Northern High Plains totaled 382,000 head, down 20 percent from the March total.

Marketings were down two percent from last month to 409,000 head.

Cattle and calves on feed for slaughter market in the United States in feedlots with

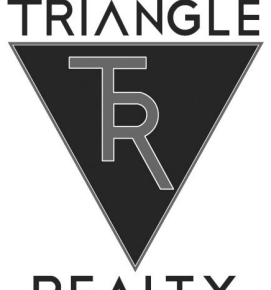
a capacity of 1,000 head or more totaled 10.7 million head on May 1.

This inventory was down three percent from May 1, 2012.

Placements in feedlots during April totaled 1.75 million head, 15 percent above April 2012.

April placements of cattle and calves weighing less than 600 pounds totaled 375,000 head; 600-699 pounds totaled 270,000 head; 700-799 pounds totaled 455,000 head; 800 pounds and greater totaled 650,000 head.

Marketings of fed cattle during April totaled 1.86 million head, two percent above the same period in 2012.



PHYLLIS BRIDGES
AGENT
806.685.1543
PHYLLISB@TRIANGLEREALTY.LLC.COM

TRIANGLE REALTY LLC
7669 CANYON DRIVE
AMARILLO, TX 79110
806.367.8334

WWW.TRIANGLEREALTY.LLC.COM

BROWNING SEED, INC
800-243-5271

Hybrid Forage Sorghums

- Silage Master
- Bundle King

Sorghum Sudangrass Hybrids

- Cadan 99B® WMR®
- "The other Lignin Forage®"
- Tridan 3 Way Crosses
- Sweet Sioux® WMR®
- Sweet Sioux® BMR VI

Open Pollinated Sorghum & Millet

- Maxi Pearl Hybrid Pearl Millet
- Hegari
- Rox Orange

----- Serving American Agriculture -----
----- For Over 50 Years -----
www.cornseed.info

JUNE 7&8, 2013

Coors COWBOY CLUB RANCH

RODEO

TRI-STATE FAIRGROUNDS • AMARILLO, TEXAS

A Barbecuing, Picnicking, Dancing, Shopping, Celebrating, Working Ranch Rodeoing weekend...and we ain't exaggerating.

Tickets available at
Tri-State Fair office - (806) 376-7767
panhandletickets.com or CoorsCowboyClub.com







Online Subscription to the Muleshoe Journal

ONLY \$22.00

www.muleshoejournal.com



Send Your Student to College with an Online Subscription to the

Muleshoe Journal

201 W Ave C., Muleshoe, TX 79347 • Call 806-272-4536



The Sudan Buzz



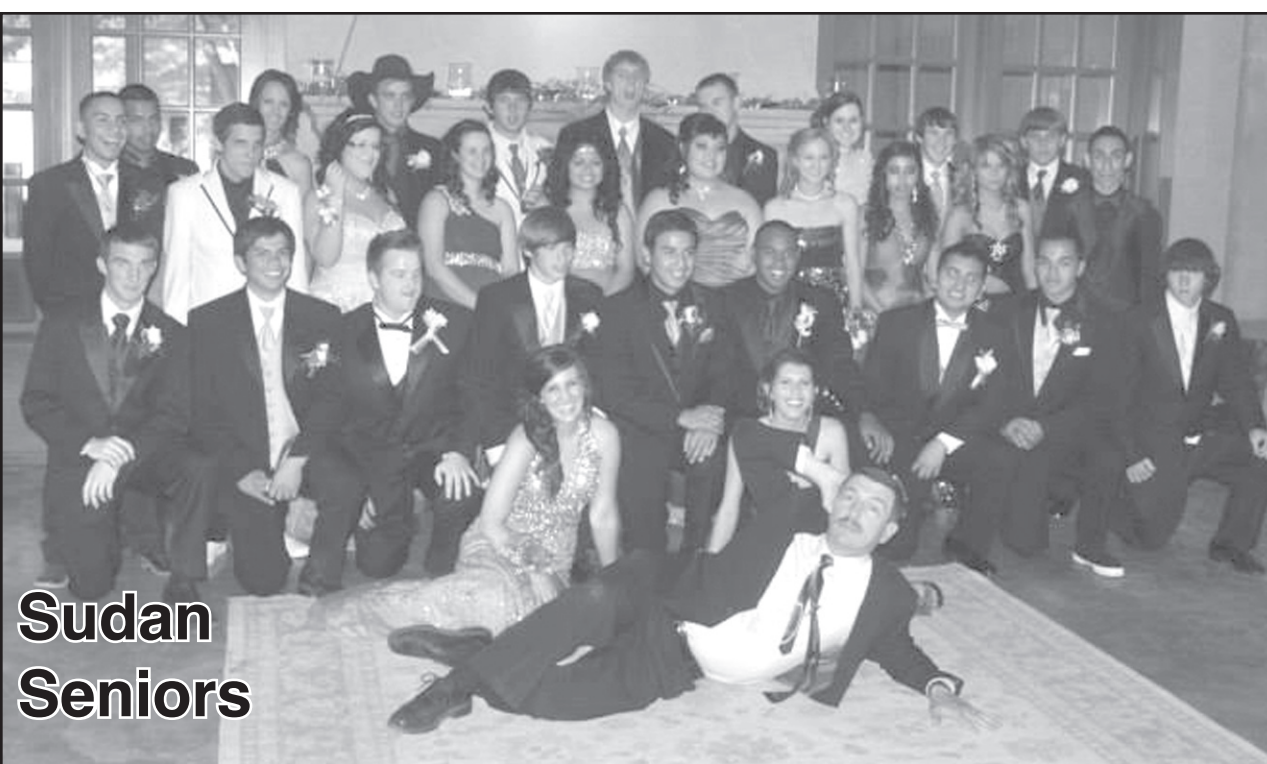
Sudan Seniors, Juniors Celebrate

By Cheri Sain
Sudan Correspondent

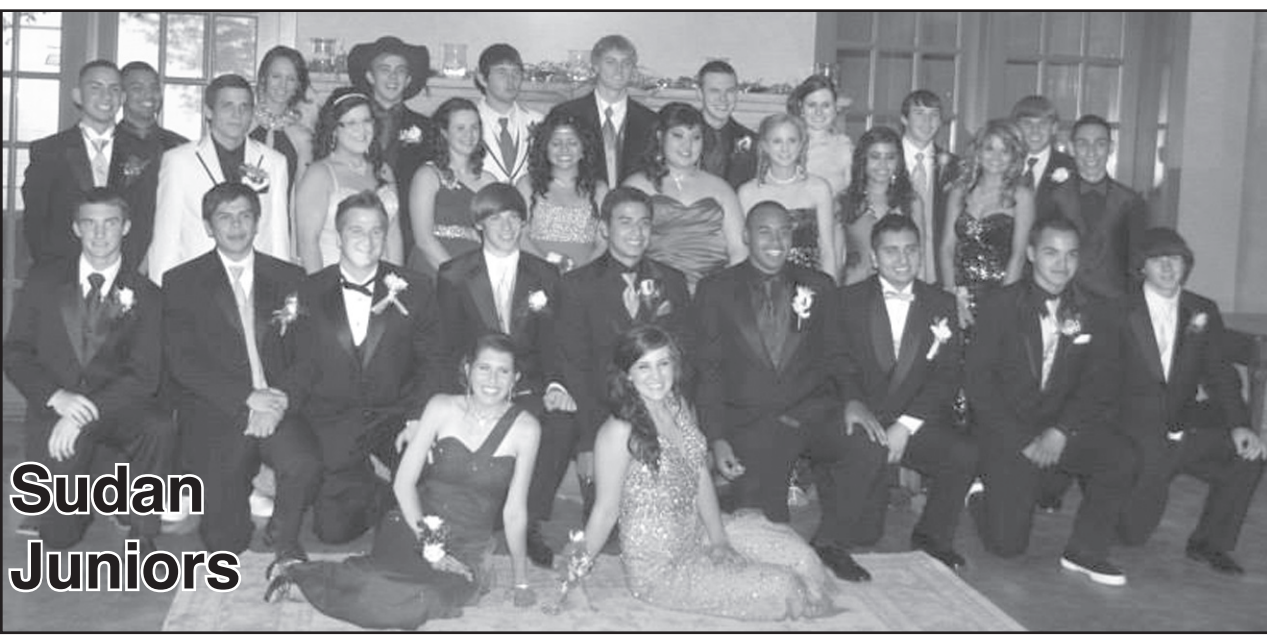
The Sudan High School prom was held at the Caprock Event Center in Lubbock on Saturday, May 18. More than 110 students and faculty celebrated the end of school with a wonderful meal, dancing until midnight, and a fun-filled awards ceremony.

Some of the highlights of the night were that Keela Chester and Jake Chester were named Mr. and Miss SHS. Also, Maribel Centeno and Jake Chester were prom queen and king.

The food was catered by Honey Child. The meal consisted of catfish and pepper steak with all kinds of side dishes and desserts. The DJ for the festivities was Bo Garza.



Sudan Seniors



Sudan Juniors

KING AG AVIATION, INC.

Specializing in Aerial Spraying - Insecticide, Herbicide & Seeding - Field Scouting Service

Johnny King Home (806) 227-2211
P.O. Box 189 Fax (806) 946-3659
Sudan, Texas 79371 Mobile (806) 946-7309
Business (806) 946-3399 Vernon Office (940) 552-6102

SUDAN ISD

EXCELLENCE

IN EDUCATION

WWW.SUDANISD.NET

Hwy. 303 PHONE: (806) 227-2431
SUDAN, TX 79371 FAX: (806) 227-2146

SUDAN VETERINARY SERVICES

CHRIS LARSON D.V.M.

- ◆Specializing in Dairy Medicine◆
- ◆Small Animal & Equine◆
- ◆Same Day Minor Surgery◆
- ◆Farm & House Calls◆
- ◆Climate Controlled Boarding◆
- ◆Services by Appointment Only◆

208 Ormand Street
806-227-2444 806-241-1915

Eating Healthy = Lower Cancer Risk

Sudan Valedictorian, Salutatorian Announced



Jade Goen

By Cheri Sain
Sudan Correspondent

Sudan High School has announced that its 2013 valedictorian and salutatorian are Jade Goen and Dakota Rogers, respectively.

Valedictorian Jade Goen has been involved in athletics, UIL, band, and FCCLA. Jade was an intricate part of the State Championship basketball team last year.

She has also qualified for state in FCCLA and band. She is a multiple regional qualifier in accounting. Jade is planning to be a doctor and will attend Texas Tech in the fall.

Salutatorian Dakota Rogers has been involved in athletics, UIL, TSA, SUDS, and FCCLA. Dakota has participated in football, basketball, track, and golf.

He has been a member of the UIL journalism

team, and he has performed many hours of community service through FCCLA and SUDS.

Dakota will attend South Plains College and major in pre-engineering.



Dakota Rogers

COMPOSTED CATTLE MANURE

Paco Feed Yard -- Hub
Cargill Cattle Feeders -- Bovina
Bovina Feeders -- Lazbuddie

BRANDON SCHILLING
Mobile 806-225-7700
OFFICE 1-800-650-2550

NORTH PLAINS COMPOST, INC.
PO BOX 1099
FARWELL, TEXAS 79325



The Perfect Gift for Your Graduate

Graduation gift cards available at any First United Bank location.



www.FirstUnited.Net

ATTENTION MULESHOE AREA COTTON FARMERS



FM 2011GT – A HIGHER-YIELDING VARIETY FOR THE HIGH PLAINS OF TEXAS.

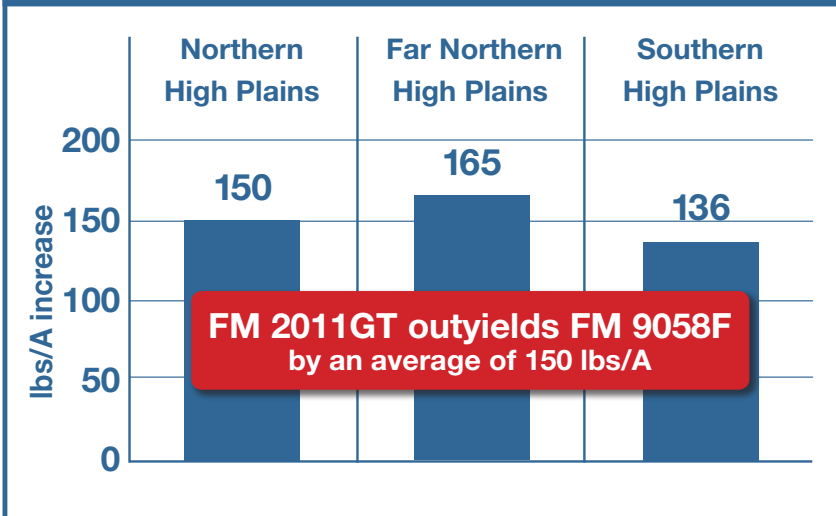
Along with very good tolerance to *Verticillium* wilt and root-knot nematodes, growers are discovering higher yields and higher profit potential with FM 2011GT.



“Last year we planted FM 2011GT for the first time. It yielded 2,235 pounds per acre, even under extremely dry conditions...I was really impressed with the genetics. Now, after the first year, we know where we can push it. My goal is to make five-bale cotton with this variety.”

Steven Albracht – Hart, Texas

Yield of FM 2011GT over FM 9058F Over 70 High Plains CAP Trials 2010-2012



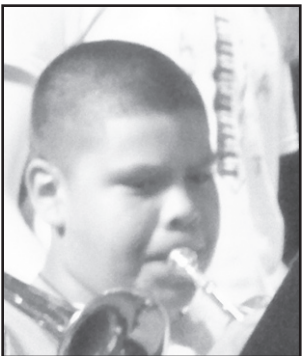
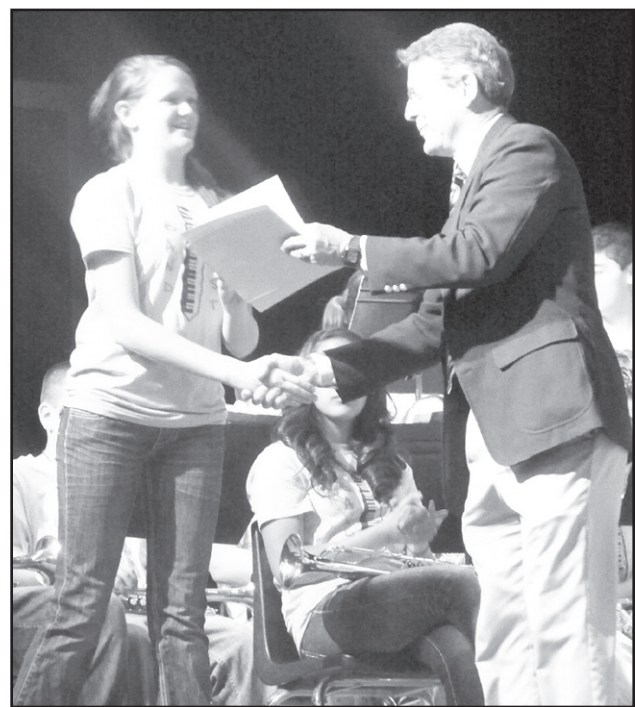
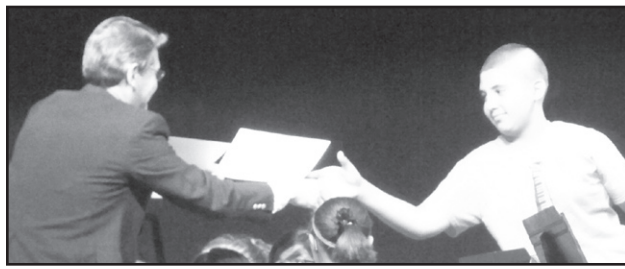
CAP trial data over the past three years has shown that FM 2011GT outperforms FM 9058F 95% of the time with an average yield increase of 150 lbs/A.

Bayer CropScience LP, 2 T.W. Alexander Drive, Research Triangle Park, NC 27709. Always read and follow label instructions. Bayer, the Bayer Cross, FiberMax and GlyTol are registered trademarks of Bayer. For additional product information call toll-free 1-866-99-BAYER (1-866-992-2937) or visit our website at www.FiberMax.com CR0313FIBMAXA054V00R0



See your local seed retailer for more details, or contact Jeremy Hawkins at (806) 773-7259 for more information on FM 2011 GT and other FiberMax varieties.

2013 SPRING BAND CONCERT



CONGRATULATIONS CECIL CHAVEZ FOR MAKING A HOLE IN ONE!!!

ON THE 9TH HOLE AT THE MULESHOE COUNTRY CLUB • MAY 14, 2013

WITNESSES WERE:
DAVE BRUNSON,
LYNN MOORE,
RODNEY BAKER,
DJ ROBERSON
& JACOB HUERTA

WAY TO GO!
LOVE,
RAQUEL
CHAVEZ



Courtesy photographs by Dominique Mata



Give the M.O.S.T. Treasured Gift of All...
An Education.

MULESHOE OPPORTUNITY SCHOLARSHIP TRUST

The annual fundraiser for the Muleshoe Opportunity Scholarship Trust is currently underway and we are on our way to our goal of \$20,000 in donations. **ALL GRADUATING SENIORS WHO ATTEND A UNIVERSITY, COLLEGE, OR TRADE SCHOOL WILL RECEIVE A \$500 M.O.S.T. SCHOLARSHIP TO HELP THEM REACH THEIR CAREER GOALS.**

Remember, even a small amount, when pooled with others, can make a difference.

OUR GOAL IS TO RAISE \$20,000 BY MAY 31, 2013.

You may drop your donation by the superintendent's office or mail it to:

**M.O.S.T. c/o Muleshoe ISD
514 W. Ave. G
Muleshoe, Texas 79347**

Please join us in providing an opportunity for our graduates to make the M.O.ST. of their education. Your generosity will be appreciated and acknowledged in a published thank-you.

Public Notice

Muleshoe ISD is participating in the Summer Food Service Program, June 1, 2013 through July 2, 2013. Meals will be provided to all children without charge and are the same for all children regardless of race, color, national origin, sex, age or disability, and there will be no discrimination in the course of the meal service.

Meals will be provided at the sites with dates and times as follows:

- June 1, 2013 thru July 2, 2013 - Monday, Tuesday, Wednesday, Thursday, & Friday
- Dillman - 510 W 18th St - Breakfast 7:30 am-8:30 am
- Dillman - 510 W 18th St - Lunch 12:00 pm-1:45 pm
- June 10, 2013 thru June 27, 2013 - Monday, Tuesday, Wednesday, Thursday, & Friday
- DeShazo - 303 W 3rd St - Breakfast 7:30 am-8:30am
- Watson Jr High - 500 W Ave F - Breakfast 7:30am-8:30am
- Watson Jr High - 500 W Ave F - Lunch 12:00pm-1:45pm

To file a complaint of discrimination, write or call immediately to:

USDA
Director, Office of Civil Rights
1400 Independence Avenue, SW
Washington, DC 20250-9410
(800)795-3272 or (202)720-6382 (TTY)



Congratulations & Best Wishes!

Sudan High School Class of 2013

Commencement Exercises: Friday,
May 31st at 8 PM



JADE GOEN
VALEDICTORIAN



DAKOTA ROGERS
SALUTATORIAN



KEELA CHESTER



DAYTON FISHER



CESAR MEDRANO



MATTHEW OLIVAREZ



DOUG AMES



NANCY DELGADO



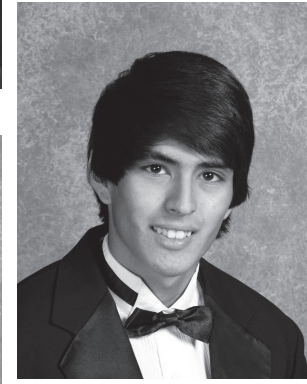
JACOB JASSO



RICHARD MONTES



ROMAN PARADEZ



CHRISTIAN RUIZ



AUDREY BINION



HAILEE GONZALES-DIAZ



MACKENZIE LANCE



CAITLYN NETHERLAND



ADRIANA PORRAS



LEANDRA BRISENO RUIZ



MARIE CARRIZALES



OSMAR DIAZ



TIFFANIE MALDONADO



BILL NOLTE



JC RODRIGUEZ



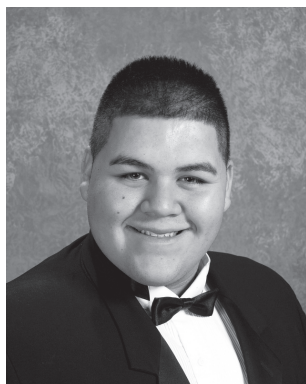
BRYLEIGH SCHOVAUSA



MARIBEL CENTENO



SHELBY DURHAM



IVAN TRILLO



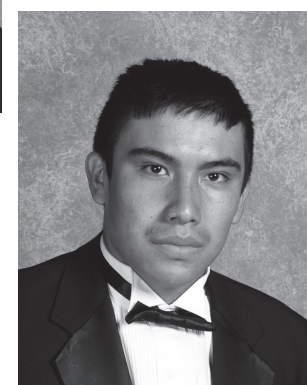
ANDREW ROMAN



YANETH SOLIS



JAKE CHESTER



EDWIN SITAL

GOOD LUCK & BEST WISHES!

SUPPORT THE BUSINESSES WHO SUPPORT OUR STUDENTS
THESE BUSINESSES WISH TO CONGRATULATE THE
CLASS OF 2013

MCDONALD'S OF MULESHOE
I'm lovin' it
1315 W. American Blvd. • 272-3333
Open at 5 AM every day!

Lance Insurance
212 Main Street
Sudan, 227-2466
Congratulations
Caitlyn Netherland

5A
"THE FIVE AREA TELEPHONE COOPERATIVE, INC."
302 Uvalde • 272-5533

SUDAN MEDICAL CLINIC
611 E. Hwy 84
SUDAN
806-227-2292

Muleshoe Animal Clinic & Vet Supply
1430 US Hwy. 84
806-272-3061

KING AG AVIATION, INC.
P.O. Box 139
Sudan, TX
806-946-3399

BCEC
BAILEY COUNTY ELECTRIC COOPERATIVE ASSN.
A Touchstone Energy Cooperative
610 E. American Blvd.
Muleshoe

SUDAN VETERINARY SERVICES
Chris Larson D.V.M.
208 Ormand Street
806-227-2444
806-241-1915

Hill Service Center
E. Hwy. 84, Sudan
227-2373

Dodd Cotton Gin
965-2311

Webb, Webb & Wright, CPA's
823 S. Littlefield Drive
385-5181

Burritos & More Great Job!
111 W. Hwy 84 • Sudan, TX
806.227.2406

Wilson Drilling Inc.
2900 West American Blvd.
Muleshoe, Texas
(806)272-5521

Leal's RESTAURANT
1010 W. American Blvd.
Muleshoe, Texas
272-3294
"The Original - Since 1957"

Muleshoe Journal
201 W. Ave. C • Muleshoe, TX 79347
806-272-4536
Congratulations Sudan Graduates!!

CAPITAL FARM CREDIT
Rural Land Farms & Ranches
Livestock & Equipment
Operating Capital
Muleshoe Credit Office
806-272-3010

MULESHOE STATE BANK
MEMBER FDIC
272-4561
101 W. American Blvd.
Going Strong since 1931

Central Compress & Warehouse
205 Railroad Ave.,
Sudan
227-2388

SUDAN

Congratulations Class of 2013
PO BOX 249 (HWY 303) • SUDAN, TX • (806) 227-2431

H&R BLOCK
H&R Block
104 E. Ave. C
Muleshoe, Texas

Congratulations & Best Wishes!

Lazbuddie High School Class of 2013

Commencement Exercises: Saturday, June 1 at 10 am

IN THE NEW GYM



KARINA GALAVIZ
VALEDICTORIAN



JESSICA ESTRADA
SALUTATORIAN



ALFREDO CHAVIRA



JESUS ESPARZA



ALEX LOPEZ



SHEA SCOTT



JARED TIMMS



KEENA DIAZ



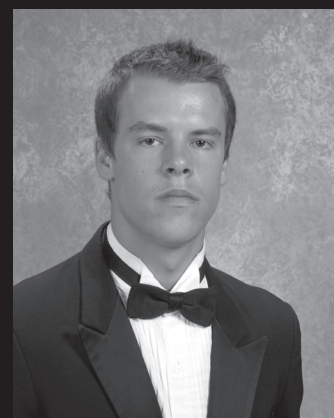
VICTOR GODINEZ



JUAN MURILLO



ROSS STEINBOCK



KEYNAN YOUNGBLOOD

ALFREDO CHAVIRA
Son of Maria Nunez and Flavio Nunez, Grandson of Juanita Galaviz and Herrierto Galaviz.

After graduation I plan to work for a while and attend the art institutes or pratt institute I plan to major in art. My hobbies consist of sketching, chillin with friends, listening to music, working out, and playing with my miniature pup.

My favorite foods are devil food chocolate cake, sour patch kids, and burgers. Favorite drinks, tea and koolaid. Activities I did in school were autocad for robotics, athletics, lunch.

TARYN SHEA SCOTT
Daughter of Lee and Carolyn Scott I plan to attend West Texas A&M University Major: Psychology, Activities: CrossCountry, Basketball,

Track, FFA, NHS, Robotics, UIL, 1 year-Robotics, State Piano, 2 years- Cross Country, Science Bowl, 3 years-NHS, 4 years-Basketball, Track, FFA, UIL

VICTOR A GODINEZ
Son of Luis & Vickie Godinez.

Plans after High School: Move to Amarillo. Activities, FFA, Art, Robotics, Football.

ALEXIS LOPEZ
Son of Rafael & Violeta Lopez. Plans after High School: I plan to attend Amarillo College and get a degree in Pre-Medicine. Afterwards, I plan to attend Medical School at Texas Tech. Activities: Basketball- 4 years, Football- 4 years, Track- 4 years, Robotics- 4 years, One Act Play- 2 years, National Honor Society- 3 years.

JESSICA J. ESTRADA
Daughter of Guillermo & Maria Vallejo.

Plans after High School: Move to Amarillo and attend Amarillo College for Massage Therapy.

Activities: Basketball- 4 years, Cross Country- 4 years, Cheerleading- 2 years, Golf- 1 year, Tennis- 2 year, Track- 2 year, Science Bowl, FCCLA- 2 years, FFA- 1 year, Robotics- 3years, One Act Play, U.I.L., National Honor Society.

KEENA DIAZ
Daughter of Meliton Jr. & Esmeralda Aguirre. Plans after High School: I plan to attend West Texas A & M University and pursue a degree in Psychiatry. Activities: Robotics-3 years, One Act Play- 2 years, National Honor Society Member, State Fecla, All-Region Cheerleader, 2012-2013 Homecoming Queen.

KEYNAN C. YOUNGBLOOD
Son of Robert & Terri Youngblood.

Plans after High School: Move to Amarillo to attend Amarillo College for an undecided degree. Activities: FFA- 4 years, Football- 1 year, Track- 2 years, Art- 1 year

JESUS ANTONIO ESPARZA
Son of Luis & Belsora

Esparza. Plans to move to Amarillo and attend Amarillo College to pursue a certificate in Diesel Mechanics. Achievements: Robotics, Art, FCCLA

JUAN MURILLO
Son of Juan & Rosa Murillo. Plans to attend Amarillo College and become a Dental Hygienist. Activities: Football- 2 years, Track- 2 years, Basketball- 4 years, FFA- 1 year.

KARINA E. GALAVIZ
Daughter of Jaime and Elizabeth Salazar. Activities: Basketball- 4 years, Cross Country- 2 years, Cheerleading- 2 years, Golf- 1 year, Track- 1 year, Tennis- 1 year, FCCLA- 2 years, FFA- 1 year, Robotics- 3 years, One-Act Play- 2 year, UIL- 2 years, National Honor Society- 2 years, Science Bowl- 2 years. Plans to move to Amarillo and attend Amarillo College for one year. After a year plan to move to San Antonio and transfer

to UTSA and continue to pursue a bachelor's degree in Dental Hygiene. After degree received, get a nice job, get married, eventually have 2 beautiful children, and travel the world.

ROSS COLTON STEINBOCK
Son of Terry & Judy Steinbock. Activities: Cross Country, Track, Robotics, One-Act Play, Basketball Manager, NHS.

JARED ALLEN TIMMS
Son of Chris & Jill Timms
Plans after high school: I plan to attend Clarendon College and start my studies in Physical Therapy.

Activities: During my four years of high school I played Basketball, Football, Golf, Tennis, ran track/ cross-country, I was involved in FFA, and Robotics.

GOOD LUCK AND BEST WISHES!

THESE BUSINESSES WISH TO CONGRATULATE THE CLASS OF 2013 • SUPPORT THE BUSINESSES WHO SUPPORT OUR STUDENTS

Deon Gallman Cattle
806-946-7712
Way to go Class of 2013!

MULESHOE STATE BANK
MEMBER FDIC
272-4561
101 W. American Blvd.
"Where a handshake still means something."

Treider Hardware & Supply
Trieder Electric
P.O. Box 99, Lazbuddie
965-2191

5A TELEPHONE COOPERATIVE, INC.
302 Uvalde
272-5533

Chevron Dale Oil Co.
413 W. American Blvd.
272-5576

MCDONALD'S OF MULESHOE
"I'm lovin' it"
1315 W. American Blvd. • 272-3333
Open at 5 AM every day!

Wilson Drilling Inc.
2900 West American Blvd.
Muleshoe, Texas
(806)272-5521

Lazbuddie Garage & Supply
P.O. Box 100, Lazbuddie
806-965-2188

BCEC BAILEY COUNTY ELECTRIC COOPERATIVE ASSN.
A Touchstone Energy Cooperative
610 E. American Blvd.
Muleshoe

Muleshoe Animal Clinic & Vet Supply
1430 US Hwy. 84
806-272-3061

Leal's RESTAURANT
1010 W. American Blvd.
Muleshoe, Texas
272-3294
"The Original - Since 1957"

CAPITAL FARM CREDIT
Rural Land Farms & Ranches
Livestock & Equipment
Operating Capital
Muleshoe Credit Office
806-272-3010

WILBUR-ELLIS
550 Hwy 214
Muleshoe, TX
806-965-2330

Russell Spraying
Ken, Clint & Casey Russell
637 Hwy. 214 • Lazbuddie
806-965-2624

MULESHOE PEA & BEAN, INC.
1680 CR 1044
272-5589
Nicky Nickels

Dodd Cotton Gin
965-2311

Gallman Payloader Service
806-946-7711
We are proud of you Class of 2013!

H&R BLOCK
H&R Block
104 E. Ave. C
Muleshoe, Texas

CENTRAL COMPRESS & WAREHOUSE
205 Railroad Ave., Sudan
227-2388

Muleshoe Journal
201 W. Ave. C • Muleshoe, TX 79347
806-272-4536
Congratulations Lazbuddie Graduates!!

Clay's Corner Gin
558 Hwy 214
Lazbuddie, TX
806-965-2176

School Board... Continued From A1

a way to attract new teachers," board member Kelly Kettner said.

"We don't have the room for everyone to send their children here for pre-K," Sheets said, but with the program currently having about 10 empty seats, it was something that could benefit the district.

"It would help us with the state," he said.

One of the problems

state officials have with the current program is that it is limited to lower-income students. Still, while the district receives extra funding for those students, the district will have to foot the bill for the students who don't meet the lower-income requirements.

Although the school board approved the change for next year, it

may have to reevaluate the issue if a larger number of local, lower-income students qualify for the program.

While discussing the pre-Kindergarten program, and the children of teachers attending class within the school district, board member Carroll Precure raised the issue of teachers living within the district

enrolling their children elsewhere.

"Can the school district require teachers to enroll their children here?" Precure asked.

"It irritates me when the schools are good enough for them to teach in, but not good enough for their children," he added, referring to teachers who actually lived within MISD's boundaries.

The superintendent said the school board could pass such a requirement, but added, "It's like the deal of whether teachers should live here. We've got some very good teachers that don't live in the school district."

Sheets said when he's considering which of two applicants to offer a position with the district — one who intends to move into the district, and one who does not — he leans toward selecting the applicant who does, but that isn't

always the option.

Board president Thurman Myers said, "I agree with you, but I don't know how you'd make the policy."

While board member Kelly Kettner expressed disagreement.

Kettner explained that MISD had worked hard to achieve its status as a Recognized School District. "I'd really hate to jeopardize that by ruffling some feathers."

"I'd hate to lose a top quality teacher over such a rule," he added.

The school board also approved new assistant choir instructor position for next year at the superintendent's

recommendation.

"We've looked at this for a couple of years," Sheets said, adding that it was something he felt was needed for the longevity of the district's choir program.

"Choir is one of the most successful programs we have, if you look at the number of kids involved," he said, noting that more than 200 students are enrolled.

"If we're going to have it, we should have a good one," the superintendent said.

The school board approved the new position, subject to assignment.



Donation Presented To Chamber

Normally, it's the Muleshoe Chamber of Commerce & Agriculture making presentations to individuals and businesses in the community, but recently the Muleshoe Roadriders turned the table on them. Pictured above, Robin Dickerson, president of the Roadriders, along with members Danny Dickerson and Lonnie Adrian, presents a donation check to chamber president Gina Wilkerson.

More Classifieds

Continued from B5

plant, harvest, store grain, repair operate tractor, rock picker, plow, disc, drill, harvest equip, sprayer, grain truck. Must be able to obtain a driver's license with 30-90 days following hire. Hermanson Farm and Ranch, Stanley, ND. **Apply at ND Workforce Solutions, 701-328-3066, job #317848.**

2 temp positions: Farm work, 4/25/13 to 12/31/13 @ \$15.25 p/hr. Housing provided, 48 hrs p/wk. 3/4 guarantee, transportation and subsistence expenses to worksite paid after 50% completion of contract. Tools, equipment provided at no cost. Min. 3 months experience. Duties: drive, plant, harvest, store grain, repair operate tractor, rock

picker, plow, disc, drill, harvest equip, sprayer, grain, truck. Must be able to obtain a driver's license with 30-90 days following hire. Jim Berg, Starkweather, ND. **Apply at ND Workforce Solutions, 701-328-3066, job #317363.**

FOR RENT

For Rent country house, 3 bedroom, 2 dining areas, 1 living room, 1 bath, central natural gas heat, connected double garage. Located 2-1/2 miles due west, of L&L Pallet Supply Co., on County Road 1018, in Progress. Call 806-925-6763 or 806-315-0248

MISCELLANEOUS

Kid's Art Camp June 17th-21st sponsored by Muleshoe Art Association.

Grades 4th-6th Call 272-5914 or 946-9221 for more information.

HOUSE FOR SALE BY OWNER

Nice 3/2/2, fireplace, granite countertops, utility with lots of storage, office/study, central H/A, large detached garage with bathroom, storage building, fenced yard with sprinkler system. Call 806-946-9293 or 806-781-1123.

3 Bedroom Brick with Hollywood bath. Single Car Garage. Fenced with oversized lot and a half. Built-ins, ceramic tile in kitchen area. Currently occupied but tenants are aware of sale. Home is in good shape, just needs some tlc. Motivated seller here. Phone 806-778-0015 or email at sbrentc2011@yahoo.com for pics or showing!

SERVICES

Custom CRP Grass Planting and shredding. Free estimates! Call 806-638-6449 or 575-760-2085.

REAL ESTATE

House for Sale- 3/3/4 Nicely updated bathrooms and kitchen, large bedrooms, 4-car carport, big backyard with a covered patio, sprinkler system, two storage sheds, and a storm cellar. 1810 W. Ave C \$135,000 Contact Greg Brown with Keller Williams at 806-777-4459.



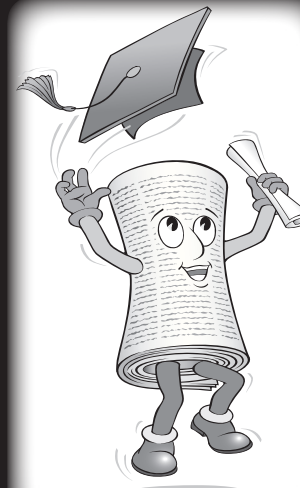
On behalf of the Muleshoe Roadriders we would like to say **THANK YOU** to all of the merchants and businesses that sponsored our motorcycle rally this year.

Without your support it would not have been as successful as it was. Thank you once again and can't wait to see you all next year.

God Bless, Muleshoe Roadriders



Show your Muleshoe, Sudan and Lazbuddie Graduates how proud you are.....with a special message in the MULESHOE JOURNAL 2013 Keepsake Graduation Sections



DAYS OF SUMMER AUCTION
Eastern New Mexico University | kenw

"37th Annual KENW Auction is Online"

Beginning now and continuing through June 11th, you can go online and place bids on over 2000 items. Proceeds will be used to offset the cost of purchasing programming for KENW-TV. With your help we hope to raise \$65,000 for our programming budget!

For Auction listing, go to: <http://auction.kenw.org>

You can view the items, and place bids as soon as you register. When you open the home page, there is a "Register" link at the top of the page. Just follow the directions -- it's that easy! When you are "outbid," you will receive an e-mail, and you can place another bid if you choose to.

Keep checking back as new merchandise is being added every day! Call Sheryl Borden at 575-562-2112 or 1-888-367-5369 if you have any questions.

There's Something for Everyone!



5 days/4 nights in Cancun \$600 - #1996



Lobster Dinner/2 direct \$147 - #1986



2 nights' - Welch House Inn, Maine \$147 - #1986

Get ready to "Surf - Bid (High) and Buy" **KENW-TV Online Auction June 1st - 11th, 2013**

Public Television from Eastern New Mexico University, Portales, New Mexico

Congratulations Grad!
We're very proud of you,
Class of 2013!
Your Senior
Starting at \$27

Hurry!
Deadline for our special senior sections is Friday at noon, May 24th for Muleshoe, Lazbuddie & Sudan. Muleshoe, Lazbuddie and Sudan seniors will be published on May 30th.

Muleshoe Journal

201 W. Ave. C • P.O. Box 449 Muleshoe, TX 79347 (806) 272-4536
Contact: Rhea Gonzales (806) 272-4536 adsales@muleshoejournal.com

CLASSIFIEDS

Deadline is Monday at noon to place a classified ad. Call 272-4536.

LEGAL PUBLIC NOTICE

NOTICE OF SHERIFF'S SALE THE STATE OF TEXAS COUNTY OF BAILEY By virtue of an Order of Sale issued out of the Honorable 287TH Judicial District Court of Bailey County, on the 3rd day of May, 2013, by the Clerk thereof, in the cases styled as follows: Cause No. 8,510 Styling BAILEY CENTRAL APPRAISAL DISTRICT v. GAUNA, NORA LEGAL DESCRIPTION 1. lot Sixteen (16), Block One (1) of the Mulshoe Park addition to the City of Mulshoe, Bailey County, Texas. Cause No. 9008 Styling BAILEY CENTRAL APPRAISAL DISTRICT v. BELMONTE, JORGE, ET AL LEGAL DESCRIPTION 2. Lot Sixteen (16), Block Two (2), Highland Addition to the City of Mulshoe, Bailey County, Texas. Cause No. 8864 Styling BAILEY CENTRAL APPRAISAL DISTRICT v. CUEVAS, AURELIO, SR. LEGAL DESCRIPTION 3. Lots Thirteen (13), Fourteen (14), Fifteen (15), Sixteen (16), and Seventeen (17), Block twenty-nine (29), Original Town Addition to the City of

Mulshoe, Bailey County, Texas Cause No. 6374 Styling BAILEY CENTRAL APPRAISAL DISTRICT v. DIELE, JACOB AKA JAKE DIELE LEGAL DESCRIPTION 4. The West Seven (W 7) acres of the East Twenty (E 20) acres of the South Forty (S 40) acres of the Northeast Quarter (NE/4) of Section Twenty-two (22), Block Y, W.D. & F.W. Johnson Sub-division in Bailey County, Texas. Cause No. 6018 & 8,497 Styling BAILEY CENTRAL APPRAISAL DISTRICT v. JOHNSON, LOUIE DON LEGAL DESCRIPTION 5. Lot Seventeen (17), block Two (2), Harvey Addition, bailey County, Texas. Cause No. 8768 Styling BAILEY CENTRAL APPRAISAL DISTRICT v. REYES, MARIA DE LA LUZ RAMIREZ LEGAL DESCRIPTION 6. Lots One (1), Two (2), AND Three (3), Block Thirty (30), Original Town Addition to the City of Mulshoe, Bailey County, Texas. Cause No. 8864 Styling BAILEY CENTRAL APPRAISAL DISTRICT v. CUEVAS, AURELIO, SR. LEGAL DESCRIPTION 3. Lots Thirteen (13), Fourteen (14), Fifteen (15), Sixteen (16), and Seventeen (17), Block twenty-nine (29), Original Town Addition to the City of

VELASQUEZ LEGAL DESCRIPTION 7. The West part of Lot Seven (7), Block One (1), Harvey Addition to the City of Mulshoe, Bailey County, Texas. Cause No. 8949 Styling BAILEY CENTRAL APPRAISAL DISTRICT v. WILLIAMS, LAILA JOYCE, IND/HEIR OF BILLY FRANK WILLIAMS, DECEASED, ET AL LEGAL DESCRIPTION 9. The Southeast Fifty-tree feet (SE 53') of Lots One (1), and Two (2), Block Six (6), Northside Addition to the City of Mulshoe, Bailey County, Texas. Cause No. 9024 Styling BAILEY CENTRAL APPRAISAL DISTRICT v. BUTYNSKI, JOSEPH LEGAL DESCRIPTION 10. Lot Seventy-seven (77), Parkridge Addition to the City of

Mulshoe, Bailey County, Texas. and to me, as Sheriff, directed and delivered, I will proceed to sell, at 1:00 P.M. on the 4th day of June, 2013, which is the first Tuesday of said month, at the East door of the Courthouse of Bailey County, in the City of Mulshoe, Texas. Levied on the 3rd day of May, 2013, as the property of said defendants, to satisfy the judgment rendered in the above styled and numbered cause, together with interest, at 12 percent per annum, and all costs of suit in favor of each jurisdiction. "ALL BIDDERS MUST NOW DISPLAY PROOF OF COMPLIANCE WITH 34.015 OF TEXAS TAX CODE." GIVEN UNDER MY HAND THIS 3rd DAY OF May, 2013. Richard Wills SHERIFF, BAILEY COUNTY, TEXAS BY: DEPUTY. Published in the Mulshoe Journal May 16, 2013, May 23, 2013 and May 30, 2013.

Mulshoe ISD will be requesting proposals (RFP) for various summer construction projects. Proposals will be due no later than 4:00pm. CST. Thursday May 30th. at the M.I.S.D. administration building located at 514 west Ave. G. Mulshoe, Texas 79347. Information and viewing of sites may be arranged by calling Sam Whalin (806)272-7400 Monday thru Friday between the hours of 8:00 am. and 4:00 pm.. MISD reserves the right to receive and or reject any or all proposals in the best interest of the district. Published in the Mulshoe Journal May 16, 2013 and May 23, 2013.

HELP WANTED

Lamb Healthcare Center is accepting applications for the following positions: full time night OB/RN, full time night ER/RN Supervisor, full time night ER/RN, and full time night RN or LVN. Apply at 1500 S. Sunset, Littlefield. For more information, call 8016-385-6411, ext. 214. LHC is an EEOC employer.

Cargill Cattle Feeders, Bovina, Texas position available in the Cattle Department for doctoring/processing. Responsibilities include processing cattle, doctoring, assisting with shipping, and other duties as assigned. Applicants must be willing to perform

all of these responsibilities. Work schedule will include 1 & 1/2 days off on most weeks and 50-60 straight wage no overtime. Position includes full benefits package including 401K and Health Insurance. Interested applicants should apply in person at Cargill Cattle Feeders, 600 US HWY 60, (806)225-4400.

COMMUNITY YARD SALE

TO BENEFIT
RHONDA & AMBER BIRNOR'S
MISSION TRIP TO INDIA

Saturday, May 25th
8:00 am
FBC Sudan Parking Lot

BAKED GOODS

TOYS . BOOKS .

CLOTHES . SHOES .

BABY STUFF .

LOTS OF GOODIES .

IF YOU WANT TO DONATE ITEMS FOR THIS FUNDRAISER PLEASE CONTACT RHONDA BIRNOR OR TARA PROVENCE

TRIANGLE REALTY

Triangle Realty, LLC
(806) 367-8334
info@trianglererealtyllc.com

GREAT brick home in Springlake Texas.
404 South U.S. HWY 385 - 3 bedrooms, 2 3/4 baths, basement, 3 living areas, large attached garage with workbench area. Springlake-Earth School district. \$8000.00 carpet allowance offered to buyer. Call: Phyllis -- 806/685-1543. Visit www.trianglererealtyllc.com to view photos of this property.

Prime Farmland in Lamb County, Texas!
531± acres, two 1/4 mile pivots, four wells on property — all tied together — 700 gallon minute combined, per owner. 40x50 metal shop, cattle scales, working chute, automatic waters, pipe/cable working pens. Five-strand barbedwire fenced and cross-fenced around property. Call: JT — 806/681-3421.

HELP WANTED

DRIVER

RUAN

Now Hiring Shuttle Drivers Based in Clovis, NM HOME DAILY Great Pay

EXCELLENT BENEFITS AND 401 K
CDL-A w/ 1 yr. T/T exp.

Must Have Tank Endorsement

800-879-7826
www.ruan.com/jobs
Dedicated to Diversity. EOE

REAL ESTATE

Byrd Realty

Ronald Byrd
575-760-1495
Licensed Broker
Crista Bass
806-946-7261
Sales Associate
Carleton Johnson
806-789-4289
Sales Associate

- **New Listing**-Nice 3 bedroom, 1 3/4 bath brick home, fireplace, built-ins, central air and heat, all electric, sprinkler system, single car garage, fenced backyard, large storage building or extra garage. A great home for a great price.
- **New Listing in Country on Highway**-Nice 3 bedroom, 1 bath home, central air and heat, sprinkler system, detached garage, storage building, septic system, all on 5.75 acres. Priced to Sell, this one will not last long.
- **PRICE REDUCED ONLY \$64,900** - Nice large 3 or 4 bedroom, 1 1/2 bath home, central air and heat, electric fireplace, appliances, large living room, utility, all electric, covered patio, carport, fenced backyard, storage building, great home on corner lot, Priced to sell!!!!
- **PRICE REDUCED In Country on 10 acres.** Nice 4 bedroom, 2 1/2 bath brick home, fireplace, utility, built-ins, new windows, roof and air, large storage, 2 car garage. Call for more details.

228 Main Street, Mulshoe, Texas
Check all of our listings at
www.byrdrealestate.net

Check our websites for other properties.

COCHRAN CO., TX. - 864 ac. +/-, w/ 552 ac. +/- of cropland presently in improved grasses, balance native grass. At \$450.00/per acre this property needs looking at (large deer in the area!)

COCHRAN CO. - 353 ac., 2 circles, one pivot, two wells, corners in CRP.

HWY. 385 - Lamb Co., TX. - 160 ac. +/-, 1/4 mile sprinkler w/4 irr. wells.

LAMB CO., TX. - 368.6 ac. +/- SW of Littlefield, CRP, grass & dryland.

HALE CO., TX. - 2700-cow dairy in excellent condition, on 127, double-35 parallel parlor, 1,080 acres +/- of choice farm land in a strong water area, 6 pivots. PRICE REDUCED! MAKE AN OFFER!

OCHILTREE CO. DAIRY - double 16 (expandable to 20) parallel, rapid exit parlor, 990 lockups, 160 ac. +/-, 4 yrs. old, excellent farming area, very nice!

LEA CO., NM - 1400 cow dairy on 136 acres, double 20 parallel parlor, beautiful 5 bdrm./4 bath home, on pvmt. PRICE REDUCED! MAKE AN OFFER!

LONG CORRAL 420 ACRES - Parmer Co., TX. - 3 bdrm./2 bath, double-car garage brick owner's home, large hay/commodity barn, other barn & out bldgs., livestock pens suited for beef or dairy cattle, excellent dryland farm, irr. wells not in use, all weather road.

CASTRO CO., TX. - 6,424 ac. +/-, in 5 tracts, on pvmt., each tract can be bought separately, developed w/sprinklers, irr. wells, homes, barns, steel pens w/feed bunks on each tract, hwy. frontage.

CASTRO CO., TX. - 1832.49 ac. +/-, 2 sections SE of Dimmitt, good irr. acreage (1/2 & 1/4) S. of Hart on hwy. w/house & almost new shop/barn.
www.scottlandcompany.com
www.texascrp.com
Ben G. Scott - Broker
Krystal M. Nelson - NM Qualifying Broker
800-933-9698 day/eve

Vic Coker Land Co.
Agricultural Real Estate

Farmland/Investment

Western Bailey County - Irrigated - 174 acres, 2 irrigation wells, Valley Sprinkler, 1 domestic well, on pavement, corners in grass.

Bailey and Parmer Counties - 960 acres, 9 wells, 5 center pivot sprinklers, Brick house w/ improvements.

Bailey County - 177 acres, 10 year CRP contract. On pavement, could be a nice recreational place. Mule deer and other wildlife in the area.

Lamb and Bailey County - 451 acres. 5 wells, 3 sprinklers. Good potential for wheat pasture cattle operation. Will divide. Seller is motivated.

Castro County, Dodd Area - 335 acres, Lays good, 4 wells, 2 sprinklers. 2 circles of wheat go with land if purchased soon.

Parmer County, Lazbuddie Area - 160 acres, 2 wells, good sprinkler, Lays perfect, 2013 possession available.

Bailey County - 144 acres Northeast of Mulshoe. 2 wells, center pivot. Immediate possession available.

Country Home

Mulshoe area. Brick home on 1.5 acres. 3 bedroom, 2 bath, nicely updated, metal roof. Property also has a metal shop and a pole barn for horses or FFA/4-H projects.

Vic Coker, Broker
Cell 806-946-7242

Barry Coker, Agent
Cell 806-787-0917

316 Main Street • Mulshoe, Texas
Office: 806-272-3100 • www.vicoland.com

Medwards Realtors
FARM & RANCH RESIDENTIAL COMMERCIAL

LAND

360 acres - 1440 acres - 360 acres

Sudan -Texas 192 acres , Lateral 1995 Valley Sprinkler Five wells, currently in alfalfa.

Sudan - Texas 180 acres, 1982 Valley Sprinkler, Three wells, currently in alfalfa.

Sudan Texas 373 acres, Valley sprinkler. 3 wells, 1/2 currently in cotton.

RESIDENTIAL

Sudan - 210 Austin 2BR, 2BA, 2 Car garage Large Family Room and Patio, Move in ready \$73,000.00

Sudan - 201 Ormand, 4 BR, 2 bath, 3 Car Garage and large family room with fireplace, New updates and tile. \$110,000.00

Sudan - Country Home, 3BR,2B, Carport and Sun Room. All on four acres, one mile north of Sudan. Asking \$75,000.00

Sudan - Sudan Country home 3BR,2BA needs some work, can include land 5-15 acres. \$55,000.00

COMMERCIAL

Seven Commercial Lots in a package that is 37.9 Acres Total \$100,000.00

Monty Edwards
Broker

Vernie Moore
Agent

(806) 227-2465

Free consultation! We will work with other brokers.

www.medwardsrealtors.com

Nieman Realty

116 E. Ave. C • George Nieman, Broker • 272-5285 or 272-5286
CHECK OUR LISTING INFO., PHOTOS, ETC. ON-LINE AT www.niemanrealty.com
HAVE BUYERS! NEED HOME AND LAND LISTINGS!!

HIGH SCHOOL AREA

- NICE 3-2-2 Home, corner lot, built-ins, Cent. A&H, workshop/storage plus storage building!! 1974' lvg. area!! **\$96K!! PRICE REDUCED \$79,500**
- Remodeled 3-2-1 Det. Garage Home, Cent. A&H, built-ins, hdwood & tile floors, 4 fans, fenced yd., approx. 1520' lv. area!! **\$80K!!! Price Reduced \$69,500**
- 3-1.5-1 carport Home, Cent. A&H, stove thermal windows, "AS IS", MAKE OFFER!! \$47K!!
- 3 Bedroom, 2 Bath, 2 Car Garage Home on corner lot, wall furnace heat, win. refrig. air, stove, refrigerator, ceiling fans w/lights, large wkshop in garage, fenced yd., stor. bldg., includes 1 bdrm. rental unit!! \$83,450!!
- 5-3-2+2 carport home, Cent. Air & Heat, approx. 3124' lv. area, FP in den, WB stove in lv. area, 2 large workshops, stor. bldgs., +1 bdrm aptmt., corner lot, MUCH MORE!! \$140,000!!
- VERY NICE - 3 - 2 Brick Home, Cent. A&H, built-ins, WB stove, nice flooring, utility, thermal win. & doors, fans, fence yd., stor. bldg.!! \$99K!!
- 2 Bedroom, 1 Bath, 1 Car Detached Garage, Cent Air & Heat, Built-ins, den or 3rd Bedroom, fenced yd., approx. 1408' lv. area!! \$58K!!

RURAL

- VERY NICE CUSTOM BUILT 3 Bedroom, 3 Bath, 2 car garage home, at edge of town on 80 acres!! Geothermal heat & air, built-ins, FP, ash cabinets, approx. 2544' main lv. area plus 625' finished basement w/safe & storage, splkr system, beautiful trees and landscaping, circle sprklr, 5 wire barbwire fence, 36' x 48' metal insulated bldg w/2 12' doors!! MUCH MORE!!
- 3-1 1/2-1 Home on 8 acres, approx. 1664' lv. area, Cent. A&H, built-ins, sunroom, storm shelter, stor. room, 2 CP, RV port, 1440' metal bldg.!! MORE!! \$110K!!
- NICE 4.8 acre homesites, deed restricted!! \$17,500!!
- West of Sudan 3-2-2 Brick Home on 5-57 acres, Cent. A&H, built-ins, approx. 2688' lv. area, fenced yd., 40' x 80' quonset bam!! MUCH MORE!! \$135K!!
- NICE 3-2-2 Home on 11 acres at edge of town, Cent. A&H, built-ins, FP, freshly painted interior, thermal windows & doors, plus 1 bdrm house, workshop, storage, greenhouse, plus 3 garages, barns & outbuildings!! \$455,000!! \$135,000!!
- FM 1760 / edge of town, nice 3-2-2 carport home on 3 acres, cent. A&H, built-ins, FP, approx. 2253' lv area, fenced, horse barn w/corrals, hay & tack room!! \$105K!!!!
- VERY NICE 4-3 doublewide (2006) on 7.38 acres, Cent. A&H, built-ins, FP, fenced yd., 25' x 40' metal bldg., septic system, domestic well, on pavement close to town!! **PRICE REDUCED!! MAKE OFFER!**
- FM 303-4 Bedroom, 2 Bath, 2 Det. Garage, 2 acre tract, Par. Cent. A&H, Dwg. disposal, thermal windows, storm doors, fans, stor. bldg.!! \$89!! \$74,000!!
- 3 Bedroom, 2 Bath Mobile Home (1998 Skyline), approx. 2280' lv. area, Cent. air&heat, built-ins, FP, metal roof, auto splkr., 40' x 80' insulated metal building, w/office, 1/2 bath workshop, loft storage, 220 electric, 14.68 acres on Hwy.84 close to town!! MUCH MORE!! \$157,900!!

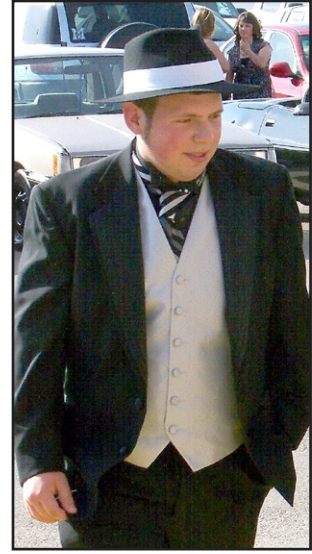
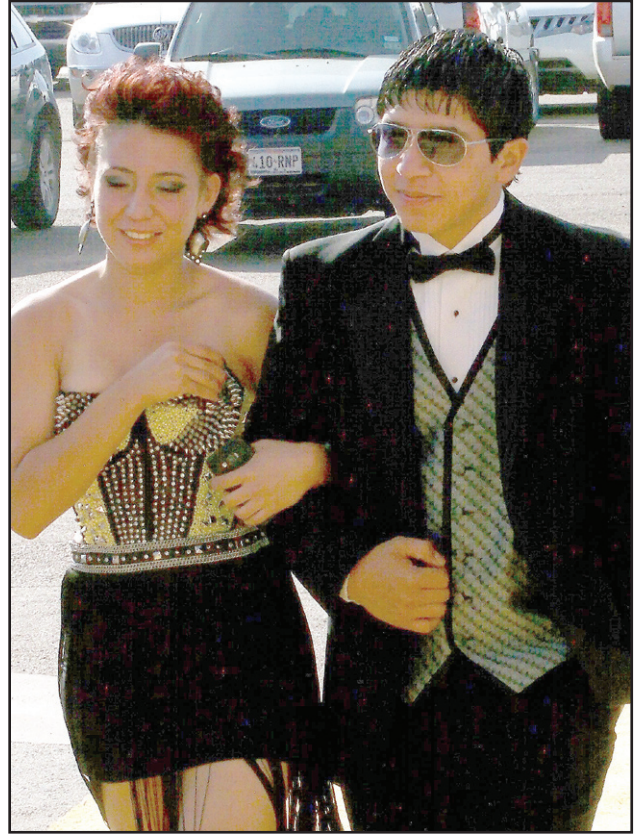
LAND & COMMERCIAL

- Approx. 1080' metal bldg. w/off. & 3 bay garage/workshop area plus chain link fenced area!! \$39,500!!
- GREAT BUSINESS LOCATION - 13000' Bldg., 7000' paved parking, corner lot, Hwy. 84 & Main. A&H, \$100,000!! **Price Reduced \$80,000!!**
- 101.8 acres, edge of town, pasture & farm land, 1 irrig. well!! \$122,244!!
- FOR LEASE - 2100' office space + 20,500' warehouse area!!
- 308 W. 2nd - 2856' bldg. - former Odd Fellows Lodge, PRICED TO SELL!! \$31,500
- 1020 S. Main - 200' x 104' tract w/ 1000' Bldg.!! \$20K!!
- 70 acres NE of Mulshoe - \$450 per acre!!

LENAU • COUNTRY CLUB

- 3 Bdrm, 2 bath, 2 carport, Cent A&H, Dishwasher, WB Stove, approx. 2156' lv. area, \$60K!!

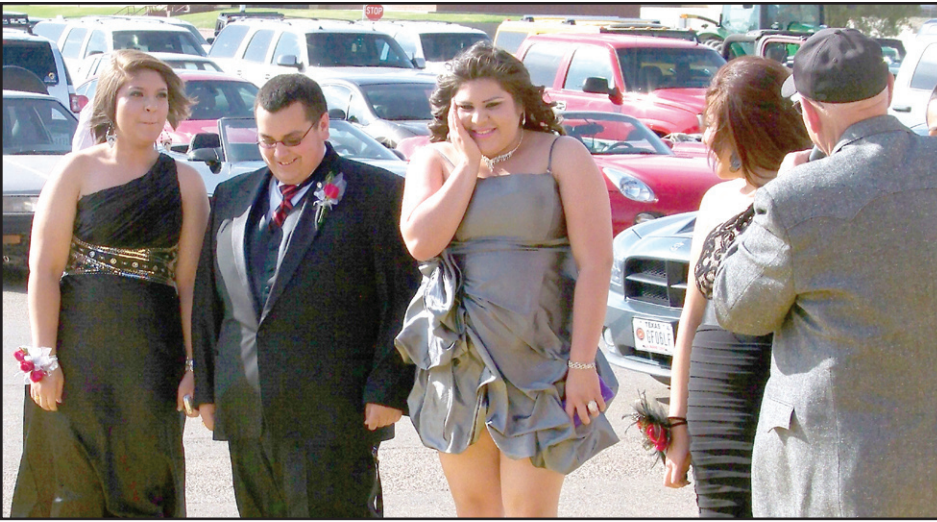
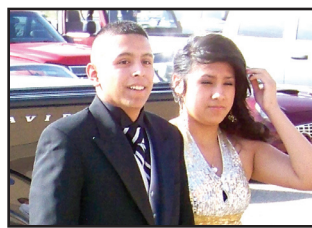
2013 W&S Junior, Senior Prom



Photographs by Larry Thornton



Let The Bidding Begin **W & J Auction**
LIVING ESTATE AUCTION
SATURDAY MAY 25, 2013
4342 South Roosevelt Rd #25 Kenna, New Mexico Go South On Hwy 70 To Kenna At Kenna Turn North At The White Church Go To The "T" In The Road Turn Left Follow Road To The Right To House. Watch For Flags And Sign
VIEWING IS FRIDAY FROM 9 TO 5
TRACTOR AND WELDER, GUNS, LIVESTOCK EQUIPMENT, ANTIQUES AND COLLECTIBLES, APPLIANCES, HOUSEHOLD ITEMS and MISC.
***** NO BUYERS PREMIUM * www.wjauction.com *****
4205 S Prince Clovis, NM 88101 * Terms: Cash, Check, Visa or Mastercard
W & J Auction, Inc.
OUR KNOWLEDGE IS YOUR SECURITY
AUCTIONEERS: James Priest, Gid Priest, Butch Priest
TX LIC # 11077 & 15977
1-800-822-1243




ORANGE BARREL SPECIALS
1633 W. AMERICAN BLVD. • 272-3998

\$8.99 PLUS TAX





(2) SONIC® CHEESEBURGERS
(2) MED. TOTS
(2) MED. DRINKS

\$6.99 PLUS TAX




(2) BREAKFAST BURRITOS
(2) MED. TOTS
(2) MEDIUM DRINKS - COFFEE, FOUNTAIN, OR TEA

LIMITED TIME OFFERS. VALID AT 1633 W. AMERICAN BLVD. LOCATION ONLY.
Tax not included, add-ons, add-ins extra. Not valid in conjunction with any other offers or deals.
TM & ©2013 America's Drive-In Brand Properties, LLC.