



# MULESHOE JOURNAL

'The Community of Opportunity-Where Water Makes the Difference'



Volume 54, Number 3

14 Pages

Published Every Thursday at Muleshoe, Bailey County, Texas 79347

10 Cents

Thursday January 20, 1977



**YOUNG FARMERS CHAPTER OFFICES** . . . During a reorganization meeting Tuesday night of the Muleshoe Chapter of Young Farmers, new officers were elected. They include from left seated, Danny Noble, president; Dean Black, vice president; Rusty

Whitt, secretary; and standing from left, Dickie Hanks, treasurer; Johnny Ramage, program chairman; Kenny Kittrell, recreation and refreshment chairman and Kem Bales, reporter. The Young Farmers will meet the second Monday night of each month.

## Local Young Farmers Reorganize Chapter

Young men interested in agriculture and agri-business, take notice! The elite of young farmers and agri-businessmen are just in the process of reorganizing the Muleshoe Young Farmers chapter and hope to be existing all of the more than 50 young farmers and at least that many more young agri-businessmen in the area.

Following election of officers, the newly reorganized group set dates at \$10 per year and meeting nights for the second Monday of each month at the vo-ag building at Muleshoe High School.

## Speakers Planned For Soil Meeting

Several prominent agricultural specialists will be in Muleshoe on Monday, January 24, for a soil fertility meeting, according to Bailey County Agriculture Extension Agent Spencer Tanksley.

Timely information is expected to be presented producers at the meeting, according to the county agent. "Farmers should be able to make easier decisions about next year's crops after the meeting," said Tanksley. "I feel that the program for this year is really geared to answering important questions on the farmer's mind."

## City Council Approves Bid For Vehicles

Muleshoe Motor Company, Crow Chevrolet and Town and Country all bid on two new pickups and one new truck chassis for the city according to bids opened during the regular city council meeting Tuesday morning.

Speakers include Marvin Sartin, an economist, who will speak on Small Business Loans and Hedging.

Dr. Bob Metzger, a cotton specialist from Texas A&M University, will talk on Cotton Varieties.

## Girl Scouts To Sponsor Lifesaving

Muleshoe Girl Scouts will sponsor a demonstration on lifesaving methods on Friday, January 21, at 7:30 p.m. in the Muleshoe State Bank community room.

John Blackwell and Jerry Mick will demonstrate mouth-to-mouth resuscitation by using a life size mannequin and a baby mannequin. A lifesaving film will also be used during the demonstration.

Girl Scouts, their parents and all interested persons are invited to attend the free lifesaving methods demonstrations.

## Revenue Funds Are Discussed During Meeting

Persons who have any thoughts or ideas about how the City of Muleshoe should spend some \$60,000 in revenue sharing funds expected this year had just better forget it. During a public meeting Tuesday night, at which time the residents of Muleshoe were invited to submit suggestions on the use of the federal money, no one came.

Antonio Huerta attended the meeting to ask about the possibility of paving some of the streets in southeast Muleshoe to help prevent flooding and to help improve the neighborhood.

City Manager Dave Marr explained that generally, Revenue Sharing funds are used for purchase of firefighting equipment, police vehicles and equipment and sealing of city streets. He also told Huerta of a recent application for federal funds to pave a portion of Muleshoe, including streets in southeast Muleshoe.



**GUN TO BE PRESENTED** . . . DPS Trooper Louis Cardinal admires a gun engraved by Trooper Burt Sinclair. The gun, which was purchased by contributions from law enforcement officers, will be presented a man who killed the slaver of DPS Trooper Sammy Long. The unknown hunter killed the man as he pumped bullets into the body of the downed trooper.

## Gleason, Harrison Entries Sweep Junior Cattle Show

### JV Mullettes Win Tournament Award

### Bamert Is Presented Showmanship Award

Karen Stovall scored 15 or her 25 points in the final quarter of play in the finals of the Littlefield Junior Varsity Tournament Saturday night and sparked the Muleshoe Mullettes to a 46-42 comeback victory over the Dimmitt Bobcats.

Muleshoe trailed throughout the ball game and was down by a score of 34-27 going into the final quarter of the action. Then they rallied and overcame Dimmitt's lead with a 19-8 fourth quarter showing. "The comeback was typical of the Mullettes victories this season," said JV coach for the Mullettes, Ronnie Jones.

Entries shown by Jimmy Gleason and Kelly Harrison were judged tops in the annual Bailey County Junior Cattle Show at Muleshoe Saturday afternoon. Named as Grand Champion of the show was an 1185-pound steer shown by Jimmy Gleason, son of Dr. and Mrs. Jerry Gleason. The steer had won first in the heavyweight steer division of the show.

Reserve Grand Champion was a 1079-pound steer which had won first place in the heavy middleweight division. The steer was shown by Kelly Harrison, son of Mr. and Mrs. Ted Harrison.

Muleshoe Mullettes Junior Varsity players include Beth Whitt, Karen Stovall, Gina Burden, Denise Reeder, Benetta Roming, Debra Washington, Treena Bass, Susan Crittenden, Chana Eubanks, Toni Beversdorf, Stephanie Brantley, Annie Kirven, Penny Howell, Glenda Rasco and Diane Medlock.

Season record for the JV Mullettes now reads at 15 wins and two losses with seven games remaining on the schedule. They have won first place trophies in both the Amherst and Littlefield tournaments. They were scheduled to have a rematch with Dimmitt on Tuesday, January 18, at 5 p.m.

Third place winner in the heavyweight division was a steer shown by Belinda Wheeler; Kelly Harrison, fourth; Alan Harrison, fifth; Clayton Ramm, sixth; Craig Kirby, seventh; Jerrol Layton, eighth; Kirk Lewis, ninth and Mitch Black, tenth. Second through tenth place in the heavy middleweight class

included Jerry Gleason, Jay Gleason, Eddie Black, Mike Davenport, Craig Kirby, Marvin Davenport, Kirk Lewis, Randy Waggoner and Randy Waggoner. Light middleweight winners included Nicky Bamert, first; Eddie Black, second; Jay Gleason, third; Jacinda Gleason, fourth; Jimmy Gleason, fifth; Loveta Black, sixth; Brian Kirby, seventh; Jacinda Gleason, eighth; Staci Kirby, ninth and Steve Turner, tenth.

## Jaycee Banquet Is Postponed Until Monday

Because of a conflict in dates, the Muleshoe Jaycees Bosses Night Banquet will be postponed to Monday, January 24, at 7 p.m. The banquet will be at the American Legion Hall on West Avenue B.

During the evening, awards will be presented the Outstanding Young Farmer; Boss of the Year and Merchant of the Year.

## Police Report

Three arrests for driving while intoxicated were recorded by the Bailey County Law Enforcement Center over the weekend. At the same time, three people were charged with being drunk; one was charged with drunk disturbance and destruction of private property and one person was picked up for trial for non-child support.

Burglaries and/or incidences of vandalism have been almost non-existent in Muleshoe, however, the area has not escaped untouched.

The manager of Gibson's in Friona reported a burglary sometime Saturday night at the store in Friona. The spokesman said the intruders entered through a back wall and escaped with four guns, one portable recorder, two cameras and a number of watches.

Parmer County Sheriff Charles Lovelace and Friona City officers are investigating the burglary.

## Basketball Honors Scheduled Friday

The homecoming king and queen of basketball will be named at halftime Friday during the varsity game in Muleshoe, according to Coach Raymond Schroeder, basketball coach at Muleshoe High School.

Mule's season record stood at 10-11, with a tough Dimmitt team coming in Tuesday night for action. Morton has been picked to win the district with Dimmitt in a close race for top honors with the Morton Indians.

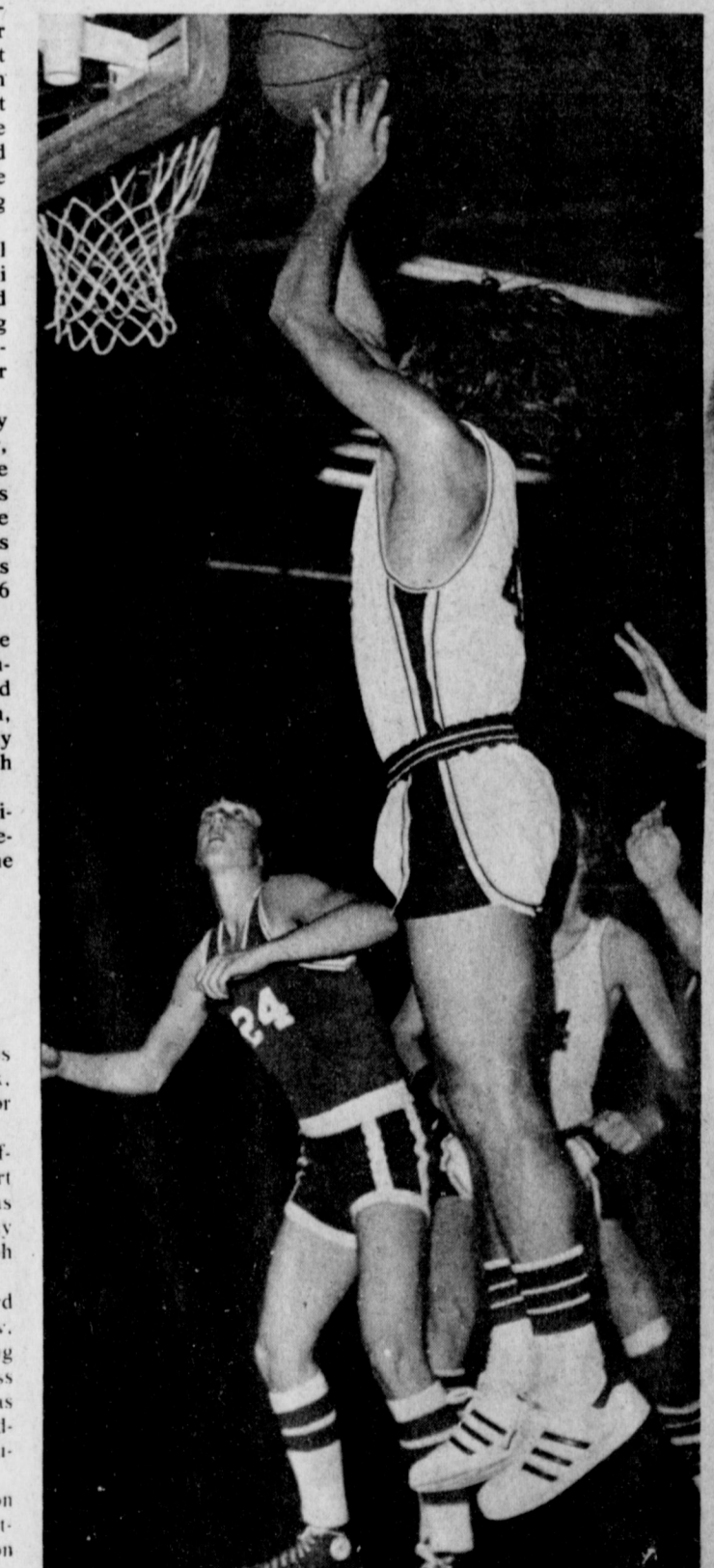
Varsity players include Mike Wisian, Jimmy Ybarra, Randy Whalin and Ricky Hayes, all seniors; Brad Baker, Doug Precure, Danny Wilson, Billy Vinson, Mark Washington, Marcus Beversdorf and Dean Northcutt, all juniors and one sophomore, Charles Briscoe.

Candidates for basketball queen are Cynthia Isaac, Dani Dunham, Evelyn Grace and Susan Crittenden while king candidates include Mike Wisian, Jimmy Ybarra, Brad Baker and Billy Vinson.

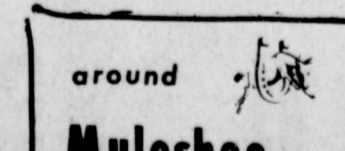
"The boys are playing pretty good," said Coach Schroeder. "Inconsistency is hurting us the most as we are not shooting as well as we should. Our defense is very good, and our offense is rated one point higher at this time than our defense at 46 points per game."

In the Littlefield game, Mike Wisian scored 16; Dean Northcutt, 13; Doug Precure, 10; Brad Baker and Mark Washington, each four points and Jimmy Ybarra and Danny Wilson, each two points.

Tuesday afternoon, immediately preceding the Muleshoe-Dimmitt game at Muleshoe, the



**IN FOR A LAYUP** . . . Dean Northcutt goes in for a lay-up during the Muleshoe-Dimmitt game Tuesday night. Tomorrow night, Friday, Muleshoe will play Littlefield in the Muleshoe Junior High School gym. It will be homecoming and the king and queen of basketball will be named.



The LCC Association will meet Thursday, January 20, at 7:30 p.m. in the home of Mrs. Roy Jordan.

## GIGANTIC NEW TOOL AUCTION

Friday, January 21, 1977

Complete selection of tools for the mechanic, welder, plumber, carpenter, electrician, trucker, farmer, contractor, and shop owners.

## W & J AUCTION

108 Pile Clovis, N. Mex.

## TFB State President Named New Director

Carrol Chaloupka, Dalhart livestock and grain producer, was elected to the board of directors of the American Farm Bureau Federation at the conclusion of the organization's 58th annual meeting in Honolulu last week. Chaloupka is president of the 195,000-member Texas Farm Bureau.

Chaloupka, elected president of the Texas Farm Bureau in 1974, headed up the state's 14 voting delegates to the AFBF annual meeting. A delegation of 450 Texans were among the 16,000 persons attending the convention.

In a carefully-worded resolution, the voting delegates said that use of agricultural income support measures was necessary as a "cushion against disaster", but wanted to avoid "undue interference" in the marketplace.

Delegates also adopted national policies for 1977 attacking the

growing power of government regulatory agencies, restraints on access and development of world markets, interference with a market-oriented economy and the failure of government leaders to produce a comprehensive national energy policy.

The national Farm Bureau convention will be held in Houston next January.

Chaloupka's farming and ranching activities on his 10,000-acre operation near Dalhart include production of wheat, grain sorghum and beef cattle.

A native of Iowa, Chaloupka is married to the former Dorothy Peters of Dawson, Iowa, and they are parents of a grown son and daughter.

Government farm programs to improve farm income "should be designed and administered to enhance market opportunities to the end that farmers will earn higher incomes in the marketplace and will not be dependent on government payments for a portion of their income," the delegates said.

"We will continue to oppose any program, which by excessively high target prices or loan rates, would make farmers dependent on government payments or re-establish a government-controlled stockpile of any agricultural product," they added.

The delegates agreed that "Minimum use of price and income support measures" for agriculture that are economically sound was necessary as a cushion against disaster, but insisted that "support programs must be carefully designed and implemented to avoid conditions

which are self-perpetuating, to protect our competitive position in world markets and to avoid undue interference with market-directed adjustments in production and marketing."

The delegates vigorously opposed "all governmental restrictions on the sale of agricultural products in world markets. Agricultural exports must not be held hostage in the name of political expediency or foreign

\*\*\*\*  
The man who is superstitious isn't interested in the truth.

\*\*\*\*  
It's good you don't hear most of what people say about you.

\*\*\*\*  
Most people have some good in them, and all people some evil.

policy. Decisions affecting agricultural exports should be made with full participation of farmers and the Secretary of Agriculture."

## News Of Our Servicemen

### Sonya King Gets Promoted

The U.S. Air Force has promoted Sonya N. King, whose parents are Mr. and Mrs. Dale Newsom of Star Route, Sudan, to the rank of senior airman. Airman King is serving at Lackland AFB as a medical laboratory specialist.

## WHO KNOWS?

1. What is the origin of the name for Kansas?
2. Is a whale a fish?
3. Identify a lexicographer.
4. Where is the Post Office, Santa Claus?
5. Name the longest river.
6. Which state has the largest number of Indians?
7. What do you call a collection of cats?
8. What is the speed of a cheetah?

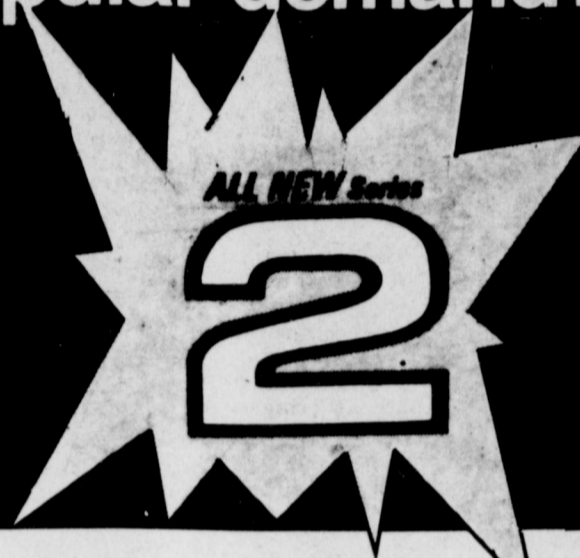
## Answers To Who Knows

1. Sioux words for "south wind people."
2. No. It's a mammal.
3. Compiler of dictionaries.
4. Indiana.
5. The Nile.
6. Arizona.
7. A clatter of cats.
8. 70 m.p.h.



Back by popular demand...

# BANK VAULT BINGO



GAME VALUE	NUMBER OF PRIZES	ODDS FOR ONE GAME PIECE	ODDS FOR 10 GAME PIECES	ODDS FOR 25 GAME PIECES
\$1,000	96	1 in 98,400	1 in 7,376	1 in 3,768
\$500	96	1 in 98,400	1 in 7,376	1 in 3,768
\$50	191	1 in 49,503	1 in 3,808	1 in 1,904
\$20	393	1 in 24,667	1 in 1,899	1 in 743
\$10	785	1 in 12,333	1 in 951	1 in 425
\$5	1,570	1 in 6,166	1 in 475	1 in 212
\$2	3,140	1 in 3,083	1 in 238	1 in 106
\$1	6,280	1 in 1,541	1 in 119	1 in 53
TOTAL	37,820	1 in 250	1 in 19	1 in 10

NEW CASH PRIZES TOTALING \$190,727

Prices good thru January 22, 1977. We reserve the right to limit quantities. None sold to dealers.

Heavy Aged Beef, Blade Cut  
**Chuck Roast**  
**78¢**  
Lb.

HORMEL THICK SLICED  
**Slab Bacon**  
**\$1.19**  
Lb.

Piggly Wiggly  
**Sugar**  
**79¢** Limit One (1)  
5-Lb. Bag

Betty Crocker  
All Layer Varieties  
**Cake Mix**  
**49¢**  
18 1/2-oz. Box

### HAM & CHEESE SPECIALS

- Fryers Breast or Leg Quarters Tenderized Bottom **49¢** Lb.
- Round Steak Breded Pre Cooked **\$1.58** Lb.
- Beef Fingers **\$1.03** Lb.
- Piggly Wiggly Longhorn Cheese **89¢** 8-oz. Pkg.
- Cream Cheese **59¢** 8-oz. Pkg.

Buckboard Boneless Fully Cooked  
**Ham** **\$1.89** Lb.

### SEAFOOD SPECIALS

- Catfish Steaks Fresh Whole **\$1.39** Lb.
- Skinned Catfish **\$1.39** Lb.
- Salmon Steaks **\$1.39** Lb.
- Shrimpburgers **\$1.65** 12-oz. Pkg.
- Fisher Boy Fishsticks Eckrich Heat & Eat **\$1.00** 2-8 oz. Pkg.

**Smoked Sausage** **\$1.59** Lb.

### EVERYDAY LOW PRICE

- Arm & Hammer Laundry Detergent **99¢** 70-oz. Box
- Welch's Jam or Grape Jelly **99¢** 20-oz. Jar
- Piggly Wiggly Waffle & Pancake Syrup **89¢** Qt.
- Joan of Arc Green Peas **\$1** 17-oz. Cans
- Joan of Arc Whole Kernel Golden Corn **\$1** 16-oz. Cans

### EVERYDAY LOW PRICE

- Austex Beef Stew **99¢** 24-oz. Can
- Plain, with Meat or Mushrooms Ragu Sauce **\$1.25** Qt.
- Quick Old Tyme Mixes **43¢** 5 1/2-oz. Pkgs.
- Golden Best Tomatoes **\$1** 16-oz. Cans
- Husband Pleasin' Ranch Style Beans **\$1** 15-oz. Cans

# PIGGLY WIGGLY Inaugural Specials!!

CALIFORNIA CHOICE  
**NAVEL ORANGES**  
**5 \$1** Lbs.

De'ANJOU WASHINGTON  
**PEARS** **29¢**

FLORIDA  
**SWEET CORN** **7 EARS \$1**

**CUCUMBERS** **39¢** Lb.

CALIFORNIA  
**TANGERINES** **3 \$1** Lbs.

Frozen Foods  
In A Basket, Frozen  
**Morton's Chicken** **\$1.99** 2-Lb. Box

Tater Tots & Fries, Frozen  
**Ore-Ida Potatoes** **69¢** 2-Lb. Bag

Fresh Dairy  
Piggly Wiggly  
**Low-Fat Milk** **79¢** 1/2-Gal. Ctn.

Piggly Wiggly Regular Quarters  
**Fresh Margarine** **3 \$1** 1-Lb. Pkg.

Piggly Wiggly Ind. Wrapped  
**American Cheese** **\$1.39** 1 lb. pkg.

Health & Beauty Aids  
Children's  
**Bayer Aspirin** **39¢** 36-Ct. Btl.

Tablets  
**Vanquish** **89¢** 30-Ct. Btl.

Twin Blade Cartridges Schick  
**Super II** **\$1.79** 9-Ct. Pkg.

Gillette Deodorant, Bronze  
**Right Guard** **\$1.99** 13-oz. Can

Special Buys  
Fast Acting  
**Bayer Aspirin** **\$1.99** 200-Ct. Btl.

Regular or Mint  
**Phillips Milk of Magnesia** **\$1.89** 26-oz. Btl.

Sinus Medicine  
**Sine-Off** **\$1.09** 24-Ct. Btl.

Lotion Shampoo  
**Head & Shoulders** **\$1.99** 11-oz. Btl.

ALL GAME PIECES PRODUCED FOR OUR BANK VAULT BINGO PROGRAM #478 HAVE BEEN DISTRIBUTED AND THAT PROGRAM HAS OFFICIALLY TERMINATED IN ACCORDANCE WITH F.T.C. REGULATIONS. ALL PRIZE WINNING GAME PIECES FOR PROGRAM #478 MUST BE PRESENTED FOR PAYMENT BY JANUARY 30, 1977 AND NONE WILL BE ACCEPTED FOR PAYMENT AFTER THAT DATE.

**Paper Towels**  
**39¢**  
1-Roll Pkg.

- Lady Scott **Facial Tissue** **59¢**
- Lady Scott, Assorted Colors **Bath Tissue** **57¢**
- Floor Polish, Regular, Lemon or Natural Wood **Johnson's Pledge** **\$1.49** 14-oz. Can
- Dry Dog Food **Gravy Train** **\$7.98** 50-Lb. Bag
- Instant Chocolate Drink Mix **Nestle's Quik** **\$1.79** 2-Lb. Can





**CHILDREN AT WORK** . . . The Muleshoe United Methodist Children's Center is teaching young children how to share and to learn creative art work, among many other activities. This Center is also helpful to many parents of the community.

## Consumer Food News

**COLLEGE STATION** -- Record large orange supplies -- barring a freeze or other weather damage -- are making prices relatively low on fresh oranges and canned and frozen juice for Texas grocery shoppers.

Also, grapefruit will produce a record crop, forecasters say.

"Oranges and grapefruit in 'bag lots' have more economical prices. These are medium-to-small-size fruit, but quality is excellent," according to Mrs. Gwendolyn Clyatt, consumer marketing information specialist with the Texas Agricultural Extension Service, The Texas A&M University System.

Apple prices are trending upward but quality remains good -- and reasonable prices also appear on smaller sizes of that

item, the specialist said.

At vegetable counters, several items are among the "most plentiful, most economical" selections.

They include cabbage, carrots, broccoli, dry yellow onions, potatoes, squash, rutabagas, sweet potatoes and turnips.

In meat departments, pork prices remain stable with many markets offering "specials". Best values appear on hams, picnics, and shoulder steaks and roasts, Mrs. Clyatt said.

At poultry sections, fryer chickens have attractive prices, she said.

At beef counters, reports indicate a plentiful supply -- but prices are trending upward gradually.

"Consumers who find special prices on beef cuts they buy and use often might consider buying a few extras for freezing and use later," the specialist advised.

She listed best beef values as those on round steaks and roasts, and ground beef -- along with arm and blade pot roasts and steaks.

**CONSUMER WATCHWORDS:** To make a piece of beef "go a long way", make a stew -- with a comparatively small amount of meat, plus lots of vegetables and gravy -- for a hot meal on a cold day, with no budget strain.

\*\*\*\*

No man has an absolute right to free speech -- especially married men.

### West Plains Medical Center Briefs

**ADMISSIONS**  
January 14 - William F. Wimberly.  
January 15 - Patricia Pena, Essie Plunket, Glendon Kenney, W.F. Creamer, Ida L. Gonzales, and Billy Van Leer, Jr.  
January 16 - Elizabeth Black.  
January 17 - Rita Hawkins, Charlie F. Garth and Darla Kay Cooper.

**DISMISSALS**  
January 14 - Robert Donaldson.  
January 15 - Lucille Scheller, Patricia Pena and Elizabeth Black.  
January 16 - Viola Layne, Rhonda L. Bentley and baby boy, and Glendon Kenney.  
January 17 - Charlie F. Garth, Cuca Cuevas and Billy Van Leer, Jr.

## Muleshoe Child Center Termed Successful

The Muleshoe United Methodist Children's Center was started December 13, 1976, under the direction of Mrs. Monty Dollar.

The Center has been set up for the use of working parents or parents needing care for their children. It has been licensed by the Texas Department of Health, Education and Welfare. No discrimination is practiced at the Center. Hours for the Center are 7:30 a.m. to 6:00 p.m.

Qualifications needed for any child enrolled at the Center are shot records, must be between the ages of six weeks and 14 years, children must be enrolled by a parent or appointed guardian and proof of sufficient insurance must be shown to the director of Health-Accident Insurance will be secured for each child at \$2.50 per year.

Approximately 30 children are enrolled at the center as of this date. Helping Mrs. Dollar with the children each day are Bonnie Carpenter, Infants; Eva Dale Carpenter, two year olds; Frankie Carpenter, three years olds; and Neva Gray, four and five year olds.

children each day along with two snacks, one in the morning and one in the afternoon. The center has a set rate for regular and drop-in children. These rates are subject to change.

Several holidays are observed by the Children's Center. The ones observed are Memorial Day, Labor Day, July 4, Thanksgiving Day, Christmas Day and New Year's Day.

Every child is allowed to bring certain belongings each day to the center. Children coming every day must bring a change of clothing, cloth or plastic diapers should be brought for infants daily. Toys brought from home should be soft and cuddly.

When a child becomes ill at the

Center, the parent is immediately contacted. The child is isolated and put under supervision until leaving the Center. If injured, the child will be given first aid. Any child seriously injured, will be taken to the nearest emergency room and treated by a physician named by the parents.

Mrs. Dollar said the Muleshoe United Methodist Children's Center has been termed very successful.

\*\*\*\*

Young children identify with and model themselves after the people with whom they have a loving relationship. Mrs. Ilene Miller, family life education specialist with the Texas Agricultural Extension Service, The Texas A&M University System, says.

\*\*\*\*

Envy supplies the motivation for about fifty per cent of the world's small talk.

### Couple To Be Honored Jan. 23

Mr. and Mrs. Gene Lowe of Muleshoe will be honored by their children Sunday, January 23, from 2:00 to 4:00 p.m. at the Muleshoe State Bank Community Room.

The reception will honor the couple on their 40th anniversary.

### ESA District IX Meeting Jan. 22

The Epsilon Chi Chapter of Epsilon Sigma Alpha is going to be the hosting chapter for the District IX business meeting on Saturday, January 22, at 2:00 p.m. in the 16th and Avenue D Church of Christ.

On the agenda for the meeting is the District IX business and the beauty queen contest will be held in conjunction with the meeting. Representing the Muleshoe chapter will be the 1976-1977 beauty queen, Mrs. John Birdwell. She was selected by the chapter by secret ballot last fall and will be competing against the other chapter beauty queens.

\*\*\*\*

If you can have but one possession, character is still your best bet.

### Nursing Home News

By Annie Brown

Those playing "42" Tuesday were Walter Damron, Marie Engram, Onie McDaniel, Arthur Perkins, Red Glasscock, Royce Clay, Mrs. Boydston, Donnor Burford, Rosie McKilip, D.B. Head, Ruby Garner and Florene Mills.

\*\*\*\*

Mr. and Mrs. Bill Hanson of Dimmitt visited her mother, Mrs. Clara Weaver, Monday.

\*\*\*\*

Thursday was Mrs. Chaney's birthday. Those visiting her were Pauline Tunnel of Muleshoe, Laura Burdone, Willie Welch and her daughter, Wanda Slaton, all of Lubbock.

\*\*\*\*

Thomas Lee Harper visited his mother, Beulah Harper, Friday. Mrs. Lee Marshall also visited her.

\*\*\*\*

Ernest Green visited his mother, Margaret Green, Friday and brought her a malt.

\*\*\*\*

Mrs. Alma Henley visited Miss Dottie Wilterding Thursday.

\*\*\*\*

Linda Wilhite and Alda Odum visited Mrs. Finley Friday.

\*\*\*\*

Janie Moraw visited her sister, Mrs. Onie McDaniel, Friday.

\*\*\*\*

Floyd Dunn of the United Methodist Church came Saturday morning and brought us a devotional which we all enjoyed.

\*\*\*\*

Singers from the Assembly of God Church came Sunday afternoon and brought us a devotional and sang several songs. We always enjoy their program a lot and always look forward to their coming.



**MARRIAGE ANNOUNCED** . . . Mr. and Mrs. Lamar Braswell of Cleveland wish to announce the marriage of their daughter, Mary Evelyn to Dixon C. Raye, son of Mr. and Mrs. O.D. Raye of Muleshoe. The couple was married Tuesday, January 4, in the 12 Street Baptist Church of Vernon. Tommy Layne, pastor of the church, officiated. Raye is a 1962 graduate of Muleshoe High School and is presently employed by Vernon Pipe and Steel, where the couple is presently living.

## Young Homemakers Plan Social Feb. 5

The Lazbuddie Young Homemakers met Thursday, January 6, in the Home Economics Department of Lazbuddie High School, Charlotte Redwine, president, called the meeting to order.

Reports were given by several members. In Der ober, fruit baskets were made. Delivered to several elderly people in the community. It was reported that two school children needed glasses and members decided to pay for the glasses.

The Young Homemakers are in the process of obtaining lights to light the tennis courts at the high school. Also discussed was a social for February 5. It will be

## Friendship Club Has Installation

The Friendship Club met in the home of Mary Young Thursday, January 6. Mrs. Young served as hostess and Maud Young served as co-hostess.

Jewel Griffiths, president, presided over the meeting. Adelyn Swafford presented the Club's highlights of 1976 to the members.

Mrs. Katherine Cole, Installing Officer, had an installation service for Gladys Darsey, president, Adelyn Swafford, vice president, Jewell Griffiths, secretary, Lois Witherspoon, treasurer, Maud Young, reporter, and Billie Mathis, program chairman.

Gifts were presented to the out-going president, vice presi-

\*\*\*\*

Much of the poor performance in audio equipment is the result of not properly installing and operating the equipment. Before you buy, ask a salesman to familiarize you with the installation requirements and operating instructions. Follow the directions carefully and be sure to save all manuals and operating instructions in case you have a question later on.

\*\*\*\*

Drive carefully and avoid the sorrow that will come to you if you cripple a child for life.

\*\*\*\*

dent, program chairman and to the installing officer. There were 17 members present.

## INAUGURAL SALE

STARTS WED. JAN. 19

**DOUBLE KNIT \$2.49 YD.**  
Values To \$5.98 yd.

**1 TABLE 50¢ YD.**  
**1 TABLE 98¢ YD.**

*Dot's Shop*

Muleshoe

127 Main 272-4635



### Cory Lynn Bentley

Mr. and Mrs. Jerry Lynn Bentley of Friona are the proud parents of a new baby boy born January 14, at 4:20 p.m. at West Plains Medical Center. The baby weighed seven pounds and six ounces and was named Cory Lynn Bentley. He is the couple's first child.

Maternal grandparents are Mr. and Mrs. Sam Richards of Friona and paternal grandparents are Mr. and Mrs. A.L. Bentley of Friona.

Great-grandparents are Mr. and Mrs. N.W. Lee of Muleshoe, Mr. and Mrs. A.D. Bentley of Friona and Mr. and Mrs. J.A. Richards of Bowie.

Great-great-grandparents are Mr. and Mrs. Tom Payne of Muleshoe.

it's Good!

**99¢**

**Country Basket SALE**

**Dairy Queen**

A Great Country Meal and a Good Deal.

You get both, with the 99¢ Country Basket Sale. The Country Basket, with chicken-fried meat strips, golden fries, Texas toast, and country gravy. If you like country cookin', you'll love The Country Basket. On Sale!

Tuesday through Sunday only - January 18-23 at participating stores.

©Copyright 1976 Texas Dairy Queen Trade Assoc. Trademarks of the Texas Dairy Queen Trade Assoc.

<p><b>DRESSMAKER LENGTHS COTTON &amp; COTTON BLENDS FABRICS</b></p> <p><b>66¢</b></p> <p>2-5 YD. LENGTHS YD.</p>	<p><b>HEAT TRANSFER PRINTS POLYESTER DOUBLE KNITS</b></p> <p>60 IN. WIDE <b>\$1.17</b></p> <p>DRESSMAKER LENGTHS YD.</p>
<p><b>SHORT LENGTHS DRAPERY FABRIC</b></p> <p>45" WIDE</p> <p><b>2 FOR \$1</b></p> <p>YD.</p>	<p><b>DAN RIVER GINGHAM CHECKS</b></p> <p>45" WIDE 65% POLYESTER 35% COTTON <b>99¢</b></p> <p>YD.</p>
<p><b>3 DAYS ONLY SAYELLE OR ODYSSEY YARN</b></p> <p><b>77¢</b></p> <p>4 oz. SKEIN</p>	<p><b>PLASTIC DRAPES</b></p> <p>36" X 84" WITH VALANCE <b>\$1.19</b></p> <p>REG 1.59</p>
<p><b>LARGE BATH TOWELS</b></p> <p><b>\$1.17</b></p> <p>SLIGHT IRREGULARS</p>	<p><b>ACRYLIC BLANKETS</b></p> <p>72" X 90" SOLIDS OR CHECKS <b>3/\$9.99</b></p>

**perry's**

DIGGIN' AIN'T COWBOY WORK, BUT NOT LETTIN' M' HORSE PLOW KEEPS SOME OF MY DIGNITY.



**BACHELOR OF SCIENCE**... Mrs. Doyle (Debbie) Weir, a 1973 graduate of Lazbuddie High School, received her Bachelor of Science Degree in Composite Sciences in December from West Texas State University. She finished with a 3.7 grade average. Mrs. Weir was selected to "Who's Who Among American Colleges and Universities", was a member of Kapa Delta Pi, an educational honor society; Beta Beta Beta Biological Honor Society, and Alpha Chi National Honor Society. Debbie is the daughter of Mr. and Mrs. Richard Engkeling of Lazbuddie.

## Corporate Wife Of 25 Years Ago

Editor's note: This is the first of a four-part series concerning the role of the corporate wife.

**COLLEGE STATION** -- Wives of corporate and business executives have taken on different roles from those they assumed 25 years ago. Debby Johnson, a family life education specialist, contends.

While the latter part of this series will focus on their present roles, first a look into the 1950's will help readers understand and appreciate the changes which have occurred. Feminists may react with disbelief and horror, and traditionalists with delight, at what many corporations once termed "The Wife Problem" Miss Johnson predicts.

Miss Johnson is with the Texas Agricultural Extension Service, The Texas A&M University System.

"In the early 1950's, businesses developed an interest in the home and family life of their aspiring managers and executives, primarily with their own interests at heart. Many felt that a man who had a happy, stable home life could exert all of his energies to the job. Their definition of the 'ideal' wife was one who was highly adaptable, highly gregarious and realized her husband belonged to the corporation."

Broken down, adaptability was interpreted to mean that the wife was comfortable in a variety of situations, could put those around her at ease, acted as mother and father to children, relocated when necessary, and refrained from complaining about long hours and frequent trips. It was also to her advantage to be well-read and informed in many areas of interest, to be able to talk intelligently with her husband's business associates, and to listen to and understand the pressures and problems of his business, the specialist said.

"To be gregarious was to be a good social mixer, hostess and entertainer, both in the home and away -- in other words, a 'social operator'."

"And if these two ideals were accomplished, then surely, by definition, the wife knew her husband belonged to the corporation. Who does it leave time for, anyway? One company went so far as to say that they wanted men who lived only for the company -- the man who put his family first had no place in their business."

Equipped with these standards or criteria for the "ideal" wife, corporations had to find a way to insure that their executives had the right wife. This was where the "wife interview" came into view. In 1950, a study conducted by "Fortune" magazine revealed that half of the companies questioned and screened the wife, and 20 percent of the acceptable applicants were turned down because their wives failed to measure up.

These interviews were generally "informal" social visits in which a higher executive called on the wife in her home. Some took their own wives along to help spot things, and they might even ask a few questions around the neighborhood to find out how popular she was. One college president insisted upon eating breakfast with an applicant's family; if the wife couldn't fix a good breakfast, the man was a bad risk.

Amidst all of these undercover and subjective tactics, how did the wife feel about her roles and responsibilities? In general, during the early 1950's, she liked it.

a feminist she was not -- why bite the hand that feeds you? In her mind, the corporation provided her with a life style that she enjoyed, through company benefits and employment security. The inconveniences sometimes imposed by the corporation were just part of her life, to be understood and adjusted to in the best way possible, the specialist said.

"Admittedly, many women today may still identify with this sketch of a corporate wife," Miss Johnson said.

Other articles in this series will take a closer look at the corporate wife today, problems she faces, the changing corporate viewpoint, and general trends in how business and industry affect the family structure.

**NEXT: Changing Role of the Corporate Wife.**

\*\*\*  
The trouble with getting ahead in life is staying ahead.

## MANAGING YOUR MONEY

HOW MUCH CREDIT IS RIGHT FOR YOU?

Being short of money is the rule rather than the exception these days. As a result, it's more important than ever to have a clear understanding of how much debt your family can handle.

The key question is how much credit is too much for you.

To answer this question for yourself, the Consumer Credit Institute—a counseling service of consumer finance companies—suggests that you establish a systematic budget or money management plan. This involves keeping track of what comes in and what goes out so you are sure to have money for the essentials. Then, if you are faced with a financial emergency or a special family need, you will have the facts to determine whether or not you can use credit safely.

According to the Institute, the use of credit can seem very easy—in some cases, too easy—for the family that needs many things and cannot afford them all at once.

Keep in mind that you can afford credit only:

—if you are using credit for those things that make a contribution to your family life and to your own family values; and,

—if you are spending less each month than you make.

To determine how much credit you can afford, follow these basic tips:

1. Begin with your monthly

## TRAVEL TIPS AND TRICKS

Don't change your fashion habits for a trip. It will make you uncomfortable and self-conscious. If, for example, you don't like wearing a raincoat in Philadelphia, don't buy one for Amsterdam. Rely instead on an umbrella.

When traveling with children in an automobile, be



especially careful not to put any sharp, heavy or hard-edged objects on the rear window ledge.

\*\*\*  
If you can't laugh at yourself, learn to occupy your time with a good hobby.

## DECORATING INGENUITY

IDEAS TO HELP YOU

New Aid For Selecting Furniture

Almost every person who shops for furniture has a nagging doubt: "The furniture looks great in the showroom, but how will it really look when I get it home?"

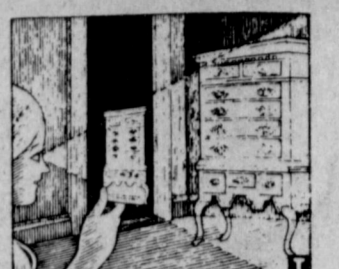
One furniture company has come up with a simple and inexpensive method that helps shoppers overcome that doubt by visualizing how a particular piece of furniture will look against that bare wall at home.

The device, from American Drew, is called "The Furniture Fitter," and it's a large booklet of cutouts. Not paper dolls, but paper pieces of furniture—highboys, chests, tables, desks—printed in color precisely to scale on heavy paper.

The consumer cuts out the piece that she is most interested in. Then, by holding it in front of her eye and squinting beyond it at the blank wall, the piece seems to materialize against the wall.

The process takes a little experimentation, but works well enough for it to be used in high school consumer education classes.

Altogether, the kit illustrates some 40 pieces and groupings of furniture, from armoires and chests more than six feet high to a vanity table two and a half feet high.



At home decorators can use the cutouts as guides to how similarly proportioned pieces will look. And with imagination and adjustments, the technique could be applied to certain pieces of furniture found in magazines or catalogs.

Those interested in the kit can receive one by sending \$2.00 to The Furniture Fitter, American Drew, P.O. Box 489, North Wilkesboro, North Carolina 28659.

"No disguise can long conceal love where it exists or long feign it where it is lacking." La Rochefoucauld

## ATTENTION

January 31st Is The Last Day To Pay 1976 Taxes Without Penalty. 1977 Car Registration Renewal Notices Have Been Mailed From Austin. Your 1977 License Renewal Stickers Can Be Purchased Starting February 1, 1977 And Must Be On Your Vehicles By April, 1977

JEAN LOVELADY  
BAILEY COUNTY  
TAX ASSESSOR-COLLECTOR

**GIBSON'S DISCOUNT CENTER**

# CLEARANCE SALE

PRICES EFFECTIVE JAN. 20-22  
WE RESERVE THE RIGHT TO LIMIT QUANTITIES.

Coupon  
THIS COUPON GOOD FOR  
**25% OFF**  
ON ANY ONE ITEM IN  
OUR STORE  
**JAN. 20, 1977 ONLY**  
LIMIT ONE COUPON PER CUSTOMER-PLEASE

<p><b>VAN CAMPS PORK AND BEANS</b> 16 OZ. <b>4 FOR \$1</b></p>	<p><b>PRESTONE II ANTIFREEZE</b> <b>\$3.49</b></p>	<p><b>WHILE THEY LAST</b> CLOSEOUT ON SELECTED <b>LADIES SHOES \$1.50</b></p>	<p>COMPLETE NEW STOCK FOR <b>MENS &amp; BOY TRACK SHOES &amp; JOGGING SHOES 30% OFF</b></p>
<p><b>KRAFT MIRACLE WHIP</b> 32 OZ. <b>95¢</b></p>	<p><b>PROTECT YOUR CAR FOR SPRING</b> <b>STP OIL TREATMENT 89¢</b></p>	<p><b>ALL CHILDRENS CLOTHES 40% OFF</b></p>	<p><b>CONTROL TOP PANTY HOSE</b> <b>TUMMY CONTROL 97¢</b> REG. \$1.37</p>
<p><b>KOZY KITTIN CAT FOOD</b> 15 OZ. <b>6 FOR \$1</b></p>	<p><b>STP GAS TREATMENT 69¢</b> 12 OZ.</p>	<p><b>LADIES WINTER GOWNS 30% OFF</b></p>	<p><b>FULL SIZE DUAL CONTROL</b> <b>NORTHERN ELECTRIC BLANKET \$16.97</b> REG. \$24.97</p>
<p><b>PALMOLIVE RAPID SHAVE</b> 11 OZ. <b>69¢</b> REG. \$1.09</p>	<p><b>STP SINGLE STAGE OIL FILTERS \$1.87</b> REG. \$2.68</p>	<p><b>LADIES PURSES 50% OFF</b></p>	<p><b>FALLS CITY MINNOW BUCKET</b> MODEL 710 REG. \$3.99 <b>\$2.66</b> MODEL 104 REG. \$3.79 <b>\$2.56</b></p>
<p><b>1 GAL CAPACITY AUTOMATIC STEAM VAPORIZOR \$6.77</b> REG. \$7.77</p>	<p><b>DUPLICATE KEYS MADE 53¢ EA. OR 2/99¢</b></p>	<p><b>EDGECRAFT PUT-TOGETHER SHELFING 30% OFF</b></p>	<p><b>AQUA MASSAGE SHOWER MASSAGER</b> MODEL 10-000 REG. \$16.97 <b>\$9.97</b> MODEL 15-000 REG. \$26.97 <b>\$15.97</b></p>
<p><b>PVC 3/4" X 66" ELECTRICAL TAPE 3/\$1</b> REG. 49¢</p>	<p><b>ALL MENS COVERALLS 30% OFF</b></p>	<p><b>ALL BLANKETS, SHOWER CURTAINS, &amp; CURTAINS 30% OFF</b></p>	
<p><b>LEE RECONDITION SPARK PLUGS 8/99¢</b></p>	<p><b>ALL MENS &amp; LADIES COATS 30% OFF</b></p>	<p><b>3 PC. SET TROJAN LUGGAGE \$22.88</b> REG. \$33.67</p>	
<p><b>ALL RECORDS AND TAPES ON SALE</b></p>			

**STATE CAPITAL**  
*Highlights*  
**AND Sidelights**  
by Lyndell Williams  
TEXAS PRESS ASSOCIATION

**AUSTIN** — The 65th legislature reported at the capitol last week and quickly organized for business.

House Speaker Bill Clayton was re-elected to a second term without opposition, and both houses adopted procedural rules with a minimum of controversy.

was to Clayton's House rules centered on a change which would permit representatives, by resolution, to direct closed-door sessions of committees.

Both Clayton and Lt. Gov. Bill Hobby in the Senate lost no time in naming their standing committees, clearing the decks for early hearings on bills.

And Gov. Dolph Briscoe

a week earlier than usual, spelled out his recommendations for legislation in a state-of-the-state message.

Briscoe urged top priority tags on school and highway finance programs — which will cost more than \$800 million each — for public health measures and crime control.

The governor repeated his familiar commitment to veto any spending which would require new or additional taxes and expanded the pledge:

"There will be no new or additional state taxes so long as I am governor."

If the governor seeks and wins another four-year term next year, the anti-tax promise will extend until the 1983 legislature.

Both Briscoe and Clayton

emphasized need for fiscal restraint.

Clayton urged prudent handling of \$3 billion in increased revenue as a top legislative policy goal.

**Briscoe Running**

Gov. Briscoe edged closer to jumping into a race for a third term at a meeting with nearly 300 supporters at a South Texas ranch recently.

Reports indicated the governor told the gathering he expected to announce his candidacy after the legislature adjourns at the end of May. He later conceded

that he only promised to make a "formal announcement" sometime in the future, but he added his intentions are "well known."

Meanwhile, Atty. Gen. John Hill opened a campaign office and hired (effective February 1) former Texas AFL-CIO Political and Legislative Director John Rogers to help him beef up his organization. However, Hill, who acknowledges he aspires to be governor, said he has not definitely made up his mind to be a candidate and will wait until the legislature adjourns to announce his decision.

When rumors began circulating that Agriculture Commissioner John C. White may go to Washington as deputy U.S. Secretary of Agriculture, a long line of prospective candidates for his state job began forming.

**Appointments**

Gov. Dolph Briscoe named three old friends, Jess Hay of Dallas, Mrs. Roland Blumberg of Seguin and Dr. Sterling Fly Jr. of

Ulvide to The University of Texas board of regents.

At the same time, Briscoe selected John B. Coleman and John Blocker of Houston to the Texas A&M University system board. He reappointed H. C. "Dulie" Bell Jr. of Austin as an A&M regent.

Felipe Reyna of Waco was Briscoe's choice for criminal district attorney for McLennan County, succeeding Martin Eichelberger, also of Waco.

Briscoe named Claudius Branch of Edna to the Lavaca-Navidad River Authority board of directors.

**Courts Speak**

Stores are liable for false arrests by guards they hire under contract, the Supreme Court held in a recent Houston case.

The high court will determine ownership of millions of dollars worth of lignite in a Freestone County contest.

Mere presence of a surgeon in an operating

room does not make him responsible for negligence of all others working there, the Supreme Court determined in cases from Gray and Taylor counties.

The court ordered state payment of a \$849,674 judgement against the University of Texas, favoring a construction company.

A Polk County appeal of an intermediate court decision knocking down the county's tax on 61.9 miles of Tennesseo pipeline will be heard by the Supreme Court.

Court of Criminal Appeals denied a motion to stay the execution of condemned murderer Jerry Lane Jurek.

**AG Opinions**

Law does not require presence of an attendant at every self-service gasoline station, but the State Board of Insurance can impose such a requirement, Atty. Gen. John Hill said.

In other recent opinions, Hill concluded:

The Department of Mental Health and Mental Retardation may contract to sell products of its sheltered workshops to the state, and goods made by the mentally retarded have purchase preference.

A commissioners' court may approve or disapprove salaries for the county attorney's secretary, but may not set the salary scale.

**Short Shorts**

A 47-member task force of prominent citizens last week began evaluating the \$734 million a year Texas Medicaid program of health care for the needy.

Texas Industrial Commission Director Jim Harwell has unveiled a job-matching program designed to reduce manufacturing unemployment in Texas from 6.6 per cent to four per cent by 1980.

Texas revenues are continuing to flow in at record levels, totaling \$1.6 billion during the first three months of fiscal 1977 — an 11 per cent increase over fiscal 1976.

Texas Court of Criminal Appeals judges claim they have the heaviest judicial work load in the nation, and called on the legislature for aid.

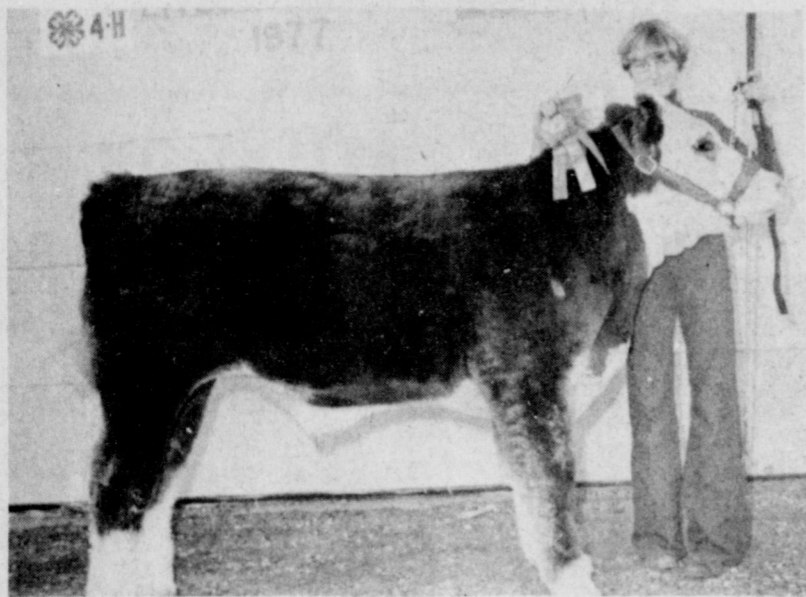
Don Simmons of Abilene and Mrs. Virginia Stacey of San Antonio are in a February 7-8 runoff for Texas State Teachers Association 1977-78 president-elect.

Southwestern Bell is suing to set aside the \$57.8 million business in Texas according to a new study of organized crime.

Commercial sex is a \$137 million business in Texas according to a new study of organized crime.

Republican Sen. Betty Andujar of Fort Worth is new Senate president pro tempore.

**CONGRATULATIONS**  
**JUNIOR LIVESTOCK SHOWMEN!**



FIRST PLACE FEEDER STEER... Was shown by Jacinda Gleason daughter of Dr. & Mrs. Jerry Gleason of Muleshoe.

**JAMES CRANE**  
**TIRE CO.**



Decisions that will have a telling effect on the future of cotton will be made in Orlando, Florida, during the final days of January and the first day of February.

January 31 and February 1 are the dates of the National Cotton Council Annual Convention in Orlando, but committee meetings will begin on January 28. Top items on which NCC actions are expected include cotton legislative policy, strategy for combating onerous regulations on cotton dust proposed by the Occupational Safety and Health Administration, a USDA proposal which would change the makeup of the Cotton Board, and a plan designed by the NCC Executive Committee to reduce the wide fluctuations in cotton prices.

"The Texas High Plains will be well represented in all these deliberations," notes Donald Johnson, Executive Vice President of Plains Cotton Growers, Inc., "through our delegates to the Council from the various industry segments, Council board members, members of important committees and others from the area who will attend the convention."

Johnson is a member of the Industrywide Bysynosis Committee which will lay plans for the attempt to prevent final adoption of OSHA's proposed cotton dust regulations. According to Johnson these regulations would bring financial disaster to a high percentage of U.S. cotton ginners, particularly those in areas where stripper harvesting is practiced.

Speaking to the convention will be the new Secretary of Agriculture Robert Bergland and David Bowen, Chairman of the House Cotton Subcommittee.

Producer delegates to the Council from the Plains include W.B. Criswell of Idalou, PCG President; Lloyd Cline of Lamesa, PCG Vice President; and Bill Reid of Lamesa. Respective alternates to these three are Joe Pate, Jr., of Lubbock, Gary Ivey of Ralls, a PCG Director, and J.G. Dobbs of Grandview, Texas.

Bill Weaver of Lamesa, a former PCG Director, is a ginner delegate and Council board member. Raymond Tapp of Lubbock is a merchant delegate to the Council, and W.L. Goble of Levelland is a cottonseed crusher delegate.

Representing cooperative interests on the Plains will be delegate and board member Dan Davis of Lubbock and delegates Wayne Martin and Rex McKinney, both of Lubbock. Cooperative alternates are Carey D. Gooch of Shallowater, Joe Rankin of Ralls, and R.D. McCallister of Slaton. Also, Ed Breihan of Lubbock is Vice President of the NCC Board.

"There will be a number of others from the Plains attending the convention in various capacities," Johnson said, "and we can be assured that the interests of the High Plains cotton industry will be given due consideration."

**BIBLE VERSE**

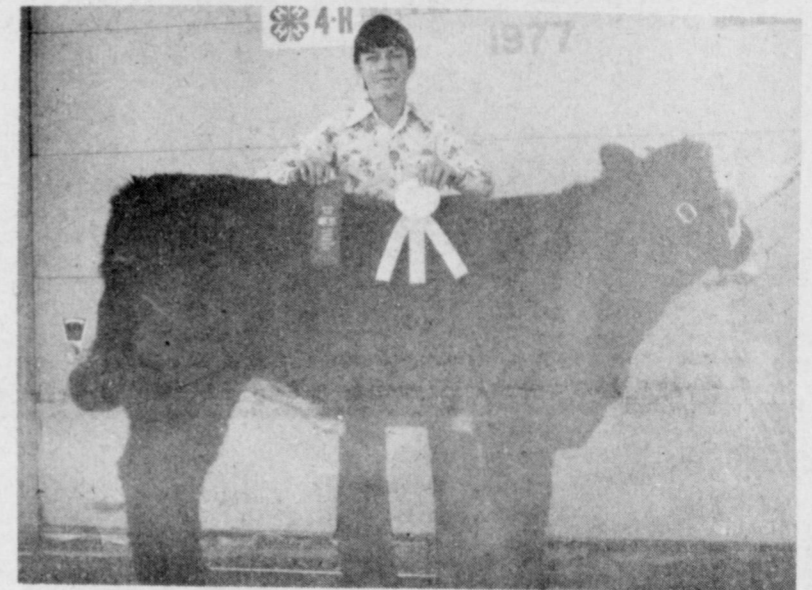
"For unto you is born this day in the city of David a Saviour, which is Christ the Lord."

1. Who is the author of the above verse?
2. Where may a similar verse be found in the Old Testament?
3. Who made this proclamation?
4. Where may this verse be found?

**Answers To Bible Verse**

1. Luke.
2. Isaiah 9:6.
3. The angel of the Lord to the shepherds in the field.
4. Luke 2:11.

**CONGRATULATIONS**  
to the entrants of  
**Junior Livestock Show**



HEAVY MIDDLEWEIGHT... Was shown by Kelly Harrison son of Mr. & Mrs. Teddy Harrison of Muleshoe.

**MULESHOE**  
**CO-OP GIN**

**CONGRATULATIONS**

We share a pride in the outstanding achievements of our County Junior Livestock Feeders.



HEAVY WIEGHT... Was shown by Jimmy Gleason son of Dr. & Mrs. Jerry Gleason of Muleshoe

**JOHN'S CUSTOM MILL**

**CONGRATULATIONS**



FIRST PLACE HEIFER... Was shown by Staci Kirby daughter of Mr. & Mrs. Reuel Kirby of Three-Way

**FIRST NATIONAL BANK**

MEMBER OF FDIC



## The Speaker Reports

by Bill Clayton

AUSTIN—The first days of this legislative session have set a tone which I am hopeful will continue throughout the 140 days the Legislature will be meeting.

Before the abbreviated first week ended, the organizational aspects of the session were resolved, freeing us to begin the actual work of the House.

In past sessions it has been many days before all the housekeeping details were completed, committees appointed and the referral of bills to committees begun.

This session every one of those details was taken care of during the first three days. Our committees already have bills with which to work.

On opening day I was re-elected to a second term as Speaker. It was my pleasure to inform the members at that time that the House of Representatives had during the last two years reduced expenditures by more than a half a million dollars each year.

I was also able to inform

them that new procedures were being instituted to provide members, the news media and the general public more bill information much faster.

All of the changes that have been made in the House since the 1975 session have been designed to modernize our legislative body into the 20th century. By using computer technology, training professionals in their duties and by making an unqualified attempt to promote excellence we are making government more accessible to the people. We are making the people's government more efficient.

In my speech to House members, and in Governor Dolph Briscoe's remarks at a joint session with the Texas Senate, we both plugged for many of the same ingredients in this session.

Our priority list is very similar. We both want public school finance to become a settled issue. All top state officials are interested in law and order legislation. We want the state's revenue

surplus handled in a prudent manner. We want medical malpractice insurance resolved and trust there can be something done about the high cost of utilities and other energy questions resolved.

We're off to a fast start, but still ahead is the work that must be done.

## Enochs News

By Mrs. J.D. Bayless

Mr. and Mrs. Jackie Sumpter from Reydon, Okla. spent Thursday night with Rev. and

## The Sandhills Philosopher



Editor's note: The Sandhills Philosopher on his Johnson grass farm on Sandy Creek takes an inverted look at a few things this week.

Dear editor: If, so to speak, you look down the wrong end of the telescope, you some times get a better view of things.

When for example political leaders say "no new taxes", look out for an increase in the old ones. Politicians have been running against high taxes ever since I can remember and taxes have been going up for the same length of time. You reckon we're real bright?

Or take Russia. Right now Russia is telling the world she has a bumper grain crop. This almost automatically depresses the price of grain in the U.S., where farmers have produced a genuine bumper crop and were hoping to get a good price for it. Since the CIA has never been

able to train any of its agents to look out a window to see if Russia has a drought, we won't know whether the Soviets really have a bumper crop or not until, a few months later, they've quietly bought up a lot of American grain at those depressed prices. You reckon we're really bright?

Another item: according to some figures I read last night, it now costs a million dollars a year to keep a Congressman in office. You reckon... No. I won't ask it.

Let's change the subject. I notice that the new Secretary of Agriculture is a farmer, actually operates a farm. I don't care what his salary is as Agriculture Secretary, he'll need every penny of it to keep the farm going, especially if he has any cattle. Ranching today is like the highway system - it's not supposed to make a profit, it's a public service project.

Changing the subject again, I see that Mr. Carter, true to his promise, has put some women in his cabinet, but what I want to know is how's he going to handle the problem, sure to be brought up about there being no college or professional football team in the entire country with a woman coach?

Yours faithfully,  
J.A.

## Federal Tax Return Due

Employers must report Social Security and withheld income taxes for the last quarter by Monday, January 31, the Internal Revenue Service said today.

This deadline does not apply to those employers who make timely deposits in Federal Reserve or approved commercial banks of the full amount of tax due. They are allowed until February 10 to file Form 941, "Employer's Quarterly Federal Tax Return".

The IRS emphasized that employers who received the pre-addressed Form 941 in the mail should use it to file their report. Those persons who did not receive the pre-addressed forms can obtain forms from their local IRS office.

Any balance of Federal unemployment tax not over \$100 for 1976 should be paid by January 31, using Form 940. Balances of tax due over \$100 require the employer to make a deposit with Form 508. As with Form 941, taxpayers who deposit the full amount of tax on time have until February 10 to file the return.

IRS Publication 15, "Circular E -- Employer's Tax Guide", provides further information on these taxes and is available free from most local IRS offices.

Mrs. Charlie Shaw.

Mr. and Mrs. G.H. McCall of Harlingen met Mr. and Mrs. E.N. McCall at Dallas Monday, January 3, and flew to Hawaii for a vacation.

Mr. and Mrs. Bob Newton drove to Stinnett Friday evening to spend the weekend with their son, Mr. and Mrs. Dennis Newton and children.

Mrs. J.E. Layton took her son, Jarrol, to Amarillo one day last week to see his knee doctor.

Mrs. E.M. Autry was a patient in the Littlefield Hospital Monday through Thursday with the flu.

Mrs. Erlene Lowgston of Levelland spent the weekend with her sister, Mrs. A.P. Fred.

Due to the snow and the zero weather the attendance was low at the churches Sunday.

Mr. and Mrs. Joel Sinclair and daughter Brooke of Muleshoe spent the weekend with her parents, Mr. and Mrs. Harold Pollard.

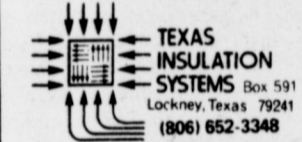
Mr. and Mrs. Joe Milsap of Lubbock visited in the home of Mr. and Mrs. Clyde Price last Sunday afternoon.

Mr. and Mrs. Chester Petree drove to Clovis, N.M. Friday and were dinner guests in the home of their son, Mr. and Mrs. Kenneth Petree.

Donnie Nichols will go back to Canyon Thursday after spending the holidays with his parents, the Dale Nichols.

India warns U.S. aircraft sale peril to peace.

## HIGH UTILITY BILLS?



ThermoCon Spray-on for Metal Buildings & Shops  
ThermoCon Loose-Fill for Residential Application  
"Insulation doesn't cost, it pays!"  
Please call for a free estimate without obligation.

## Cotton Trading Down As Season Nears End

The United States Department of Agriculture's Agricultural Marketing Service reported cotton trading was moderate to slow during the week ending January 14, according to Paul R. Dickson, in charge of the Lubbock Cotton Classing Office.

The Lubbock Cotton Exchange's Spot Quotations declined approximately \$15.00 per bale from the previous week, even though prices firmed Thursday. The base price for grade 41, staple 34, mike 3.5 through 4.9 was 59.35 cents on Friday, January 14, down 300

points from the previous Friday. Demand was moderate to light, Dickson said.

Prices paid growers for cottonseed ranged from \$85 to \$112 per ton, mostly \$95 to \$105.

Grades 42 and 43 were predominant in classings at Lubbock this week. Grade 42 accounted for 17 percent and 43 made up 23 percent. Bark reduction was assigned to 46 percent of the samples classed. Predominant lengths were staples 30, 31, and 32. Staple 30 was 17 percent, and 31 and 32 accounted for 31 percent each.

Mike readings in the desirable 3.5 - 4.9 range amounted to 38 percent of the total. Mike 3.3 - 3.4 was eight, 3.0 - 3.2 accounted for 16 percent, 2.7 - 2.9 claimed 15 percent, while 2. and below was 20 percent.

Pressley tests indicated breaking strengths average 80,000 pounds per square inch at Lubbock.

About 23,000 samples were classed by the Lubbock Cotton Classing Office during the week. Season's total stands at 897,000 compared to 685,000 on this same date a year ago.

\*\*\*\*\*

Successful family life depends upon team work rather than individual joyrides.

## CONGRADULATIONS

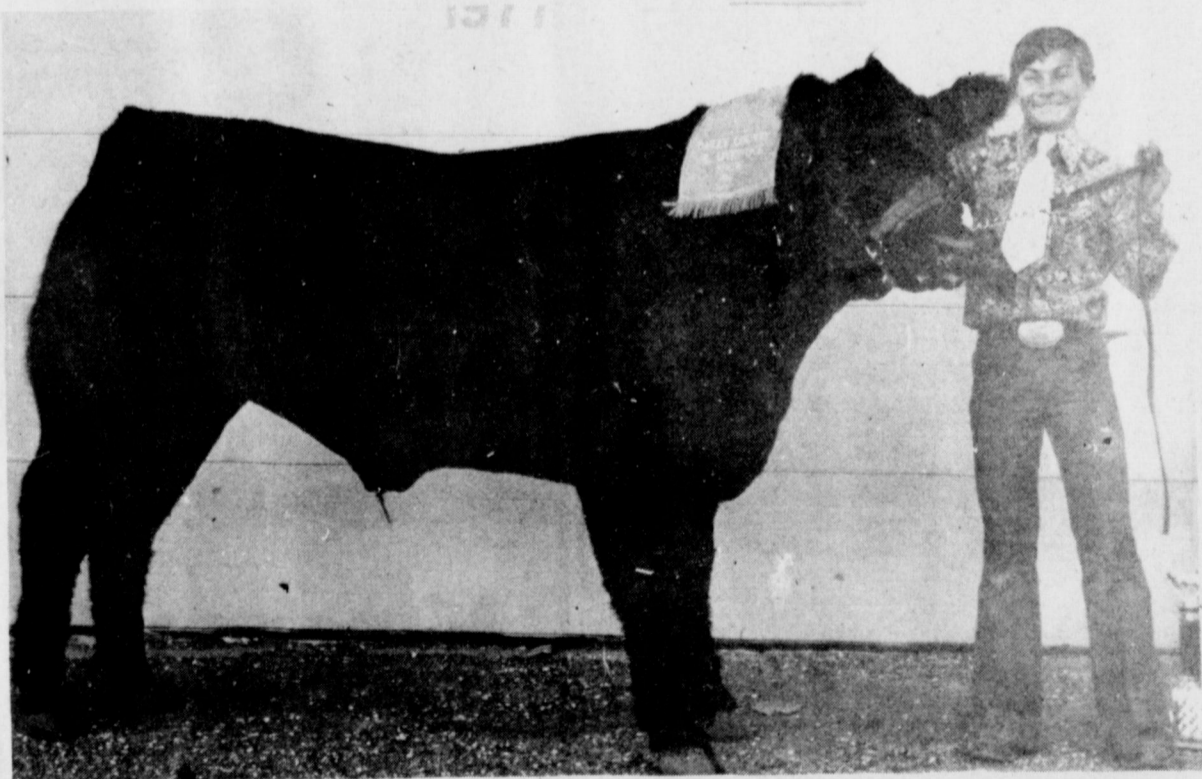
Everyone Taking Part In The Annual JUNIOR LIVESTOCK SHOW



LIGHTWEIGHT... Was shown by Alan Harrison son of Mr. & Mrs. Teddy Harrison of Muleshoe.

## WESTERN "66" COMPANY

## CONGRATULATIONS



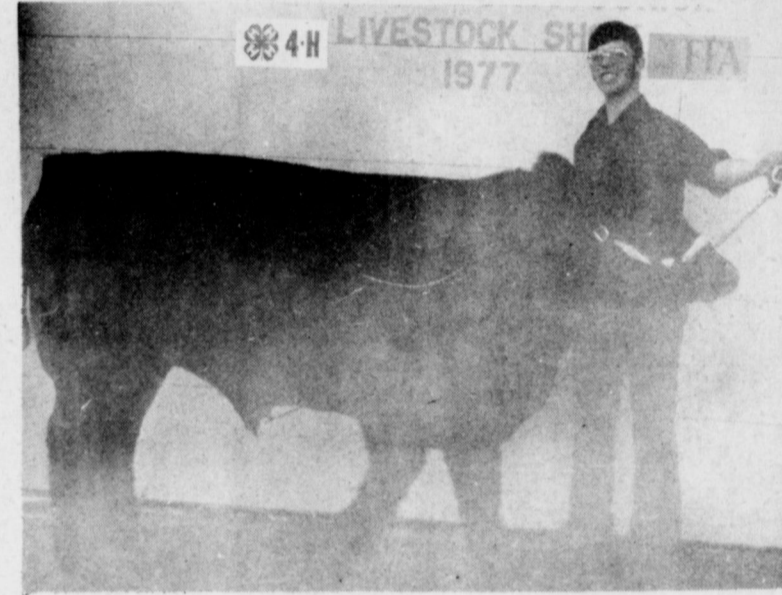
GRAND CHAMPION... Was shown by Jimmy Gleason son of Dr. & Mrs. Jerry Gleason of Muleshoe

## MULESHOE STATE BANK

MEMBER OF FDIC

## CONGRATULATIONS

To These FFA And 4-H Exhibitors On Another Fine JUNIOR LIVESTOCK SHOW



LIGHT MIDDLEWEIGHT... Was shown by Nicky Bambert son of Mr. & Mrs. Carl Bambert of Muleshoe

## BAILEY COUNTY ELECTRIC COOPERATIVE ASSOCIATION

## CONGRATULATIONS

4-H and FFA Young Men and Women Who Know That

## QUALITY COUNTS



RESERVE CHAMPION... Was shown by Kelly Harrison son of Mr. & Mrs. Teddy Harrison of Muleshoe.

## PRODUCTION CREDIT ASSOCIATION











### Three Way News

By Mrs. H.W. Garvin

Mrs. Don Lowe underwent surgery in Methodist Hospital in Lubbock Thursday.

Mr. and Mrs. Tommy Durham from Lubbock spent the weekend with her parents, the George Tysons.

Mr. and Mrs. W.W. Chamberlain from Ft. Worth, J.W. Chamberlain and Mrs. James Gillentine from Lubbock visited the H.W. Garvins Saturday.

Mrs. Rayford Masten is in Lubbock with her father, Clarence Benton, who is a patient in Methodist Hospital.

Mrs. Joe Sowder underwent minor surgery in Lubbock Mon-

day.

Mr. and Mrs. Kenneth Fox and children from Clovis, N.M., spent Saturday night and Sunday with her parents, the H.W. Garvins.

Mr. and Mrs. D.A. Williams and Dwayne visited in the George Tyson home Sunday.

Mr. and Mrs. Byron O. Benton from Bridgeport spent Thursday night in the Rayford Masten home.

Mrs. Oleta Off and Marvin Long from Amarillo spent Wednesday until Friday with the S.G. Longs.

Rev. Preston Harrison from Panhandle was the guest speaker at Three Way Baptist Church Sunday evening.

Rev. and Mrs. Vernon Stephens are attending the evangelistic meeting in Ft. Worth this week.

Mr. and Mrs. D.S. Fowler were in Lubbock Tuesday on business and visited their sons, the James and Ray Fowler families.

Mr. and Mrs. D.S. Fowler visited his siter, the R.L. Reeves in Post Saturday.

Mr. and Mrs. Zed Robinson of Muleshoe visited the D.S. Fowlers Friday.

Mr. and Mrs. Bud Huff visited his mother in Midland last Friday evening and Saturday.

Mr. and Mrs. Bobby Kindle and girls spent the weekend in Roswell, N.M. with her mother and other relatives.

Mr. and Mrs. Joe Sowder spent the weekend in Muleshoe visited his mother, Mrs. Opal Ruth Sowder.

Three Way basketball teams played Whitehall Friday on the home court. Three way girls

and the Three Way boys both won.

The Home Ec room of the Three Way School was the scene Saturday afternoon of a wedding shower honoring Mr. and Mrs. Larry Neutzler.

Saturday evening the friends and neighbors of Mr. and Mrs. Bobby Foley honored them with a house warming.

The community received a light snow and very cold weather over the weekend.

Mrs. Adolph Wittner was in Lubbock Wednesday to be with her mother, who underwent eye surgery.

Mrs. Rayford Masten spent Thursday in Littlefield with her father.

Many of the new fur coats use a combination of furs and leather or two different furs.

## Mesquite Control Can Add Profits

In dry years mesquite control near streams and lakes can add profits through increased water yields.

Research indicates that the deep tap root system in mesquite consumes soil moisture during dry years to keep the brush alive. The tap roots, however, do not perform any important functions during wet years.

Studies at Texas Tech University have investigated the water consumption habits of mesquite as a measure of transpiration losses -- moisture lost through leaf surfaces.

"However, mesquite control can result in loss of wildlife habitat. That is important to the ranchers since most of them lease hunting rights on their land. But we do not know how the economics of hunting leases compares with increased forage through water yields," one Texas Tech researcher said.

That will be a separate study, according to Dr. Ronald E. Sosebee, range and wildlife management researcher at Texas Tech.

Sosebee recently completed two separate studies on mesquite transpiration. He studied environmental influences and plant characteristics as they affected transpiration.

Transpiration rates were studied from trees growing on a sandy loam soil. Half the trees were irrigated and half received only rain or snow. Other trees were selected that were naturally watered from shallow water and still others on naturally dry sites.

**Beginner**  
Hold-up Man: "Stick'em up . . . or else!"  
Victim: "Or else what?"  
Hold-up Man: "Don't confuse me . . . this is my first job."

"Where a supplemental source of water exists, like a stream or lake, our work indicates that it is profitable to control mesquite for water yields during dry years," Sosebee said.

The studies were conducted during 1974 and '75.

"During the first year when soil water was limited, there was a significant difference between transpiration rates of trees with cut and uncut tap roots on the non-irrigated site. The next year there was more precipitation and there were no significant differences in apparent transpiration," Sosebee explained.

Trees on the irrigated site never showed significant differences between those with cut and uncut tap roots, he added.

Transpiration rates followed a distinct daily pattern on both wet and dry sites. It started very slowly about sunrise, increased to a maximum rate about noon and decreased slowly the remainder of the day until a sharp increase started two hours prior to sunset. The transpiration of trees growing where soil water was limited peaked earlier than noon and the rate decreased much more rapidly throughout the remainder of the day.

Results of the two studies are discussed in the "1976 Noxious Brush and Weed Control Research Highlights" published by the College of Agricultural Sciences.

The studies were funded by the State legislature.

**Wrong Nickname**  
When William was getting ready for college he told the family, "I wish you all would stop calling me 'Big Bill.'"  
"Why?" they asked.  
"College names sometimes stick, and you know I am going to be a doctor."

# Thrifty Shopper Special

- OWENS PURE PORK HOT OR MILD SAUSAGE ..... 1 lb. BAG \$1.15 ..... 2 lb. BAG \$2.29
- WILSONS CERTIFIED THIN SLICED BACON ..... (1 lb. pkg.) \$1.19
- KINGS CHOICE BRAND GREENLAND TURBOT FISH FILLETS ..... LB. 98¢
- SWIFTS PREMIUM PROTEN BEEF SIRLOIN STEAK ..... LB. \$1.19
- SWIFTS PREMIUM PROTEN BEEF T-BONE STEAK ..... LB. \$1.59
- SWIFTS PREMIUM PROTEN BEEF ARM ROAST ..... LB. 98¢
- SWIFTS PREMIUM PROTEN BEEF RANCH STEAK ..... LB. 98¢
- SWIFTS PREMIUM PROTEN BEEF RIB STEAK ..... LB. 89¢

REGULAR Owens Country Style Sausage Straight from the farm

6 1/2 oz. CAN CARNATION CHUNK LIGHT TUNA 59¢

MIRACLE WHIP

Wm. A. Rogers Silverplated BRACELET

A Treasure to To Own, Also A Distinctive And Memorabile Gift Created And Crafted By Oneida Silversmiths

Yours FOR ONLY \$1.99

With a \$5.00 Purchase At Cashway

- ### FROZEN FOOD SPECIALS
- 1/2 GAL. Ctn. BORDENS ROUND Ctn. ICE CREAM ..... \$1.19
- 12 oz. CAN MINUTE MAID ORANGE JUICE ..... 59¢
- 9 oz. Ctn. BIRDS EYE COOL WHIP ..... 69¢
- 10 oz. pkg. KEITHS WHOLE BABY OKRA ..... 39¢

- ### DISCOUNT FOOD PRICES
- 3 oz. CAN SWIFTS POTTED MEAT ..... 19¢
- 13 1/2 oz. JAR DERBY BEEF TAMALES ..... 59¢
- 16 oz. BOX HUNGRY JACK MASHED POTATOES ..... 89¢
- 2 3/4 oz. BOX LIPTON ONION SOUP MIX ..... 59¢
- #303 CAN DEL MONTE SAURKRAUT ..... 3/\$1
- #1 1/2 CAN WHITE SWAN PINEAPPLE (Sliced, Chunks, Crushed) 39¢
- #303 CAN DEL MONTE PEAS & CARROTS ..... 39¢
- 1 lb. BOX KEEBLERS ZESTA CRACKERS ..... 59¢
- GALA II JUMBO ROLLS PAPER TOWELS ..... 69¢
- DETERGENT GIANT SIZE BOX COLD POWER ..... \$1.19
- 28 oz. BOTTLE PINE-SOL ..... \$1.39
- 24 oz. BOTTLE TOILIT BOWL CLEANER LYSOL ..... 89¢
- 18 oz. JAR BAMA PEANUT BUTTER ..... 89¢
- 1 lb. TUB WHITE SWAN SOFT OLEO ..... 49¢
- 24 oz. Ctn. CLOVERLAKE COTTAGE CHEESE ..... 99¢
- 18 oz. JAR KRAFT RED PLUM PRESERVES ..... 69¢
- 69¢ pkg. MORTONS CHIPS ..... (Chili, Sour Cream, Bar-B-Q) 49¢
- 32 oz. BOTTLE - 6 BOTTLE Ctn. COCA-COLA ..... \$1.59

FRESH PRODUCE

COLORADO NO.2 WHITE RUSSETS POTATOES ..... 10 lb. BAG 55¢

CALIFORNIA LARGE SIZE AVOCADOS ..... 4/\$1

CALIFORNIA SUNKIST LEMONS ..... LB. 35¢

TEXAS RUBY REDS GRAPEFRUIT ..... LB. 19¢

WASHINGTON EXTRA FANCY GOLDEN DELICIOUS APPLES ..... 3 lb. / \$1

15 lb. BAG WHITE SWAN PURE CANE SUGAR 75¢

(Limit 1 With \$7.50 Purchase or more)

3 lb. CAN SNOWDRIFT SHORTENING 99¢

(Limit 1 With \$7.50 Purchase or more)

1/2 GAL. Ctn. CLOVERLAKE BUTTER MILK 69¢

Come To CASHWAY For Your WIC Card Purchases

We Welcome USDA FOOD STAMP COUPONS

Listen to MULETRAIN 10:15a.m. Monday-Friday Over KMUL Sponsored by Whites Cashway

THIS COUPON IS GOOD FOR 100 EXTRA GUNN BROS. STAMPS AT WHITE'S CASHWAY With the Purchase of \$7.50 or more

Please fill in your name and city, Only One Coupon Per Customer-Coupon Expires

Whites CASHWAY 7:30a.m. til 9:p.m. MONDAY-SATURDAY CLOSED SUNDAYS Double Gunn Bros Stamps Every Wednesday We Reserve The Right To Limit Quantities