



# Muleshoe Journal

Striving to be your source for local news

75¢

Volume 94, No. 2

www.muleshoejournal.com

Muleshoe, Texas

January 10, 2013



Photograph by Larry Thornton

From left to right: Sherri Harrison, Robin Dickerson, Debra Redwine, Jackie Claborn II, Kent Wiley, Butch Vandiver, Joey Kindle and Richard Wills.

## County Officers Seen Swearing At Courthouse

By Larry Thornton  
Managing Editor

County elected officials gathered at the Bailey County

Courthouse Wednesday, Jan. 2, to be sworn into office.

With friends and family members looking

on, County Judge Sherri Harrison asked the elected officials to raise their right hands and take their oaths of

office. This year, the "new" office holders outnumbered the veteran office holders. Justice of the Peace Debra Redwine, County Attorney Jackie Claborn II, and County Constable Kent Wiley are filling

their first complete terms of office.

County Clerk Robin Dickerson is completing the unexpired term of former County Clerk Paula Benton, who retired in December 2012.

Previously, Redwine

served in the unexpired term of JP Deb Stone, while Claborn was appointed to fill the unexpired term of Jeanine Backus who resigned in August 2009.

Claborn filled the

Continued on A2



**No!**  
Lady Mule Kaylie Morris is surprised as the basket ball is knocked away during the recent game against Littlefield's ladies.  
Photograph by Gabby Perez

## Television Stolen At Gunpoint

By Larry Thornton  
Managing Editor

Muleshoe police officers were searching Tuesday for the suspect in an armed robbery that occurred at a local department store on Monday.

Shortly after 6 p.m. Monday, according to Lt. Benny Parker, an Hispanic male entered Alco, on West American Blvd., and wandered through the store as if he were shopping.

A few minutes later, Parker said, the man was



Photograph of Monday's alleged robbery suspect.

seen trying to take a 40-inch television through the store's east doors when one of the store's employees approached him and asked what he

was doing.

"I work here," the man reportedly said, a statement the actual employee knew to be false.

At this point, according to the police lieutenant, the man allegedly pulled a handgun and threatened the employee.

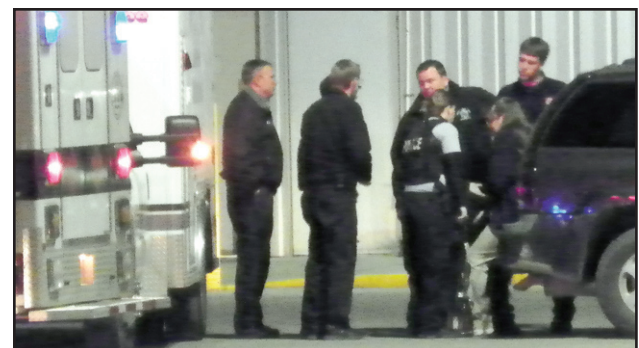
The suspect then left the store with the television, and is believed to have driven westbound on Hwy. 84 (West American Blvd.) in a white Ford pickup.

Contrary to rumors about the incident, there was not a hostage situation, nor were any shots fired.

The police are looking for a Hispanic male, from 20 to 24 years of age, 5-8 to 5-10 in height, and 160 to 180 pounds, with short hair.

According to Parker,

Continued on A5



Officer Jacie Anstead speaks to one of the witnesses following the incident at Alco Monday.

## Construction Zone Mishap

The Muleshoe Police Department responded to an accident with injury that occurred in the construction zone on West American Blvd., near 20th Street, shortly before 11:30 a.m. Monday, Jan. 7.

An unidentified juvenile from Hobbs, N.M., was injured when the SUV she was in struck the rear of a flatbed trailer, both of which were traveling west through the construction zone on West American Blvd.

According to officers at the scene, the SUV was occupied by two individuals while the vehicle pulling the trailer was occupied by one individual. Further details about the accident weren't available prior to the newspaper's press deadline.

Photograph by Larry Thornton



First Bank is proud to announce our new MasterCard Debit Card.

FIRST BANK ONLINE [www.fbmlshoe.com](http://www.fbmlshoe.com)

202 S. First • Muleshoe, TX 79347 • 806-272-4515



## Around Muleshoe...



Announcements from non-profit organizations in the Muleshoe area.

To post an announcement send an email to editor@muleshoejournal.com

### MAHD Filing Period

The filing period for a place on the Muleshoe Area Hospital District's general election is from Jan. 30 until March 1.

Individuals wishing to file may do so at the Muleshoe Area Medical Center, 215 S. First, between a.m. and 5 p.m., Monday through Friday.

## Lamplight

By Larry Thornton

### Ice Feathers Are Fleeting, God's Promises Are Not

Ice feathers... my pickup was covered in them. The windows, the hood... one morning last week the entire truck was covered with some of the most beautiful ice art that I've seen this year, or last.

Feathery crystals of ice that swirled across the surface of the truck and made me wish I had a camera in hand to document and display their fragile beauty.

Unfortunately, I didn't have a camera with me and I was in a "catch 22" situation. I couldn't start the truck or clear the windshield to drive to the office to get a camera without losing the art I wanted to preserve.

Sadly, this is the way with many earthly things. They may be beautiful, but their life expectancy is fleeting at best.

Our jobs, worldly possessions and honors... everything we accumulate as we travel this mortal sod will one day disappear like an icicle grasped in your hand.

Several years ago, I purchased a brand new graphite fishing rod, grabbed the rest of my gear and headed out for an afternoon of bass fishing at a large pond.

This particular pond was surrounded by dense trees, which required the fishermen honored with access to do so by foot.

As I traveled down the path toward the water, I was enjoying the day, the sunlight and the adventure that lay ahead, but I wasn't watching the tip of my new rod as it drifted back and forth in front of me. So, when the tip encountered a scrub oak tree and shattered, I was greatly surprised.

A second earlier, I had a promising afternoon ahead of me. With the new rod in hand, I'd left other rods at home. Now, all was gone... both the new rod and my plans for the afternoon.

But God reminds us that his promises are eternal, and that the treasures we store in heaven are neither fragile nor short-lived.

Matthew 6:19-20 NIV says, "Do not store up for yourselves treasures on earth, where moth and rust destroy, and where thieves break in and steal. But store up for yourselves treasures in heaven, where moth and rust do not destroy, and where thieves do not break in and steal. For where your treasure is, there your heart will be also."

Thank you, God, for the promises we receive through the blood of your Son.

Thank you for the opportunities we receive to do your work on earth, and for the crowns we will receive on that glorious day when we stand before you... crowns which we in turn will lay at your holy feet. Amen.

## God's People Know The End Of The Story

Setting up housekeeping is no easy task. But the task on the other end of the journey is harder.

Ask anyone who has buried their last parent or whose parents have had to move into a care facility. Sifting through three-quarters of a century's worth of accumulated mounds of paper, pictures, trinkets, and family treasures is a daunting task.

But it can be interesting. It can bring laughter. And tears. And it certainly can make you think.

Such an undertaking takes much of its character and color from the character and lives of the folks who have gone on. At least, that was my experience with my own parents.

Mom passed away first, and we cleaned and culled. But the real job came when Dad passed away some years later.

I was surprised at some of what they



**Focus On Faith**  
Curtis Shelburne

kept and some of the treasures and the trinkets we ran across.

We found tons of birthday and anniversary cards that Mom and Dad gave to each other, cards lovingly inscribed in their completely unique handwriting. (Mom's was the most beautiful and perfect penmanship I have ever seen; Dad's, perhaps the most unique.)

I don't think they ever threw away a single card.

My siblings and I even found the little pencil-written penny post card that Dad had mailed to his own folks as he and my mother had just left their wedding for their honeymoon.

He described them as "supremely happy," and signed the card

proudly, "Mr. & Mrs. G. B. Shelburne, Jr."

I found the letter one of the men I'm named for had penned to me and my family when I had just been born.

I found a kindergarten graduation diploma, a notebook with pasted pictures used to help me learn the letters of the alphabet in first grade, and crayon-colored pictures that I had drawn in third grade.

I found a letter (the page dripping with homesickness) I'd written home from scout camp.

I found a number of pictures of myself in various embarrassing stages of adolescent ugly-duckling-hood.

And I think I found every letter I'd ever written Mom and Dad once I'd left home.

I read some of the college letters we'd written, and I was

reminded reading between the lines (I'd blissfully almost forgotten) that Juana and I thought we might starve before we got me through school.

We didn't starve. We made it.

And that may be one very valuable lesson that comes from taking this sort of mandatory trip down memory lane.

What we were so worried about then either never happened or we got through it.

Mom and Dad made a successful trip through this life. If our eyes stay focused on the same Lord who led them through, so will we.

We may not know what may transpire in our life's story tomorrow or Thursday or next week.

But Christians know the Author. He's told us the end of the story. And it's great!

### Provisions Of 2008 Farm Bill Extended

By Mary Jane Buerkle  
Cotton News

High Plains cotton farmers and bankers now have at least some certainty with regard to financing the 2013 crop, as the Senate and the House passed an extension of various provisions of the 2008 Farm Bill last week as part of the fiscal cliff legislative package.

"This whole package certainly isn't perfect, and the extension is only a short-term solution, but it does adequately address the immediate needs of High Plains cotton producers," PCG Executive Vice President Steve Verett said.

"We greatly appreciate the work of our Senate and House Ag Committee leaders throughout this process

and look forward to resuming talks toward a five-year bill that will give farmers across the nation long-term stability," he said.

The legislative package restored the \$5 million exemption level for the estate tax, which many farm groups, including the National Cotton Council, saw as positive.

"The industry looks

Continued on A8

### County Court...

Continued from A1 office until 2010, at which time he was elected to a two-year term, and filled it until being elected in November to his current four-year term.

Other returning candidates sworn in Wednesday included County Commissioners Butch Vandiver for Precinct 1, and Joey Kindle for Precinct 4; and Sheriff Richard Wills.

Also sworn in during Monday's proceedings was Dep. County Clerk Yolanda Vasquez.

Along with Wednesday's ceremonial duties, Judge Harrison also headed up a special session of the commissioners' court during which she was authorized to sign a 2013 resolution concerning the county's participation in the indigent defense grant program.

The court also approved bonds for several elected officials.

**PHYLLIS BRIDGES**  
AGENT  
806.685.1543  
PHYLLIS@TRIANGLEREALTY.LLC.COM

TRIANGLE REALTY LLC  
7669 CANYON DRIVE  
AMARILLO, TX 79110  
806.367.8334

**McDaniel's APPLIANCE**  
1020 Main Street, Clovis, NM  
505-762-4481 or 800-682-7891

**Time for new appliances?**

**WE ARE YOUR HOMETOWN WHIRLPOOL DEALER.**

WE NOW CARRY SPEED QUEEN!

Whirlpool

# UNLIMITED EVERYTHING

with NEW Plateau 4G

**Drop by your nearest Plateau store today and get the 4G-capable LG DoublePlay Android phone for FREE!**

Plateau 4G is now available, and with it we're introducing NEW plans featuring unlimited calling, unlimited messaging and unlimited data - starting at just \$50 per month!

**To learn more, call us at 877.PLATEAU. Find your nearest Plateau store at plateautel.com.**

Phone offer ends January 31, 2013. The LG DoublePlay Android phone is available for free only with a two-year contract for wireless service. While supplies last. Contract Term: One or two-year commitment required. Early termination Fee: \$100 per year, maximum \$200 and is prorated. Activation Fee \$25.00. Partial megabytes rounded up. Full speeds available up to monthly data allotment; capable device required. After data allotment used, speeds slowed to up to 2G speeds for remainder of billing cycle. Night and weekend minutes are available when within the Plateau Network. Night and Weekend Hours: Monday through Thursday 7 p.m. through 6:59 a.m. and Friday 7 p.m. through Monday 6:59 a.m. Free Mobile to Mobile calls between Plateau mobile phones within the Plateau area. When outside the designated Plateau Area - Roaming: \$.10 per minute with Free Nationwide Long Distance. Additional taxes, fees and surcharges may apply. 50% usage on all plans must be on the Plateau network. Unlimited data: 4G speeds up to your selected plan of 2GB or 5GB. May not be available in all markets.

1-877-PLATEAU (752-8328)  
www.plateautel.com

**PLATEAU**

## Thank you for reading!

**Muleshoe Journal USPS 367820**  
Established Feb. 23, 1924 Published by Panhandle Weeklies, LLC.  
Every Thursday at 201 W. Ave. C, P.O. Box 449, Muleshoe, TX 79347.  
Periodicals paid at Muleshoe, TX, and at additional mailing offices.  
Postmaster: Send address changes to the Muleshoe Journal, P.O. Box 449, Muleshoe, TX 79347.

We are qualified members of the Panhandle Press Association, West Texas Press Association and Texas Press Association

**David Wedel, Publisher**  
dwedel@hearstmp.com

**Larry Thornton, Managing Editor**  
editor@muleshoejournal.com

**Rhea Gonzales Ad Representative**  
adsales@muleshoejournal.com

**Ad Design / Classified Advertising**  
advertising@muleshoejournal.com  
classifieds@muleshoejournal.com

**Subscriptions:**  
By Carrier Yearly — \$27  
Bailey County, by mail — \$29  
Elsewhere — \$40  
By E-mail — \$22

Advertising rate cards on request

© 2013

West Texas Press Association

Hours are 8 a.m. to 5 p.m., Monday - Thursday, and 8 a.m. to noon on Friday. \*Advertisers should check their ad the first day of insertion. The Journal will not be liable for failure to publish an ad or for a typographical error or errors in publications except to the extent of the cost of the ad for the first day of insertion. Adjustment for errors will be limited to the cost of that portion of the ad where the error occurred."



# SPORTS NEWS

## Mules Defeat Littlefield, But Fail In Tourney Bid

By Delton Wilhite  
Sportswriter

Eli Leal hit the opening bucket against the Anton Bulldogs in the Mules' second game of the Littlefield Wildcat Tournament after the Christmas break.

The Mules fell behind 12-10 by the end of the first period.

The Mules were fired up in the second quarter and out scored the Bulldogs 21-7. The Mules cruised to a 55-40 win. It was the only

game the Mules won in the tournament.

The Mules traveled back to Littlefield to kick off the 2013 portion of district against the Wildcats. Blaine Hurtado sank a 3-pointer from the corner to tie the game in the final period.

Littlefield responded and out ran the Mules to the finish line for a 52-47 win over the Mules.

Austin Ross tied the game against Anton 30

seconds into the second period with a short jumper.

Josh Lopez put the Mules in front for the first time since Leal's first basket. Matt Barron answered an Anton trey with one of his own.

Blaine Hurtado followed with a trey and started a 12-point Mule scoring run.

Grey Johnson nailed a trey and bucket. Leal sank a pair of free throws and basket. Johnson just beat the

buzzer for the final basket of the first half.

Leal led the Mules with 14 points and was six-of-six from the charity line. Johnson and Barron scored nine points each and Hurtado dropped in eight.

Shawn Atwood added six points, Ross made five and Lopez chipped in four points.

Leal scored all 12 of the Mules first 12 points against Littlefield with a pair of 3-pointers, an old-fashion three-point play and was four-of-five from the charity line.

The Mules trailed 15-12 after one period.

The Mules went into a shooting slump that lasted for next two quarters. Leal made a lay up to open the second period and Lopez tied the score with a basket.

It was nothing but free throws for the Mules after that and they made five-of-nine from the line.

But full court pressure by the Mules held the Wildcats down and the score was tied at 21-21 at the intermission.

The Mules shooting woes continued in the third quarter. Leal finally hit a trey near the five minute mark and Atwood scored in the paint to end the Mule scoring.



Mule Eli Leal takes a shot during the recent game against Littlefield. Photograph by Gabby Perez

## Lady Mules Fall To Littlefield's Ladies

By Delton Wilhite  
Sportswriter

The Lady Mules defeated the Farwell Lady Blue in the opening round of the Littlefield Wildcat Tournament during the Christmas break 45-27.

It was the only win for the Lady Mules in the tournament as they played their way back into shape following the break.

The Lady Mules returned to Littlefield Jan. 4 to open the 2013 district portion of the season against the Lady Cats.

The Lady Mules trailed 30-28 beginning the final period. The Cats converted nine of 13 free throws in the final period to defeat the Lady Mules 41-33.

The Lady Mules got off to a slow start against

Farwell and trailed 5-0 before Kaylie Morris drove coast-to-coast for a lay up with 5:30 left in the first period.

Adrienne Precure battled through a foul for a basket. She failed to convert the three-point play.

McKenna Dunham put back an offensive rebound for a hoop with 1:47 left in the opening period and was fouled.

She added the charity toss to complete the old-fashion three-point play to put the Lady Mules in front to stay.

Katelyn Gable and Morris finished the quarter with a basket each for an 11-5 Lady Mule lead.

DonAnn Rempe scored in the paint to open the second period.

Morris drove for a lay up and hit the Lady

Mules first 3-pointer of the day to end an 18-0 Lady Mule scoring run.

The Lady Mules led 18-5 with 5:34 left in the first half.

Daniela Diaz sank a trey one minute prior to the half ending with the Lady Mules leading 25-13.

Precure, Brandy Castorena and Morris hit a 3-pointer each in the second half.

Morris led the Lady Mules in scoring with 14 points. Precure finished with seven points and Gable made six. Rempe dropped in four points. Castorena, Cas Moore, Diaz and Dunham added three points each.

Littlefield scored three treys in the first period to jump in

Continued on A4

Need an ag loan?



We're the answer.

Capital Farm Credit has been making loans for agriculture and rural real estate since 1917. The source of our strength is our cooperative structure: We share our earnings with our borrowers and operate in their best interests. In fact, we have returned more than \$400 million to our customers.

Experienced in agricultural production loans

Flexible loan programs to fit any operation

Eligible for patronage program

Competitive interest rates



Muleshoe Credit Office  
Contact Greg Lance  
806.272.3010

CapitalFarmCredit.com



PART OF THE FARM CREDIT SYSTEM

TEXAS' LARGEST RURAL LENDER

**SPRHS**  
South Plains Rural Health Services, Inc.  
*...for family health*

South Plains Rural Health Services is

Accepting New Patients

Dr. Amita Alexander, MD

Family Practice



Dr. Amita Alexander has been seeing patients here since January 26, 2012 she treats patients with Diabetes, High Blood Pressure, Cholesterol, plus many other issues.

Dr. Alexander is now taking appointments for annual exams, immunizations, and sick visits.

Please Call 806-894-7842 to schedule your appointment today. Walk Ins Welcome.

South Plains Rural Health Services, Inc.  
1000 FM 300, Levelland, Texas



# Senior Citizen News

By Susan Skipworth

The Oneita Wagon Senior Center is starting the New Year off with a bang!

We are so blessed in Bailey County to have a senior center that is so warm, inviting and so active.

Seems there is always something going on at the center. Please come and enjoy the laughter, fellowship, wonderful food, intense domino games and the good coffee.

The holidays are over and it is time to get back into the swing of things now.

Monday, Jan. 14, will be the regular board meeting.

The meeting will be here at the center beginning at 12:30 p.m. All meetings are open to the public.

We will play Bunco on Tuesday, Jan. 15, starting at 10 a.m.

On Wednesday, Jan. 16, the South Plains Senior Companion Group will be here for lunch.

Remember that we will have our birthday party, honoring all of our senior citizens who have birthday's this month on Thursday, Jan. 17.

Also, we will play Bingo on Thursday, beginning at 1:30 p.m.

Brady, from IntegraCare, again will be doing a fine job as our caller.

Come and enjoy a day filled with fun.

We do keep all of our senior citizens who are out with illness in our prayers daily.

We miss each one of you and wish you a speedy recovery!

**Jan. 14-18 menus:**  
Monday, Jan. 14 — Barbecue chicken, baked potato with sour cream, whole wheat roll, mixed vegetables, mandarin oranges, and low fat milk.  
Tuesday, Jan. 15 — Taco salad, refried beans, Spanish rice, broccoli and cauliflower salad, corn or flour tortilla, apricot halves, and low fat milk.  
Wednesday, Jan. 16 — Grilled steak, mashed sweet potatoes, green


beans, tossed vegetable salad, low calorie French dressing, cornbread, tropical fruit salad, and low fat milk.

Thursday, Jan. 17 — Cheeseburger, potato wedges, tomato wedge salad, and melon medley.

Friday, Jan. 18 — Fish or chicken strips, borracho beans, green peas, tossed vegetable salad, low calorie French dressing, whole wheat roll, tropical fruit mix, and low fat milk.

**"Honor the LORD with your wealth, with the firstfruits of all your crops; then your barns will be filled to overflowing, and your vats will brim over with new wine."**

Proverbs 3:9-10, NIV



# Lady Mules...

Continued from A3 front of the Lady Mules. Precure and Morris hit a trey and a charity toss each in the opening quarter.

Dunham chipped in a free throw and the Lady Mules trailed 13-9.

Morris opened the second period with a short jumper and Precure made a pair from the free throw line to tie the game at 13-13.

C. Moore added a hoop and Precure chipped in two more free throws. Littlefield hit a trey to out score the Lady Mules 9-8 in the second period for a 22-17 lead at the half.

Littlefield was called for nine fouls in the opening half to just five for the Lady Mules.

The foul count was reversed in the second half with the Lady Mules being tagged 12 times for infractions and Littlefield

was only called for five. Morris hit from the elbow to put the Lady Mules on the board in the second half.

Precure sank a floating jump shot and nailed a trey.

Mandy Scolley hit from behind the arc to briefly give the Lady Mules the lead and chipped in a free throw before the quarter ended.

The Lady Mules had cut the lead to 30-28 with one quarter left to play.

Precure led the Lady Mules with 13 points and Morris added eight. Scolley dropped in six points, Dunham scored four and C. Moore chipped in two points.

The Lady Mules hosted the Tulia Hornets Tuesday night.

They will travel to Abernathy to play the Lady Lopes in the final game of the first round of district.

# BAILEY COUNTY DEVOTIONAL PAGE

**ASSEMBLY OF GOD**  
**FIRST ASSEMBLY OF GOD**  
Pastor Ryan Pate  
521 South First Street  
272-3017  
S.S. 9:45 am,  
W.S. 10:30 am & 6:00 pm,  
Wed. 7:00 pm  
**EL BUEN PASTOR**  
415 E. Ave. F - 272-5455  
Pastor Ruben Acevedo  
272-4542  
S.S. 9:45 am, W.S. 11 am & 6 pm; Wed. 7 pm

**BAPTIST**  
**CALVARY BAPTIST**  
1733 W. Ave. C.  
Rev. Jeff Coffman  
**FIRST BAPTIST**  
220 West Ave. E  
Dr. Stacy Conner  
**FIRST BAPTIST**  
Lazbuddie • 965-2126  
**PRIMERA IGLESIA**  
**BAUTISTA**  
223 E. Ave. E  
Interim Rev. Troy Smith  
**PRIMITIVE BAPTIST**  
621 South First  
Elder Bernard Gowens, Min.  
**PROGRESS BAPTIST**  
Progress, TX  
**PROGRESS SECOND BAPTIST**  
Arthur Hays, Min. - 1st & 3rd Sundays  
**RICHLAND HILLS BAPTIST**  
Bro. Larry Thornton  
17th & West Ave. D  
S.S. 10 am; W.S. 11 am  
www.rhbc-muleshoe.org  
**TRINITY BAPTIST**  
314 E. Ave. B -  
272-3301

**CATHOLIC**  
**IMMACULATE CONCEPTION CATHOLIC CHURCH**  
805 E. Hickory  
Leonardo Pahamtang, Min.

**Ephesians 5:1-2** Solutions on A5

M L R I S K Y R T Z G M Z A G X O S Y M V E G O E  
D A P H V Y I L K B A O T O J L H R W U V K C R P  
H E A N M L E B B E K R A U G C D P G O W F H V P  
I T V F A K I E A X I B T T O R W N K F O L A O P D N D  
M K V A K T E Y I B T T O R W N K F O L A O P D N D  
S Y L G G I D C R F A U J B N J O W L P W S M V Z  
E A Y A H D X T F S I G F B I A M O C B E U U G T  
L S E K W H N M O K N R B U D U W H E G G X S O O  
F A C R D D E A C J T O C H J E R D C X U H H D F  
U F C N O I N H B L H W H A K I V V J O G B J S F  
P R R W T F I A E L E Z P V S C L O H K O I Z E E  
U A P X W L E A Z D W L S T V S W C L E A B R X R  
K G P P D C T R X D A A V W U P O C W Y G K D A I  
K R Z R R J C E E N Y X B D J R A L X H L J H M N  
X A E Z H Y O X G H S L E C N S N N Q U S R B P G  
H N V A S S D I K U T V X V Y X Y Z L I E C A L A  
U T R N T H Q O R Q O W Y S E S Y J D O B S Y E N  
K F K A O L V O G L U J W P J D O T S R A R P V D  
E F W R Q M F C N O H X D J O Z M N R G F W W H C  
U H H X J K X W Q C T A J D K Z W P Z U Y L N I X

Follow... God's example... therefore as... dearly loved... children... and walk... in the way... of love... just as... Christ... loved us... and gave... himself up... for us... as a fragrant... offering and... sacrifice... to God.

This devotional & directory is made possible by these businesses who encourage all of us to attend worship services.

**LUTHERAN**  
**ST. JOHN LUTHERAN**  
Lariat, TX • David Symm, Min.  
S.S. 10:30 am; W.S. 9:30 am

**METHODIST**  
**FIRST UNITED METHODIST**  
507 W. 2nd St.  
S.S. 9:45; W.S. 11:00;  
Praise & Prayer 6 pm;  
First Sunday of Month  
4 pm Parkview Nursing Home Service  
Mon. 9 am Ladies Bible Study;  
Tues. 6 pm Adult Bible Study;  
Pastor Mindy McLanahan,  
272-5517

**LAZBUDDIE METHODIST**  
S.S. 9:30 am; W.S. 10:30 am  
Pastor Ken Peterson  
965-2121

**EL DIVINO SALVADOR U.M.C.**  
619 E. 5th Street & Ave. G,  
Fernando Sanchez, Pastor  
272-6888

**PENTECOSTAL**  
**Iglesia Apostolica de la Fe en Cristo Jesus**  
207 East Ave. G  
Sunday 1:30 pm  
Wednesday 7:30 pm

**INTER DENOMINATIONAL**  
**NEW COVENANT**  
Plainview Hwy.  
Steve Claybrook, Pastor  
W.S. 10 am; Wed. 7 pm  
**MULESHOE COWBOY FELLOWSHIP**  
710 E. American Blvd.  
Steve Friskup, Minister  
272-5199  
Service: 7:30 p.m. Thursday

If you have changes to make to church information, please contact the Journal at 272-4536.

Serve Wholeheartedly, as if you were serving the Lord, not men. Ephesians 6:7

**MULESHOE VALLEY INC.**  
2601 W. American Blvd.  
P.O. Box 631  
Muleshoe, Texas

(806) 272-4266  
Mobile (806) 946-8763  
mviinc@fivearea.com

**EPISCOPAL - CHARISMATIC**  
**ST. CLEMENTS CHURCH COMMUNION OF CHRIST THE REDEEMER**  
Hwy. 214 South • 272-5954  
Father Sergio Leal  
Sun. W.S. 10:30 am

**CHRISTIAN**  
**TRINITY CHRISTIAN CENTER**  
1723 W. American Blvd.  
272-3877  
Reydon Stanford, Pastor  
Sun. W.S. 10:30 am  
**CENTRO CRISTIANO**  
117 E. Birch St.  
Hermanos Barron  
S.S. 10 a.m.; W.S. 11 a.m. & 6 p.m.; Wed. 7 p.m.

**CHURCH OF CHRIST**  
**LARIAT CHURCH OF CHRIST**  
Wesley Roach, Min.  
S.S. 10 a.m.; W.S. 11 a.m. & 6 p.m.; Wed. 7:30 p.m.  
**LAZBUDDIE CHURCH OF CHRIST**  
Nathan Crawford, Min.  
S.S. 9:30 am; W.S. 10:20 am & 5 pm; Wed. 7 pm  
**MULESHOE CHURCH OF CHRIST**  
22nd & W. American Blvd.  
S.S. 9:30 am; W.S. 10:20 am & 6 pm; Wed. 7:30 pm  
**16th & AVE. D**  
**CHURCH OF CHRIST**  
Curtis Shelburne, Min.  
272-4619  
S.S. 9:30 am; W.S. 10:30 am; Growth Gr. 1:30 pm; Wed. 7:00 pm

**SHIPMAN'S BODY SHOP, INC.**  
410 N. First St. • Muleshoe, TX  
Office: 806-272-4408 • Fax: 806-272-3366 • Night # 806-336-5422

**CENTRAL COMPRESS & WAREHOUSE**  
SUDAN, TEXAS

Antiques & Fine Things  
2104 W. American Boulevard  
Muleshoe • 272-4217

Trollbeads  
every story has a bead

**"THE FIVE AREA TELEPHONE COOPERATIVE, INC."**  
West Plains Telecommunications, Inc.  
Five Area Systems, Inc. • Plateau Wireless  
Five Area Long Distance • Five Area Internet  
302 Uvalde Muleshoe, USA (806) 272-5533

**MAPLE COOP GIN**  
927-5501  
Maple, Texas

**Muleshoe Journal**  
201 W. Ave. C, Muleshoe  
OFFICE: 806.272.4536

**1ST BANK** MEMBER FDIC  
202 South First 272-4515

**McCORMICK SEEDS, INC.**  
400 East Ash • 272-3156  
Muleshoe, Texas  
A COMPLETE LINE OF FIELD SEEDS  
Tim McCormick

**Lal's TORTILLA FACTORY**  
105 E. Ash St., Muleshoe • 272-5772  
Phillipians 4; "I can do all things through Christ who strengthens me."

**Deaf Smith County Grain, Inc.**  
Cliff A. Skiles, Jr.  
Jeb S. Skiles

**BOEHNING DAIRY**  
690 CR 45, Earth  
"MILK - A PART OF EVERYTHING THAT IS GOOD!"

**MULESHOE ANIMAL CLINIC**  
GENERAL PRACTICE  
**M V S**  
1430 US Hwy. 84, Muleshoe Office: 272-3061

**BCEC** BAILEY COUNTY ELECTRIC COOPERATIVE ASSOCIATION  
A Touchstone Energy Cooperative  
Muleshoe — 272-4504 Morton — 266-8600

**Muleshoe Journal**  
www.muleshoejournal.com

**McDONALD'S OF MULESHOE**  
1315 W. American Blvd. • 272-3333  
Open at 5 AM every day! i'm lovin' it

**WAYNE COPLEY TRUCKING**  
CALICHE, SAND & ROCK PRODUCTS  
P.O. Box 63 Muleshoe, Texas 79347 (806) 272-3697 Mobile: (806) 946-8072

To Place Your Ad Here  
Call Rhea At

201 W. Ave. C, Muleshoe  
OFFICE: 806.272.4536  
FAX: 806.272.3567

1412 W. American Blvd.  
Muleshoe • 272-4213  
Open: Sun.-Mon. 11AM-11PM  
Lunch Buffet: Sun.-Fri. 11:30 AM-1:30PM  
Monday Night Buffet: 6-8PM  
PIZZA HUT WING STREET IS HERE!  
"Gather round the Good Stuff"

Julie DeBruin, Agent  
1602 West Amer Blvd  
Muleshoe, TX 79347  
Bus: 806-272-7548  
Fax: 806-272-4756

**Muleshoe Journal**  
806-272-4536 or  
806-518-4606



# Obituaries

## Jonnie Ivy

Funeral services for Jonnie Marie Ivy, 69, of Lazbuddie were held on Tuesday Jan. 8, at the First Assembly of God with the Rev. Ryan Pate of Muleshoe and Corey Wallace of Sudan officiating.

Burial followed in Lazbuddie Cemetery.

Jonnie died on Jan. 5, 2013, in Lubbock. She was born on March 25, 1943, in Muleshoe, to James and Guirty (Jones) Burris, and married D.G. "Shorty" Ivy in Muleshoe on Jan. 9, 1965.

Jonnie had lived in the Muleshoe and Lazbuddie area all of her life. She was a member of the First Assembly of God of Muleshoe. She was a homemaker.

She was preceded in by a brother — James Dewayne "Sonny" Burris, and a sister — Naomi Burris.

Survivors include her husband — D.G.



"Shorty" Ivy of Lazbuddie; a daughter — Cami White and husband Bill of Katy; two sons — Dewayne Ivy and wife Michelle of Mesquite, and Lanse Ivy and wife Shelly of Lazbuddie; three sisters — Jean Kemp of Muleshoe, Wanda Kemp and husband James of Muleshoe, and Libby Black of Lubbock; a brother — Jackey Burris of Muleshoe; and eight grandchildren.

Memorials may be sent to the American Diabetes Association, 8008 Slide Rd. Lubbock, Texas 79424.

## John St. Clair

John Arlen St. Clair, 81, passed away on Dec. 19, 2012, in Austin at Stonebriar Nursing Home. He had been a resident there for three years. He was born in Cotton Center on Dec. 6, 1931.

He was known to his friends as Johnie, and he graduated from Cotton Center High School in 1950.

Johnie married Jannette Hancock on June 11, 1950. Johnie and Jannette spent most of their life together farming in the Texas Panhandle and were residents of Muleshoe for 25 years.

Da Johnie, as he was known to his grandkids, never met a stranger and was quick with a warm smile and a big laugh.

He was preceded in death by his son — Johnny Lee St. Clair.

He is survived by his wife of 62 years — Jannette St. Clair. He is also survived by his daughter — Jana Cox; three grandsons — Trenton Cox, Brandon Cox and Devon Cox; a granddaughter-in-law — Christy Cox, and four great-grandchildren; and by two sisters — Darlene Pierce and Juanita Hadley.

Da Johnie will always hold a special place in the hearts of those who knew him. As a husband, father, and grandfather, he was one of a kind, and will always be remembered.

He is at peace now, either riding in or working on a big orange tractor in the sky.

## Death Notices

### Prima Barron

Muleshoe resident Prima Barron, 82, died on Saturday, Dec. 29, 2012. She was born on June 10, 1930, in Mexico to Teodoro and Micaela Moreno. Funeral services were held on Wednesday, Jan. 2, at Immaculate Conception Catholic Church of Muleshoe, followed by burial in Bailey County Cemetery.

### Antonia Herrera

Muleshoe resident Antonia Villegas Herrera 74, died on Thursday, Jan. 3, 2013. She was born on April 21, 1938, to Delfino and Justina Villegas in Mexico. Funeral services were held on Monday, Jan. 7, at the Church of God of the First Born in Muleshoe. Burial followed in Muleshoe Memorial Park Cemetery.

### Robbery... Continued from A1

the suspect was wearing a black vest and a red plaid, long-sleeved shirt.

Individuals with information about the incident are encouraged to contact Lt. Parker or Det. Sgt. Cassie Crandell at the Muleshoe Police Department, 806-272-4569.

information about the incident are encouraged to contact Lt. Parker or Det. Sgt. Cassie Crandell at the Muleshoe Police Department, 806-272-4569.

## JV Ladies Fall To Lady 'Cats In 2012 Opening

By Delton Wilhite  
Sportswriter

The JV Lady Mules held the Littlefield Lady Cats scoreless in the final quarter in their opening game of 2013. But Littlefield held a 35-14 lead entering the final period and the Lady Mules could only make up nine points for a 35-23 final.

Sasha Esparza led the Lady Mules with three hoops in the opening period. Carolina Franco had finally broke the scoring ice with 3:48 left in the first period. The Lady Mules trailed 14-8 after one quarter.

Littlefield added nine points in the second quarter while the Lady Mules could only score four.

Angelina Perez made the Lady Mules first hoop and Esparza chipped in the second. Littlefield led 23-12 at the half.

Esparza made the Lady Mules only basket in the third period.

Perez drained the Lady Mules only 3-pointer with 5:10 left in the ball game. Esmeralda Flores scored a bucket and Shanice Rosas chipped in a free

throw and a basket. Esparza ended the Lady Mules' scoring with a free throw.

Esparza set the scoring pace for the Lady Mules with 11 points. Perez finished with five points, S. Rosas scored all three of her points in the final quarter and Franco and Flores chipped in two points each.

The Lady Mules returned home Tuesday to host the Tulia Lady Hornets and travel to Abernathy to face the Lady Lopes on Jan. 11.

## Ephesians 5:1-2

M	L	R	I	S	K	Y	R	T	Z	G	M	Z	A	G	X	O	S	Y	M	V	E	G	O	E
D	A	P	H	V	Y	I	L	K	B	A	O	T	O	J	L	H	R	W	U	V	K	C	R	P
H	E	A	N	M	L	E	B	B	E	K	R	A	U	G	C	D	P	G	O	W	F	H	V	P
I	T	V	F	K	I	A	C	X	U	J	A	S	T	U	X	Q	V	L	A	O	P	D	N	D
M	K	V	A	K	T	E	Y	I	B	T	T	O	R	W	N	K	F	O	L	V	I	H	Q	W
S	Y	L	G	G	I	D	C	R	F	A	U	J	B	N	J	O	W	L	P	W	S	M	V	Z
E	A	Y	A	H	D	X	T	F	S	I	G	F	B	I	A	M	O	C	B	E	U	U	G	T
L	S	E	K	W	H	N	M	O	K	N	R	B	U	D	U	W	H	E	G	G	X	S	O	O
F	A	C	R	D	D	E	A	C	J	T	O	C	H	J	E	R	D	C	X	U	H	H	D	F
U	F	C	N	O	I	N	H	B	L	H	W	H	A	K	I	V	V	J	O	G	B	J	S	F
P	R	R	W	T	F	I	A	E	L	E	Z	P	V	S	C	L	O	H	K	O	I	Z	E	E
U	A	P	X	W	L	E	A	Z	D	W	L	S	T	V	S	W	C	L	E	A	B	R	X	R
K	G	P	P	D	C	T	R	X	D	A	A	V	W	U	P	O	C	W	Y	G	K	D	A	I
K	R	Z	R	R	J	C	E	E	N	Y	X	B	D	J	R	A	L	X	H	L	J	H	M	N
X	A	E	Z	H	Y	O	X	G	H	S	L	E	C	N	S	N	Q	U	S	R	B	P	G	
H	N	V	A	S	S	D	I	K	U	T	V	X	V	Y	X	Z	L	I	E	C	A	L	A	
U	T	R	N	T	H	Q	O	R	Q	O	W	Y	S	E	S	Y	J	D	O	B	S	Y	E	N
K	F	K	A	O	L	V	O	G	L	U	J	W	P	J	D	O	T	S	R	A	R	P	V	D
E	F	W	R	Q	M	F	C	N	O	H	X	D	J	O	Z	M	N	R	G	F	W	W	H	C
U	H	H	X	J	K	X	W	Q	C	T	A	J	D	K	Z	W	P	Z	U	Y	L	N	I	X

## Obituaries and Death Notices

Death notices will be published free of charge in the Muleshoe Journal.

Obituaries will be published at the rate of \$4.50 per column inch.

In all cases, the death notice and obituary information should be submitted by the funeral home for verification purposes.

The guidelines that will be used to determine if, and how much the publication will cost is as follows:

### Death Notices...

Death notices may include the deceased's name, city of residence, age, date and place of birth, date and place of death, and the names of parents. Survivor information will not be included.

If the notice is to be published prior to any services, the time, date and location of services, and location of burial may be included.

If publication will be after said services, the time will not be included.

### Obituaries...

Obituaries printed in the Muleshoe Journal are printed at the rate of \$4.50 per column inch, and may contain a variety of information, including but not limited to: Date and details of funeral and place of burial; date and place of birth and parents names; date of marriage; biographical information; names of parents, spouses or children who have preceded the person in death; names of survivors; and where memorials may be directed.

A black and white photo will be included; however, there is an additional charge of \$75 to include a color photograph.

**W & J Auction**

## Let The Bidding Begin

### MOVING AUCTION

**Sat., January 12, 2013**  
**608 E 17<sup>th</sup> Lane, Portales, NM-10:30 am**

Turn Off Of Kilgore Onto 17<sup>th</sup> Place \* Viewing Friday 9 To 5

**NICE CLEAN FURNITURE AND APPLIANCES**

\*\*\*\*\* NO BUYERS PREMIUM \* www.wjauction.com \*\*\*\*\*

4205 S Prince Clovis, NM 88101 \* Terms: Cash, Check, Visa or Mastercard

**W & J Auction, Inc.**

OUR KNOWLEDGE IS YOUR SECURITY  
AUCTIONEERS: James Priest, Gid Priest, Butch Priest

TX LIC # 11877 & 15577  
1-800-822-1243

## SHOP THESE

### MOLESHOE MERCHANTS!

**Storewide Sale thru January!**  
Bring in this coupon and get  
**\$10 OFF**  
any Square Toe Boots  
Expires • 1-31-13

**EL NORTENO**  
WESTERN WEAR  
308 S Main • 272-4884

1105

**RED WING SHOES®**  
Made in USA

**The Fair Store**  
120 Main 272-3500

## Interested in this space?

### Call Rhea at the Muleshoe Journal

**272-4536**  
or  
**806-518-4606**

WE'RE AT YOUR

# Service

Visit the following local businesses for quality service and customer satisfaction!

---

Interested in advertising your business here?

We've got low weekly rates!

Contact **Rhea Gonzales** at the **Muleshoe Journal** 806-272-4536

Support the Boosters Who Support Our Teams, Schools and Community!

**MULESHOE ANIMAL CLINIC & MULESHOE VET SUPPLY**

1430 US HWY. 84, MULESHOE  
272-3061 OR 272-4990

**BAILEY COUNTY ELECTRIC COOPERATIVE ASSN.**

610 E. American Blvd.  
Muleshoe • 272-4504

**CHS**

Service Center  
Clovis Hwy. West  
Muleshoe • 272-4203  
Bruce Bruns, Location Mgr.

**TIRE & SERVICE TIREWORKS TIRE PROS**

Glenn Kahlich • M: 806-344-7034  
220 E. American Blvd.  
Muleshoe, TX 79347 • 272-4594

**McDONALD'S OF MULESHOE**

1315 W. American Blvd.  
806-272-3333

## Muleshoe Journal

www.muleshoejournal.com

**201 W. Ave. C • 272-4536**

Striving to be your source for local news!

H&R BLOCK

104 E. Ave C  
Muleshoe, TX 79347  
272-3332

WE SUPPORT THE MULES & LADY MULES!

Jan 11th • JVB - 5:00 PM • VB - 8:00 PM (Abernathy, There)  
JVG - 5:00 PM • VG - 6:30 PM (Abernathy, There)  
Jan 15th • JVB - 5:00 PM • VB - 8:00 PM (Whitharral, Here)  
JVG - 5:00 PM • VG - 6:30 PM (Whitharral, Here)  
Jan. 18th • JVG - 5:00 PM • VG - 6:30 PM • (Friona, There)  
JVB - 5:00 PM • VB - 8:00 PM • (Friona, There)

Thank you for reading!





From left to right: Candace Roper, Paul Narduzzo, Rickie Warren, Barbara Finney, LeeAnn Gallman, Sandy Vandevender, Dean Church and Rod Crile

## MAEF Receives CoBank Grant Funds

A \$5,000 matching grant has been awarded to the Muleshoe Area Education Foundation by CoBank, through Bailey County Electric Cooperative.

CoBank made this matching grant

available to cooperatives they finance across rural America through a "Sharing Success" program.

"BCEC took the opportunity to participate and sent an application for different

non-profit organizations in the Muleshoe area and is pleased to announce that Muleshoe Area Education Foundation received the grant in this area," BCEC representative Rickie Warren said.



Photograph by Larry Thornton

## Quick Response

The quick response of the Muleshoe Volunteer Fire Department kept a local warehouse south of the Bailey County FFA barn from receiving significant damage from a fire this past week.

[www.muleshoejournal.com](http://www.muleshoejournal.com)



# The Sudan Buzzy

## Superintendent Lance Responds To Parental Safety Concerns

The Sudan Independent School District recently responded to the recent tragic events at Sandy Hook Elementary School in Newtown, Conn.

Superintendent Bo Lance sent a letter to parents to reassure and outline steps that Sudan ISD has taken to insure the safety of its students.

The letter reads as follows:

Friday's tragic school shooting at Sandy Hook

Elementary shooting is a grim reminder of what a changing and increasingly violent world we live in. It is getting harder to say that we are secluded from such a disaster.

This is not correspondence to assure you as parents, grandparents, family and friends that something of this nature will never happen at our campus, but rather it is to provide you with steps we have taken to make our school more

secure and to get input on what future actions we can take to make Sudan ISD as safe as possible.

A few years ago we limited access to each campus by locking most entrance doors. Earlier this year we installed a lock on the elementary entrance that requires school personnel approval to enter after classes have started.

All classroom doors can be locked to prevent outside entry and

lockdown procedures are in place.

We want to know your concerns and suggestions to make our school safe. Feel free to email your principal, counselor, teachers, or me. We also invite you to call or come by and visit with any of us.

We want you to know that the safety of our students, teachers, and personnel is of extreme importance to us and we will look into all measures to achieve that goal.

**SUDAN ISD**  
**EXCELLENCE**  
 IN  
**EDUCATION**  
  
**WWW.SUDANISD.NET**  
 Hwy. 303 PHONE: (806) 227-2431  
 SUDAN, TX 79371 FAX: (806) 227-2146

**SUDAN VETERINARY SERVICES**  
  
**CHRIS LARSON D.V.M.**  
 ♦Specializing in Dairy Medicine♦  
 ♦Small Animal & Equine♦  
 ♦Same Day Minor Surgery♦  
 ♦Farm & House Calls♦  
 ♦Climate Controlled Boarding♦  
 ♦Services by Appointment Only♦  
 208 Ormand Street  
 806-227-2444 806-241-1915

## Sudan ISD Has A Busy Schedule

By Cheri Sain  
 Sudan Correspondent

School has started off fast and furious with a full week's schedule including a busy weekend this week.

On Monday, members of STUCO and Sudan ISD sponsored another blood drive for Freddie Maxwell.

Maxwell was involved in a terrible car crash and is continuing to recover in Lubbock.

At the same time, the eighth grade girls and boys plus the seventh grade boys played Morton in district junior

high action.

The eighth grade girls and boys both won their games, but the seventh grade boys lost.

Tuesday night sees the JV boys and varsity boys playing at West Texas A&M's Box for a non-district game against Dalhart.

It will be the boys' last non-district game before district play begins against Springlake-Earth in an away game at the Wolverine gym.

The girls JV and varsity teams will play their second district game against Bovina at home. The girls' varsity team lost a close game in their first district game against Morton last Friday night with a score of 41-45.

Area 4-H and FFA students will participate in the Lamb County Stock Show at Littlefield this weekend starting

on Thursday.

The seventh and eighth grade girls will also travel to Idalou for a basketball tournament. And, parents and students are invited to attend a SPIN meeting at 6 p.m.

On Friday, it is the official end to the third six weeks. Because it is the end of the official end to the semester, the teachers will have a workday. School will be dismissed at noon.

The public is welcome to attend a retirement reception for Susan Baker, CA Williams, and Maria Montez that will be held in the commons area at 12:15 p.m.

Later that night, the JV girls and boys plus the varsity boys and girls will play Springlake-Earth in district action.

Saturday does

not slow down at all for the teachers and students. The Sudan Speech Team will host a speech tournament at the school.

Twenty-three schools will participate in various speech events. The junior high girls will continue their tournament in Idalou.


The county stock show continues and finishes that night. The power lifting team will travel to Bovina for their first meet of the year.

Some of the other UIL coaches and students will participate in the Red Raider Classic at Texas Tech in Lubbock.

Finally, the high school ATSSB area band tryouts will happen in Lubbock as well.

**News about your college student**  
 If your college student is graduating or has made the Dean's or President's List, in order for that information to appear in the *Muleshoe Journal*, we must receive notice from the respective educational institution.  
 Your son or daughter must sign a release so the information can be sent to us.  
 Have them visit their bursar's office to sign a form indicating they wish to share their good news!  
 Once permission to share information has been granted, the college or university should send the info via email to: editor@muleshoejournal.com.

  
**KING AG AVIATION, INC.**  
*Specializing in Aerial Spraying - Insecticide, Herbicide & Seeding - Field Scouting Service*  
 ~~~~~  
**Johnny King** Home (806) 227-2211  
 P.O. Box 189 Fax (806) 946-3659  
 Sudan, Texas 79371 Mobile (806) 946-7309  
 Business (806) 946-3399 Vernon Office (940) 552-6102

**START THE NEW YEAR WITH A BRIGHT SMILE!**  
  
 Come in and see  
**Hillary Harris, Amber Garcia, Jessica Haltom, and J.W. Haltom**  
**Dr. J.W. Haltom Family Dentistry**  
 • Nitrous oxide available  
 • Emergencies seen promptly.  
 • Insurance and credit cards accepted.  
**320 E. 8th St., Littlefield**  
 Hours: Mon. - Thurs. 8 to 5 Fri. 8 to noon  
**For Appt.: 385-6935**

**COMPOSTED CATTLE MANURE**  
 Farwell Feed Yard -- Farwell  
 Cargill Cattle Feeders -- Bovina  
 Bovina Feeders -- Lazbuddie  
**BRANDON SCHILLING**  
 Mobile 806-225-7700  
 OFFICE 1-800-650-2550  
**NORTH PLAINS COMPOST, INC.**  
 PO BOX 1099  
 FARWELL, TEXAS 79325



# Farm Bill... Continued from A2

looks forward to continuing to work for prompt enactment of balanced long-term policy that is fiscally responsible, consistent with U.S. trade obligations and provides certainty for

farmers, consumers, agribusinesses and rural communities," the NCC said in a news release. "The industry also welcomes the action of Congress in reforming the estate tax to lessen the

devastating economic impact it can have on farm families who want to continue producing food and fiber in future generations," according to the NCC release. "The House and Senate Agriculture

Committees will begin work on a new farm bill in the near future, and PCG will continue to monitor progress and send updates as necessary," according to a Plains Cotton Growers representative.



**Lance Insurance**

**Competitive Rates, Variety of Leading Companies For Home, Auto, Commercial and Crop**

**806-227-2466**

# CLASSIFIEDS

**Deadline is Monday at noon to place a classified ad. Call 272-4536.**

## LEGAL PUBLIC NOTICE

**CITY OF Muleshoe APPLI-CATION NOTICE HOME - HOMEOWNER REHABILITATION ASSISTANCE PROGRAM TO REHABILITATE/ RECONSTRUCT HOME FOR LOW-INCOME HOMEOWNERS** The City of Muleshoe has received funds through the Texas Department of Housing and Community Affairs to administer a HOME Homeowner Rehabilitation Assistance Program within the city limits of Muleshoe, Texas. This program is designed to reconstruct homes for eligible low-income homeowners who occupy their homes. The application period will be open from January 10, 2013 to February 11, 2013. The first six (6) households to (1) complete and

return the application information, (2) provide all requested information to verify eligibility, (3) meet all eligibility requirements and (4) agree to participate in the program will be served. Application packets will be available for pick up at the Muleshoe City Hall starting on January 10, 2013. The City of Muleshoe is an Equal Housing Opportunity entity. *Published in the Muleshoe Journal January 10, 2013.*

## HELP WANTED

Runningwater Draw Care Center seeking LVN 2 to 10 p.m. shift, full time, benefits available, competitive pay. Non profit skilled nursing facility, 800 West 13th St., Olton, TX. Please call for appointment at 806-285-2677.

**Accolade Home Care** is currently seeking a full time Registered Nurse in the Morton, Texas area. Accolade Home Care considers it an honor to care for our patients & to serve our employees. We offer competitive salaries, generous PTO benefits, excellent health and life options and a supportive work environment. If you are interested in learning more about this amazing opportunity, please contact Shelly Olis at 806-266-0022 or email your resume to shelly.olis@FMS-Regional.com

**Cargill Cattle Feeders, Bovina Texas** - positions available in the cattle department. Cattle department responsibilities include processing cattle, doctoring, shipping, riding pens, and other duties as assigned. Applicants must be willing to perform all of these responsibilities. Work schedule will include 1 & 1/2 days off on most weeks and hours will average 50-60 straight wage no overtime.

Position includes full benefits package including 401K and Health Insurance. Interested applicants should apply in person at Cargill Cattle Feeders 600 US Highway 60, (806)225-4400.

10 Temp positions: Farm work, 02/01/13 to 11/30/13 @ 9.30 p/hr. Housing provided, 48 hrs p/wk. 3/4 guarantee, transportation and subsistence expenses to work-site paid after 50% completion of contract. Tools, equipment provided at no cost. Min. 3 months experience. Duties: drive, plant, harvest, store grain, repair tractor, rock picker, plow, disc, drill, harvest equip, sprayer, grain truck, basic literacy math skills required. CEM Partnership, East Brickeys, AR. **Apply at nearest AR Dept of Workforce Services office, (501)683-2372, use job listing # 503220.**

**HOUSE FOR SALE BY OWNER**  
House for Sale: Progress TX 1700 sq ft on 3 lots. Wa-

ter well, new heat pumps, roof and some new windows. 3BR, 2 full baths, 1/2 bath w/ utility, 2Lg Living areas. 2 car garage and incinerator, all electric. Appliances and some furniture may be included. As is \$78,500. Serious interest only! Please call Gary at 806-893-0716.

## SERVICES

**Concealed Handgun Classes**, call for class dates. Private classes available, DPS Certified instructor Toby Turpen 806-364-6362.

## HELP WANTED

**Sonic Drive-In** is now accepting applications for assistant. Apply in person at 1633 W. American Blvd. EOE

## FARM & RANCH SERVICES

Custom CRP Grass Planting and shredding. Free estimates! Call 806-638-6449 or 575-760-2085.

**Thanks for reading!**

## HELP WANTED

**Health Care Professionals**

• **Licensed Vocational Nurse**  
\$2,000 Sign on Bonus if hired by 1/18/13 with agreement

We offer a competitive salary and benefits are available. If you are a person dedicated to providing quality care, please apply in person to or fax resume to:

**Littlefield Nursing and Rehabilitation, L.P.**  
1241 W Marshall Howard Blvd.  
Littlefield, TX 79339  
Phone: 806-385-6600  
Fax: 806-385-4688

[www.daybreakventure.com](http://www.daybreakventure.com)  
EOE

**DRIVER**

**LIMITED OPENINGS!**  
**Based in Clovis, NM**

**HOME DAILY**

Set Route & Great Pay  
Free Medical Benefits Avail.  
CDL-A w/ 1 yr. T/T exp.  
Must have tank endorsement

**800-879-7826**  
[www.ruan.com/jobs](http://www.ruan.com/jobs)

**RUAN**

Dedicated to Diversity. EOE

## REAL ESTATE

**Vic Coker Land Co.**  
Agricultural Real Estate

**Country Homes**

**New Listing!- Muleshoe area.** Brick home on 1.5 acres. 3 bedroom, 2 bath, nicely updated, metal roof. Property also has a metal shop and a pole barn for horses or FFA/4-H projects.

**Northwestern Lamb County - Pleasant Valley.** 3 or 4 bedrooms, 2 1/2 bath, fireplace, sunrooms, granite counter tops, 2 car garage, on 5.94 acres on pavement.

**INCORPORATED**

**Farmland/Investment**

**Western Bailey County - Irrigated** - 174 acres, 2 irrigation wells, Valley Sprinkler, 1 domestic well, on pavement, corners in grass.

**Bailey County**- 1140 acres of recreational property with an income stream. 767 acres in C.R.P. 9 years remaining on contract. Mule Deer, Dove, Pheasant and Quail. Some improvements.

**Lynn & Terry Counties - GRP** - 270 acres in CRP, 50 acres in native pasture for a total of 320 needed acres.

**Bailey and Parmer Counties** - 960 acres, 9 wells, 5 center pivot sprinklers, Brick house w/ improvements.

**Bailey County** - 177 acres, 10 year CRP contract. On pavement, could be a nice recreational place. Mule deer and other wildlife in the area.

**Vic Coker, Broker**      **Barry Coker, Agent**  
Cell 806-946-7242      Cell 806-787-0917  
316 Main Street • Muleshoe, Texas  
Office: 806-272-3100 • [www.vicoland.com](http://www.vicoland.com)

## REAL ESTATE

**TRIANGLE REALTY**

**REALTY**

Triangle Realty, LLC  
(806) 367-8334  
[info@trianglererealtyllc.com](mailto:info@trianglererealtyllc.com)

**Excellent Farmland**  
Located East of Springlake, TX. 120 acres under circle sprinkler system; two 10 acre dry-land corners. Circle is currently in cotton. Call Phyllis at 806-685-1543

Call Phyllis for all your real estate needs!

**POSITIONS AVAILABLE:**

**Insurance Clerk**  
Full Time Position

The Insurance Clerk files inpatient and outpatient hospital claims to insurance carriers. Computer skills required. Prior claims experience preferred.

• **Competitive pay • Paid vacation, sick & holidays**  
• **Group health, life, dental, vision & more**  
• **Retirement & other benefits**

**Certified Nursing Assistant**  
Part Time Position

Certification required. Experience preferred.

(Complete job descriptions available online at [ParmerMedicalCenter.com](http://ParmerMedicalCenter.com))

**To apply, send resume or fill out an application at:**

Parmer Medical Center Human Resources  
1307 Cleveland Friona, TX 79035

**ParmerMedicalCenter.com**

## REAL ESTATE

**Medwards REALTORS**

LAND

**360 acres - 1440 acres - 360 acres**

**Sudan** - Texas 192 acres, Lateral 1995 Valley Sprinkler Five wells, currently in alfalfa.

**Sudan** - Texas 180 acres, 1982 Valley Sprinkler, Three wells, currently in alfalfa.

**Sudan Texas** - 177 acres, Valley sprinkler. 3 wells, 1/2 currently in cotton.

**Sudan Texas** - 174 acres, Valley sprinkler. 3 wells, 1/4 currently in peanuts.

**RESIDENTIAL**

**Sudan** - 539 fm 298. Beautiful 4/3/2. 2959 sf. Two Story Home just outside of town. Built in 2007 this is a must see home. By appointment only. \$350,000.00

**Sudan** - 201 Ormand, 4 BR, 2 bath, 3 Car Garage and large family room with fireplace, New updates and tile. \$110,000.00

**Sudan** - Country Home, 3BR,2B, Carport and Sun Room. All on four acres, one mile north of Sudan. Asking \$75,000.00

**COMMERCIAL**

**Littlefield** - 701 West 3rd. Laguna Market: 40x40 metal building, combination Deli and convenience store. Money Maker, Large Lot close to school. Frisbee course brings in a lot of customers. \$130,000

**Monty Edwards**      **Vernie Moore**  
Broker      Agent  
(806) 227-2465

Free consultation! We will work with other brokers.

[www.medwardsrealtors.com](http://www.medwardsrealtors.com)

**Byrd Realty**

**Ronald Byrd**  
575-760-1495  
Licensed Broker

**Crista Bass**  
806-946-7261  
Sales Associate

**Carleton Johnson**  
806-789-4289  
Sales Associate

• **New Listing**-Very nice 2 bedroom, 2 bath brick home, central heat and air, appliances, large utility, 2 car garage, sprinkler system, storage building, fenced backyard. Priced to sell!!

• **New Country Home on Highway**-Extremely nice 4 bedroom, 3 1/2 bath brick home on 46.61 acres, in a beautiful setting. Two living areas, large utility/office, sprinkler system, septic system, city water, 2 car garage, approx. 1200 sq.ft. shop, out buildings, fenced backyard, patio, this house is a must see!!

• **ONLY \$45,000.00** - Great Investment Property-3 bedroom, 2 bath home, central air and heat, carport, fenced backyard.

• **ONLY \$69,900.00** - Nice large 3 or 4 bedroom, 1 1/2 bath home, central air and heat, electric fireplace, appliances, large living room, utility, all electric, covered patio, carport, fenced backyard, storage building, great home on corner lot, Priced to sell!!!!

• **ONLY \$45,000** - Nice 2 or 3 bedroom, 1 3/4 bath home, hard wood floors, fireplace, single car garage, fenced backyard, patio, would make a great starter or investment property.

• **PRICE REDUCED In Country on 10 acres.** Nice 4 bedroom, 2 1/2 bath brick home, fireplace, utility, built-ins, new windows, roof and air, large storage, 2 car garage. Call for more details.

• **ONLY \$69,900.00** - Nice 3 bedroom, 1 bath brick home, central air and heat, appliances, single car garage, carport, fenced backyard.

**228 Main Street, Muleshoe, Texas**  
Check all of our listings at  
[www.byrdrealestate.net](http://www.byrdrealestate.net)

## REAL ESTATE

**Nieman Realty**

116 E. Ave. C • George Nieman, Broker • 272-5285 or 272-5286  
**CHECK OUR LISTING INFO., PHOTOS, ETC. ON-LINE AT [www.niemanrealty.com](http://www.niemanrealty.com)**  
**HAVE BUYERS! NEED HOME AND LAND LISTINGS!!**

**HIGH SCHOOL AREA**

• NICE 3-2-2 Home, corner lot, built-ins, Cent. A&H, workshop/storage plus storage building!! 1974' lvg. area!! **\$96K!! PRICE REDUCED \$79,500**

• Remodeled 3-2-1 Det. Garage Home, Cent. A&H, built-ins, hdwood & tile floors, 4 fans, fenced yd., approx. 1520' lv. area!! **\$80K!!! Price Reduced \$74K**

• 3-1.5-1 carport Home, Cent. A&H, stove thermal windows, "AS IS", MAKE OFFER!! \$47K!!!

• 3 Bedroom, 2 Bath, 2 Car Garage Home on corner lot, wall furnace heat, win. refrig. air, stove, refrigerator, ceiling fans w/lights, large wkshop in garage, fenced yd., stor. bldg., includes 1 bdrm. rental unit!! **\$83,450!!**

**RICHLAND HILLS • PARKRIDGE • HIGHLAND**

• 2 Nicely Remodeled Duplex Units & 1 NEW Duplex Unit!! **Price Reduced!! \$350K!!!!**

• Nicely Remodeled 3-2-2 Brick, Cent. A&H, built-ins, FP w/wood pellet insert, corner lot, fenced yd., auto. spkrl., + lot w/stor. bldg.!! 2159' lv. area!! **\$150K!! REDUCED!**

• VERY NICE 3-2.5-2 Brick Home, Cent. A&H, built-ins, FP, approx. 2749' lv.area, lots of storage, nice courtyard & landscaping, workshop/storage/fenced yd., Much More!! Reduced-\$170K!

• VERY NICE 3-2-2 Brick Home on corner lot, Cent. A&H, built-ins, FP, remodeled bathrooms, nice carpet & tile, sunroom, fenced yd., auto. spkrl., approx. 2216' liv area!! **\$125K!!**

• BEAUTIFUL 3-2-2 Brick Home, (2007), approx. 1575' lv. area, built-ins, ceiling fans, auto spkrl., fenced yd.!! **\$139,500!! PRICE REDUCED!!**

• 2-1 Home, wall furnace heat, window evap. air!! **\$30,000!!!**

• NICELY REMODELED 3-2-2 Brick Home, Approx. 2474' lv. area, Geothermal Cent. A&H, Built-ins, FP, cov. porch & patio, auto. spkrl., fenced yd!! **MUCH MORE!! \$170,000!!**

**LENAU • COUNTRY CLUB**

• 3 Bdrm, 2 bath, 2 carport, Cent A&H, Dishwasher, WB Stove, approx. 2156' lv. area, **\$60K!!**

**RURAL**

• VERY NICE CUSTOM BUILT 3 Bedroom, 3 Bath, 2 car garage home, at edge of town on 80 acres!! Geothermal heat & air, built-ins, FP, ash cabinets, approx. 2544' main lv. area plus 625' finished basement w/safe & storage, spkrl system, beautiful trees and landscaping. circle spkrl, 5 wire barbwire fence, 36' x 48' metal insulated bldg w/2 12' doors!! **MUCH MORE!!**

• 3-1 1/2-1 Home on 8 acres, approx. 1664' lv. area, Cent. A&H, built-ins, sunroom, storm shelter, stor. room, 2 CP, RV port, 1440' metal bldg.!! **MORE!! \$110K!!!**

• NICE 4.8 acre homesites, deed restricted!! **\$17,500!!**

• 3-2-2 HOME ON 2 AC. (2860 FM 303)- APPROX. 2146' lv. area, DW, ceiling fans, thermal windows, lg. conc. patio, workshop/storage!! **\$89,000!! \$80 K!!**

• West of Sudan 3-2-2 Brick Home on 5.57 acres, Cent. A&H, builtins, approx. 2688' lv. area, fenced yd., 40' x 80' quonset barn!! **MUCH MORE!! \$135K!!**

• NICE 3-2-2 Home on 11 acres at edge of town, Cent. A&H, built-ins, FP, freshly painted interior, thermal windows & doors, plus 1 bdrm house, workshop, storage, greenhouse, plus 3 garages, barns & outbuildings!! **\$155,000!!**

• FM 1760 @ edge of town, nice 3-2-2 carport home on 3 acres, cent. A&H, built-ins, FP, approx. 2253' lv area, fenced, horse barn w/corral, hay & tack room!! **\$105K!!!!**

• LARIAT AREA - 3-1 Home, Cent. heat, 5 acres, 1989 lv area (2300) 2870 sq ft, out bldgs., **Reduced \$39K!! POSSIBLE OWNER FINANCE!!**

• VERY NICE 4-3 doublewide (2006) on 7.38 acres, Cent. A&H, built-ins, FP, fenced yd., 25' x 40' metal bldg., septic system, domestic well, on pavement close to town!! **PRICE REDUCED!! \$130,000!!!**

• FM 303-4 Bedroom, 2 Bath, 2 Det. Garage, 2 acre tract, Par. Cent. A&H, DW, \$8000, thermal windows, storm doors, fans, stor. bldg.!! **\$800!! \$74,000!!**

**LAND & COMMERCIAL**

• Building w/approx. 3300' plus 1040' upstairs, Cent. A&H, 2 restrooms, **MORE!! \$39,500!! MAKE OFFER!!**

• Approx. 1080' metal bldg. w/off. & 3 bay garage/workshop area plus chain link fenced area!! **\$39,500!!**

• GREAT BUSINESS LOCATION - 13000' Bldg., 7000' paved parking, corner lot, Hwy. 84 & Main. A&H, \$100,000!!! **Price Reduced \$80,000!!**

• 101.8 acres, edge of town, pasture & farm land, 1 irrig. well!! **\$122,244!!**

• FOR LEASE - 2100' office space + 20,500' warehouse area!!

• 308 W 2nd - 2856' bldg. - former Odd Fellows Lodge, **PRICED TO SELL!! \$31,500**

**Subscribe Today!**



The coldest days of the year are...

...great for ice skating and sledding.



# Newspaper Fun!

www.readingclubfun.com

Animills LLC © 2013 V10-N1

Brrr!

## Arctic Action!

## Lands of Ice and Snow!

Can you read these clues and fill in the puzzle with the "icy" items?

Can you imagine living in a land of cold, snow and ice all year long?

The coldest areas of the world are the Polar regions, North and South. Greenland, Siberia, Alaska and Canada are close to the North Pole. Antarctica is the land mass that surrounds the South Pole.

People started exploring these lands of cold, snow and ice many years ago. In the area of the North Pole, people came to find new trade routes to the Far East. Some explorers wanted to be the first to reach the poles. Many kept written records of their observations.

Today, scientists study weather patterns, glacial movement and animal life in the Polar regions. These lands give clues to the Ice Ages, during which a large part of the Earth's surface was covered with ice!

Print out our new puzzles: **Animals Of Cold Lands, Budgeting for a Get-Together, and A New Year!** [www.readingclubfun.com](http://www.readingclubfun.com)

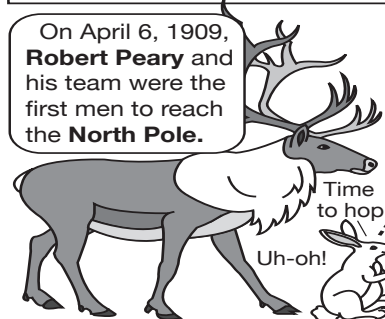
Free puzzles

### + C Items!

There are lots of "icy" items. Can you help little penguin catch them? **Find and circle them in the puzzle.**

- |            |           |             |            |
|------------|-----------|-------------|------------|
| ice skates | ice cream | ice hockey  | icebreaker |
| ice sheet  | ice cave  | ice fishing | iceboating |
| ice caps   | Iceland   | iceberg     | icehouse   |
| ice pick   | ice milk  | ice pack    | ice storm  |

On April 6, 1909, **Robert Peary** and his team were the first men to reach the **North Pole**.



Time for lunch!

Later, on December 14, 1911, **Roald Amundsen**, from Norway, and his team were the first to reach the **South Pole**.

If you visit Mount Rainier National Park in the state of Washington or Yosemite National Park in California...



...you will learn about the Ice Ages. You will see signs of a time when it was "winter" all year long!

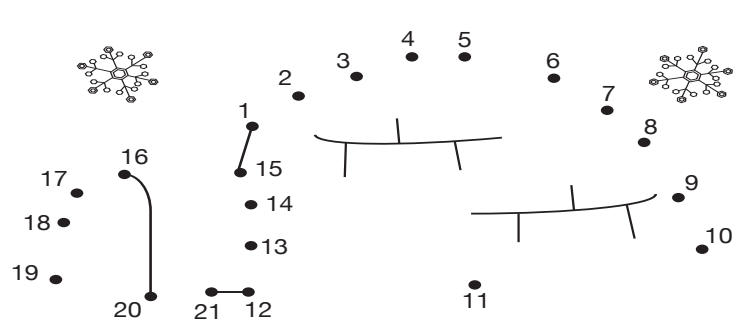
Really? Not even a worm?

I C E S K A T E S P O J N F G R E S C V I L N G Y B  
 J N U Y L H S F T J I O C L K J H I  
 H B J I I M J H N G E A E L K M J C  
 V E T R M J I O U Y T P O I U F N H B G D  
 F D S E T E B I M K Y L O P O I U Y I H V G F D H  
 F D S C C G C J H U Y K J H G S G V G K O  
 G K O U I C E L A N D K J U G G F R E K H U Y H K I R V U  
 X C H U I J H J H R E S A D G N I T A O B E C I O P E C U  
 B I K J O P O L E J N U Y G T R F D V C U Y G N K H B F E  
 F P K N H Y C F D S I P O K I U J Y H T G R F G K J E K T  
 A E E I U E K N G V C T I C E S H E E T R T H G D J C I Y  
 V C J T I C E C A V E O U H B S H E R O V S E W Q A I W H  
 K I M J Y G Y L K J C U R E K A E R B E C I L K P J U K E  
 U V G B U J K I O L A I O P L K J N M H Y T G E K O U Y D  
 K J N H Y T R E D F P D F T G H B J U I C E C R E A M L K  
 I C E S T O R M K J S R T G B H J U I K M I T K H N E S A

### Snow House Pop Quiz!

The Inuit people (Eskimos) of Greenland and the Canadian Arctic live in lands of ice and snow. They have learned how to thrive there. Those who travel or hunt often have the skills to build an igloo or a snowhouse to shelter themselves. Here is a short pop quiz about igloos. **Read each statement about igloos and circle "T" if it is true or "F" if it is false.**

- |                                                                         |   |   |
|-------------------------------------------------------------------------|---|---|
| 1. An igloo is a dome-shaped house made out of blocks of dirt.          | T | F |
| 2. A hunter or traveler could build an igloo for a shelter.             | T | F |
| 3. Inuit families live in wooden or other kinds of houses today.        | T | F |
| 4. An igloo has a short tunnel entrance to help keep out wind and cold. | T | F |
| 5. It is very cold outside an igloo, and colder inside.                 | T | F |



# WELCOME

## to the Annual Bailey County Junior Livestock Show

### January 18<sup>th</sup> & 19<sup>th</sup>

#### Bailey County Coliseum

Friday, Jan. 18 – 8:30 a.m. Swine, Beef, Dairy, Sheep and Goat • 11:00 a.m. Lunch  
 Saturday, January 19 -- 8:30 a.m

|                                                                                                                                                                                                                                                                                                                              |                                                                                                                                                                                                                                                                                                                                         |                                                                                                                    |                                                                                               |                                                                                                    |                                                                                                      |
|------------------------------------------------------------------------------------------------------------------------------------------------------------------------------------------------------------------------------------------------------------------------------------------------------------------------------|-----------------------------------------------------------------------------------------------------------------------------------------------------------------------------------------------------------------------------------------------------------------------------------------------------------------------------------------|--------------------------------------------------------------------------------------------------------------------|-----------------------------------------------------------------------------------------------|----------------------------------------------------------------------------------------------------|------------------------------------------------------------------------------------------------------|
| <b>The Muleshoe Chamber of Commerce and Agriculture</b><br>115 E American Blvd.<br>Muleshoe, TX<br>272-4248                                                                                                                                                                                                                  | <br><b>"THE FIVE AREA TELEPHONE COOPERATIVE, INC."</b><br>West Plains Telecommunications, Inc.<br>Five Area Telephone Cooperative, Inc.<br>Five Area Long Distance<br>5A Broadband<br>Five Area Systems • Fivearea.com<br>West Plains Telecommunications<br>Plateau Wireless Network<br>Sandy Vandevender, CEO<br>302 Uvalde • 272-5533 | <b>Muleshoe Journal</b><br>Striving to be your source for local news!<br>201 W. Ave. C<br>P.O. Box 449<br>272-4536 | <br><b>BAILEY COUNTY ELECTRIC COOPERATIVE ASSOCIATION</b><br>610 E. American Blvd<br>272-4504 | <b>Muleshoe Feed Barn HI-PRO FEEDS</b><br>311 W. American Blvd.<br>272-5626                        | <b>Lasting Impressions Florals &amp; Gifts</b><br>516 S. First Street<br>Muleshoe, Texas<br>272-4287 |
| <b>McINTYRE INSURANCE AGENCY. GP</b><br>• MULTI PERIL CROP INSURANCE<br>• CROP HAIL INSURANCE<br>• LIVESTOCK INSURANCE<br>• PASTURE LAND INSURANCE<br>DELTON E. WILHITE<br>P.O. BOX 587<br>228 Main Street Muleshoe, TX 79347<br>806-272-7680 • 888-272-7682<br>Fax 806-272-7681 • Cell 806-566-8228<br>mcicrop@fivearea.com | <br><b>Azteca Milling LP</b><br>272-6701                                                                                                                                                                                                                                                                                                | <b>Livestock</b><br>                                                                                               | <b>Hereford Feed Ingredients</b><br>232 S. Main • 272-5871<br>David Tipps                     | <b>J&amp;S Dairy</b><br><br>1260 CR 1038, Muleshoe<br>272-7706                                     |                                                                                                      |
| <br><b>TIRE &amp; SERVICE TIREWORKS TIRE PROS</b><br><br>Glenn Kahlich<br>Cell: 806-344-7034<br>220 E. American Blvd.<br>Muleshoe, TX 79347<br>806-272-4594                                                                                                                                                                  | <b>WEST TEXAS GAS INC.</b><br>705 N. First, Muleshoe<br>272-3157<br>                                                                                                                                                                                                                                                                    | <b>Dale Oil Co.</b><br>413 W. AMERICAN BLVD.<br>MULESHOE • 272-5576<br>                                            | <b>Dodd Cotton Gin</b><br>2912 CR 504<br>965-2311                                             | <br><b>Farmers Co-Op Gin Assn. of Enochs</b><br>3081 State Hwy 214<br>Morton, TX 79346<br>927-5511 | <br>104 E. Ave. C.<br>Muleshoe, TX<br>272-3332                                                       |

Support our FFA & 4-H youth by attending all events!