



DeShazo Elementary
registration set...
Page 10



Heritage Foundation News:
Ray, Donna West Day...
Page 6



Editorial:
Denying God...
Page 3



Muleshoe Journal



Striving to be your source for local news

Volume 88, No. 32

www.muleshoejournal.com

Muleshoe, Texas

50¢

August 9, 2007

Commissioners court discusses new budget

By Larry Thornton
Managing Editor

The Bailey County Commissioners' Court met Friday to put the final touches to the FY '07-08 budget.

According to County Judge Sherri Harrison, the proposed county general fund expenditure budget approaches \$3 million, and while county finances look better than last year, it was

is going up."

However, the judge made it clear that even if the county's tax rate was going to have to increase it would not be enough to require a rollback election.

While discussing how a portion of the general fund would be split up to maintain the county's farm to market roads, it was noted that the five cents set aside for the

F&M roads last year had generated \$141,000.

Previously, these monies were split between the county precincts based upon the

amount of paved roads the precinct was maintaining, but it was noted that this formula excluded Precinct 4 from receiving any funds because it doesn't have any paved roads.

Precinct 2 Commissioner C.E. Grant said the "best deal" would be for the court to set aside an amount to be used on maintenance of the county's paved roads and dividing the remaining funds between the precincts.

Precinct 3 Commissioner Joey Kindle appeared to agree. "These guys have more traffic, more people and more dairies," he said, referring to Precincts 1 and 2.

"The general fund isn't

hurting right now," Harrison said, "so we could move some of these funds into precinct funds.

Eventually, the court agreed to funding the four precincts with 15 percent of the general fund, an amount slightly more than \$476,000, which would be split for the upcoming year with Precincts 3 and 4 receiving about \$99,000 each, and Precincts 1 and 2 receiving about \$139,000.

The judge also said the court needed to consider earmarking funds in future budgets for "right-of-way" issues, such as will probably be required for the road to the planned ethanol plant.

In other business, the court:

- Talked about raising the rent on the Bailey County Coliseum, noting that the rental fees for the arena, the small meeting room and it's kitchen had not been increased for several years.

Currently, the arena is being rented for \$7.50 per hour. If the change is made, the commissioners talked about raising the fees to \$10 per hour for the arena, \$30 per event for the small meeting room and \$25 for the use of the attached kitchen.

- Agreed to transferring about \$50,000 into Precinct 1's current year budget due to cost overruns in its recent

Continued on page 3



Great job...

It wasn't a great catch, but it was a great job just the same. One blocked catch down, a season of them will hopefully follow. Pictured above two Muleshoe athletes participate in an interception drill during Monday's opening "two-a-day" practice. Muleshoe sports fans are already chomping at their bits in anticipation of another exciting season of Mule football.

Photograph by Larry Thornton

Local Weather

Thursday
I. T-Strms..... 95/64

Friday
I. T-Strms..... 94/62

Saturday
Sunny..... 93/62

Sunday
Sunny..... 91/62

Monday
Sunny..... 90/61

Tuesday
Pt. Cloudy..... 89/61

Wednesday
Pt. Cloudy..... 89/60

Give It
A Thought
The absence of
the beloved, short
though it may last,
always lasts too long.
— Jean Baptiste Poquelin
Words to ponder from Beverly

Missed your paper?
Call the carrier Bobby
Flores at 806-891-3950
(leave a message)
or call the Journal
at 272-4536, between
8:00 a.m. and 5 p.m.

MAHD board proposes to increase tax rate

By Larry Thornton
Managing Editor

The Muleshoe Area Hospital District Board of Directors approved a proposed tax rate of .40 per hundred during Tuesday's early morning special session.

Although there was discussion about significantly raising the tax rate by 10 cents at the

hospital board's July 30 special meeting no action was taken at that time because there was a question about the district's tax rate cap.

Muleshoe Area Hospital District CEO Ray Mason clarified that particular issue at the beginning of Tuesday's meeting, informing the board that according to the Texas State

Comptroller's office the hospital district's rate cap is set at 40 cents due to a previous district tax vote.

However, board member Wayne Pierson pointed out that previously the hospital district hadn't attached a debt service rate to the taxes collected specifically earmarking the funds needed to pay off the bond issue on Park View Nursing

Care Center.

According to the district's chief financial officer, Sharon Novack, the funds have always been handled separately inhouse and at the bank, where a separate account has been maintained for funds collected to pay off the bond, but she apparently agreed with Pierson that such an action would better

inform the public as to how the tax monies are used.

Therefore, included in Pierson's motion to approve a proposed tax rate increase was also the requirement that the debt service rate of .0975 per hundred be added to the district's maintenance and operation rate of .3025 per

Continued on page 10



CHRISTIAN MUSIC SENSATION JACK STONE

Stone to perform at Nashville

By Larry Thornton
Managing Editor

It only took some 15 years, but Jack Stone of Muleshoe has become an "over-night" sensation in Nashville, and will be headed to the country music capital later this year to perform his single "Jesus is Enough" at the Christian Country Music awards.

"It's just been a blessing," Stone, who while known for his singing voice to Muleshoe residents, probably spends most his time ministering as the pastor of the First Assembly

of God.

"It's a pretty neat deal," Stone said. As part of Inspirational Music Week, Oct. 31 - Nov. 4, Stone learned recently that he will be performing two musical numbers at one of the showcases in one of the music halls associated with the "Grand Ole Opry."

Obviously, "Jesus is Enough," will be one of the numbers, but Stone said he hadn't decided which he would pick to accompany it.

As of Friday's interview, Stone didn't know whether he would be performing at

the Radison Opry Land Hotel, or in the "Grand ole Opry" building. No matter which, he said it would be a "pretty awesome deal."

Stone also said there was a possibility of a nomination for "new artist of the year," but said such wouldn't be known until the ballots that will be going out in next month's "Power Source" music magazine are collected and tabulated.

"Hopefully, we'll be up for an award," the First Assembly pastor said.

Continued on page 4



76 Years and Going Strong

MULESHOE STATE BANK

Muleshoe Branch:
272-4561
101 W. American Blvd.
Farwell Branch:
481-9580
801 Ave. A



Reserved seating tickets

Reserved seat tickets for the 2007 Muleshoe Mules football season will go on sale Monday, Aug. 6. The tickets are \$25 for five home games.

Persons who held reserved seat tickets for the 2006 football season may purchase their seating options at the School district's administration office, located at 514 W. Ave. G, Monday through Friday, during regular business hours.

Beginning Monday, Aug. 27, all remaining tickets will go on sale on a first come, first serve basis.

Any reserved seats remaining after the season starts will be available at a cost of \$6 per game and may be purchased at the administration office on game day.

If you have questions concerning the ticket sales, contact Dana Rasco at 272-7400.

Nickels benefit set for Aug. 12

A benefit luncheon for Jayci Joy Nickels, the daughter of Guy and Kimberly Nickels, has been scheduled for Sunday, Aug. 12, from 11 a.m. until 2 p.m., at the Muleshoe High School Cafeteria.

The menu will include barbequed brisket, beans, potato salad, and all the fixings.

Tickets are \$7 for adults and \$5 for children.

Advance tickets are available at Williams General Store. Takeout plates will be available, and delivery in the Muleshoe area can be arranged by calling 272-7306.

Alzheimer's disease support group

The Bailey County Alzheimer's Disease Support Group will be meeting Thursday, Aug. 9, at 12 noon, at Park View Nursing Home. Lunch will be served.

Kenna Dubberly of Garrison Geriatric Center will present "Caring for the Care Giver."

For more information contact Debbie Crabtree, Bailey County Aging Services, 272-3647, or Mandi Seaton, Bailey County extension agent — Family and Consumer Sciences, 272-4583.

Alfalfa production workshop

Crop producers, cattle raisers and grass farmers who are interested in alfalfa should mark Aug. 9 on their calendars. That is the date for a regional alfalfa workshop in Farwell, sponsored by Texas Cooperative Extension and New Mexico State University.

The workshop will begin with registration at 8:30 a.m. central time at the Farwell Community Center, 207 Ninth St., two blocks south of U.S. Hwy. 84. The program will run from 9 a.m. to 1 p.m. Lunch is included with registration. Registration costs \$20 per person.

Horned lizard program

The Muleshoe Heritage Foundation is sponsoring an informational program on Texas horned lizards, also known as "horny toads," at 7 p.m., on Monday, Aug. 13, in the Santa Fe Depot of the Heritage Center.

Lee Linam from the Texas Parks and Wildlife Department in Austin, and Dr. Gad Perry of the Texas Tech Department of Range, Wildlife and Fisheries Management, will share a short overview of the current research, habitat needs, tracking and population information of horned lizards throughout the state with a question and answer session afterward.

Children and adults are invited to attend this informal event. There is no admission charge.

Dillman Elementary registration

On Aug. 13-14, from 8 a.m. - noon, and 1-4 p.m., Dillman Elementary will have registration for new students for the 2007-08 school year.

Parent will need to provide the following items to register: Photo ID, a birth certificate, social security card, shot records. For Head Start and Pre-Kindergarten, proof of income will also be necessary.

For additional information, call 272-7382 after Aug. 6.

www.muleshoejournal.com

Muleshoe Bible school offered

The First United Methodist Church of Muleshoe will be offering a new approach to Summer Bible School, Aug. 14-16... Endeavor Bible School: Family Style!

The event will include supper each evening from 5:30 - 6 p.m., after which children going into Kindergarten through fifth grade will rotate between a lesson, crafts, music, and games.

There will be classes for students going into sixth through eighth grades as well.

And this year, there will be classes for adults, too. The adult classes include "How to give your children a blessing," "Discipleship 101," "Christian finance," "Fruits of the spirit for couples," "Christian parenting," and "Standing on the promises."

After the classes, the families will take part in a brief worship time, from 8:15-8:30 p.m.

Sudan "KFC" Bible school offered

The First United Methodist Church of Sudan will be hosting a "Kids for Christ" Bible School from Monday, Aug. 13, to Friday, Aug. 17, from 9-11 a.m.

The theme of the Bible school will be "Heroes of the Bible." The classes will range from Kindergarten to sixth grade.

Bailey County diabetes support group

The Bailey County Diabetes Support Group will meet on Tuesday, Aug. 21, at 6:30 p.m. in the dining room of Muleshoe Area Medical Center.

The program will be *Foot Care* presented by NursCare Home Health.

This program is free of charge to anyone interested. For more information, contact Mandi Seaton, Bailey County extension agent — Family and Consumer Sciences, 118 W. Ave. C., Muleshoe, TX 79347, 806-272-4583.

Texas FSA seeks proposals for conservation initiative

Texas Farm Service Agency is asking federal, state and local agencies as well as private or non-profit organizations to submit proposals for a new 500,000-acre conservation reserve program to improve habitat for high-priority wildlife species nationwide.

Nearly 40,000 acres has been allocated to Texas

"The State Areas for Wildlife Enhancement (SAFE) initiative provides an opportunity to develop grassroots conservation projects to address high priority wildlife needs through habitat restoration," said Kim Hanlin, executive director for the Bailey County FSA. "This initiative further extends the positive environmental impacts of the CRP."

With more than 36 million acres enrolled, CRP is the nation's largest, voluntary private-lands conservation program. CRP practices improve water quality, air quality and wildlife habitat.

SAFE will enable the public, producers, state and federal agencies, non-profit conservation organizations and others to propose areas where new CRP acreage may be established to address the habitat needs of endangered, threatened or high-priority fish and other wildlife species.

In addition, conservation practices currently offered under CRP can be fine-tuned under SAFE to improve, connect or create higher-quality habitat to promote healthier ecosystems in areas identified as essential to effective species management.

Proposed SAFE acreage located in counties that have reached the CRP acreage enrollment cap of 25 percent

will not be considered.

All proposed acreage for CRP enrollment under the SAFE program must have been cropped or meet FSA's definition of "farmable," four of six years during the period 1996-2001.

For SAFE proposal details, format and protocol, contact the Bailey County FSA at (806)272-4538 or visit the national web site at: <http://www.fsa.usda.gov>; click on "Conservation Programs."

The deadline for receipt of SAFE proposals is Aug. 13.

Muleshoe athletic boosters to meet

The Muleshoe Athletic Booster Club will be meeting in the Muleshoe High School science room on Monday, Aug. 13, at 7 p.m.

Subscribe!

Correction

Kolby Wilkerson is the son of Ronnie and Gina Wilkerson, and not Ronnie and Gina Smith, as was noted in the Aug. 2 issue of the *Muleshoe Journal*.

The *Journal* regrets the error and apologizes for any inconvenience it may have caused.

SHOT CLINIC
AT MHS NURSE'S OFFICE
FRIDAY
AUGUST 24
10 AM - NOON
 MUST HAVE PARENT OR GUARDIAN WITH YOU IF UNDER AGE 18.
ALL SHOTS \$10 EACH
 FOR MORE INFO, CONTACT
MICHELE BARTON, RN
AT 272-7303.

Muleshoe Journal USPS 367820
 Established February 23, 1924. Published by Lambai Publishing LP
 Every Thursday at 201 W. Ave. C, P.O. Box 449, Muleshoe, TX 79347.
 Periodicals Postage paid at Muleshoe, TX.
 POSTMASTER: Send address changes to the Muleshoe Journal, P.O. Box 449, Muleshoe, TX 79347.
 We are qualified members of:
 Panhandle Press Association, West Texas Press Association and Texas Press Association © 2007

Sandra Aven, Publisher
saven@hearstnp.com

Leah Bell, General Manager/Ads
ctyankee@fivearea.com

Larry Thornton, Managing Editor
editor@muleshoejournal.com

Bookkeeping/Classified Advertising
classifieds@muleshoejournal.com

SUBSCRIPTIONS:
 By Carrier Yearly - \$22.00
 Bailey County — By Mail - \$24.00
 Elsewhere - \$35.00
 By E-mail - \$22.00
 Advertising Rate Cards On Application

Member TPA 2007 TEXAS PRESS ASSOCIATION

PPA Panhandle Press Association

WEST TEXAS PRESS ASSOCIATION

Advertisers should check their ad the first day of insertion. The Journal will not be liable for failure to publish an ad or for a typographical error or errors in publications except to the extent of the cost of the ad for the first day of insertion. Adjustment for errors will be limited to the cost of that portion of the ad where the error occurred.

AUGUST BACK TO SCHOOL SPECIAL!

Free Activation with a School Supply Donation!

MOTOROLA RAZR Only \$59

OUR BEST PLAN ONLY \$39.95

- > 1000 Anytime Minutes with FREE Nationwide Long Distance
- > FREE Unlimited Night and Weekend Minutes with FREE Nationwide Long Distance
- > FREE Unlimited Mobile-to-Mobile
- > FREE Carryover Minutes
- > FREE Loyalty Minutes

NETWORK EXPANSION

NEW CELL SITE IS LOCATED AT:

- Corona — Located at 500 Franklin Street in Corona, NM. This site will provide coverage to the town of Corona and along Hwy. 54 in that area.

Bring in three school supplies — valued at \$10 or more — and receive FREE ACTIVATION on a new wireless plan. A \$25 VALUE!

PLATEAU Wireless

www.plateauwireless.com 877-PLATEAU (752-8328)

Race to any Plateau Wireless store to sign up! Way To Go, Plateau!

Muleshoe Five Area Telephone Coop. 302 Uvalde (806) 272-7700	Muleshoe Connection Warehouse 117 Main St. (806) 272-5532	Frona WT Services 1010 Columbia (806) 250-5555
--	---	--

Contract Term: 2 years. Early termination fees: \$200 per year, maximum of \$400. Night and Weekend hours are Monday through Thursday 7:00 PM through 6:59 AM and Friday 7:00 PM through Monday 6:59 AM. When outside the designated home area, Roaming: \$3.50 per minute with Free Long Distance. Additional taxes, fees, and surcharges may apply. Carryover Minutes: unused plan minutes are carried over month to month. Loyalty Minutes: 30 minutes after one year of service, 60 minutes after three years of service and 100 minutes after five years of service. Carryover and Loyalty Minutes are removed on the date of disconnect and/or forfeited in the event of suspension/termination for nonpayment. Plan only available on GSM phones. Offer not available in all markets. Certain Restrictions Apply. Offer valid through 8/31/07.

Park View Nursing Care Center
 "A Commitment to Caring"

- Beautifully landscaped facility
- Two fireplaces to add to the "homey" feel of our facility
- Three sun rooms overlooking the park
- Game & activity rooms
- Spacious private & semi-private rooms
- Certified for Skilled Nursing Care

Call **Sandy Z. Sandlin** Administrator
1100 W. Avenue J, Muleshoe • 272-7578

Editorial

Report says you must deny God to serve your country

Christian servicemen may be encouraged to "give their all" for their country, but if you listen to many in charge of the United States' military lately, you come away with the idea they'd prefer them to yield their flesh and blood to this country's enemies as quietly as possible.

Case in point, the recent explosion of rancor over a group of generals, and other upper-level military leaders, who had the audacity to express their belief in God while attired in uniforms displaying their rank.

For many years, the servicemen of this nation were looked upon as "second class" citizens. They accepted service in one branch of the armed forces or another at the cost of their right to vote. It wasn't until May 1943 that such rights were guaranteed by Congress.

But even more important than a soldier's right to vote is that soldier's right to believe in, worship, and seek to serve God.

Now, falling under the same misguided "wisdom" of Justice Hugo Black, these general officers are being persecuted for believing in God, and voicing this belief in a Christian video.

Apparently, the way some military detractors of Christianity feel is that former Pres. Bill Clinton's policy of "don't ask, don't tell" would best be applied to an individual's faith in God and not the service personnel's sexual leanings.

Gen. George Washington, who incidently served as president, said, "It is impossible rightly to govern the world without God and the Bible."

Gen. Ulysses S. Grant, another former president, said, "Hold fast to the Bible a the sheet anchor of your liberties; write its precepts on your heart and practice them with your lives. To the influence of this Book we are indebted for the progress made, and to this we must look as our guide in the future."

And, Gen. Dwight D. Eisenhower, ditto on the president thing, said, "In the swift rush of great events, we find ourselves groping to know the full sense and meaning of these times in which we live. In our quest of understanding, we beseech God's guidance."

Based upon the attitudes of such as the staff at the U.S. Army's Inspector General's office, these former national military leaders will be lucky if they aren't dug up and court marshaled as well.

An old saying holds that "there aren't any atheists in foxholes," but apparently this isn't true.

It also makes one wonder if communism didn't win the Cold War after all.

Commissioners' court...

Continued from page 1

employees from salary to an hourly wage, during which County Treasurer Shonda Black said many of the county employees were receiving overtime because they had accumulated the maximum number of compensatory hours, requiring the county to pay them for the overtime they worked.

Judge Harrison said she felt it would benefit the county if \$51,000 was used to clear off the county employee's comp time backlog of hours, and the employees received overtime pay.

• Discussed switching non-elected county

employees from salary to an hourly wage, during which County Treasurer Shonda Black said many of the county employees were receiving overtime because they had accumulated the maximum number of compensatory hours, requiring the county to pay them for the overtime they worked.

Judge Harrison said she felt it would benefit the county if \$51,000 was used to clear off the county employee's comp time backlog of hours, and the employees received overtime pay.



New addition to police force

Patrolman Jared King, pictured above on the left, was sworn in as the newest member of the Muleshoe Police Department by Judge Juana Shelburne Monday.

Letter to the Editor

Reader talks about the Bible's accuracy

Letter to the Editor: Isaiah was one of the many prophets in the Old Testament. He prophesied in a period of 760 to 698 B.C.

In Chapter 53 (of the Book of Isaiah), he described the birth of Jesus Christ and his blood redemption for the sins of the world.

The accuracy of Isaiah's prophecy cannot be questioned. What are the odds in a span of some 700 years before the birth of Christ?

Isaiah 45:22 says, "Look unto me and be ye saved, all the ends of the earth, for I am God, and there is none else!"

Is this the God who commands his believers and followers to kill Christians and Jews?

Kenneth Precure, Muleshoe

Additional letter on page 12...

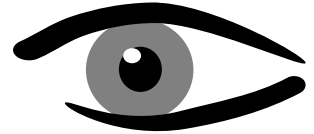
Lazbuddie ISD to host cookout

The fourth annual community-wide "Back to School Cookout" has been set for Friday, Aug. 24, at 6 p.m., in the Lazbuddie School Cafeteria.

The annual event gives new staff members an opportunity meet other staff members and the friends and students of Lazbuddie ISD.

The evening's menu will include hamburgers, chilidogs, chips and dessert.

¡Se Habla Español!



TO ALL TEXAS MEDICAID PERSONS

We see Texas Medicaid people and want you to know that all Medicaid holders who are over 21 years of age are entitled to an eye exam when your card says you are eligible. We will get this exam done for you.

And of course, we also see children who are eligible for eye care.

Dr. A.R. Ploudre
OPTOMETRIST
1515 GIDDING STREET • CLOVIS
505-762-2951

Subscribe!

LOSE WEIGHT



We are in Clovis every
Tuesday from 9:00 am—6:00 pm
& Friday from 9:00 am—5:00 pm!
309 Main St, Suite 4

Serving Clovis for over 1 year!

CALL TODAY TO LOSE UP TO 50 LBS. IN 10 WEEKS!

Call (806) 356-6066

Julie has lost 50 pounds & has kept it off for over 2 years!



Results Guaranteed
*Lose up to 3-5 lbs. per week
*Increase your Metabolism
*No prepackaged meals
*Have more energy
*No hunger or calorie counting

Diga HOLA al Internet de alta velocidad!



FIRME HOY PARA OBTENER LA INSTALACIÓN GRATIS

¡Y el tercer mes de servicio es gratis!

Ahorre un total hasta de **\$169⁹⁵**

- 6 velocidades disponibles para ajustarse a cualquier necesidad y presupuesto
- Baje fotos y música rápidamente y fácilmente
- No hay señales de ocupado, ya no tiene que esperar más
- No necesita línea telefónica o alambrado de cable para recibir el servicio



¡Llame hoy y ahorre!
1.800.963.4984

Rapid Communications 2007. Para clientes residenciales nuevos únicamente. La disponibilidad de los servicios y precios pueden variar y no está disponible en todas las áreas. El crédito por el tercer mes de servicio será puesto en su cuenta y aparecerá en la tercera factura. Después se aplicarán las tarifas regulares. La velocidad para bajar y conectar son a máxima velocidad; éstas pueden variar y no están garantizadas. Hay cargos de franqueo, impuestos, instalación, restricciones y otros cargos pueden aplicarse, el monto actual depende de la ubicación y del servicio ordenado. Si el servicio es cancelado antes de 12 meses, un cargo de servicio de \$100 será agregado a la cuenta del cliente. Un módem para el cable o una tarjeta para la cadena pueden ser requeridos al momento de la instalación. Se puede requerir como requisito mínimo tener una computadora. La oferta está sujeta a cambios. Se pueden aplicar otras restricciones. RAPID07719

AFFORDABLE BAIL BONDS
Bonding available for Parmer & Bailey counties.
806-481-3280
806-481-3281
806-272-6820
7 days a week!

www.drippi.com

BOOTS SHOES CLOTHING
Work & Dress Casual & Athletic Western & Athletic

GENERAL WILLIAMS STORE
SINCE 1963

1405 West American Blvd.
Muleshoe, Texas
806-272-MULE (6853)

Lance Insurance
Competitive Rates, Variety of Leading Companies
For Home, Auto, Commercial and Crop
806-227-2466



Lackey meets Grammy winner

Brenda Lackey recently had the opportunity to pose for a photograph with six-time Grammy Award winner Marty Stuart at a "meet and greet" at the Cotton Barron's Ball in Plainview on Saturday, July 28.

Stone... Continued from page 1

Debuting at 90 on the music charts a few months ago, "Jesus is Enough," quickly rose to 50, climbed to 31st place, and recently was listed as 16th out of 20th, placing it in good position for additional climb prior to the casting of the official ballots, Stone said.

Although Stone started singing, and began devoting a portion of his ministry to music about 15 years ago, "Jesus is Enough," written by Russ Murphy, was the Muleshoe pastor's first

national release, but it probably won't be his last.

Stone said Friday that HMG Nashville, which produced and distributed the CD single, has been talking to him about producing more of his songs. "It's grown to a whole new level," Stone said. Commenting also on the significance of having his first national release make it into the top 20. "We'll see how it goes after the awards show," he added.

"One day God reached

down and touched my life," Stone said. Although he didn't grow up with musical aspirations — noting that he doesn't read music — Stone said he first got into singing because it enhanced his ministry.

"A lot of people like to be ministered to through music," he said. "I use it to bring glory to God's name... that's the bottom line."

Stone has been the pastor of the First Assembly of God in Muleshoe for almost 12 years, adding that

returning to the church in Muleshoe was like "coming home," because his father pastored the church from 1976 until 1981.

Prior to returning to Muleshoe, he pioneered a church in Lubbock as a bivocational minister, working as the territorial manager in a greeting card company, before beginning a weekend music ministry with his wife Deb, who is currently serving as the Bailey County Justice of the Peace.

BAILEY COUNTY DEVOTIONAL PAGE

WESTERN DRUG
& Something Special Gifts
 1411 W. American Blvd. 272-3106 Muleshoe

"THE FIVE AREA TELEPHONE COOPERATIVE, INC."
 West Plains Telecommunications, Inc.
 Five Area Systems, Inc., Plateau Wireless
 Five Area Long Distance - Five Area Internet
 302 Uvalde Muleshoe, USA (806) 272-5533

MCCORMICK SEEDS, INC.
 400 East Ash • 272-3156
 Muleshoe, Texas
 A COMPLETE LINE OF FIELD SEEDS
 Tim McCormick

United Supermarkets

Farmers Coop Ass'n of Sudan
 P.O. Box 120 • Sudan, Texas
 227-2461
 Mobile: (806) 638-7692 FAX (806) 227-2102
 Dennis Flowers, Gen. Manager Email: dflowers@fivearea.com

IRRIGATION PUMPS & POWER

Zimmatic W. Hwy. 84
 CENTER-PIVOTS 272-5597

minsa CORPORATION
 US Hwy. 84 East
 Muleshoe • 272-5545

BCEC BAILEY COUNTY ELECTRIC COOPERATIVE ASSOCIATION
 Muleshoe — 272-4504 Morton — 266-8600

MULESHOE PEA & BEAN, INC.
 1680 CR 1044, Muleshoe • 272-5589
 Ed, Nicky & Chad Nickels

MAPLE COOP GIN
 927-5501
 Maple, Texas

Deaf Smith County Grain, Inc.
 Cliff A. Skiles, Jr.
 Jeb S. Skiles

SPARKLE Cleaners
 "WE CARE ABOUT YOU"
 114 East Ave. C, Muleshoe
 272-3570

MULESHOE TIRE
 107 Main St., Muleshoe • 272-4594
 After Hour Service: 946-7668

BOEHNING DAIRY
 690 CR 45, Earth
 "MILK - A PART OF EVERYTHING THAT IS GOOD!"

WAYNE COPLEY TRUCKING
 CALICHE, SAND & ROCK PRODUCTS
 P.O. Box 63 (806) 272-3697
 Muleshoe, Texas 79347 Mobile: (806) 946-8072

Welcome Home
 by Max Lucado

I came home one night to find the place unusually quiet. Molly was gone. She'd slipped out unnoticed. The search began immediately. Within an hour we knew that she was far, far from home. Now, if you don't like pets, what I'm about to say is going to sound strange. If you do like pets, you will understand. You'll understand why we walked up and down the street, calling her name. You'll understand why I drove around the neighborhood at 10:30 P.M. You'll understand why I put up a poster in the convenience store and convened the family for a prayer. (Honestly, I did.) You'll understand why I sent e-mails to the staff, asking for prayers, and to her breeder, asking for advice. And you'll understand why we were ready to toss the confetti and party when she showed up.

Here is what happened. The next morning Denalyn was on her way home from taking the girls to school when she saw the trash truck. She asked the workers to keep an eye out for Molly and then hurried home to host a moms' prayer group. Soon after the ladies arrived, the trash truck pulled into our driveway, a worker opened the door, and out bounded our dog. She had been found.

When Denalyn called to tell me the news, I could barely hear her voice. It was Mardi Gras in the kitchen. The ladies were celebrating the return of Molly.

This story pops with symbolism. The master leaving his house, searching for the lost. Victories in the midst of prayer. Great things coming out of trash. But most of all: the celebration at the coming home. That's something else you have in common with Molly - a party at your homecoming.

Those you love will shout. Those you know will applaud. But all the noise will cease when he cups your chin and says, "Welcome home." And with scarred hand he'll wipe every tear from your eye. And you will dwell in the house of your Lord - forever.

From *Traveling Light* Copyright (W Publishing Group, 2001) Max Lucado

This devotional & directory is made possible by these businesses who encourage all of us to attend worship services.

<p>ASSEMBLY OF GOD FIRST ASSEMBLY OF GOD 521 South First Street 272-3017 Jack Stone, Pastor • 272-3984 S.S. 9:45 am, W.S. 10:30 am & 6:00 pm, Wed. 7:00 pm EL BUEN PASTOR 415 E. Ave. F - 272-5455 Pastor Domingo Luna - 272-4542 S.S. 9:45 am, W.S. 11 am & 6 pm; Wed. 7 pm</p>	<p>CATHOLIC IMMACULATE CONCEPTION CATHOLIC CHURCH 805 E. Hickory Leonardo Pahamtang, Min.</p> <p>EPISCOPAL - CHARISMATIC ST. CLEMENTS CHURCH COMMUNION OF CHRIST THE REDEEMER Hwy. 214 South • 272-5954 Father Sergio Leal Sun. W.S. 10:30 am</p>	<p>LUTHERAN ST. JOHN LUTHERAN Lariat, TX • David Symm, Min. S.S. 10:30 am; W.S. 9:30 am</p> <p>METHODIST FIRST UNITED METHODIST 507 W. 2nd St. Spanish Service 8:30; S.S. 9:45; W.S. 11:00 Praise & Prayer 6 PM Pastor Monty Leavell, 272-5517 LAZBUDDIE METHODIST S.S. 9:30 am; W.S. 10:30 am Pastor Ken Peterson 965-2121</p> <p>EL DIVINO SALVADOR U.M.C. 619 E. 5th Street & Ave. G, Muleshoe Javier Careaga, Pastor 272-6888</p>
<p>BAPTIST CALVARY BAPTIST 1733 W. Ave. C. Rev. Jeff Coffman CIRCLE BACK BAPTIST Intersection FM 3397 & FM 298 FIRST BAPTIST 220 West Ave. E Dr. Stacy Conner FIRST BAPTIST Lazbuddie • 965-2126 PRIMERA IGLESIA BAUTISTA 223 E. Ave. E Interim Rev. Troy Smith PRIMITIVE BAPTIST 621 South First Elder Bernard Gowens, Min. PROGRESS BAPTIST Progress, TX PROGRESS SECOND BAPTIST Arthur Hays, Min. - 1st & 3rd Sundays RICHLAND HILLS BAPTIST Bro. Larry Thornton 17th & West Ave. D S.S. 10 am; W.S. 11 am & 6 pm; Weds. 7 pm TRINITY BAPTIST 314 E. Ave. B - Bennie Wright, Min.</p>	<p>CHRISTIAN TRINITY CHRISTIAN CENTER 1723 W. American Blvd. • 272-3877 Reydon Stanford, Pastor Sun. W.S. 10:30 am CENTRO CRISTIANO 117 E. Birch St. Hermanos Barron S.S. 10 a.m.; W.S. 11 a.m. & 6 p.m. Wed. 7 p.m.</p> <p>CHURCH OF CHRIST LARIAT CHURCH OF CHRIST Sam Billingsley, Min. S.S. 10 a.m.; W.S. 11 a.m. & 6 p.m., Wed. 7 p.m.</p> <p>LAZBUDDIE CHURCH OF CHRIST Nathan Crawford, Min. S.S. 9:30 am; W.S. 10:20 am & 5 pm; Wed. 7 pm MULESHOE CHURCH OF CHRIST 22nd & W. American Blvd. S.S. 9:30 am; W.S. 10:20 am & 6 pm; Wed. 7:30 pm 16th & AVE. D CHURCH OF CHRIST Curtis Shelburne, Min. 272-4619 S.S. 9:30 am; W.S. 10:30 am; Growth Gr. 1:30 pm; Wed. 7:00 pm</p>	<p>PENTECOSTAL UNITED PENTECOSTAL LIGHTHOUSE 207 East Ave. G 1-800-454-6051 S.S. 10 am; Thursday, Bible Study 7 pm</p> <p>INTER DENOMINATIONAL NEW COVENANT Plainview Hwy. Steve Claybrook, Pastor W.S. 10 am; Wed. 7 pm MULESHOE COWBOY FELLOWSHIP 710 E. American Blvd., Muleshoe Steve Friskup, Minister 272-5199 Service: 7:30 p.m. Thursday</p>

If your church has a change of information, please call 272-4536.

1ST BANK MEMBER FDIC
 202 South First 272-4515

Serve Wholeheartedly as if you were serving the Lord, not men. Ephesians 6:7
MV ALLEY INC.
 2601 W. American Blvd. P.O. Box 631
 Muleshoe, Texas
 (806) 272-4266
 Mobile (806) 946-8763
 mvinc@fivearea.com

MULESHOE ANIMAL CLINIC
 GENERAL PRACTICE
M S
 1430 US Hwy. 84 • Muleshoe Office: 272-3061

MCDONALD'S OF MULESHOE
 1315 W. American Blvd. • 272-3333
 Open at 5:00 a.m. every day! i'm lovin' it

Lowe's MARKETPLACE
 401 W. American Blvd. • Muleshoe • 272-4585

Lazbuddie Feeders, Ltd.
 "We make your dairy bull calves worth more!"
 Lazbuddie, Texas
965-2435

HENRY INSURANCE AGENCY
 Rama Smalling Agent
 111 W. Avenue B P.O. Box 563
 Muleshoe, TX 79347
 888-658-4581
 (806) 272-4581
 Fax (806) 272-5892

CENTRAL COMPRESS & WAREHOUSE
 SUDAN, TEXAS

PACO FEED YARD, LTD.
 Commercial Cattle Feeders
 P.O. Box 956, Friona
 265-3281
 Feller Hughs-Mgr.

Pizza Hut
 1412 W. American Blvd.
 Muleshoe • 272-4213
 Open: Sun.-Mon. 11 AM-11 PM
 Lunch Buffet: Sun.-Fri. 11:30 AM-1:30 PM
 Monday Night Buffet: 6-8 PM
 "Gather round the Good Stuff"

J&S Dairy
 1260 CR 1038, Muleshoe
 272-7706

Lial's TORTILLA FACTORY
 105 E. Ash St., Muleshoe • 272-5772
 Phillipians 4: "I can do all things through Christ who strengthens me."

TEXAS FARM BUREAU INSURANCE Co.
 FARM BUREAU INSURANCE
 1612 W. American Blvd., Muleshoe • 272-4567

LAW OFFICE OF TINA DAVIS
 Criminal - Probate - Real Estate - Family Law
 101 S. Main, Muleshoe • 272-7776

Interim HEALTHCARE
 110 E. Ave. C Muleshoe
 272-5549
 www.InterimHealthcare.com
 Annette Orcozo • LeAnn Altman • Kristen Meeks, RN-BSN • Myranda Whitte, RN-BSN • Kay Gray
 Olivia Barrera • Arlene Brook • Brandi Hamilton • Deena Hamilton • Twila Ratter

BAILEY COUNTY DEVOTIONAL PAGE

Obituaries

Lona Hale

Funeral services for Lona Mae Hale, 91, were held on Wednesday, Aug. 1, at Abilene Primitive Baptist Church with Elders Travis Brown and Hulan Bass officiating. Burial followed at the Clyde Cemetery.

Hale died on Monday, July 30, at an Abilene hospital. She was born on March 16, 1916, in Goldthwaite to Wade Washington and Mary Earnest Barrington.

She attended school in McAdoo, and married Eddie Clovis Hale on Oct. 31, 1936, in Afton. They moved to Clyde from Morton in 1980.

Hale was a homemaker and a member of the Abilene Primitive Baptist

Church.

She was preceded in death by her parents; a daughter — Mayre Jane Hale; and two brothers — Aubrey and Clyde Barrington.

Survivors include her husband — Eddie Clovis Hale of Clyde; four sons and their wives — Clovis and Judy Hale of Huntsville, Ala., Michael and Patricia Hale of Wyoming, Ronald and Alice Hale of Lawn, and Larry and Kay Hale of Dumas; a sister, Christine Herring of Midland; eight grandchildren and 14 great-grandchildren.

Memorials may be sent to Hendrick Hospice Care, P.O. Box 1922, Abilene, Texas 79604.

Charles Nace

Funeral services for Dr. Charles G. Nace, DVM, 88, of Littlefield were held on Tuesday, Aug. 7, at Hammons Funeral Home Chapel with the Rev. Wendell Horn officiating. Burial followed in Littlefield Memorial Park.

Nace died on Thursday, Aug. 2, 2007 at Lynwood Nursing and Rehab Center in Levelland. He was born on Dec. 10, 1918, in Eldorado, Kan., to Roy and Eva Nace. He married Gwen Lee Erichsen on May

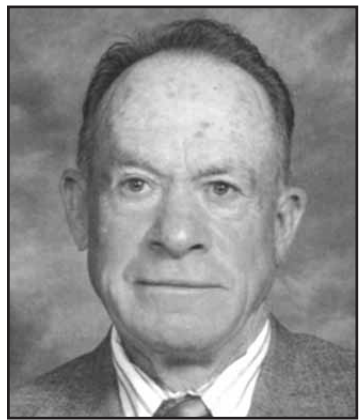
28, 1950.

He served in the U.S. Army, and graduated from Kansas State University in 1950 and moved to Littlefield to establish his veterinary practice until May of 1972, after which he worked for the USDA Vet Services until his retirement in 1994.

He was preceded in death by his wife — Gwen; his parents; and a sister — Helen Carter.

Survivors include a son — Brad Nace of Littlefield; a son and his wife — Gary and Darlis Nace of Claude; a sister — Pauline Donaldson of Columbia, Mo.; five grandchildren and five great-grandchildren.

Memorials may be sent to the Armstrong Livestock Show Board, Box 528, Claude, TX 79019, or the Lamb County Stock Show c/o Lee Ray, P.O. Box 475, Sudan, TX 79371.



DALTON MIMMS

Dalton Mimms

A church service for Dalton Mimms, 86, of Hereford, formerly of Lazbuddie, was held on Wednesday, Aug. 8, at the Central Church of Christ in Hereford with Michael, Pete, Clay and Quentin Mimms officiating. Burial followed in Muleshoe Memorial Park Cemetery.

Mimms died on Sunday, Aug. 5, 2007 in Hereford Regional Medical Center. He was born on June 7, 1921, in Dickens, to Otho and Maggie Mimms, and married Beulah Thomas in Martinez, Calif., on April 2, 1955.

Mimms graduated from Ralls High School. He was a World War II veteran serving in the U.S. Air Corps in Okinawa.

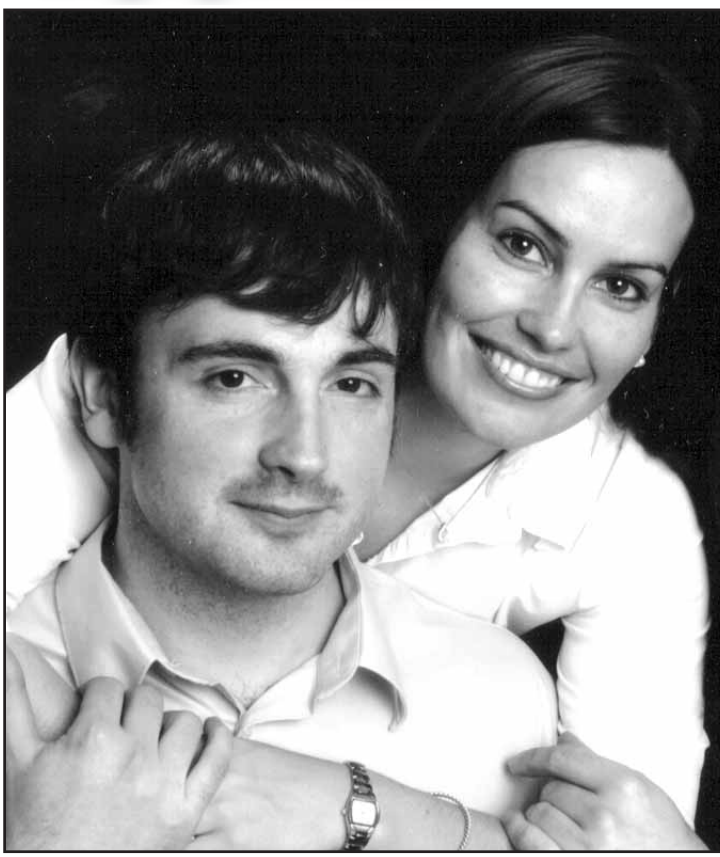
Mimms moved to Hereford from Lazbuddie where he had farmed and ranched for a number of years. He was a member of the Lazbuddie Church of Christ.

He was preceded in death by his parents; a daughter — Karen in 1979; four sisters and two brothers.

Survivors include his wife — Beulah; two sons — Michael Mimms of Hereford and Quentin Lee Mimms of Dallas; a daughter — Susan Bachman of Deer Creek, Okla.; three sisters — Claudia Porter and Jerrine Parks of Lubbock and Doris Moorman of Clovis, N.M.; two brothers — Darrell Mimms of Conway, Ark., and Pete Mimms of Shallowater; and nine grandchildren.

Memorials may be sent to the High Plains Children's Home of Amarillo or Lubbock Christian Children's Home.

Engagement



JO BETH GILLELAND AND COLIN DRAKE

Gilleland, Drake engaged

Gary and Amy Gilleland announce the engagement of their daughter, Jo Beth Gilleland of Irving, to Colin Ashley Whyte Drake of London, England.

The prospective bride is a 1997 graduate of Muleshoe High School. She is a 2000 graduate of McMurry University of Abilene with a bachelor of science in biology, and

received her juris doctorate from the University of Texas School of Law in May 2004.

She is employed as an associate attorney at law with the law firm of Ayers & Ayers of Colleyville.

The prospective groom is the son of Dr. Nollaig Whyte and the Rev. Leslie Drake.

He graduated from the University of London with a bachelor of arts degree in history, and received a post-graduate certificate of education in music from Middlesex University.

He is employed as the head of music at Langdon School in Newham, London, England.

The wedding has been scheduled for Dec. 30, 2007, at 7 p.m., at North Richland Hills.

Local youth basketball meeting set

A meeting to organize Muleshoe Youth Basketball has been set for Thursday, Aug. 9, at 6 p.m., at the Muleshoe Church of Christ, 2201 W. American Blvd.

The program will include both girls and boys in third through sixth grade.

Parents and potential coaches are encouraged to attend.

Legalism Is Bad in Society and Worse in Religion

Legalism. Merriam-Webster's Online Dictionary defines "legalism" as "strict, literal, or excessive conformity to the law or to a religious or moral code."

In our society, the silliness of legalism is so pervasive that we hardly notice it anymore.

Have you installed a computer program recently? If you have, you almost certainly came to a screen early on that said, basically, check this box if you've read and agree with the following paragraphs and pages of

physical address to get it back with NMR (No Mail Receipt) scrawled across it. To be "strictly" legal, though our good postal folks here are good at finding us and know our address has never changed, I have to fill out a change of address card to keep happy and employed some USPS bureaucrat way up the food chain who likes rules better than delivering mail.

Legalism. "Excessive" conformity to law.

It's bad in society and bureaucracy. It's worse in religion.

Legalism in religion means trusting in law rather than in God. It's death to real faith. It means that people get ground up in the gears of religion.

Consider, for example, religion and divorce.

In the church of my youth, legalism meant that a man contemplating divorcing his wife was likely better off just shooting her instead. He'd get more practical forgiveness from us for murder than for divorce even if, sadly, the divorce really needed to happen.

But, turning the tables, it was also legalism that made divorce easier in the church of a friend whose church taught that if you weren't married in their church, you weren't married at all. So go ahead and divorce your wife of however many years and break the hearts of your children. No problem. You're legal.

Dear God, save us from legalists and forgive us when they are us! May we never be the modern incarnation of those "experts in the law" Jesus wrote about who, knowing law but not knowing you, "load people down with burdens they can hardly carry" and "will not lift one finger to help them" (Luke 11:46).



Focus On Faith
Curtis Shelburne

legal mumbo-jumbo our fine lawyers have come up with about how this program should be used, not copied, not redistributed, etc.

You probably did agree with them, and you probably will use the program legally, but I'll betcha you checked the box, and I'll just about bet the farm that you did not read it. Don't feel bad. Nobody (except the seriously neurotic) does. So legalism virtually forces everyone who installs software to tell (well, make that "click on") a lie. And if you worry much about that, you're probably too scrupulous to live long and prosper on this planet without driving yourself and everyone around you nuts.

I recently remembered to sign a change of address card for our church. No, we're at the same place we've been for almost 40 years. But since we get our mail at a Post Office box, I don't want folks who send mail to our

Curtis Shelburne is minister of the 16th & D Church of Christ in Muleshoe.

Legacy of Love Hospice

420 Phelps Ave., Littlefield
806-385-9329

www.legacyoflovehospice@valornet.com

How does hospice care begin?

Typically, hospice care begins as soon as a formal request or a "referral" is made by a patient's doctor. Often a hospice program representative will make an effort to visit the patient within 48 hours of that referral, providing the visit meets the needs and schedule of the patient and family or primary caregiver. Usually, hospice care is ready to begin within a day or two of the referral. However, in urgent situations, hospice services may begin sooner.

- We provide palliative & hospice care
- RN on call 24 hrs. a day, 7 days a week
- Pain and symptom management

MULESHOE FLAG FOOTBALL LEAGUE

7 ON 7 FLAG FOOTBALL



Season Schedule
2 Games per Sunday
15 12-Man Rosters
Referees
80 Yard Field

PLAYOFFS AT THE END OF THE SEASON!
GET OFF THE COUCH AND COME PLAY!

Entry Deadline is Sept. 16
Season Starts Sept. 30
\$450 per Team - Ages 17+

For more information, contact:
RAY (806) 535-3562 or
ROBERT (806) 566-8959

Check out our website...
www.muleshoejournal.com

CALVERT

HOME HEALTH CARE, LTD.

Celebrating 20 years as the choice for quality home health care.

Littlefield Office:

913 Phelps Avenue, Littlefield, TX 79339
Phone: (806) 385-1904
Fax: (806) 385-5905

Main Office:

Calvert Home Health Care, Ltd.
8004 Indiana Avenue, Suite B-15, Lubbock, Texas 79423
Phone: (806) 747-8972
Fax: (806) 747-8965

Grand Court Office:

4601 71st Street, Suite 231
Phone: (806) 785-4006
Fax: (806) 785-4211

Ventura Place Office:

3026 54th Street, Suite 315
Phone: (806) 793-2662
Fax: (806) 793-2636

Carillon Office:

1717 Norfolk, Suite 2105
Phone: (806) 281-6192
Fax: (806) 791-3415

Elmbrook Estates Office:

5301 66th Street, Room 1000, Lubbock, TX 79424
Phone: (806) 783-8878
Fax: (806) 783-8986

Petersburg Office:

1520 Main Street, Petersburg, TX 79250
Phone: (806) 667-1500
Fax: (806) 667-9401

Heritage Foundation News

By Jean Allison

On Tuesday, Aug. 14, the Muleshoe area will celebrate a Muleshoe High School graduate's generosity.

This day has been set aside by the Muleshoe City Council as Ray and Donna West Day.

The Muleshoe Heritage Foundation is the recipient of \$100,000 given by Ray and Donna and is hosting the day to show its appreciation.

However, this is not the first time that the Muleshoe area has benefited from the West's generosity. Previously, the new Muleshoe Nursing School also received the same amount.

The day will begin with a welcome reception and tour at the Heritage Center when the Wests arrive at 10:30 a.m.

Before the day is over, they will get a taste of how Ray's hometown is both

vibrant and interesting.

Next Ray will speak to the Rotary Club at the noon meeting at the Bailey County Coliseum where he will be honored. Then back to the Heritage Center at 1:30 p.m., for activities there.

Under the direction of Alice Liles, Muleshoe students will be participating in Girls Gone Styled getting grooming and style lessons.

At 3 p.m., the Wests will visit the Muleshoe Medical

Center where the School of Nursing is located. At 4:45 p.m., it is back to the Heritage Center where an interview by TV Channel 6 will be conducted.

Viewers will see a young man who is giving back to his hometown. Ray graduated from Muleshoe High School in 1954.

Everyone is invited to a reception at the Heritage Center at 5:30 p.m. where the presentation of the West's donation to the Heritage Foundation will be celebrated.

Many other special guests are expected to attend this function such as former officers and volunteers of the foundation.


Jim Allison, former president of the board and his wife Renee, will be coming from Huntsville, Ala.

Jim and Ray were friends and graduated together in 1954.

The final activity for this day will be the dance and pot luck dinner at the senior citizen's dance at 8:30 p.m. where the class of '54 and Ray West will be honored.

The final activity honoring the Wests will be a breakfast at the Dinner Bell on Wednesday, Aug. 15, at 8:30 a.m., hosted by the Heritage Foundation Board.

This will be followed by a shopping and tour break visiting the Heritage Thrift Shop on the tour. Then lunch at noon at the Onieta Wagon Senior Citizens' Center, where Girls Gone Styled will be featured in a style show.



PANDORA
Jewelry

One for every charmed moment

As seen in Glamour, Oprah and Lucky magazines

Antiques & Fine Things

2104 W. American Blvd., Muleshoe • 272-4217

Bridal Shower Selections

Please join us for the

Muleshoe Memorial Park Cemetery

Annual Board Meeting

Tues., August 14, 2007

6:00 PM

Five Area Meeting Room

Senior Citizen News

By Laverne Winn

Fall is fast approaching. If you have not been by the Onieta Wagon Senior Citizens' Center to see the beautiful sunflower decorations you need to come by.

Joyce and her helpers did a great job. Thanks to all of you.

Mandi Seaton gave a very informative and entertaining program on Tuesday.

We are so glad to have her visit us each month with her programs. Our thanks and appreciation.

The center opens at 8 a.m. and closes at 4 p.m., Monday through Friday.

We serve lunch from 11:30 a.m. until 1 p.m. We invite all you senior citizens to come and enjoy the meals. Bring a friend and enjoy the fellowship with everyone.

Our thanks to Dale Allenburg for being the disc jockey for our Tuesday night

dance on Aug. 7. He did a great job.

Tuesday, Aug. 14, will be Ray West night at the dance. Make plans to come and show Ray your appreciation.

Remember to bring your favorite dish for the pot luck supper. Sandy will be the DJ.

Wednesday, Aug. 15, will be a very special day at the center. Interim Home Health will sponsor a game of Bunko beginning at 10:30 a.m.

All you seniors who do not play dominoes, are encouraged to come and have fun learning to play Bunko.

Also, on Wednesday, Aug. 15, during the lunch period, the seniors will be entertained with a style show performed by the Girls Gone Style.

All parents and grandparents should make plans to come and see the girls.

Remember the Bingo on Thursday beginning at 1:30 p.m.

Bring a can of food for the food bank and come have fun with us.

LaShea will be back to call this Thursday.

Menu for - Aug. 13 - 17:

Monday, Aug. 13 — Oven-roasted brisket, potatoes, pinto beans, onions, pickles, tomatoes, cornbread and pudding.

Tuesday, Aug. 14 — Turkey, dressing, gravy, broccoli, salad, cranberry sauce, wheat roll and peach cobbler.

Wednesday, Aug. 15 — Grilled steak, gravy, mashed potatoes, green beans, salad, wheat roll and cake.

Thursday, Aug. 16 — Chicken spaghetti, sweet peas, salad, wheat roll and jello fruit salad.

Friday, Aug. 17 — Fish or chicken strips, gravy, pinto beans, coleslaw, cornbread and fruit salad.



Mini-Pros take title

The Mini-Pros captured the title at the recent 2007 Muleshoe Invitational Tournament, at Roger Miller Park. The Mini-Pros include Nathan Rejino, Jojo Rejino, Britton Beall, Wesley Clarkson, Braden Bessire, Anson Castanon, Tyer Mendoza, Beto Diaz, Jason Flores, Brandon Chavez, J.J. Gandara, Medardo Andrade, Roman Franco, Eric Alvarado, Gabriel Reza and Troy Herrera.



Muleshoe Cattle Market

The Muleshoe Cattle Market is brought to you each week by Muleshoe Livestock Auction, located east of Muleshoe on U.S. 84. Muleshoe Livestock conducts sales every Saturday, beginning with hogs, sheep and goats at 10 a.m. and cattle following at approximately noon.

REPRESENTATIVE SALES

SAT., AUGUST 4, 2007

651 head of cattle, 116 hogs and 616 sheep and goats for a total of 1,383 livestock sold at the August 4 sale. Market steady on most all classes of cattle with good demand.

FOR INFORMATION ON SALES OR TO CONSIGN CATTLE - 272-4201

Seller, City	# Type	Wt. CWT or PH
Jamie Grey, Littlefield	Char. bull	365 lbs. at \$141.00
Lewis F&R, Morton	2 Char. bulls	395 lbs. at \$147.50
Lewis F&R, Morton	2 Char. bulls	523 lbs. at \$116.00
Lewis F&R, Morton	3 Char. bulls	617 lbs. at \$107.00
Charles Summers, Dimmitt	Blk. bull	645 lbs. at \$107.00
JCL, Inc., Sudan	3 Blk. str	658 lbs. at \$113.00
JCL, Inc., Sudan	4 Mxd. str	755 lbs. at \$107.50
Luis Salamanca, Maple	Blk. str	745 lbs. at \$110.00
Raul Ramirez, Hale Center	Blk. hfr	195 lbs. at \$340.00
D&F Cattle, Littlefield	Red hfr	305 lbs. at \$141.00
Olivera Adalpi, Plainview	Red hfr	340 lbs. at \$133.00
Luis Salamanca, Maple	Blk. hfr	350 lbs. at \$112.00
Luis Salamanca, Maple	Blk. hfr	530 lbs. at \$112.00
Lewis F&R, Morton	3 Char. hfrs	370 lbs. at \$159.00
JCL, Inc., Sudan	14 Blk. hfrs	523 lbs. at \$115.50
JCL, Inc., Sudan	8 Blk. hfrs	658 lbs. at \$111.00
Bill Spears, Seminole	4 Blk. hfrs	598 lbs. at \$106.00
Bill Spears, Seminole	3 Blk. hfrs	687 lbs. at \$105.00
Bill Spears, Seminole	5 Blk. hfrs	480 lbs. at \$118.00
Charles Summers, Dimmitt	5 BMF pairs	\$975.00
Charles Summers, Dimmitt	BMF pair	\$1010.00
Charles Summers, Dimmitt	Blk. cow P8	\$785.00
Charles Summers, Dimmitt	Blk. cow	1435 lbs. at \$55.00
Dan Day Jr., Meadow	2 Blk. cows P8	\$835.00
Dan Day Jr., Meadow	2 Blk. cows	1195 lbs. at \$58.50
Dan Day Jr., Meadow	Blk. cow	1330 lbs. at \$57.50
Lewis F&R, Morton	2 Char. cows	1070 lbs. at \$57.25
Dale Hand, Clovis, NM	Char. cow	1015 lbs. at \$56.50
H&W Cattle, Lubbock	2 Char. cows	1308 lbs. at \$56.25
H&W Cattle, Lubbock	Brin. cow	1085 lbs. at \$55.00
H&W Cattle, Lubbock	Blk. bull	2070 lbs. at \$67.00
Tommy Lewis, Morton	Blk. bull	1900 lbs. at \$67.00

Say HELLO to High-Speed Internet!



Rapid Communications
your local link to the world

SIGN UP TODAY TO GET FREE INSTALLATION

and the 3rd month of service free!

Total savings up to \$169⁹⁵

- 6 Speeds available to fit any need and budget
- Download photos and music quickly and easily
- No busy signals, never have to wait again
- No phone line or cable wire needed to receive service

Service is available in the rural areas surrounding the communities listed above. Call for more details.



Call Today and Save!

1.800.963.4984

Rapid Communications 2007. For new residential customers only. Available services & pricing may vary and not be available in all areas. Credit for the 3rd month of service will be posted to your account and will appear on your third month's bill. Regular retail rates apply thereafter. Download & upload speeds are maximum speeds, they may vary & are not guaranteed. Franchise fees, taxes, installation, restrictions & other fees may apply, the actual amount depending on location & service ordered. If service is canceled before 12 months, a \$100 service charge will be applied to customer's account. A cable modem or network card may be required at installation. Minimum computer requirements may be required. Offer subject to change. Other restrictions may apply. RAPID07717

www.muleshoejournal.com

Curry County Fair to include demolition derby

Roaring engines and medal crashing will be some of the exciting sounds at this year's Curry County Fair, Aug. 13-18.

The annual event is scheduled to wave the checkered flag on Thursday, Aug. 16.

Car engines start at 7 p.m. in the Mounted Patrol Arena.

\$2,000 in prize money, plus awards will be given to the top drivers at the end of the derby.

A limit of 40 cars will be permitted to participate in the event.

Drivers must be at least 18 years of age and registered with the Curry County Fair.

The fair must receive entry forms and \$50 entry fee per car no later than Aug. 15.

The demolition derby coordinator is Ray Reeser at 505-763-7400.

A complete set of rules, schedule, and entry forms, including liability releases, are now available at the Curry County Extension Office, 818 Main St., Clovis, Cliff's Battery Service, Clovis or may be obtained by contacting the Fair Office at 505-762-8827.

World cotton conference set

Online registration will close Friday, Aug. 10, for the Fourth World Cotton Research Conference, to be held Sept. 10-14, at the Lubbock Memorial Civic Center.

At this time, more than 500 scientists and cotton industry leaders have taken advantage of online registration.

Following the close of online registration, people who wish to attend WCRC-4 can still participate by registering at the front desk at the Memorial Civic Center the first day of the conference.

For questions regarding the World Cotton Research Conference-4 contact Mike Stephens at wrcr4secretariat@gmail.com or call 806.747.7634.

Weddings

Holsaeter, Barrett wedding held

Melanie Holsaeter of Edmond, Okla., and James Barrett of Muleshoe were united in matrimony on June 2, 2007, at the First Presbyterian Church of Oklahoma City, Okla., with the Rev. Dr. Stacy Conner and the Rev. Matt Meinke officiating.

The bride is the daughter of Matti Holsaeter of Edmond, Okla. The groom is the son of Cindy and Bruce Barrett of Muleshoe.

The bride's maid of honor was Katrina Holsaeter. The bridesmaids were Megan Barrett, Sara Sarfraz, Carrie Pierce, Amy Graf, Catherine Murawski and Ashley McIntosh.

The groom's best man was Keith Yerkles. The groomsmen were T.J. Hutto, Clint Black, Josh Rosen, Jarrett Hubert, Thomas Holsaeter and Andrew Holsaeter.

The ushers were Dan Williams, Mitch Mason and Ryan Hodge.

The bride wore an ivory, A-line formal length gown designed by Jasmine Couture. It was French embroidered with A'loncon lace on the strapless bodice and on the bottom layer of the silk taffeta bustled skirt.

The gown featured a champagne sash at the waistline, which was tied in a bow and centered by a custom-made brooch of pearls and Swarovski crystals by Toni Federici. She also wore a diamond white fingertip veil with silver crochet stitching accented with freshwater pearls and was highlighted by a custom-made headpiece of pearls and Swarovski crystals by Toni Federici.

The bride carried a nosegay bouquet of pale



Mr. & Mrs. JAMES BARRETT

pink, champagne and ivory roses. She also had an "old" pearl necklace, a "new" wedding brooch, her mother's pearl earrings, and a "blue" garter.

The bride's attendants wore identical European black formal-length gowns by Bill Levkoff. The strapless, A-line gown of European satin featured ruched bobinette and a black satin ribbon tied at the waistline. The attendants carried a nosegay bouquet of pale pink roses.

The groom was attired in a black three-button traditional tuxedo with an ivory shirt and tie.

The groomsmen were dressed in a similar manner with petal pink ties.

Following the ceremony, a reception was held at the Gaillardia Country Club.

They honeymooned in Las Vegas, Nev.

The bride is a graduate of Edmond North High School. She attended Texas A&M University, and is currently attending the University of Oklahoma Medical School.

The groom is a graduate of Muleshoe High School, and attended Texas A&M University and West Texas A&M University. He is employed as a free-lance artist.

The couple plan to reside in Oklahoma City.

"Listen, my son, to your father's instruction and do not forsake your mother's teaching. They will be a garland to grace your head and a chain to adorn your neck...."

Proverbs 1:8-9, NIV

Dr. J.W. Haltom

Family Dentistry & Orthodontics



Erika Trotter, Amber Garcia, Jessica Haltom & J.W. Haltom

For A Limited Time
\$50 OFF
Crowns and Bridges

- Emergencies Seen Promptly
- Insurance Accepted
- Patient Financing
- Adults & Children Welcome
- Televisions & Head Phones In Treatment Rooms
- Relaxation Gas

806-385-6935

320 East 8th Street, Littlefield, Texas

MINI MULE CHEERLEADING CAMP

SATURDAY AUG. 18

Registration:
Aug. 18 - 8:30-9:00 AM
Camp:
9:00-11:00 AM

MHS GYM

Ages:
Pre-K thru 6th Grade

Fee includes camp shirt!

\$25 PER CHILD INCLUDES CAMP SHIRT!



2007 Property Tax Rates in the Muleshoe Area Hospital District

This notice concerns 2007 property tax rates for the Muleshoe Area Hospital District. It presents information about three tax rates. Last year's tax rate is the actual rate the taxing unit used to determine property taxes last year. This year's *effective* tax rate would impose the same total taxes as last year if you compare properties taxed in both years. This year's *rollback* tax rate is the highest tax rate the taxing unit can set before taxpayers can start tax rollback procedures. In each case these rates are found by dividing the total amount of taxes by the tax base (the total value of taxable property) with adjustments as required by state law. The rates are given per \$100 of property value. This notice contains a summary of actual effective and rollback tax rates' calculations. You can inspect a copy of the full calculations at 302 Main St., Muleshoe, Texas. This notice was prepared by Kaye Elliott, Chief Appraiser, on August 3, 2007.

MULESHOE AREA HOSPITAL DISTRICT

LAST YEAR'S TAX RATE

Last Year's Operating Taxes	1,041,059
+Last Year's Debt Taxes	-0-
=Last Year's Total Taxes	1,041,059
/Last Year's Tax Base	272,172,206
=Last Year's Total Tax Rate	.3825

THIS YEAR'S EFFECTIVE TAX RATE

Last Year's Adjusted Taxes	1,038,864
/This Year's Adjusted Tax Base	299,486,592
=This Year's Effective Tax Rate	.3468

THIS YEAR'S ROLLBACK TAX RATE

Last Year's Adjusted Operating Taxes	1,038,864
/This Year's Adjusted Tax Base	299,486,592
=This Year's Effective Operating Rate	.3468
x1.08=Maximum Operating Rate	.3745
+This Year's Debt Rate	.0975
=This Year's Rollback Rate Before Adjustment	.4720
-Sales Tax Adjustment Rate	NA
=Rollback Tax Rate	.4720

SCHEDULE A: UNENCUMBERED FUND BALANCES

The following estimated balances will be left in the taxing unit's property tax accounts at the end of the fiscal year. These balances are not encumbered by a corresponding debt obligation.

-0-

SCHEDULE B: 2007 DEBT SERVICE

Muleshoe Area Hospital District plans to pay the following amounts for long-term debts that are secured by property taxes. These amounts will be paid from property tax revenues (or additional sales tax revenues, if applicable)

Description of Debt	Principal or Contract Payment to be Paid from Property Taxes	Interest to be Paid from Property Taxes	Other Amounts to be Paid	Total Payment
Certificates of Obligation	\$135,000	\$145,647	-0-	\$280,647
Total required for 2007 debt service			\$280,647	
-Amount (if any) paid from funds listed in Schedule A			-0-	
-Amount (if any) paid from other resources			-0-	
-Excess collections last year			-0-	
=Total to be paid from taxes in 2007			280,647	
+Amount added in anticipation that the unit will collect only 95% of its taxes in 2007			14,770	
=Total Debt Levy			295,417	

The debt service tax revenue is used to pay for bonded indebtedness. The bonds were approved by the voters of this district.

STATEMENT OF INCREASE/DECREASE

If the Muleshoe Area Hospital Dist. adopts a 2007 tax rate equal to the effective tax rate of \$.3468 per \$100 of value, taxes would increase compared to 2006 taxes by \$10,585.

BIBLE SCHOOL FAMILY STYLE!

Each evening of August 14-16

First United Methodist Church is excited to offer a new approach to Summer Bible School.

Supper will be served each evening from 5:30-6:00 PM.

6:00-8:00 PM Activities

Kids K-5th grade will enjoy lessons, crafts, music and games.

Kids 6th-8th grade will have activities.

Adult Classes include "Giving Your Children a Blessing," "Discipleship 101," "Christian Finance," "Fruits of the Spirit for Couples," "Christian Parenting," and "Standing on the Promises."

NURSERY WILL BE PROVIDED.

Please plan to join us!

First United Methodist Church

507 W. 2nd Street, Muleshoe • 272-5517

Time for new appliances?



WE ARE YOUR HOMETOWN WHIRLPOOL DEALER.

McDaniel's APPLIANCE

1020 Main Street, Clovis, NM
505-762-4481 or 800-682-7891

We now carry Speed Queen!

Health

Wearing 'sun-protective clothing' suggested

Submitted by Mandi Seaton, Bailey CEA-FCS

After years of slip-slap-slop... slipping on a shirt, slapping on a hat, and slopping on sunscreen... the "slip" may be changing.

We have always known that certain clothing items can protect us from the sun more than others.

For example, a black t-shirt gives us more protection than a white t-shirt.

But now, there are clothes made specifically with sun protection in mind and products available that can make a normal t-shirt more protective from the sun.

Thanks to the newest technologies, we may now start saying slip on "sun-protective clothing," slap on a hat, and slop on sunscreen.

But would adding sun-protective clothing to our skin protection routine really be the most economical decision?

Clothes can protect your skin from the ultraviolet (UV) rays of the sun. Even clothes not meant for sun-protection may provide some protection.

Similar to the SPF rating of sunscreen, clothing is given a UPF rating. UPF stands for ultraviolet sun protection factor and tells you how much UV light from the sun is being absorbed.

A fabric with a UPF of 50 means that only 1/50th, or two percent, of the sun's

rays are able to pass through the fabric to your skin. Just like with the SPF for sunscreen, the higher the UPF, the more sun-protection it provides.

The color, weave, weight, and fiber type of the fabric can all affect the amount of sun-protection any clothing item has.

A good way to help judge the fabrics of your clothes is to hold them up to the light. If you can see through an item, so can the sun, which means UV light is able to reach and potentially harm your skin through that piece of clothing.

It is important to remember that if the shirt is stretched, or wet, the UPF will go down.

For example, the average white cotton t-shirt with a UPF of seven can go down to a UPF of three when it is wet.

When selecting clothes to wear for sun protection, you want to choose clothes that cover the most skin, like long-sleeved shirts and long pants.

Dark colors, as opposed to lights and whites, are best. Fabrics with a tight weave can provide the most protection.

If you want to buy clothes made for sun protection, more and more companies are manufacturing clothes that are designed to offer a good deal of sun protection.

Many companies are taking into account both design, maximizing the amount of skin covered, with sleeves and hoods; and the fabric with UPF ratings up to 50.

Coolibar®, a clothing brand recommended by the Skin Cancer Foundation, sells shirts, hats, pants, and swimwear, all offering maximum sun protection.

Most shirts on their website are long-sleeved and range from children to adult sizes.

Search the web, you will find many other sites selling similar products, some boasting that their products are much cheaper than others.

It is important to look for a high UPF when ordering from such sites.

Another option that may prove to be much more cost efficient when it comes to sun-protective clothing is to wash sun-protection into your clothes.

The only laundry aid endorsed by the Skin Cancer Foundation is Sun Guard® from the makers of RIT® dyes.

At about \$1.99 a package, you simply add it in along with your detergent to any load of laundry that you want to have sun protection.

The chemicals in Sun Guard® wash a UPF of 30 into your clothes without altering their color or comfort. The UPF will last in your clothes for up to 20 washes.

Remember, in addition to covering with sun protective clothing, you should protect your skin by following these tips:

- Stay in the shade or indoors between the hours of 10 a.m. and 4 p.m.

- Avoid tanning outdoors or in tanning beds.

- Use sunscreen with an SPF of at least 15 everyday.

- Apply sunscreen 30 minutes before going outdoors, and reapply it at least every two hours.

- Keep newborns out of the sun, and use sunscreen on children six months and older.

- Examine your skin every month.

For more information c o n s u l t www.skincancer.org. or Mandi Seaton, Bailey County extension agent – Family and Consumer Sciences, Texas Cooperative Extension, 806-272-4583.

SPC sets fall 2007 registration

South Plains College will host registration on its Lovelland, Plainview and Byron Martin Advance Technology Center campus locations on Aug. 22.

Fall classes begin Aug. 27.

The Lovelland campus will offer registration for orientation students from 1:30 to 2 p.m. Normal registration will be from 2 to 5:30 p.m.

New and returning students (excluding orientation students) can contact the Admissions and Records Office to obtain a registration time permit. These permits indicate the time students should report for registration.

SPC Plainview Center, located at 1920 W. 24th St., will offer fall registration from 5 to 7 p.m. No permit is required.

Registration for SPC at the Byron Martin ATC, 3201 Ave. Q, is set for 5 to 7 p.m. Students must have been admitted to SPC with transcripts on file to be eligible to register.

Late registration is scheduled from 8:30 a.m. to 4 p.m. on Aug. 27-28.

Current or new students who have been accepted for admission may register through the Campus Connect link at w as long as they have a pin number.

Students must bring the following items to registration: time permit, pen or pencil, valid driver's license, vehicle registration information and form of payment for tuition and fees.

For more information for the Lovelland campus, contact the Admissions and Records Office at 806-894-9611, ext. 2578 or 2572. For registration permits at the Reese Center, contact 806-885-3048, ext. 2902 or 4660.

NEW OPEN!
the **SEWING ROOM**
alterations, dressmaking, home decor
Gail Aukerman
111 S. 1st Street, Muleshoe
806-778-1829

2007 Property Tax Rates in the City of Muleshoe, Bailey Co. General Fund and Bailey Co. Farm Market Road

This notice concerns 2007 property tax rates for the City of Muleshoe, Bailey County General Fund and Bailey County Farm Market Road. It presents information about three tax rates. Last year's tax rate is the actual rate the taxing unit used to determine property taxes last year. This year's *effective* tax rate would impose the same total taxes as last year if you compare properties taxed in both years. This year's *rollback* tax rate is the highest tax rate the taxing unit can set before taxpayers can start tax rollback procedures. In each case these rates are found by dividing the total amount of taxes by the tax base (the total value of taxable property) with adjustments as required by state law. The rates are given per \$100 of property value. This notice contains a summary of actual effective and rollback tax rates' calculations. You can inspect a copy of the full calculations at 302 Main St., Muleshoe, Texas. This notice was prepared by Kaye Elliott, Chief Appraiser, on August 3, 2007.

	CITY OF MULESHOE	BAILEY CO. GEN. FUN	BAILEY CO. FARM MKT. ROAD
LAST YEAR'S TAX RATE			
Last Year's Operating Taxes	714,915	1,286,528	265,311
+Last Year's Debt Taxes	-0-	361,619	-0-
=Last Year's Total Taxes	714,915	1,648,147	265,311
/Last Year's Tax Base	108,271,336	257,563,249	253,401,478
=Last Year's Total Tax Rate	.6603	.6399	.1047
THIS YEAR'S EFFECTIVE TAX RATE			
Last Year's Adjusted Taxes	714,499	1,647,335	264,987
/This Year's Adjusted Tax Base	117,733,064	294,858,418	290,515,293
=This Year's Effective Tax Rate	.6068	.5586	.0912
THIS YEAR'S ROLLBACK TAX RATE			
Last Year's Adjusted Operating Taxes	714,499	1,445,842	264,987
/This Year's Adjusted Tax Base	117,733,064	294,858,418	290,515,293
=This Year's Effective Operating Rate	.6068	.4903	.0912
x1.08=Maximum Operating Rate	.6553	.5295	.0984
+This Year's Debt Rate	-0-	.1108	-0-
=This Year's Rollback			
Rate Before Adjustment	.6553	.6403	.0984
-Sales Tax Adjustment Rate	NA	.0554	N/A
=Rollback Tax Rate	.6553	.5849	.0984

SCHEDULE A: UNENCUMBERED FUND BALANCES

The following estimated balances will be left in the taxing unit's property tax accounts at the end of the fiscal year. These balances are not encumbered by a corresponding debt obligation.

Bailey County:			
General Fund Maintenance & Operation			
Farm to Market Maintenance & Operation	-0-	630,933	142,158

*General Fund Debt Service (I&S) 345,461
*\$319,231 of this amount is the market value (as of June 30th) of a U.S. Treasury & Agency Obligation that will not mature until 6/14/2013.

SCHEDULE B: 2007 DEBT SERVICE

Bailey County General Fund plans to pay the following amounts for long-term debts that are secured by property taxes. These amounts will be paid from property tax revenues (or additional sales tax revenues, if applicable)

Description of Debt	Principal or Contract Payment to be Paid from Property Taxes	Interest to be Paid from Property Taxes	Other Amounts to be Paid	Total Payment
Certificates of Obligation for Jail Construction	\$160,000	\$196,672	-0-	\$356,672
Total required for 2007 debt service		\$356,672		
-Amount (if any) paid from funds listed in Schedule A		26,229		
-Amount (if any) paid from other resources		13,368		
-Excess collections last year		3,330		
=Total to be paid from taxes in 2007		313,745		
+Amount added in anticipation that the unit will collect only 95% of its taxes in 2007		16,512		
=Total Debt Levy		330,257		

SCHEDULE C: EXPECTED REVENUE FROM ADDITIONAL SALES TAX (see below)

In calculating its effective and rollback tax rates, the unit estimated that it will receive \$___ in additional sales and use tax revenues. For County: The county has excluded any amount that is or will be distributed for economic development grants from this amount of expected sales tax revenue.

	N/A	165,170	N/A
--	-----	---------	-----

SCHEDULE F: ENHANCED INDIGENT HEALTH CARE EXPENDITURES

The County of Bailey spent \$134.37 from July 1, 2005 to June 30, 2006 on enhanced indigent health care at the increased minimum eligibility standards, less the amount of state assistance. For the current tax year, the amount of increase above last year's enhanced indigent health care expenditures is \$3,275.01.

STATEMENT OF INCREASE/DECREASE

If the City of Muleshoe adopts a 2007 tax rate equal to the effective tax rate of \$.6068 per \$100 of value, taxes would increase compared to 2006 taxes by \$8,452.

If Bailey Co. General Fund adopts a 2007 tax rate equal to the effective tax rate of \$.5586 per \$100 of value, taxes would increase compared to 2006 taxes by \$16,732.

If Bailey Co. Farm Market Road adopts a 2007 tax rate equal to the effective rate of \$.0912 per \$100 of value, taxes would increase compared to 2006 taxes by \$2,796.

Muleskinner tourney results are released

The results from the Muleshoe Country Club Muleskinner Tournament on Aug. 4-5 were as follows:

Final Results

Championship Flight

61/64=125 Jeff Fontanilla and George Simmons

62/64=126 Ronnie Angeley/Ross Tyler

66/62=128 Mark Foster/ Kevin Welch

First Flight

65/63=128 Pete Sierra / Isaac Pacheco

68/61=139 Greg Trujillo/ David Maldonado

70/60=130 Derrel Embry/ Kyle Kimbrough

Second Flight

64/65=129 Trent Black/ Tim Black

66/64=130 D.J. Robertson/Frank Torres

67/67=134 Charlie Longbotham/James Kinsey

Third Flight

69/68=137 Martin Griego/ Zack Griego

79/69=141 Dale Richardson / Roger Guajardo

74/69=143 Johnny Vera/ Bob Maganalles

Fourth Flight

69/67=136 Mike Trammell/Nick Nunley

69/69=138 Jobey Claborn/Jason Claborn

73/69=142 Vince Erdmann/John Saylor

Fifth Flight

70/67=137 Scott Kline/ Ryan Hahn

73/68=141 Cecil Chavez/ Mike Hasley

74/68 =142 Rody Spradling/Doug Spradling

Sixth Flight

74/72=146 Jim Berry/ Jerry Gleason

73/78=151 Greg Young/ Scott Miller

73/81=154 Ryan Roberts/Trevor Herington

**Come One....
Come All.....
Come Hungry!**
Hamburgers, Chilibogs,
Chips & Dessert

It's time for the 4th Annual Community-Wide Back to School Cook-Out
Meet new LHS staff members & greet familiar staff friends!
Friday, August 24, 2007 at 6 PM
in the Lazbuddie School Cafeteria

Our beloved husband, father, grandfather and great grandfather accepted Jesus Christ as his Lord and Savior Tuesday, July 17, 2007 and went to be with his Savior on July 21, 2007.

Thank you for all of your prayers, support, words of encouragement and watch and care over us this past year. Thank you for the beautiful flowers, phone calls, visits and love shown to us.

Our prayer is that God will bless you richly.

With our love...
Janice Snell, Gary Cain, Andy & Tatia Snell, Steve & Linda Watson, Lincoln Snell, Dennis & Cari Snell, Katrina Snell, Jessie & Christina Snell, Douglas & Chelana Snell and Scott & Rebecca Brayerton, our 36 grandchildren and 6 great grandchildren

MAHD tax rate increase...

Continued from page 1 hospital district's total hundred. The hospital's annual bond payment on the construction of Park View is \$300,000. Mason said today's action would make it easier for the public to see how much of the district's extra funds were needed by the nursing home. "We should have been doing this all along," added board member Zona Gatewood. According to Vicki Black of the Bailey County Appraisal District, the

rollback, including the debt service rate is would be .4720 per hundred if it weren't for the rate cap. It was also explained that should the nursing home be sold, the funds from the sale would be used to retire the debt and the total tax rate would be reduced by the amount of the debt service rate. The hospital board will set the dates and times for the two public hearings required on the proposed tax rate increase at its Aug. 16 regular meeting.

www.muleshoejournal.com

DeShazo Elementary registration set

Students needing to register for third through fifth grades at DeShazo Elementary may do so on Aug. 16-17, from 10 a.m. until 7 p.m. New students will need to bring their birth certificate, social security card, and immunizations records. School officials also note that school records or a report card from the school previously attended by the student would be helpful in the registration process. Call 806-272-7364 for additional information.

Publication of announcements in the Journal

The Muleshoe Journal invites your news of weddings, engagements, showers, anniversaries and births. In order to be fair to everyone, we must limit the amount of space for certain events. For weddings and quinceaneras 25 column inches, which includes a photo if desired, is the limit. If the photo and announcement run longer, we reserve the right to eliminate parts of the story or the person placing the article may indicate which portions may be left out. However, if a longer write-up is desired, it may be purchased in the form of an ad. For anniversaries, if two photos are included, the limit will be 25 inches. It will be 15 inches if only one photo is used. That space will be free for anniversaries of 50 years or more. A fee may be charged for other anniversaries. Birth announcements with one-column photos are run free of charge with names of the immediate family, including grandparents. Please understand that the permission of both parents is required for a birth announcement to be published. Small stories describing showers are run free of charge after the fact and may include the names of the principals, items served at the showers, a brief description of the decor and the names of special or out-of-town guests. It is the responsibility of the party providing the information to provide all of the information. News releases in which names were left out by the party providing the information will not be re-published free of charge. A deadline of four months after an event will be the rule for free publication. Information must be received by Monday noon. However, publication cannot be guaranteed in the week it is provided. Drop by for a form or send the information via e-mail to editor@muleshoejournal.com.

More CLASSIFIEDS

Deadline - 5 PM Monday
272-4536

HELP WANTED

SPC SOUTH PLAINS COLLEGE
EMPLOYMENT OPPORTUNITIES

PART TIME JOB OPENING
SPC MULESHOE EXTENSION CENTER COORDINATOR

- Serve as SPC contact person in Muleshoe
- Assist students w/Admissions, Financial Aid, & advisement

HEALTH OCCUPATIONS
INSTRUCTOR-ADN TRANSITION PROGRAM-EXTENSION CAMPUS
INSTRUCTOR IN ADN - CLINICAL
INSTRUCTOR IN ADN-MED/SURG
PART TIME CLINICAL RESPIRATORY
PART TIME VN CLINICAL
PART TIME ADN CLINICAL

Complete job description & application at:
www.southplainscollege.edu Submit to: South Plains College, HR, 1401 College Ave, Levelland, TX 79336, (806) 894-9611 ex. 2177. AA & EEO Edu. Institution

UNDER NEW MANAGEMENT

minsa NOW HIRING

MINSA IS ACCEPTING APPLICATIONS FOR 2 POSITIONS IN THE MAINTENANCE DEPT.

Some previous maintenance or welding experience preferred. Apply in person at Minsa or at WorkSource, 201 S. Main, Muleshoe, EOE. TFNch2:23

UNDER NEW MANAGEMENT

minsa NOW HIRING

MINSA HAS SEVERAL POSITIONS AVAILABLE IN OUR PRODUCTION FACILITY.

We are looking for hardworking individuals to fill several positions. Apply in person at Minsa or at WorkSource, 201 S. Main, Muleshoe, EOE. TFNch2:23

CITY OF LUBBOCK
TREATMENT PLANT OPERATOR-IN-TRAINING

DUTIES: Under direct supervision of a certified treatment plant operator; inspect, operate, and maintain equipment in a treatment plant on an assigned shift.

QUALIFICATIONS: Any combination of education and experience equivalent to completion of a high school diploma or G.E.D. with an additional one year general water work experience. **Possession of a Texas Operator's License. Must live within 15 minutes travel time of Sudan Pump Station. Must possess a Water Class C Certificate issued by the Texas Commission on Environmental Quality within two years of employment.** Knowledge of industrial water safety and operation of water or wastewater utility equipment. Ability to monitor and control treatment plant equipment. Ability to prepare reports and interpret written instructions. Beginning salary - \$12.00/Hourly, benefits include: 10 Vacation Days, 15 Sick Days, 11 Paid Holidays, City Paid Group Health, Dental, Life and TMRS 5 Year Vesting, Employee Paid Deferred Compensation, Vision Plan, Pre-paid Legal Plan, Section 125 Medical Spending Plan, Disability and Cancer Insurance Plan. For further job description, visit www.mylubbock.us and click on Employment Opportunities or call (800) 621-0793. EEO. 2ch8-9

NOTICE! Applications are now being taken for the position of **Meter Reader.** The job description may be picked up from the Office Manager, 305 E. Ave. B, Muleshoe, 272-4504, but the application form must be filled out in-house. If you feel you are interested and can meet the qualifications as outlined in the Job Description, have your application completed no later than **5:00 p.m., Monday, August 20, 2007.** Bailey County Electric Cooperative is an equal opportunity employer. 2ch8-9

FOR SALE

BELL
MOBILE HOMES
WHERE YOU BUY THE BEST FOR LESS

SHIPLEY BROTHERS, INC.
806-894-7212
806-894-8187
806-894-1580

◆New '07 16 wide 3+2. Just \$214.93 monthly* and 1300 down.*Call (800) 830-3515 (se habla espanol) 24,600 to finance 9.5 APR 300 months WAC*

◆Call our 24 hour credit Hotline to see if you qualify for a Home Loan. (800)375-8739.

◆1st time Home buyers or Single Parent Programs, E-Z Financing. (888) 539-7780 (se habla espanol)

◆New '07 5+3 only \$524.50 monthly*, just 2400.00 down.*(888) 539-7780 (se habla espanol) 62,500 financed amount, 300 month 9% WAC*

◆Need A Home Now! We have over 50 to choose from and cheapest prices anywhere! Call Bell Mobile Homes, Everyone's Approved! **Guaranteed!** (800) 830-3515.TFNch11-18

Elevator Help Needed - The AGP Grain Marketing elevators are in need of elevator help for various locations. Applicants must be at least 18 years of age and must pass a pre-employment physical and drug screen. Must be able to work in grain dust. If interested, please pick up applications at the main office in Bovina or call 806-251-1521 local, or toll free at 866-583-7362. 4ch8-2

ARAMARK, food service partner of Muleshoe ISD, seeking Cafeteria Manager to join Food Service Team. Will organize, lead, control and evaluate operations at assigned school. Reports to Food Service Director. Supervisory experience preferred. Email resume to thacker@muleshoeisd.net, or fax 806-272-4177, or you may apply in person at the Food Service office located in the High School Cafeteria. AAE/ELE. 2ch8-9

AZTECA MILLING LP

Temporary harvest help needed. Apply in person 1-1/4 miles E. of Muleshoe on Hwy. 84 or call for more info. 272-6701. Positions needed: **Corn testers Ticket writers Truck probers** 3ch7-26

Support Medical of Muleshoe is looking for a FT customer service rep. Some medical experience/background preferred but not required. Must have basic computer skills. 40 hrs./week, health insurance provided. Apply at 202 S. Main, Muleshoe. 1ch8-9

DRIVER

AARTMAN
TRANSPORT CORPORATION

Food Grade Tanker Drivers

LOCAL AND OTR RUNS

- * Medical, Dental, Vision
- * Excellent 401k plan
- * Paid Holidays and Vacation

CDL-A w/tank end. & 1 yr. exp.

888-AARTMAN
EOE 1pd8-9

CALL 272-4536 TO ADVERTISE!

FOR SALE

\$250 KING pillowtop no flip mattress & box, NEW with WARRANTY. 806-549-3110. 2ch8-9,8-23

QUEEN pillowtop mattress set, never used, in wrapper, \$150. 806-549-3110. 2ch8-9,8-23

4 POSTER bedroom set, bed, dresser/mirror, nightstand, still boxed, sell \$999. 806-549-3110. 1ch8-9

FULL ORTHOPEDIC mattress set & warranty, still new, \$125. 806-549-3110. 2ch8-9,8-23

Yard Maintenance help wanted. Cargill Cattle Feeders is looking for a person to work on yard maintenance performing the tasks of welding, operating heavy machinery and other maintenance tasks. The desired candidate would also be capable of performing electrical, hydraulic and pneumatic repairs. Experience is not mandatory but would be beneficial. For more information on this position contact Brian at 806-225-4400 ext. 34. Or come by Cargill Cattle Feeders to pick up an application. 1ch8-2

The Town & Country Difference 3ch8-9

NOW HIRING

A Career Path with a Difference

We Offer Excellent Benefits:

- Good Starting Wages
- Flexible Hours
- Health & Dental Insurance
- Stock Purchase Plan
- 401K

It is essential that you can successfully demonstrate the following skills:
Ability to Communicate with Customers & Basic Arithmetic

Walk-in interviews will be conducted on Tuesday, August 14, 2007 from 2 pm to 5 pm at the store located at 1900 W. American Blvd. in Muleshoe.

Pre-Employment Drug Test Required
For on-line applications visit our website at www.tlcs.com
Direct Deposit Payroll Required Drug Testing Required

EOE

Good Value. Great People.

Sanderson Grain in Springlake is accepting applications for PT secretary/scale/office help. Starting Sept. 1 till Dec. 1. Using adding machine & working with numbers is part of the job. Mon.-Fri. and weekends when needed. If interested, pick up appl. at Sanderson Grain in Springlake or call 806-986-4236. 2ch8-2

Accounting position: Exp. preferred. A/R, A/P, G/L & P/R. Benefits: Insurance, profit sharing. Send resume with references to: P.O. Box 106, Tulia, TX 79088. 2ch8-9

Certified Nurse Aide Classes
Beginning Sept. 5th Pre-registration is required.
Possible Financial Aid. Class size is limited.
Runningwater Draw Care Center
(806) 285-2677 4ch8-9

SECURITY OFFICERS
\$7.50/HR
Full/Part Time
Frona, Texas Area
Vacation/401K
Stock options/Uniform
No criminal record/
Pre drug screening.
Apply at Security Officer/Cargill Meat Solutions, 1530 West Highway 60, Frona. 806-295-8357. EOE/M/F/D/V. 2ch8-9

\$1500 Bonus for Experienced Satellite Installers
We need full-time, hard-working DirecTV satellite installers with strong customer service skills. Excellent wages and medical/dental/vision/401k benefits available. Paid Training for those with no experience. Call 800.411.4374 or go to www.permiercomm.com for further info. 4ch8-9

IMMEDIATE OPENINGS for Steel Building Erectors, Concrete Workers and a Full-Time Mechanic. Apply at Anderson Building Company, 2110 E. Mabry Dr., Clovis, NM, 505-762-5951. 1ch8-9

GARAGE SALES

Multi-family sale, 1/4 mi. east of Earth on Hwy. 70, brown brick house on north side. Sat., Aug. 11 from 9 am to 5 pm; Sun., Aug. 12 from 1 pm-?? Baby items, toys, furniture, household items, refrigerator, microwave & antiques from store closing. 1ch8-9

First Assembly of God Annual Garage Sale
Saturday, Aug. 11
8 AM till noon
521 S. First St.
1ch8-9

PROPERTY FOR SALE

6.2 acres with a circle drive on pavement. Ideal for mobile home, doublewide or good location for a permanent home. Lots of big tress and has its own water well. It has 3 all-metal barns: #1, 105' x 75'; #2 60' x 21'; #3 46' x 24' with a 15' x 24' shop on one end. It also has pens or corals around the big barn. All of this is located 10 miles east and 1/2 mile north of Muleshoe. 806-632-1677. 3pd8-2

ADVERTISE!

AUTOMOBILES

2000 Chevy Suburban for sale. Great condition, runs well. 142K miles. Asking \$9,700. Call 272-3072 or 946-7450. 4ch7-19

'04 Z71 Suburban, 4x4, sunroof, leather seats, DVD, CD, satellite radio, On-Star, excellent condition, \$20,000. 806-825-3135. 4ch8-9

AUCTIONS

REAL ESTATE/ HOUSEHOLD AUCTION

AUGUST 11, 07 10:30 AM (CT)
COUNTY RD 1038 MULESHOE TX,

Go West out of Muleshoe on 70/84 to West Camp Road 1028, Go west to County Road 123, Turn South, go to County Road 1038 turn West. 1st Home on South side

INFO ON REAL ESTATE: COUNTY RD 1038 MULESHOE TX,

THE HOME SETS ON 5.3 ACRES. 2 BEDROOMS & GAME ROOM DOWNSTAIRS, 2 BEDROOMS UPSTAIRS, , KITCHEN, LIVING ROOM, DINING AREA, UT ROOM, VINYL SIDING, METAL ROOF, 40 X 50 METAL BUILDING, STORM WINDOWS, DUAL FUEL HEAT PUMP. CALL 800-822-1243 OR 505 763-7311 FOR APPOINTMENT TO VIEW IT. KARL CAMPBELL (BROKER)

LIVING ROOM: Spinnet piano, piano bench, chair, wood rocker, small table lamp, set of lamps, coffee tables, bookcases, grandma clock, spot chair, love seat, divan, "ROLL TOP DESK" End tables

Collectibles: 3 metal dairy stanches, funnels, Fairbanks Scales, Antique bed with small post, child's desk, Army foot locker, wood rocky house, collection of birds, lantern, bottle collection, "SQUARE COKE BOTTLE", 100 year old wood premier

Collectibles: Old toys, magazine holder, kerosene cane hobbles, milk can, 5 flat irons, childhood rockers, Nick knacks, hat boxes. Single tree,

DINING ROOM: Table with 4 chairs, pantry cabinet,

BEDROOM: Bookcase headboard, 2 chest, 3drawer dresser, king size mattress & box spring, full size mattress & box spring, dresser, 2pc, bed suite with bookcase headboard, bunk bed with full size on the bottom, 1920 Vanity dresser base, 3pcs Bassett bedroom suite, chest with night stand, full size tilt & vibrating

MISC.: small windmill, ut cart, 2 bike, exerciser, rolling cart, books, fishing pole, cat play unit, sm wood wheel barrow, cook books, card table, Christmas deco. Bed spread & curtains, birdhouse, wall hanging, fountain, computer, Kenmore sewing machine.

APPLIANCES: Gas dryer, Tapon microwave, washer, under counter ref. Upright deep freeze,

SHOP: Wheel barrow, barrel with p ump, metal ladder, buckets, air compressor, 2 step ladders, metal shelving.

NO BUYERS PREMIUM

OFFICE: Oak office Chair, 2 file cabinet, computer table, office chair,

Smile

TERMS: CASH, CHECK, VISA, MASTERCARD

James Priest & Associates • W & J Auction, Inc.
"YOUR KNOWLEDGE IS YOUR SECURITY"
AUCTIONEERS: James Priest, Gid Priest, Butch Priest

50 YEARS OF SERVING YOU

PREMIUM space age memory foam mattress set, warranty, shrink wrapped, \$599. 806-549-3110. 2ch8-9,8-23

LEATHER SOFA & LOVE, new still boxed, worth over \$2K, must sell NOW \$750. Can deliver. 806-549-3110. 1ch8-9

ADJUSTABLE BED base and mattress, list \$2500, sell \$1299, NEW. 806-549-3110. 2ch8-9,8-23

DININGROOM 10 pc. carved ball & claw wood set, double pedestal table/leaves, 6 chairs, QUALITY, NEW, \$1995. 806-549-3110. 1ch8-9

Wanted: Responsible party to take on small monthly payments on High Definition Big Screen TV 1-800-398-3970. 2pd8-9

WANT TO BUY FURNITURE

We buy used furniture, appliances and more. We'll take it off your hands and out of your way! Call 505-762-7838 or 505-714-2814. 1smo2ndwhch

CLASSIFIEDS

Deadline is Monday at 5 PM to place a Classified ad. Call 272-4536.

PUBLIC NOTICE

PUBLISHER'S NOTICE

All real estate advertising in this newspaper is subject to the Fair Housing Act which makes it illegal to advertise "any preference, limitation or discrimination based on race, color, religion, sex, handicap, familial status or national origin, or an intention, to make any such preference, limitation or discrimination. "Familial status includes children under the age of 18 living with parents or legal custodians, pregnant women and people securing custody of children under 18."

This newspaper will not knowingly accept any advertising for real estate which is in violation of the law. Our readers are hereby informed that all dwellings advertised in this newspaper are available on an equal opportunity basis. To complain of discrimination, call HUD toll-free at 1-800-669-9777. The toll-free telephone number for the hearing impaired is 1-800-927-9275.



PUBLIC NOTICE

NOTICE TO BIDDERS

Muleshoe Area Hospital District is seeking Bids to sell, Park View Nursing Care Center, for cash (land and improvements) located at 1100 West Avenue J, Muleshoe, Texas. The subject property is approximately 5.0 acres in size and contains a 90 bed nursing home facility (18 bed separated secure unit), located in Bailey County, Texas. Bids will be due at the Muleshoe Area Medical Center, 708 South First Street, Muleshoe, Texas 79347

Bid Packet

Bid Packets can be requested by calling Lori Davis (806) 272-4524 ext. 104. To inspect the property, please contact Ronnie Dent (806) 946-9155. Financials will be available upon request after Bidder Information Questionnaire is completed (available in packet). **Bids will close on September 14, 2007 at 2:00 p.m.** The name of the bidders will be available at

that time, but the amounts of Bid for the property will not be available. The result of the Bids will be made available at the regular Board Meeting of September 20, 2007. **The Bid must be presented in a sealed envelope marked, "Bid for Nursing Home: Attention Board Members."** The Board Reserves the right to accept or Refuse any or all bids. *Published in the Muleshoe Journal on August 2 and 9, 2007.*

PUBLIC NOTICE

NOTICE OF SALE

The Bailey County Commissioners Court will offer for sale to the highest bidder various items of surplus and salvage property. All bids must be in writing and must refer to the item number being bid on. All vehicles and equipment will be parked at the Muleshoe Airport on Hwy. 70 for inspection. Bids must be in writing, in sealed envelopes and submitted to the

County Judge's office no later than 10:00 A.M., Monday, August 27, 2007. All items will be sold "AS IS." The Court reserves the right to accept or reject any or all bids. Bids will be opened at 10:00 A.M., August 27, 2007, at the Courthouse. *Published in the Muleshoe Journal on August 9 and 16, 2007.*

LAWN SERVICES

FRIESEN LAWN SERVICE
925-6789
Cell: 806-470-0406
JAY FRIESEN TFFNH

REAL ESTATE

- Irrigated farms — Spade, Earth, Levelland, Plainview and 6 at Littlefield, also 3/2/2 brick, 102 E. 23rd, \$94,750.
- Amherst — 2 irr. labors. 5/2/2 on 2 acres, \$43,000.

FARRAR & ASSOCIATES
806-894-7099

Byrd Realty
Ronald Byrd
Licensed Broker
Crista Bass

228 Main Street, Muleshoe, Texas
www.byrdrealestate.net

Extremely nice country home on highway - 3 bedroom, 1-3/4 bath brick home, fireplace, cent. A/H, built-ins, wood blinds, large utility, den, enclosed swimming pool, sprinkler system, patios, 2 car garage, 40' x 80' barn, separate office, all on 5 acres. This home has too much to describe. Call for more details. Priced to sell!!!

This home will not last long. Spacious 3 bedroom, 2 bath, 2 car garage brick home on 2 acres, central heat and air, whirlpool tub, large utility room, storage building, sprinkler system, fenced back yard, all on corner lot.

Priced to sell!!! - Nice 3 bedroom, 1-3/4 bath home, central air and heat, appliances, washer/dryer included, FP, wood floors. Storage bldg. and fenced back yard.

Nice 2 bedroom, 1 1/2 bath brick home, cent. heat & air, built-ins, large utility room, fireplace, fenced back yard, 2 separate garages, all on corner lot.

New Listing - 160 acres on highway includes very nice 3 bedroom, 2 bath brick home. Refrigerated air and central heat. Built-ins, fireplace, large utility and 2 car garage. Has circular sprinkler, 2 wells, 70'x100' hay barn, 24'x25' storage building, and more.

Nice 3 bedroom, 2 bath brick home, sunroom, 2 fireplaces, built-ins, large master bedroom, lots of closet and storage space, indoor grill, finished basement, sprinkler system, storage area building, fenced back yard, plus more.

Spacious - 4 bedroom, 3 bath brick home, built-ins, refrig. air/central heat, 2 living areas, utility room, sunroom, built-in grill, fireplace, dining room, sprinkler system, fenced back yard, 2 car garage. Plus more!

Lazbuddie area - 2 bedroom, 1 bath brick home, built-ins, ref. air/central heat, 2- car garage, all on approximately 2-3 acres.

NEED HOUSE LISTINGS! HAVE BUYERS! GIVE US A CALL!!

Office: (806) 272-5380 Toll Free: 1-888-999-3846

PUBLIC NOTICE

NOTICE OF SHERIFF'S SALE THE STATE OF TEXAS

County of BAILEY
Buy virtue of an Order of Sale issued out of the Honorable 287th Judicial District Court of Bailey County, on the 2nd day of Aug., 2007, by the Clerk thereof, in the case(s) styled as follows:
Cause No.: 8,153 Styling: Bailey Central Appraisal District vs. Alberto Belez
Legal Description: 1. A 2.00 acre tract of land out of the Northwest part of Labor 25 League 193, Foad County School Lands, Bailey County, Texas.
Cause No.: 8,196 Styling: Bailey Central Appraisal District vs. Curtis L. Carpenter Ind./dba Muleshoe Floor Covering
Legal Description: 2. Lots 5,6, Block 3, Warren #2 Addition to the City of Muleshoe, Bailey County, Texas.
Cause No.: 8,257 Styling: Bailey Central Appraisal District vs. Wendell Audain
Legal Description: 3. Lot 68, Parkridge Addition to the City of Muleshoe, Bailey County, Texas.
Cause No.: 8,278 Styling: Bailey Cen-

tral Appraisal District vs. Carmen Arriaga
Legal Description: 4. E45' of E90' of Lots 7-9, Block 5, Warren #1 Addition to the City of Muleshoe, Bailey County, Texas.
Cause No.: 8,279 Styling: Bailey Central Appraisal District vs. Rosa Linda Cruz
Legal Description: 5. A 3.5 acre tract of land out of the Southwest Quarter of Section 33, Block X, WD & FW Johnson Subdivision of Bailey County, Texas.
Cause No.: 8,281 Styling: Bailey Central Appraisal District vs. Matthew Lee
Legal Description: 6. Southeast Part of Tract 1, Block 1, of the Harvey Addition to the City of Muleshoe, Bailey County, Texas.
Cause No.: 8,282 Styling: Bailey Central Appraisal District vs. Benny Martinez
Legal Description: 7. An Undivided Interest in Lot 28, Block 1, Gatlin Addition to the City of Muleshoe, Bailey County, Texas.
8. An Undivided Interest in Lot 27, Block 1, Gatlin Addition to the City of Muleshoe, Bailey County, Texas.
9. An Undivided Interest in Lot 26, Block 1, Gatlin Addition to the City of Muleshoe, Bailey County, Texas.
10. An Undivided Interest in the South 20' of Lot 15, Block 1, Gatlin Addition to the City of Muleshoe, Bailey County, Texas.
Cause No.: 8,284 Styling: Bailey Central Appraisal District vs. Christina Olivarez
Legal Description: 11. West 60' of Lot 10, Block 1, Murruh Addition to the City of Muleshoe, Bailey County, Texas.

said month, at the East door of the Courthouse of Bailey County, in the City of Muleshoe, Texas. Levied on the 2 day of August, 2007, as the property of said defendants, to satisfy the judgment rendered in the above styled and numbered cause, together with interest, at 12 percent per annum, and all costs of suit in favor of each jurisdiction. "ALL BIDDERS MUST NOW DISPLAY PROOF OF COMPLIANCE WITH 34.015 OF TEXAS TAX CODE." GIVEN UNDER MY HAND THIS 2 DAY OF AUGUST, 2007. Signed **Richard Wills**, SHERIFF OF BAILEY COUNTY, TEXAS BY: **Kimberly Harris**, DEPUTY. *Published in the Muleshoe Journal on August 9, 16 and 23, 2007.*

WANT TO BUY

Want to buy Flintridge China, Bon-Lit, white (rim). Ori. purchased @ Higginbotham-Bartlett in early 1950s. Call 806-786-2745.

PUBLIC NOTICE

Lee Lewis Construction, Inc. will receive proposals for the **Watson Junior High Additions and Renovations, Muleshoe Independent School District, Muleshoe Texas.** Proposals are due by 4:00 PM, Wednesday, August 22, 2007. No proposals will be accepted after this time. We specifically invite **Small Business Concerns and Women Owned Business Concerns, and Small Business Concerns Owned/Controlled by Socially and Economically Disadvantaged Individuals.** Plans are available from: Lee Lewis

PUBLIC NOTICE

Construction, Inc., 7810 Orlando Ave., Lubbock, Texas 79423, 806-797-8400. Plans are available for viewing in the following locations: **AGC Plan Room - Lubbock Dodge Plan Room - Lubbock Dodge - Scan A Pre-Proposal Conference will be conducted at 11:00 AM on Wednesday, August 15, 2007 in the library of Watson Junior High School located at 514 W. Ave. G, Muleshoe, Texas.** *Published in the Muleshoe Journal on August 9 and 16, 2007.*

MISCELLANEOUS

D&L MOBILE WELDING
806-7-12
Stock Pens - Custom Commercial - Residential Farm Equipment
106 W. 19th, Muleshoe
Home: (806) 272-3803
Cell: (806) 566-5028

Rex Lowery Painting
Painting in the Muleshoe area over 40 years!
FREE ESTIMATES
Cell: **789-9142**

FEED, SEED & HAY

Winter Wheat & Fall Forage Seeds
WHEAT — TAM 111, TAM 112, Cutter, Jagalene
BEARLESS WHEAT — Deliver, Longhorn, Russian Bearless, Weathermaster 135
TRITICALE — Bobcat Beardless Blend, Presto, Pika, T-23, Full Season Trit Blend, Tamcale 5019, Jenkins
GRAZING BLENDS — Bobcat Beardless Trit Blend, Full Season Trit Blend, Triple B Beardless Blend
BARLEY — P919 Bearless Barley
RYE — Maton, Elbon, Strain Cross, Oklon
OATS — Troy, Hy-test, Jerrys
Bagged or Bulk. Delivery Available.
800-299-9273 — 806-258-7394
GAYLAND WARD SEED
Hereford, Texas

HOUSE FOR SALE BY OWNER

1130 CR 1028, Muleshoe, 2.4 miles off Hwy. 84 on West Camp Road. 3 bedrooms, 1-1/2 bath, 2 car garage. 1800 sq. ft., approx. 2.5 acres. Well less than 2 yrs. old, new kitchen floor, windows about 2 yrs. old. Contact Betty, 946-3321 or 240-1199.

300 W. 19th-Richland Hills, Muleshoe. 3/2/2 2,630 sq. ft., large corner lot, 2 living areas, fireplace, C/H/A, sunroom and lots of storage. New roof and insulation. Large back yard, 2 covered patios, sprinkler system and large storage house. For more info., call 806-369-7002 or 806-369-7920.

REAL ESTATE

Courtyard REAL ESTATE
ERA
• 4BR-2BA-2CP-2GA at 401 Hornet Drive in Sudan. Approx. 1900 sq. ft. 2 car garage located 2 blocks from Sudan Community Center lot - \$59,500. Pictures available at: <http://associates.era.com/montyedwards>.
• 3BR-1BA-1GA, 309 Worth Street, Sudan. Home with app. 1284 sq. ft. living area sits on double lot w/separate detached 2 car garage/workshop. Nice house with lots of potential.
Monty Edwards, Agent
(806) 786-5426

Call A Sales Rep Today!
Did you know...
Our classified section appears in its entirety on the Muleshoe Journal website at www.muleshoejournal.com.

REAL ESTATE

Vic Coker Land Co.
Agricultural Real Estate

- **Great Hunting** - Mule Deer, Quail, Dove, Pheasant. 1256 acres in Lamb County. 580 acres irrigated with center pivot sprinklers. 13 wells. 530 acres of CRP. A lot of depreciable assets and good cash flow.
- **Lamb County** - Earth - Beautiful, red brick home. 4 bedrooms, 3 baths, 4 park garage, lots of storage, fenced back yard, sprinkler system, \$130,000. Too nice to pass up.
- **Parmer County** - 480 acres northeast of Farwell on FM 3333, 3 sprinklers, 3 wells, good direct payment.
- **Castro and Lamb Counties** - 637 acres in 3 tracts in Dodd area. Some pavement. 4 sprinklers, 5 wells. Very good direct payment. A clean, well groomed farm.
- **Lamb/Castro County Line** - 316 acres north of Earth, 2 central pivots, 4 wells. Very productive.
- **Lamb County** - Northwest of Littlefield. 5 labors, 5 pivots, good allotment. Growing alfalfa and wheat for hay. A lot of depreciable assets.

316 Main Street • Muleshoe, Texas
Office: 806-272-3100 Home: 806-965-2468
Website: www.vicoland.com

REAL ESTATE

Cleavinger & Associates
Real Estate Just Became A Breeze

Hart Farm — These two half sections are 2 miles apart north and west of Hart. The north half section has 3 wells, 2 are 500 gpm and one is 200 gpm. The south section has 3 wells all about 500 gpm. All wells were metered in Nov. '06.
Bailey County Farm — 547 acres setup for cow/calf operation. Four center pivot sprinklers, four different improved grasses, four 200 gpm wells, permanent fencing, and a 2650 sq. ft. house. Adjacent to this property is an additional 160 acres that could be bought and another 160 acres that could be leased.
Muleshoe — 6000 sq. ft. space for lease on American Blvd. next to Dollar General and across the street from McDonald's. As is or build-out would be considered for a long term lease.
Muleshoe Area Farm in Prime Dairy Location — 1149 acres NE of Muleshoe. This farm consists of seven quarter sections that have been very well maintained with newer center pivot sprinklers all packaged for 700 gal/min.
Lazbuddie — 2451 County Road X: House and 8 acres of land two miles N of Lazbuddie. This is a well maintained country home with many updates and additions as well as a 50' x 60' shop building.
Olton — 160 acres NW of Olton in the Valley with 750 gpm pack well, 600' x 100' lot, 700' x 100' lot of Olton both with 7 tower valley sprinklers & 550 gpm packages.
Lazbuddie Farm — 1120 acres with center pivots on all quarters. Two beautiful homes and two miles of highway frontage.
Dodd Farm — 967 acres with center pivots 2 miles E of Dodd in a good water area. A very nice home and barn on the highway.
Muleshoe — 105 acres 3 miles E of Muleshoe. 50 acres under a pivot and 2 wells.
623 W. American Blvd., Muleshoe, TX — A thriving business in a progressive rural city. The business currently includes tree and plant sales, landscaping projects of all sizes, yard sprinkler planning and installation, and yard and tree spraying. Great opportunity!
311 W. American Blvd., Muleshoe, TX — An established business that carries everything for your farm animal needs. Currently, this business carries hay, Hi-Pro feed for large and small animals and a wide variety of animal care essentials. It is located in an area surrounded by feed yards, dairies and farmsteads.

MIKE CLEAVINGER, ABR
KELLER WILLIAMS REALTY
4747 S. Loop 289, Suite 110
Lubbock, TX 79424
Cell: (806) 239-5139
Office: (806) 771-7710

REAL ESTATE

Nieman Realty
116 E. Ave. C • George Nieman, Broker • 272-5285 or 272-5286
CHECK OUR LISTING INFO., PHOTOS, ETC. ON-LINE AT WWW.NIEMANREALTY.COM
HAVE BUYERS! NEED HOME AND LAND LISTINGS!!

RICHLAND HILLS-PARKRIDGE AREA-HIGHLAND AREA
• VERY NICE 3-2-2 Brick. Cent. A&H, built-ins, fireplace, utility, new paint, carpet, tile, atrium doors, blinds, 7 fans, cov. patio, stor. bldg., fenced yd.!! MORE!! \$145,000!!
• VERY NICE 3-2-5-2 Brick Home, Dual Fuel Heat Pump, built-ins, FP, basement, cent. vac. & humidifier systems, auto. spkr., workshop/storage, fenced yd., corner lot!! \$169,500!!
• VERY NICE 3-2-2 Brick Home, Cent. A&H, built-ins, FP, fans, basement, cov. patio, 26' x 30' metal bldg. w/A&H, fenced yd.!! \$170,000!!

LENAU - COUNTRY CLUB AREA
• 2-1 Home, 1 car detached garage, wall furn. heat, win. evap. air!! \$11,900!!
• VERY NICE 2-2-2 carport Home, cent. heat unit, 3 win. refrig. air units, 5 ceil. fans, woodburning stove in den, sunroom, hdwood, carpet, & tile, workshop/storage, fenced yd., corner lot!! \$445,000!!

HIGH SCHOOL AREA
• NICELY REMODELED 2-1-2 carport, new electrical, plumbing, fixtures, cabinets, texture & paint, Cent. A&H (elec. heat pump), new shingles & storm windows, workshop/storage!! \$47,500!!
• VERY NICE 3-2-2 Brick Home, Cent. A&H, built-ins, FP, nice tile & laminate floor, cov. patio, 26' x 30' metal bldg., fenced yd.!!

COMMERCIAL
• ANA'S BEAUTY SHOP — Approx. 1120' bldg., with or without furniture & fixtures!! PRICED TO SELL!!
• 3 office units on 40.6' x 140' lot across from our house!! \$33,000!!
• VERY NICE CHURCH BLDG. WITH PARSONAGE - MAY BE SOLD SEPARATE!! Priced to sell!!
• GOOD INCOME PROPERTY-LONG TERM LEASE-Approx. 8,075' office bldg. w/ approx. 20,000' paved parking area!! PRICE REDUCED \$350K
• NICELY REMODELED - 800 sq. ft. Bldg., Cent A&H, updated electrical & plumbing, \$42K.
• 4.2 acre tract at edge of town, 40' x 60' metal insulated bldg., 2 other sheetrock bldgs., chainlink fenced area, numerous uses!! \$59K!!
• Approx. 1274' Building, 75' x 140' lot, U.S. Hwy. 84!! \$39.5K!!
• 100' x 140' tract, corner lot on Hwy. 84, 1760' Bldg., 1076' Bldg., 308' storage, & 2-56' x 22' metal canopies w/paved area!! \$49.5K!!
• FORMER RICHLAND HILLS TEXACO - 1414' Bldg. + 1080' canopy + 16,530' asphalt paving!!

FARMS
• 160 acres close to town on S. Hwy. 214, 2-4" well, 1-2" well, circle spkr., good stock fence and corral!! PRICED TO SELL!! Adjoining 160 also available.
• LAZBUDDIE AREA — 3-2-2 Home, Cent. A&H, built-ins, FP, deck, hot tub, cellar, stor. bldgs., on 2 acre tract!! \$95K!! Additional 156 acre farm w/circle sprinkler, 3-20 hp. sub. wells!! \$495 per acre!!
• CLAY'S CORNER - 320 acres, 2 wells, 2 circle sprinklers, 3 bedroom 2 bath, 2 carport home!!

RURAL
• 3 bdrm, 2 bath home on 30 acres, 24' x 36' workshop, 13' x 36' storage, domestic well, irrig. well!! MORE!! \$75K!!
• NICE 4.8 acre homesites, close to town, deed restricted!! \$17,500!!
• NICE 3-2-5 carport Home on 2 acres, Cent. heat, Cent. evap. air, built-ins, fireplace, fans, utility, cellar, large shop, stor. bldg., MORE!! \$129,500!!
• SUDAN - VERY NICE 2-1-1 carport Brick Home, elec. baseboard heat, window evap. air, fans, large utility, approx. 1220' lv. area, cov. patio, 3 car detached carport with storage, corner lot!! \$32,500!!
• CLAY'S CORNER — VERY NICE 3-2-75-2 HOME on 5 acre tract, Cent. A&H (Elec. Heat Pump), built-ins, FP, 1100 sq. ft. new in 2005 plus additional updating w/carpet, tile, painted, fenced yd., cov. patio, 600' workshop/storage Bldg.!! Numerous other amenities!! \$189,500!!
• SUDAN-NICE 4-2 Mobile Home on 94' x 140' lot, 1848' lv. area, Cent. A&H, built-ins, Mstr. bath has garden tub & separate shower, 1 car detached garage, deck w/hot tub!! \$45K!!
• NICE 3-2-2 Home on 60 acre tract!! Central A&H, built-ins approx. 2575' lv. area, 10 hp. well, workshop, barns, corrals, fenced!! MORE!! \$130,000!!
• PROGRESS - NICE 3-2 Mobile Home on 1.24 acres, approx. 1876 sq. ft., Cent. A&H, built-ins, FP, 5 fans, 2 carport, 1250' Metal shop, 160', 480', & 96' stor. bldgs., domestic well, fenced yd.!! MORE!! \$75K!!
• 3-2 BRICK HOME on .67 acre, W. Hwy. 84, built-ins, office, geothermal heat pump, whirlpool tub, basement, paved circle drive & conc. parking!! MORE!! \$120K!! Additional 6.66 acres can be purchased!!



Photograph by Larry Thornton

Forget the Cotton-eye Joe...

Forget the Cotton-eyed Joe, the Hustle, or any of the honky-tonk line dances out there. If you want to see some exciting "Mule-style" line dancing plan to attend this year's Mule football games. Pictured above, a coach works with both offensive and defensive players during Monday's practice.

Letter to the Editor

Response made to water conservation district letter

To the Editor:

Phil Garrett of Muleshoe recently raised concerns regarding changes to the rules and by-laws of the High Plains Underground Water Conservation Dist. 1.

We appreciate his concern and wish to clarify points raised in his letter to the editor.

Chapter 36 of the Texas Water Code as amended by HB 1763 specifically outlines requirements that districts must follow regarding announcement of

rulemaking hearings. The High Plains Water District met all these requirements for the July 10 hearing in Hereford and the July 12 hearing in Lubbock.

The public had the opportunity to voice opinions regarding the proposed rule revisions before, during, and

after these hearings.

Most in attendance favored the rule revisions; however, Mr. Garrett was the only person within the district to offer written and oral opposition to the rule change.

The board appreciated his comments and considered them when making its decision.

Mr. Garrett's letter states that "As of July 17, the water district has a county board elected by the people with no duties and no process for replacement at the end of their elected term."

The revised district by-laws clearly outline the responsibilities of the County Advisory Committee, including communicating to the board any information concerning the wishes of people in the county;

reporting any violations of the district's rules; attending an annual County Advisory Committee meeting; and performing other duties as required by the board.

Effective July 18, the board shall appoint persons to serve as members of its County Advisory Committee. The current elected County Committee members shall continue to serve in this capacity until their respective terms end in either 2008 or 2010.

At that time, the district's board shall begin appointing candidates to serve either a new four-year term or re-appointment to a second four-year term.

The water district will make the public aware when it is time to appoint County Advisory Committee members within the respective district directors' precincts.

We will accept suggestions for nominations from any constituent within the district.

Let me emphasize that the High Plains Water District is governed by a five-member board of directors elected by residents in the precincts they represent.

The recent rule change does not impact the board of directors, but only the County Advisory Committees.

The revised County

Advisory Committee duties simply reflect changes in district administrative procedures and technological advances added to the water well permitting process.

As always, the final decision regarding all water well permits continues to rest with the district's board of directors.

The High Plains Underground Water Conservation District No. 1 has always welcomed input from constituents, such as Mr. Garrett.

Those with questions about the recent rule revisions are invited to contact me at 806-762-0181.

Jim Konkright,
general manager,
High Plains UWCD



Watson Junior High cheerleaders attend camp

The Watson Junior High cheerleaders attended the NCA Commuter Cheer Camp recently at Lubbock Christian University, bringing home the Spirit Stick each day of camp.

Three Muleshoe students, Samantha Reyna, Araceli Mascaias and Gesela Perez were nominated for All-American tryouts.

And the squad received

the camp's Spirit Megaphone award.

Pictured above, from left to right, are: Back row — Shelbi Harrison, Rashelle Hall, Araceli Mascaias, Alyssa Leal, Samantha Reyna, Ashley Thomas and Baylee Bessire; middle row — Jessa Garner, Jessica Kube, Stephanie Vasquez, Gisela Perez and Mandy Scolky; front row — Alexa Fuentes.

Sudan "KFC" Bible school offered

The First United Methodist Church of Sudan will be hosting a "Kids for Christ" Bible School from Monday, Aug. 13, to Friday, Aug. 17, from 9-11 a.m. for kids K-6th grade.



**SUPER
SIDEWALK
SALE**
FRIDAY & SATURDAY

1/2 Off Shoes & Sandals
Kids • Womens • Mens

We pay taxes on Sidewalk Sale for Xtra Savings!

NEW ARRIVALS 10% OFF

1405 W. American Blvd., Muleshoe • 272-6853

**HUGE
SIDEWALK SALE**

**ALL NEW CLOTHING
WILL BE ON SALE!**

NO NEED TO WAIT FOR THE TAX FREE WEEKEND, SAVE NOW!

3 BIG DAYS!

FRIDAY, SATURDAY & SUNDAY ONLY

AUGUST 10-12, 2007

SALE STARTS AT 8:00 AM



**LOWE'S
MARKETPLACE**

401 West American Blvd., Muleshoe • 272-4585



August Sale!

Closeout on Unfinished Cutouts
50% Off Already Reduced Prices. Great for craft projects!

Sale on Praying Cowboy Garden Art

20% - 50% Off on Selected Handcrafted Wall Art, Lamps & More! Great Deals!

It's Time to Order Custom Gifts for Christmas to Ensure Holiday Delivery!

224 W. American Blvd., Muleshoe
272-7572
Mon.-Fri. 10 AM to 6 PM



*We are Expanding
August 6th 9:00 a.m.*

GOODWILL
Living For Less

STORE

**2208 E. HWY. 114
LEVELLAND, TX**

PORTALES HORSE SALE

Open Horse Sale & Tack Sale on the 3rd Saturday each month!

No pre-consignment necessary.

**NEXT SALE:
AUGUST 18**

at Portales Livestock Auction

South Floyd Hwy., Portales, NM

Starting Time: 1 PM

Horses must have current Coggins and any health papers needed.

For more info., contact:
Randy Bouldin 505-760-6670
Monty Black 505-714-1177
Portales Livestock 505-356-8524

