



**Iometown Heroes**  
Our educators...  
Page 3



**Editorial:**  
Just admit it...  
Page 2



# Muleshoe Journal



Striving to be your source for local news

75¢

Volume 92, No. 32

www.muleshoejournal.com

Muleshoe, Texas

August 11, 2011

## County court receives redistricting proposal

By Larry Thornton  
Managing Editor

The Bailey County Commissioners' Court took the next step in its redistricting process during Monday's regular meeting, with a decision to move forward with a proposed plan it is

court, both of which he noted met the US Justice Department's requirement of being within a 10 percent population variance.

Public entities are required to redistrict after every US census. Since the last census,

the county's total population of 7,165, required the redistricting to attempt to get as close as possible to the "magic number" of 1,791.25 per precinct, and with the majority of the county residents being located in Muleshoe, the redistricting effort would need to focus on the county seat.

According to the numbers presented to the court Monday, Precincts 1 and 2 — as identified in the current district map, had increased in population in the past decade, while Precinct 3 had decreased.

Preston said Plan A met the justice department requirements, with a 3.8 percent variance, with minimal changes to the current precinct boundaries.

This would leave three precincts with a "minority majority,"

Continued on page 12

**"I can't get it any more balanced than this... This ought to keep you in compliance until the next census..." — Curtis Preston**

thought would reduce difficulties encountered in determining which precinct a voter was located.

Attorney Curtis Preston of Lubbock, with whom the court had previously contracted to assist in the redistricting process, presented two redistricting drafts for consideration by the

Preston said population movements within the county had created a 12 percent variance, which the court needed to address.

"Plan A does what the justice department asks us to do," Preston said, displaying a large map of the redistricting proposal.

According to Preston,



Attorney Curtis Preston discusses redistricting Plan A during Monday's commissioners' court, while Precinct 1 Commissioner Butch Vandiver and Precinct 2 Commissioner CE Grant look on.

Photograph by Larry Thornton



Work is underway on the CDBG paving project at Hickory and Houston.

Photograph by Larry Thornton

## City council appoints redistricting committee

By Larry Thornton  
Managing Editor

In its redistricting efforts, the Muleshoe City Council appointed a 12-member advisory committee to work with the city's attorney on a redistricting plan that will be submitted to the US Department of Justice for approval.

At attorney Slater Elza's recommendation, City Manager David Brunson was added to the 11-person committee slate in a non-voting, advisory capacity.

The committee is to

meet on Monday, Aug. 15, and will present its recommendations to the council at a later date.

The other members of the committee include: Edward Orozco, Kenneth Henry, Charles Bratcher, Juan Chavez, Lupe Mendoza, James Turnbow, Juanata Del Toro, Freddy Andazula, Ann Perez, Mike Hunt and Adena Johnson.

In other business, the council:

- Approved a resolution denying Atmos Energy's fourth

Continued on page 3

## Muleshoe to compete with Walmart™ for RV business

By Larry Thornton  
Managing Editor

County and municipal officials agreed to join with the Muleshoe Heritage Foundation Monday in the construction and operation of an RV park on West American Blvd.

Kenneth Henry, and former Muleshoe resident and high school

with the idea to construct the recreational vehicle park during Monday morning's meeting, and repeated their presentation Monday afternoon before the Muleshoe City Council, in both instances receiving promises of support, and both in-kind and financial assistance on the project.

During the presentation to the court, Henry talked about the ongoing efforts at the Muleshoe Heritage Center, including the renovations underway to the Yellow Jacket building, and a temporary building purchased from the

Muleshoe Independent School District that will eventually become the foundation's welcome center.

"We're not in competition with anyone (locally) with this type of operation," Henry told the court, explaining that the purpose of the RV park will be to invite travelers through Muleshoe to stop and spend some time in the Bailey County seat... free of charge.

West noted that Levelland has a similar park that allows RVs to hook up to water and electricity, and also discharge their

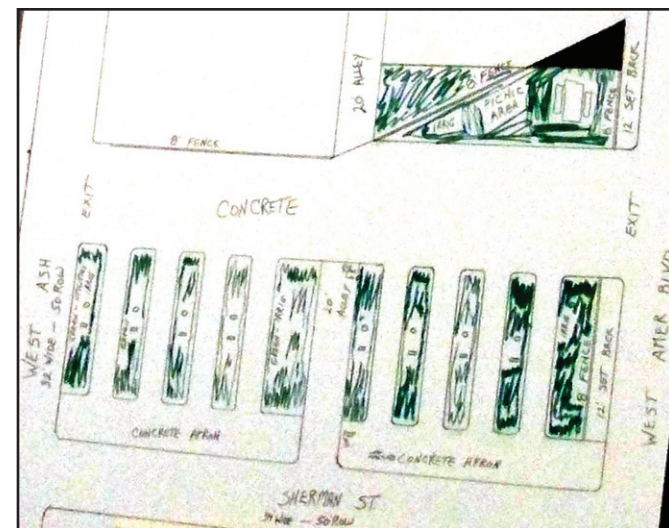
gray water, and stay up to three days free of charge.

"I've been amazed by

**"We're very aware they're coming through, but how do we get them to stop?" — Irene Mason**

the number of RVs that come down the highway (Hwy 84)," West said.

The Heritage Foundation has purchased the former Richland Hills service station at Sherman and West American Blvd., and plans to construct four RV parking spaces, with sufficient room



RV park drawing

to maneuver the large vehicles. It is also hoped that adjacent property may eventually be purchased to enlarge the project.

At the commissioners' court, this purchase of property raised the

only concerns expressed during the two public meetings, in this case by Precinct 4 Commissioner Juan Chavez, who noted that the purchase by a tax-exempt entity such as the Heritage Foundation

Continued on page 3

**FIRST BANK** First Bank is proud to announce our new MasterCard Debit Card.  
**FIRST BANK ONLINE** www.fbmmuleshoe.com  
 202 S. First • Muleshoe, TX 79347 • 806-272-4515



## Around Muleshoe...



Announcements from non-profit organizations in the Muleshoe area.

To post an announcement send an email to editor@muleshoejournal.com

### Reserved stadium seats

Reserved seat tickets for the 2011 Muleshoe Mules football season will go on sale Monday, Aug. 1. The tickets are \$30 for five home games.

Persons who held reserved seat tickets for the 2010 football season may purchase their seating options at the MISD Administration office, located at 514 W. Ave. G, Monday through Friday, during regular business hours.

Beginning Monday, Aug. 22, all remaining tickets will go on sale on a first come, first serve basis.

Any reserved seats remaining after the season starts will be available at a cost of \$8 per game and may be purchased at the MISD administration office on game day.

If you have questions concerning the ticket sales, please contact Dana Rasco at 272-7400.

### Meals on Wheels

Donations are being sought by Bailey County Meals on Wheels to allow the program to provide its services to eligible recipients over the weekend.

For more information, or to donate, contact Shelby Carpenter at Bailey County Office of Aging, 272-3647.

### Girl Scouts

The Muleshoe Girl Scouts plan a back-to-school party, registration and bridging ceremony on Thursday, Aug. 18, from 7-9 p.m. at the Jennyslipper Mule Putt Golf Course beside the Bailey County Coliseum.

This will be a fun event with hotdogs and other refreshments as well as games. Families are invited to come with their girls, to register as a Girl Scout and celebrate the 100th year of Girl Scouting. You will meet the troop leaders and Service Unit Members and see the new journey books "It's your Planet, Love it."

Registration is \$12 for the year and financial aid is available.

The Troop level's are: Daisy — K-first grade; Brownie — second and third grade; Junior — fourth and fifth grade; Cadette — sixth through eighth grades; Seniors — ninth and 10th; and Ambassadors — 11th and 12th grades.

Presently in leadership positions are Nelda Merriott, Heather Harper, Yvette Garcia, Stacie Craig and Sonia Bustillos. Adults are invited to help in volunteer positions in this great organization for the girls.

### Senior citizen sports passes

Muleshoe ISD is once again offering the MISD local pass to senior citizens who are residents of the district.

The MISD Local Pass was designed to allow senior citizens who are residents of the Muleshoe school district to attend locally sponsored school events at no cost.

Senior citizens who wish to obtain a MISD local pass may do so by seeing Pam Thomson the MISD superintendent's office or by calling her at 272-7404.

### Elder Care Conference set

This year's Elder Care Conference has been set for Aug. 20, from 9 a.m. until 1 p.m., at the Oneita Wagnon Senior Center.

Call Kathy Carr, Texas AgriLife Extension Service, 806-272-4583, for additional information.

[www.muleshoejournal.com](http://www.muleshoejournal.com)

### Muleshoe Journal USPS 367820

Established Feb. 23, 1924 Published by Panhandle Weeklies, LLC. Every Thursday at 201 W. Ave. C, P.O. Box 449, Muleshoe, TX 79347.

Periodicals paid at Muleshoe, TX.

Postmaster: Send address changes to the Muleshoe Journal, P.O. Box 449, Muleshoe, TX 79347.

We are qualified members of the Panhandle Press Association, West Texas Press Association and Texas Press Association

**Sandra Aven, Publisher**  
saven@hearstnp.com

**Larry Thornton, Managing Editor**  
editor@muleshoejournal.com

**Rhea Gonzales Ad Representative**  
adsales@muleshoejournal.com

**Ad Design / Classified Advertising**  
advertising@muleshoejournal.com  
classifieds@muleshoejournal.com

#### Subscriptions:

By Carrier Yearly — \$27  
Bailey County, by mail — \$29  
Elsewhere — \$40  
By E-mail — \$22

Advertising rate cards on request

Hours are 8 a.m. to 5 p.m., Monday - Thursday, and 8 a.m. to noon on Friday. Advertisers should check their ad for a typographical error or errors in publications except to the extent of the cost of the ad for the first day of insertion. Adjustment for errors will be limited to the cost of that portion of the ad where the error occurred.



## Editorial

### Just admit the mistake

We shouldn't be surprised at the White House spin doctor's accusations, blaming the GOP Tea Party legislators for the recent financial debacle resulting in the nation's first financial rating downgrade.

It would be refreshing, but highly unusual for a sitting President, or his administration, to step forward early in a crisis and plainly admit wrong decisions were made. Instead, weeks of the blame game seem to be required — and even then any admission of administrative wrongdoing will undoubtedly be muffled.

But the truth is that President Barack Obama must shoulder the majority of the blame for this latest situation. The old saying is that "players win, and coaches lose," and the same holds true for the nation's financial situation, also.

Should the Tea Party accept some blame for their uncompromising position regarding the reduction in the national debt? Certainly, but to a lesser degree than the current administration.

First, while affiliated with the Grand Ol' Party, the legislative mandate these elected officials rode to Capitol Hill focused in large part on the issue of extreme fiscal conservatism. They were elected with the specific intent of getting a firm hand on the national spending problem.

It would be as impossible for them to toss aside this party plank — especially in their first year in office, at it would be for the majority of the current Democratic leadership to denounce the social programs they have husbanded since Pres. Lyndon Johnson's "Great Society."

Second, Standards & Poor's have already acknowledged that a great part of their

### MISD receives 'Recognized' TEA rating

The Muleshoe Independent School District received the highest rating it has ever received from the Texas Education Agency, according to Superintendent Dr. Gene Sheets.

"We are very proud to announce that we achieved the highest overall TAKS scores we have ever had as a school district," Sheets said. "However, because of the way TEA calculated the ratings this year, we received a lower rating than we received last year."

MISD received the second highest rating that TEA gives to school districts that of "Recognized," making it the only Recognized school district in the area.

TEA rates schools as Exemplary, Recognized, Acceptable, and Academically Unacceptable.

The ratings for the MISD campuses are as

Continued on page 7

decision concerning the downgrade lay in the opposition to the type of significant debt management that the Tea Party sought.

Should the Democratic Party and the remainder of the GOP accept some blame? Obviously. Both parties have taken fiscal protectionism to an extreme in recent years, but to do otherwise would require a leopard to change its spots... a tiger its stripes.

Even though we have a government of compromise here in the United States, in recent years the nation's two political extremes have reached a point beyond compromise on too many of the issues involving our nation's dollars. The only acceptable compromise, they figure, must come from the other side of the political aisle.

Which leaves us with the third party in the national debt and finance debacle... a quasi-third party because it's leader is the defacto leader of the Democratic Party, who from his first year in office has called for a style of "bipartisanship" that requires anyone or any organization that opposes his plans or ideals to submit.

How deeply the recent events will impact this nation and the world is still unknown, but for our nation's leader to respond to the downgrade in the manner he has may be the expected political response, but that doesn't make it any less wrong.

**McDaniel's APPLIANCE** 1020 Main Street, Clovis, NM 805-762-4481 or 800-682-7891

Time for new appliances?  
**WE ARE YOUR HOMETOWN WHIRLPOOL DEALER.**

WE NOW CARRY SPEED QUEEN!

Names & Numbers  
www.namesandnumbers.com

Whirlpool

**Need Braces?**

Now offered at  
**J.W. HALTOM**  
Family Dentistry & Orthodontics

**Come in for an Ortho Consult for only \$99!**

- Invisalign, the new invisible braces now offered!
- Adults and children welcome!
- Convenient, no interest payment plan!

320 E. 8<sup>th</sup> St.  
385-6935  
Monday - Thursday 8 to 5  
Friday 8 to noon

Jessica Haltom, J.W. Haltom, Amber Garcia & Erika Trotter

**Back to School Loans**  
Call **272-7505** today for a **LOAN up to \$1200.00**

Hours 9 am till 6 pm  
Monday thru Friday

**Reliable Finance**  
1604 W. American Blvd.  
Muleshoe, TX 79347

**FREE Android Phones**

**NEW Family Data Plan**

- UNLIMITED local data
- Only \$10 per month (per line after 1st line)

Plateau Wireless has your whole family covered with back-to-school savings on the hottest Android phones. Sign up now, and up to four family members will receive a FREE Samsung Galaxy 5 Android phone with access to 1000s of popular apps!

And with our new family data plan, you'll save big on **UNLIMITED LOCAL DATA** for all family members.

To learn more, call us today!

**FREE Activation with donation of 3 school supplies (minimum \$10 value)!!**

Local Family Data Plan requires one Local Premium Browsing Plan per account. Lines two through four on Local Family Data Plan must also subscribe to a Voice Plan. Limit of four free Samsung Galaxy 5 phones available when subscribing to voice and data services. A two-year contract is required on each new phone. While supplies last. Other restrictions apply.

877-PLATEAU  
[plateauwireless.com](http://plateauwireless.com)

**PLATEAU**  
Wireless



# Muleshoe Heritage Foundation RV park...

Continued from page 1  
would remove it from the tax rolls.

The commissioners' court approved a motion to provide in-kind services, leveling and grading the property for construction of the park, and possibly assist with materials to construct the parking surface and drive needed for the heavy vehicles.

County Judge Sheri Harrison also noted there was a possibility that \$7,000 in economic development funds might be available for the project.

At the city council meeting, city officials approved a \$50,000 grant from the Muleshoe Economic Development Corporation that will be used in the construction of the park.

While a two-year period was included in the motion, City Manager David Brunson added that should the project experience a delay, the foundation could request an extension on the grant.

The city council members also approved the city providing the

water and sewer taps and service needed in the project, along with providing the electricity for the RV customers, and collecting fees for those who stay beyond the "free period" allowed.

"We don't want a construction worker pulling in there and staying for six months," someone noted.

"How did you come upon this (idea)?" Mayor Pro Tem Irene Mason asked the foundation representatives.

Henry explained that some participants in the annual Tour de Muleshoe Bicycle Ride came from out of state, often traveling a great distance, and they would ask about a place to park their RVs.

With the addition of the RV park to the Muleshoe Heritage Center, Brunson said, "The Heritage Center, if it's not already, could be a destination site."

"We're very aware they're coming through, but how do we get them to stop?" Mason said she often thought.

It is thought that allowing RV travelers the



Ray West discusses the park at Monday's court.

opportunity and space to stop at Muleshoe will garner visitors to the center itself and customers for local restaurants and businesses.

Several years ago, corporate giant Walmart™ opened its parking lots to RV travelers, providing them a place to park for the night, and a place to shop

as well. With Monday's joint decisions, Muleshoe will be doing the same... with additional conveniences needed by the travelers.

"We won't be creating jobs," West said, "but we may be saving jobs."

"It'll be a great asset for Muleshoe, and it'll beautify that area," Chavez said.

Remember! Letters to the editor must be signed and include a contact telephone number or email address for verification to be considered for publication in the Journal.

If Your Door is Stuck...  
You're in Luck!



24 HOUR Emergency Service  
Sales, Service & Repair Specialists

575-763-1216

www.cmbgaragedoors.com

## City council acts...

Continued from page 1

annual rate review, at the recommendation of the city manager.

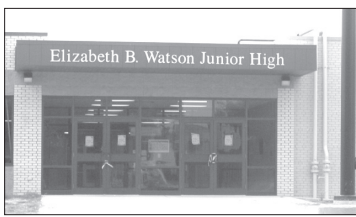
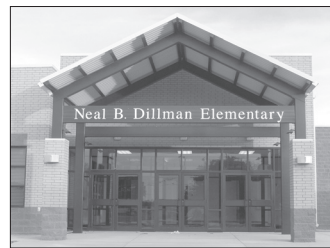
The City of Muleshoe is a member of a municipal coalition involved in negotiations with the energy corporation. According to Brunson, the coalitions study of Atmos' rate increase request wasn't supported by the company's expenses and revenues, which he said actually calls for a slight rate reduction.

- Received the city's financial statement for the month ending July 31.
- Received an administrative report that noted the success of this year's attendance at the water park and announced the last day the pool would be open would be Aug. 21.
- Learned that the city's CDBG paving project is under way.
- Announced that a public hearing on the city's proposed tax rate is set for Aug. 25, at 5:30 p.m., with a budget workshop to follow.

Thank you teachers, administrators, staff and other educational leaders for your loving care of the children of this area. Your commitment is appreciated, though we all too often let it go unsaid. You are helping to shape the future of the world!

# HOMETOWN HEROES

EDUCATORS  
MEDICAL PROFESSION  
EMERGENCY PERSONNEL  
SPIRITUAL LEADERS & CITY GOVERNMENT



For your service, we honor you....



**Muleshoe Independent School District Personnel:** **Dillman Elementary personnel**—Gloria Agundiz, Kathy Ambriz, Cathy Anthony, Rosemarie Anzaldua, Kim Berry, Kay Lynn Brantley, Claire Brown, Sandra Burciaga, Donna Burton, Terry Byers, Kimberly Carter, Santana Chavez, Becky Collins, Joyce Conn, Patricia Dial, Dora Diaz, Sylvia Dominguez, Denise Dunham, Charlotte Field, Yolanda Galindo, Vickie Garner, Victoria Garza, Brittini Grant, Myndi Green, Anna Gutierrez, Laticia Gutierrez, Jena Kemp, Kylan Karr, Suzanne King, Linda Latham, Charlotte Lee, Debbie Lovelady, Rosemary Lowe, Debbie Magby, Lacy Magby, Gina Mardis, Donna Mason, Rosa Melendez, Melissa Moran, Christy Montiel, Todd Newberry, Joan Nix, Caritina Pineda, Monica Rosa, Magdalena Ramirez, Juanita Regalado, Joyce Scott, Diane Skipworth, Leah Spears, Rhonda Stevens, Billie Stout, LaTonia Stroud, Melody Thomason, Dora Toscano, Letti Tovar, Kathy Vandevender, Lora Wallace, Lynda Washington; **DeShazo Elementary personnel**—Connie Alanis, Rachel Alvarado, Shannon Atchley, Nancy Benham, Erin Boatman, Terri Bohler, Mitzi Branscum, Kristen Brown, Nora Burris, Kensey Calhoun, Andrea Crawford, Maria E. Delgado, Estela Duarte, Emily Edgmon, D'dee Ellis, Tammy Frieda, Tiffany Fullen, Debbie Gallman, Desirae Gallman, Beatrice Garcia, Maria Garcia, Kami Groetken, Debbie Kemp, Toni King, Irene Mason, Donna McFadden, Valinda Miller, Laura Mora, Kyra Newberry, Kimberly Nickels, Beatrice Olivas, Tammy Phoenix, Rhonda Roberts, Lindsey Ramage, Chantel Riley, Rebecca Sanchez, Mikayla Stephenson, Letti Tovar, Shelly Turnbow, Nelda Wilhite; **Watson Jr. High personnel**—Nancy Barrier, Tracy Been, Cindy Bessire, Brenda Black, Dean Black, Tom Boutell, Jose Cabezuela, Amanda Clifton, Charissa Conner, Michael D'Arcy, Diana Gallegos, Jennifer Givens, Kay Griswold, Diana Harrison, Virgie Hartline, Dani Heathington, Hollye Hooten, Angel Hunt, Arron Jimenez, Jalissa King, Kay Leopard, Albert Lopez, Sally Messenger, Karissa Parker, Cari Pate, Peggy Petersen, Charity Price, Amanda Sealy, Ryan Steck, Tommie Stiles, Ashley Turnbow, Jody Wood, Kimberley Woolbright, Will Worley; **Muleshoe High School personnel**—Valton Acree, Debra Alward, Charles Bertram, Wesley Boatman, Staci Buie, Vicki Burch, Kirk Byrd, Ian Campbell, Sandi Chitwood, Linda Cogliandro, Jason Cole, Debbie Conner, Dorian Crowder, Jimmie Daniel, Jaimie Diaz, Kit Diaz, Sabrina Eckles, Annette Escobar, Matt Gafford, Jay Gorman, Jennifer Gresham, Josie Guerrero, John Gulley, Belinda Head, Benjie Jay, Chris Mardis, Morgan Marricle, Lorissa Mason, Ralph Mason, Valerie McCamish, Billy Moore, Heidi Moore, Kerry Moore, Annette Orozco, Diana Rodriguez, Cassandra Sanders, April Smith, Cheryl Steck, Nicholas Stephenson, Carey Sudduth, Kay Taylor, Laurie Taylor, Brandon Thomason, Leigh Thomason, Sharon Villa, David Wood, Joshua Woolbright; **District Wide personnel**—Margie Alarcon, Brian Arnold, Lysine Cleavinger, Erik Craig, Rosemary Franco, Dan Greathouse, Pam Hancock, Daniel Harper, Debra Jennings, Carl Krug, Trudy Krug, Barbie Lovell, Cindy Magby, Dave McNeill, Eva Mendoza, Noemi Mora, Darla Myatt, Diana Pacheco, Dana Rasco, Gene Sheets, Pamela Thomason, Lisa Whalin, Sam Whalin.

**Maintenance personnel:** Shain Berry, Ruben Campos, Sylvia Campos, Jeff Carpenter, Hector Carriaga, Josefina Carriaga, Freddy Castillo, Ector Estrada, Phillip Espinoza, Juan Gamboa, Patricia Gamboa, Mart Long, Luis Quintana, Laura Reese, Dolores Salazar, Jewell Valenzuela, Jesse Vargas.

**MISD Cafeteria personnel:** Sharon Campbell, Director; Irma Acosta, Angelica Alvidrez, Alma Franco, Bette Freeman, Marta Garcia, Debbie Hammer, Valentina Mata, Olga Mendoza, Sophia Pacheco, Maria Solano, Margaret Stephens, Lupe Guzman, Rosa Rubio, Carlene Stroud, Linda Tosh, Lela Villarreal.

**Transportation personnel:** Martha Acevedo, Bob Donaldson, Emilio Estrada, Guadalupe Flores, Loyd Garlington, David Gray, John Harris, Richard Hawkins, Jack Henderson, Vangie Leal, Donald Phelps, Leon Seals, Annabelle Solis, Howard Watson.

**Trustees:** Daniel Guzman, Sergio Leal, Thurman Myers, Carroll Precure, Curtis Preston, Kelly Kettner, Jay Cage.

The Texas Education Agency has rated Muleshoe ISD as a **RECOGNIZED DISTRICT**. Muleshoe ISD is proud to announce that we are the **only RECOGNIZED SCHOOL DISTRICT in our area**. We have the highest overall test scores we have ever had. We are proud of the education that students in Muleshoe receive!

We had tremendous success in extra-curricular activities, qualifying for post-district honors in multiple activities, including Football, Boys and Girls Cross Country, Boys Basketball, Boys Golf, Softball, Choir, The Academic Challenge, and the UIL Academic Contest. In addition, DeShazo Elementary received the **Distinguished Achievement Award** from the Texas Education Agency for consistently achieving high student performance for the last three years.

Muleshoe ISD has a budget of about \$13 million, and has a total of 229 employees. Our administrative costs are well below that of similar-sized districts, and our student/teacher ratio is about 12 to 1. Muleshoe ISD has received a **Superior Achievement** rating from the Texas Education Agency for its financial condition for seven years in a row. Our payroll of \$9,000,000 makes us the largest employer in Bailey County. Statistics show the economic impact of our payroll on the community to be \$35-\$40 million per year.

In 2011, the Muleshoe ISD Board of Trustees increased the MOST Scholarship award. Every graduating senior now receives a \$500 scholarship from the MOST Scholarship Fund to go to any post-secondary institution. We appreciate the Muleshoe community and friends of Muleshoe ISD who contributed funds to support our students with these scholarships.

**We have a new school, new curriculum, and a new attitude. This is an exciting time to be a part of Muleshoe ISD!**

## We Love Our Hometown Heroes!

MULESHOE ANIMAL CLINIC & VET SUPPLY 1430 US Hwy. 84, Muleshoe • 272-3061/272-4990	MCDONALD'S OF MULESHOE 1315 W. American Blvd., Muleshoe • 272-3333	FARMERS INSURANCE 1602 W. American Blvd., Muleshoe • 272-7548
FIVE AREA TELEPHONE ORGANIZATION 302 Uvalde, Muleshoe • 272-5535	MULESHOE TIRE 107 Main Street, Muleshoe • 272-4594	BAILEY CENTRAL APPRAISAL DISTRICT 302 Main Street, Muleshoe • 272-5501
BAILEY COUNTY ELECTRIC CO-OP ASSN. 305 E. Ave. B, Muleshoe • 272-4504	MAPLE CO-OP GIN Hwy. 596, Maple • 927-5501	RAY LEE EQUIPMENT 2800 W. American Blvd., Muleshoe • 272-4296
LOWE'S MARKETPLACE 401 W. American Blvd., Muleshoe • 272-4585	MULESHOE JOURNAL 201 W. Ave. C, Muleshoe • 272-4536	UNITED SUPERMARKETS 104 W. 9th, Muleshoe • 272-3120

The Muleshoe Chamber of Commerce and Agriculture would like to thank the following businesses who helped sponsor our July 4th celebration.

We couldn't have done it without you.

- \* Xcel Energy Irrigation Pump & Power \*
- \* 5 Area Telephone Black water Ag \*
- \* Winfield Solutions Vision Furniture \*
- \* Joe's Boot Shop Wilson Drilling \*
- \* Farm Chemicals, Inc. Muleshoe State Bank \*
- \* Atmos Energy Ray Lee Equipment \*
- \* Frontera Feedyards Muleshoe Valley Inc. \*
- \* Western 66 Caprock Dairy \*
- \* Mohawk Auto Jarman Seed \*
- \* Bailey County Electric Co. Prairie View Dairy \*
- \* Pat Angeley Fry & Cox \*
- \* Muleshoe Vet Supply/Clinic Coyote Lake Ranch \*

Also to all the participants in the parade, the Muleshoe PD and City of Muleshoe employees for directing the parade and traffic control. To the Muleshoe Journal, Channel 6 and Rooney Moon broadcasting for advertising and televising it. To the Jennyslippers, Senior Center for the events they sponsored and to the Muleshoe Roping Club for the use of the Dusty Rhoades Arena for our Ranch Rodeo and to Buddy Embry for his time and everyone else that had a part in it.



# Senior Citizen News

By Laverne Winn

The monthly board meeting will be Monday, Aug. 15, in the center. The meeting will begin at 12:30 p.m., and is open to the public.

We invite you to come and present any new ideas or projects that will help and benefit the center.

Tuesday, Aug. 16, is Bunco playing day. Call a friend and come enjoy a morning of fellowship and fun. You just might win a prize.

We appreciate helpers from IntegraCare and Interim Home Health for giving their time to come and be hostess for the games.

Thursday, Aug. 18, will be birthday party day. All you senior citizens with birthdays in August we invite you to come and be recognized. We sincerely hope you have and will be getting a

birthday card from all your friends at the center through the mail.

We at the center always enjoy the beautiful music provided by Pat and W. T. Watson. It is a blessing to hear them play. So make plans to come join the celebration.

Saturday, Aug. 20, the center will be having a seminar and lunch for all you seniors. There will be a guest speaker.

Make plans to come and have a very enjoyable Saturday morning at the center. This is an annual function, sponsored by Kathy Carr at the AgriLife Extension Office.

Come, bring a friend and enjoy.

The attendance at the center is still below our normal count. We know there are still friends traveling and enjoying the coolness of Colorado. We wish you a happy trip, and looking forward

to having all our friends by at the center.

Our prayers and well wishes go to the seniors who are out because of sickness. We miss you and hope you are back with us soon.

**Menu for Aug. 15-19**  
Monday, Aug. 15 — Barbecue pork on a bun, ranch style beans, salad, chips, cookies and fruit.

Tuesday, Aug. 16 — Meatloaf, scalloped potatoes, carrots, salad, wheat roll and cake.

Wednesday, Aug. 17 — Grilled steak, gravy, mashed potatoes, green beans, salad, whet roll and apple cobbler.

Thursday, Aug. 18 — Chicken stroganoff, sweet peas, salad, wheat rolls and banana pudding.

Friday, Aug. 19 — Fish or chicken strips, gravy, beans, coleslaw, cornbread and fruit salad.

# Rising to your highest height

*Something worth saying...*  
By Glen Williams

I dare say that we all have "good times and bad," our "ups and downs" based to some extent upon the quality of our judgements the decisions we make.

They depend upon the fullness and accuracy of the information upon which such judgements are made-which in turn is a reflection of the study and research to which we have applied ourselves-and the integrity of such research.

As one man on television says "The proof of the pudding is in the eating." In other words, when our days have been fulfilled, and we sleep with the fathers, the people will then make judgement as to what kind of people we were.

Pretensions, personal claims and such like will have served their purposes. And I am convinced that the "people" will then see us

as we were — good, bad, indifferent or however.

There is a few principles of life that I have tried to pass on to other folks, especially the younger ones. One of these is; you must work from where you are "now" today — right where you are. Another is; you must set goals — something you want to be or to achieve.

You must "examine yourself." Does it fit your situation? Will you enjoy that type work? Can you make a good living at it?

Is there room in your work for service to others? For finally, that is where you will get the real joy of living. When I speak of "we" or "you," or "us" or "them," etc. I may be speaking of anyone, no matter their

(our) age, their nationality or whatever might be their circumstances of life. In my judgement, we will be rewarded according to the efforts put forth.

I have a paper that was published years ago by the Late Norman Vincent Peale. One article in it was written by a little lady who was what we generally speak of a being a dwarf. It is very interesting for she tells about herself.

She said, at that time she was about 30 years of age, she was 40 inches in height and weighed 52 pounds. But she was well educated and had a positive outlook on life.

For she said that, as she entered the college where she would receive a master's degree she was

Continued on page 5

# BAILEY COUNTY DEVOTIONAL PAGE

**"THE FIVE AREA TELEPHONE COOPERATIVE, INC."**  
West Plains Telecommunications, Inc.  
Five Area Systems, Inc. • Plateau Wireless  
Five Area Long Distance • Five Area Internet  
302 Uvalde Muleshoe, USA (806) 272-5533

Save Wholeheartedly, as if you were serving the Lord, not men. Ephesians 6:7.  
**MULESHOE VALLEY INC.**  
(806) 272-4266  
Mobile (806) 946-8763  
mvlinc@fivearea.com  
2601 W. American Blvd., P.O. Box 631 Muleshoe, Texas

**MCDONALD'S OF MULESHOE**  
1315 W. American Blvd. • 272-3333  
Open at 5 AM every day! i'm lovin' it

**PAGO FEED YARD, INC.**  
Commercial Cattle Feeders  
P.O. Box 956, Friona 265-3281  
Feller Hughes - Mgr.

**MAPLE COOP GIN**  
927-5501  
Maple, Texas

1412 W. American Blvd. Muleshoe • 272-4213  
Open: Sun.-Mon. 11AM-11PM  
Lunch Buffet: Sun.-Fri. 11:30 AM-1:30PM  
Monday Night Buffet: 6-8PM  
**PIZZA HUT WING STREET IS HERE!**  
"Gather round the Good Stuff"

2800 West American Blvd. Muleshoe 272-4296  
**Ray Lee EQUIPMENT CO., LTD.**

**MULESHOE PEA & BEAN, INC.**  
1680 CR 1044, Muleshoe • 272-5589  
Nicky Nickels

**United Supermarkets**

**IRRIGATION PUMPS & POWER**  
**Zimmatic** W. Hwy. 84 272-5597  
CENTER PIVOTS

**Interim HEALTH CARE.** 110 E. Ave. C Muleshoe 272-5549  
www.InterimHealthcare.com  
Elizabeth Jaime, CSR • Olivia Barrera, Home Health Aide  
Birdie Valdez, LVN • Brenda Testerman, RN Case Manager

**Lowe's MARKETPLACE**  
401 W. American Blvd. • Muleshoe • 272-4585

**Muleshoe Journal**  
www.muleshoejournal.com  
201 W. Ave. C, Muleshoe  
806.272.4536 FAX 806.272.3567

**Exodus 20**

E X O D U S T W E N T Y H S P J F G S  
Z I Q J B Q E W H Y P Z E E H X P S L  
A A Y G O I Y S R T J G O H B U D Q U  
E N G N I T E V O C A P E T U S H F D  
Z I Y I R E D R U M L B I V Z X E P Y  
L S K Z Z J G W I E T C B T B M A W N  
G T I Z B F D N O A H L X A Y S V N O  
X N H H X D E F Q A E I O M S U E E M  
W U H W F V I X K Z F V W Z H E N M I  
N O R A A S S E N O T S R A T L A C T  
Y M D R R B U R N T O F F E R I N G S  
W M G A D U L T E R Y P L L S I D V E  
B T E N C O M M A N D E N T S E E J T  
K L T H E L O R D Y O U R G O D A Z E  
N D Q F P K W R M C H S O M T A R G S  
M E L K P S D O G E S L A F S K T D L  
K S T N E R A P R U O Y R O N O H W A  
N R P C A W D L N T R L Y O L B W T F  
G B G L Z U E W B C X R X O C D X N D

- Exodus twenty
- Ten commandments
- The Lord your God
- False gods
- Graven images
- Blasphemy
- Sabbath
- Honor your parents
- Murder
- Adultery
- Theft
- False testimony
- Coveting
- Moses
- Burnt offerings
- Altar stones
- Mount Sinai
- People of Israel
- Aaron
- Heaven and Earth

(Solutions on page 7)

This devotional & directory is made possible by these businesses who encourage all of us to attend worship services.

**ASSEMBLY OF GOD**  
FIRST ASSEMBLY OF GOD  
Pastor Ryan Pate  
521 South First Street  
272-3017  
S.S. 9:45 am,  
W.S. 10:30 am & 6:00 pm,  
Wed. 7:00 pm  
**EL BUEN PASTOR**  
415 E. Ave. F - 272-5455  
Pastor Domingo Luna -  
272-4542  
S.S. 9:45 am, W.S. 11 am &  
6 pm; Wed. 7 pm

**CATHOLIC**  
IMMACULATE CONCEPTION  
CATHOLIC CHURCH  
805 E. Hickory  
Leonardo Pahamtang, Min.

**EPISCOPAL - CHARISMATIC**  
ST. CLEMENTS CHURCH  
COMMUNION OF CHRIST  
THE REDEEMER  
Hwy. 214 South • 272-5954  
Father Sergio Leal  
Sun. W.S. 10:30 am

**CHRISTIAN TRINITY CHRISTIAN CENTER**  
1723 W. American Blvd.  
272-3877  
Reydon Stanford, Pastor  
Sun. W.S. 10:30 am  
**CENTRO CRISTIANO**  
117 E. Birch St.  
Hermanos Barron  
S.S. 10 a.m.; W.S. 11 a.m. &  
6 p.m.; Wed. 7 p.m.

**CHURCH OF CHRIST**  
LARIAT CHURCH OF CHRIST  
Wesley Roach, Min.  
S.S. 10 a.m.; W.S. 11 a.m. &  
6 p.m.; Wed. 7:30 p.m.  
**LAZBUDDIE CHURCH OF CHRIST**  
Nathan Crawford, Min.  
S.S. 9:30 am; W.S. 10:20 am  
& 5 pm; Wed. 7 pm  
**MULESHOE CHURCH OF CHRIST**  
22nd & W. American Blvd.  
S.S. 9:30 am; W.S. 10:20 am  
& 6 pm; Wed. 7:30 pm  
**16th & AVE. D**  
CHURCH OF CHRIST  
Curtis Shelburne, Min.  
272-4619  
S.S. 9:30 am; W.S. 10:30 am;

Growth Gr. 1:30 pm;  
Wed. 7:00 pm

**LUTHERAN**  
ST. JOHN LUTHERAN  
Lariat, TX • David Symm, Min.  
S.S. 10:30 am; W.S. 9:30 am

**METHODIST**  
FIRST UNITED METHODIST  
507 W. 2nd St.  
S.S. 9:45; W.S. 11:00;  
Praise & Prayer 6 pm;  
First Sunday of Month  
4 pm Parkview Nursing Home  
Service  
Mon. 9 am Ladies Bible Stdy;  
Tues. 6 pm Adult Bible Stdy;  
Pastor Monty Leavell,  
272-5517  
**LAZBUDDIE METHODIST**  
S.S. 9:30 am; W.S. 10:30 am  
Pastor Ken Peterson  
965-2121  
**EL DIVINO SALVADOR U.M.C.**  
619 E. 5th Street & Ave. G,  
Fernando Sanchez, Pastor  
272-6888

**PENTECOSTAL**  
UNITED PENTECOSTAL  
LIGHTHOUSE  
207 East Ave. G  
1-800-454-6051  
S.S. 10 am; Thursday,  
Bible Study 7 pm

**INTER DENOMINATIONAL**  
NEW COVENANT  
Plainview Hwy.  
Steve Claybrook, Pastor  
W.S. 10 am; Wed. 7 pm  
**MULESHOE COWBOY FELLOWSHIP**  
710 E. American Blvd.  
Steve Friskup, Minister  
272-5199  
Service: 7:30 p.m. Thursday

**Antiques & Fine Things**  
2104 W. American Boulevard  
Muleshoe • 272-4217  
**Trollbeads**  
every story has a bead

**TEXAS FARM BUREAU INSURANCE CO.**  
1612 W. American Blvd., Muleshoe • 272-4567

**CENTRAL COMPRESS & WAREHOUSE**  
SUDAN, TEXAS

**Deaf Smith County Grain, Inc.**  
Cliff A. Skiles, Jr.  
Jeb S. Skiles

**MCCORMICK SEEDS, INC.**  
400 East Ash • 272-3156  
Muleshoe, Texas  
A COMPLETE LINE OF FIELD SEEDS  
Tim McCormick

**1ST BANK** MEMBER FDIC  
202 South First 272-4515

**Lial's TORTILLA FACTORY**  
105 E. Ash St., Muleshoe • 272-5772  
Phillipians 4; "I can do all things through Christ who strengthens me."

**MULESHOE ANIMAL CLINIC**  
GENERAL PRACTICE  
**M V S**  
MULESHOE VET SUPPLY  
1430 US Hwy. 84, Muleshoe Office: 272-3061

**BOEHNING DAIRY**  
690 CR 45, Earth  
"MILK - A PART OF EVERYTHING THAT IS GOOD!"

**BCEC** BAILEY COUNTY ELECTRIC COOPERATIVE ASSOCIATION  
A Touchstone Energy Cooperative  
Muleshoe — 272-4504 Morton — 266-8600

**WAYNE COPLEY TRUCKING**  
CALICHE, SAND & ROCK PRODUCTS  
P.O. Box 63 (806) 272-3697  
Muleshoe, Texas 79347 Mobile: (806) 946-8072

**J&S Dairy**  
1260 CR 1038, Muleshoe  
272-7706

To Place Your Ad Here  
Call Terry At  
Muleshoe Journal  
272-4536

# BAILEY COUNTY DEVOTIONAL PAGE



## Baby Showers



### Magby feted with shower

A baby shower honoring Lacy Magby was held on Saturday, Aug. 6, at the home of Janice Bradshaw.

Hostesses for the event included Sarah Black, Janice Bradshaw, Claire Brown, Brittnei Grant, Stephanie Foster, Jena Kemp, Marca Morris, Vicki Morris, Rickie Seaton, Jana St. Clair, Janette Thorn and Christie Whitt. The hostess gift presented to Magby was cash.

Special guests attending included Christal Tiller, Debbie Magby, Joy Cantrell, Tara Provence, and Dawnda and Ridge Daniel.

## Wedding Announcements



### Lopez, Pena to wed

Rashonda Lopez and Christopher Pena, both of Amarillo announce their upcoming wedding.

The prospective bride is the daughter of Cathy Godinez of Amarillo and Fidel Lopez of Utah.

The prospective groom, formerly of Muleshoe, is the son of Eddie and Christine June Ortiz of Bovina, and Roger Pena of Muleshoe, and the grandson of Palestina Perez Contreras and the late Andres Perez Sr. and Elena Hernandez, all of Muleshoe.

The wedding is set for Aug. 13, 2011, at Trinity Fellowship Church in Amarillo.

## Something worth saying...

Continued from page 4  
having a bit of trouble with her books, etc. and another girl, another student, looked at her and asked, "who shrunk you?"

She said she told her, "Nobody did, I'm just not quite as fortunate as you."

And she said that another girl — another student — stopped and asked if she might help me with my books and things of that nature? And she replied, "Yes, you may and if I can ever be of help to you I will be happy to do so."

From that little "get together" they formed a friendship, and they agreed to meet there every morning, to work together and help each other. Now, if I remember correctly, she said they did that throughout their school

days there.

But the climax of her story was at the time she wrote it she was serving as a psychologist on the police department in the City of New York.

Now, as I said, that was an experience accounted for by herself. It presents her picture. And it is true. Speaking, as it does, it tells us that "out of the most burdensome problems of life people rise to the highest of heights."

And it was, finally, when he appeared on the speakers' platform with the mayor of Chicago — and the mayor was shot and killed — that I learned that Pres. Roosevelt was a crippled man.

Please note: I haven't read the article about the little lady in a long time. It may therefore be a bit erroneous on some of the details, but the basics are correct.

## Death Notices

### Lathal Landers

Former Muleshoe resident Lathal Landers, 65, of Lubbock died on Aug. 3, 2011. Funeral services were held on Saturday, Aug. 6, at Ellis Funeral Home Chapel in Muleshoe. Burial followed in Muleshoe Memorial Park.

### Modesto Muniz

Muleshoe resident Modesto Muniz, 67, died on Sunday, Aug. 7, 2011. He was born on April 10, 1944, to Rosario and Maria Muniz in Chihuahua, Mexico. Funeral services were held on Wednesday, Aug. 10, at Immaculate Conception Catholic Church of Muleshoe. Burial followed in Bailey County Cemetery.

### Public Notification of Nondiscrimination

#### Muleshoe ISD

#### Career and Technology Education Programs

1. It is the policy of Muleshoe ISD not to discriminate on the basis of race, color, national origin, sex, or handicap in its vocational programs, services, or activities as required by Title VI of the Civil Rights Act of 1964, as amended; Title IX of the Education Amendments of 1972; and Section 504 of the Rehabilitation Act of 1973, as amended.
2. It is the policy of Muleshoe ISD not to discriminate on the basis of race, color, national origin, sex, handicap, or age in its employment practices as required by Title VI of the Civil Rights Act of 1964, as amended; Title IX of the Education Amendments of 1972; the Age Discrimination Act of 1975, as amended; and Section 504 of the Rehabilitation Act of 1973, as amended.
3. Muleshoe ISD will take steps to assure that lack of English language skills will not be a barrier to admission and participation in all educational and vocational programs.
4. For information about your rights or grievance procedures, contact the Muleshoe ISD Assistant Superintendent at 514 W. Ave G, Muleshoe, Texas 79347. You may call at 806-272-7400.

### NOTIFICACIÓN PUBLICA DE NO DISCRIMINACIÓN

#### MULESHOE ISD

#### PROGRAMAS DE EDUCACIÓN DE CARRERAS Y TECHNOLOGIA

1. Es norma de Muleshoe ISD no discriminar por motivos de raza, color, origen nacional, sexo o impedimento, en sus programas, servicios o actividades vocacionales, tal como lo requieren el Título VI de la Ley de Derechos Civiles de 1964, según enmendada; el Título IX de las Enmiendas en la Educación, de 1972, y la Sección 504 de la Ley de Rehabilitación de 1973, según enmendada.
2. Es norma de Muleshoe ISD no discriminar por motivos de raza, color, origen nacional, sexo impedimento o edad, en sus procedimientos de empleo, tal como lo requieren el Título VI de la Ley de Derechos Civiles de 1964, según enmendada; el Título IX de las Enmiendas en la Educación, de 1972, la ley de Discriminación por Edad, de 1975, según enmendada, y la Sección 504 de la Ley de Rehabilitación de 1973, según enmendada.
3. Muleshoe ISD tomara las medidas necesaria para asegurar que la falta de habilidades en el uso de la idioma ingles no sea un obstáculo para la admisión y participación en todos los programas educactivos y vocacionales.
4. Para información sobre sus derechos o procedimiento de quejas, por favor de ponerse en contacto con el Asistente Superintendente en el 514 W. Ave. G, Muleshoe, Texas 79347. También puede hablar al 806-272-7400.

Prices Good Thru 9/3/11

# IT'S BACK TO SCHOOL

WE HAVE EVERYTHING YOU NEED FOR A TASTY LUNCH, INCLUDING YOUR FAVORITE SNACKS, CHIPS, CANDY AND COOKIES!

Store # 34  
312 W. American. Blvd.  
Muleshoe, TX 79347  
806-272-4862



ASSORTED  
**OSCAR MAYER  
LUNCHABLES**

**\$2.49**



FRUIT PUNCH  
**CAPRI SUN  
8 PACK**

**2 \$6  
FOR**



BAR-S ASSORTED  
**DELI STYLE  
MEATS**

**2 \$5  
FOR**



ALLSUP'S  
**SANDWICH  
BREAD**  
89¢ EACH OR

**2 \$1.49  
FOR**

BUY ONE  
**RICE KRISPIES  
BIG BAR**  
2.6 OR 3.2 OZ.  
GET ONE

**FREE**



JACK LINK'S ORIG. OR TERIYAKI  
**SASQUATCH STEAK**  
2.4 OZ.

**2 \$5  
FOR**



BUY 12 GALLONS OF  
FRESH ALLSUP'S  
**MILK**  
GET ONE  
**FREE!**



ALLSUP'S ASST. FLAVORS  
**ICE CREAM**  
1/2 GALLON  
**2 \$6  
FOR**



ASSORTED FLAVORS  
**PEPSI**  
12 PACK  
**\$3.79**



ASSORTED FLAVORS  
**BRISK TEA**  
1 LITER  
**99¢**



ASSORTED  
**COKE**  
20 OZ.  
**2 \$2.50  
FOR**

WESTERN FAMILY  
**BATH  
TISSUE**  
4 ROLL PKG.  
**\$1.09**

WESTERN FAMILY  
**PAPER  
TOWEL**  
2 PLY ROLL  
**79¢**







I love ice cream sandwiches!

# Newspaper Fun!

www.readingclubfun.com

I like to make root beer floats!

Animills LLC © 2011 V8-N32

## What's the Scoop?

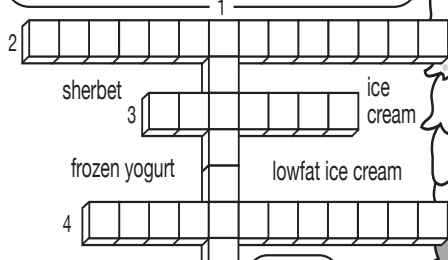
We seem to like ice cream dished out any way we can get it! It is said to be the favorite dessert in our country.

Can you find and circle these favorite ice cream treats, flavors and toppings?

### How Do We Like It?

R C H O P P E D N U T S O E D C J O K I U H V  
P E R F G V U H J Y I A W S E D C R G T Y H A  
Y W E R C G H U M A R S H M A L L O W L O U N  
V M I W E X F T Y H O P L K U J M N H U A S I  
M I N T C H O C O L A T E C H I P I E D F T L  
G L O E F R T G H U L P O O J R D E A S H L  
O K M E F V Y U I J H A S O H F K O P L G D A  
I S J B Y D F Y U H B F G K L I F R A P P E T  
S H L J N I H F R B L P I I J G R E G F E U T  
R A B L J S U N D A E K J E K O U P E G A J P  
Y K H U G H K O U N K H F S X C T U I J C E Q  
C E A Z G Y J I K A M H T A O L F J B F H O Y  
Z F R E A J I Y U N K L M N J F Y R E D E C T  
N K C A N D Y K L A V S O D A O P K L J S A Y  
V F O D E Y I O K S X U H C A S O U E K H U R  
F E O C Y R E D J P I O J R J H G B M O T U R  
H J K E D A U B H L B J G E L I J O A B H U E  
B U I S V B R H C I W D N A S Y U T R L O K B  
B H E O U T G H J T G V D M L O K J A J B R W  
M H S K O I U F R S E A C E S C T K C K O L A  
V U T H E K O J U S P R I N K L E S L P I U R  
L M Y G N K S E W D X A C T G Y H U I J O K T  
C H O C O L A T E I E R I U F C H E R R I E S  
I R E S C O L E S E G D U F T O H O S A O U I

What's your favorite frozen dessert? Frozen yogurt? Ice cream? Sherbet? Lowfat ice cream? Frozen desserts are great any time, but they are especially refreshing on hot summer days. Do you know your scoops?



Read the clues and fill in the puzzle:

- smooth, sweet frozen dessert made of cream, sugar, eggs and flavorings
- sweetened, frozen, less than 10% milk fat
- mostly made of water, sugar, flavoring and a small amount of milk
- like a custard, it is made from milk; it has a slight sour-sweet taste

Pinch, you don't mind sharing, do you?



Hmmph, okay help yourself.

- cherries
- caramel
- hot fudge
- chopped nuts
- marshmallow
- mint chocolate chip
- cookies and cream
- coffee
- vanilla
- chocolate
- strawberry
- peaches
- cookies
- candy
- sprinkles
- cone
- float
- soda
- frappe
- dish
- sundae
- bar
- milkshake
- banana split
- sandwich

## Cool Treats!

During summer vacation we are keeping a lookout for cool treats. We ride our bikes or walk together to the stores with the sign:



S = Strawberry (pink) C = Chocolate (brown)

C	C	C	C	S	S	C	C	S	S	S	C	S	S	S	C	C	C	C	C	C
C	C	C	C	S	C	S	C	C	C	C	C	C	C	C	C	C	C	C	C	C
C	C	C	C	S	C	S	C	C	C	C	C	C	C	C	C	C	C	C	C	C
C	C	C	C	S	C	S	S	S	S	S	C	C	C	C	C	C	C	C	C	C
C	C	C	C	S	S	C	C	C	C	C	C	C	C	C	C	C	C	C	C	C
S	S	S	C	S	S	C	S	S	C	S	S	C	S	S	C	S	S	S	S	S
S	C	C	C	S	C	S	C	C	C	C	C	S	C	S	C	S	C	S	C	S
S	C	C	C	S	C	S	C	C	C	C	S	C	S	C	S	C	S	C	S	S
S	S	S	C	S	S	C	S	C	C	C	S	C	S	C	S	C	S	C	S	S

## Enter the Reading Club Fun Book Giveaway

This summer we will give away dozens of books and lots of stickers to encourage kids to read. Just send in this signed form to be entered in the giveaway. No purchase needed. One entry per person per week. (Void where prohibited by law.) Visit [ReadingClubFun.com](http://ReadingClubFun.com) for more details.

★ you may send up to 3 entries for 3 children in one envelope!

**Cut out & mail this form to:** Reading Club Fun, P.O. Box 646, Canton, CT 06019

Name \_\_\_\_\_

Age \_\_\_\_\_ Grade \_\_\_\_\_ Boy  Girl

Street/Apt. \_\_\_\_\_

City/Town \_\_\_\_\_ State \_\_\_\_\_ Zip \_\_\_\_\_

Which newspaper is this? \_\_\_\_\_

Grownup's Last Name \_\_\_\_\_ First \_\_\_\_\_

Grownup's signature (over 18) \_\_\_\_\_

Email address: \_\_\_\_\_

Please print clearly! Final Giveaway will be Thursday, September 1, 2011



## Check presented

Greg Lance of Capital Farm Credit recently presented Gary Clark of the Muleshoe Fire Department with a check for \$500.

## Exodus 20

E X O D U S T W E N T Y H S P J F G S  
Z I Q J B Q E W H Y P Z E E H X P S L  
A A Y G O I Y S R T J G O H B U D Q U  
E N G N I T E V O C A P E T U S H F D  
Z I Y I R E D R U M L B I V Z X E P Y  
L S K Z Z J G W I E T C B T B M A W N  
G T I Z B F D N O A H L X A Y S V N O  
X N H H X D E F Q A E I O M S U E E M  
W U H W F V I X K Z F V W Z H E N M I  
N O R A A S S E N O T S R A T L A C T  
Y M D R R B U R N T O F F E R I N G S  
W M G A D U L T E R Y P L L S I D V E  
B T E N C O M M A N D E N T S E E J T  
K L T H E L O R D Y O U R G O D A Z E  
N D Q F P K W R M C H S O M T A R G S  
M E L K P S D O G E S L A F S K T D L  
K S T N E R A P R U O Y R O N O H W A  
N R P C A W D L N T R L Y O L B W T F  
G B G L Z U E W B C X R X O C D X N D

**COMPLETE AUTOMOTIVE REPAIR**

**Burton Service Center**

272-5330  
Cell: 946-8274

**IRRIGATION ENGINES & SERVICE**  
**COMPUTER DIAGNOSTICS**  
**OIL CHANGES STATE INSPECTIONS**

803 W. American Blvd., Muleshoe

## TEA rating...

Continued from page 2 follows:

DeShazo Elementary – Recognized; Dillman Elementary – Recognized; High School – Acceptable; and Watson Junior High – Acceptable.

Muleshoe High School and Watson Junior High just barely missed being Recognized by a few points, according to the superintendent, and DeShazo Elementary just barely missed being rated Exemplary by a few points as well.

"We are very proud to be the only school district in the area that is Recognized," said Sheets.

"Our faculty and staff have worked very hard to achieve these results," he said. "Our students have also been very serious about their education. We are proud to be associated with such a high quality school district."

## Senior citizen passes available

Muleshoe ISD is once again offering the MISD local pass to senior citizens who are residents of the district.

The MISD Local Pass was designed to allow senior citizens who are residents of the Muleshoe school district to attend locally sponsored school events at no cost.

Senior citizens who wish to obtain a MISD local pass may do so by seeing Pam Thomson the MISD superintendent's office or by calling her at 272-7404.

## SHOP THESE MULESHOE MERCHANTS!

**Muleshoe Auto Parts**

Quick Oil Change & Service

102 W. American Blvd.  
272-4288

**Auto Plus**

402

RED WING SHOES  
Made in USA

**The Fair Store**  
120 Main 272-3500

**FARMERS INSURANCE GROUP**  
Symbol of Superior Service

**FARMERS**

Julie DeBruin  
Agent

Call for a free quote  
**AUTO • LIFE**  
**HOME • BUSINESS**

1602 W. American Blvd.  
Muleshoe, Texas  
272-7548  
jdebruin@farmersagent.com

**LOWE'S**

**Lowe's MARKETPLACE**

401 W. American Blvd.  
Muleshoe, Texas  
272-4585

**Valencia's**  
(We've moved up by the big shop.)

**NEW LOCATION!**  
Jewelry, Purses, etc.  
Come see us today!

1782 Hwy 214  
1 mile North of Hub  
on the right  
(Mixer Center)  
806-677-6367

**Want to advertise in the Muleshoe Journal?**  
Call Rhea (Ad Sales Rep.)  
@  
272-4536  
or  
806-518-4606

## Notice of Public Hearing on Tax Increase

The COUNTY OF BAILEY will hold two public hearings on a proposal to increase total tax revenues from properties on the tax roll in the preceding tax year by 7.197671 percent (percentage by which proposed tax rate exceeds lower of rollback tax rate or effective tax calculated under Chapter 26, Tax Code). Your individual taxes may increase at a greater or lesser rate, or even decrease, depending on the change in the taxable value of your property in relation to the change in taxable value of all other property and the tax rate that is adopted.

The first public hearing will be held on August 18, 2011 at 10:00 AM at Bailey County Courthouse, Commissioners Court Room, 300 S. First Street, Muleshoe, Texas.

The second public hearing will be held on August 29, 2011 at 10:00 AM at Bailey County Courthouse, Commissioners Court Room, 300 S. First Street, Muleshoe, Texas.

The members of the governing body voted on the proposal to consider the tax increase as follows:

- FOR: Judge Sherri Harrison, Commissioner Butch Vandiver, Commissioner C.E. Grant, Commissioner Joey Kindel, Commissioner Juan Chavez
- AGAINST: None
- PRESENT and not voting: None
- ABSENT: None

The average taxable value of a residence homestead in COUNTY OF BAILEY last year was \$59,383. Based on last year's tax rate of \$0.747000 per \$100 of taxable value, the amount of taxes imposed last year on the average home was \$443.59.

The average taxable value of a residence homestead in COUNTY OF BAILEY this year is \$60,717. If the governing body adopts the effective tax rate for this year of \$0.755800 per \$100 of taxable value, the amount of taxes imposed this year on the average home would be \$458.90.

If the governing body adopts the proposed tax rate of \$0.810200 per \$100 of taxable value, the amount of taxes imposed this year on the average home would be \$491.93.

Members of the public are encouraged to attend the hearings and express their views.

### Special Provisions if Applicable

#### Criminal Justice Mandate (use for counties, if applicable):

The Bailey County Auditor certifies that Bailey County has spent \$0 in the previous 12 months beginning 07/01/2010, for the maintenance and operations cost of keeping inmates sentenced to the Texas Department of Criminal Justice. Bailey County Sheriff has provided information on these costs, minus the state revenues received for reimbursement of such costs.

#### Enhanced Indigent Health Care Expenditures (use if applicable):

The COUNTY OF BAILEY spent \$936 from 07/01/2009 to 06/30/2010 on enhanced indigent health care at the increased minimum eligibility standards, less the amount of state assistance. For the current tax year, the amount of increase above last year's enhanced indigent health care expenditures is \$459.

\* "Appraised value" is the amount shown on the appraisal roll and defined by Section 1.04(8), Tax Code.

\*\* "New property" is defined by Section 26.012(17), Tax Code.

\*\*\* "Taxable value" is defined by Section 1.04(10), Tax Code.

**Shop the merchants who support your local news!**





# The Sudan Buzzy



## Sudan's 'Monster' softball team

The Sudan Monster softball team — Chesanie Brantley, Kaylie Miller, KyLee Shultz, Jessica Barrett, Katee Gonzales, Ashton Shultz, Eliana Herrera, Stormi Peck, Emily Ysasi, Kristina Thorn, Amber Binion, and Shaelynn Rosales. Coaches for the team were Chelsie Cline, Missy Shultz, and Gabe Narramore, and Tommy Whitehurst helped with the team.



## Swing away!

Sudan softballer Ashton Schultz swings at a "Monster" softball game. The Sudan Monster softball team qualified for the Babe Ruth Southwest Regional Tournament, July 19-25. The team qualified after competing in many baseball games and tournaments in this area.

## Annual Elder Care Conference set

This year's Bailey County Elder Care Conference has been set for Aug. 20, from 9 a.m. until 1 p.m., at the Oneita Wagnon Senior Center, in Muleshoe. Area individuals seeking additional information about the annual event should call Kathy Carr, Texas AgriLife Extension Service, Muleshoe, at 806-272-4583/

**SUDAN ISD**  
**EXCELLENCE**  
 IN  
**EDUCATION**



**WWW.SUDANISD.NET**  
 Hwy. 303 Sudan, TX 79371  
 PHONE: (806) 227-2431  
 FAX: (806) 227-2146



**KING AG AVIATION, INC.**

*Specializing in Aerial Spraying - Insecticide, Herbicide & Seeding - Field Scouting Service*

**Johnny King**  
 P.O. Box 189  
 Sudan, Texas 79371  
 Business (806) 946-3399

Home (806) 227-2211  
 Fax (806) 946-3659  
 Mobile (806) 946-7309  
 Vernon Office (940) 552-6102

[www.muleshoejournal.com](http://www.muleshoejournal.com)



## Check presented

Greg Lance of Capital Farm Credit recently presented Sudan Fire Chief Mike Hill with a check for \$500.

**SUDAN VETERINARY SERVICES**  
**S&S**  
**CHRIS LARSON D.V.M.**

- Specializing in Dairy Medicine
- Small Animal & Equine
- Same Day Minor Surgery
- Farm & House Calls
- Climate Controlled Boarding
- Services by Appointment Only

208 Ormand Street  
 806-227-2444 806-241-1915



**Muleshoe Journal**  
 201 W. Ave. C • PO Box 357 Muleshoe, TX 79347 • (806) 272-4536

Sharing a newspaper is a great way to spend time with your grandchildren!

## We're at Your Service

Visit the following local businesses for quality service and customer satisfaction!

☆ **Five Star Automotive** ☆

**We Fix:**

- Transmissions
- Engines
- Flats
- Oil Change
- Change Brakes
- and Tune-Up

325-226-2198 • 8:30 am - 5 pm, Mon.-Sat.  
 201 N. 1st • Muleshoe, TX

**The Energy of Life Wellness-Center**  
 Discover the benefits of  
**GOOD NUTRITION**  
 Improve your health • Boost your energy  
 Control your weight  
**And enjoy life to the fullest!**

To make an appointment contact: **FREE SAMPLE!**  
 Elvia Gutierrez • 806-729-1831  
 Mon.-Fri. 8 am-11 am and 5 pm-8 pm • Sat. 8am-11am  
 122 E. Ave. B • Muleshoe, TX 79347

**CABINETS LOOKING**  
**Wills Doors & More**

Ronnie Wills  
 806-441-0931

Richard Wills  
 806-965-2897

A LITTLE TIRED?  
 Custom Cabinetry & Remodeling  
 New Cabinets • Refacing Cabinets  
 Remodel Kitchens • Remodel Baths

**Samaritan Hospice**  
 "Neighbors making a difference"

Serving 13 counties including:  
 Bailey, Parmer, Deaf Smith, Castro, Lamb and Hale.

Nurse on call 24/7  
 426 N. Main, Suite E • Hereford, TX 79045  
 806-363-6085 • 866-595-0564  
 A non profit Christian organization

**RESCUE HEATING AND AIR**

272-5085  
**Sales • Service Installation**  
 21 Years Experience  
**100% Satisfaction Guarantee**  
 TACLB23924E

24 Hour Service Free Second Opinion & Estimates

**15% Off First Cleaning with Coupon**

**Next to Godliness Cleaning**

Residential Cleaning  
 Call Kelly @ 806-272-3255

**R.A.S.S**  
 (Reliable, Alert, Security, Specialist)  
 Security & Private Investigations

**JULIAN DOMINGUEZ: 806-946-6799**  
**RALPH SANCHEZ: 806-946-7189**  
 Office: 806-272-6025 • Fax: 806-272-5922  
 2705 W. American Blvd., Muleshoe, TX 79347  
 rassecuritypi@gmail.com  
 "Licenced by the Texas Commission on Private Security" License # C16529

**If we can't fix it, throw it away!**  
 Sheetrock, Drywalling, Tape & Bed, Patch Up Jobs, Acoustic & Paneling, Small Concrete Jobs, Picket Fences, Bathroom Remodeling, Floor Tile, Sky Lights, Carports, Garage Doors, Insulation, Etc. Add On's and Roofing - References Available

**Handy Randy**  
 We will travel!

Pager: 766-9342 Home: 806-385-3103  
 Member of BBB of Lubbock Cell: 806-632-5261 Littlefield, TX

**FOR LADIES ONLY ZUMBA FITNESS**

DITCH THE WORKOUT! JOIN THE PARTY!  
 MONDAY - FRIDAY \* 8 AM - 8 PM  
 For More Information Contact:  
**Carla Avila @ 432-294-2836**  
 124 E. AVE. B., MULESHOE, TX  
 Must Show Valid Photo I.D. \* No Children Allowed

NEW MEMBERSHIPS RECEIVE \$10.00 OFF 1st MONTH!  
 \$40 mo. membership \$3 per session

- MERENGE
- SALSA
- REGGETON
- CUMBIA
- QUEBRADITA
- SAMBA

YOU MAY BRING YOUR OWN TONING STICKS!!

**Klassy & Sassy HAIR SALON**  
 (806) 272-7785

804 W. American Blvd.  
 Hair and Waxing

Mon.-Fri. 9:00 a.m.-5:00 p.m. • Saturday 9:00 a.m.-Noon  
 Claudia Morales & Crystal Regalado





### Let's hear a cheer!

The Mighty Mules football team isn't the only group that has been getting ready for exciting Friday nights on the gridiron. Muleshoe's cheerleaders have been practicing also, and plan to be ready for the upcoming games.

## Local roper wins regional team roping championship

A local roper was big winner during the recent United States Team Roping Championships (USTRC) Southwest Regional Finals on Aug. 4 at the Curry County Events Center in Clovis, N.M.

Josh Morris of Lazbuddie, and Brandon Gonzales of Bosque, N.M., came from the third call back position to defeat former world champions Patrick Smith and Speed Williams in the Open division.

The pair won a \$5,000 paycheck of the \$17,336

purse, along with custom leather rope bags.

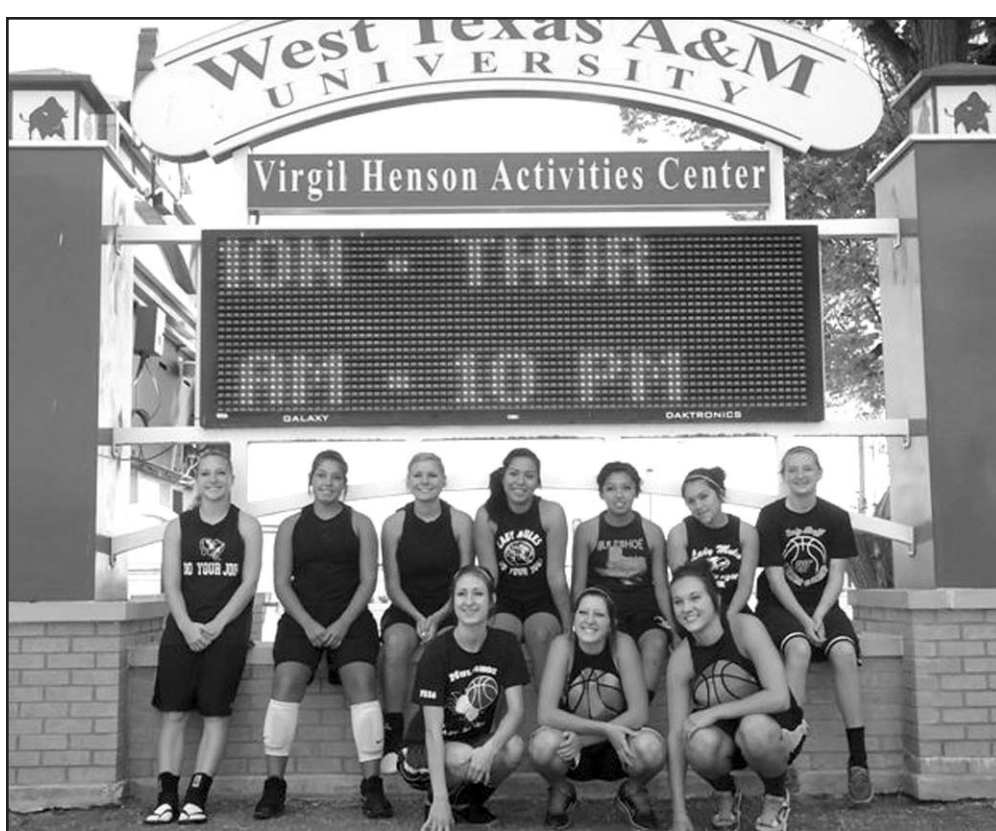
The Southwest Regional Finals is the second among seven Regional Finals to take place across the U.S. throughout the summer with an estimated purse of \$300,000 along with \$77,000 in prizes, including 22 Martin Saddles and Gist Silversmiths buckles.

Also held during the Regional Finals is a preliminary roping event that allows ropers to qualify for the USTRC-branded "Shoot Out" finals division for each classification.

Much like in the sport of golf, ropers are handicapped or receive a classification rating based on their skill level and competitive ability.

Ropers can be classified from a #1 to a #10, depending on their roping position and ability.

Offering an estimated combined total of \$2 million in cash and prizes, Regional Finals events are a stepping-stone leading to the USTRC Cinch National Finals of Team Roping in Oklahoma City, Okla., Oct. 22-30.



### Lady Mules take part in WTA&M camp

Lady Mules Varsity Basketball participated in the West Texas A&M University Team Camp July 29 -31. In the camp tournament, the Lady Mules received Consolation of over 40 teams that participated in the camp.

## School News

Dr. Gene Sheets, MISD Superintendent

Are you ready for some football? Believe it or not, it's that time again.

The Muleshoe Mules will host their first football scrimmage in Muleshoe this Saturday, Aug. 13, at 10 a.m. against Idalou.

The varsity will play first, followed by the ninth and junior varsity playing at the same time (going in different directions) around 11:30 a.m.

We will have the **Thanks for reading the Journal!**

annual "Meet the Mules" night on Tuesday, Aug. 16, at 7 p.m. in the Muleshoe High School gymnasium (It's air conditioned).

The Mules will host their second football scrimmage in Muleshoe on Aug. 18 against Lubbock Cooper at 5 p.m.

The ninth and junior varsity will play at the same time, 5 p.m. (going in different directions), followed by the varsity around 6:30 p.m.

The Mules will play their first football game here in Muleshoe on Aug. 26 against Shallowater at 7:30 p.m.



**Lance Insurance**  
Competitive Rates, Variety of Leading Companies  
For Home, Auto, Commercial and Crop  
**806-227-2466**



### Chamber Employee of the Month

The Muleshoe Chamber of Commerce & Agriculture recently honored Ernesto Rubio as the July Business of the Month. Pictured above, chamber president Scott Simmons, left, with David McNeill, right, presents Rubio with a certificate for his achievement.

### 2011 Property Tax Rates in CITY OF MULESHOE

This notice concerns 2011 property tax rates for CITY OF MULESHOE. It presents information about three tax rates. Last year's tax rate is the actual rate the taxing unit used to determine property taxes last year. This year's *effective* tax rate would impose the same total taxes as last year if you compare properties taxed in both years. This year's *rollback* tax rate is the highest tax rate the taxing unit can set before taxpayers can start tax rollback procedures. In each case these rates are found by dividing the total amount of taxes by the tax base (the total value of taxable property) with adjustments as required by state law. The rates are given per \$100 of property value.

<b>Last year's tax rate:</b>	
Last year's operating taxes	\$789,328
Last year's debt taxes	\$122,372
Last year's total taxes	\$911,700
Last year's tax base	\$132,437,634
Last year's total tax rate	0.688400/\$100

<b>This year's effective tax rate:</b>	
Last year's adjusted taxes (after subtracting taxes on lost property)	\$911,700
+ This year's adjusted tax base (after subtracting value of new property)	\$127,773,525
= This year's effective tax rate	0.713500/\$100

<b>This year's rollback tax rate:</b>	
Last year's adjusted operating taxes (after subtracting taxes on lost property and adjusting for any transferred function, tax increment financing, state criminal justice mandate and/or enhanced indigent health care expenditures)	\$789,328
+ This year's adjusted tax base	\$127,773,525
= This year's effective operating rate	0.617700/\$100
× 1.08 = this year's maximum operating rate	0.667100/\$100
+ This year's debt rate	0.089800/\$100
= This year's rollback rate	0.756900/\$100

**Statement of Increase/Decrease**  
If CITY OF MULESHOE adopts a 2011 tax rate equal to the effective tax rate of 0.713500 per \$100 of value, taxes would increase compared to 2010 taxes by \$ 9,350.

**Schedule A: Unencumbered Fund Balances:**  
The following estimated balances will be left in the unit's property tax accounts at the end of the fiscal year. These balances are not encumbered by a corresponding debt obligation.

<b>Type of Property Tax Fund</b>	<b>Balance</b>
Maintenance & Operation	0
Interest & Sinking	0

**Schedule B: 2011 Debt Service:**  
The unit plans to pay the following amounts for long-term debts that are secured by property taxes. These amounts will be paid from property tax revenues (or additional sales tax revenues, if applicable).

Description of Debt	Principal or Contract Payment to be Paid from Property Taxes	Interest to be Paid from Property Taxes	Other Amounts to be Paid	Total Payment
Certificates of Obligation	59,768	56,610		116,378
Total required for 2011 debt service				\$116,378
- Amount (if any) paid from funds listed in Schedule A				\$0
- Amount (if any) paid from other resources				\$0
- Excess collections last year				\$6,200
= Total to be paid from taxes in 2011				\$110,178
+ Amount added in anticipation that the unit will collect only 95.000000% of its taxes in 2011				\$5,799
= Total Debt Levy				\$115,977

This notice contains a summary of actual effective and rollback tax rates' calculations. You can inspect a copy of the full calculations at 302 MAIN STREET, MULESHOE, TX 79347.  
Name of person preparing this notice: KAYE ELLIOTT  
Title: CHIEF APPRAISER  
Date prepared: August 9, 2011



**precision ag**  
guiding your farm into the future

precisionPROS




**Trimble FmX Yield Monitor**

- precisionGUIDANCE—Affordable options to fit any combine
- Yield & Moisture Mapping
- precisionHARVEST—Yield map processing for any monitor
- AutoSwath for Harvest
- Maximize your investment in technology—call our PrecisionPROS for complete precision ag solutions.
- Hybrid/Variety Mapping

Make better agronomic and economic decisions with our PrecisionHARVEST Information Package - first year FREE with your yield monitor purchase.

806-293-8839

www.southplainsprecisionag.com





### Chamber Business of the Month

The Muleshoe Chamber of Commerce & Agriculture recently honored Jerry Redwine as the July Business of the Month. Pictured above, chamber president Scott Simmons presents Dr. Redwine with a certificate for his achievement.



### Big winner announced

Margarest Bruton of Muleshoe was the "big winner" in the "Million Dollar Summer" promotion held at United Supermarkets. Pictured above, Bruton receives a \$10,000 check from Ray Ybarra of United.

Other local winners included Benjie Jay, \$500; David Gray, \$1,000; and Anselna Chavez, \$500.

[www.muleshoejournal.com](http://www.muleshoejournal.com)

### 2011 Property Tax Rates in MULESHOE AREA HOSPITAL DISTRICT

This notice concerns 2011 property tax rates for MULESHOE AREA HOSPITAL DISTRICT. It presents information about three tax rates. Last year's tax rate is the actual rate the taxing unit used to determine property taxes last year. This year's effective tax rate would impose the same total taxes as last year if you compare properties taxed in both years. This year's rollback tax rate is the highest tax rate the taxing unit can set before taxpayers can start tax rollback procedures. In each case these rates are found by dividing the total amount of taxes by the tax base (the total value of taxable property) with adjustments as required by state law. The rates are given per \$100 of property value.

<b>Last year's tax rate:</b>	
Last year's operating taxes	\$1,050,685
Last year's debt taxes	\$302,419
Last year's total taxes	\$1,353,104
Last year's tax base	\$338,275,818
Last year's total tax rate	0.400000/\$100

<b>This year's effective tax rate:</b>	
Last year's adjusted taxes (after subtracting taxes on lost property)	\$1,353,103
+ This year's adjusted tax base (after subtracting value of new property)	\$337,187,767
= This year's effective tax rate	0.401200/\$100

<b>This year's rollback tax rate:</b>	
Last year's adjusted operating taxes (after subtracting taxes on lost property and adjusting for any transferred function, tax increment financing, state criminal justice mandate and/or enhanced indigent health care expenditures)	\$1,050,684
+ This year's adjusted tax base	\$337,187,767
= This year's effective operating rate	0.311600/\$100
× 1.08 = this year's maximum operating rate	0.336500/\$100
+ This year's debt rate	0.060800/\$100
= This year's rollback rate	0.397300/\$100

**Statement of Increase/Decrease**  
If MULESHOE AREA HOSPITAL DISTRICT adopts a 2011 tax rate equal to the effective tax rate of 0.401200 per \$100 of value, taxes would increase compared to 2010 taxes by \$5,948.

**Schedule A: Unencumbered Fund Balances:**  
The following estimated balances will be left in the unit's property tax accounts at the end of the fiscal year. These balances are not encumbered by a corresponding debt obligation.

<b>Type of Property Tax Fund</b>	<b>Balance</b>
Maintenance & Operation	0
Interest & Sinking	0

**Schedule B: 2011 Debt Service:**  
The unit plans to pay the following amounts for long-term debts that are secured by property taxes. These amounts will be paid from property tax revenues (or additional sales tax revenues, if applicable).

Description of Debt	Principal or Contract Payment to be Paid from Property Taxes	Interest to be Paid from Property Taxes	Other Amounts to be Paid	Total Payment
Certificates of Obligation	150,000	59,443	0	209,443
Total required for 2011 debt service				\$209,443
- Amount (if any) paid from funds listed in Schedule A				\$0
- Amount (if any) paid from other resources				\$0
- Excess collections last year				\$17,615
= Total to be paid from taxes in 2011				\$191,828
+ Amount added in anticipation that the unit will collect only 93.000000% of its taxes in 2011				\$14,439
= Total Debt Levy				\$206,267

This notice contains a summary of actual effective and rollback tax rates' calculations. You can inspect a copy of the full calculations at 302 MAIN STREET, MULESHOE, TX 79347.  
Name of person preparing this notice: KAYE ELLIOTT  
Title: CHIEF APPRAISER  
Date prepared: August 9, 2011

### USDA reminds producers of sales closing date

Producers who want to purchase coverage through the Noninsurable Crop Disaster Assistance Program (NAP) to do so before the sales closing date of Sept. 1. NAP provides financial assistance to producers of noninsurable crops when low yields, loss of inventory or prevented planting occur due to normal disasters. In order to meet eligibility requirements for NAP, crops must be noninsurable, commercially-produced agricultural commodity crops for which the catastrophic risk protection level of crop insurance is not available. For more information on sales closing dates and NAP, contact the Bailey County FSA office at 806-272-4538.

### Many Thanks

The SPCCA Back Pack Giveaway was a huge success!



Dear Community,  
On behalf of South Plains Community Action Association, Inc., we would like to thank you for your generous donation during our annual **Back to School Extravaganza** event. Your contribution made it possible to issue back packs filled with basic school supplies to households who may have been affected by the ongoing recession. Your local Community Action office and your community impacted 211 children. During this event, the public was educated on resources which are available to them in Bailey County area. We would like to acknowledge the following resources and contributors which helped make this event possible and successful.

- Muleshoe State Bank
- O&C Erections Sprinkler Service
- Muleshoe Tire
- First Bank of Muleshoe
- Shipman's Body Shop
- MB Express
- Muleshoe Auto Parts
- Cowboy Church
- Dave's Welding Service
- Alex Tire Service
- Alco
- United Supermarket
- Five Area Telephone,
- Cargill
- Jim & Carrie Hale
- Richard Barrett Produce
- Farm Bureau Insurance
- Jerry Marts
- Muleshoe Valley Inc.
- Lueras Construction
- Gerald & Sue Bond
- Ray Lee Equipment
- Henry Nail's
- Dollar General
- Multex Inc.
- Support Medical
- Loioe's Shear Shack
- Julie De Bruin Insurance
- Lasting Impressions
- THANK YOU!**

### 2011 Property Tax Rates in COUNTY OF BAILEY

This notice concerns 2011 property tax rates for COUNTY OF BAILEY. It presents information about three tax rates. Last year's tax rate is the actual rate the taxing unit used to determine property taxes last year. This year's effective tax rate would impose the same total taxes as last year if you compare properties taxed in both years. This year's rollback tax rate is the highest tax rate the taxing unit can set before taxpayers can start tax rollback procedures. In each case these rates are found by dividing the total amount of taxes by the tax base (the total value of taxable property) with adjustments as required by state law. The rates are given per \$100 of property value.

	<b>GENERAL FUND</b>	<b>FARM MARKET ROAD</b>
<b>Last year's tax rate:</b>		
Last year's operating taxes	\$1,803,960	\$356,231
Last year's debt taxes	\$331,121	\$0
Last year's total taxes	\$2,135,081	\$356,231
Last year's tax base	\$334,128,495	\$329,843,632
Last year's total tax rate	0.639000/\$100	0.108000/\$100

<b>This year's effective tax rate:</b>		
Last year's adjusted taxes (after subtracting taxes on lost property)	\$2,135,081	\$356,231
+ This year's adjusted tax base (after subtracting value of new property)	\$330,180,015	\$326,110,533
= This year's effective tax rate for each fund	0.646600/\$100	0.109200/\$100
Total effective tax rate	0.755800/\$100	

<b>This year's rollback tax rate:</b>		
Last year's adjusted operating taxes (after subtracting taxes on lost property and adjusting for any transferred function, tax increment financing, state criminal justice mandate and/or enhanced indigent health care expenditures)	\$1,972,998	\$356,231
+ This year's adjusted tax base	\$330,180,015	\$326,110,533
= This year's effective operating rate	0.597500/\$100	0.109200/\$100
× 1.08 = this year's maximum operating rate	0.645300/\$100	0.117900/\$100
+ This year's debt rate	0.098800/\$100	0.000000/\$100
= This year's rollback rate for each fund	0.744100/\$100	0.117900/\$100
This year's total rollback rate	0.862000/\$100	

**Statement of Increase/Decrease**  
If COUNTY OF BAILEY adopts a 2011 tax rate equal to the effective tax rate of 0.755800 per \$100 of value, taxes would increase compared to 2010 taxes by \$ 15,824.

**Schedule A: Unencumbered Fund Balances: GENERAL FUND**  
The following estimated balances will be left in the unit's property tax accounts at the end of the fiscal year. These balances are not encumbered by a corresponding debt obligation.

<b>Type of Property Tax Fund</b>	<b>Balance</b>
General Fund Maintenance & Operation	0
General Fund Debt Service	0

**Schedule B: 2011 Debt Service: GENERAL FUND**  
The unit plans to pay the following amounts for long-term debts that are secured by property taxes. These amounts will be paid from property tax revenues (or additional sales tax revenues, if applicable).

Description of Debt	Principal or Contract Payment to be Paid from Property Taxes	Interest to be Paid from Property Taxes	Other Amounts to be Paid	Total Payment
Certificates of Obligation for Jail Construction	185,000	171,840	0	356,840
Total required for 2011 debt service				\$356,840
- Amount (if any) paid from funds listed in Schedule A				\$0
- Amount (if any) paid from other resources				\$22,479
- Excess collections last year				\$22,848
= Total to be paid from taxes in 2011				\$311,513
+ Amount added in anticipation that the unit will collect only 95.000000% of its taxes in 2011				\$16,395
= Total Debt Levy				\$327,908

**Schedule A: Unencumbered Fund Balances: FARM MARKET ROAD**  
The following estimated balances will be left in the unit's property tax accounts at the end of the fiscal year. These balances are not encumbered by a corresponding debt obligation.

<b>Type of Property Tax Fund</b>	<b>Balance</b>
Farm to Market Maintenance & Operation	145,593

**Schedule D - State Criminal Justice Mandate (For Counties)**  
The Bailey County Auditor certifies that Bailey County has spent \$ 0 in the previous 12 months beginning 07/01/2010, for the maintenance and operations cost of keeping inmates sentenced to the Texas Department of Criminal Justice. Bailey County Sheriff has provided information on these costs, minus the state revenues received for reimbursement of such costs.

**Schedule F - Enhanced Indigent Health Care Expenditures**  
The COUNTY OF BAILEY spent \$ 936 from July 1, 2009 to June 30, 2010 on enhanced indigent health care at the increased minimum eligibility standards, less the amount of state assistance. For the current tax year, the amount of increase above last year's enhanced indigent health care expenditures is 439.

This notice contains a summary of actual effective and rollback tax rates' calculations. You can inspect a copy of the full calculations at 302 MAIN STREET, MULESHOE, TX 79347.  
Name of person preparing this notice: KAYE ELLIOTT  
Title: CHIEF APPRAISER  
Date prepared: August 9, 2011



# CLASSIFIEDS

**Deadline is Monday at 5 p.m. to place a classified ad. Call 272-4536.**

## LEGAL/PUBLIC NOTICE

**PUBLIC NOTICE**  
The annual return of the Russell Scott Redwine Memorial Scholarship Fund is available, at the address noted below, for inspection during normal business hours, by any citizen who so requests within 180 days after publication of this notice of its availability. Harrol Redwine 959 Hwy 214 Friona, Texas 79035 The principal manger is Harrol Redwine, Chairman, telephone number (806)965-2958. *Published in the Muleshoe Journal August 11, 2011.*

## HELP WANTED

Sonic Drive In is now hiring self motivated Assistant Managers, skating carhops and cooks come by and see Candy today!

LHC Family Medicine is accepting applications for a full time clinic LVN. Apply at 1600 S. Sunset, Littlefield or call 806-385-6424 ext. 374 for more information. LHC is an EEOC Employer.

Part-time positions, 1-2 hours per day, with the Federal Government reviewing harvest procedures at Cargill Packing in Friona, Texas. Hourly rate \$11.95 to \$18.59. Call (301) 438-3758 for application information.

Regence Health Network, Inc. Muleshoe Clinic is accepting applications for Licensed Vocational Nurse (LVN) or Medical Assistant (MA) Licensed to practice vocational nursing in the State of Texas (LVN) or Medical Assistant. Experience with Electronic Health Records - MS Office preferred. Applications accepted at 208 West Second St. Muleshoe, TX 79347 Fax: 806-322-0533 Hr.director@regencehealth.net Equal Opportunity Employer.

Great company, great people, great benefits. A nighttime position is open for a plant operator whose duties will include taking hourly readings, monitoring analytical equipment, use of MS Word, and MS Excel, climb ladders, use various wrenches and supervise plant activities. Full major/medical, dental, vision, 401K available after 90-day probation period

is completed. This is a great job and possible career for someone willing to start from the bottom and work their way up. Will train the right person. Pick up application at 930 FM 1760 Muleshoe, TX and ask for Justin or call 806-925-6669 or 806-315-0212.

**Baby Sitter Wanted**  
Local family looking for a dependable care giver to take care of a 14-month old boy starting August 15 with the addition of a baby sister in January. Hours will be Monday thru Friday 7am to 5pm working on Sunday's school calendar. We are looking for a reliable person with references and a vehicle in case of an emergency. In my home or yours can be discussed as will pay. CPR certification is a plus. Please call Justin at 806-315-0212.

Cargill Cattle Feeders, Bovina Texas - positions available in the cattle department. Cattle department responsibilities include processing cattle, doctoring, shipping, riding pens, and other duties as assigned. Applicants must be willing to perform all of these responsibilities. Work schedule

will include 1&1/2 days off on most weeks and hours will average 50-60 straight wage no overtime. Position includes full benefits package including 401 K and Health Insurance. Interested applicants should apply in person at Cargill Cattle Feeders 600 US Highway 60. (806)225-4400.

Cargill Cattle Feeders, Bovina Texas - positions available as night-watchman. Responsibilities include unloading cattle, bunk reading, housekeeping,

and other duties as assigned. Applicants must be willing to perform all of these responsibilities. This is a night shift position 4pm to 4am. Work schedule will include 2 days off on most weeks and hours will average 50-60 straight wage no overtime. Position includes full benefits package including 401K and Health Insurance. Interested applicants should apply in person at Cargill Cattle Feeders 600 US Highway 60. (806)225-4400.

**Subscribe Today!!**

**MANAGEMENT OPPORTUNITY**  
Sonic Drive-In is on the grow - with exciting opportunities for fast food assistant managers. Are you looking for a change? Sonic is a quick service food chain whose time has come again . . . on the grow with new ideas and innovations in the food industry. We want to take a few potential managers and provide them with the opportunity to achieve. If you have food service experience, operational and people skills, the willingness and stamina to follow through, a possibility of relocation, and a desire to work, then Sonic may be the place for you. We are a locally owned and operated franchise with 35+ years of success.

Please send resumes to:  
J. Howard  
217 Springfield  
Clovis, NM 88101



**DUE TO EXPANSION IN SERVICES AND CENSUS - PARKVIEW NURSING CARE CENTER IN MULESHOE IS PLEASED TO ANNOUNCE WE HAVE A FEW SELECT JOB OPENINGS AVAILABLE NOW!**

**C.N.A - DAY SHIFT AND EVENING SHIFT**  
**L.V.N. - PM SHIFT**  
**R.N. - EXCITING NEW POSITION!**  
(R.N.-WEEKEND-BAYLOR POSITION! WORK FOR A FEW LONG DAYS & GET PAID FOR 40!)

Perfect for that person that needs to be home during the week!  
Call Betty or Christie at 806-272-7578  
E.O.E

**HELP WANTED**

**Licensed Vocational Nurse**

**TWO FULL TIME POSITIONS**  
8 p.m.-8 a.m. shift, shift differential.

- Competitive pay
- Group health, life, dental, & more
- Paid vacation, sick & holidays
- New facility

**To apply, send resume or fill out an application at:**  
Parmer Medical Center  
Human Resources  
1307 Cleveland  
Friona, TX 79035

Applications may be submitted online at [ParmerMedicalCenter.com](http://ParmerMedicalCenter.com)

TMC provides center-based, full-day Head Start services to eligible migrant children and their families at the centers in Muleshoe TX and Clovis NM.

Full-time positions are eligible to participate in medical, dental, vision and life insurance, as well as 401k.

**Muleshoe Center**      **Clovis Center**

4 - Teachers      1 - Teacher

Teacher Qualifications: AA/BA in Early Childhood or Child Development or AA/BA in related field with a minimum of 18 hours in Early Childhood Development or Child Development.

**Please submit resumes and cover letters to:**  
Human Resources Department  
6104 45th Street Suite A  
Lubbock TX 79407  
Fax: 806-763-9136  
[coral.mabie@mail.tmccentral.org](mailto:coral.mabie@mail.tmccentral.org)

## GARAGE SALES

Three House Garage Sale Friday, August 12 7:00 - 9:00 Saturday 8:30 a.m. 607, 612, & 619 West Ave G.

## HOUSE FOR SALE BY OWNER

4/1 1/2 Carport home. Newly remodeled kitchen,

new roof, new exterior paint. Central heat and air, all electric. Approx. 1400 sq. ft. Must See! Asking 75K. No owner finance. Located at 409 E. Austin. Call 806-777-4950.

## HOUSE FOR SALE BY OWNER

Two bedroom, two bath, fireplace.

**RN Needed**  
**6 am - 2 pm or 2 am - 10 pm**  
**2 weekends a month**  
**Contact Mindy at**  
*Runningwater Draw Care Center*  
Olton, Texas  
(806)285-2677

## REAL ESTATE

Check our websites for other properties.  
**COCHRAN CO.** - 353 ac., 2 circles, one pivot, two wells, corners in CRP.  
1530 S HWY 385 - Historic Home on the edge of Dimmitt, home of an accomplished musician. This home would make a charming bed & breakfast or just a quaint place to reside. 3 bedrooms, 2 full baths, with much room to expand, parlor/living room, dining room, office/workroom, wonderful gardens and outbuildings.  
**COYOTE RIDGE** - mule deer, bobwhite & blue quail, sandhill crane & varmint hunting, 2 subs. for domestic water. 2500 ac. +/-, 220.6 ac. CRP, balance native grass. Please call for details!  
**LONGVIEW 531** - Bailey Co., TX. - 531 ac., 388.7 ac. in CRP, native pasture, wells, on pvmt. south of Muleshoe.  
**PROGRESS 80** - Bailey Co., TX. - 80 ac., expired CRP, well, pvmt., excellent homesite west of Muleshoe.  
**1200 SOW FALLOW TO FINISH OPERATION** - Moore Co., TX. - New 5 yr. lease with major hog company. Two separate units, can be divided - Please contact broker for info package and price.  
**BAILEY/LAMB CO, TX.** - 177 ac., 176.4 ac. in CRP, Elm tree grove.  
**CASTRO CO., TX.**, on pvmt., 1808 ac. +/-, permitted for 7,200 cows (4,000 milking), precon. pens w/permit, sprinklers, irr. wells, employee housing, barns.  
[www.scottlandcompany.com](http://www.scottlandcompany.com)  
[www.texascrp.com](http://www.texascrp.com)  
**Ben G. Scott - Krystal M. Nelson, Brokers**  
800/933-9698

**Vic Coker Land Co.**  
Agricultural Real Estate

**COTTLE COUNTY**  
Paducah Area- 470 acres on pavement. 326 acres in C.R.P. Balance in native pasture. Excellent hunting. Good Wildlife cover & feed.

**BAILEY COUNTY**  
354 acres of C.R.P. Half just renewed for 10 years. Half has one year remaining on current contract. Near Wildlife refuge.

**BAILEY COUNTY**  
349 acres cultivated. Non irrigated. Exceptional direct payment. Immediate possession available.

**RURAL RESIDENTIAL**  
**LAMB COUNTY- EARTH AREA**  
Nice 3 bedroom, 2.5 bath home on 3 acres with fenced yard, nice storage building and on pavement. Fireplace, 2 large living areas, formal dining room, large office. VERY NICE!

316 Main Street • Muleshoe, Texas  
Office: 806-272-3100 Home: 806-965-2468  
Website: [www.vicoland.com](http://www.vicoland.com)

607 W. Ave. Harvesting- Corn B, Muleshoe. or Milo Harvesting 806-647-4285. \$14ac. 20cents hauling. Call Pete 325-998-0114 or Mike 325-214-2282.

**\* Delivery Technician Needed \***  
**Full Time**  
**8:30 a.m. - 5:30 p.m.**  
**Monday - Friday**  
**Must be 21 and have good customer service skills!**

**BENEFITS INCLUDE:**  
• 401(k)  
• health insurance  
• company phone & vehicle

**Support Medical Company**

103 S. Main Street • (806) 272-7552  
Muleshoe • [www.supportmedical.com](http://www.supportmedical.com)

**M. Edwards Investment Group Inc.**  
Commercial Farm & Ranch Residential  
**(806) 227-2465**

Some homes you must just see to appreciate and this Sudan 32A Carport Home is truly a move in ready. \$74,500

**309 Worth St.- 3bedroom bath with shop & garage on corner lot. \$40,000**

**10 Acres, 2514 S.E. Drive, Lubbock, TX.** Security fenced, zoned M2, located just inside East Loop 289, easy access to I-27- Call agent.

**About Sold Out- Need Your Listings!**

Vernie Moore, Agent  
(806) 543-9347

**Thank you for reading the Muleshoe Journal classifieds!**

**Byrd Realty**  
Ronald Byrd 575-760-1495 Licensed Broker  
Crista Bass 806-946-7261 Sales Associate  
Carleton Johnson 806-789-4289 Sales Associate

- **New Listing** -3 bedroom, 2 bath Brick Home- built-ins, fireplace, office, central, A&H, 2 car garage, fenced backyard.
- **New Listing Country Home** - Nice 3 bdr, 1 3/4 bath home on 60 acres, central, A&H, 6 built ins, 2 1/2 acres, septic system, perm. fence around acreage. Call for more details.
- **New Listing In Country** - 2 or 3 bedroom, 1 3/4 bath home, central heat, office, fireplace, built-ins, lots of storage, basement, 2 car garage, storage buildings, all on approx. 2 acres.
- **New Listing** - Spacious 2 or 3 bedroom, 2 bath home, 2 living areas, large master bedroom and bath, furniture and appliances included, central air and heat, approx. 2004 sq.ft., Great Price!! Call for more details!
- **New Country Listing** - 2 bedroom, 1 3/4 bath home, sunroom, built-ins, 2 living areas, utility, central air and heat, 2 car garage, 2 large barns, all on 3 acres.
- **New Country Listing** - 3 or 4 bedroom, 1 3/4 bath home, central air and heat, utility, garage, barn, all on 1.5 acres.

228 Main Street, Muleshoe, Texas  
Check all of our listings at [www.byrdrealestate.net](http://www.byrdrealestate.net)

**Nieman Realty** REALTOR

116 E. Ave. C • George Nieman, Broker • 272-5285 or 272-5286  
CHECK OUR LISTING INFO., PHOTOS, ETC. ON-LINE AT [www.niemanrealty.com](http://www.niemanrealty.com)  
HAVE BUYERS! NEED HOME AND LAND LISTINGS!!

**HIGH SCHOOL AREA**

- VERY NICE 3-2-2 Brick Home, Cent. A&H, built-ins, FP, approx. 2336' lv. area, auto. spkrl, fenced yd, MORE!! \$125K!!
- VERY NICE 3-3-2 CP Home, Cent. A&H, built-ins, FP, approx. 2653' lv. area, covered deck & patio, workshop/ store cellar!! Auto. spkrl (front yd.) \$140,000!!!
- NICE 3-2-2 Home, corner lot, built-ins, Cent. A&H, workshop/storage plus storage building!! 1974' lvg. area!! \$96K!!
- 3-1 Brick Home, enclosed garage, Cent. A&H, DW, Refrig., utility, workshop/storage!! MORE!! \$78K!!

**RURAL**

- VERY NICE CUSTOM BUILT 3 Bedroom, 3 Bath, 2 car garage home, at edge of town on 80 acres!! Geothermal heat & air, built-ins, FP, ash cabinets, approx. 2544' main lv. area plus 625' finished basement w/safe & storage, spkrl system, beautiful trees and landscaping, circle spkrl, 5 wire barbwire fence, 36' x 48' metal insulated bldg w/2 12' doors!! MUCH MORE!!
- VERY NICE 4-3 doublewide (2006) on 7.38 acres, Cent. A&H, built-ins, FP, fenced yd., 25' x 40' Metal Bldg. septic system, domestic well, on pavement close to town!! \$152K \$130K!! MAKE OFFER
- NICE 4.8 acre homesites, deed restricted!! \$17,500!!
- LARIAT AREA - 3-1 Home, Cent. heat, 5 acres, 1989' lv. area (2 story), 2880' quonset barn, out bldgs., Reduced \$39K!! POSSIBLE OWNER FINANCE!!
- 3-2-2 HOME ON 2 AC. (2860 FM 303)- APPROX. 2146' lv. area, DW, ceiling fans, thermal windows, lg. conc. patio, workshop/storage!! \$89,000!!
- PROGRESS- 3-2-2 Home, Cent. Geo, A&H, built-ins, FP, approx. 2064' lv. area on 1.24 acres, 2 wells, 720' insul. shop w/288' awning, carport, storage Bldg., cellar!! MUCH MORE!! \$125K!!
- West of Sudan 3-2-2 Brick Home on 5.57 acres, Cent. A&H, builtins, approx. 2688' lv. area, fenced yd., 40' x 80' quonset barn!! MUCH MORE!! \$135K!!

**LENAU • COUNTRY CLUB**

- 3 Bdrm, 2 bath, 2 carport, Cent A&H, Dishwasher, WB Stove, approx. 2156' lv. area, 217 E. Elm. \$60K!!
- NICELY REMODELED 3-1-1, 2 carport, Brick home, Cent. A&H, built-ins, tile, wood laminate, & carpet flooring, thermal windows & doors, 6' metal fenced yd. on concrete foundation, wood blinds!! MORE! \$75K!!
- 2-1-2 Carport, Wall Furnace, evap. air, stor. bldgs, corner lot. \$45K

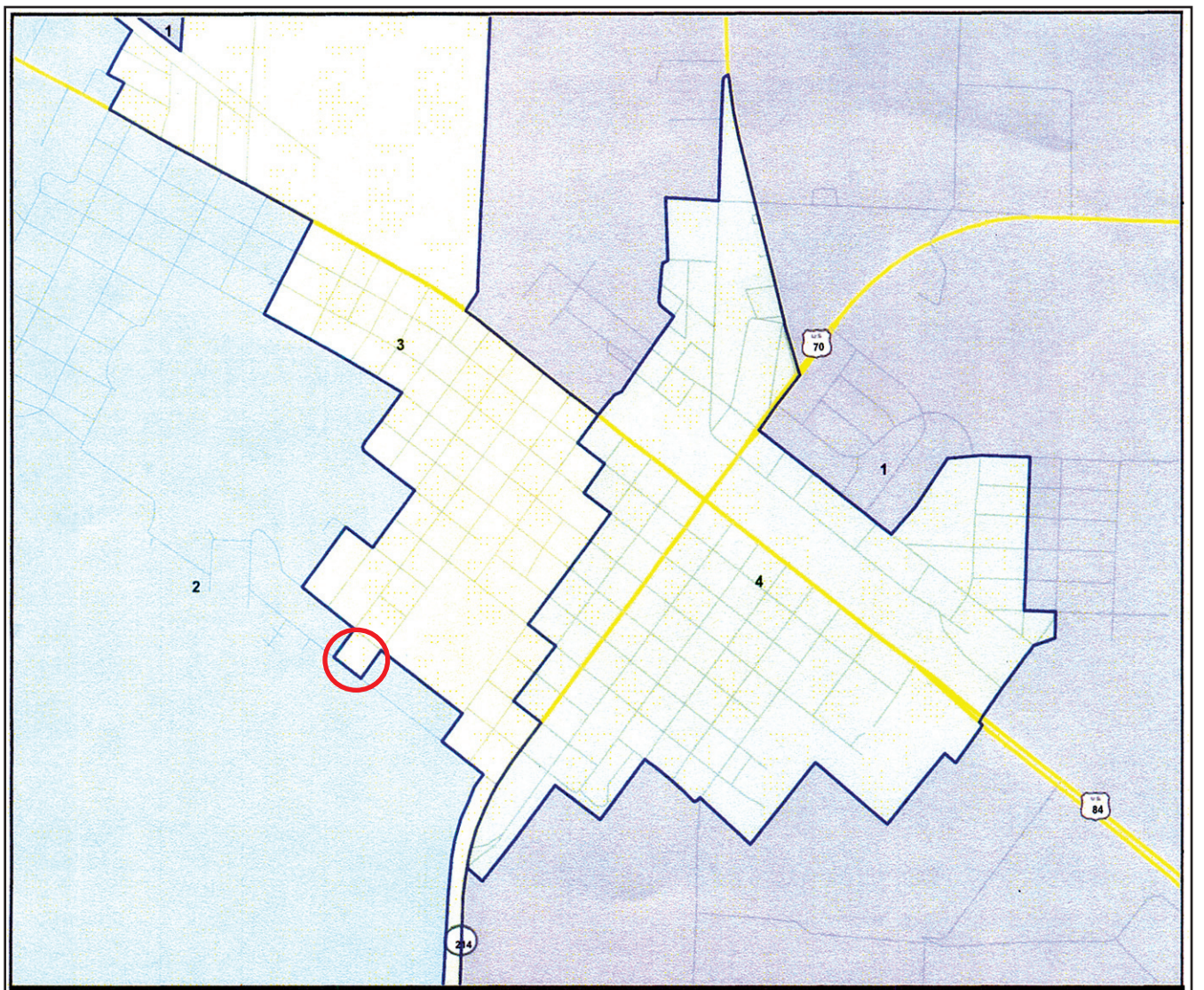
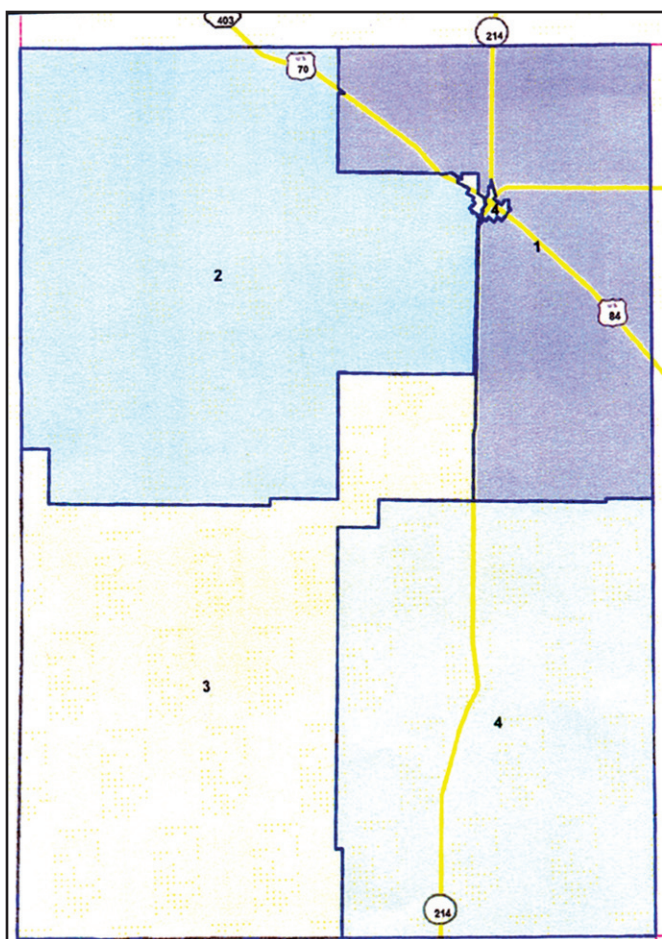
**COMMERCIAL**

- Building w/approx. 3300' plus 1040' upstairs, Cent. A&H, 2 restrooms, MORE! \$39,500!! MAKE OFFER!!
- REMODELED 1900' Off. Bldg., 106' x 140' lot on Hwy. 70 and 84!! \$79.5K!! PRICE REDUCED \$62K!!
- Approx. 1080' metal bldg. w/off. & 3 bay garage/workshop area plus chain link fenced area!! \$39,500!!
- NICE 3-2-2 Home on 11 acres at edge of town, Cent. A&H, built-ins, FP, freshley painted interior, thermal windows & doors, plus 1 bdrm house, workshop, storage, greenhouse, plus 3 garages, barns & outbuildings!! \$155,000!!



## Proposed Bailey County redistricting Plan B

Muleshoe on right, and entire county below. Voting block 2054 encircled in red on right.



## County redistricting...

Continued from page 1 and one precinct with an "Angelo majority."

However, Preston recommended Plan B, which quickly received support from both the court and County Clerk Paula Benton, who oversees conduct of county elections, because of its simplicity.

According to Preston, not only would adoption of Plan B get rid of precinct fingers that reach into other precincts to meet previous requirements regarding voting places being located within the individual precincts, but according to the numbers, it would have a variance of only one percent.

"That's a pretty amazing number," he added.

"I can't get it any more balanced than this," Preston said, referring to the raw numbers alone. He pointed out that adjustments for political reasons would be the responsibility of the court.

"This ought to keep you in compliance until the next census," Preston said about Plan B.

Of primary concern to several of the court members was the possibility of an expensive lawsuit such as occurred about 20 years ago to change precinct boundaries guaranteeing that at least one of the precincts had a minority majority.

"I don't want to spend money on a lawsuit," Precinct 3 Commissioner Joey Kindle said.

As did Plan A, Plan B would leave three precincts with a "minority majority," and one precinct with an Angelo majority.

During Monday's discussion of Plan B, it was decided to make a small adjustment of one voting block, 2054, from Precinct 3 to Precinct 2 to eliminate a "knob" that was sticking out on the proposed map, giving it an even "cleaner" appearance.

"It looks alright," Precinct 4 Commissioner Juan Chavez said about Plan B, "I think I can live with it."

The proposed plan will be presented at a

public hearing on Aug. 18 and 29, after which the court will give its final recommendation, and present it to the justice department for approval.

In other business, the commissioners' court:

- Set the proposed tax rate at the "rollback" amount of .8102, and set public hearings on the issue on Aug. 18 and 29.

- Approved payment of bills totaling \$188,747.29

- Approved the county treasurer's June report, and received the report for July.

- Discussed whether it would be better to pay a worker's compensation claim with county funds rather than submitting it to the county's insurance provider.

"You always take the risk that if something else comes along down the road and they say it's related to the earlier incident," County Treasurer Shonda Black said in her recommendation for the item to be turned over to the county's insurance carrier.

- Approved the minutes to the July 11 regular meeting.

- Discussed the state's decision to close the rest stop located across from the Bailey County Coliseum, on West American Blvd. Reportedly, this action is expected in March or April.

- Adopted the IRS mileage guide for out of county travel.

**Charles Oil & Gas, Inc.**

**DOT Inspections on semi trucks and trailers**

Hwy. 60 Bovina, Texas 251-1284

*It is with great pleasure*  
Terry Marricle R.D.H. and Tom K Bonds D.D.S.,  
**announces the association of**

*Hilda Ortiz R.D.H.*

**She is available for dental cleaning appointments at**  
Tom K. Bonds D.D.S. P.A. clinic in Muleshoe.



**Se habla espanol !**

Please contact Dr. Bonds Clinic at  
(806)272-5004 or (806)272-5908  
for an appointment.

**W&J AUCTION SERVICE** Estate Auction

**Auction of Katherine Huckabee**  
Saturday, Aug. 13, 2011 @ 10:30am CST  
Location: 1301 West 7th, Friona, TX

*This is a beautiful house full of furniture!*  
Appliances, Living Room, Bedroom, Household Goods  
Viewing on Friday from 9 to 5 and Saturday before the auction

INF. 1-800-822-1243 • TEXAS LIC:# 11077 / 15577

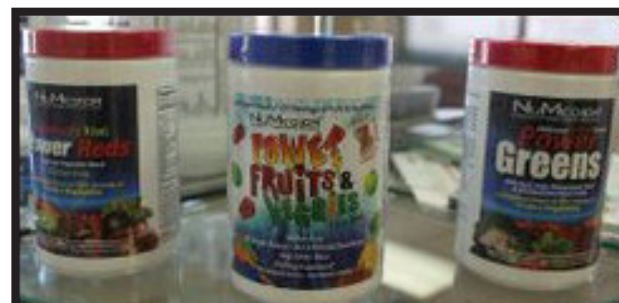
**NO BUYERS PREMIUM • www.wjauction.com**

TERMS: CASH, CHECK, VISA, MASTERCARD

All purchases must be paid for on the day of sale. While descriptions are believed correct, the Auctioneers or Owners make no warranties or guarantees as to the genuineness, authenticity of or value in any way and will not be held responsible for advertising discrepancies or inaccuracies. All sales are final, unless specified to the contrary. Buyer accepts full responsibility for all purchases made and holds the Auction Company and Owners free of any liability in the event of theft or disappearance of any items purchased. ANY ANNOUNCEMENT MADE BY AUCTIONEERS SUPERSEDES ANY PRINTED MASTER PERTAINING TO THE Inspection All Day Friday & Saturday Prior to Auction.

**James Priest & Associates W & J Auction, Inc.**  
"YOUR KNOWLEDGE IS YOUR SECURITY"  
AUCTIONEERS: James Priest, Gid Priest, Batch Priest

50 YEARS OF SERVING YOU



**Pure Encapsulations, HC3 trim drops**



**Phase 1 Dietary Program and NuMedica**



**Great new selection of:**  
**Foster Grant Reading Glasses**

We carry Pharmaceutical grade supplements!

**K&K PHARMACY**  
*We strive to improve your life through knowledge, experience, and service.*

*Se Habla Espanol!*  
806-272-7511 • 1411 W. American Blvd.



Kay Campbell, R. Ph.  
Kristine Isaacson, PharmD., R. Ph.

**Subscribe!**