



# Muleshoe Journal

Striving to be your source for local news

75¢

Volume 94, No. 12    www.muleshoejournal.com    Muleshoe, Texas    March 21, 2013

## Time To Party Like It's 1913!

By Larry Thornton  
Managing Editor

Last year, the Muleshoe Chamber of Commerce & Agriculture brought a bit of revelry to town with a 1950s-theme banquet, and this year the trip moves even further back as the

chamber celebrates the community's 100th birthday.

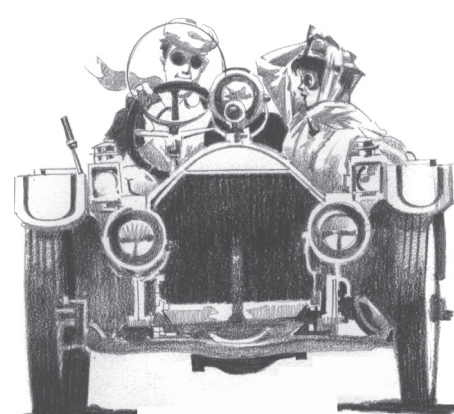
According to "Tales and Trails of Bailey County," the county's only incorporated community was found on land recorded by EK Warren on Oct. 23, 1913, adjacent to the existing

railroad line that ran through the area.

Since that time, Muleshoe has grown to be a thriving community on the sandy plains of West Texas, with a bank opening in 1914, and the city becoming the Bailey County seat in 1919.

The Muleshoe Chamber of Commerce itself was formed on Tuesday, Feb. 10, 1925, during a meeting at the Bailey County Courthouse, with Taylor White elected as the organization's first president.

This year's chamber celebration, it's 63rd annual celebration will include a barbecue dinner on Saturday, April 6, catered by

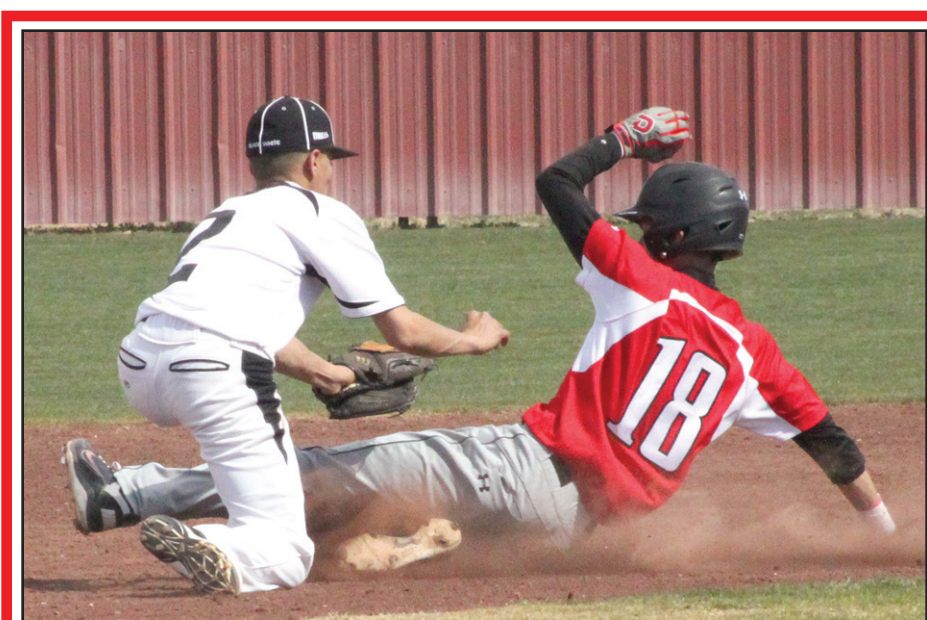


Muleshoe's Cafe 21, at the Bailey County Coliseum.

The event will begin at 6:30 p.m., and will include entertainment

by Holly Ave., a musical group born out of Lubbock's Cactus Theater, a silent auction, and a live auction.

Last year, "Elvis" arrived at the building on a motorcycle, and the screams of both the young and the "young at heart," and the music theme for this year comes from the same era. Holly Ave. is  
Continued on A3



### Too Little... Too Late

Thankfully, good efforts don't always pan out — at least for the Slayton runner pictured above and below, as his attempt to steal a base during the recent game against the varsity Mules doesn't quite make it. By the time the runner's foot hit the bag, Mule Matt Barron's quick glove had already done what it needed to send him back to the dugout. Photographs by Gabby Perez



### Muleshoe Pursuit Suspect Visits Parmer County Jail

By Larry Thornton  
Managing Editor

A Muleshoe man was booked into Parmer County Jail Saturday night, after a lengthy pursuit that originated in Muleshoe.

According to Muleshoe Police Sgt. Steve Clifton, Ofc. Jacie

Anstead pulled over a gold Saturn sedan near the intersection of First and American Blvd., around 11 p.m. on March 16, and after making contact with the driver — Allen Beasley, 45, of Muleshoe, requested assistance from a drug canine out

of Lamb County. However, before the Lamb County canine unit arrived, Beasley allegedly fled from the scene of the traffic stop, traveling north of Lazbuddie, and eventually to the Hubb area.

Beasley was eventually apprehended in Parmer County, after his car broke down, and is being held in the Parmer County jail on charges related to his attempt to elude and possession of a small amount of what was believed to be a controlled substance.

Other related charges are pending in Bailey County, Clifton said.

### Changes Noted In Mailed Newspaper Delivery

Due to some circumstances beyond the control of the Muleshoe Journal's staff, in-county mail subscribers can expect their Journal edition to be delivered on Thursday, instead of Wednesday.

Carrier subscribers will still received their newspapers on Wednesday.

Out-of-county mail subscribers should also expect their newspapers a day later than they have in the recent past.

### Varsity Softball Wins!

By Delton Wilhite  
Sportswriter

An early lead plus Marissa Cortez only giving up one hit to the Abernathy Lady Lopes added up to what appeared to be a relatively easy first district win for the Lady Mule softball squad.

Cortez did not give up a walk and struck out seven during her five innings of work.

The Lady Mules

downed Abernathy 16-0 to start district with a 1-0 record.

Cortez received plenty of help at the plate with the Lady Mules combining for 11 walks, five hits and 12 RBIs.

No Lady Mule struck out. Diamond Lopez led the Lady Mule offense with two hits, four RBIs and crossed the plate twice. Cortez helped herself at the plate with

two hits, one RBI and one base on balls.

Adriana Loya drew three base on balls and Gabi Chavez walked twice.

"Discipline was a big part of our game today," said first-year Lady Mule coach Erin White. "We had four rough games just before starting district today and part of the problem was that we

Continued on A8

### Ag Mechanic Students Place

Muleshoe High School students recently competed in the Junior Ag Mechanics contests in San Angelo and San Antonio.

Three Ag Mechanics projects were built by students in the Muleshoe High School Ag Shop. The Ag Mechanics teacher is Brandon Thomason.

The students did an outstanding job on all three of the projects.



There were about 375 Projects that competed at the San Angelo Stock Show.

Almost 400 Ag Mechanics projects were entered in the San Antonio Stock Show. The competition was very competitive at

both contests.

Both contests were divided into divisions according to the type of project. Muleshoe High School entered their projects in the Trailer Division. All of the trailers first went

Continued on A3



Photograph by Larry Thornton

### Already Moving Steel

With a projected completion date 120 days after the Feb. 13 ground breaking, construction crews at Muleshoe's new McDonald's™ have been working hard and are already moving the building's steel beams into place.

Advertisement for First Bank, featuring the bank logo and text: "First Bank is proud to announce our new MasterCard Debit Card. FIRST BANK ONLINE www.fb.muleshoe.com 202 S. First • Muleshoe, TX 79347 • 806-272-4515"



# OPINION

## Paradox: The Gift Given Fully For One Is Given Fully For All



**Focus On Faith**  
Curtis Shelburne

The greatest gift ever given to me, the most intimate and personal gift I've ever received, was the gift given to everyone, not just me.

That greatest gift was given to everyone who has ever breathed, to multitudes who no longer breathe, and to untold millions who've yet to take their first breath.

It was a gift about me, suited perfectly for me, a gift handcrafted precisely to fit my need, a gift I've been told that the Giver would have given if I'd been the only one in need.

Having tasted the love of this Giver, I fully believe that the tellers of such magnanimity tell me the truth.

And so the gift is mine. But the gift is made all the more beautiful and personal and real, undiminished in any way but enlarged into dimensions dwarfing comprehension, because it is also completely and perfectly yours.

The gift is so vast, so all-encompassing, so high and wide and deep, that though it was given once for all for all time, it is also truly given for you, for me, for right now, for this time.

Its power pulses into the far reaches of

eternity, as well as into the air you'll draw in with your next breath.

It gives life to scads of galaxies yet unnamed and unimagined, even as it frees genuine life and joy to cascade into the soul presently inhabiting the miniscule universe of your own body bounded at its farthest reaches by ten fingers, ten toes.

It is a gift that mysteriously breathes grace into my life even as it also enlivens the whole body.

"Bread ceases not to be" bread even as it becomes for me his body and a means of grace.

Wine ceases not to be wine even as it flows, rich and red and real, blood from his head and hands and feet, down that tree, for me, but also for millions so like, and yet, snowflake like, so unlike, me.

That blood washes over me as it covers us all who lay down forever any claim to any offering, any gift ever given, but one — his.

Seeing the gift, receiving the gift, given for me, given for us all, I cry at Love's breathtaking

extravagance, the spectacle of such precious blood being shed.

But the tears, drip, drip, dripping from my eyes, soon join the tears falling from all other faces ever turned toward His, and they become a salty river of joy, a tribute to the One whose blood is the River of Life flowing not only for me, but for us all.

The same gift that binds me forever to his

precious Body, also frees me, and all who trust in him, to dance forever together, complete in his joy.

No accident it is that the gift is given on a cross where God's justice and God's mercy mysteriously intersect, and no small part of the wonder it is that those arms are thrown open so wide that the gift given fully and forever for each one of us is also given fully and forever for all.

### Around Muleshoe...



Announcements from non-profit organizations in the Muleshoe area.

To post an announcement send an email to editor@muleshoejournal.com

#### Project Graduation

Parents of the Muleshoe High School Class of 2013 need your help to make Project Graduation safe, fun and memorable for this year's graduates.

Donations are being sought to help with the expenses for the celebration following the MHS graduation on May 31.

Project Graduation is a parent-sponsored, non-alcohol and drug-free event. Donations need to be received by April 5. Send donations and questions to Pargie Lopez, Project Graduation 2013, c/o Muleshoe State Bank, PO Box 1010, Muleshoe, TX 79347, or call 806-272-4561.

#### Night to Shine

Muleshoe High School's Fine Arts Night to Shine will be held on Monday, March 25, at 6 p.m., in the high school auditorium.

Tickets are \$8 and will include a meal of brisket, beans, potatoes, rolls, dessert, and tea, served from 6 - 6:30 p.m., in the cafeteria.

The choir, band and auction is scheduled for 6:30-8 p.m., followed by the MHS One Act Play.

#### Fish Friday

Immaculate Conception Catholic Church, at 805 E. Hickory, will be hosting a fish fry on Friday, March 22, from 5- 8 p.m.

The meal will include fish, homemade French fries, hush puppies, slaw, dessert and a drink, and is \$8 for adults and \$5 for children five years old and younger. Call 272-4167 for carry-out orders.

This is the last Friday the church will be having the "Fish Fry" during this Lent season. Proceeds from the dinner will be used for the expansion of the church center.

#### Food Manager Certification

Texas A&M AgriLife Extension Service of Cochran County is offering a professional food manager certification training course April 15-16, at 200 B W. Taylor in Morton.

The \$125 cost includes training, materials, and a national food manager certification examination.

#### Energy Assistance Program

South Plains Community Action Association, Inc. has received additional funding from the Texas Department of Housing and Community Affairs to operate the Comprehensive Energy Assistance Program until Dec. 31.

The primary intent of this is to make funds available to enable SPCAA to respond to energy needs affecting low-income households. Priority will be given to eligible households and to households that include at least one member that is elderly, disabled or a child age five or younger.

Service delivery not only entails utility payments on behalf of the client, but also a system that addresses the underlying contributing causes of energy-induced hardship.

For additional information concerning this program, please contact Janie Pasadas, 804 W. American Blvd., 806-272-7537, Monday through Friday, from 8 a.m. until noon, and 1-5 p.m.

### Letter to the Editor

#### Reader Applauds Editorial

To the Editor:

As always I enjoy your editorials. "Syrian Assistance Is Confusing" is especially perceptive.

Evidently while supporting the Syrian government, the Obama administration plans to ignore or invalidate our Constitutional Second Amendment right, which protects our citizens' ability to defend themselves against even their own government.

Thus, how can our United States government support the Syrian government's destruction of its citizens' right to defend themselves even against their own government?

And this nation's taxpayers are possibly giving Syria 20 newly built F-16 fighter jet planes with a 500 mile fuel refill range that can fly to Israel and back. Also 200 tanks. All capable of being used against Israel. Only President Obama can give them free, courtesy of the US taxpayers.

Does it seem wise that US taxpayers give those fighter freebies to Syria, while its most likely target is Israel?

LaVonne McKillip,  
Muleshoe

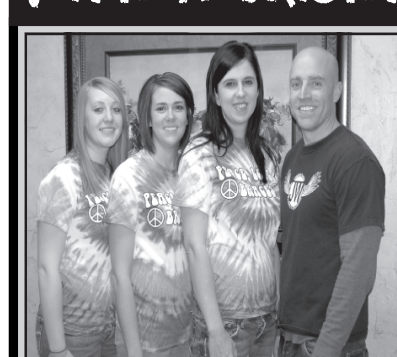
**STOP BY TODAY AND SEE OUR**  
EASTER AND END OF SCHOOL OUTFITS

230 Main Street \* 806-225-7283 \*  
Muleshoe (Located in The Studio)

BUY From Spring Line and draw an Easter egg for 10-50% off one item!



### START THE NEW YEAR WITH A BRIGHT SMILE!



Come in and see  
**J.W. Haltom,  
Jessica Haltom,  
Amber Garcia  
and  
Hillary Harris**

#### Dr. J.W. Haltom Family Dentistry

- Nitrous oxide available
- Emergencies seen promptly.
- Insurance and credit cards accepted.

**320 E. 8<sup>th</sup> St., Littlefield**  
Hours: Mon. - Thurs. 8 to 5 Fri. 8 to noon  
**For Appt: 385-6935**

# Plateau 4G is the Champion!



Starting at \$50 per month you get:

- » Unlimited Calling
- » Unlimited Texting
- » Unlimited Data

Step into the ring of champions today and get the 4G-capable Samsung Exhibit or LG DoublePlay Android phone for FREE!

Drop by your nearest Plateau store or call us today to learn more.

Phone offer ends April 30, 2013. The Samsung Exhibit or LG DoublePlay Android phone is available for free only with a two-year contract for wireless service. While supplies last. Contract Term: One or two-year commitment required. Early termination fee: \$100 per year, maximum \$200 and is prorated. Activation Fee \$25.00. Partial megabytes rounded up. Full speeds available up to monthly data allotment; capable device required. After data allotment used, speeds slowed to up to 2G speeds for remainder of billing cycle. Night and weekend minutes are available when within the Plateau Network. Night and Weekend Hours: Monday through Thursday 7 p.m. through 6:59 a.m. and Friday 7 p.m. through Monday 6:59 a.m. Free Mobile to Mobile calls between Plateau mobile phones within the Plateau area. When outside the designated Plateau Area - Roaming: \$10 per minute with Free Nationwide Long Distance. Additional taxes, fees and surcharges may apply. 50% usage on all plans must be on the Plateau network. Unlimited data: 4G speeds up to your selected plan of 2GB or 5GB. May not be available in all markets. Certain restrictions apply.



1-877-PLATEAU (752-8328)  
www.plateautel.com



**Muleshoe Journal USPS 367820**  
Established Feb. 23, 1924 Published by Panhandle Weeklies, LLC.  
Every Thursday at 201 W. Ave. C, P.O. Box 449, Muleshoe, TX 79347.  
Periodicals paid at Muleshoe, TX, and at additional mailing offices.  
Postmaster: Send address changes to the Muleshoe Journal, P.O. Box 449, Muleshoe, TX 79347.  
We are qualified members of the Panhandle Press Association, West Texas Press Association and Texas Press Association

**Michael Distelhorst, Publisher** © 2013  
mdistelhorst@hearstmp.com

**Larry Thornton, Managing Editor**  
editor@muleshoejournal.com

**Rhea Gonzales Ad Representative**  
adsales@muleshoejournal.com

**Ad Design / Classified Advertising**  
advertising@muleshoejournal.com  
classifieds@muleshoejournal.com

**Subscriptions:**  
By Carrier Yearly — \$27  
Bailey County, by mail — \$29  
Elsewhere — \$40  
By E-mail — \$22  
Advertising rate cards on request

Hours are 8 a.m. to 5 p.m., Monday - Thursday, and 8 a.m. to noon on Friday. \*Advertisers should check their ad the first day of insertion. The Journal will not be liable for failure to publish an ad or for a typographical error or errors in publications except to the extent of the cost of the ad for the first day of insertion. Adjustment for errors will be limited to the cost of that portion of the ad where the error occurred.



# Super News: Ag Mechanics... Continued From A1

through a "sift" where the students showed the trailers and explained their project to the judges.

answered questions and showed their project book to the judges. The project book had pictures of every step of the building process.

Students had to justify what they did to their project and explain why they used the materials that they used.

Students were also asked questions from the judges about the capacities of the trailers, axles, tires, and safety chains.

And, they were asked about other things such as the paint, the painting process, and any safety procedures they used in applying such products.

This was a very in-depth evaluation that truly demonstrated the knowledge of the students and the construction of the project. At the end of the contest, the students receive a blue, red, or white ribbon.

The blue represents that the project is of quality and will be considered for a higher placing.

All other colors will not be considered for any other prize. All of our participants received a blue ribbon at both the San Angelo and San Antonio Stock Shows.

One of the projects built by the students was an 18' utility equipment trailer.

This trailer was built and exhibited by Chris Cage, Colten Harris, and Caleb Wood.

The trailer won third place overall in its division at the San Antonio Stock Show.

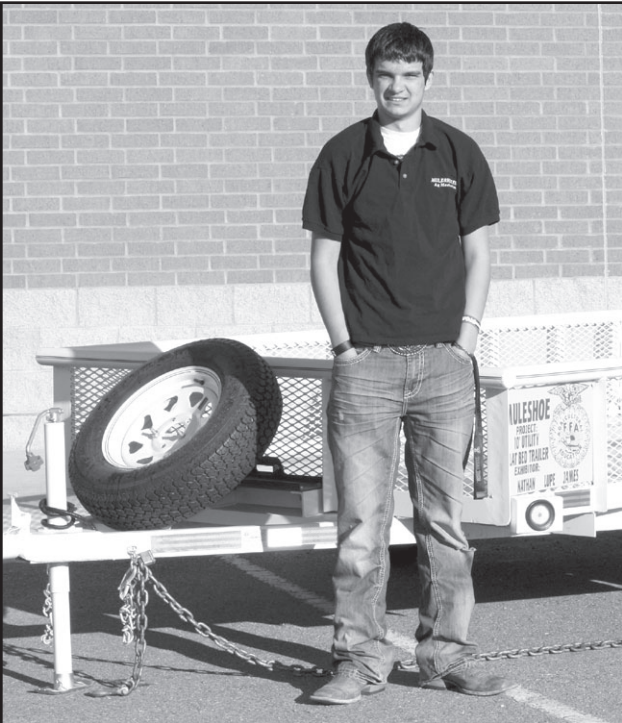
The students earned \$250 vouchers for equipment or products for their third place showing.

Earning a blue ribbon for quality workmanship was the 10-foot trailer built by Nathan Stanford, Lupe Campos, and James Mendoza.

The trailer was exhibited by Nathan



Chris Cage, Colten Harris and Caleb Wood with the 18-foot' flatbed trailer



Nathan Stanford with the utility flatbed trailer



Jose Rascon, Cruz Castorena and David Flores with the barbecue pit smoker

## Annual Muleshoe Art Show Set For Next Month

Come see the work of local artists as they display their work for the public view at the Muleshoe Art Association's annual art show, April 9-11, from 9 a.m. until 3 p.m., at Muleshoe State Bank.

Artists wishing to display their work, may do so on Monday, April 8, from 10 a.m. until 3 p.m.

The cost for entries is \$10 for non-members and \$5 for members, plus the \$20 annual

membership dues.

Judging will begin on Tuesday, April 9, at 9 a.m.

Critiques and awards will begin at 1:30 p.m.

Categories for the event will include: Oils, acrylics, watercolor, pastels, and miscellaneous.

Prizes for each category will be first place, \$50; second, \$30; and third, \$20.

There will also be a \$100 prize for Best of Show, provided by the First Bank of Muleshoe and a \$350 Purchase Award provided by Muleshoe State Bank.

## Chamber Banquet...

Continued from A1 named in honor of Lubbock's legendary Buddy Holly.

And at last year's gathering, many of the chamber members and their guests attend wearing period 1950s costumes, but this year there will be a wider variety on display.

"Come dressed as your favorite character from the past 100 years for a chance to win a prize," chamber president Gina Wilkerson urges. "Maybe a cowboy, flapper, hippie, 'Elvis,' sock hopper or disco dancer."

Tickets for the event are \$15 for adults, \$8 for children, and \$100 for a table of eight.

For more information, or to purchase tickets, call Becky Hoksbergen at 272-4248, or Gina Wilkerson at 240-2111. Or email the chamber at chamber@fivearea.com.

## Bailey County Relay For Life Meeting Set

Bailey County Relay for Life will be holding a committee and team captain meeting on March 24, in the parlor of the First Baptist Church.

The committee meeting is set for 1 p.m., followed by the team captain meeting at 1:30 p.m.

This will be a station meeting, bring any questions for committee members, such as if you need electric outlet.

The theme for this year's Relay For life — which is set for June 7, is "Dream Big, Hope Big, Relay Big."

**Staying Active = Staying Healthy**

**TRIANGLE REALTY**

**PHYLLIS BRIDGES**  
AGENT  
806.685.1543  
PHYLLISB@TRIANGLEREALTY.LLC.COM

**TRIANGLE REALTY LLC**  
 7669 CANYON DRIVE  
 AMARILLO, TX 79110  
 806.367.8334

SUPERIOR BEAN & SEED

INTEGRITY \* CLASS \* TRUST

COME GROW WITH US...

**Black Eye Pea Contracts 2013**  
**Wheat Cleaning \$2.00/Bushel**

**Jason Trotter \* 806-891-3564 Anytime**  
 580 US HWY 84 \* Sudan, TX 79371 \* Office 806-227-2194

**Correction for Dates**  
**NOTICE OF PUBLIC OPEN HOUSE MEETING**  
**FOR THE PROPOSED CURRY TO BAILEY 115 KV TRANSMISSION LINE PROJECT**

**CLOVIS HIGH SCHOOL LECTURE HALL**  
 1900 THORNTON STREET  
 CLOVIS, NEW MEXICO 88101  
 WEDNESDAY, MARCH 27, 2013  
 ANY TIME BETWEEN 5:00 – 7:30 p.m.

**BAILEY COUNTY ELECTRICAL COOPERATIVE**  
 610 EAST AMERICAN BOULEVARD  
 MULESHOE, TEXAS 79347  
 THURSDAY, MARCH 28, 2013  
 ANY TIME BETWEEN 5:00 – 7:30 p.m.

Xcel Energy, Inc., invites you to attend a public open house meeting to review and comment on the proposed segments for the proposed Curry to Bailey 115 kilovolt (kV) transmission line project (Project). The Project consists of approximately 40 to 50 miles (depending on the route selected) of new transmission line circuit, with proposed segments located in Curry and Roosevelt Counties, New Mexico and Bailey and Parmer Counties, Texas. The proposed Project will connect the existing Xcel Energy Curry Substation, located approximately 0.5 miles east of the intersection of NM 270 and Norris Street in Curry County, New Mexico, to the existing Bailey Substation located 0.2 miles south of the intersection of State Route 214 and North 1<sup>st</sup> Street in Bailey County, Texas.

The proposed segments were identified by TRC, a consulting company retained by Xcel Energy for the Project, in compliance with the rules and regulations of the Public Utility Commission of Texas (PUCT), the Texas Utilities Code, and the New Mexico Public Regulation Commission for segments in New Mexico. As part of the on-going planning process, Xcel Energy will host public open house meetings to display the proposed segments for the Project, allowing individuals to provide comments and ask questions. Detailed maps and information will be available at the open houses for review anytime between 5:00 p.m. and 7:30 p.m. Please note there are no formal presentations during the open houses. Xcel Energy representatives will be available to discuss the Project and answer questions. Materials displayed at the meeting will also be available for reference and review at Xcel Energy's Siting and Land Rights offices, located on the 27<sup>th</sup> floor of the Chase Tower, 600 South Tyler Street, Amarillo, Texas, the Clovis Public Library, located at 701 North Main Street, Clovis, New Mexico, the Muleshoe Library, located at 322 West 2nd, Muleshoe, Texas, and on the Power for the Plains website (www.powerfortheplains.com). Public input is important and will help Xcel Energy identify and evaluate proposed segments to be included in its application to the PUCT.

If you have any questions concerning the public open house meeting, please contact Xcel Energy by email at elizabeth.a.kirkpatrick@xcelenergy.com or by calling 303.571.7088.

## SHOP THESE MULESHOE MERCHANTS!

Interested in this space?  
 Call Rhea at the Muleshoe Journal  
 272-4536  
 or  
 806-518-4606

402

RED WING SHOES  
Made in USA

The Fair Store  
120 Main 272-3500



# Senior Citizen News

By Susan Skipworth

Spring began on March 20, and there have been reports of several Robin sightings.

We here at the Oneita Wagon Senior Center are ready for the beginning of a new season filled with the promise of spring.

We certainly enjoyed having some folks from Park View Nursing Care Center with us for lunch.

Janice and the staff do an amazing job. It

was such a joy to be able to see each one again.

The center wishes each and everyone a blessed Easter. We will be open on Good Friday, March 29. So come on down and have lunch with us.

Please continue to remember the family of Grace Scoggin in your prayers. She will be greatly missed at the center.

Pray for rain!

**March 25-29 menus:**  
Monday, March 25 —

Glazed meatloaf, red bliss potatoes, bread stick, mixed vegetables, and country apple crisp.

Tuesday, March 26 — Cheeseburger, potato wedges, tomato wedges, salad, and melon medley.

Wednesday, March 27 — Grilled steak, mashed potatoes, green beans, tossed vegetable salad, low calorie French dressing, cornbread, and tropical fruit salad.

Thursday, March 28 — Brisket, ranch-style beans, cornbread, buttered carrots, and strawberries.

Friday, March 29 — Fish or chicken strips, beans, green peas, tossed vegetable salad, low calorie French dressing, wheat roll, and tropical fruit mix.

**"Honor the LORD with your wealth, with the firstfruits of all your crops; then your barns will be filled to overflowing, and your vats will brim over with new wine."**

Proverbs 3:9-10, NIV



## Publications In The Muleshoe Journal

The *Muleshoe Journal* invites your news of weddings, engagements, showers, anniversaries and births.

But, in order to be fair to everyone, we must limit the amount of space for certain events.

For weddings, 25 column inches, which includes a photo if desired, is the limit. If the photo and announcement runs longer, we reserve the right to eliminate parts of the story.

However, if a longer write-up is desired, it may be placed in purchased space.

For anniversaries, the space will be free for anniversaries of 50 years or 75, specifically, and will be limited to a single photograph. A fee will be charged for other anniversaries.

Birth announcements with one-column photos are run free of charge with the names of the immediate family, including grandparents. Great-grandparents, etc., will not be included.

The permission of both parents is required for a birth announcement to

be published.

Small stories describing showers are run free of charge after the fact and may include the names of the principals, the hostess gift, the names of special or out-of-town guests, and a one-column photograph of the honoree.

It is the responsibility of the party providing the information to provide all of the information.

News releases in which names were left out by the party providing the information will not be re-published free of charge.

A deadline of three months after an event will be the rule for free publication.

Information must be received by Monday noon. Publication cannot be guaranteed in the week it is provided.

Drop by the *Journal* office, or go to www.muleshojournal.com, for a form. The information may be e-mailed to editor@muleshojournal.com.

# BAILEY COUNTY DEVOTIONAL PAGE

### Seven Churches

W L V Y Z R H S O R S T U G N C N O L D  
K X E V S V A W S A R H G P W K X U K T  
S U L Y J K X K P I H N Y H T C K Q X U  
S E N H V L B O O K O F L I F E S Z P Y  
N N H Y Z D A E C I D O A L W L E D B Y  
S I A C E R C O D A A S C A R P V T Y Y  
F C E T R O U Z A Z I R R D H S E B Q V  
Q O H A A W O V F R N M A E A Y N A Z X  
E L N L T S Z D L A Z C S L D R C R A X  
W A W L S D F S W J R U T P X D A K E G  
H I O F G E N O H Q S I F H F R N Z Z O  
I T R J N G V Y E Z M M T I R X D D I N  
T I C E I D T E S U B N Y A L Q L J O P  
E A S Z N E D N N I G W H R Y F E U S I  
S N R E R E K X D S D O A C N H S D I X  
T S O B O L J U P L T R G Y R A T T O B  
O A T E M B C Q C W H A A A H S I W P G  
N M C L M U M A G R E P R S N C C I V S  
E F I L F O E E R T K I K S N Y K K L C  
V K V G M D I V A D F O Y E K J S V Z X

Solutions on A5

- Ephesus
- Seven Stars
- Seven Candlesticks
- Tree of Life
- Smyrna
- Synagogue of Satan
- Victors Crown Pergamum
- Double-edged Sword
- Nicolaitians
- White Stone
- Thyatira
- Jezebel
- Morning Star
- Sardis
- Book of Life
- Philadelphia
- Key of David
- Laodicea
- Lukewarm

This devotional & directory is made possible by these businesses who encourage all of us to attend worship services.

### ASSEMBLY OF GOD FIRST ASSEMBLY OF GOD

Pastor Ryan Pate  
521 South First Street  
272-3017  
S.S. 9:45 am,  
W.S. 10:30 am & 6:00 pm,  
Wed. 7:00 pm  
**EL BUEN PASTOR**  
415 E. Ave. F - 272-5455  
Pastor Ruben Acevedo  
272-4542  
S.S. 9:45 am, W.S. 11 am &  
6 pm; Wed. 7 pm

### BAPTIST

**CALVARY BAPTIST**  
1733 W. Ave. C.  
Rev. Jeff Coffman  
**FIRST BAPTIST**  
220 West Ave. E  
Dr. Stacy Conner  
**FIRST BAPTIST**  
Lazbuddie • 965-2126  
**PRIMERA IGLESIA  
BAUTISTA**  
223 E. Ave. E  
Interim Rev. Troy Smith  
**PRIMITIVE BAPTIST**  
621 South First  
Elder Bernard Gowens, Min.  
**PROGRESS BAPTIST**  
Progress, TX  
**PROGRESS SECOND  
BAPTIST**  
Arthur Hays, Min. - 1st & 3rd Sundays  
**RICHLAND HILLS BAPTIST**  
Bro. Larry Thornton  
17th & West Ave. D  
S.S. 10 am; W.S. 11 am  
www.rhbc-muleshoe.org

### CATHOLIC

**IMMACULATE CONCEPTION  
CATHOLIC CHURCH**  
805 E. Hickory  
Leonardo Pahamtang, Min.

Serve Wholeheartedly, as if you were serving the Lord, not men. Ephesians 6:7

**MULESHOE VALLEY INC.**  
2601 W. American Blvd.  
P.O. Box 631  
Muleshoe, Texas  
(806) 272-4266  
Mobile (806) 946-8763  
mviinc@fivearea.com

**CENTRAL COMPRESS & WAREHOUSE**  
SUDAN, TEXAS

**Muleshoe Journal**  
201 W. Ave. C, Muleshoe  
OFFICE: 806.272.4536

**Deaf Smith County Grain, Inc.**  
Cliff A. Skiles, Jr.  
Jeb S. Skiles

**Muleshoe Journal**  
www.muleshojournal.com  
201 W. Ave. C, Muleshoe  
OFFICE: 806.272.4536  
FAX: 806.272.3567

**EPISCOPAL - CHARISMATIC**  
**ST. CLEMENTS CHURCH**  
**COMMUNION OF CHRIST**  
**THE REDEEMER**  
Hwy. 214 South • 272-5954  
Father Sergio Leal  
Sun. W.S. 10:30 am

**CHRISTIAN TRINITY CHRISTIAN CENTER**  
1723 W. American Blvd.  
272-3877  
Reydon Stanford, Pastor  
Sun. W.S. 10:30 am  
**CENTRO CRISTIANO**  
117 E. Birch St.  
Hermanos Barron  
S.S. 10 a.m.; W.S. 11 a.m. & 6 p.m.; Wed. 7 p.m.

Antiques & Fine Things  
2104 W. American Boulevard  
Muleshoc • 272-4217  
Trollbeads  
every story has a bead

**1ST BANK** MEMBER FDIC  
202 South First 272-4515

**BOEHNING DAIRY**  
690 CR 45, Earth  
"MILK - A PART OF EVERYTHING THAT IS GOOD!"

**McDONALD'S OF MULESHOE**  
1315 W. American Blvd. • 272-3333  
Open at 5 AM every day! i'm lovin' it

**Pizza Hut**  
1412 W. American Blvd.  
Muleshoe • 272-4213  
Open: Sun.-Mon. 11AM-11PM  
Lunch Buffet: Sun.-Fri. 11:30 AM-1:30PM  
Monday Night Buffet: 6-8PM  
**PIZZA HUT WING STREET IS HERE!**  
"Gather round the Good Stuff"

**CHURCH OF CHRIST**  
**LARIAT CHURCH OF CHRIST**  
Wesley Roach, Min.  
S.S. 10 a.m.; W.S. 11 a.m. & 6 p.m.; Wed. 7:30 p.m.

**LAZBUDDIE CHURCH OF CHRIST**  
Nathan Crawford, Min.  
S.S. 9:30 am; W.S. 10:20 am & 5 pm; Wed. 7 pm

**MULESHOE CHURCH OF CHRIST**  
22nd & W. American Blvd.  
S.S. 9:30 am; W.S. 10:20 am & 6 pm; Wed. 7:30 pm

**16th & AVE. D CHURCH OF CHRIST**  
Curtis Shelburne, Min.  
272-4619  
S.S. 9:30 am; W.S. 10:30 am; Growth Gr. 1:30 pm; Wed. 7:00 pm

**"THE FIVE AREA TELEPHONE COOPERATIVE, INC."**  
West Plains Telecommunications, Inc.  
Five Area Systems, Inc. • Plateau Wireless  
Five Area Long Distance • Five Area Internet  
302 Uvalde Muleshoe, USA (806) 272-5533

**McCORMICK SEEDS, INC.**  
400 East Ash • 272-3156  
Muleshoe, Texas  
**A COMPLETE LINE OF FIELD SEEDS**  
Tim McCormick

**MULESHOE ANIMAL CLINIC**  
GENERAL PRACTICE  
**M V S**  
1430 US Hwy. 84, Muleshoe Office: 272-3061

**WAYNE COPLEY TRUCKING**  
CALICHE, SAND & ROCK PRODUCTS  
P.O. Box 63 Muleshoe, Texas 79347 (806) 272-3697 Mobile: (806) 946-8072

**FARMERS INSURANCE GROUP**  
Julie DeBruin, Agent  
1602 West Amer Blvd  
Muleshoe, TX 79347  
Bus: 806-272-7548  
Fax: 806-272-4756

**LUTHERAN**  
**ST. JOHN LUTHERAN**  
Lariat, TX • David Symm, Min.  
S.S. 10:30 am; W.S. 9:30 am

**METHODIST**  
**FIRST UNITED METHODIST**  
507 W. 2nd St.  
S.S. 9:45; W.S. 11:00;  
Praise & Prayer 6 pm;  
First Sunday of Month  
4 pm Parkview Nursing Home Service  
Mon. 9 am Ladies Bible Study;  
Tues. 6 pm Adult Bible Study;  
Pastor Mindy McLanahan,  
272-5517

**LAZBUDDIE METHODIST**  
S.S. 9:30 am; W.S. 10:30 am  
Pastor Ken Peterson  
965-2121  
**EL DIVINO SALVADOR U.M.C.**  
619 E. 5th Street & Ave. G,  
Fernando Sanchez, Pastor  
272-6888

**PENTECOSTAL**  
**Iglesia Apostolica de la Fe en Cristo Jesus**  
207 East Ave. G  
Sunday 1:30 pm  
Wednesday 7:30 pm

**INTER DENOMINATIONAL NEW COVENANT**  
Plainview Hwy.  
Steve Claybrook, Pastor  
W.S. 10 am; Wed. 7 pm  
**MULESHOE COWBOY FELLOWSHIP**  
710 E. American Blvd.  
Steve Friskup, Minister  
272-5199  
Service: 7:30 p.m. Thursday

If you have changes to make to church information, please contact the Journal at 272-4536.

**SHIPMAN'S BODY SHOP, INC.**  
410 N. First St. • Muleshoe, TX  
Office: 806-272-4408 • Fax: 806-272-3366 • Night # 806-336-5422

**MAPLE COOP GIN**  
927-5501  
Maple, Texas

**Lal's TORTILLA FACTORY**  
105 E. Ash St., Muleshoe • 272-5772  
Phillipians 4; "I can do all things through Christ who strengthens me."

**BCEC** BAILEY COUNTY ELECTRIC COOPERATIVE ASSOCIATION  
A Touchstone Energy Cooperative  
Muleshoe — 272-4504 Morton — 266-8600

To Place Your Ad Here  
Call Rhea At  
**Muleshoe Journal**  
806-272-4536 or  
806-518-4606



# Obituaries

## Roxie Stroud

Funeral services for Roxie Stroud, 92, of Muleshoe were held on Saturday, March 16, at Ellis Funeral Home Chapel of Muleshoe with the Rev. Dr. Stacy Conner of Muleshoe and Joel Sinclair, also of Muleshoe officiating.

Burial followed in Enochs Cemetery under the direction of Ellis Funeral Home of Muleshoe.

Mrs. Stroud died on Wednesday, March 13, 2013, in Lubbock. She was born on Nov. 5, 1920, to John and Edna (McManus) Smith in Healdton, Okla., and married Goldman Stroud in Clemscott, Okla., on Jan. 23, 1937.

He preceded her in death in 2004. She was also preceded in death by her parents, two son-in-laws — Ernie Trull, and Harry Pollard, by a grandson — Perry Trull, and a great-grandson — Justin Jones.

Mrs. Stroud had lived in Bailey County since 1947, having moved from Crosbyton. She enjoyed gardening and sewing. Roxie loved spending time with her family.

Survivors include three sons — Arvin Stroud and wife Beverly of Brownwood, Glynn Stroud and wife Carlene



of Muleshoe, and Gene Stroud and wife Ann of Midwest City, Okla.; four daughters — Lil pollard of Littlefield, Doris Pirkle and husband Richard of Plainview, Bonnie Belliveau and husband Phil of Lubbock, Sandra Dickie and husband Jimmie of Woodrow, and Carolyn Kirby and husband Craig, also of Muleshoe; a sister — Eloise Middlebrooks of Ardmore, Okla.; a brother — Bill Smith of Healdton, Okla.; 22 grandchildren and numerous great-grandchildren and great-great-grandchildren.

Condolence may be made online at [www.ellisfuneralhomes.com](http://www.ellisfuneralhomes.com).

Memorials may be sent to Enochs Cemetery, c/o Wanda Layton, 3140 CR 184, Morton, Texas 79346, or to the Bailey County Meals on Wheels, 300 S. First, Muleshoe, Texas 79347.

## Grace Prater Scoggin

Chapel services for Grace L. Prater Scoggin, 97, of Muleshoe were held on Friday, March 15, at Ellis Funeral Home Chapel of Muleshoe with the Rev. Mindy McLanahan officiating.

Graveside services were held on Monday, March 18, at the Greenlawn Cemetery in Checotah, Okla., under the direction of Ellis Funeral Home of Muleshoe.

Mrs. Scoggin passed away on Monday, March 11, 2013 in Lubbock. She was born on May 20, 1915, to Vollie and Exie (Studdard) Killingsworth in Carbon Hill, Ala., and married Johnie Prater in Pierce, Okla., in 1930.

He preceded her in death on July 27, 1987. She married Lewis Scoggin in Muleshoe in 2000. He preceded her in death on July 3, 2005. She was also preceded in death by her parents, and a son — Arnold Prater.

Mrs. Scoggin had lived most of her life in Checotah, Okla., and Muleshoe. She was a member of the First United Methodist

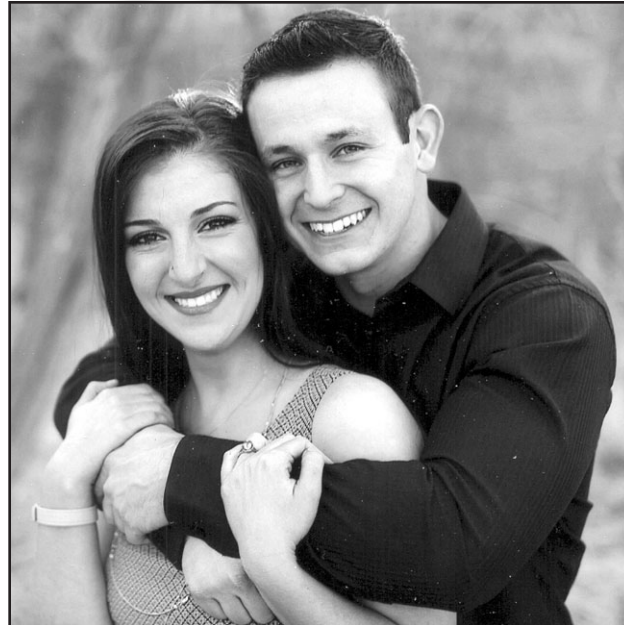


Church in Muleshoe, and also a member of the First United Methodist Church in Checotah, Okla., and was a homemaker. She will be missed by her family and many friends.

Survivors include a son — Gerald Prater and wife Ann of Seminole, Okla.; a sister — Edith of Flint, Mich.; two brothers — Roy Killingsworth and wife Reba of Tulsa, Okla., and Wilburn Killingsworth and wife Uldene, also of Tulsa; four grandchildren, and three great-grandchildren. And many nieces and nephews who loved her dearly.

Memorials may be sent to the Oneita Wagnon Senior Center, PO Box 292, Muleshoe, Texas 79347.

# Engagement



Whitney Kuehler and Landon Minatra

## Kuehler, Minatra To Wed

Jan Whitt Kirby of Littlefield announces the engagement and approaching marriage of her daughter, Whitney Kuehler, to Landon Minatra of Andrews.

The prospective bride is the granddaughter of the late Roy and Joy Whitt.

She is a 2009 Frenship High School graduate.

The prospective groom is a 2008 graduate of Andrews High School.

Both the future bride and groom will be

graduating from Texas Tech in May 2013.

She will receive a degree in retail management and a minor in restaurant and hotel management.

He will receive degrees in international business and marketing with a minor in Spanish.

The couple is planning a wedding in late April at the Fulford Barn in Brownfield, followed by a honeymoon in Cabo.

The couple plans to reside and work in the Dallas area.

# Death Notices

## Nancy Riggs

Muleshoe resident Nancy Lee Riggs, 70, died on Sunday, March 17, 2013, at her residence. No services are planned at this time.

## Jim Bret Hanks

Jim Bret Hanks, 51, of Muleshoe passed away on Thursday, March 13, 2013, at his residence.

Graveside services were held on Tuesday, March 19, at the Bailey County Cemetery, under the direction of Ellis Funeral Home of Muleshoe.

Bret was born on Sept. 23, 1961, to Kenneth and Charlene (Willman) Hanks in Muleshoe.

He graduated from Muleshoe High School and became a welder. He was a lifelong resident of the Muleshoe community and will be dearly missed by all who know him.

Bret was preceded in death by his parents and a brother — Gary Hanks.

Survivors include his daughter — Bretney Hanks of Porterville, Calif.; and two brothers — Dicky Hanks and his wife Debbie of Bardstown, Ken., and Westley Hanks of Plainview.

Online condolences may be made at [www.ellisfuneralhomes.com](http://www.ellisfuneralhomes.com).

## Fish Friday Set

Immaculate Conception Catholic Church, at 805 E. Hickory, will be hosting a fish fry on Friday, March 22, from 5-8 p.m.

The meal will include fish, homemade French fries, hush puppies, slaw, dessert and a drink, and is \$8 for adults and \$5 for children five years old and younger. Call 272-4167 for carry-out orders.

Proceeds from the dinner will be used for the expansion of the church center.



Jim Bret Hanks

## Seven Churches

W L V Y Z R H S O R S T U G N C N O L D  
 K X E V S V A W S A R H G P W K X U K T  
 S U L Y J K X K P I H N Y H T C K Q X U  
 S E N H V L B O O K O F L I F E S Z P Y  
 N N H Y Z D A E C I D O A L W L E D B Y  
 S I A C E R C O D A A S C A R P V T Y Y  
 F C E T R O U Z A Z I R R D H S E B Q V  
 Q O H A A W O V F R N M A E A Y N A Z X  
 E L N L T S Z D L A Z C S L D R C R A X  
 W A W L S D F S W J R U T P X D A K E G  
 H I O F G E N O H Q S I F H F R N Z Z O  
 I T R J N G V Y E Z M M T I R X D D I N  
 T I C E I D T E S U B N Y A L Q L J O P  
 E A S Z N E D N N I G W H R Y F E U S I  
 S N R E R E K X D S D O A C N H S D I X  
 T S O B O L J U P L T R G Y R A T T O B  
 O A T E M B C Q C W H A A A H S I W P G  
 N M C L M U M A G R E P R S N C C I V S  
 E F I L F O E E R T K I K S N Y K K L C  
 V K V G M D I V A D F O Y E K J S V Z X

**Do you  
 have story  
 or photo ideas?  
 Let us know!  
 272-4536**



**Muleshoe's Storm Siren Signals**  
*"Hi-lo" wavering signal... seek more information by radio, television or internet.*

*Long steady signal, break, long steady signal... "all clear."*

(Cut and keep!)

# THE POWER OF ONE



## ONE Mammogram

Yearly Peace of Mind - If you're over 35 and have been putting off your annual mammogram... call today for an appointment that could save your life.

Bringing digital mammography service to a location near you.

**APPOINTMENTS AVAILABLE FOR THIS MOBILE LOCATION**

**Muleshoe Area Medical Clinic**      **Wednesday, April 10**  
**708 South First, Muleshoe**      **9:15 am - 6:00 pm**

**CALL NOW 1-800-377-4673**

Call 1-800-377-4673 to schedule your mammogram the next time our mammography coach comes to your city or for an appointment at the Harrington Breast Center in Amarillo.

Businesses, clinics and hospitals throughout the region are encouraged to invite the Mobile Mammography Coach to come to their location to offer breast screening services.



[www.harringtoncc.org](http://www.harringtoncc.org)  
 Appointments: 806-356-1905 or 800-377-4673

**Mother's Day Out**

**FIRST BAPTIST CHURCH**  
 Muleshoe, TX

**COST:**  
 \$50 Deposit  
 \$125 per Month

**TIME:**  
 9:00 a.m. - 2:00 p.m.

**Fall Enrollment**

**AGES:**  
 BIRTH TO 4 YEARS OLD

**happy kids**

220 W. Ave. E      806-272-4224





# The Sudan Buzzy

## Neugebauer Updates Constituents On Prairie Chicken

Cong. Randy Neugebauer joined other members of Congress recently to speak with Fish & Wildlife Service Director Dan Ashe about the proposal to list the Lesser Prairie Chicken as "threatened" under the Endangered Species Act.

Listing the Lesser Prairie Chicken as "threatened" would place significant restrictions on activities on both public and private land. Neugebauer released the following statement for constituents who will be affected by the decision:

"I appreciate that Director Ashe took the

time to meet with us to discuss our concerns about the proposal."

"But I am still very concerned that the Service is working under litigation-driven deadlines that don't allow for enough time to consider the complex science and stakeholder concerns."

"Listing this species would have a big effect on the West Texas economy, so it's important that the decision is made the right way, with adequate time for review."

"Extending the deadline is just plain common-sense."

"I'm confident that the tireless efforts being

made by landowners, industry, and state wildlife experts will prove to be the most effective means to conserve the Lesser Prairie Chicken while respecting private property."

"I asked Director Ashe to continue to work as tirelessly as they are to make that happen, and I hope he ultimately concludes that the proposed listing is not warranted."

As a result of a lawsuit settlement with environmental groups, the Fish and Wildlife Service submitted the proposed rule in December and a final decision is currently

set for September 30, 2013. The Service has indicated that it may not have enough time to consider all the state and local experts' proposals and information on the listing proposal.

The Fish & Wildlife Service can extend the final deadline by six months if it finds there is uncertainty or disagreement over the science.

Cong. Neugebauer emphasized that

sound science and conservation efforts already underway at the state and local level shouldn't be denied

consideration just because the Fish & Wildlife Service agreed to follow arbitrary deadlines.



**Robertson Honored**

Jonathan Robertson, pictured above, received the UIL Sponsor of the Year Award at the UIL State CX Debate Meet in Austin.

UIL Directors Janet Riggins and Dr. David Stevens presented Robertson with his award.



### Ames Receives Fourth Place In CX Debate

Doug Ames, pictured above, received the fourth place speaker award after the preliminary rounds at the UIL State CX Debate Meet in Austin.

Ames and his partner — Brianna Azua, broke to the second day of competition on Tuesday, March 12.

**Thank you for reading the Journal!**



### Sudan Powerlifters Go To State Meet

The Sudan Powerlifting Team will send two representatives to the State Powerlifting Meet in Abilene on March 22-23. Senior Matthew Olivarez and Junior Adam Martin will compete in their weight divisions for a shot at the state title. Their coach is Patrick Odom. Pictured above are Damion Montes, Adam Martin, Edwin Delgado, Matthew Olivarez, Coach Patrick Odom, Coach Corey Wallace and Cesar Medrano.

### Sudan Track Teams Compete At Plains Meet

By Cheri Sain  
Sudan Correspondent

The Sudan Track Teams competed at the Everett McAdams Relays at Plains High School on March 8.

The varsity teams, both boys and girls, finished second overall while the JV boys team placed sixth and the girls JV team placed third.

This was an impressive showing since 1A and 2A were represented at the track meet.

The varsity girls results were as follows: Shaylee Johnson placed first in the 100 meter dash.

Marie Carrizales placed first and Ambrosia Nelson placed third in the 3200 meter run.

Hailee Gonzales placed second and Ashton Sawyer placed third in the 300 meter hurdles.

The 4x100 meter relay team of Sawyer, Johnson, Ashton Shultz, and Bryleigh Schovajsa placed second.

Madi Edwards placed first in the high jump. Sawyer placed third in

the pole vault. Johnson placed sixth in the long jump.

The junior varsity girls results were as follows:

Karina Centeno placed fifth in the 800 meter run. Denise Salazar placed third in the 3200 meter run. Kristina Thorn placed first in the long jump and second in the triple jump.

The varsity boys results were as follows: Jake Chester placed fifth in the 100 meter dash. Christian Ruiz placed second in the 3200 meter run.

The 4x100 meter relay placed first. Team members are Jake

Chester, Dayton Fisher, Barry Johnson, and Osmar Diaz.

The 4x200 meter relay placed third. Team members are Chester, Tanner Fisher, Jelmer Vanderlei, and Dayton Fisher. Dayton Fisher also placed first in the high jump, and Tanner Fisher placed fifth.

Chester placed third in the long jump. Dayton Fisher placed first in the triple jump.

The JV Boys results were as follows: Ty Shaw placed fifth and Luke Tiller placed sixth in the 100 meter dash. Carson Phillips placed first, Luke Tiller placed second,

and Marcos Gonzales placed third in the 200 meter dash.

Greg Wood placed fourth in the 800 meter run. Jeremy Binion placed sixth in the 3200 meter run.

Stephen Schovajsa placed fourth in the 110 meter hurdles.

The 4x200 meter relay placed fourth with Stephen Schovajsa, Carson Phillips, Marcos Gonzales, Ashton Bartley. Schovajsa also placed third in the high jump.

**Lance Insurance**

Competitive Rates, Variety of Leading Companies For Home, Auto, Commercial and Crop

**806-227-2466**

**SUDAN ISD**

EXCELLENCE IN EDUCATION

**WWW.SUDANISD.NET**

Hwy. 303 PHONE: (806) 227-2431  
SUDAN, TX 79371 FAX: (806) 227-2146

**SUDAN VETERINARY SERVICES**

**S&S**

**CHRIS LARSON D.V.M.**

- ◆Specializing in Dairy Medicine◆
- ◆Small Animal & Equine◆
- ◆Same Day Minor Surgery◆
- ◆Farm & House Calls◆
- ◆Climate Controlled Boarding◆
- ◆Services by Appointment Only◆

208 Ormand Street

806-227-2444 806-241-1915

**COMPOSTED CATTLE MANURE**

Farwell Feed Yard -- Farwell  
Cargill Cattle Feeders -- Bovina  
Bovina Feeders -- Lazbuddie

**BRANDON SCHILLING**  
Mobile 806-225-7700  
OFFICE 1-800-650-2550

**NORTH PLAINS COMPOST, INC.**  
PO BOX 1099  
FARWELL, TEXAS 79325

**KING AG AVIATION, INC.**

Specializing in Aerial Spraying - Insecticide, Herbicide & Seeding - Field Scouting Service

Johnny King Home (806) 227-2211  
P.O. Box 189 Fax (806) 946-3659  
Sudan, Texas 79371 Mobile (806) 946-7309  
Business (806) 946-3399 Vernon Office (940) 552-6102



# CLASSIFIEDS

**Deadline is Monday at noon to place a classified ad. Call 272-4536.**

## LEGAL PUBLIC NOTICE

**NOTICE OF BID**  
Regence Health Network WIC program in Mulshoe, TX is seeking new clinic space in the immediate future. Each bid received will be reviewed by RHN to determine the feasibility of utilizing the proposed site to fulfill WIC requirements. Bids must be submitted by April 5, 2013 and include a floor plan, square footage, maintenance responsibilities and term for lease with renewal options. The site must meet American Disabilities Act (ADA) guidelines, provide a reception/waiting area, two office-sized

rooms, area for conducting classes to accommodate 10 people, public/private restroom, area for obtaining heights, weights and hematocrits with availability to running water, and allow placement of a satellite dish on building roof. The total floor space must be a minimum of 1600 sq. ft. The site must meet all fire and safety codes. Address bids to the attention of Ms. Barbara Khaleeq, WIC Director Mail: 2801 W. 8th Street, Plainview, Texas 79072, or Email: Barbara.khaleeq@regencehealth.net or Fax to 806-293-5826 If you have any questions please contact Barbara Khaleeq

at (806) 293-0182 between the hours of 9am and 5pm, Monday through Thursday and 8am – noon on Friday. In accordance with Federal Law and U.S. Department of Agriculture policy, this institution is prohibited from discriminating on the basis of race, color, national origin, sex, age, or disability. To file a complaint of discrimination, write USDA, Director, Office of Adjudication, 1400 Independence Avenue, SW, Washington, D.C. 20250-9410 or call toll free (866) 632-9992 (Voice). Individuals who are hearing impaired

or have speech disabilities may contact USDA through the Federal Relay Service at (800) 877-8339; or (800) 845-6136 (Spanish). USDA is an equal opportunity provider and employer.

**NOTICE OF PUBLIC SALE: ADVANCED TOWING** gives Notice of Foreclosure of Lien and intent to sell these vehicles on 4/2/13, 8:00 am at 516 N 1st ST MULESHOE, TX 79347-2204, pursuant to Occupations Code, Chapter 2303 Section 2303.157 of the Texas Statutes. **ADVANCED TOWING** reserves

the right to accept or reject any and/or all bids.  
1 N 4 D L O I D 2 - WC105050 1998 Nissan Altama 2 MEFM 75 W 5 - WX658619 1998 Mercury Grand Marquez 1GBF-G15R8X1148957 1999 Chevy Gladiato r  
*Published in the Mulshoe Journal March 21, 2013.*

**HELP WANTED**  
Park View Nursing Care Center is taking applications for Part time Activity Asst. Must work weekends. Please come by 1100 West Ave J or call Janis Morrison at 806-272-7578 for

more info.  
**FOR SALE**  
Used Gas Range \$150. Shop Wood htr. w/blower \$250. 1999 Jayco 5th Wheel- Super Slide duct heat and air \$9000. Call 806-946-8015.

Warehouse located 3 miles North of Mulshoe, 18,000 sq/ft, includes 30'x40' cold room with 60 Tons refrigeration. Has loading dock for 3 semi trailers. Will consider lease or purchase. Call Ronnie 432-599-2626 or Roy 956-457-7569.

**FOR RENT**  
516 W. Ave E 2 Bdr / 1 Bath ,

no appliances, \$450mo., \$375 dep. required. Tenant pays water/elec./gas. Call 272-5144 or 210-867-8911.

**SERVICES**  
C o n c e a l e d Handgun Classes, call for class dates. Private classes available, DPS Certified instructor Toby Turpen 806-364-6362.

Custom CRP Grass Planting and shredding. Free estimates! Call 806-638-6449 or 575-760-2085.

Cleaning Done-office, house, initial one-time windows and yard. References. Call 575-693-6188

**Subscribe Today!**

## HELP WANTED

**Certified Nurses Aide Classes**  
Beginning March 27th  
**Runningwater Draw Care Center**  
**(806)285-2677 - Olton**

## HELP WANTED

**THE CITY OF MULESHOE IS TAKING APPLICATIONS FOR A WATER PARK MANAGER. HIGH SCHOOL GRADUATE/ GED REQUIRED. UPON EMPLOYMENT, SUBJECT MAY BE REQUIRED TO PASS A DRUG TEST. APPLICATIONS AND JOB DESCRIPTIONS CAN BE PICKED UP AT CITY HALL, 215 SOUTH FIRST, MULESHOE, TX. POSITION OPEN UNTIL FILLED. EOE,ADA**

## REAL ESTATE

Check our websites for other properties.  
**HALE CO., TX.** - 2700-cow dairy in excellent condition, on I27, double-35 parallel parlor, 1,080 acres +/- of choice farm land in a strong water area, 6 pivots.  
**OCHILTREE CO. DAIRY** - double 16 (expandable to 20) parallel, rapid exit parlor, 160 ac. +/-, 4 yrs. old, very nice!  
**LEA CO., NM.** - 1400 cow dairy on 136 acres, side by side double 20 parlor, beautiful 5 bdrm./4 bath home, on pvmnt. PRICE REDUCED!  
**LONG CORRAL 420 ACRES** - Parmer Co., TX. - 3 bdrm./2 bath, double-car garage brick owner's home, large hay/commodity barn, other barn & out bldgs., livestock pens suited for beef or dairy cattle, excellent dryland farm, irr. wells not in use, all weather road.  
**CASTRO CO., TX.** - 5,033 ac. +/-, in 4 tracts, on pvmnt., each tract can be bought separately, developed w/sprinklers, irr. wells, homes, barns, hwy. frontage.  
www.scottlandcompany.com  
www.texascrp.com  
Ben G. Scott - Broker  
Krystal M. Nelson - NM Qualifying Broker  
800-933-9698 day/ eve

**TRIANGLE REALTY**  
Triangle Realty, LLC  
(806) 367-8334  
info@triangler Realtyllc.com

**Excellent Farmland**  
Located East of Springlake, TX. 140 + acres under circle sprinkler system two dry-land corners.  
**PRICE REDUCED**  
Call: Phyllis -- 806/685-1543.

**Prime Farmland In Lamb County, Texas!**  
531± acres, two ¼ mile pivots, four wells on property — all tied together — 700 gallon minute combined, per owner. 40x50 metal shop, cattle scales, working chute, automatic waters, pipe/cable working pens. Five-strand barbed wire fenced and cross-fenced around property.  
Call: JT — 806/681-3421.

**Edwards REALTORS**  
FARM & RANCH RESIDENTIAL COMMERCIAL

**LAND**  
360 acres - 1440 acres - 360 acres  
**Sudan** - Texas 192 acres, Lateral 1995 Valley Sprinkler Five wells, currently in alfalfa.  
**Sudan** - Texas 180 acres, 1982 Valley Sprinkler, Three wells, currently in alfalfa.  
**Sudan Texas** 177 acres, Valley sprinkler. 3 wells, 1/2 currently in cotton.

**RESIDENTIAL**  
**Sudan** - 210 Austin 2BR, 2BA, 2 Car garage Large Family Room and Patio, Move in ready \$73,000.00  
**Sudan** - 201 Ormand, 4 BR, 2 bath, 3 Car Garage and large family room with fireplace, New updates and tile. \$110,000.00  
**Sudan** - Country Home, 3BR,2B, Carport and Sun Room. All on four acres, one mile north of Sudan. Asking \$75,000.00  
**Sudan** - Sudan Country home 3BR,2BA needs some work, can include land 5-15 acres. \$55,000.00

**COMMERCIAL**  
Seven Commercial Lots in a package that is 37.9 Acres Total \$100,000.00

**Monty Edwards Broker (806) 227-2465**  
**Vernie Moore Agent**  
Free consultation! We will work with other brokers.  
www.medwardsrealtors.com

**Byrd Realty**  
Ronald Byrd 575-760-1495 Licensed Broker  
Crista Bass 806-946-7261 Sales Associate  
Carleton Johnson 806-789-4289 Sales Associate

**• New Listing**-Very nice 2 bedroom, 2 bath brick home, central heat, appliances, large utility, 2 car garage, sprinkler system, storage building, fenced backyard. Priced to sell!!

**• New Country Home on Highway**-Extremely nice 4 bedroom, 3 1/2 bath brick home on 46.61 acres, heat pump, ductless, two living areas, large utility/office, sprinkler system, septic system, city water, 2 car garage, approx. 1200 sq.ft. shop, out buildings, fenced backyard, patio, this house is a must see!!

**• ONLY \$45,000.00** - Great Investment Property-3 bedroom, 2 bath, central air and heat, carport, fenced backyard.

**• PRICE REDUCED ONLY \$64,900** - Nice large 3 or 4 bedroom, 1 1/2 bath home, central air and heat, electric fireplace, appliances, large living room, utility, all electric, covered patio, carport, fenced backyard, storage building, great home on corner lot, Priced to sell!!!!

**• PRICE REDUCED In Country on 10 acres**, Nice 4 bedroom, 2 1/2 bath brick home, fireplace, utility, built-ins, new windows, roof and air, large storage, 2 car garage. Call for more details.

**• ONLY \$69,900.00** - Nice 3 bedroom, 1 bath brick home, central heat, appliances, single car garage, carport, fenced backyard.

**228 Main Street, Mulshoe, Texas**  
**Check all of our listings at**  
**www.byrdrealestate.net**

**Vic Coker Land Co.**  
Agricultural Real Estate

**Farmland/Investment**  
**Western Bailey County - Irrigated** - 174 acres, 2 irrigation wells, Valley Sprinkler, 1 domestic well, on pavement, corners in grass.  
**Bailey County** - 1140 acres of recreational property with an income stream. 760 acres in C.R.P. 9 Years remaining on contract. Mule Deer, Dove, Pheasant and Quail. Some improvements. **SOLD**

**Bailey and Parmer Counties** - 960 acres, 9 wells, 5 center pivot sprinklers, Brick house w/ improvements.  
**Bailey County** - 177 acres, 10 year CRP contract. On pavement, could be a nice recreational place. Mule deer and other wildlife in the area.  
**Lamb and Bailey County** - 451 acres. 5 wells, 3 sprinklers. Good potential for wheat pasture cattle operation. Will divide. Seller is motivated.  
**Castro County, Dodd Area** - 335 acres, Lays good, 4 wells, 2 sprinklers. 2 circles of wheat go with land if purchased soon.  
**Parmer County, Lazbuddie Area** - 160 acres, 2 wells, good sprinkler, Lays perfect, 2013 possession available.

**Country Home**  
**New Listing!- Mulshoe area**. Brick home on 1.5 acres. 3 bedroom, 2 bath, nicely updated, metal roof. Property also has a metal shop and a pole barn for horses or FFA/4-H projects.

**Vic Coker, Broker Cell 806-946-7242**  
**Barry Coker, Agent Cell 806-787-0917**  
316 Main Street • Mulshoe, Texas  
Office: 806-272-3100 • www.vicoland.com

**Nieman Realty**  
116 E. Ave. C • George Nieman, Broker • 272-5285 or 272-5286  
**CHECK OUR LISTING INFO., PHOTOS, ETC. ON-LINE AT www.niemanrealty.com**  
**HAVE BUYERS! NEED HOME AND LAND LISTINGS!!**

**HIGH SCHOOL AREA**  
• NICE 3-2-2 Home, corner lot, built-ins, Cent. A&H, workshop/storage plus storage building!! 1974' lvg. area!! **\$96K!! PRICE REDUCED \$79,500**  
• Remodeled 3-2-1 Det. Garage Home, Cent. A&H, built-ins, hwdwood & tile floors, 4 fans, fenced yd., approx. 1520' lv. area!! \$80K!!! **Price Reduced \$69,500**  
• 3-1-5-1 carport Home, Cent. A&H, stove thermal windows, "AS IS", MAKE OFFER!! \$47K!!!  
• 3 Bedroom, 2 Bath, 2 Car Garage Home on corner lot, wall furnace heat, win. refrig. air, stove, refrigerator, ceiling fans w/lights, large wkshop in garage, fenced yd., stor. bldg., includes 1 bdrm. rental unit!! \$83,450!!  
• 5-3-2+2 carport home, Cent. Air & Heat, approx. 3124' lv. area, FP in den, WB stove in lv. area, 2 large workshops, stor. bldgs., +1 bdrm aptmt., corner lot, MUCH MORE!! \$140,000!!  
• VERY NICE - 3 - 2 Brick Home, Cent. A&H, built-ins, WB stove, nice flooring, utility, thermal win. & doors, fans, fence yd., stor. bldg.!! \$99K!!

**RURAL**  
• VERY NICE CUSTOM BUILT 3 Bedroom, 3 Bath, 2 car garage home, at edge of town on 80 acres!! Geothermal heat & air, built-ins, FP, ash cabinets, approx. 2544' main lv. area plus 625' finished basement w/safe & storage, spklr system, beautiful trees and landscaping. circle spkrlr, 5 wire barbwire fence, 36' x 48' metal insulated bldg w/2 12' doors!! MUCH MORE!!  
• 3-1 1/2-1 Home on 8 acres, approx. 1664' lv. area, Cent. A&H, built-ins, sunroom, storm shelter, stor. room, 2 CP, RV port, 1440' metal bldg.!! MORE!! \$110K!!!  
• NICE 4.8 acre homesites, deed restricted!! \$17,500!!  
• West of Sudan 3-2-2 Brick Home on 5.57 acres, Cent. A&H, built-ins, 288' lv. area, fenced yd., 40' x 80' quonset barn!! MUCH MORE!! \$135K!!  
• NICE 3-2-2 Home on 11 acres at edge of town, Cent. A&H, built-ins, FP, freshly painted interior, thermal windows & doors, plus 1 bdrm house, workshop, storage, greenhouse, plus 3 garages, barns & outbuildings!! \$455,000!! \$135,000!!  
• FM 1760 @ edge of town, nice 3-2-2 carport home on 3 acres, cent. A&H, built-ins, FP, approx. 2253' lv area, fenced, horse barn w/corrals, hay & tack room!! \$105K!!!  
• VERY NICE 4-3 doublewide (2006) on 7.38 acres, Cent. A&H, built-ins, FP, fenced yd., 25' x 40' metal bldg., septic system, domestic well, on pavement close to town!! **PRICE REDUCED!! MAKE OFFER!**  
• FM 303- 4 Bedroom, 2 Bath, 2 Det. Garage, 2 acre tract, Par. Cent. A&H, Dw, disposal, thermal windows, storm doors, fans, stor. bldg.!! \$80!! \$74,000!!

**LAND & COMMERCIAL**  
• Building w/approx. 3300' plus 1040' upstairs, Cent. A&H, 2 restrooms, MORE! \$39,500!! MAKE OFFER!!  
• Approx. 1080' metal bldg. w/off. & 3 bay garage/workshop area plus chain link fenced area!! \$39,500!!  
• GREAT BUSINESS LOCATION - 13000' Bldg., 7000' paved parking, corner lot, Hwy. 84 & Main. A&H, \$100,000!! **Price Reduced \$80,000!!**  
• 101.8 acres, edge of town, pasture & farm land, 1 irrig. well! \$122,444!!  
• FOR LEASE - 2100' office space + 20,500' warehouse area!!  
• 308 W. 2nd - 2856' bldg. - former Odd Fellows Lodge, PRICED TO SELL!! \$31,500  
• 1020 S. Main - 200' x 104' tract w/ 1000' Bldg.!! \$20K!!  
• 70 acres NE of Mulshoe - \$450 per acre!!

**IN CONTRACT**  
**LENAU • COUNTRY CLUB**  
• 3 Bdrm, 2 bath, 2 carport, Cent A&H, Dishwasher, WB Stove, approx. 2156' lv. area, \$60K!!

## FOR SALE

**WE GOT FARM DIESEL TANKS AT PRICING YOU CAN'T BEAT!**

**600 Gal. w/ baffles. • 960 Gal. w/ baffles**  
**BOTH IN STOCK!!**  
This new line of Diesel Tank come with 2-5200 lbs axles w/ brakes on one axle.  
5 inch channel frame. LED lights  
• 10,000 lbs Jack with a 2 5/16 coupler.  
Receiver hitch on the back.

**TWO PUMP OPTIONS AVAILABLE.**  
• 5 Hp. Honda with 28 Ft. Hose Reel  
35 to 40 GPM 12 Volt 25 GPM Fill rite.  
Can be purchased without pump.

**CALL FOR PRICING!**

Check us out at [www.mcfaddenfarms.com](http://www.mcfaddenfarms.com)

**Michael McFadden • McFadden Trailer Sales**  
209 N. Hwy. 168 • P.O.Box 394 • Olton, Texas 79064  
806-638-1771 cell • 806-285-3194 office

Thanks for reading the Mulshoe Journal!

LOOKING for Something FIND it, in the Mulshoe Journal





# Varsity Softball... Continued From A1

were being free-swingers at the plate.”

“The girls did a much better job today in waiting for a good pitch to hit and not just swinging away. You do not like to do that to another team but we did not want to swing at bad pitches either.”

“I was proud of the way they watched for their pitch and the way Marissa (Cortez) pitched.

She had 11 first-pitch strikes to the 17 batters she faced.”

Cortez served notice early by striking out the first two batters she faced. The first went down swinging and the second was looking.

Amber Lopez charged a slow roller to short stop and threw a strike to Chavez at first for the third out in the top of the first inning.

Loya was the first Lady Mule to the plate and drew a walk on four pitches.

Linda Sanchez laid down a bunt sacrifice to advance Loya to second.

Miranda DeBruin sacrificed Loya to third with a ground ball to second base. Loya scored on a wild pitch for the Lady Mules only run of the first inning.

Daniela Mendoza fielded a ground ball to second base for the first Lady Lope out of the second inning.

A. Lopez drifted back under a pop fly at short stop for the second out. Cortez set the third batter down on strikes.

The Lady Mules exploded for seven runs in the bottom of the second inning to take an 8-0 lead after two innings.

A. Lopez was hit by a pitch to lead off the inning and advanced to second base on a wild pitch. Cortez walked.

A. Lopez went to third on a wild pitch. Cortez

advanced to second on the next pitch.

Mandy Scolley walked. A. Lopez scored on a wild pitch and Cortez went to third base. D. Lopez lofted a fly ball into shallow center field and the Abernathy second baseman gave chase.

The ball hit her glove but she could not hang on for the out. Cortez scored and Scolley went to second, stole third and scored on a throwing error by the second baseman.

D. Lopez advanced to second and went to third on a wild pitch. Mendoza was hit by a pitch and Loya was safe on an error by the short stop. Mendoza rounded second, went to third on a throwing error by the short stop and scored.

Sanchez hit a line drive double to right center field to send Loya to third base. Loya scored on a passed ball and Sanchez went to third.



Photograph by Gabby Perez

Muleshoe's short stop picks up a grounder in the recent game against Frenship.

De Bruin grounded out to the pitcher to sacrifice Sanchez home.

Chavez walked and then was caught trying to steal second base.

Cortez continued to shut down the Lady Lopes and the Lady

Mules added eight more runs in the third inning to slam the gate shut on the Lady Lopes.

The Lady Mules defended their home turf against the defending District Champion Lady Cats

of Littlefield at 5 p.m. on Tuesday.

The Lady Mules will travel to Floydada, Abernathy and Littlefield before returning home to host the Abernathy Lady Lopes on April 5.

## Mules Fall To Lockney In Consolation Bid

By Delton Wilhite  
Sportswriter

The Mules and Tulia Hornets were tied 4-4 Saturday afternoon in the Lockney Longhorn Tournament.

The Mules lost the consolation trophy on the tie breaker.

The Mules were leading 4-1 entering the bottom half of the seventh inning and gave up three runs to create the tie.

The Mules outslugged the Slaton Tigers 9-8 in the opening round of the tournament but could not push across enough runs.

The Tigers won the game 8-3.

The Mules ran away from the Olton Mustangs in the second round for an 11-1 win to qualify for the consolation game.

The Mules gave up one run in each of the first two innings to the Tigers and two runs in the third.

Slaton added three runs in the top of the third inning on two hits, a Mule error and balk to lead the Mules 7-0.

The Tigers tacked on a single run in the top of the sixth inning and one in the top of seventh.

Felipe Espinoza finally got the Mules on the board in the bottom of the sixth inning. He reached first on an error center fielder and beat the throw to second base.

Espinoza advanced to third when Chris Lozano sacrificed to the short stop and scored on an error by the catcher.

The Mules trailed 8-1.

The Mules final two runs came in the bottom of the seventh inning. Felipe Guerrero sent a ground ball single to left field. He was followed by a single by Matt Flores.

Flores hit a high fly ball that the third baseman could not reach. Guerrero went to second on the play.

Guerrero and Flores both advanced a base to get into scoring position on a passed ball.

Wes Clarkson sent a slow roller to the short stop that scored Guerrero from third and advanced Flores to third.

Flores stole home for the Mules final run.

The Mules had an eight-run scoring burst against the Olton Mustangs in the first inning that carried the

Mules to an 11-1 win in five innings.

The Mules were led by a flawless day at the dish by Guerrero as he was 1-1 against Olton's pitching.

He tripled in the fourth inning.

Nacho Elizalde got it done on the rubber by allowing only one run in five innings. He

struck out six, walked none and surrendered three hits.

The Mules built on their lead in the fourth when Guerrero tripled to score Lozano. Ramon Mendoza singled to score Guerrero. The Mules led 10-1 after four innings. The Mules final run came in the fifth inning when Clarkson

reached on an error.

Clarkson advanced to second on a wild pitch and scrambled to third on a second wild pitch.

Matt Barron laid down a perfect bunt to score Clarkson for the

final run of the game.

The Mules hosted Abernathy Tuesday to open district play.

The Mules travel to Tulia on March 23 and return home to host the Littlefield Wildcats on March 26.

## Muleshoe Varsity Golf Teams Play At Dimmitt

By Delton Wilhite  
Sportswriter

The Lady Mules and Mules golf teams played at Dimmitt Tuesday.

The Lady Mules did not have enough for a full team due to illness and scheduling conflicts but three girls did play.

The Mules sent a full team and finished third.

Kaley Lovell finished the course with a total of 105 strokes. Miranda deBruin shot a 124 and Stefani Lopez had a 130.

The Mules finished one stroke behind the Roosevelt Eagles with a team total of 362 strokes.

Colten Harris led the

Mules with an 86 and Eli Leal shot an 88.

Conner Harrison finished with an 89 and Matthew Dickerson shot a total of 99 strokes.

John deBruin fired a round of 105 and Britton Beall finished with a 109.

“The kids are coming along pretty well especially considering the weather they have had to practice,” said Muleshoe golf coach Carey Sudduth. “District is almost here and we are hoping to do well.”

The teams played in Farwell March 19-20.

March 25 the Mules will open district at Dimmitt and the Lady Mules will travel to Tulia.

**McDaniel's APPLIANCE**  
1020 Main Street, Clovis, NM  
505-762-4481 or 800-682-7891

Time for new appliances?  
**WE ARE YOUR HOMETOWN WHIRLPOOL DEALER.**

WE NOW CARRY SPEED QUEEN!

Whirlpool

**Higginbotham Bartlett Co.**  
PLAYER OF THE WEEK

MARISSA CORTEZ

**ACE Paint** HBC  
1516 American Blvd.  
Muleshoe, Texas • 272-3351

Support the Boosters Who Support Our Teams, Schools and Community!

**MULESHOE ANIMAL CLINIC & MULESHOE VET SUPPLY**

1430 US HWY. 84, MULESHOE  
272-3061 OR 272-4990

**BCEC**  
A Touchstone Energy Cooperative

**BAILEY COUNTY ELECTRIC COOPERATIVE ASSN.**  
610 E. American Blvd.  
Muleshoe • 272-4504

**CHS**  
Service Center  
Clovis Hwy. West  
Muleshoe • 272-4203  
Bruce Bruns, Location Mgr.

**MICHELIN TIRE & SERVICE TIREWORKS TIRE PROS**

Glenn Kahlich • M: 806-344-7034  
220 E. American Blvd.  
Muleshoe, TX 79347 • 272-4594

**McDONALD'S OF MULESHOE**  
1315 W. American Blvd.  
806-272-3333

**Muleshoe Journal**  
www.muleshoejournal.com  
201 W. Ave. C • 272-4536  
Striving to be your source for local news!

**H&R BLOCK**

104 E. Ave C  
Muleshoe, TX 79347  
272-3332

**WE SUPPORT THE MULES & LADY MULES!**

**BASEBALL**  
Mar. 23rd • V - 12:00 PM • JV - 2:30 PM (Tulia, There)  
Mar. 26th • V - 7:00 PM • JV - 4:30 PM (Littlefield, Here)

**SOFTBALL**  
Mar. 22nd • V - 5:00 PM • JV - 6:30 PM (Floydada, There)  
Mar. 26th • V - 5:00 PM • JV - 6:30 PM (Abernathy, There)

**WE'RE AT YOUR Service**

Visit the following local businesses for quality service and customer satisfaction!

Interested in advertising your business here?

ONLY \$10<sup>00</sup> PER WEEK TO ADVERTISE HERE!

Contact **Rhea Gonzales** at the **Muleshoe Journal** 806-272-4536



# Welcome to Bailey County

When you receive your electricity from Bailey County Electric Coop, you're more than a customer... you're an owner. At Bailey County Electric, "Owned by those we serve," is not just a slogan, it's our goal in achieving customer satisfaction.

The BCE Co-op website is designed to help our members learn more about the co-op, alert you to current events and inform you on all the programs that the co-op offers its members. For your convenience, we have added a calendar that keeps you updated on all upcoming holidays and a weather app that keeps you updated on current weather conditions. In addition, you can browse our photo gallery and see our



crews at work.

We completed our move to the new building located at 610 East American Blvd. in Muleshoe, TX. Included in our new building is our brand new community center that is available to members and the community. Call the co-op to book the community center for your next event.



## WE SUPPORT THE AGRICULTURAL INDUSTRY!

We thank you for choosing Muleshoe and the surrounding area as your home. You pour your heart into farming, ranching and operating dairies and feedyards in this area and your hard work doesn't go unnoticed. Your innovative, forward thinking industries keep our West Texas economy strong and we pledge our full support today and in the future!



A Touchstone Energy® Cooperative



### Bailey County Electric Co-op Assn.

610 E. American Blvd • Muleshoe • 272-4504

# Saluting the West Texas Agriculture Industry

Advertisers  
Word Search  
on Page 2

Published by the  
Muleshoe Journal ©2013



Z L I C V Y Y G O O H B I C D O Y T M K J J X I A G L S X X M W Z B  
C K L L L N S X C O A O I N I E Z K C O B D G B M P D L H E H F C M T  
T H Q I Y O V F C Z C N N S Y B W G B S S F U A R D A M W J R H T  
Z X F B P K W N T O Z T I L M N C K H E G G L V P R O L M P J G Z Z U  
D Y Z A H C Q V I S B G I C H S L B D N A E A E L X U L I Z V R K L V  
K H N I E B K F X A P B Z P J N K S I R S S F W E T K L Y F V D F X Y  
W C W S Y F P Y C O R U H R P C N L N H C I F S C B A G J H L Z B U T  
X T D I W F P X O W U D X F M P L Y O W J I C I O T U K U P Z K Z K H  
K O A E U D K C F S I D A F I I Q E I M T P N K O S O H O M G K P M T  
V Y E V M Z S K I T A W V C R R H S Y L T C I V P P I V R X R D N N N E  
Z S W H Z R J Z T A W O O D J T F P E J L E C L G W Q V J P X G P K A  
E D K J E W Q V D B N V N G A G F T P C T V O R I T V B F L Q T M R R  
O M H M M N U U K B X O V T W Y B O L B U X E S N Q D Y E C A V S O L  
D Y R K O L P F S X S G E U W B P A Y Z J A W P W D C I H D M A W G L  
A A Q M K H W I V L B U C N U I M S N X T Q A H C E A K F L H N D A  
F V L T P I A K I U A C I M S I A W V P D M F V W J D C V X F F H C D  
I P A W C E N W V N O L Q T N A F D L T A F D T A Q A N D T A V H W D  
V V T A Q U W L K I A D A S A Y G N A O G Q F I R Q X R W T R O Q S O A  
E N V N O M F S P A D A E I M M I X O D O J W Y M Q M M U C I J N  
A L K D F R O W M X U O Q L L N D Q E X C V Q U H A T E Q Y B A L K D  
R B F W S X U U K V H T G M S L I D S D Y K L H C F R C V A B V H J S  
E T G S V V N N X S D B O A X Z E H M J B E M Q M S Q X H V S U G R O  
A Z K O N Y H E Y S T G P P V U R V G S Z X C I E N E K V T A Q W N  
T O C Z J E K L I B F I S A A X D P U H C J B N R O X A X V I R I S  
E H A G N W U Y P N Y Q X X R R L O B L D U S L M V G U E T C Z J Y C  
L T E O A M V B D S L Q K W O U T E I T L D Y J P R R N S M N L S P  
E F K G A B D P U F W M I B U O J S P S R I M M Q U S Y Z T M U L O K  
P S N F O M C R C X J Z X A Q O W L K A I D W Q K O R D N H C Y C U M  
H J Y N O P A A L Q U Z Q G U I O E N O Q D W B N Z T S T I R B R J A  
O I A A V N I T Y F E Z G R K A C C N I Y E L L A V E O H S E L U M F  
N R N U C G D Y B Z W S N I G R E N R O C S Y A L O T O F G A I H Q R  
E S T E K E P L I W B A P W S E G K X F A R W E L L G I N Y B D T B O  
D C L O S F Z J Z P L X S O H N I E S I R F V D D T P K L I B D E I  
V U Y O L Y V M H W D W C U S J C F X X N K W N L B Q G A F G Y N S S  
U L X I Z G S N K D Y G Z W W M I P J F R L A C F R N M Z J J D L Y S  
B Z F M V J O K E V E X B V C S B N O H M U T C J L O Q Z U I D Y P  
S Z U P X S A P G X Z I Y P D Q Z D G V E Q F U O P L O P X R Q B O R  
N N X O T A B B M U N T H T G B W Q B S Q D L Z H U B Q D Q M P E F D  
A S S F D C C K F K D X D L P Z X V M B V W P I V F C X K A X O P J Y  
N N Q N H P L E J G U R K W E C D F Q J V R R N H G T P G W T W C N Q

- West Texas Ag Industry Advertisers**
- MEDC... Page 3
  - Muleshoe Valley Inc... 6
  - Wilbur Ellis... 8
  - Muleshoe Animal Clinic... 9
  - Farmers Insurance... 11
  - Mohawk Auto Parts... 4
  - Earl Ladd And Sons... 5
  - Maple Coop Gin... 7
  - Clays Corner Gin... 2
  - Farwell Gin... 2
  - Five Area Telephone... 10
  - Great Plains Ag Insurance... 9
  - Muleshoe State Bank... 4
  - Farmers Coop Gin... 6
  - Dodd Gin... 8
  - Wilson Drilling... 7
  - Muleshoe Journal... 11



**Julie DeBruin**  
*Insurance and Financial Services Agent*

**FARMERS**



1602 West American Boulevard  
Muleshoe, TX 79347

Bus: 806-272-7548  
Fax: 806-272-4756  
jdebruin@farmersagent.com

Registered Representative  
Farmers Financial Solutions, LLC  
30801 Agoura Road, Bldg. 1,  
Agoura Hills, CA 91301-2054  
818-584-0200  
Member FINRA & SIPC

**AUTO • HOME • LIFE • BUSINESS**

### Look To Farmers For Your Insurance Needs

Julie DeBruin is the agent for Farmers Insurance Group in Muleshoe. She has been a resident of Bailey County since 2001, moving from central Texas. She is a graduate of Tarleton State University, where she studied accounting. Julie worked in the accounting field before becoming an agent for Farmers Insurance. Julie's agency offers insurance products for auto, home, life and business needs. Don't forget, the agency can also help with preparing for retirement, rollovers, variable universal life insurance, 401(k) plans, IRA's and 529 College Savings Plans. Stop by Farmers Insurance and talk with Julie DeBruin or her customer service representative, Armida Rascon, about all of your insurance needs.



Planting foxtail millet, a summer annual forage with low water needs, helps conserve water for subsequent crops. Photo by Scott Bauer/ ARS Image Gallery



**Clay's Corner Gin**  
**806-965-2176**  
*Serving Area Farmers For Over 30 Years!*

Please come by anytime for a cup of coffee or a cold soda pop. We look forward to serving you this season. Call Doyle Weir or Chandra Sanchez at Clays Corner Gin or Deon Hunt at Farwell Gin for any questions you might have.

*Best wishes for a bountiful harvest this season!*



**Farwell Gin**  
**806-481-3397**

**West Texas Ag Industry Advertisers**

Z L I C V Y Y G O O H B I C D O Y T M K J J X I A G L S X X M W Z B  
C K L L L N S X C O A O I N I E Z K C O B D G B M P D L H E H F C M T  
T H Q I Y O V F C Z C N N S Y B W G B S S F U A R D A M W J R H T  
Z X F B P K W N T O Z T I L M N C K H E G G L V P R O L M P J G Z Z U  
D Y Z A H C Q V I S B G I C H S L B D N A E A E L X U L I Z V R K L V  
K H N I E B K F X A P B Z P J N K S I R S S F W E T K L Y F V D F X Y  
W C W S Y F P Y C O R U H R P C N L N H C I F S C B A G J H L Z B U T  
X T D I W F P X O W U D X F M P L Y O W J I C I O T U K U P Z K Z K H  
K O A E U D K C F S I D A F I I Q E I M T P N K O S O H O M G K P M T  
V Y E V M Z S K I T A W V C R R H S Y L T C I V P P I V R X R D N N N E  
Z S W H Z R J Z T A W O O D J T F P E J L E C L G W Q V J P X G P K A  
E D K J E W Q V D B N V N G A G F T P C T V O R I T V B F L Q T M R R  
O M H M M N U U K B X O V T W Y B O L B U X E S N Q D Y E C A V S O L  
D Y R K O L P F S X S G E U W B P A Y Z J A W P W D C I H D M A W G L  
A A Q M K H W I V L B U C N U I M S N X T Q A H C E A K F L H N D A  
F V L T P I A K I U A C I M S I A W V P D M F V W J D C V X F F H C D  
I P A W C E N W V N O L Q T N A F D L T A F D T A Q A N D T A V H W D  
V V T A Q U W L K I A D A S A Y G N A O G Q F I R Q X R W T R O Q S O A  
E N V N O M F S P A D A E I M M I X O D O J W Y M Q M M U C I J N  
A L K D F R O W M X U O Q L L N D Q E X C V Q U H A T E Q Y B A L K D  
R B F W S X U U K V H T G M S L I D S D Y K L H C F R C V A B V H J S  
E T G S V V N N X S D B O A X Z E H M J B E M Q M S Q X H V S U G R O  
A Z K O N Y H E Y S T G P P V U R V G S Z X C I E N E K V T A Q W N  
T O C Z J E K L I B F I S A A X D P U H C J B N R O X A X V I R I S  
E H A G N W U Y P N Y Q X X R R L O B L D U S L M V G U E T C Z J Y C  
L T E O A M V B D S L Q K W O U T E I T L D Y J P R R N S M N L S P  
E F K G A B D P U F W M I B U O J S P S R I M M Q U S Y Z T M U L O K  
P S N F O M C R C X J Z X A Q O W L K A I D W Q K O R D N H C Y C U M  
H J Y N O P A A L Q U Z Q G U I O E N O Q D W B N Z T S T I R B R J A  
O I A A V N I T Y F E Z G R K A C C N I Y E L L A V E O H S E L U M F  
N R N U C G D Y B Z W S N I G R E N R O C S Y A L O T O F G A I H Q R  
E S T E K E P L I W B A P W S E G K X F A R W E L L G I N Y B D T B O  
D C L O S F Z J Z P L X S O H N I E S I R F V D D T P K L I B D E I  
V U Y O L Y V M H W D W C U S J C F X X N K W N L B Q G A F G Y N S S  
U L X I Z G S N K D Y G Z W W M I P J F R L A C F R N M Z J J D L Y S  
B Z F M V J O K E V E X B V C S B N O H M U T C J L O Q Z U I D Y P  
S Z U P X S A P G X Z I Y P D Q Z D G V E Q F U O P L O P X R Q B O R  
N N X O T A B B M U N T H T G B W Q B S Q D L Z H U B Q D Q M P E F D  
A S S F D C C K F K D X D L P Z X V M B V W P I V F C X K A X O P J Y  
N N Q N H P L E J G U R K W E C D F Q J V R R N H G T P G W T W C N Q



**Muleshoe Journal**

**Proudly Supports the Agricultural Industry and its Importance to the Community!**

201 W. Avenue C. • Muleshoe, TX 79347  
806.272.4536



# A New Tool For Mapping Water Use And Drought

By Dennis O'Brien  
Agricultural Research Service

Farmers and water managers may soon have an online tool to help them assess drought and irrigation impacts on water use and crop development, thanks to the work of two U.S. Department of Agriculture (USDA) scientists.

Agricultural Research Service (ARS) scientists Martha Anderson and Bill Kustas have developed an evapotranspiration (ET) and drought modeling system at the ARS Hydrology and Remote Sensing Laboratory in Beltsville, Md. The modeling system also will help forecasters monitor ET and drought conditions across the United States and overseas.

ARS is USDA's principal intramural scientific research agency, and the research supports the USDA priorities of responding to climate change and promoting international food security.

The model, known as ALEXI (Atmosphere-Land Exchange Inverse), uses thermal infrared imagery from satellites and calculates soil and plant temperatures that can be used to create maps of ET rates of plants growing in cultivated areas, forests and natural habitats around the world.

ET consists of the water evaporated from soil and plant surfaces, and the water vapor that escapes, or transpires, through plant leaf pores (stomata) as the plants absorb carbon dioxide through photosynthesis. Generally, evaporation cools surfaces, so a cooler land surface is an indicator of higher ET rates and wetter soils.

Water stress elevates soil and leaf temperatures, which can be detected by satellites. Anderson and Kustas can use satellite temperature data to create ET maps. The maps are capable of detecting rivers, lakes, wetlands, riparian buffers, irrigated cropland and areas under water stress.

The work is funded by the National Oceanic and Atmospheric Administration (NOAA) and the National Aeronautics and Space Administration (NASA). NOAA plans to use the system to generate ET estimates over the continental United States.

The system is expected to become particularly relevant as climate change presents challenges for growers and water managers in areas such as the Texas Panhandle, the Florida Everglades and the southwestern United States.

Getting routine ET estimates for individual fields is laborious, but the researchers are streamlining the process. With help from new satellite imagery, they hope to be able to move toward routine mapping at the "field scale" level.

ALEXI has been estimating evapotranspiration (ET) rates since 2000, but the researchers continue to refine the system and plan to make the maps available online soon on the U.S. Drought Portal at [www.drought.gov](http://www.drought.gov).

Anderson and Kustas, with colleagues, are currently mapping parts of Africa, including the Horn of Africa, where drought has caused famine in Somalia. Local ET data would be particularly helpful in places such as Africa, where networks of weather stations don't exist.

## The Five Area Communications Family...

Five Area Telephone Cooperative, Inc. was chartered May 1,1950. This is providing telephone service to approximately 1200 access lines in 6 exchanges, covering a 2000 square mile area in portions of Bailey, Parmer, Lamb, Castro and Cochran, and Hockley counties of West Texas.

Since the early years, the story of Five Area has been one of steady growth and development. The changes in the industry have been tremendous and have taken their toll on all telephone cooperatives, but Five Area has met the challenge of the times. Five Area Telephone Cooperative, Inc. is actively pursuing technology that will allow for the cost-effective deployment of broadband services in areas of low density and great mileage distances. More than 60 percent of our subscribers are located farther 10 miles from the central office and many are more than 20 miles .

West Plains Telecommunications, Inc. is a wholly owned subsidiary of Five Area Telephone Cooperative, Inc. and began operations October 1,1995. West Plains Telecommunications, Inc. serves the communities of Earth, Muleshoe, Olton, Springlake and Sudan using the latest in fiber optic and digital technology in telephone central office equipment.

Five Area Long Distance , a subsidiary of Five Area Telephone Cooperative, is a full service provider for all of your voice communications needs. This means simply one bill for your local and long distance services, friendly and knowledgeable customer representatives who you probably already know, and a dedicated commitment to quality and customer satisfaction. Furthermore, your dollar stays right here, in your own community where it can be invested and support your local economy.

We provide the same level of technology, including Digital Fiber Optic networks and Digital Switching as used by larger Long Distance Companies. This technology assures you long distance service that is always there and always clear. With our simple and competitive 1+ rate structure listed below, we take the confusion out of analyzing complicated rate plans loaded with fine print and miscellaneous surcharges. To sign up visit our office at 302 Uvalde, Muleshoe, Tx., give us a call at 1(800) 965-3253, (806)272-5533, or e-mail us at [billing@fivearea.com](mailto:billing@fivearea.com)

## Muleshoe Economic Development Corporation

Committed to Improving the Quality of Life of Bailey County Citizens



**Wayne Pierson**  
New MEDC Board Member



**Mark Morton**  
President



**Gil Rennels**  
Secretary/Treasurer

*Our Mission:*  
The Muleshoe Economic Development Corporation (MEDC) is committed to the promotion of high quality development in the Muleshoe Area and to improvement in the quality of life for its citizens.



**Dustin Cleavinger**  
MEDC Board Member



**Jose Sanchez**  
Vice President

**We support our local Agricultural Industry!**

Director of Economic Development

**Kasey Coker**  
215 S. First, Muleshoe  
806-272-7455  
FAX 806-272-5260  
Email: [muleshoe@fivearea.com](mailto:muleshoe@fivearea.com)  
[www.muleshoeedc.com](http://www.muleshoeedc.com)



# Vision, Commitment And Cooperation

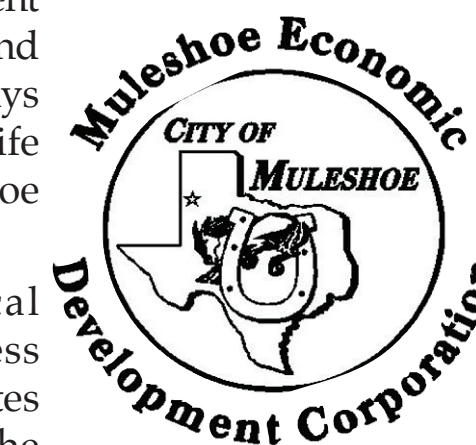
The Muleshoe Economic Development Corporation is committed to the promotion of a high quality development in the Muleshoe Area and to improvement in the quality of life for its citizens.

Vision, commitment and cooperation- these words describe the attitude of the Muleshoe EDC. MEDC promotes quality development of the West Texas region and is always searching for ways to enhance the quality of life for the citizens of Muleshoe and the surrounding area.

Coupled with the local government's pro-business attitude, the MEDC promotes quality development of the West Texas region. The MEDC has assisted in the creation and expansion of several businesses. Incentives to an eligible business are based upon job creation and retention and an increase in tax base.

The MEDC welcomes new board member Wayne Pierson. Wayne will be a valuable asset because of his extensive knowledge of financial matters and his dedication to the community.

The Muleshoe Economic Development Corporation would like to thank all the area residents who work in the agricultural industry for their hard work and diligence in providing quality products.



[www.muleshoejournal.com](http://www.muleshoejournal.com)

**CULTIVATING THE SOIL**  
**HARVESTING SUCCESS**

*We know that without the people who farm, ranch, dairy and engage in other Ag-related businesses, ensuring a bountiful future for all Americans would be impossible.*

*Thank you for hanging in there and sharing your hard work and harvest with the world!*

## THE FIVE AREA ORGANIZATION



Five Area Telephone Co-op, Inc. • West Plains Telecommunications, Inc.  
Plateau Wireless Network • Five Area Systems, Inc.  
Five Area Long Distance, Inc. • 5A Broadband  
[fivearea.com](http://fivearea.com) (Your local Internet provider)  
**Sandy Vandevender, C.E.O.**  
**302 Uvalde • 272-5533 or 800-741-6925**  
[fivearea@fivearea.com](mailto:fivearea@fivearea.com)



# MOHAWK AUTO PARTS, INC.

1701 W. American Blvd.  
272-4425

*Serving the farming and ranching community since 1968.*

We appreciate all of our customers and we are thankful to live in such a great community.



**AUTO PARTS**

## Program Reflects Widening Interest In Homegrown, Homemade Foods

By Paul Schattenberg  
Ag.tamu.edu

More than 70 people from throughout South Central Texas attended the Texas A&M AgriLife Extension Service and Don Strange of Texas, Inc. program "Preserving and Serving the Harvest" at the Don Strange Ranch in Boerne.

The program included demonstrations on food preparation and preservation basics by AgriLife Extension instructors and others, plus a menu of locally produced foods from executive chef Susan Johnson and her staff at Don Strange Ranch in cooperation with Di-Anna Arias, director of culinary vision.

The morning menu included buttermilk biscuits with specialty jams and jellies. The lunch menu included Reuben sandwiches with corned beef, pickled vegetables, potato salad and sauerkraut. During lunch, Johnson explained how each menu item was made at the ranch.

"This was one of the Backyard Basics programs being piloted by AgriLife Extension in several South Central Texas counties to provide information and hands-on instruction relating to the benefits of home food production, preparation and preservation," said Dr. Connie Sheppard, AgriLife Extension agent for family and consumer sciences in Bexar County, one of the program's coordinators.

During the day, AgriLife Extension personnel from Atascosa, Bexar, Comal, Guadalupe, Kendall and Wilson counties presented hands-on demonstrations at several indoor and outdoor sites at the ranch. They gave instruction on bread making, cheese making, drying foods, freezing fruits and vegetables and pressure canning. Additionally, members of the San Antonio Herb Market Association demonstrated how to grow herbs in a home garden and how to use fresh herbs in recipes.

Arias said the interest in canning, pickling and preserving homegrown

and homemade foods is a good way for consumers to stretch food dollars and have greater control over the ingredients and preparation of their food.

"At Don Strange of Texas, we believe in serving fresh and wholesome foods," said Arias. "This program fits well with our desire to provide consumers the best tasting and most nutritious foods possible."

She added that she was glad to have had the opportunity to present a "community" program at the ranch as the facility is normally used for private parties.

Program attendees came from a multi-county area of South Central Texas. While most were from Boerne and San Antonio, others came from Canyon Lake, Corpus Christi, Dale, Hondo, George West, Ingram, Kerrville, Rockport and other towns.

"My wife and I have two young girls and we're here because we're interested in knowing more about what goes into the foods we eat and how to make better, healthier foods for our family," said Lance Lira of Boerne. "We want our daughters to learn how to make good, healthy foods so they can later share that information with their own children."

Sue Huggles of San Antonio, who grew up on a farm in Iowa, said she learned about the program while visiting the AgriLife Extension displays at the San Antonio Stock Show and Rodeo in February.

"I found out about the program while I was buying this year's rodeo tomato at the Bexar County Master Gardeners booth and visiting the AgriLife Extension kitchen at the pavilion," she said. "I came here today to see the different canning and preservation methods to find out which were the best and safest. I also wanted to see if I could get some new recipes and ideas."

Huggles said the Backyard Basics program at the ranch reminded her of

Continued on Page 9

## Homemade Foods... Continued From Page 4

her farm days in Iowa.

"We used to do a lot of this sort of thing on the farm, but now it's becoming a lost art," she said. "I'm glad to see there are still programs that show people how to make and preserve their own food."

This program and other Backyard Basics programs offered by AgriLife Extension serve to help address consumer concerns about where

and how their food is produced and prepared, Sheppard said.

"Our Backyard Basics series has been designed in response to the resurgence of interest in home-based food production, such as growing vegetables and fruits or raising hens for fresh meat and eggs," she said. "The focus of the series is self-reliance and healthier living through homemade and homegrown foods."



Researchers looked at four sets of cattle in different crude glycerin studies to determine its value as a livestock feed. (Texas AgriLife Research photo by Dr. Jim MacDonald)

## Alternative Feed... Continued from page 7

diets, often excess nitrogen is formed in the rumen, which is excreted as urea and volatilized into the atmosphere as ammonia. The crude glycerin may allow more of the nitrogen to be captured before it is excreted and, thus, reduce ammonia emissions of cattle grazing high quality forage.

"We also observed no negative impacts on animal health up to 10 percent inclusion in diets of newly received calves," MacDonald said.



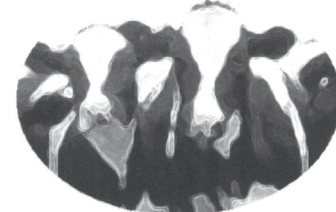
We Support Our Local and Surrounding Agriculture Industry!

218 S. Main St • 272-4271

## Muleshoe Animal Clinic Muleshoe Vet Supply

Proudly Supports

## All Agricultural Industry



### Muleshoe Animal Clinic - (806) 272-3061

Barry Cowart, D.V.M.

Steve Kennedy, D.V.M.

Dusty Urbantke, D.V.M.

Kevin Holman, D.V.M.

Garth Cummings, D.V.M.

Jennifer Ermon, D.V.M.

Elizabeth McCollum, D.V.M.

### Muleshoe Vet Supply - (806) 272-4990

1430 US Highway 84, Muleshoe, Texas

## Muleshoe Animal Clinic Has A Tradition Of Service

MAC began in 1960 with Jerry Gleason DVM as mixed animal practice. It continues to grow and expand to fit the needs of area cattle growers and dairymen.

MAC serves an area in the Texas Panhandle and Eastern New Mexico that extends to more than an 80 mile radius around Muleshoe.

Currently MAC is staffed by seven veterinarians.

These individuals have dedicated themselves to providing the best veterinary services available to the cattle growers and dairies on the Panhandle of Texas and Eastern New Mexico.

If you are in need of a service that we do not currently provide, please let us know and we will meet your needs as soon as possible.

"We look forward to getting to know you and working with you."

Please feel free to give us a call anytime, or come by the clinic for a cup of coffee and visit.

"AND ON THE 8TH DAY, GOD MADE A FARMER."

We are grateful to our Ag Producers.

\* Ask about our special Low Rate Equipment Financing \*

Going Strong Since 1931

## MULESHOE STATE BANK

www.muleshoestatebank.com

Muleshoe Branch: 272-4561 • Farwell Branch: 481-3681

PRAYING FOR RAIN AND AMERICA,  
JUST LIKE YOU...





<b>Earth, Texas</b> 806.257.3456 Jamie Goodman 806.292.8857 (Mobile)	<b>Muleshoe, Texas</b> 806.965.2330 Matt Davis 806.315.0180 (Mobile)
<b>Littlefield, Texas</b> 806.385.4456 Justin Bellar 806.777.2999 (Mobile)	<b>Friona, Texas</b> 806.265.3271 Cody Copeland 806.252.4549 (Mobile)

## Wilbur-Ellis: Committed To Excellence

Established in 1921, Wilbur-Ellis is an international marketer and distributor of agricultural products, animal feed and specialty chemicals and ingredients. By developing strong relationships, strategic market investments and the ability to capitalize on new opportunities, we've grown to a \$3 billion business.

Our three divisions are Agribusiness, Connell Brothers, and Feed. Each of these divisions succeed in their respective businesses by maintaining these core tenets:

- Taking a true partnership approach with customers and suppliers
  - Identifying challenges and working side-by-side with customers and suppliers to solve problems
  - Continually seeking new markets and growth opportunities
  - Searching out innovative ways to increase efficiency and provide quality solutions
- These are the growth engines for our company. They maximize the value we provide to customers and suppliers.

Agribusiness addresses crop challenges and individual grower needs with tailored solutions in crop protection, nutrition and seed technology. We maintain a full network of field specialists who live in the regions they serve. This enables them to gain a clear understanding of the problems their customers face, recognize and respond quickly to opportunities and develop strong one-to-one relationships.

With our advanced crop production technology and earth-friendly operations, we offer solutions that produce the best returns.

We have extensive experience in:

- Pest diagnosis
- Yield monitoring
- Soil analysis
- Water management
- Nutrition
- Regulatory and environmental issues



## Forage, Corn Feed Alternative May Come From Biodiesel Industry

By Kay Ledbetter  
skledbetter@ag.tamu.edu

Crude glycerin, a byproduct of biodiesel production, could be an economical ingredient in cattle diets, according to studies by Texas AgriLife Research and West Texas A&M University personnel.

Dr. Jim MacDonald, AgriLife Research beef cattle nutritionist in Amarillo, said during biodiesel production from sources such as cottonseed oil, glycerol is separated from fatty acids. The fatty acids become the biodiesel and the glycerol, combined with the impurities that remain, is a potential ingredient

in livestock feed.

"Crude glycerin is usually priced at a discount relative to corn, so we wanted to look at replacing corn to evaluate at the energy value of the glycerin," MacDonald said. "Then the question became, what if you replace forage, which would be the case with stocker cattle?"

MacDonald said glycerin has good flowability in low temperatures, as opposed to molasses or other similar products, and is non-corrosive to feeding equipment — both traits making it attractive to the cattle feeding industry.

Additionally, glycerin is low in phosphorus, protein and sulfur, which can be concentrated in other dietary ingredients, he said.

While the researchers knew the physical and nutritional properties made crude glycerin an attractive carrier in liquid supplement programs, relatively little was known about its performance implications in growing or high-concentrate finishing diets for beef cattle.

For the past two years, MacDonald has teamed up with Dr. Mike Brown at West Texas A&M University to conduct four experiments designed to determine the value of feeding crude glycerin in beef growing and finishing diets.

The studies were funded by the Texas Department of Agriculture Food and Fibers Research Grant Program with the thought that cottonseed oil could be used for biodiesel production. Capturing the value of the byproduct is important to bioenergy plants, and "that's where we came in," MacDonald said.

Continued on Page 7

## EARL LADD & SONS, INC.

Since 1935

**NEW AND USED EQUIPMENT**  
Hesston • Gleaner • Tye  
Rhino • Massey

*We support the agriculture industry in West Texas and Muleshoe!*

**602 W. American Blvd., Muleshoe • 272-3308 or 4672**

## Kissing Bug Warning... Continued From Page 5

All surfaces the bug touched should then be thoroughly cleaned.

Hamer said there are 11 species of kissing bugs in Texas with *Triatoma sanguisuga*, *Triatoma indictiva* and *Triatoma gerstaeckeri* being the three most common.

They all are about an inch long and are found around woodpiles, yard debris and woodrat nests. Like many blood-feeding insects, they are also attracted to the lights and carbon dioxide associated with human houses and dog kennels.

Hamer said the parasite that causes Chagas disease lives in the kissing bugs' digestive system.

"After taking a blood meal from a human or dog, the kissing bug then defecates and the parasites are in the feces. Open wounds on the

host animal, even the bite that the bug just made in feeding, and mucous membranes, are all pathways through which the parasite can enter the host's body and cause infection."

Chagas disease causes a localized reaction at first, but the parasite can later affect the heart and digestive tract, and can ultimately cause death. No vaccines exist and medications are few and not always effective, Hamer said.

Hamer said Curtis is the primary contact at the Texas A&M lab for the public regarding questions about Chagas disease or inquiries about where to direct kissing bug sample submissions.

She can be contacted at rcurtis@cvm.tamu.edu or 979-458-4924.

"For our research, it is very important for us to know the time and date the bug

was collected and exactly where the bug was found and what it was doing: flying, walking or some other activity," Hamer said.

"Samples from the bugs, wild animals and dogs are being tested for the parasite. One of our research goals is to understand how Chagas disease is being maintained among

kissing bugs, wildlife and domestic animals in order to reduce the risk of the disease becoming a major public health concern in the U.S."

Hamer noted that the Texas Department of State Health and Human Services also is a great contact for the public regarding insect identification and information.

**We Proudly Support the Agriculture Industry**

## DODD COTTON GIN

**2912 CR 504 • 965-2311**

## Texas Ag Extension Says: Never Kiss A Kissing Bug

By Steve Byrns  
tam.u.edu

One look at the kissing bug and kissing would be the last thought most folks would have, but even touching one can sometimes have dire consequences, said a vector-borne disease expert with Texas A&M University who is leading a study and asking for the public's help to determine the insect pests' current range in the southern U.S.

The study team includes Dr. Sarah Hamer, study leader and an assistant professor along with doctoral student Rachel Curtis, both with the department of veterinary integrative biosciences; Dr. Gabriel Hamer, department of entomology faculty member; and Dr. Karen Snowden, department of veterinary pathobiology, all at Texas A&M University.

The team is studying kissing bugs and Chagas disease, which is caused by parasites many of the bugs harbor.

"Kissing bugs are commonly known as cone-nose bugs or Mexican bed bugs," Hamer said.

"The adult bugs feed on blood at night. They are called kissing bugs because they often bite people around the mouth or eyes while they sleep," she said.

She added that kissing bugs are not to be confused with the common bed bug of the cimicid family, or with other bugs that look similar but do not feed on blood, such as leaf-footed bugs.

"Chagas disease is a major public health concern in Central and South America, but new evidence suggests that kissing bugs and the parasite that causes Chagas disease are becoming increasingly recognized in the southern U.S. Our research group is actively sampling the vector and mammals that may be infected to understand the natural cycles of disease transmission. With the public's help, we hope to

increase our sample size to understand the ecology of the disease emergence in the U.S.," Hamer said.

Hamer warns never to touch a kissing bug with a bare hand, because the parasite *Trypanosoma cruzi*, which causes Chagas disease in humans and dogs, may be present within the bug and its feces. And she said, even if the bug is not carrying the parasite, a bite can cause an allergic reaction in some individuals similar to bites from other insects.

"If you see a bug that you believe is a kissing bug and you would like confirmation of the species identity and to submit it for testing, our lab will accept carefully-obtained samples for research purposes," she said.

To submit a sample, Hamer advised using a glove or small plastic bag to catch the insect while avoiding direct contact. Store the bug in a sealed plastic bag, in a vial, or other small container.

Continued on page 8



*Triatoma sanguisuga* adult female, sometimes called the kissing bug, is the vector or "carrier" of the parasite that causes Chagas disease in humans and dogs. (Texas A&M University photo by Rachel Curtis)



# HPWD Precinct Two Director Jim Copeland Resigns

Jim Copeland of Anton resigned as Precinct Two District Director of the High Plains Underground Water Conservation District No. 1 (HPWD) effective March 12.

Copeland served on the HPWD Board since January 1998 and held the office of vice-president from June 2006 to January 2011.

He was re-elected in Nov. 2010 to a four-year term (2010-2014) representing Cochran County, the portion of Hockley County in

the district, and Lamb County.

Copeland is an active cattle rancher, who also raises cotton and grain sorghum. He is involved in various community activities, including the Hockley County Stock Show committee.

The HPWD Board of Directors will appoint a successor to fill the remainder of the unexpired term as outlined in Chapter 36.051(c) of the Texas Water Code.

This is the same process the HPWD Board followed in appointing Ronnie Hopper of Petersburg as Precinct Five District Director on March 5.

Public meetings will be held March 22 in each county in District Directors' Precinct Two to outline the appointment process and solicit input of local residents.

- The Cochran County public meeting is set for 9 a.m., March 22 at the Cochran County Activity Center, 200 W. Taylor, in Morton.

- The Hockley County public meeting is set for 1 p.m., March 22 at the Levelland City Council Room, 1709 Avenue H, in Levelland.

- The Lamb County public meeting is set for 4 p.m., March 22 at the Littlefield Junior High School Auditorium, 105 N. Lake Avenue, in Littlefield.

Application forms and qualifications to serve as a member of the HPWD Board of Directors are available by contacting Kathryn CdeBaca at the district office in Lubbock at (806) 762-0181 or may be viewed/downloaded at <http://hpwd.com/about-hpwd/precinct-2-director-vacancy>.

It is important to remember that a candidate for appointment to this office must reside either in Cochran County, the portion of Hockley County in the water district, or Lamb County.

Completed application forms for all potential appointees must be received no later than 5 p.m., March 28, at the district office in Lubbock.

They may be submitted by mail to Kathryn CdeBaca, High Plains Water District, 2930 Avenue Q, Lubbock TX 79411-2499; by fax at 806-762-1834; or by e-mail at [kathryn@hpwd.com](mailto:kathryn@hpwd.com).

Application forms received after the 5 p.m. March 28 deadline will not be considered.

Interviews with the candidates will be held during a special April 2 board of directors meeting at the High Plains Water District office in Lubbock. It is hoped that the appointment can be made that day so that the new member will be in place for the April 16 regular monthly meeting.

## FARMERS COOP GIN ASSN. OF ENOCHS

**Chemicals • Seed • Fuel & Oil • Fertilizer**

Wade Baker, Manager  
806.927.5511  
Enochs, Texas  
3081 State Hwy. 214  
Morton, TX 79346

"It's your Gin, if  
you use it"



**MAPLE  
COOP GIN**

**We would like to thank our loyal customers for their continued patronage.**

**We wish everyone a successful growing season.**



**Give us a call for your ginning needs:**

**Maple**  
806-927-5501

**Muleshoe**  
806-272-4794

# Alternative Feed... Continued from page 5

Another portion of the study was funded by the Department of Transportation – Research and Innovative Technology Administration through the South Central Sun Grant program.

The studies were designed to determine the feeding value, optimal concentration and which dietary components were most optimally displaced by crude glycerin in growing diets, he said.

Within the studies, the researchers looked at two strategies: replace corn or replace some forage. In the studies replacing corn, the researchers saw an optimal inclusion between 2.5 percent and 7.5 percent glycerin, MacDonald said. At 10 percent inclusion, feed efficiency was reduced.

When forage was replaced in one study, they saw no change in average daily gain, but the cattle consumed less feed and so feed efficiency was improved, Brown said. The feed efficiency was improved when either five percent or 10 percent glycerin was fed. Another advantage is a less bulky ration as forage is replaced.


"I feel very comfortable using crude glycerin up to 7.5 percent of a diet," MacDonald said.


The researchers even tested for a possible negative impact on fiber digestibility, but found none when the crude glycerin was fed at the low levels.

"We also saw an increase in microbial protein and a reduction in rumen ammonia," MacDonald said.

This information could lead to further studies, he said. In high-forage

Continued on Page 9





**VALLEY**  
The Leader in Precision Irrigation

Often the little things make the biggest difference. When it comes to service and parts for your pivots, a small malfunction can cause a shutdown. When that happens on the driest day of the year, it's a big deal. That's why Valley has more trained, experienced pivot repair specialists than anyone. And we have parts distribution centers across the country, for fast access to the highest quality parts, to get you up and running in a hurry.

Maybe that's why there are more Valleys circling the globe than all the other brands combined. Your crops are too valuable to rely on anyone but Valley.

**Muleshoe Valley, Inc.**  
2601 W. American Blvd.  
Muleshoe, TX 79347  
806-272-4266  
[www.valmont.com/irrigation/](http://www.valmont.com/irrigation/)

## Call Wilson Drilling For Water Well Services

Wilson Drilling, Inc. has provided complete water well services to the area for over 40 years. It is a family owned and operated business that is fully licensed and insured.

They offer a wide variety of pumps and motors for all of your agricultural and residential needs, specializing in low-maintenance equipment; and provide irrigation, domestic, test hole, environmental, municipal and industrial drilling.

Wilson Drilling, Inc. stays up to date on new technologies and are able to provide service and support for all the newest products on the market today.

Their other services include down-hole video and geophysical borehole

logging. Borehole geophysical logging includes the measurement of various chemical and physical characteristics of materials and fluids in and around a borehole.

These important tools have a key advantage over surface methods in that measurements of the physical properties of soil and rock are recorded and analyzed underground at their location from wells or test holes.

At Wilson Drilling, Inc. they know that timely maintenance and repair services are important to well owners. They are a full service company with experienced staff to make your life easier.



**Wilson Drilling Inc.**



**2900 West American Blvd.  
Muleshoe, Texas  
(806) 272-5521**

*Family  
Owned and  
Operated  
for Over  
40 Years*