

Mr. Muleshoe . . .

By J. M. Forbes

In the past we have tried to bring to attention of the people their opportunity to hear fine music when the Easter or Christmas chorals are staged. Hundreds and hundreds of you have attended these programs, for free. Now, our young talent of Muleshoe will stage another entertainment, but this time you'll buy a ticket and it's for the good purpose of providing money to buy a piano for the new high school auditorium.

VIENNA—(Special to The Journal)—You can rent a castle in Austria for \$40 a week or live in a clean, comfortable hotel here for as little as \$2 a day, including meals. Either way Austria is one of the least expensive tourist attractions in the world right now.

Editor's Note: The above, from the European Travel Commission, may sound pretty good to you, and even I, I thought we might spend a week end in old Vienna, visit the opera, take part in the gay fall and winter season, listen to the greatest revival of music since the days of Johann Strauss. I had thought of a slight sojourn in the Province of Carinthia, south of the main mountain range of the Alps, where warm weather extends into the middle of October, and motor thence, a two hour ride, to the Tyrol, where there is year-round snow for skiing, a big attraction for me and my friends, and of course some of us go in for mountain climbing, though perhaps the more adventurous of us would prefer scaling the Matterhorn.

Coach Woodie Green, coach of Muleshoe High School, was guest speaker at the Lions Club Wednesday noon at their regular luncheon at Gerald's Cafe. He was introduced by Carroll Goss, who had charge of the program for the meeting.

Coach Green Addresses Lions

On a report on the swimming pool, Coach Green said that approximately \$2300 had been taken in by the pool since opening. The pool is scheduled to close Sept. 1, but said that if enough people wanted the pool to stay open for three or four hours in the afternoon, they would continue operation for two or three more weeks.

He also outlined the football situation at Muleshoe High School the coming season. He said the Yellow Jackets probably would not be district contenders, but they would win several games, and would have a better team than last year. All new material will be used as the Muleshoe eleven will have only one returning first stringer. Muleshoe has a rough schedule of ten games, and the five home games will be some of the best games of the season, Coach Green assured the Yellow Jacket fans.

Mrs. C. W. Grandy appeared before the club and outlined the forthcoming production, "Ballad for Americans" which will be presented at the new high school auditorium next Friday night. She urged everyone and their families to attend, as all the proceeds will be turned over to the school to buy a new piano for the auditorium.

In the attendance contest, the team headed by Bill Moore edged past T. C. Young's team by a narrow margin of three members. All Lions are urged to attend the meeting next Wednesday.

VISIT OKLAHOMA CITY

Mr. and Mrs. C. B. "Buddy" Howard and children and Mr. and Mrs. Les Lambert spent the week end in Oklahoma City. The Howards attended a family reunion and the Lamberts visited with the local folks also saw Mr. and Mrs. Lowell Young, Muleshoe people who now live in Oklahoma City.

AT BIRTHDAY EVENT

Mr. and Mrs. S. H. Engram Saturday attended the Castro County reunion held in Dimmitt and saw many old timers they have known through the years.

The Muleshoe Journal

DEDICATED TO THE PROGRESS AND DEVELOPMENT OF BAILEY COUNTY AND THE GREAT MULESHOE COUNTRY

Volume 28, Number 34

MULESHOE — County Seat of Bailey County — TEXAS

Thursday, August 17, 1950

"Ballad For Americans" Is Story Of America—Past, Present, And Future

It is hoped that you who read this are becoming aware of the fact that a most unusual event is to take place on the evening of August 25, in the new high school auditorium—"Ballad for Americans."

Lazbuddie School To Begin Term Monday, August 28—Register 25th

The Lazbuddie school will begin August 28. High school students will register Friday, August 25, from 9 a. m. until noon.

Local Elevators Set To Ship CCC Milo, Storage To Be Made Available

Muleshoe and Lariat Elevators this week began preparations for a big movement of government milo out of their bins and into terminals at Galveston and thence into export channels.

Oliver Implement Firm To Open

A new tractor and implement firm is slated to open in Muleshoe in the very near future. It will be known as the Murphy-McDonald Implement Co., and will feature complete sales and service for Oliver tractors and farm machinery.

The new firm is owned by John T. McDonald, Jr., and John R. Murphy, formerly of Amarillo.

They are planning a formal opening in the near future, but in the meantime everyone in this area is invited to drop by and get acquainted with them.

The new business will have a complete repair department and Mr. McDonald said that he hoped to carry the best lot of parts of any Oliver dealer in this area.

WEEK END IN ROSWELL Mr. and Mrs. Jim Clements were week end visitors in Roswell, New Mexico.

Longview Church Revival Planned

A revival meeting at the Longview Baptist Church will begin Wednesday, August 23, at 8 p. m.

Lightning Hits Power Plant

At 8:18 p. m. Tuesday, lightning hit the main buses on the 69,000 volt line at the Southwestern Public Service Company plant at Tuco, disrupting service all over the area for more than an hour.

High voltage went on through the Denver City plant and was stopped by the 22,000 KV. transformer at Carlsbad, destroying the Carlsbad transformers.

Springlake Will Begin School 5th

Springlake school will open Sept. 5 for the 1950-51 school year.

Football Meet Friday Night

A meeting of all football boys has been called for Friday night, August 18, at 9 o'clock, at the new high school building, Coach Woodie Green announces.

BLAZE IN COOK SHACK A blaze in the cook car of the Santa Fe extra gang Wednesday brought the Muleshoe Fire department on the run.

Parking Meter Controversy To Get District Court Airing

Pros and cons of the parking meter question will be heard in district court in Muleshoe tomorrow, Friday, August 18 before District Judge E. A. Bills, who last Friday at a hearing in his chambers granted a temporary injunction against the city commission and ordered the hearing that is set for tomorrow.

Bula Revival To Conclude Sunday

Revival services are underway at the Bula Baptist Church beginning last Sunday and scheduled to continue through the coming Sunday, August 20, Rev. Jessie E. Leverett, pastor, said everyone is invited to attend.

JayCeers To Aid Miss South Plains Contestants

The Muleshoe Junior Chamber of Commerce will serve as campaign headquarters for the Bailey County contestants entering the contest of "Miss South Plains" to be named by the judges at the Panhandle-South Plains fair to be held in Lubbock in October.

Who May Enter Any girl, married or single, and 16 years of age may enter this contest. She must live in the South Plains area.

Elementary School First grade—Mrs. Radie Boone, Miss Effie Childress, Mrs. Mary DeShazo, Mrs. Virginia Banks, all of Muleshoe.

Second grade—Mrs. Doris McAnally, Mrs. Evelyn Perkins, Mrs. Bobbie Jo Putman, Mrs. Lois Witherspoon, all of Muleshoe.

Third grade—Miss Ruth Armstrong, Mrs. Floree Peugh, Miss Katherine Pierce, Miss Lula Stotts, all of Muleshoe.

Fourth grade—Mrs. Margaret Marshall, of Abernathy, Mrs. Mary Oberhaus, Mrs. Ruth Burchett, Mrs. Lucille Shelby, all of Muleshoe.

Junior High School Mr. Oscar Davis, mathematics; Miss Mittie Hill, science; Mrs. Ruth Page, English; Miss Geneva Stewart, English; Mrs. Elizabeth Watson, history; Mrs. Katherine Spivy, English; Mrs. Dorothy Beddingfield, soc. science; Mrs. Blanche Johnson, mathematics, all of above of Muleshoe.

Colored School Miss Bessie Williams, Muleshoe. Senior High School Mrs. Beatrice Blackburn, English; Mrs. Jaunita Kirk, English; Mr. T. J. Bailey, athletics; Mr. O. E. Bowman, science; Mr. L. C. Browder, general shop; Miss Norma Osborn, commercial; Mrs. G. S. Dowell, soc. science; Mrs. Helen Gardner, commercial; Bob L. Gray, music; Mr. Durwood Green, athletics; all of above of Muleshoe; Miss Ruby Griffin, Abilene, English; Mr. Delton M. Costlow, Muleshoe, science; Mrs. Ole B. Jones, Whitehall, mathematics; Miss Gretta Paul, Brownfield.

Karl Lovelady, city attorney. The city commission recently announced a plan to install about 160 parking meters on the principal streets.

The judge's order read, in part: "It is accordingly ordered that the Clerk of this Court issue a temporary restraining order, operating until and pending hearing below ordered, restraining and enjoining the defendants herein from constructing, erecting or allowing anyone else to construct or erect parking meters in, around, adjoining or near Main Street, the City of Muleshoe, and these plaintiffs' places of business and from pledging the credit of the City of Muleshoe for the purchase of parking meters provided that plaintiffs shall, prior to the issuance of such restraining order, file with the clerk a bond executed by plaintiffs executed in the sum of \$1,000.00 payable to the defendants with two or more good and sufficient sureties approved and conditioned as the law requires."

The Muleshoe Junior Chamber of Commerce will serve as campaign headquarters for the Bailey County contestants entering the contest of "Miss South Plains" to be named by the judges at the Panhandle-South Plains fair to be held in Lubbock in October.

Members of the Tennis Club are planning to build two new concrete tennis courts at the junior high school in the very near future. Construction is planned to be underway by next week.

Members of the Tennis Club are planning to build two new concrete tennis courts at the junior high school in the very near future. Construction is planned to be underway by next week.

A full faculty has been signed by Supt. C. W. Grandy and all will be on hand and in readiness for the beginning of the school term.

Mr. Grandy announced the following roster of teachers for the various schools:

Supervisors Mr. Jack Beddingfield, Muleshoe, bus superintendent; Mrs. Elmore Baker, Muleshoe, school nurse; Miss LaVada Reed, Hale Center, grade supervisor; and Mrs. Ethel Doyle, Abilene, dietitian.

Administration Mr. Troy Perkins, elementary principal; Mr. Jerry Kirk, high school principal; and Mr. C. W. Grandy, supt. of schools.

Supervisors Mr. Jack Beddingfield, Muleshoe, bus superintendent; Mrs. Elmore Baker, Muleshoe, school nurse; Miss LaVada Reed, Hale Center, grade supervisor; and Mrs. Ethel Doyle, Abilene, dietitian.

Administration Mr. Troy Perkins, elementary principal; Mr. Jerry Kirk, high school principal; and Mr. C. W. Grandy, supt. of schools.

Supervisors Mr. Jack Beddingfield, Muleshoe, bus superintendent; Mrs. Elmore Baker, Muleshoe, school nurse; Miss LaVada Reed, Hale Center, grade supervisor; and Mrs. Ethel Doyle, Abilene, dietitian.

Supervisors Mr. Jack Beddingfield, Muleshoe, bus superintendent; Mrs. Elmore Baker, Muleshoe, school nurse; Miss LaVada Reed, Hale Center, grade supervisor; and Mrs. Ethel Doyle, Abilene, dietitian.

JayCeers, Tennis Club To Build Courts On Junior High Campus

The Muleshoe Junior Chamber of Commerce with the assistance of the recently organized Tennis Club are planning to build two new concrete tennis courts at the junior high school in the very near future.

Members of the Tennis Club are planning to build two new concrete tennis courts at the junior high school in the very near future.

Members of the Tennis Club are planning to build two new concrete tennis courts at the junior high school in the very near future.

Members of the Tennis Club are planning to build two new concrete tennis courts at the junior high school in the very near future.

Members of the Tennis Club are planning to build two new concrete tennis courts at the junior high school in the very near future.

Members of the Tennis Club are planning to build two new concrete tennis courts at the junior high school in the very near future.

Members of the Tennis Club are planning to build two new concrete tennis courts at the junior high school in the very near future.

Members of the Tennis Club are planning to build two new concrete tennis courts at the junior high school in the very near future.

Members of the Tennis Club are planning to build two new concrete tennis courts at the junior high school in the very near future.

Members of the Tennis Club are planning to build two new concrete tennis courts at the junior high school in the very near future.

Members of the Tennis Club are planning to build two new concrete tennis courts at the junior high school in the very near future.

Members of the Tennis Club are planning to build two new concrete tennis courts at the junior high school in the very near future.

Local Markets

Table with market prices: Cream, Eggs, doz., Heavy Hens, lb., Light Hens, lb., Hogs, cwt., Hegari, cwt., Maize, cwt., Kafir, cwt., Wheat, bu.

## Draft Age Men Who Marry Should At Once Notify Their Draft Board

AUSTIN, August 8—Filling of the Texas draft quota of 2,513 men for September is being jeopardized by the fact that many men, now classified in 1-A, have failed to report marriages and other changes in their circumstances, Brigadier General Paul L. Wakefield, state director of Selective Service, charged in a strongly-worded statement today.

"If we fail to furnish the number of men desired from this state, this failure on the part of many men will be the chief factor in that failure," General Wakefield said.

The state director said that many of the local draft boards are reporting that when they issue orders to report for physical examination, many of the registrants are coming with evidence of marriages that took place "many months before."

General Wakefield pointed out that if these men who have married had notified local boards immediately after the marriage took place, they would never have been sent an order to report for physical examination in the first place.

"We are operating with little time to get the job done demanded of us," the general said. "The local boards, unless they want to declare such registrants delinquent, have to turn around and get out an order to report for physical examination to the next man in order of age. All this takes time, and our local boards have a short deadline to meet."

Selective Service wants to "be reasonable about the situation," the state director said, "but we know that the patience of our local board members are wearing thin. We just want to point out that it is not mandatory under the law that married men be reclassified into 1-B under such circumstances."

"Such men who fail to report change of status, such as marriage, or a change of address legally are liable to be declared delinquent for failing to comply with the law. A delinquent can be inducted immediately ahead of all others under this law, and if we are forced to do so in order to meet our calls, we will comply with the law to the letter," General Wakefield continued.

The state director concluded with the statement that notifications

concerning marriage, change of address, and other changes of status are "the entire responsibility of the registrant," and that notifications of change must be sent to local boards in writing over the signature of the registrant.

"Too much damage has already been done," he said. "The time is almost past for men to get things squared with their draft boards."

### HAVE A BETTER KITCHEN

Any homemaker will affirm the fact that nothing is more exasperating than lack of proper storage space in the kitchen. Yet, kitchen planners say this is one of the most common kitchen difficulties.

There is no "pat" answer to the problem, because kitchen rooms differ so widely in size and architectural arrangement. But the proper location of base and wall storage cabinets in relation to the cabinet sink, range and refrigerator goes a long way toward easing the homemaker's work. These are the areas in which convenient storage of utensils and supplies is most badly needed.

Modern kitchen equipment is designed to provide this needed space. Base cabinets are made in such a wide variety of sizes (generally from 15" to 36" in width) that there is room in nearly any kitchen for at least one unit in each area. These cabinets have both drawers and shelves in which to keep pots, pans, smaller utensils and food supplies. And the cabinet tops, of course, provide the work surface.

Wall surface above the base units should be filled with shelved wall cabinets for storage of other supplies, as well as dishes.

A new cabinet designed to help solve the storage problem is one that uses frequently wasted corner space in an L-shape and U-shape kitchen. This cabinet has three circular shelves, each 22" in diameter, which hold a large number of food articles. One homemaker reported that she is able to store 75 items of canned and boxed foods in this cabinet. The shelves turn easily on a ball bearing and the wanted items are brought to the front with just a flip of the finger. A back panel prevents the stored goods from falling into the area in back of the cabinet.

## Happy Figuring



Dress by Jonathan Logan

For the young in heart—a lesson in fundamentals makes happy figures! A light tummy-flattening, hip-snugging pantie girdle by Warner's will put them at the top of the class... and with their new slim-skirted fashions make them preen with pride.

## Salvation Army Is On Alert For War Emergency

DALLAS, Aug. 15—The Salvation Army in Texas is alerted to the needs of the war emergency, and is organizing in every Texas city and town where it operates to provide its familiar Red Shield services for the men and women of the armed forces, Lt. Col. John A. Morrison, Texas divisional commander, announced today.

The Salvation Army already is financing and operating a number of Red Shield clubs throughout the country which formerly were under the direction of United Service Organizations (USO).

"These centers will be increased as the need of the military personnel demands," the Salvation Army Commander announced. Colonel Morrison said that some thought has already been given by The Salvation Army to a national campaign to raise money for the servicemen's clubs, either through Community Chests, or as an independent campaign.

"This will not be necessary," he said, "if USO is reactivated." He pointed out that USO is still a legal corporation and can be reactivated by the President, if and when the need arises. In that event, the Salvation Army would transfer the interim services which it is now mapping into the USO of which it is an integral part.

Remember when we used to get a premium with everything we bought—and another when we paid the bill? Nowadays the only premiums we hear about are the insurance kind.

## 80 More Men To Be Called

The nation's stepped up military preparedness program has brought two more calls for men to take physical examinations. Mrs. James Case, secretary of the Bailey, Lamb and Cochran County Draft Board, located in Muleshoe, said 80 more men soon will be summoned.

There is a call for 30 men to report for physicals on August 15,

and another for 50 men to report August 21.

Twelve men left Muleshoe Tuesday for Amarillo to get their physical examinations. If acceptable, these men will be notified for induction late in September and their names will be released for publication at that time, Mrs. Case said.

The draft board is composed of one man from each county. George Johnson is the member for Bailey County, Floyd Coffman of Littlefield is the member for Lamb County and the Cochran membership is vacant now since the member for that county has moved away.

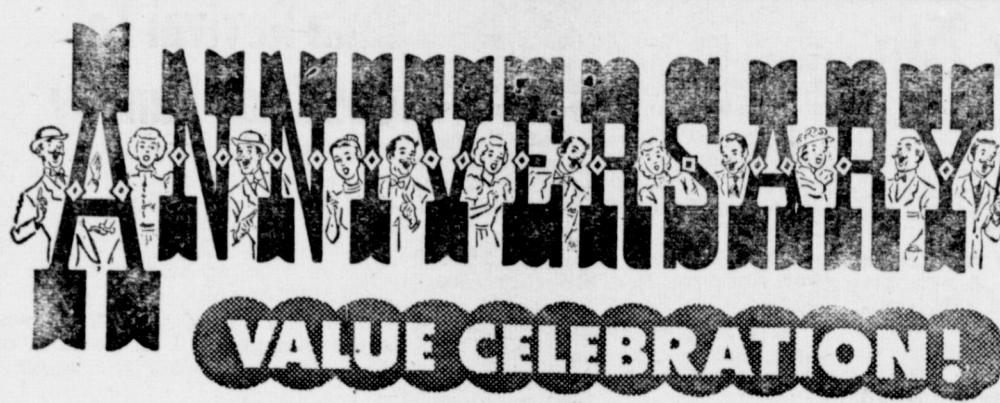
## SCRATCH DALLAS!

Why Should Dallas Run Texas? Four of five run-off races have Dallas candidates — TOO MUCH DALLAS!

For Lieutenant Governor: **PIERCE P. BROOKS** of Dallas County **EAST TEXAS**  
**BEN RAMSEY** of San Augustine County  
For Associate Justice of Supreme Court (Place 1): **WILL WILSON** of Dallas County **SOUTH TEXAS**  
**FAGAN DICKSON** of Bexar County  
For Associate Justice of Supreme Court (Place 3): **MEADE F. GRIFFIN** of Hale County **WEST TEXAS**  
**W. A. MORRISON** of Dallas County  
For Judge of the Court of Criminal Appeals: **W. A. MORRISON** of Milam County **CENTRAL TEXAS**  
**ROBERT L. (BOB) LATTIMORE** of Dallas County

SCRATCH DALLAS ON AUGUST 26

COMMITTEE FOR STATEWIDE GOVERNMENT  
Chairman: EMMETT ALEXANDER, Marble Falls, Texas



## THREE BIG DAYS — FRIDAY, SATURDAY and MONDAY — AUGUST 18, 19 and 21

For great savings in furniture, plan now to attend Johnson Furniture's gigantic 2nd Anniversary Sale. In spite of rapidly advancing prices they offer you never-before-seen prices. Yes, they are overstocked and have a large stock of new furniture that has just arrived. They are going to sell to you at prices you just can't pass up.

<h3>BED ROOM SUITES</h3> <p>Beautifully Designed In Many Colors</p> <p>4 Piece Poster Suite</p> <p>Large Dresser, 6-in. Poster Bed, Bench With Back, Extra Large Chest. Finished In Blonde. \$198.00 Value.</p> <p><b>Sale Price \$159.50</b></p> <p>4 Of These Suites In Stock</p> <hr/> <p>One Bedroom Suite in Hundry's Mahogany, Beautifully Hand Finished, With Large Double Dresser, Night Stand and Panel Bed. Regular \$289. Now</p> <p><b>\$198.00</b></p> <hr/> <p>One 5-Piece Twin Bed Suite. All Solid Hardwood. Finished In Walnut. This Is A Large Suite With 36"x38" Plate Glass Mirror Vanity. Regular \$169.95 Value.</p> <p><b>Sale Price \$129.00</b></p> <hr/> <p>One 4 Piece Marco Rancho Solid Oak. Oak Finished. Regular \$198.00. Anniversary Special. For</p> <p><b>\$169.00</b></p> <hr/> <p>GOOD USED SUITE IN WALNUT and MAHOGANY FINISH FROM</p> <p><b>\$69.00 to \$79.00</b></p> <hr/> <p>MANY OTHER SUITES AT REDUCED PRICES</p> <hr/> <p>FLOOR LAMPS</p> <p>Regular Price \$12.95</p> <p><b>Sale Price \$9.95</b></p>	<h3>DINETTE SUITES</h3> <p>Chrome &amp; Plastic</p> <p>1 Group In 5 Piece Suites</p> <p><b>Sale Price \$49.50</b></p> <hr/> <p>Arvin Suites</p> <p>Chrome Finish With Enamel Top. Large Suites Well Built, In Two-Tone Colors. \$74.50 Values.</p> <p><b>Sale Price \$54.50</b></p> <hr/> <p>Kuehne Suites</p> <p>One Group Size 30"x52" In Many Colors. No. 34 Chairs. Regular Price \$89.50. Sale</p> <p><b>\$79.50</b></p> <hr/> <p>Duncan Phyfe</p> <p>Chrome and Plastic. Size 34"x60". Any Color. Regular Price \$119.50.</p> <p><b>Now \$99.50</b></p> <hr/> <p>One Kuehne Suite</p> <p>Size 36"x72" Oval With No. 77 Spring Seat Chairs. Regular Price \$169.95.</p> <p><b>Sale \$149.95</b></p> <hr/> <p>TORCHIERE LAMPS</p> <p>Blonde and Bronze, Regular \$15.95. Sale Price</p> <p><b>Sale Price \$12.95</b></p> <hr/> <p>MANY OTHER ITEMS ON SALE</p>	<h3>LIVING ROOM FURNITURE</h3> <p>2 Piece Studio Suites</p> <p>2-Piece Studio Suites In The New Firestone Plastic. Grey and Two-Tone Colors. These Suites Are Well-Built, Hardwood Constructed With Steel Springs. Flex-O-Lator Padded. Built To Sell For \$179.00.</p> <p><b>\$139.50</b></p> <hr/> <p>2 Piece Studio Set</p> <p>In Frieze. Made By Dulaney In Grey, Wine and Beige. Regular \$189.50 and \$179.50. Sale Price</p> <p><b>\$149.00 &amp; \$159.00</b></p> <hr/> <p>ROYAL REST</p> <p>Innerspring Mattress. Regular \$49.50. Anniversary Special</p> <p><b>\$29.95</b></p> <hr/> <p>SANDRAN</p> <p>Floor Covering. Beautiful Sandran Is Vinyl Plastic. In Many Colors. Bring Your Room Measurements And We Will Figure Your Job. Regular \$1.79 Square Yard.</p> <p><b>Sale \$1.65 Sq. Yd.</b></p>	<h3>LINOLEUM RUGS</h3> <p>Size 9'x12'</p> <p><b>\$5.95</b></p> <hr/> <p>ANOTHER BULLSEYE</p> <p>General Electric</p> <p>VACUUM CLEANER</p> <p>Upright With All Attachments, Only</p> <p><b>\$36.50</b></p> <hr/> <p>USED REFRIGERATORS</p> <p>1 Servel, '42 Model, 7 Ft., Excellent Condition.</p> <p><b>Sale Price \$89.95</b></p> <hr/> <p>1 Servel, 8 Ft. Been Used 2 Years. Like New.</p> <p><b>\$139.50</b></p> <hr/> <p>1 Used Crosley, 7 Ft. With New Unit.</p> <p><b>\$99.50</b></p> <hr/> <p>1 Used Hotpoint, '47 Model, Like New, Only</p> <p><b>Only \$169.00</b></p> <p>Good Stock Of All Sizes In New Crosley And Gibson Refrigerators.</p>
---	--	---	--

# PEERLESS PUMPS

Hornbrook Drilling Company  
Phone 163-J Muleshoe



BEAT THE WEATHER TO YOUR CORN CROP

have your own Allis-Chalmers Corn Harvester

1. A 2-row machine at a 1-row price.
2. Undermounted to get down stalks, provide added safety and stability.
3. On or off in less than 30 minutes. Weight, only 1,630 lb., centered over rear tractor wheels.
4. Combination rubber-against-steel husking rolls give hand-and-peg husking action.
5. Twin air blast fans take out trash.

**\$785**

La Porte, Indiana

**ALLIS-CHALMERS SALES AND SERVICE**

Muleshoe Implement & Supply Co.  
PHONE 137 MULESHOE

# JOHNSON FURNITURE

Phone 116 Muleshoe, Texas Main Street

**VISIT CORRINGTON FAMILY**  
Mr. and Mrs. Wiley Bowers and family have just returned from visiting Mrs. Marie Corrington and family. Mrs. Corrington is the former Bailey County HD agent, leaving Muleshoe last fall. The Corringtons now run Taney-Como Park at Bronson, Mo., which is an ideal vacation spot in the heart of the "Shepherd of the Hills" country, the most beautiful of the Ozark scenery. There, the Bowers say, the fish bite, without the mosquitoes biting you, picnic grounds, entertainment for the young, boats for deep water fishing or joy rides.

**ON VACATION**  
Mr. and Mrs. Clyde Holt and family left Tuesday for a trip to Oklahoma, Kansas and Nebraska. They plan to visit the Bob Herzington's in Cozad, Neb. while gone.

**ZILPHA ZIMMER**  
RETAILER  
Look and Feel Better in Individually Designed "Sprella" Natural Support Free Demonstration

**FORMER HALL COUNTY PEOPLE TO FOREGATHER**

A reunion of former Hall County residents now living in this area is set for Sunday, August 20, according to word from Charles Whitacre, secretary and Clarence A. Powell, president of the association. The place is McKenzie Park, Lubbock. Hours are from 10 a. m. until around "milking time". "Bring a basket full of something good to eat," says the secretary in announcing the gathering. The following directions are given for those who may plan to attend: Enter the park at Hub Homes entrance. Take right hand road to foot of hill. See Hall Co. Picnic sign on left. Put your heavy foot on brake—tumble out—grab your basket of food. Cover your bald spot from the sun. Powder your nose—get all the kids out and tie the dog to a post—and start talking. It's all yours.

**TO RUIDOSO**  
Mr. and Mrs. Travis Barnett spent the week end in Ruidosa with friends.

**CONGRATULATIONS TO**  
Mr. and Mrs. Herbert S. Fung on the birth of a daughter, Janith Larine, July 31, in a Littlefield Hospital.

**Warren Lands In Bailey County Reportedly Leased In Oil Deal**

LUBBOCK, August 15—Two transactions involving South Plains oil lands were revealed here, with reports indicating as much as \$3,500,000 changed hands. One was the sale of a slice of the mineral rights on 30,625 acres of the Mallet Ranch in Hockley, Cochran, Terry and Yoakum counties for a rumored consideration of three million dollars. The other was a lease on property of the U-Bar Ranch, reportedly encompassing lands in Bailey, Parmer and Lamb counties and Roosevelt county in New Mexico. The U-Bar is owned by E. K. Warren & Son of Three Oaks, Mich., and the lease, which according to reports is not filed, is being effected by Magnolia Oil Company.

In the Mallet Ranch deal, a mineral deed has been filed in the office of County Clerk H. E. Clingard of Leveland conveying 13,602 1/2 per cent of the mineral rights on 30,625 acres of the Mallet Ranch from Mrs. Helen Devitt Jones and husband, Tom Jones of Lubbock, to Southern Methodist University of Dallas. A deed of trust from Southern Methodist to the Republic National Bank of Dallas in the amount of one million dollars was filed. Four notes, the first payable Aug. 20, also were listed.

In Lubbock, W. Tom Jones confirmed he had joined his wife in the sale of a portion of her mineral rights to the university. He declined to confirm the amount of the transaction. In Midland Magnolia authorities refused to confirm or deny the other deal. There are reportedly 800 to 900 producing wells on the Mallet Ranch property in the rich Slaughter field at this time.

**JIM JOHNSON TAKING NAVY TRAINING IN VIRGINIA**  
Over 1000 Navy Reserve Officers Training Corps Midshipmen from fifty-two colleges and universities throughout the United States are currently undergoing amphibious training, both ashore and afloat at the Naval Amphibious Base, Little Creek, Va. Among those receiving this training under the naval reserve officer training program is Northwestern University's Midshipman James P. Johnson of Muleshoe. Midshipman Johnson, son of Mr. and Mrs. Fred J. Johnson of Muleshoe, is participating in the afloat phase as talker on a gun mount aboard ship.

**THREE FRUIT SONS ARE IN NATIONAL GUARD CAMP**  
Three sons of Mr. and Mrs. Charles Pruitt, of Muleshoe, are in camp at El Paso with the New Mexico National Guard. They are Garvin, Charles, Jr., and Jasper Lee Pruitt, all of Muleshoe. The boys were members of a Clovis unit. Garvin is a newlywed, having been married in a ceremony performed about a week before he was called. He is a radio specialist. The New Mexico guard, it is understood, has been called for active duty. The Pruitts have another son who is a radar man in a regular Army outfit at El Paso. Often as we read the news of the day we feel as insecure as a skinny old maid in a strapless evening gown.

**VISIT IN OKLAHOMA**  
Mr. and Mrs. James Reed and children visited over the week end with her parents, Mr. and Mrs. L. R. Cain, in Hollis, Okla. Their children stayed for a two weeks visit with their grandparents.

**INSURANCE**  
Life - Health - Accident Hospital - Polio - Cancer  
For All Your Needs See—  
**EDDIE LANE**  
Phone 24-W

**TOUR NORTHWEST**

Mr. and Mrs. W. H. Awtrey, Sr., returned Monday from a tour of the northwest. They visited in Pueblo, Colo., with their son and his wife, Mr. and Mrs. W. H. Awtrey, Jr., then journeyed to Yellowstone National Park and to Salt Lake City. They were in seven states while on their trip, and saw some beautiful country in Colorado, Idaho, and Utah, but still that Muleshoe is the best.

**VISIT SISTER**  
Mrs. A. R. Holley and daughter, Bennie, and Mrs. Dot McCan are visiting their sister here, Mrs. Flora Frie. Mrs. Frie is staying with her mother at the present time in Frederick, Okla., but is in Muleshoe on business for a few days.

**VISIT F. H. DAVIS**  
Visitors this week in the home of Mr. and Mrs. F. H. Davis are his mother, Mrs. Minnie Cobb, his sister, Mrs. Aubrey Redfean, and a niece, Mrs. Mataline Bronch, and daughter, all of Mt. Pleasant, Texas. Mrs. Cobb will visit the remainder of this month and the others will return Friday afternoon.

**ALL DAY CANNING AT CALDWELL HOME**  
Fifteen members of the Church of Christ met at the S. C. Caldwell farm on Friday, August 3, to can for a needy family. One hundred and twenty-eight jars of peas, beans, and cucumbers were canned. At noon a covered dish luncheon was served. Those present were Mr. and Mrs. Ebb Randol, Mr. and Mrs. Charles Baker, Sr., Mrs. Self and daughter, Mrs. Ivey, Mrs. W. A. Witherspoon, Mrs. Goodwin and small daughter and son, Mrs. Joe Jarmon, Mrs. Viola Dutton, Mrs. Buford, Mrs. White, and Mr. and Mrs. S. C. Caldwell.

**TO MORTUARY SCHOOL**  
Jack DeShazo left Sunday for Dallas to enroll Monday in the Dallas Institute of Mortuary Science for a course of study lasting about nine months. Jack, who is a son of Mr. and Mrs. J. J. DeShazo, has been an employee of The Journal since the first term at John Tarleton, Stephenville, ended last February. He has worked for The Journal, sometimes as a regular, sometimes as a spare time worker, for several years.

**LOCKNEY MAN HERE**  
Obed Willbanks, principal of the grade school at Lockney, visited with the editor J. M. Forbes, with Howard Cox and with other friends here Monday. Willbanks, who formerly coached at Springlake and still officiates in football games of the area, had been to Hot Springs with his family and had car trouble here. Mrs. Willbanks and children were taken Sunday afternoon to Lockney by D. E. Cox of that city, who was visiting here.

**FROM SUDAN**  
Mrs. Robert Masten and son, Mrs. Buddy Rollins and Marvin and Hilary Lee Sharrick of New Mexico who are visiting in the Masten home were Muleshoe visitors Monday. Marvin and Hilary Lee visiting Jimmy Clyde Holt.

**TO JAYTON**  
Miss Caroline Moore and brother J. B. visited with friends and relatives in Jayton, Sunday and Monday.

**VISIT FORBES'**

Mr. and Mrs. John Ansted, of Olustee, Okla., and Mrs. Arthur Ansted, of Plainview, visited briefly with Ansted's cousin, J. M. Forbes and family here Tuesday.

**CONGRATULATIONS**  
Mr. and Mrs. J. R. Carter, of Baileyboro community are parents of a girl, Paula Jean, born July 31.

Anyone can be brave from a safe distance.



We Now Give S. & H. Green Stamps With Every Purchase

**Conoco Petroleum Products**  
**Firestone Tires & Tubes**  
**Washing & Lubrication**  
**Several Bargains In Used Cars**  
**GOSS CONOCO SERVICE**  
On Plainview Highway  
Phone 364-W Muleshoe, Texas

**AMERICAN KITCHENS' AMAZING OFFER!**  
NOW! You Can Own a Big 8-Foot American KITCHEN for less than The Price of Many Television Sets!  
TODAY'S TOP BUY! BIGGEST BARGAIN IN TOWN!  
Save Money on American Kitchens' Mid-Summer Offer!  
**SAVE OVER \$62.00**  
Regular Price—\$362.25  
NOW ONLY \$299.95  
Special!  
FOR A LIMITED TIME ONLY! Check These EXTRAS We've Added!  
Complete kitchen includes big 54" double drain-sink with 2 storage shelves, 2 drawers of crumb cup strainer, 2 big 21" base cabinets, 2 wall cabinets, 2 what-not shelves. Check these features:  
DELUXE FAUCET ASSEMBLY: Push-button spray for easy rinsing. 3-1/2" high, handle! Non-splash acetate.  
EXTRA STORAGE SPACE! Top cabinets have regular drawer plus 2 concealed drawers. Sink also has two roomy drawers—8 drawers in all!  
TWO BEAUTIFUL WALL WHAT-NOTS round out your kitchen. Hold radios, plants or nick-nacks.  
SOLID MAPLE TOP for cutting and chopping. Edge-grained and laminated!  
Look at These Other American Kitchens Features:  
• Drawers rounded and seamless. Easy to clean!  
• Concealed drawer pulls! No dirt catching handles!  
• Sturdy concealed hinges keep doors open or closed!  
• Extended counter tops and recessed bases for easy work!  
• Insulated construction deadens sound on doors!  
• Amazing strength! Heavier gauge steel used!  
plus installation.

**BERRY ELECTRIC CO.**  
Muleshoe, Texas

**Wheat Seed**  
TENMARQ  
WICHITA  
WESTAR  
We Now Have On Hand A Good Supply Of  
**VETCH SEED**  
WEED KILLER & INSECTICIDES  
JOHNSON GRASS ..... CHLORDANE  
BIND WEED ..... D D T  
**RAY GRIFFITHS ELEVATOR**  
Phone 32 Muleshoe

**LOWEST-PRICED FULL-SIZE PICKUP** WITH OIL FILTER, OIL-BATH AIR CLEANER

**Ford**

**A DOZEN REASONS WHY AMERICA'S NO. 1 TRUCK VALUE WILL DO MORE PER DOLLAR!**

- THRIFTY 95-H.P. SIX-CYLINDER ENGINE for all-around performance in the 4,700 lb. G.V.W. class. 100-h.p. V-8 available at slight extra cost.
- LOADMATIC IGNITION saves gas by providing spark advance for changes in engine load and speed.
- FLIGHTLIGHT PISTONS save oil. Cam-ground aluminum alloy for true fit and better oil control.
- ALL-STEEL BODY with spacious 45 cu. ft. of loadspace.
- HYDRAULIC BRAKES with true and easy stopping action.
- DEMOUNTABLE BRAKE DRUMS simplify maintenance. Drum can be bought separately for replacement.
- SHOCK ABSORBERS, airplane-type, standard front and rear.
- MILLION DOLLAR CAB with door-glass Air Wing ventilators and Level Action suspension.
- SYNCHRO-SILENT TRANSMISSION for easy, quick and quiet shifting.
- GYRO-GRIP CLUTCH for better clamping action.
- HYPOID REAR AXLE with integral type housing. Shafts removable from wheel end.
- ROLL ACTION STEERING with needle bearings for easier control.

**Ford Trucking Costs Less because—**  
**FORD TRUCKS LAST LONGER**  
Using latest registration data on 6,592,000 trucks, life insurance experts prove Ford Trucks last longer!

**MOTOR CO.**  
Phone 33 Muleshoe, Texas

# Panhandle Waterfowl Hunting Opens November 10, Lasts 45 Days

AUSTIN, Aug. 15—The Texas Game, Fish and Oyster Commission recommended a straight 45-day waterfowl shooting season beginning November 10. An earlier request for a zoning season to benefit Panhandle counties has been placed before the Federal Fish and Wildlife Service as has also a proposed bag limit of eight (8) ducks per day and eight in possession instead of the four ducks per day and four in possession allowed last fall.

The Commission authorized a nine-day antelope season west of the Pecos to be patterned after the 1948 special season in which 702 permits were issued to bag male antelope. The number of 1950 permits to be issued has not yet been determined.

Game and fish seasons for the newly created regulatory authority

in the new twenty-eight county Panhandle area also were approved. They call for a deer and turkey season from November 17 to November 26 for all Panhandle counties excepting Armstrong, Randall, and Briscoe. The limit will be one (1) buck deer and two turkey gobblers for each hunter. The three counties were exempted because of recent restocking activities by the Game Department.

The Commission approved a whitewing dove season for September 15, 17, and 19 beginning at 4 p. m. and lasting until sunset with a limit of ten birds a day and ten in possession. The Commission voted for a statewide dove season of 45 days, beginning October 20 and lasting until December 3 in the south zone and beginning September 1 and running through October 15 in the north

## NOTICE TO BIDDERS

Notice is hereby given that the Commissioners' Court of Bailey County, Texas will receive bids on the following described road machinery, to-wit:

Two (2) All Wheel Drive and Steer Power Graders equipped with 100 HP diesel engine, 13' blade with 2' LH extension, 14.00 X 20 tires front and rear, enclosed cab, lights, scarifier, defroster, heater, drawbar-delivered in Bailey County, Texas and take in trade 2 used Austin-Western 99-M Power Graders.

Warrants in payment thereof not to exceed \$20,000.00 bearing not more than 5% interest and being due not later than April 15, 1955. Contract to be made by the Commissioners' Court of Bailey County, Texas for the purchase of such machinery on the 14th day of August, 1950. Bids on same may be delivered to the County Judge of Bailey County on or before 10:00 a. m., August 14, 1950. The Commissioners' Court reserves the right to reject any and all bids.

Cecil H. Tate  
County Judge  
Bailey County, Texas

31-3tc

## TO CALIFORNIA

Leaving Saturday for San Francisco, Calif. for a visit were Mr. and Mrs. Glenn Davis and Mr. and Mrs. Don Bryant and daughter.

zone, with a daily bag limit of ten and a possession limit of ten. The Panhandle area was granted a quail season from December 1 to January 16, which are the same dates as the general state law, but the bag limits for the new regulatory area were cut from 12 per day to 10 per day and the possession limit was cut from 36 per week to 20 in possession at any one time. The Commission abandoned plans for open seasons on antelope, prairie chicken and pheasants in the Panhandle because of insufficient data and a policy of "playing safe" until more information on these species could be obtained.

For the regulatory area west of the Pecos, the Commission authorized a deer season and a quail season similar to 1949. In this area, El Paso and Terrell counties were eliminated from the antelope shooting regulations.

The statewide deer and turkey season as well as the quail season are set by law and are not affected by the latest commission action. Deer and turkey seasons for the state are run from November 16 through December 31, inclusive, with a limit per hunter of 2 buck deer and 3 gobblers. The quail season is from December 1 to January 16, inclusive, with a bag limit of 12 per day and a possession limit of 36 per week.

Other action concerning the new Panhandle regulatory area include: squirrel season, May 1 to July 1 and from October 1 to December 31, with a bag limit of 5 per day and a possession limit of 5; trapping season on furbearing animals December 1 to December 31, except Muskrat, December 1 to December 28; limiting crappie bag to 15 per day and 30 in possession and similar provisions for channel cat, with black bass limited to 6 per day and 12 in possession, and no bag limits on sunfish, perch, bream, blue cats and mud cats; restricting each fisherman to one trotline of not more than 20 hooks and an aggregate of not more than 20 hooks of all kinds for each fisherman; limiting a fisherman to possession of 200 minnows and putting a 20-foot limit on minnow seines.

**Our Tours of Europe**  
In SWITZERLAND  
EVERY SUMMER  
200 ACTORS PERFORM  
THE COLORFUL, EXCITING  
STORY OF WILLIAM TELL  
IN A BEAUTIFUL OUTDOOR  
SETTING AT INTERLAKEN.  
VISITORS WILL SEE  
THE PLAY ON SUNDAYS  
AND THURSDAYS  
DURING JULY AND  
AUGUST, AND ON  
SEPT. 3 AND 10.

MOST AMERICANS WHO VISIT EUROPE  
DON'T SPEAK A FOREIGN LANGUAGE.  
THEY DON'T NEED TO. SO MANY  
EUROPEANS SPEAK ENGLISH THAT  
LANGUAGE IS NO BARRIER TO  
HAVING A GOOD TIME.

ICELAND,  
WITH ITS  
PEACEFUL  
VALLEYS, SNOW-CAPPED  
MOUNTAINS, SWIFT  
RIVERS AND WARM  
SUMMER SUNSHINE,  
MAKES A PERFECT  
VACATION LAND FOR  
PEOPLE WHO ENJOY  
FISHING, MOUNTAINEERING,  
AND EXPLORING THE  
UNINHABITED INTERIOR  
OF THE COUNTRY.

## Sudan Wildcat Near City Limit

(From The Sudan News)

Location of the wildcat oil well which will be drilled near Sudan by H. L. Hunt of Dallas, was staked Monday afternoon on the Lee Robinson farm three fourths mile west and one-quarter mile north of Sudan.

The well will be known as the H. L. Hunt, C. W. Robertson, and Lee Robinson No. 1. It is located 660 feet from the North and East Lines of Labor 16, League 223, Collingsworth County school lands.

According to Ves Terry former Sudan engineer, who was responsible for some 8,000 acres of leases for O. L. Johnson of Midland, who turned it to Hunt, the contract calls for drilling to the Ellenburg which is approximately 9,000 ft.

One of the heaviest type drilling rigs made is expected to arrive here this week with drilling operations to start immediately, said Terry.

Approximately 1,000 feet of caliche road is being built to the site of a well. Drilling of a water well for use in the oil drilling is underway.

Terry estimated that drilling operations would take from six to eight months to complete. Drilling crews will work eight hour shifts around the clock. Terry said that the operation would require at least three five man crews with as many as three extra men on duty at all times. The extra men are an electrician, mudman and motorman.

Johnson acquired the block by taking a 10,000 acre farmout from Honolulu Oil Corporation and adding the 8,000 acres acquired for him by Terry in the immediate territory. Honolulu retained a checkerboard spread of 9,000 acres out of the block, which Johnson turned to Hunt with provision to retain an override.

Leases Scarce: Royalty High  
Very little leasing activity within any reasonable distance of the well was reported, however, some report that as much as \$50 per A. is being paid for royalty within the 15,000 block.

Terry is a licensed lease and royalty agent and has been active in buying and selling leases and royalty in this section of the Pan-

KARL L. LOVELADY  
ATTORNEY-AT-LAW  
So. Side of Square  
Muleshoe - Texas

"It's time  
for  
BROOKS!"

Pierce  
Brooks  
for  
LT. GOVERNOR

## Social Security Man Here Aug. 23

During recent weeks there has been an increasing number of persons calling on the social security representative in Muleshoe about the possible increase in benefits as a result of possible changes in the social security law. It will not be necessary for those persons already receiving benefits to contact the social security office or representative, because any increases in their benefits will be made automatically.

John G. Hutton, manager of the Lubbock Social Security office will be in the Post Office in Muleshoe on Wednesday, August 23, 1950 at 9:30 a. m. He will be glad to furnish information about possible changes in the social security law.

## TO COLORADO

Mr. and Mrs. Alton Turrentine and son, Tommy, have been visiting at Colorado Springs, Colo., and touring Colorado and New Mexico. They were accompanied by several friends of Levelland.

## FROM CALIFORNIA

Mr. and Mrs. Earl Wilkins of Corcoran, Calif. visited her sister Mrs. Bill Collins, Mr. Collins and girls over the week end. The Wilkins were enroute to Missouri to visit with his relatives.

handle-Plains. It is reported that other Sudan businessmen have applied for a license to buy and sell leases and royalty.

## Supplement Grain In Hog Rations

COLLEGE STATION, Aug. 15—The present condition of rising prices makes hog production very profitable for farmers who have home-grown grain on hand, and the pork producer who feeds a ration that will put the most economical gains on his hogs receives the widest margin of profit.

Farmers should not allow their attention to be diverted from the advantages of feeding a balanced ration to hogs by the present rising hog prices and favorable feed prices, cautions E. M. Regenbrecht, extension swine husbandman of Texas A. & M. College.

Neglecting to include the necessary amount of protein supplement reduces the digestibility of the ration, raising the feed required per pound of grain and reducing the margin of profit.

Regenbrecht says that a farmer who has home-grown grain can get economical gains by including only a good protein supplement and providing a good pasture to insure that the nutritional deficiencies of the corn or other grain are met.

He points out that corn or sorghum grain alone produces slow and costly gains, but when the grain is

## WORKERS CONFERENCE TO BE HELD AT HICKS CHAPEL

The West Plains Baptist Association's monthly Workers Conference will be held with Hicks Chapel Baptist Church of Bailey County as host church Friday August 18. Rev. B. L. Carter is pastor of Hicks Chapel.

On the program will be W. O. Kay of Amherst; F. N. Allen, of Rockyford; E. W. Campbell of Progress; M. C. Ellis of Three Way; F. E. Swanner, Plainview; and the Hicks Chapel Church singers will give special music. The hosts are to serve lunch at noon.

supplemented with the correct protein and mineral supplements, the rate of gain is speeded up and the cost of gain is reduced.

HAVE  
YOU TRIED  
OUR  
18 MONTHS  
UNCONDITIONALLY  
GUARANTEED  
TIRES  
H. C. HOLT

## OIL LEASES & ROYALTIES CLYDE A. BRAY, SR.

YOUR STATE LICENSED DEALER IN  
MINERAL, OIL LEASES & ROYALTIES

## FARM MACHINERY FOR SALE

### Four Combines & Two Binders

2 International Combines: 1-1948 Self propelled and 1-1947 Pull Type. Both 12 ft. machines.

2 Massey-Harris Combines, 1949 Model, 14 ft. Canvas headers.

2 McCormick-Deering 2-row Binders. Have cut 300 acres each.

TOP QUALITY USED MACHINERY AT  
REASONABLE PRICES

## CONRAD WILLIAMS

GOODLAND, TEXAS

BE SURE TO GET YOUR COUPONS FOR

# Appreciation Day

EACH SATURDAY IN MULESHOE

"Pot" For Saturday, Aug. 19 - \$128.00

The Following Muleshoe Firms Are Supporting  
APPRECIATION DAY

- COX RADIO & ELECTRIC
- CASHWAY GROCERY
- SAM E. FOX — TEXACO PRODUCTS
- BENTON GROCERY & MARKET
- FRY & COX BROS.
- COBB'S DEPT. STORE
- ST. CLAIR DEPT STORE & VARIETY
- C. & H. CHEVROLET CO.
- DYER HARDWARE & FURNITURE
- MULESHOE AUTOMOBILE CO.
- ARNOLD MORRIS AUTO CO.
- HIGGINBOTHAM-BARTLETT
- WAGNON GROCERY & MARKET
- DAMRON DRUG STORE
- WESTERN DRUG STORE
- MULESHOE FOOD MARKET
- CITY MOTOR CO.
- JOHNSON & NIX

- E. R. HART CO.
- COVIN MOTOR CO.
- BOVELL MOTOR SUPPLY
- CHAS. L. LENUU LUMBER CO.
- PIGGLY WIGGLY
- H. S. SANDERS LUMBER CO.
- MAGNOLIA PETROLEUM CO.
- MULESHOE JOURNAL
- BLONDY RAY'S SERVICE STATION
- MULESHOE LIQUEFIED GAS CO.
- TAYLOR'S PRODUCE & HATCHERY
- POOL INSURANCE AGENCY
- SOUTHWESTERN PUBLIC SERVICE CO.
- CONSUMERS FUEL & SUPPLY
- GULF OIL CO.
- WIEDEBUSH & CHILDERS

TRADE WITH YOUR FRIENDS IN MULESHOE

## MID - SUMMER TUNE - UP TIME



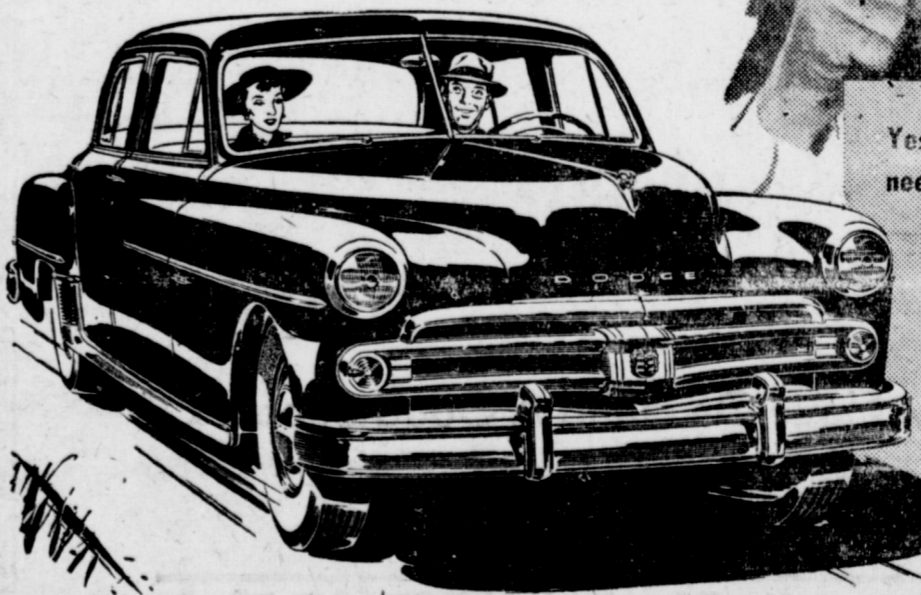
It is time to drive in for that mid-summer motor check-up. We'll adjust the ignition, adjust carburetor, service battery, check radiator, drain and refill crankcase, check fan belt, and check brakes and lights. Be sure that there is the least possible chance of anything happening to your car while you are driving.

DUNLOP TIRES and TUBES  
CONOCO GASOLINE.  
ALL LEADING BRANDS OF OILS  
AUTO PARTS and ACCESSORIES

## City Motor Co.

Jim Burkhead — "Red" Glasscock — Francis Gilbreath  
Phone 53 Muleshoe, Texas

"WILL YOU TAKE 5 MINUTES  
TO SAVE \$1000?"



Yes, 5 minutes is all we need to show you how you could pay \$1,000 more and not get all the extra room... ease of handling... and famous ruggedness Dodge gives you!

## NOW IS THE TIME TO TRADE

— your present car may never again be worth what we will give you!

Just 5 minutes behind the wheel of today's big Dodge and you'll discover roominess far costlier cars can't match... head room, leg room, shoulder room that lets you ride easier, more comfortably, mile after mile. Drive the new Dodge today!

You'll get handling and driving ease that you'll want to make your own for keeps.

You'll feel the flashing power of the big "Get-Away" Engine... the silken smoothness of Fluid Drive. And you'll sense the ruggedness... the famous

dependability, that belongs to Dodge and Dodge alone.



Arnold Morris Auto Co. Muleshoe



SCHEDULE OF SERVICES

MAIN STREET MISSIONARY BAPTIST CHURCH
M. E. Robinson, Pastor
Sunday School 10 a. m.
Morning Worship 11 a. m.
Training Union 6:30 p. m.
Evening Worship 8 p. m.
W.M.U., Wed. 2 p. m.
Mid-week Prayer Service, Wednesday 7 p. m.

MULESHOE ABSTRACT CO.

Complete & Efficient Abstract Service
Phone 352-J
Barry T. Lewis

ST. JOHN'S LUTHERAN CHURCH
Lariat, Texas
W. B. Gummelt, Pastor
S. S. and Bible Class 10 a. m.
Divine Services 11 a. m.
Ladies Aid meets the first Thurs. of each month 2:30 p. m.
The Walther League meets 1st Sun. of each month 6:30 p. m.
Sunday School Teachers meet every Wednesday 7:30 p. m.
A cordial welcome awaits you at St. John's Lutheran Church.

Y. L. BAPTIST CHURCH
First and Third Sundays
Rev. Lavender, Pastor
Sunday School 10 a. m.
Morning Worship 11 a. m.
Training Union 7:30 p. m.
Evening Worship 8:30 p. m.
Services every 3rd Sunday Starting at 10:30

CHURCH OF THE NAZARENE
Rev. J. O. McCaskell, Pastor
Mack Hale, S. S. Supt.
Sunday School 10 a. m.
Morning Worship 11 a. m.
Young People's Service 7:30 p. m.
Evening Worship 8 p. m.

ANTIOCH PRIMITIVE BAPTIST CHURCH
Across Street From Hospital
ELDER JIMMIE BASS, Pastor
Services 1st Saturday at 2:30 p. m. and first Sunday.
Singing every Sunday night except 1st Sunday night.

METHODIST CHURCH
Lazbuddie, Texas
Rev. Silas Dixon, Pastor
Sunday School 10 a. m.
Church Service 11 a. m.
Evening Service 8:30 p. m.
Mid-week Prayer and Song Service 8:40 p. m.
Everyone invited to our services.

NORTH SIDE CHURCH OF CHRIST
Worship, each Lord's Day 10:30
Extending to all a cordial invitation.

PROGRESS METHODIST CHURCH
Carroll M. Jones, Pastor
Sunday School 10 a. m.
Morning Worship 11 a. m.
Evening Fellowship 8 p. m.
Evening Worship 8:45 p. m.
W.S.C.S. 2nd & 4th Mondays

LONGVIEW BAPTIST CHURCH
Rev. J. E. Moore, Pastor
Sunday School 10 a. m.
Preaching Services 11 a. m.
B. T. U. 8 p. m.
Preaching Services 8:30 p. m.
W. M. S., Monday 2:30 p. m.
All Church Night, Wed., 7:30 p. m.

WEST CAMP FIRST BAPTIST CHURCH
Rev. E. H. Mitchell, Pastor
Sunday School 10 a. m.
Morning Worship 11 a. m.
B. T. U. 7 p. m.
Evangelistic Service 7:45 p. m.
Mid-week Prayer 7 p. m.
Service, Thursday 2 p. m.

FIRST METHODIST CHURCH
H. W. Hanks, Pastor
Church School 9:45 a. m.
Bible Study 10 a. m.
Preaching 11 a. m.
Evening Service 8 p. m.
W. S. C. S., Tuesday 2:30 p. m.
Wesleyan Guild Meets second and fourth Monday nights.
Choir Practice, Wed. 8 p. m.

FIRST BAPTIST CHURCH
Rev. A. W. Blaine, Pastor
Sunday School 9:45 a. m.
Morning Worship 11 a. m.
Training Union 6:30 p. m.
Evening Worship 8 p. m.
Officers and Teachers, Wednesday 7 p. m.
W. M. U., Wednesday 2 p. m.
Choir Rehearsal, Thurs. 7 p. m.

ASSEMBLY OF GOD CHURCH
Rev. M. C. Cox, Pastor
Sunday School 10 a. m.
Morning Worship 11 a. m.
Evening Service 8 p. m.
Young People's Service, Tuesday 8 p. m.
Mid-week Service, Thursday 8 p. m.

FIRST BAPTIST CHURCH
Lazbuddie, Texas
L. B. Edwards, Pastor
Sunday School 10 a. m.
Morning Worship 11 a. m.
Training Union 6:45 p. m.
Evangelistic Service 7:45 p. m.
"Not forsaking the assembling of yourselves together. Heb. 10:25"

FIRST CHRISTIAN CHURCH
2 bks. West 1/2 blk. North Shady Rest
Frank Reece, Minister
Bible School 9:45 a. m.
Morning Worship 11:00 a. m.
Evening Worship 8:00 p. m.
Midweek Prayer Service Wednesday 8:00 p. m.
Organization Committee Meeting 1st Wed. each month.
"We are Workers Together With God"—Paul.

SUMMER IN DALLAS

The century point in Fahrenheit is finally here, after a summer of amazing mildness. It's not now, as it should be, and the locals are complaining. Dallas was the greatest town on earth until a few days ago when the thermometer acted up. Honestly, you can't please anybody.

The heat is 90 per cent mental, 10 per cent physical. He who complains is selfish; he's thinking about himself, when he ought to be in the kitchen washing his wife's dishes or out in the shade with the garden hose spraying his bald pate and his toes under a calladium leaf.

Don't cuss Dallas in summer. There is plenty of water. Ice abounds—cubed, caked, cartonned, or crushed. Melons are cheap. Lemonade is had for a minute's

Grade B Eggs Food Value High

COLLEGE STATION, Aug. 15.—An egg a day is one step toward being well fed, states Louise Mason, extension food specialist of Texas A. & M. College. Grade B eggs are now coming into the markets in ever increasing amounts, while the supply of Grade AA and A eggs is decreasing. Shying away from Grade B eggs is not good economy, as they are equal in food value to eggs of higher grade, Miss Mason points out. At this season of the year when they are a few cents less per dozen than Grade A, Grade B eggs are a good buy.

The main reason for this change in supply is that hot weather causes eggs to fall from the peak of freshness in a very short time. The supply of Grade B eggs is also increased because young pullets which are just coming into production at this time of the year, lay eggs which will not measure up to the higher egg grades, particularly in weight.

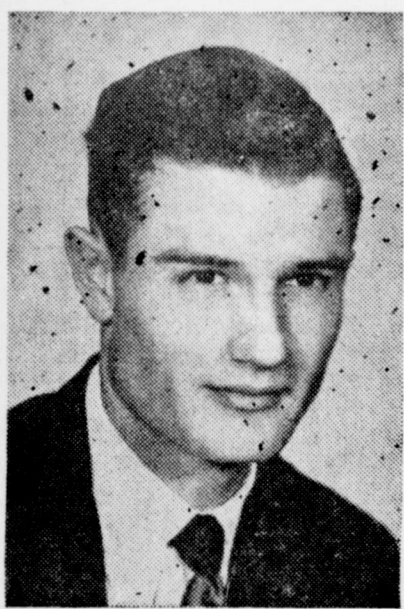
Eggs are rich in blood building substances, iron, and its helper, copper. They are good sources of bone building materials, calcium, and phosphorus. They are rich in Vitamin D which is essential effort. When sweat beads burst on your brow, wipe them off, grin and take the kids for a ride. Don't cuss Dallas or kick the cat. Nobody ever died of heat prostration taking it easy with his mind on something else. Unselfishness and chronic complaints are more deadly than the sun. Greet the August sun, as does the red bird. Sing at it—in the shade.—Dallas News.

for their Vitamin A content which help keep the eyes and the thin layer of skin lining the internal parts of the body in a vigorous and healthy condition. They supply some Vitamin B which helps keep nerves steady and some niacin which prevents pellagra. They contain fat of a quality that supplies quick energy. Therefore, Miss Mason says, the egg deserves the attention of the homemaker who plans and prepares the family meals as well as the individual who eats out. Shell color does not affect the flavor, the food value or the cooking performance. Neither is it a guide to yolk color. There is no advantage to the homemaker in paying more for brown or white eggs of the same quality or size. High quality eggs, Grades AA and A, are ideal for poaching, frying and cooking in the shell, but Miss Mason recommends the Grade B eggs as an economical product for general cooking.

MULESHOE LIVESTOCK AUCTION
J. K. Freeman Hugh Freeman
Cattle Sale Each Wednesday
Col. Dick Doshier, Auctioneer
All Farm Sales 5%—Bills Paid
To Book Farm Sales
CALL HUGH FREEMAN — PHONE 11 or 278-J Or 2501 Farwell

DR. B. R. PUTMAN OPTOMETRIST

First Door North Sue's Beauty Shop Muleshoe, Texas Phone 342-J



R. M. "Bob" Gregory
REPRESENTATIVE OF
Great National Life Insurance Company
LIFE INSURANCE FOR YOU & YOURS
P. O. Box 187 - 1308 W. 4th

Entertainment at Your Local THEATERS

MULESHOE, TEXAS
Week Days Open 7:45 p. m., Starts 8:00 p. m.
Saturday and Sunday Open at 1:45, Start at 2:00 and Continuous Showing

Bargain Nights — Tuesday And Wednesday
Adults 25c Children 12c
Regular Admission Prices
Adults 36c Children 12c

VALLEY
THURSDAY and FRIDAY
James Stewart
Shelley Winters
In
Winchester '73
SATURDAY
Eddy Arnold
In
Hoedown
Sunday, Monday & Tuesday
Joseph Cotten
Valli
In
The Third Man
Wednesday
Bargain Night
Sir Ralph Richardson
In
The Fallen Idol

PALACE
THURSDAY and FRIDAY
Will Rogers
In
Steamboat Round The Bend
SATURDAY
Mikel Conrad
In
The Flying Saucer
SUNDAY and MONDAY
Audie Murphy
Wanda Hendrix
In
Sierra
Tuesday & Wednesday
Bargain Nights
Peggy Cummins
John Dali
Gun Crazy

Motion Pictures Are Your Best and Cheapest Entertainment

Step in... step up in the world!

This is the Chrysler New Yorker Newport... the original "hard-top" convertible... the car that started today's smartest trend in design. But you've only to see it and drive it to realize that there still is not another car like it. No car regardless of price can match the luxury or the materials and appointments in the lovely interiors. Even the Clearbar rear window still stands alone for grace, beauty, and exceptional

driver vision. And there's built-in value all the way through without equal. Built-in value that will make you a Chrysler buyer from now on. Quality... craftsmanship... engineering... that mean you invest not only in prestige and pleasure, but in lasting satisfaction as well. See this car or any one of the 21 body styles available today!

NEW YORKER NEWPORT... with Clearbar rear window



See it—drive it... there's built-in value all the way through!

Chrysler Driving Advantages:
Fluid Drive... automatic gear shifting with exclusive car control High Compression Sphifire Engine... extra power at all speeds. Superfinished parts for longer life. Chemically treated cylinder walls for far greater wear! Waterproof Ignition System... prevents stalling in flood or storm. Full Flow Oil Filter keeps oil clean longer.

Chrysler Comfort Advantages:
Chair Height Seats... no crouching on the floor... Functional Design... room for your head, legs, shoulders. Easy to enter and leave. Center-arm Steering... minimizes road shock, wheel lift. Rubber Body Mountings... Floating Power... eliminate vibration, help give softest, smoothest ride in history.

Chrysler Safety Advantages:
Safety Rim Wheels... won't throw tires after blowouts at normal speeds. Constant Speed Windshield Wipers... electrically operated. Safe Guard Hydraulic Brakes... balanced brake power, smoother stops, less pedal pressure. CYCLEBOND linings for double the wear. Full vision... wherever you need it.

The Beautiful CHRYSLER with Fluid Drive

COVIN MOTOR COMPANY, Muleshoe, Texas

Here it is

YOUR PIGGLY WIGGLY  
Guarantee

We of the Piggly Wiggly Super Markets hereby guarantee honest quality in all our selections. We back up this quality with lowest possible prices on your daily purchases. We guarantee a time-saving arrangement of every item we sell; also, its freshness and goodness. We promise every shopping shortcut and improvement which our increasing number of customers demand, and which our modern buildings can afford. We guarantee your complete satisfaction. And above all, every item you purchase at Piggly-Wiggly is unconditionally guaranteed!

CANNED FOODS

- PINEAPPLE Silver River Crushed No. 2 Can. 17c
- TOILET TISSUE Waldorf 4 Rolls 23c
- HOUSE OF GEORGE 46 OZ. CAN TOMATO JUICE 19c
- LIBBY'S NO. 2 CAN SPINACH 19c
- NIBLETT'S 12 OZ. CAN MEXICORN 17c
- BROOKS NO. 303 CAN BUTTER BEANS 12 1/2c
- CHB LARGE BOTTLE CATSUP 19c
- SWANSON 6 OZ. CAN Chicken Spread 29c
- LIBBY'S 46 OZ. CAN APRICOT NECTAR 39c
- DORMAN MEDIUM NO. 2 CAN New Potatoes 12 1/2c
- RENOWN WHOLE NO. 2 CAN Green Beans 17c
- BALL, PINT, DOZEN FRUIT JARS 69c
- HAGGARD'S 1 LB. PKG. VANILLA WAFERS 25c
- PETER PAN 12 OZ. JAR PEANUT BUTTER 37c

- ARMOUR'S 12 OUNCE CAN TREE 49c
- APPLE JELLY Bama 12 oz 15c
- MARSHALL'S PORK & BEANS 3 No. 300 25c
- HONEY Petty Ext. 2 lb. 43c
- CLOROX qt. 17c
- WHITE KARO 1/2 gal. 57c
- AJAX CLEANSER can 12c
- CORN Milford No. 300 12 1/2c
- OLD BILL NO. 1/2 CAN VIENNA SAUSAGE 12 1/2c
- HERSHEY BARS 6 for 25c
- CAMAY Soap 2 for 17c
- PILLSBURY CAKEMIX Box 35c

GROCERY ITEMS

- MEADOWLAKE COLORED QUARTERS MARGARINE, lb. 33c
- FROSTEE Liptons 2 pkg. 27c
- KOOLAID 6 pkgs. 25c
- TEA Lipton's 1/4 lb. 32c
- PEAS, Green Gt. No. 303 20c
- VEL, large box 28c
- FAB large box 28c
- TUNA Tuxedo No. 1/2 can 25c
- BABY FOOD Libbys 3 for 25c
- HERSHEY'S 8 OUNCE CAN CHOCOLATE SYRUP 18c

FRESH FRUITS AND VEGETABLES

- BANANAS lb. 12 1/2c
- CARROTS large bunch 7 1/2c
- LETTUCE lb. 10c
- GREEN ONIONS bunch 5c
- RADISHES bunch 5c
- BLUE GOOSE LEMONS lb. 10c
- THOMPSON SEEDLESS GRAPES lb. 12 1/2c

PIGGLY WIGGLY QUALITY MEATS

- FIRST CUT CHUCK ROAST lb. 55c
- PORK LIVER Sliced lb. 39c
- BEEF SHORT RIBS lb. 39c
- Sliced BACON Arm. Star lb. 69c
- WHITE TROUT lb. 23c
- SWIFT'S PREMIUM DRESSED FRYERS lb. 69c
- ARMOUR'S STAR HALF OR WHOLE PICNICS LB. 43c

- LUSTER CREAM \$1.00 SIZE SHAMPOO 59c
- CHAMBERLAIN'S \$1.00 SIZE HAND LOTION 53c
- PEPSODENT TOOTH BRUSH 33c
- COLGATE 75c SIZE Dental Cream 39c
- LADY GRACE 10c SIZE HAIR OIL 5c

- GOLD MEDAL 10 LB. BAG FLOUR 89c
- SUGARKIST 8 OZ. BAG MARSHMALLOWS 15c
- KRISPY CRACKERS lb. 27c
- PAPER Napkins 60 Ct. 12 1/2c
- RAISIN BRAN Box 15c
- FRIZZ Ice Cre. Mix 2 for 29c
- DOG FOOD Pard Can 15c
- PRINCE ALBERT Can 10c
- TOMATOES 3 No. 1 Cans 25c
- GRAPE JUICE B. Ross qt. 39c
- HUMPTY DUMPTY 1 LB. CAN SALMON 39c

HI-C 46 OZ. CAN ORANGE ADE Can 29c

## Society News

THE MULESHOE JOURNAL, Thursday, August 17, 1950

### Mrs. Aubrey Heathington Honored With Bridal Shower Thursday Afternoon

### Fidelis Class Meets Thursday

The Fidelis Class of the First Baptist Church met in the home of Mrs. W. R. Young with Mrs. N. C. Moore as co-hostess, Thursday, August 10 for their regular business and social meeting.

The meeting opened with a prayer by Mrs. Ray Griffith and each member answered roll call with a favorite Bible verse.

Mrs. A. W. Crow, Mrs. R. D. Precure, and Mrs. I. L. St. Clair were appointed to serve on the year book committee and Mrs. T. C. Young, Mrs. L. T. Green, and Mrs. J. W. Peeler on the nominating committee.

Miss Ray Buster, on furlough from Brazil, brought us an interesting talk on our girl in Brazil. Another visitor was Mrs. Karl Lovelady.

The meeting was closed with a prayer by Ray Buster. Refreshments of a salad plate, cake and tea was served to the following members and visitors: Mrs. C. A. Barnett, Mrs. W. B. McAdams, Mrs. Joe Damron, Mrs.

The home of Mrs. Bill Moore was the scene of a bridal shower Thursday, August 10, between the hours of three and five o'clock, honoring Mrs. Aubrey Heathington, the former Beverly Casey.

Hostesses with Mrs. Moore included Mrs. R. A. Bradley, Mrs. Durwood Green, Mrs. Morris Childers, Mrs. Ray Keeling and Mrs. Clyde Brown. Thirty-five guests autographed a satin and lace covered, hand-painted, bell shaped, bride's book made by Mrs. Brown.

After reviewing the gifts displayed on the lace covered tables in the bedrooms, guests were served individual cakes, mixed nuts and lime punch. The dining room table cover of lace over blue was centered by a mirror holding two interlocking white satin wedding rings using white asters as the gems and bearing streamers saying "Beverly" and "Aubrey". Blue lace candles in silver holders flanked this arrangement. Summer flowers were used throughout the house.

I. M. Stinson, Mrs. W. F. Harrison, Mrs. A. W. Crow, Mrs. Arlie Thomas, Mrs. L. T. Green, Mrs. Ray Griffith, Mrs. J. V. Peeler, Miss Ray Buster, Mrs. Carl Lovelady, and the hostesses, Mrs. N. C. Moore and Mrs. W. R. Young.

### Fidelis SS Class Honors Teacher

The Fidelis Sunday School Class of the First Baptist Church honored their teacher, Mrs. Hattie Griffiths, with a coffee in the home of Mrs. R. L. Jones August 14 at 9 a. m. Hostesses for the occasion were Mesdames Lou Green, Vivian McAdams, Mary Young and Jones.

Coffee and gingerbread squares topped with whipped cream were served to Mesdames Jack Cox, Mae Busbice, Loie Precure, Jackie Tate, Mary Thomas, Mae Schuster, Lila Pence, Lavina Crow, Billie Mathis, Naomi St. Clair, Maude Lovelady, Viola Layne, and Misses Ray Buster, Pamela St. Clair, Nell DeShazo, Billie Jones and the honoree.

### Sorority Held Buffet Supper

The Epsilon Chi Chapter of Epsilon Sigma Alpha had a buffet supper Wednesday night at the home of a member, Mrs. Marjorie Precure. Members present were Miss Wyneth Bigham, Billie Jones, Jean Lovelady, Jerry Farrell, and Ann Howell.

Guests attending were Carroll Howell, Karl Lovelady, Willis Farrell, Mr. and Mrs. Tom Hunke, Donald Green, Miss Margaret Johnson, Jane Scott, and Kenneth Precure.

Miss Jane Scott has been chosen the Sorority's "August girl."

### Pleasant Valley News

Mr. and Mrs. Floyd Andreas and Mr. and Mrs. George Didlake, of Roswell, motored to Durango, Colo., points in New Mexico, then to Phoenix and back to Muleshoe.

Mrs. Kenneth Osborn, of Hobbs, and Mr. and Mrs. Sam McKinstry, of Hagerman, N. M., are spending a week in the Oscar and Harold Allison home.

Miss Doris Bickel spent the week end in Lubbock visiting her roommate, and friends at Tech.

Mrs. B. H. Bickel and daughters were shopping in Clovis Monday.

Mr. and Mrs. George Dulin and daughters, of Robstown, spent last week in the J. E. Dulin home.

Tommye Sue Short is spending this week visiting her grandfather, T. G. Dulin.

### PLEASANT VALLEY SOCIAL CLUB

The Pleasant Valley Social Club met Wednesday, August 9, with Mrs. Gerald Allison as hostess. During the business meeting it was decided to meet on Friday, August 11, to work on cornice boards and curtains for the community house. It was also decided to have a picnic Saturday, August 26, at the sand hills.

Eight members were present: Mesdames Andreas, Dulin, Bickel, Reeder, O. K. Angeley, R. L. Roubinek, Oscar Allison, Gerald Allison, and one new member, Mrs. Stevens. There were also several guests, Mrs. Geo. Didlake of Roswell, Mrs. Kenneth Osborn of Hobbs, Mrs. Sam McKinstry of Hagerman, and Miss Doris Bickel. Next meeting will be in the Oscar Allison home.

### Miss Beverly Craig, Mr. Joe Mack Wagnon United In Sunday Ceremony

Muted intonation of a quartet provided the musical background for the ceremony which united Miss Beverly Craig, daughter of Mrs. Ray Hawthorn of Muleshoe, and Mr. J. W. Craig of Bryan, to Mr. Joe Mack Wagnon, son of Mr. and Mrs. W. B. Wagnon of Muleshoe.

The recitation of vows was performed at 2:30, August 13, at the Muleshoe Church of Christ with Ebb Randol, minister, officiating.

Miss Craig entered on the arm of Mr. Ray Hawthorn to a nuptial setting dominated by illuminated tapers and basket arrangements of white gladiolus and palm foliage.

A summer wedding dress of taffeta and white net fashioned with a decollete yoke and bouffant skirt of ballerina length was completed by a cascading lace edged illusion veil. She carried a colonial bouquet of gardenias and stephanotis.

Attending the bride as matron of honor was Mrs. Dixon Wagnon, of Lubbock. She wore a matching gown of bud green and carried a pink bouquet of pink rose buds.

Miss Jane Moody, Graham, served as bridesmaid, wearing pale yellow and carrying cream rosebuds.

Brother of the bridegroom, W. B. Wagnon, Jr., served as best

man. Another brother, Dixon Wagnon of Lubbock, served as bridegroom's man.

Preceding the ceremony, Mr. Wiley Baker sang "Indian Love Call" and Mr. Jack Baker sang "Because." A prayer closed the ceremony.

Upon returning from a trip to New Mexico, the couple will live in Muleshoe.

For travel the bride wore a mustard gold wool jersey, with forest green and brown accessories, and

wearing a gardenia corsage. Out of town guests were from Graham, Lubbock, Midland, Odessa, Brownfield, and Houston.

### BREAKS BONE IN FOOT

Mrs. S. H. Engram had the misfortune to break a bone in her foot. She and Mr. Engram had gone to the truck garden north of town to get some vegetables. She stepped on a rock which turned, breaking the bone.

### FARLEY INSURANCE AGENCY

FIRE, CASUALTY, POLIO, AUTO FINANCING  
MULESHOE STATE BANK BLDG. PHONE 375-W

as advertised in  
**GLAMOUR**

## Setting the Stage for Fall



A. It's a junior honey in anybody's language! High styled Mary Lane junior hit created in famous 100% wool Nottingham Tweed with dashing button-tab cuffs and clever button pockets! Looks adorable on and is perfect for campus wear, dates and football games. Cravenette to shed showers. Junior sizes.

\$29.75



B. Juniors everywhere are talking about this adorable suit! It's a come hither smartie designed just for juniors with that heart-melting young look that juniors love! Beautifully detailed and cut in Americas finest 100% wool sheen gabardine with hand bound button holes and self buttons. Its little boy collar is fated for flattery. Sparkling new fall colors. Regular sizes.

\$39.75

A.

## Use our convenient Layer-Way Plan!



C. A glowing welcome to fall... Mary Lane's brilliantly styled "Panel Pretty" coat with striking design detail in front and back. It has the beauty of utter simplicity, delicately accented with feminine paneling. There's unexcelled workmanship throughout this fine coat that is a symbol of the quality found in all Mary Lanes. Cut in very fine quality Sheen Gabardine of 100% wool in exciting array of new shades. Fully satin lined. With or without zip lining. Regular sizes.

\$49.75



D. So right for fall in every way! Wear it with proud assurance for it's a famous Nottingham Tweed topper of 100% wool expertly tailored by the master tailors of Mary Lane coats and suits. An exclusive with our store. Combined with a Mary Lane Nottingham Tweed suit it makes a striking three piece outfit that everyone will admire! In Brown or Gray. Regular sizes.

\$29.75

as advertised in  
**VOGUE**

# COBB'S

4-WAY HAIR SHAPING  
"SIX SNIP" SHINGLE

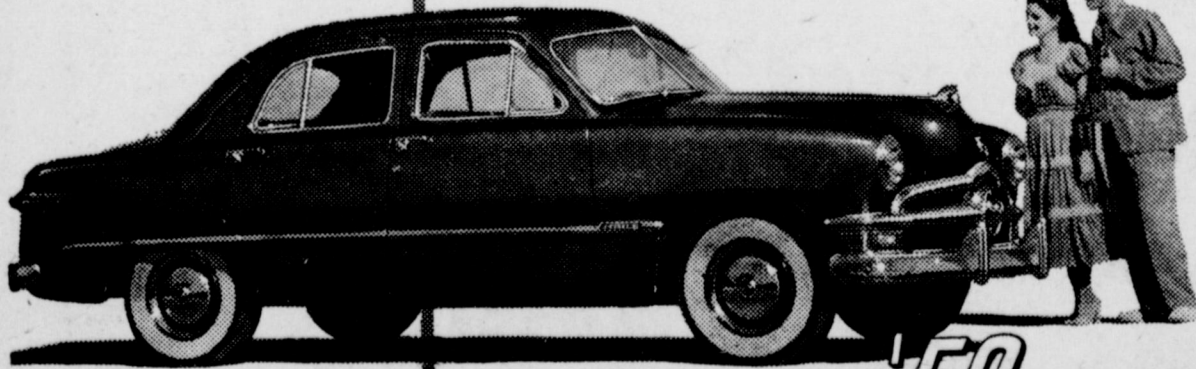
New! Wonderful! Let us create a just-for-you exciting hair style! Shaped to flatter—long enough to curl prettily—short enough for easy grooming.

**MULESHOE BEAUTY SHOP**  
Phone 114-W  
Lucille Cherry Caroline Moore

## Upper bracket Beauty

For the second straight year, Ford has received the Gold Medal award as "Fashion Car of the Year." And its good looks are matched, as owners will tell you, by its fine-car quality. Take a "Test Drive" in this '50 Ford and you'll find it has the "feel" of America's finest cars, too. We call it "big-car roadability"—you'll call it the smoothest, quietest ride on wheels. You'll agree Ford's

THE ONE FINE CAR IN THE LOW-PRICE FIELD



White sidewall tires and wheel trim rings optional at extra cost.

## '50 Ford

## Low bracket Cost

Compare the '50 Ford, feature for feature, with cars costing hundreds more! Only Ford, in the low-price field, offers an engine choice of either the 100 h.p. V-8 or its companion-in-quality, the 95 h.p. Six! Only Ford offers a "Lifeguard" Body! Only Ford offers 35% easier-acting King-Size Brakes! And no car offers a bigger combination of savings—savings in original cost, savings in running costs and the long run savings that result from Ford's high resale value.

"TEST DRIVE" IT AT YOUR FORD DEALER'S TODAY!



**MOTOR CO.**

Muleshoe, Texas







Entered as second-class matter at the Muleshoe Post Office under the Act of Congress, March 3, 1897.

Subscription Rates  
TERRITORY, Year . . . . . \$2.00  
OUT OF IMMEDIATE  
TERRITORY, Year . . . . . \$2.50

CHRISTIAN SCIENCE SERVICES  
"Mind" is the subject of the Lesson-Sermon which will be read in all Churches of Christ, Scientist, on Sunday, August 20.

The Golden Text is: "Blessed be the name of God for ever and ever: for wisdom and might are His: . . . He giveth wisdom unto the wise, and knowledge to them that know understanding" (Daniel 2:20, 21).

Among the citations which comprise the Lesson-Sermon is the following from the Bible: "Let this mind be in you, which was also in Christ Jesus" (Philippians 2:5).

The Lesson-Sermon also includes the following passage from the Christian Science textbook, "Science and Health with Key to the Scriptures" by Mary Baker Eddy: "When we fully understand our relation to the Divine, we can have no other Mind but His,—no other Love, wisdom, or Truth, no other sense of Life, and no consciousness of the existence of matter or error" (page 205).

### Littlefield To Present Big Show

LITTLEFIELD, Aug. 15—A two-hour variety show staged by Seymour Davis Productions of Oklahoma City will visit Littlefield Aug. 30-31 to give two benefit shows for the Lamb County Youth center.

Ticket sales, conducted by Lamb County civic groups, have passed the 1,000 mark already, and with interest in the project mounting, prospects are good for raising enough money to complete the \$3,500 Youth Center building now under construction. About \$5,000 is needed.

Sponsored by the County Wide News, the Seymour Davis show will be seen at 8:30 p. m. Wednesday and Thursday, Aug. 30-31, in Seely stadium. All proceeds will be turned over to the Youth Center fund.

Judge: Well, Sam, I see you're back for fighting with your wife. Liquor again?  
Sam: No, sah, Jedge, she licked me dis time.

### RABSON DISCUSSES Our Foreign Policy



Roger W. Rabson

Gloucester, Mass., August 11—The country is disappointed by setbacks in Korea and alarmed at the possible prospects of a third World War less than five years after the second. Even if we do succeed in Korea, it will not cause enthusiasm among us—only relief. For all thinking Americans know by now that the Russian objective is subjection of the entire world. So, of course, any "peaceful" solution of the Korean problem can only be temporary. For Russia's policy is to divert America's attention from her strategy, disperse and scatter U. S. troops as thinly as possible over the globe and to attack all "soft spots" everywhere from without and/or within.

**PAST STUPIDITY**  
We may be our own worst enemies. We have been blind and foolish and some among us have even committed treason. Who on behalf of the U. S. consented at Yalta to the cutting in half of Korea, with Russia given control of the best developed industrial part of the country? Who withdrew U. S. aid to Nationalist China because Chiang Kai-shek refused to take Communists into the government? China would have been a bulwark against tyranny in the Orient. Who denied the military importance of Korea and Formosa only a few months ago?

Who ordered State Department files stripped of "derogatory" information on employees as early as four years ago? Who put Alger Hiss in high position at the formation of the U. N. and at the world-dividing conference at Yalta? Who partitioned Germany so that the U. S., Britain and France had no access to its main city and capital except by grace of the Russians? Who withdrew our forces from Korea months ago? Who failed to deliver what the Non-Communist government asked in military supplies? It doesn't look to me as if our government has been operating for us. It's actions have encouraged the spread of communism caused us anxiety of mind and a lien on our pocketbook.

**PRESENT POLITICAL TRENDS**  
Months ago Senators Taft, Knowland, and McCarthy, among others, called attention to the danger in the Orient and the need for protective action. Today the President still appears loathe to reorganize the government on a non-partisan basis. There is still a failure to appoint the best brains and ability in the country to the most important administrative positions. Also there is a general feeling in Congress that all of Russia's friends have not been cleaned out of government departments.

If a real emergency develops in the near future, we have reason to believe that price, wage and material controls will go into effect immediately. Yet, it looks as if neces-

sary action would be delayed if possible until after the coming Congressional elections. If controls come again, we should let our Congressmen know that we want good judgment and restraint on the President's appointees to control jobs. The American people know now that they were pushed around by quite a few political crackpots of questionable loyalty during World War II.

**OUTLOOK FOR COMMODITIES AND HOUSES**  
The transportation of foodstuffs great distances and possible losses of food-carrying vessels is always to be anticipated under war conditions. Therefore, no curtailing of crop production need be expected in the next year. A sharp crack-down on civilian consumption can be expected before the summer is over. Now may be a good time to buy an automobile; but there is no reason for now hoarding foods, clothing or shoes. There will be some inventory accumulation in business; but not on a large scale.

The Korean war will tend to make prices fairly firm for the present. This applies especially to foods and livestock. The latter may drop in late summer or early fall. Grains will tend to drop too unless weather or war developments interfere. Industrial materials will rise moderately. This applies to metals, textiles, and building materials. Real estate, especially residential, could have an earlier slump than now anticipated because of an expectation among younger men of being drafted. This could curtail home purchases. All of these are of necessity short-term price trends, subject to the "risk of war". If great amounts are now thrown into defense, our government must cut civilian spending. If not, we are in for more inflation. We all know how dangerous that is.

### Company Grade Officers Wanted

AUSTIN, Aug. 15—Regardless of arm or service, company grade officers of the civilian components may apply for extended active duty. Col. Oscar B. Abbott, Chief of Texas Military District announced today.

Previously it was announced that only certain arms and services were open to company grade officers desiring extended active duty. Restriction is no longer in force. Applications of company grade officers will be accepted by the Army as long as the maximum age requirements of 41 for lieutenant and 45 for captains are met.

At the same time, Col. Abbott announced that vacancies still remain for majors and lieutenant colonels for extended active duty in the Medical, Dental and Medical Service Corps. Field Grade officers not now eligible for active duty because of their arm or service are being advised to keep in contact with their unit instructors for changes in requirements.

### TODAY'S meditation



THE WORLD'S MOST WIDELY USED DEVOTIONAL GUIDE

Thoughts From the Book of Hebrews  
"How shall we escape, if we neglect so great salvation; . . . ?" (Hebrews 2:3). Read Hebrews 2:1-10.

We have all become familiar with the word escapism. Men seek ways of escape from the defeats of the past, the tensions of the present, and the anxieties of the future. The Scriptures emphasize the need of another escape—the escape from the sins that so easily beset us. Our way of escape is provided by the salvation Christ offers. To shun or to neglect this important matter is fatal.

Some years ago fishermen went out early one morning to where their nets were anchored. Suddenly storm clouds appeared in the sky. A few of the men, realizing the threatening danger, left their nets in the sea and made for the shore. The others, thinking of the loss of nets and fish, bent their energies toward gathering them into the boats before pulling for the shore. Before the task was completed, the storm broke upon them. They all perished. They neglected to embrace the opportunity to escape at the first ominous signs of the storm.

God offers to us a great salvation. It is our way of escape from the sins and trials of life. Peril lurks in delay. Now is the day of salvation.

**PRAYER**  
Save us, O Lord, from the fatal sin of neglect. Make us diligent in our Christian duty. For Christ's sake. Amen.

**THOUGHT FOR THE DAY**  
The day of peril is too late for preparation.  
Sidney Davison (Ontario)

**WANT A VACATION?**  
Mechanization has been moving rapidly toward the day when it conquest of the farms, and horses began to disappear, it looked as if the animal would be first to go.

Now it looks as tho the tables have turned and the farmer's muscles may be on their way out faster. Electricity and a new invention have turned the trick. For a number of years farmers have been using electricity to water their cows, sometimes feed them, and then milk them. This new invention goes a step further. Bossie stands on a platform and the milk milks her.

The new gadget pipes the milk directly to a refrigerated cooler. Why not go a step further and have the milk piped right into the dairy in town? The farmer could sit on his front porch.

Some men are known for their deeds. Others for their mortgages.

### Our Expanding Economy Demands Power Increase

History will undoubtedly record the electrification of the farm homes of America as one of the outstanding accomplishments of the first half of the 20th Century. With nearly 80 per cent of the country's farms now powered by electricity, as compared with only 11 per cent when the Rural Electrification Administration was established in 1935, it can hardly be doubted that a major feat of social engineering has been achieved during the last 15 years.

Those who took part in the movement to bring electricity to the farm have every reason to be proud of its success. And this pride of accomplishment should strengthen our determination to succeed in the immensely difficult job which remains ahead of us as we enter the second half of the century.

That task, as I see it, is the building of a power system adequate to support our expanding American economy and our rising standard of living. Such a system will have been created when the Nation's power plant can deliver to consumers all the electricity they want, when they want it, at the lowest possible rates consistent with sound business principles.

At present, as members of rural electrification cooperatives well know, we are a long way from that goal. In many parts of the country, power supply is seriously short, transmission facilities are inadequate, service is unreliable, and rates are unreasonably high.

Administrator Wickard further states that "if farm people are to make the fullest use of electric

power, that power will have to be made available to them at rates they can afford to pay." Although the Bonneville Power Administration sells wholesale electricity to cooperatives at three and one-half mills per kw-hr and private companies in various parts of the country have established rates of from five and one-half to seven and one-half mills, rates to cooperatives in the New York-New England region, for example, still exceed one cent and run as high as 2 cents per kilowatt hour.



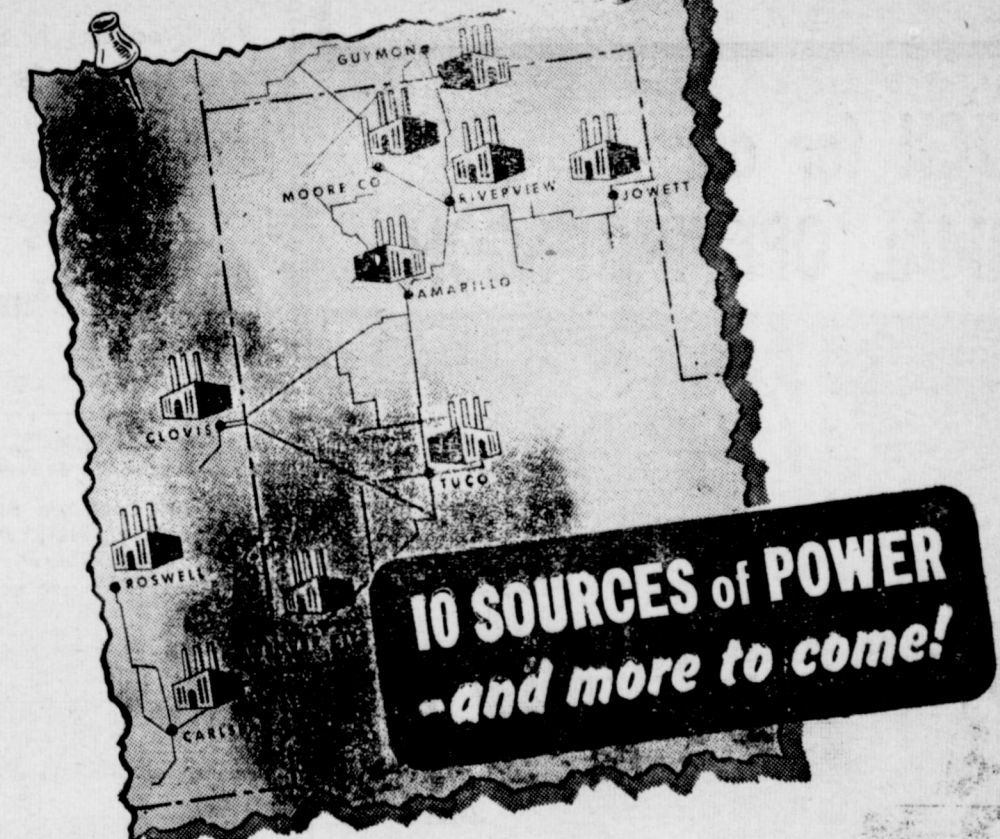
WORLD'S MOST COPIED TRACTOR

When you add Ferguson's unusually high-quality standards to these features—and the many others you will see in an actual demonstration on your farm—we know you'll agree that although you can buy a cheaper tractor, you can't buy a better tractor at any price.

Ask for a demonstration on your farm. Find out for yourself why so many others have tried to copy the features of the revolutionary Ferguson Tractor.

**D. H. SNEED SUPPLY CO.**  
Phone 364-J Muleshoe, Texas Plainview Highway

**The FERGUSON SYSTEM makes the DIFFERENCE!**



10 base load power plants are operated by your Public Service Company to meet your needs for dependable, low-cost electric service. These 10 power plants are strategically placed approximately 100 miles apart.

These 10 great power plants are tied together by a 2700-mile network of transmission lines. The heart of our system—a 115,000-volt transmission line—makes electric power generated at our Riverview plant available at Carlsbad, New Mexico, if needed.

To further assure you a continuous and economical supply of electricity, your Public Service Company has provided a central load-dispatching center which allocates generation to each plant for most economical operation. In this manner the local area plant is still able to meet increased demand for electric service within its own area when necessary.

To meet your growing need for electric power, important 1950 plant expansions will be made at Amarillo and Moore County, and a new unit has already gone on the line at Roswell. Yes, your Public Service Company is on the job keeping ahead of the rapid growth of the Panhandle - Plains - Pecos Valley - Eastern New Mexico area.

**SOUTHWESTERN PUBLIC SERVICE COMPANY**  
28 YEARS OF GOOD CITIZENSHIP AND PUBLIC SERVICE

You're sure to be ahead with CHEVROLET TRUCKS



**Better Buy**  
Chevrolet trucks with Loadmaster engine offer more net horsepower—proved by certified ratings on engines used as standard equipment in conventional models of the five most popular makes, 13,000 to 16,000 lbs. G.V.W.

**Better Operation**  
Chevrolet offers Valve-in-Head engine—rugged dependability, economy, quality. Chevrolet cuts maintenance costs—makes real reductions in operating expenses.

**Better Resale**  
Chevrolet trucks have led in sales for eight consecutive production years—proof of owner satisfaction which makes Chevrolet's resale value traditionally higher.

PLUS—Chevrolet Advance-Design Truck Features!

- TWO GREAT VALVE-IN-HEAD ENGINES • THE NEW POWER-JET CARBURETOR • DIAPHRAGM SPRING CLUTCH
- SYNCHRO-MESH TRANSMISSIONS • HYPOID REAR AXLES • DOUBLE-ARTICULATED BRAKES • ADVANCE-DESIGN STYLING • BALL-TYPE STEERING

**C. & H. CHEVROLET COMPANY**

PHONE 12 YOUR CHEVROLET DEALER MULESHOE, TEXAS

BUY SELL LOAN RENT TRADE

# USE THE CLASSIFIED FOR RESULTS

RENT TRADE BUY SELL LOAN

## CLASSIFIED AD RATES

The minimum for any classified ad is 35c; 2 1/2 cents per word for one insertion; 1 1/2 cents per word for additional insertions. All classified advertising is strictly cash in advance.

THE MULESHOE JOURNAL, Thursday, August 17, 1950

**OUR BEST HOG MARKET IS AT CLOVIS**

**CLOVIS HOG CO.**

Clovis, N. M.  
Phone 6122 - Box 267

**A MILLION DOLLARS WORTH OF CONTENTMENT**

160 A. Farm, five miles from Bovina. Fair improvements. 150 A. in cultivation, being summer-tilled for wheat. Very nice, smooth and level and plenty of irrigation water. Possession on purchase. \$125. per acre.

320 A. eight miles from Bovina. 280 A. in cultivation. 30 A. extra good grass. Very little improvements. About 170 A. will irrigate. This is the best price that we have heard of this year. Only \$50. per acre. Possession on purchase.

Several more Quarters—Halves—Sections, of top quality wheat land. Contact

**O. W. RHINEHART**  
Or  
**W. E. McCUAN**  
Bovina, Texas 32-3tc

**DEPT VACANT TO SELL**—Modern four room and bath home. 45x60 ft. lot. Will sell to party on installment plan. Pay like rent. Property worth the money. G. H. Davenport, Box 126, Muleshoe. 33-2tp

**FOR SALE**—Used gas ranges. Good condition. Priced right. Muleshoe Liquefied Gas Co. 33-3tc

**WANTED**—ironing to do, price reasonable. 1201 E. Third St. 32-5tp

### REAL ESTATE SPECIALISTS

If you are contemplating buying property in or around Muleshoe the person to see is Emette Cross, who always has listings on the best available property.

Large farms, small farms, ranches, houses, residence lots, or whatever your needs might be, be sure you check with him before you buy.

Listen to KVOW 7:45 a. m., 1490 on your dial, six days a week.

**EMETTE CROSS**  
Real Estate & Auctioneer  
East side of Muleshoe on Lubbock Highway

**HAIRY VETCH SEED** for sale. Cleaned and sacked. Bill Millen. Muleshoe, Texas. 32-3tp

**FOR SALE**—3-room modern house to be moved. M. O. Nigh, Progress. 3014tc

**FOR SALE**: 500 bushels of Westar Seed Wheat, and Oliver wheat drill 16-10. R. L. Kimbrough, 12 miles north of Muleshoe. 33-3tp

### Come to see us, Folks!

• \$30.00 per acre on two sections of land that is located here in Bailey County, about half farm land and half grass, three good windmill, water wells, fenced and cross fenced, a good stock farm. Terms.

• A well improved irrigation farm, shallow water, electric irrigation well, half minerals reserved. \$150.00 per acre.

• If you have a good 40, 60, or 80 acre tract, give us a listing. Let us sell your property now and you can locate where you like.

**MULESHOE REAL ESTATE AGENCY**  
**CLYDE A. BRAY, SR.**  
Box 793 - Muleshoe - Phone 282

### FARMS AND HOMES FOR SALE

We have all kinds and sizes of farms and homes for sale. Come to see us before you buy. If you have something to sell give us a listing on it. We are having some prospects for just what you have.

### SEE US FOR A SQUARE DEAL

**HANOVER & DAY REAL ESTATE**

On Morton Highway just North of Courthouse

**FOR SALE**: Concord grapes at W. H. Awtrey's farm 3 miles north and 1 west of Muleshoe. 34-1tp

**FOR RENT**—Bedroom, innerspring mattress, near bath, private entrance. 1201 E. Third St. 32-3tp

**STANLEY PRODUCTS**  
Phone 24J  
**MRS. ELGIN BOYTER** 6-tfc

**FOR SALE**—Nice clean rye seed mixed with 10% hairy vetch and other grains, in bulk, sell any amount 1 bushel to 1000, at wheat prices. Allison Cassidy, 2 miles on Plainview highway and 4 1/2 North on pavement. 33-4tp

### We Specialize In Good HAIR CUTS

See Us Next

**Mack's Barber Shop**

**LUZIER'S Fine Cosmetics & Perfumes**

1101 East 2nd St.  
**MRS. E. E. HOLLAND**  
Phone 256-W

**FOR SALE**. Austra White pullets \$1.00 each. Large enough to lay. Call at Lazbuddie store. W. C. Dane. 34-1tp

**RESIDENCE LOT**—For sale or trade. FHA approved. Bill Collins. 33-3tc

**FOR RENT**—Unfurnished apartment recently redecorated. 923 W. 1st. St. S. O. Workman. 34-1tp

**FOR SALE**—Last year's Grm Alfalfa Seed, re-cleaned, 35c lb. See Kenneth Priboth, 3 1/2 miles N. E. of Muleshoe. 34-1tp

**SPENT WEEK END HERE**  
**FOR RENT**—3 rooms and bath. Across Legion Hall. Mrs. Anna Schroeder. 33-1tp

**DR. B. Z. BEATY DENTIST**  
Across Street From Muleshoe Motor Co.  
**OFFICE HOURS**  
9 a. m. to 12 — 1 to 5 p. m.  
OL. Pno. 248 - Res. Pno. 253-W

**FOR RENT**—3 room modern house. See Spencer Beavers at Bovell Motor Supply. 34-1tc

**FOR RENT**—3 room and bath. 2 room furnished apartment. Mrs. J. A. Truelock, South Main. 34-1tp



### LET US HELP YOU BUY A GOOD HOME

320 acres the best of land and well improved. 2 good irrigation wells.

320 acres north of town. Well improved. \$100.00 per acre.

320 acres near Lazbuddie. Good irrigation well. Fair improvements. \$150.00 per acre.

A good 80 acre tract on the highway with a good irrigation well. Can be bought worth the money.

One of the best 80 acres east of town. 6 room and bath house. This is a good farm.

Plenty of other good listings and we welcome more. We sell them and don't keep them.

We have some good houses in the city for sale.

Notary  
**C. L. "HAPPY" DYER**  
Phone 17 Muleshoe

### REAL ESTATE FOR SALE

City property; dry land farms; small, medium and large irrigated farms; some good buys and trades. Need more listings.

**J. H. FARLEY REAL ESTATE & INSURANCE**  
Phone 375-W  
Muleshoe, Texas

**Over Bank**  
Wanted—Will take orders for custom made Venetian Blinds.  
**Howard Cor, Cox Radio Shop.** 23tfc

**JOHN DEERE** Implement Agency for sale. Bud Holdeman. 34-2tp

**SPECIAL PRICES**  
On all Radiators. International Farmall Cores \$25 exchange.  
**STOVALL-BOOHER**  
Radiator Sales & Service  
Plainview, Texas 13-tfc

**FOR SALE**—Five room and bath. 901 West 5th, phone 198-J 28-tfc

**FOR SALE**—'49 Chevrolet truck, 1 1/2 ton. Low mileage. See D. Clemens. 32-3tp

**FOR SALE**: 11 baby caves. 6 mi. north on Friona highway. 3/4 mi. west. J. T. Barnes. 34-1tp

**FOR RENT**—3 room house, four miles out on Plainview highway. see H. W. Blair. 33-2tp

**WANTED**—6 per cent loan \$6,000 to \$8,000. First mortgage on \$30,000 investment. Write Box N, Muleshoe Journal. 34-3tp

**FOR SALE**—Grapes. 2 1/2 miles north. C. E. Briscoe. 34-1tp

**BEDROOM FOR RENT**—903 West Third. Phone 274-W. 32-tfc



You are entitled to a profit on your savings, and you..

have it here with Safety



**MULESHOE FOR INFORMATION SEE**  
Mildred Davis  
Western NFLA  
Building  
Muleshoe  
**FIRST FEDERAL SAVINGS AND LOAN ASSOCIATION**  
Clovis, N. M. P. O. Box 470

## MIRACLES Are Not Out Of Date Many A Motor Car....

which seems to be dying, can be restored to life with a few hours work by mechanics who know how to make hair-line adjustments.

**From A Set Of New Spark Plugs...**  
to a complete overhaul, our service department is ready to figure what you need for satisfactory transportation.

**Our Staff Of Mechanics...**  
is the same type of specialist we have always had and are specially trained for their job. They do not guess.

**The Economical Tune Up**  
is needed at regular intervals by every car, regardless of its age or make. Quite frequently it gives you results which seem like a modern miracle.

**C. & H. Chevrolet**  
PHONE 12 — MULESHOE

TRY

# SUNLITE BREAD

Now On Your Grocers' Shelves

WATCH for our FORMAL OPENING SOON



**Here's the new 2-row Oliver Cotton Master**... a completely modern power-driven, power-lift harvester. It operates efficiently at speeds up to six miles per hour... picks as much as 20 bales a day.

Specially designed stripping teeth, and wide, flared gathering-unit throat openings gather cotton that is high or low on the stalk. The 38-inch spacing of the gathering units will handle all conventional row widths. Adapted to the harvesting of storm-proof varieties, the Oliver Cotton Master does a thorough job of separating the cotton from the stalks, breaking open bolls and knocking out moates, trash and dirt.

See us for full information on this new pull-type Oliver Cotton Master that is quickly attached to any tractor... that speeds up the cotton harvest, and helps you deliver a high-grade product to the gin.

**MURPHY-McDONALD IMPLEMENT CO.**  
Plainview Highway  
MULESHOE, TEXAS

**Need a Plumber?**

WE HAVE EVERYTHING YOU NEED TO FURNISH YOUR BATHROOM

Save time... Save money... Save trouble with quick, efficient, low cost repairs.

Guaranteed service at all times. Call us whether your job is large or small.

**LAMBERT PLUMBING CO.**  
Phone 96 Muleshoe, Texas

DOMESTIC COMMERCIAL INDUSTRIAL PLUMBING

for the LUCKY QUEENS a FREE TRIP to HAVANA

In connection with the 33rd Annual Panhandle-South Plains Mid Century Fair to be held at Lubbock during the week Oct. 2 thru 7, there will be chosen TWO lucky queens from the South Plains Area... both will be given an all expense tour for them and a companion of their choice to Havana, Cuba, or \$500 in cash... Below is your entry blank... from these entry blanks will be chosen the final candidates... and from the candidates will be chosen the two Queens and the Queens' courts of Honor.

Entry must be 16 years or older, married or single, and a resident of the South Plains Area... Mail Blank to Junior Chamber of Commerce, Lubbock, not later than Tuesday noon, August 22nd. Only one entry blank per person.

This Entry Blank Is Worth 1000 Votes

Entry Blank

Name .....

Address .....

Age ..... Phone .....

**SAVE**

DOLLARS BY BUYING COMBINES & OTHER FARM MACHINERY AT JOHNSON & NIX.

**Allis-Chalmers Combines**

Four used Allis-Chalmers combines priced from \$500 to \$1,000. All are in excellent condition and ready for harvest. 1945, 1948 and 1949 model machines. These machines are real bargains!

**International Harvester Combines**

For one of the cleanest and best combines on the market. We have two new International Harvester machines. One is a large 12-ft. model and the other is a 5-ft. Come by today and let us show you one of these combines. We Can save you money!

**JOHNSON & NIX**  
Phone 116 Muleshoe, Texas