



The Midland Chapter Order of Demolay recently elected officers for the spring term. They are, from left, Bruce Phillips, junior counselor; Greg Collins, master counselor; and Doug Fox, senior counselor. (Staff photo)

Japanese leader to visit Washington

TOKYO (AP) — Japanese Foreign Minister Saburo Okita is to visit Washington next week amid growing feelings of U.S. protectionism and pressure on Japan to increase defense spending following Soviet intervention in Afghanistan. Japanese officials insist there is "no particular significance" to the trip — Okita's first to the United States since taking office last November — other than to prepare for a visit by Prime Minister Masayoshi Ohira in April or May. And they said that Okita, one of the few Japanese politicians fluent in English, will concentrate on economic issues. However, talks also expected to cover the massive Soviet military intervention in Afghanistan, the Iran crisis, and U.S. demands that Japan step up defense efforts. No timetable or agenda has been announced.

For PROMPT SERVICE CALL 682-5311 (Before 6:45 p.m. weekdays. Before 10:45 a.m. Saturday and Sunday) We want you to have YOUR NEWSPAPER ON TIME EVERY TIME The Midland Reporter-Telegram

WOLFE NURSERY

The South's Finest Garden Centers

FERTI-LOME WEED & FEED PRE-EMERGENT COVERS 1500 Sq. Ft. \$8.95	FERTI-LOME LAWN FOOD PLUS IRON PREMIUM HI-CONCENTRATE LAWN FERTILIZER WE RECOMMEND A MONTHLY APPLICATION BEGINNING IN EARLY SPRING THROUGHOUT AUGUST TO PRODUCE A DEEP GREEN THICK LAWN. COVERS 5,000 SQ. FT. 7.95
ROSE FOOD WITH SYSTEMIC INSECTICIDE FEED ROSES AND CONTROL INSECTS IN ONE EASY STEP. THIS WAY THE INSECTICIDE CANNOT BE WASHED OFF OR BLOWN AWAY. ASSURE YOUR ROSES OF THE BEST PROTECTION AGAINST SUCKING AND PIERCING TYPE INSECTS. 5 lb. 3.98	GARDENER'S SPECIAL 25 lb. Ideal for flowerbeds or garden. 7.95 ROSE SPRAY COMBINATION INSECTICIDE-FUNGICIDE FOR CONTROL OF POWDERY MILDEW, APHIDS, LEAF MINERS, MITES AND MANY OTHER INSECTS. QT. 8.98

AVAILABLE AT your NEAR BY WOLFE NURSERY

NOW! TO PLACE CLASSIFIED Want Ads Dial Direct DIAL 682-6222

MC dean named to association post

Camal C. Dakil, dean of students at Midland College, was recently elected president of the Texas Association of Community College Chief Student Affairs Administrators for 1980-81. A native of Wellington, Dakil received his bachelor's and master's degrees from West Texas State University. He has had additional graduate studies at Sam Houston State and The University of Texas at Austin.



Camal C. Dakil

He has served as a junior high school teacher, coach and counselor for the Dumas Public Schools and came to Midland in 1966 as a high school counselor. Dakil's other professional organization memberships include Junior College Student Personnel Association of Texas, Texas Association of College and University Personnel Administrators, Southwest Student Personnel Administrators, Texas Association of College Registrars and Admissions Officers and Texas Junior College Teachers Association.

No-smoking week planned at MC

Midland College's respiratory therapy school will lead a no-smoking week beginning Monday with a lung display and film strip in the Student Union Building. On display in the student snack bar during the noon hour will be replicas of three lungs, one healthy, one displaying signs of emphysema and one showing the ravages of cancer. Thursday's highlight will be a "walk around Midland College" with Midland Mayor Ernest Angelo, Sheriff Dallas Smith, Police Chief Wayne Gideon and MC President Al Langford among the invited participants.

Serbian nationalists sentenced

BELGRADE, Yugoslavia (AP) — Seven Serbian nationalists were sentenced in a Serbian town Friday for "hostile activity" against Yugoslavia and for other crimes, the Yugoslav news agency Tanjug reported. The group, uncovered in 1979, received sentences of between three-and-a-half and nine years by the district court of Cacak, some 60 miles south of here, the agency said.

Church schedules day care hours

Beginning Monday, the Midland Foursquare Church, 415 Alta Ave., will be open to parents who wish to leave their children for a day or two a week. The days will be Mondays and Thursdays. For more information call 683-8569 or 684-5308.

Concert slated

The Galileans, gospel singers, will appear in concert Sunday at 7 p.m. at the First Assembly of God Church, 100 W. Wadley Ave. The group perform songs in English and Spanish. Now one of gospel music's top touring groups, the group is based in Grand Prairie, Texas.

CLASSES in Bargello & Needlepoint CREWEL (Beginning & Advanced) Starting March 24th. Enrollment will be limited. Call for Reservations 697-1241

THE STITCHING POST

Open til 9pm Thursday San Miguel Square Wadley & Midkiff Mon-Sat 10-6

WOLFE NURSERY

The South's Finest Garden Centers

ROSES • GROUND COVER • CAMELLIAS • PETUNIAS • MARIGOLDS • FLOWERING SHRUB • VEGETABLES • FRUIT TREES

SPRING SPECTACULAR!

GROUND COVERS • BULBS • EVERGREEN SHRUBS • TROPICAL FOLIAGE • BEDDING PLANTS • SHADE TREES

PAPERSHELL PECAN TREES FRESH FROM OUR OWN FIELDS! SEE WHAT YOU WILL HARVEST-SAMPLES WITH EACH TREE! WICHITA, STUART, MAHAN, BURKETT, CHOCTAW, W. SCHLEY. 5-6 ft. were 13" now \$8.88 6-8 ft. were 17" now 10.88 8-10 ft. were 22" now 12.88	ROSES LARGE SELECTION OF COLORS & VARIETIES! HYBRID TEA: FORTY NINER, CRIMSON GLORY, PEACE, NOCTURNE, CHRYSLER IMPERIAL, EDITOR McFARLAND, McCREDY'S SUNSET, WHITE AMERICAN BEAUTY. CLIMBERS: BLAZE, PEACE, DON JUAN, QUEEN ELIZABETH. FLORIBUNDA: FASHION, FLORADORA, RED PINOCCHIO. GRANDIFLORA: MONTEZUMA, QUEEN ELIZABETH. 1 gal. SIZE 3.49 ea. PATENTED: LADY BIRD JOHNSON, PERFUME DELIGHT, DOUBLE DELIGHT, ANGEL FACE, YANKEE DOODLE, JACK FROST, MISS ALL AMERICAN BEAUTY, MISTER LINCOLN, KINGS RANSOM, ARIZONA, GYPSY. 2 gal. SIZE 5.49	HARDY SHADE TREES 6-8 ft. tall balled in rich earth CHOOSE: • FRUITLESS MULBERRY • SILVERLEAF MAPLE fast growing, excellent shade reg. 12.99 ea. now 9.88 ea.	
VEGETABLE PLANTS TOMATO, PEPPER, SQUASH, CUCUMBERS, EGG PLANT, AND MORE. 1 3/4" pots 22 ea. 2.49 dozen 4lb. SEVIN DUST -CONTROLS MOST GARDEN INSECTS. 1.99 MARIGOLD TRAYPACKS -VARIETIES & COLORS. 6 plants per pack 89c	PECAN FOOD 10 lb. \$3.98 25 lb. \$8.49 16-8-4 with Iron & Zinc	your CHOICE: TOP SOIL, PEAT MOSS or COW MANURE-40 lb. bags. 2.99 ea. mix or match 5 for \$12	JOB FERTILIZER SPIKES -EASY WAY TO FEED SHRUBS, SHADE AND FRUIT TREES. 5 PAK 3.25 20 PAK 10.99 50 lb. SULFA SOIL-ACIDIFIES SOIL 5.98 50 lb. GYPSUM-ENRICHES AND HELPS BREAK DOWN CLAY SOIL 3.59 V-7 TURF FOOD LAWN FERTILIZER covers 3,000 SQ. FT. 6.99
balled in earth FRUIT TREES 5-8 ft. tall CHOOSE POPULAR VARIETIES OF PLUM, PEACH, PEAR, APRICOT, APPLE, or NECTARINE. 8.99 your choice	DWARF FRUIT TREES CHOOSE: PLUM, PEACH, PEAR, APPLE, APRICOT OR CHERRY B&B 5-6 Ft. Tall 9.99	LANDSCAPE SHRUBS Choose: Golden Euonymus, cherry laurel, Hollyhock juniper, wax ligustrum, or Indian Hawthorne 5 gal. size 14.99	LANDSCAPE SHRUBS CHOOSE WAX LIGUSTRUM, BOXWOOD, DWF. CHINESE 1 gal. reg. 2.99 ea. 2.44 ea. 10 for \$24 EUONYMUS PLANTS GREEN, GOLDEN, GOLD SPOT or SILVER KING. 1 gal. 3.49 ea.
PETUNIA TRAYPACKS -6 plants per pack RED, PINK, WHITE, BLUE, CORAL or BI-COLOR 89c GERANIUMS RED, PINK, WHITE. IN BUD & BLOOM. 4 1/2" pots 1.99 GRAPEVINES -CONCORD, NIAGRA, CATAWBA, THOMPSON, FREDONIA. 1 gal. reg. 3.49 2.99 ea.	PLANT BULBS FOR SPRING COLOR ELEPHANT EAR 49c ea. CANNA TUBER pkg. 1.39 PAHILA TUBER pkg. 1.19 BEGONIA TUBER pkg. 1.19 CALADIUM BULBS -NO. 2 29c ea.	FERTILOME GARDENERS SPECIAL 25 lb. \$7.95 DECO BARK CHIPS 3 cu. ft. bag 3.98 QUALITY HAND TOOLS TROWEL, WEEDER, CULTIVATOR or TRANSPLANTER. 99c ea.	TABLETOP TROPICAL FOLIAGE -to accent your good taste CHOOSE DIFFENBACHIA, SCHEFFLERA, MARGINATA, WARNEKII & FERNS. 6" pots 4.99 ea.

PROFESSIONALISM IS OUR MOTTO! THIS SYMBOL MEANS OUR PERSONNEL HAVE PASSED RIGID EXAMINATION TO BECOME TEXAS CERTIFIED NURSERYMEN. LET ONE OF OUR PROFESSIONALS ASSIST YOU WITH ANY LAWN OR GARDEN PROBLEM.

OPEN 9-6 MON. THRU SAT. 10-6 SUNDAY

127 NORTHLAND SHOPPING CENTER 684-7804

SPECIALS GOOD THRU TUESDAY

Charge it!

Banker, wife face reckless homicide charges

SHERIDAN, Ind. (AP) — A retired banker and his wife have been charged with reckless homicide in the "slavery" death of a 74-year-old man, one of three mentally retarded people who lived in a filthy trailer behind their home for years.

Willard Stafford, 75, and his wife, Olive, 74, were freed on \$50,000 bond after a preliminary hearing Thursday in Hamilton County Superior Court. They will be arraigned March 28.

A charge of involuntary manslaughter also was filed in the death of Virgil Stuart, 74, who was 5-feet, 8-inches tall and weighed only 67 pounds when he died last week. He normally weighed 145 pounds, authorities said.

Stafford retired in 1974 as vice president of the American State Bank at Sheridan, where he had worked for 50 years. Prosecutor Steven R. Nation said he still was trying to determine how the Staffords got custody of three people from a state mental facility at Fort Wayne in 1954.

The other two were identified as Virgil Stuart's brother, Charles Stuart, 57, and Wanda Watkins, 65.

Nation said the three lived in a tiny excrement-filled trailer behind the Stafford's rambling white farmhouse at the end of Main Street in Sheridan, a small town of 2,200 people about 35 miles north of Indianapo-

lis. "For them it was home," Nation said. "It was all they knew — wake up, eat, work and sleep."

Lt. Richard Russell, a sheriff's deputy, said the

three had "jars to use if they had to go to the bathroom, but most of the time they just used the floor."

"It was slavery, (that) is really what it was," Russell said. "I don't

know what else you could

call it." Nation said it appeared that Virgil Stuart "got sick about two months ago and couldn't get up to get his food from the farmhouse, so

he just laid in his bed and starved."

Nation said Charles Stuart lived in the trailer for about 15 years. He suffered frostbite on all his limbs in 1975 while being forced to work on

the farm without any gloves or winter clothing.

He was placed in a Noblesville nursing home after one of his legs was amputated as a result of the exposure.



Coming Saturday Only!

FREE EAR PIERCING
With the Purchase of a pair of 24 karat hypo-allergenic overlay studs at 10.00

Have your ears pierced at Dunlap's Saturday by a trained technician. Beautiful 24 karat hypo-allergenic overlay studs are yours for only 10.00. The ear piercing is free.

DUNLAPS

dellwood mall

Saturday 10-6

NOW! Dial Direct TO PLACE CLASSIFIED Want Ads 682-6222

FLA Shrimp Inc. Proudly Brings You Direct from FLORIDA!!!
FRESH TRUCKLOAD SEAFOOD SALE!
Beautiful Gulf Rock & Pink available.

SHRIMP

SALE THURS., FRI. & SAT. MARCH 13, 14, 15

FRESH FROZEN 5 LB. BOXES	Medium Headless Rock	\$2.59 LB.	IN 25 LB. LOTS 5 (5 LB.) BOXES OR	\$2.99 LB.	10 A.M. to 6 P.M.
---------------------------------	--------------------------------	-------------------	-----------------------------------	-------------------	--------------------------

ALSO SELECT LARGE, JUMBO & BREADED AVAILABLE, TOO!

ALASKAN CRAB LEGS \$3.60 lb. 20 lb. case or \$3.99 lb. 2 1/2 lb. Bags

3/4 LB. REAL MAINE LOBSTER \$3.99 EA. 7 oz. tails \$4.99 EA.

SCALLOPS-FLOUNDER-RED SNAPPER

MERLE NORMAN PARKING LOT ANDREWS HWY. & CUTHBERT MIDLAND

WE PAY TOP PRICES FOR GOLD & SILVER!

We are proud of our high quality seafood. Come by and see before you buy. **LOW, LOW PRICES! FREE RECIPES!**

HERE IS THE SALE YOU'VE BEEN WAITING FOR!!!

THE FREIGHT DAMAGE STORE 2900 W. FRONT THE BIG PURPLE BUILDING

BUYS OUT HUGE FURNITURE FACTORY WAREHOUSES

OVER HALF A MILLION DOLLARS IN FAMOUS BRANDS FURNITURE AS FURNITURE FACTORIES BITE THE BULLET! THEIR LOSS IS YOUR GAIN! HURRY! THIS INCREDIBLE WAREHOUSE STOCK WILL BE SOLD FOR PENNIES ON THE DOLLAR!

LIQUIDATION

DIRECT TO THE PUBLIC

FURNITURE-BEDDING LAMPS & ACCESSORIES FOR AS LITTLE AS 30¢ ON THE DOLLAR

SHOP THIS FABULOUS SALE DAILY 9 A.M. TILL 6 P.M.

RECLINERS START AT \$68.88	ALL WOOD DINING SET TABLE & FOUR CHAIRS' MAPLE OR PINE FINISH \$178.88	MAPLE OR PINE BOSTON ROCKERS \$33.88
-----------------------------------	---	---

ABOUT THIS ANNUAL SALE
THIS ANNUAL PLANNED EVENT HAS BECOME THE MOST WATCHED FOR SALE OF THE YEAR! EACH YEAR AT THIS TIME, THE FREIGHT DAMAGE STORES PUT IT ALL TOGETHER! WE SPEND MONTHS NEGOTIATING FOR WAREHOUSE STOCKS! AND FOLKS WE'VE REALLY DONE IT THIS TIME! TRUCK LOAD AFTER TRUCK LOAD OF SENSATIONAL FURNITURE VALUES, UNLOADED IN OUR STORE, AND WAREHOUSES. COME AND GET IT!

MAGNIFICENT DINING ROOMS CHOICE OF THREE STYLES!

FAMOUS BRAND OVAL TABLE SIX CHAIRS AND LIGHTED CHINA CABINET

\$699.88

CASH OR CREDIT

SENSATIONAL PRICE EXAMPLES

Reg. 1299 ⁹⁵	3 Pc. LIVING ROOM SUITES	-CUT TO	-788 ⁸⁸
Reg. 2399 ⁹⁵	5 Pc. BED ROOM SUITES	-CUT TO	-1488 ⁸⁸
Reg. 469 ⁹⁵	CHROME AND GLASS DINETTES	-CUT TO	-268 ⁸⁸
Reg. 399 ⁹⁵	MATTRESS & BOX SPRINGS	-CUT TO	-178 ⁸⁸
Reg. 1399 ⁹⁶	LIVING ROOM SUITES	-CUT TO	-888 ⁸⁸
Reg. 269 ⁹⁵	FINE—ALL WOOD TABLES	-CUT TO	-119 ⁸⁸
Reg. 999 ⁹⁵	BED ROOM SUITES	-CUT TO	-588 ⁸⁸
Reg. 1399 ⁹⁵	8-Pc. DINING ROOM SUITES	-CUT TO	-888 ⁸⁸

BIG 3Pc. GROUP

COVERED IN PRETTY PLAID MERCURON SOFA-CHAIR AND LOVE SEAT ALL THREE! WHILE THEY LAST

CHOICE OF COLORS!

\$228.88

RULES OF THIS SALE
EVERYTHING WILL BE SOLD ON A FIRST COME FIRST SERVED BASIS! BUY WITH CASH OR TIME PAYMENT PLAN! CASH DEPOSIT REQUIRED ON C.O.D. OR HOLD ORDERS! LAYAWAYS ON DESIGNATED ITEMS ONLY! ALL SALES FINAL NO RETURNS—NO REFUNDS!

THE FREIGHT DAMAGE STORE
2900 W. FRONT 685-3045
THE PLACE TO BUY — IF YOU DON'T MIND PAYING LESS

SHOP OUR HUGE STORE FOR ALL YOUR FURNITURE NEEDS! SEE HUNDREDS OF FAMOUS BRANDS, BEDROOM SUITES, DINING ROOM SUITES, LIVING ROOM SUITES, MATTRESSES, RECLINERS, TABLES, LAMPS, CHAIRS, DINETTES & ETC. ALL PRICED AT FANTASTIC GIVE AWAY PRICES.

Iranians begin electing parliament

By The Associated Press

Iranians voted under sunny skies Friday in the first of two rounds of balloting for the Parliament that Ayatollah Ruhollah Khomeini has said will decide the fate of the 50 American hostages. President Abolhassan Bani-Sadr said holding the hostages was hurting Iran's image, a French newspaper reported.

Khomeini cast his "secret vote" at his Tehran residence, and militants holding the hostages voted inside the 27-acre compound, 132 days after they occupied the embassy and seized their captives.

The Interior Ministry, which supervises the polling, announced that 100 people had been arrested in connection with "certain irregularities...at some polling stations in Tehran."

A ministry statement carried by the official Pars news agency said the irregularities "consisted of incidents...where lists of certain candidates were given to illiterate people at mosques with instructions to vote only for them, and instances where people had been appointed by local committees to fill in the ballot slips for the illiterate."

Tehran Radio said that voting was heavy, especially in the provinces, and that polls remained opened past the 6 p.m. deadline to accommodate the crush of voters.

As polls opened at 8 a.m. in Tehran, a bomb exploded at the

downtown offices of the daily Bamdad newspaper. Right-wing extremists claimed responsibility for the blast, which caused heavy damage but no injuries. A number of radical organizations have previously said the newspaper was "imperialist and pro-western."

Bani-Sadr, elected president in January, toured working class districts in south Tehran and warned that those violating the election law would be punished.

In an interview with the French newspaper Le Figaro, Bani-Sadr was quoted as saying that holding the Americans captive lowered Iran's standing among non-aligned and European nations.

Khomeini, 79, said two weeks ago that the 270-member Majlis, or Parliament, would decide if and when to free the hostages. The second round of balloting is scheduled for April 4, and the Majlis is not expected to take up the issue until May.

The first round of balloting will narrow the field of 3,300 candidates. If no one candidate for each seat wins an absolute majority, the two leaders will be on the April ballot. The two-stage system was chosen by the governing Revolutionary Council, dominated by conservative Moslem clergymen.

Bani-Sadr and others have criticized the two-stage system, saying it will deny representation to sizable segments of the population.

Shah's surgeons considering removal of inflamed spleen

PANAMA CITY, Panama (AP) — Iran's deposed Shah Mohammad Reza Pahlavi was admitted Friday to Patilla Clinic where he will be examined to determine if his inflamed spleen should be removed, hospital administrator Rodrigo Moreno announced.

He declined comment on the shah's condition but said the 61-year-old patient walked into the hospital and was taken to a six-room suite, accompanied by his wife Farah.

Some members of Iran's revolutionary Islamic government have called for the assassination of the shah, who fled his country in January 1979, and his flight here from the Contadora Island was again cloaked in secrecy. The Iranian government also seeks his extradition from Panama.

There have been reports the ousted monarch's spleen may be cancerous and would be removed.

Moreno said that if surgery is required, he did not believe the operation would be performed before Saturday morn-

ing. Dr. Michael DeBakey, the noted U.S. heart surgeon, was expected to fly here from his clinic in Houston, Texas. DeBakey has received permission from Panamanian authorities to assist local physicians, but is not licensed to perform operations in Panama.

Pahlavi's spokesmen have said he also is suffering from anemia and other blood disorders. The exiled monarch came to Panama's Contadora Island on Dec. 15 from the United States, where he was hospitalized in New York City for the removal of his gallbladder and treatment for lymphatic cancer.

Mark Morse, one of the shah's spokesmen, visited the private Patilla hospital on the outskirts of Panama City before the shah's arrival "to confirm medical and security details." He said Pahlavi was being treated by a team of 15 doctors led by a Panamanian physician.

There had been reports the entire third floor of the hospital was reserved for the former ruler, but Moreno said, "We have set aside six

rooms. That is all we are able to spare."

The Iranian government filed an extradition request with Panama Jan. 23, but there is no extradition treaty between the two countries.

Under Panama's complex extradition law, written 50 years ago, Iran has 60 days to present a number of documents, including a copy of a warrant for the shah's arrest, proof of his identity, the charges against him and possible penalties upon conviction.

Pre-Easter SALE 20% off

Selected group of spring fashions. Sizes 3 to 13



ALL SALES FINAL, PLEASE



2312 W. OHIO

WOVEN WOODS. HURRY FOR BEST SELECTION. MINI BLINDS

NEW MANAGER SALE

March 14-20

\$5.00 OFF any twin or full bedspread

\$6.00 OFF any king or queen bedspread

BED PILLOWS REDUCED \$1.50

VELVET THROW PILLOWS REDUCED \$2.00

HURRY FOR BEST SELECTION

THE SPREAD SHED

FACTORY OUTLET STORES

337-0241 1412 WEST COUNTY RD. ODESSA, TEXAS

OPEN 10:00 TO 5:30 P.M. DAILY

Sew up some dramatic savings on beautiful all-season fabrics.

REMNANTS

Choose from Cottons, Cotton Blends, Crepe de Chines, Woolens, Polyester Suedes, Corduroys, Velours, Polyester Double Knits, Velveteens, Qiana®

All Remnants from our regular stock of Fine Fabric

Hurry for peak Remnant selections

50% to 75% Off

Leggett's Fabrics

9 Plaza Shopping Center 683-3101

New store hours: 10 to 6

Garfield & Wadley Midland

NOW! Dial Direct TO PLACE CLASSIFIED

Want Ads 682-6222

The worth of Woodard

STYLISH PATIO FURNITURE



ON THE TERRACE

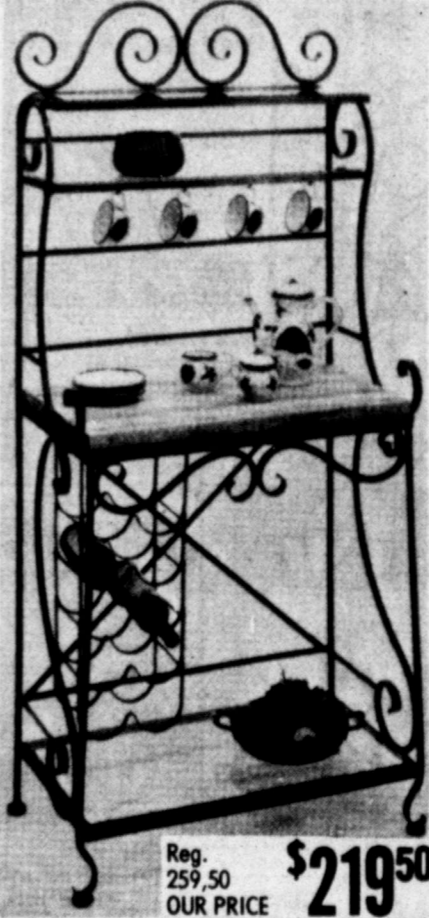
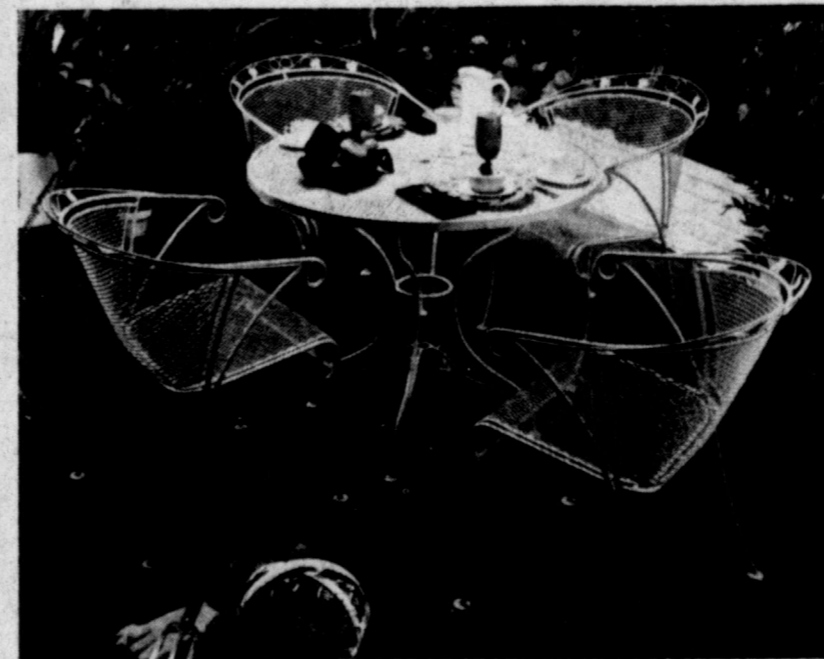
Is this lovely group featuring a 41 1/2-inch diameter table, 28 inches high with top mesh; barrel settee with dimensions of 44" wide, 24" deep, and 30" high and barrel spring base chair that stands 28" high, 24" deep and 23" wide, and an end table 24" in diameter and 17" high with top mesh. Colors yellow, white, black.

5-PIECE SET

Reg. 339.50

OUR PRICE \$284.50

For outdoor use, carefully check the finish. The tough finish applied by Woodard, for example, is achieved through an exacting process which includes coating metal with molten zinc, a chemical stabilization bath, prime coating and enameling, and two bake cycles before a final decorative antiquing may be applied to bring out and maintain the full beauty of the design.



REG. 119.50

\$98.50

TEA CART—Top obscure tempered glass only. Rounded corners. Bottom mesh shelf.

GOURMET STAND—33"W, 19"D, 71"H. Center shelf plastic laminate (Butcher block pattern). Detachable wine rack. Available in terra cotta, yellow, almond, black and blue colors.

CHAISE LOUNGE—29"W, 74"D, with reversible cushions



Reg. 259.50

OUR PRICE \$219.50



A GREAT GROUP FOR OUTDOOR LIVING—Features an easy chair 28"W, 31"D, 33"H, Spring base chair, 28"W, 31"D, 32"H, and sofa 72"W, 31"D, 33"H, all with reversible cushions, and coffee table 36"W, 18"D and 17"H, and end table 24"W, 18"D and 22"H, both with top obscure tempered glass only and rounded corners.

5-PIECE SET

This beautiful set features a 48" - inch diameter table with top mesh in 29" - inch height, with four barrel chairs 27 inches wide, 29 inches deep and 33 inches high.

Reg. 379.50

OUR PRICE \$319.50

Sloan - Bagwell

FURNITURE

3508 W. Wall OPEN THURSDAYS UNTIL 8:30

694-8101 563-0817

SCRAM-LETS WORD GAME
Edited by CLAY K. POLLAN

1 Rearrange letters of the four scrambled words below to form four simple words.

TEALIR
SYLDA
REXET
TIFCEN

2 PRINT NUMBERED LETTERS IN THESE SQUARES

3 UNSCRAMBLE LETTERS TO GET ANSWER

4 Complete the chuckle quoted by filling in the missing word you develop from step 10 below.

Sign in a bank: "Don't kiss our girls, they're"

Sign in a bank: "Don't kiss our girls, they're TELLERS."

Retell - Sadly - Exert - Insect - TELLERS

SCRAM-LETS ANSWERS

DAILY CROSSWORD PUZZLE
Edited by Margaret Farrar and Trude Jaffe

ACROSS

1 Nap

6 Name in tennis lore

13 University in Hamilton, N.Y.

16 Cretan princess

17 Baltimore players

18 Imply

19 Things, in legal phrases

20 Isolate

22 Tear

23 Region of the NW Peloponnesus

25 Historic battle-ship

26 Sounds of disapproval

27 Far East capital

29 Sweet

30 Scottish hero

31 Spurs on

33 Nipponese entertainer

34 University student

35 Eerie sound

36 City in the Adirondacks

39 Mounting

42 Affirms confidently

43 Morse code signal

44 Burns

46 Ships records

47 Memorable clergyman and lore

49 100 dinars

50 Card

51 Old Dan and family

53 Edward

54 First aid item

56 Geological period

58 Gave as proof

59 Middle East people

59 Flower-like ornament

60 Turn outward

12 Fishing

14 Abound

15 Avoided

21 Relatives of half truths

24 Helps

26 More salty

28 Big cats

30 Tree-climbing animals

32 Links place

33 District of W India

35 Followers of the Prophet

36 Coastal region of SW India

37 Tropical fruit

38 Explanatory lists on maps

39 Drench

40 Unaffected simplicity

41 Brush or tool for marking wood surfaces

43 Withdraw

45 Craftiest

47 Seattle's Sound

48 Third largest city of Pennsylvania

51 Relative of discretion

52 About

55 Becoming

57 Year in Trajan's reign: Rom.

DOWN

1 Make a goal

2 Anita Loos heroine

3 Relative of syncope

4 Concoit

5 Buddies

6 Blank space

7 Wear away

8 Popular accompaniment of cheese

9 Tributary of the Yangtze

10 Fragrant

11 Ohio college

THE BETTER HALF

"If this is Thousand Island dressing, half of the island must've been used for nuclear testing."

Answer on Page 9A

ANDY CAPP

Answer on Page 9A

SHOE

STEVE ROPER

STEVE CANYON

DICK TRACY

REX MORGAN, M.D.

HEATHCLIFF

PEANUTS

MARMADUKE

FUNKY WINKERBEAN

The Funky Winkerbean
GUIDE TO TAKING TESTS!

TRUE AND FALSE TESTS - TRUE AND FALSE TESTS PROVIDE AN EXCELLENT OPPORTUNITY TO TRY YOUR LUCK AGAINST THE LAWS OF PROBABILITY. THERE ARE FORMULAS WHICH CAN BE USED TO DISCOURAGE GUESSING BUT MOST TEACHERS NEVER USE THEM ONCE THEY GRADUATE FROM COLLEGE. THE NICE THING ABOUT TRUE AND FALSE TESTS IS THAT, EXCEPT IN SOME RARE CASES, YOU NEVER HAVE POINTS TAKEN OFF FOR SPELLING!

BLONDIE

MARY WORTH

JUDGE PARKER

STEVE ROPER

STEVE ROPER

STEVE CANYON

STEVE ROPER

STEVE CANYON

STEVE ROPER

STEVE CANYON

STEVE ROPER

STEVE CANYON

STEVE ROPER

STEVE CANYON

STEVE ROPER

STEVE CANYON

STEVE ROPER

STEVE CANYON

Holiday on Ice skaters 'born-again'

By GEORGIA TEMPLE
Staff Writer



The average age for an ice show skater is 23. Carol and Clive Phipson have been skating with the Holiday on Ice production, currently showing through Sunday at the Chaparral Center, for 12 years. At 36, she has been associated with ice shows for 17 years. His 20-year association spans half his lifetime.

"We're past the age when we want to feel young. We're quite proud of where we are and what we're doing," Carol said.

Carol, who's a Londoner, didn't start skating until she was 14, but her background included gymnastics, ballet and horseback riding. Clive, who is from Brakpan, South Africa, was the South African boxing champion and tennis champion. In college, he was the captain of the rugby and cricket teams.

The two met in England where they were both skating competitively, decided to work together and fell in love. Or as Clive jokingly explained the

spin, yet it is one of the easiest for us to do. However there's no margin for error. If I trip and fall, she's out."

In the event of a fall, Carol said, she prefers to be knocked out because that way "I don't feel it. I wake up in the dressing room where it's warm.

"If ever I'm feeling nervous before a show I read Psalms 91:11-12 which goes 'For He shall give His angels charge over thee, to keep thee in all thy ways. They shall bear thee up in their hands, lest thou dash thy foot against a stone.'" Carol said. In reading this passage she changes the last words "a stone" appropriately to "the ice."

Both Phipsons are born-again Christians who credit their skating expertise to God.

As Carol explained, "He gave us our talent. We have to do the work, but He gives us the drive and the will to do the work."

"We both agree on religion to a point, but Carol's more a practicing Christian than I am," Clive added. "I believe He gives you this talent and you have the free will to use it."

Carol quickly interjected, "If you ask the Lord for strength, He's there."

Clive responded with, "How can He give it to you again; it's already there."

It's obvious both are enjoying this word-sparring match. What's undecided is who's going to play into the other one's hand first.

Then Carol said if she hadn't become a spirit-

filled Christian 18 months ago, she would have probably stopped skating by now.

"Ah," said Clive, with an amused smile, "see He gave us this talent so that's why we have to skate five more years."

And with that, he was off to play tennis.

Carol, Christopher and Clive Phipson usually spend their time, when Carol and Clive are not performing with the Holiday on Ice Show, currently appearing at Chaparral Center, either scuba diving, horseback riding, snow skiing, film making or watching their video tapes. Performance times for the ice show are today at 2 and 7:30 p.m. and Sunday at 2 and 6 p.m. Tickets prices are \$7.50 and \$6.50 with \$1.50 off for children under 12 at selected performances. They may be purchased at Chaparral Center or Sears stores in Midland and Odessa. (Staff Photo by Mike Kardos)

"For He shall give his angels charge over thee, to keep thee in all thy ways. They shall bear thee up in their hands, lest thou dash thy foot against a stone." Psalms 91:11-12.

situation, "I never hit anyone when I was skating except for her, so she made me marry her."

In their present routines, Clive said, "She's the one that's going to fall from 10 feet."

Carol replied by saying, "Usually I make sure that I fall on him."

Clive finds it ironic that audiences sometimes don't know how to actually judge the danger of a particular act.

"We might do something very good that doesn't look dangerous but it is, and we get a small hand from the audience. But if something obviously could happen, we hear the ah's of apprehension from the crowd."

The most dangerous stunt we do is the neck

Kelview Heights to hear guest,

The Rev. Earl Oldham will speak at Kelview Heights Baptist Church, North Big Spring Street and Scharbauer Drive, at 10 a.m. Sunday.

Oldham has been pastor of Calvary Baptist Church in Grand Prairie for more than 30 years as well as president of the Arlington Baptist College for 26 years.

The public is invited to attend.

THE NEWSPAPER BIBLE

'Well then, who are you?'

The Jewish leaders sent priests and assistant priests from Jerusalem to ask John whether he claimed to be the Messiah.

He denied it flatly. "I am not the Christ," he said. "Well then, who are you?" they asked. "Are you Elijah?"

"No," he replied. "Are you the Prophet?"

"No." "Then who are you? Tell us, so we can give an answer to those who sent us. What do you have to say for yourself?" He replied, "I am a voice from the barren wilderness, shouting as Isaiah prophesied, 'Get ready for the coming of the Lord!'"

Then those who were sent by the Pharisees asked him, "If you aren't the Messiah or Elijah or the Prophet, what right do you have to baptize?"

John told them, "I merely baptize with water, but right here in the crowd is Someone you have never met,

Who will soon begin His ministry among you, and I am not even fit to be His slave."

This incident took place at Bethany, a village on the other side of the Jordan River where John was baptizing.

John 1:19-28

Used by permission, Tyndale House Publishers, 1971
For inquiry or to request free Living New Testament:
THE NEWSPAPER BIBLE, INC. (non-profit)
P.O. Box 1374, Roswell, N.M. 88201

Rev. Roald Kindem to preach on 'Momentum for Mission'

The Rev. Roald Kindem will preach on "Momentum for Mission" at the 8:30 a.m. and the 11:30 a.m. services of Midland Lutheran Church, 2705 W. Michigan Ave., Sunday. He will also speak to the pastor's class at 9:45 p.m.

Kindem is the director for the Momentum for Mission at the American Lutheran Church, Minneapolis, Minn. He has written articles for the "Lutheran Standard," "Christ in our Home," "Event" and "The Lutheran Teacher."

David Ford will be Crestview evangelist

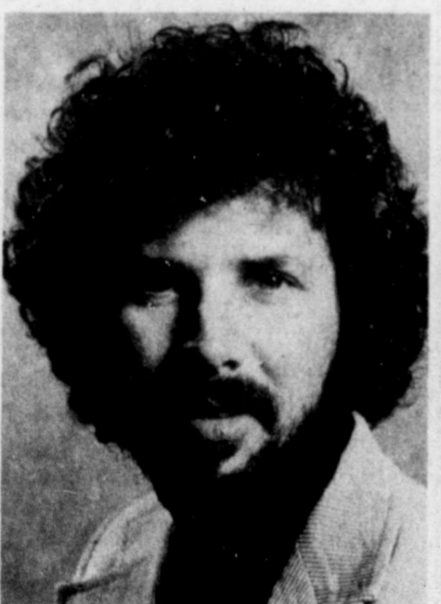
David Ford will be the music evangelist for the spring revival at Crestview Baptist Church, 3300 Thomas Ave., Sunday through Wednesday.

Ford has been in music evangelism for many years and is a member of the Centuryme, a group of 100 men, which is a part of the ministry of the Southern Baptist Convention's Radio-TV Commission.

The Rev. Malcolm Bane, First Baptist Church of College Station, will be the evangelist. Bane, a 1953 graduate of Odessa High, has been at the College Station church for just over 10 years. Revival meeting times are 10:30 a.m. and 7 p.m. Sunday and noon and 7:30 p.m. Monday through Wednesday.

He served from 1966 to 1973 as the senior pastor at Grace Lutheran Church in Albert Lea, Minn. Then he was appointed vice president for development at California Lutheran College.

In that capacity he was responsible for church relations among the 556 congregations of the South Pacific District of the American Lutheran Church and the congregations in a seven state area of the Pacific Southwest Synod of the Lutheran Church of America.



Ira Stanphill, a well-known gospel singer and composer, will appear in concert at Christian Life Center, 2901 W. Kansas St., Sunday at 10:50 a.m. Until recently, Stanphill was senior pastor at Rockwood Park Assembly of God Church, Fort Worth. He now devotes his full time to his traveling ministry. The public is invited to attend.



The Christian singing group New Wine, from left, Steve Tudor, Alan Delafield, Laura Walters and Delva Duffy, will be in concert Sunday at 7 p.m. at St. Paul United Methodist Church, 4501 Thomason Drive. The group sings a contemporary style of Christian music by various artists as well as their own songs. The public is invited to attend.



The Coy Edwards evangelist party, from left, Coy, Leta and Ken Edwards, will be at Midland Foursquare Church, 415 Alta Ave., Wednesday at 7:30 p.m. for a concert and service. The public is invited to attend.

SUNDAY, MARCH 16
8:30 and 10:50 a.m.
Sermon Topic
"And That's the Way He Is!"
7:00 P.M.
MUSICAL GROUP
"The New Wine"
in Concert
St. Paul's United Methodist Church
4501 Thomason
EVERYONE WELCOME


"REJOICE IN THE LORD"
SUNDAY EVENING WORSHIP
7:00 P.M.
FEATURING THREE GUEST PREACHERS
MARCH 16 Dr. Joseph Quillion
Dean of Perkins School of Theology, Southern Methodist University, Dallas
MARCH 23 Dr. Jordan Grooms
Leader in Spiritual Life and Prayer Seminars, Amarillo
MARCH 30 Dr. Barry Bailey
Pastor, First United Methodist Church, Fort Worth. Television ministry (Ch 11)

First United Methodist Church
Main Street at Illinois Avenue
Midland

REVIVAL
CRESTVIEW BAPTIST CHURCH
3300 THOMAS
MALCOLM BANE, PASTOR OF FIRST BAPTIST CHURCH OF COLLEGE STATION WILL BE THE EVANGELIST.
10:30 A.M. & 7:00 P.M. SUNDAY MARCH 16
12:00 NOON & 7:30 P.M. MONDAY-WEDNESDAY
MUSIC EVANGELIST IS DAVID FORD. FORD IS A MEMBER OF THE CENTURYMEN, A MINISTRY OF THE SOUTHERN BAPTIST CONVENTION'S RADIO-TV COMMISSION.





GOLF COURSE ROAD Church of Christ
WELCOME
SUNDAY BIBLE CLASSES 9:30 A.M.
WORSHIP 10:30 A.M. & 6:00 P.M.
TUESDAY LADIES BIBLE CLASSES 10:00 A.M.
WEDNESDAY BIBLE CLASSES & DEVOTIONAL 7:30 P.M.
SERVICES FOR THE DEAF CLASSES FOR THE BLIND
LARRY VANSTENBERG-Pulpit Minister BIBLE CALL DEVOTIONAL 12 NOON TO 9 P.M. 694-6681
DON DAVIS-Education Minister WALTER BREIDEL-Evangelism Minister



3500 W. GOLF COURSE ROAD PHONE 694-8836

The GALILEANS
IN CONCERT
Sunday Evening 7:00-9:00
MIDLAND'S FIRST ASSEMBLY OF GOD
100 W. Wadley
The First Hour Will Be Filmed by KMID TV Channel 2 For Prime Time Release on Sunday March 23, 2:00 P.M.
Admission Free
Doors Open At 6:00
Pastor Raymond Schaeffer



JOHN 6:63
"THE WORDS THAT I SPEAK UNTO YOU, THEY ARE SPIRIT, AND THEY ARE LIFE."
*If your worship is a dead, dry experience of wandering in a faithless and WORDLESS wilderness, than you must make a decision!
*Remember the Bible is a letter from the Heavenly Father written to each of us personally. Consistent, anointed teaching from its pages will create life and enthusiasm in our lives.
Stan McKibbin
JOIN US IN AN EXCITING AND FAITH-INSPIRING STUDY OF GOD'S WORD!
SUN., MAR. 16 10:30 and 6:00 P.M.
WED., MAR. 19, 7:30 P.M..
FRONTIER ROOM HOLIDAY INN 3904 West Wall 1st Fasken Dr.)

882-6222 for action!

TANNING

W. Indiana 84-9401 "Sked" Hall

"Tee Personal Carpet Man"

CLYDE GREEKE CARPETS
a Midwest KARASTAN CARPET
412 Andrews Hwy. 683-7736

nap's

ood Mall

AY HAMM Griffith stone
Delwood Plaza

tsors & FOOD
ews Hwy.

S & HOME SUPPLY
ll for Less!
Industrial 43-4761

T THE ADS WORK
2-6222

LOCK
the "terpedic" G SPRING 744

ermal Eagles
o. 2982

S A WEEK E'S
TS, INC.
PHOTORENA Rd. 682-1680

TRIC Service
Austria Ave. 4-4313

orld
Supply Center 1181

Public Repair MOTOR
ICE OWNER 682-2091

Myers CY URANCE
S. 682-1112

rs
K AND CO.

WANTED

LIE CH

WORCESTER
e Mart 694-1482

Berg Motor Co. 24th Anniversary SALE

SUPER SPECIALS

Table with 4 columns: Item description, WAS, SAVE, NOW. Includes items like 73 Ford F100 Pickup, 74 Ford Torino, 78 Chrysler Cordoba, etc.

ECONOMY

Table with 4 columns: Item description, WAS, SAVE, NOW. Includes items like 76 Dodge Colt, 79 Datsun Hatchback, 79 Ford Fairmont.

INTERMEDIATES

Table with 4 columns: Item description, WAS, SAVE, NOW. Includes items like 75 Cutlass Supreme, 77 Cutlass Sedan, 77 Cutlass 442.

STANDARD & LUXURY

Table with 4 columns: Item description, WAS, SAVE, NOW. Includes items like 74 Buick Electra, 75 Buick Lesabre, 78 Buick Electra, etc.

WILLIAM SEALES, O'NEIL JAMES. THE GOING CONCERN. Berg Motor Co. 3205 W. Wall. 694-7741 or 563-1479

Many Customers Think It's Just Sound Business To Buy A Used Car.

Year in and year out, we have certain steady customers who buy nothing but used cars. To them, it makes good business sense to buy a good used car...



FRANK SEE

- 1980 CUTLASS SUPREME \$7995
1976 PONTIAC WAGON \$1995
1979 CUTLASS SUPREME \$5995
1977 GRAND PRIX LF \$3295
1979 CHEVY MONZA 2-DR. \$4895
1979 CHEVY MALIBU 4-DR. \$3995
1978 TOYOTA CORONA 2-DR. \$4595
1976 GMC SPRINT PICKUP \$3295
1978 FORD T-BIRD \$4995
1976 CHEVY IMPALA 4-DR. \$2295

FRANK SEE Chevrolet. 4100 West Wall Street Midland. Phone 694-9601. GARY USELTON BOBBY MACHEN

Motorcycles 33 Motorcycles 33 Recreational Vehicles 36 Garage Sales 40

KNOW WHY VESPA'S MY MOPED? IT'S LIGHT. Every time I lift my Vespa I moped over a curb or onto a car carrier. I'm glad I got a Vespa...

LOOK AT THESE TRADE-INS! 1977 Buick Wildcat, 1978 Buick Wildcat, 1979 Buick Wildcat. BILLY SIMS TRAILER TOWN. 520 E 2nd, Odessa. 337-6635

MOVING 71 Torina, furniture, household goods, clothes. 4513 Anetta Dr. MOVING SALE Scrap, knick knacks, Harlequin novels, furniture, T.V., glassware, linens, much miscellaneous.

THE JEAN STATION 4306 W. NEELY. 50% off regular price on second article of every two articles purchased. Includes Levi's, Designer Jeans, Skirts and Western shirts, body shirts, knits, shorts and overalls.

KE100 DUAL-PURPOSE BUDGET BIKE. 6 Month Warranty \$799. KAWASAKI OF MIDLAND. 1900 W. Front. 683-3067

Permian Pontiac's SERVICE DEPT. IS NOW OPERATIONAL. Service Manager Don Williams invites everyone to bring your car in for your every service need. PERMIAN PONTIAC, INC. Managed by Story Enterprises 701 W. Texas 684-7101

