

LITTLE OPPOSITION UNTIL ISSUE SPOTLIGHTED

LBJ May Have Hurt Longer House Term Plans

By JOHN BECKLER. WASHINGTON (AP)—President Johnson may not have helped the cause of longer terms for House members by urging it so strongly. A determined backstage effort to extend the present two-year terms to four years was nearing success in the House without

much interest being shown in it until Johnson spoke out. Fate In Doubt. But ever since he plugged the four-year term in his State of the Union address on Jan. 12, the issue has been caught in the glare of controversy and its fate is now in doubt. To win congressional approval, the proposed amendment

effectively lining up support for a four-year term constitutional amendment. By his own count Chelf wrote more than 8,000 letters to his 534 colleagues in the House and Senate with arguments in support of longer terms. He talked about it at every opportunity, got dozens to introduce amendments. Working through his fellow members of the House Judiciary Committee he finally persuaded Chairman Emanuel Celler, D-N.Y., an unyielding opponent of the amendment, to hold hearings. Nearly 50 members

appeared to sing the praises of longer terms, none in opposition. Celler couldn't find anyone who would testify against it and he was finally forced to move the amendment to the top of the committee calendar, ready for almost certain approval at the start of this session. Then the President spoke out. Celler has no lack of members and outside witnesses who now want to testify against the amendment and he is preparing to renew the hearings. Second Thoughts. The awakened interest in the four-year term also has caused members who thought they favored it to look more closely at what is at stake. Some are having second thoughts. They don't like Johnson's proposal that the four-year terms coincide with the President's term serving a four-year term the chance to run against a senator unless he resigns from the House. Chelf, an untiring optimist, has not eased up in his efforts to get an amendment approved and on its way to the states. But what seemed within his grasp a few weeks ago will now be harder to obtain.

IT'S GETTING POPULAR

You Are Middle-Aged If Too Old To Dance Frug, Too Young For Medicare

By HAL BOYLE. NEW YORK (AP)—Middle age is getting popular. It must be because more and more people are becoming middle-aged. As a matter of fact, some young folks show signs of being prematurely weary of the problems of youth today, and plaintively wonder when they, too, can enjoy the advantages of middle age. In some cases couples at the age of 20 who have been going steadily since they were 12 do not s if they were already middle-aged. But they are interlopers. Only those who have put in the necessary apprenticeship by actual living should be allowed to dwell in the silver pastures of middle age. Some Guideposts. Here are some guideposts. You undoubtedly are middle-aged if: You are too old to dance the frug and too young to get Medicare. Your appetite is great. You are now able to eat with relish

any kind of food put upon your plate which the doctor says is bad for you. During the day you catnap, but at night it is impossible to sleep eight full hours at a stretch. You invariably wake up in the morning before the alarm clock goes off. It bothers your conscience to look out the window and see your wife shoveling snow. You even consider going out and helping her, but think better of it. Talk To Yourself. You talk to yourself as you shave, because you realize you probably won't have such a sympathetic audience the rest of the day. It is necessary to send flowers so often to hospitalized friends that you open a charge account with the florist. When you read a gossip column, you don't recognize the names of eight of 10 of the people being gabbled about and don't really care what happens to the other two. Any cheese you buy at the supermarket doesn't have the remembered tang of the "rat cheese" sample your old-fashioned grocerman used to give when you were a boy. At a party you find it much easier to make conversation with women wearing bifocal glasses. They seem to have so much more common sense. You know at least one person who has the gout. The world is in a mess, but you aren't sure it is worth the bother it would take to unscramble it. You Hesitate. If someone asks, "Anybody got a pen?" you hesitate to volunteer yours. After all, over the years you've lost a lot of good pens that way. Half your working day is spent doodling on ways you can possibly retire ahead of time without starting. You don't cut your toenails as often as you once did. If kind of winds a fellow bending over that long. Helping the wife dress isn't so much of a nuisance. You can now zip up the back of her dress without getting the zipper stuck more than twice a year. You get more cautious. You gulp a couple of antacid pills before, but after eating a package of Brussels sprouts. When you buy a new suit, you feel cheated if a vest doesn't come with it, whether you'd actually ever wear the vest or not. What's In Tabiti. If someone asks you a free-rolling question like "What's in Tabiti?" you don't know. What's in Tabiti for a kid? When someone beats you to your favorite parking place, you can't decide whether this is part of a Communist plot or just another setup by the government. You begin to believe that real estate is the only safe investment, so you make the down payment on a cemetery plot. That's middle age. With benefits like these accruing, you can see why everybody's trying to get into the act early instead of waiting his turn.

TONIGHT

Rodeo Opens Fort Worth Stock Show

FORT WORTH (AP)—Some 400 of the nation's top cowboys open competition tonight at the Southwestern Exposition and Fair Stock show opens. Headed by Dean Oliver of Boise, Idaho, world champion all-around cowboy, contestants will be bidding for a rodeo purse totaling nearly \$40,000. Following tonight's show and a tripleheader Saturday, rodeo performances will move at a two-day clip throughout the stock show's 10-day run. Weather forecasts were particularly optimistic but officials hoped to equal the 1965 attendance mark of nearly 500,000.

Downtown Parade

The downtown Western parade officially opened the exposition today, and early estimates called for record parade entries and spectators. Rep. Jim Wright, Fort Worth Democrat, was selected to head the parade and to open the stock show rodeo. Duke Riding Club of Duke Okla., winner of its parade division last year, returned for another shot at the crown. The Oklahomaans were named the No. 1 riding club in the nation last year. The midway, opening to the Thursday evening and barns began filling with early arrivals in the breeding cattle and sheep contests and junior and quarter steer exhibitors. Some \$112,000 is being offered to livestock exhibitors and \$15,000 to horse show competitors. Livestock exhibits exceed 10,000.

Junior Champion

Among the early highlights will be the selection Saturday of the grand champion steer of the junior show. Open champion steers will be named Monday and Tuesday and the grand champion will be chosen Feb. 2. Entertainment this year includes "The Singing Butler Sisters," featuring Mary Lou Butler. The Fireballs, a truck riding troupe, a sheepdog act, and Bill Buschhorn and his horse Mr. Nifty. An offshoot of the show will be the world premiere Feb. 2 of "The Rare Breed," a movie about the polled Hereford. Its leading stars, James Stewart and Maureen O'Hara, will attend.

Woman Is Named

New Dean Of Students. WELLESLEY, Mass. (AP)—Miss Jean V. Crawford, a faculty member at Wellesley College since 1951, will be the new dean of students. She succeeds Miss Teresa G. Fritsch, who retired in June. Miss Crawford was graduated from Mount Holyoke College in 1940, and received a doctorate in chemistry from the University of Illinois in 1950.

Ethan Allen OLD HOMESTEAD HOME OF Ethan Allen HAROLD GRIFFITH FURNITURE CENTER 316 N. COLLEGE

Visit Our Funeral Home and the Unique "Little Church of the Flowers." Anytime.

A TIME TO BE FRANK The entire subject covered in this message and others in this series, Resthaven realizes, is a sensitive one. We humbly apologize if these, or any of those carried on TV, cause anyone unhappiness. But we consider the truths in these messages of such vital importance to the people of Lubbock, that they must be told.

Resthaven FUNERAL HOME CEMETERY - MAUSOLEUM "EVERYTHING IN ONE PLACE" 599-3643 ACROSS FROM LUBBOCK CHRISTIAN COLLEGE



PRE-NEED FUNERALS AND COMMON SENSE. "How much shall I spend on a funeral? This decision can be made far ahead of that moment of crisis and emotion. HOW? Through Resthaven's "Pre-Need" funeral plan. You can make this inevitable arrangement NOW. In Lubbock, this plan, including funeral home, cemetery or mausoleum arrangements all at one place (complete funeral facilities including embalming, funeral directing and complete undertaking services) are available only at Resthaven. The "Pre-Need" funeral plan enables you to make funeral arrangements complete in every detail. Resthaven Funeral Home conducts burial services in all cemeteries. The Resthaven funeral plan is available to anyone; regardless of age or health condition; It is available for as little as \$1.25 a week. Resthaven cannot cancel your contract. Resthaven's "Pre-Need" plan is revolutionary for the Lubbock area. You pay only what you contract for, then pay no more, EVER (unlike burial insurance). Money paid in can be used for any member of the family (unlike burial insurance).

WHAT'S WRONG WITH COMMON SENSES FOR YOUR OWN PEACE OF MIND Cut Off Here And Mail Today! RESTHAVEN 5740 19th Street Lubbock, Texas 79407 Please supply us with further information about your unique program. NAME ADDRESS CITY STATE

WHAT'S WRONG WITH COMMON SENSE?

Tailored to Measure Hedges & Hedges Men's and Ladies' SUITS SLACKS COATS SKIRTS WESTERN WEAR Deans Ltd 2426 BROADWAY P.O. BOX 8516 For Your Want-Ad-Dial P.O. BOX 8511

TODAY'S STOCK MARKET PRICES

Industrials Soften On Stock Mart

NEW YORK (AP)—Industrials softened in an irregular stock market early this afternoon. Trading was heavy.

Higher On Balance Nonferrous metals, rails, drugs and some of the electronics were higher on balance.

The Dow Jones industrial average at noon was down 1 3/8 at 988.86.

A number of sizable blocks sold at lower prices. Standard Oil (New Jersey) actively reported its first annual earnings.

Rate Probe News American Telephone held at 6 1/2 cents, low for 1965, as the Federal investigation of its rates neared.

Prices were mostly higher in heavy trading on the American Stock Exchange.

New York Stock List

Table listing various stocks with columns for High, Low, Last, and Change. Includes symbols like J, K, L, M, N, O, P, Q, R, S, T, U, V, W, X, Y, Z.

Table listing Dow-Jones Averages with columns for Stock, High, Low, Last, and Change. Includes categories like 30 Industrials, 20 Bonds, and 100 Common Stocks.

Table listing various market reports including Livestock, Produce, and Yale Gallery Has Latin-American Art.



LUBBOCK POLICE DEPT. NEEDS QUALIFIED MEN... NOW!

POLICEMAN SOUGHT—A drive to recruit men for the Lubbock Police Department was started this morning...

Sides Of Buses Advertise Need For Police Recruits

A new recruiting campaign for the understaffed Lubbock Police Department began this morning...

During 1965, the department hired 10 patrolmen, but lost 32 to other employment...

Few applications have been received in recent months for the advertised vacancies.

Applicants should be between the ages of 21 to 35, have the equivalent of a high school education...

Scouts Head For Meet In Austin BRAVO! You don't have to give up smoking to give up nicotine.



NOW IN NEW LOCATION DEWITT & COMPANY, INC. 1308 AVE. K - POS-6384

MEMBERS AMERICAN STOCK EXCHANGE

Advertisement for GREAT PLAINS RENTALS, INC. featuring 51,000 Shares and a Price of \$5.00 per share.

Livestock

CHICAGO REPORT: Good trade in good quality steers...

Produce

CHICAGO REPORT: Wheat - Good trade in good quality...

Yale Gallery Has Latin-American Art

NEW HAVEN, Conn. (AP) - A major exhibition of Latin American art...

Over The Counter

Table listing various over-the-counter stocks with columns for Bid, Asked, and other market data.

STOCK AVERAGES

Table showing various stock averages like Dow Jones, S&P 500, and others.

BOND AVERAGES

Table showing various bond averages and yields.

STOCK MARKET

Large table listing individual stocks with columns for High, Low, Last, and Change.

Roper TV and Appliance 4710 Ave. Q - SH7-2222



THE FINEST IN STEREOGRAPHIC Reg. \$429 ... NOW ... \$364

Complete Service Department, We Service What We Sell, All Sales Prices Include Installation and Free Delivery.

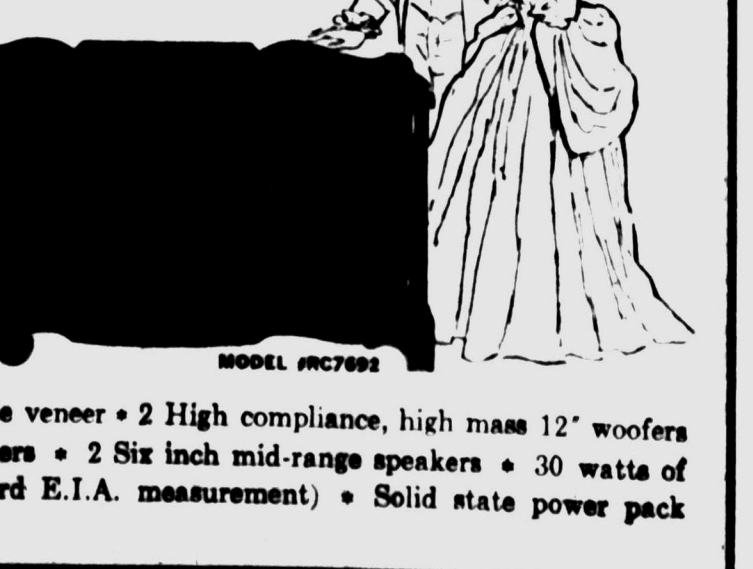
Save Now During Our Fabulous ... CLEAN OUT SALE!



Easy To Own... Easy To Operate! GENERAL ELECTRIC COLOR TV!

REG. \$519 NOW \$449. Features: Front Controls and Front Sound...

The Dewitt STEREO CONSOLE



Lustrous hard maple veneer • 2 High compliance, high mass 12" woofers • 2 Three inch tweeters...

INFANTS LATER GROW UP TO BE LESS EFFECTIVE STUDENTS

Researcher Says Premature Babies Face Uphill Fight



WEDDED WITCH—Maxine Morris, 18, surrounded by a few tools of her trade, claims to be queen of England's witches. She recently married witch "king" Alex Sanders in what was said to be the first witchcraft wedding ceremony in Britain in more than two centuries.

BALTIMORE, Md. (AP) — A Johns Hopkins Medical School research team has concluded after a 13-year study that a "significant number" of premature infants later grow up to be less effective students than normal infants.

Dr. Gerald Wiener and Dr. Paul Harper said "contrary to the old wives tale that premature

children catch up, there is no evidence that this is so."

Gap Widens

In a study of 992 single births in several Baltimore hospitals, the researchers found that IQ scores were about three points less than those of normal children at the age of six. By three or more years later, the IQ gap had widened to 5.5 points, said the researchers.

The study, financed by the U.S. Department of Health, Education and Welfare, said arithmetic skill was more impaired than reading skill — possibly, they said, because reading problems don't show up as readily at an early age.

The researchers said their findings held true for both Negro and white children in the 492 infants of less than 5½ pounds compared to the remaining control group of normal children.

Reasoning Flaws

The researchers said they also found "flaws in comprehension and abstract reasoning, poor gross motor development, immature speech and (an) impaired IQ" in a significant number of premature children.

had reached this academic level, compared to 56.4 for the normal-birth control group.

Wiener said medical science "knows that the incidence of prematurity is higher among low socio-economic classes." He said about 10 per cent of all babies are born prematurely. He said the rate is up to 30 per cent among certain population groups.

Wiener said medical science "knows that the incidence of prematurity is higher among low socio-economic classes." He said about 10 per cent of all babies are born prematurely. He said the rate is up to 30 per cent among certain population groups.

CHARTERS CORPORATION
EARLE M. CRAIG, Jr., Pres.
BUYERS OF PRODUCING OIL PROPERTIES
Working Interests—Royalties
701 Midland Natl. Bank Bldg.
Midland, Texas
Phone: 915-682-8474

SPEAKS FOR ARABS

Indonesian diplomats now represent the interests of some Arab nations in Germany.

The study, financed by the U.S. Department of Health, Education and Welfare, said arithmetic skill was more impaired than reading skill — possibly,

they said, because reading problems don't show up as readily at an early age.

had reached this academic level, compared to 56.4 for the normal-birth control group.

Wiener said medical science "knows that the incidence of prematurity is higher among low socio-economic classes." He said about 10 per cent of all babies are born prematurely. He said the rate is up to 30 per cent among certain population groups.

Wiener said most premature children or low-birth weight in-

Penneys
ALWAYS FIRST QUALITY

PRE-INVENTORY

clearance

EARL WILSON:

Hair Trend Is Serious



NEW YORK—Can it really be true that all male VIPs will be wearing long curls down to their shoulders by 1975?

Are we to have David Merrick, Yul Brynner, Frank Sinatra, Mayor Lindsay, and Mike Quill in ringlets? Are they going to spend all afternoon in beauty parlors? Are we going to say "Hello there, Ginger" to find out we've just insulted Tom's Shag?

THE TREND IS GROWING

I regret to say that the teenage trend is growing in popularity and could catch on.

But Milton Berle, the exemplar of the hair, said: "If it becomes a fad, I wouldn't do it," he said quite seriously. "I wore my hair long as a gag for 8 years but I'd never do it in real life."

Lisa Kirk told me in Sardis: "I don't want men's hair to be longer than mine. I want to be the girl."

Gina Martin, a beauty at Dales in Dallas, said: "I'm looking to get married, and I want to see the fellow's face."

BUT BURGESS MEREDITH'S wife, Kay, whose 14-year-old son Jonathan is a hair-down-to-the-shoulders singer, once tried and tried to persuade her husband not to get a haircut, so his would grow long, too.

But the sneak got a haircut when she wasn't watching.

Her son has the answer to the kidders who may make longhairs of us all.

"I don't wear mine any longer than Thomas Jefferson wore his," he said defiantly.

The smart places like El Morocco have been forced to make any decision about whether to let the longhairs come in. They hope they never have to.

EXCEPTION FOR THE BEATLES

If it's the Beatles who want to drop around, well, they wouldn't stop them. But as somebody was saying, "The Beatles somehow look like they may have combed their hair sometime."

But would you want your own brother to have singles down to his shoulders... and your dear father? Well, now, surely, it was good enough for George Washington.

Still, I wonder if George really liked it?

YOU'LL HEAR OTHER VERSIONS, but when Sophia Loren indulged onto the London set of "The Countess From Hong Kong" in some clinging red pajamas, Charlie Chaplin, her director, groaned: "Oh, just to be 60 again!"

Secret Stuff: Security people warned a brilliant comedian to avoid it or he may become a martyr. Mia Farrow is a very dutiful daughter, keeps constantly in touch, and phoned auster Prudence congratulations on her 18th birthday. Maureen O'Sullivan tells me: "Very Worst Pun: Soupy Sales tells of the mobster who burned a brother-in-law in concrete, his way of cementing relations."

Dinah Shore tried to buy up all the diamonds on 5th Ave and suits, accessories, and bags, for her Plaza opening, then feasted at Le Grenouille.

"Jolly Joe" Levine, the Boston strongbox who became a famous motion picture producer, now gets asked for autographs. A woman at the Grosvenors in fact asked for his autograph after explaining that she'd gone to watch Sean Connery several times in "Thunderball" and "The Hill". Joe thanked her, not bothering to explain he had nothing to do with either film.

Elizabeth Hartman, who talked about for an Oscar nomination for "A Patch of Blue," has some of that Middle West shyness. (She's from Youngstown in God's Country.) Ohio: Refusing to pose for cheesecake, she says, "I'm so old-fashioned I don't even own a bathing suit."

SOPHIE TUCKER, rereading birthday greetings, found a wire from LBJ... Barbra Streisand bought a trampoline to practice for her special, "Wanna buy a used trampoline?"... Michael ("Ippress File") Caine told a panting blonde H'wood star: "Sorry, I don't date married women."... Leopold Stokowski, given a party at El Morocco after his American Symphony concert, talked shop with the cafe's bandleader.

Charles Aznavour ignored Rome's persistent paparazzi until one of 'em burst into a lingerie shop to film his girl's selection of panties. Then he battled them... A local major league ballplayer often borrows, but isn't as fast at repaying... Singer Frankie Randall, opening Feb. 3 at the Copa, will be introduced by Dean Martin via telephone from L.A.... One of Broadway's longest-running hits passed up its dividend check for the first time since Oct. '63... Rock 'n' roll dying? The Rolling Stones'll get 100Gs plus expenses for a ten-day tour of Australia.

Debbie Reynolds and Harry Karl, vacationing in Hawaii, are looking for real estate there... Veteran actor Paul Ford—85 this year—calls his film company Grandaddy Productions.

Lawmaker Wins Heart Of The Year Award

NEW YORK (UPI) — The lion to create and sustain the American Heart Association/National Institutes of Health, has named Rep. John E. Fogarty Thursday for "faith, courage, D.R.I., recipient of its courage and achievement in 1966 Heart of the Year Award, meeting the personal challenge... Fogarty, sponsor of legisla-



SAVE!
WOMEN'S DRESSES
Orig. 6.98 to 14.98
NOW . . .

\$2

\$3

\$5



CHARGE IT!

SAVE!
WOMEN'S COATS
Orig. 19.98
NOW . . .

\$10

- WOMEN'S NYLON SLEEPWEAR** Orig. 5.98 **NOW 3⁹⁹**
- WOMEN'S PANTIES** **4 for \$1**
- WOMEN'S COSTUME JEWELRY** Orig. \$1 **NOW 10^c**
- WOMEN'S HANDBAGS** Orig. 2.99 **NOW \$1**
- WOMEN'S GLOVES** Orig. 1.98 **NOW \$1 and 50^c**
- WOMEN'S PANTS, SHELLS, BLOUSES** Orig. 2.98 to 4.98 **NOW 1⁹⁹**
- WOMEN'S SWEATERS** Orig. 7.88 **NOW 3⁸⁸**
- WOMEN'S PANT SETS** Orig. 14.98 **NOW \$6**
- WOMEN'S DENIM ANKLE PANTS** Orig. 3.98 to 4.98 **NOW \$1 and \$2**
- WOVEN TWIN BEDSPREADS** Orig. 4.98 to 6.98 **NOW 1⁹⁹**
- THREAD** **1^c**

- DOWNTOWN ONLY**
- MATCHING VALANCE** Orig. 1.49 **NOW 50^c**
 - TIER CURTAINS** Orig. 2.98 **NOW \$1**
 - SEWING NOTIONS** **10^c**
 - MEN'S ALL-WEATHER COATS** Orig. 16.88 to 29.95 **NOW 7⁸⁸**
 - MEN'S DRESS PANTS** Orig. 6.95 **NOW 2⁹⁹**
 - MEN'S DRESS PANTS** Orig. 10.98 **NOW 4⁹⁹**
 - MEN'S WESTERN SHIRTS** Orig. 5.98 **NOW 1⁹⁹**
 - MEN'S DRESS SHIRTS** Orig. 3.25 **NOW 1⁹⁹**
 - MEN'S WESTERN BELTS** Orig. 2.98 **NOW 50^c**
 - MEN'S CAPS** Orig. 2.98 **NOW 50^c**

- MEN'S SWEAT SHIRTS** Orig. 1.98 **NOW \$1**
- MEN'S HOUSESHOES** Orig. 5.99 **NOW 1⁸⁸**
- WOMEN'S OXFORDS** Orig. 3.99 **NOW 2⁸⁸**
- WOMEN'S HOUSESHOES** Orig. 3.99 **NOW \$1**
- CHILDREN'S HOUSESHOES** Orig. 2.99 **NOW 50^c**
- GIRLS' KNEE HI SOCKS** Orig. 59c **NOW 25^c**
- MEN'S THERMAL UNDERWEAR** Orig. 1.69 **NOW \$1**
- BOYS' LONG SLEEVE KNIT SHIRTS** Orig. 2.49 **NOW 1²²**
- BOYS' SWEATERS** Orig. 6.95 **NOW \$3**
- BOYS' SWEATERS** Orig. 4.98 **NOW \$2**
- BOYS' WESTERN JACKETS** Orig. 3.49 **NOW 1⁵⁰**

- MONTEREY ONLY**
- WOMEN'S GRANNIE DRESSES** Orig. 6.98 to 9.98 **NOW \$2**
 - WOMEN'S ALL-WEATHER COATS** Orig. 9.88 **NOW \$5**
 - WOMEN'S BELL BOTTOM PANTS** Orig. 2.99 **NOW \$2**
 - WOMEN'S VELOUR BLOUSES** Orig. 6.98 to 7.98 **NOW \$2**
 - WOMEN'S SKIRTS** Orig. 4.98 **NOW \$2**
 - ONE GROUP OF WOMEN'S BLOUSES** Orig. 1.98 to 4.98 **NOW 88^c**
 - WOMEN'S PANT SETS** Orig. 14.98 to 6.98 **NOW \$3 and \$5**
 - WOMEN'S HANDBAGS** Orig. 2.99 to 8.99 **NOW 88^c and 1⁸⁸**
 - WOMEN'S JEWELRY** Orig. \$1 and \$2 **NOW 10^c-25^c-50^c**

- WOMEN'S SLIPS (full and half)** Orig. 3.98 to 4.98 **NOW 25^c**
- WOMEN'S TEXTURED HOSE** Orig. 1.25 **NOW 22^c**
- WOMEN'S PETTI PANTS** Orig. 98c to 1.98 **NOW 50^c and \$1**
- GIRLS' SKIRTS** Orig. 3.98 to 4.98 **NOW \$1**
- MEN'S SPORT SHIRTS** Orig. \$5 **NOW 2⁵⁰**
- BOYS' LONG SLEEVE PANT SETS** Orig. 3.98 to 4.98 **NOW 1⁹⁹**
- MEN'S SUITS** **19⁸⁸**
- BOYS' JACKETS** Orig. 9.98 **NOW \$5**

- MEN'S CORDUROY JEANS** Orig. 3.98 **NOW 1⁹⁹**
- MEN'S INSULATED UNDERWEAR** Orig. 12.98 **NOW \$6**
- BOYS' KNIT CAPS** Orig. \$1 **NOW 25^c**
- READY MADE DRAPES** Orig. 7.98 to 21.98 **NOW \$5**
- DRAPERY REMNANTS** **25^c-75^c-\$1**
- LONG BOY SHEETS** Orig. 3.29 **NOW 1⁵⁰**
- BLANKETS** **\$3**
- ONE LARGE GROUP WOMEN'S, CHIL- DREN'S, MEN'S, GIRLS' SHOS** **\$1 to \$5**

DOWNTOWN—1102 BROADWAY
MON., TUES., WED., FRI. 9:00 to 5:30
THURS. 9:00 to 9:00 SAT. 9:00 to 6:00

MONTEREY—50TH AND GARY
MON. THRU SAT. 9:30 to 9:00
MONTEREY STORE OPEN SIX NIGHTS A WEEK

DEVOTED TO PERFECTION

Violin Virtuoso Claims There Are Only Two Kinds Of Music—Good And Bad

By BOB THOMAS LOS ANGELES (AP) — "I never felt I had to tell any lies or make any excuses," says violin virtuoso Mischa Elman, admitting to his 75 years.

"When the time arrives that I have to find excuses, I will simply retire," he says. "Pink-faced and roly-poly, he seemed far from retirement as he played in a concert for International Concerts Exchange at the Dorothy Chandler Pavilion of the Music Center Tuesday night."

Elman remains contemporary by the same rigorous schedule of practice he maintained as a youth in Russia. "I don't have the right to let my admirers down," he said, "and so I practice every day; it is the duty of every artist to do so. But the advantage of age is that you learn what you must practice. You skip over the parts that you know and concentrate on those passages that are difficult for you."

Elman is an articulate man with a round, friendly face and a head almost devoid of hair. He retains an amazing zest for travel, amazing since he has likely traveled farther than any performer from Jenny Lind to Bob Hope. "I hope to go on playing for more years," said Elman. "I hope I can give audiences just a much pleasure as they have given me. I still feel there is beauty in life."

Elman is an articulate man with a round, friendly face and a head almost devoid of hair. He retains an amazing zest for travel, amazing since he has likely traveled farther than any performer from Jenny Lind to Bob Hope.

Elman is an articulate man with a round, friendly face and a head almost devoid of hair. He retains an amazing zest for travel, amazing since he has likely traveled farther than any performer from Jenny Lind to Bob Hope.

Elman is an articulate man with a round, friendly face and a head almost devoid of hair. He retains an amazing zest for travel, amazing since he has likely traveled farther than any performer from Jenny Lind to Bob Hope.

Elman is an articulate man with a round, friendly face and a head almost devoid of hair. He retains an amazing zest for travel, amazing since he has likely traveled farther than any performer from Jenny Lind to Bob Hope.

Elman is an articulate man with a round, friendly face and a head almost devoid of hair. He retains an amazing zest for travel, amazing since he has likely traveled farther than any performer from Jenny Lind to Bob Hope.

Elman is an articulate man with a round, friendly face and a head almost devoid of hair. He retains an amazing zest for travel, amazing since he has likely traveled farther than any performer from Jenny Lind to Bob Hope.

Elman is an articulate man with a round, friendly face and a head almost devoid of hair. He retains an amazing zest for travel, amazing since he has likely traveled farther than any performer from Jenny Lind to Bob Hope.

Elman is an articulate man with a round, friendly face and a head almost devoid of hair. He retains an amazing zest for travel, amazing since he has likely traveled farther than any performer from Jenny Lind to Bob Hope.

Elman is an articulate man with a round, friendly face and a head almost devoid of hair. He retains an amazing zest for travel, amazing since he has likely traveled farther than any performer from Jenny Lind to Bob Hope.

Elman is an articulate man with a round, friendly face and a head almost devoid of hair. He retains an amazing zest for travel, amazing since he has likely traveled farther than any performer from Jenny Lind to Bob Hope.

Elman is an articulate man with a round, friendly face and a head almost devoid of hair. He retains an amazing zest for travel, amazing since he has likely traveled farther than any performer from Jenny Lind to Bob Hope.

Elman is an articulate man with a round, friendly face and a head almost devoid of hair. He retains an amazing zest for travel, amazing since he has likely traveled farther than any performer from Jenny Lind to Bob Hope.

Elman is an articulate man with a round, friendly face and a head almost devoid of hair. He retains an amazing zest for travel, amazing since he has likely traveled farther than any performer from Jenny Lind to Bob Hope.

Elman is an articulate man with a round, friendly face and a head almost devoid of hair. He retains an amazing zest for travel, amazing since he has likely traveled farther than any performer from Jenny Lind to Bob Hope.

Elman is an articulate man with a round, friendly face and a head almost devoid of hair. He retains an amazing zest for travel, amazing since he has likely traveled farther than any performer from Jenny Lind to Bob Hope.

Elman is an articulate man with a round, friendly face and a head almost devoid of hair. He retains an amazing zest for travel, amazing since he has likely traveled farther than any performer from Jenny Lind to Bob Hope.

Elman is an articulate man with a round, friendly face and a head almost devoid of hair. He retains an amazing zest for travel, amazing since he has likely traveled farther than any performer from Jenny Lind to Bob Hope.

Elman is an articulate man with a round, friendly face and a head almost devoid of hair. He retains an amazing zest for travel, amazing since he has likely traveled farther than any performer from Jenny Lind to Bob Hope.

Elman is an articulate man with a round, friendly face and a head almost devoid of hair. He retains an amazing zest for travel, amazing since he has likely traveled farther than any performer from Jenny Lind to Bob Hope.

KOKO PALACE BALLROOM

Presents "ROCKIN' DAVE ALLEN" AND HIS BAND direct from Houston —also— Go-Go Girl Dance Show SATURDAY, JANUARY 29th 9:00 'til 1:00 Semi-Formal Advance Tickets \$2.50, at Door \$3.00 FOR RESERVATIONS—DIAL SH4-9477

EVERY SATURDAY NIGHT DANCING V. F. W. POST

CRYSTAL BALLROOM, 34th & AVE. N *****THIS SATURDAY NIGHT MUSIC BY***** Bob Lamont Public Invited! \$4.00 Per Couple (Couples Only) BALLROOM RENTALS INVITED

TRAIL DRIVE IN THEATRE

Open 6:25 Cartoon 7:00 \$1 PER ADMITS TWO CAR OR MORE! SEXY! THE IMPRESS FILE... THE DANGER TAKES PLACE IN THE DARKNESS OF THE CITY... THE CIRCLE OF HER ARMS! GREGORY PECK DIANE BAKER "MIRAGE" VINCENT PRICE "diary of a madman"

CIRCLE DRIVE IN THEATRE

OPEN 6:25—CARTOON 7:00 \$1 PER ADMITS TWO OR MORE! SOUTH ON AVE. "A-H-Q" In-Car Heaters DIAL SH4-6486 THREE UNIT HORROR DIAL... NO. 1 HORROR... NO. 2 HORROR... NO. 3 HORROR... THE MOST DIABOLICAL PAGES EVER WRITTEN!!! THE OLD DARK HOUSE... THE MANIAC... VINCENT PRICE... diary of a madman... THE REWARD... THE ACTION BEHIND THE HEADLINES... Motor Psycho... WHAT'S UP FRONT... RICHARD WIDMARK SIDNEY POITIER The Bedford Incident... BUNNY LAKE SMILING... THE SOUND OF MUSIC... SEAN CONERY THUNDERBALL... THE MENTOR... THE MENTOR... THE MENTOR...

CONTRIVENTAL Cinema

LUBBOCK PREMIER FEATURES 7:00 & 9:00... "YOU HAVE NEVER SEEN A BULLFIGHT PICTURE UNTIL YOU HAVE SEEN 'THE MOMENT OF TRUTH'... 'HE IS CONVINCING AND COMPELLING!'... 'SPECTACULAR!'... 'MAGNIFICENT!'... 'VIBRANT BEAUTIFUL!'... TONIGHT AT 10:30 RAINBOW THEATRE "BLUE VEIL" Starring Jane Wyman and Charles Laughton IN COLOR CHANNEL 13 KLBK-TV



SATURDAY NIGHT DANCE TO THE MUSIC OF "JAKE MILLER" It Costs No More To Enjoy The Best \$3 Per Couple VISIT THE OVER 28 CLUB MEETS EVERY TUESDAY, 8 TO 12 Palm Room IDALOU HWY. PO3-3709 CALL EARLY FOR RES.

BOX OFFICE NOW OPEN! The PRODUCING MANAGERS' COMPANY presents the National Tour of HANS CONRIED IN THE ABSENCE OF A CELLO by IRA WALLACH with RUTH McDEVITT LUBBOCK AUDITORIUM Wed., Feb. 9—8 P.M. Lower floor: \$4.50, \$4 & \$3.50 Civic Lubbock, Inc. Balcony: \$4.50, \$3.50, \$3 & \$2.50 Box 5486 DIAL PO2-4616

U HORSESHOE OPEN 6:15 — CARTOON 7:00 ADM. 90c — CHILDREN FREE IN CAR HEATERS SATURDAY LAST DAY SEE HOW THE WEST WINS AGAIN! DON'T LANCASTER LEE REMICK JIM BUTTON PAMELA TIFFIN THE HALLELUJAH TRAIL DONALD PLEASANCE BRIAN KEITH "SURF PARTY" WINNER OF 3 ACADEMY AWARDS! ANTHONY QUINN ALAN BATES IRENE PAPAS MICHAEL CACOVANNIS PRODUCTION "ZORBA THE GREEK" LILA KEDROVA

RED RAIDER OPEN 6:15 — CARTOON 7:00 SPECIAL ATTRACTION ADMISSION \$1.00 NO MERCHANTS OR COURTESY PASSES ACCEPTED The ACTION BEHIND THE HEADLINES Motor Psycho WHAT'S UP FRONT RICHARD WIDMARK SIDNEY POITIER The Bedford Incident BUNNY LAKE SMILING

Village Destined to be one of the biggest hits ever! —Life RODGERS & HAMMERSTEIN'S ROBERT WISE THE SOUND OF MUSIC JULIE ANDREWS CHRISTOPHER PLUMMER STEREPHONIC SOUND

Arnett BENSON Best Bond Ever SH W I N G ADULT \$1.00 CHILD 50c SEAN CONERY THUNDERBALL COLOR & PANAVISION

ARCADIA WOULD YOU? Jeff Morrow—Marie Anders THE YOUNG SWINGERS Rod Lauren—Molly Bee THUNDER ISLAND Gene Nelson—Fay Spain DINE AND DANCE AT THE NEW SANDS LOUNGE 1708 4TH ST. featuring Royce Clark and "Beacons" Friday Night, January 28th DANCING FROM 8:30 TO 12:00 JIM GORDON, Owner

The Capri Is The Best THURS., FRI., SAT. "BUD DIETRICH" "Comedy At It's Best" TONIGHT "THE BLUE NOTES" featuring Shirley Arate * Italian Food * Steaks Open at 11:30 A.M. Club Capri For Guest Information Call SH9-4314 (after 5pm) 3002 Slide Road

1316 TEXAS AVE. ADULT 70c State PO3-5461 THE PLAGUE OF THE ZOMBIES FREE! DRACULA FANGS DRACULA PRINCE OF DARKNESS ZOMBIE EYES CHILD 25c

Lindsey THIS IS A BIKINI MACHINE NOW SHOWING Dr. GOLDFOOT AND THE BIKINI MACHINE PATHECOLOR PANAVISION VINCENT PRICE ANGLON ROCKMAN SUSAN HART JACK HULLANEY

Village Destined to be one of the biggest hits ever! —Life RODGERS & HAMMERSTEIN'S ROBERT WISE THE SOUND OF MUSIC JULIE ANDREWS CHRISTOPHER PLUMMER STEREPHONIC SOUND

Arnett BENSON Best Bond Ever SH W I N G ADULT \$1.00 CHILD 50c SEAN CONERY THUNDERBALL COLOR & PANAVISION

Vertical text on the far right edge of the page, including "Gir", "OVER", "New", "Are", "In", "First L.", "whose wife", "daughter of", "Boiling of 13", "graduated", "electronic w", "at Mather", "Sacramento", "Following", "training at", "be assigne", "Fortress at", "at Dyess A", "lege. He is", "bock High", "uated from", "bachelor of", "Casstever", "and Mrs.", "Fairborn.", "He was c", "Air Force", "upon compl", "program.", "Alrman M", "Mrs. Alex", "ton, has b", "ing at She", "Whita F", "maintenan", "cently com", "at, Lackl", "San Anton", "Capt. Ch", "wife, Juan", "Mr. and M", "R. I. Lub", "ated for a", "bombing n", "Nam. He r", "Force Air", "AFR, Tex.", "ently assi", "for exist", "bombing t", "targets, fr", "the captai", "duty there", "graduate o", "School.", "Alrman", "son of Mr", "Kimbell, l", "has been", "specialist", "AFB. He i", "Plainview", "tepled Wa", "His recent", "training at", "FROM", "LONDON", "owner kee", "customers", "charitable", "App", "ID", "TO", "Se", "4 1/2", "Each", "C", "Av", "8", "FOR", "PO", "C", "LI", "PO", "D", "C", "Gee

Girl Wants To Enter West Point, Lawmaker Promises To Check Possibility

OVER WORLD: News About Area Men In Service

First Lt. Jerry D. Casstevens, whose wife, Elizabeth, is the daughter of Mr. and Mrs. Ed Bojling of 1301 43rd St., has been graduated from the Air Force electronic warfare officer course at Mather Air Force Base, Sacramento, Calif.

Following specialized aircrew training at other bases, he will be assigned as a B-52 Strato Fortress aircraft crew member at Dyess Air Force Base, Abilene. He is a graduate of Lubbock High School and was graduated from Texas Tech with a bachelor of science degree.

Casstevens is the son of Mr. and Mrs. Kenneth A. Gordon, Fairborn, Ohio.

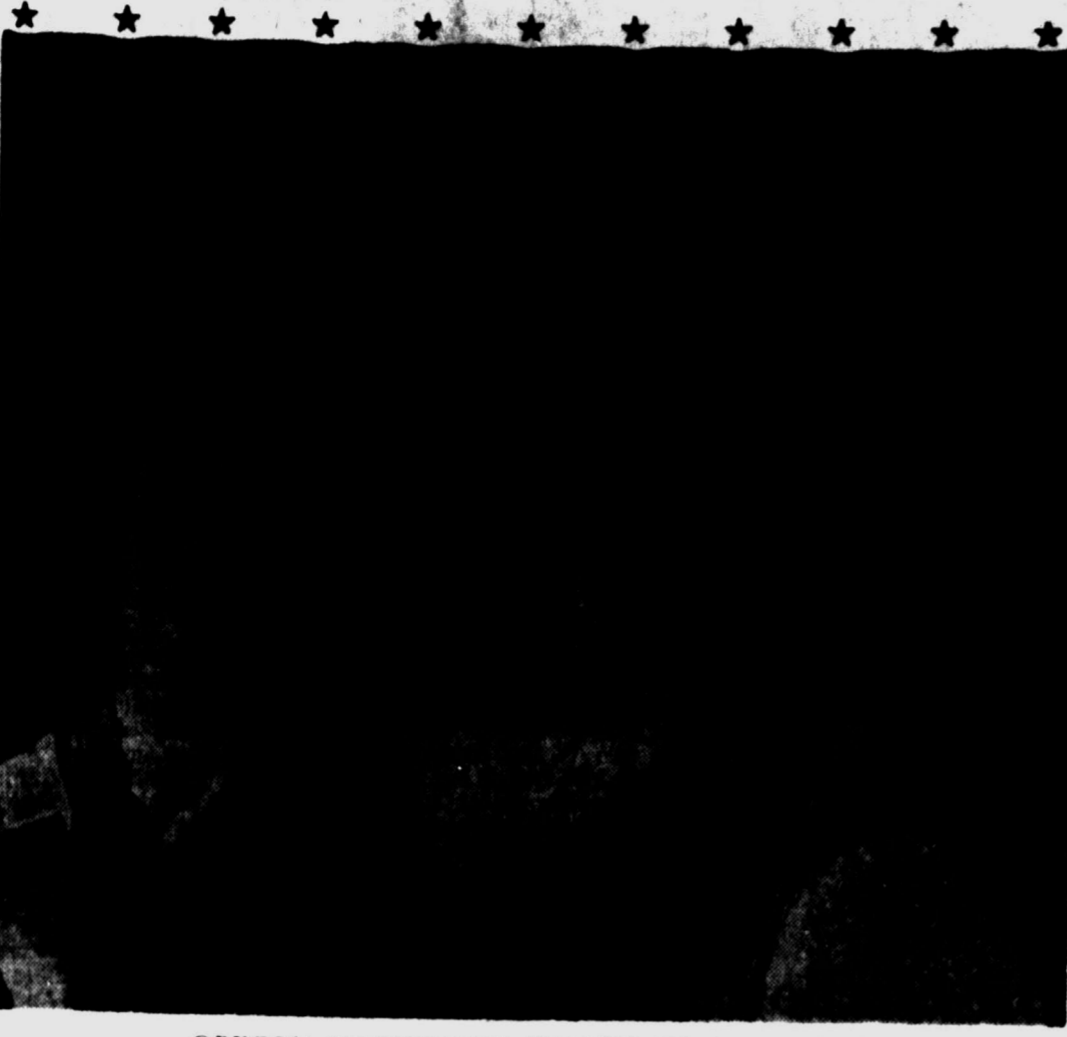
He was commissioned into the Air Force at Texas Tech in 1964 upon completion of the AFOTC program.

Airman Manuel Flores, son of Mrs. Alexandra V. Flores of Antonio, has been chosen for training at Sheppard Air Force Base, Wichita Falls, as an aircraft maintenance specialist. He recently completed basic training at Lackland Air Force Base, San Antonio.

Capt. Charles O. Pike, whose wife, Juanita, is daughter of Mr. and Mrs. H. L. Thomason, R.F. 1, Lubbock, has been decorated for a B-52 Strato Fortress bombing mission in South Vietnam. He received the U. S. Air Force Air Medal at Carswell AFB, Tex., where he is permanently assigned. The award was for outstanding airmanship on bombing runs against Viet Cong targets, flown from Guam while the captain was on temporary duty there last year. He is a graduate of Sulphur (La.) High School.

Airman Merlin W. Kimbell, son of Mr. and Mrs. Eugene T. Kimbell, 1603 Joliet, Plainview, has been selected for supply specialist training at Amarillo AFB. He is a 1960 graduate of Plainview High School and attended Wayland Baptist College. He recently completed basic training at Lackland AFB.

FROM THE BIRDS
LONDON A British pet shop owner keeps a parrot who asks customers to donate to several charitable funds.



OREGON SCHOOLGIRL WANTS TO BE A PLEBE
Cathy Christy, 16, Appeals To Congressman For Help

CURIOUS POLL IN HOLLYWOOD

Frank Sinatra Accumulates Most Publicity During '65

HOLLYWOOD (UPI) — One of Hollywood's most curious polls is conducted by an outfit titled Publitrax, and it measures the amount of publicity accumulated by a star during the year.

Winner of the 1965 poll is Frank Sinatra.

That means that the thin singer's name appeared more often in newspapers and magazines than any other star in the business.

Close behind in No. 2 spot was Julie Andrews, last year's Oscar winner.

Richard Burton and Elizabeth Taylor were at the top of the 1964 poll, and they don't even have a press agent. This year Elizabeth dropped to fourth place and Burton to seventh.

Bob Hope was No. 3 this time, probably due to his enormous popularity with newsmen and his trek to Viet Nam.

Others In Succession
After Miss Taylor in the fourth spot were Judy Garland (5), Dorothy Malone (6), Burton (7), Marlon Brando (8), Patricia Neal (9) and Rex Harrison (10).

Miss Garland was married in 1965. Miss Malone and Miss Neal made news with near brushes with death. Brando was mixed up in a child custody suit, and there's no explaining Harrison except that he won the best actor award in the 1965 presentations.

These gradually fading in publicity saturation during the year were Cary Grant, Burt Lancaster, Doris Day, William Holden, Gregory Peck, Kirk Douglas, Glenn Ford, David Niven, Sandra Dee, and Ingrid Bergman.

Those holding a high level included Ring Crosby, John Wayne, Elvis Presley, Sean Connery, Ann-Margret, Natalie Wood, Kim Novak, Jack Lemmon, Gina Lollobrigida and Brigitte Bardot.

JUMBLE — that scrambled word game

Unscramble these four Jumbles, one letter to each square, to form four ordinary words.

NOJIT

GANTY

CUDREE

WUETOA



HOW JANWALKERS SOMETIMES END UP FEELING.

Now arrange the circled letters to form the surprise answer, as suggested by the above cartoon.

Post the SURPRISE ANSWER here.

Yesterday's Jumble IDIOM GROOM PLENTY SUPERB
Answer: What the ungrammatical prisoner liked to end a sentence with — A "PROPOSITION"

THE ALMANAC:

Today In History

Today is Friday, Jan. 28, the 28th days of 1966 with 327 to follow.

The moon is between new and first quarter.

No morning star.

The evening stars are Jupiter, Saturn and Mars.

Polish concert pianist Arthur Schnitke was born on this day in 1927.

On this day in history:

In 1915, Congress passed legislation creating the U. S. Coast Guard.

In 1922, the roof of Washington's Knickerbocker Theatre collapsed under the weight of heavy snow and killed 95 persons.

In 1961, Harvey Gantt became the first Negro to attend school with whites in South Carolina without incident at Clemson College.

In 1965, Nicholas DeB. Katzenbach was named U. S. Attorney General by President Johnson.

A thought for the day: American writer Henry Brooks Adams: "Chaos often breeds life, when order breeds habit."

University Plans To Develop Top Medical Program

AUSTIN (AP) — The University of Texas announced Thursday plans to develop one of the nation's outstanding medical education and research programs at its medical institutions in Houston.

W. W. Heach, chairman of the board of regents, listed these board actions aimed at development of the Houston medical institutions.

Directed the administration to prepare a \$2.5 million grant to construct a \$5 million building for a dental research institute. The board plans to pay for the other half with permanent university fund bond proceeds.

To Receive Grants
Authorized the administration to receive gifts and grants to construct one or more buildings to house the Graduate School of Biomedical Sciences, the Division of Continuing Education and the Institute of Environmental Medicine.

Directed the administration to prepare a master plan for the Houston institutions, including the M. D. Anderson Hospital and Tumor Institute, the Dental Branch, the Dental Research Institute, the Graduate School of Biomedical Sciences, the Division of Continuing Education and the Institute of Environmental Medicine.

The proposed plan will include land use, physical plant, academic program development and financing plans.



BILL GILLESPIE
FIRST TO ANNOUNCE FOR STATE REPRESENTATIVE

By MARTHA HARRIS
WASHINGTON (AP) — Girls in West Point?

Well, there would be if pretty 17-year-old Cathy Christy had her way. She'd like to become Plebe Christy. And her congressman says he's willing to look into the possibility.

Cathy had become disturbed by the exclusiveness of the military academy and wrote a letter to her congressman, Rep. Robert B. Duncan, D-Ore., asking why women were not admitted.

Not Prejudiced
He replied that although the military establishment was somewhat steeped in tradition, he was sure that the cadets, as red-blooded American men, were not prejudiced against women. He apologized and asked if perhaps she had a brother.

Wednesday the congressman, a lieutenant commander in the Naval Reserve, said he'd reconsider.

Why does she want to go to West Point? She says: "Women should have an equal chance for the excellent education afforded by a military academy."

Cathy, a dark-haired senior from Ashland Senior High School, is being sent to the home economics class to lower the hems.

Class time lost during the altercation must be made up after school. So far, all offenders have been able to sew.

While at first amused by Cathy's request, he said that perhaps there was some merit in her argument.

Promises To Check
He promised to examine the qualifications, and if she were eligible, perhaps he would consider appointing her to a first or second alternate position.

Col. R. E. Kren, public information officer of the military academy, said in a telephone interview Wednesday night: "It appears a congressman may appoint whom he desires."

However, acceptance into the military academy is determined by the academy. It appears doubtful at this time if a girl could meet the physical aptitude requirements necessary for admission.

Regulations at all the service academies specify that all applicants for admission must be male.

Col. Kren said further study of the laws governing admission of cadets to West Point would be necessary before a final determination could be made on the eligibility of a female appointee.

INCOME TAX and BOOKKEEPING
Reasonable Rates
JOHN REEVES
111 W. 81st — SM4-4032

COMMERCIAL ELECTRIC RATES IN LUBBOCK ARE LOWER*

Rates For 10,000 KWH

Lubbock	\$181.50
Amarillo	\$232.94

YOUR ELECTRIC COMPANY MAKES THE DIFFERENCE!

LUBBOCK POWER & LIGHT
906 TEXAS AVE. P.O. BOX 200
*1964 Federal Power Comm. Report

FINAL-ANNIVERSARY SELL OUT REDUCTIONS

HAROLD GRIFFITH FURNITURE

OLD HOMESTEAD LOCATED AT 116 N. COLLEGE LUBBOCK

SOFAS?

KROEHLER
2 ONLY SOFAS \$125
\$289.95 & \$299.95 Values

LA-Z-Y BOY
11 ONLY RECLINER-ROCKERS INCLUDING HIGH BACKS CLOSE OUT PRICES

FRENCH BEDROOM GROUPS
Fruitwood Finish Or Gold On White
1 Only Triple Dresser, Bed, Nite . . \$149

ITALIAN DINING ROOM GROUPS
FINAL CLOSE OUT PRICES

FINAL DAYS ANNIVERSARY CLOSE OUT SALE

DANISH-CONTEMPORARY BED ROOM GROUPS INCLUDED
SEVERAL OPEN STOCK GROUP

SIMMONS
NEW EXCLUSIVE AJUSTO REST
Quilted Mattress Or Box Springs . . \$59
AS SEEN IN LIFE MAGAZINE

SIMMONS
3 ONLY — HIDE-A-BEDS
\$145 to \$179

FRENCH PROVINCIAL-OUR SELECTION IS CONSIDERED ONE OF THE BEST

TYPING STUDENTS
8 1/2 x 11"
Approx. 600 Sheets
50¢ PER PKG.
IDEAL FOR KIDS TO SKETCH ON!

Scratch Pads
4 1/2 x 5 1/2 x 1/2"
Each Pad **5¢**

AT OUR CIRCULATION DEPARTMENT
Avalanche-Journal
8th & Ave. J
FOR SPECIAL ORDERS
POB-0343 EXT. 307

Neighborly!
AMERICAN STATE BANK
MEMBER F.D.I.C.

CARAVAN CLUB
4805 Ave. Q SM4-4411

FRI. & SAT. NIGHT

Live Music Every Friday and Saturday night in the Persian Room. Dinner and Dancing at its finest.

Arabian Lounge Piano Bar
"ORBY McCLESKEY"
Sun. thru Thurs. starting at 8:00

"THE MELODY MIXERS"
(Guitar)
Mon. — Fri., Starting at 5:00

Guests Welcome John Pfeiffer, Mgr.

MON.-FRI.—12:00 to 12:00
SAT., 12:00-1:00, SUN. 4:00-12:00
\$10 Cal. Yr. Membership

"Be Ready to Vote"

PAY YOUR POLL TAX BY JAN. 31

CLIP & MAIL THIS COUPON TODAY

APPLICATION FOR PAYMENT OF POLL TAX BY MAIL

To Russell Hardin, Assessor and Collector of Taxes, Lubbock County, Texas:

I, _____ (print or type name), hereby apply for Poll Tax or Exemption Certificate, and by this instrument furnish you the information necessary to enable you to prepare my Poll Tax or Exemption Certificate.

Date of Birth _____ My home address in Lubbock County is _____

Age _____ Years

I have resided in Texas _____ years My occupation is _____

I have resided in Lubbock County _____ years I was born in _____

I have resided in Lubbock _____ years Race _____ Sex _____

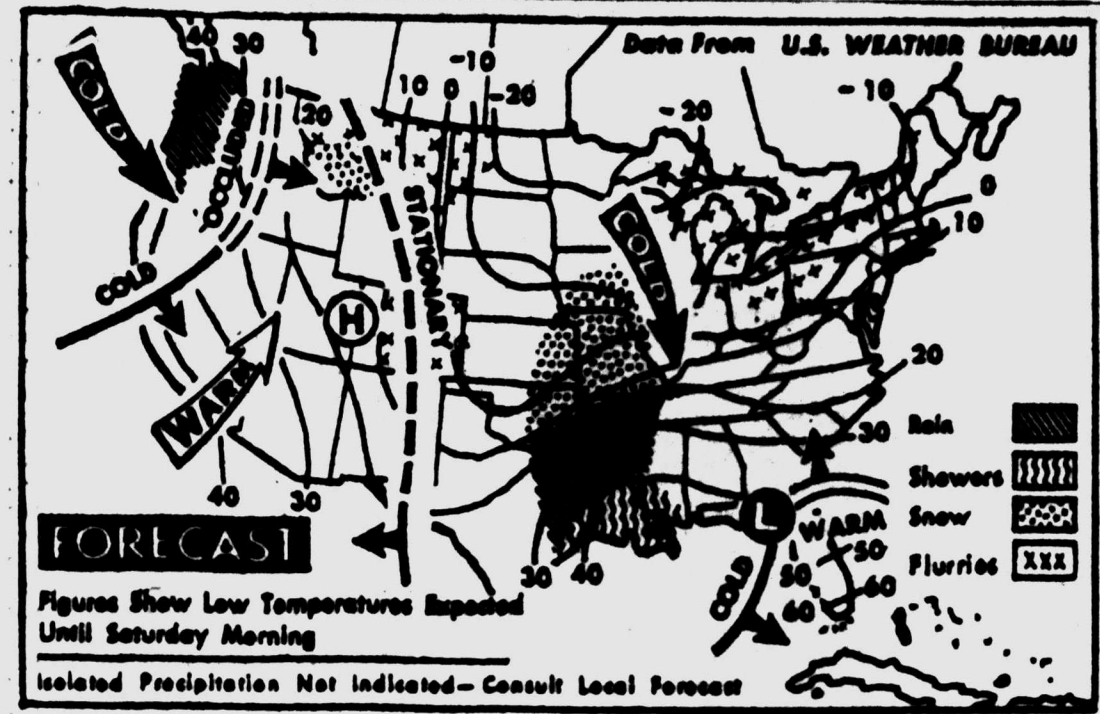
Native born or naturalized citizen _____

(Enclose \$1.75 cash or check for each Poll Tax) (Signed) _____ Applicant

This Application Must reach the Office of the Assessor and Collector of Taxes Not Later than January 31st

OFFICIALS FEAR WATER-SOFTENERS TO BE BANNED

Dallas Votes Saturday On Fluoridation Controversy



WEATHER FORECAST—Snow and flurries are expected tonight in the northern Plains...

The Weather

Table with 2 columns: City, High/Low temperatures. Includes Lubbock, Dalhart, Wichita Falls, etc.

Area Readings

Table with 2 columns: City, High/Low temperatures. Includes Brownfield, Floydada, Lamesa, etc.

Congratulations to

Mr. and Mrs. Orlando Gutierrez, 1271 7th St., on the birth of a daughter...

HIGH AND LOW

Readings In Texas

Table with 3 columns: City, High, Low. Lists major Texas cities and their current weather readings.

Tech Classes Open Today

Spring semester classes at Texas Tech opened this morning with 12,047 students who had completed enrollment Thursday...

Jury Continues To Deliberate In \$370,000 Suit

A 72nd District Court civil jury was still deliberating shortly before noon today in a damage suit arising from a traffic mishap Sept. 12, 1960.

By PRESTON MOGRAW

DALLAS (UPI)—City authorities say that if Dallas voters decide in a special election Saturday to stop adding fluoride to the municipal water supply...



A LANDING FIRST—A new charter helicopter service went into operation Thursday when Roger Evans, president of Plains Helicopter, Inc., made the official landing with Bill Wyatt...

First Charter Helicopter Service Operated Here

The first charter helicopter service in the Panhandle and South Plains areas went into operation here Thursday...

Official Records

Marriage Licenses: James Laverne Hammon and Miss Patricia Kay Payne...

Bob Hubble Sr. Dies At Midland

Bob N. Hubble Sr., about 67 of Midland, a former Ballis student, died at 9 a.m. Thursday in a Midland hospital after a lengthy illness.

County Court

13TH DISTRICT COURT: James L. Bowers, Judge Presiding. 12th District Court against Robert L. Hester...

Pair Jailed In Attack On Cabbie

SNYDER (Special) — Two Snyder men were arrested shortly before midnight Thursday on charges of aggravated assault and robbery...

Wait For Warrant

The man had run from a washing machine repair shop in the 2100 block of Ave. R and officers proceeded to surround the structure...

One Killed, 3 Hurt In Press Blast

TULIA (Special) — A 37-year-old Tulia man was killed and three others injured here about 3:30 p.m. Thursday when a steam press at North Plains Cotton Compress exploded.

Pair Condition

In fair condition today at the same hospital were Jose Serna, 23, and Norberto C. Gonzales, 20. Julia Alfaro, 49, was treated and released after the mishap.

The Weather Across U.S.

Table with 3 columns: City, High, Low. Lists major US cities and their weather forecasts.

\$5,550 Goes To Texas Tech For Cotton Research

Checks totaling \$5,550 were presented this morning to the Institute For New Uses For West Texas Cotton at Texas Tech.

7 Pleaded Guilty, Draw Penalties

Seven defendants pleaded guilty this morning in County Court-at-Law No. 1, including a suspect in a shooting incident.

Astronaut Recalls Emergency Landing

HOUSTON (AP) — Astronaut Michael Collins can reasonably hope the Gemini 10 he is scheduled to ride this year comes down as beautifully as he did on his emergency aircraft landing...

Deadline Near For Pageant

Entries in the Lubbock Jaycees' Miss Lubbock Pageant are due no later than midnight Monday, officials of the beauty contest announced.

Dallas Draft To Take Husbands, Students

DALLAS (UPI) — Husbands and college students will be among the 202 Dallas County men drafted in February.

Sterilized Mosquitoes Have Morale Problem

JACKSONVILLE, Fla. (AP) — An insect morale problem is snagging a campaign to wipe out yellow fever-carrying mosquitoes by sterilizing the males.

Trucker Treated After Accident

Lewis C. Gibbons, 38, 3007 54th St., was treated for bruises and abrasions at West Texas Hospital about 7 a.m. today after the truck he was driving overturned about 2:45 a.m. on State Hwy. 116 near Hurwood.

President Wins Freedom Award

NEW YORK (UPI) — President Johnson is this year's winner of the Freedom Award, the Freedom House announced Thursday.

FOR OFFICE Farmers Union Endorses Naman

District 2 of the Texas Farmers Union endorsed Jay Naman of Waco, TCU president, as a candidate for the presidency of the National Farmers Union here Thursday at a meeting of county FU presidents and others in the Plainsman Hotel.

Lubbock Minister Speaks At Lamesa

The Rev. Bob Hearn, pastor of Second Baptist Church, was the speaker at a luncheon today in Lamesa, where awards were presented to United Fund leaders.

El Paso Bell Tower To Be Consecrated

EL PASO (AP) — A 65-foot bell tower at Our Lady of the Light Catholic Church will be consecrated Feb. 24.

Jury Deliberates Incest Case Here

A jury of 13th District Court was to continue deliberations at 1 p.m. today in the case of a 36-year-old Lubbock man, J. C. Yates, charged with incest.

Paris Choirs In France Will Sing In English

PARIS (UPI) — French bed makers will increase mattress size.

Overlooks Detail

(UPI) — A overlooked just today when he stepped up a theater of the crowded crowd.

President Wins Freedom Award

NEW YORK (UPI) — President Johnson is this year's winner of the Freedom Award, the Freedom House announced Thursday.

Trucker Treated After Accident

Lewis C. Gibbons, 38, 3007 54th St., was treated for bruises and abrasions at West Texas Hospital about 7 a.m. today after the truck he was driving overturned about 2:45 a.m. on State Hwy. 116 near Hurwood.

El Paso Bell Tower To Be Consecrated

EL PASO (AP) — A 65-foot bell tower at Our Lady of the Light Catholic Church will be consecrated Feb. 24.

Miss Chinatown USA

MISS CHINATOWN USA—Hawaii's Jacqueline Chun, the 1966 Miss Chinatown USA, received her crown from 1965 queen, Mary Tom of New York, at coronation ceremonies in San Francisco Thursday night.

Paris Choirs In France Will Sing In English

PARIS (UPI) — French bed makers will increase mattress size.

Advertisement for 'LITTLE CHURCH OF THE FLOWERS' available for weddings—no charge. Includes contact info for Frank W. Wilson, Funeral Director.

Red Chinese Educator Says Students Overworked In, Outside Classrooms

By JOHN RODERICK
TOKYO (AP) — A Red Chinese educator says students are being worked too hard both in the classroom and in outside

extracurricular activities, including political lessons. President Kuang Ya-ming of Nanking University says the burden must be eased "to coordinate labor with rest more satisfactorily" so as to improve moral, intellectual and physical development.

ANOTHER LAWMAN
ST. PETER PORT Channel Island (AP) — The States of Guernsey — the island Parliament — has decided that the police force of the neighboring Channel Island of Alderney should be raised by 100 percent

Published In Paper
Kuang, who is first secretary of the university's Communist Committee, made his criticism in Peking's Kuang Ming Jih Pao, a paper of non-Communist political parties that are allowed to function in China. A

copy of the paper was received in Tokyo. This criticism of the Communist educational system is one of the sharpest and most trenchant in recent years. He presumably included high schools as well as universities in his critique.

"We must now seriously grapple with this problem," he said. "Because of excessive classwork, the physical condition of a great number of students in many schools has been seriously impaired. Does this not sound an emergency warning deserving our serious attention

and thought?" Urging a letup, he observed: "departing or not proceeding from this ultimate objective, all kinds of school work will become purposeless and meaningless, as things that drift aimlessly."

Four Aspects
Kuang listed these four aspects of Chinese education:
1. "Excessive extracurricular sports, cultural, recreational and group activities."
2. "Excessive political lessons and other activities including participation in meetings of dif-

ferent types and performances of unprescribed labor."
3. "Excessive classroom subjects, complicated content of teaching improperly conducted lectures, and unscheduled examinations."
4. "The excessively grand scale of running schools and overcrowding of students with the result that general affairs and support services cannot keep pace with the mounting work load. This affects improvement of study and living conditions of students, causing nervous tensions and imposing

additional burdens on the students and thus impairing their health."
Says Mao Agrees
Kuang proposed more part-work, part-study, part-farming, part-study schools. Kuang said his "rest with la-

bor" solution to the student problems coincided with the thinking of Communist Chairman Mao Tze-tung. He said it was not "a matter of expediency" but one "fraught with far-reaching, strategic significance."

He implied that if the present system is allowed to continue, no all-around development of the Communist individual will be possible and the end product will be a person whose "mold is mechanically and passively cast."



SPLASHY FLORAL CAMPUS CASUALS

Going on a cruise? Want to feel like June in January? Then this is just what you're looking for...

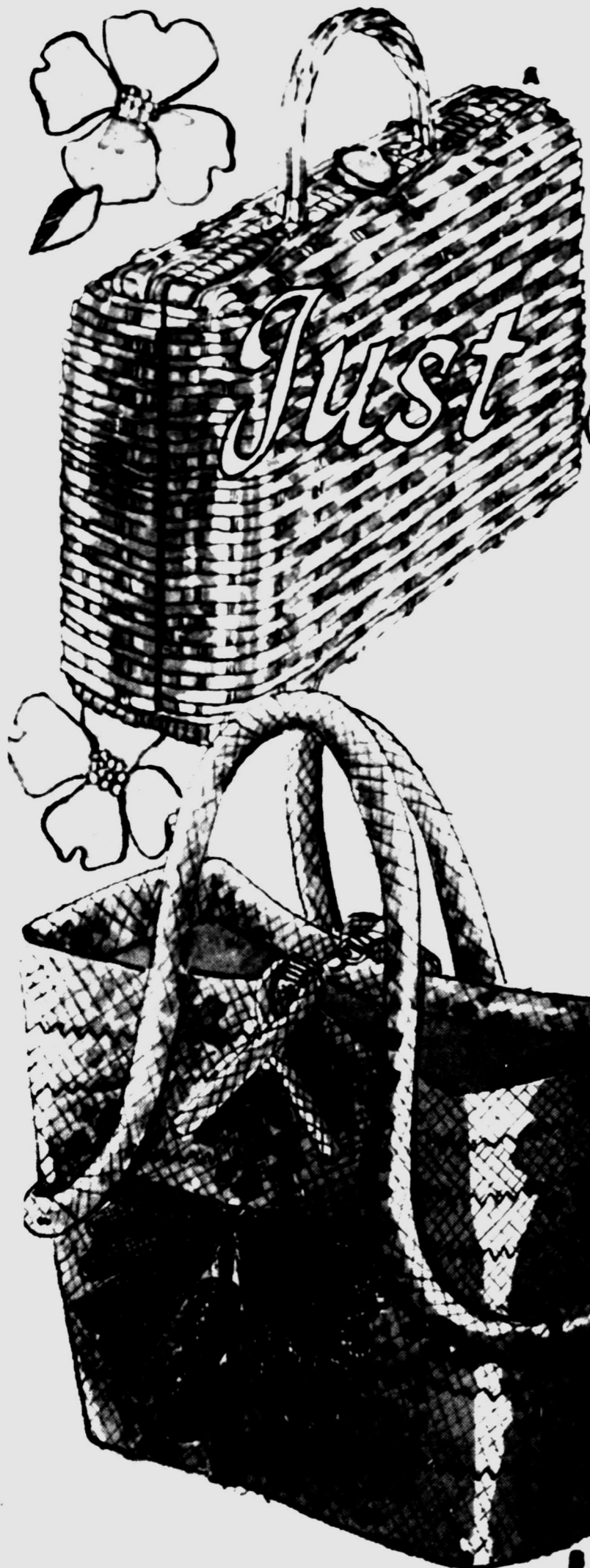
- A Roll sleeve blouse in gold or turquoise 5.00
 - B Tailored straight skirt in gold, turquoise or white 6.00
 - C 3/4 sleeve blouse in gold or turquoise 7.00
 - D Pullover blouse in gold or turquoise 6.00
 - E Slacks in gold or turquoise 8.00
- Sportswear, Downtown and Monterey



GOSSARD HAS THE 'ANSWER'

for your figure perfection there's nothing like the GOSSARD 'Answer' foundations...
• all cotton bra adjusts to your every move 2.50
• with special Kodel polyester lining that adds fullness to in-between sizes 4.00
• Answer deb girdles are proportioned for your waist and body length... panty girdle 13.00
high-rise panty girdle 14.00
regular girdle 9.00
Foundations, Downtown and Monterey

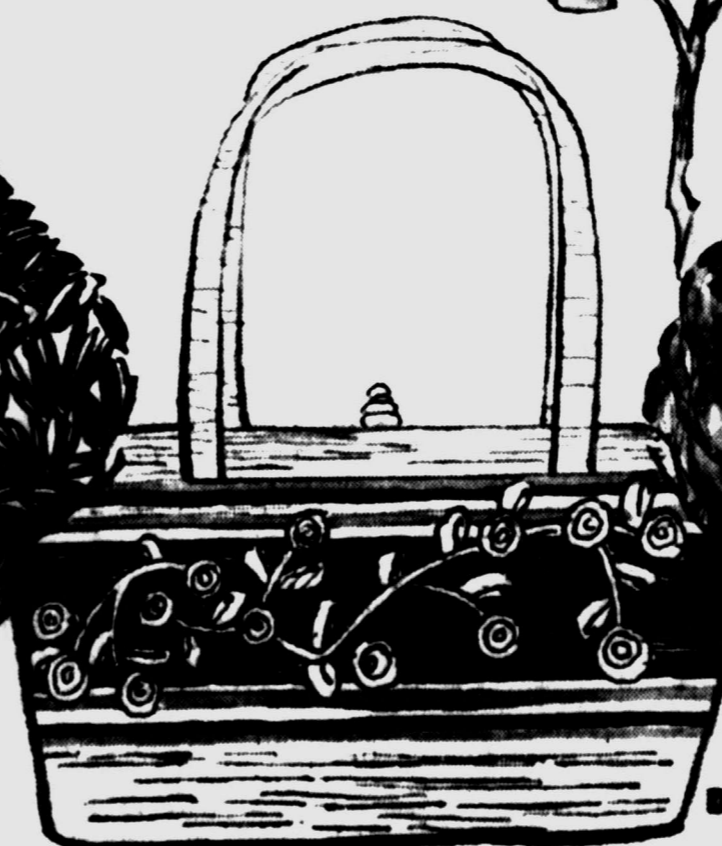
Hempill-Wells



COLORFUL STRAW BAGS

Just can't wait 'til spring!

- the first step toward spring begins with a new straw bag.
- A Shiny woven-plastic in many colors 12.00
 - B Tote bag trimmed with strawberries 17.00
 - C Dainty straw purse 4.00
 - D Fine Milan straw bag sprinkled with flowers 26.00
 - E Gold framed straw bag 18.00
 - F Straw basket enclosed in a sturdy nylon net 12.00



Worker's Suicide Over Withholding Of Salary For Taxes Stirs Controversy

By EDMUND DE MOCH
CHICAGO (AP) — A few years ago William Rodriguez, 24, in debt far beyond his means and his salary garnished, committed suicide.

Public reaction led the Illinois Legislature to pass several bills protecting debtors. Among the bills was one that permitted a debtor to keep \$45 or 85 per cent of his wages, whichever was greater, before any wage deduction to satisfy a debt could be made.

Early Saturday, Carl W. Clark, 24, of Peotone, Ill., shot himself because of mounting financial problems and because his last two weekly pay checks were almost entirely taken to satisfy a delinquent tax payment. He died Monday, leaving a widow and 5-year-old daughter.

Clark, employed by the Ford Motor Co. in Chicago Heights, had lived in Indiana, near the Illinois state line from 1960 to 1965, when he moved to Peotone.

Indiana said he failed to pay his state income taxes during the time he lived in the state and owed about \$325. He was notified several times of his delinquency.

The state of Indiana then contacted the Ford Motor Co. and asked that the money be withheld from Clark's pay check until the debt was paid.

Ford attorneys in Dearborn, Mich., said the company had no alternative but to comply with the Indiana request.

When Clark collected his pay envelope Jan. 13, there was no check for him, but a typewritten note informed him that the full \$127 had been withheld as payment on his tax debt to the state of Indiana.

He asked his union, the United Auto Workers Local 588, if this was legal. President Rudolph Milasich Sr. said he would look into it.

Clark worried about meeting other bills the next week and how his wife and daughter

would live. He asked his employer that his vacation pay be included in his Jan. 20 check. When he got the second pay envelope, there was a note informing him that the remainder of his tax debt to Indiana had been withheld. In the envelope was a check for \$30.

Clark called his father in Alabama, asking for a loan of \$500. He was promised the money in a few days. Clark also called the UAW local office and pleaded for Milasich to help. The union

president sent a telegram to Gov. Roger D. Branigin of Indiana, asking that Clark's debt be paid off in small payments, rather than the way it had been.

Hours later and "driven to despair," said Milasich, Clark shot himself. He died two days later.

How could the state of Indiana order the Ford Motor Co., with headquarters in Michigan, to collect a delinquent tax from a former Indiana resident now living in Illinois?

William L. Fortune, state revenue commissioner in Indiana, said the wages were withheld under a tax levy executed by the Porter County sheriff at Valparaiso, where Clark formerly lived, and served on a Ford Motor Co. resident agent in Indianapolis.

Joseph Conon, in charge of industrial relations at the Ford plant in Chicago Heights, said Ford attorneys had discussed the withholding of money from

See SUICIDE Page 10



MORE OF THE SAME—Just a week ago Mother Nature tucked Lubbock's landscape under a blanket of white. Much of that snow remains, and the weatherman indicated today that there's more to come. Ann Easton, venturing from her room in Wall Hall on the Texas Tech campus, takes a closer look at the "trusting" left on trees

and shrubbery by unusual icy fog which enveloped the area at times during the week. Ann, a freshman elementary education major, is the daughter of Mr. and Mrs. Louis H. Easton, 3411 25th St. Staff Photo by Ray Westbrook.

Defense Won't Cut Civilian Production

By STERLING F. GREEN
WASHINGTON (AP) — Economic advisers have assured President Johnson that the peacetime allocation machinery will suffice to give military orders priority over civilian production during the \$15 billion Viet Nam buildup.

The President's Council of Economic Advisers submitted a study showing that the planned outlays for Viet Nam will have far less economic impact than outlays during the Korean War, which created some civilian shortages.

No Added Powers
Johnson sent the council's report to Congress Thursday along with his annual Economic Message. The findings indicated that the White House will not seek added control powers when the Defense Production Act comes up for renewal this spring.

Although the business stimulus resulting from Pentagon spending will be felt throughout the economy, the council said, total defense outlays will claim only 7.6 per cent of national output in fiscal 1966 and 1967.

That is only a shade more than the 7.5 per cent in fiscal 1965. By contrast, defense spending tripled in the two years after the Korean War began in 1950, climbing from less than 5 per cent of national output to over 12 per cent in 1952.

Largely because of the vast expansion of the nation's industrial capacity since Korea, the council said, it will not be necessary to fortify the present Defense Materials System.

Priority Program
The DMS is the allocation program for basic metals. It has been ticking along since the Korean War, routinely assuring that defense contracts get priority over civilian orders for materials.

SECTION B
Society Editorials General News
LUBBOCK AVALANCHE-JOURNAL
Lubbock, Texas, Friday Evening, January 28, 1966

IN HULL ELECTION Wilson's Policies Win Endorsement

By ARTHUR L. GAVSHON
LONDON (AP) — British Laborites pressed Prime Minister Harold Wilson today to call votes more than Labor's win a general election soon following margin there in the 1964

Wilson's stock has risen in a special election at Hull. Wilson's recent public opinion polls, and a corresponding shift in the vote on a national level would give Wilson a substantial majority in Commons. But his closest confidants report he is convinced the British people have had enough politics in the past few years and wants a period of stable government.

Wilson reportedly reasons the margin registered in the district by any political party in more than 15 years and was 4,170 votes more than Labor's win in a general election.

Wilson's government won a five-year mandate in the 1964 general election, but the prime minister can go to the voters at any time.

Increased Majority
The victory of Labor candidate Kevin McNamara in Hull North Thursday night and the death of Conservative MP Dame Edith Pitt Thursday morning increased Wilson's majority in Commons from 2 votes to 4.

McNamara, 21, a law lecturer, defeated Conservative candidate Toby Jessel, also 21, by 2,351 votes. It was the biggest

City's Traffic Toll

	Jan. 27, 1966
Accidents	585
Deaths	66
Injuries	66
Same date 1965	
Accidents	399
Deaths	0
Injuries	80

SATURDAY LAST DAY! Savings up to 75%!



Pre-inventory CLEARANCE

CHARGE IT! TAKE MONTHS TO PAY!

SHOP SATURDAY TILL 6 P.M.

DOWNTOWN—CAPROCK—TOWN AND COUNTRY—FAMILY PARK



POCKET THE SAVINGS ON THIS GROUP!

ELEGANT OVAL ROOM FASHIONS

SAVE **75%**

If you have a flair for fashion, you'll want to be one of the first to see our fine collection of famous name dresses, suits, costumes, after fives and formals. These magnificent selections are designed to flatter and fit. Sizes 6-20. Hurry and stock up now!

THE OVAL ROOM — DOWNTOWN ONLY

SEE THIS GROUP FIRST!

IVY LEAGUE LITTLE HEEL LIZARDS

USUALLY 20.00 **9.00**

Your savings are spectacular with superbly designed Ivy League Lizards. Styled to please all fashion-minded women, these charming little heels are yours in favorite colors of Black, Navy, Beige or Brown. Hurry to Dunlap's and see them today!

LADIES' SHOES — DOWNTOWN AND CAPROCK

LADIES' FASHIONS ... No matter what your fashion preference may be, you'll find it in our special group of dresses, suits and costumes now reduced for top savings. Values to 40.00 **1/2 PRICE**
READY TO WEAR — ALL FOUR DUNLAPS

LADIES' BETTER SPORTSWEAR ... Skirts, pants, shirts and blouses, beautifully constructed to meet your active needs, are now yours at fantastic savings. Values to 20.00 **5.00**
SPORTSWEAR — ALL FOUR DUNLAPS

BRAS AND GIRDLES ... Enhance every figure type with famous name bras and girdles. Outstanding savings are yours now for exceptionally low prices. **SAVE 1/2**
FOUNDATIONS — ALL FOUR DUNLAPS

LADIES' ALLIGATOR PUMPS ... Exquisitely designed by Sal Shain. High or mid heel in Black, high heel in Brown. Reg. 40.00 **14.00**
LADIES' SHOES — DOWNTOWN AND CAPROCK

JUNIOR DRESSES ... Famous name after five dresses, casual dresses, and sport dresses designed especially for juniors. Sizes 3-15 **SAVE 1/2**
"THE PLACE" FOR JUNIORS — ALL FOUR DUNLAPS

GIRLS' AND SURTEEN DRESSES ... A great assortment of beautiful styles, fabrics and colors to choose from. Broken sizes ... Reg. 6.00 to 18.00 **SAVE 1/2**
GIRLSWEARS — DOWNTOWN AND CAPROCK

SOCIETY BRAND SUITS ... Dress smart ... look distinctive. Large group of fine quality suits in all sizes. Favorite colors and patterns **SAVE 30%**
MEN'S DEPARTMENT — ALL FOUR DUNLAPS

ALL WEATHER COATS ... Be warm and comfortable all year round without bulky weight. Zip out or regular linings. All sizes **SAVE 20%**
MEN'S DEPARTMENT — ALL FOUR DUNLAPS

MEN'S DRESS SHIRTS ... Handsome dress shirts in White or your favorite colors. Many sizes and collar styles to choose from ... **SAVE 20% to 50%**
MEN'S DEPT — ALL FOUR DUNLAPS

BOYS' SUITS AND JACKETS ... Superbly designed with the young man in mind. Many styles and colors. See them now! **SAVE 20% to 50%**
BOYSWEARS — ALL FOUR DUNLAPS

G.E. CLOCKS ... Choose from 200 quality clocks in shapes and sizes sure to compliment the decor of your home. Values to 12.00 **1/2 PRICE**
HOUSEWARES — DOWNTOWN & CAPROCK

STOCK UP AND SAVE!

CHRISTIAN DIOR TEXTURED HOSE

USUALLY 2.95, 3.95 AND 4.95 **99c PAIR**

You can add a flattering touch of fashion to your wardrobe now with popular textured hose from Christian Dior. You'll be delighted with the magnificent range of fashion tones to choose from at an unusually low price. Sizes 8 1/2 - 11.

HOSE — DOWNTOWN ONLY

ALL FIRST QUALITY!

CANNON COTTON PERCALE SHEETS

"CARNATION" 81x108 **2.25**
USUALLY 4.49
"CANDY STRIPE" 72x108 **1.75**
USUALLY 3.49
"CANDY STRIPE" PILLOW CASES **1.25 Pr.**
USUALLY 2.49

Now ... get first quality Cannon sheets and pillow cases at budget-boosting prices. Choose from printed or candy striped sheets with matching pillow cases. Excellent for home use or lavish gifts. Come into Dunlap's today and get an armload.

BEDDING — LOWER LEVEL — DOWNTOWN AND ALL THREE SUBURBANS

CREATE EXPRESSIVE FACE

Eyes, Made Up Effectively, Can Change Woman's Outlook

By ALICIA HART
Beauty Editor
Newspaper Enterprise Assn.

woman's outlook . . . and that of others who admire her expressive face.
The secret to eye make-up is not one of excess, though. Too much eye make-up detracts just as too little fails to attract.

most anyone can apply color to the eyelids in a variety of combinations to complement skin tone, hair and clothes.
Those with fair skin and hair should combine a nude shade with blue or lettuce. This combination also complements pastel fashions.
Lettuce with blue comes out a cool, grayish turquoise, according to make-up specialists that goes with hazel and brown eyes.
Brown eye color combined with blue gives a soft beige for fair and brunette skins.
Eye color application also

makes a difference in how your eyes appear. For example, deep-set eyes appear more vivid if the color is applied close to the lash. Then color the upper lid to brow on outer corners.

Erase Circles
Recess prominent eyes by using a nude shade close to the lash while small eyes look larger if the nude shade is

applied from lashline to the brow.
Narrow eyes look wider with the shadow deepened in tone on the outer sides of the lids. Lighten normally dark lids by applying a nude shade on the lids from lashline to brow.
If you have dark circles under your eyes, white out the circles before applying other make-up. You can do this with a pure white underbase.
It seems what nature will

reveal cosmetics can conceal.

NEW STORE HOURS: OPEN SAT. EVE'S and THURS. NITES
New Passenger Elevator
W. D. WILKINS & CO 2204 Ave. G

Edyth Thornton McLeod

Beauty After Forty

"Dear Edyth Thornton McLeod"

"I AM 50. I would like a pale yellow wool dress, but my dressmaker says yellow would not be good for my type. I have gray hair, fair skin and am going on a cruise. If not yellow, what?" Nan.

Yellow is far from flattering to the after-40 woman. I suggest white wool. I recently met a very attractive woman designer; she wore a white wool jacket suit banded with black braid stunning!

"MY DAUGHTER mailed a beautiful black and brown tweed coat to me. I have no brown accessories; only black and all new. I expected a black coat. Would black go with this coat? I have gray hair." Mrs. S.

Black is much smarter than brown accessories, so you need not worry. How nice of your daughter to send you a coat!

"YOU HAVE suggested charcoal gray wool several times as a good dress for a dinner. Would it also look well for a 9 o'clock champagne party?" G.

Yes, this is a very good fashion and looks "different," and very smart. Use gray pearls or silver jewelry. Hosiery in sheerest type, off-black.

"I HAVE A black suit and skirt no blouse. I thought a blouse would be better than wearing a scarf at the neck. What color is suitable?" G.

A white blouse, or a black one or a blouse of any soft pastel shade. You could have one of large print in black and white. Several blouses thus give you in effect, several costumes.

"CAN A WOMAN of mature years wear those flat gold slippers at a party in her own home? I have a black velvet hostess gown." Mrs. R.

Yes, and they are not only very smart, but also very comfortable. Heels give you more poise, but if "flats" are for you, perfect.

Monday: "Dear Edyth Thornton McLeod."

Colonial Needle Club Conducts Business

The Colonial Needle Club met Thursday afternoon in the home of Mrs. B. B. Chappell, 1617 18th St. for business and a social hour.

Nine members were present. Projects were voted and dues were paid.

A devotional was given by Mrs. A. A. Booth.
Next meeting will be Feb. 10 in the home of Mrs. E. N. Evans, 1709 Ave. O.

Insurance Program Given During Coffee

The Lubbock - Crosby - Garza County Women's Medical Auxiliary met Tuesday morning in the Lubbock Women's Club for a coffee.

Guest speaker was Larry Lott, with a program on "Reading the Chinese Print."

He provided information on interpreting household insurance policies and discussed how to read between the lines in considering purchase of insurance.



COMBINE SHADES — Correct eye faults with eye make-up by combining more than one shade. New sponge-tip applicator with four shades of compressed powder shadow comes in kit form.

Tacky Party, Supper Given TOPS Members

Diet-Right TOPS club met Tuesday night in the home of Mrs. Jim Gordon, 4509 27th St., for a "tacky" party and salad supper.

Prize winners in the "tacky" contest were Mrs. Kenneth Wright, first, and Mrs. H. A. Cone and Mrs. Elvora Allen, runners-up.

Eleven members and two guests attended. Invocation was given by Mrs. George Grantham.

Mrs. Don Butler, with a weight loss of 6 1/2 pounds, was "big loser of the week." Mrs. Arthur Cooper was runner-up.

Next meeting will be at 7 p.m. Tuesday in Methodist Hospital nurses classroom.

NEEDLE CLUB MEETS

The Betsy Ross Needle Club met Thursday afternoon in the home of Mrs. Carmon Tripp, 1904 28th St. Refreshments were served to 11 members. Next meeting will be in the home of Mrs. Orb Vinson, 2612 26th St., at 2:30 p.m. Feb. 10.

LONDON English animal shelters will get government aid.

Lubbock Affiliate No. 26 Hairdressers & Cosmetologists Assn. Presents Guest Artist

Mr. James Allen

Recognized throughout the United States as outstanding in his abilities as a HAIR STYLIST and Demonstrator. Mr. Allen will demonstrate advanced salon work and contest styling on

MONDAY, JAN. 31st.

AT THE CAPROCK Salon of BEAUTY CAPROCK CENTER

ADVANCED SALON STYLING: 1 p.m.-6 p.m. OPEN TO ALL HAIR STYLISTS
CONTEST STYLING: 8 p.m. TICKETS \$10 EACH CLASS

Tickets Available: The Southwest Company of Texas 4138 34th, Hub Beauty Supply 2836 34th and Caprock Salon of Beauty.

CAPROCK CENTER Phone SW5-7115

Lena Stephens, Inc.

Line Department Store
34th & Indiana SW9-3631

PRE Inventory Sale

STORE HOURS: 10:00 A.M. - 6:00 P.M.

SATURDAY AND MONDAY ONLY!

End-of-Season merchandise . . . all at drastic reductions . . . Save up to 50% and more! Be early for best selections!



LADIES' READY-TO-WEAR

Drastically Reduced!

ONE LARGE GROUP SPORTSWEAR

1/2 PRICE and LESS

ONE GROUP FALL AND EARLY SPRING

DRESSES 1/2 PRICE and Less

Many other tremendous savings in Ready-to-Wear not mentioned here

SHOE DEPARTMENT

One Group Shoes for 1/2 PRICE and LESS
Men, Women, Children

Special Group CHILDREN'S SHOES 1.00

Special Group WOMEN'S SHOES 5.90 up

Special Group MEN'S SHOES 6.50 up

ACCESSORIES

HANDBAGS Gen. Leather 1/2 PRICE
TEXTURED HOSE 2 PAIR 1.00

COSMETICS

One Group 1/2 PRICE

CHILDREN'S DEPARTMENT

One Group Children's Dresses and Headwear 1/2 PRICE

HOME FURNISHINGS DEPT.

FIELDCREST "ROSE CASCADE" Bath towels, guest towels, wash cloths 1/2 PRICE

TOSS PILLOWS

Choose from many beautiful colors and shapes. Reg. 2.98. 2 for 5.00



"Soft Spun" Acrylic Blanket 2 blankets woven as one. Twin or full Reg. 7.98 5.89

Assorted Patterns Cotton Blanket 100% Cotton, completely washable. Size 72x90 Reg. 5.98 3.89

MEN'S DEPARTMENT

Final Mark-downs! Outstanding Values!

MEN'S SUITS
Reg. 49.95-55.00 29.99
Reg. 75.00-79.50 49.99
Reg. 95.00 62.99

MEN'S SPORT COATS
Reg. 39.95 24.99
Reg. 45.00 29.99
Reg. 50.00 31.99
Reg. 65.00 39.99

Special Group Young Men's Ivy Style Suits Sizes Listed Below 50% off

	35	36	37	38	39	40	42
Reg.	1	3	2		1	1	3
Long		1	2	3	3		



MEN'S HATS 40% off

MEN'S TOPCOATS 40% off

MEN'S SLACKS 40% off

MEN'S SPORT SHIRTS 40% off

MEN'S JACKETS 40% off

ONE TABLE Ties, Shirts Sweaters 1/2 price

BOYS' DEPARTMENT

Final Clearance of Boys' Wear, sizes 6-20. Many outstanding Values

SNOW SERVED AS PROTECTIVE BLANKET

Cold Weather Changes Gardening Picture

By ED ZUKAUCKAS
Tech Horticulturist
This past week's cold temperatures have changed the gardening picture.

Fortunately, the snow which fell probably served as an excellent insulation for ground cover materials and also a protective blanket for the foliage of the broad-leaved evergreens. Therefore, the snow-draped boughs of the live oaks probably materially contributed to their well being.

When temperatures reached the below zero point or hovered near zero, the rate of wind movement was relatively low and should result in less damage than the below zero temperatures of recent years.

Perhaps some of the problems that were beginning to plague gardeners before the cold snap have partially disappeared. Reports indicated that aphids were in relative abundance and active on English ivy and, apparently, some roses. Much of this activity should also now be under control.

Serve As Warning
This cold should also serve as a warning to those gardeners eager to begin trimming their roses. Severe cold will, of course, kill back the roses, usually from the tips. In most instances, the amount of injury is directly related with the severity of the low temperatures. Rose gardeners had better wait until sometime in the late winter or early spring before beginning pruning.

Mild days in mid-winter are, however, quite suitable for the planting of most trees. Therefore, you should make plans soon for tree-planting activities.

Before you know it, a new season will be upon us, and the time has already arrived for the planting of geranium seed, which are slow in producing established plants. Seed of the Texas bluebells also should be sown almost immediately.

In Sunny Areas
Some other perennials could also be planted if you have a sunny enough area to maintain the plants a while before you set them out.

In almost all cases, it will be about a month from the time you sow seeds until the plants are ready to be transplanted, and it will be about another month before the plants are ready to be set out in the garden.

Therefore, it is certainly not premature to begin planting perennials which would have some cold tolerance, since it could be as much as two months before these plants can be set out; and April planting of most perennials and even the cool-weather plants like snapdragons and pansies is not usually too early at all.

Don't forget some columbine, dianthus, trifolium, and possibly a few Oriental varieties in your seed planting. If you are one of the eager gardeners who orders calladium bulbs by mail, orders must go in quickly to get the choice large sizes, which are usually sold out first.

City Of Dallas Buys Homes Near Air Field

DALLAS (AP)—The city of Dallas has purchased two more homes north of the city's Love Field after complaints of noise from planes.

The city began quietly buying homes some time ago after homeowners complained of noise from jets using a new runway. Others have sought damages through the courts and some of them have sought to stop the jets by legal action have been made.



IN MINIATURE—Dr. Sam Campbell, 3910 54th St., shows a miniaturized Japanese black pine growing in a small pot with moss covering the soil.

★ ★ ★ ★ ★
MOVED HERE FROM CALIFORNIA

Miniature "Bonsai" Trees Are Major Attraction In City Couple's Garden

Dr. and Mrs. Sam Campbell create. To some extent, the practice of root pruning and re-planting within the garden. This practice of fertilization and limited watering will tend to grow small-leaved plants at its first stages, and the effect of the garden setting and the individual details of their many miniature trees.

The Campbells are eager gardeners who enjoy both the larger effect of the garden setting and the individual details of their many miniature trees.

The Campbells have, in recent years, been expanding and developing their collection of miniature trees and pot gardens and have added a fiberglass greenhouse to the north side of their home in the back yard to help pursue their interests.

In addition to the many small pines and other conifers, the succulents also provide enjoyment, but some adjustment in cultural procedures have been necessary to adapt to growing conditions on the South Plains.

The principal difference in the culture of bonsai is that these plants grown in small containers require, in most instances, twice a day watering here rather than once a day, which would be more typically the California practice during the summer.

Few Requirements
During the winter, the cultural requirements under cool conditions even in a plastic greenhouse are very slight, even though the plants are growing in relatively small containers.

Winter is, however, a fine time to begin to prepare bonsai specialties to attempt to achieve the rugged perfection of a gnarled, twisted old tree. Most of the cultural procedures involved in the production of miniature, or dwarf, trees involve the adjustment of the growth pattern of the plant chosen to a much slower rate by root pruning, limited fertilization, and limited watering, and of course, placing the plant in a somewhat restrictive container.

Now that many area plant dealers have dormant materials and inactive conifers, it might not be a bad time to pick up plants of junipers or pines to begin a bonsai project.

In order to be especially successful, you should make it a point to use plants with growth patterns that are in scale with the effect you are trying to

Different Farms
Many different forms of bonsai are present in the Campbell greenhouses, many of which would be admirably suited for window sill gardens. Some of the miniature bonsai in themselves represent complete small gardens some of which are no larger than a teacup. In these instances, a very small scale woody plant could represent the tree, and moss would represent grass, and a pebble would represent a boulder.

The Campbells also enjoy outdoor camping activities and 500th flight hour at the General Dynamics plant here.

Eleven of the planes, once near future to develop a Japanese garden, complete with a running stream. The broken concrete way on the first group of 431 crete will serve as a base for production F111's.

F111 Warplane Logs 500th Flight Hour

FORT WORTH, (AP)—The F111 warplane, the variable wing craft expected to be the backbone of the nation's combat fleet, has logged its 500th flight hour at the General Dynamics plant here.

Eleven of the planes, once near future to develop a Japanese garden, complete with a running stream. The broken concrete way on the first group of 431 crete will serve as a base for production F111's.

WEED AS YOU FEED!

ferti-lome
WEED & FEED SPECIAL
50 lb. Bag Covers 1250 Sq. Ft. \$4.95
NOW IN ONE EASY STEP YOU CAN FEED YOUR LAWN AND PREVENT GERMINATION OF WEED SEEDS!
An organic base plant food with weed preventer added
Now is The Correct Time To Apply!
● Use As Pre-Emerge Before Wild Weeds and Grasses Appear
● Use While Good Turf Grass Is Still Dormant
● Use On Common Bermuda Grass Only
● Do Not Apply To Young Grass That Has Not Had Full Season's Growth
WILLIAMSON Seed Co. LUBBOCK TEXAS
335 AVE. H, LUBBOCK PO3-0421

FENCES

6 ft. Red Cedar Fence Installed, 2 Gates Included at No Extra Cost.
\$160
MINIMUM FOOTAGE REQUIREMENT
JANUARY CLEARANCE
TAKE ADVANTAGE OF THESE SPECIALS WHILE THEY LAST
El Ray Builders
PO3-1534 or PO3-5165
Erskin at North Ave. Q

FRONTIER SAVING STAMP

NEEDS SPRING START

Winter Is No Excuse To Suspend Lawn Care

Lawn care should not be suspended in winter. Remove leaves that have matted down on the lawn, using a sharp-tooth rake. If you do not, they may smother the grass by spring. Maple leaves seem to mat more thickly than others.

If you determine that your lawn needs lime, winter is a good time to apply it, as the lime tends to heave up and down with the action of the frost. But don't do your soil testing in winter as you are likely to get a false reading.

Proportion Given
About 3 to 5 pounds of ground limestone usually may be applied with safety to 100 square feet. It will be well worked into the soil by spring.

KEEP PLANTS COOL
Most house plants will do well in daytime temperatures between 65 and 75 degrees, but like it cooler at night—between 50 and 55 degrees. Porous clay pots, whose walls absorb less heat, will help keep plant roots cooler. In overheated houses, it's a good idea to keep plant collections on tables with wheels, which can easily be moved to cool locations at night.

TEST YOUR PLANTS
If the top soil of your plants feels dry to the touch, they need water. This test is reliable only if plants are in porous red clay pots. Plants in thin non-porous containers may have dry top soil but roots are still moist. That's why it's easy to over-water unless plants are kept in the clay pots.

WINTER FRESHNESS
Give your pot plant collection a fresh new look for winter by surrounding one or two potted amaryllis plants with ferns, potted ivies or other foliage plants.

Petland
OPEN 8 A.M. TO 6 P.M.
2626 - 34th Street SWS-7364
The largest stock of Exotic Pets and Supplies in West Texas.
The Finest POODLE GROOMING in the Southwest
BIG AQUARIUM SALE
Large New Shipment of Fish
PEPPER 25¢
Registered P.F. 25¢
P.T. 25¢
T.V. 25¢
Extra Work Cords 25¢
Sweaters 25% OFF
Beautiful Redwood WED BIRD FEEDERS \$2.49 up

Held Over Another Big Week
Wolfe Nursery's **FABULOUS 14 HOUR SALE!** 9 HOURS SATURDAY 5 HOURS SUNDAY
2 BIG DAYS
Ridiculous Prices
Buy now at terrific savings... fresh... direct from the grower.

FRUITLESS MULBERRY
HUGE 10 FT. SHADE TREES
Reg. 6.95 **\$2.99** 2 for 5.50 4 for 10.00
Huge beautifully branched trees... big enough for instant shade... now available in Wolfe's famous "double size" Maple Leaf variety... have a fun week-end... planting these smart attractive shade trees.

APRICOT TREES
California Royal - Moorpark
Reg. 1.89 SIZE NOW **\$1.39** EA. 2 for 2.50

WESTERN SCHLEY PEGAN TREES
Huge 5 Yr. Old Bearing Size
Reg. 14.95 NOW **\$10.99** EA. 2 For 20.00

BLAZE ROSES
Gorgeous Blooming Climber
Reg. 1.00 Size NOW **29¢** EA.
A distinctive superb Scarlet Rose that blooms in Mar., June, July, August and September.

BURFORD HOLLY
1 Gal. Container Size
Reg. 1.49 NOW **89¢** EA.

RED GRAPE MYRTLE
Big 2 Yr. Old Size
Reg. 1.00 Each NOW... **39¢** EA. 3 For 1.00

HAWAIIAN TREE BERRY
Delicious Dewberries
3 for \$1.00

THESE PRICES ARE NOT AVAILABLE FOR MAIL ORDER
WOLFE NURSERY
4006 34th St.—SWS-4434
OPEN 9-6 SAT. 1 TO 6 SUN.
SPRING BLOOMING BULBS
DAFFODILS 8 for 1.00
HYACINTHS 8 for 1.00
DUTCH IRIS 25 for 1.00
TULIPS 5¢

Plant Shade Trees NOW, For Good Root Growth... Good Selection Of Balled & Burlaped Maple, Fruitless Mulberry, Catalpa, Sycamore, Russian Olive

FRUIT TREES \$2.95
Complete Selection
● Pear ● Apple
● Peach ● Apricot
● Cherry ● Plum

PEGAN TREES
Western Schley, Burford, Barton
\$4.50 to \$18.50

GRAPE VINES
3 for \$1.00

Big 2-Yr. Monocorony CHERRY TREE
\$1.44

Bright Red NANDINA
98¢

GIANT - Red or Orange PYRACANTHA
1-Gal. Size 2 for \$4.00

BIGGEST LANDSCAPE ROCK SELECTION

YOUR TREE OUR TREASURE
Tom's Tree Place
West End of 34th At Slide Road
OPEN 8 A.M. TIL 6 P.M. SWS-3477
CLOSED ON SUNDAY
100% Guarantee On All Plant Material

AGGREGATE PATIO CONSTRUCTION

"COME UNTO ME... FOR I AM GOD & THERE IS NONE ELSE"

THE BUSINESS FIRMS LISTED BELOW—MAKE POSSIBLE THESE PAGES:

THE BUSINESS FIRMS LISTED BELOW—MAKE POSSIBLE THESE PAGES:

- RAUSCHER-PIERCE & CO., INC.**
Member of the New York Stock Exchange
1217 13th Street... POS-7431
- RESTHAVEN FUNERAL HOME CEMETERY & MAUSOLEUM**
Lovelland Highway... SW9-3643
- ROBBERTSON STEEL, INC.**
"Everything Steel for Building"
302 Ave. O... P.O. Box 786... POS-8561
- DR PEPPER - SEVEN-UP BOTL. CO.**
1201 N. Ave. Q... PO3-4311
- SAFeway FOOD STORES**
34th & Avenue Q... 34th & Quaker
- SEARS ROEBUCK & CO.**
- SNELL DRUG**
1221 College... POS-5833
- SOUTHWESTERN PUBLIC SERVICE CO.**
10th & Avenue K... Lubbock, Texas
- SPORTS CENTER**
1602 13th... POS-6645
Monterey... SWS-3972
- STATE SAVINGS & LOAN ASSN.**
"Investing in Lubbock's Future"
1617 Broadway... PO3-8278
- THE CHICKEN SHACK**
Banquet & Party Facilities
1710 34th St... SH7-7673
- T.I.M.E. FREIGHT, INC.**
2598 74th... SH7-3131
- T.N.M.&O. COACHES, INC.**
1313 13th Street... POS-6641
- TOM'S TREE PLACE**
"Your Tree Our Treasure"
5104 34th Street... SW9-3637-9-3678
- TOP OF THE PLAINS RESTAURANT**
20th Floor of the Plains Life Building
- TOWNSEND-STRONG**
Standard Oil Products
1320 E. Broadway... PO3-0491
- TWIN OAKS PHARMACY**
Free Delivery... SW9-3636
3405 34th... Indiana Gardens
- UNITED SUPER MARKETS**
1704 50th... 1924 4th... 4400 W. 19th
4234 Boston... 103 N. Coll. Mackenzie V.I.
50th & Slide Rd
- WESTERN BRICK & SUPPLY CO.**
410 34th Street... SH4-4501
- WESTERN IMPLEMENT COMPANY**
Alls Chalmers & New Holland Farm Equip.
321 19th Street... POS-5121
- WEST TEXAS EQUIPMENT COMPANY**
702 (New) Slaton Highway
- AI GLASS COMPANY**
1603 Avenue H... PO2-0449
- BAKER COMPANY, THE**
Office Equipment... Printing
13th & Avenue L... PO3-4333
- BEDFORD'S PRESCRIPTION PHARM.**
"Free Parking in the Back"
1312 Main St... West Texas Clinic
- BELL DAIRY PRODUCTS, INC.**
Bell Quality of Chard
- BENTON OIL COMPANY**
Phillips 66 Products
- BILLINGS TRANSFER & STORAGE**
Moving... Local... Long Distance
708 9th Street... PO2-1922
- BIRD FURNITURE COMPANY**
115 N. College... PO2-5730
- BOB MILNER PONTIAC**
Wide Track... Corner Main & Ave. Q
- BORDEN COMPANY, THE**
519 Avenue J... PO3-2892
- BRADY PLUMBING CO., H. H.**
Heating & Air Conditioning
4401 Avenue H... SH4-2303
- BRANDON & CLARK ELECTRIC CO.**
2314 Fourth Street... POS-8818
- BROOKS SUPER MARKETS**
224 Avenue H... PO2-1636
- BROWN'S VARSITY SHOP**
Men's Clothing... College at Broadway
- CAMPBELL RAMBLER, INC.**
"Home of the Friendly Giant Killer"
1602 Main Street... POS-9467



When Millie goes to bed she stops by the stairway window to say good night to her favorite star. It twinkles in the frosty evening sky, and to me it seems remote and cold. But to Millie, the star is a warm and glowing friend. It's just a matter of viewpoint. A grown-up sees through the eyes of experience. The child gazes through the eyes of innocence. And as we all know, it isn't easy to exchange our experience for innocence again.

Yet, this is exactly what many of us need to do. Many of us need a new approach, a new look at the old things, the old truths. We need to open our eyes, and let ourselves see; to open our ears, and let ourselves hear.

There is no better place to discover this new approach than in your church. In church next Sunday you will find a new point of view. Let yourself see, let yourself hear. You will be surprised at the results.

Copyright 1966 Keister Advertising Service, Inc., Strasburg, Va.

Sunday Genesis 3:1-7	Monday Job 42:1-6	Tuesday Amos 5:4-9	Wednesday Luke 24:28-35	Thursday I Corinthians 4:13-18	Friday Ephesians 2:14-22	Saturday Hebrews 11:8-16
----------------------------	-------------------------	--------------------------	-------------------------------	--------------------------------------	--------------------------------	--------------------------------

CHURCHES OF LUBBOCK... SUPPORT THEM EVERY WEEK

- ADVENTIST**
Savannah Day 1924 10th St
- ASSEMBLY OF GOD**
Bethel Assembly 42nd & Ave. H
Bethel Assembly 42nd & Ave. H
Calvary 46th & Ave. P
Central 421 Ave. N
College Avenue 48th & College
Evangel 52nd & Ave. P
Faith 3001 E. 7th
First 34th & Ave. S
First Spanish 127 N. Ave. L
Highland 38th & Quaker
Northside Bates & N. Detroit
Redeemer Spanish, Dartmouth & N. Flint
Riverlawn 1805 N. Ave. A
Second Spanish 3309 E. 13th St
Westmoreland 48th & Englewood
Wolfforth Spanish 509 5th St
- BAPTIST**
Antioch 111 E. 82nd St
Arnatt-Benson 201 N. Boston
Baptist Student Center 2401 13th
Berean 60th & Harford
Bible Baptist Church 53rd & Ave. P
Butler Heights 4201 Ave. J
Bellaire 5500 34th St
Calvary Baptist 1921 18th St
Carlisle Carlisle Street
Central 1317 18th
Chapel Hill Mulberry & 1st
College Avenue 2422 10th
Emmanuel N. Ash & Queens
First Baptist 2201 Broadway
First Free-Will Cornell & Gary Sts.
Flint Avenue 908 N. Flint
Grace 3901 E. 4th St
Harwell Heights 302 38th
Highland 4316 34th
Hillcrest 1305 Itasca St
Lakewood 804 48th St
Latin American Mission 307 N. Sherman
Mackenzie Terrace 516 N. Quirt
Memorial 3017 39th
Monterey 3601 50th
Mount Olive 1103 E. Quons
Mt. Giload 2510 Fir
New Hope 2002 Birch
Northwest 3700 No. College Ave.
Oakwood 6002 Ave. U
Parkdale 355 Ave. D
Parkway Drive 2916 E. 1st Pl
Plains 2208 Ave. O
Pleasant Ridge 801 Slide Rd.
Primitive Baptist Church, 23rd & Ave. X
Primitive Baptist Church 2402 5th
Rising Star 35th & Quaker
Quaker Ave. Missionary, 51st & Quaker
Saint James 2611 Cedar
Saint Luba 368 E. 26th
Western Hills Baptist 55th & Wayne

- BAPTIST**
Second Baptist Church 3002 54th
Skyline 902 E. Newcomb
Southeast 1601 48th
Southside 4314 Ave. D
Tabernacle 1911 34th
Temple Baptist 2524 1st Place
Trinity 34th & Boston
Twenty-Fifth Street 2436, 25th
University 27th & Seaman
Victory 6508 Ave. P
Westmoreland 5605 46th St
West End 6117 W. 19th
Zunit Park 3808 34th
- CATHOLIC**
Christ The King 4001 54th
Our Lady of Grace 3118 Erskine
Saint Elizabeths 2305 Main
Saint Joseph's 102 N. Ave. P
St. Patrick 1603 Cherry
- CHRISTIAN (Disciples of Christ)**
Bethany 50th St. & Ave. N
Christian Student Center 2318 13th
Bible Chair 2323 Broadway
Lubbock View 3301 34th
Westmont Christian 48th & Utica
- CHRISTIAN (Independent)**
Apostolic Christian 84th & Ave. J
Plains Christian Church 802 Ave. O
Full Gospel Church 23rd & Ave. D
- CHRISTIAN SCIENCE**
First Church of Christ, Scientist 2202 Broadway
- CHURCH OF CHRIST**
Caprock 5201 College
Broadway
Church of Christ 1924 Broadway
Church of Christ 3rd & Temple
Bible Chair 2406 Broadway
Colgate Street 2521 Colgate
College Avenue 2601 College
Jr.-Sr. Bible Chair 1810 Main
Greenlawn 5601 W. 19th
Mackenzie Manor N. Quirt & Emory
Memphis Avenue 3802 22nd
Monterey 58th & Memphis
Northside 101 E. Wabash
Parkway Drive 3120 E. Parkway Dr.
Pioneer Park 708 Ave. T
Smithlawn 702 76th
Southside 1409 23rd
Spanish 604 Ave. D
Sunrise 4406 N. College
Sunset 3723 34th
Vandilla Village 2002 60th
Twenty-Ninth & Birch 204 E. 20th
West End 26th Street
Westmoreland 45th and Englewood

- CHURCHES OF GOD**
Church of God 2103 Ave. O
Church of God No. 2 3014 Auburn
First Church 424 & Ave. P
Southside 1302 54th St
Spanish Church of God 128 Ave. M
- CHURCHES OF GOD (In Christ)**
Number 1 2101 Ash
Number 2 2411 Fir
Number 3 1712 E. 29th
- EPISCOPAL**
St. Christopher's 4203 Elgin
St. Paul's Church of the Plains 2406 16
St. Stephen's Mission 11th & Slide Rd.
- FOUR SQUARE GOSPEL**
College Heights 4427 35th
First Foursquare 3115 2nd
Skyview 1705 5th
Southside 5724 Ave. H
Thirly Fourth Street 922 34th
- JEWISH**
Congregation Shearith Israel 1706 23rd
- LATER DAY SAINTS**
Church of Jesus Christ, 3211 58th St
Spanish Branch 807 Ave. T
The Reorganized Church of Jesus Christ, 1126 Slide Rd. (Redbud Square)
- LUTHERAN**
Ascension 50th & Indiana
Carter Lutheran 3521 50th
Holy Trinity 1706 Slide Rd.
Redeemer 2221 Ave. W
Shepherd King 2122 18th
Our Savior Lutheran Ch. 220 Quirt
University 2615 19th St.
- METHODIST**
Agape 1215 Slide Rd.
Aldersgate 1506 E. 15th
Asbury 2005 Ave. T
Bethel AME Railroad Ave.
Calvary Evangelical Methodist Church 4424 35th
Canyon Acuff Rd.
Carter Chapel CME 2411 Elm
Congregational 1711 7th
Cooper Tahoka Highway
Epworth 508 N. Quirt
First Methodist 1411 Broadway
Forrest Heights 3007 33rd
Full Gospel 46th & Ave. P
Latin American Methodist Church 104 N. Ave. M
Mt. Vernon 2304 Cedar
Oakwood 2215 58th
Overton 504 46th

- METHODIST**
Pioneer Memorial 2617 Cornell
St. Johns 1501 College
St. Luke's 3717 44th
St. Matthews 5320 50th St
Wesley 108 E. University
Wolfforth
- NAZARENE**
Calvary Church 2726 Duke
First Church 4510 Ave. O
Grace Church 4523 34th
Latin American 1210 Vanda
Monterey 4308 E. 50th
Parkway E. Duke & N. Zenith
- NON-DENOMINATIONAL**
Church of The Good Shepherd 45th & Ave. L
Faith Temple 501 34th
Philadelphia Gospel Church 15th & Ave. G
- PENTECOST (Christian)**
Full Gospel Church 801 31st St.
- PENTECOSTAL**
Peace Tabernacle 2104 5th
- PENTECOSTAL HOLINESS**
First Pentecostal 502 41st
- PRESBYTERIAN**
First Cumberland 910 Ave. O
First Presbyterian 1500 14th
Grace 4820 19th
John Knox 2102 49th
Messiah 1616 Ave. B
Modern Manor 4202 Canton
Cumberland 4600 48th
The Church of the Covenant 2520 E. Erskine
University Center 2414 13th
Westminster 3321 33rd
- SAVATION ARMY**
Salvation Army 1112 17th
- UNITARIAN-UNIVERSALIST**
First Unitarian 36th & Ave. U
- VARIOUS DENOMINATIONS**
Bible Missionary 2613 Dartmouth
Christian and Missionary Alliance 1320 E. Rice
Church of God of Prophecy 101 Kemper
Holiness Church 1614 Vanda Ave.
Lubbock Bible Church 3202 34th St.
Pilgrim Chapel 2002 Ave. J
Assembly 3603 E. 15th Pl.
Spanish Apostolic

- CEMENT & SUPPLY CO.**
Avenue J and First... PO3-6464
- COLLEGE AVE CO-OP GIN**
Route No. 4 S. College... SH4-2422
- CUSTOM LEASING, INC.**
409 S. 50th Street... SH4-4191
318 Texas Avenue... El Paso, Texas
- DEAL'S MACHINE SHOP**
2732 Texas... SH4-4537
- DRAUGHON'S BUSINESS COLLEGE**
1414 Texas Avenue... POS-5544
- ECONOMY MILLS**
EVERLAY Poultry Feed
- FARMER'S COOPERTIVE COMPRESS**
Old Slaton Highway... P.O. Box 1652
- FARMER'S CORNER**
402 19th... PO2-8191
- FELIX WEST PAINTS**
4425 34th... SWS-0645
2319 Clovis Rd... PO3-3444
- FIRST FEDERAL**
Savings & Loan Association of Lubbock
1120 19th Street, Lubbock, Texas
- FRAZER & MORLEN**
Kelly Tires... Distributor
1219 Avenue H... PO3-4541
- FULTON & COMPANY, R. H.**
- FURR'S CAFETERIAS**
- FURR'S FOOD STORES**
- HARRIS & THRUSH MFG. CO.**
P.O. Box 345... Plainview Hwy.
- HORKEY OIL COMPANY**
406 Erskine... POS-6681
- HYGEIA BOTTLED WATER & HYGEIA LAWN SPRINKLER SYSTEM**
405 Avenue U... POS-9544
- INCE OIL COMPANY**
115 34th Street... SH4-2224
- ISBELL'S UNIV. OF BEAUTY CULTURE**
Hair Styles From Around The World
1520 13th Street... PO3-8286
- JACK SPRATT JANITOR SUPPLY**
412 Avenue G... PO2-0279
- JESSIE LEE'S**
Hair Design Inst... 902 Ave. M
Bill's Beauty Salon... 805 College
- JOE MILLER PLUMBING SERVICE**
Shop on Wheels... 24 Hour Service
3620 Brownfield Hwy... SW9-4345
- JOHNSON MANUFACTURING CO.**
1802 E. 50th Street... SH7-3491
- JONES-ROBERTS SHOE STORES**
1205 Broadway... 34th & College
Town & Country... Lubbock, Texas
- LAKON PLASTIC PIPE**
Box 671 Tahoka Hwy... SH4-6525
- LIBERTY MACHINE & MFG., INC.**
4079 Ave. A... P.O. Box 676
- LUBBOCK BODY WORKS**
1609 19th... SH7-3235
- LUBBOCK BOWLING CLUB**
4420 Avenue O... SH4-5535
- LUBBOCK BUILDING PRODUCTS**
214 Avenue M... POS-7721
- LUBBOCK HARDWARE COMPANY**
607 Main Street... Lubbock, Texas
- LUBBOCK LIVESTOCK AUCTION CO.**
1219 Avenue D... PO3-4387
- MODERN CHEVROLET COMPANY**
"See MODERN and Save"
1902 Texas... SH7-3211
- MONTGOMERY WARD**
Caprock Center... SWS-8221
- MORTON'S POTATO CHIPS**
404 34th Street... SH4-4561
- NEWSOM PAINT & SUPPLY CO.**
1414 Avenue K... PO3-5343
- NUNN ELECTRIC SUPPLY CORP.**
2425 Texas Ave... Appl. Div. 1817 4th
- PIGGLY-WIGGLY SUPER MARKETS**
"Home of Your 58th Green Stamp Store"
- PLAINS CO-OP OIL MILL**
2901 Avenue A... SH4-1416
- PLASTIC PIPE DISTRIBUTOR**
2402 Erskine... PO3-6531
- PRODUCERS GRAIN CORPORATION**
2101 East 27th Street... Lubbock

THE PLAINSMAN

That Girl on Broadway says some of the worst accidents arise when a one-track mind gets to running on the wrong track.

This could be remembered as an age during which there were more chisellers than there were whittlers.

TODAY'S POME

It used to be in years gone by—
This now sounds very funny—
All the foolish spending stopped
When one ran out of money.
(Ethel Postgate.)

A friend is a person who comes in when the whole world has gone out.

(For Men Only. How to Irritate Your Wife Division.)

When the Little Woman remarks on your return home from work that she's been to the beauty parlor that day, ask her:
"Well, did you get waited on?"

THE CURRENT edition of the national magazine, "U. S. News & World Report," underlines fears in many quarters that the halt to bombing in North Viet Nam, and the generally decreased U. S. offensive on the ground, during the so-called "peace offensive" has been of considerable aid to the enemy.

During the last 25 days or so, the Reds have been given a breathing spell which they have used to regroup and shore up their troops, improve anti-aircraft defenses and distribute supplies.

As a result of the lull, it is widely expected that when heavy fighting gets well under way again, the cost will be heavy in U. S. life and limb.

The risk, of course, was "calculated," but when all the figures are totaled public reaction in the U. S. is likely to be highly critical.

MEANWHILE, a coalition of 25 Democratic Senators, led by Sen. Vance Hartke, of Indiana, and joined, of course, by J. William Fulbright, are in a tizzy. They don't think bombing should be resumed and complain that the President is listening to military experts, instead of them, on the bombing problem.

It's a pretty good guess that if Senators Hartke, Fulbright, & Co. had a stoppied-up sink in their home kitchens, they'd call a plumber for specialized service. Peculiarly, it doesn't occur to them that military experts should be in better position than they to advise the President on military matters.

Incidentally, Senator Hartke served in the Coast Guard, not the Air Force, in World War II, and Senator Fulbright's biographies in the Congressional Directory and Who's Who in America do not list military service.

Nomination for the most perceptive observation of 1966 to date.

An automobile is a machine which first did away with the horse and is now doing away with people. —Evan Essar

THERE WAS an item in the paper the other day, dated Brownfield, which told of funeral rites for Jacob Sandage.

Although I never met Mr. Sandage, and did not previously know of his death, as I read the item I felt I lost a friend.

Mr. Sandage, 77, was a retired farmer. From time to time he contributed to the A-J's "Letters to the Editor" column, nearly always disagreeing with some observation of mine on the same subject. But Mr. Sandage's letters, while usually disagreeing, were never disagreeable. Further, they were well thought out, carefully written and revealed a consistency of view.

The country needs more people like Jacob Sandage, people who are willing to take a stand and let it be known, whatever it happens to be.

Although I never saw him, I'm sorry he's gone.

A good many people have encountered dark days as the result of burning the candle at both ends.

That Man on Avenue Q says the best test of patience is to be around a smart aleck kid and not let him upset you.

A crime usually is some guy who's been down that same road before.

A SIZABLE Texas corporation has elected Joan Crawford, the actress, as a member of its board of directors. Whatever else may result from Miss Crawford's becoming a business tycoon, attendance at both board meetings and gatherings of stockholders is bound to be better than it otherwise would be. Miss Crawford is no longer a kid, but she still has plenty of zing and jockey boom.

Come to think of it, the fact that Joan Crawford is both a stockholder and director, beneficially expected to be on hand at all official meetings, might cause the company's stock to be considered of greater value. After all, it's worth something to be "included in" a business family with a big name individual and through the business, maybe even placed in a position of meeting her in person.

Since Miss Crawford also has done quite well for herself in the play-acting business, and reportedly has laid by a considerable amount of moolah, she quite conceivably could be a worthwhile director. It's not outside the realm of reason to suspect her of being able to contribute sound business judgment to the undertaking.

All in all, the company snaring Miss Crawford as a director apparently has done a pretty smart thing. Many corporations have a lot of fat, bald-headed gents to help run them, but not many have Joan Crawfords.

BILLY GRAHAM:

My Answer

QUESTION: Do you believe in teaching sex in our churches? L.S.

ANSWER: Yes! If done within the Biblical framework. Why should sex education be confined to the school playground, the back alley, and the barber shop? Too often our children get a perverted version of what sex is, and if the church and parents don't start talking about it in a constructive way, our children will get the "gutter interpretation" of it, and that would be tragic.

The Bible has a great deal to say about sex. It also gives examples of good men who failed because they used it wrongly.

Jesus had a great deal to say about sex, fornication, marriage, and other phases of sex. He recognized it as one of the greatest gifts ever given to men, and He also warned against perverting it and using it selfishly.

The church is concerned with moral and spiritual education, and I think that every church could have classes taught by qualified people, in which the mystery of life, and the Scriptural significance of sex is taught. This would do a great deal to debunk the popular, errant concepts of the life force, would make for better citizens, and would certainly curtail the demand for salacious literature.

Taught from the Christian standpoint, sex is one of the most beautiful things in life. It can be a useful servant, or a brutal taskmaster.

ALLEN & SCOTT:

Passports Probe Set



WASHINGTON—Sen. J. William Fulbright, chairman of the prestigious Foreign Relations Committee, is launching an investigation that could be embarrassing to the State Department.

The probe, aimed to a considerable extent at Secretary Rusk, will dig into the department's reputed wholesale issuance of diplomatic passports to persons other than department personnel.

Senator Fulbright, who has long aspired to Rusk's job, is studying information volunteered by State Department insiders indicating that these "golden key" travel credentials are being given to Government and business officials going abroad on other than diplomatic missions.

IN NUMEROUS instances, Fulbright has been told, diplomatic passports have been issued to friends of "high State Department and other Administration officials."

Detailed instances have been submitted to Fulbright of diplomatic passports, which guarantee immunity from foreign prosecution and other special privileges, being given at the specific instructions of Rusk and Undersecretary William Crockett.

As undersecretary for administration, Crockett has jurisdiction over the Office of Security and Consular Affairs, which handles passports.

PRELIMINARY INQUIRIES by the Foreign Relations Committee staff disclosed that Passport Office Director Frances Knight is being bypassed in the issuance of these diplomatic passports.

The controversial career official reportedly is directed to issue these "untouchable" travel documents by phone or letter from the offices of Rusk or Crockett. She is given no choice in passing judgment on them.

PUBLIC AIRING of this alleged abuse of diplomatic passports could play havoc with a backstage plan of Secretaries Rusk and Crockett to "reorganize" Mrs. Knight out of her job.

This move, which calls for revamping of the sensitive Office of Security and Consular Affairs, is pending on Rusk's desk. So far, nothing has been done on it because of warnings from congressional leaders against any attempt to ax Mrs. Knight and security officer Otto Otepka, who has waged a long fight to prevent being ousted.

IN ADDITION to the passport probe, Senator Fulbright is interviewing a number of State Department and AID officials whose jobs would be eliminated in other sweeping reorganizations planned by Rusk and Crockett around March 1.

With President Johnson urging Congress, in his State of the Union message, to support "a new and daring direction to our foreign aid program," Fulbright sees a long-awaited chance to further some of his controversial ideas on foreign policy and to shake up the State Department.

OTHER FOREIGN Relations Committee members are urging other inquiries. These range from surveying the activities and policies of the Central Intelligence Agency to the multi-billion dollar foreign aid expenditures and the administration of Public Law 80, under which hundreds of millions of dollars in surplus commodities are shipped out annually to foreign countries.

THE EXISTENCE of "an uneasy alliance" between former President John F. Kennedy and Dominican Communists has been documented by the Senate Subcommittee on Internal Security.

That's the private report Sen. Thomas J. Dodd, (D-Conn.), vice-chairman, has sent the White House. He is telling President Johnson the documents were presented at closed hearings held last month. Much of the data came from Alfonso L. Tarabochia, an Internal Security staff member with extensive Dominican contacts, and Juan Isidro Tapia Adames, defector from the rebel cause.

IN HIS REPORT to the President, Dodd states: "The Subcommittee's latest hearings present important new evidence that Juan Bosch, ex-President of the Dominican Republic, and his lieutenants maintained indirect contact with Communists before and after the recent uprising. Mr. Bosch apparently thought he could use the aid of the Dominican Communists and other leftist agents while secretly distrusting them."

But the hard fact emerges that, despite mutual suspicions, the Bosch people and the Red activists did maintain liaison for the purpose of cooperation.

This subcommittee's findings back the warning CIA Director William Eason gave the President during the first days of the Dominican rebellion. He reported that Bosch, then in Puerto Rico, was daily consulting with Communists on the strait-torn Caribbean island.

PRESIDENT SUKARNO'S third wife, a Japanese with the Indonesian name of Ratna Sari Dewi, is a Communist spy who reports to Moscow to intelligence authorities. Reportedly, she was Sukarno's main contact with Indonesian and Japanese Communists before the military cracked down on Indonesian Reds following their abortive coup.

Communist Chinese agents are believed to have murdered two officers of the Portuguese political police last month. The body of Mario de Jesus Silva Mateus, 32, was found in a forest 20 miles from Lisbon. The body of Jose Da Silva Varela, 46, was found in another forest near Amadora. Both were undercover agents of the political police.

Nationalist Chinese intelligence claims that anti-Peking revolts are spreading throughout Tibet. From last October until January five revolts are said to have occurred. The Nationalists say these uprisings constitute a threat to Peking's control of Tibet.

ANOTHER'S VIEW

Farm Solutions

THE SOVIET Union has a big farm relief program under way. The objective is to raise living standards on the farms and to increase the farm output. To do these things the plans are to make electric power rates lower, make bank credits easier and reduce prices for manufactured goods that are sold in rural areas.

The Russians are trying to get more production from their farms. They do not have the same kind of problem that the United States has. Here there also is a big farm relief program. An essential element in this is curtailment of production.

Both the United States and the Soviet Union have decided that the natural operations of the market place are not satisfactory. They have had opposite problems to solve but have gone about them in much the same manner. The United States has sought to keep prices up for farmers. The Soviets are trying to keep costs down for farmers. The intended results in both cases are to make things easier for the farmers, but the Soviets hope to increase production while the Americans seek to and do curtail production.

The Russians need that increase in agricultural production. There is a demand that, according to the market principle, ought to provide the incentive and the financing necessary for more farm output. In America the program was to reverse the workings of the market by maintaining income that normally would have declined because of lack of demand. In the Soviet Union the demand is there and the land and farmers are there.

But the Communist system also is there. It won't let things work naturally even when they will work.—(Fort Worth Star Telegram)

Apt To Get Grabbed This Year



TODAY'S EDITORIAL:

No "Easy Poverty Cure"

THE PROBLEM of poverty has existed since the beginning of history, and no one, so far, has found a way to solve it. In fact, it is only in fairly recent times that anyone has believed it could be solved. In the ancient world, and through the Middle Ages, poverty was more or less taken for granted, although there may have been a few sporadic efforts made to alleviate it. But the majority of the world's population always has been poor, and that remains true today, despite the spreading technological revolution which many have believed would eventually abolish poverty.

Now, however, there is a growing feeling that the existence of poverty and affluence, side by side, in the modern world may be leading to a new crisis. Speaking before the House Committee on Science and Astronautics in Washington the other day, Sir Charles Snow, British scientist and author, expressed doubt that the world can survive half rich and half poor.

Sir Charles is joint parliamentary secretary of the British Government's Ministry of Technology. He told the U. S. lawmakers that he viewed the immediate future with a mixture of confidence and anxiety—confidence that science, technology and well being will go forward in the industrialized nations, anxiety as to the fate of the rest of the world.

"The rich countries will get richer," he

said, adding "I wish I could believe that the poor countries, countries containing more than half of our fellow men, would not get relatively poorer... To echo with reverence the greatest of democratic leaders, the world cannot survive in peace, half rich and half poor. It remains to be proved whether it can for long survive at all if it remains half rich and half poor."

The crisis of poverty and hunger through out much of the world is the greatest challenge to our science, technology and ingenuity, Sir Charles said, and may prove to be the final challenge to humanity.

It is not certain, however, that the increase of technical knowledge, or that application of Socialistic theories, will eliminate poverty. Two Britons reported recently that, despite the growing affluence of that country, the number of people in the poorer and poorest categories has increased enormously. And even in the affluent United States, we have many "pockets of poverty."

The problem cannot be solved by a redistribution of existing wealth. All the wealth of the affluent nations, if distributed evenly among the countries of the world, would not make the poor ones rich. Instead of bringing about "shared prosperity," it would bring "shared poverty." That is a fact the Socialists and some Democratic politicians do not like to admit.

WILLIAM S. WHITE:

Western World Holds Breath Over Mrs. Gandhi's Course



WASHINGTON—Never has the Western world so held its breath over the will and the intentions of a woman as it does now over the new Prime Minister of India, Mrs. Indira Gandhi.

Not since Queen Victoria of imperial Britain has a lady ruled a major part of this earth to the degree that Mrs. Gandhi is to rule giant India in the transition that has followed the death of Prime Minister Lal Bahadur Shastri. For the Indian leadership holds power, indeed there is, of course, an opposition and an opposition party. But in reality it all comes to a far more nominal kind of opposition than is common in the West.

SHASTRI CAME to office all but unknown on this side of the oceans. He was a most modest, a most colorless successor to the brooding and the deeply self-assured father of both modern India and of Mrs. Gandhi, Prime Minister Jawaharlal Nehru.

But modest or not and colorless or not, Shastri, this little man who had risen to power almost in anonymity in the West, became a first-rate statesman, and a far better friend of the West than Nehru had ever been. And even the small beginning made by Shastri toward some improvement of India's relations with her neighbor, Pakistan, Nehru given all that he was, could hardly have made.

NEHRU WAS doctrinaire and difficult, and he had on his shoulder a chip against the West that was, perhaps, an understandable legacy of bitter memories of British colonial rule. But Shastri was practical and flexible. Nor did he think that the old and all-but-forgotten sins of a vanished Western imperialism could in any way excuse the new and far more brutal Communist imperialism.

Where Nehru had followed a course of neutralism that on many critical occasions had been in effect pro-Communist, Shastri in his quiet way had importantly renewed India's ties with the West. Indeed, it can now be disclosed that before he died on Jan. 11 he had made honest and urgent efforts to persuade the Russians, with whom the Indians have good relations, not to allow the Chinese Communists to drag them wholly into the pit in support of the Chinese-backed aggression in South Viet Nam.

SHASTRI'S DEATH, in a word, was a great blow to hopes for a decent settlement of the Vietnamese war.

What, now, will be Mrs. Gandhi's course? This is the profound, the historic question which in the world sense dwarfs all others upon her accession to leadership. Though she is Nehru's daughter, in an instance of what here would be called dynastic politics but which troubles the

LUBBOCK AVALANCHE-JOURNAL

(Evening Edition)
An independent democratic newspaper published every week day evening except Saturday and Christmas Day by Avalanche Journal Publishing Co., Inc. in its building at 8th St. and Ave. J, Lubbock, Texas.
Consolidated on Sunday mornings only with the Lubbock Avalanche-Journal, Morning Edition.
Second class postage paid at Lubbock, Texas.
PARKER F. PROUTY, President
CHAR A. GUY, Editor and Publisher
Full listed member of Associated Press and United Press International. National Advertising representative, Texas Daily Press League, Dallas, Texas.
Page 8-B Friday Evening Jan. 28, 1965

SYLVIA PORTER:

Key Found In Deficits



THE VITALLY significant point about the budget deficits the Federal Government is running this year and next is not their size. The crucial point is how the Treasury raises the money to finance these deficits.

This is the financial heart of the matter, for how the Treasury raises the money can either (1) add to inflationary forces in our country and make upward price-wage pressures almost irresistible or (2) be a "neutral" factor in our heated economy.

THIS IS A tough subject in the rarefied sphere of high finance. But it's so important to understand the point that here's my attempt to explain it in simple terms.

In 1965 the Treasury ran a multi-billion dollar deficit, issued billions of IOUs to cover it and thereby pushed the public debt to an all-time peak. But all of the debt increase—the entire deficit—was financed outside of our banking system.

U. S. CORPORATIONS bought large amounts of short-term U. S. Treasury securities, thus locking up billions of dollars instead of spending them and competing with the U. S. Government for goods and services. States, cities, welfare and pension funds bought big amounts of the securities, also diverting billions of dollars from the marketplace.

Foreign central banks and foreign investors did the same thing. Although the U. S. Savings Bond program faltered as the year rolled on, sophisticated individual investors were buyers of the Treasury's marketable IOUs on a retailing scale as interest rates on these IOUs rose in late 1965 to historically high levels for this generation.

BECAUSE THIS was the way the Treasury raised the money to meet the deficit, the inflationary influence of the 1965 budget deficit was at a minimum.

But what if the deficit had been met by commercial bank buying of U. S. Government securities? Then the situation would have been dramatically, dangerously different.

The reason is that when banks buy the Treasury's new securities, they simply place a deposit in the Treasury's name on their books, and they put up only a fraction of their own cash to cover their purchases. When these deposits in the Treasury's name are on the banks' books, the Treasury has the money to spend.

AS THE TREASURY spends the money for hard goods, soft goods and services, the extra bank-created cash becomes profits and paychecks in the hands of the public. These profits and paychecks translate into more spending in the marketplace, and unless the supply of goods and services increases to absorb the extra money, the basis for inflationary price-wage increases is strengthened.

By avoiding financing the deficit through the banking system in 1965, the Treasury did not flood the marketplace with bank-created money. Other inflationary pressures, developed as our economy moved toward full productive capacity and manpower shortages, plus toward immense power shortages, but the Treasury's deficit financing did not add to the pressures.

AS IT WAS in 1965, so it must be so in 1966. With price-wage pressures now so obvious, it is essential that the Treasury raise the money to cover the budget deficit outside the banks. It is essential that interest rates on U. S. Government securities be attractive enough to pull in non-bank money.

It was imperative for the Treasury to raise the rates on U. S. Saving Bonds to hold the \$49 billion already invested in E and H bonds and being in more buyers. If there were any rush by individuals to cash in these bonds and if the Treasury had to refinance even a part of that \$49 billion through the banks, the inflation lid could blow off.

The budget deficit this year will not intensify our inflation problem if it is financed out of savings rather than bank-created money. This the Treasury must do. This is the heart of the matter.

J. C. Metcalfe:

Portraits . . .

YOUR HAND, DEAR
When you touch me with your hand, And so gently smile at me, . . . Skies of forest (and dew) are in the middle of the day. And I think you ought to know. Stars I see within your eyes. . . . Though the sun of afternoon, In the sky heaven lies. When you touch me with your hand, . . . And I see your smiling face. In my heart the whole wide world. . . . Is a wondrous magic place.

RUTH MILLETT:

We—The Women



MEMO TO overworked housewives. A recent report from the American Heart Association indicates that physically active men get fewer heart attacks than desk-sitting, television-watching men. The active men also have a much better chance of surviving a heart attack than the sitters.

Doesn't that give you an idea? What you should be doing, instead of hogging all those jobs that demand physical exertion, is to share them with your desk-bound, television-chained husband.

GIVE HIM a chance to run after the family creeper or toddler when he's around the house. Give him a shopping cart and then to bike around that one-stop shopping center. Looking for Jiff's jeans and Aunt Emmy's birthday gift?

Let him help with the window washing, floor waxing, garage cleaning and a few other of the old jobs that are good physical exercise.

Wives have for so long been told they should spare their overworked husbands any kind of hard, physical work around the house and yard that many of them have been ushering their husbands to an easy chair before the television set night after night and weekend after weekend, even though their husbands sit all day behind an office desk.

NOW IN GOOD conscience, the overworked wife and mother can turn over to her husband some of the jobs that she has been sparing him from.

She can assure him that, if he sits all day at a desk, the worst thing in the world for him to do with his evenings and weekends is to sit in an easy chair watching television—while she chases after the kids and gets all that wonderful exercise that would do him so much good.

The first long range weather forecasting was done by people publishing almanacs.

CONVERT "wall" TELEPHONE Mount this side or back phone: it to using front panel inside emergency thing you

MEIN 163

PRELUDE

GOSH DAD! NICE THING!

YOU COST! FROM PAGE FOUR!

CHIEF

HOW LOOK IT WA INF

B.C.

AHE

THE WIZARD WE SIGHT

WAYOUT

EDISON

convenient "wall desk" 30% OFF

new convenience Caloric CADDIE ends kitchen clutter

Mount this new caddie on either side or below an installed telephone: it adds real convenience to using the phone. Hinged front panel drop to from desk — inside holds pencils, paper, emergency numbers... everything you need with your phone.

Reg. 12.95 **9⁸⁸**

Reg. 9.95 **6⁸⁸**

MEINECKE BROS. 1633 Broadway

Member: Cotter & Co., Largest Hardware Distributor

CROSSWORD PUZZLE

ACROSS

- Inkate
- Blind
- Khan
- Press for payment
- Unique person
- Father
- Rice paste
- Recognize by symptoms
- Emporium
- Woody plant
- By way of
- Hone
- Separation of elements
- Boundary

DOWN

- Human race
- Cougar
- Weaken
- Turf
- Army detachment
- Burn
- Impel
- Fuss
- Anesthetic
- Fruit drink
- Unused
- Sesame
- Rand, author
- Ruffian
- Sea bird
- Palm lilies
- Donkey
- Nothing
- In like manner
- Inside
- Give way
- Muffin
- Small
- Vocal solo
- Social climber
- Color quality
- "Hum-dinger"
- Sign
- Obtain
- Seaweed
- Content
- Hair-piece

SOLUTION OF YESTERDAY'S PUZZLE

1. Inmate 2. Blind 3. Khan 4. Press for payment 5. Unique person 6. Father 7. Rice paste 8. Recognize by symptoms 9. Emporium 10. Woody plant 11. By way of 12. Hone 13. Separation of elements 14. Boundary 15. Human race 16. Cougar 17. Weaken 18. Turf 19. Army detachment 20. Burn 21. Impel 22. Fuss 23. Anesthetic 24. Fruit drink 25. Unused 26. Sesame 27. Rand, author 28. Ruffian 29. Sea bird 30. Palm lilies 31. Donkey 32. Nothing 33. In like manner 34. Inside 35. Give way 36. Muffin 37. Small 38. Vocal solo 39. Social climber 40. Color quality 41. "Hum-dinger" 42. Sign 43. Obtain 44. Seaweed 45. Content 46. Hair-piece

FRED BASSET

GO ON... TAKE HIM NOW...

OH NO... NOT WITH THAT STUPID EXPRESSION ON HIS FACE

'Stupid expression'?

'Stupid expression', indeed... I was SMILING?

NOW!

AHA... THAT'S BETTER

ANDY CAPP

OH-OH!

HEY, MATE - YER GAVE ME THE WRONG CHANGE

BEAT IT! YER SHOULD'VE TOLD ME AFORE YER LEFT THE COUNTER!

SUIT YERSELF, SQUIRE

'E GAVE ME TEN BOB TOO MUCH

CAPTAIN EASY

Y'SEE, DOC, UNCLE SHERMAN'S GOT DA IDIAR. HE'S A HORSE! WON'T EAT NUTS IN BUT ONTS, GALLUPS OVER DA HILLS, WINNIN' AN' 'TIZ AN' SKEERIN' DA NEIGHBORS!

HE KICKED DOC KLOTZ AND BROKE HIS LEG! BUT IF WE SAY YOU'S A VET, HE MAY HOLD STILL!

BUT I KEEP TELLING YOU I'M NO DOCTOR! I JUST BE HAVING A NIGHTMARE!

GHATS! HE'S LISTED HIS HALTER. WE LEFT HIM TIED TO DIS TREE!

I'LL SNEAK UP ON 'EM IN DIS DISGUISE AND HEAR HIM NERB: WHO DA CAR! YOU KEEP DA DOC BAITERAIN'D!

I CAN READ TO HIM... BY DO DA BUSH! CUT DA BIG WORDS DA BIG WORDS

FRECKLES

By MERRILL BLASSER

GOSH DAISY, YOUR DAD TREATED ME SO NICE THIS EVENING!

I KNOW, BAZOO!

YOUR COSTUME FROM THE SCHOOL PAGEANT FOOLED HIM...

HE THOUGHT YOU'D REALLY JOINED UP!

DENNIS THE MENACE

By HANK KETCHAM

"IT WASN'T MY FAULT! I TOLD HIM HE WAS TOO OLD TO PLAY FOLLOW-THE-LEADER!"

NANCY

By ERNIE BUSHMILLER

DOG SHOW

ONLY THOROUGH-BREDS MAY BE ENTERED

THIS WON'T HARM YOU--- IT'S JUST WATER COLOR

WHAT KIND OF A DOG IS THAT?

DOG SHOW

A POINTER

FRANCIS

ART THIEVES!

CAN YOU IMAGINE THOSE TWO ARTISTS? THEY THOUGHT THEY COULD SNEAK INTO MY HOME AND STEAL MY VALUABLE VAN GOON!

WELL, I SURE SHOWED THEM! A LITTLE MANUAL LABOR WILL TEACH THEM A LESSON...

DIG, THIEVES, DIG!

ALLEY OOP!

By V. T. HAMLEN

AWRIGHT, YOU PIN-HEADED MONKEYS! CUT IT OUT, WILL YUH? WHASSA PEA, ACTIN' LIKE THAT?

CHON NOW, CALM DOWN!

WHAT ARE YOU GETTING ON OOP, OSCAR?

BEETLE BAILY

By MORT WALKER

ALL RIGHT! SOMEONE TOOK THE WRONG LAUNDRY AGAIN!!

WHO DID IT?! WHO DID IT?!

GEE... I THOUGHT I GOT PROMOTED!

CHIEF

By JOHNNY HART

HOW ARE-INSPIRING TO LOOK UP AT THE HEAVENS IT MAKES ONE REALIZE HOW INFINITELY SMALL HE IS.

AND LIFE IS SO SHORT, YEGAR ONE OF THESE DAYS WE'LL ALL BE ANSWERING TO THAT BIG TURTLE UP IN THE SKY.

BIG TURTLE?

JUDGE PARKER

By PAUL NICHOLS

PERHAPS YOU SHOULD GET A FEW HOURS SLEEP DEBORAH! I'LL PHONE OUR CHAIRMAN ABOUT SEVEN AND HE CAN DRIVE UP WITH THE EXTRA SET OF KEYS FOR MY CAR.

IT'S SO PLEASANT HERE!

WON'T YOUR MOTHER BE WORRIED ABOUT YOUR NOT COMING HOME TONIGHT?

SHE WON'T REALIZE I'M NOT THERE UNTIL MORNING WHEN SHE AWAKENS! BY THEN I'LL HAVE CALLED HER.

I'M BESIDE MYSELF JUDGE! DEBORAH JUST ISN'T THE KIND OF GIRL WHO WOULD STAY OUT ALL NIGHT! WHAT SHALL I DO? MRS. STANTON HAS NO IDEA WHERE LOCKER MAY HAVE TAKEN HER!

R.C.

AHEM...

HI...

OH... GASP...

SIGH EEEEEEE...

LEG STRAPS DRIVE THEM OUT OF THEIR MINDS.

THE WIZARD OF ID

by parker and hart

WAR IS HORRIBLE!... WE SHOULDN'T BE KILLING AND FIGHTING!... IT'S ATROCIOUS!

WHY DON'T YOU GET TOGETHER WITH THE ENEMY AND TALK?

WE DID THAT TWO MONTHS AGO.

WHAT HAPPENED?

THAT'S WHEN THE WAR STARTED.

CLANK BASH

GIGH CLANK BOK

REX MORGAN, M.D.

By DAL CURTIS

I AM SETTING UP MY HEADQUARTERS HERE AT THE HOTEL SELMA! TOMORROW MY STAFF WILL JOIN ME AND WE SHALL SET UP MY LECTURE SERIES LATER IN THE WEEK! I AM LETTING YOU ATTEND THE LECTURES FREE!

THANK YOU DOCTOR!

WHY DON'T YOU STOP BY ABOUT NOON AND WE CAN HAVE LUNCH TOGETHER?

MEANWHILE I STILL THINK WE SHOULD STOP SOMEWHERE AND GETTEN A GOOD NIGHT'S REST GEORGE!

NO, I DON'T TRUST ALONE IN TOWN, RUDY! YOU CAN GET INTO TOO MUCH TROUBLE!

WAYOUT

KEEN MISE

THERE MUST BE A LIMIT ON HOW MANY TIMES COFFEE CAN BE WARMED OVER!

FLASH GORDON

By DAN BARRY

WHO TOLD YOU TO HEED UP SHIPMENTS TO EARTH? I WANT THAT STEEL SHIPPED NOW!!

SORRY SIS, I HAVE TO FINISH MY LAB COMPUTATIONS BEFORE I CAN GIVE YOU AN OKAY.

LAB?! THIS IS FIELD WORK! A MAN'S WORK! FLASH WILL HANDLE THE LAUNCHING... ON MY OKAY!

SORRY SIS, HE WON'T! HE RESPECTS MY TITLE!

YES, MISS KINS? I'M CALLING ON BEHALF OF MY BROTHER! GET THE FIRST SHIPMENT READY, A WRITTEN ORDER WILL FOLLOW!

REX MORGAN, M.D. (continued)

PERHAPS YOU SHOULD GET A FEW HOURS SLEEP DEBORAH! I'LL PHONE OUR CHAIRMAN ABOUT SEVEN AND HE CAN DRIVE UP WITH THE EXTRA SET OF KEYS FOR MY CAR.

IT'S SO PLEASANT HERE!

WON'T YOUR MOTHER BE WORRIED ABOUT YOUR NOT COMING HOME TONIGHT?

SHE WON'T REALIZE I'M NOT THERE UNTIL MORNING WHEN SHE AWAKENS! BY THEN I'LL HAVE CALLED HER.

I'M BESIDE MYSELF JUDGE! DEBORAH JUST ISN'T THE KIND OF GIRL WHO WOULD STAY OUT ALL NIGHT! WHAT SHALL I DO? MRS. STANTON HAS NO IDEA WHERE LOCKER MAY HAVE TAKEN HER!

LISTEN, YOU THERE, ON THE HOME FRONT:

Americans Are In An Awful Fix In Viet Nam

By TOM TIEDE

NEW YORK (NEA)—There is a feeling in Viet Nam that the politicians and the press still dismiss the conflict as a con-

frontation of diplomats rather than dogfights, that it is a war not of warriors but of words.

Indeed, a GI can easily feel he's part of a political poker match as Viet Nam's curious casino draws countless office-

holders who joy in visiting briefly and sometimes ignorantly playing the game.

Clad in khaki they helicopter (at 250 tax dollars an hour) into a war zone, summon up weary troops from home districts, slap them on the back and ask if anyone has any problems?

Any problems? Well, sir, first there are the Viet Cong. They're a problem. Then there are the insects big enough to carry a man away, the malaria and dysentery, the 14-15 hour workdays, the absence of women, booze and overtime pay.

One VIP learned of a problem recently when he asked a trooper: "Anything bothering you here, son?"

"Yes, sir," the soldier replied.

"Well, what? We'll try to get it fixed up."

The boy hesitated.

"What is it?" the visitor persisted. "I'll take care of it, boy."

"Well," the kid said, "I got this ingrown toenail, see, and . . ."

The GI was not being impertinent. In his own way he was trying to make the point that this is war. That it's not a game. That though the visitor will leave, the troopers won't. That it is dirty, rotten and serious.

This is the fact. It's war. Feeling in Viet Nam is that most backhomers, including lawmakers, do not understand or accept this truth. That the bulk of America considers Southeast Asia with confusion and thus, if anything with mild contempt.

A soldier returning home from the front will find many people can't yet point Viet Nam out on a map, can't guess the number of weekly casualties there, can't figure out who the enemy is, and can't understand what it's all about except they guess freedom is involved.

"You think Viet Nam is bad?" a statesider will grin. "Brother, you should have been in New York during the blackout."

"Too bad you're home," another adds grimly. "Traffic's terrible."

"In Drang?" a third will say. "Nothing. You should've seen the Battle of the Bulge. Now that was real war."

Indications are that few comprehend. Viet Nam is still a pop art oddity 12,000 miles away. The public worries more about living with a possible tax increase. Officials worry about living with world opinion. The GI worries only about living.

His world there is nightly blackout and mortar traffic. It's alive with booby traps that can blow his legs or his life to shreds. It's occupied by an enemy and an ally who look exactly alike.

He would give a month's pay for a sound sleep. And 10 years of his life for a night at home. He is not a bit player in a comic opera conflict, not the trump in an international card game and not 12,000 miles away but as near as the muddy and bloody pictures in the newspapers.

He is an American citizen in a hell of a fix. And thus are we all, in fact. Because this is war.



THE LONG MUDDY LINE: "He is not a bit player in a comic opera conflict, not the trump in an international card game . . ."

Hospital Imports

British Nurses

DALLAS (AP)—Parkland Hospital, like other institutions shortages, is importing 20 or 40 nurses from the British Isles.

A recruiting trip to Great Britain took place late last year, but red tape slowed the arrival of the nurses. Mrs. Elizabeth Wright, director of nursing service, says she now expects some of the nurses to arrive shortly.

Two Parkland nurses, Mrs. Pat Lumkin, American and Mrs. Gertrude Ince, British, recruited in London, Manchester, Edinburgh, Glasgow, Belfast and Dublin.

ISTANBUL, Turkey, will ask the U.S. for large loans.

How to live with a woman

The art of making a woman happy is often misunderstood by baffled husbands.

In February Reader's Digest an experienced minister and marriage counselor reveals a few important secrets, tells how to cultivate the kind of masculinity to which women respond.

Get February Reader's Digest—now on sale.

People have faith in Reader's Digest

Rancher Is Judged Innocent Of Murder

EASTLAND (AP)—Ivan J. Allen, 71, prominent Eastland County rancher, was judged innocent of murder charges Thursday by jurors in 91st District Court.

The state had asked the death penalty in the Nov. 7 shooting death of Allen's nephew, Dr. Albert Reidel, a Dallas psychiatrist.

Allen took the stand late in the four-day trial and testified that the shooting was an accident. State witnesses testified that the defendant had chased peon pickers from his ranch with a rifle on the day of the shooting.

Allen's attorney, H. Ford, withheld from Clark's paycheck the legally permissible amount. Clark still would have about \$108 take-home pay.

Local 588 of the UAW filed suit in Circuit Court Thursday seeking to stop Ford from withholding more than 15 per cent of an employee's pay for any reason.

The suit charged that Ford has withheld all the wages of Dennis Sheehy, 32, of suburban Park Forest since Jan. 14 because of delinquent taxes owed the state of Indiana.

A union official said the union is seeking a ruling that goes beyond the cases of Clark and a personal endorsement of Wil-

son and a slap at Edward Heath, leader of the Conservative opposition.

McNamara, who fought his will file a test case in Michigan campaign on Wilson's policies, polled 24,470 votes or 52.2 per cent. Jones and 19,328 or 40.8 per cent.

The big loser was Laurie Millward, a Hill city councillor who ran for the tiny Liberal party and polled 2,945 votes. In 1964 her vote was 7,570.

Much attention was paid before the election to Richard Gott, a left-wing independent who campaigned against Wilson's support of U.S. policies in Viet Nam. There was speculation that he would siphon off enough Liberal votes to put a Conservative in, but he polled only 250 votes.

Two fringe candidates, Kelvin Woodhouse and Russell Eklies, collected 68 votes between them.

Gott's poor showing put left-wing Labor MPs on notice that their lack of electoral support for their desire to discontinue Britain's role in the American position in Viet Nam. Gott had predicted he would get 1,000 votes or more.

Dazzling Triumph Even Conservative commentators acknowledged that the election was a dazzling triumph for Wilson. Heath immediately issued a call for unity in his party, which is divided over the Rhodesian rebellion and over economic policy.

The Conservatives were expected to have no trouble regaining the Edgbaston seat, an exclusive area of Birmingham, which became vacant on the death of Dame Edith Pitt. She won it in 1964 by a majority of 11,759. She died from a brain hemorrhage at the age of 59.

Wilson's forces in Commons Thursday night defeated a Conservative motion to censure the government's economic policies. The vote was 287-284 with the 10 Liberal party members siding with the Conservatives.

The censure motion accused the government of failing to curb the "rapid" rise in the cost of living.

Standards Regulating Junkyards Announced WASHINGTON (UPI) Commerce Secretary John T. Connor has made public draft standards for regulation of auto junkyards and highway advertising under last year's Highway Beautification Act.

Connor said Thursday public hearings would be held before final minimum standards are set. The act provides for control of billboards within 660 feet and junkyards within 1,000 feet of interstate or federally added primary highways.

They said they planned the joke robbery while sitting in a laundromat Dec. 29. They entered a nearby Bank of America branch and gave the teller a note reading: "Don't look up. You're covered by a ray-gun that will leave nothing but the fillings in your teeth. Hah! We need a million dollars quick. Please oblige."

The teller pressed an alarm. The joking "bank robbers" were arrested as they danced out of the bank, arm in arm.

Production FROM PAGE ONE

terials and plant capacity in case of any conflict. DMS is managed by the Commerce Department's Business and Defense Services Administration.

With industry operating at rates well below capacity, the allocation system has proceeded "without bumping private demands to any noticeable extent," the council said.

It went on: "With industry's operating rates now higher than before, there may be some cases where the execution of civilian orders will be somewhat delayed."

"However, these will be exceptional, and will not be such as to require alteration in our present machinery for materials priorities and allocations."

No Extreme Demands Neither will there be extreme demands on any individual industries, the council said, even though textile producers and some others which are getting new military orders were already operating at high rates because of consumer demand.

The estimated \$6 billion increase from 1965 in defense outlays during this calendar year represents nearly 13 per cent of the anticipated \$46 billion increase in gross national product, or GNP, the total dollar value of all goods and services produced.

"These outlays will exert a broad fiscal stimulus," said the council headed by Dr. Gardner A. Key.

Indeed, because they directly and immediately add to GNP, defense purchases tend to have a somewhat larger and more rapid economic effect than a tax reduction of the same size, which must be respent before it can stimulate production."

The report estimated that 35 per cent of the rise in defense outlays this year will go for the pay and allowances of the increased number of military and civilian personnel and 10 per cent for training, food, lodging, clothing, and transportation costs of the added manpower.

Another 22 per cent represents gasoline, ammunition, ordnance, and other miscellaneous items. Of the rest about 18 per cent goes into large, sophisticated weapons systems like missiles, aircraft and ships.

Labor Win FROM PAGE ONE

voters might react against another election campaign with apathy or might turn against Labor for forcing another election.

The Hill victory was seen as a personal endorsement of Wilson and a slap at Edward Heath, leader of the Conservative opposition.

McNamara, who fought his will file a test case in Michigan campaign on Wilson's policies, polled 24,470 votes or 52.2 per cent. Jones and 19,328 or 40.8 per cent.

The big loser was Laurie Millward, a Hill city councillor who ran for the tiny Liberal party and polled 2,945 votes. In 1964 her vote was 7,570.

Much attention was paid before the election to Richard Gott, a left-wing independent who campaigned against Wilson's support of U.S. policies in Viet Nam. There was speculation that he would siphon off enough Liberal votes to put a Conservative in, but he polled only 250 votes.

Two fringe candidates, Kelvin Woodhouse and Russell Eklies, collected 68 votes between them.

Gott's poor showing put left-wing Labor MPs on notice that their lack of electoral support for their desire to discontinue Britain's role in the American position in Viet Nam. Gott had predicted he would get 1,000 votes or more.

Dazzling Triumph Even Conservative commentators acknowledged that the election was a dazzling triumph for Wilson. Heath immediately issued a call for unity in his party, which is divided over the Rhodesian rebellion and over economic policy.

The Conservatives were expected to have no trouble regaining the Edgbaston seat, an exclusive area of Birmingham, which became vacant on the death of Dame Edith Pitt. She won it in 1964 by a majority of 11,759. She died from a brain hemorrhage at the age of 59.

Wilson's forces in Commons Thursday night defeated a Conservative motion to censure the government's economic policies. The vote was 287-284 with the 10 Liberal party members siding with the Conservatives.

The censure motion accused the government of failing to curb the "rapid" rise in the cost of living.

Standards Regulating Junkyards Announced WASHINGTON (UPI) Commerce Secretary John T. Connor has made public draft standards for regulation of auto junkyards and highway advertising under last year's Highway Beautification Act.

Connor said Thursday public hearings would be held before final minimum standards are set. The act provides for control of billboards within 660 feet and junkyards within 1,000 feet of interstate or federally added primary highways.

Suicide FROM PAGE ONE

an employee's paycheck with Indiana officials and were told the state law called for "no extensions and 100 per cent withholding."

Michael Miela, an Illinois assistant attorney general in the State Labor Department, said all the details of the Clark case had not yet been made available to the state and there would be no comment now on Ford's withholding of more money from Clark's paycheck than legally allowable.

Heid Ford, withheld from Clark's paycheck the legally permissible amount. Clark still would have about \$108 take-home pay.

Local 588 of the UAW filed suit in Circuit Court Thursday seeking to stop Ford from withholding more than 15 per cent of an employee's pay for any reason.

The suit charged that Ford has withheld all the wages of Dennis Sheehy, 32, of suburban Park Forest since Jan. 14 because of delinquent taxes owed the state of Indiana.

A union official said the union is seeking a ruling that goes beyond the cases of Clark and a personal endorsement of Wilson and a slap at Edward Heath, leader of the Conservative opposition.

McNamara, who fought his will file a test case in Michigan campaign on Wilson's policies, polled 24,470 votes or 52.2 per cent. Jones and 19,328 or 40.8 per cent.

The big loser was Laurie Millward, a Hill city councillor who ran for the tiny Liberal party and polled 2,945 votes. In 1964 her vote was 7,570.

Much attention was paid before the election to Richard Gott, a left-wing independent who campaigned against Wilson's support of U.S. policies in Viet Nam. There was speculation that he would siphon off enough Liberal votes to put a Conservative in, but he polled only 250 votes.

Two fringe candidates, Kelvin Woodhouse and Russell Eklies, collected 68 votes between them.

Gott's poor showing put left-wing Labor MPs on notice that their lack of electoral support for their desire to discontinue Britain's role in the American position in Viet Nam. Gott had predicted he would get 1,000 votes or more.

Dazzling Triumph Even Conservative commentators acknowledged that the election was a dazzling triumph for Wilson. Heath immediately issued a call for unity in his party, which is divided over the Rhodesian rebellion and over economic policy.

The Conservatives were expected to have no trouble regaining the Edgbaston seat, an exclusive area of Birmingham, which became vacant on the death of Dame Edith Pitt. She won it in 1964 by a majority of 11,759. She died from a brain hemorrhage at the age of 59.

Wilson's forces in Commons Thursday night defeated a Conservative motion to censure the government's economic policies. The vote was 287-284 with the 10 Liberal party members siding with the Conservatives.

The censure motion accused the government of failing to curb the "rapid" rise in the cost of living.

Standards Regulating Junkyards Announced WASHINGTON (UPI) Commerce Secretary John T. Connor has made public draft standards for regulation of auto junkyards and highway advertising under last year's Highway Beautification Act.

Connor said Thursday public hearings would be held before final minimum standards are set. The act provides for control of billboards within 660 feet and junkyards within 1,000 feet of interstate or federally added primary highways.

They said they planned the joke robbery while sitting in a laundromat Dec. 29. They entered a nearby Bank of America branch and gave the teller a note reading: "Don't look up. You're covered by a ray-gun that will leave nothing but the fillings in your teeth. Hah! We need a million dollars quick. Please oblige."

The teller pressed an alarm. The joking "bank robbers" were arrested as they danced out of the bank, arm in arm.

Savings and Loan Associations

OFFICIAL STATEMENT OF FINANCIAL CONDITION Of The Briercroft Savings and Loan Association at Lubbock, State of Texas, as of the close of business on the 31st day of December, 1965.

Table with columns for ASSETS and CAPITAL AND LIABILITIES. Assets include First mortgage loans outstanding, Loans secured by savings accounts, Property Improvement Loans, Unsecured loans, Real estate sold on contract, Real estate owned, Stock in Federal Home Loan Bank, Other investment securities, Cash on hand and in banks, Leasehold improvements less amortization, Furniture, fixtures and equipment, less depreciation, Deferred charges, Other Assets (specify). Capital and liabilities include Savings Accounts, Advances from Federal Home Loan Bank of Little Rock, Accounts payable, Loans in process, Advance payments by borrower for taxes and insurance, Deferred credits to future operations, Permanent Reserve fund stock, General reserves, Legal reserve and/or Federal Insurance Reserve, Other reserves, Surplus or Undivided Profits.

TOTAL ASSETS \$10,451,922.73. TOTAL CAPITAL AND LIABILITIES \$10,451,922.73. STATE OF TEXAS. COUNTY OF LUBBOCK. We, C. R. Meadows, Jr., as President, and Emilia Eckstine as Assistant Secretary of the Briercroft Savings and Loan Association located at Lubbock, Texas, each of us do solemnly swear that the statement hereof is true to the best of our knowledge and belief.

CORRECT-ATTEST W. B. Rushing, C. R. Meadows, Jr., President. J. C. Chambers, Emilia Eckstine, Asst. Secretary. Edward R. Smith, Directors.

Subscribed and sworn to before me this the 26th day of January, 1966. MOZELLE WOODLOCK, Notary Public, Lubbock County, Texas. My Commission expires June 1, 1967.

HEATH'S 3 DAYS! TREMENDOUS! GIGANTIC! SALE. BELOW IS LISTED ONLY A FEW OF OUR STOREWIDE SALE ITEMS! TAKE ADVANTAGE OF THESE TREMENDOUS SAVINGS NOW! SAVE UP TO 60% AND MORE! EASY CREDIT TERMS! FREE DELIVERY! KROEHLER SOFA SLEEPER \$188. 9-PC. EARLY AMERICAN LIVING ROOM \$178. EARLY AMERICAN WINGBACK SOFA \$99. 2 PC. KROEHLER LIVING ROOM SUITE \$199. 3-CUSHION QUILTED SOFA \$139. DINETTE SPECIAL! 5 PC. DINETTE SUITE \$22. EARLY AMERICAN SWIVEL ROCKER \$48. 13-CU. FT. UPRIGHT FREEZER \$175. 3-PC. BEDROOM SUITE \$98. Innerspring Mattress or Matching Box Springs \$18. 5-PC. WESTERN LIVING ROOM GROUP \$188. 36" Magic Chef Range \$99. 3-Pc. French Provincial BEDROOM SUITE \$138. SOLID OAK 2-PC. BEDROOM SUITE \$98. 13-CU. FT. COPPERTONE REFRIGERATOR \$169. MAYTAG AUTOMATIC WASHER \$188. 60-INCH CONSOLE STEREO \$186. SPANISH-STYLE BEDROOM SUITE \$138. 2-pc. BEDROOM SUITE \$68. SOLID MAPLE GUN CABINET \$99. SIMMONS KING-SIZE Innerspring Mattress Box Springs Ensemble \$148. 7-Piece DINETTE SET \$49. 9-Piece DINETTE SET \$69. Large Swivel Rocker \$48. 5-Piece LIVING ROOM \$199. LARGE SELECTION RECLINERS \$58. TRADITIONAL SOFA \$138. EASY CREDIT TERMS FREE DELIVERY. PO5-5795 1923-4th St.

Mc LHS Palo By CARL Avalanche-Bathed District 3 and prom citement a supremacy mands, th Plainsmen Sandies sq an 8 p.m. luxe in Mu And, gene that he v tarnished to the smooth the second H Unbea Both Gerai and Johnny enter the co records in and boast s 2 and 18-1 The high to the first perfect 8-0 l tery, 58-57 overtime so The loss w setback han during the i And, while cus on the fare, Lubbo Westerners, native side ger after a Berger, hit te with Pal affair in Am Other leag rock to Par Plainview. Monterey straight loo round with a tory over night. The day, are 24 Superlativ teams pos standing im impressive sive records Wells Plainsmen a ly respecti game and A Local fan the "district" dead-eyed S a 6-1 senior points-per-ga game outlins (6-7) Two other hitting in d Harp (6-0) outine and averaging a game. The Plain than four o who are ave uros throug Steve Har Coleman (1 11.4 points) Reed (6-7) (6-4) are b Chuck Lew out the MI Weste Joining Wells in t Sandie attt Falk (6-0) (6-1) Coach M emers will their secon at the 500 of the free-wi LHS crew four gam 1 for their fir round Tues at 12 Pal losing to F tuck affair. O'Banion in leader 11.0, Bill C Burrell (6-5 (5-9 5-1) Dackson (6 Shuffield (6 strong (6-6) a good def Westerners De Palo Dur will field Harold Ma Keon (6-1) (5-7), Sand either Davi Kiser (6-1) The West 15-6 for the is 8-10. Lu the Dons, 5 ing of the Monterey the unbeate in a 6 p.m. at the Colu is the lone tersy's "B" Lubbock hands will Palo Dur Farrell. Houston H O U S Pitchers D Bruce sign day with t They ha Houston cl League de the busiest Between Bruce sta season. F record, Br

Tech Officials Surprised By Blast From Texas Cage Coach Harold Bradley

By BURLE PETTIT
Avalanche-Journal Sports Staff
Texas coach Harold Bradley leveled a double-barreled blast at Texas Tech basketball crowds Thursday, but Red Raider officials absorbed the shock with a tongue-in-cheek attitude and an expressed desire to "avoid any controversy."

reference encounter will bring him into Lubbock, was quoted in an Associated Press story as saying "Tech has the worst crowd in the United States." The Longhorn cagemaster also asserted that referees' decisions are often swayed by the Municipal Coliseum audience.

honest," Bradley said, "but they're bound to be swayed by a fanatical crowd yelling, 'Watch that charing,' and 'Watch that three seconds in the lane.'"

"I don't understand it," Gibson said. "Gosh, I can show you articles where his (Bradley's) players say they'd rather play here than anywhere."

you want. And most of the time it conducts itself in a very orderly fashion. "Now any basketball crowd is highly partisan, because it is generally made up mainly of the home supporters. Everything that is said and done shows up more in a basketball crowd than it would at an outside event."

During the past five years, Tech has four times received the SWC sportsmanship award. The crowd behavior at football and basketball games weighs heavily in judging for the sportsmanship trophy.

Journal by telephone that he knew nothing of Bradley's complaints. "I have heard no complaints about Lubbock from our officials," Curtis said. "Not one has indicated to me that he didn't like to work games out there."

RECORD TIED
The record for the 1-1/2 mile Pimlico Futurity at Baltimore, Md., was set by Count Fleet in 1942 at 1:43 3/5 and equaled in 1964 by Sadaiir.

REVOLUTIONARY NEW "HWB" ROTOMATIC
Completely Automatic Car Wash

Texas Western May Get Tourney Berth

Miners Tip ASU Quint

By TED MEIER
Associated Press Sports Writer
Texas Western, a "tremendous" basketball team, appears certain to land a berth in either the NCAA or the NIT come tournament time in March.

Team Is Praised
"This is a tremendous basketball team," said Ned Walk, Arizona State coach. "It's a very well coached club with outstanding personnel. I was impressed with its depth and its exceptional quickness."

Houston Wins
Houston, another leading independent, won its seventh in a row by defeating Texas Christian at Houston 100-79 behind 33 points by Elvin Hayes, a 6-8 soph. Hayes' effort combined with 20 points by Joe Hammond, offset the 34 points scored by Gary Turner for TCU. Hayes also grabbed 27 rebounds and blocked six shots.



UP AND AFTER Arkansas' 6-foot-5 John Talkington (10) goes up with a shot. Herb Biggs of Mississippi State in an inter-sectional basketball game Thursday night. Watching are Bulldogs John Sopen (11) and Paul Smith (22), and Arkansas' Ricky Sugg (32). The Bulldogs won 69-61. AP Wirephoto

LOOP GAME TONIGHT Panthers To Host Midland's Carver

The Dunbar Panthers will host the Midland Carver team in a basketball game tonight at 8 p.m. at the Dunbar gymnasium. The Panthers are currently leading the loop with a record of 16 wins and 2 losses. The Carver team is currently 12-10.

Slaton Cagers Rip Buffaloes

Slaton (Special) Slaton's Tigers thumped Petersburg, 75-55, in a non-district basketball game here Thursday night. Jack Mason pitched in 27 points to run Slaton's record up to 18-1 for the year. Jim Weathers scored 14 for Petersburg.

SNOW PREVENTS GAME

CARBONDALE (UPI) Heavy snow in the Midwest postponed Thursday night's basketball game between Richmond and Southern Illinois, the nation's top-ranked small college. Efforts are being made to reschedule the contest.

AT CHAPARRAL FIELDHOUSE LCC Hosts South Plains In Battle For WJC Lead

South Plains College and Lubbock Christian College, who have battled many times to finish above each other in the lower part of the Western Junior College Conference race, will meet tonight for the top spot. South Plains comes into the game at LCC Fieldhouse with a 5-0 WJCC record while LCC is 3-1, but in second place. Tipoff is slated for 7:30 p.m.

Easton Boss Of Mexico's Track Team

LAWRENCE, Kan. (AP) — Bill Easton, former track coach at Kansas with an 18-year record of almost unbroken success, was appointed Thursday head track coach of the Mexico Olympic track team and coordinator in charge of track for the 1968 Olympic Games at Mexico City.

Celts Pound Detroit Five

(By The Associated Press)
The Boston Celtics, perennial champions of the National Basketball Association, aren't doing too badly in their new role of chasing the leader.

GRAND SLAMMERS

CHICAGO (UPI) — Eric Banks of the Chicago Cubs shares the record for most grand slam home runs in one major league season with Jim Gentile.

Basketball Results

Thursday's College Basketball Results
BY THE ASSOCIATED PRESS
MAYNARD (AP) Boston College 74, Wake Forest 64. Duke 77, North Carolina 64. Wake Forest 74, Boston College 64. Wake Forest 74, Boston College 64.

Senior High Results

WACO (UPI) — Waco's boys basketball team won the state championship by defeating Austin 44-34 in the final game of the state tournament.

Senior High Results

WACO (UPI) — Waco's boys basketball team won the state championship by defeating Austin 44-34 in the final game of the state tournament.

Senior High Results

WACO (UPI) — Waco's boys basketball team won the state championship by defeating Austin 44-34 in the final game of the state tournament.



GOLDEN OPPORTUNITY
The development of the Car Wash Industry started with a need! Now it becomes a permanently profitable business with the introduction of the revolutionary HWB Rotomatic Kwik Kar Wash.

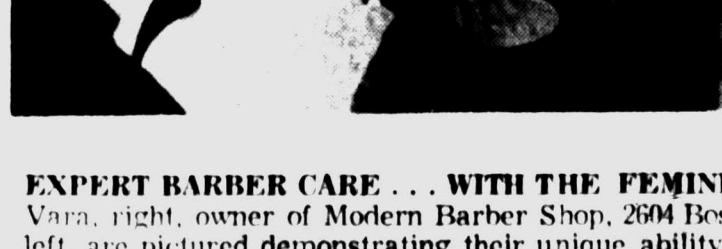
Completely automatic, washes the car and wheels in two minutes! Made by a pioneer manufacturer of industrial cleaning maintenance equipment. Carries a full warranty.

We provide full training, planning, and financing to assure successful operation. Minimum investment \$6,000. Investors, Real Estate, Gas Station operators, write or phone

Hinkle Development Co.
Box 2002
Roswell, New Mexico
Phone 505-622-7070

Now IS THE TIME TO TRADE UP!

You can turn the town upside down. You can dicker, figure, horse-trade and just about go crazy, but if you try to find better cars than ours, you'll find you can't. So, there's nothing else to do but visit our showroom soon for a demonstration ride of a Plymouth Valiant for '66.



DAN HAYNIE
Fenner Tubes Co.
Universal • Chrysler • Plymouth Since 1946
POS-8524
10th & Ave. L

IT'S adopted, it does inconsistent. Now of Lubbock, the Big City, and Austin. So I'm sure on he made. In a stirred along town into town.

AT M
RE
IN
MEXI
Texas' a 12-str College being P Country. Coteh who abo Nicholls Odessa Steve low rou him abo nexy whor Tom Hredlar Kinney a 74 bu a team didn't goe \$4 for a

Jong LeCron while H Tommy player Walker had a Larrry won th

Bled
Whit
BLE
Box se night to harral, outing John the los league The back to the gld Linda soe. T in leas

many and varied. Expert hairstyling, regular cuts, shaves, herb treatments, shampoos, and massages are purchased by Mrs. Cruz Vara from Roy Gladson. The services offered by Mrs. Vara, Mrs. Anna Fisher, and John Anderson, Tech student who works only on Saturday, are

Special emphasis is placed upon shampoos and massages. Shop hours are Tuesday through Saturday, 10 to 6, closed Mondays. Convenient location, just off of 4th & Boston, plenty of free parking. Experience, friendliness, and satisfaction are our trademarks. (adv.)

S&Q Clothiers Basement Store
JANUARY SAVINGS ON Men's Quality SHOES
NEW SHIPMENT JUST RECEIVED
Wings — Penny Loafers — Others
The most wanted kind
SAVE \$10.00 to \$17.00
Regularly \$16.95 to \$32.95
OUR PRICE
\$9.95 and \$16.95
Not quite perfect
S&Q Clothiers Basement Store

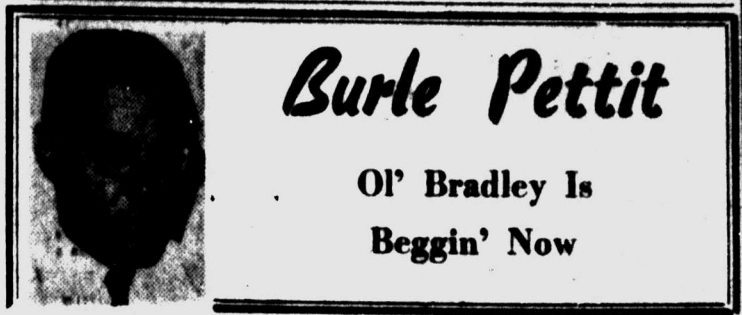
flyin's great!
best of all in a modern low wing PIPER CHEROKEE
The swing's to wings. Everyone's learning to fly. You'll see why when you take lessons in the modern Piper Cherokee. So simple to fly because it has "total handling ease" only a low wing plane can give you.
SPECIAL \$5 INTRODUCTORY FLIGHT LESSON
COME SEE, COME FLY the Cherokee. Try the special \$5 Introductory Lesson with an expert instructor. You'll be on the flying yourself!
Wai-Tex AIRCRAFT Piper Distributor Lubbock MUNICIPAL AIRPORT
POS-9296



EXPERT BARBER CARE... WITH THE FEMININE TOUCH — Mrs. Cruz Vara, right, owner of Modern Barber Shop, 2604 Boston, and Mrs. Anna Fisher, left, are pictured demonstrating their unique ability to please the discriminating barbering tastes of two young gentlemen.

Modern Barber Shop, 2604 Boston in Plaza Shopping Center, has been recently purchased by Mrs. Cruz Vara from Roy Gladson. The services offered by Mrs. Vara, Mrs. Anna Fisher, and John Anderson, Tech student who works only on Saturday, are

Braves To Defy Order By Milwaukee Court



Burle Pettit

Ol' Bradley Is Beggin' Now

WRAPPING UP ANOTHER week, wonderin' what it is that's eatin' on Harold Bradley.

Here's a tough guy to figure, this Bradley. Although his motive for yesterday's story blasting the Tech crowds is almost obvious, Bradley's logic isn't.

Lubbock's the next stop on his SWC calendar, and it is highly possible that he intended to put a little pressure on the officials designated to call next Saturday's game. Perhaps if he could get that story in print across the state—which he did—the referees might be inclined to bend backwards to prove him wrong.

Works kinda like drawing a technical foul, which some coaches try to do when several successive calls go against them. It would be difficult to establish the effectiveness of either, although the theory is quite popular.

BUT BRADLEY APPARENTLY is overlooking the obvious. His acid remarks likely will not enhance his popularity hereabouts, nor are they apt to lessen the enthusiasm of the crowd.

Seems like he may have baited the trap, then stuck his own finger into it. Anyway, it will be interesting to witness the response he will draw here come next week.

WHY DID HE single out Tech, except for the fact it is his next stop? Although his statements insisted the contrary, folks who travel all over the league will tell you that Lubbock is no worse than several other stops across the circuit.

And you'd be surprised how many will single out Bradley's own Gregory Gym as the toughest spot in the conference.

A couple of years ago, in fact, this typist asked a former player who'd played in packed houses as offered by almost all eight of the teams just which among them all was the most unnerving of the lot.

"Gosh, I'd have to say Gregory Gym," the former all-SWC star quickly replied. "Their crowds are large, noisy and they sit right behind the bench, their knees in your back throughout the game. I'd say personally that it is by far the toughest."

MUNICIPAL COLISEUM The largest in the league has two distinctions that make it a formidable house of higher basketball: 1. It draws better than any of the rest, and 2. For the past several years it has almost always sported a fairly salty basketball team.

But, being entirely objective, this scribe has seen no more unruly displays (i.e. flying cups, ice and coins) here than he has seen in College Station, Houston and—yes—Gregory Gym.

And there is one factor here that Gregory certainly can not (or does not) provide: The visiting team is completely out of reach of the fans. Although chairs do adorn the courtside during a sell-out ball game, the visitors' bench can not feel, physically, any wrath that hot tempo basketball may provide.

The area behind their seating capacity is made up of fans following that team. In other words, complimentary tickets given to the Texas team occupy the area immediately behind the Longhorn bench.

So if Bradley or one of his players is gigged by a knee, an elbow or an unkind word, the abuse will come from a Steer follower.

JUST LAST WEEK Bradley took a backhanded slap at his adopted state of Texas (Harold is a New York native), saying it does not promote basketball. His latest remark, then, is an inconsistency.

Nowhere does enthusiasm for the game in Texas match that of Lubbock, which Bradley admits. And, having seen games in the Big Eight, Missouri Valley and elsewhere basketball is definitely promoted, it is this opinion that Lubbock, College Station and Austin crowds are relatively mild.

So it appears, then, that Bradley was merely applying pressure on the referees for his upcoming trip in this direction. But he made one mistake which may blow up in his face.

In gaining the attention of the officials, he likely has also stirred the wrath of the fans. And with the anonymity that goes along with a 1-4 record, he likely could have otherwise made it into town virtually unnoticed.

AT MEXICO CITY MEET

Raider Golf Squad Leads International Tournament

MEXICO CITY (Special) The Texas Tech golf team grabbed the day for Odessa, a 77, while a 12-stroke lead Thursday in the Bruce Cotton had a 78. Jerry College International tournament. Smith of Andrews had an 82 and being played at Club De Golf Country Club.

Coach Danny Mason's linksters who shot 300, while LSU had 313, Nicholls College had 318 and Odessa College had 325.

Steve LeCrone had a 70 for the low round of the day and it put him ahead in the amateur tourney which is being held in conjunction with the team meet. Tom Orndorff had a 75, Jerry Hmelar had 77 and Robert McKinney had a 78. Joe Huber had a 74 but he wasn't designated as a team member, so his score didn't count. Jim Conline had an 84 for another score.

54 Holes Left
Jorge Molinar had a 73 to trail LeCrone in the amateur meet, while Huber is tied for third with Tommy Lehman and Walker Cup player Deane Beman. Another Walker Cupper, Dale Morey, had a 77.

Larry Lumpkin of Pecos, who won the Andrews invitation this

Bledsoe Five Beats Whitharral By 69-59

BLED SOE (Special) — Chris Bledsoe scored 28 points here Thursday to pace Bledsoe past Whitharral, 69-59, in a District 6-B outing.

Johnny Tipton scored 18 for the losers. Bledsoe is now 6-1 in league play.

The Whitharral fems turned back the home girls, 79-30, with the aid of Karen Lott's 20 tallies. Linda Brown scored 14 for Bledsoe. The Bledsoe fems are 0-7 in league efforts.

GOOD BRAND OF BANKING
AMERICAN

ATLANTA, Ga. (AP) — The Atlanta Braves, caught between courts in two different states, are going ahead with plans to play their 1966 home games in Atlanta.

Braves' President William C. Bartholomay said individual game tickets will go on sale Monday. Advance season tickets sales are nearing \$1 million.

Bartholomay's remarks came Thursday despite a ruling by a Wisconsin judge minutes earlier that the baseball team must prepare to play its 1966 home games in Milwaukee in case it is ordered to do so by the court.

Open In Atlanta
"The Braves," Bartholomay said, "will open the 1966 baseball season in Atlanta Stadium on April 12, 1966."

Circuit Judge Elmer W. Roller of Milwaukee ordered the Braves to prepare to play their home games in Milwaukee this year until league expansion takes place with the city gaining a replacement franchise.

Opposing Roller's order is a temporary injunction issued Dec. 17 by Atlanta Judge Sam

Queens Play NBC Squad

PLAINVIEW (Special) — The Hutchinson Flying Queens go to Tennessee today to play rival Nashville Business College, winners of the National Women's Basketball Tournament last season.

NBC left the only scratches on the Flying Queens' record last season by beating the Queens three of the five times they met, once in the National Tournament.

The game tonight will be played in Murfreesboro, the hometown of freshman Linda Tucker, 5-4 rover for the Queens. The Saturday game will be in Nashville. Only one of the games will count in league ratings.

The leading scorers for NBC are Nora White and Joan Crawford. Big threats this season, and quite potent against the Queens last year.

NBC is 6-0 thus far in season play. They are 2-0 in league standings. Both the Raytown Pirettes and Iowa Wesleyan have fallen to NBC, two games each, in addition to the Atlanta Tomboys. Only one game with Iowa Wesleyan and another with Raytown counted as league games.

Kelso Won't Enter Hialeah's Widener

MIAMI, Fla. (AP) — Kelso, the world's biggest money winning horse, probably will skip the \$100,000-added Widener at Hialeah Park Feb. 19, his trainer said Thursday.

"It is, of course, extremely doubtful he'd be primed for such a long, tough race that soon," said trainer Carl Hanford. "However, Kelso is doing fine, breathing well and we plan to race him before the Hialeah meeting ends March 3 even if it isn't in a stake event." The Widener is at 1 1/4 miles.

Kelso, a 9-year-old Gelding has won \$1,977,396.

COMMERCIAL ELECTRIC RATES IN LUBBOCK ARE LOWER*

Rates For 375 KWH	
Lubbock	18.00
Amarillo	15.44

YOUR ELECTRIC COMPANY MAKES THE DIFFERENCE!

LUBBOCK POWER & LIGHT
916 HILL AVE. P.O. BOX 100
*1964 Federal Power Comm. Report

BUD'S MEN'S SHOP SLASHES

1/2 off

Special Groups of Men's Suits, Sport Coats, Jackets, Sweaters, All Weather Coats.

TOWN & COUNTRY SHOPPING CENTER
North of Tech Stadium

Phillips McKenzie ordering the Braves to fulfill a contract calling for home games in Atlanta. Bartholomay noted both rulings and said McKenzie "has already ordered that the contract entered into by the Stadium Authority and the Braves is valid and binding."

To Honor Contract
"The Braves fully intend to honor our contract with the Stadium Authority and all our larger obligations to the citizens of Atlanta, of Georgia, and of the entire southeast, as the Braves have always honored our agreement with the county of Milwaukee."

"Until the Milwaukee order is reversed," Bartholomay said, "the Braves may be faced with the regrettable necessity of choosing which court to obey."

"It has always been the stated intent of the Braves to honor any and all orders issued by courts properly having jurisdiction to issue those orders."

"To play 1966 home games at any place other than Atlanta Stadium would be a direct breach of the order entered by the only court which has before it the Braves, the National Baseball League and the Stadium Authority."

Arthur Montgomery, chairman of the Authority, said, "All of us here in Atlanta are looking forward to the evening of April 12 when the Braves will open their National League schedule with the Pittsburgh Pirates in Atlanta's beautiful new stadium."

Bartholomay said the Wisconsin judge's ruling was "the result of a continuing campaign of harassment and intimidation carried on against the Braves by certain persons."

Meanwhile, opposing attorneys in litigation designed at keeping the Braves in Milwaukee continued taking depositions

in Atlanta Thursday. Manager Bobby Bragan testified he would not return to Milwaukee even if his salary were tripled.

He said, "It's not a good baseball town... the climate is against it. Secondly, there is a second antagonism regarding the press."

Bartholomay said the Wisconsin judge's ruling was "the result of a continuing campaign of harassment and intimidation carried on against the Braves by certain persons."

Meanwhile, opposing attorneys in litigation designed at keeping the Braves in Milwaukee continued taking depositions

Bragan said a third reason he would not go back to Wisconsin is "Milwaukee is hemmed in on the north by Minnesota and on the south by Chicago." Both field major league teams.

He said, "It's not a good baseball town... the climate is against it. Secondly, there is a second antagonism regarding the press."

Bartholomay said the Wisconsin judge's ruling was "the result of a continuing campaign of harassment and intimidation carried on against the Braves by certain persons."

Meanwhile, opposing attorneys in litigation designed at keeping the Braves in Milwaukee continued taking depositions

MANAGER TRAINEE
Excellent Opportunity For Men Between the Ages of 21-35. At Least High School Education. Must Have Completed Military Service.

KARATE & BODY BUILDING
Classes Now Being Formed
Our Body Building Course Will Prepare Your Body (any age) For Learning The Wonderful Art of Karate.

Lubbock Athletic Club
1007 - Main (West Side, Dir.) P.O. Box 2722

INTERSTATE FINANCE
1312 Avenue J

OPEN DAILY 9 AM til 10 PM - SUNDAYS NOON TO 6

CLARK'S **PRICES LOWER THAN USUAL!**

15 FOOT TROUBLE LITE **77¢**

6 PACK FLASHLITE BATTERIES **38¢**

High quality "D" batteries. Heavy duty, long life. Lab tested and approved. For flashlights, toys, and radios.

60 - 100 W LITE BULBS **48¢**

Protested, includes 2-60 watt and 2-100 watt bulbs. American made, fully guaranteed, gives maximum efficiency.

Huge Selection of **ASSORTED TOOLS**

66¢

LANTERN & 4 BATTERIES **\$1.33**

FLASHLITE & 2 BATTERIES **58¢**

Built-in automatic warning blinker, 6 volt power, four way push button switch, sealed beam reflector, unbreakable plastic case. Operates on 4 "D" batteries.

Top Quality, complete with batteries. Chrome plated flashlight with red lense guard.

AVENUE Q at 41st STREET LUBBOCK

LUBBOCK AVIATION-JOURNAL... DIAL PO3-9311

CLASSIFIED WORD AD DEADLINES... WEEK DAYS 8:00 A.M. to 4:30 P.M. SATURDAYS 8:00 A.M. to 11:30 A.M.

Complete List Of WANT-AD CLASSIFICATION

- 1. Announcements
A-Lodges & Societies
B-Personal Notices
C-Professional Directors
D-Funeral Notices
E-Counseling Service
F-Card of Thanks
G-In Memoriam
H-Managements
I-Cemetery Lots
J-Floral & Nursery
K-Lot & Found

- 2. Bus. Opportunities
A-Business Chances
B-Business For Sale
C-Business Wanted
3. Business Service
A-Building Services
B-Building Materials
C-Beauty & Barber
D-Do It Yourself
E-Business Services
F-Professional Services
G-Women's Column

- 4. Employment
A-Male Help Wanted
B-Female Help Wanted
C-Male or Fem. Wanted
D-Agents-Sales Rep.
E-Positions Wanted-Male
F-Positions Wanted-Fem.

- 5. Education
A-Schools
B-Correspondence
C-Child Nurseries
6. Financial
A-Insurance
B-Investments
C-Farm-Ranch Loans
D-City Loans
E-Auto Loans
F-Personal Loans
G-Money Wanted
H-Money Loans

- 7. Farmers Exchange
A-Farm Equipment
B-Feed, Seed, Grain
C-Livestock
D-Poultry
E-Auctions

- 8. Miscellaneous
A-Miscellaneous
B-Office Supplies
C-Sporting Goods
D-Furniture
E-Appliances
F-Television-Radio
G-Piano & Instruments
H-Antiques
I-Pots
J-Machinery & Tools
K-Wanted Misc.
L-Articles For Rent
M-Moving & Storage
O-Coins-Stamps

- 9. Rentals
A-Bedrooms
B-Room & Board
C-Unfurnished Houses
D-Furnished Houses
E-Unfurnished Apts.
F-Furnished Apts.
G-Hotel Rooms
H-Resorts-Rentals
I-Garages-Private
J-Business Property
K-Office Space
L-Wid. Rms., Apts., Hse.
M-Wid. Bus. Prop. Rent
N-Wid. Farms For Rent
O-Farms For Rent
P-Mobile Homes-Parks

POLITICAL ANNOUNCEMENTS
The Avalanche-Journal has been authorized to present the names of the following citizens as candidates for office...

FOR REPRESENTATIVE
FOR DISTRICT CLERK
FOR COUNTY JUDGE
FOR COUNTY COMMISSIONER

FOR COUNTY CLERK
FOR COUNTY AT-LAW
FOR COUNTY SCHOOL SUPERINTENDENT
FOR COUNTY TREASURER

1. Announcements
A-Lodges & Societies
B-Personal Notices
C-Professional Directors
D-Funeral Notices
E-Counseling Service
F-Card of Thanks
G-In Memoriam
H-Managements
I-Cemetery Lots
J-Floral & Nursery
K-Lot & Found

2. Bus. Opportunities
A-Business Chances
B-Business For Sale
C-Business Wanted
3. Business Service
A-Building Services
B-Building Materials
C-Beauty & Barber
D-Do It Yourself
E-Business Services
F-Professional Services
G-Women's Column

4. Employment
A-Male Help Wanted
B-Female Help Wanted
C-Male or Fem. Wanted
D-Agents-Sales Rep.
E-Positions Wanted-Male
F-Positions Wanted-Fem.

5. Education
A-Schools
B-Correspondence
C-Child Nurseries
6. Financial
A-Insurance
B-Investments
C-Farm-Ranch Loans
D-City Loans
E-Auto Loans
F-Personal Loans
G-Money Wanted
H-Money Loans

7. Farmers Exchange
A-Farm Equipment
B-Feed, Seed, Grain
C-Livestock
D-Poultry
E-Auctions

8. Miscellaneous
A-Miscellaneous
B-Office Supplies
C-Sporting Goods
D-Furniture
E-Appliances
F-Television-Radio
G-Piano & Instruments
H-Antiques
I-Pots
J-Machinery & Tools
K-Wanted Misc.
L-Articles For Rent
M-Moving & Storage
O-Coins-Stamps

9. Rentals
A-Bedrooms
B-Room & Board
C-Unfurnished Houses
D-Furnished Houses
E-Unfurnished Apts.
F-Furnished Apts.
G-Hotel Rooms
H-Resorts-Rentals
I-Garages-Private
J-Business Property
K-Office Space
L-Wid. Rms., Apts., Hse.
M-Wid. Bus. Prop. Rent
N-Wid. Farms For Rent
O-Farms For Rent
P-Mobile Homes-Parks

2. Bus. Opportunities
A-Business Chances
TACOS & MALT SHOP
WANT TO RUN YOUR OWN BUSINESS!

WANT TO RUN YOUR OWN BUSINESS!
Mobile Service Station For Lease. Key locations available at this time...

WANTED
Well Groomed Woman For Wholesale Business, full or part time.

CON-OPERATED Auto Landries
24 Washers, 3 Dryers, Runs \$75-100...

BEAUTIFUL RESTAURANT FOR SALE
Elegantly decorated, new and as profit as any anywhere serving steaks, roasters and top menu...

Partnership Breakup DRIVE-IN RESTAURANT
With equipment and contracts, doing over \$15,000 per year...

Service Station For Lease
2 & 1/2 Bn. Stations For Lease. Locations in major highways...

FOR SALE OR LEASE
DISCOUNT partnership McIntire's Drive-In Restaurant Well established 24-hour business...

2. Bus. Opportunities
A-Business Chances
COMPLETE GROCERY & MARKET FIXTURES for 5,000 SQ. FT. STORE

11. Automotive
A-Automobiles For Sale
B-Trucks For Sale
C-Motor Scooters
D-Airplanes
E-Mobile Homes
F-Trailer Trailers-Campers
G-Wanted Cars-Trucks
H-Auto Repairing

CLASSIFIED WORD AD DEADLINES
WEEK DAYS 8:00 A.M. to 4:30 P.M. SATURDAYS 8:00 A.M. to 11:30 A.M.
All ads placed MUST run a minimum of ONE DAY.

3. Business Service
A-Building Services
B-Building Materials
CICERO SMITH LUMBER DISCOUNT MART

CONCRETE WORK
HOUSE CLINIC
Remodeling - Room Additions. Best prices on major repairs.

ROOFING
INSULATION
FLOOR TILE
CORR. PLASTIC

WATER HEATERS
CEILING TILE
WHOLESALE LUMBER
SPECIAL

TOOL AND STORAGE HOUSE
No home has enough storage space. A better tool and storage house is available...

ATTENTION BOYS
Best Wall Gyp. Bd. No. 1-4x8, 1/2" Ea. 1.19

CASH & CARRY
CEMENT
PRE-FINISHED PANELING

ADVERTISING
FOR CLASSIFIED WORD AD DEADLINES
DIAL PO3-9311

3. Business Service
B-Building Materials
PAY CASH AND SAVE
STRONGBARN CORRUGATED IRON

VEAZEY Cash Lumber Co.
DIAL 5H7-3118 2701 AVE. A

FARM DISCOUNT STORE
"Am't got no overhead"
DIAL 6A1-6115

RAY W. DICKEY LUMBER CO.
COTTON PICKING SPECIAL
Only 249.00 Board Feet of Fresh Run Left

WHOLESALE LUMBER
SPECIAL
WATER HEATERS
CEILING TILE

WHOLESALE LUMBER
SPECIAL
WATER HEATERS
CEILING TILE

WHOLESALE LUMBER
SPECIAL
WATER HEATERS
CEILING TILE

WHOLESALE LUMBER
SPECIAL
WATER HEATERS
CEILING TILE

WHOLESALE LUMBER
SPECIAL
WATER HEATERS
CEILING TILE

3. Business Service
B-Building Materials
MORGAN portable aluminum storage buildings, many sizes...

INCOME TAX \$5 UP
H&R BLOCK CO.
America's Largest Tax Service

AMOS GARRETT
INCOME TAX
19 years experience, 2013 Clovis Road

BRANCH MANAGER TRAINER
Branche has had 20 years of experience in training...

ROUTE SALESMAN
FOR A PROGRESSIVE ORGANIZATION
OPPORTUNITY FOR HIGH EARNINGS

ROUTE SALESMAN
FOR A PROGRESSIVE ORGANIZATION
OPPORTUNITY FOR HIGH EARNINGS

ROUTE SALESMAN
FOR A PROGRESSIVE ORGANIZATION
OPPORTUNITY FOR HIGH EARNINGS

ROUTE SALESMAN
FOR A PROGRESSIVE ORGANIZATION
OPPORTUNITY FOR HIGH EARNINGS

ROUTE SALESMAN
FOR A PROGRESSIVE ORGANIZATION
OPPORTUNITY FOR HIGH EARNINGS

4. Employment
A-Of Interest MALE
CAREER OPPORTUNITIES
EXAMINE THE EARNINGS \$400

Mr. Norrell
18 am. to 5 p.m. Friday, January 28, 1966 at 2204

COLLEGE STUDENTS
WE NEED FOUR COLLEGE MEN TO SELL OUR NEW PRODUCT

MECHANICAL DRAFTSMEN
(HAND ARCHITECTURAL)
HAWKCO MFG. CO.

TRUCK SALESMAN
Immediate opening for aggressive young man call Durwood Reynolds

MANAGER - TRAINER
Due to our expansion program Underwood has need of young married man...

ROUTE SALESMAN
FOR A PROGRESSIVE ORGANIZATION
OPPORTUNITY FOR HIGH EARNINGS

ROUTE SALESMAN
FOR A PROGRESSIVE ORGANIZATION
OPPORTUNITY FOR HIGH EARNINGS

ROUTE SALESMAN
FOR A PROGRESSIVE ORGANIZATION
OPPORTUNITY FOR HIGH EARNINGS

4. Employment
B-Of Interest FEMALES
IMMEDIATE PLACEMENT
LADIES - Attractive, intelligent, experienced...

WOMEN ONLY
With a real need for \$500 a week will be considered. Must be able to work 7:30 to 3:30 hours...

LUZIER COSMETICS
SALESLADIES NEEDED
Viviane Woodard cosmetics offers challenging positions for attractive women...

VER-SATILE MAINTENANCE MAN
Plumbing, Electrical, Refrigeration, etc. Good job for sober dependable person...

SECRETARY URGENT
Experienced 3000 stamp. Boren's Personnel, 1111 Texas Ave.

SECRETARY URGENT
Experienced 3000 stamp. Boren's Personnel, 1111 Texas Ave.

SECRETARY URGENT
Experienced 3000 stamp. Boren's Personnel, 1111 Texas Ave.

SECRETARY URGENT
Experienced 3000 stamp. Boren's Personnel, 1111 Texas Ave.

SECRETARY URGENT
Experienced 3000 stamp. Boren's Personnel, 1111 Texas Ave.

IF HE BEHAVES, HE'LL GET AID

U. S. Has Nasser On Trial

By PHIL NEWSOM
UPI Foreign News Analyst
The magnificence of the Cairo museum, the hotels along the Nile and the future promise of the great Aswan dam have little in common with some 23 million Egyptians who still are among the have-nots.

Nor has their lot been bettered by the costly adventures into which President Gamal Abdel Nasser has been led by his ambitions for leadership in both Africa and the Arab world of the Middle East.

It was with both these considerations in mind that at the beginning of the year the United States and the Nasser government entered into an agreement, at least, hoped would mark the beginning of a new and friendlier era in relations which hit a low during Christmas, 1961.

The new agreement will bring to the United Arab Republic American wheat, cooking oil, tobacco and frozen chicken for a total of \$55 million.

Agreement Expires
The previous agreement expired last June after a three-year period in which total U.S. aid came close to \$500 million.

After a five-month lapse, during which relations gradually improved, President Johnson opened new aid negotiations in November.

Relations between the two countries, already strained by the burning of the U.S. embassy library in Cairo, hit a low when Nasser boasted publicly of his arms shipments to Congolese rebels and told the United States it could take its aid and "go drink sea water."

An angry U.S. Congress threatened cut Nasser from its foreign aid package and only reluctantly gave the President discretionary powers to decide whether aid to the U.A.R. was in the United States' best interests.

There were compelling reasons for a change of heart by Nasser which began evincing itself shortly thereafter.

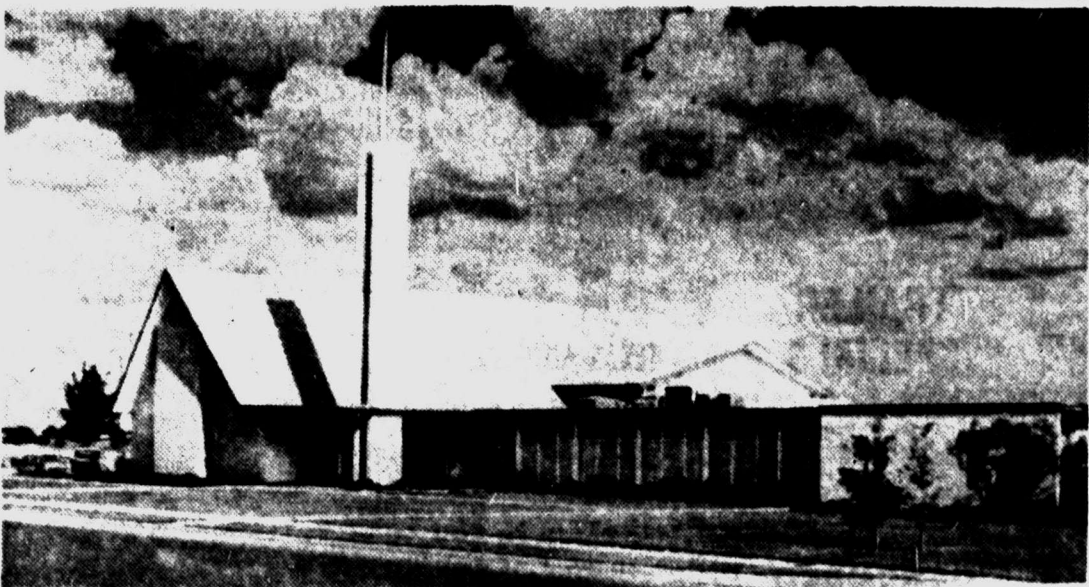
One was his desperate need for food.

Another was his losing venture in the Yemen where his attempts to support the Republican government against the royalists was using up more than 50,000 of his troops and costing him more than \$1 million per day.

Another was the fact of his great friend, Ahmad Ben Bella of Algeria and the discovery of a plot against himself at home.

Now was the moment in the Congo going well.

At any rate, Nasser cooperated in rebuilding the burned States asked the U.A.R. to look hand to create mischief both in the Middle East and in the Congo. The new agreement is much shorter and smaller than Egypt. In August he agreed with Saudi Arabia to seek peace in the Yemen. It was the view of many And 25 per cent of the aid must be repaid in dollars.



DEDICATION PLANNED—The completed building of the Church of Jesus Christ of Latter-day Saints, the chapel of which is to be dedicated Saturday, is pictured. More than half of the structure was built in the final phase of construction.

ON SATURDAY

Dedication Of Chapel Is Planned

Dedication of the chapel of the Lubbock first branch of the Church of Jesus Christ of Latter-day Saints will take place at 7:30 p. m. Saturday, said Dr. John M. Anderson, president of the branch.

Officiating at the dedicatory service will be Elder Bernard P. Brockbank, assistant to the Council of Twelve Apostles. He is a building contractor for Salt Lake City and member of Salt Lake Real Estate Board, Utah Home Builders Association, Holiday Lions Club and Sons of Utah Pioneers. He has held numerous positions in his church, including those of bishop, stake high councilman and stake president.

He has been a missionary in Great Britain, president of the North British and Scotch-Irish Mission. The last two years he had charge of the Mormon Pavilion exhibit at the New York World's Fair.

Assisting in the dedication will be Sanford W. Ellesen, Dallas, president of the Texas Mission, and F. S. Gonzalez, Lubbock, in charge to Elissen.

WEEK-END SPECIALS



★ STORE OPEN TONIGHT 'TIL 9 P.M.!

LARGE SELECTION MEN'S SWEATERS
VALUES TO 12.99 **\$5**
Stripes, Pullovers, Cardigans, Many Colors.
Sizes S, M, L, XL

MEN'S SPORT SHIRTS
4 FOR \$5
LARGE SELECTION. SOLIDS, PLAIDS, COLORS. LONG SLEEVE. SIZES S-M-L-XL.



HUGE ASSORTMENT LADIES' FASHION COATS
SPECIAL GROUP... **\$40**
VALUES TO '70
NATURAL MINK COLLARS IN BEIGE, RANCH, GREYS. 100% CASHMERE OR BOTANY WOOLS...

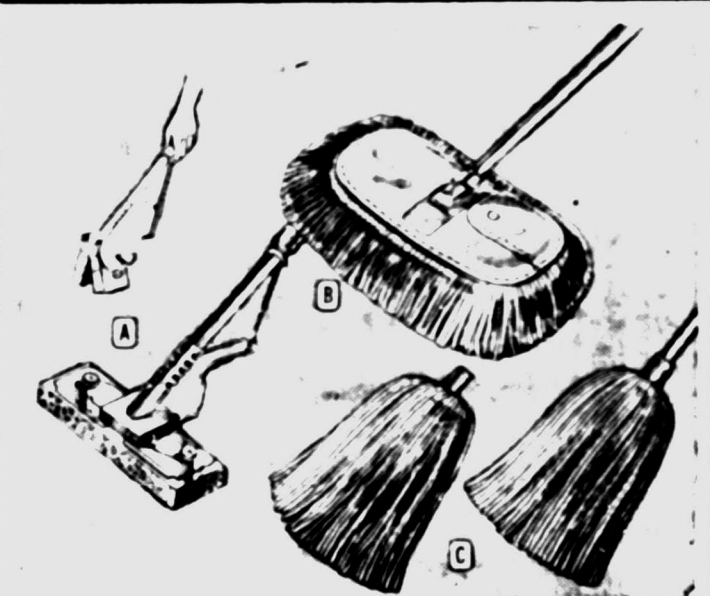
GROUP 1 Values to 39.95 \$20 Plains Fur Trimmed, Wool, Dress or Casual. All sizes.	GROUP 2 Values to 45 \$29 Untrimmed, Cashmeres, Wool Fur Fibers. Sizes 8-20.	GROUP 3 Values to 119 \$68 100% Wool, Suedes, Many Styles and Colors. Ladies' sizes 8-18.
--	--	---

CHARGE IT!

FABRIC CLEARANCE
VALUES TO **2 YD \$1**
ASSORTMENT, COTTONS, BROCADES AND OTHERS!

LARGE SELECTION BOYS' Sweaters
VALUES TO 7.99 **3'88**
V-neck, cardigan, pull-overs, Large Selection
BOYS DRESS PANTS
Values to 7.99 **2 Pair \$5**

MEN'S WESTERN JEANS
REG. 2", 3" **2 FOR \$5**
HEAVY DUTY 13 1/2 OZ. DENIM, BROKEN SIZES... SO HURRY!
MEN'S GLOVES
VALUES TO 6.99 **1.97**
Leather, Fur Lined, PRICED FROM



CLEAN-UP SPECIAL!
Mops & Brooms 88c
VALUES TO 1.49
PERFECT FOR WINTER CLEANING!
LOW SUDS DETERGENT
FREE PAIL INCLUDED **3.77**
20 LB. SIZE. REG. 4.69

CHILDREN'S Sleepwear
REG. 1.37 **1.98**
Machine Washable and Dry. Fine Quality Cotton Knits. Shrinkage Controlled.
LITTLE BOYS' SWEATERS
WHITE, SLIPOVERS, SIZES 2-6x **REG. 2.99 \$2**

MEN'S RUGGED 6-INCH WORK SHOES
8.44 REG. 9.99
Brown leather uppers, locked-stitched to prevent ripping. Neoprene cork sole. Leather insole 6 1/2 to 12.

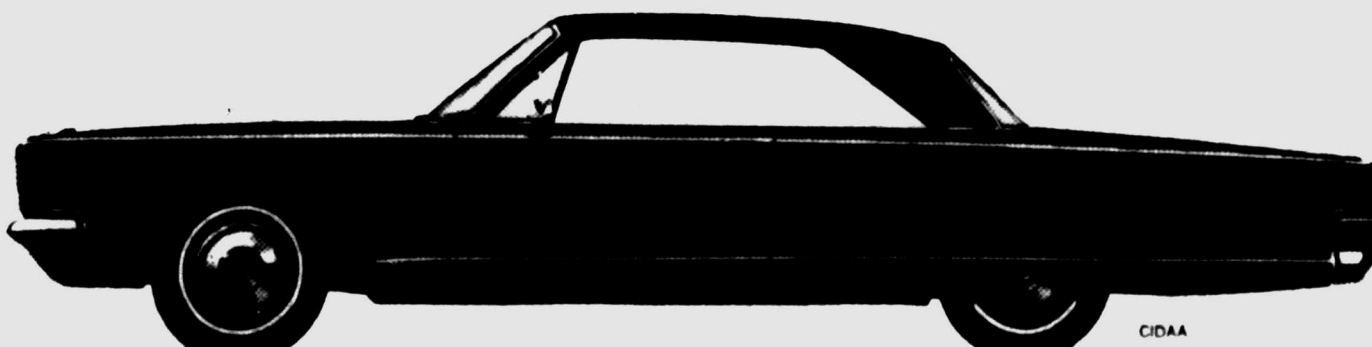
HALF PRICE SPECIALS!
DOROTHY GRAY BODY LOTION REG. \$2 **\$1**
DOROTHY GRAY HORMONE HAND CREME REG. 2.50 **1.25**
REVLON Moisturizing Conditioner REG. 5.50 **3.50**

**Why settle for less?
Get the big car with
the big warranty*
for a few dollars a month more.**

Make	Wheelbase	Overall Length	V-8 Engine Displacement	Monthly Payments	Difference Per Month
CHRYSLER NEWPORT	124"	219.0"	383	\$65.80	—
FORD GALAXIE 500	119"	210.0"	289	\$58.32	\$7.48
CHEVROLET IMPALA	119"	213.2"	283	\$58.45	\$7.35

***CHRYSLER'S 5-YEAR/50,000 MILE ENGINE AND DRIVE TRAIN WARRANTY WITH THIS COVERAGE**
Chrysler Corporation warrants for 5 years or 50,000 miles whichever comes first against defects in materials and workmanship and will replace or repair at a Chrysler Motor Corporation Authorized Dealer's place of business, without charge for required parts and labor, the engine block, head and internal parts, intake manifold, water pump, transmission case and internal parts (excluding manual clutch), torque converter, drive shaft, universal joints, rear axle and differential, and rear wheel bearings of its 1966 automobiles, provided the owner has the engine oil changed every 3 months or 4,000 miles whichever comes first. The oil filter replaced every second oil change and the carburetor air filter cleaned every 6 months and replaced every 2 years, and every 6 months furnishes to such a dealer evidence of performance of the required service and requests the dealer to certify (1) receipt of such evidence and (2) the car's then current mileage.

Nobody comes close to Chrysler's big car value—or its 5-year/50,000-mile engine and drive train protection.



Move up to Chrysler—the big car you can afford

Fenner Tubbs Co.

1302 - Tenth Street Lubbock, Texas

Caprock Center • 50th & Boston • Open Mon., Thurs, Fri., Sat. 'til 9