



**PARTLY CLOUDY**  
High 64 / Low 34  
**Tomorrow:**  
High 66 / Low 27

# The University Daily

Serving the Texas Tech University community since 1925

www.universitydaily.net

**THURSDAY**  
**Jan. 30, 2003**

Volume 78 ■ Issue 80  
Lubbock, Texas  
© Copyright 2003

## Dept. of Justice probes professor's policy

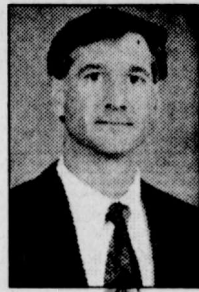
By Kelly McAlister/Staff Reporter

The U.S. Department of Justice has launched an inquiry into a complaint filed against a Texas Tech professor who stands accused of religious-based discrimination against students seeking letters of recommendation.

In a letter of inquiry dated Jan. 21 to Tech officials, the USDOJ requests information from Tech in relation to biology professor Michael Dini's criterion for issuing letters of recommendation to students, including all written policies relating to faculty Web sites and copies of any complaints received concerning alleged discrimination by Dini.

According to Dini's university-based Web site, a student must "truthfully and forthrightly affirm a scientific answer" to questions related to the origin of human species before he will issue letters of recommendation to them.

Tech General Counsel Pat Campbell said he will give the USDOJ content from the Web site and ask Dini if there is any explanation he would like forwarded to the USDOJ.



Dini

"I plan to respond (to the USDOJ request) very forthrightly," Campbell said. "I plan to ask the Justice Department where (Dini's criterion) asks someone to disavow their religious beliefs."

Staff Attorney Hiram Sasser of the Plano-based Liberty Legal Institute, which filed the USDOJ complaint, said Dini's criterion violates students' freedom of religion.

"It's unlawful discrimination," he said. "One thing professors cannot do is deny students rights because of race, gender, religion or nationality."

Sasser said the Liberty Legal Institute initially tried to resolve the issue with Tech administrators before filing the complaint.

"By sanctioning (Dini's) activity, they

have adopted his discrimination as their own," Sasser said. "Eventually, Tech will have to stop the discrimination because the law requires it."

President's Chief of Staff Ronald Phillips said a formal complaint has not been filed with the university about the content of Dini's Web site.

"We're gathering information that would be responsive to (the USDOJ's) request," he said.

There is no university policy that dictates how or for whom professors write letters of recommendation, Phillips said.

According to the USDOJ's letter of inquiry, "There have also been allegations of professor Dini making disparaging remarks

in class about certain religious groups. These allegations, if true, could constitute a violation, which authorizes the attorney general to initiate and maintain appropriate legal proceedings."

According to Dini's Web site, "The central, unifying principle of biology is the theory of evolution, which includes both micro- and macro-evolution, and which extends to all species."

Sasser said he was disappointed with the university's handling of the matter.

"Texas Tech has the opportunity to stop this locomotive headed down the wrong track by following the law," he said.

Dini did not immediately return phone calls.

## Tech professors analyze address

By Heidi Toth/Staff Reporter

Iraq was the key issue in President Bush's second State of the Union address Tuesday.

"The dictator of Iraq is not disarming," he told the vice president, a joint session of Congress and millions of people watching and listening around the globe. "To the contrary, he is deceiving."

He also highlighted education, the economy, health care reform, homeland security and business reform as key areas that have improved over the last two years but still need more help.

"In all these days of promise and days of reckoning, we can be confident," he told the audience. "We will work for a prosperity that is broadly

shared, and we will answer every danger and every enemy that threatens the American people."

According to a CNN/USA Today/Gallup poll taken after the speech, 84 percent of those who watched the speech had a positive reaction to Bush's statements, and 44 percent said they had more confidence the United States could handle its problems, while 7 percent expressed less confidence.

The time Bush spent arguing Iraq appeared to be successful. Almost 70 percent of those polled said the president made a convincing case about the United States' need to go into Iraq to force disarmament.

ADDRESS continued on page 5

## Weapons inspectors ask for more time

By Dafna Linzer/Associated Press

UNITED NATIONS — Top weapons inspector Hans Blix on Monday said Baghdad had not genuinely accepted U.N. resolutions demanding that it disarm, while his counterpart Mohamed ElBaradei said there was no evidence so far that Iraq was reviving its nuclear program and asked for a "few months" to complete the search.

The Bush administration dismissed Iraq cooperation as inadequate, and U.S. Ambassador John Negroponte said he had heard nothing that gave "any hope that Iraq will disarm" vol-

untarily.

Secretary of State Colin Powell said inspectors' findings "came as no surprise" and that Saddam Hussein has "not much more time" to comply if he wants to avoid war.

Asked whether the threat from Saddam was imminent, White House spokesman Ari Fleischer said, "From the president's point of view, it remains a very grave threat."

Other Security Council members with the same veto power as the United States disagreed.

INSPECTION continued on page 5

## MASTERING THE Mallet



DAVID JOHNSON/Staff Photographer

BRANDON RUEZA, A freshman undecided major from Dallas, hits a Croquet ball while playing with his friends between the Jerry S. Rawls College of Business Administration building and the Art building Tuesday.

## Two killed in factory explosion

By Estes Thompson/  
Associated Press

KINSTON, N.C. — An explosion followed by a raging fire demolished a plastics factory Wednesday, killing at least two people and injuring at least 37. Three others were feared missing in the burning ruins, which sent a black, acrid smoke billowing over the countryside.

There were conflicting reports on the number of casualties, but Gov. Mike Easley and Mayor Johnnie Mosley later said two deaths had been confirmed. The mayor also said three people were unaccounted for.

Plant manager Thomas Clagon appealed to workers to check in to help figure out who was still missing.

The cause of the thunderous blast at the West Pharmaceutical Services plant was not immediately known. The factory, which made syringe plungers and IV supplies, was cited for numerous safety violations last fall.

Workers who escaped the fireball and the choking smoke said they thought the factory was under terrorist attack. Sampson Heath said the explosion on the other side of the factory sent a plume of fire toward his work station and knocked him off his feet.

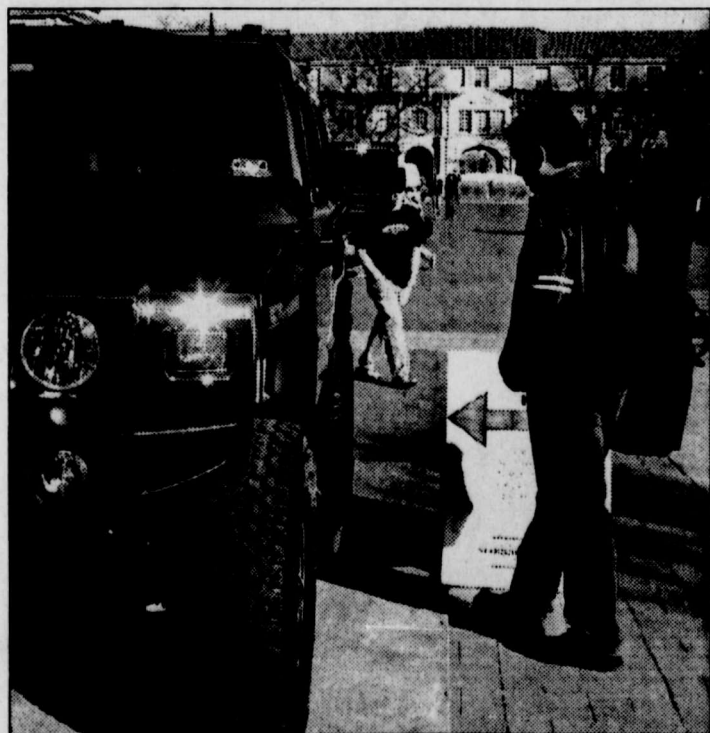
When he stood up, he saw wires and tiles hanging from the ceiling and he could hear trapped co-workers screaming for help.

"Your life did flash before your eyes," Heath said as he stood in the yard of a church, getting hugs and kisses from relatives.

The first emergency crews on the scene said they repeatedly rescued workers who were dangling from steel

EXPLOSION continued on page 5

## HUMMER HUNTING



HEATHER DOUGHERTY/Staff Photographer

ADOLFO GONZALES, A sophomore psychology major from Houston takes a look at a Hummer outside of the Student Union building Tuesday morning. Students have a chance to win this Hummer by attending the 23rd Annual Rec Sports All-Nighter on Friday night.

## Honor society looking for exceptional inductees

By Matt Muench/Staff Reporter

The Texas Tech Mortar Board is accepting applications in an effort to recruit members for next year. However, this year's selection process will be different from the past.

Mortar Board Adviser Susan Talkmitt calls it the most prestigious group of seniors on campus.

Why are they the most esteemed seniors on campus?

She said because they boast three top qualities — high GPA, commanding leadership and top-of-the-line character.

"We are looking for the very best," said Talkmitt, who also serves as a professor in the College of Education. "The emphasis now is we want to get the word out so we can select from the very best."

Not as many members will be ac-

cepted, which will make the organization even more distinguished, Talkmitt said.

The selection process begins with a student first applying either online at www.orgs.ttu.edu/mortarboard or in Room 228 of the Center of Campus Life, which is located in the Student union.

Applications are due Feb. 14. Mortar Board members will review the applications, make a few rounds of cuts and debate about candidates.

The entire process takes six to eight hours. This year, 35 to 40 seniors will be selected. In the past, about 50 were chosen.

Mortar Board member Michael Taylor, a senior psychology major from Killeen, said he is excited about being involved in the process of the selection even if it will be a long day.

"It ends when it ends," he said. "It is one of those processes where we will give everyone a fair chance. We look for the right people, and we want to make sure we don't cut anybody short."

Emily Goulet, a senior cellular molecular biology major from Allen and treasurer of the Mortar Board, said the reason fewer students will be selected this year is because it will make it tougher to be selected.

"It is supposed to be the most dis-

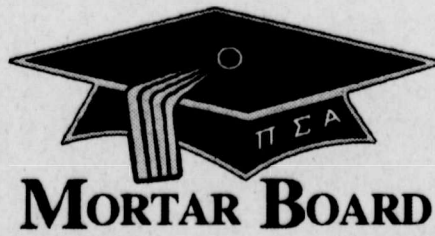
tinguished groups on campus," she said. "But it got so large where we had many members who were indifferent about it. We want to keep it select to people who are committed to Mortar Board."

Talkmitt said the smaller group will allow advisers to do more for them and give them more individual attention. "We want to enhance this to be more of a family atmosphere," she said. "We want to be more efficient in what we do."

Taylor said although GPA is a factor, it is not the deciding decision.

"We won't lie to you," he said. "The GPA is a factor. But we also look at the person's character as well as their community service. We look at what makes them a leader. But it is not just GPA because there are people

SOCIETY continued on page 5



**MORTAR BOARD**

AG EXPO  
SHOWCASES  
CORPORATIONS  
NEWS, PAGE 3



'THE HOURS' A  
POWER HOUSE  
FOR WOMEN  
LIFE & LEISURE, PAGE 7



BOB NIGHT  
KNOCKS OFF  
799  
SPORTS, PAGE 8



ON THE WEB  
www.universitydaily.net  
READ THE UD ONLINE FOR TECH NOTES  
THAT DO NOT APPEAR IN PRINT

The Rundown



Prison supervisor killed in inmate attack

AMARILLO (AP) — A supervisor at an Amarillo prison shoe factory died Wednesday about four hours after he was attacked by an inmate who slashed his throat, apparently with a knife.

Stanley A. Wiley, 38, first was taken to the infirmary at the Clements Unit of the Texas Department of Criminal Justice, then was transferred by ambulance to a hospital in Amarillo, prison spokesman Larry Todd said from Austin.

"We have several eyewitnesses to the assault and we plan to file murder charges as quickly as the evidence is documented," Todd said.

Wiley was pronounced dead about 11 a.m., he said.

Todd said an inmate was in custody and officials were questioning him along with others who observed the attack.

"We have several witnesses," he said. "The inspector general says there is significant evidence and eyewitnesses."

About 50 inmates were in the shoe factory when the attack occurred around 7 a.m.

U.S. would help find safe haven for Saddam

WASHINGTON (AP) — The United States would try to help find a haven for Iraqi President Saddam Hussein, his family and close aides if he would agree to leave Baghdad, Secretary of State Colin Powell said Thursday.

"That would be one way to try to avoid war," Powell said at a news conference as President Bush, talking tough on Iraq, rejected calls from war opponents to let inspectors deal with Saddam.

Just containing the Iraqi leader could leave that country free to join with terrorists to attack America "and never leave a fingerprint behind," Bush said in Grand Rapids, Mich.

"In my judgment you don't contain Saddam Hussein," Bush said in a speech that focused on his domestic policy agenda. "You don't hope that therapy will somehow change his evil mind."

Powell endorsed exile for Saddam but said it would not be up to the United States alone to determine whether the Iraqi leader should be granted immunity from prosecution as a war criminal.

France, Germany delay NATO backup

BRUSSELS, Belgium (AP) — NATO delivered another setback to the United States on Wednesday, again delaying military preparations for a limited backup role should the United States attack Iraq.

Washington wants NATO to prepare to send planes and missiles to protect Turkey from a possible Iraqi counter-strike, intensify naval patrols in the Mediterranean, fill in for U.S. troops transferred from the Balkans and plan for peacekeeping in a post-war Iraq.

Backed by Belgium and Luxembourg, the French and Germans say ordering military preparations now would be premature and could harm efforts by the United Nations to disarm Iraq peacefully.

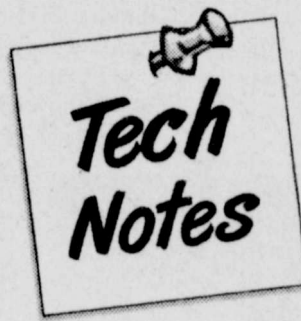
Officials said the U.S. proposals were not even discussed at a meeting of the alliance's policy-making North Atlantic Council, after the 19 allies failed to agree in private talks on Tuesday.

"We will not let up in our efforts to resolve this conflict without a war," German Chancellor Gerhard Schroeder told a news conference in Berlin.

COUNSELOR QUESTIONNAIRE



HEATHER DOUGHERTY/Staff Photographer  
JON EASTERHAUS FROM Pine Cove Christian Camps interviews Meagan Lewis, a sophomore public relations major from Fort Worth Tuesday morning in the Student Union building for a possible job at the camp held June 1 through Aug. 17 in Tyler.



The Texas Tech Pre-Medical American Medical Student Association will have their first meeting of the semester at 6 p.m. today in Room 102, Biology. Jean Barty, volunteer services coordinator for the Health Sciences Center, will speak. For more information, contact Sarah Ross at (806) 724-5233 or sarah.ross@ttu.edu.

The Hispanic Student Society is inviting all students to their meeting 7 p.m. today in Room 75 of Holden Hall. The society also will conduct a membership drive Friday for interested and current members. For more information, contact Miguel Lopez at (806) 687-2646.

Attention Volunteers: Alpha Phi Omega is having Spring Open Rush at 7 p.m. today in the Mator room located in the Student

Union building and 7 p.m. Feb. 5 in the Double T located in the Student Union building. For more information, contact the Alpha Phi Omega office at (806) 742-1019 or RushAPO2003@yahoo.com.

The Robert H. Ewalt Recreational Center is hosting its 23rd annual Rec Sports All-Nighter starting at 5 p.m. Friday. The night will feature Tournament of Champions, which is a series of 10 tournaments that students, faculty and staff can compete in. Students can pre-register for these events and receive a free T-shirt. There will also be drop-in activities from 6 p.m. to 9 p.m. Hypnotist Tom DeLuca will perform at 9 p.m. The night will conclude with a drawing for a 2003 Hummer. For more information and to register, visit www.ttuhsc.edu/recsports.

The Catholic Student Association is sponsoring Raider Awakening, a three day retreat for college students. The retreat will be held Feb. 28 through Mar. 2. Sign-ups are at 2 p.m. Sunday in St. Elizabeth's Hanley Hall, 2305 Main St. For more information visit www.raidercatholic.org or e-mail Katherine Lashlee at katxp52@hotmail.com.

Delta of Texas, Texas Tech's Phi Theta Kappa Alumni Association,

will have their first meeting of the Spring semester at 6 p.m. Tuesday in Room 226 of Holden Hall. For more information, visit Delta of Texas' Web site at www.orgs.ttuhsc.edu/phithetakappa or contact Genelle at (806) 724-7116 Beverly.g.miffleton@ttu.edu.

The game Outcast will be at 10 p.m. Feb. 7 in the Student Union Courtyard. To become a contestant, students can enter a drawing at the Rec All Nighter on Friday or stop by Room 228 in the Student Union. Names of contestants will be drawn and announced prior to the game on Feb. 7. For more information call (806) 742-5433.

Income tax forms are available in the Tech library basement. For more information, call (806) 742-2282 or visit the library's Web site, which has a current list of IRS and private Web sites that provide more information on federal taxes, at www.lib.ttuhsc.edu/gov\_docs/ustaxes.htm.

Freshman, first-year transfer students and graduate students are encouraged to participate in the Lauro Cavazos and Ophelia Powell-Malone Mentoring Programs, which match students with current faculty and staff members. For more information or to join, visit www.doubletdiversity.com/mentor.htm or call (806) 742-8671.

Never stop loving...  
Never stop believing...



Dreams do  
come true...



ROBERT LANCE  
Jewelers  
5217 82nd St. in Rockridge Plaza  
794-2938  
www.robertlancejewelers.com

Announce your  
news!

Send Tech Notes  
to UD@ttu.edu

J&B Coffee

2701 26th  
7 a.m. to midnight  
coffee • espresso • moda

6,300 friends  
(or 3,150 potential dates)

3 million meals

Fall 2003 Early Sign-ups = guaranteed living space!  
All sign-ups begin at 10 a.m. at the respective hall offices.

RESIDENCE HALLS

- Feb. 24-25 Same room
- Feb. 26 New room, same hall
- Feb. 27-28 New room, new hall

CARPENTER/WELLS (Current Residents Only)

- Feb. 24-25 Same room, same apartment
- Feb. 26 New room, same apartment
- Feb. 27-28 New apartment

GASTON APARTMENTS (Current Residents Only)

- Feb. 24-25 Same apartment
- Feb. 27-28 New apartment
- Feb. 27-28 New room, new hall

For more information, visit www.housing.ttuhsc.edu or call 742-2661.

increase your options.  
live in the halls.



housing & hospitality  
TEXAS TECH UNIVERSITY

South Plains largest tan shop \* 18 years in Lubbock



BODYBRONZE

4134 19th  
(next to Gym X)  
788-1301

3 locations

3,500  
Openings  
Daily

BEAT ANY AD W/No Restrictions

TAN Unlimited  
All Spring  
Semester

\$ 29  
3 Pmts  
of

TILL  
May  
15th

NO CHARGE for appointments  
Big Bed, Stand up, High Pressure  
NO EXTRA COST

includes free accelerator  
NO SALES PITCH • NO CONTRACT • NO NONSENSE

# Agriculture career expo showcases corporations

By Jack Sheaffer/Staff Reporter

The College of Agricultural Sciences and Natural Resources held its annual career expo Wednesday with more than 20 agricultural related businesses attending.

The expo allowed students to hand out resumes to companies that are seeking part-time and full-time employment, as well as internships to connect with prospective employers. Students were able to sign up for job interviews and speak with representatives about the criteria they were seeking from graduates.

Kelly Jones, a graduate student studying agricultural education from Clayton, N.M., said the expo was more beneficial than he had anticipated.

"The expo provided the students with many opportunities to reach out and ask questions concerning their field of study," he said. "In my years of experience, this expo was the busiest one that I have seen as far as students are concerned. The expo had a very good turn out, and the feedback that the students re-

*"In my years of experience, this expo was one of the busiest ones that I have seen as far as students are concerned."*

— KELLY JONES

GRADUATE STUDENT STUDYING AGRICULTURAL EDUCATION

ceived from the companies that attended was phenomenal."

Companies had booths setup in the Student Union Ballroom with highly recognizable names and room to move and congregate with the students. The companies were able to demonstrate their products to the students as well as provide information on the

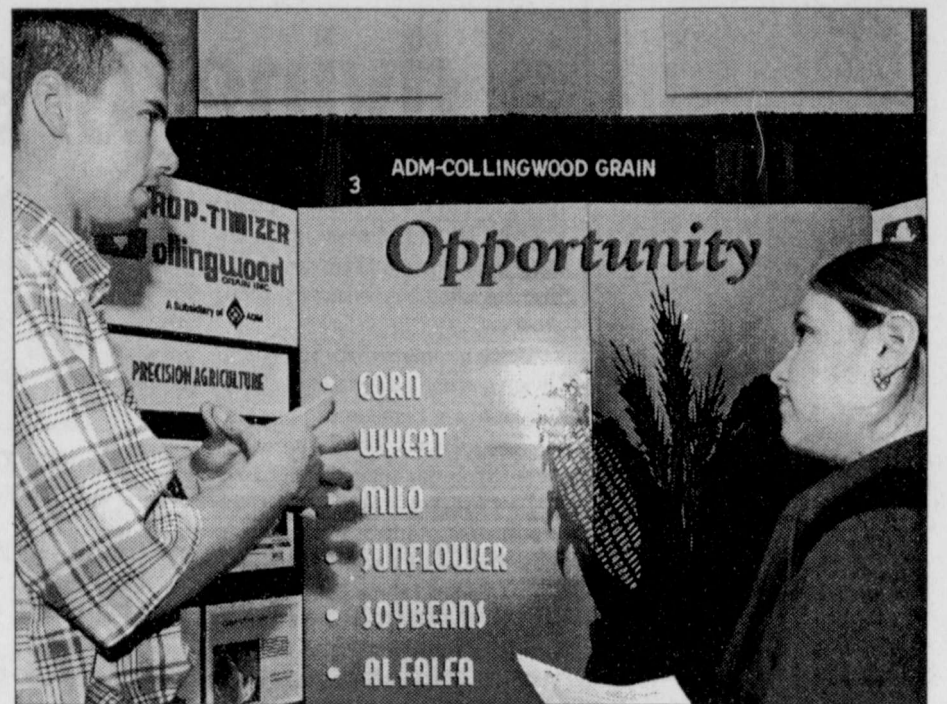
positions that they are hiring for.

Matt Conner, a sophomore undecided major from Lubbock, said he knows the importance of agriculture in this region, and this expo was an even bigger event than even he had anticipated.

"I am here at the career expo so that I can practice my interview skills and maybe even land a part-time job for this summer," he said. "I'll probably just hand out some resumes and hopefully impress a hand-full of companies. You never know, they might be looking for me."

Some of the companies that attended the expo were Bartlett and Company, Cactus Feeders, Cemcare, Collingwood/Crop-timizer, Color Spot Nurseries, Conagra Beef Company, Farmer's Insurance, Monsanto and Mutual of Omaha.

Representatives from many of these companies will interview students all day Thursday. Students can sign up for the interviews by logging onto the Career Center Web.



HEATHER DOUGHERTY/Staff Photographer  
TROY GRIMES, representing ADM-Collingwood grain, talks to Shannon Harris, a junior agriculture economics major from Alvin, on Wednesday at the agriculture career expo.

# Bush proposes \$13 billion nuclear weapon proliferation plan

WASHINGTON (AP) — The Bush administration will propose a 30 percent increase to \$1.3 billion next year for programs aimed at keeping nuclear materials out of the hands of terrorists, officials said Wednesday.

The proposal, much of it to help Russia secure its nuclear material, represents the second year of increased spending for nuclear nonproliferation after the Bush administration — before the Sept. 11, 2001 terrorist attacks — sought to scale back the programs.

Energy Secretary Spencer Abraham broadly outlined the additional spending in a speech Wednesday.

It will be part of the proposed budget

President Bush will send to Congress next week for the fiscal year beginning Oct. 1.

"We intend to be aggressive" on nuclear nonproliferation, Abraham told members of the Center for Strategic and International Studies.

The proposed budget, he said, will "contain the largest request for nonproliferation programs in U.S. history."

The government currently is spending about \$1 billion on these programs to help Russia secure its nuclear materials and other nuclear nonproliferation efforts. More than \$7 billion has been spent on the effort over the past decade.

Earlier this month, a report developed

by 15 international organizations and financed by the Washington-based Nuclear Threat Initiative, called nuclear proliferation "the gravest danger in the world today" and said efforts to deal with it have fallen short.

For example, the report said less than half of Russia's weapons-usable nuclear material identified by the Energy Department is considered to be in secure locations. And virtually none of its plutonium and only one-seventh of its highly enriched uranium so far has been rendered unusable for weapons use, should terrorists or rogue states obtain it.

Robert Einhorn, a former Clinton administration nuclear arms specialist now at

the Center for Strategic and International Studies and a co-author of the report, said he had not yet analyzed the proposed spending increase to determine its likely impact.

Abraham said the proposal for fiscal 2004 will let the government expand programs to help secure Russia's 600 metric tons of weapons-usable nuclear material.

"We expect to complete most of the work (in securing these materials) over the next few years, in many cases ahead of schedule," said Abraham.

The secretary said the proposal will include \$110 million for improving nuclear material detection, including programs to monitor border checkpoints and major ship-

ping ports worldwide, focusing on so-called "megaports" through which 90 percent of container ship traffic flows.

Also, Abraham said, "We must reduce the total amount of excess nuclear material and end its production."

The proposed budget "will allow for the securing of an additional 18 sites in Russia where this material is stored."

The budget will also be allocated toward locating, consolidating and securing an additional 225 orphan or surplus radioactive sources in the former Soviet Union," said Abraham.

Deadline for Tech Notes is two days before the run date. For an event on Friday, the Tech Note must be received by 5 p.m. Wednesday by e-mail at [ud@ttu.edu](mailto:ud@ttu.edu).

## The University Daily

Copyright © 2002 Texas Tech University Student Media/The University Daily. All UD articles, photographs and artwork are the property of The UD and Student Media and may not be reproduced or published without permission.

### Breaking News

Phone: (806) 742-3393  
E-mail: [UD@ttu.edu](mailto:UD@ttu.edu)  
Fax: (806) 742-2434

### Tech Notes

Tech Notes is a service provided to Texas Tech students by the Student Government Association and The University Daily. To have your student organization event listed, please call 742-3631 or e-mail [UD@ttu.edu](mailto:UD@ttu.edu).

### Corrections

Call: (806) 742-3393  
Policy: The University Daily strives for accuracy and fairness in the reporting of news. If a report is wrong or misleading, a request for a correction or a clarification may be made.

### Publishing information

Periodical Postage paid by The University Daily, Student Media building, Texas Tech University, Lubbock, Texas 79409. Publication number: 766480. The UD is a student newspaper published Monday through Friday, September through May; Tuesdays and Fridays June through August, except during university examination and vacation periods. The UD is funded primarily through advertising revenues generated by the student sales staff with free campus distribution resulting from student service fees.

### Subscriptions

Call: (806) 742-3388  
Subscription Rates: \$120 annually; single issues: 25 cents. Postmaster: send address changes to The University Daily, Box 43081 Texas Tech University, Lubbock, Texas 79409.

**LEARN TO FLY**  
**STRATOS Aviation INC.**  
\$49.00 Introductory Flights  
→ Flight Training → Aircraft Rental  
→ Student Discount → Pilot Services  
Call 765-8138  
Lubbock International Airport [www.stratosaviation.com](http://www.stratosaviation.com)

**AWESOME SUN CO.**  
Across from Campus  
4009 19TH ST.  
785-0444  
Our Promise To You:  
\*15-Minute Guarantee  
We'll have a tan unit available within 15 minutes of your arrival or your next upgrade session is free!  
\*Best Price Guarantee  
We'll beat any advertised price of any full-service tanning-only facility in today's UD by 10% and you can tan in units as large as 40 lamps with high-power facials!  
\*Free Lotion (\$30-\$55 value)  
With any semester pass or larger purchase. Select group of California Tan, Mohari and Power Tan.  
\*Tan All Semester \$50  
Mornings only, tan anytime add \$25.  
\*Restrictions: excludes 3pm-8pm, single arrivals only, 1 person per vehicle.  
We Proudly Carry John Abate International Tanning & Skin Care

**PLEDGE THE FIRST OFFICIAL ONLINE FRATERNITY. RUSH OFFICIALLY BEGINS TODAY!**  
JOIN THE BROTHERS OF  $\Lambda\epsilon\Omega$  AT [WWW.OLDSCHOOL-THEMOVIE.COM](http://WWW.OLDSCHOOL-THEMOVIE.COM)! YOU MAY GET HAZED, BUT YOU'RE GOING TO LOVE IT.  
**OLD SCHOOL**  
COMING SOON TO THEATRES EVERYWHERE  
PLEDGES CAN WIN FREE PONY GEAR!

**JEFFERSON COMMONS**  
unique student apartments  
**Home is where your FRIENDS are.**  
Individual Leases  
Extended Basic Cable  
Fully-Furnished Apartments  
On Texas Tech University Shuttle Route  
Billiards/Game Room  
Full-Size Washer/Dryer in Every Apartment  
Fitness Facility  
Internet Access  
Tanning Bed  
Resort-Style Pool with Jacuzzi  
Student Services Center  
Amenities, Rents and Incentives are subject to change.  
Now Leasing for Spring 2003!  
Rents Starting at \$340!  
1002 S. Frankford Ave. Lubbock, TX 79416  
[www.jeffersoncommons-lubbock.com](http://www.jeffersoncommons-lubbock.com)  
Call for more information 806-785-4088

PERSPECTIVES

# Under 21 — a dying breed

All of my friends are turning 21, and I am one of the few left behind. I am not embarrassed to admit I am one of the young ones.

Being a summer baby has had its advantages and disadvantages. It was so cool to say I graduated from high school at the age of 17 and barely turned 18 by the time I came to college. I was so proud to buy my first pack of cigarettes and flash my driver's license that said I was legal. But right when I turned 18, my friends started turning 21, and once again, I was left behind.

I often wonder if I have some hidden complex about always being the youngest that is not able to do everything. I can still get into some bars, but they are not the bars that my friends go to, so I once again get left at home by myself.

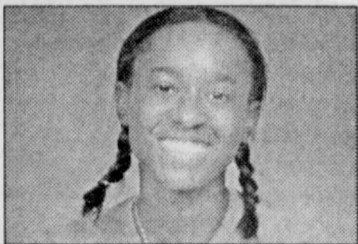
But I have been thinking of some clever ways to get around this hindrance to my social life. I have started to hang out with younger people who also are left behind by the older crowd. While the old ones play around at the bar, we play around at home. It is like going back to high school; we play board games and sit around and drink while talking crap about all the people who went out to the bars. I know this does not sound that exciting, but really it is.

I am sure I seem like a big nerd, but we do what we must in order to have fun. Every once in a while, I can convince my friends to go to some bar that I can go to, but they see these places as boring. They think that 18 and up bars are a waste because practically anyone can get in. I am always on the look-out for drink specials that will help in the convincing process.

I was thinking I could also invest in a fake ID. I know this is illegal, and I would never really do it since I never drink, but the thought did cross my mind. But then I thought that this idea would take away from the whole experience of turning 21. There would be no surprise to the whole bar scene if I were to have a fake. So I am throwing that idea out the window for now. I am coming up with more legal ways to help my situation.

There also are those few nights where I can convince them to drink at home. I debate with them on how much cheaper it is to just go buy a 30-pack instead of spending the equivalent amount at the bar on a few drinks. And besides, if they were at the bar, they would not have the pleasure of my company, and that in my eyes takes precedent over some bar. But if they should choose some bar over my company, then I don't care. I don't make them feel guilty over it, and I don't sit at home crying myself to sleep.

I always make sure and go out and have a good time. I round up all the other young folk and make a night of dancing and some drinking, even if it



**Kellie Tolbert**  
kittynymph\_klt@hotmail.com

*But I have been thinking of some clever ways to get around this hindrance to my social life. I have started to hang out with younger people who also are left behind by the older crowd.*

is illegal for us. I can't really blame them for leaving because I have to admit that if I were 21, I would leave all the youngsters behind too.

But this realization does not stop the loneliness from coming every time my friends drive away toward the depot. I get in my car and drive to some boring house party where they don't ID and where the liquor and beer is free to all girls. It's a great feeling to know that my friends are spending money while I am saving it.

I really can't wait to turn 21 because it will be something new to do for a while. Everything else has gotten old and definitely played out. It seems to be the same thing over and over again. We go to a fraternity party, everyone gets stinky drunk and then someone throws up and we go home. I am sure it is pretty much the same at the bar, but it is still a different atmosphere for it all.

For the first time this past weekend, I was tired at a party. I wasn't in the mood to dance or just hang out with anyone. This has been the first time I have not wanted to get up and dance the night away. I didn't know what to do with myself so I went home early and went to bed at a halfway decent hour.

So I am going to just bide my time until my 21st birthday hits. I will try not to be jealous all the time of my friends who get to go out and have new experiences while I am stuck behind at home or elsewhere.

When you see me out and I am not in a bar, come on over and say hello, especially if you are under 21 because we all need to stick together — for we are a dying breed.



## Democracy needs articulate opinions

### Guest Column

**Pradeep Suthram**  
suthiram@rediffmail.com

*The realization of a newer world with different politics, different attitudes and different materialisms has been accepted, and this has successfully given rise to certain opinions.*

The coin was flipping in the air, defying my every possible understanding on the probability of seeing only one side in the end. In the air, I saw neither heads nor tails but a globe of indefinable dimensions providing me only seconds to choose a face: heads or tails.

On the contrary, time cannot always dictate many other things, for example, our thoughts. For every free individual, these thoughts take the form of an opinion giving shape to the system of democracy. At a primitive level, not necessarily outdated, the fundamental difference between two opinions will either be at its greatest or will be zero, similar to flipping a coin.

In the midst of a weak economy, doubtful airport security and increasing concerns of international terrorism, America is trying to find an opinion. The national polls and elections have proven to support the Bush administration's foreign policy and the approach to public policies, domestic problems and economic revitalization.

As Osama bin Laden feels homesick yet welcome in certain places, our thoughts on the crazy man are seldom recalled. As international interests are foiled by certain proposals, the opinions at home are taking various shapes — basically two: one side of the coin showing a choice to promote the war, the other side representing the opposition to the war.

Forget flipping the coin, it has boiled down to obtaining only a binary yes/no answer because on the larger scale of things, polls to be specific, it is the only aspect that matters. It is acceptable to ignore the "I don't know" option for now.

voting for a person alone will not represent the voice of America completely because the core of an opinion is the reasoning behind it and the probable consequences, but not the opinion itself.

The reasoning behind the opinion is more important than the opinion itself. This is because the actions of an elected representative will depend on his or her reasoning behind his opinion and not necessarily the opinion itself.

To account for the incompleteness in the new upgraded democracy, a change in the system can be seen as crucial by some people. Others might choose a harder but more mature approach, which is to see that no pronounced change is necessary in the system or the administration but in the people, because unless one changes, nothing around him or her will.

In a democracy, it is the people who matter. The post-Sept. 11 democracy calls for highly informed, analyzed and practical opinions, not merely acceptable, objective and idealistic thoughts. The newer world calls for a change in approach toward forming an opinion, not for a change in ideals.

Developed thoughts form opinions. Concrete opinions, not necessarily rigid, may be formed by self-inquiry, external knowledge, dialogue and a tinge of intuition. The presumption of the people's inability to form better opinions needs to be challenged. One can be prone to underestimate the power of collective thinking, but this is achievable by every member of a democratic society through a conscientious effort to educate and understand oneself, the nation and the world (and maybe, the pressure on the Electoral College can be eased).

I am flipping the coin again, and I see more than two sides ... clearly.

Send letters to the editor and guest columns to [opinions@universitydaily.net](mailto:opinions@universitydaily.net). Look online for letters, columns that may not appear in print.

The University Daily

**Editorial Board**

- Melissa Borden / Editor
- Courtney Muench / Managing Editor
- Michael Castellon / News Editor
- David Wiechmann / Sports Editor
- Michelle Bowles / Copy Editor
- Jaime Tomás Aguilar / Photography Editor

**LETTERS:** The UD welcomes letters from readers. Letters must be no longer than 300 words and must include the author's name, signature, phone number, social security number and a description of university affiliation. Letters selected for publication have the right to be edited. Anonymous letters will not be accepted for publication. All letters are subject to verification. Letters can be e-mailed to [opinions@universitydaily.net](mailto:opinions@universitydaily.net) or brought to 211 Student Media.

**GUEST COLUMNS:** The UD accepts submissions of unsolicited guest columns. While we cannot acknowledge receipt of all columns, the authors of those selected for publication will be notified. Guest columns should be no longer than 750 words in length and on a topic of relevance to the university community.

**UNSIGNED EDITORIALS** appearing on this page represent the opinion of The University Daily. All other columns, letters and artwork represent the opinions of their authors and are not necessarily representative of the editorial board, Texas Tech University, its employees, its student body or the Texas Tech University Board of Regents. The UD is independent of the School of Mass Communications. Responsibility for the editorial content of the newspaper lies with the student editors.



# Rec center expands to include free services

By Phillip Barnhard / Staff Reporter

The Robert H. Ewalt Student Recreational Center is growing again without added expense to Texas Tech students.

Healthsouth Texas Limited Partnership and the Texas Recreational Sports signed an agreement to utilize the services of trainers from Healthsouth in order to provide onsite sports medicine and athletic training services for students, faculty and staff at Tech.

The center opened recently opened a new athletic training office serviced by Healthsouth Out Patient

Rehabilitation Center that will provide injury evaluations, protective taping and wrapping and first-aid during emergency situations. The also will treat or ice down pulled muscles, if necessary.

The services the trainers provide are free to students with Tech IDs. However, for protective taping and wrapping, the student must provide the tape that may be purchased at the Equipment Issue located in the rec center.

Jill Carver, a sports medicine director for Healthsouth, said Healthsouth looks forward to working with Tech.

"Healthsouth is the nation's larg-

est health care services provider and largest employer of athletic trainers with nearly 1,900 facilities in all 50 states and abroad," she said. "Healthsouth is really excited to have the opportunity to work with (Rec Sports) and service that population of students."

The new Healthsouth will provide first-aid to injured students and also make assessments on student injuries and recommendations for proper care.

Joe MacLean, director of Rec Sports, said he views the service as a bonus for both Healthsouth and Rec Sports.

"I think as a department, we have

always wanted to have trainers available, but we've never had the finances to put a certified trainer in," MacLean said. "Healthsouth came and made a proposal to (Rec Sports) to hire their business and services. It was a win-win situation for (both of us) because it wasn't going to cost us any money and (Healthsouth) would get exposure for their operations."

Cody Montgometry, one of the licensed athletic trainers and a Tech graduate, said he is excited about working for Rec Sports and wishes these services were provided while he was a student at the university.

"My old roommate used to come

home when we lived together with a sprained ankle from playing basketball at the rec center," Montgometry said. "Before, if they sprained their ankle, but they just hobbled off the court. But (now), they can come in, see one of us, get a bag of ice and we can do an evaluation of them to see the extent of the injury."

Jessie Morgan, a junior accounting major from Fort Worth, was one of the first students to receive aid after he obtained an ankle injury while playing basketball at the rec center.

"It's real good," Morgan said about his experience with the trainer. "It's

nice to have somebody on the spot there for you to try and help you out a little bit."

Morgan also said he plans to take advantage of the free before his intramural basketball games.

The Healthsouth office is located downstairs in Room 002 of the rec center (the old Fitness/Wellness Office) and is open from 4 p.m. to 11 p.m. Monday through Thursday and 1 p.m. to 10 p.m. Sundays.

The training office will be operated by one of eight licensed athletic trainers that Healthsouth will provide, as they work through a rotation during the week.

## Address

CONTINUED FROM PAGE 1

ment. "The most important section of the speech was devoted to trying to rally public support for an invasion of Iraq," Brian Gerber, assistant professor of political science, said.

Public opinion is still split on the United States' involvement in Iraq. The majority of Americans support an invasion with international support and U.N. backing, he said. Most are against unilateral action.

Lt. Col. David Reid, the department chair of Army ROTC and a professor of military science, said going to war with Iraq will have several consequences, for both Texas Tech and Lubbock. Because about half of the Armed Forces are reservists, the activation process that is going on now will send many local men and women to military bases and then overseas.

"That's the immediate impact to Lubbock and Texas and all localities around the country," he said.

Americans also will need to support the military and be prepared for danger surrounding a war, Reid said. Bush also pushed his domestic plan, as the economy is at the forefront of many people's minds.

"Jobs are created when the economy grows; the economy grows when Americans have more money to spend and invest, and the best and fairest way to make sure Americans have that money is not to tax it away in the first place," he said.

Americans are not quite as confident about the economy as they are Iraq, however. Gallup's poll showed a fairly even split on the issue. Forty-nine percent of those polled said they believe Bush's economic program will get the country out of trouble, while 43 percent said it will not work.

Bush pushed for the tax cut to be made permanent and effective this year, instead of in future years as was originally planned, in addition to adjusting other issues such as marriage and child credit.

Associate professor of economics Ron Gilbert said the tax cuts will help the economy.

"There is no doubt that Bush's tax cuts... would stimulate spending," he said.

By lowering tax rates and ending double taxation of dividends, Americans will have more money to invest and put back into the economy. All taxpayers will receive a reduction as well.

"These are not just for the high income people," he said. "It's across the board."

While the budget plan will give more money back to people and improve the economy, it is not as significant as it could be.

"In spite of the fact that opponents are calling it too costly, it's too modest to be noticed," he said. "He probably wanted to propose something with a chance of passing in a highly divided Congress."

Although Bush's ratings after the speech were high, the numbers dropped from last year, when 94 percent of speech watchers said they had a positive reaction to the speech, with almost three-fourths saying their reactions were very positive. This year, 84 percent said they had positive reactions and half said very positive.

Gerber said Bush's approval rating, which fluctuates between 50 and 60 percent, is near what it was before Sept. 11, 2001.

"His support has been reduced over the last couple of months because of uncertainty over Iraq and economic uncertainty in the U.S.," he said.

Bush's first term is half over, and the 2004 elections are looming. Two things drive Bush's re-election prospects, Gerber said. If the military conflict in Iraq goes well and there is not a long-term occupation, his chances are good.

However, success abroad is not the only factor in a second term.

## Explosion

CONTINUED FROM PAGE 1

beams. Many had third-degree burns. The Red Cross said at least 37 people were injured, some of them critically.

The blast was felt for miles and the building was still burning seven hours later, with the smoke punctuated by exploding fireballs. Nearby trees and brush were aflame.

"The damage is catastrophic to the building," said Greg Smith, operations chief of the Kinston Public Safety Department. "The structure is so compromised that you just can't enter and walk around."

Emergency officials urged residents within a mile of the plant to evacuate because of the smoke. Included fumes from burning plastic.

## Inspection

CONTINUED FROM PAGE 1

"The job has not been completed. We share the view of many that this process has not been completed and more time is needed," said China's deputy U.N. ambassador Zhang Yishan.

Russian Ambassador Sergey Lavrov said his country strongly supported calls "for inspections to continue."

Marc de Saligne ambassador Jean-Francois the S.U.N. also supported the need for inspections "to go forward...with the objective of Iraq's verifiable disarmament," adding that it could be "several weeks" or "a few months." He said there was strong backing in the 15-member council for additional time.

## Society

CONTINUED FROM PAGE 1

with straight 4.0s, but they just hit the books all the time."

He said he hopes students do not apply just to help their reputation.

"It is not something people should do to put on their resume," he said. "If you get into Mortar Board, you are not expected to just sit around and say 'I'm a member of Mortar Board.' You are expected to take part in the organization."

To get more seniors informed, Goulet said the organization is sending 500 letters to the top incoming seniors to let them know about Mortar Board.

Although there are other honorary societies on campus, she said none of them compare to the Mortar Board.

"I think it is more distinguished because you only get one chance to get in," she said. "Other honorary societies offer several opportunities to apply and apply again. This is a one-time opportunity."

During the course of the year the members do community, campus and national projects.

"It runs the gamut," Taylor said. "We do a lot of community service as well as national service. It's something where we get out and deal with the community as a whole and learn from them."

When the selections are finalized, the current Mortar Board members dress up in their graduation gear and notify the new members while they are attending class and sing the Mortar Board song and tell the class why the student has been selected.

"Some people look at it as an embarrassment," Taylor said. "But we look at it as an honor to be singled out in front of your peers."

Taylor remembers when he was selected. He said he was not embarrassed.

"I was in a psychology class and the next thing I know, people came in and went through the whole procedure. I was more surprised."

Like most of the current Mortar Board, Taylor and Goulet will be graduating in May.

Taylor said he plans on getting an internship in Washington, D.C., before attending graduate school, and Goulet is hoping to get into medical school.

Goulet said Mortar Board is something that will help her get jobs and recommendations in the future.

## finding out there's an internship for people like you: priceless

cds (this year alone): \$300

vintage rock posters: about \$40 each

letter from neighbor complaining about music: \$0

frame for concert ticket stubs: \$13

used turntable: \$20

guitar pick necklace: \$.75

**Apply for a summer internship with Interscope/Geffen/MCA Records at mastercard.com.**

You could be sent to Nashville, where you'll spend five weeks learning from industry bigwigs.

You might even be flown to LA to work on the Jurassic 5 album *Power in Numbers*.

there are some things money can't buy, for everything else there's MasterCard.<sup>®</sup>

Official Site. We purchase business travel or other eligible travel on behalf of our U.S. and international clients who are 18 to 29 years of age and are enrolled in full- or part-time undergraduate education in a U.S. Department of Education accredited 2-year or 4-year college/university or in a U.S. Department of Education accredited 2-year or 4-year vocational/technical school. Employees of MasterCard International Incorporated, MasterCard member financial institutions, MasterCard member hospitals, the American and National League of Professional Sports, the American and National League of Professional Baseball Clubs, the Major League Baseball Clubs, and the Major League Soccer Clubs, and their respective parent companies, subsidiaries, affiliates, distributors, officers, directors, governors, related entities, partners, partnership partners, agents, business, customer, sponsor, representative, successor and assignee, and advertising promotion agencies (collectively "Excluded Parties") and members of the immediate family (mother, father, siblings, sisters, sons, daughters and spouses) and household of each such employee are not eligible to participate. This restriction is subject to applicable federal, state and local laws and regulations. Void where prohibited. How to Enter: 1) Visit www.mastercard.com and click on the MasterCard<sup>®</sup> Process Edge<sup>™</sup> from MasterCard Process Edge<sup>™</sup> (MPE) and select the MasterCard Process Edge<sup>™</sup> promotion. 2) Click on the link representing your preferred MasterCard Process Edge<sup>™</sup> course of study. 3) Click on the link representing your preferred MasterCard Process Edge<sup>™</sup> course of study. 4) Select the appropriate form for your study course. 5) Fill out the application form for your study course. 6) Click on the link representing your preferred MasterCard Process Edge<sup>™</sup> course of study. 7) Click on the link representing your preferred MasterCard Process Edge<sup>™</sup> course of study. 8) Click on the link representing your preferred MasterCard Process Edge<sup>™</sup> course of study. 9) Click on the link representing your preferred MasterCard Process Edge<sup>™</sup> course of study. 10) Click on the link representing your preferred MasterCard Process Edge<sup>™</sup> course of study. 11) Click on the link representing your preferred MasterCard Process Edge<sup>™</sup> course of study. 12) Click on the link representing your preferred MasterCard Process Edge<sup>™</sup> course of study. 13) Click on the link representing your preferred MasterCard Process Edge<sup>™</sup> course of study. 14) Click on the link representing your preferred MasterCard Process Edge<sup>™</sup> course of study. 15) Click on the link representing your preferred MasterCard Process Edge<sup>™</sup> course of study. 16) Click on the link representing your preferred MasterCard Process Edge<sup>™</sup> course of study. 17) Click on the link representing your preferred MasterCard Process Edge<sup>™</sup> course of study. 18) Click on the link representing your preferred MasterCard Process Edge<sup>™</sup> course of study. 19) Click on the link representing your preferred MasterCard Process Edge<sup>™</sup> course of study. 20) Click on the link representing your preferred MasterCard Process Edge<sup>™</sup> course of study. 21) Click on the link representing your preferred MasterCard Process Edge<sup>™</sup> course of study. 22) Click on the link representing your preferred MasterCard Process Edge<sup>™</sup> course of study. 23) Click on the link representing your preferred MasterCard Process Edge<sup>™</sup> course of study. 24) Click on the link representing your preferred MasterCard Process Edge<sup>™</sup> course of study. 25) Click on the link representing your preferred MasterCard Process Edge<sup>™</sup> course of study. 26) Click on the link representing your preferred MasterCard Process Edge<sup>™</sup> course of study. 27) Click on the link representing your preferred MasterCard Process Edge<sup>™</sup> course of study. 28) Click on the link representing your preferred MasterCard Process Edge<sup>™</sup> course of study. 29) Click on the link representing your preferred MasterCard Process Edge<sup>™</sup> course of study. 30) Click on the link representing your preferred MasterCard Process Edge<sup>™</sup> course of study. 31) Click on the link representing your preferred MasterCard Process Edge<sup>™</sup> course of study. 32) Click on the link representing your preferred MasterCard Process Edge<sup>™</sup> course of study. 33) Click on the link representing your preferred MasterCard Process Edge<sup>™</sup> course of study. 34) Click on the link representing your preferred MasterCard Process Edge<sup>™</sup> course of study. 35) Click on the link representing your preferred MasterCard Process Edge<sup>™</sup> course of study. 36) Click on the link representing your preferred MasterCard Process Edge<sup>™</sup> course of study. 37) Click on the link representing your preferred MasterCard Process Edge<sup>™</sup> course of study. 38) Click on the link representing your preferred MasterCard Process Edge<sup>™</sup> course of study. 39) Click on the link representing your preferred MasterCard Process Edge<sup>™</sup> course of study. 40) Click on the link representing your preferred MasterCard Process Edge<sup>™</sup> course of study. 41) Click on the link representing your preferred MasterCard Process Edge<sup>™</sup> course of study. 42) Click on the link representing your preferred MasterCard Process Edge<sup>™</sup> course of study. 43) Click on the link representing your preferred MasterCard Process Edge<sup>™</sup> course of study. 44) Click on the link representing your preferred MasterCard Process Edge<sup>™</sup> course of study. 45) Click on the link representing your preferred MasterCard Process Edge<sup>™</sup> course of study. 46) Click on the link representing your preferred MasterCard Process Edge<sup>™</sup> course of study. 47) Click on the link representing your preferred MasterCard Process Edge<sup>™</sup> course of study. 48) Click on the link representing your preferred MasterCard Process Edge<sup>™</sup> course of study. 49) Click on the link representing your preferred MasterCard Process Edge<sup>™</sup> course of study. 50) Click on the link representing your preferred MasterCard Process Edge<sup>™</sup> course of study. 51) Click on the link representing your preferred MasterCard Process Edge<sup>™</sup> course of study. 52) Click on the link representing your preferred MasterCard Process Edge<sup>™</sup> course of study. 53) Click on the link representing your preferred MasterCard Process Edge<sup>™</sup> course of study. 54) Click on the link representing your preferred MasterCard Process Edge<sup>™</sup> course of study. 55) Click on the link representing your preferred MasterCard Process Edge<sup>™</sup> course of study. 56) Click on the link representing your preferred MasterCard Process Edge<sup>™</sup> course of study. 57) Click on the link representing your preferred MasterCard Process Edge<sup>™</sup> course of study. 58) Click on the link representing your preferred MasterCard Process Edge<sup>™</sup> course of study. 59) Click on the link representing your preferred MasterCard Process Edge<sup>™</sup> course of study. 60) Click on the link representing your preferred MasterCard Process Edge<sup>™</sup> course of study. 61) Click on the link representing your preferred MasterCard Process Edge<sup>™</sup> course of study. 62) Click on the link representing your preferred MasterCard Process Edge<sup>™</sup> course of study. 63) Click on the link representing your preferred MasterCard Process Edge<sup>™</sup> course of study. 64) Click on the link representing your preferred MasterCard Process Edge<sup>™</sup> course of study. 65) Click on the link representing your preferred MasterCard Process Edge<sup>™</sup> course of study. 66) Click on the link representing your preferred MasterCard Process Edge<sup>™</sup> course of study. 67) Click on the link representing your preferred MasterCard Process Edge<sup>™</sup> course of study. 68) Click on the link representing your preferred MasterCard Process Edge<sup>™</sup> course of study. 69) Click on the link representing your preferred MasterCard Process Edge<sup>™</sup> course of study. 70) Click on the link representing your preferred MasterCard Process Edge<sup>™</sup> course of study. 71) Click on the link representing your preferred MasterCard Process Edge<sup>™</sup> course of study. 72) Click on the link representing your preferred MasterCard Process Edge<sup>™</sup> course of study. 73) Click on the link representing your preferred MasterCard Process Edge<sup>™</sup> course of study. 74) Click on the link representing your preferred MasterCard Process Edge<sup>™</sup> course of study. 75) Click on the link representing your preferred MasterCard Process Edge<sup>™</sup> course of study. 76) Click on the link representing your preferred MasterCard Process Edge<sup>™</sup> course of study. 77) Click on the link representing your preferred MasterCard Process Edge<sup>™</sup> course of study. 78) Click on the link representing your preferred MasterCard Process Edge<sup>™</sup> course of study. 79) Click on the link representing your preferred MasterCard Process Edge<sup>™</sup> course of study. 80) Click on the link representing your preferred MasterCard Process Edge<sup>™</sup> course of study. 81) Click on the link representing your preferred MasterCard Process Edge<sup>™</sup> course of study. 82) Click on the link representing your preferred MasterCard Process Edge<sup>™</sup> course of study. 83) Click on the link representing your preferred MasterCard Process Edge<sup>™</sup> course of study. 84) Click on the link representing your preferred MasterCard Process Edge<sup>™</sup> course of study. 85) Click on the link representing your preferred MasterCard Process Edge<sup>™</sup> course of study. 86) Click on the link representing your preferred MasterCard Process Edge<sup>™</sup> course of study. 87) Click on the link representing your preferred MasterCard Process Edge<sup>™</sup> course of study. 88) Click on the link representing your preferred MasterCard Process Edge<sup>™</sup> course of study. 89) Click on the link representing your preferred MasterCard Process Edge<sup>™</sup> course of study. 90) Click on the link representing your preferred MasterCard Process Edge<sup>™</sup> course of study. 91) Click on the link representing your preferred MasterCard Process Edge<sup>™</sup> course of study. 92) Click on the link representing your preferred MasterCard Process Edge<sup>™</sup> course of study. 93) Click on the link representing your preferred MasterCard Process Edge<sup>™</sup> course of study. 94) Click on the link representing your preferred MasterCard Process Edge<sup>™</sup> course of study. 95) Click on the link representing your preferred MasterCard Process Edge<sup>™</sup> course of study. 96) Click on the link representing your preferred MasterCard Process Edge<sup>™</sup> course of study. 97) Click on the link representing your preferred MasterCard Process Edge<sup>™</sup> course of study. 98) Click on the link representing your preferred MasterCard Process Edge<sup>™</sup> course of study. 99) Click on the link representing your preferred MasterCard Process Edge<sup>™</sup> course of study. 100) Click on the link representing your preferred MasterCard Process Edge<sup>™</sup> course of study. 101) Click on the link representing your preferred MasterCard Process Edge<sup>™</sup> course of study. 102) Click on the link representing your preferred MasterCard Process Edge<sup>™</sup> course of study. 103) Click on the link representing your preferred MasterCard Process Edge<sup>™</sup> course of study. 104) Click on the link representing your preferred MasterCard Process Edge<sup>™</sup> course of study. 105) Click on the link representing your preferred MasterCard Process Edge<sup>™</sup> course of study. 106) Click on the link representing your preferred MasterCard Process Edge<sup>™</sup> course of study. 107) Click on the link representing your preferred MasterCard Process Edge<sup>™</sup> course of study. 108) Click on the link representing your preferred MasterCard Process Edge<sup>™</sup> course of study. 109) Click on the link representing your preferred MasterCard Process Edge<sup>™</sup> course of study. 110) Click on the link representing your preferred MasterCard Process Edge<sup>™</sup> course of study. 111) Click on the link representing your preferred MasterCard Process Edge<sup>™</sup> course of study. 112) Click on the link representing your preferred MasterCard Process Edge<sup>™</sup> course of study. 113) Click on the link representing your preferred MasterCard Process Edge<sup>™</sup> course of study. 114) Click on the link representing your preferred MasterCard Process Edge<sup>™</sup> course of study. 115) Click on the link representing your preferred MasterCard Process Edge<sup>™</sup> course of study. 116) Click on the link representing your preferred MasterCard Process Edge<sup>™</sup> course of study. 117) Click on the link representing your preferred MasterCard Process Edge<sup>™</sup> course of study. 118) Click on the link representing your preferred MasterCard Process Edge<sup>™</sup> course of study. 119) Click on the link representing your preferred MasterCard Process Edge<sup>™</sup> course of study. 120) Click on the link representing your preferred MasterCard Process Edge<sup>™</sup> course of study. 121) Click on the link representing your preferred MasterCard Process Edge<sup>™</sup> course of study. 122) Click on the link representing your preferred MasterCard Process Edge<sup>™</sup> course of study. 123) Click on the link representing your preferred MasterCard Process Edge<sup>™</sup> course of study. 124) Click on the link representing your preferred MasterCard Process Edge<sup>™</sup> course of study. 125) Click on the link representing your preferred MasterCard Process Edge<sup>™</sup> course of study. 126) Click on the link representing your preferred MasterCard Process Edge<sup>™</sup> course of study. 127) Click on the link representing your preferred MasterCard Process Edge<sup>™</sup> course of study. 128) Click on the link representing your preferred MasterCard Process Edge<sup>™</sup> course of study. 129) Click on the link representing your preferred MasterCard Process Edge<sup>™</sup> course of study. 130) Click on the link representing your preferred MasterCard Process Edge<sup>™</sup> course of study. 131) Click on the link representing your preferred MasterCard Process Edge<sup>™</sup> course of study. 132) Click on the link representing your preferred MasterCard Process Edge<sup>™</sup> course of study. 133) Click on the link representing your preferred MasterCard Process Edge<sup>™</sup> course of study. 134) Click on the link representing your preferred MasterCard Process Edge<sup>™</sup> course of study. 135) Click on the link representing your preferred MasterCard Process Edge<sup>™</sup> course of study. 136) Click on the link representing your preferred MasterCard Process Edge<sup>™</sup> course of study. 137) Click on the link representing your preferred MasterCard Process Edge<sup>™</sup> course of study. 138) Click on the link representing your preferred MasterCard Process Edge<sup>™</sup> course of study. 139) Click on the link representing your preferred MasterCard Process Edge<sup>™</sup> course of study. 140) Click on the link representing your preferred MasterCard Process Edge<sup>™</sup> course of study. 141) Click on the link representing your preferred MasterCard Process Edge<sup>™</sup> course of study. 142) Click on the link representing your preferred MasterCard Process Edge<sup>™</sup> course of study. 143) Click on the link representing your preferred MasterCard Process Edge<sup>™</sup> course of study. 144) Click on the link representing your preferred MasterCard Process Edge<sup>™</sup> course of study. 145) Click on the link representing your preferred MasterCard Process Edge<sup>™</sup> course of study. 146) Click on the link representing your preferred MasterCard Process Edge<sup>™</sup> course of study. 147) Click on the link representing your preferred MasterCard Process Edge<sup>™</sup> course of study. 148) Click on the link representing your preferred MasterCard Process Edge<sup>™</sup> course of study. 149) Click on the link representing your preferred MasterCard Process Edge<sup>™</sup> course of study. 150) Click on the link representing your preferred MasterCard Process Edge<sup>™</sup> course of study. 151) Click on the link representing your preferred MasterCard Process Edge<sup>™</sup> course of study. 152) Click on the link representing your preferred MasterCard Process Edge<sup>™</sup> course of study. 153) Click on the link representing your preferred MasterCard Process Edge<sup>™</sup> course of study. 154) Click on the link representing your preferred MasterCard Process Edge<sup>™</sup> course of study. 155) Click on the link representing your preferred MasterCard Process Edge<sup>™</sup> course of study. 156) Click on the link representing your preferred MasterCard Process Edge<sup>™</sup> course of study. 157) Click on the link representing your preferred MasterCard Process Edge<sup>™</sup> course of study. 158) Click on the link representing your preferred MasterCard Process Edge<sup>™</sup> course of study. 159) Click on the link representing your preferred MasterCard Process Edge<sup>™</sup> course of study. 160) Click on the link representing your preferred MasterCard Process Edge<sup>™</sup> course of study. 161) Click on the link representing your preferred MasterCard Process Edge<sup>™</sup> course of study. 162) Click on the link representing your preferred MasterCard Process Edge<sup>™</sup> course of study. 163) Click on the link representing your preferred MasterCard Process Edge<sup>™</sup> course of study. 164) Click on the link representing your preferred MasterCard Process Edge<sup>™</sup> course of study. 165) Click on the link representing your preferred MasterCard Process Edge<sup>™</sup> course of study. 166) Click on the link representing your preferred MasterCard Process Edge<sup>™</sup> course of study. 167) Click on the link representing your preferred MasterCard Process Edge<sup>™</sup> course of study. 168) Click on the link representing your preferred MasterCard Process Edge<sup>™</sup> course of study. 169) Click on the link representing your preferred MasterCard Process Edge<sup>™</sup> course of study. 170) Click on the link representing your preferred MasterCard Process Edge<sup>™</sup> course of study. 171) Click on the link representing your preferred MasterCard Process Edge<sup>™</sup> course of study. 172) Click on the link representing your preferred MasterCard Process Edge<sup>™</sup> course of study. 173) Click on the link representing your preferred MasterCard Process Edge<sup>™</sup> course of study. 174) Click on the link representing your preferred MasterCard Process Edge<sup>™</sup> course of study. 175) Click on the link representing your preferred MasterCard Process Edge<sup>™</sup> course of study. 176) Click on the link representing your preferred MasterCard Process Edge<sup>™</sup> course of study. 177) Click on the link representing your preferred MasterCard Process Edge<sup>™</sup> course of study. 178) Click on the link representing your preferred MasterCard Process Edge<sup>™</sup> course of study. 179) Click on the link representing your preferred MasterCard Process Edge<sup>™</sup> course of study. 180) Click on the link representing your preferred MasterCard Process Edge<sup>™</sup> course of study. 181) Click on the link representing your preferred MasterCard Process Edge<sup>™</sup> course of study. 182) Click on the link representing your preferred MasterCard Process Edge<sup>™</sup> course of study. 183) Click on the link representing your preferred MasterCard Process Edge<sup>™</sup> course of study. 184) Click on the link representing your preferred MasterCard Process Edge<sup>™</sup> course of study. 185) Click on the link representing your preferred MasterCard Process Edge<sup>™</sup> course of study. 186) Click on the link representing your preferred MasterCard Process Edge<sup>™</sup> course of study. 187) Click on the link representing your preferred MasterCard Process Edge<sup>™</sup> course of study. 188) Click on the link representing your preferred MasterCard Process Edge<sup>™</sup> course of study. 189) Click on the link representing your preferred MasterCard Process Edge<sup>™</sup> course of study. 190) Click on the link representing your preferred MasterCard Process Edge<sup>™</sup> course of study. 191) Click on the link representing your preferred MasterCard Process Edge<sup>™</sup> course of study. 192) Click on the link representing your preferred MasterCard Process Edge<sup>™</sup> course of study. 193) Click on the link representing your preferred MasterCard Process Edge<sup>™</sup> course of study. 194) Click on the link representing your preferred MasterCard Process Edge<sup>™</sup> course of study. 195) Click on the link representing your preferred MasterCard Process Edge<sup>™</sup> course of study. 196) Click on the link representing your preferred MasterCard Process Edge<sup>™</sup> course of study. 197) Click on the link representing your preferred MasterCard Process Edge<sup>™</sup> course of study. 198) Click on the link representing your preferred MasterCard Process Edge<sup>™</sup> course of study. 199) Click on the link representing your preferred MasterCard Process Edge<sup>™</sup> course of study. 200) Click on the link representing your preferred MasterCard Process Edge<sup>™</sup> course of study. 201) Click on the link representing your preferred MasterCard Process Edge<sup>™</sup> course of study. 202) Click on the link representing your preferred MasterCard Process Edge<sup>™</sup> course of study. 203) Click on the link representing your preferred MasterCard Process Edge<sup>™</sup> course of study. 204) Click on the link representing your preferred MasterCard Process Edge<sup>™</sup> course of study. 205) Click on the link representing your preferred MasterCard Process Edge<sup>™</sup> course of study. 206) Click on the link representing your preferred MasterCard Process Edge<sup>™</sup> course of study. 207) Click on the link representing your preferred MasterCard Process Edge<sup>™</sup> course of study. 208) Click on the link representing your preferred MasterCard Process Edge<sup>™</sup> course of study. 209) Click on the link representing your preferred MasterCard Process Edge<sup>™</sup> course of study. 210) Click on the link representing your preferred MasterCard Process Edge<sup>™</sup> course of study. 211) Click on the link representing your preferred MasterCard Process Edge<sup>™</sup> course of study. 212) Click on the link representing your preferred MasterCard Process Edge<sup>™</sup> course of study. 213) Click on the link representing your preferred MasterCard Process Edge<sup>™</sup> course of study. 214) Click on the link representing your preferred MasterCard Process Edge<sup>™</sup> course of study. 215) Click on the link representing your preferred MasterCard Process Edge<sup>™</sup> course of study. 216) Click on the link representing your preferred MasterCard Process Edge<sup>™</sup> course of study. 217) Click on the link representing your preferred MasterCard Process Edge<sup>™</sup> course of study. 218) Click on the link representing your preferred MasterCard Process Edge<sup>™</sup> course of study. 219) Click on the link representing your preferred MasterCard Process Edge<sup>™</sup> course of study. 220) Click on the link representing your preferred MasterCard Process Edge<sup>™</sup> course of study. 221) Click on the link representing your preferred MasterCard Process Edge<sup>™</sup> course of study. 222) Click on the link representing your preferred MasterCard Process Edge<sup>™</sup> course of study. 223) Click on the link representing your preferred MasterCard Process Edge<sup>™</sup> course of study. 224) Click on the link representing your preferred MasterCard Process Edge<sup>™</sup> course of study. 225) Click on the link representing your preferred MasterCard Process Edge<sup>™</sup> course of study. 226) Click on the link representing your preferred MasterCard Process Edge<sup>™</sup> course of study. 227) Click on the link representing your preferred MasterCard Process Edge<sup>™</sup> course of study. 228) Click on the link representing your preferred MasterCard Process Edge<sup>™</sup> course of study. 229) Click on the link representing your preferred MasterCard Process Edge<sup>™</sup> course of study. 230) Click on the link representing your preferred MasterCard Process Edge<sup>™</sup> course of study. 231) Click on the link representing your preferred MasterCard Process Edge<sup>™</sup> course of study. 232) Click on the link representing your preferred MasterCard Process Edge<sup>™</sup> course of study. 233) Click on the link representing your preferred MasterCard Process Edge<sup>™</sup> course of study. 234) Click on the link representing your preferred MasterCard Process Edge<sup>™</sup> course of study. 235) Click on the link representing your preferred MasterCard Process Edge<sup>™</sup> course of study. 236) Click on the link representing your preferred MasterCard Process Edge<sup>™</sup> course of study. 237) Click on the link representing your preferred MasterCard Process Edge<sup>™</sup> course of study. 238) Click on the link representing your preferred MasterCard Process Edge<sup>™</sup> course of study. 239) Click on the link representing your preferred MasterCard Process Edge<sup>™</sup> course of study. 240) Click on the link representing your preferred MasterCard Process Edge<sup>™</sup> course of study. 241) Click on the link representing your preferred MasterCard Process Edge<sup>™</sup> course of study. 242) Click on the link representing your preferred MasterCard Process Edge<sup>™</sup> course of study. 243) Click on the link representing your preferred MasterCard Process Edge<sup>™</sup> course of study. 244) Click on the link representing your preferred MasterCard Process Edge<sup>™</sup> course of study. 245) Click on the link representing your preferred MasterCard Process Edge<sup>™</sup> course of study. 246) Click on the link representing your preferred MasterCard Process Edge<sup>™</sup> course of study. 247) Click on the link representing your preferred MasterCard Process Edge<sup>™</sup> course of study. 248) Click on the link representing your preferred MasterCard Process Edge<sup>™</sup> course of study. 249) Click on the link representing your preferred MasterCard Process Edge<sup>™</sup> course of study. 250) Click on the link representing your preferred MasterCard Process Edge<sup>™</sup> course of study. 251) Click on the link representing your preferred MasterCard Process Edge<sup>™</sup> course of study. 252) Click on the link representing your preferred MasterCard Process Edge<sup>™</sup> course of study. 253) Click on the link representing your preferred MasterCard Process Edge<sup>™</sup> course of study. 254) Click on the link representing your preferred MasterCard Process Edge<sup>™</sup> course of study. 255) Click on the link representing your preferred MasterCard Process Edge<sup>™</sup> course of study. 256) Click on the link representing your preferred MasterCard Process Edge<sup>™</sup> course of study. 257) Click on the link representing your preferred MasterCard Process Edge<sup>™</sup> course of study. 258) Click on the link representing your preferred MasterCard Process Edge<sup>™</sup> course of study. 259) Click on the link representing your preferred MasterCard Process Edge<sup>™</sup> course of study. 260) Click on the link representing your preferred MasterCard Process Edge<sup>™</sup> course of study. 261) Click on the link representing your preferred MasterCard Process Edge<sup>™</sup> course of study. 262) Click on the link representing your preferred MasterCard Process Edge<sup>™</sup> course of study. 263) Click on the link representing your preferred MasterCard Process Edge<sup>™</sup> course of study. 264) Click on the link representing your preferred MasterCard Process Edge<sup>™</sup> course of study. 265) Click on the link representing your preferred MasterCard Process Edge<sup>™</sup> course of study. 266) Click on the link representing your preferred MasterCard Process Edge<sup>™</sup> course of study. 267) Click on the link representing your preferred MasterCard Process Edge<sup>™</sup> course of study. 268) Click on the link representing your preferred MasterCard Process Edge<sup>™</sup> course of study. 269) Click on the link representing your preferred MasterCard Process Edge<sup>™</sup> course of study. 270) Click on the link representing your preferred MasterCard Process Edge<sup>™</sup> course of study. 271) Click on the link representing your preferred MasterCard Process Edge<sup>™</sup> course of study. 272) Click on the link representing your preferred MasterCard Process Edge<sup>™</sup> course of study. 273) Click on the link representing your preferred MasterCard Process Edge<sup>™</sup> course of study. 274) Click on the link representing your preferred MasterCard Process Edge<sup>™</sup> course of study. 275) Click on the link representing your preferred MasterCard Process Edge<sup>™</sup> course of study. 276) Click on the link representing your preferred MasterCard Process Edge<sup>™</sup> course of study. 277) Click on the link representing your preferred MasterCard

# Scholarship Stampede nets more than \$600,000

By Angela Timmons/Staff Reporter

Donors lined the walls of University Medical Center's McInturff Conference Center prepared to give away more than \$600,000 in scholarships Wednesday night at the School of Nursing's third annual Scholarship Stampede.

Exa Goode, director of marketing and development for the School of Nursing, said the Stampede is important for several reasons.

The Stampede gives the School of Nursing a chance to recognize donors who are critical to many students' success in nursing.

The occasion also gives students a chance to connect with donors and get to know them on a personal level.

Overall, the Stampede is the chance to give away money to nursing students and give them a chance to find access to other scholarship money.

The stampede involved drawings for 15 scholarships based on faculty nominations.

There were also random drawings for 39 \$500 scholarships; students pooled for those scholarships are nominated by faculty.

Goode said donors, for the most part, have previous associations with Texas Tech's School of Nursing.

Goode said sometimes many students must drop out of the Nursing program because financial burdens.

Goode said the school's graduation rate is vastly improved by support from scholarship donors.

"It's really critical to us, and we are so appreciative of donors that provide money," Goode said. "It's critical to be able to augment education with scholarship funding."

Goode said about 85 percent of School of Nursing graduates remain in the West Texas and the South Plains area after graduation. Because of this retention percentage,

Goode said many donors from the area donating in an effort to improve the quality of life and health services in the South Plains and West Texas area.

"It's a good way for them to provide funding and provide something of quality to the citizens in this area," she said.

Alexia Green, dean and professor for the School of Nursing, said the Stampede is an opportunity for donors to "link up" with the students receiving their scholarships.

"It's a chance for donors to see the students their donation is going to," Green said. "For them to see the opportunity they're giving."

Green is responsible for starting the Stampede three years ago, saying she has previously seen a gap between donors and recipients.

"Often a donor gives money but never meets recipients," she said. "A letter's only a letter - if they can shake

their hands and see them it's that much better."

Nancy Neal, a 1985 graduate of Tech's nursing program and donor to the Scholarship Stampede was present at the ceremony.

Neal said she and her husband, private practice physician Thomas Neal, believe firmly in scholarships, as they both were recipients of scholarships.

Neal said there is a need for scholarship money in the field of nursing.

"It's even greater now," she said. "The need for nurses is so acute. When I was in school, it probably wasn't as great as it is today."

Neal said she has never met a recipient of her and her husband's scholarship.

"I hope to meet some today," she said. "It's fun to be able to connect face to face with names and realize they're using it to stay in school."

Families, work and school were major themes during scholarship presentation.

Trecia Jones-Clouden, a senior nursing student from Virginia, has been a three-time recipient of Stampede scholarships.

Jones-Clouden, a wife and mother of one child, said she would not have been able to complete nursing school without the help of the scholarships she has received.

"I would've had to stop school and work a little," she said. "The scholarships have paid for about half of my



CHRIS NELSON, A senior nursing student from Desoto, receives a \$500 scholarship Wednesday at the Scholarship Stampede. The event dispersed more than \$600,000 for Texas Tech nursing students.

TYSON JEFFRIES/Staff Photographer

tuition and other expenses."

Debra Robles, a junior nursing student from Lubbock, has been a past recipient of Stampede scholarships and was again a recipient Wednesday afternoon. Robles, a wife and mother of two children, said the scholarships have greatly helped her and a substan-

tial number of other nursing students. Robles plans to attend graduate school for nursing as well as go on to become a nurse practitioner and remain in the Lubbock area.

"If I keep getting money, I'll go as far as I can," she said.

Robles said the scholarships are

important to the field of nursing so they may fund more nurses to take care of a growing national population.

"We need to make sure the health care will be there and provide for people," she said.

# Grief management plays key role in healthy lifestyle

By Felicia Simpson/Staff Reporter

The death of Texas Tech student O.J. Garcia has left students and faculty mourning the loss of their friend.

Diana Simmons, a junior middle school education major from Katy, said she was upset at the death of Garcia. "I was kind of shocked," she said. "It's hard to understand, since he was so young. It's hard to understand why it happened."

Simmons said she tries to recall positive memories of her friend in order to deal with his death.

"It's really hard to come to work," she said. "I try to remember the per-

son that he was; that he was good to be around."

Jo Henderson, health education coordinator for Student Health Services, said grief is an emotional reaction to loss.

She said grief does not just occur because of the death of a friend or family member. It may happen from divorce, loss of a job or illness in someone close to the individual.

Henderson said there are numerous emotions associated with grief. These feelings do not have to occur in set stages, and they do not need to be those which society deems as normal.

She said denial might be the first stage. This is where the individual refuses to accept whatever is being grieved.

The next stage is anger. She said family members and friends might feel this if someone died in an accident, which could have been prevented.

"People have anger for the situation," she said. "It would be reasonable for family members to have anger for (someone) not taking preventive measures."

The next stage may be bargaining she said. This would occur where an individual will bargain with a deity in order to try to gain the desired result.

She said the next stage is depression. Sadness is the emotion most associated with grief.

The final stage can be acceptance, Henderson said. However, this may take years to achieve or may even never fully occur.

She said that stages might be repeated or skipped. Other feelings can also occur.

"There is no right or wrong way to grieve," Henderson said.

Some physical sensations which can be experienced include shortness of breath, lack of appetite, lack of desire to participate in social events and fatigue.

She said fatigue occurs so the body can shutdown in order to emotionally deal with difficult situations.

"It's important for us to realize it's all OK, but we need to look at people if they're dangerous to themselves," Henderson said.

Some unhealthy forms of grief are

those which are exaggerated, masked, chronic, or delayed. Exaggerated grief leads to alcoholism and depression. Masked is where the individual refuses to accept the situation.

When someone constantly feels depressed, they have chronic grief. Delayed is when emotions are not initially shown but sets in later Henderson said.

There are many ways to cope with grief, she said. Journaling is where the individual will write his or her emotions daily in order to convey them.

However, she is cautious about medicating in order to deal with the emotions.

"It can often lead to a long-term problem since it's used as a crutch. It should be a last resort," she said.

Instead, Henderson suggested talking to family and friends, strangers or counselors.

This method will provide feedback for the person experiencing grief.

## Likud party expected to win majority

JERUSALEM (AP) — Prime Minister Ariel Sharon's Likud party, which has taken a hard line in dealing with the Palestinian uprising and other right-wing factions, will enjoy a comfortable majority in Israel's parliament, according to TV projections. The opposition Labor party, which proposed restarting peace talks, posted its worst-ever result.

Likud won 36 seats in the 120-member parliament, according to Israel TV's exit poll. The once-dominant Labor won only 18 seats, and the centrist Shinui Party got 14 seats.

The bloc of right-wing and religious parties anchored by Likud would control 70 seats in the Knesset. Israel's dovish parties, which had led the failed peace-making effort with the Palestinians in the 1990s, were trounced. The leftist Meretz faction lost half its strength, dropping to five seats.

Despite the apparent victory, Sharon is expected to face difficulties in forming a stable government from the myriad political and religious factions, especially amid the turmoil of the Palestinian uprising.

Israel's security forces barred Palestinians from entering Israel, and voting was proceeding smoothly as of Tuesday evening despite Israeli concern about possible terror attacks.

In the Palestinian areas, seven Palestinians were killed. Three died in a mysterious explosion in Gaza City house; the army said the blast was triggered by militants handling explosives, while the Palestinians said the home was hit by an Israeli missile. Four Palestinians were killed in gun battles with Israeli troops in the West Bank town of Jenin.

The vote is Israel's fourth national election in seven years.

**Who says there's no such thing as the perfect job!**  
Apply to be a Double T Crew Summer Orientation Leader.

**What they do...**  
Double T Crew Members help welcome approximately 6,000 incoming students to Texas Tech. As a Double T Crew member, you will facilitate teambuilding activities, participate and develop a student skit depicting the realities of college life, mentoring new students attending orientation, and much more.


**Deadline Tomorrow January 31 at noon**

**Benefits:**  
\$1500 stipend  
Free Housing and Dining for the summer  
\*\*Take one class per summer session (optional)

**Requirements:**  
No other summer employment  
2.50 cumulative GPA  
Full-time student during Spring 2003

**Hear what former Double T Crew Members had to say about their experiences:**

"It was the experience of a lifetime!! I have never had so much fun working hard, meeting new people, and learning so much about Texas Tech. I wouldn't trade it for anything."



"It was an incredible experience, and a chance to get involved with the University and truly make an impact on incoming students."

If this sounds like the job for you, fill out the application online at [www.admissions.ttu.edu/doubletapp.html](http://www.admissions.ttu.edu/doubletapp.html) or pick one up in West Hall, room 141. Applications are due in West Hall, room 141. Questions and comments should be directed to Megan O'Brien, Director of Orientation through e-mail: [megan.obrien@ttu.edu](mailto:megan.obrien@ttu.edu) or phone: (806) 742-0048.

**The University Daily Ski Report**

| Ski Area          | Base  | New Snow | Details   |
|-------------------|-------|----------|-----------|
| <b>New Mexico</b> |       |          |           |
| Angel Fire        | 36    | 6        | PP 100%   |
| Red River         | 27.39 | 0        | M.G.      |
| Ski Apache        | 40    | 3        | PP- 100%  |
| Santa Fe          | 32    | 1        | M.G.      |
| Sandia Peak       | 11    | 0        | 95% open  |
| Taos              | 44.59 | 3-4      | PP 90%    |
| <b>Colorado</b>   |       |          |           |
| A-Basin           | 46    | 0        | Pow PP    |
| Aspen Mountain    | 30    | 1        | PP-Pow    |
| Aspen Highlands   | 35    | 1.5      | PP        |
| Beaver Creek      | 34    | 1        | PP-Pow    |
| Breckenridge      | 37    | 0        | PP        |
| Buttermilk        | 28    | 1        | PP        |
| Copper Mountain   | 41    | 1        | PP        |
| Crested Butte     | 32    | 0        | PP        |
| Keystone          | 33    | 1        | PP        |
| Loveland          | 47    | 1        | PP        |
| Monarch           | 36    | 0        | PP        |
| Purgatory         | 37    | 1        | Pow-PP    |
| Silvercreek       | 34    | 0        | All Lifts |
| Ski Cooper        | 37    | .5       | Pow-PP    |
| Snowmass          | 33    | 1        | PP        |
| Steamboat         | 45    | .5       | Pow-PP    |
| Telluride         | 40    | 0        | PP        |
| Vail              | 32    | .5       | Pow-PP    |
| Winter Park       | 33    | 1.5      | PP        |
| Wolf Creek        | 67    | 3        | Pow-PP    |

**Eat lunch or dinner for only \$3.99!!!!**



at **Tio Jaime's Mexican Restaurant**

**797-8888**  
3017 34th (1 block east of Flint)  
Monday - Friday 7am - 2pm; 5pm - 9pm  
Saturday 7am - 9pm

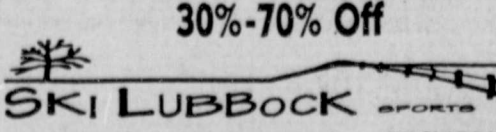
**With a valid Tech Faculty/Student I.D. get your choice of the following plates...**

- 1) 2 Chalupas, 1 Taco, Rice & Beans
- 2) 3 Tacos (beef or chicken), Rice & Beans
- 3) 3 Enchiladas (Cheese, Chicken or Beef), Rice, Beans & Salad

**We also feature Daily Specials for only \$5.25 w/ drink!**

Delivery available Mon-Sat 5-9pm on orders more than \$12.00!

**Mid Season Clearance Sale**  
30%-70% Off



SKI LUBBOCK SPORTS  
\*Lubbock's ONLY true and unique SKI SHOP\*

67th & Indiana 799-1699

**MODELS / SPOKES MODELS**  
Needed for promotions in Lubbock area. Must have outgoing personality and be at least 21 years old. \$22 per hour. Call GMR Marketing 1-800-899-9651

**Miss Lubbock USA 2003**  
Pick up applications at the Student Union Information Center For information: 535-1503 or 239-2472

# 'The Hours' a power house for women

In the movie business, there are certain films that one could collect. These are the "Oscar vehicles." That is, these films are made with the knowledge that the Academy will want to recognize them.

"The Hours" is one of these films. But the thing with "Oscar vehicles" is they are usually excellent films. One does not deny this. But when a film stars such great actresses as Meryl Streep, Julianne Moore and Nicole Kidman and is based on a Pulitzer Prize-winning novel, it becomes somewhat obvious.

Regardless, "The Hours" proves to be a very good film about how three women's lives intertwine over a period of about 70 years.

Kidman portrays the author Virginia Woolf in the 1920s, struggling with mental anguish and depression as she strives to write a book called "Mrs. Dalloway."

## FILM REVIEW



**James Eppler**  
jeppler@hotmail.com

Moore plays housewife Laura Brown in the 1950s who is beginning to read "Mrs. Dalloway" and is having second guesses of the choices she is making in her life.

Streep plays Clarissa Vaughan living in New York in 2001 who seems to live her life as the Mrs. Dalloway from the novel.

The film dashes from one time period to the next and does so quite

smoothly. Director Stephen Daldry and cinematographer Seamus McGarvey have made a gorgeous movie and bathed the screen with beautiful images, while Philip Glass' score complements every scene perfectly.

Each story seems to be independent of the others, but through plot devices and developments, we learn they all connect.

Kidman is barely recognizable as Woolf, partly because of a fake nose, but mostly because of her incredible performance as a manic-depressive, suicidal writer who finds her only solace in smoking reefer and writing her novel. Woolf has alienated her husband and is carrying on a secret affair with a woman on the side.

Meanwhile, Moore is leading a seemingly happy life in the 1950s. She is a pretty, young housewife with a loving husband (John "I'm in ev-

erything this year" C. Reilly) and a young son.

But she soon discovers some feelings welling up inside of her that she discovers almost by accident. This realization spirals her downward into a pit of suicidal thoughts and depression, all while reading the novel by Woolf.

Streep is living with her partner (Allison Janney from "The West Wing") and also is taking care of her former lover, Richard (Ed Harris), who is dying of AIDS.

In fact, the best scenes in the film occur between Streep and Harris as he is preparing to die and she is trying desperately hard to avoid talking about it. The performances are stellar.

In fact, there are many scenes in this film that are gripping and even tormenting at times. The film deals with some very tough issues, not the least of which is lesbianism.

It manages to address this topic without directly speaking to it. This factor is immensely important in each of these women's characters, but the film (and the book, from what I understand) neglects to delve deeper into it.

One character, in particular, that is just beginning to realize her lesbian tendencies is merely wrapped up in the end with a monologue. It would have been much more interesting to actually experience these discoveries with her, even if it made for a longer film with an R-rating.

But one does realize, however, that back in the 1950s and before, homosexuality was not as widely accepted as it seems to be today. They were, indeed, forced to hide it. That may be why the film has chosen to censor itself.

It is refreshing, however, to see a film that showcases some excellent

roles for female actors.

Hollywood is notorious for having few juicy roles for women, but this film not only has the great roles to play, but three of the most gifted actresses working today playing them.

They, along with an astonishing performance from the underrated Harris, are the sole reason for seeing this film and the reason for which I give it a high rating.

EPPLER'S RATING: ★★★★★

- ★★★★★ - Flawless
- ★★★★ - Excellent
- ★★★ - Good
- ★★ - Mediocre
- ★ - Awful

## O'Toole: Honorary Oscar is premature

LOS ANGELES (AP) — Peter O'Toole's peers want to reward him with an honorary Academy Award.

But the actor, who has been nominated for an Oscar seven times but never won, is not sure he's ready to accept it.

O'Toole, 70, sent a handwritten letter last week to the Academy of Motion Picture Arts and Sciences saying he was "enchanted" at the thought of an honorary Oscar.

He said that he still had a shot at earning the award for a particular acting performance.

The academy announced last week that it intended to award O'Toole an honorary Oscar.

The academy wants to give O'Toole this award for a career that has included best-actor nominations for "Lawrence of Arabia," "The Lion in Winter," "Goodbye, Mr. Chips," "My Favorite Year" and three other film roles.

The actor wrote back that since he was "still in the game, and might yet win (the award) outright, would the academy please defer the honor until I am 80?"

Academy officials said Wednesday they had not gotten a definite

answer from O'Toole.

Officials did not know whether the letter meant he would not show up to collect the award at the Oscar ceremony March 23.

An O'Toole spokeswoman contacted by telephone Wednesday declined to comment.

The story first appeared in the trade paper Daily Variety.

In his letter, O'Toole said he learned of the honorary Oscar from his agent, who had talked informally with the Academy board.

"We don't negotiate and it's not contingent upon anyone appearing," Academy President Frank Pierson told Variety.

The statue will be waiting for O'Toole whenever he is ready to accept it, Pierson said.

The academy's board "unanimously and enthusiastically voted you the honorary award because you've earned it and deserved it," Pierson said in a response to O'Toole. "It will be there for you at the awards ceremony March 23 and we hope you'll be there with us. If not, it will be at the academy for you pick up when you're 80, or whenever you're ready."

## Mountain Goats surpass expectations

John Darnielle, the Mountain Goats, has abandoned that which has made him great and by doing so, has created an album that is, well, better than great.

Before looking at Darnielle's latest release, *Tallahassee*, it's necessary that I give you a little perspective on the past of The Mountain Goats. First of all, Darnielle is the Mountain Goats — sort of like how Trent Reznor is Nine Inch Nails. Plenty of outside talent have contributed to the rich history of what is now known as The Mountain Goats, but what has remained constant and most central is the world that Darnielle has created. What is probably most noteworthy of The Mountain Goats history is Darnielle's insistence on recording his material lo-fi.

High fidelity (hi-fi) recording in the context of production means the sounds produced on an album are as clearly re-produced as is technically possible. Cashes and labels shell out tons of band in order to create an album that sounds clean and crisp.

On the polar opposite side of that is lo-fi recording. Basically, this sums up to an artist recording their material by pressing record on a store bought boom box and playing their instruments near the microphone.

Remember the static hiss that accompanied your voice as a kid when you recorded your voice on a tape

## MUSIC REVIEW



**Rocky Ramirez**

ramirez\_rocky@hotmail.com  
Lo-fi recording relish this hiss as if it were another instrument entirely. Beck used to record this way, and more recently, The Microphones have found success using this technique. The Mountain Goats have used this technique since their beginning.

Lo-fi recording coupled with extremely literate lyrics and underlying anti-folk sensibilities have given The Mountain Goats an underground cult status. So why go through all of the trouble of explaining lo-fi recording? Well, because, on Darnielle's debut, *Tallahassee*, he has completely abandoned it.

So minus the production trickery, is Darnielle's songwriting ability enough to carry the weight of expectations placed on *Tallahassee*?

This question can be answered on track seven, "No Children," possibly the most powerfully written song I heard all last year. If you've caught this song on the radio, then you know ex-

actly what I am talking about.

First, a word about the storyline up until this point: *Tallahassee* is the story of a dysfunctional old married couple that Darnielle has sung about in past albums. This album has them moving down to Florida's capital in order to grow old and finish off their lives and also their fading marriage.

"No Children" represents a pivotal moment in this couple's relationship. Hatred has been building up to the boiling point, and by track seven, it is ready to explode. The male figure who has had it cries, "I hope the junkyard a few blocks from here burns down / and I hope the rising black smoke carries me far away, and I never come back to this town again / in my life / I hope I lie / and tell everyone you were a good wife / and I hope you die / I hope we both die."

The level of emotion that is created in this moment is almost unbearable to hear without cringing. And that is when you realize you are not listening to a mere CD, you are watching this actually happen.

The best albums are those that can be considered 'cinematic.' Although

by this catch phrase, it is something you should not miss.

*Tallahassee* is not just cinematic; it's IMAX, from the simple intro track "Tallahassee" to the crushing climax on track 13, "Oceanographers Choice." I don't want to give away anything, but the entire album builds up to the climax that can be pinpointed to when Darnielle says the title of the album. Let me just tell you that if you have been following along closely, by the time he utters the word "Tallahassee," you will have chills running down your spine.

Since the album has become most popular in CD form, rather than vinyl or tape, it has been difficult for the musician to form a solid "album" type mentality. Most artists are content with writing a few singles and surrounding them with fluff. Darnielle is a great example of an artist shunning this idea of music making and in favor of creating a solid album. The tale Darnielle spins is so involving it will leave you wanting to know more about this couple and the bitter, yet withstanding love they hold for each other.

## MSNBC could host Donaldson talk show

NEW YORK (AP) — Veteran ABC News reporter Sam Donaldson is the latest name to surface for another shakeup at troubled MSNBC.

Donaldson is talking to the cable network about a potential prime-time talk show, according to industry executives who spoke on the condition of anonymity. A deal is not said to be imminent.

Since losing his job as host of the Sunday morning public affairs show, "This Week," to George Stephanopoulos, Donaldson has been concentrating on his ABC News radio program. His television appearances are rare.

Losing badly in the ratings to Fox News Channel and CNN, MSNBC is also expected to sign former Minnesota Gov. Jesse Ventura for a prime-time talk show.

## Spent the Rent?

- Get your benefits and use your card instead
- Just \$3.50 on top of every \$100 charged
- For convenience or emergencies
- Tell your folks, tell your friends!

**RentCharge**  
 .com



Presents...

**TONIGHT**

**TRAVIS LINDVILLE**

**\$1 PITCHERS 'TILL 11:00**



**FRIDAY SATURDAY**

**HARRIS & RYDEN MACON GREYSON**

**\$10.50 BUCKETS 'TILL 11:00**

1806 Buddy Holly Ave. 806-762-1185  
www.thebluelightlive.com

**Cricket's Grill**  
Only the finest meats  
**Whiskey River**  
Jim Jack Crown  
**\$2.50**  
Weller Seagrams' Seven Old Whiskey River  
2412 Broadway 744-HOPS

**West is the key for 2003**  
Marketing Representatives  
Up to **\$10.00\*** Per hour  
\*Based on tenure and number of hours worked weekly.  
**\$200 Bonus** for 200 calling hours  
Inquire with Human Resources for more details.  
We Offer:  
• Earn \$125 in attendance bonuses every 90 days  
• Base Wage Increase  
• Great Benefits  
• Career Advancement  
• Paid Training  
• Professional Environment  
Now Accepting Applications!  
Monday 8 a.m. – 6 p.m.  
Tuesday – Friday 8 a.m. – 5 p.m.  
Saturday 9 a.m. – 1 p.m.  
Human Resources Office  
2002 West Loop, 289 Lubbock  
785-2211  
E-mail: lubjobs@west.com  
Please come dressed professionally and bring two pieces of identification with you when applying.

**SunSational**  
Tanning and Nails  
Tan for ONLY \$12.50 a month. Plus receive 1 FREE month.  
5409 4th 795-8100

**JIMENEZ BURRITOS**  
**\$1.24 HUGE BURRITO**  
Potato, Egg, & Cheese Combo  
Mon - Fri 605 University Sat 7a - 4p  
6a - 4p 763-9953

**The Quitting Crash Course**  
If you want to quit smoking or dipping, but aren't quite sure how to go about it, the **Quitting Crash Course** is for you.  
You'll learn the do's and don'ts of quitting -- should you use the patch? Nicotin gum? Zyban? What about quitting cold turkey? What do I do about cravings? What help can I get?  
We'll answer these questions and more, plus hear from Tech students who have successfully quit.  
Tuesday, February 4th 3:00 - 3:45 p.m.  
Room C-122 Student Health (Thompson Hall)  
OR  
Wednesday, February 5th 6:00 - 6:45 p.m.  
Room 206 Student Rec Center  
**You MUST Call 743-4481 to reserve a space.**  
(Space is limited. The course is FREE to all Tech students, faculty and staff.)

# Sports

Sports Editor:  
David Wiechmann  
(806) 742-2939  
sports@universitydaily.net

## Fight overshadows win No. 799

By Matt Muench/Staff Reporter

The United Spirit Arena turned into a boxing ring Wednesday night. In the end, it was Texas Tech that delivered the final knockout blow as it defeated Colorado 66-56 to end the Red Raiders' two-game losing streak.

It got ugly in the second half, which featured four technical fouls, 30 total fouls and a couple of scuffles that almost turned into a brawl.

It all started at the 15:49 mark when Tech forward Pawel Storzynski and Colorado center David Harrison began trash talking after Tech guard Andre Emmett dunked the ball to give Tech a 46-31 lead.

Harrison, who was fuming the en-

tire game, bumped Storzynski to the floor resulting in a technical foul. Not being able to maintain his composure, Harrison was held back by teammates.

Two and a half minutes later, another technical foul was called, this time on the Colorado bench after words were exchanged during a timeout.

Then it was Round 2 between Storzynski and Harrison. After a scuffle under the basket that left Harrison with a bloody nose, he charged Storzynski and shoved him again, causing him to receive another technical foul and an ejection.

As he walked toward the bench to get calmed down, he quickly turned around and ran toward Storzynski af-

ter realizing he was bleeding. Storzynski put his fists up as if he were ready to throw blows. No punches landed.

Colorado players Michel Morandais and Blair Wilson said Tech was cheap shooting them all night, and Harrison had a reason to be upset.

"I don't see how you bleed and then get the technical," Morandais said.

Tech players and coach Bob Knight downplayed the melee, but guard Will Chavis added a little humor to the situation.

"I guess (Harrison) was just jealous of (Storzynski's) hair," he said.

Tech guard Nick Valdez said the Raiders were not throwing cheap shots.

"That definitely didn't happen," he said.

Knight said he does not know what to say about the melee.

"I didn't see it," he said. "So I don't know what happened."

After the melee, there was a game to be finished.

Colorado responded well, and Tech did not as the Buffaloes came soaring back to cut the 15-point lead to four points with 4:23 remaining.

During that stretch, Tech did not

hit a field goal in seven minutes and could not seem to sink a free throw shot, as it missed 10 of its first 13 in the second half.

"At that point, I thought that if we made one free throw the rest of the night, it was going to be big," Knight said.

Tech found its groove from the charity stripe by scoring its last 10 points from the free throw line to seal the win.

The Raiders built their big lead in the first half when they went on a 21-2 run over a 6-minute period.

Knight called that run the best basketball his team has played in awhile.

"I thought that was the best stretch of basketball we have played this conference season," he said. "But things kind of got out of hand for us after the melee."

Lost in all the commotion is that Knight now has reached 799 career wins.

With a win on Saturday night at Texas A&M, he will be the fourth Division-I men's basketball coach to achieve the feat. Earlier this month, women's basketball coaches Jody Conradt of Texas and Pat Summit of Tennessee reached 800 wins.



JAIME TOMÁS AGUILAR/Staff Photographer

NICK VALDEZ AND Robert Tomaszeck defend Colorado's Chris Copeland during Tech's 10-point victory Wednesday night in the United Spirit Arena. Bob Knight won his 799th career game.

www.universitydaily.net

### THE Daily Crossword Edited by Wayne Robert Williams

**ACROSS**

- State capital meaning "wooded"
- "Columbo" star Falk
- One way to stand
- Add
- Band together
- Raw mineral
- #1 song from "Rocky"
- Director Craven
- City near Phoenix
- Go-between
- Gradual deterioration
- Act as
- Go-fer's task
- Religion of zombies
- Chatter away
- Stingers
- Craze
- Slimy stuff
- Commutes
- Besides
- Sample
- Doomed one
- Speak monotonously
- Miss a step
- Long-time Mets hurler
- Tornid zone
- Reindeer do?
- Seraglio
- Mexican water
- Wrigley greenery
- #1 song from "The Graduate"
- Classical opener?
- Like some kitchens
- Roanne's river
- Wildbeest
- Prepare
- Barn bedding

**DOWN**

- Purse
- Yoko
- "Holiday"
- Dignitary in DC
- Scrutinize
- Throb
- "Only Time" singer
- Soft metal
- '40s arena
- Satisfying returns
- #1 song from "Back to the Future," with "The"
- Wrestling site
- Cantankerous
- Make an effort to resist
- Classic Pontiac letters
- Railroad station
- Blooper
- #1 song from "Vision Quest"
- Behind time
- Baffling question
- Blunderer's word
- "Star Wars" villain
- Port and hock
- TV's Mr. Grant
- Active folk
- Campus military grp.
- Torment
- Parched
- "Norma"
- RR stop
- Ready or
- Polite address
- pro nobis
- Innovative

By Gregory E. Paul  
Scottsdale, PA 1/30/03

### Wednesday's Puzzle Solved

FEES CALF SPOIL  
LARK ALOE TILDE  
URGE CLOT ONION  
BLOW SHOT AND GOLD  
LET UGH  
LAYOUT AWRY POP  
ELOPE OTIS JOWA  
MAKE SUIPONES MIND  
WOMEN TALK LASED  
NOD BULL COMEDY  
ERR DOT  
DISINONESHEELS  
ORATE KENT CLIO  
COLOR RAIL HALL  
KNAPS ARMY ONTO

## Men's tennis set to take court for opener

By Kyle Clark/Staff Reporter

Texas Tech tennis coach Tim Siegel has one thing in common with Forrest Gump. Siegel's team is his box of chocolates, and he "doesn't know what he's gonna get."

After losing its No. 1 player, Radek Nijaki, to the professional ranks last fall and losing a potential No. 2 player to a failing SAT score, the Tech tennis coach will find out how good the remainder of his team is in matches against Rice and Lamar in Houston this weekend.

"Our character will show against teams like Rice," Siegel said. "Last season, we finished fourth in the Big 12 (Conference), and if this year if we don't come to play every match, we could finish last. This is the hardest team I've ever had to predict."

Tech begins this season at No. 56 in the nation, and Siegel said if the team had retained Nijaki, it would easily be ranked around No. 30. Losing a top player, who was considered by some as one of the top five in the region, has made Siegel realize every player on the team will have to be at his best.

"We need maximum effort from every player," Siegel said. "We're not going to win on talent alone. On paper, this team is not as strong even as

last year, but I love this group. How a team handles adversity is the true measure of a team."

Adversity should be in no short supply against Rice, which comes into the tournament ranked No. 36, but has most around the Tech program convinced it is a much better team.

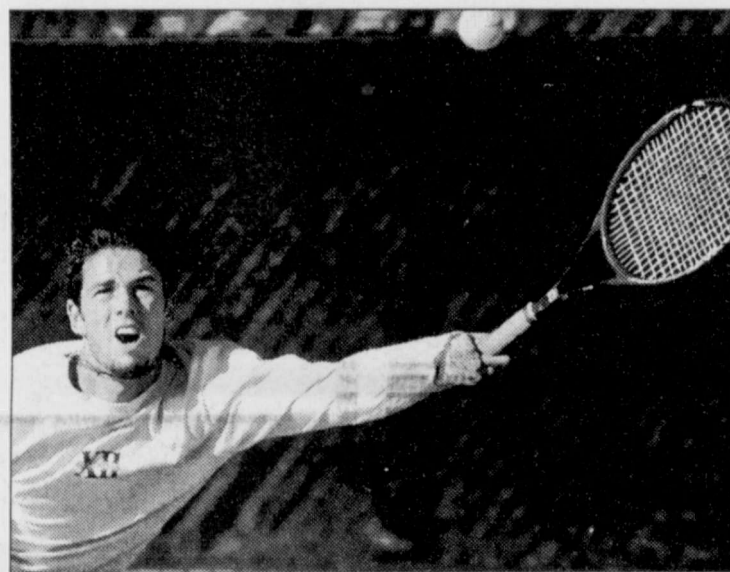
Siegel believes Rice is a strong contender to reach the Top 10 this season and said starting off against such a good opponent would be beneficial for Tech.

"Starting out with Rice is a great way to start," Siegel said. "I don't think anybody on this team is interested in playing teams we know we can beat. Why not play one of the best teams in the country? I'm not into padding my record; I want us to play the best teams possible every week."

Senior Alfonso Perez also believes Rice will be a challenge and thought that No. 36 being handed to Rice was no indication of how good the team really is.

"They should be ranked higher," Perez said. "Preseason rankings don't count on how good the team really is. Rice is a contender to be in the top 10 or the top 5 in the country."

Perez also showed no interest in Tech's No. 56 ranking, while reiterating that preseason rankings have no



CRAIG SWANSON/Staff Photographer

Diderick DeGroot hits a forehand during practice at the McLeod Tennis Center. The Red Raiders open their season this weekend in Houston.

significance.

"I don't pay attention to preseason rankings," Perez said. "We have to prove on the court how good we really are, and everybody will be ready to play this weekend."

Tech has had to scramble through the early part of the year to fill the top spots on the team, and that has left the lineup more flexible. Siegel said the lineup will virtually change daily throughout the season.

Perez said everyone on the team is

pretty equal and that everyone will have a chance to play at every spot.

Although there will be much shifting, Siegel said he believes losing Nijaki brought the team closer together.

"Losing our No. 1 player brought us closer," Siegel said. "Obviously, there was a bitterness after because he was one of the best players in the region, but this is a good group."

For now, the team is anxious to get back on the court. Perez, who is in his final season with the Raiders, said spring is the time of year most beloved by the team.

"We've been away for a year," Perez said. "This team loves the spring. We've been waiting for spring for a year to prove to everyone what Texas Tech tennis is all about."

**BIG MONDAY NIGHT Basketball (Big Screen inside)**

**STELLA'S RESTAURANT & DELI**  
4646 50th St. (50th & Utica) EST. 1973

\$3.00 margaritas (monday)  
\$2.00 20 oz Domestic Drafts  
\$1.50 slices of pizza  
\$2.00 wells Sunday - Thursday 4-9

**Caprock Collision Center**

**FREE** Loaner Car Program & Estimates

**Luxury Auto Repair**

54th & L (Behind Copper Caboose) 765-9300

**BASH RIBROCK'S**  
2419 Main St (Lubbock's Oldest College Bar)

**LIVE** Tragedy Thursday, 1/30 \$1.50 Domestic Pints All Day Every Day

**LIVE** Texas 114 opening for Django Walker Friday, 1/31 POWER HOUR Mon-Fri 3-4pm .50 drafts \$3 Pitchers \$1 longnecks

**LIVE** Texas 114 Saturday, 2/1 www.bashriprocks.com

**Naughty-bull**, the mechanical bull, perfect for parties and get-togethers. Call to get rental information, ask for Gary. 795-0675

**TAXES**  
GUARANTEED LOWEST PRICES  
Have your money in 24 to 72 hrs  
Call or come by  
**WORLD FINANCE SERVICE**  
(806) 744-1491  
1417 34TH LUBBOCK, TX

LUBBOCK'S METRO BIBLE STUDY

**paradigm** EST. 1997

\ 'par-é-, dím\ n 1: A shift in thought, philosophy, and action, that can change the world.

**THURSDAY @ 8:00PM**

Led by: **Jon Randles** & **The Justin Colfield Band**

8 blocks east of Tech @ FBC  
**747-2702**  
paradigm@fbcublock.org  
www.paradigmministries.com

**The Crescent**  
6504 Quaker Avenue  
Great Location in Southwest Lubbock!

Call Us! We Have Move-In Specials!

1, 2 & 3 Bedroom Apartment Homes

- \* Swimming Pool
- \* Courtyards
- \* Dishwashers
- \* Ceiling Fans
- \* Frost-Free Refrigerators
- \* 24-hour Maintenance
- \* On-Site Management

under new management  
**SENTRY** property management, inc.  
Available Now & Pre-Leasing for Summer and Fall Semesters!  
See our ad in the Apartment Directory!  
792-7730



# Softball tired of practice, ready for action

By Kyle Clark/Staff Reporter

At some point, even the best of friends get tired of practicing with each other. Enter the world of the Texas Tech softball team, which, after months of practicing against one another, is excited about the chance of competing against other opponents.

The team will play this weekend in the Southwest Texas Tournament in San Marcos. Scheduled opponents for the Red Raiders are Corpus Christi A&M, Oregon, Southwest Texas State, Arkansas and Houston.

Months of seeing the same faces on the field can become a monotonous occurrence that Tech assistant coach Dave Feinberg knows can bog down a team.

"We're ready to play," Feinberg said. "It comes to a point where you're tired of practicing and tired of scrimmaging. Every team at this time of the season feels that way."

The idea of getting on the field with players from other teams is a treat for the Tech players, who have been scrimmaging against each other all year.

Sophomore pitcher Amie Stines said at practice Tuesday that she and

the other pitchers are definitely excited about the tournament.

"We're tired of just practicing," Stines said. "Today is a scrimmage, and scrimmages have even gotten that way. The team is hitting so well that we don't really know how good we're pitching by comparison."

It is that comparison to the talent of other teams that may tell the Red Raiders how far they have come from last season's record of 13-39 and 2-16 in the Big 12 Conference.

Feinberg said the team has made a lot of changes since last season, and this tournament should be an early indication of how well the changes have worked out.

"This is a measuring stick of how far we've come," Feinberg said. "Our competition level is going to be high throughout the year and some Top 25 teams are going to be at this tournament. This is indicative of how well we're going to do."

Feinberg also mentioned that Arkansas is coming off a strong year in the Southeast Conference, just as Houston had a good year in Conference USA. Corpus Christi A&M has a good team from what he's seen from exchanged scouting reports.

The other two teams Tech will face in the tournament were sized up by Stines and pitching partner Kristina Blair.

Stines said when Tech faced Southwest Texas State last season, SWT was without many of its starters, and the team is filled with good hitters.

As for Oregon, Blair said the Ducks Pac10 Conference schedule itself made the team a powerhouse.

"Anyone in the Pac10 is going to be good," Blair said. "Their caliber of competition is the best. They play UCLA and Arizona, and those are the types of teams they play every week."

Feinberg said the reason changes were made by Tech coach Bobby Reeves was to be more competitive against talented teams. Among the changes made to this year's team was the influx of new talent.

One of the new players, catcher Elyssa Sigala, is a player that Feinberg said would play an important role in what Tech tries to achieve this season.

Sigala, who played last season for West Valley Community College in California, said she is anxious to see how well her game will hold up in Division I softball competition.

"I came from JUCO where I was dominating," Sigala said. "This is the next level. I'm kind of scared to see how well I'm going to do. I really do think things are going to work out though."

Sigala also said the new talent of the team has bonded with the left-over players, and the team has congealed.

"We've come together a lot as a team," Sigala said. "We depend a lot on each other; more than we used to. I'm really confident in this team."



ELYSSA SIGALA PREPARES to throw the ball during practice at Rocky Johnson Field. The Red Raiders will open their season Friday at 11 a.m. in San Marcos. JENNA HANSEN/Staff Photographer

www.universitydaily.net

## January 30

Today in Tech Sports History...

1985: In head coach Marsha Sharp's third season with Tech, the Lady Raiders defeat Texas Christian University 96-52. The 44-point victory was just one on the way to a 24-8 season for Tech. The Lady Raiders posted a 12-4 Southwest Conference record that season as well and were eliminated by Texas in the conference tournament.



**PATRIOT**  
FIREARMS  
Family Shooting Center  
Welcomes Tech students w/ ID.  
\$5 daily. Rental guns available.  
Open Mon.-Sat. 9-8 & Sun 1-5.  
5840 49th St. 796-2858

### Piercecution

Body Piercing & Tattoo Studio


Clean and Sterile Environment  
Single-use Needles

**\$10 off with Tech ID**

1820 19th Street  
Lubbock, TX 79401  
(806) 749-8280

Tech will host the First and Second Rounds of the NCAA Women's Basketball Tournament March 23-25.

**\$2 SHOTS \$2 SHOTS**



**"Where Everybody Plays"**

**TONIGHT**

**Bleacher's Tea Party!!**

**.50¢ Long Island Ice Teas!**

**Plus... Koozies**

**1719 Buddy Holly • www.Bleachersportscafe.com • 744-7767**

**TECH'S #1 PARTY VENDOR!**

| THURSDAY                |                          |                      |                            | JANUARY 30              |                       |                        |
|-------------------------|--------------------------|----------------------|----------------------------|-------------------------|-----------------------|------------------------|
| STAT. CHAN. AFFIL. CITY | KTVT 9 PBS Lubbock       | KCBD 11 NBC Lubbock  | KLBK 13 CBS Lubbock        | KUPT 23 UPN Lubbock     | KAMC 23 ABC Lubbock   | KJTV 63 FOX Lubbock    |
| 7:00                    | Body Elec. Callou        | Today Show           | News                       | Tarzan Digimon          | Good Morning          | K. Copeland Arnie      |
| 8:00                    | Berenstein Barney        |                      | Early Show                 | Recess Lightyear        | America               | Paid Program           |
| 9:00                    | Dragon Tales Arthur      | Today Show           | Montel Williams            | Judge Mathis            | Regis & Kelly         | TBA                    |
| 10:00                   | Sesame Street            | Martha Stewart       | Price is Right             | People's Court          | View                  | John Walsh             |
| 11:00                   | Mr. Rogers TeleTunes     | Hwy Square Jeopardy  | Young & the Restless       | Paid Program            | Access Port Charles   | Other Half             |
| 12:00                   | Old House Watercolor     | News Days of Our     | News Beautiful             | Jerry Springer          | All My Children       | Good Day Live          |
| 1:00                    | Needle Arts Dragon Tales | Lives Passions       | As the World Turns         | Jenny Jones             | One Life to Live      | Caroline Rhea          |
| 2:00                    | Zoom                     | In-Edition           | Guiding Light              | Paid Program            | General Hospital      | Divorce Court          |
| 3:00                    | R. Rainbow Cyberchase    | Oprah Winfrey        | Maurycy Povich             | Change/Heart Blind Date | Wayne Brady           | Joe Brown Joe Brown    |
| 4:00                    | Clifford Arthur          | Dr. Phil             | Life Moments               | Street Smart            | Home Inq. Millionaire | News & More            |
| 5:00                    | Liberty Nightly Bus.     | In-Edition           | Judge Judy For Women       | Weakest Link            | ABC News              | Simpsons That 70's     |
| 6:00                    | NewsHour                 | News W/ Fortune      | CBS News News              | Pyramid Extra           | E.T.                  | Friends Raymond        |
| 7:00                    | This Old House           | Friends Scrubs 'TV14 | Star Search                | WWE Smackdown           | ABC Movie: "Columbo"  | Stupid Stupid          |
| 8:00                    | Ed Sullivan              | Will/Grace Good      | C.S.I. 'TV14               | "                       | "Likes The Nightlife" | Pulse                  |
| 9:00                    | Frontline                | E.R. 'TV14           | Without a Trace 'PG        | Dharma/Greg Dharma/Greg | Primetime             | News                   |
| 10:00                   | Nightly Bus. Destinies   | News Tonight Show    | News David Letterman Craig | King/Hill Voyager       | News Nightline        | Seinfeld Frasier       |
| 11:00                   | "                        | Coran                | Extra                      | MASH Access             | Access                | Raymond Shoot Me       |
| 12:00                   | "                        | O'Brien Last Call    | Kilbom Paid Program        | Jimmy Kimmel            | "                     | King/Hill Paid Program |

6 FRIENDS 6 DAYS @ 6PM!

**F.R.I.E.N.D.S**

MONDAY - SATURDAY

**FOX 34**

## CLASSIFIEDS

**102 JOURNALISM BLDG. 742-3384**

CLASSIFICATIONS: Typing • Tutors • Help Wanted • Furnished for Rent • Unfurnished for Rent • For Sale • Tickets for Sale • Services • Lost & Found • Miscellaneous • Personals • Roommates • Legal Notice

ATTENTION CLASSIFIED READERS: The University Daily screens classified advertising for misleading or false messages, but does not guarantee any ad or claim. Please be cautious in answering ads, especially when you are asked to send cash, money orders, or a check.

**CLASSIFIED WORD ADS**  
RETURN: 11 a.m. one day in advance  
\$125.00 per day/15 words or less; 15¢ per word/day for each additional word.  
Bills in advance \$100 extra per day.

**CLASSIFIED DISPLAY ADS**  
No charge if 12 days in advance. Local \$11.00 per column inch.  
Out of town \$14.00 per column inch.

**PAYMENT TERMS**  
All ads are payable in advance with cash, check, Visa, Mastercard or Discover.

**TUTORS**  
1-2-3 IT'S EASY! Help for Math/Stats, all levels. Don't be left in the dark! Illuminatus Tutoring, 790-2636, 786-8557.

**PRIVATE TUTOR**  
There is no substitute for one-on-one tutoring. Over 35 years experience, covering Math 03010-2350. Call 785-2750 seven days a week.

**HELP WANTED**  
BARTENDERS NEEDED! Earn up to \$300 per day. No experience necessary. Call 1-866-291-1884 ext. U26

BARTENDERS/WAITSTAFF and DJ's needed for new club on Main & X. Call 438-0182.

BASS PLAYER needed for rock band. Call 543-0504.

CATTLE BARON hired for all positions. Experience preferred. No phone calls please. 8201 Quaker.

COUNSELORS NEEDED for after-school programs with Camp Fire USA. 15-20 hours/week. Call 785-6394.

COVER GIRLS PHOTOGRAPHY is seeking attractive modeling candidates to submit for various modeling assignments. \$5,000 - \$10,000 possible per assignment. Call 796-2549.

HIRING ALL positions apply in person Tuesday-Friday afternoons. Midnight Rodeo 7301 University.

**JAKE'S SPORTS CAFE**  
Hiring all positions. Jake's is a new restaurant and bar next to Gold's Gym. Opening in February. Seeking experienced professionals. Apply in person at 5025 50th 9am-5pm.

KID'S KINGDOM is hiring for morning and afternoon teachers. CPR & First Aid certification required. Experience preferred. Bring copy of schedule. Apply at 5320 50th St. (inside St. Brings the United Methodist Church).

LANGSTON LAWN & sprinkler workers needed for irrigation/landscape crew. To apply call 796-8229.

NANNY NEEDED for 2 school-age children. Start in July. Room/board provided. References required. 788-1753.

**NEXT TRILLION \$ INDUSTRY!**  
Launching Lubbock now! International science-based nutrition company filling associate positions now. Unlimited income potential! Flexible hours! Call Jason, 687-4848. www.exactnutrition.com

**BARTENDER TRAINEES NEEDED**  
\$250 a day potential.  
Local Positions.  
1-800-293-3985 EXT. 526

Earn \$1,000 - \$2,000 for your Student Group in just 3 hours!  
College fundraising made Simple, Safe and Free!

**Campus Fundraising**  
Your Trusted Source for College Fundraising.  
888-923-3238 • www.campusfundraiser.com

ORLANDO'S IS now looking for delivery drivers. Excellent training available - no experience necessary. Apply in person at 6951 Indiana Avenue between 2-5 p.m.

P-T DELIVERY driver for afternoon. For more info go to [www.midwestprint.com](http://www.midwestprint.com).

SPRING BREAK 2003 with STS, America's #1 Student Tour Operator. Sell trips, earn cash, travel free. Information/reservations 1-800-648-4849 or [www.ststravel.com](http://www.ststravel.com)

THE DAVIS COMPANY, join our team of landscapers, sprinkler/irrigation and total lawn and tree care. Call 749-9147.

**FURNISHED FOR RENT**  
IMMEDIATE LEASE TAKE-OVER Jefferson Commons \$309 + bills, 1 bedroom in 4 bedroom apartment. 777-0348.

**UNFURNISHED FOR RENT**  
1, 2, and 3 bedroom houses for rent. Call Jason White, 747-1070 or 777-0548. Same Jason, new company!

1 BEDROOM house near campus with hardwood floors and backyard. \$395/mo, 783-3401.

1919 23RD - 2/1/11 Two living areas. Hardwood. Central Heat / Air. W/D hookups. \$650. John Nelson Realtors 794-7471.

2 BEDROOM house near campus with hardwood floors. \$695/mo, 783-3401.

2120 20th 2/1/1 carpet, \$450 + utilities. Deposit + references required. 778-0312, 797-4471.

2319 MAESTRI, upper kitchen in duplex. Appliances, \$425, bills paid. John Nelson Realtors 794-7471.

2323 B MAIN, 2-1/2 townhouse in fourplex. 2 years old, appliances, c/h/a, w/d hookups, security system in place. \$650 + electric. John Nelson Realtors 794-7471.

59th St. (Corner Johnson) 3 bedrooms, 2 bath, 2 car attached garage, 1749 sq. ft., w/d connections, lots of storage space. \$990/mo, \$600/dep, broker/owner. 783-8784.

**ATLANTIS APARTMENTS**  
Walk to Tech, efficiency, one and two bedrooms. \$265-395. Most pets accepted. 747-5831.

BACK HOUSE EFFICIENCY, 421 sq ft. Short walk to Tech. W/d, hardwood floors, large patio with grill. (469) 688-6855.

CLOSE TO CAMPUS! Large 3/2 brick house. Huge living room, appliances, carpet, w/d connections, fenced yard. 2428 21st. \$850/mo, \$400/dep. 787-2323, 789-9713.

FARM HOME. Lovely 2/2/2. (2 living areas) 45 minutes northeast of Tech. Garden/porch. \$555. Bills paid. For info see Ann 4211 34th 1-5 pm. 796-1651

HOUSE FOR LEASE. 2/1, newly redecorated, close to campus. \$700 per month. No pets, please. Call Michelle at 535-1252.

JUST REMODELED 2/1/1. New range, dishwasher, paint, refinished hardwoods. \$600/monthly, 2610 39th. Owner/broker. 762-4934.

ONE BEDROOM Tech medical area. \$395/mo, 3715 23rd. 797-6358.

PRE-LEASING FOR SPRING. Large luxury apartments. 1, 2, & 3 bedrooms available. Pool and courtyard. 744-0434.

SMALL HOUSE for rent near Tech. 1/1 with storage unit. Newly redone \$350/ month. 773-6513.

STUDENTS: YOUR CHOICE of two 3/2/2 c/h/a, w/d connections, extra off-street parking. 5417 29th or 3101 42nd, available 2/1/03. 785-8174.

TAKE OVER my lease immediately! 1/1 corner apartment at Heritage Apartments. W/d connections, very clean, \$409/mo + electricity. 786-8735.

THREE NICE updated houses available now for lease, c/h/a, dishwasher, stoves, refrigerators, no pets. 796-0774.

TOTALLY REMODELED! 3/2 - 2 story brick house! Central Heat and Air, Appliances, W/D connections. Hardwood floors, Dining room + cellar, fenced yard 2008-26th. \$975/mo., \$475/dep. 787-2323, 789-9713.

**FOR SALE**  
KEMMERE WASHER & DRYER, \$400. Kenmore refrigerator with icemaker, \$250, 438-5872.

TWO TECH TERRACE homes. Three bedrooms. Good buys. Ideal for Tech student or faculty. 796-0774.

WASHER & DRYER \$100 OBO. HP 48GX calculator \$60 OBO. 785-8069.

**MISCELLANEOUS**  
GREEKS BATTLE IT OUT IN THE KINGDOM!  
Don't miss your chance to win over \$1,000 in cash and prizes with the Lubbock Cotton Kings! Sign-up deadline: Jan. 31st. Call Jeanne at 747-7825 ext. 211

HOCKEY: \$3.00. Play pick-up games of hockey every Thurs. night 8-10 p.m. at The Rink. 796-1361.

LEARN TO FLY! Be a pilot now! In the air four months max. Most economical flight program in Lubbock. (806) 797-2040.

LEGEND HAS RETURNED. Uncle Nasty's on Main & X. Totally remodeled. Has best dance club, loudest music & unspeakable drink prices. A different party every night. Check out our schedule on Friday, Feb. 7 during our grand opening bash. DJ & \$500 cash prize to loudest Tech table. Where the elite and the underdog meet, so come party like a rock star!

**NEED EXTRA MONEY**  
We buy gold and silver jewelry. Any kind in any condition, even broken. James Avery, David Yurman, etc. Varsity Jewelers, across from Tech, 1311 University. [www.varsityjewelers.com](http://www.varsityjewelers.com)

**WASHERS & DRYERS FOR RENT**  
Great units. Quick delivery. Local Service. \$35/month (plus tax). Call University Leasing toll free at 1-877-700-7704 or apply online at [www.universityleasing.com](http://www.universityleasing.com)

**SERVICES**  
**ANDROPOLIS**  
NEW TALENT \$16-\$20 includes haircut and style. Request Andi or Ashley. 747-8811.

CLEANING!! Let me clean your home. Great rates! Call 687-5512.

FREE CELL PHONE with purchase of a \$40 plan. High Tech Cellular. Call Bruce at 438-3882.

GET READY for spring break! Salons Southwest, full-service salon. Haircuts, highlights, perms, & brow waxing. 82nd & Quaker, down from Zookin's. Call Kelly, Melinda, or Miranda.

GUITAR LESSONS: Concert Artist, Beginning/Advanced. All styles. Reasonable rates. 25% discount startup month! Park Tower, near Tech. Grisanti Guitar Studio. 747-6106. CD's at Hastings Music and Amazon.com.

PROFESSIONAL LITERARY SERVICES. Consultation, Editing, Thesis Dissertations, Writing, Technical, Books - biographies/auto biographies. 3403 73rd, Suite 9. 806-785-0552.

QUICK APPLIANCE REPAIRS and sales. Refrigerators, freezers, washers/dryers, A/C units. Work guaranteed. 741-0041.

RESNET HAS ABANDONED YOU If you want face to face help with someone who IS in the business of fixing computers call 786-8782. [tenyemire.com](http://tenyemire.com)

**PROBLEM PREGNANCY**  
Aaron Women's Clinic of Lubbock-Lic#028  
(806) 792-6331

**BEACH & SKI TRIPS**  
**SPRING BREAK**  
[www.sunchase.com](http://www.sunchase.com)  
1-800-SUNCHASE

**ONLINE FILING:**  
Prepare and file your taxes yourself online @ [www.absolute-taxes.com](http://www.absolute-taxes.com) for a minimal fee of \$9.95 for 1040EZ and \$14.95 for 1040. Click on Online Filing and the program will walk you through your return step by step. FREE E-FILE!!

#1 Choice for over 19 years!  
**SPRING BREAK**  
**CANCUN**  
**ACAPULCO**  
**MAZATLAN**

U.S. Ski BRECKENRIDGE  
VAIL BEAVER CREEK  
KEYSTONE A-BASIN  
1-800-BEACH-BUM  
1-800-232-9428  
[www.universitybeachclub.com](http://www.universitybeachclub.com)

**CASH PAID TODAY**  
Join Us The Month Of February  
**GET YOUR CHANCE TO WIN A GATEWAY COMPUTER!**  
Ask about our Lifesaver bonus program.  
EARN \$180 a month! \$60 the 1st week!  
New donors bring this ad for an additional \$5 cash bonus  
**ALPHA PLASMA CENTER**  
747-2854  
\*Open 7 days a week \*Improved repeat donor fees

**SPRING BREAK MAZATLAN FROM \$219** with Studentcity.com. Packages include Round-trip bus transportation, 5-nights hotel, hotel taxes/gratuities, free beach parties, 8 free meals and over 40 hours of free drinks! Space is limited, book now! Call 1-800-293-1443 or go to [www.studentcity.com](http://www.studentcity.com).

STUDENTS, got a problem? The Ombudsman is in. A safe place for students to bring concerns and find solutions. 203 Student Union Bldg. M-F 8:00-5:00. 742-4791.

[www.writeawayresume.com](http://www.writeawayresume.com)  
Killer graduate resume and cover letters. Increase your hiring potential—Call 796-0681.

**REDAIDERTIPS.COM**  
reaidertips.com reaidertips.com reaidertips.com reaidertips.com reaidertips.com

**ROOMMATES**  
FEMALE GRADUATE student seeks female roommate for fully furnished, brand new 3/2/2. No smoking, quiet environment. \$350/mo, bills included. For more info call Allison at 441-5775.

FEMALE ROOMMATE needed 3/2 house. Close to Tech. \$350/mo + 1/3 bills. 763-5730.

**Visit the UD Online**

@

**www.universitydaily.net**

# A PLACE TO CALL HOME!



## APARTMENT FEATURES:

- Ethernet service included
- W/D in every apartment
- Private bedrooms available
- Private bathrooms available
- **BRAND NEW APARTMENTS**

## COMMUNITY FEATURES:

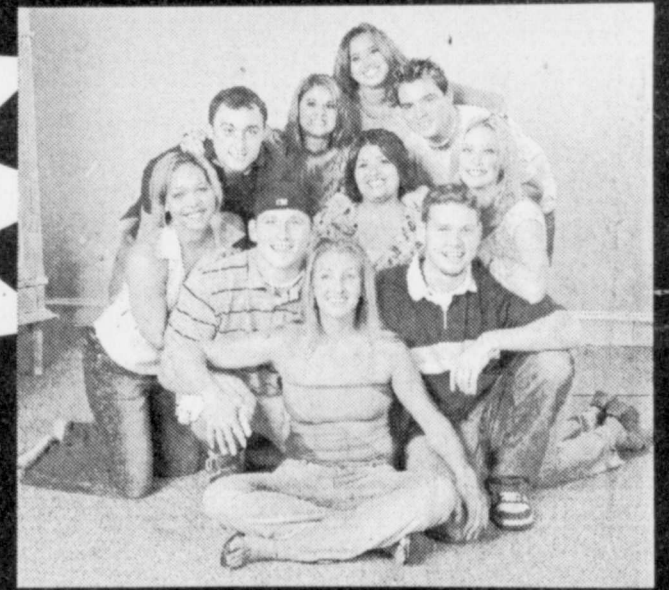
- 24 Hour emergency maintenance
- State of the art computer center
- Huge Fitness center
- 2 Blocks from Campus
- Resort Style Pool w/Hot Tub

It's **MARDI GRAS** time at **STERLING UNIVERSITY TRAILS!!**



\*Join us **TODAY** for  
**GRAND OPENING & RIBBON CUTTING CEREMONY**  
 from 12:00-5:30PM!

- \*Live Remote w/ our friends from Z102
- \*Lots of great **GIVEAWAYS**
- \***FREE** Refreshments
- \***LIVE** Entertainment



\*Come visit our **BRAND NEW CLUBHOUSE** JUST 2 BLOCKS east of University at 2210 Main Street

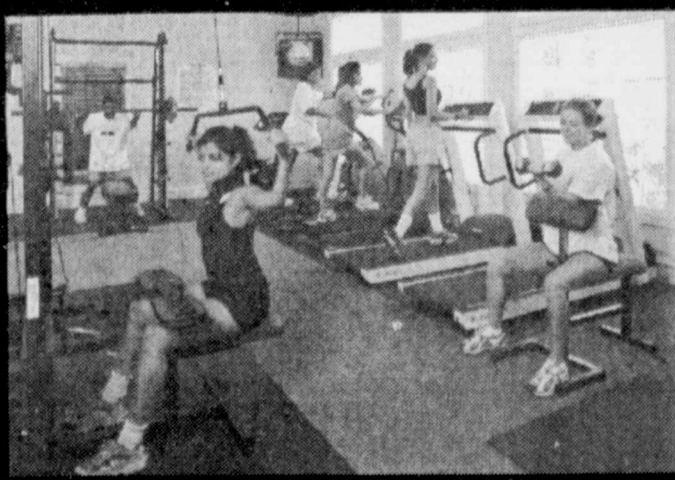


## STERLING UNIVERSITY

# Trails

**COLLEGIATE RESIDENCES**

\*Take a tour today and discover your **BRAND NEW HOME!!**



**(806) 749-2200**  
 2210 Main Street  
 Lubbock, TX 79401  
[www.suhtrails.com](http://www.suhtrails.com)



An SUH Community  
 SUH is a Trademark of SUH, Inc.