

\*\*\*\*\*5-DIGIT 79235  
 Floyd County Histori Museum  
 PO BOX 304  
 FLOYDADA, TX 79235-0304

# The Floyd County Hesperian-Beacon

THURSDAY, AUGUST 15, 2019

HESPERIANBEACONONLINE.COM

\$1.00

## August 21 registration deadline for ACE After-School Care

By Deon Fincher  
 The Hesperian-Beacon

FLOYD COUNTY SCHOOLS – With the start of the school year just around the corner, parents have after-school care on their minds. ACE After-School Programs are available at the Lockney Elementary, AB Duncan Elementary (Floydada) and the Floydada Jr. High.

The program offers activities that assist students with homework completion and preparation, academic understanding and enrichment, career information, college prep, and a myriad of other topics.

A primary goal for the program is parental engagement in which mentors strive to assist parents and children in working together on academic and social goals. Parent Night events are offered throughout the year which provide family-centered activities.

The Texas ACE programs aim to improve student attendance, behavior, and academics, while providing safe supplemental learning space for students and families who otherwise would not have such opportunities.

Both programs are open to Kindergarten through Jr. High. Applications are available at the Lockney Elementary School office, AB Duncan office and the Floydada Jr. High office. Registration closes on August 21st—spaces are limited.

ACE (The Texas Afterschool Centers on Education) is administered by the Texas Education Agency and is funded through the 21st Century Community Learning Centers Initiative of the U.S. Department of Agriculture.

For additional information, contact Lockney ACE coordinator- Shaina Hart at [Shaina.hart@ciissouthplains.org](mailto:Shaina.hart@ciissouthplains.org) or in Floydada, AB Duncan ACE coordinator-Chelsea Walker at [Chelsea.walker@ciissouthplains.org](mailto:Chelsea.walker@ciissouthplains.org), or the Floydada Jr High ACE coordinator-Liza Perez at [liza.perez@ciissouthplains.org](mailto:liza.perez@ciissouthplains.org).



SPC Photo/Wes Underwood

**SOUTH PLAINS COLLEGE NURSING CLASS OF 2019** – South Plains College Plainview Center recently hosted a pinning ceremony to honor the graduates of the Class of 2019. Shown are (Front row, l-r) Christella Reyna of Olton, Toni Cordova of Plainview, Clarissa Denise Hernandez of Plainview, Anissa Adelina Guerrero of Lockney; (Back row, l-r) Cynthia Luna of Plainview, Jordan Nichole Valadez of Plainview, Josh Mata of Plainview, Gracie Cervantes of Lockney, and Crystal Lynn Vasquez of Lockney. The event was held in the Fair Theatre.

## South Plains College Plainview Center honors nursing graduates

Special to The Hesperian-Beacon

PLAINVIEW – South Plains College Plainview Center recently honored nine graduates during a pinning ceremony Thursday (Aug. 8) in the Fair Theatre.

Lockney graduates include

Crystal Vasquez, Gracie Cervantes and Anissa Guerrero.

Plainview graduates include Toni Cordova, Clarissa Denise Hernandez, Josh Mata, Jordan Nichole Valadez and Cynthia Luna.

And, Christella Reyna of Olton.

Program Coordinator and Assistant Professor Suzanne Griffin, AAS, ADN, RN, served as mistress of ceremonies. SPC Director of Nursing Programs Melissa Tomblin, MSN, RN, provided the welcome.

Chief Nursing Officer for Covenant Health-Plainview Leslie Hackett, MAM/HCA, BSN, RN, delivered the keynote ad-

dress. Musical entertainment was performed by Jeremy Huffhines. Representatives of the Gideon Auxiliary presented bibles to the graduates.

Members of the SPC Plainview Center faculty Becky Halford, MSN, RN, instructor of vocational nursing; Leah Rios, LVN, clinical instructor; Lori Conklin, LVN, clinical instructor; and Juan Gonzalez, LVN, clinical instructor, assisted with the pinning.

The Pinning Ceremony marks the completion of the vocational nurses training and the eligibility of the graduates to write the National Council Licensing Exam to become licensed vocational nurses.



Courtesy Photo

**JOYFULEA CREATIONS AND MORE** celebrated their grand opening Saturday, August 10th, with the official Chamber of Commerce Ribbon Cutting witnessed by friends, family and customers. Located in the Raceway Fuel building at 118 E. Shurbet, the business offers upcycled furniture, antiques, handmade crafts and used furniture. The company purchases estate and garage sale lots. Pictured (L to R): Corina Gonzales (Chamber), Dalton Thornton, Curtis Dalrymple, Joy Dalrymple, Dalton Webster, Mayor Michael DeLeon, Tessa Rogers (Chamber) and Sandra Salazar (Chamber). Front (L to R): J.R. DeLeon and Adalyn DeLeon.

## Upcoming

Events are listed free of charge for nonprofit civic organizations, schools and community events. Please submit listings at least two weeks ahead of the date. Listings will run through the date of the event. Emailed submissions are preferred to [fchb.editor@yahoo.com](mailto:fchb.editor@yahoo.com).

### LOCKNEY SENIOR CITIZENS SUNDAY LUNCH

The Lockney Senior Citizens Center will have their Sunday lunch on August 18th from 11:30 a.m - 1 p.m. Menu includes roast beef, mashed potatoes, green beans, macaroni & cheese, roll and dessert. Donations are appreciated.

### FLOYDADA ISD 1ST DAY OF SCHOOL

Floydada students will be headed off to school on Monday, August 19<sup>th</sup>. This will also be an early release day--be sure to pick up your kids at 1:30 p.m.

### LOCKNEY ISD 1ST DAY OF SCHOOL

Lockney students will be heading off to school on Wednesday, August 21<sup>st</sup>.

### LOCKNEY LIBRARY ASSOCIATES

Lockney Library Associates will have a Bake Sale and Book Sale on Old Fashioned Saturday, August 24. If anyone is interested in helping by donating some baked goodies, please bring them to the library Saturday morning or call 983-7735 and someone will pick them up.

### LOCKNEY OLD FASHIONED SATURDAY

The Lockney Old Fashioned Saturday will be held Saturday, August 24. More info to follow.

### FLOYD COUNTY 4-H ACHIEVEMENT BANQUET

The Floyd County 4-H Achievement Banquet will take place Sunday, August 25, at 1:00 p.m. at the Unity Center. Meal will be Mexican Stack. Please call the Extension Office to sign up to bring a food item. 806-983-4912. No cost to attend.

See **UPCOMING**, Page 7

## Corrections

If you spot an error of fact, contact the FCHB office email: [fchb.editor@yahoo.com](mailto:fchb.editor@yahoo.com)

## News on the go

Use your smartphone to scan the quick response, or QR, code to visit us online.

The Floyd County Hesperian-Beacon  
 Copyright 2019  
 123rd Year, No. 14  
 USPS 202-680



## August 24th is Lockney's Old-Fashioned Saturday

By Deon Fincher  
 The Hesperian-Beacon

LOCKNEY – Chamber of Commerce organizers have, once again, planned a host of activities and events that will transport each and every participant back to those memorable community festivals of the "good ol' days".

Each year a raffle becomes one of the event's primary highlights. This year, tickets are being sold for a Henry 22-Magnum Rifle. Tickets cost \$20 each, or one can purchase 6 tickets for \$100. The Chamber of Commerce members are selling those tickets and will have tickets for sale at their booth during the Saturday event. The raffle drawing will take place Saturday evening, at 5:00 pm.

The vendors will be unveiling their wares at 10:00 that morning which will kick off the day's events. While shoppers fill their bags with baked goods, lunch, and other trinkets, the Road King's Car Show participants will be rolling into town and into place. Featuring classics from every decade, the show is always an impressive selection of some of the most sought after and unique automobiles.

The only Pet Show in Floyd county, Old-Fashioned Saturday's pet show is gaining popularity. Open to any unaggressive pets—last year there were numerous different varieties of dogs...and a prize-winning bunny—the show really wants to showcase pets of all kinds. Organizers ask that you and your pet be present, and registered, by 10:00 am. The show will begin at 10:00.

Kids' activities are one of the key elements of this festival. Those games will begin at 11:00 am and continuing through 3:00 pm. The Floyd County Sheriff's Office has sponsored this year's Bounce House for the kiddos.

For all of Floyd County's performers, Old-Fashioned Saturday provides a stage. Participants need to contact Karen Wilson at 806-292-8519 in order to be registered as participant. The Talent Show will get started at 2:00 pm. After the Talent Show, festival goers will want to stick around for the drawing of the raffle for the Henry 22-Magnum Rifle.

A new activity this year is being organized by Marcos Bernal—a 3-on-3 basketball tournament. The tournament will be a double-elimination tourney with winner taking all the money. Teams can be registered up until noon, Saturday August 24th. Cost is \$10 per person. For more information or to register teams (up to five players), contact Marcos at (806)983-1306.

Tying up the evening will be the street dance, starting at 8:00 pm. DJ Tommy Lopez of Plainview. Lopez will entertain the crowds until 11:00 pm. The dance is free for all and will be the culmination of the festival.

"Helping you change things for the better"

On-line Banking - [fnbfloydada.com](http://fnbfloydada.com) • TeleBanking - 1-855-232-8601

The First National Bank of Floydada  
 124 S. Main, Floydada • 806-983-3717

BarwiseElevator.com

**Barwise Elevator**

Sunflowers • Wheat • Milo • Sesame • Corn

**Integrity Fertilizer**

12-48-8 CALFA 20-20-20 Zinc 9-15-30 MILLER

806-983-4200 806-983-2051

ECO-DRIP

**ECO-DRIP IRRIGATION**

1722 US Hwy 70 | Floydada, Texas 79235  
 806-686-2183

**WELCOME BACK TO SCHOOL!**

**Payne Pharmacy**

200 S. Main St. Floydada (806) 983-5111 • (800) 345-7961 Denise Payne, R.Ph



The Floyd County Hesperian-Beacon, 201 W. California, Floydada, Texas 79235, is open from 10 a.m. to 5 p.m. Monday through Friday. Phone (888) 400-1083. Email fchb.editor@yahoo.com

**PUBLISHER**  
William C. Blackburn  
**EDITOR**  
Deon Fincher  
**GENERAL MANAGER**  
Barbara Anderson

The Floyd County Hesperian-Beacon (USPS 202-680) is published every Thursday, including holidays, by Blackburn Media Group Inc., P.O. Box 1260, Childress, Texas, 79201-1260. Entered at U.S. Post Office, Floydada, Texas, for transmission through the mail as a Second-Class matter, according to an Act of Congress, March 3, 1879. Periodical Rate Postage Paid at Floydada, Texas, 79235. Postmaster: Send address changes to The Floyd County Hesperian-Beacon, 201 W. California, Floydada, Texas, 79235

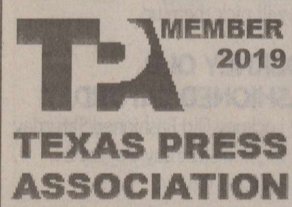
All material Copyright 2019 The Floyd County Hesperian-Beacon

It is the mission of this newspaper to promote the rights of individualism in the American Declaration of Independence. The right of life, liberty and ownership of property are the cornerstone of freedom. Government's sole purpose is to enhance our liberty and freedom. Therefore, we hold every elected and appointed agent of government accountable to that standard.

**DEADLINES**  
Advertising: Noon Fridays  
Editorial: Noon Mondays

**SUBSCRIPTIONS**  
\$36 a year in the county  
\$42 a year outside the county

Call 888-400-1083



Thank You For Reading  
The Floyd Hesperian  
Beacon!

**Karen Houchin**  
Attorney  
806-983-5556

**J & K Insurance**  
Auto, Property, Commercial, Farm & Crop Insurance

**Jim Martin**  
Independent Agent

**Allen Martin**      **Danny Durham**

**Linda Garcia**      **Lupe Delafuente**      **Phyllis Smith**

LOCKNEY, TEXAS (806) 652-3386

Announce your wedding  
in Floyd Hesperian-Beacon  
\$25+

Email the picture of the couple and a write up (maximum of 500 words) to fchb.editor@yahoo.com and call 888.400.1083 to make payment. Be sure to include where the couple is from, where they plan to make their home, their parents' names and where they are from, and any other information you would like to include!



Courtesy Photo

**FLOYDADA ROTARY - Brooklyn Golden, Rotary Youth Exchange student, spoke about her experiences in France as an exchange student. Since 1929, Rotary International has sent young people around the globe to experience new cultures. Every year more than 7,600 young people have the opportunity of a lifetime — a chance to live in another country and see the world from a new perspective through the Rotary Youth Exchange program. Typically, students are sent to another country for a year-long stay, generally living with multiple host families during the year and being expected to perform daily tasks within the household as well as attend school in the host country. Short term exchange programs are also quite common. These typically involve direct student exchanges between two families arranged through Rotary to coincide with major school holiday periods.**

## The 501: Home-grown thoughts on pot

Ever smoke pot? I haven't, except for secondhand smoke.

Yes, I've had friends who were dedicated to marijuana. Georgia swore it helped her asthma. Sanford (not his name of choice)

just liked the stuff. And how can I forget Hank from Honolulu (pseudonym), who walked to work because he was afraid a drug dog might zero in on his vehicle?

Now that pot is somewhat legal, I could use all three real names, but Sanford is probably still paranoid even in death, and dear Hank probably still prefers to remain a closet smoker. When you spend most of your adult life hiding an addiction, it's not easy to kick the hide-the-addiction habit.

Closet smoker. Ha. I see someone stooped and tightly squeezed between suits and

dress, head just below the hanger rod, puffing with purpose in the dark claustrophobic space, swearing that pot is the best remedy for claustrophobia. Maybe it is.

I'll say this. People who believe in marijuana convincingly declare it's the perfect remedy for all sorts of things.

Me, I first heard about marijuana in a circa-1956 television show. Jazz musicians had crashed their car. The speedometer was stuck on 90, or something like that. They'd been using marijuana. The inference was that marijuana makes you play better music, drive recklessly and get killed.

Hmmm, I thought. Along about the same time I was learning the words to "La Cucaracha." The phrase "marijuana que fumar" got my attention.

Hmmm, I thought. Then suddenly it was the '60s. The rest is history. Weed came into its own. Now "its own" is still being defined and taking on new meaning in the context of treatment for problems like pain, laying previous snake oils in the shade. I'm abstaining, but if I had back pain or some other overwhelming ill, I'd probably want to try it. In which case, I'd be tempted

to grow my own. I'm addicted to opportunities to save money.

It's likely the five-leafed plant has already been grown on our farm. Years ago, when my mother happened to drive one of the less-traveled roads on our place, she encountered a former resident who, curiously, was holding a coffee can with a plant in it.

"Oh Carmen (fictitious name), did you come over her to get some dirt for your plant?" my mother asked.

She smiled and nodded yes. I love that story.

Meanwhile, here's a serious observation regarding marijuana, but I must credit television's Dr. Phil:

He was counseling a young man with a penchant for beating his girlfriend. The kid was something like 17. He'd been smoking pot for a couple of years. Dr. Phil told him he would have to get off the stuff in order to solve his anger issues by learning to deal with life's problems without a crutch. Otherwise, he'd never grow up.

Hmmm, I thought. If only Dr. Phil could explain why I've never grown up. He might say it's a choice I've made myself.

Maybe so. I can't blame pot.

## About Town

This summer has seemed like a whirlwind took up residence in my life. With the ending of the school-year, I really thought I would have some time to relax. That was not the case—or perhaps it was, as I was struck by health issues that demanded I make some changes. Although change is easy for me, and usually inspiring, working to cut-back on work really deflated me. Putting less than 110% into something that I am passionate about—I am passionate about the families of these two communities in our county—is unfathomable. As a result, I've spent three months trying to re-wire my brain and making hard lists to realign priorities.

Our duties at the newspaper are not set by the clock; therefore, sitting in an office isn't reasonable—that's not where the news is happening, nor are the events hemmed in to an 8:00 am to 5:00 pm window. Think about how many activities take place after-hours in our community—sporting events, banquets, civic meetings, entertainments—the list goes on and on. Covering those events is what makes the news, so that is where my priorities lie. Our offices tend to be a 'drop-off' location more so than a work-zone. I understand that this is a bit off-road than what the public wants, but, with a skeleton staff of two, it is the only option we have.

As the reporter and the photographer, it is my duty to be present at as many events as possible; however, I need help knowing about those events. Your monthly organizational meeting is easy for you to remember, but I have a dozen monthly meetings of which to keep track, and so often, meetings get moved for scheduling reasons, so although you might think your meetings are 'regular' and should be easy to remember, I need assistance with that and forgiveness for not showing up! A quick text or email reminder is so helpful to keeping me in the right place at the right time. If you have news to submit, please feel free to contact us with the details—as much detail as possible—so we can give the true and correct information to our readers without having to spend precious time making phone calls and endless texts to verify or gather information.

There are beautiful personal stories all around us! Believe me when I say that I see them everywhere and that I would love to write each and every one of them and plaster those profiles in the pages of print. Please understand that most newspapers have numerous writers, and those writers specialize in different segments, which enables them to do the very best job they can for that type of writing. Personal profiles take hours and hours of time to interview, transcribe, and then write. News stories, on the other hand, can be researched, noted and written in an hour or so. Please be patient with us, especially if an interview has been done or an idea has been suggested. We simply don't have the luxury of a staff to write and publish a lot of feature stories.

We are bombarded by news day in and day out, and we must decide what goes into our newspaper based on a number of factors such as amount of advertisers, amount of space, which week of the month, the news we've got and the news we get at the last minute, time...and our budget. Pages take funds to print, and although we may have a story written and ready to place, the limitation of space may take priority and that story may be pushed forward to a future issue. We will, when possible, place that story for our readers.

Putting together a paper that is worth reading is one of the pleasures of my life—but it is also the hardest and most demanding part of my life. We plan to continue to bring local news to the newspaper, and as time and space allows, some interesting profiles and features; any help in achieving those goals, as well as understanding, is appreciated.



Courtesy Photo

**LOCKNEY ROTARY - District Rotary Governor Steve Long and his wife Sandy (Paul Schacht, standing on the right) visited Lockney's Rotary meeting last week. He shared the organization's goals, specifically for small clubs. Energetically, he encouraged hosting new guests to meetings, utilizing the local newspapers, completing a service project and making a new contribution to Rotary Foundation. The 'Kick-Start' campaign is being shared by the District Governor in person as he and his wife visit large and small Rotary clubs all over the District.**

## Letter to the editor policy

The Floyd County Hesperian-Beacon welcomes letters from readers on topics of local, state, national and international importance. Email letters are preferred to: fchb.editor@yahoo.com.

All letters must include a first and last name, street address (no post office boxes), town, and daytime phone number. Letters sent via U.S. mail may be sent to 201 W. California Street, Floydada, Texas 79235.

GROW YOUR COMMUNITY  
Shop Local

# SOCIETY

## THE FLOYD COUNTY HISTORICAL MUSEUM MEMORIES 1979

BENJAMIN F. AND MARY ELIZABETH THOMAS

Benjamin Franklin Thomas was born in Milltown, Kentucky, Adair Co. on Sept 27, 1851. His parents were William H. and Mary Ann Thomas. He was married to Mary E. Wilkinson Jan 1, 1873, in Breedington, Adair County, Kentucky. Mary Elizabeth's parents were Gilbert G. Wilkinson and Susan (Coffee) Wilkinson. To this union was born six sons. Ben F and Mary's first son, James Herschel was born Nov. 22, 1873, at Breedington, Kentucky.

Benjamin, being a farmer, decided to come west to Texas. Together with his young wife and baby son, he made the long journey to McClellan County, Texas by train in 1875. Their only assets were their clothes, an ax and their not being afraid of hard work. It wasn't long before they became well known and loved in the small community of Moody. At first Ben worked for other farmers, then farmed by renting on third and fourths. By hard work and saving their money they were able to buy six

hundred forty acres near Moody and McGregor. Their family grew also. On November 15, 1875 their second son, William Lucian was born. On April 20, 1878, a third son, Benjamin Arthur was born. On June 21, 1880 the fourth son, Elbert Jackson was born. On Jan. 21 1885, Robert Ivy and on Dec. 22, 1887, the sixth and last Clarence Gaither was born.

Their oldest son made a medical doctor. The middle four sons were farmers. Clarence, the youngest, was a carpenter. In 1907, Elbert, the fourth son wanted to come west where irrigation was sure to be developed. He and his young wife, Oddie and baby son Valca, came to Floyd County and bought three hundred twenty acres two miles northwest of Lockney. In 1909 Elbert lost his wife, Oddie when she died from typhoid fever after giving birth to a baby girl Vera.

Ben and Elizabeth moved to Floyd County in 1909 to help their son Elbert raise his children. Ben being the

hard worker he was soon acquired several sections of land. The Thomas Boys all were a real close family so it wasn't very long until all six boys and their families were making Floyd County their home. Farming and ranching over 2340 acres of land in the west part of the county.

Mary Elizabeth died in 1922. Ben lived his later years with the granddaughter he reared. Vera Thomas Rogers and her family, husband Joe Rogers and the daughter Vera Jo. Ben died December 23, 1937.

It is with a feeling of pride and gratitude the following generations, who still live in Floyd County and farm Thomas land say to Ben and Elizabeth Thomas, "Thank you for our inheritance and this strong feeling heritage-May we live up to your hopes and expectations," Vera Thomas Rogers, Vera Jo Rogers Bybee, Frank, Robert, and Mildred Thomas, W. L. Thomas, Meda Ruth Watts and Keith Thomas.

By: Joe Rogers

## Lockney Senior Citizen's News

By Renee Armstrong  
Special to The Hesperian-Beacon

LOCKNEY - Don't forget to come join us on August 18th for our "Sunday Lunch". We will be serving roast beef, mashed potatoes, green beans, macaroni & cheese, roll and dessert. Serving will begin at 11:30 a.m. - 1 p.m. Donations welcome!

We hope you are all having a great week! Come and eat with us and enjoy the fellowship!

### AUGUST CALENDAR:

18th - Sunday lunch  
23rd - Fish fry  
Be sure and mark your calendars with the important events coming up at the Center.  
Breakfast is served here at the Center from 5:30 a.m. - 8:30 a.m. Monday thru Friday only. Lunch is served Monday thru Friday from 11:30 a.m. - 12:30 p.m.

Be sure and call the Center by 9:30 a.m. if you would like to eat lunch at the Center. Our phone number is 806-652-2745.

Remember Exercise with Dorothy - Monday, Wednesday, and Friday, 8:45 - 9:30 a.m. Coffee time - Monday-Saturday - 9:30-10:30 a.m.

Our Thursday night pot luck is from 5-9 p.m. Bring a dish and a friend and enjoy games afterwards.

### MENU

August 19 - August 23

**Monday** - Manager's special  
**Tuesday** - Cowboy nachos  
**Wednesday** - Hamburger steak  
**Thursday** - Baked potatoes  
**Friday** - Smothered pork chops  
(Menu subject to change without notice)

## Floydada Senior Citizen's News

By LuAnn Collins  
Special to The Hesperian-Beacon

FLOYDADA - The Center's ice machine broke so we are taking donations to purchase a new ice machine. Donations are greatly appreciated.

Our next 2nd Tuesday Bingo Night will be August 13. Doors open at 5:15 and we begin play at 5:30. The Progressive Bingo payout will start at \$50.00. Our Bingo special includes meal, dessert, drink and 2 cards for \$5.00. Additional cards cost \$1.00 for one or \$2.00 for 3 cards. Door prizes, cash prizes, fun and fellowship. Remember, Tuesday meals are \$4.00 meals. Check the menu to see what is offered each Tuesday.

Call us at 983-2032 for home delivery by 11:00 am. Our delivery drivers will begin delivering at 11:30. Our mailing address is P.O. Box 573, Floydada, Texas 79235. Our phone number is 983-2032. Thank you for remembering the Center with your donations or memorials.

### MENU

August 19 - August 23

**Monday** - Meatloaf  
**Tuesday** - BBQ on bun - \$4  
**Wednesday** - Salisbury steak  
**Thursday** - Chicken fried steak  
**Friday** - Salmon croquettes  
(Menu subject to change without notice)

Place your birth announcement in  
*The Floyd County Hesperian-Beacon!*

The Floyd County  
**Hesperian-Beacon**

**\$25**



Email a picture of your baby and a write up (maximum of 500 words) to [fbhb.editor@yahoo.com](mailto:fbhb.editor@yahoo.com) and call 888.400.1083 to make payment. Be sure to include parents' names, grandparents' names, time and date they were born, place of birth, length and weight.

## Introducing Price for Life

We're changing the game with a **lifetime deal** from Suddenlink.  
Power your home with **Altice One** plus lightning-fast Internet.

**Altice One +  
400 Mbps Internet**

**PRICE FOR LIFE** **\$54.99** mo. FOR LIFE  
plus taxes, fees and charges

- + 400 Mbps Speed
- + Over 200 Channels
- + Voice Activated Remote
- + Free Installation
- + No Annual Contract

\$325+ SAVINGS OVER AT&T over 2 yrs.



Get a **\$100 Amazon.com Gift Card**.  
Restrictions apply, see [amazon.com/gc-legal](http://amazon.com/gc-legal).

**We've got 1 Gig Internet service in your area.**  
**Ask about upgrading your speed when you call.**

Call **1.888.628.9057** or visit **suddenlink.com**  
Act by: **September 30, 2019**

**suddenlink**  
by altice

Amazon.com offer is not available to individuals who have previously participated in a Suddenlink Amazon.com gift card promotion within the past 12 months. Amazon.com Gift Card will be mailed to customers who maintain promotion and remain in good standing with no past due or returned payments throughout first 90 days after account activation. Allow 4-6 weeks for delivery. Limit 1 per customer. Other terms & conditions apply. All rights reserved. Amazon.com is not a sponsor of this promotion. Except as required by law, Amazon.com Gift Cards cannot be transferred for value or redeemed for cash. Amazon.com Gift Cards may be used only for purchases of eligible goods at Amazon.com or certain affiliated websites. Restrictions apply, see [www.amazon.com/gc-legal](http://www.amazon.com/gc-legal).  
ALTICE ONE offer: Must maintain all srves at req'd level and be in good standing to maintain promo pricing. Pricing applies to life of current account holder and is non-transferable. Other terms & conditions apply. Offer not available in all areas. 1 Savings claim based on 2-year comparison with AT&T Internet 300 + Select TV available at [www.att.com](http://www.att.com) as of 5/13/19. Speed: Up to 400 Mbps download/Up to 40 Mbps upload. Offer for new residential customers. Taxes, fees, and restrictions apply. Not available in all areas. See Suddenlink.com for details. All trademarks and service marks are the property of their respective owners. Suddenlink is a registered trademark of Suddenlink Communications, a subsidiary of Altice USA, Inc. ©2019 Suddenlink Communications.

# OBITUARIES/CHURCH

## Allison Rachelle Griggs

Allison Rachelle Griggs, 29, of Brownwood, passed away Friday, August 9, 2019. Two memorial services will be held; Saturday, August 17, 2019 at 1 p.m. at Rocky Creek Baptist Church in Brownwood Texas, Rick Justus will officiate; and in Lubbock, Wednesday, August 28 at 10 a.m. at St. Luke's Methodist church, Andy Hurst will officiate.

Allison was born on March 16, 1990, in Lockney, Texas to Kenneth "Kenny" and Judy (Davis) Griggs.

She attended school in Floydada and graduated in 2008. She was active in scouting, 4-H, FFA, band, and church. She enjoyed making handicrafts, baking, decorating cakes, and fishing.

Allison leaves behind her boyfriend, Ricky Isbell and support dog, Coco, of Brownwood; mother, Judy Griggs of Lubbock; brother, Derrick Griggs and wife, Reba of Levelland; step-mother, Christy Griggs of Petersburg; step-brother, Zeke Vickers of Petersburg; nephew, Royce Griggs of Levelland; grandmother, Helen Griggs, of Floydada; and many aunts, uncles, cousins, and friends.

She was preceded in death by her father, Kenny Griggs and grandparents, Wiley Griggs and James and Lucy Mae Davis.

## Wit and Wisdom

By Charles Keaton  
The Hesperian-Beacon

(All quotes are from George Orwell)

Every generation imagines itself to be more intelligent than the one that went before it, and wiser than the one that comes after it.

Freedom is the right to tell people what they do not want to hear.

Political language -- and with variations this is true of all political parties, from Conservatives to Anarchists -- is designed to make lies sound truthful and murder respectable, and to give an appearance of solidity to pure wind.

The great enemy of clear language is insincerity. When there is a gap between one's real and one's declared aims, one turns as it were instinctively to long words and exhausted idioms, like a cuttlefish spurting out ink.

People sleep peaceably in their beds at night only because rough men stand ready to do violence on their behalf.

Investing in the communities we serve

**MR**  
**Moore-Rose**  
Your Hometown Funeral Home

**Floydada Remodel Completed:**  
December 2018

**Lockney Remodel Completed:**  
Summer 2019

Proud to serve the families in the communities we care about!  
-The Moore-Rose Funeral Home Staff

329 W. California St.  
Floydada  
806-983-2525

402 S. Main St.  
Lockney  
806-652-2211

www.moorerosefh@yahoo.com    www.moore-rose.com

If both the past and the external world exist only in the mind, and if the mind itself is controllable -- what then?

War is a way of shattering to pieces, or pouring into the stratosphere, or sinking in the depths of the sea, materials which might otherwise be used to make the masses too comfortable, and hence, in the long run, too intelligent.

In a time of universal deceit, telling the truth is a revolutionary act.

On the whole human beings want to be good, but not too good, and not quite all the time.

All animals are equal but some animals are more equal than others.

# CHURCH DIRECTORY

## Faithful Service

The Lord says, "When you pass through the waters, I will be with you; and when you pass through the rivers, they will not sweep over you." - *Isaiah 43:2 (NIV)*

In August 2016, south Louisiana experienced major flooding, causing widespread devastation. Many homes and businesses suffered major damage and people lost virtually all their possessions. The situation was stressful and depressing.

Yet all around us we also saw reminders of God's Spirit. It was common for people to pray together in driveways as they prepared for the difficult work ahead. Friends -- and even people we didn't know -- brought meals. We received relief packages from all over the country. Churches and relief organizations provided clothing and other essentials. People

came from near and far to help. A group from Los Angeles worked all day on my friend's house and gave her a new Bible. They then invited us to dinner at the church where they were lodging. These acts of kindness lifted our spirits and strengthened us.

Recovery is a long, slow process. But God worked through the actions of friends and strangers to sustain us materially and spiritually. It is hard to imagine that any of us could fully recover without the active work of God's Spirit. God brought many from far and wide to rescue us from the flood.

**TODAY'S PRAYER**  
Thank you, loving God, for lifting us up when life is difficult. Amen.

**Lighthouse Electric Coop**  
806.983.2814  
703 A Matador Hwy.

**ASSITER INSURANCE AGENCY, LLC**  
120 W. California Street, Floydada, Tx.  
806-983-2511

**Agriculture Precision Supply**  
Pivots, Flow meters & Equipment  
www.GoA-P-S.com  
806.773.3025 • 806.253.2521

**Plains LAND BANK** Jeff Taylor  
806-296-5579  
plainslandbank.com  
Part of the Farm Credit System

**Payne Family Pharmacy**  
806.983.5111  
200 S. Main, Floydada

**Goen & Goen Insurance**  
806.983.3524  
102. E. California - Floydada

**Floydada Coop Gin, Inc.**  
319 N. 5th Street  
Floydada TX 79235  
806-983-2884

**Barwise Gin**  
Barwise Community  
806.983.2737

**Lockney Co-op Gin**  
Lockney, Texas  
806.652.3377

**Prosperity Bank**  
Member FDIC  
217 W. California -- 806.983.3725

**Aiken Baptist Church**  
Dennis Butler, Pastor  
Morning Worship..11 a.m.  
\*\*\*\*\*

**Bible Baptist Church**  
810 S. 3rd, Floydada  
Darwin Robinson, Pastor  
983-2578  
Sunday School....10 a.m.  
Morning Worship - 10:50 a.m.  
Evening Worship - 6 p.m.  
Wednesday - 7 p.m.  
\*\*\*\*\*

**Calvary's Cornerstone Fellowship**  
Floydada  
Armando Morales, Pastor  
Sunday School - 9:45 a.m.  
Morning Worship - 11 a.m.  
Bible Study - 6 p.m.  
Wednesday Evening - 7 p.m.  
\*\*\*\*\*

**Carr's Chapel**  
Service Every Sunday  
Morning Worship - 9 a.m.  
Sunday School 10:30 a.m.  
\*\*\*\*\*

**Church of Christ**  
West College & Third  
Lockney  
Morning Worship - 10:30 a.m.  
Afternoon Worship - 1:30 p.m.  
Wednesday Service - 7:30 p.m.  
\*\*\*\*\*

**City Park Church of Christ**  
Matthew Benfield, Minister  
Floydada  
Sunday Bible Study - 9:30 a.m.  
Morning Worship - 10:30 a.m.  
Evening Worship - 6 p.m.  
Wed. Bible Study - 7 p.m.  
\*\*\*\*\*

**First Baptist Church**  
Floydada  
Mark Snowden, Pastor  
Nathan Adams, Minister of Students and Discipleship  
Ashley Adams, Minister of Music  
Ludustria Prisk, Director of Children's Ministry  
Sunday School - 9:15 a.m.  
Morning Worship - 10:30 a.m.  
Evening Worship - 6 p.m.  
Wed Bible Study - 6:30 p.m.  
\*\*\*\*\*

**First Baptist Church**  
Lockney  
Joseph Tillery, Pastor

Chad Cook, Youth Min.  
Sunday School, 9:45 a.m.  
Morning Worship, 10:45 a.m.  
Evening Worship, 6:00 p.m.  
\*\*\*\*\*

**First United Methodist Church**  
Floydada  
Rev. Gary Boles, Pastor  
Morning Worship - 9:30 a.m.  
Sunday School - 10:50 a.m.  
Youth (Sunday) - 6:30 p.m.  
\*\*\*\*\*

**First United Methodist Church**  
Lockney  
Rev. Ricky Carsensen, Pastor  
Sunday School - 9:30 a.m.  
Worship Service - 10:30 a.m.  
Evening Service - 6 p.m.  
Wed. Jr. High - 5:30 p.m.  
Wed High School - 6:30 p.m.  
\*\*\*\*\*

**Grant Chapel Church of God in Christ**  
Joe Bennett, Pastor  
Sunday School - 10 a.m.  
Morning Worship - 11 a.m.  
Evening Worship - 7:30 p.m.  
Tuesday - 8 p.m.  
Wednesday Service 7:30 p.m.  
\*\*\*\*\*

**Main Street Church of Christ**  
Lockney  
James Blair, Minister  
Bible Study - 9:30 a.m.  
Morning Worship - 10:30 a.m.  
Evening Worship - 6:00 p.m.  
Wednesday - 7:00 p.m.  
\*\*\*\*\*

**Mt. Zion Baptist Church**  
Floydada  
Rev. Timothy Askey  
401 N 12th St. 983-5805  
Sunday School - 10 a.m.  
Morning Worship 11 a.m.  
Evening Worship - 6 p.m.  
Wednesday Study - 6 p.m.  
\*\*\*\*\*

**New Salem Primitive Baptist Church**  
Floydada  
Pastor Elder Ronnie Hedges  
(806) 637-0430  
Sunday Singing - 10:30 a.m.  
Morning Worship -11 a.m.  
\*\*\*\*\*

**Out Reach Harvest Pentecostal Church**

310 Mississippi  
Floydada  
Rev David Ramos, Pastor  
Ester Ramos, Praise Leader  
Sunday Bible - 10 a.m.  
Morning Praise - 11 a.m.  
Evening Praise 5 - p.m.  
Wed Worship - 7 p.m.  
\*\*\*\*\*

**Power of Praise Full Gospel Church**  
Rev. Manuel Rendon, Pastor  
704 B Main, Lockney  
Sunday Services - 10 a.m.  
Sunday Evening - 5 p.m.  
Wednesday - 7:30 p.m.  
\*\*\*\*\*

**Primera Iglesia Bautista**  
Lockney  
Jesus Caballero, Pastor  
Sunday School - 9:45 a.m.  
Worship Service - 11 a.m.  
Discipleship - 5 p.m.  
Wed. Service - 7 p.m.  
\*\*\*\*\*

**Primera Iglesia Bautista**  
Floydada  
Rev. Toby Gonzales  
Sunday School - 9:30 a.m.  
Morning Worship 10:40 a.m.  
Evening Worship - 6 p.m.  
Wed Evening - 7 p.m.  
\*\*\*\*\*

**San Jose Catholic Church**  
Lockney  
Rev. Renato Cruz  
Parochial Vicar - Jacob Powell  
Sun - 9 a.m. Children Bible study  
10 a.m. - Mass  
Wed. - 6 p.m.- Faith Formation -  
CYO to follow  
Thurs. - 6:30 pm- Evening Mass  
\*\*\*\*\*

**South Plains Baptist Church**  
Dan Beaty, Pastor  
Sunday School - 10 a.m.  
Morning Worship - 11 a.m.  
\*\*\*\*\*

**Templo Getsemani Assembly of God**  
701 W. Missouri  
Joe M. Hernandez  
983-5286 (Church)  
Sunday School  
English - 9:45 a.m.  
Spanish - 11 a.m.  
Worship  
Spanish - 9:30 a.m.

English - 11 a.m.  
Evening Service 5 p.m.  
Wednesday 7 p.m.

**St Mary Magdalen Catholic Church**  
Floydada  
Rev. Renato Cruz  
Parochial Vicar - Jacob Powell  
983-5878  
Sunday Mass - 11:30 a.m.  
Mon. & Wed. Mass - 6:30 p.m.  
Confession Sat - 10-11 a.m.  
\*\*\*\*\*

**Templo Bautista Salem**  
Lockney  
Rev. Joe Hernandez  
Bun Prayer Service - 9:30 a.m.  
Sunday School - 9:45 a.m.  
Worship Service - 11 a.m.  
Evening Worship - 6 p.m.  
Wed. Meeting - 7 p.m.  
\*\*\*\*\*

**Templo Bethel Spanish Assembly of God**  
Washington And 1st St.  
Sunday School 9:45 a.m.  
Morning Worship - 11 a.m.  
Evening Worship - 5 p.m.  
Wed Service - 7 p.m.  
\*\*\*\*\*

**Templo Nueva Vida**  
Rev. Herman Martinez  
Co-Pastor Gilbert Flores  
308 W. Tennessee, Floydada  
Sunday School - 10:00 A.M.  
Evening Worship - 5:00 P.M.  
Wednesday Service - 7:00 P.M.  
\*\*\*\*\*

**Trinity Assembly**  
500 W. Houston  
Kari & Justin Brown, Pastors  
983-5499  
Sunday School - 9:30 a.m.  
Morning Worship - 10:40 a.m.  
Sunday Evening - 6 p.m.  
\*\*\*\*\*

**Trinity Lutheran Church**  
Providence Community On Fm 2301  
293-3009  
Rev. Peter W. Harrington, Minister  
Sunday School - 9:45 a.m.  
Worship Service 11 - a.m.  
\*\*\*\*\*

**West Side Church of Christ**  
Floydada  
983-2672 Or 470-0950  
Sunday Worship - 10:30 a.m.  
Sunday Evening - 2 p.m.



# AGRICULTURE

## Tech, USDA open cotton classing facility



Photo courtesy of Texas Tech University

Courtesy Photo

Agricultural leaders and TTU officials attended the groundbreaking of the new cotton classification facility at the University. U.S. Reps. Jodey Arrington (R-Lubbock) and Mike Conaway (R-Midland) were also in attendance.

Special to the Hesperian-Beacon

LUBBOCK - Texas Tech University and the U.S. Department of Agriculture (USDA) broke ground last month on a new cotton classing facility set to go on the university's campus.

This opportunity proves Texas Tech's position as an agricultural research university, Texas Tech University Chancellor Dr. Tedd Mitchell said. "Having an opportunity like this, for us, is a seminal moment for Tech for multiple reasons—not only because it allows us to do things academically and through research that are new horizons for us, but it also helps to solidify the position of this university," Mitchell

said.

The current facility in Lubbock is one of the largest in the U.S. and the world, regularly classifying about 20 percent of the U.S. cotton crop, according to USDA. Ibach said the facility in Lubbock classifies three to four million samples a year. The new facility will be larger and have the capability to classify up to five million samples each year.

The new cotton classing facility on the Texas Tech campus will enhance the quality of research for experts and students, provide a more centralized location for cotton classification and provide students with more internship and employment opportunities.

USDA hopes to have the facility open in 2021.



Courtesy Photo

FIFTEEN FLOYD COUNTY 4-Hers attended the yearly 4-H County Camp. The kids brought food items to donate to SOS in Floydada--Ronda gave a tour of SOS and explained the process and the significance of what they do. Next, they ate Pizza at Double Dave's, then headed to Buffalo Springs Lake where they had a blast at Altitude H2O-Buffalo Springs Lake. Pictured left to right: (standing) Cristen Brooks, Jared Phares, Alberto SotoGonzalez, Elijah SotoGonzalez, Adrian Jimenez, Jaxson Smith, Austin Phillips, Colby Guerrero, Kaylee McInvale, Preslie Brooks, Tyann Phillips, Avery McInvale, Mark Carroll (front row) Amelia Phillips, Lily Jimenez, Karis McIntosh, Makinley Whittle.

**Diversity D**  
specializing in drip irrigation

We are committed to offering state of the art irrigation solutions to meet your every need.

Nick Joiner-Manager  
Cell: 806.983.3532

117 E. Locust St., Lockney, TX • 806.652.5000

**BRIAN & DILIA'S PROFESSIONAL SERVICE CENTER**

Brian and Dilia Emert  
611 East Houston Street  
Floydada, Texas  
(806)983-9368

Motorcraft  
ACDelco  
MOPAR

"Come see us when your engine light comes on—we can scan your vehicle! James is 'Dealer-level Certified' and can get you back on the road!"

Specializing in John Deere Tractor and automotive repairs  
"Proud to use GoldenWest Hydraulic Oil"



Out here, three things remain constant: the land, the family who farms it, and the local co-op that helps keep it profitable.

Your cooperative takes pride in providing you with the quality inputs and the risk management, agronomic and other services that are right for your operation. Out here, the co-op's commitment to the success of its members never wavers. As long as you have a local cooperative, you never farm alone.

Your cooperative. Local. Loyal. Trusted by generations.



1002 FM 786, Lockney, TX 79241  
(806)293-5341 | jimmy.cervantes@chsinc.com



A renowned and brilliant gardener, Monty Don, recently stated, "A garden provides so many things, but most of all, it should provide happiness." What a statement!

There are some days that my gardens tend to be more frustration than happiness—I do have to be honest; and yet, it just takes one quick trip to the garden, finding a ripe tomato, and popping into my mouth. Pure, sunshine-y joy!

The heat has definitely affected the gardens—sometimes benefitting and sometimes harming the plants.

The benefit has been that those sun-loving plants are starting to reach upward and put on fruit. My first three planting of tomatoes died due to rain and more

rain and hail. The current plants were a planting of seeds, done late in the season. These plants have consistently done well. I believe that I've got three plants that are as tall as I am—crawling up pallets' sides and into the wire of the arbor. With the heat, some fertilization, and a lot of copper fungicide, we are getting tomatoes on a regular basis. Not bushels of tomatoes, but a handful day in and day out.

Interestingly, our yellow and zucchini squash waited until the end of July to start putting on fruit. I haven't yet started leaving bags of squash on all of my neighbors' porches, but we are enjoying the addition to our meals.

The harm coming from See **WHAT'S UP**, Page 7

**LOCKNEY CO-OP GEN**  
The Gin of Choice  
806-652-3377  
LOCKNEY, Tx.

1000 West Locust Street  
Clay Lowrance – Manager  
lockney.coop.mgr@pcca.com

**ADAMS WELL SERVICE**  
720 North 2nd Street  
Floydada, TX 79235  
806-983-5003

Lineshaft turbine and submersible sales & service  
Poly pipe installation • Complete irrigation service  
Irrigation and house well pumps sales & service

**COWPOKES** By Ace Reid  
http://www.cowpokes.com

"We can win the Kentucky Derby if that hoss can run forward as fast as he jist went backwards."

FEATURE IS SPONSORED BY THE

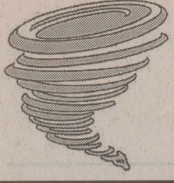
Financing for: Farms, Ranches, Rural Recreational Properties and Rural Homes



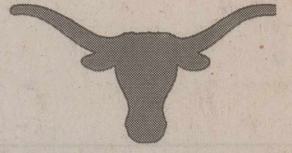
Jeff Taylor  
806-296-5579

plainslandbank.com

Part of the Farm Credit System



# School News



## LONGHORNS BEGIN WORKOUTS, MEET WITH FANS CREATING A STRONG FOUNDATION FOR EXCELLENCE



Courtesy Photo



Courtesy Photo

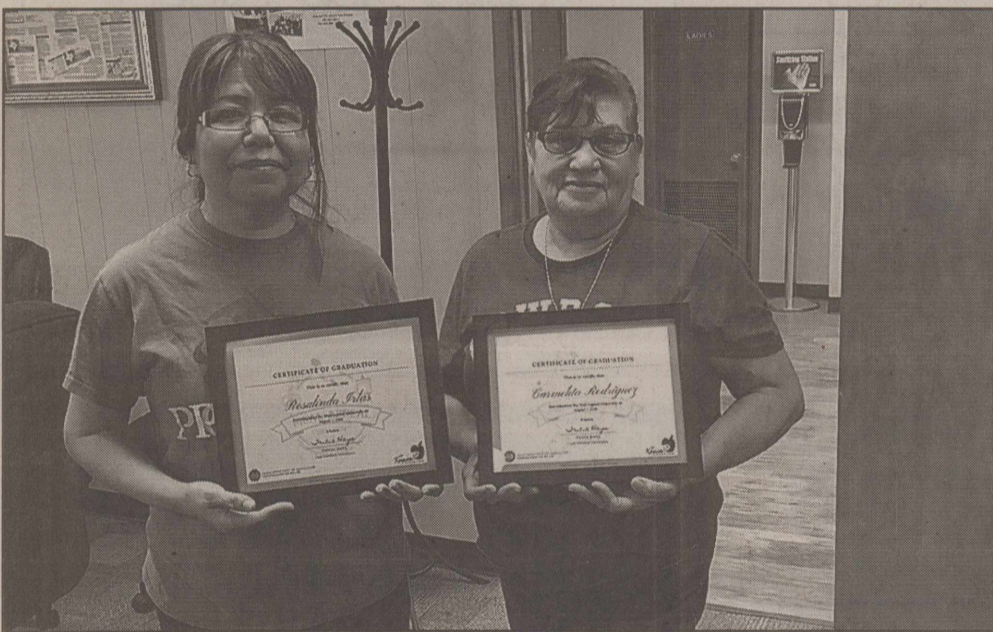
**LOCKNEY** – The Lockney Longhorns began their season last week, and their fans have pitched in showing tremendous support for the team. With the annual First Baptist Church Watermelon-fest for players and coaches, and the more formal, "Meet the Longhorns", the Horns are well on their way to a successful foundation to the season. There is a lot of excitement for this group as it heads into the 2019 season. The young team has 19 starters returning from last season, so experience will be the biggest strength to the improvements that are expected this year.

### FLOYDADA SCHOOL MENU August 19 - August 23

<b>Monday</b> Breakfast – Morning sausage roll, fresh fruit, milk Lunch – Loaded chicken nachos, spicy chicken pizza, seasoned refried bean, fresh fruit, vegetable bar, milk	vegetable bar, milk	<b>Lunch</b> – Breaded beef fingers, roll, mini chicken corndogs, seasoned mashed potatoes, fresh fruit, vegetable bar, milk
<b>Tuesday</b> Breakfast – Fluffy banana muffin, fresh fruit, milk Lunch – Chicken nuggets, roll, hamburger, seasoned mashed potatoes, fresh fruit,	<b>Wednesday</b> Breakfast- Colby omelet w/ biscuit, fresh fruit, milk Lunch – Spaghetti w/meat sauce, breadstick, pepperoni & mushroom pizza, curly fries, white yellow corn, fresh fruit, vegetable bar, milk	<b>Friday</b> Breakfast – Chocolate chip French toast, fresh fruit, milk Lunch – Chicken fajita burrito, ham & cheese wrap, spiced charro beans, crispy crinkle cut fries, fresh fruit, vegetable bar, milk
	<b>Thursday</b> Breakfast – Cocoa Puffs cereal, toast, fresh fruit, milk	

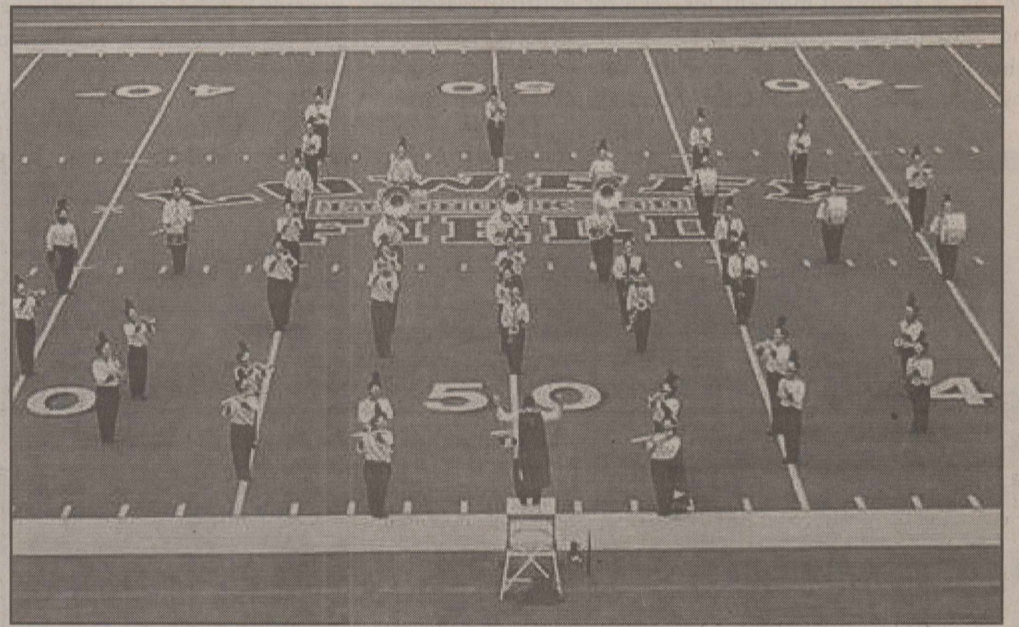
### LOCKNEY SCHOOL MENU August 19 - August 23

<b>Monday</b> NO SCHOOL	oven fries or X-treme burrito, corn, garnish, veggie cup, fruity gelatin, milk	oranges, milk
<b>Tuesday</b> NO SCHOOL		<b>Friday</b>
<b>Wednesday</b> Breakfast- Scrambled eggs, biscuit, gravy, bacon, fruit, fruit juice, milk Lunch – Chicken sandwich,	<b>Thursday</b> Breakfast – Pancake wrap or PBJ, yogurt, fruit, fruit juice, milk Lunch – Asian bowl eggroll or hamburger steak, gravy, potatoes, broccoli salad, mandarin	Breakfast – Cinnamon roll, hash browns or cereal & toast, fruit, fruit juice, milk Lunch – Pizza choice, baby carrots, garden salad, fresh fruit, Crispy cereal treat, milk



Courtesy Photo

FLOYDADA ISD'S EMPLOYEES Linda Irlas and Carmelita Rodriguez have been congratulated for their efforts in becoming certified from Meal Appeal University, sponsored by Region 17 and TDA. The certification involved an intensive training on meal preparation.



Courtesy Photo

THE WINDS MARCHING BAND has been hard at work with their summer camp which started August 5th. With a new director, Mr. Franklin Piland, and returning Assistant Director, Jaden Pena, there are positive changes taking place. With almost 80 High School students registered to participate in the 2019-2020 school year, the organization is looking forward to fun and growth as they tackle new musical pieces and perfect the classics. A new website specifically to keep band members and their families updated can be found at [www.floydadabands.org](http://www.floydadabands.org).

**Wright's Auto Service**  
Parts and Repairs

105 East Locust Street | Box 931 | Lockney, TX 79241  
806-652-2335 • Fax 806-652-2762

**Texas Plains Federal**  
Just plain Texas... Just like you!

806-983-3922 office 206 W. California St.  
800-272-6641 toll free Floydada, Texas 79235  
806-983-3932 fax www.texasplainsfederal.org

CDs • Loans • Checking • Savings

**WILBUR-ELLIS®**

Tyler Kidd-Manager • 806-652-2544  
803 E HWY 70, Lockney TX

W.J.  
**MANGOLD**  
MEMORIAL HOSPITAL

320 N. Main • Lockney, Texas • 806-652-3373

**Nutrien**  
Ag Solutions™

(806) 983-2233  
517 E. Houston St., Floydada, TX  
nutrienagsolutions.com

**Script Printing & Office Supply**

108 S. Main, Floydada, Texas 79235  
806-983-5131

**Floydada Power & Light**

114 West Virginia Street  
Floydada, TX 79235  
806-983-2834

**Floyd County Supply**

720 S. Main 652-2312 Lockney  
420 S. 2nd 806-221-2505 Floydada

**Lighthouse Electric Co-op**

806-983-2814  
703 A Hwy 70 E  
Floydada TX

Floydada – Memphis, Texas

**ASSITER ASSOCIATES**  
REALTORS AUCTIONEERS • APPRAISERS

Office: 806-983-3322 • www.assiter.net • www.assiter.auction  
Tim Bandy Assiter Broker #533147

**ZIMMATIC BY LINDSAY** Shannon Shurbet

**Caprock Irrigation Systems**

609 N. 2nd Street Floydada, TX  
(806)983-8095

DAVID & DAR LEE FOSTER JODY & SHAWNDA FOSTER

**D&J Gin**

LESCA DURHAM Marketing Specialist SEGAYLE FOSTER Admin. Assistant

806-652-3351 306 E. Shurbet St.  
806-652-3738 (Fax) Lockney, TX 79241

## WHAT'S UP

From Page 5

the heat has been bugs—and they have exponentially multiplied overnight in my gardens. This heat is tricky—plants need water, but, if you really soak the area, then fungi start embedding themselves into the veggies' growing systems. Fungus can kill tomatoes, squash, and cucumbers within days, and we have had a few losses—I pulled out our vining spaghetti squash plants and the watermelons. It's great that our spaghetti squash produced early; we were terribly sad to lose several watermelons; but, as happens in gardens, other plants are beginning to thrive in the places we have taken out plants.

Late summer brings on so much potential, and even as things are putting on fruit, my mind is occupied with my fall garden planting. We plan to remake some of our above-ground beds, we are planting mini-clover in some of the walkways, and I am finally ready to develop a true herb garden. The herbs will benefit us in the kitchen as well as give our bunnies some delectable treats—our herbs will be planted around the bunny hut.

So, the joy of our gardens continues to pay off for us, and as the seasons transition, it is thrilling to watch the transformations occurring in each of the garden areas around our house.

## Weather Whys

Q: Which state gets hit by lightning most often?

A: The state of Florida gets more lightning strikes than any place in the world, says Brent McRoberts of Texas A&M University. "Because of its large coastline and the frequent thunderstorms that pop up almost daily, Florida is a lightning center and the city of Tampa is called the lightning capital of the United States," McRoberts says. "It records about 40 lightning strikes per square mile each year, an incredible amount. According to the National Weather Service, there are around 25 million lightning strikes in the U.S. each year. On average, NASA satellites detect about 40 to 50 lightning flashes each second worldwide."

Q: What about Texas cities and lightning strikes?

A: Houston is the lightning capital of Texas, recording about 20 strikes per square mile, and the city averages 1,700 strikes each year during its active summer lightning period, McRoberts adds. "A single bolt of lightning can carry up to 50,000 volts of electricity," he notes. "That's why lightning kills about 50 people in the U.S. each year, second only to floods. Most who are struck by lightning survive, but the vast majority of these people will suffer serious long-term side effects. The spring and summer months are the most active for lightning, so people need to be aware of just how dangerous and potentially deadly lightning can be." Weather Whys is a service of the Department of Atmospheric Sciences at Texas A&M University

Thanks For Reading!

## Pet Talk: Why did the turtle cross the road?

Have you ever wondered why turtles cross the road? There are a few reasons why these slow-pokes venture into the street, but no matter their agenda, we should be cautious of their presence while driving.

"Turtles often cross the road after rain events," said J. Jill Heatley, associate professor at the Texas A&M College of Veterinary Medicine & Biomedical Sciences. "Additionally, many times they are female turtles seeking an appropriate place to lay their eggs."

If you come across a turtle in the road while driving, the turtle may benefit from a helping hand to get to safety; however, Heatley said to be careful in doing so.

"If you can pull safely off to the side of the road and traffic permits, you can safely move the turtle to the side of the road in the direction it was headed," Heatley explained. "If the turtle is injured, you can also take the turtle to a rehabilitator or veterinarian for care."

Even if traffic permits you to save a turtle's life, you should be careful handling certain turtles for your own safety. Heat-

ley said some turtles, such as the alligator and common snapping turtle, can injure a person by biting or jabbing at them with the rear of the shell.

"Only experienced individuals should handle these animals," Heatley said. "But in the case of box turtles, soft-shelled turtles, and slider turtles, they may be safely handled by grabbing the rear of the shell while wearing lightweight gloves." If the turtle needs to be taken to a veterinarian, it can be placed in a cardboard box. Otherwise, Heatley said uninjured turtles should remain in the wild to live their lives and breed. Though wild turtles may need our help every now and then, you should not risk your own life to save a turtle. If you do see a turtle crossing the road, drive cautiously and stop to help, if needed.

Pet Talk is a service of the College of Veterinary Medicine & Biomedical Sciences, Texas A&M University. Stories can be viewed on the web at [vetmed.tamu.edu/pet-talk](http://vetmed.tamu.edu/pet-talk). Suggestions for future topics may be directed to [editor@cvm.tamu.edu](mailto:editor@cvm.tamu.edu).

## WBU Students Participate in First Aid Training

Special to The Hesperian-Beacon

PLAINVIEW – Wayland Baptist University puts a premium on student safety on campus and in the dorms. Wayland Residence Hall Supervisors and Resident Assistants are trained in basic CPR and First Aid as part of their preparation for students moving back into the dorms at the beginning of each academic year.

As WBU prepares for students to return to campus, the RSHs and RAs have been in training all week. This year, Wayland nurse, Coralyn Dillard, worked with Covenant Hospital nurses to provide "Stop the Bleed" training as well.

"This is a recognized program originally developed for all Army troops," Dillard said. "It has been modified for the general public to learn how to use a tourniquet and pack a wound."

Dillard said the emer-

gency room nurses at Covenant are trained to teach the short course that allows students to learn the skills and techniques in using tourniquets and packing wounds.

Dillard said the RSHs and RAs are also trained in using the automated external defibrillators (AEDs) that are located across campus, and on what to do in case of a seizure. Students who come to campus are also encouraged to complete Magnus Health which is a health registration that can be accessed in case of an emergency.

"We restock their first aid bags and provide 911 cards for each student who has completed Magnus Health," Dillard said. "In the event of an emergency, the 911 card gets handed off to the emergency personnel who gives it to the ER doctor in order to access the student's health records."

Dillard said she sees cases of normal illness and

minor injuries such as cuts and bruises throughout the course of a semester. Having additional hands that can help with basic first aid makes it easier to handle any issues that arise.

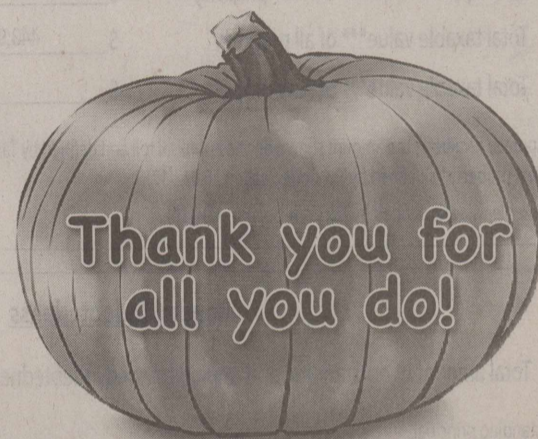
"It never hurts to be proactive and prepared," she said.

## UPCOMING

From Page 1

**FLOYDADA BLOOD DRIVE**  
The Floydada "Labor of Love" Blood Drive will be held Monday, August 26th from 2:15 til 6 pm in the Bloodmobile at Lowe's Market. Everyone that donates will receive a \$10 Lowe's Market gift card. To schedule appt call 806-797-6804.

The Families of  
**Pumpkin Pyle**  
wholly support our community's  
students, athletes,  
teachers and administrators.



Prices Good Thru 09/07/19

awesome  
**\$ummer SAVINGS**

PRICES VALID AT ALL LOCATIONS

**ALLSUP'S**

**\$3.00**

**HATCH GREEN CHILE & CHEESE BURRITO COMBO**

includes a hatch green chile & cheese burrito and a 32 oz tallsup



**\$1 OFF ANY BREAKFAST BURRITO**



When You Buy an Apple or Orange, 12 oz. **MINUTE MAID JUICE**

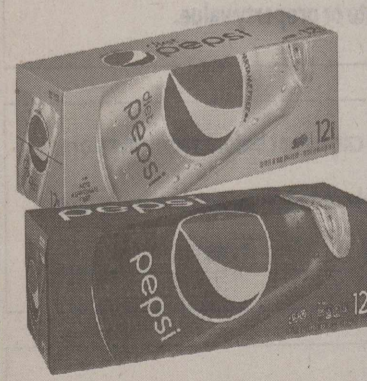


**TALLSUP TIME 99¢**  
32 oz. only  
Daily 2pm - 5 pm

**FREE BEEF & BEAN BURRITO**



WHEN YOU BUY TWO 20 oz. **MTN DEW PRODUCTS**



**PEPSI PRODUCTS**  
12 PACK, 12 OZ. CANS

**2\$8 FOR**



**BLUE BUNNY CONES**

**2\$3 FOR**



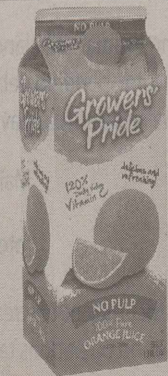
**RED DIAMOND TEA**  
gallon

**2\$5 FOR**



**GATORADE SPORTS DRINKS**  
28 OZ.  
buy 2, get 1

**FREE**



**GROWERS' PRIDE ORANGE JUICE**  
59 oz.

**\$2.49**



**KOOL-AID JAMMERS**  
10 pack

**2\$4 FOR**

**PUBLIC NOTICE**

**NOTICE OF PUBLIC MEETING TO DISCUSS BUDGET AND PROPOSED TAX RATE**

The Lockney ISD will hold a public meeting at 7:00 pm, August 27, 2019 in the LISD Administration Bldg. at 601 W. Poplar St.

Lockney, Texas

**The purpose of this meeting is to discuss the school district's budget that will determine the tax rate that will be adopted. Public participation in the discussion is invited.**

The tax rate that is ultimately adopted at this meeting or at a separate meeting at a later date may not exceed the proposed rate shown below unless the district publishes a revised notice containing the same information and comparisons set out below and holds another public meeting to discuss the revised notice.

**Maintenance Tax** \$ 1.0489 /\$100 (Proposed rate for maintenance and operations)

**School Debt Service Tax**  
**Approved by Local Voters** \$ 0.16792 /\$100 (proposed rate to pay bonded indebtedness)

**Comparison of Proposed Budget with Last Year's Budget**

The applicable percentage increase or decrease (or difference) in the amount budgeted in the preceding fiscal year and the amount budgeted for the fiscal year that begins during the current tax year is indicated for each of the following expenditure categories:

Maintenance and operations	<u>13.76</u> % increase	or	<u>        </u> % (decrease)
Debt service	<u>        </u> % increase	or	<u>7.66</u> % (decrease)
Total expenditures	<u>11.86</u> % increase	or	<u>        </u> % (decrease)

**Total Appraised Value and Total Taxable Value (as calculated under Tax Code Section 26.04)**

	Preceding Tax Year	Current Tax Year
Total appraised value* of all property	\$ <u>532,195,041</u>	\$ <u>495,713,842</u>
Total appraised value* of new property**	\$ <u>40,430</u>	\$ <u>36,090</u>
Total taxable value*** of all property	\$ <u>443,935,494</u>	\$ <u>407,554,979</u>
Total taxable value*** of new property**	\$ <u>40,430</u>	\$ <u>36,090</u>

\* "Appraised value" is the amount shown on the appraisal roll and defined by Tax Code Section 1.04(8).  
\*\* "New property" is defined by Tax Code Section 26.012(17).  
\*\*\* "Taxable value" is defined by Tax Code Section 1.04(10).

**Bonded Indebtedness**

Total amount of outstanding and unpaid bonded indebtedness\* \$ 5,335,000

\* Outstanding principal.

**Comparison of Proposed Rates with Last Year's Rates**

	Maintenance & Operations	Interest & Sinking Fund*	Total	Local Revenue Per Student	State Revenue Per Student
<b>Last Year's Rate</b>	\$ 1.14000	\$ 0.16792*	\$ 1.30792	\$ 5,104	\$ 8,061
<b>Rate to Maintain Same Level of Maintenance &amp; Operations Revenue &amp; Pay Debt Service</b>	\$ 0.97895	\$ 0.16750*	\$ 1.14645	\$ 4,776	\$ 8,309
<b>Proposed Rate</b>	\$ 1.04890	\$ 0.16792*	\$ 1.21682	\$ 4,846	\$ 10,635

\* The Interest & Sinking Fund tax revenue is used to pay for bonded indebtedness on construction, equipment, or both. The bonds, and the tax rate necessary to pay those bonds, were approved by the voters of this district.

**Comparison of Proposed Levy with Last Year's Levy on Average Residence**

	Last Year	This Year
Average Market Value of Residences	\$ 39,495	\$ 40,165
Average Taxable Value of Residences	\$ 24,155	\$ 24,006
Last Year's Rate Versus Proposed Rate per \$100 Value	\$ 1.30792	\$ 1.21682
Taxes Due on Average Residence	\$ 315.92	\$ 292.11
Increase (Decrease) in Taxes		\$ (23.81)

Under state law, the dollar amount of school taxes imposed on the residence homestead of a person 65 years of age or older or of the surviving spouse of such a person, if the surviving spouse was 55 years of age or older when the person died, may not be increased above the amount paid in the first year after the person turned 65, regardless of changes in tax rate or property value.

**Notice of Voter-Approval Rate:** The highest tax rate the district can adopt before requiring voter approval at an election is 1.21682. This election will be automatically held if the district adopts a rate in excess of the voter-approval rate of 1.21682.

**Fund Balances**

The following estimated balances will remain at the end of the current fiscal year and are not encumbered with or by a corresponding debt obligation, less estimated funds necessary for operating the district before receipt of the first state aid payment:

Maintenance and Operations Fund Balance(s)	\$ 3,318,000
Interest & Sinking Fund Balance(s)	\$ 30,540

A school district may not increase the district's maintenance and operations tax rate to create a surplus in maintenance and operations tax revenue for the purpose of paying the district's debt service.

**PUBLIC NOTICE**

**NOTICE OF PUBLIC MEETING TO DISCUSS BUDGET AND PROPOSED TAX RATE**

The FLOYDADA INDEPENDENT SCHOOL DISTRICT will hold a public meeting at 6:30 P.M., AUGUST 26, 2019 in CONFERENCE ROOM FISD CENTRAL OFFICE

FLOYDADA, TEXAS

**The purpose of this meeting is to discuss the school district's budget that will determine the tax rate that will be adopted. Public participation in the discussion is invited.**

The tax rate that is ultimately adopted at this meeting or at a separate meeting at a later date may not exceed the proposed rate shown below unless the district publishes a revised notice containing the same information and comparisons set out below and holds another public meeting to discuss the revised notice.

**Maintenance Tax** \$ 1.0684 /\$100 (Proposed rate for maintenance and operations)

**School Debt Service Tax**  
**Approved by Local Voters** \$ 0.453 /\$100 (proposed rate to pay bonded indebtedness)

**Comparison of Proposed Budget with Last Year's Budget**

The applicable percentage increase or decrease (or difference) in the amount budgeted in the preceding fiscal year and the amount budgeted for the fiscal year that begins during the current tax year is indicated for each of the following expenditure categories:

Maintenance and operations	<u>3.5</u> % increase	or	<u>        </u> % (decrease)
Debt service	<u>        </u> % increase	or	<u>5.3</u> % (decrease)
Total expenditures	<u>1.3</u> % increase	or	<u>        </u> % (decrease)

**Total Appraised Value and Total Taxable Value (as calculated under Tax Code Section 26.04)**

	Preceding Tax Year	Current Tax Year
Total appraised value* of all property	\$ <u>978,271,636</u>	\$ <u>931,319,234</u>
Total appraised value* of new property**	\$ <u>1,000,000</u>	\$ <u>31,190</u>
Total taxable value*** of all property	\$ <u>805,138,561</u>	\$ <u>764,662,697</u>
Total taxable value*** of new property**	\$ <u>1,000,000</u>	\$ <u>31,190</u>

\* "Appraised value" is the amount shown on the appraisal roll and defined by Tax Code Section 1.04(8).  
\*\* "New property" is defined by Tax Code Section 26.012(17).  
\*\*\* "Taxable value" is defined by Tax Code Section 1.04(10).

**Bonded Indebtedness**

Total amount of outstanding and unpaid bonded indebtedness\* \$ 36,145,000

\* Outstanding principal.

**Comparison of Proposed Rates with Last Year's Rates**

	Maintenance & Operations	Interest & Sinking Fund*	Total	Local Revenue Per Student	State Revenue Per Student
<b>Last Year's Rate</b>	\$ 1.17000	\$ 0.42900*	\$ 1.59900	\$ 10,163	\$ 6,507
<b>Rate to Maintain Same Level of Maintenance &amp; Operations Revenue &amp; Pay Debt Service</b>	\$ 0.94172	\$ 0.45299*	\$ 1.39471	\$ 9,725	\$ 7,120
<b>Proposed Rate</b>	\$ 1.06840	\$ 0.45300*	\$ 1.52140	\$ 10,243	\$ 8,241

\* The Interest & Sinking Fund tax revenue is used to pay for bonded indebtedness on construction, equipment, or both. The bonds, and the tax rate necessary to pay those bonds, were approved by the voters of this district.

**Comparison of Proposed Levy with Last Year's Levy on Average Residence**

	Last Year	This Year
Average Market Value of Residences	\$ 36,070	\$ 36,278
Average Taxable Value of Residences	\$ 21,853	\$ 21,601
Last Year's Rate Versus Proposed Rate per \$100 Value	\$ 1.625	\$ 1.5214
Taxes Due on Average Residence	\$ 355.11	\$ 328.63
Increase (Decrease) in Taxes		\$ (26.48)

Under state law, the dollar amount of school taxes imposed on the residence homestead of a person 65 years of age or older or of the surviving spouse of such a person, if the surviving spouse was 55 years of age or older when the person died, may not be increased above the amount paid in the first year after the person turned 65, regardless of changes in tax rate or property value.

**Notice of Voter-Approval Rate:** The highest tax rate the district can adopt before requiring voter approval at an election is 1.06835. This election will be automatically held if the district adopts a rate in excess of the voter-approval rate of 1.06835.

**Fund Balances**

The following estimated balances will remain at the end of the current fiscal year and are not encumbered with or by a corresponding debt obligation, less estimated funds necessary for operating the district before receipt of the first state aid payment:

Maintenance and Operations Fund Balance(s)	\$ 9,366,818
Interest & Sinking Fund Balance(s)	\$ 0

A school district may not increase the district's maintenance and operations tax rate to create a surplus in maintenance and operations tax revenue for the purpose of paying the district's debt service.



# Hesperian-Beacon Market Place

Phone: 888-400-1083 • Email: fchb.editor@yahoo.com • 201 W. California, Floydada

## HELP WANTED

**APPLICATIONS ARE BEING ACCEPTED** thru August 22, 2019, for a full-time position with USDA Farm Service Agency. Applicant must have a high school diploma or GED, meet the public well, possess good organizational skills, excellent computer skills, accept daily multi-tasking duties and be willing to accept responsibilities. Applications can be obtained at the following link: <https://www.usajobs.gov/GetJob/ViewDetails/542149700> USDA is an equal opportunity employer

## HOUSES FOR SALE

**BRICK HOUSE FOR SALE** - 808 W. Marivena, Floydada. 3-bedroom, 2-bath, carport, fenced backyard. Call Assiter & Associates Auctioneers - 806-983-3322.

## HOUSES FOR SALE

**HOUSE FOR SALE - FLOYDADA** - Well maintained, spacious craftsmen style house. Two bedrooms, plus a study/office, 1 bath, 2 car carport with storage and additional storage building. Asking \$35,000, no owner financing. Call 806-983-1433.

## SERVICES

**LARRY OGDEN AUCTIONEERING - FLOYDADA** Estates, Farm, Ranch, Business, Liquidations, State Licensed and Bonded. 806-983-5808. TX #9240. Tfn

## Network Auto Glass

WE come to YOU with Auto Glass Repairs & Replacements  
Autos, Trucks, Tractors, Farm Equipment

**Kent Marshall**  
Cell 806-292-8261

Serving Lockney, Floydada, Petersburg, Tulia, Silverton, Turkey, Quitaque and more!

872 CRR Plainview, TX 79072

## NOTICE OF PUBLIC HEARING

City of Floydada

Request for a zoning variance to install a metal carport at the following described property:

Lot 20, Block 8, Steen Place Addition  
127 JB Avenue  
and  
Lot 14-15, B 18, Steen Place Addition  
224 W. Marivena Street

THE PLANNING AND ZONING COMMISSION OF THE CITY OF FLOYDADA WILL HOLD A PUBLIC HEARING ON TUESDAY, AUGUST 20, 2019 AT 4:00 PM IN THE COUNCIL CHAMBERS AT FLOYDADA CITY HALL IN REGARD TO THE PROPOSED REQUEST FOR A ZONING VARIANCE TO INSTALL A METAL CARPORT ON THE WEST SIDE OF HOUSE. PERSONS WHO NEED SPECIAL ASSISTANCE WISHING TO ATTEND THIS MEETING SHOULD CONTACT CITY HALL AT 983-2834 AT LEAST 24 HOURS IN ADVANCE.

## ERA Roberts & Wilkins Realtors

### Lockney

3/2/2, Brick, Finished Basement, 2 Living Areas, Front Lawn Sprinklers 23x29 Two Car Workshop w/ Extras.

3/2/2, Large Corner Lot, Basement Iso. Master, Cent Air/Heat Security Lighting, Handicap Rails and Ramp. Bring Offers!!

### Petersburg

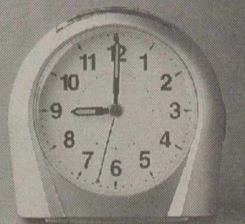
3/2, 2 Living Areas, over 2000 Sq Ft Living Area, 1/2 Acre Lot, Basement Over 1600 sq Ft Workshop! Carport, Needs A Little TLC. Price Below Tax Value!

Call 806-983-6059

**Children's Eye Exams**  
Medicaid, Chip, Most Insurances  
3415 19th Street Lubbock  
806-796-2020

"A man who stops advertising to save money is like a man who stops the clock to save time."

-Henry Ford



Does advertising work? ... It just did!

**You've got it!!**  
Somebody else wants it!!



Got something special you no longer use? Sell it in the Classifieds. It may just be the perfect item to fill someone else's need!

Call us today!

888-400-1083

Limited Time, Special Offer Below!

It's easier than ever to wake up with...

## The Floyd County Hesperian-Beacon

\*Subscribe to the Hesperian-Beacon each week and get it every day online for FREE!

NEWS • SPORTS • OBITS • LEGALS  
AGRICULTURE • COLUMNS • CLASSIFIEDS



NAME \_\_\_\_\_  
STREET \_\_\_\_\_  
TOWN \_\_\_\_\_ ZIP \_\_\_\_\_  
TELEPHONE ( ) \_\_\_\_\_

\*For a limited time, get a complimentary online subscription with the purchase of a print subscription!

CHOOSE SELECTION(S):

- In County Resident Annually \$36  Out of County Resident Annually \$42  
 Out of State Resident Annually \$52  Online FREE

PAYMENT BY PHONE: 888-400-1083, Ext. 100

OR MAIL CHECK TO: Blackburn Media Group  
P.O. Box 1260  
Childress, Texas 79201  
www.hesperianbeacononline.com

MasterCard VISA  
EXPIRATION DATE MM/YY  
V CODE on back of card  
SIGNATURE: X  
Email Address for FREE Online Sub: \_\_\_\_\_

Advertise Here!  
Call 888-400-1083!

## WE BUY OIL, GAS, & MINERAL RIGHTS

Both non-producing and producing including Non-Participating Royalty Interest (NPRI)  
Provide us your desired price for an offer evaluation.

CALL TODAY: 806.620.1422

**LOBO MINERALS, LLC**  
PO Box 1800 • Lubbock, TX 79408-1800  
LoboMineralsLLC@gmail.com

## Have you been diagnosed with Non-Hodgkin's Lymphoma?

If you have been diagnosed with the serious medical condition, Non-Hodgkin's Lymphoma, after exposure to **Roundup herbicide**, you may be entitled to compensation.

Call Us Toll Free: 800-801-2870

The Law Offices of Foster & Houston PLLC  
Principal Office: Austin, TX; Co-counsel may be associated.

## Be Your Own Boss Choose Your Own Routes!

Looking for CDL drivers to deliver new trucks all over the country, starting in Laredo, TX.

Experience preferred. Must have DOT physical and be willing to keep logs. No DUIs in last 10 years, clean MVR.



Apply Online at [www.qualitydriveaway.com](http://www.qualitydriveaway.com) or call 574-642-2023

## ESTATE SALE - LOG HOMES PAY THE BALANCE OWED ONLY!!!

AMERICAN LOG HOMES IS ASSISTING JUST RELEASED ESTATE & ACCOUNT SETTLEMENT ON HOUSES.

4 Log Home kits selling for BALANCE OWED, FREE DELIVERY

- 1) Model # 101 Carolina \$40,840...BALANCE OWED \$17,000
- 2) Model # 203 Georgia \$49,500...BALANCE OWED \$19,950
- 3) Model # 305 Biloxi \$36,825...BALANCE OWED \$14,500
- 4) Model # 403 Augusta \$42,450...BALANCE OWED \$16,500

BEFORE CALLING: VIEW at [www.loghomedream.com](http://www.loghomedream.com) Click on House Plans

NEW - HOMES HAVE NOT BEEN MANUFACTURED

- Make any plan design changes you desire!
- Comes with Complete Building Blueprints & Construction Manual
- Windows, Doors, and Roofing not included
- NO TIME LIMIT FOR DELIVERY!

BBB A+ Rating

\*OFFER NOT AVAILABLE TO AMERICAN LOG HOME DEALERS\*

SERIOUS ONLY REPLY. Call (704) 602-3035 ask for Accounting Dept.

## TEXAS STATEWIDE CLASSIFIED ADVERTISING NETWORK



TexSCAN Week of Aug. 11, 2019

### ACREAGE

Looking for hunting/recreational/retirement property. We have some of the best in Texas, from the Hill Country to South Texas. Large acreage or small, 30 year fixed rate owner financing, only 5% down. [www.ranchenterprisesltd.com](http://www.ranchenterprisesltd.com). 800-876-9720.

### CHARITY

Donate a boat or car today to Boat Angel. 2-Night Free Vacation. Sponsored by Boat Angel Outreach Centers to stop crimes against children. 800-700-BOAT, [www.boatangel.com](http://www.boatangel.com).

### ESTATE SALE

Home/Motorcycle Shop, Aug. 15-18, 9 a.m.-4 p.m., 287 CR 407, Floresville. 12,000 sq. ft., air conditioned. Complete liquidation: '67 Ford Mustang Race Car Kit; parts for Harley Davidson, Triumph, S&S, Nissan, Suzuki; and more. Top Hat Estate Sales.

### OIL AND GAS RIGHTS

We buy oil, gas & mineral rights. Both non-producing and producing including non-Participating Royalty Interest (NPRI). Provide us your desired price for an offer evaluation. 806-620-1422, [LoboMineralsLLC@gmail.com](mailto:LoboMineralsLLC@gmail.com). Lobo Minerals, LLC, PO Box 1800, Lubbock, TX 79408-1800.

### TRUCK DRIVERS

Be Your Own Boss! Get Paid to See the Country! Quality Drive-Away is looking for CDL Drivers to Deliver Trucks! [www.qualitydriveaway.com](http://www.qualitydriveaway.com), 574-642-2023.

Texas Press Statewide Classified Network  
273 Participating Texas Newspapers • Regional Ads  
Start At \$250 • Email [ads@texaspress.com](mailto:ads@texaspress.com)

NOTICE: While most advertisers are reputable, we cannot guarantee products or services advertised. We urge readers to use caution and when in doubt, contact the Texas Attorney General at 800-621-0508 or the Federal Trade Commission at 877-FTC-HELP. The FTC web site is [www.ftc.gov/bizop](http://www.ftc.gov/bizop).

### LOG HOMES

Log Homes - 4 Log Home kits selling for balance owed, free delivery. Model #101 Carolina, bal. \$17,000; Model #203 Georgia, bal. \$19,950; Model #305 Biloxi, bal. \$14,500; Model #403 Augusta, bal. \$16,500. View plans at [www.loghomedream.com](http://www.loghomedream.com).

### LEGAL ASSISTANCE

18-Wheeler Wrecks - It's easy to blame the driver when a big rig is involved in a wreck, but the truth is usually much more complex. When trucking company management cuts corners in training, equipment and maintenance, the rest of us pay the price. If you or someone you love has been killed or injured in a truck wreck, call 800-460-0606 for professional insight or visit [www>YourCarWreck.com](http://www>YourCarWreck.com).

Diagnosed With Non-Hodgkin's Lymphoma after exposure to Roundup herbicide? You may be entitled to compensation. Call: 800-801-2870. Law Offices of Foster & Houston PLLC, Principal Office: Austin, TX; Co-counsel may be associated.

### MISC. FOR SALE

KILL BED BUGS! Buy Harris Sprays, Traps, Kits, Mattress Covers. DETECT, KILL, PREVENT Available: Hardware Stores, The Home Depot, homedepot.com.

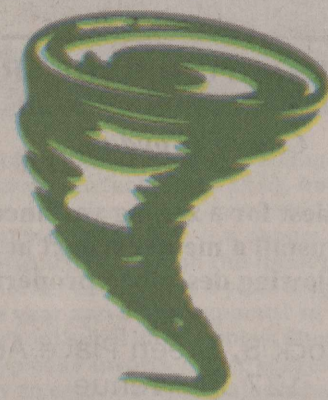
KILL SCORPIONS! Harris Scorpion Spray/Odorless/Non-Staining. Effective results begin after spray dries. Available: Hardware Stores, The Home Depot, homedepot.com.

Harris Diatomaceous Earth Food Grade 100% OMRI Listed - For Organic Use. Available: Hardware Stores, The Home Depot, homedepot.com.

# THE FUTURE WHIRLWIND CHEERLEADERS!



Deon Fincher/Hesperian-Beacon



**By Deon Fincher**  
The Hesperian-Beacon

FLOYDADA – Little footsteps were all over Whirlwind Gym last week as the Cheerleaders took their younger counterparts and taught them the ropes.

It's not an easy thing, keeping forty young girls' attention, and toward the end of the

camp days, it was apparent that 'all-hands-on-deck' were needed to ensure the young cheerleaders would be taking all of their new skills and cheers that could possibly be taught.

In the end, each of the age groups' cheer presentations were exceedingly impressive and moms, dads, grandparents, and family members were thrilled with the show that the girls put on.

**-ARE YOU GETTING THE MOST-  
From your Insurance Dollars?  
Goen & Goen wants to make sure you do!**



Contact Taylor Sue today for a free, no obligation quote.  
Call 806 983 3254, stop by, or visit  
[www.goen-goen.com](http://www.goen-goen.com)  
Goen & Goen – Your Hometown Insurance Provider

**ASSITER & ASSOCIATES**  
REALTORS AUCTIONEERS APPRAISERS  
Buyers Premium

**AUCTION**

**Caprock Motor Parts**  
114 W. California, Floydada, TX  
REAL ESTATE, FORKLIFT, HYD HOSE MACHINE, SHELVING & DISPLAYS, TOOLS, HARDWARE, AUTO PARTS, BOLTS, CHAINS, TRUCK PARTS, and more (see catalog [assiter.net](http://assiter.net)).

**LIVE WEBCAST AUCTION SATURDAY AUGUST 24th 10 AM**  
Inspection Open on Location M-F 9-5!  
**Assiter & Associates Auctioneers**  
Online Bidding Begins Aug 14th [assiter.net](http://assiter.net) or 806 983-3322

**FINAL LIQUIDATION AUCTION**  
EVERYTHING GOES & REAL ESTATE  
1000 Lots - 2 Rings  
LAST WEEK OF LIQUIDATION





**TEXAS BORN**

**ADOPT-A-HIGHWAY**

**AT**  
[dontmesswithtexas.org](http://dontmesswithtexas.org)

**TxDOT**

**TEXAS IS GROWING!**

There's more traffic on Texas roadways, so that means more trash. We can all help keep Texas clean with the Texas-born Adopt-a-Highway program.

With the help of volunteers like you, we can significantly reduce the litter on our roads. It's a fun and easy way for members of the community to come together and beautify our state.

**PARTICIPATION IS SIMPLE AND FREE. HERE'S HOW THE ADOPT-A-HIGHWAY PROGRAM WORKS:**

- Adopt a 2-mile stretch of highway for a minimum of two years.
- You agree to pick up litter four times per year.
- Adopt-a-Highway signs will be posted with your group's name at your adopted section.
- Adopt-a-Highway provides safety vests and trash bags.

It's our volunteers who keep the Adopt-a-Highway program going strong, and your help is needed now more than ever. Go the extra two miles!

**Visit [dontmesswithtexas.org](http://dontmesswithtexas.org) to participate today!**