

7/30/06  
Floyd County Historical Museum  
P.O. Box 304  
Floydada TX 79235

# Hesperian-Beacon

"Celebrating 110 Years of Floyd County News"

www.hesperianbeacon.com

Thursday, March 9, 2006

©The Floyd County Hesperian-Beacon

Floydada, Texas 79235 (USPS 202-680)

Volume 110 Number 10

## Elections not over

Runoffs needed for Judge and Commissioner

The only clear winner in the locally contested Republican races was found in the District Judge race. Although Tempie Francis carried Floyd County with 655 votes to Bill Smith's 650 votes, Francis ultimately lost the race with a four county total vote of 877 to Bill Smith's 1,288 votes.

A runoff election will have to be held in the Floyd County Judge race and the Commissioner Pct. #2 race. In a three way race the winner must receive 50% plus one more vote. The runoff election will be held April 11, 2006.

Craig Gilly and Penny Golightly will have to face off in a County Judge runoff. Gilly received 528 votes, or 39.27%; Golightly received 554 votes, or 40.04%; and Kirt Wyrick got 255 votes or 19.22%.

In the Commissioner race, incumbent Lennie Cilroy received 49.23%, or 225 votes; Lindan Morris received 40.04%, or 183 votes; and Preston Belt got 49 votes, 10.72%.

A breakdown of the four counties in the 110th District Judge's race showed:

Briscoe County: Bill Smith, 250; Tempie Francis, 77.

Motley County: Smith, 244; Francis, 124.

Dickens: Smith, 20; Francis,

14. Floyd: Smith, 650; Francis, 655.

Uncontested (on the Republican ticket) local race's totals were: Patty Davenport, District Clerk, 988; Commissioner Pct. #3 Bill Quattlebaum, 98; Commissioner Pct. #4 Jon Jones, 154; Constable Pct. #2 & #3 Ray Macha, 440; County Chairman Kerry Pratt, 1,007.

Uncontested races on the Democrat ticket were: Margaret Ponce, County Judge, 195; Marilyn Holcomb, County Clerk, 155; Delia Suarez, County Tax Assessor-Collector, 173; Elva Martinez, County Treasurer, 177; Justice of the Peace, Pct. #1 & #4, Drew-Ann Lloyd, 69; Justice of the Peace Pct. #2 & #3, Michelle Araujo, 71; Jeffrey Johnson, County Chairman, 141.

It was unclear at press time how many people voted in Floyd County, but the approximate number was 1,350. A total should be available next week.

508 early votes were cast in the Republican primary.

84 early votes were cast in the Democrat primary.

**Other Republican Winners in Floyd County:**

State Representative, District 85: Jim Landtroop, 682; Drew Mouton, 365; and Jerry

Middleton, 68.

U.S. Representative: Randy Neugebauer, 1,022.

Governor: Rick Perry, 804; Rhett Smith, 157; Star Locke, 40; and Larry Kilgore, 102.

Lieutenant Governor: David Dewhurst, 817; Tom Kelly, 246.

Railroad Commissioner: Buck Werner, 440; Elizabeth Jones, 518.

A complete breakdown of all races by precinct will be printed in next week's paper. The precinct breakdowns were not available at press time.

**Other Democrat Winners in Floyd County:**

U.S. Senator: Gene Kelly, 70; Darrel Hunter, 35; Barbara Radnofsky, 47.

U.S. Representative: Robert Ricketts, 123.

State Representative: Joe Heflin, 127.

Governor: Chris Bell, 75; Bob Gammage, 70; Rashad Jafer, 9.

Lieutenant Governor: Benjamin Grant, 334; Maria Alvarado, 84; Adrian DeLeon, 40.

Agriculture Commissioner: Hank Gilbert, 102; Koeceadee Melton, 34.

A complete breakdown of all races by precinct will be printed in next week's paper. The precinct breakdowns were not available at press time.



**GALA RAFFLE--**Auctioneer Tim Assiter sits on top of the John Deere Gator being given away at the Floyd County Friends Gala, March 25. Raffle tickets are currently being sold for \$25 each, or 5 for \$100. You do not have to be present to win. Assiter will be in charge of the lively auction at the Gala. Shawnda Foster is collecting items for the Silent Auction. If you wish to donate items for the Silent Auction call Shawnda at 652-3351. The Gator can be seen in the lobby of Nick Long's Insurance office. Tickets to the Gala are \$30 per person or a table of 8 for \$280. Guests will be served steak and shrimp. For tickets contact Nick Long's office or D&J Gin in Lockney. Shown with Tim are: (l-r) Amy Watson and Dedra Thomas. Staff Photo



**REGIONAL TEAM TENNIS CHAMPS--**The Whirlwinds competed in Regional Team Tennis Tournament, March 4th in Plainview. They defeated Slaton, Shallowater, and Hedley to advance to the State Tournament. They are going to the State Team Tennis Tournament in Round Rock on March 10-11. Team members are: (back, l-r) Coach Robin Nixon, Brandon Rainwater, Lindsey Leatherman, Cam Battey, Kody Smith, Lance Terrell, Trey Helms, Blake Greer, Coach Regenia Smith; (front, l-r) Tori Terrell, Emily Griffin, Tana Lloyd, Marla Reeves, Kevin Smith, Kelsey Williams, Jesalyn Bradley, and Landon Lackey. Photo by Jim Covington

## Johnny Bill Sue's restored cars bring back memories

By Darwin Robinson

The Quality Body Shop of Floydada opened for business in January, 1962 under the ownership of Johnny Bill Sue. Johnny Bill is not a collector of small items, such as coins or arrowheads, but he collects old antique cars. He restores them to their new mint condition as his personal hobby.

For the past 44 years, 2 months and 9 days, Johnnie Bill has been banging on cars, pickups and trucks repairing the fender-benders and the automobile wrecks of Floyd County residents.

Johnny Bill and his wife, Margie, have been married 49 years. Johnny Bill served his time in the Army, before he and Margie came home to Floydada where they have resided ever since.

Johnny Bill began collecting

and restoring old cars in the early '90s. He and Margie are members of the Nifty Fifty Club here in Floydada. They drive and show off their dazzling display of restored cars at Old Settler's Day here in Floydada, or any time an event calls for a parade downtown. They have participated in many parades and displays at Ruidoso, New Mexico and several other towns in West Texas.

Original parts for these old cars were bought throughout the United States and from Canada. Johnny Bill told the Hesperian-Beacon, "It cost a lot of money to restore an old vehicle. Some run as high as \$30,000. People are always coming to me asking if I would restore an old vehicle for maybe \$1500. I tell them it just can't be done for that amount."

One of the first vehicles Johnny Bill restored around 1990

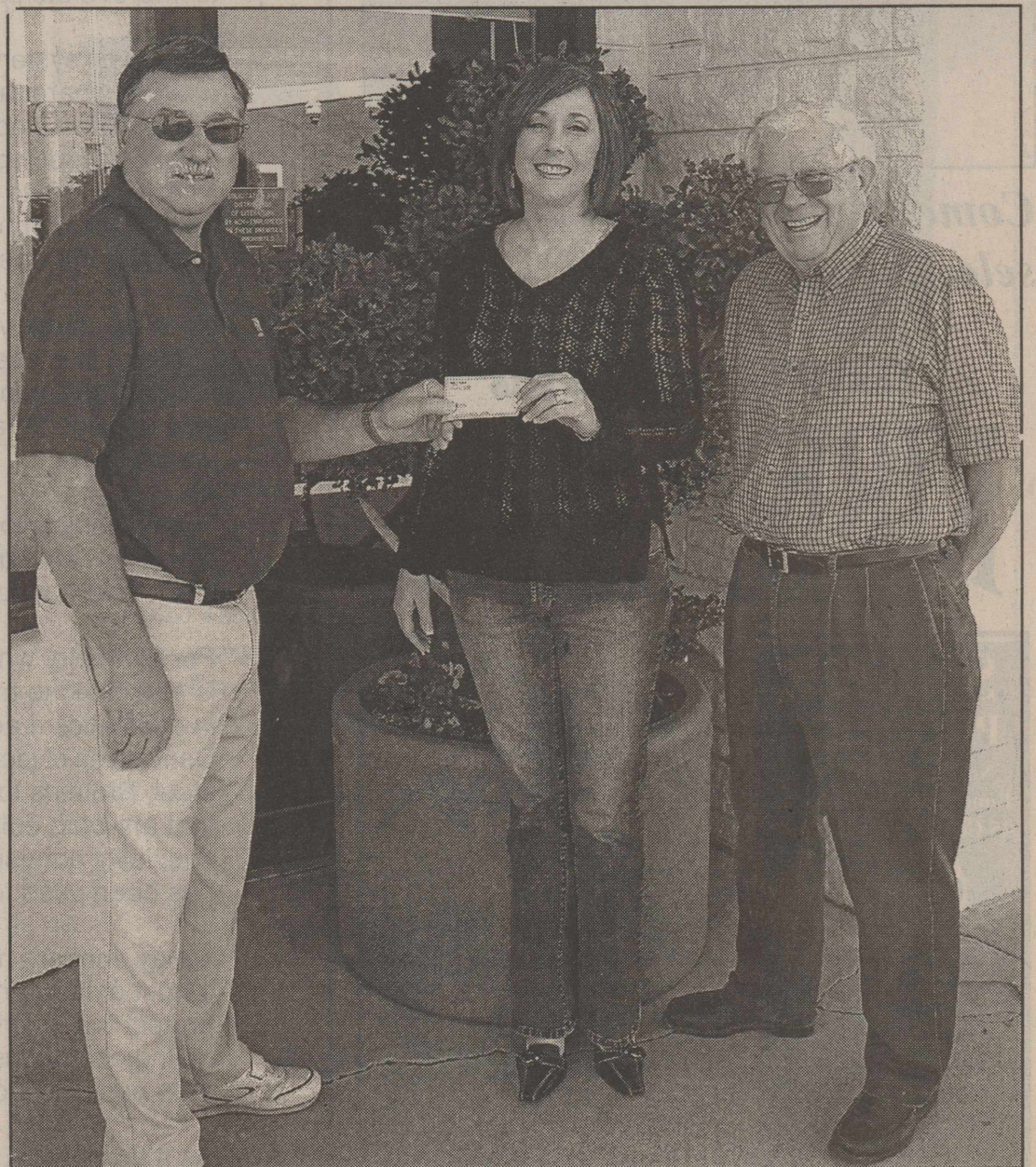
was an orange and white 1976 Ford Bronco, that has a jeep type body style. He acquired the Bronco from Dr. Tommy McIntosh, who had bought the vehicle brand new at the old Reed Ford dealership in 1976. Johnny Bill restored it inside and out and it is almost one of a kind today.

The next car to be restored to its original condition was a 1959 Ford Fairlane, two door hard top. Johnny Bill said, "I bought this car in Ruidoso. I completely restored this car in the mid-'90s."

Johnny Bill put a Continental Kit spare tire rack, bought in Canada, on the back of this turquoise and white, long and luxurious vehicle. Its sleek low and wide body design looks like a "dream come true" as it rolls down the street. Its chrome wheel covers ("fender skirts") are a great reminder and a great



**LOCAL SCOUTS RECOGNIZED--**(l-r) J.C. Chappell, B.J. Chappell, Jerry Chappell, Darla Chappell and Zane Montandon. The South Plains Council held its Annual Recognition Banquet Tuesday, February 21 at the Frazier Alumni Pavilion at Texas Tech. Eagle Scouts B.J. Chappell and Zane Montandon joined other Scouts at attendance at a reception honoring the Eagle Class of 2005. The guest speaker was Dr. Wallace Davis, past president of Wayland Baptist. The Silver Beaver, the highest award the South Plains Council can bestow to a volunteer was presented to three adults, Jerry Chappell, Troop #357, Floydada; Randall Hust, Troop #140, Lubbock; and Kenneth Quigle, Troop #406, Lubbock. The South Plains Council currently serves a twenty County Area which includes over 4,000 youth members and almost 1,000 adult volunteers. Courtesy Photo

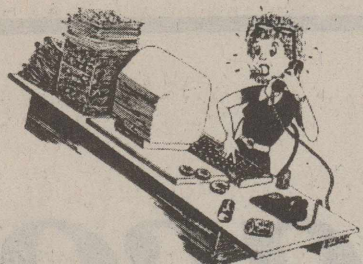


**GRANT DONATION--**The Floydada Lions Club was the first Civic organization to donate to the downtown beautification grant. The City of Floydada has been awarded a \$10,000 matching grant from the Texas YES Rural Beautification Program administered by TDA. The grant funds will be used to enhance the downtown area with self watering planter boxes (like the one seen in this picture). Each planter will cost \$250. Shown here are: (l-r) Lion Clubs President Tommy Ogden presenting a \$250.00 check to EDC President Dora Ross and EDC Director Charles Tyer. Staff Photo



## By The Way

By Alice Gilroy



email:floydada@amaonline.com

There was some confusion last week over an ad in the newspaper that led to some hard feelings among a few of our readers.

There were some who misunderstood an ad placed by the Floyd County Republican Party, as being a copy of the Republican Primary Ballot.

Since they misinterpreted the ad they believed we had run the Republican Ballot and not run the Democratic Ballot.

In truth we did not run either ballot--which also caused some hard feelings.

We did not have room to run the ballots. The ballots are always run for free by us when we have the space. We did not have the space this time. The ballots could be found posted at the Courthouse for anyone who was interested.

The ad, which was paid for by the Republican Party, was placed to show support for the whole

slate of local Republican Candidates. It was also placed to remind people of the polling places, and to remind people if you wanted to vote for any of those candidates you must ask for a Republican ballot.

We thought it was a good ad full of good information. We appreciated it.

It was not an endorsement by this newspaper for the Republican candidates.

We made a mistake by leaving off the disclaimer at the bottom of the ad which reads, "This political ad paid for by...yada yada yada."

We are sorry for forgetting that and adding to the hard feelings.

\*\*\*\*\*

This column will already be pasted on the page when the results come in for the election, so I just want to congratulate all the winners!

## Palo Duro Basin Oil and Gas Update

Courtesy of Tom Musser

**Floyd County:** SimDrill was rigging up over the weekend and the first of this week on the Bankers Petroleum (US) Inc. Jones Lease Well #1. The Jones Lease Well #1 is located 2 1/2 miles southwest of Dougherty in AB&M Survey, Block 1, South Half of Section 134.

**Floyd County:** BASA Resources, Inc. Foster Lease Well #1 completed the horizontal drilling. The total vertical depth is

9,002 feet. The horizontal section is 2,160 feet. The total footage of the Foster #1 is 11,162. 4 1/2 inch production casing was set to 11,135 feet. The Foster #1 is awaiting completion work.

**Patterson-UTI Rig #494:** The Patterson-UTI Rig #494 is scheduled to rig-down off of the BASA Resources, Inc. Foster Lease Well #1 on Tuesday, March 7 and move from Floyd County to a new drilling location in the Midland District.

## Congressman Neugebauer rated top House conservative

Washington, DC-The United States House of Representatives consists of 435 members and Congressman Randy Neugebauer comes in as one of the top House conservatives, according to a leading publication that covers Congress.

Neugebauer is the U.S. Congressman for District 19, which includes Floyd County.

National Journal magazine gave Neugebauer a "composite

conservative score" of 95.8 out of 100, tying him for first with four other House members.

His strong conservative rating comes as no surprise to Neugebauer. "It is my job to be the voice in Congress for the constituents of the 19th District," Neugebauer said. "Folks across the South Plains and the Big Country possess traditional, conservative values, and I am proud to support those values in the

U.S. House of Representatives."

In addition to the composite score, National Journal gave each House member a separate score for his votes on key economic, social, foreign policy issues during 2005. According to the magazine's study, Neugebauer is more conservative than 97 percent of his House colleagues on economic issues, and more conservative than 89 percent on both social and foreign policy issues. Neugebauer was more liberal than zero percent of his colleagues in all three categories.

Key votes on economic issues include supporting the permanent repeal of the Death Tax (H.R. 8), curbing spending by \$40 billion over five years (H.R. 4241), and extending tax relief (H.R. 4297).

Votes on social issues in the

study include support for strengthening enforcement of immigration laws (H.R. 4437), increasing the fines for broadcasting indecent material over the airwaves (H.R. 310), and prohibiting the transportation of a minor girl across state lines to obtain an abortion without parental notification (H.R. 748).

On the foreign policy front, Neugebauer supported increasing funding for U.S. military operations in Iraq and Afghanistan (H.R. 1268), reducing U.N. funding (H.R. 2862), and authorizing U.S. military personnel to aid border security efforts (H.R. 1815).

National Journal's ratings appear in its February 25, 2006 issue.

## Floydada Police Report

March 4th, at 6:44 p.m., Floydada Police stopped a van in the 100 block of E. Houston loaded up with 16 illegal aliens.

"Everyone in the vehicle was an illegal alien," said Floydada Police Chief Darrell Gooch.

"They were all detained for INS," said Gooch.

One of the passengers, Isaias Sarabia-Guerrero, 26, was arrested for Possession of Cocaine.

"This is something we are starting to see a lot of," said Gooch. "We believe they are coming through here on their way from the Arizona border to Dallas. The County Deputies also stopped a vehicle recently that had 12 illegal aliens inside."

In other police activities during the month of February:

February 6 police questioned a 21 year old man found loitering around an abandoned residence. The man was found with marijuana in his possession.

"A fight broke out between the suspect and the officer," said Gooch. "A foot pursuit ensued and the suspect got away. Charges are pending and the case has been turned over for Grand Jury review."

Feb. 8, Latoya Glenn, 17, was arrested for outstanding municipal warrants.

Feb. 10, police were called to the 300 block of W. Crockett in reference to narcotics. Omar Garza, 19, was arrested for Possession of Marijuana.

Feb. 11, Lasaro Gonzales, 27, of Lockney, and Terry Martin, 26, of Lockney, were arrested for furnishing alcohol to minors.

Feb. 17, Joe Anthony Garza, 20, of Floydada, was arrested for outstanding municipal warrants.

Feb. 18th, police took a report from a 66 year old woman who stated her 42 year old daughter had hit her. The case has been

turned over to the District Attorney.

Feb. 25th, Mary Jane Alaniz, 40, was arrested for unauthorized use of a motor vehicle.

Feb. 26th and 27th police took two reports of tires being slashed in the 800 block of S. Wall and the 700 block of S. Main.

In January:

January 5 police took a report from a woman who stated that 2 Hispanic males had forged her checks. After an investigation the woman who made the complaint, Carrie Alexander, 46, of Floydada, was subsequently arrested and charged with making a false report to a police officer and perjury.

January 8, Keith Collins, 24, of Floydada, was arrested for outstanding municipal warrants.

January 9th, police stopped a vehicle in the 400 block of W. Virginia. Petey Segura, 18, and 2 juvenile males and 1 juvenile female were arrested for possession of marijuana.

January 11, police arrested Domanik Gutierrez, 18, for outstanding municipal warrants.

January 21, Jonathan Martinez, 21, of Floydada, was arrested in the Allsup's parking lot for DWI.

Also on the 21st, at 11:53 p.m., Jose Rivera, 24, of Plainview, was arrested in the 600 block of S. 3rd, for DWI.

January 26, a woman reported theft and forgery of personal checks. An investigation showed 4 individuals attempting to pass forged checks. The case has been referred to the District Attorney for Grand Jury review.

January 27, police were called to the 100 block of E. Houston in reference to domestic violence. Charles Rando, 41, was subsequently arrested for domestic violence.

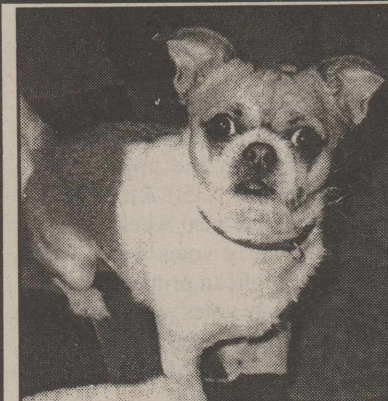
## GOEN & GOEN

First Rate Service  
With Discount Prices!  
Come see us for a quote:

Kyle Smith, Pam Bennett,  
Jana Borchardt & Rebecca Moore

Serving You for Over 70 Years  
102 E. California, Floydada 983-3524

www.goen-goen.com



**REWARD**  
**\$200.00**

**Lost: Brown & White Chihuahua/Shih Tzu Mix. 2 yrs. old / Weight 10 lbs.**

He may have been taken from our home off north Hwy. 207- First house on the right - One mile north past Flomot Hwy. Has a red collar. Goes by the name **Buddy.**

If you have seen him please call Tina @ 983-5256 Wk. or call Randy Calahan @ 983-7145 or 983-2034

**Please remember to pray for our soldiers**



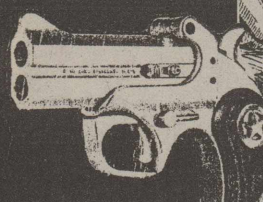
Come in and check out our new selection of sofas from *Mayo*

SERVING YOU SINCE 1918

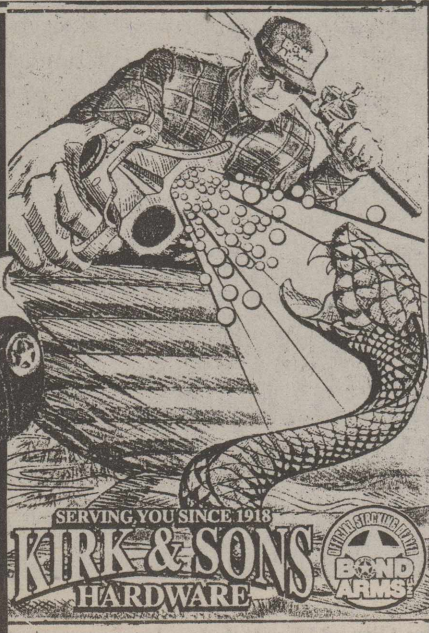
**KIRK & SONS**  
HARDWARE

### SNAKE PROBLEM

Not since I carry my Bond Arms Defender in .45 Colt & .410 shotshell!



And with a quick turn of an allen wrench, I can change it to one of 16 other calibers from .22 long rifle to .45 Colt!



Manufactured by Floydada's own Greg Bond in Granbury, Texas

### THE DAIRY INDUSTRY: PROTECTING OUR ENVIRONMENT & FUTURE

"The long-term wealth of any nation depends on the productivity of its soil and how well it is nurtured and preserved over time.

Farmers who are closest to the land, and who depend on it for their livelihood, have long recognized the need to take good care of their land. Today, modern dairy farmers operate to improve the productive capacity of their land and to improve the environment.

Two basic systems of dairying exist in the United States. *One* involves cows grazing on pasture where the manure is returned directly to soil. The *second* system involves cows being maintained in an area with feed, water and shelter being provided for them. In the latter concept, special waste handling systems are developed. These special systems return the waste to the land as natural fertilizer for use on cropland. Some operations market the composted waste for use on gardens and lawns in urban areas, therefore reducing the need for chemical fertilizers.

Each day large volumes of milk move from dairy farms to milk processing plants. Much of this milk is used to process dairy foods other than fluid milk products. For example, cheese making produces cheese plus a "leftover" called *whey*. Many years ago this product was considered a waste product and was discarded in various ways - often harmful to our environment.

Today whey is looked upon as a useful product and is used in its entirety. It contains significant amounts of quality nutrients such as protein and minerals. It is made into many foods and non-food products that add economic value to its products.

For example, whey proteins are used in making candy, baby food and bakery goods. It is also used to make lactic acid, an ingredient in cake mixes. It is an important ingredient in cosmetics. Lactose (milk sugar) is used extensively in the pharmaceutical industry. Derivatives of lactose can be used in making toothpaste and as a specific agent in hardening steel. Proteins found in cheese whey can be used to make clear film packaging materials that are both edible and readily biodegradable. Both whey and lactose are used to make speciality adhesives and paper coating. Recently, special "high clarity" casein (protein) has been used to manufacture television screens.

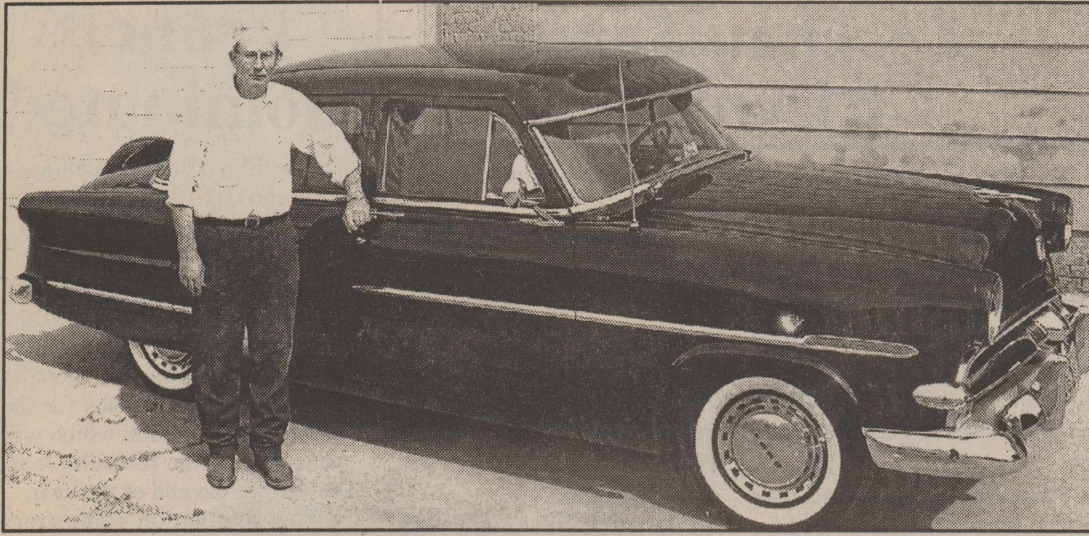
Today, modern milk processing plants use all of the milk received from farms - producing a host of food and non-food products that create economic value and at the same time, protect the environment. Modern plants now remove water from milk in condensing and drying operations and use such products to clean plant facilities before recycling the water onto pasture and grass growing operations.

As it faces the future, the United States dairy industry is committed to produce more and better products for its consumer, while it continues to improve the environment and the land..

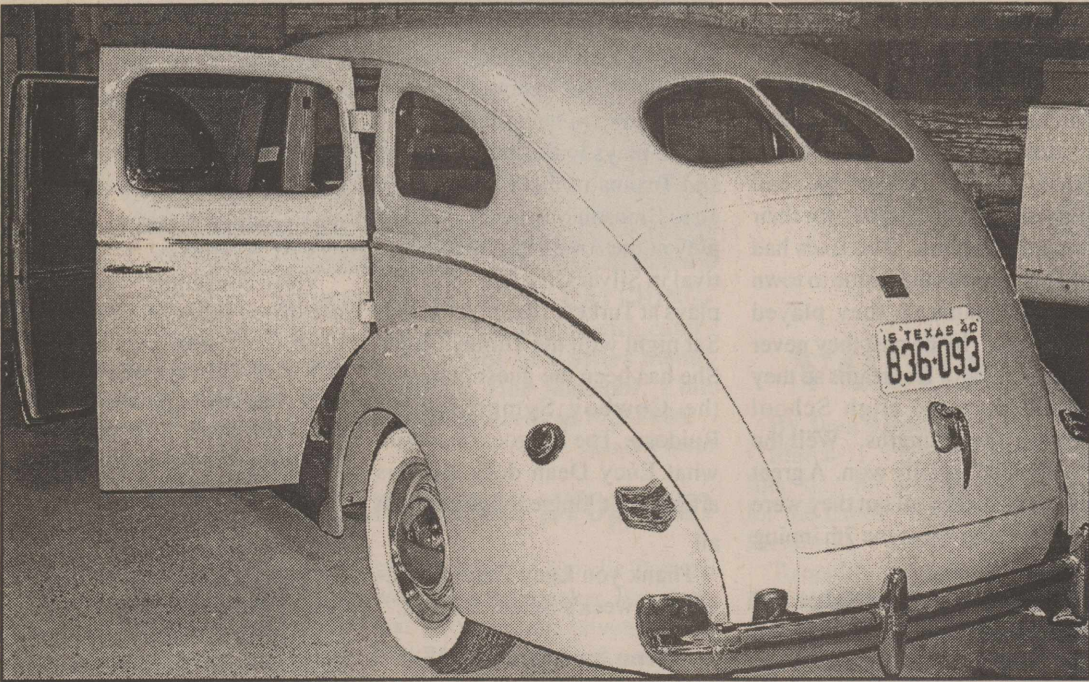
Article taken from "Milk From Cows to Kids". by Southwest Dairy Farmers

This information sponsored by Floydada Economic Development and Opportunity Lockney





1953 CUSTOMLINE FORD



1940 MODEL FORD

### Sue restores cars to mint condition

**Continued From Page 1**  
memory-maker for those who grew up in the '50's.

In the late '90s Johnny Bill restored a 1953 four door Ford Customline. "This car is my favorite vehicle of all," said Johnny Bill. "It still has the original V-8 engine in it. It was bought brand new by L.H. Blume in Crosbyton at the Crawford Ford dealership. I bought it from his granddaughter in Canyon."

This jet black '50's vehicle has a sun visor, an optional addition to these cars back in the '50s. Also, it too has fender skirts and a Coronado spare tire indentation into the trunk, which makes the car look almost like a low-rider. The chrome hub caps and chrome bumpers are all things of the past in today's world of cars with very little chrome.

Another one of Johnny Bill's restored "car's of the past" is a four door 1940 Model Ford. Johnny Bill said, "I bought this car from Don Hardy. Don acquired it in the '70s and he already had it restored back to its original condition. I only had to add the small chrome hub caps, mohair seat covers, and few other minor things."

This "Al Capone type" looking car is painted a light tan cream color. Its two back doors open forward. Johnny Bill said these are called "suicide" doors. The reason being, if they are opened while going down the road, the wind will jerk not only the door quickly open, but whoever opened it will probably be pulled out.

Not to be out done by her husband, Margie bought her a white 1967 Mustang convertible from an individual in Lubbock. The car came from a previous owner in Colorado.

"We restored this car from top to bottom, including the engine and all the mechanical parts underneath," said Johnny Bill.

Being a convertible, this car is in demand to carry "queens" in parades on special days in Floydada. Margie also drives this sleek petite looking car to the car shows, when Johnny Bill takes one of his cars to the show.

I would like to thank the voters of Pct. 4 for your confidence and support in reelecting me as your Floyd County Commissioner. I will continue to perform the duties of my office to the best of my ability.

**Thank You.**  
**Jon Jones**

pol. ad paid for by Jon Jones

### WHAT THE DAIRY INDUSTRY HAS DONE FOR HEREFORD & DEAF SMITH COUNTY

- Population: 18,415
- 9 dairies milking 33,000 head
- Produce 1 million pounds of milk per day
- 240+ jobs
- 4 new dairy service businesses
- 2 ethanol companies have announced plans to build plants in 2006 that will burn manure; increase in tax base by \$250 million; employ 60 people
- 20+ homes built in 2005
- 2 new multi-family housing projects
- Hereford has become a shopping hub for area towns
- Sales tax revenue grew 23% in 2005
- School enrollment increase by 200+ students

Hereford Mayor Bob Josseland said the city built its history on agriculture. Some 1.5 million cows live, eat and die within a 50-mile radius of Hereford each year. Hereford is staking its future on agriculture and industries in Hereford complement each other. What we just decided - Hereford in not going to draw the Bell Helicopters. We're ag. "Everybody has worked together stringently to make it happen."

This information is sponsored by Floydada Economic Development and Opportunity Lockney

**We are proud to offer**  
**Circle (E) Candles.**

**Come see Stacie** 983-2220  
**at Scott Gin** 2 miles south on the Ralle Hwy.



**PETITE MISS FLOYDADA BRIANNA CASILLAS** will be competing with Ballet Folklorico PAIOMA LIBRE of Lorenzo at the 12th Annual Festival Viva Aztlan to be held at the Lubbock Civic Center theater on March 10 & 11. Brianna is the daughter of Angelica Rea and Robert Casillas, granddaughter of Jose & Luisa Rea, Ralph & Selia Casillas, & great granddaughter of Francisca Trevino. Many thanks to our sponsors: Campbell Farms & Garcia's O.K. Tires, all of Floydada.

Courtesy Photo

The  
Floydada  
Chamber  
of  
Commerce  
Banquet  
will  
be  
April 10th

### THE FLOYD COUNTY HESPERIAN-BEACON (USPS 202-680)

Published weekly each Thursday at 111 East Missouri Street, Floydada, Texas 79235. Periodical postage paid at Floydada, Texas 79235. POSTMASTER: Send change of addresses to: The Floyd County Hesperian-Beacon, 111 E. Missouri, Floydada, Texas 79235.

Dear Voter:

I would like to thank each of you who participated in the recent primary election. We are all blessed with the right to cast our vote and elect our public officials.

I would also like to thank Angela Ragland for her constant support and hard work.

I am so proud of my Co-Chairmen, Adrain Helms and Mitch Probasco and the Executive Committee Chairman, Paul Schacht. Your work and wisdom are beyond compare. Thank You.

I thank the children, young people and their parents for all their dedication. You make our country great.

I appreciate every "Friend and Supporter" and each kind word you have spoken, every telephone call you have made, every letter you have written, and every smile you have shared. I also thank you for all of your donations of time and money.

I want to thank my family. Each of you have played an important role and I love you very much.

*With deepest appreciation,*  
**Tempie T. Francis.**

Paid pol. ad by Tempie T. Francis, 201 W. California, Floydada, Tx. Angela Ragland, Treasurer.



TEMPIE FRANCIS

Choosing the right bank could change  
**HOW YOU SPEND YOUR TIME.**



Jim: a trip to his bank, his accountant, his auto lender...



Terry: a trip to the campground with his family.

Your time is valuable. Why spend it driving all over town for your financial services? Choose **American State Bank** and have a variety of checking and savings accounts, online banking, trust services, mortgages, loans and credit cards—all in one place. To save even more time, our Relationship Bankers will help you sort through your options and develop a customized financial plan.

Call today to find out how time-saving and convenient "banking for you" can be.

**ASB**  
**AmericanStateBank**

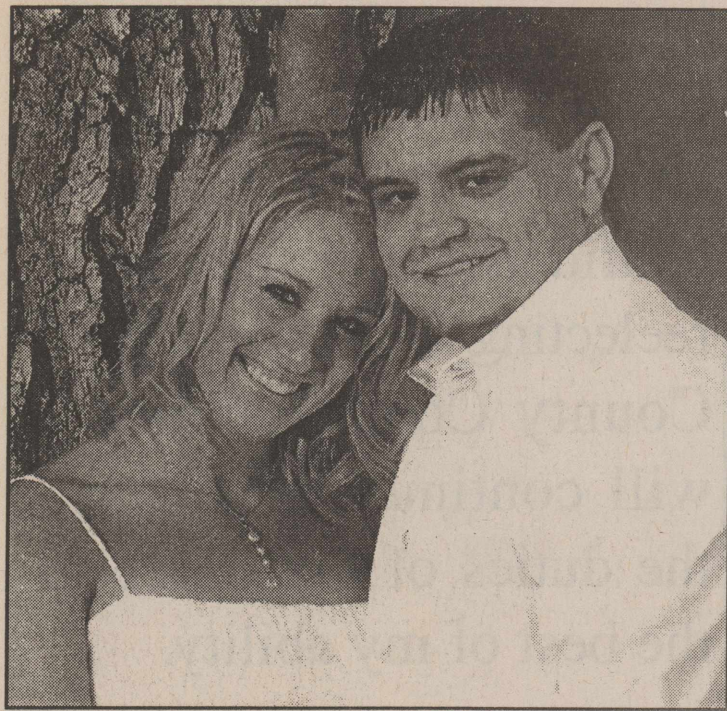
Banking for you.

983-3725 ★ www.asbonline.com  
Customer Service Available: M-F 7 am - 7 pm; Sat 9 am - 5 pm



9854FL  
Member FDIC





ASHLEY BROCK AND CHAD HARMON

## Brock and Harmon

Kyle and Kay Brock of Lockney announce the engagement of their daughter, Ashley Kay, to Chad Harmon, son of Donna Harmon of Floydada and Paul and Debbie Harmon of Lubbock.

The bride-elect is the granddaughter of Byron and Charlotte Brock and Boyd and Gayle Reay of Lockney. She is a graduate of Lockney High School and currently attends Texas Tech University. She is employed at North Star Jewelers.

The prospective groom is the grandson of Ruth Mathis of Floydada. He is a graduate of Floydada High School and earned his Bachelor's degree from Texas Tech University. He is employed as a realtor with Creel and Harmon Realtors of Lubbock.

The couple will be married 7:30 p.m. June 2, 2006, at the Baker building in Lubbock.

## Floydada Senior Citizen News

By Margarette Word

February 28, Irene King, our Floydada Senior Citizen Center director retired, after 15 1/2 years of work.

Thursday, March 2, a retirement party was given to her with cake and ice cream and a money tree after the noon meal. We will truly miss Irene's leadership. We hope she has a restful, happy retirement. She plans to stay on as a volunteer so we will get to see her often. There were 54 people that ate the day of her retirement party. Thank you Irene for a job well done.

Joan Smith is our new director and we are looking forward to her leadership.

Recently Francis Gunter's sister Estelle and her husband Amos Mize of Amarillo came to visit him and they went to Roaring Springs to visit friends and ate lunch there.

Francis Gunter also told me that his brother and wife, who live in Oklahoma, lost their home and all their belongings to a grass fire that covered a large area and damaged many other homes a few weeks ago.

William Bertrand is coming to the Center to eat lunch almost every day now. He is doing real well and healing fast from his accident.

Dorothy Reeves is in the hospital.

Thank you for remembering the Center when you need to make a memorial donation.

In memory of **Glenna Mae Orman** - Leora Younger.

In memory of **Bill Hicks** - Tom and Edwina Emert, James and Darlenda Marquis, Judy Griggs and family.

In memory of **Elizabeth Armstrong** - James and Darlenda Marquis, Whirlwind Good Sam Club, Ruth Hammonds, Joe and Lynn Dunn.

In memory of **Cole DuBois** - James and Darlenda Marquis.

In memory of **Glenna Mae Orman** - James and Darlenda Marquis, Genelle Breed, Ed and Mary Parks.

In memory of **Beverly Ann Knight** - Mike Breed, Jerry and Shirley Towler, Genelle Breed, Genelle Breed.

In memory of **C.O. Lyles** - Norma Welch.

In memory of **Kathy Adams** - Norma Welch.

In memory of **Edell Moore** - Norma Welch, Jean Kendrick.

In memory of **Leonard Matsler** - Norma Welch, Jean Kendrick.

In memory of **Ila Hammonds** - Norma Welch.

In memory of **Lorilla Bradley** - Jean Kendrick.

In memory of **Effie Foster** - Jean Kendrick.

In memory of **James Stair** - Joe and Lynn Dunn.

Thought for the week - Keep praying for more rain.

Thought for the week - I think people should go into public office for a term or two and then get back into their businesses and live under the laws they passed.

-Mike Curb

### Menu March 13 - March 17

**Monday**-Baked chicken w/ mushroom sauce, mashed potatoes, broccoli, tossed salad/1000 Island, lemon cake

**Tuesday**-Pizza, Italian vegetables, tossed salad/Ranch, garlic bread, banana pudding

**Wednesday**-baked ham, potatoes, spinach or greens, tossed salad/French, roll, frosted cake

**Thursday**-Hamburger steak in brown gravy, rice, squash, wheat roll, golden congealed salad

**Friday**-Brisket, au gratin potatoes, squash, pickles, wheat roll, apricot cobbler

Bridal Selections for:

**Ginger McHorse & Monty Anderson**  
**Kayla Vines & Dusty Anderson**  
**Ashley Brock & Chad Harmon**  
**Mandy (Emert) Curry, mother to be (It's a girl)**

### PAYNE PHARMACY

200 S. Main, Floydada 983-5111

New Shipment of **WEBKINZ** and **Willow Tree Angels & Figurines**

Bridal Selections for:

**Ashley Brock & Chad Harmon**  
**Gretchen Quebe & Paul Koen**

### Schacht FLOWERS, JEWELRY & GIFTS

112 W. Poplar, Lockney 8:30-5:30, Mon.-Sat., 652-2385  
1-800-566-5754

## Lockney Senior Citizen News

By Vera Jo Bybee

Ham Gammage's brother David and wife Neva of Plainview came over last Thursday morning to have coffee at the Center with Ham and the food smelled so good they stayed and had lunch with him. It is always so good to have guests eat with us.

Also Ham's daughter Linda and husband of Lubbock are here this week sitting with their grandchildren and plan on eating lunch at the Center all week, except the day that Liver and Onions are served. I don't blame them. I can't eat liver of any kind either.

Last Saturday March 4 two teams of "Old Timers" baseball players were in Lockney for their annual ballgame. The Exes had enough players that came to town for two teams so they played each other. In the past they never had enough for two teams so they would play the High School Horns, "the youngins." Well the "youngins" usually won. A great time was had by all but they were ready to stop when the 7th inning was up.

Our grandson Tyler Bybee and friend Amy Flaten came in from San Angelo for the game. I enjoyed visiting with Amy while Tyler played ball. I still had to holler at Tyler to keep his eye on the ball. I loved it when my grandsons played their sports.

The Floyd County Pioneer Association will be holding a meeting Monday night at 7:00 p.m. in the Courthouse. Everyone is invited to attend.

J.B. Martin is in the Lubbock Covenant Hospital having tests run.

Our thoughts and prayers are with the family of Helen Karr who passed away Sunday March 5. Helen was one of eleven Calahan children. Jr. Calahan of Abilene is the only surviving Calahan child, as told to me by Jontha Mercersone of the Calahan granddaughters.

While talking to Jontha I asked how she was doing with her recuperation after her open heart surgery and she said, "Good". She has started her walking again. That is great news.

This week's Senior Citizen's profile is on Lucy Dean Record. Lucy Dean Rose was born June 1, 1924 at Lockney to C.H. and Mary Ida Casey Rose. Lucy Dean graduated from Lockney High School. She attended Texas Tech, Draughan's Business College, and the St. Louis Mo. Institute of Music.

On October 1, 1942 she married C. L. Record in Amarillo. He then joined the Army Air Corps and was shipped out October 24, 1942. Lucy Dean worked 2 1/2 years for the Corps until C.L. received his medical discharge in 1945.

C.L. was born November 3, 1922 in Amarillo to Charles Hamilton and Pearl Lankford Record. He attended school in Amarillo and graduated from

# Society

## Blood Drive set for March 21

Lockney residents have the opportunity to celebrate life by joining in the Mangold Memorial Hospital/community blood drive from 10:00am to 1:00pm, Tuesday, March 21st at the hospital in the UBS mobile coach. "It is important to come together as a community to help one another," says Connie Hollinshead, Donor Recruitment Representative with United Blood Services.

It takes 180 blood donations every day to meet the needs of area patients and to be ready for emergencies. "We all expect blood to be there for us if we ever need it," said Hollinshead. "But only about 8 percent of area residents donate blood."

Each blood donation can help several patients. Every unit of donated blood is sent to the United Blood Services laboratory for testing and processing. Laboratory technicians separate the whole blood into components (including red blood cells, plasma and cryoprecipitate).

Red blood cells carry oxygen throughout the body and are used for surgery patients. Plasma contains vital blood clotting factors. Cryoprecipitate is a special blood clotting factor concentrate that helps control massive bleeding in surgical and trauma cases. Another blood component, platelets, is vital for cancer and leukemia patients undergoing chemotherapy. While individual components are transfused for specific medical needs, a patient with a serious injury may require several different components.

Blood donated here helps save the lives of patients in the South Plains area hospitals.

Donors must be at least 17, weigh at least 110 pounds and be in good health. All donors must have a picture ID and a list of any medications that they are taking. All donors will receive their choice of a T-shirt, mug, canvas bag, or cap. For an appointment, please contact Shedia Benton at 652-3373, ext. 229.

Bridal Selections For:

**Ginger McHorse & Monty Anderson**  
**Kayla Vines & Dusty Anderson**  
**Ashley Brock & Chad Harmon**

### Caprock Motor Parts & Hardware

114 W. California, Floydada 983-2865

### DON JONAS framed prints & Calligraphy

We have New Arrivals for your home decor, including Decorator Lamps, Fragrances, Wreaths and Spring Floral Arrangements.

Bridal Selections:

**Ashley Brock & Chad Harmon**  
**Gretchen Quebe & Paul Koen**



M-F 10AM-6PM Sat. 10AM-4PM  
www.heartsdesireonline.com  
652-2548 Fax 652-2546

## Francis nominated

The Equal Justice Volunteer Program of Legal Aid of Northwest Texas has announced that Tempie T. Francis has been nominated for consideration by the Texas Equal Access to Justice Foundation (TEAJF) Communication Committee regarding the potential candidates for the Pro Bono Champion which will be featured in the Texas Bar Journal before the end of the year.

The nomination came from Legal Aid of Northwest Texas, a non profit organization that assists low income individuals with certain legal matters.

"Tempie T. Francis, an attorney out of the Floydada area, is being nominated for such award because she is always eager and willing to assist Legal Aid in any way possible," said Luisa Vigil, EJVP Coordinator.

Vigil continued, "Although, her office is about 1 hour away from the Plainview Legal Aid office, she always offers and assists with any legal clinics which may take place in Plainview. In addition, she takes almost any case that is referred to her by Legal Aid. She is just a great person."

"She has assisted the Equal Justice Volunteer Program of Legal Aid of Northwest Texas in Plainview by assisting at legal clinics and accepting cases from legal aid. And although when EJVP refers cases to her on a Reduced Fee basis, she almost always completes the cases at no charge to Legal Aid."

High School in Dumas where he was making his home with his Uncle Ike Record. C.L. passed away July 2, 1991.

Their children are Donna and husband Guy Roberson of Lubbock and Breck and wife Marla of El Paso. Baby son Bobby Bruce passed away in 1949. There are 6 grandchildren and 7 greats.

Lucy Dean still leads a real active life. She plays the piano along with her former student, Diane Johnson, on the organ in Lockney's First United Methodist Church and teaches her music students in her studio.

She plays with Jimmy Burson and Texans in the Swing. They go to Branson Mo. every year and play at the American Music Festival in Silver City, Mo. She also plays at Turkey, Texas on the first Sat night with the Turkey Gems. She has been the guest pianist at the Cowboy Symposium in Ruidoso. The list goes on and on what Lucy Dean does but this article isn't long enough to list it all

Thank you Lucy Dean for being this week's Senior Citizen.

### Menu for March 13-17

Monday	Chicken Fried Steak
Tuesday	Hamburger Steak
Wednesday	Meat Loaf
Thursday	Soft Tacos
Friday	Fish



Glad you survived and made it to 65 We Love You



MARIA ELIZABETH CASARES was Tiny Miss Valentine Sweetheart at the St. Mary Magdalen contest. She would like to thank everyone who made this possible through donations and any help that was given. Courtesy Photo

Trinity Assembly Church and the family of James and Sue Lovell would like to invite you to a reception given in honor of their **60th** Wedding Anniversary.

(No gifts please)

Where: Trinity Assembly Church  
When: Sunday, March 19, 2006  
2:00 to 3:30 P.M.

Y'ALL COME

Bridal Selections For:

**Ginger McHorse & Monty Anderson**  
**Kayla Vines & Dusty Anderson**  
**Ashley Brock & Chad Harmon**

### Sue's Gifts & Accessories

100 East California, Floydada 983-5312

### New Arrivals From Market

Bridal Selections:

**Ashley Brock & Chad Harmon**  
**Gretchen Quebe & Paul Koen**

Insurance representative Ken Holt will be available in the pharmacy 9:00 a.m. - 5:00 p.m., by scheduled appointment, every Tuesday and every other Thursday to help enroll you or answer any questions you may have concerning the Medicare Plan D Prescription Plan. Joel Williams will be in every other Thursday.

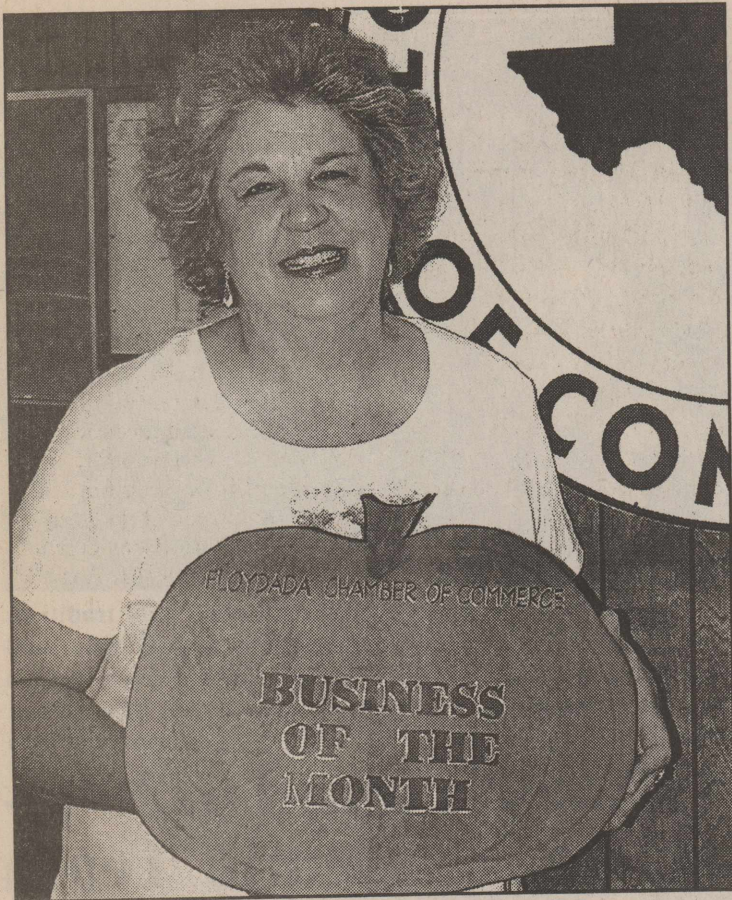
Please call to schedule a 30 minute appointment and bring your Medicare Card, list of medications and any information you may have received from Social Security indicating your qualification for financial assistance.

### CLARK PHARMACY

Danny Clark

309 North Main, Lockney-Pharmacy - 652-3353  
Residence - 652-3712 (24 hour call)  
Free in town prescription delivery





**BUSINESS OF THE MONTH-SCHACHT'S CATERING-** Judy Schacht has a home based business that began with catering proms and has expanded from there. She now offers menus from luncheons, dinners and receptions. Her husband, Clar, handles the grill. Call us for your catering needs at 983-2906. Staff Photo

### Lockney Elementary hosts program

Lockney Elementary will host a puppet show given by Plainview Municipal Court Judge Pat Hernandez and Lockney Municipal Court Judge Michelle Araujo on "Stranger Danger" for kindergarten and pre-kindergarten. The show will be given at 9:30 a.m. and 1:30 p.m. Thursday, March 9. An assembly was held Monday, March 6 in the Junior High Gym for third, fourth and fifth

grade students. Gaynelle Colburn was the guest speaker. Her topic was "Conquering Adversity and Making Good Choices."

On Thursday, February 23, Lockney Municipal Court Judge and Justice of the Peace Michelle Araujo and Floyd County Sheriff's Deputy Paul Raisse presented a "Drug and Alcohol Abuse" program to the fifth grade students.

### Long celebrates 80th Birthday with family

LaVerne Long of Silverton had an early 80th birthday celebration with a family dinner in her home on March 4th.

Those in attendance were her husband George; Nancy and Mel Sperry of Fraser, Colorado; Nick and Melissa Long of Floydada; Tyler and Evie Sperry of Dallas; and Molly Long of Lubbock.

LaVerne was born March 12, 1926 in the Lone Star community in Floyd County. The family requests that friends and relatives help LaVerne acknowledge her 80th birthday with a card, note or phone call. Her address is PO Box 48 Silverton, Tx 79257.



**LON ADAMS, of Hedley (far right) was recently named Donley County Man of the Year. Lon shares this honor with Larry Gray, of Clarendon (far left). Also pictured are Tommy Saye, Saint Roost Award, and Laura Hommel, Woman of the Year. Lon is the grandson of Estelle Carthel of Floydada. Larry is the brother of Charlene Brown of Floydada.**

Photo courtesy of Clarendon Enterprise.

## Final deadline for veterans names

By Jean Appling  
March 31, 5:00 p.m. will be the final day for submitting names for the Crosby County Veterans Memorial.

To qualify, a veteran must have had, 1) an honorable discharge, 2) born, resided or buried in Crosby County, to include McAdoo, Estacado and Red Mud.

In addition, please include, 1) veteran's name, 2) in which war he or she served, to include important service during peace time. We will place a name only one time so if your veteran has

served in more than one war, please choose only one. If there is a contact person we ask you to include it also, being a name, address and/or phone number.

Any names received after March 31 will have a fee for engraving. If you are not sure if a veteran's name has been submitted please send it to us and we will make sure it is there. It is our desire that no veteran's name be missed.

Please submit names to: Verna Anne Wheeler, 101 W. Main Street, Crosbyton, Texas 79322 (or email to: appling@sptc.net).

## Muse News

By Carolyn Hardy

There have been several visitors in to specifically look at the Texas Independence display. Floyd County is named for Dolphin Ward Floyd who died at the Alamo. Many counties in Texas are named for those who gave their life defending the Alamo. The Museum has commemorative silver coins with Dolphin Ward Floyd's picture on them for sale. One of these coins makes a nice gift. Many people buy one to have a keepsake of Floyd County.

Several people have brought in old family pictures to be scanned. These are scanned into the Museum's collection but the originals are returned to the person who brought the pictures in. The photograph collection is a great asset. People come in to look for a specific picture and end up staying for hours reminiscing as they look through the collection.

Family names researched the past three weeks include Collins, Faulkenberry, Warren, Simpson, Braidfoot, Hart, Floyd, Burrow, King, Sims, Mason, Blakemore, Brunson, Vega, Early and Smith. The Mary Lou Bollman History

and Genealogy Center continues to grow daily. The staff and volunteers like to hear people comment on how impressed they are with all the research materials available in the Center. More and more people use these materials every day.

Since February 16, guests have registered from Oregon, New Mexico and Georgia. Texas visitors registered from Dallas, Canyon, Flomot, Lubbock, McAdoo, Olton, Midland Amarillo, Hale Center, Lockney and Floydada.

The Floyd County Pioneer Reunion will be Saturday, May 27, this year. The Wild Flower Show will be held in the East room. The volunteer rope makers will be helping children make rope on the rope machine.

To kick off this year's celebration, the Museum will host open house on Friday, May 26. The Museum is celebrating its 35th anniversary this year. Mark your calendars and plan to come to the Museum both days.

Memorials received in the last three weeks were made in memory of: Edell Moore, Bill Hicks, Robert McDonald, Theta Brotherton, Buena Ventura Garcia and Louise Argon.

## South Plains Hobby Club News

By Sandra Lass

The South Plains Hobby Club met at the South Plains Baptist Church on February 8, 2006. Those present included Hobby Club members: Peggy Roberts, Donnie Bowman, Anne Hartman, Wanda Lane, Carolyn Marble, Mildred Smitherman, Barbara Cawley, Virginia Taylor, Dovey Davis, Connie Sanders, Sandra Lass and Janis Julian, the club's newest member. Guests included Oleta Wilson, Tanya Covington and Linda Gayle Waller.

Lou Burleson, professional History Teller, was invited to portray a "Woman of the Depression." Carolyn Marble introduced Lou by telling the group that Lou really began her newest career when she was a child and entertained family members by giving skits and recitations.

Miss Minnie said that during that era, times were tough for most people. The depression began with the stock market crash in 1929 and lasted until the early 1940's. Many people throughout the United States lost their jobs, homes and money. What little money people had placed in banks was lost shortly after the crash. Unable to earn a living and feed their families, some people were left with scarcely more than the shirts on their backs. To compound the problem, from 1932 - 1936, many farms in Oklahoma, Texas, Kansas and New Mexico were repossessed by the bank because those states sustained a huge economic loss due to severe drought. There was no rain and farmers could grow no crops or raise livestock to sell or put food on the table or make payments or pay taxed on their farms. Some schools closed in the south and many people loaded up their cars (if they had one), gathered their kids and a few possessions, then got on old Route 66 and headed for California.

Rural people survived the depression better than city people.

Miss Minnie said. People living in cities found themselves standing in soup lines and begging for money and jobs, any kind of jobs (for a dollar a day, the going rate at the time), just to feed themselves and their families. Shanty towns emerged within and around many cities and whole populations shifted from one place to another in the United States. Family members drifted apart. But many rural people stayed put and stuck it out together, scarcely aware of what was going on outside their own communities. Rural people gathered at neighbors' houses to listen to the radio for entertainment. Having a radio was a luxury for most people and not everyone had one. But neighbors who did invited those who didn't to listen to such programs as "The Grand Ole Opry," "Lux Radio Theater," "The Shadow" and "Fibber McGee and Molly." (How many of us remember "Baby Snooks?" Many families went to town on Saturday night where they met to have Spelling Bees or to go shopping or see a movie. The average movie in Miss Minnie's town cost 25 cents for adults and 10 cents for kids under 12. Hugely popular movies such as "Gone With the

Wind" and "The Wizard of Oz" cost 75 cents apiece for everyone.

Miss Minnie said that most rural areas had little refrigeration. Many rural homes had no electricity. When a rural family slaughtered a cow (usually the skinniest one), they shared what they could not eat with other families so that no food, albeit how little, was ever wasted. Rural families had a water pump outside, a well-house that kept things somewhat cooler and a basement or cellar for keeping home-preserved food, apples, onions and other edibles that would keep for a while without spoiling. Just about anything growing wild such as wild onions was used for food. Some people even picked dandelions out of their yards and nearby fields to add to salads.

Few rural families had indoor plumbing. Saturday night was bath night for many rural families. A large galvanized tub (the same one that was used for washing clothes) was placed in the middle of the kitchen floor and filled with water that had been gotten from the hand pump outside and heated either on an indoor wood stove or outdoors over a fire. The whole family used the same water, but the dirtiest fam-

ily member had to take his or her bath last. Most families had an outdoor privy. The Sears or Montgomery Ward catalogs were used for more than just reading.

President Franklin Roosevelt provided some relief to families when he launched the Civilian Conservation Corps (CCC) program in 1932. This program paid a salary of \$35 per month per worker. Men who worked for the CCC built many of our state parks, roads and bridges. During the depression and later during World War II, rural people took care of each other. In many ways, the hardships of the depression persisted and worsened for some, as husbands, sons, fathers, brothers and friends went to war never to return.

Following questions and reminiscences, President Barbara Cawley thanked Lou for her presentation and distributed the 2006 Hobby Club calendar. Hostesses Wanda Lane and Mildred Smitherman served pink Valentine cupcakes and pink punch. The next meeting will be held at the South Plains Baptist Church March 8, 2006. Doris McLain has been invited to give a book review and share with the group other books she has enjoyed.

**Father, all powerful and everlasting God, we do well always and everywhere to give you thanks and praise. We ask that you bless all the merchants and businesses of Floydada, Lockney, and the surrounding communities so that the people of Floyd county may prosper.**



**GRANT THIS THROUGH JESUS CHRIST OUR LORD AMEN**

## You could WIN this 4X4 John Deere Gator




Pictured on the "Gator" is Kylie Ricketts

This John Deere Gator will be raffled off at this year's **FLOYD COUNTY FRIENDS GALA**

Tickets are \$25 each or 5 tickets for \$100.

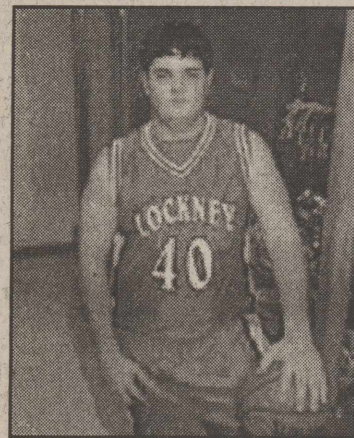
Tickets can be purchased at State Farm Insurance in Floydada or D&J Gin in Lockney or any Floyd County Friends Board Member.

**Shaklee Products**  
For your Shaklee needs call Sue Reeves  
983-2562

**Have You Made Your Will?**  
  
Laney & Stokes,  
Lawyers  
293-2618



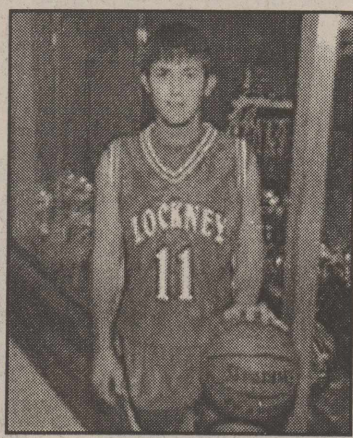
# Lockney Longhorns named to 2005-2006 All-District 6AA Basketball Team



**TREVOR MORRIS**

Lockney - Senior  
6AA ALL-DISTRICT  
FIRST TEAM  
\*ACADEMIC  
ALL-DISTRICT  
IN BASKETBALL

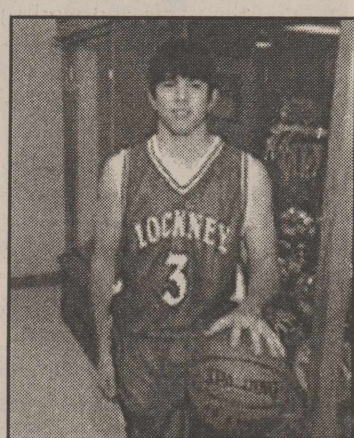
Photo by Hall Photography



**DAHLEN MCCARTER**

Lockney - Senior  
6AA ALL-DISTRICT  
FIRST TEAM  
\*ACADEMIC  
ALL-DISTRICT  
IN BASKETBALL

Photo by Hall Photography



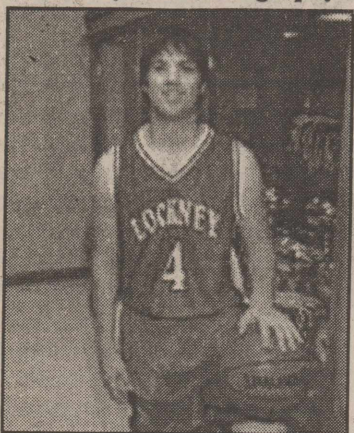
**TYLER KIDD**

Lockney - Junior  
6AA ALL-DISTRICT  
ALL DEFENSIVE TEAM  
\*ACADEMIC  
ALL-DISTRICT  
IN BASKETBALL

Photo by Hall Photography



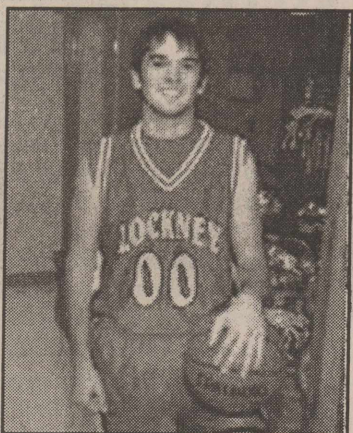
**LOCKNEY ALUMNI GAME**--Lockney Alumni squared off against each other in the traditional baseball game, March 4. Participating were: (back, l-r) Louie Bybee, Josh Quebe, Todd Cotham, Mark Ford, Josh Lambert, Danny Lambert, Trey Graves, Chris Reecer, Jordan Lambert, Hagen Johnson; (front, l-r) Scott Stapp, Chase Westbrook, Reid Carthel, Tyler Bybee, Randy Rendon, and Carlos Rendon.  
Courtesy Photo



**BRANCE WILSON**

Lockney - Senior  
6AA ALL DISTRICT  
HONORABLE MENTION  
\*ACADEMIC  
ALL-DISTRICT  
IN BASKETBALL

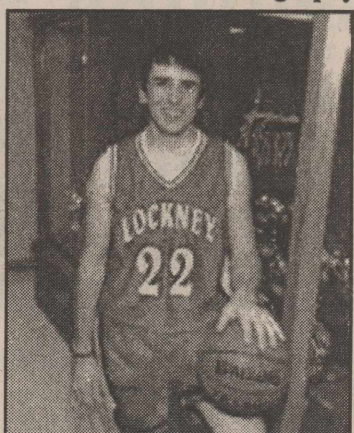
Photo by Hall Photography



**LANDON COTHAM**

Lockney - Senior  
6AA ACADEMIC  
ALL-DISTRICT  
IN BASKETBALL

Photo by Hall Photography



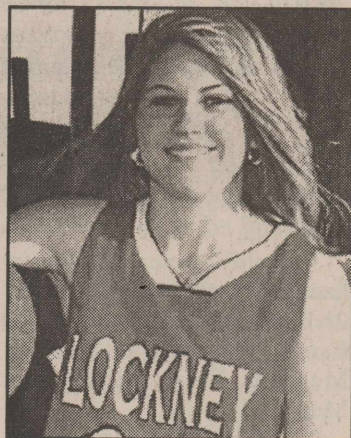
**J.W. MCPHERSON**

Lockney - Senior  
6AA ACADEMIC  
ALL-DISTRICT  
IN BASKETBALL

Photo by Hall Photography

# Lockney LadyHorns named to 2005-2006 All-District Academic Team

Photos Courtesy of Hall Photography



**HEATHER BROCK**

Lockney - Freshman  
6AA ACADEMIC  
ALL-DISTRICT  
IN BASKETBALL

**AMBER DORMAN**

Lockney - Senior  
6AA ACADEMIC  
ALL-DISTRICT  
IN BASKETBALL

**TRINITY FORD**

Lockney - Senior  
6AA ACADEMIC  
ALL-DISTRICT  
IN BASKETBALL

Lockney - Sophomore  
6AA ACADEMIC  
ALL-DISTRICT  
IN BASKETBALL

**REBEKAH THORNTON**

Lockney - Senior  
6AA ACADEMIC  
ALL-DISTRICT  
IN BASKETBALL

**KRISTA RASCO**

Lockney - Junior  
6AA ACADEMIC  
ALL-DISTRICT  
IN BASKETBALL



**SENEE FOSTER**

Lockney - Sophomore  
6AA ACADEMIC  
ALL-DISTRICT  
IN BASKETBALL



**LOCKNEY'S LITTLE LONGHORNS** for the week of March 6, 2006---(back row, l-r) Kennedy Hallmark, Marcos Mercado, Gabby Peralez, Jake Bramlet, Elisa Naranjo, (middle, l-r) Andres Garcia, Aylin Chavana, Andrew Hooten, Analia Hernandez, Janette Ybarra, Celestina Rodriguez, (front, l-r) Destiny Garcia, Ryder Race, Anthony Salazar, Nimsi Kate Perez, Taleah Peralez.  
Staff Photo

## Congratulations

## Lockney Independent School District Varsity - JV Baseball 2006 Schedules

Date	Day	Opponent (*=District)	Place	Time
Mar. 9-11	Thurs.-Sat.	Plainview Tournament	Plainview	TBA
Mar. 16-18	Thurs.-Sat.	Field of Dreams	Lockney	TBA
Mar. 21	Tuesday	Tulia*	Tulia	4:30
Mar. 24	Friday	Floydada*	Lockney	5:00
Mar. 28	Tuesday	Olton*	Olton	4:30
Mar. 31	Friday	Dimmitt*	Dimmitt	5:00
Apr. 4	Tuesday	Friena*	Lockney	5:00
Apr. 7	Friday	Tulia*	Lockney	5:00
Apr. 11	Tuesday	Floydada*	Floydada	5:00
Apr. 14	Friday	Olton*	Lockney	5:00
Apr. 21	Friday	Dimmitt*	Lockney	5:00
Apr. 25	Tuesday	Friena*	Friena	5:00
<b>Junior Varsity</b>				
Mar. 18	Saturday	Littlefield	Littlefield	DH 12:00
Mar. 20	Monday	Childress JV	Lockney	5:30
Mar. 25	Saturday	Levelland JV	Lockney	1:00
Mar. 28	Tuesday	Olton JV	Olton	7:00
Apr. 3	Monday	Open		
Apr. 8	Saturday	Clarendon JV	Lockney	DH 12:00
Apr. 10	Monday	Childress JV	Childress	5:30
Apr. 14	Friday	Olton JV	Lockney	7:00
Apr. 17	Monday	Claude JV	Lockney	5:00
Apr. 22	Saturday	Plainview Fr.	Plainview	1:00
Apr. 24	Monday	Levelland JV	Levelland	6:00

S  
C  
H  
O  
O  
L

**Super Saturdays At**  
Floydada Ford Mercury  
NAPA Auto Parts & ACE

**FREE FOOD**  
**EVERY SATURDAY**  
11:00 A.M. TO 1:00 P.M.

The food is free but we will be taking donations for a different charity each week. So come get a Free Hotdog or Hamburger and support our local charities. We will match any contributions.

**GO RETRO  
SAVE \$40!**  
ON OUR CRESTLINE SERIES RINGS

Enjoy \$40 rebate on any gold ArtCarved Crestline class rings (excludes the two-tone option).

Hurry! Offer valid 3/13/06 through 4/15/06.

**ARTCARVED.  
CLASS RINGS**

To receive rebate ask the store associate for a rebate form.

**Schacht**  
FLOWERS, JEWELRY & GIFTS  
112 W. Poplar, Lockney  
8:30-5:30 Mon-Sat  
652-2385 1-800-566-5754

**AMA-TECHTEL**

Satisfy your need for speed!

AMA-TECHTEL brings you high-speed fixed wireless Internet access. With speeds up to 50 times faster than dial-up and access that's always on, you'll connect to the world faster than ever.

AMA-TECHTEL is committed to providing the latest technology and the best customer service, so no matter who you're connecting with, you can count on us to get you there.

Now you can have the fastest, most reliable Internet service available. So act fast; contact your local distributor today!

**ASSITER INSURANCE**  
120 W. CALIFORNIA • 983-2511

**ACE HARDWARE**  
1101 S. RALLS HIGHWAY • 983-3000

connect

**FARM BUREAU INSURANCE**  
Auto • Home • Life

One of the leaders in property insurance is your local Farm Bureau Insurance agency. For over half a century, we've provided proven protection, prompt personal service, and competitive rates. Plus, we'll review your needs without obligation. Give us a call.

**For all your insurance needs...**

Helping You is what we do best.

**David True**  
Agency Manager  
(806) 983-3777  
101 S. Wall  
Floydada, TX 79235  
sfbll.com • txfb-ins.com

**DRUGS ARE BAD!  
NO DRUGS ARE GOOD!**

**THE FLOYD COUNTY HESPERIAN-BEACON**  
(USPS 202-680)  
Published weekly each Thursday at 111 East Missouri Street, Floydada, Texas 79235. Periodical postage paid at Floydada, Texas 79235.  
POSTMASTER: Send change of addresses to: The Floyd County Hesperian-Beacon, 111 E. Missouri, Floydada, Texas 79235



# A record season for the Floydada Whirlwinds

By Nick Long  
KFLP Broadcaster

For the 4<sup>th</sup> time since 2000, the Floydada Whirlwinds basketball season ended in the 3<sup>rd</sup> round of the State Playoffs at the Regional Quarterfinals by falling to the Tahoka Bulldogs 72-69 at the Lubbock Monterey "hot" Box on February 28.

Floydada had reached this plateau of the playoffs in 2000 under Coach Ty Stovall, followed by Chris Brattain leading the Whirlwinds to this level in 2003, 2005 and 2006. Each season had its own unique story, but 2006 may have been the most heart-breaking ending of the previous since the Whirlwinds had a gaudy 30-1 season record and a #2 state ranking entering the game against Tahoka. Floydada had been in the top 3 of the state since Dec 11<sup>th</sup> and even held the distinction of being the state's #1 rated Class 2A team for 2-weeks from January 16<sup>th</sup> - 30<sup>th</sup>. The stage appeared to be set for advancement to the Regional Tournament. But, the season's accomplishments and thrills far outweighed the final game making this season one that will be remembered for a long time.

The Whirlwinds qualified for the playoffs as the District 6-2A Champions and received a first round bye in the playoffs. Floydada ran the table in the district's double round robin play by going 10-0. It was the first time the Floydada boys had won an outright district title since 1976.

### Floydada - 51 Seymour-38

Floydada's first playoff game was in the Area round on February 24<sup>th</sup> at Merkel by taking a 51-38 win over the Seymour Panthers. The Whirlwinds had a lackluster first half by trailing 19-16 at intermission. But after a lengthy locker room visit where the players were a good 3-minutes coming on to the court after the Floydada coaches, the Whirlwinds looked like the dominating team of old by outscoring the upset minded Panthers 17-9 in the 3<sup>rd</sup> quarter and 18-10 in the 4<sup>th</sup> stanza by feeding off the full-court press that came up with 13-steals. Floydada was 10-of-11 at the free throw line in the 4<sup>th</sup> quarter and led in every statistical category.

Floydada 12 4 17 18 - 51  
Seymour 10 9 9 10 - 38  
(F) Payte Beedy-18; Oscar Garza-11; Douglas Williams-8; Dustin Ochoa-8; Jacob Reddy-6  
(S) Andrew Thomas -15; Hayden Holub -12  
Rebounds: Floydada 29-24 (Williams-7; Reddy-6; Ochoa-6; Beedy-5)  
Steals: Floydada 13-8 (Williams-4; Garza-4)  
Turnovers: Seymour 29-25  
Assists: Floydada 7-2  
Records: Floydada 30-1; Seymour 19-12

**Tahoka - 72 Floydada-69**  
It was an unusually warm day of 88-degrees in Lubbock on February 24<sup>th</sup>. It appeared to be even hotter in the Monterey "Box" with 1,200 fans of standing room only and the doors were locked that turned away an undetermined amount of fans.

Tahoka was coming off a 54-46 upset of #4 Olney in the area round and was riding an 8-game winning streak. #2 Floydada was cruising with its 2<sup>nd</sup> 15-game winning streak of the season.

The Whirlwinds jumped out to a 10-point lead of 16-6 late in the first quarter, before Tahoka closed out the opening stanza with a 13-3 run to lead 20-19 after one period.

The remainder of the game was a "see-saw" contest with Floydada ending with leads of 39-37 at halftime and 55-53 at the end of the third quarter. I remember midway through the 2nd half when Tyler Helms, KFLP Colorman, said with enthusiasm "this is a fun game, both teams are playing great!" Tyler was correct as the fans were getting their money's worth as they were fanning their faces with the game's program.

Whirlwind coach Chris Brattain had the same opinion, "It was a great game," said Brattain. "Tahoka did a great job of hanging around and made the last run. I told our team the winner probably would go to Austin. Tahoka earned it and they deserve it (trip to Austin)."

Floydada held a 6-point lead with just under 2-minutes remaining in the game, and Whirlwind fans were hoping its first trip to the Regional Tournament was about to take place. But Tahoka made the last run to pull off its second straight upset.

Even though Floydada lost and its season ended at 30-2, the Whirlwinds played one of their better games of the season. The bottom line was Tahoka was on a roll and their performance showed it by beating the Whirlwinds in every statistical category, only the 2<sup>nd</sup> time it had been done this season by an opponent. Tahoka's attack was balanced with 5-players scoring in the doubles figures led by 6'1 junior Damon Moore's 16-points and 6'2 senior Colby Gardner's 15. But no one over shadowed the performance of Floydada's 6'3 sophomore Payte Beedy with a game high 27-points. Oscar Garza ended his great Senior season with 15.

Tahoka went on to Midland to cruise past Colorado City 68-54 and #20 Reagan County 50-40 to claim the Region I Tournament Championship on March 4<sup>th</sup>. The Bulldogs will play in the State Tournament Semi-finals this Thursday at 10:30am against #10 Ponder (32-6). The other 2A Semi-final will have #11 Arp (30-4) vs San Antonio Cole (29-6) at 9:00am.

Floydada - 19 20 16 14 - 69  
Tahoka - 20 17 16 19 - 72  
(F) Beedy-27; Garza-15; Williams-7; Reddy-7; Ochoa-6; Helms-5; Duran-2  
(T) Moore-16; Gardner-15; Z. Tillman-13; J. Tillman-11; Dotson-10; Baker-4.

Rebounds: Tahoka 30-23  
Turnovers: Floydada 21-19  
Assists: Tahoka 18-9  
Steals: Tahoka 10-9  
Records: Floydadas(30-2)  
Tahoka (25-8)  
**Coach Chris Brattain comments:**  
Fan support — "the fan support all season and especially during the playoffs was great. We played in a great atmosphere many times".  
Reason for success this season — "very good senior leadership. There was a great chemistry with this team. They enjoyed playing the game and worked hard at it. I just let them be athletes and run/press because that was the system that fit this bunch".

What about the future — "I'm excited. The future is good. We'll have a tough district next year, but we have a good nucleus coming back to compete" (7-varsity players returning; plus JV that won 23-games and District title)

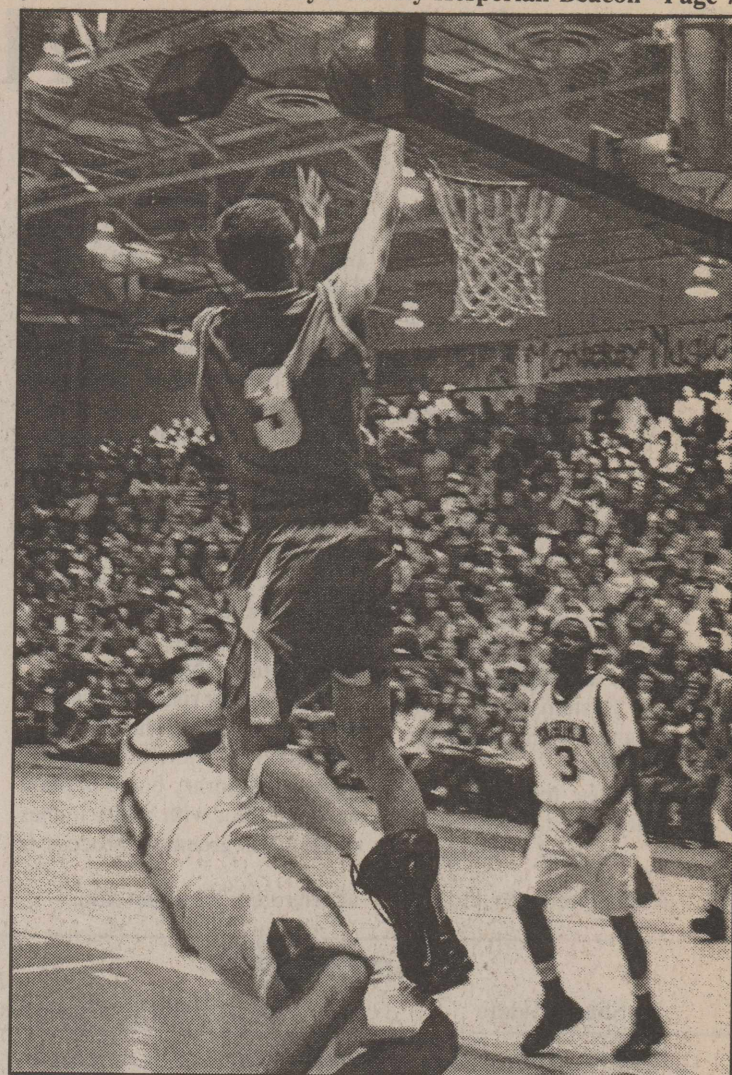
Accomplishments you are proud of: "30-2 record. Two tournament championships (Floydada and New Deal) and a Consolation at the ABC Caprock Holiday Tournament. The District Championship and going 10-0. The showing at the Caprock was a huge confidence builder."

**All-District recognition:**  
Co-MVP'S - Douglas Williams (6'4 Jr) & Payte Beedy (6'3 soph)  
First Team - Jacob Reddy (6'3 Sr) & Oscar Garza (5'10 Sr)  
Defensive Team - Dustin Ochoa (5'9 Sr)  
Honorable Mention - Trey Helms (5'9 Sr)

**INDIVIDUAL STAT LEADERS:**  
Scoring: Williams, Beedy & Garza - (13 each)  
Rebounding - Reddy (8); Williams (7)  
Assists - Ochoa & Williams (3 each)  
Steals - Williams (3) Beedy, Garza & Ochoa (2 ea.)

**ROSTER:**  
Seniors (6) - Bradley Duran, T.J. Collins, Oscar Garza, Trey Helms, Dustin Ochoa, Jacob Reddy  
Juniors (3) - Raymond Everett, Ryan Monreal, Douglas Williams  
Sophomores (6) - Payte Beedy, Blake Greer, Brandon Monreal, Troy Reedy, Kevin Smith, Kody Smith  
Freshmen (2) - Aarrhon Flores, Titus Miller  
Video Manager - Tanner Sue (soph)

**COACHES:**  
Head: Chris Brattain, 4<sup>th</sup> year (93-34 record at Floydada; 5-4 in playoffs)  
Assistants: Daniel Johnston and Keith Prather.



WHIRLWIND GOING HIGH FOR A LAY-UP in last week's Regional Quarterfinal game against Tahoka. Tahoka won 72-69. (see related story) Photo by Jim Covington



DUNCAN STUDENTS & EDUCATORS OF THE WEEK: Students: Savannah Wilson (Second Grade), Christian Coronado (First Grade), Gerardo Reyes (Pre-Kindergarten), Arnoldo Martinez (Kindergarten). Educators: Nora Collins (PE Teaching Assistant) & Sue Chesshir (Speech Teaching Assistant). Courtesy Photo

Whirlwind Basketball  
All-District boys  
pictures will be in next  
week's paper.

Mark It Down  
The Floydada  
Chamber of  
Commerce Banquet  
Will Be April 10!

PLEASE  
REMEMBER TO  
PRAY  
FOR OUR SOLDIERS

Subscribe to the Floyd County Hesperian-Beacon

Floydada Baseball Association  
Sign-ups  
March 10th - 27th

Pick up forms at school and  
turn them back in at school  
NO LATE SIGN-UPS

## Whirlwinds baseball team place 2nd at Ralls tournament

The Floydada Whirlwinds Baseball Team competed in the Ralls Tournament on March 2-4, 2006. They placed second in the tournament losing to Ralls 12-11 on a grand slam hit in the bottom of the 7th inning.

Floydada beat Seagraves 11-9 and Crosbyton 11-1 to advance to the championship game. Rudy Luna, Taylor Beedy and Lionel Garza were named to the All-Tournament Team.

## 2006 WHIRLWIND VARSITY BASEBALL SCHEDULE

DATE	DAY	OPPONENT	LOCATION	TIME
03-09	Thursday	Levelland Tourn	Levelland	TBA
03-10	Friday	Levelland Tourn	Levelland	TBA
03-11	Saturday	Levelland Tourn	Levelland	TBA
03-18	Saturday	Floydada Alumni	Floydada	1:00
03-21	Tuesday	Olton *	Floydada	5:00
03-24	Friday	Lockney *	Lockney	5:00
03-28	Tuesday	Friona *	Floydada	5:00
03-31	Friday	Tulia *	Tulia	5:00
04-04	Tuesday	Dimmitt *	Floydada	5:00
04-07	Friday	Olton *	Olton	5:00
04-11	Tuesday	Lockney *	Floydada	5:00
04-14	Friday	Friona *	Friona	5:00
04-21	Friday	Tulia *	Floydada	5:00
04-25	Tuesday	Dimmitt *	Dimmitt	5:00

\* DENOTES DISTRICT GAMES

Head Coach - Freddie Tobias ----- Asst. Coach - Blake Hurst

## Spring Break Dance

March 10, 2006

7:00 p.m. - 11:00 p.m.

Dance Contest At Dance Contest  
A.B. Duncan

\$3.00 per person or \$5.00 per couple

FOOD AND DRINKS

Sponsored by the Floydada Police Department

A Subscription Brings The  
Newspaper  
To Your Front Door

## Super Saturdays

At Floydada Ford Mercury  
NAPA Auto Parts

Pop balloons for  
5-15% discount  
at  
ACE Hardware &  
NAPA Auto Parts



FREE FOOD

EVERY SATURDAY  
11:00 A.M. TO 1:00 P.M.

The food is free but we will be taking donations for a different charity each week. So come get a Free Hotdog or Hamburger and support our local charities

Auctioneer Tim Assiter will be holding the  
LIVE AUCTION  
at this year's Floyd County Friends Gala  
on March 25th



Pictured on the John Deere Gator 4X4 to be raffled off are Tim Assiter, Amy Watson & Dedra Thomas

If you have items to donate to the auction please contact State Farm Insurance, D&J Gin or any Floyd County Friends Board Member.



# Grazing too early may damage stressed pastures

By: Robert Burns, rd-burns@tamu.edu

Grazing too early this year could perform the 'coup de grace,' further damaging already stressed bermudagrass pastures, said a Texas Cooperative Extension expert.

Beset by drought and wildfires, north central Texas producers may be tempted to turn cattle into their bunch grasses or coastal and Tifton85 bermudagrass pastures as they green up from recent rains.

But don't "jump into pastures" just yet, cautioned Dr. Yoana Newman, Extension forage specialist based at the Texas A&M University System Agricultural Research and Extension Center at Stephenville.

"Just because they green up, doesn't mean pastures have recovered," she said. "The green color is accentuated by the dark

color of the burnt ground giving the impression that there is more herbage than there actually is. Whether they have bunch grasses or sod-forming coastal or Tifton85, they need to allow more time to ensure restoration of the sugar reserves that foster growth before the animals graze the pasture again."

Though bermudagrass pastures should recover with proper management, they have been severely stressed. But to graze these north-central Texas pastures now might further damage the stands, especially those of ranchers who did not de-stock their pastures, Newman said.

At particular risks are pastures burnt by wildfire, she said. The ash left from the fire only provides a temporary boost of plant nutrients. So, with a few inches of rain the green-up process is accelerated, Newman said.

Most native bunch grasses propagate through seed production, but sod-forming bermudagrass stands can recover and fill in open spots from their below-ground reserves stored in roots and rhizomes (underground stems) and from sugars in the stubble. This characteristic makes bermudagrass highly resistant to both drought and wildfire.

But after such events, "plant reserves become more critical for long-term recovery," Newman said. "For full recovery from stress, overgrazed bermudagrass needs a certain amount of time to build back reserves."

In the initial green-up stage, the plant pulls reserves from both rhizomes and stubble to form new leaves. If the stressed plant is grazed during this stage, before it can replace some nutrient reserves via photosynthesis, there is a danger of depleting the rhi-

zome reserves.

Newman made the following recommendations:

\*Wait longer than usual before turning cattle into pastures.

Bermudagrass stands should be at least 8 inches tall before grazing;

\*Collect soil samples now if you have not done so already, and base pasture fertilization on soil test results.

"Due to drought and lack of growth, soils may have more nutrients than anticipated," Newman said.

\*Wait until nighttime temperature reaches 60 F for several days in a row before fertilizing.

"Fertilizing too early will be the equivalent of fertilizing weeds' since warm-season grasses are still dormant when night time temperatures are below 60 F," Newman said.

\*Wait to apply total fertilizer over several days in a row, not all in one day;

\*Wait until rain is forecast, and target fertilization until just prior to a rain.

\*Control weeds when moisture is present.

"Moisture is necessary for many herbicides to work properly and to be translocated inside the weed plant."

Farmers may be "out of feed

and grazing the green-up is very attractive," she said. But buying hay for a few more weeks will more than offset the potential damages and expenses (like weed control, replanting, etc.) that will result from grazing too early.

"Delaying grazing now, controlling your weeds and fertilizing your pastures will translate into solid summer pastures."

## Protect the Future of Glyphosate By Adding Residual

As commercial biotechnology in the United States celebrates its 10th anniversary in our fields, it's hard to talk about this significant change in production agriculture without mentioning glyphosate. But with all advancements in technology, caution should be exercised because nothing is invincible.

Over the past few years, more weeds have developed documented resistance to glyphosate. The list now includes pigweed, marestail, common ragweed, lambsquarters and waterhemp. Plus universities continue to field reports from growers that other weeds may be exhibiting tolerance to glyphosate.

To keep this valuable tool working for another decade and beyond, adding residual chemistries like FirstRate<sup>®</sup> herbicide to your Roundup Ready<sup>®</sup> weed control program is a sound agronomic and economic decision. Adding a residual herbicide:

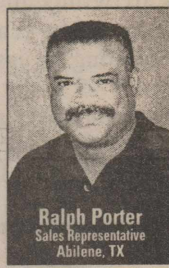
- Allows you to burn down weeds while providing residual for late-emerging weeds
- Reduces weed competition for emerging soybeans, giving them a greater chance to reach their yield potential
- Helps manage risk by widening your post-glyphosate application window
- Mode of action different than glyphosate.

As part of a preemergence or early post tank mix with Glyphomax<sup>®</sup> XRT, Durango<sup>™</sup> or other glyphosate herbicide, FirstRate delivers improved control of morningglory, giant and common ragweed, cocklebur, sunflower and marestail.

To learn more about improving weed control in Roundup Ready soybeans and keeping a valuable tool effective for years to come, see your local ag retailer about the residual benefits of FirstRate.

Dow AgroSciences

©2005 Durango, FirstRate and Glyphomax are trademarks of Dow AgroSciences, LLC. Roundup Ready is a registered trademark of Monsanto Company. Always read and follow label directions. www.FarmSmart.com



Ralph Porter  
Sales Representative  
Abilene, TX

## 4-Her's take honors at San Angelo Show

By J.D. Ragland

Eight Floyd County 4-H'ers exhibited livestock during the San Angelo Stock Show held February 16-24. Junior Heifers, goats and gilts were shown in early portions of the show. Heifer exhibitors Brazos Williams received Reserve Grand Baby Heifer Calf Champion with his Angus Heifer. Tylee Williams continued wins with her heifers as she received Reserve Grand Heifer, Champion Baby Heifer Calf Division. Brazos was also awarded Junior Heifer Showmanship and placed 2<sup>nd</sup> in the Heifer Futurity and Tylee placed 4<sup>th</sup> in the Heifer Futurity.

Junior goat exhibitors were Kortney and Kolby Williams. Junior gilt show results were McCrae McCormick Reserve Champion York and also a 3<sup>rd</sup> Place York. Madolyn McCormick also showed gilts. Ashley Lucke also exhibited her spot and chester gilts. Barrow exhibitors included Dylan Thomas, Ashley Lucke, McCrae McCormick and Madolyn McCormick.

Floyd County Senior Livestock Judging Team placed 6<sup>th</sup> overall team with team members Brady Ragland, Tyler Chesshir, Sene Foster and Segayle Foster.

ter. Brady also was 3<sup>rd</sup> Overall High Individual.

All Floyd County 4-H'ers are commended on all their hard work and extremely competitive efforts at this year's San Angelo show.

### PRODUCERS COOPERATIVE ELEVATOR

983-2821 - Floydada  
983-3770 - Dougherty

### FIRST NATIONAL BANK OF FLOYDADA



Floydada 983-3717  
Member F.D.I.C.

### FLOYDADA COOPERATIVE GINS, INC.



Floydada 983-2884

ment rate allowed by current program rules. So far the calculated 2005 Weighted Average Price is still more than four cents below the 52 cent threshold where Counter-cyclical payment rates begin to drop.

Based on the latest figures over half of the 2005 crop cotton marketed to date was traded in December and January. Figuring in the level of activity being reported by High Plains cotton warehouses, February marketings should also remain strong and provide another significant bump to the cumulative

marketing total. The preliminary mid-month price reported for February 2006 was 48.3 cents per pound.

The 2005 Counter-cyclical payment rate authorized under the 2002 Farm Bill will be based on the 12 month Weighted Average Price Received by growers. For cotton the 12 month Weighted Average Price will reflect price and marketings for the 2005 marketing year. The 2006 cotton marketing year began on August 1, 2005 and ends July 31, 2006.

## 4-Her's win at San Antonio Stock Show

By J.D. Ragland  
Floyd County  
Extension Agent

Seventeen Floyd County 4-H'ers exhibited livestock over two weeks during the 2006 San Antonio Livestock Show. Starting off during the first week, February 7 - 11, the Junior Gilt and Heifer shows were held. Two Floyd County 4-H gilt exhibitors included McCrae McCormick who placed 4<sup>th</sup> and 6<sup>th</sup> with his Yorkshire gilts. Madolyn McCormick also participated.

Also during the first week the Junior Heifer Show was held.

Four Floyd County 4-H exhibitors participated with outstanding results. In the Angus division Tylee Williams received a 2<sup>nd</sup> and 3<sup>rd</sup> place along with a Reserve Champion Senior Heifer. In the Red Angus Division Dixie Williams took 1<sup>st</sup> place honors while Sunny Williams placed 2<sup>nd</sup> and had Reserve Champion Senior Heifer. In the Chianina Division SyAnn Foster received a 1<sup>st</sup> and 2<sup>nd</sup> along with Champion and Reserve Champion Heifer Calf. She later went on to win Reserve Grand Champion Overall Supreme Heifer which awards her

**Cotton** **News** **4517 West Loop 289 Lubbock, Texas 79414 Telephone: 806-792-4904 Fax 806-792-4906**

Cumulative Upland cotton marketings for the first half of the 2005 marketing year surpassed the 10.1 million bale mark in January according to information released February 28 by the USDA by the USDA National Agricultural Statistics Service.

USDA estimated that January 2006 marketings were 2.42 million bales with an average selling price of 48.6 cents per pound. Data for December 2005 indicate 3.264 million bales marketed at an average price of 47.9 cents per pound.

Based on these numbers, the 2005 Upland Cotton Weighted Average Price calculated through January 2006 stands at 47.34 cents per pound. This indicates that 2005 Counter-cyclical payments will ultimately be based on the maximum 13.73 cent pay-

**Snap-on KRL722 For Sale.**

**New**

Only used 2 months & kept in storage for about 9 months. EXCELLENT condition!!

Asking \$3,500.00 OBO

Contact Chris Hartline @ 241-4713

**BOEDEKER DOZER & EXCAVATOR SERVICE**

BRUSH GRUBBING & RAKING, FENCE LINES, ROADS  
DEMOLITION, OIL FIELD WORK, EQUIPMENT HAULING

Terry Boedeker Home 806-455-1699  
Quitaque, Texas Mobile 806-269-1799

**Oxygen & Acetylene Refills**

Available at  
**FERGUSON SPRAYING, INC.**  
608 W. Houston, Floydada - 983-2474

**\*\*\*\*\* AUCTION CALENDAR \*\*\*\*\***

Saturday, March 11, 2006—Sale Time: 9:30 a.m.  
**Gohlke Farms—Owner**  
Located: Littlefield, Texas—Selling: Farm Equipment Horses

Monday, March 13, 2006—Sale Time: 10:00 a.m.  
**Tims Farms—Owner**  
Located: Sunray, Texas—Selling: Farm Equipment

Thursday, March 16, 2006—Sale Time: 10:00 a.m.  
**Hodges Farms—Owner**  
Located: Memphis Lakeview, Texas—Selling: Farm Equipment

Saturday, March 18, 2006—Sale Time: 10:00 a.m.  
**Ray Farms—Owner**  
Located: Lamesa, Texas—Selling: Antique Tractors

Monday, March 20, 2006—Sale Time: 10:00 a.m.  
**Thurman Farms—Owners**  
Located: Edmonson, Texas—Selling: Farm Equipment

Thursday, March 23, 2006—Sale Time: 10:30 a.m.  
**Guseman Ranches—Owner**  
Located: Hereford, Texas—Selling: Farm Ranch Equipment

Saturday, March 25, 2006—Sale Time: 10:00 a.m.  
**Townsend Farms—Owner**  
Located: Rule, Texas—Selling: Farm Equipment

---

**Five Star Auctioneers**

Answering Service: (806) 296-0379  
PO Box 1030—Plainview, Texas 79073-1030  
Website: [www.farmauctionguide.com/fivestar](http://www.farmauctionguide.com/fivestar)  
Terms of Sale: Cash, Personal or Business Check  
All Accounts Settled Day of Sale—Lunch Will Be Available  
We Are Agents & Agents Only

Jim Sumners.....(806) 864-3611 (1006) (Home)  
Jimmy Reeves.....(806) 864-3362 (Clerk) (Home)  
Donna Noel.....(806) 293-1124

A tradition of trust.  
A new source for crop insurance.

John Deere is a name you know and trust. Now, John Deere Risk Protection<sup>®</sup> has teamed up with a select group of crop insurance agents to provide the best source for crop insurance. Visit our website to locate the nearest authorized agent in your area.

**JOHN DEERE MOLINE, ILL.**

**JOHN DEERE MOLINE, ILL.**

**JOHN DEERE QUALITY FARM EQUIPMENT**

**JOHN DEERE**

**The Altman Group, Inc.** PO Box 120 Silvertown, TX 79257

Barry Altman - General Agent 806-893-7333  
Mark Altman - Authorized Agent 806-893-2056  
Mikhael Durham - Authorized Agent 806-549-1988

806-823-2189

**JOHN DEERE** [www.JohnDeereRiskProtection.com](http://www.JohnDeereRiskProtection.com)

\*John Deere Risk Protection, Inc. (dba, JDRP Crop Insurance Services in the State of California) is a subsidiary of John Deere and acts as the Managing General Agent for crop insurance for Westfield Insurance Company and Westfield National Insurance Company. Not offered in all states. John Deere Risk Protection, Westfield Insurance Company, Westfield National Insurance Company and The Altman Group, Inc. are equal opportunity providers. 866-404-9057 CR0810120 Litho in U.S.A. (06-01)



# THE CLASSIFIEDS

Call 806-983-3737 or 806-652-3318

web site: www.hesperianbeacon.com ----- e-mail: floydada@amaonline.com

### AUTOMOTIVE FOR SALE

**FOR SALE--1991 Ford Ranger** pickup. 4 cyl., 5 speed. Real clean. Good gas mileage, mechanically sound. \$2,500. Call 293-7413. tfn

**1998 GMC SUBURBAN--4x4.** Good condition. Call 983-5174. 3-16p

### FARM MISCELLANEOUS

**RYE SEED FOR SALE--Rye** is an excellent cover crop and great for grazing. Rye matures earlier than wehah, so it can be terminated earlier to plant cotton. 806-292-9723. tfn

**NO-TILL DRILL--Custom** drilling of wheat in milo. Inter-seeding of grass, cotton stalks, etc. 806-292-9723. tfn

**WHEAT PASTURE WANTED--** Call 806-292-9723. tfn

### FOR RENT OR SALE

**FOR RENT OR SALE--2** bedroom, 1 bath house. 416 W. Missouri, Floydada. Call 983-6111. tfn

### BARKER MINI-STORAGE

**MONTHLY RENTALS**  
5'x10' - \$18.00 per month  
10'x10' - \$28.00 per month  
10'x15' - \$35.00 per month  
**ASK ABOUT OUR LONG TERM DISCOUNTS**  
**PHONE: 652-2642**  
Corner Main & Locust, Lockney

### HELP WANTED

**PLAINS BAPTIST ASSEMBLY** has part-time openings for cooks and housekeepers. Cooks must be available for weekends. Apply at Plains Baptist Assembly office M-F 9:00 a.m. - 5:00 p.m. For directions call 983-3954. 3-9c

**CAREER STALLED OUT?** Get a new start with Richeson Restaurants. 49-unit company now hiring for **Manager** at our Spur location. Need to love working with people, meeting new people, drug and smoke-free environments. Call District Manager Kenny Clifton. 325-207-2096. 3-23c

**CO. DRIVERS O/OPS:** Regional runs. More home time! 2/26. Pay increase. Lease purchase! CDL-A with Hazmet, one year experience. Call 800-454-2887, [www.arnoldjobs.com](http://www.arnoldjobs.com) 3-9p

**AHEC OF THE PLAINS** is hiring a Health Career Promotion Coordinator. Responsible for educating students K-12 about health careers, financial aid and scholarships. Graduation from a 4-year degree program in health care, public health, education or related field. Send resume and salary requirements to AHEC of the Plains, P.O. Box 1116, Plainview, Texas 79073 or fax to 806-291-0130 or email to: [cindy.burleson@ahecpains.org](mailto:cindy.burleson@ahecpains.org) 3-9p

**CAPROCK HOME HEALTH SERVICES** currently seeking Attendants/Providers for Floyd County home health clients. Must be dependable, flexible and enjoy working with the elderly. Increased salary for dependable back-up attendants/providers. Apply at 3411 Knoxville, Lubbock, fax your resume to 806-791-1446, or call 806-793-3615 to speak with Micki or Adela. 3-23c

### HOUSES FOR SALE

**Floydada FOR SALE - TO BE MOVED!!** 4 bedroom/2 bath house - \$20,000. 30x40 pipe barn - \$5,000. 2 bedroom trailer house - \$500. Call 806-293-1722 after 5:00 p.m. 3-16c

**SPACIOUS 2 BEDROOM** with 2 living areas and great workshop. Two baths, roomy utility room, on corner lot. \$50,000. Call Brian Aycock at McDougal Realtors, 806-778-5956. 3-23c

**HOUSES FOR SALE--**  
\*\* 5 bedroom, 3 bath, 2 car garage with 3 apartments on 2 lots - \$45,000 (tax appraisal is \$61,800).  
\*\* 3 bedroom, 2 bath, large garage with office on 3 lots - \$38,000. Call 983-5475 or 470-8695. 3-9p

**TWO STORY HOME FOR SALE--** 3 bedrooms, 2 baths (both bathrooms have been remodeled), sunroom, office, 2 car garage and shop in backyard. 809 W. Missouri. Call after 6:00 p.m. Sheryl Back. Call 983-6291 or 787-9662. 3-9p

**FOR SALE--2** bedroom, 1 bath. Central heat/air. Asking \$18,000. Call 983-3305. 3-9p

**NEW HOME,** 3 bedroom, 1 bath, ACH, 118 W. Mississippi. New appliances, new price. Call 986-5556. tfn

**NICE COUNTRY HOME** southwest of Floydada. 4 bedroom, 2-3/4 bath, brick, on pavement with 35 acres. 4" well with underground pipe. \$125,000. Call Bill Strickland at Area Wide Realty, 806-292-1687. tfn

**REDUCED! MUST SELL!** 3 bedroom, 2 bath, storage building, fireplace. 114 J.B. Avenue. Call 983-6456. tfn

**1104 S. RALLS HIGHWAY--2** bedroom, 2 bath, 2 car garage. Home has living and family room. Close to High School. Call Assiter and Associates for more info or to set up viewing times. 806-983-3322. tfn

### MISCELLANEOUS

**PLAINS BELL FEDERAL CREDIT UNION**  
206 W. California, Floydada. Remember us for all your personal financial needs - CD's, loans, checking and savings accounts. Call Laura at 983-3922. [www.plainsbellfcu.org](http://www.plainsbellfcu.org) 1-4-07p

**WANTED: GOOD PLACE** to hunt Prairie dogs. Call 812-907-8774. 4-27p

**\$145 - NEVER USED** full size mattress and box. In plastic from manufacturer. Warranty. 806-649-3110. 3-9p

**2 PIECE QUEEN MATTRESS** set. Brand new, factory plastic wrapped, factory warranty. Only \$165. 806-549-3110. 3-9p

**KING CHERRY SOLID** wood sleigh bed. NEW IN ORIGINAL BOX. Asking \$399. 806-549-3110. 3-9p

### PETS

**ALPHATEX KENNEL, AIKEN, TEXAS** offers superior quality AKC Registered, DNA Certified Collies, Golden Retrievers and German Shepherds. Puppies and stud service available. [www.alphatexkennels.com](http://www.alphatexkennels.com) tfn

### SERVICES

**LARRY OGDEN AUCTIONEERING** Estates, Farm, Ranch, Business, Liquidations, State Licensed and Bonded. (806) 983-5808. TX. #9240. tfn

**NEED TREES CUT,** fence repairs, house painted (exterior and interior), yard and lots cleaned? Call Joe. 983-5471. 3-23p

**U.S. SAVINGS U.S. BONDS**  
Creating a New Century of Savings

Thanks for reading the Hesperian-Beacon



**Roberts & Wilkins REALTORS®**

**Country Homes with Acreage on Pavement:**  
**Large Brick,** 4 bdrm., 2-3/4 bath, double garage, basement, shop, horse barn and corrals on 6 acres South of Lockney.....Call Rhonda  
**Lots of Character** in this 2-story home with 3 bath, 5 bedrooms, lots of space, on appx. 3 acres. North of Lockney.....Reduced to \$129,900

**Recent Updated Interior** in this 3 bdrm, 2-1/2 bath, home with over 2000 sq. ft, 2 living areas, double garage on appx. 1 acre S of Lockney. Will have new well and septic system at listed price of ..... \$95,000  
**Lockney Homes**

**Great Street Appeal,** cozy 2 bedroom has central heat/air, small shop, 2 car carport.....Only \$34,843  
**Neat Two-Story** has 3 bedrooms, 1 bath. Upstairs could be 4th bdrm. or game room..... Reduced to \$22,500  
**Floydada Homes**

**Great Starter Home,** 3 bdrm, 1-3/4 bath, single garage. Good floor plan, central electric H/A/C, covered patio. Good location..... \$29,900

**Rhonda K. Thomas 652-2152**  
**Rob or Ceil Wilson 293-5722**  
**Dan or Debbi Wilkins 292-0263**  
**Joey Davis - 292-7589**  
**Jolie Steele - 729-6278**  
**3009 Olton Road Plainview, Texas**  
[www.rwrealtors.com](http://www.rwrealtors.com)

**Keep Up On What is Going On With Your Kid In School---Subscribe to the Floyd County Hesperian-Beacon!**  
**\$23.00 per year in County; \$25.00 per year Out of County**

### PUBLIC NOTICE

#### NOTICE OF PUBLIC HEARING

City of Floydada

**Ordinance No. 06-1 Amending Chapter 2 Animal Control of the Floydada City Code of Ordinances**

The City Council of the City of Floydada will hold a public hearing on Tuesday, March 21, 2006 at 6:30 p.m. in the Council Chambers at City Hall, 114 W. Virginia to hear from citizens regarding additional instructions on Ordinance No. 06-1 for the keeping of large dogs over 35 pounds and aggressive dogs. Persons who need special assistance wishing to attend this meeting should contact City Hall at 983-2834 at least 24 hours in advance.

3-9c

### Public Notice

#### OFFICIAL NOTICE OF NOMINATING COMMITTEE MEETING

10:00 a.m. - March 10, 2006

Lighthouse Electric Cooperatives, Inc. Headquarters  
East U.S. Highway 70  
Floydada, Texas

In accordance with Article IV, Section 4.06 of the Bylaws of Lighthouse Electric Cooperative, Inc., the Board of Directors has appointed a Committee on Nominations to prepare a list of nominations for Directors to be elected at the annual membership meeting of the Cooperative on April 27, 2006. Three (3) Directors, one each from District 2, District 5 and District 8, will be elected in 2006. Although Directors are nominated from the District which they represent, all members in attendance at the annual meeting vote on all candidates who may be properly nominated.

#### SECTION 4.02 QUALIFICATIONS:

No person shall be eligible to become or remain a director of the Cooperative who is a close relative of an incumbent director or an employee of the Cooperative, or is not a member in good standing of the Cooperative and receiving service within the District he represents; PROVIDED, that the operating or chief executive of any member which is not a natural person, such as a corporation, church, etc., or his designee, shall be eligible to become a director, from the Directorate District in which such member is located, if he or such designee (1) is in substantial permanent occupancy, direction or use of the premises served by the Cooperative, and (2) is a permanent and year-round resident within or in close proximity to an area served by the Cooperative; BUT PROVIDED FURTHER, that no more than one (1) such person may serve on the Board of Directors at the same time. No person shall be eligible to become or remain a director of, or to hold any other position of trust in, the Cooperative who does not have the legal capacity to enter into a binding contract or is in any way employed by or financially interested in a competing enterprise, or a business selling electric energy or supplies to the Cooperative, or a business primarily engaged in selling electrical or plumbing appliances, fixtures or supplies to, among other, the members of the Cooperative. No person shall take or hold office as a Director who is the incumbent of or candidate for an elective public office in connection with which a salary is paid.

#### SECTION 4.05 DIRECTORATE DISTRICTS

The territory served by the Cooperative shall be divided into nine (9) Directorate Districts. Each District shall be represented by one director and the Districts are described upon the map on the territory served by the District attached to the Bylaws and made a part hereof.

#### SECTION 4.06 NOMINATIONS

It shall be the duty of the Board of Directors to appoint, not less than thirty (30) days nore more than one hundred (180) days prior to the date of the meeting of the members at which directors are to be elected, a Committee on Nominations, consisting of not less than five (5) nor more than eleven (11) members. The Committee shall prepare and post at the principal office of the Cooperative at least twenty (20) days prior ro the meeting a list of nominations for directors to be elected, listing separately the nominee (s) for each Directorate District from or with respect to which director must, pursuant to this Article, be elected at the meeting. The Committee may include as many nominees for any director to be elected from or with respect to a Directorate District as it deems desirable. Any fifteen (15) or more members of the Cooperative, acting together, may make additional nominations in writing over their signatures, listing their nominee (s) in like manner, not less than fifteen (15) days prior to the meeting, and the Secretary shall post such nominations at the same place where the list of nominations made by the Committee is posted. The Secretary shall mail to the members with the notice of the meeting, or separately, but at least ten (10) days prior to the date of the meeting, a statement of the names and addresses of all nominee (s) for each Directorate District from or with respect to which a director must be elected, showing clearly those nominated by the Committee and those nominated by petition, if any. The chairman at such meeting, after all nominations so made have been duly announced, shall call for additional nominations from the floor and shall ascertain and announce, after any nominations made from the floor, the particular Directorate District from or with respect to which any additional candidates have been nominated.

#### NOMINATING COMMITTEE FOR 2006

##### District 2

Harold Bertrand Kay Crabtree  
RR 2, Box 65 RR 4, Box 68  
Floydada, Texas 79235 Floydada, Texas 79235

##### District 5

Charles Huffman Bruce Rigler  
RR 1, Box 145 522 CR CC  
Lockney, Texas 79241 Plainview, Texas 79072

##### District 8

Eddie Braidfoot Milton Bradley  
RR 2, Box 143 RR 2, Box 124  
Memphis, Texas 79261 Memphis, Texas 79245

3-9c

**POOLE WELL CAM & SUBMERSIBLE SERVICE**  
Dual Lens for Color Videos of Irrigation and domestic wells.  
Reveals sand infiltration, crusting or deterioration, blockage 4"-30" I.D.  
704 Matador Hwy. Floydada, Texas 806-983-2285

**SCRIPT PRINTING & OFFICE SUPPLY**  
\* Commerical Printing  
\* Office Supplies & Furniture  
\*Business Machines  
108 S. Main Floydada 983-5131

Have a nice week!

**LARRY JONES REAL ESTATE**  
Dedra Thomas 806-791-2277

- 4 Bed-2 bath home with 2 living areas. Near high school.
- Cozy 3 bed-2bath home with 1 car detached garage near track field. REDUCED PRICE!!
- COMMERCIAL BUILDINGS AND LOTS-Located on corner of Hwy 62/70 and Hwy 207--3+ buildings and many lots. MUST SELL!!
- 5 Lots on Houston St.—Comm./Resid. Zoned.

Call for more details on these houses and the others we have listed!!



## Obituaries

**HELEN CALAHAN KARR**  
Helen Calahan Karr, 89, of Lockney, died Sunday, March 5, 2006 at Sunrise Assisted Living Center in Boulder, CO.

She was born January 13, 1917 in Farmersville, TX, to the late Horace Sebron and Lala Delilah Calahan. She graduated from Lockney High School in 1935. She married Walter Bryan Karr on December 19, 1936 in South Plains, TX. He preceded her in death on June 4, 2005. She was a Homemaker, a member of the Wemons Missionary Union and taught Sunday School for the First Baptist Church of Lockney where she was also a member.

She was also preceded in death by her parents, six sisters and three brothers.

Survivors include one son, Elton Karr of Anaheim, CA; one daughter, Yvonne Lanelle Deavenport of Boulder, CO; one brother, H.S. Calahan Jr. of Abilene, TX; five grandchildren and eight great grandchildren.

The family greeted friends at the funeral home Thursday, March 9, 2006.

Funeral services will be at 2:00 p.m. Friday, March 10, 2006 at the First Baptist Church in Lockney with Reverend Harold Abney, officiating. Burial will be in Floyd County Memorial Park under the direction of Moore-Rose-White Funeral Home of Lockney.

The family suggests memorials be made to the First Baptist Church of Lockney, P.O. Box 446, Lockney, TX 79241.

### Obituary Policy

At this point in time we do not charge for obituaries. However most newspapers do.

Because we do not charge we reserve the right to edit the copy, which explains why some of our obituaries are worded differently than those in other daily newspapers.

We do not list grandchildren or in-laws unless that is the only local connection to the deceased.

Only immediate family members are usually in the obituary--sons, daughters, brothers, sisters, parents, wives and husbands.

**Our country and our leaders need your prayers**

## Public Notice

### NOTICE TO BIDDERS

Floydada Housing Authority (An Equal Opportunity Employer) is accepting bids for landscaping at 9 sites of Public Housing and 2 sites at Rural Development projects.

Bids must be received by March 24, 2006 at 5:00 p.m. at the office, 210 E. California, Floydada, Texas 79235. (site addresses can be picked up at the office).

3-9, 3-16, 3-23c

### NOTICE TO BIDDERS

Notice is hereby given that the Caprock Hospital District in Floyd County, Texas, intends to receive bids for a Ambulance Remount. Any bidders that want to bid on the Ambulance Remount must deliver its completed bid to Katrina Gooch at the Floydada EMS at 109 N. Main Street, Floydada, Texas on or before 1:00 p.m. on March 20, 2006.

Further information may be obtained by contacting Katrina Gooch at 806-983-3004 or at 109 N. Main Street, Floydada, Texas 79235.

3-9, 3-16c

### NOTICE TO BIDDERS

The City of Floydada has the following surplus property for sale:

1 - Cooper-Bessemer 1740 horsepower natural gas motor with an Ideal electric generator with a rated capacity of 1250, 60-cycle generator attached. Unit was working when retired.

1 - Superior-White 1769 horsepower natural gas/diesel motor with an Ideal electric generator with a rated capacity of 1250, 60-cycle generator attached. Unit was working when retired.

2 - Nordberg 1770 horsepower natural gas/diesel motor with a General Electric generator with a rated capacity of 1250, 60-cycle generator attached. One generator working when the unit was retired.

1 - Cooper-Bessemer 2500 horsepower natural gas motor with an Ideal electric generator with a rated capacity of 1250, 60-cycle generator attached. Unit was working when retired.

4 - Big mufflers  
6 - Cooling towers  
All switchgear inside generation plant

The items may be used for the production of electricity, at your site, or purchased for parts or scrap.

The City of Floydada will receive sealed bids on any or all of the above items until 5 p.m. Friday, March 17, 2006. The bids will be opened on Monday, March 20, 2006 and presented to the Floydada City Council for action at their regular meeting scheduled for Tuesday, March 21, 2006.

The sealed bids should be mailed or hand delivered by the deadline to:

City Secretary  
City of Floydada  
114 W. Virginia St.  
Floydada, TX 79235

The bid envelope should have written on it: **Surplus Electric Equipment Bid**

The City of Floydada reserves the right to accept or reject any or all bids.

The above equipment may be inspected Monday through Friday, 8 a.m. to 5 p.m. at 114 W. Virginia, Floydada, Texas 79235

3-9c

## Floyd County Church Directory

**AIKEN BAPTIST CHURCH**  
Jay Simpson, Pastor  
Sunday School ..... 10:00 a.m.  
Morning Worship .. 11:00 a.m.  
Evening Worship .... 6:00 p.m.  
Wednesday ..... 7:30 p.m.

**BIBLE BAPTIST CHURCH**  
810 S. 3rd, Floydada  
Darwin Robinson, Pastor  
983-5278  
Sunday School ..... 10:00 a.m.  
Morning Worship .. 10:50 a.m.  
Evening Worship .... 6:00 p.m.  
Wednesday ..... 7:00 p.m.

**CALVARY'S CORNERSTONE FELLOWSHIP**  
Floydada  
Armando Morales, Pastor  
Sunday School ..... 9:45 a.m.  
Morning Worship .. 11:00 a.m.  
Bible Study ..... 6:00 p.m.  
Wednesday Evening 7:00 p.m.

**CARR'S CHAPEL**  
Service Every Sunday:  
Morning Worship .... 9:00 a.m.  
Sunday School ..... 10:30 a.m.

**CHURCH OF CHRIST**  
West College & Third, Lockney  
Steve McLean -Minister  
Morning Worship .. 10:30 a.m.  
Evening Worship .... 5:30 p.m.  
Wednesday Service 7:30 p.m.

**CITY PARK CHURCH OF CHRIST**  
Ken Free- Minister  
Floydada  
Sunday Bible Study 9:30 a.m.  
Morning Worship .. 10:30 a.m.  
Evening Worship .... 6:00 p.m.  
Wed. Bible Study .... 7:00 p.m.

**FIRST BAPTIST CHURCH**  
Anthony D. Sisemore, Pastor  
Bill Swinney,  
Minister of Ed./Music  
Eric Kaiser - Min. Students  
Sunday School ..... 9:15 a.m.  
Morning Worship ... 10:30 a.m.  
Evening Worship .... 6:00 p.m.  
Wed. Bible Study ... 7:00 p.m.

**FIRST BAPTIST CHURCH, Lockney**  
Carl Moman, Pastor  
Chad Cook, Youth Min.  
Phil Cotham, Music Min..  
Sunday School ..... 9:45 a.m.  
Morning Worship .... 10:45 a.m.  
Evening Worship ..... 6:00 p.m.  
Wednesday ..... 6:30 p.m.  
Wednesday (Youth).....7:15 pm

**FIRST UNITED METHODIST CHURCH**  
Floydada  
Rev. Leš Hall, Pastor  
Early Worship ....8:30 am.  
Sunday School..... 9:45 a.m.  
Morning Worship ...10:50 a.m.  
Youth (Sunday).....5:00p.m.  
Youth (Wednesday)..7:30 p.m.

**American State Bank**  
Member FDIC  
217 W. California  
983-3725

**Barwise Gin**  
Barwise Community  
983-2737

**City Auto Buick, Pontiac, GMC**  
201 E. Missouri  
Floydada  
983-3767

**Clark Pharmacy**  
320 N. Main - Lockney  
652-3353

**Davis Lumber**  
102 E. Shubet  
Lockney  
6523385

**Garcia's OK Tire Store**  
306 S. Main - Floydada - 983-3370  
511 1st Olton, TX 2657796

**Lighthouse Electric Coop**  
102 E. California  
983-3524

**FIRST UNITED METHODIST CHURCH**  
Lockney  
Rev. Neely Landrum, Pastor  
Sunday School ..... 9:30 a.m.  
Worship Service ... 10:30 a.m.  
Evening Service .... 6:00 p.m.  
Wed. Jr. High .....5:30 p.m.  
Wed. High School... 6:30 p.m.

**GRANT CHAPEL CHURCH OF GOD IN CHRIST**  
Joe Bennett, Pastor  
Sunday School ..... 10:00 a.m.  
Morning Worship .. 11:00 a.m.  
Evening Service ..... 7:30 p.m.  
Tuesday ..... 8:00 p.m.  
Wed. Service ..... 7:30 p.m.

**MAIN STREET CHURCH OF CHRIST**  
Lockney  
Jay Don Poindexter, Minister  
Bible Study ..... 9:30 a.m.  
Morning Worship .. 10:30 a.m.  
Evening Worship ... 6:00 p.m.  
Wednesday ..... 7:30 p.m.

**MT. ZION BAPTIST CHURCH**  
Floydada  
Rev. Ralph Jackson  
401 N 12th St (983-5805)  
Sunday School ..... 10:00 a.m.  
Morning Worship .. 11:00 a.m.  
Evening Worship .... 6:00 p.m.  
Wednesday Study .. 7:00 p.m.

**NEW SALEM PRIMITIVE BAPTIST CHURCH**  
Floydada  
Pastor Elder Ronnie Hedges  
(806) 637-0430  
Sunday Singing .... 10:30 a.m.  
Morning Worship .. 11:00 a.m.

**OUT REACH HARVEST PENTECOSTAL CHURCH**  
310 E. Mississippi  
Floydada  
Rev. David Ramos, Pastor  
Ester Ramos, Praise Leader  
Sunday Bible...10:00 a.m.  
Morning Praise...11:00 a.m.  
Evening Praise ....5:00 p.m.  
Wed. Worship.... 7:00 p.m.

**POWER OF PRAISE FULL GOSPEL CHURCH**  
Rev. Manuel Rendon, Pastor  
704 N. Main, Lockney  
Sunday Services .. 10:00 a.m.  
Sunday Evening .... 5:00 p.m.  
Wednesday ..... 7:30 p.m.

**Goen & Goen Insurance**  
102 E. California  
983-3524

**Lockney Co-op Gin**  
652-2377

**Lockney Ins. Agency**  
105 N. Main  
652-3347

**Moore-Rose-White Funeral Home**  
329 W. Calif. Floydada 983-2525  
402 S. Main Lockney 652-2211

**Oden Chevrolet-Olds**  
221 S. Main, Floydada  
983-3787

**Payne Family Pharmacy**  
200 S. Main, Floydada  
983-5111

**Pay-n-Save**  
210 N. Main  
Lockney  
652-2293

**PRIMERA IGLESIA BAUTISTA**  
Lockney  
Jesse Caballero, Pastor  
Sunday School ..... 9:45 a.m.  
Worship Service ... 11:00 a.m.  
Evening Service .... 6:00 p.m.  
Wed. Service ..... 7:30 p.m.

**PRIMERA IGLESIA BAUTISTA**  
Floydada  
Rev. Lupe Rando  
Sunday School ..... 9:45 a.m.  
Morning Worship .. 10:55 a.m.  
Evening Worship ... 6:00 p.m.  
Wed. Evening ..... 7:00 p.m.

**SAN JOSE CATHOLIC CHURCH**  
Lockney  
Jim McCartney, Pastor  
Wed. Communion .. 8:00 p.m.  
Sunday Mass ..... 11:30 a.m.

**SOUTH PLAINS BAPTIST CHURCH**  
Joe Weldon, Pastor  
Sunday School ..... 10:00 a.m.  
Morning Worship ... 11:00 a.m.  
Prayer Meeting..... 7:00 p.m.

**TEMPLO GETSEMANI ASSEMBLY OF GOD**  
701 W. Missouri  
Rev. Ray Gonzales  
983-5286 (church)  
983-3047 (parsonage)  
Sunday School ..... 9: 45 a.m.  
Morning Worship .. 11:00 a.m.  
Evening Service ..... 5:00 p.m.  
Wednesday ..... 7:00 p.m.

**ST. MARY MAGDALEN CATHOLIC CHURCH**  
Floydada  
Father Jose Relente  
Deacon Ricky Vasquez  
Phone: 983-5878  
Sunday Mass ..... 11:30 a.m.  
Mon.Wed. Mass ..... 6:30 p.m.  
Confession Sat. 10:00-11:00 a.m.

**TEMPLO BAUTISTA SALEM**  
Lockney  
Pedro Reyes, Pastor  
Sun. Prayer Service 9:30 a.m.  
Sunday School ..... 9:45 p.m.  
Worship Service ... 11:00 a.m.  
Evening Worship ... 6:00 p.m.  
Wed. Meeting ..... 7:00 p.m.

**TEMPLO BETHEL SPANISH ASSEMBLY OF GOD**  
Washington and 1st St.  
Rev. Eliseo Ovalle 983-6202  
Sunday School ..... 9:45 a.m.  
Morning Worship .. 11:00 a.m.  
Evening Worship ... 5:00 p.m.  
Wed. Service ..... 7:00 p.m.

**TEMPLO NUEVA VIDA**  
Rev. Herman Martinez  
308 W. Tennessee,  
Floydada  
Sunday School ..... 10:00 a.m.  
Evening Worship .... 5:00 p.m.  
Tuesday ..... 7:30 p.m.  
Thursday Service ... 7:30 p.m.

**TRINITY ASSEMBLY**  
500 W. Houston  
Floydada  
Henry Russell, Co-Pastor  
Vance Mitchell, Co-Pastor  
983-5499  
Sunday School ..... 9:45 a.m.  
Morning Worship .. 10:40 a.m.  
Sunday Evening ..... 6:00 p.m.  
Wednesday ..... 7:00 p.m.

**TRINITY LUTHERAN CHURCH**  
Providence Community  
on FM 2301 293-3009  
Rev. Burnell Lund,  
Minister  
Sunday School ..... 9:45 a.m.  
Worship Service ... 11:00 a.m.

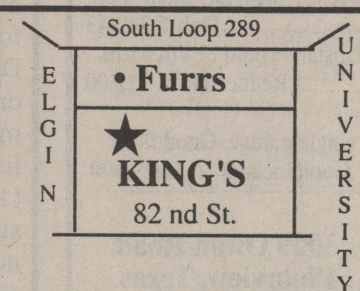
**WEST SIDE CHURCH OF CHRIST**  
Floydada 983-3548  
Sunday Worship ... 10:30 a.m.  
Sunday Evening .... 5:00 p.m.

*This page is brought to you by the following sponsors:*

**Schacht**  
Flowers, Jewelry & Gifts  
112 W. Poplar, Lockney  
652-2385

**Sunshine Pump Oliver Clark**  
Box 266, Lockney  
983-5087 - 774-4412 (Mobile)

**HEARING AIDS**  
**KING HEARING CENTER**  
2821 74th Street----Lubbock, TX. 79423



**Ears:**  
Once hearing is damaged it often can't be restored  
• Avoid noise - too loud or too long, wear earplugs  
• Certain chemicals and ototoxic drugs can damage your hearing  
• Some diseases, such as measles or meningitis cause hearing loss  
• Injuries can create physical damage - careful cleaning ears  
• Aging - weakness in your hearing can catch up with you

**Hearing Loss:**  
There are two main types of hearing loss  
• "Conductive" hearing loss is caused by obstruction or malfunctions in the outer or middle ear.  
• "Sensorineural" hearing loss is caused by damage to the hair cells in the inner ear.

**Help:**  
Signs that you need a hearing test  
• Ringing sensation in the ears (tinnitus)  
• People complain that you talk too loudly  
• You have to ask people to repeat often  
• You find conversation hard to hear, especially in noisy settings  
• Others complain you watch television with the volume too loud

**King Hearing Center**  
Personal Attention to Your Hearing Needs  
Testing, Hearing Aids, Service and Repair  
**806-745-7878**  
Toll Free: 1-800-222-4410