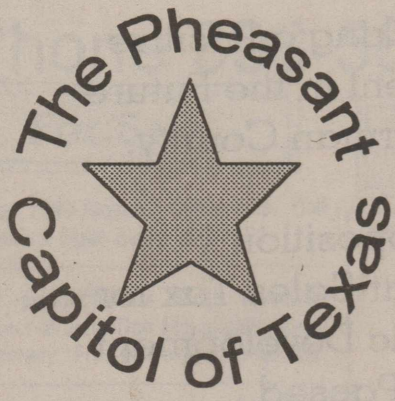


W.G. Hart
Box 3
Stratford, TX 79084

12/96

Depot Doins' Saturday, August 17th D.D. Spurlock Family To Be Honored



THE STRATFORD STAR

50 CENTS

Published for 95 YEARS in STRATFORD, SHERMAN COUNTY, TEXAS 79084 usps 523-108

NUMBER 33 AUGUST 15, 1996

Tax Rate To Remain The Same

The Stratford Hospital Board of Directors voted on Thursday, August 8th at their board meeting that the tax rate would remain the same which is .22409.

Annual Depot Doin's Sat. August 17th

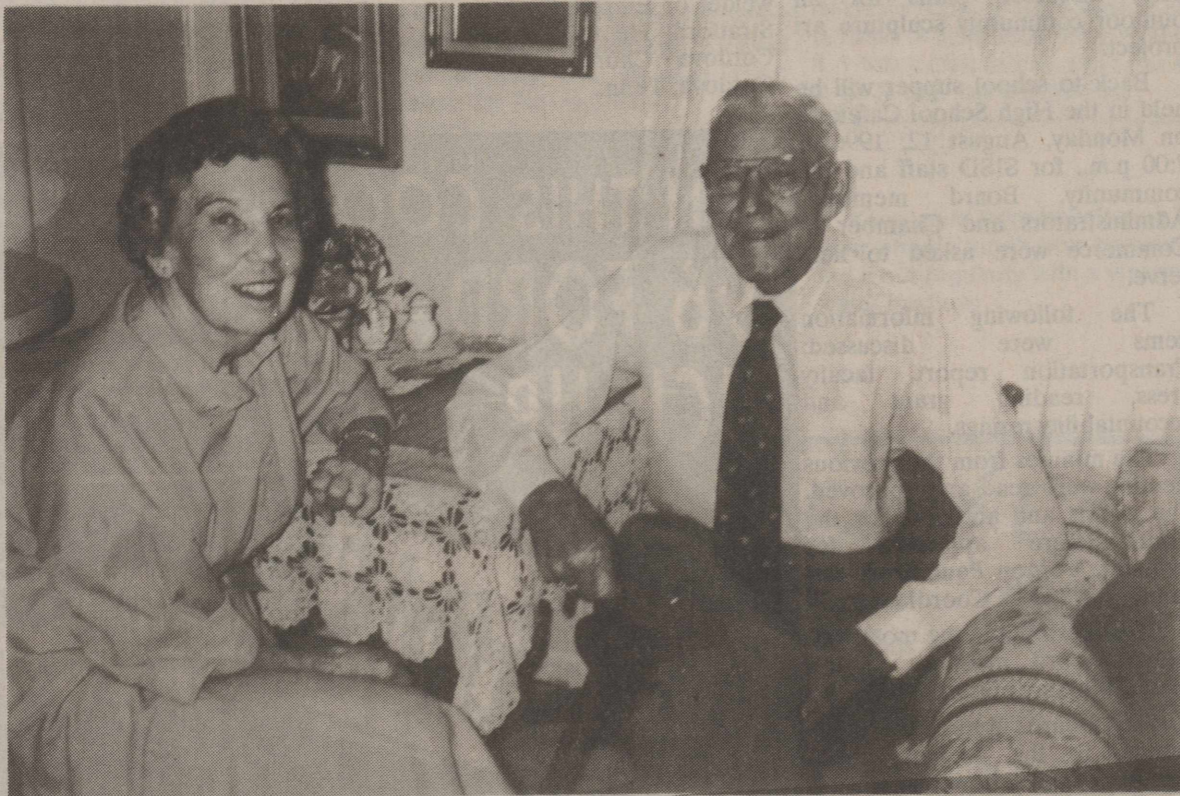
Authentic Mexican Food will be served at the annual Depot Doin's to be held Saturday, August 17, at 6:30 p.m. at the Museum. This food will be prepared by Eva Cano, Betty Saenz, and Viola Abeyta.

Photography Contest

I'm going to take a couple of my pictures to that photography department at the Sherman County Fair!!! Sept. 5, 6 and 7.

Bingo At Scot Hall

Bingo at Scot Hall Thursday at 7 p.m. August 15th.



Old Timer King & Queen

1996 Old Timer King & Queen are Mary Woodford Wisdom and Russell Kelp. They will be officially crowned on Sept. 7 at the annual Old Timer Reunion and program sponsored by Prospectus Study Club. Everyone is invited to the event.



Other children of the D.D. Spurlock's: Edgar, Elizabeth Spurlock Cummings, Belle Spurlock Cummings and Florence Spurlock Mullins.

Community Youth Choir

Rehearsals will be on Wednesdays at 8 p.m. First United Methodist Church Sanctuary. Music, food and fun.

Cheerleaders To Have Concession Stand Friday At Scrimmage

The High School Cheerleaders will be having a concession stand serving hamburgers and all the trimmings at the blue and white scrimmage, Friday, August 16th starting at 5:30 p.m.

Craft Show To Be Held

There will be a Craft Show in a conjunction with the Sherman County Fair on Saturday Only Sept. 7 at the Parish Hall. For more information call Bobbie Wilson at 5891.

Attention Girls Pageant Coming Up

Miss Stratford Scholarship Pageant August 24, 1996 at 7:00 p.m. at the Stratford High School Auditorium.

Age Divisions Entry Fee:

Little Miss - \$5.00
Young Miss - \$10.00
Princess Miss - \$15.00
Jr. Miss - \$20.00
Miss Stratford - \$25.00

Deadline to Enter is August 15, 1996.

Entry forms can be picked up by calling Marie Sladek at 2865 or at Brooks Video - Becky Brooks at 2845.

See You At The Pole

See you at the Pole on September 18, 1996 at 7 a.m. at the Stratford High School. 8 a.m. at the Mary Allen Elementary School. See you There!!

Address For (Cotton) Williams

Richard (Cotton) Williams has had several hospital stays recently, due to complications from Lukemia. His address-Dick William-1936 Bluebird, F. Worth, Tx 76111.

4-H Bake Show Training

4-H Bake Show Training will be Thursday, August 22 at 4:00 p.m. in the meeting room of the county Extension Office. Youth will learn proper techniques for preparation of muffins and rules for the County Bake Show will be discussed. All 4-H'ers and their parents are encouraged to attend.

New Swimming Pool Hours

The Stratford Swimming Pool will be open Sat. August 17 and Sunday, August 18th from 2:00 - 5:00. Starting September 14th the pool will be open Sat. and Sun. from 2:00 - 5:00 every 2nd and 4th weekend of the month.

Texas State Pedal Pullers August 31st, 1996

Texas State Pedal Pullers meet will be in Lockney, Texas August 31, 1996. The registration for all 1st and 2nd qualifiers will be at 11:30 with the pulls beginning at 1:00.

Stratford Voters Approve Half-Cent Sales Tax For Economic Development

On Saturday, August 10th, the voters of Stratford elected to increase their city sales tax one-half cent in accordance with Section 4B, Article 5190.6 V.T.C.S., as amended (The Development Corporation Act of 1979). The one half of one percent of tax revenues from the city's sales tax will be designated strictly for economic development. This brings the local sales tax rate to 7.75%.

The proposition passed 100 for - 50 against. The City announces that the revenues will be used for the development of new and expanded business enterprise; land, buildings, and equipment, related roads, streets, water and sewer facilities, demolition of existing structures, drainage and other related improvements, and any other project that is determined to directly contribute to the creation of jobs and or/increased tax base.

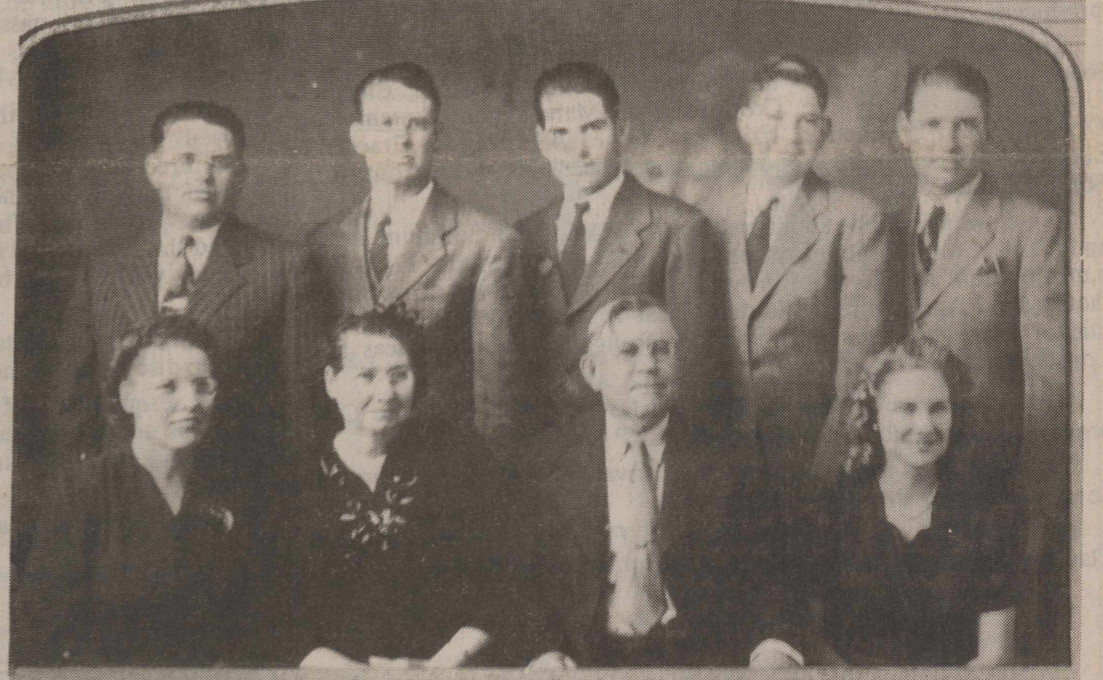
Stratford joins over 292 other cities in the State of Texas who have passed this Economic Development Tax.

Superintendents & Chairmans To Meet Tuesday, August 20th

Sherman County Fair and Jamboree superintendents and chairman will meet Tuesday, August 20 at the County Barn at 7:00 p.m. This will be the final meeting before the celebration Sept. 5, 6, 7 & 8. The High Plains Bagpipers have accepted an invitation to be part of the parade.



This snapshot was taken on D.D. and Mary Frances Spurlock on their 50th Wedding Anniversary on July 23, 1926.



The W.A. Spurlock Family taken in 1945. Top Row from left: Harvey, Clay, Alvin, Neal and Travis. Bottom Row from left: Maymie, Annie, Will, and Elsie.

Spurlock Family To Be Honored

Big excitement on Main Street this Saturday Night as the Museum celebrates its 14th Annual DEPT DOIN'S with a Mexican Dinner. Dinner starts at 6:30 p.m. Tickets for the dinner can be purchased from any museum board member or at the door. Tickets are \$6.00 for adults and \$3.50 for children. Each year the Museum honors a pioneer family. The chosen family this year are the D.D. and W.A. Spurlock Family. Their stories will be told at the Doin's. Will Spurlock came to Texas with his folks, the D.D. Spurlocks as a 16 year old boy. Will married Annie Fedric in 1907. Since Will and Annie had 5 boys, all of whom have settled in and around Sherman County, these stories will mostly be about them. All of the boys, as well as their two girls were educated at the Spurlock School and Stratford High.

DAVID DRURY SPURLOCK 1900

For several years D. D. Spurlock had been thinking of moving to Texas. His brother, Bob, had moved his family down on the Canadian River in Hutchinson County in 1884. Brother Bob was always writing about how good the land was "north of Dumas". In the winter of 1899, D. D. and his wife, Mary Frances Rogers Spurlock, decided to make the move. In April 1900, David Drury Spurlock, his wife and children left Sharp County, Arkansas by train for Panhandle, Texas. Mrs. Spurlock's brother, Alec Rogers, and his wife, who was a sister of D. D. Spurlock, and their child, en came on the same train to Texas also.

After reaching Panhandle, wagons were secured to haul the two families and their belongings to the south central part of Sherman County. Tom Chambers was "batching" in his home on the Palo Duro and the Spurlock family moved in with him until they could get a house built. In return for this hospitality, Mrs. Spurlock cooked and kept the house.

In November of 1900 the Spurlocks moved into their new home. It was a half dugout with one room above. D. D. had taught school in Arkansas, so the first winter he taught two of his children, Elizabeth and Belle, and two Rogers children, Gertrude and Jennie. Since the Rogers children lived with the Spurlock's except on week-ends and the house was only two rooms, it must have been crowded. A small one-room school house, Prairie View, was constructed on the northeast corner of the same section where the Spurlock Chapel now stands and D. D. taught, in addition to the original four pupils, Frank, Ovie, Floyd, Ira, Flora and

Cont. on page 8

WILL AND ANNIE SPURLOCK

In the Fedric ranch home William Alexander Spurlock and Annie Clay Fedric were joined in marriage on February 24, 1907. There were 36 guests present and a celebration dinner was served that evening.

The couple moved into what is now known as "The Old Dortch Place." Mr. Will took care of cattle for a Mr. O'Harrow. They had only the bare necessities for keeping house, using mostly what had been left in the house by former tenants. As Annie put it, "we just batched there." Their first child, Maymie, was born November 9, 1907. She weighed only 3 pounds but with much love and care developed into a beautiful healthy child.

On March 8, 1908, Mr. Will rented a house and did stock farming for a Mr. Jordan on what is now the Don Ellison home place. The family grew and lived here for eight years. Three more children were born here: Harvey, November 5, 1909; Clay, July 23, 1911; and Travis, December 28, 1915.

Mr. Will bought a ranch, a house, and adjoining land for pasture, from his father-in-law, S.B. Fedric. Cattle and feed were their main income. Three more children were born at this, the home place: Alvin, October 10, 1917; Elsie Pearl, November 6, 1922; and Neal, June 28, 1930. In addition, Mr. Will and Annie helped raise a nephew, Sherman Holt, after his mother, the former Clara Spurlock Derrick, died.

When help was hard to find during World War I,

Cont. on page 6

SCDC To Sponsor September Business Seminars!

The Sherman County Development Committee, Inc. will be sponsoring two business seminars during the month of September. The first is an eight hour computer training course on Word Perfect 6.1 to be held on Saturday, September 14th. The training will be given by Nelson Creative Consultants from Amarillo and will be held in the Stratford High School Computer lab. The cost is \$100 for SCDC member and \$115 for non-members. Fee includes workbooks and training materials and two breaks. Lunch will be on your own. Class is limited, so register soon.

The second business seminar is one you won't want to miss. Jeanne Archer, a renown author and award winning public speaker, will be giving a presentation called "WOWing the Customer of the 90's". This will be a luncheon seminar held on Tuesday, September 17th at the First Christian Church Fellowship Hall. Lunch will begin at 11:30 a.m. and her presentation will begin at 12:15 p.m. The program should end around 1:15 p.m. The cost for this seminar is \$20.00 for SCDC member and \$25.00 for non-members. This includes a buffet lunch. RSVP to the SCDC office by Friday, September 13th.

Please make your plans to attend either or both of these exciting and educational programs. Look for more details to come. For questions, call 396-2897. Mark Your Calendars!

Beef Cattle Conference To Be Held In Dumas

Moore, Sherman, Hartley and Dallam Counties of the Texas Agricultural Extension Service will be sponsoring a Beef Cattle Conference on Thursday, August 15, 1996. Registration for the conference will begin at 8:30 a.m. in the Moore County Community Building located at 16th and Maddox in Dumas.

The conference will get underway at 9:15 a.m. with Dr. Ted McCollum, Extension Beef Cattle Specialist-Amarillo, discussing management tips for incoming stocker cattle. At 10:00 a.m. Mr. Jim Gill, Texas Cattle Feeders Association-Amarillo, will give a cattle market outlook for late 1996 and 1997. Dr. Steve Amosson, Extension Economist-Amarillo, will address future feed prices and what strategies cattlemen can utilize to control the price paid for feed.

A catered lunch will be provided courtesy of Dow-Elanco Ag Products. Key note speaker for the conference will be Gary Smith of Friona Industries, L.P. Mr. Smith will talk on where the cattle industry is headed and where the stocker cattle operator fits in. The conference will adjourn at 2:00 p.m.

For more information, contact the Sherman County Extension Office at (806) 396-2081.

Bushland Field Day Scheduled For August 22nd

The annual Panhandle Summer Crops Ag Field Day will be held on Thursday, August 22, 1996 at the Bushland Research Center. Registration for the Field Day will start at 8:30 a.m. with coffee and donuts provided courtesy of Ciba Crop Protection.

Bus tours will start at 9:15 a.m. where participants will see research results and demonstrations results and demonstrations highlighting sorghum, corn, forages, and alternate summer crops. More than 20 speakers will be on hand to address topics important to Panhandle producers.

Tour stops and topics during the morning session include the following: Dryland Forages and Alternative Summer Crops; Efficient Use Of Irrigation Water; Crop Residue Management Systems for Dryland Grain Production; Irrigated Tillage and Cropping Practices; Short Season Sorghum Production; and Insect and Weed Control in Sorghum and Corn.

Lunch, which will be sponsored by the Texas Grain Sorghum Board and Texas Grain Sorghum Association, will be served from 12:00-1:30 p.m. Key note speaker for lunch will be Dr. B.A. Stewart, Director of the Dryland Agriculture Institute at West Texas A&M University. The title of Dr. Stewart's speech will be Drought: It's Occurrences and Consequences.

At 1:30 p.m., a closing session will be held discussing the CRP program and techniques for converting CRP to cropland.

Two (2) CEU's for recertification of private licensed applicators will be offered during the Ag Field Day.

For more information regarding the Field Day, contact Michael Clawson, Sherman County Extension Agent, at (806) 396-2081.

Elk Football Season Underway

Practices for the 1996 Elk Football season are underway for what hopes to be a successful year. Forty three young men showed up last Wednesday to begin two-a-day practices at 8 a.m. and again at 3 p.m. By Monday morning the pads had been handed out and the contact began to happen. The Elks will begin to practice once a day at 3 p.m. starting Tuesday in preparation for their first scrimmage against Vega on Aug. 23 at 6:00 p.m. in Stratford.

There will be an Intra-squad Scrimmage on Friday Aug. 16 starting around 6:30 p.m. followed by Hamburgers and ice cream.

SISD Board Meeting Held

The Board of Trustees of the Stratford Independent School District met for a regular board meeting on Thursday, August 8, 1996 at 7:00 p.m. Board members present were: Kenton Kimball, Sandy Baskin, Philip Walden, John Wheeler, Roy McAlister and Karen Riffe. Barbara Chumley was absent.

Henry King, Quicksilver Consultants, took the board members on a walk through the Middle School and High School to see how the Renovation project is coming along.

The meeting got underway with the invocation being given by Vernon Paul, Supt.

The Imagination Station was visited by Evelyn Schmidt, Dana Buckles and Judy Sutton Kracke. They discussed plans for an outdoor community sculpture art project.

Back to school supper will be held in the High School Cafeteria on Monday, August 12, 1996 at 7:00 p.m. for SISD staff and the community. Board members, Administrators and Chamber of Commerce were asked to help serve.

The following information items were discussed: Transportation report, faculty dress, reading grant and accountability ratings.

The minutes from the previous meeting were read and approved. The claims and accounts for the month were approved for payment. Vernon Paul, Supt. was named as Title IX Coordinator.

The board made the motion to change board meetings to the second Monday of each month.

The board approved some changes to the present school calendar. Stock Show day will be on Friday, January 24, 1997 instead of January 31. Local In-Service dates will be changed to Friday February 14 and 21, 1997 instead of February 24 and 25, 1997. On these dates there will be no school.

The UIL requires that he board of trustees pass courses identified as no pass, no play exemption.

In other business, the board approved the 1995-96 expenditures, adopted the 1996-97 proposed budget by function, all funds as presented. The board accepted the tax rate for the 1996-97 school year, it will be set at \$1.30800.

The board went into closed session to discuss personnel.

The resignation of Rinda Allison was accepted with regrets. Shanda Davis was hired subject to assignment.

Meeting adjourned at 10:05 p.m.

Obit

E.J. Massie

E.J. Massie, 82, a former longtime Stratford resident, died Thursday, August 8, 1996, in Memphis, Tenn. at Eastwood Hospital.

Services were held at 10 a.m. Tuesday August 13 in the Church of Christ with Jon Heatwole, minister, officiating. Burial was in Stratford Cemetery by Morrison Funeral Directors.

Mr. Massie was born in Sedan, N.M. June 11, 1914. He was a longtime Stratford resident before moving to the Memphis, Tenn., area in 1993. He married Ollie Rice February 24, 1951 at Amarillo.

He was a World War II veteran of the Army Air Corps and a welder of Empire Construction of Stratford. He was a member of Cordova Church of Christ in Cordova, Tenn.

Survivors include his wife; a daughter, Tina Jondron of Canton; a son, Jack Morgan of Cordova; a sister, Marguerite Terrell of Stratford; and four grandchildren. The family requests memorials be to a favorite charity.

THANK YOU VOTERS!

For Making a Positive Investment in the Future of Sherman County.

Proposition 1
Half-Cent Sales Tax for Economic Development
Passed
on August 10th

Pd. Pol Adv. by SCDCP.O. Box 652, Stratford, TX 79084

WIN THIS COOL '96 FORD XLT PICK-UP AT ALLSUP'S



NO PURCHASE NECESSARY. REGISTER AT ANY ALLSUP'S STORE THROUGH AUGUST 17, 1996

CHECK OUT the FIREWORKS at ALLSUP'S

| | |
|--|---|
|  Enjoy Coca-Cola CLASSIC Coca-Cola \$1.99 3 Liter | COMBO MEAL Piping Hot Link, Potato Wedges & Tallsup \$1.99 |
|  CHEETOS & LAY'S® Grab Bags REG. 75¢ 2 \$1.00 FOR |  HORMEL SLICED LIGHT & LEAN Ham or Turkey 8 OZ PKG \$1.79 |

ALLWAYS a LOW PRICE on

| | | | |
|---|--|---|---|
|  BLUE BUNNY VANILLA OR NEAPOLITAN Ice Cream Sandwiches EACH 2 \$1.00 FOR |  SHURFINE Ultra Detergent 110 OZ. BOX \$4.99 |  SHURFINE Colby Cheese 10 OZ. PKG. \$1.59 | |
| You'll find all this and more at your Allsup's store Stratford, Texas |  WESTERN FAMILY 35 MM Disposable Camera 27 EXPOSURE \$5.99 |  LANA'S Egg Rolls 2 \$1.00 FOR | |
| Allsup's Milk 1 Gal. \$2.29 | Shurfine Charcoal \$1.79 | Shurfine Charcoal Lighter Fluid \$1.39 | Allsup's Bread 2 For \$1.29 or \$.89 each |

Instantly Win up to \$1,000 or other great cash prizes & free products!



Get a Free Game Ticket With Every HONCHO 44 oz. Fountain Drink Purchase!

Take this coupon to any Strebeck location. If you purchase a new vehicle before August 31, 1996, you will receive \$50.00 worth of free gasoline courtesy of ALLSUP'S.

LOW PRICES, GREAT PRODUCTS 24 HOURS A DAY

PRICES EFFECTIVE AUGUST 14-20, 1996 OFFER GOOD WHILE SUPPLIES LAST

Calendar Of Events

Thursday-August 15th School Begins, Scot Hall at 1 p.m. AA-Alton 8 p.m. County Barn, Scot Hall Bingo 7 p.m.

Friday-August 16th-Scot Hall 1 p.m. pool, ceramics.

Saturday-August 17th-Scotcers Dance/out of town. Dance-Guymon Museum at Depot Doin's.

Sunday-August 18th-9 a.m. Coldwater Manor-First United Methodist Church.

Monday-August 19th-Scot Hall 1 p.m. pool and ceramics. 7:30 Dance practice.

Tuesday, August 20th-Scot Hall 1 p.m.. pool, Scot Board Meeting at 10 a.m.

Wednesday August 21-Scot Hall 1 p.m. pool & ceramics. Coldwater Manor Bible Study, Assembly of God.

★★ RE-ELECT ★★

SHERIFF JACK HAILE

SHERMAN COUNTY SHERIFF

Pd. Pol. Adv. Pd. for by Jack Haile, HCR 1 Box 302, Stratford, TX 79084

10th Year, 2681 Babies In Dumas

Women's Health Center

Normal and high risk pregnancies
Gynecologic cancer screening
Breast cancer screening
Infertility and family planning
Menopause and hormone problems

Dr. Turhan I. Baykan, M.D.

Specializing In
OBSTETRICS-GYNECOLOGY

110 S. Bliss

Monday - Friday 9 a.m. - 6 p.m.

935-6599



Timi's Tidbits

By Timmie Brown

Happy Day to you Sherman County Old Timers and readers. This sparkling Monday morning August 12, 1996.

We have been very busy this last week moving a settling down at home for the rest of our lives.

Naturally there has been little time to gather news for Tidbits.

However we are grieving with those who have lost loved ones namely, E.J. Massies' family; The Rex Tillery's in loss of Greg. The Haile families in loss of their cousin.

May each grieving person find comfort in their belief of eternal life as a loving Heavenly father. Amen.

Remember to check your activity calendar so you won't miss out on meetings you want to take part in.

To old timers who remember the Knudsen family of Stevens Tex, We have word from the former Mrs. Irwin Knudsen that she suffered a heart attack the first of June but is recovering nicely. Donna has been living in a Florida retirement center for a couple of years. Her daughter Karen and granddaughter Erika were with her this weekend again and we had a good family gossip session via telephone. They send greetings to friends in Stratford an Sherman County with School starting this week May everyone settle up to a comfortable living routine O.T.'s can resume spreading Shoulder pats and luv among peers and friends.

Enrollment Night Monday-August 19th

All youth ages 8 years old and entering the third grade through age 19 are invited to the annual Sherman County 4-H Enrollment Night, Monday, August 19th. The evening activity will be held from 7:00-8:30 p.m. at the Sherman County Exhibit Building.

Hot dogs, in-line skating, and other recreation will be offered to those in attendance along with information about the variety of projects, community service, and leadership opportunities available to youth through 4-H program.

Each youth is asked to bring either a food or personal hygiene item for the Pantry as their admission to the activity. PARENTS are asked also to attend and learn more about Sherman County 4-H, ways to assist their child, and opportunities to participate in this youth development program as an adult.

Enrollment night coordinators, Earl Griffin, Jesse Rescendes, and Jeff Kautz encourage all current and prospective 4-H club members to attend. For more information, contact either Earl (396-2436), Jesse (769-4454), Susie Spurlock (396-2122) of Michael Clawson (396-2081) at the County Extension Office.

The Sherman County 4-H program supports the state goal of developing responsible, productive, and self-motivated youths and adults. In addition it supports the Sherman County LREP of enhancing skills for quality of life.

4-H Foods Project Training Tuesday

Training for volunteers who are interested in serving as 4-H Food and Nutrition Leaders will be Tuesday, August 20 at 6:00 p.m. at the County Extension Office.

Leaders will receive information on the program objectives, resources available, and nutrition information on use of grains in the diet. Project groups will also be assigned during the one and one-half hour long meeting.

Individuals interested in serving as a project leader are asked to contact Susie Spurlock, Sherman County Extension Agent or Family and Consumer Sciences at 396-2122.

Qualifications for this great opportunity to be involved in education young people is the deserve to be assist with the development of responsible, productive, independent young people.

If you suffer what does not appear to be a serious sprain, apply an ice pack (do not apply a heating pad or wrap tightly with surgical tape). However, if there is swelling or the pain does not subside, see a doctor.

Kerrick News

By Marylou McDaniel

It's Kerrick Reunion time! This Sunday, Aug. 18, 3 p.m., come to the Community Center. Area people are asked to bring a freezer of ice cream or something to go with ice cream. Those coming from a distance are to bring just themselves.

Trisha Schoonover had a Home Interiors party Friday night by Shirlee Gerber of Dalhart. It was Kaci McBryde's birthday, so she had a birthday cake for all share. Present were Ellen Tillery, Kathy Hart, Misty McBryde, Stacy Metcalf, Brenda Taylor, Nita Taylor, Jo June McDaniel, Charissa Beattie, Kaci McBryde, Marylou McDaniel.

Marihoward Engelbrecht and Brenda Taylor were in Santa Fe Aug. 5-8 where they attended a chamber music program and two operas, Madam Butterfly and Daphne.

Kayo & Jo June McDaniel attended a family reunion of Beth McDaniel's in Dumas on Aug. 4.

Marylou McDaniel spent Aug. 7 with Boots, Rene, Jody and Wil Avent near Sinnet. Wil is doing much better. He's on oxygen all the time, but walks around the house.

The Wells family reunion was held Aug. 9-10-11 at Camp Billy Joe with about 90 attending. Jan and son Kristopher arrived a week before from South Texas for visit with parents, Kenneth and Lynn Wells. Husband Claude Tondre came for the Reunion. Spending Aug. 7-8 with the Wellses were Phyllis Hayes of Colorado Springs and Diane George of Salsalita, Ca.

Lynn reports that family was there from Iowa, Indiana, Virginia, California, Colorado, Oklahoma & Texas. The rains had made the area green and beautiful.

Hank & Mabel Rogers spent their 53rd wedding anniversary in Amarillo Aug. 6. Joining them for lunch were Joshua Rogers, Ian Weems, Florence Wolfe and Mark Wolfe.

Jimmy Gillenwaters and his bride, the former Sundry Gilchrist, were married Saturday night at the lakeside home of her aunt near Coldwater, Ks. They flew to St. Lucas on their honeymoon.

George and Barbara Avent hosted a barbecued ribs luncheon Sunday for 35 family & friends.

New Electronic System For Issuing Hunting & Fishing Licenses

Texas Parks and Wildlife is going to an electronic system for issuing hunting & fishing license effective Sept. 1, 1996. The General Store will continue to issue licenses with the new system beginning 9-1-96. There will be some changes in the requirements and the way the licenses will be issued. A Texas Drivers License, DPS, ID number Social Security number or out of State Drivers License will be required to issue a license. License fees will remain the same as last year and payment for the license will be cash or check, for the accounting procedures required. We would like to encourage people who wish to purchase a license for the 97 season, which runs from 9-1-96 to 8-31-97, to begin purchasing their license early, for a smoother change over from manual to electronic issuing. We will try to make the transition as smooth as possible for our customers to purchase their license. If you have any questions concerning the new issuing process, call or come by The General Store, or you may contact the Texas Parks and Wildlife at 1-800-792-1112.

"Management Of Multiple Roles" Seminar To Be Held

"Management of Multiple Roles", a time management seminar will be conducted twice in Stratford Sherman County residents. Participants will gain skills in basic management concepts of goals, goal setting, needs, wants, and priorities for fulfillment of work and family roles.

The first session will be held on Thursday, August 22 from 9:30 to 11:30 a.m. at the County Extension Office. A repeat session will be held on Tuesday, August 27 from 6:00 to 8:30 p.m. Class sizes are limited to five persons per session and \$2.00 registration fee will be charged for materials.

See you at the Pole on September 18, 1996 at 7 a.m. at the Stratford High School. 8 a.m. at the Mary Allen Elementary School. See you There!!

Come learn how to take control of your life through this seminar. Seminar sponsors are the Sherman County Family Living Committee and the Sherman County office of the Texas Agriculture Extension Service.

The seminar supports the state goal of promoting individual responsibility for improving health, safety, productivity, and well-being and the Sherman County LREP issue of Enhancing Skills for Quality of Life.

Extension programs serve people of all ages regardless of socioeconomic level, race, color, sex, religion, disability, or national origin.

In Australia, Labor Day is called Eight Hour Day and commemorates the successful struggle for a shorter working day.

GREETINGS FROM STRATFORD!!!

The Stratford Fair & Jamboree invites you to show off your town, organization or business in the Stratford Jamboree Parade, Saturday September 7, 1996.

The parade theme will be: Songs of America

Entries will be judged for awards: Theme Floats - \$100 for 1st, \$80 for 2nd, \$65 for 3rd place Commercial and Organization Floats. (Separate Adult and Youth categories.) Riding Clubs-Must be attired in Long-Sleeved Western shirts, blue jeans, boots and hat. Senior Cowgirl and Cowboy - \$5.00, Junior Cowgirl and Cowboy (12 years and under) \$5.00 each. Kiddie Entries - Theme & Non-Theme, prizes ranging from \$7.50 to \$1.50.

Parade entries will be placed and judged at 10:00 AM at the Stratford School parking lot at 8th and Main. Horses will assemble at Main and 7th. Kiddie entries will be placed and judged at the First Christian Church parking lot between 4th and 5th on Main Street. The Kiddie Parade will precede the Parade at 10:45 AM.

Please fill out this entry form below and return it to the Stratford Fair & Jamboree or the Chamber of Commerce by September 6, 1996. We look forward to seeing you this year.

For more information contact:
Jim Bob Brown 406-396-5305 Chairman
H 806-396-5914
Chamber of Commerce 806-396-2260

STRATFORD FAIR & JAMBOREE PARADE ENTRY -
P.O. Box 373
Stratford, TX 79084

Chamber of Commerce
P.O. Box 570
Stratford, TX 79084

CIRCLE ENTRY TYPE AND INDICATE NUMBER IN GROUP
AUTOMOBILE OPEN CLASS WAGON OR BUGGY
RIDING CLUB COWBOY/COWGIRL-Junior/Senior MACHINERY/EQUIPMENT

THEME FLOAT-COMMERCIAL/ADULT ORGANIZATION/JUNIOR ORGANIZATION
KIDDIE ENTRY-THEME/OPEN CLASS MARCHING ORGANIZATION

NUMBER IN GROUP _____

For publicity purposes, please give a description of your entry and identify the participants _____

Organization Name: _____
Contact Person: _____
Mailing Address: _____
Telephone: _____

Tri State Antique & Tractor Show

The Tri State Antique Truck and Tractor Association will hold its third annual show August 31 thru Sept. 2 at the Will Rogers Range Riders Rodeo Grounds in Amarillo. See rare and unusual antique trucks, tractors, engines, implements, and machinery, along with a toy show and toy swap meet.

Special events include daily parades, truck games, tractor games, and children rides. An antique tractor pull is scheduled for Saturday, August 31 at 7:30 p.m. and Sunday September 1 at 2:00 p.m.

Admission is \$3.00. Children 12 and under accompanied by an adult will be admitted FREE with the donation of one can of food for the High Plains Food Bank.

For additional information call 806-374-3056 or 806-358-3433.

P.S. Bring your Antiques and play with us. We are a non profit association that enjoys our old tractors and trucks.

Scot News

By Jack Gore

Thursday August 15th is Bingo at 7 p.m.

"Texas" on the 16th has been canceled due of lack of enough signed up to go.

Tuesday, August 20th Scot bus and I will be taking some of the nursing home residents to see the play "Texas".

Saturday, August 17th Depot Doins-lets all go out and support this organization and also have a lot of fun. Ideas for booth at Fair & Jamboree is still needed. If you have ideas or want to help put the booth together, please let us know.

We all need to take part in helping with the Stratford days celebration.

Assembly of God

Rev. Mike Leonard
921 Fulton
Sunday School 9:45 am
Super Church 10:45 am
Morning Worship 10:45 am
4:00 Cable Ch. 3 for
Morning Worship Service
Evening Worship 6:00 pm
Wed. Youth Service 6:30 pm
Wed. Bible Study 7:00 pm

First Christian

Rev. David Harker
5th & Main
Sunday Coffee Fellowship 9:00 am
Sunday School 9:45 am
Morning Worship 10:45 am
Evening Worship 6:00 pm
Wed., Adult Choir 8:00 pm

First United Methodist

Rev. Mark Metzger
520 N. Main
Sunday School 9:40 am
Morning Worship 10:50 am
Junior High UMY 5:30 pm
Senior High UMY 6:00 pm
Evening Worship 6:00 pm
5:00 pm Cable Ch. 3 for
Morning Worship Service

St. Joseph Catholic

Michael Colwell - pastor
6th & Wall
Rectory - 5687, Parish Hall - 2298
No Saturday Mass
Sunday English Mass 9:00 am
Sunday CCD 10:00 - 11:00 am
Sunday Spanish Mass 11:00 am

Church of Christ

Jon Heatwole
N. 3rd & Chestnut
Sunday School 10:00 am
Morning Worship 11:00 am
Evening Worship 6:00 pm
Wednesday Bible Study 7:30 pm

Calvary Baptist

Gerald Clark
302 S. Main
Morning Worship 10:30 am
Children's Active Learning 10:30 a.m.
Evening Worship 6:00 pm
Wed. Bible Study & Fellowship 7:30 pm

First Baptist

Bro. Jerry Stewart
702 N. 3rd
Sunday School 9:45 a.m.
Morning Worship 10:50 am
Church Training 6:00 pm
Evening Worship 7:00 pm
Wednesday Bible Study 7:00 pm

La Mision Bautista

Roca De Salvacion
County Barn
Domingo-(Sunday)
Estuela Dominical 9:45 am
Servicio De Adoration 11:00 am
Servicio De Adoration 6:00 pm

The Martian soil is two to four times richer than Earth in elements such as potassium, rubidium, chlorine, bromine, sodium, zinc and lead.

DEPOT DOIN'S

Authentic Mexican Dinner
Saturday, August 17, 1996
Depot Museum Main St.
3 p.m. Museum Open
6:30 Mexican Dinner
7:30 Presentation of Pioneer Family, the D.D. Spurlock's family
Adult Ticket - \$6.00 - Child - \$3.50
Tickets Available From Board Members and at Depot Museum
Contributions Tax Deductible

STRATFORD DAYS ROPING

DAN LAW, Superintendent
Saturday, August 24, 1996
TEAM PENNING at 7:00 p.m.
Sunday, August 25, 1996
Books open at 1:30 p.m. for Roping at 2:00 p.m.
Concession Stand
Refreshments Provided by
4-H Younger Texans
Thank You To Our Buckle Donors
First State Bank Walter Lasley & Sons
W & C Land and Cattle Brown's Meat Locker
Coronado Feedyard Stratford Feedyard
Hi-Pro Stratford Grain Co. Larry Parsons
Cargill Bobby Edmond Horse & Trailer Sales

The Churches of Stratford Welcome You

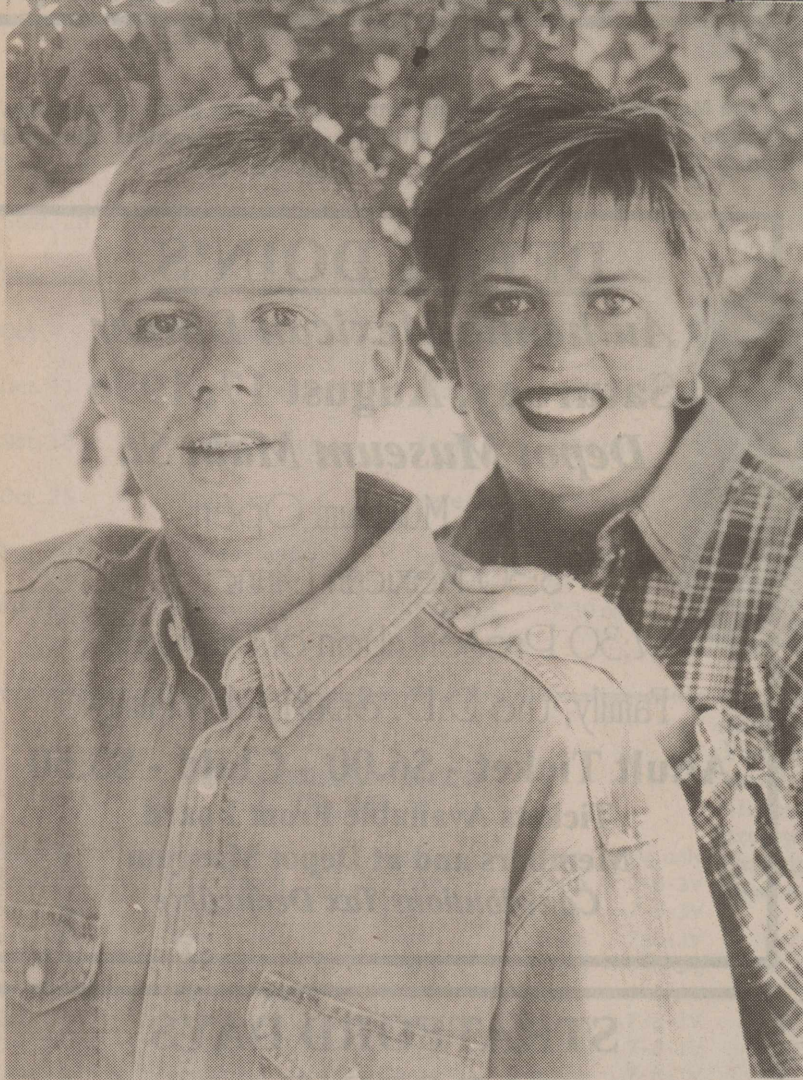
Love Thy Neighbor
But I say unto you, that ye resist not evil: but whosoever shall smite thee on thy right cheek, turn to him the other also.
Matthew 5:39

Sponsored by;
Thriftway 396-5586
Smith & Smith Well Co. 396-2111
Stratford Grain 396-5541
Lautz 769-4485
Ellie's 396-2092
Stratford Star 396-5885
Walter Lasley & Sons, INC. 753-4411

Mission Hispania Assemblies DeDios

Pastor Roberto Frescas
County Barn
Sunday School 10:00 a.m.
Morning Worship 11:30 a.m.

Miercoles (Wednesday)
Estudio Biblico & Servicio De Oracion 6:00 pm
Se Cuidamos Susninos Durante El Servicio.



Engagement Announced

Gary & Orlanda Garoutte announce the engagement of their daughter, Jolina, to Jason Kline. Jason is the son of Dan and Nancy Kline of Ft. Wayne, Indiana. The couple plan to be married December 28 in the First Christian Church of Stratford. Jolina is a senior majoring in Criminal Justice and minoring in Spanish at Kansas Wesleyan University in Salina, Kansas where she has played basketball the last three years. She is employed at Crestwood in Salina and will graduate in May, 1997. Jason received a business degree from Indiana Tech in Ft. Wayne and is working on his Masters in business at Kansas Wesleyan University where he is a men's basketball coach.

Births

Cheryl & Coby Galla announce the arrival of their son Braiden Michael, born August 8 at Dumas Memorial. He weighed 7 lb. 1 1/2 oz and was 18 1/2 inches long.

Paternal grandparents are Mike Galla of Stratford, LuAnn Galla-Amarillo. Maternal Grandparents are Steve and Vickie Beattie, Stratford.

Great grandparents are Jean Turner, Stratford, G.L. Sherrrod-Duncanville, Roy and Pat Green-Elk City, Oklahoma; William Galla- Pittsburgh, Pennsylvania, Robert & Nancy Beattie-Amarillo; W.J. and Mona York, Bend, Texas.

Kevin & Elizabeth Ickles are delighted to announce the birth of their daughter, Kirsten Beth. She arrived at 9:10 a.m. on August 11, 1996 in Greenville, North Carolina. The little miss weighed in at 6 lbs. 2 ozs., but is only 12 inches long.

The proud grandparents are Shirley Kirkham of Stratford, Jim Kirkham of Pampa and Dan and Pat Ickles of Houston. The great grandparents are Ed & Pearl Boggess of Borger, Faye Whitney of Pampa, Mr. and Mrs. Dan Hines of Jasper, X and Mrs. Ickles of Buena, TX.



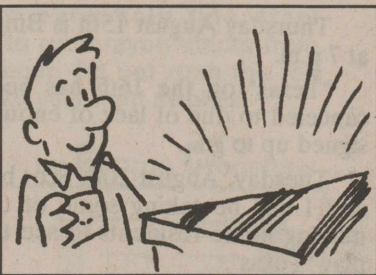
In colonial days, cooked tea leaves were sometimes salted, buttered and eaten on bread.

Card of Thanks



Dear Citizens & Businesses of Stratford I would like to take this opportunity to give a big "Thank You" to the community for assisting me on the Washington D.C. Conference I attended. I learned a lot about the governmental processes and policies, and even had fun doing it! This was definitely the highlight of summer and years to come and I wanted to let everyone know how appreciative I am for the support. I have always known that I'm lucky to live in a community such as Stratford, but I have really realized this past summer how generous, concerned, and supportive this community is of its kids. I am so lucky to have such a wonderful town backing me and I hope I was able to make you proud. There were so many citizens and businesses that donated money or helped at or supported my fundraisers. I want each and everyone of you to know how touched I am at your interest and support. I am very grateful!

Sincerely, Jessica Sikora



To clean a countertop, never use an abrasive cleaner on a plastic-laminated surface. Clean these easy-to-scratch areas with the gentlest product possible.



The term "air-conditioning" came into use years before anyone produced a practical air-conditioning system. The expression is credited to the physicist Stuart W. Cramer, who in 1907 presented a paper on humidity control in textile mills before the American Cotton Manufacturers Association. Control of moisture content in textiles by the addition of measured quantities of steam into the atmosphere was then known as "conditioning the air."



Peggy Green, Career & Modeling
 Congratulations
 To Our Student
 Sabrina Bonds
 1996-97
 Farm Bureau District Queen
 Representing Sherman
 County
 Sign up now for
 Pageant Preparatory
 806-249-8036

Happy Birthday,
 Andres, Jessica, Karina, Nathaniel, Tanya,
 Carie, Marcella, Buffy, Clint, Karen, Alberto,
 Elizabeth, Gary, Jim, Tyler, Wayne, Ashley,
 Scott, Sunny, Adam, Amie, Kendra, Matthew,
 Nigel

Happy Birthday
 Joe Shane
 Love,
 Mom, Dad,
 Timi, & your
 grandparents
 from
 El Paso

Stratford Country Club Fri., August 16

5:30 p.m. Golf Scramble
 7-8 p.m. Chuck Wagon Supper
 9:00 p.m. NIGHT GOLF
 SCRAMBLE

Per Person:
 Scramble - \$15.00
 Chuck Wagon Supper - \$6.00
 Please RSVP at 396-2259
 no later than 8/12/96!!

1946 August 15 1996

In honor of the
 Fiftieth Wedding Anniversary of
 Mr. and Mrs. Albert Zimmer
 their children
 request the pleasure of your company
 at a Reception
 Sunday, August eighteenth
 nineteen hundred and ninety-six
 at two o'clock in the afternoon
 St. Joseph's Catholic Parish Hall
 510 South Fulton
 Stratford, Texas

The gift of your presence is all that we need!

The Eureka Vacuum Power Sale! 1 WEEK ONLY!!

Eureka TheBoss Victory™
 with Quieter Operation
 SALE \$99.99
 Model 4335

Powerline Victory™
 Bonus 1-Year Supply of Bags
 \$129.99
 * Clean air design has built-in motor fan protection system
 * Back Saver™ handle
 120 Amps
 Model 4351

100 Amps

Eureka Shop Boss™ Wet/Dry
 \$49.99
 * Powerful blower
 * 9 gallon capacity
 * Unique tank design and 5 wheel caster system helps stop tip overs
 1.5 peak horsepower
 Model 2812

SUPERBROOM!® Brush Up™
 \$34.99
 * Cleans carpets & bare floors
 * Easy empty dust cup—no bags to change
 * Weighs less than 4 lbs.
 Model 167

EUREKA Bravo!® Upright
 6.0 Amp Motor
 • 3-Position Height Adj.
 \$69.99
 Model 9002
 SAVE \$60

Performance You Expect. Quality You Demand.
EUREKA THE General Store
 515 N. Poplar Stratford, Texas 79084
 (806) 396-5308
 Save on Genuine Eureka Bags & Belts

FIRST State Bank

Box 48 Stratford, TX 79084 Box 680 Dumas, TX 79029 Box 1112 Dalhart, TX 79022

STATEMENT OF CONDITION
 JUNE 30, 1996

OFFICERS

B.A. DONELSON, President and Trust Officer
 JOHN M. WILSON, Sr. Vice President & Cashier
 RICK REINART, Sr. Vice President
 MARTHA MITTS, Vice President & Trust Officer
 BRENT FUTRELL, Sr. Vice President and Office Manager
 BRENT HOLMAN, Vice President and Office Manager
 PATSY ANDERSON, Vice President
 DOAK CRABTREE, Vice President
 JERRY DYESS, Vice President
 CAROL FLETCHER, Vice President
 ARNITA LANE, Consumer Loan Officer
 SHERYL PHELPS, Vice President
 EDDIE PHILLIPS, Vice President
 LORENE WRIGHT, Assistant Cashier

DIRECTORS

B. A. DONELSON, Chairman of the Board
 LARRY BUTTS
 PAT DONELSON
 DOUG MCBRYDE
 BILL D. PITTMAN
 JAMES SPURLOCK
 NEAL SPURLOCK
 JOHN M. WILSON

ADVISORY DIRECTOR
 WESLEY SPURLOCK

RESOURCES

| | |
|--|-------------------------|
| Cash and Due from Banks | \$ 2,685,328.39 |
| Certificates of Deposit | 2,969,000.00 |
| U. S. Government Securities | 3,480,734.78 |
| Municipal Bonds | 7,680,528.83 |
| Other Securities | 16,898,705.89 |
| Federal Funds Sold | 1,360,000.00 |
| Loans, total (excluding unearned discount) | 67,784,555.17 |
| Less Reserve for Bad Debts | 898,098.44 |
| Loans, Net | 66,886,456.73 |
| Income Earned Not Collected | 1,492,171.17 |
| Banking House, Furniture, and Fixtures | 2,811,600.63 |
| Other Assets | 1,715,653.60 |
| | \$107,980,180.02 |

LIABILITIES

| | |
|------------------------------------|-------------------------|
| Capital Stock | \$ 600,000.00 |
| Surplus | 6,737,374.88 |
| Undivided Profits | 3,542,478.43 |
| Deposits | 95,541,776.95 |
| Accrued Interest and Expense | 644,848.37 |
| Other Liabilities | 913,701.39 |
| | \$107,980,180.02 |

First Class Banking



Class of 1976 - Back Row L-R: Betty Hacker Laxson, Debbie Arnold McDaniel, Darrell Doshier, Ted Allen, Jeff Wiley. Front Row L-R: Bitsy Chesmer Chrismon, Vicki Bell Naughton, Jode Lasley, Lou Ann Sherrod Galla, Blake Sladek. Others not pictured: Janice Messer Hughes, Kathleen Martin Searle, Ricky Keener, Shirlyn Christian Smith, Ricky and D'Lynn Brown Reed, Nora Hampton Wells, Lester Irlbeck, Ernie Ellison.



Class of 1966 - Top L-R: Gail Mitchell Allen, Ronnie Ford, Lorelyn Haile Powers, Johnny Naylor. Bottom L-R: Charles Britten, Linda Mitts Quinn, Janetta Willey Britten, Danny Brannon, Roger Dowdy. Others attending: Sandy French Sink, Dora Davis Bruns, Linda O'Quin Forthman, Walter Lasley, Wanda Robbins Blake.

RAYMOND E. JOHNSON

H. E. GALLOWAY

ELWOOD LAMB

LARON DINGO

JANIS GREEN

JANETTA FAYE BEALL

ESMERE FRANCE

BROOKE EDDY

CLARA MAE STONE

STRATFORD SENIORS

PETE BRITMAN

PATRICIA TAYLOR

LYNN HUTTON

BILLIE PLEYER

CARL O'QUIN

FRANKIE GANTREE

HAROLD KEENER

ERNE HAMILTON

DONNA PEDIGO

BOB EPPKE

JOAN SMITH



Class of 1956 Now - L-R: Billie Pleyer Terrell, Ernestine Palmer Almquist, Poe Keener, Joy Armstrong Keener, Bruce Bidy, LeRayne Mitts Donelson, Sherry Goule Newman, Pat Taylor Johnson, Ray Fisk, John Wilson, Pete Bateman, Carl O'Quin.

See you at the Pole on September 18, 1996 at 7 a.m. at the Stratford High School. 8 a.m. at the Mary Allen Elementary School. See you There!!

Capture Fall's Best Deals

\$200 FREE

in clothing and accessories of your choice.

OR

ZERO DOWN

No payments for 90 days and 90 days FREE financing with the Polaris StarCard.*

Choose the best deal for you from your local participating Polaris dealer when you take delivery of a new Polaris ATV between August 1 and October 31, 1996. Go hunting with a big game pro you can depend on...every Polaris model is built for adventure and fun!

POLARIS Believe it.

Hansford Implement Co.

Hwy. 207 South - Spearman 1-800-753-1511

*On approved credit. WARNING: ATVs can be hazardous to operate. Never carry passengers. Be especially careful on difficult terrain. Never ride on paved or public roads. Always wear a helmet and protective clothing. Polaris ATVs may not be ridden by anyone under 18, and all riders should take a training course. For safety and training information, see your dealer or call Polaris at 1-800-342-3764. Offer good only to residents of the U.S. and at participating Polaris dealers. Offer good August 1-October 31, 1996 and only at time of sale. ©1996 Polaris Industries Inc.



Lollipop Junction Kids enjoyed a Day Out in Amarillo 2 weeks ago. They visited the Discovery Center & Zoo. Above Brady, Chandler & Jennie chasing the Peacock. Ask them what happened to them for chasing it!



Lollipop Kids looking at the Bears at the Zoo.

Check Out The Library
By Dorothy Haile

Thirty percent of Americans ages four to 30 bite their nails.

Jack Barton
Attorney at Law

Private Practice Law Office
Hours By Appointment Only
For Appointments call 8:00 - 5:00
Monday - Friday 396-2270
Evenings 396-2140

Two new cooking books for the library are FAT FREE BAKING and GOURMET LIGHT. GOURMET LIGHT contains simple and sophisticated recipes for The Calorie-conscious cook. Each recipe has the nutritional breakdown plus the calories per serving. These were gifts for our collection.

Another gift book is Norman Vincent Peale's THIS INCREDIBLE CENTURY. Read the memorable stories of "the way it was" in America throughout the 20th century. Although the author walks his readers through the dark days of two devastating wars, through the painful years of the Great Depression, through the hectic and disturbing sixties, one always senses that America's future is bright.

A fee book from Jack Dreyfus is THE LION OF WALL STREET. He tells the story of his use of medicine to overcome his depression; he has also authored A REMARKABLE MEDICINE HAS BEEN OVERLOOKED.

Another gift book carries a 1993 copyright date-WORST PILLS, BEST PILLS II.

New fiction titles from the best seller list are: Accordion Crimes by Annie Proulx, Cause of Death by Patricia Cronwell, Exclusive by Sandra Brown, and I Was Amelia Earhart by Jan Mendelsohn.

"We went to the store for sour cream and to check our numbers. We never did get the sour cream."

Prize:
\$4,823,749.44*

Winning Numbers:
1 6 29 37 38 50

Their System:
"I picked the first and last number, the age of my sons, how long we've been married and the number of grandkids."

First Purchase:
"I bought a tiller."

What She Did With Her Ticket:
"I signed it immediately and took it home and put it in a sealed plastic bag."

*Paid over 20 years.



"I saw that all six numbers matched, and I just went to dancing."

SUE CLEMENTS



OVER 200 MILLIONAIRES AND STILL COUNTING

1996 Stratford Elks Football

| | | | |
|----------|---------------------|-------|----------|
| Sept. 6 | Wheeler | Here | 8:00 pm. |
| Sept. 13 | Boise City, Okla. | There | 8:00 pm. |
| Sept. 20 | Olton | There | 7:30 pm. |
| Sept. 27 | Gruver (Homecoming) | Here | 7:30 pm. |
| Oct. 4 | Memphis | There | 7:30 pm. |
| Oct. 11 | *West Texas | Here | 7:30 pm. |
| Oct. 18 | *Boys Ranch | There | 7:30 pm. |
| Oct. 25 | *Sunray | Here | 7:30 pm. |
| Nov. 1 | *Spearman | Here | 7:30 pm. |
| Nov. 8 | *Canadian | There | 7:30 pm. |



Have you noticed the freshly painted Highway Signs? The renovation project was a joint effort between the Sherman County Development Committee, Inc., City of Stratford and the Stratford Area Foundation. The signs had been in a state of disrepair and now visitors traveling through have an inviting sign "Welcoming them to Stratford". The project was done in conjunction with the "Keep Stratford Beautiful" program. Thanks to the City and the Area Foundation for their participation. Partnerships can result in great improvements. The signs were painted by Don Stone of Clarendon.

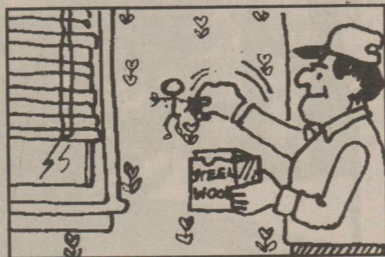
See you at the Pole on September 18, 1996 at 7 a.m. at the Stratford High School. 8 a.m. at the Mary Allen Elementary School. See you There!!

Hey Kids ages K-8th

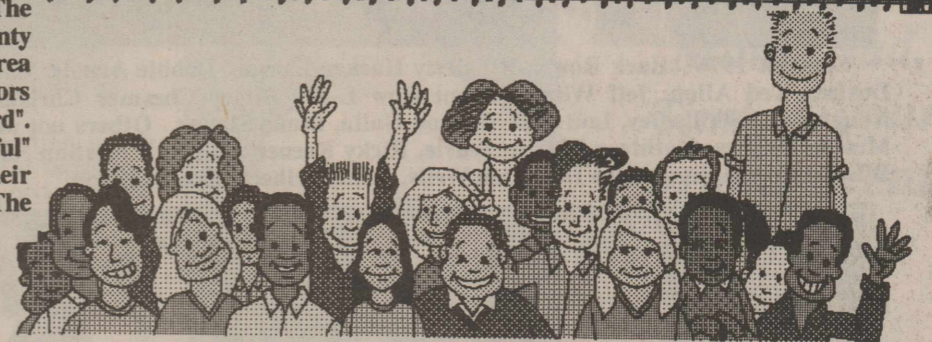
The Stratford Fair & Jamboree Parade is just right around the corner and we decided to do something different this year. We think it would be super if you kids decorated your bikes, trikes, etc. about "Songs of America" and parade them down Main Street along with the Stratford Elks Jr. High Band. So you kiddos start thinking about different and fun ways you can decorate. Check out the Stratford Star later for more details and little hints on this big event!!

**1996 Football Schedule
7th, 8th, and JV**

| | | | | |
|----------|------------|-------|----------|---------|
| Sept. 5 | West Texas | Here | 6:00 pm. | JV only |
| Sept. 12 | Boys Ranch | There | 5:00 pm. | 7-8-JV |
| Sept. 19 | Sunray | Here | 5:00 pm. | 7-8-JV |
| Sept. 26 | Spearman | Here | 5:00 pm. | 7-8-JV |
| Oct. 3 | Canadian | There | 5:00 pm. | 7-8-JV |
| Oct. 10 | West Texas | There | 5:00 pm. | 7-8-JV |
| Oct. 17 | Boys Ranch | Here | 5:00 pm. | 7-8-JV |
| Oct. 24 | Sunray | There | 5:00 pm. | 7-8-JV |
| Oct. 31 | Spearman | There | 5:00 pm. | 7-8-JV |
| Nov. 7 | Canadian | Here | 5:00 pm. | 7-8-JV |



Use extremely fine steel wool to rub crayon marks from wallpaper. Do not rush the job but use very light strokes.



Miss Stratford Pageant August 24th

The annual Miss Stratford Scholarship pageant is gearing up for the crowning of a new Miss Stratford 1996-1997. On August 24, at 7:00 p.m.

Sabrina Bonds, Jessica Lucero, Alisha Sladek, and Chelsie Thiessen the reigning Miss Stratford, Junior Miss Stratford, Princess Miss Stratford and Young Miss Stratford respectively will be stepping down as four lucky young ladies will be crowned.

While Miss Stratford receives a MSSP Scholarship to the college of her choice, the Junior Miss, Princess Miss, and Young Misses and 1st Runner-Ups receive savings bonds.

This year the MSSP will be adding to the pageant a Most Photogenic. This contest will be open to all the girls who enter the pageant.

Miss Stratford contestants will be giving a 3 minute speech on a critical issue of their choice, instead of an on stage question. Junior Misses, Princess Misses and Young Misses will be asked an on-stage question. Little Misses will only be introduced in party or church dresses.

Miss and Jr. Miss, Princess and Young Miss Contestants will be judged on poise, appearance, personality, on-stage, off stage interview and modeling.

Junior Misses and Miss Stratford will also be judged in Sportswear.

Divisions and ages are as follows:

(for upcoming school year)
Pre-K, K - 1st -- Little Misses. (All participants will receive award gifts.)

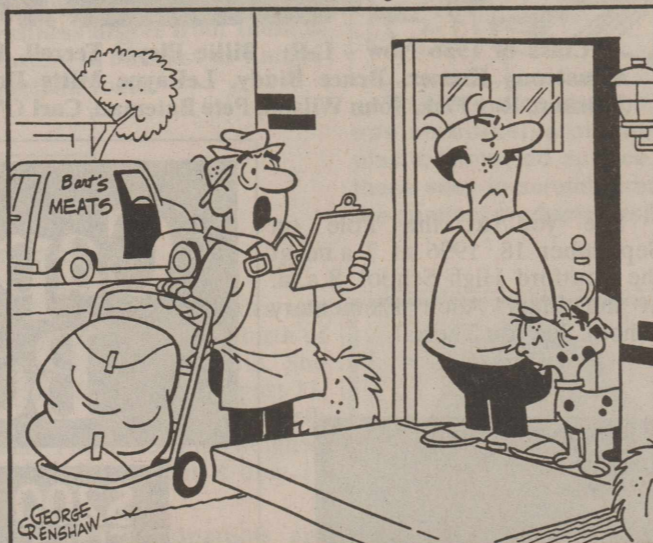
- 2-3-4 grade -- Young Misses
- 5-6-7 grade -- Princess Miss
- 8-9 grade -- Junior Miss
- 10-11-12 grades -- Miss Stratford.

- Age Divisions Entry Fee:
- Little Miss - \$5.00
- Young Miss - \$10.00
- Princess Miss - \$15.00
- Jr. Miss - \$20.00
- Miss Stratford - \$25.00

Deadline to Enter is August 15, 1996. No late entries will be accepted.

Entry forms can be picked up by calling Marie Sladek at 2865 or at Brooks Video - Becky Brooks at 2845.

BELVEDERE by George Grenshaw



Cont. from page 1

Mr. Will sent money to South Carolina for two boys to come live and work for him. They were both teenagers: Wesley Ponder and Theran Cash. The boys stayed about five years.

The ranch house was always open to all passersby, friends and relatives. Since the Old Chisholm Trail was but a short distance away many freighters spent the night with the Spurlocks. Annie has set out a ton of food and bedded many through the years.

The children attended grade school at the Spurlock School, except Elsie, who attended school in Stratford until her last year when she was transferred to Sunray, where she graduated.

Annie lived in Stratford for three school terms so Clay could finish high school. Both Maymie and Elsie Pearl boarded out during their school years when weather permitted they would come home on the weekends. Maymie boarded with her Spurlock grandparents three years and with Aunt Betty Jackson, whom she dearly loved, her last year. Elsie boarded with Mrs. Ed Ritchie, Mrs. J.P. Roberts, and Mrs. Earl Garoutte. Harvey went to Houston to attend a business college. Clay is a graduate with a B.S. degree from Panhandle State University graduating in 1940. He then went to Oklahoma State where he earned his masters degree in agronomy in 1941. He was an agriculture teacher in Conway, Arkansas for one year and also worked with the County Extension Service in Perryton before marrying and taking up farming. Alvin attended Stratford School. He farmed with his dad until called to serve in World War II. Travis also attended Stratford school and farmed with his dad until he married. Neal graduated from Stratford in 1949. He attended West Texas State in Canyon where he played basketball. In 1951 he joined the U.S. Air Force.

In January of 1950, Mr. Will started a new house for me and Annie in Sunray. On February 13, 1950, Mr. Will died. He is buried in the Stratford cemetery. Annie moved into the new home in February and still resides there.

Marriages of Spurlock children:
Maymie— W.H. Bowen; one son, William Leon.
Harvey— Blanch Harrell Folsom; one son, W.A., one daughter, Dixie Lee.

Clay— Joyce Gilbert; two daughters, Sheryl Elsie, Debbie Mae.

Travis— Helen Lorene Folsom; one son, James Russel, two daughters, Islla Jean, Francis Elaine.
Alvin— Ramona Jane Reynolds; one daughter, Alvina Kay, one Son, Stanley Boyd.

Elsie Pearl— Alvin Freeman (deceased July, 1956) two daughters, Dianna Gail, Alvina Marie. Later married Vaughn D. Hill; one son, Keith Vaughn.

Neal— Mary Wayne Tinkler; two sons, Wesley Alexander, Jeffery Wayne, two daughters, Susan Lynda, Kathy Aliene.

There are seventeen grandchildren, thirteen great-grandchildren, two step great-grandchildren, and seven step great-great-grandchildren.

| | | | | | | | | | | | | |
|---|---|---|---|---|---|---|---|---|---|---|---|---|
| S | H | E | D | S | P | A | L | M | W | I | T | H |
| L | E | M | O | N | I | L | I | E | J | N | R | E |
| A | M | I | L | E | A | L | E | S | T | E | R | A |
| V | I | L | L | A | I | N | O | U | S | E | R | A |
| C | L | A | U | S | E | E | L | S | A | | | |
| H | U | N | T | R | O | D | E | Z | I | L | C | H |
| A | T | T | E | S | T | S | T | E | R | I | L | E |
| R | E | E | S | E | L | O | S | E | O | M | A | R |
| P | E | D | D | L | E | T | I | E | R | | | |
| E | L | I | A | S | C | O | R | E | C | A | R | D |
| S | E | N | T | T | O | M | E | T | R | A | I | L |
| K | N | E | E | E | V | A | N | I | L | I | K | E |
| Y | A | R | D | R | E | N | E | C | O | D | E | D |

ANSWERS

Business Directory

WALTER LASLEY & SONS INC.
THE Feedyard
Since 1953
753-4411

Stratford Grain Co.
Stratford 396-5541
Lautz 769-4485
4 North Main

Stratford Auto Electric
119 S. Wall Stratford, Texas 79084
Phone 396-5941 396-5857
Alternator, Starter, - Magneto Repair
Since 1964

Betty Brown's Medical Claim Service
401 N. 3rd. P.O. Box 7
Stratford, TX. 79084 806-396-2623

George Harding Sewer & Drain Cleaning
Plumbing, Electrical, Remodeling, Painting
396-2206

Brown's Meat Locker
Custom Wholesale & Retail Meat
Federally Inspected
Hwy 287 South 396-2513

THRIFTWAY
Big Town Selection ★ Small Town Friendliness
Wide Selection Frozen Food
Quality Foods Fresh Produce
Hwy 54 East 396-5586

Westside Laundry
Call 1-800-547-2761
for Pickup and Delivery
Mon. - Wed. - Fri.
Pants \$1.75 Shirts \$1.50

Termite Termination
10 Yrs. Exp. - Free Estimates
Lots of Local References
House Leveling
Call Dennis at 1-800-613-9317

The Designers Salon
Haircuts, Perms, Hi-Lites, Up Do's
Nails, Facials, Wax, Ear Piercing
Alma Perez, Owner & Stylist
Karina Chabolla/Stylist
Tues. - Sat. 9:00 - 6:00
715 E. 1st Street
Dumas, Texas 79029
Bus. 935-9922 Res. 935-8763
Tanning Bed

COLDWATER MANOR
"LOVE SPOKEN HERE"
1111 BEAVER RD., STRATFORD, TX
(806) 396-5568

BROOKS MOTOR PARTS PLUS
396-2631
314 S. Poplar

For Your Moorman Mineral & Feed Supplements Come By THE General Store or Call Ronnie at 396-5308

Nina C. Lavake
Bookkeeping & Income Tax Service
396-5874
N. 3rd & Chestnut
(North plains Savings & Loan Building)

Ellie's
For all your gift and floral needs
Baby & Bridal Registry
209 S. Main 396-2092

Joe Flores
Farm Bureau Insurance
396-5538 office
396-5389 home

STRATFORD GLASS & MIRROR
Glass chip repair - Auto glass - Store fronts
Plumbing, Electrical, Carpentry, General Repair
Phone 806-396-5852
Hwy. 54 E. Stratford

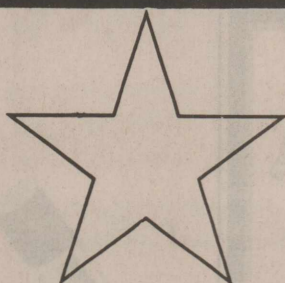
ELK PHARMACY
317 N. Main
Stratford, TX 79084
806-396-5505
We Honor...P.C.S. P.A.I.D. BC/BS Texas Medicaid
Gifts & Decorative Accessories ● Helium Balloons
● UPS Shipping Center ● Bridal Registry
● One Day Photo Processing ● Baby Shower Registry
Visa and Mastercard Welcomed ● Toys

Dumas Travel Center
A Full Service Travel Agency
Joan Bell 1-800-753-2792
396-5958
Do all your travel plans at no cost to you.

P.T.'s Star Pizza
287 South 396-5332
Dine In - Take Out
Free Delivery
5:30 p.m. - 9 p.m. - Mon. thru Sat.

Tommy's Embroidery
405-423-7718
Texhoma, OK.
122 W. Main
Caps, Shirts, Jackets, Baby Blankets, Towels,
Towel Wraps, School Logos & Much More!

The Golden Needle
VICKI GORE, OWNER
319 N. 9TH ST.
P.O. BOX 267
STRATFORD, TEXAS 79084
(806) 396-2326
CUSTOM SEWING ALTERATIONS



It Pays To Look In The

Star Classifieds

..The Best Salesperson Around

Phone 396-5885

For Sale

For Sale: 1993 Mustang Convertible. Call Arnita at First State Bank. 396-5521. 4-4-tfn

Showers for Suzie Goodwin, bride-elect of Jerry Don McLaughlin are at Elk Pharmacy. Free delivery to the shower. 8-22-c

FOR SALE -

In Stock (Salem, Cornnet, Mohawk & Diamond Mills) Tackless, Plush, Sculpture Carpet on Sale - \$17.99 Sq. Yd. Installed over 6 pound pad.

K's Interiors
396-2760

8-14-4xc

We now have Carpet Samples at THE General Store. A broad range of carpets available direct from Diamond Carpet Mills. Come by for an estimate. 8-22-tfn

TAM 202 & TAM 107 Seed Wheat. 2nd Yr. from Foundation at \$6.30 - Cash. L.B. Blake, 396-2543 or 396-2567. 8-1-3xc

Seabrook, Waverly Wallpaper & Borders & Fabrics. Stock Wallpaper & borders - \$12.99 single roll. Installation available. K's Interiors 396-2760

Our Glass Cutting Machine is installed at THE General Store. We can cut Plexiglass or regular glass. Call or come by for price quote & sizes available. 8-22-tfn

For Sale: Acreage & Barns. Contact First State Bank Trust Department 396-5521. 7-11-tfn

THE General Store has shower selections for Suzie Goodwin, bride-elect of Jerry Don McLaughlin. Free delivery to the shower on August 24. 8-22-c

Console/Spinnet Piano for Sale. Take on small payments. See locally. 1-800-343-6494. 8-15-p

Ertl 1/64 scale farm country die-cast metal replica toy at THE General Store. Excellent birthday gift for boys of all sizes. 8-15-tfn

For Sale: Brand New Huffy Tiempo 10-speed bicycle. \$40.00, 396-2897 or 396-2397. 8-15-p

If you need used fixed light fixtures. Contact the SISD Superintendents office. The Price is Right!!!! 8-15-2xc

THE General Store has a 30% off sale on wallcovering & border now through Nov. 30. Pre-pasted and washable for the do-it-yourselfer. 8-15-tfn

Help Wanted

The U.S. Department of Agriculture, Sherman County Farm Service Agency (FSA) Office presently is accepting bids for janitor. The bids need to be in our office by August 19, 1996. Anyone interested should call Gary Lundberg at 396-2211 for more information. The United States Department of Agriculture (USDA) prohibits discrimination in its programs on the basis of race, color, national origin, sex, religion, age, disability, political belief's and marital or familial status. USDA is an equal employment opportunity employee. 8-8-2xc

Help Wanted: Needed - Truck Driver/Concrete Plant Manager for the Stratford Plant. Apply at Trans Mix in Dalhart, Hwy 54 West. 5-2-tfn

RN/DON LTN CNA NA Available - Full time position available, State Certified. If you like a challenge in long term care. Apply at Cimarron Nursing Home, Boise City, Okla. Call 405-544-2501 Ext. 141. 8-15-2xc

Nurse Aide Positions are now available at Coldwater Manor. Excellent benefits including health insurance after 90 days. Will provide training for certification. Apply in person at Coldwater Manor. 1111 Beaver Road, Stratford, Texas. EOE. 7-25-tfn

Services

"Independent Insurance Agent"

Life Insurance, Retirement planning, Burial Insurance, Medicare Supplement, Disability Income Insurance

Molly Griffin, LUTCF
396-5612

3-Nights, 4 Day trip to Branson, 3 shows, 3 meals on trip, free, excellent price, interested call 396-5911, after 5:00 p.m. leave a message. 8-15-c

IMPRINTABLE

STATIONERY...broad selection of imprintable stationery for birthday parties, bridal showers, baby showers, special occasions, backyard cookouts....NEW AT ELK PHARMACY

Recycle

(Behind Thriftway)

New Hours:
Effective May 1st
Wed. 9-11 a.m.
Sat. 9-12 a.m.

Newspapers & Magazines,
Glass-clear, colored plastic milk cartons
Soft-Drink, tin, aluminum, sorted-flattened-rinsed

VETERANS - Needing Assistance in filing Eligible Verification Reports (EVR) applying for Pensions, Hospitalization, Land and Housing purchase. Contact Max Stephenson CSO at 396-5348. 8-29-p

For Termite Control

Call Leo Russell
1-383-7075 Amarillo. Have been working Stratford for 28 years. Have City and State license for the City of Stratford.

Dallas Cowboy Pkgs. available with air, hotel, game day breakfast, transportation to & from game, game ticket and tour of Texas Stadium. Call Joan Bell 396-5958. 8-1-3xc

Would like to keep your children in my home. Sybil Roberts, 1116 Putman, 396-2722. 8-15-c

CLASSIC WRAP...A fun way

to wrap that special gift...great for centerpieces...come by ELK PHARMACY and let us show you our new Classic Wrap for balloon bouquets or give us a call at 396-5505

Garage Sale

Garage Sale: 3 Family, 613 S. Pearl, Sat. Aug. 17, 8:00 - 4:00, Furniture, Clothes, Children's Clothing & Lots More! 8-15-c

Garage Sale: Sat. Aug. 17, 9:00 - 4:00 North 5th & Wall. 8-15-p

For Lease

For lease sprinkler irrigated farm land. 16 mi. southeast of Stratford. Phone 806-396-5326. 8-15-2xc

Help Wanted

Needed: People to work in fields around Stratford Roguing. If interested call 935-4130. 7-25-4xp

Truck Driver Needed: CDL Required. Call Panhandle Agri-Tech. 396-2618. 7-18-1xc

A good way to clean oven racks is by putting them on an old bath towel and soaking them in the bath tub in a mixture of hot water and ammonia.

Houses For Sale

House for Sale: 2 story home, 4 bedroom, 2 bath, den, North 3rd & Maple. Call 396-5927 or 396-5831. 11-9-tfn

94 16 X 80 Mobile Home 3 Bdrm., 2 bath w/ fireplace. All appliances included. Call 396-2596. 7-18-tfn

House for Sale: 3 Bdrm. large backyard, new heat pump. Been remodeled. 114 S. Fulton. Call 2401 or 2403. 4-18-tfn

Home for Sale: 3 bedroom, 1 3/4 bath, lots of closet space, corner lot, new paint inside and outside, near school. Ready for immediate occupancy. 1002 N. Maple. For appointment call 1-806-935-2853. 1-11-tfn

Houses for Sale: 3 BR, Brick home, 1200 sq. ft., 1 1/2 bath, 1 car garage, central heat, equipped with dishwasher stove and refrigerator, close to both schools at 806 N. Fulton. A 3 BR, wood siding, 2000 sq. ft, 1 bath, central heat/air, with basement at 401 N. Wall. Call 806-396-2348. 4-4-tfn

Alcohol Anonymous And Al-Anon meets every Thursday at 8 p.m. at the County Barn

Keep mold from building up in your child's lunch box by washing it out regularly with a vinegar-water mixture.

Ad Rem Land Co.

Office 118 E. 7th, P.O. Bx. 621 Dumas, TX 79029

806-935-7364 • Fax 935-7687

Homes • Farms • Ranches • Commercial Real Estate

New Listing: 3 Bedroom Brick, 1 3/4 Baths, 1,913 Sq. Ft. Living Area, Double Garage, Storage Bldg., Central Heat/Air. \$72,000

New Listing: 2 Bedroom Brick, 2 Bath, New Carpeting, New Cabinet Tops, New Roof. \$35,000

New Listing: 4 Bedroom Brick, 2 3/4 Baths, 2,550 sq. ft. living area, garage, storage building, central heat/air, new sprinkler system. \$85,000

New Listing: 3 Big Bedrooms Brick Home, 2 Full Baths, New Garage, New Living Area, New Utility Room, 24x48 Shop Building, 14x38 Lean To in Pasture, 12x24 Storage Building, 3 12x12 Horse Stalls with outside runs & pens, 7.5 acres. \$135,000

New Listing: 3 Bedroom Brick, 1 Bath Plus, 720 Sq. Ft. Heated Shop in Back. \$40,000

Listing: 4 Bedroom Brick Home, 2 Baths. \$35,000

Reduced: 4 Bedroom, 1 bath on 3 lots with all new storm windows. \$22,500

Reduced: 3 Bedroom, 1 Bath, New Heat Pump. \$27,500

Agent: Keith Waters - Call 806-396-5391 Day or 806-396-5801 Night

Tom Ferguson, Broker - Res. 806-935-7408

Wanted

"Cash"

Wanted!!! Used Mobile Home. Must be in Fair to Good Condition. Call (800) 416-3731. Leave a message. 8-1-4xp

For Rent

For Rent: One bedroom, furn. apt. 6th and Fulton. 396-5692 night, day 5541 day. 12-21-tfn

The world's oldest written history comes from China, where records were discovered written before 1000 B.C.

Cards of Thanks

To all my Friends and Family, I want to thank you for your concern and support shown my family. The cards, gifts of food, and prayers are greatly appreciated. The support helps renew one's faith and strength. Words alone can not express my gratitude for this community. There are several individuals that without their determination, this would be a different story. Our ambulance service for exceeded what might be considered just doing their job. When medical science had done their all, the only thing that brought me through the darkness was your prayers. I want to thank you and to let you know it was not wasted nor shall it be. My trial is not over yet, but with your continued help, my family can expect to be complete and remain so.

Thank you
Thom Sikora



On October 13, 1939, Alvin "Shipwreck" Kelly ate 13 doughnuts while standing upside down on a plank that jutted out from the top of the Chanin building in New York.

If your shower starts losing power, it may be caused by lime deposit building up in the shower head. Remove the head, soak it for ten minutes in vinegar, then rub off the deposit with an old tooth brush.

CROSSWORD 2

| | | | | | | | | | | | | | |
|----|----|----|----|----|----|----|----|----|----|----|----|----|----|
| 1 | 2 | 3 | 4 | 5 | 6 | 7 | 8 | 9 | 10 | 11 | 12 | 13 | |
| 14 | | | | | 15 | | | | 16 | | | | |
| 17 | | | | | 18 | | | | 19 | | | | |
| 20 | | | | | 21 | | | | 22 | | | | |
| | | | | 23 | | | | 24 | 25 | | | | |
| 26 | 27 | 28 | 29 | | | | 30 | 31 | | | | | |
| 32 | | | | | 33 | 34 | | | 35 | 36 | 37 | 38 | 39 |
| 40 | | | | 41 | | | | 42 | 43 | | | | |
| 44 | | | | | | 45 | 46 | | | | 47 | | |
| | | | | 48 | 49 | | | | 50 | 51 | | | |
| 52 | 53 | 54 | 55 | | | | 56 | 57 | | | | | |
| 58 | | | | | | 59 | 60 | | | 61 | 62 | 63 | 64 |
| 65 | | | | | | 66 | | | | 67 | | | |
| 68 | | | | | | 69 | | | | 70 | | | |
| 71 | | | | | | 72 | | | | 73 | | | |

ACROSS

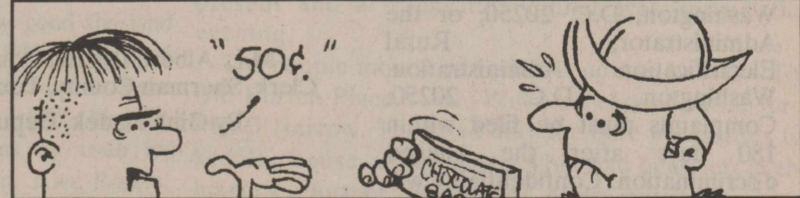
- Abris
- Frond source
- My Dinner Andre
- Car that no one wants
- "Nasty" Nastase
- Anent (2 wds.)
- Talk a minute (2 wds.)
- Stouts
- "The Man"
- Like Hook and crew
- Joanie's portrayal on "Happy Days"
- Be familiar with
- Mispelled and mistyped words
- Contract term
- Novelist Morante
- Peck's partner
- Taunted
- Nada
- Certifies
- Like an unopened Band-Aid
- Della or Pee Wee
- Be beaten
- Persian poet
- Thanks ! (2 wds.)
- Hat or Canal

- Vend
- Seating section
- Author of *Poor Relations*
- You can't tell the players without them
- Put in the mail
- Large volume
- Run behind
- Patella locale
- The Blackboard Jungle author Hunter
- " like" (2 wds.)
- Scotland, for one
- M. Descartes
- Keyed

DOWN

- Tito, e.g.
- Partial: prefix
- Painter Nolde
- Barbie or Ken, e.g.
- Creeps
- Rubinstein's instrument
- Permitted
- Place
- Disorders
- More prudent
- Within: prefix
- It might be recessive
- Kind of rinse
- Not active
- Level
- Blacken the outside
- Ancient guitar
- Fatten the poker pot
- Utah athletes
- Subtractor's word
- Norway's capital
- Do a laundry chore
- City in Peru
- Kind of chowder
- Zeus' sister
- Whiskered circus performer
- Cheyenne abode
- Osman's empire
- Director Richard
- Ocean
- Annoying
- Verdugo of films
- Luncheonette
- Obsolete
- Dunne or Worth
- Shoreline recess
- Singer Guthrie
- Sortie
- Netherlands sight
- Go-devil

Answers on Page 6



The Europeans first learned about chocolate from the Aztecs.



NOW READY TO HELP YOU
BUY OR SELL A HOUSE
CALL ROY J. HILL AT 396-2087
CURRENT LISTINGS

1215 N. Division
207 S. Pearl
N. 3rd & Maple

619 N. Maple
LIC.#0118281

806 N. Maple
508 N. Fulton
511 S. Main

Munden & Munden

Certified Public Accountants
Accounting ★ Auditing ★ Tax Service

Hours: 9-5 Mon.-Fri. 216 N. Main (806) 396-2177 Stratford, TX

Legal Notice

NOTICE TO VENDORS

Sealed proposals addressed to Stratford Independent School District Business Office, will be received at 503 N. 8th Street, P.O. Box 108, Stratford, Texas 79084 until 4:00 p.m. August 30, 1996 for catalog purchases made during the 1996-97. Any proposal received after the specified time shall be disqualified. Proposals may be submitted for any/all categories. For information contact Darla Cummings at 806-396-2612.

Published in The Stratford Star, Thursday, August 15, 1996 and Thursday, August 22, 1996.

LEGAL NOTICE

The Stratford Independent School District is soliciting vendors for requests for proposals on the categories of personal property listed below for the period of September 1, 1996 through August 31, 1997. Vendors desiring to be on the request for proposal list for these categories shall submit their name, address, phone number, contact person and the names of the categories of personal property they wish to propose:

- Teaching Supplies
- Gasoline & Oil
- Custodial & Maintenance Supplies
- Insurance
- Band Equipment
- cafeteria Supplies
- Athletic Supplies
- Computers
- Computer Supplies
- Transportation Supplies
- Office Supplies

Vendor information will be accepted until August 7, 1997. For information contact the Superintendent's office, Stratford Inc. School District, P.O. Box 108, Stratford, TX 79084, Phone Number 806-396-2612.

Published in The Stratford Star, Thursday, August 15, 1996 and Thursday, August 22, 1996.

STATEMENT OF NONDISCRIMINATION

XIT Rural Telephone Cooperative, Inc. is the recipient of Federal financial assistance from the Rural Electrification Administration, an agency of the U.S. Department of Agriculture, and is subject to the provisions of Title VI of the Civil Rights Act of 1964, as amended, Section 504 of the Rehabilitation Act of 1973, as amended, the Age Discrimination Act of 1975, as amended, and the rules and regulations of the U.S. Department of Agriculture which provide that no person in the United States on the basis of race, color, national origin, age, or handicap shall be excluded from participation in, admission or access to, denied the benefits of, or otherwise be subjected to discrimination under any of this organization's programs or activities.

The person responsible for coordinating this organization's nondiscrimination compliance efforts is Doug Schoppe, Office Manager. Any individual, or specific class of individuals, who feels that this organization has subjected them to Discrimination may obtain further information about the statutes and regulations listed above from and/or file a written complaint with this organization; or the Secretary, U.S. Department of Agriculture, Washington, D.C. 20250; or the Administrator, Rural Electrification Administration, Washington, D.C. 20250. Complaints must be filed within 180 days after the alleged discrimination. Confidentiality will be maintained to the extent possible.

Published in The Stratford Star, Thursday, August 15, 1996.

Cont. from page 1

Maggie Smith, and Wiles, Nettie, Tommie and Carrie Burgess. When the Smith family moved into Stratford, the school house was skidded to the present site of the Spurlock Chapel, in the southwest corner of the section. D. D. Spurlock deeded the land for the site and it has been known as the Spurlock School and later the Spurlock Chapel.

The first year in Texas was not easy. A family traveling through exposed the children to small pox or Cuban Itch. Mrs. Spurlock, miles from a doctor and with only the simplest home remedies, nursed four of the children through that dread disease and none suffered after-effects.

Mrs. Spurlock loved to have people eat with them. Since money and meat were scarce, she always made gravy—lots of gravy. People used to say that the Spurlocks brought a

Clerk of the Court, M.L. Albert, P.O. Box 270, Stratford, Texas 79084.

Petitioner's Attorney or Petitioner, Louis T. Dubuque, P.O. Box 1085, Dumas, Texas 79029

The State of Texas

NOTICE TO DEFENDANT: "You have been sued. You may employ an attorney. If you or your attorney do not file a written answer with the clerk who issued this citation by 10:00 a.m. on the Monday next following the expiration of forty-two days after the date of issuance of this citation and petition a default judgment may be taken against you."

To: All persons claiming any interest in land herein described, unknown heirs, persons, successors, and assigns, greeting.

You are hereby commanded to appear by filing written answer to the Plaintiff's Original Petition at or before ten o'clock a.m. of the Monday next after the expiration of forty-two days after the date of issuance of this citation the same being Monday the 16th day of September 1996, before the Honorable District Court of Sherman County, Texas at the Courthouse of said County in Stratford, Texas. Said Plaintiff's Petition was filed in said court on the 24th day of July, 1996, in this case numbered 4151 on the docket of said court, and styled, Paul H. Freeman and Tina M. Freeman, Plaintiff, vs William Herchel Francis, Et al, Defendant.

The real name of Defendants are **WILLIAM HERCHEL FRANCIS** also known as **HERCHEL FRANCIS**, individually and as power of attorney for Gary Don Francis and Larry Francis.

GARY DON FRANCIS also known as Gary Francis and the unknown heirs of Gary Don Francis, deceased.

LARRY FRANCIS and the unknown heirs of Larry Francis, deceased.

GRACIE A. PACK sometimes known as Gracie Pack

R. H. FLEMING and the unknown heirs of R.H. Fleming, deceased.

A brief statement of the nature of this suit is as follows, to wit:

WHEREFORE, Plaintiff requests that DEFENDANT be cited to appear and to answer and that upon final trial, PLAINTIFF have:

1. Judgment for title to and possession of the real property which is the subject matter of this suit. This parcel of real property is more particularly described as follows: LOTS 7, 8, 9, 10, 11, 12, 19, 20, 21, 22, 23, 24, Block 30, Town of Texhoma, Sherman County, Texas, as shown and designated on the official map or plat recorded in the Deed Records of Sherman County, Texas.
2. Costs of suit.
3. Such other and further relief to which Plaintiffs may be justly entitled.

and is more fully shown by Plaintiff's Petition on file in this suit. The officer executing this writ shall promptly serve the same according to requirements of law, and the mandates hereof, and make due return as the law directs.

Issued and given under my hand and the seal of said Court, at office in Stratford, Texas, this the 31st, day of July, 1996.

M.L. Albert, District Court Clerk, Sherman County, Texas
By Gina Sladek, Deputy

Published in The Stratford Star, Thursday, August 8, 1996, Thursday, August 15, 1996, Thursday, August 22, 1996 and Thursday, August 29, 1996.



TEXAS EDUCATION AGENCY

1701 NORTH CONGRESS AVENUE • AUSTIN, TEXAS 78701-1494 • 512/463-9734 • FAX: 512/463-9838

August 1, 1996

Mr. Vernon Paul
Superintendent
Stratford Independent School District
P.O. Box 108
Stratford, TX 79084

SUBJECT: Application for Academics 2000: First Things First Reading Improvement Grant
Document Control Center Number: 049

Dear Mr. Paul:

The Texas Education Agency is pleased to inform you that your district has been selected as a recipient of an Academics 2000: First Things First local subgrant for the application(s) referenced above. The selection was made after evaluation by agency staff and management as well as a committee of parents and professionals from outside the agency. The implementation of these types of programs across the state should produce a positive educational impact for the identified population.

The application for funds may require minor changes through negotiation. The Notice of Grant Award and approved application will be mailed to you as soon as negotiations and the approval process are complete. In the event that negotiations cannot be concluded and the application is not approved, paragraph G of Schedule 6A—Provisions and Assurances of the Standard Application System shall apply, in that the monetary value of services properly performed by the contractor pursuant to the conditions of the contract and within the established beginning and ending dates of the contract shall be determined by the Texas Education Agency and paid to the contractor as soon as reasonably possible.

Your immediate contact person for this program is Peggy Mays, Division of Curriculum and Professional Development. If you have any questions regarding this selection notice, please contact Ms. Mays at (512) 463-9315.

Congratulations on your selection, and best regards for a productive year.

Sincerely yours,

[Signature]
Felipe T. Alanis
Deputy Commissioner
for Programs and Instruction

| 1996 DISTRICT ACCOUNTABILITY SUMMARY | | | | | | | | | |
|--|--|--|--|--|---|--|--|--|--|
| DISTRICT NAME: STRATFORD ISD | | | | | | | | | |
| DISTRICT NUMBER: 2119021 | | | | | | | | | |
| ACREDITATION STATUS: ACADEMICALLY ACCEPTABLE | | | | | | | | | |
| ADDITIONAL ACKNOWLEDGMENT: RECOGNIZED | | | | | | | | | |
| SUMMARY | | | | | ADDITIONAL ACKNOWLEDGMENTS | | | | |
| ACCOUNTABILITY RATINGS | | | | | CAMPUS RATING: # OF SCHOOLS | | | | |
| CAMPUS RATING: # OF SCHOOLS | | | | | CAMPUS RATING: # OF SCHOOLS | | | | |
| EXEMPLARY RECOGNIZED ACCEPTABLE LOW PERFORMING ALTERNATIVE ED. DELAYED(Y)E NOT RATED | | | | | EXEMPLARY RECOGNIZED NOT APPLICABLE NOT ELIGIBLE DOES NOT QUALIFY ALTERNATIVE ED. DELAYED(Y)E NOT RATED | | | | |
| TOTAL | | | | | TOTAL | | | | |
| DELAIED(Y)E = YEAR ROUND EDUCATION. | | | | | | | | | |
| CAMPUS | | | | | | | | | |
| RATING | | | | | | | | | |
| ADDITIONAL ACKNOWLEDGMENT | | | | | | | | | |
| SPECIAL ANALYSIS | | | | | | | | | |
| YEAR-ROUND | | | | | | | | | |

TEXAS EDUCATION AGENCY CONFIDENTIAL - 1996 ACCOUNTABILITY DATA TABLES

BASE INDICATORS

CAMPUS NUMBER: 2119021
CAMPUS NAME: STRATFORD I H
GRADE SPAN: 04 - 09

| ATTENDANCE TABLE | | | |
|-------------------------|-------------------|-----------------|-------|
| 1994-95 ATTENDANCE DATA | | | |
| Total Days Present | Total Days Absent | Attendance Rate | |
| All Students | 28,287 | 28,195 | 97.2% |

| DROPOUT TABLE | | | | | | | | | | |
|---------------------------------------|--------------------|--------------|--------|--------------------|----------------------------------|--------------|--------|-------------------------|---------------|-----|
| 1994-95 DROPOUT DATA GRADES 7-12 | | | | | 1993-94 DROPOUT DATA GRADES 7-12 | | | | | |
| STUDENT GROUPS | | | | | | | | | | |
| ANALYSIS GROUPS ARE THOSE WITH AN "X" | | | | | | | | | | |
| Number of Dropouts | Number of Students | Dropout Rate | Change | Number of Dropouts | Number of Students | Dropout Rate | Change | Reduction to % Standard | Met Std. Imp. | |
| All Students | 128 | 100.0% | 83.7% | 0 | 0 | 0.0% | 0.0% | -1.7 | < 0.0 | N/A |
| Hispanic | 36 | 48.3% | 73.9% | 33 | 42 | 31.4% | 80.0% | -2.7 | > 3.8 | N/A |
| White | 81 | 104.2% | 77.3% | 80 | 80 | 81.2% | 88.8% | -1.4 | < 0.0 | N/A |
| Economically Disadvantaged | 54 | 73.4% | 74.0% | 37 | 50 | 37.8% | 74.0% | +0.0 | < 3.2 | N/A |

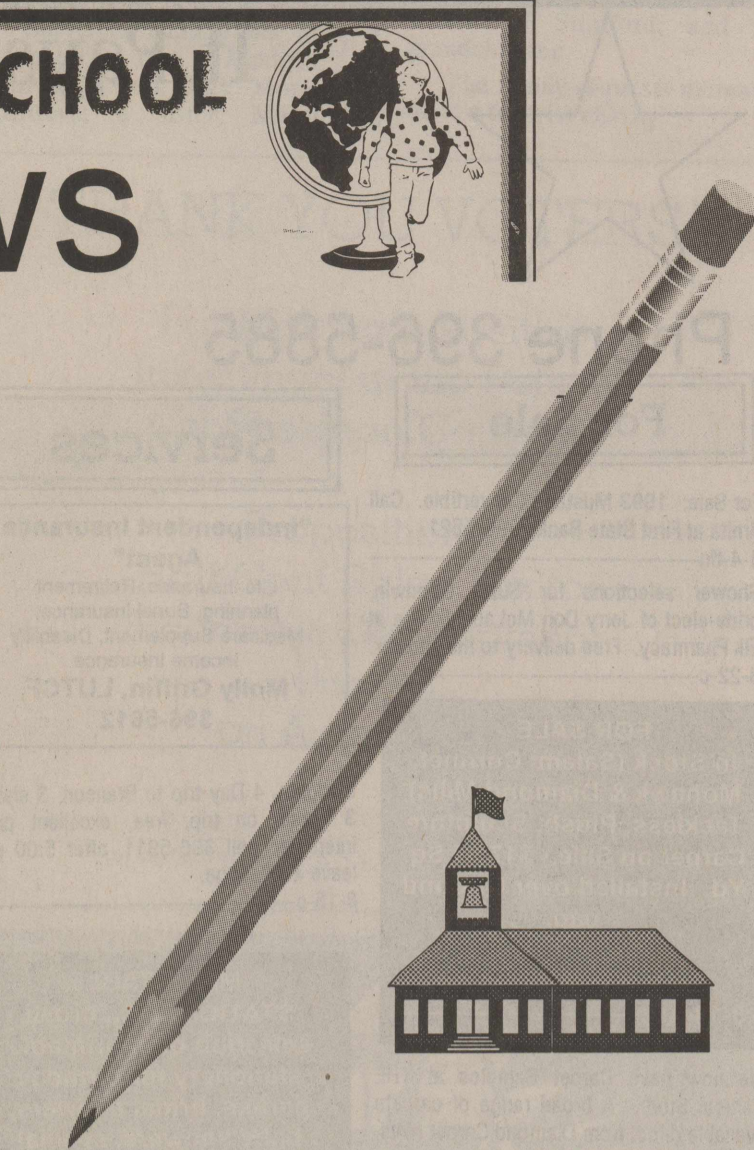
| TEXAS ASSESSMENT OF ACADEMIC SKILLS (TAAS) TABLE | | | | | | | | | | |
|--|---------------|-----------------|-----------------|----------------|-----------------------------|-----------------|-----------------|---------------|----------------------|-----|
| SPRING 1995 GRADES 3,8 & 10 | | | | | SPRING 1996 GRADES 3,8 & 10 | | | | | |
| STUDENT GROUPS | | | | | | | | | | |
| ANALYSIS GROUPS ARE THOSE WITH AN "X" | | | | | | | | | | |
| Number Passing | Number Taking | Student Percent | Percent Passing | Number Passing | Number Taking | Student Percent | Percent Passing | Actual Change | Required Improvement | |
| All Students | 128 | 100.0% | 83.7% | 112 | 132 | 100.0% | 84.8% | -1.7 | < 0.0 | N/A |
| Hispanic | 36 | 48.3% | 73.9% | 33 | 42 | 31.4% | 78.2% | -2.7 | > 3.8 | N/A |
| White | 81 | 104.2% | 77.3% | 80 | 80 | 81.2% | 88.8% | -1.4 | < 0.0 | N/A |
| Economically Disadvantaged | 54 | 73.4% | 74.0% | 37 | 50 | 37.8% | 74.0% | +0.0 | < 3.2 | N/A |

little furniture from Arkansas and all of the barrels were full of gravel! Some of the oldtimers probably remember that they used to say, "Pass the Spurlock, please" meaning gravel, of course. In the 1930's when there were so many "bums", Mrs. Spurlock always fed them with big parcels of food. Since the Spurlocks had little enough for themselves, a neighbor once asked Mrs. Spurlock why she gave so much to a "bum"? To which she replied, "Well, you never know but what one of them might be Our Lord returning to us."

Both D. D. and Mrs. Spurlock were strong believers in churches in general and the Methodist Church in particular. Soon after coming to the county D. D. organized Sunday School which was held in his home and the homes of his brother-in-law, S. A. Rogers, and Dick Pincham, who had married his niece, Allie Spurlock. In the summer of 1901 he started a residence in Stratford. When the frame work was up and the roof on, four families, including his own, camped in it to attend a camp meeting which was then in session. He assisted Rev. W. B. McKeown in conducting the revival, the first revival held in the Panhandle north of the Canadian River. Following this revival a Methodist Church, ME Church South, was organized and lots purchased on the corner of 4th and Pearl (D. D. Spurlock, S. A. Rogers, and J. W. Bowman, Jr., Trustees) and a church was begun.

In April of 1901 D. D. Spurlock was appointed County Surveyor of Sherman County. He was also serving as deputy sheriff under Dick Pincham. On May 2, 1901 an election for the removal of the county seat from Coldwater to Stratford was held. On May 6, 1901 the commissioners court met to canvass the votes, found the election carried, and proceeded to move the records. D. D., along with County Judge D. W. Snyder, Clerk C. F. Rudolph, Treasurer Tom Chambers, Sheriff Dick Pincham and possibly others completed the move in the middle of the night.

David Drury (D. D.) Spurlock, occupation farmer, was born March 3, 1854 near Hardy, Sharp County, Arkansas and died April 16, 1935 at the home of his daughter, Belle Cummings, near Stratford and was buried in Stratford Cemetery. He married Mary Francis Rogers July 23, 1876. She was born October 26, 1856 in Sharp County, Arkansas. She died November 19, 1940 at the home of her daughter, Elizabeth Cummings, in Dalhart, Texas and was buried in Stratford Cemetery. To this union was born eight children. Florence Palestine, October 2, 1877; Wesley Winfield, February 6, 1880, Clara Etha, January 28, 1882; William



TEXAS EDUCATION AGENCY CONFIDENTIAL - 1996 ACCOUNTABILITY DATA TABLES

BASE INDICATORS

CAMPUS NUMBER: 2119021
CAMPUS NAME: STRATFORD ISD
GRADE SPAN: 04 - 09

| ATTENDANCE TABLE | | | |
|-------------------------|-------------------|-----------------|-------|
| 1994-95 ATTENDANCE DATA | | | |
| Total Days Present | Total Days Absent | Attendance Rate | |
| All Students | 28,659 | 27,318 | 97.6% |

| DROPOUT TABLE | | | | | | | | | | |
|---------------------------------------|--------------------|--------------|--------|--------------------|----------------------------------|--------------|--------|-------------------------|---------------|-----|
| 1994-95 DROPOUT DATA GRADES 7-12 | | | | | 1993-94 DROPOUT DATA GRADES 7-12 | | | | | |
| STUDENT GROUPS | | | | | | | | | | |
| ANALYSIS GROUPS ARE THOSE WITH AN "X" | | | | | | | | | | |
| Number of Dropouts | Number of Students | Dropout Rate | Change | Number of Dropouts | Number of Students | Dropout Rate | Change | Reduction to % Standard | Met Std. Imp. | |
| All Students | 28 | 100.0% | 87.9% | 37 | 42 | 100.0% | 88.1% | -0.2 | < 0.0 | N/A |
| Hispanic | 5 | 6.2% | 80.0% | 9 | 9 | 21.4% | 80.0% | -27.8 | > 3.8 | N/A |
| White | 23 | 27.8% | 88.2% | 30 | 33 | 38.1% | 90.8% | -15.9 | > 0.0 | N/A |
| Economically Disadvantaged | 8 | 11.3% | 83.8% | 18 | 19 | 45.2% | 84.2% | -11.5 | < 1.2 | N/A |

| TEXAS ASSESSMENT OF ACADEMIC SKILLS (TAAS) TABLE | | | | | | | | | | |
|--|---------------|-----------------|-----------------|----------------|-----------------------------|-----------------|-----------------|---------------|----------------------|-----|
| SPRING 1995 GRADES 3,8 & 10 | | | | | SPRING 1996 GRADES 3,8 & 10 | | | | | |
| STUDENT GROUPS | | | | | | | | | | |
| ANALYSIS GROUPS ARE THOSE WITH AN "X" | | | | | | | | | | |
| Number Passing | Number Taking | Student Percent | Percent Passing | Number Passing | Number Taking | Student Percent | Percent Passing | Actual Change | Required Improvement | |
| All Students | 28 | 100.0% | 87.9% | 37 | 42 | 100.0% | 88.1% | -0.2 | < 0.0 | N/A |
| Hispanic | 5 | 6.2% | 80.0% | 9 | 9 | 21.4% | 80.0% | -27.8 | > 3.8 | N/A |
| White | 23 | 27.8% | 88.2% | 30 | 33 | 38.1% | 90.8% | -15.9 | > 0.0 | N/A |
| Economically Disadvantaged | 8 | 11.3% | 83.8% | 18 | 19 | 45.2% | 84.2% | -11.5 | < 1.2 | N/A |

TEXAS EDUCATION AGENCY CONFIDENTIAL - 1996 ACCOUNTABILITY DATA TABLES

BASE INDICATORS

CAMPUS NUMBER: 2119001
CAMPUS NAME: STRATFORD I S
GRADE SPAN: 04 - 12

| ATTENDANCE TABLE | | | |
|-------------------------|-------------------|-----------------|-------|
| 1994-95 ATTENDANCE DATA | | | |
| Total Days Present | Total Days Absent | Attendance Rate | |
| All Students | 28,674 | 27,871 | 98.4% |

| DROPOUT TABLE | | | | | | | | | | |
|---------------------------------------|--------------------|--------------|--------|--------------------|----------------------------------|--------------|--------|-------------------------|---------------|-----|
| 1994-95 DROPOUT DATA GRADES 7-12 | | | | | 1993-94 DROPOUT DATA GRADES 7-12 | | | | | |
| STUDENT GROUPS | | | | | | | | | | |
| ANALYSIS GROUPS ARE THOSE WITH AN "X" | | | | | | | | | | |
| Number of Dropouts | Number of Students | Dropout Rate | Change | Number of Dropouts | Number of Students | Dropout Rate | Change | Reduction to % Standard | Met Std. Imp. | |
| All Students | 2 | 0.0% | 0.0% | 0 | 0 | 0.0% | 0.0% | -0.0 | < 0.0 | N/A |
| Hispanic | 0 | 0.0% | 0.0% | 0 | 0 | 0.0% | 0.0% | -0.0 | < 0.0 | N/A |
| White | 2 | 2.4% | 87.5% | 0 | 0 | 0.0% | 87.5% | -2.4 | < 0.0 | N/A |
| Economically Disadvantaged | 0 | 0.0% | 0.0% | 0 | 0 | 0.0% | 0.0% | -0.0 | < 0.0 | N/A |

| TEXAS ASSESSMENT OF ACADEMIC SKILLS (TAAS) TABLE | | | | | | | | | | |
|--|---------------|-----------------|-----------------|----------------|---------------------------|-----------------|-----------------|---------------|----------------------|-----|
| SPRING 1995 GRADES 3 & 10 | | | | | SPRING 1996 GRADES 3 & 10 | | | | | |
| STUDENT GROUPS | | | | | | | | | | |
| ANALYSIS GROUPS ARE THOSE WITH AN "X" | | | | | | | | | | |
| Number Passing | Number Taking | Student Percent | Percent Passing | Number Passing | Number Taking | Student Percent | Percent Passing | Actual Change | Required Improvement | |
| All Students | 28 | 100.0% | 82.9% | 30 | 33 | 100.0% | 80.9% | -8.0 | < 0.0 | N/A |
| Hispanic | 0 | 0.0% | 0.0% | 0 | 0 | 0.0% | 0.0% | -0.0 | < 0.0 | N/A |
| White | 28 | 28.8% | 88.8% | 28 | 28 | 84.8% | 89.2% | -1.9 | > 0.0 | N/A |
| Economically Disadvantaged | 5 | 11.3% | 80.0% | 7 | 9 | 27.3% | 77.8% | -23.8 | > 2.4 | N/A |

After-School Refuel

(NAPS)—It's three p.m. School is out for the day, but most kids aren't ready to slow down. Refueling this "kid machine" is definitely in order. Today many kids are responsible for making their own after-school snacks. It's no secret that fresh grapes are loved by kids of all ages. Whether in school or out, grapes satisfy a kid's sweet tooth without added sugar or fat. Grapes are naturally sweet and provide plenty of energy-boosting carbohydrates. Back-to-school time is also the peak of the California grape harvest. Grapes are in abundance and are available in green, red and blue-black colors. Picked Pita Pockets are a fun, easy and nutritious energy-boosting snack that kids can prepare themselves. And guess what? They taste good, too. Zesty salsa complements the sweet taste of grapes in this quick-to-fix snack.



In half of the states in the U.S., welfare paid more than a \$19,000 a year job.



The tallest person to ever be president of the U.S. was Abraham Lincoln.

Alexander, January 2, 1884; Edgar Forest, November 4, 1886; Elizabeth, March 30, 1891; Mary Belle, March 9, 1893; Chloe, April 11, 1896. These children were all born in Sharp County, Arkansas.