



# The Stanton Reporter

Stanton, Texas  
THE PERMIAN BASIN PUBLISHING COMPANY  
Telephone No. 756-3344 211 Broadway



NEAL ESTES General Manager

Entered at the post office at Stanton, Texas as second class mail matter.

Published Every Thursday.

Any erroneous reflection upon the character, standing or reputation of any persons, which may occur in the columns of THE STANTON REPORTER, will be gladly corrected upon being called to the attention of the editor.

Advertising Rates on Application

### SUBSCRIPTION RATES

Martin County \$2.50 a year  
Outside County \$3.00 a year

The publisher is not responsible for copy omission, typographical errors or any unintentional errors that may occur other than to correct it in the next issue after it is brought to his attention. All advertising orders are accepted on this basis only.

## Philosopher Wants One Spot In World Used Over and Over As International Trouble Area

(Editor's note: The Martin County Philosopher on his Martin County grass farm apparently has a lot of problems on his mind, his letter this week indicates.)

Dear Editor:

There are too many things to think about in this world and it's getting worse all the time.

For example, I woke up this morning and the first thing I read in today's newspaper was a headline: Trouble Breaks Out In Panama.

Now up to then I hadn't given a moment's thought to Panama, outside of knowing there's a canal down there, being occupied with the Presidential election, state and local elections, the Supreme Court, Viet Nam, Paris peace talks, Czechoslovakia, the Israel - Jordan prob-



lem for October, Biafra, the astronauts, law and order, a battery and winter coming on, high hospital costs in case I get sick, football, in-laws, etc., although these aren't necessarily listed in the order of importance. There are some global problems that can't hold a candle to some in-laws.

The point is, with all the domestic and national problems a man has to deal with, it's unfair to load him down with constantly changing international problems, and once more I call on the world to establish an international Trouble Spot.

Just pick out one place, stock it with reporters and television cameras, and let all the crisis occur there. This practice of letting trouble break out helter-skelter around the world, lots of time in countries I never heard of before, is worse than having four different telephone systems in one town. It's gotten so a newspaper can keep one headline set up in type reading: Trouble Breaks Out In Dallas, and all it has to do is fill in the blank from day to day.

If a man's going to have time to take care of his own business we've got to simplify. We need one country for crisis, one university for riots, one city for crime, so a man could go to sleep with not over three major problems on his mind outside of the hundreds of minor ones he has to find off in his own neck of the woods.

Here comes a neighbor now probably fixing to tell me my cows are out again.  
Yours faithfully,  
J. A.

High school training taken under the G. I. Bill does not reduce eligibility for advanced training.

The largest hospital system in the free world under a single head is run by the VA.

The VA is the world's largest employer in about 10 medical and related professions.

About 35 million persons served in U. S. Armed Forces during the nation's wars. Nearly one million gave their lives and additional millions were wounded.

Patronize your hometown merchants and save!

## Bible Comment—

### Tolerance Is A Vital Part Of Christianity

If one reads the earlier history of many churches, the impression spreads that there were individuals whose religion consisted chiefly in the delight that they took in disciplining others. In general it may be said that the Church has been far readier to adopt Paul's suggestions about discipline than it has been to put into practice Paul's much more important teaching concerning love as the greatest thing in the world.

A good cause is never well served in intolerant attitudes. There is such a thing as being intemperate, even in our advocacy of temperance.

At a temperance convention was heard the loud and raucous voice of a rather intolerant man who was haranguing the crowd. My friend, a total abstainer and strongly opposed to the liquor traffic, said to me, "I never hear that man advocate temperance without feeling like going out and having a drink."

If a man so thoroughly devoted to the cause could be reacted upon in that way, what must have been the effect upon others? The temperance cause has been served most ably by those who have first of all practiced temperance, and who in their total life and conduct have manifested the beauties and graces of Christian living.

In his letter to Titus, Paul sets forth the things which, as he puts it, "befit the sound doctrine." It is a plea for temperance, sobermindedness, love, and patience, for well-disciplined, noble living, the sort of thing that will never bring shame upon themselves or disgrace upon the church. It is as we make all these constructive virtues evident in our lives that we exert the truest influence on others, while attaining what is best for ourselves.

**• Spell Quiz •**  
Which of the Following is Spelled Correctly?  
Foliage Foilage Foliage  
(Meaning: Leaves, collectively.)  
See Classified Page for Correct Answer.

## Political Calendar

Oct. 31—Last day for transfer of registration receipt in order to qualify for General Election, in County Office.  
Nov. 5—General Election.

Local Representative  
**Lubbock Monument Works**  
Red Granite — Marble — Gray Granite  
Ronald D. Gilbreath  
Display 209 N. St. Charles SK 6-3355

OTHER STYLES \$19.95 TO \$40.00  
First in Quality!  
**NUNN-BUSH**  
ANKLE-FASHIONED SHOES  
Style 2293  
DARWIN Last  
Cow Brings  
of Stock Feet  
Leather Uppers  
EDGERTON SHOES FROM \$14.95  
**J. A. WILSON DRY GOODS**



## RE-ELECT ATTORNEY GENERAL CRAWFORD MARTIN

*We, the undersigned . . .*  
proudly and with confidence recommend  
**CRAWFORD MARTIN**  
for re-election for a second term as  
**ATTORNEY GENERAL**

(Paid Political Ad By Martin County Friends of Crawford Martin)

## A TIME FOR DECISION

A Presidential election, the most important one in our lifetime, is close upon us. With three candidates in the race Texans are confronted with such a variety of appeals that some confusion is not surprising. We see some of our top state political leaders urging support of Hubert Humphrey on the self-serving appeal of party loyalty. We see fine Texans tempted to support George Wallace because they like his outspoken position on certain issues and are thus swayed by an appeal of sheer emotion. With full respect for the right of every Texan to make a personal decision, this message in behalf of Richard Nixon is offered as

### ... AN APPEAL TO REASON!

#### HUBERT HUMPHREY WILL NOT

change. He has proved consistently anti-Texas. He is famous for his filibuster against Texas owning its tidelands. He has fought our right-to-work laws and sought to destroy our vital oil depletion allowance. On every issue of world importance his position is contrary to that of most Texans. Humphrey, an ultra-liberal founder of the ADA organization, would gain executive authority for radical minority viewpoints should he become president. This cannot happen by popular vote. In view of his vicious attacks upon George Wallace, what a ghastly miscarriage of intent it would be if Wallace supporters themselves should throw the election into the House of Representatives where every Wallace vote in Texas would automatically go to Humphrey.

#### GEORGE WALLACE CANNOT

be denied his impressive showing. A number of fine people heed his third party call. The very least that can be said is that he has dramatized the desires of many people for a change of direction in the affairs of our government. However, the very most his supporters can hope for is to split the popular vote so that all of us would be at the mercy of Washington politicians who would elect our president for us. This is Hubert Humphrey's only hope for election. The more positive way to vote for change is to recognize the many fine merits of Richard Nixon and his program, then vote for Nixon to assure the election of our president by the people instead of by the Congress!

### RICHARD NIXON CAN... AND WILL

supply dynamic, experienced leadership for an immediate change of direction—at the top—in all our national affairs at home and around the world. Your concerns are his concerns!

- NIXON ON LAW AND ORDER is pledged to help improve local police protection to appoint an Attorney General dedicated to rooting out crime, to restore balance in our courts strengthening peace forces against criminal elements and to cease freeing so many of the guilty on technicalities.
- NIXON ON VIET NAM will call upon his experience as vice-president during eight great Eisenhower years of peace to reform world alliances now in disarray, to redirect our strategy on new global terms. He will end this war and avoid future ones by dealing with adversaries in the only way they respect—through strength, collective security and patience.
- NIXON ON LOCAL GOVERNMENT is pledged to move control of local schools and all other governmental functions which properly belong at the local level closer to the people.
- NIXON ON OTHER PROBLEMS has solid solutions PLUS solid backing of enough members of Congress to implement those solutions.

IF YOU REALLY WANT A CHANGE . . . AND IF YOU WANT TO BE SURE YOU REALLY GET IT . . . VOTE FOR NIXON/AGNEW

**NIXON'S THE ONE!**

**TEXANS FOR NIXON**

Political Advertising Paid for By Texans for Nixon

BRN H. CARPENTIER  
Chairman  
P.O. BOX 919  
STANTON, TEXAS 75785

## Big Lake To Host District Music Group

The Twelfth District of the Texas and National Federation of Music Clubs will have its annual conference in Big Lake, Saturday, October 26, hosted by the Allegro Music Club of Big Lake. Mrs. Raymond Marshall, Lubbock, past president of TFMC, will be luncheon speaker.

Highlight of the conference will be a choral concert, to which the public is cordially invited to attend. The concert will be at 2:30 p.m. in the Reagan County High School Auditorium, Saturday afternoon, October 26.

The concert will be given by the Central High School Choir of San Angelo, Ronnie Bates, director; the Big Spring High School A Cappella Choir of Big Spring, Kenny Shepherd, director, and the Odessa College A Cappella Choir of Odessa, Maurice Alfred, director.

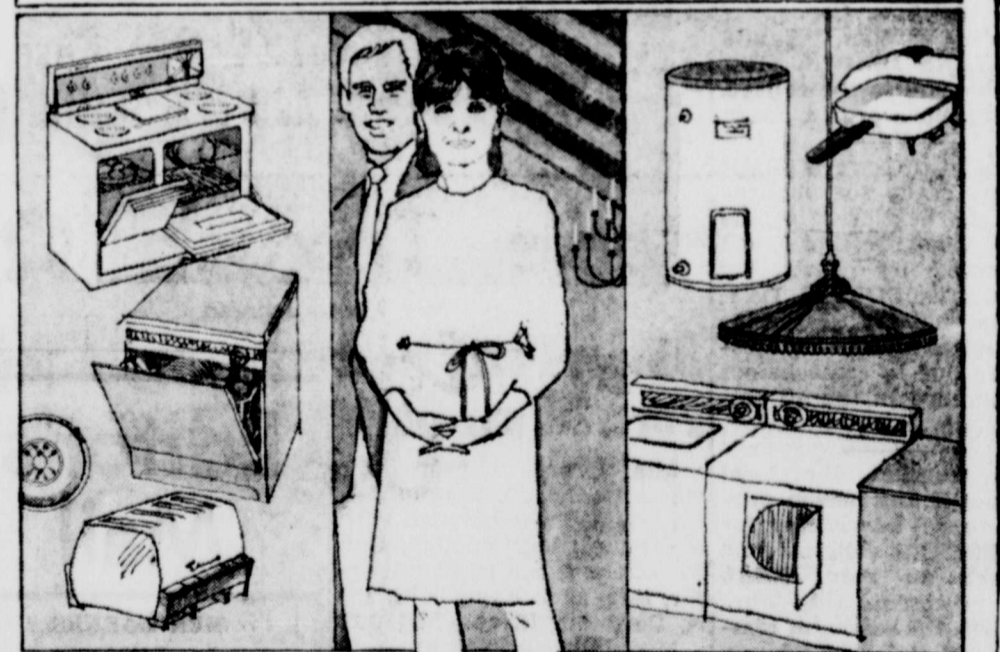
Special invitations are being extended to all school students in the surrounding area to attend.

The 12th District is made up of clubs from Big Lake, Big Spring, two clubs from Odessa, three clubs from Midland, and Stanton. Mrs. Paige Eiland is Stanton Music Club president. Mrs. Glenn Brown is second vice-president of the state officers and is auditor of District XII, as well as district American Music Club chairman.

Mrs. Homer Schwalbe is district treasurer, and chairman of finance and budget. Mrs. Edmund Tom, district chairman of the dance department, and Mrs. R. O. Anderson, district chairman of magazine and literature promotion.

The Veterans Administration reports that the last Revolutionary War veteran died 85 years after the war officially ended.

surround yourselves with total comfort and convenience



Buy or build a Total Electric Home

Let electricity do all the nice things for you that add up to total living ease. This clean, flameless energy will keep you blissfully cool in summer and warm in winter. It will cook your meals, wash your dishes, wash and dry your clothes, and perform many other helpful household chores. It will provide plentiful hot water and the cheery glow of modern light. Surround yourselves now with the comfort, the work-saving convenience of a Total Electric Gold Medallion Home. Let us tell you about all the advantages of this better way of living and our low rates for Total Electric Homes.



# McCamey Badgers Storm Past Stanton Buffs, 33-8

McCamey halfback Frank Taylor ripped off 186 yards rushing and two touchdowns to lead the Badgers to a 33-8 victory over the Stanton Buffaloes in a District 5-AA opener for both teams.

Bojen also followed his PAT kick with a kickoff from the 40-yard line. The ball was a high floater and gave the Badgers time to get down underneath the football. The ball took one high bounce before the McCamey halfback Morris Brooks snagged the ball setting McCamey in scoring position on the Stanton 25.

Statistics		Stanton
McCamey		
12	First downs	10
253	Yds. rushing	43
52	Yds. passing	82
4-10	Passes completed	8-16
0	Passes inter. by	2
0	Fumbles lost	1
11-95	Penalties - yds.	5-45
4-21.5	Punts - avg.	4-41.3

Four plays later, quarterback Charles Graves pitched a four-yard pass to end Stan Love for the touchdown. Again, Bolen's kick was good. With 3:30 left in the first half, McCamey had a 14-0 lead.

Taylor carried the ball 17 times and his longest runs of the night were for 20, 24, 49 yards. His average was 10.9 yards per carry.

The Badgers stopped another Stanton drive on their own 24-yard line. The Badgers were unable to move the ball and had to punt.

Neither team was able to score in the first quarter. Stanton took the opening kickoff and drove down to the McCamey five-yard line before losing the ball on downs.

Graves attempted a pass into the flat and was picked off by Stanton's Gary Kitchens, who raced 43 yards for the score. Buffalo quarterback David Jones passed to Kitchens for two points for the conversion.

Late in the first period the Badgers began their first scoring drive from their own 34-yard line, they drove in for the initial touchdown in 10 plays.

McCamey had a 14-8 lead at halftime.

With just 9 minutes and 55 seconds left in the first half Taylor blasted over his own tackle for 11 yards and the touchdown. Gary Bolen kicked the extra point giving McCamey a 7-0 edge.

McCamey came back after the intermission with their third down. McCamey halfback Boone McMarilyn set up the touchdown with a 41-yard return of the second half opening kickoff. McMarilyn also scored with a seven-yard run off right tackle. This time Bolen's kick was wide to the left.

## Beta Sigma Phi Activities

Xi Epsilon Delta Chapter of Beta Sigma Phi, met Oct. 17, at the home of Mary Payne, for their regular business meeting and program. A program on "Planning the Kitchen," was given by Vivian Ferguson. She discussed basic plans and shapes, with planning suited to personality and mode of living.

The touchdown gave McCamey a 28-8 lead with 9:55 left in the third quarter.

Present were: Tince Ory, Lois Powell, Bert Schwalbe, Fiji Brandt, Georgia McMeans, Margie Ireton, Allie Anderson, Mary Payne, Helen Thrailkill, Aylene Kelly, and Vivian Ferguson.

A Stanton fumble early in the fourth quarter set up another McCamey touchdown.

Those attending were: Latrell Welch, Barbara Douglas, Wanda McIntyre, Ruth Holcombe, Ray Simpson, Gracie Hanson, Edna Linder, Ginger Henson, and Janelle Britton.

Pete Casillas recovered the Stanton fumble on the Buffalo 24-yard line.

A bingo party was planned for Nov. 2, at the home of Barbara Douglas.

Taylor took the ball on the first play following the fumble and blasted the 24 yards to the end zone. The conversion attempt failed leaving McCamey with a 26-8 edge with 10 minutes left in the game.

Discussions were held on projects, and the fall banquet. Barbara Douglas presented the program on "Planning the Kitchen."

With less than two minutes left, McCamey got possession

Those attending were: Latrell Welch, Barbara Douglas, Wanda McIntyre, Ruth Holcombe, Ray Simpson, Gracie Hanson, Edna Linder, Ginger Henson, and Janelle Britton.

Mrs. Glen Gates, 503 West 5th Street, was hostess Thursday evening, October 17, in her home of Preceptor Mu Chapter of Beta Sigma Phi. Mrs. Juil Reid, president, conducted the business session. The chapter voted to send a Christmas donation to the Abilene State School.

Mrs. Leo Turner, program chairman, introduced Mrs. Glen Gates, who presented the program, "Looking Inward for Greater Awareness."

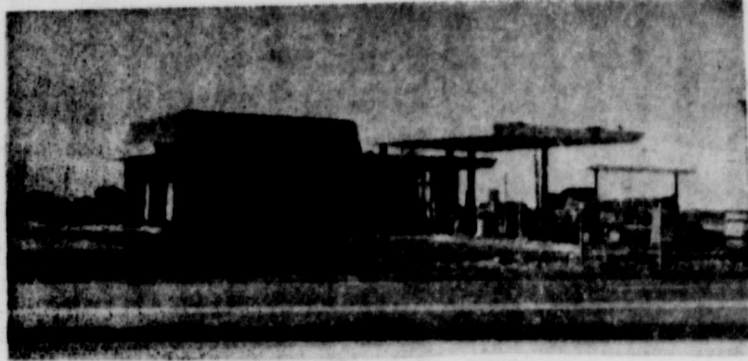
The hostess, Mrs. Gates, served refreshments. Attending were: Mrs. John Wood, Mrs. Stanley Reid, Mrs. Louis Roten, Mrs. Glenn Brown, Mrs. Leo Turner, Mrs. Helen Dawson, Mrs. Juil Reid, Miss Sammie Laws, and Mrs. Gates.

Members of Preceptor Mu Chapter of Beta Sigma Phi, met Thursday evening, October 3, in the home of Miss Sammie Laws, 305 West Broadway Street. The business session was conducted by Mrs. Juil Reid, president. Mrs. P. M. Bristow II, gave a report of the West Texas Area Council Meeting, that was held recently in Odessa.

Mrs. Leo Turner, program chairman, introduced Mrs. John Wood, who spoke on "A Well Adjusted Personality." The hostess, Miss Sammie Laws, served refreshments to the following: Mrs. Juil Reid, Mrs. John Rouche, Mrs. Bob Latimer, Mrs. Leo Turner, Mrs. Glenn Brown, Mrs. Glen Gates, Mrs. P. M. Bristow, II, Mrs. Helen Dawson, Mrs. Louis Roten, Mrs. Stanley Reid, and Mrs. John Wood.



STEVE EDWARDS



NEW TEXACO STATION



## Steve Edwards Texaco



FREE DR PEPPER

I. S. 20 and Hwy. 137

Phone 756-2249

FREE DR PEPPER

# GRAND OPENING

October 25, 26, 27, 1968

## Free Refreshments

Bubble Gum and Balloons for Children

# To Be Given Away

Sunday, October 27, 1968, 5:00 P. M.

## RCA CLOCK RADIO

JUST REGISTER  
NO PURCHASE NECESSARY — NEED  
NOT BE PRESENT TO WIN.

- F** \$10.00 Worth of S&H Stamps WITH 10 GALLON FILL-UP OR MORE.
- R** \$10.00 Worth of S&H Stamps WITH OIL CHANGE
- E** \$75.00 Worth of S&H Stamps WITH EVERY PURCHASE OF NEW GOODYEAR TIRES.
- E** \$10.00 Worth of S&H Stamps WITH EACH GALLON OF TEXACO ANTI-FREEZE PURCHASED.

Take Plenty of Dr Pepper Home With You: **\$1.65 Per Case, Plus Deposit**  
**.42 Per 6 Bottle Carton, Plus Deposit**

## We Have Texaco Quality Line for Car and Home Use

### This Week Special:

- TEXACO RUST PROOF — Reg. \$1.50, Dis. \$1.27 — Protects Air Conditioners For Winter Storage.
- TEXACO FAST FLUSH — Reg. \$1.25, Dis. 99c — Clean Your Radiator Before Installing Anti-Freeze.
- TEXACO TIRE INFLATOR — Reg. \$2.98, Dis. \$2.47 — Seals And Inflates Tires.
- TEXACO CHARCOAL LIGHTER FLUID — Reg. 65c, Dis. 47c — Perfect For Starting Fire Places.
- TEXACO SUPER CAR CLEANER AND WAX — Reg. \$1.75, Dis. \$1.19 — Protects Your Car Finish.

OPEN 24 HOURS A DAY TO SERVE YOU



# Steve Edwards Texaco

## Baptist Will Convene In Fort Worth

Baptist leaders from around the world will be featured at the 1969 Baptist General Convention of Texas and World Missions Conference scheduled for Fort Worth Nov. 11-14.

Among the many Southern Baptist luminaries with key convention role are Ron Willis, Oakland, Calif., "Missionary to the Hippies"; William Hendricks, Southwestern Seminary professor of theology; Arthur B. Rutledge, Home Mission Board executive secretary, Atlanta; BGCT President Gordon Clinard; Jesse C. Fletcher, Missionary Personnel secretary, Foreign Mission Board, Richmond, Va.; T. A. Patterson, BGCT executive secretary, and myriad missionaries, pastors,

students, and laymen.

Meeting in the sparkling new Tarrant County convention Center, the state convention will be combined with a two-day World Missions Conference scheduled the afternoons of Nov. 12-13. Night sessions of BGCT conclude will be held in the mammoth 13,850 seat arena.

"Our Hope in Christ" will be the convention theme. "We were instructed by last year's convention to mix the business sessions and toward missions in such a way as to make the mission program the main emphasis. We have no precedent for what we have done this year. I don't believe we have left a single aspect of missions untouched," said Program Committee Chairman J. P. Allen, pastor of Fort Worth's Broadway Baptist Church.

This sign greets motorists entering Interstate 40 at Amarillo: "Smile. You are on a road."

**RUST-PROOF DENT-PROOF**

- Threadless "non-jamming" cups; insulated, leak-proof Lox-On Stopper; non-drip pouring lip.
- Electronically-tested, seamless, vacuum-insulated filler.
- Filler has tip protector; "floating" rubber-cushioned shock absorber.

**TOMORROW'S BOTTLE TODAY**

**99c**

STANTON WALGREEN DRUG AGENCY

## Stanton Pickup Center For The All New Chevrolet Pickup



C10 Fleetside Pickup

Best Trades Possible  
3/4 Ton and 1/2 Ton In Stock More Arriving Daily

Trade Now At

# Alsop-Nowlin Chevrolet

756-3311

STANTON

LO 3-0530 MIDLAND

# SPOOK-TACULAR

## SPECIALS

GET **S&W** GREEN STAMPS, TOO!



**PRICES GOOD**  
**Thurs., Oct. 24**  
 Thru  
**Wed., Oct. 30**

**NEW STORE HOURS:**  
 Mon., Tues., Thurs., and Fri.,  
 8 A. M. — 8 P. M.  
 Wed., and Sat.,  
 8 A. M. — 9 P. M.

**Mellorine** GANDY'S 1/2 Gal. **33¢**  
**Flour** KIMBELL'S 5 Lb. Bag **39¢**

BANQUET 8 Oz. Pkg. GALA 60 Count  
**Pot Pies . 6 for \$1** | **Napkins . 2 for 25c**

 **Oxydol** King Size **\$1.14**  
 BORDEN'S **COTTAGE CHEESE** 2 Lb. Ctn. **55¢**

ZEST Bath Size HUNT'S 20 Oz. Bottle  
**SOAP . 2 for 39c** | **CATSUP . . 33c**

**Ivory Soap** PERSONAL SIZE Ea. **5¢**  
 (WITH COUPON IN CIRCULAR)



FOLGER'S **Coffee** Pound Can **59c**

**SPAM** LUNCHEON MEAT 12 Oz. Can **49¢**  
**Bleach** PUREX 1/2 Gallon **29¢**

SEE OUR CIRCULAR FOR OTHER FINE BUYS!

**Chili** WOLF ALL-MEAT No. 2 Can **59¢**  
**Sugar** IMPERIAL PURE CANE 5 Lb. Bag **49¢**

### Better Buys in Quality MEATS



ARMOUR'S **SMOKED HAM** SHANK PORTION Lb. **49¢**



**Gooch Beef Cutlets . . . . . lb. 59c**



ARMOUR'S **SMOKED HAM** BUTT PORTION Lb. **59¢**

**SAUSAGE** SHOP MADE Lb. **49¢**



ARMOUR'S **SMOKED HAM** CENTER SLICES Lb. **89¢**

**PORK STEAK** LEAN BOSTON BUTT Lb. **59¢**

**PORK ROAST** LEAN BOSTON BUTT Lb. **49¢**



## BUDDIES SUPER MARKETS

200 N. St. Mary

**Apples** ROME or JONATHAN, lb. **15¢**

**GREENS** FRESH Bunch **10¢**

**Yams** EAST TEXAS lb. **10¢**

**Pie Pumpkins** **10¢**

**CARROTS** Lb. Cello **2 For 25¢**

**Potatoes** All Purpose Russet 70 Lb. Bag **49¢**

## Red's Corner

By RED GIBSON

It is with exceeding reluctance that I must report the discovery of a plot to extract millions of dollars from an unsuspecting American public.

Although exposure of evil is just part of the day's work in the news business, and zeal for public service is in this case tempered by sadness at the thought of what such exposure may mean to the Nation's children. Mine in particular.

Here are the facts: Halloween is being kept alive by the candy cartel, working directly and overtly with the American Dental Association, a wholly owned subsidiary.

The cartel - cavity axis has turned the trick - or - threat movement from its historic and constitutional role as tipper of outhouses and made it a massive collecting of sweets, with a resulting upsurge in the number of teeth with soft spots in them.

There are those who will deny the charges. Let them. They will point out that other factors are involved in the lessening incidence of outhouse - tipping, principally a decline in the number of outhouses. Ignore these people; you can't argue with those whose minds are frozen.

Today's children do not know the true meaning of the words "Trick or Treat." For them there is no thrill of minor - league extortion in yelling those magic words. They know from an early age that no one is going to deny them a treat - candy, of course, - and, besides, these children don't know what tricks are.

It was not always thus. Halloween was invented by carpenters, who made extra money for Christmas by re-shingling houses almost derelict by young sports with

a knack for getting a buggy atop a gable. Gate - makers were quick to get in on the celebration, for it brought them a magnificent increase in trade.

Youngster called their evening's escapades trick - or - treating in those days, too, for some reason, although a homeowner had only a 50 - 50 chance of being given an opportunity to buy off the pranksters. Trickling was considerably more popular than treating.

The tykes were left out completely; Halloween was a job for teen-agers.

Then came the candy cartel with its sweet tooth for profits. The first thing the cartel did was to convince the parents that trick - or - treating should be for little kids, which wasn't easy. Teen-agers were reluctant to give up their role in the evening. (Indeed, some pretty big goblins can still be found trick-or-treating.) Parents didn't like to get out in the night air, but kiddies under eight need help carrying the bulging sacks, so parents were sawyed by the old togetherness pitch.

One need not admire but he must respect the genius of the forces behind this move. They have taken a fine old American tradition, an evening that once stimulated both trickster and trickee, and turned it into an economic bonanza.

They have overwhelmed my household, and most others. I can't lick them, and I won't join them (got enough tooth problems already). Only one thing remains to comfort us: The despoilers of tradition may be riding high, but we all know that the goblins will get them if they don't watch out.

### Abilene CMS Reports 24,000 Samples Processed

The Consumer and Marketing Service reported a total of 24,000 cotton samples processed last week at Abilene, compared to a total of 6,000 for the same week last year. Daily sample receipts have increased to 5,000, while daily classing totals have been 4,000. Two classers will be added to the staff this week and this should enable us to keep up with daily receipts, says B. B. Manly, Jr., officer in charge of the U.S.D.A. Cotton Classing Office, Abilene.

Grade continues to be exceptionally good, with 69 per cent in the white category, the same as last week, and 31 per cent in the light spotted category.

Staple is also remaining constant, 15.16 being the predominant length, at 37 per cent. Other percentages were:

29.4 per cent; 31.26 per cent; 32.16 per cent; 33.9 per cent; 34.4 per cent, and 35 and better, 4 per cent.

Micronaire readings were down to 89 per cent in the 3.5-4.9 premium range; 9 per cent, 5.0 - 5.2; and 2 per cent, 5.3 and above.

Pressley or strength readings were still good with 90 per cent reading 80,000 P.S.I. (pounds per square inch) and better.

Activity picked up on the market last week and generally cotton is selling for 300 points above the government loan rate. This means a bale of Middling, 15/16 sells for 21.05 cents per pound; a Strict Low Middling, 31/32 for 20.45 cents per pound; and a Middling Light Spotted, 15/16 for 20.17 cents per pound.

### PERSONALS

Mr. and Mrs. Elma Nichols and Randy, attended the Watson family reunion in Midland, recently.

Mr. and Mrs. L. F. Clark have moved to Yarnell, Arizona.

Eva Mae Cook is a patient in a Houston hospital.

Mr. and Mrs. Kenneth Stroup and sons from Fort Worth, visited their parents, Mr. and Mrs. Herbert Shipp, and Mr. and Mrs. Phi Berry, here last week.

Mrs. Finley Rhodes is a patient in Malone-Hogan Hospital in Big Spring.

Guests of Mr. and Mrs. Elma Nichols last week, were her brother-in-law and sister, Mr. and Mrs. J. B. Chambers from Madison, West Virginia, and her two sisters, Mrs. Velma Haynie and Mrs. Sybil Bickley from Midland.

Mrs. P. M. Bristow is a patient in the local hospital.

Guests of Mrs. Noybe Hamilton last week-end were her sons and their wives, Mr. and Mrs. H. C. Hamilton of Lubbock, and Mr. and Mrs. Cecil Hamilton of Big Spring.

Mrs. and Mrs. John Wood attended a Lions Club meeting at Buchanan Dam, last week-end.

Mr. and Mrs. Clayton Burnam of Lake Leon, are visiting here this week.

Mr. and Mrs. Herman Barnett and Mrs. Lena Caviness of Carlsbad, New Mexico, Mrs. Hattie Cooper and Mrs. Susan Buckalew, of Kerrville; Mr. and Mrs. Raymond Cooper of Big Spring, and Mrs. Catherine Shurtliff from Colorado City, were weekend visitors with Mr. and Mrs. Grady Standefer.

### Baptist Church Activities

The Intermediate Girl's Auxiliary of the First Baptist Church, met at the home of Mrs. Philip Stovall, Oct. 16, for their forward step study meeting.

Refreshments were served by Carol Smith to: Rosalyn Louder, Deborah Doyle, Betty Anderson, and Zanna Angel.

The last Mexican War veteran survived for 81 years after that war; the last Civil War veterans, Union and Confederate, live on 90 and 93 years, respectively.

The VA is no longer waiting for young veterans to come and ask about veterans' benefits but is contacting them shortly after they are discharged.

Trade at home and save!

# Most Participants In Vets' Land Program Prove Good Risk

With 3,800 veterans land loans completed since the program was revived in January, the Texas Veterans Land Board got a report showing that GIs are pretty good credit risks — but a few don't pay, so a sale will be held.

The board headed by Land Commissioner Jerry Sadler, with Ted Connell of Killeen, and John Burns of Austin, as members, got a report from Executive Secretary W. W. Glass of Jacksonville, that

\$32,300,000 in loans have been made since January. This in an average of \$8,500 per loan, against the maximum of \$9,500 which can be made.

Business looks like it will continue to be good. At the time of the report, Glass said 10,197 other veterans had requested application forms, saying that they have located tracks of land they want to buy.

The board has sold \$60,000,-

000 worth of bonds, and the \$27,700,000 remaining is earning a profit for the state since it is invested in securities paying the state a higher rate of interest than the state is paying in interest on the bonds.

Burns, a banker, estimated that the money on hand will last nearly a year longer before additional bond sales will be needed.

The news about what sort of credit risks Texas GIs are came when Glass reported that only 32 tracts, out of 37,000

being paid out of over 40 years by veterans, had to be repossessed during the last two years. Those 32 will be put up for resale by sealed bids Nov. 19 at 11 a.m. Only eligible veterans who have not used their loan privileges, before will be entitled to bid on the tracts.

In addition, the board will put up 33 other tracts, mostly left over from the veterans land scandals in the 1950s for bidding Nov. 19. Since they have been offered before to veterans only, they will be offered this time to non-veterans as well. Interest at 6.5 per cent, where the veterans' interest rate is only 5.5 per cent.

# Speakers Set For Meeting

At the tenth Annual Meeting of the Texas State Historical Survey Committee and the Texas Historical Foundation Nov. 1 and 2 in San Antonio, members will hear distinguished speakers discussing a number of topics pertinent to historians.

Leading off the program will be Wayne Bell, architectural restoration consultant for the Historical Survey Committee. Bell will discuss the "National Historic Preservation Act of 1966." Ultimately, funding of this Act by Congress will allow state matching grants - in aid for historical restoration and preservation projects.

Following on the program will be Emil Huber, director, Program Field Service Division of the Office of Metropolitan Development, Department of Housing and Urban Development. Huber will discuss

ways and means of acquiring grants for historical preservation projects from HUD.

Other distinguished speakers will include: R. Henderson Shuffler, director of the Institute of Texan Cultures, who will speak on "The Future of the Institute";

Tom Taylor, director, Travel and Information Division, Texas Highway Department—"Hospitality Seminar";

Mrs. Deolece Parmelee, director of research for the Survey Committee—"How to Write a County History";

Dr. Dorman Winfrey, executive director of the Texas State Library—"Setting Up a History Collection in a Local Library"; and

Miss Margaret Gething, San Antonio Conservation Society—"The King William Historic District."

There will also be a "RAMPS Wrap-up" by the Survey Committee, which will cover the progress made in the committee's five-year program to "Record, Appreciate, Mark, Preserve and Survey," Texas history.

Additionally, "How Will We Know It's Us?" a film featuring the Housing and Urban Development program used for preservation purposes will be shown.

Meeting delegates will also take an educational tour of San Antonio's King William Historic District and San Jose Mission State Park.

Headquarters for the meeting is the Gunter Hotel. Registration is \$15.00. The meeting is open to all interested Texans. For further details, write the Texas State Historical Survey Committee, P. O. Box 12276, Austin, Texas 78711.

Magistrate salaries will be set by the Judicial Conference with a maximum of \$22,500 a year for full-time service and a range of \$100 to \$11,000 for those serving part-time.

In giving compensation, the conference will take into consideration the nature and average number of cases in the various districts over the last five years and estimate the future workload.

The Judicial Conference comprises 25 ranking federal judges headed by Chief Justice Earl Warren.

Trade at home and save!

Magistrate salaries will be set by the Judicial Conference with a maximum of \$22,500 a year for full-time service and a range of \$100 to \$11,000 for those serving part-time.

In giving compensation, the conference will take into consideration the nature and average number of cases in the various districts over the last five years and estimate the future workload.

The Judicial Conference comprises 25 ranking federal judges headed by Chief Justice Earl Warren.

Trade at home and save!

## First National Bank Installs New Safe Deposit Boxes

The First National Bank announced today that the installation of new safe deposit boxes had been completed and were now ready for rental to customers. The new boxes are particularly adaptable for use by customers that wish to protect abstracts and other valuable papers or documents.

Since these boxes will be rented on a first come first served basis, the public is invited to consult with the bank for early reservations.

The 32 tracts repossessed in the last year, available only to eligible veterans, are 47 acres in Brown County; 97 acres in Callahan County; 22 acres in Cameron County; 100 acres in Clay County; 98 and 80 acres in Dickens County; 94 acres in Gaines County; 74 acres in Guadalupe County; 21, 15, 14, 18, and 21 acres in Hidalgo County; 18, 42, 66, and 23 acres in Hunt County; 30 and 53 acres in Jasper County; 83 and 78 acres in LaSalle County; 23 acres in Liberty County; 66 acres in Milam County; 23 acres in Potter County; 50 acres in Rains County; 16 and 15 acres in Randall County; 105 and 40 acres in Reeves County; 80 acres in Yoakum County, and 31 and

### Grassroots Opinion

There is no doubt in anyone's mind, that driving at an excessive rate of speed on any highway is a dangerous practice that flirts with death and injury to those who speed and to those on the same highway with the speeder. But there is a reverse side of the coin of automobile driving. The other side and a big menace is the too slow driver. He is the infuriating "creep" who moseys along a public highway at a rate of 15 to 30 miles per hour. The reasons for his "creeping" might be anything from lack of faith in his handling of the car to the fact that he's enjoying the scenery. One fact though is always apparent—he's completely oblivious to the piled up string of traffic stretching behind him on curves and hills."

DIYERSBURG, TENN.: MIRROR: "There is no doubt in anyone's mind, that driving at an excessive rate of speed on any highway is a dangerous practice that flirts with death and injury to those who speed and to those on the same highway with the speeder. But there is a reverse side of the coin of automobile driving. The other side and a big menace is the too slow driver. He is the infuriating "creep" who moseys along a public highway at a rate of 15 to 30 miles per hour. The reasons for his "creeping" might be anything from lack of faith in his handling of the car to the fact that he's enjoying the scenery. One fact though is always apparent—he's completely oblivious to the piled up string of traffic stretching behind him on curves and hills."

### LBJ Signs Law Abolishing U.S. Commissioners

President Johnson signed into law Thursday a bill abolishing U. S. commissioners and replacing them with salaried federal magistrates.

The magistrates will be authorized to try minor criminal cases while the commissioners could try only petty offenses committed on federal reser-

### Election Notice

GENERAL ELECTION

TUESDAY, NOVEMBER 5, 1968

POLLS OPEN: 8 A. M. — 7 P. M.

VOTING PLACES:

PRECINCT: No. 1

Stanton Elementary School Gym.

Opal Jones, Presiding Judge

Mrs. James Biggs, Clerk

PRECINCT: No. 2 Stanton Methodist Church

Grady Standefer, Presiding Judge

Hazel Ham, Clerk

PRECINCT: No. 3 — WOLCOTT GIN

Jimmy Heald Presiding Judge

Bonnie White, Clerk

PRECINCT: No. 4 — Bethel Church at Flower

Grove Co-op Gin

J. H. Burrow, Clerk

ABSENTEE VOTING — County Clerks Office

8 A. M. — 5 P. M.

Bob Haislip, Presiding Judge

James Jones, Clerk

Jimmy Stallings, Clerk

**Jim McCoy**

## HAMILTON OPTOMETRIC CLINIC

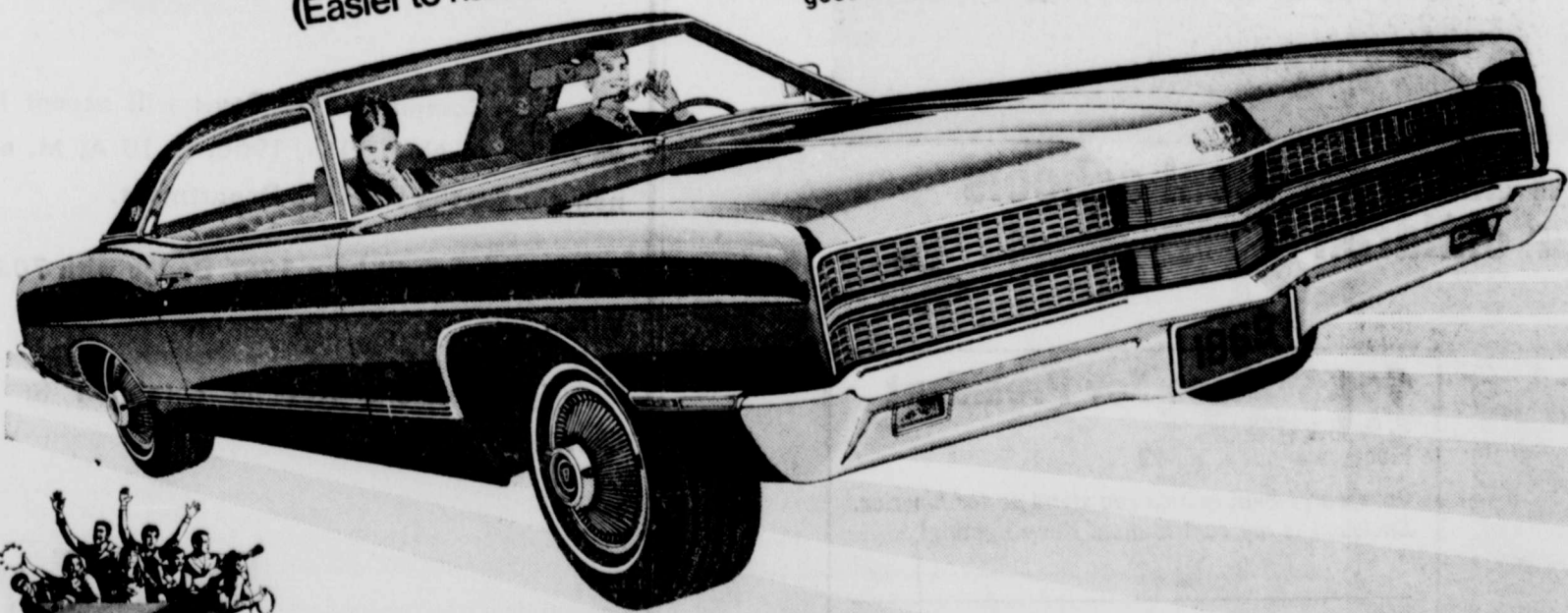
AND PRESCRIPTION LENS LABORATORY

(Across Street North Of Court House)

BIG SPRING, TEXAS

106 - 108 West Third Dial AM 3-2501

**1969 Ford.**  
**Wider. Longer.**  
**Quieter. Roomier.**  
(Easier to handle.)



These are the things to look for in a great road car. And every day more and more people are finding them in the 1969 Ford.

Wider. The '69 Ford hugs the road with as wide a track as Cadillac.

Longer. The '69 Ford smooths your ride with a longer wheelbase than Chevrolet. Yet it turns in a smaller circle than last year's Ford.

Roomier. We've grouped all the controls in front of the driver, made our front passenger compartment so spacious people are calling it the Front Room.

Quieter. Our '69 LTD is designed to ride even quieter than the LTD that rode quieter than Rolls-Royce.

Record first-month sales of the '69 Ford tell us we've got a good thing going. A test drive will tell you.



## This Is Telling It Like It Really Is!



**Fiction:** MR. NIXON Says a Vote for GOV. WALLACE Is a Vote for HUMPHREY.

**Fiction:** MR. HUMPHREY Says a Vote for GOV. WALLACE Is a Vote for NIXON.

**Fact:** A Vote for GOV. WALLACE is a Vote FOR GOV. WALLACE and the Return of the GOVERNMENT TO THE PEOPLE.

Even The LIBERAL POLLS Place GOV. WALLACE Second In The Presidential Race. TV and Radio Polls Across The Nation Place Him Far Ahead of Both NIXON and HUMPHREY. The Scare Tactics Are All They Have Left. STAND PAT — STAND UP FOR AMERICA — VOTE WALLACE — LeMAY NOVEMBER 5th.

(Martin County Wallace Campaign — G. B. Therwhanger, Chairman)

## WHITE MOTOR COMPANY

STANTON, TEXAS 79782



The place you've got to go to see what's going on—your Ford Dealer!

Mr. and Mrs. R. C. Thrailbill and their daughter, Mrs. W. E. Stribling and Stacy, visited with Mr. and Mrs. Dick

Thrailbill in Gravett, Ark., last week. They attended the Arkansas and Baylor football game in Fayetteville, on Saturday.

If you change your mind about the kind of life insurance policy you need, are you stuck? Ask your Southwestern Life Agent. He has the answers.

**J. WOODFORD SALE**

756-3477

Representing  
**Southwestern Life**



### Garden Club Met October 22

The Stanton Garden Club met Oct. 22, with Mrs. Edmund Tom. Roll call was answered with "Tips on Landscaping." The program was on landscape design.

Members present were: Mrs. Cecil Bridges, Mrs. L. M. Estes, Mrs. Harry Haislip, Mrs. L. C. Hazewood, Mrs. James Jones, Mrs. Ray Kelly, Mrs. B. F. Smith, Mrs. W. T. Wells, Mrs. S. W. Wheeler, Mrs. J. A. Wilson, Mrs. Artuhr Wilson, Mrs. Oma Womack, Mrs. Ohmer Kelly, Mrs. Edmund Tom, and one new member, Mrs. Morgan Hall.

### Farmers Rate Political Issues

Law and order followed by Vietnam and inflation outrank farm policy as political issues according to a survey of commercial farmers conducted by Doane Agricultural Service, Inc. of St. Louis.

The survey, based on a representative sample of commercial farmers grossing over 2,500 per year, reported that only a slim majority — 58.3 per cent — feels that current farm programs help maintain income. However, the survey said, a greater majority think government should put a top limit on farm payments.

Farmers were asked to select from a list of current is-

uses the three most important facing the federal government today. The results 2343; 84.2 per cent selected law and order, 78.6 per cent Vietnam, 53.8 per cent inflation, and 35.3 per cent agricultural policy.

Others were: Civil right 17.5 per cent, international trade 10.3 per cent, 9.7 per cent air and pollution, 3.0 per cent draft revision, and 2.4 per cent gun control.

The survey reported "no particularly significant variations in the rating of these issues by economic class of farms, size of farms in acreage, age of operator, tenure status of operator or geographic area."

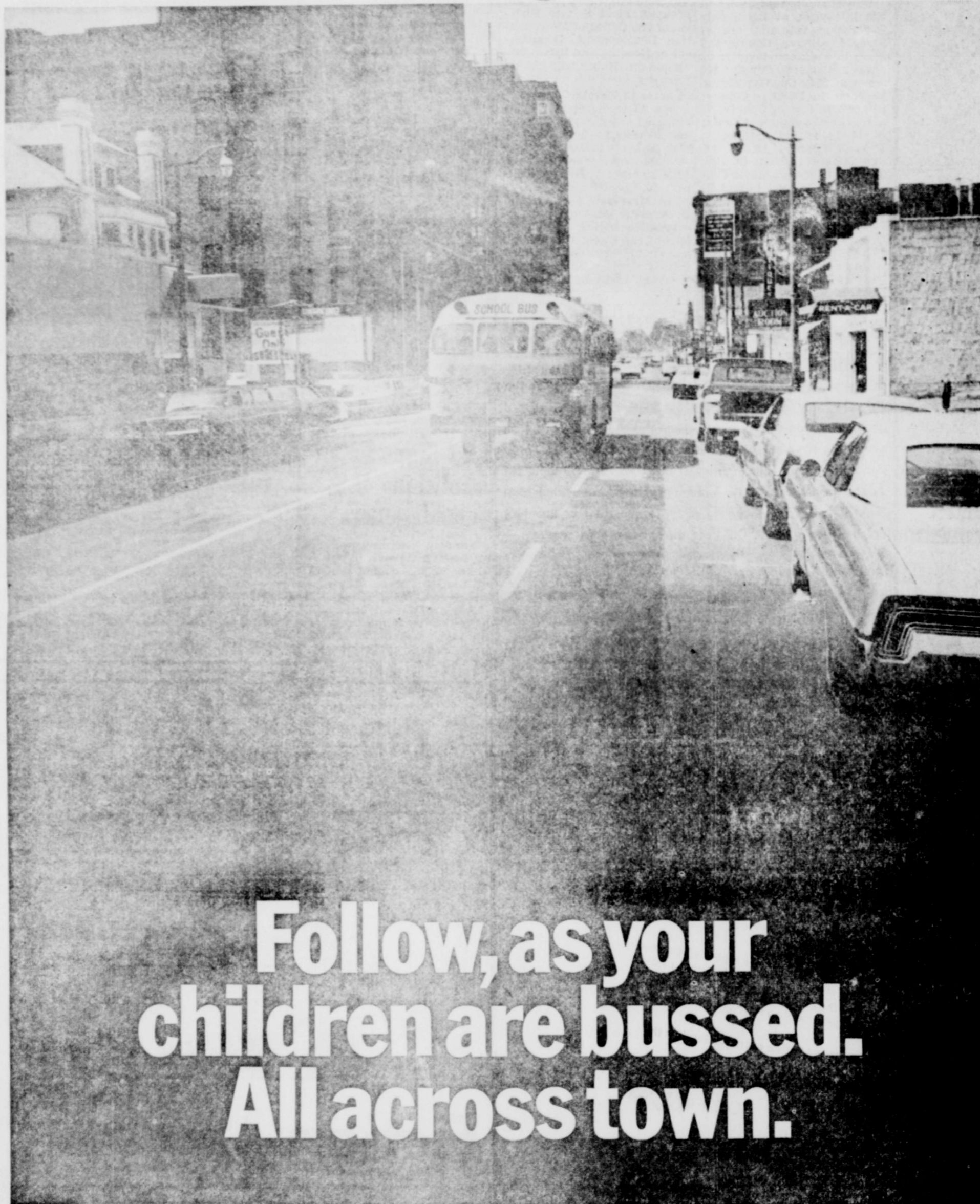
### Sheriffs Posse Sponsored Trail Ride Oct. 19

The Martin County Sheriffs Posse sponsored a trail ride to Signal Mountain, about 15 miles southeast of Big Spring Saturday, October 19.

Lunch was served to approximately 35 persons, with riders coming from Odessa, Rottan, Big Spring, and Lubbock.

**Smallest States Name Big** Rhode Island, the nation's smallest state, has the longest official name — "State of Rhode Island and Providence Plantations."

## If you're wondering why more and more millions of your fellow Americans are turning to Governor Wallace:



# Follow, as your children are bussed. All across town.

**Governor Wallace as President will let you and your local schools decide what is best for your children**

Both the National Republicans and Democrats have let you down. They have failed to provide controls over the test tube theories of the HEW. This means that today, children are being taken out of their own neighborhoods and bussed across American cities as part of a bold Washington scheme that has nothing to do with learning the ABC's. Governor Wallace will reverse this trend. He'll turn control of schools back to you and local folks.



(Martin County Wallace Campaign — G. B. Therwanger, Chairman)

### Gov. Wallace For President

P. O. Box 1968  
Montgomery, Ala. 36103

Governor, I want to help you stand up for America. Enclosed is my contribution. Keep fighting!

NAME \_\_\_\_\_  
ADDRESS \_\_\_\_\_  
CITY \_\_\_\_\_ STATE \_\_\_\_\_ ZIP \_\_\_\_\_

Paid political advertisement of the Wallace Campaign, Ten High Building, Montgomery, Alabama, Seymore Trammell, Chairman.

## Classified Ads

### ANNOUNCEMENTS A

#### Special Notices A-2

Village Kindergarten and Nursery, 209 North Gray St. has opening for several more children. Call 756-2545 or 756-3417. 10-42-tnc

Wanted: One or two sections of good land with cotton allotment, located between Stanton and Lamesa. Give name and price. Jack Miller, Box 277, Dimmitt, Texas. 10-43-44-2tp

### AUTOMOTIVE D

#### Motors & Bikes D-3

Two motorcycles for sale. See Robert Patterson, four miles out on Lamesa Highway. 10-44-tnc

### BUS. OPPORTUNITIES E

#### Business Chances E-1

AVON world's largest cosmetic company, has immediate opening in Stanton, Tarzan, and Courtney. If you want to work and earn money, check out the wonderful earning opportunity Avon has created. Write Box 4141, Midland, Texas 79701. 1-25-tnc

### BUSINESS SERVICES F

#### Furniture & Upholstery F-2

GERT's a gay girl — ready for a whirl after cleaning carpets with Blue Lustre. Rent electric shampooer \$1. James Jones Hardware.

### RENTALS L

#### Houses L-2

Two bedroom house for rent. 402 West Third Street. Call 756-3762. 7-31-tnc

Country home for rent. Approximately 6 miles west of town, 6 rooms, bath and porch. Call 756-3360 for details. 10-43-2tp

### MERCHANDISE K

#### Appliances K-1

Have your GIFTS and PARTY FAVORS personalized with monogramming. We do it in all COLORS. NAPKINS, R I L L F O I L D S, STATIONERY and MATCHES. STANTON DRUG STORE.

Since World War I, the total number of living war veterans has never fallen below 4.2 million, the Veterans Administration says. Today there are more than 22.9 million war veterans, more than at any time in history.

### Needed Buyers For Midland Homes

Moving to Midland Call **MARY THOMPSON**

682-7681

FHA — VA — EQUITY  
Grube, Realtor, 682-1621

### REAL ESTATE M

#### Farms & Ranches M-2

Farm For Sale: 80 acres, 31 acre cotton allotment, 8 miles east of Andrews. No improvements. Write Roger Hartsell, Route B Lamesa, or call 497-5359.

Farm For Sale: 160 acres, 3 1/2 miles north of Stanton. 61 acre cotton, 80 acres milo. Call Rick Orson, 872-7616, Lamesa. 10-44-4tp

#### Houses For Sale M-4

House for sale, take up monthly payments two bedroom, carpeted. 802 St. Boniface, 756-2494, Raymond Walton. 10-43-2tp

### Site Spotted In Glasscock

Warren A. Ellsworth, Jr. of Midland filed application to drill a wildcat 12 miles southeast of Stanton in Glasscock County.

No. 1-14 Edwards is 660 feet from the north and west line of Section 14, Block 34, T-2-S, T&P Survey.

It will go to 7,500 feet to test the Wolfcamp.

In addition to providing educational assistance in colleges and universities, the V9 has on-the-job training programs and high school completion training for veterans with service after Jan. 31, 1955.

### Spell Quiz

Correct Answer is:  
**Foliage**

### LOANS

Mid-City Credit Co.  
Stanton Supply Finance  
LO 3-1377 756-3422  
Midland-Odessa Stanton

### APPLIANCE SERVICE

- Radio and T.V.
  - All Small Household Appliances
  - All Major Appliances
- Regardless of Make or Model.  
Phone 756-2201

### Heating and Air Conditioning Specialist

All Parts and Labor Carry 90-Day Guarantee  
"Frigidaire Authorized Sales and Service"

### STANTON ELECTRIC

SAM MOORE, Service T. R. LOUDER

### Notice

The Commissioners Court will accept bids on Monday, Nov. 11th, 1968, at 10 A. M. on a new car for the Sheriff's Department.

Trade in will be a 1967 Dodge with 70,000 miles.

Specifications can be obtained at the Sheriff's office.

**Jim McCoy,**  
County Judge

10-24-31-1968

**LEGAL NOTICE**

(The following change in voting boxes will not be effective until January 1, 1969)

**NOTICE**

Notice is hereby given that the Commissioners' Court of Martin County, Texas, at its regular meeting, August 12, 1968, did, under the provisions of Article 2.04 of the Election Code of the State of Texas as amended, divide the County of Martin into election precincts.

Number 1 was left undisturbed under the boundaries heretofore existing. Voting boxes no. 2, 3, 4, 5, 6, and 7 have been changed to form new voting boxes and their boundaries are as follows:

**VOTING BOX NO. 2:** Stanton (Methodist Church)

Beginning at a point on the South Martin County line, said point being where the East section line of Section 35, Block 36, T 1 S, T & P Ry. Co. Survey, Martin County, Texas, intersects said County line.

Thence North on section line, a distance of 2 miles or to the Northeast corner of Section 26, Block 36, T 1 S;

Thence West following section line, a distance of 1/4 mile;

Thence North following the same course, as the section line to a point in the South boundary line of the City of Stanton, and said point being the center of St. Peter Street;

Thence North following St. Peter Street and Second Street in North Addition to the town of Stanton;

Thence West two block, or to St. Paul Street;

Thence North of the Business Route of State Highway No. 137;

Thence Westwardly to the 1/2 section line of Section 14, Block 36, T 1 S, T & P Ry. Co. Survey, Martin County, Texas;

Thence North following the 1/2 section line to the North section line of said Section 14;

Thence West 1/2 mile to the Northwest corner of said Section 14;

Thence North following section line to the Northeast corner of Section 46, Block 36, T 1 N, T & P Ry. Co. Survey, Martin County, Texas;

Thence West one mile to the Northwest corner of said Section 46;

Thence North 4 miles to the Northeast corner of said Section 21, Block 36, T 1 N, T & P Ry. Co. Survey, Martin County, Texas;

Thence East on section line to the East Martin County line;

Thence South on East Martin County line to the SE corner of Martin County;

Thence West on said Martin County line to the place of beginning.

**VOTING BOX NO. 3:** Tarzan (Tarzan Marketing Association)

Beginning at a point on the West Martin County line, said point being where said Martin County line intersects the South section line of Section 32, Block 39, T 2 N, T & P Ry. Co. Survey, Martin County, Texas;

Thence East on section line to the SE corner of Section 40, Block 37, T 2 N, T & P Ry. Co. Survey, Martin County, Texas;

Thence North 2 miles on section line to the NE corner of Section 29, Block 37, T 2 N, T & P Ry. Co. Survey;

Thence East 1 mile on section line to the SE corner of Section 31, Block 36, T 2 N, T & P Ry. Co. Survey;

Thence North on section line to the Northeast corner of Section 15, Block 36, T 3 N, T & P Ry. Co. Survey;

Thence West 1 mile on section line to the NW corner of said Section 15, Block 36, T 3 N, T & P Ry. Co. Survey;

Thence South 1/2 mile on section line to the SW corner of the N 1/2 of said Section, Block 36, T 3 N, T & P Ry. Co. Survey;

Thence West with North lines of Leagues No. 245, 246, 247, 248, and 318 to the Northwest corner of League No. 318, Martin County, Texas;

Thence North with East boundary line of Section 1, Block HA to South line of Block 7, University Land, Martin County;

Thence Westwardly with the South line of Section 31 and Section 32, Block 7 of University Land to the West boundary line of Martin County;

Thence South on the West Martin County line to the place of beginning.

**VOTING BOX NO. 4:** Pleasant Valley (Snell Residence)

Beginning at a point on the West Martin County line said point being where said Martin County line intersects the East section line of Section 8, Block 34, T 3 N, T & P Ry. Co. Survey, Martin County, Texas;

Thence Eastwardly with South section lines of Section 32 and 31, Block 7, University

Land to the Northeast corner of Section 1, Block HA, Martin County, Texas;

Thence Southwardly with the East section line of Section 1, Block HA, Martin County, to the Northwest corner of League No. 318, Farmer County School Land;

Thence Eastwardly with the North boundary lines of Leagues No. 318, 248, 247, 246, and 245 to the Northeast corner of League 245, Dickens County School Land;

Thence North on section line to the Northwest corner of Section 15, Block 36, T 3 N, T & P Ry. Co. Survey, Martin County, Texas;

Thence East 1 mile to the Northeast corner of said Section 15, Block 36, T 3 N;

Thence North following section line to the Northeast corner of Section 6, Block 36, T 3 N, T & P Ry. Co. Survey, Martin County, Texas;

Thence West 1/2 mile to the Southwest corner of SE 1/4 of section 43, Block 36, T 4 N, T & P Ry. Co. Survey;

Thence North to the North Martin County line;

Thence West on the North Martin County line to the Northwest corner of Martin County;

Thence South on the West Martin County line to the place of beginning.

**VOTING BOX NO. 5:** Lenorah (Baptist Church)

Beginning at a point on the East Martin County line, said point being where said County line intersects the South section line of Section 48, Block A, Bauer & Cockrell Survey, Martin County, Texas;

Thence West on section line to the Northeast corner of Section 44, Block A, Bauer & Cockrell Survey, Martin County, Texas;

Thence North 2 miles on section line to the Northeast corner of Section 52, Block A, Bauer & Cockrell Survey, Martin County, Texas;

Thence West on section line to the Northwest corner of Section 20, Block 36, T 2 N, T & P Ry. Co. Survey, Martin County, Texas;

Thence South 3 miles on section line to the Northeast corner of Section 42, Block 36, T 2 N, T & P Ry. Co. Survey, Martin County, Texas;

Thence West 1 mile on section line to the Northwest corner of Section 42, Block 36, T 2 N, T & P Ry. Co. Survey;

Thence South on section line 5 miles to the Southwest corner of Section 18, Block 36, T 1 N, T & P Ry. Co. Survey, Martin County, Texas;

Thence East on section line to the East Martin County line;

Thence North on East Martin County line to the place of beginning.

**VOTING BOX NO. 6:** Brown Paymaster Gin

Beginning at a point on the North Martin County line said point being where North Martin County line intersects the East section line of Section 8, Block 34, T 3 N, T & P Ry. Co. Survey, Martin County, Texas;

Thence South on section line to the SE corner of Section 29, Block 34, T 3 N, T & P Ry. Co. Survey, Martin County, Texas;

Thence West on section line 5 miles to the SW corner of Section 26, Block 35, T 3 N, T & P Ry. Co. Survey, Martin County, Texas;

Thence South on section line 4 miles to the Southeast corner of Section 1, Block 35, T 2 N, T & P Ry. Co. Survey, Martin County, Texas;

Thence West on section line 3 miles to the Southwest corner of Section 3, Block 35, T 2 N, T & P Ry. Co. Survey, Martin County, Texas;

Thence South 2 miles on section line to the Southwest corner of Section 10, Block 35, T 2 N, T & P Ry. Co. Survey, Martin County, Texas;

Thence East 7 miles on section line to Northeast corner of Section 52, Block A, B & C Survey, Martin County, Texas;

Thence South 2 miles on section line to the Northeast corner of Section 44, Block A, B & C Survey, Martin County, Texas;

Thence East on the section line to the East Martin County line;

Thence following the East Martin County line Northwardly to the Northeast corner of Martin County;

Thence West on said Martin County line to place of beginning.

**VOTING BOX NO. 7:** Flower Grove (School)

Beginning at a point on the North Martin County line said point being where North Martin County line intersects the East section line of Section 8, Block 34, T 3 N, T & P Ry. Co. Survey, Martin County, Texas;

Thence South on section line to the SE corner of Section 29, Block 34, T 3 N, T & P

# Stanton High School News

By PUG DEAVENPORT



The Buffalo herd, hampered by injuries, could not muster a second half rally last Friday night, and failed in their first district contest 33-8. The defeat, at the hands of the McCamey Badgers, left the Bisons with a 4-2 record.

Stanton's sole tally came with three seconds remaining in the first half, when Gary Kitchen intercepted a McCamey pass, and carried the pigskin 43 yards into the endzone for the six points. Jones' pass to Kitchens for the EP was good and narrowed the Badger's lead to 14-8.

In the second half McCamey came on strong, and rolled up nineteen points to win the conference battle.

—SHS—

The Buffalo Junior Varsity suffered a 44-0 loss last Thursday, when they found themselves, out-classed by powerful Big Spring sophomore team.

Coach Phil Stovall has recognized two "B" team boys for their defensive effort in the last two games. Freshman Frankie Barnhill was cited for defensive aggressiveness with his 10 tackles in the Wink game, and sophomore Roy Kelly was chosen for best effort against the Big Spring sophom.

—SHS—

Four more names have been added to the Buffaloes weekly choice of back of the week, and lineman of the week David Jones, quarterback, and Frankie Arguello, tackle, were selected for their efforts against Coahoma. Arguello was also chosen for the lineman's mention in the Post contest.

Ry. Co. Survey, Martin County, Texas;

Thence West on section line 5 miles to the SW corner of Section 26, Block 35, T 3 N, T & P Ry. Co. Survey, Martin County, Texas;

Thence South on section line 4 miles to the Southeast corner of Section 1, Block 35, T 2 N, T & P Ry. Co. Survey, Martin County, Texas;

Thence West on section line 3 miles to the Southwest corner of Section 3, Block 35, T 2 N, T & P Ry. Co. Survey, Martin County, Texas;

Thence South 2 miles on section line to the Southwest corner of Section 10, Block 35, T 2 N, T & P Ry. Co. Survey, Martin County, Texas;

Thence West on section line 5 miles to the SW corner of Section 26, Block 35, T 3 N, T & P Ry. Co. Survey, Martin County, Texas;

Thence South on section line 4 miles to the Southeast corner of Section 1, Block 35, T 2 N, T & P Ry. Co. Survey, Martin County, Texas;

Thence West on section line 3 miles to the Southwest corner of Section 3, Block 35, T 2 N, T & P Ry. Co. Survey, Martin County, Texas;

Thence West 1/2 mile on section line to the Southwest corner of the SE 1/4 of Section 43, Block 36, T 4 N, T & P Ry. Co. Survey, Martin County, Texas;

Thence North on the 1/2 section line to the North Martin County line;

Thence following the North Martin County line Eastwardly to the place of beginning.

Martin County shall hereafter be divided into only 7 voting boxes.

Signed: COMMISSIONERS' COURT OF MARTIN COUNTY, TEXAS

Jim McCoy, County Judge

W. W. Atchison, Commissioner Prec. 1

M. D. Coggin, Commissioner Prec. 2

Sam W. Cox, Commissioner Prec. 3

G. E. Cave, Commissioner Prec. 4.

10-42-43-44-31c

IF YOU NEED LP-GAS, CALL . . .

**Jerry Graham**

756-3692

FOR ACCURATE MEASUREMENT THROUGH A PRINTING METER

# Farm & Ranch Review

**ROOT ROT CONTROL** — Lee and Bill Roessler of the Oenaville Community in Bell County, know that deep plowing is an aid for controlling cotton root rot. County Agent Don Decker, said they broke

land used in a demonstration to a depth of 12 inches in October 1967. This year the deep plowed area, with only a trace of dead cotton, produced 315 pounds of lint per acre while the check plot produced 189 pounds per acre and contained about 75 percent dead cotton. Bill and Lee said results would have been even better had the plowing been done during the hot, dry days of August.

Dianna Mims called the roll. Debbie Hazlewood and Cindy Davis led the group in songs. For the program, the nine natural Future Homemaker objectives were discussed.

—SHS—

Two high school games are a tap this week. On Thursday the "B" team will meet the Coahoma Bulldogs on the home field in hopes of avenging an earlier loss to the Bulldogs. Game time is slated at 7:00

On Friday, the Mighty Mites will travel to Crane country, to meet the undefeated, top ranked Cranes. Kick-off is scheduled at 8:00 for the district contest.

Be there and back the Buffs through their tough district games.

Go Buffs!! Pluck the Cranes!!

Approximately fifty band members marched in the parade. They were led by drum major Linda Holder, and were preceded by cheerleaders Debbie White, Marty McArtur, Vickie Morrison, Laura Costlow, and Pug Deavenport, and pep squad members, Doris White and Nancy Hursh. The girls carried signs spelling out "Stanton" and "Buffs."

The Stanton High School student council met Wednesday, October 16, for their weekly business meeting. David Adkins presided over the meeting. Following the roll call and the reading of the minutes, the members discussed pressing problems. The council voted to sell book covers and to investigate into the possibilities of showing movies to high school students.

A movie committee and finance committee were appointed. The council also discussed the installation of members.

—SHS—

Annual sales will be winding up before November 1, so don't forget to order your copy of the 1968-69 Round-up. The year books are five dollars, if purchased now, and \$5.50 if your name is placed on reserve.

Congratulations go to the new 4-H Gold Star winners, Debbie Hazlewood, and Willie Wells. Debbie is a member of the Stanton High School junior class, and Willie is a freshman at SHS.

—SHS—

At the pep rally preceding the McCamey game, Coach Phil Stovall, and band director, George Walker, gave speeches. Mr. and Mrs. Douglas, awarded the spirit stick to the "B" team members.

—SHS—

The Buffalo Booster Club is finishing plans for the annual Halloween carnival to be held October 29, in the American Legion hall. Concessions will be served, and booths, cake-walks, and bingo contests will be set up. Proceeds from the carnival will go toward the payment of the weight room.

—SHS—

This week marks the end of the first nine weeks of school, and report cards will be issued Wednesday, October 23.

On Wednesday, nine week's tests for the odd period classes were given, and the even number classes had tests on Thursday.

—SHS—

The members of the Future Homemakers of America met Tuesday, October 21, in the auditorium. Cindy Davis presided over the meeting, and

You can now buy Freedom Shares — which earn interest at the higher rate of 5 percent if held to maturity of 4 1/2 years — over the counter, in single purchases with Series E Savings Bonds of the same or larger denomination.

**Methodist Collections Slightly Down**

Methodist gave \$49,161,597 for church work in the fiscal year ended May 31, 1968, a decline from the record total of \$50,443,002 in fiscal 1967, but the second highest total in the 36 years of the fund-raising service of Methodist local churches and annual conferences.

In that time, Methodists have given more than half a billion dollars to the building of churches and to other phases of the church's mission in financial crusade led by the denominational staff of professional fund-raisers according to the Rev. Dr. Alton E. Lowe, New York.

**FARM - CITY WEEK**—The period from November 22-28, has been designated by President Lyndon B. Johnson, as Farm - City Week in the United States. Theme for this year's observance is "Tomorrow's Food and Fiber — Everybody's Business."

**PECAN PRODUCTION** — Based on October 1 conditions, the Texas Crop and Livestock Reporting Service, reports pecan production in Texas this year should total 50 million pounds, 47 percent above last year, and 27 percent above the 1962-67 average. The nation's pecan crop is expected to reach 181.3 million pounds, 22 percent less than last year, and 13 percent below average.

# STOCK UP DAYS ARE HERE

PRICES GOOD FOR THURSDAY, FRIDAY, And SATURDAY, OCT. 24th, 25th, And 26th. And MONDAY, TUESDAY, And WEDNESDAY, OCT. 28th, 29th, And 30th.

- Peanut Butter and Jelly, Bama . . . . . 19 oz. jar 53c
- CARMELS, Kraft, With Sticks . . . . . 14 oz. pkg. 31c
- TISSUE, Pert . . . . . 4 roll pkg. 29c
- SYRUP, Vermont Maid . . . . . 59c
- FLOUR LIGHT CRUST . . . . . 25 Lb. Bag \$1.79
- Marshmallow Cream, Kraft . . . . . Pint, 2 for 43c
- MIRACLE WHIP, Kraft . . . . . quart 49c
- Peaches, Pacific Gold . . . . . No. 2 1/2 Can, 3 for 89c
- CORN, Kounty Kist . . . . . 12 oz. can, 4 for 69c
- TAMALES, Wolf . . . . . No. 300 Can, 2 for 59c
- Corn Meal, Aunt Jemima, White or Yellow . . . . . 5 lbs. 59c
- CRISCO . . . . . 3 Lb. Can 69c
- Semi-Sweet Dainties, Hershey's, Chocolate . . . . . 6 oz. 25c
- COOKIES, Keebler's, Cream Filled . . . . . 10 1/2 oz. pkg., 4 for \$1.00
- ICE CREAM, Gandy's Best . . . . . 1/2 gal. 69c
- Butter Milk Borden . . . . . 1/2 gal. 43c
- DR PEPPER, King Size . . . . . 6 bottle ctn. 39c

# VEGETABLES FOR EASY TO DO SALADS

- YAMS JUMBO, NEW CROP . . . . . Lb. 9c
- CARROTS . . . . . 1 Lb. Cello Bag 9c
- POTATOES . . . . . 10 Lb. Bag 39c
- BANANAS . . . . . Lb. 10c
- LEMONADE LIBBY . . . . . 6 Oz. Can 10c
- TV DINNERS Beef, Chicken, Turkey . . . . . Each 39c
- SAUSAGE Pork, Wright's Flavor Rite . . . . . 3 Lb. Roll \$1.09
- BACON DECKER'S, QUALITY SLICED . . . . . 1 Lb. 59c
- BOLOGNA WRIGHT'S, ALL MEAT . . . . . Lb. 49c
- BEEF RIBS Choice, Lean, Meaty . . . . . Lb. 29c

## Stanton Food Market

BOB COSTEY And DWAIN HENSON — Owners

— WE DELIVER —

GET YOUR OHMER KELLY MILK HERE!

We Give Frontier Stamps. Double Stamps On Wednesday With Purchase \$2.50 Or More

HOME OWNED — HOME OPERATED

WATCH OUR WINDOWS FOR TUESDAY AND WEDNESDAY SPECIALS.

211 WEST BROADWAY PHONE 756-2167

