

Serving the Pheasant Capitol of Texas

# The Stratford Star

Number 29 35 Cents Publishing for 89 Years in Stratford, Sherman County, Texas 79084

USPS 523-108 July 20, 1989

## The Winners Are



The 35th Miss Stratford Pageant was held Saturday night July 15, 1989 at the High School Auditorium. All of the girls competing were beautiful but the big winners pictured are Elizabeth Kirkham 1st runner up, 1989 Miss Stratford, Dawn Gray. 2nd runner up, Renne Allen and Talent Winner, Leigh Bass.



Jr. Miss Stratford, Jennifer Haynes, the 1st runner up was Stephanie Gray. Her picture will be in the Stratford Star next week.

## NOTICE

Notice: Countdown-20 days before our Youth Revival-lets use those 20 days to witness our Christian Beliefs and to pray, without ceasing for a real revival.

### NOTICE

There will be a meeting of the Community Development Committee on Monday August 14 at the Sherman County Library.

### NOTICE

Remember to get your commemorative bricks: Contact the Chamber of Commerce, Gaynelle Riffe, Pat Johnson, Joyce Hart or Martha Ellison at the Flower Shop.



Teen Miss division winners were 1st runner up Cherise Davis, Teen Miss Stratford Sasha Browning and Jolna Garoutte 2nd runner up.



Young Miss Stratford Tami Davis, Princess Miss Chancey Rhoades and Jennifer Washburn, Younger Miss Stratford.

## Kansas Woman Killed



A Norton, Kansas woman died when the 1977 Ford Maverick automobile she was driving slid broadside into a tree approximately 1 mile south on Highway 287 Sunday at 11:30 a.m. Stephanie M. Stromer, age 20 was dead at the accident site, Texas Dept. of Public Safety said. Stromer was driving South on U.S. Highway 287 when she lost control of the vehicle and went off the road and slid into a tree on the driver's side. The woman was wearing seat belts, DPS said.

## Court Signs Resolution Adopting 911 Emergency System For Sherman County

The Commissioners Court of Sherman County, Texas, convened in regular session, sitting as the governing body of Sherman County, Texas, at the Sherman County Courthouse in the City of Stratford, Texas, on the 10th day of July, 1989, with the following members present to-wit: W.C. Fesler, County Judge, Wayne Cummings, Comm. Prec. 1; Boyd Spurlock, Comm. Prec. 2; Dale Hamilton, Comm. Prec. 3; Darrell Cotney, Comm. Prec. 4; M.L. Albert, County & District Clerk. Absent None. The above constituting a quorum, the following proceedings were conducted.

Motion was made and seconded that the minutes of the regular meeting held June 12, 1989 be approved as read. All ayes. Motion carried.

Motion was made and seconded that the monthly

reports of all elected officials be and are hereby approved. All ayes. Motion carried.

Motion was made and seconded that the monthly reports of all elected officials be and are hereby approved. All ayes. Motion carried.

Bids for seal coating were received, opened and considered: 1. De Pauw \$58,753.47 2. Lewis Const. \$51,717.84; 3. Appian Corp. \$49,373.26. Motion was made and seconded that the bid of Appian Corp. of \$49,373.26 be accepted. All ayes. Motion carried.

The order establishing an office of Emergency Management was read, approved and adopted on second reading.

Motion was made seconded that the following people be appointed as election judges for a one year term beginning August 1, 1989: Prec. 1, Mary Lou Walden; Prec. 2, Mrs. Ruth Morris;

Prec. 3, Clarence Thrasher; Prec. 4, Millie Hacker; Prec. 5 Joyce Ann Lasley; Prec. 6 Marty Bain; Prec. 7 M.W. Terrell, Absentee, Don Riffe.

Alternate Judges: Prec. 1 Mrs. Don Gurley; Prec. 2 Kathryn Brandvik; Prec. 3 Mrs. J.H. Hall; Prec. 4 Terry Kennedy; Prec. 5 Charlene Oquin; Prec. 6 Arlene Baker; Prec. 7 Georgia Lavake; Absentee W. N. Bridwell, A.E. Pronger.

Motion was made and seconded to sign a resolution changing the manner in which the Board of Directors of the Sherman County Appraisal District are chosen. All ayes. Motion carried. Copy of resolution on file at County and District clerks office.

Motion was made and seconded to make the parking area on the west side of the courthouse accessible  
Cont. On Page 2

## Emergency Farm Loan Applications Being Accepted

Applications for emergency farm loans for losses cause by tornadoes, flooding, and severe storms are being accepted at the Farmers Home Administration (FmHA) office located at 801

Bliss, Suite 104, in the Town Center Building, FmHA County Supervisor Mary E. Bathenhorst said today.

Moore, Sherman and Hutchinson Counties are 3 of 57 in Texas recently named

by Secretary of Agriculture Richard E. Lyng as eligible for loans to cover part of actual production losses resulting from the tornadoes flooding and severe storms.

Cont. On Page 5

**Obituaries**

**Russell James Griffing**

Texhoma- Russell James Griffing, 55 died Saturday, July 15, 1989.

Services were held at 2 p.m. Tuesday, July 18, 1989 in First Baptist Church with the Rev. Winston Curtis, pastor, officiating. Burial was in Texhoma Cemetery by Dawson-Welch Funeral Home.

Mr. Griffing was born in Mankato, Minn. He moved to the Texhoma area in 1986 from Guymon, Okla. He married Judy Ford in 1968 at Mankato, Minn. he was a veteran of the Korean Conflict.

Survivors include his wife; a daughter, Jilayne Theden of Mankato, Minn.; four sons, David Griffing, Keith Griffing, Kevin Griffing and Ronald Griffing, all of Texhoma; two sisters, Virginia Kennedy of Lynn, Minn., and Betty Harroun of Mankato, Minn.; a brother, Alfred Griffing of Guymon, Okla.; and a grandchild.

**Comm. Court  
Cont. From Page 1**

for the elderly. All ayes. Motion carried.

Meeting was recessed for lunch from 12:00 to 1:00 p.m. for lunch at the Sherman County Library.

Gary Pitner with Panhandle Regional Planning Commission met with the court to discuss the 911 Emergency System. Motion was made and seconded to sign a resolution adopting the 911 Emergency System for Sherman County. All ayes. Motion carried. Copy of Resolution on File in County and District Clerks office.

B.A. Donelson and Dave McReynolds met with the court to discuss Sherman County becoming a member of the Panhandle Area Alliance. Annual membership cost is .10cents per capita based on the 1980 census. Motion was made and seconded that Sherman County become a member of the Panhandle Area Alliance. All ayes. Motion carried.

Motion was made and seconded that Sherman County join the Panhandle Regional Planning Commission. All ayes. Motion carried.

Danon Smith with TLS National Marketing Co. met with the court to discuss Transport Life Insurance Co. Cancer Insurance. No action taken.

Jack Haile, Sheriff, met with the court to discuss mapping for 911 and equipment for 911 system. No action taken.

Meeting was adjourned at 3:30 p.m.



The globefish staves off predators by gulping a large quantity of water, till it becomes simply too large to be swallowed by its enemies.

**Low rates make State Farm homeowners insurance a good buy.**

Our service makes it even better. Call me.

**BING SEAL**  
601 E. 7th ST.  
Dalhart, TX  
249-5400

STATE FARM INSURANCE

Like a good neighbor, State Farm is there.

**Your Right To Know**

**By Terry Kennedy**

According to a letter dated July 7, Sherman County was one of 17 counties named as a natural disaster area due to damages and losses caused by severe weather which began on May 4th. As you may know, our worst weather began on May 3, so there may be some difficulty in making applications for agricultural assistance. The Farmers Home Administration is the agency to contact for emergency loans if you are eligible.

The County Judge, Bill Fesler, is to be congratulated for seeking assistance for the members of our agricultural community who suffered losses.

**Letters to the Editor**

**LETTERS TO THE EDITOR POLICY FOR PUBLICATION:** All letters will be accepted, provided they are not anonymous and a bonafide address is given. We will not print statements that are obscene or libelous per se. This paper assumes no responsibility for content and all views are strictly the views of the writer. Copies of letters which have been submitted to other newspapers will receive a low priority for publication. The newspaper reserves the right to edit letters with respect to length or potentially libelous material.

**To The Editor:**

**Condemned By Gossip**

Don't sit in judgement the Bible doth say,  
With people's lives it's a sin to play.  
Gossip and lies are made up by the bored,  
To be good at this practice we ill can afford.  
You gossiped about me to say the least  
On idle ears a gossip will feast.  
The good things shall come and those I will savor.  
Thou shalt not bare false witness against thy neighbor.  
(Ninth Commandment)

A families reputation at the stake you have burned.  
What could come to you, I'm glad I've not earned.  
So people it seems you pushed God off the throne.  
You choose to judge me all on your own.  
Jesus says good Christians be  
What you do unto others you do unto me.  
I'll face my maker and you will too.  
Lets be ever so careful what we say and do.  
What has happened to me, can happen to you.

Susan Ringler

**Satellite Cattle Exchange, Ltd.**  
Stratford Representative  
**Steve Dettle**  
396-2426  
"Give me a call for more information"

**LOOK Large Farm AUCTION Equipment sale For Mid September**  
If you have equipment to sell, Call Keith Waters  
806-396-5391 or 806-396-5801

Auction to be held adjacent to Stratford International Airport

**JAMES H. PERKINS AND ASSOCIATES AUCTIONEERS**

P. O. BOX 779  
212 N. POPLAR  
STRATFORD, TEXAS 79084  
(806) 396-5665

**Dan H. Loving, D.D.S.**  
GENERAL DENTISTRY  
HOME: (806) 381-2212

**Blair G. Loving, D.D.S.**  
GENERAL DENTISTRY  
HOME: (806) 935-9086

212 S. BLISS  
DUMAS, TEXAS 79029 (806) 935-9212

Serving the Pheasant Capital of Texas

**The Stratford Star**

Second Class postage paid at Stratford, Texas, 79084. Subscription rates are \$13.00 per year in Sherman and adjoining counties; all other \$20.00 per year.

**Martha Robertson  
Janis Tillery  
Sharon McCarver  
Shari Hudson**

**Editor & Publisher  
Darkroom & Advertising  
Darkroom & Advertising  
Bookkeeper**

**MEMBER 1989**

**TEXAS PRESS ASSOCIATION**

**Chamber Chatter**

**By J.A. Lasley**

Am I the only one who feels as though time is simply flying by? School was just out and here we have had the Depot Doins, 4th of July, Miss Stratford 35th,

Monday Nite Madness Sale and in 9 days Ex-Student Reunion. You know what is coming next? 2 a-days for football, band 2 a-days, and then it will be Labor Day. I'd like to insert a poem a professor at Institute handed out to us. This is the

**Star Dates**

Thursday, July 20		Monday, July 24	
9-10 8 a.m.	Scot Walking Tops 897 County Barn	9 a.m.	Scot Walking
8 p.m.	City Council City Hall	1-4 p.m.	Scot Ceramics
		1-4 p.m.	Scot Quilting
		7:30 p.m.	Dance Practice Southside
Friday, July 21		Tuesday, July 25	
9-10 a.m.	Scot Walking	9 a.m.	Scot Walking
1-4 p.m.	Scot Ceramics	10 a.m.	Scot Board Mtg.
	Scot All Day Quilting	2 p.m.	Scot Games
7 p.m.	Scot Game Night		
Sunday, July 23		Wednesday, July 26	
		9 a.m.	Scot Walking
		1-4 p.m.	Scot Quilting

Worship Your Lord  
With Thanksgiving

**Editors Note:** In last Weeks edition of the Stratford Star on the pictures of the little ones who will probably be opening the Time capsule in the future, Trenton Boyds name was left out of the picture, We apologize Trenton.

beginning of a new day, God has given me this day to use as I will. I can waste it .. or use it for good. What I do today is important, because I am exchanging a day of my life for it. When tomorrow

comes, this day will be gone forever. Leaving in its place something I have traced for it. I want it to be gain not loss, good not evil, sucess,

Cont. On Page 3

**Women's Health Center**

Normal and high risk pregnancies  
Gynecologic cancer screening  
Breast cancer screening  
Infertility and family planning  
Menopause and hormone problems

**Dr. Turhan I. Baykan M.D.**  
Specializing In  
**OBSTETRICS-GYNECOLOGY**

201 South Bliss  
Monday-Friday 9 a.m.-6 p.m.  
Appointments 935-6599  
Emergencies 935-7171

**BIG 4 ROOFING**

**Ron Solberg  
396-2879**

OVER 20 YEARS ROOFING EXPERIENCE  
WE ARE RELIABLE AND AVAILABLE 365 DAYS A YEAR  
WE ARE LISTED IN THE YELLOW PAGES THROUGHOUT THE PANHANDLE  
WE PUT ON A NEW ROOF THAT LOOKS "NEW"  
WE DO ROOFING OF ALL TYPES, INCLUDING HOT TAR  
WE GIVE FREE INSPECTIONS, FREE ESTIMATES  
WE GUARANTEE ALL WORK  
LIST OF REFERENCES ON REQUEST  
ALL WORK HAND NAILED  
WE USE ASPHALT SHINGLES

**Tired Of Paying That Huge Deductible**  
On Wind And Hail Damage?  
Consider the advantages of a rugged steel roof or steel siding.  
They are both extremely hail resistant.

Turn on a home with Stile  
"THE LATEST IN PREMIUM ROOFING."  
"With 20 years of roofing, Stile is the best metal roof I've seen."  
—Chuck Freitas, Big Island Roofing  
"After our evaluation of the metal roof sheets, we believe them to be a superior building material compared to conventional composition shingles."  
—Scott Maurer, Broadview Service Corp.

- The look of clay tile. Stile combines the durability of steel with the look of clay tile at approximately 1/10 weight.
- The strength of steel sheets. Stile is manufactured from 26 gauge steel.
- Durable, long-life finish. Stile is coated with tough fluoropolymer paints... a 20 year finish.
- Protection you need. Stile has a Class A fire rating when properly applied.

STILE (STEEL ROOFING WITH THE LOOK OF TILE)

Thinking about painting the house? Think again! Get the final solution.

ALSIDE steel siding and overhangs

NOBODY DOES IT BETTER!  
Quality Materials and Fine Craftsmanship

**Metal Concepts**  
604 N. Main P.O. Box 286  
Dumas, Texas 79029

Act now and get \$50 for your old paintbrush and freedom from house painting forever!  
With purchase of siding or trim.  
Call Collect 935-3655 For your free estimate, and have your paintbrush ready!

★ Offer Expires 8-1-89

Doug Hatter, owner 806-935-3655

# SCOT Notes

by Timmie Brown

Happy Day to you Sherman County Older Texans, Neighbors, Friends and Scotters on this Monday a.m. July 17, 1989. We see a rain-washed world this a.m. since quite an electric storm took place here last evening. Several rains have fallen lately-one leaving 2 1/2 inches of water. Days have been quite warm.

With Scot Calendar in hand please note again that on Thurs., July 20 the Scot bus goes to Amarillo. Senior Citizens wishing to take advantage, hurry to get your name in the pot.

Friday evening at 7 p.m., July 21 is game time. Scot finances need a volunteer to organize and carry out a community wide "42" and bridge-tournament as a fund-raising event. Such has often been mentioned but never executed.

Tuesday, July 25, 1989 is Board-meeting time-where all business relating to S.C.O.T. organization is discussed and later brought to the body of members for action. Since a number of members have a hearing disability we want to bring the following items to your attention, Visiting with Director Vicki Gore about our Sherman County Older Texans Organization we noted some pertinent facts that are basic in sustaining the organization financially and want to share these facts with readers and persons interested in this Community project, S.C.O.T.

S.C.O.T.s present yearly budget is approximately \$10,000 which is \$850.00 per month. The present membership of 126 at \$12.00 each yearly dues brings in \$1452.00 The remaining \$8548 must come from other sources such as the annual Bean Supper and other activities which bring in money for running expenses, not special projects. The fund raising projects of pie sales at the Park July 4th and the flea market netted about \$370. We must have a sustaining income. Some one has the solution. Bring your idea before the Board of Directors, so we can get the idea into production! Scot Hall is open daily so lights and aircondition are in use. Director Vicki Gore is leading well but she must have a productive, willing following from members to

## Sonseekers

## Safari

Dear Friends,

I'd like to invite your children and their friends to join us for a fun-filled, exciting program that will add a new dimension to their lives. We're excited about the Church of Christ's Vacation Bible School to be held July 24th-28th, from 7:00-9:00 p.m. This year's theme is SONSEEKER SAFARI-SEARCHING TO KNOW GOD.

How we can seek and find the Lord will be taught using stories of Bible characters. Children will learn who God is and how they can know Him better. Exciting crafts and lively songs will center on the theme of searching to know God.

In addition to the children's classes that will be provided for babies through high school there will be an adult class on Wednesday evening. This special adult class will be July 26 during our regular V.B.S. time. Gary Moore from Hooker, Okla. will be speaking on "How To Minister and Deal With Crisis".

Every member of your family will benefit from attending Vacation Bible School at the Stratford Church of Christ. Make plans to be with us for a wonderful week of life-changing Bible Study.

Sincerely  
Clark Tatum

accomplish goals-one of which is financing. Think about it. Act!!! Gifts, memorials etc. help with finances but to operate smoothly Scot needs a sustaining flow of money available for running expenses.

At 7 p.m. on Thurs. July 27, 1989 the annual Scot Hamburger Supper takes place. Mark the calendar now so that it won't be passed by!

Sat. July 29 is the day at Scot Hall given over to S.H.S. Homecoming events. The luncheon served at 12 o'clock noon is for all exstudent of Stratford school from 1907-1939 and ALL teachers of any date. It is a Dutch Treat affair served with a warm welcome and good food provided, spiced with a sauce of wonderful fellow-ship. Come, ALL!

A dance for all Ex-students and Scotter will be held at Scot Hall Saturday, July 29 AFTER the Student Banquet. Folks are welcome whether they dance or come to visit! Just be there!

Tues. July 11, Eskie Ritchie, Opal Bryant, Levi Worley, Corda Pleyer, Jewel Dovel and Timmie Brown enjoyed 88 at Scot Hall.

Corda Pleyer has lately enjoyed visits from her sister, Georgia Freeman of Amarillo and children Dolores & Carl Humphreys, Glendale, Ariz.

Carolee B. Campbell, Kimberly Campbell and her friend, Heather, all of Liberal, Ks. were Timmie Brown's guests Friday evening. They visited Joyce Hart and family Sat. They viewed the movie of the Baskin-Brown reunion with Lorelyn Powers at her home.

Elsie Pickens guests were her triplet great-grandsons from Okla. who are grandchildren of Kay & Dickie Bachman. Elsie is the only Scotter who holds this distinction, we think. Will secure their names and other interesting data of these small fry later. Elsie is not available this A.M. Lorelyn H. Powers and Timmie Brown were week-end guests of Joy Lyn Powers and Y.O.U. organization at U. Canyon, Tex. They met Joy's teachers and sponsors and joined in campers activities.

On Scotters not-so-well list are Alma Lee McMahan, E.W. Butler and Glennell Dettle. Keep them in our prayers and love.

We extend SCOT and personal love and prayers to Clay Spurlock and family in the death of his wife and mother Joyce Gilbert Spurlock. Joyce was the adopted

daughter of the late Jessie Loomis and Cline Gilbert. She was Cline's niece, also. "Miss Jessie" is one of the earliest pioneers of Sherman Co. Much is written of her in God, Grass and Grit Vol. 1

All these words written and spoken about "liberties" are unacceptable as far as our personal opinion is concerned. When folks ignore the true statements "In the beginning was God" and "He ordained" any opinion offered is theory-yet to be proved. resulting in faulty Court decision, faulty ideas on liberties, faulty acts. Morality cannot be legislated, it already exists. Referring to two articles in Amarillo News of Friday, July 7, 1989 namely "Lawmakers and courts can't mandate morality and protection for the flag. What is your opinion of them? Rep. Bill Sarpalis is a product of morality taught him at Boys Ranch. Our area is fortunate that he is our representative.

Scotters face a busy week with usual activities at Scot Hall marked "Go" and three specials. Scotters will take them all in stride and still have time to spread "Luv u" and Scots shoulder pats of encouragement among peers and friends, won't we?.

### Chamber Chatter Cont. from Page 2

not failure, in order that I shall not regret the price I paid for it.

Makes sense doesn't it? Busy minds and bodies keeps us growing.

Has the burning of flags ignited your very being? It has mine. Are we going to sit on our laurels, shrug our shoulders and say or do nothing? If you are offended let your congressmen know. They could not destroy the Bible and God's Word. Do we want to destroy the one symbol of christian beliefs and freedom?

Of the three counties, Moore, Dallam and Sherman Sherman Co. has not reached its potential from the Job Training Partnership Act (JTPA). We may be missing out by not knowing the facts. You may qualify for free funds available for vocational training, GED preparation of on-the-job training. Call 935-2342 for more information and/or appointment.

At the present Workers Comp. has bogged down. We are a people who do not like to compromise - sad but true.

Things are gearing up for the annual Ex-student Association get together. Call those good buddies. They'll get a warm and rewarding welcome by we homefolks. Once they come they don't like to miss.

# Kerrick News

by Marylou McDaniel

Barbeque sandwiches with meat and buns furnished, will be served Friday, July 21, 7:30 p.m. at Kerrick Community Center. Everyone else should bring a dish to go with it-salad, vegetables, dessert. Hosts are Nita Mae Taylor, Pat and Bill Boren.

July 11 eight Kerrick EH Club members and guests travelled to Cimarron, N.M. They stopped for a coffee break in Clayton, toured the Old Mill Museum at Cimarron, ate lunch at St. James Hotel, then toured the historic hotel. They went on to Philmont Scout Ranch, the former Phillips summer home. In Springer there was a stop at the old Livery Stable Antique Shop. Supper was eaten at Ekland Hotel in Clayton. Reports are a great time by all, Pat Boren, Jo June McDaniel, Franny Taylor, Barbara Avent, Joyce Iribek, Mabel Rogers and guests, Nita Taylor and Donna Gillenwaters.

Minnie Butler, Nita Taylor and Franny Taylor recently enjoyed dinner at a Keyes cafe. The Ralph Warrens and all their family were there celebrating their anniversary.

Friends far and near gathered at the Colorado City, Co., home of Donna Baker for an eighth annual

4th of July party which is co-hosted by Marylou and Fred McDaniel.

Backyard tables were decorated in red, white and blue accented with flowers and flags.

Those enjoying the fun, food and fireworks were Sonny and Emma Lou Hodges, Forgan, Ok. Kay and Kathy Nieden, Booker, Tex., Dr. Herman and Sandra Muns, El Paso, all amateur radio operator friends of Fred.

Also Mike and Kathy McDaniel, Sasha and Lynz, Stratford, Myron Leedy, Junction City, Ks., Franny Taylor, Kerrick, Brenda Taylor and Patti McDaniel, Denver, Co.

Local guests included Cindy Graham and husband Jim Stewart, Conyers Stewart, Lone and Bob Moore, Elanor Byars.

Fred and Marylou McDaniel returned from their mountain home, "Fred's Spread", July 13 after two weeks there. Marylou's father, Myron Leedy, was with them. It got up to 80 degrees about three days when it was over 100 in Pueblo. They were guests at friend's for breakfast, a cookout, then hosted a fish fry for 19 guests on July 7.

Attending a Community Leadership Workshop in Amarillo July 11 were Lynn

Wells, Susie Spurlock and Jean Everett.

Kenneth and Lynn Wells and grandson Derek Wells made a "shakedown run" with their new to them fifth wheeler to Cimarron Canyon.

The Wells Reunion is set for July 22-23 at Camp Billy Joe. Anyone who would like to visit is invited to drop by.

Alvin and Dayle Harris, Gerald and Gay Wilhelm attended the races in Raton Sunday.

Congratulations to Thea James for participating in the Little Miss Revue Saturday. Bigger brother Levi was an escort for another young lady.

Visiting Sunday with the Ben Tom James family were her aunt and uncle, Mildred and Truman Redwine of Hale Center and Aunt Betty Olson of Pendleton, Oregon.

Monday guests at Hank and Mabel Rogers' were their sister-in-law, Jo Alice Rogers of Oden, Ark., Florene Wolfe and son Mark of Amarillo.

Jean Danner, Guymon, spent July 17-18 with daughter Barbara Schoonover. They are planning a family 20th reunion, Aug. 13.

Nita Taylor and Kenneth Borth attended Holiday races at Raton.

Guests at the Leonard Hawkins home Friday thru Monday morning were Peggy's brother-in-law, Vic Holiday, and nephews Tim and Jason Holiday.

# Attend Services

## The Churches of Stratford Welcome Your Family



### FIRST BAPTIST

Dr. Derrel Lewis  
702 North 3rd  
Sunday School 9:45 am  
Morning Worship 10:50 am  
Church Training 6:00 pm  
Evening Worship 7:00 pm  
Wednesday Bible Study 7:30 pm

### FIRST CHRISTIAN

Rev. David Harker  
5th & N. Main St.  
Sunday Coffee Fellowship 9:00 am  
Sunday School 9:45 am  
Morning Worship 10:45 am  
Evening Worship 6:00 pm  
Wednesday, Adult Choir 8:00 pm

### CALVARY BAPTIST

David Jones  
302 S. Main St.  
Sunday School 10:00 am  
Morning Worship 11:00 am  
Evening Worship 6:00 pm  
Wednesday Prayer Service & Bible Study 7:00 pm p.m.

### CHURCH OF CHRIST

Minister Clark Tatum  
N. 3rd & Chestnut St.  
Sunday School 10:00 am  
Morning Worship 11:00 am  
Evening Worship 6:00 pm  
Wednesday Bible Study 7:30 pm

### FIRST UNITED METHODIST

Rev. John Wagoner  
520 N. Main  
Sunday School 9:40 am  
Morning Worship 10:50 am  
Junior High UMY 5:30 pm  
Senior High UMY 6:00 pm  
Evening Worship 6:00 pm

### ASSEMBLY OF GOD

Rev. Terrance Fred  
Corner of Purnell & Fulton  
Sunday School 9:45 am  
Morning Worship 10:45 am  
Evening Worship 6:00 pm  
Wednesday Bible Study 7:30 pm

## GOD GIVES US THE STRENGTH TO DO HIS BIDDING

There was many a thing you attempted to do,  
Then discovered it couldn't be done;  
Like a worthless vocation you tried to pursue,  
Or some foolish adventure for fun.  
With your mission abandoned, in only one way  
could you learn it was not in accord  
With your temple of worship, where lessons convey

That your life's in the hands of the Lord.  
Let's obey His commands and remember at length

It will help us in getting along.  
If we heed His advice He will give us the strength

That we need, and we'll never go wrong.

-Gloria Nowak



"It is God that girdeth me with strength, and maketh my way perfect."  
-Psalm 18:32

Let God have your life. He can do more with it than you can.  
-Dwight L. Moody

C & C Texaco Station  
C & C Texaco Products  
396-2429

North Plains Savings & Loan  
396-5534

The Girls Next Door  
C'S Male Box  
396-5971

Thriftway  
396-5586

Stratford Grain Co.  
396-5541 Lantz 769-4485

Ellie M'S  
396-2092

Consumers Co.  
396-2261

Smith & Smith Well Co. Inc.  
396-2111

Stratford Star  
396-5885

Williams Repair Service  
396-5330 396-2547

Headquarters Restaurant  
396-2120

Walter Lasley & Sons, Inc.  
753-4411

P A S S P O R T

SEARCHING TO KNOW GOD

▶ Crafts ▶ Songs ▶ Recreation ▶ Refreshments  
**Vacation Bible School**  
**Stratford Church Of Christ**  
 Place: **3rd and Chestnut**  
 Dates: **July 24th - 28th**  
 Time: **7:00 p.m. to 9:00 p.m.**  
*Your passport to the greatest adventure of all!*

# Star SOCIETY



A bridal shower was held for Jana [Coll] Gibson, bride of Jeremy Gibson in the home of Karen Perrin, Tuesday, July 11. Pictured Holly Gibson sister in law, mother of the groom Carole Gibson. Jana and Donita Robertson, Jeremy's sister.

## Donelson Appointed

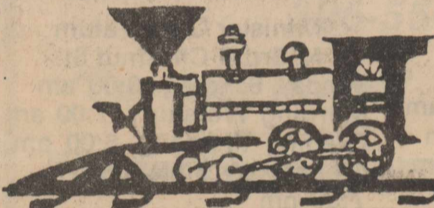
LeRayne Donelson of Stratford, has been appointed to the Child Protective Services Advisory Committee of the Texas Department of Human Services. LeRayne joins 170 other Texans who serve on the department's twelve advisory groups, assisting the Board of Human Services and the department's staff in identifying and coping with issues in the delivery of human services.

"These citizen-advisors render a valuable service to the department in providing their expertise and experience in helping shape the programs that assist approximately two million Texans annually," said Rob Mosbacher, chairman of the

Board of Human Services which approved the appointment.

The purpose of the advisory committee on which LeRayne Donelson will serve is to review and make recommendations on the department's child protection services program which includes child abuse/neglect investigations, foster care, adoption, and services to truant and runaways.

During fiscal year 1988 staff investigated 65,966 reports of alleged abuse/neglect involving more than 103,000 alleged victims. Approximately 43% of these reports were confirmed. About 5,600 children were in foster care as of August 31, 1988.



## Museum Notes

Well summer is finally here! Boy, has it been hot around the Depot. But we have a very good air conditioner so it's the perfect time to come see the new displays.

Since we are celebrating Sherman County's centennial birthday, we're honoring the older living County officials. Madge Lowe is the one we are featuring now. Madge served as County Treasurer from 1962 to 1976, about 14 years. In the years since, her health has failed and she is now a resident of Coldwater Manor. She was a china painter in years past and since living at the Manor has taken up watercolor painting and needlepoint. Come by and enjoy the lovely things she's

made.

This is the month of the Stratford Schools reunion, so we have displays of school memorabilia. Come see if we don't make you remember something you'd forgotten from school days. You'll enjoy reminiscing. Thanks to Jack Davis and Mrs. Boston, we have a good number of school annuals for you to browse through also.

Then if you haven't seen them yet, we still have E.W. Butler's display of miniature coal-oil lamps on display. They are most interesting and you'll enjoy seeing them. Bet you didn't know there were that many made!

So you see there is something for everyone at the Depot and it's cool! See you there!

## Tips & Topics

By Susie Spurlock County Extension Agent

### Vacationing With Kids

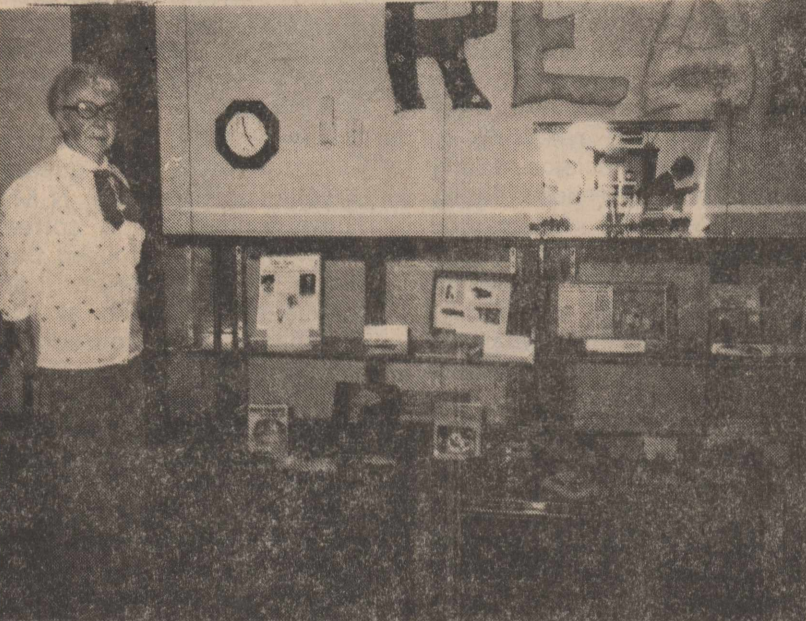
Summer means vacations and travel for many children and families. As families have become more mobile and as more and more children travel alone to visit a non-custodial parent, summer days often find them "on the road." Advance planning can make travel and vacation days less stressful for both children and parents.

The following tips may help to ease the stress of summer travel: 1. Arrive at the airport, train or bus station early. Allow plenty of time to park the car, check the baggage and board the plane, train or bus. Allowing extra time will help to reduce the stress that both parents and children experience. 2. Very young children and their parents often find travel difficult. It is difficult for children to sit still for long periods of time, and they tire easily. Bring along toys and snacks that will help to ease the wait for the child — and for the parents. Pack a

tote bag with paper and crayons, small toys and games. Include something new that will catch the child's attention as well as old favorites which can provide the child with a sense of security. Crackers, nuts, cheese, dried fruit and individual packs of juice make good snacks for traveling. Be sure to include chewing gum if you are traveling by air as it may help to relieve the pressure which can build up in the child's ears during take-off and landing. 3. Taking a camera on a vacation can help capture family activities and trip memories. The school-age child is old enough to take photographs of his own and will enjoy this opportunity. A Polaroid camera is especially nice because the pictures can be seen immediately. 4. When traveling with children, an emergency kit is a necessity! include band-aids, medicines, a flashlight and

### Out The Library

By Dorothy Haile



Reader of the Week, Jewel Peterson.

Jewel Peterson is observing an exhibit in the display case at Sherman County Public Library. Featured is the book, TRAIN TO ESTELLINE.

The author, Jane Roberts Wood, has written about her mother who arrived by train to begin a school teaching assignment in rural Hall County, Texas. The book is classed as fiction, but much of the story is based on true facts.

Jewel and Jane's mother were teaching at the Weatherly School which is the setting for this novel. The author, Jane, and her twin, Betty, have continued to be in contact with Mrs. Peterson.

The information in the story is based on "letters to

family members and freinds back home, hastily-penned notes to her new associates, and impassioned diary entries. Lucy shares the details of her experiences as a struggling teacher while revealing her own developing character and love for her students. At White Star school Lucy encounters ignorance, poverty, racism, and chauvinism, along with enthusiasm for learning, tremendous generosity of spirit, and a healthy, if sometimes grudging, respect for her goals and methods-traits that are strangely compatible within a single community."

The library is grateful to Jewel Peterson for personal information about the author.

### From Our Home To Yours

On Tuesday, Coldwater Manor had its honored guest luncheon. This month we honored Elaine Standard for the help she has given me and the decorating she has done to our home. We want to thank her. Her presence is very much appreciated here.

Our monthly birthday party was sponsored by the 4H. We had a good time. Our birthday list was Faye Elder, Richard Groves, Mollie Hawkins, Ralph Kennedy, Walter Lee, Shirley Raymond, Toy Wood and Mable Burke. The 4H group put on a style show and sang. We had a lot of fun.

Friday at our Trivia game, Ken Altman walked away

with the winning score. Way to go Ken!

Monday July 17, we had an employee appreciation day. We had a cook out for the employes of our home. We also had a dress down day. We want to thank each one of them for their love and hard work.

Our crafts are going great. Aug. 26 and 27 we will have a booth at the county barn to sell what we have made. Ya'll come out and see. (You can buy too).

Again, thanks to our many volunteers and their very meaningful contributions. If you are interested in volunteer work, see Kay Stedum at anytime.

### Ladies Golf

Women's Golf Association met July 11. Present were Charlene Oquin, Aida Mitts, Mary Brooks, Pat Williams, Frances Gray and Reba Pittman. The team of Frances Gray won, each received a ball, Charlene Oquin, Pat Williams. Frances Gray won two balls for Playday. Reba Pittman and Judy Oquin tied for second in First Flight in Tucumcari, New Mexico, June 26. Reba Pittman and Judy Oquin won First in First Flight in Guymon, Oklahoma, July 11, a covered dish was enjoyed by all.

### Plainview Of Griggs

There will be a come and go bridal shower for Michelle Asher on July 18, 6:00 p.m. till 8:00 p.m. at the home of Minnie Cox. Everyone is invited to come.

On Wednesday evening visiting Mildred and Betty Grabeal were Bonnie Grabeal, Nikki Pugh and her sons, Chad and Nick. On Sunday they were surprised when Bob and Mary John Carter and Larry and Susan Grabeal from Hammond stopped by as they were returning from a cycle tour of Texas, New Mexico and Colorado.

John Lee from Colorado Springs, Colorado visited in the Lawrence Wells home on Monday.

The Marella U.M.W. Women met at the home of Mildred Grabeal last Thursday. Joyce Wells was lesson leader. Call your news in at 543-6450.

### Garden Club

Stratford Garden Club met in the home of Mrs. Mary Peach Smith on Thursday morning. Delicious refreshments were served to the following members, Mrs. Opal Bryant, Corda Pleyer, Xenia Green, Audrey Gamble and Betty Lou O'Brien, and hostess. President Corda Pleyer called the meeting to order after a short business meeting, we all worked together planning our program and year book for 1989-90.



The first airplane purchased by the U.S. government was called the Miss Columbia and bought from the Wright brothers in 1909.

Beverly Joan Batt  
and  
Delvin Wesley Howard  
have chosen the first day  
of our new life together  
as Saturday, the fifth of August  
nineteen hundred and eighty-nine  
You are invited to share our joy  
as we exchange vows  
at two o'clock in the afternoon  
First Baptist Church  
Haysville, Kansas

Reception following  
First Baptist Church  
Fellowship Hall

Here's a cool idea for a refreshing, innovative beverage. Cherry-Banana Shake combines three favorites. Northwest fresh sweet cherries, ice cream and banana in a luscious drink that's as easy to make as it is appealing.

- Cherry-Banana Shake**
- 1-1/2 cups pitted Northwest fresh sweet cherries
  - 1/2 large banana, peeled and sliced
  - 5 large scoops vanilla ice cream
  - 2 whole Northwest fresh sweet cherries with stems

Puree cherries and banana in blender. Add ice cream and blend until smooth. Pour into 2 glasses; garnish each with whole cherry. Serve immediately. Makes 2 servings.

tissues. 5. Avoid planning trips which are too long and too involved for children. The novelty of being away from home and their usual environment can take their toll quickly with children. Keep in mind the child's developmental level and attention span when planning vacation activities. Theme parks can be great fun for older children but may be exhausting and frightening to young children. Short, simple trips may be more fun, less expensive and more restful for the whole family. 6. If the child will be traveling alone, prepare the youngster well in advance. Airlines will assist children who are traveling alone to assure their safety. Vacations are supposed to be fun-filled times. With a little advance planning and preparation, they can be.

## Look Out "Little Yellow Frozen Food Truck" We're out to get'cha!!

Thriftway Meat Department is proud to offer you Institutional Size Frozen Foods. Just Check out the Savings!

	Our Price	Their Price
3 # Breaded Popcorn Shrimp.....	\$10.99	3# \$17.95
2-1/2# Breaded Catfish Strips .....	\$9.99	2-1/2# \$13.60
6# Cooked Fish Sticks.....	\$11.25	3# \$11.25
(Twice as much for the same price)		
6# Bread-Cod Squares .....	\$18.99	6# \$21.50
3# Breaded Shrimp .....	\$14.89	4# \$19.95
3# Breaded Chicken Strips .....	\$12.99	3# \$14.25
3# Chicken Nuggets .....	\$9.99	3# \$11.55
3# Breast Patties .....	\$9.99	3-1/3# \$14.25
2# Onion Rings .....	\$2.89	2# \$2.99
2# Breaded Okra .....	\$1.99	3# \$4.95
(\$1.00 per lb.) (\$1.65 per lb.)		
2# Breaded Mushrooms .....	\$3.79	3# \$5.75
(\$1.89 per lb.) (\$1.92 per lb.)		
2# Broccoli Spears.....	\$2.39	2# \$2.70
2# Carrots .....	\$1.99	2# \$2.40

### Here are more items at Very Competitive Prices!

- 10# Ground Beef Patties
- Pancakes & Sausage on a Stick (Very good for a quick breakfast)
- 36 count Corn Dogs
- Pork, Shrimp or Cabbage Egg Rolls
- Breaded Zucchini
- Apple Stix
- Oriental Mixed Vegetables

- Breaded Cauliflower
- Breaded Cheese Stix
- Vegetable Stix
- Steak Fingers
- Sausage & Egg Biscuits
- Burritos

If we don't have something you want. Just Ask, we can probably get it.

We're proud to give you more!

# THRIFTWAY

Stratford, Texas

Hwy. 54 East

REMEMBER! WHY PAY MORE Just Because They're At Your Door?

## Cards of Thanks

We want to thank Gophers, Country Kitchen, Barbecue 54, Betty Henry and Stacy Sell.

Stratford Little League

I would like to thank the Chamber of Commerce for making the Miss Stratford Pageant so enjoyable. I would also like to thank the Scholarship Committee for the wonderful scholarships, the Girls Next Door and Family and Friends for their gift certificates, Larry Parsons and Walter Lasley for the Photograph Session and the people who helped me backstage. But most of all I would like to thank Joyce Ann for all her hard work, patience and support. I also want to thank Morrison Funeral Directors for sponsoring me.

I am very glad to have the opportunity to represent Stratford and I will do my best to represent Stratford to the best of my ability.

Dawn Gray  
Miss Stratford 1989

There are not enough, nor big enough Thank yous for all of the tremendous people in this community, who helped make the 35th annual Miss Stratford Scholarship Pageant such a grand success. A special thanks to those who contributed to the Scholarship, Stratford businesses and individuals are generous folk, Saturday evening the Miss Stratford Scholarship Board committed themselves to \$1,000 in scholarship. To Ann Diehl and Simmons Cable for providing our crowns, North Texas Wholesale for inscribing the trophies and plaques, Ellie M's for all of the flowers, Family and Friends; as well as the Girls Next Door for their generosity to the winners. A big Thanks to our school, Mr. Bass for the facilities and a generous thanks to Roxie and Jack Newcomb. They were the ultimate in making it gel and happen. To the backstage crew-you were terrific-Handling little ones-Middle size and the big ones too: Tanya Davis, Ellen Tillery, Susie Harlow, Christy Yell, Jan Sell, Stephanie Harrison, Cheryl Reese, Patti Vincent, Tami Lerman, Barbara Haile and Susan Wheeler. Bless you. For Marr le Bryson; as well as Susan for taking care of Judges-Susie Spurlock and Leonda Fedric for the awesome task of auditing pts. To my volunteer crew who were make up artists and hair curlers (PDQ) Jode, Orlanda, Nikki, Leah, Lisa you did it! To our musicians, Jimmy, Ineta Chesher, Jim Tallafiero and Marihoward Engelbrecht and your God Giving talent. Our entertainers that kept the showing going; Melissa Beattie, Wendy Allison, Lisa White, Bobby Chesher and to Kristi Blake our now Past Miss Stratford who entertained and helped in many ways. To the video crew Dee Brannon, Sandy Tillery and Ben Hulen; News Media Janis and Eric Tillery and Marty Robertson, all to be reviewed and remembered. To Debbie Vandiver and Martha Duncan who set the stage with our centennial (S.S.W.) theme; the Prospectus Study Club & the super reception. For Karen Pulliam who took your money, Eric Tillery for selling programs Wow! What a crew, Thank You, Thank You, To Patti Vincent, Judge Fesler and Viola Kautz for Thursday night mock interview, You got them knowing it was for real and lastly and more special to me the girls, All ages (& young men) who did such a wonderful job, all of you are winners and very special and I love you all.

J.A. Lasley

Thank you to the Miss Stratford Scholarship Board for a successful pageant. I'd like to thank my sponsor Thriftway. J.A. for the hard work and encouraging words and to the ladies behind the stage. Also I want to thank Stephanie Harrison, the Scholarship donors, the businesses who donated plaques, trophies, crowns, flowers, banners, charms and prizes. You all made this a memorable night for many girls.

Thank you Stratford for the opportunity to participate in such a fun event. I will proudly represent you this centennial year as your Jr. Miss.

Jennifer Haynes

The family of Bonnie Mitchell wish to say a BIG THANK YOU to all of you who gave your support in prayer, cards, visits, food, flowers and plants, inquires whether by phone or stopping us on the street, helping out with whatever needed to be done throughout Mom's illness and since her passing. Nothing about this was easy but it helps to know that the STRATFORD folks are always behind you and sometimes a step ahead of you when you need them. David Harker, Mildred and Paul Aduddell, we love you, your support is greatly appreciated. Again Stratford, thank you for being there.

Roy Mitchell  
Judi, Joe, Mitch and Barrett Boren  
Gall, Lynn, Renne and Jami Allen

## County Agent by Jim Allison Sherman County Extension Agent

### White Grubs And Their Control

The white grub is the larval form of an insect commonly known as the May or June beetle. The larva feed ravenously on grass roots. Severely damaged grass can be lifted easily by hand or rolled off of the ground.

The white grub requires 1 year to complete its life cycle in most of Texas. Once a year adult beetles emerge from the soil to mate. Mated females tunnel into the earth and lay eggs, which give rise to small larvae (first instar or stage). These, in turn, result in larger second and third instar larvae that feed ravenously in grass roots. The pupal or resting stage is the last immature phase of the insect's development cycle and occurs just before the adults emerge to initiate the cycle anew.

Adults, known as May or June beetles, are about 1/2 inch to 5/8 inch long and light brown with a slight reddish tinge just behind the head. Studies indicate that female beetles may aggregate at the time of egg laying, a condition which commonly results in localized or "clumped" lawn infestations. The egg laying period averages 30 days.

A female beetle is capable of laying 30 to 40 eggs which hatch in 3 to 4 weeks. Eggs are deposited in the soil at depths of 2 to 5 inches. Egg-laying females appear to avoid sod which has been heavily watered.

The insect passes through three larval stages (instar). Stages one and two require about 3 weeks; the third stage is in the soil the rest of

the year, and during the summer and fall causes most of the lawn damage by its root feeding. Feeding of large numbers of grubs causes lawns to turn yellow and the severely damaged grass can be lifted easily by hand from the ground or "rolled up" because of its shortage of roots. Third stage larvae overwinter in the soil. Under certain conditions, spring root feeding and subsequent damage may occur. White grubs having a 2-year life cycle will feed actively on roots during the second year.

The pupal, or resting stage, lasts for about 3 weeks, during which time no food is consumed. Pupal can be found in small earthen cells at depths of 3 to 6 inches.

Lawns suspected of harboring grubs should be examined during the critical treatment period which is generally the last week in July and the first week in August. Check the lawns by taking several small plug samples or cores. The plugs should be at least 3 to 4 inches in diameter and 4 inches in depth. Examine a total area of at least 1 to 2 square feet. Take the plugs from all parts of the lawn, being careful to include areas of suspected grub damage. Tear the plugs apart and thoroughly examine them for grubs. Treatment usually is justified when more than four grubs per square foot are found.

Insecticides recommended for grub control are much less effective against eggs and large grubs than against small grubs. The residual effectiveness of the insecticides applied after the critical treatment period often prove ineffective because grubs have become large and very difficult to kill.

Use insecticides containing diazinon, Oftanol (Dursban). The residual effect of Oftanol is longer than Dursban or Diazinon. A decline in the number of grubs should be observed about 30 days following treatment. If the grubs are definitely restricted to one area of the lawn, treat the infested area only.

Proper application procedure is important. The key to control is getting the chemical to the grubs in the root zone at the proper time. Granular formulations are easier to apply and can be accurately and quickly applied with a lawn fertilizer spreader. Proper distribution of the granules is important. Make sure that swaths overlap. Immediately follow granular applications with a thorough lawn sprinkling or watering (1/2 to 1 inch of water).

If spray formulations are used, first water the lawn with about 1/4 inch of water.

This will wet the grass and allow the spray formulation to better penetrate the soil. Apply at least 15 to 25 gallons of spray solution per 1,000 square feet. Wash the insecticide into the soil immediately with 1/2 to 1 inch of water. Keep children, pets and other animals off the lawn until the insecticide has been thoroughly watered into the sod and sprays have dried.

Insecticide label clearances are subject to change and changes may have occurred since this publication was printed. The pesticide USER is always responsible for the effects of pesticides on his own plants or household goods as well as problems caused by drift from his property to other properties or plants. Always read and follow carefully the instructions on the container label.

The information given herein is for educational purposes only. References to commercial products or trade names is made with the understanding that no discrimination is intended and no endorsement by the Cooperative Extension Service is implied.

## TSTIs Reducing Workforce

TSTI in Amarillo will reduce its workforce and eliminate seven instructional programs effective August 31 as part of a program to consolidate and integrate its education delivery system. TSTI officials began notifying 41 employees, including 17 faculty and 24 support and administrative positions, this morning, said Ron DeSpain, Amarillo campus president. The programs to be cut are boot and shoe operations, cosmetology, feedmill and elevator technology, meat processing and marketing, precision optics technology, saddle and tack making and transport refrigeration.

DeSpain said the elimination of programs will affect some students currently enrolled, but individual students will be counseled based on their status within the programs.

"We are very sensitive to the impact a reduction in workforce has on individual employees and will be working with them to help find other employment and/or retraining opportunities during the 60 days remaining in budget year 1989," DeSpain said.

DeSpain said officials carefully reviewed positions in keeping with the mission of the institution, faculty/student ratios, enrollment histories, generation of student contact hours and the appropriations bill passed by the Texas Legislature for the coming biennium before making the decision to reduce staffing.

A similar announcement was made today on the TSTI Waco campus where 71 positions will be affected. No programs are being eliminated at the Waco campus, and TSTI's other campuses in Harlingen and Sweetwater are not affected.

Since funding to higher education is based on a formula driven primarily by enrollment, DeSpain said a

decline in student numbers over the past few years resulted in a decline in state funding. DeSpain said the reduction in staff will not reduce the quality of education offered at TSTI but will allow the school to accommodate the staffing needs of growing programs

and to facilitate the development of programming for emerging and advancing technologies. DeSpain said he will continue to work to streamline and consolidate operations on campus.

On a very positive note, DeSpain said that the state legislature has given TSTI \$962,000 to be used over the next biennium for renovations of campus buildings. That money will be used to repair roofs, replace air conditioning and upgrade campus facilities which will be a plus in attracting more students.

## FACTS & FIGURES

The leaders of the 21st century: There are now over seventeen million American children between the ages of four and nine, U.S. Census Bureau statistics indicate.



To help them enjoy life and enter into learning, brightly-packaged seven-piece activity kits have been devised by Western Publishing Company, Inc., manufacturer of Golden activity products.

These Golden Fun Kits feature popular cartoon characters. Each kit also contains a box of Golden crayons plus a mix of coloring, activity and storybooks.

PUBLICATION COPY - COMMERCIAL AND SAVINGS BANKS  
CONSOLIDATED REPORT OF CONDITION (Including Domestic and Foreign Subsidiaries)

STATE BANK NO. 1791-09  
FEDERAL RESERVE DISTRICT NO. 11 13 08633

LEGAL TITLE OF BANK: The First State Bank of Stratford  
Box 48, Stratford, Texas 79084

CITY: Stratford, COUNTY: Sherman, STATE: Texas, ZIP CODE: 79084, CLOSE OF BUSINESS DATE: June 30, 1989

		Dollar Amounts in Thousands			
		Bil	Mil	Thou	
<b>ASSETS</b>					
1. Cash and balances due from depository institutions:	a. Noninterest-bearing balances and currency and coin		1,414		1.a.
	b. Interest-bearing balances		3,961		1.b.
2. Securities			24,982		2.
3. Federal funds sold & securities purchased under agreements to resell in domestic offices of the bank & of its Edge & Agreement subsidiaries, & in IBFs:	a. Federal funds sold		2,865		3.a.
	b. Securities purchased under agreements to resell		none		3.b.
4. Loans and lease financing receivables:					
a. Loans and leases, net of unearned income			21,630		4.a.
b. LESS: Allowance for loan and lease losses			674		4.b.
c. LESS: Allocated transfer risk reserve			none		4.c.
d. Loans and leases, net of unearned income, allowance, and reserve (item 4.a minus 4.b and 4.c)			20,956		4.d.
5. Assets held in trading accounts			none		5.
6. Premises and fixed assets (including capitalized leases)			421		6.
7. Other real estate owned			112		7.
8. Investments in unconsolidated subsidiaries and associated companies			none		8.
9. Customers' liability to this bank on acceptances outstanding			none		9.
10. Intangible assets			none		10.
11. Other assets			1,417		11.
12. a. Total assets (sum of items 1 through 11)			56,128		12.a.
b. Loans deferred pursuant to 12 U.S.C. 1823 (j)			none		12.b.
c. Total assets and losses deferred pursuant to 12 U.S.C. 1823(j) (sum of items 12.a and 12.b)			56,128		12.c.
<b>LIABILITIES</b>					
13. Deposits:					
a. In domestic offices:					
(1) Noninterest-bearing			5,715		13.a.(1)
(2) Interest-bearing			43,466		13.a.(2)
b. In foreign offices, Edge and Agreement subsidiaries, and IBFs			none		13.b.
(1) Noninterest-bearing			none		13.b.(1)
(2) Interest-bearing			none		13.b.(2)
14. Federal funds purchased and securities sold under agreements to repurchase in domestic offices of the bank & of its Edge & Agreement subsidiaries, & in IBFs:					
a. Federal funds purchased			none		14.a.
b. Securities sold under agreements to repurchase			none		14.b.
15. Demand notes issued to the U.S. Treasury			none		15.
16. Other borrowed money			none		16.
17. Mortgage indebtedness and obligations under capitalized leases			none		17.
18. Bank's liability on acceptances executed and outstanding			none		18.
19. Notes and debentures subordinated to deposits			648		19.
20. Other liabilities			648		20.
21. Total liabilities (sum of items 13 through 20)			49,829		21.
22. Limited-life preferred stock			none		22.
<b>EQUITY CAPITAL</b>					
23. Perpetual preferred stock (No. of shares outstanding)			none		23.
24. Common stock (No. of shares a. Authorized b. Outstanding)			60,000		24.
25. Surplus			1,800		25.
26. a. Undivided profits and capital reserves			3,899		26.a.
b. LESS: Net unrealized loss on marketable equity securities			none		26.b.
27. Cumulative foreign currency translation adjustments			none		27.
28. a. Total equity capital (sum of items 23 through 27)			6,299		28.a.
b. Losses deferred pursuant to 12 U.S.C. 1823 (j)			none		28.b.
c. Total equity capital and losses deferred pursuant to 12 U.S.C. 1823 (j) (sum of items 28.a & 28.b)			6,299		28.c.
29. Total liabilities, limited-life preferred stock, equity capital, and losses deferred pursuant to 12 U.S.C. 1823 (j) (sum of items 21, 22, and 28.c)			56,128		29.
<b>MEMORANDA: Amounts outstanding as of Report Date:</b>					
1. a. Standby letters of credit, Total			173		MEMO 1.a.
b. Amount of Standby letters of credit in memo 1.a. conveyed to others through participations			none		MEMO 1.b.

NOTE: This report must be signed by an authorized officer(s) and attested by not less than three directors, other than the officer(s) signing the report.

I/We, the undersigned officer(s), do hereby declare that this Report of Condition has been prepared in conformance with official instructions and is true

SIGNATURE OF OFFICER(S) AUTHORIZED TO SIGN REPORT: John M. Wilson, Sr. Vice President & Cashier

DATE SIGNED: July 13, 1989

AREA CODE/PHONE NO: 806-396-5521

We, the undersigned directors, attest the correctness of this Report of Condition and declare that it has been examined by us and to the best of our knowledge and belief and has been prepared in conformance with official instructions and is true and correct.

SIGNATURE OF DIRECTOR: [Signatures]

(MAKE MARK FOR NOTARY'S SEAL) State of Texas, County of Sherman, Sworn to and subscribed before me this 13th day of July, 1989, and I hereby certify that I am not an officer or director of this bank. My commission expires February 15, 1992.

Signature Notary Public: Arnita Lane

# Business Directory



**North Plains Savings & Loan**  
Stratford - 396-5534

401 N. 3rd Dumas 935-4184  
Dalhart 249-5513

**WALTER LASLEY & SONS INC.**  
**THE Feedyard**  
Since 1953  
753-4411

**Stratford Auto Electric**  
Check with us for trailer wiring  
Champion & Stitt Sparkplugs  
Specialize in Starter, Alternator & Magneto Repair  
119 South Wall 396-5941

**BARBECUE 54**  
Orders to go 396-2588  
Hours 10:30 - 2:00  
4:30 - 8:00  
Monday - Saturday  
Hwy 54 East

**Coldwater Manor**  
396-5568  
"Superior Rated"  
Tender Loving Care  
1111 Beaver Road



**Consumers Company**  
396-2261  
Hwy 287 & 54  
MORE GOING FOR YOU.



**Keener Automotive & Machine**  
396-5615  
Automotive & Irrigation Repair  
Hwy 54 West Stratford, Texas

## THRIFTWAY

Big Town Selection ★ Small Town Friendliness  
Wide Selection Frozen Food  
Quality Foods Fresh Produce  
Hwy 54 East 396-5586

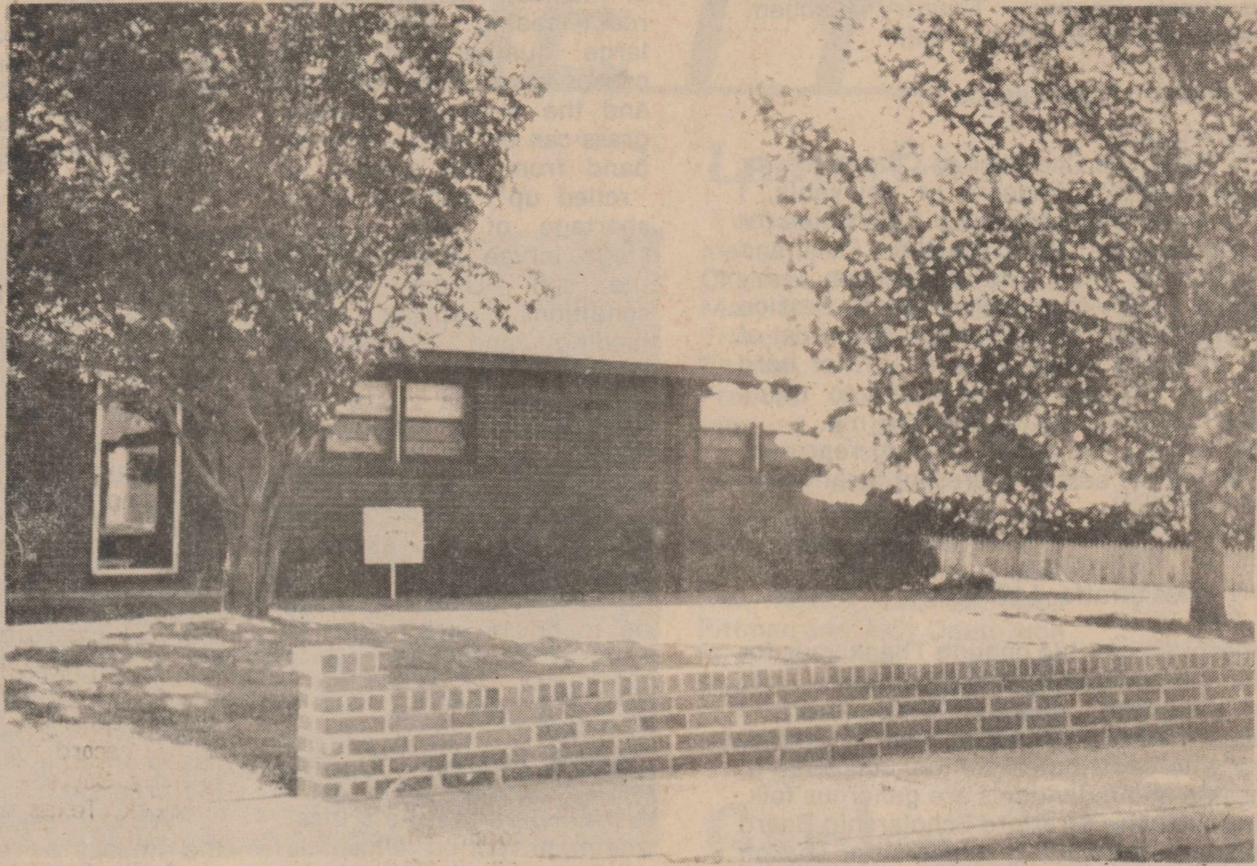
**Golden Spread Implement Company, Inc.**  
**Case IH**  
A Fresh Team for Today's Farmer  
396-5520 396-5529



**COUNTRY CUTS**  
301 N. Main  
396-2424  
Leah Washburn  
June Decker



# Yard Of The Month



Yard of the Month for July belongs to Becky and Tommy Asher at 1308 North Chestnut.

## Coldwater Manor



Honored Guest at the Coldwater Manor luncheon, Tuesday, was Elaine Standard.



These 4H youngsters hosted the birthday party at Coldwater Manor July 11. They are Cara Lavake, Keri Wight, Janell Pronger, Kaci Wight, Wendy Allison and Kyle Ellison.

## Award Presented



Joe Flores and Leonda Fedric received the annual Multi-line Agency Award for District 1, presented by Mr. Charles Scruggs, District Sales Manager of Texas Farm Bureau Insurance. This award is for best all around Auto, fire and Life insurance Agency for 1988.



Birthday kids, Walt Lee, standing, Shirley Raymond, Toy Wood and Richard Groves.



More birthday kids, Mabel Burke, Faye Elder, Mollie Hawkins, Ralph Kennedy and Fred Sweet.

**Stratford Star**  
396-5885  
If you would like your ad here give us a call for our special pricing

**Brown's Meat Locker**  
Custom Wholesale & Retail Meat  
Federally Inspected  
Hwy 287 South 396-2513

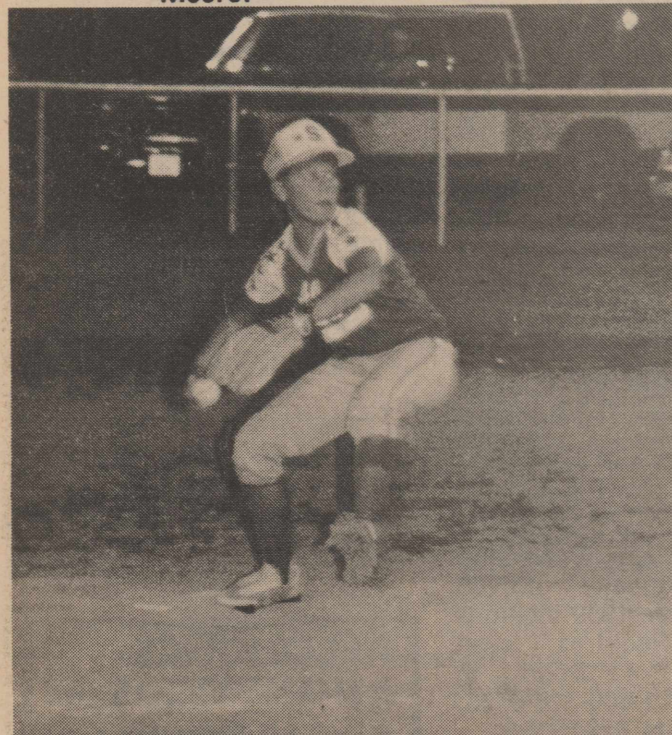
**Moorman's**  
**Tommy R. Ames**  
Sales Representative  
Moorman Mfg. Co.  
Phone: 806-249-4796 BOX 204 DALHART, TX 79022

**Headquarters Restaurant**  
Biscuits & Gravy Daily  
Salad Bar - 11:00 til closing  
Sunday Buffet  
Tues. - Sat. 6:00 A.M. to 9:00 P.M.  
Sunday 6:00 A.M. - 2:00 P.M.  
Orders to go 396-2120  
Pat Crenshaw

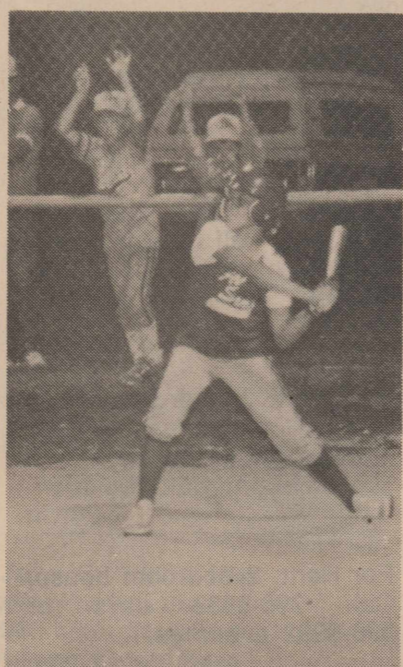
## All Stars



The Stratford All Stars had their tournament last week. Dalhart had 2 teams and took first and second with Stratford placing 3rd. All Star players are Ricardo Chavoya, Rhea Chumley, Kyle Ellison, Clint McAdams, Chris Haynes, David Griffin, Brandon Starnes. Back Row, Head coach Mike Vincent, Clint Vincent, Asst. coach, Steve Haynes, Ben Pigman, Marcus Lavake, Trew James, Clint Craig, Asst. Coach Rusty Craig and Kendall Moore.



Clint Vincent, pitcher for tournament action.



Swing!



Pee Wee Allstars: back row Christopher Bell, Anthony Lucero, Justin Starnes, Shawn Brooks, Jennifer King, Ashley Stoy, Scott McAllister and Casey Switzer. Front row, Paul Brown, Ryan Davis, Wendy Gray, Eric Hernandez, Oscar Aquilera and Cliff Moore. Coaches for this team are Floyd Keener, Howard Naugle, Tommy Stoy, David Brown and Dirk Davis. These Allstars will be playing in the Dalhart tournament Thurs. Fri. and Sat. this week.

## Basketball Camp



The Athletes In Action sponsored a basketball camp in Stratford. Pictured are Craig Stadek, Camp Director from San Diego, Calif., Jason Swain, Wellington, Lance Gallard, Texhoma, Denton Coyto, Plainview, Latosha Brown, Plainview, Ashley Parsons, Stratford, Rhonda Murphy, Texhoma, Derick Formby, Asst. Director, Austin. Middle Row, Jennifer Newcomb, Jeb Brotherton, Toby Diamond, Mandy Mires, Lea Shuping all from Stratford, Crystal Murphy, Texhoma, Brian Barnum, Texhoma. Top Row, Jennifer Swain, Cherise Davis, Matt Brotherton, Lawerance Aquilera all of Stratford, Lelania Hanes, Keyes, Okla., Monte Chapman, Asst. Director, Clarendon, Tex. Not pictured Jared McDaniel, Texhoma and Albert Aquilera Stratford. Matt Brotherton was Free Shot Champ. Stephanie Barnum Girls Most Valuable player. Tyson Hanes, Boys Most Valuable Player, Albert Aquilera, Hot Shot Champ.

## Empty Saddle 5K Run

The 12th ANNUAL XIT EMPTY SADDLE 5K RUN will be held at 7:00 a.m. on Saturday, August 5, 1989, at Dalhart, Texas. This is an official event of the Annual XIT Reunion. This is a well organized run and Panhandle Runners look forward to participating each year. In addition to Texas Runners, there are usually participants from New Mexico, Oklahoma, Kansas and Colorado as well as some other states.

The course record for men is held by Robert Ferguson of Tucumcari, New Mexico with a time of 15:08. The course record for women is held by Caylene Caddell of Lubbock, Texas with a time of 20:01.

There are seven classifications for men beginning with 14 and under and ending with 60 and over. The Women have five classes beginning with 14 and under and ending with 40 and over.

Medals will be given to the top three winners of each division. A "RUN THE HIGH COUNTRY" T-Shirt will be given to the first 100 registrants. IF YOU LIKE TO RUN, DON'T MISS THIS EVENT.

## Kirkwood Completes Basic Training

Army Private Michael W. Kirkwood has completed basic training at Fort Leonard Wood, Mo. During the training, students received instruction in drill and ceremonies, weapons, map reading, tactics, military courtesy, military justice, first aid, and Army history and traditions. Michael is the son of Patsy E. and Doyle L. Kirkwood of 102 N. Third, Stratford, Texas. The private is a 1988 graduate of Stratford High School. Mike is married to Kay Lynne Spurlock and they have a son Kyler Scott.

## Business Directory

**PAT JOHNSON**  
Travel Consultant  
Res. (806) 396-2243

**PALO DURO TRAVEL SERVICE**

**JOAN BELL**  
Travel Consultant  
Res. (806) 396-5958  
Bus. (806) 396-5561

2009 Coulter  
Amarillo, TX 79106



## The Allen Agency

Health Insurance Specialist

302 N. Main

396-5810

For all your gift and floral needs

## Ellie M's Baby & Bridal Registry

209 S. Main

396-2092



## Stratford Grain Co.

Stratford 396-5541

Lautz 769-4485

4 North Main



## Stratford Printing & Office Supply

- PRINTING
- OFFICE SUPPLIES & FURNITURE
- COMPUTER SUPPLIES

*Eastman*

Copiers & Fax Machines

*Suinterc*

Typewriters & Calculators

806-396-5371

208-211 N. MAIN ST.  
STRATFORD, TEXAS 79084



## ELK PHARMACY

317 N. Main  
Stratford, TX 79084  
806-396-5505

We Honor . . . P.C.S. P.A.I.D. BC/BS  
Texas Medicaid

- Baby Shower Registry
- Gifts & Decorative Accessories
- Helium Balloons
- Toys
- UPS Shipping Center
- Bridal Registry
- One-Day Photo Processing

Visa and MasterCard Welcomed



## Country Kitchen

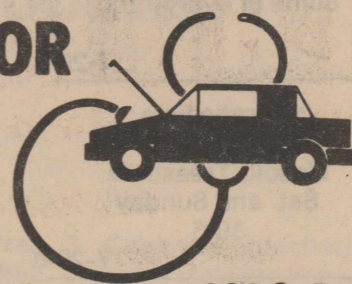
Home Cookin

207 N. Main

396-2038

## BROOKS MOTOR COMPANY

396-2470



802 S. 1st



806-396-2031  
396-2379

## SMITH AGENCY

Insurance  
319 N. Main  
Stratford, TX 79084

SHARON BROWN  
Home 806-396-2356

MILES SMITH  
Home 806-396-2540

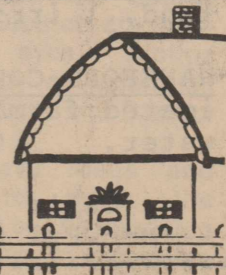


## The Girl's Next Door

396-5971

214 North  
Main

CINDY & ELLIOTT CRABTREE



# IT PAYS TO LOOK IN THE **Star** CLASSIFIEDS

'THE BEST SALESPERSON AROUND'

Phone 396-5885 to place your Star classified ad

★ **FOR SALE** ★

For Sale: Street legal dune buggy. Call 396-2222. 7-20-p

For Sale: 1983 2 door Ford Heritage Thunderbird. For details call 396-5626. 6-22-tfn

For Sale: 1988 Chrysler Le Baron, 4-Door, loaded, low mileage, call 396-5985 evenings or early morning. -8-3-p

Come to THE General Store for all your Nichols tillage tools, 8" sweeps through 7 ft. sweeps. 6-8-tfn

**USED AUTO PARTS FOR SALE**  
Located 4 miles West of Hooker on Hwy 54.  
**MUSSCAT AUTO SALVAGE**  
405-652-2400

12-22-tfn

Come by and check out our complete line of Rubbermaid Housewares in all the newest colors at THE General Store. 7-13-tfn

For Sale: Wooden Storage Building. 20 x 12 ready to move. Contact John at the Bank. 396-5521. 7-27-c

Oat and Alfalfa hay for sale. Call 405-426-2223. 6-23-tfn

For Sale: 1 building, 36 ft. by 54 ft. To sell and be moved. Swimming Pool accessories, pump and heater for sale. Call J.A. at 5911 or 2260. 7-27-c

For Sale, Monogramming machine, excellent business opportunity. Call 396-2462 evenings. 8-3-c

We have left over Sidewalk Sale items 1/2 price of sale price at the Elk Pharmacy. Come in for some fantastic bargains. 7-20-c

**garage sales**

Garage Sale  
One Day Only  
Saturday, July 22  
8:00 a.m.-?  
1219 N. Division  
Some of everything 7-20-c

Garage Sale  
702 N. Poplar  
Unsold Treasures  
Sat. and Sunday  
10-5 7-20-c

Garage Sale  
8:30 a.m. - 6:30 p.m.  
Sat. July 22  
1220 Butler  
Clothes, cooktop stove,  
misc. items, lots of good  
stuff. 7-20-c

★ **SERVICES** ★

For Termite Control  
Call Leo Russell  
at 1-383-7075 Amarillo. Have  
been working Stratford for  
28 years. Have City and  
State License for the City of  
Stratford. 4-24-tfn

Ellies has bridal selections  
for Eileen Miller and Ron  
Pulliam. Free delivery to the  
shower. 8-10-c

Come by for a free Halon fire  
extinguisher demonstration.  
I've also got smoke detectors  
for your home. Call or come  
by Bill Riffe 396-5541. 8-24-tfn

THE General Store has  
bridal selections for Eileen  
Miller and Ron Pulliam with  
free delivery to the shower  
August 12. 8-10-c

Mary Manicures  
401 North 3rd  
Phone 396-2546 7-27-p

THE General Store has  
bridal selections for Rick  
and Sis Olson. Free delivery  
to the shower July 21st. 7-20-c

**HAVE TRACTOR WILL MOW.** Competitive Rates, by the job or by the hour. 396-2869 or 396-5581  
Dennis Davis 7-6-tfn

**VETERANS**--Many benefits are available to veterans including Veterans Land Program and Veterans Housing Assistance Program. For assistance in applying for these and other VA benefits, Contact Max Stephenson, CSO at 396-5348 8-31-p

Call your Local Used Cow Dealer for 7 day a week dead Stock Removal Toll Free 1-800-692-4043. 20 years of Service to the Texas Panhandle. 9-22-tfn

**DUMAS TRAVEL CENTER**  
For your convenience, We now have a new 800 number 1-800-635-8415. Call Toni and Lisa or call Jack Vincent at 396-5388. 1-19-tfn

Ann's Country Kitchen will remain open in our present location until July 31. We will open in our new location August 1, Hwy 287 south at the old Panhandle Commodities Building. Hours will be 5:30 a.m. to 9 p.m. Monday thru Saturday Same menu but lower prices. Come for a visit for a real taste of Country Cooking, Drive up window, Call in orders welcome. 396-2038. Your business and support has been sincerely appreciated in the past and will be in the future. Ann Diehl 7-13-tfn

★ **MISC** ★

Reward offered, ladies pave diamond ring. Call Pat Johnson, 396-2243. 7-20-c

THE General Store now has in stock Thomas Light fixtures for every room in the home, plus yard and porch lights. Come by and take a look. 7-20-c

**OPENING SOON**  
M's Meet & Eat will be reopening soon for your convenience. With the Country Kitchen moving to a new location we feel a continuing need for a place to eat downtown. Come by for lunch or coffee break. We appreciate your past support and are looking forward to serving you again.  
Thanks,  
Martha Ellison  
P.S. I hope the food is as good as the words I am eating 7-6-tfn

THE General Store has Bridal selections for Ellen (Henry) & Robby Goodman with free delivery to the shower July 30th. 7-27-c

**lost and found**

Lost: Long Hair Black persian female cat with gold eyes. Named Velvet, lost from 308 S. Fulton if found call 396-5613. "Reward Offered". 7-27-c

Found: Young kitten, gray and white with siamese markings. Found on North Chestnut. Call 396-2459. 7-20-c

Stratford Lodge  
No. 874  
**M. M. ZALIAFERRO**  
Worshipful Master  
Third Thursday  
8 p.m.

**HARLAND CONSTRUCTION**  
Ron Harland Guymon, OK 405-338-3630

Steel Buildings  
Pole Barns  
Storage Buildings  
Carports  
Overhead Doors

**Michael Padwick M.D.**  
Board Certified in Family Practice

9 a.m.-5 p.m.  
Mondays-Fridays  
Until 7 p.m. Wednesdays

201 South Bliss Dumas, Texas 935-7730

Family Practice  
with Obstetrics  
Se Habla Espanol

**Williams Repair Service**  
Phone 396-2429 or 5330

Don Williams Eddie Williams

**For Plumbing & Heating Trouble**

**Roof Repair & Home Repair**

**Ditching & Backhoe Work**

**Gas Line - Sewer Line - Electric Line**

★ **FOR RENT** ★

Gillis Apts: 1 and 2 Bdrm. furnished and unfurnished. All utilities paid except electricity. Call 396-2450. 7-21-tfn

3 bedroom house for rent. Days call 966-5151 evenings after 8:00 p.m. 935-3534. 3-9-tfn

For Rent: 1 bedroom furnished apartment, clean and neat. 6th and Fulton. Call Bill Riffe 396-5692 to look. 4-13-tfn

3 bedroom house for rent. evenings call 935-3534 after 5 p.m. 5-4-tfn

Apartments For Rent, 2 Bedroom, all electric on North Chestnut. Call Mike O'Brien, 396-2261 or 396-5656 7-6-tfn

For Rent: 3 bedroom house with 2 baths, an outdoor storage house 10 by 12 ft. 501 S. Main. Call 396-2054. 7-20-tfn

For Rent, 2 bedroom house, Call 396-5538 days or 396-5992 evenings. 7-20-c

The Stratford Star will be calling all the local businesses for ads to be combined in a business directory to be distributed to all local residents. If you have a service or trade you would like to advertise in the directory please contact us at 396-5885. There may be services in town that we are not aware of and don't want to miss anyone. This project is a concept of the Community Development committee and the Chamber of Commerce.

★ **Classified Ad Rate** ★

- ★ 16¢ per word after 25 words
- ★ \$4.00 minimum up to 25 words
- ★ 16 cents each additional word first week
- ★ 8¢ per word on subsequent insertions
- ★ \$1.00 discount if paid in advance

★ **Deadline Noon Mondays** ★

★ **HOUSES FOR SALE** ★

For Sale 1980 28 x 70 Mobile Home 3 bedroom, 2 baths, central air and heat. Call 769-4467. 7-27-p

Ants can be frozen for long periods without harm. Many spend the winter inside logs and stumps, coated with ice crystals.

★ **WANTED** ★

Wanted Yard Work, Call Laura Spurlock at 1-948-5409 7-20-c

Responsible Person Wanted to own and operate high profit candy vending route. Nationally proven program since 1959-includes training. Requires cash investment of \$4237 to \$14070. Call 1-800-328-0723. EAGLE INDUSTRIES SINCE 1959 7-20-p

Wanted, Good used refrigerator, call 396-5810 Carolyn Tarver or evenings 396-2393. 7-20-c

**Stratford Refrigeration & Appliance Repair**  
Repair to Refrigerators, Freezers, Washers and Dryers.  
**WAYNE MERRILL**  
396-2129

Family Vision Care Specialists  
**Dr. J.W. McCormick**  
**Dr. David Riddleburger**  
OPTOMETRISTS

THE STRATFORD OFFICE WILL BE CLOSED FOR THE SUMMER MONTHS  
FOR APPOINTMENT CALL DUMAS, 935-6491

**Catherine D. Taylor**  
Certified Public Accountant  
North Plains Building  
401 N. 3 rd 396-2435  
Monday - Friday 9 a.m. - 5 p.m.

**Ad Rem Land Co.**  
710 S. Dumas Ave. 935-7364 **MLS**

3 bedroom brick, new carpet, very nice. Reduced to \$39,000.00.

Very nice-3 BR brick, fireplace, built-ins-2 bath-corner-fence-covered patio. \$69,500.00

Beautiful 3 bedroom-2 1/2 Bath country home with 2 acres. House can be moved-\$80,000.00

2bedroom mobile home-ref. air. Including 5 lots \$12,000.00.

Priced to sell, 2 BR large 2 page, cellar, \$20,000. Make offer.

Beautiful 3 BR. 2 bath-brick-fireplace New exterior paint-motivated SELLER \$64,900.

Owner says SELL. 2BR carpet Rich wood paneling. Large kitchen, dining room, combo., with lots of storage. \$5,000.00 allowance for renovations. \$20,000.00

Marty Bain 396-2053 Tom Ferguson, Broker Pat Johnson 396-2243

**ALCOHOLICS ANONYMOUS and AL-ANON meet each Thursday at 8:00 p.m. in the old County Barn**

**HELFFENBEIN & SONS ROOFING**

"Quality Work - Reasonable Prices"  
We specialize in Residential Dwellings  
Composition - Wood - Tear-offs  
Bonded  
Free Estimates

Dumas, TX 935-9137 Dumas, TX 935-2387

\*\*\*\*\*  
\* **James F. Hayes & Co.** \*  
\* AGRICULTURAL REAL ESTATE \*  
\* CLARENDON, TEXAS 79226 \*  
\* \*\*\*\*\* \*  
\* SHERMAN COUNTY - 320 acres farm- \*  
\* land, 1 irrigation wells. \*  
\* \*\*\*\*\* \*  
\* HANSFORD COUNTY - 436 acres irr- \*  
\* igated farmland, good soils, good \*  
\* water. \*  
\* \*\*\*\*\* \*  
\* Call: David Davidson \*  
\* Mon-Fri 8 to 5 at 874-3546 \*  
\* \*\*\*\*\* \*  
\*\*\*\*\*



***Stratford Ex-Students & Teachers Celebration***

***July 28 - 29, 1989***



***EX-STUDENT BEGINNING***

***Olive Davis Boston, Vice-President, Linus Gunzelman, President,  
Marcella Garrison Gillis, Treasurer and Marty McMahon, Secretary.***

***Stratford ExStudent Association***

***35th Anniversary***

***1953 - 1989***

# Class of 1929



1929 - 30 Basketball Team - Top Row: Coach Newsome, Rex McDaniel, Tom James, J.T. Griffin. Front Row: Virgil Plunk, Eldon Plunk, Irvin Wigginton, Norman Lawler, S.F. Flores.



### PICTURES

Picture Louise Harris when she was cute,  
And Ruth Harrison when she was mute,  
Picture Annie Boney when she was sunny,  
And Wendell Flores when he was funny,  
Picture Penny Pronger about to fly,  
And Tommy Adams eating gooseberry pie,  
Picture Pie Roberts when he sings,  
And Sheldon Foster with his diamond rings.  
Picture a school without a Senior  
And a Freshman with a wise demeanor.

This information was taken from the 1929 annual.

## Smith Agency Insurance



Miles Smith class of 1975 and Sharon Smith Brown class of 1962.

## Lasley & Sons Feedyard



Steve Batis class of 1988, Ralph Hampton class of 1956, Betty Naylor Fesler class of 1960, Charlie Crabtree class of 1963, Ray Lerman class of 1986, Whit McDaniel class of 1979, Robert Jeffries class of 1990, Walter Lasley Sr. class of 1938, Paul Camacho class of 1986, Max Lowe class of 1977, Not pictured, Walter Lasley Jr. class of 1986

# Class of 1939



## WHO'S WHO OF THE SENIORS

Most popular boy .....	Robert Murdock.
Most popular girl .....	Roberta Wray.
Most brilliant boy .....	Jack Dettle.
Most dignified girl .....	Mary Simpson.
Most mischievous boy .....	Pete Taylor.
Most agreeable .....	Fannie Sue James.
Most innocent senior .....	Elva Cartrite.
Wittiest .....	Mildred Pendleton.
Most original .....	Tommie Bryan.
Largest smile .....	Harvey Cartrite.
Best sport .....	Elsie Ellison.

## HALL OF FAME

Sweetest .....	Betty Rhea Lee.
Cutest .....	Marcella Garrison.
Most bashful .....	David Steel.
Fattest .....	a tie between Estelle and Bob Lee.
Best personality .....	Selma Mullins.
Prettiest teacher .....	Mrs. Boston.
Most affectionate .....	Lois James.
Best disposition .....	Mary Woodford Kidwell.
Most humorous .....	Allan Cartrite.
Biggest flirt .....	Betty Jo Sims.
Most talkative .....	Mabel Murdock.
Cutest teacher .....	Miss Gidden.
Quietest .....	Elsie Pearle Spurlock.
Most romantic couple .....	Tommie Bryan and Virgil Garoutte.
Most business like .....	Leon Guthrie.
Most handsome .....	Marvin Patterson.
Neatest .....	Margaret Ritchie.
Best musician .....	L. J. Davis.
Best athlete .....	Beans Parker.

## Mike Vincent Insurance



Aml Vincent class of 1988, Patti Starnes Vincent class of 1970, Sabrina Palmer Melton class of 1985 and Mike Vincent class of 1968

## DUSTER STAFF

Editor-in-Chief .....	Tommy Bryan
Assistant Editor .....	Lewis Higginbottom, Jr.
Sports .....	Virgil Garoutte
Senior .....	Tommy Bryan
Junior .....	Margaret Ritchie
Sophomore .....	Christie Jo Roberts
Freshman .....	Marvin Patterson
P. O. H. .....	Dale Mullins
Glee Club .....	Mildred Hill
Chuckle Burs .....	Roberta Wray
Society .....	Mildred Pendleton
Sponsor .....	Miss Floellen Feild

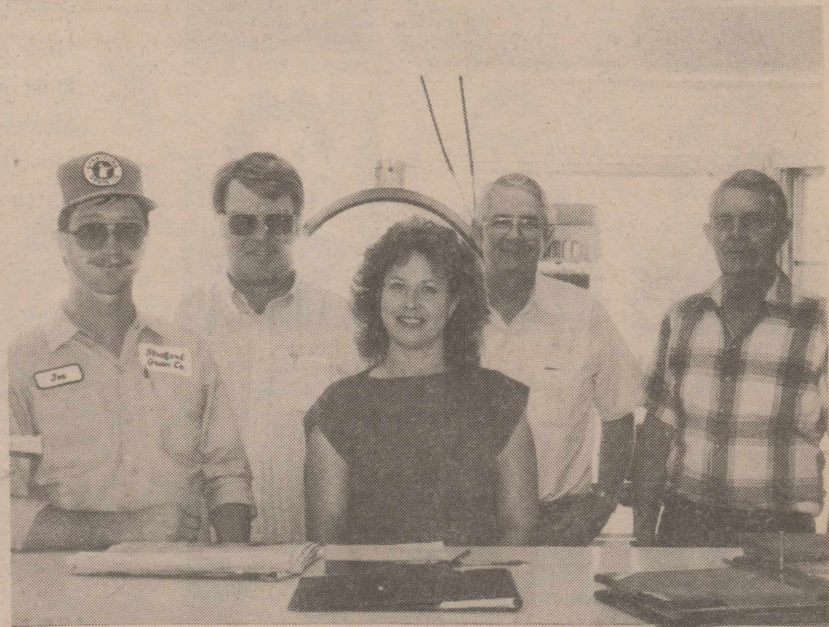
This information was taken from the 1939 annual.

# Keener Automotive & Machine



Travis Melton class of 1988, Carroll Sadler class of 1975, Rick Keener class of 1976 and James Gillenwaters class of 1984.

# Stratford Grain Elevators



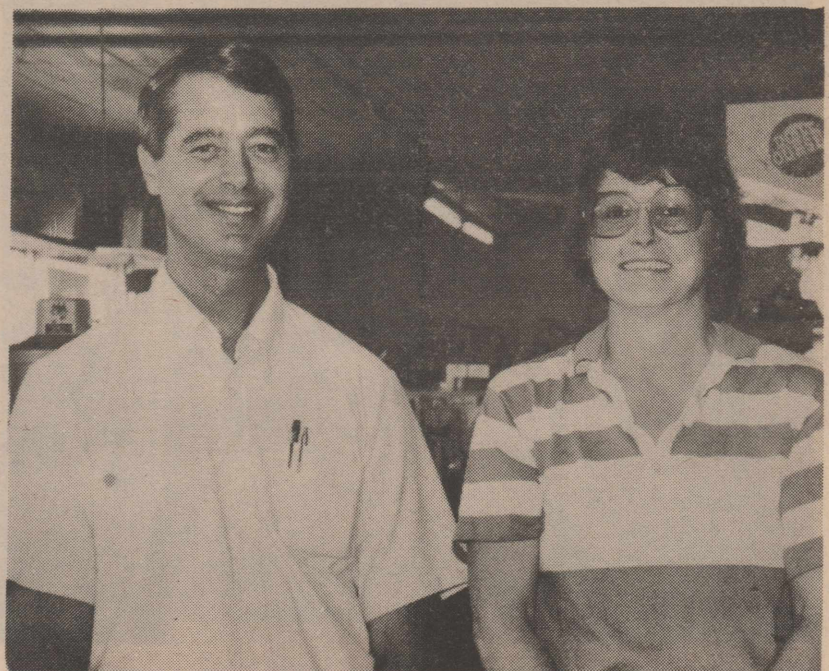
Joe Zak class of 1981, James Spurlock class of 1959, Keri Perrin Knight class of 1982, Bill Riffe class of 1952 and Don Riffe class of 1948.

# Bain Tire Company



Tino Garza class of 1987, Lupe Garza class of 1984, Johnny Garza class of 1980, Becky Asher class of 1969 and Phillip Bain class of 1949.

# THE General Store



Ronnie Pickens class of 1962 and Karen Keener Pulliam class of 1965.

# Class of 1964



Queen Linda Reesing  
King Duane Pittman



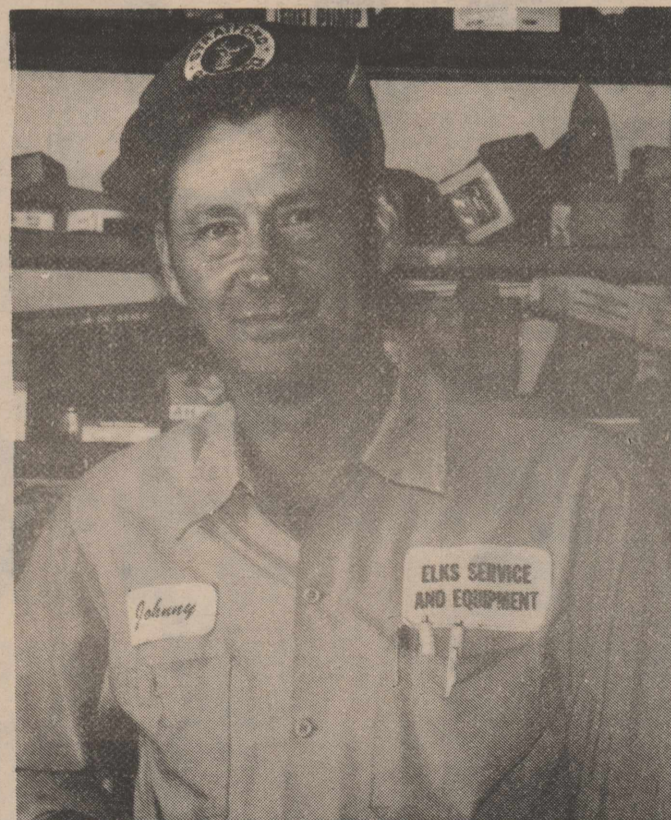
CLASS OF 1964 - Top Row: R.W. Standefer, Jr. Supt., M.P. Bateman, Prin., Justin Roland, Lynn Allen, Sherrel Collins Phelps, Dwayne DeBord, Phil Dettle, Charlotte Eller Postum, Andy Hamel, Lanita Judd Tyson. 2nd Row: Cindy Hell Crabtree, Gary Hudson, Orlanda Lasley Garoutte, Kathleen Leal Limer, Jesse Little, Donna Moon, Marie Moore, Senora Mullican Fessler. 3rd Row: Beth Naylor Morton, Carmen Otegui Leon, Marshall Ottinger, Ricky Pickens, Duane Pittman, Dennis Plunk, Sue Plunk Hudson, Carol Reeder Conklin. 4th Row: Linda Reesing Gore, Mac Sanders, Kenneth Scott, Judy Steinberger Keeney, Sandy Tillery, Wanda Weller, Gary West, Don Williams, Tommy Woods.

## Stratford Printing & Office Supply



VIAnn Ferguson Reed class of 1982 and Donavan Ferguson class of 1978.

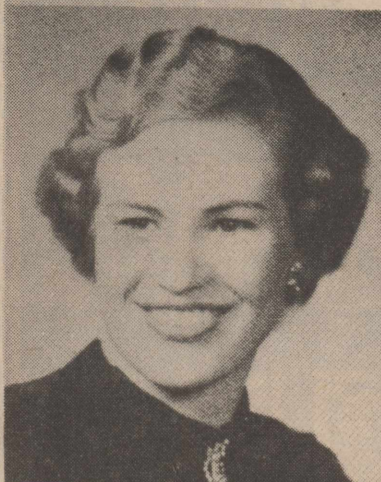
## Elk Service



Johnny Pulliam class of 1963.

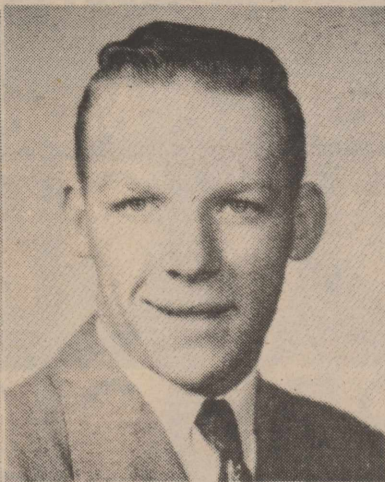
# Class of 1954

Secretary



Lynne Reeder

President



James Crawford

Vice President



Jean Seaman



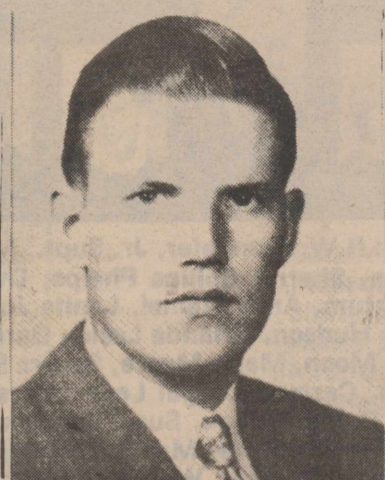
Shirley Finch



Shirley Plunk



Adabelle Knight



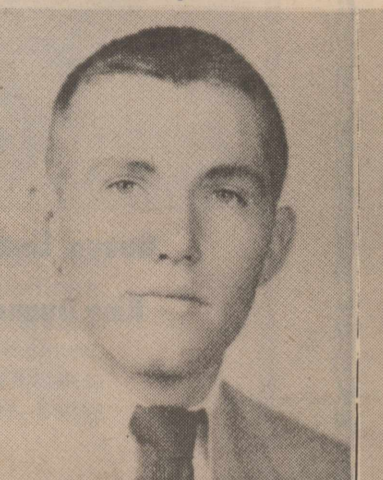
Benny Bidy



Helen Finch



James Davis



B.A. Donelson



Arlene Doerfler



Cynthia G. Reed



Bob Garoutte



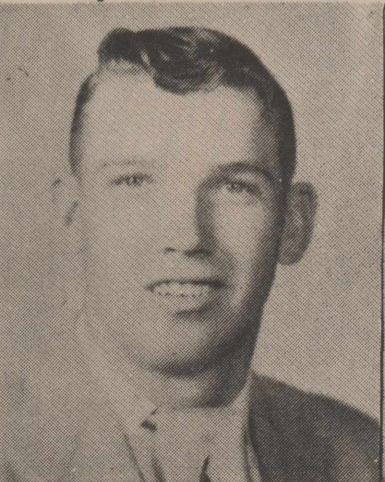
Irene Doerfler



Francis Norris



Jo Wayne Harding



Frank Hamilton



Carol Anne Parvin



Yvonne Mitts

*W*

WELCOME ALL EXES  
supplement as much as  
for allowing us to disrupt  
and have a safe trip h

# FOOTBALL SQUAD



Jeanne W. Brannon



Rita Joyce Neal

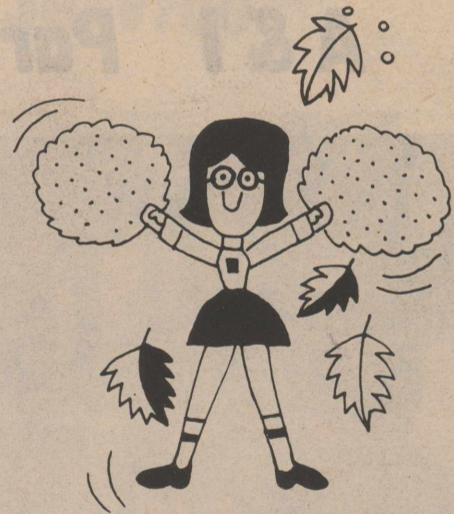


**STRATFORDS FIRST FOOTBALL TEAM 1954**

Back row: B.A. Donelson, Glen Wakefield, Bill Mc Minn, Bob Garoutte, Bob Newman, Ben Bidy, Bruce Bidy, James Crawford, Ralph Hampton, Mick Neal, Jimmy Ingham. Center: Donald Stone, Emery Hamilton, Dan Gillis, Donnie Jacobs, Larry Cagle, Perry Coffman, Lynn Hudson, Dickie Bachman, Homer Boren, Jimmy Davis, John Seaman. Front row: Lance Harrington, Dickie Bammas, Carroll Wisdom, Wayne Cummings, Raymond Kirkwood, Sonny Judd, Poe Keener and Teddy Oakley.

Haskell Bilbery, Coach - Baker Duggins, Assistant Coach

OPPONENT	HOME TEAM	OPPONENT
Texline	12	18
Gruver	7	0
Vega	0	40
Boys' Ranch	20	7
Spearman	13	6
Groom	13	26
Stinnett	0	53
Claude	6	6
Texhoma	0	21



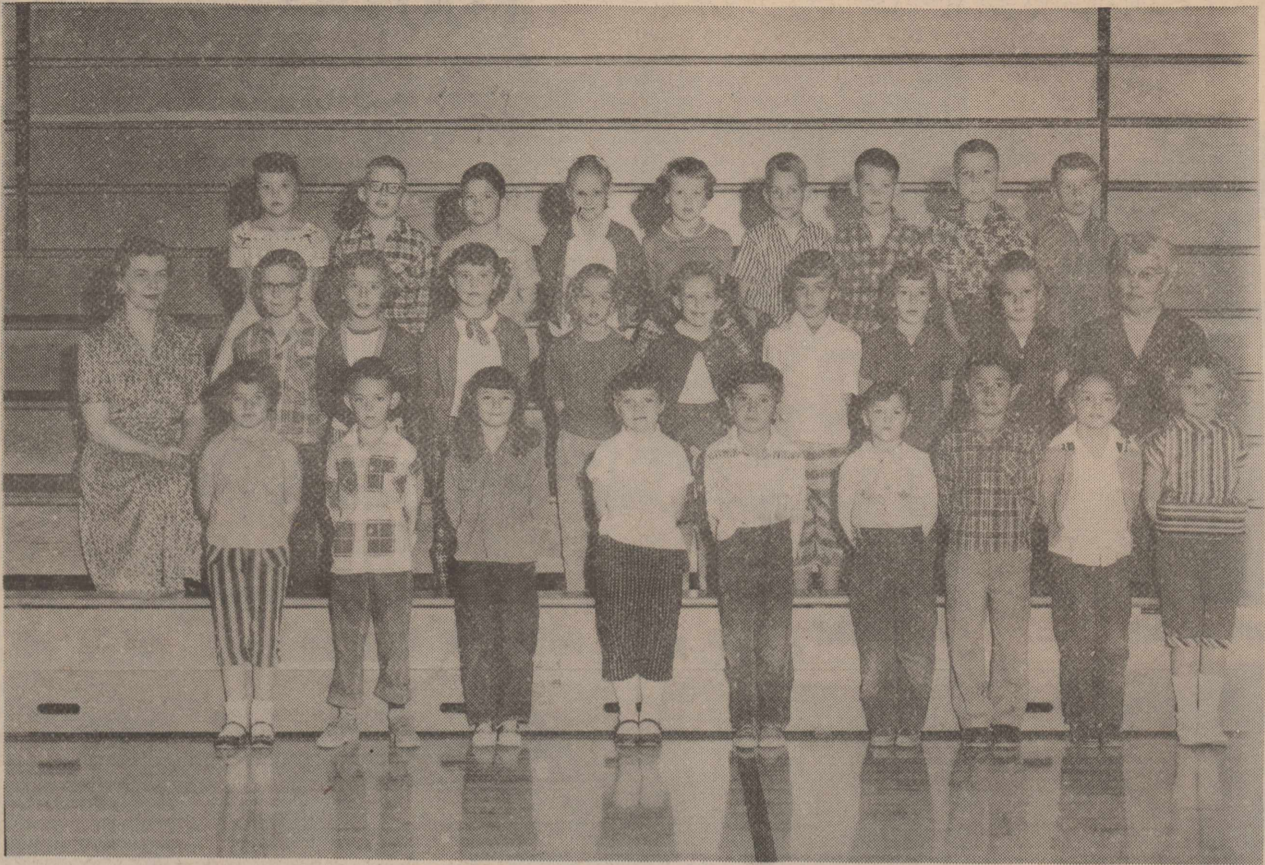
# Welcome Back

**LOOKING AHEAD ! ! ! 1990 Ex-Students and Teachers,  
July 27 & 28, 1990**

**Honored Classes : 1930, 1940, 1955, 1965, 1980,  
Plus any other classes wishing so.**

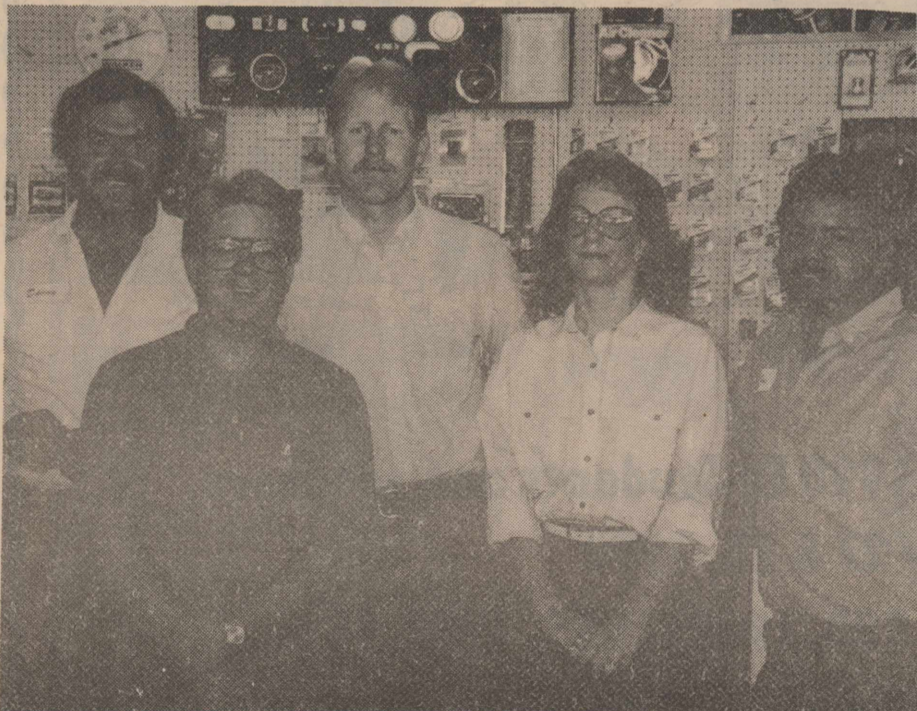
The staff of The Stratford Star hopes you enjoy this we did putting it together. Thank you to all the businesses at their busy schedules to take pictures. Enjoy the reunion come.

# Class of 1969



Class of 1969 - Front row: Pat Hudson, Mickey Davis, Cassie Mitchell, Ann Pickens, Carlos Lopez, Freda Williams, Albert Miranda, Colleen Coffman, Shirly McRay. Second row: Mrs. Mehner, Steve Baskin, Neta Brannan, Nancy Davis, ?, Sue Roberts, Claudia Hell, Mary Gupton, Grant Keener, Mrs. Corley. Third row: Susie Blades, Kevin Cummings, Randy Williams, Andrea Zimmer, Kathy Allen, Larry Dick, Allan Ross, Eddie Williams, Doug Taylor.

## A & I Parts



Danny Brooks class of 1970, Gary Blain class of 1982, Mark Wright class of 1977, Dana Oquin Craig class of 1971, Joe Barraza class of 1982 and not pictured John James class of 1988.

## G & W Industrial



Paulette Gupton Palmer, Randy Williams and Andrea Zimmer Norris were all the class of 1969.





## Class of 1979

CLASS OF 1979 - Top Row: Mrs. Dorothy Haile, Spon., Mr. E.L. Bass, Supt., Mr. Dale Prescott, Prin., Lindon Weese, Marian Haile, Noel Chesmer, Valerie Mitts, Jacque Chesher, Areace Bain, Margaret Hall Bell. 2nd Row: Vince Barraza, Craig Bell. 3rd Row: Terry Bilbrey, LaRinda Blain, Tammie Borth, Barrie Donelson, Wayne Dyess, Melissa Ellison. 4th Row: Chet Everett, Jerry Ewers, Leon Farris, Jay Bennett Hacker, Ralph Hampton, Brian Harrison, Tracy Hudson, Karr Ingham, Kelley Irlbeck, Toby Kautz, Mark Keener, Mike Lovett. 5th Row: Dennis Luther, Whit McDaniel, Kennetha Melton, Tarry Jo Melton, Ricky Olson, Rodney Oquin, Beth Palmer, Johnny Payne, Ruben Perez, Theresa Perrin, Kevin Plunk, Danny Ray Reed. 6th Row: Stephanie Sewell, LaRonda Stacy, Patti Stokes, Cindy Stovall, Pat Vigil, Roger Wells, Jana Wiley, Jay Willard, Tamara Wilson, Toby Wisdom, Jimmy Wright, Merlene Heiskell.

The class of '79 will be celebrating it's 10 year reunion on July 28th and 29th. We have the following plans scheduled: Friday, July 28th-8:00 p.m. till ? Get together at Stratford Country Club for classmates and spouses only. Saturday, July 29th-11:30 a.m. till 3:00 p.m. Family picnic at Stratford Country Club. Golfing, swimming and visiting. Saturday, July 29th-9:00 p.m. till 1:00 a.m. Ex-students dance at Stratford Country Club parking lot, west on Hwy 54. We hope that all members of the class of '79 will come and join in the fun.

**CLASS  
ACT**

## Stratford Auto Electric



Roy McAllister class of 1978 and Valerie Mitts McAllister class of 1979.

# Stratford Feedyard



Ava Griffin class of 1975, D.K. Kirkwood class of 1953, Jocko Pulliam class of 1983, Mark Hawkins class of 1983, Joe Lopez class of 1966, T.J. Bench class of 1974, Roger West class of 1984, Keith Green class of 1950, Rudy Martinez class of 1983, Merlene Dean class of 1979.

# Farm Bureau Insurance



Leonda Harryman Fedric class of 1968, Joe P. Flores class of 1949 and Jean Harrison Turner class of 1951.

# Family & Friends



Jode Lasley class of 1976 and Orlanda Lasley Garoutte class of 1964.

# Ellie's



Martha Crabtree Ellison class of 1953, Michelle Steward Duncan class of 1983 and Jacque Lasley McIver class of 1973.

## Jerry's Automotive



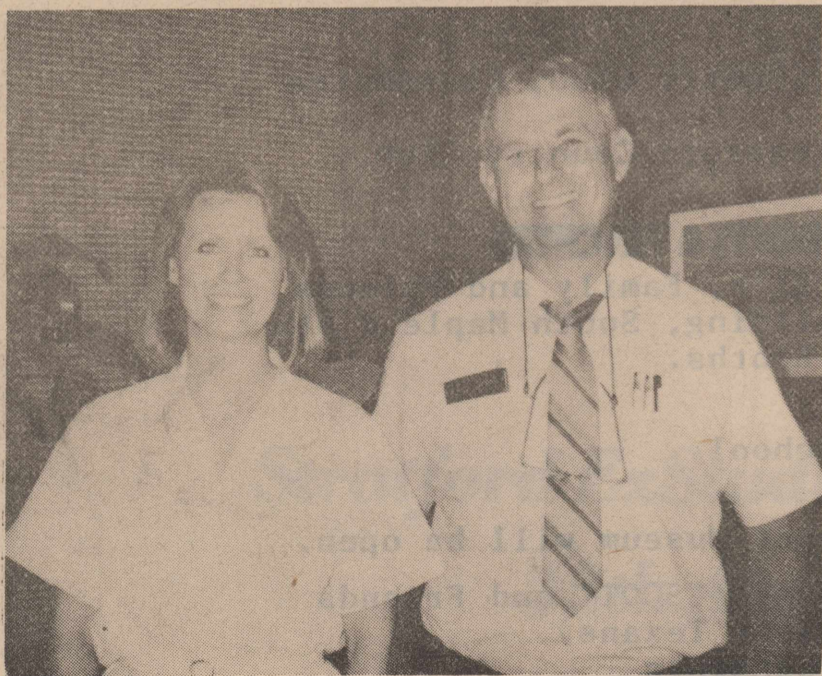
Jerry Ewers class of 1979.

## The Allen Insurance Agency



Carolyn Allen Tarver class of 1971 and Kathy Allen McDaniel class of 1969.

## North Plains Savings & Loan



Sandy Jeffcoat Williams class of 1971, Jerry Dyess class of 1963.

## First State Bank



Front row: Suzanne Preston Ashley class of 1980, Natcha Morris Dyess class of 1961, Cindy Boring McMurray class of 1989, Gail Mitchell Allen class of 1966, Laura Melton Smith class of 1974, Louise Stone Dettle class of 1963, Martha Stone Mitts class of 1959, Back row: Les Dodson class of 1951, John Willson class of 1956, B. A. Donelson class of 1954, Sherrel Collins Phelps class of 1964, not pictured, Cheryl Everson Starnes class of 1976 and Tammy Baker class of 1989.

### EX-STUDENT DIRECTORS

Johnny Pulliam, Chairman  
John Wilson, Vice-Chairman  
Valerie Duncan Naugle, Sec. - Treas.  
Gaynelle Parker Riffe, Historian  
Friday Night -- Class of '65 Ellen Tillery  
Class of '66 Gail Allen  
SCOT Lunch -- Gaynelle Parker Riffe  
Banquet -- Class of '80 Melonee York  
Class of '81 David Davis  
Dance -- Class of '79

1929 Doris Pronger Dyess  
Howard Etheridge  
1939 Jack Dettle, E. W. Butler  
Elsie Ellison Pickens  
1954 JoWayne Harding Summerour  
B. A. Donelson  
Shirley Plunk Armstrong  
1964 Lynn Allen  
Orlanda Lasley Garoutte  
Sherry Collins Phelps  
1969 Mary Pat Williams  
Becky Guthrie Asher  
1979 Tammie Borth Helmuth  
Valerie Mitts McAlister  
Craig Bell

### CLASS ACTIVITIES

- 1929 - 1939** Saturday noon honored guests at a dutch treat lunch at SCOT Hall, 515 North Third.  
(For all Ex-Students 1907-1939 and ALL Ex-Teachers)
- 1954** Saturday Lunch at the Ranch of Johnny and JoWayne Summerour (Southwest of town). Also invited are members of '53, '55, and '56 classes.
- 1964** Friday, 9:00 p.m. at the Farm Bureau Building.  
Saturday, 12:30 p.m. at Lynn and Gail Allen's, West of town.
- 1969** Friday, 9:00 p.m. at Becky and Tommy Asher's home, 1308 North Chestnut.  
Saturday, 11:00 a.m. to 3:00 p.m. Family Get-Together at Catholic Parish Hall, 515 S. Fulton.  
Saturday After Banquet, Mary Pat and Randy William's home, 612 South Fulton.
- 1979** Friday, 9:00-til?, Stratford Country Club, Classmates and Spouses only, please.  
Saturday, 11:30 to 3:00 at Stratford Country Club, Family Picnic.

### ACTIVITIES FOR ALL EX-STUDENTS & TEACHERS

Friday Night July 28 7:00	FOOD & VISITING, EX's, Family and Friends County Exhibit Building, South Maple & 6th Dutch Treat Food Booths.
Saturday July 29 10-11 a.m.	Visit Stratford School
1:30-3:30	Sherman County Depot Museum will be open.
1:00-3:00	SCOT HALL open to all "SCOT" and Friends (Sherman County Older Texans) Visiting and Refreshments
7:00	ALL Ex-Students & Teachers Steak Supper County Exhibit Building. \$7.50 per person
9:00-1200	SCOT Dance "45 and up" (Admission)
9:00- 1:00	Ex-Students Dance, Class of '79 Hosts (Admission)

(All Activities are open to the public unless otherwise noted).