

Famous Southern Pie for Company



Reputations are made with this delicious pecan-and-Karo filling! Here's a conversation-making dessert, a pie that's a real stunner! Eyes light up, and requests for the recipe are sure to follow the first bite. Pecan Pie is a Southern heirloom recipe, so delicious that it has gained country-wide fame, simply on the strength of its luscious, luscious flavor. This easier-than-ever recipe makes it as simple to fix as a package dessert.

PECAN PIE

- 1/2 recipe pastry
2 eggs, beaten
1 cup Karo Syrup
1/4 teaspoon salt
1 teaspoon vanilla
1 cup sugar
2 tablespoons melted butter or margarine
1 cup pecan meats

Roll pastry 1/8 inch thick. Line a 9-inch pie pan. Mix remaining ingredients together, adding pecans last. Pour into pastry shell. Bake in hot oven (400° F.) 15 minutes; reduce heat to moderate (350° F.) and bake 30 to 35 minutes longer.

Wichita County 4-H Club Boys in Chicago Trip

Ralph Swinford and Bill Kolter, outstanding Wichita county club boys were listed to trip by Floyd Lynch, state 4-H leader, as winners of all-... Congress, Chicago, Novem-... 25-Dec. 2. They were named...

tors. Ralph's record will be entered for national honors. Ralph is an old hand at winning 4-H honors. He is a Gold Star boy; the exhibitor of champion steers at the local show; state winner in range management demonstration team contest; county and district winner in safety and electric programs and last year won a trip to the International Livestock Show and loving cup for an essay on soil conservation.

Found New Milk Replacer Formula For Dairy Calves

Research with a new simple milk-replacer formula has resulted in impressive rates of gain among young dairy calves at Texas A&M college. Feeding studies for several years have been focused on the development of a formula, which when mixed with warm water, will replace whole milk in the diet of dairy calves, says B. T. Haws, county agent.

In experiments now underway, whole milk is replaced before calves are 10 days of age with a gruel which contains dried skim milk, dried whey and a Vitamin A and D supplement. This mixture contains approximately the same amount of protein as whole milk. Eighteen calves comprised the experimental group while 14 others served as a check.

Texas DHIA Honor Herds

Two Wichita County dairy farmers received honors for the DHIA testing year just completed, according to information just received from the Texas A&M college by B. T. Haws, county agent. The honor herds in milk production include all herds on DHIA test completing a herd year on test with a herd average of 10,000 pounds milk or more.

Mr. Carl Williamson, Wichita County dairyman, has a herd of 40 cows that produced a herd average of 11,904 lbs. of milk with an average butterfat test of 3.4 and a herd average of 400 pounds of butterfat. His herd ranked sixth in the state. Mr. Ellis Gragg, also a Wichita County dairyman, has a herd of 35 cows that produced a herd average of 11,709 pounds of milk with an average butterfat test of 3.6 and a herd average of 426 pounds of butterfat.

Wichita Co. Boy 4-H Poultry Winner

David Behlen, Gonzales county Tom Bob Tilley, Nacogdoches county; Cyrill Hermes, Cooke county and Jerry Whitaker of Wichita county today were named state winners in the 4-H Poultry Fact Finding program. This program, now in its second year, is sponsored nationally by the Institute of American Poultry Industries, Chicago, in Texas, Western Hatcheries of Dallas is donor for the program.

to promote improvements in processing, marketing, distribution and consumer education of the poultry industry thru demonstrations; stimulate 4-H members to acquire more information on the poultry industry; encourage closer relationship between youth and adults as an aid to interest youth in choosing the poultry industry as a profession and to implement the opportunities afforded youth in the varied fields of the industry.

Jerry is the son of Mr. and Mrs. J. N. Whitaker of Iowa Park and poultry production has been his major demonstration for the six years spent in 4-H. He has handled more 1,000 birds including turkeys, broilers and egg producers. Eggs as well as broilers and turkeys are sold to regular customers and most of the marketing chores are done at home. Jerry says, "It means more profit to me when I sell direct." His studies of marketing have led to these conclusions: you cannot market quality products without first producing them; consumers demand top quality so why strive to produce anything but the best; and finally he believes his poultry demonstrations will send him to college if he practices what he has learned in his poultry fact finding studies.

Mrs. Roy Magers and Mrs. Walter Riley served as judges in the Vernon flower show last Saturday.

For Philco SALES and SERVICE SEE BILLS T-V and Appliances



MAW! RECKON WE SHOULD INSURE THEM CRATES ON GRAN'MAW WITH...

Burk Insurance Agency HOWARD CLEMENT PHONE 282

FOR... Mercury CASEY LOGAN 312 Ave. C Phone 131

GRAGG MOTOR CO. For NEW and USED CARS A Good Selection to Choose From 1201 Lamar Wichita Falls, Texas

Wait! Wait! Wait! DODGE and PLYMOUTH HAVE DONE IT -- WAIT AND SEE Daring New --- Dazzling New 1955 DODGE and PLYMOUTH On Display Nov. 17th BURKBURNETT MOTORS Established 35 Years

Katy Caroladings

Revenue freight cars loaded on the Missouri-Kansas-Texas lines during the week ended October 15, 1954, totalled 4,718 compared with 5,675 for the corresponding week of 1953. There were 3,975 revenue cars received from connecting railroads, as against 4,269 for the same week last year, bringing to 8,693 the total of revenue cars handled during the week, compared with 9,944 last year.

Night Doubles Traffic Troubles

"Night doubles traffic troubles" Col. E. B. Tilley of Houston, President of the Texas Safety Association and Services Advisor for the Gulf Oil Corp. said today. This is more than just another slogan, it's an important truth, and one which pedestrians as well as motorists should keep in mind.

- 1. Always walk on the sidewalk, not in the road. If you have to walk on roads that have no sidewalks, walk on the left shoulder of the road facing traffic.
2. Cross at intersections whenever possible. At night cross at lighted intersections.
3. Remember, pedestrians in dark clothing are difficult for motorists to see. When walking on a roadway that has no sidewalks, always wear light clothing or carry something white. Better still, carry a flashlight or something made of reflectorized material.
4. Don't trust your judgment too far in estimating the speed of an approaching car by its headlights at night. Never cross a street or highway unless you are absolutely certain you have ample time to reach the other side safely.

BIG LOOK Motorola TV 149.95 17" Table TV Priced Low!

Authorized G-M-C TRUCK & PONTIAC Car Sales and Service Allis Chalmers Implements H. S. (Hooney) Thaxton Sales Mgr. A. C. HOUSER MECHANIC Thaxton Bros. Motor Co. 114 Ave. B - Phone 715

Herring's Radio & T-V Service 411 North Berry St. PHONE 960 Open Evenings Till 10:00 P. M.

Col. Tilley gave four rules that pedestrians can follow to keep safe when they must walk near traffic after dark.

Col. Tilley's comments were made in connection with the night traffic hazards safety program being sponsored in Texas this month by the Texas Safety Association, the Texas Department of Public Safety, and the National Safety Council.

I. O. O. F. LODGE BURKBURNETT, TEXAS Meets at I.O.O.F. Lodge every TUESDAY NIGHT, 7:30 P. M. Visitors Welcome C. A. WEST, Noble Grand BILL BRYANT, Vice Grand RALPH ENGLAND, Secretary

double-cushioned for double comfort • double beauty • double value! exclusively yours in the famous Morning Glory CHAMPION MATTRESS The Yeg's Best \$59.50 Buy at Boyd Bros. Telephone 199 Burkburnett, Texas

A New Beauty for 1955 Lee Ann Meriwether "Miss America" for 1955 The exquisite 24-inch PHILCO "Miss America" From the very first glance—the gorgeous Philco "Miss America" will win your vote! You'll thrill to the big-as-life, clear, brilliant picture—the power proven chassis that makes even distant stations seem right next door! You'll applaud Philco's exclusive new Finger Tip Tuning System that takes the toil out of tuning; puts all controls at your finger tips! It's custom-styled into an exquisite Mahogany finish console—Philco 6110. See it now at... BILLS T-V & APPLIANCE PHONE 467

Burkburnett Dollar Day

"WHERE YOUR DOLLAR GOES FARTHER"

Monday, November 8th

\$300.00

Worth of merchandise to be given away.

Awards to be made at 5:00 P. M. Mon., Nov. 8th, Corner Ave. B and 3rd St.

TO PARTICIPATE IN THESE VALUABLE AWARDS, JUST REGISTER AT ANY OF THE MERCHANTS LISTED ON THIS PAGE. YOU DO NOT HAVE TO MAKE A PURCHASE. REGISTER SATURDAY OR MONDAY.

The Following Burkburnett Merchants and Businessmen Invite You to Participate in The Burkburnett Dollar Day Events:

Geo. Byerly, Magnolia Agt.
Chassis Grease
One 5 Lb. CAN **\$1**

Reynolds Barber Shop
Dixoil Shampoo
Regular \$2.00 Value For **\$1**

Texas Hardware & Furn.
Good Brooms
Regular \$1.49 Value **\$1**

Garland Furniture Co.
\$59.95 Mattress **\$39.95**
Special for Dollar Day

Tom Britton Motors
Permanent Anti-Freeze **\$1.95**
One Gallon, Regular \$2.95 Value

Alexander Service Station
4 Quarts Mobiloil
Regular \$1.60 Value **\$1**

Clark's Drug Store
Any Costume Jewelry **49c**
Regular \$1.00 Value For

Roy Magers, Insurance
Policy Holders **FREE**
For Your Insurance Policies

Campbell Auto Supply
One 5-Pc. Socket Set **\$1.69**
Regular \$2.95 Value For

Heine's Drug Store
1 Bottle Toilet Water **\$1**
Regular \$1.98 Value For

Palace Cafe
Regular 85c Lunch **65c**
Special November 8th

The Manhattan
Women's Nylon Hose **\$1**
51 Gauge, 2 PAIR FOR

Corner Drug Store
Mary Kent
Creme Sachet Perfume **\$1.25**
\$1.00 Value. 2 FOR

Butler's 5 & 10
Boys' Blue Jeans **\$1**
Regular \$1.98 Value

Burkburnett Star
1 Year Subscription (New) **59c**
Good Until November 30th

Ben Franklin Variety Store
DeLuxe Crochet Thread **\$1**
Regular \$1.45 Value, 5 ROLLS

Elite Dress Shop
Reg. \$14.95 Dresses **\$10.95**
Special November 8th

Western Auto Store
2 Yr. Guar. Battery **\$10.95**
\$15.25 Value For

Monroe's Gro. & Mkt.
1 Lb. Ground Beef **19c**
Regular 45c Pound

Bill's Shoe Repair
T-P Mocks **\$1.98**
Regular \$2.95 Value

Adams Drug Store
Ladies' Compacts **\$1**
Values to \$5.95

Burk Insurance Agency
\$25 Gov't. Savings Bond **FREE**
To Be Awarded Monday, Nov. 8th

Vogue Cleaners
Suit Cleaned & Pressed **FREE**
To Be Awarded Monday, Nov. 8th

Burkburnett Laundry
\$1.00 Worth Ldry. Work **FREE**
To Be Awarded Monday, Nov. 8th

Burkburnett Motors
Auto Floor Mat **\$1**
Regular \$1.75 Value

Boyd. Bros.
Cheer Washing Powder **\$1**
5 Large Boxes

Logan Appliances
Herth-glo Heating Stoves **\$16.95**
Regular \$20.95. Special

Floyd Thompson Ser. Sta.
With Every New Tire **Free Innertube**
Sold Monday, Nov. 8th

Stevens and Campbell
4 Qts. Amaile Motor Oil **\$1**
To carry with you. Reg. \$1.60. Special

Mathis Chevrolet Co.
Motor Tune Up **\$1**
MONDAY, NOVEMBER 8th

First National Bank
Personalized Checks **\$1**
Reg. \$1.50 for 200 Checks. Special

J. F. Kelley Grain Co.
100 lb. Bag Stock Salt **\$1**
Regular \$1.35. SPECIAL

Ranchouse Motel
Reg. \$4.00 Room **\$1**
For Couple. SPECIAL

Casey Logan, Mercury
Wash and Grease Job **\$1.50**
\$2.50 Value For

White Auto Supply
6.00 x 16 W. S. Tire **\$8.95**
Plus Old Tire & Tax, \$13.75 Val.

Cicero Smith Lumber Co.
Enterprise Food Chopper **\$2.60**
Regular \$3.95 Value

Ideal Cleaners
Suit Cleaned & Pressed **FREE**
To Be Awarded Monday, Nov. 8th

Dudley Feed and Produce
Egg Laying Mash **\$2.00**
Evergreen, 50 Lb. Bag

Burkburnett Tailors
\$5.00 Cleaning, Pressing **FREE**
To Be Awarded Monday, Nov. 8th

Bills T-V and Appliances
Philco Portable Radio **\$39.95**
Large. \$99.95 Value For

Home Furniture Co.
Dinette Suite, 7-Pc. **\$89.95**
Chrome. Reg. \$119.00 Val. For

United Super Market
Whole Kernel Corn **\$1**
LaGrande Vacuum Packed 9 For

Herring's Hardware
Oil Heater **\$29.95**
\$39.95 Value For

Opal's Dress Shop
2 Pair Ladies' Hose **\$1.65**
\$3.30 Value For

The Famous
59c Cotton Dress Materials **\$1**
And PRINTED NYLON, 3 YDS.

Cliff Wampler Ins. Agency
Policy Holders **FREE**
Nice Leather

House of Beauty
Regular \$10.00 Permanents **\$7**
SPECIAL

Westbrook Jewelry
53 Piece Service for 8 **\$59.75**
Community Plate Silverware
Regular \$79.75 for

Tom's Cafe
WITH EACH ALACART ORDER
VALUE TO 75c **FREE**
Drink and Dessert

C. D. Shamburger Lbr. Co.

Thaxton Bros. Motor Co.

Texas Electric Service Co.
Estes Grocery & Market
B. & B. Gro. & Mkt.

Trades Day Tickets will be given with each 50c purchase by the merchants listed on this page beginning Tuesday, November 9th. These merchants are working with the Chamber of Commerce in staging these gigantic Dollar Day events. Ask for your tickets and save your stubs. Check this page for some of the hottest Dollar Bargains you ever heard of. They'll be here!

Your Best Buy Is **DEPENDABLE** Insurance

WAMPLER INSURANCE AGENCY

114 East Third Street Phone 628

Loretta Gough Is Farm Bureau Queen



Miss Loretta Gough of Wichita County will represent 17 counties in this area at the Texas Farm Bureau Queen contest, Nov. 12-16 at Gilverson. She will compete with 12 other lovely Farm Bureau district queens. Miss Gough was chosen Dis-

trict 3 queen in a contest held Sept. 16 in Wichita Falls.

Miss Gough, 16, is the daughter of Mr. and Mrs. S. E. Gough of Graham. She is a junior in Graham High school where she is active in Future Homemakers of America and the Thespian Club. Loretta is the youngest of five children and enjoys horseback riding, music, writing poetry and sports of all kinds. She plays the piano.

The lucky girl chosen state queen will receive \$500 in expenses for herself and her matron escort to attend the 36th annual convention of the American Farm Bureau Federation, Dec. 12-16 in New York City. They will make the trip on a special train carrying the Texas delegation to the convention.

All contestants will receive expense paid trips for themselves and their matron escorts to the state contest which will be held in connection with the 21st annual convention of the Texas Farm Bureau. In addition they will receive beautiful wrist watches. All except the one chosen state queen will receive a week's stay at the Crazy Hotel in Mineral Wells, compliments of the management.

Roots Of Child Delinquency

By A. N. Spanel, Chairman International Latex Corp.

The sun won't shine so brightly for America's children in the years to come, unless attention is given to the plight of our schools. Part of our troubles trace back to the neglect and shameful indifference of the recent war period. Thousands of skilled teachers left the profession for better paying jobs in government and war industries. Even today the turnover and loss of skilled teachers is at least 50 percent higher than normal expectations. More than that, we are not meeting the need for additional teachers for increasing enrollments due to the high birth rates of the 1940's. These conditions, if they persist, will harm America's children beyond all calculation.

The situation is improving too slowly. Too few capable young people want to be teachers. They are turning to better paid occupations. Many graduates of teachers colleges are not going into the profession. There is a present demand for 160,000 new teachers in the elementary schools. Less than 38,000 teachers college graduates, are prepared each year to enter these positions. Already employed in the schools are 65,000 teachers who hold substandard certificates. The birthrate greatly increas-

ed during World War II. These war born children are now in school. Many of them are children of veterans. The birthrate continues high. Increased enrollments will reach a peak in 1959-60. There will be more pupils, and fewer teachers.

Condemn Children to Inferiority
Teachers are still quitting the profession because they are underpaid. One teacher in 5 today receives less than 2500 a year. They are victims of our shortsightedness. The high cost of living has wiped out their savings. Jobs outside the schools offer better pay. The teachers are taking them. They will continue to do so until the American people decide to pay teachers a living wage.

This Nation cannot afford short changing its teachers. American wages for all others have been raised substantially in recent years. The national income has increased 283 percent over 1949, yet teachers' incomes have been raised only about 125 percent. It's crazy as it is shameful.

A Crazy & Shameful Condition
It is a miracle that there are good teachers in this country who sacrifice themselves and their substance to remain in the profession. Some of them are forced to work at outside jobs after school hours to remain on the ragged edge of respectability. Must we sit back, doing nothing, while these teachers are forced to struggle in vain for a living wage? Can we afford to let that happen?

In the meantime, American children are being robbed of a fair start in life. Three million children of school age are not in school at all. Millions of others are herded into huge classes where there is little chance to learn.

Kids Headed For Jail
Idle children are roaming the streets. There is a rising tide of juvenile delinquency. Juvenile courts are over-burdened, youth on the skids to jail. America cannot afford to waste its children. They are America.

Right now we are denying America's children, and America itself. The situation is completely out of hand, and what has developed into a serious condition is now become a national catastrophe.

What We Can Do About It

No citizen, no man or woman can afford to let this catastrophe engulf America. The time for action is now, you have but to read your newspapers to see how dangerously our nation has been undermined. And you could be doing something about it even if you did no more than write to the mayor of your town, to the councilmen or aldermen around him, with copies of such letter mailed to the superintendent of the schools.

For to do less is to remain silent; and to remain silent means to every political figure, in nearly every community, the continued toleration of an intolerable situation.

Grace Lutheran Church

Third Street and Ave. E
The Church of The Lutheran Hour and TV's "This Is The Life"
J. H. KOLLMEYER, Pastor

Saturday, 10:00 a. m. Saturday School and confirmation class.

SUNDAY —
10:00 a. m. Sunday School and Bible classes.

11:00 morning service with Holy Communion. Registration for Holy Communion, after Saturday school and Sunday after Sunday School.

Tuesday, 7:30 p. m. Sunday School Teachers' meeting (Beginners and Primary Division: 5:15 p. m.)

Wednesday, 8:00 p. m. Waltham League topic study at Clara.

FOR . . .

Mercury

SEE CASEY LOGAN

312 Ave. C Phone 131

New Building To Be Dedicated At Warm Springs

A new building for the Gonzales Warm Springs Foundation for Crippled Children has been completed and will be dedicated at 10 A. M. Sun., October 24th.

The dedication ceremony was planned in order to give the general public an opportunity to visit and inspect the new Midland building, which has already been occupied and enables the Foundation to extend its services to many more of the crippled children of Texas.

The completion of this building makes possible a centralization of some of the administrative facilities that have heretofore been located in four of the other buildings on the hospital grounds. The Midland building now houses the administrative offices, staff offices, recreation room, lounge, library, commissary, therapy rooms, dining room and kitchen. In removing these functions from the nearby buildings, space will be available for forty additional beds. This will bring the total number of beds in the hospital to 140.

Printed Checks At The Star

HELP for Coughs

You feel cooling, soothing help from the very first dose. Clogging phlegm is loosened, you breathe deeper.

CREOMULSION

relieves Coughs, Chest Colds, Acute Bronchitis

Glasses on Credit . . .

SINGLE VISION GLASSES as low as

\$9.50

Pay \$1 Weekly

NO INTEREST OR CARRYING CHARGE

MAST Optical

918 INDIANA Wichita Falls

NO APPOINTMENT NECESSARY

CP - Budget-priced!



Universal

555 AUTOMATIC PLUS GAS RANGE!

Less \$270.00
Trade-in 40.50

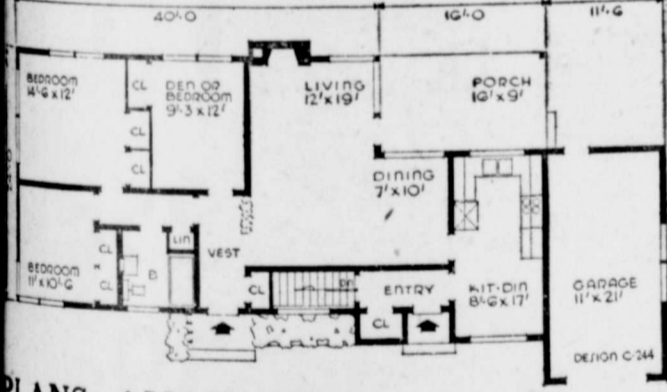
\$229.50

\$5 Down, \$7.37 Month and this beautiful range is yours! Plus features like chrome Whirlpool broiler pan, automatic lighting top burners, oven, and broiler, oven door window, oven light, CP standards!

One Star Gas Company



A SMALL HOUSE PLANNING BUREAU DESIGN NO. C-244



PLANS AVAILABLE . . .

HOMES OF CUSTOM-BUILT QUALITY!

15 Years Experience In Building Better Homes

CHARLES W. AINSWORTH Building Contractor

For building complete new homes, Adding a Room or Complete Remodeling

FOR FREE ESTIMATE PHONE 574 or 23

Owner completely covered by insurance until completion of structure
Burkburnett, Texas

Automobile Glass INSTALLED WITHOUT DELAY

Radiators

Repaired -- Recored -- Cleaned

MOYER Radiator & Glass Shop

East 3rd Street Phone 355

Sunshine Sue,

star of WRVA's "Old Dominion Barn Dance" says:

"You know, friends, I just couldn't set a good table without Karo"



the hearty maple-y flavor of Karo makes my meals a big success"



Pour Karo Waffle Syrup on biscuits, pancakes... everything!

★ 1/2-POUND AND 3-POUND BOTTLES... 5- AND 10-POUND CANS ★

"ELECTRIC COOKING HELPS KEEP MY KITCHEN CLEAN"



Any homemaker who uses an electric range will tell you . . . electric cooking is CLEAN . . . as clean as electric light. Your walls, curtains and ceilings stay cleaner . . . pots and pans stay shiny and bright through years of use. Take advantage of all the benefits an electric range has to offer. Cook electrically because it's clean . . . but cook electrically, too, because it gives you more leisure time, and more for your mealtime money year-in and year-out

See your electric appliance dealer's Special Jubilee Showing of modern electric ranges NOW, and select the size and type electric range you need to save your time and energy.



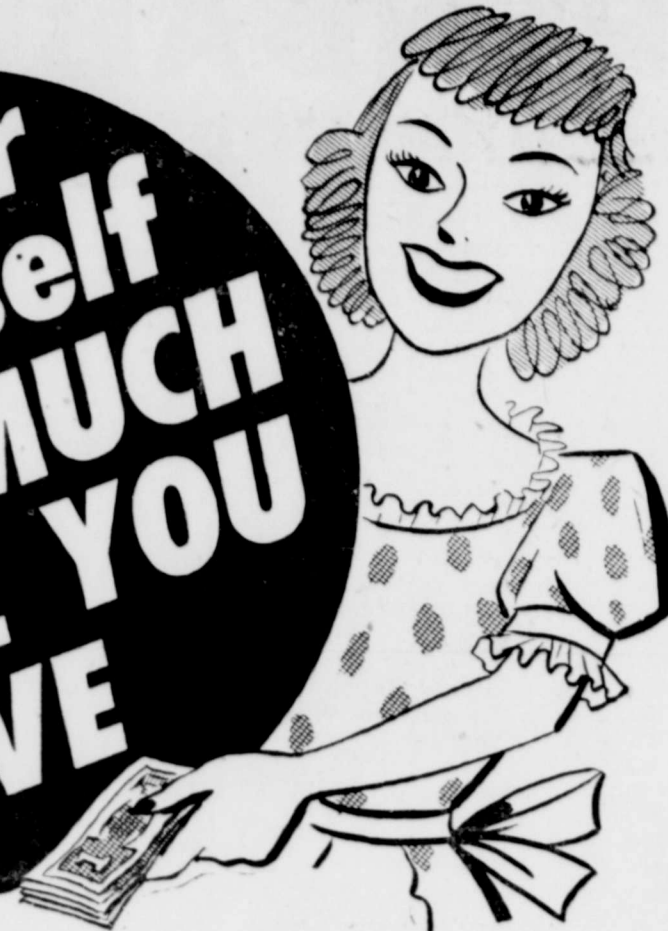
TEXAS ELECTRIC SERVICE COMPANY

J. B. ADY, Manager

Phone 138



**See for yourself
HOW MUCH
MORE YOU
SAVE**



UNITED
Super Markets
We Sell for Less
WE RESERVE THE RIGHT TO LIMIT



1 LB BOX CHASE
Chocolate Covered
CHERRIES **59¢**

16 OZ. Can HONEY BOY
Salmon **39¢**

LB. PILLOW CASE BAG
25 Light Crust FLOUR \$1.69

Chassers Frozen 1 LB. 4 OZ
FRYERS CUT-UP READY TO FRY Each **69¢**

PUMPKIN DEL MONTE NO. 2 Can 2 for **35¢**

100-SIZE WOODBURY'S
HAND LOTION .. **50¢**

WALDROF -A-SCOTT
TISSUE 3 rolls for **25¢**

200 Size Box SCOTTIES
Facial Tissue . 2 for **29¢**

2 pkgs. T-V
POPCORN for ... **29¢**

NOW! SLICED 2 WAYS
SWIFT'S PREMIUM BACON
REGULAR SLICED OR THICK SLICED
TAKE YOUR CHOICE

59¢ lb.

LOOK FORWARD TO
Christmas Around Town
December 9-10

Quality Meats



YOU CAN'T BAKE WRONG WITH BAKE-RITE
For All Cooking, Baking and Frying **69¢**

PICNIC HAMS LB. **39¢**

SWIFT PREMIUM ALL MEAT FRANKS LB. **45¢**

LEAN PORK ROAST LB. **49¢**

U. S. GOOD Chuck ROAST LB. **35¢**

U. S. GOOD Chuck STEAK LB. **39¢**

U. S. GOOD T-Bone STEAK ... LB. **59¢**

WARDO - CAN Vienna Sausage Can **10¢**

MARYLAND CLUB COFFEE LB. **\$1.07**

ADMIRATION COFFEE LB. **\$1.05**

WEDNESDAY IS DOUBLE GUNN BROS STAMP DAY At UNITED

303 CAN Allen BLACKBERRIES **23¢**

303 CAN - KING OF THE OZARKS Butter BEANS 2 for **23¢**

NO. 2 CAN Kimbells CHILI **49¢**

6 oz JAR MARYLAND CLUB Instant COFFEE **\$1.75**



OLEO 19¢
Lb.

NO. 2 1/2 CAN MISSION Spiced PEACHES in Heavy Syrup **29¢**

Rusty DOG FOOD 3-16 oz Cans **25¢**

NO. 2 1/2 CAN - HEAVY SYRUP Elberta PEACHES 3 for **\$1.00**

48 OUNCE JAR Richnut PICKLES - Sour or Dill **39¢**

NO 2 CAN HOME FOLK Fresh Shell Blackeye PEAS 2 for **35¢**

Kraft DINNERS 2 boxes **25¢**

VINERIPE CALIFORNIA
Tomatoes lb. 19¢

GRAPEFRUIT
LARGE - JUICY - SWEET A "BEST BUY"
7c lb

LARGE STALK
CELERY **15¢**

FLAMING
Tokay Grapes 2 lbs. for 25¢

CENTRAL AMERICAN
BANANAS 2 lbs. 25¢

\$5 to \$25

Trade-In Allowance on Your Old Watch

LAY-AWAY NOW FOR CHRISTMAS

ON A NEW

HAMILTON — BULOVA — ELGIN — GRUEN

Westbrook Jewelry

Junior High News

The homeroom mothers of the eighth grade held a meeting Friday, Oct. 22 and elected the following officers for the current year:

- Mrs. Dave McNeil, Chairman of the entire 8th grade. Mrs. E. E. Welborn, Assistant Chairman Mrs. Grady Walker, Chairman of 8-1 Mrs. L. H. Gilbert, Chairman of 8-2 Mrs. Glen Maltby, Chairman of 8-3. Other homeroom chairmen elected in Junior hi were: Mrs. H. L. Dempsey, 3-3 Mrs. W. H. Preston, 6-1 Mrs. W. Swinford, 6-2 Mrs. Thomas Middleton, 6-3 Mrs. E. M. Kinnett, 7-1.

The Bull Pups played a hard game Thursday night but lost to Electra 58-0. The Jr. High band played at the game for the first time this year. They looked very nice in their blue and gray uniforms and did some expert maneuvering on the field at the half.

The eighth grade newspaper staff wishes to thank all those who helped make Bullpups Howl a bigger and better Junior Hi paper this week. The news reporters turned in more recent news developments, such as football games between the fifth and sixth sections, and developments of the band and pep squad. Several social columns have added to the appeal of the Howl such as Who's who, Teacher of the Week, Fashions, and a Word Game. The eighth grade classes have just completed a unit of work on writing for a newspaper, and the most appropriate editorials and news stories are used.

Mrs. Rigby Hostess To Study Club

The University Study club met Wednesday afternoon, Oct 20 in the home of Mrs. J. H. Rigby for a regular business and social meeting.

Mrs. Bunstine, president, conducted a short business meeting planning for the Federated Banquet and electing a delegate to the State Convention at Mineral Wells, Nov. 8-11. She also announced that the club would hold a rummage sale, Saturday, Nov. 6th. The membership voted to subscribe to Texas Clubwoman 100 percent.

The program was Builders of American Democracy. Mrs. Tevis discussed John Marshall, expounder of the constitution. She said Marshall, an able lawyer, served his country as soldier and statesman. He was ungainly but dignified in appearance, never wanting praise or power and respected at home and abroad. Under pressure, he served as Secretary of State and later as Chief Justice of the Supreme Court during the administration of President Adams.

Mrs. Holt discussed Woodrow Wilson's essay Road Away from Revolution. He cited the tension between the common people and capitalists using the Russian revolution as example and discussed things he hoped would end this difference and make the World safe for Democracy and that the United States must accept her responsibility as leader in a spiritual revival.

Mrs. Harwell won the door prize, a beautiful vase given by the hostess.

A lovely refreshment plate was served to one visitor, Laura Louise Tevis, and the following members, Mesdames A. R. Bunstine, Joy Sessums, I. E. Harwell, R. P. Reagan, P. A. Wiggins, W. H. Holt, A. W. Newman J. M. Pogue, R. C. Tevis, O. E. Melton, J. D. Majors, W. J. Lacy, S. S. Reger and the hostess, Mrs. Rigby.

The next meeting will be the Federated Banquet.

Mr. and Mrs. Leonard Randolph of Wichita Falls are the proud parents of a new baby boy born, Oct. 20th. He has been named Richard Dave. Mrs. Randolph is the former Grace Reiver.

Trinity Lutheran Church

Clara, Texas

THE CHURCH OF THE LUTHERAN HOUR AND TV'S THIS IS THE LIFE

J. H. Kollmeyer, Vacancy Pastor Saturday, 9:00 a. m. Saturday School and Confirmation class.

Sunday— 9:30 a. m. Morning Service with Holy Communion. Registration, before the service. 10:30 a. m. Sunday School.

Wednesday, 8:00 p. m. Walthor League.

Nazarene Church

Rev. Roy McCoy, Pastor

God is blessing us in every phase of our work. For which we give Him praise. We have had many new people attending of late. A hearty welcome awaits you at our church, if you do not have a church home.

Our Sunday School meet each Lords day — 9:45 a. m.

Morning Worship — 10:45 a. m.

Young People Service 7:00 p. m.

Evangelistic Service—7:45 p. m.

Wednesday Prayer Meeting 7:30 p. m.

Dr. J. E. GALLOWAY, Optometrist

EYES EXAMINED GLASSES PRESCRIBED

Repairs — Duplications — Adjustments

OFFICE HOURS

9:30 A. M. to 5:00 P. M. Monday, Wednesday, Friday

9:30 A. M. to 12:00 Noon Saturday

Other Hours by Appointment

414 Avenue C Phone 112

Feeding Livestock

CUT COSTS! FEED A SALT SUPPLEMENT MIXTURE

Many cost-conscious livestock raisers will let their animals feed themselves a salt and protein supplement mixture this winter to help cut labor outlays.

Research has shown salt a satisfactory "limiter" in the consumption of concentrates, says B. T. Haws, county agent. By varying the salt percentages, the pounds of supplement consumed by livestock daily can be regulated closely. Cattle will eat the mixture until they can take no more salt, Haws says.

He says a mixture of 35 pounds of salt and 65 pounds of supplement allows animals to consume two pounds of supplement daily. Twenty to 25 percent salt will allow animals about three pounds while an increase of 40 to 45 percent salt lets the animals take in about one pound of supplement.

A plentiful supply of water is a "must" for cattle using this system, Haws continues. Ample water must be available to remove excess salt from their systems.

Church of God

Rev. E. M. Smith, Pastor

121 Ave. E.

10:00 a. m. Sunday School

11:00 a. m. Hour of Worship

7:15 p. m. Evangelistic service

7:30 p. m. — Tuesday — mid-week prayer meeting

7:30 p. m. Thursday — Young peoples endeavor

If you haven't a church home we would like very much for you to visit us where the full gospel is preached in the old time way. There is special music and singing each service. Each and everyone has a warm and hearty welcome to come worship with us.

Mr. and Mrs. J. B. Leith left last Thursday for an extended visit with relatives at Sandoval, Ill., and to attend the Golden wedding anniversary of Mr. and Mrs. James Meredith. Mrs. Meredith is a sister of Mr. Leiths. There will be services at the church at 11:00 a. m., lunch and then visiting hours from two to four.

NOTICE Men's Bible Class

FIRST BAPTIST CHURCH

Invites You to Worship With Them

Each Sunday Morning at 9:30

"Come As You Are"

GEORGE COUNTER, President

W. R. CARSWELL, Teacher

Mrs. A. M. Reynolds was turned to her home Monday from the Wichita General hospital where she underwent surgery recently. She is doing fine at present time.

FOR . . .

Mercury

SEE

CASEY LOGAN

312 Ave. C Phone 112

J. A. Suttles Electric Shop

Motors and Parts Wire and Supplies

CONTRACTING — REPAIRING

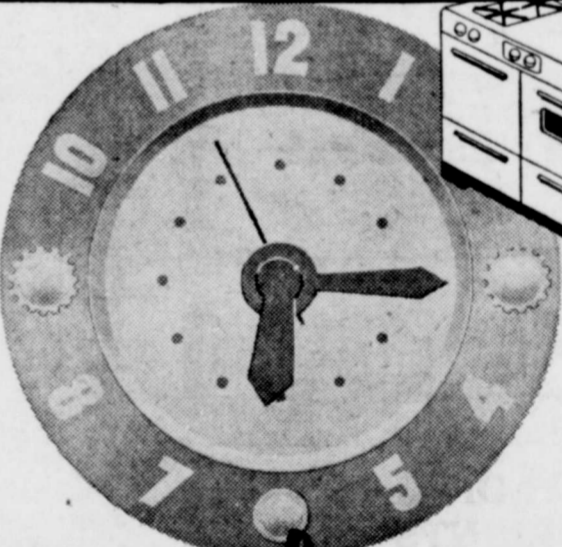
205 East 2nd Street Burkburnett, Texas

FOR PROMPT SERVICE ON ALL MAKES Phone 734 Parker's Television Service

Let Us Aid You in Time of Sorrow. Owens & Brumley Funeral Home. Unexcelled Ambulance — Day or Night. Includes phone numbers for Burkburnett, Wichita Falls, City Calls, and Bowie.

Annual Old Stove Round-Up Sale Now Save at GAS Range Dealers and Lone Star Gas Company

Gas TURNS ON TURNS OFF



by Clock Control



LOAD YOUR '55 AUTOMATIC PLUS GAS RANGE OVEN . . . set the oven temperature and clock control . . . leave! At the exact time cooking should start, your new Gas Range oven will light automatically . . . cook an oven meal . . . then turn off. It cooks by clock control — giving you time for shopping, friends and fun while cooking's being done.

You get pure, stainless heat from all burners . . . plus smokeless flame broiling. Flame broiling is the only clean broiling.

See clock-controlled Gas cooking demonstrated on a '55 Automatic Plus Gas Range. See it right away while leading dealers are having their Annual Old Stove Round-Up Sale. You'll find the biggest values and the easiest terms, ever!

Modern Gas Cooking is Automatic Plus

- Automatic — completely automatic
Clean — pure stainless heat plus smokeless flame broiling
Cool — insulated oven and broiler
Flexible — 101 heats, not just a few
Safe — American Gas Association laboratory tested and approved
Fast — gas is the world's only instantly adjustable heat
Economic — in most cities served by Lone Star Gas, gas is cheaper four to one!

Save at Old Stove Round-Up Sale Now Trade for '55 Automatic Plus GAS Range

Here Nov. 12 The '55 FORD! It's got Trigger-Torque Performance. SEE YOUR FORD DEALER. Includes illustration of a rabbit and a car.

Since 1913 1,553,444 FORD CARS and TRUCKS have been BUILT IN TEXAS BY TEXANS!

Tom Britton Motors CORNER AVENUE D AND MAIN Burkburnett, Texas PHONE 353

Parker's Super Market

We've Sharpened Our Pencil to Make These...

Lower Prices

★ With the holidays not far distant, Savings are increasingly important. Parker's has gone all out to bring you the best quality foods at Lowest Possible Prices!



PUMPKIN CHIFFON PIE

1 baked pie shell
1 envelope unflavored gelatine
1/4 cup orange juice
3 egg yolks
1 cup sugar
1/4 cups canned pumpkin

1/2 cup milk
1/2 teaspoon salt
1/2 teaspoon cinnamon
1/2 teaspoon nutmeg
3 egg whites

Soften gelatine in orange juice. In top of double boiler, beat egg yolks until bubbly. Stir in 1/2 cup sugar, pumpkin, milk, salt, cinnamon, nutmeg. Cook over boiling water, stirring constantly, until thickened. Stir in softened gelatine, continuing to stir until gelatine is dissolved, remove from heat. Chill until slightly thicker than consistency of unbeaten egg white. Beat egg whites until stiff enough to hold soft peaks. Gradually beat in remaining 1/2 cup sugar, about 1 tablespoon at a time. Gently stir pumpkin mixture into egg whites. Pour into baked pie shell. Chill until firm.

RECIPE FROM EVERYWOMAN'S TEST KITCHEN
By Prudence Dorn, Food Editor

The Harvest is in! All our stores are bright and gay with fall decorations and an abundance of Nature's Best. Plan to stock your pantry from the new packs... Values Galore this week. Come and see! STAPLE ITEMS — Canned Goods — Quality Meats — Frozen Foods — Fresh Vegetables — Bakery Features.

Our well-stocked Health and Beauty Departments hold all the necessities you'll want to meet the changing needs of colder weather. We can satisfy your every desire, as we carry all popular, well-known brands. Visit this department the next time you grocery shop.

OUR BUSINESS IS FOODS!

LOOK TO **Parker's** FOR FRESHER PRODUCE

Rome Beauty Apples ^{Double Red} Lb. . . . 12 1/2¢

Your Choice

Turnip Greens
Mustard Greens
Radishes
Green Onions

2 Bunches 15¢

PASCHAL CELERY

Large Stalk 15¢

VINE RIPE TOMATOES

Crt. 19¢

Florida Seedless Oranges 5 Lb. Bag . 29¢

LOOK TO **Parker's** FOR BEST MEAT BUYS

DECATUR DICO Sausage Lb. 79¢

Swift Premium BACON lb 59c
SIRLOIN STEAK Economy lb 59c
CHOICE ROAST Economy lb 33c
GROUND BEEF lb 33c
RANGER FRANKS lb 43c
FRESH FRYERS Whole lb 47c

RANGER CURED WHOLE HAMS Lb. 57¢

Del Monte Crushed Pineapple No. 2 Can 25¢

Del Monte Whole Kernel CORN 12 Oz. Can 15¢

Derby Tamales 300 Size Can 15¢

Bailey's Grape JELLY 12 Oz. Jar 19¢

Libby's Tomato JUICE 46 Oz. Can 25¢

Halo Shampoo Large Size 39¢

NEW LOW PRICE HOLLANDALE

MARGARINE 1/4's Colored Lb. 21c

SPAGHETTI SKINNERS 7-Oz. Pkg. . 14c

MACARONI SKINNERS 7-Oz. Pkg. . 14c

RAISIN WHEAT SKINNERS Pkg. 18c

Dependable Canned Foods

MUSTARD GREENS 303 Can. . 10c
TURNIP GREENS 303 Can. . 10c
GREEN BEANS And POTATOES . 303 Can. . 17c
GREEN BEANS 303 Can. . 15c
FANCY SPINACH 303 Can. . 13c

NEW CROP BURLESON'S STRAINED HONEY 2 lb jar . . 69¢

NABISCO Sugar Honey GRAHAMS Lb. 34¢

WEDNESDAY IS DOUBLE

J.N. GREEN STAMP DAY
With the Purchase of \$3.00 or More of Merchandise

UNDERWOOD'S DEVILED HAM 4 1/2 oz can 37c

Garden Club Fruit PRESERVES PEACH 12 oz jar . . 25c
APRICOT 12 oz jar . . 25c

PARKER'S FOOD STORES

WE GIVE J.N. GREEN STAMPS

Texas, California, Missouri Other States Rank High In Some Individual Products

Some relatively small steel producing states are among the leaders in capacity for manufacturing specific steel products...

California ranks first of the 19 states with concrete reinforcing bar capacity. It has about 20 percent of the 2 million ton national total.

Surgery is relied upon to remove cancerous tumors and is used in nearly two-thirds of the cases. X-ray or radium is used to advantage for the remaining group.

gen, banker; and William E. Halsell, rancher. To complete the mural, a panel devoted to the chroniclers of West Texas land dominates the Hurd.

VETERANS Administration Questions and Answers

Q—I am an ex-WAC, planning to attend school under the Korean GI Bill. My husband is working. Will VA pay me the added GI allowance for a veteran with dependents, even though he is working?

Monument to The Pioneers Of West Nears Completion

A pictorial monument to the pioneers of West Texas, nearly three years in the making, nears completion on the campus of Texas Tech.

Artist Peter Hurd is applying the final touches on a 16 panel fresco mural in the Museum at Texas Tech that will commemorate, so long as the Museum stands, those men and women who carved an empire from the plains.

The mural, forming a continuous landscape, around the Rotunda, will be completed early in November. Hurd began actual work in February, 1953, following almost two years of preparation.

Each panel will feature the likeness of a man or woman who made a significant contribution to the development of West Texas. While actual persons are portrayed, each has been chosen to represent a class of leadership.

Those persons honored are: Marcy Mathias Dupre, school teacher; D. R. Couch, farmer; Crone Webster Furr, merchant; Dr. Clifford B. Jones, civic leader; Mrs. Dora Roberts, pioneer woman; W. H. Bledsoe, lawyer; James L. Dow, journalist; M. V. Brownfield, townbuilder; the Rev. R. Robert F. Dunn, Circuit rider; Sid Richardson, oilman; Sam C. Arnett, cowboy; Walter S. Posey freighter; Dr. Marvin C. Overton, doctor; Charles Ernest Maed

Texas State Dept. of Health

Dr. Henry A. Holle, M. D.

"Cancer, the State's No. 2 killer, accounted for one out of every eight deaths during the past year, and this was 13 percent of all deaths that occurred in Texas," declared Dr. Henry A. Holle, State Health Officer.

For many years there were but two ways of treating cancer. 1st by surgery and 2nd, by use of radium or x-ray. Treatment must be started early and in the hands of a competent surgeon.

DODGE has done it... better wait!



She's hoping for REVERE WARE. Illustration of a woman's face and a Revere Ware logo.

REVERE WARE. Illustration of a cooking pot and pan with descriptive text.

Herring's Hardware and Appliances. WE GIVE "S. and H." GREEN STAMPS. PHONE 232 201 EAST MAIN STREET

ALWAYS TIRED?

You may be dangerously taxing your entire system when you allow fatigue, nervousness—poor appetite and sleepless nights to drag you down because your body is vitamin and iron starved.

Bexel Helps Build Rich Red Blood FAST!

Each high-potency BEXEL Special Formula capsule gives you 5 times the daily minimum requirements of iron; more than the daily minimum requirements of all the B-vitamins that doctors will tell you are essential for proper nutrition; plus Vitamin B12 and trace minerals.

Penny for penny—you get MORE value in just one high-potency BEXEL Special Formula Capsule! CORNER DRUG STORE

"Executive Suite," Palace Fri. - Sat.



William Holden tries to control a hysterical Barbara Stanwyck, emotionally distraught by news of the death of a man whom she has vainly loved.

FOR..... Mercury - SEE - CASEY LOGAN 312 Ave. C Phone 131 Classified Ads Get Results

Special Regular \$15.00 Value Polish Job \$10.95 For Only Mathis Chevrolet

\$ DOLLAR DAYS SPECIALS

REGULAR \$1.50 HOME PERMANENTS \$1 PANGBURNS T. V. MILK CHocolates 10 Oz. Box \$1.25

Clark's Drug Store PHONE 142 Burkburnett, Tex

REBEKAH RUMMAGE SATURDAY, NOVEMBER 211 E. 3rd.

Partnership Notice

We, the subscribers, have day entered into a partnership agreement by provision of the Revised Statute Title 105, relating to partnership, and do hereby certify that the name of the partnership to be conducted is Y. Glaze Doughnut Company.

STATE OF TEXAS COUNTY OF WICHITA I Dora Davis, County Clerk, do hereby designate the Burkburnett Star as the official publication in which the above Partnership certificate shall be published for four consecutive weeks as prescribed by law.

Mrs. J. C. Adams and M. E. Clack attended a luncheon at the Country Club in Wichita Falls Thursday.

Vertical text on the far right edge of the page, including 'BURKBURNETT STAR' and other illegible words.

