

Chamber of Commerce Luncheon Each FIRST MONDAY at Town Hall Everybody Invited Each Pays for His Meal

# Burkburnett Star

SOME -- READ BY EVERYBODY LIKED BY MANY -- CUSSSED BY

Why Not Marry? Two can live as cheaply as one can five years from now.

BURKBURNETT, WICHITA COUNTY, TEXAS, THURSDAY, NOVEMBER 27, 1958

NUMBER 12

## Head Easter Seal Fund Campaign



Robert A. Murray, M. D., is the new president of the State's Easter Seal Society, the Texas Society for Crippled Children and Adults, TSSCA, operating 32 treatment centers throughout the state for crippled children and also the announcement of Dr. Murray's election was made in Dallas Tuesday by Martin Baker, TSSCA executive director. The Texas Society is holding its annual meeting Nov. 16-19 in Dallas in conjunction with the national convention of the parent Easter Seal organization, the National Society for Crippled Children and Adults, approximately 1500 Easter Seal volunteer workers and professional staff members from all parts of the nation met in Dallas Tuesday. Baker's announcement drew attention to Dr. Murray's record of service with the Easter Seal Society in Texas and other civic and professional organizations.

## SW Conference Football Broadcasts Humble Saturday

Four football games played by Southwest Conference teams will be broadcast this Saturday by Humble Oil and Refining Co. The traditional Texas A and M football game against Texas Tech will be broadcast from Austin to describe the game and color. Radio time will be 1:45 p. m., CST. WBAP, Fort Worth. The Baylor-Rice game will be broadcast Saturday night by Ves Box and Radio time will be 8:30 p. m. The SMU-TCU game will be broadcast from Dallas Saturday by Kern Tips and Radio time is 8:30 p. m. The Texas Tech-University of Houston game will be broadcast from Houston Saturday by Bob Walker and John Radio time will be 8:30 p. m.

## Wee Eagles Received Awards Tuesday Night

The Wee Eagles enjoyed a big supper at the Boys Club in Wichita Falls Tuesday night. They received several awards. All Stars were: Jim Owen, end; Tom Holman, guard; and Butch Moore, quarterback. Honorable mentions were Jerry Harsh, guard; Ronnie Friedls, center. Coaches for this team were Coach Todd and Mr. Ralph Owen. Other people from Burkburnett attended this meeting. The special speaker was Big Ed Green, a pro football player from the Green Bay Packers. Little Leaguers who have not seen the game play, have missed a lot. We have a game at Sheppard Field Thursday. Everybody is urged to go. These boys are better than all the way.

## 1959 Edsel Now On Display at Casey Logan's

The new 1959 Edsel is now on display at Casey Logan Motors, 310-312 Ave. C.

According to reports: It's the biggest news of the new car year. A car that makes sense. Outstanding without being gaudy. A car that makes sense. Full sized and roomy without useless length. Powerful without hogging gas. A car that's sensibly built to last and sensibly priced to buy.

It's an exciting new kind of car that makes history by making sense. The new 1959 Edsel is now on display at Casey Logan Motors. Only the 1959 Edsel gives you styling that's solidly distinctive—from the strength of its verticle grille to the sweep of its clean flight deck. Only the 1959 Edsel offers such luxury as comfort shaped contour seats that relax you while you ride.

Only the 1959 Edsel has dual-temp climate control—that sets heat, ventilates, even air conditioning—at a twist of the wrist. And only the 1959 Edsel has 4 great new engines, ranging from a thrifty economy six, to one of the world's most powerful V-8's. So you can select the exact combination of power and economy you want. Yet Edsel is now priced with the most popular three. It's a car that makes history by making sense. See it, drive it, price it.

## Cotton Farmers To Vote Dec. 15

Cotton growers will make an important decision on Monday, Dec. 15th, Howard Henderson, member of the Wichita Agricultural Stabilization and Conservation Committee, reminds farmers.

On that day, growers will vote in a referendum to decide whether marketing quotas will be in effect for their 1959 upland cotton crop. All farmers who engaged in the production of upland cotton in 1958 will be eligible to vote in the referendum.

If at least two-thirds of the growers voting approve the quotas, Mr. Henderson explains marketing quotas will be in effect on all farms growing upland cotton in 1959. Penalties will apply on excess cotton and growers will have an opportunity to elect a choice between complying with their regular choice (A), farm allotments or increasing their cotton acreage by as much as 40 percent; this second choice is called choice B.

By complying with the choice (A) allotment, a grower will be eligible for price support at the full level available, not less than 80 percent of parity in 1959; by complying with the choice (B) allotment, a grower will be eligible for price support at a level 15 percent of parity lower than under the choice (A) program.

If more than 1-3 of the growers disapprove quotas, there will be no marketing quotas or penalties, only regular choice (A) allotments will be in effect, and price supports to eligible growers (those who comply with their regular allotments) will be available at 50 percent of parity.

In either case, acreage allotments of some kind will continue in effect for the 1959 cotton crop as a means of determining eligibility for the available price support.

Mr. Henderson pointed out that legislation directs the Secretary of Agriculture to proclaim marketing quotas for the next upland cotton crop when the cotton supply exceeds normal. Quotas are not put into operation, however unless they are approved by at least 2-3 of the growers voting in a referendum question.



For freedom, for plenty, for all the blessings of home and family, we say a prayer of gratitude on this Thanksgiving Day. As we celebrate with the traditional feast, we are grateful, too, for many other American traditions . . . and for the privilege of all to work, plan and save for a bountiful future.

Burkburnett Star

## Notice of Special City Election

THE STATE OF TEXAS COUNTY OF WICHITA CITY OF BURKBURNETT To the resident qualified Tax-paying voters of the city of Burkburnett of Wichita County, Texas:

Take notice that an election will be held on the 2nd day of December, 1958, in the City of Burkburnett of Wichita County, Texas, at the places, in the manner, and on the proposition set forth in the attached copy of an Order For Special City Election, duly entered by the City Commission of the City of Burkburnett of Wichita County, Texas, on the 10th day of November, 1958. Said attached order for Special City Election is made a part of this notice for all intents and purposes.

Therefore, be it ordered by the City Commission of the City of Burkburnett of Wichita Co., Texas:

That an election be held in said City on the 2nd day of December, 1958, at which election the following proposition shall be submitted to the resident qualified taxpaying voters of said City for their action thereupon:

PROPOSITION FOR Extending the City Limits of the City of Burkburnett, Texas, AGAINST Extending the City Limits of the City of Burkburnett, Texas.

A. W. NEWMAN, City Clerk, Burkburnett, Texas. 12-1tc

## Card of Thanks

I wish to express my sincere thanks and appreciation to my friends and neighbors for the nice flowers and cards and visits I received during my recent illness. May God bless each of and everyone of you. Ralph England, Sr.

Dana Matherly was admitted to Wichita General Hospital Tuesday with an eye injury. He is the son of Mr. and Mrs. Ray Matherly.

## Quail Season Opens Dec. 1

Two more shooting seasons on important species will open Dec. 1st, according to the director of law enforcement of the Game and Fish Commission. Of widest importance will be the opening of quail season, with a bountiful crop reported throughout the state. The deer season west of the Pecos also will open at that time. Shooting of quail will be legal until Jan. 16th, but trans-Pecos deer season will end Dec. 8th.

All dove shooting in Texas is over for the year. Any further killing of doves is illegal.

The season also is open on all species of geese. It is now legal to kill Canadas and white fronted geese. He warns, however, no more than two of either of the Canadas or specs, or one of each, may be legally killed.

## Branson Rites Were Monday

Funeral services for William O. Branson, 74, a Burkburnett resident for 30 years, were held in the Church of Christ in Burkburnett at 2 p. m. Monday. Officiating was Rev. W. M. Wilhoit, assisted by Rev. Herbert Smith, pastor.

Branson, who resided at 713 Park, died Saturday. He was a retired farmer and a member of the Church of Christ.

He is survived by the widow, two sons, four daughters, four sisters, 12 grandchildren and four great-grandchildren.

Pallbearers are W. J. Bingham, J. W. Stubblefield, Buddy Byars, John Page, Clark Gresham and Cliff Cannon.

Burial was in the Burkburnett Cemetery under the direction of Owen-Brumley Funeral Home of Burkburnett.

## With Our Subscribers

NEW—Preston Johnson, Jr. Mrs. Hallie Eastman Mrs. Bill H. Matthews. George H. Cromleigh B. L. Black Robert H. Busby Ediths Beauty Shop J. W. Alvey.

RENEWALS—Mrs. Maude Green Mrs. Martha Shores Floyd Lawler Mrs. M. O. Swan Harrison Goble Mrs. Jack Harris Mrs. S. W. Jack Mrs. W. A. Strickland J. C. Still Myrtle B. Capps Ted Averitt Mrs. Roy F. Wilson Owens-Brumley G. O. Baley James H. Holt L. W. Maney Mrs. Eva Robinson R. O. Brown Thelma Wirges Mrs. F. A. Wilkinson D. M. Morris Jack Dickson Roy Millikin O. H. McBride Mrs. Miles B. Hays J. W. Simpson Clarence Bridges Mrs. Buddy Bowles Page E. Brown Fred Hunt B. L. Turner Mrs. Beatrice Cole Mrs. Charles Begeman F. A. Jamieson H. J. Powell Mrs. E. C. Hennis Winfred Henry Alice Pyles Albert Westbrook C. E. Jones Henry Maloney Oma VanCleave Lawrence Gilbert S. S. Reger J. C. Parks Tom Key Mrs. J. H. Brumley

Mr. Jack Kelly of Boerne, Tex. was visiting friends here this week. Mr. Kelly is the former owner of the gas co here. This was his first visit here in 21 years.

## Local Merchants Are Assembling Valuable Prizes for Xmas Shoppers

Burkburnett merchants are amassing an enormous array of valuable prizes to be given Christmas shoppers who come to Burkburnett. Merchandise prizes, totaling in excess of \$2,000 will be given away each Saturday on December 6, 13 and 20.

On Wednesday, December 24th, the Chamber of Commerce is giving away cash awards of \$500.00.

Watch next week's Star for a list of the merchants' prizes.

## Small Football Teams to Play Thurs. at SAFB

Two Burkburnett Junior League football teams will play in the Turkey Bowl at Sheppard Field Thursday, November 27.

The Burk Eagles play at 1:30 P. M.

The Midget Bulldogs play at 6:30 P. M.

There will be band music and all the color attached to any big football bowl game.

## LIONS CLUB

Town Hall Each Tuesday 7:30 P. M.

Wayne Chambers, who had charge of the program, introduced County Clerk Dora Davis, who talked on . . . "Signs". She related many humorous happenings in her office over a long period of years, along with some pathetic instances. She also told of many humorous signs she has seen during vacation travel in several different states. Everyone enjoyed the program.

Mrs. Charles Harr was the guest of Mrs. Davis.

Lions Mobley and Ronnie Gresham were introduced as Baby Lions.

Next week Harry Dodson will bring the program.

## Coming Dates

Dec. 9 Lions, Rotarians and members of the Chamber of Commerce will hold a joint meeting.

Dec. 16 will be ladies night at the Lions Club.

B. H. Preston, permanent program chairman and his group will be responsible for the entertainment.

## Redbud Garden Club Game Night Set for Mon. Night, Dec. 1st

The Redbud Garden club, a unit of the Lowannah Horizon club, is sponsoring a Game Night, Monday, Dec. 1st, at 7:30 p. m. at the Town Hall. Games of "42", dominoes, canasta, bridge and monopoly will be enjoyed, and high and low prizes will be given. Free refreshments will be served. There will also be a cake and pie auction sale.

Tickets are on sale now at Adams Drug Store or from any Redbud Garden club member. They will also be available at the door that night.

The Redbud group is sponsored by the Burkburnett Garden club and they are helping with the game night.

All proceeds from the Game Night will be used to give a Christmas party for the senior citizens of the Wichita County Farm on Dec. 17th. Individual gifts will be wrapped for each of the 45 patients. The girls are also planning some entertainment for the party and refreshments will be served.

Mr. and Mrs. John Rigby visited relatives in Grandview over the week-end and also attended the opening of the new Methodist Church there. The old building burned about a year ago and has been replaced with a new and modern structure.

## Completes Basic Training



—U. S. Army Photo Army Pvt. Carlos R. Stafford, son of Mr. and Mrs. Everett I. Stafford, 639 E. Third St., Burkburnett, recently completed 8 weeks of basic combat training with the 2nd Armored Division at Fort Hood, Texas. The 18 year old soldier is a 1958 graduate of Big Pasture High School, Randlett, Oklahoma.

## Ralph Swinford In College Who's Who

Ralph Swinford, son of Mr. and Mrs. R. R. Swinford, Route 4, Wichita Falls is one of 32 East Texas State College students listed in Who's Who Among Students in American Universities and Colleges.

Swinford, a junior advertising-public relations major has a 1.78 grade average, is president of the Student Union Building Board and secretary for the Paragon social club.

The Burk High School graduate is also a Student Adviser and reporter for the college newspaper.

More than 100 ETSC students were nominated for Who's Who. To qualify, students must have a 1.5 grade average and be either a junior, senior, or graduate.

They are also judged on participation and leadership in academic and extra-curricular affairs, citizenship and service to school, and promise of future usefulness.

## Smith-Morrow Engagement Announced

Mr. and Mrs. S. M. Smith announce the engagement and approaching marriage of their daughter, Juddie, to Leon Morrow, son of Mr. and Mrs. Ed Morrow of Devol, Okla. The wedding will be an event of Dec. 20, at the First Baptist Church in Burkburnett. Rev. Leroy Meyer, pastor, will officiate the 7 p. m. ceremony.

The prospective groom is a graduate of Big Pasture High School. The bride will be a 1959 graduate of Burkburnett High School.

The couple will establish residence in Burkburnett.

Mr. Bill Donnell, manager of the Lone Star Gas Co. here, was returned to his home Saturday from the Wichita Falls General Hospital. Mr. Donnell received painful injuries and bruises when the pickup he was driving overturned approximately two weeks ago.

Preston Johnson, Jr., has returned home from the Veterans Hospital at Dallas where he was visiting her brother, Mr. and Mrs. H. D. Maney and family, here for a few days.



# The Burkburnett Star

JOHN W. BROOKMAN -:- HARRY C. DODSON  
Owners and Publishers  
Harry C. Dodson, Editor



Printed weekly at Burkburnett, Wichita County, Texas. Entered as second class matter at the post-office at Burkburnett, Texas, August 19, 1907, under the Act of Congress of March 3, 1879.

**Notice to the Public:** Any erroneous reflection upon the character, standing or reputation of any person, firm or corporation, which may appear in The Star, will be gladly corrected as soon as it is brought to the attention of the publishers.

**SUBSCRIPTION RATES PER YEAR**  
In Wichita and Cotton Counties ..... **\$2.00**  
Outside These Counties ..... **\$2.50**

## Grass Roots Opinion

**BEAVER FALLS, PO., NEWS-TRIBUNE:** "Interest rates already are heading rapidly toward the high levels reached during the tight money period of 1957 when the Federal Reserve also was fighting inflation. But the main impact on inventory purchasing programs, Washington analysts believe, will not be soaring interest costs alone. The real problem for many firms eventually will be getting bankers to approve larger loans, as the Federal Reserve gradually tightens up in the months ahead."

**ROSEBURG, ORE., NEWS-REVIEW:** "It has been interesting to note that while there has been considerable interest shown in the small foreign cars, which advertise economy and space, a lot of these cars are being used for 'seconds', and have had but little effect on the domestic market."

**CLERMONT, FLA., PRESS:** "When Lenin wrote his book on Communism, one line in that book was all powerful: 'We shall force the United States to spend itself into destruction.'"

**GILLESPIE, ILL., NEWS:** "Nations build up their stock pile of atom bombs, which could lead to the ultimate destruction of mankind. The atomic age we have, what we do with it, is up to man, who must become either master or slave."

"In a heartily industrial region the challenge has been accepted, the largest power companies have joined together in a gigantic experiment. The principal is there, now how to bring out its good qualities, perfect it, make it into the greatest element of all time."

**MILLERTON, N. Y., NEWS-REPUBLICAN:** "One may assume that a proper understanding of the history of the world is necessary if citizens in a self governing country are to pass intelligent judgement upon the issues that present themselves in connection with the modern world."

## More Fun At Thanksgiving

In the old days, the homemaker's preparations for Thanksgiving amounted to a huge task. Chores often started weeks ahead of time. Some recipes took days to prepare. Gathering the food for Thanksgiving dinner meant a long tour of various shops.

But now, as a house organ issued by First National Stores points out: "The modern 'Cook of the Day' can have a complete Thanksgiving dinner ready in a matter of a few hours. Scientific improvements in the food itself and in packaging have made cooking so easy, beyond any dream of generations past."

Anyone who's ever been in a modern American food market can attest to that. Everything is ready to hand—plainly marked as to price, weight and quality, and attractively packaged. And an ever lengthening list of foods now come in ready-for-the-pan or ready-to-eat-form.

As the First National's magazine says: "Food shopping for Holiday time or any time is faster, pleasanter, cleaner than in the old days, which, of course, was fun with the family hustling around doing all the preparation work. But today it's even more so because pre-holiday preparations leave time for recreation that goes with Thanksgiving."

## The Age Of Distribution

Historians of the future may well call the 20th Century the Age of Distribution.

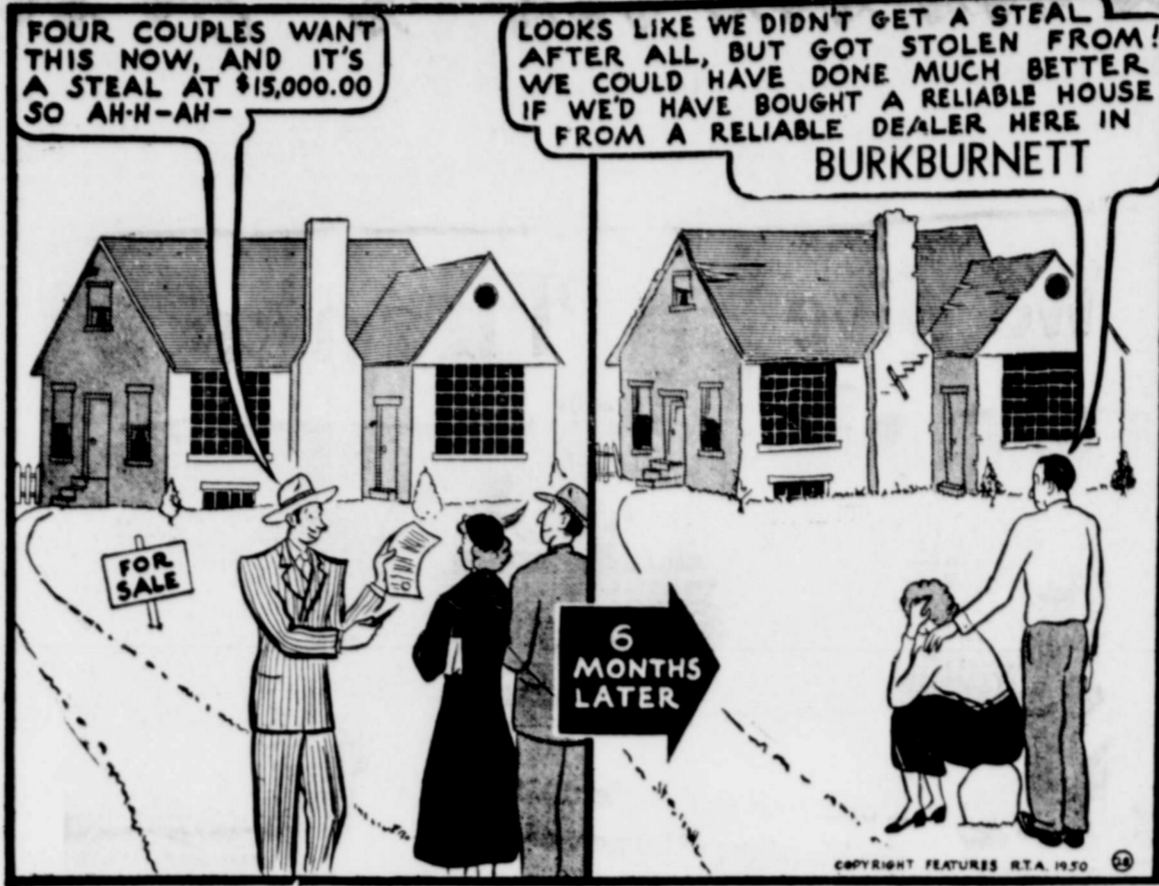
That comes from John A. Logan, president of the National Association of Food Chains. He elaborated in these words: "In America, a relatively young country with vast land area, we look upon population growth as a favorable portent—this is not true in many countries where more mouths to feed increase pressures on inadequate food production and undeveloped distribution methods."

"Today's textbooks cite the introduction of agriculture and the Industrial Revolution as fundamentals to the development of civilization as we know it today. So, young people of the future may find school classes devoted to the ways the revolution in distribution helped make possible for the people of the 20th century to learn to live peacefully in the atomic age."

The industrial revolution, and the revolution in agriculture, made possible mass production. But all the production on earth without a comparably efficient system of getting the goods to the people would be worthless. The development of our mass distribution system—based on huge turnover at a small unit profit—largely made possible our living standards.

American retail leaders have been active for decades in perfecting a mass distribution system. American merchandising innovations are finding ever wider acceptance in a long list of countries. And this, one hopes, will make a significant and lasting contribution to the cause of peace.

## HOW BOUT THAT By RALPH TEE



## The Fifth Freedom

The four freedoms, made famous during World War II as a philosophical base of Allied purpose, were these: Freedom of Worship, Freedom of speech, Freedom from want, and freedom from fear.

Now a fifth freedom, as important as any of the others, should be added to the list: freedom of choice.

This is the point of a leaflet issued by the American Medical Association. It adds: "This philosophy of free choice touches on every phase of your daily life. Certainly not the least of these is your basic right to choose your line of work, the neighborhood in which you live, the church you attend, and the physician in whom you have the greatest confidence."

The AMA is concerned, and rightly so, with a recent trend toward programs in which the physician is chosen for you. It is of small moment whether such programs are inspired by government, by a labor union, by an enterprise, or by any other kind of organization. They deprive you of freedom of choice, and they may lead to inferior medical care. When you do not have the freedom of choice, your own physician, your individual physical and emotional needs may be neglected, because you and the physician have not had ample opportunity to develop a feeling of mutual understanding and trust.

It's high time we stressed the fifth freedom—in every phase of human life.

### WA KI YA CAMPFIRE

The Wa Ki Ya Campfire girls met on Wednesday, Nov. 19th. They held a meeting and then went on a two and one half mile penny hike.

On a penny hike the direction you go is determined by flipping a penny. At each corner the penny is flipped. If heads come up, you go to the right and if tails come up, you go to the left.

The Illinois State Senate voted to eliminate its Committee on Efficiency and Economy for reasons of Efficiency and economy.



### Homeowning Can Be Hazardous Too!

No matter how long the bronc-buster has been riding, he can never be sure the next horse won't throw him.

Such is the case with the homeowner. No matter how careful he tries to be, an unnoticed frayed electric cord, overloaded circuit, or smoldering cigarette can leave his home in cinders.

It's too late then to realize his insurance is "too little—and the wrong kind."

Be sure when you insure. Call on your local independent agent for a thorough appraisal of your needs.



See Us FIRST For Insurance of ALL Kinds

## ROBERTS Insurance Agency

George and Mildred Counter  
Palace Theatre Bldg.  
BURKBURNETT, TEXAS  
Office — Phones — Res.  
JO-9-2771 — — — JO-9-2754

## Mr. and Miss Junior High School Named

Miss Junior High is Billie Eidson, eighth grade student and the daughter of Mr. and Mrs. W. L. Eidson. Billie is also cheerleader at Junior High School. Mr. Junior High is Barney Fudge, eighth grade student and son of Mr. and Mrs. W. H. McLean. Barney is also president of the eighth grade and an outstanding scholar.

Call JO 9-2191 For All Printing

## BURKBURNETT... HISTORY

Revealed By The Star Files 10 Years Ago . . .

Mr. and Mrs. J. R. Hill of Oklahoma City were guests in the O. E. Melton home last week.

Mrs. Lewis Shores of Burkburnett and Mr. and Mrs. F. H. Corbin of Wichita Falls left Tuesday morning for Houston where they'll spend the Thanksgiving holidays with their children, Mr. and Mrs. Sanford Shores and family.

John Clement and Dee Ivey left the first of the week for a hunting trip to San Marcos, Tex.

Alice Milikin of NTSC, Denton, spent the weekend at home.

James Thomas of Houston is visiting friends here this week.

Mrs. J. P. Lawler spent the weekend in Seiling, Okla., visiting her son, Rev. Ray Lawler and family.

Mr. and Mrs. Dick Ha Linda plan to spend the days in San Antonio.

Janice Smith is back in this week after a two week absence due to a tonsillectomy.

Mrs. Floyd Gladden of Colo., arrived this week to Mr. and Mrs. C. C. Gilbert to attend the Gilbert-Utts ding Thursday.

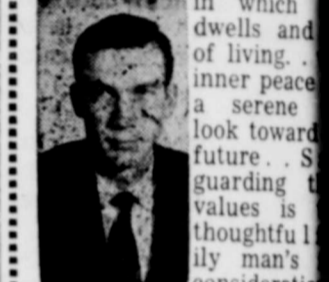
Mr. and Mrs. Van Buren of Corpus Christi, announce arrival of a baby boy, R. James, born Nov. 13th at Wichita Falls General Hospital.

Classifieds Pay Divided

## Safe n Sound

By BILL BROWNING

Of all the values of American family life, None is more rooted than these . . . A home in which dwells and of living . . . a serene look toward future . . . S guarding the values is thoughtfully man's consideration



This Agency acting as a friend and counselor is ready to help you with a program that will secure protection for your home, possessions, your car . . . come funds in case of illness or accident . . . So why let us show you how we make your home and valuable possessions more secure, and give you complete peace of mind, all you to do is call . . .

## Browning Agency

GENERAL INSURANCE  
REAL ESTATE  
319 Ave. C Ph. JO 9

## Burk Transit Mix Concrete Co.

SAND AND GRAVEL — FILL DIRT AND CHAT

IMMEDIATE DELIVERY

Satisfaction Guaranteed

102 East College PHONE JO-9-2741  
NIGHTS JO-9-3775

H. SALES, Owner

\* TOP TV—The Dinah Shore Chevy Show—Sunday—NBC-TV and the Pat Boone Chevy Showroom—weekly on ABC-TV.



The 4-door 9-passenger Kingswood with rear-facing back seat and automatic rear window

Be our guest for a pleasure test . . .

## THIS IS THE ONE FOR WAGONS! 1959 CHEVY

Chevrolet's five stunning new station wagons for '59 are shaped to the new American taste with fresh, fine Slimline design. And they're beautifully practical—with roomier, quieter Bodies by Fisher, an even smoother ride, new ease of handling!

Wagons were never more beautiful or dutiful. From low-set headlights to wing-shaped tailgate, these '59 Chevrolets are as sweet looking as anything on wheels. They're just about the handiest things on wheels, too—from their overhead-curving windshield to their longer, wider load platform. Besides additional cargo space, you also get added seating room (4 inches more in front, over 3 inches in back). And you'll find such other practical advantages as new easy-ratio steering,

Safety Plate Glass all around, bigger, safer brakes, smoother-than-ever Full Coil suspension and a roll-down rear window (electrically operated as standard equipment on the 9-passenger Kingswood). Your dealer's waiting now with all the details on why this year—more than ever—Chevy's the one for wagons.



now—see the wider selection of models at your local authorized Chevrolet dealer's!

## MATHIS CHEVROLET COMPANY

300 EAST 2nd STREET

BURKBURNETT, TEXAS

PHONE JO-9-3888

## Septic Tank Pumping Service

ARLIS KEY IF NO ANSWER  
Phone JO 9-3265 Dial JO 9-3605  
501 EAST 6th STREET BURKBURNETT, TEXAS



# CLEAN UP SALE

**ODDS -- ENDS -- FLOOR SAMPLES**

## BED ROOM FURNITURE

**BLONDE DOUBLE Dresser & Bed**  
Reg. \$129.95  
**CLOSE OUT \$59.95**  
*With Trade*

**WALNUT DOUBLE Dresser & Bed**  
Reg. \$179.95  
**CLOSE OUT \$129.95**  
*With Trade*

**ODD BEDS SPECIAL**  
Reg. \$24.95  
**\$19.95**

**Mattress and Box Spring Set**  
Reg. \$79.95  
**SPECIAL \$49.95**  
BOTH FOR

**NEW BENDIX WASHER AND GAS DRYER**  
Reg. \$499.95  
Units, Special  
With Old Washer  
**\$325.00**

**USED BABY BEDS**  
From \$7.00

**NORGE WASHER**  
Speeds—2 Cycles  
Reg. \$269.95—With Trade  
**SPECIAL \$188**

**SHOP OUR STORE AND SEE FOR YOURSELF**

**TREE LAMPS ..... \$15.00**

**USED T-V SETS**  
From \$29.75



# BILLS

**RADIO - TV - AND FURNITURE**

Phone JO 9-3651

Burkburnett, Texas

301 N. Avenue D

## LIVING ROOM SETS

**Green 2 Pc. Sectional, Reg. \$239.95**  
**CLOSE OUT \$150.00**  
WITH TRADE

**Rose Beige 2 Piece Sectional**  
Regular \$239.95  
**CLOSE OUT \$150.00**  
WITH TRADE

**KROEHLER SLEEPER**  
Foam Rubber Cushions—Beautiful Brown  
**CLOSE OUT \$175.00**  
Regular \$249.95 — With Trade

**Green 2 Piece Set, Reg. \$129.95**  
**CLOSE OUT \$69.95**  
WITH TRADE

### EASY TERMS

*CLOSE OUT — Regular \$109.95*  
**T-V LOUNGE ..... \$69.95**

**SUNBEAM MIXMASTER**  
**CLOSE OUT \$29.95**

**SPECIAL TABLE LAMPS ..... \$3.95**

**ODD CHAIRS ..... \$7.50**  
AND UP

**22 H. P. SCOTT Outboard Motor**  
AT DEALER'S COST  
Manual or Electric

**HOT WATER HEATERS**  
30 Gal., 10 Year ..... \$79.95  
20 Gal., 10 Year ..... \$59.95

**COMPLETE STOCK**  
**NEW PHILCO RADIOS**

## Close Out ON FLOOR MODEL REFRIGERATORS

**Buy Now and Save!**

## T-V SETS

**4 Speaker LOW BOY Value!**



"X-400" Decorator Series DeLuxe Console TV!

### PRE-CHRISTMAS SPECIAL

- Master crafted contemporary cabinet
- Four Speaker Balanced Sound System
- Out Front Sound
- Top front tuning with push button "On-Off"
- Positive Picture Lock
- High voltage circuitry, for clearer, sharper picture
- 2-Position Electronic Range Switch
- Available in stripe mahogany, pin stripe walnut and blonde finishes

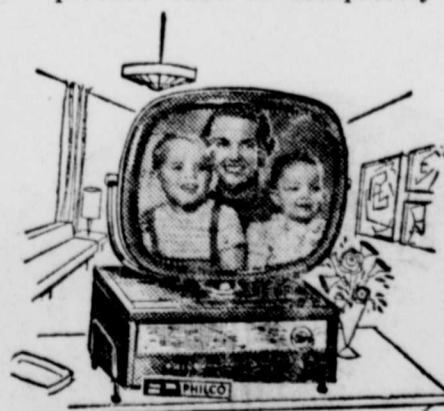
NOT \$399.95

**YOU PAY ONLY \$299.95**

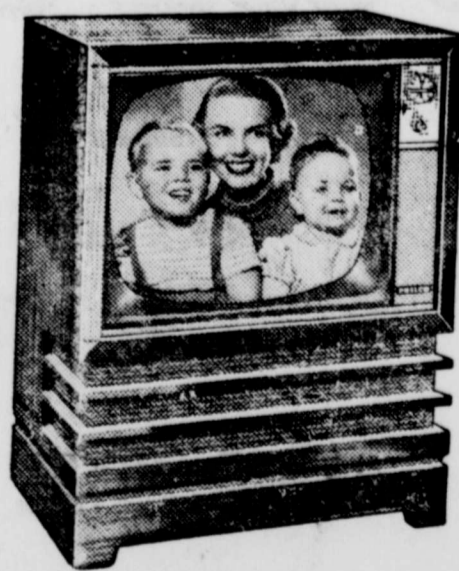
### World's First Swivel Screen TV

At the touch of a finger, Philco's amazing Predicta picture tube swivels—beams its picture right where you want it. Years ahead semi-flat picture tube is completely closed all around.

Unbreakable filter lens. Super-powered Predicta chassis. Mahogany cabinet only 8" high.



**\$249.95**



Handsome Console Three Speakers Swivel Casters

**\$279.95**



**Free Legs**

**\$189.95**



## Memberships and Contributions to Burk Swim Club

The Burk Swim club, Inc. now has a total of 162 pledges of membership. Some pledges have been paid in full and others are being paid out in monthly installments. The board of Directors would like to encourage all members to pay out their membership pledges as soon as possible.


This would enable the Directors to go ahead and accept bids for the pool construction and would possibly insure your use of the swimming pool next summer. If your name is not included on the list below and you desire membership in order to make an investment in the recreation facilities of your city, contact James T. Brady, Jr., at 409 Ave. C.

Membership of the Burk Swim Club, Inc., include:

J. C. Adams, Jr.  
Dr. Jerome M. Adams  
Charles Ainsworth  
B. H. Alexander, Jr.  
Jack Alexander  
Ray W. Anderson  
Billy Earl Askins  
T. E. Austin  
Terry Leon Austin  
Charles K. Bailey  
Royce Gene Bankhead  
Willis Bartley  
M. E. (Bill) Bean  
Francis Beaver  
G. C. Beaver, Jr.  
J. L. Bills, Jr.  
K. B. Blankenship

James Bohner  
Walter H. Bohner  
Warren Bolinger  
Cecil Bradley  
James T. Brady, Jr.  
Clarence Bridges  
Roy L. Bridges  
Ralph O. Brookshier, Jr.  
Page Brown  
Walter Lee Brown  
Mrs. J. H. Brumley  
Bill Bryant  
E. B. Burton  
Charles C. Bradford  
W. W. Chambers  
E. E. Clack  
William H. Clement  
T. M. Cornelius  
Newton T. Crane  
Joe Crowley  
Dr. Joseph A. Davey  
Ralph M. Davis  
W. C. Davis  
Dempsey Harding  
D. C. Dodson  
Joe Dodson  
William Haskell Draper  
Fred A. Eastman  
Joe F. Eastman  
Lyle C. Eaton  
Darrell J. Edwards  
Harry H. Elliott  
Madell Ellis  
Delmar England  
Guy T. England, Jr.  
I. C. Evans  
Paul R. Fisher  
James B. Foyce  
Winston Freeman  
Seeley L. Galloup  
Truman Garland  
C. C. Gilbert  
Lewis P. Gray  
G. C. Gresham  
Grady A. Green  
Eugene Griffin  
T. C. Hampton  
Mrs. I. E. Harwell  
Johnnie L. Herring  
Ruth Hicks  
Alvin Hill  
Tom Hill

### Budget Item



Can you afford to be sick? Tuberculosis means months of treatment, more months of convalescence. Your tuberculosis association works to protect you and your family from this contagious disease. You help yourself when you give to the fight against TB.

... BUY AND USE CHRISTMAS SEALS

Dan Hofacket  
Foye L. Holland  
T. H. Holman  
Paul Hooper  
Lansden E. Hudson  
Joed Inman  
S. L. Johnson  
Mrs. Jessie Jones  
Mrs. Francis Kauer  
Russell M. Kelley, Jr.  
Lee C. Kennedy  
Arlis D. Key  
Mrs. Harriett Lam  
Wallace Landrum  
C. J. Lippard  
Webster A. Littlefield  
E. H. Logan  
Joseph T. Logan  
J. S. Looney  
Glen E. Lynskey  
George McClarty  
W. H. McLean  
J. J. Maag  
H. D. Mabry  
Luther D. Magee  
Floyd A. Marten  
Earl D. Martin  
Jack Mathis  
Donald R. Mills  
H. A. Mills  
Emily Moore  
Charles A. Morgan  
Eldon O. Morris  
Dr. Carl J. Morrison  
David R. Mulheren  
E. M. Mullins  
John E. Musick  
Weldon Nix  
Jack Northcott  
Jerry O'Mary  
Bill Ooten  
J. D. Owen  
John Page  
V. E. Parrack  
Donald Pemberton  
Jim Pirtle  
H. C. Preston, Jr.  
B. H. Preston, Jr.  
Harold Preston  
J. J. Renfroe  
F. K. Reynolds  
Keith Rhine  
James D. Riddle

Ted Roark  
Gene Robertson  
John Robinson  
Dr. Rudolph Robinson  
E. A. Schroeder  
J. D. Shipman  
K. D. Simmons  
Charles P. Skidmore  
Irvin L. Smith  
S. M. Smith  
Warren Smith  
J. R. Sprague, Jr.  
Ralph E. Stevens  
Carl Sutherland  
E. J. Tatum  
Finis Taylor  
C. M. Thompson  
M. M. Thornton  
Cecil Todd  
Leslie Tuel  
Neal Tullis  
B. L. Turner  
Gerald G. Tyler  
George E. Unger  
Harold Van Loh  
Joseph C. Viavattene  
Bill J. Vincent  
Clifton B. Wampler  
E. E. Welborn  
C. A. West  
E. A. Westbrook  
Ralph White  
Floyd Wilson  
Joe K. Wolfe  
E. M. Wood, Jr.  
Harold Wood  
Martin Wright  
W. T. Zimmerman  
Lions Club  
Lions Club  
Lions Club  
Burkburnett Study Club  
Burkburnett Study Club  
Burkburnett Study Club  
Contemporary Study Club  
Current Literature Club  
Current Literature Club  
Forum Study Club  
Jr. University Study club  
Jr. University Study club

### CADET KENNETH R. PETERS PROMOTED TO CADET SGT. AT WENTWORTH ACADEMY

Cadet Kenneth R. Peters, son of Mrs. L. E. Griffin, Rt. 1, Box 129, Burkburnett, has earned a promotion at Wentworth Military Academy, it was announced today.

Lt. Col. H. E. Link, professor of military science and tactics at the school, said that Kenneth has been advanced from the rank of cadet Corporal to that of cadet Sergeant for displaying outstanding leadership qualities executing orders in a commendable manner and assuming major responsibilities. Kenneth's duty assignment is that of squad leader in Company "C".

### Senior Class Invited Draughon's Formal Christmas Dance

The Senior class of Burkburnett High School will be the guests of Draughon's Business College, Wichita Falls, Dec. 16th, 8:00 p. m. at a formal Christmas dance in the beautiful Kemp Hotel Ballroom. A name band will provide the music and a professional floor show will complete the evening's entertainment.

Each month the students of Draughon's are provided with entertainment, chaperoned gatherings, and get-togethers under the direction of the Student Council. This event will be the highlight of the year.

Our young people are not offered the opportunity too often of wearing their formals their mothers bought for their Junior-Senior formal. The seniors of Burkburnett accept and are grateful to be remembered in the Draughon's Christmas party plans.

Our own Gordon Spillers, a 1958 graduate and the vice president of the Student Council, Draughon's Business College, has taken a very active part in assisting with the plans for the social activities. He is to be commended for his enthusiasm and the fine job he is doing in his studies and Student Council Work.

### TANDA CAMPFIRE

The Tanda Campfire girls met at the home of Mrs. B. R. Magee for a regular weekly meeting. Evelyn Peterson served cakes and potato chips. The girls finished their fathers Christmas presents, then sang Christmas carols and played games. One new member was welcomed into the group.

Linda Eidson, Scribe

### Smith-Morrow Engagement Announced

Mr. and Mrs. S. M. Smith announce the engagement and approaching marriage of their daughter, Juddie, to Leon Morrow, son of Mr. and Mrs. Ed Morrow of Devol, Okla.

The wedding will be an event of Dec. 20th at the First Baptist Church in Burkburnett. Rev. Leroy Meyer, pastor, will officiate at the 7 p. m. ceremony.

The prospective groom is a graduate of Big Pasture High School. The bride will be a 1959 graduate of Burkburnett High School.

The couple will establish residence in Burkburnett.

Our Classified Ads Get Results

### MONEY for

Hospital Room and Board  
Surgical Fees  
Special Hospital Services  
Doctors' Calls in Hospital  
Maternity — Polio

Have us tell you about the exceptional new Family Hospital and Surgical Expense plan now to be had from the Metropolitan Life. You will find it helps to give just the protection you may have been seeking. Write or telephone

**CARL MOORE**  
Box 474 Phone JO 9-3693  
Burkburnett, Texas

Representing  
Metropolitan Life Insurance Co.  
1 Madison Avenue  
New York 10, N. Y.

### Jr. High School News

The students of the Jr. High School welcome a new girl, Allen. She is from Abilene, New Mexico.

There have been a great many pupils absent from school the past few days. We hope very soon they will return. They were Anita Nelson from Lubbock and Jerry Anthony from Abilene.

Call JO 9-2191 For All

**PALACE THEATRE**  
BURKBURNETT, TEXAS  
50c 35c 20c  
Week Nite Open 6

FRI.-SAT., Nov. 28

**The Law and Jake Wade**  
ROBERT TAYLOR  
RICHARD WIDMOR

—PLUS—  
**Andy Hardy Comes Home**  
MICKEY ROONEY

SUNDAY MONDAY  
Nov. 30 - Dec. 1

**The Sheepman**  
GLENN FORD  
SHIRLEY MACLAIN

—PLUS—  
**The Happy Feet**  
DEBBIE REYNOLDS

TUES.-WED.-THURSDAY  
December 2-3-4

**Harry Black and The Tiger**  
STEWART GRANT

—PLUS—  
**The Hot Angles**  
JACKIE LOUGHER  
EDWARD GEMMELL

### NOTICE

If you haven't enough room in your home for guests, let us help you. Bedrooms from \$3.00 up. Tile baths, vented heat, wall to wall carpeting, TV and room telephones. Meals served in room if desired.

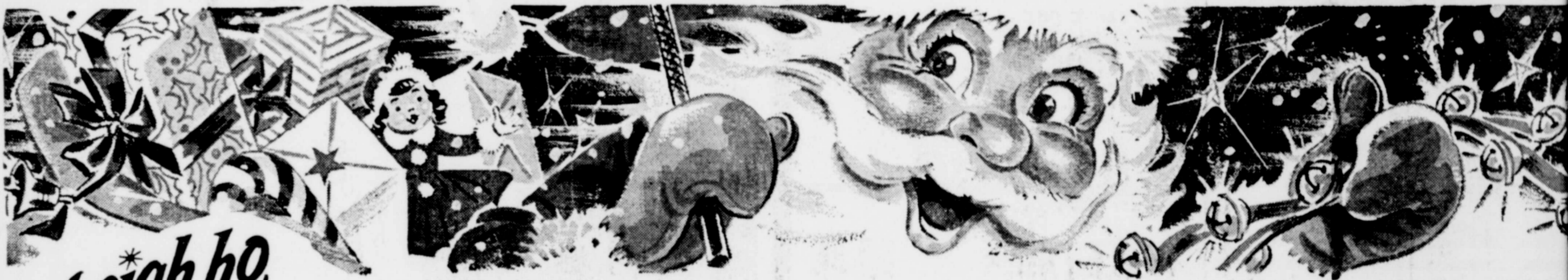
### RANCHOUSE MOTEL

Southeast Section of Town on Highway

277 and 281

Phone JO 9-2211

Please Mention This Ad



heigh ho,  
heigh ho,

ITS' CHRISTMAS SHOPPING WE GO...

# In Burkburnett

- BECOME ELIGIBLE FOR WEEKLY DRAWINGS.
- MERCHANDISE GIFTS EACH SATURDAY DECEMBER 6-13-20
- \$500 WEDNESDAY, DECEMBER 24th

GRAND TOTAL **\$2500.00** GIFT AWARDS

SHOP EARLY—SHOP BURK—PARTICIPATE IN Merchants Appreciation Month





# All Insurance is the same 'til you have a claim

**Burk Insurance Agency**  
**HOWARD CLEMENT**  
 New Location—Next To Legion Hall

**RESOLUTION**  
 Extending the City Limits of the City of Burkburnett

Resolved to empower the city to call an election for the day of December, 1958, to be the first Tuesday of the month for the purpose of extending the City Limits of the City of Burkburnett, as follows:

Beginning at the present southeast corner of the City of Burkburnett, which point is located as follows:

Beginning at a point, the southeast corner of the original city limits of Burkburnett, N 62° 0-30' E, 50' to a corner of the city limits designated by the city charter May 8, 1923;

Thence, S, 22° 0-30' 250' with the east line of Avenue F, a corner of the city limits as adopted by the Charter May 8, 1923.

Thence S 89° 0-30' E, along the South side of the Old Meridan Highway at 3234.9' same being 30' South of the northeast corner of outer Block No. 17 at 3645.3 for the northeast corner of the City Limits Lines of the City of Burkburnett.

Thence, along the existing City Limits lines of the City of Burkburnett, as follows:

Thence, S 0° 0-06' W, Parrallel with and 300' East of the East right-of-way lines of the proposed U. S. Highway No. 70 cutoff to the Burkburnett Bridge across Red River, at 1724.95', at 1844.95 a steel rod driven in the ground 60' South of the center line of the above pavement, at

8608.8' the north fence of the Burkburnett-Wichita Falls pavement U. S. Highway No. 70, at 9137' the North fence of a 60' wide paved East-West road, which jogs South about 360' West at 9564.65' the Southeast corner of the City Limits of the City of Burkburnett.

Thence S 89° 0-32' W, 2003.8' parallel with and 300' South of the South line of an East-West paved road, the most southerly southwest corner of the City of Burkburnett;

Thence, South, along the east line of the Lone Oak Addition, 938';

Thence, along the east line of the Scruggs Addition South, 180' S 9° 0-57' E, 183'; South, 229.3';

Thence, along the south line of the Scruggs Addition, N. 89° 0-52' W, 304';

Thence, along the west line of the Scruggs Addition, North 589.3';

Thence, along the south line of the Lone Oak Addition, N. 89° 0-42' W, 390.3';

Thence, along the west line of the Lone Oak Addition, N. 9° 0-40' W, 927.9';

Thence, along the north line of the Lone Oak Addition, N88° 0-42' E, 93.5';

Thence, along the west line of the Chambers Addition, North, 739';

Thence, along the north line of the Chambers Addition, East 165'; South, 150'; East, 129'; North, 150'; N 88-53' E., 462-81 to the Northeast corner of the Chambers Addition;

Thence, North, 50' to the North line of a paved road West;

Thence, S. 88° 0-40' W, along the north line of a paved road West, 1272' to the east right-of-way line of the W. F. and N. W. R. R.;

Thence, along the east right-of-way line of the W. F. and N. W. R. R. S. 8° 0-45' E, 50' to the south line of a paved road West;

Thence, S 8° 0-45' E 2271.6';

Thence southerly along a curve in the railroad right-of-way line 700' to the south line of the CTRR Co. Sur. No. 1, Abstract No. 49 at a point 950' more or less West of the southeast corner of the survey;

Thence southeasterly along the railroad right-of-way a distance of 1416' more or less in Block No. 12, Red River Valley Lands, to the West Line of the C. Winters Abstract No. 322;

Thence southeasterly along the railroad right-of-way a distance of 1000' more or less in the C. Winters Abstract No. 322;

Thence, East across the C. Winters Abstract No. 322 a distance of 8000' more or less to the center of the Gilbert Creek Bridge on U. S. Highway No. 277;

Thence N. 40° 0-19' E, 350';

Thence, 300' from and parallel to the east right-of-way line of U. S. Highway No. 277, N. 49° 0-41' W, 2020' more or less to the east line of the Ashton tract;

Thence along the east line of the Ashton tract, North 1100' more or less to the northeast corner of the Ashton tract;

Thence, along the north line of the Ashton tract, West 1200' more or less;

Thence, 300 feet from and parallel to the east right-of-way line of U. S. Highway No. 277 N 49° 0-41' W, 1550' more or less to the west right-of-way line of a paved County Road along the Burkburnett Cemetery;

Thence, along the east line of the Burkburnett Cemetery, North 750' more or less to the northeast corner of the Burkburnett Cemetery;

Thence, along the north line of the Burkburnett Cemetery, West 850' more or less to a point 300' East of the east right-of-way line of U. S. Highway No. 277 Expressway;

Thence, 300' from and parallel to the east right-of-way line of U. S. Highway No. 277 Expressway, North 9264' more or less;

Thence, West, 1022' to the place of beginning, the northeast corner of the old City Limits.

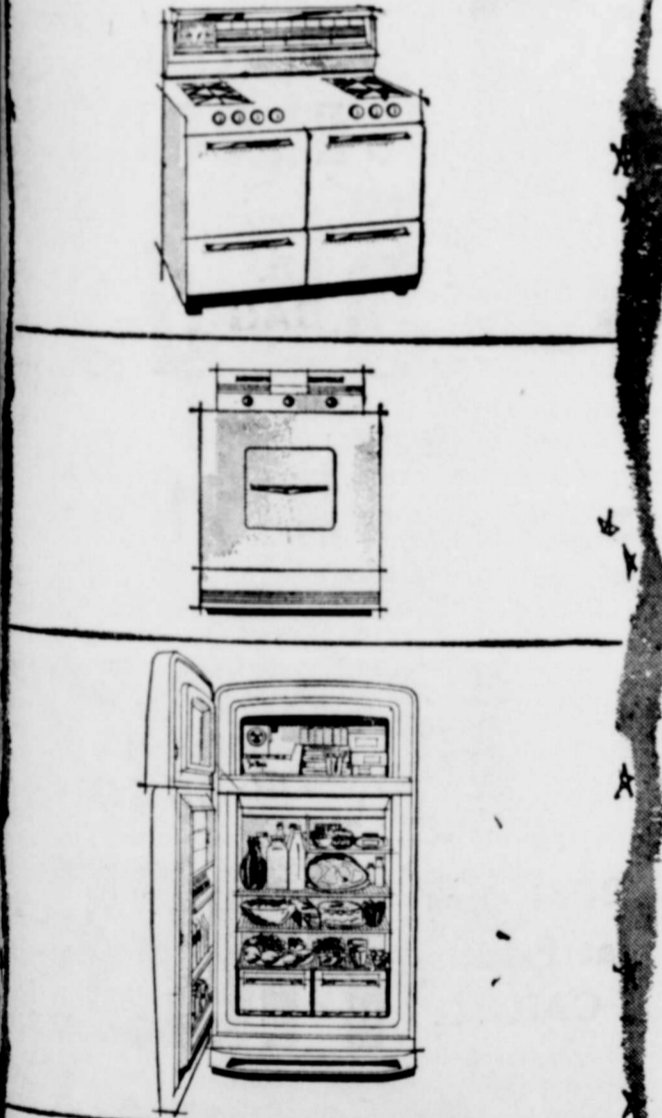
Ayes 5  
 Noes None  
 Resolution carried and to be published in local paper.

ATTEST:  
 H. D. SMITH,  
 Mayor

A. W. NEWMAN  
 Secretary



June and Fred MacMurray say:  
 'Let's make this the Merriest Christmas ever!'  
 Give her an automatic gas appliance



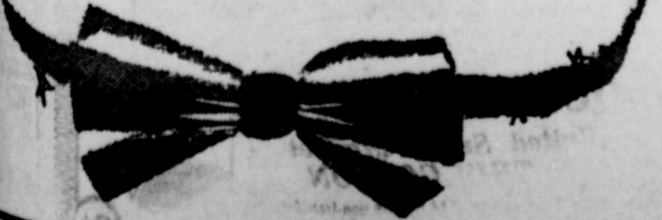
**A MODERN GAS KITCHEN** with automatic Burner-with-a-Brain, no hangover heat and smokeless, closed-door broiling—makes cooking truly faster, cleaner, cooler! And cooking with Gas is 4 times as thrifty as electricity.\*

**A GAS DRYER**, another gift of thrift, lets her dry 7 loads for the cost of drying 1 electrically.\* Faster and fully-automatic!

**THE RCA WHIRLPOOL REFRIGERATOR** with automatic ice-maker, is the only refrigerator backed by a 10-year guarantee on its silent, dependable GAS freezing system.

\*Almost everywhere in Lone Star Land.

See Your Gas Appliance Dealer or  
**LONE STAR GAS COMPANY**



**CHRISTMAS SEALS FIGHT TB**

buy yours TODAY!

**Hardin 4-H Club Met Recently**

The Hardin 4-H club was called to order by the president, Treva Mills. The roll was called and the minutes were read by Twila Bridges. Then we had our pledge and prayer. We voted on the reporter and council delegate. Those elected were Sheila Davey, reporter; Barbara Wolf, council delegate. We also voted on the following demonstrators: Marsha Barry, clothing; and Lee Robertson, food.

At the first meeting we elected president, Treva Mills; vice pres., Brenda Morris; sec., Twila Bridges.

Liquor is a lubricant only if man happens to be going down hill.

**A. F. & A. M.**  
 Stated Meetings First and Third Monday at 7:30 p. m. at the Masonic Hall

School of Instruction Thursday Night  
 J. H. Ferguson, Secretary  
 R. D. Cook, W. M.

**Irvin J. Vogel**  
 LAWYER  
 514-516 Wichita Nat'l. Bank Bldg. Wichita Falls, Texas

**El Wanda Cotton Hostess to Flying Red Horse Club**

The flying Red Horse club held its monthly meeting Thursday night, Nov. 20th in the home of Mrs. El Wanda Cotton. The meeting was called to order by the vice president, Gloria

Connell. The secretary read the minutes of the previous meeting and they were approved. The treasurer gave her report. A nominating committee was appointed by the vice president to nominate officers for the following year and present them at the December meeting. The door prize, a pair of lovely ear rings, was won by Gloria Connell.

Refreshments of brownies, Cokes and coffee were served to the following members: Mesdames Dorothy Coyle, Gloria Connell, Reba Wright, Peggy Hale, Jackye Kinnard and the hostess, El Wanda Cotton.

The Dec. 9th meeting will be held at the home of Mrs. Peggy Hale on Hilltop Street. Everyone is to bring a gift to exchange.

Annually yours . . .

**THE CHRISTMAS BARGAIN OFFER**

for

**MAIL SUBSCRIBERS**

only

Here's your chance to have this great newspaper mailed to you daily in 1959 for only a few cents a day. Act now, while these reduced rates are in effect.

**THE DAILY OKLAHOMAN**  
**THE SUNDAY OKLAHOMAN**

Mail This Coupon Today!

Circulation Department  
 The Oklahoma Publishing Co.  
 Oklahoma City 1, Oklahoma

Offer expires January 1, 1959

Your one-year subscription begins with receipt of this order form . . . or whenever your present subscription ends. Enclose check or money order. These rates good for mail subscriptions only.

NAME \_\_\_\_\_

ADDRESS \_\_\_\_\_

CITY \_\_\_\_\_ STATE \_\_\_\_\_

CHECK ONE ONLY	SAVE	NEW LOW Mail Rate
<input type="checkbox"/> Daily & Sunday	\$5.80	\$15.00
<input type="checkbox"/> Daily Oklahoman Only	2.40	8.00
<input type="checkbox"/> Sunday Oklahoman Only	2.40	8.00

Oklahoma residents add 2% Sales Tax

**OLDSmobility FOR '59 INTRODUCES A NEW STYLING CYCLE...**

Ninety-Eight Holiday Sport Sedan

**NEW "LINEAR LOOK"!** A star bursts into the space age! The '59 Oldsmobile opens up a whole new vista in automotive styling! The slim, trim silhouette spells out a travel adventure story!

*The Conquest of Inner Space!*

**MORE ROOM WHERE YOU RIDE... MORE GLASS AREA ALL AROUND!**  
 Interiors surround you with spaciousness . . . more than ever before! There's a greater expanse of glass all around—Safety Plate Glass! New Vista-Panoramic Windshield sweeps up into the roof . . . lets you see above, ahead, asid!

**UP TO 64% MORE LUGGAGE SPACE!**  
 Vastly increased luggage space takes suitcases, hatboxes, packages of every size and description with room to spare! In every respect, it's the roomiest Rocket ever! Enter the space age . . . at your Olds dealer's today!

DISCOVER THE ADDED VALUES IN

**OLDSMOBILE FOR '59**  
 AT YOUR LOCAL AUTHORIZED QUALITY DEALER'S

**MATHIS CHEVROLET CO.**  
 300 East 2nd Street Phone JO 9-3381  
 Burkburnett, Texas

TUNE IN THE "NEW OLDS SHOW," STARRING PATTI PAGE • EVERY WEEK ON ABC-TV



# Better Food Buys



**2** ALL GRINDS  
Pound Can **\$1.35**

Griffin's  
**BLACK EYE PEAS** 11 FOR **99¢**  
300 Size Cans

Griffin's  
**Mexican Style Beans** 11 FOR **99¢**  
300 Size Cans

Griffin's  
**COCOANUT** 1/2 Lb. Pack **25¢**  
Cello Package

**RED WOOD LUNCHEON MEAT** 3 12 oz. Cans **\$1.**

Chicken of the Sea  
Chunk Style **Tuna** Large 9 1/2 Oz. Can **39¢**



## Pork Steak

Lean and Tender **49c** Pound

Wright's Whole Hog  
**Sausage** 2 Lb. PKG. **99¢**

CENTER CUT  
**Pork Chops** Lb. **69¢**

Cudahy's Nutwood  
**BACON** 2 lbs. THICK SLICED **99¢**

RUSSET  
**POTATOES**

10 Lb. BAG **39¢**

ORANGES  
OR  
Grapefruit

5 Lb. Bag **29¢**



TEXAS GARDEN FRESH GREEN  
**Cabbage**

Lb. **4¢**



HEMET  
**SPICED PEACHES** No 2 1/2 Can **25¢**

POLAR BEAR  
**NEW POTATOES** 2 303 CAN **25¢**

**LIGHT CRUST FLOUR** 5 Lb. BAG **39¢**  
The finest of fine flours

INSTANT MAXWELL HOUSE COFFEE  
**Coffee** 6 oz. Jar **\$1.19**

GRIFFIN'S  
**PORK & BEANS** 11 300 Cans FOR **99¢**

WILSON'S ALL MEAT NO BEANS  
**CHILI** Buy two 24 oz. cans At Regular Price GET 3rd CAN ... **FREE**

SHURFINE  
**Pumpkin** 2 No. 2 1/2 Can **39¢**

MRS. TUCKER'S  
**SHORTENING** 3 Pound Carton **59¢**

**DOUBLE GUNN BROS STAMPS**  
EVERY WEDNESDAY WITH \$2.50 PURCHASE

# UNITED SUPER MARKET

**COUPON SAVE 8¢ ON LIQUID CHIFFON**  
At United Super Market WITH THIS COUPON  
Each redemption value 1/20 of 1¢. Coupon non-transferable and void if taxed, licensed, prohibited or restricted by law.  
COUPON EXPIRES 1958







# CHURCH NEWS

## First Baptist Church

Corner Ave D. and 4th St.  
LEROY MEYER, Pastor  
Gavin Vaughn, Music Director

Sunday School, 9:45 A. M.  
Morning Worship, 10:55 A. M.  
Training Union, 6:15 P. M.  
Evening Worship, 7:30 P. M.  
Prayer Meeting, Wednesday, 7:30 P. M.  
"In the heart of the city for the hearts of the city"

## Grace Lutheran Church

Third St. and N Ave. E  
J. H. KOLLMEYER, Pastor  
The Church of the Lutheran Hour, TV's "This Is The Life"

Sunday, 10 A. M., Sunday School and Bible classes.  
11 A. M., morning service.  
LWMS meeting every first Tuesday, 2 P. M.  
Sunday School teachers' meeting and teacher training course, every second and fourth Tuesday, 6:30 P. M.  
You are cordially invited to our services.

## Bible Holiness

J. T. RICHARDS, Pastor

Sunday School—10 a. m.  
Morning Worship—11 a. m.  
Sunday Night Worship—7:30.  
We wish to extend a hearty invitation to all who do not have a church home, to come and worship with us. The Bible is our only literature. We are an independent pentecostal group and believe in the old time power of God to save, deliver, heal and meet your every need. We extend a special invitation to the children for all of our services.

**Men's Bible Class**  
FIRST BAPTIST CHURCH  
Invites You To  
Worship With Them  
Each Sunday Morning at 9:45  
W. R. CARSWELL, Teacher  
JEWEL RILEY, President

## First Methodist Church

Leon Turner, Pastor

Sunday School—9:45 a. m.  
Morning Service—10:55 a. m.  
Junior, Intermediate, and Senior Youth Groups at 6:00 P. M.  
Evening Worship, 7:00 P. M.  
Official Board meets every fourth Monday  
Visitors are cordially invited to attend all our services.  
A nursery is provided for nursery age children for both the morning and evening services.

## Calvary Baptist Church

College and Ave B.  
Ray C. Morrow, Pastor

10:00 a. m.—Sunday School.  
We use the Bible as our only literature  
11:00 a. m.—Song, preaching service.  
7:00 p. m.—Young People services  
7:30 P. M.—Night preaching service.  
Calvary Baptist is an independent Baptist church, free from organizational control and teaching the truth in love. You have a friendly welcome to all services.

## Church of God

J. W. JACKSON, Pastor

10:00 a. m.—Sunday School  
11:00 a. m. Hour of Morning Worship  
7:00 p. m.—Evangelistic Services  
7:30 p. m. Wednesday—Young Peoples Endeavor  
If you haven't a church home we would like very much for you to visit us where the full gospel is preached in the old time way. There is special music and singing each service. Each and every one has a warm and hearty welcome to come worship with us.

## Thrift Memorial Baptist Church

Marion D. Baker, Pastor

Sunday School, 9:45—Henry Hodges, Supt.  
Morning Worship Service, 10:50 a. m.  
Evening Worship Service, 7:30 p. m.  
Training Union, 6:30 p. m.  
Director, W. D. Sage  
Wednesday night Prayer Service, 7:30 p. m.

## Assembly of God Church

Rev. Lonnie Finney, Pastor

Sunday School—10:00 a. m.  
Worship Service—11:00 a. m.  
Sunday Night Service—7:00.  
Women's Missionary Service, Tuesday—2:00 to 4:00 p. m.  
Prayer Meeting Service—Wednesday night—7:00 p. m.  
Church location—Two blocks west of School on College St.

## Church of The Nazarene

Rev. T. F. Keese, Pastor

Sunday School—9:45 a. m.  
Morning Worship—11:00 a. m.  
Young People Service—6:45  
Junior Society—6:45 p. m.  
Evening Worship—7:30 p. m.  
Wednesday—Prayer Meeting, 7:30 p. m.

## Church of Christ

Herbert A. Smith, Minister

Bible Study Sunday—9:45 a. m.  
Worship—10:45 a. m.  
Young Peoples classes, 5 p. m.  
Worship—6:00 p. m.  
Ladies' Bible Class—Tuesday, 9:30 a. m.  
Bible study Wednesday 7:30  
We welcome you to any of our services.

## 1st Church of Christ Scientist

Tenth and Van Buren  
Wichita Falls, Texas

Sunday School for Children under 20 years of age at 9:30 a. m. in the Church Edifice.  
Services 11:00 - 12:00.

## First Christian Church

2nd St. and Ave. D

Rev. Wayne Black  
9:45 A. M. Church School.  
Classes for all ages.  
11:00 A. M. Morning Worship.  
Attend services regularly, and bring a friend.

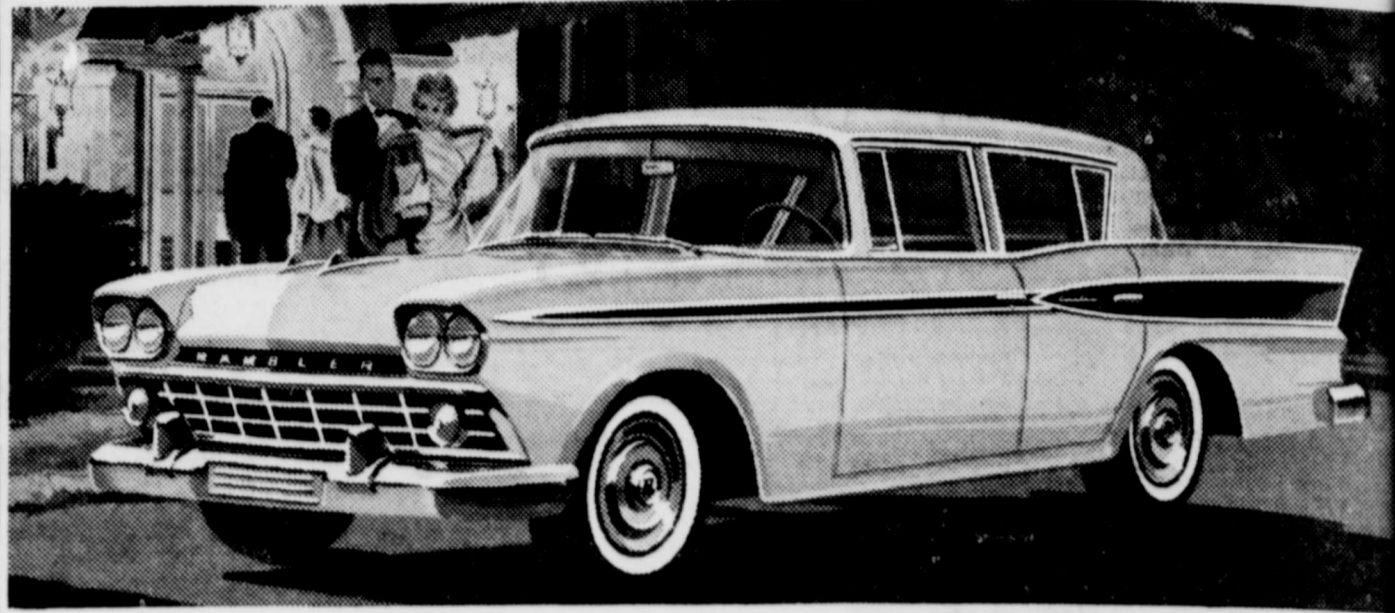


**YOU and Social Security**  
A representative of the Social Security Administration will be at the following place at the time shown below:  
Burkburnett, City Hall, Monday, 9:00 A. M. Dec. 1st.  
Persons who desire information or assistance in Social Security matters are invited to meet with the representative.

With other leading cars way up in price and size... There's only one buy in the low-price field



# Rambler!



- Rambler saves every way. On first cost, Rambler saves you many, many dollars over other leading low-priced cars.
- New carburetion gives more mileage on regular gas.
- Rambler saves you more than ever on maintenance with Single Unit Construction and "Deep-Dip" Rustproofing.
- Rambler alone offers you Personalized Comfort—Individual, adjustable front seats, Airliner Reclining Seats, Adjustable headrests, Twin Travel Beds, Weather Eye heating-ventilating.
- Drive Rambler today. See how it out-saves all '59 cars.

**New 100-inch wheelbase RAMBLER AMERICAN**  
Lowest First Cost...  
Lowest Operating Cost!  
Easy on gas, easy to park, easy to handle in heavy traffic! Peppy, sweet 90 H.P. Six. Available with fully automatic transmission, reclining seats.

**CASEY LOGAN MOTORS** 310-312 Avenue C, Burkburnett, Texas

St. Boniface Club  
Met Nov. 20th With  
Mrs. John Cools

On Thursday, Nov. 20th, the St. Boniface Study club affiliated with Sacred Heart Roman Catholic church of Wichita Falls met in the home of Mrs. John Cools, 305 S. Holly St.  
This year the group will discuss the seven sacraments. Anyone interested in joining the group may contact Mrs. J. A. Davey, JO 9-3436.  
Refreshments were served to the following members: Mesdames Simons, Blannar, Slama, Glover, Nix, Janeke, Crowley, Davey and Cools.

Trinity Lutheran Church

The Church of Radio's Lutheran Hour and the Family Worship Hour and of TV's "THIS IS THE LIFE."  
Lutheran Hour, Frederick, 1670, 9:30 a. m.  
Sunday School, 10:00 a. m.  
Advent Communion Service, 10:45 a. m.  
Tues., Men's Club, 8 p. m.  
Wednesday—Walter League, 7:30 p. m.  
Mixed Choir, 8:45 a. m.  
Saturday—Saturday School 9:00 a. m.

Confirmation classes 9:00 a. m. Dec. 6th, Childes Christmas Service Rehearsal, 10:00 a. m. A Friendly Welcome to All.  
Rev. L. Boriack, Pastor

If you think women never do anything on time, you've never gone shopping with them.

Things could be worse. You know your errors were and published every those of a ballplayer.  
An executive is a man who knows how to get things done and who to get to do it.

Dr. J. E. GALLOWAY, Optometrist announces his return to practice at offices  
**DRS. PARRY & GALLOWAY**  
Ninth and Bluff Sts. Wichita Falls,  
(One block West of First Baptist Church)  
AFTERNOONS, Monday through Friday  
PHONE 322-3777

## WILLING HANDS CAN TURN WORK INTO PLAY



The autumn cleanup of the "home grounds" becomes a breeze (even a lot of fun) when the whole family gets together on it. Same thing goes for saving. When everybody helps save for something that everybody wants, it's almost like a game in which the home team is pretty sure to win. Especially when the savings go here... where they grow so much faster.

The **1**st NATIONAL BANK  
BURKBURNETT, TEXAS  
MEMBER FEDERAL DEPOSIT INSURANCE CORPORATION

**SPECIAL FREE!**  
**Muffler and Tailpipe Inspection**  
**FREE**  
**Instalation**  
of Either When Purchased Here  
-0-0-0-0-0-0-  
**TATUM GARAGE**  
413 Avenue B Phone JO-9-2391

**THANKSGIVING REVIVAL**  
**NOVEMBER 23rd. to 30th.**  
**THRIFT MEMORIAL BAPTIST CHURCH**  
814 Tidal Street  
REV. KENNETH EMMERSON, Evangelist  
**Services Daily at 10 A. M. and 7:30 P. M.**  
(A NURSERY WILL BE PROVIDED FOR THE CHILDREN)  
**The public is cordially invited to attend**  
REV. MARION D. BAKER, Pastor

**This Is YOUR City**  
The Light and Water Systems are owned by the revenue from these properties provide services and conveniences. Each payment is investment in a better place in which to live.  
**THINK IT OVER**  
Municipal Electric Utilities Are Tax Relief  
**CITY OF BURKBURNETT**

**SHOP GUNN BROS.**  
Gift and Stamp Redemption Store  
For Lovely Christmas Gifts  
New Gifts Arriving Daily  
**3 WAYS TO BUY**  
(1) All Stamps  
(2) Part Stamps, Part Cash  
(3) All Cash  
**GUNN BROS.**  
Gift and Stamp Redemption Store  
Located at Sheppard Road and Avenue D  
In United Grocery



# Auto Liability From The Travelers Insurance Co.

IT DOESN'T COST ANY MORE TO  
**BE SURE**  
HOWARD CLEMENT, Agent  
New Location - Next to Legion Hall

**B. N. Cauthorn**  
Burk Garden  
Wednesday

was use what you have in your own backyard.

Mrs. R. C. Tevis presented the club a book for their library. It was titled Reading the Landscape.

Twelve members were served a lovely salad plate by the hostess, Mrs. Cauthorn. The meeting adjourned to meet Dec. 16 in the home of Mrs. J. M. Pogue.



## Local Births

Birth certificates were issued to the following Burkburnett parents last week: Messrs and Mesdames:

Floyd Francis Smith, boy, Floyd Scott

Paul Maborn Underwood, boy, Mitchell Lynn

## News From The County Agent

A series of rat demonstrations will be held in the County the week of Dec. 8th. Meetings and demonstrations will be conducted all over the county. Demonstrations will be conducted in grain fields and pastures using poison grain to control rats. Demonstrations on rat control will also be conducted in barns. The county agent will be assisted in this series of demonstrations by Mr. A. F. Smith, Rodent Control Ft. Worth.

B. T. Haws, county agent and Thelma Wirges, HD agent for Wichita County, have arranged the following meetings: Dec. 2, Valley Farms Community House at 7:30 p. m. Cecil Parker, Program Specialist, Texas A-M College will discuss. Income to be reported. Deductible expenses, Capital gains, Tax management and tax changes from 1958-'59.

A good general rain is still needed in the county for all growing crops especially small grain. Winter legumes and fall sown alfalfa. Most of the small grain's been planted and is up. Some farmers are getting some grazing for their livestock on small grain.

Farmers in the county are harvesting their pecans. The yield in some areas in the county is poor. Rats have done a lot damage to pecans in the county.

Pecans have deteriorated greatly since early September. This has resulted in many pecans that are sub-standard in quality. The trouble seems to be general in several sections of Texas. Reports indicate that the same situation prevails in the Southeastern states as well. The husks turned black prematurely and did not readily separate from the nuts.

Economics of laying flocks in Texas is title of a publication released by the Texas Agricultural Experiment Station and Texas Agricultural Extension Service.

This 8 page bulletin reports the results of a study to determine the production, production

requirements, costs and returns and production efficiencies of representative farm laying flocks. Some of the topics discussed in the publication are description of poultry enterprise, production practices, prices, paid and received, income from egg laying and other related subjects.

The bulletin is available from the local county agents office.

Refugio ranchman, John J. O'Brien, solved his prickly pear problem with chemicals. He used a mixture of a half gallon of 2-4-D and a like amount of 2-4-5T in 40 gallons of kerosene. The cost was only a fraction of what hand grubbing or other mechanical means would have been.

Farmers eligible to vote in the upcoming referendum on 1959 crop cotton marketing quotas has been defined. Persons in doubt about their eligibility to vote in the Dec. 15th referendum are urged to contact their county ASC office where all necessary facts may be obtained.

Refrigerators will soon be bulging with supplies of turkey and all the trimmings for Thanksgiving dinner. Extension foods and nutrition specialists pass along a reminder that sanitary handling and proper storage are the utmost importance to the safety, appetite appeal and flavor of meat.

Wheat capable of protecting the soil, resisting insects and diseases, yielding a forage crop after normal grain harvest, producing high protein grain and having high drought tolerance is the goal in prospect of a long term hybridization program being conducted by USDA agronomists.

## Clem Hardy Circle Met Recently With Mrs. G. E. Benton

Mrs. G. E. Benton was hostess to the Clem Hardy Circle recently. Chairman, Mrs. W. S. Carter, presided at the meeting. Prayer by Mrs. R. H. Brister. The secretary-treasurer read the report of the meeting. Roll call was given by members with scripture verses. Ten members were present. They are as follows: Mesdames J. D. Grizzle, Lawrence Holstead, E. E. Welborn, J. L. Treadwell, Alta Krammer, R. H. Brister, G. E. Benton, H. D. Munceys, W. S. Carter and Oma VanCleave.

Mrs. E. E. Welborn gave a stewardship devotional. Mrs. R. H. Brister, prayer chairman, assigned parts to those on the week of prayer program of Royal Service for December at the first Monday night meeting, Dec. 1st. A motion was made and carried that we pay the November Mexican offering of \$1.25. The offerings were \$3.94.

Refreshments of sandwiches, cookies and cold drinks were served. Mrs. G. E. Benton, was elected as community chairman. All the members enjoyed a good meeting.

## YOUR NEW Social Security

Do you plan to retire soon? If you do, there is a way to speed-up your first social security check. Inquire before You Retire.

You should visit the social Security office 2 or 3 months before you retire to learn what proofs you will need when you do apply.

The people at the social security office will want to see your social security card and some evidence of your age. They will tell you if further proof of your age is needed. If you cannot locate proof of your age, you will be advised what proof of age is required and how to get it. Your recent work will be dis-

cussed. If you are employed, bring a copy of the last Form W-2 (Statement of Earnings) you received from each of your employers. If you are self-employed, bring along a copy of your Federal income tax return. You will be advised if there is need for other proofs.

The people at the social security office will be glad to help you start work on your claim ahead of time. If you inquire before you retire, chances are you will cut down the time it will take to get your first check after you actually retire.

Mr. Joe A. Nesbit, field representative of the social security office in Wichita Falls will be in Burkburnett, Monday, Dec. 1, 1958, at 9:00 a. m. at the City Hall.



For **COLDS** take **666**

ff Waupler  
Landscape

## AUTO BUSINESS HOME

Phone JO-9-3161  
203 N. Ave. D

## HOUSE OF BEAUTY

PRE-CHRISTMAS SPECIAL ON ALL PERMANENTS FROM NOW THROUGH DECEMBER

Special	
5.50	\$6.00
6.50	\$7.50
8.00	\$8.00
10.00	\$10.00



Well trained stylists familiar with the latest in hair cuts and styles to serve you.

Mary Schmitt, Ruby Hartsell, Pat Tyler

E. L. Neal, Owner & Operator

Appointments on Thursday and Friday nights)  
3rd St. Phone JO 9-3491

See **LEO** For  
Sand and Gravel  
DRIVEWAY MATERIAL  
FILL DIRT  
**LEO BRYANT**  
521 Tidal Ph. JO-9-3704

## J. A. SUTTLES Electric Shop

Motors and Parts ♦ Wire and Supplies

CONTRACTING — REPAIRING  
205 East 2nd Street Burkburnett, Texas



UNEXCELLED  
AMBULANCE  
SERVICE  
DAY OR NIGHT

A REPUTATION  
BUILT ON INTEGRITY

Burkburnett Phone JO-9-3361

Wichita Falls Phone 2-3181

CITY CALLS . . . \$5.00

Others According to Distance

All Calls Are Strictly Cash

Bowie Phone TR-2-2233

Fort Worth Phone ED-5-4557

**Owens & Brumley  
Funeral Home**

Life is brighter...work is lighter  
in a MEDALLION Home!



Planned and equipped to help you  
Live Better . . . Electrically

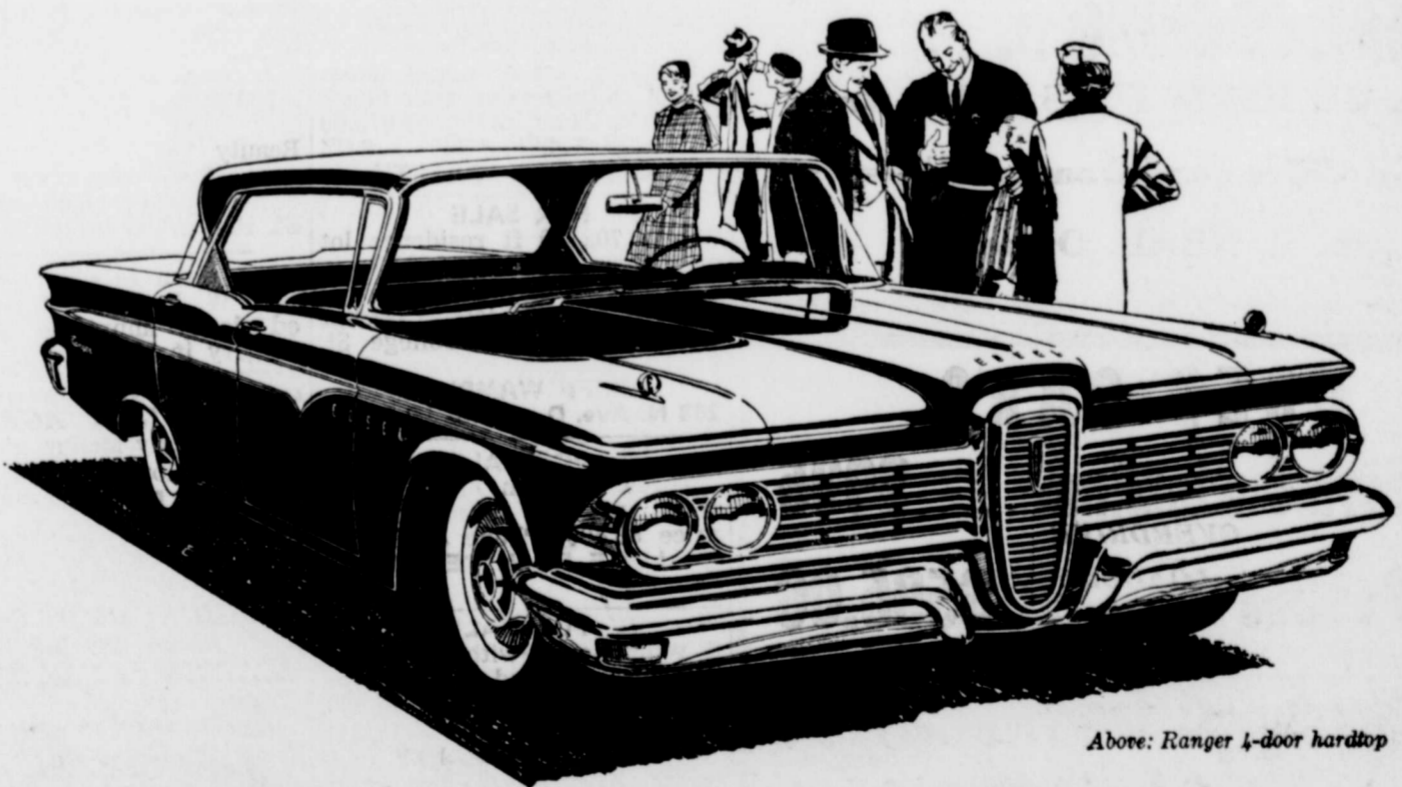
You'll find living more pleasant . . . enjoy added comforts and conveniences . . . in a "Live Better Electrically" Medallion Home. It's a home equipped with basic work-saving electric appliances . . . a home designed with beautiful, efficient light for living . . . a home that's wired for full HOUSEPOWER.

Only newly-constructed homes that meet modern standards of electrical living can display the "Live Better Electrically" Medallion. The Medallion is your assurance of a home in which you can live better electrically . . . now and in the years to come.

Whether you build or buy, make sure your new home qualifies for the "Live Better Electrically" Medallion. For additional information, consult your builder or call our office.

This metal Medallion, set into the sidewalk, steps or a wall of a home, identifies it as one that is designed and equipped for Better Living Electrically. Actual size of the Medallion is three inches in diameter. It is a national "hallmark of excellence" in electrical living.

## 1959 EDSEL



Above: Ranger 4-door hardtop

Now priced with  
the most popular three!

This is the car built with a shrewd buyer in mind. A car that's made right. Styled right. And priced right. For the challenging new 1959 Edsel is actually priced with the most popular three—Ford, Plymouth and Chevrolet! And Edsel's new, low price is just the start. Everything about this all-new car makes sense. Its crisp, clean lines give you the kind of distinction

that usually costs much more. Its sound engineering gives you spacious six-passenger room without useless length. Its four new mileage-minded engines include a thrifty six and spirited new V-8 that uses regular gas! See the car that makes history by making sense. At your Edsel dealer now. EDESEL DIVISION • FORD MOTOR COMPANY

1959 Edsel makes history by making sense

**CASEY LOGAN MOTORS**

310-312 Avenue C, Burkburnett, Texas

**TEXAS ELECTRIC SERVICE COMPANY**



# Why Buy Less Than The Best?

THE LARGEST MULTIPLE LINE INSURANCE COMPANY IN THE WORLD SEE YOUR AGENT. INSURE With The TRAVELERS INSURANCE CO.

BURK INSURANCE  
**Howard Clement**  
Phone JO 9-3333 — Next to Legion

### FOR RENT

FOR RENT—Modern furnished 2 room house. Extra nice. Phone JO 9-3738 or JO 9-3651. CZ

FOR RENT—New 3 bedroom unfurnished home with attached garage. \$100.00 per month. Phone JO 9-3333.

**BURK INSURANCE AGENCY**  
8-CZ

FOR RENT — Nice modern 2 room furnished apartment. Utilities paid. Available Dec. 1. 512 E. 2nd. 12-1tC

### FOR RENT

FOR RENT — Clean 3 room furnished apartment. Private bath. 811 Ave E. Pho JO 9-2775. 12-1tC

FOR RENT — Clean, well furnished house. 3 rooms and bath. Large closets, built-ins, hardwood floors, rugs, venetians, curtains. Couple only. 126 Ave D. Phone JO 9-2473. 12-1tP

FOR RENT — House. 510 Glendale. If interested, write P. O. Box 306, Burkburnett. 12-1tP

FOR RENT — 5 room unfurnished house. Call JO 9-2573 or inquire at 112 W. College. F. W. Farley. 12-1tP

### FOR SALE

New 3 bedroom home for sale. 1 bath, attached garage. \$250.00 down. Phone JO 9-3333  
**BURK INSURANCE AGENCY**  
1CZ

VETERANS— New 3 bedroom home. No down payment.  
**B. H. ALEXANDER, Jr.,**  
Off. JO 9-2831 Home JO 9-3434  
33-CZ

**RANCH STYLE HOME**  
Very attractive 3 bedroom home. Separate dining room, comfortable den, two baths, lot 100x150 ft. Total price only \$12,600.00 Phone JO 9-3490.  
**JO SMITH REALTY**  
11-1tC

FOR SALE — New Admiral Radios. \$14.85. 5-CZ  
**HERRINGS HARDWARE**  
201 East Main

### For Sale

**FOR SALE**  
Nice 2 bedroom house with garage. Corner lot. Total price \$6,800. G. I. loan. Pho JO 9-2321.  
**LOISE BEAN REALTY**  
11-CZ

**FOR SALE** — Turkeys. Dresser on foot. 5 miles east and 1 1-4 north of Cookie Town, Okla. Phone 670-J-3, Walters, Okla. 11-4tP

**FOR SALE**  
Two bedroom house on 75x150 ft. lot. Total price only \$1,250. cash. Phone JO 9-3490 11-1tC  
**JO SMITH REALTY**

**FOR SALE**—Three choice lots for sale in Burkburnett. One lot has new concrete cellar. See Mrs. Buddy Bowles, 1 1-2 miles across Burk Bridge. Phone Lyric 9-2151, Randlett, Okla. 8-CZ

### G. I. RESALE

Choice 2 bedroom home. Wall to wall carpet and drapes in living and dining room. Corner lot. Enclosed yard. Garage and breezeway. Total price only \$8,950.00. Pho. JO 9-3490 11-1tC  
**JO SMITH REALTY**

**FOR SALE** — 9-piece Duncan pyffie dining room suit, Westmore automatic washer, Westinghouse roaster oven with stand and Philco chest type freezer. Will sell as a unit or separately. Priced to sell. Pho. JO 9-2644, after 5 p. m. 10-CZ

### FOR SALE

Beautiful 3 bedroom home with entry hall, large living and dining room, shiny hardwood floors. Spacious front kitchen with breakfast area. Large FHA loan. Phone JO 9-3490 11-1tC  
**JO SMITH REALTY**

### FOR SALE Residential and Commercial Properties

See  
**Cliff Wampler**

Real Estate Broker  
"Licensed and Bonded"  
Phone JO-9-3161  
203 North Avenue D 37-CZ

### FOR SALE

Beautiful home. Three bedrooms, two baths, large den, dining room, living room, built in electric kitchen, drapes and carpets throughout, double garage and carport. Pho. JO 9-2321. 4-CZ  
**LOISE BEAN REALTY**

**FOR SALE** — New Admiral Clock Radios. \$19.85 5-CZ  
**HERRINGS HARDWARE**  
201 East Main

### FOR SALE

5 room house across from school. Nice 3 room rent house in back. Total price, \$5,975.00 Phone JO 9-2321. 6-CZ  
**LOISE BEAN REALTY**

### FOR SALE

Choice 70x140 ft residence lot on Reagan Street, \$1,200.00

Also Two 70x150 lots in Garner Addition, south of College St. \$400.00 each. 9-CZ  
**CLIFF WAMPLER**  
203 N. Ave. D. Pho. JO 9-3161

### FOR SALE

Three bedroom house across from primary school. Total price \$3,800. Phone JO 9-2321.  
**LOISE BEAN REALTY**  
9-CZ

### FOR SALE

5 room house with garage. 1/2 acre, orchard and garden. Water well. Total price only \$6,800. Pho. JO 9-3490. 11-1tC  
**JO SMITH REALTY**

**FOR SALE** — Two space heaters, \$10.00 and \$17.50. 602 Forest. Phone JO 9-3370. 12-1tC

**FOR SALE** — Two bedroom home. Excellent location, nicely landscaped yard. Large garage and storage room. Rent house on same lot. Both houses newly decorated. For sale by owner. \$9,750.00. Phone JO 9-3177. 312 E. 6th St. 12-1tC

**FOR SALE** — Farmall "M" tractor. Four row equipment. All in A-1 condition. Pho. JO 9-2822. Burk Implement Co. 12-1tP

Mrs. Opal Gamblin and Mrs. E. L. Carnhan returned home Sunday form a visit with relatives in Abilene and Kermit.

Mrs. John Brookman returned home this week from Houston where she had been visiting for several days.

### WANTED

**WILL PAY CASH** for anything of value. New and second hand door, windows, window screen and glass, furniture, etc for sale. Pittsburg Paint Sale. Best outside paint, \$5.98 gallon. Just received 100 double windows. Good condition. O. S. Wilson, Second Hand Store, 305 So. Ave. D. Phone JO 9-8103. 9-CZ

### RESPONSIBLE PERSON

Male or Female to service route of established coin operated units. This unit is revolutionary. Good income for person who qualifies. Must have 4 to 6 hours free time weekly. Car, references and minimum of \$700.00 necessary. Give phone number, and particulars. Write Federal Distributing Company, Box 2116 Dallas, Texas. 12-1tP

**HELP WANTED** — SALES- MEN and SALES WOMEN. Two salesmen and two sales ladies to work with large expanding company to sell hospitalization insurance. Must be neat in appearance. Have dependable car. Age 25-55. Ability to talk with people. Selling in field. Income limited to persons ability. No experience necessary. Trained in field by Mgr. Write to Box 16 Burkburnett for appointment or call JO 9-3461. 12-1tP

**WANTED SALESMAN**—Age 21 to 40 to live in Burkburnett. \$90 per week while in training, with opportunities for permanent position with Metropolitan Life Insurance Company, 612 Staley Building, Wichita Falls, Phone 322-8426. 12-1tC

**WANTED** — Ride to SAFB 5 days a week. Day Shift. Wm. C. Brown, Wichita Hwy. 1-2 mile south of cemetery on left side of highway. 12-1tP

### NOTICE

**NOTICE**—If you have a small carpenter or cement job, call JO 9-3218. 7-CZ

**DO THAT HOME REPAIR JOB NOW** — No down payment and up to 60 months to pay on home improvement loans. Inquire at CICERO SMITH LBR. CO. 211 Ave. B, Pho. JO 9-3711. 10-CZ

**NOTICE** — \$5.00 permanent wave special. Edith's Beauty Shop, 300 S. Ave D. Phone JO 9-3111. 29-CZ

**NOTICE** — If you want a permanent before Xmas, make your appointment now. I haven't much time left. Edith's Beauty Shop, 300 S. Ave. D. Phone JO 9-3111. 10-CZ

**STRAYED OR STOLEN** — Roan cow. Last seen north of Burk in the riverbed. If stolen, \$200 reward will be paid for information leading to arrest and conviction of thief. Charles Payne, Grandfield, Okla. 12-4tP

**NOTICE** — Pat Tole will take late appointments at Bessie's Beauty Shop. Special Mondays only. \$10. permanent waves. \$7.50; \$7.50 for \$6.00. 406 E. 4th St. Phone. JO 9-2731. 12-2tC

Mr. John Brookman's sister, Mrs. W. L. Mooring, is reported slowly improving following surgery in Houston last week.

**"ROCK OF AGES"**  
Family Monuments  
Unconditionally Guaranteed  
**MR. DAVE MCNEIL**  
Burkburnett  
Representative For  
**WINTERS MONUMENT CO.**  
Phone JO 9-3753

**CLIFF SAYS:**

Some people find good reason,  
For passing on a hill,  
**WITH PRICES HIGH—**  
**THEY'D RATHER DIE—**  
Than pay the grocery bill.

IT WASN'T RAINING WHEN NOAH BUILT THE ARK

**WAMPLER INSURANCE AGENCY**  
PHONE JO-9-3161  
203 Avenue D

**CORNER DRUG STORE**  
PRESCRIPTIONS

320 EAST 3rd STREET

**STORE HOURS:**  
Week Days: 8:00 A. M. to 8:30 P. M.  
Sundays and Holidays: 8:00 A. M. till 11:00 A. M.

PHONE JO 9-3333  
For Drug Service When Store Closed Please Call  
JO 9-2328 (George)  
or JO 9-2427 (Cliff)

**SERVICES**

**SEPTIC TANK PUMPING SERVICE**—Prices according to size. Phone JO 9-3605. 51-CZ

**CONVALESCENT HOME.** Thirteen years experience. Newly re-decorated. Television. Phone 3217 Electra, Texas. 5-CZ

Bring your **SEWING MACHINE TROUBLES to Tony's Hat Shop** 313 Ave. D 45-CZ

See us for **USED RADIOS. ALL makes and prices. BILLS RADIO and APPLIANCES.** Phone JO-9-3651. Corner Ave. D and 2nd St. CZ

Have your **FELT HATS** cleaned now before laying away. **Tony's Hat Shop. 313 Ave D 45-CZ**

**CHECK YOUR TV TUBES FREE AT HOME FURNITURE.** 313 E. Main Phone JO-9-2801 44-CZ

**SINGLETON'S DRESS MAKING AND ALTERATIONS.** Also covered buttons and belts, 600 E. 3rd St. 24-CZ

**MOTHER-DAUGHTER DEC. 3rd AT TOWN HALL**

The annual Mother tea sponsored by the and Campfire groups burkburnett, will be held Wednesday, Dec. 3rd, 4:00 to 5:00 the Town Hall. A craft by show will be held in conjunction with the tea this year.

**Classifieds Pay Div**

**DENTUR-I**  
"Miracle Plastic" R

**BETTER 6 W**

1. Not a messy paste or powder but a tube of flowing plastic
2. Molds to shape of your gums gives tighter, better fit.
3. Cushions sore spots and tender areas.
4. One application lasts weeks.
5. Will not stick to gums—removable at any time.
6. Tasteless, odorless, safe.

Satisfaction unconditionally guaranteed, 75c and \$1.25 tubes.

Get **DENTUR-I** today at **Corner Drug Store**

**DENTUR-I**

**BICYCLE Sales and Service REPAIRS KEYS MADE**

PHONE JO-9-3561

**Burk Service Center**  
211 East 3rd Street

**SUPREME**

in its field—that is the Burk Insurance Agency, next door to Legion Hall. If we were accused of the crime of doing a fine job for our insurance clients any

**COURT**

in the land would find us guilty. We find that when a family really

**APPROVES**

of the way we've handled their insurance program, they tell all their friends and that's the kind of advertising we dearly

**LOVE**

**TELEPHON TALK**

by C. A. Deuschle, Manager

**FORECASTING THE FUTURE**

Looking into the crystal ball, we see continued and development in and near Burkburnett within a few years. With this growth of course comes in demand for telephone service.

Factors influencing this growth are continued expansion of Sheppard Air Force Base, relocation at ending of Highway 281 through Burkburnett, economic development of this area, and continued vision for housing in Burkburnett. It is my thought the vision for extended area telephone service for Burkburnett within 18 months is certainly in keeping with development, future growth, and telephone service of Burkburnett.

Burkburnett now has a total of almost 170 phones, with a net increase of 94 so far this year.

**A NEW FAMILY PLAN**

For some time now, railroads and airlines have been telling people about "Family Plans". Well, I have heard of an older couple who thought up their own "Plan" for get-togethers with their married children living out of town.

Since Sunday always seemed the loneliest day out the family around—and because long distances are lower all day—they set up a regular Sunday schedule for their sons and daughter. On the first of the month, Bill, the oldest son, calls and puts the whole family on the line; on the second Sunday, middle boy, Ralph, Jane, the only girl (she has girl of her own now) calls on the third Sunday, fourth Sunday, it's Tom's turn. He's the youngest just married.

I didn't learn what happens when a month has Sundays, but I do know that these Sunday calls lonely day into a happy one for the folks back home.

**TUOCHDOWNS BY TELEPHONE**

Many telephone employees aren't as lucky as when it comes to football. Usually—if I can duck projects my wife saves up for me to do on Saturday can enjoy a game on radio or television.

For other telephone people, football is work, broadcasts and telecasts, as well as news accounts the games, are flashed from city to city over telephone company lines.

Here in our part of the country, where there's much interest in football, it takes a lot of skilled phone people and a lot of telephone facilities at work keep fans in touch with what's happening to their favorite teams.

Call by number. It's twice as fast.

**SOUTHWESTERN BELL TELEPHONE COMPANY**

**HOSPITAL**  
(I'M SURE GLAD I CARRIED SOME...)

**HOSPITALIZATION INSURANCE**

**SEE US!**

**Howard Clement**  
**BURK INSURANCE**  
PHONE JO 9-3333

**You'll Like Our Food & Service..**

Hamburgers Fountain Drinks  
Hot Dogs Candies - Cookies

BREAKFAST SERVED — OPEN 7:00 A. M.

**SWEDEN'S FREEZE**  
RONNIE GRESHAM, Proprietor

**NOW OPEN FOR BUSINESS**

**NEAL'S Do-Nut HUT AND CAFE**

Located Across from Sheppard Air Force Base  
Midway between the North and South Gates

**FORMAL OPENING . . . .**  
WILL BE HELD TUES., DEC. 2nd  
FREE Coffee and Donuts All Day

**E. L. NEAL, Owner**

**USED CARS**

'55 Ford Customline . . . . \$995  
OVERDRIVE

'52 Pontiac 4 Door . . . \$595.00  
LOADED \$250.00 Motor Job Just Completed

'56 Mercury 4 door . . . . \$1195  
Standard Transmission

'56 Chevy Pickup \$1095.00  
HYDRAMATIC TRANSMISSION

'57 Ford Fairlane . . . . \$1595

SEVERAL MORE TO CHOOSE FROM

Best Place By Far For Repair of Your Car

**Smith MOTOR & AUTO PARTS**

YOUR JOBBER FOR  
**McQuay-Norris Automotive Parts**

GLENN SMITH LLOYD SMITH  
414 Ave. B Pho. JO 9-2881 Burkburnett