

# Burkburnett Star

LIKED BY MANY--CUSSED BY SO ME--READ BY EVERYBODY

People who like to be waited on are the hardest ones to be cured of their ailments.

NO. 52

BURKBURNETT, WICHITA COUNTY, TEXAS, THURSDAY, MARCH 5, 1959

NUMBER 26

## Chamber of Commerce Luncheon Each FIRST MONDAY at Town Hall Everybody Invited Each Pays for His Meal

Chamber of Commerce luncheon each first Monday at Town Hall. Everybody invited. Each pays for his meal.

## Volunteer Fire Department Sponsoring Noodle Supper to Aid Fire Truck Fund

The volunteer fire department is sponsoring a noodle supper on Saturday, March 7, to raise money toward a new fire truck. The supper will be held at the town hall and is open to all. Tickets are \$1.00.

## Swim Club to Meet March 10

There will be a general meeting of all members of the Burk Burnett Swim Club, Inc., on Tuesday, March 10, at 7:30 p. m. in the Hardin Grade School auditorium. The meeting will discuss the club's plans for the coming season.

## Notice

The regular monthly Newcomers Coffee will be held Monday, March 9, 10:00 a. m. at the town hall. All local residents and business men are invited to come by and get acquainted with the newcomers to our city.

## LIONS CLUB

Guests were Jerry Thomas, Bill Beaver and Claude Reed. Arthur Houser brought a very interesting program in two parts. Van Maraman, sales engineer of Wichita Falls, spoke on "History of Schlumberger."

## ANNUAL PORCH LIGHT DRIVE FOR RED CROSS MON., MAR. 9

On Monday, March 9th., under the direction of the Forum Study Club, the civic clubs of Burk Burnett will cooperate in the annual Red Cross fund campaign. The porchlight drive will be held from 7:00 to 8:00 p. m. Clubs participating in the drive by each taking a section of town to work or by securing workers for a section. The clubs taking part are the LoWannah Horizon Club, Gay Ladies Club, Mimosa Garden Club, University Study Club, Current Literature Club, Jr. University Study Club, Modern Study Club and the Theta Epsilon Sorority. In addition to club members, there are a number of other individual workers who will participate in the drive.

## Twirling Contest Here Sat., Mar. 14

An open baton twirling contest, sponsored by the high school student council, will be held in Burk Burnett, March 14. Red River Valley Open Twirling contest will be the first of its kind ever held in this area by a high school and is sanctioned by the National Baton Twirling Association. No other such contest can be held within 500 miles on that day under NBTA rule. Entries in 16 events will compete for 19 trophies and 40 medals, including a grand championship trophy for the top solo twirler in the contest.

## OPEN HOUSE AT IOOF HALL MON., MAR. 9th

The Odd Fellows and Rebekahs will hold open house Monday night, March 9th at the IOOF hall beginning at 7:30 p. m. to celebrate their 37th anniversary. A good program has been planned and refreshments will be served.

## V. N. Blankenship New Owner of Martin's Laundry

Mr. V. N. Blankenship announces this week that he has purchased Martin's Steam Laundry, located at 306 Ave. A and assumed management Monday. Mr. Blankenship formerly owned and operated this laundry several years ago and states that he will appreciate your business.

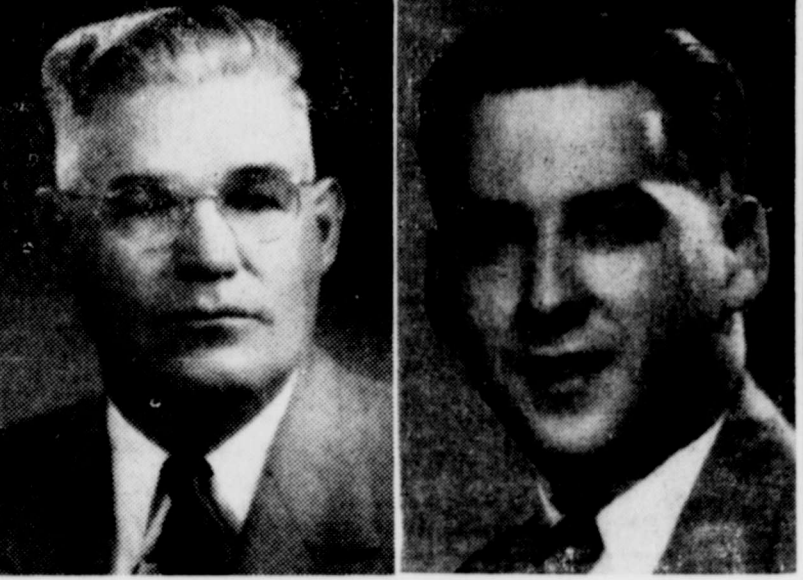
## Theta Epsilon Sorority Won Award At District Meeting

Epsilon Sigma Alpha District Six Council elected and installed officers at their district meeting Sunday in the W. F. George High School in Iowa Park. Miss Eugena Sapp, of Austin, international president, was installing officer. Mrs. Jean Beasley also of Austin, international corresponding secretary, was a special guest. Registration totaled 85 members and three guests.

## Contributions to Fire Truck Fund

Mr. and Mrs. Ralph White returned home Tuesday after several days visit with Mr. and Mrs. Jimmy Roy Morris and children and Mr. and Mrs. Charles White and children in Abilene, Texas.

## In City Commissioners' Race



Four men filed to have their names placed on the ballot in the City Commissioners' race. Two, Winston Freeman and John Page are running for re-election. John Durham and Ralph Brookshier, Sr., are opposing them.

## Bills Introduced For State Support Of Midwestern

Bills have been introduced in the 56th Legislature seeking state support for Midwestern University by September, 1961. These bills are Senate Bill 6 and House Bill 211. We are convinced that the bills are in the best interest of the state's system of higher education.

## Homecoming Sunday At Calvary Baptist

Nineteen years ago in this month, the present pastor of Calvary Baptist church first came to Burk Burnett. For several years now that date has been set aside as an annual homecoming, as well as anniversary date. Next Sunday, March 8th is that special day.

## Burk Riding Club In Regular Meeting

The Burk Burnett Riding Club held their regular monthly meeting Monday night, March 2nd. Winston Freeman showed hat samples to the club and the members decided on white straw hats. Club members who wish to buy their shirt material, can get it at the Famous.

## Eight File for Place On School Ballot

Eight filed for the school board election which will be held in April. Running for re-election are Weldon Nix, Herman Y. Miller and J. L. Mitchell. Others are Newton T. Crane, J. R. Story, Jr., R. O. Brookshier, Jr., John E. Larsen and Russell C. Lewis.

## Junior Play Dates Friday, March 13

Friday, March 13th, is the date set for the Burk Burnett Junior play to be given in the high school auditorium. The three act comedy play "Deadly Earnest" has a cast of 14.

## Eight File for Place On School Ballot

Eight filed for the school board election which will be held in April. Running for re-election are Weldon Nix, Herman Y. Miller and J. L. Mitchell. Others are Newton T. Crane, J. R. Story, Jr., R. O. Brookshier, Jr., John E. Larsen and Russell C. Lewis.

## Farm Equipment Field Day Set For Fri., Mar. 6

The annual Wilbarger-Wichita Soil Conservation Dealer-District Association Farm Equipment Field Day has been set for March 6th, according to A. R. Etter, Association President. The B. P. Hathorn's place on South Beverly Drive and South of the Texas Highway Dept. Warehouse on Beverly Drive and Loop 11 on west edge of Wichita Falls has been secured for the day's activities, Etter stated. Equipment will be on hand for exhibition and demonstration from 10:00 a. m. to 3:30 p. m. The latest in farm machinery and light industrial equipment will be shown. Harvesting, land and seedbed preparation, conservation, weed control and earth moving equipment will be shown along with 1959 tractors. Due to the interest and time of Bermuda grass establishment, Bermuda grass spriggers, and sodders are expected to be shown.

## ROTARY CLUB

Harold VanLoh introduced a very timely program Tuesday noon when he presented the Dixie Land High School band and its director, Mr. Wickersham in conjunction with Texas Public school week. This fine band is composed of Patsy McNeil, Mike Morris, James Siber, Gary Wood, Royce Miller, Peggy Wallace & Johnny Cools. These young people rendered several numbers of the late 20's which proved to be a big hit with the club. Miss McNeil also sang, "Don't Blame Me."

## Homecoming Sunday At Calvary Baptist

Nineteen years ago in this month, the present pastor of Calvary Baptist church first came to Burk Burnett. For several years now that date has been set aside as an annual homecoming, as well as anniversary date. Next Sunday, March 8th is that special day.

## Junior Play Dates Friday, March 13

Friday, March 13th, is the date set for the Burk Burnett Junior play to be given in the high school auditorium. The three act comedy play "Deadly Earnest" has a cast of 14.

## Contributions to Fire Truck Fund

Mr. and Mrs. Ralph White returned home Tuesday after several days visit with Mr. and Mrs. Jimmy Roy Morris and children and Mr. and Mrs. Charles White and children in Abilene, Texas.

## Homecoming Sunday At Calvary Baptist

Nineteen years ago in this month, the present pastor of Calvary Baptist church first came to Burk Burnett. For several years now that date has been set aside as an annual homecoming, as well as anniversary date. Next Sunday, March 8th is that special day.

## Junior Play Dates Friday, March 13

Friday, March 13th, is the date set for the Burk Burnett Junior play to be given in the high school auditorium. The three act comedy play "Deadly Earnest" has a cast of 14.

## Contributions to Fire Truck Fund

Mr. and Mrs. Ralph White returned home Tuesday after several days visit with Mr. and Mrs. Jimmy Roy Morris and children and Mr. and Mrs. Charles White and children in Abilene, Texas.



# The Burkburnett Star

JOHN W. BROOKMAN - HARRY C. DODSON  
Owners and Publishers  
Harry C. Dodson, Editor



Printed weekly at Burkburnett, Wichita County, Texas. Entered as second class matter at the post-office at Burkburnett, Texas, August 19, 1907, under the Act of Congress of March 3, 1870.

Notice to the Public: Any erroneous reflection upon the character, standing or reputation of any person, firm or corporation, which may appear in The Star, will be gladly corrected as soon as it is brought to the attention of the publishers.

SUBSCRIPTION RATES PER YEAR  
In Wichita and Cotton Counties \$2.00  
Outside These Counties \$2.50

## Billions From Pennies

"Life begins at 40" is a saying that will hold little comfort for the nation's taxpayers on Wednesday, Feb. 25th. That marked the 40th birthday of America's first gasoline tax.

The "gas tax" idea was born on Feb. 25th, 1919, when a "one cent a gallon" levy was enacted by the Oregon legislature. That year three other states followed suit. By 1929 every state had a gasoline tax, and by then the average rate had climbed to 3.8 cents a gallon. In 1932, a federal gasoline tax was added.

In its first year this "Penny tax" cost the motorist of four states a little more than \$1 million. Now it is costing highway users a whopping \$4.6 billion a year. Its present national average rate of 8.9 cents a gallon amounts to a 41% "sales tax on gasoline."

In 40 years, motorists have paid \$52.8 billion in state and federal gasoline taxes, more than half of this just since 1951. State gas tax receipts, now running to more than \$3 billion a year, have more than doubled in the last ten years, with 75 rate increases enacted since World War II.

The federal tax, its rate doubled by two increases enacted since the war, is today costing motorists \$1.6 billion a year at 3 cents a gallon. Now there is a move for another increase, the biggest ever, to boost the federal rate 4 1/2 cents a gallon.

With that, motorists would be paying on an average more than \$1 in gas tax on every ten gallons, and close to \$5-1.2 billion a year, a large part of it channeled to general funds, not roads.

So a Happy "Gas Tax" Birthday to you!

## Nobody Can Control The Budget

Neither the Administration nor Congress actually can control spending because nobody can control the budget," says The Wall Street Journal.

If that startles you, here's the paper's explanation for the sad state of affairs: "Some Government projects exist outside the budget as though they were imbued with some magical independent life. Money is spent that hasn't been appropriated. Congress throws spending measures together in slap-dash fashion and naturally emerges with a crazy quilt. We don't even know what the budget is, for all the more than a thousand pages of fine print in the big book. For example, the Administration says it plans to spend \$77 billion in fiscal 1960, but actually the whole Government plans to spend, including its non-budgeted outlays, nearly \$93 billion. So where does that leave us when we try to talk about 'the budget'?"

Various cures have been suggested. One is for Congress to put a ceiling on spending as each session begins and thus to regard the budget as a whole instead of just passing bills as they come along. Another is to give the President power of the item veto, so that he could disapprove parts of money bills without affecting the rest. As matters stand now, the President has to take the whole hog or none when a bill reaches his desk. This forces the executive in many ways to give his signature to spending he considers unwise and unnecessary, because use of the veto would also eliminate appropriations for essential purposes.

Whatever the cure, it's high time we were given it, before we die of the disease.

## Septic Tank Pumping Service

ARLIS KEY IF NO ANSWER  
Phone JO 9-3265 Dial JO 9-3605  
501 EAST 6th STEET BURKBURNETT, TEXAS



UNEXCELLED  
AMBULANCE  
SERVICE  
DAY OR NIGHT

### A REPUTATION BUILT ON INTEGRITY

Burkburnett Phone JO-9-3361  
Wichita Falls Phone 2-3181  
CITY CALLS . . . \$5.00  
Others According to Distance  
All Calls Are Strictly Cash  
Bowie Phone TR-2-2233  
Fort Worth Phone ED-5-4557

## Owens & Brumley Funeral Home

## HOW BOUT THAT By RALPH TEE



## Farming The Farmers

If you are a taxpayer, and who isn't, some figures on crop price supports published in The Wall Street Journal are worth remembering.

Out of some 250 farm crops in the U. S., only 12 have price supports at fixed minimums.

Just 3 of these, wheat, cotton and corn, account for 85% of surpluses stored by the government although they produce only 20% of the total cash farm income.

For over \$9 billion of surplus crops by July 1, storage will cost some \$1 billion a year.

The price-support program "does little to help the farmers in greatest difficulty," says President Eisenhower. The bulk of the money goes to big producers of a few crops.

"Cultivating" the farmers to produce a crop of votes is an old political pastime but it may become less popular as the farmer-taxpayer becomes better informed.

The majority of farmers raise crops that are not covered by price supports and do as well as other business over the years. They do not raise surpluses for the rats to eat while they and everyone else pay taxes to maintain artificial production and prices.

Consumers and farmers are the victims of politicians who "farm" the farmers to raise a crop of votes for themselves and taxes for all.

## Mrs. Billy E. Askins Teacher Of The Year Nominee Of 1st Dist.

The Federated Study clubs of Burkburnett have endorsed Mrs. Billy E. Askins as nominee for the Federation teacher of the year in First District. Awards will be announced at the district convention in Mineral Wells March 2-3rd.

Mrs. Askins, the former Sidney Gamblin, was born and reared in Burkburnett where she attended elementary and high school. She received a Bachelor of Science Degree from Midwestern University in Wichita Falls, majoring in business education and taking a minor in music and secondary education. She has taught in the Burkburnett public school system for two and one half years and directed the high school choral group for two years.

Try Our Classifieds For Results

## I. O. O. F. LODGE BURKBURNETT, TEXAS

Meets at I. O. O. F. LODGE  
Every Tuesday Night, 7:30 p. m.  
Visitors Welcome  
W. J. BINGHAM, Noble Grand  
JOE LEMM, vice Grand  
RALPH ENGLAND, Jr. Secy.  
C. A. WEST, Fin. Secy.  
J. H. CECIL, Treasurer



## EMBARRASSING WHAT?

When you're face to face with danger, it's too late to wonder how good your protection is.

No hunter would venture out on safari unless he were certain his equipment was the very best. Why should you be less well prepared to face tornadoes, fire, hail, explosion, or other severe damage to your property?

Be sure your home and your possessions are covered by quality capital stock insurance purchased through

(Agency Name)



See Us FIRST For  
Insurance of ALL Kinds

## ROBERTS Insurance Agency

George and Mildred Counter  
Palace Theatre Bldg.  
BURKBURNETT, TEXAS  
Office — Phones — Res.  
JO-9-2771 — — — — — JO-9-2754

Cliff Wampler  
General Insurance  
AUTO BUSINESS HOME  
Phone JO-9-3161  
203 N. Ave. D



## Chevy stops quickest... goes farthest on a gallon

Chevy showed the best brakes of the leading low-priced three in a test of repeated stops at highway speeds conducted and certified by NASCAR\*. Chevy also won over the other two in a NASCAR economy run—with the highest gas mileage for 6's and V8's at cruising speeds of just over 55 miles an hour.

Here's a car that knows how to get the most out of a gallon. And it's the only car in its field to bring you hydraulic valve lifters in all popular engines—6 and V8. This means smoother, quieter performance for you.

There are many other advances just as fundamental as the efficiency of Chevrolet's engines and the depend-

ability of its new brakes (with an area that's any other low-priced car). But why not stop by your dealer and let Chevy do its own thing?



\*National Association for Stock Car and Research.

see your local authorized Chevrolet dealer for quick appraisal—early delivery!

## MATHIS CHEVROLET COMPANY

800 EAST 2nd STREET BURKBURNETT, TEXAS PHONE JO-9-3361





# 42<sup>ND</sup> Birthday Sale

**Wednesday Is Double ~~2x~~**  
GREEN STAMP DAY with Purchase of \$3.00  
or More of Merchandise

Wichita Falls Locations: 4106 Call Field Road, 500 Indiana Avenue, 1701 Ninth Street, 3010 Seymour Road, Parker Square, 110 East Scott Street  
Out-of-Town Locations: Olney - Bowie, Burkburnett, Vernon - Nocona, Iowa Park, Lawton, Okla.

QUANTITY RIGHTS RESERVED

WE'RE "FORTY-TWO... THANKS TO YOU!" .. and HERE  
WE BRING YOU EXTRA MONEY-SAVING VALUES TO PROVE OUR APPRECIATION!

F. and P. <b>FRUIT COCKTAIL</b> 303 Can <b>19¢</b>	A GRAPE DRINK <b>WELCHADE</b> Quart Can <b>25¢</b>	BETTY CROCKER (White - Yellow - D. Food - Spice) <b>CAKE MIXES</b> 4 Pkgs. <b>\$1</b>	<b>CRISCO</b> 3 Lb. Can <b>69¢</b>	<b>TIDE</b> Giant Box <b>59¢</b>
----------------------------------------------------------	----------------------------------------------------------	------------------------------------------------------------------------------------------------	---------------------------------------	-------------------------------------

TOPIC 22 - VANILLA

## MELLORINE

1/2 Gallon Carton **33¢**

COOKIES BISCUITS	2 cans	15c
KLEENEX TISSUES	2 200 boxes	25c
MONTE PEAS	2 303 cans	39c
NAPKINS, Zee	80's pack	10c
PEACHES	No. 2 1/2 can	29c
CHILI	No. 2 can	65c

NABISCO PREMIUM-SUNSHINE KRISPY-SUPREME SALAD

## CRACKERS

Your Choice Lb. Box **25¢**

PORK and BEANS	Van Camp's 2 300 cans	25c
KLEENEX TISSUES	400's Box	25c
GOLD MEDAL FLOUR	5 lb bag	49c
PEANUT BUTTER	Peter Pan 12 oz jar	39c
Grapefruit JUICE	Texsun 46 oz can	29c
PARKAY MARGARINE	3c off deal lb	24c
RED CHERRIES	Thank You 300 Can	23c
Crushed PINEAPPLE	Del Monte No. 2 Can	29c
LOG CABIN SYRUP	12 Oz. Bottle	29c
SO-WHITE BLEACH	Quart Bottle	15c

ALUMINUM

## GREASE CONTAINERS

EACH **\$1.00**

VICKS

## VAPO-RUB

Jar **33¢**

Boyer's H. A. HAIR ARRANGER

Medium Size	Large Size	Economy Size
<b>35¢</b>	<b>65¢</b>	<b>\$1.08</b>

## TOOTH PASTE

PEPSODENT	STRIPE
Large TUBE <b>29¢</b>	Large TUBE <b>29¢</b>
Giant TUBE <b>49¢</b>	Giant TUBE <b>49¢</b>
Economy TUBE <b>65¢</b>	Economy TUBE <b>65¢</b>

Fresh Ungraded Country **EGGS 3 DOZ. \$1.**

FERTILIZERS

SLIPS "66"	80 lb bag	\$2.29
RO- Regular	100 lb bag	\$3.99
RO- Golden	50 lb bag	\$3.09
MAGREEN plant food	100 lb bag	\$3.19
igan PEAT For Flower Beds	100 lb bag	\$2.98

**EGGS** U.S.D.A. Medium "B" DOZ. **39¢** U.S.D.A. Large "A" Caged DOZ. **49¢**

EBNER'S CURED AND SMOKED

## PICNICS

6 to 8 Pound Size **29¢** Pound

LOOK FOR THE U. S. D. A. GRADE

U. S. D. A. GOOD SIRLOIN STEAK	lb	89¢
U. S. D. A. GOOD RIB STEAK	lb	89¢
U. S. D. A. GOOD CHUCK ROAST	lb	49¢
U. S. D. A. GOOD ARM ROAST	lb	55¢

## GROUND BEEF

Pound **49¢**

FISHER BOY FISH STICKS

5 8 OZ Box **\$1.**

CEDAR FARM THICK SLICED BACON

2 LB. Pkg. **79¢**

FRESH RADISHES Or GREEN ONIONS

Bunch **5¢**

FANCY C. A. BANANAS

Lb. **10¢**

FANCY VINE RIPE TOMATOES

Lb. **19¢**

U. S. No. 1 COLO. RED POTATOES

10 Lb. Bag **29¢**

MEAD'S FROZEN ROLLS

24 Count Pkg. **19¢**



### Gary Wood Awarded Certificate Of Merit

One senior at Burkburnett High School has reached the finals of the 1958-59 National Merit Scholarship Program and has been awarded the Certificate of Merit, according to Principal Roy L. Silkwood.

Gary Wood has received the Certificate, which attests to his high academic promise.

The Senior distinguished himself by his high score on the two college aptitude tests used in the National Merit Scholarship competition. About six-tenths of one percent of the seniors in each state received the awards. A national total of 10,000 students were honored.

Over 478,000 students were tested in the 1958-59 National Merit Scholarship competition which began last April. The test results have pared the competition down to the 10,000 finalists. Some 700 of the Finalists will be named Merit Scholars this spring. They and the colleges they have chosen, will share in \$3.5 million in Merit Scholarships funds offered by over 80 different organizations and individuals. The winners will be determined by the results of final judging now being conducted. The Merit Scholars will be announced about May 1, 1959.

The names of the Certificate of Merit winners are being sent to over 1,500 colleges, universities and other scholarship-granting agencies for consideration for thousands of other privately financed scholarships offered outside of the Merit Scholarship program.

Previous experience indicates that the Finalists will be offered some \$2.5 million worth of fresh-

man year scholarship assistance from these sources, in addition to the awards made to those selected as Merit Scholars.

The Certificate of Merit winners number 10,000 this year, an increase of 2,500 from previous years, declared Mr. John M. Stalnaker, President of National Merit Scholarship Corp., the non-profit organization that conducts the annual competition.

Each year we try to focus the attention of the nation's scholarship donors upon a limited group of high school graduates with the highest demonstrated potential to benefit from college training. These are the Certificate of Merit winners, the top performers in our national testing. We provide as many of them with direct assistance as our funds permit, and encourage a great variety of independent donors to do the same.

### NOTICE

Due to temporary vacancy and illness in the staff of the Wichita County Department of Public Welfare we will not be able to service the sub office in Burkburnett on a scheduled basis until further notice.

We will resume our regular visits as soon as possible. Until that time we are trying to maintain our other services in your community.

Persons who wish to apply or who are receiving and have emergency needs to report may write to: State Dept. of Public Welfare 822 Ohio, St., Wichita Falls

H. D. Smith, A. W. Newman, John Brookman and George McClarty were in Anadarko, Okla. Monday on business for the city.

### What Do You Want Legislature To Do For You?

1. Should a person be required to join a union to hold a job?  
Yes \_\_\_\_\_ No \_\_\_\_\_

2. Should the state regulate hours & wages of city employees?  
Yes \_\_\_\_\_ No \_\_\_\_\_

3. Should minors 15 years or older be tried for crimes the same as adults?  
Yes \_\_\_\_\_ No \_\_\_\_\_

4. (A) Should Texas encourage new industry to come to the state?  
(B) Should Texas offer some tax advantages to corporations planning to locate in Texas?  
Yes \_\_\_\_\_ No \_\_\_\_\_

5. Should the state pay off its \$85 million deficit before spending more money?  
Yes \_\_\_\_\_ No \_\_\_\_\_

6. (A) Do you favor enactment of the Hale-Aikin recommendations?  
(B) Would you approve a large tax bill to pay for these Hale-Aikin programs?  
Yes \_\_\_\_\_ No \_\_\_\_\_

7. Should Texas continue to spend more money on schools, highways, hospitals and special schools and public welfare (now takes 93 percent of the budget)?  
Yes \_\_\_\_\_ No \_\_\_\_\_

8. If you favor economy in government, what do you suggest we economize?  
Public Schools—, Highways—, Hospitals and Special Schools—, Public Welfare—, Others—

Age \_\_\_\_\_  
Address \_\_\_\_\_  
Occupation \_\_\_\_\_

Mail to: Rep. Vernon J. Stewart or Jack Connell, Jr., %House of Representatives, Austin, Texas

Try Our Classifieds For Results

### Public Safety News

The Highway Patrol investigated 355 rural traffic accidents that occurred in Wichita County during 1958. Sergeant F. E. Webster, Patrol Supervisor of this area, announced today.

Property damage accounted for 253 of the total, personal injury for 96 and 6 were fatal accidents. These accidents caused a total property damage of \$191,963.00 with 146 persons injured and 7 lives lost.

In 1958 Texas recorded 1,869 fatal motor vehicle traffic accidents which resulted in 2,311 deaths, said Sgt. Webster. 639 of these were in cities over 2,500 population while the remaining 1,672 were rural traffic deaths.

The Sergeant further pointed out that these figures were not complete and an accurate account will not be known until about March 15th. He estimated that when the final reports are received, the 1958 death figure should be approximately eight percent less than 1957.

Sgt. Webster advised the Highway Patrol had investigated 34 rural accidents in Wichita County during January 1959 with the following breakdown: Property damage 22, Personal Injury 11, and fatal accidents 1. This is a decrease of 3 accidents for the same period of 1958.

The Sergeant pointed out that speed continues to be number one killer in traffic accidents throughout the State and called on all motorists to voluntarily observe the speed limits in an effort to prevent further carnage on our streets and highways.

### DEN 1—Pack 155

We held our weekly den meeting on Feb. 25th at Mrs. R. Wooten's house. Candle lanterns were made. Mrs. John Houck served refreshments to: David Mahaffey, Mark Glandon, Jimmy Burton, James Creel, Cy Mills, Larry Houck, Rudy Robinson, Kenny Roberts, John Robinson and Rex. Simenson, den chief. Larry Houck, den keeper of the Buckskin

### BURKBURNETT FOOD LOCKER

WHOLESALE CUTS

Ready for Your Locker or Deep Freeze From CHOICE BEEF

ROUNDS ..... lb 59c  
LOINS ..... lb 59c  
HIND QUARTERS ..... lb 59c  
WHOLE SIDES ..... lb 49c

### RETAIL MEAT SPECIALS

ROUND STEAK ..... lb 89c  
CHUCK STEAK ..... lb 49c

301 Avenue C Phone JO 9-3101  
TOM PIERCE, Manager

### Local Births

Birth certificates were issued to the following Burkburnett parents last week: Messrs and Mesdames:

David Joseph Porter, girl  
Patricia Carol Ann  
Alvin G. Neugebauer, boy.  
Jay Lynn  
Carl Glen Edwards, boy.  
Kenneth Ray  
Irving O'Neal Fleming, girl.  
Debra Paulette

### THE BUSY BEAVERS 4-H CLUB

A 4-H work club met Feb. 24 at the home of Mrs. Gerald Savage. At this meeting they named their club the Busy Beavers. Officers were elected as follows: Sec., Toni Ann Savage; & reporter, Brenda Hillis. Their terms run for a month. The demonstration for the day was on eggs for variety in meals.

The following members attended: Pat Cook, Brenda Hillis, Patsy Koenig, Lora Jordan, Judy Masters, Diana Swan, Toni Ann Savage, Kathy Savage and Janice Sloan. Bonnie Lanig was a guest.

Mrs. R. E. Northcott was admitted to the Wichita General hospital Saturday.

### Notice

OF CITY ELECTION

A regular City election will be held on April 7, 1959 at the City Hall in Burkburnett, Texas, the same being the first Tuesday in April as set forth in the City Charter of the City of Burkburnett, Texas, for the express purpose to elect two (2) City Commissioners for a term of two (2) years to the City Commission of the City of Burkburnett, Texas.

Deadline for filing with the City Secretary the necessary forms for having name placed on ballot will be Saturday, March 7, 1959, same being 30 days preceding date of election as required by law.

Regular forms may be obtained at the office of the City Manager.

H. D. Smith, Mayor  
(ATTEST)  
A. W. Newman,  
City Manager

### ELU TA WA CAMPFIRE

The Elu Ta Wa Campfire girls met in the home of Mrs. Billie Hudson Feb. 26th with nine members present. Yvonne Davis called the meeting to order. Sally Mitchell led the group in the pledge of allegiance and then sang America. A discussion was held on going roller skating Saturday. Games were played outside. Refreshments were then served. All members participated in singing taps. The meeting was then adjourned.

### Bids Wanted

NOTICE TO BIDDERS: Sealed proposals addressed to Mr. Arnold J. Muller, President, Board of Education, Burkburnett Independent School District, Burkburnett, Texas, for the construction of Twelve-room, auxiliary rooms, office space and cafeteria with kitchen space for an elementary school building, for Burkburnett Independent School District, Burkburnett, Texas, hereinafter called "owner" in accordance with plans, specifications and contract documents, which were prepared by and may be obtained from James R. Kilbrew, Architect, will be received at the School Tax Office in Burkburnett, Texas, until 2:00 P. M. o'clock March 26, 1959, and then publicly opened and read aloud. Any bid received after closing time will be returned.

check, or bond payable amount not largest possible submitted in accordance with contract and as may be called to pay for labor engaged in the project will be prevailing local similar work in accordance with 403 of the progress, approved 1935, as amended, full compliance wage law that The owner will reject any bid and specifications amended without the office of James R. Kilbrew, Architect, located on Street, Wichita Plans may be James R. Kilbrew, Architect, located on Street, Wichita upon a deposit guarantee as of the plans within a five day receipt of be held 30 days sooner by the Arnold J. Board of

stained  
duction  
onified

T. MAGER

can sustain  
the records  
but to  
therner Roy  
ita Falls  
nt 24 year  
one of th  
nderwriter  
er coming  
hern, deci  
be a "Re  
e made u  
ut himself  
thereby he  
least one  
y week.  
y himself  
realize th  
ld become  
This habit  
weeks to  
into year  
1, 248 we  
, or 24 ye  
perhaps th  
ndustry-wi  
only one of  
ewriter ou  
ould be  
which w

ppened to  
week ch  
ask? Eve  
nd that h  
was just  
ppointing,  
occurrences  
spite of al  
etimes. An  
itter blow,  
very phil  
hough i  
g, hard fi  
ed it. I  
ith less t  
all have a  
roduction

smokin  
PANTIE

BE, YET TH  
AY SOFT

olin treated  
nylon Edgin  
terproof  
n-Allergic  
tilated

Bloomer styl  
to \$1.98

Fancy  
Fashion  
Too

ner

PH

PH

IT'S NOT THE SIZE THAT'S MOST IMPORTANT!

And so it is with your credit. It's not the size or the number of purchases you make that counts most, but the way you handle the credit you have been given. Remember that PROMPT PAYMENT is the most important thing in credit. It's just "common sense" to help yourself by paying EXACTLY as agreed.

### Retail Merchant's Assn.

JAMES T. BRADY, Jr., Manager

No other car conquers lean and sway like a wide-track PONTIAC!

AMERICA'S NUMBER 1 ROAD CAR

Wheels are 5 inches farther apart. This widens the stance, not the body. Gives you a steadier, balanced, road-hugging ride.

SEE YOUR LOCAL AUTHORIZED PONTIAC DEALER

### BOOMTOWN PONTIAC

103 East 3rd Phone JO 9-3611 Burkburnett, Texas

YOUR CHOICE ..... \$39

OPEN STOCK

EARLY AMERICAN STYLE SALEM MAPLE

Dresser .....	\$39.00	Desk and Chair	
4/6 Bar Bed	\$39.00	Double Dresser	
4 Dr. Chest ...	\$39.00	Nite Stand	

- Vel-Var Finish
- Tilt Mirrors
- Center Draw
- Dust Proof Co

YOU WILL HAVE TO SEE THIS TO APPRECIATE

### MONAGHAN FURNITURE & APPL

JERRY O'MARY, Manager  
301 East Third Street



# Auto Liability From The Travelers Insurance Co.

IT DOESN'T COST ANY MORE TO  
**BE SURE**  
HOWARD CLEMENT, Agent  
New Location - Next to Legion Hall  
Call JO 9-2191 For All Printing

**"Sustained Production"**  
"Sustained production" can mean many things to many people. But to Roy Magers, it means a way of life. He has been producing for 24 years. You know one of those character writers who, when coming with a story, decided he would be a "Regular". He made up his mind to write about himself on a regular basis. He would produce at least one article a week. He realized this would become such a habit that it would stretch into years — a year, 248 weeks, or 24 years, to be precise. Perhaps that isn't industry-wise, but Roy Magers, a writer or any other profession, would be proud of which we certainly would be.

Bill Sexton, vice-president and director of public relations, wrote Roy, asking him if he had any memories or experiences he'd like to share with us in connection with his years as a "Regular". Here's what this veteran said:  
"One time just before Christmas, the weather was cold and foggy, and I had the flu, but this did not deter me in securing the needed application. Frankly, then and now, I doubt the wisdom of my actions in this matter."  
"On occasion I have driven 20 miles and back to secure that much wanted app. I have had to leave the bedside of sick relatives, go through heat, cold and also stormy weather, even hurry home from a funeral to find some friend who would buy a policy. I have really had to drive myself to keep up the sustained production. It was never an easy task. I could never think of being a haphazard producer; I have certainly had to 'boss' myself a lot."  
—From the  
Great Southerner  
Insurance Magazine

**WA KAN KI YA CAMPFIRE**  
The Wa Kan Ki Ya Campfire group held their meeting Thursday, Feb. 6th at Mrs. Wilson's home. Refreshments of cookies and Cokes were served. During the business meeting, a new member, Treva Mills, was welcomed into the group. The girls practiced on what they were going to do at the Father-Daughter Banquet Feb. 12th at the school cafeteria.  
On Feb. 19th another regular meeting of the campfire group was held in the home of their leader, Mrs. Wilson. Susie Parsons served refreshments. The girls then worked on their memory books.  
The Campfire group met Feb. 27th with Mrs. Wilson. They discussed ways to improve their meetings and made plans to have a bake sale Saturday, Feb. 28th in front of the Famous. Dinetta Magee served refreshments.  
Cookies Sims, Scribe

**SCOUT TROOP 154**  
Troop 154 met Monday, March 2nd at the Legion Hall. The following new officers were elected: John Wood, Sr., Patrol leader; Charles Galloup, Scribe; Gary Tarkington, quartermaster. Patrol leaders are Bill Byars, Ricky Landrum, Larry Bowles. Wallace Landrum is scoutmaster and Pete Jeffers, assistant scout master. Twenty-two boys were present at this meeting.  
Charles Galloup, Scribe

**NOTICE**  
There will be a singing meeting every Thursday night at 7:30 p. m. at the Valley View church, just across the river bridge in Oklahoma. Come one and all.

**Men's Bible Class**  
**FIRST BAPTIST CHURCH**  
Invites You To  
Worship With Them  
Each Sunday Morning at 9:45  
W. R. CARSWELL, Teacher  
J. C. GAY, President

**A. F. & A. M.**  
Stated Meetings First and Third Monday at 7:30 p. m. at the Masonic Hall  
School of Instruction Thursday Night  
J. H. Ferguson, Secretary  
R. D. Cook, W. M.

Weekend visitors in the home of Mr. and Mrs. Martin Wright and Gail were Mrs. Wright's mother, Mrs. M. S. Burkhart, and sister, Mr. and Mrs. Jimmy McMinn and son, Jimmy Joe all of Dallas.  
Call JO 9-2191 For All Printing

'59 cars too high in price? ... too hungry for gas? \*

**GO RAMBLER** Costs less to buy... less to own!

Get the quality car with built-in savings—Rambler '59. Save more than ever on first cost, on gas. Highest resale, too. Enjoy Personalized Comfort: individual sectional sofa front seats. See your Rambler dealer.

**CASEY LOGAN MOTORS 310-312 Ave. C.—Burkburnett Texas**

... happened to break week chain of ask? Even Roy and that hard to was just one of appointing, inexcusable that spite of all our sometimes. And that bitter blow, Roy very philosoph- though it has g, hard fight, I ed it. I think ith less tension all have as large production in the

**Stokin's PANTIES**

... YET THEY WAY SOFT

... nylon Edging terproof n-Allergic itilated

Bloomer styles to \$1.98

Fancy Fashions Too

... APPRECIATED

... & APPL

MARY, Manager

... BURKBURNETT, TEXAS

50<sup>th</sup> Anniversary 1909 - 1959

## GREAT SOUTHERN'S 50th ANNUAL REPORT

Discloses a Year of Great Service and Progress

**OFFICERS AND DIRECTORS OF THE GREAT SOUTHERN LIFE INSURANCE COMPANY**

- OFFICERS**  
PAT M. GREENWOOD, President  
H. LEWIS RIETZ, Executive Vice President  
F. JACK GREENWOOD, Vice President & Secretary  
A. F. MITCHELL, Insurance Vice President  
G. H. McDANIELS, Vice President & Treasurer  
WILLIAM SEXTON, Vice President & Director of Public Relations  
F. V. OLNHAUSEN, Vice President & Manager of Agencies  
FRED DINKLER, M.D., Medical Director  
JOSEPH W. HAHN, Actuary  
ROBERT S. BOYLE, Auditor  
WALTER S. DEWAR, Assistant Actuary  
L. G. BROCK, Assistant Vice President  
PAT G. COMBS, Assistant Vice President  
CARMON L. GREENWOOD, Assistant Vice President  
J. C. HARRIS, Assistant Vice President  
SAM R. HAY, Assistant Vice President  
E. MARCUS HOUSE, Assistant Vice President  
N. L. WILLIAMS, Assistant Vice President
- DIRECTORS**  
R. S. ALLISON, R. E. Allison Drilling Co., Shreveport  
E. T. EARNEST, President, Superior Insurance Co., Dallas  
J. A. ELKINS, Senior Chairman of the Board, First City National Bank, Houston  
F. JACK GREENWOOD, Vice President & Secretary  
PAT M. GREENWOOD, President  
J. S. HUDSON, Hudson & Hudson, Dallas  
A. F. MITCHELL, Insurance Vice President  
W. R. MOORE, Munger & Moore, Dallas  
S. S. McCLENDON, JR., Vinson, Elkins, Weems & Scarls, Houston  
G. H. McDANIELS, Vice President & Treasurer  
A. C. NICHOLSON, Rancher, Dallas  
H. LEWIS RIETZ, Executive Vice President  
WILLIAM SEXTON, Vice President & Director of Public Relations  
M. B. SOLOMON, Chairman of the Board, Austin Bridge Company, Dallas

We measure growth in terms of service, rather than size. The promise of Great Southern protection became a consoling reality for the beneficiaries of 1,729 policyowners who died during 1958. These beneficiaries received \$5,680,852. An additional \$5,741,300 was disbursed to living policyowners under matured endowments, annuity payments, and cash equities withdrawn. Since organization Great Southern has disbursed the sum of \$177,538,670 to living policyowners and to beneficiaries. Great Southerners in the field last year wrote more than fifteen thousand policies for new life insurance totaling \$121,027,116.

**FINANCIAL STATEMENT**  
December 31, 1958

ASSETS	
United States Government Bonds	\$ 24,019,547
Municipal and Corporate Bonds	18,696,333
Preferred and Common Stocks	7,586,353
First Mortgage Loans	131,391,142
Real Estate, including Home Office Building	1,010,621
Policy Loans	14,084,869
Collateral Loans	70,000
Cash	1,540,253
Net Premiums in Course of Collection	5,156,143
Interest Due and Accrued	1,065,716
All Other Assets	10,893
<b>Total Assets</b>	<b>\$204,631,870</b>
LIABILITIES AND SURPLUS	
Policyowners' Reserves	\$163,243,292
Additional Policyowners' Funds	6,420,693
Claims Not Completed	753,216
Premiums and Interest Paid in Advance	1,596,219
Provision for Taxes and Other Liabilities	2,860,250
Dividends to Stockholders Declared and Unpaid	216,000
Security Valuation Reserve	2,532,511
<b>Total Liabilities</b>	<b>\$177,622,181</b>
<b>Reserve for Contingencies and Other Surplus Funds</b>	<b>\$ 27,009,689</b>
Capital	\$ 5,400,000
Surplus and Reserve for Contingencies	21,609,689
<b>Total Liabilities and Surplus</b>	<b>\$204,631,870</b>



**GREAT SOUTHERN**  
Life Insurance Company  
Founded 1909  
Home Office • Houston, Texas

ROY T. MAGERS 412½ North Avenue C, Burkburnett, Phone JO 9-2241



# One Killed, One Hurt Feb. 17 As Car Rams Truck Near Stanton

A Coahoma man's car plowed under the rear of an ice truck east of Stanton Tuesday, killing James C. Martin, 34 of Big Spring and seriously injuring the driver.

Both vehicles were traveling westward on U. S. 80, Sheriff Dan Saunders of Stanton reported. Willard Eugene Henry of Coahoma, driver of the car, apparently failed to see the truck.

There were no skid marks or other evidence to indicate he had tried to avoid the collision, Sheriff Saunders said.

Martin a passenger in the car was killed instantly.

Henry was taken to the Stanton hospital with severe chest injuries and numerous cuts. He suffered shock and officers had been unable to talk to him this morning. However, hospital authorities said Henry spent a fairly restful night and appeared to be slightly improved today.

Driver of the Southern Ice Co. truck was Juan Robles, Big Spring. He was not injured. Both vehicles were badly damaged. The collision occurred on U. S. 80 three and a half miles east of Stanton.

Martin, who had lived in Big Spring for 10 years, was employed by the Frank Brehaney Drilling Co. He was born Feb. 16th 1925, in Randlett, Okla., and was a veteran of World War II. He resided here at 1201 Main.

Funeral services were held at 2 p. m. Friday in the River Funeral Home Chapel. Interment will be in City Cemetery.

Survivors include his wife, Mrs. Carolyn Martin; seven bro-

thers, Grant of Tatum, N. M., Ira of Muleshoe, George of Lander, Wyo., Raymond of Odessa, Ott Doyle and Mike Martin of Chickasha, Okla., and two sisters, Mrs. Don Coker of Leveland and Mrs. Dick Cavell of Chickasha.

## News From The County Agent

Every farmer or business man interested in agriculture is urged to attend a Soil Fertility program, March 11th at the Valley Farms Community house. The program is as follows:

10:30-10:40—Introduction.  
10:40-11:10—Paul Marion, Supt. of Spur Experiment Station, Research

11:10-11:50—Jack Barton, Extension Agri. Economist, Agricultural Outlook-Business.

11:30-11:50—Lester Brook, Iowa Park Experiment Station.

12:10-12:30—Cecil Parker, Extension Farm Management Spec.

12:30-1:30—Free lunch at Noon  
1:30-1:50—J. M. Schrum, Manager Sugarland Industries.

1:50-2:20—W. F. Bennet, Extension Soil Chemist, Soil testing.

Is conservation being left out of your farm plans because of the cost involved? If so, you are advised to see your local county agent who can explain some programs that may help make this increasingly important practice a part of your operations, suggests B. T. Haws, Co. agent.

It is garden planting time in Wichita County says B. T. Haws, county agent. For even the experienced gardener, a plan on paper is helpful. By choosing the desired kinds of vegetables before planting time, seed can be purchased, if certain varieties are not available locally, orders can be placed and the seed will arrive in time for planting. There is no perfect plan that fits all gardens. It is best to group vegetables according to the pro-

per time for planting. In general vegetables are divided into 3 groups, early, midseason and late. The early group, such as English peas, carrots, spinach, beets, cabbage, & onions should be planted in one section of the garden midseason vegetables should be planted in another part and the late vegetables in still another part. If possible, the lowgrowing types of vegetables should be planted so that they are not shaded by the tall ones.

Mr. John Hutchinson, Director of the Texas Agricultural Extension service will attend the meeting. Committee chairmen will give evaluation reports.

The program building committee represents the people of Wichita County to help plan for the local county extension program. The group will have a picnic supper.

### BUSY BEE BLUEBIRDS

The Busy Bee Bluebirds met with their leader, Mrs. A. H. Byrum, after school Tuesday and journeyed to the Burk Star office. Following a tour of the office, where the girls watched the various steps in putting a newspaper together, they returned to the home of their leader for refreshments.

Girls attending this meeting were Annette Bracken, Carol Dickson, Kathy Reasoner, Shirley Oliver, Ingrid Trott and Sandra Byrum.

### TANDA CAMPFIRE

We held our regular meeting at the home of Mrs. Billie Magee. Glenda Magee served pop and pig skins. Janice Bolinger called the meeting to order. Linda Eidson showed how to care for a blister. We played musical chairs, then the meeting was dismissed. All were present except one.

### CHERRY BLUEBIRDS

The Cherry Bluebirds met Tuesday, March 3rd in the hut. Stephanie served chocolate ice cream cones to all the members. We changed officers and learned some new songs.

Phyllis Keisling, Reporter

## News From The Congress

by Congressman Frank Ikard

A substantial part of the revenue of our State is derived from taxes levied in one way or another on the oil and gas industry. They are by far the largest tax payers in the state. Revenues received and prorated in the omnibus tax fund by the State for the year ending Aug. 1957 totaled 339 million. A little more than 190 million of this was paid by the oil and gas industry. The impact of imported oil into this country has materially affected these revenues and has contributed materially to the deficit situation that presently exists. In addition to affecting State revenues, excessive imports have reduced drilling activities and have held production down, all of which have reduced employment in the oil and gas industry. For several years strong efforts have been made by representatives of the producing states to bring about an effective control of oil imports so that our domestic industry would not be completely destroyed. So far, real meaningful controls have been forthcoming; however, it is now expected that the Administration will, by not later than March 2nd, issue their new imports control plan. All indications are this plan will be a mandatory one and will control the importation of not only crude oil but products. It is hoped that this new program will bring a substantial reduction in the present level of crude and product imports, and the announcement of this new plan is anxiously awaited.

Everyone here is hoping that the treatment of Secretary Dulles cancer will be successful. Regardless of what might be the opinion of the Secretary's policies, there can be no dispute that few men have served with the energy and the dedication that he has demonstrated. It is hoped that he will recover sufficiently to continue in his responsible position as Secretary of State.

Visitors in Washington this week were Dr. J. K. Kearns, Supt. of Schools, Gainesville, and Mrs. Kearns; Mrs. James B. Barnett, Mrs. Roy Hyatt, Mr. Frank Mitchell and Mr. Dan Martin of Wichita Falls; and Mr. Welcome Wilson, Mr. J. Holford Russell, Mr. Bill E. Utter, Mr. Riley Cross and Mrs. G. F. West of Denton.

## Wilbarger-Wichita

### SOIL CONSERVATION DISTRICT NEWS



More coastal bermuda grass will be established in the Wichita Valley portion of the Wilbarger-Wichita Soil Conservation District during 1959 than has been established to date, according to Elvy Sargent, Work Unit Conservationist at Iowa Park.

Most establishment will likely be by sodding since a local contractor is available and sufficient acreage has been established to Coastal Bermuda grass to provide adequate sod where needed. Mike Hartmangruber of Iowa Park has two semi automatic sod planters that he is using to sod bermuda grass. Hartmangruber has a mechanical sod cutter that rapidly cuts and loads large volumes of sod.

The King Farm of Kamay, C. L. Hacker of Valley View and Roy Childers of Iowa Park have sodded Coastal Bermuda grass. Tom B. Medders of Wichita Falls will sod more than 200 acres to Coastal Bermuda grass. J. H. Allison of Wichita Falls will sod more than 100 acres. D. H. Ford of Valley View will sod 11 acres. Medders, Allison and Ford are sodding to provide vegetative cover for cropland in conservation Reserve of Soil Bank program.

Coastal bermuda grass provides good land use and profitable crop for many acres of tight land in Wichita County. Recent surveys made by Soil Conservation Service show that approximately 10,000 acres of these lands could best be used for irrigated grasses. Federal cost sharing has been increased to \$14.00 per acre and additional cost sharing for land preparation.

For cost sharing, farmers are advised to contact ASC at Iowa Park. If land selection, land preparation, water management, fertilizing assistance is needed, the Soil Conservation Service will be glad to help. Dr. Carl Gray of Midwestern University will run soil analysis and make fertilizer recommendations.

About 4.8 trillion cubic feet of gas were marketed in Texas in 1957.

**PALACE THEATRE**

50c 35c 20c  
Week Nite Open 6:15  
BURKBURNETT, TEXAS

FRI. - SAT., Mar. 6-7

**GUNSMOKE IN TUCSON**

MARK STEVENS  
FORREST TUCKER

**The Brothers Rico**

RICHARD CONTE  
DIANNE FOSTER

SUN. - MON., Mar. 8-9

**THE KEY**

WILLIAM HOLDEN  
SOPHIA LOREN

**TORERO**

LOIS PROCUNA

TUES. - WED. - THURS.  
March 10-11-12

**The Gun Runners**

AUDIE MURPHY  
EDDIE ALBERT

**Night of The Blood Beast**

MICHAEL EMMET

**TRAFFIC NOVELTY PILLOWS**

for kids or play room  
cotton fabric—  
cotton napper filled  
retail value up to \$1.59

CAUTION SOFT SHOULDERS

FULL STOP

DANGEROUS CURVES AHEAD

I-GO-4U

NO PARKING

Special 99¢ ea.

CORNER DRUG STORE

**TRY OUR SUPER AFTER-SHOW SNACKS**

Whether you want a quick bite or have a ravenous appetite, we've the snack to fill the bill. You'll like our pleasant table service and also thrifty prices. Stop in soon.

CLUB CAFE

Next Door to House of Beauty  
MRS. VELMA FARRELL

MARTIN'S STEAM LAUNDRY

SOLD TO V. N. BLANKENSHIP

We wish to express our sincere appreciation to our many friends and customers for their patronage the past 5 years. Your kindness to us during this time will be long remembered.

MR. AND MRS. C. E. MARTIN

HEADQUARTERS FOR

Marine Supplies

**BOATS**

**MOTORS**

Trailers — Skies  
Life Jackets

BOATS AND BOATING SUPPLIES

---

14 FOOT RIG COMPLETE \$995.00

---

BILLS TV — Furniture And Appliance

301 NORTH AVENUE D  
Phone JO 9-3651 J. L. BILLS, Owner  
"We Sell the Best and Service the Rest"

Who? Where?  
What'd you say?

STAMPEDES, MASSACRES, GUN SMOKE needn't mess up your phone conversations. With conveniently located extension telephones around the house, you just shut a door, shut out noise when you want to talk. Black or choice of 9 decorator colors (one-time-only charge for color). Call the telephone business office.

EXTENSION PHONES COST \$1.00 A MONTH PLUS INSTALLATION  
Call by number... It's twice as fast

ST. BONIFACE STUDY CLUB  
MET MARCH 2 WITH MRS. NIX

On Monday, March 2nd the St. Boniface Study club of Burkburnett entertained at a luncheon the Altar Society of Sacred Heart church in Wichita Falls at the home of Mrs. Weldon Nix.

Following the luncheon the society held their regular monthly business meeting. Monsignor Anthony E. Daly and James A. Boyle spoke briefly.

Decorations in the rumpus room were in green and white, a St. Patrick's Day motif.

Co-hostesses with Mrs. Nix were Mesdames Askins, Botti, Bernethy, Bohner, Cools, Davey, Defke, Janke, Reed, Glover, Slama, Simons.

GAY BLUEBIRDS

The Gay Bluebirds met in the home of Mrs. Pat Austin, March 3rd for a regular meeting. We made cup cakes and then had some moving pictures made. Pam Swan served refreshments. The meeting was then dismissed.

Karen Austin, Reporter

Considering its age this is a mighty fast old world.

NOTICE

I have purchased the  
**MARTIN STEAM LAUNDRY**  
LOCATED AT 306 AVENUE D  
and will appreciate your continued  
All Modern Equipment to Sell

V. N. BLANKENSHIP, Owner

NOW! WASHER AND DRYER  
RINSE, DRY IN 15 MINUTES  
\$-SAVING GAS APPLIANCE

From America's first family appliances comes the new, gas Whirlpool GAS Washer-Dryer Combination.

A washday miracle! Just toss in the controls... your RCA WHIRLPOOL from there. Washes up to 10 lbs. at a powerful, jet-stream of filtered suds. Then, automatically, clothes are dried and pass through a cooling-fluffing cycle, wrinkles, cuts down ironing. Then the shuts itself off... and all the while, you busy elsewhere!

Gas saves you money, time... gives you exclusive Filter-Stream washing and rinses out even stubborn soil yet is safe for delicate fabrics.

Build-in gas water heater automatically temperature throughout wash and rinse cycle. Tempered Heat, another RCA WHIRLPOOL feature, insures safest drying for anything from nylons to jeans.

Saves your time two ways... frees you for or relaxation, is 30% faster than electric combination. Can be used as washer only, dryer only.

See this modern miracle gas appliance today! Star Gas. Down payment tailored to your 36 months to pay.

See your Gas Appliance Dealer  
**LONE STAR GAS COMPANY**



Prices Right - for...



DOUBLE GUNN BROS. STAMPS WEDNESDAY With \$2.50 Purchase



**Pork Chops** Lb. **49¢** **Crackers** Lb. Box **19¢**  
 Supreme, Sunshine or Nabisco



CENTER CUT

**Pork Steak** Lb. **39¢**

**Pork Roast** lb..... **39¢**

**Pork Bones** lb..... **39¢**

**Bacon** 2 Lb. Pack **89¢**

Wilson's All Meat **CHILI** No Beans 24 Oz. Can **49¢**

Wright's Delite Brand **Pure Lard** 3 Lb. Carton **39¢**

Swish Liquid **Detergent** 22 Oz. Can **39¢**

OPEN 7 DAYS A WEEK 7:00 to 9:00 Each Day Except Sunday: 8 to 8



VINE PINK **Tomatoes** Lb. **17¢**

**Meat Tuna** 2 No. 1/2 Size **49¢**

SOUTHERN SUN FROZEN **ORANGE JUICE** 12 Oz. Can **39¢**

CALIFORNIA **Celery Hearts** Cello. Pac Each **19¢**

Sliced or Halves **Apples** In Heavy Syrup 3 No. 2 1/2 Cans **89¢**

No. 1 IDAHO **Russets** 10 Lb. Bag **49¢**

**TSUP** 5 14 Oz. Bottles **\$1.**

BELL BRAND **FISH STICKS** 10 Oz. PACK

FRESH **Radishes** Cello. Bag Each **5¢**

**Potatoes** 303 Can **10¢**

**2 FOR 49¢**

JACK-O-LANTERN **Sweet Potatoes** 303 Can **10¢**



**MARYLAND CLUB COFFEE** ALL GRINDS **2 Lb. CAN \$12.5**



**UNITED SUPER MARKET**



# CHURCH NEWS

**First Baptist Church**  
Corner Ave D. and 4th St.  
LEROY MEYER, Pastor  
Gavin Vaughn, Music Director

Sunday School, 9:45 A. M.  
Morning Worship, 10:55 A. M.  
Training Union, 6:15 P. M.  
Evening Worship, 7:30 P. M.  
Prayer Meeting, Wednesday, 7:30 P. M.  
"In the heart of the city for the hearts of the city"

**Grace Lutheran Church**

Third St. and N Ave. E  
J. H. KOLLMEYER, Pastor  
The Church of the Lutheran Hour, TV's "This Is The Life"

Sunday, 10 A. M., Sunday School and Bible classes.  
11 A. M., morning service.  
LWMS meeting every first Tuesday, 2 P. M.  
Sunday School teachers' meeting and teacher training course, every second and fourth Tuesday, 6:30 P. M.  
You are cordially invited to our services.

**Assembly of God Church**

Rev. Lonnie Finney, Pastor  
Sunday School—10:00 a. m.  
Worship Service—11:00 a. m.  
Sunday Night Service—7:00.  
Women's Missionary Service Tuesday—2:00 to 4:00 p. m.  
Prayer Meeting Service—Wednesday night—7:00 p. m.  
Church location—Two blocks west of School on College St.

**Church of the Nazarene**

Rev. T. F. Keese, Pastor  
Sunday School—9:45 a. m.  
Morning Worship—11:00 a. m.  
Young People Service—6:45  
Junior Society—5:45 p. m.  
Evening Worship—7:30 p. m.  
Wednesday—Prayer Meeting, 7:30 p. m.

**Thrift Memorial Baptist Church**

Marion D. Baker, Pastor  
Sunday School, 9:45—Henry Hodges, Supt.  
Morning Worship Service, 10:50 a. m.  
Evening Worship Service, 7:30 p. m.  
Training Union, 6:30 p. m.  
Director, W. D. Sage  
Wednesday night Prayer Service, 7:30 p. m.

**See LEO For**

Sand and Gravel  
DRIVEWAY MATERIAL  
FILL DIRT  
LEO BRYANT  
521 Tidal Ph. JO-9-3704

**First Methodist Church**

Leon Turner, Pastor  
Sunday School—9:45 a. m.  
Morning Service—10:55 a. m.  
Junior, Intermediate, and Senior Youth Groups at 6:00 P. M.  
Evening Worship, 7:00 P. M.  
Official Board meets every fourth Monday  
Visitors are cordially invited to attend all our services.  
A nursery is provided for nursery age children for both the morning and evening services.

**Calvary Baptist Church**

College and Ave 15.  
Ray C. Morrow, Pastor  
10:00 a. m.—Sunday School. We use the Bible as our only literature  
11:00 a. m.—Song, preaching service.  
7:00 p. m.—Young People services  
7:30 P. M.—Night preaching service.

Calvary Baptist is an independent Baptist church, free from organizational control and teaching the truth in love. You have a friendly welcome to all services.

**Church of God**

J. W. JACKSON, Pastor  
10:00 a. m.—Sunday School  
11:00 a. m. Hour of Morning Worship  
7:00 p. m.—Evangelistic Services  
7:30 p. m. Wednesday—Young Peoples Endeavor

If you haven't a church home we would like very much for you to visit us where the full gospel is preached in the old time way. There is special music and singing each service. Each and every one has a warm and hearty welcome to come worship with us.

**Trinity Lutheran Church**

The Church of Radio's Lutheran Hour and the Family Worship Hour, and of TV's "THIS IS THE LIFE."

Lutheran Hour, Frederick, 1670, 9:30 a. m.  
Bible Class and S. S., 10 a. m.  
Worship Service, 10:45 a. m.  
Wednesday—Walthar League, 7:30 p. m.  
Mixed Choir, 8:45 p. m.  
Saturday—Saturday School 9:00 a. m.  
Confirmation classes 9:00 a. m.  
Junior Choir, 10:00 a. m.  
A Friendly Welcome to All services

**First Church of Christ Scientist**

Tenth and Van Buren  
Wichita Falls, Texas  
Sunday School for Children under 20 years of age at 9:30 a. m. in the Church Edifice.  
Services 11:00 - 12:00.

**Mrs. Glen Bear Luncheon Hostess Burk Garden Club**

Burkburnett Garden club met Feb. 25th in the lovely home of Mrs. Glen Bear for their annual club luncheon. Co-hostesses were Mesdames J. C. Adams and A. R. Bunstine.

The main table was covered with a St. Patrick's green table cloth and was set with all white china and Irish linen cutwork napkins. The centerpiece was all white asters and shasta daisies with leaves to match the green cloth. The smaller tables matched the large table with china settings and small arrangements.

Mrs. Walter Riley, president, presided. The president and Mrs. Carl Morrison were elected delegates to the Zone meeting in Denton with Mrs. Jude Willingham alternate.

Miss Irma Ned Riley was elected parade queen for the rodeo in the summer.

The program topic was Stow it, Don't Throw it, with Mrs. Walter Riley as leader. A song was sung by the group accompanied by Mrs. Bill Crosley.

Don't be a Litter Bug. A scroll presentation by the Junior Gardeners, was unfurled and signed by four hundred and thirty-six people to be placed downtown to remind all not to be litter bugs.

Mrs. Bill Crosley gave a paper on the litterbug trail. The unsightly highways, bottles and cans carelessly tossed on the broad beautiful highways in Texas and the cost of the state in cleaning this rubbish yearly, were highlighted. Mrs. J. C. Adams and Mrs. A. R. Bunstine brought a short skit on the litterbug problem. Mrs. Adams, attired in a disheveled overcoat and hat with insightfully beer cans and large bottles tied all over her, pretended to be throwing rubbish carelessly on a make believe highway and was singing, How Dry I Am. Mrs. Bunstine

was trailing behind with a large red sign, Stow It, Don't Throw It. The skit focused attention on this problem here and elsewhere.

An auction sale sponsored by the finance group of baked sweets and others items brought \$27.25 in the treasury.

Present were Mesdames C. M. Archer, B. N. Cauthorn, Bill Crosley, D. C. Dodson, Carl Morrison, J. M. Pogue, J.B. Riley, Walter Riley, R. C. Tevis, Jude Willingham, Ralph Swinford and the guests of the hostess, Mrs. Smith, mother of of Mrs. Morrison, Mrs. Newman, Miss Laura Louise Tevis, Mrs. I. E. Harwell and the hostesses, Mesdames Bear, Bunstine and Adams.

**Church of Christ**

Herbert A. Smith, Minister  
Bible Study Sunday-9:45 a. m.  
Worship—10:45 a. m.  
Young Peoples classes, 5 p. m.  
Worship—6:00 p. m.  
Ladies' Bible Class—Tuesday, 9:30 a. m.  
Bible study Wednesday 7:30  
We welcome you to any of our

**First Christian Church**

2nd St. and Ave. D  
Rev. Wayne Black  
9:45 A. M. Church School.  
Classes for all ages.  
11:00 A. M. Morning Worship  
Attend services regularly, and bring a friend.  
**Bible Holiness**  
J. T. RICHARDS, Pastor  
Sunday School—10 a. m.  
Morning Worship—11 a. m.  
Sunday Night Worship—7:30  
We wish to extend a hearty invitation to all who do not have a church home, to come and worship with us. The Bible is our only literature. We are an independent pentecostal group and believe in the old time power of God to save, deliver, heal and meet your every need. We extend a special invitation to the children for all of our services.



BRIGHTEN BREAKFAST WITH VARIETY

One of the best ways to vary breakfast is to vary the bread. Because it is rich in essential minerals, vitamins and protein, enriched bread is the mainstay of a well-balanced breakfast. Variety begins with the way you serve toast. Try some of Mrs. Baird's enriched bread.

**WA KI YA CAMPFIRE GIRLS**

The Wa Ki Ya Campfire girls met at Mrs. Watkins home Wednesday, Feb. 18th. All members were present. After the business meeting we discussed making a tour of a mill or shop, said our laws and studied the Trail Seekers charm and the Trail Seekers Desire.

On Feb 25th, the girls held a regular meeting in the home of Mrs. Watkins. All girls were present. After the business meeting we went on a tour of Harlan Mills Co. and the Bicycle Shop. The meeting ended with each girl receiving an ice cream cone.

Pat Cook, Scribe

**LOTTIEMOON GA'S**

The Lottie Moon GA's were called to order at 3:40 p. m. by Virginia Stamps. Jerry Lanig led us in our opening prayer. We said our GA Allegiance, then sang our GA hymn. The meeting was then turned over to Mrs. Landrum. We studied our Forward Steps. Sammie Cantwell led us in our closing prayer. Mary Christian, Reporter

**BILL BRYANT'S AUTO SALVAGE**

WE BUY CARS  
Of ALL Makes and Models

OKLAHOMA CUT-OFF  
Phone JO-9-3581

Classifieds In the STAR

**This Is YOUR CITY**

The Light and Water Systems are... The revenue from these properties... services and conveniences. Each... investment in a better place in which... THINK IT OVER.

Municipal Electric Utilities Are The  
**CITY OF BURKBURNETT**



WHEN IT COMES TO OPENING A... account, there will never be a time as... Nothing is easier than putting it... is better (for your financial future)... started at once upon a program of... saving. Don't waste precious time... account here NOW.

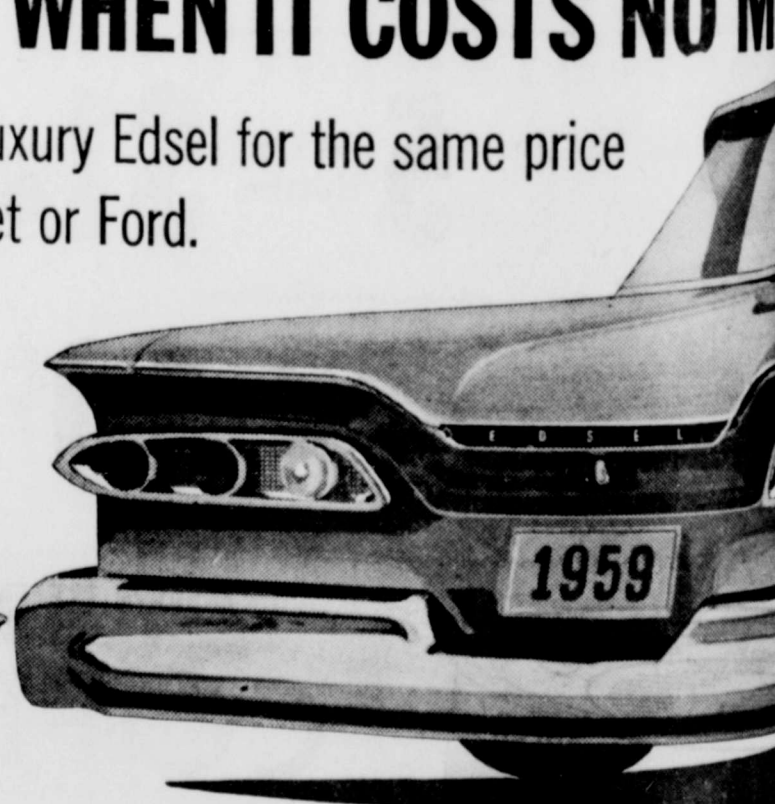
**3%**

**CURRENTING JO DIVIDING BUILDING**

The **1st NATIONAL** One

**IT PAYS TO ESCAPE FROM THE CROWD—ESPECIALLY WHEN IT COSTS NO MORE**

Now you can own a luxury Edsel for the same price as Plymouth, Chevrolet or Ford.



The Edsel was designed as a medium-priced car and is now sold in the low-priced field. You'll find that the wheelbase is longer, the interiors much more luxurious, and all the extras you would expect in a luxury car are in the Edsel as standard equipment. Step up to the 1959 Edsel and save!

**1959 EDS**  
SEE IT! DRIVE IT! HERE

**CASEY LOGAN MOTORS**

310-312 AVENUE C.

Phone JO-9-3323

BURKBURNETT

**More families agree...**  
Mrs Baird's Bread stays fresh longer

**MRS BAIRD'S ENRICHED BREAD**  
STAYS FRESH LONGER

met, Wich  
al In  
L. WI  
J. Bear  
Read Fe  
cular inter  
nds in this  
ment of the  
age of Doro  
former re  
ett and A  
of Travis  
field, Calif.  
Northern  
Reno, Ne  
site for the  
g ceremony  
Rev. Euge  
assed by th  
I close frier  
active bride  
by her bro  
higham, Jr.  
was attire  
silver lame  
plimented  
white hat,  
a large wh  
chid was c  
ble. Loan  
er sister-in  
old and ru  
been wor  
her mother  
er at their  
also wore  
garter and  
ence in he  
rge Wellbo  
OLI  
take 6  
e E  
ing Jo  
DIVIDING  
Building  
We Ar  
ll Colle  
TON  
diana  
1st  
The  
NATIONAL  
One  
ELE  
It's two v  
the floor  
es...then  
uous oper  
soiled clo  
matie co  
Electric  
TEXA  
Manag



# Insurance is the same 'til you have a claim

**Burk Insurance Agency**  
**HOWARD CLEMENT**  
New Location—Next To Legion Hall

## L. Whigham J. Beardsley Read Feb. 14

Particular interest to her friends in this area is the presence of the Valentines page of Dorothy Louise former resident of et and Albert Joe of Travis Air Force field, Calif. The picture Northern Baptist Reno, Nevada, beside for the 2:30 p. m. ceremony performed by Eugene Duncan, son of the bride's close friends.

her sister as Matron or Honor and chose a black flecked suit with matching veiled hat for the occasion. A red carnation corsage complimented her outfit. Best man duties were performed by Michael Briley of Travis AFB.

Immediately following the ceremony, the bride's mother, Mrs. Lula Mae Whigham, entertained at a dinner for the wedding party. Mrs. Whigham was dressed in a delf blue jacketed dress and wore a small red hat. A corsage of red carnations was pinned at her shoulder.

The new Mrs. Beardsley, daughter of Lula Mae Whigham and the late Alva C. Whigham, Sr., former residents of Burkburnett is widely known both here and in Fairfield, Calif., where she has made her home home for the past seven years. Mrs. Beardsley was graduated from Burk High School & Draughon's Business College before going to California where she has been employed as a medical secretary at Travis Air Force Base hospital. She has been active in civic and church affairs locally and in Burk. The groom, son of Mrs. Gertrude Beardsley, of Chariton, Iowa, was born and reared in Chariton. Upon graduation from high school he moved to Los Angeles and was there graduated from Calif. College of Mortuary Science. For the past three years he has been stationed at Travis Air Force Base as an X-ray technician.

Following their honeymoon to Monterey and Carmel-by-the-Sea the newly weds will make their home in Vacaville, Calif.

Call JO 9-2191 For All Printing

## HARDIN HD CLUB

The Hardin HD club met with Mrs. Blainer as hostess in the home of Mrs. Simons for a regular meeting.

Our meeting was called to order by the president, Mrs. A. A. Jacobs.

Opening song, The Lord Is My Sheppard. Poem, A Package of Seed by Mrs. Jenkins. Minutes of the previous meeting were read by the secretary, Mrs. Askins. Treasurers report was given by Mrs. Cleo Askins. Roll call was answered by giving suggestions on How I Could Improve my Kitchen. Club committee reports were given. It was discussed and voted on to have a parade queen and to help at the concession stands with the other clubs during the rodeo. A parliamentary report was given by Mrs. Hewell.

Our assistant HD agent, Miss Ethel Lynn Geislin, gave a demonstration on Organize Your Kitchen.

The club received a nice thank you card from Mrs. Farley who has been on the sick list. Club adjourned to meet with Mrs. Brady, Sr., March 11th.

Refreshments were served to Mesdames Jenkins, Krusemark, Jacobs, S. E. Askins, Cool, Stimpson, Slama, Simons, Markum, Brady, Hillis, Loraine Askins, Evert, Goins, Hewell, Enderli, Blainer, Roderick, Miss Ethel Lynn Geislin and three visitors. Mrs. West, Mrs. M. D. Glover and daughter, Pamela and Mrs. Glen Ladd.

## Election Order and Notice

On this the 12th day of Feb., 1959, the Board of Trustees of Burkburnett Independent School District convened in regular session with the following members present, to wit:

Arnold Muller, president; Herman Miller, J. L. Mitchell, Weldon Nix, W. T. Zimmerman, Harold Preston, Huck McDonnell and the following absent: none, constituting a quorum and among other proceedings had by said Board of Trustees was the following:

Whereas the term of office of Mr. Weldon Nix, Herman Miller, and Roy Mitchell, members of the Board of Trustees of this School District will expire in April, 1959, said first Saturday being April 4, 1959, and on said date a trustee election will be held in said School District.

Whereas it is necessary for this board to pass an order establishing the procedure for filing for and conducting said trustee election.

THEREFORE BE IT ORDERED BY THE BOARD OF TRUSTEES OF BURKBURNETT INDEPENDENT SCHOOL DISTRICT:

1. That an election be held in said School District on April 4, 1959, for the purpose of electing three members to the Board of Trustees of said School District.
2. That all requests by candidates to have their names placed upon the ballot for the above mentioned election shall be in writing and filed with Mr. Dow Estes at Tax Office, not later than March 4, 1959, at 4:00 p. m.

At Town Hall building in Burkburnett, Texas, in said School District, with Emil Schroeder as presiding judge, and Mrs. Sylvia Lohofener and Mrs. Evelyn Felty, Clerks.

4. The manner of holding said election shall be governed, as near as may be, by the Election Code of this State, and this Board of Trustees, will furnish all necessary ballots and other election supplies requisite to said election.

5. Immediately after said election has been held the officers holding the same shall make returns of the results thereof to the Board of Trustees of said School District, and return the ballot box to the Secretary of said Board for safekeeping.

6. The secretary of this Board of Trustees shall forthwith issue

a notice of said election by posting copies of this order at three different places within the boundaries of said School District, which posting shall be done not less than ten days prior to the date for said election.

The above order being read, it was moved and seconded that the same do pass. Thereupon, the question being called for, the following members of the

Board voted AYE: Miller, Nix, Mitchell, Zimmerman, Preston, McDonnell and the following voted NO: none.

(ATTEST)  
Arnold Muller, President  
Board of Trustees  
W. W. Nix, Secretary

24-31C

Many people reach great heights by putting up a bluff.

**Keep 'Em GROWING from the day they HATCH**

**ONE FEED IS ALL YOU NEED from Hatchery to Henhouse**

Never a Set-Back from Changing Feeds

Our store is a meetin' place for successful poultry raisers. One professional flock owner says: "My chicks never stop growing from the day they hatch. I get the best quality pullets I can buy, then I keep them healthy with Superior All-in-One — all the way. Rarely lose a chick. My birds lay because 'egg laying' is bred into them and then fed into them. Superior's Financing Plan\* is now helping me expand for a bigger cash income."

\*NOTE: Ask us about Superior's Pullet Financing Plan. It may help you make more money.

**Superior ALL-IN-ONE**  
STARTS—GROWS—MATURES  
**J. F. KELLY, Grain & Hatchery**  
100 East 3rd Street Phone JO 9-2591  
Burkburnett, Texas

**OLDS take 666**

## Estimates On

### Roofing Jobs — Asbestos Siding

### Building or Carpenter Work

We Are Working in Burkburnett

Call Collect 3-4745 — or Write

## TON ROOFING COMPANY

Indiana Wichita Falls, Texas

## Burkburnett Election Judges Named, 1959

County Commissioners this week appointed the following election judges to serve during 1959 in Precinct 2.

Cashon Baptist Church — Bee E. Bryant, presiding judge; Mrs. O. J. Cooper, O. J. Cooper, Mrs. Sam Spencer.

Burk High School — R. P. Reagan, presiding judge; Mrs. C. M. Archer, Finis D. Taylor, Roy L. Silkwood.

Burk City Hall — F. T. Felty, presiding judge; Jim Frye, Mrs. F. T. Felty, Mrs. Jess Hageman, Bell Oil and Gas Office — Henry Vaughn, presiding judge; Sylvia Lohofener, Mrs. D. M. Morris, W. A. Minick.

## Burk Transit Mix Concrete Co.

SAND AND GRAVEL — FILL DIRT AND CHAT

IMMEDIATE DELIVERY

Satisfaction Guaranteed

102 East College PHONE JO-9-2741  
NIGHTS JO-9-3775

H. SALES, Owner

## One unit does two big washday jobs

## Combination ELECTRIC WASHER-DRYER

It's two wonderful work-savers in the floor space of one! First it washes...then it dries...all in one continuous operation. Just put in soiled clothes, set the automatic controls and your Electric Washer-Dryer does the work while you attend to other things. It even does your laundry while you sleep. For space-saving convenience and real washday freedom, investigate the advantages of an Electric Washer-Dryer.

See Your Electric Appliance Dealer

## TEXAS ELECTRIC SERVICE COMPANY

Phone JO 9-3373

# FORD is built for people...

Ford's wide seats are deeply padded all the way across... there's no hard spot for the middleman. And all six passengers have plenty of elbow and hip room.

It's so much easier to get into and out of a Ford... with wide door openings contoured to fit you. Inside, you get the head room you need to wear your hat... leg room to stretch out comfortably.

## FORD is built for savings!

Fords are lowest priced of the most popular three! Equipped with radio, heater, and automatic transmission—Fords are priced up to \$102.75 less!

Ford Six and standard Thunderbird V-8 engines thrive on lower-cost regular gas... save you up to a dollar a tankful. Ford's standard Full-Flow Oil Filter saves still more... you go a full 4000 miles between oil changes.

New, standard aluminum Ford mufflers normally last twice as long as the ordinary kind. And Ford's exclusive new Diamond Lustre Finish never needs waxing.

## 59 FORDS world's best-selling cars...

WORLD'S MOST BEAUTIFULLY PROPORTIONED CARS

# WOLFE FORD COMPANY

3rd and AVENUE D BURKBURNETT, TEXAS PHONE JO-9-2275



# Why Buy Less Than The Best?

THE LARGEST MULTIPLE LINE INSURANCE COMPANY IN THE WORLD SEE YOUR AGENT. INSURE With The TRAVELERS INSURANCE CO.

BURK INSURANCE HOWARD C. HOWARD Phone 9-3233

## FOR RENT

FOR RENT—Modern furnished 2 room house. Extra nice. Phone JO 9-3738 or JO 9-3651. CZ

FOR RENT—Modern furnished apartment. Call JO 9-3694 or JO 9-3233. 26-11C

FOR RENT—3 room modern house. 401 East 4th St. 26-11C

FOR RENT—Modern 3 room furnished house. Water bill paid. Available March 9th. No pets. Inquire at 512 E. 2nd St. 26-11C

FOR RENT—3 rooms and bath, furnished. Bills paid. 404 E. 3rd. McNeill Apts. 26-2C

FOR RENT—Furnished houses. 3 rooms and bath. Available March 18th. Phone JO 9-2786. 26-21C

FOR RENT—4 room modern house, furnished. \$40.00 month. 211 8th St. Inquire at 214 8th St. after 5 p. m. 26-11C

## FOR SALE

VETERANS—New 3 bedroom home. No down payment. B. H. ALEXANDER, Jr., Off. JO 9-2831 Home JO 9-3434. 33-CZ

FOR SALE—New Admiral Radios. \$14.85. 5-CZ HERRINGS HARDWARE 201 East Main

FOR SALE—Beautiful 3 bedroom, 2 bath home. Separate dining room. Lovely den. FHA loan. \$10,650. Total price only \$12,600.00. Choice location. Ph. JO 9-3490. JO SMITH REALTY. 23-CZ

FOR SALE—Real nice two bedroom home. Garage and storage. Corner lot. Assume loan. Phone JO 9-2321. LOISE BEAN REALTY. 24-CZ

FOR SALE—Lovely 3 bedroom home, two baths. Large den. Also dining room, electric kitchen, carpet and drapes throughout. Two car garage. Water Well. Phone JO 9-2321. LOISE BEAN REALTY. 24-CZ

FOR SALE—Real nice two bedroom home. One bath, 1,119 square feet floor space, 14x28 foot attached garage on lot 125x218 ft. 428 W. College. Phone JO 9-2855. 24-CZ

FOR SALE—Large 3 room and bath home, in excellent condition. Choice lot with new concrete storm cellar and separate store room. 1/2 block from school. Total price \$5,000.00. Ph. JO 9-3161. 18-CZ

FOR FURTHER INFORMATION AND APPOINTMENT CALL CLIFF WAMPLER Ph. JO 9-3161 203 N. Ave. D. 13-CZ

FOR SALE—Home made cakes pies and cookies. Will make birthday and party cakes. Mrs. Fred Burns, 208 Linden, Phone JO 9-3732. 15-CZ

**FOR SALE**  
**TWO BEDROOM HOUSE**  
Good Condition  
**TO BE MOVED**  
Browning Agency  
GENERAL INSURANCE  
REAL ESTATE  
319 Ave. C Ph. JO 9-2691  
\$500.00 DOWN  
Almost new two bedroom home. Good location. Total price only \$6,950. Phone JO 9-3490. 26-CZ  
JO SMITH REALTY

## FOR SALE

FLORIDA  
Information on 5 acre land tract west of Miami. Call JO 9-3576. Burkburnett, Texas. 23-4tp.

FOR SALE—CAFE FIXTURES  
PHO. JO 9-3474. Louis Todd. 23-4tc.

NEW COMBINATION WASHER DRYER. Bargain at Herrings Hdw. \$399.95. Save \$100.00. 201 East 3rd St. Ph. JO 9-2711. 23-CZ

FOR SALE—New Portable 17" TV's, \$129.95 plus tax. HERRING HDW. 201 E 3rd St. Ph. JO 9-2711. 22-CZ

**FOR SALE**  
**Residential and Commercial Properties**  
See  
**Cliff Wampler**

Real Estate Broker  
"Licensed and Bonded"  
Phone JO-9-3161  
203 North Avenue D. 37-CZ

LISTINGS NEEDED  
We have buyers for 2 or 3 bedroom dwellings and farm property. Financing available.

**Browning Agency**  
GENERAL INSURANCE  
REAL ESTATE  
319 Ave. C Ph. JO 9-2691. 25-CZ

## WANTED

WILL PAY CASH for anything of value. New and second hand door, windows, window screen and glass, furniture, etc for sale. Pittsburg Paint Sale. Best outside paint, \$5.98 gallon. Just received 100 double windows. Good condition. O. S. Wilson, Second Hand Store, 305 So. Ave. D. Phone JO 9-8103. 9-CZ

FOR SALE—Complete stock of Marine Supplies. Corner Ave. D. and 2nd St. Phone JO 9-3651. BILLS TV & APPLIANCES. 26-CZ

FOR 3 or 5 YEAR LEASE—480 acres. One half grasslands. Will take best offer after \$2,200 per acre. Located northeast of Lawton, Okla. See owner, Mrs. Bointy, 1705 Irwin Ave, Lawton. 26-11P

FOR SALE—Girls 24" bicycle \$15.00. Also an 18 inch power lawn mower, \$19.00. 228 Meadow Drive. 26-11p.

NOTICE—Pat Cole will take late appointments at Bessie's Beauty Shop. SPECIALS TUESDAY ONLY. \$10.00 permanent waves, \$7.50; \$7.50 for \$6.00. 406 E. 4th St. Phone JO 9-2731. 26-CZ

**SERVICES**  
LIST YOUR PROPERTY WITH US  
Ten years experience in sales and financing.  
WE FEATURE—  
Appraisals, FHA & Conventional Loans, Sub Division Planning  
CLIFF WAMPLER  
203 N. Ave. D. Ph. JO 9-3161. 21-CZ  
Call JO 9-2191 For All Printing

SEPTIC TANK PUMPING SERVICE—Prices according to size. Phone JO 9-3265. If no answer dial JO 9-3605. 20-CZ.

SERVICES—For expert TV repair, call Home Furniture Co., day or night, JO 9-2801 or JO 9-2743. 9-CZ

SINGLETON'S  
DRESS MAKING AND ALTERATIONS. Also covered buttons and belts. 602 E. 3rd St. 18-CZ.

SERVICES—I install carpets, second hand or new. Small job or large. Call me for an estimate today. JO 9-3570. 24-CZ

SERVICES—Will do Income Tax returns. Reasonable. Phone JO 9-2570. 108 Meadow Drive. Betty Parsons. 24-CZ

CHECK YOUR TV TUBES FREE AT HOME FURNITURE. 313 E. Main Phone JO-9-2801. 44-CZ

SEE SKID'S NURSERY for landscaping and shrubs. 539 N. Berry St. Ph. JO 9-3188. 21-8tp.

RADIATORS REPAIRED. Also welding service. All work guaranteed. Prices reasonable. Gulf Service Station, 404 E. 3rd St. 23-CZ

Bring your SEWING MACHINE TROUBLES to Tony's Hat Shop. 313 Ave. D. 45-CZ

Have your FELT HATS cleaned now before laying away. Tony's Hat Shop. 313 Ave. D. 45-CZ

NOTICE—If you have a small carpenter or cement job, call JO 9-3218. 7-CZ

DO THAT HOME REPAIR JOB NOW—No down payment and up to 60 months to pay on home improvement loans. Inquire at CICERO SMITH LBR. CO. 211 Ave. B. Ph. JO 9-3711. 10-CZ

SERVICES—Will keep children by the week, day, night or hour. Fenced in yard. 13 years experience keeping children. Mrs. J. M. Rich, 217 7th St. Phone JO 9-3638. 26-13tc

## DEVOL NEWS

MRS. C. O. WOODLEY  
Mrs. T. C. Dillow was removed to her home here last week after undergoing minor surgery in a Wichita Falls hospital. She is reported as feeling much better and is able to sit up some and receive visits from her friends.

Mr. and Mrs. Homer Tanner and children, Jess Ward and Carla June, of Apache visited her mother, Mrs. Pearl Cates, last weekend.

Guests of Mrs. W. M. Harrison Sunday were Rev. Dean Burk, Mr. and Mrs. Bryan Harrison, Mr. and Mrs. George Douthitt and Mrs. Peggy Barnett of Electric.

Mr. and Mrs. C. O. Woodley and Mr. and Mrs. Bob Woodley of Wichita Falls visited Mr. and Mrs. John Woodley in Dallas Sunday.

Mrs. Gertrude Farmer left this week for New York to visit her daughter, Mrs. Geraldine Skaggs and family, for a few weeks.

Mr. and Mrs. J. B. Stevens were Sunday guests of Mr. and Mrs. W. H. Miller and family in Grandfield.

Stevie Davis visited his sisters in Hobbs, N. M. over the weekend.

Mr. and Mrs. O. W. Lagrone of Texas City, Tex., visited Mr. and Mrs. Vernon Lagrone Saturday.

Mr. and Mrs. A. L. Mays and Mrs. A. J. Mays transacted business in Clinton Thursday.

Mr. and Mrs. Charles Shindpaugh and children of Wichita Falls spent Sunday with her parents, Mr. and Mrs. F. J. Uthe.

Mr. and Mrs. Jim Eley and Mary Beth visited relatives in Ft. Worth Sunday and were accompanied home by Mrs. Eley's mother, Mrs. A. B. Rayfield.

The ladies of the Baptist church are observing the Annie Armstrong Home Mission program each morning this week at the church.

The GA girls met Monday, Tuesday and Friday evenings with Mrs. F. J. Uthe for their week of prayer.

## Randlett News

MOLLIE R. ELLIOTT, Reporter

Mr. and Mrs. Jim Harper of Temple and Mr. and Mrs. Walter Bridges of Hastings visited their nephew, Mr. and Mrs. Paul Bridges and girls Sunday.

Mr. and Mrs. Ray Braden and son of Edmond visited Mrs. S. M. Braden, Sr., and Miss Betty Jo and Alta Mae Braden Saturday and Sunday.

Kirk Beard was reported ill in a Wichita Falls hospital Sunday and Sunday night. He was returned home Monday.

Mrs. J. C. Fowler visited her son, Mr. and Mrs. Otis Fowler of Burk from Sunday until Wednesday of last week.

Mr. and Mrs. Nick Nichols, Mr. and Mrs. Henry Tompkins, Mr. and Mrs. Hoyt Tompkins, all of Okla. City and Mr. and Mrs. Woodrow Tompkins of McCloy, visited Mrs. R. C. Tompkins, Feb. 22nd.

Mrs. Jackie Elliott spent Saturday night and Sunday with Mr. and Mrs. Virgil Ford and children of Springtown.

Mr. and Mrs. Leroy Hise and daughter, and Mr. and Mrs. Herbert Keisling of Burk were visitors in the home of Mrs. Blanche Solomon Sunday.

Mrs. R. H. Rhoads returned home from a Lawton hospital last Thursday afternoon.

Mr. and Mrs. Eugene Elliott of Wichita Falls visited Mr. and Mrs. Paul Bridges and girls Sun.

Mrs. Omie Fisher of Okla. City spent from Saturday until Monday with Mr. and Mrs. C. L. Watson.

Mr. and Mrs. Lee Miller was ill in a Wichita Falls hospital last week and underwent surgery Monday.

Malcolm Braden of Anadarko visited his uncle, Mr. and Mrs. S. M. Braden, last Thursday.

Mrs. Beulah Riley is visiting her daughter and family, Mr. and Mrs. Sammie Cockrell, and family. The Cockrells have a new daughter born Feb. 26th.

Mrs. Jimmie Kinnard was reported ill in a Wichita Falls hospital the first of this week.

Mrs. Harry Farris is in a Wichita Falls hospital and underwent surgery Tuesday.

Mr. and Mrs. C. N. Green and Mr. and Mrs. Royce Barnes of Amarillo visited Mr. and Mrs. A. L. Anderson and grand maw Green and other relatives here over the weekend.

Mrs. Harry Griffen of Burk and Mrs. Louise McCarthy of Iowa Park visited Mrs. Robbie Best and son, Lt. Com. Carl O. Best last Friday.

Terry Kirkpatrick, son of Mr. and Mrs. Kenneth Kirkpatrick, is reported ill this week.

Mr. Tud Capps of Okla. City spent Saturday night and Sunday with his mother, Mrs. Alma Capps.

Mrs. Robbie Best and son Lt. Com. Carl O. Best and Mrs. Ella Penwell were six o'clock dinner guests of Mr. and Mrs. C. W. Carter of Burkburnett last Tuesday.

Mrs. Clark Bynum of Ada spent Sunday with her mother, Mrs. Alma Capps.

Mr. and Mrs. Jay Pruett are the grandparents of a new baby girl born Monday to Mr. and Mrs. Buster Pruett of Truckmorton.

Will Rogers of Lubbock visited his sister, Mrs. J. C. Fowler, Tuesday of last week. Mr. Rogers, Mrs. Fowler and Mrs. Ted Fowler visited relatives in Mankins in the afternoon.

Lt. Com. Carl O. Best left Monday for Monterey, Calif., after spending a leave here with his mother, Mrs. Robbie Best.

Mrs. Bobbie Eastman narrowly escaped serious injury Saturday when she was attacked by an angry cow which she and Mr. Eastman were attempting to load into a trailer. Mr. Eastman had a rope on the cow, but it broke and the cow turned on Mrs. Eastman. She received several bruises before she could roll under a fence.

Mr. and Mrs. Joe Fender Eastman and children of Burk and Mr. and Mrs. Dickie Eastman and daughter of Wichita Falls visited Mr. and Mrs. F. E. Eastman Sunday.

Mrs. Mollie Elliott spent Saturday night and Sunday with her aunt, Mrs. Evannie McClung in a Weatherford hospital.

### CORNER DRUG STORE

PRESCRIPTIONS

320 EAST 3rd STREET

STORE HOURS:  
Week Days: 8:00 A. M. to 8:30 P. M.  
Sundays and Holidays:  
8:00 A. M. till 11:00 A. M.

For Drug Service  
Closed Please  
JO 9-2328 (City)  
or JO 9-2427 (West)

Mr. S. M. Braden and girls, Betty Jo and Alta Mae, Sunday.  
Mr. and Mrs. T. A. Kinnard had a dinner guests Sunday. Mr. and Mrs. Will Wilhoit, Mr. and Mrs. Clark Gresham, Miss Joan Thornton of Burk, Mr. and Mrs. Paul Grady and Miss Marion Teller of Wichita Falls. Afternoon visitors included Mr. and Mrs. R. P. Sullivan of Waurika, Mr. and Mrs. Earl F. Hetsger of Wichita Falls and Mr. and Mrs. Joe Ed Inman and sons of Devol.

## Public Schools Established In Texas In 1854

The Constitution of the Republic of Texas, adopted March 2, 1836, declared, "It shall be the duty of Congress, as soon as circumstances will permit, to provide by law, a general system of education."  
In 1854 the School Law provided for the first State Public School system in Texas. The State Constitution declares, "A general diffusion of knowledge being essential to the preservation of the liberties of the people, it shall be the duty of the Legislature of the State to make suitable provisions for the support and maintenance of an efficient system of public free schools."  
From this grew the public school system of Texas. Historians say:  
"Education of the masses through these schools which are public schools has been the bulwark of the liberties of the people and the national freedom country."  
We must protect and nurture the public school system, without which Democracy will wither and die, for it cannot live without learning the knowledge by its citizens.

## Rebekah Lodge Met Monday Night

The Burk Rebekah Lodge No. 67 met last Monday night in regular form with the following officers presiding: Cora Lee Harmon, Noble grand; Margaret Lemm, vice grand; Eva Bingham chaplain; Cordia Lawrence, outside Guardian; Mary Cecil, sec.; and Elizabeth Gragg, treas., and musician pro-tem.  
Sick members were reported on and also number of visits made.  
The business matters of the lodge included the installation of some of the appointed officers which were unable to attend the other installation services. Officers installed were Jean McPhail, Warden; Eunice Miller, Musician and Edna Peed, Inside Guardian.  
Under the good of the Order a meeting was planned by both the Odd Fellows and Rebekahs in hopes that this meeting will induce more people to become interested in Odd Fellows and all other branches of the Order.  
Lodge closed in the usual form and refreshments of cake and coffee were served.

Larry Bills, son of Mr. and Mrs. Jessie Bills, was admitted to the Wichita General hospital Friday afternoon after he was struck by a car while crossing the highway in front of Bills' TV and Furniture store. He sustained a broken arm, two fractured ribs and numerous bruises. He was returned to his home here Monday and is reported doing nicely at the present time.

## LET'S TALK LIVESTOCK

By Ted Gouldy  
Fort Worth Market  
Cattle Open Slow and Weak, Spots 50c Lower  
Cattle and calves were very slow and most classes exhibited some weakness. Clearance was incomplete well past the noon hour as salesmen resisted the lower offers.  
Good and choice slaughter steers and yearlings ranged from \$25 to \$26.50, a few higher. Medium and plain butcher yearlings and steers cashed at \$17 to \$24.50. Fat cows sold from \$18 - \$19.50. A few young cows above that range. Canners and cutters drew \$12 to \$18.50. Bulls ranged from \$18 to \$23.50.  
Good and choice slaughter calves cashed at \$25 to \$28.50, a few higher and heavier weights were usually from \$27.50 downward. And plain and medium butcher calves sold from \$22 to \$25, and cull and common sorts drew \$17 to \$21. Medium and good stocker steer calves cashed at \$27 to \$33, and heifer calves sold from \$30 downward. Stocker yearlings bulked at \$28 down, with feeder steers from \$25 down.

The Contemporary Study club met on Monday night, March 2 in the home of Marguerite Eastman with Bobbie Beaver as co-hostess.  
Maxine Thaxton, president, presided over the business meeting.  
An interesting program was given on Texas by Venita Eastman.  
The door prize was won by Peg Crowley.  
A delightful refreshment plate was served to the following members, Cassie Smith, Reudell Maag, Venita Eastman, Marceline Wise, Marcella Elliott, Ethel Musick, Oralena Wampler, Alene Frieles, Bobbie Beaver, Peg Crowley, Evelyn Schumann, Maxine Thaxton, Cathy Evans and the hostess, Marguerite Eastman.

## Contemporary Club Met Mar. 2nd With Marguerite Eastman

The Contemporary Study club met on Monday night, March 2 in the home of Marguerite Eastman with Bobbie Beaver as co-hostess.  
Maxine Thaxton, president, presided over the business meeting.  
An interesting program was given on Texas by Venita Eastman.  
The door prize was won by Peg Crowley.  
A delightful refreshment plate was served to the following members, Cassie Smith, Reudell Maag, Venita Eastman, Marceline Wise, Marcella Elliott, Ethel Musick, Oralena Wampler, Alene Frieles, Bobbie Beaver, Peg Crowley, Evelyn Schumann, Maxine Thaxton, Cathy Evans and the hostess, Marguerite Eastman.

### '57 Chevy

Belair, V8  
Hardtop  
POWER PACK

### '57 Ford

4 Door  
Fairlane

### '53 Ford

Std. Shift  
Real Nice

### '55 Mercury 4 Dr., Nice

### '54 Chevrolet 2 Door

### '50 Buick 4 Door

1953 CHEVY  
1/2 Ton Pickup

1953 PLYMOUTH 1954 PONTIAC

BEST PLACE By Far For REPAIRS

## Smith

YOUR JOBBER FOR  
McQuay-Norris Automotive  
GLENN SMITH  
414 Ave. B Ph. JO 9-2881

CLIFF SAYS:

Traffic laws aren't made because ALL drivers need correction, OUR TRAFFIC LAWS— ARE MADE BECAUSE— Good drivers need protection.

IT WASN'T RAINING WHEN NOAH BUILT THE ARK

## WAMPLER INSURANCE AGENCY

PHONE JO-9-3161  
203 Avenue D

## LAWNMOWERS

Sales and Service  
REPAIRS  
KEYS MADE  
PHONE JO-9-3561  
Burk Service Center  
211 East 3rd Street

Member of...  
cheon I...  
NDAY a...  
Everybod...  
Pays I...  
NO. 52  
Sarnett...  
aska...  
L. May...  
T. M...  
is wo...  
hole e...  
ta. He...  
chemist...  
ble Oil...  
n ala...  
a gra...  
High...  
Creek...  
ka Pen...  
explor...  
illed ir...  
continue...  
ble Oil...  
te at Be...  
4,261 f...  
passed...  
of 14...  
standar...  
a at De...  
Penin...  
ssed St...  
noon of...  
of the...  
Benny F...  
ly go...  
as one...  
hts ag...  
Mr. and...  
oil in...  
experien...  
will al...  
mble w...  
costlies...  
arked t...  
ng oper...  
which i...  
Les sout...  
aska P...  
Kodia...  
rluk...  
was...  
23, 19...  
ock, wi...  
wild...  
overcome...  
ould c...  
has been...  
al hur...  
Temp...  
to 22...  
win...  
miles...  
the go...  
outposts...  
it m...  
girls after...  
love to tel...  
prayer by...  
Nine mem...  
members...  
Judgy...  
tion...  
F...  
Mr. and...  
ris of Ab...  
proud par...  
Malinda...  
Feb. 28th...  
new baby...  
Ferguson...  
Land...  
Ralph Whit...  
oyd...  
yzer...  
Call JO 9-2...  
FAMILY...  
Unconditio...  
DAVE...  
B...  
Repro...  
Winters...  
Ph...  
March 13th...  
the Bu...  
to be gi...  
auditor...  
Jedy play...  
a cast of...  
of Th...  
S...  
express...  
to fi...  
their...  
to us...  
hospital...  
etc., w...  
ted...  
and De...  
TIC...  
PTA reg...  
uesday...  
in the Gr...  
by seve...  
ack M...  
terback...  
Monday...  
High...  
ortant...  
Robert...  
recent...  
Mr. and...  
with and...  
togethe...  
bertson...  
several...  
ed.