

Merry Christmas

Greetings to all

John Brookman

Lola Mae Bailey

Harry Dodson

Charlie Wisdom

Forest Green

# Burkburnett Star

LIKED BY MANY..CUSSED BY SOME.. READ BY EVERYBODY

BURKBURNETT, WICHITA COUNTY, TEXAS, THURSDAY, DECEMBER 24, 1959

SECTION 1

Christmas Greetings  
Sixteen Pages

NUMBER 15

## WORK STARTS ON NEW SEWER SYSTEM



From the  
Office of  
Governor  
Price  
Daniel

Gov. Price Daniel said today he had "High Hopes that Texans will make the Christmas-New Year's season one of the safest instead of the most deadly we have ever had on Texas highways."

A prediction of 111 traffic deaths, one of the largest in recent years, had been made by the Texas Dept. of Public Safety due to the 12 day length of the holiday period and its two week-end.

The Governor said he had mailed nearly 11,000 letters to college and public school officials, local traffic safety officials, newspapers, radio and television stations and others interested in the statewide traffic safety crusade.

"I have asked all these Texans and I appeal to all of the automobile drivers in this state to join in the most talked about most publicized and most effective safety campaign we have ever staged during Christmas-time," the Governor said.

Official records of the Dept. of Public Safety show that more Texans lost their lives in traffic during December than in any other month for six of the past twelve years. And December holds the fateful record of recording more deaths in a single month than any other month—Dec., 1950, when 303 persons died in Texas traffic.

Under these circumstances," the Governor said, "it is my duty to remind Texans again & again that if their homes are to remain secure and their families complete for what should be the hap-

piest season of the year, then the members of those families need drive more carefully than ever. Nothing can help make a happy Christmas more certain than careful driving and obedience to the traffic laws, designed for our personal safety.

Christmas Day, the same DPS records show, can also be a fateful day for many families. In 1958, 22 persons died in Texas traffic on Christmas Day, slightly more than one third of the 63 Texans who met death in last year's holiday traffic. That toll was a record low for any Christmas holiday period. As a further matter of record, last Christmas day saw more Texans meet death in traffic than any other Christmas Day on record, with the single exception of Dec. 25, 1951, when 24 persons died. On Ten Christmases out of the last 13, the records show, Christmas Day traffic collisions resulted in 10 or more deaths, and in each case, the Christmas Day death toll was higher than the daily average for that year.

"This year," the Governor said, "we have been joined by thousands of ministers all over Texas in calling to the attention of their congregations the close relationship between their religious beliefs and their attitude and actions in highway traffic. I believe this emphasis will have a great impact on many thousands of Texans as we strive to keep Christmas happy and joyous, free from heartbreak and sorrow. For this reason, I continue to admonish Texans: "Don't Let A Collision Spoil your Holiday."

### Last Rites Today In Providence For William C. Beall

Funeral services for William Cary Beall, 45, were held at 2:00 p. m. Wednesday at the Primitive Baptist church at Providence, Tex. Burial was in the Providence Cemetery under direction of the Pearson Funeral Home of Walters.

Beall died in a Wichita Falls hospital Monday after suffering a stroke. He had been a resident of Burkburnett for the past ten years and was employed by the Magnolia Sales Dept. here.

Survivors include one brother, of Oklahoma and a sister, Mrs. Ellis High of Ft. Worth.

If you think the younger generation isn't interested in getting ahead, just wait till one of them pulls up next to you at a stop light.

Shoe dept. manager: "Yes, mam, we have a collection of loafers. Just let me see if I can get one of them to wait on you."

### School News

The Latin Club of Burkburnett High School was organized recently under the direction of Mr. James L. Shannon, Latin instructor. Officers elected included president, Johnny Cools; vice-president, Sheryl Simpson, secretary-treas., Judy Nichols, and club reporter, La Nien Clark.

The motto chosen was "Sapere Aude", dare to be wise. In keeping with this motto is the Christmas project in which club members are busily collecting new and used toys to give to the Salvation Army.

Scheduled for the 18th of December was a Christmas program the theme of which was Saturnalia meaning or having to do with the observance of Christmas by the Romans. The birth of Christ was read from the Latin Bible, odeste firell—O Come All Ye Faithful was sung by the group. The Latin club is open to all Latin students and those interested in the classical studies.

—La Nien Clark, reporter.



We're headlining our greetings for a happy holiday season to wish all our friends and patrons health and good cheer at Christmas time!

### The Burkburnett Star

### Xmas Baskets Distributed By 2 Organizations

The American Legion and the Men's Bible Class of the First Baptist Church made twenty-nine families happy at Christmas time this year with generous Christmas baskets filled with goodies for the table.

The Legion delivered 21 baskets to deserving families Tuesday night.

The Bible class distributed their baskets Tuesday morning.

### Accuracy Record of Babson's Financial Forecast Outstanding

Roger W. Babson's Business and Financial Forecast for 1960 will appear in this paper December 31st.

Mr. Babson—a pioneer in the field of business and financial statistics—enjoys an unusual record of accuracy in his Annual Forecasts. His score for 1959 was 84% accurate.

Forecast For	% Accurate
1959	84
1958	86
1957	88
1956	85
1955	84
1954	86
1953	84
1952	88
1951	86
1950	81
1949	80
1948	91
1947	93
1946	95
1945	87
1944	91
1943	94
1942	86
1941	78
1940	76

Watch for the Babson Business and Financial Forecast for 1960 in our issue of December 31st.

### New Ford Auto Will Be Given Away Dec. 24th

Some lucky Burkburnett shopper will be driving a brand new Ford during the Christmas holidays, compliments of the Chamber of Commerce and the merchants of Burkburnett.

More than 260,000 tickets have been given away to shoppers during the Christmas shopping period.

The car will be awarded at 2:00 P. M. Thursday, December 24th in down town Burkburnett at the intersection of Avenue C and Main, or 3rd Street.

You must be present to win, and the winner must be 21 years of age or older.

### Mrs. Jack Mathis Hostess Dec. 14th Circle 1 Xmas Party

Circle 1 of the Womens Society of Christian Service met in the home of Mrs. Jack Mathis Dec. 14th for a Christmas party. We were greeted at the door by Peggy to the strains of beautiful music from her new Hi-fi. Mrs. Morris opened the meeting with prayer after which she presided over a short business meeting. We decided to take a Xmas basket to some worthy family.

Mrs. Turner brought a beautiful devotional and Mrs. Gilbert told a touching Christmas story. Delicious refreshments were served, then gifts were exchanged. Those present were Mesdames J. P. Lawler, R. L. Gragg, Leon Turner, M. L. Keil, H. C. Gilbert, F. L. Pilkenton, Bill Cauthorn, J. B. Grace, W. C. Gage, D. M. Morris, Bruce, R. D. Revier, J. H. Rigby and hostess, Mrs. Jack Mathis.

Safety instructor to class: This bottle has 331 pills in it. Just one is poison; the rest are sugar pills. Who wants one? "Nobody accepted. Said the instructor: You are smart. That's the same chance you'd take if you tried to slip through a red light".

### City Hall Will Be Closed Thurs. Noon to Monday

Those who wish to do business at the City Hall are reminded that the office will close at noon Thursday and remain closed until the following Monday morning.

Emergency calls will be handled in the usual way, but daily business as usual will be suspended over the week end.

### Burk Scouts Place First

Troop 154 of the American Legion in Burkburnett won first place over 14 teams from five districts in the Northwest Area Council annual first aid meet held Saturday in the Wichita Falls Boys Club.

Members of the winning team were John Woods, Bill Byars, Pete Glover, Barry Six and Chas. Davey. Another team member Rickey Landrum, is in the hospital convalescing from an automobile accident. Wallace Landrum is scoutmaster of the troop which scored 5930 points out of a possible 6,000.

The boys received the new Boy Scout Handbook which was autographed by the meet officials and a silver medal.

Other winners in the meet were: second place, Troop 40 of the First Methodist Church in Electra with Paul Carpenter, scoutmaster; and third, Troop 32 of the St. Mark's Methodist Church of Wichita Falls with Quincy Lee, scoutmaster.

Team members of Troop 40 were Bill Gibbs, George Roessler, Richard Carpenter, James Proffitt and Billy Reams. Composing the group from Troop 32 were Lindon Box, Tommy Hansen, Jim Pomeroy, Kenny Vandiver, Emerson Hall III, and Donald Grote.

The second place team won gold medals with the third place group awarded bronze medals.

Meet officials were Rollins Woodall, Council Health and Safety Chairman; Martin Nelson, meet director; Capt. Andy Andrews, chief judge; Ed Oglesby, chief scorer; and Ben Davis, assistant scorer.

Judges were Eltine Box, Marilyn Vandiver, Louise Pascoe, Velta Reeves, Beadie Griswell, Lenora Lesley, Dink Lawson, Bill Bumpas, A. E. Ford, Bobby Banner, H. Hardesty, Paul Atkins, Grady Marsell, Jim Jameson, G. R. Smith, Roy Robb, S. E. Marchand and E. E. Keller.

Melvin Smith is the scout executive.

### Sharon Wooten Honored On Her Sixth Birthday

Sharon Wooten was honored with a birthday party at her home, 119 N. Hilltop, on December 13th. The young lady was six years old. Games were played and Christmas carols were sung by the little guests. After opening the gifts, refreshments of cake and ice cream were served to the honoree, Sharon, and Kenie Simmons, Rusty Mullens, Jimmy Sims, Phyllis Hall, Linda Hagstrom, Paula Swan, Rodney Roberts, Jimmy Simpson, Becky Dark, Barbara Byars, Jr. Smothers, Bogie Hunter, Debbie and Donna Lewis and Norman Wooten.

Assisting Mrs. Wooten were Mesdames Orlanda Simpson and Elyn Mullens.

### Wet Weather Puts Signal Lites On The Blink

Constant rains for two or three days played havoc with down town traffic signal lights. Water found its way inside the lights and shorted out the controls.

Traffic really got snarled up when the lights showed both red and green on one side, while the other side showed green only. At other times signals would show for only one lane of traffic. To remove the confusion, the lights were turned off. Examination showed the controls completely burned out. Frantic telephone calls from the City Hall did not locate the needed parts for a day or two. As soon as the necessary parts arrived, the lights were repaired and put back in operation. The parts alone cost more than \$100.00.

### Royce Miller and Gary Wood to Play in Cot. Bowl

Mr. James Royce Miller, son of Mr. and Mrs. Herman Y. Miller and Mr. Gary Lynn Wood, son of Mr. and Mrs. Harold Wood, will both participate with the University of Texas Longhorn Band in its activities at the Cotton Bowl game in Dallas on New Year's Day. Both students are freshmen at the University.

The Longhorn band, made up of a total of 175 members, will appear in the halftime ceremonies at the Texas-Syracuse football game to be nationally televised by CBS on Jan. 1, 1960.

This year the band has performed at eight football games and appeared on national telecast at the California game and on regional telecast at the Oklahoma game in Dallas.

For its halftime performance, the Longhorn Band will enter the field to the strains of "March Grandioso." Upon reaching midfield, the band will perform the symbol long associated with the state of Texas—the lone star, flanked by the letters UT.

The main formation of the afternoon will be the script Texas which has truly earned them the name "The Show Band of the Southwest." Music to be played during the show includes "My Hero" and "Manhattan Beach" followed by "The Eyes of Texas" under the direction of Vincent R. DiNino, director of the Longhorn band.

The band will move to the north end of the Cotton Bowl playing the fight song "Texas Taps." They will be joined by the Syracuse band and five high schools bands for a Grand finale.

On the evening of Dec. 30th, the Longhorn band will attend a performance of the Broadway musical, "My Fair Lady."

The Longhorn Band will occupy a prominent spot in the New Year's Eve parade in downtown Dallas and will attend several social functions including the Texas party to be given Dec. 31st in the Humphrey Lee Student Center at SMU.

So you're going places and passing them all? When we find the wreckage, just whom shall we call?

# The Burkburnett Star

JOHN W. BROOKMAN - HARRY C. DODSON  
Owners and Publishers  
Harry C. Dodson, Editor



Printed weekly at Burkburnett, Wichita County, Texas. Entered as second class matter at the post-office at Burkburnett, Texas, August 19, 1907, under the Act of Congress of March 3, 1879.

**Notice to the Public:** Any erroneous reflection upon the character, standing or reputation of any person, firm or corporation, which may appear in The Star, will be gladly corrected as soon as it is brought to the attention of the publishers.

### SUBSCRIPTION RATES PER YEAR

In Wichita and Cotton Counties ..... \$2.00  
Outside These Counties ..... \$2.50

## Farm Program Must Be Revised

It is inevitable as the seasons that our government will be compelled in the near future to effect radical reforms in its farm program. The need for change has long been apparent. And the big change must be in the subsidy schedules. Five key commodities are being overproduced to the point of satiety. These are cotton, corn, wheat, peanuts and tobacco, and these are the crops which get the major support. In short, we are having trouble with the crops that are supported by subsidies and limited by quotas. Those crops which are not affected by supports and quotas are cause of no trouble.

The farm program as it now operates benefits none and hurts all. The farmers do not want supports. They want government restrictions removed to give them opportunity to operate on a free market. A nation-wide poll of farmers conducted by the Committee for Constitutional Government showed 80% of those polled want the government to get out of farming. The Dept. of Agriculture doesn't want the present program and certainly the taxpayers don't want it.

Out of the \$6,000,000,000 already proposed for the crop subsidy programs for next year, \$1,000,000,000 will be required to pay for storage charges on overproduced crops in the five key categories. These surpluses have become so mountainous that simply finding places to store them has become a serious problem. Yet the subsidies go on and on and the public pays three times: once for the supports, once for the cost of storage and once again for the purchase of over priced farm commodities. Unless public apathy to this situation ends, we can expect Congress to continue to pour our money down the economic drain. The tax money wasted on the farm program this year alone is \$2,200,000,000 more than the entire federal budget for 1929.

## A Law That Saves Money

A law enacted in 1951 imposes size and weight limitations on packages carried by parcel post between first class post offices. And these limitations, says a publication of the Chamber of Commerce of the United States, have saved the taxpayers money.

Here is why: "Since enactment of the law, substantial amounts of large package business have been returned to commercial carriers. This has benefited the nation's economy. The business should not now be turned back to the government."

"Parcel Post is still subsidized government service, since part of its costs are hidden in the budgets of other agencies and are not charged against the Post Office Department. Moreover, postal facilities are not adequate now to provide all the service assigned to the Department. Any increase in the size and weight of packages permitted in the mails would increase the need for more governmental spending for enlarged facilities."

It should be noted that the current limitations apply only to traffic moving between first class post offices, which are in sizeable communities where private carriers are equipped to handle all transportation needs. Thus, protection is provided to people living in the smaller communities and in rural areas where adequate private service may not exist. Any law which removes unnecessary government costs from the bent and weary backs of the taxpayers is a good one. And that's certainly true of the parcel post limitation law. A3

## When Britain Cried Enough

Of all the free countries, England has had the widest experience with the welfare state, and with the widespread socialization of enterprise that inevitably accompanies that institution. Following the last world war, when the Labor Party was returned to power, there was good reason to believe that England was embarked on a course that could only lead to virtually total socialism.

Yet today further nationalization of enterprise is a dead issue in Britain. Labor Party leaders frankly admitted as much in speeches during what amounted to an election postmortem. They are particularly distressed by the fact that the young voters, on whom the future of any political party depends, not only were unattracted by the socialist program but defected in droves to the Conservatives. The emphasis in Britain now, under the MacMillan government, is on the encouragement of private enterprise and private investment both at home and abroad.

Well, as the old saying has it, experience is the best of all teachers. And experience has taught a majority of the British electorate that socialism, whatever the theoretical claims made for it, leads to a dreary morass of higher taxes, inflated prices, lessened liberty, bureaucratic dictation and a loss of national vitality all along the line. And so, in the last election, Britain cried "Enough!" in decisive terms.

Let us hope that the people of the United States will profit from the example of the ally with which we share a common language and much of our heritage. The drive for more socialism goes on, with the electric industry still the principle target as it has been for a generation. But, at the same time, the resistance to the welfare state and the socialist ideology grows and deepens.

## Septic Tank Pumping Service

ARLIS KEY IF NO ANSWER  
Phone JO 9-3265 Dial JO 9-3605  
301 EAST 6th STREET BURKBURNETT, TEXAS

### THE FLYING BLACK SHEEP



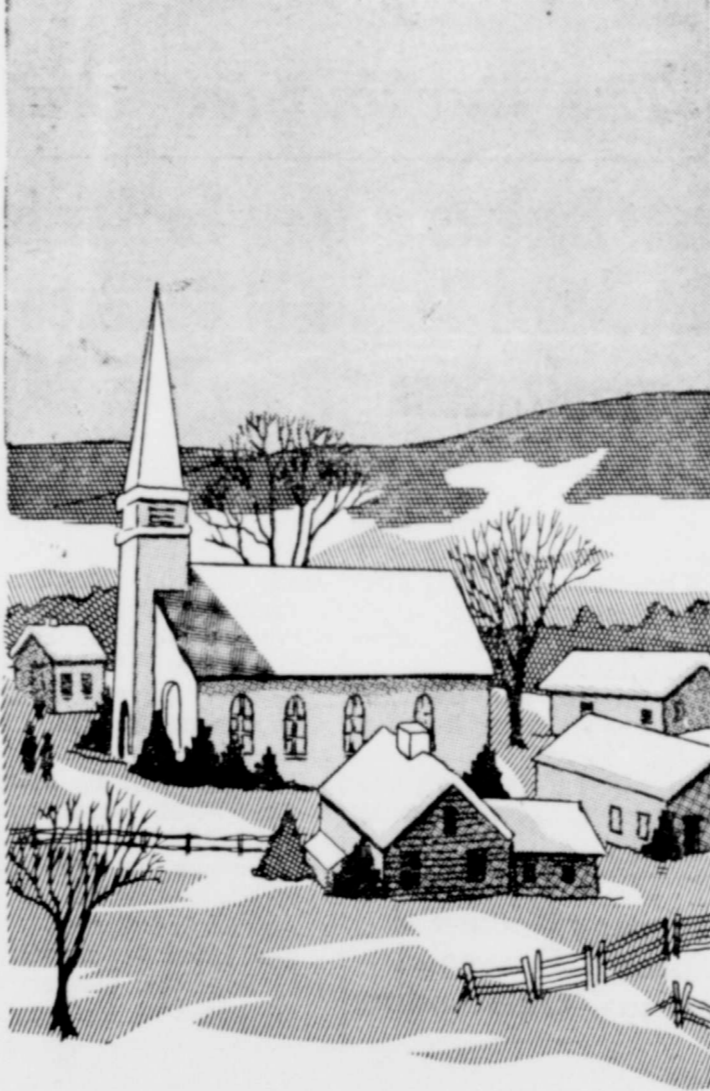
## No Vacations On The House

Between sessions "junkets" are an old and useful Congressional tradition. The reasons given for these trips always are legitimate and in most cases our legislators conscientiously bring home the informational bacon they go after.

This year Congressional committeemen are off to Europe, the Near East, Far East, Latin America and other near and far spots. They are checking on foreign aid, defense spending, the European Common Market, overseas civilian employment and assorted other activities in which American interests and tax money are involved.

They will, we hope, come back better equipped to do their jobs when Congress reconvenes.

However, no individual accounting is required of funds spent on these trips and this has led to past abuses of the junketing privilege. We hope there'll be none of that this year, but just the same it wouldn't hurt to keep an eye on our wandering boys, to find out where they went and what they did. Taxes being what they are, our elected representatives could hardly expect us to be happy to learn that any of them have been taking vacations on the House.



Merry Christmas

To all of our friends we  
send greeting and wish you  
a Merry Christmas.

## BURKBURNETT CHAMBER OF COMMERCE

CLIFF WAMPLER, President  
MARJORIE HOFACKET, Secretary  
CASSIE SMITH  
DIRECTORS AND MEMBERS

## BURKBURNETT... HISTORY

Revealed By The Star  
Files 10 Years Ago . . .

Mrs. H. L. Ivey returned home last week after visiting relatives in Strawn, Tex.

Mrs. I. E. Harwell and Mrs. P. A. Wiggins of Burkburnett and Mrs. R. L. Mattingly of Wichita Falls were Dallas visitors Monday.

Mrs. Sid Gamblin spent Sunday with her brother-in-law, H. C. Gamblin at Comanche, Tex. She was accompanied by Sydney, Judy Willingham and Joan Sites who visited in Stephenville while Mrs. Gamblin was in Comanche.

Joe Bill Dodson left Monday for Odessa, Tex., where he will spend Christmas in the home of his grandparents, Mr. and Mrs. S. W. Dodson.

M-Sgt. and Mrs. R. P. Breaux and Cathy left Tuesday morning to spend Christmas with relatives in Biloxi, Miss.

Mr. and Mrs. Blake Browning and Donna and Mr. and Mrs. W. P. Boydston and Mike will leave Sunday to visit Mr. and Mrs. R. G. Candier in Pampa.

Mr. and Mrs. Garland Johnston of Vernon will spend the holidays with her parents, Mr. and Mrs. J. D. Majors.

Mr. and Mrs. H. C. Dodson and Jean will spend Christmas with his sister, Mrs. W. D. Goyer and family in Tyler.

### I. O. O. F. LODGE

BURKBURNETT, TEXAS

Meets at I. O. O. F. LODGE

Every Tuesday Night, 7:30 p. m.

Visitors Welcome

H. T. LEMM, Noble Grand  
EARL DIXON, Vice Grand  
L. L. MILLIKIN, Fin. Secy.  
RALPH ENGLAND, Jr. Secy.  
J. H. CECIL, Treasurer

R. H. Henry, Jr., arrived in Burk this week from Venezuela, South America for a vacation visiting his parents, Mr. and Mrs. R. H. Henry. R. H. is a field auditor for the Gulf Oil Co in Venezuela.

Card Of

I wish to express thanks to friends for the prayers, and visits I received stay in the hospital. My return home thanks is extended. Center for his many kindnesses remembered.

Call JO 2-191



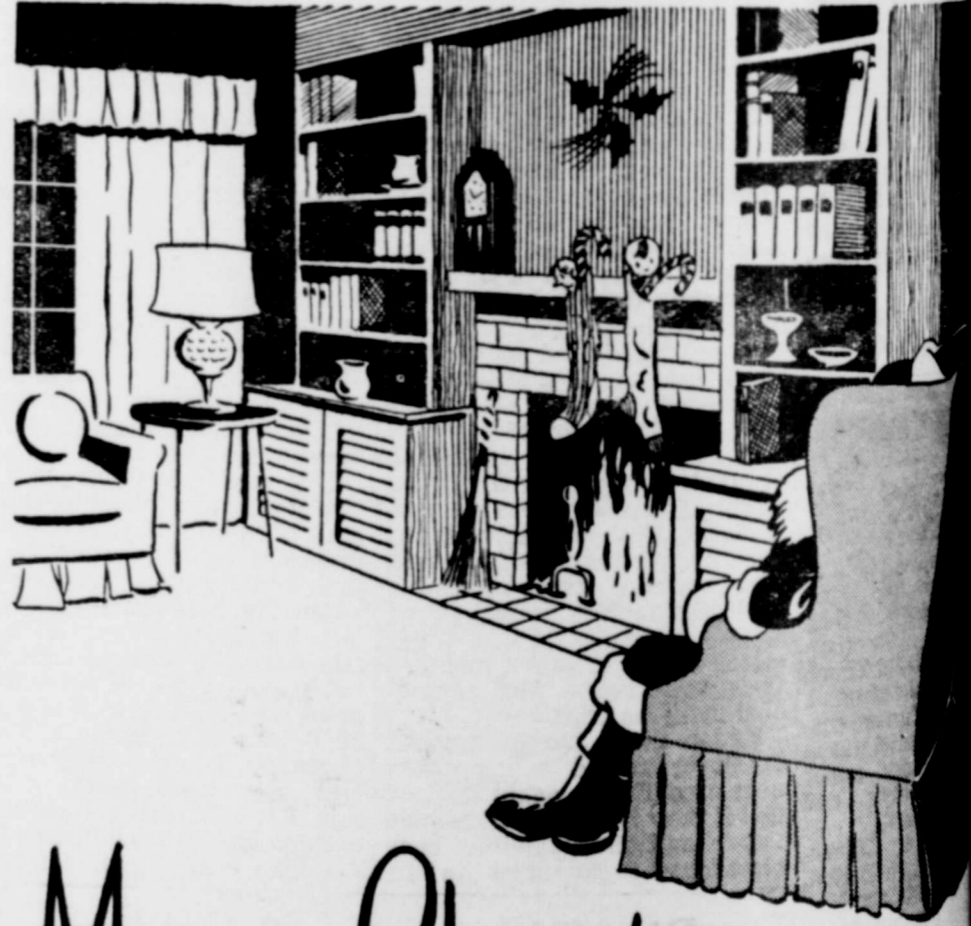
We join you in singing his praise this Christmas day.

## CASEY LOGAN AUTO SALES

Casey Logan and Employee

310-312 Avenue C

Burkburnett, Texas



Merry Christmas

And may the season bring you  
deep and abiding happiness

## CITY OF BURKBURNETT WATER AND SEWER DEPARTMENTS

THE CITY COMMISSIONERS  
A. W. NEWMAN, City Manager  
AND ALL THE CITY EMPLOYEES

# Insurance is the same 'til you have a claim

**Burk Insurance Agency**  
**HOWARD CLEMENT**  
 New Location—Next To Legion

## Classifieds In the STAR Get Results



MAY HAPPINESS BE WITH YOU EACH STEP THIS CHRISTMAS SEASON

**FARMERS CO-OP. GIN AND FEED AND SUPPLY OF BURKBURNETT**  
 Paul Hooper, Manager

## For Kiddies as Eve

of December 23rd at Santa Claus headquarters, in the big building on the corner of 3rd Street and Ave. C. The names of all the kiddies who write in will be placed in a box. From this box the lucky names will be drawn. So get those letters in to old Santa. State in the letter your name and age.



and Mrs. Russell Duvall

## Preparation Is Important for Perfect Turkey

Turkey and all the trimmings—that's what makes a Christmas feast fit for a king.

The turkey, of course, is the most important item so great care and consideration must be given to the selection and preparation of this native American fowl.

Age, sex, and tenderness of the meat determine the market class of the bird. The youngest turkeys, by far the most popular with American families today, weigh from 4 to 6 pounds.

The next class, popular with larger families weigh in from 6 to 25 pounds and is composed of toms and hens over eight months of age. These older toms tend to be stronger in taste and for that reason the hens are more popular.

### Top Birds

A top quality bird should have a well-developed, moderately broad breast, well fleshed through its entire width and length. The breastbone should not protrude.

Preparing your fowl is important also. Be sure that all wingtip feathers have been removed. Any remaining ones can be pulled out by pressing the skin around the feathers down to the tips of the quills with the forefinger and thumb of one hand and pulling the feathers straight out with the other hand.

### Helps Taste

By using a pair of pliers you can remove many of the heavy tendons of the legs. This greatly improves the cooking and taste of the drumsticks.

Stuff your turkey just before putting it into the oven. Use three skewers before closing the cavity. Tie a square knot after each skewer so the lacing won't tighten. This allows steam to escape and prevents soggy dressing.

And last, but important, give your turkey a chance to cool before serving. It will carve much better if you do.

## Builders Class Met With Mrs. Buchanan

Mrs. Hattie Buchanan was hostess to the Builders Class that met in her home Thursday afternoon, Dec. 10th at 2:00 p. m. The group sang What A Friend We Have in Jesus, then Mrs. H. S. VanCleave led in prayer. Devotional was given by Mrs. R. E. Carnes.

Vice president, Mrs. J. H. Ferguson, presided at the meeting in the absence of Mrs. Mary Griffin. Two of the four group captains gave their reports for the month of November.

Group No. 1, Mrs. S. V. Darland and members served refreshments of cake, Jello and coffee to those present. Prayer by Mrs. R. E. Carnes.

Our teacher, Mrs. F. M. McMurtry, was absent because of the death of her husband, Mr. F. M. McMurtry. We have lost 2 members of our group by death, Mrs. M. B. Riley and Mrs. A. G. Barton. Dismissal prayer by Mrs. Cain Moore.

Thirteen members and three visitors were present. One of our group captains, Mrs. Flora Bentley, was unable to attend. Secretary, Mrs. K. L. Harris and Mrs. S. V. Darland counted our Lottie Moon offering. Mrs. Cain Moore read a poem on Christmas.

Those attending the meeting were Mesdames Hattie Buchanan, J. H. Ferguson, R. E. Carnes, R. G. Redman, visitor, G. T. England, Biddie Smith, J. R. Woods, W. J. Wright, K. L. Harris, Cain Moore, H. S. VanCleave, Sr., Bessie L. McKnight, visitor, Cordie Keller, visitor and Miss Oma VanCleave.

Our next meeting will be the first Thursday in January. Oma VanCleave, Reporter

M-Sgt. and Mrs. G. E. Kress and daughters of Sherman Air Base, Clinton, Okla., spent the weekend with her parents, Mr. and Mrs. O. H. Buzbee of Iowa Park.

Our Classified Ads Get Results

Sunday visitors in the home of Mrs. M. C. Ring were Mr. and Mrs. Virgil Wiggington and family of Watonga, Okla., Mr. and Mrs. Jack Green, Mr. and Mrs. M. C. Sherman and Mr. and Mrs. G. B. Sanders and family all of Wichita Falls. These families all brought covered dishes for lunch and gifts for Mrs. Ring.

It pays to advertise—in the Star

### A. F. & A. M.

Stated Meetings First and Third Monday at 8:00 p. m. at the Masonic Hall

School of Instruction Thursday Night H. W. FOWLER, W. M. B. R. MATTHEWS, JR., Secy.



May your Christmas be one of joy and lasting peace.

## FLORA COBB

DISTRICT CLERK AND DEPUTIES

## Is Your Home 'Safe' For the Holidays?

Did you ever wonder if the home you have lavishly decorated for the holiday season is anything but "safe"? If your home and decorations are "average," you are most likely surrounded by more fire hazards than the law allows.

The Christmas tree, in all its shiny splendor, is a potential torch. A "safe" tree is one that is freshly cut, with the base submerged in water or wet sand as long as it remains in the house. It is also located away from all sources of heat.

Safe lights for the tree must be laboratory-approved, and carefully inspected for frayed cords and damaged sockets. It is unwise to "economize" by using old cords year after year. It is also unwise to overload electrical circuits with additional lights, toys and appliances.

Only nonflammable decorations should be used on the tree. Discarded Christmas package wrappings should never be left scattered under the tree. Turn tree lights off when retiring or leaving the house. Regardless of whether the New Year has arrived or not, throw out the tree once the needles become dry and fall off.



Christmas is a time of peace and boundless good will. Our cordial good wishes to all.

## B and B GROCERY

Mr. and Mrs. Cecil Todd and Employees  
 Wichita Highway  
 Phone JO 9-3701



PREVIEW... There are few things more exciting to the youngster who has been waiting and waiting for Christmas than slipping down the stairs to see if the jolly old gentleman has arrived. If the hour is yet too early, who's to know if a fellow decides to set up watch by the chimney and greet Old Santa when he comes?



May the Christmas bells ring out for you with great joy and cheer.

## Williams Petroleum Co.

PHIL D. WILLIAMS

P. O. Box 727

Phone JO 9-2531

BURKBURNETT, TEXAS

Merry Christmas

Christmas is a time of peace and boundless good will. Our cordial good wishes to all

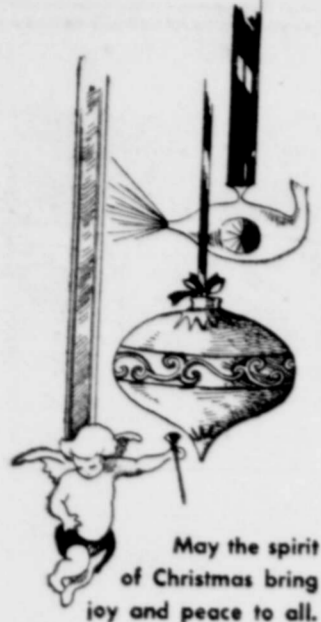
## PAGE

3rd Street  
 JO 9-3121

## WESTERN AUTO ASSOCIATE STORE



Merry CHRISTMAS



May the spirit of Christmas bring joy and peace to all.

**DUKE'S Service Station**

Mr. and Mrs. Jack Duke  
AVENUE D  
Burkburnett, Texas

Mechanic to man with broken down car: "If this car were a horse, it would have to be shot."

Greetings



May the Christmas season hold complete happiness for you.

JOE JANEKE  
Attorney

414 Avenue C  
Burkburnett, Texas

**TRINITY Lutheran Church**

The Church of Radio's Lutheran Hour and The Family Worship Hour and of Television's "This Is The Life"

**Sunday, December 27, 1959**  
Lutheran Hour-Frederick Kc 1670 9:30 A. M.  
Sunday School and Bible Classes, 10 A. M.  
Public Worship Service, 10:45 A. M.  
Installation of newly and re-elected officers, 10:45 A. M.  
"This Is The Life"—Wichita Falls, Ch. 6, 10:30 A. M.  
**Monday, December 28th**  
SS Teachers and TT Course at 7:30 P. M.  
Tues.—Confirmation Class, 4:15 P. M.  
Wed.—Walther League, 8:00 P. M.  
Wed.—Mixed Choir, 9:00 P. M.  
Thurs.—New Year's Eve Service, 7 P. M.  
Sat.—Saturday School, 9 A. M.  
Sat.—Confirmation Classes 9 A. M.  
Sat.—Junior Choir, 10:15 A. M.  
**Thursday, December 31st**  
Special New Year's Eve Service, 7 P. M.  
You and yours are extended

a cordial invitation to attend one of our Sunday School or Bible classes conducted for all age groups and our public worship services.

Rev. L. Boriack, Pastor

**Card Of Thanks**

We are sincerely grateful for the many kindnesses shown us during our stay in the hospital. The flowers, gifts and visits were especially appreciated. These kindnesses will be long remembered.

Mrs. F. G. Jeffers,  
Ricky Landrum  
and Families

Mrs. F. G. Jeffers and grandson, Ricky Landrum, were returned to their homes here Saturday from a Wichita Falls hospital. Mrs. Jeffers is able to be up and around some, but Ricky is in a body cast and will have to remain in bed for approximately three more weeks. They were in a serious car accident last week.

You're less likely to lose your shirt if you keep your sleeves rolled up.

If your wife insists on driving, don't stand in her way.

**Legend Says Christmas Trees Came From Egypt**

Legend has it that the Christmas tree originated in Egypt, where the first trees used were palm trees.

The Germans brought the tree to America, however, as they also introduced it to England. The German Prince Albert, consort of Queen Victoria, introduced the first tree into England when he had a tree for his young daughter.

Martin Luther is said to have brought the first Christmas tree indoors for decoration, early in the 16th century.

When you fasten ornaments to your tree this year you will be commemorating a centuries-old Arabian legend that relates how plants blossomed and flowered and trees miraculously bore ripened fruit on the eve of the first Christmas.

**Exercise Care in Outdoor Decorations**

If you light an outdoor tree, do it with care and caution.

Spruce, firs and pines, when not too large, are ideal for outdoor Yuletide display, but hemlock, yew, boxwood and aborvitae are a little more sensitive to the heat of Christmas lights and their needles may be scorched if caution is not used.

**NORGE SELF-SERVICE COIN-OPERATED WASH**



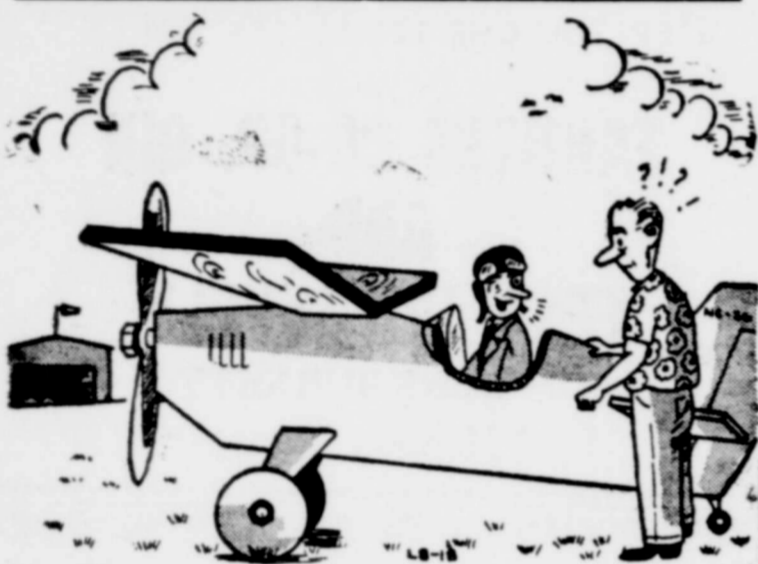
Now Home-Own  
M. M. THORN  
and  
W. W. FRENZ  
Open 24 Hours  
15¢ WASHES  
9 POUNDS

5c — Dries up to 16 lbs., 7 1/2 Min

**M & W LAUNDRY**

Just Around Corner From  
Jack Alexander Service Station on AVENUE D  
P. O. Box 725

**"KNOTHEADS"** by Buddy Byars



Why certainly it'll fly; it's made from the choicest lumber that Cicero Smith Lumber Company sells.

**CICERO SMITH Lumber Co.**  
L. J. BYARS, Manager  
311 Avenue B Phone JO 9-3711

Season's Greetings



AND A MERRY CHRISTMAS.

**C. D. SHAMBURGER LUMBER COMPANY**

R. C. "Bob" Tevis, Manager  
Burkburnett, Texas

**WANTED!**



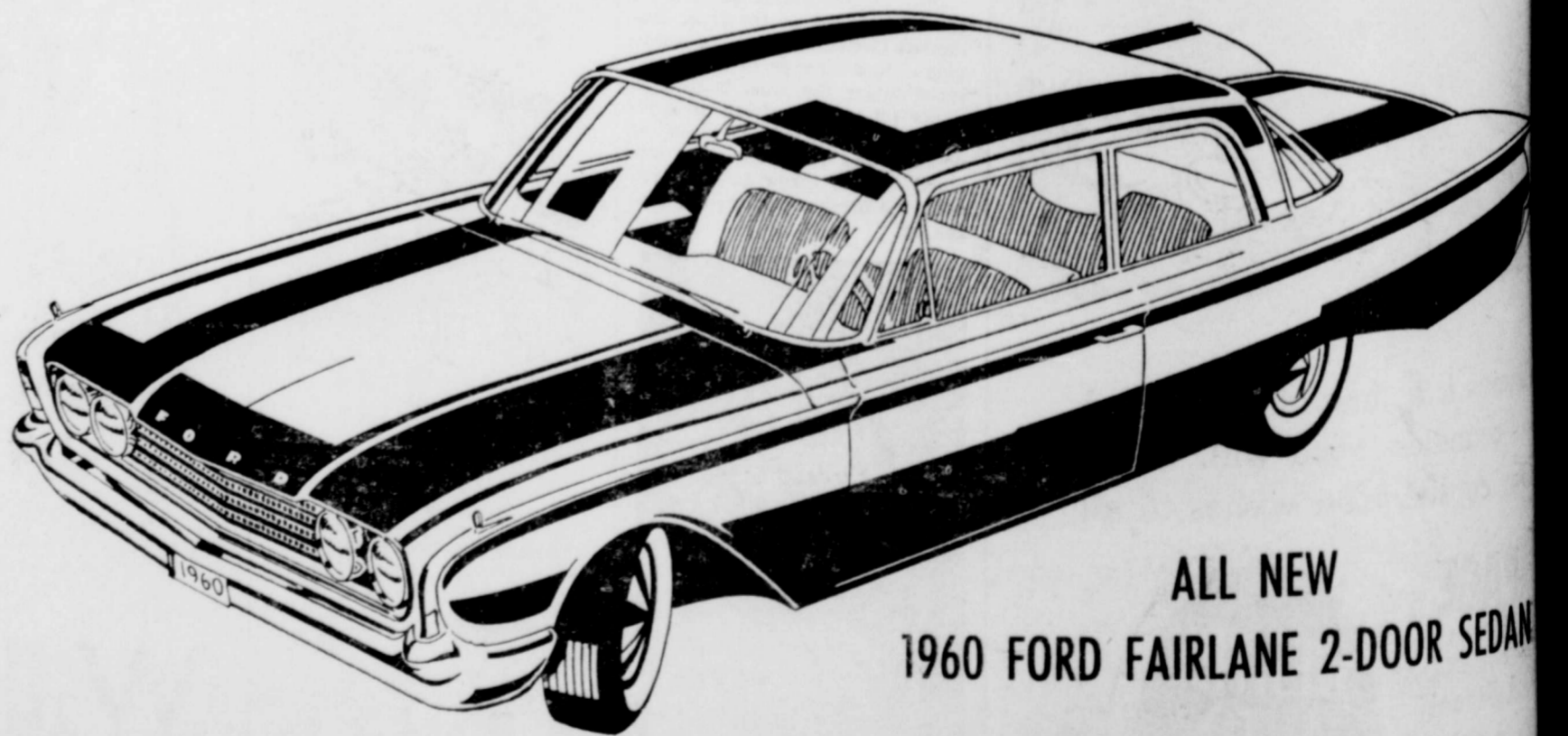
~~DEAD OR ALIVE~~

TO BE ON HAND DEC. 24th 2:30 P.M.

TO WIN THIS

**REWARD!**

FOR THE WISE SHOPPER THAT TRADES WITH THE PROGRESSIVE MERCHANTS OF BURKBURNETT



ALL NEW  
1960 FORD FAIRLANE 2-DOOR SEDAN

**SUPPORT BURK!** Town with a big future!

OPEN FRIDAYS 'TIL 8 P.M.

# Burkburnett Star

LIKED BY MANY..CUSSED BY SOME.. READ BY EVERYBODY

**SECTION 2**  
Christmas Greetings  
Sixteen Pages

BURKBURNETT, WICHITA COUNTY, TEXAS, THURSDAY, DECEMBER 24, 1959

NUMBER 25



the day after Christmas?  
Christmas "spent" in lavish preparation and anticlimax, then thrown aside with the wrapping and ribbon?

the day after Christmas?  
A deep sigh and inwardly say, "I'm glad that other year?"  
then certainly we are not "keeping the Christmas" is superficial. Our Christmas symbols many of them pagan in their origin, are only decorations for creating a festive spirit.

**It Is Real**  
is not superficial. Christmas is REAL. And so of the holiday be REAL and not the mere matter of customs and practices as a matter of conformity. gone from evergreens and holly wreaths on the day. The tree suddenly becomes old and drops its needles. No longer does the bright figure of Santa adorn the way; it simply hangs there, bereft of glamour and participation.

**It Has Meaning**  
have "kept the Christmas" in preparations for, and Christmas Day, then we have observed a meaningless holiday.

us keep the Christmas in a spirit that will keep the meaning of the holiday deep in our hearts for the remainder of the year.

the Christmas, we must find time to meditate upon that upon this day Christ was born, bringing to all promise of eternal salvation. This is the message of the secret to the successful keeping of Christmas forever.

**Thanks**  
TO EXPRESS to our and thoughtful heart-felt thanks expressions of our Bro. Turner for comfort and Dr. his services. The offerings were appreciated.  
and family.  
and Bob Browning.  
5-1p.

Mr. and Mrs. Ralph Brookshier left Wednesday by plane for Hanford, Calif., where they will spend the Christmas holidays with their son, Dr. and Mrs. R. W. Brookshier and family.

Mrs. Jodie Metz was dismissed from the Wichita General Hospital Friday and is now at the home of her son, James Metz, 633 Pecan. She is reported doing nicely at this time.

## Free Kiddie's Show At Palace Theatre Thursday, Dec. 24th

There will be a Free Kiddie's Show Thursday morning, December 24th at 10 a. m. at the Palace Theatre. All children of this area are invited to attend.

## ROTARY CLUB

Floyd Marten, President  
Buddy Byars, Secretary

Ellis Gragg was the guest of Buster Morgan; Miss Estella Holstead of Wichita Falls, guest of C. A. Deuschle of Vernon; Alden Smith, guest of I. C. Evans and Miss Kayrene Davis guest of Floyd Marten. Rotarians from Wichita Falls included Andy Andrews, Elmer Watkins, Jim Hendon and W. A. Hotchkiss and from Electra were C. P. Nichols and Grover C. Harrison.

Joe Janeke introduced Tom Nuckles of Wichita Falls as his program. Mr. Nuckles showed slides of his nine weeks trip to South America and they proved to be very interesting. After viewing their way of life, it makes one feel proud that we live in the good old USA.

Miss Kayrene Davis spoke to the club on the necessity of having periodic check-ups for that dreaded disease of TB and urged all to take advantage of the free tests that are held annually.

Al Lohofener will be program chairman next Tuesday.

## Bible Holiness Church

413 Berry St.  
Pastor, Bro. and Sister Calhoun

Sunday School, 9:45 a. m.  
Morning worship, 11 a. m.  
Sunday night evangelist service, 7 p. m.  
Saturday night fellowship, 7:30 p. m.

## HOW TO SAY Merry Christmas

As Christmas is the most universally celebrated of all world holidays, so is the expression "Merry Christmas" the most universal of all greetings. Here is an interesting game based upon this Yuletide salutation. See if you can match the greeting at left with the proper language on the right:

- |                     |            |
|---------------------|------------|
| 1. Buon Natale!     | Hawaiian   |
| 2. Glad Julen!      | Japanese   |
| 3. Tin Hao Nian!    | Italian    |
| 4. Chrystovjina!    | Chinese    |
| 5. Feliz Natal!     | Greek      |
| 6. Joyeux Noel!     | Portuguese |
| 7. Kinge Shinnen!   | Swedish    |
| 8. Mele Kalikimaka! | French     |

ANSWERS: 1. Italian; 2. Swedish; 3. Chinese; 4. Greek; 5. Portuguese; 6. French; 7. Japanese; 8. Hawaiian.

## Christmas Revival At Calvary Baptist Dec. 27th Thru 31st

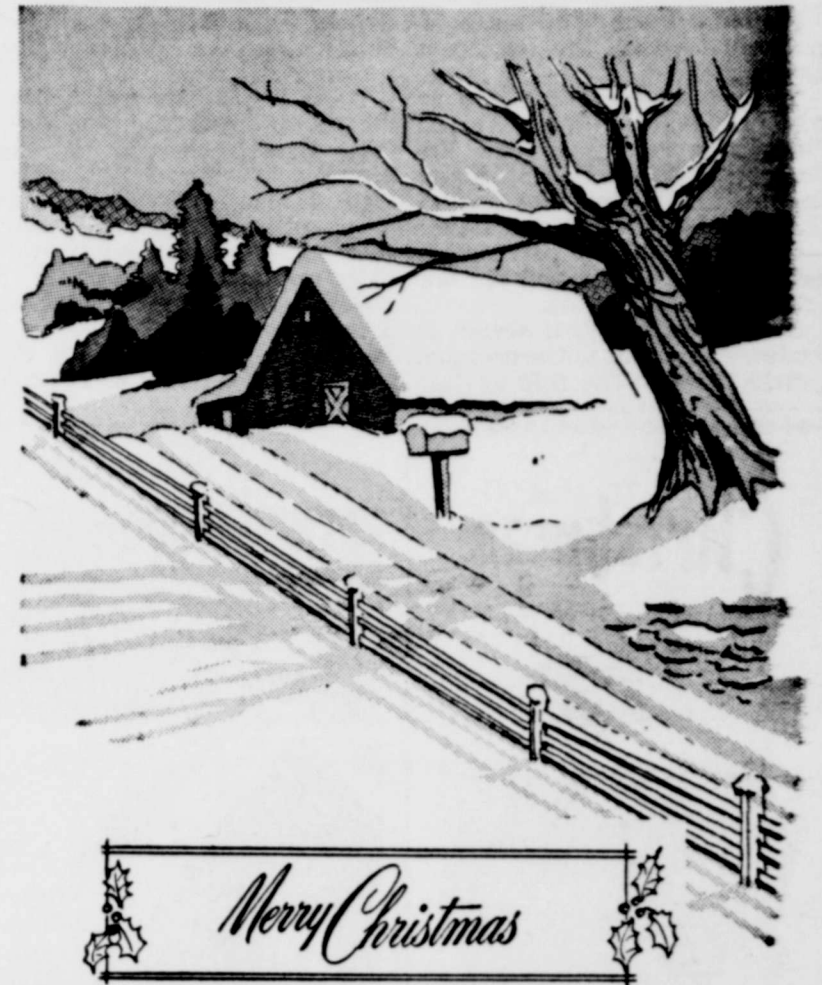


Sunday night, Dec. 27th the Sunday night following Christmas, Calvary Baptist church begins a five night revival. The revival will close out Thursday night, Dec. 31st, which night will be New Year's night. That night will be a special night of fellowship, with other pastors and churches coming from surrounding towns. There will be preaching and singing until past midnight, when the old year goes out. Our Revival speaker will be the last speaker of that night. Bro. Aubrey Cooper, pastor of Fellowship Baptist church, Amarillo, Tex., will be evangelist for this five night revival. Bro. Cooper is one of our outstanding young preachers among Independent Baptists, with a good knowledge of God's word and the ability to declare it clearly. If you hear him once, we are sure you will come back to hear him again. Special singing will also feature the services. A warm and sincere welcome is extended to all. Services begin at 7:15 p. m.

Mr. Roy Magers was returned to his home here last week from the Wichita General Hospital. He is reported doing nicely at this time.

Mr. and Mrs. Bob Laney have returned to their home in Houston following several days visit here.

Call JO 9-2191 For All Printing



**CARL'S WATCH SHOP**  
Mr. and Mrs. Carl Ray Nelson and Carla  
310 East 3rd St. Phone JO 9-3721

# Merry Christmas



## OFFICERS

A. R. HILL, President  
JAMES E. FRYE, Vice-Pres. and Cashier  
JERRY L. THOMAS, Assistant Cashier



## DIRECTORS

GLEN H. BEAR  
C. B. BOWLES  
P. B. BROWNING  
JAMES E. FRYE  
A. R. HILL  
GEO. H. McCLARTY  
HAROLD VAN LOH  
O. W. PRECHEL

3% INTEREST ON SAVINGS ACCOUNTS



**1st THE FIRST NATIONAL BANK OF BURKBURNETT, TEXAS**

"Serving Burkburnett Since 1907"



# Buy Auto Liability

From The

# Travelers Insurance Co. ||

IT DOESN'T COST ANY MORE TO BE SURVIVED  
**BE SURVIVED**  
HOWARD CLEMENT  
New Location - Next to

**STATE CAPITAL**  
*Highlights AND Sidelights*  
by Vern Sanford  
TEXAS PRESS ASSOCIATION

Sometimes the law enforcement officer has the feeling of being alone.

This statement was made by Abilene Police Chief Warren Dodson at the Texas Law Enforcement Foundation's banquet in Austin. It pinpoints one of the reasons for TLEF's existence—to effect a better partnership between the public and the law enforcement agencies.

Public sympathy, it seems, is inclined to go out to the criminal putting him in the role of "underdog," the hapless victim of hard-hearted policemen and prosecuting attorneys.

Texas Legislature has a poor record for crime fighting. Gov. Price Daniel charged at the meeting.

Of 27 law enforcement bills proposed last season, only three were passed, and these were partially crippled.

Gov. Daniel warned that crime is increasing three times as fast as the population, and it is the state's most serious social problem.

lem. During the first six months of this year, lawlessness flourished at the rate of three murders, 3 rapes and 125 burglaries each day. TLEF is a privately financed organization of outstanding citizens from over the state.

### Save The Seed—

State Board of Education has gone on record as being unanimously opposed to spending anything but the income from the \$400,000,000 Permanent School Fund. Fund has been built up over the years, principally through sales of mineral rights on the school lands. It has been invested in government and municipal bonds which have an income of about \$12,500,000 per year.

This investment income is used for school operating expenses. It is dipping into the principal—the \$400,000,000—that the Board opposes.

Board resolution compared the school trust fund to seed corn which "our forefathers saved to plant instead of grinding it for use as food." There has been some talk of tapping the permanent fund to meet current demands for a teacher pay raise.

Board of Education approved the holding of a county-wide election to see if Cooke County residents would be willing to support a junior college at Gainesville. A study of the feasibility of establishing a junior college in Midland was also approved.

Textbooks in seven subjects were adopted by the Board including, for the first time, journalism books.

Rule Hits 'Corporate Optometry' Within the next few weeks Texas optometrists will vote on a proposed new rule prohibiting practice under any name except the name under which the optometrist is licensed. Before polling the optometrists, the Board of Examiners in Optometry got a ruling from Attorney Gen. Will Wilson stating that the regulation would be legal and valid.

While the board is not bound by the results of the balloting, it was predicted that a favorable response would almost certainly result in adoption of the rule. This, because there are hundreds of individuals engaged in optometry as compared with firms so engaged. If adopted, the rule would prohibit practice under an assumed name, corporate name, trade name or any name other than the name under which the optometrist is licensed. This would mean the end of such firms as Texas State Optical and Lee Optical, where glasses are available at considerable savings to the general public.

Hospital Problems Studied— State Hospital Board has under way studies aimed at three of its current problems.

One is to find a way, other than providing expensive mental hospital facilities, to care for some 2,700 patients whose only ailment at present is old age. 2 plans are being considered. One is state assistance toward the cost of caring for the oldsters in private nursing homes. Other is providing for state nursing homes.

Under law, the state is not responsible for giving institutional care for the aged. But these patients were all admitted on court order as mental cases. Now they are too infirm to be turned out.

Another problem is that of tuberculosis patients who go "awol" from TB hospitals before they are completely cured. Danger is not only that they will relapse, but that they will infect healthy outsiders.

Third matter under study is the facilities needed for present and future care of mentally retarded children under school age.

Carr Appoints— Named by speaker Waggoner Carr to the Joint Educational Standards Commission were

Daniel says he wants Johnson to be chairman, but that he (Daniel) will take an active role in working for the senator both here and in other states.

### A Careful Holiday

Americans are "holiday-minded" and, usually, enjoyment of a holiday means piling into the family car and taking off for a visit with friends and relatives. Christmas and the after-Christmas holidays are no exception.

Yet, this is the time of the year when driving conditions are at their "worst" in many sections of the country—snow, ice and unpredictable weather conditions.

Most winter drivers have snow-grips, chains, and comfortable auto heaters, all of which make driving easier and somewhat safer—certainly more enjoyable. But winter driving offers many more hazards than are present during other seasons of the year. So—be careful—don't mar the holiday season by injecting a note of tragedy. If you drive, drive carefully, as if your life depended upon it—which it does.

Twelfth Night, or Epiphany, is marked with many customs, ceremonies and legends throughout the world. French and Swiss children, for example, look forward to the pastry they receive on that day in which a bean, coin or china figure is hidden. Whoever gets the prize is crowned king of the family.

Epiphany means "appearance" and commemorates the visit of the Three Wise Men to the infant Jesus. Their arrival was proof to believers that Christ the Savior had been born.

The visit is told in Matthew 2: 1-2: "Now when Jesus was born in Bethlehem of Judaea in the days of Herod the king, behold there came wise men from the east to Jerusalem.

"Saying, where is he that is born King of the Jews? for we have seen his star in the east, and are come to worship him."

### Early Plays

During the Middle Ages, Epiphany, or Twelfth Night, was commemorated with plays presented in churches. Solemn observances largely disappeared in Elizabethan England, and they became a time for revelry.

Shakespeare's "Twelfth Night" reflects this mood. It was probably presented in a command performance at Whitehall Palace on January 6, 1601, according to historians.

Today child "kings" crowned with golden paper coronets roam the streets of Europe on Epiphany, singing hymns and carols. In Italy, millions of children awake to find their stockings filled with presents from La Befana, the good-hearted witch who takes the place of Santa Claus.

Custom In France, a portion of the Epiphany cake is often set aside as "la part de Dieu"—God's share. It is given to the first poor person who comes to the door.

In Greece, three pieces of cake are cut: one for Christ, one for Mary, and one for St. Basil. In Britain, Twelfth Night cake is washed down with Lambs' Wool, a drink made with hot, strong ale spiced with nutmeg and sugar.

CHRISTMAS THOUGHT It is said that the Christmas spirit led St. Francis to pray that "I may not so much seek to be consoled as to console; to be understood; as to understand; to be loved, as to love. For it is in giving that we receive, it is in pardoning that we are pardoned; it is in dying that we are born to eternal life."

Christmas is a spirit-lifting season . . . marking the birth of the Babe of Bethlehem . . . and as such it promises a golden blessing for all mankind.

Reps. C. T. Matthew of Yoakum, Leon Thurman of Anson and Maurice S. Pipkin of Brownsville. Commission is to search for ways to cut school costs without sacrificing necessities.

Reps. Louis Anderson of Midland and C. W. Pearcy of Temple have been selected by Carr to serve on a committee to study the state fiscal system.

Four big city solons will serve on a committee to study the possibility of merging some functions of city and county government. They are Reps. Raymond R. Russell of San Antonio, Warren C. Cowen, Ft. Worth & Ben Atwell of Dallas County.

Texas Supreme Court justices will sit at their new marble bench for the first time Dec. 3, rather than Nov. 18th, as previously announced. A special ceremony will be held Dec. 3rd in the new State Court Building with the justices formally attired in black robes for the occasion.

The Great Plains Conservation Program—What Is It? is the title of a new leaflet released by the Texas Agricultural Extension service. In Texas, 98 counties are eligible to participate in the program which is set up to provide cost sharing assistance for up to 80% of the established rates for applying or installing approved conservation practices.

This new leaflet answers the most frequently asked questions about the program. Your local county agent has copies.

About two-thirds of all hunting accidents can be traced to three causes, according to B. T.

News From The County Agent

THE GREAT PLAINS CONSERVATION PROGRAM—What Is It? is the title of a new leaflet released by the Texas Agricultural Extension service. In Texas, 98 counties are eligible to participate in the program which is set up to provide cost sharing assistance for up to 80% of the established rates for applying or installing approved conservation practices.

This new leaflet answers the most frequently asked questions about the program. Your local county agent has copies.

About two-thirds of all hunting accidents can be traced to three causes, according to B. T.

THE GREAT PLAINS CONSERVATION PROGRAM—What Is It? is the title of a new leaflet released by the Texas Agricultural Extension service. In Texas, 98 counties are eligible to participate in the program which is set up to provide cost sharing assistance for up to 80% of the established rates for applying or installing approved conservation practices.

This new leaflet answers the most frequently asked questions about the program. Your local county agent has copies.

About two-thirds of all hunting accidents can be traced to three causes, according to B. T.

THE GREAT PLAINS CONSERVATION PROGRAM—What Is It? is the title of a new leaflet released by the Texas Agricultural Extension service. In Texas, 98 counties are eligible to participate in the program which is set up to provide cost sharing assistance for up to 80% of the established rates for applying or installing approved conservation practices.

This new leaflet answers the most frequently asked questions about the program. Your local county agent has copies.

About two-thirds of all hunting accidents can be traced to three causes, according to B. T.

THE GREAT PLAINS CONSERVATION PROGRAM—What Is It? is the title of a new leaflet released by the Texas Agricultural Extension service. In Texas, 98 counties are eligible to participate in the program which is set up to provide cost sharing assistance for up to 80% of the established rates for applying or installing approved conservation practices.

This new leaflet answers the most frequently asked questions about the program. Your local county agent has copies.

About two-thirds of all hunting accidents can be traced to three causes, according to B. T.

THE GREAT PLAINS CONSERVATION PROGRAM—What Is It? is the title of a new leaflet released by the Texas Agricultural Extension service. In Texas, 98 counties are eligible to participate in the program which is set up to provide cost sharing assistance for up to 80% of the established rates for applying or installing approved conservation practices.

This new leaflet answers the most frequently asked questions about the program. Your local county agent has copies.

About two-thirds of all hunting accidents can be traced to three causes, according to B. T.

THE GREAT PLAINS CONSERVATION PROGRAM—What Is It? is the title of a new leaflet released by the Texas Agricultural Extension service. In Texas, 98 counties are eligible to participate in the program which is set up to provide cost sharing assistance for up to 80% of the established rates for applying or installing approved conservation practices.

This new leaflet answers the most frequently asked questions about the program. Your local county agent has copies.

About two-thirds of all hunting accidents can be traced to three causes, according to B. T.

THE GREAT PLAINS CONSERVATION PROGRAM—What Is It? is the title of a new leaflet released by the Texas Agricultural Extension service. In Texas, 98 counties are eligible to participate in the program which is set up to provide cost sharing assistance for up to 80% of the established rates for applying or installing approved conservation practices.

This new leaflet answers the most frequently asked questions about the program. Your local county agent has copies.

About two-thirds of all hunting accidents can be traced to three causes, according to B. T.

THE GREAT PLAINS CONSERVATION PROGRAM—What Is It? is the title of a new leaflet released by the Texas Agricultural Extension service. In Texas, 98 counties are eligible to participate in the program which is set up to provide cost sharing assistance for up to 80% of the established rates for applying or installing approved conservation practices.

This new leaflet answers the most frequently asked questions about the program. Your local county agent has copies.

About two-thirds of all hunting accidents can be traced to three causes, according to B. T.

THE GREAT PLAINS CONSERVATION PROGRAM—What Is It? is the title of a new leaflet released by the Texas Agricultural Extension service. In Texas, 98 counties are eligible to participate in the program which is set up to provide cost sharing assistance for up to 80% of the established rates for applying or installing approved conservation practices.

This new leaflet answers the most frequently asked questions about the program. Your local county agent has copies.

## Christmas



May the blessings of the season be with you.



Pause with us and remember the true meaning of Christmas.

## CATHERINE'S FLOWERS

CATHERINE PORTER  
JUANITA SMITH  
205 North Avenue D  
PHONE JO 9-3371  
Burkburnett, Texas

## EVERT GROCERY

730 West 3rd Street  
Burkburnett, Texas  
MR. AND MRS. ARTHUR EVERT



Let faith and hope be your inspiration during this Christmas season.

## WOLFE FORD COMPANY

Joe Wolfe Harold Wolfe  
And All Employees  
Burkburnett, Texas

## Twelfth Night, Traditional End Of Yule Season

Twelfth Night, or Epiphany, is marked with many customs, ceremonies and legends throughout the world. French and Swiss children, for example, look forward to the pastry they receive on that day in which a bean, coin or china figure is hidden. Whoever gets the prize is crowned king of the family.

Epiphany means "appearance" and commemorates the visit of the Three Wise Men to the infant Jesus. Their arrival was proof to believers that Christ the Savior had been born.

The visit is told in Matthew 2: 1-2: "Now when Jesus was born in Bethlehem of Judaea in the days of Herod the king, behold there came wise men from the east to Jerusalem.

"Saying, where is he that is born King of the Jews? for we have seen his star in the east, and are come to worship him."

Early Plays During the Middle Ages, Epiphany, or Twelfth Night, was commemorated with plays presented in churches. Solemn observances largely disappeared in Elizabethan England, and they became a time for revelry.

Shakespeare's "Twelfth Night" reflects this mood. It was probably presented in a command performance at Whitehall Palace on January 6, 1601, according to historians.

Today child "kings" crowned with golden paper coronets roam the streets of Europe on Epiphany, singing hymns and carols. In Italy, millions of children awake to find their stockings filled with presents from La Befana, the good-hearted witch who takes the place of Santa Claus.

Custom In France, a portion of the Epiphany cake is often set aside as "la part de Dieu"—God's share. It is given to the first poor person who comes to the door.

In Greece, three pieces of cake are cut: one for Christ, one for Mary, and one for St. Basil. In Britain, Twelfth Night cake is washed down with Lambs' Wool, a drink made with hot, strong ale spiced with nutmeg and sugar.

CHRISTMAS THOUGHT It is said that the Christmas spirit led St. Francis to pray that "I may not so much seek to be consoled as to console; to be understood; as to understand; to be loved, as to love. For it is in giving that we receive, it is in pardoning that we are pardoned; it is in dying that we are born to eternal life."

Christmas is a spirit-lifting season . . . marking the birth of the Babe of Bethlehem . . . and as such it promises a golden blessing for all mankind.



## Welcome to your Merry Christmas Drug Store

# CORNER DRUG STORE

## Christmas Gift Headquarters

- DRISTAN COLD TABLETS 98c size 59c
- CORICIDIN COLD TABLETS 98c size 59c
- SUPER ANAHIST COLD TABLETS 98c size 59c
- Colgate Tooth Paste Economy Size 65c size 43c
- GERITOL TONIC Giant \$4.98 Size \$3.49
- 100 BAYERS ASPIRIN 49c

Every-Day Your Best Vitamin Buy  
BEXEL-M (High Potency) 100 Capsules \$9.00  
(Just Costs 9c per day to take the best)

- KLEENEX (400 size) Regular 2 for 59c size 2 for 49c
- \$3.50 St. Regis HEATING PAD \$2.49
- Tippy Toe Pixie Shoes Regular \$3.50 \$2.79

If we forget to offer you one—Please call for  
1960 Weather Chart Calendar  
(The old fashioned kind)

### PRESS 25 FLASH BULBS

Carton of 12 Bulbs \$5.95 Eastman Brownie Camera Starlet

### Poloroid Land Cameras

Reg. \$74.95 Model 80A Reg. \$109.95 With Wink Light Attachment Reg. \$166.69

### Eastman Movie Outfit

Late Model Camera and Projector Regular \$97.45

### LADY SHEAFFER PENS

Glamorous and Serviceable \$10.00 Pen \$12.50 Pen

### Gillette Adjustable Razor

Regular \$1.95 (With Blades and Travel Kit) OTHER MODELS FROM \$5.00 to \$11.00

### Eversharp Schick 500 Razor

HYDRO-MAGIC Reg. \$5.00

**IT DOESN'T COST ANY MORE TO BE SURVIVED**  
**BE SURVIVED**  
HOWARD CLEMENT  
New Location - Next to

**Methodist Church**  
Turner, Pastor  
School—9:45 A. M.  
Worship—10:55 A. M.  
Union, 6:15 P. M.  
Worship, 7:30 P. M.  
Meeting, Wednesday

**Grace Baptist Church**  
Turner, Pastor  
School—9:45 A. M.  
Service—10:55 A. M.  
Intermediate, and Groups at 6:00 P. M.  
Worship, 7:00 P. M.  
Board meets every Monday  
are cordially invited to our services.  
Bible school is provided for children for day and evening

**First Baptist Church**  
Turner, Pastor  
School—9:45 A. M.  
Service—10:55 A. M.  
Intermediate, and Groups at 6:00 P. M.  
Worship, 7:00 P. M.  
Board meets every Monday  
are cordially invited to our services.  
Bible school is provided for children for day and evening

**First Christian Church**  
Turner, Pastor  
School—9:45 A. M.  
Service—10:55 A. M.  
Intermediate, and Groups at 6:00 P. M.  
Worship, 7:00 P. M.  
Board meets every Monday  
are cordially invited to our services.  
Bible school is provided for children for day and evening

**First Memorial Baptist Church**  
Turner, Pastor  
School—9:45 A. M.  
Service—10:55 A. M.  
Intermediate, and Groups at 6:00 P. M.  
Worship, 7:00 P. M.  
Board meets every Monday  
are cordially invited to our services.  
Bible school is provided for children for day and evening

**First Lutheran Church**  
Turner, Pastor  
School—9:45 A. M.  
Service—10:55 A. M.  
Intermediate, and Groups at 6:00 P. M.  
Worship, 7:00 P. M.  
Board meets every Monday  
are cordially invited to our services.  
Bible school is provided for children for day and evening

**First Presbyterian Church**  
Turner, Pastor  
School—9:45 A. M.  
Service—10:55 A. M.  
Intermediate, and Groups at 6:00 P. M.  
Worship, 7:00 P. M.  
Board meets every Monday  
are cordially invited to our services.  
Bible school is provided for children for day and evening

**First United Methodist Church**  
Turner, Pastor  
School—9:45 A. M.  
Service—10:55 A. M.  
Intermediate, and Groups at 6:00 P. M.  
Worship, 7:00 P. M.  
Board meets every Monday  
are cordially invited to our services.  
Bible school is provided for children for day and evening

**First Baptist Church**  
Turner, Pastor  
School—9:45 A. M.  
Service—10:55 A. M.  
Intermediate, and Groups at 6:00 P. M.  
Worship, 7:00 P. M.  
Board meets every Monday  
are cordially invited to our services.  
Bible school is provided for children for day and evening

**First Christian Church**  
Turner, Pastor  
School—9:45 A. M.  
Service—10:55 A. M.  
Intermediate, and Groups at 6:00 P. M.  
Worship, 7:00 P. M.  
Board meets every Monday  
are cordially invited to our services.  
Bible school is provided for children for day and evening

**First Memorial Baptist Church**  
Turner, Pastor  
School—9:45 A. M.  
Service—10:55 A. M.  
Intermediate, and Groups at 6:00 P. M.  
Worship, 7:00 P. M.  
Board meets every Monday  
are cordially invited to our services.  
Bible school is provided for children for day and evening

**First Lutheran Church**  
Turner, Pastor  
School—9:45 A. M.  
Service—10:55 A. M.  
Intermediate, and Groups at 6:00 P. M.  
Worship, 7:00 P. M.  
Board meets every Monday  
are cordially invited to our services.  
Bible school is provided for children for day and evening

**First Presbyterian Church**  
Turner, Pastor  
School—9:45 A. M.  
Service—10:55 A. M.  
Intermediate, and Groups at 6:00 P. M.  
Worship, 7:00 P. M.  
Board meets every Monday  
are cordially invited to our services.  
Bible school is provided for children for day and evening

**First United Methodist Church**  
Turner, Pastor  
School—9:45 A. M.  
Service—10:55 A. M.  
Intermediate, and Groups at 6:00 P. M.  
Worship, 7:00 P. M.  
Board meets every Monday  
are cordially invited to our services.  
Bible school is provided for children for day and evening

**First Baptist Church**  
Turner, Pastor  
School—9:45 A. M.  
Service—10:55 A. M.  
Intermediate, and Groups at 6:00 P. M.  
Worship, 7:00 P. M.  
Board meets every Monday  
are cordially invited to our services.  
Bible school is provided for children for day and evening

**First Christian Church**  
Turner, Pastor  
School—9:45 A. M.  
Service—10:55 A. M.  
Intermediate, and Groups at 6:00 P. M.  
Worship, 7:00 P. M.  
Board meets every Monday  
are cordially invited to our services.  
Bible school is provided for children for day and evening

**First Memorial Baptist Church**  
Turner, Pastor  
School—9:45 A. M.  
Service—10:55 A. M.  
Intermediate, and Groups at 6:00 P. M.  
Worship, 7:00 P. M.  
Board meets every Monday  
are cordially invited to our services.  
Bible school is provided for children for day and evening

**First Lutheran Church**  
Turner, Pastor  
School—9:45 A. M.  
Service—10:55 A. M.  
Intermediate, and Groups at 6:00 P. M.  
Worship, 7:00 P. M.  
Board meets every Monday  
are cordially invited to our services.  
Bible school is provided for children for day and evening

**First Presbyterian Church**  
Turner, Pastor  
School—9:45 A. M.  
Service—10:55 A. M.  
Intermediate, and Groups at 6:00 P. M.  
Worship, 7:00 P. M.  
Board meets every Monday  
are cordially invited to our services.  
Bible school is provided for children for day and evening

**First United Methodist Church**  
Turner, Pastor  
School—9:45 A. M.  
Service—10:55 A. M.  
Intermediate, and Groups at 6:00 P. M.  
Worship, 7:00 P. M.  
Board meets every Monday  
are cordially invited to our services.  
Bible school is provided for children for day and evening

**First Baptist Church**  
Turner, Pastor  
School—9:45 A. M.  
Service—10:55 A. M.  
Intermediate, and Groups at 6:00 P. M.  
Worship, 7:00 P. M.  
Board meets every Monday  
are cordially invited to our services.  
Bible school is provided for children for day and evening

**First Christian Church**  
Turner, Pastor  
School—9:45 A. M.  
Service—10:55 A. M.  
Intermediate, and Groups at 6:00 P. M.  
Worship, 7:00 P. M.  
Board meets every Monday  
are cordially invited to our services.  
Bible school is provided for children for day and evening

**First Memorial Baptist Church**  
Turner, Pastor  
School—9:45 A. M.  
Service—10:55 A. M.  
Intermediate, and Groups at 6:00 P. M.  
Worship, 7:00 P. M.  
Board meets every Monday  
are cordially invited to our services.  
Bible school is provided for children for day and evening

**First Lutheran Church**  
Turner, Pastor  
School—9:45 A. M.  
Service—10:55 A. M.  
Intermediate, and Groups at 6:00 P. M.  
Worship, 7:00 P. M.  
Board meets every Monday  
are cordially invited to our services.  
Bible school is provided for children for day and evening

**First Presbyterian Church**  
Turner, Pastor  
School—9:45 A. M.  
Service—10:55 A. M.  
Intermediate, and Groups at 6:00 P. M.  
Worship, 7:00 P. M.  
Board meets every Monday  
are cordially invited to our services.  
Bible school is provided for children for day and evening

**First United Methodist Church**  
Turner, Pastor  
School—9:45 A. M.  
Service—10:55 A. M.  
Intermediate, and Groups at 6:00 P. M.  
Worship, 7:00 P. M.  
Board meets every Monday  
are cordially invited to our services.  
Bible school is provided for children for day and evening

**First Baptist Church**  
Turner, Pastor  
School—9:45 A. M.  
Service—10:55 A. M.  
Intermediate, and Groups at 6:00 P. M.  
Worship, 7:00 P. M.  
Board meets every Monday  
are cordially invited to our services.  
Bible school is provided for children for day and evening

**First Christian Church**  
Turner, Pastor  
School—9:45 A. M.  
Service—10:55 A. M.  
Intermediate, and Groups at 6:00 P. M.  
Worship, 7:00 P. M.  
Board meets every Monday  
are cordially invited to our services.  
Bible school is provided for children for day and evening

**First Memorial Baptist Church**  
Turner, Pastor  
School—9:45 A. M.  
Service—10:55 A. M.  
Intermediate, and Groups at 6:00 P. M.  
Worship, 7:00 P. M.  
Board meets every Monday  
are cordially invited to our services.  
Bible school is provided for children for day and evening

**First Lutheran Church**  
Turner, Pastor  
School—9:45 A. M.  
Service—10:55 A. M.  
Intermediate, and Groups at 6:00 P. M.  
Worship, 7:00 P. M.  
Board meets every Monday  
are cordially invited to our services.  
Bible school is provided for children for day and evening

**First Presbyterian Church**  
Turner, Pastor  
School—9:45 A. M.  
Service—10:55 A. M.  
Intermediate, and Groups at 6:00 P. M.  
Worship, 7:00 P. M.  
Board meets every Monday  
are cordially invited to our services.  
Bible school is provided for children for day and evening

**First United Methodist Church**  
Turner, Pastor  
School—9:45 A. M.  
Service—10:55 A. M.  
Intermediate, and Groups at 6:00 P. M.  
Worship, 7:00 P. M.  
Board meets every Monday  
are cordially invited to our services.  
Bible school is provided for children for day and evening

**First Baptist Church**  
Turner, Pastor  
School—9:45 A. M.  
Service—10:55 A. M.  
Intermediate, and Groups at 6:00 P. M.  
Worship, 7:00 P. M.  
Board meets every Monday  
are cordially invited to our services.  
Bible school is provided for children for day and evening

**First Christian Church**  
Turner, Pastor  
School—9:45 A. M.  
Service—10:55 A. M.  
Intermediate, and Groups at 6:00 P. M.  
Worship, 7:00 P. M.  
Board meets every Monday  
are cordially invited to our services.  
Bible school is provided for children for day and evening

**First Memorial Baptist Church**  
Turner, Pastor  
School—9:45 A. M.  
Service—10:55 A. M.  
Intermediate, and Groups at 6:00 P. M.  
Worship, 7:00 P. M.  
Board meets every Monday  
are cordially invited to our services.  
Bible school is provided for children for day and evening

**First Lutheran Church**  
Turner, Pastor  
School—9:45 A. M.  
Service—10:55 A. M.  
Intermediate, and Groups at 6:00 P. M.  
Worship, 7:00 P. M.  
Board meets every Monday  
are cordially invited to our services.  
Bible school is provided for children for day and evening

**First Presbyterian Church**  
Turner, Pastor  
School—9:45 A. M.  
Service—10:55 A. M.  
Intermediate, and Groups at 6:00 P. M.  
Worship, 7:00 P. M.  
Board meets every Monday  
are cordially invited to our services.  
Bible school is provided for children for day and evening

# TAKE YOUR PROBLEMS TO CHURCH -- MILLIONS LEAVE THEM THERE



## Mommy, What's Christmas Mean?

How would you answer this question? Could you explain to a little child that Christmas means something more than jolly old St. Nicholas with his fabulous reindeer and sleigh and his miraculous bag of toys? Or maybe you never thought your child should know more than this. The Church thinks every child needs and deserves to celebrate the real Christmas, the memory of the event of the Christ child coming into the world as a real baby, born in difficult circumstances, destined to know all the meaning of a human life. Christmas is above all the birthday of Jesus. All the tinsel and glory of this beautiful season are meant to point to the gracious act of God in which His love is made visible, literally breaking into human history.



The Church is God's appointed agency in this world for spreading the knowledge of His love for man and of His demand for man to respond to that love by loving his neighbor. Without this grounding in the love of God, no government or society or way of life will long persevere and the freedoms which we hold so dear will inevitably perish. Therefore, even from a selfish point of view, one should support the Church for the sake of the welfare of himself and his family. Beyond that however, every person should uphold and participate in the Church because it tells the truth about man's life, death and destiny: the truth which alone will set him free to live as a child of God.



© 1958, Coleman Adv. Serv., P. O. Box 4887, Dallas, Texas

### Grace Lutheran Church

Third St. and N Ave. E

J. H. KOLLMAYER, Pastor  
The Church of the Lutheran Hour, TV's "This Is The Life" Sunday, 10 A. M., Sunday School and Bible classes. 11 A. M., morning service. LWMS meeting every first Tuesday, 2 P. M. Sunday School teachers' meeting and teacher training course, every second and fourth Tuesday, 6:30 P. M. You are cordially invited to our services.

### Free Church of God In Christ In Jesus Name

West 6th Street  
W. W. Dixon, Pastor  
Saturday—9:45 a. m.—Sabbath School 11:45 a. m.—Preaching Service Thurs. night service—7 p. m. We welcome all colored and white people to our services.

### Church of the Nazarene

Rev. T. F. Keese, Pastor  
Sunday School—9:45 a. m. Morning Worship—11:00 a. m. Young People Service—6:45 Junior Society—6:45 p. m. Evening Worship—7:30 p. m. Wednesday—Prayer Meeting, 7:30 p. m.

### First Church Of Christ Scientist

2156 Avenue H Wichita Falls, Texas

Sunday School for children under 20 years of age at 11 A. M. in the Church Edifice. Nursery Services at 11 A. M. Wednesday evening services 8 P. M.

### Church of Christ

Tommie Swearer, Minister  
Bible Study Sunday—9:45 a. m. Worship—10:45 a. m. Young Peoples classes, 5 p. m. Worship—6:00 p. m. Ladies' Bible Class—Tuesday, 9:30 a. m. Bible study Wednesday 7:30 We welcome you to any of our

### Church of God

J. W. JACKSON, Pastor  
10:00 a. m.—Sunday School 11:00 a. m. Hour of Morning Worship 7:00 p. m.—Evangelistic Services 7:30 p. m. Wednesday—Young Peoples Endeavor If you haven't a church home we would like very much for you to visit us where the full gospel is preached in the old time way. There is special music and singing each service. Each and everyone has a warm and hearty welcome to come worship with us.

### Assembly of God Church

Rev. Lonnie Finney, Pastor  
Sunday School—10:00 a. m. Worship Service—11:00 a. m. Sunday Night Service—7:00. Womens Missionary Service, Tuesday—2:00 to 4:00 p. m. Prayer Meeting Service—Wednesday night—7:00 p. m.

**Baptist Church**  
Five D. and 4th St.  
MEYER, Pastor  
Music Director  
School, 9:45 A. M.  
Worship, 10:55 A. M.  
Union, 6:15 P. M.  
Worship, 7:30 P. M.  
Meeting, Wednesday,  
"Heart of the city for  
of the city"

**Methodist Church**  
Turner, Pastor  
School—9:45 a. m.  
Service—10:55 a. m.  
Intermediate, and Sen-  
Groups at 6:00 P. M.  
Worship, 7:00 P. M.  
Board meets every  
day  
are cordially invited  
our services.  
ry is provided for  
children for both  
g and evening ser-

**ary Baptist Church**  
ge and Ave. B.  
C. Morrow, Pastor  
m—Sunday School.  
e Bible as our only  
m.—Song, preaching  
m.—Young People  
m.—Night preaching

**st Christian Church**  
St. and Ave. D  
Wayne Black  
School—9:45 a. m.  
Worship—11:00 a. m.  
Chi RHO—6:00 p. m.  
Worship—7:30 p. m.

**st Memorial Baptist Church**  
D. Baker, Pastor  
School, 9:45—Henry  
Worship Service,  
Worship Service, 7:30  
Union, 6:30 p. m.  
W. D. Sage  
ay night Prayer Ser-  
p. m.

**ity Lutheran Church**  
ck of Radio's Lutheran  
the Family Worship  
of TV's "THIS IS THE  
ass-SS, 10:00 a. m.  
Service, 10:45 a. m.  
Father League  
Party, 8:00 p. m.  
ation Class, 4:15 p. m.  
8:00 p. m.  
8:00 p. m.  
Children's Christmas  
3:30 p. m.  
Christmas  
10:45 a. m.  
y School 9:00 a. m.  
ation class, 9:00 a. m.  
oir, 10:15 a. m.  
invitation extend to all  
ev. L. Boriack, Pastor

**FORD COMPANY**  
Complete Service and Sales  
Phone JO 9-2275

**Famous Dept. Store**  
Charles B. Bowles  
Winston Freeman

**BUTLER'S 5 & 10**  
Complete Variety Store  
222 East 3rd Street

Courtesy of  
**FRANKLIN STORE**  
Mrs. Francis C. Kauer

**RL'S WATCH SHOP**  
Mr. and Mrs. Carl Nelson  
310 East 3rd Street

**RNER DRUG STORE**  
George McClarty  
320 East 3rd Street

**Cicero Smith Lumber Co.**  
L. J. "Buddy" Byars, Manager  
311 Avenue B

**United Super Market, Inc.**  
Kenneth Palmer, Manager  
Wichita Highway at Tidal

**DICKSON OIL CO.**  
**DICKSON MOTEL**

**Mathis Chevrolet Company**  
Best Place By Far to Buy Your Car  
300 East 2nd Street

**THE MANHATTAN**  
Complete Department Store  
218 East 3rd Street

**BILL BRYANT'S**  
**TRUCK and AUTO SALVAGE**  
New and Used Auto Parts

**FARMERS CO-OP. GIN**  
Paul Hooper, Manager  
591 Avenue B

**SCHROEDER SUPPLY**  
For the Best in Pump Supplies  
Tidal and South Avenue D

**HOFACKET STATION**  
**HUMBLE PRODUCTS**  
Avenue D and College

**G. R. SLOAN**  
**SERVICE STATIONS**

**Smith Motor & Auto Parts**  
Automotive Repair — Parts  
Used Cars and Pickups

**Ranchouse Gulf Station**  
**Ranchouse Motel**

**STEVENS & CAMPBELL**  
**GROCERY and STATION**  
Paul Stevens Tommy Campbell

**Burkburnett Florists**  
Mr. and Mrs. L. V. Richards  
415 So. Ave. B Phone JO 9-2281

**HARLIN A. MILLS**  
**GRAIN COMPANY**

**WAMPLER**  
**INSURANCE AGENCY**  
203 North Avenue D

**C. D. Shamburger Lbr. Co.**  
R. C. Tevis, Manager  
200 West 3rd Street

**BILL PENN**  
**WELL SERVICE**

**WILLIAMS PETROLEUM**  
**COMPANY**

**Owens & Brumley**  
**Funeral Home**

**Preston Dairy Products**  
Hugh and Buddy Preston  
219 East 2nd Street

**PALACE THEATRE**  
MOVIES ARE YOUR BEST  
ENTERTAINMENT

**B. and B. GROCERY**  
Choice Meats and Groceries  
500 Avenue D Phone JO 9-3701

**BOYD BROTHERS**  
Department Store

**BELL Service Stations**  
of Burkburnett

**Burkburnett Star**  
Phone JO 9-2191

### Lions Club Pancake Sale Again In Feb.

Local Lions are giving advanced notice they will hold their popular pancake and sausage day again some time in February. This annual get-together, when all the Lions pitch in and help, will last all day and into the night. Lions prepare and serve delicious pancakes and sausage, along with coffee and all the other side attractions.

The little metal trumpets decorating Christmas trees date from early Danish custom of blowing in the Yule with four hymns representing the four corners of the world.

**A. F. & A. M.**  
Stated Meetings First and Third Monday at 8:00 p. m. at the Masonic Hall  
School of Instruction Thursday Night  
H. W. FOWLER, W. M.  
B. R. MATTHEWS, JR., Secy.

## Christmas Bells

Bells have long been associated with Christmas and New Years as well as hundreds of other joyous occasions, but there are fewer today than there have been for centuries.

During World War II thousands of bells were melted down for metal or were shattered by bombs. After the war only three churches in all London had bells that could be rung. In Germany, the Nazis melted down an estimated 150,000 bells, only a fraction of which have been replaced. Italy restored more than 11,000 church bells lost or damaged in the war.

Because of this shortage, there has been a demand for bells ever since the war, but there are probably less than 20 foundries engaged in casting the huge bronze bells that peal in towers throughout the world.

One foundry belongs to a Troy, New York, family that has been manufacturing bells since Revolutionary days. Another family concern is located in Sinn, West Germany, and has been turning out bells for 350 years. A London foundry still making bells was established in 1570.

#### Origin Lost

The origin of bells has been lost, but the business of making them hasn't changed much since the Chinese Emperor Heang-ti ordered a set in 2697 B. C.

To make a bell, a foundryman builds up a "core" of brickwork and fine clay bound with hair to shape the vessel. The mold's outer portion is similarly sculptured inside an iron casting.

When the two molds are finally prepared and clamped together, metal is poured into the hollow between them. In the old days casting called for solemn ceremony, and nobles gathered to toss in offerings of gold and silver.

#### Composition

For this reason, many an old bell is reputed to ring more sweetly, but the truth is that a bell owes its sonorous voice to its time-honored content of about four parts copper and one part tin.

Big bells are always made to order. The world's largest has never pealed. The 193-ton "Tsar Kolokol" was cast in Moscow in 1733 and allowed to cool off in its earth-covered molds for 103 years. It lost an 11-ton bit of its lip before being hung.

A second Moscow bell, 123 tons, is the greatest in actual use. An 18-ton bell in the Riverside Church, New York, is the largest bell ever tuned.

### Christmas Rose

#### Legend Associates Plant With Christmas Day

Numerous plants and animals are associated with Christmas legends and some of the most beautiful have to do with flowers.

The Christmas rose, for instance, was said divinely created. A shepherd maid wept because she had no gift to lay before the infant Child in the Manger, when suddenly an angel appeared before her—

The angel spoke, his voice was low and sweet  
As the sea's murmur on low-lying shore.  
Or the whisper of wind in ripened wheat.

Then, after hearing why the maiden wept, the angel touched the ground where her tears had fallen with the branch of lilies he carried. Immediately the place was white with Christmas roses, which the happy maid gathered and laid on the manger.

Of the others, Sainfoin, or Holy Hay, is believed to have cradled the infant Christ in the Manger.

And the snowdrop is the flower of the Virgin Mary, and is said to be the emblem of the candles she lighted on Christmas Eve.



Bright  
be  
Your  
Holiday



We hope the season brings all the joys you have waited for.

## EDITH'S BEAUTY SHOP

300 South Avenue D  
PHONE JO 9-3111

## Retail Merchants Association

JAMES T. BRADY, Jr.  
Manager

Burkburnett, Texas



## Good Will Toward Men...

May the spirit of Bethlehem bring peace to the world.

**HARLIN A. MILLS GRAIN COMPANY**  
Burkburnett, Texas

## ABOUT EGG NOG

Eggnog's popularity is such that at Christmas and New Year's, the drink can be found in nearly every average American home. It is generally believed that Eggnog came to us from the Old English sack-posset, a hot drink which contains the same ingredients—milk, eggs, sugar and nutmeg. No one really knows who invented Eggnog. Researchers just say that it goes 'way, way back and like Topsy it "grewed and growed."

The flavorful taste of Eggnog is not the only reason for the drink's popularity. Eggnog is easy to make, it goes a long way, and it allows the hostess to have as much fun as anybody else without having to worry about the guests. Eggnog is a serve-yourself drink, and most folks seem to prefer to fill their cup themselves.

Eggnog is flexible. That is, you can make a lot of it in one batch if you've got a large enough punch bowl and your refrigerator is particularly spacious. On the other hand, Eggnog can be made in smaller quantities—which are equally delightful and flavorful.

And, of course, in these modern times, you can buy it at the super market or from the milkman—packaged in containers of various sizes.

### Spicy

#### Original Injun' Pudding New England Treat

**Early Favorite**  
England isn't the only country that has traditional holiday dishes. An old New England favorite and one handed down from mother to daughter since early colonial days, is old Injun' Puddin'.

**Original Injun' Puddin'**  
5 cups milk  
½ cup dark molasses  
¼ cup granulated sugar  
½ cup yellow cornmeal  
1 teaspoon cinnamon

½ teaspoon nutmeg  
1 teaspoon salt  
4 tablespoons butter  
Heat 4 cups of milk and add molasses, sugar, cornmeal, salt, spice and butter to it. Cook 20 minutes or until mixture thickens. Pour into baking dish, add remaining cold milk. Do not stir. Put into slow oven (325° F.) and bake for 1½-2 hours without stirring. Serve warm with Cognac or Hard Sauce.  
Serves 8.



**BURN A BAYBERRY**  
According to tradition, one who burned a bayberry candle on Christmas Eve or Christmas Day would have a long life and a happy one.  
An old verse reads:  
"To learn your luck for the year they say  
Burn a bayberry dip on Christmas Day.  
If the flame burns bright and the light shines clear,  
Good Luck will be yours throughout the year."

Classifieds In the STAR Get Results

The first Christmas tree in San Francisco was made in 1850 from Douglas fir branches wired on a stick by a German wine shop proprietor.

Over three-fourths of the nation's Christmas trees come from the states bordering Canada.

**Men's Bible Class**  
**FIRST BAPTIST CHURCH**  
Invites You To  
Worship With Them  
Each Sunday Morning at 9:45  
J. H. FERGUSON, Teacher  
JOHN BROOKMAN, President

## Season's Greetings



In the traditional manner, we wish for you a happy holiday.

## GILL'S GROCERY and MARKET

Mr. and Mrs. John Gill,  
Robert and Patricia  
205 East 3rd Street  
PHONE JO 9-2661  
Burkburnett, Texas

## Outdoor Decorations Began in Small Towns

Today nearly every community in the land has some kind of outdoor Christmas decorations and in nearly every big city you can find two or three spectacular displays. It was a small town that first came up with the idea of lighting up the outdoors at Christmas time, but no one is quite sure which town gets credit for the idea.

Four communities are believed to have thought of it about the same time, as early as 1913. Two of them, McDonald and Germantown, are in Pennsylvania. Salem, Ore., decorated a Sitka spruce and Riverside, Calif., illuminated a large evergreen, an Aracuria.

## Merry Christmas

Good cheer, friends and a most happy holiday season.



## RICH STEAM LAUNDRY

Mr. and Mrs. Oscar Rich  
308 Avenue A  
Phone JO 9-2261

**White House Has Always Had a Tree**  
President Theodore Roosevelt approved of Christmas trees for several years before bringing them into the White House.  
But one year, his son, Archie, suggested that he set it up in the White House. The discovery, by the great forester and the President's son, that the tree was a Pennsylvania Scotch pine, was a fortunate one, as this tree is the most hardy of the evergreens because it grows in a room to grow.  
Ever since, the White House has had an indoor tree.



May each moment of Christmas mean to you one.

## ELITE DRESS SHOP

MRS. C. C. GILBERT



And a Merry, Merry Christmas to one and all



**TEXAS ELECTRIC SERVICE COMPANY**  
AND ALL THE EMPLOYEES  
Burkburnett, Texas  
J. B. ADY, Manager



# Rating Plan For Auto Coverage Released by Board

In culmination of a year of painstaking official State Board order promulgated by the Texas Safe Driving Institute, to become effective in 1960, Board estimated a reduction of 10 per cent in 1960 premiums for drivers.

Part of the system is the plan for drivers for each violation or accumulation of points resulting in property damage over \$25, death or injury to a person, or a clean slate will result in a 20 per cent reduction from the standard premium. Those with one violation will pay the standard premium, while those with two points must pay 10 per cent; three points, 20 per cent; four points, 30 per cent; and five points, 40 per cent. Those drivers with six or more points, as determined from their driving record with the Department of Public Safety, will pay double the annual rate.

Penn J. Jackson, Board chairman, said he knew of no other state with a similar plan to reward drivers. From a sample of 40,000 drivers' records from the files of the Department of Public Safety, it appears that more than half of the Texas motorists can take advantage of this reward. Zero ratings were given drivers of 57.1 per cent of the autos sampled, while only 2.2 per cent had six points or more.

Along with the order the Board compiled three exhibits. The first shows the safe driving record premiums in all Texas territories, another shows the effect of the plan in the various territories, and the third contains 41 questions and answers relative to the plan.



With the advent of another year we might well be skeptical and say, "Why celebrate with such fervor and excitement? A good year had to die so 1956 could be born."

We might say this, but no one does. If 1955 was a good year, it will be well remembered, but few will dwell upon its passing. It must give way to a bright new year bringing with it the profound impression that we are again blessed with an invaluable supply of new days, hours and minutes. We have found a new reservoir of time; time in which to make plans, to do things, to live and think, and to make our dreams come true.

Time is indeed the true coin of our mortal realm, a deeply personal possession that each is free to spend, squander, sell, give away, devote to the glory of God and to the causes of humanity.

And though 1956 marks yet another milestone along the journey of life that is all too short and quickly travelled, it is joyfully welcomed as the giver of a new and magical handful of time. With this magical handful it is possible to defeat the worries of age; to conquer fear; to see through the shadows of disillusionment.

With unified determination and with the help of God, this handful of living, this New Year 1956, can be recorded in the book of life upon earth as a year of achievement in man's hopeful quest for a better world—where all nations and all people live together in joy, peace and harmony.



CUTE CUTOUT . . . A novel Santa cutout can easily be made by the children in the house and will lend a cheerful spirit to home surroundings.

Motorists are getting so concerned over the number of miles they can get per tank of gas that the auto manufacturers are going to enlarge the size of the tanks.

Remember when you used to go to bed with the curfew? Today they just blow it to wake you up.

Isn't it peculiar that middle age always starts a few years earlier for the other fellow?

If success made the heart swell like it does the head, this would be a far better world.

Reckon meteorologists give feminine names to hurricanes because they're spinsters?

For **COLDS** take **666**

**Irvin J. Vogel**  
LAWYER  
514-516 Wichita Nat'l Bank Bldg.  
Wichita Falls, Texas



May tidings of great joy be yours.

**CARL'S DRIVE-IN**  
NORTH BERRY STREET  
MRS. OPAL SENKBEIL  
MRS. LILLIE CASHWHEELER



May the guardians of the Christmas Season attend you.

**IDEAL CLEANERS**  
JOE "Red" HENSLEY AND EMPLOYEES



**BEN FRANKLIN STORE**  
Mrs. Francis Kauer and Leslie Kauer, Owners  
Burkburnett, Texas



May you have a Bright and Happy Holiday.

**BILL BRYANT'S TRUCK and AUTO SALVAGE**  
We Buy Trucks and Cars of All Makes and Models  
Oklahoma Cut-off  
Phone JO 9-3581



**GOINS' Sinclair Service**  
MR. AND MRS. TOMMY GOINS AND CHILDREN  
300 North Avenue D  
Burkburnett, Texas



And our best wishes for a happy holiday.

**CLODELLA'S BEAUTY SHOP**  
608 East College  
PHONE JO 9-2671  
MR. AND MRS. CLARENCE BRIDGES AND CHILDREN

**DICKSON OIL COMPANY STATION AND MOTEL**  
"JACK" DICKSON  
409 South Avenue D Phone JO 9-8124  
Burkburnett, Texas

Merry Christmas  
JOYOUS GREETINGS TO ALL OUR FRIENDS.

**CAMPBELL'S AUTO SUPPLY**  
CARL CAMPBELL  
East 3rd Street Phone JO 9-3391  
Burkburnett, Texas

The most wonderful gifts plug into an electrical outlet!

Give better ELECTRICALLY

Choose exciting, useful gifts from this Christmas check list. You give year-round better living when you give something electrical!

- Alarm clock
- Bedcovering
- Blender
- Coffeemaker
- Corn popper
- Deep fryer
- Egg cooker
- Floor lamp
- Food mixer
- Griddle
- Hair dryer
- Heat lamp
- Heater (portable)
- Iron
- Pin-to-wall lamps
- Radio
- Roaster
- Shaver
- Skillet
- Table lamp
- Television set
- Toaster
- Waffle baker
- Warming pad

Visit your favorite store that sells electric appliances

**TEXAS ELECTRIC SERVICE COMPANY**  
J. B. ADY, Manager Phone JOrdan 9-3873

### Randlett News

By Mollie Elliott

The Daisy Club met Tuesday December 15th in the home of Mrs. F. A. Wilkinson of Burkburnett. The president called the meeting to order and Mrs. F. E. Eastman read the second chapter of St. Luke as the devotional and led the club in prayer. A motion was made by Mrs. T. A. Kinnaird that we have club sisters again next year and the motion was seconded by Mrs. Raymond Underwood and it was also voted to pay two dollars for each present. The motion carried and names were drawn for secret sisters.

The Christmas grab bag was enjoyed by the members after which the club adjourned to meet Jan 5th with Mrs. C. H. Dunn. Delicious refreshments of cake, coffee and cocoa were

served to Mrs. John Martin, Mrs. F. E. Eastman, Mrs. W. R. Baldwin, Mrs. Paul Hooper, Mrs. Fred Spoon, Mrs. C. H. Dunn, Mrs. J. C. Goode, Mrs. G. L. Pfeifer, Mrs. B. B. Man, Mrs. Clarence Vashe and Susane, Mrs. W. T. Oliver, Mrs. C. B. Ressel, Mrs. C. O. Wilson, Mrs. Raymond Hale, Mrs. N. R. Kirkpatrick and Rick, Mrs. B. L. Ressel, Miss Ola Austin, Mrs. T. A. Kinnaird and Vickie, and Mrs. Raymond Underwood.

Mr. and Mrs. Lonnie Boles visited Mr. and Mrs. Bruce Reed of Norman last week.

Mr. and Mrs. R. H. Rhoads visited Mr. and Mrs. Louie Ellis and children of Burkburnett from Sunday to Tuesday last week.

Lt. Commander Carl O. Best of Monterey, Calif. is spending the Christmas holidays with his mother, Mrs. O. Best.

Mr. and Mrs. C. H. Thompson returned home last Wednesday from a two weeks visit with their daughter, Mrs. Oneal Weaver, and Mr. Weaver and children of

Lake Charles, La. Sunday dinner guests of Mr. and Mrs. Ralph Postlewait included Mr. and Mrs. W. G. Harwell, Mr. and Mrs. Kenneth Ellis and sons and Mr. and Mrs. Gaylor Harwell of Wichita Falls, Glen Harwell of Little Rock, Ark., and Mr. and Mrs. Fay Postlewait, Mr. and Mrs. C. B. Ressel and Wayne and Mr. and Mrs. W. T. Oliver and Nicki. Roy Braden visited Mr. and Mrs. Sam Braden and family of Lufkin, Texas, from Thursday to Sunday of last week.

Mr. and Mrs. Joseph Thomas of Kansas City, Mo., visited Mr. and Mrs. Raymond Underwood over the week-end.

Mr. and Mrs. Bill Lund and children of Tulsa, Mr. Bill Thompson of Houston, Texas, and Mr. and Mrs. Oneal Weaver and children of Lake Charles, La., are spending the Christmas holidays with Mr. and Mrs. C. H. Thompson.

Mr. and Mrs. Reed McCandless and children visited in Oklahoma City Friday night and Saturday.

Mr. and Mrs. Peyton Cozby and daughter of Burkburnett visited Mrs. W. J. Morrow Sunday.

Mrs. Andy Shaw visited her son, Ross Allen Shaw, and family of Pampa, Texas, last week and reports the arrival of a new grandson born Dec. 11 and named Frank Andrew. Mr. Shaw drove out to return her home and of course to see the new grandson.

Mr. and Mrs. Paul Clayton of Dallas and Mr. and Mrs. Fred Clayton of Roscoe, Texas, visited Mr. and Mrs. Roy Clayton over the week-end.

Mr. and Mrs. Mack Malone and family of Electra, Texas and Mr.



FAMOUS SCENE . . . Folks come from far and wide each year to view the Christmas decorations at New York's famous Rockefeller Center and to attend the annual Candlelight Concerts held beneath the famous tree shown in the center of the photograph.

and Mrs. Buster Pruitt and baby of Burkburnett visited Mr. and Mrs. E. J. Pruitt Sunday.

Mrs. Sadie Green of Alameda, Calif., and Mrs. Frank Massey of Little Rock, Ark., were recent visitors in the home of Mr. and Mrs. R. L. Baldwin.

Mrs. Addie Vaughn of Lawton is spending this week with her brother, B. J. Pruitt, and family.

Cadet Billie Stark of the Air Force Navigation school of Harlingen, Texas, is spending the Christmas holidays with his parents, Mr. and Mrs. G. M. Stark.

Mr. and Mrs. Fred Spoon left Wednesday to spend the holidays with their son, Willard and family of Springtown, Texas.

Sgt. and Mrs. Bill McSparrin of twenty-nine Palms, Calif., arrived Sunday to spend the holidays with her mother, Mrs. Alma Capps.

Mr. and Mrs. Eugene Elliott of Wichita Falls, visited Mr. and Mrs. Paul Bridges, Friday night.

Mrs. A. L. Scott Hostess Dec. 17th Mary Martha Class

The Mary Martha Class of the First Baptist church met Thursday night, Dec. 17th at the home of Mrs. A. L. Scott with Mrs. Gay as co-hostess, for their Christmas party. The class president, Mrs. Scott, introduced Miss Karen Burton, who favored the class with two Christmas songs. Mrs. Hattie Buchanan, a special guest, led the group in prayer. Mrs. Gay asked that the group form a line and follow her. We were led into a beautifully decorated dining room and were served a turkey dinner with all the trimmings.

After dinner, the group assembled back in the living room. A short business meeting was held then Mrs. Gay gave as her devotional the Christmas story taken from Luke.

Members then enjoyed the gift exchange and singing Christmas carols.

Those present were Mesdames Florence Nichols, Zelpha Brown, Adah Lois Burnet, Mary Fuller, Angie Randal, Lillie Duke, Jewel Reed, Elizabeth, Sloan, Betty Manning, Rnby Daughtry, Helen Turner, Moriselle Gay, Ola Quattlebaum, Jo Smith, Nellie Askins, Hazel Waggoner, Bertha Scott, G. E. Benton, W. M. Ferguson, John Brookman, Mary Horr, Hattie Buchanan and Dottie Reece.

A diplomat can tell you where to go and make you look forward to the trip.

### Card Of Thanks

I wish to express my sincere appreciation to everyone who was so nice to me during my recent stay in the hospital. The prayers, cards, flowers and visits were especially appreciated. May God bless each of you. Mrs. Jodie Metz.

Mr. and Mrs. Leonard Isaacs and family of Brownfield, Texas, are spending the Christmas holidays in the home of her sister, Mr. and Mrs. Weldon Nix and family.



TO ONE AND ALL, MAY WE SAY THANKS FOR YOUR PATRONAGE AND FRIENDSHIP.



### SMART SHOP

Mrs. A. L. Scott  
Mrs. Russell Lewis  
Mrs. Jess Hageman  
Mrs. J. T. Deckard  
Mrs. Charlie Schumann  
Wendlyn Ann Goins

224 East 3rd Street  
Burkburnett, Texas



### SIMPSON'S LAUNDRY

MAE, ELLEN,  
ELLA and LUDIE

### News From The HD Agent

Homemade fruit cakes, cookies, candies and other food items make Christmas gifts with a "built-in" personal touch that's always appreciated.

Start now to check your Christmas list and make plans to include some gifts from your kitchen. Here are some suggestions from Thelma Wirges, co. HD agent.

One pound fruit cakes and larger decorated cakes with candied fruits and nuts, wrapped in cellophane.

A box of homemade jams, preserves or jellies put in uniform jars and wrapped in holiday attire.

Special yeast breads, tea rings, Jule Zaza and loaves of bread, wrapped attractively.

Cookies or candy packed in decorative tins or gaily wrapped boxes.

Bottles of homemade salad dressing.

Gala popcorn balls, wrapped

in bright cellophane with ribbon for children. Plum Puddings. Wooden bowls with cans and a nut cracker. A mexican basket of colorful fruits.

Canned chicken or meats from your pantry. Homemade spreads in tery jars.

Mrs. Raymond Krull, prepared and frozen family Christmas dinners and enjoy home and Christmas Day. There is a minute rush for the meal.

Mr. Robert Hickey left night by plane for his Baltimore, Mr. following here.

### Hello

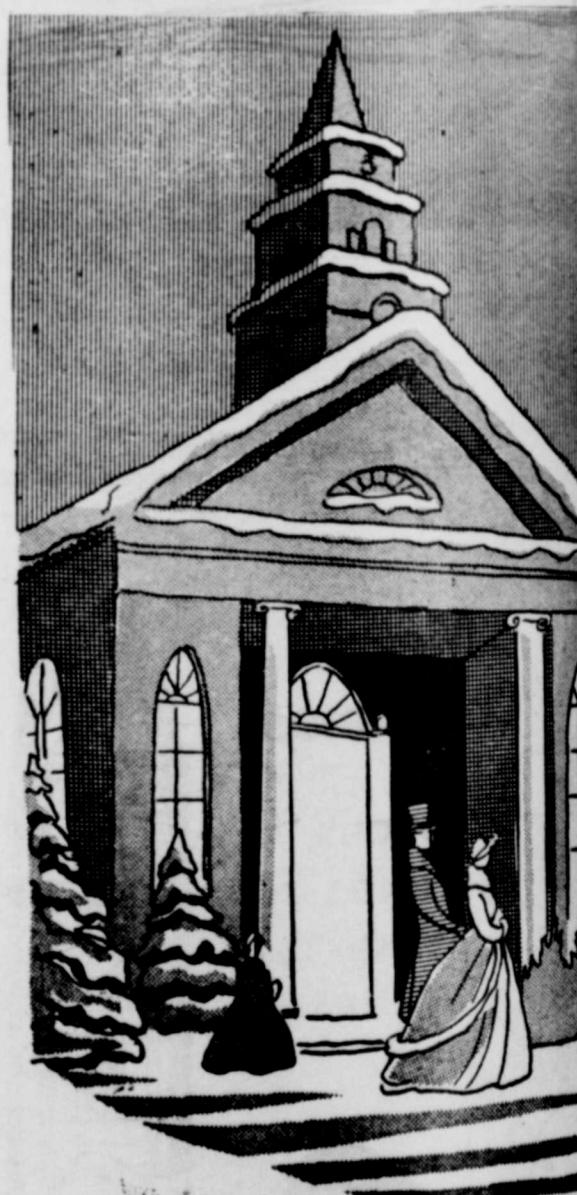


### DORA DAVIS

County Clerk  
and Deputies



Mr. and Mrs. Winston Freeman and Family



### JOY AT CHRISTMAS

May your house be filled with the true meaning of Christmas.

### SLOAN OIL COMPANY

Jobbers for American Petrofina  
Burkburnett, Texas



We hope your glass overflows this Yule season with joy and great happiness.

### STEVENS and CAMPBELL

BELL Gas, Oil and GROCERIES  
610 East 3rd Street  
Burkburnett, Texas



MAY JOY FILL YOUR DAYS THIS HOLIDAY SEASON.

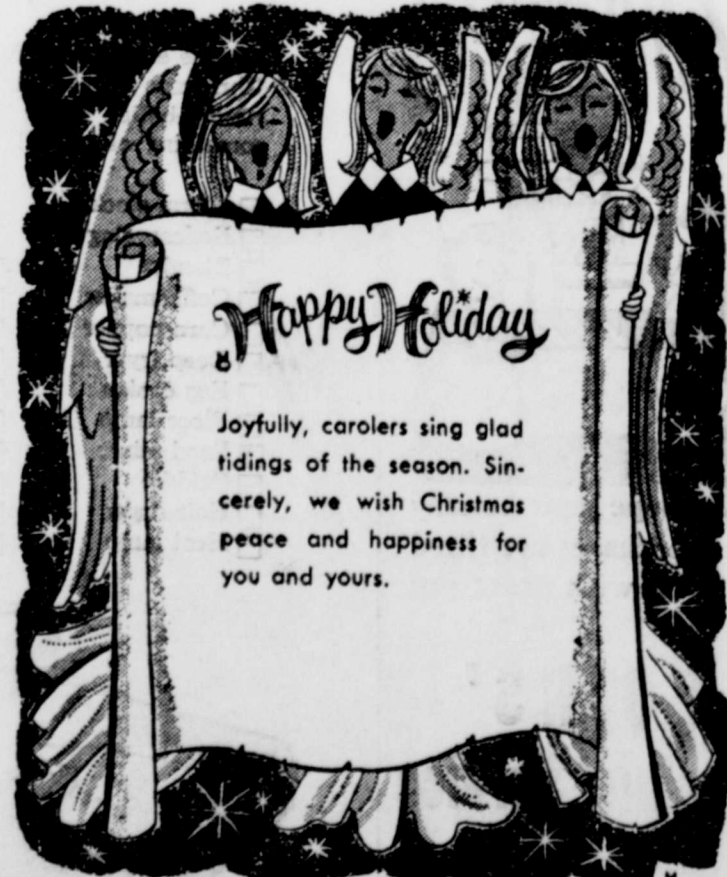
### SKID'S BEAUTY SHOP

N Berry St. -- Ph. JO 9-3188  
EILEEN SIBER  
BERTHA SKIDMORE  
NANCY ALLEN



### BURKBURNETT LAUNDRY

MR. AND MRS. H. D. SMITH  
AND ALL EMPLOYEES



### JO SMITH REALTY

MR. AND MRS. D. H. SMITH  
Phone JO 9-3490  
Burkburnett, Texas

### "WHAT'S LEFT" SALE

SATURDAY and MONDAY  
AT THE MANHATTAN DEPT. STORE

Women's COATS 1/2 PRICE  
\$22.50 Coats . . \$11.25 \$27.50 Coats . . \$13.75

ONE RACK  
Women's DRESSES 1/2 PRICE  
\$5.98 Dresses . . \$2.99 \$8.95 Dresses . . \$4.47  
\$10.95 Dresses Now \$5.47

BOYS'  
JACKETS and COATS 1/3 OFF  
\$7.95 Jackets . . \$5.30 \$10.95 Jackets . . \$7.30  
\$12.95 Jackets Now \$8.63

WOMEN'S DRIP-DRI  
COTTON BLOUSES  
Regular \$1.99  
Extra Special 2 FOR \$2.50

20 x 40 INCH  
HEAVY CANNON  
BATH TOWELS 2 FOR \$1  
Assorted Colors

MEN'S 59c NYLON  
Stretch Sox 3 PAIR \$1

We Give S. & H. Green Stamps  
Manhattan DEPARTMENT STORE  
We Give S. & H. Green Stamps

Wichita County, Texas

## Democratic Leaders of Texas Favor Abolition of Poll Tax

Leaders of the Democratic Party in Texas have been active in an effort to bring about the abolition of the poll tax. The poll tax, a requirement for voting since 1902, is thus under the heaviest attack in its history. The Democratic wheel-horses, frequently at odds on other issues, constitute a formidable coalition against the poll tax. Texas is one of only five states still clinging to what is regarded by many as an infringement on voters' rights.

Walter G. Hall, Dickinson banker, Democrats of Texas club member, and longtime supporter of both Senators Yarborough and Johnson, heads up the drive as State Organizer. The two US Senators and Mr. Rayburn, plus Mrs. Randolph and Mr. Skelton, are State co-sponsors. Hall's working committee is composed of Mrs. Jean Lee and Fagan Dickson of Austin and Richard Seinfeld of Houston.

The Method the committee & its sponsors are using to achieve abolition is the time honored petition method. Texas law states that if ten percent of the voters in the last preceding party primary sign petitions in favor of specific legislation, the issue must then be placed on that party's next primary ballot for a referendum. If the issue carries in the primary election, it is then mandatory that the party make the issue a part of its platform in the coming general election. Since Texas is a one party (Democratic) State, such a mandate would indicate almost certain passage of the abolition measure in the state Legislature. Such legislation would have to be in the form of a Constitutional Amendment to be voted on by all the people of the State.

Impetus for the petition drive came primarily from liberal groups and Yarborough backers but members of the "moderate" faction have also expressed opposition to the poll tax. Senator Johnson, for example, supports proposed Federal legislation to render the poll tax illegal, and he and Speaker Rayburn supported an effort in 1949 to abolish the poll tax by Constitutional amendment. Senator Yarborough has stated that "Experience in states which have recently abolished the tax shows that thousands of additional citizens voted when they no longer had to pay this uneven burden to participate in selection of their elective officials."

The 1949 effort to abolish the poll tax came in an off year and was narrowly defeated. Ironically, many Texans lost the opportunity to vote against the poll tax in that year because, in an off year of little political interest they were not qualified to vote

because they had not acquired their poll tax receipts. Banker Hall is optimistic about the success of the petition drive. "The fact that five top leaders in the Democratic party have found common ground in this issue is very encouraging," Hall said. "With this kind of support we are shooting for 225,000 signatures. This is more than we need, but we want to show the State and the rest of the world for that matter, that this last big obstacle to the exercise of the right to vote is unpopular and on its way out," Hall said.

Petition campaign committees are being set up county by county throughout the state, under Hall's direction. Hall and Mrs. Lee are contacting all Democratic County Chairmen from Mrs. Lee's office at 3110 West Avenue in Austin, and the drive leaders are confident that most Democratic Party officers will follow the lead of the party bigwigs.



Homemakers shopping for turkeys often ask how much to buy. Thelma Wirges, county HD agent offers some suggestions on this problem.

Small turkeys have a larger percentage of bone than do the larger birds. Allow 3-4 to 1 pound of ready to cook turkey for each serving, if the bird weighs less than 12 pounds. Allow 1-2 to 3-4 pound per serving if the bird weighs 12 pounds or more.

For each serving of roasted turkey quarter or half, or braised drumsticks or thighs, cut from large birds, allow 1-2 to 3-4 pounds of ready to cook weight.

If you are expecting your family and guests to have a big appetite you may need to allow more than one serving per person.

Too, you may want planned left overs to take care of some extra holiday meals. If so, make allowance as you shop.

For information on buying, preparing and cooking turkey, ask your county HD agent or contact a member of the county foods and nutrition committee. Committee members are: Mesdames L. L. McHugh, E. A. Moore, V. C. Lamb, G. A. Day and E. F. Pfluger. Mrs. McHugh and Mrs. Pfluger are both excellent managers of a poultry flock.

Do you feel your family is too small for a big Christmas turkey?

key. Try a half or a quarter turkey this year, Thelma says it will cut down roasting time and you won't have the problem of left overs.

Here are directions for roasting a half or quarter turkey. Rub the cut side with salt. Skewer skin to meat along cut edges to hold the skin and meat together during roasting. Tie the leg to the tail piece and tie a cord around the breast to hold the wing flat. Place the bird, skin side up, on a rack in a shallow pan. Grease with cooking fat and cover with a fat moistened cheesecloth. Baste during roasting. Set oven for 325 degrees.

Here is a guide for roasting times:

3 1-2 to 5 lbs—3 to 3 1-3 hours  
5 to 8 lbs—3 1-2 to 4 hours  
8 to 12 lbs—4 to 4 1-2 hours

Prepare your favorite stuffing as usual and bake in a greased pan or casserole during the last one or one and a half hours of roasting time. To perk up the stuffing, baste with pan drippings or giblet broth.

Some homemakers seem to have real problems when it comes to making creamy, smooth delicious turkey gravy. Many questions are asked on this subject, according to Miss Wirges.

To make good turkey gravy, be careful not to use too much fat. Begin the process by skimming the fat from the roasting drippings. Then measure 1 tablespoon of the turkey fat, 1 1-2 to 2 table spoons flour, 1 cup liquid (juices from pan, broth, water) and 2 table spoons chopped giblets. Put measured fat in pan, blend in the flour and add liquid. Cook gently until thickened. Season to taste and add giblets.

Members of the foods and nutrition committee have completed plans for 1960 work. Plans include work on poultry, Quick meals, eating well for less, vegetables in family meals, meal planning, etc. If interested, the committee will be glad to help you get the information or arrange for you to visit a demonstration. Mrs. L. L. McHugh, chairman, lives at 4012 Iowa Park Road, Wichita Falls. She represents the whole county and can help you in your needs.

There's nothing faster on the take-off than a bus you've just missed.

Any man who looks up his family tree is apt to get out on a limb.

## Ask for Tickets On New Ford When You Shop

Shoppers in Burkburnett are reminded that merchants are giving away a new Ford automobile Christmas Eve, Thursday, December 24th. Tickets on the car are given free with purchases.

During the rush, clerks may forget the tickets. Just ask for them. They will be



We wish to take this opportunity to express our appreciation to the many friends in Oklahoma and in Burkburnett. We wish you a very Merry Christmas and a Prosperous New Year.

**HENRY'S PASTRY SHOP**  
Winford, Louise,  
Julia Ann and Mitchell

given gladly. As an added convenience for some who cannot shop during the regular hours, some stores are remaining open until 8 o'clock every night until Christmas.

Mr. and Mrs. Dick Chambers left Wednesday morning for Richardson where they will spend the Christmas holidays with their daughter, Mr. and Mrs. Bob Fite and children.

Women like to look into a mirror, except when pulling away from a parking place.



OWEN Bell Station  
Oklahoma Cut-off  
MR. and MRS. J. D. OWEN AND BOYS



A train-load of good wishes for this holiday season.

**CLARK GRESHAM**  
COUNTY COMMISSIONER  
PRECINCT No. 2

# GREETINGS



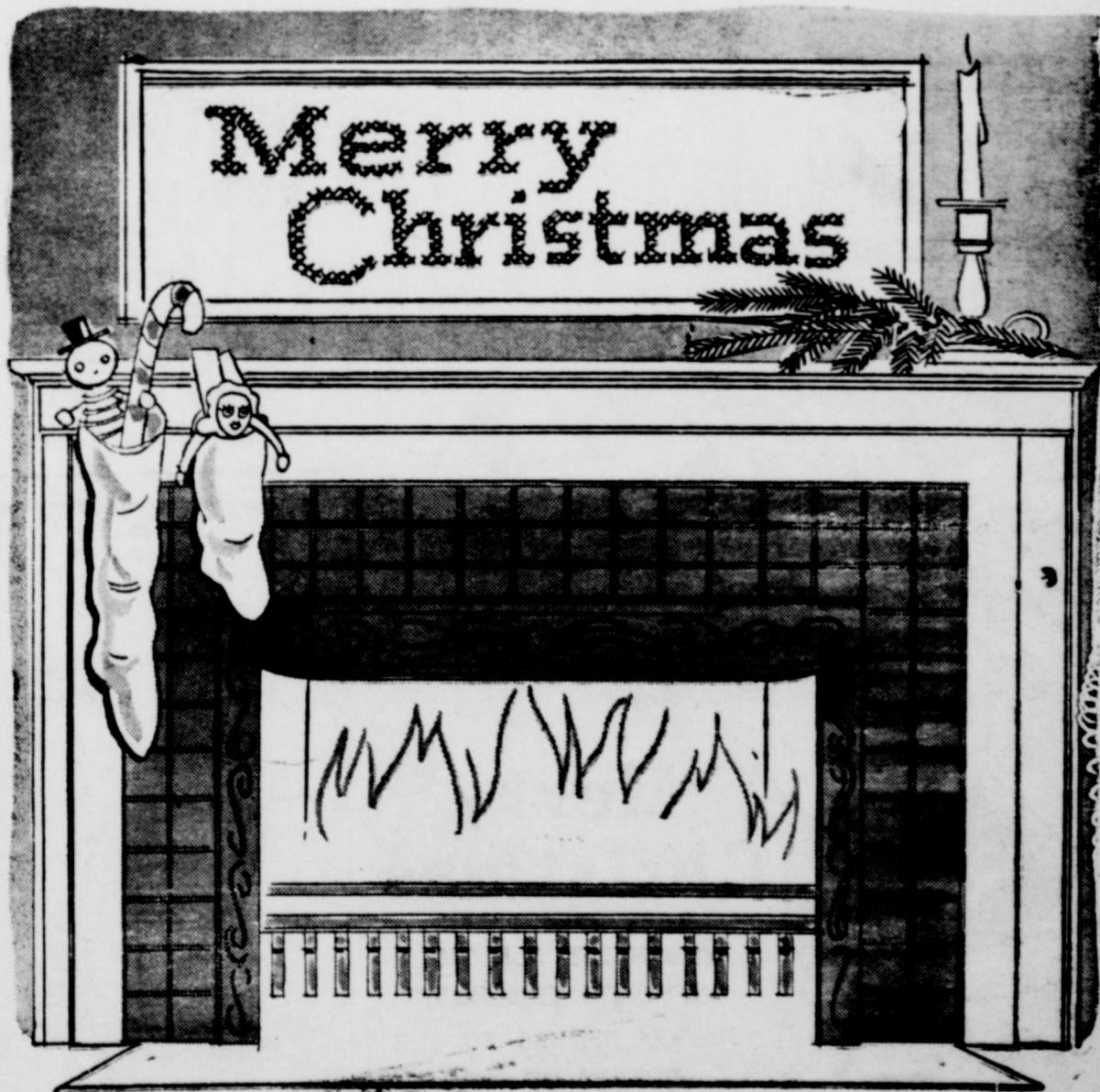
To all our friends everywhere we send greetings and our sincere wish for a happy Christmas.

and Mrs. B. B. Bowles  
**THE Famous DEPARTMENT STORE**

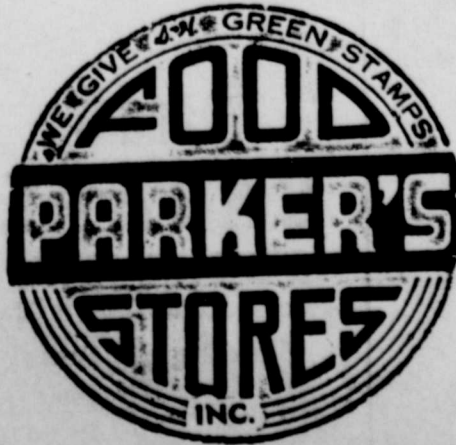
Mr. and Mrs. Winston Freeman



**TATUM GARAGE**  
E. J. TATUM  
Burkburnett, Texas



To old friends and to new friends we hope to earn, it is a pleasure to extend best wishes of the season.



**PARKER'S FOOD STORE**  
Burkburnett, Texas  
and  
ALL EMPLOYEES  
Henry W. Hall, Manager

### Luncheon Thursday Honor Judges Home Flower Show

A luncheon was held Thursday, December 17th, in the home of Mrs. Carl Morrison, with Mrs. C. M. Archer, Chairman of the Hospitality Committee, as co-hostess, honoring the judges of the Christmas Home Flower Show, held from the hours of 4 to 8 p. m. Those attending were: Mrs. W. H. Bohner, president of the Council and general chairman of the Flower Show, Mrs. A. W. Newman, chairman of the Judges Committee and the following judges: Mesdames Jack Farley, Bill Duncan, E. S. Carter of Wichita Falls, L. B. Slaughter of Electra, C. B. Haynes and Durr of Chillicothe, Texas.

Through it was a rainy cold day, a beautiful show sponsored by the Burkburnett Council of Garden Clubs, was enjoyed by many. The Horticulture, Education Exhibits and Junior Garden Club exhibits were held in the Town Hall. The Artistic arrangements were displayed in the homes of Mesdames George McClarty, B.

H. Preston, Sr., Jos. A. Janek, Don Morris and C. A. Morgan. Mrs. Carl Morrison was winner of the most Blue Ribbons with five in the Horticulture division and one in Artistic Arrangement. Mrs. A. L. Gilbow won four Blue Ribbons in the Artistic Arrangements. Other Blue Ribbon winners in the Artistic and Horticulture divisions were: Mesdames B. B. Six, C. M. Archer, Jude Willingham, J. A. Johnson, A. W. Newman, J. C. Adams, T. J. Campbell, W. B. Short and Clyde Peed.

Several awards were given in the Educational Exhibit division. Special awards were given to Mrs. Jack Mathis on Bird Feeders, The Golden Rod Jr. Garden Club on Tree with Food for birds, Mrs. Joe Frazier on a Feather Tree and a Tooth Pick Tree, Candle Exhibits award to Mrs. C. M. Archer.

The Junior Achievement Award in Artistic exhibits was given to Delores Peters. The Junior Garden Club Show was rated one of the best held in this area. Burkburnett has three Junior Garden Clubs which are very active: Young Sprouts, sponsored by the Bluebonnet Gar-

den Club with Mrs. W. H. Bohner, leader; Gay Ladies Junior Club sponsored by the Gay Ladies Garden Club with Mrs. Floyd Wilson, leader; Golden Rod, sponsored by the Burkburnett Garden Club, leader, Mrs. J. B. Riley and Mrs. Page Brown, Unity Junior Garden Club, sponsored by the Unity Garden Club with Mrs. R. C. Gilbow, leader.

Burkburnett also supports five Adult Federated Garden Clubs. The Unity Garden Club; Bluebonnet, Gay Ladies, Mimosa and Burkburnett Garden Club. There were a total of 134 entries in the Horticulture and Jr. Division and 55 Artistic Arrangements in the homes.

#### About Mistletoe

One cannot help but wonder how mistletoe came to be the "kissing plant." The mistletoe is a parasite, or "thief" which attaches to a host tree and under certain circumstances will sap the life out of a healthy, sturdy tree.

Mistletoe usually grows on oaks, mostly in the top branches. The seeds are probably scattered by birds.

There's a man with the angles for every girl with the curves.

Haberdashers sell clothes to fit the man and suit the wife.



**Merry Christmas**

It is our wish that this Yule season be the best you have ever spent.

**GARLAND FURNITURE**

AND

**MODERN BUTANE CO.**

**Christmas Greetings**

May His blessing be with you this Christmas.



**PARAGON TAILORS**

MR. and MRS. T. M. MAY AND EMPLOYEES



**Merry CHRISTMAS**

Accept our sincere best wishes for this Holiday Season.

**BILLS TV FURNITURE and APPLIANCES**

Television Headquarters

Avenue D and 2nd St. Phone JO 9-3651 Burkburnett, Texas

### Bethlehem Observes Three Christmases

This year, as usual, pilgrims from all over the world will worship in the little town of Bethlehem, the holiest spot of Christendom. Visitors will worship in the grotto where Christ was born and in the towering Basilica of the Nativity, built during the sixth century by Emperor Justinian.

Yet the residents of Bethlehem, which has a far greater population than it had some 2,000 years ago, will celebrate three Christmases, rather than one.

The western church keeps December 25 holy. The Greek Orthodox Church keeps the Christmas according to the Georgian calendar, on Jan. 7, and the Armenians observe January 19.

The Greek Orthodox Church and the Armenians share the Basilica, the Roman Catholics use their own church adjoining—but all three share the grotto where, traditionally, during the early hours of December 25 a tiny statue of Jesus is wrapped in swaddling clothes and laid in the manger.

If you're ashamed of your gas mileage, do as others do—fib about it.

Mr. and Mrs. O. H. (Country) Owen of Long Beach, Calif., arrived here Sunday to spend the Christmas holidays with relatives and friends.



**Merry Christmas**

We hope old Santa brings to your house a full load of cheer.

### Christmas Holiday Was Once Forbidden

Christmas has not always been a "legal" holiday in this country. In 1659, the general court of Massachusetts Bay colony passed this resolution:

"Whosoever shall be found observing any such day as Christmas or the like, either by forbearing labor, feasting, or any other way, as a festival, shall be fined five shillings."

The first "legal" observance in this country is believed to have taken place in Boston in 1686 when Governor Andros conducted services in the town hall. And it was still many years later, in 1856, that the State of Massachusetts officially passed laws which permitted the observance of Christmas.

Mr. and Mrs. Weldon Nix announce the birth of a new baby boy, David, born Sunday, Dec. 20th at the Wichita General Hospital. The baby weighed 6 lbs. 5 1/2 ounces.



TO ALL OUR FRIENDS... BEST WISHES

To all of our old and new customers, we send greetings and our sincere wish for a HAPPY CHRISTMAS

Mr. and Mrs. A. W. COLES

Ph. JO 9-2326 - 414 E 1st St. Burkburnett, Texas

is derived from the custom of early Christians who celebrated the feast of the Nativity of Christ for 12 days, placing special emphasis on the last or twelfth day. The "Twelfth Night" tree burning is also said to commemorate the light of the Star of Bethlehem.

The manufacture of toys for Christmas gifts and other uses last year required approximately 130,000 tons of steel products from all sources.

There's a lot of dirt that detergents can't touch.

**Merry Christmas**



We wish for you good companionship and happiness this holiday season.

**OPAL'S DRESS SHOP**

MR. AND MRS. MORRIS BOOKBINDER

PAULINE MORE

DORRIS HODGE

RUBY LANGE

The Puritan government had outlawed Christmas. With the restoration of the Christmas customs and regained its former place in England.

The first Christmas card mailed in 1846 by Henry Colburn, a Victorian family assembly festive board and bore famous greeting: "A Merry Christmas and a Happy New Year."

Call JO 9-2191 For



A MERRY Christmas

to all. And may peace good will among men ever all the earth.

**BURK BEAUTY SHOP**

Barbara Schroeder,

PAULINE MORE

DORRIS HODGE

RUBY LANGE



**Merry Christmas**

YOU MERIT ALL THE HAPPINESS THIS MAGIC SEASON OFFERS TO THE HEARTS OF MEN.

**MATHIS CHEVROLET CO.**

P. O. Box 488 Phone JO 9-3381

Chevrolet — Oldsmobile

Burkburnett, Texas

**it's Christmas**



May your holiday stocking be filled with naught but joy.

**B and C GARAGE**

CECIL BRADLEY

Across from Legion Hall Burkburnett, Texas



BEST WISHES FOR Christmas

and this Holiday Season.

**GEO F. BYERLY**

MOBIL OIL COMPANY WHOLESALE AGENT

Burkburnett, Texas



**Greetings To All**

With this old fashioned scene we extend a hearty, old fashioned greeting to all in our community

**BOYD BROTHERS**

Jimmy and Charlie Boyd and Entire Personnel

Phone JO 9-2214

Burkburnett, Texas

Wichita County, Texas

### From The City Agent

... may overlook income tax regulations which would reduce their

1959 tax. One new feature is the 20 percent first year depreciation allowance on tangible personal property. Farm and ranch operators should know the limitations on this special depreciation option in order to decide whether to use it, according to B. T. Haws, county agent. To be eligible for this years

write off, the property must have a useful life of six or more years. Usually a tractor or combine will qualify. Also, the property must have been purchased. Haws said any asset acquired by gift or inheritance does not qualify.

The maximum amount on which this depreciation can be taken is \$10,000 on a separate return and \$20,000 on a joint return. However, explained the agent, this limitation may include several items of property to make up the total.

The full 20 percent additional depreciation can be taken on equipment bought in December so it enables quick recovery of this much of the cost. Then, the

regular yearly depreciation can be set up for the remaining cost, less salvage value. For example, a tractor bought on December 5th for \$4,200, would be allowed \$840 first year depreciation. In addition, one month's regular depreciation would be allowed. If a salvage value of \$160 is set up, the annual straight line depreciation on an eight year basis would be \$400. Depreciation for the month of December would be \$33. So the total depreciation allowance on this tractor for 1959 would be \$873 (\$840 plus \$33). In 1960 the depreciation allowance on the straight line method would be \$400.

Some situations in which this additional first year depreciation might be beneficial tax-wise are: In years of unusually high net income, and in period when considerable borrowed capital is needed for beginning or expanding operations. Also, in case of casualty losses involving considerable equipment, such as a fire, windstorm or flood. Haws said the advantage of larger depreciation allowances would cushion the financial shock of re-investing in equipment needed.

For complete explanation of this and other newer features of the tax regulations, obtain a copy of the 1960 Farmer's Tax Guide. It is available from your local county agriculture agent

and from the Internal Revenue Service.

Connecticut this year enacted the Uniform Vehicle Code definition: "Stop means complete cessation of movement."

Men wonder why the fool moth will fly straight into the flame—and then go out and try to beat a train to the crossing.

Normal speed meets every need.

**WANT IT... then WANT ADS are for you!**



Season's Greetings.

**MERRY CHRISTMAS**

**J. A. SUTTLES Electric Shop**

Motors and Parts ♦ Wire and Supplies

CONTRACTING — REPAIRING

205 East 2nd Street

Burkburnett, Texas

## Greetings To All

... of our many friends. We hope you have great happiness this Christmas.



**LEO BRYANT**

521 TIDAL  
PHONE JO 9-3704

## HOLIDAY GREETINGS



This is the great holiday that brings great joy to one and all.

**HERRING'S HARDWARE & APPLIANCES**

201 East Main Street  
PHONE JO 9-2711

## Merry Christmas

May happiness dwell upon every hearth.



**JACKIE'S BEAUTY SHOP**

411 Ave. C - Pho. JO 9-2641  
Mrs. D. L. Alexander, Melba  
Mrs. Ralph Brookshier  
and Carol Roderick

## Merry Christmas



Joy to the world and to all our sincere greetings.

**MAGEE Service Station**

Mobil Products  
Telephone JO 9-8111

BILLIE MAGEE, Owner  
Burkburnett, Texas



May the peace and joy of Christmas abide with you throughout the coming year.

**BOOM TOWN MOTORS**

Gayle Rhyne, Owner  
103 East 3rd St. Burkburnett, Texas

## MR. HOME OWNER

Is Your Outside Water Bill Prohibitive?

Your Own Water Well Is Your Cheapest Solution

**Water Well Drilling**  
Irrigation — Domestic

**PUMPS**

Sales and Service

FREE ESTIMATES

SATISFACTION GUARANTEED

Landrum Phone Grover 9-5470  
Grandfield, Oklahoma

## Merry Christmas

May every star in the heavens, every joyful Christmas hymn, every greeting from the heart remind us of the true deep meaning, the inspiring message of Christmas.



With every good wish for your happiness.

**O. D. Wortham Radiator Shop**

115 East 3rd Street  
PHONE JO 9-2431  
Burkburnett, Texas

**Butler's**  
5 & 10



Pictured left to right: Mrs. Laverne Poole, Mrs. Bertha Shufflin, Mrs. Dorothy Coyle, B. L. Turner, Mrs. Bonnie Bryant, Mrs. B. L. Turner, Mrs. Opal Boren and Mrs. Opal Keith.

Two employees not pictured are: Sally Wulbrecht and Alice Bryan.

Mr. and Mrs. B. L. Turner, owners of Butler's 5 & 10, and all employees sincerely wish each of you a very Merry Christmas and a Happy New Year.

It has been a great pleasure to serve you in the past and your continued patronage will be greatly appreciated.

**WORTHAM DRUG STORE**  
PRESCRIPTIONS

Burkburnett, Texas

### Fidelas Class Has Christmas Party

Members of the Fidelas class of the Thrift Memorial Baptist church held their Christmas social, Dec. 11th in the beautiful new home of Mrs. W. L. Herring with Mrs. G. W. Pemberton as co-hostess.

A short business meeting was conducted by the president, Mrs. G. T. Roberts, Mrs. R. J. Shaw brought the devotional from the Christmas story as found in

Luke. A Christmas poem was read by Mrs. J. J. Dwyer. The entire group joined in the singing of several Christmas songs. A solo was sung by little Miss Teresa Herring.

After the business meeting and program, gifts were exchanged and refreshments were served to Mesdames Lea Roberts, Willie Bradley, Eunice Miller, Laura Ludington, Artie Mullins, Minnie Hill, Maggie Gilger, Elizabeth Shaw, Lucy Pemberton, Velma Key, Nina Owen, Lucille Mullins, Ann Stubblefield, Josie Robin-

son, Verona Mullins, Vera Ellis, Bertha Dwyer, Ila Lee Herring, Keene, and Massey and one visitor, Vesta Sutterfield of Wichita Falls.

Mr. and Mrs. Sam Shrum of Eunice, N. M. visited her mother, Mrs. Minnie Wallace, here over the weekend. They left Tuesday for Corpus Christi where they will spend Christmas with their daughter, Mr. and Mrs. Bob Kerns and son Mike.

Call JO 9-2191 — For Printing

### Who Really Sent That Very First Christmas Card?

What is generally conceded to be the first card specifically designed as a Christmas greeting—the card designed in England by J. Horsley for Sir Henry Cole (in 1843)—did not meet with an enthusiastic reception. Sent to his personal friends, Cole's card had side panels which depicted the feeding of the hungry and the clothing of the naked. This was well and good. The objections to the card arose from the illustration in the central panel—a scene in which a middle-class English family raised their wine glasses to toast an absent friend (obviously the recipient of the card). The scene so aroused temperance zealots that Cole never authored another card.

#### Still Looking

Actually the search for the "first" Christmas card is still going on. Although it bore no specific greeting, the New York Historical Society, some 30 years before the Horsley-Cole card, sent to members and friends of the society a woodcut of St. Nicholas, which bore a Christmas poem in both Dutch and English.

In 1832, Carl W. Drepper discovered in a Pennsylvania attic a "broadsheet" issued about 1842 by John M. Wolff, Philadelphia printer. The sheet, 10 inches by 15 inches, featured a reproduction of C. C. Moore's "The Visit of St. Nicholas" and as well carried the greeting, "A Merry Christmas and A Happy New Year."

The first commercial venture into the Christmas card business was made in 1863 when an English firm hired Punch cartoonist C. H. Bennett to illustrate a series of cards which were sold in that year as "Christmas complimentary stationery."

### Gingerbread Is Top Holiday Treat

Turkey and all the trimmings, fresh fruits, candies and nuts—all help to put a "szg" in the kitchen or dining room table during the Christmas season. Sweetbreads, rolls and other evidence of Mom's cooking artistry are usually in evidence. Despite the fact everyone gathers around for the big Christmas dinner, "nibbling" between meals is a custom nearly everywhere.

For such families, here is a "nibbler's" suggestion:

#### Honey Gingerbread (Makes 1 loaf)

- ¼ cup shortening
  - ¼ cup sugar
  - 1 cup honey
  - 2 eggs, beaten
  - 2½ cups sifted flour
  - 1 teaspoon baking soda
  - 1 teaspoon ginger
  - 1 teaspoon cinnamon
  - ½ teaspoon cloves
  - 1 cup boiling water
- Cream shortening and blend in sugar. Beat in honey and eggs until mixture is light. Mix and sift dry ingredients and add to honey mixture alternately with hot water. Turn into a greased 9-inch loaf pan and bake at moderate (375° F.) temperature for 20 minutes. Reduce heat to 350° F. and bake 10 to 15 minutes longer.

### Christmas Tree Needs Care

From the moment you bring your Christmas tree home, keep it moist if you wish to insure safety, beauty and fragrance. Of course, you have to start with a fresh tree—one that won't drop its needles when you move or shake it.

The first step is to throw cold water all over it as soon as you get it home. Then recut the stem with a new diagonal cut at least an inch above the old cut to open pores for drawing up water.

#### Keep Cool

Set the tree in water and keep it in a cool shady place until it is brought indoors for trimming. The first day a 5 to 6-foot tree is placed in water, it may take up a quart. After that, the water needs replenishing daily because the tree may take up a cup of water every day in a warm room.

Many chemicals have been tried for fire-proofing trees. Even substances like sugar, aspirin, or fruit acids have been used. None however, has proved as effective as plain water which keeps the tree naturally moist.

Good location for a Christmas tree is in the cool part of the room, away from radiators, fireplace, radio, TV set, or other sources of heat. They should not be placed in doorways or locations that could block exit if fire should occur.

Plan the location before you select the tree.

Call JO 9-2191 — For Printing

### Legionnaires News

The game night Saturday night was the largest and most profitable one yet.

The 1960 membership outlook is very bright. Our membership is crowding 200 at the present time and is expected to reach 500 members by the middle of July or August. Let's hope so at any rate.

Plans are being made to install florescent lighting and venetian blinds in the legion hall. There is much more to be done to the hall.

There will be a game night this Saturday night as always at 7:30 p. m. and we wish to stress that open to the public.

It being the day after Christmas and most everyone having some friends or relatives visiting them and looking for some place to go, we should have a very large crowd out.

The womens Auxiliary is now meeting with the Legionnaires every Thursday night at 8:00 p. m. Any wife, daughter, mother or relative by marriage is eligible to join the Ladies Auxiliary. Anyone wishing to sign up may do so on Thursday night at the Legion hall.

### Local Births

Birth certificates were issued to the following Burkburnett parents last week: Messrs and Mesdames:

- Frances Raymond Price, boy, Mark Alan
- Luther Bryant, boy, Luther Jay Lynn
- Alon Smith, boy, Steve Vernard
- Julius C. Billingsley, boy, Randall Keith

Mrs. H. S. VanCleave and Oma left Sunday afternoon for Fort Worth where they will spend the Christmas holidays in the home of Dr. and Mrs. W. Frank Armstrong.

### Mrs. H. Clement Hostess December 17 Jr. University Club

The Jr. University Study club met Thursday night, Dec. 17th in the home of Mrs. Howard Clement with Mrs. Gene Robertson as co-hostess.

As it was our annual Christmas party, there was no business meeting. Gifts were exchanged and Mrs. George Yarbrow read an enjoyable and original Christmas story.

Delicious refreshments were served to the following members: Mesdames Margaret Alex-

ander, Becky Bryan, Clemment, Geneva Fisk, Kelley, Mary Jo Kell, Landrum, Rhee, McCullough, Reba, Marilyn Robertson, Sprague, Betty Stas, Anna Strayhorn, Joyce Vincent, Marybrook and Maureen, Mrs. Marilyn Robertson the door prize.

Mrs. Ruth Terry for Torrance, Calif., Christmas holidays with her daughter, Mrs. Peggy family.



We wish you a train load of happiness during this joyous season.

### PRESTON DAIRY PRODUCTS

HUGH AND BUDDY AND ALL EMPLOYEES

BURKBURNETT, TEXAS

### GREETINGS



May this great holiday bring peace to you and the hearts of all men.

### Jack Alexander

CAR and HOME Supplies

Goodyear Tires and Tubes

Fishing Tackle and Shot Gun Shells

Mobilgas - - Mobiloil

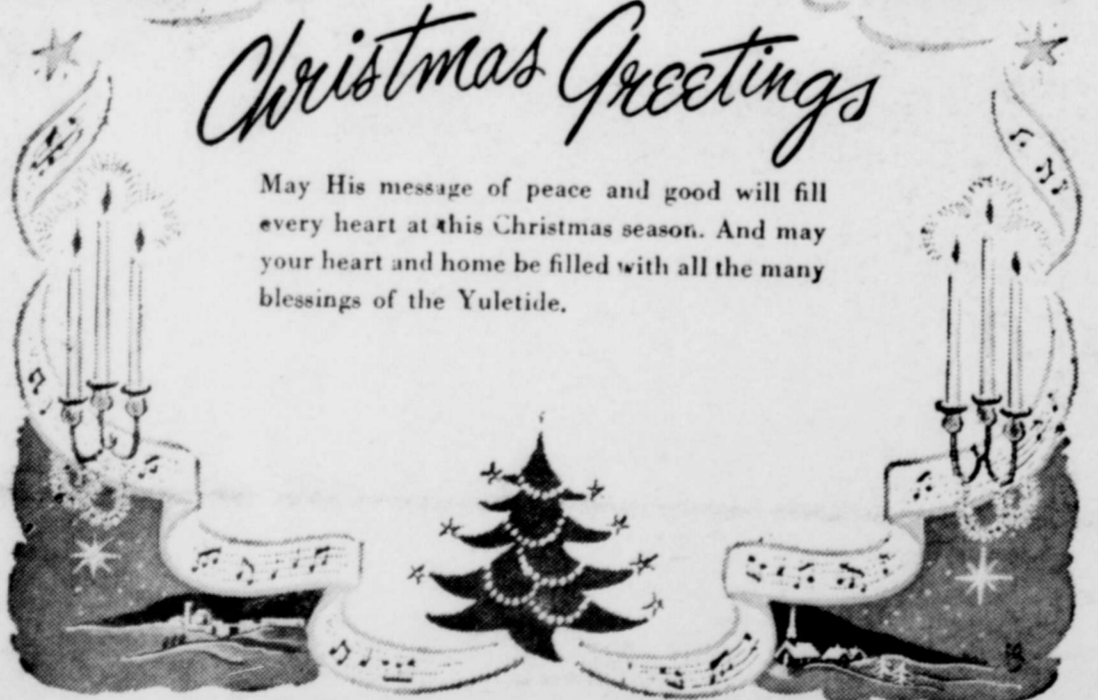
Phone JO 9-2381

Burkburnett, Texas



### Christmas Greetings

May His message of peace and good will fill every heart at this Christmas season. And may your heart and home be filled with all the many blessings of the Yuletide.



# UNITED SUPER MARKET

### Christmas Peace



May the wonderful peace of the first Christmas be yours this holiday season.

### MR. and MRS. J. F. KELLEY

### Holiday Greetings

We send our sincere good wishes to all of our friends and patrons . . . we hope this Yuletide finds you well and happy . . . that this glad season fills your homes and your hearts with a warm glow that will last throughout the year to come.

### Wampler Insurance Agency

Oralena, Cliff, David and Gay Robin Wampler and Jeanne Holly

Wichita County, Texas

**Lohofener Dec. 15th Class Party**

Class of the First met in the home Lohofener Tuesday their Christmas one served as co- yard was beauti- with Yuletide

glory. The guests were met at the door by the hostess, Mrs. Lohofener and escorted to a beautiful blue and pink Christmas tree where gifts were placed by secret pals, to be revealed later. The table was covered with a pink imported linen cloth and centered with a pink gladioli arrangement. The hostess poured coffee from a silver service at one end of the table and Mrs. Luke Warren, group lead-

er served punch from the other end. Dainty sweets and tiny sandwiches were also served.

**Redeemer Legends Common Among American Indians**

Redeemer legends were common among American Indians. While some were aboriginal, others probably were greatly influenced by contacts with Europeans, especially missionaries.

One of these legends was gathered by the Reverend Ephraim S. Alphonse, a Wesleyan Methodist minister who lived among the Valiente Indians for 21 years. The legend concerns the Ulukron (orphan of the Virgin) and how he traveled long ago from the far, far north. He talked to stout little men, to tall red men, to men in huts, to men in tall houses made of stone, to men who make broad roads and wear fine soft clothes and pearls and silver and gold. The Ulukron passed among them long, long ago and told the men to be good, to love good, and to do good. The Ulukron passed and talked. His eyes were soft and seeing. His eyes saw through men. His eyes saw and saw and men looked on and wept and stopped their wars. They stopped their hate. Their bows and arrows shot the deer but never man again.

The Ulukron pointed to the stars. He talked of the Crab, the Plough, the Great Bear. He talked of the God above those stars and he told men to be good and he would come again for all good men; and men began to be good. All Indians wait for the Ulukron.

Such is the story of the Ulukron, which as you can see, closely parallels (and most likely is) the story of Christ.

**Carols Traditional On Beacon Hill**

Every Christmas Eve the lights of Boston's Beacon Hill shine more brightly as happy carolers sing out their Yuletide greetings. The custom of Beacon Hill carols was originated by Frederick W. Briggs, in 1895, after spending a merry and musical evening in an English town. In recent years some 150,000 Christmas celebrators have joined the wandering minstrels in celebrating Joyous Yuletide on the Hill.

From the brilliantly illuminated State House to Charles Street, from aristocratic Beacon Street right over the Hill into the slum districts, old houses beam holiday tidings. Carolers stream up and down the Hill, past mansion fronts which are gaily illuminated with vari-colored lights. At Louisburg Square, guests toast each other with eggnog and the evening rings with the sounds of good fellowship and the echo of happy Yuletide greetings.

**Burk Garden Club Annual Xmas Party Wednesday Dec. 15**

The annual Christmas party of the Burk Burnett Garden club was held in the home of Mrs. D. C. Dodson, Wednesday, Dec. 15. Mrs. Glen Bear was leader of the program and presented Mrs. O. C. Egdorf of Wichita Falls whose subject was Madonnas.

She displayed pictures and figurines of Madonnas she has collected during her travels of all parts of the world.

Arrangements featuring Madonnas had been made by Mesdames C. M. Archer, J. M. Pogue, J. B. Riley and Jude Willingham.

Mrs. A. H. Lohofener supervised the exchange of gifts from the beautiful tree. The refreshments course of holiday foods was served from the dining table covered with a felt cloth and centered with a Christmas arrangement.

Two guests, Mrs. O. C. Egdorf and Mrs. Darrell Moore, and the following members attended: Mesdames J. C. Adams, Dewey Austin, C. M. Archer, Glen Bear, A. R. Bunstine, Paul Browning, J. L. Caffee, B. N. Cauthorn, Bill Crosley, D. C. Dodson, Johnnie Herring, A. H. Lohofener, Geo. McClarty, Carl Morrison, J. M. Pogue, B. H. Preston, J. B. Riley, Walter Riley, Joy Sessums, and Jude Willingham.



**Manhattan APARTMENT STORE**

**Merry Christmas**  
MAY THIS CHRISTMAS BRING YOU HAPPINESS, CONTENTMENT AND PEACE

**CICERO SMITH Lumber Co.**  
Buddy Byars, Manager  
And All Employees

**Redeemer Legends Common Among American Indians**

Redeemer legends were common among American Indians. While some were aboriginal, others probably were greatly influenced by contacts with Europeans, especially missionaries.

One of these legends was gathered by the Reverend Ephraim S. Alphonse, a Wesleyan Methodist minister who lived among the Valiente Indians for 21 years. The legend concerns the Ulukron (orphan of the Virgin) and how he traveled long ago from the far, far north. He talked to stout little men, to tall red men, to men in huts, to men in tall houses made of stone, to men who make broad roads and wear fine soft clothes and pearls and silver and gold. The Ulukron passed among them long, long ago and told the men to be good, to love good, and to do good. The Ulukron passed and talked. His eyes were soft and seeing. His eyes saw through men. His eyes saw and saw and men looked on and wept and stopped their wars. They stopped their hate. Their bows and arrows shot the deer but never man again.

The Ulukron pointed to the stars. He talked of the Crab, the Plough, the Great Bear. He talked of the God above those stars and he told men to be good and he would come again for all good men; and men began to be good. All Indians wait for the Ulukron.

Such is the story of the Ulukron, which as you can see, closely parallels (and most likely is) the story of Christ.

**Carols Traditional On Beacon Hill**

Every Christmas Eve the lights of Boston's Beacon Hill shine more brightly as happy carolers sing out their Yuletide greetings. The custom of Beacon Hill carols was originated by Frederick W. Briggs, in 1895, after spending a merry and musical evening in an English town. In recent years some 150,000 Christmas celebrators have joined the wandering minstrels in celebrating Joyous Yuletide on the Hill.

From the brilliantly illuminated State House to Charles Street, from aristocratic Beacon Street right over the Hill into the slum districts, old houses beam holiday tidings. Carolers stream up and down the Hill, past mansion fronts which are gaily illuminated with vari-colored lights. At Louisburg Square, guests toast each other with eggnog and the evening rings with the sounds of good fellowship and the echo of happy Yuletide greetings.

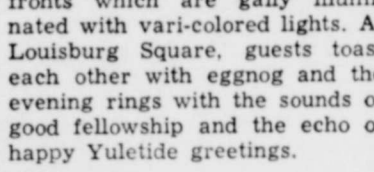
**Gift-Giving 'Must' For Big Business**

Christmas business gifts amounts to really big business when it comes to executives of large companies, a survey reveals. It has been estimated that about \$2 billion a year is spent on Christmas presents alone by industries for customers, suppliers and others on whose good will businessmen depend.

And fifty per cent of the executives don't like the idea although they continue the practice because they feel they must. Typical comments concerning the practice: "Anyone who doesn't give is out in left field." And, "It's a shakedown, and we know it. But we're helpless. We're suckers if we do and saps if we don't."

Many companies believe that a no-receiving policy isn't wise or won't work and permit employees to accept gifts of limited value. They offer the rule of thumb attributed to former President Truman: "If you can eat it up, smoke it up, or drink it up in one day, it's all right."

Six out of every 10 executives in big business "flatly disapprove" of giving business Christmas gifts.



**THERE HE IS . . .** Many a youngster would like nothing better than to catch Santa Claus coming down the chimney.

Mr. and Mrs. O. H. Buzbee & M-Sgt. and Mrs. G. E. Kress and daughters visited in the home of Mr. and Mrs. Tom Key Saturday afternoon. They also visited Mr. Tom Harris.

**Hardin HD Club News**

Members of the Hardin Home Demonstration club held their Christmas party Wednesday afternoon in the beautifully decorated home of Mrs. E. J. Simons.

The Christmas story was acted out by a few of the members of the club and carols were sung by the group. Gifts were distributed to members of the club from a traditionally decorated tree. The dining room was decorated in the Yuletide motif and the table was covered with a lovely Christmas cloth and candles.

Lovely refreshments were served to the following: Mesdames S. E. Askins, A. A. Jacobs, Bert Lepley, Loraine Askins, Joe Slama, W. E. Goins, J. H. Enderli, Mary Blamer, Ray Stimpson, E. J. Simons, Julia Roderick, H. W. Krusemark, C. L. Jenkins, T. A. Markum, M. L. Hillis, A. A. Everett and Mrs. G. C. Rankin, a visitor.

Mrs. Edward Simons installed the 1960 officers of the Hardin HD club. They are: Mrs. Julia Roderick, president; Mrs. A. A. Jacobs, vice president; Mrs. C. L. Jenkins, sec.; Loraine Askins, treas.; Mrs. Ray Stimpson, council delegate; Mrs. S. E. Askins, parliamentarian; Lena Cools, reporter.

**FRRIENDLY BLUEBIRDS**

The Friendly Bluebirds entries for the mother and daughter tea were western belts and pencil holders. Kathryn Reed won first place on the belts, Treva Ladd, 2nd and Diana Swan, 3rd. Lynne Kelly won first on the pencil holders, Kathryn Reed, 2nd, and Jan Vincent, 3rd.

We met Dec. 10th at the hut and wrapped our Christmas presents and made Christmas ornaments. Sheri Garland served lovely refreshments.

We had our Christmas party Dec. 17th at the home of our leader, Mrs. Glen Ladd. Mrs. Paul Fisher, assistant and Mrs. Bill Vincent, sponsor, were present also. Charlotte Wallace and Irma Ned Riley led us in singing which was enjoyed by all. Special guests were Debbie Vincent and Danny Ladd.

Kathryn Reed, reporter

Mr. and Mrs. Mike Harms and sons of Dallas spent last weekend in the home of his father, Mr. Tom Harms.

**CHEERFUL BLUEBIRDS**

We had our Christmas party on Tuesday, Dec. 15th in Mrs. Phillips home. We had fun playing "dress-up" in our mothers dresses, high heels and jewelry. Then we exchanged Christmas gifts.

Mrs. Alexander and Mrs. R. C. Bankhead served refreshments to the following girls: Cathy Alexander, Brenda Bankhead, Patricia Bankhead, Debbie Holtzen, Meredith Kelly, Cynthia Parrish, Cheryl Phillips, Sonja Gayle Preston, LaDeana Sneed, Denise Story and Kathy Unger.

**Bethlehem Basilica Among Oldest Churches**

The Basilica of the Nativity at Bethlehem, constructed more than 1,620 years ago, is one of the oldest churches in Christendom.

As it stands today it represents the original building as erected by Emperor Constantine and restorations and additions made under Justinian.

It is surrounded by three convents of separate faiths, Greek, Latin and Armenian. All three have the privilege of worshipping in the Grotto of the Nativity.

**Season's Greetings**

Cordial good wishes to all our friends this Christmas season.

**BURKBURNETT FLORIST**  
MR. AND MRS. L. V. RICHARDS  
Phone JO 9-2281  
BURKBURNETT, TEXAS

**MERRY CHRISTMAS**

May the star of Christmas light your path this holiday season

**Owens & Brumley Funeral Home**

**BURKBURNETT PHONE JO 9-3361**

**WICHITA FALLS PHONE 322-3181**

