

# Burkburnett Star

LIKED BY MANY..CUSSED BY SO ME.. READ BY EVERYBODY

You'll be happier if you are necessary to somebody.  
Horsepower was wonderful when only the horses had it.

Chamber of Commerce Luncheon Each FIRST MONDAY at Town Hall Everybody Invited Each Pays for His Meal

NO. 53

BURKBURNETT, WICHITA COUNTY, TEXAS, THURSDAY, JANUARY 28, 1960

NUMBER 20

## Stanley C. Kirk Nominations for District Attorney



STANLEY C. KIRK

### SPORT BITS By NORMAN WILSON

If you have not watched the boys and girls basketball teams play ball this year, the following schedule might interest you. As we go to press, the "Nocona Indians are about to come into town, looking for Bulldog scalps and the scores of the games will not be available until next week.

But on Saturday night the Junior tournament will be in progress in Holliday. This Thursday night, the Junior High boys will also be involved in the same tournament. Friday night "Jack-burn" will be in town to play the boys and girls "A" teams; Monday night, Feb. 1st boys and girls "A" team, Iowa Park, there, and "B" team girls in Henrietta Tuesday, Feb. 2nd, Jr. High and "B" boys, Electra, here; Feb. 5th, boys and girls "A", Olney, there; Feb. 6th, Finals of the Jr. High district tourney, here; Feb. 9th, Decatur, here, boys and girls "A" teams; Feb. 12, "Bowie there, boys and girls "A" team; Feb. 16, Electra here, boys and girls "A" team; Feb. 18 "Nocona there, boys and girls "A" teams.

Janice Martin tops the scorers for the girls "A" team with 130 points, followed by Shirley Hodges with 119 and Sharon Nix with 87. The girls have won two games and have lost 11. Bobby Lewis has scored 192 points to lead the boys "A" team round-batters. Eddie Eastman follows with 61 and Donald Mason is next with 22. These totals do not include the Electra game, which the boys won 49-47. Lewis scored a healthy 28 markers in that one. The boys have won only one, and that win over the afore mentioned Electra Tigers for a 1-8 record.

There have been several changes in the district for this year, changes that will interest everyone. Next week, there will be a complete run down on the new district alignment.

## School Cafeteria Menu

- FEBRUARY 1-5**
- MONDAY**  
Sausage and cream gravy  
Whipped Potatoes  
Lettuce-Tomato Salad  
Chocolate cake-choc. icing  
Milk—Bread
- TUESDAY**  
Pinto beans-ham hocks  
French fries-tomato catsup  
Cabbage slaw  
Cornbread and Butter  
Ice Cream—Milk
- WEDNESDAY**  
Steamed Weiners  
Macaroni and cheese  
Buttered green beans  
Sliced peaches  
White cake-white icing  
Bread—Milk
- THURSDAY**  
Steak—cream gravy  
Whipped potatoes  
Applesauce—Gingerbread  
Milk—Bread—Butter
- FRIDAY**  
Tuna salad—crackers—Bread  
Whole kernel corn  
Apple cobbler  
Milk

### NOTICE

All who are interested in the Summer Kid Baseball Program are asked to meet at the town hall, Monday, Feb. 1st at 7:30 p. m. The purpose of the meeting will be to elect new officers and make plans for the coming year.

But is a necessity in having effective law enforcement. Kirk is married to the former Patsy Ballard of Electra. They have three children, Karol 7, Cain 3, and Van 1. A world War II veteran, Kirk spent two years overseas in Italy where he won five battle stars and received a Presidential Unit Citation.

## James Alexander Died January 21st After Short Illness in Hospital

James W. Alexander, 73, a prominent citizen of Burkburnett died Thursday afternoon in a Wichita Falls hospital after a short illness.

Funeral services were held at 4:00 p. m. Friday from the First Methodist church with the pastor, the Rev. Leon Turner, officiating. Interment was in the Burkburnett cemetery under direction of Owens and Brumley Funeral Home.

Alexander was born Dec. 12, 1886 in Petty, Texas. He moved to Burkburnett from Tipton, Okla., where he was manager of the Collier Bros. Furniture and Hardware Store. He transferred to Burkburnett in 1918.

Later, Alexander bought a Magnolia Oil Co. Service Station and managed it until his retirement.

He was a 32nd degree Mason and a Shriner and had been a member of Methodist church. Alexander was a charter member of the Burkburnett Rotary club. He also served on the City Council during the Burkburnett Oil Boom.

Alexander is survived by his wife, Mary (two daughters, Mrs. H. C. (Bennie Lee) Dodson of Burkburnett, Mrs. Carl Campbell of Marlow, Okla.; one son, Jack, Burkburnett; two sisters, Mrs. Raleigh Corbett and Mrs. Mattye Shipman, both of Denison, Tex.; two brothers, Fred of Los Angeles, Calif., and B. H. Alexander, Sr. of Burkburnett; and five grandchildren.

## Marlin D. Terrell New Service Agent For Farm Bureau

Marlin D. Terrell recently accepted the work of Service Agent for Wichita County Farm Bureau with offices at 105 N. Wall St., Iowa Park. He was formerly employed by the Collin County Farm Bureau as Special agent and comes to this county with an outstanding record of selling Farm Bureau and its services in that county.

Mr. Terrell was born and reared in Prosper, Tex., having graduated from high school there. He attended A and M College.

He and his wife Jorita, who is a registered lab technician, have two children, Judy 6, and Gary 7. The Terrell family reside at 205 E. Jefferson in Iowa Park. They attend the Presbyterian church and Mr. Terrell served as an elder in Prosper before coming to Iowa Park. Mr. Terrell is a Master Mason and Mrs. Terrell is an Eastern Star.

Mr. Terrell invites all Farm Bureau members and their friends to come by the Farm Bureau office in Iowa Park and get acquainted with him in order that he can better serve Wichita County as Service Agent.

## Burkburnett Shriners To Meet Newly Elected Potentate

A delegation of Burkburnett Shriners and their ladies will go to Wichita Falls Saturday night for the formal introduction of Wallace R. Hardy, a native of Seymour, as the newly elected Potentate of Maskate Temple. The illustrious Potentate and Mrs. Hardy are to be introduced at a reception at 7:30 on the mezzanine of the Temple.

Invitations have been mailed to more than 2100 area Shriners and their wives. Following the reception the presentation of immediate Past Potentate C. W. Muelberger and other Past Potentates and their wives and Divan members and wives will be held in the Temple's Ballroom at 8:30. The Potentate's Ball will follow at nine o'clock.

Among Burkburnett area Shriners who are expected to attend the affair are: Roy Anderson, M. E. Bean, Morris Bookbinder, M. M. Carlton, H. W. Fowler, T. H. Garland, R. L. Gragg, J. N. Hall, E. S. Henry, G. T. Jackson, E. D. Martin, J. W. Mathis, Dr. R. Robinson, D. H. Smith, H. D. Smith, J. H. Wolfe and W. T. Zimmerman.

### Card Of Thanks

The family of J. N. Hicks wish to say that your many deeds of kindness and sympathy are more deeply appreciated than any word of thanks can ever express.

May God bless each and every one of you.  
Mrs. J. N. Hicks  
James N. Hicks



JIM ALEXANDER

## Donald Lee Craig Nominated For Air Force Academy

Congressman Frank Ikard announced the nomination of Donald Lee Craig, 613 Magnolia, Burkburnett, Texas, to the United States Air Force Academy.

The nomination, Congressman Ikard said, means that Donald will have the opportunity to take competitive examinations for an appointment to the Academy. These will include a physical aptitude examination, an Air Force Officer qualifying test, College Entrance Examination Board tests and an Air Force Academy Medical examination.

Donald, who is 19, is the son of Jim O. Craig of Burkburnett. He is a senior at Burkburnett High School where he is a member of the Agricultural Leadership League Debate team. Donald formerly lived in Wichita Falls.

### LIONS CLUB

Town Hall Each Tuesday  
7:30 P. M.

Lion D. L. Ligon of Wichita Falls was a guest and spoke briefly in the interest of his candidacy for District Governor.

C. J. Lippard, in charge of the program, presented Gary Bean, who sang several numbers, including one of his own compositions. He played his own accompaniment on the guitar. The program was most entertaining and appreciated.

Next week James Mason will bring the program.

## Alden Joseph Smith Gets History Degree

Alden Joseph Smith of Burkburnett, received his baccalaureate degree in History at the Jan. 23rd graduation at Texas A. and M. College.

## January 31st Deadline For Paying Poll Tax

The most important date for the Texas voter this month is Jan. 31st.

After that it will be too late to get a poll tax receipt that will enable him to participate in this year's merry-go-round of political events.

Since 1960 is a presidential election year, lines will probably be long on the night of the 31st. Safest course is to do it now.

Our Classified Ads Get Results

## BOOMTOWN BOWL GRAND OPENING FRIDAY, JAN. 29th

Friday will mark the beginning of a three day grand opening of Boomtown Bowl located at the East edge of the city limits on Wichita Highway. Owned by a Burkburnett corporation, this layout represents a \$250,000.00 investment. Bill Adams is manager of the 16 lane bowl. The new enterprise is the very latest word in bowling facilities. Nothing has been left undone.

Outside the spacious building, 250 cars can be comfortably parked. Part of the parking area is already paved. The remainder will be concreted as soon as possible.

Inside the building a most pleasing color scheme of white, aqua and gray was worked out. Comfortable fiberglass chairs are provided for spectators and players. A modern restaurant features Vinyl tile ceramic pattern floor and stainless steel appointments. The Vinyl tile also covers all other walking areas. Facilities offered are a fully equipped nursery, locker rooms, rest rooms, sports equipment room and a shop for drilling balls and servicing equipment.

The free nursery will have an attendant at all times.

The sixteen lanes are as perfect as can be made. . . they have a tolerance of just five thousandths from one end to the other. The pins are spotted by A.M.F. automatic pin setters. They are a maze of intricate equipment and electrical controls. When a player breaks a foul line an electric eye turns on a red light and nullifies the play.

There is a 20 foot mural in the restaurant showing actual photographs of Burk in the boom and mud days. Another large boom days photo graces the wall in the office.

Tournaments will draw bowlers from all over Texas and Oklahoma. Photographic score projectors will show scores at all times during tournament play.

Grand opening days, Friday, Saturday and Sunday, will feature free coffee and do-nuts, balloons for the little ones, also free bowling and other prizes to those who register.

### NOTICE

A stew supper will be held at the Town Hall Friday night, Jan. 29th. Come and eat all you want for \$1.00. Serving hours will be 6:00 to 7:30 p. m. This supper is sponsored by the WMC's of the Assembly of God Church. All proceeds will go into the church building fund.

Best way to carve a tombstone is to chisel traffic.

### To Be Filed On

## All City Taxes Delinquent After January 31st

All unpaid City taxes become delinquent after January 31st, after which date penalty and interest will be added.

This includes ALL City taxes, 1959 and prior.

Taxes declared delinquent will be filed on for collection, and this includes 1959 taxes. Pay your taxes and avoid penalty and interest and collection costs.

Due to the fact that Jan. 31 is Sunday, tax payers will be allowed to pay taxes through Tues., Feb. 2nd without penalty or interest.

C. R. CHAMBERS,  
City Tax Assessor-Collector

## Missionary To Show Movie Slides At Town Hall Thurs.

Royce Thomason, a missionary to the British West Indies, will be in Burkburnett Thursday night, Jan. 28th at the Town Hall, 7:30 p. m. to show slides of the West Indies and the jungles of Surivame.

He will also have on display some articles that he brought back from the jungles and which are used there by the Wild Bush people. The public is cordially invited to attend.

### Card Of Thanks

It is with deepest gratitude we extend this word of thanks to our neighbors and friends for their kind acts of sympathy in our bereavement. These expressions are sincerely appreciated.  
Mrs. J. W. Alexander  
Mr. and Mrs. Jack Alexander  
Mr. and Mrs. Carl Campbell  
Mr. and Mrs. H. C. Dodson

### NOTICE

Anyone wishing to purchase a 1959-60 Burk High School annual is requested to contact one of the school principals, Mr. James Pearson, Mr. Morris Simonson or Mr. Roy Silkwood. You must make a deposit on the yearbook when you place your order and orders must be in by March 1st.

### NOTICE

Saturday, Jan. 29th is pick-up day for any old soft drink bottles, coat hangers, old papers, magazines or any articles the Cub Scouts might turn into ready cash. If you have anything to donate, please call JO 9-2629, JO 9-2812 or JO 9-3269 for pick up.

## Asks Re-election As Judge of 78th District Court



Temple Shell said this week that he would base his candidacy for re-election on his record as District Judge. He said he wished to thank the people of Wichita County for their confidence and for the privilege of serving as Judge of the 78th District Court in the past, and he feels his record justifies his asking the people of Wichita County for re-election.

His formal announcement will follow later.

## Church Of Nazarene Schedules Weekend Revival, Jan. 29-31

In observance of Youth week, the Nazarene Young People's Society is sponsoring a weekend revival.

The public is cordially invited to attend these services beginning Friday, Jan. 29th through Sunday, Jan. 31st each evening at 7:30 p. m. and the Sunday morning service at 9:41 a. m.

The special speaker will be Wales Lankford and the music will be under the direction of Duane Yoesel. Both young men are seniors attending Bethany Nazarene College, Bethany, Okla.

## Adult Sewing Class Will Start Feb. 4th

An advanced sewing class for adults will start Thursday night, Feb. 4th at Burkburnett High School. These classes will be free. All who are interested are invited to come to the home-making department at 7:30 p. m. 20-2t

## BLUE ANGELS SPONSORING SHEET DRIVE FOR CANCER SOCIETY OF WICHITA FALLS

The Blue Angels Jr. Nursing Club is sponsoring a sheet drive in Burkburnett for the American Cancer Society of Wichita Falls. If you have any old sheets, white or colored to donate to this very worthwhile project, please call JO 9-3518 and someone will pick them up. The sheets are used to make bandages and pads for cancer patients in Wichita County. Burkburnett Study club sponsors the Blue Angels club.

Mrs. B. G. Good of Longview is a guest in the home of Mr. and Mrs. A. C. Harris this week.

Soda Beldon was returned to his home here Tuesday from a Wichita Falls hospital.

## Political Announcements

Fees for announcements will be as follows:  
District Offices ..... \$20.00  
County Offices ..... \$15.00  
Precinct Offices ..... \$15.00  
City Offices ..... \$10.00  
All fees cash in advance.

For Sheriff, Wichita County  
WELDON BAILEY  
(Re-election)

For District Attorney  
TOLLY WILSON  
(Re-Election)

STANLEY C. KIRK

For State Senator  
GEORGE MOFFETT  
(Re-Election)

For Assessor & Collector of  
Taxes  
GEORGE McMACKIN

For Judge, 78th District Court  
TEMPLE SHELL

# PAY YOUR POLL TAX NOW!

## LAST DAY - JANUARY 31

# The Burkburnett Star

JOHN W. BROOKMAN - HARRY C. DODSON  
Owners and Publishers  
Harry C. Dodson, Editor



Printed weekly at Burkburnett, Wichita County, Texas. Entered as second class matter at the post-office at Burkburnett, Texas, August 19, 1907, under the Act of Congress of March 3, 1879.

**Notice to the Public:** Any erroneous reflection upon the character, standing or reputation of any person, firm or corporation, which may appear in The Star, will be gladly corrected as soon as it is brought to the attention of the publishers.

### SUBSCRIPTION RATES PER YEAR

In Wichita and Cotton Counties ..... \$2.00  
Outside These Counties ..... \$2.50

## VOTE - Don't Just Talk

Commenting editorially the Ontario, Oregon, Argus-Observer, said in part, "Louise Humphrey, Portland tax expert, hit the nail on the head in her speech before the Oregon Farm Bureau Federation when she blamed taxpayers apathy as one of the big reasons for ever increasing expenditures, some necessary, some unnecessary."

"Everyone gripes, but only a small handful care enough to try to do something. Major decisions involving large expenditures of money or just policy, are passed every day without a lift of an eyebrow or comment from the average citizen."

"Too often the comment is 'what can I do? How I feel doesn't make any difference.' How wrong is this attitude. Each and everyone of us has a weapon—our vote. If only we could be bothered to take the time to mark a ballot when it is presented to us, we could do something. Too often, only a few take the time to vote—exposing us not to the rule by majority, but to rule by minority."

Mrs. Humphrey told the Farm Bureau convention that expenditures should be challenged as to necessity and, and that elimination of some items would not necessarily "unlock jail doors and close school doors."

## Anti Trust Laws For Unions

The following editorial is reprinted from The American press:

"During the next few months there will undoubtedly be a flood of suggestions for dealing with management-labor relations. The tremendous losses to workers, manufacturers, government and the public resulting from the steel strike cannot help but lead to fervent demands for legislation to prevent repetition."

"In the editorials of the newspapers of the country, we have read many proposals for dealing with the situation. But we have read none that make more sense than the seemingly simple answer of making anti-trust laws applicable to labor as well as to management."

"The anti-trust laws were enacted in the first place to prevent industry from ganging up on labor and the public and taking unfair advantage of the power which could be wielded by building monopolies."

"Now the shoe seems to be on the other foot. Business and the public now need similar protection against labor. For it seems just as dangerous for labor to form tremendous, industry-wide unions, which are in a position to break the back of industry and inflict hardship on the public, as it would be to permit industries to form monopolies."

When bigness reaches monopoly proportions, history has taught us that it must be broken up."

## GRASS ROOTS OPINION

NORWALK, CONN., HOUR: "Public apathy has replaced consciousness of the dangers inherent in a continually upward spiral of prices. Inflation has been present so long it is accepted by many persons as an unalterable condition, as witnessed by wage increases geared to cost of living indexes and a general expectation that wage increases automatically call for higher prices."

CLEWISTON, FLA., NEWS: "We must remember that the United States reached its present strength and freedom, through strength and vigor, not through laziness and indifference."

NOGALES, ARIZ., HERALD: "It is true that featherbedding 'makes jobs,' but it can cost more jobs than it makes. The cost of featherbedding is to be found in prices. When product or service prices go up there are fewer customers. Fewer customers mean fewer jobs."

RIVERSIDE, CALIF., RECORD: "A foreigner was quite proud of the fact that he had learned the English language. 'But I had to read an awful lot of comic books to do it,' he said."

LISBON FALLS, ME., NEWS: "There are many tips given to newspaper readers, in editorial columns, and we will proceed to offer one at this time. It may be worth twenty-nine cents, or it may be worth a good bit."

"The advice we offer is for every high school or college student to learn to write well enough to express his views. Being able to express oneself clearly is an advantage in almost any avenue of life. It can make the difference in getting jobs, in salary increases, and in achieving agreements, and in almost every other field."

## A Definition Of Seapower

What is seapower?  
If you think that can be answered by saying "A powerful Navy," think again.

Here for instance, is what Admiral Arleigh A. Burke, Chief of Naval Operations, has to say: "Seapower is not just men-of-war. It includes cargo ships, passenger lines, tankers and the many other craft and auxiliaries that make up the Merchant Marine. Our experiences in World War I and II demonstrated beyond question our dependence upon our merchant arm, our 'Fourth Arm of Defense,' and we must strive always to keep our merchant fleet virile and strong."

Military leaders also point out that the development of new and terrible weapons of war have in no way diminished the importance of the Merchant Marine. If anything, they have increased it—for nuclear war might wreak such destruction on other forms of transport that merchant ships would be the only means of moving the vast quantities of supplies on which survival of the western world would depend.

Way back in 1936 Congress formally declared that it was the policy of the United States to foster the development and encourage the maintenance of a first class U. S. flag Merchant Marine. Time has proven, beyond doubt, the wisdom of that action.

## Another Problem For the Schools

Time was when reading, writing and arithmetic along with a smattering of Greek or Latin and a dab of history, made up a good basic education.

Time also was when the sky was the limit, when it took weeks or months to learn about the latest trouble in the Indian territories or across the sea. No more. Things have speeded up, stretched out, interlocked, overlapped and generally complexed themselves so as to be practically unintelligible to anybody.

**I. O. O. F. LODGE**  
BURKBURNETT, TEXAS  
Meets at I. O. O. F. LODGE  
Every Tuesday Night, 7:30 p. m.  
Visitors Welcome  
H. T. LEMM, Noble Grand  
EARL DIXON, Vice Grand  
L. L. MILLIKIN, Fin. Secy.  
RALPH ENGLAND, Jr. Secy.  
J. H. CECIL, Treasurer

**A. F. & A. M.**  
Stated Meetings First and Third  
Monday at 8:00 p. m.  
at the Masonic Hall  
School of Instruction  
Thursday Night  
H. W. FOWLER, W. M.  
B. R. MATTHEWS, JR., Secy.

## J. A. SUTTLES Electric Shop

Motors and Parts ♦ Wire and Supplies

CONTRACTING — REPAIRING

205 East 2nd Street Burkburnett, Texas



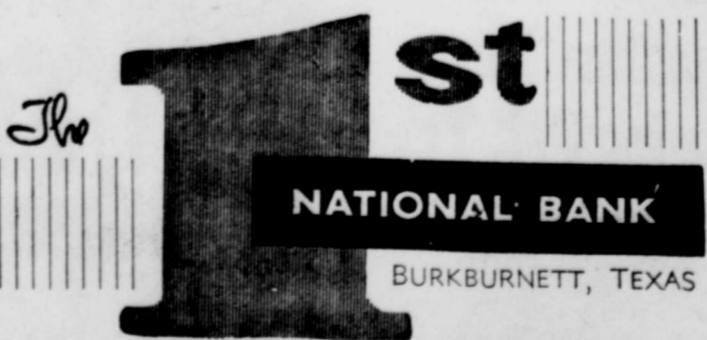
Don't be Check-Mated...

DON'T LET lack of ready cash check-mate your hopes and aims for the future. Look ahead, plan ahead and save ahead with purpose and persistence . . . and you'll have "what it takes" to make the right move at the right time for your success and happiness.

Your **FIRST** move is to open a savings account here. Then keep adding to it regularly. This simple strategy will WIN for you

x - x - x - x - x

**3%** Current Dividends On Savings



"SERVING BURKBURNETT SINCE 1907"

MEMBER

Federal Deposit Insurance Corporation

## BURKBURNETT.... HISTORY

Revealed By The Star Files 10 Years Ago . . .

Burk's High School band will attend the Ft. Worth Fat Stock show Sat., Feb. 4th, which has been designated as Burk Day. The band will go to Ft. Worth in two chartered buses and have an invitation to play in the parade and before the coliseum before the rodeo gets underway.

Organization of a Jr. Chamber of Commerce here was started Monday night when twenty young men met at Town Hall for the initial steps. Election of officers for the new organization will be held at Town Hall Monday night, Feb. 6th.

Mr. and Mrs. Gene Robertson attended the Roy Kelley Funeral in Dallas Sunday.

Mrs. Florence (Foster) Hayes underwent a major surgery operation last week in an Enid, Okla., hospital.

Rev. T. Herbert Minga and Clark Gresham were in Dallas last Wednesday to hear Gen. Marshall, head of the American Red Cross, who spoke at the Adolphus hotel.

Mr. and Mrs. Joe F. Kirkpatrick visited Mr. and Mrs. Dwain Jones in Grandfield Monday night.

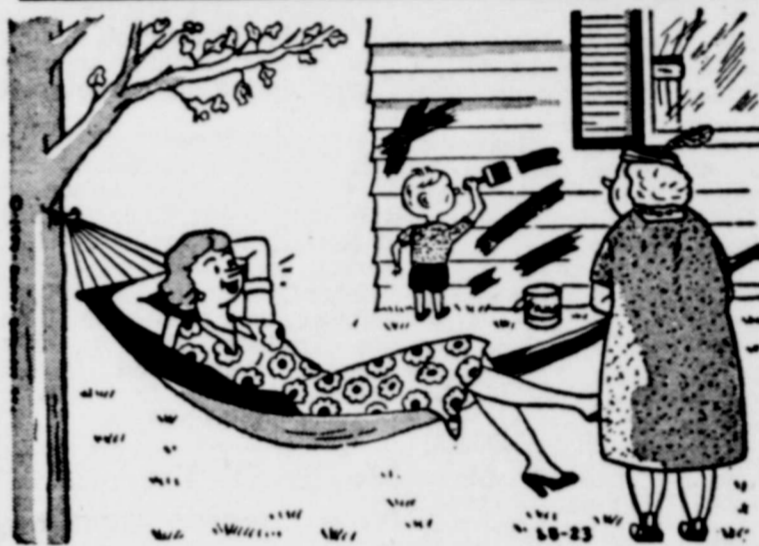
Mr. and Mrs. Bill Harrelson of Crane, Tex., visited her parents, Mr. and Mrs. Frank Kelley, over the weekend.

J. V. Ryan of Los Vegas, N. M. visited in the home of Mr. and Mrs. D. M. Morris this week.

Mr. and Mrs. R. H. Henry, Jr., are visiting in town this week.

Live pedestrians and successful men always think fast on their feet.

## "KNOTHEADS" by Buddy Byars

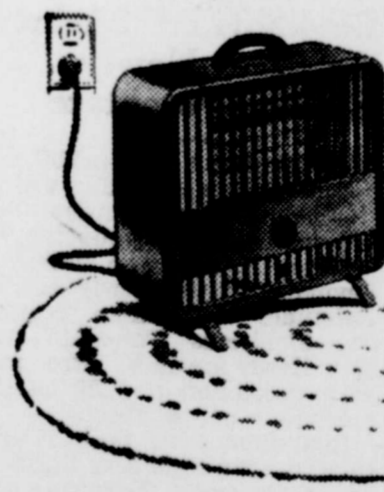


Oh, don't mind him . . . he's been painting like that ever since we built this new home with materials from Cicero Smith Lumber Company.

**CICERO SMITH Lumber Co.**

L. J. BYARS, Manager  
311 Avenue B Phone JO 9-3711

## Handy way to INSTANT WARMTH



## A portable ELECTRIC heater

Wherever extra warmth is needed for comfort, a portable electric heater gives it to you instantly. Just plug it in, flip a switch and radiant, sun-like electric heat quickly chases away the chill.

You'll find today's electric heaters provide new features—like automatic temperature control and fan-forced circulation—that make them even more efficient and convenient to use than ever before. Select yours now and enjoy extra warmth wherever you need it—all winter long.



See your favorite electric appliance dealer

**TEXAS ELECTRIC SERVICE COMPANY**

J. B. ADY, Manager Phone Jordan 9-3373

## Septic Tank Pumping Service

ARLIS KEY IF NO ANSWER  
Phone JO 9-3265 Dial JO 9-3605  
501 EAST 6th STEET BURKBURNETT, TEXAS



Birth certificates to the following parents last week:  
Mesdames:  
Carl Duncan, girl  
Kathy Elaine  
Clarence Theodore, boy, Byron Hugh  
Tom Sales, girl  
Charlotte Ann  
David K. Booher, David Allen

**Men's Bible FIRST BAPTIST**  
Invites You  
Worship With  
Each Sunday Morning  
J. H. FERGUSON,  
JOHN BROOKMAN

## Sinclair

By Tom G.



Oh, Oh - Here's old's We have the "touch" able service. We're fr who want to keep you and do everything make it possible.

Motor Tuning and Brake Adjustment Our Specialty

Not a Filling Station a Service Station

UNIOR HIGH  
PERFECT ATTENDANCE

Richard Alexander  
Berrell Goins  
Larry Lanig  
Erald Nixon  
Larry Six  
Paul Taylor  
De Tigaret  
Jimmy Ostereich  
Donna O'Nesky

De Bilyeu  
Larry Boling  
Yra Dilbeck  
Tommy Hoover  
Larry Mason  
Michael Musik  
Canny Parrack  
Lusty Ratliff  
Eggy Reynolds  
Ann Savage  
Eilene Silkwood  
Rocks, Simmons  
Arbara Walker  
John Williams  
Don Wulbrecht  
John Parrish

Tarilyn Greenewold  
John Wooten  
Ray Chandler  
Max Crowley  
Steve Glover  
Linda Hillis

Barfield  
Larry Bills  
Donald Bilyeu  
Larry Burk  
Donna Glass  
Erald Greenup  
Larry Hillburn  
Larry Kinnert  
Larry Shipman  
Linda Trotter

Jimmy Cason  
Paul Giehrst  
Wayne Nickens  
Lyle Perry  
Larry Warren  
Norman Wooten  
Lyle Yarbro

Oris Caulhoun  
Michael Morris  
Brother Reynolds  
Baron Smith  
Virginia Stamps  
Donna Williams

Minnie Blevins  
Jan Bryan  
Lennie Cornelius  
Lyle Dilbeck  
Lana Matherly  
Larry Melton  
Lance Mills  
Norma Shipman  
Jimmy Wise

Audie Abdouch  
Lyle Byars  
Larry Cash  
Lyle Jenkins  
Lyle Koller  
Lyle Lacy  
Lyle Miller  
Lyle Owen  
Lyle Tetter  
Lyle Monson

Lyle Broyles  
Lyle Butcher  
Lyle Davis  
Lyle Dillard  
Lyle Gorham  
Lyle Greenup  
Lyle Harsh  
Lyle McDonald  
Lyle Shaw  
Lyle Sims

Den 3, Pack 156, Won Cubby for Month of January



Den 6 of Pack 156 won the Pack Cubby for the month of January. Members of the den are pictured above with their Den Mother, Mrs. Evans, and the Cubby. Mrs. Evans' Den also had the Cubby for the month of November. Den 3 won the Cubby for December. Mrs. Knowles is Den Mother of Den 3.

Bluebonnet Club  
Met Jan. 19 With  
Mrs. B. McClendon

The Bluebonnet Garden club met Tuesday, Jan. 19th in the home of Mrs. Brewer McClendon with Mrs. B. Preston as co-hostess.

Mrs. Lou Ethel Boyd conducted the business session. It was voted to ask Mrs. A. L. Gilbow to give her talk on Planning and Planting a bird sanctuary in February, as she was unable to attend the January meeting.

The following new officers for 1960-61 were elected: president, Mrs. Elizabeth Brady; vice president, Mrs. Gail Butts; secretary, Mrs. Lena Warren; assistant sec., Mrs. Elizabeth Gragg; corresponding sec., Mrs. Icie Howard; treas., Mrs. Mary Cecil; Historian, Mrs. Grace Markum; reporter, Mrs. Bertha Johnson.

Mrs. Hattie Burns, parliamentarian, gave a very timely talk on accepting your responsibilities in club. Mrs. Burns, as leader, then called on Mrs. Hettie Gilbert who talked on Designing Dish Gardens & terrariums.

Mrs. Icie Howard won first place on her dried arrangement. Mrs. Boyd won second place.

The hostess served delicious refreshments to Mesdames Banning, Maude Bohner, Boyd, Brady, Burns, Cecil, Chambers, Gilbert, Gragg, Howard, Johnson, Markum, Maud Mathis, Neal, Teal and Warren.

Willie Freeman of Burkburnett was admitted to the Wichita Falls General Hospital Sunday night where he will receive treatment for a heart ailment.

THE STATE OF TEXAS

TO: H. Hechter, J. P. McClain, J. C. Burks, Bohner & Shelton, A. H. Dunkerley, F. V. Louderdale, A. E. Rawlins, J. T. Maye, C. C. McMahan, J. T. Aldridge, P. Freeman, B. F. Scott, C. W. Weber, B. M. Willis, Louis Joly, C. Joly, J. W. Hudson, J. E. Walraven, T. C. May, Joe Kucera, O. J. Anderson, F. Kucera, J. R. Ballew, J. H. Taylor, W. E. Ross, J. C. White, Willis Maye, R. S. Burke, M. Schneider, Gus Meyer, C. D. Champion, G. W. Henry, Mrs. W. R. Maye, Telye Chesteen, Mrs. G. S. Boemer, J. T. Townsend, G. A. Griffin, A. R. Salmon, Morgan & Boedeker, L. R. Salmon, Ida Hancock, J. E. Walraven, Mrs. S. C. Short, E. M. Stoddard, J. A. Hessen, Mrs. N. B. Delamster, Mrs. S. B. O'Leary, G. B. Ethredge, M. T. Mills, William White, J. P. H. Nelson, Charles Jerome, Mrs. N. W. Smith, J. R. Hardy, Mrs. W. E. Clark, A. M. Thomason, W. F. Courtney, W. J. Price, J. R. Peary, Mrs. A. J. Bland, C. W. Weber, H. M. Ferrin, W. S. Bourland, Ottomie Burk, E. L. Sharp, H. M. Hardy, J. B. Hardy, T. L. Anderson, Maner Crawford, Charles Simon, G. T. Ballew, W. V. S. Allen, W. L. Browning, Rufus Simmons, H. W. Tibbitts, J. A. Gazaway, Mrs. M. E. Stevenson, Mrs. S. Enoch, J. O. Mann, A. R. Soloman, Mrs. H. J. Hilton, Mrs. M. J. Dickey, M. F. Hilton, E. T. Hilton, H. J. Hilton, M. O. Parrish, J. L. Guest, H. C. Truelove, B. K. Neely, T. H. Sharp, H. V. Blessing, J. A. Bain, R. F. Stevenson, J. B. Hardy, A. C. Newsom, J. R. Perry, J. C. Sikes, Flora Newmon, S. M. Davis, J. R. Hardy, Miner Crawford, J. E. Crawford, T. R. Hammock, H. S. Lundy, J. T. Mercer, E. M. Billings, W. G. Billings, Mrs. E. W. Clark, J. P. Brown, C. T. Philpott, J. E. Philpott, E. T. Ramsey, Mrs. N. L. Helms, Mrs. Lucy Joyce, N. N. Ramsey, M. W. Ramsey, J. B. Hardy, Mrs. A. E. Sikes, B. R. Stone, J. W. Hale, J. H. Daniel, R. M. Mitchell, G. M. Rountree, S. J. Rountree, J. H. Crowley, E. R. Philpott, J. C. Mitchell, C. A. Simmons, H. M. Hardy, J. R. Peary, E. T. Nasery, C. C. Leatherwood, Mertie Nash,

R. E. L. Simmons, Mrs. R. H. Bloxham, P. H. Glancy, A. R. Harris, Ralph Walters, C. T. Hess, V. A. Edwards, T. M. H. Rodgers, T. A. Beard, J. B. Hardy, Jr., Mary A. Morgan, C. B. Hall, Mrs. N. Lawrence, William Ricks, H. T. Hooks, W. R. Hooks, P. D. Gold, A. C. Ussery, M. T. Pace, J. H. Leopard, Q. D. Robertson, W. T. Carlton, C. Thomason, M. W. Ussery, W. H. Ross, E. Leopard, J. P. Brown, Legrand Summer, L. B. Payne, F. F. Rector, M. D. Summer, W. C. Bronscome, W. W. Summer, J. W. Jones, G. F. Carr, R. S. Higgins, J. D. Edwards, Mrs. Mary Edwards, J. O. Thomason, Dennis Mason, Jr., J. P. Gardner, Mrs. Jane Bronscome, M. L. Payne, Etta R. Payne, S. E. Payne, Rush F. Summer, Mrs. R. A. Edwards, Mrs. L. Kreigo, H. L. Summer, A. M. Burgess, J. H. Leopard, C. A. Landers, J. P. Brown, R. V. Tingle, E. M. Lupton.

A. M. Thomason, Miner Crawford, T. L. Anderson, J. A. Carver, Leslie D. Mason, Walter Mason, Rena Mason, Myrtle Morris, Charles Mason, Jennie E. Mason, Lillian Mason, Clyde Mason, Ralph Morris, B. H. Brewer, J. T. Hardy, C. A. Brewer, J. W. Greathouse, Dr. Thomas P. Wall, Lillie Smith, J. B. Hardy, Alice Lupton, C. H. Lupton, Charley Salter, J. A. Hamilton, M. Hamilton, Abbie Hampton, Maryetta Taylor, J. E. Taylor, S. Taylor, L. L. Smith, J. E. Nelson, Theresa Nelson, Wilber Nelson, Amanda Nelson, J. D. Smith, A. L. Robinson, J. W. Hamilton, S. Nelson, M. Smith, Mary Nelson, Mrs. C. M. Goode, J. R. Peary, Dr. N. W. Goodfellow, E. S. Lundy, G. C. Rector, G. C. Sumner, H. D. Lambeth, P. H. Taylor, T. O. Taylor, C. B. Hall, Mrs. G. D. Burch, P. A. Moore, F. R. Burton, S. E. Allen, A. C. Long, E. W. Long, J. T. Blalock, F. P. Blalock, L. Z. & M. A. Rudd, J. W. Blalock, John Boyd, Allen Hamilton, J. L. Smith, Leslie Enich, David Enoch, J. B. Hardy, B. Hardy, J. R. Hardy, Miner Crawford, J. H. Caplinger, J. L. Syewart and J. W. Glass.

DEFENDANTS: GREETING: YOU ARE HEREBY COMMANDED TO APPEAR BEFORE THE HONORABLE 78th District Court of Wichita County, at the Courthouse thereof, in Wichita Falls, Texas, by filing a written answer at or before 10:00 o'clock A. M. of the first Monday next after the expiration of forty-two days from the date of the issuance of this citation, same being the 29th day of February A. D. 1960, to Plaintiff's Petition filed in said court, on the 11th day of January A. D. 1960, in this cause, numbered 64,838-B on the docket of said court and styled S. H. WALTON and ANNA B. POWELL, R. L. LABON, J. L. LABON, LILLIAN PRESLEY, C. N. McFARLAND, JAS. W. POWELL, C. M. PHILLIPS, BEULAH POWELL, SUE MURRAY, WALTER POWELL, FAY GRIFFIN, PHIL POWELL, CALLIE McFARLAND, Plaintiffs vs.

All those first named in this writ and to whom the same is directed, DEFENDANTS A brief statement of the nature of this suit is as follows, to-wit: This is a trespass to try title suit wherein plaintiffs allege that on or about December 23, 1959 they were and still are owners in fee simple of the following described land and premises, situated in Wichita County, Texas, to-wit:

Being eighty-seven (87) acres, more or less, out of H&GNRRCO. Survey No. 21, Abstract No. 142, in Wichita County Texas, described as follows:

BEGINNING at the Northwest corner of said Survey; Thence South along the West line thereof 1420 feet; Thence East parallel with North line said Survey 2640 feet; Thence North parallel with West line said Survey 1420 feet to North line said Survey;

THENCE West along North line said Survey 2640 feet to the place of beginning and containing 87 acres of land, more or less.

That on the day and year aforesaid defendants unlawfully entered upon and dispossessed plaintiffs of such premises and withhold from them the possession thereof. Plaintiffs would further show to the Court that they, and those under whom they claim title, have been in peaceable and adverse possession of said lands herein described, cultivating, using and enjoying the same, for a period of more than twenty-five years, and have paid all ad valorem taxes assessed against the same, and that said lands have been enclosed by fence and that no one has asserted any claim or title to said lands for more than twenty-five years, adverse to the title of these plaintiffs.

Wherefore plaintiffs pray that citation issue and that on final hearing they have Judgment for title and possession of above described premises, for his damages, for costs of suit and for such other and further relief as they may be entitled to, either in law or in equity.

If this citation is not served within ninety days after the date of issuance, it shall be returned unserved.

The officer executing this

process shall promptly execute the same according to law and make due return as the law directs.  
Issued and given under my hand and the Seal of said Court, at office in Wichita Falls, Texas this the 13th day of January

A. D. 1960.  
(SEAL)

FLORA COBB, Clerk  
District Courts, Wichita  
County, Texas  
By Wayne Wiggins,  
Deputy

19-41C

THE AMERICAN WAY



A Sinking Ship

Manhattan  
Dept. Store

36 INCH  
FAST COLOR  
PRINTS  
3 Yards  
\$1

36 In. Twistalene  
36 In. Print & Solid  
Cotton Crepe  
36 In. Solid & Print  
Drip-Dri Cottons  
2 Yards  
\$1

VERY SPECIAL  
36 INCH  
Heavy Unbleached  
DOMESTIC  
5 Yards  
\$1

36 Inch  
Pampered Prints  
45 Inch  
Drip-Dri Suiting  
Reg. 98c - Now  
67c

ONE-CENT  
NYLON HOSE SALE  
51 GAUGE - 15 DENIER  
In New Spring Shades  
YOU PAY 69c FOR THE  
FIRST PAIR AND ONLY  
2 PAIR FOR ONLY 70c

MEN'S  
Sport Shirts  
Arrow, Sweet and  
B. V. D. Brands  
Reg. \$4.98 and \$5.95  
\$3.88  
Reg. \$3.98  
Sport Shirts \$2.88

E.O.M.  
end of the month sale

THURSDAY - - FRIDAY - - SATURDAY

Women's Regular 98c  
Silk Scarfs 2 For \$1  
Solid Colors and Prints

Boys' Regular \$1.98  
FLANNEL  
SPORT SHIRTS \$1.57

Women's Regular \$1.98  
OUTING FLANNEL  
GOWNS ..... \$1.77

Boys' \$2.98 INSULATED  
THERMAL KNIT  
PAJAMAS \$1.98  
Size 10 to 16

Women's SHOES  
Values to \$5.95  
Broken Styles and Sizes  
PAIR \$2.99

Men's 59c NYLON  
Stretch SOX 3 pr \$1.00

WOMEN'S PEDAL PUSHERS  
and CAPRIS REDUCED 1/3  
Reg. \$2.98 Values Now \$1.99  
Reg. \$3.98 Values Now \$2.65  
Reg. \$5.95 Values Now \$3.97

SALE! MEN'S LONG SLEEVE  
KNIT SHIRTS  
\$2.98 SHIRTS NOW \$1.99  
\$3.98 SHIRTS NOW \$2.99  
\$4.98 SHIRTS NOW \$3.44

REGULAR 19c and 25c  
Dish Cloths ... 3 for 39c

1-3 OFF BOYS' JACKETS  
\$3.98 JACKETS NOW \$2.65  
\$6.95 JACKETS NOW \$4.63  
\$8.95 JACKETS NOW \$5.97

We Give  
S. & H.  
Green  
Stamps  
Manhattan  
DEPARTMENT STORE  
We Give  
S. & H.  
Green  
Stamps

Shady Lawn Trailer Court, Inc.

FORTY TRAILER SPACES

70 x 30 LOT

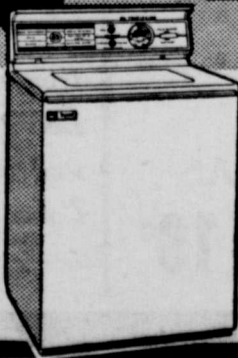
32 1/2 West 3rd St. Pho. JO 9-8137

10 Frigidaire Washer Prices Begin at \$179 WITH TRADE

WHY SETTLE FOR LESS THAN

RATED  
NO. 1

the washer  
rated No. 1



1960  
FRIGIDAIRE  
AUTOMATIC WASHERS

RATED NO. 1 FOR ALL-AROUND PERFORMANCE BY U. S. TESTING CO., INC. In controlled laboratory tests of 6 leading automatic washers! Report No. 57745, dated May 21, 1959.

GARLAND FURNITURE COMPANY

East 3rd Street Phone JO 9-3331 Burkburnett, Texas



# LOOK MA'AM! MORE FOOD \$SAVINGS!



IN BURKBURNETT

QUANTITY RIGHTS RESERVED

WEDNESDAY IS DOUBLE **S.N. GREEN** STAMP DAY  
With Purchase of \$3.00 or More of Merchandise

<b>ICE CREAM</b>	All Flavors Brentwood	1/2 Gal. Carton	<b>59¢</b>
<b>FLOUR</b>	Gold Medal	5 Lb. Bag	<b>49¢</b>
<b>BISCUITS</b>	Freshee	3 Cans	<b>19¢</b>
<b>Grape Drink</b>	Welch	2 Qt. Cans	<b>49¢</b>
<b>DOG FOOD</b>	Top Kick	4 1 Lb. Cans	<b>25¢</b>

CREAMY **CRISCO**  
3 Lbs. **59¢**

**KLEENEX**  
ALL COLORS  
Pkg. of 200 **10¢**

**KRAFT'S PRESERVES**  
PINEAPPLE OR PEACH  
12 Oz. Jar **25¢**

<b>OLIVES</b>	Touie Plain	10 Oz. Jar	<b>49¢</b>
<b>CHERRIES</b>	Thank You Brand	300 Can	<b>19¢</b>
<b>TUNA FLAKES</b>	Tuxedo	1/2's Can	<b>19¢</b>
<b>FOIL</b>	Reynolds	25 ft. Roll	<b>29¢</b>
<b>MACARONI</b>	O. B. Brand	2 7 Oz. Pkgs.	<b>29¢</b>
<b>CHILI BEANS</b>	La Grande	300 Can	<b>10¢</b>
<b>Golden CORN</b>	Del Haven	2 303 Cans	<b>25¢</b>
<b>TAMALES</b>	Austex	300 Can	<b>25¢</b>
<b>CORN FLAKES</b>	Kellogg	12 Oz. Pkg.	<b>25¢</b>
<b>BUTTER</b>	Fairmont Better	Lb. Carton	<b>76¢</b>

## FRESH PORK SALE

COWBOY PORK SAUSAGE  
2 lb roll **59¢**

RANGER FRANKS  
lb pkg **49¢**



<b>LOIN ROAST</b>	Half or Whole	LB.
<b>PORK CHOPS</b>	Loin Rib	LB.
<b>PORK CHOPS</b>	Loin Cuts	LB.
<b>BACK BONES</b>	Lean	LB.
<b>PORK STEAK</b>	Butt Cuts	LB.
<b>PORK ROAST</b>	Loin End	LB.
<b>PORK ROAST</b>	Butt Cut	LB.

CEDAR FARM SLICED **BACON**  
2 Lb. Pkg. **69¢**

STAR-KIST **TUNA CASSEROLE**  
One Package FREE with Purchase of One —OR— 2 7 Oz. Pkgs. **29¢**

STAR-KIST **LOBSTER NEWBERG**  
One Package FREE with Purchase of One —OR— 2 7 Oz. Pkgs.

<b>MUSTARD</b>	Del Haven	303 Can	<b>11¢</b>
<b>KRAUT</b>	Del Haven	2 300 Cans	<b>27¢</b>
<b>HOMINY</b>	Del Haven	No. 2 Can	<b>11¢</b>
<b>SPINACH</b>	Del Monte	302 Can	<b>15¢</b>
<b>PEAS</b>	Del Monte	303 Can	<b>20¢</b>
<b>CATSUP</b>	Heinz	14 Oz. Bottle	<b>25¢</b>
<b>CORN on COB</b>	Libby's	No. 2 1/2 Can	<b>35¢</b>
<b>MACARONI</b>	Ronco	8 Oz. Box	<b>15¢</b>
<b>GLO-COAT APPLIERS</b>		Each	<b>79¢</b>

COLGATE **DENTAL CREAM**  
LARGE SIZE TUBE **57c**

Lustre Creme **SPRAY NET**  
GIANT \$2.00 SIZE **88¢**  
TAX INCLUDED

**PARKER'S FROZEN FOOD**  
HILL-O-HOMES  
Candied Yams  
14 oz pkg **29¢**

**CUT OKRA**  
10 Oz. Pkgs.  
7 for **\$1.00**

WHOLSUN  
Orange Juice  
6 Oz. Cans  
6 for **\$1.00**

**SALE**  
EVER FRESH  
Green Peas  
10 Oz. Pkgs.  
6 for **\$1.00**

Strawberries  
10 Oz. Pkgs.  
5 for **\$1.00**

Cut Corn  
10 Oz. Pkgs.  
6 for **\$1.00**

SIMPLE SIMON  
**PIES**  
APPLE — CHERRY PEACH  
8 in pie **38¢**

CHEF'S **WAFFLES**  
pkg of 6 **10¢**

PATIO **TORTILLAS**  
pkg of 12 **19¢**



Ironing Board Pad and Cover

**88**

# PARKER'S FOOD STORES

# TAKE YOUR PROBLEMS TO CHURCH -- MILLIONS LEAVE THEM THERE

## Training is Important



The Church is God's appointed agency in this world for spreading the knowledge of His love for man and of His demand for man to respond to that love by loving his neighbor. Without this grounding in the love of God, no will long persevere and the freedoms which we hold so dear will inevitably perish. Therefore, even from a selfish point of view, one should support the Church for the sake of the welfare of himself and his family. Beyond that however, every person should uphold and participate in the Church because it tells the truth about man's life, death and destiny; the truth which alone will set him free to live as a child of God.

The proper training of the young is one of the most important tasks in all the world.

Even the animals know this. The mother collie devotes patient hours to the training of her puppies. She will help them learn to walk and run; teach them when to bark and what to eat; warn them of possible dangers and show them whom to trust. Instinctively, she knows that it is her responsibility to provide for their safety and welfare by providing them with proper training.

The same thing is true in even larger measure of human parents. We know that, for their safety and welfare in life, it is important that our children receive the finest training possible — and that we are responsible for helping to provide such training.

A part of the basic training of our children is, of course, moral and spiritual training. A good part of such training must come in the home and family — but we are fortunate in having in our community so many churches, all of which specialize in moral and spiritual training, especially for the young. Wise parents see to it that their children take advantage of this special training which is available and so important for human lives.

Why not take your children — the whole family — to Sunday School and church this week? You will all be helped by the spiritual training you will receive.

*"Train up a child in the way he should go; and when he is old, he will not depart from it."*  
(Proverbs 22:6)

© 1959, Coleman Adv. Serv., P. O. Box 4887, Dallas, Texas

### First Baptist Church

Corner Ave D. and 4th St.  
LEROY MEYER, Pastor  
Sunday School, 9:45 A. M.  
Morning Worship, 10:55 A. M.  
Training Union, 6:15 P. M.  
Evening Worship, 7:30 P. M.  
Prayer Meeting, Wednesday,  
8 P. M.  
"In the heart of the city for  
the hearts of the city"

### First Methodist Church

Leon Turner, Pastor  
Sunday School—9:45 a. m.  
Morning Service—10:55 a. m.  
Junior, Intermediate, and Sen-  
ior Youth Groups at 6:00 P. M.  
Evening Worship, 7:00 P. M.  
Official Board meets every  
fourth Monday  
Visitors are cordially invited  
to attend all our services.  
Nursery is provided for  
every age children for both  
morning and evening ser-  
vices.

### First Church Of Christ Scientist

2156 Avenue H  
Wichita Falls, Texas  
Sunday School for children  
over 20 years of age at 11 A.  
in the Church Edifice.  
Nursery  
services at 11 A. M.  
Wednesday evening services  
8 P. M.

### Assembly of God Church

Rev. Lonnie Finney, Pastor  
Sunday School—10:00 a. m.  
Worship Service—11:00 a. m.  
Sunday Night Service—7:00  
Women's Missionary Service,  
Monday—2:00 to 4:00 p. m.  
Prayer Meeting Service—  
Wednesday night—7:00 p. m.

### First Christian Church

2nd St. and Ave. D  
Rev. Wayne Black  
Sunday School—9:45 a. m.  
Morning Worship—11:00 a. m.  
Prayer and Chi Rho—6:00 p. m.  
Evening Worship—7:30 p. m.

### Church of Christ

Mamie Swearinger, Minister  
Bible Study Sunday—9:45 a. m.  
Morning—10:45 a. m.  
Young Peoples classes, 5 p. m.  
Evening—6:00 p. m.  
Bible Class—Tuesday,  
8:30 a. m.  
Bible study Wednesday 7:30  
We welcome you to any of our

### Church of the Nazarene

Rev. F. Keese, Pastor  
Sunday School—9:45 a. m.  
Morning Worship—11:00 a. m.  
Young People Service—6:45  
Prayer Society—8:45 p. m.  
Evening Worship—7:30 p. m.  
Wednesday—Prayer Meeting,  
8 p. m.

### Grace Lutheran Church

Third St. and N Ave. E  
J. H. KOLLMEYER, Pastor  
The Church of the Lutheran  
Hour, TV's "This Is The Life"  
Sunday, 10 A. M., Sunday  
School and Bible classes.  
11 A. M., morning service.  
LWMS meeting every first  
Tuesday, 2 P. M.  
Sunday School teachers' meet-  
ing and teacher training course,  
every second and fourth Tues-  
day, 6:30 P. M.  
You are cordially invited to  
our services.

### Free Church of God In Christ In Jesus Name

West 6th Street  
W. W. Dixon, Pastor  
Saturday—  
9:45 a. m.—Sabbath School  
11:45 a. m.—Preaching Service  
Thurs. night service—7 p. m.  
We welcome all colored and  
white people to our services.

### Calvary Baptist Church

College and Ave B.  
Ray C. Morrow, Pastor  
10:00 a. m.—Sunday School  
We use the Bible as our only  
literature.  
11:00 a. m. —Song, preaching  
service.  
7:00 p. m. — Young People  
services  
7:30 P. M.— Night preaching  
service.

### Thrift Memorial Baptist Church

Kenneth D. Bradshaw, Pastor  
Sunday School, 9:45—Henry  
Hodges, Supt.  
Morning Worship Service,  
10:50 a. m.  
Evening Worship Service, 7:30  
p. m.  
Training Union, 6:30 p. m.  
Director, W. D. Sage  
Wednesday night Prayer Ser-  
vice, 7:30 p. m.

### Church of God

J. W. JACKSON, Pastor  
10:00 a. m.—Sunday School  
11:00 a. m. Hour of Morning  
Worship  
7:00 p. m.—Evangelistic Ser-  
vices  
7:30 p. m. Wednesday —  
Young Peoples Endeavor  
If you haven't a church home  
we would like very much for you  
to visit us where the full gospel  
is preached in the old time way.  
There is special music and sing-  
ing each service. Each and every-  
one has a warm and hearty  
welcome to come worship with  
us.

### Bible Holiness Church

413 Berry St.  
Pastor, Bro. and Sister Calhoun  
Sunday School, 9:45 a. m.  
Morning worship, 11 a. m.  
Sunday night evangelist ser-  
vice, 7 p. m.  
Saturday night fellowship, 7:30  
p. m.

CORNER DRUG STORE  
George McClarty  
320 East 3rd Street

OLFE FORD COMPANY  
Complete Service and Sales  
Phone JO 9-2275

The Famous Dept. Store  
Charles B. Bowles  
Winston Freeman

BUTLER'S 5 & 10  
Your Complete Variety Store  
222 East 3rd Street

Courtesy of  
FRANKLIN STORE  
Mrs. Francis C. Kauer

CARL'S WATCH SHOP  
Mr. and Mrs. Carl Nelson  
310 East 3rd Street

BILL BRYANT'S  
TRUCK and AUTO SALVAGE  
New and Used Auto Parts

FARMERS CO-OP. GIN  
Paul Hooper, Manager  
501 Avenue B

Cicero Smith Lumber Co.  
E. J. "Buddy" Byars, Manager  
311 Avenue B

United Super Market, Inc.  
Kenneth Palmer, Manager  
Wichita Highway at Tidal

DICKSON OIL CO.  
DICKSON MOTEL

Mathis Chevrolet Company  
Best Place By Far to Buy Your Car  
300 East 2nd Street

THE MANHATTAN  
Complete Department Store  
218 East 3rd Street

SCHROEDER SUPPLY

For the Best in Pump Supplies  
Tidal and South Avenue D

HOFACKET STATION

HUMBLE PRODUCTS  
Avenue D and College

G. R. SLOAN  
SERVICE STATIONS

Smith Motor & Auto Parts  
Automotive Repair — Parts  
Used Cars and Pickups

Ranchouse Gulf Station  
Ranchouse Motel

BILL PENN  
WELL SERVICE

WILLIAMS PETROLEUM  
COMPANY

STEVENS & CAMPBELL  
GROCERY and STATION  
Paul Stevens Tommy Campbell

Burkburnett Florists  
Mr. and Mrs. L. V. Richards  
415 So. Ave. B Phone JO 9-2281

HARLIN A. MILLS  
GRAIN COMPANY

WAMPLER  
INSURANCE AGENCY  
203 North Avenue D

C. D. Shamburger Lbr. Co.  
R. C. Tevis, Manager  
200 West 3rd Street

BELL Service Stations  
of Burk Burnett

Burkburnett Star  
Phone JO 9-2191

Owens & Brumley  
Funeral Home

Preston Dairy Products  
Hugh and Buddy Preston  
219 East 2nd Street

PALACE THEATRE  
MOVIES ARE YOUR BEST  
ENTERTAINMENT

B. and B. GROCERY  
Choice Meats and Groceries  
500 Avenue D Phone JO 9-3701

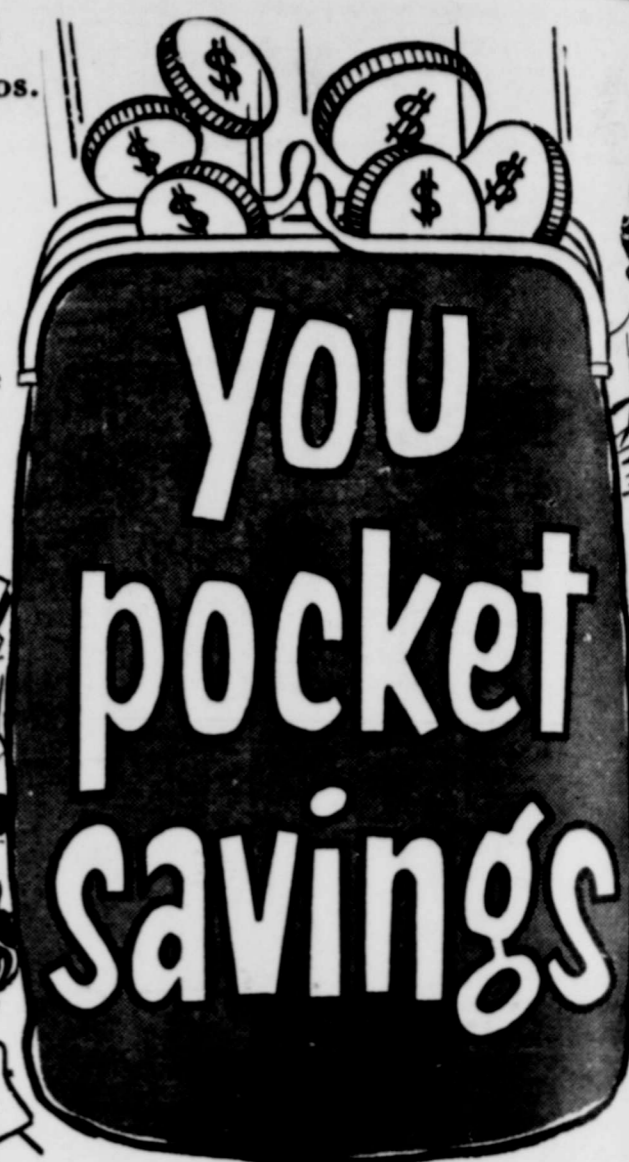
BOYD BROTHERS  
Department Store



# HERE



DOUBLE  
Gunn Bros.  
Stamps  
Every  
Wednesday  
With  
\$2.50 Purchase



MAXWELL HOUSE INSTANT

## Coffee

6 Oz.  
Jar

### 79¢

SHURFRESH

## CRACKERS

1 Lb.  
Box

### 23¢

SHURFRESH

## Jumbo Pies

12 to  
The Box

### 49¢



NIFTY

## Note Book Filler

98c  
Size

### 59¢

BETSY ROSS

## Grape Juice

3

24 Oz.  
Bottles

### 89¢

FOR DELICIOUS MEALS  
**QUALITY MEATS**

Neuhoffs Tennessee Farm

## SAUSAGE

1 lb. bag ..... 59¢

2 lb. bag ..... \$1.17

NEUHOFF'S

## SMOKIES

Lb.

### 59¢

Neuhoff's  
Lone Star

## BACON

LB.  
Tray

### 39¢

Neuhoff's  
Preferred

## Franks

All  
Meat

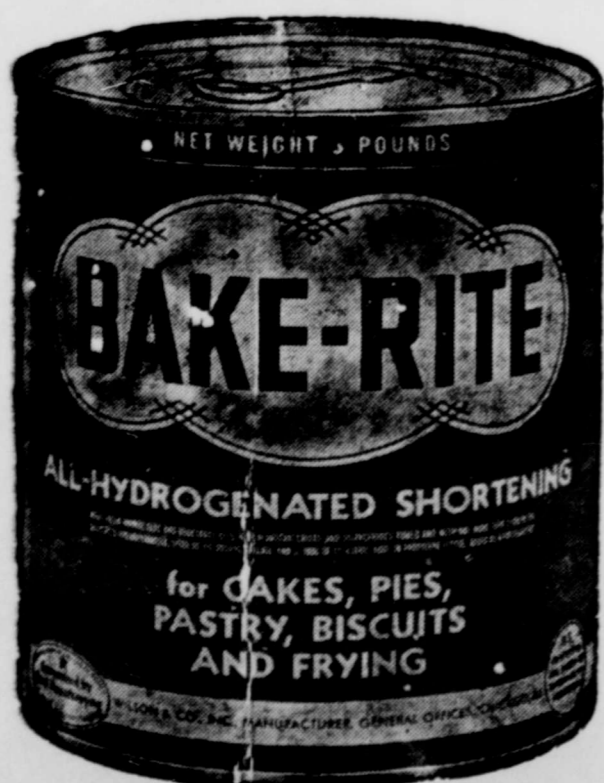
LB.

### 49¢

## Fresh Ground Beef

Lb.

### 45¢



WILSON'S  
BAKERITE  
Shortening

3 LB. Can 

### 49¢



## RED Potatoes

10 lb  
BAG

### 49¢

## RUBY RED GRAPE FRUIT

EACH

CRISP — FRESH

## CARROTS

1 lb.  
Cello  
Bag

### 7 1/2¢

SUNKIST NAVEL

## ORANGES

LB.

### 12¢

KOUNTY KIST

## Whole Kernel CORN

2 12 Oz.  
Cans

ARROW

## POP CORN

2 10 Oz.  
Cans  
White or  
Yellow

WILSON

## All Meat CHILI

No  
Beans

24 oz.  
Can

CARNATION

## TUNA

Family  
Size Can

ELITE CHOCOLATE

## Covered Cherries 49¢



# UNITE SUPER MARKET



Legion Notes

Francis Perry, Commander
Last Friday night we welcomed Mr. Sam Montgomery and his family...

Randlett News

MOLLIE R. ELLIOTT, Reporter

Mr. and Mrs. T. A. Kinnard and Mr. and Mrs. Jimmie Kinard and children visited Mr. and Mrs. Paul Grady of Wichita Falls...

Mrs. Cora Tew Last Rites Monday

Funeral services for Mrs. Cora Tew, 52, who died in a Wichita Falls hospital Saturday afternoon, were held at 11 a. m. Monday at Owens and Brumley Funeral Home chapel.

News From The County Agent

The use of liquid fertilizers is becoming widespread and they are proving to be a good source of plant nutrients. But, points out B. T. Haws, county agent...

Rebekah Lodge No. 67

The Burk Rebekah Lodge No. 67 met in usual form with Cora Lee Harmon, Noble Grand, presiding. After the roll call of officers the minutes of the last meeting were read and approved.

DEN THREE

Den 3 met Wednesday, Jan. 20 at the home of Mrs. Knowles. The Den held opening exercises then painted tea pots.

Mrs. Evelyn Farris Hostess Jan. 25th To Theta Epsilon

Members of Theta Epsilon Epsilon Sigma Alpha, held their regular meeting Monday night, Jan. 25th in the home of Mrs. Evelyn Farris. Mrs. Ruth Ramsey served as co-hostess.

CACTUS CAFE UNDER NEW MANAGEMENT

The Cactus Cafe on the Oklahoma cutoff is now under the management of Mrs. Sam McCuiston and Mrs. Velma Farrell. They feature good home cooked meals and coffee with real cream for only a nickel a cup.

WCS STUDY - LUNCHEON SCHEDULED MONDAY, FEB. 1

The WCS of the Methodist church will continue their study of Africa in the Wesley Room at 10:30 a. m. Monday, Feb. 1st.

UNDER NEW MANAGEMENT CACTUS CAFE

GOOD HOME COOKED MEALS Home Made Pies, Lunches, Fish and Shrimp HOME MADE CHILI AND STEW GOOD COFFEE with real cream 5c

Farm Bureau Pres. Urges Voters to Get Poll Tax Receipts

Pay your poll tax before Jan. 31st if you want to have a voice in selecting those who govern you, the president of the Wichita County Farm Bureau is urging all farmers and ranchers in the county.

George McMackin was greeting friends and a visitor to the Star office Thursday morning.

Charlie Boyd left Wednesday morning for Dallas where he will undergo a general check-up at the Veterans hospital.

A lot of fellows who say what they think don't do enough thinking.

Frank Krajca of Wichita County Farm Bureau said that Farm Bureau on all levels is planning to carry on an intensive citizenship program this year.

Individual participation in election of public officials is especially important this year since it is a presidential election year, the county agriculture leader said.

The county leader said that the Farm Bureau itself is non-partisan and takes a stand only on issues. Policies for the county state and national Farm Bureau were decided last fall and winter in convention held on all those levels.

However, we do urge that each citizen of voting age participate in the party of his choice, not only in casting ballots, but also in individual participation in precinct conventions.

Krajca said that preserving the present form of representative government in a society where individual freedom is guaranteed is the objective of the Farm Bureau citizenship activities.

He who dozes while he drives will rest in pieces forever.

PRICES SLASHED
Following Prices Good Through Saturday, February 6th OR UNTIL STOCK DEPLETED
EXTRA SPECIAL! GARZA FINE QUALITY MUSLIN SHEETS
WHITE MUSLIN Size 81 x 99 Reg. \$2.39 ..... \$1.77
WHITE MUSLIN Size 81 x 108 Reg. \$2.69 ..... \$1.97
GUARANTEED 100 WASHINGS
NYLON HOSE LADIES' 1st QUALITY 60 Ga.—15 Denier 47¢ pr. Reg. 79c Value
MEN'S 1st QUALITY WORK SOX Special! 5 prs .. \$1.00 REGULAR 29c PR. VALUE
BOYS' 10 Oz. SANFORIZED BLUE JEANS Sizes 6-12 \$1.00 pr Reg. \$1.59 Value
1 GROUP BOYS' SPORT SHIRTS Values to \$1.98 Cotton "Wash 'N Wear" and Long Sleeve "Knits" \$1 EACH
1 GROUP MEN'S SUITS and SPORT COATS Values to \$35 .. \$15.97
FINE QUALITY MEN'S E & W HANDKERCHIEFS 10 for ..... 77¢
EXTRA SPECIAL — PIECE GOODS OVER 1,000 YARDS! DRIP DRI PRINTS AND SOLIDS BATES DISCIPLINED FABRICS SPORTS DENIM — 45" GINGHAMS INDIAN HEAD LINENS — POLISHED COTTONS 2 yards ..... \$1.00 Values to 98c yd.
1 GROUP MEN'S WORK BOOTS By ● ACME ● JUSTIN ● FRIEDMAN-SHELBY ● Values to \$16.95 INSULATEDS WELLINGTONS RUFF OUTS STEEL TOES ENGINEER BOOTS EXTRA SPECIAL \$10.97
1 GROUP LADIES' DRESSES 1/2 PRICE
1 GROUP LADIES' SWEATERS and SKIRTS DYED TO MATCH 1/2 PRICE
ENTIRE STOCK Men's and Boys' JACKETS 1/3 OFF
MANY OTHER SPECIALS NOT LISTED
THE Famous DEPARTMENT STORE

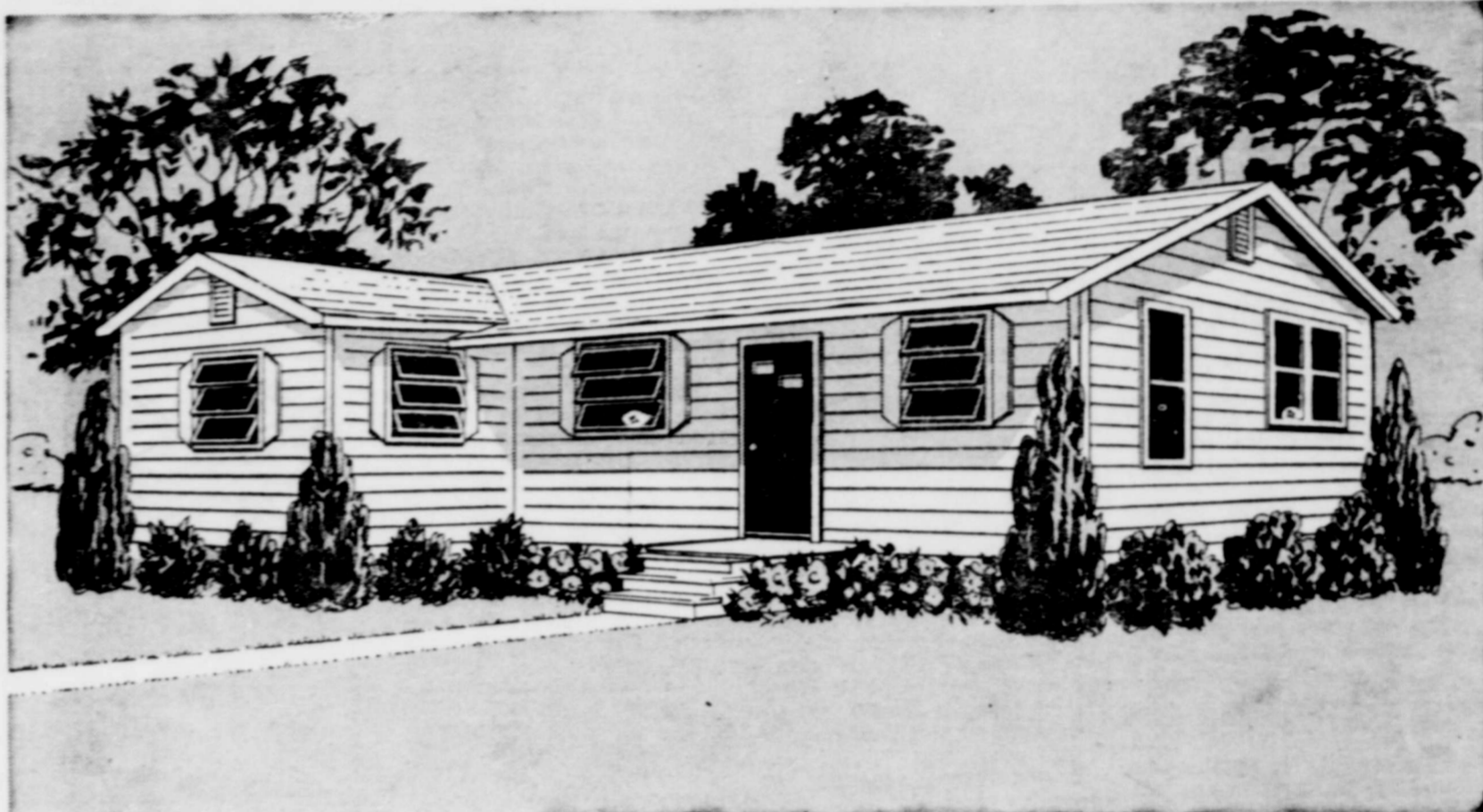
Wichita County Bell Service Station
Open Under New Management
BELL GAS AND ALL NAME BRANDS OIL FOR SALE
CAR WASHING AND LUBRICATION
101 E. Main St. -- Albert Boswell, Mgr.

Buy Auto Liability

From The

Travelers Insurance Co. ||

# OPEN HOUSE This Sunday



**SOUTHERNER**

## \$2695.00

Mr. and Mrs. Gerald Rooden,  
118 So. Ave. B Here in Burkburnett  
Texas are inviting everyone to come  
out Sunday and inspect their new Jim  
Walter home. Be sure to come by  
118 South Avenue B Anytime  
SUNDAY, JANUARY 31, 1960

Yes, this coming Sunday, January 31, is the big  
day Jim Walter is having open house right  
here in Burkburnett, Texas

Come one, come all, bring the family and friends. See for your-  
self why over 45,000 families have chosen Jim Walter to build  
their home.

IF FOR ANY REASON you cannot attend our big open house,  
clip and mail the coupon below. We will be glad to drive out and  
explain how you can own any one of our **25 Different Models.**

### HERE IS WHAT YOU GET IN A JIM WALTER HOME:

- The home of your choice custom built on your lot or farm.
- Lifetime Aluminum Awning Windows.
- Two coats of top grade outside paint.
- Mortgage life insurance at no extra cost.
- First year's fire insurance is paid for you.
- 210 Lb. Shingle Roofing.
- Your home completely paid for in 6 years or less, depending on the model you choose.
- Your interior finish can be financed with any Jim Walter home.
- All financing is handled for you.
- No abstract required.

**ONLY  
\$10  
DOWN**

Over twenty-five beautiful Jim Walter model homes to choose from. A home to meet any family's requirements and any family's budget. Why continue to pay rent, when for the cost of a four cent stamp the Jim Walter folks will explain how you can change your rent payments into house payments.

#### CLIP AND MAIL TODAY!

Mail to the office nearest you  
**JIM WALTER CORPORATION**

I am interested in owning a Jim Walter home and would like more information.

I have a clear deed to my lot.....

Please send literature.....

Please have a representative call on me.....

Name.....

Address.....

Directions if route.....

Lawton, Okla. - 1003 S. Sheridan - Call Collect EL-5-7332  
or Write to P. O. Box 2102, Lawton, Oklahoma

IF IT'S A QUALITY SHELL HOME...IT'S A JIM WALTER HOME!

# JIM WALTER CORP.





Burkburnett Is Growing!

Best Wishes  
to



# BOOMTOWN BOWL GRAND OPENING

3 BIG DAYS  
FRI. - SAT. - SUN.

January 29-30-31

3 BIG DAYS  
FRI. - SAT. - SUN.

THE FOLLOWING BUSINESS MEN OFFER CONGRATULATIONS AND BEST WISHES TO THE BOOMTOWN BOWL:



Wolfe Ford Company  
HAROLD WOLFE — JOE WOLFE

Alexander Service Station  
JACK ALEXANDER MOBIL STATION

BILLS T-V & Appliance  
We Are Sponsoring Two Teams  
Mr. and Mrs. Jessie Bills



*The Manhattan*  
BURKBURNETT'S LEADING DEPT. STORE

Burkburnett Motors  
BOB — PAUL — WYLIE — BLAKE

See Billy the Barber  
OR WE BOTH LOSE



Burk Service Center  
MARION THORNTON

**WHITE**  
Auto Store

WELDON NIX, Owner

*The Famous*  
DEPARTMENT STORE

CHAS. BOWLES  
WINSTON FREEMAN

Western Auto Store  
JOHN PAGE, Owner

**MATHIS CHEVROLET CO.**  
PO BOX 488 BURKBURNETT, TEXAS 569-3381  
Chevrolet - Oldsmobile

*Butler's*  
10



Herring's Hardware  
MR. AND MRS. JOHN HERRING

The Palace Cafe  
Mr. and Mrs. Clyde (Huck) McDonnell

**MORRIS JEWELRY**  
M. G. MORRIS, Owner

Ben Franklin Store  
Mrs. Francis Kauer — Leslie Kauer

The First National Bank  
ESTABLISHED IN 1907

Chamber of Commerce  
MARJORIE HOFACKET, Secretary

City of Burkburnett  
A. W. Newman, City Manager

Corner Drug Store  
GEO. H. McCLARTY

Texas Electric Service Co.  
J. B. ADY, Manager

Boomtown Motors  
PONTIAC — — RAMBLER



**BOWLING RECREATION THE WHOLE FAMILY WILL ENJOY**

**With Our Subscribers . . .**

**G. F. Smith**  
**Mrs. Kay Cline**  
**Mrs. S. M. Harrison**  
**Mrs. Nick Alessi**  
**Bob R. Ivey**  
**George Wright**  
**M-Sgt. C. C. MacKenzie**  
**Herman Brown**  
**Don Short**  
**C. B. Bowles**  
**D. L. Sykes**  
**Howard Henderson**  
**A. J. Simons**  
**Sgt. C. W. Johnson**  
**A. C. Shackelford**  
**G. E. Tereck**  
**Dan Woodard**  
**Mrs. L. O. Campbell**  
**Mrs. Biddie Smith**

**STAR RENEWALS**

**Thomas Day**  
**E. F. Knox**  
**Loyd Morrell**  
**Mrs. Agnes Boyd**  
**R. C. Campbell**  
**Mrs. R. C. Bassett**  
**W. H. Parr, Jr.**  
**S. J. Moreman**  
**Mrs. Bennie McDonald**

**T. P. Head**  
**Lawrence B. Sewell**  
**Mrs. Annie Marine**  
**A. W. Beniot**  
**Frank Ikard**  
**T. J. Ivey**  
**Mrs. A. J. Willis**  
**Mrs. A. C. Whigham**  
**Mrs. J. K. Jones**  
**W. D. Cross**  
**A. G. Bingham**  
**David M. Germany**  
**U. S. Hill**  
**Lowell L. Ladd**  
**Hertis Baber**  
**J. L. Pearson**  
**Mrs. Augusta Ramming**  
**Mrs. John Yeilush**  
**Mrs. Floyd Henry**  
**H. A. Kiesling**  
**James King**  
**O. H. Buzbee**  
**Glenn A. Ladd**  
**John B. Leith**  
**Wilburn Glass**  
**Mrs. James Haley**  
**E. M. Coyle**  
**Arnold Holtzen**  
**R. E. Carnes**  
**R. P. Thaxton**  
**Jim Anderson**  
**Clark Ladd**  
**H. S. Butts**  
**Pop Ivey**  
**Mrs. Wade Campbell**

**H. J. Brown**  
**Anna Freeman**  
**A. C. Auld**  
**J. D. Stegall**  
**Mike Hrazdil**  
**H. L. Martin**  
**Ben Givens**  
**Glen Bear**  
**F. B. Thompson**  
**Mrs. S. E. Askins**  
**C. W. Carter**  
**Mrs. B. H. Preston**  
**J. M. Patterson**  
**H. A. Goodwin**  
**B. F. Hewell**  
**Ralph Davis**  
**A. W. Newman**  
**Leo Evans**  
**Mrs. Ramey Bowman**  
**W. H. Bohner**  
**Virgil Aaron**  
**Lois Smith**  
**Mrs. Jack Duke**  
**J. S. Gore**  
**W. H. Cross**  
**A. R. Bunstine**  
**Paul Schroeder**  
**John G. Morgan**  
**Ella Billingslea**  
**Mrs. John H. Rigby**  
**Major Jane Sewell**  
**W. K. Clayton**  
**Mrs. H. L. Lawson**  
**Herbert J. Salisbury**  
**Roy L. Silkwood**  
**Mrs. Joe Burns**  
**J. A. Johnson**  
**Mrs. M. R. Hewell**  
**John A. Capehart**

**DEVOL NEWS**

**MRS. C. O. WOODLEY Reporter**

Mrs. Gary Moore, the former Oleta Doty, was honored with a bridal shower in the community building Monday night. Hostesses included Mesdames Jim Miracle of Grandfield, Tom Monson, C. S. Monson, Bryan Harrison, J. B. Stevens, Sonny Coles, Gertrude Farmer, Grace Utte, Ernest Wood, Jr., Robert Hopkins and W. M. Harrison, K. B. Utte and T. A. Landers of Grandfield, Mrs. Bob Hinkle of Burk, Mrs. John Hartsell of Loveland, Mrs. Shep Baber, Mrs. Carmon Shaw, Mrs. Mamie Manley of Randlett.

After the many lovely gifts had been presented, cake and punch were served to a large number of guests. Mr. and Mrs. Moore are at home in Burk.

Mrs. Lester Coker returned home last week from California where she has been visiting her father who has been quite ill, but is reported somewhat improved at this time.

Mr. and Mrs. R. A. Odom were Sunday guests of Mr. and Mrs. R. C. Gardner of Grandfield.

Mrs. Carl Powell of Ft Worth visited Mrs. Avis Wood and family and also visited her sister, Mrs. T. P. Randall in Burk.

Mrs. J. P. Eley has returned home from Ft. Worth where she has been visiting a daughter and son-in-law. Mr. and Mrs. Bill Shirley who are parents of a new baby boy who weighed 7 lbs and 4 oz. and was named Nathan Shawn.

Mrs. M. T. Crocker returned home from Okla. City last week where she was at the bedside of a niece who is a patient in a hospital there and is reported seriously ill with a brain tumor.

Mr. and Mrs. F. E. Waldrip of Frederick visited his sister, Mrs. J. B. Stevens and family Sunday. Mr. and Mrs. Willie Miller and children of Grandfield were also guests in the Stevens home Sun.

Among those attending the WMU rally in Frederick Thursday were Mr. and Mrs. John Stevens, Mrs. W. C. Charboneau, Mrs. E. L. McClurkan, Mrs. F. J. Utte and Mrs. Gertrude Farmer.

Its unfortunate that the symptoms of fatigue and of laziness are practically identical.

Keep in the rut too long and you will dig your own grave.

**HIGH SCHOOL HONOR ROLL**

**9th Grade**

Ramona Bridges  
 Charles Davey  
 Pam Duke  
 Mary Durham  
 Billie Eidson  
 Janis Fowles  
 Eddie Gellner  
 Janice Harris  
 Ronnie Harris  
 Janelle Hinkle  
 Christine Jorgenson  
 Robert Kelley  
 Janice Leitner  
 Beatrice Lewis  
 David Littlefield  
 Maxie Mathis  
 Tom Murphy  
 Charles Olson  
 Kathryn Siber  
 Cheryl Simpson  
 Terry Tarbell  
 Marilyn Vaughan

**10th Grade**

Ronald Anderson  
 Ray Brammer  
 Judy Brister  
 Karan Burton  
 Mickey Cornelius  
 Donnie Culpepper  
 Jim Davey  
 Jill Deemer  
 Pat Dulin  
 Chuck Duke  
 Lynn Engel  
 Margaret Faulk  
 Harley Hart  
 Jill Hill  
 Linda Holt  
 Jean Hunter  
 Lahoma Johnson  
 Joene Lambert  
 Sandra Lindsey  
 Wade Morris  
 Judy Murray  
 Dave Nelson  
 Sue Revier  
 Shirley Reynolds  
 Jimmy Seay  
 Patricia Simons

Glenda Turner  
 Daisy Walker  
 Harvey Wilds  
 Howard Wooten

**11th Grade**

Barbara Abbott  
 Karen Abdouch  
 Sandra Archer  
 Nita Bingham  
 Sharon Boyle  
 Shirley Boyle  
 Loretta Brocker  
 Johnnie Cools  
 Beverly Enloe  
 Wayne Gray  
 Wendlyn Goins  
 Shirley Hodges  
 Jo Ann Hervey  
 Judy Lattimore  
 Carole Obley  
 Patsy Preston  
 Irma Ned Riley  
 Judy Roy  
 Virginia Roebuck  
 Shirley Thaxton

**12th Grade**

Janice Burk  
 Jo Ann Clayton  
 Barbara Coles  
 Don Craig  
 Kayrene Davis  
 Donna Gibson  
 Grady Grizzle  
 Pat Hart  
 Judy Hofacket  
 Ruby Pearl Lange  
 Janice Martin  
 Dorothy Mason  
 Lafaye McDonnell  
 Eloise Morris

**FLAMING ARROW**

The Flaming Arrow met Monday, Jan. 25, a regular patrol meeting. The leader is Oliver McCall and Ronald Knowlton.

Mr. and Mrs. W. E. Ed their son, Gerald, at VA Hospital in Dallas Monday, Gerald underwent abdominal surgery Tuesday. He will be confined to hospital for quite some time.

Marian Parrack, Bobby Robinson, Linda Roark, Morris Seay, Tony Turk.

**PALACE THEATRE**

50c 35c  
 Week Nite Open  
 BURKBURNETT, TEXAS

FRI. - SAT., Jan. 28-29

Man Without a Star

RICHARD BURTON

Curse of the Undead

SUNDAY - MON. Jan. 31st - Feb. 1st

The Last Man

PAUL MUNI DAVID

Joy Ride

RAD FULTON

TUES. - WED. Feb. 2nd - 3rd

Sign of the Gladiator

ANITA ECKBERG CHELO

Man Bear

ROCK MADON

Effective daily February 1 through May 15

**FARES SLASHED**

**1/2 OF THE 1-WAY FARE for the ROUND TRIP**

Both First Class and Coach Travel

from F.W.&D. points to Colorado Springs and Denver



**Burlington Route**

**FORT WORTH AND DENVER RY**

See your F.W.&D. Agent for Tickets and Reservations

Effective February 1 through May 15, a round trip ticket from any point on the Fort Worth and Denver to Colorado Springs and Denver will cost you just one and one-half times the one way fare for the round trip. Safe, comfortable, dependable Burlington service is yours at by far the lowest cost of any type of transportation.

**TRINITY Lutheran Church**  
 The Church of Radio's Lutheran Hour and The Family Worship Hour and of Television's "This is The Life"

Lutheran Hour  
 Frederick-1670, 9:30 a. m.  
 Bible classes and Sunday School, 10:00 a. m.  
 Public Worship Service, 10:45 a. m.

"This is the life, Wichita Falls Channel 6, 10:30 a. m.

Tuesday, Confirmation class, 4:15 p. m.

Tues., Men's club, 7:30 p. m.

Wednesday—

Exec. Board meeting 7:30 p. m.

Walther League, 8:00 p. m.

Mixed Choir, 9:00 p. m.

Thurs., Ladies Aid, 2 p. m.

Saturday—

Saturday School, 9:00 a. m.

Confirmation Classes, 9 a. m.

Junior Choir, 10:15 a. m.

Membership Group Discussion, 1:30 p. m.

A friendly welcome to you and yours.

Rev. L. Boriack, Pastor.



**Grand OPENING**



**BOOMTOWN BOWL**

1101 WICHITA HIGHWAY

BURKBURNETT, TEXAS

**3 BIG DAYS**  
 FRI. - SAT. - SUN.

**JANUARY 29-30-31**

**BIG DAYS**  
 FRI. - SAT. - SUN.

**PLENTY OF FREE PARKING AREA**  
**FREE NURSERY WITH ATTENDANT**  
**FREE BALLOONS FOR THE KIDDIES**  
**FREE COFFEE AND DO-NUTS**



**Match Games by Some of the Area's Top Bowlers**  
 In All Divisions — From 10 Years Through Class A Bowlers



**BE SURE AND ENTER YOUR TEAM IN THE LEAGUES THAT ARE FORMING NOW**

**Be Sure and Come Out and Register for the List of Valuable Free Prizes**

**DRAWING EVERY HOUR FROM 9:00 A. M. TO 12:00 MIDNIGHT**

**PRIZES CONSIST OF THE FOLLOWING ITEMS**

- FREE BOWLING
- 2 BOWLING BALLS (CUSTOM FITTED)
- 2 PAIR BOWLING SHOES
- 2 BOWLING BAGS

# All Insurance is the same 'til you have a claim

**Burk Insurance Agency**  
**HOWARD CLEMENT**  
New Location—Next To Legion Hall

## JUNIOR HIGH HONOR ROLL

Darrellyn Edward  
Marilyn Groenewold  
Brenda Hillis  
Ronald Knowles  
Joy Roberts

7-4 Larry Bills  
Jan England  
Gerald Greenup  
Lynn Halsey  
Peggy Hilburn  
Brenda Marine  
Joe Montgomery  
Margaret Veach

7-5 Twila Bridges  
Jimmy Casen  
Sheila Davey  
Paul Gilchrist  
Robert Jackson  
Lora Jordan  
Johnny Karstetter  
Judy Morgan  
Jean Page  
Perry Dale  
Dale Perry  
Jerry Warren  
Carole Yarbrow

8-1 Doris Calhoun  
Myra Knowles  
Michael Morris  
Dorothy Reynolds  
Dixie VanReenan  
Donna Williams  
Bruce Strickland

8-3 Bill Byers  
Idolia Jenkins  
Johnny Koller  
Mitchell Miller  
Judy Monson  
Betty Rambo

8-4 Glen Chitwood  
Wanda Gorham  
Gustena Lawson  
Louise McDonald  
Jane Sage  
Fleta Smith  
Kay Shaw

## ARROWHEAD CAMPFIRE

Kathy Reasoner was hostess to the Arrowhead Campfire girls and guardians when they met on Wednesday, Jan 20th in the home of Mrs. Page Brown.

The meeting was opened with prayer. We had an interesting discussion on "Conservation of Trees and Wildlife." We then had a Charter Ceremony. We answered the Wohelo call, gave the Handsign and sang "The Campfire Law". After the candle lighting ceremony we sang "Wohelo for Aye. Our group charter was presented by Mrs. Brown, as well as membership cards for every girl, guardian and sponsor. As the flames were extinguished we formed our friendship circle and sang Green Trees and Taps.

Attending were Peggy Anderson, Judith Bowles, Jan Brown, Carol Dickson, Anita & Phyllis Kiesling, Sylvia McDonald, Kathy Reasoner, Stephanie Slusher, LaQuita Stout, Mrs. Page Brown and Mrs. Raymond Stout.

Seeing is believing, if you see it in print.

Have character, don't be one.

**See LEO For Sand and Gravel DRIVEWAY MATERIAL FILL DIRT LEO BRYANT**  
521 Tidal Ph. JO-9-3704

**Burk Transit Mix Concrete Co.**  
Sand and Gravel - Fill Dirt and Chat  
IMMEDIATE DELIVERY  
Satisfaction Guaranteed  
Phone JO 9-2741  
102 East College NIGHTS JO 9-3775  
H. SALES, Owner

**Just one bottle of McKesson's Vitamin C Tablets gives you the Vitamin C of five crates of average oranges!**

It is vital for you and your children to have the proper daily amount of Vitamin C. Start your insurance with strict attention to nutrition supplemented with plenty of vitamin C... in order to help build body resistance to colds and other wintertime illnesses. Make sure! Supplement your diet with McKesson's Vitamin C (ascorbic acid) Tablets—to insure a full supply of this precious vitamin each day.

**Special Money-Saving Offer At Your Drug Store—Be sure you have a good supply of McKesson's Vitamin C Tablets to start the winter. Your druggist has this special offer for a limited time—2 large 100-tablet bottles for the price of only 1! So, stock up now! And remember, each bottle of McKesson's Vitamin C Tablets (250 mgm strength) contains as much Vitamin C as five crates of average oranges.**

**2 FOR THE PRICE OF 1 BETTER.. by MCKESSON**

**CORNER DRUG STORE BURKBURNETT, TEXAS**

## Mrs. R. C. Chambers Hostess Monday To Fuller Circle

The Fuller Circle of the First Baptist church met in the home of Mrs. C. R. Chambers Monday afternoon.

Mrs. Brack Preston conducted the meeting. Mrs. W. R. Carswell gave the devotional and led the group in prayer for a year of work and service.

The club voted to buy ingredients for stew. Mrs. Teal made the stew. Mrs. Browning, a salad, and Mrs. Brack Preston, angel food cake, to take to the Johnson home as our community mission work for the month. Also we took soup and fruit to Mrs. Hudgeons whose son had been burned.

Mrs. Preston talked on work done in Cuba and the situation there in relation to the US.

Cookies and coffee were served to Mesdames Preston, Carswell, Vaughn, Teal, Short, Ady, Hinkle, Browning, Horr and Kent.

## GRADE SCHOOL HONOR ROLL

4-1—Olson  
Paul Porter  
Tami Abernathy  
Jeff Beavers  
Patricia Bryant  
Sharon Holman

4-2—Harkrider  
Mike Abdouch  
Kenneth Hahaffey  
Janice Cozby  
Rebecca Meacham

4-3—Owen  
Eddie Gann  
Sammy Henry  
Johnny Mitchell  
John Page  
Rusty Todd  
LaDonna Beasley  
Linda Fisher  
Sheri Garland  
Amy Hillis  
Lynne Kelley  
Barbara Koenig  
Treva Ladd  
Nancy Malone  
Pam Six  
Kathryn Reed

4-4—Dunn  
Gail Gilchrist  
Daryl Knowles  
Bonnie Lanig  
Susan Leitner  
Ulana Ludeke  
Lance Merchant  
Linda Mitchell

4-5—Wineinger  
Cathy Robison  
Steven Alcott  
Jimmy Bruton  
Candy Monson  
Cathleen Mitscher  
Randy Clement  
Ronald Butcher

5-1 Sandra Abernathy  
Phyllis Kiesling  
Loretta Potts  
Janina Inman  
Randy Morine  
Laquita Stout

5-2—VanReenan

## PITTSBURG PLATE GLASS MIRRORS AT BOYD BROS.

**INCOME TAX SERVICE**  
REASONABLE RATES  
MOST ECONOMICAL FORMS USED  
HOURS: 9:00 A. M. to 6:00 P. M.  
After 6:00 P. M. by Appointment Only  
MRS. RUSSELL DUVALL  
612 1/2 East 2nd Street Phone JO 9-3718  
BURKBURNETT, TEXAS

## UNEXCELLED AMBULANCE SERVICE DAY OR NIGHT

**A REPUTATION BUILT ON INTEGRITY**  
Burkburnett Phone JO-9-3361  
Wichita Falls Ph. 322-3181  
CITY CALLS . . . \$5.00  
Others According to Distance  
All Calls Are Strictly Cash  
**Owens & Brumley Funeral Home**

## See LEO For Sand and Gravel DRIVEWAY MATERIAL FILL DIRT LEO BRYANT

521 Tidal Ph. JO-9-3704

## Irvin J. Vogel LAWYER

514-516 Wichita Nat'l Bank Bldg. Wichita Falls, Tex.

## Bill Meachum Sally Mitchell Bonnie Moore Tona Nix Carol Potter

6-2—Morton  
Karen Bentley  
Eddie Bumpus  
Mary Christian  
Frankie Hunter  
Terry Key  
Gary Koenig  
Johnny Nelson  
Nancy Northcott  
Wallace Robinson  
David Mooney  
Sharon Swearingen

6-3—McCullough  
Beth Byers  
Judy Masters  
Valoree Matherly  
Frances Perry  
Jimmy Goins  
Oliver McDonald  
Phil Seay

6-4—Matherly  
Yvonne Davis  
Linda Eidson  
Larry Malone

## Mrs. W. E. Goins and Katie Fink visited Gerald Goins at the Dallas VA hospital Sunday.

If It's For Sale Advertise!

**7 for COLDS take 666**

**Cliff Wampler General Insurance**  
AUTO BUSINESS HOME  
Phone JO-9-3161  
203 N. Ave. D

**UNEXCELLED AMBULANCE SERVICE DAY OR NIGHT**  
A REPUTATION BUILT ON INTEGRITY  
Burkburnett Phone JO-9-3361  
Wichita Falls Ph. 322-3181  
CITY CALLS . . . \$5.00  
Others According to Distance  
All Calls Are Strictly Cash  
**Owens & Brumley Funeral Home**

**See LEO For Sand and Gravel DRIVEWAY MATERIAL FILL DIRT LEO BRYANT**  
521 Tidal Ph. JO-9-3704

## Irvin J. Vogel LAWYER

514-516 Wichita Nat'l Bank Bldg. Wichita Falls, Tex.

## Bill Meachum Sally Mitchell Bonnie Moore Tona Nix Carol Potter

6-2—Morton  
Karen Bentley  
Eddie Bumpus  
Mary Christian  
Frankie Hunter  
Terry Key  
Gary Koenig  
Johnny Nelson  
Nancy Northcott  
Wallace Robinson  
David Mooney  
Sharon Swearingen

6-3—McCullough  
Beth Byers  
Judy Masters  
Valoree Matherly  
Frances Perry  
Jimmy Goins  
Oliver McDonald  
Phil Seay

6-4—Matherly  
Yvonne Davis  
Linda Eidson  
Larry Malone

## Mrs. W. E. Goins and Katie Fink visited Gerald Goins at the Dallas VA hospital Sunday.

If It's For Sale Advertise!

**7 for COLDS take 666**

**Cliff Wampler General Insurance**  
AUTO BUSINESS HOME  
Phone JO-9-3161  
203 N. Ave. D

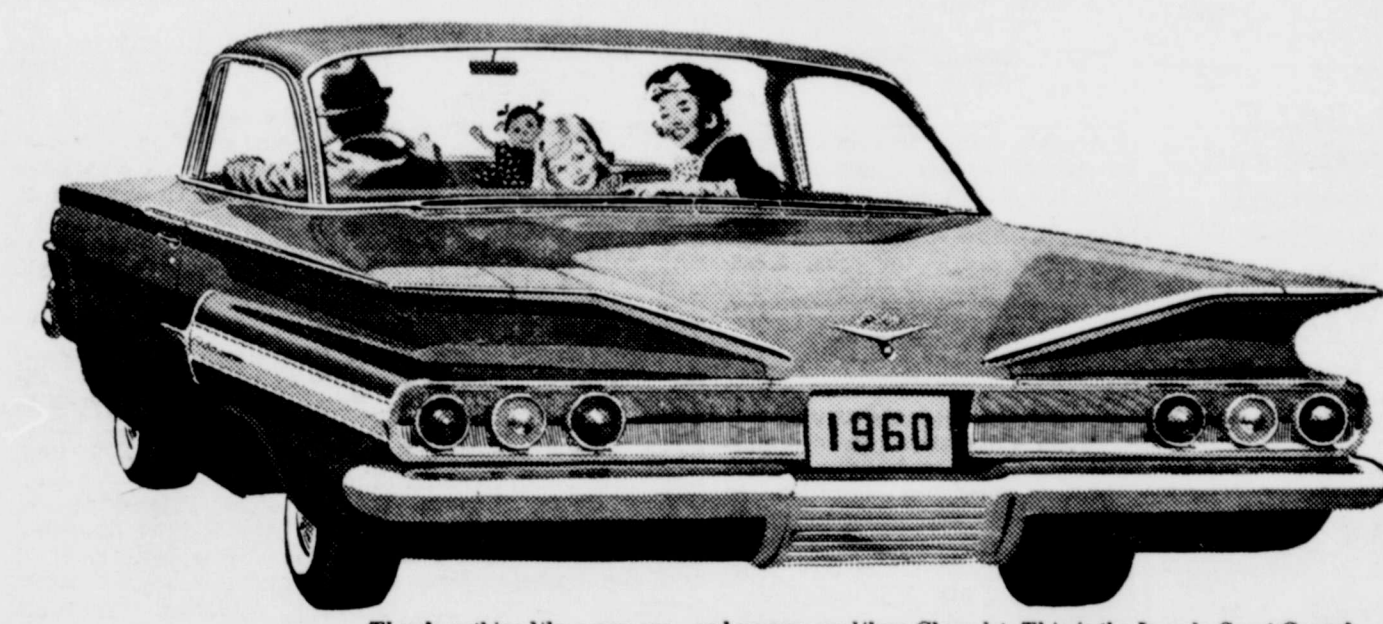
**UNEXCELLED AMBULANCE SERVICE DAY OR NIGHT**  
A REPUTATION BUILT ON INTEGRITY  
Burkburnett Phone JO-9-3361  
Wichita Falls Ph. 322-3181  
CITY CALLS . . . \$5.00  
Others According to Distance  
All Calls Are Strictly Cash  
**Owens & Brumley Funeral Home**

## See LEO For Sand and Gravel DRIVEWAY MATERIAL FILL DIRT LEO BRYANT

521 Tidal Ph. JO-9-3704

## Irvin J. Vogel LAWYER

514-516 Wichita Nat'l Bank Bldg. Wichita Falls, Tex.



There's nothing like a new car—and no new car like a Chevrolet. This is the Impala Sport Coupe!

**GO '60 GO CHEVY!**

**NOW- THE CAR THAT STARTS THE SIXTIES WITH SO MUCH THAT'S NEW SO MUCH THAT'S DIFFERENT ..AND SETS THE PACE WITH LOWER PRICES!**

Chevrolet speaks of the Sixties like no other car—with a broad accent on spaciousness, stirring new concepts in styling and strong emphasis on spirit and thrift.

Step inside this superlative '60 and look at the worlds of room around you: head room, hip room, shoulder-squaring room. Note how Chevrolet's engineers have further flattened and narrowed the transmission tunnel to give the middle man more foot room. Chevrolet's greater roominess is inside where you want it—not outside in useless body overhang.

You'll find economy teamed with performance in a new standard V8, engineered to deliver up to 10% more miles for every gallon, or the strapping Hi-Thrift 6.

And riding comfort in the new one is a never-ending treat, thanks to Full Coil spring suspension. There are also thicker, newly designed body mounts that filter noise and vibration to the vanishing point, more rigid frame and many other engineering advances.

But you'll have to drive the Sixty sizzler yourself—that's the clincher.

Why not see your Chevrolet dealer now—for a drive and the happy details on Chevy's new lower prices.

See The Dinah Shore Chevy Show in color Sundays, NBC-TV—the Pat Boone Chevy Showroom weekly, ABC-TV.

Now—fast delivery, favorable deals! See your local authorized Chevrolet dealer.

**MATHIS CHEVROLET COMPANY**  
300 East 2nd Street Phone JO 9-3381 Burkburnett, Texas

# Why Buy Less Than The Best?

THE LARGEST MULTIPLE LINE INSURANCE COMPANY IN THE WORLD. SEE YOUR AGENT. INSURE With The TRAVELERS INSURANCE CO.

BURK INSURANCE  
Howard Clement  
Phone 9-3161 — Next to Legion

### FOR RENT

FOR RENT — Two room modern furnished house. Ph. JO 9-3651 or JO 9-3738. 1-CZ

FOR RENT — Modern furnished apartment. Ph. JO 9-3331. After 5 p. m. JO 9-3694. 12-CZ

FOR RENT — 3 room modern unfurnished house. Large rooms. Newly decorated. 302 W. 3rd St. Phone JO 9-3110. 18-CZ

FOR RENT — Neat 2 room furnished house. Call JO 9-2385 or JO 9-3422 after 3:30 p. m. weekdays, any time Saturday and Sunday. 20-1tc

FOR RENT — 3 room furnished apartment. \$12.50 a week all bills paid. 224 E. College. Ph. JO 9-3306. 20-1tc

FOR RENT — 4 room modern unfurnished house. 510 Glendale. Phone JO 9-2372. 20-1TP

FOR RENT — Furnished private house. 3 rooms, full bath. Hardwood floors, venetians. Nice and clean. Couple. Reasonable. 608-2 S. Harwell. 20-1TP

FOR RENT — 3 room modern furnished house. Ph. JO 9-3630. 20-1TP

FOR RENT — Furnished two bedroom home in Wichita Falls. See George Magee, 716 Glendale. Burkburnett. 20-1TP

FOR RENT — 2 bedroom furnished duplex apt. Large living room, plenty of large closets. Available Feb. 1st. Inquire at Cactus Cafe, Okla. cutoff highway. 20-1TP

FOR RENT — 3 room modern furnished house. Also nice trailer spaces. Mrs. Jack Duke, 114 N. Ave. D. 20-1tc

### FOR SALE

**FAMILY MONUMENTS**  
Unconditionally Guaranteed  
**DAVE McNEILL**  
Burkburnett  
Representative For  
Winters Monument Co.  
Phone JO 9-3753

**FOR SALE**  
107 Sunset Drive. \$1,000 down, small monthly payments.  
**BURK INSURANCE AGENCY**  
305 Ave. C. Ph. JO 9-3333 3-CZ.

**FOR SALE**  
**Residential and Commercial Properties**  
See **Cliff Wampler**  
Real Estate Broker  
"Licensed and Bonded"  
Phone JO 9-3161  
203 North Avenue D. 37-CZ

### FOR SALE

TWENTY ACRES. 1,000 ft. frontage. Beautiful home site. Will sell all or part. Faces paved road. Close in.

**Cozy Two Bedroom Home.**  
Spacious kitchen, wall to wall carpeting in living room. Two blocks from town. Only \$4,000.  
**Pretty Two Bedroom Home**  
With Family Room. Attached garage. Fenced yard. Only \$9,250.00.

**OLDER 3 BEDROOM HOME**  
with separate dining room, garage, water well. Lots of pecan and shade trees. 120 ft. frontage by 420 ft. deep. Zoned for business. Only \$10,500.00.  
**JO SMITH REALTY**  
Phone JO 9-3490 19-CZ

**ATTENTION VETERANS**  
No down payment on new 3 bedroom home.  
**B. H. ALEXANDER, Jr.**  
Off. JO 9-2831—Home JO 9-3434

**FOR SALE** — New 3 bedroom home. 3% down payment.  
**F. H. A. Loan**  
**B. H. ALEXANDER, Jr.,**  
Off. JO 9-2831 Home JO 9-3434 33-CZ

**FOR SALE** — Home made cakes pies and cookies. Will make birthday and party cakes. Mrs. Fred Burns, 208 Linden, Phone JO 9-3732. 15-CZ

**FOR SALE** — Registered male Terrier Bulldog. 7 1/2 Glendale, Mrs. Bones. 20-1TP

### FOR SALE

FOR SALE—57 Morris Minnor, English made. \$900. Ford pickup, six ply tires, \$295.00 Phone JO 9-3560. 20-1TP

FOR SALE — Three Bedroom home, 3 years old. Buy small equity and assume monthly payments. 200 Linden. 20-1TP

FOR SALE — 3 room modern house. Deep water well. Good lot. Two blocks from high school \$4,000.00. Call JO 9-3571 or JO 9-2595. 4-CZ

FOR SALE—Nice size laying hens. 75c each. First house across Burk bridge. Bertha Day. 20-1TP

### SERVICES

**FLORAL ARRANGEMENTS**  
MADE TO ORDER. Come in now, leave your order for Easter Lily. Mrs. Ruby Harris' Studio, 405 E. 2nd St. Ph. JO 9-2492. 20-1TC

**SEPTIC TANK PUMPING SERVICE**—Prices according to size. Phone JO 9-3265. If no answer dial JO 9-3605. 20-CZ.

**SERVICES** — For expert TV repair, call Home Furniture Co., day or night, JO 9-2801 or JO 9-2743. 9-CZ

Bring your SEWING MACHINE TROUBLES to Tony's Hat Shop 313 Ave. D. 45-CZ

Have your FELT HATS cleaned now before laying away. Tony's Hat Shop, 313 Ave D. 45-CZ

**CHECK YOUR TV TUBES**  
FREE AT HOME FURNITURE.  
313 E. Main. Phone JO 9-2801. 44-CZ

**SERVICES**—I install carpets, second hand or new. Small job or large. Call me for an estimate today. JO 9-3316. 24-CZ

**WADDELL'S RADIO & TV** — Service calls \$3.00. Expert repair. 101 Vaughn. Ph. JO 9-3676. 11-CZ

**MONUMENTS**  
**HENDERSON MONUMENT CO.**  
A Manufacturer Since 1906  
5001 Jacksboro Hwy. Wichita Falls  
Ph. 767-7750 Res. 767-1064  
A monument at a price any family can afford.  
Rock of Ages — Georgia Marble Stone Eternal 8-CZ

**TAILORING** — Ladies suit and dressmaking. Mrs. Asako Kreidler, 323 E. 4th St. 20-1tp.

**SERVICES** — Call me for large or small carpenter jobs. Reasonable prices. JO 9-2211. 19-2tc

### WANTED

**RURAL HOUSEWIVES**  
Avon Cosmetics offers opportunity for growing income through servicing families in your neighborhood. Openings in Clara, Thrift and South Burkburnett. Rural. Write Mrs. Morton, Box 1898, Wichita Falls, 19-3tc.

**WANTED** — Part time work, typing or bookkeeping. Also will baby sit day or night in my home 602 Forest. 20-1TP

**WANTED**—Would like ride to Wichita Falls 5 days a week, 8:00 to 5:00. 416 Elm. Ph. JO 9-2244. 20-1TP

**WANTED** — Dependable woman to baby sit in my home 5 days a week. References. Ph. JO 9-2362. 20-1TP

**MALE HELP WANTED**  
Carnation Company of Texas has opening for retail milk route salesman and solicitors. Prefer married men 22 to 35 years of age. High School graduates. Sales experience helpful but not necessary. Employee group insurance benefits and paid vacation. Apply in person at  
**CARNATION COMPANY**  
326 Ohio Street  
between 1:00 and 4:30 p. m. or call 723-8191 for appointment. Ask for Curtis Aday. 20-1TC

We're busy as a cranberry merchant, returning cranberries. Perseverance indicates a strong will; obstinance a strong won't. Time is that expense of space between paydays.

Ulcers aren't caused by what you eat, but what's eating you. A person can get just as drunk on water as on land.

### NOTICE

NOTICE — We cut dates on monuments in any cemetery. Boydston, Box 445, Grandfield, Okla. 17-4TP

### For Sale in Burk

Equipment for Saddle and Shoe Shop

Two stitchers, two patch machines, finisher, rivet machine, cutter and skiver two glass show cases, light fixtures, racks, work bench and tables, plenty of hand tools and saddle racks. Some merchandise. Total price, \$1,250.00  
Call LYrick 9-2187  
Randlett, Oklahoma  
BILL SLABAUGH

### Clearance Sale

1/3 OFF  
ON  
All Merchandise  
(Except Paint)

Must Vacate Building By February 10th  
**O. S. WILSON**  
Trading Post  
305 South Avenue D

### Goins Home Scene Forum Club Meeting

On Jan. 14th, the Forum Study club met in the home of Mrs. Charles Goins for a business meeting. Mrs. Don Mills, presided.

Roll call was answered by 15 members. Officers and committee chairmen made their reports. The Valentine dinner was discussed. Mrs. Jack Northcott, vice president, appointed the nominating committee to nominate the officers for next year. The committee, Mesdames Joe Wolfe Gene Bankhead and Tom Burnett, will submit their report at the next meeting.

Mrs. Huck McDonnell had charge of the program for the evening. She discussed, Our Foreign Policy, using the topic Foreign Aid.

The benediction was given by Mrs. Tom Burnett.

Mrs. Jack Northcott won the door prize. This money is put into the park beautification fund.

Refreshments were served to the following members: Mesdames Tom Burnett, B. H. Preston, Jr., Hugh Preston, Jr., Don Swan, Jack Northcott, Don Mills, Eugene McNish, Gene Bankhead, Don Holtzen, Lonnie Bankhead, Wallace Landrum, Joe Wolfe, Edwin Green, Huck McDonnell, and the hostess, Mrs. Charles Goins.

### BLUE ANGELS VALENTINE PARTY HELD TUESDAY AFT.

The Blue Angels Jr. Nursing club held a Valentine Party Tuesday afternoon in the home of Dr. and Mrs. Phillip A. Carpenter. Mitzi Mills president, served punch from a beautifully decorated refreshment table. The centerpiece was a gold vase filled with pink roses and encircled by a valentine heart and net. The punch bowl was surrounded by pink rose buds.

During the afternoon, the girls made valentines and covered a valentine box for the Fowler Home in Wichita Falls. They also discussed the Heart Fund Drive scheduled for February and planned to take part in it.

Following the business meeting, the girls went to the bank and officially opened the annual Polio Drive by presenting posters to Buster Morgan, president of the Burkburnett Chamber of Commerce, and George McClarty, mayor of Burkburnett. Alvin Hill and George Counter made pictures of the group. Mesdames Jack Mathis, Joe Wolfe, Ollie Ratliff and Alvin Hill helped Mrs. Carpenter with the party.

The Blue Angels are sponsored by the Burkburnett Study club.

Ulcers aren't caused by what you eat, but what's eating you.

A person can get just as drunk on water as on land.

### Forum Study Club Met Recently In Don Swan Home

A regular meeting of the Forum Study club was held in the home of Mrs. Don Swan. Roll call was answered by 14 members. Mrs. Don Mills presided over the business.

Mrs. Eugene McNish gave a report from the social committee. Mrs. Hugh Preston, Jr., gave a departmental chairman committee report.

Several projects were discussed. The club project committee is going to present a petition to the city council for the improvement of traffic safety in the school area. We are also to look into the requirements for food handlers to have X-rays.

The club members voted to set aside \$50 in a special fund as our project for park beautification. We will cooperate with the other civic organizations on the project of beautifying the swimming pool area.

The program, Dr. Lillian Gilbreath, Industrial Engineer, was presented by Mrs. Tom Burnett. The meeting closed with a bible quiz. Mrs. Don Mills won the door prize.

### CHEERFUL BLUEBIRDS

On Saturday, Jan. 16th, Mrs. Phillips and Mrs. Gene Bankhead took our group to Electra where we boarded a train and rode to Wichita Falls. After we arrived in Wichita we had refreshments at the depot.

Tuesday, Jan. 19th, we had our regular meeting at Mrs. Phillips home. We made pillboxes by painting little boxes and decorating the tops.

Mrs. Benton and Mrs. Story served refreshments to the following girls: Cathy Alexander, Brenda Bankhead, Patricia Bankhead, Debbie Holtzen, Meredith Kelly, Cynthia Parrish, Cheryl Phillips, Sonja Gayle Preston, La Deana Sneed, Denise Story, and Kathy Unger.

### FRIENDLY BLUEBIRDS

The Friendly Bluebirds met Jan. 9th at the hut. We elected officers for the next six weeks. They are: pres., Treva Ladd; vice pres., Karan Metz; sec., Kathy Reed; treas., Sheri Garland; candle lighter, Pam Six; song leader, Barbara Koenig; reporter, Linda Fisher; monitors, Jan Vincent, Lynne Kelley, Diana Swan.

We all enjoyed the refreshments served by Barbara. On the following Monday, our leader, Mrs. Frances Ladd and our assistant leaders, Mrs. Paul Fisher and Charlotte Wallace, took us to Wichita Falls to the Meads Bakery. They gave us a hot donut. Then we went to the drug store for refreshments. We all had a nice time.

### Friendship Class Met In Home Mrs. E. H. Logan

The Friendship class of the First Baptist church met in the home of Mrs. E. H. Logan with group 2 as co-hostess.

Mrs. E. E. Gibson led the opening prayer. Mrs. C. R. Chambers conducted a short business session. Mrs. R. P. Thaxton, teacher presented year books to class members. The class gave a rising vote of thanks to Mrs. Thaxton and to Miss Reed who helped with the books.

After the reports were given, by secretary, Mrs. J. D. Kennedy and group leaders, Mrs. H. S. Butts called on Mrs. Kennedy who gave a beautiful devotional on the Whiteness of Winter comparing the older years of our lives to the winter months and giving some scriptures and ways of spending our winter months thus growing old gracefully and without fear.

Mrs. Butts conducted a game on the ABC's in bible names.

The hostess served pie and coffee to Mesdames R. W. Kent, Lena Hinkle, J. D. Kennedy, Casey Logan, Will Teal, C. R. Chambers, H. D. Smith, H. S. Butts, Clyde Peed, B. F. Hewell, Cordia Keller, Jim Ady, E. E. Gibson and R. P. Thaxton.

In Russia they have a TV in every hotel room—only it watches you.

## CORNER DRUG STORE

320 EAST 3rd STREET  
**STORE HOURS:**  
Week Days: 8:00 A. M. to 8:00 P. M.  
Sundays and Holidays: 8:00 A. M. till 11:00 A. M.

For Drug Service When Store Closed Please Call  
JO 9-2328 (George)  
or JO 9-2427 (Cliff)

### Mrs. O. E. Melton Hostess Jan. 20th Uni. Study Club

The University Study club met in the pretty new home of Mrs. O. E. Melton Wednesday, Jan. 20th. Mrs. E. R. Burns, president called the meeting to order and the club prayer was repeated in union.

Mrs. Joe Majors, program chairman, presented Mrs. I. E. Harwell and Mrs. B. N. Cauthorn who spoke on Progress in Conservation.

Mrs. Harwell's subject was Minerals. She quoted "Minerals are very important in our lives. Minerals are used in construction, limestone and marble, in manufacturing metal products, tire making and aluminum, in food, sodium, iron, calcium and phosphate in fuel, in jewelry and in cosmetics. Uranium is a rare metallic element and is the main practical source of atomic energy released through fission or splitting of the atom. Uranium is silvery white, slightly softer than steel and more than eighteen times as heavy as water. She passed samples of uranium and sandstone to the members to view. The sandstone was found in a 2600 foot deep well in Taylor county near Buffalo Gap.

Mrs. Cauthorn brought us the use of trees and how they work for us. They add beauty to our highways, our lakes and streams. They provide many of our necessities, wood for homes, churches, factories, schools, stores, furniture, paper, clothing, toys and many more things. Wood is also used to make gun powder, ships, barracks, planes and other material essential to our defense. It is wise to consult a forester who is trained to decide which products should be removed and how to provide for continuous growth and production. Let's consider our woodland as our forest bank account. "Money indeed grows on Trees."

Mrs. Pogue gave a parliamentary item.

A lovely refreshment plate was served to the following: Mesdames Bill Crosley, J. B. Morris, Luke Warren, A. R. Bunstine, Joe Majors, Marshall Young, B. N. Cauthorn, R. P. Reagan, J. M. Pogue, J. H. Rigby, E. R. Burns, S. S. Reger, Blake Brown, L. W. Mathis and hostess, Mrs. Melton.

The Friendly Homemakers HD club met Jan. 21st at 10:00 a. m. in the home of Mrs. J. G. Cheney president of the club. The roll call was answered with how I spent Christmas.

Mrs. J. L. Graham from Electra had the program on city census taking and the meaning of THDA.

Committees were named for the new year and the club program for the year was outlined. The next meeting will be Feb. 4th in the home of Mrs. Monroe Gray on Berry Street.

Those present were Mesdames Dorothy Cole, Midge Hill Doris Savage, Myrtle Masters, Mattie Cheney, Emmy Midkiff, Ruby Lanig, Monroe Gray, Elizabeth Sloan, C. E. Jones, Kenneth Landers, D. R. Dulworth and a guest, Mrs. J. L. Graham.

### Mrs. J. G. Cheney Hostess Friendly Homemakers Club

The Garden club of the Kitowa Campfire girls met with the Unity Garden club in October with Mrs. Newman and Mrs. Stevens as instructors. We decorated candles. Each girl had brought a candle and little designs to put on the candles. Mrs. Newman and Mrs. Stevens showed us how they were to be done.

In November, we met with Mrs. Gilbow and made dried arrangements. Each girl had brought a dish and some dried leaves. Mrs. Gilbow showed us the way to balance them in the dish correctly.

In December we met at the hut with Mrs. Newman and Mrs. Campbell to make Christmas wreaths. Some made theirs on cardboard and some on coat hangers. The wreaths were to be entered in the flower show.

On Jan. 12th, the Kitowa Campfire group met with Mrs. Gilbow and Mrs. Schroeder. They showed us how to make plastic

### KITOWA CAMPFIRE GROUP

The Kitowa Campfire group met Jan. 19th to look back over the last 3 months of work and to look forward to the future fun of campfire. They remembered things of interest which included a swimming party with lunch prepared by each girl; the miniature golf game at the start of the year; the Halloween party; the mother-daughter tea; the recent Christmas party and later the skating party the last of December.

The officers of these last months were: president, Vicki Turner; vice pres., Judy Morgan; treas., Jean Page; sec., Patsy Koenig; reporter, Carliss Fisher; Song leader and telephone chairman, Linda Sue Beaver; hostess and refreshment chairman, Beth Wooten. Each of these girls want to say thank you, to the Unity Garden club for helping us to form a Junior Garden club within our campfire group. The Unity Garden club has taught us how to make Christmas candles, dried arrangements, Christmas wreaths and wax leaves. We are looking forward to the meetings these wonderful ladies have arranged for us.

After a glance backward, we began to look forward. We began with the election of new officers pres., Carliss Fisher; vice pres., Patsy Koenig; sec., Jean Page; treas., Vicki Turner; reporter, Linda Sue Beaver, song leader and telephone chairman, Beth Wooten; hostess and refreshment, Judy Morgan. We discussed the father-daughter banquet. Boxes are to be made according to our father occupation, the table setting is to be a campfire scene. Then we began in earnest to work on honor books and our firemakers requirement booklet bringing all our records up to date.

Meeting was dismissed with our friendship song. Our guardian is Mrs. Robert Beaver; assistant guardian, Mrs. Clarence Koenig and sponsor, Mrs. John Page.

### KITOWA CAMPFIRE GROUP

The Garden club of the Kitowa Campfire girls met with the Unity Garden club in October with Mrs. Newman and Mrs. Stevens as instructors. We decorated candles. Each girl had brought a candle and little designs to put on the candles. Mrs. Newman and Mrs. Stevens showed us how they were to be done.

In November, we met with Mrs. Gilbow and made dried arrangements. Each girl had brought a dish and some dried leaves. Mrs. Gilbow showed us the way to balance them in the dish correctly.

In December we met at the hut with Mrs. Newman and Mrs. Campbell to make Christmas wreaths. Some made theirs on cardboard and some on coat hangers. The wreaths were to be entered in the flower show.

On Jan. 12th, the Kitowa Campfire group met with Mrs. Gilbow and Mrs. Schroeder. They showed us how to make plastic

### JEHOVAH'S WITNESSES ATTEND TRAINING AT LUBBOCK, TEXAS

leaves. First you take then you put this in mold. You may use we used an electric all enjoyed this very. We want to say thank all these wonderful their time.

Jehovah's Witnesses area are preparing their three day training in Lubbock, Jan. 28-30.

In discussing the B. C. Coghurn of White, "Jehovah's Witnesses a preaching fellowship, the Divine Will which assembly theme."

The primary work of the Divine Will is to be a good news of the and training at this is designated to improve quality of our preaching.

Mrs. Coghurn said she talks and demonstrates morning, afternoon on the theme of the show how all may bring Jehovah's will.

The crest of the Divine Will is to be a good news of the and training at this is designated to improve quality of our preaching.

Mrs. Coghurn said she talks and demonstrates morning, afternoon on the theme of the show how all may bring Jehovah's will.

The crest of the Divine Will is to be a good news of the and training at this is designated to improve quality of our preaching.

### Allie McCulloch Hostess Jan. 21st Jr. University

The Jr. University met Thursday, Jan. 20th in the home of Mrs. Allie McCulloch.

President, Mrs. Brookshier, presided. The program was given by Mrs. Riley.

Mrs. Barbara Kelley program on the subject Little People.

Mrs. Mary Jo Kellness, served refreshments. Margaret Alexander, Brookshier, Geneva Barbara Kelley, Mary Sammie Landrum, Lough, Rhea McLean, Robertson, Betty Joyce Taylor, James Maureen Yarbrough, Sprague, and Marjorie.

The door prize was Mrs. Barbara Kelley.


The smallest good mother than the greatest.

Inconsistency is the women are consistent.

### CLIFF SAYS:

Whatever your insurance need, We're ready to supply it. AND ONE MORE DAY— THAT YOU DELAY— Could be too late to buy it.

IT WASN'T RAINING WHEN NOAH BUILT THE ARK



## BILL BROWNING

### INSURANCE AGENCY

REAL ESTATE BROKER  
Professional Protection Specialists  
319 Avenue C JO 9-2691

## WAMPLER

### INSURANCE AGENCY

PHONE JO 9-3161  
203 Avenue D