

# Burkburnett Star

LIKED BY MANY..CUSSED BY SOME..READ BY EVERYBODY

BURKBURNETT, WICHITA COUNTY, TEXAS, THURSDAY, OCTOBER 18, 1962

NUMBER 6

You're getting older when the narrow waist and the broad mind begin to change places.

Chamber of Commerce Luncheon Each FIRST MONDAY at Town Hall. Everybody Invited Each Pays for His Meal

## Pass and Kick Contests Scheduled Sunday, November 4

The Ford Company is again sponsoring the Ford Motor Company Pass and Kick Contests in Burk Burnett.

## Last Days Of Texas State Fair This Weekend

This week end is "last call" for Texans to join in the fun at the State Fair of Texas.

## G. Houston Camp Pendleton Surprise Test

The Private First Class G. Houston, son of Mrs. G. Houston, 213 Westwood Dr., Burk Burnett took part in a surprise test to evaluate the ability of the First Battalion, First Marine Regiment, from September 20 at Camp Pendleton, California.

## Lutheran Church to Celebrate Mission Festival

The Lutheran Church, 801 West of Burk Burnett at the intersection of State High 240 and Farm Road 1813, will celebrate their annual Mission Festival this Sunday, October 21.

## Four Classes For Volunteer Workers For Red Cross To Begin October 23

Under the sponsorship of the Wichita Falls County Chapter of the American Red Cross, four classes for volunteer workers will begin Tuesday, October 23, 1:00 p. m. at the Wichita Falls Health Unit, 602 Broad.

## H. D. Maney Reunited With Brother

H. D. Maney, a resident of Burk Burnett for 41 years, reunited this week with his brother, E. L. Maney of Oakland, California. The brothers have not seen each other since 1920. Also visiting Mr. Maney is his sister, Mrs. Oma Sams of Kansas City. This is the first time in 42 years that the three have been together.

## 4 SW Conference Games In Humble Broadcast Oct. 20

Four Southwest Conference football games will be broadcast over radio Saturday by Humble Oil & Refining Company. In addition, Humble will co-sponsor the live telecast of the SMU-Rice game.

## New Burk Burnett "Welcome" Sign

Burkburnett has a new "welcome" sign located on Highway 281 between Burk Burnett and Wichita Falls. Theme for the new billboard is "Room for Growth."

## Two Burk Students Honored On Merit Scholarship Test

Two seniors at Burk Burnett High School have been honored for their high performance on the National Merit Scholarship Qualifying Test (NMQT) given last spring.

## Burk Opti-Mrs. Club Met October 9

The newly-formed Burk Burnett Opti-Mrs. Club had its second monthly meeting October 9 at the home of Mrs. Bill J. Reasoner.

## JanLee's Girls' Auxiliary Observe Golden Anniversary

GAs all over the United States of America are celebrating a special birthday this year. It is the 50th Anniversary of Girls' Auxiliary.

## First Student Bank Day Held at School

Pupils in Mrs. McMinn's Fifth grade were quite excited October 10 when Sheppard-Burkburnett School held their first student bank days.

## Episcopal News

The Episcopal Women of St. John the Divine voted to study the colors of the different seasons in the Christian Calendar for the coming year.

## County Democratic Organization To Meet Mon., Oct. 22

The Wichita County Democratic Organization will meet Monday night, October 22 at 7:30 p. m. in the court room of the Wichita County Court House.

## Burk Tigers Dump Leathernecks 12-0

Burkburnett Tigers downed Wichita Falls Leathernecks Thursday night at Bulldog Stadium in Midget League football action.

## Ex-Burkburnett Minister Dies

Willis Kreager, Sr., former minister of the Burk Burnett Church of Christ, died Monday in his Gainesville, Texas home.

## JanLee's Girls' Auxiliary Observe Golden Anniversary

GAs all over the United States of America are celebrating a special birthday this year. It is the 50th Anniversary of Girls' Auxiliary.

## CAFETERIA MENU OCTOBER 22-26

- Monday**  
Chicken and Dumplings  
Buttered English Peas  
Sliced Tomatoes  
Chocolate Cake, Fudge Icing  
Milk, Bread, Butter
- Tuesday**  
Meat Loaf with Tomato Sauce  
Steamed Rice  
Buttered Green Beans  
Jello with Fruit  
Orange Cake, Iced  
Milk, Bread, Butter
- Wednesday**  
Chicken Fried Steak, Cream  
Gravy  
Whipped Potatoes  
Lettuce Wedges, 1000 Island Dressing  
Gingerbread, Cranberry Sauce  
Milk, Bread, Butter
- Thursday**  
Hamburgers  
Potato Chips  
Carrot Sticks  
Sliced Pineapple  
White Iced Cake  
Milk
- Friday**  
Catfish Fillets, Catsup  
Buttered Whole Kernel Corn  
Cabbage and Pepper Slaw  
Apple Cobbler  
Milk, Bread, Butter

## TYPE II POLIO VACCINE TO BE GIVEN SUNDAY, OCTOBER 21st

Second phase of the "Help Stamp Out" Polio" drive in Wichita County will be Sunday, October 21, when Type II oral vaccine will be made available to all residents.

## County Democratic Organization To Meet Mon., Oct. 22

The Wichita County Democratic Organization will meet Monday night, October 22 at 7:30 p. m. in the court room of the Wichita County Court House.

## Burk Tigers Dump Leathernecks 12-0

Burkburnett Tigers downed Wichita Falls Leathernecks Thursday night at Bulldog Stadium in Midget League football action.

## Ex-Burkburnett Minister Dies

Willis Kreager, Sr., former minister of the Burk Burnett Church of Christ, died Monday in his Gainesville, Texas home.

## JanLee's Girls' Auxiliary Observe Golden Anniversary

GAs all over the United States of America are celebrating a special birthday this year. It is the 50th Anniversary of Girls' Auxiliary.

## Annual Wichita County Farm Bureau Convention In Iowa Park - Oct. 22

The Annual Convention of the Wichita County Farm Bureau will be held October 22, 1962 at 7:30 p. m. at the Youth Center in Iowa Park.

## First Student Bank Day Held at School

Pupils in Mrs. McMinn's Fifth grade were quite excited October 10 when Sheppard-Burkburnett School held their first student bank days.

## Episcopal News

The Episcopal Women of St. John the Divine voted to study the colors of the different seasons in the Christian Calendar for the coming year.



Burkburnett has a new "welcome" sign located on Highway 281 between Burk Burnett and Wichita Falls. Theme for the new billboard is "Room for Growth."

Two seniors at Burk Burnett High School have been honored for their high performance on the National Merit Scholarship Qualifying Test (NMQT) given last spring.

The newly-formed Burk Burnett Opti-Mrs. Club had its second monthly meeting October 9 at the home of Mrs. Bill J. Reasoner.

GAs all over the United States of America are celebrating a special birthday this year. It is the 50th Anniversary of Girls' Auxiliary.

The Annual Convention of the Wichita County Farm Bureau will be held October 22, 1962 at 7:30 p. m. at the Youth Center in Iowa Park.

Pupils in Mrs. McMinn's Fifth grade were quite excited October 10 when Sheppard-Burkburnett School held their first student bank days.



The Episcopal Women of St. John the Divine voted to study the colors of the different seasons in the Christian Calendar for the coming year.

Officials look for more persons in Wichita County to turn out for the type II vaccine than did for type I immunization.

When type I was given, nearly 75 per cent of the county was immunized. Almost 100,000 persons took the vaccine, officials reported.

Over six thousand eight hundred (6,800) people took the Type I vaccine at the Burk Burnett Town Hall.

Officials expressed the hope that the turnout will be even larger this time — because the administration of oral vaccine not only prevents polio in the person who takes the dosage, but also eliminates the possibility of that person becoming a carrier of the dread, crippling disease.

The motto of the campaign is "Help Stamp Out Polio."

The vaccine will be given at the Town Hall between 12:00 noon and 6:00 p. m.

All persons over the age of three months are urged to take the type II vaccine regardless of whether Salk shots have been taken and regardless of whether or not type I Sabin vaccine has been taken.

Types I and II have been given unqualified approval by the surgeon general.

If Type III is cleared for usage, it will be distributed here in the late winter or early spring.

Officials look for more persons in Wichita County to turn out for the type II vaccine than did for type I immunization.

When type I was given, nearly 75 per cent of the county was immunized. Almost 100,000 persons took the vaccine, officials reported.

Over six thousand eight hundred (6,800) people took the Type I vaccine at the Burk Burnett Town Hall.

Officials expressed the hope that the turnout will be even larger this time — because the administration of oral vaccine not only prevents polio in the person who takes the dosage, but also eliminates the possibility of that person becoming a carrier of the dread, crippling disease.

The motto of the campaign is "Help Stamp Out Polio."

The vaccine will be given at the Town Hall between 12:00 noon and 6:00 p. m.

All persons over the age of three months are urged to take the type II vaccine regardless of whether Salk shots have been taken and regardless of whether or not type I Sabin vaccine has been taken.

Types I and II have been given unqualified approval by the surgeon general.

If Type III is cleared for usage, it will be distributed here in the late winter or early spring.

Officials look for more persons in Wichita County to turn out for the type II vaccine than did for type I immunization.

When type I was given, nearly 75 per cent of the county was immunized. Almost 100,000 persons took the vaccine, officials reported.



# The Burkburnett Star

HARRY C. DODSON, Owner and Editor

Mrs. Lola Mae Bailey, Bookkeeper-Society Editor  
Chas. L. Wisdom, Mechanical Foreman  
Forrest Green, Linotype-Pressman  
J. W. Brookman, Commercial Printing



Printed weekly at Burkburnett, Wichita County, Texas. Entered as second class matter at the post-office at Burkburnett, Texas, August 19, 1907, under the Act of Congress of March 3, 1879.

**Notice to the Public:** Any erroneous reflection upon the character, standing or reputation of any person, firm or corporation, which may appear in The Star, will be gladly corrected as soon as it is brought to the attention of the publisher.

**SUBSCRIPTION RATES PER YEAR**  
In Wichita and Cotton Counties ..... **\$2.50**  
Outside These Counties ..... **\$3.00**

## ONE BIG DIFFERENCE

You may think there is little or no difference between a government owned and a privately owned utility company. Electricity is electricity, you may reason, and a phone call is just a phone call.

Well, there are differences—many and profound differences. Columnist Alice Widener, in an article appearing in the Shreveport, Louisiana, Journal, tells about one of them.

Our public service companies, she writes "... are not perfect. What is. But compared to similar enterprises in other countries, they give near-perfect service—a fact remarked by most foreign visitors to our land.

"Certainly lots of American gripe about public utilities services. They phone or write to 'the company' and raise the dickens. Most times, the customers get prompt action. Try and get in any foreign country where the government operates the phone, gas, light and power industries."

Anyone who has dealings with government agencies will say "amen" to that. A complaining citizen, confronted by an entrenched bureaucracy commonly encounters delays, indifference, virtually impenetrable red tape and, in some instances, outright discourtesy. The bureaucrat knows that his job is secure, unless he is guilty of actual malfeasance. And the big bosses and administrators are remote far away, and generally unreachable.

To sum up, you can regulate private enterprise and make it toe the line when necessary. But nobody can effectively regulate the government and its agencies.

## Classifieds In The STAR Get Results



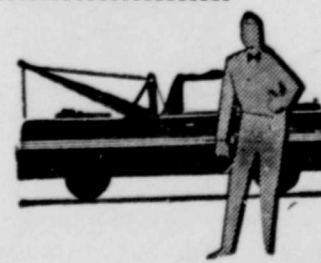
**QUALITY SERVICE COSTS LESS THAN YOU'D GUESS!**

- ✓ SPECIAL TOOLS
- ✓ FACTORY EQUIPMENT
- ✓ FACTORY-TRAINED MEN

Save money and still be sure your Rocket's running right ... with our Olds Guardian Maintenance! You have the assurance of skilled, courteous service from our factory-trained men. Their experience plus special tools and equipment mean every job done right the first time! Come in soon!

**OLD'S Guardian Maintenance**  
PROTECTS YOUR ROCKET... AND YOUR POCKET

For Fast Efficient **WRECKER SERVICE**



DAYS 569-3381 NIGHTS 569-3745

**MATHIS CHEVROLET CO.**  
Chevrolet-Oldsmobile  
IRVIN "Smitty" SMITH, Service Manager

## WASHINGTON AND "SMALL BUSINESS"

By C. WILSON HARDER

There seems to be great confusion as to whether or not, officially the United States is anti-communist. It is perhaps easy to understand this confusion as for two decades many in government, especially in the State Dept. have labored hard to spread confusion.

A recent example of confusion spreading was the action taken regarding Peru. A new government was about to come in power in that nation headed by a group that had at one time been considered quite communist, but now, according to State Dept. views, merely "liberal." The conservative Peruvian army leaders were apparently not so sure on this score, so a military junta took over.

In 24 hours, the U. S. State Dept. cancelled that portion of the world wide give away funds that had been earmarked for Peru. Apparently the cry of the day was "millions for the left, but not one cent for the right."

Of course, a few days earlier this selfsame State Dept. had been most active on the Hill arguing that Congress should in nowise limit the authority of the department to give more away to Communist Tito, who has already gotten \$2 billion.

These maneuvers confuse the public. But even Congressman Glenn Cunningham is confused. He is one of the proponents of a bill introduced last January to stop the flow of Russian propaganda into the U. S. from being handled postage.

He says, "I am not sure if it is to be fought in this country, it will be the duty of Congress to wage such a fight, as from evidence at hand it appears the State Dept. is either heavily staffed with some very colossal idiots, or dedicated leftists."

free. The nation's independent business, voting through the National Federation of Independent Business, have overwhelmingly voiced support of this measure.

Under international postal usage, nations are supposed to carry in their mails the newspapers, publications, pamphlets of other nations free. Several years this privilege was stopped for Russian material, then restored in past 18 months as State Dept. did not want to hurt Kremlin feelings.

Rep. Cunningham says a Customs Bureau official reports that in a single year, through only three ports, Russian propaganda has reached as high as 20 million pieces.

A great deal of it, he says, is known as "redemption material" being directed to people in America whose heritage is in countries now behind the Iron Curtain, urging them to come back to glorious communism.

But the Congressman finds by his fight on this issue he is not influencing people and winning friends in the Red circles. He reports, "It has been most enlightening to me to see how the left supports the free flow of communist propaganda into this country and a continued subsidy by the taxpayers for such material. I have always been interested in the attacks they launch on me personally."

It appears if communism is to be fought in this country, it will be the duty of Congress to wage such a fight, as from evidence at hand it appears the State Dept. is either heavily staffed with some very colossal idiots, or dedicated leftists.

## BURKBURNETT... HISTORY

Revealed By The Star Files 10 Years Ago . . .

Mr. and Mrs. Curtis Matthews and daughter, Patsy, of Seymour were Sunday visitors in the Ralph White home.

Mr. and Mrs. Wylie Browning visited relatives in Dallas last week and also attended the State Fair.

Mrs. G. W. Stewart returned from Longview, Sunday to the home of her daughter, Mrs. B. A. Landers.

Mrs. John Brookman is spending a few days in Abilene visiting her mother and sister there.

Fred Fewin, Jr., TT-1 and Mrs. Fewin left Friday, October 10th to establish their home at Mare Island, California.

G. C. Posey, Jr., and family of Long Beach, California, have been here for the past week visiting with friends and relatives. They are former Burkburnett residents.

Duke Owen, who spent several days in the hospital at Wichita

**I.O.O.F. Lodge BURKBURNETT, TEXAS**  
Meets at I. O. O. F. LODGE Every Tuesday Night 7:30 p. m. Visitors Welcome  
EARL DIXON, Noble Grand  
GENE BRYANT, Vice Grand  
CLOYD ADAMS, Secretary  
THOMAS AMES, Fin. Secy.  
GEORGE BENTON, Treasurer

Falls, has returned to his home here in Burkburnett.

Mr. and Mrs. Leslie Teal were in Dallas over the week end.

Mr. and Mrs. Dan Hofacket attended the Dallas Fair and the Texas-Oklahoma football game in Dallas Saturday.

Mrs. M. C. Tucker went to the General Hospital in Wichita Falls for surgery Saturday at 8 o'clock. She is reported to be recovering nicely.

Mr. and Mrs. John Rigby spent Tuesday in Grandview and Cleburne visiting relatives.

Mr. and Mrs. Cecil Smith of

Corpus Christi, Texas, Burkburnett a few days week visiting with his Mr. and Mrs. John Smith enjoyed their visit very and saw several of their here. Mr. and Mrs. Smith attend the Dallas State route home.

Yellowstone, in 1872 designated the first park in the U. S. . . . 787,000,000 acres . . . conquered by Joshua Bible, is the most ancient town in the world, built about 8,000 years ago.

Texas petroleum industry employs some 221,000 (about 1 out of every 10 workers) with wages of \$10.00 annually.

**IRVIN J. VOGEL**  
ATTORNEY  
312 City National Bldg.  
PHONE 723-4105  
WICHITA FALLS, TEXAS

## THIS WEEK FREE THIS WEEK

30 Min. Pressing with each load of DRY CLEANING

Burkburnett's newest and finest Operated Laundry & Dry Cleaning

Zero Soft Water — Ldry. Open 24 Hrs.

Refrigerated Air S. & H. GREEN STAMPS Attendant On Duty

**EZ Way Wash and Dry Cleaning**

ON MAIN STREET ACROSS FROM THE DEPOT

## A Savings Account

WITH 1st Savings and Loan Association Is The Best Investment You Can Make For Your Family.

Plan For Their Future Now... By Opening A Savings Account Now



CURRENT DIVIDEND 4% Payable Quarterly

REMEMBER THIS — It is better to spend what is left over after saving than it is to save what is left over after spending.

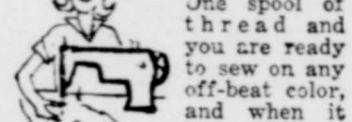
**First Savings & Loan Ass'n.**

BURKBURNETT, TEXAS 314 East 3rd St. Phone 569-2200

Making your city a better place to live, work and raise a family — the result of a GROWING Savings and Loan business

## HOME

in inner or outer space by ALICE CARTER



Gather round, there's good news today. A colorless, translucent nylon sewing thread has been introduced that can be used on any color fabric. Think what that is going to mean in terms of changing thread on the sewing machine, or finding that you have bobbins wound with every color except the one you need.

The spool of thread and you are ready to sew on any off-beat color, and when it comes to putting in hems, you'll find the stitches show less than with the best color match that is usually possible. The new thread was introduced by the Western Filament Company.

Of course, translucent nylon thread is about to usher in a whole new era in fabric design and it is predicted that within a few years there will be translucent upholstery fabrics to use over iridescent cushion filling that will produce effects of jewel-like brilliance. Also new to the scene will be disposable paper upholstery. Disposable work clothes and play clothes for children will also make their appearance in the not too distant future.

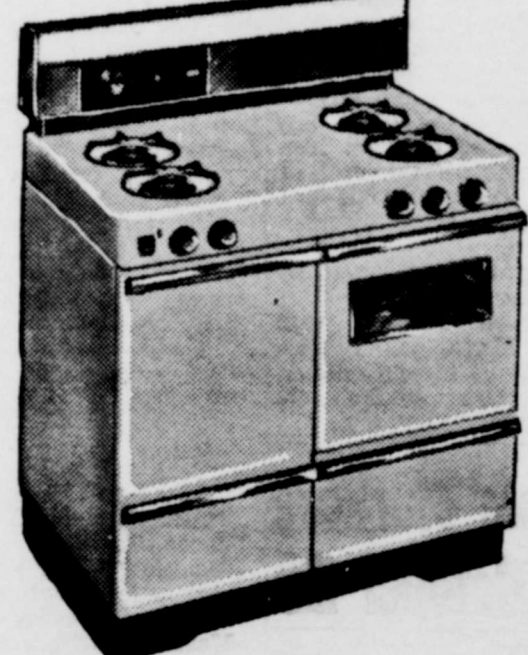
No wonder the problem of what to do with our leisure time is fast becoming a subject for serious study and research. That old adage about "man's work being from sun to sun, but woman's work is never done" is about to go down the drain for good.

What with ready prepared foods, wear and throw away clothes, and air conditioners to keep dust out of the house, such old-fashioned recreations as embroidery, applique and tapestry are coming back into vogue. We are at last going to have time for the beautiful handiwork that took the place of tranquilizers back in great grandmother's day.

The current touring exhibit of fine French tapestries is a case in point. It still takes the most skillful hand weavers a month to produce a square yard of tapestry. The yarns they use are dyed with the most modern fade-resistant aniline dyes, and are scientifically moth-proofed in ways the ancient weavers never dreamed of, but the technique is the same and so is the enduring charm of pictures done by hand in wool. Modern chemistry has simply improved the colors and materials, and made it possible for us all to have more time in which to practice and enjoy fine handicrafts.

## SAVE \$40

on this gorgeous new modern GAS range during "Lucky Days" sale at Lone Star Gas



**Caloric GOLD STAR AWARD MODEL 56PXT**

This smart-looking, automatic-cooking GAS range has all the modern features that qualify it for the Gold Star Award. Burner-with-a-Brain prevents boil-overs and burned foods — lets you turn your back on delicate sauces, bacon, etc. without worrying about scorches. New 140° keep-warm setting keeps foods serving-hot for hours without over-cooking. See the many other wonderful features of this beautiful model. And what a saving!

REG. PRICE \$279 CALORIC 56PXT

SALE PRICE \$237<sup>15</sup> PLUS TAX WITH TRADE-IN

Now at LONE STAR GAS Showrooms!

Capital expenditures by the Texas chemical industry totaled \$719 million (23% of U. S. total) in 1961, the major part of which represented expenditures in the petrochemical field.





# Fight 'Em Bulldogs!



## We Are With You All The Way!



### Burk Furniture Mart

Mr. and Mrs. James W. Hammond  
569-3901 211 East 3rd St.  
Burkburnett, Texas

### Mathis Chevrolet Co.

Jack W. Mathis  
569-3381 300 East 2nd St.  
Burkburnett, Texas

### Boomtown Bowl, Inc.

Mr. and Mrs. C. A. Morgan  
569-8139 1001 Wichita Hwy.  
Burkburnett, Texas

### Savings & Loan Ass'n.

Al Dillard, Manager  
569-2206 314 East 3rd St.  
Burkburnett, Texas

### Homeowning Insurance Ag'y.

C. J. Lippard  
569-2691 319 Avenue C  
Burkburnett, Texas

### Harlin A. Mills Grain Co.

Harlin A. Mills  
569-3311 100 East 2nd St.  
Burkburnett, Texas

### First National Bank

Alvin Hill, President  
569-2221 300 East 3rd St.  
Burkburnett, Texas

### Boyd Bros. Dept. Store

Furniture, Appliances, Dry Goods, Shoes  
Hardware — Groceries and Meats  
Charlie and Jimmie Boyd  
East 3rd St. Ph. 569-2214—569-2215



### The Famous Dept. Store

Chas. A. Bowles and Winston Freeman  
Phone 569-2441 217 East 3rd St.  
Burkburnett, Texas

### T. M. Cornelius, Insurance

T. M. Cornelius  
Phone 569-3498 South Berry St.  
Burkburnett, Texas

### M. D. McDaniel Plumbing

M. D. McDaniel  
Phone 322-1812 Iowa Park Road  
Wichita Falls, Texas

### Alexander Ins. Agency

B. H. Alexander, Jr.  
Phone 569-2831 114 East 3rd St.  
Burkburnett, Texas

### Burk Insurance Agency

Howard Clement  
Phone 569-3333 303 Avenue C  
Burkburnett, Texas

### Preston Dairy Products

Hugh and Buddy Preston  
Phone 569-2181 219 East 2nd St.  
Burkburnett, Texas

### The Athletic Club

Ollie Ratliff  
Phone 569-8111 103 East 3rd St.  
Burkburnett, Texas

### Cicero Smith Lbr. Co.

James Mason, Manager  
Phone 569-3711 211 Avenue B  
Burkburnett, Texas

### Texas Electric Service Cr.

J. B. ADY, Manager  
412 Avenue C Phone 569-3373  
Burkburnett, Texas

### Bills TV, Furn. & Appl.

Frigidaire Appliances  
Curtis-Mathis and Zenith TV and Stereo  
Real Fine Furniture  
301 N. Ave. D Phone 569-3651  
Burkburnett, Texas

## Friday Night, Oct. 19th

## Burkburnett Bulldogs

## OPEN

### PREPARING TO MEET ST. MARY'S (Okla City) OCT. 27 AT BULLDOG STADIUM



**Burk 4-H Club Met Monday, Sept. 10**

The Burk Burnett Community 4-H Club met Monday, September 10, 1962 at the Youth Center.

The meeting was called to order at 7:30 by the vice president, Bill Byars. The roll call and minutes of the previous meeting were read by the Secretary Toni Savage. New officers were elected for the following year. Those elected were President Bill Byars; Vice President, Kathy Savage; Secretary-Treasurer, Diane Bentley; Reporter, Jerri Lynn Savage; Council Delegate, Toni Ann Savage; Historian, Gail Krenzer; Game Leader, Susan Leitner.

Each new member filled out an enrollment card. Refreshments were furnished by Tom's Texaco Station. Those members

present were Bill Byars, Diane, Marian and Louise Bentley, Patty Thaxton, Patty Perry, Joan Dolman, Gail Krenzer, Susan Schuman, Vicki Endres, Stephen Cele, Toni Ann, Kathy, and Jerri Lynn Savage. Reporter Jerri Lynn Savage.

It's not much comfort to realize that when you retire to vacationland, you'll meet the same kind of people you left behind, in precisely the same percentages.

THE STATE OF TEXAS COUNTY OF WICHITA IN THE NAME AND BY THE AUTHORITY OF THE STATE OF TEXAS

TO: C. F. King, his unknown heirs or assigns, whose residence is unknown, and the heirs and legal representatives of said C. F. King, if any, whose

name and residence are unknown, and the respective unknown heirs and legal representatives of all the above named parties whose names and places of residence are unknown, and any and all other persons, including adverse claimants, owning or having, or claiming any legal or equitable interest in or lien upon the hereinafter described property delinquent to plaintiffs herein for taxes.

YOU ARE HEREBY NOTIFIED that suit has been brought and is now pending in the Honorable District Court, 89th Judicial District, Wichita County, Texas, wherein The City of Burkburnett, Texas, is plaintiff, and the Burkburnett Independent School District; The State of Texas and the County of Wichita, Texas, are impleaded party defendants; and C. F. King, his unknown heirs and assigns are defendants, by the filing by said plaintiff of a pet-

ition on the 23rd day of August, 1962, and the file number of said suit being No. 33,671-C, and the nature of which is a suit to collect delinquent ad valorem taxes on the following described property, to-wit:

Lot Twelve (12) and the East Half of Lot Eleven (11) of Block No. Seventeen (17) of the Original Town of Burkburnett, Wichita County, Texas, together with interest, penalties, cost, charges, and expenses of suit which have accrued and which may legally accrue thereon.

The amount of taxes due each plaintiff, exclusive of interest, penalties and cost is as follows: The City of Burkburnett, Texas—\$502.58.

The Burkburnett Independent School District—\$502.12.

The names of all taxing units which assess and collect taxes on said property who are im-

pleaded as defendants are: The State of Texas and the County of Wichita, Texas.

Plaintiff and all other taxing units who may set up their tax claims herein seek recovery of delinquent ad valorem taxes on the property hereinabove described, and in addition to the taxes all interest, penalties, and costs allowed by law thereon up to and including the day of judgment herein, and the establishment and foreclosure of liens, if any, securing the payment of same, as provided by law.

All parties to this suit, including plaintiff, defendants, and intervenors, shall take notice that claims not only for any taxes which were delinquent on said property at the time this suit was filed but all taxes becoming delinquent thereon at any time thereafter up to the day of judgment, including all

interest, penalties and costs allowed by law thereon, may, upon request therefore, be recovered herein without further citation or notice to any parties herein, and all said parties shall take notice of and plead and answer to all claims and pleadings now on file and which may hereafter be filed in said cause by all other parties herein, and all of those taxing units above named who may intervene herein and set up their respective tax claims against said property.

You are hereby commanded to appear by filing a written answer and defend such suit on the first Monday after the expiration of forty-two (42) days from and after the date of issuance hereof the same being the 5th day of November, A. D. 1962. (Which is the return day of such citation), before the honorable District Court of Wichita County, Texas, to be

held at the Courthouse then and there to show why judgment shall not be rendered for such taxes, interest and costs, and to foreclose of the constitution and statutory tax liens for taxes due the plaintiff taxing units parties and those who may intervene herein, together with interest, penalties, and costs allowed by law up to and including the day of judgment, and all costs of this

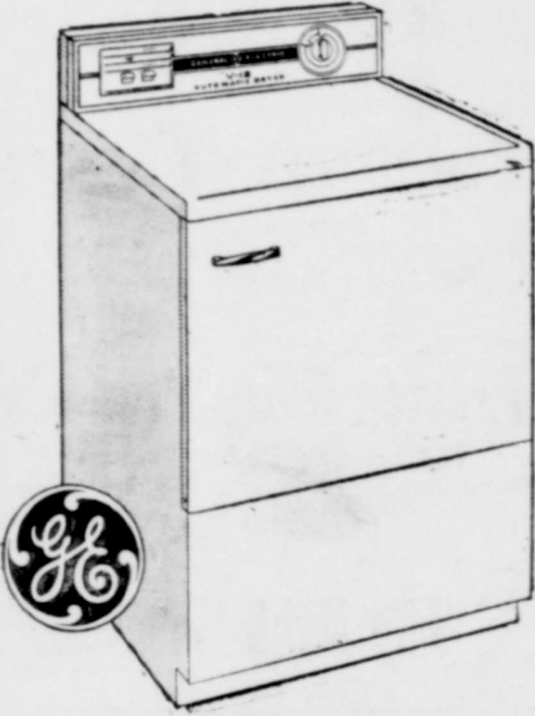
Issued and given under hand and seal of said of the City of Wichita Falls, Wichita County, Texas, this 18th day of September, 1962, Wiggins, District Clerk, County, Texas.

(SEAL) By Alma Lee Arm Deputy.

# OCTOBER SPECTACULAR!

## CLOTHES DRYER

MERCHANDISE MIRACLE -- 3 IN 1 OFFER



FREE Hair Dryer

FREE WIRING and This Special Priced G-E Clothes Dryer

ALL THIS FOR ONLY ..... **\$158**

## Special Offer!

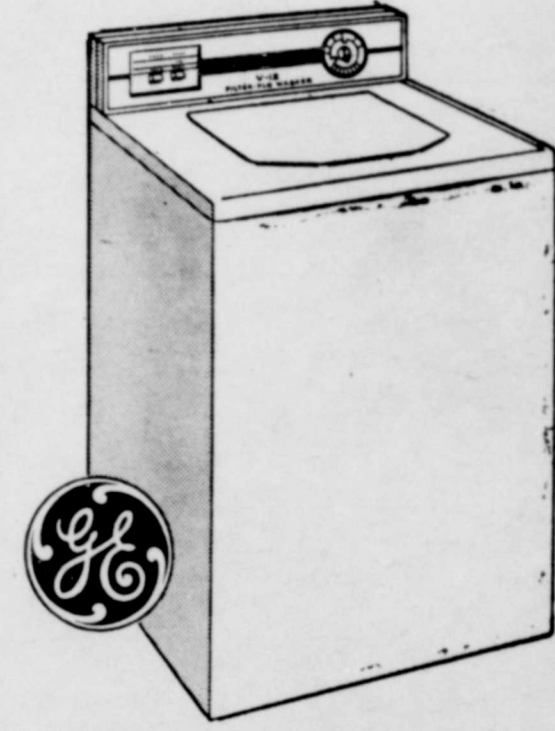


19 INCH G-E TELEVISION WITH ONE YEAR WARRANTY ON ALL PARTS

With Free Roll Around Base

ONLY ..... **\$158**

## Famous G-E Filter Flo Washer - 2 Speed, 2 Cycle



WITH BIG 12 LB. WASH LOAD FILTERS ON ANY PART OF LOAD 5 YR. TRANSMISSION WARRANTY ONE YEAR FREE SERVICE

DURING OCTOBER

SPECIAL PRICE ..... **\$195** With Trade

## Furniture - New & Used

NEW 3 Piece BED ROOM SUITE (Walnut) **\$97** With Chest, Bookcase Bed and Dresser Was \$147.50 ..... NOW ONLY

ODD CHESTS ..... reg. \$34.95 ..... now \$23.00

1 Only Repossessed 3 pc. Bedroom Suite Charcoal **\$65.00**

2 pc. Living Room Suite, good shape ..... **\$45.00**

2 pc. Repossessed Bed Room Suite, blonde ..... **\$67.00**

2 Used Refrigerators - - - 1 Chest 17 ft. FREEZER With Special Low Prices

No Down Payment --- Up to 36 Months to Pay

# MONAGHAN FURNITURE & APPL.

200 East 3rd Street

Burkburnett, Texas

Phone 569-3112

317  
In  
Re  
ins  
Co  
inc  
an  
Ro  
Co  
Lai



# Buy Auto Liability From The Travelers Insurance Co. |

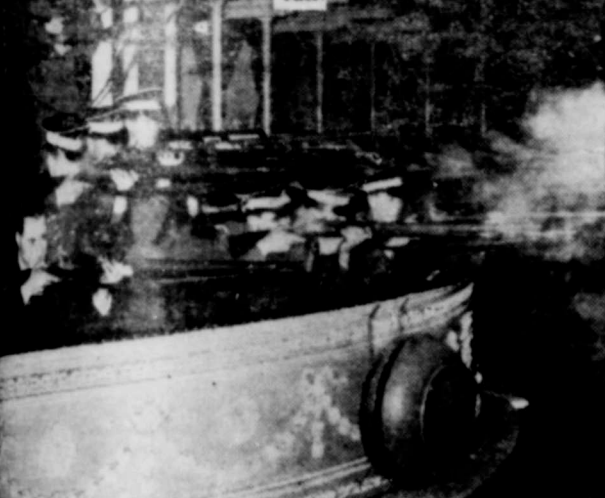
IT DOESN'T COST ANY MORE TO  
**BE SURE**  
HOWARD CLEMENT, Agent  
New Location - Next to Legion Hall

## Central States News Views

CONSUMER being examined at a vegetable plant is a vegetable dehydrator making up filters in most of the cigarettes. Pioneered by the company in 1952, it will be used in record-breaking 270 billion cigarettes this year.



LOOK OUT below! You can never tell when those hanging drops, rigged by a resourceful Central States plumber, will fall.



CRITICS? No, these sharpshooters are rehearsing for their roles as riflemen in Beethoven's explosive "Battle Symphony."

## Classifieds In the STAR Get Results

### Now Is the Time . . . . .

To Get Your Bicycles Repaired

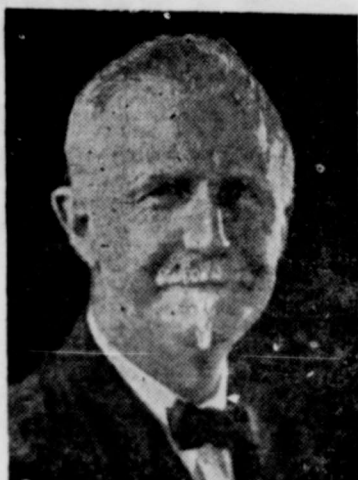
All Work Guaranteed

**BURK SERVICE CENTER**

309 EAST 3rd STREET

PHONE 569-3561

## Roger W. Babson Weekly Report



Roger W. Babson

### BABSON DISCUSSES SUPERMARKETS

Many newspaper publishers have noticed recently that supermarkets are cutting down their advertising. Naturally this is of interest to readers of this column who depend on supermarket advertising to check the prices of their products one with another. Let me discuss this week the possible reasons for this reduction in advertising by some of the supermarket chains.

#### Cost of Trading Stamps

When only a few stores used trading stamps (S&H), the distribution of stamps was reasonable. These stamps, used in limited amounts, were doubtless appreciated by many who were buying goods. Not only were the amounts then used very limited, but the stamps were often thrown away by buyers. Today the situation has changed greatly. Not only are most of the supermarkets and similar establishments using trading stamps, but they are competitive with one another in the number of stamps they give for the purchase of certain items.

Furthermore, many of the large chains are printing their own stamps and operating their own centers for redeeming the stamps. Altogether this is becoming quite expensive and I fear the cost is being charged to general advertising. The final result will depend on whether the owners of the supermarkets get more customers through trading stamps or through advertising. From studies I have made, it is evident to me that business derived from trading

## Farm Facts

The word "corn" is used to describe the cereal that may happen to be the major crop in an area. In England, for example, it refers to wheat. In other countries it may mean barley or oats.

Corn, as we know it in this country, originated in the Americas and was unknown elsewhere until Columbus reported its discovery in Cuba. Now scientists, through the use of radioactive carbon to measure the age of vegetation, have established that corn was being grown in South America as far back as 1000 B.C. and in North America in 2000 B.C.

The Mayas, Aztecs, and Incas of Latin America cultivated corn and it was a staple item in their diet. It was grown by the mound dwellers in the Mississippi Valley and the cliff dwellers of the Southwest.

Popularity of the grain spread rapidly after it became known in Europe, and today corn is found all over the world. In acreage planted it ranks second only to wheat.



America is the home of corn.

It grows equally well in Canada, Russia, and in the tropical climates of South America. Corn is being harvested somewhere every month in the year. The U.S., however, produces more than half the world's crop.

stamps has about reached its maximum. I believe that the better supermarkets are returning to increased newspaper advertising and are curtailing so far as possible the competitive use of stamps.

#### Supermarket "Overproduction"

Many who invested earlier in the stocks of new supermarkets have made a great deal of money. A number of these stocks sell at several times their original cost. The rapid raise of supermarkets was due primarily to bulk purchasing and modern merchandising. It did not take long for them to wipe out the old grocery stores, meat markets, and similar competitors. Many of the small stores combined at first into co-operative organizations to meet the new competition. Some of these co-operatives have survived and others have been disbanded or bought by supermarkets.

The automobile has been a big help; the supermarkets saw at once the importance of providing sufficient parking space for their customers. This caused many of them to leave the center of the city, but the customers did not object because practically all of them came in automobiles. The supermarkets also provided "carts" for the customers to push around and fill up; and then provided boys to

take the packages out of the carts to the customers' automobiles. The policy of the supermarkets in purchasing big parking lots has made them large real estate owners. Furthermore, the locations secured by the early supermarket chains have become very valuable and, in a stock quotations for the superway, make them a monopoly in the industry. It is difficult for a new supermarket coming to a city to secure a decent location.

#### Importance of Discount Houses

The fact that many supermar-

kets are awakening to the importance of "discount houses" makes me believe that the markets will go higher. Many of these supermarkets are erecting the buildings for these discount houses directly adjoining their own operations. While the growth of supermarkets has a very definite relation to population, it is possible that some of those located in areas of stagnant population might be able—at least for a time—to offset this handicap by attaching to themselves discount houses. Otherwise, supermarkets in stagnant populations will be licked.

As one who believes in the "cycle theory," I am interested to note how every community started with its "general store" which included everything from the cracker barrel to the post office. Then the general lines of industry became distributed amongst a large number of small local stores. Now the cycle is coming back to the general store idea which was so common in every community

one hundred years ago. This makes me again bullish on the stocks of supermarket chains.

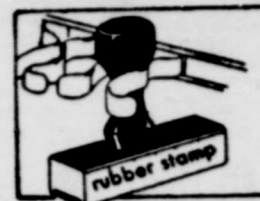
## WHAT TO MAKE

By Allan Carpenter  
Director, Service Bureau  
**Popular Mechanics Magazine**

### ONE-EVENING PROJECTS



This lantern will decorate your porch or entry way every day of the year. For plans to make a lantern and many other "one evening projects," send 25¢ for D16 to this newspaper, c/o Service Bureau, 740 N. Rush, Chicago, Ill.



A rubber stamp is the greatest labor and time saving device of the modern bank, office or factory. Used in countless ways for the small investment involved it has no equal in business equipment.

Order by mail or telephone—we guarantee satisfaction and to fill your order correctly.

Turn In Your Order at

*The Office of This Newspaper*

## OWENS-BRUMLEY FUNERAL HOME

AMBULANCE SERVICE

PHONE 569-3361

Harold Van Loh  
President

Joe Allcorn  
Manager



NEW FORD FAIRLANE 500 HARDTOP

# NOW! 9 IN OUR LINE OF '63 FORD FAIRLANES!



Only your Ford Dealer has 'em! Hot new middleweights with V-8 punch! New wagons! New hardtops! New sedans! New savings!

Ford Fairlane goes all out for '63! Handsome middleweight wagons in a size as new as '63 itself. They load like the big ones, save like the compacts! Trim hardtops—and you can even have bucket seats! Dashing sedans! Each of these solid citizens can be fired up with your choice of 2 optional Challenger V-8's! Or choose the gas-sipping standard Six. And remember . . . these cars cut your costs and cares as only Fords can—with exclusive twice-a-year or 6,000-mile maintenance! So come in—discover Fairlane and all the rest of America's liveliest, most care-free cars!

F.D.A.P.

## WOLFE FORD COMPANY

3rd and AVENUE D

PHONE 569-2275

BURKBURNETT, TEXAS



weatherproof  
your washdays  
with a flameless  
**ELECTRIC  
DRYER**

Let it rain! Let the northers blow! You can dry clothes in comfort no matter what the weather when you have an electric clothes dryer. You'll like the speed, cleanliness and automatic ease of electric drying, too. Clean, flameless electric heat pampers your clothes . . . dries them fluffy-soft and sweet-smelling without a trace of fuel grime or odor. Electric drying is flameless and precisely controlled, safe for even your daintiest washables. Remember, only electricity gives you flameless clothes drying . . . clean, safe and modern.



See your dryer dealer soon about his special installation offer on a flameless electric dryer.

**TEXAS ELECTRIC SERVICE COMPANY**

J. B. ADY Manager

JO 9-3373



HARVEST BIG FOOD

SAVINGS...NOW!



GRAB AN ARMEFUL OF BARGAINS



U. S. GOOD



Chuck ROAST

lb ..... 49

Fresh Ground Beef

3 LBS. \$1

SHORT RIBS FRESH LEAN MEATY

3 LBS. 89

No. 1 SALT PORK

LB. 39



Rath Black Hawk Canned

HAM 3 LB. Size \$2.79



RATH'S BLACK HAWK

BACON

LB. 49

KRAFT SALAD DRESSING Qt. Jar DRESSING

49¢



Double Gunn Bros. Stamps Every Wed. With \$2.50 Purchase

TIDE

Large Size Box

25

SWIFT'S CHILI No. Beans

24 Oz. Can 49¢

GREEN GIANT Sweet Peas

5 303 Cans \$1.00

SHURFRESH Crackers

1 LB BOX 25¢

SHURFINE Pork & Beans

3 300 Cans 39¢

NIFTY Notebook FILLERS

300 Count Pack 49¢

SOFLIN Facial Tissue 400 Count White

2 Box For 39¢



EAST TEXAS

YAMS

LB. 50

POTATOES RUSSET U. S. No. 1 10 Lb. Bag

49¢

JONATHAN FANCY

APPLES 4 lb BAG

39¢



CENTRAL AMERICAN GOLDEN RIPE

Bananas LB. 9¢



UNITED SUPER MARKET





### Randlett News

Mrs. Mollie R. Elliott, Reporter

Word was received here this week by friends of the death of Mrs. Jessie Hall Seeling of Henton, Oklahoma. Mrs. Seeling was a former teacher in the Randlett School and will be remembered by many of her pupils. She was found dead at her home in bed at Henton, Oklahoma.

Mr. and Mrs. Jerry Williams of Southeastern College at Durant, Oklahoma, visited his parents, Mr. and Mrs. Louis Williams over the week end.

Mr. and Mrs. Oran Wilson and children of Burkburnett visited his parents, Mr. and Mrs. C. O. Wilson last Friday night.

Mr. Ben Martin of Southeastern College at Durant, Oklahoma spent the week end with his parents, Mr. and Mrs. J. M. Martin, Jr.

Miss Pauline Shaw of Northeastern College at Weatherford, Oklahoma spent the week end with her mother, Mrs. Carmon Shaw and Darlene.

Mr. and Mrs. Willis Hendricks of Iowa Park visited her mother, Mrs. Zaida Bryant Saturday eve.

Mrs. Bill Harrison and children, Mrs. Zaida Bryant, Mrs. D. A. Cornstubble and Mrs. R. H. Rhoads visited Mrs. Donald Jackson of Lawton, Oklahoma, Tuesday afternoon of last week.

Mrs. Hattie Campbell, home from a Wichita Falls hospital last Saturday afternoon after a three weeks stay in the hospital.

Mr. and Mrs. C. B. Ressel were business visitors in Salina, Kansas Wednesday to Friday.

Mr. and Mrs. Ralph Leo of Dallas, Mr. and Mrs. D. L. Nichols and children of Wichita Falls, visited Miss Alta Mae Brannen Saturday.

Mr. Tud Capps of Oklahoma City, Oklahoma spent the week end with his mother, Mrs. Alma Capps.

Mr. and Mrs. Clyde Kruger of Englewood spent Thursday night and Friday with Mr. and Mrs. R. L. Baldwin.

Mr. and Mrs. Ray Braden and son Dale of Yukon, Oklahoma visited his sister, Miss Alta Mae Braden Saturday night and Sunday.

Mrs. Clyde Dowdy, Mrs. Bertha Dowdy of Charlie visited Mr. and Mrs. R. L. Baldwin Friday.

Mr. and Mrs. John Sells of Devol, Oklahoma were Wednesday dinner guests of Mrs. Bill Harrison and children.

Miss Carolyn Horton of Burkburnett spent Friday night with Miss Jo Ann Rhoads.

Mrs. Zaida Bryant is visiting with her granddaughter, Mr. and Mrs. Glenn Solmon and sons of Wichita Falls.

Mr. and Mrs. Frank Bohac of Wichita Falls spent Tuesday night and Wednesday with her parents, Mr. and Mrs. R. H. Rhoads and Jo Ann.

Mrs. Claude Bowers of Oklahoma City, Oklahoma is visiting Mr. and Mrs. C. M. Morris Thursday till Saturday.

Mr. Roy Braden visited his brother, Mr. and Mrs. Sam Braden and children of Lufkin last week.

Mrs. George Garner and Mrs. Charles M. Fender of Wichita Falls spent Tuesday of last week with Mr. and Mrs. C. M. Morris.

Cathy Bridges of Burkburnett spent Friday night and Saturday with her grandmother, Mrs. Mollie Elliott.

Mrs. Marie Brown of Lawton, Oklahoma spent Sunday and Monday with Mrs. Robbie Best.

Mr. and Mrs. L. E. Ellis and children of Burkburnett visited Mr. and Mrs. R. H. Rhoads Sunday afternoon.

Mrs. Anna Belle Legg of Wichita Falls visited Mr. and Mrs. M. H. Hyatts and Mr. Luther Pendergrass last Friday.

Mrs. N. R. Kirkpatrick visited Miss Osie Bowers and Mrs. Tience Fortado of Wichita Falls last Monday.

Mr. and Mrs. Lewis Rackley

of Muscle Shoals, Alabama visited her parents, Mr. and Mrs. A. J. Turner Saturday and Sunday. Mr. and Mrs. Turner returned home with them for a visit.

Miss Murle Hatcher of Oklahoma City, Oklahoma spent from Friday afternoon until Sunday afternoon with her mother, Mrs. Flora Hatcher. Miss Sharon Hatcher of Wichita Falls spent Saturday night with her mother.

Mrs. Lanette Swinford is staying this week with Mrs. Oran Wilson and children of Burkburnett while Mr. Oran Wilson is going to a business course, this week in Oklahoma City, Oklahoma.

Mr. and Mrs. T. E. Spannagel visited Mrs. Earl Spannagel of Walters, Oklahoma Saturday afternoon.

Sunday dinner guests of Mrs. Carmon Shaw were Miss Pauline Shaw of Weatherford, Oklahoma, Mr. and Mrs. Tom Shaw and son, Ray Dean of Burkburnett, Mr. and Mrs. Freddie Lamanick of Comanche, Oklahoma, Mr. F. J. Lamanick.

Miss Jo Ann Rhoads spent Saturday night with Carolyn Horton of Burkburnett.

Mrs. E. R. Taylor of Oklahoma City, Oklahoma spent the week end with her mother, Mrs. Hattie Campbell.

Mrs. Flora Hatcher accompanied by her daughter, Miss Murle Hatcher of Oklahoma City, Oklahoma, were Sunday dinner guests of Mr. and Mrs. Howard Hatcher of Wichita Falls.

Mr. Jimmy Baber of Southeastern College of Durant, Oklahoma spent the week end with his parents, Mr. and Mrs. T. J. Baber.

Mr. and Mrs. Gary Inman of Houston announce the birth of a daughter Lee Ann, October 8th. Paternal grandparents are Mr. and Mrs. Jo Edd Inman.

Mrs. Claude Bowers of Oklahoma City, Oklahoma is spending Thursday to Saturday with Mr. and Mrs. C. M. Morris.

Mrs. Lanette Swinford spent from Thursday till Saturday with Mr. and Mrs. Hershall Walker of Wichita Falls.

Mr. and Mrs. Charles Sonnemaker and sons of Tyler spent a few days visiting with her parents, Mr. and Mrs. Raymond Hale.

Bro. and Mrs. Roy Clayton received word that their daughter, Judith was elected President of Oklahoma Y. M. A. She is a student at Southeastern at Weatherford, Oklahoma.

Miss Janie Eschler of OU at Norman, Oklahoma spent the week end with her parents, Mr. and Mrs. Dan Eschler.

Mr. and Mrs. L. F. Whittington and Bobby of Bochita, Oklahoma, Mr. and Mrs. Dale Whittington and son of Ardmore, Oklahoma visited Mr. and Mrs. S. H. Davis over the week end.

Mr. and Mrs. J. T. Martin attended the Oklahoma and Texas football game at the Cotton Bowl at Dallas Saturday.

A Bridal Show was given for Mr. and Mrs. Dan Fowler, Thursday night, October 11th. Host was Mrs. C. O. Wilson, co-hostesses were Mrs. Herman McAdoo, Mrs. Grady Martin, Mrs. Joe Burton, Mrs. Tom Antwine, Mrs. Wes Beard, Mrs. Ralph Postelwaite, Mrs. N. R. Kirkpatrick, Mrs. G. M. Stark, Mrs. Jo Edd Inman and Mrs. Mollie Elliott.

Punch and cake were served to the following guests of honor and co-hostesses and guests as follows: Mr. and Mrs. Dan Fowler, Mesdames, Jimmie Kinnard and children, A. L. Patterson, Louis Williams, Beulah Riley, A. J. Turner, Ted Fowler, Herman McAdoo, G. M. Stark, Mollie Elliott, Archie Faulk, Jo Edd Inman, N. R. Kirkpatrick, Mary Gresham, Mr. and Mrs. H. F. Spoon, Mr. and Mrs. C. O. Wilson, Miss Shirley McAdoo. A large number sent gifts not being able to attend.

A Bridal Shower was given Mr. and Mrs. Jerry Williams Saturday night, October 13th in the Baptist Church. Punch and cake were served to the guests of honor and approximately 25

### News From The HD Agent

The Texas-Oklahoma Hereford Breeders sale will be held at the 4-H Barn in Wichita Falls on November 27. 74 top individual animals will be entered in the sale. James Grote will judge the show starting at 9:00 a. m.

The annual Texas Turkey Industry Day will be held Wednesday, November 7, 1962 on the campus of Texas A&M College. This program is being sponsored by the Department of Poultry Science. All people who have an interest in the Texas Turkey Industry are invited to attend. Bring someone with you.

The 1963 Annual Convention of the Texas Pecan Growers Association will convene in Dallas on July 9 and 10. The Texas Pecan Growers Association will host a joint meeting to which all the Pecan Grower Associations in the nation will be invited to attend. This includes the Southeastern, Louisiana, Oklahoma, and Kansas Associations. Plan now to bring the family and attend this national meeting. Remember "IT'S BIG D IN 1963."

Twenty-two Wichita County 4-H boys and girls entered steers and beef heifers in the Dallas Fair this week. The steer auction sale will be held on Friday, October 19 beginning at 9:30 a. m. The boys and girls entering steers and beef heifers are: Larry Edwards, Betty and Jimmy Moser, Sonny and Karen Bentley, Roy Childers, Glen Taylor, James and Charles Westmoreland, Glen Baxter, Albert, Carl, James and Sarah Brockreide, George Streit, and James, Flynn, and Elizabeth Stewart.

These wrecks accounted for one person killed, thirteen persons injured and an estimated property damage of \$7,945.00. The rural accident summary for Wichita County from January through September of 1962 shows a total of 148 crashes. As a result of these crashes there were six persons killed and 102 persons injured. The estimated property damage amounted to \$78,256.00. "Accidents Go Up When the Sun Goes Down" is a slogan so true. Darkness hides danger, giving the driver a false sense of security. That is the reason traffic accidents increase during October's shorter days and longer nights. National Statistics show that the traffic death rate at night is three times the daylight rate, and more than half of all accidents occur after sundown, despite reduction in the volume of traffic.

At sundown, the long shadows and fading light make it increasingly difficult for drivers to spot traffic hazards and stop in time. The veteran patrol supervisor said, "make it a habit to turn on your driving lights at the first hint of dusk and always use them properly."

All members of the Boomtowners are requested to be at the Town Hall for rehearsal at 8:00 p. m., Friday night, October 19, 1962.

Dr. R. M. Sims

Dr. R. M. Sims

Dr. R. M. Sims

Dr. R. M. Sims

Dr. R. M. Sims

Dr. R. M. Sims

Dr. R. M. Sims

Dr. R. M. Sims

Dr. R. M. Sims

Dr. R. M. Sims

### Notice To Truck Dealers

Sealed proposals addressed to the Commissioners' Court of Wichita County, Texas will be received at the office of County Auditor, Wichita Falls, Texas until 10:00 o'clock a. m., October 29, 1962 for the purchase of two or more 2 Ton Trucks with three to four yard dump beds, 8.25 x 20 ten ply tires, heavy duty springs, booster brakes, fresh air heaters and defrosters, turn signals, two speed axle, standard size backup mirrors, with trade-in of one 1950 1 1/2 Ton Chevrolet dump truck and one 1955 Two Ton Chevrolet Dump Truck both in Precinct No. 2. Trucks are for use in Wichita County.

A Cashier's Check for five (5%) per cent of the total amount of the bid, made payable without recourse to the order of Joe C. Gowdy, County Auditor, must accompany each proposal. The trucks will be purchased from the lowest and best responsible bidder. The successful bidder will be required to enter into contract and to make bond in the full amount of the contract price executed by some surety company authorized to do business in the State of Texas.

Bids must be submitted in sealed envelopes, and marked "Bids on Trucks."

Usual rights reserved by Wichita County.

### Texas Dep't. Of Public Safety

The Highway Patrol investigated 15 rural accidents in Wichita County during the month according to Sergeant E. L. Stroud, Patrol Supervisor of this area.

These wrecks accounted for one person killed, thirteen persons injured and an estimated property damage of \$7,945.00.

The rural accident summary for Wichita County from January through September of 1962 shows a total of 148 crashes.

As a result of these crashes there were six persons killed and 102 persons injured. The estimated property damage amounted to \$78,256.00.

"Accidents Go Up When the Sun Goes Down" is a slogan so true. Darkness hides danger, giving the driver a false sense of security. That is the reason traffic accidents increase during October's shorter days and longer nights.

National Statistics show that the traffic death rate at night is three times the daylight rate, and more than half of all accidents occur after sundown, despite reduction in the volume of traffic.

At sundown, the long shadows and fading light make it increasingly difficult for drivers to spot traffic hazards and stop in time. The veteran patrol supervisor said, "make it a habit to turn on your driving lights at the first hint of dusk and always use them properly."

All members of the Boomtowners are requested to be at the Town Hall for rehearsal at 8:00 p. m., Friday night, October 19, 1962.

Dr. R. M. Sims

Dr. R. M. Sims

Dr. R. M. Sims

Dr. R. M. Sims

Dr. R. M. Sims

Dr. R. M. Sims

Dr. R. M. Sims

Dr. R. M. Sims

Dr. R. M. Sims

Dr. R. M. Sims

### CAFETERIA MENU SHEPPARD-BURKBURNETT OCTOBER 22-26, 1962

- Monday**  
Hamburger and Spaghetti  
Green Beans—Pickle Sticks  
Bread—Butter—Milk  
Rolled Wheat Apple Sauce  
Cake
- Tuesday**  
Baked Ham  
Black Eye Peas  
Baked Sweet Potatoes  
Bread—Butter—Milk  
Banana Pudding
- Wednesday**  
Oven Fried Chicken  
Creamed Potatoes  
Tossed Salad  
Bread—Butter—Milk  
Ice Cream
- Thursday**  
Chicken Pie  
Glazed Carrots—Buttered Peas  
Hot Biscuits—Butter—Milk  
Chocolate Cake
- Friday**  
Salmon Croquettes  
Buttered Corn—Mixed Greens  
Hot Rolls—Butter—Milk  
Strawberry Jelly

### NOTICE

Voting place for Burkburnett Precinct 27 has been changed from the High School building to the Youth Center. Commissioner Clark Gresham requested the action, pointing out that the new voting station would provide needed room for voters. The next general election will be November 6, 1962.

### DEN 1—PACK 156

Den 1 met with their Den Mother, Mrs. Jack Rupard on Tuesday, October 16, 1962 at 3:30.

Randy Green our Denner opened the meeting with the pledge and we sang "America the Beautiful." We worked on our props for the November theme. Mrs. Rupard reminded us of our toy collection. We sang a song and closed with the Cub Scout Promise and The Law of the Pack.

Randy Green gave a candy treat to Bill Poole, Ken Bailey, John Bilyeu and Joel Rupard.

Joel Rupard, Keeper of the Buckskin

### For hearty appetites!



**MRS. BAIRD'S Pul-A-Part BREAD**

**P.S. Serve it Hot!**

### NOTICE

### Dukes Shamrock Service Station

Is Open For Business  
WHOLESALE AND RETAIL

Listen to KTRN and win a FREE tank of gas if you have the correct speedometer reading.

114 N. AVE. D Mrs. Lillie Duke, Mgr.



### LURE TO STREAM TEST—Kenny Magoon of Lakey Bait Corp.

has shipped us 300 of his popular N-Bass baits. This is a new surface lure that when you snap the line, dives a couple of feet under the floats back to the top.

It looks like a black bass about to gobble up an insect. It's realistic.

Kenny designed the lure himself. Now, after four months of experimenting, he wants you to try it. So, drop a postcard requesting a sample. We'll forward you complimentary . . . providing you're among the first 100 to write in. Just tell us in what newspaper you saw this offer, then let us know what luck you had with the bait.

For your free lure, write OUTDOORS IN TEXAS, L. Texas.

W. Morine was added to Wichita General Hospital last week for surgery.

Industry spent \$1.8 billion on construction equipment and during 1958 in Texas.

Texas oil and gas dollars paid for 42% of state cost of public education; 60% of state cost of teacher retirement, old-age assistance, blind assistance, and aid to dependent children (1961).

**DISH PAN BY LOMA**  
\$1.98 Value  
Low Discount Price 88c  
Less 10% Discount 9c  
**NET PRICE TO YOU JUST 79c**

# 10% Discount On Discount Prices THE ONLY TRUE DISCOUNT STORE IN THE WICHITA FALLS AREA...

# Discount City

LOCATED OUT OF THE HIGH RENT DISTRICT. ON THE BURKBURNETT HIGHWAY BETWEEN THE TWO MAIN GATES OF SHEPPARD FIELD. NEXT TO THE CAPEHART HOUSING AREA... LOOK FOR THE BIG YELLOW SIGN... DRIVE A LITTLE AND SAVE A LOT ON LOW DISCOUNT PRICES... MORE MERCHANDISE LESS MONEY!

★ **Plenty Free Parking**

★ **PLUS AN ADDITIONAL 10% CASH DISCOUNT ON ALL SALES OVER 50c AT THE CHECK OUT STAND**

● Featuring: General Electric Appliances ● Loma Plastic House Wears ● Electrical Supplies ● Toys ● Dolls ● Gift Items ● Women's and Children's Shoes ● Wearing Apparel ● Lingerie ● Hose ● Light Hardware ● Tools ● Halloween Items

**AUTOMATIC CAN OPENER**  
Regular Price \$15.77  
10% Discount \$1.58  
Net Price To You **\$14.19**



**YOUR HEALTH**

This Information Supplied by Wichita Health Unit 602 Broad Street Wichita Falls, Texas

**YOUR CHILD'S WELFARE**

**1 TO 2 YEARS**  
**GATES, WINDOWS AND DOORS—**  
Doors which lead to stairways, driveways, and storage areas should be safely fastened. Keep screens locked or nailed. Put gates on porches and

stairways.  
**PLAY AREAS—**  
Fence the play yard. The kitchen is a dangerous area. Turn pot handles to the wall. Lock up the matches, furniture polish and cleaning agents, especially lye and detergents. Electric cords attached to coffee pots, toasters, irons and radios should be kept out of reach. Toys should have no small removable parts and should be unbreakable. Keep guard in front of wall heaters and around registers and floor furnaces.  
**WATER—**  
Never leave your child alone in the tub, wading pool or around open and frozen bodies of water. Even shallow water is dangerous.  
**POISONS—**  
Put medicines and poisons un-

der **LOCK AND KEY IMMEDIATELY** after use. Some cosmetics are poisonous. Store kerosene and gasoline away from children. **The child of this age investigates. He climbs, opens doors and drawers, takes things apart, and likes to play in water. He has no sense of danger—watch him. Don't let an emergency lead to an accident.**  
**2 TO 3 YEARS**  
**TRAFFIC—**  
Keep your child away from the street and driveway with a strong fence and firm discipline.  
**WADING POOLS—**  
Even shallow wading pools are unsafe unless supervised.  
**PLAYMATES—**  
Accidents are more frequent when playmates are older. The two-year-old may be

easily hurt by bats, hard balls, bicycles, and rough play.  
**TOYS—**  
Large, sturdy toys without sharp edges or small, removable parts are safest.  
**BURNS—**  
Keep matches and cigarette lighters away from children. Full skirts close to open flames have caused many deaths.  
**DANGEROUS OBJECTS AND POISONS—**  
Lock up medicines, household and garden poisons. Store dangerous tools and garden equipment in a safe place.  
**The child of this age is lightning fast. He is impatient with restraint. He tries to do things alone. He imitates. He begins to understand, but still does not know what is dangerous. Don't let an emergency lead to an accident.**

**Pentecostal Church Of God**  
Berry Street  
Rev. Alfred B. Qualls, Pastor  
Sunday School, 9:45 a. m.  
Morning Worship, 11:00 a. m.  
Sunday Night Evangelist Service, 7:00 p. m.  
Saturday Night Fellowship 7:30 p. m.

**Burkburnett Lodge NO. 1027**  
A. F. and A. M.  
Stated Meetings First and Third Monday, At 7:30 p. m.  
School of Instruction 2nd and 4th Mondays  
Visiting Brethren Welcome  
R. W. Morine, W. M.  
J. H. Ferguson, Secy.

**Church of St. John The Divine (Episcopal)**

Bible School, 1:15 p. m.  
Morning Prayer and Holy Communion, 1:30 p. m.  
First Christian Church, the Rev. Eugene McCrary, Vicar In Charge.  
Nursery is available.  
Monday, 4:00 p. m.—Catechism Class—Rectory, 728½ W. 3rd Street.  
Monday, 7:30 p. m.—Adult confirmation and Inquirers Class.  
Tuesday, 8:00 p. m.—Choir practice, Mrs. Taton's, 210 Westwood.  
Wednesday, 7:30 p. m.—Acolyte practice, 811 Preston Street.  
**Our Classified Ads Get Results**

**Men's Bible Church**  
FIRST BAPTIST CHURCH  
Invites You To Worship With Them  
Each Sunday Morning  
A. R. Hill, President  
W. R. Carswell, Teacher  
C. R. Chambers, Secretary

**Trinity Lutheran Church**  
Eight Miles West of Burkburnett on State Highway  
Pastor, Rev. David W. J. ...  
9:45 a. m.—Sunday and Bible Classes.  
10:45 a. m.—Worship and Communion Service—Sunday of each month.  
Walter League meets every Wednesday, 8:00 p. m.  
A Church of the Lutheran Church—Missouri Synod

**TAKE YOUR PROBLEMS TO CHURCH -- MILLIONS LEAVE THEM THERE**

- Texas Electric Service Co.**  
J. B. ADY, Manager
- B. & B. GROCERY**  
Choice Meats and Groceries  
500 Avenue D. — Phone 569-3701
- BOYD BROS. DEPT. STORE**  
General Merchandise-Furniture  
Maytag and G. E. Appliances  
117-123 Main — Phone 569-2214
- BURKBURNETT FLORIST**  
Member Florist Telegraph Delivery  
Mr. and Mrs. L. V. Richards  
415 South Ave. B — Phone 569-2281
- TULLIS MOTOR COMPANY**  
Your Satisfaction Is Our Desire  
Okl. Cutoff — Phones 569-3305 569-3306
- UNITED SUPER-MARKETS**  
Kenneth Palmer Manager  
Wichita Highway And Tidal Street
- WOLFE FORD COMPANY**  
Complete Service and Sales  
Phone 569-2275
- BOOMTOWN BOWL, Inc**  
AMF "Magic Triangle" Pinspotter  
Snack Bar —Nursery—Phone 569-8139  
1001 Wichita Highway
- FAIRMONT Dairy Products**  
Milk — Ice Cream  
Cottage Cheese  
Always The Peak Of Perfection
- SPINKS FINA SERVICE**  
418 South Avenue D  
Your AAA Service Station—Pho. 569-8108

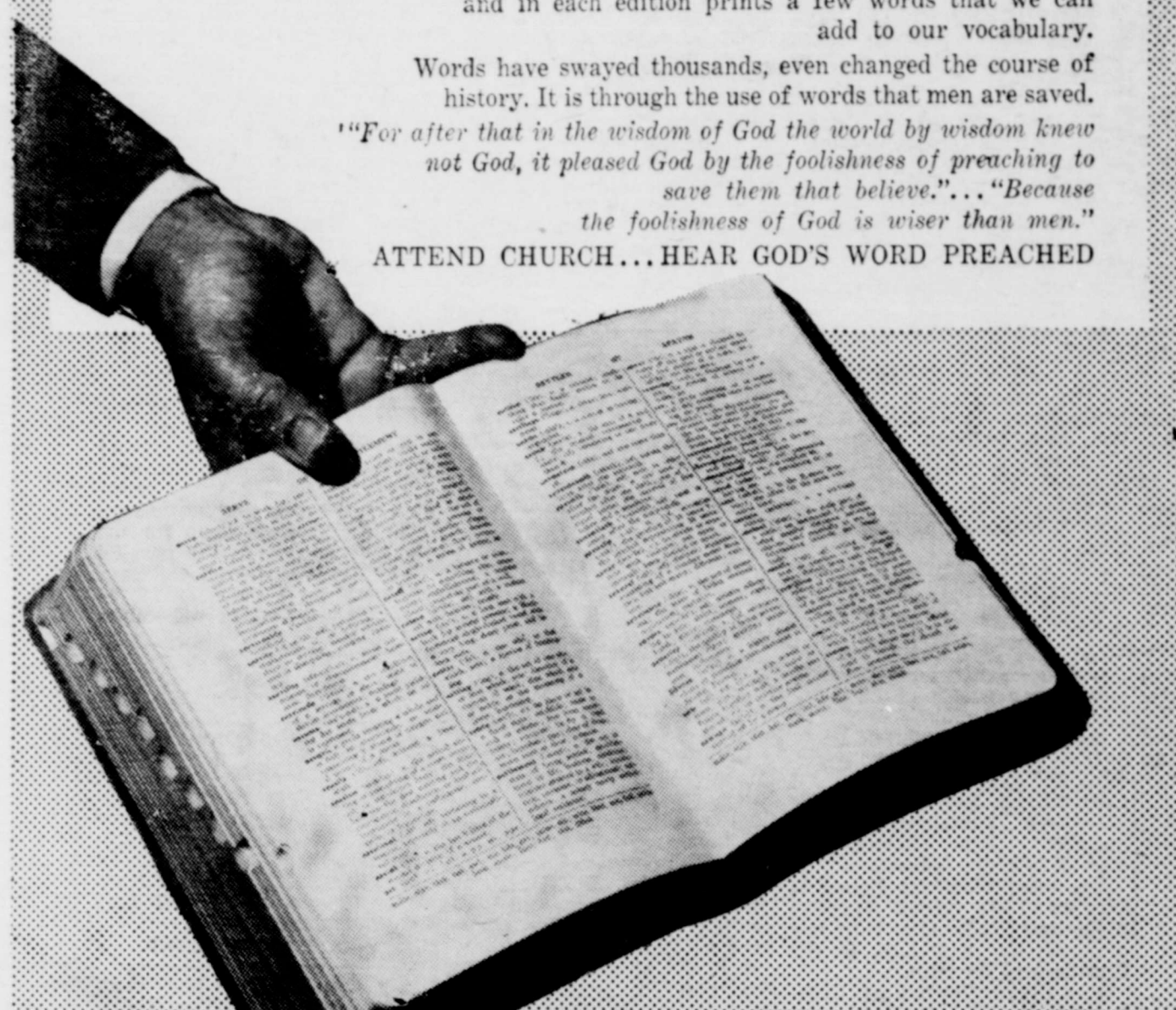
**WORD POWER!**

One of our popular publications, encourages the learning of new words, and in each edition prints a few words that we can add to our vocabulary.

Words have swayed thousands, even changed the course of history. It is through the use of words that men are saved.

*"For after that in the wisdom of God the world by wisdom knew not God, it pleased God by the foolishness of preaching to save them that believe..." "Because the foolishness of God is wiser than men."*

**ATTEND CHURCH...HEAR GOD'S WORD PREACHED**



The Church is God's appointed agency in this world for spreading the knowledge of His love for man and of His demand for man to respond to that love by loving his neighbor. Without this grounding in the love of God, no government or society or way of life will long persevere and the freedoms which we hold so dear will inevitably perish. Therefore, even from a selfish point of view, one should support the Church for the sake of the welfare of himself and his family. Beyond that, however, every person should uphold and participate in the Church because it tells the truth about man's life, death and destiny, the truth which alone will set him free to live as a child of God.

**EVERYONE IN THE CHURCH THE CHURCH IN EVERYONE**

(© Coleman Adv. Serv., P. O. Box 4887, Dallas, Texas)

- VIRGIL AARON**  
SANITATION CONTRACTOR  
Complete, Modern Facilities
- COMPLIMENTS OF  
**MEAD'S BAKERY, Inc.**
- Farmers Co-op Gin, Feed and Supply**
- C. D. Shamburger Lumber Co.**  
Gene A. Ien, Manager  
200 West 3rd Street
- Preston Dairy Products**  
For The Finest In Dairy Products  
Hugh and Buddy Preston  
219 East 2nd Street
- Manhattan DEPARTMENT STORE**  
We Give S. & Green Stamp
- DICKSON OIL COMPANY**  
**DICKSON MOTEL**
- Payton Cozby Heating and Plumbing**  
409 East Main Street  
PHONE 569-3911
- CORNER DRUG STORE**  
George McClarty  
320 East 3rd Street

**ATTEND THE CHURCH OF YOUR CHOICE THIS SUNDAY**

- Jan Lee Baptist Church**  
Rev. Travis McMinn, Pastor  
Across from Junior High School  
Sunday School, 9:30 a. m.  
Morning Worship, 10:45 a. m.  
Training Union—5:30 p. m.  
Worship—6:30 p. m.  
Wednesday—Teachers and Officers 7:00 p. m.  
Church in Prayer—8:00 p. m.  
Choir Practice, 8:15 p. m.  
Large enough to accommodate, small enough to appreciate.
- Church of Christ**  
Eugene Gilmore, Minister  
Bible Study Sunday, 9:45 a. m.  
Worship, 10:45 a. m.  
Young People Class 5:00 p. m.  
Worship, 6:00 p. m.  
Bible Study, Wednesday, 7:30 p. m.  
Ladies' Bible Class, Tuesday, 9:30 a. m.  
"We welcome you to any of our services."
- First Methodist Church**  
Avenue C and 4th Street  
Phone 569-3778  
Carrol D. Copeland, Minister  
Merwin K. Turner, Assoc. Min.  
Morning Worship, 8:30 a. m.—10:50 a. m.  
Sunday School, 9:45 a. m.  
Methodist Youth Fellowship, 5:45 p. m.  
Evening Worship, 7:00 p. m.  
Bible Study, 7:00 p. m., Wednesday and Thursday.  
Nursery provided for all Church Services.
- Central Baptist Church**  
814 Tidal St.  
Kenneth D. Bradshaw, Pastor  
Sunday School, 9:30 a. m.  
Morning Worship, 10:45 a. m.  
Training Union, 6:00 p. m.  
Evening Worship, 7:00 p. m.  
Wednesday Night Prayer Service, 7:30 p. m.  
"A Friendly Progressive Southern Baptist Church"
- Assembly of God Church**  
Lonnie Finney, Pastor  
Sunday School, 9:45 a. m.  
Morning Worship, 11:00 a. m.  
Evening Worship, 7:30 p. m.  
Women's Missionary Council, Tuesday, 2:00 p. m.  
Youth Service, Tuesday, 7:30 p. m.  
Prayer Meeting, Thursday, 7:30 p. m.
- Church of God**  
J. W. Jackson, Pastor  
10:00 a. m., Sunday School.  
11:00 a. m., Hour of Morning Worship.  
7:00 p. m., Evangelistic Services.  
7:30 p. m., Wednesday, Young Peoples Endeavor.  
If you haven't a church home, we would like very much for you to visit us where the full gospel is preached in the old time way. There is special music and singing each service. Each and every one has a warm and hearty welcome to come worship with us.
- The First United Pentecostal Church of Jesus Christ**  
We want to invite you to any or all of our Services. You have a standing invitation where you can hear the Bible preached in the old fashion way.  
Come and bring some one.  
Service Nights—Thursday, 7:45 p. m.  
Saturday, 7:45 p. m.  
Sunday, 7:45 p. m.  
Sunday School, 10:00 a. m.  
Pastor, Rev. E. H. Menton  
Phone 569-1108  
606 E. 6th Street
- First Church of Christ Scientist**  
2156 Avenue H  
Wichita Falls, Texas  
Sunday School for children under 20 years of age, 11:00 a. m. in the Church Edifice.  
Nursery.  
Services at 11:00 a. m.  
Wednesday Evening Services, 8:00 p. m.
- First Baptist Church**  
Rev. Hollis Morris, Pastor  
Corner Ave D and 4th St.  
Sunday School, 9:30 a. m.  
Morning Worship, 10:45 a. m.  
Training Union, 5:30 p. m.  
Evening Worship, 6:30 p. m.  
Prayer Meeting, Wednesday, 7:30 p. m.  
"In the heart of the city for the hearts of the city."
- Grace Lutheran Church**  
Third St. and Ave E  
Philip M. Otten  
The Church of the Lutheran Hour, TV's "This is the Life".  
Sunday, 9:15 a. m., Sunday School and Bible Classes.  
10:30 a. m. Morning Services.  
LWMS meeting every first Tuesday, 2 p. m.  
Sunday School teachers meeting, Teacher training course, every 2nd and 4th Wednesday, 7:30 p. m.  
Walther League Meeting, every 2nd and 4th Sunday at 7:30 p. m.  
You are cordially invited to our services.
- Free Church of God In Christ In Jesus Name**  
West 6th St.  
W. W. Dixon, Pastor  
Saturday—9:45 a. m., Sabbath School.  
11:00 a. m., Preaching Service  
Thursday Night Service, 7:00 p. m.  
We welcome all colored and white people to our services.
- Calvary Baptist Church**  
College and Ave B  
Ray C. Morrow, Pastor  
10:00 a. m., Sunday School.  
An Independent Southern Baptist Church.  
We use the Bible as our only literature.  
11:00 a. m., Song, Preaching Service.  
7:00 p. m., Young Peoples Services.  
7:30 p. m., Night Preaching Service.  
Wednesday Night—6:45 p. m., Teachers Meeting.  
7:30 p. m.—Prayer Meeting.
- Church of the Nazarene**  
Main at Holly  
R. A. Noakes, Pastor  
Sunday School, 9:45 a. m.  
Morning Worship, 11:00 a. m.  
Young Peoples Service, 7:30 p. m.  
Junior Society, 6:45 p. m.  
Evening Worship, 7:30 p. m.  
Wednesday Prayer Service, 7:30 p. m.
- First Christian Church**  
2nd St. and Ave. D  
"For the young and the young in heart."  
Rev. Hugh E. Caffey, Pastor  
Off. and Res.: 500 Mimosa  
Phone 569-1236  
SUNDAY—9:45 a. m., Church School  
11:00 a. m., Morning Worship  
6:00 p. m., Youth Meeting and Junior Choir  
7:30 p. m., Evening Worship  
8:00 p. m., Fellowship Hour  
WEDNESDAY—7:30 p. m., Choir  
For Results, Try Classified



Burk Burnett, Wichita County, Texas

# COLORADO IS CALLING AGAIN

By Harry Dodson

Colorado is calling thousands of Texas hunters at the call will be answered by thousands. Monday morning the highways were well crowded with hunting vehicles. Pickups, Jeeps, cars pulling house trailers, and an array of gear convinced one that there are indeed resource-rich areas in Colorado. It comes to building stock for hunting. So many Texans flock to Colorado for big game. First it is a revelation for us flat country hunters to see beautiful rugged mountains, tumbling running streams and many colored trees turn after the first night. The majority of the Colorado hunters have a way of thinking that Texans feel well appreciated. The city of the Colorado is so warm that hunters of Texas correspond during the year forward with much to the genuine and enjoyable hunting season. One of the best examples of Colorado hospitality is the Archuleta family. The Archuleta was the great-grandfather of L. M. Archuleta.

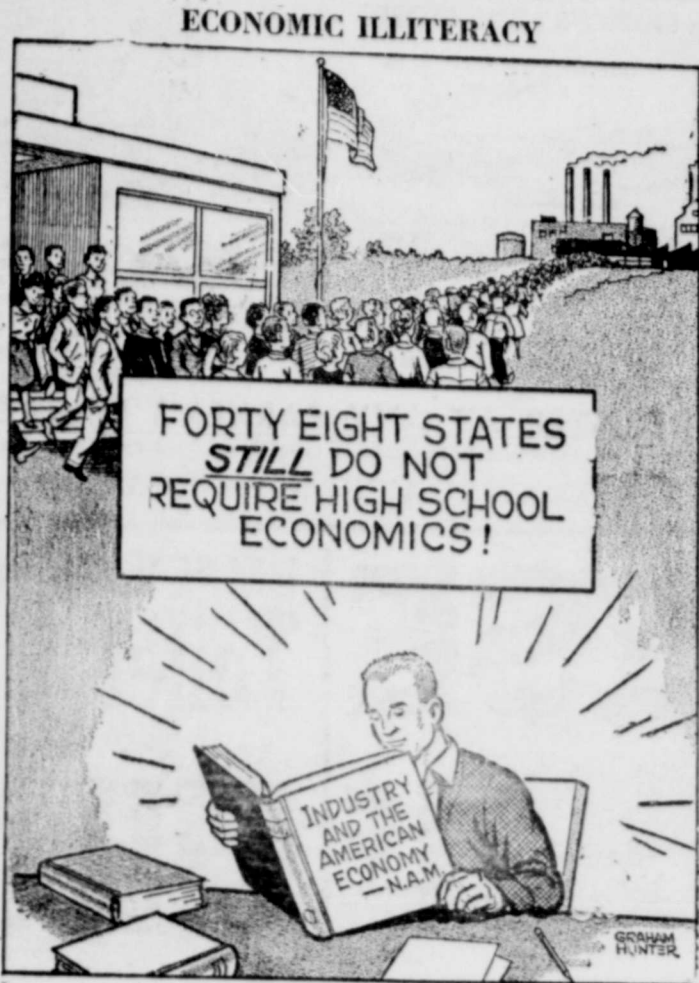
At one time he owned most all of the county and his holdings extended over into other surrounding counties. Each succeeding generation split the land up into smaller and smaller tracts. L. M. owns 9,000 or more acres in the most picturesque part of the county, some twenty-three miles South and West of Pagosa Springs.

Margaret Archuleta, a daughter of L. M. Archuleta owns the El Cantina Bar in Pagosa Springs. Hunters from all over the United States make this bar their headquarters and drop in for frequent visits with other hunter friends they have met there.

Margaret, a young business woman, is mature in years. She is also years ahead of many other business people because of her dreams and steadfast belief in the future of the Pagosa Springs area as the playground of the United States.

Some years ago we talked with Margaret about a site for a super-duper recreation spot in Colorado. In fact, that dream has been with us for many years. The exact spot is indelibly stamped in our mind and the search has been a constant one each trip to Colorado.

One of the most thrilling and exciting two hours of my life occurred last year. By appointment, Margaret, Mr. Archuleta and I headed toward the ranch about one



o'clock one afternoon. Snow was fluttering down in soft, noiseless beauty. As we got farther and farther from town the country turned to rolling and sometimes treeless terrain. I was disappointed. It seemed we were going away from the spot I had been dreaming of.

Conversation never lagged. Margaret was giving a running description of the area as we crept along the slippery road. One of her first positive statements was "Some day this will be the biggest playground in the United States. Not only in the summer time but the year 'round. Many dams will be built. Airstrips will be constructed. Transportation facilities will be stepped up. We are right in the middle of all of it."

When we turned off the main highway, my disappointment turned to curiosity. I could see a towering snow-capped mountain lifting high above us. The snow was now peppering down in earnest.

When we turned into the Archuleta ranch we saw a sign which impressed us no small bit. This sign was a

simple one, but it carried all the impact of a billboard 50 feet high, it might well be a monument to the man who put it up—L. M. Archuleta. It said "HUNTERS WELCOME". What a challenge to any man who claims to be a hunter. Are you, or are you not a hunter? This welcome sign must certainly have caused many a man to take inventory of himself.

Past the sign the easily negotiable but narrow road turned sharply upward and upward. The trees were larger. The smaller evergreens, beginning to grow limp under the weight of

the snow were more beautiful. Some two or three miles farther I was asked to pull out into an opening, a grass covered hill rising some two or three hundred feet above the road. From the top of this hill looking Northeast the sight was magnificent, but it wasn't my dream spot.

Slowly I turned around toward the mountain. By this time the snow was almost obscuring my vision. There, as I wiped my eyes, my dream came true. As I looked and looked I could see a giant lodge made of native timber with its back to the friendly 3,000 foot mountain. On one side I could see a ski lift. It was busy carrying people to the top of the run for the breathtaking trip back to the valley surrounding the lodge.

There it was, as plain as anything I ever saw, a rippling stream in the valley in front of the lodge. The bridge across it was also made of logs.

I don't know how long I stood there. It must have been several minutes. I had left the pickup running with the heater going. Finally I thought I heard someone say "Aren't you cold? If you don't have chains for the pickup perhaps we had

better be going back to town."

The trip to town was unreal. All I could see was that lodge and all the happy people. Do dreams come true? Yes. Some day perhaps that dream will come true for the second time. It may not be a dream. It may be just as real as the mountain protectively hovering over my dream.

My gear is all packed. Colorado, here I come again.

**TELEPHONE TALK**  
by C. A. Deuschle, Manager

**SURE WAY TO SCORE**

If I were a sports writer, I think I'd devote this month's column to football. There have really been some exciting games this season—high school, college and professional.

October is a good month for taking in one of the out-of-town games. And if you're planning a big football weekend, why not let your telephone help you "call plays"?

You'll never fumble if you call ahead for reservations, and if you plan to drop in on friends, a call to let them know you're coming is a sure way to score. You'll score again after you get home if you call and thank your friends for their hospitality.

**ONE CAN DO IT**

Looking ahead to next month, I'm reminded that the November elections will soon be upon us.

Just how important will your vote be? Well, let's look back in history.

In 1868, Andrew Jackson was acquitted of impeachment charges by one vote in the senate.

In 1876, Samuel Tilden defeated Rutherford Hays in the popular vote, but Hays won a majority in the electoral college—by one vote.

In 1941, the Selective Service Extension Act was passed by the House on a 203 to 202 vote. This law provided that draftees be kept in service as long as the government thought necessary. Less than four months after it passed, the U. S. declared war on Japan.

Conclusion: Your vote is mighty important—don't neglect it.

**TELEPHONE DIRECTORY NEWS**

Beginning with the February, 1963 directory issue, Burk Burnett telephone customers will be listed in both a combined Wichita Falls - Burk Burnett - Henrietta - Iowa Park and Charlie directory and a smaller Burk Burnett directory.

We are already at work on the new Wichita Falls directory and work will begin shortly on the new Burk Burnett directory. Remember, each Burk Burnett customer will be listed in both directories. Now is the time to check your business and residence listings and be sure that you are properly listed for your new directory service.

**ONE LAST THOUGHT**

They tell me that what makes them "the good old days" is usually a rich imagination and a poor memory. So long til next month.

Call by number. It's twice as fast.

**SOUTHWESTERN BELL TELEPHONE COMPANY**

Reserve District No. 11  
REPORT OF CONDITION OF  
**The First National Bank**  
BURKBURNETT, IN THE STATE OF TEXAS,  
CLOSE OF BUSINESS ON September 28, 1962

In response to call made by Comptroller of Currency, under section 5211, U. S. Revised Statutes.

ASSETS	
Balances with other banks, and cash items	
U. S. Government obligations, and guaranteed (of any reserves)	\$ 977,794.00
U. S. Savings Bonds (of any reserves)	1,249,190.00
U. S. Government securities (including \$10,500.00 stock Federal Reserve Bank) (of any reserves)	1,236,104.37
U. S. Government securities (including \$28,815.72 overdrafts) (of any reserves)	10,500.00
Real estate owned \$61,129.77	2,770,449.62
Loans and fixtures \$21,471.60	82,601.37
State owned	
Other than bank premises	6,760.50
Assets	1,560.72
<b>TOTAL ASSETS</b>	<b>\$6,334,960.58</b>
LIABILITIES	
Deposits of individuals, partnerships, and corporations	3,302,859.21
Savings deposits of individuals, partnerships, and corporations	1,634,781.91
U. S. Government securities (including postal savings)	220,116.84
U. S. Government securities (of States and political subdivisions, and officers' checks, etc.)	511,934.51
U. S. Government securities (of States and political subdivisions, and officers' checks, etc.)	62,691.82
<b>TOTAL DEPOSITS</b>	<b>5,732,384.29</b>
Total demand deposits	4,082,602.38
Total time and savings deposits	1,649,781.91
<b>TOTAL LIABILITIES</b>	<b>5,732,384.29</b>
CAPITAL ACCOUNTS	
Common Stock, total par	\$100,000.00
Retained profits	100,000.00
Reserves (and retirement account for deferred stock)	250,000.00
	245,528.51
	7,047.78
<b>Total Capital Accounts</b>	<b>602,576.29</b>
<b>Total Liabilities and Capital Accounts</b>	<b>6,334,960.58</b>
MEMORANDUM	
James E. Frye, Vice-President, of the above named bank hereby declares that this report of condition is correct to the best of my knowledge and belief.	482,000.00
/s/James E. Frye	
The undersigned directors attest the correctness of the report of condition and declare that it has been prepared by us and to the best of our knowledge and belief is true and correct.	
C. B. BOWLES GLEN H. BEAR GEORGE H. MCCLARTY Directors	

your friend for life...



**B. H. Alexander**

You may already know this man. If you do, you have a valuable friend—a man whose business is planning for the future.

When you marry, when a baby comes along, when you begin thinking about retirement, the counsel of this Southwestern Life agent will be of great importance.

Should your family some day be without you, they will benefit not only from your foresight in providing for them financially, but also from the comfort of this good friend and adviser.

If you do not know this Southwestern Life agent yet, talk to him when he calls. Your Southwestern Life agent—your friend for life.

**Southwestern Life Insurance Co.**  
Better Plans for a Better Life  
111 South Ave D  
Burk Burnett, Texas  
Phone 569-2176

**PALACE Theatre**  
BURKBURNETT, TEX.

Sun-Mon Tues — OCT. 21-22-23  
**THAT TOUCH OF MINK**  
CARY GRANT AND DORIS DAY  
IN TECHNICOLOR  
WED. - THURS. - FRI. - SAT.  
OCTOBER 24-25-26-27

THAT GREATEST OF ALL RELIGIOUS DRAMA  
THE IMMORTAL  
**THE KING OF KINGS**  
IN BEAUTIFUL TECHNICOLOR  
Special Admission On KING OF KINGS  
Adults 75¢ — Children 35¢



**WONDERFUL WAY TO ARRIVE IN STYLE...**  
yet it's Oldsmobile's lowest-priced, full-size series!

Meet the style-leader—Oldsmobile's Dynamic 88 for 1963! Its crisp lines and sculptured silhouette will win your heart from the moment you see it. And with all this beauty goes a price tag that makes the Dynamic 88 the outstanding buy in its field. If you're ready to move up to a full-size, no-compromise car, see the Dynamic 88... and check the price. You'll be delighted with both.

New style to delight you! Rocket action to excite you!

*Dynamic 88*  
**OLDSMOBILE**  
There's "Something Extra" about owning an OLDSMOBILE!

SEE YOUR LOCAL AUTHORIZED OLDSMOBILE QUALITY DEALER

**MATHIS CHEVROLET CO. 300 East 2nd Street**



PARKERS QUALITY MEATS



# FRYERS

**FREDDY THE FRYER**  
**U. S. GRADE "A"**

MOST DELICIOUS WHEN SERVED WITH OCEAN SPRAY CRANBERRY SAUCE

WHOLE Lb. ....

# 29¢

**FREE HOLIDAY IN MEXICO FOR TWO!**  
4 NIGHTS MEXICO CITY - 2 NIGHTS ACAPULCO  
PLUS \$100.00 SPENDING MONEY  
FREE From PARKER'S FOOD STORES



TRIP MUST BE COMPLETED BY DEC. 15th  
Fly Braniff to Dallas and board one of Braniff International Airways' luxurious Super Jets... the wonders of Mexico City and Acapulco are just a few hours away. Mexico is truly the land of enchantment. Native architecture and age-old customs are charming and delightful, the people gracious and friendly. En route you'll cruise at over 600 miles per hour on Braniff's Super Jets and enjoy the extra comforts, delicious food, supremely comfortable seats, and special care that are traditions with Braniff.

**JUST REGISTER AT ANY PARKER'S FOOD STORE!**  
Nothing to Buy—Need Not Be Present to Win—Children Under 18 Years and Parker's Employees Not Eligible  
WINNER TO BE ANNOUNCED OCTOBER 22nd



While in Mexico you will stay at the Balsa Hotels, famed for their hospitality, convenience and comfort of all their hotels. The Del Prado in Mexico City, overlooking Alameda Park, will be your base for sight-seeing the City. For your leisure at the Balsa Hotel in Acapulco, the Elcano offers you a beach, pool, air-conditioned comfort in an oceanfront room, and all the facilities of a deluxe hotel.

**Parker PLAZA**  
412 SOUTH AVE. D  
BURKBURNETT, TEX.  
Quantity Rights Reserved

**WEDNESDAY IS DOUBLE GREEN STAMP DAY**  
With Purchase of \$3.00 or More of Merchandise

**WESSON OIL**  
38 Oz. Bottle **65¢**

For More of the GOOD FOOD FLAVORS & Less of the Saturated Fats... COOK WITH WESSON.

**CHEESE**

Kraft Link  
Nippy — Garlic  
Smoked Bacon

6 Oz. ROLL **31¢**

**DELSEY Toilet Tissue** 2 ROLL PKG. **19¢**

**MILK** Carnation Evaporated 2 TALL CANS **25¢**

**BACON**

RATH Black Hawk SLICED

LB. **57¢**

**Franks**

BURLISON'S

3 LB. BAG **\$1.**

**Kotex** SANITARY NAPKINS BOX **29¢**

**Dog FOOD** FRISKIE 2 300 CANS **25¢**

**MILK** CARNATION INSTANT 8 QUART PKG. **59¢**

**CABBAGE** FIRM GREEN HEADS A Penny A Pound LB. **1.00**

**Grapefruit** RUBY RED FIRST OF THE SEASON 5 LB. Bag **39¢**

**Apples** ROME BEAUTY Queen Of The Bakers 4 LB. BAG **39¢**

**ORANGE JUICE** Wholesun Frozen 7 6 OZ. CANS **\$1.00**

**OLEO** Wilson's Solid Pound **10¢**

**RINSO** BLUE GIANT PKG. **55¢**

6 Reg. Carton **25¢**  
PLUS Deposit

**TOMATOES** Del Haven 303 CAN **10¢**

**COTTAGE CHEESE** 12 OZ. CTN. **19¢**

**Peas** DEL MONTE 2 303 Cans **39¢**

**MARYLAND CLUB** DECAFFEINATED INSTANT COFFEE

5 OZ. JAR **99¢**

**MELLORINE** TOP 22

3 1/2 Gallon Cartons **1.**

**PINEAPPLE** DEL MONTE CRUSHED 2 NO. 2 CANS **55¢**

**CORN** DEL MONTE CREAM STYLE GOLDEN 3 303 CANS **55¢**

**SPINACH** DEL MONTE 3 303 CANS **55¢**

**FRUIT COCKTAIL** DEL MONTE 3 303 Cans **69¢**

**PARKER'S FOOD STORES, Inc.**

WEDNESDAY IS DOUBLE GREEN STAMP DAY WITH PURCHASE OF \$3.00 OR MORE OF MERCHANDISE

317  
In  
Re  
ins  
Co  
inc  
an  
Ro  
Co  
Lai



# All Insurance is the same 'til you have a claim

**Burk Insurance Agency**  
 HOWARD CLEMENT  
 New Location—Next to Legion Hall

## Deep Dish Mince Meat Pies



As easy as pie to make fancy desserts when modern mince meat is used in either its ready-to-use or condensed form. Newest proof comes with the Borden Kitchen's novel recipe for individual Crust Deep Dish Mince Meat Pies.

The tasty individual pies combine two time-saving ingredients: ready-to-use mince meat and instant mixing pie crust mix. In the only variation from standard pie crust making, the addition of extra coconut and topped with whipped cream, served warm with a liberal serving of vanilla ice cream.

### Coconut Crust Deep Dish Mince Meat Pies (Makes 6 individual pies)

1/2 jar None Such ready-to-use Mince Meat  
 1/2 cup instant mixing pie crust mix  
 1/3 cup angel flake coconut  
 2 tablespoons hot water  
 Whipped cream or ice cream, optional

Divide mince meat evenly into 6 equal walnut-size balls. On floured board, roll each into a 4-inch circle. Cut slits, or designs in center of each circle. Place over each custard cup. Fold overhanging edge so that pastry edge rests evenly on rim of cup. Press the edges firmly against rim of cup with tines of upturned fork. Bake in hot oven (425°F.) about 30 minutes or until crust is browned. If desired, garnish tops with extra coconut. Serve with flavored whipped cream or served warm with vanilla ice cream.

## FALL CALENDAR BRINGS SOCIAL SEASON INTO FULL SWING



AUTUMN HAS TAKEN the housewife's entertainment efforts out of the backyard and into the home, with emphasis on stylish, beautiful table settings. The table shown here, one of 12 included in the Melamine Council's "Invitation to Dining" book, features a lovely blue and gold pattern on melamine dinnerware. Copies may be obtained by writing the Melamine Council, 75 West Street, New York City. Enclose 25 cents to cover mailing costs.

When the U. S. Navy first discovered during World War II that melamine, the hardest of all plastic material, made sturdy, long lasting dishes, no one expected this break resistant material to evolve into anything like today's beautiful but practical dinnerware. This exquisitely appointed table, set with melamine of patrician delicacy, illustrates how far the Navy's husky wartime baby has come.

This dinner service is classic both in shape and pattern, yet it will stand up in an automatic dishwasher as no other dinnerware can, and the rich blue and gold of its pattern is molded in so it can never fade or wear away.

The table, designed in traditional style expressly for the night "we have your parents and mine over for dinner," is from the book "Invitation to Dining" by the Melamine Council. The book is illustrated in full color and presents 12 imaginative table settings that can be duplicated easily.

An interesting note is the use of napkin rings, fast regaining their lost popularity, in this setting which features dinnerware pattern called "Golden Patrician". Its deep blue and gold are carried out by blue candles in brass candlesticks, and the low bowl of anemones in blues and reds makes a color bridge to the hot tomato bouillon that awaits the guests.

The balance of the menu, as suggested in the book, is roast pork with apple and onion dressing, glazed apple rings and duchess potatoes, head lettuce salad with Roquefort dressing and lemon meringue pie. What father-in-law could resist a meal like that?

"Invitation to Dining" is available by writing to The Melamine Council, 75 West Street, New York 6, N. Y. The Council asks only that you enclose 25 cents to cover the cost of mailing.

Yes, Santa Claus...



SENTIMENT COMBINES WITH tradition to make 1962 Christmas cards the warmest ever. Studio cards have lost their bite and will offer gentle whimsy in place of brash humor, like this Norcross card that remembers the famous letter written in 1897 by the editor of the old Sun. He said "Yes, Virginia, there is a Santa Claus." The card shows a delightful mite in a red nightgown and she says "Yes, Santa Claus, there is a Virginia." Particularly notable are the religious cards, which this year as in past years, will account for more than 30% of all Christmas cards sold.

## INDIAN INFLUENCE

While the European colonists who settled America have been scornful of Indian culture, modern 20th century architects are showing a higher respect.

According to the Southern Pine Association, there's a remarkable resemblance in the lines of the new A-frame homes to the old Indian tepee.

Like the wigwam, wood members of the A-frame converge at the roof, the main difference being that solid or laminated

lumber beams are used for arch support instead of poles. And in lieu of bear-skin covering, there are two inch thickness of wood decking to complete the A-frame.

## REVERSE TWIST

A rustic "natural" look is desirable for many "second homes" in wooded settings, and the Southern Pine Association suggests a unique reverse twist: exposure of the rough side of wood boards-and-battens on the exterior house walls.



enjoy flameless electric living in a **TOTAL ELECTRIC GOLD MEDALLION HOME**

There's wonderful modern living in a Total Electric Gold Medallion Home, where flameless electricity heats in winter and cools in summer, cooks the meals, does the dishes, washes and dries clothes, provides plenty of hot water and does so many other jobs efficiently and economically. Before you build or buy a home, let us give you complete information about Total Electric Living in a Gold Medallion Home... and about our new low electric rates for home heating and for electric water heating.

**TEXAS ELECTRIC SERVICE COMPANY**



## FOR SALE ADVERTISE

GENUINE ENGRAVED LETTERHEADS DESIGNING \$17.00 PER 1000

Each year, on March 1, the U. S. Marine Corps sends anniversary greetings to the British allies, commemorating the friendship established when that regiment and the 1st Marine Regiment served together in China during the Boxer Rebellion in 1900.

HOLD THAT LINE



## ON EXPENSE!

Cash that you carry in your pocket seems to vanish... disappear into thin air. But carry it in a checking account and you can account for almost every dollar.

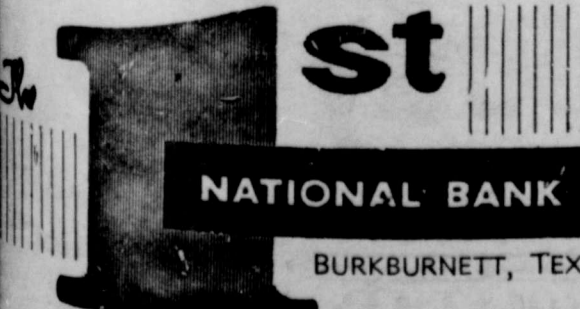
That is why many successful savers pay by check because they can control expense. Try it yourself. You'll have more left over at the end of the month if you do.

## INTEREST PAID ON SAVINGS

**3 1/2% 4%**  
 6 MONTHS 1 YEAR

DRIVE IN BANKING

DRIVE IN BANKING HOURS:  
 Mon. Thru Fri. 9 a. m. to 2 p. m.—4 p. m. to 6 p. m.  
 Saturday 9 a. m. to 12 Noon



SERVING BURKBURNETT SINCE 1907  
 MEMBER Federal Deposit Insurance Corporation

The motor fuel used in the Iwo Jima campaign would have filled a train of tank cars 238 miles long, and the lubricating oil would have filled an additional 125 box cars.

The first instrument flight from Akron, Ohio to Washington, D. C. was made in 1930 by Marine Corps Captain A. H. Page, who was awarded the Distinguished Flying Cross for his feat.

For Results—Advertise

**PALACE** Theatres  
 BURKBURNETT, TEX.

25c - 50c  
 NEW STARTING TIME  
 Matinees Sat. and Sun.  
 Window Opens 1:45  
 Show Starts 2:00

Evening Shows:  
 Boxoffice Opens 6:45  
 Show Starts 7:00

FRI-SAT - OCT 19-20

Merrill's Marauders  
 JEFF CHANDLER  
 TY HARDIN

Hand of Death  
 PAULA RAYMOND  
 JOHN AGAR

SUN.-MON.-TUES.  
 OCTOBER 21-22-23

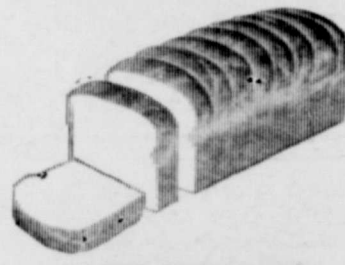
That Touch Of Mink  
 DORIS DAY  
 CARY GRANT

WED-THU-FRI-SAT  
 OCTOBER 24-25-26-27

KING OF KINGS  
 A STORY OF CHRIST

For Results, Try Classified Ad.

Richer flavor!



MRS BAIRD'S Pul-A-Part BREAD

P.S. Serve it Hot!

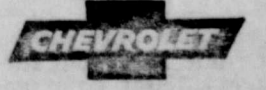


## EXCITING! GO '63 CHEVY II

SPUNKY NEW WAGONS THAT LEAD LONGER, HAPPIER LIVES

What a new kick you'll get out of going places in this one! And what a solvent feeling you'll get as the savings on upkeep mount! There's a full line of models, including three wagons. Basically, we've kept Chevy II's liveliness and roominess and easy loading ways. Kept its crisp looks, too (with a bit of freshening here and there). The changes we've made weren't for change's sake, you see—but for yours. Just for a sample: the brakes are self-adjusting. The new Delcotron generator gives you more electrical reserve power and helps your battery reach a vigorous old age. The Body by Fisher

beauty lasts longer, too; air pushes rain and wash water down through the rocker panels (where most rust begins!) in a clever new flush-and-dry system. The ride is smoother and quieter because of a large number of small improvements we've made. And things are a lot plusher inside. Now you've read this far, haven't you? Isn't that good evidence that Chevy II is made for you? The clincher will come when you take the wheel at your Chevrolet dealer's.



See four entirely different kinds of cars at your Chevrolet dealer's... Chevrolet, Chevy II, Corvair & Corvette.

**MATHIS CHEVROLET COMPANY**

800 East 2nd Street Phone JO 9-3381 Burk Burnett, Texas



# Why Buy Less Than The Best?

THE LARGEST MULTIPLE LINE INSURANCE COMPANY IN THE WORLD. SEE YOUR AGENT. INSURE With The TRAVELERS INSURANCE CO.

BURK INSURANCE  
**Howard Clemen**  
Phone Next to Legion

**CLASSIFIED RATES**  
5c per Word, 20s Per Line  
60c Minimum Charge

### FOR RENT

FOR RENT OR SALE—Five room modern house. Ph. 569-3869. 5-CZ

FOR RENT—New 2 bed room brick apartments. Heat and water furnished. \$85.00. 1000 E. Sycamore Rd. Ph. 569-3806. 5-2TP

FOR RENT—Two room modern furnished house. Ph. 569-3651 or 569-3738. 1-CZ

Trade for a new Zenith or Philco TV at Bill's TV and Furniture Co. 301 N. Ave. D. Ph. 569-3651. 30-CZ

FOR RENT—Mobile Home Park. 3 big individual fenced yards. Big storm cellar. South end Preston St. Ph. 569-3336. 51-CZ

FOR RENT—3 bed room furnished house. Fenced back yard. Close to school. Ph. 569-2711. Nights, 569-2414. 53-CZ

FOR RENT—Small 2 bed room furnished house. 125 Ave. F. Ph. 569-3305. 4-CZ

FOR RENT—Two bed room modern, furnished house. Water paid. \$50.00 month. 710 Park St. Ph. 569-1212. 6-1TP

FOR RENT—Two bed room modern, unfurnished house. Attached garage. Ph. 569-2475. 6-1TC

FOR RENT—Shady trailer space. Private fenced yard. Vivian Lilly. 721 Glendale. Ph. 569-3493. 6-CZ

FOR RENT—New bed room with private tile bath. For 1 or 2 persons. Twin beds or full bed. Ph. 569-1106. 6-1TC

FOR RENT—House trailer space. \$15.00 mo. Contact G. D. Kreigh, 1105 Cheryl Dr. Ph. 569-2272. 6-1TC

FOR RENT—One bed room duplex apartment. Large rooms, fire place and built-in book cases. Large kitchen and bath. Unfurnished or will furnish. Mrs. J. D. Riddle. Ph. 569-2755. 6-CZ

HOUSE FOR RENT—Furnished. Three large rooms, one small room. Water, garbage and sewer paid. Located across road from Fina Filling Station on Berry St. Price reasonable. 6-1TP

FOR RENT—One bed room unfurnished house. Good location. Attached garage. Washer connections. Couple or 1 child. Mrs. H. C. Thompson. 704 Tidal St. Ph. 569-2437. 6-1TC

FOR RENT—3 room furnished house. Water paid. Airmen preferred. Ph. 569-2570. 711 Park St. 6-1TP

If It's For Sale Advertise!

### FOR SALE

### FOR SALE

**SPECIAL . . . .**  
Almost new 3 bed room home. Spacious family room—electric kitchen. Central heating. Low down payment. Immediate possession.

**ONLY TWO LEFT . . . .**  
Brand new 3 bed room bricks. Wall-to-wall carpeting. One and a half tile baths. Pretty kitchen with built-in oven and cooktop. Near new grade school. Only \$350.00 down. Total price \$10,750.00. \$88.50 month.

**HILLTOP . . . .**  
Three bed room brick. Wall to wall carpeting, bath and a half. Lots of closets. Beautifully landscaped corner lot.

**HOME AND INCOME . . . .**  
Two bed room unfurnished home and one bed room furnished home. 150-ft. frontage. Nice location for business. Total price only \$7,950.00.

**Jo Smith Realty**  
Ph. 569-3490

### FOR RENT

FOR RENT—One nice trailer space with patio. Also 3 room modern furnished house. Water paid. Duke's Trailer Park, 114 N. Ave. D. Ph. 569-2567. 6-1TC

FOR RENT—Furnished apartment. 2 rooms, private bath, private entrance. Clean, comfortable. 322 E. 7th St. Ph. 569-3520. 6-1TC

FOR RENT—4 room furnished house. \$45.00 month. 615 Glendale. Ph. 569-3020. 6-1TC

FOR RENT—Two bed room unfurnished house. Fenced yard. Water and garbage paid. 405 W. College. Ph. 569-1035. 6-1TP

### FOR SALE

### FOR SALE

**COLONIAL HOME . . . .**  
A decorator's choice—three bed rooms. Carpeted. Bath and a half. Double garage. FHA and GI approved.

**B. H. Alexander, Jr.**  
BUILDER  
569-2831 - PHONE - 569-3434  
53-CZ

FOR SALE—Two bed room house. Storm cellar. Price \$3,650.00. 712 N. Ave. F. 6-1TP

FOR SALE—New 2 bed room house. Two corner lots on Okla-Cutoff. Write C. A. Johnson, 2418 H Ave., Lawton, Oklahoma. 6-1TP

FOR SALE—1961 Chevrolet Bellaire Hardtop. 4-door. Low mileage. Radio and heater. 712 Park St. Ph. 569-2387. 6-1TP

FOR SALE—Toy Terrier puppies. 6 weeks old. Reasonable. 714 E. 4th. Ph. 569-2373. 6-1TC

FOR SALE—Frying rabbits Also 1 white buck, servicable age. See at parsonage First Baptist Church, Devol. Okla. 6-1TC

### FOR SALE

Exceptionally nice women and children's apparel. Our stock includes fashions by Dean-Jones, Mr. Mort and Jax of California.

Open Monday — Saturday  
10:00 a. m. to 2:00 p. m.

**The Fashion Plate**  
Oklahoma Cut-Off  
6-1TC

FOR SALE—Home made cakes pies and cookies. Will make birthday and party cakes. Mrs. Fred Burns, 208 Linden, Phone 569-3732. 15-CZ

9x12 ft. inoteum rugs for only \$4.95 at Bill's TV and Furniture Co. 301 N. Ave. D. Ph. 569-3651. 30-CZ

FOR SALE—New refrigerators, washers and stoves at unheard of prices. We're afraid to quote prices here. BURK FURNITURE MART, Ph. 569-3901.

### FOR SALE

**COIN-O-MATIC LAUNDRY . . . .**  
24 washers, 6 dryers, 1 rapid dry-cleaner. This is a clean, money making business. Best location in town.

**LARGE CORNER LOT . . . .**  
Nice two bed room home. Living room-dining room combination. Carpet and drapes. Double garage. Near school.

**CHOICE LOCATION . . . .**  
Older 9 room home. One block of town. 6 bed rooms, 2 baths. Carpet and drapes. PLUS 2 furnished 1 bed room apartments. Good investment.

**THREE BED ROOM FRAME . . . .**  
Brick trim. Carpets. Attached garage. Large lot.

**THREE BED ROOM BRICK . . . .**  
Central heat. Carpet. Built-in kitchen. Patio.

**Loise Bean Realty**  
569-3986 PHONE 569-2321  
53-CZ

### FOR SALE

FOR SALE—Furniture at large discounts. Save 20% to 60% on all items. BURK FURNITURE MART, 211 E. 3rd St. 23-CZ

### FOR SALE Residential and Commercial Properties

**Cliff Wampler**  
Real Estate Broker  
"Licensed and Bonded"  
203 North Avenue D  
Phone 569-3161

FOR SALE—1954 Ford 2-door standard shift. Ph. 569-3051. J. W. Simpson. 54-CZ

FOR SALE—Furniture. 4 rooms. ALL NEW. Includes 2 bedroom suites, all dust proof center guided drawers. These are not cheap veneer suites; good quality living room suite—5 pieces; dinette suite—7 piece. All of this beautiful furniture for \$380.00 total. No down payment and only \$13.72 per month. BURK FURNITURE MART, 211 E. 3rd St. 4-CZ

### Lloyd Clemmer LUMBER CO.

Pittsburg Paints, Dierks Creosote Posts, Sheet Iron, Roofing, Sheetrock, Lumber, Plywood, etc.  
Reasonable Prices  
Ph. 569-2911  
OKLAHOMA CUT-OFF

### MONUMENTS HENDERSON MONUMENT CO.

A Manufacturer Since 1906  
5001 Jacksboro Hwy.  
Wichita Falls Res. 767-1064  
A monument at a price any family can afford  
Rock of Ages—Georgia Marble Stone Eternal 8-CZ

FOR SALE—Bunk beds, cedar or maple. These are really beautiful and durable. At a price you can afford. See them. BURK FURNITURE MART, 211 E. 3rd St. 23-CZ

FOR SALE—Decorator pictures. All sizes and scenes at prices you won't believe. Come in. BURK FURNITURE MART, Ph. 569-3901. 23-CZ

### SPECIAL

Wax Leaf Nandina  
Pyracanthia Boxwood  
Gold Spot Silver Leaf Elm

**98¢ EACH**  
In Gallon Bucket

**NICK'S Produce and Nursery**  
640 E. THIRD  
BURKBURNETT, TEXAS

FOR SALE—1955 Mercury Station wagon. Power steering and brakes, radio and heater. Air conditioned. 206 7th Street. Ph. 569-1032. 3-CZ

REPOSSESSED FURNITURE FOR SALE—Buy this group at a steal. Ph. 569-3901. BURK FURNITURE MART. 23-CZ

FOR SALE—7 pc. living room group, beautiful. \$119.00. "That's too high, but what ain't." BURK FURNITURE MART, Ph. 569-3901. 23-CZ

**Cliff Wampler**  
General Insurance  
AUTO BUSINESS HOME  
Phone 569-3161  
203 N. Ave. D

### BUCKNER Refrigeration — Air Conditioning Electric Service

Phone 569-1041 315 Ellis St. Burkburnett, Texas

### FOR SALE

For Fedder air conditioners, see Bill's TV and Furniture Co. 301 N. Ave. D. Ph. 569-3651. 30-CZ

FOR SALE—1959 Great Lakes mobile home. 10 x 50-ft. Excellent condition. Small equity. Inquire at 707 Sheppard Road. 53-CZ

Save Money for You. Shop HERRING'S in 1962. New 5-tube Radio \$12.50. 17-CZ

FOR SALE—New dinette suites, \$44.00. BURK FURNITURE MART, Ph. 569-3901. 23-CZ

**MONUMENTS . . . .**  
And markers. All name brands of granite and marble. Dave McNeill. Ph. 569-3753. 2-CZ

### Purkey's Glass Co.

Auto Glass, Window Glass, Plate Glass, Mirrors, Shower Doors.

All Kinds of Glass—Cut To Any Size

All Work Guaranteed—12 Years Experience  
610 E. 3rd St. Ph. 569-1201  
6-1TP

### SERVICES

NOTICE—Permanent waves, \$5.00 and up. EDITH'S BEAUTY SHOP, 300 So. Ave. D. Ph. 569-3111. 3-CZ

G-E and Maytag Washing Machines repaired.  
Phone 569-2214  
Boyd Bros. Dept. Store

SERVICES—All kinds of remodeling. Homes or businesses. Up to 60 months to pay. W. T. Porter, Building Contractor, 214 W. 1st St. Ph. 569-2917. 2-CZ

WILSON'S REFRIGERATION AND AIR CONDITIONING. Residential—Commercial—Auto. All work guaranteed. Ph. 569-3495. 1004 Marion Dr. 34-CZ

SERVICES—For expert TV repair, call Home Furniture Co. day or night. 569-2901. or 569-2743. 9-CZ

Save Money for You. Shop HERRING'S in 1962. Motorola Television. 17-CZ

Save Money for You. Shop HERRING'S in 1962. Houseware Savings. 17-CZ

STOVES reconditioned for winter. Phone 569-2214. Boyd Bros. Dept. Store

### DUMP TRUCK HAULING

Top Soil, Fill Sand, Concrete and Masonry Sand  
Driveway Material  
**LEO BRYANT**  
PHONE 569-3704  
612 College, Burkburnett

SERVICES—Sewing and alterations. Ida Bus. 627 W. 3rd St. Ph. 569-3072. 6-1TC

TRACTOR WORK . . . . Mowing, plowing and leveling. 704 Tidal. Ph. 569-2437. H. C. Thompson. 6-2TC

SERVICES—High school junior girl will baby sit nights and week ends. References. Ph. 569-2780. 6-2TC

SERVICES—Books kept in my home. Permanent residence. References. Ph. 569-2162. 6-1TP

SERVICES—For your tree trimming, tree topping, tree removing. PHONE 569-3200. 6-1TP

For Results, Try Classified Ads

### SERVICES

SEWER LINES—Small yard machine. Free estimates. Logan Plumbing Co. Ph. 569-3553. 10-CZ

CHECK YOUR TV TUBES FREE AT HOME FURNITURE. 313 E. Main Phone 569-2801

**Minnows & Worms**  
Okla. Fishing Licenses  
**NICK'S Produce AND NURSERY**  
740 E 3rd St-Ph 569-8119  
35-CZ

SERVICES—I repair Kenmore, Whirlpool, Norge and many other automatic washers. Few good machines for sale. Guaranteed. Reasonable prices. Cliff Hagstrom. Ph. 569-3488. 47-CZ

**GIBSON TV & RADIO SERVICE**  
1108 Shady Lane  
Ph. 569-3833  
35-CZ

SERVICES—Fifteen years experience in all carpenter work. Remodel or new. First class work. Specialty in cabinet and trim work. Herman Snider, 201 N. Ave. D. Ph. 569-3371. 49-CZ

Save money every day on furniture and appliances at Bills TV and Furniture Company. 301 N. Ave. D. Phone 569-3651. 30-CZ

### WANTED

WANTED: People to Save Money; Buy Quality Merchandise at Discount Prices at HERRING'S. 17-CZ

WANTED—100 live bodies with good credit to buy furniture at large discount prices. Apply BURK FURNITURE MART, 211 E. 3rd St. 23-CZ

WANTED—White lady for light housekeeping three days a week. Ph. 569-2586 or 569-3407. 6-1TC

### FOUND

FOUND—Set of keys in front of Plemmons Shamrock Station. Owner must identify keys and pay for ad. Inquire at 108 N. Harwell. 6-1TP

Texas has 72,000 miles of gas pipelines.

### DEADLINES

For Classified Advertising  
Tuesday News  
FRIDAY, 5 00 P. M.  
Thursday Star  
WEDNESDAY NOON

### WANTED

Infants and children's winter clothing. Must be clean and in very good condition. We sell for you on a commission basis.

Open Monday — Saturday  
10:00 a. m. to 2:00 p. m.

**The Fashion Plate**  
Oklahoma Cut-Off  
6-1TC

### DECA Sweetheart



COOKIE MORREN

Cookie Morren was elected DECA Sweetheart Tuesday at the weekly DECA meeting. Cookie is a senior and she is Senior Vice President. She will represent the local chapter of DECA at the district meeting. Cookie is employed by Bill's TV and Appliance.

Marilyn Bailey, Reporter

### DEVOL NEWS

Mrs. C. O. Woodley, Reporter

The Devol Demonstrators met for an all-day meeting in the Club rooms Thursday, when two quilts were worked on, with a covered dish lunch served at noon. Lunch was also served to workmen who were there to install rest rooms in the Community Building. Club ladies present included Ethel McCasland, Dollie Hardin, Bluah Miracle, Belle Charboneau, Pearl Cates, Grace Uthe, Pearl Coker, Willie Cozby, Lucille Morrow, Clara Mae Woodley, Lorien Weaver and Nora Wood and Rilla Nalls.

Mr. and Mrs. K. L. Smith received word Sunday night of the death of their grandson, Johnnie Smith, 18 months old son of Mr. and Mrs. Lynn Dale Smith of Pueblo, Colorado, who died Sunday in Pueblo of pneumonia. Funeral services were planned for Thursday at 2:30 in Pueblo. K. L. Smith and daughter, Mrs. Jord Inman attended the service. Mrs. Smith was unable to go because of ill health.

Mrs. Brian Harrison received painful cuts on both hands Friday, from the sharp teeth of a tiny Chihuahua, she attempted to rescue from the attack of two large dogs at her home. She was treated by a physician at Burkburnett and returned home where she is reported doing nicely.

Mrs. W. C. Charboneau entertained a group of friends Friday afternoon in her home with a Stanley party when the hostess was Mrs. Myrtle Weaver. Other guests present were Mesdames Walton Manley, Mozelle Baldwin, Bobby Eastman, Guy Hutson and Clara M. Woodley.

Sunday guests of Mr. and Mrs. K. L. Smith were Mr. and Mrs. Bill Smith of Oklahoma City, Mr. and Mrs. Joed Inman and Mrs. Dollie Hardin.

Mr. and Mrs. E. C. Palmer visited Mrs. Josephine Whitehead in Lawton Sunday.

Mrs. Mattie Harrison of Grandfield was a guest over the week end of Mr. and Mrs. Brian Harrison and children.

Mrs. Don McCasland and Brent were guests over the week end of her grandmother, Mrs. Donna B. Able of Wichita Falls.

Mr. and Mrs. Carl Cox of Law-

### U. S. Urges Flu Shots

Q. Is Asian flu likely to again this year? Is the vaccine effective?  
A. According to the U. S. Health Service, recent patterns of influenza A2 (as the Asian strain) indicate this type of influenza is in the United States again in the winter. Outbreaks usually occur in all parts of the country and possibly in Canada. The vaccine is quite effective, the Public Health Service encourages use of the vaccine. It has sought the cooperation of physicians, medical students and voluntary health agencies in planning extensive vaccination campaigns.

**Bunions**  
Q. I have bunions on both feet. Would an operation be done to take long to recover? Would I be able to take walks and dance?  
A. Operation for bunions is especially serious but it does give an experienced surgeon the best results. Plenty of time should be allowed for healing. You should follow the doctor's advice. You should be happy with the results.

### Medical

Measured by fast relief from pain or swift recovery from illness—prescribed medicines. Measured by reasonable prices, prescription medicine is the biggest "money can buy."

**CORNE DRUG**  
320 E. Third St. Phone 569-2218  
After Hours 569-2218 or 569-2219  
Store Hours 8 A.M. to 11 P.M.  
Sun-Holidays 8 to 11 A.M.

ton were Devol visitors day afternoon.

Mrs. Bessie Burleson and Mrs. Gordon Woodley visited Mrs. C. O. Woodley Sunday.

The Devol Doers Club regular meeting Club ed to order by the Lucille Coles. Roll call Adams, acting secretary answered by "A Dietlem." Devotional by Wheeler Matt. 5-8-15.

Mrs. Betty Dahms was present and showed Rheumatic Fever, Heart Disease and on Refreshments of cookies were served.

Wood and Julie, Mary Joy and Roy, Delores and Lonnie, Joan Adams, Julie, Tommy Wheeler, Dorothy Turner.

Young people, now realize that money is earned when they grow old.

### Horses For Hire

Gentle Saddle Horse  
New Equipment  
\$1.00 Per Hour  
Scenic Riding Trails  
Free Riding Instruction  
Donnie "Cowboy"  
Southwest Devol.  
Follow the Sign  
Phone LYric 9-24

## A COMPLETE PAINT AND Auto Body Shop

**MATHIS CHEVROLET CO.**  
201 East 2nd Street  
PHONE 569-3381